



# National Institute of Justice

## Research Preview

Jeremy Travis, Director

April 1996

# Intervening with High-Risk Youth

## Preliminary Findings from the Children-at-Risk Program

*Summary of a Presentation by Adele Harrell, Ph.D., The Urban Institute*

The Children-at-Risk (CAR) program, a drug and delinquency prevention program, targets high-risk adolescents ages 11 to 13 who live in distressed neighborhoods. The program features integrated delivery of comprehensive services that are tailored to the community and involve close collaboration among the police, schools, case managers, and other youth service providers. Originally implemented in 1992 as a 3-year experimental demonstration program, it is funded by numerous private foundations and the Bureau of Justice Assistance (BJA), the Office of Juvenile Justice and Delinquency Prevention (OJJDP), and the National Institute of Justice (NIJ).

Under NIJ sponsorship, the Urban Institute is conducting an outcome evaluation of the program's impact on school performance, family functioning, delinquent behavior, and substance abuse. Preliminary results based on the first year of program operation in the first four cities to begin CAR programs indicate that:

- Youths in the CAR program had fewer contacts with police and courts than the control group and had higher rates of school attendance and promotion to the next grade level.
- There was evidence of greater declines in neighborhood crime in CAR neighborhoods in three of the four cities.

### The CAR approach to drug and delinquency prevention

The CAR approach to prevention builds on the integration of two established criminology theories: First, the social control approach maintains that delinquency and problem behaviors occur when youths fail to acquire the norms and values of mainstream society; the second argues that youths resort to illegal activities because they cannot attain their goals through legal means.

**Selection criteria.** The CAR program focuses on small, high-risk geographic areas with a comprehensive approach that is designed to meet needs at the individual, family, peer-group, and neighborhood levels.

Youths are selected for the program based on the following criteria:

- Ages 11 to 13 years—a critical developmental stage of increasing peer involvement.
- Enrollment at the neighborhood school and living in the target neighborhood.
- Meeting one of the following risk criteria: a family risk, such as a history of family violence or of child abuse and neglect, a family member convicted of a crime, gang membership, or suspected drug use; a school risk, which includes not only an academic problem but also a behavioral problem; and a personal risk, such as drug abuse, past arrest, gang membership, or teen pregnancy.

**Program services.** Case management of the entire family is the heart of the program, with each family having a case manager to assess needs and to supply each family member with appropriate services. Approximately half of these youths have also been recommended for mentoring, but the high rate of broken appointments has been a problem. In one site, a mentoring preparation program was established to teach the youths how to keep appointments and to instruct mentors about types of activities to do with the youths.

The education component is also critical in order to prepare children to succeed. Most of the youths are far behind grade level and need interesting activities and incentives to motivate them. Afterschool tutoring has not been as well attended as an afterschool computer lab. To create incentives to improve academic achievement in

---

Austin, Texas, Big Brothers/Big Sisters is giving the youths certificates guaranteeing them \$2,000 towards a college education if they complete high school. Summer programs stress work experience and provide stipends for youths performing jobs and attending employment training.

Local police are also very active in the CAR program and organize activities in the neighborhoods. The closest police collaboration exists in the Bridgeport, Connecticut, program where police officers and case managers share a storefront office accessible to the youths.

The final element of the program is services integration. Agencies work together at two levels. Policy boards meet to resolve issues among agencies; case managers discuss the child with members from each agency to determine what services are needed.

## Preliminary evaluation findings

**Study method.** The full evaluation includes CAR programs in high-risk neighborhoods in five cities: Austin, Texas; Bridgeport, Connecticut; Memphis, Tennessee; Savannah, Georgia; and Seattle, Washington. In the target neighborhoods, half of the eligible youths (338) were randomly selected to participate in the program. The remainder (333) became the control group. Comparison neighborhoods, similar in poverty rates, crime, and drug problems, were selected in the same cities and 203 high-risk youths in these neighborhoods were chosen to serve as a quasi-experimental comparison group. Comparisons of the treatment and control groups within the target neighborhoods will assess the impact of intensive case management, family services, mentoring, and education incentives. The quasi-experimental comparisons in each city will be used to look at the effects of neighborhood intervention. Evaluation data will include interviews with the youths and caregivers that were conducted before the start of services and 2 years later, at the end of services, as well as records provided by police, courts, and schools.

Analyses are under way. The following preliminary findings were based on a sample from the first year of the program, which included 228 youths from the first four cities to begin CAR programs (excluding Savannah, which began in the fall of 1993).

## Individual comparisons

In comparison to the control group, CAR participants had:

- Almost half the number of contacts with the police (41 compared to 69 for the control group) although prior to implementation of CAR, the two groups had similar numbers.

- Less than half the number of contacts with the juvenile court compared to the control group (34 compared to 71). Data included both police cases and cases sent directly to courts (e.g., schools referring directly for truancy).

- A greater percentage of youths being promoted to the next higher grade (88 percent compared to 72 percent) and indications of lower rates of chronic absenteeism.

The CAR youths did not, however, have higher grades or higher scores on standardized tests. As noted earlier, it has been difficult to motivate youths to attend afterschool tutoring partly because of the problems of traveling home in dangerous neighborhoods.

## Neighborhood comparisons

Findings were collected from the four cities that had quasi-experimental comparison neighborhoods and included the percentage change in Part 1 crimes from 1991 to 1993. The CAR neighborhoods showed that the decline in Part 1 offenses in three of the four cities exceeded the decline in the comparison neighborhoods and exceeded declines citywide. The only exception was Memphis, perhaps due to considerable turnover in the police department during this period. For Part 2 offenses, there was also a differential improvement in the CAR neighborhoods, again, except for Memphis.

## Future analyses

An analysis of the costs of the program is planned, which will include comparing both direct costs with the monetary value of benefits that might result from the program's ability to prevent crime and drug abuse. This is an important first step in identifying break-even points in the program—the level of success that CAR needs to achieve to pay for itself. Other areas include examining differences in risk factors for violence in comparison to risk factors for drug abuse and differences in the effect of the program on males and females.

The evaluation is being conducted under NIJ grant 92-OD-CX-0031 by Adele Harrell, Ph.D., Director, Program on Law and Behavior, The Urban Institute. For further information on the project, please contact Rosemary Murphy, Program Manager, Office of Research and Evaluation, NIJ, at 202-307-2959.

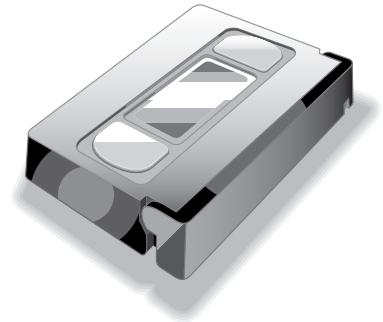
As part of NIJ's Research in Progress Seminar Series, Dr. Harrell discussed this study with an audience of researchers and criminal justice professionals and practitioners. A 60-minute VHS videotape of this and the other presentations in the series is available for \$19 including postage and handling (\$24 in Canada and other countries). Please ask for NCJ 153270.

Use the order form on the next page to obtain this videotape and any of the other tapes in the series.

Points of view in this document do not necessarily reflect the official position of the U.S. Department of Justice.

# The Latest Criminal Justice Videotape Series from NIJ:

## *Research in Progress Seminars*



Learn about the latest developments in criminal justice research from prominent criminal justice experts.

Each 60-minute tape presents a well-known scholar discussing his current studies and how they relate to existing criminal justice research and includes the lecturer's responses to audience questions. In addition to *Intervening with High-Risk Youth: Preliminary Findings from the Children-at-Risk Program*, reported on in this Research Preview, the other tapes available in VHS format are:

**NCJ 152235** — Alfred Blumstein, Ph.D., Professor of Urban Systems and Operations Research, Carnegie Mellon University: *Youth Violence, Guns, and Illicit Drug Markets*.

**NCJ 152236** — Peter W. Greenwood, Ph.D., Director, Criminal Justice Research Program, The RAND Corporation: *Three Strikes, You're Out: Benefits and Costs of California's New Mandatory-Sentencing Law*.

**NCJ 152237** — Christian Pfeiffer, Ph.D., Director of the Kriminologisches Forschungsinstitut Niedersachsen: *Sentencing Policy and Crime Rates in Reunified Germany*.

**NCJ 152238** — Arthur L. Kellerman, M.D., M.P.H., Director of the Center for Injury Control, School of Public Health and Associate Professor in the Division of Emergency Medicine, School of Medicine, Emory University: *Understanding and Preventing Violence: A Public Health Perspective*.

**NCJ 152692** — James Inciardi, Ph.D., Director, Drug and Alcohol Center, University of Delaware: *A Corrections-Based Continuum of Effective Drug Abuse Treatment*.

**NCJ 153271** — Marvin Wolfgang, Ph.D., Director, Legal Studies and Criminology, University of Pennsylvania: *Crime in a Birth Cohort: A Replication in the People's Republic of China*.

**NCJ 153730** — Lawrence W. Sherman, Ph.D., Chief Criminologist, Indianapolis Police Department, Professor of Criminology, University of Maryland: *Reducing Gun Violence: Community Policing Against Gun Crime*.

**NCJ 153272** — Cathy Spatz Widom, Ph.D., Professor, School of Criminal Justice, State University of New York — Albany: *The Cycle of Violence Revisited Six Years Later*.

**NCJ 153273** — Wesley Skogan, Ph.D., Professor, Political Science and Urban Affairs, Northwestern University: *Community Policing in Chicago: Fact or Fiction?*

**NCJ 153850** — Scott H. Decker, Ph.D., Professor and Chair, Department of Criminal Justice and Criminology, University of Missouri—St. Louis, and Susan Pennell, Ph.D., Director, Criminal Justice Research Unit, San Diego Association of Governments: *Monitoring the Illegal Firearms Market*.

**NCJ 154277** — Terrie Moffitt, Ph.D., Professor, Department of Psychology, University of Wisconsin: *Partner Violence Among Young Adults*.

**NCJ 156923** — Orlando Rodriguez, Ph.D., Director, Hispanic Research Center, Fordham University: *The New Immigrant Hispanic Populations: Implications for Crime and Delinquency in the Next Decade*.

**NCJ 156924** — Robert Sampson, Ph.D., Professor, Department of Sociology, University of Chicago: *Communities and Crime: A Study in Chicago*.

**NCJ 156925** — John Monahan, Ph.D., Professor of Psychology and Legal Medicine, University of Virginia School of Law: *Mental Illness and Violent Crime*.

**NCJ 157643** — Benjamin E. Saunders, Ph.D., and Dean G. Kilpatrick, Ph.D., Medical University of South Carolina: *Prevalence and Consequences of Child Victimization: Preliminary Results from the National Survey of Adolescents*.

**NCJ 159739** — Joel H. Garner, Ph.D., Research Director, Joint Centers for Justice Studies: *Use of Force By and Against the Police*.



To order any of these tapes, please complete and return this form with your payment (\$19, U.S.; \$24, Canada and other countries) to National Criminal Justice Reference Service, P.O. Box 6000, Rockville, MD 20849-6000. Call 800-851-3420, or e-mail askncjrs@ncjrs.aspensys.com if you have any questions.

Please send me the following tapes:

Qty.	Presenter Name and NCJ Number	Subtotal
_____	_____	_____
_____	_____	_____
_____	_____	_____
_____	_____	_____
		Total _____

Name \_\_\_\_\_

Address \_\_\_\_\_

City \_\_\_\_\_ State \_\_\_\_\_ ZIP \_\_\_\_\_ Daytime phone ( ) \_\_\_\_\_

Payment enclosed (U.S. dollars)  Deduct this item from my NCJRS Deposit Account, account no. \_\_\_\_\_

Charge my:  MasterCard  VISA Account no. \_\_\_\_\_

Exp. Date \_\_\_\_\_ Signature \_\_\_\_\_

---

**U.S. Department of Justice**

Office of Justice Programs

*National Institute of Justice*

*Washington, D.C. 20531*

Official Business

Penalty for Private Use \$300

BULK RATE  
POSTAGE & FEES PAID  
DOJ/NIJ  
Permit No. G-91