

CR sent  
H-27-83

Mississippi  
Department  
of  
Youth Services

NCJRS

FEB 10 1988

ACQUISITIONS

109060

1986  
Youth Court  
Report

109060

MISSISSIPPI YOUTH COURT STATISTICS 17 67

January 1, 1986, through December 31, 1986

MISSISSIPPI DEPARTMENT OF YOUTH SERVICES

301 North Lamar Street, Suite 410

Jackson, Mississippi 39201

(601) 359-1066

U.S. Department of Justice  
National Institute of Justice

109060

This document has been reproduced exactly as received from the person or organization originating it. Points of view or opinions stated in this document are those of the authors and do not necessarily represent the official position or policies of the National Institute of Justice.

Permission to reproduce this copyrighted material has been granted by

Mississippi Department of Youth Services

to the National Criminal Justice Reference Service (NCJRS).

Further reproduction outside of the NCJRS system requires permission of the copyright owner.

## CONTENTS

General Summary of Information . . . . .	2-6
--	-----

### Tables

Disposal by Method of Handling . . . . .	7
Dispositions by Month by County . . . . .	8-9
Dispositions by Manner of Handling . . . . .	10
Referrals by Source of Referral . . . . .	10
Type of Referral by Place of Care . . . . .	11
Age by Type of Referral . . . . .	11
Age by Reason Referred . . . . .	12
Age by Disposition . . . . .	13
Reason Referred by Race and Sex . . . . .	14
Reason Referred by Disposition . . . . .	15-16
Children in Jail or Police Station by Race and Sex . . . . .	17
Children in Jail by Age by Type of Referral . . . . .	17
Age by Grade Placement . . . . .	18
Age by Years of School Completed . . . . .	19
Living Arrangement by Age . . . . .	20
Living Arrangement by Race and Sex . . . . .	21
Income Assistance/Non-Assistance by Race . . . . .	21
Marital Status of Parent by Race and Sex of Child . . . . .	22
Marital Status of Parents of Juveniles in Institutions . . . . .	23
Reasons for Commitments to Institutions . . . . .	23
Educational Level of Commitments to Institutions . . . . .	23

### Graphs

Percentage of Juveniles Committed to Institutions in Violation of Parole by Age . . . . .	24
Percentage of Juveniles Committed to Institutions by Age and Sex . . . . .	25
Percentage of Juveniles Committed to Institutions by Age and Race . . . . .	26
Age by Type of Referral . . . . .	27

Instrument . . . . .	back cover
----------------------	------------

## YOUTH COURT REPORT

January 1, 1986, through December 31, 1986

As required by Section 43-21-257 of the Mississippi Code of 1972, Annotated, the Mississippi Department of Youth Services has the statutory authority to collect and report the statistical information of the Mississippi Youth Courts regarding juvenile offenses such as delinquency and status offenses.

The data in this report was taken from a statistical card developed and provided by the Mississippi Department of Youth Services. For each court, Youth Service Counselors or other designated persons complete a record on every case disposed of during the calendar year. The statistical cards are then forwarded to the Central Office of the Department of Youth Services where the data is compiled. The following information is included on all statistical cards: age, sex, race, reason for referral, type of care received pending disposition, manner of handling the case (i.e., officially or unofficially) and case disposition.

This report covers the period from January 1, 1986, to December 31, 1986. A deadline of January 16, 1987, was established for receipt of all statistical cards for that period. The data in this statistical report should be used to indicate trends or characteristics of youth court cases rather than an exact accounting of cases handled by the courts.

A total of 14,607 cases were reportedly disposed of during calendar year 1986. Eighty-one counties reported at least one or more cases referred and carried to disposition. A total of over 6,152 cases were disposed of in six counties, with each county reporting 600 or more cases. These were as follows:

Hinds . . . . .	1,521
Harrison . . . . .	1,220
Jackson . . . . .	1,073
Washington . . . . .	955
DeSoto . . . . .	731
Lauderdale . . . . .	652

When a judge, referee or probation officer handles a case formally and a written petition is filed, the case is known as an official case. Of the 14,607 cases reported, 5,789 were handled officially. When a judge, referee or probation officer handles a case informally and no petition is filed, the case is known as an unofficial case. There were 8,818 unofficial cases handled during the reporting period.

Each offense committed by a youth is processed by the courts either as a separate case or as a new referral for delinquency, status offense, abuse or neglect. Therefore, the total of 14,607 does not include the actual number of youths who have had more than one referral to the court during the year.

Of the 14,607 cases disposed of during 1986, 67 percent were referrals for delinquent offenses, 18 percent were referrals for status offenses and 14 percent were neglect or abuse cases brought before the youth courts. The remaining 1 percent of the referrals required special procedures. As in past years, more cases were handled unofficially (60 percent) than officially (40 percent). Males composed over 71 percent of the

total number of referrals and 29 percent of the cases were female. Forty-nine percent of all referrals were white, 50 percent were black and 1 percent were of another race. A total of 1,563 referrals violated probation or parole, with 1,141 cases of probation violation and 422 cases of parole violation. 1,697 cases were classified as children in need of supervision.

A status offense is noncriminal behavior by a juvenile, which would not be a crime if committed by an adult. In 1986, there were 2,628 referrals to the youth court for status offenses. The average age for the status offender was 15.2 years, whereas the most often reported age for the status offender was 16. Ungovernable behavior was the most prevalent offense, and running away was second, with 966 referrals.

A delinquent offense is the commission of an illegal act by a juvenile which would be a crime if committed by an adult. In 1986, there were 9,784 referrals to the youth court for delinquent acts. The most often reported age for the delinquent offender was 17, and the average age for the delinquent offender was 15.1. The three most common reasons for delinquent referrals were shoplifting (1,928 cases), burglary (1,519 cases) and larceny (945 cases).

In 1986, a total of 18 violent crimes were reported. These include four murders, one negligent manslaughter and thirteen rapes. Four males and one female were referred for murder and negligent manslaughter. Ten black and three white males were referred for rape. There were 147 reported cases of juveniles carrying and/or using guns in the commission of offenses. Knives were reportedly involved in 216 cases.

A drug offense, including sales, manufacture, use and possession, was listed as the primary reason for referral in 245 cases; however, 634 cases involved drugs or drug use. 1,213 cases cited possession or use of

alcohol as the primary reason for referral; however, 1,697 listed alcohol involvement.

Males were referred more often than females for all delinquent offenses except prostitution. However, twice as many females as males were referred as runaways, a status offense. In addition, females were listed as the victims of abuse more often than males.

Out of the 2,628 status offenders, only 594 were held overnight or longer. Twenty-two percent of that number were detained in jail or a police station and 52 percent were held in a detention center. Twenty-three percent were given shelter care and 3 percent were given care in a foster home or in other facilities.

Most of the youths referred for delinquency were not detained overnight. Of the 1,527 children requiring detention, 34 percent were held in jails or police stations and 62 percent were held in detention centers. The remaining 4 percent were held in other facilities. Eighty-two percent of the juveniles held overnight in jails, police stations or detention centers were males. The average length of stay in a jail was 6.3 days, whereas the average length of stay in a detention center was 6.37 days.

Of the juveniles referred to the youth courts, 77 percent were reported to be enrolled in school. Of that percentage, 58 percent of the juveniles were placed according to expected grade level, 36 percent were placed below expected grade level, and less than one percent were placed above expected grade level. Additionally, 4 percent of the juveniles were enrolled in special education programs and one percent were enrolled in vocational programs.

Twenty-eight percent of the juveniles referred to the Mississippi Youth Courts lived at home with both natural parents, 12 percent lived with one natural parent and one stepparent, and 46 percent lived in a single parent

home. Approximately one percent lived in a foster family home, an institution, or in an independent living arrangement, respectively.

Juvenile delinquents are committed by Youth Court Order to the Mississippi Department of Youth Services for institutionalization on either the Oakley or Columbia Campus. In 1986, 30 percent of the juveniles were committed for an offense which was a violation of parole and 70 percent of the juveniles committed were for a violation of probation and/or other offenses. Juveniles age 16 accounted for the greatest number of commitments in 1986, with 25 percent. The predominant number of commitments by sex was male and the predominate number of commitments by race was black.

The majority of institutionalized juveniles were from households with one parent, with as few as 15 percent from two parent households. Only 56 percent of the juveniles were enrolled in school at the time of commitment. More than half of those who were enrolled in school were performing below their expected grade level. Forty-three percent of the juveniles were not enrolled in school at the time of commitment according to reported data.

Twelve percent of institutionalized juveniles were committed for delinquent acts including murder, manslaughter, forcible rape, robbery, aggravated assault and carrying/possessing weapons. Burglary, larceny, motor vehicle theft, arson, forgery/counterfeiting, fraud, embezzlement and buying/receiving/possessing stolen property accounted for another 65.1 percent of the commitments.

Additional data relating to juvenile commitments to the Mississippi Department of Youth Services is reported in tables and charts beginning on page 7 of this report.



**DELINQUENCY, STATUS, NEGLECT, ABUSE AND SPECIAL PROCEEDINGS  
CHILDREN DISPOSED OF BY THE MISSISSIPPI  
YOUTH COURTS IN 1986, BY COUNTY, BY METHOD OF HANDLING**

**Table 1.**

County	Total	Unofficial	Official	County	Total	Unofficial	Official
<b>TOTAL</b>	<b>14,607</b>	<b>8,818</b>	<b>5,789</b>				
Adams .....	526	245	281	Leflore .....	261	170	91
Alcorn .....	160	43	117	Lincoln .....	111	1	110
Amite .....	15	3	12	Lowndes .....	428	320	108
Attala .....	79	70	9	Madison .....	210	120	90
Benton .....	2	—	2	Marion .....	79	53	26
Bolivar .....	354	212	142	Marshall .....	27	3	24
Calhoun .....	39	31	8	Monroe .....	96	—	96
Carroll .....	9	6	3	Montgomery .....	116	90	26
Chickasaw .....	29	14	15	Neshoba .....	67	28	39
Choctaw .....	16	12	4	Newton .....	21	12	9
Claiborne .....	25	17	8	Noxubee .....	10	5	5
Clarke .....	56	41	15	Oktibbeha .....	151	126	25
Clay .....	100	74	26	Panola .....	166	142	24
Coahoma .....	341	236	105	Pearl .....	159	113	46
Copiah .....	45	2	43	Perry .....	0	—	—
Covington .....	15	2	13	Pike .....	227	112	115
DeSoto .....	731	673	58	Pontotoc .....	44	4	40
Forrest .....	475	448	27	Prentiss .....	69	13	56
Franklin .....	5	4	1	Quitman .....	124	107	17
George .....	193	145	48	Rankin .....	166	49	117
Greene .....	30	13	17	Scott .....	47	40	7
Grenada .....	268	195	73	Sharkey .....	21	12	9
Hancock .....	288	187	101	Simpson .....	79	1	78
Harrison .....	1220	845	375	Smith .....	21	—	21
Hinds .....	1521	524	997	Stone .....	26	11	15
Holmes .....	54	40	14	Sunflower .....	451	274	177
Humphreys .....	26	17	9	Tallahatchie .....	69	54	15
Issaquena .....	1	—	1	Tate .....	55	53	2
Itawamba .....	44	36	8	Tippah .....	2	1	1
Jackson .....	1073	928	145	Tishomingo .....	39	9	30
Jasper .....	12	6	6	Tunica .....	77	66	11
Jefferson .....	11	5	6	Union .....	61	2	59
Jeff. Davis .....	4	—	4	Walthall .....	52	22	30
Jones .....	330	153	177	Warren .....	280	131	149
Kemper .....	0	—	—	Washington .....	955	365	590
Lafayette .....	91	63	28	Wayne .....	117	88	29
Lamar .....	66	57	9	Webster .....	26	20	6
Lauderdale .....	652	381	271	Wilkinson .....	12	3	9
Lawrence .....	5	1	4	Winston .....	32	—	32
Leake .....	105	84	21	Yalobusha .....	31	24	7
Lee .....	370	176	194	Yazoo .....	165	156	9
				City of Pearl .....	71	29	42

# **NUMBER OF DISPOSITIONS BY MONTH BY COUNTY**

**Table 2.**

County	Total	Jan.	Feb.	Mar.	Apr.	May	June	July	Aug.	Sept.	Oct.	Nov.	Dec.
<b>TOTAL</b>	<b>14607</b>												
Adams .....	526	16	46	90	46	27	55	32	28	54	51	44	37
Alcorn.....	160	15	10	4	18	10	10	19	6	21	20	17	10
Amite.....	15	0	0	1	0	0	1	0	3	6	1	2	1
Attala.....	79	6	4	15	8	13	2	6	5	6	4	4	6
Benton.....	2	0	0	0	1	0	0	0	0	1	0	0	0
Bolivar .....	354	23	28	20	24	47	24	46	31	39	36	11	25
Calhoun .....	39	5	5	0	2	5	1	2	3	12	3	0	1
Carroll.....	9	2	2	0	0	1	0	0	1	0	1	0	2
Chickasaw .....	29	0	3	0	1	1	4	3	1	5	3	4	4
Choctaw .....	16	0	2	1	1	0	1	1	3	0	4	0	3
Claiborne .....	25	1	2	0	4	4	0	5	1	3	3	2	0
Clarke.....	56	5	6	4	5	10	4	3	7	3	7	0	2
Clay .....	100	7	8	7	4	8	6	8	18	10	9	7	8
Coahoma .....	341	20	25	16	6	25	45	29	38	31	38	27	41
Copiah.....	45	1	0	6	0	8	5	4	0	2	8	8	3
Covington .....	15	0	2	3	3	1	0	2	0	4	0	0	0
DeSoto .....	731	16	35	65	76	56	75	99	34	112	74	50	39
Forrest .....	475	37	29	42	67	37	34	43	45	38	37	44	22
Franklin.....	5	0	0	0	0	0	0	0	0	0	3	1	1
George .....	193	15	17	18	28	10	18	15	25	22	14	8	3
Greene .....	30	0	3	4	2	1	1	3	6	1	4	3	2
Grenada.....	268	14	15	32	9	15	19	41	7	32	44	26	14
Hancock .....	288	21	19	32	24	24	26	22	19	41	16	17	27
Harrison.....	1220	73	113	195	107	104	89	108	83	95	102	92	59
Hinds.....	1521	42	49	99	151	163	133	152	132	156	166	134	144
Holmes .....	54	3	3	4	3	1	2	21	7	2	2	3	3
Humphreys.....	26	0	1	6	0	5	0	5	0	0	9	0	0
Issaquena .....	1	0	0	0	0	0	0	0	0	0	0	0	1
Itawamba .....	44	6	4	1	2	3	2	2	6	14	1	2	1
Jackson .....	1073	39	48	82	73	57	101	123	101	200	132	41	76
Jasper .....	12	1	3	0	2	0	1	0	0	2	2	1	0
Jefferson .....	11	0	2	0	0	5	1	0	0	2	1	0	0
Jefferson Davis ..	4	3	0	0	0	0	0	0	0	0	0	0	1
Jones .....	330	28	19	27	31	21	26	29	29	30	34	31	25
Kemper.....	0	0	0	0	0	0	0	0	0	0	0	0	0
Lafayette.....	91	6	5	11	6	6	5	6	10	11	12	7	6
Lamar .....	66	5	5	1	6	7	18	2	9	5	4	2	2
Lauderdale .....	652	47	41	36	71	61	62	47	56	71	60	43	57
Lawrence.....	5	1	2	1	1	0	0	0	0	0	0	0	0
Leake .....	105	8	15	13	16	5	6	4	8	13	5	0	12

# **NUMBER OF DISPOSITIONS BY MONTH BY COUNTY**

**Table 2 (continued)**

County	Total	Jan.	Feb.	Mar.	Apr.	May	June	July	Aug.	Sept.	Oct.	Nov.	Dec.
Lee .....	370	31	14	41	19	24	51	36	27	27	53	24	23
Leflore .....	261	20	11	25	35	24	20	24	8	35	28	11	20
Lincoln .....	111	6	7	14	7	5	0	3	6	16	15	12	20
Lowndes .....	428	37	33	34	32	36	35	31	40	39	44	25	42
Madison .....	210	14	13	16	29	12	23	10	23	22	15	15	18
Marion .....	79	7	8	12	10	4	8	7	3	5	6	7	2
Marshall .....	27	2	5	1	1	0	1	2	0	7	4	0	4
Monroe .....	96	3	10	1	19	3	13	12	8	8	0	14	5
Montgomery .....	116	12	7	11	2	6	3	8	16	4	21	13	13
Neshoba .....	67	1	1	3	12	6	2	14	6	7	0	7	8
Newton .....	21	0	3	0	2	5	3	0	0	1	1	6	0
Noxubee .....	10	1	0	0	0	0	4	0	1	2	1	1	0
Oktibbeha .....	151	4	6	19	16	14	9	13	11	19	18	7	15
Panola .....	166	26	14	19	18	23	10	4	7	13	6	10	16
Pearl River .....	159	11	19	12	13	9	9	9	16	21	22	6	12
Perry .....	0	0	0	0	0	0	0	0	0	0	0	0	0
Pike .....	227	14	12	14	28	12	12	29	26	16	23	18	23
Pontotoc .....	44	1	2	5	5	6	2	3	5	1	9	0	5
Prentiss .....	69	6	0	6	3	10	1	4	0	20	10	3	6
Quitman .....	124	14	2	7	8	8	6	10	18	9	10	12	20
Rankin .....	166	19	23	11	18	12	11	9	16	14	14	15	4
Scott .....	47	11	2	7	1	1	2	2	6	7	5	2	1
Sharkey .....	21	3	3	0	2	0	3	1	3	0	3	1	2
Simpson .....	79	3	14	2	4	9	6	9	3	8	7	7	7
Smith .....	21	0	2	1	0	0	10	0	1	2	1	2	2
Stone .....	26	9	1	1	1	0	7	2	4	0	1	0	0
Sunflower .....	451	16	30	40	33	35	48	36	38	69	37	36	33
Tallahatchie .....	69	11	0	1	2	13	3	4	12	1	10	5	7
Tate .....	55	4	2	5	9	3	4	7	3	7	3	4	4
Tippah .....	2	0	0	1	0	1	0	0	0	0	0	0	0
Tishomingo .....	39	1	7	5	4	0	4	2	1	1	8	4	2
Tunica .....	77	17	4	1	6	2	8	9	4	8	7	11	0
Union .....	61	2	1	7	2	8	1	20	0	10	1	6	3
Walthall .....	52	0	10	5	3	3	4	4	1	6	7	9	0
Warren .....	280	16	18	37	14	14	21	41	23	31	33	15	17
Washington .....	955	66	54	66	99	71	82	100	58	122	125	65	47
Wayne .....	117	0	2	4	12	8	15	14	16	17	18	7	4
Webster .....	26	0	1	8	2	0	0	0	2	1	0	0	12
Wilkinson .....	12	0	6	1	1	0	0	0	0	0	1	2	1
Winston .....	32	3	4	3	2	3	0	3	1	6	1	3	3
Yalobusha .....	31	3	0	1	8	0	4	2	3	3	1	6	0
Yazoo .....	165	16	11	22	11	14	15	15	11	15	9	17	9
City of Pearl .....	71	7	4	11	7	5	5	11	10	7	4	0	0

**DISPOSITION OF CHILDREN'S CASES IN 1986  
BY MANNER OF HANDLING**

**Table 3.**

	Total Cases	Unofficial Cases	Official Cases
	14,607	8,818	5,789
Disposition			
Waived to Justice or Circuit Court .....	160	23	137
Dismissed: not proved or not found involved .....	1,627	1,013	614
Warned: adjusted, counseled .....	3,306	3,126	180
Held open without further action .....	954	695	259
Youth Court Counselor to supervise .....	3,162	1,671	1,491
Supervision and fined .....	639	229	410
Fined .....	235	121	114
Supervision and restitution .....	583	189	394
Restitution .....	169	123	46
Supervision and special services .....	187	64	123
Special Services .....	89	66	23
Supervision and suspended license .....	49	18	31
Suspended license .....	16	12	4
Other combination of supervision, restitution fine or special services .....	99	19	80
Run away returned .....	425	370	55
Referred to another agency or individual for supervision or service .....	979	772	207
Other public institution .....	23	7	16
Public agency or department .....	195	94	101
Private agency or institution .....	65	16	49
Other disposition .....	217	114	103
Transfer legal custody to:			
Public institution for delinquents .....	619	—	619
Other public institution .....	27	4	23
Public agency or department (including court) .....	187	11	176
Private agency or institution .....	75	6	69
Individual .....	453	33	420
Other .....	67	22	45

**REFERRALS OF CHILDREN'S CASES IN 1986  
BY SOURCE OF REFERRAL**

**Table 4.**

Referred By	Total Cases
Total Cases .....	14,607
Law enforcement agency .....	10,115
School .....	316
Social agency .....	1,169
Youth Services Counselor .....	182
Family .....	1,635
Other court .....	74
Other source .....	1,116

## TYPE OF REFERRAL BY PLACE OF CARE

**Table 5.**

	Total	Delinquent	Status	Neglect and/or Abuse	Special Proceedings	Informal Adjustment Unsuccessful
	14,607	9,784	2,628	2,044	110	41
No overnight care	11,888	8,257	2,034	1,498	69	30
Jail or Police Station	652	512	129	—	1	10
Detention Home	1,270	954	310	3	3	—
Shelter Care	531	8	139	365	19	—
Foster Family	121	2	5	108	6	—
Other	145	51	11	70	12	1

## AGE BY TYPE OF REFERRAL

**Table 6.**

	Total	Delinquent	Status	Neglect and/or Abuse	Special Proceedings	Informal Adjustment Unsuccessful
	14, 607	9,784	2,628	2,044	110	41
Under 1 year	122	—	—	121	1	—
1	146	—	—	144	2	—
2	134	—	—	132	2	—
3	123	—	—	120	2	1
4	105	—	—	102	3	—
5	113	—	1	109	3	—
6	132	1	3	124	4	—
7	169	37	5	123	4	—
8	182	51	13	116	2	—
9	234	102	11	120	1	—
10	313	180	18	112	3	—
11	450	297	50	101	2	—
12	629	445	85	91	6	2
13	1,107	785	209	108	3	2
14	1,892	1,307	426	143	13	3
15	2,520	1,733	651	101	24	11
16	3,013	2,228	655	100	18	12
17	3,048	2,464	487	73	15	9
18	175	154	14	4	2	1

# AGE BY REASON REFERRED

Table 7.

	Total	Less Than One	1	2	3	4	5	6	7	8	9	10	11	12	13	14	15	16	17	18 and Older
TOTAL	14,607	122	146	134	123	105	113	132	169	182	234	313	450	629	1,107	1,892	2,520	3,013	3,048	175
Reason Referred																				
Murder or non-negligent manslaughter	4	—	—	—	—	—	—	—	—	—	—	—	—	—	1	—	—	2	1	—
Manslaughter by negligence	1	—	—	—	—	—	—	—	—	—	—	—	—	—	—	—	1	—	—	—
Forcible Rape	13	—	—	—	—	—	—	—	—	—	—	—	1	—	—	5	1	2	3	1
Robbery: purse snatching by force	30	—	—	—	—	—	—	—	—	—	—	—	—	1	—	4	5	8	10	2
Robbery: all except purse snatching	52	—	—	—	—	—	—	—	—	—	—	—	—	2	2	3	11	22	11	1
Assault: aggravated	293	—	—	—	—	—	—	—	—	2	3	5	7	9	15	34	55	79	75	9
Assault: all except aggravated	906	—	—	—	—	—	—	—	2	—	7	11	40	35	68	108	169	208	244	14
Burglary: breaking and entering	1,519	—	—	—	—	—	—	—	10	8	18	28	48	61	133	213	268	320	382	30
Larceny: shoplifting	1,928	—	—	—	—	—	—	—	9	14	26	52	83	131	232	308	338	394	330	11
Larceny: all except shoplifting	945	—	—	—	—	—	—	—	3	9	5	23	25	54	97	175	165	191	183	15
Motor Vehicle Theft: unauthorized use	204	—	—	—	—	—	—	—	—	—	—	1	4	3	16	27	42	54	54	3
Motor Vehicle Theft: all except unauthorized use	65	—	—	—	—	—	—	—	—	—	—	1	—	1	2	15	11	15	19	1
Weapons: carrying, possessing, etc.	153	—	—	—	—	—	—	—	—	—	1	3	1	4	9	26	25	40	43	1
Arson	29	—	—	—	—	—	—	—	1	—	1	—	3	3	3	7	5	2	3	1
Forgery and counterfeiting	92	—	—	—	—	—	—	—	—	—	—	1	—	1	2	7	13	23	40	5
Fraud	37	—	—	—	—	—	—	—	—	—	—	—	—	1	—	2	5	7	20	2
Embezzlement	18	—	—	—	—	—	—	—	—	—	—	—	—	—	1	—	4	1	11	1
Stolen property: buying, receiving, possessing	111	—	—	—	—	—	—	—	—	—	1	2	3	4	12	15	15	31	27	1
Vandalism	685	—	—	—	—	—	—	1	8	13	21	27	44	65	59	116	120	116	93	2
Disorderly conduct	853	—	—	—	—	—	—	—	4	3	13	16	20	33	58	95	165	221	217	8
Trespassing	455	—	—	—	—	—	—	—	—	2	5	5	11	18	39	52	103	103	113	4
Drunkenness	388	—	—	—	—	—	—	—	—	—	—	—	—	2	9	19	71	134	147	6
Prostitution	4	—	—	—	—	—	—	—	—	—	—	—	—	1	1	—	—	1	1	—
Sex offenses: all except forcible rape and prostitution	103	—	—	—	—	—	—	—	—	—	1	1	5	5	8	23	20	20	17	3
Violation of Drug Laws: Narcotic (use, man., sale, poss.)	80	—	—	—	—	—	—	—	—	—	—	—	—	1	—	3	8	25	40	3
Violation of Drug Laws: all except narcotic (use, man., sale, poss.)	165	—	—	—	—	—	—	—	—	—	—	—	—	4	3	20	29	41	65	3
Gambling	12	—	—	—	—	—	—	—	—	—	—	—	—	1	—	3	2	4	2	—
Driving under the influence	415	—	—	—	—	—	—	—	—	—	—	—	—	—	—	3	38	117	241	16
Contempt of court	115	—	—	—	—	—	—	—	—	—	—	2	1	1	12	19	17	22	32	9
Escape from detention	49	—	—	—	—	—	—	—	—	—	—	—	—	—	—	1	8	12	27	1
Other	60	—	—	—	—	—	—	—	—	—	—	2	1	4	3	4	19	13	13	1
<i>Delinquency Subtotal</i>	<i>9784</i>	<i>0</i>	<i>0</i>	<i>0</i>	<i>0</i>	<i>0</i>	<i>0</i>	<i>1</i>	<i>37</i>	<i>51</i>	<i>102</i>	<i>180</i>	<i>297</i>	<i>445</i>	<i>785</i>	<i>1307</i>	<i>1733</i>	<i>2228</i>	<i>2464</i>	<i>154</i>
Running away	966	—	—	—	—	—	—	—	—	—	1	4	18	25	78	162	252	258	162	6
Violation of curfew	173	—	—	—	—	—	—	—	—	—	—	—	2	2	8	41	41	42	35	2
Ungovernable behavior/incorrigible	1,079	—	—	—	—	—	1	3	5	13	10	14	30	56	110	195	273	225	141	3
Possessing or drinking of alcohol beverages	410	—	—	—	—	—	—	—	—	—	—	—	—	2	13	28	85	130	149	3
<i>Status Offense subtotal</i>	<i>2,628</i>	<i>0</i>	<i>0</i>	<i>0</i>	<i>0</i>	<i>0</i>	<i>1</i>	<i>3</i>	<i>5</i>	<i>13</i>	<i>11</i>	<i>18</i>	<i>50</i>	<i>85</i>	<i>209</i>	<i>426</i>	<i>651</i>	<i>655</i>	<i>487</i>	<i>14</i>
Neglect	1,165	89	112	90	65	64	73	74	70	64	70	68	44	44	48	60	47	42	40	1
Abuse: Sexual	335	6	4	12	26	17	21	16	21	21	18	17	23	20	24	31	25	22	10	1
Abuse: Other than sexual	544	26	28	30	29	21	15	34	32	31	32	27	34	27	36	52	29	36	23	2
<i>Neglect and Abuse subtotal</i>	<i>2,044</i>	<i>121</i>	<i>144</i>	<i>132</i>	<i>120</i>	<i>102</i>	<i>109</i>	<i>124</i>	<i>123</i>	<i>116</i>	<i>120</i>	<i>112</i>	<i>101</i>	<i>91</i>	<i>108</i>	<i>143</i>	<i>101</i>	<i>100</i>	<i>73</i>	<i>4</i>
Special proceedings	110	1	2	2	2	3	3	4	4	2	1	3	2	6	3	13	24	18	15	2
Informal Adjustment Unsuccessful	41	—	—	—	1	—	—	—	—	—	—	—	—	2	2	3	11	12	9	1

# AGE BY DISPOSITION

Table 8.

	Under		1	2	3	4	5	6	7	8	9	10	11	12	13	14	15	16	17	18
	Total	1 Year																		
	14,607	122	146	134	123	105	132	169	182	234	313	450	629	1,107	1,892	2,520	3,013	3,048	175	
Disposition																				
Waived to Justice or Circuit Court	160	0	1	0	1	0	0	0	0	0	0	0	0	0	1	8	12	32	88	16
Dismissed: not proved or not found involved	1627	25	35	24	31	24	24	28	32	36	35	48	63	59	86	167	237	301	342	30
Warned, adjusted, counseled	3306	2	11	14	13	8	7	11	29	34	65	90	119	169	294	453	587	700	665	34
Held open without further action	954	8	3	6	5	2	4	4	5	4	5	7	22	38	59	113	173	217	268	9
Youth Court Counselor to supervise	3162	1	0	3	2	2	2	4	11	20	30	58	92	161	275	503	633	727	610	27
Supervision and fined	639	0	0	0	0	0	0	0	0	0	0	7	11	23	44	72	103	155	209	15
Fined	235	0	0	0	0	0	0	0	1	0	2	2	3	1	10	7	35	56	112	6
Supervision and restitution	583	0	0	0	0	0	0	0	2	5	9	7	19	23	45	97	127	125	119	5
Restitution	169	1	0	1	0	0	0	1	4	3	3	4	6	13	19	21	27	25	36	4
Supervision and special services	187	1	0	3	2	0	2	1	0	1	2	4	4	9	14	14	36	49	43	2
Special services	89	0	0	0	0	0	0	0	0	0	1	0	1	6	5	13	11	25	25	2
Supervision and suspended license	49	0	0	0	0	0	0	0	0	0	0	0	0	0	0	0	3	16	29	1
Suspended license	16	0	0	0	0	0	0	0	0	0	0	0	0	0	0	0	2	3	11	0
Other combination of supervision, restitution fine or special services	99	0	0	0	0	0	1	0	0	0	0	1	1	2	6	11	15	23	37	2
Run away returned	425	0	0	0	0	0	0	0	0	0	1	3	7	12	35	63	120	115	68	1
Referred to another agency or individual for supervision or service	979	18	22	33	31	27	32	36	39	30	45	36	41	48	73	113	123	121	107	4
Other public institution	23	0	0	0	0	0	0	0	0	0	0	0	0	2	1	3	1	11	5	0
Public agency or department	195	8	13	10	4	10	6	11	7	11	6	7	10	8	16	9	19	17	22	1
Private agency or institution	65	2	6	1	2	1	0	1	0	2	0	2	3	6	5	14	4	10	5	1
Other disposition	217	3	7	2	2	4	5	3	2	3	8	1	10	8	12	19	27	51	43	7
Transfer legal custody to: Public institution for delinquents	619	0	0	0	0	0	0	0	0	0	0	2	6	20	51	109	137	153	141	0
Other public institution	27	0	0	0	0	1	1	0	0	1	0	0	3	1	1	4	4	6	5	0
Public agency or department (including court)	187	16	10	10	6	5	2	8	7	3	0	10	4	7	14	18	30	20	16	1
Private agency or institution	75	1	1	2	0	2	4	2	2	3	2	3	1	1	8	15	13	7	8	0
Individual	453	32	32	23	23	18	22	21	28	25	18	19	22	10	27	36	36	36	24	1
Other	67	4	5	2	1	1	1	1	0	1	2	2	2	2	6	10	5	12	10	0

# REASON REFERRED BY RACE AND SEX

Table 9.

	TOTALS	WHITE		BLACK		HISPANIC		OTHER			
	14,607	7,198		7,279		23		107			
		MALE	FEMALE	MALE	FEMALE	MALE	FEMALE	MALE	FEMALE		
		10,442	4,165	4,973	2,225	5,374	1,905	14	9	81	26
Reason Referred:											
Murder or non-negligent manslaughter	4	3	1	2	—	1	1	—	—	—	—
Manslaughter by negligence	1	1	—	—	—	1	—	—	—	—	—
Forcible Rape	13	13	—	3	—	10	—	—	—	—	—
Robbery: purse snatching by force	30	27	3	2	—	25	3	—	—	—	—
Robbery: all except purse snatching	52	49	3	12	1	36	2	—	—	1	—
Assault: aggravated	293	214	79	62	14	151	65	—	—	1	—
Assault: all except aggravated	906	677	229	222	82	454	147	—	—	1	—
Burglary: breaking and entering	1519	1463	56	593	30	855	23	3	—	12	3
Larceny: shoplifting	1928	1323	605	358	153	955	451	1	—	9	1
Larceny: all except shoplifting	945	841	104	312	46	526	56	—	2	3	—
Motor Vehicle Theft: unauthorized use	204	183	21	87	13	93	8	1	—	2	—
Motor Vehicle Theft: all except unauthorized use	65	59	6	36	4	20	2	3	—	—	—
Weapons: carrying, possessing, etc.	153	140	13	53	4	87	9	—	—	—	—
Arson	29	24	5	12	3	12	2	—	—	—	—
Forgery and counterfeiting	92	69	23	37	12	31	11	—	—	1	—
Fraud	37	26	11	19	8	7	3	—	—	—	—
Embezzlement	18	11	7	6	4	5	3	—	—	—	—
Stolen property: buying, receiving, possessing	111	105	6	25	3	80	3	—	—	—	—
Vandalism	685	605	80	317	46	285	34	—	—	3	—
Disorderly conduct	853	656	197	274	102	378	95	1	—	3	—
Trespassing	455	401	54	182	38	217	16	—	—	2	—
Drunkenness	388	334	54	289	46	41	7	—	—	4	1
Prostitution	4	1	3	1	1	—	2	—	—	—	—
Sex offenses: all except forcible rape and prostitution	103	99	4	42	2	57	2	—	—	—	—
Violation of Drug Laws: narcotic (use, manu., sale, poss.)	80	63	17	44	14	18	2	1	1	—	—
Violation of Drug Laws: all except narcotic (use, manu., sale, poss.)	165	141	24	99	22	40	2	1	—	1	—
Gambling	12	11	1	4	1	7	—	—	—	—	—
Driving under the influence	415	373	42	344	41	27	1	—	—	2	—
Contempt of court	115	84	31	35	8	48	23	—	—	1	—
Escape from detention	49	46	3	24	3	22	—	—	—	—	—
Other	60	50	10	28	6	22	4	—	—	—	—
Delinquency Subtotal	9784	8092	1692	3524	707	4511	977	11	3	46	5
Running away	966	340	626	257	453	71	164	1	2	11	7
Violation of curfew	173	132	41	73	19	58	22	—	—	1	—
Ungovernable behavior/incorrigible	1079	590	489	306	241	280	248	2	—	2	—
Possessing of drinking of alcohol beverages	410	326	84	267	77	59	6	—	—	—	1
Status Offense subtotal	2628	1388	1240	903	790	468	440	3	2	14	8
Neglect	1165	572	593	293	344	261	239	—	3	18	7
Abuse: Sexual	335	56	279	41	174	15	103	—	—	—	2
Abuse: Other than sexual	544	251	293	151	166	99	122	—	1	1	4
Neglect and Abuse subtotal	2044	879	1165	485	684	375	464	—	4	19	13
Special proceedings	110	54	56	37	35	17	21	—	—	—	—
Informal Adjustment Unsuccessful	41	29	12	24	9	3	3	—	—	2	—



# REASON REFERRED BY DISPOSITION

Table 10.

	Total	Waived to justice or circuit court	Dismissed: Not proved or not found involved	Dismissed, warned, counseled	Held Open without further action	Youth Court Counselor to supervise	Supervision and fined	Fined	Supervision and restitution	Restitution	Supervision and special services	Special Services	Supervision and suspended license
	14,607	160	1,627	3,306	954	3,162	639	235	583	169	187	89	49
Reason Referred													
Murder or nonnegligent manslaughter	4	0	2	0	0	1	0	0	0	0	0	0	0
Manslaughter by negligence	1	0	0	1	0	0	0	0	0	0	0	0	0
Forcible rape	13	8	3	0	1	0	0	0	0	0	0	0	0
Robbery: Purse snatching by force	30	5	2	2	1	12	0	0	0	0	0	0	0
Robbery: All except purse snatching	52	3	10	8	2	13	0	0	3	0	1	1	0
Assault: Aggravated	293	18	53	65	17	72	7	1	16	4	1	0	2
Assault: All except Aggravated	906	6	166	305	79	217	24	6	22	7	5	2	0
Burglary: Breaking and entering	1519	48	116	123	47	500	109	12	235	22	24	0	0
Larceny: Shoplifting	1928	13	87	691	95	622	112	42	28	14	44	30	1
Larceny: All except shoplifting	945	10	135	151	49	296	48	4	74	20	14	4	1
Auto theft: Unauthorized use	204	3	33	26	8	69	2	1	16	2	1	0	0
Auto theft: All except unauthorized use	65	4	2	17	3	14	2	0	5	1	0	0	0
Weapons: Carrying, possessing, etc.	153	2	12	37	24	45	7	3	1	0	6	0	0
Arson	29	1	6	1	3	8	1	0	2	0	1	0	0
Forgery and counterfeiting	92	6	14	6	8	17	4	0	19	4	2	2	0
Fraud	37	0	3	6	10	6	2	7	0	2	0	0	0
Embezzlement	18	0	1	4	2	5	0	0	3	2	0	0	0
Stolen property: buying, receiving, possessing	111	2	24	21	2	27	6	1	5	1	1	3	0
Vandalism	685	2	98	151	40	128	25	4	123	72	7	8	0
Disorderly conduct	853	3	110	377	81	165	25	6	5	5	19	4	1
Trespassing	455	3	47	167	69	102	19	8	12	2	2	1	0
Drunkenness	388	4	17	105	51	87	31	47	0	0	3	10	3
Prostitution	4	0	0	2	0	0	0	0	0	0	0	0	0
Sex offenses: all except forcible rape and prostitution	103	1	26	24	8	22	1	0	0	0	0	0	0
Violation of drug laws: Narcotic	80	1	10	11	12	22	5	1	1	0	1	2	0
Violation of drug laws: All except narcotic	165	1	10	37	12	53	22	3	1	0	2	1	0
Gambling	12	0	1	3	3	4	0	0	0	0	0	0	0
Driving under the influence	415	6	13	18	6	69	99	70	5	0	9	4	39
Contempt of court	115	0	9	11	7	22	2	1	0	2	4	5	0
Escape from detention	49	1	1	2	34	1	0	0	0	0	0	0	0
Other	60	2	10	18	2	12	0	5	4	0	0	1	0
<i>Delinquency Subtotal</i>	<i>9784</i>	<i>153</i>	<i>1021</i>	<i>2390</i>	<i>676</i>	<i>2612</i>	<i>553</i>	<i>222</i>	<i>580</i>	<i>169</i>	<i>147</i>	<i>78</i>	<i>47</i>
Running Away	966	0	58	130	64	115	2	0	2	0	2	1	2
Violation of Curfew	173	1	7	72	13	29	15	8	0	0	2	0	0
Unmanageable behavior	1079	0	87	361	71	255	9	0	0	0	4	3	0
Possessing or drinking liquor	410	1	19	143	62	83	55	5	0	0	10	7	0
<i>Status off. Subtotal</i>	<i>2628</i>	<i>2</i>	<i>171</i>	<i>706</i>	<i>210</i>	<i>482</i>	<i>81</i>	<i>13</i>	<i>2</i>	<i>0</i>	<i>18</i>	<i>11</i>	<i>2</i>
Neglect	1165	1	241	130	37	20	0	0	0	4	8	0	0
Abuse: Sexual	335	1	64	7	9	6	0	0	0	2	7	0	0
Abuse: Other than sexual	544	2	124	48	15	21	0	0	0	3	7	0	0
<i>Neglect and Abuse Subtotal</i>	<i>2044</i>	<i>4</i>	<i>429</i>	<i>185</i>	<i>61</i>	<i>47</i>	<i>0</i>	<i>0</i>	<i>0</i>	<i>9</i>	<i>22</i>	<i>0</i>	<i>0</i>
Special proceedings	110	1	2	17	4	6	3	0	0	0	0	0	0
Informal Adjustment unsuccessful	41	0	4	8	3	16	2	0	1	0	0	0	0

# REASON REFERRED BY DISPOSITION

Table 10. (Continued)

Suspended license	Other combination of supervision, restitution fine or special services	Run away returned	Referred to another agency or Individual for supervision or service	Other Public Institution	Public agency or department	Private agency or institution	Other disposition	Public Institution for delinquents	Other public Institution	Public agency or department	Private agency or institution	Individual	Other
16	99	425	979	23	195	65	217	619	27	187	75	453	67
0	0	0	0	0	0	0	0	1	0	0	0	0	0
0	0	0	0	0	0	0	0	0	0	0	0	0	0
0	0	0	1	0	0	0	0	0	0	0	0	0	0
0	0	0	0	0	1	0	1	4	0	2	0	0	0
0	0	0	0	0	0	0	0	10	0	1	0	0	0
0	0	0	4	0	3	1	5	18	1	0	2	0	3
0	2	0	11	2	0	0	13	33	0	2	1	1	0
0	26	2	14	3	5	1	18	197	5	4	2	1	5
1	9	2	36	0	6	2	14	68	0	4	1	3	3
0	17	2	16	1	3	2	6	79	4	1	4	1	3
0	0	1	9	1	0	0	4	22	1	3	0	1	1
0	1	0	2	0	1	0	1	9	0	2	0	0	1
1	0	0	2	1	2	3	0	6	0	0	0	0	1
0	2	0	1	0	0	0	0	3	0	0	0	0	0
0	0	0	2	0	0	0	2	6	0	0	0	0	0
0	0	0	0	0	0	0	0	1	0	0	0	0	0
0	0	0	0	0	0	0	0	1	0	0	0	0	0
0	1	5	2	0	0	0	3	6	0	0	0	1	0
0	5	0	4	1	0	0	2	11	0	1	1	2	0
0	2	0	12	1	1	0	8	18	2	3	0	1	4
0	1	1	2	1	0	1	0	12	0	1	2	0	2
0	1	5	12	2	2	1	2	1	1	1	1	0	1
0	0	0	1	0	0	0	1	0	0	0	0	0	0
0	0	0	8	0	0	1	0	8	0	2	0	2	0
0	1	1	3	0	1	2	1	3	0	0	2	0	0
0	1	0	4	1	1	1	4	7	0	1	2	0	1
0	1	0	0	0	0	0	0	0	0	0	0	0	0
14	20	0	19	1	3	1	13	1	0	3	0	0	2
0	2	0	3	0	1	1	12	26	1	4	1	0	1
0	0	0	0	0	0	0	1	5	0	1	1	2	0
0	1	0	0	0	0	0	0	4	0	0	0	0	1
16	93	19	168	19	32	15	111	560	15	36	20	15	29
0	1	389	106	2	10	7	15	12	2	13	3	26	4
0	0	0	4	0	0	0	1	19	0	0	0	1	1
0	0	14	170	4	6	9	18	23	3	6	14	20	2
0	4	1	15	0	0	0	1	1	1	0	1	1	0
0	0	0	235	1	90	18	38	0	4	74	25	223	16
0	1	1	104	1	11	8	9	0	0	26	1	71	6
0	0	1	165	0	41	5	19	0	0	29	1	58	5
0	0	0	11	0	5	1	5	0	2	2	9	38	4
0	0	0	1	0	0	0	0	4	0	1	1	0	0

**Children In Jail or Police Station  
by Race and Sex**

**Table 11.**

	<b>Total</b>	<b>BOYS</b>	<b>GIRLS</b>
	652	537	115
White	303	236	67
Black	344	296	48
Hispanic	2	2	—
Other	3	3	—

**Children in Jail by Age by Type of Referral**

**Table 12.**

	<b>Total</b>	<b>Delinquent</b>	<b>Status</b>	<b>Neglect or Abuse</b>	<b>Special Proceeding</b>	<b>Informal Adjustment Unsuccessful</b>
	652	512	129	0	1	10
Less than 1 year	0	—	—	—	—	—
1 year	0	—	—	—	—	—
2 years	0	—	—	—	—	—
3 years	0	—	—	—	—	—
4 years	0	—	—	—	—	—
5 years	0	—	—	—	—	—
6 years	0	—	—	—	—	—
7 years	1	1	—	—	—	—
8 years	1	1	—	—	—	—
9 years	1	1	—	—	—	—
10 years	2	2	—	—	—	—
11 years	10	9	1	—	—	—
12 years	6	5	1	—	—	—
13 years	35	22	13	—	—	—
14 years	75	59	15	—	—	1
15 years	136	93	40	—	—	3
16 years	180	136	40	—	1	3
17 years	195	174	19	—	—	2
18 years	10	9	—	—	—	1

# AGE BY GRADE PLACEMENT

Table 13.

Age	Total	Below expected level	expected level	Accelerated	Special education	GED program	Vocational Program	Inapplicable
	14,607	4,103	6,524	1	463	105	46	3,365
Under 1 year	122	—	—	—	—	—	—	122
1	146	—	—	—	—	—	—	146
2	134	—	—	—	—	—	—	134
3	123	—	—	—	—	—	—	123
4	105	—	—	—	—	—	—	105
5	113	1	9	—	—	—	—	103
6	132	3	77	—	1	—	—	51
7	169	12	144	—	2	—	—	11
8	182	35	132	—	2	—	—	13
9	234	38	184	—	8	—	—	4
10	313	70	217	—	11	—	—	15
11	450	113	300	—	24	—	—	13
12	629	195	379	—	38	—	—	17
13	1107	360	613	—	56	—	—	78
14	1892	709	927	—	66	—	—	190
15	2520	888	1175	1	105	6	4	341
16	3013	962	1260	—	95	21	12	663
17	3048	689	1070	—	51	70	29	1139
18	175	28	37	—	4	8	1	97

# AGE BY YEARS OF SCHOOL COMPLETED

Table 14.

	Years of School Completed														
	TOTAL	NONE	1	2	3	4	5	6	7	8	9	10	11	12	Unknown
AGE	14,607	937	212	225	338	505	719	1,677	2,127	2,520	2,288	1,522	1,005	253	279
Under															
1 year old	122	122	—	—	—	—	—	—	—	—	—	—	—	—	—
1	146	146	—	—	—	—	—	—	—	—	—	—	—	—	—
2	134	134	—	—	—	—	—	—	—	—	—	—	—	—	—
3	123	123	—	—	—	—	—	—	—	—	—	—	—	—	—
4	105	105	—	—	—	—	—	—	—	—	—	—	—	—	—
5	113	113	—	—	—	—	—	—	—	—	—	—	—	—	—
6	132	113	19	—	—	—	—	—	—	—	—	—	—	—	—
7	169	47	108	13	—	—	—	—	—	—	—	—	—	—	1
8	182	14	61	82	22	—	—	—	—	—	—	—	—	—	3
9	234	2	13	72	111	32	—	—	—	—	—	—	—	—	4
10	313	3	7	42	103	128	22	—	—	—	—	—	—	—	8
11	450	—	1	13	60	165	172	35	—	—	—	—	—	—	4
12	629	2	—	2	30	88	226	226	48	—	—	—	—	—	7
13	1107	3	1	1	8	48	168	443	349	70	—	—	—	—	16
14	1892	1	—	—	3	24	71	475	626	548	116	—	—	—	28
15	2520	2	—	—	—	4	32	282	527	778	704	133	—	—	58
16	3013	2	—	—	—	10	12	134	345	683	833	771	167	—	56
17	3048	5	2	—	—	6	16	79	218	422	608	594	800	215	83
18	175	—	—	—	1	—	—	3	14	19	27	24	38	38	11

# LIVING ARRANGEMENT BY AGE

Table 15.

	TOTAL	Under 1 Year	1	2	3	4	5	6	7	8	9	10	11	12	13	14	15	16	17	18
	14,607	122	146	134	123	105	113	132	169	182	234	313	450	629	1,107	1,892	2,520	3,013	3,048	175
With both parents	4166	41	43	36	30	25	26	29	37	44	65	84	108	159	270	484	723	902	1,018	42
With Mother/ Stepfather	1430	—	2	4	4	4	6	8	17	14	22	22	43	59	124	187	296	317	283	18
With Father/ Stepmother	332	—	—	1	1	3	3	1	1	6	6	6	9	15	19	52	66	74	65	4
With Mother Only	6143	62	71	68	61	57	49	73	88	93	114	152	234	312	535	867	1031	1183	1034	59
With Father Only	637	—	2	4	7	2	5	5	10	7	10	7	10	19	43	85	104	145	162	10
With Relatives	1329	14	21	12	17	10	15	12	13	17	14	30	36	52	76	163	216	299	291	21
Foster Family Home	132	1	4	5	3	1	4	3	2	1	2	6	6	4	21	16	18	15	19	1
Institution	98	1	—	—	—	—	—	—	—	—	—	—	1	2	7	10	19	23	32	3
Independent Living Arrg.	170	—	—	—	—	—	—	—	—	—	—	—	1	—	1	5	13	23	112	15
Other Place	170	3	3	4	—	3	5	1	1	—	1	6	2	7	11	23	34	32	32	2

# LIVING ARRANGEMENT BY RACE AND SEX

Table 16.

	TOTAL	WHITE		BLACK		HISPANIC		OTHER	
	14,607	7,198		7,279		23		107	
		MALE	FEMALE	MALE	FEMALE	MALE	FEMALE	MALE	FEMALE
		4973	2225	5374	1905	14	9	81	26
With both parents	4166	2028	743	1047	315	4	1	19	9
With mother & stepfather	1430	601	291	388	133	4	3	8	2
With father & stepmother	332	186	85	38	20	—	1	2	—
With mother only	6143	1336	682	3037	1044	4	3	31	6
With father only	637	320	126	152	33	—	—	4	2
With relatives	1329	296	155	603	268	2	—	4	1
<u>2</u> In Foster Family Home	132	28	31	24	35	—	—	10	4
In Institution	98	50	17	21	9	—	—	1	—
In Independent living arrangements	170	61	44	31	32	—	1	—	1
In Other Place	170	67	51	33	16	—	—	2	1

# INCOME ASSISTANCE/NON-ASSISTANCE BY RACE

Table 17.

	TOTAL	WHITE	BLACK	HISPANIC	OTHER
	14,607	7,198	7,279	23	107
Receiving assistance at time of referral	3724	697	3003	4	20
Not receiving assistance at time of referral	5143	3249	1851	11	32
Unknown	5740	3252	2425	8	55

# MARITAL STATUS OF PARENT BY RACE AND SEX OF CHILD

Table 18.

	TOTAL 14,607	WHITE 7,198		BLACK 7,279		HISPANIC 23		OTHER 107	
		MALE 4973	FEMALE 2225	MALE 5374	FEMALE 1905	MALE 14	FEMALE 9	MALE 81	FEMALE 26
Married & Living Together	4215	2097	766	1006	310	5	1	20	10
Divorced or Separated	4865	1919	897	1493	514	5	4	26	7
Both Dead	122	31	8	56	26	—	—	1	—
Father Dead	988	267	103	462	146	1	1	6	2
Mother Dead	349	94	50	147	58	—	—	—	—
Other Reason	37	11	10	9	7	—	—	—	—
Parents Not Married To Each Other	1988	99	64	1397	416	1	—	10	1
Other Status	23	7	6	4	4	—	1	1	—
Unknown	2020	448	321	800	424	2	2	17	6



Marital Status of Parents of Juveniles  
Committed to Mississippi Department of Youth Services Institutions

Table 19

MARRIED AND LIVING TOGETHER	15%
DIVORCED OR SEPARATED MOTHER DEAD/FATHER DEAD PARENTS NOT MARRIED TO EACH OTHER	77%
OTHER CIRCUMSTANCES	8%

Reasons for Juveniles Committed to  
Mississippi Department of Youth Services Institutions

Table 20

MURDER/MANSLAUGHTER/FORCIBLE RAPE ROBBERY/AGGRAVATED ASSAULT/ASSAULT CARRYING, POSSESSING WEAPONS	11.6%
BURGLARY/LARCENY/MOTOR VEHICLE THEFT ARSON/FORGERY AND COUNTERFEITING/FRAUD EMBEZZLEMENT/BUYING, RECEIVING, POSSESSING STOLEN PROPERTY	65.1%

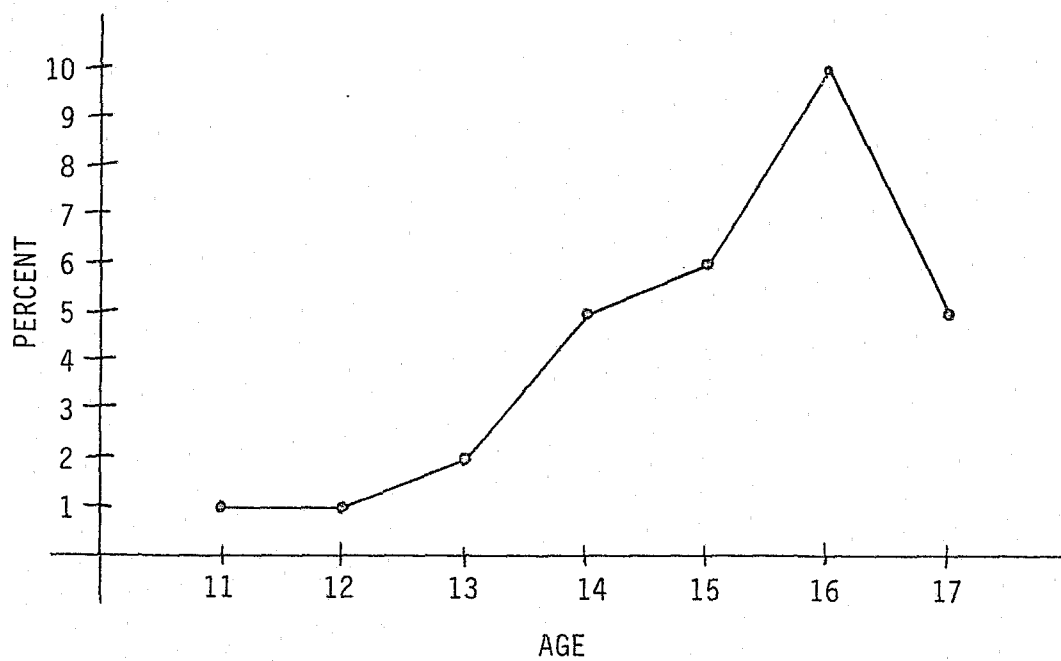
Educational Level of Juveniles Committed to  
Mississippi Department of Youth Services Institutions

Table 21

BELOW EXPECTED GRADE LEVEL IN SCHOOL	56%
SPECIAL EDUCATION/GED PROGRAM/VOCATION PROGRAM	17%
AT EXPECTED GRADE LEVEL IN SCHOOL OR ACCELERATED	27%

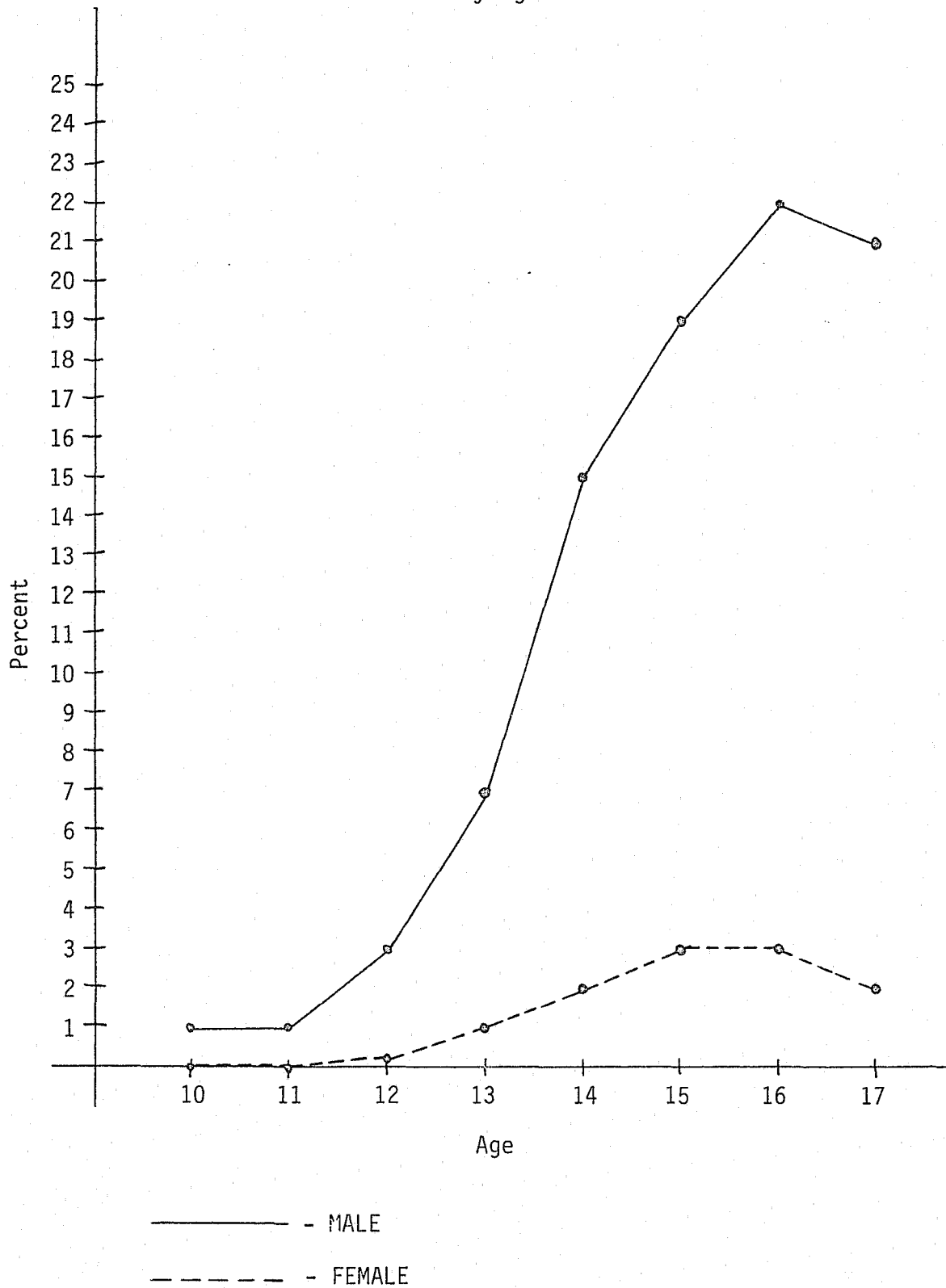
Graph 1

Percentage of Juveniles Committed  
to Mississippi Department of Youth Services Institutions  
in Violation of Parole by Age



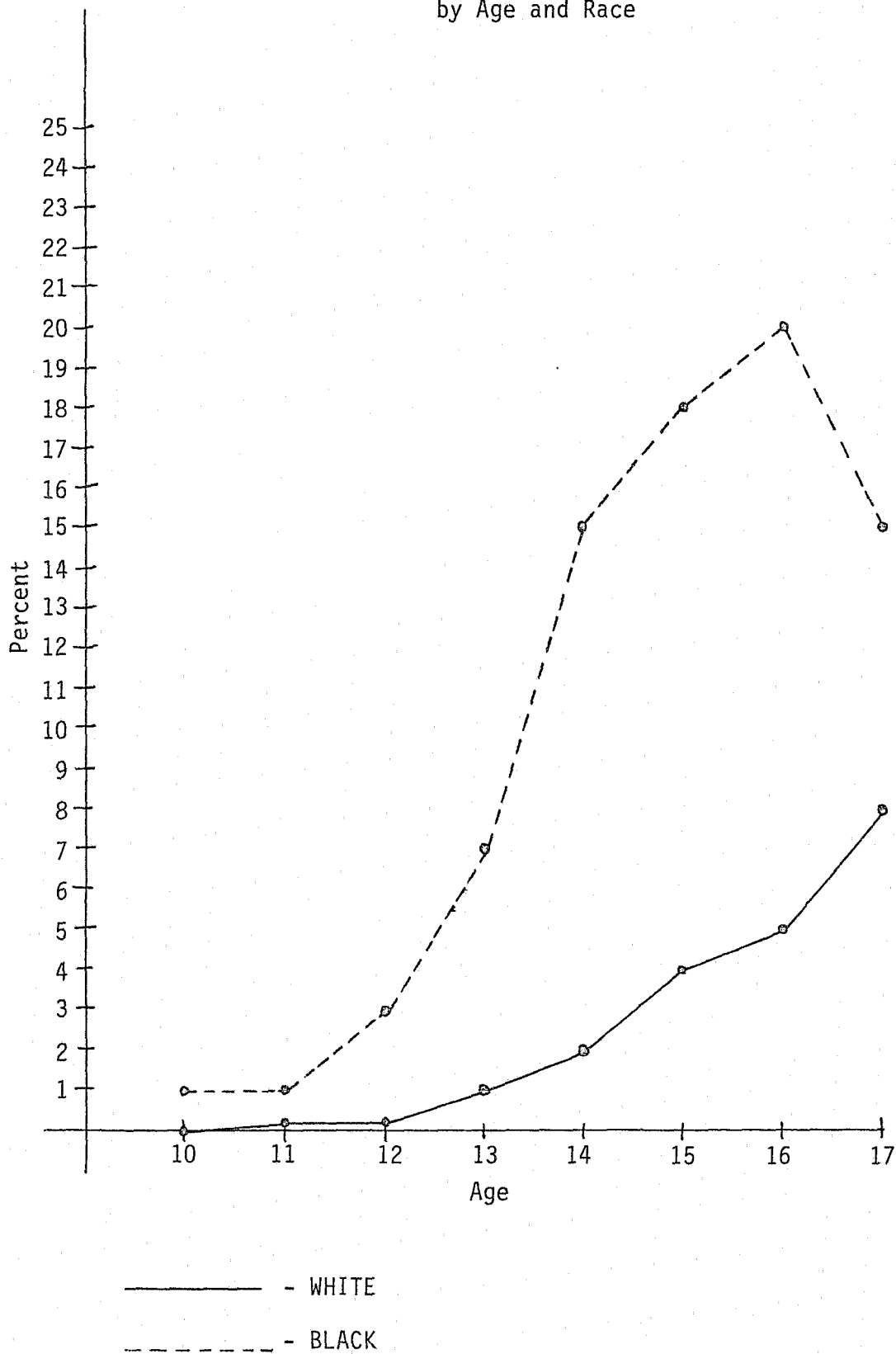
Graph 2

Percentage of Juveniles Committed  
to Mississippi Department of Youth Services Institutions  
by Age and Sex



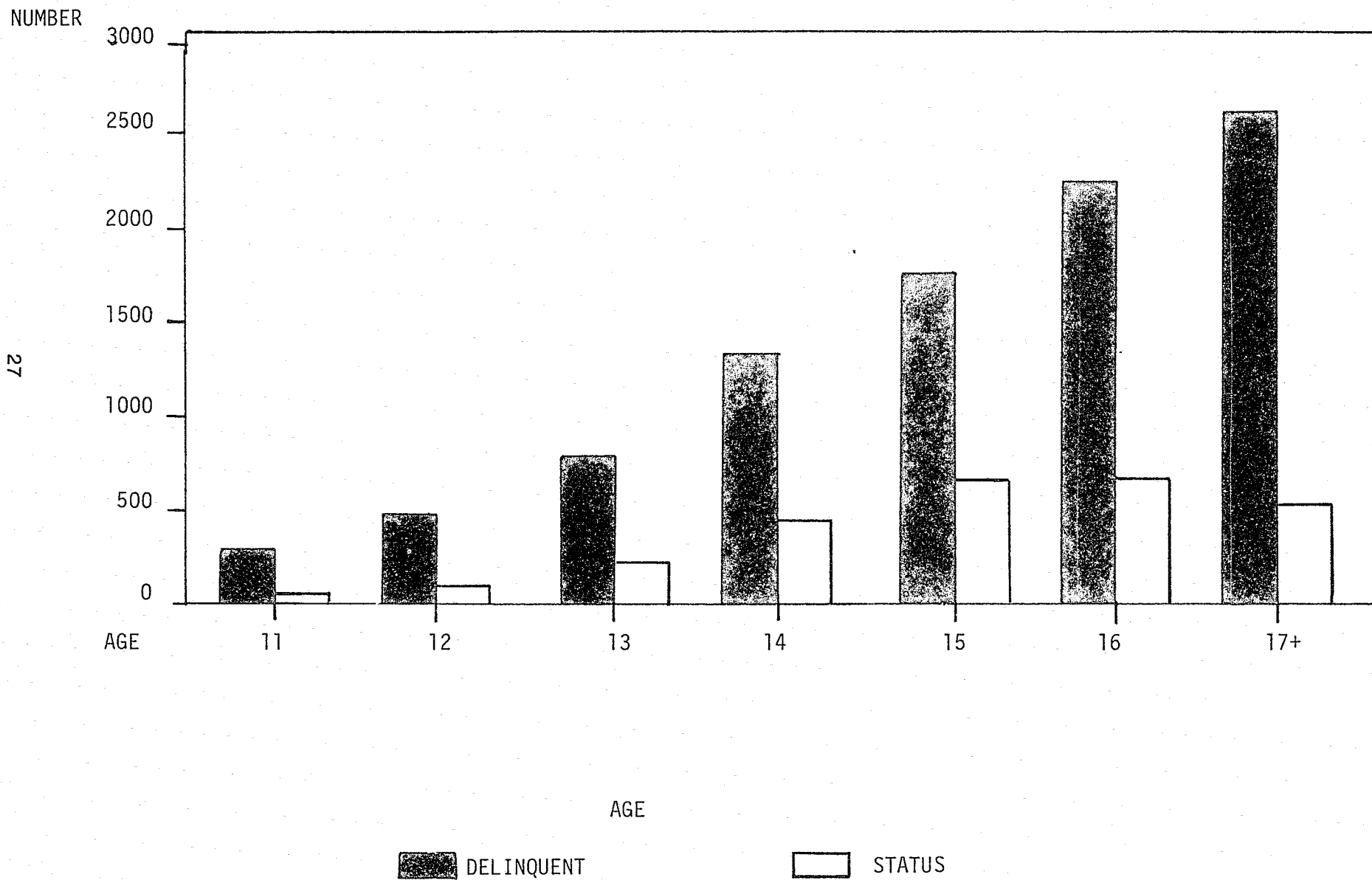
Graph 3

Percentage of Juveniles Committed  
to Mississippi Department of Youth Services Institutions  
by Age and Race



Graph 4

AGE BY TYPE OF REFERRAL



Counselor's Name \_\_\_\_\_

1 County ☐ ☐ 1

2 Intake Number (if applicable) ☐ ☐ ☐ ☐ ☐ ☐ ☐ ☐ ☐ ☐ 2

3 Child Number ☐ ☐ ☐ ☐ ☐ ☐ 3

4 Date of Birth ☐ ☐ ☐ ☐ ☐ ☐ ☐ ☐ ☐ ☐ 4

Month

Day

Year

5 Age in Years ☐ ☐ 5

6 Sex (Male-M — Female-F) ☐ 6

7 Race ☐ 7

1 White

2 Black

3 Hispanic

4 Other (Specify) \_\_\_\_\_

8 Referred by ☐ 8

1 Law Enforcement

2 School

3 Social Agency

4 Youth Services Counselor

5 Family

6 Other Court

7 Other Source (Specify) \_\_\_\_\_

9 Prior Delinquency

Referrals:

a This calendar year ☐ ☐ 9

b In prior years ☐ ☐ 10

10 Care Pending Disposition ☐ 11

0 No detention or shelter care overnight.

Detention or shelter care overnight or longer in:

1 Jail or Police Station

2 Detention Center

3 Shelter Care

4 Foster Family Home

5 Other place (specify) \_\_\_\_\_

11 If detained in jail/detention center give date entered and length of stay:

Date entered: \_\_\_\_\_ 12

Days: \_\_\_\_\_ 13 Hours: \_\_\_\_\_ 14

Name of Facility: \_\_\_\_\_

12 Date Referred ☐ ☐ ☐ ☐ ☐ ☐ 15

Month

Day

Year

13 Reason Referred:

01 Murder or non-negligent

manslaughter

02 Manslaughter by negligence

03 Forcible Rape

04 Robbery: purse snatching

by force

05 Robbery: all except

purse snatching

06 Assault: aggravated

07 Assault: all except aggravated

08 Burglary: breaking and entering

09 Larceny: shoplifting

10 Larceny: all except shoplifting

11 Motor Vehicle Theft: unauthorized use

12 Motor Vehicle Theft: all except unauthorized use

13 Weapons: carrying, possessing, etc.

14 Arson

15 Forgery and counterfeiting

16 Fraud

17 Embezzlement

18 Stolen property: buying, receiving, possessing

19 Vandalism

20 Disorderly conduct

21 Trespassing

22 Drunkenness

23 Prostitution

24 Sex offenses: all except forcible rape and prostitution

25 Violation of Drug Laws: narcotic (use, manu., sale, poss.)

26 Violation of Drug Laws: all except narcotic (use, manu., sale, poss.)

27 Gambling

28 Driving under the influence

29 Contempt of court

30 Escape from detention

31 Running away

32 Violation of curfew

33 Ungovernable behavior/incorrigible

34 Possessing or drinking of alcoholic beverages

35 Informal adjustment unsuccessful

36 Neglect

37 Abuse: Sexual

38 Abuse: Other than sexual

39 Special proceedings (specify) \_\_\_\_\_

40 Other (specify) \_\_\_\_\_

Primary Reason Referred ☐ ☐ 20

Secondary Reason Referred ☐ ☐ 21

Additional Offenses this Referral ☐ ☐ 22

☐ ☐ 23

☐ ☐ 24

14 Were drugs or alcohol involved in this referral? Yes = Y, No = N

14a Drugs ☐ 25

Alcohol ☐ 26

15 Manner of Handling ☐ 27

1 Without a petition

2 With a petition

16 Violation of: Yes = Y, No = N

Probation ☐ 28

Parole ☐ 29

17 Child in need of supervision ☐ 30

18 Date of Adjudicatory Hearing ☐ ☐ ☐ ☐ ☐ ☐ 31

Month

Day

Year

19 Date of Disposition ☐ ☐ ☐ ☐ ☐ ☐ 32

Month

Day

Year

20 Disposition ☐ ☐ 33

00 Waived to Justice or Circuit Court

01 Dismissed: not proved or not found involved

02 Warned, adjusted, counseled

03 Held open without further action

04 Youth Court Counselor to supervise

05 Supervision and fined (Amount) \$ \_\_\_\_\_ 34

06 Fined (Amount) \$ \_\_\_\_\_ 35

07 Supervision and restitution (Amount) \$ \_\_\_\_\_ 36

08 Restitution (Amount) \$ \_\_\_\_\_ 37

09 Supervision and special services (# of hours) \_\_\_\_\_ 38

10 Special services (# of hours) \_\_\_\_\_ 39

11 Supervision and suspended license

12 Suspended license

13 Other combination of supervision, restitution (\$ \_\_\_\_\_) 39

line (\$ \_\_\_\_\_) 40 or special services (# of hours) \_\_\_\_\_ 41

14 Run away returned

15 Referred to another agency or individual for supervision or service

16 Other public institution (identify) \_\_\_\_\_

17 Public agency or department (identify) \_\_\_\_\_

18 Private agency or institution (identify) \_\_\_\_\_

19 Other disposition (specify) \_\_\_\_\_

Transfer legal custody to:

20 Public institution for delinquents

21 Other public institution (identify) \_\_\_\_\_

22 Public agency or department (including court) (identify) \_\_\_\_\_

23 Private agency or institution (identify) \_\_\_\_\_

24 Individual

25 Other (specify) \_\_\_\_\_

21 Living arrangements of child ☐ ☐ 42

In own home

01 With both parents

02 With mother and stepfather

03 With father and stepmother

04 With mother

05 With father

06 In home of relatives

07 In foster family home

08 In institution

09 In independent living arrangements

10 In other place (specify) \_\_\_\_\_

22 Marital Status of Natural Parents ☐ ☐ 43

01 Parents married and living together

02 Divorced or separated

03 Both dead

04 Father dead

05 Mother dead

06 Other reason (specify) \_\_\_\_\_

07 Parents not married to each other

08 Other status (specify) \_\_\_\_\_

09 Unknown

23 Family Income ☐ 44

1 Receiving assistance at time of referral

2 Not receiving assistance at time of referral

3 Unknown

24 Location of Residence ☐ 45

1 Rural

2 Urban — predominantly residential

3 Urban — predominantly business or industrial area

4 Suburban

25 Length of residence (of child) in county ☐ 46

0 Not currently resident of county

1 Under one year

2 One year but less than 5 years

3 Five years or more

26 School placement and adjustment ☐ 47

a Presently in school (Yes = Y, No = N)

b Years of schooling completed ☐ ☐ 48

00 01 02 03 04 05 06 07 08 09 10 11 12 or more

c Grade placement in relation to age ☐ 49

1 Below expected level

2 At expected level

3 Accelerated

4 Special education

5 GED program

6 Vocational Program

7 Inapplicable (not in school) ☐ 50

d Serious or persistent school misbehavior ☐ 51

Y = Yes, N = No, 3 = Inapplicable (not in school)

26 Employment Status: Y = Yes, N = No

Child is employed either part-time or full-time ☐ 51