

Archival Notice

This is an archive page that is no longer being updated. It may contain outdated information and links may no longer function as originally intended.

ANNUAL REPORT

KANSAS CITY, MISSOURI
POLICE DEPARTMENT

1987



110460

110460

110460

**U.S. Department of Justice
National Institute of Justice**

This document has been reproduced exactly as received from the person or organization originating it. Points of view or opinions stated in this document are those of the authors and do not necessarily represent the official position or policies of the National Institute of Justice.

Permission to reproduce this copyrighted material has been granted by

Kansas City Missouri Police
Department

to the National Criminal Justice Reference Service (NCJRS).

Further reproduction outside of the NCJRS system requires permission of the copyright owner.

Kansas City, Missouri Police Department



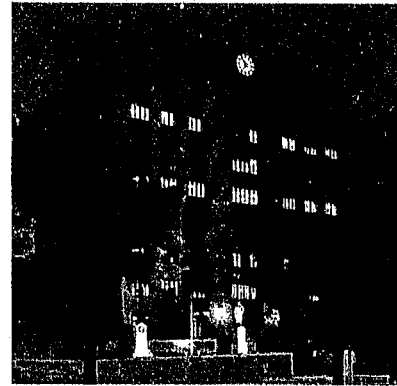
1987 Annual Report

NCJRS

APR 11 1988

ACQUISITIONS

Larry J. Joiner
Chief of Police



Credits

Narrative and Layout by:

Ms. JoAnne Sweet, Public Affairs Unit

Statistical Summary by:

Administrative Analysis Division

Graphic Illustration and Transparent Oil Work by:

Mrs. Cathy Williams, Printing and Publications Unit

Photographs by:

Sergeant Steven W. Wright,

Officer Stephen C. Warlen,

Mr. John J. Falk,

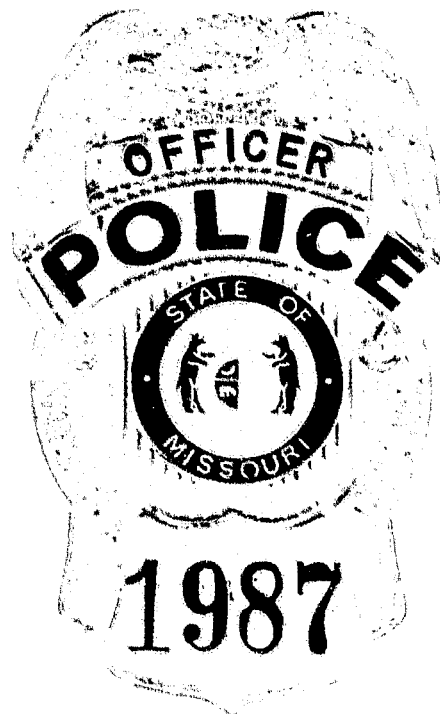
Regional Crime Laboratory

Printed by:

Printing and Publications Unit, Mr. Wayne L. Bosler III, Supervisor

Table of Contents

Chief's Letter of Transmittal.....	2
Board of Police Commissioners.....	3
Office of the Chief of Police.....	5
Field Services Bureau.....	9
Investigations Bureau.....	13
Information and Budget Bureau.....	17
Administration and Services Bureau.....	21
1986 Award Recipients.....	24
Police Facilities and Patrol Division Boundaries.....	26
Financial and Statistical Summary.....	27
Distribution and Comparison of Police Budget.....	28
Length of Service and Age of Personnel by Rank/Title.....	29
Law Enforcement Salary Schedule.....	30
Civilian Salary Schedule.....	31
Calls-For-Service (Car Dispatches).....	32
Part I Offenses Reported to the Police.....	33
Controlled Substance Enforcement.....	34
Arrests by Organizational Elements.....	35
Persons Arrested.....	36
Juvenile Summary.....	37
Value of Property Stolen.....	38
Value of Property.....	39
Traffic Summary.....	40



In Memoriam



Martin Hynes	1881	Michael Y. Sayeg	1918	George R. Johnson	1929	Clyde W. Harrison	1951
Patrick Jones	1882	Frank Mansfield	1918	Charles H. Dingman Jr.	1929	Mike Pearson	1954
John Martin	1892	Issac Fenno	1919	Oliver P. Carpenter	1932	William Kenner	1955
John E. Jacobson	1897	Frederick F. Tierney	1919	Richard E. Fitzgerald	1933	Richard Reeves	1957
Frank McNamara	1902	Ula A. McMahan	1920	Leroy Van Meter	1933	Kieffer C. Burris	1960
Alexander R. McKinney	1903	William H. Scobee	1920	William J. Grooms	1933	Herbert E. Bybee	1960
Stephen O. Flanagan	1903	James H. Horn	1920	Frank E. Hermanson	1933	Bennie A. Hudson	1960
Joseph P. Keenan	1903	Frank S. Archer	1920	Morris Bigus	1933	Arthur J. Marti	1961
Frank C. McGinnis	1904	William C. Bayne	1921	Eric O. Bjorkback	1933	Richard L. Chatburn	1962
William P. Mulvihill	1905	Carl J. Bickett	1921	John Ruffolo	1934	Hugh L. Butler	1968
John Dwyer	1906	James N. Brink	1921	William E. Wood	1934	Marlon R. Bowman	1968
Albert O. Dolbow	1908	Gerald L. Fackert	1921	Grant V. Schroder	1934	George E. Lanigan	1968
Michael P. Mullane	1908	Richard P. McDonald	1922	Frank Franano	1935	Larry D. Oliver	1968
Joseph Raimo	1911	Hershel M. Wyatt	1923	Frank Stevens	1936	David C. Woodson	1968
Homer Darling	1911	William C. Zinn	1923	William T. Cavanaugh	1936	Ronald D. Yoakum	1968
Robert L. Marshall	1912	Willard L. Ferguson	1923	Lawrence K. Morrison	1937	James W. Glenn	1969
Homer Riggle	1913	Wright D. Bryant	1923	Thomas McAuliffe	1937	Richard D. Bird	1969
Andrew Lynch	1913	Thomas J. Wilson	1923	Henry Shipe	1938	John E. Dacy	1969
William F. Koger	1913	Dennis J. Whalen	1924	Ralph R. Miller	1941	Robert W. Evans	1971
Bernard McKernan	1914	Barney Jasper	1924	Arthur J. Morris	1942	Russell D. Mestdagh	1975
Samuel K. Holmes	1914	George E. Lawson Jr.	1924	Melvon L. Huff	1945	Charles C. Massey Jr.	1975
William Hauserman	1915	Emmett C. Barnes	1924	James H. Owens	1947	Warren G. Jackman	1976
Glenn Marshall	1916	Jack P. Wilcox	1924	Floyd H. Montgomery	1948	Douglas A. Perry	1978
William A. Spangler	1916	Albert B. Cummings	1925	Charles H. Perrine	1948	John J. O'Sullivan	1978
John Houlehan	1916	John V. Kincaid	1926	William S. Wells	1948	David J. Inlow	1980
Harris W. West	1917	John W. Lelter	1926	Charles W. Neaves	1948	Phillip A. Miller	1983
Arthur M. Dorsett	1917	James H. Smith	1928	Sandy W. Washington	1948		
Harry J. Keating	1918	Ralph Hinds	1929	Robert D. Edmunds	1949		



Chief's Letter of Transmittal

Commissioners:

I hereby respectfully submit the Annual Report for 1987.

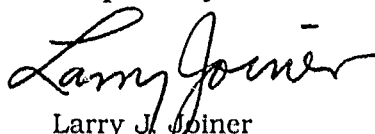
During the past year, numerous efforts have been undertaken to deal with the rising crime statistics, and the success of these efforts has been recognized on both local and national levels.

From the outset of 1987, the problem of drug trafficking in our city played an important role in the crime situation. This required that the department take a firm stand on how to deal with this problem, to curtail the flow of drugs into our area. In order to do this, the public needed to be educated on the dangers and risks involved in the use of drugs, primarily the use of cocaine or crack, as well as recognizing the symptoms and consequences associated with the presence of drugs in our society. In cooperation with several federal agencies, a Crack Task Force was formed to identify, arrest, and prosecute those individuals directly responsible for the flow of drugs into our city. This effort and the on-going investigations have not only benefited the department and the citizens of Kansas City, but set an example for other cities and agencies to follow.

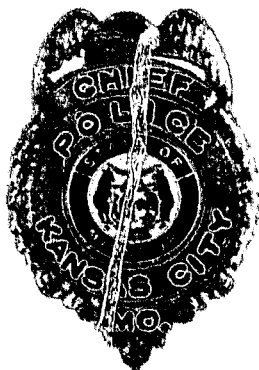
The department formed two new units in 1987. Over the last several years, there has been an increase in the number of vehicles stolen. The Auto Theft Unit was formed after a successful joint investigation by the Crimes Against Property Division and the FBI, aimed at professional car thieves, chop shops, and illegal salvage yards. This unit addresses the auto theft problem through the investigation of criminal offenses and by enforcing the laws governing salvage yard operations. During the past year, this unit had a substantial impact on the auto theft problem. The Career Criminal Unit was formed to coordinate efforts directed toward the identification, arrest, and prosecution of the most active criminals, those who earn their living from crime. More than one-half of those persons initially targeted by this unit have since been charged.

But the overall success of these efforts, and the many more which are not mentioned, could not have been achieved without the cooperation and dedication of every member of this department. Throughout the year, these men and women remained dedicated to assuring that the laws that have been instituted were carried out to their fullest extent, in order to insure the safety and well-being of the citizens of this city. Additionally, members of this department were called upon from time to time to lend assistance to other agencies. The commendable manner in which department members performed their duties reflects highly upon our department, as well as upon our city.

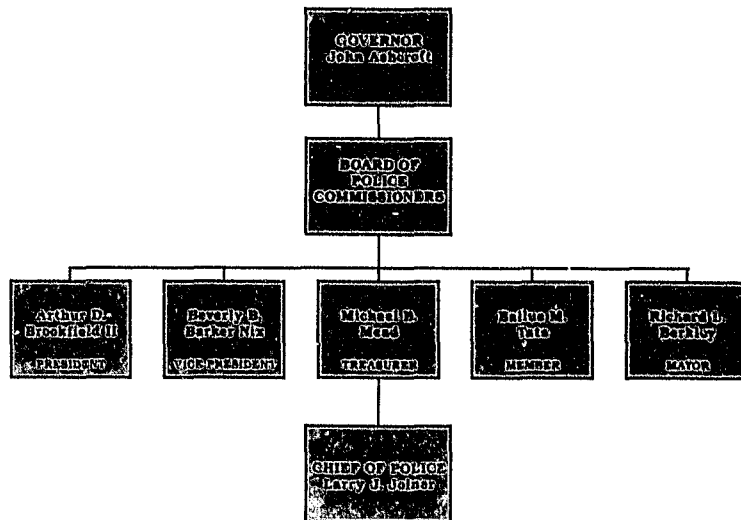
Respectfully,



Larry J. Joiner
Chief of Police



Board of Police Commissioners



The Board of Police Commissioners has the responsibility of providing police service to the citizens of Kansas City, Missouri, as mandated by Missouri state statute. The Governor of Missouri, with the consent of the State Senate, appoints four citizens to serve on the Board of Police Commissioners. These commissioners serve four-year terms, with one member's term expiring each year. The fifth member of the Board is the Mayor of Kansas City, by virtue of his elected office. The Secretary/Attorney of the Board of Police Commissioners is appointed by the Board and acts as legal consultant, as well as managing clerical matters for the Board.

The Board has the responsibility for the appointment of the Chief of Police, police surgeons, physicians, attorneys, chaplains, and consultants, and oversees the management and control of the Kansas City, Missouri Police Department.

On October 16, 1987, Mr. Bailus M. Tate became the newest member of the Board of Police Commissioners. Commissioner Tate is a native of Kansas City, Missouri, having graduated from Central High School, receiving a Bachelor of Science degree from Park College, and a Master of Arts degree in Human Resources from Central Michigan State University. Commissioner Tate is married and has two children. He is currently Manager of Customer Service for the Kansas City Commercial Office of Kansas City Power and Light.



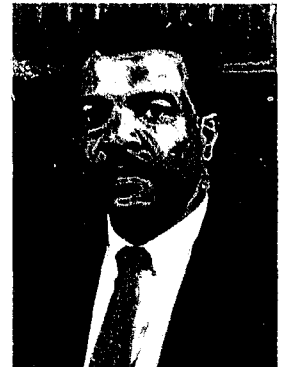
ARTHUR D. BROOKFIELD II
President



BEVERLY B. NIX
Vice President



MICHAEL B. MEAD
Treasurer



BAILUS M. TATE
Member



**MAYOR
RICHARD L. BERKLEY**
Ex-Officio Member



WILLIAM RAY PRICE, JR.
Secretary-Attorney



Lt. Col. Lester N. Harris
Executive Officer
Office of the Chief



Larry J. Joiner
Chief of Police



Maj. James A. Reynolds
Commander
Special Investigations Div.



Mr. Michael Allan Wee
Legal Advisor



Capt. Les Goss
Commander
Enforcement Unit



Maj. Victor A. Kauzlarich
Commander
Internal Affairs Div.



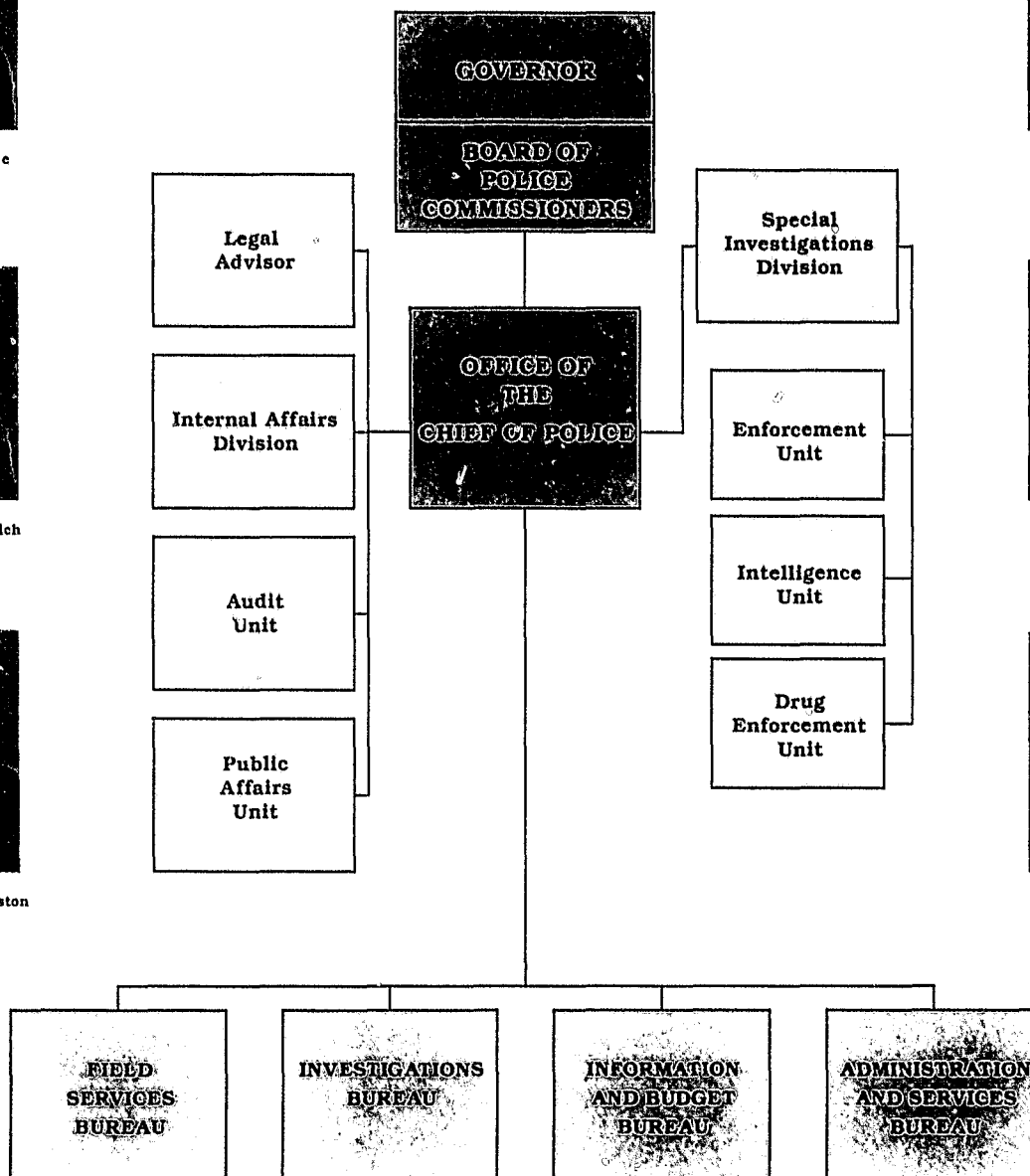
Capt. Dennis R. Shreve
Commander
Intelligence Unit



Capt. Robert L. Livingston
Commander
Audit Unit



Capt. David M. Darton
Commander
Drug Enforcement Unit



Office of the Chief of Police



Larry J. Joiner became the 37th man to be appointed Chief of Police of the Kansas City, Missouri Police Department on March 30, 1984. The Chief's Office oversees four bureaus, each commanded by a lieutenant colonel. Those bureaus are Field Services, Investigations, Information and Budget, and Administration and Services. It also oversees the department's Legal Advisor, Internal Affairs Division, Special Investigations Division, Public Affairs Unit, and Audit Unit. Assisting Chief Joiner in his administrative duties is the Executive Officer, Lieutenant Colonel Lester N. Harris.



In July of 1987, Chief Joiner was present when Missouri Governor John Ashcroft signed into law a bill which improves the Police Officers Retirement System. This new law changes pension annuity, benefits for surviving spouses and dependents, and death benefits.

In addition to serving as a consultant to the Chief, the Legal Advisor is responsible for updating and monitoring department procedures and policies from a legal perspective, legislation, and court case decisions and opinions as they pertain to the department and its personnel.



Office of the Chief of Police (cont.)

Internal Affairs Division

The Internal Affairs Division is responsible for conducting complete and objective investigations involving citizens' complaints lodged against the department and its employees, conducting miscellaneous internal investigations, discharge of firearm by a department member or involving a department member, disarming of an officer, and investigations regarding commendation and honor award recommendations. One of the aspects of this type of assignment requires analysis of radio tape recordings of field operations.

The Public Affairs Unit is primarily responsible for publishing the department's monthly newsletter and the Citizens' Crusade Against Crime quarterly newsletter, processing department awards for presentation by the Chief of Police, and making necessary arrangements for various department functions and banquets that occur through the year. The supervisor of the Public Affairs Unit is responsible for the dissemination of newsworthy items to the media and assisting the media in obtaining information useful in their news-gathering activities.

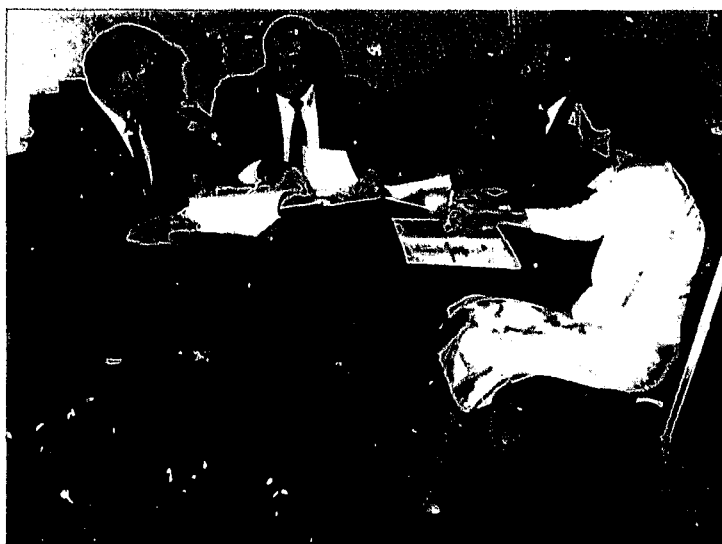


Special Investigations Division

The Special Investigations Division is comprised of three units: Intelligence, Enforcement, and Drug Enforcement. Each of these units is responsible for gathering and reporting intelligence data for resource allocation purposes, and targeting groups or individuals who are known or suspected to be involved in organized criminal activities and drug trafficking.

In January of 1987, a federal grand jury returned indictments against 10 Jamaican citizens believed to be the top management of a drug importation and distribution organization managed locally by Jamaican nationals. This was the result of a cooperative effort with federal agencies, which included serving numerous search warrants, and the seizure of large amounts of cocaine/crack, money, and firearms.

Although this task force occupied a large portion of these detectives' time, they helped investigate a variety of fencing and white collar crime activities, obscenity and gambling violations, and aided in efforts to curtail street prostitution and organized prostitution (escort services).



The chief purpose of the Audit Unit is to assist management in recognizing problems and recommending realistic courses of action to correct the problems. Operational auditing permits management to evaluate performance not only on the basis of periodic reports, which may not reflect conditions as they actually exist, but also on the basis of direct observation by the auditors.





Lt. Col. Manfred W. Guenther
Commander
Field Services Bureau



Maj. Richard C. Fletcher
Executive Officer
Field Services Bureau



Maj. Donald D. Rey
Commander
Metro Patrol Division



Maj. Steven C. Bishop
Commander
East Patrol Division



Maj. William D. Dycus
Commander
Central Patrol Division



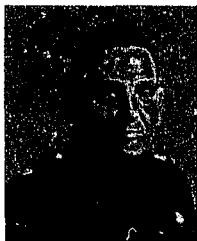
Maj. Joseph E. Chambers
Commander
North Patrol Division



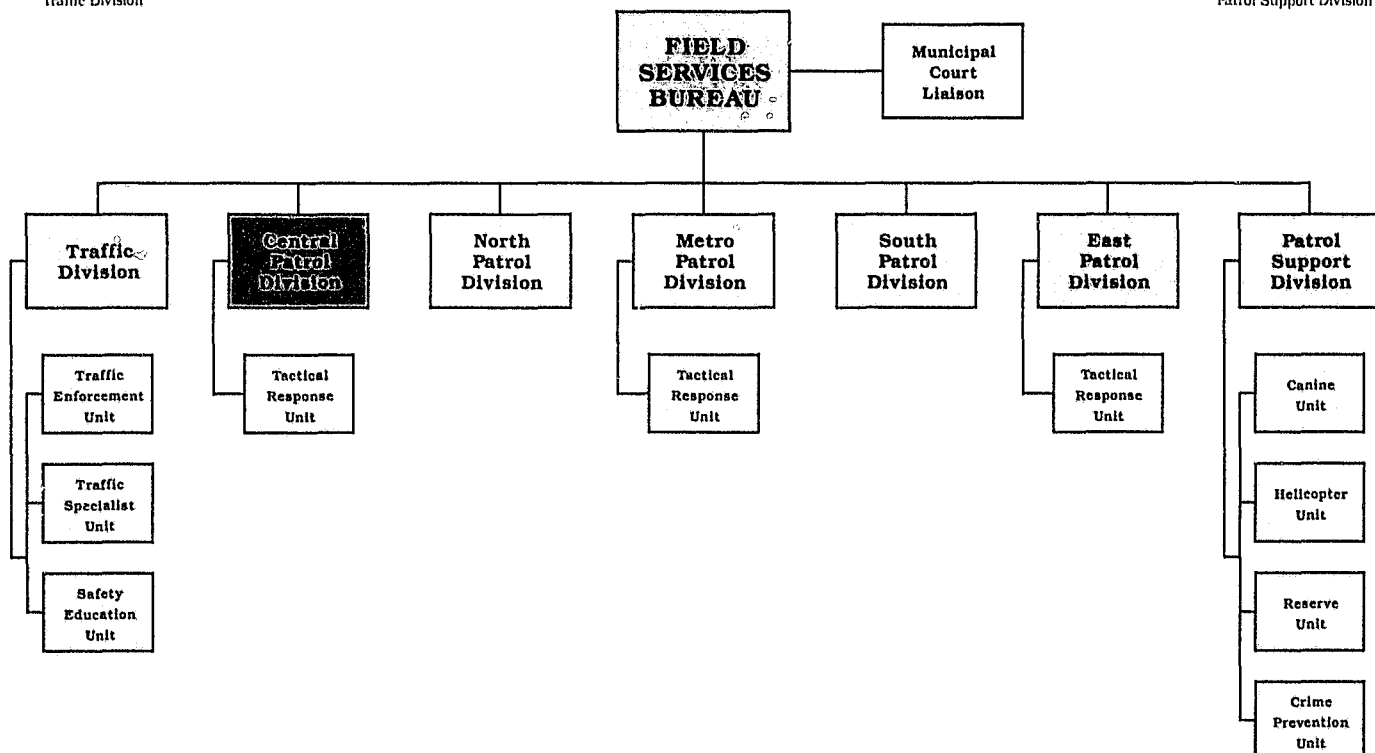
Maj. Raymond D. Roberts
Commander
South Patrol Division



Maj. Milan E. Mulac
Commander
Patrol Support Division



Maj. Lester D. Hash
Commander
Traffic Division



Field Services Bureau



The Field Services Bureau, commanded by Lieutenant Colonel Manfred W. Guenther, is comprised of seven divisions: Central, Metro, East, North, and South Patrol; Traffic; and Patrol Support. Assigned to the Central, Metro, and East Patrol Divisions are Tactical Response Units.

The Tactical Response Units are responsible for the handling of incidents involving armed, barricaded parties and hostage situations. During 1987, the department's Mobile Command Post bus was updated to facilitate operations developed to counter these types of situations.

The officers assigned to these units participate in training exercises four times a month. The training exercises involve the use of M.I.L.E.S. equipment, which is sound-activated laser beam equipment that can be used with standard firearms. Officers also receive tactical training using the department's armored personnel carrier, firearms training, and physical training.

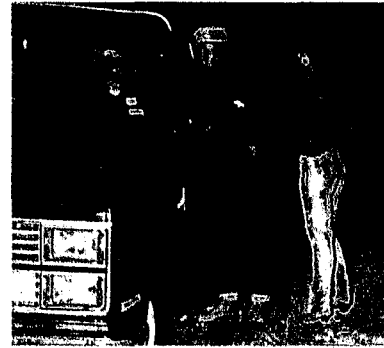


Field Services Bureau (cont.)

Within the Field Services Bureau, the department's largest bureau, are 814 law enforcement and civilian personnel. In 1987, there were over 492,790 radio dispatched calls of patrol cars, with 218,808 arrests. The vast majority of these arrests were effected by the officers assigned to the patrol divisions. These officers are responsible for handling complaints from citizens regarding the parks within the North Patrol Division boundaries; participating in decoy operations, in an effort to curtail prostitution activity within the Central Patrol area; handling excessive traffic on the Country Club Plaza in the Metro Patrol area; and dealing with newly acquired problems at the Longview Reservoir in the South Patrol Division area. Because the reservoir is bounded by Kansas City, Grandview, and Lee's Summit, yet patrolled by the Water Patrol and located in Jackson County, the responsibility for jurisdiction was confusing. Therefore, an informal agreement was reached between the department and the Water Patrol, with the hope that a formal agreement will be adopted in 1988.

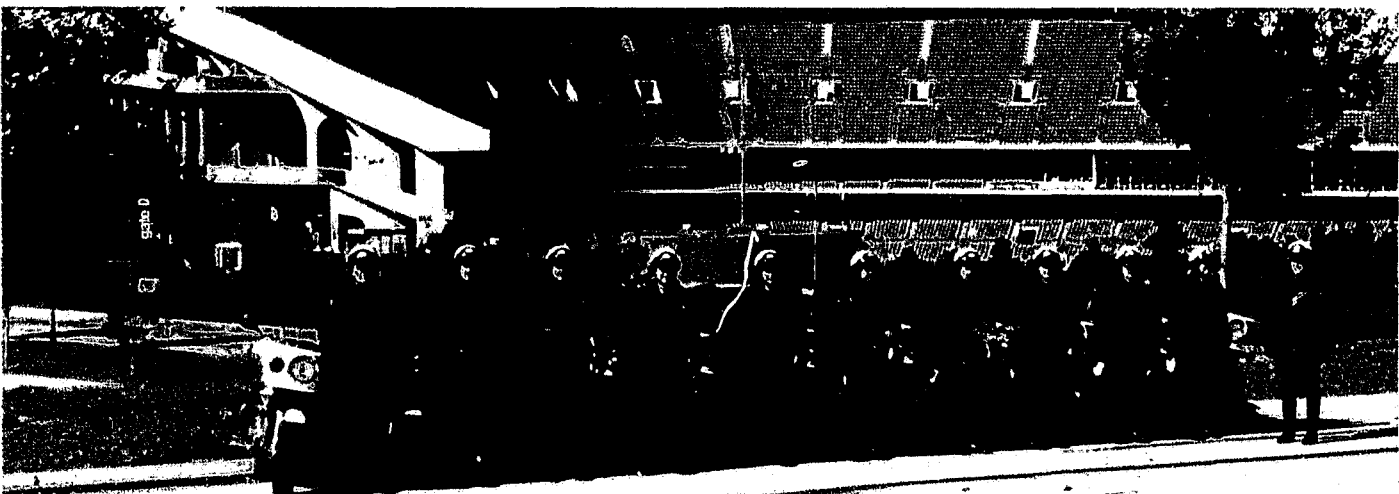
Traffic Division

The Traffic Division is comprised of three units: Traffic Enforcement, Safety Education, and Traffic Specialist. The responsibilities of this division include the enforcement of traffic laws, and the apprehension and prosecution of violators.



During 1987, members of the Traffic Enforcement Unit issued 3,564 citations on the freeways of the city while participating in a 55 MPH enforcement grant from the state of Missouri. Members are also responsible for handling the flow of traffic for a variety of events, ranging from visiting dignitaries to parades and sports events.

The Safety Education Unit presents programs on traffic safety, assigns and monitors school crossing guards, and conducts commercial vehicle inspections. Under their Motor Carrier Safety Assistance Program grant, 40% of the 1,363 trucks inspected in 1987 were placed out-of-service for serious safety violations.



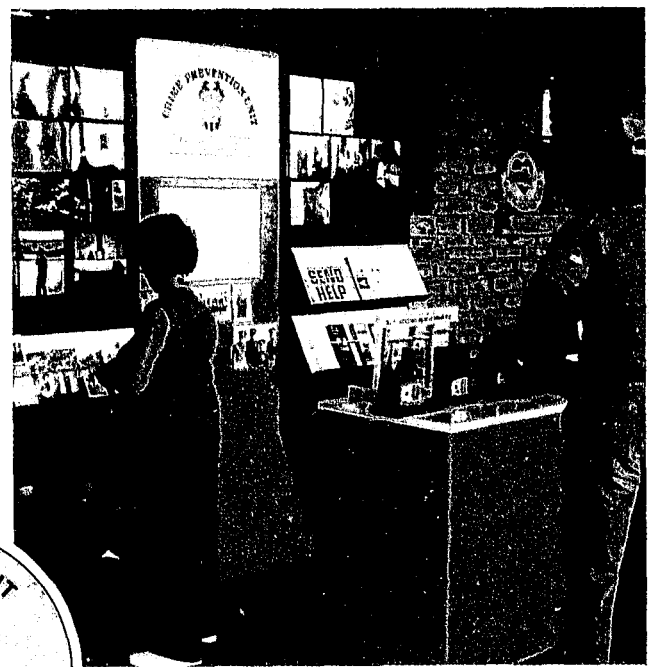
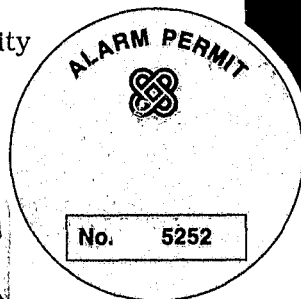
The Traffic Specialist Unit is responsible for on-scene investigations of vehicular accidents, follow-up investigations of hit-and-run accidents, and conducting sobriety checkpoints. In 1987, ten checkpoints were conducted, with over 2,500 vehicles stopped and an average of over 10 intoxicated drivers detected per checkpoint. As compared with 1986, approximately 27% fewer vehicles were checked in 1987, with only a 20% decrease in the number of intoxicated drivers detected.

Patrol Support Division

The Patrol Support Division consists of four units: Canine, Helicopter, Reserve, and Crime Prevention. This division is responsible for providing additional and specialized support to the patrol and traffic divisions.

During 1987, the Canine Unit acquired a dual-purpose patrol and narcotic dog, and established a K-9 Narcotic Detection Program. This canine, a German import trained for narcotic detection using German techniques, has been instrumental in the detection and seizure of substantial amounts of drugs and money, and an assortment of firearms. Within this unit are three explosive detection canine teams which are used in explosive detection service and searching for suspects.

Over the past year the Helicopter Unit responded on 2,485 calls for service, assisted in 396 arrests, helped locate 235 fleeing suspects, assisted in 167 car chases, and helped locate two downed aircraft in the vicinity of the Lake City Arsenal. Unit personnel spent 3,678 manhours in the air.



The Reserve Unit consists of volunteers who contribute their time at no cost to the department, in addition to holding full-time jobs. Members of this unit handled 5,215 calls for service, donating 14,925 hours of service during 1987.

The Crime Prevention Unit is dedicated to reducing crime through public awareness. During 1987, they acquired a portable display which requires only one person to construct.

As a result of a new city ordinance dealing with false alarms, the position of Alarm Coordinator was created in an effort to collect data pertaining to alarm calls handled by patrol officers.



Maj. John L. Coleman
Commander
Criminalistics Div.



Maj. Elmer Meyer
Commander
Crimes Against Persons Div.



Lt. Col. Robert E. Jenkins
Commander
Investigations Bureau



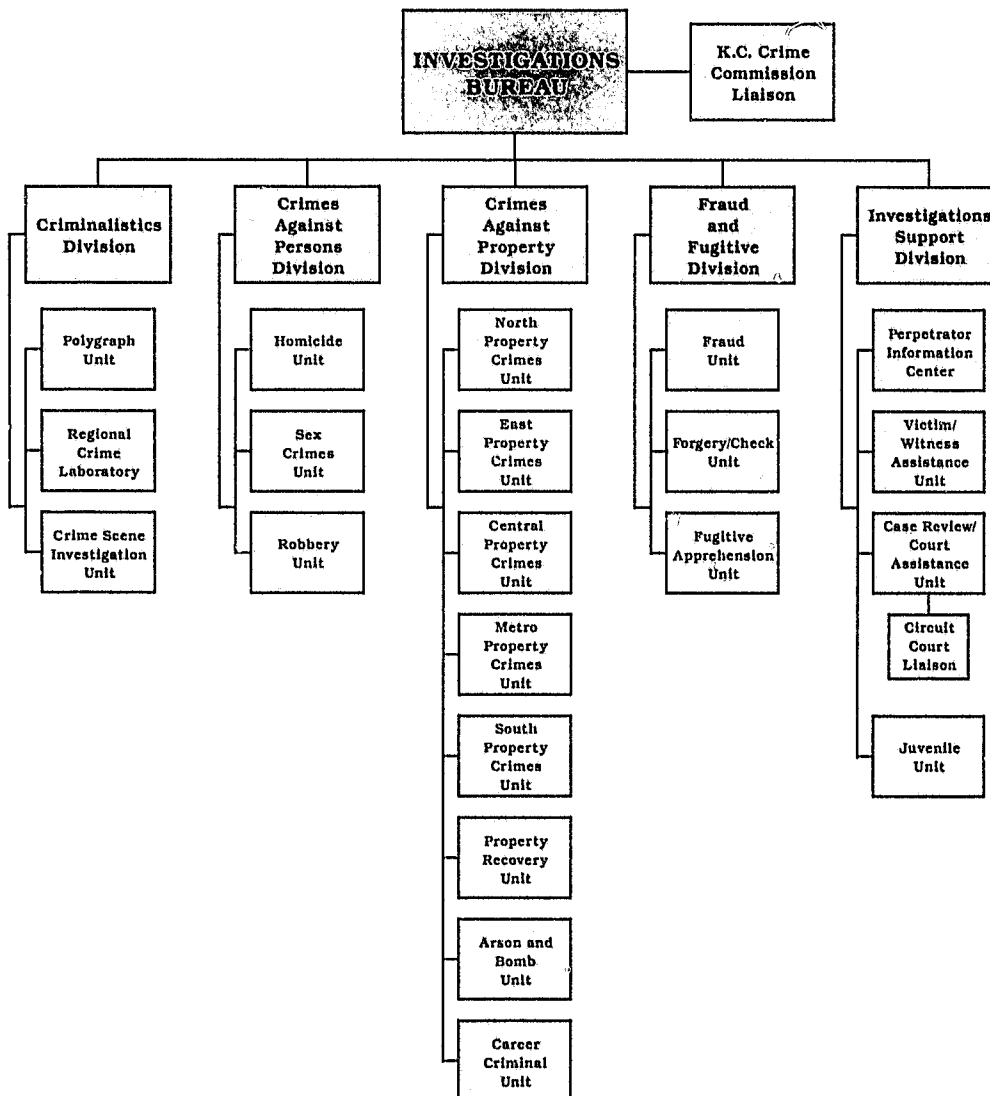
Maj. Thomas O. Mills
Commander
Crimes Against Property Div.



Maj. Carl T. Foxworthy
Commander
Fraud and Fugitive Div.



Capt. Ralph T. Pugh
Commander
Investigations Support Div.



Investigations Bureau



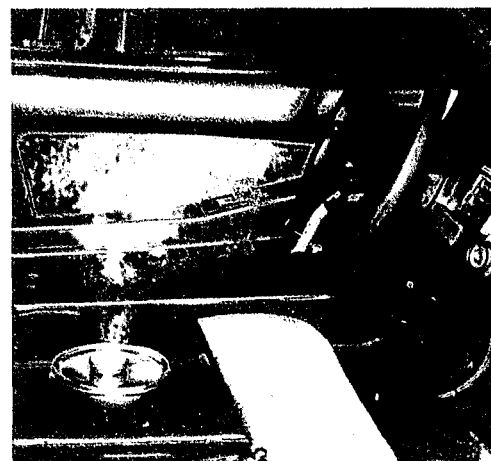
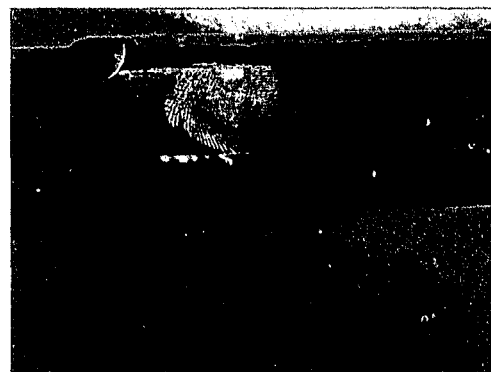
The Investigations Bureau is comprised of five divisions: Criminalistics, Crimes Against Persons, Fraud and Fugitive, Investigations Support, and Crimes Against Property. The bureau, under the command of Lieutenant Colonel Robert E. Jenkins, is responsible for conducting investigations of criminal offenses in an effort to identify, apprehend, and prosecute those persons responsible.

Criminalistics Division

The Criminalistics Division consists of three units: Regional Crime Laboratory, Crime Scene Investigation, and Polygraph. The division is responsible for the collection and preservation of evidence related to criminal offenses, forensic examination of the evidence collected, and administration of polygraph examinations.

The Regional Crime Laboratory uses a variety of instruments and methods to examine the over 100,000 items of evidence received by the laboratory each year. One method used to retrieve fingerprints which would otherwise go undetected is the super glue fuming technique to set the prints and, in conjunction with laser dye, to enhance the prints.

The Crime Scene Investigation Unit is partially responsible for the location, preservation, and collection of physical evidence at crime scenes. In 1987, the number of suspects identified through fingerprints increased by forty-two percent over 1986.



Investigations Bureau (cont.)

Fraud and Fugitive Division

The Fraud and Fugitive Division is comprised of three units: Forgery/Check, Fugitive Apprehension, and Fraud. This division conducts investigations involving frauds, confidence games, destructions of property, forgeries, shoplifts, embezzlements, telephone harassments, missing persons, and runaway juveniles.

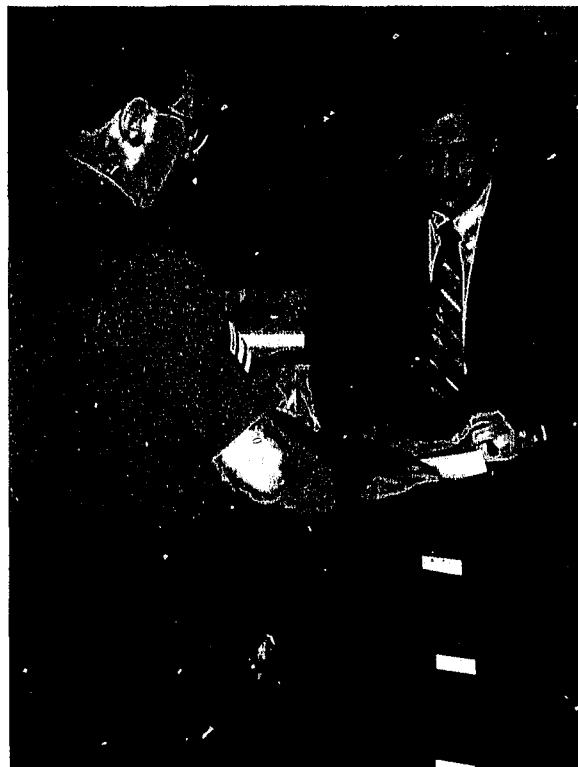
The Forgery/Check Unit handles the investigation of forgeries and other crimes involving checks. Over the past year, unit members were able to bring 86.1% of the assigned cases to a positive conclusion. Felony charges were filed in 65.8% of the cleared cases.

The Fugitive Apprehension Unit is responsible for receiving information on missing persons, runaway juveniles, and fugitives wanted on local and outside state and federal warrants. During 1987, members of this unit handled: 955 reports of missing/runaway juveniles, with 951 located; 204 missing person reports involving adults; and arrested 692 persons on state and federal warrants.

The Fraud Unit investigates frauds, pickpockets, confidence games, property damages, embezzlements, and shoplifts.

Crimes Against Persons Division

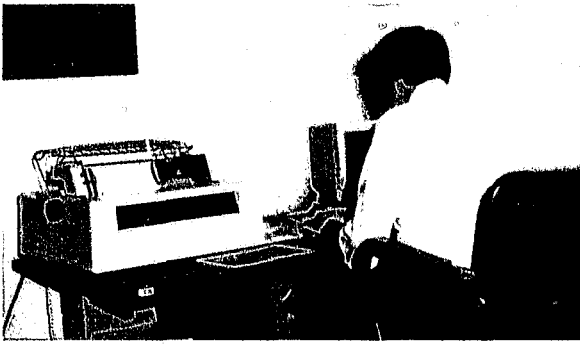
The Crimes Against Persons Division is made up of three units: Homicide, Sex Crimes, and Robbery. The Homicide Unit investigates assaults, harassments, threats against witnesses, dead bodies, suicides, and homicides. When a homicide case involves numerous unknowns, such as the absence of a suspect or motive, a special squad may be formed to investigate the case. In 1987, over one-half of the homicides in the city involved the formation of special squads.



The Sex Crimes Unit investigates reported sex offenses, kidnappings, obscene telephone calls, abductions, and reported child abuse or neglect. Due to a 300% increase in the number of requests for service from the Division of Family Services, all requests are now handled through the Communications Unit. During 1987, the number of reported rapes increased 6% over the previous year, and the number of rape cases filed increased 114%. The number of overall cases involving children under the age of 17 also increased in 1987.

The Robbery Unit handles not only the various kinds of robberies throughout the city but also reported purse snatches and weapon charges. In 1987, there was a substantial increase in the number of weapon charges filed in state court.





Investigations Support Division

The Investigations Support Division consists of four units: Case Review/Court Assistance, Perpetrator Information Center, Victim/Witness, and Juvenile. The Case Review/Court Assistance Unit is responsible for reviewing criminal files, presenting those files for the filing of charges, and notifying officers to appear in court.

The Perpetrator Information Center is responsible for collecting various intelligence data, assisting department elements and outside agencies, and videotaping for investigative needs.

The Victim/Witness Assistance Unit familiarizes victims and witnesses of crimes with the criminal justice system requiring their participation, and notifies victims of any progress made in their cases.

The Juvenile Unit is responsible for the booking of all juveniles for state and municipal violations, except traffic, and processing them after they are taken into custody.

Crimes Against Property Division

The Crimes Against Property Division, the only decentralized division within the Investigations Bureau, is made up of: Career Criminal Unit; Arson and Bomb Unit; Auto Theft Unit; and five Property Crimes Units, one located at each of the patrol division stations.

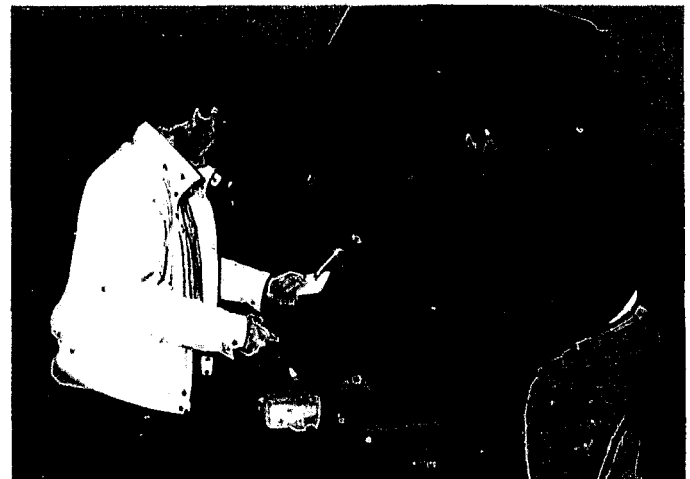
The Career Criminal Unit, formed in March of 1987, is responsible for coordinating efforts directed toward the identification, arrest, and prosecution of those persons who are the most active criminals in the city and who earn their livelihood from crime. Fifty subjects were initially targeted, through cooperative efforts of the detectives assigned to this element and the officers of the Field Services Bureau. As a result, forty of these subjects and twenty-three of their associates have been charged.



The Arson and Bomb Unit is responsible for investigating all arsons and incidents involving explosives. Highly sophisticated bomb suits were purchased to enhance the safety of the explosive ordnance disposal technicians. Members investigated over 370 arson incidents and 60 incidents involving suspected explosive materials.

The Property Crimes Units are responsible for investigating residence and non-residence burglaries. During 1987, detectives presented over 1,350 cases to the prosecutor, with 80% of these cases filed for criminal prosecution.

The Auto Theft Unit was established in 1987 to combat the auto theft problem through the investigation of criminal offenses and by enforcing laws governing salvage yard operations. Over the past year, members have investigated 664 thefts, resulting in over 458 charges being filed.





Lt. Col. Floyd O. Barte
Commander
Information & Budget Bureau



Maj. William H. Trimble
Commander
Information Services Div.



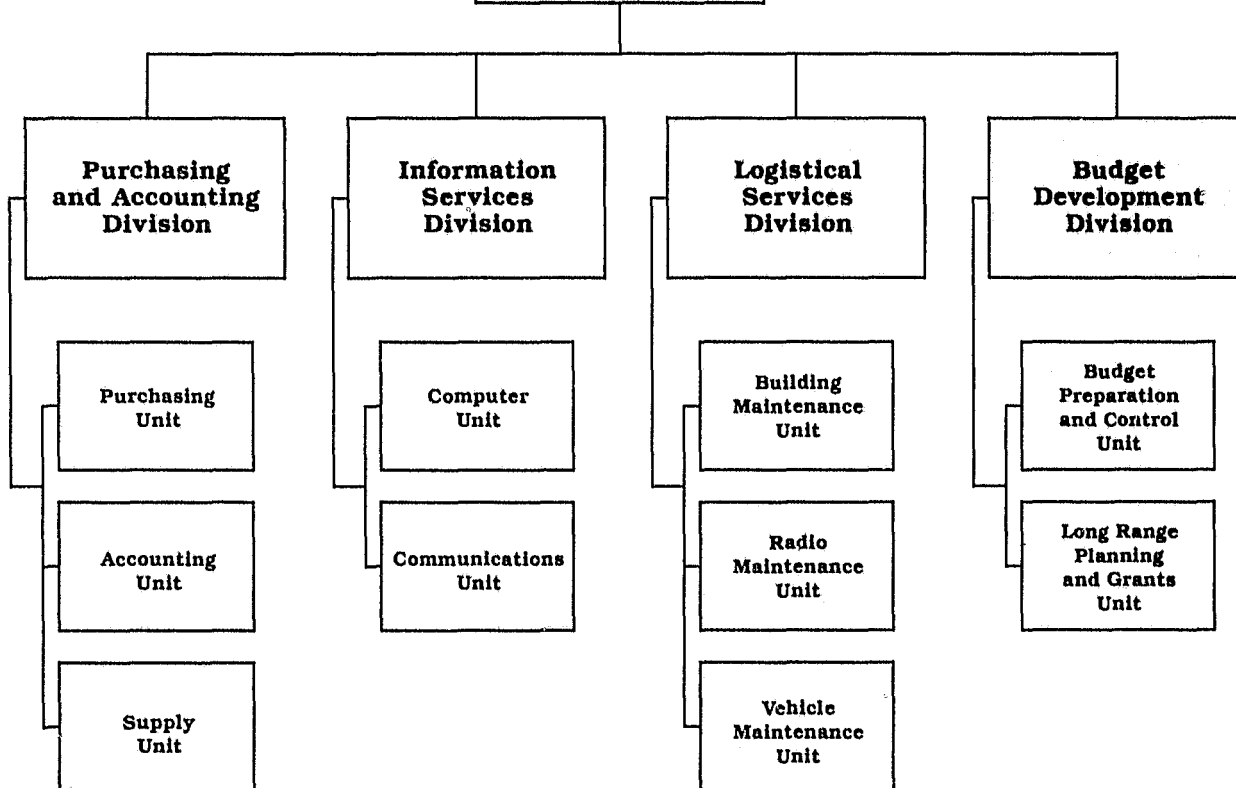
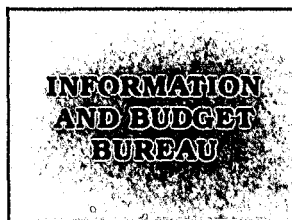
Maj. Michael L. Boyle
Commander
Logistical Services Div.



Capt. Richard C. Sayles
Commander
Budget Development Div.



Capt. William E. Frazier
Commander
Purchasing & Accounting Div.



Information and Budget Bureau



The Information and Budget Bureau, under the command of Lieutenant Colonel Floyd Bartch, consists of four divisions: Budget Development, Purchasing and Accounting, Information Services, and Logistical Services. The 256 personnel, civilian and law enforcement, assigned to this bureau are responsible for the proper use and care of department resources, including an operating budget of \$63,189,550 for fiscal year 1987-88.

During 1987, this bureau reorganized the Emergency Communication Center (ECC) to handle all communication functions in the event there is a disruption of service at the headquarters facility. The center, equipped to accommodate all radio frequencies and incoming calls for service.

During the year, renovated space was acquired in the Argyle Building to accommodate the needs of Internal Affairs Division personnel. Although plans were developed in 1987, the final relocation will be completed in 1988.



Information and Budget Bureau (cont.)

Budget Development Division

The Budget Development Division is comprised of two units: Budget Preparation and Control, and Long Range Planning and Grants. The division prepares the department's budget request, continually reviews expenditures, and monitors balances related to appropriated funds. The overall 1987-1988 budget was \$70,931,352; \$63,180,550 was for payment of payroll, benefits, supplies, equipment, and other expenses; the remainder for retirement programs.

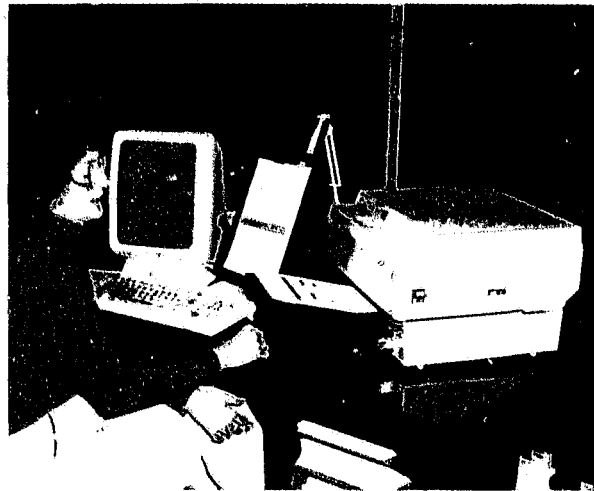
The Budget Preparation and Control Unit prepares and maintains the budget, continually analyzes its status, and maintains the Position Control Roster and the Comprehensive Program Information Summary.

The Long Range Planning and Grants Unit develops long-range programs designed to improve performance, ascertains program cost, seeks project development funds through grants-in-aid, and develops liaisons with other planning elements. For capital improvements, such as the renovation of facilities, members prepare submissions to the Public Improvement Advisory and the Capital Improvement Advisory Committees.

Purchasing and Accounting Division

The Purchasing and Accounting Division consists of three units: Purchasing, Accounting, and Supply. This division records all financial transactions, and purchases and disburses materials and services.

The Purchasing Unit accounts for all appropriated funds and the purchase of



equipment, materials, supplies, and services. In 1987, 563 new protective vests were purchased for patrol officers. These custom-fitted vests wrap around the officer's body, adding more side protection. This unit monitored the testing of flashlights by patrol personnel, and coordinated the installation of a new phone system to improve the efficiency of the department.

The Accounting Unit monitors all financial transactions, receipts, and invoices, and keeps elements apprised of their budgetary status. During 1987, Payroll Section, which is responsible for all payroll functions and instructing personnel on new tax changes, was transferred to this unit.

The Supply Unit maintains supplies and equipment for issue to elements. This year, in addition to winter-weight jackets, this unit also issued newly purchased light-weight jackets to patrol personnel.



Logistical Services Division

The Logistical Services Division consists of three units: Vehicle Maintenance, Building Maintenance, and Radio Maintenance. The division maintains and repairs the department's motor fleet, police facilities, and radio electronic equipment. The Vehicle Maintenance Unit's achievements included completely refurbishing 10 parking control jeeps. This required dismantling the jeeps, completely overhauling engines, restoring bodywork, and replacing worn or old parts. The end result is a jeep that runs and looks like new, at a fraction of the cost.

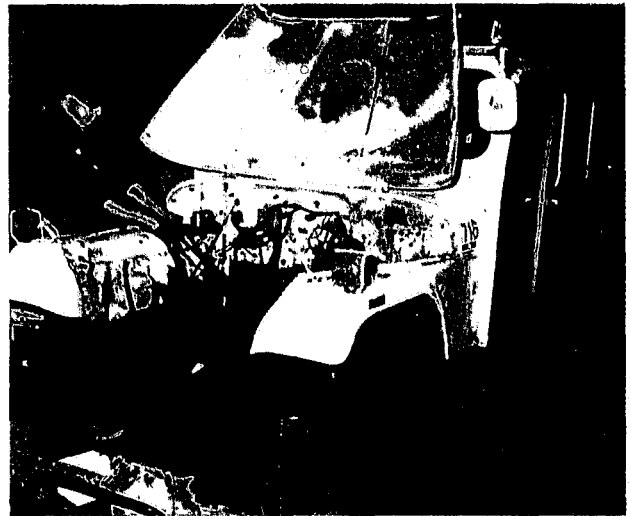
The Building Maintenance Unit maintains department facilities, grounds, and adjoining parking areas, and provides building security for the headquarter's garage. They are also responsible for minor facility and equipment repairs and the coordination of major repair projects.

The Radio Maintenance Unit installs and repairs most department radio and electronic equipment, as well as providing service to sixteen other elements within the city government. During 1987, the unit acquired an IBM Personal System 2 computer to computerize the parts inventory and service history. The unit also renovated and installed the radio equipment in the recently reorganized Emergency Communications Center.

Information Services Division

The Information Services Division consists of the Communications and Computer Units. It provides dispatch and computer services on a twenty-four hour basis, as well as computer service to 70 other criminal justice agencies making up the ALERT network, state, and federal systems.

The Communications Unit receives all incoming 9-1-1 calls for police, fire, and



ambulance, and all other police calls for service. During 1987, the position of calltaker was established to create an entry-level classification for police dispatcher.

In 1987, the Computer Unit installed a more sophisticated communications controller and replaced one of its central processing units with a new and larger machine. These acquisitions provided the increased capacity, greater speed, and enhanced monitoring capability necessary to accommodate growth of the ALERT System. Major application projects implemented during the year included a mobile terminal system for use by one of the ALERT affiliated police agencies, and a system designed to monitor intrusion and holdup alarms.



Lt. Col. Rufus Evans
Commander
Administration & Services Bureau



Maj. Charles R. Key
Commander
Training Division



Maj. Alfred C. Lomax
Commander
Personnel Division



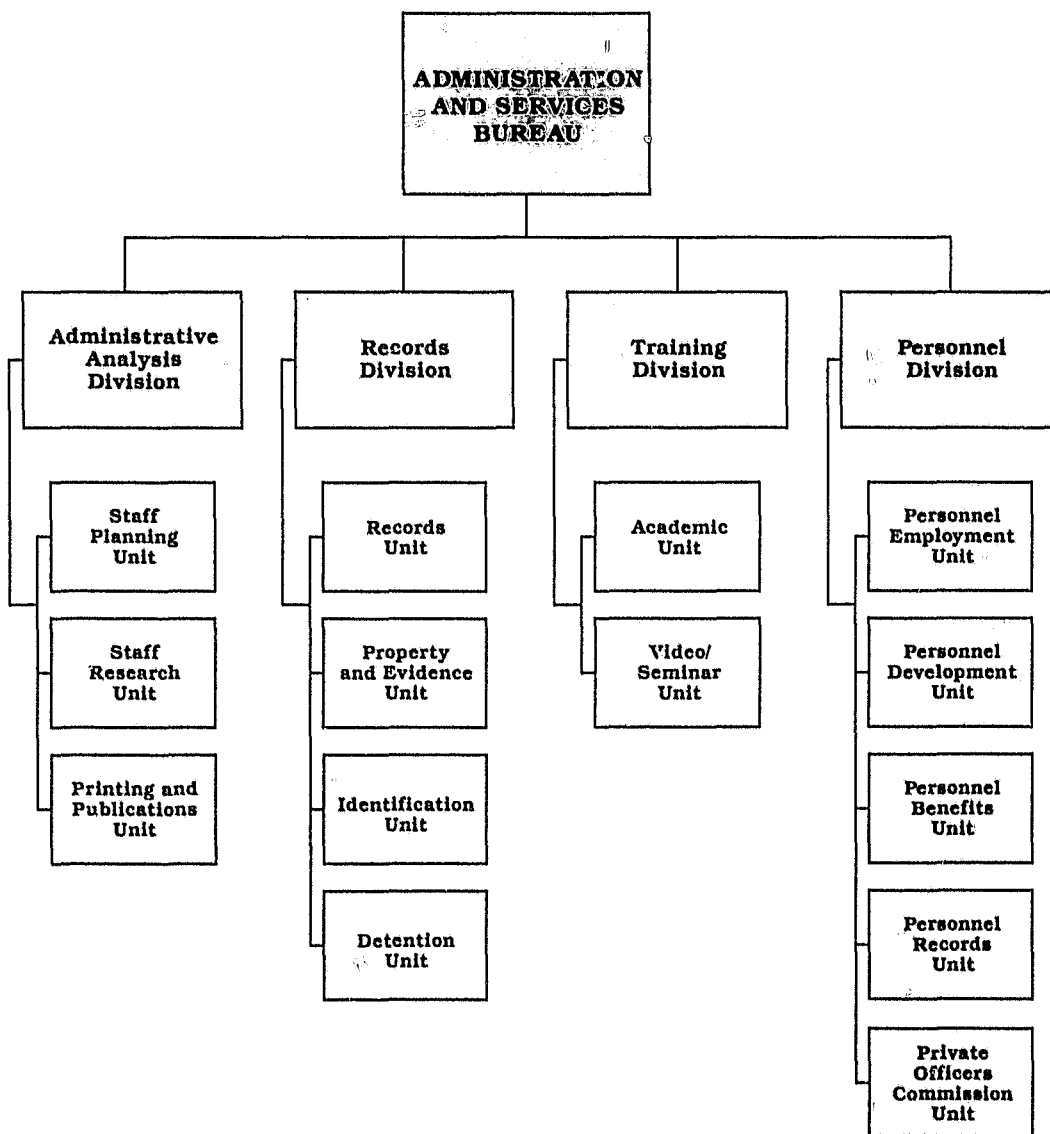
Maj. Gerald A. Kimmis
Executive Officer
Administration & Services Bureau



Maj. Robert L. Wesley
Commander
Records Division



Maj. Arthur F. Barnett
Commander
Administrative Analysis Division



Administration and Services Bureau

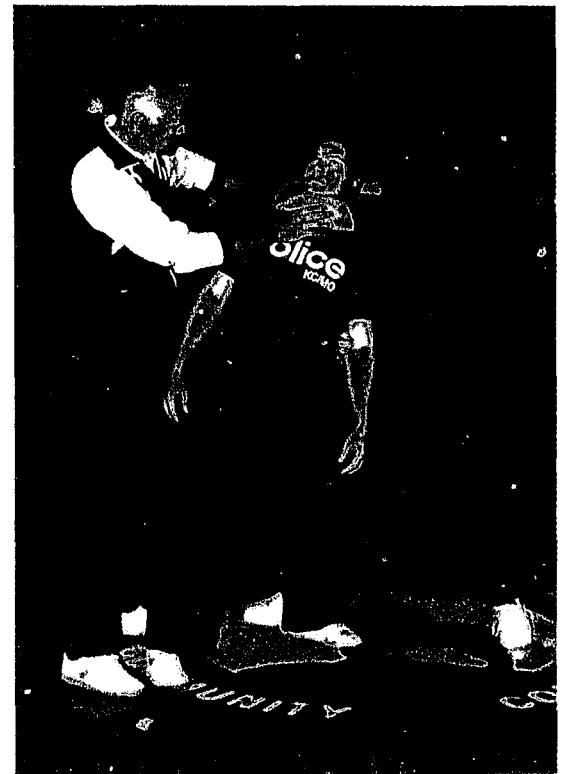


The Administration and Services Bureau, commanded by Lieutenant Colonel Rufus Evans, is comprised of four divisions: Training, Personnel, Administrative Analysis, and Records. This bureau, with 195 law enforcement and civilian personnel, provides administrative support to the department.

Training Division

The Training Division is made up of the Academic and Video/Seminar Units, with the responsibility of providing basic police training for seventy-seven law enforcement agencies in the eight-county metropolitan area, in-service police training, specialized training for various police technical positions, management training for all levels in a police organization, and situational training for new recruits. During 1987, this division conducted five national teleconferences in cooperation with the FBI, Drug Enforcement Administration, and Kansas City Area Hospital Association, with seven such programs planned for 1988.

The Academic Unit experienced a substantial increase in the number, and size, of entrant-level training classes for the Kansas City, Missouri Police Department in 1987. This rise required that additional instructors be assigned to accommodate the increase in recruits, and to offer the best possible training.



Administration and Services Bureau (cont.)



The Video/Seminar Unit not only organized the production of various teleconferences throughout 1987, but also was responsible for producing a Field Training Officer film to train prospective trainers. This project was significant because it involved the use of more equipment, required more editing, and used more people in the production aspects than previous projects. The production totals over 30 minutes in air-time, the longest film to date produced by this unit. Additionally, plans are being made for the 1988 teleconferences and the possible involvement of other agencies in these productions.

Personnel Division

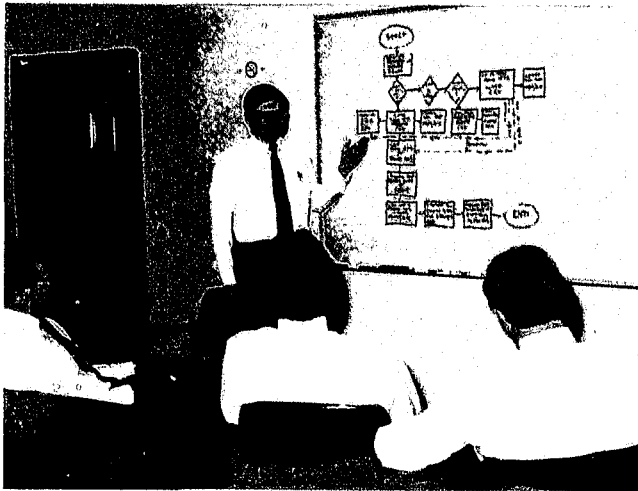
The Personnel Division is made up of five units: Employment, Development, Employee Benefits, Personnel Records, and Private Officers Commission. The division is responsible for testing and processing applicants, internal requests for transfers, researching pay, job classifications and reclassifications, monitoring and administering employee benefits, promotional processes for sergeants and captains, and maintaining records of past and present employees.

During 1987, 1,846 applications for police officer were processed, with 190 applicants completing the hiring process and engaging in basic police training. In an effort to streamline the department and yet maintain the quality of benefits to its members, numerous changes were made regarding benefits for employees and retirees of the department.



In 1987, the division acquired a Driving Simulator, designed to acquaint officers with possible hazards of the road associated with everyday driving, and evasive maneuvers to prevent accidents. This equipment is used in the instruction of law enforcement entrant officers as well as officers participating in the remedial training program conducted by the Traffic Division. This equipment recreates driving situations in which the participant has a specified period of time to react; then analyzes the action taken.





Administrative Analysis Division

The Administrative Analysis Division is comprised of three units: Staff Planning, Staff Research, and Printing and Publications. The Staff Planning and Staff Research Units conduct analyses, studies, research, and plans to resolve problems and needs of the department, and to enhance policy and procedure for department operations. One notable project during 1987 was the development of a practical written directive on communicable disease avoidance by the use of precautions and protective equipment. This procedure was formulated through a department-wide representative task force study on communicable disease exposure.



The Printing and Publications Unit is responsible for printing and distributing all printed material used by the department. One major task for 1987, was the printing of 26,000 coloring books for use by the Safety Education Unit in their Child Pedestrian Safety Program. These books are targeted toward children in kindergarten through third grade, offering safety tips as well as information on the 9-1-1 system and the police department.

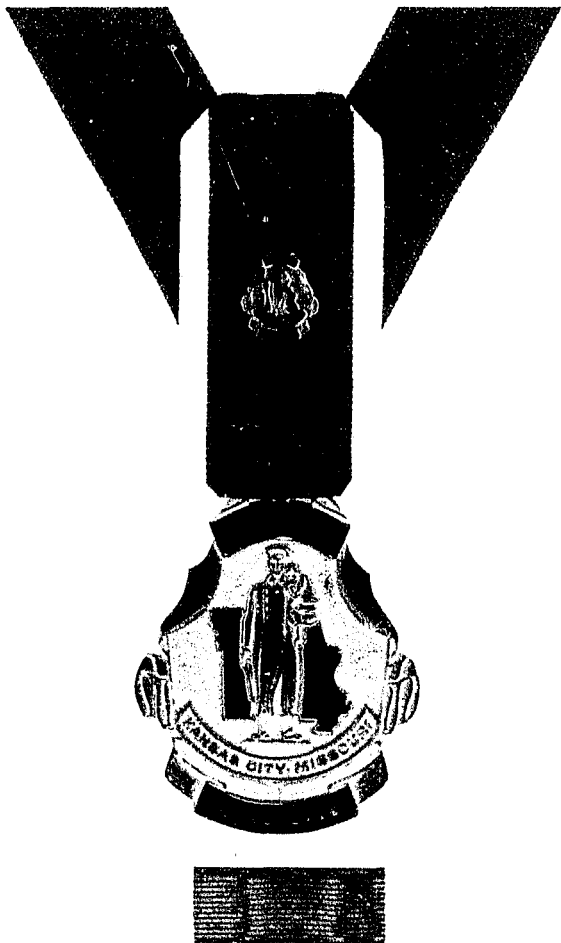
Records Division

The Records Division is made up of four units: Identification, Property and Evidence, Detention, and Records. The division is responsible for maintaining criminal records, files, arrest warrants, and reports taken by department personnel; management of property and evidence; fingerprint identification; and detention of arrests. During 1987, the Detention Unit acquired two additional video cameras, a high-tech VCR, and a defensive blocking pad, all in an effort to better monitor prisoners, while increasing security and reducing injuries to both personnel and detainees.

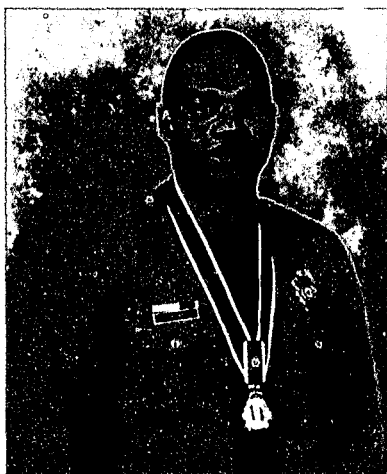


1987 Award Recipients

Valor



Distinguished Service



P.O. Michael D. Brown
Medal of Valor



P.O. Paul L. Weatherford
Medal of Valor



R/Capt. George Hammontree
Distinguished Service Award



**Certificate of
Commendation**



**Meritorious Service
Award**



Special Unit Citation

Distinguished Service Award

Sergeant Richard R. Clark
P.O. William M. Deal

Meritorious Service Award

Retired Chief Bernard C. Brannon
Retired Chief Norman A. Caron
Retired Chief Clarence M. Kelley
Major Donald D. Rey
Captain Gary R. Chapman
Captain Robert C. Mathis
Sergeant Jon D. Perry
Sergeant Charles A. Rice
Sergeant Emily J. Stuart
Detective Larry D. Fisher
P.O. Joseph R. McCune
Civilian Richard L. Johnson
Civilian Brenna G. Loftin

Special Unit Citation

Special Investigations Division
Central Tactical Response Unit,
170 Squad

Certificate of Commendation

Sergeant Vincent P. McNerney
Sergeant Douglas B. Miller
Sergeant Laura A. Mulloy
Detective Daniel W. Abernathy
Detective George L. Burns
Detective Terry G. Ford
Detective Marvin E. Halstead
Detective Larry H. Jacks
Detective Gerald F. O'Donnell
Detective Judith L. Riebesell
Detective Rebecca K. Rishel
Detective Dennis F. Trabue
P.O. David J. Class
P.O. Randy T. Ethington
P.O. Marcial O. Felix
P.O. Randolph J. Garcia
P.O. Russell A. Groshans
P.O. Gary W. Habelitz
P.O. Eugene E. Haug
P.O. Charles L. Lewis
P.O. Shandy L. Ludwig
P.O. Donna L. Rollo
P.O. Donna J. Standley
S.C.G. Viola R. Cornett



Red Cross Award



Firearms Proficiency

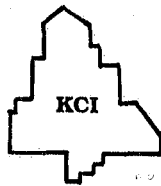


Training Officer



Safe Driving

Police Facilities & Patrol Division Boundaries



Barrelview

Police Facilities

- A. **Police Headquarters**
1125 Locust
- B. **Administrative Annex**
306 East 12th Street
- C. **Regional Police Academy**
3201 Southwest Trafficway
- D. **Agnes Police Facility**
1328 Agnes
- E. **Regional Crime Lab**
1525 Holmes
- F. **Service Station**
1245 Prospect
- G. **Radio Maintenance**
3224 East 12th Street
- H. **Vehicle Maintenance**
5215 East 27th Street
- I. **Pistol Range**
6900 Coal Mine Road
- J. **K-9 Unit**
8100 Ozark Road
- K. **Helicopter Unit**
4601 Eastern

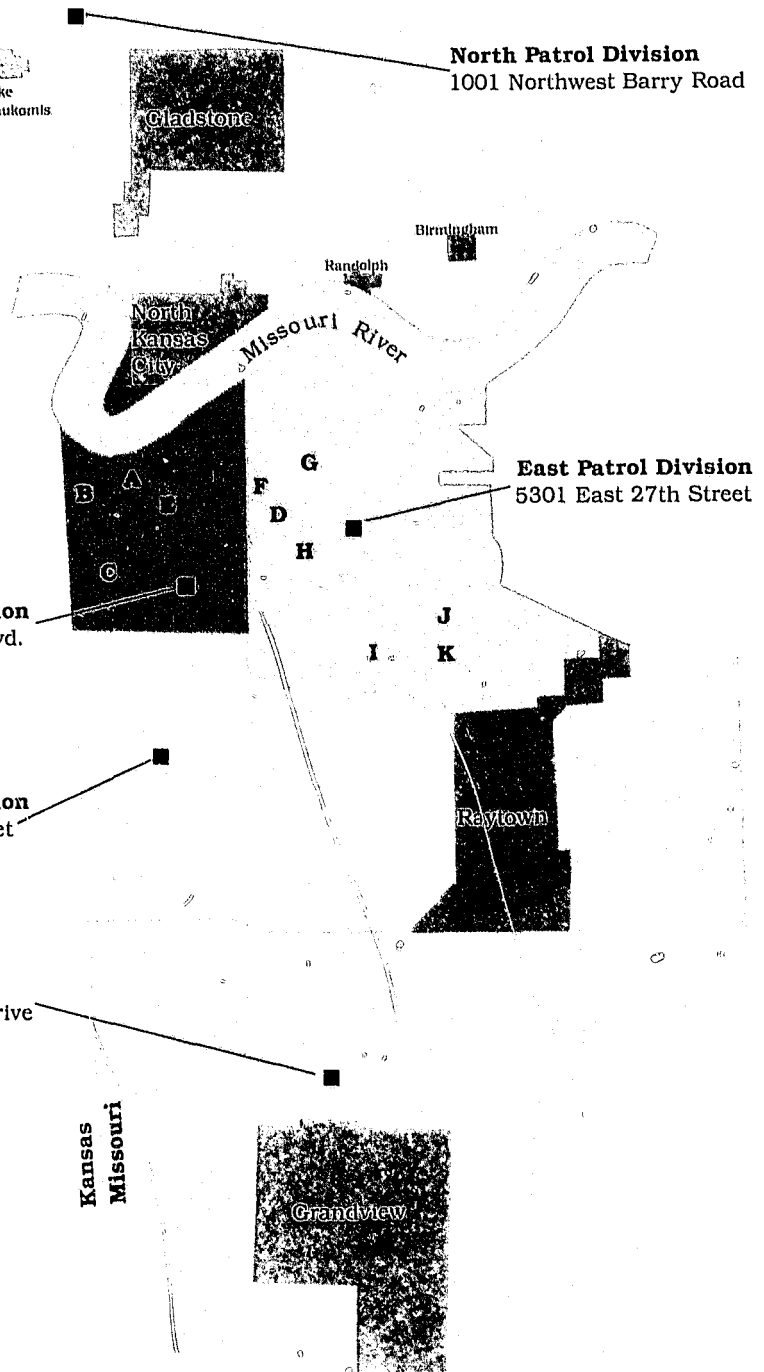
Central Patrol Division
1120 East Linwood Blvd.

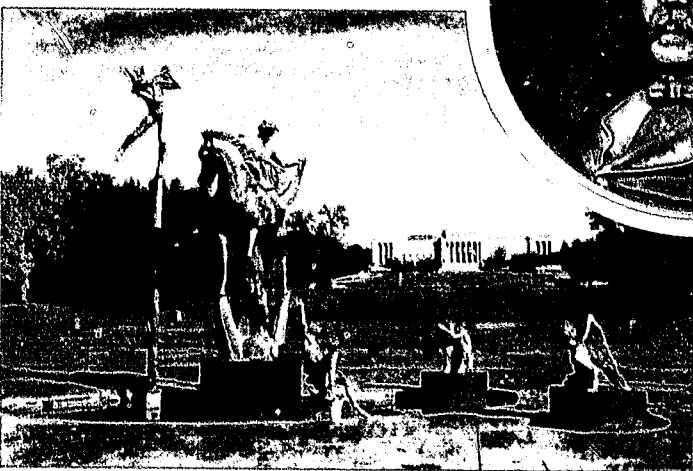
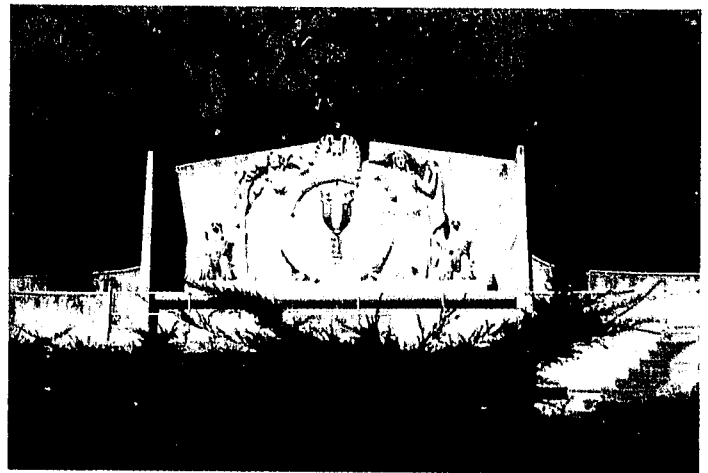
Metro Patrol Division
1880 East 63rd Street

South Patrol Division
11109 Hickman Mills Drive

North Patrol Division
1001 Northwest Barry Road

East Patrol Division
5301 East 27th Street





Financial & Statistical Summary

Kansas City, Missouri Data

Population	448,159
Land Area	317 Square Miles
Government	Council-Manager
Budget	\$462,175,855
Roadways	2,643 Miles
Parks	7,657 Acres
Registered Vehicles	270,616



Distribution of Police Budget*

1987 - 1988 POLICE BUDGET

SALARIES	\$53,441,096 =	84.6%
RENT, STRUCTURAL REPAIRS, UTILITIES, ADVERTISING, INSURANCE, ETC.	\$7,020,000 =	11.1%
MISC. MINOR EQUIPMENT, VEHICLE FUEL AND PARTS, UNIFORMS, OFFICE SUPPLIES, ETC.	\$1,878,454 =	3.0%
VEHICLES, COMMUNICATION EQUIPMENT, OFFICE EQUIPMENT, ETC.	\$850,000 =	1.3%

TOTAL BUDGET APPROPRIATION	\$63,189,550 =	100.0%
---	-----------------------	---------------

Police Budget Comparisons

	1985-1986 Fiscal Year	1986-1987 Fiscal Year	1987-1988 Fiscal Year	Requested Budget 1988-1989 Fiscal Year
PERSONAL SERVICES	\$48,532,426	\$50,302,773	\$53,441,096	\$58,765,174
CONTRACTUAL SERVICES	7,972,369	7,079,176	7,020,000	8,053,087
COMMODITIES	2,347,633	2,009,566	1,878,454	2,405,241
CAPITAL OUTLAY	891,000	1,100,899	850,000	2,055,987
TOTAL	\$59,743,428	\$60,492,414	**\$63,189,550	\$71,279,489

* Does not include pension and F.I.C.A. contributions

** As of December 1, 1987

Length of Service by Rank - Title

Years	Chief	Lt. Col.	Major	Capt.	Sgt.	Det.	Officer and Invest.	Prog. Tech. II	Dir. of OCC	Hell. Pilots	Poly-graph.	Total	Percent In Each Service Group
0- 4					1	4	253					258	22.9
5- 9				1	22	22	108					153	13.6
10-14				5	25	31	80					141	12.5
15-19		1	5	18	88	77	139			2		330	29.3
20-24			7	16	36	24	63	1		1	1	149	13.3
25-29	1	4	9	11	26	10	30		1	1	1	94	8.4
TOTALS	1	5	21	51	198	168	673	1	1	4	2	1,125	100.0%

Average length of service of all law enforcement personnel - 13.39 years

Age of Personnel by Rank - Title

Age	Chief	Lt. Col.	Major	Capt.	Sgt.	Det.	Officer and Invest.	Prog. Tech. II	Dir. of OCC	Hell. Pilots	Poly-graph.	Total	Percent In Each Service Group
21-24							80					80	7.1
25-29					4	5	148					157	13.9
30-34				1	18	21	113					153	13.6
35-39				13	47	41	117					218	19.4
40-44			3	17	63	56	122			2		263	23.4
45-49	1	1	13	11	44	28	55	1		2		156	13.9
50-54		3	4	5	18	14	29				2	75	6.6
55-59		1	1	3	3	3	9					20	1.8
60-64				1	1				1			3	0.3
TOTALS	1	5	21	51	198	168	673	1	1	4	2	1,125	100.0%

Average age of all law enforcement personnel - 38 years

Salary Schedule

Law Enforcement

As of December 29, 1987

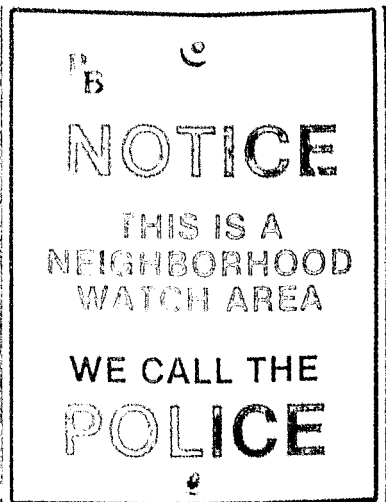
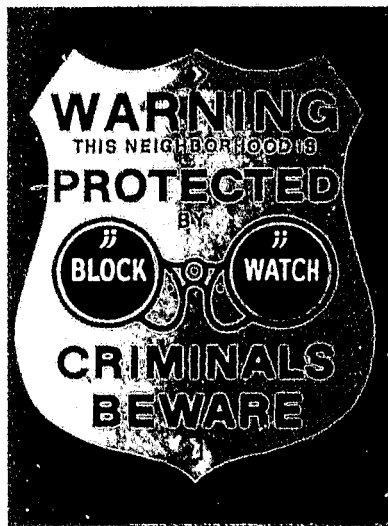
<u>Number of Personnel</u>	<u>Rank/Title</u>	<u>Annual Minimum Salary</u>	<u>Annual Maximum Salary</u>
1	Chief of Police	\$79,908	\$79,908
5	Lieutenant Colonel	54,540	57,804
21	Major	48,936	51,864
51	Captain	44,400	47,052
198	Sergeant	37,092	41,256
168	Detective	22,416	35,064
23	Investigator	22,416	35,064
592	Police Officer	22,416	35,064
58	Probationary Police Officer	21,360	21,360
4	Helicopter Pilot	37,092	41,256
2	Polygraphist	37,092	41,256
1	Programmer Technician II	37,092	41,256
1	Director - Office of Citizen Complaints	44,400	47,052
<hr/> 1,125	TOTAL		

Salary Schedule

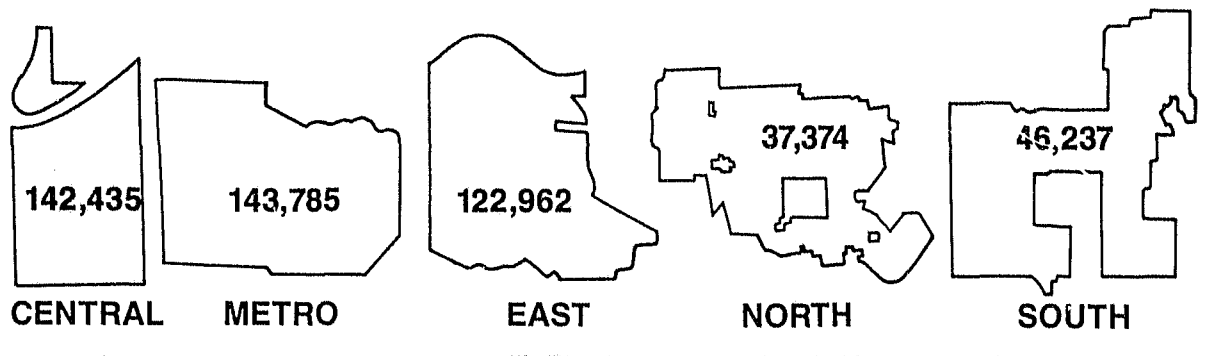
Civilian

As of December 29, 1987

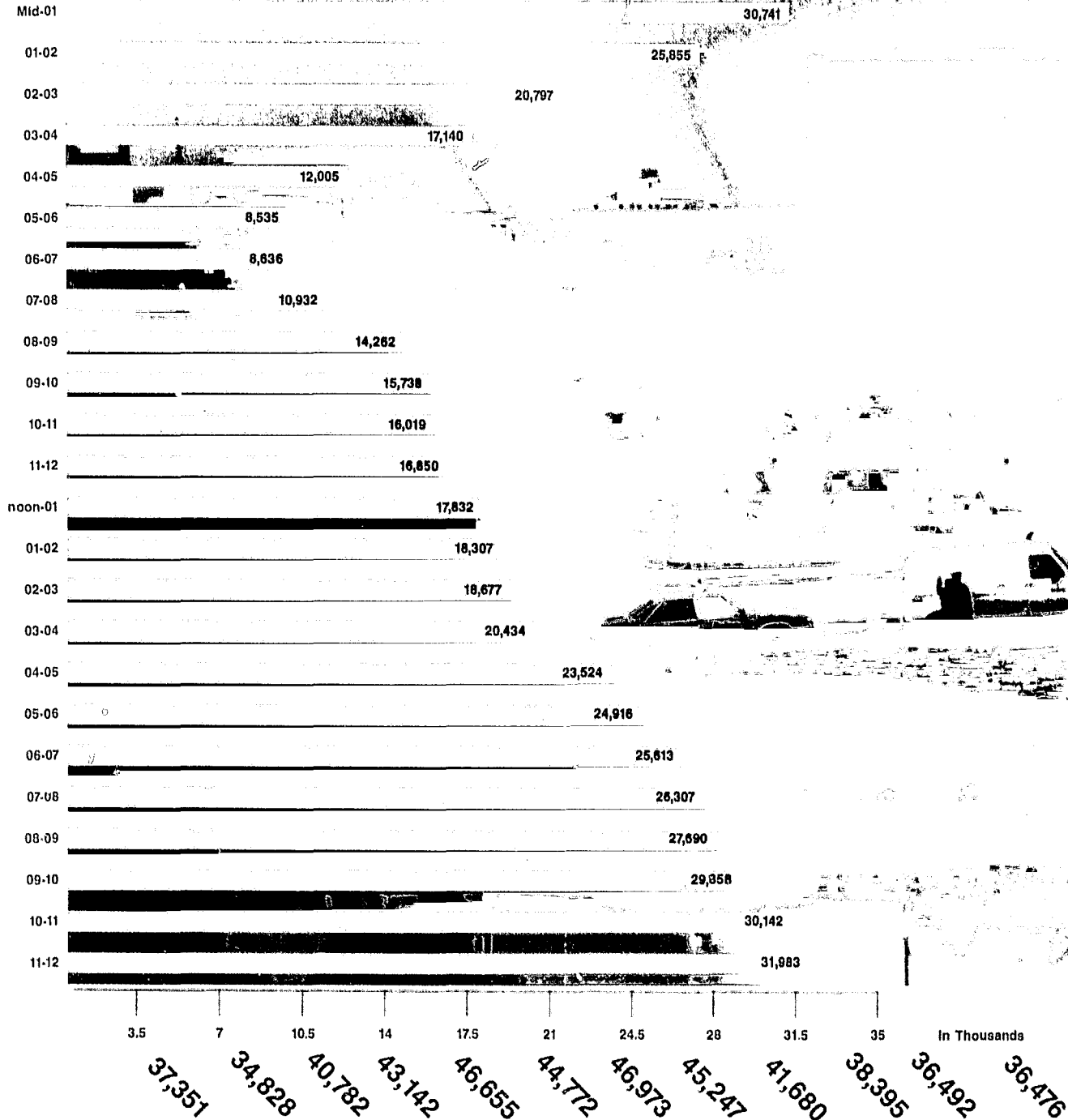
NO.	TITLE OR CLASSIFICATION	Minimum Annual Salary	Maximum Annual Salary	NO.	TITLE OR CLASSIFICATION	Minimum Annual Salary	Maximum Annual Salary
5	Accounting Assistant	\$16,788	26,292	1	O.C.C. Assistant	16,788	26,292
2	Aircraft & Power Plant Mechanic	19,440	30,420	1	Operations Analyst	24,804	38,808
2	Alert II Coordinator	20,412	31,944	1	Painter	17,628	27,600
1	Applicant Interviewer	14,508	22,716	1	Paralegal Assistant	18,516	28,968
1	Applicant Processor	15,984	25,044	15	Parking Control Officer	14,508	22,716
1	Assistant Legal Advisor	31,644	49,548	2	Parking Facility Attendant	11,928	20,604
1	Asst. Supv., Bldg. Maintenance	20,412	31,944	1	Payroll Specialist I	16,788	26,292
3	Asst. Supv., Communications	19,440	30,420	1	Payroll Specialist II	18,516	28,968
2	Asst. Supv., Input Control	18,516	28,968	1	Personnel Assistant	15,228	23,844
4	Automotive Body Mechanic	18,516	28,968	2	Personnel Specialist I	16,788	26,292
18	Automotive Mechanic	18,516	28,968	1	Personnel Specialist II	20,412	31,944
1	Automotive Parts Custodian	15,228	23,844	2	Photographer	15,228	23,844
11	Automotive Servicer	13,152	20,604	1	Pistol Range Technician	13,800	21,624
3	Benefits Coordinator	16,788	26,292	51	Police Clerk	11,364	17,808
1	Benefits Specialist	20,412	31,944	46	Police Dispatcher	15,984	25,044
1	Board Assistant	16,788	26,292	77	Police Officer Candidate	18,084	18,084
1	Body Shop Crew Leader	21,420	33,552	18	Police Secretary	13,800	21,624
2	Budget Assistant	16,788	26,292	43	Police Typist	11,928	18,708
1	Building Manager	31,644	49,548	2	Polygraph Examiner	24,804	38,808
5	Building Security Guard	12,516	23,844	1	Printing & Pub. Crew Leader	20,412	31,944
4	Bureau Secretary	14,508	22,716	3	Programmer I	18,516	28,968
18	Calltaker	14,508	22,716	4	Programmer II	22,488	35,208
1	Carpenter	15,984	25,044	2	Programmer / Analyst	27,336	42,792
4	Cashier	13,152	20,604	2	Project Coordinator	31,644	49,548
2	Chief Forensic Chemist	31,644	49,548	1	Public Affairs Specialist	17,628	27,600
1	Chief Forensic Firearms and Toolmark Examiner	31,644	49,548	1	Purchasing Assistant	16,788	26,292
2	Clerical Assistant	16,788	26,292	8	Real Time Operator	14,508	22,716
1	Clerical Supervisor	19,440	30,420	5	Reprographic Technician	17,628	27,600
7	Communications Servicer	22,488	35,208	1	Secretary to the Chief	15,984	25,044
5	Computer Operator I	13,800	21,624	3	Senior Computer Operator	19,440	30,420
3	Computer Operator II	15,984	25,044	3	Software Analyst	31,644	49,548
0	Data Base Analyst	31,644	49,548	9	Stock Clerk	13,152	20,604
35	Detention Facility Officer	15,228	23,844	1	Supv., Aircraft Maintenance	24,804	38,808
1	Director, Criminalistics Lab	36,612	57,360	1	Supv., App. Programming Unit	33,216	52,032
1	Evidence Custodian	14,508	22,716	3	Supv., Communications	26,040	40,764
8	Fingerprint Classifier	15,228	23,844	0	Supv., Communications Maint.	27,336	42,792
1	Forensic Chemist I	20,412	31,944	1	Supv., Computer Operations	26,040	40,764
2	Forensic Chemist II	22,488	35,208	1	Supv., Employee Benefits	28,692	44,952
1	Forensic Chemist III	24,804	38,808	1	Supv., Identification	22,488	35,208
0	Forensic Firearms & Toolmark Examiner I	20,412	31,944	1	Supv., Input Control	26,040	40,764
0	Forensic Firearms & Toolmark Examiner II	22,488	35,208	1	Supv., Parking Control	21,420	33,552
2	Forensic Firearms & Toolmark Examiner III	24,804	38,808	1	Supv., Personnel Records	24,804	38,808
4	Garage Crew Leader	21,420	33,552	1	Supv., Physical Training & Self Defense	28,692	44,952
1	Graphic Illustrator	15,228	23,844	1	Supv., Printing & Publications	24,804	38,808
1	Gunsmith	18,516	28,968	1	Supv., Systems Programming	33,216	52,032
13	Input Control Operator I	13,152	20,604	4	Switchboard Operator	10,812	16,956
2	Input Control Operator II	14,508	22,716	2	Systems Analyst	28,692	44,952
1	Intelligence Analyst	19,440	30,420	1	Testing Specialist	20,412	31,944
2	Internal Auditor	22,488	35,208	2	Training Development Specialist	20,412	31,944
27	Investigative Typist	13,152	20,604	1	Training Supv., Communications	26,040	40,764
4	Latent Fingerprint Examiner	19,440	30,420	1	Video Production Specialist	20,412	31,944
1	Legal Advisor	40,380	63,228	5	Word Processing Specialist	14,508	22,716
24	Maintenance Custodian I	11,364	17,808	2	Work Leader, Input Control	15,984	25,044
9	Maintenance Custodian II	13,800	21,624				
2	Maint. Custodian Crew Leader	16,788	26,292				
3	O.C.C. Analyst	26,040	40,764				
				601	TOTAL		
				11	Board Employees		
				0	Contract Employee		
				77	Crossing Guards		
				1	Work Leader Crossing Guards		



By Division



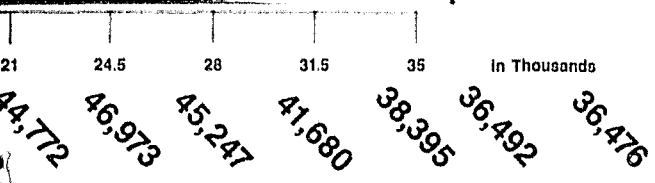
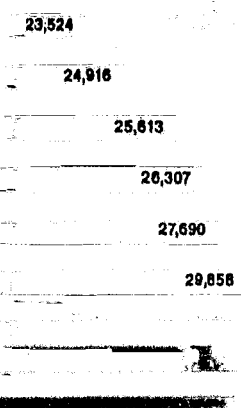
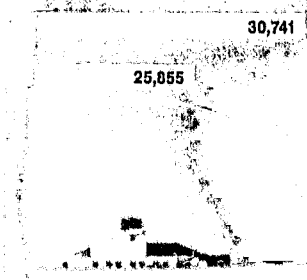
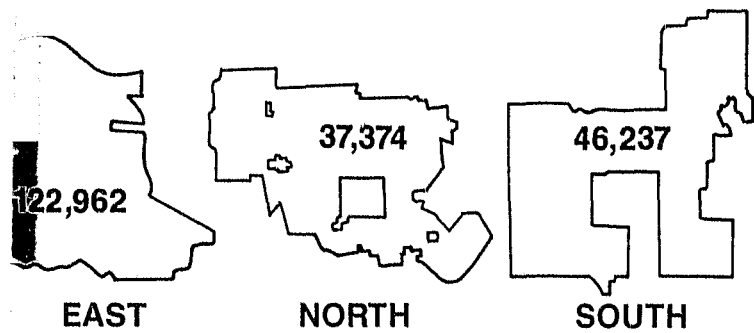
By Time of Day



By Month

(Car Dispatches)

TOTAL 492,793

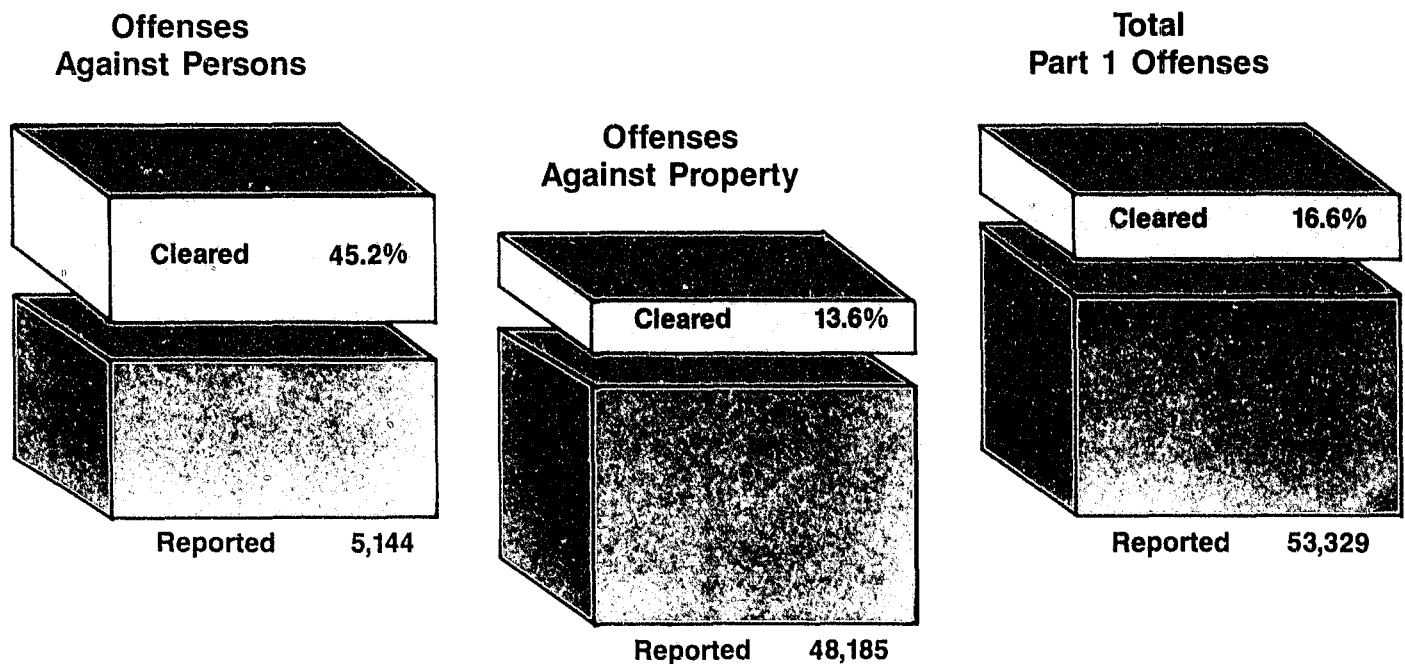


hes) TOTAL 492,793

Part I Offenses Reported to the Police

Classification of Offenses	Offenses Reported 1986	Offenses Reported 1987	Cleared by Arrest	Percentage Cleared by Arrest	Offenses Per 100,000 Population 1986*	Offenses Per 100,000 Population 1987*
Murder & nonnegligent manslaughter	116	131	77	58.8	25.9	29.2
Rape	460	486	190	39.1	102.6	108.4
Robbery	3,442	3,279	704	21.5	768.0	731.7
Assault-aggravated	5,655	4,527	2,059	45.5	1,261.8	1,010.1
Burglary	13,525	13,767	1,108	8.0	3,017.9	3,071.9
Larceny over \$200	8,851	8,073	557	6.9	1,975.0	1,801.4
Larceny under \$200	15,524	16,151	3,670	22.7	3,463.9	3,603.9
Auto theft	6,805	6,362	408	6.4	1,518.4	1,419.6
Arson	554	553	89	16.1	123.6	123.4
TOTALS	54,932	53,329	8,862	16.6	12,257.2	11,899.6

*Figures based on 1980 U.S. Census population of 448,159.



Readers are cautioned against drawing conclusions from comparisons of crime figures between communities without considering the factors which will affect the amount and type of crime. Some of those factors are: density and size of the community and metropolitan populations, economic status and mores, attitude of the public toward law enforcement problems, and the administrative and investigative efficiency of the law enforcement agency.

Controlled Substance Enforcement



During the year 1987, \$65,784 in federal, local, and Organized Crime Narcotics grant funds were expended in the investigation of and the undercover purchase of controlled substances from illicit dealers. This investment was returned by the recovery of controlled substances with an estimated value of \$1,157,787; recovery of firearms with an estimated value of \$12,163; and other property with an estimated value of \$241,013, for a total estimated value of \$1,410,963 in recoveries.

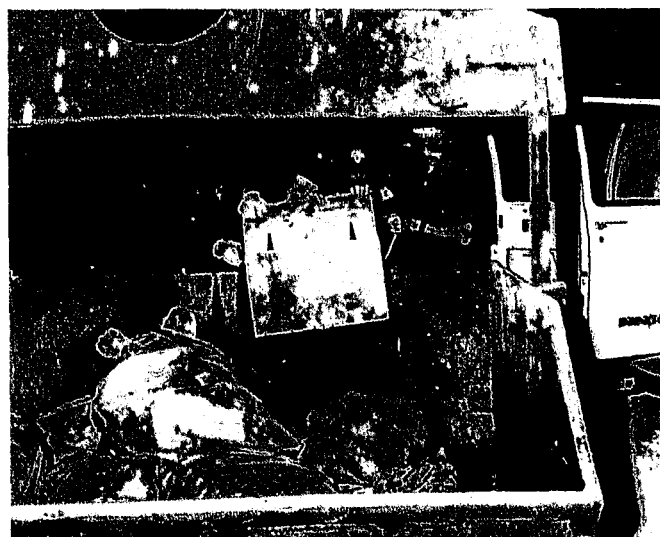
Recovered controlled substances are destroyed as are firearms and other contraband. After receiving a court order approving destruction, controlled substances are taken to a local steel company and destroyed in an electric furnace.

A total of 140 cases involving the undercover purchase of controlled substances were investigated during the year. Seventy-three of these purchase cases were successfully submitted for prosecution: 39 accepted by the federal prosecutor; 32 submitted to the state prosecutor; one accepted by the juvenile court system; and one submitted to the city prosecutor. Overall during the year, 260 controlled substance purchases were made from illegal sources, with 100% in the hard drug group of PCP, heroin, cocaine, LSD, and methamphetamine.

The Drug Enforcement Unit processed 505 controlled substance possession cases submitted by other elements of the department. Charges were filed in 215 cases (43%) at the federal, state, city, and juvenile court system levels.

During the year, Drug Enforcement Unit personnel continued their efforts in a joint federal task force to attack the growth of a Jamaican organized crime crack distribution organization. The joint federal task force efforts have resulted in the following to date:

- Search warrants obtained and served on 100 drug distribution locations, commonly termed "dope houses."
- 106 Jamaican nationals charged with felonies in the federal court system.
- 43 Jamaican and local citizens charged with felonies in the Missouri state court system.
- 22 Jamaican nationals deported without further criminal charge.
- 18.5 kilograms of crack/cocaine seized, having an estimated value of \$2,220,000.
- Currency/assets seized, having an estimated value of \$605,721.
- Firearms seized including 184 handguns and 37 assault rifles and/or machine guns.



Arrests by Organizational Elements

	TOTAL	Central Patrol Division			Metro Patrol Division			East Patrol Division			North Patrol Division			South Patrol Division			Traffic & Patrol Support Divisions	Invest. Divs.	Other
		Watch I	Watch II	Watch III	Watch I	Watch II	Watch III	Watch I	Watch II	Watch III	Watch I	Watch II	Watch III	Watch I	Watch II	Watch III			
Part I Offense Arrests																			
Murder & nonnegligent manslaughter	137	5	33	25	6	11	12	8	9	14	1	-	1	-	-	1	-	9	-
Manslaughter by negligence	1	-	1	-	-	-	-	-	-	-	-	-	-	-	-	-	-	-	-
Rape	216	19	43	33	12	15	30	11	14	20	2	-	3	5	3	5	-	1	-
Robbery	718	87	183	127	29	44	73	26	32	77	4	8	11	5	15	26	-	21	-
Assault-aggravated	1,394	183	153	172	81	103	185	90	110	175	25	17	35	11	21	26	1	33	11
Burglary	1,269	93	199	183	81	127	109	79	129	162	10	21	26	14	24	19	-	34	1
Larceny	6,815	279	600	634	174	557	593	183	547	528	60	333	487	65	488	460	15	119	333
Auto theft	846	63	127	110	67	77	95	77	58	68	6	5	7	11	6	15	1	27	-
Arson	94	12	16	10	2	6	4	8	13	13	4	2	2	-	1	6	-	1	4
Subtotal	11,490	713	1,072	1,254	452	940	1,101	482	912	1,057	112	386	572	111	558	558	17	245	349
Part II Offense Arrests																			
Assault-nonaggravated	7,063	574	742	930	398	412	822	556	448	939	152	143	222	121	110	240	17	50	127
Forgery & counterfeiting	603	29	203	164	16	29	26	5	23	30	1	7	7	1	19	10	-	8	-
Fraud	456	25	73	57	20	37	41	11	32	31	4	24	17	6	17	16	-	36	4
Embezzlement	7	12	6	11	-	-	-	-	-	1	-	-	-	-	-	1	-	1	-
Vandalism	1,707	139	171	175	121	107	198	156	99	233	32	37	58	29	27	72	4	19	26
Sex offenses	816	60	163	175	20	33	70	39	36	80	11	8	19	6	4	11	7	20	49
Weapons	1,542	104	163	258	109	73	169	164	56	164	20	12	25	9	11	15	5	43	17
Prost./commercialized vice	1,556	533	116	423	24	9	35	16	61	44	2	1	6	4	-	4	-	260	10
Narcotics	1,132	70	177	160	50	104	141	52	95	119	18	46	40	6	9	28	6	6	5
Gambling	9	1	1	-	-	-	-	-	-	-	1	-	7	-	-	-	-	-	-
Offenses vs. family & child	196	19	33	39	8	10	17	10	6	25	1	3	3	-	5	5	-	20	-
Violation of liquor laws	1,579	72	335	227	12	13	173	72	29	113	48	18	197	19	7	34	24	1	135
Disorderly conduct	2,808	349	242	552	206	94	255	260	116	295	82	45	65	58	26	64	13	7	79
Other offenses except traffic	39,045	2,195	5,352	4,151	1,388	4,083	3,071	1,726	4,563	3,597	570	2,568	1,187	554	1,533	1,010	629	299	559
Subtotal	58,519	4,277	7,073	7,437	2,372	5,004	5,018	3,067	5,564	5,671	942	2,912	1,853	813	1,768	1,510	705	770	1,011
Traffic Arrests																			
Driving under influence	7,137	931	553	509	407	215	230	599	51	632	341	166	205	209	78	79	1,231	-	666
Careless driving	8,204	287	502	407	329	617	438	307	194	652	229	350	392	184	347	314	1,758	-	897
Speeding	69,325	70	77	63	494	641	228	156	71	179	901	1,994	1,306	184	675	602	59,415	-	2,269
Other traffic violations	64,133	1,170	4,362	3,853	1,950	2,627	2,367	2,218	1,041	4,997	625	1,220	875	456	910	913	29,547	-	3,497
Subtotal	148,799	4,440	5,440	4,837	3,180	4,100	3,263	3,280	1,357	6,460	2,096	3,730	2,778	1,033	2,010	1,908	91,951	-	7,329
GRAND TOTAL	218,808	9,477	15,046	12,971	6,004	10,044	9,382	6,829	7,833	13,188	3,150	7,028	5,203	1,957	4,336	3,976	92,673	1,015	8,689

Persons Arrested

Part 1 Offense Arrests	TOTAL	WHITE MALE	BLACK MALE	OTHER MALE	WHITE FEMALE	BLACK FEMALE	OTHER FEMALE
Murder & nonnegligent manslaughter	137	27	87	1	5	17	-
Manslaughter by negligence	1	1	-	-	-	-	-
Rape	216	54	158	1	1	2	-
Robbery	718	141	476	-	21	80	-
Assault-aggravated	1,394	378	720	1	48	246	1
Burglary	1,269	441	736	1	43	48	-
Larceny	6,815	1,981	2,520	14	1,014	1,271	15
Auto theft	846	202	538	7	40	59	-
Arson	94	53	29	-	7	5	-
Subtotal	11,490	3,278	5,264	25	1,079	1,728	16

Part II Offense Arrests

Assault-nonaggravated	7,063	2,447	3,755	18	364	478	1
Forgery & counterfeiting	603	159	198	-	87	159	-
Fraud	456	158	127	-	69	102	-
Embezzlement	7	5	2	-	-	-	-
Vandalism	1,707	719	748	1	96	142	1
Sex offenses	816	433	346	2	15	20	-
Weapons	1,542	436	951	2	43	109	1
Prost. / commercialized vice	1,556	717	411	25	151	252	-
Narcotics	1,132	300	644	2	74	112	-
Gambling	9	8	1	-	-	-	-
Offenses vs. family & child	196	31	70	-	31	64	-
Violation of liquor laws	1,579	919	461	5	155	39	-
Disorderly conduct	2,808	1,076	1,262	4	190	276	-
Other offenses except traffic	38,845	14,511	14,648	75	5,626	3,976	9
Subtotal*	58,319	21,919	23,624	134	6,901	5,729	12

Traffic Arrests

Driving under influence	7,137	4,352	1,895	8	697	182	3
Careless driving	8,204	4,415	1,785	22	1,502	474	6
Speeding	69,325	38,706	8,220	130	18,177	4,053	39
Other traffic violations	64,133	30,578	15,211	138	13,276	4,880	50
Subtotal	148,799	78,051	27,111	298	33,652	9,589	98
GRAND TOTAL	218,608	103,248	53,939	457	41,732	17,046	126

*Does not include 200 violations by businesses

Juvenile Summary

Part I Offense Arrests	1987									
	Offender							Disposition		
	1987	1986	Repeat	First	Not Stated	On Pro-bation	On Parole	Juvenile Court	Invest. Divisions	Not Stated
Murder & nonnegligent manslaughter	2	3	1	1	-	-	-	2	-	-
Manslaughter by negligence	-	1	-	-	-	-	-	-	-	-
Rape	26	14	20	6	-	-	-	25	1	-
Robbery	66	86	34	31	1	-	-	61	4	1
Assault-aggravated	213	238	108	100	5	-	-	185	23	5
Burglary	346	398	179	161	6	-	-	314	26	6
Larceny	964	930	381	568	15	-	-	707	242	15
Auto theft	309	303	193	115	1	-	-	284	24	1
Arson	28	12	11	17	-	-	-	23	5	-
Subtotal	1,954	1,985	927	999	28	-	-	1,601	325	26

Part II Offense Arrests										
Assault-nonaggravated	185	81	87	95	3	1	-	159	23	3
Forgery & counterfeiting	21	12	14	7	-	-	-	20	1	-
Fraud	10	6	5	5	-	-	-	10	-	-
Embezzlement	-	1	-	-	-	-	-	-	-	-
Vandalism	114	102	48	65	1	-	-	83	30	1
Sex offenses	37	29	20	17	-	-	-	33	4	-
Weapons	56	54	36	19	1	-	-	48	7	1
Prost./commercialized vice	10	36	4	6	-	-	-	7	3	-
Narcotics	15	26	8	7	-	-	-	14	1	-
Gambling	-	-	-	-	-	-	-	-	-	-
Offenses vs. family & child	1	2	-	1	-	-	-	-	1	-
Violation of liquor laws	67	45	24	43	-	-	-	39	28	-
Disorderly conduct	93	94	44	49	-	-	-	56	37	-
Other offenses except traffic	1,491	1,473	476	725	290	-	-	956	246	289
Subtotal	2,100	1,961	766	1,039	295	1	-	1,425	381	294

Traffic Arrests										
Driving under influence	27	25	-	-	-	-	-	-	-	-
Careless driving	376	376	-	-	-	-	-	-	-	-
Speeding	1,051	1,091	-	-	-	-	-	-	-	-
Other traffic violations	1,303	1,326	-	-	-	-	-	-	-	-
Subtotal	2,757	2,818	-	-	-	-	-	-	-	-
GRAND TOTAL	6,811	6,764	1,693	2,038	323	1	-	3,026	706	322

Value of Property Stolen



Robbery	Number	Amount
Highway	1,912	\$883,354
Commercial House	596	343,982
Service Station	211	29,742
Chain Store	93	14,323
Residence	371	278,374
Bank	15	4,857
Miscellaneous	81	15,189
TOTAL	3,279	\$1,569,821

(Average loss each robbery - \$479)

Burglary	Number	Amount
Residence, Night	2,427	\$2,397,031
Residence, Day	3,104	3,058,133
Residence, Unknown	4,657	5,141,291
Nonresidence, Night	892	403,978
Nonresidence, Day	285	120,432
Nonresidence, Unknown	2,402	2,689,850
TOTAL	13,767	\$13,810,715

(Average loss each burglary - \$1,003)

Larceny	Number	Amount
Pickpocket	73	\$14,742
Purse Snatch	398	55,812
Shoplifting	4,375	425,686
Theft From Auto	4,167	2,099,950
Auto Accessories	7,942	1,897,149
Bicycles	445	95,341
From Building	586	262,463
Coin-Operated Machines	174	13,231
Miscellaneous	6,064	3,452,079
TOTAL	24,224	\$8,316,453

(Average loss each larceny - \$343)

Larceny By Value	Number	Amount
\$200 and over	8,073	\$7,477,233
\$50 to \$200	4,852	611,080
Under \$50	11,299	228,140
TOTAL	24,224	\$8,316,453

(Average loss each larceny - \$343)

Auto Theft	Number	Amount
Auto Theft	6,362	\$23,471,210
TOTAL	6,362	\$23,471,210

(Average loss each theft - \$3,689)

Other Crimes	Number	Amount
Miscellaneous*	617	\$55,434
TOTAL	617	\$55,434

* (Property loss in connection with homicides & rapes - \$90)

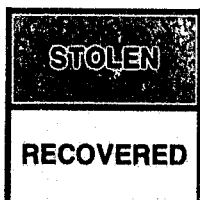
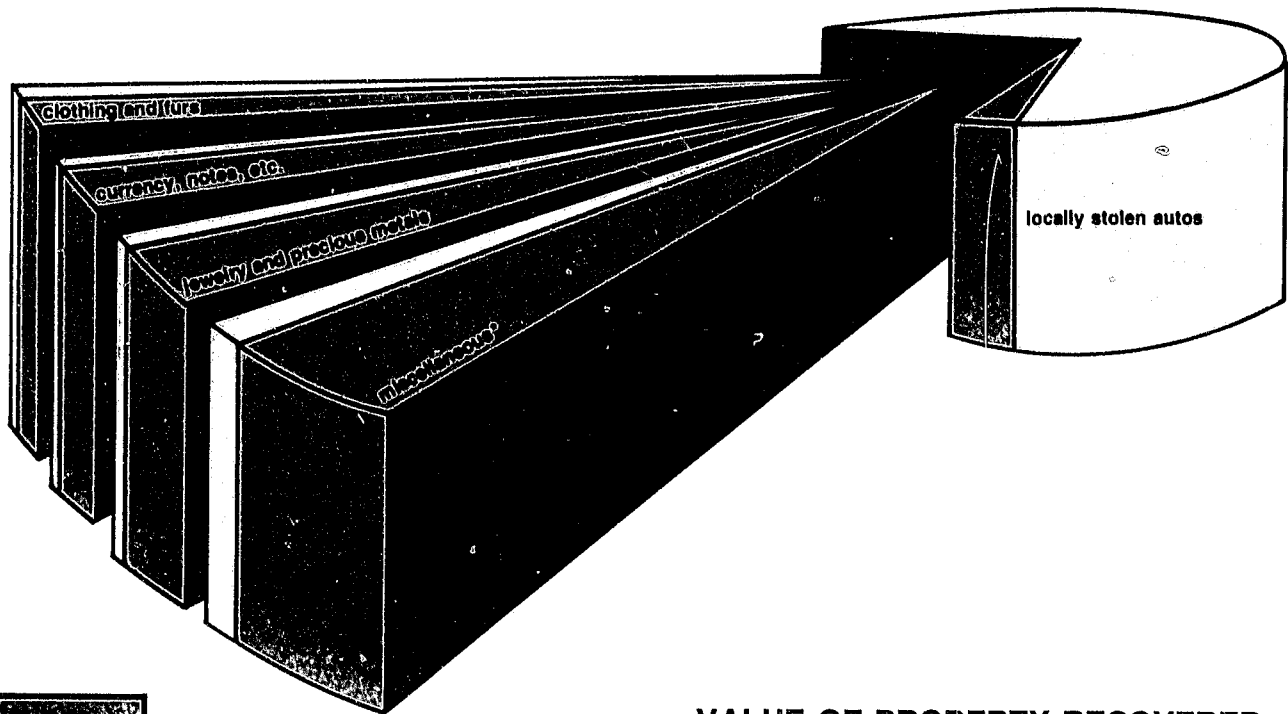
Grand Total of Property Stolen **\$47,223,633**
Grand Total of Property Recovered **\$21,223,283**

Value of Property

VALUE OF PROPERTY STOLEN

Amount	Type of Property	Value of Property Stolen
3.1%	currency, notes, etc.	\$ 1,481,505
8.9%	jewelry and precious metals	4,218,816
2.9%	clothing and furs	1,360,131
52.8%	locally stolen autos	24,913,493
32.3%	miscellaneous*	15,249,688
100.0%	Total	\$ 47,223,633

*Includes auto accessories, appliances, bicycles, etc.



VALUE OF PROPERTY RECOVERED

Amount	Type of Property	Value of Property Recovered
.2%	currency, notes, etc.	\$ 32,402
1.0%	jewelry and precious metals	217,570
.6%	clothing and furs	117,468
93.8%	locally stolen autos	19,912,091
4.4%	miscellaneous*	943,752
100.0%	Total	\$ 21,223,283

*Includes auto accessories, appliances, bicycles, etc.

Traffic Summary

ACCIDENTS & HAZARDOUS MOVING VIOLATION ARRESTS BY HOUR

Hour Beginning	Number of Accidents	Percent of Accidents	Number of MV Arrests	Percent of MV Arrests
1 AM	742	2.4	3,381	2.5
2	541	1.7	2,866	2.1
3	394	1.3	2,104	1.6
4	245	.8	1,033	.8
5	224	.7	1,088	.8
6	616	2.0	2,165	1.6
7	1,743	5.6	6,888	5.1
8	1,478	4.7	6,966	5.1
9	1,145	3.6	5,623	4.2
10	1,385	4.4	8,150	6.0
11	1,762	5.6	9,430	7.0
12 Noon	2,137	6.8	9,369	6.9
1	1,761	5.6	6,674	4.9
2	2,024	6.4	4,730	3.5
3	2,462	7.8	4,602	3.4
4	2,878	9.2	9,214	6.8
5	2,786	8.9	10,115	7.5
6	1,689	5.4	6,252	4.6
7	1,227	3.9	8,109	6.0
8	1,050	3.3	7,854	5.8
9	941	3.0	6,572	4.9
10	821	2.6	4,767	3.5
11	801	2.6	3,890	2.9
12 Midnight	527	1.7	3,427	2.5
TOTAL	31,379	100.0%	135,269	100.0%

ACCIDENTS & HAZARDOUS MOVING VIOLATION ARRESTS BY DAY OF WEEK

Day	Number of Accidents	Percent of Accidents	Number of MV Arrests	Percent of MV Arrests
Monday	4,815	15.4	20,382	15.1
Tuesday	4,717	15.0	23,282	17.2
Wednesday	4,484	14.3	24,709	18.3
Thursday	4,466	14.2	24,250	17.9
Friday	5,442	17.4	19,427	14.3
Saturday	4,590	14.6	11,872	8.8
Sunday	2,865	9.1	11,347	8.4
TOTAL	31,379	100.0%	135,269	100.0%

ACCIDENTS & CORRESPONDING ENFORCEMENT ACTIVITY

Type	Number of Accidents	Summonses Issued
Prop. damage	24,416	12,091
Injury	6,891	
Fatal	72*	
TOTAL	31,379	

*Represents 79 persons killed

TOTAL ENFORCEMENT ACTIVITY

Type	Summonses Issued
Hazardous moving violations	135,269
Nonhazardous moving violations	13,530
TOTAL MOVING VIOLATIONS	148,799
Parking violations	183,163
TOTAL TRAFFIC VIOLATIONS	331,962

HAZARDOUS MOVING VIOLATION ARRESTS BY CAUSE

Type of Violation	Number of Arrests
Speeding	68,863
Fail to yield right-of-way	2,778
Drive wrong side/wrong way	1,427
Improper passing	456
Failure to obey stop sign	6,075
Disregard traffic signal	11,093
Following too close	299
Made improper turn	21,943
Other improper driving	14,735
Driving under the influence	7,137
Failure to signal	463
TOTAL	135,269

SEX OF VIOLATOR

Male	94,146
Female	41,123
TOTAL	135,269

AGE OF VIOLATOR

15 and younger	154
16	2,106
17	3,406
18 to 19	8,412
20 to 24	27,633
25 to 34	47,616
35 to 44	24,193
45 to 54	11,090
55 to 64	6,639
65 to 74	2,958
75 and older	1,062
TOTAL	135,269

TYPE OF VEHICLE

Passenger car	97,579
Truck	19,362
Semi-trailer	8
Taxi	-
Bus	13
Motorcycle	235
Other	18,072
TOTAL	135,269

RESIDENCE OF VIOLATOR

Local resident	79,646
Resident elsewhere in state	35,070
Nonresident	20,553
TOTAL	135,269

