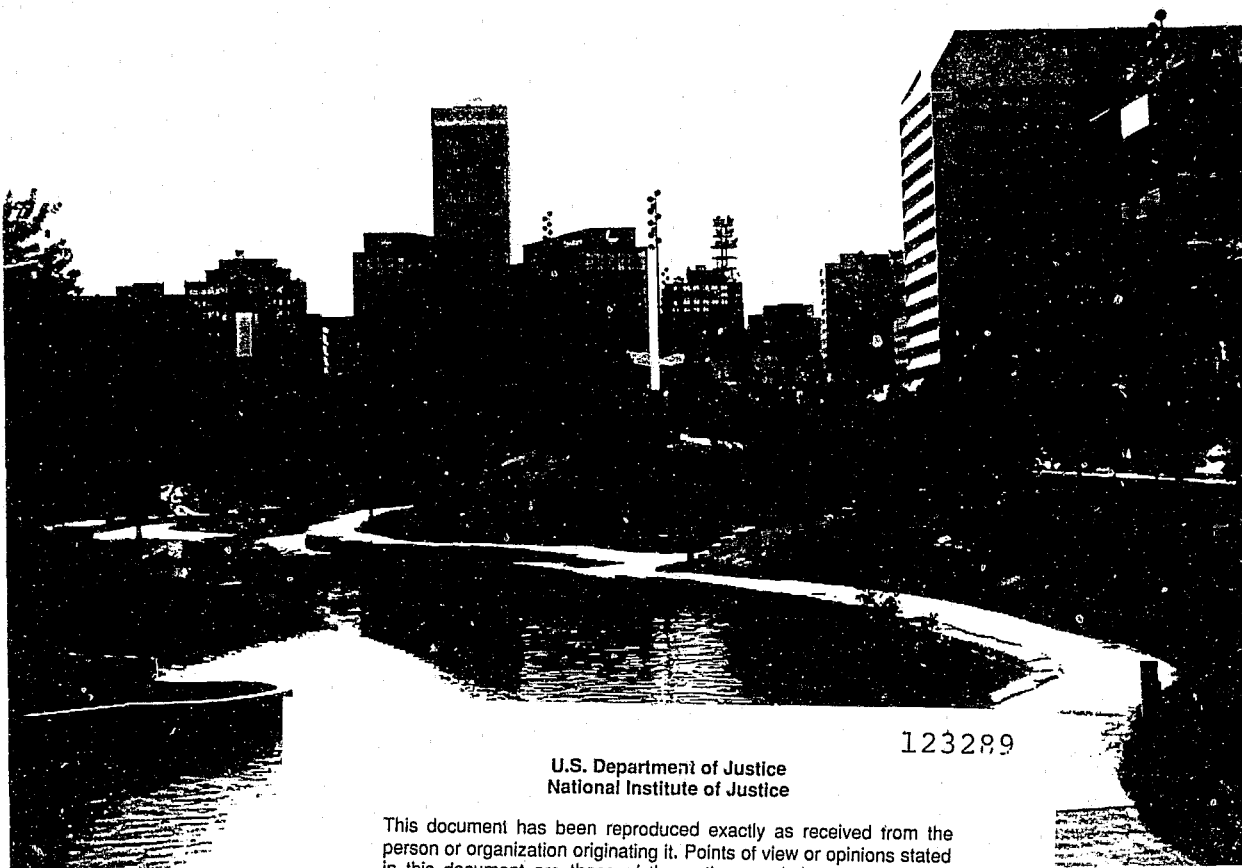


1988 ANNUAL REPORT OMAHA POLICE DIVISION



CR-sent
9-4-90 MFI

123289



123289

**U.S. Department of Justice
National Institute of Justice**

This document has been reproduced exactly as received from the person or organization originating it. Points of view or opinions stated in this document are those of the authors and do not necessarily represent the official position or policies of the National Institute of Justice.

Permission to reproduce this copyrighted material has been
granted by
Omaha Police Division

to the National Criminal Justice Reference Service (NCJRS).

Further reproduction outside of the NCJRS system requires permission of the copyright owner.

Omaha, Nebraska - 1988

POPULATION
347,631

SWORN OFFICERS
602

**MOTOR VEHICLES
REGISTERED
DOUGLAS COUNTY**
345,417

**102.39
SQUARE MILES**

**POLICE OFFICERS
PER 1,000 POPULATION**
1.74

STREET MILES
1,515
LANE MILES
3,707

CITY PARKS
158

Law Enforcement Code of Ethics

As a Law Enforcement Officer, my fundamental duty is to serve mankind; to safeguard lives and property; to protect the innocent against deception, the weak against oppression or intimidation, and the peaceful against violence or disorder; and to respect the Constitutional rights of all men to liberty, equality and justice.

I will keep my private life unsullied as an example to all; maintain courageous calm in the face of danger, scorn, or ridicule; develop self-restraint; and be constantly mindful of the welfare of others. Honest in thought and deed in both my personal and official life, I will be exemplary in obeying the laws of the land and the regulations of my department. Whatever I see or hear of a confidential nature or that is confided to me in my official capacity will be kept ever secret unless revelation is necessary in the performance of my duty.

I will never act officiously or permit personal feelings, prejudices, animosities or friendships to influence my decisions. With no compromise for crime and with relentless prosecution of criminals, I will enforce the law courteously and appropriately without fear or favor, malice or ill will, never employing unnecessary force or violence and never accepting gratuities.

I recognize the badge of my office as a symbol of public faith, and I accept it as a public trust to be held so long as I am true to the ethics of the police service. I will constantly strive to achieve these objectives and ideals, dedicating myself before God to my chosen profession . . . law enforcement.

OMAHA POLICE DIVISION

MISSION STATEMENT

The primary mission of the Omaha Police Division is to insure the safety of all citizens and their property.

It is our concern that all citizens be safe in their homes and businesses and that they, as individuals, feel free to live, work and play without fear of becoming victims.

Prevention of crime and community responsiveness shall be the hallmark of the Division.

It is with this in mind that we will, over a period of time, be initiating policy changes and programs.

Interaction between police personnel and the community will be intensified to promote better understanding.

The Division will use all available community resources and media organizations to enhance the cooperative effort between the police and the community.

The Division will coordinate policies with the various branches of federal, state and local governmental bodies that have a direct impact on crime. We will review and provide input to legislation and promote passage of laws affecting law enforcement and crime prevention effectiveness.

New police technology and methods shall be constantly monitored and developed. All Division operations will be re-evaluated and updated routinely. Procedures for program accountability and goal achievement will be developed.

A career development plan to benefit all personnel shall be established. Jobs will be clearly defined with responsibility and accountability outlined. Personnel shall be given the flexibility and resources to accomplish measurable goals within their areas of responsibility. Criteria for evaluating efficiency and proficiency of all Division personnel will be established.

Operations will be enhanced by the Police Division initiating effective personnel recruitment, development and retention.



TOTAL INDEX CRIMES

FBI - UCR STATISTICS, JAN - DEC 1987

CITIES WITH POPULATION OF 250,000 TO 500,000

Rank	City	1987 Population	1987 Crimes Per 100,000 Population	1987 12 Mos. Crimes
1.	Fort Worth, TX	432,305	18,042.1	77,997
2.	Tampa, FL	285,856	17,343.7	49,578
3.	Portland, OR	390,845	16,702.5	65,281
4.	Atlanta, GA	429,953	15,622.9	67,171
5.	Miami, FL	385,089	15,316.2	58,981
6.	Seattle, WA	494,426	14,839.2	73,369
7.	Newark, NJ	318,402	12,801.7	40,761
8.	St. Louis, MO	429,414	12,801.4	54,971
9.	Oklahoma City, OK	441,408	12,791.3	56,462
10.	Minneapolis, MN	359,371	12,694.7	45,621
11.	Oakland, CA	365,983	12,294.3	44,995
12.	Kansas City, MO	444,382	12,000.9	53,330
13.	Tucson, AZ	374,546	11,363.6	42,562
14.	Charlotte, NC	356,596	11,201.2	39,943
15.	Fresno, CA	291,855	11,053.4	32,260
16.	Sacramento, CA	331,728	10,437.5	34,624
17.	Albuquerque, NM	371,756	10,006.3	37,199
18.	Birmingham, AL	282,171	9,937.6	28,041
19.	Tulsa, OK	369,961	9,929.7	36,736
20.	Corpus Christi, TX	265,593	9,620.0	25,550
21.	Austin, TX	469,542	9,494.1	44,579
22.	Nashville, TN	487,097	8,828.0	43,001*
23.	Toledo, OH	344,963	8,625.9	29,756
24.	Wichita, KS	290,702	8,545.9	24,843*
25.	El Paso, TX	494,954	8,529.9	42,219
26.	Colorado Springs, CO	275,106	8,355.7	22,987
27.	St. Paul, MN	265,550	8,154.8	21,655
28.	Arlington, TX	251,372	8,068.5	20,282
29.	Pittsburgh, PA	389,015	8,033.4	31,251
30.	Buffalo, NY	325,787	7,861.3	25,611
31.	Long Beach, CA	406,297	7,757.6	31,519
32.	Las Vegas, NV	481,393	7,690.2	37,020*
33.	Norfolk, VA	280,370	7,474.4	20,956
34.	Cincinnati, OH	371,585	7,468.3	27,751
35.	Louisville, KY	286,516	6,875.0	19,698
36.	OMAHA, NE	374,934	6,521.1	24,450
37.	Mesa, AZ	262,428	6,468.8	16,976
38.	Indianapolis, IN	478,693	6,389.9	30,588
39.	Virginia Beach, VA	340,158	5,543.0	18,855

*Does not include Arson

Statistics Compiled By
Omaha Police Division
Crime Analysis Section
June 1988

UNIFORM FIELD BUREAU

The Uniform Field Bureau implemented a number of major programs in 1988 designed to make the largest and most visible bureau of the Police Division more effective in responding to the communities' needs.

One program which is designed to more effectively manage the Uniform Field Bureau resulted in the transfer of all patrol lieutenants from the Police Headquarters building to the respective Assembly buildings. The decision was made to place the Sector Lieutenants in the field where they could directly supervise the sergeants and police officers at roll-call situations.

Within three to five years the Police Division hopes to have Sector Assembly buildings located in each one of the three Patrol Sectors and since the lieutenants' offices would be located in those sector buildings at that time, it was only logical that the lieutenants be moved now to facilitate that process.

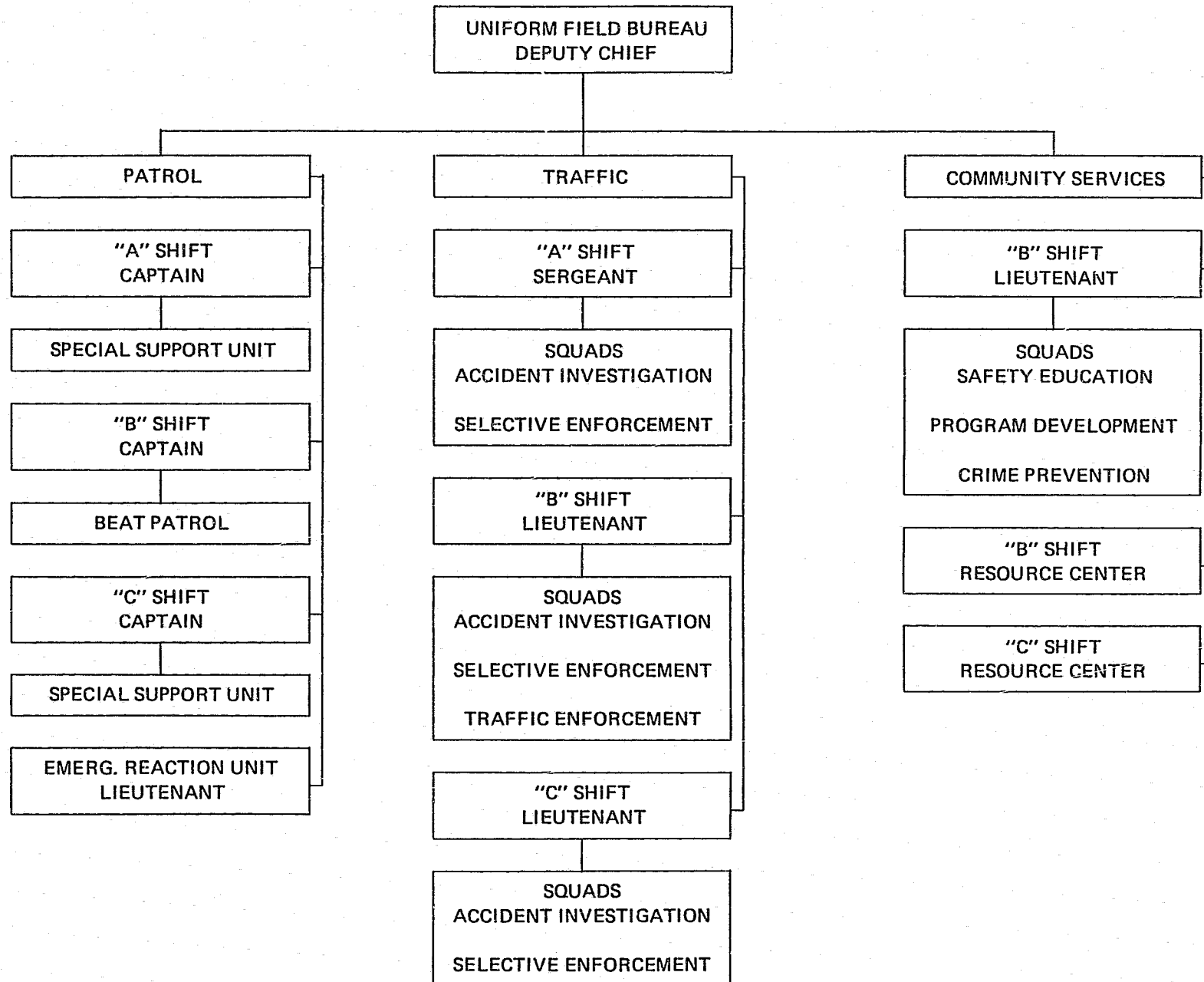
Another program instituted by the Uniform Field Bureau includes the monthly visitation at all schools by district officers. This program requires that all day shift patrol officers visit all public and parochial school buildings located in their respective districts at least once a month. This allows the officer to get to know the school staff and students on a first-hand basis. In those situations where police officers are called to the school building in an enforcement situation, it allows the school staff members and students to be much more comfortable with the officers due to the fact they have met them on previous occasions in a cordial and friendly setting.

Another program initiated in 1988 involves full-time foot patrol officers in the Public Housing Facilities of the City of Omaha. Initially six officers were assigned to these patrols and were assigned in teams to patrol all five of the Public Housing Projects within the City of Omaha. This is one of the areas in which the Police Division is responding to in an increase in youth violence and youth gang activity.



The Police Division has enacted and expanded the use of foot patrols to deal with crime and provide a greater police presence.

POLICE DIVISION
UNIFORM FIELD BUREAU



CRIMINAL INVESTIGATIONS BUREAU

Although crime comparison statistics for the City of Omaha reflect the nationwide trend of increased incidents of crime, the Omaha Police Division's clearance rate continues to remain considerably higher than the national average.

The strict enforcement of "possession of illegal firearms" laws, as well as an increased emphasis on the use of search warrants and the targeting of career criminals, has resulted in additional cases being solved, thus enhancing clearance rates.

The Criminal Investigations Bureau is currently divided into three sections, each of which is commanded by a captain. They are:

ADMINISTRATION SECTION – This section has the responsibility of providing immediate follow-up on serious crimes via the regional investigator concept. Under this concept, a regional investigator is dispatched to the scene of felony crimes to assist Uniform Field Bureau officers who have received the initial call for assistance. The regional investigator will then begin an immediate follow-up investigation while evidence is still fresh.

Other tasks assigned to the Administration Section include the processing of all fugitive and felony warrants, all polygraph testing, the highly successful Crime Stoppers program and a Crime Victims Assistance Squad which works with victims of crime in explaining the criminal justice process after the commission of a crime.

CRIME AGAINST PERSON SECTION – This section's responsibilities include the investigation of violent crimes such as homicides, assaults, rapes and robberies. Five units comprise the Crime Against Person Section. They are: Homicide/Assault, Robbery/Sex, Narcotics, Youth Services and Organized Crime/Intelligence. Each unit is responsible for specific types of crimes and/or investigations.

With a greater public awareness of the problems caused by child abuse, the Youth Services Unit has been actively involved with Omaha schools in identifying potential abuse victims. As a result, many children and parents are being helped in dealing with this problem. Additionally, the Youth Services Unit, Omaha schools and the judicial system are involved in the Shocap program which identifies serious habitual juvenile offenders and tracks them through the criminal justice system. This ensures maximum penalties commensurate with the crime committed.

CRIME AGAINST PROPERTY SECTION – There are three units assigned to this section. Each of the units is responsible for specific property crime violations. The units and their responsibilities include:

BURGLARY UNIT – burglaries, theft, criminal trespass and destruction of property

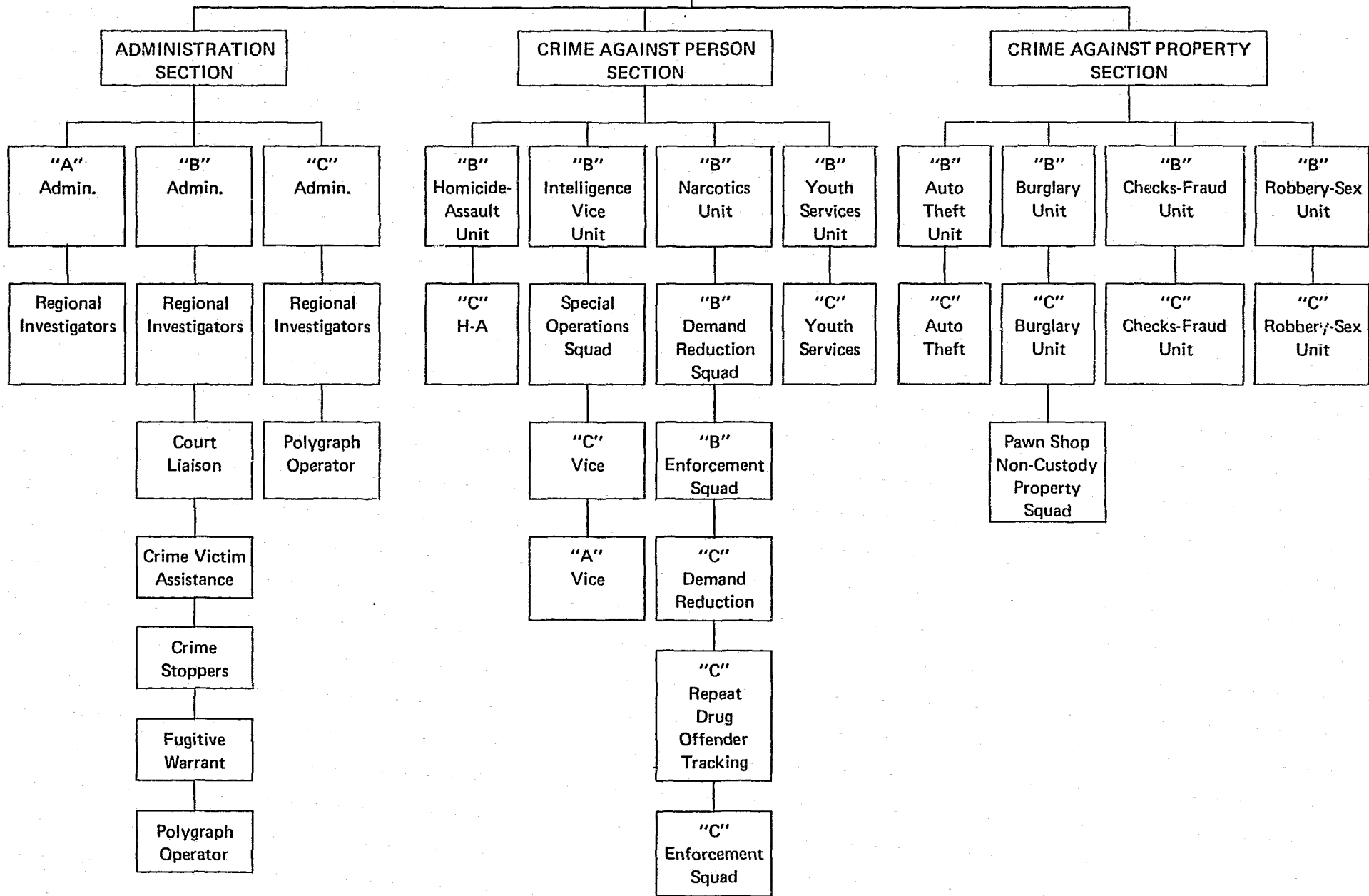
AUTO THEFT UNIT – stolen vehicles, theft from motor vehicles, failure to return leased vehicles.

CHECK/FRAUD UNIT – checks, forgery, shoplifting and theft by deception.

The Crime Against Property Section handles the vast majority of cases assigned for follow-up and, as a result, their investigators gain considerable knowledge in interviewing, interrogation and preparation of search warrants.

With the knowledge that a small number of criminals commit an inordinately large number of crimes, the future direction of the Criminal Investigations Bureau appears to focus on the investigation and the apprehension of career criminals as a means of reducing crimes in the City of Omaha.

CRIMINAL INVESTIGATIONS
BUREAU
DEPUTY CHIEF



TECHNICAL SERVICES BUREAU

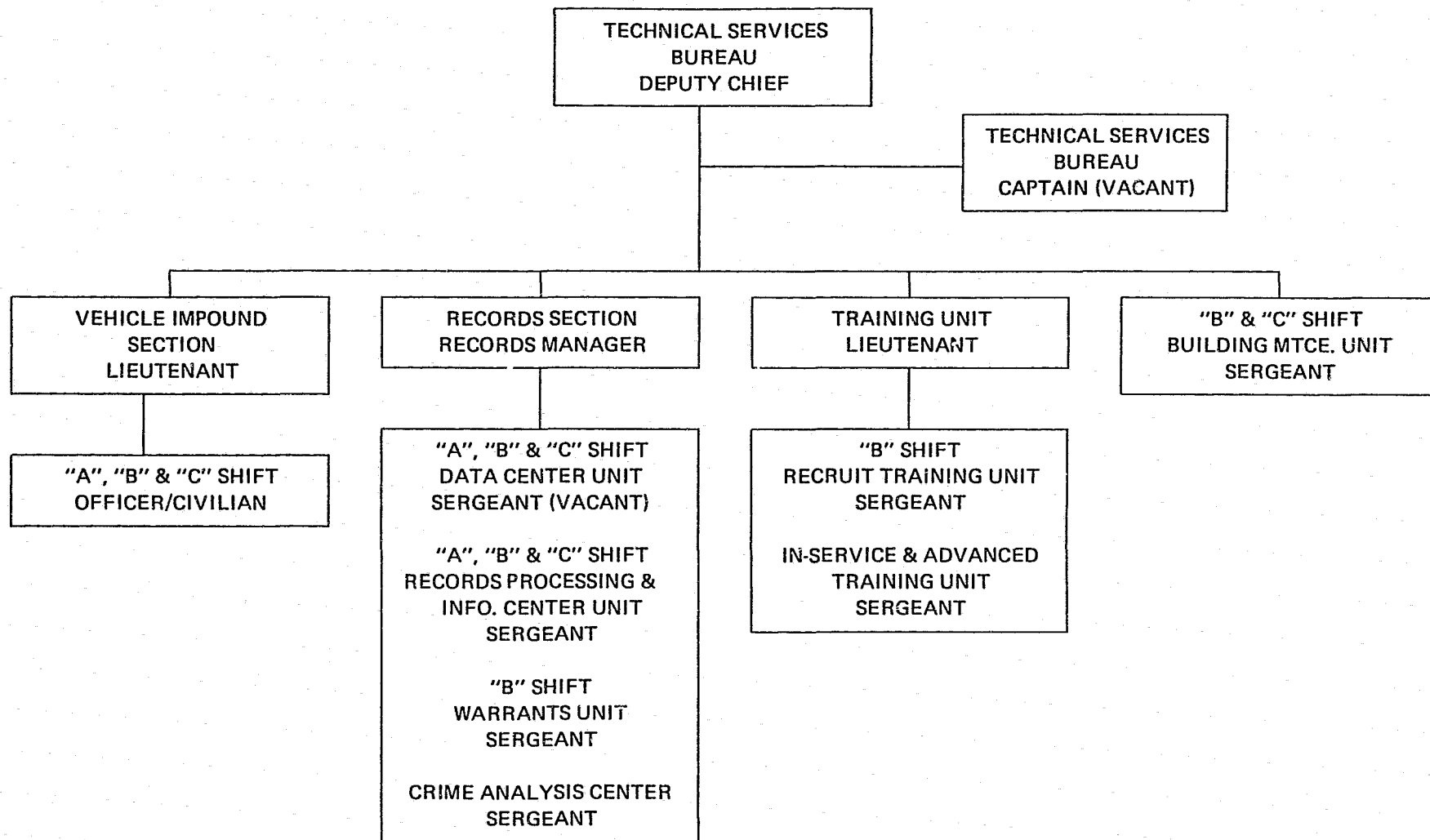
On July 13, 1988, thirty-six (36) probationary police officers were sworn in by Mayor Walt Calinger following completion of their academy training. After the seventeen weeks of classroom training, the new officers received fifteen weeks of field training within the Uniform Field Bureau prior to receiving their permanent assignments. These recruit officers are a welcome addition to the ranks of the Omaha Police Division.

Aside from the academy training provided for the recruit officers, the staff of the Training Section also planned and provided instruction for officers throughout the Division, especially in the area of practice and qualification shoots.



Thirty-six police officers were sworn in in 1988 following 17 weeks of classroom training at the Omaha Police Division Academy.

TECHNICAL SERVICES BUREAU



ADMINISTRATIVE SERVICES BUREAU

During 1988, the Sections assigned to the Administrative Services Bureau have been involved in many projects to prepare for the upcoming decade of the 90's.

The Omaha Police Crime Laboratory set another record year for the services it performed. The entire criminal justice system and particularly the Douglas County Attorney's office has placed increased emphasis on the collection, interpretation, and documentation of crime scenes and physical evidence.

The Crime Lab was able to expand into 800 sq. ft. of new office space which will greatly reduce serious overcrowding and promote increased efficiency. The Crime Lab has also expanded its field operations capabilities through the use of mini-vans which allow the carrying of more equipment for more thorough crime scene documentation. These mini-vans provide maneuverability, visibility, and are extremely practical.

The Research and Planning Section has completed the operational phase of a Domestic Violence Study that will attempt to replicate the historic Minneapolis Domestic Violence Study. The Police Division is working in cooperation with Dr. Frank Dunford of the University of Colorado at Boulder, and the Research and Planning Section has taken a major role in the implementation, management and documentation of this major research work.

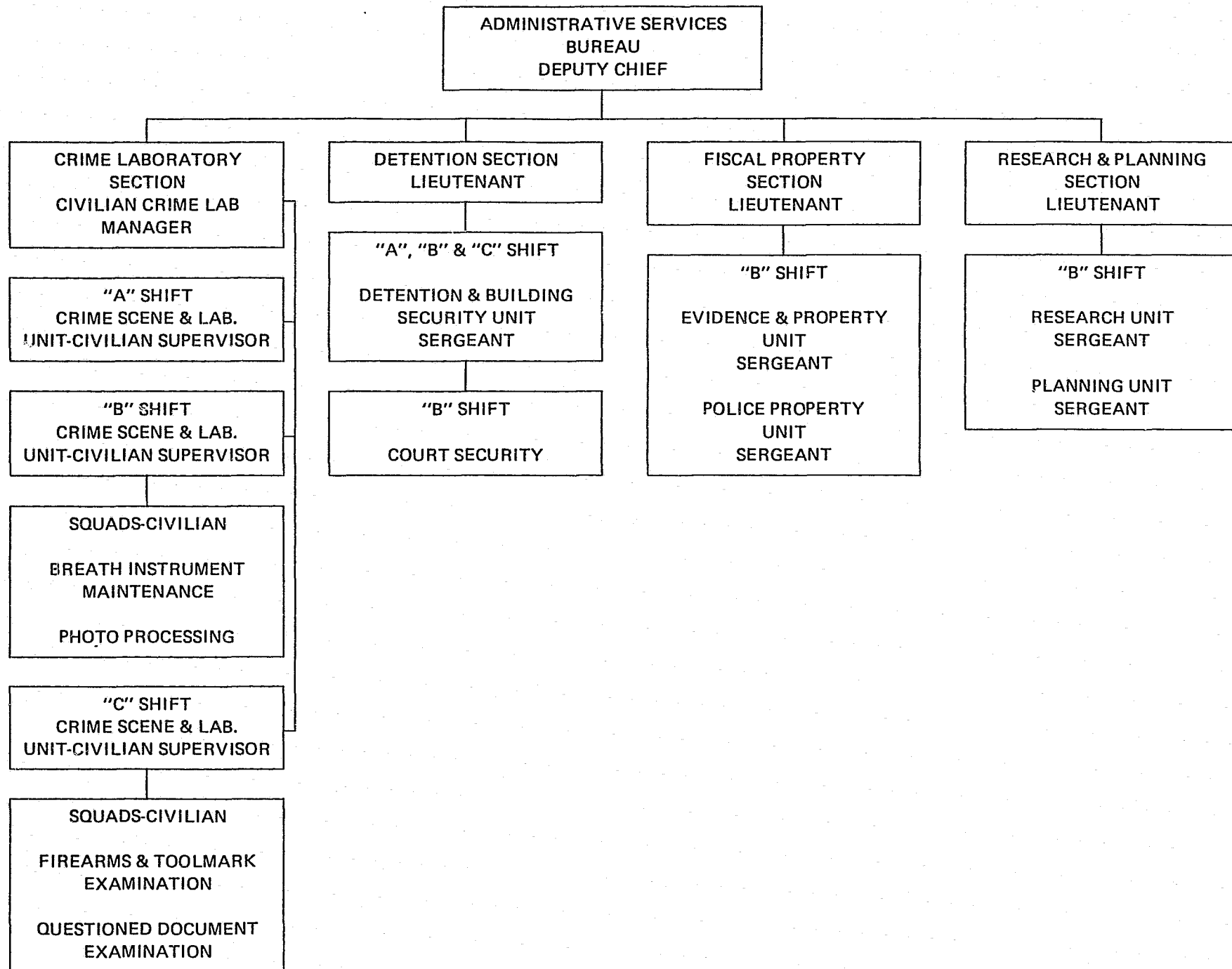
The Omaha Police Division has chosen to pursue National Law Enforcement Accreditation to exhibit to the citizens of the Omaha metropolitan area that it continues to be a leader in modern and innovative policing. The Division entered the Self-assessment Phase of Law Enforcement Accreditation this year. The office of Research and Planning is managing the Accreditation Program.

Great strides have been made this year in updating the Standard Operating Procedure (SOP) Manual. Such information is necessary for officers and command personnel to perform the ongoing daily duties and to ensure that long-range goals are met by the Division.

The Police Property and Supply Squad moved into new expanded facilities on the second floor in the area formerly occupied by the Auto Repair Shop. This new space will be more convenient for officers to conduct day-to-day operations.

The Detention Unit remains an active place with arrests climbing on a yearly basis. The Detention Unit recently assisted in the Drug Use Forecasting Program in which researchers obtained urine samples from newly arrested prisoners in order to determine the level and type of narcotics or dangerous drugs that were present in these persons at the time of arrest. The Division is actively participating in this Program in conjunction with the National Institute of Justice which is a division of the U. S. Department of Justice in Washington, DC.

ADMINISTRATIVE SERVICES BUREAU



POLICE BUDGET — 1988

Operating Expenditures

Personal (includes salary, overtime, longevity)

Sworn	\$22,128,961
Civilian	3,285,012
Total Personal	25,413,973
Non-Personal (includes outside services, equipment, etc.)	3,672,888
Total Police Division Budget	\$29,086,861

1988 Annual salary of sworn personnel by rank:

Chief	61,932
Assistant Chief	51,148
Deputy Chief	51,148
Captain	43,663 - 47,173
Lieutenant	37,738 - 40,694
Sergeant	32,309 - 35,903
Police Officer	29,556 - 30,822

PERSONNEL STRENGTH
December 31, 1988

TOTAL MEMBERS OF POLICE DIVISION AT YEAR'S END - Sworn	602
TOTAL MEMBERS OF POLICE DIVISION AT YEAR'S END - Civilian	<u>151</u>
TOTAL PERSONNEL	753

* * * * *

COMPARISON OF RANK AND FILE WITH FOUR PREVIOUS YEARS

<u>RANK</u>	<u>1984</u>	<u>1985</u>	<u>1986</u>	<u>1987</u>	<u>1988</u>
CHIEF	1	1	1	1	1
ASSISTANT CHIEF	1	1	1	1	1
DEPUTY CHIEF	4	4	4	4	4
CAPTAIN	9	9	9	9	10
LIEUTENANT	30	32	31	31	31
SERGEANT	98	98	105	105	107
POLICE OFFICER	398	394	427	434	449
RECRUITS	31	30	32	0	0
SWORN TOTALS	572	569	610	585	602
CIVILIAN PERSONNEL	162	179	164	152	151
SWORN & CIVILIAN TOTALS	734	748	774	737	753

ASSIGNMENT OF PERSONNEL

AS OF DECEMBER, 1988

Chief's Office

Sworn	38
Civilian	3

Administrative Services Bureau

Sworn	24
Civilian	43

Criminal Investigations Bureau

Sworn	132
Civilian	26

Technical Services Bureau

Sworn	36
Civilian	74

Uniform Field Bureau

Sworn	372
Civilian	5

TOTAL PERSONNEL

Sworn	602
Civilian	151

Total	753
-------	-----

EDUCATIONAL ACHIEVEMENT OF THE OMAHA POLICE DIVISION

Rank	Juris Doctorate	Master's Degree	Bachelor's Degree	Associate Degree
Chief		1		
Assistant Chief/ Deputy Chief			3	1
Captain			5	1
Lieutenant		1	14	3
Sergeant		2	31	5
Police Officer	1	3	96	17



The 6.2 km Corporate Cup Run is held downtown each year. Approximately 15,000 persons, many of them police officers, participate.

ADMINISTRATIVE SERVICES BUREAU

as of 31 Dec. 88

	SWORN					Sub-Total		Total
	Deputy Chief	Captain	Lieutenant	Sergeant	Police Officer		Civilian	
Administration	1					1	1	2
Research & Development			1	2	1	4	1	5
Fiscal & Property			1	3	3	7	7	14
Crime Laboratory							18	18
Detention			1	7	4	12	16	28
TOTAL	1		3	12	8	24	43	67

TECHNICAL SERVICES BUREAU

as of 31 Dec. 88

	SWORN					Sub-Total		Total
	Deputy Chief	Captain	Lieutenant	Sergeant	Police Officer		Civilian	
Administration	1	1				2	1	3
Training			1	1	4	6		6
Personnel			1			1	2	3
Inspections/Bldg. Maintenance				1		1	17	18
Records				4	22	26	40	66
Vehicle Impound			1	1	3	5	12	17
Crime Analysis							2	2
TOTAL	1	1	3	7	29	41	74	115

UNIFORM FIELD BUREAU

as of 31 Dec. 88

	SWORN					Sub-Total		Total
	Deputy Chief	Captain	Lieutenant	Sergeant	Police Officer		Civilian	
Administration	1					1	1	2
Patrol "A"		1	3	10	88	102		102
Patrol "B"		1	3	9	82	95	2	97
Patrol "C"		1	3	10	101	115	2	117
Traffic		1	2	8	48	59		59
TOTAL	1	4	11	37	319	372	5	377

CRIMINAL INVESTIGATIONS BUREAU

as of 31 Dec. 88

	SWORN					Sub-Total		Total
	Deputy Chief	Captain	Lieutenant	Sergeant	Police Officer		Civilian	
Administration	1					1	1	2
General Administration		1	3	21	7	32	13	45
Crime Against Person		1	5	15	43	64	6	70
Crime Against Property		1	3	8	23	35	6	41
TOTAL	1	3	11	44	73	132	26	158

1988 PROMOTIONS

To Captain:

Michael J. Pecha

Date

2-4-88

To Lieutenant:

Steve A. Coufal

4-15-88

Gary L. Becerra

4-15-88

Anthony W. Hadley

4-15-88

Joseph M. Davitt

8-23-88

To Sergeant:

Timothy Conahan

3-25-88

Mark T. Langan

3-25-88

Donald W. Thorson

3-25-88

Ray L. Fidone

3-25-88

James A. Roberts

3-25-88

Robert R. Polk

3-25-88

Robert E. Frock

7-4-88

Denise R. Cousin

7-4-88

Jesse Cortez

9-15-88

Paul H. Wade

11-2-88



Motorcycles give the Police Division added versatility to respond quickly to citizen calls for service.

1988 RETIREMENTS

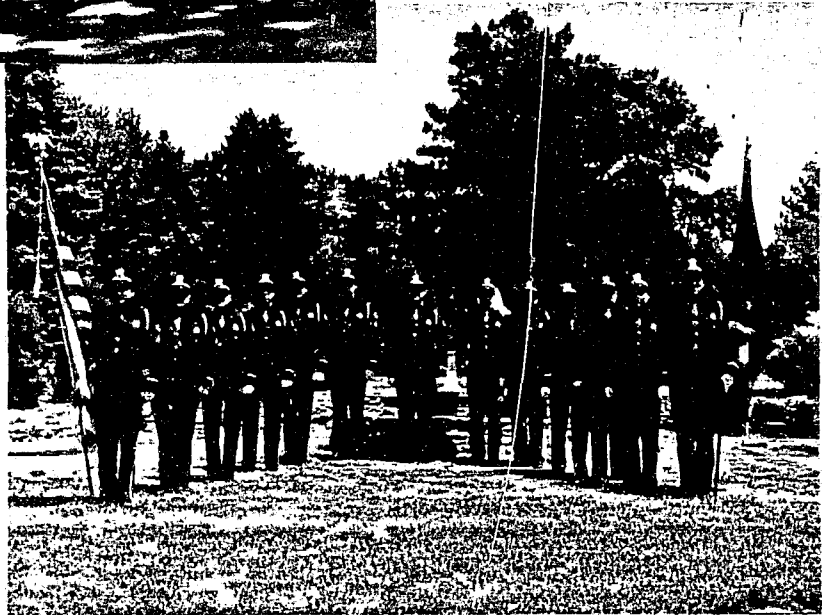
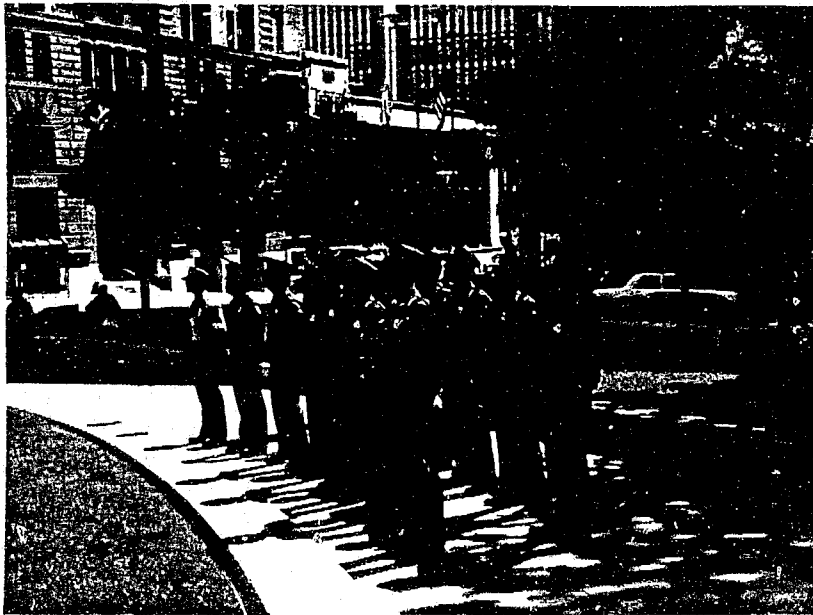
Name	Rank	Date	Years of Service
Robert R. Caruso	Sergeant	1-29-88	39 years
David M. Marion	Officer	3-5-88	25 years
Eugene D. Uryasz	Officer	3-24-88	27 years
Harold E. Flemmer	Officer	6-8-88	25 years
Eugene Kriegler	Officer	6-16-88	27 years
Vernard Hauger	Lieutenant	7-22-88	29 years
Antonio M. Ayala	Officer	8-18-88	26 years
Peter R. Sorch	Officer	8-19-88	27 years
Glenn E. Berry	Sergeant	9-15-88	26 years
Marvin O. McClarty	Sergeant	10-28-88	26 years
Wayne D. Saunders	Officer	12-24-88	32 years

1988 RESIGNATIONS

Name	Rank	Date	Years of Service
Michael J. Sackett	Officer	2-7-88	4 years
Katherine J. McKillip	Officer	8-4-88	10 years
Randall J. Brooks	Officer	11-19-88	6 years
John S. Wilson	Officer	11-30-88	19 years

IN MEMORIAM
DECEASED OFFICERS - 1988

Name	Rank	Age	Years Service	Division Status	Date Deceased
George M. Kleckner	Sergeant	51	26	Inactive	04-03-88
Raymond B. Buchta	Captain	73	40	Inactive	07-08-88
Richard E. Shaw	Lieutenant	63	31	Inactive	08-15-88



The Police Division Honor Guard is a volunteer group of officers formed to honor those officers, both active and retired, who have passed away. The Honor Guard also presents the colors at various civic functions.

OMAHA POLICE DIVISION

ANNUAL CRIME COMPARISON FOR 1987 and 1988

<u>Offenses</u>	<u>1987</u>	<u>1988</u>	<u>Amount of Inc/Dec</u>	<u>% of Inc/Dec</u>
1. Criminal Homicide	29	28	-1	-3%
2. Forcible Rape	189	216	+27	+14%
3. Robbery	570	710	+140	+25%
4. Aggravated Assault	1,749	1,820	+71	+4%
5. Burglary	5,338	4,580	-758	-14%
6. Larceny - Theft	15,292	15,185	-107	-1%
7. Motor Vehicle Theft	<u>1,217</u>	<u>1,405</u>	<u>+188</u>	<u>+15%</u>
TOTAL CRIME INDEX OFFENSES	24,384	23,944	-440	-2%

Statistics Compiled by
Omaha Police Division
Crime Analysis Section
January 1989

OMAHA POLICE DIVISION

ADDITIONAL ANALYSIS - OFFENSES KNOWN TO POLICE

<u>OFFENSES</u>	<u>1987</u>	<u>1988</u>	<u>Percent Change</u>
TOTAL ROBBERIES	<u>570</u>	<u>710</u>	<u>+25%</u>
Highways, Streets, Alleys	255	338	+33%
Residence	97	140	+44%
Commercial Establishment	123	99	-20%
Convenience Store	30	61	+103%
Gas or Service Station	32	26	-19%
Bank	8	8	0%
Miscellaneous	25	38	+52%
TOTAL BURGLARIES	<u>5,338</u>	<u>4,580</u>	<u>-14%</u>
Residence - Forcible Entry	2,899	2,602	-10%
Residence - No Force Entry	853	717	-16%
Non-Residence - Forcible Entry	1,483	1,165	-21%
Non-Residence - No Force Entry	103	96	-7%
TOTAL LARCENY — THEFT	<u>15,292</u>	<u>15,185</u>	<u>-1%</u>
Pocket-picking	51	42	-18%
Purse Snatching	105	128	+22%
Shoplifting	3,246	3,207	-1%
From Motor Vehicle	3,058	3,363	+10%
Motor Vehicle Parts/Accessory	4,014	3,312	-17%
Bicycle	642	490	-24%
From Within Building	2,499	2,853	+14%
From Coin-operated Machine	450	562	+25%
Miscellaneous	1,227	1,228	0%
TOTAL MOTOR VEHICLE THEFT	<u>1,217</u>	<u>1,405</u>	<u>+15%</u>
Automobiles	695	933	+34%
Trucks	300	262	-13%
Motorcycles, Other	222	210	-5%

OMAHA POLICE DIVISION

COMPARISON OF PERCENT OF OFFENSES CLEARED

1987 AND 1988

<u>Classification of Offenses</u>	<u>1987</u>			<u>1988</u>			<u>1987 National Average</u>
	<u>Actual Offs.</u>	<u>Offs. Clr'd.</u>	<u>% Clr'd.</u>	<u>Actual Offs.</u>	<u>Offs. Clr'd.</u>	<u>% Clr'd.</u>	
Murder and Non-negligent Manslaughter	<u>29</u>	<u>29*</u>	<u>100%</u>	<u>28</u>	<u>26</u>	<u>93%</u>	<u>70%</u>
Total Forcible Rape	<u>189</u>	<u>157</u>	<u>83%</u>	<u>216</u>	<u>166</u>	<u>77%</u>	<u>53%</u>
Rape by Force	134	117	87%	145	121	83%	
Attempted Rape	55	40	73%	71	45	63%	
Total Robbery	<u>570</u>	<u>237</u>	<u>42%</u>	<u>710</u>	<u>235</u>	<u>33%</u>	<u>27%</u>
Armed Robbery	342	144	42%	405	122	30%	
Strong-Arm Robbery	228	93	41%	305	113	37%	
Total Aggravated Assault	<u>1,749</u>	<u>1,436</u>	<u>82%</u>	<u>1,820</u>	<u>1,370</u>	<u>75%</u>	<u>59%</u>
Total Burglary	<u>5,338</u>	<u>1,006</u>	<u>19%</u>	<u>4,580</u>	<u>650</u>	<u>14%</u>	<u>14%</u>
Forcible Entry	4,382	865	20%	3,767	528	14%	
No Force Entry	956	141	15%	813	122	15%	
Total Larceny - Theft	<u>15,292</u>	<u>4,627</u>	<u>30%</u>	<u>15,185</u>	<u>4,366</u>	<u>29%</u>	<u>20%</u>
Total Motor Vehicle Theft	<u>1,217</u>	<u>265</u>	<u>22%</u>	<u>1,405</u>	<u>506</u>	<u>36%</u>	<u>15%</u>
Total Crime Index Offenses	<u>24,384</u>	<u>7,757</u>	<u>32%</u>	<u>23,944</u>	<u>7,319</u>	<u>31%</u>	<u>21%</u>

*Includes clearance of 1 Homicide which occurred in September, 1985.

FIVE YEAR COMPARISON OF

MAJOR CRIMES

IN OMAHA

OFFENSES	1984		1985		1986		1987		1988	
	ACTUAL OFFENSES	% CHNG/ PREV YR	ACTUAL OFFENSES	% CHNG/ PREV YR	ACTUAL OFFENSES	% CHNG/ PREV YR	ACTUAL OFFENSES	% CHNG/ PREV YR	ACTUAL OFFENSES	% CHNG/ PREV YR
VIOLENT CRIMES	2,410	+1%	2,498	+4%	2,726	+9%	2,537	-7%	2,774	+9%
MURDER	24	-11%	24	0%	30	+6%	29	-3%	28	-3%
FORCIBLE RAPE	202	+29%	214	+6%	225	+5%	189	-16%	216	+14%
ROBBERY	530	-15%	591	+12%	627	+6%	570	-9%	710	+25%
AGGRAVATED ASSAULT	1,654	+4%	1,669	+1%	1,844	+10%	1,749	-5%	1,820	+4%
PROPERTY CRIMES	19,457	-11%	20,222	+4%	19,785	-2%	21,847	+10%	21,170	-3%
BURGLARY	4,045	-25%	4,751	+17%	4,643	-2%	5,338	+15%	4,580	-14%
LARCENY - THEFT	14,365	-6%	14,279	-1%	13,927	-2%	15,292	+10%	15,185	-1%
MOTOR VEHICLE THEFT	1,047	-15%	1,192	+14%	1,215	+2%	1,217	0%	1,405	+15%
TOTALS	21,867	-10%	22,720	+4%	22,511	-1%	24,384	+8%	23,944	-2%

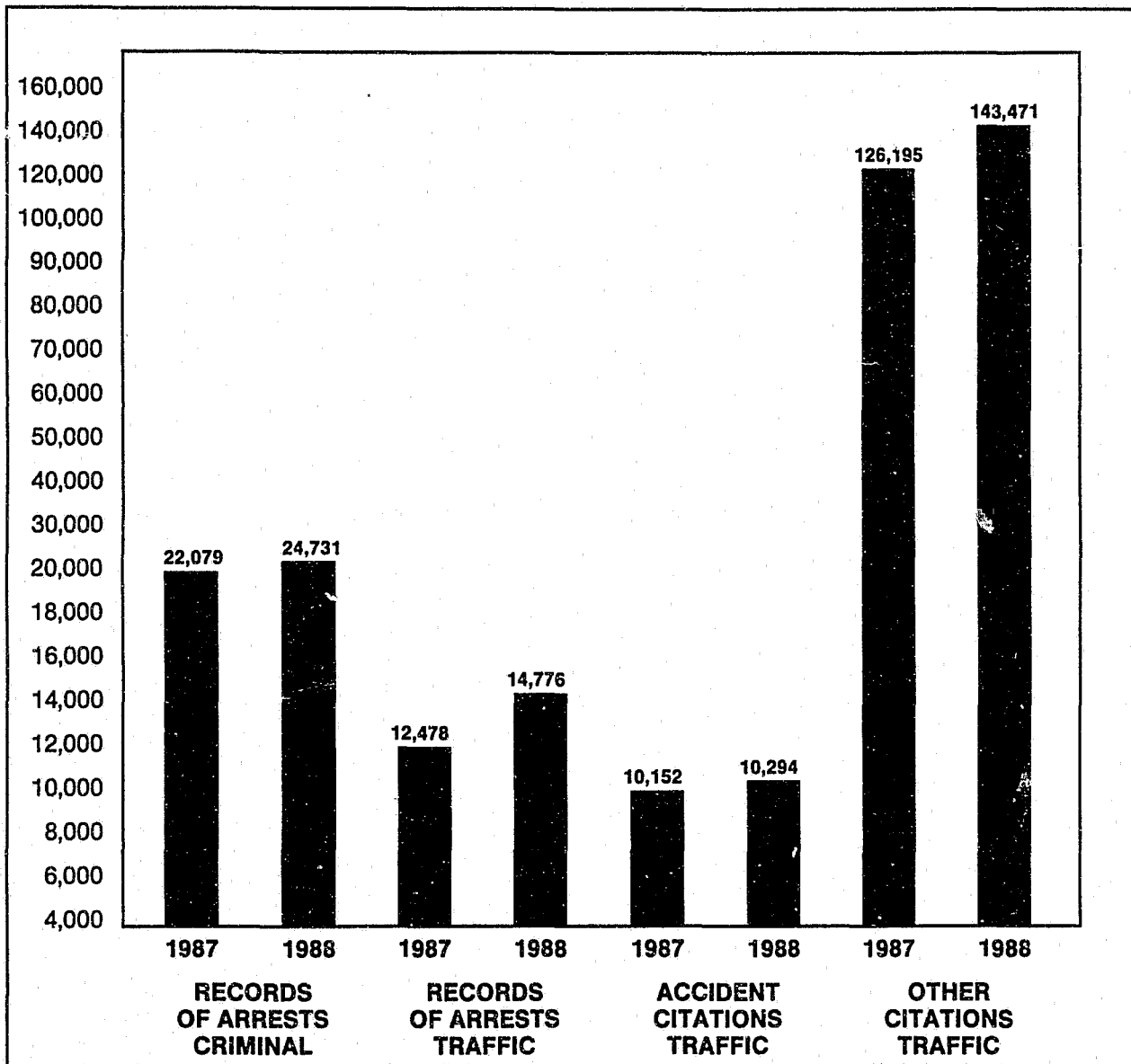
**OMAHA POLICE DIVISION
COMPARISON OF ARRESTS FOR 1987 AND 1988
JANUARY THRU DECEMBER**

OFFENSE	JUVENILES (under 18)						ADULTS (18 & over)					
	FEMALES		MALES		TOTALS		FEMALES		MALES		TOTALS	
	1987	1988	1987	1988	1987	1988	1987	1988	1987	1988	1987	1988
Murder & Manslaughter	0	1	0	5	0	6	7	4	24	17	31	21
Death by Negligence	0	1	0	1	0	2	1	4	3	3	4	7
Forcible Rape	0	0	10	10	10	10	0	0	73	69	73	69
Robbery	2	1	25	37	27	38	18	15	118	114	136	129
Felony Assault	1	4	4	17	5	21	35	20	160	143	195	163
Burglary	15	5	214	185	229	190	9	7	272	222	281	229
Larceny - Theft	464	534	926	980	1,390	1,514	914	909	1,438	1,403	2,352	2,312
Motor Vehicle Theft	4	0	49	48	53	48	4	4	51	76	55	80
Total Part I Offenses	486	546	1,228	1,283	1,714	1,829	988	963	2,139	2,047	3,127	3,010
Misdemeanor Assault	4	16	57	106	61	122	117	109	728	825	845	934
Arson	0	0	7	11	7	11	7	4	21	10	28	14
Forgery - Counterfeiting	18	14	15	19	33	33	92	105	129	137	216	242
Fraud	13	23	30	33	43	56	136	187	287	264	423	451
Embezzlement	0	0	0	2	0	2	2	12	7	5	9	17
Stolen Property	3	6	76	105	79	111	51	57	276	323	327	380
Vandalism - D.O.P.	9	21	163	219	172	240	44	55	361	364	405	419
Weapons - Carry, Possess	4	6	40	86	44	92	60	73	425	580	485	653
Prostitution & Vice	14	7	1	8	15	15	217	196	132	326	349	522
Other Sex Offenses	5	0	21	15	26	15	25	25	187	167	212	192
Drug Abuse Violations	15	22	76	137	91	159	176	219	864	1,164	1,040	1,383
Gambling	0	0	5	4	5	4	1	8	85	96	86	104
Offenses Against Family	4	1	0	0	4	1	100	153	47	89	147	242
Driving Under Influence	8	10	28	46	36	56	418	488	2,355	3,041	2,773	3,529
Liquor Laws	52	111	173	139	225	250	109	231	536	704	645	935
Drunkenness	0	0	0	0	0	0	0	0	0	0	0	0
Disorderly Conduct	19	21	63	80	82	101	327	218	1,084	872	1,411	1,090
Loitering or Prowling	0	0	0	0	0	0	22	0	21	0	43	0
Curfew & Loitering	1	0	18	0	19	0	0	0	0	0	0	0
All Other Except Traffic	58	91	212	301	270	392	586	731	2,827	3,228	3,413	3,959
Total Part II Offenses	227	349	985	1,311	1,212	1,660	2,490	2,871	10,367	12,195	12,857	15,066
Total All Offenses	713	895	2,213	2,594	2,926	3,489	3,478	3,834	12,506	14,242	15,984	18,076

OMAHA POLICE DIVISION

STATISTICS

CHARGES	1987	1988
Records of Arrest	34,557	39,507
Traffic Citations	136,347	153,765
Total Charges	170,904	193,272



TRAFFIC SECTION STATISTICS - 1988

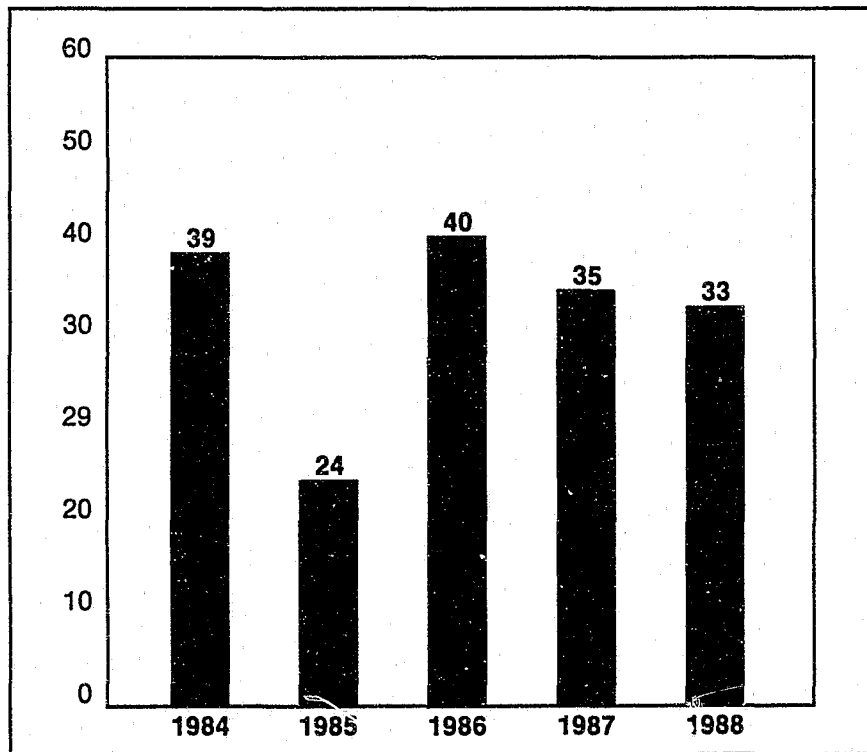
TRAFFIC ACCIDENTS

1987-1988

	1987	1988	Numerical Change	Percentage Change
Fatal Accidents	30	30	0	0
Fatalities	35	33	-2	-5.7
Injuries	6,947	7,208	+261	+3.8
Total Accidents	11,141	11,444	+303	+2.7

TRAFFIC FATALITIES

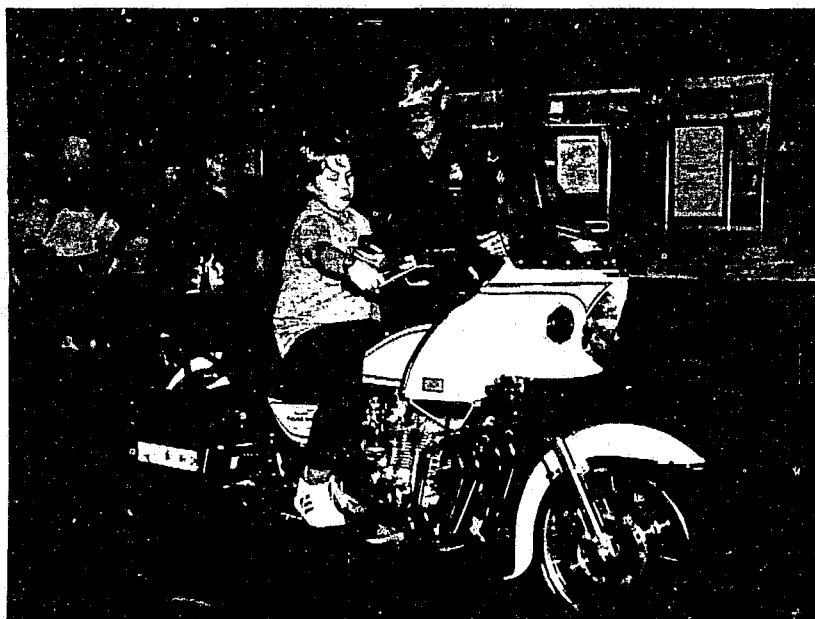
FIVE YEAR PERIOD



ANNUAL CRIME COMPARISON OF MOTOR VEHICLE ACCIDENTS FOR OMAHA

1987 vs. 1988

	<u>1987</u>	<u>1988</u>	<u>Amount of Inc/Dec</u>	<u>% of Inc/Dec</u>
1. Pedestrian	194	225	+31	+16%
2. Motor Vehicle in Transport	8,743	9,128	+385	+4%
3. Parked Motor Vehicle	774	702	-72	-9%
4. Railway Train	1	3	+2	+200%
5. Pedalcyclist	150	101	-49	-33%
6. Animal	17	17	0	0%
7. Fixed Object	1,053	1,055	+2	0%
8. Other Object	46	70	+24	+52%
9. Non-collision: Overturned	107	93	-14	-13%
10. Other Non-collision	<u>56</u>	<u>50</u>	<u>-6</u>	<u>-11%</u>
Totals	11,141	11,444	+303	+3%



Sgt. Tom Zoucha of the Police Community Services Section shows a curious youngster the controls of a police motorcycle during Vietnam Veterans Child Safety Day.

OMAHA POLICE DIVISION
CRIME LABORATORY
1988 ANNUAL STATISTICAL REPORT

I. CRIME SCENE SERVICES PERFORMED

****Crime Scene Investigations** **2,983**

II. IN HOUSE LAB SERVICES PERFORMED

Latent Identifications	458
Fingerprint Examination Requests	658
Victim Eliminations	238
Identiprint Identifications	160
Identification Checks Completed	989
Gunshot Residues Collected	59
Polaroid Photo Requests	895
Suspect Composites	80
Large Court Charts	57
Miscellaneous Graphic Requests	63
Questioned Documents Requests	693
Firearms Examination Requests	170
DWI Breath Tests for BAC	3,219

****Reports made on all crime scene investigations and in house assignments.**

TOTAL IN HOUSE SERVICES PERFORMED **7,739**

TOTAL INVESTIGATIONS: CRIME SCENE AND IN HOUSE **10,632**

1988 ANNUAL STATISTICAL REPORT

III. PRISONER PROCESSING

Total new OPD numbers processed (Fingerprinted, photographed, classified, searched and filed)	1,984
Total repeat offenders processed	2,062
TOTAL	<u>4,046</u>

IV. MISCELLANEOUS SERVICES PERFORMED

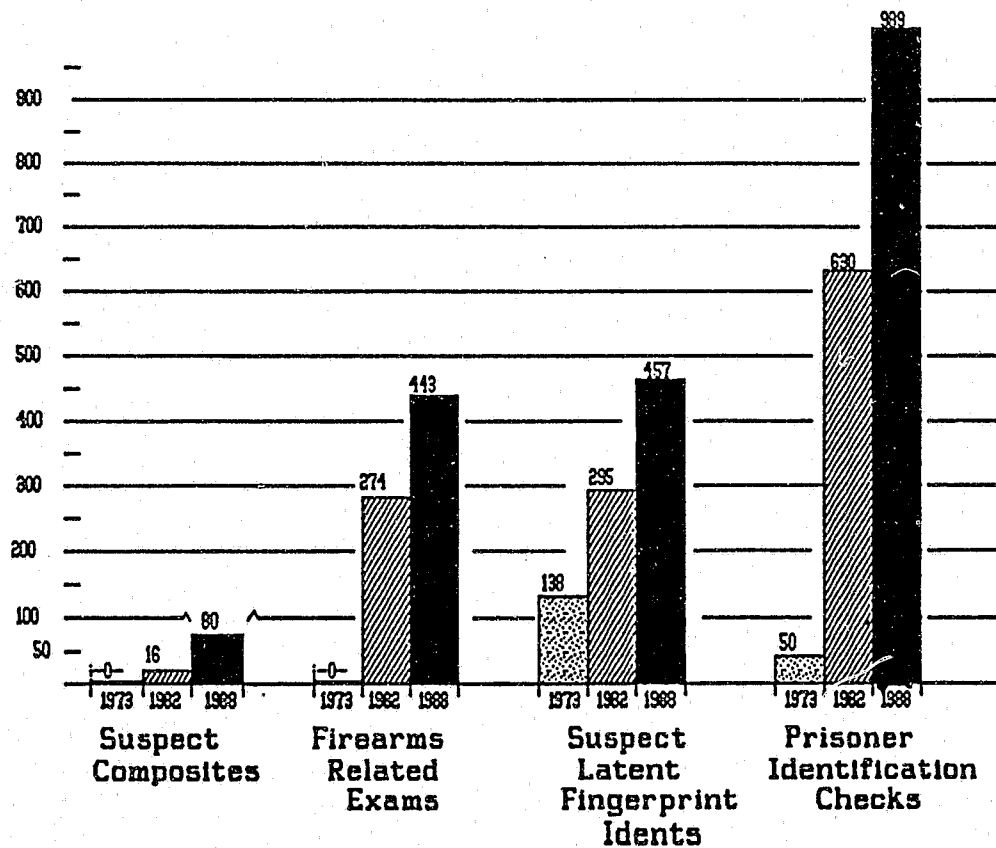
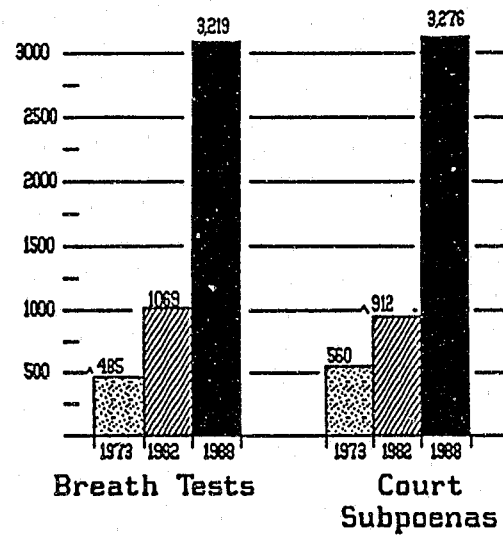
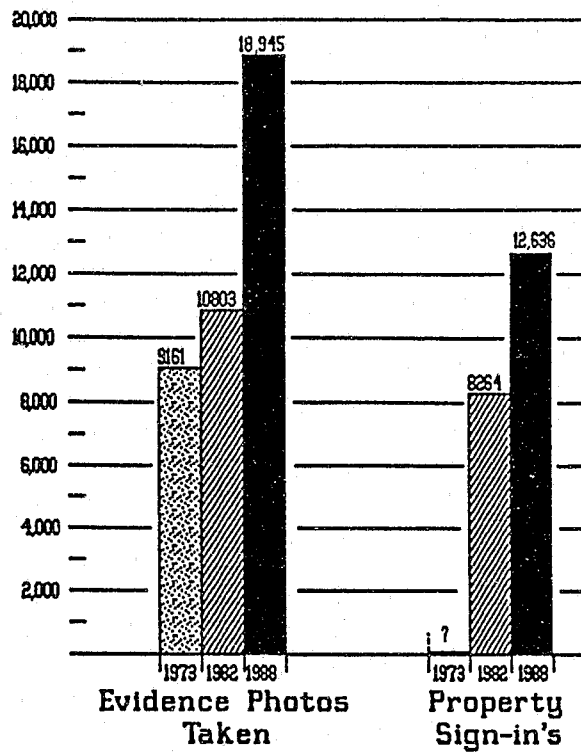
Evidence photographs taken	18,945
Polaroids taken	4,114
Shoe diagrams from crime scenes	132
Number of identifiable latents developed	1,612
Crime scene diagrams	147
Court subpoenas to Technicians	3,276
Battley cards taken and classified	3,700
Thousands of cold fingerprint searches	
*Property sign-ins	12,636

(*24 hours sign-in service and housing for all incoming OPD property/evidence)



Youths interested in law enforcement get the opportunity through the Police Explorers to learn about the police service.

**PROGRESSIVE INCREASE IN
CRIME LAB SERVICES PERFORMED
1973 1982 1988**



COMMUNITY SERVICES SECTION

The Community Services Section consists of three Units:

Crime Prevention
Youth Violence/Intelligence Unit
Program Development

A new office was opened for the Youth Violence Unit in the Blue Lion Center at 24th and Lake Streets. A Gang Hotline was established to allow citizens to call information concerning gang activities to the Omaha Police Division.

The Crime Prevention Unit has made approximately 490 visits to the Omaha area schools talking to more than 68,500 children.

The Crime Prevention Unit has given more than 500 lectures to over 20,000 people.

The Crime Prevention Unit has given about 150 tours of Central Station and/or the 911 system to over 2,000 people.

This totals over 90,000 citizen contacts for 1988.

In addition to the above duties the Crime Prevention Unit is responsible for running many civic programs.

The Neighborhood Watch.

National Night Out was on 9 August.
(National Runner-up award winner)

Business Watch

WOW Radio and Omaha Police Division Christmas Crusade
(1,300 children received toys)

The Safety Patrol Recognition Day at Peony Park
(3,200 Safety Patrol children participated)

The Explorer Scouts
(Special Olympics)
(Special Olympics torch run across Nebraska)

The Care Bear Program
(112 Bears distributed)

Camp Challenge

Pre-School Safety Training
(800 children trained)

The McGruff House

Jail and Bail
(\$32,000 in pledges received)

Red Cross Blood Drive

United Way

STATISTICS FOR QUESTIONED DOCUMENT EXAMINATION 1988

Month	Total Requests	Number of Documents	Hand-writing	Finger-print Requests	# Latents Developed	Suspects Compared	Latent Idents.	Photos	Court Charts	Type-writer	Misc.
January	60	174 (Q) 104 (K)	31	52	68	25	16	95	1	1	A
February	38	58 (Q) 31 (K)	13	32	36	27	5	23			A
March	69	92 (Q) 33 (K)	13	51	46	45	11	27			A (2)
April	50	89 (Q) 16 (K)	5	46	41	55	35	53			A
May	38	47 (Q) 25 (K)	10	33	27	11	5	10			
June	66	217 (Q) 39 (K)	12	32	82	22	53	33			A B (2)
July	41	54 (Q) 10 (K)	3	40	28	18	8	10			A
August	70	139 (Q) 69 (K)	26	64	82	32	31	72		5	A (2)
September	61	132 (Q) 13 (K)	8	54	49	17	15	28			
October	60	85 (Q) 5 (K)	12	57	32	16	3	25			A
November	74	176 (Q) 39 (K)	11	59	41	13	20	19		9	A, B, C
December	66	117 (Q) 18 (K)	13	59	31	19	12	56			A
Total (88)	693	1380 (Q) 402 (K)	157	580	563	300*	214	451	1	15	16
Total (87)	277	1044 (K)	115	195	217	297	62	274	5	2	**
Total (86)	148	407 (K)	113	**	120	47	23	174			**

*Total does not include district file searches

**Not tabulated

MISC.: A - Mix fingerprint solution
B - Speaking engagement
C - Check protector exam

Submitted by: Beverly A MAZUR
Senior Crime Lab Technician
Questioned Documents

FIREARM/TOOLMARK STATISTICS FOR 1988

Requests Submitted	170
Bullet Comparisons	93
Cartridge Case Comparisons	43
Safety/Operation Tests	77
Develop List of Possible Weapons.....	3
Identify Weapon Make	12
Identify Bullet/Casing Make/Caliber	14
GSR/Pattern Tests	27
Serial Number Restorations	16
Fingerprint Weapon/Cartridge	37
Toolmark Comparisons	15
Shoe/Tire Print Comparisons	12
Lab Casts Bore/Toolmarks	13
Firearms Recognition Reports.....	10
Test Fire for Future Use.....	9
Unload Weapon for Officer/Technician	16
Blood Tests on Weapons/Bullets/Etc.	19
Photographs: Regular/Micro/Macro.....	17
Other Misc. Services	10
TOTAL SERVICES.....	443