

ANNUAL REPORT 1989

STATE COURT
STATE OF LOUISIANA

12-790

mfl

123680



THE JUDICIAL COUNCIL OF
THE SUPREME COURT OF LOUISIANA

123680

**U.S. Department of Justice
National Institute of Justice**

This document has been reproduced exactly as received from the person or organization originating it. Points of view or opinions stated in this document are those of the authors and do not necessarily represent the official position or policies of the National Institute of Justice.

Permission to reproduce this copyrighted material has been
granted by

Louisiana Supreme Court

to the National Criminal Justice Reference Service (NCJRS).

Further reproduction outside of the NCJRS system requires permission of the copyright owner.

COVER: Most of the people who work for the Louisiana Supreme Court were present when this picture was taken; very few were absent. The day was somewhat overcast and not ideal for a photograph; however, the course had been set and the picture was taken with remarkable success. Pictured on the cover are the Chief Justice and Associate Justices; the Judicial Administrator and the staff of his office; the Clerk of the Supreme Court and the staff of his office; the Law Librarian and her staff; the Administrative Counsel and her staff; the Director of the Central Staff with his co-workers and a friend; security; and building maintenance personnel.

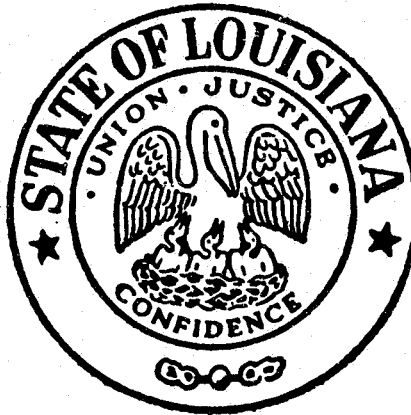


TABLE OF CONTENTS

1989 ANNUAL REPORT OF THE JUDICIAL COUNCIL

SUPREME COURT OF LOUISIANA

301 Loyola Avenue
New Orleans, Louisiana 70112

Hugh M. Collins, Ph.D.
Judicial Administrator

| | |
|---|----|
| Letter of Transmittal | 4 |
| Supreme Court | 3 |
| Judicial Council | 5 |
| Judicial Administrator's Report | 6 |
| Law Library | 7 |
| Judicial College | 8 |
| Judiciary Commission | 9 |
| Courts of Appeal | 10 |
| District Courts | 12 |
| Family and Juvenile Courts | |
| City and Parish Courts | 18 |

STATISTICAL SECTION

| | |
|--|----|
| Introduction, State Budget Graph | 20 |
| Supreme Court | 21 |
| Courts of Appeal | 22 |
| District Courts | 27 |
| Family and Juvenile Courts | 29 |
| City and Parish Courts | 30 |
| Court District Maps | 31 |
| Court Structure | 34 |

EDITOR

Paulette H. Holahan

STATISTICAL SECTION

Hugh M. Collins, Ph.D.

Ronald Wm. Stritzinger
Nancy C. Chachere
Melissa Geohegan

Rose Marie Bye
Gay G. Pilié
Terri A. Harris

THE CHIEF JUSTICE AND ASSOCIATE JUSTICES OF THE LOUISIANA SUPREME COURT



Left to right: Associate Justice Harry T. Lemmon, Associate Justice James L. Dennis, Associate Justice Pascal F. Calogero, Jr., Chief Justice John A. Dixon, Jr., Associate Justice Walter F. Marcus, Jr., Associate Justice Jack Crozier Watson, and Associate Justice Luther F. Cole.

CHIEF JUSTICE JOHN A. DIXON, JR.

Justice Dixon is elected from the Second Supreme Court District comprised of the following parishes: BIENVILLE, BOSSIER, CADDO, CLAIBORNE, DESOTO, NATCHITOCHES, RED RIVER, SABINE, VERNON, WEBSTER, AND WINN.

ASSOCIATE JUSTICE PASCAL F. CALOGERO, JR.

Justice Calogero is elected from the First Supreme Court District comprised of the following parishes: JEFFERSON, ORLEANS, PLAQUEMINES, AND ST. BERNARD.

ASSOCIATE JUSTICE JAMES L. DENNIS

Justice Dennis is elected from the Fourth Supreme Court District comprised of the following parishes: CALDWELL, CATAHOULA, CONCORDIA, EAST CARROLL, FRANKLIN, JACKSON, LA SALLE, LINCOLN, MADISON, MOREHOUSE, OUACHITA, RICHLAND, TENSAS, UNION, AND WEST CARROLL.

ASSOCIATE JUSTICE JACK C. WATSON

Justice Watson is elected from the Third Supreme Court District comprised of the following parishes: ACADIA, ALLEN, AVOYELLES, BEAUREGARD, CALCASIEU, CAMERON, EVANGELINE, GRANT, JEFFERSON DAVIS, LAFAYETTE, AND RAPIDES.

ASSOCIATE JUSTICE WALTER F. MARCUS, JR.

Justice Marcus is elected from the First Supreme Court District comprised of the following parishes: JEFFERSON, ORLEANS, PLAQUEMINES, AND ST. BERNARD.

ASSOCIATE JUSTICE LUTHER F. COLE

Justice Cole is elected from the Fifth Supreme Court District comprised of the following parishes: EAST BATON ROUGE, EAST FELICIANA, IBERVILLE, LIVINGSTON, POINTE COUPEE, ST. HELENA, ST. LANDRY, ST. TAMMANY, TANGIPAHOA, WASHINGTON, WEST BATON ROUGE, AND WEST FELICIANA.

ASSOCIATE JUSTICE HARRY T. LEMMON

Justice Lemmon is elected from the Sixth Supreme Court District comprised of the following parishes: ASCENSION, ASSUMPTION, IBERIA, LAFOURCHE, ST. CHARLES, ST. JAMES, ST. JOHN THE BAPTIST, ST. MARY, ST. MARTIN, TERREBONNE, AND VERMILION.

CLERK OF COURT
THE HONORABLE
FRANS J. LABRANCHE, JR.



Supreme Court
STATE OF LOUISIANA
New Orleans

CHIEF JUSTICE

JOHN A. DIXON, JR.

ASSOCIATE JUSTICES

PASCAL F. CALOGERO, JR.
WALTER F. MARCUS, JR.
JAMES L. DENNIS
JACK CROZIER WATSON
HARRY T. LEMMON
LUTHER F. COLE

301 LOYOLA AVE., 70112

TELEPHONE 504-568-5707

March 1, 1990

To the Members of the Supreme Court of Louisiana
To the Members of the Board of Governors of the
Louisiana State Bar Association

Ladies and Gentlemen:

This report of the Judicial Council of the Supreme Court of Louisiana marks the end of one decade of development in the court system and the beginning of another. It is also the tenth and last report to be transmitted under my signature. On April 8 the State will have a new Chief Justice--my brother Pascal Calogero.

There could hardly be a more conscientious Justice than Pas. If he is given the same support and encouragement from the judiciary and the legal community that has been my good fortune to receive, we will enter a great era of progress in the quest for justice.

Once again I emphasize the importance of gathering factual information and diligent planning for the future. The people of Louisiana deserve the best judicial system we can give them.

Sincerely,


John A. Dixon, Jr.

JADJr:CD

The Judicial Council

Three new judgeships were created by the Louisiana State Legislature following recommendation by the Judicial Council of the Louisiana Supreme Court. The legislature created one judgeship in each of the following: The 26th Judicial District, Webster and Bossier Parishes; the 34th Judicial District, St. Bernard Parish; and the 40th Judicial District, St. John the Baptist Parish. Nine other requests for additional judgeships were rejected by the Judicial Council following investigation by the Committee to Evaluate Requests for New Judgeships, chaired by Retired Judge Tom Tanner.

Following a two-year-long study and after holding an open hearing early in 1989, the Committee to Study the Adoption of Letter Size Paper as a Standard for Louisiana Courts presented a series of recommendations designed to control the amount of paper generated and stored by Louisiana's courts; however, the committee recommended against changing the size of paper used in the court system. This committee was chaired by Judge Arthur J. Planchard and was staffed by Paulette H. Holahan and Ronald Wm. Stritzinger, Deputy Judicial Administrators.

The Judicial Planning Committee of the Louisiana Judicial Council, chaired by Justice James L. Dennis, consists of several active subcommittees: The Science and Technology Subcommittee, chaired by Judge Charles A. Marvin with Judge Randolph H. Parro as Vice Chair is staffed by Ronald Wm. Stritzinger, Deputy Judicial Administrator and is presently gathering information on the use of video recording in trial courts. Deputy Judicial Administrator Rose Marie Bye chairs the subcommittee which is studying a pilot project in Baton Rouge District Court utilizing video preservation of the record for appeal. Additionally, the Science and Technology Committee is studying the use of facsimile (FAX) machines in the courts.

Judge Salvatore T. Mulé, Chair of the Juvenile Courts Subcommittee, and his group are in the discussion stage of studying the feasibility of a statewide juvenile court system and the impact that a coordinated judicial and service delivery system to children in the juvenile system will ultimately have on the adult penal system. Deputy Judicial Administrator Nancy C. Chachere staffs this committee.

The Appellate Court Delay/Court Reporting Subcommittee, chaired by Retired Judge Cleveland J. Marcel and staffed by Ronald Wm. Stritzinger, having just completed the major portion of a study regarding delay and having compiled a lengthy list of recommendations, now stands ready to assist other subcommittees as needed. Additionally, the staff is in the process of surveying Louisiana Courts to determine its next project.

As an annual project of the Judicial Council and sponsored by the Judicial Planning Committee, Paulette H. Holahan, Deputy Judicial Administrator, conducted the annual survey of the judges of the district courts of the state. Concerns which had been noted in previous years continued to rank among the priorities of the judges: adequate funding; space; independence of the judiciary. Also, in 1989, attention was given to the possible creation of a statewide juvenile court system and; a significant percentage of the judges indicated an interest in determining a method of standardization of appellate transcripts. Response by Louisiana's Chief Judges to the 1989 survey was 100%.

The Committee to Develop Time Standards for the
(continued to page 8)

The Judicial Council notes with sadness the death of Shreveport Attorney Sidney E. Cook who served on the Council, representing the Louisiana State Bar Association, from January 1, 1987 until his death on May 20, 1989.



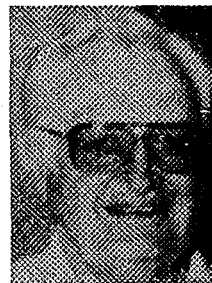
Left to right: Hugh M. Collins, Ph.D., Judicial Administrator; Chief Justice John A. Dixon, Jr. of the Louisiana Supreme Court; Judge Arthur J. Planchard, representing the Louisiana District Judges Association; Judge Robert S. Robertson, representing the Louisiana Council of Juvenile and Family Court Judges. Photos unavailable: Justice Jack C. Watson, Louisiana Supreme Court; Mr. Charles Spencer, representing the Young Lawyers Section, Louisiana State Bar Association; and Mary Lou Winters, Citizen Representative.



Judge John R. Joyce
Louisiana District
Judges Association



Judge Nancy Konrad
La. Council
Juvenile & Family
Court Judges



Judge F. Jean Pharis
Louisiana City
Judges Association



Clyde R. Webber, Jr.
Louisiana Clerks of
Court Association



Judge Pike Hall, Jr.
Conference of Court
of Appeal Judges



Representative
Joseph Accardo, Jr.
La. Legislature



Julie M. Lafargue
Louisiana State Bar
Association



Duncan S. Kemp, III
Louisiana District
Attorneys Assoc.



Senator
Fritz Windhorst
La. Legislature

The Judicial Administrator Reports



HUGH M. COLLINS, Ph.D.
Judicial Administrator

In early 1989 Timothy J. Palmatier was appointed Chief Deputy Judicial Administrator. A short time later, Timothy F. Averill joined my staff and for the first time in more than two years, all positions in my office were filled. Just as life began to return to "normal", a fire rendered one half of our office unuseable. For the last eight months, my staff has been housed in borrowed spaces and even in the hall. It is a tribute to their determination that the work of the office has not suffered in spite of the hardships and confusion brought about by the fire.

Throughout the year, Tim Palmatier and Michelle Speaser have provided staff support to the Judicial Budgetary Control Board and the Judges Supplemental Compensation Fund. They have simplified and modernized the procedures used by the Judges Supplemental Compensation Fund. They analyzed and prepared the Judicial Appropriations Bill in a timely and professional manner. With the support of the Governor and the legislative leadership, the Judicial Appropriations Bill was enacted into law. One final event of note this year was the completion of the implementation of new state of the art financial software.

During much of the year, Tim Averill and Tim Palmatier provided staff support for a major study of the financing and management of the Orleans trial courts. This study, which was completed in October, recommended dramatic changes in the structure of the Orleans courts. These recommendations will be presented to the Judicial Council at its March meeting.

Once again in 1989, the legislature appropriated funds for the first two phases of the three-phase renovation of 400 Royal Street for use by the Supreme Court, Fourth Circuit Court of Appeal and the Attorney General. Construction can begin once new quarters are found for the state employees currently housed in the building. In the meantime, the need for another facility for the court is becoming desperate. The facing on the side and back of the Supreme court has begun to fall into Gravier Street and the parking lot, thereby forcing the closure of part of the parking lot and the sidewalk.

The Judicial Council is charged with studying the judicial practices and procedures of Louisiana and with recommending improvements in these practices and procedures. Staffing for the Council is provided by my office. Paulette Holahan is the principal staff person but every member of the staff works on one or more of the Council's committees (for information about Judicial Council activities, see Page 5). It should be noted that in addition to the work of the Judicial Council, Mrs. Holahan also serves as Public Information Officer for the Supreme Court.

The Judicial Administrator's office provides staff support for the Judiciary Commission and the Supreme Court Committee on Judicial Ethics. Supporting the Commission and the Ethics Committee is a difficult and time consuming task. Principal support in these areas is provided by Nancy Chachere and Tim Palmatier.

Every year special projects consume much of the time of our staff. This year Paulette Holahan has participated in and provided logistical support to the Louisiana Task Force on Women in the Courts. Nancy Chachere and Tim Averill have monitored and assisted in the continuing efforts to resolve the lawsuits which currently challenge the manner in which Louisiana judges are elected.

One special project has come to a particularly successful conclusion. The Supreme Court, with advice from the Louisiana State Bar Association, and unflagging staff support from Tim Averill, has adopted new rules for lawyer discipline. The adoption of these rules is a major step forward for the legal profession in Louisiana. In addition, it makes Louisiana the first state to adopt substantially the ABA Model Rules for Lawyer Discipline.

The projects mentioned above provided an extensive but not exhaustive listing of the activities of my office. In the course of a year, we process hundreds of Supreme Court orders. We provide staff support to numerous judicial organizations with no staff of their own. We answer thousands of requests for information from citizens and researchers and we handle a never ceasing flow of requests for assistance from the judiciary of the state. Despite the small size of our staff, these matters are handled in a timely and professional manner because both the Deputy Judicial Administrators and the clerical staff share a commitment to keep working until the job is done, regardless of the hour.

Law Library of Louisiana 1989 Annual Report

A recent article in the journal *Special Libraries* (vol. 79, no. 1, winter 1988, pp. 56-64) uses the term "added value" to describe how librarians multiply the worth of information for their patrons. Author David C. Beveridge contends that "in addition to the value added by the quality of the information professional's applied knowledge and training, the information professional saves an organization's most valuable resource — employees' time and creativity energy." Indeed a majority of the work of the staff at the Law Library of Louisiana is performed to make the materials which it acquires more valuable to those who need them. Concurrently, most of the technological innovations that have come to the library during the past ten years have been adopted for that same reason.

If librarians did nothing but order and receive books and stick them on a shelf, the publications would be nearly useless. The work of our acquisitions and cataloging departments is to record, describe, classify and arrange the collection in a meaningful fashion so that patrons are able to locate the items appropriate to their needs with minimal time and effort. The job of our reference librarians — and indeed of our entire staff — is to know the collection well enough to guide patrons to helpful information that might otherwise remain hidden. The term "collection" now refers to far more than the books and journals occupying the library's shelves. Electronic research services such as Westlaw, LEXIS, Legal Trac, Legislate and Data-Times have made it possible for our patrons to locate and receive printed copies of court and administrative decisions, statutes, new and pending legislation, newspaper stories and references to research materials, all contained in vast databases maintained by information vendors. In order for library patrons to reap the full value from these electronic services, of course, they must be able to depend upon the specialized training and expertise of the library's staff. As author Beveridge points out: "The information professional, trained to know a great variety of sources and trained to employ them in a meaningful way, can be expected to return a result of more direct applicability to the question, with a greater expectation that relevant sources have not been missed."

1989 was another year of "adding value" to the physical resources of the Law Library of Louisiana and to the quality of service offered by its staff. Acquisitions librarian Betty Kern reported a net gain of 2,256 volumes, a 9% increase over 1988. A dramatic 86% increase in the number of new titles cataloged — 497 titles comprising 684 volumes — made the year extremely busy for cataloging librarian Janice Schull (who does double duty as a back-up reference librarian) and assistant D. D. Thompson. Making it a banner year all the way around, D. D. Thompson, who records new microfiche acquisitions, reported a 72% increase, created by 20,787 fiches. The two largest single additions, accounting for more than two-thirds of the total, were Congressional hearings and committee reports (which we receive as a U.S. Government Documents Depository) and superseded state statutes.

During fiscal year 1988/89 the library spent \$275,277 on all books, serials and microfiche. So great is the expense of keeping existing titles up-to-date that only \$12,000 of the total, the amount contributed by the Friends of the Library, was available for purchasing new titles. The single most spectacular acquisition was the 20-volume new edition of the *Oxford English Dictionary*.

In addition to new titles and continuations acquired, the library has received as gifts a substantial number of large sets of used law books no longer needed by local firms. These donations are used to supplement our collection, to replace worn volumes, and to exchange or sell to book dealers, thereby gaining more buying power for the library. The largest and most varied gift came from Mr. Rene Nicaud and Mr. Felix Rousset, who retired in the fall.

In keeping with the upward trend in activity for 1989, reference librarians Tina McLellan and Janice Schull performed 656 Westlaw and Lexis searches for patrons—an increase of 22% over 1988. Profits from the services totalled \$2,642. One of the most significant developments of the year was the coming of LEXIS service to the library. Through the cooperation of the New Orleans Bar Association the library has begun offering LEXIS searches for a fee, similar to the longstanding Westlaw arrangement. New Orleans Bar Association members who are subscribers to LEXIS and have their own passwords now have access to a Deluxe LEXIS terminal in a private room in the library. Their payments are made directly to LEXIS, and the library charges no additional fee for the use of the computer.

The library's telefacsimile (FAX) machine has proven to be an extremely useful communications tool for the staff and a great boon to out-of-town patrons who need copies of materials immediately. Ruth Mahoney, who oversees FAX service, has recorded 237 messages sent by the library and 27 received.

Janice Shull has planned and executed two excellent lobby exhibits for the library this year, one featuring federal documents and one on the library's dictionaries.

The law library's staff has had another exceptionally busy year of professional involvement. Tina McLellan is progressing toward her master's degree in library science to complement her J.D. She is also helping to plan the education program of the Southeastern Chapter of the American Association of Law Libraries. Betty Kern serves as secretary of the Southeastern Chapter, as well as chairing the national AALL Scholarship Committee. When the national convention comes to New Orleans in July 1991, Betty will be chairing the Local Arrangements Committee. Janice Shull has done an outstanding job as president of NOALL, the New Orleans Chapter of AALL. In April she planned and coordinated a very successful two-day educational program featuring law library leaders from Wisconsin and Atlanta. Ruth Mahoney and D. D. Thompson have also been active on NOALL committees. Carol Billings was elected to the Executive Board of the American Association of Law Libraries and serves on the association's Strategic Planning Committee. During 1989 she was invited to speak on law library programs in Vermont and New York. Her article on sources of constitutional history was published in *Law Library Journal*.

The Friends of the Law Library once again jumped into the breach with a large donation when the state appropriation for books fell \$12,000 short of the need as the 88/89 fiscal year drew to a close. Friends' membership renewals were arriving regularly in the December mail as the staff prepared for a gala holiday party complete with a jazz band.

— Carol Billings

Louisiana Judicial College 1989 Annual Report

As in past years, the major thrust of the Judicial College's efforts in judicial education has been the presentation of educational programs at judicial meetings.

Educational programs were provided as follows: Joint meeting of the City and Juvenile Judges - 51 attendees; Annual Spring Judges Conference - 252 attendees; Summer School for Judges - 147 attendees; Annual Fall Judges Conference - 198 attendees; Annual Fourth & Fifth Circuit Judges Conferences - 25 attendees.

The Judicial College also sponsored or co-sponsored six special seminars for Louisiana judges during the year. The conferences and number of attendees were: Evidence and Trial Practice for Louisiana Judges - 53 attendees; Rural Courts Seminar - 15 attendees; Drug Abuse in the Judicial System - 19 attendees; Reasonable Efforts - 26 attendees (this is the number of Louisiana judges and court personnel attending; the seminar was also attended by various state and local agencies); Court Response to Children - 37 attendees (this is the number of Louisiana judges only; the seminar was also attended by members of the Mississippi judiciary); Annual Torts Seminar - 73 attendees.

During 1989, the College republished the Louisiana Judicial Law Clerks Manual. The manual was distributed, without cost, to all Louisiana judges who have law clerks.

Several other publications are in progress, including civil jury charges, a civil judges benchbook, the updating of the juvenile judges benchbook and the criminal judges benchbook, and a handbook for Louisiana clerks of court.

In its efforts to keep judges abreast of recent developments, the Judicial College during 1989 published a criminal law newsletter, and distributed to the judiciary copies of 1989 legislative acts having immediate impact upon pending cases. The College also published and distributed to the judges a summary of other legislative developments during the 1989 session.

Many outstanding legal scholars and other experts made presentations at Judicial College programs in 1989. Among the speakers were Professors William Hawkland, Katherine Spaht, Cheney Joseph, and Thomas C. Galligan of the LSU Law Center; Professor Robert Force, Tulane Law School; Professors Basile Uddo and Mike Vitiello, Loyola School of Law; Professor David W. Robertson, University of Texas School of Law; Professor Laurence Rose, University of Kansas School of Law; Professor J. Eric Smithburn, Notre Dame University; Professor Nicholas P. Terry, St. Louis University; Judge Alvin B. Rubin, U.S. Court of Appeals; Judge Charles Schudson, Circuit Court Judge, Milwaukee; Judge V. Robert Payant, National Judicial College, Reno; Judge Richard J. FitzGerald, Louisville, Kentucky; Honorable Eugene J. Murret, Circuit Executive, U.S. Court of Appeals, 10th Circuit; Judge John Kuenhold, Alamosa, California; Judge John Daffron, Chesterfield, Virginia; Judge Charles A. Pannell, Jr., Dalton, Georgia; Attorneys Alan Morrison, of Washington, D.C.; H. Alston Johnson, W. Shelby McKenzie, and David W. Robinson of Baton Rouge; Michael R. Fontham and Dominic J. Gianna of New Orleans, Kenneth Rigby and Paul Carmouche of Shreveport, and Richard A. Marchetti of Columbus, Georgia; Dr. Gary Scrimgeour and Dr. John Chappel of Professional Studies Associates, Ltd., Reno; Dr. Robert W. ten Bensel, Minneapolis; Dr. Vera Fahlbert, Evergreen, Colorado; Dr. Carmen Polazzo, New Orleans; Dr. Andrew Watson, Ann Arbor, Michigan; Charlotte Booth Washington; E. Douglas Pratt of Atlanta, Georgia; John Helminski of Burlington, Vermont and Maury Geiger and Kathryn Fahnestock, Co-Directors of the Rural Justice Center.



MEMBERSHIP OF THE LOUISIANA JUDICIAL COLLEGE

Left to right: Judge P. J. LaBorde, Jr.; Judge Edward A. de la Houssaye, III; Representative Hunt B. Downer, Jr.; Professor Frank L. Maraist, Executive Director; Judge Jeffrey P. Victory; Judge Robert J. Burns; Judge Darrell D. White; Hugh M. Collins, Ph.D., Judicial Administrator; Judge Robert M. Fleming. Seated: Judge Steven R. Plotkin; Wood Brown, III; Associate Justice Harry T. Lemmon, Chairman; Judge Randolph H. Parro; Judge Patrick M. Schott. Missing from picture: Judge Charles W. Kelly, IV; Leslie J. Schiff; Judge Niles A. Hellmers; Judge Douglas J. Nehrbass; Senator Sydney B. Nelson; Senator Thomas A. Casey; Judge E. L. Guidry, Jr.; Judge Nancy Amato Konrad.

JUDICIAL COUNCIL (cont'd. from page 5)

Courts of Appeal which is chaired by Retired Judge James C. Gulotta and is staffed by Judicial Administrator Dr. Hugh M. Collins has completed time standards for the Courts of Appeal and expects to distribute the standards in the near future. The Committee has also undertaken the study of operating procedures for the Supreme Court which task is not yet completed.

A pilot project of the Committee to Develop Time Standards for District Courts, chaired by Judge Gerald P. Fedoroff and staffed by Chief Deputy Judicial Administrator Timothy J. Palmatier is continuing to gather information relevant to application of the American Bar Association Standards for Civil Case Processing.

The Judicial Council of the Supreme Court of Louisiana was established in 1950 and received its first funding by the state legislature in 1954. Its task is to evaluate and monitor the operations and procedures of the judicial system of the state. In this capacity, it serves as a clearinghouse for ideas for simplifying and expediting judicial procedures and/or correcting shortcomings in the system.

| | |
|--|--|
| NON-VOTING | |
| Honorable J. Cleveland Fruge, Retired Third Circuit Court of Appeal-Secretary | Honorable James L. Dennis Associate Justice Supreme Court of Louisiana |
| EX-OFFICIO | |
| Honorable Pascal F. Calogero, Jr. Associate Justice Supreme Court of Louisiana | Honorable Harry T. Lemmon Associate Justice Supreme Court of Louisiana |
| Honorable Walter F. Marcus, Jr. Associate Justice Supreme Court of Louisiana | Honorable Luther F. Cole Associate Justice, Supreme Court of Louisiana |
| STAFF | |
| | Paulette H. Holahan Judicial Administrator |

THE JUDICIARY COMMISSION OF LOUISIANA 1989 ANNUAL REPORT

The Judiciary Commission of Louisiana, created in 1968 by an amendment to Article IX, Constitution of 1921, is continued in existence by Article V, Section 25, Constitution of 1974.

Powers

On recommendation of the Judiciary Commission, the Supreme Court may censure, suspend with or without salary, remove from office, or involuntarily retire a judge for willful misconduct relating to his official duty, willful and persistent failure to perform his duty, persistent and public conduct prejudicial to the administration of justice that brings the judicial office into disrepute, and conduct while in office which would constitute a felony, or conviction of a felony.

On recommendation of the Judiciary Commission, the Supreme Court may disqualify a judge from exercising any judicial function, without loss of salary, during pendency of disciplinary proceedings in the Supreme Court.

On recommendation of the Judiciary Commission, the Supreme Court may retire involuntarily a judge for disability that seriously interferes with the performance of his duties and that is or is likely to become permanent.

The Commission's jurisdiction includes justices and judges of all courts of this state, including commissioners, magistrates, justices of the peace, and mayors who perform judicial functions.

Confidentiality

In accordance with Rule XXIII, Section 23, of the Rules of the Supreme Court, all documents filed with and evidence and proceedings before the Commission are confidential unless and until the Commission files a recommendation for discipline or retirement with the Supreme Court. The record filed by the Commission with the Supreme Court and proceedings before the Supreme Court are not confidential. Once a recommendation is filed with the Supreme Court, it becomes public as any other case before the Court.

Membership

Membership of the Judiciary Commission as of December 31, 1989:

Mrs. Mary Lou Winters, Chair
Herbert A. Cade, Vice-Chair
Judge Lawrence A. Chehardy
Jerry L. Hermann, Esquire
Richard E. D'Aquin
Judge Graydon K. Kitchens, Jr.

W. McKerall O'Neill, Jr.
Robert G. Pugh, Esquire
Judge L. O. Fusilier

Dr. Hugh M. Collins,
Chief Executive Officer

Complaints

During the year 1989 the Commission received 64 complaints against judges and justices of the peace, and 16 complaints were pending from 1988. These complaints included alleged violations of Canon 2, "A Judge Should Avoid Impropriety and the Appearance of Impropriety in All His Activities"; Canon 3, "A Judge Should Perform the Duties of His Office Impartially and Diligently"; Canon 7, "A Judge Should Refrain from Political Activity Inappropriate to His Judicial Office"; allegations of misconduct in exercising judicial discretion, unprofessional conduct, undue delays in rendering decisions, failure to perform judicial duties, among others, and were filed by litigants, interested citizens, and by the Commission's own motion.

Dispositions

During the year 1989 the Commission disposed of 61 complaints. These complaints were either closed because of insufficient evidence of judicial misconduct or otherwise resolved to the satisfaction of the Commission; preliminary investigations were ordered and conducted in all complaints. One case was filed in the Supreme Court with a recommendation for disciplinary action. Nineteen cases are still pending at the beginning of 1990.

Editor's Note: Complaints may be made to the office of the Chief Executive Officer of the Commission, Dr. Hugh M. Collins, 301 Loyola Avenue, Room 109, New Orleans, Louisiana 70112-1887, Telephone: (504) 568-5747.

THE LOUISIANA COURTS OF APPEAL

Roster of Judges and Clerks

Judges

Domicile

District



Chief Judge Grover L. Covington

FIRST CIRCUIT (Baton Rouge)

Parishes: Ascension, Assumption, East Baton Rouge, East Feliciana, Iberville, Lafourche, Livingston, Pointe Coupee, St. Helena, St. Mary, St. Tammany, Tangipahoa, Terrebonne, Washington, West Baton Rouge, West Feliciana

| | | |
|----------------------------------|-------------|--------|
| Grover L. Covington, Chief Judge | Hammond | Third |
| Morris A. Lottinger, Jr. | Houma | First |
| Wallace A. Edwards | Covington | Third |
| J. Louis Watkins, Jr. | Houma | First |
| Melvin A. Shortess | Baton Rouge | Second |
| Burrell J. Carter | Greensburg | Third |
| Felix H. Savoie, Jr. | Belle Rose | First |
| Walter I. Lanier, Jr. | Thibodaux | First |
| Hillary J. Crain | Bogalusa | Third |
| Steve A. Alford, Jr. | Baton Rouge | Second |
| Daniel W. LeBlanc | Baton Rouge | Second |
| Frank Foil | Baton Rouge | Second |

Clerk: Stanley P. Lemoine

SECOND CIRCUIT (Shreveport)

Parishes: Bienville, Bossier, Caddo, Caldwell, Claiborne, DeSoto, East Carroll, Franklin, Jackson, Lincoln, Madison, Morehouse, Ouachita, Red River, Richland, Tensas, Union, Webster, West Carroll, Winn

| | | |
|----------------------------------|-------------|----------|
| Pike Hall, Jr., Chief Judge | Shreveport | Third |
| Charles A. Marvin | Minden | Second |
| Fred W. Jones, Jr. | Ruston | Second |
| Fred C. Sexton, Jr. | Shreveport | Third |
| William Norris, III | West Monroe | First |
| Charles R. Lindsay | Shreveport | At Large |
| Lemmie O. Hightower ¹ | Monroe | First |
| Vacancy ² | | |

Clerk/Court Administrator: Diana Heisler

THIRD CIRCUIT (Lake Charles)

Parishes: Acadia, Allen, Avoyelles, Beauregard, Calcasieu, Cameron, Catahoula, Concordia, Evangeline, Grant, Iberia, Jefferson Davis, Lafayette, LaSalle, Natchitoches, Rapides, Sabine, St. Landry, St. Martin, Vermilion, Vernon

| | | |
|-----------------------------------|-----------------|----------|
| Jerome E. Domengeaux, Chief Judge | Lafayette | At Large |
| Edmond L. Guidry, Jr. | St. Martinville | Third |
| J. Burton Foret | Ville Platte | At Large |
| Jimmy M. Stoker | Alexandria | First |
| Ned Doucet, Jr. | Abbeville | Third |
| P. J. Laborde, Jr. | Marksville | At Large |
| Henry L. Yelverton | Lake Charles | Second |
| Jeannette Theriot Knoll | Marksville | First |
| Charles S. King | Lake Charles | Second |
| Vacancy ³ | | |

Clerk: Kenneth J. deBlanc



Chief Judge Pike Hall, Jr.



Chief Judge Jerome E. Domengeaux

1. Took office January 1, 1989

2. New judgeship effective January 1, 1989, election to be held

3. Three new judgeships effective January 1, 1989, election to be held

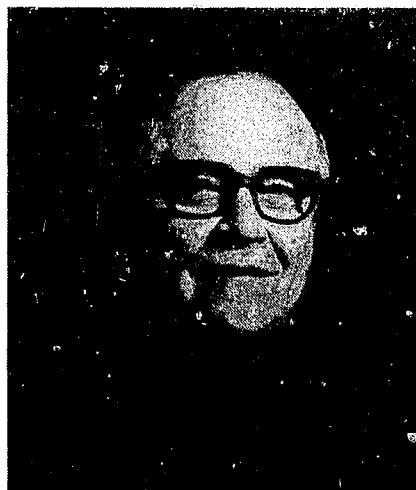
THE LOUISIANA COURTS OF APPEAL

Roster of Judges and Clerks



Chief Judge Patrick M. Schott

| Judges | Domicile | District |
|---|--------------|----------|
| FOURTH CIRCUIT (New Orleans) | | |
| Parishes: Orleans, Plaquemines, St. Bernard | | |
| Patrick M. Schott, Chief Judge | New Orleans | First |
| Jim Garrison | New Orleans | First |
| Denis A. Barry | New Orleans | First |
| Robert J. Klees | Meraux | Third |
| Charles R. Ward | New Orleans | First |
| William H. Byrnes, III | New Orleans | At Large |
| Philip C. Ciaccio | New Orleans | At Large |
| Robert L. Lobrano | Belle Chasse | Second |
| David R. M. Williams | New Orleans | First |
| Joan Bernard Armstrong | New Orleans | First |
| Steven R. Plotkin ¹ | New Orleans | First |
| Rudolph F. Becker, III ² | New Orleans | First |
| Clerk: Danielle Schott | | |



Chief Judge Lawrence A. Chehardy

| | | |
|---|----------|--------|
| FIFTH CIRCUIT (Gretna) | | |
| Parishes: Jefferson, St. Charles, St. James, St. John | | |
| Lawrence A. Chehardy, Chief Judge | Metairie | First |
| Thomas J. Kliebert | Paulina | Second |
| Fred S. Bowes | Gretna | First |
| H. Charles Gaudin | Metairie | First |
| Edward A. Dufresne, Jr. | Luling | Third |
| Charles Grisbaum, Jr. | Gretna | First |
| Thomas C. Wicker, Jr. | Metairie | First |
| Sol Gothard | Metairie | First |
| Clerk: Peter J. Fitzgerald, Jr. | | |

1. Took office January 4, 1988
2. Took office January 1, 1989

DISTRICT COURTS OF LOUISIANA

Roster of Judges and Clerks

| Judges | Parishes Within Districts | Parish Seats | Clerks of Court |
|---|--------------------------------------|---|--|
| FIRST DISTRICT | | | |
| Vacancy (Judge <i>pro tempore</i> assigned) ¹ James E. Clark C. J. Bolin, Jr., Chief Judge Carl E. Stewart John R. Ballard ² Jeffrey P. Victory Gayle K. Hamilton Eugene W. Bryson Charles R. Scott | Caddo | Shreveport | Curtis A. Warren |
| Court Administrator: Thomas N. Williams | | | |
| CADDO PARISH JUVENILE COURT | | | |
| Gorman E. Taylor, Chief Judge Andrew B. Gallagher | | | E. E. Rushing |
| SECOND DISTRICT | | | |
| Paul A. Newell, Chief Judge Leon H. Whitten Robert Y. Butler | Claiborne Jackson Bienville | Homer Jonesboro Arcadia | B. A. Gladney A. B. Walsworth F. N. Joyner |
| THIRD DISTRICT | | | |
| James M. Dozier, Chief Judge E. Joseph Bleich | Union Lincoln | Farmerville Ruston | J. A. Brantley S. Sanderson |
| FOURTH DISTRICT | | | |
| Robert W. Kostelka ² Lemme O. Hightower ³ D. Milton Moore, III John R. Harrison, Chief Judge John R. Joyce Michael S. Ingram James H. Boddie, Jr. | Morehouse Ouachita | Bastrop Monroe | A. T. Goodnight W. J. Hodge |
| Court Administrator: Dr. Robert E. Harrison | | | |
| FIFTH DISTRICT | | | |
| Glen W. Strong Glynn D. Roberts, Chief Judge Chet D. Traylor | Franklin Richland West Carroll | Winnsboro Raysville Oak Grove | F. T. Elkins R. N. Haire M. N. Oldham |
| SIXTH DISTRICT | | | |
| Charles R. Brackin Alwine M. Ragland, Chief Judge | Madison East Carroll Tensas | Tallulah Lake Providence St. Joseph | J. K. Post, Jr. E. B. Brock J. A. Kitchen |
| SEVENTH DISTRICT | | | |
| Glenn B. Gremillion, Chief Judge W. C. Falkenhainer | Catahoula Concordia | Harrisonburg Vidalia | K. Johnson C. R. Webber, Jr. |
| EIGHTH DISTRICT | | | |
| Douglas H. Allen, Chief Judge | Winn | Winnfield | D. E. Kelley |
| NINTH DISTRICT | | | |
| Alfred A. Mansour William P. Polk Richard E. "Dick" Lee ⁴ Lloyd G. Teekell Robert P. Jackson Lewis O. Lauve, Chief Judge | Rapides | Alexandria | R. L. Stewart |

1. Judge John F. Fant retired September 15, 1988; judge *pro tempore* assigned, election to be held

2. Became Chief Judge January 1, 1990

3. Elected to 2nd Circuit; effective January 1, 1989; judge *pro tempore* assigned to 4th JDC, election to be held

4. Became Chief Judge November 30, 1989

DISTRICT COURTS OF LOUISIANA

Roster of Judges and Clerks

| Judges | Parishes Within Districts | Parish Seats | Clerks of Court |
|--|----------------------------------|---|---|
| TENTH DISTRICT | | | |
| John B. Whitaker W. Peyton Cunningham, Jr., Chief Judge | Natchitoches | Natchitoches | I. L. Knotts, Jr. |
| ELEVENTH DISTRICT | | | |
| Claude "Randy" Sledge John S. Pickett, Jr., Chief Judge | Sabine DeSoto | Many Mansfield | D. M. Knippers W. A. Porter, Jr. |
| TWELFTH DISTRICT | | | |
| B. Clyde Bennett, Jr. ¹ Harold J. Brouillette, Chief Judge | Avoyelles | Marksville | S. G. Couvillion |
| THIRTEENTH DISTRICT | | | |
| Joseph E. Coreil, Chief Judge L. O. Fusilier | Evangeline | Ville Platte | W. Lee |
| FOURTEENTH DISTRICT | | | |
| Gregory D. Lyons W. Ellis Bond Billy H. Ezell Warren E. Hood A. J. Planchard L. E. Hawsey, Jr., Chief Judge Charley Quienalty James C. McInnis | Calcasieu | Lake Charles | J. R. Andrus |
| Court Administrator: W. P. Hastings | | | |
| FIFTEENTH DISTRICT | | | |
| G. Bradford Ware Douglas J. Nehrbass J. Byron Hebert Lucien C. Bertrand, Jr. Allen M. Babineaux Hugh E. Brunson Durwood W. Conque, Chief Judge Ronald David Cox John Rixie Mouton, Sr. Don Aaron, Jr. Bennett J. Gautreaux Herman C. Clause, Commissioner | Acadia Lafayette Vermilion | Crowley Lafayette Abbeville | J. A. Barousse O. C. Guilliot R. R. Gaspard |
| SIXTEENTH DISTRICT | | | |
| C. Thomas Bienvenue, Jr., Chief Judge Paul J. deMahy Edward A. de la Houssaye, III Robert M. Fleming Richard T. "Dicky" Haik Michael J. McNulty, Jr. ² Anne Lennan Simon | Iberia St. Martin St. Mary | New Iberia St. Martinville Franklin | P. Saunier J. A. Theriot C. G. Dressel |
| SEVENTEENTH DISTRICT | | | |
| Sidney A. Ordoyne, Jr. Jerome J. Barbera, III John J. Erny, Jr. Randolph H. Parro, Chief Judge | Lafourche | Thibodaux | B. A. Theriot |

1. Retired July 31, 1989; judge *pro tempore* assigned, election to be held
2. Became Chief Judge November 1, 1989

DISTRICT COURTS OF LOUISIANA

Roster of Judges and Clerks

| Judges | Parishes Within District | Parish Seats | Clerks of Court |
|---|-----------------------------|------------------|-------------------|
| EIGHTEENTH DISTRICT | | | |
| Catherine D. Kimball | Iberville | Plaquemine | J. G. Dupont |
| Ian W. Claiborne, Chief Judge | W. Baton Rouge | Port Allen | T. J. LeBlanc |
| Edward N. Engolio | Pointe Coupee | New Roads | I. G. Olinde |
| Jack T. Marionneaux | | | |
| NINETEENTH DISTRICT | | | |
| Robert D. Downing | E. Baton Rouge | Baton Rouge | H. M. Cannon |
| Freddie Pitcher, Jr. | | | |
| Bob H. Hester | | | |
| Michael E. Ponder | | | |
| Douglas P. Moreau | | | |
| Frank J. Saia | | | |
| Leo P. Higginbotham | | | |
| J. Michael McDonald | | | |
| William H. "Bill" Brown | | | |
| L. J. Hymel | | | |
| Carl A. Guidry | | | |
| Douglas M. Gonzales, Chief Judge | | | |
| Joseph F. Keogh | | | |
| Allen J. Bergeron, Jr., Commissioner | | | |
| Kay Bates, Commissioner | | | |
| Court Administrator: R. Clifton Berry | | | |
| EAST BATON ROUGE FAMILY COURT | | | |
| Jennifer Luse | | | |
| E. Donald Moseley, Chief Judge | | | |
| Anthony J. Graphia | | | |
| Court Administrator: Paul Kieffer | | | |
| TWENTIETH DISTRICT | | | |
| William F. Kline, Jr., Chief Judge | East Feliciana | Clinton | D. D. Hudnall |
| Wilson R. Ramshur | West Feliciana | St. Francisville | M. N. Marchive |
| TWENTY-FIRST DISTRICT | | | |
| Kenneth J. Fogg | Livingston | Livingston | L. W. Patterson |
| Bruce C. Bennett ¹ | Tangipahoa | Amite | C. Moore |
| Robert H. Morrison, III, Chief Judge | St. Helena | Greensburg | H. C. Newell |
| Leon Ford, III | | | |
| Edward Brent Dufreche | | | |
| Joseph E. Anzalone, Jr. | | | |
| Court Administrator: Melissa Easley | | | |
| TWENTY-SECOND DISTRICT | | | |
| France W. Watts | St. Tammany | Covington | L. R. Rausch |
| Stephen A. Duczer, Chief Judge | Washington | Franklinton | D. Seal |
| Brady M. Fitzsimmons | | | |
| John W. Greene | | | |
| A. Clayton James | | | |
| James R. Strain, Jr. ² | | | |
| Court Administrator: Robert G. Tyler, Jr. | | | |
| TWENTY-THIRD DISTRICT | | | |
| Leon J. LeSueur | Assumption | Napoleonville | L. E. Bergeron |
| John L. Peytavin, Chief Judge | Ascension | Donaldsonville | K. H. Bourque |
| John L. Goldsmith | St. James | Convent | E. E. Kinler, Jr. |
| A. J. Kling, Jr. | | | |

1. Became Chief Judge January 1, 1990

2. Elected to Slidell City Court; effective August 1, 1989; judge *pro tempore* assigned to 22nd JDC, election to be held

DISTRICT COURTS OF LOUISIANA

Roster of Judges and Clerks

| Judges | Parishes Within Districts | Parish Seats | Clerks of Court |
|--|-------------------------------------|------------------|-------------------|
| TWENTY-FOURTH DISTRICT G. Thomas Porteous, Jr. Ernest V. Richards IV Joseph F. Grefer Walter E. Kollin Clarence E. McManus ¹ Patrick J. McCabe M. Joseph Tiemann Hubert Vondenstein Wallace C. LeBrun ² Jacob L. Karno Alvin R. Eason Charles V. Cusimano, II Robert J. Burns James L. Cannella, Chief Judge Ronald P. Loumiet | Jefferson | Gretna | J. A. Gegenheimer |
| Court Administrator: Sandra Joaen Smith | | | |
| JEFFERSON PARISH JUVENILE COURT Ann Murry Keller Thomas P. McGee, Chief Judge Nancy Amato Konrad | Court Administrator: James Boulware | | |
| TWENTY-FIFTH DISTRICT Michael E. Kirby Emile E. Martin, III, Chief Judge | Plaquemines | Point-a-la-Hache | S. M. Matte |
| TWENTY-SIXTH DISTRICT Dewey Burchett, Jr. Graydon K. Kitchens, Jr., Chief Judge Cecil P. Campbell, II R. Harmon Drew, Jr. Vacancy (judge <i>pro tempore</i> assigned) ³ | | | |
| TWENTY-SEVENTH DISTRICT H. Garland Pavy Joseph A. LaHaye, Chief Judge Isom J. Guillory, Jr. Robert Brinkman | St. Landry | Opelousas | P. H. Kempf |
| TWENTY-EIGHTH DISTRICT Jimmie C. Peters, Chief Judge | LaSalle | Jena | J. D. Nugent |
| Court Administrator: Bobby L. Wilson | | | |
| TWENTY-NINTH DISTRICT Ruche J. Marino ¹ Mary Ann Vial Lemmon Joel T. Chaisson, Chief Judge | St. Charles | Hahnville | C. J. Oubre, Jr. |
| THIRTIETH DISTRICT Roy B. Tuck, Jr. Ted R. Broyles, Chief Judge | Vernon | Leesville | D. M. Perkins |
| THIRTY-FIRST DISTRICT William K. Knight, Chief Judge | Jefferson Davis | Jennings | G. B. Huff Moore |

1. Became Chief Judge January 1, 1990

2. Died April 7, 1989; judge *pro tempore* assigned, election to be held

3. New judgeship effective January 1, 1990, election to be held

DISTRICT COURTS OF LOUISIANA

Roster of Judges and Clerks

| Judges | Parishes Within Districts | Parish Seats | Clerks of Court |
|---|------------------------------|--------------|---------------------|
| THIRTY-SECOND DISTRICT | | | |
| Edward J. "Jimmy" Gaidry Baron B. Bourg, Chief Judge Timothy C. Ellender Wilmore J. Broussard, Jr. Paul R. Wimbish | Terrebonne | Houma | I. R. Boudreaux |
| Court Administrator: Walton Dill | | | |
| THIRTY-THIRD DISTRICT | | | |
| Vacancy (judge <i>pro tempore</i> assigned) ¹ | | | |
| THIRTY-FOURTH DISTRICT | | | |
| Thomas M. McBride, III ² David S. Gorbaty, Chief Judge Melvyn J. Perez Vacancy (judge <i>pro tempore</i> assigned) ³ | St. Bernard | Chalmette | L. R. Torres |
| THIRTY-FIFTH DISTRICT | | | |
| B. G. "Billy" Lutes, Chief Judge | Grant | Colfax | J. E. Lemoine |
| Court Administrator: Barry G. Toups ⁴ | | | |
| THIRTY-SIXTH DISTRICT | | | |
| Leland H. Coltharp, Jr., Chief Judge | Beauregard | DeRidder | R. L. Nichols |
| THIRTY-SEVENTH DISTRICT | | | |
| Ronald L. Lewellyan, Chief Judge | Caldwell | Columbia | E. Dunn |
| Court Administrator: Marion Harrelson | | | |
| THIRTY-EIGHTH DISTRICT | | | |
| H. Ward Fontenot, Chief Judge | Cameron | Cameron | R. U. Primeaux |
| THIRTY-NINTH DISTRICT | | | |
| Richard N. Ware, Chief Judge | Red River | Coushatta | E. V. Womack |
| FORTIETH DISTRICT | | | |
| G. Walton Caire ² Thomas J. Malik, Chief Judge | St. John the Baptist | Edgard | H. L. Montegut, Jr. |

1. Judge Edward M. Mouser retired September 19, 1988; judge *pro tempore* assigned, election to be held
2. Became Chief Judge January 1, 1990
3. New judgeship effective January 1, 1990, election to be held
4. Became Court Administrator August 14, 1989

DISTRICT COURTS OF LOUISIANA

Roster of Judges and Clerks

Judges

ORLEANS PARISH CIVIL DISTRICT COURT

Thomas A. Early, Jr.
 Robert A. Katz, Chief Judge
 Richard J. Garvey
 Louis A. DiRosa
 Gerald P. Fedoroff
 Yada T. Magee
 Robin Giarruso
 Revius O. Ortique, Jr.
 Bernette Joshua Johnson
 George C. Connolly, Jr.
 Richard J. Ganucheau¹
 Max N. Tobias
 Charles L. Rivet
 John M. Holahan
 Walter J. Wilkerson
 Avis M. Russell

Division

A
 B
 C
 D
 E
 F
 G
 H
 I
 J
 K
 L

Commissioner
 Commissioner
 Commissioner
 Commissioner

Clerk: Dan Foley
 Controller/Administrator: Bruce Pantti²

ORLEANS PARISH CRIMINAL DISTRICT COURT

Miriam G. Waltzer
 Patrick G. Quinlan
 Jerome M. Winsberg
 Frank A. Marullo, Jr.
 Rudolph F. Becker, III³
 Dennis J. Waldron
 Frank J. Shea, Chief Judge
 James F. McKay, III
 Shirley G. Wimberly, Jr.
 Leon A. Cannizzaro, Jr.
 Gerard J. Hansen
 Arthur L. Harris, Sr.
 Anthony J. Russo
 George G. Kiefer
 Andrew J. Sciambra

Section

A
 B
 C
 D
 E
 F
 G
 H
 I
 J

Magistrate-Judge
 Commissioner
 Commissioner
 Commissioner
 Commissioner

Clerk: Edwin A. Lombard
 Court Administrator: Rivers Trussell⁴
 Darryl M. Schultz⁵

ORLEANS PARISH JUVENILE COURT

Ernestine S. Gray, Administrative Judge
 Clarence B. Giarrusso, Jr.
 Salvatore T. Mulé
 Lawrence L. Lagarde
 Anita H. Ganucheau

Section

A
 B
 C
 D
 E

Clerk: Joseph L. Peyton
 Court Administrator: Mary Jordan

1. Became Chief Judge January 1, 1990
2. Resigned April 12, 1989
3. Elected to 4th Circuit; effective January 1, 1989; judge *pro tempore* assigned to Orleans Parish Criminal District Court, election to be held
4. Resigned March 21, 1989
5. Became Judicial Administrator September 1, 1989

CITY AND PARISH COURTS OF LOUISIANA

Roster of Judges and Locations of Courts

| Cities | Parishes | Judges |
|---|------------------|--------------------------------------|
| Abbeville | Vermillion | Roger C. Sellers |
| Alexandria | Rapides | Edward E. Roberts |
| Ascension Parish | Ascension | Pegram J. Mire, Jr. |
| Baker | East Baton Rouge | John E. Engelsman |
| Bastrop | Morehouse | Merwin M. Brandon, Jr. |
| Baton Rouge: Division A | East Baton Rouge | Byron Stringer |
| Division B | | Ralph Tyson ¹ |
| Division C | | Darrell D. White, Senior Judge |
| Division D | | Rosemary T. Pillow |
| Division E | | Curtis A. Calloway ² |
| Baton Rouge Clerk/Court Administrator: Milton R. Skyring | | |
| Bogalusa | Washington | Donald M. Fendlason |
| Bossier City | Bosier | Billy Ross Robinson |
| Breaux Bridge | St. Martin | W. Glenn Soileau |
| Bunkie | Avoyelles | James H. Mixon |
| Crowley | Acadia | T. Barrett Harrington |
| Denham Springs | Livingston | Raymond S. Bennett |
| DeRidder | Beauregard | Stuart S. Kay |
| Eunice | St. Landry | Lynette Young Feucht |
| Franklin | St. Mary | Charles R. Prevost |
| Hammond | Tangipahoa | John D. Kopfler |
| Hammond Clerk/Court Administrator: Walter R. Parker | | |
| Houma | Terrebonne | Jude T. Fanguy |
| Jeanerette | Iberia | John A. Rogers |
| Jefferson Parish: | Jefferson | |
| 1st Parish Court Division A | | J. Bruce Naccari, Senior Judge |
| Division B | | George W. Giacobbe |
| First Parish Court Court Administrator: Beatrice D. Tranchina | | |
| 2nd Parish Court Division A | Jefferson | John J. Molaison, Senior Judge |
| Division B | | Herbert G. Gautreaux |
| Second Parish Court Court Administrator: Rodney M. de la Gardelle | | |
| Jennings | Jefferson Davis | Bernard N. Marcantel |
| Kaplan | Vermillion | Reule P. Bourque |
| Lafayette | Lafayette | Kaliste J. Saloom, Jr., Senior Judge |
| | | Michael G. Sullivan |
| Lafayette Court Administrator: Fay Markham | | |
| Lake Charles Division A | Calcasieu | Thomas P. Quirk, Senior Judge |
| Division B | | John S. Hood |
| Leesville | Vernon | S. Chris Smith, III |
| Leesville Clerk/Court Administrator: Glenda F. Dowden | | |

1. Took office January 1, 1989

2. New judgeship created January 1, 1989

CITY AND PARISH COURTS OF LOUISIANA

Roster of Judges and Locations of Courts

| Cities | Parishes | Judges |
|------------------------|---|---|
| Marksville | Avoyelles | John R. Contois |
| Minden | Webster | John C. Campbell |
| | Minden Court Administrator: Joan Burns | |
| Monroe | Ouachita | Elvis C. Stout, Senior Judge John Larry Lolley |
| Morgan City | St. Mary | Robert S. Robertson |
| Natchitoches | Natchitoches | Fred S. Gahagan |
| New Iberia | Iberia | Robert L. Segura |
| New Orleans | Orleans | |
| 1st City Court | Section A | Charles A. Imbornone |
| 1st City Court | Section B | Dominic C. Grieshaber, Senior Judge |
| 1st City Court | Section C | Niles A. Hellmers |
| 2nd City Court | | Lorain F. Wingerter |
| Municipal Court | Section A | Eddie L. Sapir |
| Municipal Court | Section B | Bruce J. McConduit |
| Municipal Court | Section C | John A. Shea |
| Municipal Court | Section D | James E. Glancey, Sr., Senior Judge |
| Traffic Court | Section A | Dennis J. Dannel ¹ |
| Traffic Court | Section B | Thomas L. Giraud |
| Traffic Court | Section C | Louis P. Trent |
| Traffic Court | Section D | Oliver S. Delery, Senior Judge |
| | Traffic Court Court Administrator: Gerald A. Brown ² Mary Rome ³ | |
| Oakdale | Allen | John P. Navarre |
| Opelousas | St. Landry | Kenneth Boagni, Jr. |
| | Opelousas Clerk/Court Administrator: Ronnie Leger | |
| Pineville | Rapides | F. Jean Pharis |
| Plaquemine | Iberville | William C. Dupont |
| | Plaquemine Court Administrator: Lionel Jenkins | |
| Port Allen | West Baton Rouge | Philip N. Pequet |
| Rayne | Acadia | Denald A. Beslin |
| Ruston | Lincoln | Robert G. James |
| | Ruston Clerk/Court Administrator: Jennifer Floyd | |
| Shreveport: Division A | Caddo | Garner R. Miller |
| Division B | | Charles W. Kelly, IV |
| Division C | | H. Dan Sawyer ⁴ |
| | Shreveport Clery/Court Administrator: Virginia Hester | |
| Slidell | St. Tammany | Gus A. Fritchie, Jr. ⁵ |
| Slidell | St. Tammany | James R. Strain ⁶ |
| Springhill | Webster | John M. Robinson |
| Sulphur | Calcasieu | J. Steven Broussard |
| Thibodaux | Lafourche | David M. Richard |
| Vidalia | Concordia | George C. Murray, Jr. |
| Ville Platte | Evangeline | J. Wendel Fusilier |
| West Monroe | Ouachita | Charles A. Traylor, II |
| Winnfield | Winn | Jim W. Wiley |
| Winnsboro | Franklin | Michael E. Kramer |
| Zachary | East Baton Rouge | Russell Bankston |

1. Took office January 1, 1989
2. Resigned March, 1989
3. Became Court Administrator April 2, 1989

4. Retired January 5, 1990; judge *pro tempore* assigned, election to be held
5. Retired July 31, 1989
6. Took office August 1, 1989

STATISTICAL APPENDIX

INTRODUCTION TO THE STATISTICAL SECTION

The statistical information in this section was compiled from data submitted to the Judicial Administrator's Office by the various courts of Louisiana during the calendar year 1989.

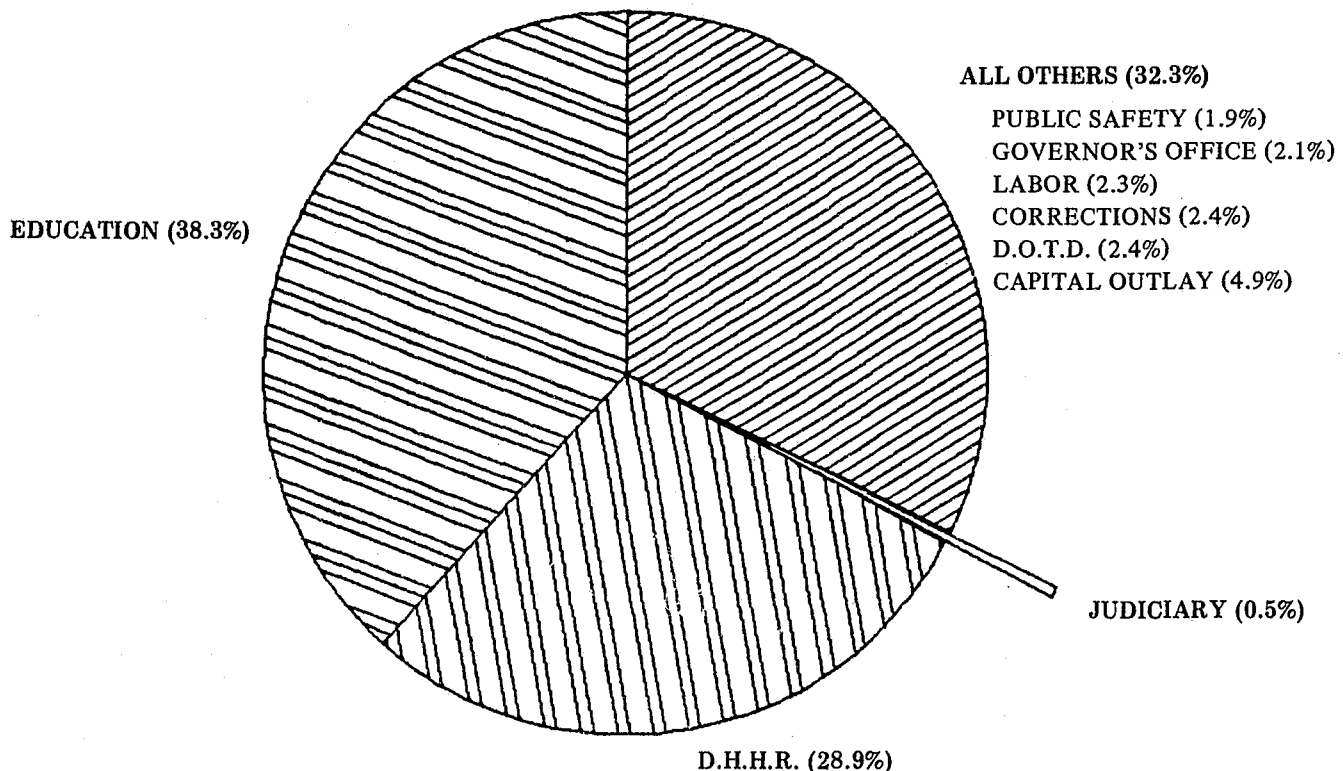
In 1989 there were 2,996 filings in the Supreme Court. The filings in 1989 were 3.6% less than in 1988. However, the filings were 30% greater than those in 1984, the first year in which the full effect of the transfer of criminal jurisdiction to the courts of appeal was felt.

In 1989, there were 7,661 filings in the Louisiana courts of appeal. This represents an increase of 187.6% over the filings 10 years earlier. However, the total filings in 1989 were 2.3% less than those in 1988. The average time interval from the filing of a civil appeal to its disposition was 394 days in the First Circuit, 254 days in the Second Circuit, 469 days in the Third Circuit, 259 days in the Fourth Circuit, and 171 days in the Fifth Circuit. The average time interval from the filing of a criminal appeal to its disposition was 303 days in the First Circuit, 216 days in the Second Circuit, 270 days in the Third Circuit, 418 days in the Fourth Circuit, and 174 days in the Fifth Circuit.

During the past 10 years, the combined civil and criminal filings in the district courts in Louisiana have increased by 18.6%. During 1989, there were 174,932 civil filings in the district courts showing no significant increase when compared with 1988. During 1989, there were 318,907 criminal filings in the district courts, a decrease of 11.3% over 1988. Civil jury trials increased by 2% when compared to 1988 and criminal jury trials increased by 10% when compared to 1988.

In 1989, there were 676,327 filings in Louisiana's city and parish courts. This represents a decrease of .4% when compared with 1988 filings. However, the 1988 filings are 11.8% higher than the filings 10 years earlier.

LOUISIANA STATE BUDGET 1989 - 1990



**SUPREME COURT OF LOUISIANA
THREE YEAR TREND IN ACTIVITY**

| | 1987 | 1988 | 1989 |
|---|-------|-------|-------|
| APPEALS: | | | |
| Filed | 35 | 24 | 20 |
| Dismissed | 0 | 4 | 2 |
| Opinions Rendered | | | |
| With written opinions | 22 | 17 | 24 |
| per curiams | 5 | 4 | 10 |
| WRITS: | | | |
| Applications Filed (Except Prisoner Pro Se) | 1,580 | 1,569 | 1,600 |
| Prisoner Pro Se Writs | 1,084 | 1,310 | 1,176 |
| Granted | 553 | 619 | 624 |
| to be argued | 93 | 85 | 86 |
| with orders | 460 | 534 | 538 |
| Dismissed | 16 | 22 | 18 |
| Not Considered | 19 | 17 | 33 |
| Denied | 1,918 | 1,871 | 1,937 |
| Opinions Rendered | 92 | 78 | 76 |
| REHEARINGS: | | | |
| Applied for | 75 | 104 | 110 |
| Granted | 10 | 12 | 21 |
| Denied/Dismissed | 79 | 74 | 91 |
| Opinions Rendered | 6 | 4 | 6 |
| ORIGINAL JURISDICTION: | | | |
| Petitions Filed | 100 | 99 | 88 |
| Opinions Rendered | 22 | 23 | 40 |
| OTHER MATTERS: | | | |
| Filed | 9 | 3 | 2 |
| Opinions Rendered | 3 | 2 | 1 |
| OTHER PER CURIAM OPINIONS RENDERED | 1 | 21 | 25 |
| TOTAL FILINGS: | 2,883 | 3,109 | 2,996 |
| Per Justice | 412 | 444 | 428 |
| TOTAL OPINIONS RENDERED | 151 | 149 | 182 |

**LOUISIANA COURTS OF APPEAL
THREE YEAR TREND IN ACTIVITY**

| | TOTAL 1987 | TOTAL 1988 | TOTAL 1989 | CIVIL 1989 | CRIMINAL 1989 |
|--------------------------------|-----------------------|-----------------------|-----------------------|-----------------------|--------------------------|
| FIRST CIRCUIT | | | | | |
| Appeals Filed | 1,076 | 1,119 | 1,022 | 817 | 205 |
| Motions Filed | 33 | 26 | 49 | 48 | 1 |
| Writs Filed (except Pro Se) | 436 | 433 | 508 | 326 | 182 |
| Writs Refused | 319 | 303 | 367 | 223 | 144 |
| Writs Granted | 125 | 121 | 136 | 102 | 34 |
| Pro Se Writs Filed | 360 | 465 | 576 | 127 | 449 |
| Pro Se Writs Refused | 267 | 397 | 452 | 115 | 337 |
| Pro Se Writs Granted | 67 | 75 | 110 | 5 | 105 |
| Appeals Dismissed | 158 | 157 | 198 | 184 | 14 |
| Opinions Rendered | 862 | 862 | 856 | 682 | 174 |
| Rehearings Acted Upon | 177 | 136 | 154 | 136 | 18 |
| Appeals Pending | 882 | 967 | 937 | 786 | 151 |
| Argued But Not Decided | 11 | 9 | 11 | 10 | 1 |
| To Be Argued | 871 | 958 | 926 | 776 | 150 |
| SECOND CIRCUIT | | | | | |
| Appeals Filed | 502 | 572 | 584 | 336 | 248 |
| Motions Filed | 10 | 12 | 9 | 3 | 6 |
| Writs Filed (except Pro Se) | 214 | 244 | 255 | 110 | 145 |
| Writs Refused | 146 | 184 | 204 | 90 | 114 |
| Writs Granted | 68 | 61 | 57 | 25 | 32 |
| Pro Se Writs Filed | 152 | 173 | 159 | 0 | 159 |
| Pro Se Writs Refused | 93 | 121 | 138 | 0 | 138 |
| Pro Se Writs Granted | 52 | 39 | 42 | 0 | 42 |
| Appeals Dismissed | 49 | 49 | 59 | 45 | 14 |
| Opinions Rendered | 484 | 478 | 507 | 253 | 254 |
| Rehearings Acted Upon | 92 | 90 | 75 | 50 | 25 |
| Appeals Pending | 307 | 333 | 362 | 224 | 138 |
| Argued But Not Decided | 54 | 50 | 41 | 33 | 8 |
| To Be Argued | 253 | 283 | 321 | 191 | 130 |
| THIRD CIRCUIT: | | | | | |
| Appeals Filed | 850 | 814 | 740 | 583 | 157 |
| Motions Filed | 15 | 22 | 19 | 19 | 0 |
| Writs Filed (except Pro Se) | 354 | 382 | 457 | 233 | 224 |
| Writs Refused | 236 | 268 | 281 | 156 | 125 |
| Writs Granted | 116 | 116 | 127 | 66 | 61 |
| Pro Se Writs Filed | 209 | 184 | 144 | 0 | 144 |
| Pro Se Writs Refused | 135 | 124 | 83 | 0 | 83 |
| Pro Se Writs Granted | 62 | 61 | 51 | 0 | 51 |
| Appeals Dismissed | 132 | 110 | 102 | 97 | 5 |
| Opinions Rendered ¹ | 640 | 630 | 610 | 448 | 162 |
| Rehearings Acted Upon | 97 | 82 | 72 | 62 | 10 |
| Appeals Pending | 783 | 861 | 875 | 758 | 117 |
| Argued But Not Decided | 9 | 14 | 13 | 8 | 5 |
| To Be Argued | 774 | 847 | 862 | 750 | 112 |

**LOUISIANA COURTS OF APPEAL
THREE YEAR TREND IN ACTIVITY**

| | TOTAL 1987 | TOTAL 1988 | TOTAL 1989 | CIVIL 1989 | CRIMINAL 1989 |
|--------------------------------|-----------------------|-----------------------|-----------------------|-----------------------|--------------------------|
| FOURTH CIRCUIT | | | | | |
| Appeals Filed | 890 | 974 | 825 | 543 | 282 |
| Motions Filed | 13 | 18 | 3 | 3 | 0 |
| Writs Filed (except Pro Se) | 419 | 450 | 525 | 389 | 136 |
| Writs Refused | 297 | 272 | 339 | 234 | 105 |
| Writs Granted | 137 | 156 | 174 | 122 | 52 |
| Pro Se Writs Filed | 1,037 | 1,140 | 1,050 | 6 | 1,044 |
| Pro Se Writs Refused | 649 | 697 | 645 | 4 | 641 |
| Pro Se Writs Granted | 358 | 392 | 425 | 5 | 420 |
| Appeals Dismissed | 75 | 115 | 96 | 82 | 14 |
| Opinions Rendered | 673 | 762 | 731 | 412 | 319 |
| Rehearings Acted Upon | 135 | 169 | 118 | 103 | 15 |
| Appeals Pending | 676 | 804 | 796 | 475 | 321 |
| Argued But Not Decided | 87 | 89 | 93 | 73 | 20 |
| To Be Argued | 589 | 715 | 703 | 402 | 301 |
| FIFTH CIRCUIT: | | | | | |
| Appeals Filed | 528 | 488 | 393 | 310 | 83 |
| Motions Filed | 18 | 26 | 9 | 5 | 4 |
| Writs Filed (except Pro Se) | 240 | 260 | 279 | 186 | 93 |
| Writs Refused | 153 | 179 | 191 | 123 | 68 |
| Writs Granted | 80 | 76 | 96 | 62 | 34 |
| Pro Se Writs Filed | 120 | 146 | 144 | 0 | 144 |
| Pro Se Writs Refused | 77 | 101 | 90 | 0 | 90 |
| Pro Se Writs Granted | 37 | 39 | 59 | 0 | 59 |
| Appeals Dismissed | 62 | 45 | 37 | 35 | 2 |
| Opinions Rendered | 394 | 468 | 406 | 316 | 90 |
| Rehearings Acted Upon | 101 | 81 | 114 | 110 | 4 |
| Appeals Pending | 270 | 243 | 162 | 122 | 40 |
| Argued But Not Decided | 47 | 62 | 52 | 39 | 13 |
| To Be Argued | 223 | 181 | 110 | 83 | 27 |
| TOTAL FOR ALL CIRCUITS: | | | | | |
| Appeals Filed | 3,846 | 3,967 | 3,564 | 2,589 | 975 |
| Motions Filed | 89 | 104 | 89 | 78 | 11 |
| Writs Filed (except Pro Se) | 1,663 | 1,769 | 2,024 | 1,244 | 780 |
| Writs Refused | 1,151 | 1,206 | 1,382 | 826 | 556 |
| Writs Granted | 526 | 530 | 590 | 377 | 213 |
| Pro Se Writs Filed | 1,878 | 2,108 | 2,073 | 133 | 1,940 |
| Pro Se Writs Refused | 1,221 | 1,440 | 1,408 | 119 | 1,289 |
| Pro Se Writs Granted | 576 | 606 | 687 | 10 | 677 |
| Appeals Dismissed | 476 | 476 | 492 | 443 | 49 |
| Opinions Rendered | 3,053 | 3,200 | 3,110 | 2,111 | 999 |
| Rehearings Acted Upon | 602 | 559 | 533 | 461 | 72 |
| Appeals Pending | 2,918 | 3,208 | 3,132 | 2,365 | 767 |
| Argued But Not Decided | 208 | 224 | 210 | 163 | 47 |
| To Be Argued | 2,710 | 2,984 | 2922 | 2202 | 720 |

1. The 1987 total includes 23 civil and 5 criminal opinions written by Judges Pro Tempore.

FILINGS PER COURT OF APPEAL JUDGE

| | <u>APPEALS</u> | <u>WRITS</u> |
|------|----------------------------------|----------------------------------|
| 1985 | 74.5 (54.9 civil, 19.6 criminal) | 52.9 (17.7 civil, 35.2 criminal) |
| 1986 | 77 (56.2 civil, 20.8 criminal) | 62.8 (18.6 civil, 44.2 criminal) |
| 1987 | 80.1 (57.8 civil, 22.3 criminal) | 73.8 (21.1 civil, 52.7 criminal) |
| 1988 | 82.7 (59.9 civil, 22.7 criminal) | 80.8 (22.8 civil, 58.0 criminal) |
| 1989 | 74.3 (53.9 civil, 20.3 criminal) | 85.4 (28.7 civil, 56.7 criminal) |

1989 FILINGS PER JUDGE BY CIRCUIT

| | <u>APPEALS</u> | <u>WRITS</u> |
|-----------------------|----------------|--------------|
| FIRST | 85.2 | 90.3 |
| SECOND | 83.4 | 59.1 |
| THIRD | 82.2 | 66.8 |
| FOURTH | 68.8 | 131.3 |
| FIFTH | 49.1 | 52.9 |
| AVERAGE ALL JUDGES | 74.3 | 85.4 |

OPINIONS BY THE COURTS OF APPEAL

| | <u>CIVIL</u> | <u>CRIMINAL</u> | <u>TOTAL</u> |
|------|--------------|-----------------|--------------|
| 1985 | 2,228 | 960 | 3,188 |
| 1986 | 2,629 | 972 | 3,601 |
| 1987 | 2,162 | 891 | 3,053 |
| 1988 | 2,251 | 949 | 3,200 |
| 1989 | 2,111 | 999 | 3,110 |

OPINIONS RENDERED PER COURT OF APPEAL JUDGE BY CIRCUIT

| | 1985 | 1986 | 1987 | 1988 | 1989 |
|-----------------------|-------|------|------|------|------|
| First Circuit | | | | | |
| Civil | 55.4 | 63.5 | 54.8 | 54.4 | 56.8 |
| Criminal | 17.3 | 13.7 | 17.0 | 17.4 | 14.5 |
| Totals | 72.7 | 77.2 | 71.8 | 71.8 | 71.3 |
| Second Circuit | | | | | |
| Civil | 38.9 | 40.9 | 42.9 | 41.1 | 36.1 |
| Criminal | 34.0 | 29.1 | 26.3 | 27.1 | 36.3 |
| Totals | 72.09 | 70.0 | 69.2 | 68.2 | 72.4 |
| Third Circuit | | | | | |
| Civil | 54.1 | 64.1 | 51.4 | 51.4 | 49.8 |
| Criminal | 18.2 | 14.8 | 16.6 | 18.6 | 18.0 |
| Totals | 72.3 | 78.9 | 68.0 | 70.0 | 67.8 |
| Fourth Circuit | | | | | |
| Civil | 36.0 | 44.0 | 34.3 | 42.1 | 34.3 |
| Criminal | 17.3 | 30.4 | 21.8 | 21.4 | 26.6 |
| Totals | 53.3 | 74.4 | 56.1 | 63.5 | 60.9 |
| Fifth Circuit | | | | | |
| Civil | 46.5 | 45.5 | 38.3 | 42.8 | 39.5 |
| Criminal | 17.8 | 11.6 | 11.0 | 15.8 | 11.3 |
| Totals | 64.3 | 57.1 | 49.3 | 58.5 | 50.8 |
| All Circuits | | | | | |
| Civil | 46.4 | 52.4 | 45.0 | 46.9 | 44.0 |
| Criminal | 20.0 | 20.0 | 18.6 | 19.8 | 20.8 |
| Totals | 66.4 | 72.4 | 63.6 | 66.7 | 64.8 |

APPEALS PENDING

| | | FIRST | SECOND | THIRD | FOURTH | FIFTH | TOTAL ALL CIRCUITS |
|------|---------------|-------|--------|-------|--------|-------|-----------------------|
| 1985 | Civil | 755 | 177 | 765 | 394 | 174 | 2,265 |
| | Criminal | 90 | 103 | 89 | 277 | 31 | 590 |
| | Totals | 845 | 280 | 854 | 671 | 205 | 2,855 |
| 1986 | Civil | 686 | 240 | 584 | 319 | 186 | 2,015 |
| | Criminal | 121 | 122 | 109 | 200 | 53 | 605 |
| | Totals | 807 | 362 | 693 | 519 | 239 | 2,620 |
| 1987 | Civil | 750 | 186 | 672 | 411 | 197 | 2,216 |
| | Criminal | 132 | 121 | 111 | 265 | 73 | 702 |
| | Totals | 882 | 307 | 783 | 676 | 270 | 2,918 |
| 1988 | Civil | 832 | 179 | 741 | 433 | 199 | 2,384 |
| | Criminal | 135 | 154 | 120 | 371 | 44 | 824 |
| | Totals | 967 | 333 | 861 | 804 | 243 | 3,208 |
| 1989 | Civil | 786 | 224 | 758 | 475 | 122 | 2,365 |
| | Criminal | 151 | 138 | 117 | 321 | 40 | 767 |
| | Totals | 937 | 362 | 875 | 796 | 162 | 3,132 |

**APPEALS PENDING THROUGH DECEMBER 31, 1989
ELAPSED TIME SINCE FILING**

| | UNDER 6 MONTHS | OVER 6 BUT UNDER 9 MONTHS | OVER 9 BUT UNDER 12 MONTHS | OVER 12 BUT UNDER 15 MONTHS | OVER 15 BUT UNDER 18 MONTHS | OVER 18 MONTHS |
|-----------------------|---------------------------|--|---|--|--|---------------------------|
| First Circuit | | | | | | |
| Civil | 364 | 163 | 162 | 62 | 9 | 26 |
| Criminal | 92 | 43 | 14 | 1 | 1 | 0 |
| Second Circuit | | | | | | |
| Civil | 143 | 75 | 2 | 0 | 0 | 4 |
| Criminal | 118 | 18 | 2 | 0 | 0 | 0 |
| Third Circuit | | | | | | |
| Civil | 254 | 151 | 139 | 148 | 49 | 17 |
| Criminal | 74 | 27 | 4 | 2 | 1 | 9 |
| Fourth Circuit | | | | | | |
| Civil | 238 | 131 | 42 | 9 | 4 | 51 |
| Criminal | 116 | 78 | 44 | 43 | 21 | 19 |
| Fifth Circuit | | | | | | |
| Civil | 113 | 4 | 1 | 0 | 2 | 2 |
| Criminal | 39 | 0 | 0 | 1 | 0 | 0 |

TIME FROM FILING TO DISPOSITION ON AN APPEAL

| | AVERAGE FOR 1985 DISPOSITIONS | ESTIMATE FOR APPEALS FILED DURING DECEMBER, 1989 |
|-----------------------|--|---|
| First Circuit | | |
| Civil | 12.5 months | 12.0 months |
| Criminal | 7.6 months | 7.0 months |
| Second Circuit | | |
| Civil | 6.2 months | 8.0 months |
| Criminal | 7.0 months | 7.7 months |
| Third Circuit | | |
| Civil | 13.2 months | 17.0 months |
| Criminal | 9.2 months | 10.0 months |
| Fourth Circuit | | |
| Civil | 8.9 months | 6.5 months |
| Criminal | 11.7 months | 11.0 months |
| Fifth Circuit | | |
| Civil | 6.4 months | 2.5 months |
| Criminal | 6.3 months | 2.5 months |

LOUISIANA DISTRICT COURTS THREE YEAR TREND IN ACTIVITY

JURY TRIALS 1989

| District | Parish | Cases Filed | Cases Filed | 1989 Juvenile | 1989 Civil | 1989 Criminal | 1989 Total | Civil | Criminal |
|----------|-----------------|---------------|---------------|------------------|---------------|------------------|---------------|-------|----------|
| | | 1987 Total | 1988 Total | | | | | | |
| 1 | Caddo | 17,229 | 18,920 | | 9,532 | 9,666 | 19,195 | | |
| | District Totals | 17,229 | 18,920 | | 9,532 | 9,666 | 19,195 | 13 | 46 |
| 2 | Bienville | 3,567 | 3,082 | 98 | 602 | 2,067 | 2,767 | | |
| | Claiborne | 2,558 | 2,383 | 142 | 500 | 1,817 | 2,459 | | |
| | Jackson | 3,251 | 2,777 | 183 | 743 | 1,435 | 2,361 | | |
| | District Totals | 9,376 | 8,242 | 423 | 1,845 | 5,319 | 7,587 | 2 | 18 |
| 3 | Lincoln | 4,074 | 4,064 | 141 | 972 | 2,698 | 3,811 | | |
| | Union | 2,492 | 2,438 | 144 | 824 | 1,634 | 2,602 | | |
| | District Totals | 6,566 | 6,502 | 255 | 1,796 | 4,332 | 6,413 | 7 | 7 |
| 4 | Morehouse | 3,390 | 3,401 | 217 | 886 | 2,855 | 3,958 | | |
| | Ouachita | 19,742 | 19,686 | 1,196 | 5,123 | 10,882 | 17,201 | | |
| | District Totals | 23,132 | 23,587 | 1,413 | 6,009 | 13,737 | 21,159 | 12 | 41 |
| 5 | Franklin | 2,567 | 2,948 | 196 | 824 | 1,321 | 2,341 | | |
| | Richland | 3,450 | 4,248 | 215 | 751 | 2,210 | 3,176 | | |
| | W. Carroll | 1,131 | 1,043 | 125 | 321 | 753 | 1,199 | | |
| | District Totals | 7,148 | 8,239 | 536 | 1,896 | 4,284 | 6,716 | 3 | 4 |
| 6 | E. Carroll | 1,514 | 1,720 | 128 | 262 | 2,097 | 2,487 | | |
| | Madison | 2,716 | 3,468 | 274 | 470 | 3,547 | 4,291 | | |
| | Tensas | 1,734 | 2,613 | 54 | 237 | 3,376 | 3,667 | | |
| | District Totals | 5,964 | 7,801 | 456 | 969 | 9,020 | 10,445 | 4 | 6 |
| 7 | Catahoula | 3,145 | 2,662 | 42 | 445 | 2,255 | 2,742 | | |
| | Concordia | 5,303 | 4,473 | 104 | 769 | 4,353 | 5,226 | | |
| | District Totals | 8,448 | 7,135 | 146 | 1,214 | 6,608 | 7,968 | 3 | 6 |
| 8 | Winn | 3,171 | 2,268 | 74 | 763 | 1,123 | 1,960 | | |
| | District Totals | 3,171 | 2,268 | 74 | 763 | 1,123 | 1,960 | 3 | 6 |
| 9 | Rapides | 18,310 | 23,936 | 449 | 5,570 | 13,549 | 19,568 | | |
| | District Totals | 18,310 | 23,936 | 449 | 5,570 | 13,549 | 19,568 | 37 | 13 |
| 10 | Natchitoches | 7,080 | 6,715 | 130 | 1,540 | 5,186 | 6,856 | | |
| | District Totals | 7,080 | 6,715 | 130 | 1,540 | 5,186 | 6,856 | 15 | 6 |
| 11 | DeSoto | 3,673 | 3,213 | 119 | 1,161 | 1,854 | 3,134 | | |
| | Sabine | 3,840 | 3,409 | 50 | 1,137 | 2,475 | 3,662 | | |
| | District Totals | 7,513 | 6,622 | 169 | 2,298 | 4,329 | 6,796 | 1 | 19 |
| 12 | Avoyelles | 3,914 | 3,751 | 153 | 1,434 | 2,763 | 4,350 | | |
| | District Totals | 3,914 | 3,751 | 153 | 1,434 | 2,763 | 4,350 | 6 | 8 |
| 13 | Evangeline | 3,084 | 3,438 | 191 | 1,685 | 1,561 | 3,437 | | |
| | District Totals | 3,084 | 3,438 | 191 | 1,685 | 1,561 | 3,437 | 6 | 2 |
| 14 | Calcasieu | 16,376 | 10,438 | 855 | 6,878 | 7,735 | 15,468 | | |
| | District Totals | 16,376 | 10,438 | 855 | 6,878 | 7,735 | 15,468 | 46 | 38 |
| 15 | Acadia | 9,434 | 8,651 | 237 | 1,601 | 5,004 | 6,842 | | |
| | Lafayette | 21,321 | 21,298 | 1,037 | 7,535 | 6,971 | 15,543 | | |
| | Vermilion | 5,597 | 5,942 | 258 | 1,528 | 1,797 | 3,583 | | |
| | District Totals | 36,352 | 35,891 | 1,532 | 10,664 | 13,772 | 25,968 | 76 | 44 |
| 16 | Iberia | 8,397 | 9,759 | 455 | 2,602 | 5,038 | 8,095 | | |
| | St. Martin | 6,978 | 8,006 | 232 | 1,348 | 4,121 | 5,701 | | |
| | St. Mary | 8,646 | 9,247 | 172 | 2,175 | 5,996 | 8,343 | | |
| | District Totals | 24,021 | 27,012 | 859 | 6,125 | 15,155 | 22,139 | 52 | 41 |
| 17 | Lafourche | 11,857 | 12,674 | 351 | 2,538 | 10,924 | 13,813 | | |
| | District Totals | 11,857 | 12,674 | 351 | 2,538 | 10,924 | 13,813 | 24 | 9 |
| 18 | Iberville | 3,754 | 4,248 | 90 | 1,551 | 2,282 | 3,923 | | |
| | Pointe Coupee | 3,551 | 3,203 | 73 | 889 | 3,980 | 4,942 | | |
| | W. Baton Rouge | 5,641 | 7,666 | 128 | 933 | 4,939 | 6,000 | | |
| | District Totals | 12,946 | 15,117 | 291 | 3,373 | 11,201 | 14,865 | 7 | 17 |
| 19 | E. Baton Rouge | 34,935 | 35,822 | | 15,621 | 14,877 | 30,498 | | |
| | District Totals | 34,935 | 35,822 | | 15,621 | 14,877 | 30,498 | 75 | 72 |

**LOUISIANA DISTRICT COURTS
THREE YEAR TREND IN ACTIVITY**

**JURY TRIALS
1989**

| District | Parish | Cases Filed 1987 Total | Cases Filed 1988 Total | 1989 Juvenile | 1989 Civil | 1989 Criminal | 1989 Total | Civil | Criminal |
|----------|------------------|------------------------------|------------------------------|------------------|---------------|------------------|---------------|-------|----------|
| | | | | | | | | | |
| 20 | E. Feliciana | 2,732 | 4,547 | 81 | 851 | 3,368 | 4,300 | | |
| | W. Feliciana | 1,341 | 1,937 | 46 | 447 | 1,573 | 2,066 | | |
| | District Totals | 4,073 | 6,484 | 127 | 1,298 | 4,941 | 6,366 | 3 | 9 |
| 21 | Livingston | 6,723 | 9,865 | 383 | 2,976 | 5,146 | 8,505 | | |
| | St. Helena | 1,245 | 1,369 | 43 | 405 | 396 | 844 | | |
| | Tangipahoa | 11,330 | 12,111 | 442 | 4,147 | 7,831 | 12,420 | | |
| | District Totals | 19,298 | 23,345 | 868 | 7,528 | 13,373 | 21,769 | 37 | 20 |
| 22 | St. Tammany | 18,038 | 17,042 | 476 | 6,748 | 13,066 | 20,290 | | |
| | Washington | 5,131 | 4,544 | 90 | 1,786 | 2,102 | 3,978 | | |
| | District Totals | 23,169 | 21,586 | 566 | 8,534 | 15,168 | 24,268 | 34 | 36 |
| 23 | Ascension* | 3,343 | 12,860 | 129 | 2,215 | 678 | 3,022 | | |
| | Assumption | 2,835 | 3,969 | 60 | 636 | 2,867 | 3,563 | | |
| | St. James | 2,875 | 2,479 | 48 | 711 | 2,024 | 2,783 | | |
| | District Totals | 9,053 | 19,308 | 237 | 3,562 | 5,569 | 9,368 | 16 | 25 |
| 24 | Jefferson* | 21,554 | 22,898 | | 18,303 | 5,758 | 24,061 | | |
| | District Totals | 21,554 | 22,898 | | 18,303 | 5,758 | 24,061 | 97 | 101 |
| 25 | Plaquemines | 5,611 | 6,791 | 237 | 1,211 | 5,472 | 6,920 | | |
| | District Totals | 5,611 | 6,791 | 237 | 1,211 | 5,472 | 6,920 | 1 | 19 |
| 26 | Bossier | 11,594 | 12,813 | 286 | 3,199 | 5,639 | 9,124 | | |
| | Webster | 5,199 | 7,435 | 137 | 1,649 | 2,968 | 4,754 | | |
| | District Totals | 16,793 | 20,248 | 423 | 4,848 | 8,607 | 13,878 | 6 | 24 |
| 27 | St. Landry | 16,417 | 20,788 | 290 | 3,082 | 11,593 | 14,965 | | |
| | District Totals | 16,417 | 20,788 | 290 | 3,082 | 11,593 | 14,965 | 48 | 62 |
| 28 | LaSalle | 2,840 | 2,294 | 94 | 747 | 1,260 | 2,101 | | |
| | District Totals | 2,840 | 2,294 | 94 | 747 | 1,260 | 2,101 | 2 | 6 |
| 29 | St. Charles | 16,550 | 24,654 | 484 | 1,788 | 20,449 | 22,721 | | |
| | District Totals | 16,550 | 24,654 | 484 | 1,788 | 20,449 | 22,721 | 19 | 12 |
| 30 | Vernon | 8,820 | 11,689 | 264 | 1,724 | 9,653 | 11,641 | | |
| | District Totals | 8,820 | 11,689 | 264 | 1,724 | 9,653 | 11,641 | 4 | 7 |
| 31 | Jefferson Davis | 5,375 | 8,210 | 248 | 1,023 | 5,465 | 6,756 | | |
| | District Totals | 5,375 | 8,210 | 248 | 1,023 | 5,465 | 6,756 | 5 | 5 |
| 32 | Terrebonne | 13,239 | 15,275 | 470 | 3,496 | 11,016 | 14,982 | | |
| | District Totals | 13,239 | 15,275 | 470 | 3,496 | 11,016 | 14,982 | 45 | 30 |
| 33 | Allen | 3,442 | 3,695 | 77 | 738 | 2,225 | 3,040 | | |
| | District Totals | 3,442 | 3,695 | 77 | 738 | 2,225 | 3,040 | 7 | 1 |
| 34 | St. Bernard | 10,478 | 9,825 | 459 | 2,827 | 8,039 | 11,325 | | |
| | District Totals | 10,478 | 9,825 | 459 | 2,827 | 8,039 | 11,325 | 16 | 15 |
| 35 | Grant | 2,855 | 3,526 | 42 | 671 | 2,880 | 3,593 | | |
| | District Totals | 2,855 | 3,526 | 42 | 671 | 2,880 | 3,593 | 0 | 3 |
| 36 | Beauregard | 4,751 | 5,712 | 156 | 901 | 2,542 | 3,599 | | |
| | District Totals | 4,751 | 5,712 | 156 | 901 | 2,542 | 3,599 | 2 | 5 |
| 37 | Caldwell | 2,050 | 1,988 | 27 | 420 | 1,490 | 1,937 | | |
| | District Totals | 2,050 | 1,988 | 27 | 420 | 1,490 | 1,937 | 1 | 2 |
| 38 | Cameron | 2,764 | 2,701 | 35 | 492 | 2,250 | 2,777 | | |
| | District Totals | 2,764 | 2,701 | 35 | 492 | 2,250 | 2,777 | 4 | 1 |
| 39 | Red River | 3,844 | 3,649 | 68 | 509 | 3,069 | 3,646 | | |
| | District Totals | 3,844 | 3,649 | 68 | 509 | 3,069 | 3,646 | 0 | 8 |
| 40 | St. John | 7,906 | 16,328 | 323 | 1,815 | 13,979 | 16,117 | | |
| | District Totals | 7,906 | 16,328 | 323 | 1,815 | 13,979 | 16,117 | 11 | 9 |
| | Orleans** | | | | | | | | |
| | Civil | 24,053 | 25,433 | | 27,665 | 0 | 27,665 | 119 | |
| | Criminal | 6,243 | 8,193 | | 0 | 8,968 | 8,968 | | 564 |
| | District Totals | 30,296 | 33,626 | | 27,665 | 8,968 | 36,633 | | |
| | Statewide Totals | 484,554 | 548,730 | 13,808 | 174,932 | 318,907 | 507,647 | 869 | 1367 |

* Violations of traffic laws and criminal misdemeanors are processed by Parish Court or Courts.

** Violations of traffic laws are processed by New Orleans Traffic Court; minor misdemeanors are processed in New Orleans Municipal Court.

JUVENILE 1989 DELINQUENCY REPORT **Felony and Misdemeanor Charges and Status**

| Parish | Filed | Detention Hearings | Pre-trial Motions | Pleas Not Guilty Guilty | | Adjudications (Trials) | Disposition DOC Other | | Dispos. Reviews | Petitions Disclosure |
|--------------------|-------|--------------------|-------------------|----------------------------|------|------------------------|--------------------------|------|-----------------|----------------------|
| Caddo Juvenile | 1065 | 160 | 5 | 289 | 686 | 295 | 109 | 492 | 806 | — |
| East B. R. Family | 1206 | — | — | — | — | — | 91 | 149 | — | — |
| Jefferson Juvenile | 4366 | 993 | 552 | 1338 | 929 | 329 | 182 | 1853 | 2364 | 29 |
| Orleans Juvenile | 4730 | 337 | 10 | 3385 | 1126 | 1642 | 696 | 4145 | 996 | — |

TRAFFIC REPORT

| Parish | Cases Filed | Not Guilty Pleas | Guilty Pleas | Trials | Dispositions Fine Other | |
|--------------------|-------------|------------------|--------------|--------|----------------------------|------|
| Caddo Juvenile | 2606 | 78 | 1015 | 96 | 412 | 1344 |
| East B. R. Family | 2145 | — | — | — | 1 | 2144 |
| Jefferson Juvenile | 1799 | 278 | 927 | 33 | 878 | 544 |
| Orleans Juvenile | 2494 | 67 | 1367 | 107 | 766 | 1091 |

NON DELINQUENCY REPORT

Abandonment, Abortion, Adoption, Neglect/Abuse, Termination and Voluntary Transfer of Custody

| Parish | Cases Filed | Cont'd. Custody Hearings | Motions | Adjudications (Trials) | Dispositions Granted Denied Other | | | Permanency Planning (18-month) Hearings | Other Judicial Dispositional Reviews |
|--------------------|-------------|--------------------------|---------|------------------------|--------------------------------------|---|-----|---|--------------------------------------|
| Caddo Juvenile | 466 | 161 | 135 | 181 | 338 | 7 | 13 | 528 | — |
| East B. R. Family | 175 | — | — | — | — | — | 256 | — | — |
| Jefferson Juvenile | 843 | 164 | 148 | 401 | 260 | — | 616 | 495 | 1333 |
| Orleans Juvenile | 544 | 246 | 9 | 390 | 323 | 4 | 569 | 43 | 1271 |

NON-SUPPORT REPORT **Criminal Neglect, Uresa**

| Parish | Cases Filed | Pleas Not Guilty Guilty | | Trials | Consent Judgements | Rules | Sentences Jail Other | |
|--------------------|-------------|----------------------------|----|--------|--------------------|-------|-------------------------|------|
| Caddo Juvenile | 535 | 34 | 4 | 94 | 216 | 495 | 7 | 6 |
| East B. R. Family | 1152 | — | — | — | — | — | — | — |
| Jefferson Juvenile | 1345 | 128 | 1 | 12 | 943 | 6612 | 48 | 5690 |
| Orleans Juvenile | 1368 | 360 | 45 | 175 | 501 | 3001 | 62 | 3354 |

ADULT REPORT

Parents in Need of Supervision, Contributing to Delinquency, Divorce, Separation

| Parish | Cases Filed | Pleas Not Guilty Guilty | | Motions | Divorce/Separation Granted Dismissed Other | | | Trials | Rules | Sentences Jail Other | |
|--------------------|-------------|----------------------------|---|---------|---|-----|-----|--------|-------|-------------------------|---|
| Caddo Juvenile | 6 | 3 | 3 | 3 | — | — | — | — | — | — | 3 |
| East B. R. Family | 3888 | — | — | — | 2998 | 114 | 808 | — | 1055 | — | — |
| Jefferson Juvenile | 10 | 9 | — | — | — | — | — | — | — | — | — |
| Orleans Juvenile | 1 | — | — | — | — | — | — | — | — | — | — |

LOUISIANA CITY AND PARISH COURTS – CASES PROCESSED

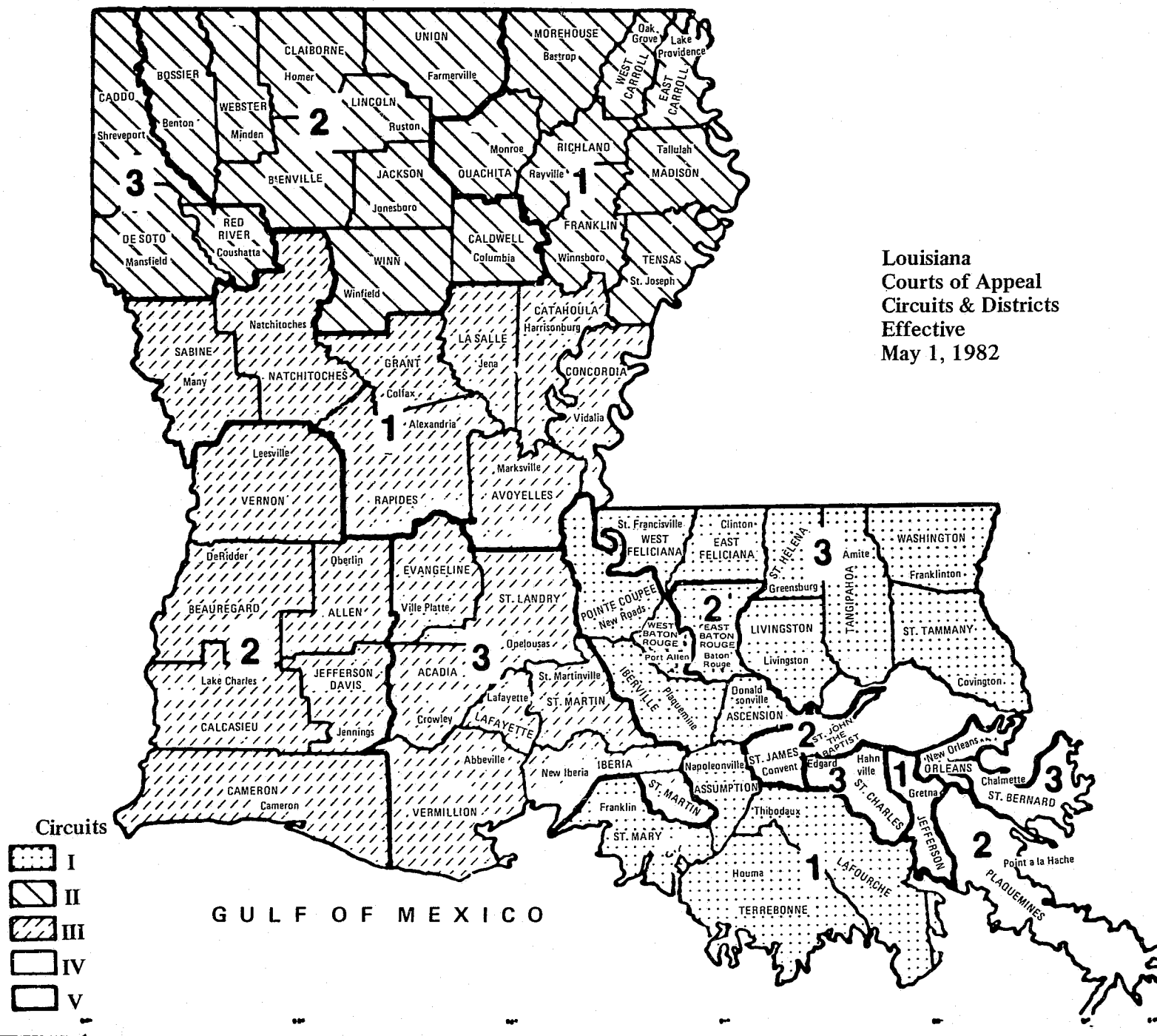
| CITY | CIVIL | | CRIMINAL | | TRAFFIC | | JUVENILE | | TOTAL CASES | |
|--------------------|-------|-------|----------|-------|---------|--------|----------|-------|-------------|--------|
| | Filed | Term. | Filed | Term. | Filed | Term. | Filed | Term. | Filed | Term. |
| Abbeville | 341 | 789 | 582 | 600 | 1106 | 1038 | 157 | 126 | 2186 | 2553 |
| Alexandria | 1710 | 746 | 2806 | 2302 | 4968 | 4731 | 771 | 771 | 10255 | 8550 |
| Ascension | 313 | 11 | 2358 | 864 | 7756 | 5786 | 120 | 68 | 10547 | 6729 |
| Baker | 154 | 17 | 666 | 457 | 1272 | 1146 | 65 | 56 | 2157 | 1676 |
| Bastrop | 825 | 468 | 1659 | 1135 | 2651 | 1908 | 226 | 170 | 5361 | 3681 |
| Baton Rouge | 7795 | 6275 | 9171 | 6284 | 84285 | 81684 | 0 | 0 | 101251 | 94243 |
| Bogalusa | 386 | 127 | 1300 | 1092 | 1031 | 926 | 433 | 465 | 3150 | 2610 |
| Bossier City | 1266 | 416 | 2374 | 1819 | 3805 | 3639 | 323 | 302 | 7768 | 6176 |
| Breaux Bridge | 250 | 61 | 717 | 577 | 653 | 478 | 73 | 58 | 1693 | 1174 |
| Bunkie | 187 | 147 | 682 | 682 | 414 | 414 | 52 | 52 | 1335 | 1295 |
| Crowley | 292 | 236 | 1394 | 1313 | 1297 | 1356 | 212 | 174 | 3195 | 3079 |
| Denham Springs | 314 | 428 | 1081 | 744 | 9853 | 7850 | 714 | 545 | 11962 | 9567 |
| De Ridder | 63 | 58 | 441 | 242 | 1169 | 713 | 89 | 77 | 1762 | 1090 |
| Eunice | 473 | 349 | 1066 | 976 | 1786 | 1767 | 172 | 172 | 3497 | 3264 |
| Franklin | 95 | 47 | 523 | 449 | 688 | 569 | 104 | 89 | 1410 | 1154 |
| Hammond | 1091 | 889 | 3777 | 1754 | 4657 | 3603 | 823 | 580 | 10348 | 6826 |
| Houma | 1927 | 1887 | 3821 | 3389 | 2139 | 2421 | 502 | 452 | 8389 | 8149 |
| Jeanerette | 96 | 96 | 430 | 317 | 688 | 411 | 17 | 22 | 1231 | 846 |
| Jeff. 1st Par. Ct. | 3472 | 4959 | 4287 | 3148 | 29566 | 18288 | 0 | 0 | 37325 | 26395 |
| Jeff. 2nd Par. Ct. | 1871 | 1253 | 4266 | 4239 | 17524 | 18997 | 0 | 0 | 23661 | 24489 |
| Jennings | 371 | 384 | 656 | 577 | 1897 | 1857 | 0 | 0 | 2924 | 2818 |
| Kaplan | 100 | 66 | 238 | 174 | 664 | 676 | 81 | 77 | 1083 | 933 |
| Lafayette | 1779 | 1146 | 3724 | 3498 | 15120 | 14700 | 941 | 881 | 21564 | 20225 |
| Lake Charles | 2810 | 2084 | 2753 | 2088 | 17282 | 18614 | 369 | 382 | 23214 | 23168 |
| Leesville | 106 | 44 | 3215 | 3321 | 4779 | 4644 | 146 | 146 | 8246 | 8155 |
| Marksville | 109 | 68 | 755 | 658 | 1158 | 1061 | 205 | 83 | 2227 | 1870 |
| Minden | 394 | 346 | 722 | 680 | 975 | 916 | 91 | 91 | 2182 | 2033 |
| Monroe | 3202 | 2713 | 17723 | 7706 | 21100 | 7704 | 633 | 710 | 42658 | 18833 |
| Morgan City | 212 | 159 | 1367 | 1038 | 2389 | 2341 | 72 | 50 | 4040 | 3588 |
| Natchitoches | 495 | 326 | 588 | 548 | 1081 | 1044 | 60 | 41 | 2224 | 1959 |
| New Iberia | 636 | 571 | 2510 | 2059 | 3980 | 3579 | 153 | 194 | 7279 | 6403 |
| N. O. 1st City | 19865 | 12263 | 0 | 0 | 0 | 0 | 0 | 0 | 19865 | 12263 |
| N. O. 2nd City | 1436 | 939 | 0 | 0 | 0 | 0 | 0 | 0 | 1436 | 939 |
| N. O. Municipal | 0 | 0 | 24483 | 22528 | 0 | 0 | 0 | 0 | 24483 | 22528 |
| N. O. Traffic | 0 | 0 | 0 | 0 | 130816 | 96985 | 0 | 0 | 130816 | 96985 |
| Oakdale | 148 | 159 | 1073 | 1028 | 1126 | 1020 | 106 | 98 | 2453 | 2305 |
| Opelousas | 416 | 292 | 2443 | 1757 | 3334 | 2636 | 388 | 391 | 6581 | 5076 |
| Pineville | 410 | 378 | 705 | 562 | 1797 | 1540 | 250 | 250 | 3162 | 2730 |
| Plaquemine | 43 | 43 | 666 | 674 | 2006 | 1994 | 68 | 68 | 2783 | 2779 |
| Port Allen | 71 | 62 | 311 | 325 | 1432 | 1397 | 105 | 69 | 1919 | 1853 |
| Rayne | 159 | 149 | 474 | 464 | 529 | 492 | 139 | 118 | 1301 | 1223 |
| Ruston | 750 | 819 | 703 | 872 | 1310 | 1316 | 197 | 139 | 2960 | 3146 |
| Shreveport | 6121 | 4281 | 4738 | 4250 | 68222 | 58195 | 0 | 0 | 79081 | 66726 |
| Slidell | 1230 | 770 | 1536 | 5449 | 4188 | 3961 | 182 | 213 | 7136 | 10393 |
| Springhill | 299 | 150 | 745 | 328 | 238 | 196 | 37 | 17 | 1319 | 691 |
| Sulphur | 582 | 378 | 1135 | 930 | 5576 | 4958 | 366 | 405 | 7659 | 6671 |
| Thibodeaux | 307 | 118 | 938 | 1031 | 2945 | 2961 | 97 | 74 | 4287 | 4184 |
| Vidalia | 27 | 17 | 241 | 237 | 854 | 850 | 28 | 21 | 1150 | 1125 |
| Ville Platte | 482 | 157 | 799 | 365 | 410 | 265 | 127 | 107 | 1818 | 894 |
| West Monroe | 925 | 675 | 1546 | 1113 | 3816 | 3578 | 232 | 220 | 6519 | 5586 |
| Winnfield | 97 | 74 | 335 | 297 | 774 | 756 | 0 | 0 | 1206 | 1127 |
| Winnsboro | 60 | 54 | 595 | 484 | 239 | 213 | 11 | 11 | 905 | 752 |
| Zachary | 255 | 46 | 186 | 131 | 923 | 691 | 0 | 0 | 1364 | 868 |
| State Total | 66818 | 48990 | 121304 | 97555 | 478268 | 398865 | 9937 | 9035 | 676327 | 554445 |

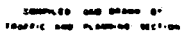
**LOUISIANA
SUPREME COURT
DISTRICTS**

The map displays the following parishes and their associated cities:

- District 1:** St. Bernard (Chalmette, Gretna), Plaquemines (Point a la Hache), Jefferson (New Orleans).
- District 2:** Caddo (Shreveport), Bossier (Benton), Webster (Minden), Bienville (Arcadia), Red River (Coushatta), Desoto (Mansfield), Natchitoches (Natchitoches), Sabine (Many), Vernon (Leesville).
- District 3:** Allen (Oberlin), Beauregard (De Ridder), Calcasieu (Lake Charles), Cameron (Cameron), Jefferson Davis (Jennings), Acadia (Crowley), Vermillion (Abbeville).
- District 4:** Union (Farmerville), Morehouse (Bastrop), Lincoln (Ruston), Monroe, Ouachita (Rayville), Richland (Tallulah), Madison, Caldwell (Columbia), Franklin (Winnsboro), Tensas (St. Joseph), Catahoula (Harrisonburg), LaSalle (Jena), Winn (Winfield), Grant (Colfax), Rapides (Marksville), Avozelles.
- District 5:** East Feliciana (Clinton, St. Francisville), West Feliciana (St. Francisville), Iberville (Plaquemine), St. Martin (St. Martinville), St. Mary (Franklin), Terrebonne (Houma), Lafourche (Thibodaux), St. Charles (Hahnville), St. James (Edgard), St. John the Baptist (Convent), Assumption (Napoleonville), Iberville (New Iberia), Iberia (Franklin), Vermillion (Abbeville), St. Landry (Opelousas), Evangeline (Ville Platte), Allen (Oberlin), Jefferson Davis (Jennings), Calcasieu (Lake Charles), Cameron (Cameron), Allen (Oberlin), Beauregard (De Ridder), Calcasieu (Lake Charles), Cameron (Cameron).
- District 6:** St. Martin (St. Martinville), St. Mary (Franklin), Terrebonne (Houma), Lafourche (Thibodaux), St. Charles (Hahnville), St. James (Edgard), St. John the Baptist (Convent), Assumption (Napoleonville), Iberville (New Iberia), Iberia (Franklin), Vermillion (Abbeville), St. Landry (Opelousas), Evangeline (Ville Platte), Allen (Oberlin), Jefferson Davis (Jennings), Calcasieu (Lake Charles), Cameron (Cameron).
- District 7:** St. Martin (St. Martinville), St. Mary (Franklin), Terrebonne (Houma), Lafourche (Thibodaux), St. Charles (Hahnville), St. James (Edgard), St. John the Baptist (Convent), Assumption (Napoleonville), Iberville (New Iberia), Iberia (Franklin), Vermillion (Abbeville), St. Landry (Opelousas), Evangeline (Ville Platte), Allen (Oberlin), Jefferson Davis (Jennings), Calcasieu (Lake Charles), Cameron (Cameron).
- District 8:** St. Martin (St. Martinville), St. Mary (Franklin), Terrebonne (Houma), Lafourche (Thibodaux), St. Charles (Hahnville), St. James (Edgard), St. John the Baptist (Convent), Assumption (Napoleonville), Iberville (New Iberia), Iberia (Franklin), Vermillion (Abbeville), St. Landry (Opelousas), Evangeline (Ville Platte), Allen (Oberlin), Jefferson Davis (Jennings), Calcasieu (Lake Charles), Cameron (Cameron).

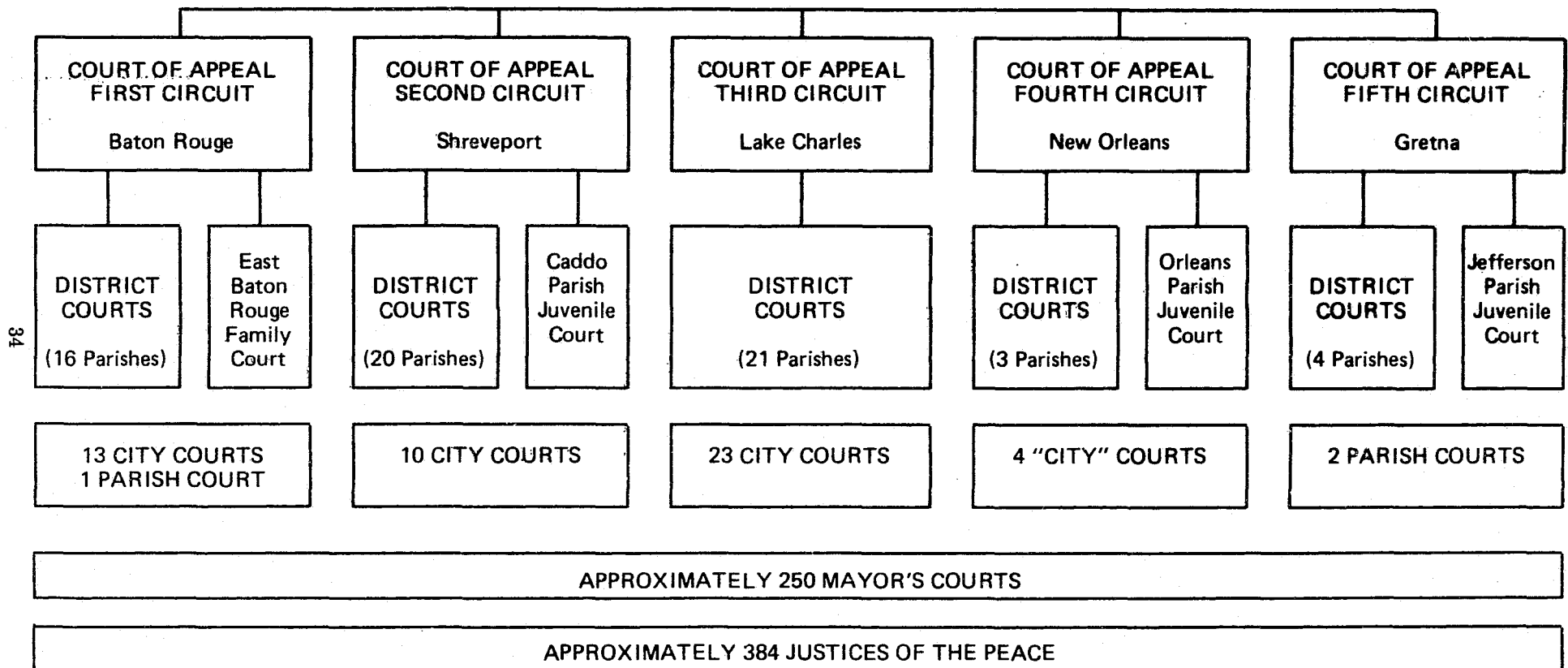
Neighboring states and the Gulf of Mexico are also labeled.





LOUISIANA COURT STRUCTURE

January 1, 1990



Number of Justices and Judges:

| | |
|------------|-------------------------------|
| 7 | Supreme Court |
| 52 | Courts of Appeal |
| 194 | District, Family and Juvenile |
| 72 | City and Parish Courts |
| <u>325</u> | Total |

IN CAPITAL CASES – WHERE THE DEATH PENALTY HAS BEEN
IMPOSED – APPEAL IS DIRECTLY TO THE SUPREME COURT
FROM THE DISTRICT COURT.

