

UNIFORM
CRIME
REPORTS

CR. Sept. 12-24-90
MFI
125236

CRIME IN CONNECTICUT
1989 ANNUAL REPORT

DEPARTMENT OF PUBLIC SAFETY
DIVISION OF STATE POLICE



U.S. Department of Justice
National Institute of Justice

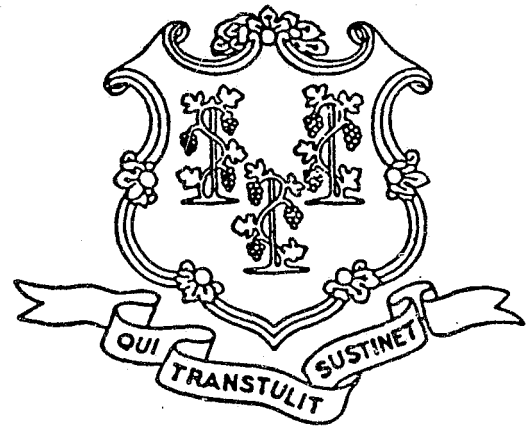
This document has been reproduced exactly as received from the person or organization originating it. Points of view or opinions stated in this document are those of the authors and do not necessarily represent the official position or policies of the National Institute of Justice.

Permission to reproduce this copyrighted material has been granted by

Connecticut Dept. of Public Safety/
Division of State Police

to the National Criminal Justice Reference Service (NCJRS).

Further reproduction outside of the NCJRS system requires permission of the copyright owner.



CRIME IN CONNECTICUT

JANUARY - DECEMBER 1989

HONORABLE WILLIAM A. O'NEILL
GOVERNOR
STATE OF CONNECTICUT

BERNARD R. SULLIVAN
COMMISSIONER
DEPARTMENT OF PUBLIC SAFETY

CHIEF WILLIAM HOLOHAN
BRANFORD POLICE DEPARTMENT
PRESIDENT
CONNECTICUT POLICE CHIEFS ASSOCIATION

SUPERINTENDENT WILLIAM F. LAMB
WATERBURY POLICE DEPARTMENT
CHAIRMAN
UCR REDESIGN COMMITTEE

CONNECTICUT STATE POLICE
RESEARCH AND PLANNING / CRIMES ANALYSIS UNIT
UNIFORM CRIME REPORTING PROGRAM / FAMILY VIOLENCE PROGRAM




STATE OF CONNECTICUT

DEPARTMENT OF PUBLIC SAFETY
DIVISION OF STATE POLICE

The publication "Crime in Connecticut - 1989" is the twelfth annual report on crime in Connecticut. This information is based on statistics collected by the Connecticut Uniform Crime Report Program. Every police department in the state has participated in the program for the year 1989.

This document illustrates the nature, volume and extent of crime reported in Connecticut. Its purpose is to provide law enforcement administrators with data for effective decision-making and make the public aware that crime within our state is a serious problem requiring attention from every segment of society.

I would like to thank all Connecticut Law Enforcement Agencies for their participation and support of the Uniform Crime Report Program.


Bernard R. Sullivan
Commissioner
Department of Public Safety

Phone

100 Washington Street, Hartford, CT 06106

An Equal Opportunity Employer

DEDICATION

This publication is dedicated to all law enforcement officers, and in particular, to the memory of the following law enforcement officer who was killed while performing his duty during 1989.

Trooper Jorge Antonio Agosto

Connecticut State Police

Enlisted: September 21, 1987

Died: November 22, 1989

FACTS AT A GLANCE

CRIME CLOCKS

In 1989, an Index Crime occurred on the average of one every 3.1 minutes, a violent crime every 31.7 minutes and property crime every 3.4 minutes.

INDEX CRIME

There were 170,700 Index Offenses reported in 1989, an increase of 5,480 over the 1988 total. This is the fifth consecutive year showing an increase in crime.

CRIME RATE

The Crime Rate for the State of Connecticut was determined to be 5270.1 Index Offenses for every 100,000 residents. The 1989 population is estimated at 3,239,000 persons. This figure is a provisional estimate provided by the Federal Bureau of the Census.

The Rate of Violent Crime increased from 454.9 offenses per 100,000 residents in 1988 to 511.8 per 100,000 residents in 1989, an increase of 12.5%.

The Rate of Property Crime increased from 4,642.9 offenses per 100,000 to 4,758.3 per 100,000 residents which is an increase of 2.5%.

VIOLENT CRIME

The Crimes of Murder, Rape, Robbery and Aggravated Assault make up the Violent Crime category. Collectively, Violent Crime increased by 1,835 offenses, a 12.4% increase.

The crime of Murder increased by 8.6%, Rape by 5.9%, and Aggravated Assault by 11.7%. Robbery increased by 14.4%.

PROPERTY CRIME

Property Crime consists of Burglary, Larceny and Motor Vehicle Theft. In 1989, Property Crime increased by 3,645 offenses which was a 2.4% increase over 1988.

Of all Property Crime, the one which showed the greatest increase was the crime of Motor Vehicle Theft. In 1989 it increased by 13.6% from 1988 levels. In the past five years, motor vehicle theft has increased by 61.4%, from 13,999 in 1985 to 22,600 in 1989.

CLEARANCE RATE

Law Enforcement Agencies cleared 22.3% of all Index Offenses.

**STOLEN/
RECOVERED
PROPERTY**

In 1989, Law Enforcement Agencies reported \$196,197,019 worth of property stolen during the commission of Index Crimes. \$80,128,586 was recovered for a 40.8% recovery rate.

**ARREST
DATA**

During 1989, there were 224,005 persons arrested for all criminal activities, an increase of 6.4% over the previous year. Of the total arrests, 19.1% were females. 12.3% of all arrests were persons under 18 years of age.

Total arrests for drug abuse violations increased from 19,870 in 1988 to 21,816 in 1989, an increase of 9.8%.

**LAW
OFFICERS
ASSAULTED**

There were 1,318 Law Officers assaulted during 1989. Of these, 607 received injuries.

TABLE OF CONTENTS

CONNECTICUT UNIFORM CRIME REPORTING SYSTEM - 1989

	PAGE
I. THE UNIFORM CRIME REPORTING PROGRAM	1
II. CONNECTICUT CRIME INDEX OFFENSES	
Index Crime Reported By Month	5
State Totals of Offenses Reported to Police	6
Murder	7
Rape	10
Robbery	11
Aggravated Assault	13
Burglary	15
Larceny	17
Motor Vehicle Theft	19
Arson	21
III. CRIME INDEX OFFENSES BY COUNTY	23
IV. VALUE OF PROPERTY STOLEN AND RECOVERED	25
V. CONNECTICUT ARREST DATA	
Narrative	27
By Age	30
By Sex	32
By Race	33
VI. OFFENSE DATA BY CONTRIBUTOR	
By Municipal Police Departments	35
By State Police Towns	85
VII. ARREST DATA BY CONTRIBUTOR	
18 Yrs. of Age and Over	89
Under 18 Yrs. of Age	106
VIII. LAW ENFORCEMENT OFFICERS KILLED OR ASSAULTED	123
IX. LAW ENFORCEMENT EMPLOYEE DATA	125
X. FAMILY VIOLENCE ANNUAL REPORT	129
XI. FAMILY VIOLENCE HOMICIDE	139
XII. FAMILY VIOLENCE INCIDENTS BY CONTRIBUTOR	145

The Uniform Crime Reporting Program

Purpose

The Uniform Crime Reporting Program periodically measures crime in the United States by counting those offenses brought to the attention of law enforcement agencies. The program's objective is to produce reliable criminal statistics for Law Enforcement administration, operation, and management. Criminal Justice professionals, legislators, scholars, and others concerned with crime problems make frequent use of UCR-generated statistics.

National Program

Uniform Crime Reporting was initiated in 1929 when the International Association of Chiefs of Police (I.A.C.P.) standardized procedures for crime data collection. On June 11, 1930, Congress enacted legislation authorizing the Federal Bureau of Investigation to collect nationwide crime counts and to serve as the clearinghouse for such data. The Committee on Uniform Crime Records of the I.A.C.P. continues to advise the F.B.I. in the operation of the UCR Program and offers them a valuable link to local police departments.

State Program

In July, 1977, Connecticut began its own Uniform Crime Reporting Program. By August of the same year, data collection began with the recruitment and training of 70 agencies. Today, Connecticut has 100 full-time police departments participating in its UCR Program.

The State Program ensures quality control and uniformity of the crime and arrest reports submitted. The centralized state collection agency streamlines the time-consuming process of resolving questions between contributors and verifiers. Upon completion of the quality control process, the returns are forwarded to the F.B.I.

Types of Data Collected

Every month law enforcement agencies throughout the state submit UCR data. They indicate the number of offenses brought to their attention through such sources as victim, police, or witness reports. The UCR Program defines Crime Index offenses as the following: Murder and Non-negligent Manslaughter, Forcible Rape, Robbery, Aggravated Assault, Burglary, Larceny-Theft, Motor Vehicle Theft, and Arson.

After counting Crime Index offenses reported, minus any unfounded complaints, contributors provide the number of "actual offenses" and the number of crimes cleared. For a criminal offense to be "cleared", either of two situations must prevail: (1) at least one person is arrested, charged, and turned over to the court for prosecution; or (2) some element beyond police control precludes the physical arrest of the offender, resulting in the offense being cleared by "exceptional means". Contributing agencies also include data on the value of property stolen and recovered in connection with the aforementioned offenses, plus specific information regarding homicides and arson.

UCR arrest data is collected for all crimes except traffic violations. The age, sex, and race of arrestees are reported for all crime categories.

Reporting Procedure

Contributing agencies are responsible for submitting their own crime reports to the State UCR Program. A full-time field representative offers training in Uniform Crime Reporting procedures to ensure quality and uniformity in the data submitted to the State Program. Contributors also receive the Uniform Crime Reporting Handbook which provides a detailed outline of offense classifying and scoring procedures.

Verification Procedure

UCR reports are set up with numerous internal cross-checks to achieve reporting accuracy of the data. It is standard operating procedure to examine each incoming report for arithmetical accuracy. Reports are then subjected to logical tests of reasonableness, which are of key importance to confirming validity. Logical errors resulting from misinterpretations of what is to be measured can then be corrected. UCR personnel correct minor errors without contacting contributors, but necessary arithmetical adjustments or unusual variations are brought to the attention of the submitting agency.

UCR Limitations

There are inherent limitations in current crime reporting practices. Of primary importance is the question of how much crime is being reported. The degree to which crimes are being reported varies from area to area. A considerable volume of crime is not reported to law enforcement agencies because the victims consider the offenses against them to be of very little consequence or that the likelihood of apprehending the suspect is small. They may also fear retaliation from offenders, or are reluctant to reveal their own involvement in the offense or in other crimes. Consequently, information concerning some offenses is never entered into the reporting system.

Even with these given limitations, the UCR Program provides the best network of State and National crime figures currently available.

Crime Factors

Because not all factors that have an impact on crime problems are measured or considered by the UCR Program, superficial conclusions are sometimes drawn from its crime and arrest data, particularly when attempts are made to compare jurisdictions. Local ordinances and criminal justice administrative policies, record-keeping practices, and the degree of adherence to Uniform Crime Reporting standards all affect the number of crimes and arrests reported. Additionally, socio-economic conditions and the characteristics and attitudes of the local population influence the extent and nature of criminal behavior in a community. The following factors must be taken into consideration before an informed assessment of crime data can be made:

- * Density and size of the community population and its surrounding area.

- * Variations in the composition of the population, particularly its age, sex, and race composition.
- * Stability of population with respect to such factors as commuters, seasonal residents, and other transient types.
- * Economic conditions, including unemployment.
- * Cultural conditions, such as educational, recreational, and religious characteristics.
- * Climate.
- * The trafficking and abuse of drugs in the community.
- * Effective strength of law enforcement agencies.
- * Administrative and investigative efficiency of the local law enforcement agency.
- * Policies of other components of the criminal justice system, such as prosecutorial, judicial, correctional, and probational.
- * Attitudes of citizens toward crime.
- * Crime reporting practice of citizens.

Future of the UCR Program

The State Uniform Crime Reporting Program and the Connecticut Chiefs of Police UCR Redesign Committee are working together to produce an Incident-Based Reporting System. The National Incident-Based Reporting System (NIBRS) will be used as a model for design and implementation.

In the future, police departments will send crime data by floppy disk, magnetic tape or by on-line transmission. The advantages to this type of system are: less paperwork for police departments, better uniformity and validity of crime data, a uniform method of collecting data and a superior criminal data base for analysis.

For the first time in Connecticut, police will have a collection of data that can be used to address pressing law enforcement issues. Information collected under NIBRS will address most of the major criminal justice issues in Connecticut. Some of the issues include: weapons offenses, drug/traffic offenses, spousal abuse, elderly abuse, domestic violence, pornography, alcohol related offenses, white collar crime, and missing children.

Together, the Connecticut Chiefs of Police and the State Police, with the financial assistance of the Bureau of Justice Statistics, can make this system work.

**CONNECTICUT
CRIME INDEX OFFENSES**

INDEX CRIME

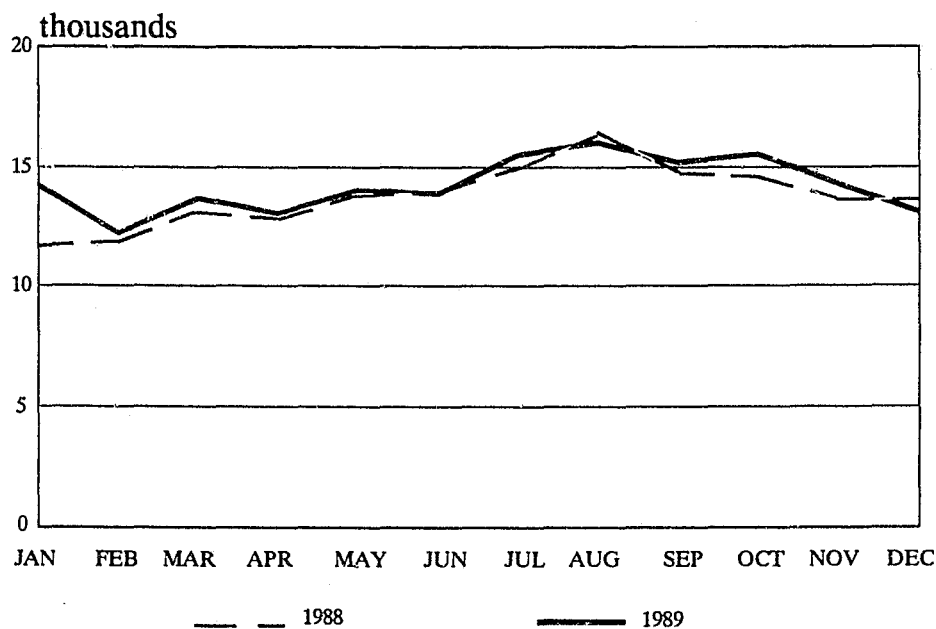
The tabulations presented in the graphs and charts in this publication illustrate the volume, fluctuation, and distribution of index crime in Connecticut. The Index is composed of those crimes considered to represent the most serious by nature or by the volume in which they occur.

Crime classifications used in the Crime Index are: Murder and Non-Negligent Manslaughter, Forcible Rape, Robbery, Aggravated Assault, Burglary, Larceny, and Motor Vehicle Theft.

TREND

<u>YEAR</u>	<u>NUMBER OF OFFENSES</u>	<u>% CHANGE</u>	<u>RATE PER 100,000</u>	<u>% CHANGE</u>	<u>% CLEARED</u>
1985	149,283	+ 2.2	4,703.3	+ 1.6	20.5
1986	153,990	+ 3.2	4,828.8	+ 2.7	20.7
1987	159,922	+ 3.9	4,980.4	+ 3.1	21.4
1988	165,220	+ 3.3	5,097.8	+ 2.4	21.0
1989	170,700	+ 3.3	5,270.1	+ 3.4	22.3

INDEX CRIME BY MONTH



AGENCY: STATE TOTALS

POPULATION: 3,239,000

INDEX CRIME	OFFENSES	CLEARANCES	VALUE OF PROPERTY STOLEN
MURDER	190	133	\$ 19,430
RAPE	892	435	4,690
ROBBERY	6,955	1,661	2,591,973
AGGRAVATED ASSAULT	8,541	5,587	N/A
BURGLARY	40,031	4,999	33,131,765
LARCENY	91,491	22,450	39,200,365
MOTOR VEHICLE THEFT	22,600	2,767	121,248,796
INDEX TOTAL*	170,700	38,032	\$ 196,197,019
*ARSON	1,086	187	\$ 19,140,360

OFFENSE BREAKDOWN

ROBBERY

HIGHWAY	4,844
COMMERCIAL HOUSE	728
GAS STATION	183
CHAIN STORE	291
RESIDENCE	470
BANK	62
MISCELLANEOUS	377

ARMED	3,879
STRONG-ARM	3,076

AGGRAVATED ASSAULT

FIREARM	1,312
KNIFE,CUTTING INSTRUMENT	1,559
OTHER DANGEROUS WEAPON	2,758
HANDS, FISTS, FEET, ETC.	2,912

MOTOR VEHICLE THEFT

AUTO	20,207
TRUCKS AND BUSES	1,222
OTHER VEHICLES	1,171

BURGLARY

RESIDENCE NIGHT	8,919
RESIDENCE DAY	12,964
RESIDENCE UNKNOWN	5,353
NON-RESIDENCE NIGHT	7,837
NON-RESIDENCE DAY	1,618
NON-RESIDENCE UNKNOWN	3,340

FORCIBLE ENTRY	28,451
UNLAWFUL ENTRY-NO FORCE	6,716
ATTEMPTED FORCIBLE ENTRY	4,864

LARCENY

POCKET-PICKING	602
PURSE-SNATCHING	1,388
SHOPLIFTING	17,142
FROM MOTOR VEHICLES	18,411
M.V. PARTS AND ACCESSORIES	15,476
BICYCLES	4,093
FROM BUILDINGS	14,658
COIN-OP MACHINES	401
ALL OTHER	19,320

\$200 AND OVER	35,459
\$50 - \$199	22,479
UNDER \$50	33,553

*ARSON NOT INCLUDED

MURDER

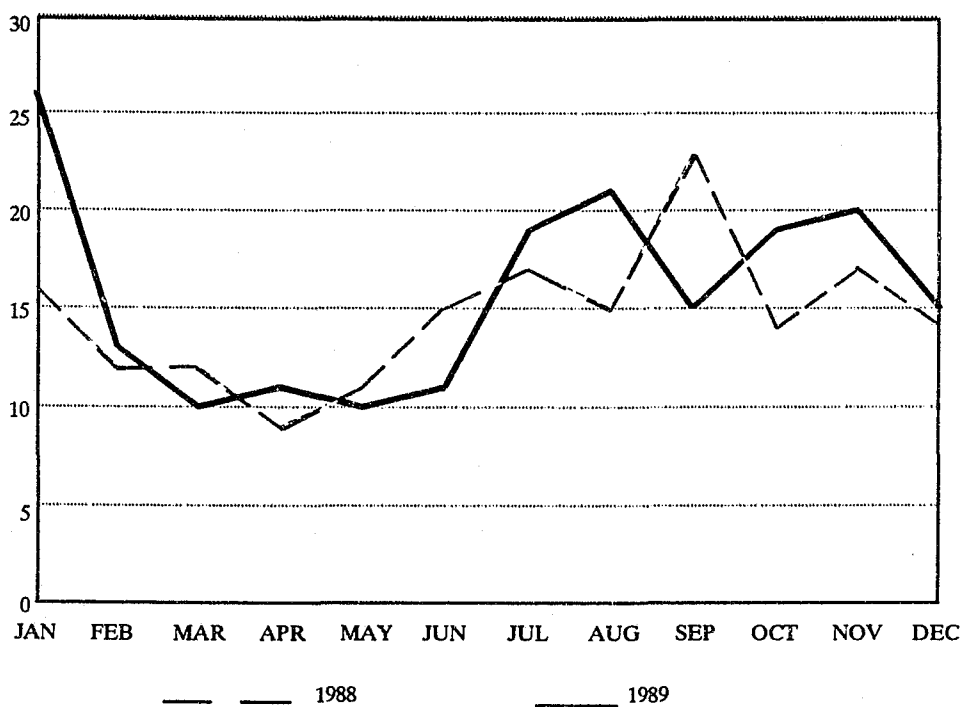
Murder is defined in the Uniform Crime Reporting Program as the willful (non-negligent) killing of one human being by another. Any death due to a fight, argument, quarrel, assault, or commission of a crime is included. Attempts to kill and assaults to kill are counted under aggravated assault. Suicides, accidental deaths, and justifiable homicides are not counted in this category.

Traffic deaths caused by the negligence of someone other than the victim are counted under arrests for Manslaughter by Negligence according to age, sex, and race.

TREND

<u>YEAR</u>	<u>NUMBER OF OFFENSES</u>	<u>% CHANGE</u>	<u>RATE PER 100,000</u>	<u>% CHANGE</u>	<u>% CLEARED</u>
1985	119	- 4.8	3.7	- 7.5	79.8
1986	148	+24.4	4.6	+24.3	70.3
1987	156	+ 5.4	4.9	+ 6.5	88.5
1988	175	+12.2	5.4	+10.2	72.6
1989	190	+ 8.6	5.9	+ 9.3	70.0

MURDER BY MONTH



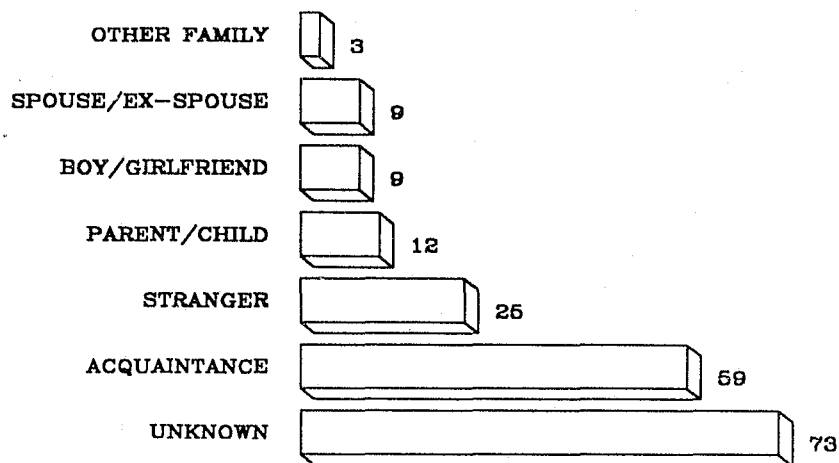
MURDER

AGE	VICTIM		OFFENDER	
	NUMBER	% DIST.	NUMBER	% DIST.
NEWBORN	0	0.0	0	0.0
UNDER 1	5	2.6	0	0.0
1 - 5	1	.5	0	0.0
6 - 10	3	1.6	0	0.0
11 - 14	3	1.6	1	.5
15 - 19	21	11.1	36	18.0
20 - 24	35	18.4	33	16.5
25 - 29	30	15.8	17	8.5
30 - 34	28	14.7	10	5.0
35 - 39	17	8.9	12	6.0
40 - 44	5	2.6	6	3.0
45 - 49	15	7.9	3	1.5
50 - 54	5	2.6	4	2.0
55 - 59	3	1.6	4	2.0
60 - 64	5	2.6	2	1.0
65 - 69	5	2.6	1	.5
70 - 74	6	3.2	1	.5
75 & OVER	3	1.6	1	.5
UNKNOWN	0	0.0	69	34.5
TOTAL	190	100.0	200	100.0
MALE	145	76.3	122	61.5
FEMALE	45	23.7	10	5.0
UNKNOWN	0	0.0	68	34.0
TOTAL	190	100.0	200	100.0
WHITE	107	56.3	67	33.5
BLACK	81	42.6	63	31.5
INDIAN	0	0.0	0	0.0
ASIAN	2	1.0	2	1.0
UNKNOWN	0	0.0	68	34.0
TOTAL	190	100.0	200	100.0
HISPANIC	31	16.3	25	12.5
NON - HISP.	157	82.6	106	53.0
UNKNOWN	2	1.1	69	34.5
TOTAL	190	100.0	200	100.0

* PERCENTAGES MAY NOT ADD TO 100 DUE TO ROUNDING

MURDER

VICTIM / OFFENDER RELATIONSHIP



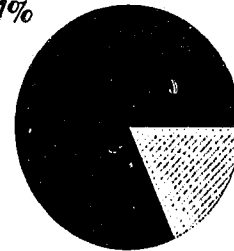
TYPE OF WEAPON USED

TYPE	NUMBER	% DIST.
FIREARM	123	64.7
KNIFE	32	16.8
BLUNT OBJECT	6	3.2
PERSONAL WEAPONS	11	5.8
FIRE	1	0.5
NARCOTICS	0	0.0
STRANGULATION	6	3.2
ASPHYXIATION	2	1.1
UNKNOWN	9	4.7
TOTAL	190	100.0

RAPE

Forcible rape is defined as the carnal knowledge of a female forcibly and against her will. For UCR purposes, this offense is divided into two categories: Forcible Rape and Attempted Rape. Statutory Rape and other sex offenses are not included in this classification.

Forcible
81.7%

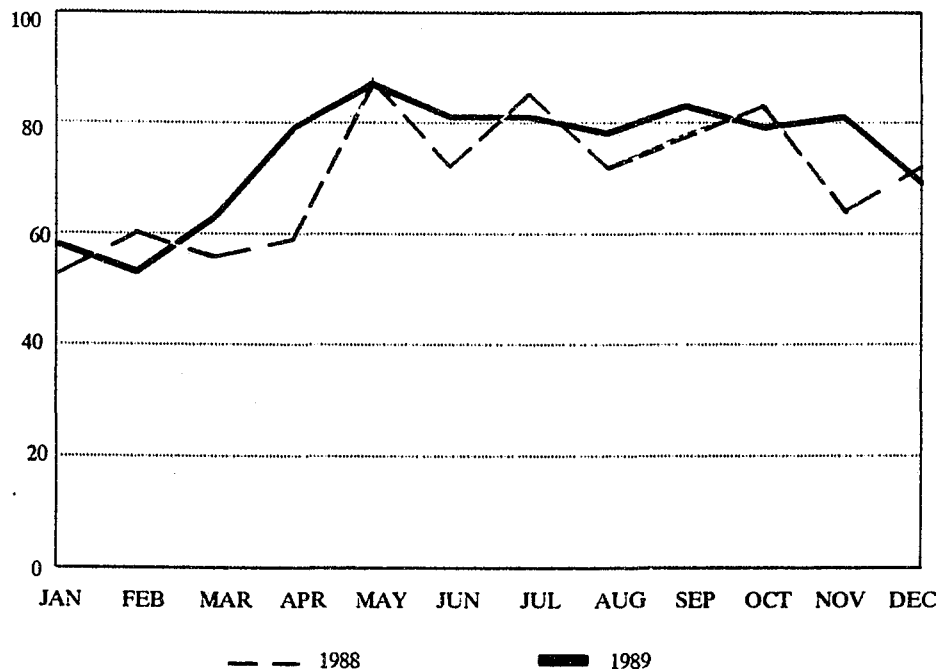


Attempts
18.3%

TREND

<u>YEAR</u>	<u>NUMBER OF OFFENSES</u>	<u>% CHANGE</u>	<u>RATE PER 100,000 *</u>	<u>% CHANGE</u>	<u>% CLEARED</u>
1985	760	0.0	45.9	- 0.9	55.9
1986	760	0.0	45.3	- 1.3	50.1
1987	798	+ 5.0	48.2	+ 6.4	52.1
1988	842	+ 5.5	49.6	+ 2.9	48.1
1989	892	+ 5.9	51.8	+ 4.4	48.8

RAPE BY MONTH



* RATE PER 100,000 BASED ON TOTAL FEMALE POPULATION

ROBBERY

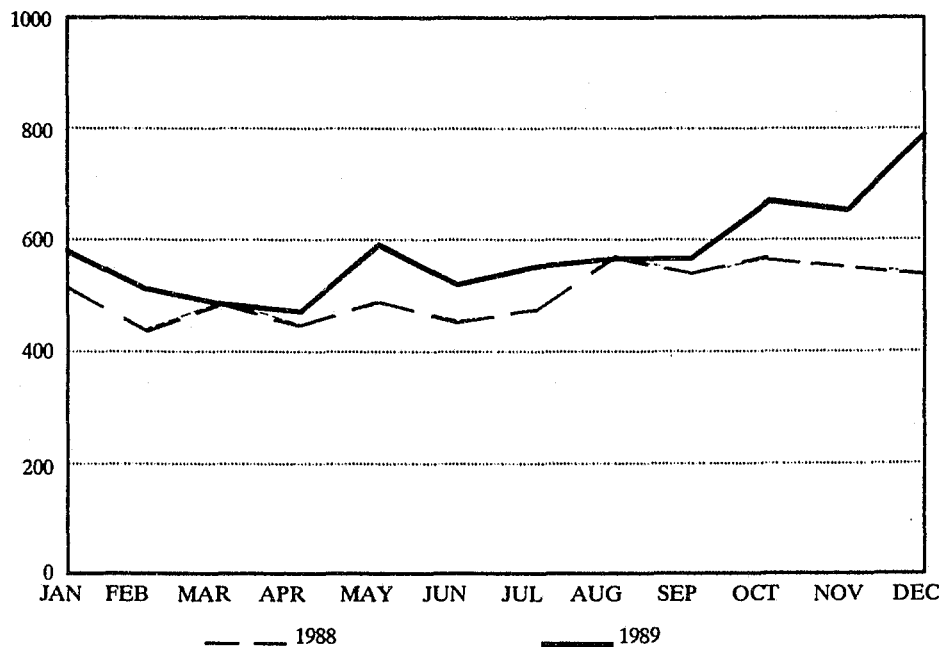
Robbery is defined as the felonious and forcible taking of property of another against his will by violence or by putting him in fear. The element of personal confrontation is always present in this crime. In the UCR Program, all attempts to rob are included in this classification.

Robberies are reported in four categories: firearms, knife or cutting instrument, strong-arm and other dangerous weapons.

TREND

<u>YEAR</u>	<u>NUMBER OF OFFENSES</u>	<u>% CHANGE</u>	<u>RATE PER 100,000</u>	<u>% CHANGE</u>	<u>% CLEARED</u>
1985	6,031	+ 0.3	190.0	- 0.3	23.4
1986	6,128	+ 1.6	192.2	+ 1.2	22.5
1987	5,709	- 6.8	177.8	- 7.5	22.9
1988	6,082	+ 6.5	187.7	+ 5.6	23.0
1989	6,955	+ 14.4	214.7	+ 14.4	23.9

ROBBERY BY MONTH

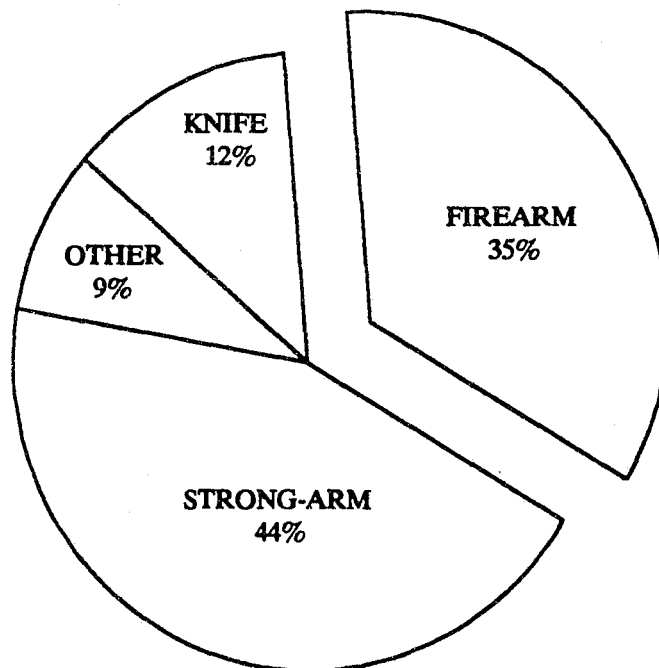


ROBBERY

CATEGORY	NUMBER OF OFFENSES	% DIST.	TOTAL VALUE STOLEN	AVG. VALUE STOLEN
HIGHWAY	4,844	69.6	\$ 1,302,523	\$ 269
COMMERCIAL HOUSE	728	10.5	360,006	495
GAS STATION	183	2.6	76,104	416
CHAIN STORE	291	4.2	75,505	259
RESIDENCE	470	6.8	193,919	413
BANK	62	.9	224,382	3,619
MISC	377	5.4	359,534	954
TOTAL	6,955	100.0	\$ 2,591,973	\$ 373

* PERCENTAGES MAY NOT ADD TO 100 DUE TO ROUNDING

WEAPONS DISTRIBUTION



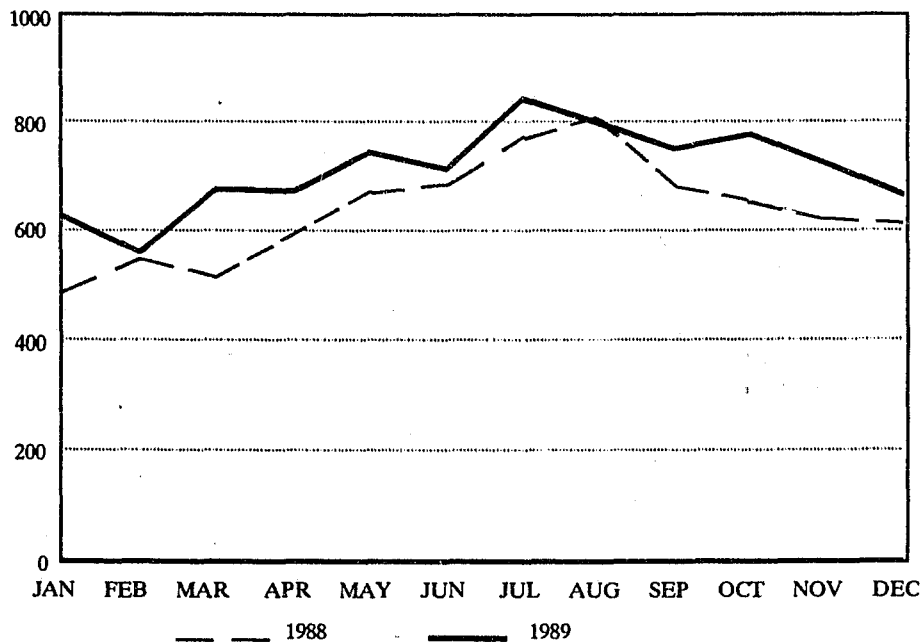
AGGRAVATED ASSAULT

Aggravated Assault is defined as the unlawful attack by one person upon another for the purpose of inflicting severe bodily injury, usually accompanied by the use of a weapon or other means to produce death or great bodily harm. Attempts to commit Aggravated Assault are included under this classification. Simple Assaults are excluded.

TREND

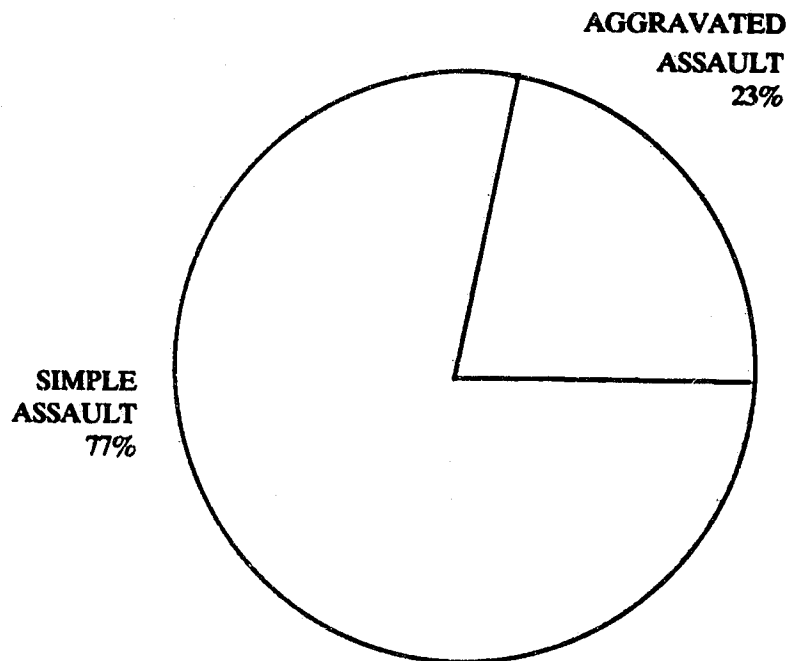
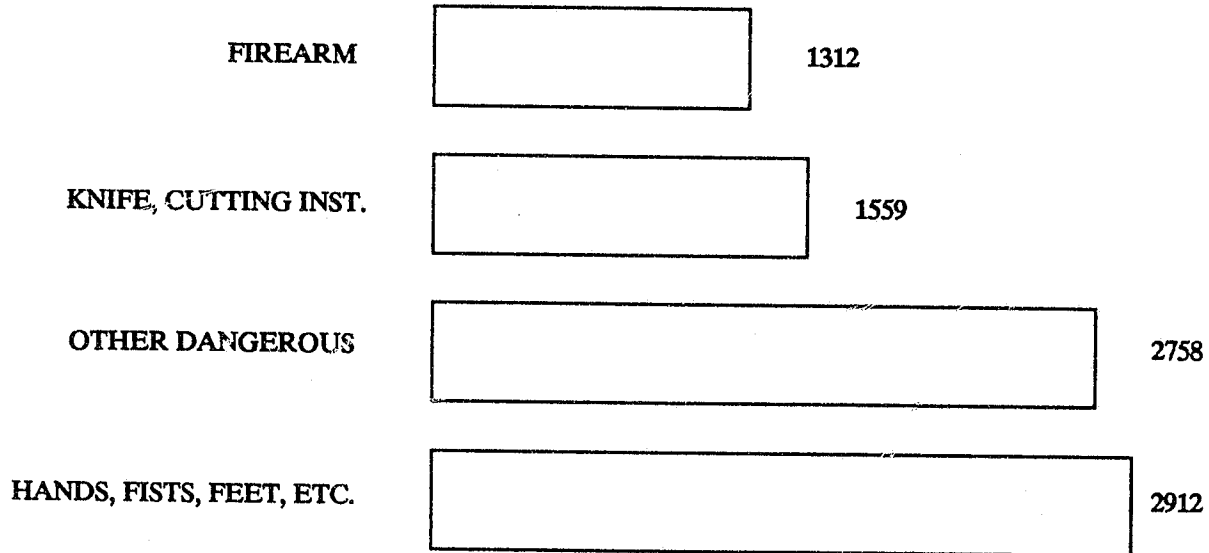
<u>YEAR</u>	<u>NUMBER OF OFFENSES</u>	<u>% CHANGE</u>	<u>RATE PER 100,000</u>	<u>% CHANGE</u>	<u>% CLEARED</u>
1985	5,840	+ 5.5	184.0	+ 4.8	64.3
1986	6,545	+12.1	205.2	+11.5	63.4
1987	6,768	+ 3.4	210.8	+ 2.7	65.8
1988	7,644	+12.9	235.9	+11.9	62.2
1989	8,541	+11.7	263.7	+11.8	65.4

AGGRAVATED ASSAULT BY MONTH



AGGRAVATED ASSAULT

WEAPONS USED



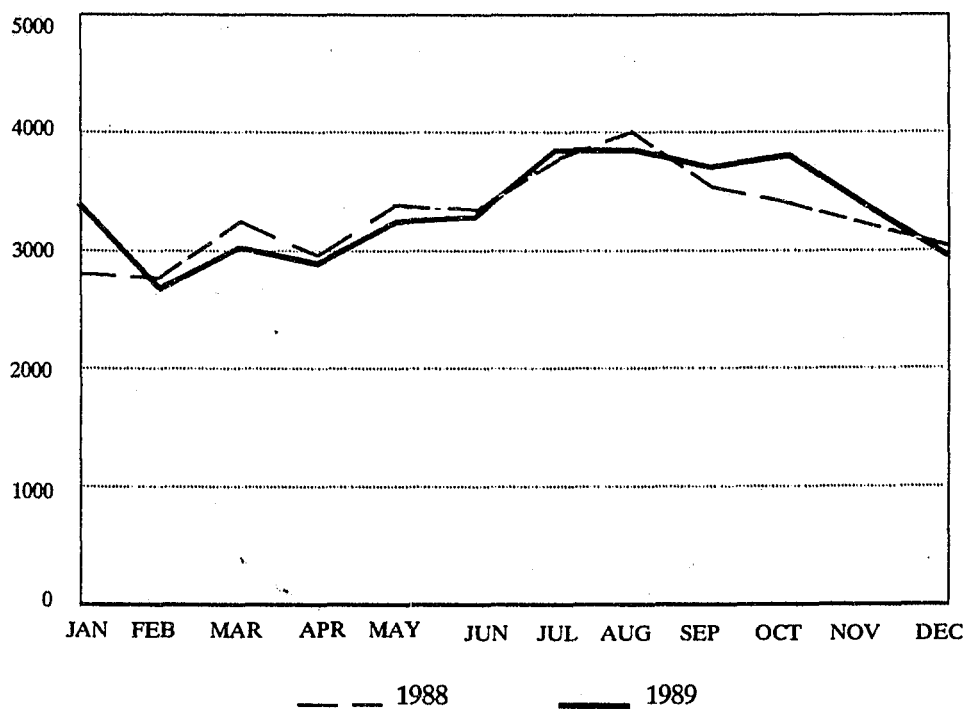
BURGLARY

Burglary is defined as the unlawful entry of a structure to commit a felony or theft. The use of force to gain entry is not required as an element for this crime. Burglary is reported under three categories: Forcible Entry, Unlawful Entry - No Force, and Attempted Forcible Entry.

TREND

<u>YEAR</u>	<u>NUMBER OF OFFENSES</u>	<u>% CHANGE</u>	<u>RATE PER 100,000</u>	<u>% CHANGE</u>	<u>% CLEARED</u>
1985	36,030	+ 1.2	1,135.2	+ 0.6	13.3
1986	38,189	+ 6.0	1,197.5	+ 5.5	12.1
1987	39,028	+ 2.2	1,215.4	+ 1.5	12.1
1988	39,477	+ 1.2	1,218.0	+ 0.2	11.5
1989	40,031	+ 1.4	1,235.9	+ 1.5	12.5

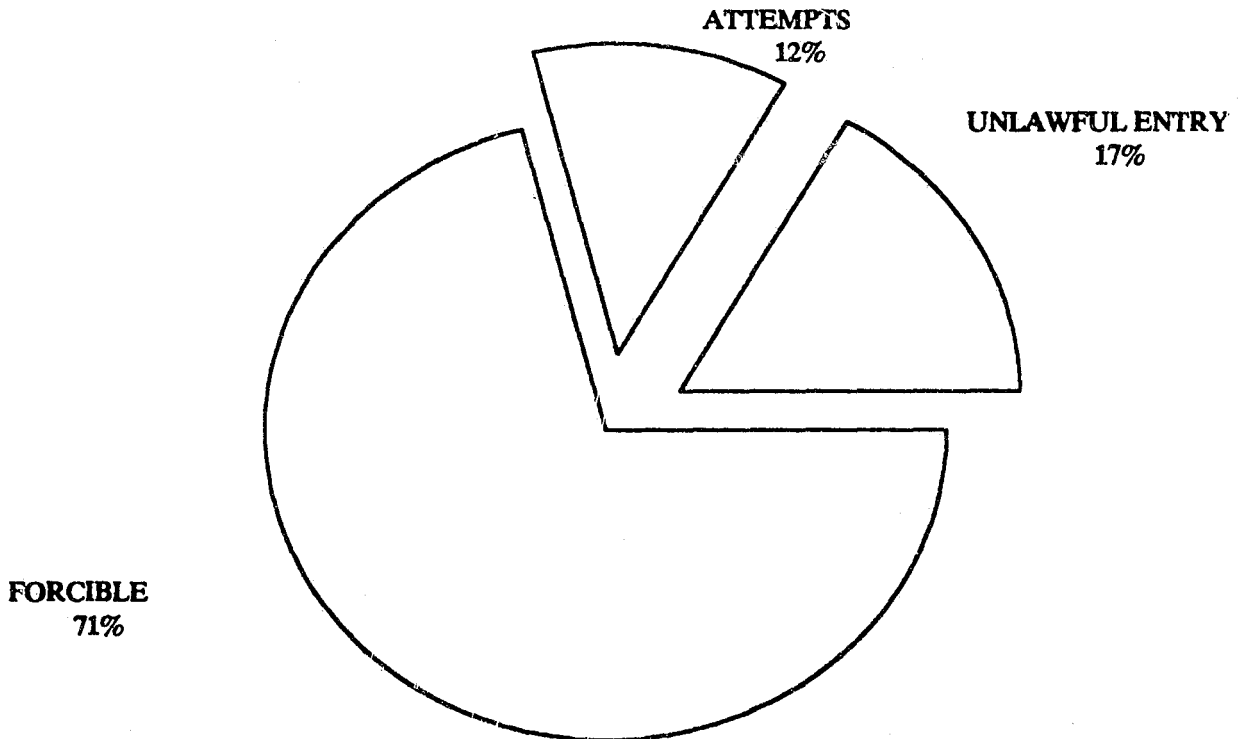
BURGLARY BY MONTH



BURGLARY

CATEGORY	NUMBER OF OFFENSES	% DIST.	TOTAL VALUE STOLEN	AVG. VALUE STOLEN
RESIDENCE				
NIGHT	8,919	22.3	\$ 5,207,470	\$ 584
DAY	12,964	32.4	11,014,525	850
UNKNOWN	5,353	13.4	5,566,560	1,040
NON RESIDENCE				
NIGHT	7,837	19.6	6,505,490	830
DAY	1,618	4.0	1,102,629	681
UNKNOWN	3,340	8.3	3,735,091	1,118
TOTAL	40,031	100.0	\$ 33,131,765	\$ 828

* PERCENTAGES MAY NOT ADD TO 100 DUE TO ROUNDING



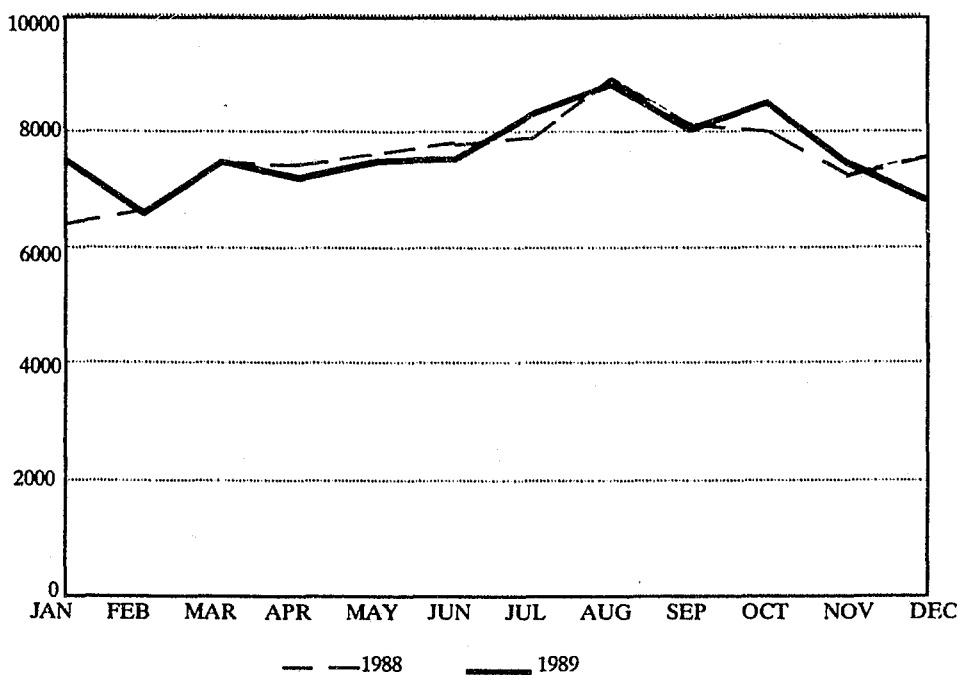
LARCENY

Larceny is defined as the taking or stealing of property from the possession or constructive possession of another without the use of force or violence. Motor vehicle theft and fraud are not included in this classification. Attempts to commit this crime are included.

TREND

<u>YEAR</u>	<u>NUMBER OF OFFENSES</u>	<u>% CHANGE</u>	<u>RATE PER 100,000</u>	<u>% CHANGE</u>	<u>% CLEARED</u>
1985	86,504	+ 2.2	2,725.4	+ 1.6	21.4
1986	87,962	+ 1.7	2,758.3	+ 1.2	22.2
1987	90,531	+ 2.9	2,819.4	+ 2.2	23.3
1988	91,101	+ 0.6	2,810.9	- 0.3	23.2
1989	91,491	+ 0.4	2,824.7	+ 0.5	24.5

LARCENY BY MONTH



LARCENY

CLASSIFICATION	NUMBER OF OFFENSES	% DIST.	TOTAL VALUE STOLEN	AVG. VALUE STOLEN
POCKET PICKING	602	.7	\$ 117,565	\$ 195
PURSE SNATCHING	1,388	1.5	217,073	156
SHOPLIFTING	17,142	18.7	2,038,710	119
FROM MOTOR VEHICLES	18,411	20.1	6,624,384	360
MOTOR VEHICLE PARTS	15,476	16.9	4,206,864	272
BICYCLES	4,093	4.5	876,662	214
FROM BUILDINGS	14,658	16.0	10,868,989	742
COIN-OP MACHINES	401	.4	95,117	237
ALL OTHER	19,320	21.1	14,155,001	733
TOTAL	91,491	100.0	\$ 39,200,365	\$ 428
OVER \$200.00	35,459	38.8	\$ 36,626,750	\$ 1,033
\$50.00 TO \$200.00	22,479	24.6	2,125,197	95
UNDER \$50.00	33,553	36.7	448,418	13
TOTAL	91,491	100.0	\$ 39,200,365	\$ 428

* PERCENTAGES MAY NOT ADD TO 100 DUE TO ROUNDING

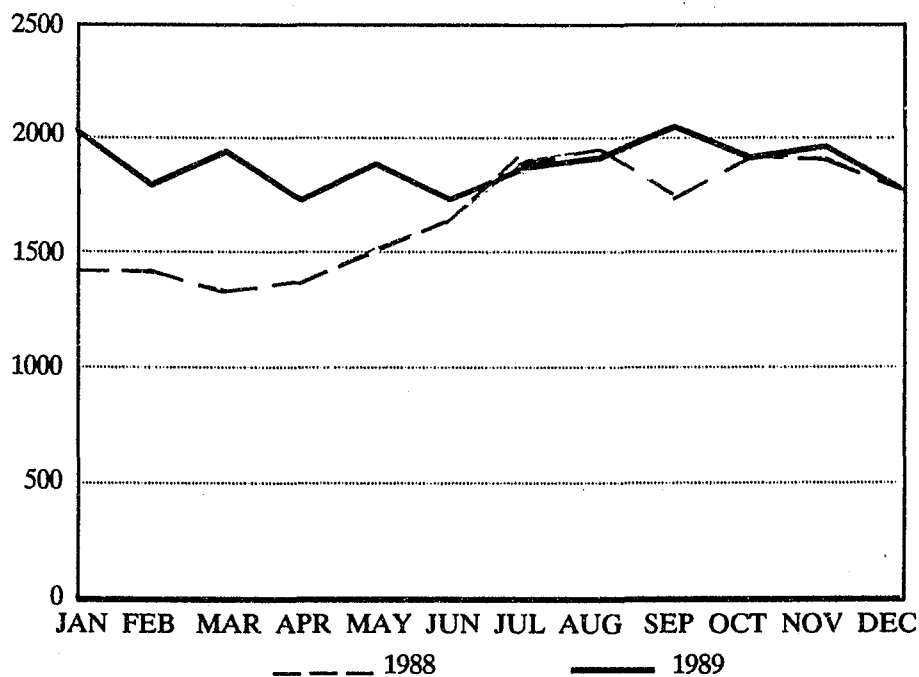
MOTOR VEHICLE THEFT

Motor Vehicle Theft is defined as the theft or attempted theft of a motor vehicle. This classification includes thefts of such vehicles as automobiles, trucks, buses, motorcycles, snowmobiles, etc.

TREND

<u>YEAR</u>	<u>NUMBER OF OFFENSES</u>	<u>% CHANGE</u>	<u>RATE PER 100,000</u>	<u>% CHANGE</u>	<u>% CLEARED</u>
1985	13,999	+ 4.9	441.0	+ 4.3	11.7
1986	14,258	+ 1.9	447.1	+ 1.4	12.0
1987	16,932	+ 18.8	527.3	+ 17.9	12.0
1988	19,899	+ 17.5	614.0	+ 16.4	11.6
1989	22,600	+ 13.6	697.7	+ 13.6	12.2

MOTOR VEHICLE THEFT BY MONTH



MOTOR VEHICLE THEFT

CLASSIFICATION	NUMBER	% DIST.
AUTOMOBILES	20,207	89.4
TRUCKS & BUSES	1,222	5.4
OTHER VEHICLES	1,171	5.2
TOTAL	22,600	100.0

TOTAL NUMBER OF MOTOR VEHICLES STOLEN

22,600

TOTAL NUMBER OF MOTOR VEHICLES RECOVERED

13,434

*TOTAL VALUE OF STOLEN MOTOR VEHICLES

\$ 123,530,343

* TOTAL VALUE OF RECOVERED MOTOR VEHICLES

\$ 74,223,589

* INCLUDES VEHICLES STOLEN IN THE COMMISSION OF OTHER INDEX CRIMES

ARSON

Arson is defined by the Uniform Crime Reporting Program to include any willful or malicious burning, or attempt to burn with or without intent to defraud, a dwelling house, public building, motor vehicle or aircraft, personal property of another, etc. Only fires determined through investigation to have been willingly or maliciously set are classified as arsons. Fires of suspicious or unknown origin are excluded.

Since Arson offenses frequently occur in conjunction with other Index Crimes; e.g., Burglary, the Hierarchy Rule has been modified specifically for Arson. Arson, regardless of its occurrence in conjunction with another crime against person or property has to be reported.

TREND

<u>YEAR</u>	<u>NUMBER OF OFFENSES</u>	<u>% CHANGE</u>	<u>RATE PER 100,000</u>	<u>% CHANGE</u>	<u>% CLEARED</u>
1985	1,195	+ 5.4	37.6	+ 4.4	16.7
1986	1,072	- 10.3	33.6	- 10.6	17.0
1987	1,008	- 6.0	31.4	- 6.5	17.2
1988	1,069	+ 6.1	33.0	+ 5.1	17.9
1989	1,086	+ 1.6	33.5	+ 1.5	17.2

<u>PROPERTY CLASSIFICATION</u>	<u>NUMBER OF OFFENSES</u>	<u>% DIST. OF TOTAL</u>	<u>AVERAGE DAMAGE</u>	<u>PERCENT CLEARED</u>
SINGLE OCCUPANCY	106	9.8	\$22,759	22.6
OTHER RESIDENTIAL	244	22.5	14,496	30.3
STORAGE	47	4.3	15,183	14.9
INDUSTRIAL/MFG.	18	1.7	98,028	16.7
OTHER COMMERCIAL	59	5.4	131,194	28.8
COMMUNITY/PUBLIC	58	5.3	4,787	27.6
OTHER STRUCTURE	64	5.9	26,450	15.6
TOTAL STRUCTURE	596	54.9	30,433	25.3
MOTOR VEHICLES	409	37.7	2,152	5.1
OTHER MOBILE	16	1.5	6,750	12.5
TOTAL MOBILE	425	39.1	2,325	5.4
TOTAL OTHER	65	6.0	214	20.0
TOTAL	1,086	100.0	17,625	17.2

**CRIME INDEX OFFENSES
BY COUNTY**

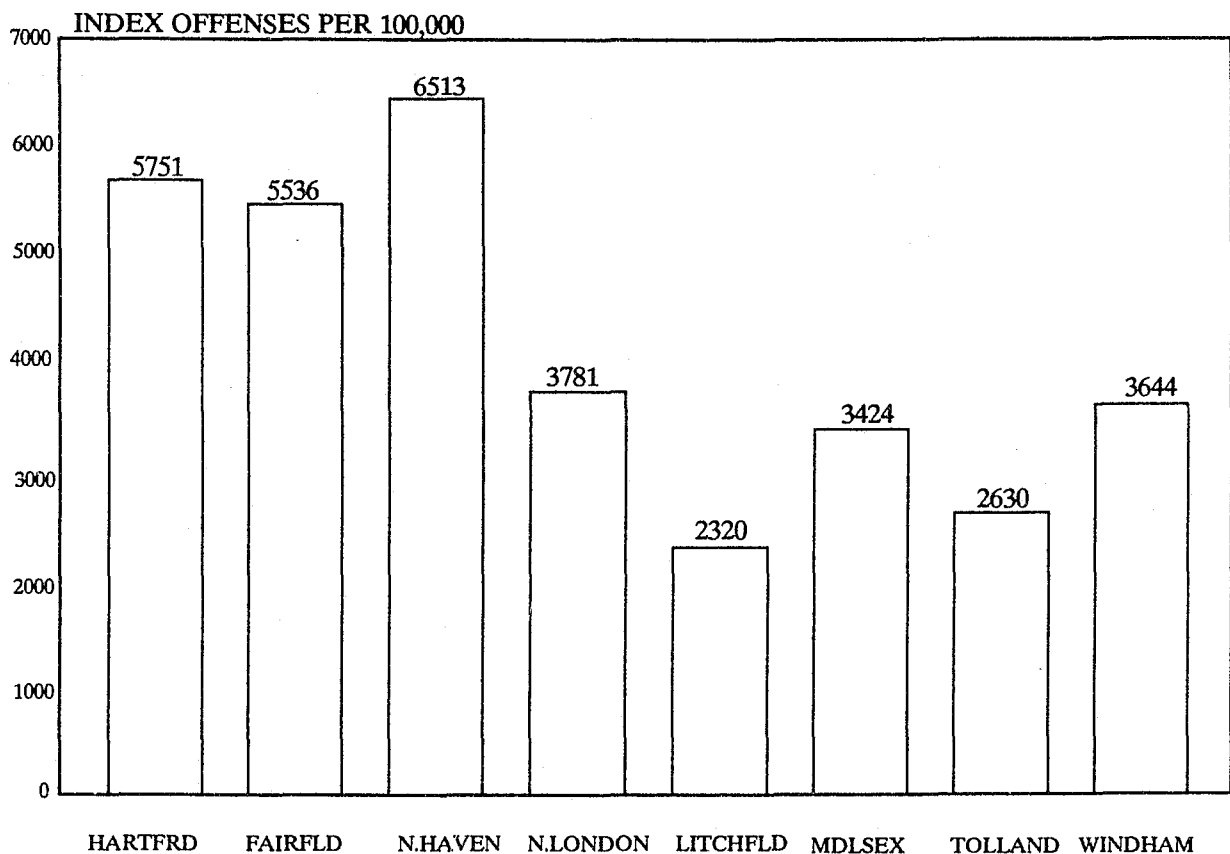
INDEX OFFENSES BY COUNTY

In 1983, Connecticut began compiling County data. Caution must be taken in attempting to make direct comparisons between counties. Many demographic factors including density and size may affect criminal behavior incidents and the reporting thereof.

According to population figures supplied by the F.B.I., Connecticut's eight counties in descending order of population are: Hartford (844,863), Fairfield (818,817), New Haven (795,874), New London (248,060), Litchfield (166,609), Middlesex (139,960), Tolland (125,633), and Windham (99,184).

CRIME INDEX BY COUNTY

RATE PER 100,000 POPULATION



INDEX OFFENSES BY COUNTY

RATE PER 100,000 POPULATION

VIOLENT CRIME RATES						PROPERTY CRIME RATES			
COUNTY	MURDER	RAPE	ROBBERY	AGG. ASSAULT	TOTAL VIOLENT	BURGLARY	LARCENY	M. V. THEFT	TOTAL PROPERTY
HARTFORD	5	35	262	338	640	1,281	3,194	636	5,111
FAIRFIELD	8	20	271	205	505	1,259	2,754	1,018	5,031
NEW HAVEN	7	28	275	301	611	1,566	3,429	907	5,902
NEW LONDON	5	41	63	261	370	805	2,380	226	3,411
LITCHFIELD	2	22	20	109	154	579	1,393	194	2,167
MIDDLESEX	6	10	58	208	282	797	2,054	290	3,142
TOLLAND	2	18	25	216	259	876	1,360	134	2,370
WINDHAM	1	24	34	219	278	1,275	1,871	219	3,365

**VALUE OF PROPERTY
STOLEN AND RECOVERED**

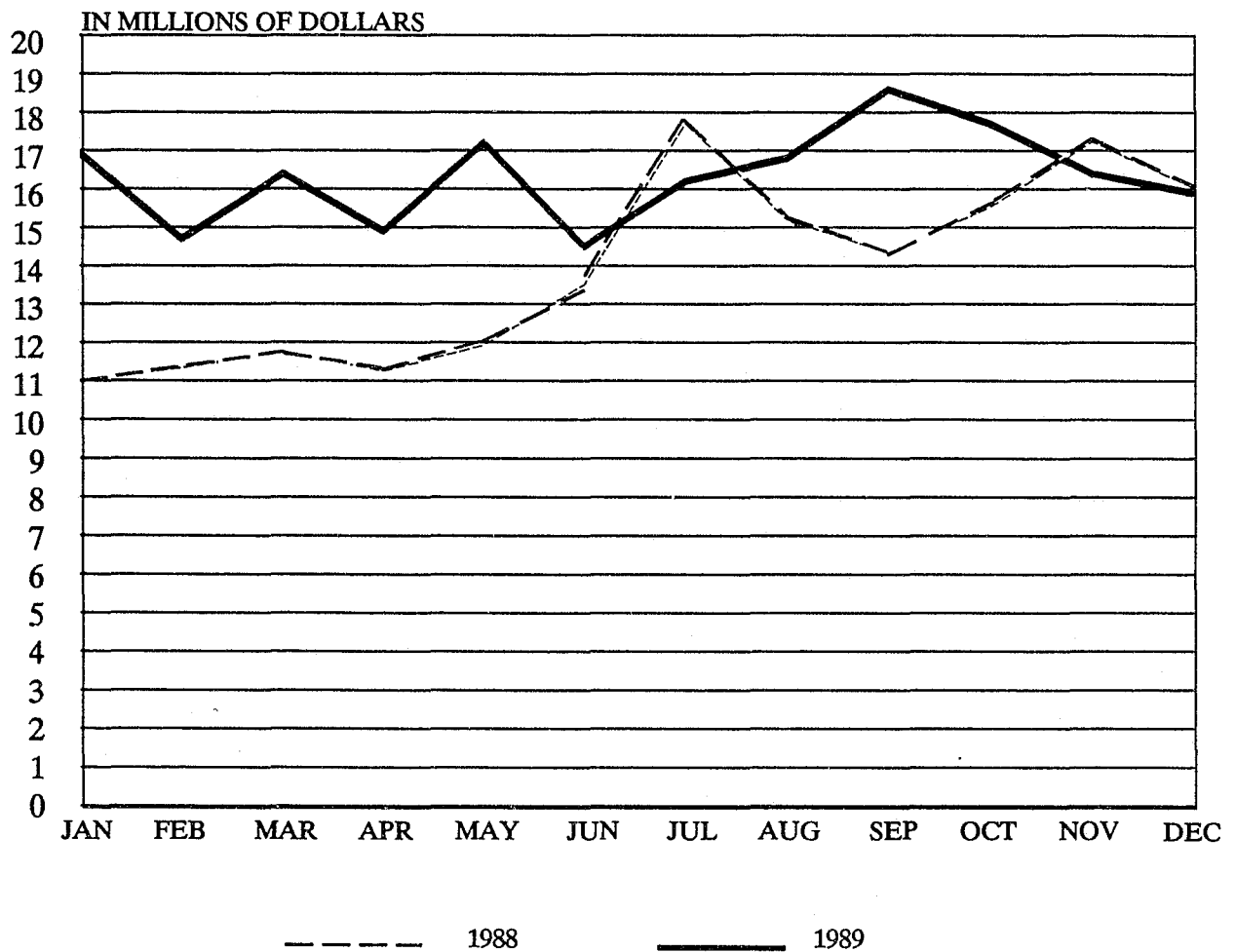
PROPERTY STOLEN AND RECOVERED

For further analysis of crime, the Uniform Crime Reporting Program collects supplementary reports relating to properties stolen and recovered by type and value.

Although Connecticut law enforcement agencies recovered approximately 41% of the property stolen, the net loss was over \$116 million dollars.

The reader should take note that these values relate only to Index Crime. Property lost or damaged as a result of crimes such as fraud, vandalism, etc., are not included in these totals.

PROPERTY STOLEN BY MONTH



VALUE OF PROPERTY STOLEN AND RECOVERED: 1988 - 1989

Type of Property	Year	Value of Property Stolen	Value of Property Recovered	Percent of Value Recovered
Curency, notes, etc	1988	\$ 10,011,050	\$ 630,112	6.3
	1989	9,609,071	530,923	5.5
Jewelry and Precious Metals	1988	14,413,480	823,325	5.7
	1989	14,292,488	986,234	6.9
Clothing and Furs	1988	2,550,758	475,081	18.6
	1989	2,995,431	562,145	18.8
Locally Stolen Motor Vehicles	1988	98,471,476	65,675,155	66.7
	1989	123,530,343	74,223,589	60.1
Office Equipment	1988	3,084,939	167,720	5.4
	1989	2,874,636	137,945	4.8
T.V.'s, Radios, Cameras, etc.	1988	12,155,337	607,411	5.0
	1989	12,846,519	717,083	5.6
Firearms	1988	663,873	85,096	12.8
	1989	637,107	99,663	15.6
Household Goods	1988	2,941,481	290,387	9.9
	1989	3,364,788	161,547	4.8
Consumable Goods	1988	776,467	181,304	23.3
	1989	1,092,296	190,548	17.4
Livestock	1988	22,383	2,013	9.0
	1989	28,853	4,309	14.9
Miscellaneous	1988	21,743,868	2,031,246	9.3
	1989	24,925,487	2,514,600	10.1
TOTAL	1988	\$ 166,835,112	\$ 70,963,850	42.5
	1989	\$ 196,197,019	\$ 80,128,586	40.8

CONNECTICUT ARREST DATA

ARREST DATA

The Connecticut Uniform Crime Reporting Program requires the submission of monthly reports concerning persons arrested in the state. A record of total arrest activity for criminal acts in both Part 1 and Part 2 crime classes is received from UCR participants according to the Age, Sex and Race of persons arrested. Traffic arrests, except driving under the influence, are not reported.

The Age, Sex, and Race of Persons Arrested Forms are designed to collect data on the number of persons arrested and not the number of charges lodged. For example, a person may be arrested on several charges at one time; only one arrest would be scored. For UCR purposes, a juvenile is counted as "arrested" when circumstances are such that if he or she were an adult, an arrest would result.

TREND

YEAR	PART 1 ARRESTS	PART 2 ARRESTS	TOTAL
1985	36,821	121,293	158,114
1986	39,274	131,332	170,606
1987	43,816	153,809	197,625
1988	44,572	166,000	210,572
1989	49,035	174,970	224,005

The Part 2 offenses are as follows:

9. OTHER ASSAULTS - Assaults and attempted assaults which are simple or minor in nature and where no weapon is used.
10. FORGERY AND COUNTERFEITING - Offenses dealing with the making, altering, uttering or possessing, with the intent to defraud, anything false in the semblance of that which is true.
11. FRAUD - Fraudulent conversion and obtaining money or property by false pretense. Includes bad checks, confidence games, etc., except forgeries and counterfeiting.

12. EMBEZZLEMENT - Misappropriation or misapplication of money or property entrusted to one's care, custody, or control.
13. STOLEN PROPERTY; BUYING, RECEIVING, POSSESSING - Offenses of buying, receiving, and possession of stolen property, as well as all attempts to commit any of these offenses.
14. VANDALISM - Willful or malicious destruction, injury, disfigurement or defacement of any public or private property, real or personal, without consent of the owner or person having custody or control. This offense covers a wide range of malicious behavior directed at property.
15. WEAPONS; CARRYING, POSSESSING, ETC. - Violations of regulations or statutes controlling the carrying, using, possessing, furnishing and manufacturing of deadly weapons or silencers. Attempts are included.
16. PROSTITUTION AND COMMERCIALIZED VICE - Sex offenses of a commercialized nature, such as: prostitution, keeping a disorderly house, pandering, and all attempts to commit the above.
17. SEX OFFENSES - (Except Forcible Rape, Prostitution, and Commercialized Vice) offenses against chastity, common decency, morals, and the like. Attempts are included.
18. NARCOTIC DRUG LAWS - Narcotic drug law arrests on the basis of the narcotics used. Includes arrests for violation of State and Local ordinances, specifically those relating to the unlawful possession, sale, use, growing, manufacturing and making of narcotic drugs.
19. GAMBLING - Charges which relate to promoting, permitting or engaging in gambling.
20. OFFENSES AGAINST THE FAMILY AND CHILDREN - Includes all charges of non-support and neglect or abuse of family and children.
21. DRIVING UNDER THE INFLUENCE - Limited to the driving or operating of any vehicle while drunk or under the influence of liquor or narcotic drug.
22. LIQUOR LAWS - With the exception of "Driving Under the Influence", Liquor Law violations, State or Local, are placed in this class. Includes: manufacturing, sale, transporting, furnishing, possessing, etc.

23. DRUNKENNESS - Not reported in Connecticut.
24. DISORDERLY CONDUCT - All charges of breach of peace including affray, unlawful assembly, disturbing the peace, disturbing meetings, refusing to assist an officer, or any attempts of the above.
25. VAGRANCY - Vagabondage, begging, loitering, etc.
26. ALL OTHER OFFENSES - Includes every other State or Local offense not included in classes 1 through 25.
27. SUSPICION - Not reported in Connecticut.
28. CURFEW AND LOITERING LAWS (JUVENILE) - Arrests made for violations of local curfew or loitering ordinances.
29. RUNAWAY (JUVENILE) - Apprehensions for protective custody as defined by Connecticut State Statute. Arrests for runaways from one jurisdiction by another agency should be counted by the home jurisdiction.

TOTAL ARRESTS BY AGE: 1989

OFFENSES	UNDER 10	10-12	13-14	15	16	17	TOTAL UNDER 18	18
Murder	0	0	3	10	12	12	37	9
Manslaughter	0	1	0	0	1	1	3	2
Forcible Rape	0	8	7	19	6	12	52	24
Robbery	4	22	83	35	51	115	310	124
Aggravated Assault	18	47	142	120	188	268	783	332
Burglary	51	171	386	281	426	420	1,735	467
Larceny-Theft	193	623	1,337	884	1,006	1,299	5,342	1,297
Motor Vehicle Theft	4	75	321	283	229	215	1,127	178
Arson	13	20	36	14	8	17	108	12
Subtotal Part 1	283	967	2,315	1,646	1,927	2,359	9,497	2,445
Simple Assault	60	171	367	364	565	650	2,177	915
Forgery/Counterfeiting	0	1	3	4	10	26	44	37
Fraud	3	1	6	8	10	21	49	81
Embezzlement	0	0	0	1	8	7	16	3
Stolen Property	0	6	16	24	16	26	88	28
Vandalism	119	294	501	299	392	440	2,045	391
Weapons Charge	11	44	124	127	154	255	715	261
Prostitution	1	0	0	0	0	9	10	16
Sex Offenses	15	41	58	41	26	33	214	24
Drug Abuse Violations	9	27	210	344	631	907	2,128	1,233
Gambling	0	1	4	4	1	1	11	2
Offenses vs Family	2	0	4	7	13	23	49	47
Driving Under Influence	4	1	5	4	62	170	246	316
Liquor Laws	1	6	26	77	160	380	650	607
Disorderly Conduct	113	294	711	622	1,016	1,303	4,059	1,716
Vagrancy	3	1	3	7	6	4	24	13
All Other Offenses	154	349	866	708	999	1,641	4,717	2,355
Curfew and Loitering	3	9	40	54	29	55	190	-
Runaways	41	90	287	232	27	10	687	-
GRAND TOTAL	822	2,303	5,546	4,573	6,052	8,320	27,616	10,490

TOTAL ARRESTS BY AGE: 1989

														65 & TOTAL 18	
19	20	21	22	23	24	25-29	30-34	35-39	40-44	45-49	50-54	55-59	60-64	OVER & OVER	
9	15	11	8	12	5	31	18	16	6	3	4	4	1	1	153
2	2	1	2	2	1	2	4	3	4	3	3	1	1	4	37
24	13	14	27	22	17	98	84	50	26	11	6	4	4	3	427
100	91	99	111	129	135	472	331	117	47	12	4	1	1	2	1,776
331	318	315	329	324	351	1,528	1,089	652	408	235	117	76	40	38	6,483
363	320	309	297	270	341	1,238	952	574	182	91	67	29	27	32	5,559
1,131	1,052	1,071	1,005	992	1,032	5,000	4,451	2,951	1,477	681	450	274	220	357	23,441
160	114	111	89	67	74	315	212	96	60	18	3	6	4	6	1,513
5	12	8	8	8	10	29	15	10	12	7	6	3	1	3	149
2,125	1,937	1,939	1,876	1,826	1,966	8,713	7,156	4,469	2,222	1,061	660	398	299	446	39,538
823	896	985	969	1,052	1,071	4,820	3,357	1,969	1,087	576	312	167	128	102	19,229
58	52	39	46	45	49	209	175	117	67	33	10	4	4	2	947
90	107	102	142	150	159	912	757	476	245	141	87	24	32	13	3,518
4	3	2	5	3	6	15	8	6	4	1	2	0	2	1	65
36	31	22	19	20	26	80	75	44	37	7	11	0	3	0	439
327	255	224	213	192	184	765	503	260	145	90	34	17	19	24	3,643
231	206	203	160	152	131	598	369	190	127	78	29	21	7	19	2,782
22	35	41	41	45	62	284	189	102	35	22	6	2	1	2	905
36	36	25	26	31	37	125	109	85	64	62	16	12	16	28	732
1,202	1,168	1,165	1,113	1,186	1,110	4,764	3,402	1,831	894	356	150	70	25	19	19,688
2	0	4	1	0	5	13	22	21	25	11	12	21	14	9	162
53	52	64	49	56	73	327	268	158	78	33	21	12	12	9	1,312
502	570	686	709	704	791	3,767	3,269	2,035	1,476	1,003	598	411	222	233	17,292
563	495	122	117	119	95	404	388	264	205	126	67	61	42	29	3,704
1,605	1,524	1,663	1,662	1,635	1,782	7,716	5,812	3,582	2,236	1,370	722	472	343	377	34,217
15	14	9	8	7	4	9	5	4	2	2	0	1	0	0	93
2,459	2,580	2,610	2,473	2,588	2,666	11,532	8,454	5,069	2,519	1,259	689	364	269	237	48,123
-	-	-	-	-	-	-	-	-	-	-	-	-	-	-	-
-	-	-	-	-	-	-	-	-	-	-	-	-	-	-	-
10,153	9,961	9,905	9,629	9,811	10,217	45,053	34,318	20,682	11,468	6,231	3,426	2,057	1,438	1,550	196,389

TOTAL ARRESTS BY SEX: 1989

OFFENSES	MALE		FEMALE	
	UNDER 18	18 & OVER	UNDER 18	18 & OVER
Murder	36	143	1	10
Manslaughter	3	30	0	7
Forcible Rape	52	425	0	2
Robbery	284	1,644	26	132
Aggravated Assault	641	5,294	142	1,189
Burglary	1,638	5,137	97	422
Larceny-Theft	3,957	16,117	1,385	7,324
Motor Vehicle Theft	1,015	1,369	112	144
Arson	104	128	4	21
Subtotal Part 1	7,730	30,287	1,767	9,251
Simple Assault	1,664	16,213	513	3,016
Forgery/Counterfeiting	32	637	12	310
Fraud	40	2,028	9	1,490
Embezzlement	3	41	13	24
Stolen Property	81	360	7	79
Vandalism	1,880	3,165	165	478
Weapons Charges	673	2,585	42	197
Prostitution	2	218	8	687
Sex Offenses	200	703	14	29
Drug Abuse Violations	1,921	16,677	207	3,011
Gambling	11	152	0	10
Offenses vs Family	36	855	13	457
Driving Under Influence	217	14,940	29	2,352
Liquor Laws	500	3,240	150	464
Disorderly Conduct	3,118	26,860	941	7,357
Vagrancy	11	71	13	22
All Other Offenses	3,920	39,677	797	8,446
Curfew and Loitering	142	0	48	0
Runaways	321	0	366	0
GRAND TOTAL	22,502	158,709	5,114	37,680

TOTAL ARRESTS BY RACE: 1989

OFFENSES	TOTAL	WHITE	RACE			ASIAN
			BLACK	INDIAN		
Murder	190	85	105	0		0
Manslaughter	40	31	9	0		0
Forcible Rape	479	280	198	0		1
Robbery	2,086	910	1,174	0		2
Aggravated Assault	7,266	4,117	3,122	4		23
Burglary	7,294	5,273	2,012	4		5
Larceny-Theft	28,783	19,353	9,283	23		124
Motor Vehicle Theft	2,640	1,593	1,043	2		2
Arson	257	199	58	0		0
Subtotal Part 1	49,035	31,841	17,004	33		157
Simple Assault	21,406	12,469	8,824	8		105
Forgery/Counterfeiting	991	660	329	1		1
Fraud	3,567	2,526	1,034	1		6
Embezzlement	81	57	24	0		0
Stolen Property	527	313	212	0		2
Vandalism	5,688	4,805	862	4		17
Weapons Charges	3,497	2,145	1,341	1		10
Prostitution	915	598	312	3		2
Sex Offenses	946	734	205	0		7
Drug Abuse Violations	21,816	13,157	8,639	2		18
Gambling	173	133	40	0		0
Offenses vs Family	1,361	946	409	1		5
Driving Under Influence	17,538*	15,449	826	6		35
Liquor Laws	4,354	3,654	694	2		4
Disorderly Conduct	38,276	27,101	11,078	19		78
Vagrancy	117	107	10	0		0
All Other Offenses	52,840	34,107	18,648	17		68
Curfew and Loitering	190	133	57	0		0
Runaways	687	586	98	0		3
GRAND TOTAL	224,005*	151,521	70,646	98		518

* Race information unavailable for 1,222 Driving Under Influence arrests 33

**OFFENSE DATA
BY CONTRIBUTOR**

AGENCY: ANSONIA P.D.

POPULATION: 18,925

INDEX CRIME	OFFENSES	CLEARANCES	VALUE OF PROPERTY STOLEN
MURDER	0	0	0
RAPE	4	4	0
ROBBERY	37	12	\$ 5,417
AGGRAVATED ASSAULT	29	24	N/A
BURGLARY	190	27	89,513
LARCENY	303	71	108,991
MOTOR VEHICLE THEFT	63	34	381,904
INDEX TOTAL	626	172	\$ 585,825
*ARSON	6	2	\$ 2,700

AGENCY: AVON P.D.

POPULATION: 14,286

INDEX CRIME	OFFENSES	CLEARANCES	VALUE OF PROPERTY STOLEN
MURDER	0	0	0
RAPE	3	3	\$ 40
ROBBERY	3	1	459
AGGRAVATED ASSAULT	4	5	N/A
BURGLARY	87	16	186,877
LARCENY	207	40	175,897
MOTOR VEHICLE THEFT	11	6	109,675
INDEX TOTAL	315	71	\$ 472,948
*ARSON	4	2	0

*ARSON NOT INCLUDED IN CRIME INDEX TOTAL

AGENCY: BERLIN P.D.

POPULATION: 16,921

INDEX CRIME	OFFENSES	CLEARANCES	VALUE OF PROPERTY STOLEN
MURDER	0	0	0
RAPE	0	0	0
ROBBERY	2	1	\$ 176
AGGRAVATED ASSAULT	2	2	N/A
BURGLARY	75	11	116,565
LARCENY	225	76	138,430
MOTOR VEHICLE THEFT	36	17	261,350
INDEX TOTAL	340	107	\$ 516,521
*ARSON	0	0	0

AGENCY: BETHEL P.D.

POPULATION: 17,963

INDEX CRIME	OFFENSES	CLEARANCES	VALUE OF PROPERTY STOLEN
MURDER	0	0	0
RAPE	3	1	0
ROBBERY	1	1	\$ 50
AGGRAVATED ASSAULT	2	1	N/A
BURGLARY	87	11	91,837
LARCENY	167	39	99,720
MOTOR VEHICLE THEFT	8	1	35,200
INDEX TOTAL	268	54	\$ 226,807
*ARSON	0	0	0

*ARSON NOT INCLUDED IN CRIME INDEX TOTAL

AGENCY: BLOOMFIELD P.D.

POPULATION: 20,197

INDEX CRIME	OFFENSES	CLEARANCES	VALUE OF PROPERTY STOLEN
MURDER	0	0	0
RAPE	2	2	0
ROBBERY	11	6	\$ 1,686
AGGRAVATED ASSAULT	53	46	N/A
BURGLARY	197	71	189,689
LARCENY	553	188	223,277
MOTOR VEHICLE THEFT	90	40	581,497
INDEX TOTAL	906	353	\$ 996,149
*ARSON	5	1	\$ 215,000

AGENCY: BRANFORD P.D.

POPULATION: 26,279

INDEX CRIME	OFFENSES	CLEARANCES	VALUE OF PROPERTY STOLEN
MURDER	0	0	0
RAPE	4	3	0
ROBBERY	8	3	\$ 8,810
AGGRAVATED ASSAULT	7	7	N/A
BURGLARY	92	15	127,380
LARCENY	440	155	568,850
MOTOR VEHICLE THEFT	102	15	826,100
INDEX TOTAL	653	198	\$ 1,531,140
*ARSON	0	0	0

*ARSON NOT INCLUDED IN CRIME INDEX TOTAL

AGENCY: BRIDGEPORT P.D.

POPULATION: 140,029

INDEX CRIME	OFFENSES	CLEARANCES	VALUE OF PROPERTY STOLEN
MURDER	36	20	0
RAPE	70	16	\$ 292
ROBBERY	1,562	215	567,479
AGGRAVATED ASSAULT	1,014	535	N/A
BURGLARY	4,207	377	2,916,244
LARCENY	5,929	1,436	2,032,606
MOTOR VEHICLE THEFT	4,634	398	32,172,024
INDEX TOTAL	17,452	2,997	\$ 37,688,645
*ARSON	44	21	0

AGENCY: BRISTOL P.D.

POPULATION: 60,773

INDEX CRIME	OFFENSES	CLEARANCES	VALUE OF PROPERTY STOLEN
MURDER	0	0	0
RAPE	5	5	0
ROBBERY	27	25	\$ 21,759
AGGRAVATED ASSAULT	172	144	N/A
BURGLARY	573	169	441,831
LARCENY	1,074	539	417,228
MOTOR VEHICLE THEFT	128	5	589,610
INDEX TOTAL	1,979	887	\$ 1,470,428
*ARSON	4	1	\$ 3,020,000

*ARSON NOT INCLUDED IN CRIME INDEX TOTAL

AGENCY: BROOKFIELD P.D.

POPULATION: 14,707

INDEX CRIME	OFFENSES	CLEARANCES	VALUE OF PROPERTY STOLEN
MURDER	0	0	0
RAPE	4	1	0
ROBBERY	3	1	\$ 22,864
AGGRAVATED ASSAULT	12	8	N/A
BURGLARY	102	14	184,559
LARCENY	230	73	192,734
MOTOR VEHICLE THEFT	18	5	119,924
INDEX TOTAL	369	102	\$ 520,081
*ARSON	0	0	0

AGENCY: CANTON P.D.

POPULATION: 8,776

INDEX CRIME	OFFENSES	CLEARANCES	VALUE OF PROPERTY STOLEN
MURDER	0	0	0
RAPE	0	0	0
ROBBERY	0	0	0
AGGRAVATED ASSAULT	2	2	N/A
BURGLARY	33	0	\$ 65,500
LARCENY	96	14	77,277
MOTOR VEHICLE THEFT	9	5	82,350
INDEX TOTAL	140	21	\$ 225,127
*ARSON	2	1	\$ 1,500,000

*ARSON NOT INCLUDED IN CRIME INDEX TOTAL

AGENCY: CHESHIRE P.D.

POPULATION: 25,437

INDEX CRIME	OFFENSES	CLEARANCES	VALUE OF PROPERTY STOLEN
MURDER	0	0	0
RAPE	4	2	0
ROBBERY	6	5	\$ 30,014
AGGRAVATED ASSAULT	4	2	N/A
BURGLARY	163	18	168,279
LARCENY	285	36	103,062
MOTOR VEHICLE THEFT	16	3	125,480
INDEX TOTAL	478	66	\$ 426,835
*ARSON	1	0	\$ 7,000

AGENCY: CLINTON P.D.

POPULATION: 12,954

INDEX CRIME	OFFENSES	CLEARANCES	VALUE OF PROPERTY STOLEN
MURDER	1	1	0
RAPE	0	0	0
ROBBERY	3	2	\$ 1,235
AGGRAVATED ASSAULT	3	2	N/A
BURGLARY	112	8	69,165
LARCENY	190	18	105,205
MOTOR VEHICLE THEFT	10	0	33,525
INDEX TOTAL	319	31	\$ 209,130
*ARSON	4	1	\$ 60,500

*ARSON NOT INCLUDED IN CRIME INDEX TOTAL

AGENCY: COVENTRY P.D.**POPULATION: 9,838**

INDEX CRIME	OFFENSES	CLEARANCES	VALUE OF PROPERTY STOLEN
MURDER	0	0	0
RAPE	1	1	0
ROBBERY	0	0	0
AGGRAVATED ASSAULT	12	8	N/A
BURGLARY	53	2	\$ 79,896
LARCENY	132	7	152,392
MOTOR VEHICLE THEFT	12	1	44,500
INDEX TOTAL	210	19	\$ 276,788
*ARSON	3	0	0

AGENCY: CROMWELL P.D.**POPULATION: 11,662**

INDEX CRIME	OFFENSES	CLEARANCES	VALUE OF PROPERTY STOLEN
MURDER	0	0	0
RAPE	0	0	0
ROBBERY	8	2	\$ 647
AGGRAVATED ASSAULT	7	8	N/A
BURGLARY	60	11	58,584
LARCENY	214	93	102,730
MOTOR VEHICLE THEFT	39	2	208,350
INDEX TOTAL	328	116	\$ 370,311
*ARSON	2	0	\$ 85,000

*ARSON NOT INCLUDED IN CRIME INDEX TOTAL

AGENCY: DANBURY P.D.

POPULATION: 64,540

INDEX CRIME	OFFENSES	CLEARANCES	VALUE OF PROPERTY STOLEN
MURDER	3	2	0
RAPE	20	5	0
ROBBERY	52	30	\$ 15,240
AGGRAVATED ASSAULT	41	27	N/A
BURGLARY	702	197	1,064,592
LARCENY	2,255	1,028	992,586
MOTOR VEHICLE THEFT	271	85	1,175,523
INDEX TOTAL	3,344	1,374	\$ 3,247,941
*ARSON	3	2	\$ 201,000

AGENCY: DARIEN P.D.

POPULATION: 17,603

INDEX CRIME	OFFENSES	CLEARANCES	VALUE OF PROPERTY STOLEN
MURDER	0	0	0
RAPE	0	0	0
ROBBERY	11	6	\$ 35,833
AGGRAVATED ASSAULT	0	0	N/A
BURGLARY	72	19	72,256
LARCENY	370	51	160,634
MOTOR VEHICLE THEFT	60	12	489,100
INDEX TOTAL	513	88	\$ 757,823
*ARSON	0	0	0

*ARSON NOT INCLUDED IN CRIME INDEX TOTAL

AGENCY: DERBY P.D.

POPULATION: 12,193

INDEX CRIME	OFFENSES	CLEARANCES	VALUE OF PROPERTY STOLEN
MURDER	3	3	0
RAPE	4	4	0
ROBBERY	11	6	\$ 5,497
AGGRAVATED ASSAULT	10	9	N/A
BURGLARY	154	26	152,509
LARCENY	348	144	108,974
MOTOR VEHICLE THEFT	57	49	502,100
INDEX TOTAL	587	241	\$ 769,080
*ARSON	2	0	\$ 227,500

AGENCY: EAST HAMPTON P.D.

POPULATION: 10,009

INDEX CRIME	OFFENSES	CLEARANCES	VALUE OF PROPERTY STOLEN
MURDER	0	0	0
RAPE	1	1	0
ROBBERY	4	3	\$ 1,095
AGGRAVATED ASSAULT	54	54	N/A
BURGLARY	53	23	84,438
LARCENY	124	28	50,500
MOTOR VEHICLE THEFT	11	1	32,650
INDEX TOTAL	247	110	\$ 168,683
*ARSON	3	0	\$ 200

*ARSON NOT INCLUDED IN CRIME INDEX TOTAL

AGENCY: EAST HARTFORD P.D.

POPULATION: 53,970

INDEX CRIME	OFFENSES	CLEARANCES	VALUE OF PROPERTY STOLEN
MURDER	1	1	0
RAPE	15	11	0
ROBBERY	109	44	\$ 49,981
AGGRAVATED ASSAULT	65	46	N/A
BURGLARY	600	74	517,446
LARCENY	1,794	439	518,938
MOTOR VEHICLE THEFT	396	16	2,944,651
INDEX TOTAL	2,980	631	\$ 4,031,016
*ARSON	12	2	\$ 1,607,350

AGENCY: EAST HAVEN P.D.

POPULATION: 26,148

INDEX CRIME	OFFENSES	CLEARANCES	VALUE OF PROPERTY STOLEN
MURDER	0	0	0
RAPE	2	2	0
ROBBERY	12	7	\$ 65,315
AGGRAVATED ASSAULT	11	10	N/A
BURGLARY	264	73	267,143
LARCENY	635	426	235,951
MOTOR VEHICLE THEFT	148	22	1,022,571
INDEX TOTAL	1,072	540	\$ 1,590,980
*ARSON	0	0	0

*ARSON NOT INCLUDED IN CRIME INDEX TOTAL

AGENCY: EAST WINDSOR P.D.

POPULATION: 9,938

INDEX CRIME	OFFENSES	CLEARANCES	VALUE OF PROPERTY STOLEN
MURDER	0	0	0
RAPE	2	1	0
ROBBERY	3	1	\$ 1,200
AGGRAVATED ASSAULT	30	19	N/A
BURGLARY	73	14	128,893
LARCENY	204	21	130,593
MOTOR VEHICLE THEFT	52	10	407,968
INDEX TOTAL	364	66	\$ 668,654
*ARSON	2	0	\$ 60

AGENCY: EASTON P.D.

POPULATION: 6,843

INDEX CRIME	OFFENSES	CLEARANCES	VALUE OF PROPERTY STOLEN
MURDER	0	0	0
RAPE	0	0	0
ROBBERY	1	0	\$ 190
AGGRAVATED ASSAULT	1	1	N/A
BURGLARY	33	2	63,036
LARCENY	65	2	55,605
MOTOR VEHICLE THEFT	1	1	1,500
INDEX TOTAL	101	6	\$ 120,331
*ARSON	1	0	\$ 70,000

*ARSON NOT INCLUDED IN CRIME INDEX TOTAL

AGENCY: ENFIELD P.D.

POPULATION: 45,584

INDEX CRIME	OFFENSES	CLEARANCES	VALUE OF PROPERTY STOLEN
MURDER	0	0	0
RAPE	4	3	0
ROBBERY	36	20	\$ 22,152
AGGRAVATED ASSAULT	26	27	N/A
BURGLARY	389	47	326,346
LARCENY	1,589	584	480,690
MOTOR VEHICLE THEFT	236	40	1,299,084
INDEX TOTAL	2,280	721	\$ 2,128,272
*ARSON	34	6	\$ 30,600

AGENCY: FAIRFIELD P.D.

POPULATION: 52,066

INDEX CRIME	OFFENSES	CLEARANCES	VALUE OF PROPERTY STOLEN
MURDER	0	0	0
RAPE	0	0	0
ROBBERY	35	13	\$ 9,351
AGGRAVATED ASSAULT	24	16	N/A
BURGLARY	489	46	371,938
LARCENY	1,301	306	453,893
MOTOR VEHICLE THEFT	358	25	3,094,422
INDEX TOTAL	2,207	406	\$ 3,929,604
*ARSON	1	0	\$ 4,000

*ARSON NOT INCLUDED IN CRIME INDEX TOTAL

AGENCY: FARMINGTON P.D.

POPULATION: 19,326

INDEX CRIME	OFFENSES	CLEARANCES	VALUE OF PROPERTY STOLEN
MURDER	0	0	0
RAPE	2	0	0
ROBBERY	5	0	\$ 986
AGGRAVATED ASSAULT	19	9	N/A
BURGLARY	162	5	126,064
LARCENY	687	140	262,183
MOTOR VEHICLE THEFT	80	1	464,307
INDEX TOTAL	955	155	\$ 853,540
*ARSON	0	0	0

AGENCY: GLASTONBURY P.D.

POPULATION: 27,651

INDEX CRIME	OFFENSES	CLEARANCES	VALUE OF PROPERTY STOLEN
MURDER	0	0	0
RAPE	1	0	0
ROBBERY	7	5	\$ 13,306
AGGRAVATED ASSAULT	9	9	N/A
BURGLARY	151	35	204,956
LARCENY	472	117	334,630
MOTOR VEHICLE THEFT	35	13	147,595
INDEX TOTAL	675	179	\$ 700,487
*ARSON	5	4	\$ 180

*ARSON NOT INCLUDED IN CRIME INDEX TOTAL

AGENCY: GRANBY P.D.

POPULATION: 9,878

INDEX CRIME	OFFENSES	CLEARANCES	VALUE OF PROPERTY STOLEN
MURDER	0	0	0
RAPE	0	0	0
ROBBERY	1	1	\$ 160
AGGRAVATED ASSAULT	5	5	N/A
BURGLARY	30	2	84,457
LARCENY	90	7	27,368
MOTOR VEHICLE THEFT	14	0	106,666
INDEX TOTAL	140	15	\$ 218,651
*ARSON	1	0	\$ 10,000

AGENCY: GREENWICH P.D.

POPULATION: 57,316

INDEX CRIME	OFFENSES	CLEARANCES	VALUE OF PROPERTY STOLEN
MURDER	0	0	0
RAPE	1	1	0
ROBBERY	20	7	\$ 41,129
AGGRAVATED ASSAULT	5	5	N/A
BURGLARY	234	26	700,508
LARCENY	1,134	103	1,282,337
MOTOR VEHICLE THEFT	134	11	790,172
INDEX TOTAL	1,528	153	\$ 2,814,146
*ARSON	4	0	\$ 14,000

*ARSON NOT INCLUDED IN CRIME INDEX TOTAL

AGENCY: GROTON CITY P.D.

POPULATION: 10,069

INDEX CRIME	OFFENSES	CLEARANCES	VALUE OF PROPERTY STOLEN
MURDER	0	0	0
RAPE	2	1	0
ROBBERY	2	1	0
AGGRAVATED ASSAULT	24	16	N/A
BURGLARY	73	7	\$ 33,485
LARCENY	147	26	57,133
MOTOR VEHICLE THEFT	9	3	1,000
INDEX TOTAL	257	54	\$ 91,618
*ARSON	0	0	0

AGENCY: GROTON LONG POINT P.D.

POPULATION: 868

INDEX CRIME	OFFENSES	CLEARANCES	VALUE OF PROPERTY STOLEN
MURDER	0	0	0
RAPE	0	0	0
ROBBERY	0	0	0
AGGRAVATED ASSAULT	0	0	N/A
BURGLARY	2	0	0
LARCENY	36	6	\$ 30,941
MOTOR VEHICLE THEFT	0	0	0
INDEX TOTAL	38	6	\$ 30,941
*ARSON	0	0	0

*ARSON NOT INCLUDED IN CRIME INDEX TOTAL

AGENCY: GROTON TOWN P.D.

POPULATION: 39,563

INDEX CRIME	OFFENSES	CLEARANCES	VALUE OF PROPERTY STOLEN
MURDER	2	1	0
RAPE	23	8	0
ROBBERY	8	4	\$ 655
AGGRAVATED ASSAULT	65	47	N/A
BURGLARY	246	34	146,714
LARCENY	1,125	370	524,112
MOTOR VEHICLE THEFT	71	40	425,460
INDEX TOTAL	1,540	504	\$ 1,096,941
*ARSON	9	0	\$ 740,000

AGENCY: GUILFORD P.D.

POPULATION: 19,847

INDEX CRIME	OFFENSES	CLEARANCES	VALUE OF PROPERTY STOLEN
MURDER	0	0	0
RAPE	1	0	0
ROBBERY	1	0	\$ 400
AGGRAVATED ASSAULT	1	1	N/A
BURGLARY	157	20	233,424
LARCENY	312	54	193,186
MOTOR VEHICLE THEFT	38	2	315,075
INDEX TOTAL	510	77	\$ 742,085
*ARSON	0	0	0

*ARSON NOT INCLUDED IN CRIME INDEX TOTAL

AGENCY: HAMDEN P.D.**POPULATION: 52,728**

INDEX CRIME	OFFENSES	CLEARANCES	VALUE OF PROPERTY STOLEN
MURDER	1	1	0
RAPE	13	11	0
ROBBERY	75	53	\$ 14,999
AGGRAVATED ASSAULT	30	21	N/A
BURGLARY	439	100	548,138
LARCENY	1,838	630	644,793
MOTOR VEHICLE THEFT	433	53	2,218,047
INDEX TOTAL	2,829	869	\$ 3,425,977
*ARSON	6	2	\$ 353,000

AGENCY: HARTFORD P.D.**POPULATION: 131,544**

INDEX CRIME	OFFENSES	CLEARANCES	VALUE OF PROPERTY STOLEN
MURDER	30	19	
RAPE	167	81	
ROBBERY	1,600	350	no dollar
AGGRAVATED ASSAULT	1,981	1,166	values
BURGLARY	5,016	526	reported
LARCENY	9,318	1,456	for 1989
MOTOR VEHICLE THEFT	2,893	353	
INDEX TOTAL	21,005	3,951	
*ARSON	292	40	

*ARSON NOT INCLUDED IN CRIME INDEX TOTAL

AGENCY: JEWETT CITY P.D.

POPULATION: 3,837

INDEX CRIME	OFFENSES	CLEARANCES	VALUE OF PROPERTY STOLEN
MURDER	0	0	0
RAPE	0	0	0
ROBBERY	1	1	\$ 90
AGGRAVATED ASSAULT	1	1	N/A
BURGLARY	4	1	1,400
LARCENY	62	21	19,663
MOTOR VEHICLE THEFT	6	4	14,917
INDEX TOTAL	74	28	\$ 36,070
*ARSON	1	0	\$ 35

AGENCY: MADISON P.D.

POPULATION: 16,330

INDEX CRIME	OFFENSES	CLEARANCES	VALUE OF PROPERTY STOLEN
MURDER	0	0	0
RAPE	1	0	0
ROBBERY	2	2	\$ 250
AGGRAVATED ASSAULT	5	4	N/A
BURGLARY	86	11	146,518
LARCENY	189	29	150,989
MOTOR VEHICLE THEFT	24	9	137,527
INDEX TOTAL	307	55	\$ 435,284
*ARSON	4	0	\$ 5,000

*ARSON NOT INCLUDED IN CRIME INDEX TOTAL

AGENCY: MANCHESTER P.D.

POPULATION: 50,794

INDEX CRIME	OFFENSES	CLEARANCES	VALUE OF PROPERTY STOLEN
MURDER	0	0	0
RAPE	27	12	0
ROBBERY	20	6	\$ 109,468
AGGRAVATED ASSAULT	36	30	N/A
BURGLARY	402	53	167,981
LARCENY	1,300	429	303,741
MOTOR VEHICLE THEFT	78	18	894,000
INDEX TOTAL	1,863	548	\$ 1,475,190
*ARSON	1	1	0

AGENCY: MERIDEN P.D.

POPULATION: 58,769

INDEX CRIME	OFFENSES	CLEARANCES	VALUE OF PROPERTY STOLEN
MURDER	1	0	0
RAPE	15	7	0
ROBBERY	65	7	\$ 93,465
AGGRAVATED ASSAULT	55	58	N/A
BURGLARY	791	49	422,280
LARCENY	1,591	265	505,446
MOTOR VEHICLE THEFT	315	30	1,790,554
INDEX TOTAL	2,833	416	\$ 2,811,745
*ARSON	35	3	\$ 632,475

*ARSON NOT INCLUDED IN CRIME INDEX TOTAL

AGENCY: MIDDLEBURY P.D.

POPULATION: 6,312

INDEX CRIME	OFFENSES	CLEARANCES	VALUE OF PROPERTY STOLEN
MURDER	1	1	0
RAPE	0	0	0
ROBBERY	0	0	0
AGGRAVATED ASSAULT	1	1	N/A
BURGLARY	24	11	\$ 46,734
LARCENY	49	24	33,963
MOTOR VEHICLE THEFT	9	6	81,343
INDEX TOTAL	84	43	\$ 162,040
*ARSON	0	0	0

AGENCY: MIDDLETOWN P.D.

POPULATION: 39,694

INDEX CRIME	OFFENSES	CLEARANCES	VALUE OF PROPERTY STOLEN
MURDER	6	4	0
RAPE	7	5	0
ROBBERY	47	19	\$ 3,002
AGGRAVATED ASSAULT	131	102	N/A
BURGLARY	381	71	247,037
LARCENY	1,571	360	338,726
MOTOR VEHICLE THEFT	221	25	1,021,419
INDEX TOTAL	2,364	586	\$ 1,610,184
*ARSON	14	2	\$ 6,310

*ARSON NOT INCLUDED IN CRIME INDEX TOTAL

AGENCY: MILFORD P.D.

POPULATION: 49,271

INDEX CRIME	OFFENSES	CLEARANCES	VALUE OF PROPERTY STOLEN
MURDER	2	2	0
RAPE	10	4	25
ROBBERY	37	10	\$ 16,020
AGGRAVATED ASSAULT	21	9	N/A
BURGLARY	512	69	635,625
LARCENY	1,578	290	879,951
MOTOR VEHICLE THEFT	487	27	3,294,315
INDEX TOTAL	2,647	411	\$ 4,825,936
*ARSON	20	3	\$ 1,211,654

AGENCY: MONROE P.D.

POPULATION: 16,921

INDEX CRIME	OFFENSES	CLEARANCES	VALUE OF PROPERTY STOLEN
MURDER	0	0	0
RAPE	1	0	0
ROBBERY	1	0	\$ 200
AGGRAVATED ASSAULT	11	10	N/A
BURGLARY	79	13	151,347
LARCENY	148	24	201,908
MOTOR VEHICLE THEFT	21	7	82,600
INDEX TOTAL	261	54	\$ 436,055
*ARSON	2	1	\$ 32,000

*ARSON NOT INCLUDED IN CRIME INDEX TOTAL

AGENCY: NAUGATUCK P.D.

POPULATION: 31,729

INDEX CRIME	OFFENSES	CLEARANCES	VALUE OF PROPERTY STOLEN
MURDER	0	0	
RAPE	1	1	0
ROBBERY	7	6	\$ 1,054
AGGRAVATED ASSAULT	33	30	N/A
BURGLARY	192	34	99,483
LARCENY	466	54	271,487
MOTOR VEHICLE THEFT	85	3	663,880
INDEX TOTAL	784	128	\$ 1,035,904
*ARSON	12	3	\$ 5,700

AGENCY: NEW BRITAIN P.D.

POPULATION: 71,913

INDEX CRIME	OFFENSES	CLEARANCES	VALUE OF PROPERTY STOLEN
MURDER	5	4	0
RAPE	29	22	\$ 67
ROBBERY	195	33	34,497
AGGRAVATED ASSAULT	165	133	N/A
BURGLARY	1,196	135	1,030,984
LARCENY	3,091	729	932,072
MOTOR VEHICLE THEFT	503	37	2,355,796
INDEX TOTAL	5,184	1,093	\$ 4,353,416
*ARSON	46	6	\$ 21,200

*ARSON NOT INCLUDED IN CRIME INDEX TOTAL

AGENCY: NEW CANAAN P.D.

POPULATION: 17,322

INDEX CRIME	OFFENSES	CLEARANCES	VALUE OF PROPERTY STOLEN
MURDER	0	0	0
RAPE	0	0	0
ROBBERY	1	0	\$ 30
AGGRAVATED ASSAULT	2	2	N/A
BURGLARY	48	15	92,035
LARCENY	199	41	207,660
MOTOR VEHICLE THEFT	11	3	122,500
INDEX TOTAL	261	61	\$ 422,225
*ARSON	0	0	0

AGENCY: NEW HAVEN P.D.

POPULATION: 124,070

INDEX CRIME	OFFENSES	CLEARANCES	VALUE OF PROPERTY STOLEN
MURDER	34	31	\$ 60
RAPE	111	59	945
ROBBERY	1,475	332	570,759
AGGRAVATED ASSAULT	1,549	830	N/A
BURGLARY	4,555	507	3,311,585
LARCENY	8,194	1,216	2,951,033
MOTOR VEHICLE THEFT	2,954	348	13,145,010
INDEX TOTAL	18,872	3,323	\$ 19,979,392
*ARSON	68	11	\$ 1,169,000

*ARSON NOT INCLUDED IN CRIME INDEX TOTAL

AGENCY: NEW LONDON P.D.

POPULATION: 27,922

INDEX CRIME	OFFENSES	CLEARANCES	VALUE OF PROPERTY STOLEN
MURDER	1	1	0
RAPE	23	8	0
ROBBERY	80	20	\$ 24,963
AGGRAVATED ASSAULT	157	120	N/A
BURGLARY	528	56	284,711
LARCENY	1,333	331	363,622
MOTOR VEHICLE THEFT	176	14	909,819
INDEX TOTAL	2,298	550	\$ 1,583,115
*ARSON	26	7	0

AGENCY: NEW MILFORD P.D.

POPULATION: 22,963

INDEX CRIME	OFFENSES	CLEARANCES	VALUE OF PROPERTY STOLEN
MURDER	1	1	0
RAPE	0	0	0
ROBBERY	3	2	\$ 346
AGGRAVATED ASSAULT	9	8	N/A
BURGLARY	106	14	86,532
LARCENY	282	73	160,717
MOTOR VEHICLE THEFT	38	15	193,840
INDEX TOTAL	439	113	\$ 441,435
*ARSON	5	3	\$ 106,795

*ARSON NOT INCLUDED IN CRIME INDEX TOTAL

AGENCY: NEWINGTON P.D.

POPULATION: 29,304

INDEX CRIME	OFFENSES	CLEARANCES	VALUE OF PROPERTY STOLEN
MURDER	2	0	0
RAPE	0	0	0
ROBBERY	8	3	\$ 4,115
AGGRAVATED ASSAULT	24	22	N/A
BURGLARY	129	30	156,490
LARCENY	750	386	374,797
MOTOR VEHICLE THEFT	76	33	467,715
INDEX TOTAL	989	474	\$ 1,003,117
*ARSON	4	2	0

AGENCY: NEWTOWN P.D.

POPULATION: 21,450

INDEX CRIME	OFFENSES	CLEARANCES	VALUE OF PROPERTY STOLEN
MURDER	0	0	0
RAPE	1	0	0
ROBBERY	1	0	\$ 4,000
AGGRAVATED ASSAULT	5	3	N/A
BURGLARY	131	1	176,331
LARCENY	134	1	75,664
MOTOR VEHICLE THEFT	15	0	88,084
INDEX TOTAL	287	5	\$ 344,079
*ARSON	7	0	\$ 192,350

*ARSON NOT INCLUDED IN CRIME INDEX TOTAL

AGENCY: NORTH BRANFORD P.D.

POPULATION: 13,265

INDEX CRIME	OFFENSES	CLEARANCES	VALUE OF PROPERTY STOLEN
MURDER	0	0	0
RAPE	0	0	0
ROBBERY	1	0	\$ 438
AGGRAVATED ASSAULT	1	1	N/A
BURGLARY	105	11	145,528
LARCENY	138	16	65,532
MOTOR VEHICLE THEFT	17	7	55,623
INDEX TOTAL	262	35	\$ 267,121
*ARSON	6	0	\$ 4,200

AGENCY: NORTH HAVEN P.D.

POPULATION: 22,502

INDEX CRIME	OFFENSES	CLEARANCES	VALUE OF PROPERTY STOLEN
MURDER	1	1	\$ 4,500
RAPE	0	0	0
ROBBERY	19	16	5,590
AGGRAVATED ASSAULT	35	36	N/A
BURGLARY	178	32	230,761
LARCENY	616	232	327,489
MOTOR VEHICLE THEFT	146	12	1,086,631
INDEX TOTAL	995	329	\$ 1,654,971
*ARSON	0	0	0

*ARSON NOT INCLUDED IN CRIME INDEX TOTAL

AGENCY: NORWALK P.D.

POPULATION: 76,271

INDEX CRIME	OFFENSES	CLEARANCES	VALUE OF PROPERTY STOLEN
MURDER	6	6	0
RAPE	20	10	0
ROBBERY	169	31	\$ 91,494
AGGRAVATED ASSAULT	95	56	N/A
BURGLARY	1,307	74	1,310,722
LARCENY	2,975	502	1,395,809
MOTOR VEHICLE THEFT	709	44	4,465,083
INDEX TOTAL	5,281	723	\$ 7,263,108
*ARSON	16	2	\$ 20,900

AGENCY: NORWICH P.D.

POPULATION: 37,459

INDEX CRIME	OFFENSES	CLEARANCES	VALUE OF PROPERTY STOLEN
MURDER	4	0	0
RAPE	28	17	0
ROBBERY	30	12	\$ 3,968
AGGRAVATED ASSAULT	117	98	N/A
BURGLARY	370	93	213,347
LARCENY	1,090	389	414,945
MOTOR VEHICLE THEFT	128	30	572,127
INDEX TOTAL	1,767	639	\$ 1,204,387
*ARSON	21	5	\$ 1,224,580

*ARSON NOT INCLUDED IN CRIME INDEX TOTAL

AGENCY: OLD SAYBROOK P.D.

POPULATION: 9,828

INDEX CRIME	OFFENSES	CLEARANCES	VALUE OF PROPERTY STOLEN
MURDER	0	0	0
RAPE	2	0	0
ROBBERY	1	1	\$ 108
AGGRAVATED ASSAULT	4	8	N/A
BURGLARY	56	5	127,794
LARCENY	315	116	300,529
MOTOR VEHICLE THEFT	29	3	199,285
INDEX TOTAL	407	133	\$ 627,716
*ARSON	0	0	0

AGENCY: ORANGE P.D.

POPULATION: 13,114

INDEX CRIME	OFFENSES	CLEARANCES	VALUE OF PROPERTY STOLEN
MURDER	0	0	0
RAPE	2	0	0
ROBBERY	14	11	\$ 6,649
AGGRAVATED ASSAULT	11	8	N/A
BURGLARY	124	22	369,770
LARCENY	716	561	217,273
MOTOR VEHICLE THEFT	84	7	796,844
INDEX TOTAL	951	609	\$ 1,390,536
*ARSON	1	2	\$ 500

*ARSON NOT INCLUDED IN CRIME INDEX TOTAL

AGENCY: PLAINFIELD P.D.

POPULATION: 14,066

INDEX CRIME	OFFENSES	CLEARANCES	VALUE OF PROPERTY STOLEN
MURDER	0	0	0
RAPE	1	0	0
ROBBERY	0	0	0
AGGRAVATED ASSAULT	12	12	N/A
BURGLARY	68	12	\$ 169,311
LARCENY	109	18	77,121
MOTOR VEHICLE THEFT	28	6	105,349
INDEX TOTAL	218	48	\$ 351,781
*ARSON	2	0	\$ 6,000

AGENCY: PLAINVILLE P.D.

POPULATION: 17,793

INDEX CRIME	OFFENSES	CLEARANCES	VALUE OF PROPERTY STOLEN
MURDER	0	0	0
RAPE	1	0	0
ROBBERY	8	1	\$ 1,125
AGGRAVATED ASSAULT	6	6	N/A
BURGLARY	119	8	104,491
LARCENY	318	35	135,259
MOTOR VEHICLE THEFT	42	15	279,900
INDEX TOTAL	494	65	\$ 520,775
*ARSON	4	0	\$ 111,625

*ARSON NOT INCLUDED IN CRIME INDEX TOTAL

AGENCY: PLYMOUTH P.D.

POPULATION: 11,521

INDEX CRIME	OFFENSES	CLEARANCES	VALUE OF PROPERTY STOLEN
MURDER	1	1	0
RAPE	4	2	0
ROBBERY	2	1	\$ 700
AGGRAVATED ASSAULT	6	2	N/A
BURGLARY	91	11	91,800
LARCENY	156	11	55,377
MOTOR VEHICLE THEFT	40	1	138,644
INDEX TOTAL	300	29	\$ 286,521
*ARSON	6	3	\$ 745,400

AGENCY: PUTNAM P.D. (MUNICIPAL)

POPULATION: 6,800

INDEX CRIME	OFFENSES	CLEARANCES	VALUE OF PROPERTY STOLEN
MURDER	0	0	0
RAPE	2	1	0
ROBBERY	1	1	0
AGGRAVATED ASSAULT	15	14	N/A
BURGLARY	26	3	\$ 14,288
LARCENY	167	44	32,380
MOTOR VEHICLE THEFT	14	4	52,300
INDEX TOTAL	225	67	\$ 98,968
*ARSON	0	0	0

*ARSON NOT INCLUDED IN CRIME INDEX TOTAL

AGENCY: RIDGEFIELD P.D.

POPULATION: 21,470

INDEX CRIME	OFFENSES	CLEARANCES	VALUE OF PROPERTY STOLEN
MURDER	0	0	0
RAPE	0	0	0
ROBBERY	1	0	\$ 60
AGGRAVATED ASSAULT	9	8	N/A
BURGLARY	82	19	138,942
LARCENY	97	36	121,265
MOTOR VEHICLE THEFT	17	0	126,650
INDEX TOTAL	206	63	\$ 386,917
*ARSON	2	0	\$ 13,000

AGENCY: ROCKY HILL P.D.

POPULATION: 16,200

INDEX CRIME	OFFENSES	CLEARANCES	VALUE OF PROPERTY STOLEN
MURDER	1	0	0
RAPE	4	2	0
ROBBERY	7	3	\$ 2,110
AGGRAVATED ASSAULT	5	2	N/A
BURGLARY	99	9	128,280
LARCENY	329	65	194,234
MOTOR VEHICLE THEFT	56	4	419,336
INDEX TOTAL	501	85	\$ 743,960
*ARSON	6	9	0

*ARSON NOT INCLUDED IN CRIME INDEX TOTAL

AGENCY: SEYMOUR P.D.

POPULATION: 14,086

INDEX CRIME	OFFENSES	CLEARANCES	VALUE OF PROPERTY STOLEN
MURDER	0	0	0
RAPE	0	0	0
ROBBERY	10	6	\$ 11,696
AGGRAVATED ASSAULT	45	45	N/A
BURGLARY	89	15	57,573
LARCENY	163	41	210,196
MOTOR VEHICLE THEFT	45	26	161,800
INDEX TOTAL	352	133	\$ 441,265
*ARSON	3	2	\$ 69,450

AGENCY: SHELTON P.D.

POPULATION: 36,498

INDEX CRIME	OFFENSES	CLEARANCES	VALUE OF PROPERTY STOLEN
MURDER	0	0	0
RAPE	5	4	0
ROBBERY	6	2	\$ 949
AGGRAVATED ASSAULT	27	25	N/A
BURGLARY	168	29	176,923
LARCENY	377	101	249,010
MOTOR VEHICLE THEFT	109	3	746,634
INDEX TOTAL	692	164	\$ 1,173,516
*ARSON	1	0	\$ 500

*ARSON NOT INCLUDED IN CRIME INDEX TOTAL

AGENCY: SIMSBURY P.D.

POPULATION: 22,632

INDEX CRIME	OFFENSES	CLEARANCES	VALUE OF PROPERTY STOLEN
MURDER	0	0	0
RAPE	0	0	0
ROBBERY	6	3	\$ 3,928
AGGRAVATED ASSAULT	2	2	N/A
BURGLARY	57	17	113,903
LARCENY	222	75	143,053
MOTOR VEHICLE THEFT	18	1	184,582
INDEX TOTAL	305	98	\$ 445,466
*ARSON	0	0	0

AGENCY: SOUTH WINDSOR P.D.

POPULATION: 21,991

INDEX CRIME	OFFENSES	CLEARANCES	VALUE OF PROPERTY STOLEN
MURDER	0	0	0
RAPE	1	1	0
ROBBERY	7	4	\$ 2,840
AGGRAVATED ASSAULT	9	3	N/A
BURGLARY	90	17	124,406
LARCENY	289	46	303,968
MOTOR VEHICLE THEFT	32	18	245,222
INDEX TOTAL	428	89	\$ 676,436
*ARSON	1	0	\$ 58,000

*ARSON NOT INCLUDED IN CRIME INDEX TOTAL

AGENCY: SOUTHLINGTON P.D.

POPULATION: 40,635

INDEX CRIME	OFFENSES	CLEARANCES	VALUE OF PROPERTY STOLEN
MURDER	1	0	0
RAPE	4	3	0
ROBBERY	11	3	\$ 14,895
AGGRAVATED ASSAULT	24	19	N/A
BURGLARY	285	37	181,472
LARCENY	715	205	428,172
MOTOR VEHICLE THEFT	55	4	321,849
INDEX TOTAL	1,095	271	\$ 946,388
*ARSON	4	0	\$ 5,800

AGENCY: STAMFORD P.D.

POPULATION: 100,446

INDEX CRIME	OFFENSES	CLEARANCES	VALUE OF PROPERTY STOLEN
MURDER	9	5	0
RAPE	19	4	0
ROBBERY	269	35	\$ 97,777
AGGRAVATED ASSAULT	279	208	N/A
BURGLARY	1,602	177	1,237,252
LARCENY	3,993	752	2,017,136
MOTOR VEHICLE THEFT	965	35	6,750,808
INDEX TOTAL	7,136	1,216	\$ 10,102,973
*ARSON	43	0	\$ 745,500

*ARSON NOT INCLUDED IN CRIME INDEX TOTAL

AGENCY: STONINGTON P.D.

POPULATION: 16,641

INDEX CRIME	OFFENSES	CLEARANCES	VALUE OF PROPERTY STOLEN
MURDER	0	1	0
RAPE	1	0	0
ROBBERY	5	3	\$ 3,686
AGGRAVATED ASSAULT	3	2	N/A
BURGLARY	115	13	121,544
LARCENY	392	45	237,419
MOTOR VEHICLE THEFT	25	0	125,282
INDEX TOTAL	541	64	\$ 487,931
*ARSON	3	1	\$ 36,500

AGENCY: STRATFORD P.D.

POPULATION: 50,073

INDEX CRIME	OFFENSES	CLEARANCES	VALUE OF PROPERTY STOLEN
MURDER	3	2	0
RAPE	18	14	0
ROBBERY	47	10	\$ 17,217
AGGRAVATED ASSAULT	30	22	N/A
BURGLARY	447	43	268,600
LARCENY	1,106	449	403,235
MOTOR VEHICLE THEFT	559	42	3,912,550
INDEX TOTAL	2,210	582	\$ 4,601,602
*ARSON	29	0	\$ 955,900

*ARSON NOT INCLUDED IN CRIME INDEX TOTAL

AGENCY: SUFFIELD P.D.

POPULATION: 11,391

INDEX CRIME	OFFENSES	CLEARANCES	VALUE OF PROPERTY STOLEN
MURDER	1	1	0
RAPE	2	0	0
ROBBERY	3	0	\$ 1,807
AGGRAVATED ASSAULT	5	5	N/A
BURGLARY	44	4	30,096
LARCENY	117	12	71,625
MOTOR VEHICLE THEFT	22	2	161,000
INDEX TOTAL	194	24	\$ 264,528
*ARSON	5	1	\$ 65,100

AGENCY: THOMASTON P.D.

POPULATION: 6,532

INDEX CRIME	OFFENSES	CLEARANCES	VALUE OF PROPERTY STOLEN
MURDER	0	0	0
RAPE	2	1	0
ROBBERY	0	0	0
AGGRAVATED ASSAULT	13	12	N/A
BURGLARY	39	6	\$ 90,666
LARCENY	47	2	37,605
MOTOR VEHICLE THEFT	17	2	54,600
INDEX TOTAL	118	23	\$ 182,871
*ARSON	0	0	0

*ARSON NOT INCLUDED IN CRIME INDEX TOTAL

AGENCY: TORRINGTON P.D.

POPULATION: 31,458

INDEX CRIME	OFFENSES	CLEARANCES	VALUE OF PROPERTY STOLEN
MURDER	1	1	0
RAPE	20	8	0
ROBBERY	14	3	\$ 8,525
AGGRAVATED ASSAULT	35	29	N/A
BURGLARY	165	11	149,252
LARCENY	725	137	220,853
MOTOR VEHICLE THEFT	119	14	388,931
INDEX TOTAL	1,079	203	\$ 767,561
*ARSON	11	0	\$ 113,700

AGENCY: TRUMBULL P.D.

POPULATION: 32,911

INDEX CRIME	OFFENSES	CLEARANCES	VALUE OF PROPERTY STOLEN
MURDER	0	0	0
RAPE	0	0	0
ROBBERY	10	2	\$ 5,209
AGGRAVATED ASSAULT	6	0	N/A
BURGLARY	147	3	212,612
LARCENY	907	165	443,962
MOTOR VEHICLE THEFT	191	4	1,569,732
INDEX TOTAL	1,261	174	\$ 2,231,515
*ARSON	0	0	0

*ARSON NOT INCLUDED IN CRIME INDEX TOTAL

AGENCY: VERNON P.D.

POPULATION: 28,553

INDEX CRIME	OFFENSES	CLEARANCES	VALUE OF PROPERTY STOLEN
MURDER	1	1	0
RAPE	8	3	0
ROBBERY	15	8	\$ 4,374
AGGRAVATED ASSAULT	66	49	N/A
BURGLARY	193	38	176,126
LARCENY	518	133	271,092
MOTOR VEHICLE THEFT	64	16	306,650
INDEX TOTAL	865	248	\$ 758,242
*ARSON	4	1	0

AGENCY: WALLINGFORD P.D.

POPULATION: 40,916

INDEX CRIME	OFFENSES	CLEARANCES	VALUE OF PROPERTY STOLEN
MURDER	0	0	0
RAPE	6	1	0
ROBBERY	14	5	\$ 2,117
AGGRAVATED ASSAULT	43	21	N/A
BURGLARY	392	22	1,263,986
LARCENY	803	147	310,592
MOTOR VEHICLE THEFT	201	39	1,340,343
INDEX TOTAL	1,459	235	\$ 2,917,038
*ARSON	3	0	\$ 5,600

*ARSON NOT INCLUDED IN CRIME INDEX TOTAL

AGENCY: WATERBURY P.D.

POPULATION: 104,714

INDEX CRIME	OFFENSES	CLEARANCES	VALUE OF PROPERTY STOLEN
MURDER	6	3	0
RAPE	31	14	0
ROBBERY	282	76	\$ 63,878
AGGRAVATED ASSAULT	251	116	N/A
BURGLARY	2,492	276	1,226,349
LARCENY	5,420	1,640	1,514,289
MOTOR VEHICLE THEFT	1,174	117	6,725,670
INDEX TOTAL	9,656	2,242	\$ 9,530,186
*ARSON	29	9	\$ 243,200

AGENCY: WATERFORD P.D.

POPULATION: 17,593

INDEX CRIME	OFFENSES	CLEARANCES	VALUE OF PROPERTY STOLEN
MURDER	2	3	0
RAPE	6	5	0
ROBBERY	11	6	\$ 26,372
AGGRAVATED ASSAULT	34	31	N/A
BURGLARY	95	33	62,469
LARCENY	645	480	252,156
MOTOR VEHICLE THEFT	37	23	287,725
INDEX TOTAL	830	581	\$ 628,722
*ARSON	4	0	\$ 39,025

*ARSON NOT INCLUDED IN CRIME INDEX TOTAL

AGENCY: WATERTOWN P.D.

POPULATION: 19,947

INDEX CRIME	OFFENSES	CLEARANCES	VALUE OF PROPERTY STOLEN
MURDER	0	0	0
RAPE	2	1	0
ROBBERY	5	2	\$ 1,960
AGGRAVATED ASSAULT	11	9	N/A
BURGLARY	100	9	64,007
LARCENY	403	72	331,400
MOTOR VEHICLE THEFT	41	12	213,353
INDEX TOTAL	562	105	\$ 610,720
*ARSON	4	0	0

AGENCY: WEST HARTFORD P.D.

POPULATION: 58,468

INDEX CRIME	OFFENSES	CLEARANCES	VALUE OF PROPERTY STOLEN
MURDER	0	0	0
RAPE	8	4	\$ 420
ROBBERY	80	32	146,796
AGGRAVATED ASSAULT	47	29	N/A
BURGLARY	569	87	746,372
LARCENY	1,699	645	639,940
MOTOR VEHICLE THEFT	249	21	1,562,651
INDEX TOTAL	2,652	818	\$ 3,096,179
*ARSON	15	5	\$ 295,520

*ARSON NOT INCLUDED IN CRIME INDEX TOTAL

AGENCY: WEST HAVEN P.D.

POPULATION: 53,379

INDEX CRIME	OFFENSES	CLEARANCES	VALUE OF PROPERTY STOLEN
MURDER	3	3	0
RAPE	6	1	0
ROBBERY	73	19	\$ 60,347
AGGRAVATED ASSAULT	138	104	N/A
BURGLARY	729	54	458,039
LARCENY	1,619	212	520,387
MOTOR VEHICLE THEFT	529	43	2,469,260
INDEX TOTAL	3,097	436	\$ 3,508,033
*ARSON	23	4	0

AGENCY: WESTON P.D.

POPULATION: 8,586

INDEX CRIME	OFFENSES	CLEARANCES	VALUE OF PROPERTY STOLEN
MURDER	0	0	0
RAPE	0	0	0
ROBBERY	0	0	0
AGGRAVATED ASSAULT	0	1	N/A
BURGLARY	23	10	\$ 60,125
LARCENY	48	17	36,228
MOTOR VEHICLE THEFT	3	2	10,000
INDEX TOTAL	74	30	\$ 106,353
*ARSON	0	0	0

*ARSON NOT INCLUDED IN CRIME INDEX TOTAL

AGENCY: WESTPORT P.D.

POPULATION: 24,896

INDEX CRIME	OFFENSES	CLEARANCES	VALUE OF PROPERTY STOLEN
MURDER	2	1	0
RAPE	2	1	0
ROBBERY	4	2	\$ 22,670
AGGRAVATED ASSAULT	24	10	N/A
BURGLARY	141	5	163,217
LARCENY	636	92	578,896
MOTOR VEHICLE THEFT	97	50	969,400
INDEX TOTAL	906	161	\$ 1,734,183
*ARSON	2	0	\$ 10,000

AGENCY: WETHERSFIELD P.D.

POPULATION: 25,968

INDEX CRIME	OFFENSES	CLEARANCES	VALUE OF PROPERTY STOLEN
MURDER	2	1	0
RAPE	2	0	0
ROBBERY	24	17	\$ 16,220
AGGRAVATED ASSAULT	46	43	N/A
BURGLARY	84	30	86,368
LARCENY	516	203	236,849
MOTOR VEHICLE THEFT	76	9	335,223
INDEX TOTAL	750	303	\$ 674,660
*ARSON	3	2	\$ 700

*ARSON NOT INCLUDED IN CRIME INDEX TOTAL

AGENCY: WILLIMANTIC P.D.

POPULATION: 15,247

INDEX CRIME	OFFENSES	CLEARANCES	VALUE OF PROPERTY STOLEN
MURDER	0	0	0
RAPE	4	1	0
ROBBERY	22	17	\$ 1,557
AGGRAVATED ASSAULT	16	8	N/A
BURGLARY	387	44	151,030
LARCENY	882	269	174,634
MOTOR VEHICLE THEFT	64	15	345,743
INDEX TOTAL	1,375	354	\$ 672,964
*ARSON	19	2	\$ 354,900

AGENCY: WILTON P.D.

POPULATION: 16,120

INDEX CRIME	OFFENSES	CLEARANCES	VALUE OF PROPERTY STOLEN
MURDER	0	0	0
RAPE	0	0	0
ROBBERY	1	1	\$ 1,150
AGGRAVATED ASSAULT	2	2	N/A
BURGLARY	47	10	78,171
LARCENY	155	39	182,944
MOTOR VEHICLE THEFT	15	8	130,852
INDEX TOTAL	220	60	\$ 393,117
*ARSON	1	0	\$ 6,000

*ARSON NOT INCLUDED IN CRIME INDEX TOTAL

AGENCY: WINDSOR LOCKS P.D.

POPULATION: 12,092

INDEX CRIME	OFFENSES	CLEARANCES	VALUE OF PROPERTY STOLEN
MURDER	0	0	0
RAPE	0	0	0
ROBBERY	6	3	\$ 2,020
AGGRAVATED ASSAULT	21	13	N/A
BURGLARY	66	12	82,070
LARCENY	235	42	137,633
MOTOR VEHICLE THEFT	44	11	543,570
INDEX TOTAL	372	81	\$ 765,293
*ARSON	0	0	0

AGENCY: WINDSOR P.D.

POPULATION: 27,611

INDEX CRIME	OFFENSES	CLEARANCES	VALUE OF PROPERTY STOLEN
MURDER	0	0	0
RAPE	12	6	0
ROBBERY	17	8	\$ 9,114
AGGRAVATED ASSAULT	15	14	N/A
BURGLARY	161	26	249,887
LARCENY	605	189	315,062
MOTOR VEHICLE THEFT	67	33	437,420
INDEX TOTAL	877	276	\$ 1,011,483
*ARSON	3	0	\$ 1,000

*ARSON NOT INCLUDED IN CRIME INDEX TOTAL

AGENCY: WINSTED P.D.

POPULATION: 11,510

INDEX CRIME	OFFENSES	CLEARANCES	VALUE OF PROPERTY STOLEN
MURDER	0	0	0
RAPE	0	0	0
ROBBERY	2	0	\$ 60
AGGRAVATED ASSAULT	16	11	N/A
BURGLARY	33	7	6,830
LARCENY	178	16	1,098,209
MOTOR VEHICLE THEFT	14	8	645,500
INDEX TOTAL	243	42	\$ 1,750,599
*ARSON	1	0	\$ 500

AGENCY: WOLCOTT P.D.

POPULATION: 13,305

INDEX CRIME	OFFENSES	CLEARANCES	VALUE OF PROPERTY STOLEN
MURDER	1	1	0
RAPE	0	0	0
ROBBERY	7	7	\$ 1,028
AGGRAVATED ASSAULT	2	2	N/A
BURGLARY	80	52	119,913
LARCENY	192	115	91,280
MOTOR VEHICLE THEFT	24	2	92,665
INDEX TOTAL	306	179	\$ 304,886
*ARSON	2	2	\$ 121,000

*ARSON NOT INCLUDED IN CRIME INDEX TOTAL

AGENCY: WOODBRIDGE P.D.

POPULATION: 8,115

INDEX CRIME	OFFENSES	CLEARANCES	VALUE OF PROPERTY STOLEN
MURDER	0	0	0
RAPE	1	1	0
ROBBERY	2	1	\$ 1,087
AGGRAVATED ASSAULT	0	1	N/A
BURGLARY	47	6	182,760
LARCENY	69	22	49,925
MOTOR VEHICLE THEFT	21	1	254,300
INDEX TOTAL	140	32	\$ 488,072
*ARSON	1	0	\$ 100,000

AGENCY: CENTRAL CT ST UNIV P.D.

POPULATION: ---

INDEX CRIME	OFFENSES	CLEARANCES	VALUE OF PROPERTY STOLEN
MURDER	0	0	0
RAPE	0	0	0
ROBBERY	0	0	0
AGGRAVATED ASSAULT	1	1	N/A
BURGLARY	3	1	\$ 20
LARCENY	90	23	21,215
MOTOR VEHICLE THEFT	2	0	6,500
INDEX TOTAL	96	25	\$ 27,735
*ARSON	0	0	0

*ARSON NOT INCLUDED IN CRIME INDEX TOTAL

AGENCY: EASTERN CT ST UNIV P.D.

POPULATION: ---

INDEX CRIME	OFFENSES	CLEARANCES	VALUE OF PROPERTY STOLEN
MURDER	0	0	0
RAPE	0	0	0
ROBBERY	0	0	0
AGGRAVATED ASSAULT	3	3	N/A
BURGLARY	7	0	\$ 462
LARCENY	124	9	17,224
MOTOR VEHICLE THEFT	3	1	3,000
INDEX TOTAL	137	13	\$ 20,686
*ARSON	0	0	0

AGENCY: SOUTHERN CT ST UNIV P.D.

POPULATION: ---

INDEX CRIME	OFFENSES	CLEARANCES	VALUE OF PROPERTY STOLEN
MURDER	0	0	0
RAPE	1	1	0
ROBBERY	0	0	0
AGGRAVATED ASSAULT	3	0	N/A
BURGLARY	6	2	\$ 302
LARCENY	111	0	31,695
MOTOR VEHICLE THEFT	27	0	186,600
INDEX TOTAL	148	3	\$ 218,597
*ARSON	0	0	0

*ARSON NOT INCLUDED IN CRIME INDEX TOTAL

AGENCY: UCONN AVERY PT P.D.

POPULATION: ---

INDEX CRIME	OFFENSES	CLEARANCES	VALUE OF PROPERTY STOLEN
MURDER	0	0	0
RAPE	0	0	0
ROBBERY	0	0	0
AGGRAVATED ASSAULT	0	0	N/A
BURGLARY	4	0	\$ 2,263
LARCENY	14	0	1,370
MOTOR VEHICLE THEFT	0	0	0
INDEX TOTAL	18	0	\$ 3,633
*ARSON	0	0	0

AGENCY: UCONN HEALTH CENTER P.D.

POPULATION: ---

INDEX CRIME	OFFENSES	CLEARANCES	VALUE OF PROPERTY STOLEN
MURDER	0	0	0
RAPE	0	0	0
ROBBERY	0	0	0
AGGRAVATED ASSAULT	0	0	N/A
BURGLARY	5	0	\$ 500
LARCENY	130	11	47,245
MOTOR VEHICLE THEFT	1	1	1,000
INDEX TOTAL	136	12	\$ 48,745
*ARSON	0	0	0

*ARSON NOT INCLUDED IN CRIME INDEX TOTAL

AGENCY: UNIVERSITY OF CT P.D.

POPULATION: ---

INDEX CRIME	OFFENSES	CLEARANCES	VALUE OF PROPERTY STOLEN
MURDER	0	0	0
RAPE	3	0	0
ROBBERY	2	0	\$ 120
AGGRAVATED ASSAULT	8	3	N/A
BURGLARY	120	19	46,274
LARCENY	418	45	85,944
MOTOR VEHICLE THEFT	6	0	8,800
INDEX TOTAL	557	67	\$ 141,138
*ARSON	3	0	\$ 260

AGENCY: WESTERN CT ST UNIV P.D.

POPULATION: ---

INDEX CRIME	OFFENSES	CLEARANCES	VALUE OF PROPERTY STOLEN
MURDER	0	0	0
RAPE	0	0	0
ROBBERY	0	0	0
AGGRAVATED ASSAULT	3	2	N/A
BURGLARY	38	5	\$ 21,861
LARCENY	61	7	18,878
MOTOR VEHICLE THEFT	1	1	1,500
INDEX TOTAL	103	15	\$ 42,239
*ARSON	0	0	0

*ARSON NOT INCLUDED IN CRIME INDEX TOTAL

AGENCY: YALE UNIVERSITY P.D.

POPULATION: ---

INDEX CRIME	OFFENSES	CLEARANCES	VALUE OF PROPERTY STOLEN
MURDER	0	0	0
RAPE	0	0	0
ROBBERY	10	1	\$ 599
AGGRAVATED ASSAULT	2	0	N/A
BURGLARY	386	33	152,584
LARCENY	747	14	365,852
MOTOR VEHICLE THEFT	45	0	135,150
INDEX TOTAL	1,190	48	\$ 654,185
*ARSON	2	0	0

AGENCY: CONNECTICUT STATE POLICE

POPULATION: 451,365

INDEX CRIME	OFFENSES	CLEARANCES	VALUE OF PROPERTY STOLEN
MURDER	15	10	\$ 14,870
RAPE	80	44	2,901
ROBBERY	130	42	149,389
AGGRAVATED ASSAULT	1,066	846	N/A
BURGLARY	3,416	451	4,951,112
LARCENY	4,268	957	4,951,094
MOTOR VEHICLE THEFT	836	222	5,042,460
INDEX TOTAL	9,811	2,572	\$ 15,111,826
*ARSON	109	10	\$ 2,210,391

*ARSON NOT INCLUDED IN CRIME INDEX TOTAL

STATE POLICE CRIME INDEX OFFENSES BY TOWN

TOWN	AGGRAVATED							TOTAL
	MURDER	RAPE	ROBBERY	ASSAULT	BURGLARY	LARCENY	MVT	
ANDOVER	0	0	0	2	19	19	3	43
ASHFORD	0	0	0	13	53	28	6	100
BARKHAMSTED	0	1	0	4	23	25	4	57
BEACON FALLS	0	0	1	13	19	40	10	83
BETHANY	0	0	0	2	24	27	4	57
BETHLEHEM	0	0	0	2	7	16	3	28
BOLTON	0	0	1	5	28	38	4	76
BOZRAH	0	2	0	5	29	33	1	70
BRIDGEWATER	0	1	0	3	6	7	1	18
BROOKLYN	0	0	0	13	61	63	14	151
BURLINGTON	0	1	1	10	48	33	4	97
CANAAN	0	0	0	2	3	3	0	8
CANTERBURY	0	1	0	4	29	17	1	52
CHAPLIN	0	0	0	4	19	22	6	51
CHESTER	2	0	0	4	22	18	5	51
COLCHESTER	0	0	1	28	51	143	13	236
COLEBROOK	0	0	0	3	16	6	0	25
COLUMBIA	0	0	1	5	39	50	9	104
CORNWALL	0	0	0	1	19	50	1	71
DEEP RIVER	0	1	1	11	32	42	10	97
DURHAM	0	0	2	6	42	35	9	94
EASTFORD	0	0	0	2	29	10	0	41
EAST GRANBY	0	0	2	7	12	33	5	59
EAST HADDAM	0	1	1	11	74	46	7	140
EAST LYME	2	1	1	48	89	165	20	326
ELLINGTON	0	1	5	20	112	67	19	224
ESSEX	0	1	2	11	22	71	11	118

TOWN	AGGRAVATED							TOTAL
	MURDER	RAPE	ROBBERY	ASSAULT	BURGLARY	LARCENY	MVT	
FRANKLIN	0	0	3	7	18	37	3	68
GOSHEN	0	0	2	3	15	14	0	34
GRISWOLD	0	2	0	13	34	60	9	118
HADDAM	0	0	0	7	47	48	5	107
HAMPTON	0	1	0	0	16	3	2	22
HARTLAND	0	0	0	0	10	2	3	15
HARWINTON	1	0	2	3	29	20	5	60
HEBRON	1	0	0	6	27	31	2	67
KENT	0	0	0	5	28	40	2	75
KILLINGLY	0	8	5	83	211	203	40	550
KILLINGWORTH	0	0	0	3	22	17	1	43
LEBANON	0	0	0	12	35	28	5	80
LEDYARD	0	0	0	24	48	107	9	188
LISBON	0	1	1	11	24	59	3	99
LITCHFIELD	0	1	0	12	45	74	15	147
LYME	0	0	0	0	7	13	2	22
MANSFIELD	0	3	3	30	224	243	19	522
MARLBOROUGH	0	0	0	4	31	25	1	61
MIDDLEFIELD	0	1	1	5	34	53	8	102
MONTVILLE	1	5	5	43	71	150	14	289
MORRIS	0	0	0	1	21	20	1	43
NEW FAIRFIELD	2	1	0	13	37	72	6	131
NEW HARTFORD	0	1	1	5	23	28	4	62
NORFOLK	0	0	1	1	13	17	3	35
NORTH CANAAN	0	1	0	13	19	33	3	69
NO. STONINGTON	0	1	2	7	34	43	8	95
OLD LYME	0	0	1	13	26	76	6	122
OXFORD	1	1	2	12	63	48	13	140
POMFRET	0	2	0	2	31	22	7	64