

STATE DEPARTMENT OF CORRECTIONS

# Annual Report

DEPARTMENT  
OF  
WELFARE  
AND  
INSTITUTIONS



Commonwealth of Virginia

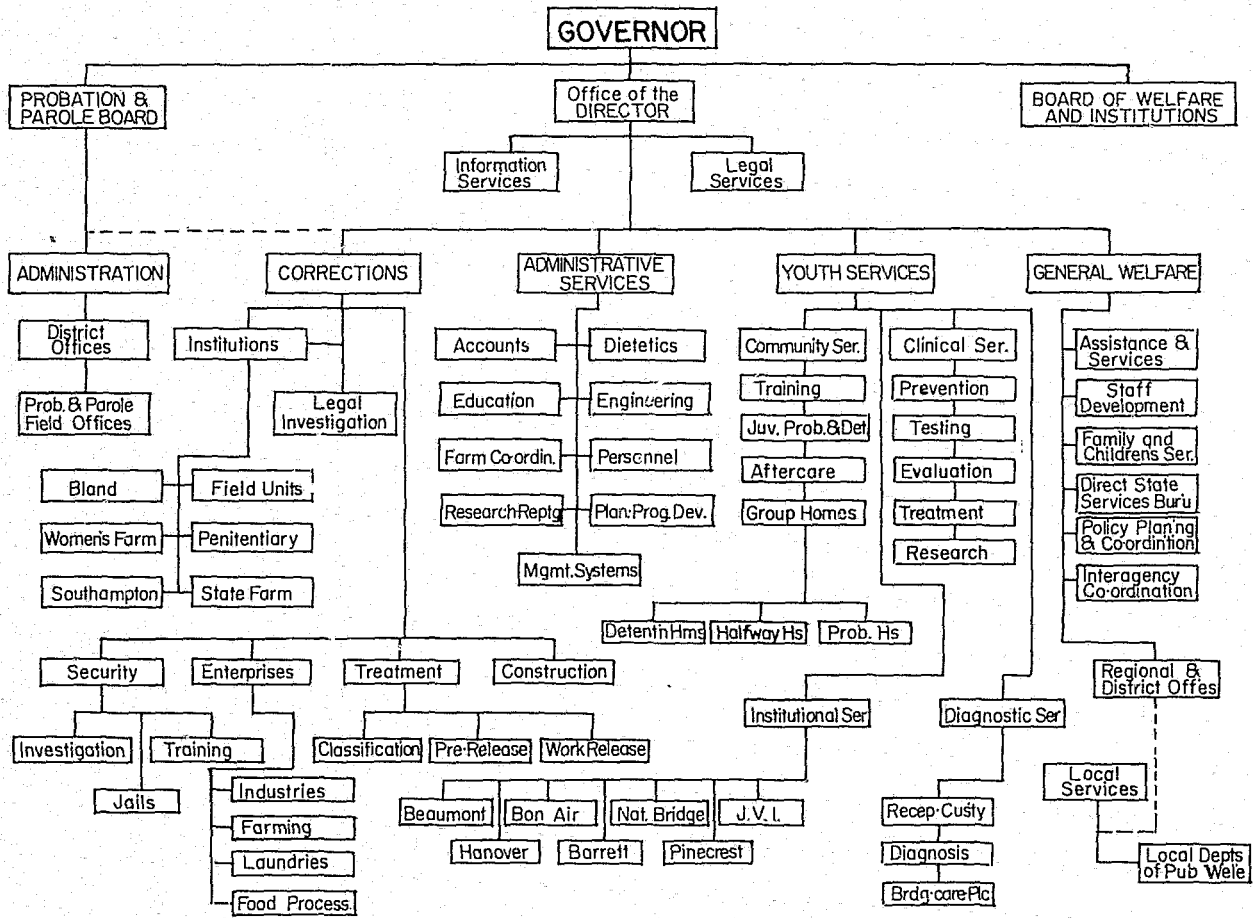
LINWOOD HOLTON

*Governor*

**ANNUAL REPORT**

July 1, 1971—June 30, 1972

VIRGINIA DEPARTMENT OF WELFARE AND INSTITUTIONS



Serving Virginia

In the Areas of . . .

- Corrections
- Probation and Parole
- Public Welfare
- Youth Services

OTIS L. BROWN  
Director

WILLIAM L. LUKHARD  
Assistant Director

Otis L. Brown assumed the duties of Secretary of Human Affairs on July 24, 1972. William C. Larkhard succeeded him as Director of the Department of Welfare and Institutions on August 1.

# State Board of Welfare and Institutions

(The Officers and Members of the Board shown below served during the fiscal year which ended June 30, 1972. The Board elects new officers from the membership at the beginning of each fiscal year.)

SENATOR J. HUBERT WHEELER, *Chairman*  
Ewing

ROBERT P. TRICE, M.D., *Vice-Chairman*  
Richmond

VICTOR J. ASHE, *Secretary*  
Norfolk

THE HON. ELMON T. GRAY  
Waverly

MRS. JANET MAYS  
Norfolk

CLARENCE PRESTON PENN, JR.  
Keysville

PHILIP JAMES ALLEN, Ph.D.  
Fredericksburg

HARVEY B. COHEN  
Arlington

R. FRANKLIN HOUGH, JR.  
Salem

## Table of Contents

	<i>Page</i>
Organizational Chart .....	2
State Board of Welfare and Institutions.....	4
Putting the Year in Perspective—A Review.....	7
FINANCIAL AND STATISTICAL TABLES	
Table I—Summary of Departmental Expenditures by Major Activity, Source of Funds Expended and Sources of Institutional Earnings .....	15
Table II—Cases and Average Grants—June 1953-1972.....	16
Table III—Public Assistance: Cases Receiving Financial Assistance and Amount of Assistance by Program and Month.....	17
Table IV—Expenditures for Public Assistance and Hospitalization of the Indigent According to Counties and Cities.....	18
Table V—Hospitalization Under the State and Local Program for the Indigent and the Public Assistance Programs.....	21
Table VI—Child Welfare Services Provided by Local Departments of Public Welfare.....	22
Table VII—Children Under Care of the Division of Youth Services	23
Table VIII—Virginia Training Schools—Per Capita Cost Statement	27
Table IX—Virginia Correctional Institutions—Per Capita Cost Statement .....	28
Table X—Distribution of Population in the Correctional Institutions .....	29
Table XI—Changes in Felon Population.....	30
Table XII—Comparison by Years of Felons Committed to Receiving Unit of Correctional System.....	32

**Financial and Statistical Tables—Continued**

	<i>Page</i>
Table XIII—Misdemeanants Committed to the State Farm, Bland Correctional Farm, Southampton Correctional Farm, State Convict Road Force and State Industrial Farm for Women According to Court of Commitment.....	33
Table XIV—Felons Committed to the Virginia State Penal System (By Court Committed from, According to Race and Sex)	35
Table XV—Jail Commitments and Prisoner Days by Months.....	38
Table XVI—Jail Commitments and Prisoner Days for the Past Ten Years .....	38
Table XVII—Total Cases Under Supervision.....	39
Table XVIII—Total Parolees Under Supervision.....	39
Table XIX—Total Probationers Under Supervision.....	39
Table XX—Total Pardonees Under Supervision.....	40
Table XXI—Out of State Cases in Virginia.....	40
Table XXII—Virginia Cases Being Supervised by Other States....	40

## Putting the Year in Perspective

The 1971-1972 fiscal year was a year of "beginnings" and long-range planning for the Virginia Department of Welfare and Institutions.

In the spring of the year, the Division of Corrections began its search for a site on which to construct a new maximum security institution, and the General Assembly gave its approval to the establishment of community-based correctional centers for inmates who do not require secure custody.

"Looking Ahead," a 15-year plan for Virginia's correctional system, was issued during the year.

The Department of Welfare and Institutions and the Department of Vocational Rehabilitation signed a one-year, one-million dollar agreement to expand vocational rehabilitation services to disabled welfare recipients and applicants.

The Division of General Welfare also began a three-year demonstration project to determine which areas of service to disabled welfare recipients need strengthening and expanding.

Decentralized welfare operations reached full stride with the fall opening of the last four of seven regional welfare offices designed to place welfare decision-making closer to the localities.

The Metropolitan Richmond Legal Aid Project opened on November 1. This pilot project, which offers legal services to public welfare recipients, is expected to be the forerunner for an eventual statewide system of legal aid services.

Movement in Probation and Parole during the year has been toward improving staff availability and developing cooperative programs with such agencies and organizations as the Department of Vocational Rehabilitation, American Bar Association, and sister agencies in the Department of Welfare and Institutions.

The Probation and Parole Board granted over twelve hundred paroles during fiscal 1971-72, a new high. Its staff handled a corresponding increase in demands from the courts for probation and presentence services.

The Division of Youth Services began work on a "Court Services Standards Project," which has as its goal the development of uniform services on a statewide basis for the juvenile district courts. The project's recommendations will be presented to the 1973 session of the General Assembly.

## PUBLIC WELFARE

A number of laws enacted by the 1972 session of the Virginia General Assembly will affect welfare recipients and the administration of the public welfare program.

The legislature directed the Virginia Advisory Legislative Council to study the feasibility and desirability of state and local administration of a public welfare program without federal funds.

Beginning in the new fiscal year, local boards and superintendents of public welfare will assist each able-bodied recipient of public assistance between the ages of 18 and 65 in obtaining employment which will restore his economic well-being.

In an effort to curb rising costs in the Aid to Dependent Children program, the legislature enacted a modified "Man in the House" law. The paternity law was strengthened, and, under new legislation, wives will be held responsible for the support of an aged or incapacitated husband.

Day care services were boosted with an appropriation of \$1.8 million which will earn \$0.1 million in federal funds in the coming biennium. Day care services are provided for children whose mothers are enrolled in the Work Incentive (WIN) program and also for children in the Aid to Dependent Children program for whom day care is necessary so that a parent may work or pursue job training or education opportunities.

The state law governing licensing procedures for child welfare agencies was rewritten to permit individuals to provide day care for up to three children without obtaining a license.

Local superintendents of public welfare have been empowered to cause a warrant or summons to be issued when it comes to their attention that public assistance has been received through fraud.

Potential recipients of welfare assistance, unable to file applications for assistance on their own, have had to wait for the court to appoint a guardian or committee before such an application could be made. Under a new law, any adult member of the potential recipient's family or another competent person having knowledge of the person's circumstances may file an application for assistance for him, prior to the court's appointing a guardian or committee.

The majority of local departments of public welfare have separated eligibility determination for income maintenance programs from services, thus generating greater federal revenues than those initially anticipated for fiscal 1971-1972. Since July, 1971, local departments which have effected the separation, as well as those departments where the caseload or staff is too small to warrant separation, have received

an 80% reimbursement (from federal and state funds) for administrative expenditures connected with the public welfare program.

Regional citizens' advisory committees were formed during the year with the goal of improving the quality of services that local welfare departments provide to recipients.

Virginia was among the first states in the Southeast Region to meet the requirements for implementing new food stamp regulations, effective in January, 1972, requiring all able-bodied persons between 18 and 65 to register for employment as a condition of eligibility.

## YOUTH SERVICES

Forward-looking legislation related to services to youth was enacted by the 1972 session of the General Assembly.

The legislature directed the Virginia State Crime Commission to study all state agencies that provide services to preserve, protect, and rehabilitate youthful offenders, with the view of providing a coordinated approach in the planning and delivery of services. The Commission will give attention to preventive services on the local level.

Courts not of record have been redesigned and placed into a system of general and juvenile district courts. The Department of Welfare and Institutions was charged by the legislature with the responsibility for developing and operating probation and related social services and with making these services available to juvenile district courts. Court social service units also will be developed upon request for counties and cities not now being served by a juvenile and domestic relations court.

New legislation directs the courts to investigate the parents' ability to pay, in whole or in part, for the support of a child committed to any public or private agency.

Guidelines for the development of working agreements between juvenile court probation staffs and local welfare departments were proposed during the year by the Divisions of General Welfare and Youth Services and endorsed by the Virginia Juvenile Officers Association and the League of Social Service Executives.

The statewide Virginia Juvenile Justice Information System (VAJJIS) was inaugurated during the year. Ultimate goals of VAJJIS are to provide a methodology for more effective planning for case management; data for evaluation of delinquency prevention services; a method of gauging the success of each child; "interface" of Youth Services statistics with data gathered by the Divisions of General Welfare and Adult Corrections; and a means for determining which programs for youth represent the wisest investment of State and local funds.

During the past year, staff members of the new Delinquency Prevention Service met with many public and private agencies and citizen groups in order to provide consultation and technical assistance on a variety of preventive programs and services. The Delinquency Prevention Service is currently formulating guidelines which localities may use in evaluating their present services against the community's needs in order to devise a delinquency prevention strategy.

Innovations at the training schools included the opening of new counseling quarters at the Beaumont School for Boys and the opening of a new self-contained cottage at the Bon Air School for Girls.

The detention home construction program that started in Virginia more than a decade ago is approaching completion. At the end of the fiscal year, 10 facilities were in operation and three were under construction. Approximately four additional homes will be required to complete the primary detention program.

The Tidewater area of the State diversified its detention program with the utilization of a "less secure" detention facility, thus permitting the court to use a selective screening process to determine which children need the secure custody provided by the Tidewater Detention Home, and which children are more likely to derive the maximum benefit from placement in a shelter-type facility.

Legislation has made it possible for smaller localities to establish and operate probation houses, and our Department has been charged with the development and maintenance of a statewide plan for these small group homes which provide judges with an alternative to committing delinquent youngsters to the State.

Many localities are showing an interest in developing probation houses, and it is expected that within the decade of the seventies, most areas of the state will have access to such a facility.

## CORRECTIONS

Significant advances in educational, vocational, work release, and recreational programs for adult inmates were achieved during the past fiscal year.

The 1972 session of the General Assembly passed legislation permitting inmates to engage in work or study programs at any hour of the day or night. Previously, such pursuits were confined to daylight hours only.

Legislation in 1970 had extended work release to misdemeanants in jails, and the 1972 session broadened the program by permitting the participation of persons serving jail sentences on criminal convictions.

Several work release inmates pursued jobs in the professional fields of television production, newspaper reporting, and computer programming.

The cooperative efforts of federal, state, and local agencies and private organizations made possible a project that provided vocational and educational training opportunities for 18 work release participants at the Wise Correctional Unit. The men received training in carpentry, plumbing, masonry, and electrical work and were able to utilize their skills in actual housing construction while employed by a local company.

The Opportunities Industrialization Center in Roanoke offered its services to our correctional field unit in Moneta for purposes of counseling and training the men and placing them in jobs in the community.

College courses for inmates continue to be provided by Virginia Commonwealth University and by a number of community colleges around the state.

With the employment of an Education Director for the Bureau of Correctional Field Units, education efforts at these facilities are being emphasized, particularly with regard to preparing men for testing for a high school equivalency diploma.

New courses in offset press operation and machine operation at the Penitentiary combine the features of both vocational and apprenticeship training. It is believed that this is the first time that such a training concept has been tested anywhere in the country.

The Virginia Employment Commission assisted us this year in an analysis of our correctional industries and in restructuring inmate jobs.

The Southampton Correctional Farm "talk team," organized last year, inspired the formation of a number of teams at other adult institutions. These groups are bringing their message to church groups, parent-teacher associations, civic organizations, and school children of all ages.

Recreational activities have diversified at the adult institutions. Professional volunteers are instructing inmates in art, and two shows featuring inmate art were held during the year, one sponsored by the Chrysler Museum in Norfolk and one by Richmond's Carillon Civic Association. In addition, the play "Certain Sacrifices Are in Order," written by inmates, was produced at the State Farm for Men.

More institutional Jaycee chapters were chartered this year, and the inmate-Jaycees became involved in community activities.

Jaycee projects included operation of a radio station; preparation and delivery of Thanksgiving baskets; renovation of used toys for needy children at Christmas; the "adoption" of children overseas through charitable organizations; repairing of furniture for donation to families

whose household goods are lost in fires; a circus trip for underprivileged children; and sponsoring of educational programs, special interest classes, and concerts for fellow inmates.

Several jails have introduced programs designed to aid inmates in obtaining a high school equivalency diploma. A number of jails, in cooperation with community groups, have set up libraries or have arranged for a lending service through their local library.

As the fiscal year drew to a close, only two jails remained on the "18 worst jails" list drawn up by the State Jails Section in 1967. The State has committed \$9 million in construction of jails since 1967.

During November, the State Jails Section held a three-day training seminar for sheriffs, the first of its kind in the state since 1967.

The Jails Section also inaugurated an 80-hour training course for jailers. Jails personnel are attending the sessions on a regional basis.

A seminar on the classification of inmates was conducted this year for Division of Corrections employees. Sheriffs from all Virginia localities also were invited to attend.

In December, the first National Conference on Corrections was held in Williamsburg. In February, Virginia's first Judicial Conference met in Williamsburg. Organized by the Division of Corrections, the Conference was designed to familiarize Virginia judges with the programs and future plans of our adult and juvenile correctional institutions and the Virginia Probation and Parole Board.

By action of the 1972 General Assembly, inmates within one year of parole eligibility may now be permitted a three-day home furlough. Also written into law this year were provisions revising good conduct time for inmates. Under the new procedures, "good time" is awarded at the end of each six months' review period.

The numerical designations of the 30 units of the Bureau of Correctional Field Units have been replaced with names which pinpoint each unit's location in the State.

Judges trying persons charged with drug offenses now have the option of committing such individuals to facilities operated by the State Hospital Board instead of to a correctional institution.

By direction of the General Assembly, our Department will develop a plan for the treatment and rehabilitation of drug addicts who are charged with violations of criminal laws.

The General Assembly also directed the State Health Department to work in close cooperation with the criminal justice system in an effort to establish an alternative to the incarceration of the alcoholic offender and persons arrested for public intoxication.

The Virginia Advisory Legislative Council is currently devising a system of comprehensive planning for and delivery of services to youthful offenders as well as a plan for improving probation and parole for all offenders.

Judges of courts of record may now appoint lawyers to counsel indigent inmates confined to state correctional facilities. A Public Defender Commission to represent indigent defendants was created by the General Assembly, and a Commission appointed by the Assembly is studying appropriate methods for providing counsel for persons charged with misdemeanors.

## PROBATION AND PAROLE

The demands in the areas of adult probation and parole programs and services continue to increase. During 1971-72 the Board paroled over twelve hundred inmates, a new high for the system. There was also an increase in demands for presentence investigations by the courts.

In order to improve the service delivery capability the Probation and Parole Board has continued its Job Development Program in the Richmond area and has developed plans to expand this program to include the Portsmouth and Roanoke areas. Employment difficulties represent a major problem to parolees and probationers. Through the efforts of the Probation and Parole staff, in cooperation with the Department of Vocational Rehabilitation, the Virginia Employment Commission, and other agencies, significant progress can be made toward helping clients to work regularly on worthwhile jobs.

A demonstration project continues in operation in the Norfolk area; a similar program has begun in Northern Virginia. With the help of grants from the Law Enforcement Assistance Administration and Virginia's Division of Justice and Crime Prevention, every effort is being made to demonstrate what can be done in Probation and Parole program when adequate staff is available.

The Board has agreed to cooperate with the American Bar Association, Young Lawyers' Section, in a program using young lawyers and law students in a one-to-one counseling relationship with parolees and probationers. The initial effort will be developed in Richmond with the expectation that the concept can be expanded to other areas of Virginia.

In cooperation with the Department of Vocational Rehabilitation a system of drug treatment teams has been planned to begin operation during fiscal 1972-73. Ten specially trained teams will be located around the State to provide direct treatment to drug-dependent offenders and to encourage the community to develop treatment capability and drug problem awareness.



The Uniform Parole Reports of the National Council on Crime and Delinquency have produced the only available national statistics on parole performance. Virginia has participated in this program since its inception in 1965. The program will shortly publish statistical data on all paroles in the United States, both one-year and two-year follow-up.

**TABLE I**  
**Summary of Departmental Expenditures by Major Activity,**  
**Source of Funds Expended and Sources of Institutional Earnings**

Year Ended June 30, 1972

FOR MAINTENANCE AND OPERATION	TOTAL EXPENDITURES	STATE GENERAL FUND	FEDERAL AND OTHER SPECIAL FUNDS
<b>CENTRAL ACTIVITIES:</b>			
Administration of the Department.....	\$ 1,465,743	\$ 402,932	\$ 1,062,816
Corrections Activities.....	384,750	384,750	
General Welfare Activities.....	2,992,445	1,787,130	1,205,315
Psychiatric Clinical Services.....	144,916	144,916	
Virginia Probation and Parole Board.....	2,007,025	2,007,025	
Youth Services Activities.....	494,022	494,022	
Board and Transportation of Delinquent Children.....	392,861	392,861	
Dependents Court Ordered Payments.....	203,359	203,359	
Childrens Services.....	458,330		458,330
In Service Training for Welfare Personnel and Scholarships.....	505,368	505,368	
Home for Needy Confederate Women.....	110,000	110,000	
Other Activities.....	37,467	37,467	
<b>STATE AID TO COUNTIES/CITIES:</b>			
Public Assistance and Related Welfare Services.....	151,604,685	50,793,688	100,810,997
Juvenile Courts and Detention Homes.....	3,612,485	3,612,485	
Operation of Jails.....	2,483,323	2,483,323	
<b>STATE CORRECTIONAL INSTITUTIONS, INCLUDING THE BUREAU OF CORRECTIONAL FIELD UNITS</b>			
Less Institutional Earnings.....	17,894,973	14,763,998	3,130,975
	4,305,948	1,216,887	3,089,061
Net Cost of Operations.....	\$13,589,025	\$13,547,111	\$ 41,914
<b>PENITENTIARY INDUSTRIAL DEPT. OPERATIONS</b>			
Less Receipts from Sales.....	2,692,949		2,692,949
	2,921,638		2,921,638
Net Gain on Operations.....	\$ 228,689		\$ 228,689
<b>STATE JUVENILE TRAINING SCHOOLS</b>			
Less Institutional Earnings.....	5,548,527	\$ 5,548,527	
	113,806	113,806	
Net Cost of Operations.....	\$ 5,434,721	\$ 5,434,721	
<b>GRAND TOTALS:</b>			
Expenses of Operation.....	193,033,233	83,671,851	\$109,361,382
Less Earnings.....	7,341,392	1,330,693	6,010,699
Net Cost of Operations.....	\$185,691,841	\$ 82,341,158	\$103,350,683
<b>SOURCES OF INSTITUTIONAL EARNINGS:</b>			
Revenue from Inmate Labor.....	\$ 3,089,061		\$ 3,089,061
Receipts from Industrial Department Sales.....	2,921,638		2,921,638
Revenue from Operation of Laundry No. 1.....	129,445	\$ 129,445	
Sale of Farm and Dairy Products.....	815,927	815,927	
Sale of Meals to Employees and Others.....	147,177	147,177	
Rental of Quarters.....	74,847	74,847	
All Other Earnings.....	163,297	163,297	
Total.....	\$ 7,314,392	\$ 1,831,617	
<b>CAPITAL OUTLAY EXPENDITURES:</b>			
Departmental Central Activities.....	\$ 300,490	\$ 300,490	
State Juvenile Training Schools.....	824,984	824,984	
State Adult Correctional Institutions.....	706,143	706,143	
TOTAL.....	\$ 1,831,617	\$ 1,831,617	

**TABLE II**  
**Cases and Average Grants**  
 June 1953—June 1972

AID TO DEPENDENT CHILDREN

	TOTAL CASES	OLD AGE ASSISTANCE		MEDICAL ASSISTANCE FOR THE AGED		CASH PAYMENTS				EMERGENCY ASSISTANCE TO NEEDY FAMILIES WITH CHILDREN		AID TO THE PERMANENTLY AND TOTALLY DISABLED		FOSTER CARE		GENERAL RELIEF			
		Cases	Grant	Cases	Grant	Cases	Adults	Child-Dep.	Grant Per Case	Grant Per Person	Cases	Grant	Cases	Grant	Cases	Grant	Cases	Monthly Grant	SERIAL CASES
June 1953	44,656	17,379	\$ 26.74			7,442	6,636	21,555	\$ 43.29	\$ 16.64			3,791	\$ 35.62	3,249	\$ 35.75	2,672	\$ 34.41	19,223
June 1954	43,763	17,389	28.69			8,385	7,428	24,985	66.44	17.18			4,447	37.38	3,569	39.61	2,715	35.25	13,171
June 1955	43,179	17,211	39.14			8,944	7,798	26,481	65.26	16.64			4,679	39.86	3,918	39.45	2,641	35.86	11,886
June 1956	42,863	16,567	31.13			8,365	7,863	27,179	67.31	17.21			4,981	39.89	4,159	36.28	2,135	35.62	12,675
June 1957	42,788	16,998	34.26			8,857	7,799	27,311	72.44	18.31			5,485	42.93	4,486	40.61	2,657	34.95	11,854
June 1958	50,494	15,544	36.53			9,154	7,947	28,751	74.73	18.64			5,607	42.33	4,877	41.62	2,414	37.39	12,868
June 1959	50,443	15,195	41.12			9,273	8,036	29,262	82.48	20.52			6,085	47.93	5,147	40.89	2,111	40.25	12,632
June 1960	51,565	14,529	44.31			9,478	8,682	29,113	84.18	20.99			6,365	49.88	5,318	41.53	2,159	42.79	13,235
June 1961	53,675	14,459	55.65			10,357	9,079	32,361	98.15	24.19			6,641	61.94	5,773	43.40	2,115	45.63	14,239
June 1962	53,889	14,084	56.19			10,764	9,350	34,283	99.12	24.29			6,553	62.99	5,565	44.45	2,183	47.69	14,399
June 1963	54,232	13,965	69.81			10,459	10,244	33,965	101.62	23.94			6,445	66.45	5,292	45.98	2,043	45.32	15,554
June 1964	57,706	13,413	62.61	1,197	\$139.23	10,533	10,386	34,537	102.42	24.12			6,732	66.64	5,613	47.27	2,059	45.54	17,039
June 1965	63,846	13,135	67.24	3,549	76.74	10,855	10,436	35,595	107.58	25.27			6,909	71.91	5,743	47.21	2,027	49.68	20,768
June 1966	66,147	12,723	73.23	5,591	92.88	11,118	10,834	36,523	111.94	26.28			6,939	77.69	7,399	50.11	2,165	53.95	20,221
June 1967	66,708	12,398	79.71	3,921	23.27	12,814	12,467	41,742	127.66	30.22			7,214	81.86	7,673	55.53	2,341	52.23	20,349
June 1968	66,683	12,524	83.22	3,634	24.68	14,659	13,911	45,772	135.03	32.53			7,419	90.44	7,589	53.81	2,818	56.03	21,626
June 1969	75,613	13,011	131.87	4,532	32.73	17,752	16,458	54,794	166.75	41.54			7,695	126.37	7,733	75.09	3,865	61.32	21,995
June 1970	94,727	13,767	91.41	66	75.19	26,274	24,326	74,644	166.43	43.63			7,998	86.86	7,581	76.79	4,453	76.89	35,038
June 1971	127,316	16,411	119.89			35,347	33,923	96,343	176.12	47.79			10,055	102.17	7,509	89.69	5,673	84.37	52,835
June 1972	150,905	18,166	136.64			43,647	41,828	113,949	171.17	47.95	895	\$ 234.44	12,336	107.96	6,736	94.36	6,972	89.86	63,676

\* Medical Assistance for the Aged started January 1, 1964. Recipients covered under the MEA Medical Only program beginning July, 1969.

† Includes cases transferred to the State of New York in the month of June, 1972 amounting to 570 cases.

**TABLE III**  
**Public Assistance: Cases Receiving Financial Assistance and**  
**Amount of Assistance by Program and Month**  
 Year Ended June 30, 1972

MONTH AND YEAR	ALL TYPES OF ASSISTANCE		OLD AGE ASSISTANCE (5)		AID TO DEPENDENT CHILDREN										AID TO THE PERMANENTLY AND TOTALLY DISABLED (6)		FOSTER CARE		GENERAL RELIEF (1)		MEDICAL ASSISTANCE FOR THE AGED (4)
	Total Cases Receiving Assistance	Total Amount of Assistance	Cases Receiving Assistance	Amount of Assistance	MONEY PAYMENTS			Amount of Assistance	EMERGENCY ASSISTANCE TO NEEDY FAMILIES WITH CHILDREN (3)				Cases Receiving Assistance	Amount of Assistance	Cases Receiving Assistance	Amount of Assistance	Cases Receiving Assistance	Amount of Assistance	Cases Receiving Assistance	Amount of Assistance	Amount of Assistance
					CASES RECEIVING ASSISTANCE				ADC CASES		OTHER NEEDY FAMILIES										
					Families	Adults	Children		Families	Amount	Families	Adults									
July 1971.....	74,998	\$10,483,485	16,446	\$1,993,002	35,995	34,514	97,592	\$6,306,225							10,260	\$1,052,780	6,830	\$ 558,822	5,467	\$ 572,656	
August.....	76,055	10,705,123	16,604	2,028,398	36,716	35,428	99,555	6,457,728							10,441	1,076,688	6,691	552,851	5,603	589,456	
September.....	76,897	10,995,400	16,857	2,093,609	37,523	36,234	101,472	6,633,116							10,573	1,107,679	6,296	556,188	5,648	604,808	
October.....	78,808	11,199,975	17,063	2,125,598	38,467	37,121	103,433	6,753,951							10,765	1,129,234	6,638	573,641	5,875	617,551	
November.....	79,983	11,369,774	17,190	2,161,511	39,242	37,827	104,905	6,860,496							10,967	1,156,022	6,637	579,513	5,947	612,232	
December.....	81,389	11,621,514	17,316	2,202,199	40,136	38,645	106,717	7,012,390							11,188	1,191,717	6,697	581,891	6,052	633,317	
January 1972.....	82,620	11,716,120	17,333	2,214,488	40,707	39,218	107,752	7,071,232							11,338	1,294,950	6,603	572,730	6,639	652,720	
February.....	83,415	11,960,028	17,430	2,254,609	41,434	39,898	109,471	7,200,577							11,551	1,225,442	6,658	584,451	6,332	694,949	
March.....	84,681	12,151,117	17,622	2,288,196	42,188	40,615	111,094	7,356,178							11,755	1,254,684	6,615	561,000	6,501	691,059	
April.....	85,551	12,334,106	17,762	2,358,324	42,735	41,044	112,249	7,408,823							11,986	1,287,372	6,583	609,587	6,485	670,000	
May.....	86,493	12,452,330	17,955	2,372,849	43,227	41,594	113,143	7,441,251	55	\$ 9,503	12	20	38	\$ 2,792	12,176	1,297,083	6,699	656,865	6,424	671,987	
June.....	87,295	12,771,471	18,100	2,473,243	43,847	41,858	113,940	7,471,202	766	176,349	39	73	115	12,378	12,336	1,331,734	6,736	635,583	6,437	670,982	
Year ending June 30, 1972..		\$139,760,443(2)		\$26,566,026(2)				\$83,973,169(2)		\$185,852(2)				\$ 15,170(2)		\$14,315,385(2)		\$ 7,023,122(2)		\$ 7,681,719(2)	
Year ending June 30, 1971..		112,548,209		20,884,657				67,140,417								10,794,050		7,131,316		6,597,769	
Year ending June 30, 1969..		78,427,760		12,854,863				45,018,376								7,725,370		7,195,959		5,086,074	\$ 547,118(2)
Year ending June 30, 1968..		63,056,836		14,908,277				27,826,350								8,726,193		6,684,341		3,893,455	1,018,220
Year ending June 30, 1968..		51,810,437		12,803,645				22,009,298								7,676,826		5,476,955		2,894,888	849,855

(1) General Relief cases represent unduplicated count, excluding cases open in other programs that were supplemented from General Relief Funds. Amount of Assistance includes supplementary payments.  
 (2) Cancellations and refunds deducted from totals shown in Table IV have not been deducted from the amount of Assistance for the several programs shown in this table.  
 (3) Emergency Assistance to Needy Families with Children program implemented in May, 1972. Emergency Assistance—ADC Cases are payments made for cases and recipients receiving money payments, therefore the count of cases is duplicated. Emergency assistance—Other Needy Families are payments made for needy families with children who are not receiving on-going maintenance assistance.  
 (4) Medical Assistance for the Aged program discontinued during fiscal year 1970 due to the implementation of the Title XIX, Medicaid Program.  
 (5) Payments made to Intermediate Care Facilities on behalf of CAA and APTD recipients, and number of recipients, are included in this table. However, effective January 1, 1972, this care was incorporated in the Title XIX, Medicaid Program. The reporting was continued by this department through June, 1972.

**TABLE IV**  
**Expenditures for Public Assistance and Hospitalization**  
**of the Indigent According to Counties and Cities**

Year Ended June 30, 1972

COUNTIES	AID TO (1) BLIND	OLD AGE ASSISTANCE	AID TO DEPENDENT CHILDREN	AID TO PERMANENTLY AND TOTALLY DISABLED	GENERAL RELIEF	FOSTER CARE	NON-MATCHING ASSISTANCE	DAY CARE AND OTHER PURCHASED SERVICES	ADMINISTRATION	TOTAL PUBLIC ASSISTANCE	APPORTIONMENT OF FUNDS BASED UPON ACTUAL REIMBURSEMENT			STATE AND LOCAL HOSPITALIZATION
											Federal	State	Local	
Accomack	\$ 19,666	\$ 407,628	\$ 739,910	\$ 155,049	\$ 58,818	\$ 23,451		\$ 11,551	\$ 184,684	1,600,757	\$ 975,453	\$ 471,544	\$ 153,760	\$ 52,893
Albemarle	7,199	204,549	377,090	81,242	25,253	18,358		11,610	1,798	908,099	540,312	268,933	98,854	17,483
Alleghany	3,489	52,827	63,660	40,084	7,463	25,349		2,208	5,733	265,933	149,295	79,401	37,237	2,609
Amelia	2,975	37,690	48,180	28,380	1,238	8,973		303	45,34	173,673	99,382	52,231	21,960	
Amherst	6,753	75,141	84,935	25,649	7,817	11,481		87	30,450	242,313	140,439	74,957	26,917	1,435
Appomattox	5,090	84,119	59,871	31,575	3,494	3,717		135	44,161	232,162	144,246	64,234	23,682	4,503
Arlington	21,275	415,933	1,427,154	184,373	316,466	341,663		153,445	885,168	3,746,477	1,888,677	1,013,799	844,001	124,630
Augusta	3,516	247,253	268,144	96,035	30,035	60,850		8,686	133,812	846,341	481,665	254,254	112,422	15,979
Bath		27,438	22,441	14,703	9,711	10,237		130	28,595	113,255	59,151	34,740	19,364	832
Bolton	5,907	120,554	258,802	49,048	1,676	11,037		5,717	135,635	586,376	363,869	160,135	64,371	3,643
Bland	8,106	36,881	15,967	6,084	1,464	735			19,344	88,581	55,455	23,974	9,152	830
Botetourt	5,975	168,281	213,543	66,696	15,393	15,226		5,119	74,571	564,704	342,463	163,497	58,744	2,610
Brunswick	6,259	96,751	101,236	40,763	2,847	1,180			70,512	319,548	196,248	91,753	31,547	2,410
Buchanan	15,990	116,385	754,477	156,524	9,893	16,745			960	207,027	1,278,001	800,875	123,633	3,538
Buckingham	3,564	39,279	148,972	17,287	2,790	3,945			179	43,446	259,462	162,349	25,571	72
Campbell	10,412	195,312	448,416	65,116	21,069	26,510		15,813	127,561	910,203	540,804	273,793	95,612	3,400
Caroline	3,890	101,541	103,014	32,504	2,223	22,201		365	72,569	338,307	195,738	99,597	41,972	6,085
Carroll	6,488	132,830	132,593	52,699	9,333	3,680		1,088	85,946	424,557	264,097	117,187	43,273	9,199
Charles City	5,826	29,099	132,238	21,141	375	4,209		1,541	41,684	236,113	142,700	70,694	22,719	
Charlotte	1,666	52,595	91,989	29,496	1,152	8,356		558	50,134	235,945	145,287	65,711	24,947	3,491
Chesterfield	14,931	237,393	416,736	114,314	7,840	101,104		18,246	268,541	1,169,105	681,708	329,659	157,738	9,395
Clarke	4,388	66,316	67,424	26,335	3,636	5,081			40,519	213,709	125,670	60,132	27,907	829
Craig		26,126	7,997	4,555	270	3,253			178	15,220	57,599	33,977	8,178	
Culpeper	3,179	138,230	200,213	34,930	15,767	18,280		1,329	84,140	496,088	288,453	151,445	56,170	10,043
Cumberland		38,721	152,013	28,345	4,206	2,725		391	40,991	267,392	160,554	73,462	33,376	1,636
Dickenson	7,958	126,599	553,372	117,294	2,387	964		3,033	195,145	1,006,752	626,814	284,283	95,655	2,743
Dinwiddie	876	58,709	85,781	43,876	2,355	22,189		2,688	58,459	275,058	154,941	84,553	35,584	1,630
Essex	1,246	37,734	54,529	5,271	1,756	15,571		390	40,781	155,278	88,937	44,613	21,728	472
Fairfax	11,173	738,474	2,944,017	207,862	486,204	485,312		280,028	1,126,282	6,296,027	3,038,361	1,820,234	1,437,432	239,158
Fauquier	6,055	170,006	107,911	25,107	10,722	34,352		16,675	78,561	432,714	242,624	133,433	56,657	16,868
Floyd	672	77,262	45,788	31,879	330	211			30,131	186,273	119,146	50,703	16,424	1,913
Fluvanna	4,104	35,118	54,232	9,442	2,724	6,561			33,226	145,407	86,533	41,061	17,813	
Franklin	3,841	198,965	77,549	1,840	1,840	8,176		615	72,241	447,128	278,363	124,068	44,697	419
Frederick	7,885	134,555	101,997	36,527	4,108	33,137		2,179	92,423	412,811	233,694	123,524	55,693	13,627
Giles	8,685	129,571	242,192	72,034	9,097	32,938		786	112,909	608,212	361,904	172,414	73,894	9,725
Gloucester	7,925	93,213	250,780	51,077	16,678	6,951		368	106,641	533,633	314,666	161,582	57,385	4,638
Goochland	1,648	47,678	136,455	32,121	4,953	15,102		5,028	57,234	300,219	174,567	90,571	35,081	2,381
Grayson	3,126	119,039	192,703	43,872	2,225	4,340		3,560	95,592	464,457	286,178	131,959	46,320	3,740
Greene	2,136	37,671	99,425	19,987	1,844	11,074		2,199	33,655	207,991	121,106	58,973	27,912	
Greensville	10,292	53,069	214,905	43,647	4,307	11,587		636	11,286	349,729	213,806	105,888	30,035	2,468
Halifax	13,776	237,985	747,303	171,306	9,289	34,596		5,003	236,272	1,455,639	904,714	403,192	147,733	10,158
Hanover	6,728	93,029	151,555	56,535	9,747	27,108		8,345	74,514	427,561	251,554	124,300	51,707	3,000
Henrico	18,708	204,639	235,362	81,466	21,443	135,090		16,132	316,198	1,029,038	551,625	303,222	174,191	7,098
Henry	5,324	185,873	356,659	84,504	20,021	46,738		13,290	261,585	928,994	539,494	273,556	115,944	20,797
Highland	2,868	21,145	3,721	5,253	177	3,292			6,677	53,133	31,232	14,822	7,079	1,068
Isle of Wight	2,698	135,894	197,640	63,547	3,899	21,460			74,103	499,241	297,394	149,001	52,846	
James City	1,875	81,221	391,346	56,063	9,258	6,271		10,739	122,655	679,429	418,447	194,317	66,665	3,116
King George	1,839	59,351	64,098	3,927	2,499	2,499		2,583	46,962	195,359	116,764	57,548	21,047	1,499
King and Queen	3,810	34,818	66,996	14,634	3,372	6,126		1,840	25,873	157,469	95,121	44,903	17,445	1,913
King William	3,669	22,590	38,375	7,581					92,154	22,154	59,167	24,325	8,672	598
Lancaster	5,484	62,827	164,528	26,145	9,580	2,178		2,559	69,979	333,290	199,277	99,829	34,184	3,662
Lee	12,535	215,068	493,537	176,849	10,085	17,234		1,560	211,332	1,138,000	688,591	334,957	114,452	7,609
Loudoun	7,894	201,967	271,727	23,131	23,131	64,079		45,694	147,464	811,113	460,398	241,995	108,720	21,705
Louisa	6,397	104,123	136,465	28,279	2,715	16,639			77,187	371,435	226,195	103,621	41,619	
Lunenburg		73,857	76,011	28,380	1,009	8,317		26	32,128	219,728	132,689	64,182	22,857	3,777
Madison	6,839	111,149	83,975	42,802	1,257	14,156		600	61,978	322,756	193,249	93,144	36,363	4,460
Mathews	8,866	86,159	110,888	20,699	9,420	4,566		600	59,935	301,133	177,960	89,067	34,116	1,966
Mecklenburg	3,372	79,076	7,400	53,216	2,880	37,417			118,515	301,817	157,947	90,618	53,311	7,837
Middlesex	456	97,546	46,238	34,349	3,628	3,067			62,553	237,837	140,679	72,762	24,396	1,888
Montgomery	7,657	301,801	294,568	90,773	14,905	40,772		18,755	169,486	938,706	536,255	294,925	107,526	15,487

**TABLE IV—Continued**  
**Expenditures for Public Assistance and Hospitalization**  
**of the Indigent According to Counties and Cities**

Year Ended June 30, 1972

COUNTIES	AID TO (1) BLIND	OLD AGE ASSISTANCE	AID TO DEPENDENT CHILDREN	AID TO PERMANENTLY AND TOTALLY DISABLED	GENERAL RELIEF	FOSTER CARE	NON-MATCHING ASSISTANCE	DAY CARE AND OTHER PURCHASED SERVICES	ADMINISTRATION	TOTAL PUBLIC ASSISTANCE	APPORTIONMENT OF FUNDS BASED UPON ACTUAL REIMBURSEMENT			STATE AND LOCAL HOSPITALIZATION
											Federal	State	Local	
Nansemond.....	\$ 22,530	\$ 337,451	\$ 1,040,082	\$ 1,795	\$ 8,145	\$ 43,330		\$ 33,769	\$ 288,066	\$ 1,986,238	\$ 1,243,768	\$ 553,946	\$ 188,524	\$ 49,996
Nelson.....	5,410	53,859	77,691	5,523	1,881	5,654		749	54,849	225,616	139,713	60,085	25,818	1,429
New Kent.....	3,062	25,329	25,997	9,369	659	3,801			26,264	51,981	27,503	53,234	11,244	
Northampton.....	16,988	162,832	336,156	6,696	13,266	4,308			4,308	727,566	455,548	210,289	61,729	43,673
Northumberland.....	3,521	63,916	43,201	1,842		2,668			53,986	179,334	109,018	50,224	20,092	928
Nottoway.....	3,971	81,589	109,027	3,414	5,638	20,951			2,747	73,128	336,465	195,012	99,239	42,214
Orange.....	6,368	170,145	127,299	3,857	8,183	28,015			3,163	94,340	487,370	288,418	148,760	60,192
Page.....	8,714	145,683	130,799	1,767	4,898	6,166			2,937	93,627	457,691	296,385	123,993	47,213
Patrick.....	7,005	176,373	126,264	7,841	14,361	7,167			2,232	55,744	445,987	268,482	131,778	45,727
Pittsylvania.....	12,059	223,788	307,247	3,645	10,095	22,324			1,438	215,535	892,131	506,013	282,362	101,766
Powhatan.....	3,375	48,405	70,967	8,267	2,054	3,664			768	28,968	186,468	115,958	52,403	18,107
Prince Edward.....	12,055	76,909	133,545	47,673	4,772	13,735			906	362,776	221,442	362,776	40,100	8,334
Prince George.....	3,135	37,659	122,461	28,337	5,671	3,337			43,791	244,391	151,799	67,685	24,907	2,063
Prince William.....	15,009	360,241	879,435	139,245	101,132	137,624	\$ 142		39,928	409,055	2,081,811	1,178,775	607,542	295,494
Pulaski.....	3,519	82,142	160,070	63,535	9,361	5,884			113,037	437,448	255,947	134,875	46,626	7,552
Rappahannock.....	3,791	30,608	65,814	22,095	3,859	6,890			41,936	174,993	105,476	48,279	21,238	2,473
Richmond.....	5,105	70,014	67,571	4,228	34,981	14,111			1,171	48,783	251,491	145,146	72,984	33,361
Roanoke.....	9,994	600,758	562,435	182,488	43,614	99,984			28,635	334,099	1,862,007	1,089,039	542,375	230,593
Rockbridge.....	7,931	71,578	217,890	42,067	9,635	11,691			824	166,419	528,035	315,723	146,032	66,280
Rockingham.....	9,766	202,521	170,160	79,763	8,857	40,218			3,483	158,020	672,788	402,073	187,817	82,898
Russell.....	10,612	156,867	235,733	112,372	10,392	18,018			1,037	145,162	690,193	425,025	189,336	75,832
Scott.....	9,248	125,019	202,191	81,241	3,864	10,501				83,351	515,415	321,422	101,234	143,655
Shenandoah.....	4,774	107,248	67,604	29,297	4,640	15,578			4,029	65,626	298,796	179,065	82,799	36,932
Smyth.....	2,727	188,844	189,958	62,437	5,163	19,516			541	136,981	602,967	356,028	189,503	66,436
Southampton.....	11,892	151,580	269,722	80,706	2,285	5,620			507	157,174	679,486	407,522	203,343	68,621
Spotsylvania.....	9,850	118,163	166,901	44,712	826	26,282			7,187	140,521	514,442	303,979	144,592	65,871
Stafford.....	1,366	63,278	106,591	14,111	2,947	10,493			35	74,824	273,645	160,960	77,899	34,786
Surry.....	2,013	39,129	35,288	14,090	753	81				35,457	126,811	74,236	39,293	13,282
Sussex.....	312	55,393	114,472	44,548	1,191	4,140			740	28,803	249,601	156,601	71,656	21,344
Tazewell.....	24,338	195,322	700,477	156,806	2,455	4,789				253,891	1,338,078	822,554	387,217	128,307
Warren.....	4,404	128,258	91,668	51,759	3,651	9,030			6,270	57,496	352,536	218,738	98,645	35,153
Washington.....	16,744	225,660	399,951	178,474	7,709	34,050			5,230	233,713	1,101,531	659,629	319,970	6,828
Westmoreland.....	1,576	91,638	157,635	27,120	1,383	7,324			2,076	73,141	361,893	219,078	107,236	35,579
Wise.....	166,851	326,876	131,638	500	1,044	583			1,044	221,871	859,080	523,463	249,434	86,183
Wythe.....	5,107	221,505	190,314	106,425	4,223	30,348			5,457	136,969	700,348	416,470	201,312	82,566
York.....	3,548	93,305	177,585	22,717	3,478	36,819			19,582	153,758	510,792	292,389	146,073	72,330
<b>TOTAL COUNTIES.....</b>	<b>\$ 646,678</b>	<b>\$ 12,653,251</b>	<b>\$ 23,770,536</b>	<b>\$ 5,836,362</b>	<b>\$ 1,587,171</b>	<b>\$ 2,644,467</b>	<b>\$ 17,451</b>	<b>\$ 847,434</b>	<b>\$ 11,708,917</b>	<b>\$ 59,712,267</b>	<b>\$ 34,566,277</b>	<b>\$ 17,230,115</b>	<b>\$ 7,915,875</b>	<b>\$ 974,080</b>
<b>CITIES</b>														
Alexandria.....	\$ 12,083	\$ 320,104	\$ 1,092,319	\$ 204,804	\$ 72,846	\$ 221,037		\$ 72,733	\$ 606,417	\$ 2,602,343	\$ 1,464,740	\$ 764,772	\$ 372,831	\$ 147,820
Bellford.....														2,670
Bristol.....	8,443	178,128	272,936	83,194	7,302	28,574		5,615	129,736	713,928	427,652	208,345	77,931	10,235
Buona Vista.....	1,535	24,184	62,558	9,765	9	3,846		555		102,452	63,193	30,951	8,308	
Charlottesville.....	33,212	214,876	627,299	129,412	37,477	71,985	\$ 2,968	52,843	283,140	1,453,212	858,414	414,979	179,819	30,161
Chesapeake.....	38,939	497,396	2,305,776	332,002	140,996	91,257		128,514	1,110,383	4,645,263	2,810,635	1,282,009	552,619	76,188
Clifton Forge.....		28,829	44,795	9,865	559	3,042		1,551	28,531	117,172	71,905	32,559	12,708	1,452
Colonial Heights.....		82,515	54,663	18,490	3,482	46,634		3,340	1,800	210,924	102,178	71,899	36,847	1,303
Covington.....	2,535	58,039	150,299	23,364	4,454	21,873		2,113	62,039	324,716	183,846	100,632	40,238	2,486
Danville.....	13,760	324,939	594,367	124,116	31,074	88,132		38,453	249,309	1,464,140	856,419	431,649	176,472	14,744
Emporia.....	1,175	36,322	124,476	17,766	6,262	8,979				68,687	263,667	158,276	71,604	485
Falls Church.....		10,882	52,147	2,510	11,399	22,650		10,694		109,482	43,845	36,322	29,315	2,729
Franklin.....	8,985	92,342	163,574	38,728	573	11,283			59,950	375,435	226,267	108,190	40,978	
Fredericksburg.....	7,998	125,326	251,349	61,697	7,410	22,964		4,393	112,026	593,163	356,813	169,595	66,755	7,956
Galax.....	3,031	38,091	72,194	33,839	1,519	2,420		1,686	30,594	183,374	110,851	54,841	17,682	1,755
Hampton.....	38,419	548,951	2,869,444	289,566	159,197	65,595		268,239	585,190	4,824,601	2,945,904	1,404,030	474,667	68,456
Harrisonburg.....	2,224	62,299	76,212	43,132	822	30,155		8,400	101,436	323,678	185,444	89,551	48,683	3,538
Hopewell.....	2,181	104,655	303,989	42,452	18,505	30,602		33,803	81,410	617,597	361,784	184,868	70,945	8,309
Lexington.....	3,084	42,740	84,067	14,527	2,905	1,390		2,861		151,574	84,616	45,262	11,696	
Lynchburg.....	58,760	516,318	863,934	256,566	21,150	112,881		39,939	365,137	2,233,815	1,532,447	847,646	253,722	53,633

**TABLE IV—Continued**  
**Expenditures for Public Assistance and Hospitalization**  
**of the Indigent According to Counties and Cities**

Year Ended June 30, 1972

CITIES	AID TO (1) BLIND	OLD AGE ASSISTANCE (2)	AID TO DEPENDENT CHILDREN	AID TO PERMA- NENTLY AND TOTALLY DISABLED (2)	GENERAL RELIEF	FOSTER CARE	NON- MATCHING ASSISTANCE	DAY CARE AND OTHER PURCHASED SERVICES	ADMINIS- TRATION	TOTAL PUBLIC ASSISTANCE	APPORTIONMENT OF FUNDS BASED UPON ACTUAL REIMBURSEMENT (3)			HOSPITALIZA- TION OF THE INDIGENT (5)
											Federal	State	Local	
Martinsville.....	\$ 2,508	\$ 138,756	\$ 378,438	\$ 79,652	\$ 30,453	\$ 31,763		\$ 114,681	\$ 122,459	898,710	\$ 539,372	\$ 261,360	\$ 97,978	\$ 5,735
Newport News.....	74,850	776,085	4,519,483	460,249	432,883	213,698		367,263	914,731	7,759,242	4,538,773	2,342,309	878,160	217,417
Norfolk.....	151,964	2,396,966	14,583,001	1,185,082	1,583,466	532,017		403,104	3,301,783	24,137,383	14,080,207	7,295,772	2,761,404	863,658
Norton.....	1,404	26,665	81,896	18,535	304	6,115		619	43,366	178,904	108,247	50,560	20,097	92
Petersburg.....	45,794	423,769	2,044,917	265,519	12,042	46,726		63,509	394,088	3,316,364	2,078,809	945,553	292,002	51,339
Portsmouth.....	57,101	1,098,274	6,095,443	970,034	262,019	117,846		201,432	1,334,656	10,036,805	6,066,950	3,010,446	959,409	228,485
Radford.....	593	59,911	25,178	20,902	5,014	9,405		5,719	32,471	159,193	91,756	46,350	21,087	5,330
Richmond.....	291,988	3,294,038	16,284,046	2,551,210	2,957,670	1,426,329		1,181,410	5,095,360	33,086,651	17,997,117	10,297,154	4,792,380	845,910
Roanoke.....	35,095	1,250,826	3,414,023	737,983	247,136	340,121		168,712	753,631	6,947,527	4,048,364	2,094,545	804,620	123,984
South Boston.....														2,186
Staunton.....	7,179	176,687	228,551	35,135	21,389	33,707		13,162	86,899	602,809	351,911	178,101	72,797	14,174
Suffolk.....	3,882	134,074	247,546	74,360	2,414	9,581		9,882	78,382	560,121	352,523	155,530	52,068	4,644
Virginia Beach.....	17,621	428,235	1,711,023	219,724	58,395	221,213		31,570	826,156	3,513,938	2,062,234	997,175	454,529	112,416
Waynesboro.....	1,831	72,816	135,653	29,465	13,873	13,696		11,282	74,008	353,624	209,328	101,807	41,489	8,597
Williamsburg.....	2,298	36,316	34,407	10,838	653	3,212		3,918	28,140	119,782	73,481	33,690	12,611	570
Winchester.....	7,090	194,025	217,971	62,105	11,065	25,284			102,847	620,387	367,620	183,277	69,490	5,145
Total Cities.....	\$ 936,562	\$ 13,813,579	\$ 60,067,964	\$ 8,376,608	\$ 6,166,728	\$ 3,916,012	\$ 2,968	\$ 3,251,095	\$ 17,079,460	\$ 113,600,976	\$ 65,621,921	\$ 34,142,931	\$ 13,836,124	\$ 2,923,582
Total Counties.....	\$ 646,678	\$ 12,653,251	\$ 23,770,536	\$ 5,836,362	\$ 1,597,171	\$ 2,644,467	\$ 17,451	\$ 847,434	\$ 11,708,917	\$ 59,712,267	\$ 34,566,277	\$ 17,230,115	\$ 7,915,875	\$ 974,080
State Total.....	\$ 1,583,240	\$ 26,466,830	\$ 83,838,500	\$ 14,212,970	\$ 7,763,899	\$ 6,560,479	\$ 20,419	\$ 4,098,529	\$ 28,778,377	\$ 173,313,243	\$ 100,188,198	\$ 51,373,046	\$ 21,751,999	\$ 3,897,662
Source of Funds:														
Federal-State-Local.....	\$ 1,583,240	\$ 26,440,268	\$ 82,919,200	\$ 14,202,346	\$ 7,459,273	\$ 6,560,479	\$ 20,419	\$ 4,098,529	\$ 28,268,513	\$ 157,512,096				
State-Local.....			188,575	10,624	133,463				509,864	14,188,327				
Local Only.....		28,562	750,725		161,163(4)					1,451,657				
Federal Only.....										161,163				
Total Funds.....	\$ 1,583,240	\$ 26,466,830	\$ 83,838,500	\$ 14,212,970	\$ 7,763,899	\$ 6,560,479	\$ 20,419	\$ 4,098,529	\$ 28,778,377	\$ 173,313,243	\$ 100,188,198	\$ 51,373,046	\$ 21,751,999	\$ 3,897,662
Apportionment of Funds: Based on Federal Partici- pation														
Federal.....	\$ 1,015,848	\$ 16,930,241	\$ 53,064,358	\$ 9,097,998	\$ 161,163(4)			\$ 3,073,904	\$ 17,218,062	\$ 100,559,574				
State.....	465,187	7,812,362	24,643,560	4,206,755	4,662,045	\$ 3,280,240		603,211	5,328,224	51,001,584				\$ 1,948,831(5)
Local.....	104,205	1,724,227	6,130,582	908,217	2,930,691	3,280,239	\$ 20,419	421,414	6,232,091	21,752,085				1,948,831
Total Funds.....	\$ 1,583,240	\$ 26,466,830	\$ 83,838,500	\$ 14,212,970	\$ 7,763,899	\$ 6,560,479	\$ 20,419	\$ 4,098,529	\$ 28,778,377	\$ 173,313,243	\$ 100,188,198	\$ 51,373,046	\$ 21,751,999	\$ 3,897,662

(1) Furnished by the Virginia Commission for the Visually Handicapped.

(2) The Intermediate Care Title XIX expenditures for Old Age Assistance and Aid to Permanently and Totally Disabled are included with other expenditures in the Old Age Assistance and in the Aid to the Permanently and Totally Disabled Programs.

(3) The difference between the amount shown as federal and state reimbursement to localities and the apportionment of funds based on federal participation represents: (a) fractional differences in computations, (b) federal funds made available for the administration of the food stamp program which is not included in the reimbursable amount as federal funds, and (c) local fund differences due to cancellation of state payments made in the prior fiscal year were processed during the current reporting period.

(4) Federal Assistance to Cuban Refugees is shown under the category of General Relief expenditures. This program is financed entirely by Federal funds.

(5) Expenditures were made for the following purposes:

	Total	State Share
For Hospitalization of the Indigent and the Mentally Indigent.....	\$3,281,016	\$1,640,508
For Out-Patient and Emergency Room Service.....	616,646	308,323
<b>Grand Totals.....</b>	<b>\$3,897,662</b>	<b>\$1,948,831</b>



Division of General Welfare

**TABLE V**  
**Hospitalization Under the State and Local Program**  
**for the Indigent\***

Year Ended June 30, 1972

	TOTAL
<b>INPATIENT CARE:</b>	
Number of admissions.....	6,968
Total hospital days paid from public funds.....	59,157
Average days paid from public funds per admission.....	8.5
Average per diem cost from public funds.....	\$ 56.44
Average cost per admission from public funds.....	\$ 479.13
Number of white patients.....	2,819
Number of nonwhite patients.....	3,735
Race not reported.....	414
Number of male patients.....	2,806
Number of female patients.....	4,156
Sex not reported.....	6
<b>OUTPATIENT HOSPITAL CLINIC AND EMERGENCY ROOM VISITS:</b>	
Number of visits.....	81,057
Total Expenditures (Matched funds only).....	\$ 616,647
<b>PAYMENTS FROM PUBLIC FUNDS—TOTAL.....</b>	
State.....	\$ 3,955,231*
Local.....	1,977,616
	1,977,615

\*Refunds made after bills are paid have not been deducted from this data. Includes both inpatient care and outpatient hospital clinic and emergency room care. Does not include local non-matched funds amounting to \$129,011 for inpatient care and \$210,260 for outpatient hospital clinic and emergency room visits.

**TABLE VI**  
**Child Welfare Services Provided by**  
**Local Departments of Public Welfare**

July 1, 1971—June 30, 1972

SERVICES PROVIDED CHILDREN DURING THE YEAR	
TYPE OF SERVICE	NUMBER OF CHILDREN RECEIVING SERVICE
Agency placement for adoption.....	1,746
Adoption study or supervision only.....	5,312
Foster placement (exclusive of adoption placement and children supervised for State Department of Welfare and Institutions).....	14,397
Pre-hearing study for Courts.....	3,463
Probation supervision.....	1,351
Supervision for State Department of Welfare and Institutions.....	483
Child protective services.....	5,893
Services to unmarried mothers.....	957
Other services.....	6,745
<b>TOTAL number of children served.....</b>	<b>40,347*</b>

\*Some children received more than one type of service: 33,543 children received service during the year.

LOCATION OF CHILDREN UNDER CARE ON  
JUNE 30, 1972

LOCATION	NUMBER OF CHILDREN
Adoptive home.....	3,206
Foster family home (placed by an agency).....	9,054
Group home.....	251
Parent's home.....	5,155
Other relative's home (not placed by an agency).....	321
Non-relative's home (not placed by an agency).....	110
Child welfare institutions.....	522
Maternity homes for unmarried mothers.....	29
All other institutions.....	506
Independent living arrangements.....	151
Elsewhere.....	493
<b>TOTAL children under care.....</b>	<b>19,799</b>

**TABLE VII**  
**Children Under Care of the Division of Youth Services**

July 1, 1971—June 30, 1972

DIVISION OF YOUTH SERVICES—SUMMARY	
In Care, July 1, 1971.....	1,486
Newly committed during year.....	1,244
Returned from placement.....	278
Returned from AWOL.....	217
Otherwise received during year.....	181
Total under Care during year.....	3,406
Returned to local supervision.....	1,156
Discharged without supervision.....	100
AWOL.....	303
Otherwise released.....	465
In Care, June 30, 1972.....	1,382

DIAGNOSTIC CENTER—STUDY UNIT	
In Care, July 1, 1971.....	176
Newly committed during year.....	1,244
Returned from placement.....	278
Transferred from training schools.....	39
Transferred from Boarding Care.....	54
Transferred from Halfway Houses.....	5
Returned from AWOL.....	47
Otherwise received.....	58
Total under Care during year.....	1,901
Returned to local supervision.....	43
Transferred to training schools.....	1,035
Transferred to Juvenile Vocational Institute.....	18
Transferred to Natural Bridge Forestry Camp.....	125
Transferred to Pinecrest Center.....	22
Transferred to Boarding Care.....	222
Transferred to Norfolk Halfway House.....	1
Transferred to Richmond Halfway House for Boys.....	12
Transferred to Richmond Halfway House for Girls.....	1
Transferred to Cedar Lodge.....	32
Discharged without supervision.....	36
AWOL.....	41
Otherwise released.....	118
In Care, June 30, 1972.....	195

DIAGNOSTIC CENTER—BOARDING CARE	
In Care, July 1, 1971.....	213
Transferred from Study.....	222
Transferred from training schools.....	42
Returned from AWOL.....	22
Otherwise received.....	27
Total under Care during year.....	526
Returned to local supervision.....	91
Transferred to training schools.....	27
Transferred to Study Unit.....	54
AWOL.....	46
Discharged without supervision.....	35
Otherwise released.....	46
In Care, June 30, 1972.....	227

BEAUMONT SCHOOL FOR BOYS	
In School July 1, 1971.....	374
Transferred from Diagnostic Center.....	553
Transferred from Cedar Lodge.....	10
Transferred from Halfway Houses.....	3
Transferred from Hanover.....	3
Returned from AWOL.....	30
Otherwise received.....	20
Total in School during year.....	991
Returned to local supervision.....	468
Transferred to Diagnostic Center.....	18
Transferred to Halfway Houses.....	17
Transferred to Juvenile Vocational Institute.....	12
Transferred to Hanover.....	1



TABLE VII—Continued

AWOL.....	39
Discharged without supervision.....	9
Otherwise released.....	99
In School, June 30, 1972.....	328
<b>HANOVER SCHOOL FOR BOYS</b>	
In School, July 1, 1971.....	273
Transferred from Diagnostic Center.....	213
Transferred from Hanover.....	1
Transferred from Cedar Lodge.....	5
Returned from AWOL.....	16
Otherwise received.....	4
Total in School during year.....	512
Returned to local supervision.....	235
Transferred to Diagnostic Center.....	16
Transferred to Halfway Houses.....	1
Transferred to Beaumont.....	3
AWOL.....	38
Otherwise released.....	23
In School, June 30, 1972.....	196
<b>JANIE PORTER BARRETT SCHOOL FOR GIRLS</b>	
In School, July 1, 1971.....	109
Transferred from Diagnostic Center.....	120
Transferred from Bon Air.....	1
Returned from AWOL.....	24
Otherwise received.....	6
Total in School during year.....	260
Returned to local supervision.....	78
Transferred to Diagnostic Center.....	19
Transferred to Bon Air.....	5
Transferred to Halfway Houses.....	1
Transferred to Boarding Care.....	5
AWOL.....	26
Otherwise released.....	27
In School, June 30, 1972.....	99
<b>PINECREST CENTER</b>	
In Care, July 1, 1971.....	40
Transferred from Diagnostic Center.....	22
Otherwise received.....	11
Total in Care during year.....	73
Returned to local supervision.....	19
Transferred to Diagnostic Center.....	2
Otherwise released.....	12
In Care, June 30, 1972.....	40
<b>NATURAL BRIDGE FORESTRY CAMP</b>	
In Care, July 1, 1971.....	82
Transferred from Diagnostic Center.....	126
Returned from AWOL.....	1
Otherwise received.....	1
Total in Care during year.....	210
Returned to local supervision.....	101
Transferred to Richmond Halfway House for Boys.....	5
Transferred to Diagnostic Center.....	1
Transferred to Juvenile Vocational Institute.....	1
Transferred to Boarding Care.....	1
AWOL.....	1
Otherwise released.....	14
In Care, June 30, 1972.....	86
<b>JUVENILE VOCATIONAL INSTITUTE</b>	
In Institution, July 1, 1971.....	51
Transferred from Diagnostic Center.....	17
Transferred from Beaumont.....	12
Transferred from Natural Bridge Forestry Camp.....	1
Returned from AWOL.....	16

TABLE VII—Continued

Otherwise received.....	38
Total in Institution during year.....	133
Returned to local supervision.....	20
Transferred to Richmond Halfway House for Boys.....	1
AWOL.....	16
Discharged without supervision.....	6
Otherwise released.....	52
In Institution, June 30, 1972.....	38
<b>CEDAR LODGE</b>	
In Care, July 1, 1971.....	11
Transferred from Diagnostic Center.....	34
Returned from AWOL.....	6
Otherwise received.....	7
Total in Care during year.....	58
Returned to local supervision.....	4
Transferred to Beaumont.....	10
Transferred to Hanover.....	5
Transferred to Halfway Houses.....	1
AWOL.....	3
Discharged without supervision.....	1
Otherwise released.....	14
In Care, June 30, 1972.....	15
<b>BON AIR SCHOOL FOR GIRLS</b>	
In School, July 1, 1971.....	149
Transferred from Diagnostic Center.....	178
Transferred from Barrett.....	4
Transferred from Richmond Halfway House for Girls.....	2
Returned from AWOL.....	50
Otherwise received.....	7
Total in School during year.....	390
Returned to local supervision.....	88
Transferred to Barrett.....	1
Transferred to Diagnostic Center.....	22
Transferred to Richmond Halfway House for Girls.....	14
AWOL.....	74
Discharged without supervision.....	3
Otherwise released.....	53
In School, June 30, 1972.....	135
<b>NORFOLK HALFWAY HOUSE FOR BOYS</b>	
In Care, July 1, 1971.....	3
Transferred from Diagnostic Center.....	14
Transferred from Beaumont.....	3
Transferred from Natural Bridge Forestry Camp.....	1
Transferred from Hanover.....	1
Otherwise received.....	1
Total in Care during year.....	22
Returned to local supervision.....	5
Transferred to Beaumont.....	1
AWOL.....	2
Otherwise released.....	8
Discharged without supervision.....	1
In Care, June 30, 1972.....	5
<b>RICHMOND HALFWAY HOUSE FOR BOYS</b>	
In Institution, July 1, 1971.....	7
Transferred from Diagnostic Center.....	11
Transferred from Juvenile Vocational Institute.....	1
Transferred from Natural Bridge Forestry Camp.....	3
Transferred from Beaumont.....	7
Returned from AWOL.....	2
Otherwise received.....	2
Total in Institution during year.....	33
Returned to local supervision.....	4
Transferred to Diagnostic Center.....	5
AWOL.....	3
Discharged without supervision.....	4
Otherwise released.....	4
In Institution, June 30, 1972.....	13

**TABLE VII—Continued**

RICHMOND HALFWAY HOUSE FOR GIRLS	
In Institution, October 1, 1971.....	7
Transferred from Diagnostic Center.....	14
Transferred from Bon Air.....	1
Transferred from Barrett.....	3
Returned from AWOL.....	1
Otherwise received.....	3
Total in Institution during year.....	28
Transferred to Diagnostic Center.....	3
Transferred to Bon Air.....	2
AWOL.....	9
Discharged without supervision.....	5
Otherwise released.....	2
In Institution, June 30, 1972.....	5

**TABLE VIII**  
**Virginia Training Schools—Per Capita Cost Statement**  
 Year Ended June 30, 1972

	RECEPTION AND DIAGNOSTIC CENTER		BON AIR SCHOOL FOR GIRLS		JANIE PORTER BARRETT SCHOOL FOR GIRLS		BEAUMONT SCHOOL FOR BOYS		HANOVER SCHOOL FOR BOYS		PINE REST CENTER		NATURAL BRIDGE FORESTRY CAMP		JUVENILE VOCATIONAL INSTITUTE		HALF-WAY HOUSES STATE FUNDS		TOTAL		HALF-WAY HOUSE FOR GIRLS LAW ENFORCEMENT AND CRIMINAL JUSTICE GRANTS		TOTAL FEDERAL AND STATE COST	
	Average Daily Population																							
Average Daily Population	233		154		92		358		217		40		88		47		14		1,243		.5		1,248	
Adjusted Appropriations for Maintenance and Operation	\$896,275		\$797,840		\$649,795		\$1,230,505		\$1,081,165		\$261,545		\$348,070		\$297,650		\$107,400		\$5,610,245		\$85,462		\$5,695,707	
	Expenditures	Per Capita Cost	Expenditures	Per Capita Cost	Expenditures	Per Capita Cost	Expenditures	Per Capita Cost	Expenditures	Per Capita Cost	Expenditures	Per Capita Cost	Expenditures	Per Capita Cost	Expenditures	Per Capita Cost	Expenditures	Per Capita Cost	Expenditures	Per Capita Cost	Expenditures	Per Capita Cost	Expenditures	Per Capita Cost
<b>TYPE OF EXPENDITURES:</b>																								
Personal Services	\$ 717,995	\$ 3,082	\$ 630,675	\$ 4,095	\$ 504,152	\$ 5,480	\$ 953,778	\$ 2,664	\$ 812,328	\$ 3,743	\$ 155,112	\$ 3,879	\$ 261,928	\$ 2,976	\$ 210,887	\$ 4,487	\$ 77,404	\$ 5,529	\$ 4,324,259	\$ 3,478	\$ 50,106	\$ 10,021	\$ 4,374,365	\$ 3,505
Contractual Services	68,666	295	39,985	260	32,967	358	61,213	171	43,892	202	10,390	260	18,023	205	22,157	471	6,555	468	303,848	244	3,363	673	307,211	246
Supplies and Materials:																								
Food	54,325	233	51,285	333	34,062	371	106,225	297	81,959	379	11,851	296	25,031	284	16,614	353	2,952	211	384,304	309	4,976	995	389,280	312
Fuel	6,861	29	15,630	102	15,687	171	30,879	86	20,924	96	519	13	9,528	108	4,082	87			104,110	84	254	51	104,364	84
Wearing Apparel	7,975	34	14,535	94	10,695	116	29,255	82	26,020	120	5,207	130	8,570	97	5,294	113	530	38	108,081	87	223	45	108,304	87
All Other Supplies and Materials	29,416	126	24,338	158	18,287	199	71,009	198	37,392	172	6,253	156	10,175	116	13,792	293	3,207	229	213,869	172	3,252	650	217,121	174
Grants—Shared Revenues			60				57																	
Equipment	5,125	22	3,707	24	14,445	157	10,464	46	11,900	55	4,819	120	6,896	78	14,455	308	303	22	78,114	63	14,643	2,929	92,757	74
Current Charges and Obligations	3,722	16	3,537	23	4,276	46	8,623	24	3,987	18	1,179	29	2,525	30	1,221	26	2,755	196	31,825	27	3,066	613	34,891	28
Pensions—Retirement and Insurance																								
Total Expense of Maintenance and Operation	\$ 894,085	\$ 3,837	\$ 783,752	\$ 5,089	\$ 634,571	\$ 6,898	\$ 1,277,503	\$ 3,568	\$ 1,038,402	\$ 4,785	\$ 185,330	\$ 4,883	\$ 342,676	\$ 3,894	\$ 288,502	\$ 6,138	\$ 93,706	\$ 6,693	\$ 5,548,527	\$ 4,464	\$ 83,366	\$ 16,673	\$ 5,631,893	\$ 4,513
Less: Institutional Earnings	5,489	24	6,452	42	2,180	24	75,038	210	13,666	63	1,290	32	6,711	76	2,212	47	768	55	113,806	92			113,806	92
Net Cost of Operation	\$ 888,596	\$ 3,813	\$ 777,300	\$ 5,047	\$ 632,391	\$ 6,874	\$ 1,202,465	\$ 3,358	\$ 1,024,736	\$ 4,722	\$ 184,040	\$ 4,851	\$ 335,965	\$ 3,818	\$ 286,290	\$ 6,091	\$ 92,938	\$ 6,638	\$ 5,434,721	\$ 4,372	\$ 83,366	\$ 16,673	\$ 5,518,087	\$ 4,421
<b>ANALYSIS OF INSTITUTIONAL EARNINGS:</b>																								
Rental of Quarters			\$ 3,763		\$ 1,372		\$ 16,545		\$ 7,649		\$ 660		\$ 2,212		\$ 990				\$ 33,191				\$ 33,191	
Sale of Farm and Dairy Products							48,252												48,252				48,252	
Sale of Meals to Employees and Others	\$ 2,476		769		613		6,895		2,108		450		1,323		1,093		\$ 318		16,045				16,045	
Court Ordered Child Support Payments	3,013		1,920		195		6,895		3,909		180		630		90		450		13,434				13,434	
Revenue—Forestry Service													2,546						2,546				2,546	
Revenue—Miscellaneous							299								39				338				338	
TOTAL	\$ 5,489		\$ 6,452		\$ 2,180		\$ 75,038		\$ 13,666		\$ 1,290		\$ 6,711		\$ 2,212		\$ 768		\$ 113,806				\$ 113,806	
Total Capital Outlays	\$ 3,453		\$ 196,811		\$ 173,073		\$ 279,979		\$ 173,668										\$ 824,984				\$ 824,984	

**TABLE IX**  
**Virginia Correctional Institutions—Per Capita Cost Statement**

Year Ended June 30, 1972

	BUREAU OF CORRECTIONAL FIELD UNITS		STATE FARM		THE PENITENTIARY		INDUSTRIAL FARM FOR WOMEN		SOUTHAMPTON CORRECTIONAL FARM		BLAND CORRECTIONAL FARM		PRE-RELEASE CENTER		TOTALS	
Average Daily Population.....	2,479		1,211		1,181		235		552		367		41		6,066	
Adjusted Appropriation for Maintenance and Operation.....	\$6,818,369		\$3,708,280		\$3,018,745		\$1,438,020		\$1,550,175		\$1,171,840		\$215,420		\$17,920,849	
	Expenditures	Per Capita Cost	Expenditures	Per Capita Cost	Expenditures	Per Capita Cost	Expenditures	Per Capita Cost	Expenditures	Per Capita Cost	Expenditures	Per Capita Cost	Expenditures	Per Capita Cost	Expenditures	Per Capita Cost
<b>TYPE OF EXPENDITURES:</b>																
Personal Services.....	\$ 4,461,575	\$ 1,799	\$ 2,441,751	\$ 2,016	\$ 2,212,244	\$ 1,873	\$ 998,490	\$ 4,249	\$ 1,065,530	\$ 1,930	\$ 810,790	\$ 2,209	\$ 161,914	\$ 3,949	\$12,152,294	\$ 2,004
Contractual Services.....	374,107	151	203,882	168	150,343	127	103,831	442	45,337	82	43,845	119	16,519	403	937,864	154
Supplies and Materials:																
Food.....	759,534	306	418,420	346	353,035	299	72,083	307	164,166	297	123,992	337	7,625	186	1,898,855	313
Fuel.....	97,779	39	101,641	84	68,896	58	46,572	198	39,261	71	15,663	43	2,243	55	372,055	61
Wearing Apparel for Inmates.....	211,412	85	75,548	62	29,385	25	7,626	32	38,282	69	15,777	43	7,071	172	385,101	63
All Other Supplies and Materials.....	509,824	206	383,264	316	179,610	152	161,590	687	145,573	264	135,333	369	9,650	235	1,524,844	251
Equipment.....	125,825	52	48,730	40	8,713	8	34,448	147	41,742	76	19,768	54	3,690	60	282,916	47
Current Charges and Obligations.....	278,313	112	26,213	22	10,507	9	7,772	33	9,785	18	6,165	17	2,283	55	341,044	57
Total Expense of Maintenance and Operation.....	\$ 6,818,369	\$ 2,750	\$ 3,699,449	\$ 3,054	\$ 3,012,733	\$ 2,551	\$ 1,432,412	\$ 6,095	\$ 1,549,676	\$ 2,807	\$ 1,171,333	\$ 3,191	\$ 211,001	\$ 5,146	\$17,894,973	\$ 2,950
Less: Institutional Earnings.....	3,459,873	1,396	353,076	291	10,742	9	193,157	822	155,595	282	131,744	359	1,761	43	4,305,948	709
Net Cost of Operation.....	\$ 3,358,496	\$ 1,354	\$ 3,346,373	\$ 2,763	\$ 3,001,991	\$ 2,542	\$ 1,239,255	\$ 5,273	\$ 1,394,081	\$ 2,525	\$ 1,039,589	\$ 2,832	\$ 209,240	\$ 5,103	\$13,589,025	\$ 2,241
<b>ANALYSIS OF INSTITUTIONAL EARNINGS:</b>																
Revenue from Convict Labor.....	\$ 3,089,061														\$ 3,089,061	
Sale of Farm and Dairy Products.....	207,195		\$ 281,806				\$ 31,785		\$ 136,249		\$ 110,640				767,675	
Rental of Quarters.....	15,230		11,072				6,425		6,829		2,100				41,656	
Sale of Meals to Employees and Others.....	67,051		27,031		\$ 10,742		9,088		8,264		8,936				131,132	
Revenue from Laundry Services.....							129,445								129,445	
Surplus Property Revenue.....	16,269		27,476						3,133		9,988				56,866	
Receipts from Work Release Program.....	62,298														62,298	
Miscellaneous Revenue.....	2,769		5,691				16,414		1,100		80				26,054	
Revenue from Forestry Service.....													\$ 1,761		1,761	
TOTAL.....	\$ 3,459,873		\$ 353,076		\$ 10,742		\$ 193,157		\$ 155,595		\$ 131,744		\$ 1,761		\$ 4,305,948	
Capital Outlay Expenditures.....	\$ 167,806		\$ 63,646		\$ 19,110		\$ 37,858		\$ 105,967		\$ 219,917		\$ 83,839		\$ 706,143	

**TABLE X**  
**Distribution of Population in the Correctional Institutions**  
 June 30, 1972

	FELONS	MISDE- MEANANTS	TOTAL
Total Prisoner Population.....	5,137	892	6,029
The Penitentiary.....	1,165		1,165
State Farm—Goochland.....	146	219	365
State Farm—Powhatan.....	838	8	846
Southampton Correctional Farm.....	551	50	601
Bland Correctional Farm.....	115	197	312
State Industrial Farm for Women.....	165	70	235
Catawba Sanatorium (custodial workers)	8	3	11
Work Release.....	186		186
Pre-Release.....	31		31
<b>CORRECTIONAL UNITS—TOTAL.....</b>	<b>1,932</b>	<b>345</b>	<b>2,277</b>
Correctional Unit 1—Pulaski.....	50	12	62
Correctional Unit 2—Caroline.....	90	2	92
Correctional Unit 3—Nansemond.....	63	5	68
Correctional Unit 4—Mecklenburg.....	77	2	79
Correctional Unit 5—Floyd.....	47	8	55
Correctional Unit 6—Woodbridge.....	39	20	59
Correctional Unit 7—White Post.....	66	17	83
Correctional Unit 8—Harrisonburg.....	57	6	63
Correctional Unit 9—Rustburg.....	83	5	88
Correctional Unit 10—Augusta.....	73	4	77
Correctional Unit 11—Culpeper.....	57	8	65
Correctional Unit 12—Fluvanna.....	6	57	63
Correctional Unit 13—Pocahontas.....	67	22	89
Correctional Unit 14—Pamunkey.....	24		24
Correctional Unit 15—Chatham.....	72	4	76
Correctional Unit 16—New Kent.....	80	10	90
Correctional Unit 17—Haynesville.....	78	3	81
Correctional Unit 18—Wise.....	42	11	53
Correctional Unit 20—Capron.....	53	10	63
Correctional Unit 21—Stafford.....	86	4	90
Correctional Unit 22—Tidewater.....	77	7	84
Correctional Unit 23—Halifax.....	69	8	77
Correctional Unit 24—Smith Lake.....	45	13	58
Correctional Unit 25—Botetourt.....	38	23	61
Correctional Unit 26—Haymarket.....	46	11	57
Correctional Unit 27—Dinwiddie.....	92	6	98
Correctional Unit 28—Patrick.....	76	10	86
Correctional Unit 29—Buchanan.....	43	9	52
Correctional Unit 30—Northern Virginia.....	117	29	146
Correctional Unit 31—Tazewell.....	43	12	55
Construction Force.....	76	7	83

**TABLE XI**  
**Changes in Felon Population**  
Year Ended June 30, 1972

PRISONERS RECEIVED DURING THE YEAR			
<b>RECEIVED ON NEW SENTENCES:</b>			
White Males.....	1,693		
White Females.....	50		
Negro Males.....	1,263		
Negro Females.....	76		
Other Males.....	12		
		2,494	
<b>RETURNED FOR VIOLATION OF PAROLE:</b>			
White Males.....	38		
White Females.....	1		
Negro Males.....	49		
Negro Females.....	1		
			89
<b>RETURNED FROM JAIL (After Court Appearance):</b>			
White Males.....	293		
White Females.....	15		
Negro Males.....	389		
Negro Females.....	32		
			729
<b>ESCAPEES RETURNED:</b>			
White Males.....	138		
Negro Males.....	83		
Other Males.....	1		
			222
<b>RETURNED FROM CENTRAL STATE HOSPITAL:</b>			
White Males.....	6		
White Females.....	1		
Negro Males.....	13		
Negro Females.....	3		
			23
<b>RETURNED FROM SOUTHWESTERN STATE HOSPITAL:</b>			
White Males.....	12		
Negro Males.....	5		
			17
<b>RETURNED FROM MEDICAL COLLEGE OF VIRGINIA HOSPITAL:</b>			
White Males.....	29		
White Females.....	8		
Negro Males.....	30		
Negro Females.....	14		
			81
<b>RETURNED FROM ST. MARY'S HOSPITAL:</b>			
Negro Male.....	1		
			1
<b>RETURNED FROM OTHER HOSPITALS:</b>			
White Males.....	2		
White Females.....	4		
Negro Males.....	5		
Negro Females.....	2		
			13
<b>RETURNED TO SERVE SUSPENDED SENTENCE:</b>			
White Males.....	10		
Negro Males.....	5		
			15
<b>RETURNED BY ORDER OF COURT:</b>			
White Males.....	1		
			1
<b>RETURNED TO SERVE BALANCE OF SENTENCE:</b>			
Negro Males.....	1		
		1	3,686
<b>DECREASES DURING THE YEAR</b>			
<b>DISCHARGED ON EXPIRATION OF TERMS:</b>			
White Males.....	465		
White Females.....	22		
Negro Males.....	532		
Negro Females.....	37		
Other Males.....	1		
		1,057	
<b>PAROLED:</b>			
White Males.....	513		
White Females.....	19		
Negro Males.....	635		
Negro Females.....	34		
Other Males.....	1		
		1,202	

**TABLE XI—Continued**  
**Changes in Felon Population**  
Year Ended June 30, 1972

<b>PARDONED:</b>			
White Males.....	4		
White Females.....	1		
Negro Males.....	1		
Negro Females.....	1		
			6
<b>TRANSFERRED TO JAIL (For Court Appearance):</b>			
White Males.....	306		
White Females.....	16		
Negro Males.....	381		
Negro Females.....	32		
			745
<b>ESCAPED:</b>			
White Males.....	157		
White Females.....	1		
Negro Males.....	91		
Negro Females.....	1		
Other Males.....	1		
			250
<b>TRANSFERRED TO CENTRAL STATE HOSPITAL:</b>			
White Males.....	19		
White Females.....	3		
Negro Males.....	24		
Negro Females.....	6		
			52
<b>TRANSFERRED TO SOUTHWESTERN STATE HOSPITAL:</b>			
White Males.....	12		
Negro Males.....	6		
Negro Females.....	1		
			19
<b>TRANSFERRED TO MEDICAL COLLEGE OF VIRGINIA HOSPITAL:</b>			
White Males.....	37		
White Females.....	7		
Negro Males.....	30		
Negro Females.....	12		
			86
<b>TRANSFERRED TO ST. MARY'S HOSPITAL:</b>			
Negro Males.....	2		
			2
<b>TRANSFERRED TO OTHER HOSPITALS:</b>			
White Males.....	2		
White Females.....	4		
Negro Males.....	4		
Negro Females.....	2		
			12
<b>RELEASED BY ORDER OF COURT:</b>			
White Males.....	6		
White Females.....	6		
Negro Males.....	6		
Negro Females.....	1		
			12
<b>RELEASED BY ORDER OF PAROLE BOARD:</b>			
White Males.....	1		
Negro Males.....	1		
			2
<b>DIED:</b>			
White Males.....	5		
Negro Males.....	10		
Negro Females.....	1		
		12	3,461

**TABLE XII**  
**Comparison by Years of Felons Committed to Receiving Unit of Correctional System**

YEAR ENDED JUNE 30	PERCENT WHITE	PERCENT NON-WHITE	TOTAL ADMITTED	CHANGE FROM PREVIOUS YEARS	
				Increase	Decrease
1942	39.06	60.94	1,600		59
1943	34.10	65.90	1,463		137
1944	34.99	65.01	1,169		284
1945	41.33	58.67	1,251	82	
1946	35.88	64.12	1,438	187	
1947	36.36	63.64	1,584	146	
1948	42.07	57.93	1,595	11	
1949	45.36	54.64	1,768	173	
1950	48.14	51.86	1,824	56	
1951	45.14	54.86	1,637		187
1952	47.58	52.42	1,715	78	
1953	42.95	57.05	1,795	80	
1954	46.94	53.06	1,909	114	
1955	44.48	55.52	1,985	76	
1956	45.34	54.66	1,791		194
1957	46.99	53.01	1,930	139	
1958	49.93	50.07	2,099	169	
1959	50.07	49.93	2,155	56	
1960	49.72	50.28	1,971		184
1961	52.58	47.42	2,031	60	
1962	50.68	49.32	1,762		269
1963	50.46	49.54	1,966	204	
1964	49.68	50.32	1,707		259
1965	49.36	50.64	1,487		220
1966	47.94	52.06	1,604	17	
1967	45.10	54.90	1,439		65
1968	44.43	55.57	1,562	123	
1969	44.16	55.84	1,549		13
1970	45.03	54.97	1,850	301	
1971	46.26	53.74	2,021	171	
1972	45.83	54.17	2,494	473	

**TABLE XIII**  
**Misdemeanants Committed to the State Farm, Bland Correctional Farm, Southampton Farm, Correctional Field Units and State Industrial Farm for Women According to Court of Commitment**

Year Ended June 30, 1972

COUNTY COURTS	STATE FARM	BLAND CORRECTIONAL FARM	SOUTHAMPTON FARM	CORRECTIONAL FIELD UNITS	STATE INDUSTRIAL FARM FOR WOMEN
Accomack					
Allegheny	18			4	
Amelia		4		1	
Amherst	19		1		1
Appomattox	1			10	
Arlington	10			1	
Augusta	1	5	6	32	3
Bath	1	12		12	2
Bedford		26		5	3
Bland		5		1	
Botetourt		10		2	1
Brunswick	15			1	
Buchanan	1	12	1	6	1
Buckingham	8			1	
Campbell	3			11	2
Caroline	9			8	
Carroll	1	43	1	14	2
Charles City					
Charlotte	8			2	1
Chesterfield	61		3	5	5
Clarke	1				
Craig					
Culpeper	1	8			1
Cumberland	1				
Dickinson		4		2	1
Dinwiddie	4			1	
Essex	4			2	
Fairfax	10	21	3	62	4
Fauquier				4	
Floyd		3		5	
Fluvanna	9				2
Franklin		15		1	
Frederick				7	
Giles		22		2	
Gloucester	2				
Goochland	63			2	28
Grayson		24		9	4
Greene	4			1	
Greensville	2			4	
Halifax	3			9	
Hanover	8			12	2
Henrico	38	1	3	30	12
Henry	1	8		6	
Highland					
Isle of Wight				5	
James City	4	1		5	
King George			1	2	
King and Queen				1	
King William				4	
Lancaster				2	
Lee		7			
Loudoun	4			9	
Louisa	2		1	3	1
Lunenburg	13				2
Madison	19	3			
Mathews				1	
Mechlenburg	3		2	25	1
Mid'essex		30		6	
Montgomery				9	
Nansemond				6	
Nelson	1			1	
New Kent				1	1
Northampton				1	
Northumberland	4		1		
Nottoway	29			6	2
Orange	11			2	3
Page		15		1	
Patrick		7		3	
Pittsylvania	2			9	6

**TABLE XIII—Continued**  
**Misdemeanants Committed to the State Farm, Bland Correctional Farm, Southampton Farm, Correctional Field Units and State Industrial Farm for Women According to Court of Commitment**

Year Ended June 30, 1972

COUNTY COURTS	STATE FARM	BLAND CORRECTIONAL FARM	SOUTH-AMPTON FARM	CORRECTIONAL FIELD UNITS	STATE INDUSTRIAL FARM FOR WOMEN
Powhatan	12	1		1	1
Prince Edward	11		1	1	3
Prince George	10			2	1
Prince William	11		1	2	
Pulaski	2	34		10	
Rappahannock				3	3
Richmond				3	2
Roanoke		16		4	
Rockbridge		5		3	
Rockingham	10	1		23	2
Russell	1	27	2	3	
Scott		5			
Shenandoah				10	
Smyth		41	1	2	1
Southampton				1	
Spotsylvania	2			12	
Stafford	6		2	9	
Surry	4			1	
Sussex	2			1	
Tazewell		38		4	
Warren	2	2		11	1
Washington	1	40		3	
Westmoreland	3	7	3	3	1
Wise		55		6	4
Wythe		45		1	1
York	11			4	
<b>TOTAL COUNTIES</b>	<b>487</b>	<b>603</b>	<b>33</b>	<b>495</b>	<b>111</b>
<b>CITY COURTS</b>					
Alexandria	5		1	24	3
Bedford				2	
Bristol		20		8	6
Buena Vista		7		3	1
Charlottesville	42				
Chesapeake	1	12		1	
Clifton Forge			1		
Colonial Heights				1	
Covington				5	1
Danville	1			3	
Emporia	3			6	
Fairfax		1		5	
Falls Church	1			3	
Franklin				19	2
Fredericksburg	1			9	6
Galax			2		
Hampton	42			3	
Harrisonburg	4			1	
Hopewell		1		34	4
Lexington	4	97	4	11	1
Lynchburg	1	5	1	14	4
Martinsville	37		2	13	29
Newport News	24			2	14
Norfolk		2	48		
Norton				2	
Petersburg	37		1	30	2
Portsmouth	3			3	
Radford		9		86	32
Richmond	91		30	26	19
Roanoke	7	129	1	1	
Salem		5			
South Boston				11	5
Staunton	1	18		7	
Suffolk				1	4
Virginia Beach	5			11	1
Waynesboro		4		1	2
Williamsburg	41		1	6	2
Winchester	2				2
<b>TOTAL CITIES</b>	<b>353</b>	<b>310</b>	<b>94</b>	<b>348</b>	<b>129</b>
<b>GRAND TOTAL</b>	<b>840</b>	<b>913</b>	<b>127</b>	<b>843</b>	<b>240</b>

**TABLE XIV**  
**Felons Committed to the Virginia State Penal System (By Court Committed from, According to Race and Sex)**

Year Ended June 30, 1972

COUNTY COURTS	WHITE			NON-WHITE			GRAND TOTAL
	Male	Female	Total	Male	Female	Total	
Accomack	3	1	4	5		5	9
Albemarle	7		7	1		1	8
Alloghany	1		1				1
Amelia	1		1				1
Amherst	13		13	2		2	3
Appomattox	1		1	7		7	20
Arlington	30	3	33	4		4	5
Augusta	20	1	21	39	4	43	21
Bedford	6		6				16
Botetourt	4		4	10		10	21
Brunswick				2		2	6
Buchanan				1		1	1
Buckingham	17		17				17
Campbell	4		4	2		2	3
Caroline	4		4	1		1	5
Carroll	20		20	6		6	8
Charles City	1		1				20
Charlotte				1		1	2
Chesterfield	17		17	12	1	13	30
Clarke	4		4				4
Craig	1		1				1
Culpeper	1		1	5		5	6
Dinwiddie	4		4	5		5	9
Essex	1		1				1
Fairfax	76	1	77	30	2	32	109
Fauquier	4	1	5	5	1	6	11
Floyd	1		1				1
Franklin	13		13	3		3	17
Frederick	7	1	8				8
Giles	10		10				10
Gloucester	4		4	1		1	5
Goochland	2	1	3	2		2	3
Grayson	12	1	13				13
Greene	3		3				3
Greensville	6		6	7	1	8	14
Halifax	1		1	4		4	5
Hanover	6		6	6		6	12
Henrico	29		29	15		15	44
Henry	17	1	18	5		5	23
Isle of Wight	6		6	12	2	14	20
James City	4		4	3		3	7
King and Queen				1		1	2
King George	1	1	2				1
King William				1		1	1
Lancaster	5		5	2		2	7
Lee	2		2				2
Loudoun	7		7	3		3	10
Louisa	3		3	6		6	9
Madison	1		1				1
Mathews				2		2	2
Mecklenburg	3		3	2		2	5
Montgomery	12		12				12
Nansemond	4	1	5	18		18	23
Nelson	1		1				1
New Kent	4		4				4
Northampton	2		2				6
Northumberland				6		6	8
Nottoway	3		3	4		4	4
Orange	3		3	11		11	14
Page	18		18	4		4	7
Patrick	4	2	6	2		2	20
Pittsylvania	11		11	2		2	8
Powhatan				9		9	20
Prince Edward	2		2	2		2	2



**TABLE XIV—Continued**

**Felons Committed to the Virginia State Penal System  
(By Court Committed from, According to Race and Sex)**

Year Ended June 30, 1972

COUNTY COURTS	WHITE			NON-WHITE			GRAND TOTAL
	Male	Female	Total	Male	Female	Total	
Prince George.....	5		5	5		5	10
Prince William.....	25	2	27	9		9	36
Pulaski.....	8	1	9	3		3	12
Richmond.....			15	5		5	20
Roanoke.....	15		2	2		2	4
Floekbridge.....	2		39	7		7	46
Floekingham.....	36	3	4				4
Floesoll.....	4		1				1
Shenandoah.....	1		15				15
Smyth.....	15		1	22		22	23
Southampton.....	1		3	3		3	6
Spotsylvania.....	3		4	1		1	5
Stafford.....	4		2	6		6	10
Surry.....	1	1	4	1		1	3
Sussex.....	4		16	1		1	17
Tazewell.....	15	1	12				13
Warren.....	12		6				6
Washington.....	6		4	4		4	4
Westmoreland.....			3				3
Wise.....	3		4	1		1	5
Wythe.....	4		6	5		5	11
York.....	5	1					
<b>TOTAL.....</b>	<b>615</b>	<b>25</b>	<b>640</b>	<b>353</b>	<b>11</b>	<b>364</b>	<b>1,004</b>

**TABLE XIV—Continued**

**Felons Committed to the Virginia State Penal System  
(By Court Committed from, According to Race and Sex)**

Year Ended June 30, 1972

CITY COURTS	WHITE			NON-WHITE			GRAND TOTAL
	Male	Female	Total	Male	Female	Total	
Alexandria.....	18	1	19	25	2	27	46
Bristol.....	10		10	3		3	13
Buena Vista.....				1		1	1
Charlottesville.....	9		9	19		19	28
Chesapeake.....	14		14	10		10	24
Clifton Forge.....	2		2				2
Colonial Heights.....							4
Danville.....	20	2	22	16		16	38
Fredericksburg.....	5		5	4	1	5	10
Hampton.....	16	2	18	26	3	29	47
Hopewell.....	1		1	2		2	3
Lynchburg.....	13	3	16	20	1	21	37
Martinsville.....	15	1	16	14	2	16	32
Newport News.....	31	2	33	46	3	49	82
Norfolk.....	65	3	68	215	14	229	297
Petersburg.....	6	1	7	36	3	39	46
Portsmouth.....	19		19	92	7	99	118
Radford.....	2		2	2		2	4
Richmond.....	95	5	100	305	27	332	432
Roanoke.....	52	2	54	25	1	26	80
Salem.....	3		3	2		2	5
Staunton.....	5		5	5		5	10
Suffolk.....	3		3	26		26	29
Virginia Beach.....	50	3	53	22		22	75
Waynesboro.....	9		9	3		3	12
Williamsburg.....	4		4		1	1	5
Winchester.....	9		9	1		1	10
<b>TOTAL.....</b>	<b>478</b>	<b>25</b>	<b>503</b>	<b>922</b>	<b>65</b>	<b>987</b>	<b>1,490</b>
<b>GRAND TOTAL.....</b>	<b>1,093</b>	<b>50</b>	<b>1,143</b>	<b>1,275</b>	<b>76</b>	<b>1,351</b>	<b>2,494</b>

**TABLE XV**  
**Jail Commitments and Prisoner Days**  
**by Months**

Year Ended June 30, 1972

MONTH	COMMITMENTS	PRISONER DAYS
July 1971.....	11,542	101,928
August.....	11,752	103,220
September.....	11,344	103,204
October.....	11,349	107,847
November.....	10,158	103,261
December.....	9,996	109,939
January 1972.....	10,446	102,557
February.....	9,629	99,768
March.....	10,811	105,508
April.....	10,839	98,378
May.....	11,605	100,481
June.....	10,701	94,712
<b>TOTAL.....</b>	<b>130,172</b>	<b>1,221,803</b>

**TABLE XVI**  
**Jail Commitments and Prisoner Days**  
**for the Past Ten Years**

FISCAL YEAR ENDED JUNE 30	COMMITMENTS	PRISONER DAYS
1963.....	118,121	1,290,908
1964.....	127,953	1,368,285
1965.....	127,993	1,340,892
1966.....	123,274	1,270,400
1967.....	121,665	1,178,682
1968.....	120,828	1,176,733
1969.....	126,662	1,172,444
1970.....	131,057	1,251,237
1971.....	131,439	1,372,350
1972.....	130,172	1,221,803
<b>YEARLY AVERAGE.....</b>	<b>125,916</b>	<b>1,284,373</b>

**TABLE XVII**  
**Total Cases Under Supervision**

Total In State and Out of State Cases Under Supervision During Fiscal Year	Probation	Parole	Pardon	Grand Total
	8,493	3,424	27	11,944

**TABLE XVIII**  
**Total Parolees Under Supervision**

	Parolees Under Supervision in Virginia	Virginia Parolees Under Supervision in Other States	Total Virginia Responsibility
As of July 1, 1971	1,567	391	1,958
Received During Fiscal Year	1,254	212	1,466
Total Under Supervision	2,821	603	3,424
Closed During Fiscal Year	837	176	1,013
Remaining as of June 30, 1972	1,984	427	2,411

**TABLE XIX**  
**Total Probationers Under Supervision**

	Probationers Under Supervision in Virginia	Virginia Probationers Under Supervision in Other States	Total Virginia Responsibility
As of July 1, 1971	4,137	352	4,489
Received During Fiscal Year	3,762	242	4,004
Total Under Supervision	7,899	594	8,493
Closed During Fiscal Year	2,921	180	3,101
Remaining as of June 30, 1972	4,978	414	5,392

**TABLE XX**  
**Total Pardonees Under Supervision**

	Pardonees Under Supervision in Virginia	Virginia Pardonees Under Supervision in Other States	Total Virginia Responsibility
As of July 1, 1971	16	4	20
Received During Fiscal Year	7	0	7
Total Under Supervision	23	4	27
Closed During Fiscal Year	7	1	8
Remaining as of June 30, 1972	16	3	19

**TABLE XXI**  
**Out-of-State Cases in Virginia**

	Probation	Parole	Pardon	Total
As of July 1, 1971	389	175	0	564
Received During Fiscal Year	357	155	0	512
Total Under Supervision	746	330	0	1,076
Closed During Fiscal Year	272	122	0	394
Remaining as of June 30, 1972	474	208	0	682

**TABLE XXII**  
**Virginia Cases Being Supervised by Other States**

	Probation	Parole	Pardon	Total
As of July 1, 1971	352	391	4	747
Received During Fiscal Year	242	212	0	454
Total Under Supervision	594	603	4	1,201
Closed During Fiscal Year	180	176	1	357
Remaining as of June 30, 1972	414	427	3	844

**END**

*7 cases/1972*