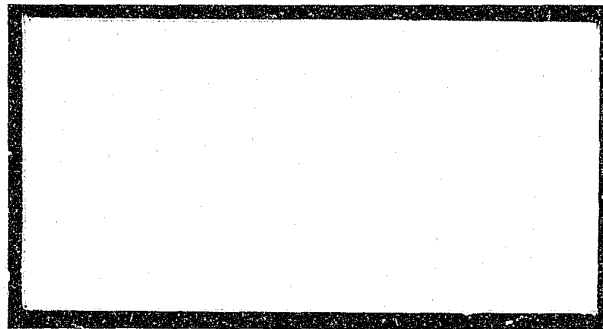


 **SAC**

**Statistical
Analysis
Center**



MF8
127460

Missouri State Highway Patrol

A division of the

Department of Public Safety

127460

**U.S. Department of Justice
National Institute of Justice**

This document has been reproduced exactly as received from the person or organization originating it. Points of view or opinions stated in this document are those of the authors and do not necessarily represent the official position or policies of the National Institute of Justice.

Permission to reproduce this copyrighted material in microfiche only has been granted by

Missouri Statistical Analysis
Center

to the National Criminal Justice Reference Service (NCJRS).

Further reproduction outside of the NCJRS system requires permission of the copyright owner.

1989

MISSOURI

CRIME AND ARREST

DIGEST

Principal Staff Researchers:

Phyllis Emmel, Research Analyst
Bill Aber, Data Processing Specialist

STATISTICAL ANALYSIS CENTER

1510 East Elm

Jefferson City, Missouri 65101

(314) 751-4026



JOHN ASHCROFT
Governor

RICHARD C. RICE
Director

STATE OF MISSOURI
DEPARTMENT OF PUBLIC SAFETY

OFFICE OF THE DIRECTOR
Truman Building, 8th Floor South
Mailing Address: P.O. Box 749
Jefferson City, Missouri 65102-0749
Telephone 314-751-4905

Adjutant General of Missouri
State Emergency
Management Agency
Division of Veterans Affairs
Division of Fire Safety
Missouri State Highway Patrol
Division of Highway Safety
Division of Liquor Control
Division of Water Safety

FOREWORD

This 1989 edition of the Missouri Crime and Arrest Digest describes significant increases in Crime Index Offenses, Violent Offenses, and Property Offenses as compared with 1988 statistics. Furthermore, law enforcement planning staff should review the levels of crime predicted through 1993 in the Digest.

As in the past, the data presented in the Digest are collected by the FBI as part of their national Uniform Crime Reporting System. At the end of each calendar year, the FBI provides these data to the Missouri State Highway Patrol, Statistical Analysis Center for analysis and interpretation. It is, therefore, extremely important that each law enforcement agency in Missouri participate in the FBI UCR Program and submit all required data.

Agencies which require additional statistics on crime or traffic safety should contact the Center directly. Also, any suggestions for improvements in the Digest or for additional statistics should be forwarded to my attention.

Richard C. Rice, Director
Missouri Department of Public Safety

ACKNOWLEDGEMENTS

Data used in this publication were obtained from the Federal Bureau of Investigation's, Uniform Crime Reporting Program. Missouri law enforcement agencies report their crime and arrest activity to this Program on a voluntary basis. The vast majority of Missouri city/county police agencies and sheriff's departments are supporting this Program by reporting their activity. Without their commitment and active participation, publications of this nature could not be produced.

The Federal Bureau of Investigation's, Uniform Crime Reporting Section has, over the years, continued to provide outstanding support to the Missouri State Highway Patrol, Statistical Analysis Center. Annually, they have furnished the reported Missouri crime and arrest data displayed in these Digests. In addition, they have provided technical assistance in conducting quality control reviews of the data as well as in its analysis.

Over the past years the U.S. Department of Justice, Bureau of Justice Statistics has supported, through grant funds, the Missouri Statistical Analysis Center's efforts in providing publications like the Digest as well as other types of information services to the Missouri criminal justice community.



Martin P. Carso Jr., Director
Missouri State Highway Patrol
Statistical Analysis Center

CONTENTS

	PAGE
EXECUTIVE SUMMARY	ix
INTRODUCTION	1
1. MISSOURI CRIME CLOCK.....	3
2. MISSOURI CRIME INDEX COMPARISON ANALYSIS	7
3. MISSOURI ARREST ANALYSIS	17
4. MISSOURI DETAIL CRIME INDEX ANALYSIS	27
4.1 Murder	29
4.2 Forcible Rape	37
4.3 Robbery	43
4.4 Aggravated Assault	49
4.5 Burglary	55
4.6 Theft.....	61
4.7 Motor Vehicle Theft	67
4.8 Arson	73
5. MISSOURI LAW ENFORCEMENT AGENCY CRIME AND ARREST ANALYSIS..	79
GLOSSARY	101

TABLES

PAGE

MISSOURI CRIME INDEX COMPARISON ANALYSIS

2.0.1	Crime Index Offenses, State of Missouri, 1989	9
2.0.2	Actual Reported Crime Index Offenses, State of Missouri, 1980-1989	10
2.0.3	Estimated Crime Index Offenses, State of Missouri, 1980-1989	11
2.0.4	Crime Index Offense Rates, State of Missouri, 1980-1989	12
2.0.5	Property Crime Index Economic Analysis, 1989	13

MISSOURI ARREST ANALYSIS

3.0.1	Crime Index Clearance Rates, State of Missouri, 1980-1989	19
3.0.2	Crime Index Arrests, State of Missouri, 1980-1989	20
3.0.3	Crime Index Arrest Rates, State of Missouri, 1980-1989	21
3.0.4	Total Persons Arrested by Most Serious Offense, State of Missouri, 1989	22

MISSOURI DETAIL CRIME INDEX ANALYSIS

Murder

4.1.1	Murder Rates by Population Group, 1989	30
4.1.2	Murder Clearance Rates, 1988-1989	31
4.1.3	Murder Arrests by Sex and Age Group, 1989	31
4.1.4	Murder Arrests by Race and Age Group, 1989	31
4.1.5	Murder Victims by Sex and Age Group, 1989	32
4.1.6	Murder Victims by Race and Age Group, 1989	32
4.1.7	Type of Weapon Used by Offenders in Murders, 1989	33
4.1.8	Circumstances with Murders, 1989	34

Forcible Rape

4.2.1	Forcible Rape Rates by Population Group, 1989	38
4.2.2	Actual/Attempted Rape Offenses, 1989	39
4.2.3	Forcible Rape Clearance Rates, 1988-1989	39
4.2.4	Forcible Rape Arrests by Sex and Age Group, 1989	39
4.2.5	Forcible Rape Arrests by Race and Age Group, 1989	40

Robbery

4.3.1	Robbery Rates by Population Group, 1989	44
4.3.2	Type of Weapon Used in Robberies, 1989	45
4.3.3	Robbery Loss/Location, 1989	45
4.3.4	Robbery Clearance Rates, 1988-1989	46
4.3.5	Robbery Arrests by Sex and Age Group, 1989	46
4.3.6	Robbery Arrests by Race and Age Group, 1989	46

TABLES

	PAGE
 Aggravated Assault	
4.4.1 Aggravated Assault Rates by Population Group, 1989	50
4.4.2 Type of Weapon Used in Aggravated Assaults, 1989	51
4.4.3 Aggravated Assault Clearance Rates, 1988-1989	51
4.4.4 Aggravated Assault Arrests by Sex and Age Group, 1989	52
4.4.5 Aggravated Assault Arrests by Race and Age Group, 1989	52
 Burglary	
4.5.1 Burglary Rates by Population Group, 1989	56
4.5.2 Type of Burglary, 1989	57
4.5.3 Burglary Loss/Location/Time, 1989	57
4.5.4 Burglary Clearance Rates, 1988-1989	58
4.5.5 Burglary Arrests by Sex and Age Group, 1989	58
4.5.6 Burglary Arrests by Race and Age Group, 1989	58
 Theft	
4.6.1 Theft Rates by Population Group, 1989	62
4.6.2 Theft by Value of Stolen Items, 1989	63
4.6.3 Nature of Theft, 1989	63
4.6.4 Theft Clearance Rates, 1988-1989	64
4.6.5 Theft Arrests by Sex and Age Group, 1989	64
4.6.6 Theft Arrests by Race and Age Group, 1989	64
 Motor Vehicle Theft	
4.7.1 Motor Vehicle Theft Rates by Population Group, 1989	68
4.7.2 Type of Vehicle Stolen, 1989	69
4.7.3 Motor Vehicle Theft Yearly Loss, 1988-1989	69
4.7.4 Motor Vehicle Theft Clearance Rates, 1988-1989	70
4.7.5 Motor Vehicle Theft Arrests by Sex and Age Group, 1989	70
4.7.6 Motor Vehicle Theft Arrests by Race and Age Group, 1989	70
 Arson	
4.8.1 Arson Rates by Population Group, 1989	74
4.8.2 Arson Loss by Type of Property, 1989	75
4.8.3 Arson Clearance Rates, 1988-1989	76
4.8.4 Arson Arrests by Sex and Age Group, 1989	76
4.8.5 Arson Arrests by Race and Age Group, 1989	76

TABLES

	PAGE
MISSOURI LAW ENFORCEMENT AGENCY CRIME AND ARREST ANALYSIS	
5.0.1 Crime Index Offenses, Municipalities 25,000 and Over by Reporting Agency, 1989	81
5.0.2 Crime Index Offenses, Municipalities Under 25,000 by Reporting Agency, 1989	83
5.0.3 Crime Index Offenses, Suburban Counties by Reporting Agency, 1989	87
5.0.4 Crime Index Offenses, Rural Counties by Reporting Agency, 1989	89
5.0.5 Total Persons Arrested, Municipalities 25,000 and Over by Reporting Agency, 1989	91
5.0.6 Total Persons Arrested, Municipalities Under 25,000 by Reporting Agency, 1989	93
5.0.7 Total Persons Arrested, Suburban Counties by Reporting Agency, 1989	97
5.0.8 Total Persons Arrested, Rural Counties by Reporting Agency, 1989	99

FIGURES

PAGE

MISSOURI CRIME INDEX COMPARISON ANALYSIS

2.0.1	Crime Index Offense Rates, State of Missouri, Time Series	14
2.0.2	Crime Index Offense Rates, State of Missouri by County, 1989	14
2.0.3	Violent Index Offense Rates, State of Missouri, Time Series	15
2.0.4	Violent Crime Offense Rates, State of Missouri by County, 1989	15
2.0.5	Property Index Offense Rates, State of Missouri, Time Series	16
2.0.6	Property Crime Offense Rates, State of Missouri by County, 1989	16

MISSOURI ARREST ANALYSIS

3.0.1	Crime Index Arrest Rates, State of Missouri, Time Series	23
3.0.2	Violent Index Arrest Rates, State of Missouri, Time Series	24
3.0.3	Property Index Arrest Rates, State of Missouri, Time Series	25

MISSOURI DETAIL CRIME INDEX ANALYSIS

Murder

4.1.1	Murder Offense Rates, State of Missouri, Time Series	35
-------	--	----

Forcible Rape

4.2.1	Rape Offense Rates, State of Missouri, Time Series	41
-------	--	----

Robbery

4.3.1	Robbery Offense Rates, State of Missouri, Time Series	47
-------	---	----

Aggravated Assault

4.4.1	Aggravated Assault Offense Rates, State of Missouri, Time Series	53
-------	--	----

Burglary

4.5.1	Burglary Offense Rates, State of Missouri, Time Series	59
-------	--	----

Theft

4.6.1	Theft Offense Rates, State of Missouri, Time Series	65
-------	---	----

Motor Vehicle Theft

4.7.1	Motor Vehicle Theft Offense Rates, State of Missouri, Time Series	71
-------	---	----

Arson

4.8.1	Arson Offense Rates, State of Missouri, Time Series	77
-------	---	----

EXECUTIVE SUMMARY

The purpose of this Digest is to provide criminal justice authorities and other interested parties with summary data on crime and law enforcement activity in the State of Missouri.

The Digest is produced annually by the Missouri State Highway Patrol, Statistical Analysis Center (SAC). The primary source of data for the Digest is the Federal Bureau of Investigation's (FBI) Uniform Crime Reporting System (UCR). Although this publication contains Missouri crime and arrest activity from 1980 through 1989, emphasis is placed on data reported in the most recent year (1989).

For statewide crime activity, estimation routines have been used to better identify the actual number of crimes that have occurred in the State. These estimation routines are designed to compensate for those law enforcement agencies that did not report their crime activity into the FBI UCR Program. Please note that no estimation routines were employed in the presentation of arrest activity.

The Crime Index is the sum of eight major offenses and is used to measure the magnitude of crime in the United States. The major offenses are included in the Index because of their frequency of occurrence and the fact that they are most likely to be reported to law enforcement agencies. These eight offenses are: murder, forcible rape, robbery, aggravated assault, burglary, theft, motor vehicle theft, and arson. The first four make up the Violent Crime Index and the last four make up the Property Crime Index.

1989 Crime Index Offenses - - - 6.0% Increase Over 1988

In 1989, a total of 253,230 Crime Index offenses were reported in the State of Missouri. It is estimated that a total of 266,848 Crime Index offenses actually occurred on a statewide basis. This was a 6.0 percent increase over 1988. In 1989, one Index Crime was committed every 2.0 minutes. In 22.4 of every 100 Crime Index offenses, the cases were cleared by arrest or exceptional means.

1989 Violent Offenses - - - 14.5% Increase Over 1988

Violent offenses made up 12.2 percent of the total 1989 Missouri Crime Index. There were 31,421 Violent Index offenses reported in 1989. It is estimated that a total of 32,658 Violent Index offenses actually occurred on a statewide basis. This was an increase of 14.5 percent compared to 1988. A violent offense was committed in Missouri every 16.1 minutes. In 48.4 of every 100 Violent Index offenses, the cases were cleared by arrest or exceptional means. A brief analysis of each type of Violent Index offense is given below.

- There were 392 murders reported in 1989. It is estimated that a total of 411 murders actually occurred on a statewide basis. This was a decrease of 0.2 percent compared to 1988. While murder is the most serious Index offense, it made up only 0.2 percent of the total 1989 Missouri Crime Index. One murder was committed in the State every 21.3 hours. In 87.5 of every 100 murders, the cases were cleared by arrest or exceptional means.
- There were 1,496 forcible rapes reported in 1989. It is estimated that a total of 1,588 rapes actually occurred on a statewide basis. This was an increase of 5.9 percent compared to 1988. Forcible rape accounted for 0.6 percent of the total 1989 Missouri Crime Index. One forcible rape was committed every 5.5 hours. In 60.5 of every 100 forcible rapes, the cases were cleared by arrest or exceptional means.

- There were 9,935 robberies reported in 1989. It is estimated that a total of 10,068 robberies actually occurred on a statewide basis. This was an increase of 16.8 percent compared to 1988. Robbery accounted for 3.8 percent of the total 1989 Missouri Crime Index. One robbery occurred every 52.2 minutes. In 27.3 of every 100 robberies, the cases were cleared by arrest or exceptional means.
- There were 19,598 aggravated assaults reported in 1989. It is estimated that a total of 20,591 aggravated assaults actually occurred on a statewide basis. This was an increase of 14.5 percent compared to 1988. Aggravated assault accounted for 7.7 percent of the total 1989 Missouri Crime Index. One aggravated assault occurred every 25.5 minutes. In 57.6 of every 100 aggravated assaults, the cases were cleared by arrest or exceptional means.

1989 Property Offenses - - - 4.9% Increase Over 1988

Property offenses made up 87.8 percent of the total 1989 Missouri Crime Index. There were 221,809 Property Index offenses reported in 1989. It is estimated that a total of 234,190 Property Index offenses actually occurred on a statewide basis. This was an increase of 4.9 percent compared to 1988. It is estimated that property offenses accounted for \$276,275,796 in property stolen or destroyed. One such offense occurred every 2.2 minutes in the State. In 18.8 of every 100 Property Index offenses, the cases were cleared by arrest or exceptional means. A brief analysis of each type of Property Index offense is given below.

- There were 54,865 burglaries reported in 1989. It is estimated that a total of 58,639 burglaries actually occurred on a statewide basis. This was an increase of 1.1 percent compared to 1988. Burglary accounted for 22.0 percent of the total 1989 Missouri Crime Index. One burglary occurred every 9.0 minutes and it is estimated that \$58,171,647 in property/cash was stolen in 1989 due to this offense. In 16.2 of every 100 burglaries, the cases were cleared by arrest or exceptional means.
- There were 138,674 thefts reported in 1989. It is estimated that a total of 146,374 thefts actually occurred on a statewide basis. This was an increase of 4.2 percent compared to 1988. Theft accounted for 54.9 percent of the total 1989 Missouri Crime Index. One theft occurred every 3.6 minutes and it is estimated that \$51,958,379 in property/cash was stolen in 1989 due to this offense. In 20.2 of every 100 thefts, the cases were cleared by arrest or exceptional means.
- There were 26,299 motor vehicle thefts reported in 1989. It is estimated that a total of 27,067 motor vehicle thefts actually occurred on a statewide basis. This was an increase of 21.1 percent compared to 1988. Motor vehicle theft accounted for 10.1 percent of the total 1989 Missouri Crime Index. One motor vehicle theft occurred every 19.4 minutes and it is estimated that \$133,744,272 in property was stolen in 1989 due to this offense. In 16.1 of every 100 motor vehicle thefts, the cases were cleared by arrest or exceptional means.
- There were 1,971 arsons reported in 1989. It is estimated that a total of 2,110 arsons actually occurred on a statewide basis. This was a decrease of 9.2 percent compared to 1988. Arson accounted for 0.8 percent of the total 1989 Missouri Crime Index. One arson occurred every 4.2 hours and it is estimated that \$32,401,498 in property was destroyed due to arson in 1989. In 20.6 of every 100 arsons, the cases were cleared by arrest or exceptional means.

INTRODUCTION

This Digest is the ninth in a series of publications prepared by the Missouri State Highway Patrol, Statistical Analysis Center (SAC). It is designed to present data on crime and arrest activity in Missouri from 1980 through 1989 with special emphasis on the most recent year's (1989) crime and arrest activity.

The crime and arrest data contained in this publication are segmented into five parts. The first section displays the Missouri Crime Clock. This clock offers an overview of the frequency of occurrence of Crime Index offenses committed in the State in relation to time. The Crime Index is the sum of the eight major offenses used to indicate the occurrence of crime in the United States. The eight offenses making up the total Crime Index are: murder, forcible rape, robbery, aggravated assault, burglary, theft, motor vehicle theft, and arson. The second section provides data related to Crime Index offenses committed in the State of Missouri. Its purpose is to provide a comparison of the various types of Crime Index offenses so that their relative importance can be assessed. In addition, Crime Index activity is displayed by geographical regions of the State and also over time to observe trends. The third section presents data on arrest activity and clearance rates associated with Crime Index offenses as well as arrest activity associated with other classes of criminal offenses. These data provide an appreciation of criminal enforcement activity being performed in the State of Missouri by class of crime. The fourth section provides a series of data and analysis related to each of the eight types of Crime Index offenses. Data are provided on crime activity, clearance rates, crime patterns, and arrest activity associated with each of these offenses. Finally, the last section provides summary data on Crime Index offenses and arrest activity for specific law enforcement jurisdictions in the State of Missouri.

The data contained in this Digest were provided on a voluntary basis by Missouri law enforcement agencies to the Federal Bureau of Investigation's (FBI), Uniform Crime Reporting (UCR) Program.

The national UCR Program was initiated in 1930 by the Committee on Uniform Crime Reports of the International Association of Chiefs of Police (IACP). This committee developed uniform offense and arrest classifications as well as reporting procedures which could be used by law enforcement agencies throughout the nation. The FBI was designated to administer the Program and became the national clearinghouse for UCR data. The Committee on Uniform Crime Reports of the IACP continues to serve the national Program in an advisory capacity. In 1966, the National Sheriff's Association also established a Committee on Uniform Crime Reports to act as an advisory body for this program and to promote reporting to the UCR Program.

Crime and arrest data are, for the most part, collected on a monthly basis in the UCR Program. The FBI provides report forms, tally sheets, and self-addressed envelopes to Missouri law enforcement agencies who complete and return them to the FBI.

The fact that this program is voluntary in nature in the State of Missouri increases the problems associated with the completeness and representativeness of the information being captured and analyzed. Certain Missouri law enforcement agencies either do not report to the program or they send incomplete data. In most states, reporting to this program is mandatory for law enforcement agencies through the enactment of state statute.

To reduce the problems associated with both non-reporting and incomplete reporting, a number of techniques have been used for displaying statewide crime and arrest activity. For statewide arrest activity, reliance has been placed on displaying arrest rates on a per 100,000 population basis. This type of data display identifies arrest activity in relation to the population of only those jurisdictions that reported the activity. For statewide crime activity, mathematical routines have been employed to estimate the actual number of crimes that occurred in the State. Crime rates on a per 100,000 population basis also are included. These rates are based on the estimates of actual crimes being committed rather than on those that were reported. Individual data displays in the Digest fully identify whether reported, estimated, or rates per 100,000 population data are used in the display.

Data displays identifying a specific law enforcement jurisdiction's crime and arrest activity contain only the activity reported into the UCR Program. No effort has been made to estimate individual law enforcement agency's crime and arrest activity.

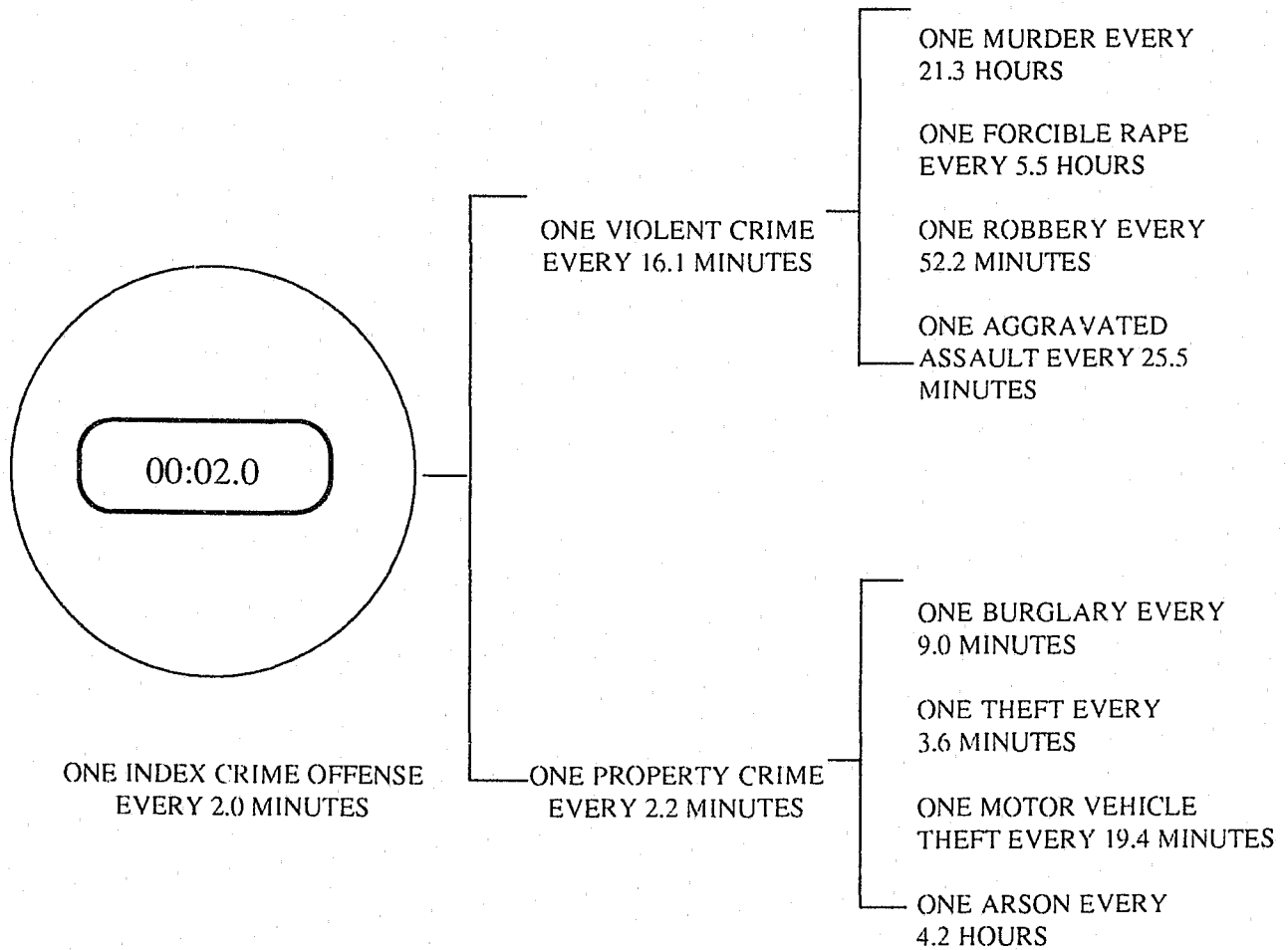
Slight discrepancies may be found if comparisons are made with FBI UCR publications and this Digest covering the same subject matter for the State of Missouri. Although similar, estimation routines and rates per 100,000 population calculations used by the FBI are not the same as those used in this Digest. Discrepancies also may be noted when examining actual reported figures. This is a result of updates having been made to the UCR files between the time the FBI data were processed and the time the SAC analysis was performed.

1.0 MISSOURI CRIME CLOCK

THE CRIME CLOCK SUMMARIZES ESTIMATED CRIMINAL ACTIVITY IN THE STATE OF MISSOURI DURING 1989 IN RELATION TO TIME. FROM THIS PERSPECTIVE, AN APPRECIATION OF THE RELATIVE FREQUENCY OF VARIOUS CRIMINAL OFFENSES CAN BE OBTAINED. THE CRIME CLOCK SHOULD BE VIEWED WITH CARE. IT IS DESIGNED TO CONVEY ANNUAL ESTIMATED CRIME EXPERIENCE BY SHOWING THE RELATIVE FREQUENCY OF OCCURRENCE OF THE INDEX OFFENSES. THIS MODE OF DISPLAY SHOULD NOT BE TAKEN TO IMPLY A REGULARITY IN THE COMMISSION OF CRIME; RATHER, IT REPRESENTS THE ANNUAL RATIO OF CRIME TO FIXED TIME INTERVALS.

MISSOURI CRIME CLOCK

1989



2.0 MISSOURI CRIME INDEX COMPARISON ANALYSIS

A SERIES OF TABLES AND FIGURES SUMMARIZES CRIME INDEX OFFENSES COMMITTED IN THE STATE OF MISSOURI. THE PURPOSE OF THESE DISPLAYS IS TO COMPARE THE VARIOUS TYPES OF CRIME INDEX OFFENSES BEING COMMITTED ACCORDING TO THEIR RELATIVE CONTRIBUTION TO THE CRIME INDEX. IN ADDITION, CRIME INDEX OFFENSE RATES ARE DISPLAYED BY GEOGRAPHICAL REGIONS OF THE STATE AND OVER TIME IN ORDER TO OBSERVE TRENDS.

CRIME INDEX OFFENSES, STATE OF MISSOURI

1989

OFFENSE	REPORTED	ESTIMATED ¹	% OF ESTIMATED TOTAL CRIME INDEX	% OF ESTIMATED VIOLENT CRIME INDEX	% OF ESTIMATED PROPERTY CRIME INDEX	RATE PER ² 100,000 POPULATION
TOTAL INDEX	253,230	266,848	100.0	--	--	5,172.5
VIOLENT INDEX	31,421	32,658	12.2	100.0	--	633.0
PROPERTY INDEX	221,809	234,190	87.8	--	100.0	4,539.4
MURDER	392	411	0.2	1.3	--	8.0
FORCIBLE RAPE	1,496	1,588	0.6	4.9	--	30.8
ROBBERY	9,935	10,068	3.8	30.8	--	195.2
AGGRAVATED ASSAULT	19,598	20,591	7.7	63.1	--	399.1
BURGLARY	54,865	58,639	22.0	--	25.0	1,136.6
THEFT	138,674	146,374	54.9	--	62.5	2,837.2
MOTOR VEHICLE THEFT	26,299	27,067	10.1	--	11.6	524.6
ARSON	1,971	2,110	0.8	--	0.9	40.9

¹See Glossary for an explanation of the computations used to obtain estimates of Missouri's Crime Index offenses.

²Crime Index Offense rates are based on estimated crime index offenses occurring in the State of Missouri. They are computed on a per 100,000 population basis. See Glossary for an explanation of the computations used to obtain these rates.

TABLE 2.0.1

ACTUAL REPORTED CRIME INDEX OFFENSES, STATE OF MISSOURI

1980 - 1989

OFFENSE	1980	1981	1982	1983	1984	1985	1986	1987	1988	1989
TOTAL INDEX	253,869	250,502	233,084	214,023	204,036	208,491	223,104	226,310	236,791	253,230
VIOLENT INDEX	26,128	25,667	24,233	22,884	22,027	24,247	27,998	26,504	27,228	31,421
PROPERTY INDEX	227,741	224,835	208,851	191,139	182,009	184,244	195,106	199,806	209,563	221,809
MURDER	515	495	454	379	333	381	437	394	388	392
FORCIBLE RAPE	1,521	1,395	1,228	1,266	1,243	1,389	1,382	1,372	1,404	1,496
ROBBERY	10,787	10,450	9,397	8,223	6,921	7,251	8,446	8,239	8,475	9,935
AGGRAVATED ASSAULT	13,305	13,327	13,154	13,016	13,530	15,226	17,733	16,499	16,961	19,598
BURGLARY	76,314	72,773	64,527	56,221	51,825	51,435	53,290	52,282	54,052	54,865
THEFT	129,875	132,332	126,868	118,295	112,760	113,623	118,486	124,824	131,774	138,674
MOTOR VEHICLE THEFT	19,358	17,869	15,767	15,055	15,776	17,576	21,358	20,811	21,557	26,299
ARSON	2,194	1,861	1,689	1,568	1,648	1,610	1,972	1,889	2,180	1,971
NUMBER OF REPORTING AGENCIES ²	229	237	238	240	237	249	241	242	245	247

²Number of law enforcement agencies that reported crime index offense activity to the UCR Program in a given year.

TABLE 2.0.2

ESTIMATED CRIME INDEX OFFENSES, STATE OF MISSOURI¹

1980 - 1989

OFFENSE	1980	1981	1982	1983	1984	1985	1986	1987	1988	1989
TOTAL INDEX	269,471	266,315	246,583	226,397	217,819	221,223	237,842	242,276	251,719	266,848
VIOLENT INDEX	27,302	26,731	25,117	23,795	23,083	25,311	29,362	27,862	28,519	32,658
PROPERTY INDEX	242,169	239,584	221,466	202,602	194,736	195,912	208,480	214,414	223,200	234,190
MURDER	552	514	481	409	362	411	467	426	412	411
FORCIBLE RAPE	1,609	1,468	1,292	1,327	1,322	1,484	1,476	1,470	1,500	1,588
ROBBERY	10,987	10,648	9,550	8,358	7,041	7,392	8,633	8,388	8,622	10,068
AGGRAVATED ASSAULT	14,154	14,101	13,794	13,701	14,358	16,024	18,786	17,578	17,985	20,591
BURGLARY	81,963	78,068	68,730	60,244	55,906	55,184	57,480	56,697	58,016	58,639
THEFT	137,342	140,536	134,296	124,895	120,415	120,642	126,550	133,957	140,510	146,374
MOTOR VEHICLE THEFT	20,374	18,911	16,618	15,756	16,582	18,353	22,315	21,723	22,351	27,067
ARSON	2,490	2,069	1,822	1,707	1,833	1,733	2,135	2,037	2,323	2,110

¹See Glossary for an explanation of the computations used to obtain estimates of Missouri's Crime Index offenses.

TABLE 2.0.3

CRIME INDEX OFFENSE RATES, STATE OF MISSOURI¹

1980 - 1989

OFFENSE	1980	1981	1982	1983	1984	1985	1986	1987	1988	1989
TOTAL INDEX	5,497.9	5,393.2	4,980.5	4,555.2	4,349.5	4,398.9	4,694.8	4,747.8	4,898.2	5,172.5
VIOLENT INDEX	557.0	541.4	507.3	478.8	460.9	503.3	579.6	546.0	554.9	633.0
PROPERTY INDEX	4,940.9	4,851.8	4,473.2	4,076.5	3,888.5	3,895.6	4,115.3	4,201.8	4,343.3	4,539.4
MURDER	11.2	10.4	9.7	8.2	7.2	8.2	9.2	8.4	8.0	8.0
FORCIBLE RAPE	32.8	29.7	26.1	26.7	26.4	29.5	29.1	28.8	29.2	30.8
ROBBERY	224.2	215.6	192.9	168.2	140.6	147.0	170.4	164.4	167.8	195.2
AGGRAVATED ASSAULT	288.8	285.6	278.6	275.7	286.7	318.6	370.8	344.5	350.0	399.1
BURGLARY	1,672.3	1,581.0	1,388.2	1,212.2	1,116.3	1,097.3	1,134.6	1,111.1	1,128.9	1,136.6
THEFT	2,802.2	2,846.0	2,712.5	2,513.0	2,404.5	2,398.9	2,498.0	2,625.1	2,734.2	2,837.2
MOTOR VEHICLE THEFT	415.7	383.0	335.7	317.0	331.1	365.0	440.5	425.7	434.9	524.6
ARSON	50.8	41.9	36.8	34.3	36.6	34.4	42.1	39.9	45.2	40.9

¹Crime Index offense rates are based on estimated crime index offenses occurring in the State of Missouri. They are computed on a per 100,000 population basis. See Glossary for an explanation of the computations used to obtain these rates.

TABLE 2.0.4

PROPERTY CRIME INDEX
ECONOMIC ANALYSIS
(PROPERTY STOLEN/DESTROYED)

1989

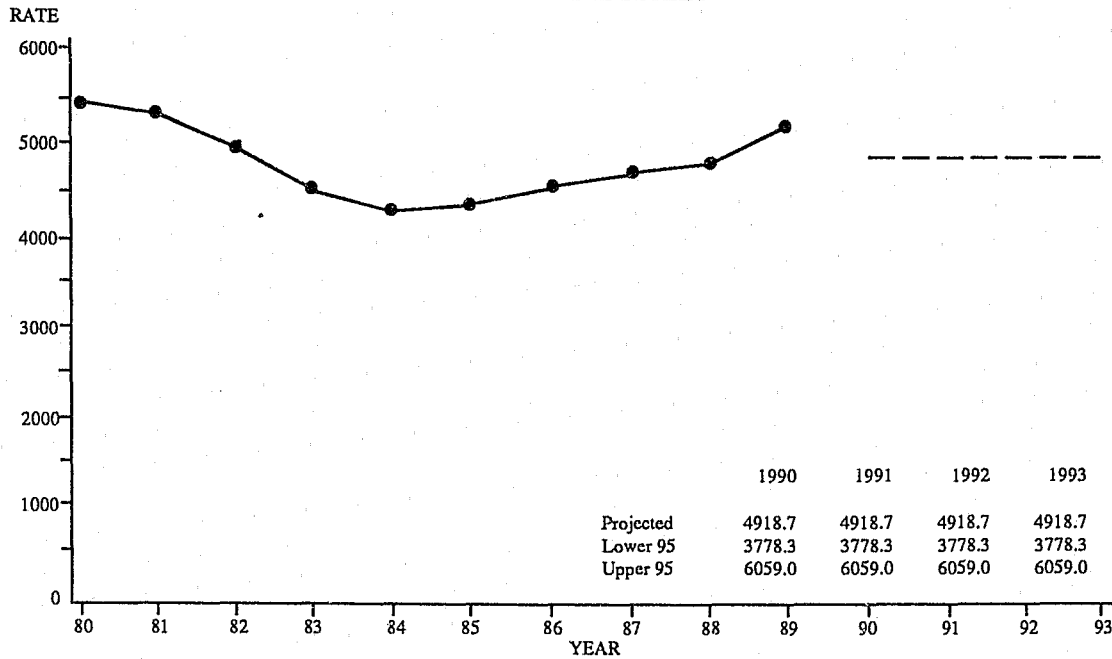
TYPE	LOSS PER ¹ OFFENSE	ESTIMATE ² TOTAL OFFENSES
BURGLARY	\$992.03	\$58,171,647
THEFT	354.97	51,958,379
MOTOR VEHICLE THEFT	4,941.23	133,744,272
ARSON	15,356.16	32,401,498
TOTAL	-	\$276,275,796

¹The dollar loss per offense was calculated using only those property offenses for which law enforcement agencies reported an actual dollar amount for the property stolen or destroyed.

²The estimate was calculated by multiplying the dollar loss per offense by the estimated number of such offenses that occurred in 1989.

TABLE 2.0.5

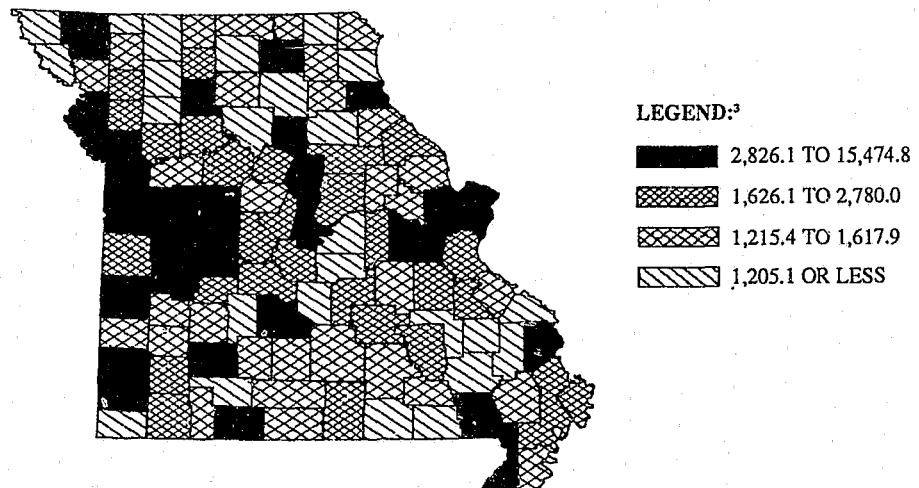
CRIME INDEX OFFENSE RATES, STATE OF MISSOURI¹ **TIME SERIES**



¹Crime Index offense rates are based on estimated crime index offenses occurring in the State of Missouri. They are computed on a per 100,000 population basis. See Glossary for an explanation of the computations used to obtain these rates.

FIGURE 2.0.1

CRIME INDEX OFFENSE RATES,¹ **STATE OF MISSOURI** **BY COUNTY / 1989²**

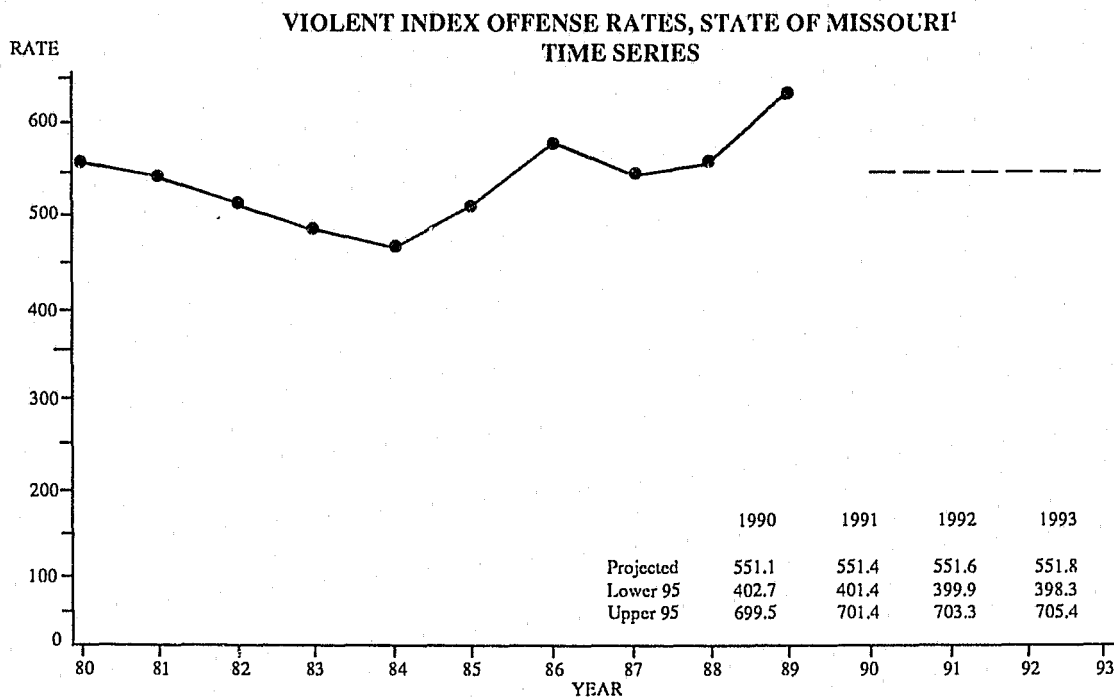


¹Crime Index offense rates are based on estimated crime index offenses occurring in the State of Missouri. They are computed on a per 100,000 population basis. See Glossary for an explanation of the computations used to obtain these rates.

²Because the jurisdictional boundaries of reporting agencies do not coincide with county boundaries in some instances, the following counties were combined: (Clay/Platte/Jackson) and (Scott/New Madrid).

³Legend categories are based on quartiles of counties.

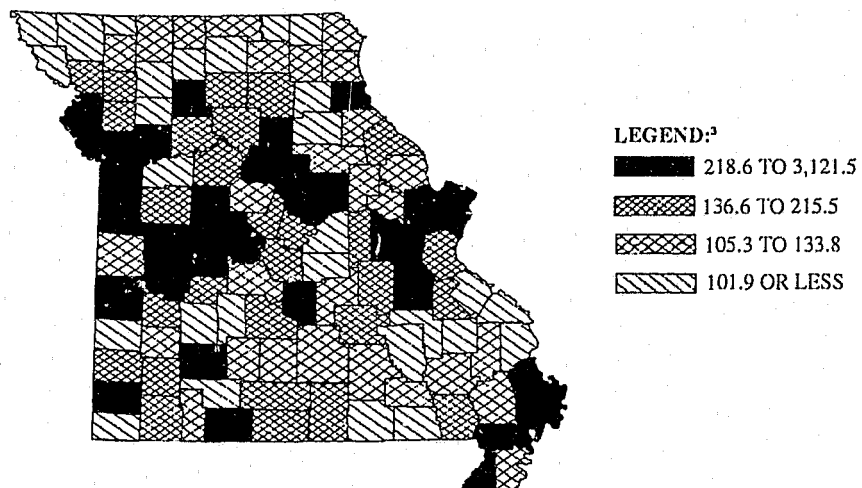
FIGURE 2.0.2



¹Violent Index offense rates are based on estimated violent index offenses occurring in the State of Missouri. They are computed on a per 100,000 population basis. See Glossary for an explanation of the computations used to obtain these rates.

FIGURE 2.0.3

VIOLENT CRIME OFFENSE RATES,¹
STATE OF MISSOURI
BY COUNTY / 1989²

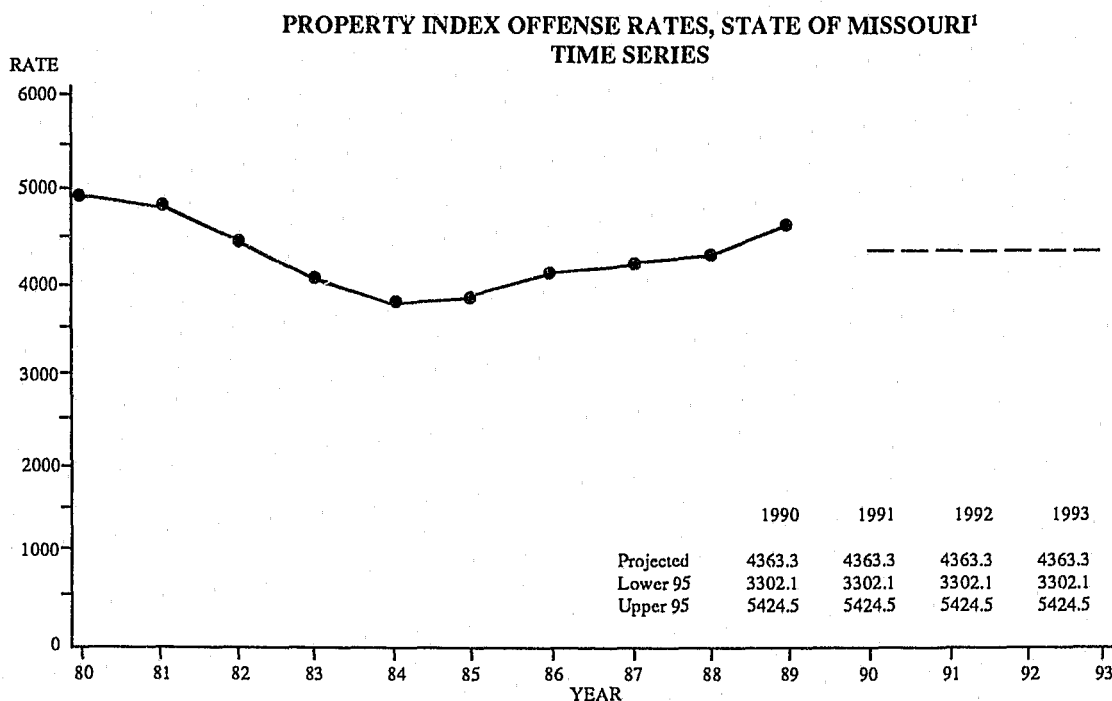


¹Violent Index offense rates are based on estimated violent index offenses occurring in the State of Missouri. They are computed on a per 100,000 population basis. See Glossary for an explanation of the computations used to obtain these rates.

²Because the jurisdictional boundaries of reporting agencies do not coincide with county boundaries in some instances, the following counties were combined: (Clay/Platte/Jackson) and (Scott/New Madrid).

³Legend categories are based on quartiles of counties.

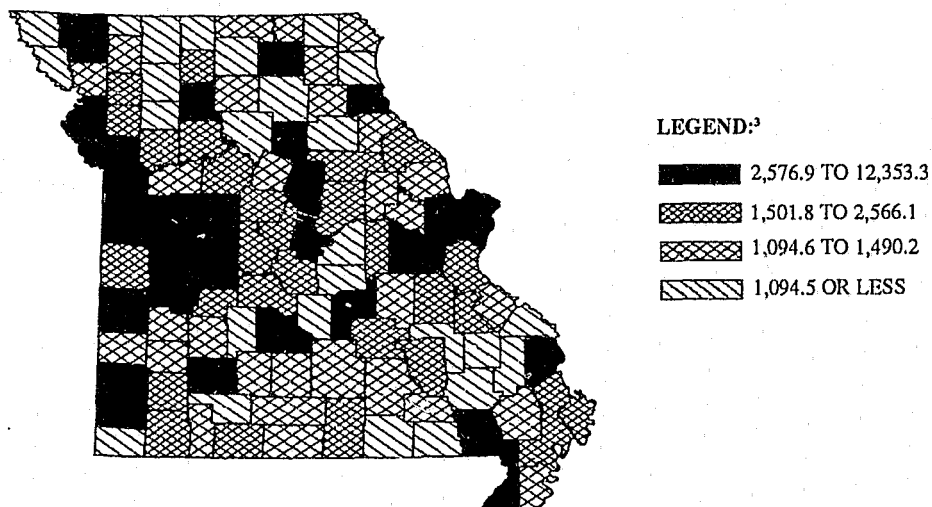
FIGURE 2.0.4



¹Property Index offense rates are based on estimated property index offenses occurring in the State of Missouri. They are computed on a per 100,000 population basis. See Glossary for an explanation of the computations used to obtain these rates.

FIGURE 2.0.5

PROPERTY CRIME OFFENSE RATES,¹
STATE OF MISSOURI
BY COUNTY / 1989²



¹Property Index offense rates are based on estimated property index offenses occurring in the State of Missouri. They are computed on a per 100,000 population basis. See Glossary for an explanation of the computations used to obtain these rates.

²Because the jurisdictional boundaries of reporting agencies do not coincide with county boundaries in some instances, the following counties were combined: (Clay/Platte/Jackson) and (Scott/New Madrid).

³Legend categories are based on quartiles of counties.

FIGURE 2.0.6

3.0 MISSOURI ARREST ANALYSIS

A SERIES OF TABLES AND FIGURES SUMMARIZES MISSOURI CRIME INDEX ARREST CLEARANCE RATES, ACTUAL ARREST ACTIVITY ASSOCIATED WITH CRIME INDEX OFFENSES, AND ARREST ACTIVITY ASSOCIATED WITH ALL OTHER CLASSES OF CRIMINAL ACTIVITY REPORTED TO THE UCR SYSTEM. THE PURPOSE OF THESE DISPLAYS IS TO PROVIDE AN OVERVIEW OF CRIMINAL ENFORCEMENT ACTIVITY BEING PERFORMED IN THE STATE OF MISSOURI BY CLASS OF CRIME. IN ADDITION, ARREST RATES ARE DISPLAYED OVER TIME IN ORDER TO OBSERVE TRENDS.

CRIME INDEX CLEARANCE RATES, STATE OF MISSOURI¹

1980 - 1989

OFFENSE	1980	1981	1982	1983	1984	1985	1986	1987	1988	1989
TOTAL INDEX ²	18.7	20.1	20.1	21.7	21.6	22.3	22.3	22.4	22.7	22.4
VIOLENT INDEX	43.5	45.6	46.0	50.0	50.6	51.2	49.7	50.6	51.0	48.4
PROPERTY INDEX ²	15.8	17.2	17.1	18.3	18.0	18.4	18.4	18.7	19.0	18.8
MURDER	78.1	77.2	70.0	79.5	76.1	77.8	74.7	71.5	88.0	87.5
FORCIBLE RAPE	51.8	55.6	56.7	59.2	54.1	60.0	55.0	57.3	61.4	60.5
ROBBERY	23.7	26.2	25.0	31.0	28.5	28.5	26.6	29.1	28.8	27.3
AGGRAVATED ASSAULT	57.4	58.8	59.2	60.4	61.0	60.6	59.9	60.5	60.6	57.6
BURGLARY	14.7	16.4	14.9	16.9	15.8	15.1	14.6	14.6	16.0	16.2
THEFT	16.8	17.9	18.4	19.2	19.6	20.5	20.7	21.0	20.8	20.2
MOTOR VEHICLE THEFT	13.8	14.7	15.0	15.9	14.1	14.6	15.1	14.5	15.3	16.1
ARSON ²	15.4	16.8	14.4	22.5	20.7	18.3	19.0	20.9 ¹	27.6	20.6

¹Clearance rates indicate the percent of reported offenses that were cleared by arrest or exceptional means. See Glossary for a further explanation.

²The 1987 arson clearance rate is different from that indicated in prior editions of this Digest as a result of a computational correction.

TABLE 3.0.1

CRIME INDEX ARRESTS, STATE OF MISSOURI

1980 - 1989

OFFENSE	1980	1981	1982	1983	1984	1985	1986	1987	1988	1989
TOTAL INDEX	45,084	50,882	50,845	44,024	43,820	43,650	44,095	43,513	45,372	52,982
VIOLENT INDEX	10,876	11,717	11,986	11,196	12,351	11,094	9,600	9,578	9,754	12,722
PROPERTY INDEX	34,208	39,165	38,859	32,828	31,469	32,556	34,495	33,935	35,618	40,260
MURDER	471	490	462	332	313	259	390	362	390	478
FORCIBLE RAPE	1,055	1,060	1,031	978	997	981	775	760	708	766
ROBBERY	2,997	2,958	2,901	2,535	2,161	2,028	2,116	2,296	2,218	2,700
AGGRAVATED ASSAULT	6,353	7,209	7,592	7,351	8,880	7,826	6,319	6,160	6,438	8,778
BURGLARY	10,074	10,906	10,374	8,189	7,056	6,717	7,034	6,696	6,697	7,450
THEFT	21,986	26,152	26,460	23,244	22,686	23,849	24,875	24,926	25,984	29,065
MOTOR VEHICLE THEFT	1,667	1,683	1,631	1,099	1,407	1,689	2,210	1,963	2,556	3,417
ARSON	481	424	394	296	320	301	376	350	381	328
NUMBER OF REPORTING AGENCIES ¹	209	215	226	228	226	241	233	231	238	241

¹Number of law enforcement agencies that reported arrest activity to the UCR Program in a given year.

TABLE 3.0.2

CRIME INDEX ARREST RATES, STATE OF MISSOURI¹

1980 - 1989

OFFENSE	1980	1981	1982	1983	1984	1985	1986	1987	1988	1989
TOTAL INDEX	1,080.6	1,206.7	1,189.3	1,158.1	1,158.6	1,106.1	1,152.2	1,130.9	1,112.6	1,278.6
VIOLENT INDEX	260.7	277.9	280.4	294.5	326.6	281.1	250.8	248.9	239.2	307.0
PROPERTY INDEX	819.9	928.8	909.0	863.6	832.1	824.9	901.3	882.0	873.4	971.6
MURDER	11.3	11.6	10.8	8.7	8.3	6.6	10.2	9.4	9.6	11.5
FORCIBLE RAPE	25.3	25.1	24.1	25.7	26.4	24.9	20.3	19.8	17.4	18.5
ROBBERY	71.8	70.2	67.9	66.7	57.1	51.4	55.3	59.7	54.4	65.2
AGGRAVATED ASSAULT	152.3	171.0	177.6	193.4	234.8	198.3	165.1	160.1	157.9	211.8
BURGLARY	241.5	258.6	242.7	215.4	186.6	170.2	183.8	174.0	164.2	179.8
THEFT	527.0	620.2	618.9	611.5	599.8	604.3	650.0	647.8	637.2	701.4
MOTOR VEHICLE THEFT	40.0	39.9	38.2	28.9	37.2	42.8	57.7	51.0	62.7	82.5
ARSON	11.5	10.1	9.2	7.8	8.5	7.6	9.8	9.1	9.3	7.9

¹Crime Index arrest rates relate to arrests made for crime index offenses reported by law enforcement agencies in the State of Missouri. They are computed on a per 100,000 population basis. See Glossary for a further explanation of the computations used to obtain these rates. Due to a change in computation methods, crime index arrest rates in this Digest will vary slightly when compared to arrest rates found in earlier editions.

TABLE 3.0.3

TOTAL PERSONS ARRESTED BY MOST SERIOUS OFFENSE, STATE OF MISSOURI

1989

OFFENSES CHARGED	TOTAL	JUVENILE	ADULT	MALES	FEMALES
TOTAL ¹	256,045	35,464	220,581	207,128	48,917
Murder & Non-negligent Manslaughter	478	88	390	435	43
Forcible Rape	766	110	656	750	16
Robbery	2,700	574	2,126	2,430	270
Aggravated Assault	8,778	1,170	7,608	7,249	1,529
Burglary	7,450	2,051	5,399	6,925	525
Theft	29,065	7,111	21,954	20,655	8,410
Motor Vehicle Theft	3,417	1,545	1,872	3,082	335
Arson	328	111	217	280	48
Violent Crime ²	12,722	1,942	10,780	10,864	1,858
Property Crime ³	40,260	10,818	29,442	30,942	9,318
CRIME INDEX TOTAL ⁴	52,982	12,760	40,222	41,806	11,176
Other Assaults	25,599	2,718	22,881	21,980	3,619
Forgery & Counterfeiting	2,130	166	1,964	1,307	823
Fraud	3,852	127	3,725	2,173	1,679
Embezzlement	55	12	43	36	19
Stolen Property	2,022	386	1,636	1,704	318
Vandalism	8,099	2,647	5,452	7,214	885
Weapons	6,425	849	5,576	5,794	631
Prostitution	2,390	34	2,356	904	1,486
Sex Offenses	2,679	303	2,376	2,533	146
Drug Abuse Violations	16,138	1,526	14,612	13,682	2,456
Gambling	343	8	335	316	27
Offenses Against Family and Children	1,399	28	1,371	1,032	367
Driving under Influence	23,858	310	23,548	20,801	3,057
Liquor Laws	8,641	1,851	6,790	7,223	1,418
Drunkenness	1,495	54	1,441	1,366	129
Disorderly Conduct	11,379	1,211	10,168	9,170	2,209
Vagrancy	371	44	327	318	53
Other Offenses (except Traffic)	81,185	5,427	75,758	64,967	16,218
Suspicion ¹	860	106	754	747	113
Curfew and Loitering	1,760	1,760	0	1,269	491
Runaways	3,243	3,243	0	1,533	1,710

¹Arrests for suspicion are not included in Total.

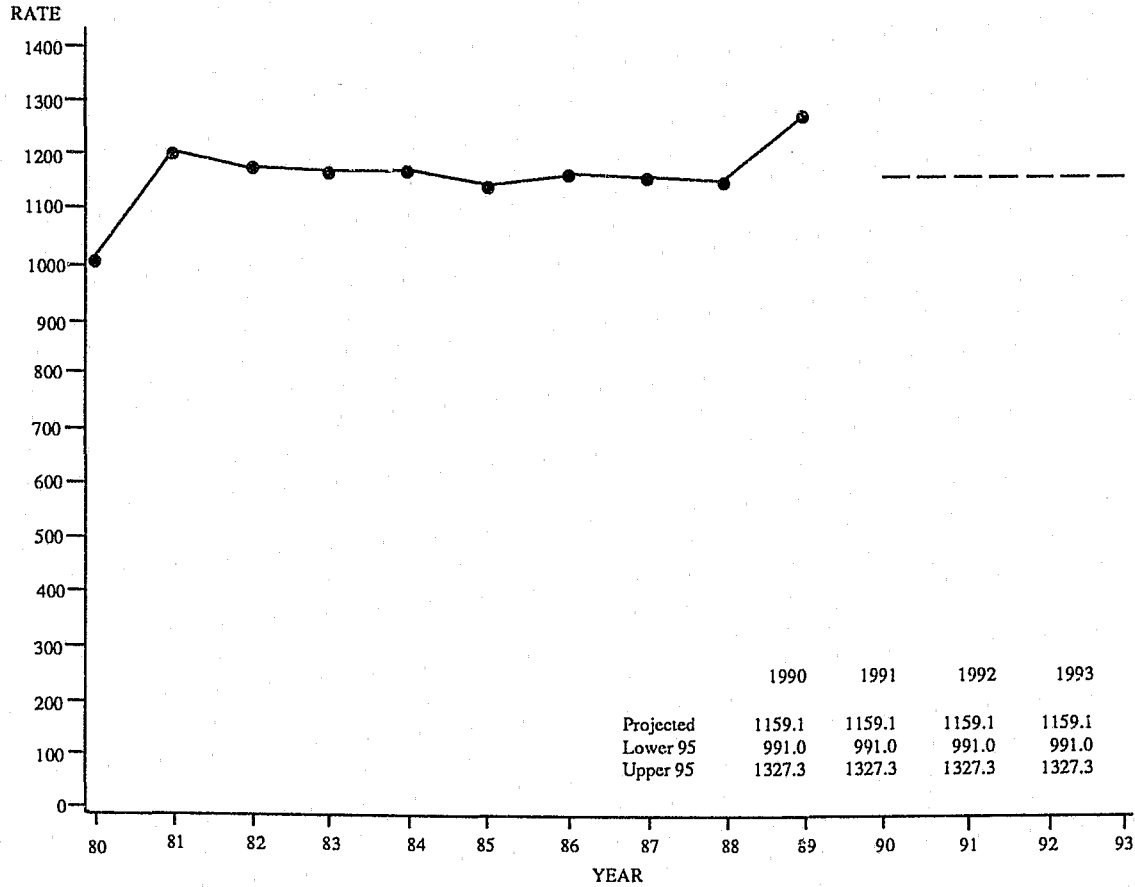
²Violent crimes include arrests for murder, forcible rape, robbery, and aggravated assault.

³Property crimes include arrests for burglary, theft, motor vehicle theft, and arson.

⁴Includes arson.

TABLE 3.0.4

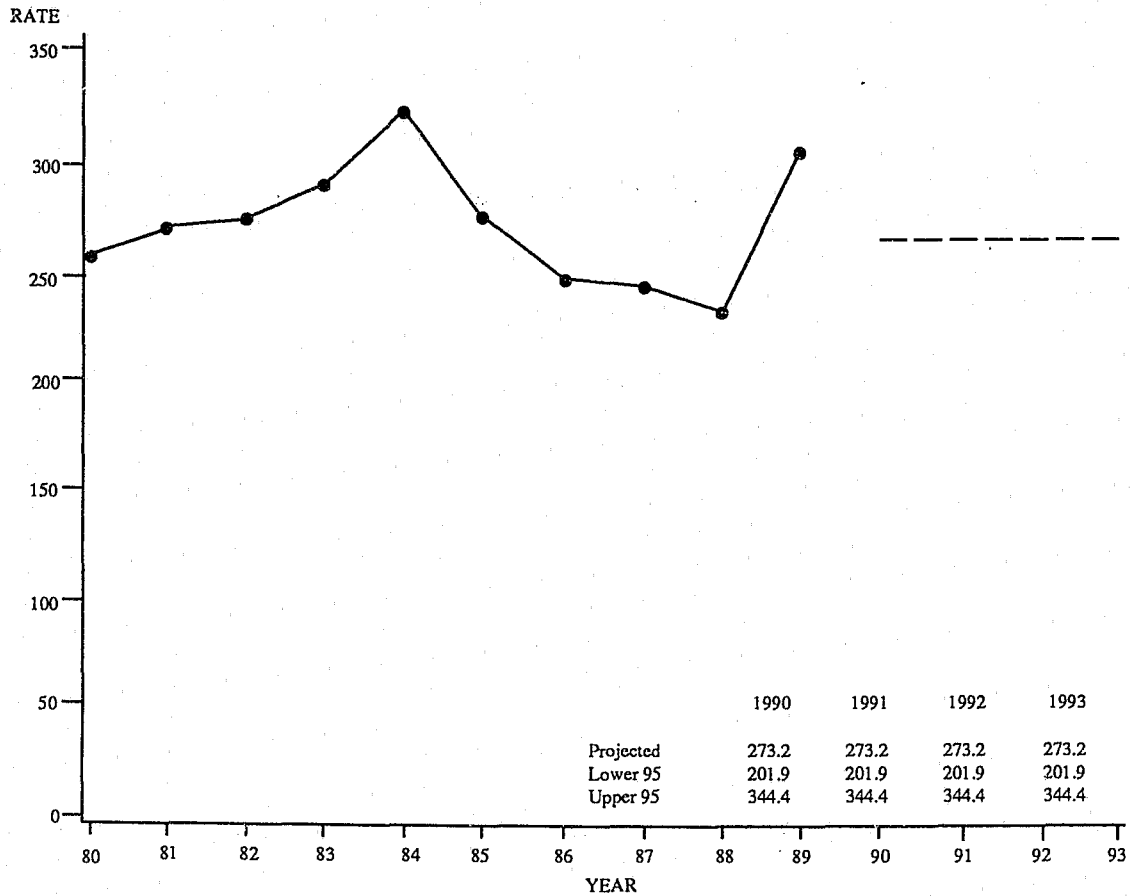
CRIME INDEX ARREST RATES, STATE OF MISSOURI TIME SERIES



¹Crime Index arrest rates relate to arrests made for crime index offenses reported by law enforcement agencies in the State of Missouri. They are computed on a per 100,000 population basis. See Glossary for an explanation of the computations used to obtain these rates. Due to a change in computation methods, crime index arrest rates in this Digest will vary slightly when compared to arrest rates found in earlier editions.

FIGURE 3.0.1

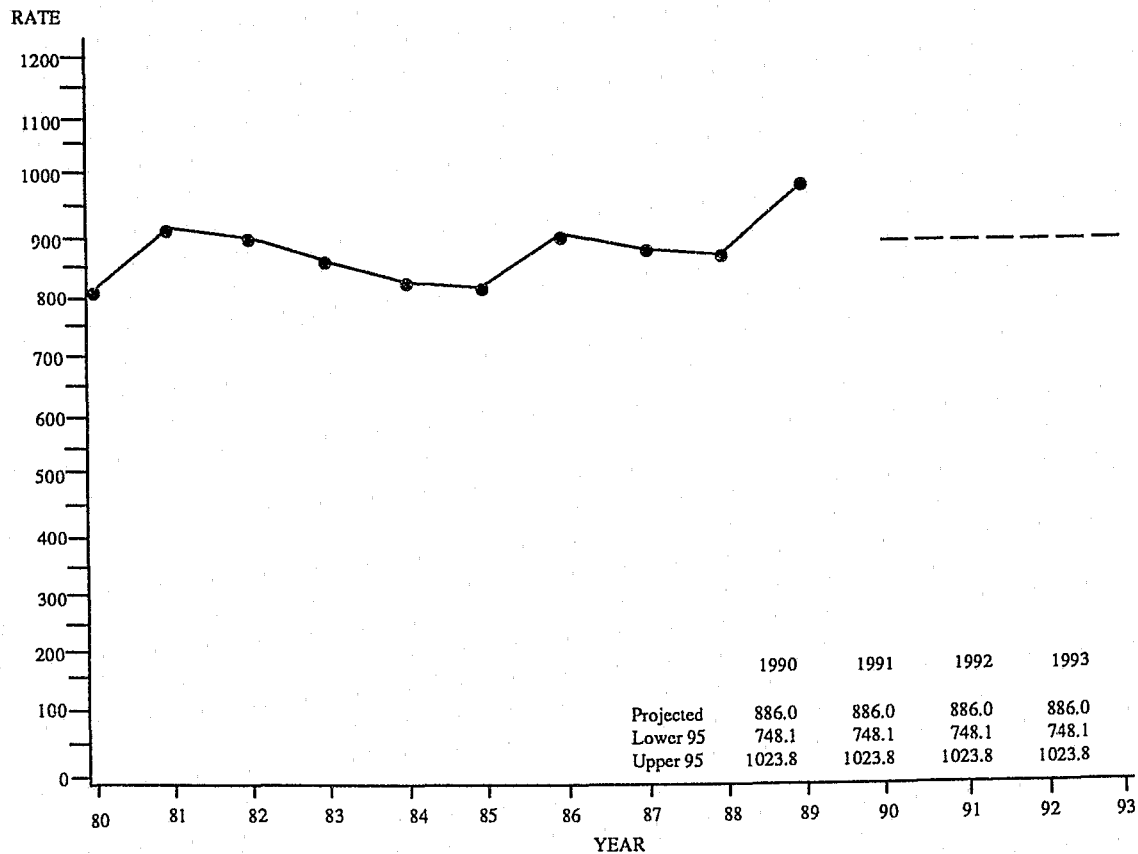
VIOLENT INDEX ARREST RATES, STATE OF MISSOURI¹ **TIME SERIES**



¹Violent Index arrest rates relate to arrests made for violent index offenses reported by law enforcement agencies in the State of Missouri. They are computed on a per 100,000 population basis. See Glossary for an explanation of the computations used to obtain these rates. Due to a change in computation methods, violent index arrest rates in this Digest will vary slightly when compared to arrest rates found in earlier editions.

FIGURE 3.0.2

PROPERTY INDEX ARREST RATES, STATE OF MISSOURI¹ **TIME SERIES**



¹Property Index arrest rates relate to arrests made for property index offenses reported by law enforcement agencies in the State of Missouri. They are computed on a per 100,000 population basis. See Glossary for an explanation of the computations used to obtain these rates. Due to a change in computation methods, property index arrest rates in this Digest will vary slightly when compared to arrest rates found in earlier editions.

FIGURE 3.0.3

4.0 MISSOURI DETAIL CRIME INDEX ANALYSIS

A SERIES OF TABLES AND FIGURES SUMMARIZES CRIME ACTIVITY, CLEARANCE RATES, CRIME PATTERNS, AND ARREST ACTIVITY ASSOCIATED WITH SPECIFIC TYPES OF CRIME INDEX OFFENSES COMMITTED IN THE STATE OF MISSOURI. DETAIL ANALYSIS IS PROVIDED ON THE FOLLOWING TYPES OF CRIME:

- MURDER
- FORCIBLE RAPE
- ROBBERY
- AGGRAVATED ASSAULT
- BURGLARY
- THEFT
- MOTOR VEHICLE THEFT
- ARSON

4.1 MURDER

DEFINITION

Murder and non-negligent manslaughter are the willful killing of one human being by another. Not included in this offense classification are deaths caused by negligence, suicide, accident, justifiable homicide (the killing of a felon by a peace officer in the line of duty or a private citizen during the commission of a felony), and attempts to murder (these are classified as aggravated assaults). Murder offenses are reported on a per victim basis.

1989 SUMMARY ANALYSIS

- There were 392 murders reported during 1989. It is estimated that a total of 411 murders actually occurred on a statewide basis. Based on this estimate, this was a 0.2 percent decrease from 1988.
- It is estimated that one murder occurred every 21.3 hours.
- Murder accounted for 0.2 percent of the Total Crime Index and 1.3 percent of all Violent Index offenses.
- The murder rate per 100,000 population was 8.0 in 1989, the same as in 1988.
- In 1989, 87.5 of every 100 murders were cleared by arrest or exceptional means.
- 478 persons were reported arrested for murder in 1989. Of these, 81.6 percent were adults and 18.4 percent were juveniles.
- Of the murder victims reported, 73.5 percent were male and 26.5 percent were female. Of the total, 84.1 percent were adults, 14.4 percent were juveniles, and 1.5 percent had an unknown age.
- A firearm was used by 61.3 percent of the offenders associated with murders and 12.7% of the offenders used a knife.

MURDER SUMMARY: 1988 and 1989

Year	Number of Estimated Offenses	Rate per 100,000 Population
1988	412	8.0
1989	411	8.0
Percent of Change	- 0.2	= 0.0

MURDER RATES BY POPULATION GROUP

1989

POPULATION GROUP	REPORTED	ESTIMATED	% OF TOTAL	RATE PER 100,000 POPULATION
<u>Police Agencies</u>				
250,000 +	298	298	72.6	35.2
100,000 - 249,999	11	11	2.7	4.3
50,000 - 99,999	5	5	1.2	2.5
25,000 - 49,999	11	11	2.7	2.4
10,000 - 24,999	15	16	3.8	2.8
2,500 - 9,999	8	10	2.4	2.0
Under 2,500	7	8	2.0	15.0
Sheriff's Dept./County Police Suburban	11	12	2.9	1.1
Sheriff's Dept. -- Rural	26	40	9.7	3.1
TOTAL	392	411	100.0	8.0

TABLE 4.1.1

MURDER CLEARANCE RATES

1988 - 1989

YEAR	PERCENT CLEARED	% OF CLEARED OFFENSES ONLY JUVENILES
1988	88.0	5.5
1989	87.5	11.2

TABLE 4.1.2

MURDER ARRESTS BY SEX AND AGE GROUP

1989

SEX	AGE GROUPS	REPORTED	% OF TOTAL MURDER ARRESTS
MALE	ADULTS	348	72.8
	JUVENILES	87	18.2
FEMALE	ADULTS	42	8.8
	JUVENILES	1	0.2
TOTAL		478	100.0

TABLE 4.1.3

MURDER ARRESTS BY RACE AND AGE GROUP

1989

RACE	AGE GROUPS	REPORTED	% OF TOTAL MURDER ARRESTS
WHITE	ADULTS	105	22.0
	JUVENILES	10	2.1
BLACK	ADULTS	284	59.5
	JUVENILES	78	16.4
UNKNOWN		1	-
TOTAL		478	100.0

TABLE 4.1.4

MURDER VICTIMS BY SEX AND AGE GROUP

1989

SEX	AGE GROUPS	REPORTED ¹	% OF TOTAL
MALE	ADULTS	255	64.4
	JUVENILES	34	8.6
	UNKNOWN	2	0.5
FEMALE	ADULTS	78	19.7
	JUVENILES	23	5.8
	UNKNOWN	4	1.0
TOTAL		396	100.0

¹Victim data were obtained from the UCR Supplemental Homicide Report. The total number of victims in this table may not exactly correspond to the 392 murders reported in 1989 because law enforcement agencies report murder offenses on a separate form entitled the Return A. Discrepancies can occur as a result of an agency inadvertently updating or adjusting only one of these reports but not the other.

TABLE 4.1.5

MURDER VICTIMS BY RACE AND AGE GROUP

1989

RACE	AGE GROUPS	REPORTED ¹	% OF TOTAL
WHITE	ADULTS	114	28.8
	JUVENILES	19	4.8
	UNKNOWN	4	1.0
BLACK	ADULTS	218	55.1
	JUVENILES	38	9.6
	UNKNOWN	2	0.5
ASIAN	ADULTS	1	0.3
	JUVENILES	0	0.0
	UNKNOWN	0	0.0
TOTAL		396	100.0

¹Victim data were obtained from the UCR Supplemental Homicide Report. The total number of victims in this table may not exactly correspond to the 392 murders reported in 1989 because law enforcement agencies report murder offenses on a separate form entitled the Return A. Discrepancies can occur as a result of an agency inadvertently updating or adjusting only one of these reports but not the other.

TABLE 4.1.6

TYPE OF WEAPON USED BY OFFENDERS IN MURDERS

1989

TYPE	REPORTED ¹	% OF TOTAL
FIREARM	260	61.3
KNIFE	54	12.7
BLUNT OBJECT	21	5.0
PERSONAL WEAPONS (Hands, feet, etc.)	24	5.7
FIRE	5	1.2
DROWNING	1	0.2
STRANGULATION	19	4.5
ASPHYXIATION	4	0.9
OTHER	36	8.5
TOTAL	424	100.0

¹The 424 offenders in this table are directly associated with 396 victims murdered in 1989. Victim and offender data were both obtained from the UCR Supplemental Homicide Report.

TABLE 4.1.7

CIRCUMSTANCES WITH MURDERS

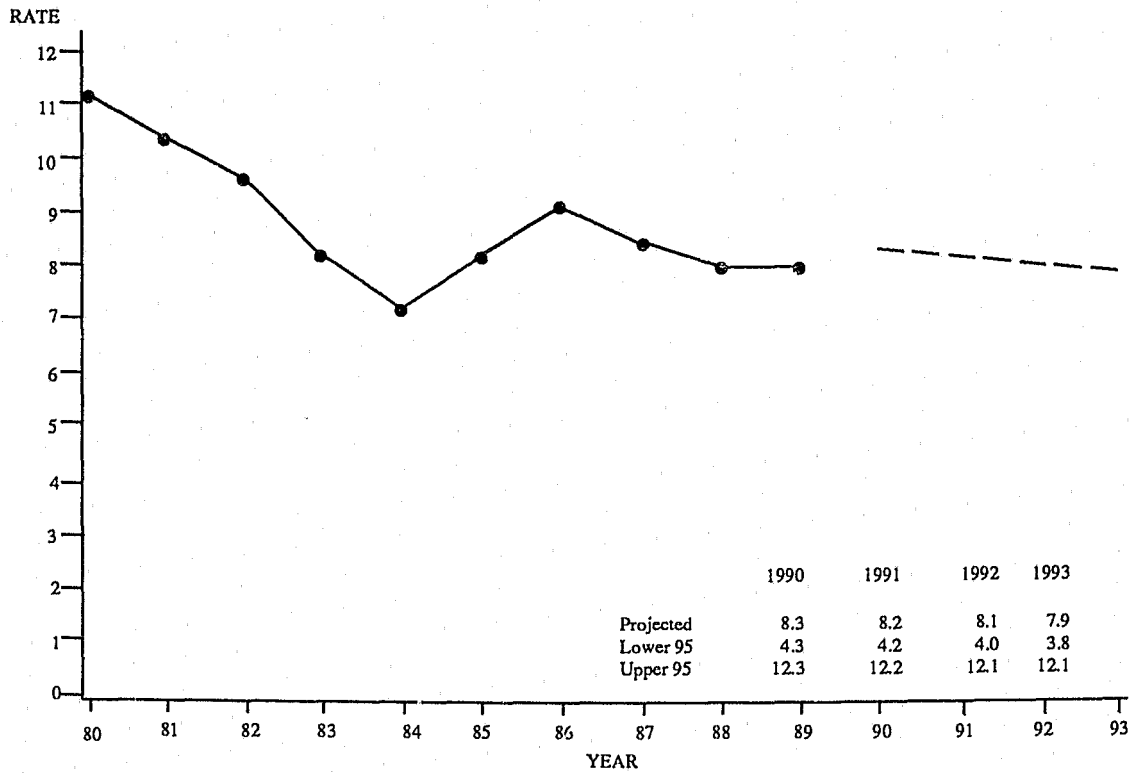
1989

TYPE	CIRCUMSTANCE	REPORTED ¹	% OF TOTAL
FELONY RELATED	RAPE	3	1.2
	ROBBERY	36	14.9
	BURGLARY	2	0.8
	ARSON	1	0.4
	OTHER ² SEX	3	1.2
	NARCOTICS LAWS	25	10.4
	SUSPECTED FELONY TYPE UNKNOWN	3	1.2
NOT FELONY RELATED	LOVER'S TRIANGLE	3	1.2
	BRAWL INFLUENCED BY ALCOHOL	3	1.2
	BRAWL INFLUENCED BY DRUGS	4	1.7
	ARGUMENT OVER MONEY/PROPERTY	4	1.7
	OTHER ARGUMENTS	95	39.4
	OTHER	59	24.5
UNKNOWN		136	
TOTAL		377	100.0

¹The 377 circumstances in this table are directly associated with the first victim and first offender in a murder incident. Victim and offender data were both obtained from the UCR Supplemental Homicide Report.

TABLE 4.1.8

MURDER OFFENSE RATES, STATE OF MISSOURI¹ **TIME SERIES**



¹Murder offense rates are based on estimated murder offenses occurring in the State of Missouri. They are computed on a per 100,000 population basis. See Glossary for an explanation of the computations used to obtain these rates.

FIGURE 4.1.1

4.2 FORCIBLE RAPE

DEFINITION

Forcible rape is the carnal knowledge of a female forcibly and against her will. Assaults or attempts to commit rape by force or threat of force also are included. However, statutory rape (without force), sex attacks on males, and other types of sex offenses are not included in this category. Forcible rape offenses are reported on a per victim basis.

1989 SUMMARY ANALYSIS

- There were 1,496 rapes reported during 1989. It is estimated that a total of 1,588 rapes actually occurred on a statewide basis. Based on this estimate, this was a 5.9 percent increase from 1988.
- It is estimated that one rape occurred every 5.5 hours.
- Rape accounted for 0.6 percent of the Total Crime Index and 4.9 percent of all Violent Index offenses.
- The rape rate per 100,000 population was 30.8 in 1989 compared to 29.2 in 1988.
- Rape by force constituted 84.1 percent of the estimated rapes while attempted rapes accounted for 15.9 percent.
- In 1989, 60.5 of every 100 rapes were cleared by arrest or exceptional means.
- 766 persons were reported arrested for rape in 1989.
- Of those persons arrested for rape in 1989, 85.6 percent were adults and 14.4 percent were juveniles.

FORCIBLE RAPE SUMMARY: 1988 and 1989

Year	Number of Estimated Offenses	Rate per 100,000 Population
1988	1,500	29.2
1989	1,588	30.8
Percent of Change	+ 5.9	+ 5.5

FORCIBLE RAPE RATES BY POPULATION GROUP

1989

POPULATION GROUP	REPORTED	ESTIMATED	% OF TOTAL	RATE PER 100,000 POPULATION
<u>Police Agencies</u>				
250,000 +	837	837	52.7	99.0
100,000 - 249,999	78	78	4.9	30.2
50,000 - 99,999	31	31	2.0	15.6
25,000 - 49,999	86	86	5.4	19.1
10,000 - 24,999	110	114	7.2	20.5
2,500 - 9,999	80	97	6.1	19.6
Under 2,500	11	13	0.8	23.7
Sheriff's Dept./County Police Suburban	171	183	11.5	17.8
Sheriff's Dept. -- Rural	92	149	9.4	11.7
TOTAL	1,496	1,588	100.0	30.8

TABLE 4.2.1

ACTUAL/ATTEMPTED RAPE OFFENSES

1989

TYPE	REPORTED	ESTIMATED	% OF TOTAL
FORCIBLE RAPE	1,260	1,335	84.1
ATTEMPTED RAPE	236	253	15.9
TOTAL	1,496	1,588	100.0

TABLE 4.2.2

FORCIBLE RAPE CLEARANCE RATES

1988 - 1989

YEAR	PERCENT CLEARED	% OF CLEARED OFFENSES ONLY JUVENILES
1988	61.4	11.5
1989	60.5	11.2

TABLE 4.2.3

FORCIBLE RAPE ARRESTS BY SEX AND AGE GROUP

1989

SEX	AGE GROUPS	REPORTED	% OF TOTAL RAPE ARRESTS
MALE	ADULTS	642	83.8
	JUVENILES	108	14.1
FEMALE	ADULTS	14	1.8
	JUVENILES	2	0.3
TOTAL		766	100.0

TABLE 4.2.4

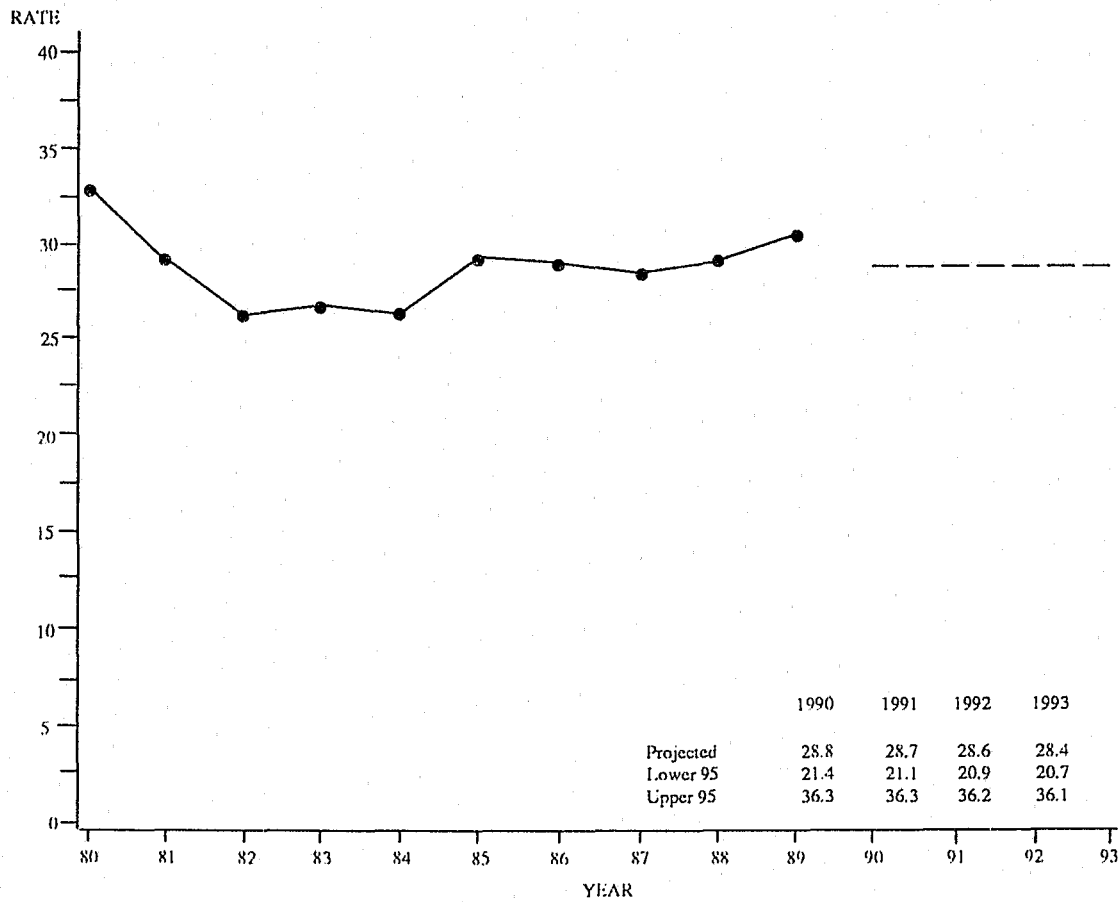
FORCIBLE RAPE ARRESTS BY RACE AND AGE GROUP

1989

RACE	AGE GROUPS	REPORTED	% OF TOTAL RAPE ARRESTS
WHITE	ADULTS	269	36.0
	JUVENILES	32	4.3
BLACK	ADULTS	374	50.0
	JUVENILES	72	9.6
ASIAN	ADULTS	1	0.1
	JUVENILES	0	0.0
UNKNOWN		18	-
TOTAL		766	100.0

TABLE 4.2.5

RAPE OFFENSE RATES, STATE OF MISSOURI¹ **TIME SERIES**



¹Rape offense rates are based on estimated rape offenses occurring in the State of Missouri. They are computed on a per 100,000 population basis. See Glossary for an explanation of the computations used to obtain these rates.

FIGURE 4.2.1

4.3 ROBBERY

DEFINITION

Robbery is the taking or attempting to take anything of value from the care, custody, or control of a person or persons by force or threat of force or violence and/or by putting the victim in fear. Robbery involves a theft or larceny but is aggravated by the element of force or threat of force. Robbery offenses are reported on an incident-by-incident basis.

1989 SUMMARY ANALYSIS

- There were 9,935 robberies reported during 1989. It is estimated that a total of 10,068 robberies actually occurred on a statewide basis. Based on this estimate, this was a 16.8 percent increase over 1988.
- It is estimated that one robbery occurred every 52.2 minutes.
- Robbery accounted for 3.8 percent of the Total Crime Index and 30.8 percent of all Violent Index offenses.
- The robbery rate per 100,000 population was 195.2 in 1989 compared to 167.8 in 1988.
- It is estimated that in 34.6 percent of all robberies, a firearm was used.
- Street robbery was the most prevalent class of robbery accounting for an estimated 65.3 percent of all such offenses.
- It is estimated that \$5,491,993 in property/cash was stolen in 1989 due to this offense.
- In 1989, 27.3 of every 100 robberies were cleared by arrest or exceptional means.
- 2,700 persons were reported arrested for robbery in 1989. Of these, 78.8 percent were adults and 21.2 percent were juveniles.

ROBBERY SUMMARY: 1988 and 1989

Year	Number of Estimated Offenses	Rate per 100,000 Population
1988	8,622	167.8
1989	10,068	195.2
Percent of Change	+ 16.8	+ 16.3

ROBBERY RATES BY POPULATION GROUP

1989

POPULATION GROUP	REPORTED	ESTIMATED	% OF TOTAL	RATE PER 100,000 POPULATION
<u>Police Agencies</u>				
250,000 +	8,044	8,044	79.9	951.4
100,000 - 249,999	298	298	3.0	115.2
50,000 - 99,999	173	173	1.7	86.9
25,000 - 49,999	375	377	3.7	83.6
10,000 - 24,999	427	442	4.4	79.6
2,500 - 9,999	233	286	2.8	57.9
Under 2,500	36	44	0.4	79.4
Sheriff's Dept./County Police Suburban	288	307	3.0	29.8
Sheriff's Dept. -- Rural	61	97	1.0	7.6
TOTAL	9,935	10,068	100.0	195.2

TABLE 4.3.1

TYPE OF WEAPON USED IN ROBBERIES

1989

TYPE	REPORTED	ESTIMATED	% OF TOTAL
FIREARMS	3,423	3,482	34.6
KNIVES OR CUTTING INSTRUMENTS	909	922	9.2
OTHER WEAPONS	971	981	9.7
STRONG ARMED (Hands, Feet, etc.)	4,623	4,683	46.5
UNKNOWN	9	0	-
TOTAL	9,935	10,068	100.0

TABLE 4.3.2

ROBBERY LOSS/LOCATION

1989

TYPE	REPORTED	ESTIMATED	% OF TOTAL	\$ LOSS/ INCIDENT
SERVICE STATION	385	401	4.1	\$237.23
CONVENIENCE STORE	369	385	3.9	482.83
BANK	56	57	0.6	4,772.58
OTHER COMMERCIAL	1,150	1,181	12.0	420.35
STREET/HIGHWAY	6,410	6,446	65.3	553.18
RESIDENCE	935	953	9.6	617.56
MISCELLANEOUS	426	452	4.6	565.23
UNKNOWN	204	193	-	-
TOTAL	9,935	10,068	100.0	545.49
1989 TOTAL STATE LOSS ESTIMATE² = \$5,491,993				

¹The dollar loss per incident was calculated using only those robbery offenses for which law enforcement agencies reported an actual monetary loss.

²This estimate of property loss was calculated by multiplying the total dollar loss per offense by the estimated number of such offenses that occurred in 1989.

TABLE 4.3.3

ROBBERY CLEARANCE RATES

1988 - 1989

YEAR	PERCENT CLEARED	% OF CLEARED OFFENSES ONLY JUVENILES
1988	28.8	14.3
1989	27.3	12.7

TABLE 4.3.4

ROBBERY ARRESTS BY SEX AND AGE GROUP

1989

SEX	AGE GROUPS	REPORTED	% OF TOTAL ROBBERY ARRESTS
MALE	ADULTS	1,889	70.0
	JUVENILES	541	20.0
FEMALE	ADULTS	237	8.8
	JUVENILES	33	1.2
TOTAL		2,700	100.0

TABLE 4.3.5

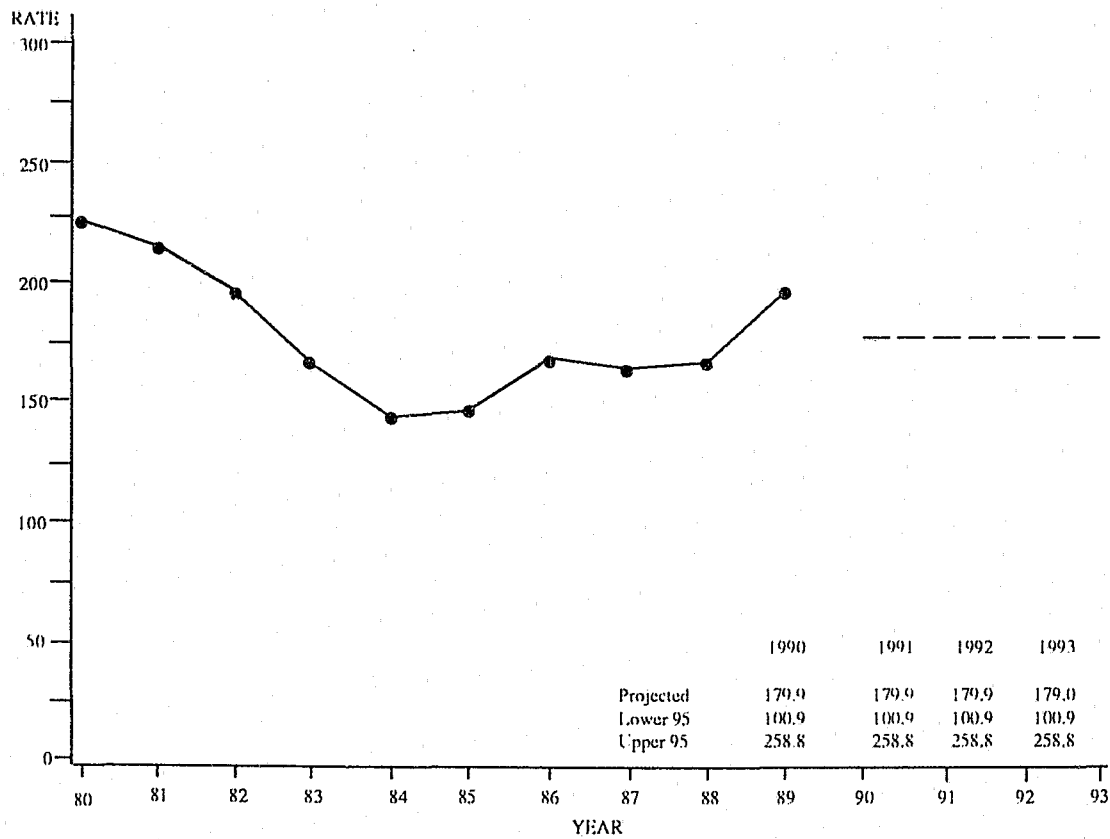
ROBBERY ARRESTS BY RACE AND AGE GROUP

1989

RACE	AGE GROUPS	REPORTED	% OF TOTAL ROBBERY ARRESTS
WHITE	ADULTS	515	19.2
	JUVENILES	131	4.9
BLACK	ADULTS	1,597	59.5
	JUVENILES	441	16.4
AMERICAN INDIAN	ADULTS	1	0.0
	JUVENILES	0	0.0
ASIAN	ADULTS	1	0.0
	JUVENILES	0	0.0
UNKNOWN		14	-
TOTAL		2,700	100.0

TABLE 4.3.6

ROBBERY OFFENSE RATES, STATE OF MISSOURI¹ **TIME SERIES**



¹Robbery offense rates are based on estimated robbery offenses occurring in the State of Missouri. They are computed on a per 100,000 population basis. See Glossary for an explanation of the computations used to obtain these rates.

FIGURE 4.3.1

4.4 AGGRAVATED ASSAULT

DEFINITION

Aggravated assault is an unlawful attack or attempted attack by one person upon another for the purpose of inflicting severe or aggravated bodily injury. This type of assault usually is accompanied by the use of a weapon or by means likely to produce death or great bodily harm. All assaults or attempted assaults by one person upon another with the intent to kill, maim, or inflict severe bodily injury with the use of any dangerous weapon are classified under this category of offense. Aggravated assault offenses are reported on a per victim basis.

1989 SUMMARY ANALYSIS

- There were 19,598 aggravated assaults reported in 1989. It is estimated that a total of 20,591 aggravated assaults actually occurred on a statewide basis. Based on this estimate, this was a 14.5 percent increase over 1988.
- It is estimated that one aggravated assault occurred every 25.5 minutes.
- Aggravated assault accounted for 7.7 percent of the Total Crime Index and 63.1 percent of all Violent Index offenses.
- The aggravated assault rate per 100,000 population was 399.1 in 1989 compared to 350.0 in 1988.
- It is estimated that a firearm was used in 30.6 percent of the cases.
- In 1989, 57.6 of every 100 aggravated assaults were cleared by arrest or exceptional means.
- 8,778 persons were reported arrested for aggravated assault in 1989. Of these, 86.7 percent were adults and 13.3 percent were juveniles.

AGGRAVATED ASSAULT SUMMARY: 1988 and 1989

Year	Number of Estimated Offenses	Rate per 100,000 Population
1988	17,985	350.0
1989	20,591	399.1
Percent of Change	+ 14.5	+ 14.0

AGGRAVATED ASSAULT RATES BY POPULATION GROUP

1989

POPULATION GROUP	REPORTED	ESTIMATED	% OF TOTAL	RATE PER 100,000 POPULATION
<u>Police Agencies</u>				
250,000 +	12,461	12,461	60.5	1,473.8
100,000 - 249,999	706	706	3.4	273.0
50,000 - 99,999	665	665	3.2	334.1
25,000 - 49,999	837	849	4.1	188.2
10,000 - 24,999	981	1,017	4.9	183.0
2,500 - 9,999	1,202	1,461	7.1	296.1
Under 2,500	190	222	1.1	402.4
Sheriff's Dept./County Police Suburban	1,802	1,959	9.5	190.5
Sheriff's Dept. -- Rural	754	1,251	6.1	98.4
TOTAL	19,598	20,591	100.0	399.1

TABLE 4.4.1

TYPE OF WEAPON USED IN AGGRAVATED ASSAULTS

1989

TYPE	REPORTED	ESTIMATED	% OF TOTAL
FIREARMS	6,189	6,295	30.6
KNIVES OR CUTTING INSTRUMENTS	3,532	3,623	17.6
OTHER WEAPONS	6,244	6,405	31.1
HANDS, FEET, ETC./ AGGRAVATED INJURY	3,632	4,267	20.7
UNKNOWN	1	1	-
TOTAL	19,598	20,591	100.0

TABLE 4.4.2

AGGRAVATED ASSAULT CLEARANCE RATES

1988 - 1989

YEAR	PERCENT CLEARED	% OF CLEARED OFFENSES ONLY JUVENILES
1988	60.6	13.0
1989	57.6	13.0

TABLE 4.4.3

AGGRAVATED ASSAULT ARRESTS BY SEX AND AGE GROUP

1989

SEX	AGE GROUPS	REPORTED	% OF TOTAL ASSAULT ARRESTS
MALE	ADULTS	6,273	71.5
	JUVENILES	976	11.1
FEMALE	ADULTS	1,335	15.2
	JUVENILES	194	2.2
TOTAL		8,778	100.0

TABLE 4.4.4

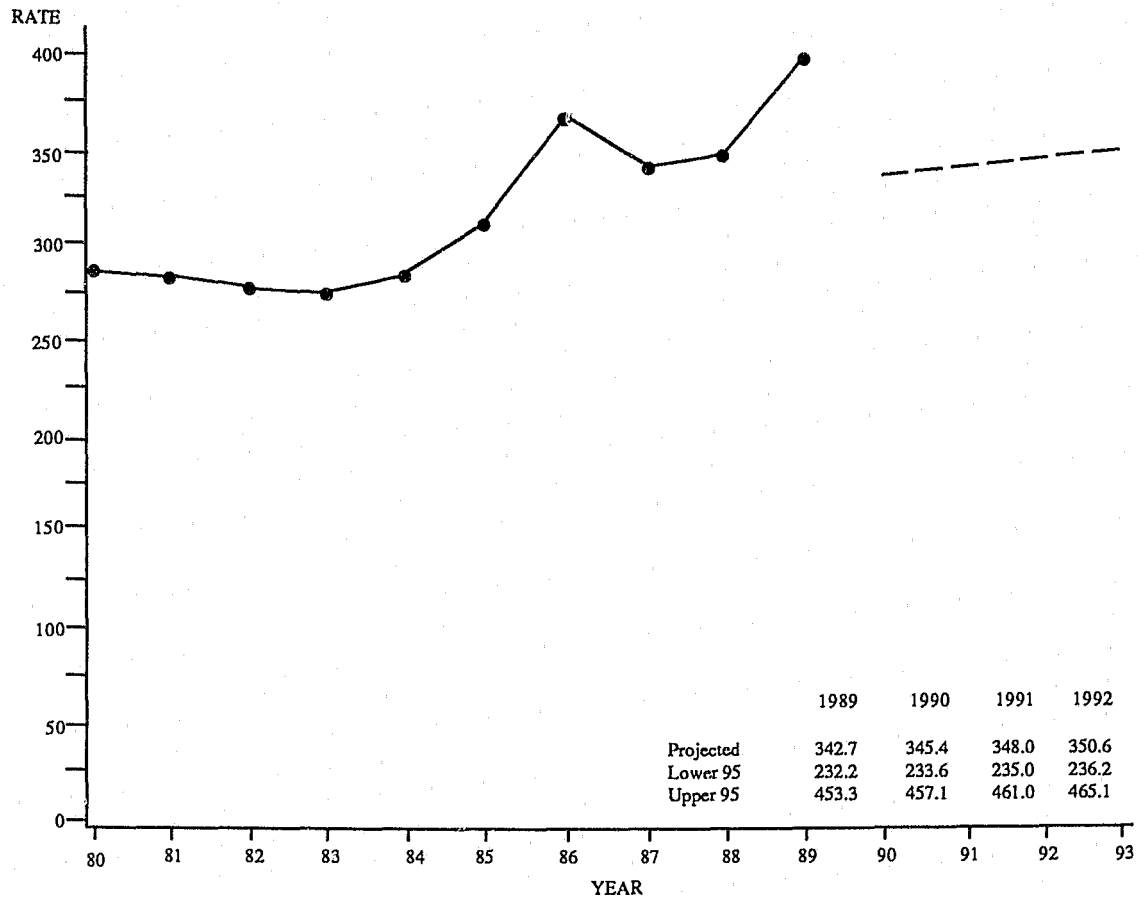
AGGRAVATED ASSAULT ARRESTS BY RACE AND AGE GROUP

1989

RACE	AGE GROUPS	REPORTED	% OF TOTAL ASSAULT ARRESTS
WHITE	ADULTS	2,959	34.4
	JUVENILES	408	4.7
BLACK	ADULTS	4,489	52.2
	JUVENILES	732	8.5
AMERICAN INDIAN	ADULTS	11	0.1
	JUVENILES	0	0.0
ASIAN	ADULTS	6	0.1
	JUVENILES	2	0.0
UNKNOWN		171	-
TOTAL		8,778	100.0

TABLE 4.4.5

AGGRAVATED ASSAULT OFFENSE RATES, STATE OF MISSOURI TIME SERIES



¹Aggravated assault offense rates are based on estimated aggravated assault offenses occurring in the State of Missouri. They are computed on a per 100,000 population basis. See Glossary for an explanation of the computations used to obtain these rates.

FIGURE 4.4.1

4.5 BURGLARY

DEFINITION

Burglary is the unlawful entry or attempted unlawful entry of a structure to commit a felony or a theft. Burglary offenses are reported on an incident-by-incident basis.

1989 SUMMARY ANALYSIS

- There were 54,865 burglaries reported during 1989. It is estimated that a total of 58,639 burglaries actually occurred on a statewide basis. Based on this estimate, this was a 1.1 percent increase over 1988.
- It is estimated that one burglary occurred every 9.0 minutes.
- Burglary accounted for 22.0 percent of the Total Crime Index and 25.0 percent of all Property Index offenses.
- The burglary rate per 100,000 population was 1,136.6 in 1989 compared to 1,128.9 in 1988.
- It is estimated that 69.3 percent of all burglaries involved a residential dwelling and 66.1 percent were accomplished by forcible entry.
- It is estimated that \$58,171,647 in property/cash was stolen in 1989 due to this offense.
- In 1989, 16.2 of every 100 burglaries were cleared by arrest or exceptional means.
- 7,450 persons were reported arrested for burglary in 1989. Of these, 72.5 percent were adults and 27.5 percent were juveniles.

BURGLARY SUMMARY: 1988 and 1989

Year	Number of Estimated Offenses	Rate per 100,000 Population
1988	58,016	1,128.9
1989	58,639	1,136.6
Percent of Change	+ 1.1	+ 0.7

BURGLARY RATES BY POPULATION GROUP

1989

POPULATION GROUP	REPORTED	ESTIMATED	% OF TOTAL	RATE PER 100,000 POPULATION
<u>Police Agencies</u>				
250,000 +	25,941	25,941	44.2	3,068.1
100,000 - 249,999	4,151	4,151	7.1	1,604.9
50,000 - 99,999	1,858	1,858	3.2	933.4
25,000 - 49,999	4,204	4,271	7.3	946.4
10,000 - 24,999	4,776	4,949	8.4	890.8
2,500 - 9,999	2,964	3,628	6.2	735.3
Under 2,500	495	579	1.0	1,047.8
Sheriff's Dept./County Police Suburban	6,922	7,410	12.6	720.6
Sheriff's Dept. -- Rural	3,554	5,852	10.0	460.1
TOTAL	54,865	58,639	100.0	1,136.6

TABLE 4.5.1

TYPE OF BURGLARY

1989

TYPE	REPORTED	ESTIMATED	% OF TOTAL
FORCIBLE ENTRY	36,279	38,788	66.1
UNLAWFUL ENTRY NO FORCE	14,144	15,226	26.0
ATTEMPTED FORCIBLE ENTRY	4,400	4,625	7.9
UNKNOWN	42	0	-
TOTAL	54,865	58,639	100.0

TABLE 4.5.2

BURGLARY LOSS/LOCATION/TIME

1989

TYPE	REPORTED	ESTIMATED	% OF TOTAL	\$ LOSS ¹ / INCIDENT
RESIDENCE				
NIGHT (6 p.m. to 6 a.m.)	10,496	11,228	21.0	\$871.50
DAY (6 a.m. to 6 p.m.)	10,847	11,488	21.5	989.58
TIME UNKNOWN	13,414	14,344	26.8	1,046.89
NON-RESIDENCE				
NIGHT (6 p.m. to 6 a.m.)	6,448	7,068	13.2	946.28
DAY (6 a.m. to 6 p.m.)	1,452	1,542	2.9	719.38
TIME UNKNOWN	7,579	7,887	14.7	1,152.34
UNKNOWN	4,629	5,082	-	-
TOTAL	54,865	58,639	100.0	992.03
1989 TOTAL STATE LOSS ESTIMATE² = \$58,171,647				

¹The dollar loss per incident was calculated using only those burglary offenses for which law enforcement agencies reported an actual monetary loss.

²This estimate of property loss was calculated by multiplying the total dollar loss per offense by the estimated number of such offenses that occurred in 1989.

TABLE 4.5.3

BURGLARY CLEARANCE RATES

1988 - 1989

YEAR	PERCENT CLEARED	% OF CLEARED OFFENSES ONLY JUVENILES
1988	16.0	18.4
1989	16.2	15.6

TABLE 4.5.4

BURGLARY ARRESTS BY SEX AND AGE GROUP

1989

SEX	AGE GROUPS	REPORTED	% OF TOTAL BURGLARY ARRESTS
MALE	ADULTS	5,031	67.5
	JUVENILES	1,894	25.4
FEMALE	ADULTS	368	4.9
	JUVENILES	157	2.1
TOTAL		7,450	100.0

TABLE 4.5.5

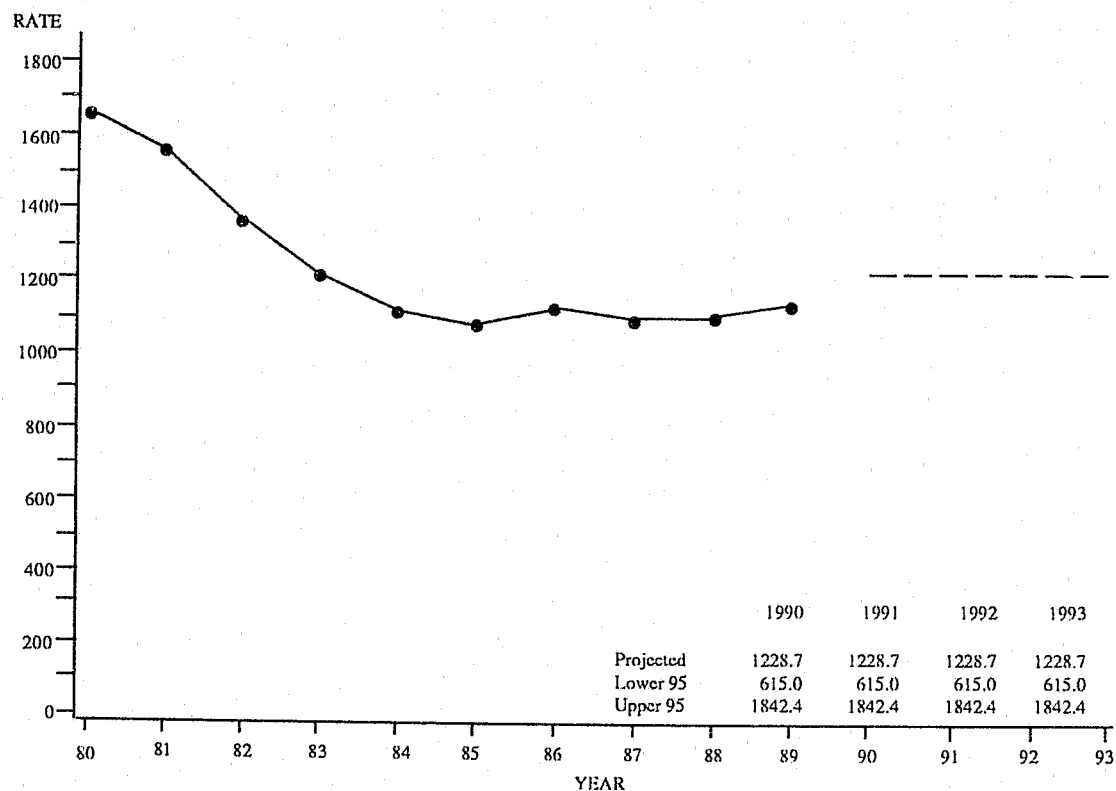
BURGLARY ARRESTS BY RACE AND AGE GROUP

1989

RACE	AGE GROUPS	REPORTED	% OF TOTAL BURGLARY ARRESTS
WHITE	ADULTS	2,774	38.4
	JUVENILES	1,290	17.3
BLACK	ADULTS	2,461	34.1
	JUVENILES	690	9.5
AMERICAN INDIAN	ADULTS	3	0.0
	JUVENILES	0	0.0
ASIAN	ADULTS	6	0.1
	JUVENILES	3	0.0
UNKNOWN		223	-
TOTAL		7,450	100.0

TABLE 4.5.6

BURGLARY OFFENSE RATES, STATE OF MISSOURI¹ **TIME SERIES**



¹Burglary offense rates are based on estimated burglary offenses occurring in the State of Missouri. They are computed on a per 100,000 population basis. See Glossary for an explanation of the computations used to obtain these rates.

FIGURE 4.5.1

4.6 THEFT

DEFINITION

Theft is the unlawful taking, carrying, leading, or riding away of property from the possession or constructive possession of another. Attempted thefts also are included. This category includes crimes such as shoplifting, pocket-picking, purse-snatching, thefts from motor vehicles, thefts of motor vehicle parts or accessories, bicycle thefts, etc., in which no use of force, violence, or fraud occurs. It does not include embezzlement, "con" games, forgery, or worthless checks. Motor vehicle theft also is excluded inasmuch as it is a separate crime index offense. Theft offenses are reported on an incident-by-incident basis.

1989 SUMMARY ANALYSIS

- There were 138,674 thefts reported during 1989. It is estimated that a total of 146,374 thefts actually occurred on a statewide basis. Based on this estimate, this was a 4.2 percent increase over 1988.
- It is estimated that one theft occurred every 3.6 minutes.
- Theft accounted for 54.9 percent of the Total Crime Index and 62.5 percent of all Property Index offenses.
- The theft rate per 100,000 population in 1989 was 2,837.2 compared to 2,734.2 in 1988.
- It is estimated that 42.3 percent of all thefts involved the taking of vehicle parts/accessories or other types of property from a vehicle.
- It is estimated that \$51,958,379 in property/cash was stolen in 1989 due to this offense.
- In 1989, 20.2 of every 100 thefts were cleared by arrest or exceptional means.
- 29,065 persons were reported arrested for theft in 1989. Of these, 75.5 percent were adults and 24.5 percent were juveniles.

THEFT SUMMARY: 1988 and 1989

Year	Number of Estimated Offenses	Rate per 100,000 Population
1988	140,510	2,734.2
1989	146,374	2,837.2
Percent of Change	+ 4.2	+ 3.8

THEFT RATES BY POPULATION GROUP

1989

POPULATION GROUP	REPORTED	ESTIMATED	% OF TOTAL	RATE PER 100,000 POPULATION
<u>Police Agencies</u>				
250,000 +	52,522	52,522	35.9	6,211.9
100,000 - 249,999	13,775	13,775	9.4	5,325.7
50,000 - 99,999	7,058	7,058	4.8	3,545.8
25,000 - 49,999	15,330	15,592	10.7	3,455.1
10,000 - 24,999	17,694	18,335	12.5	3,330.0
2,500 - 9,999	11,324	13,873	9.5	2,811.3
Under 2,500	1,745	2,102	1.4	3,804.2
Sheriff's Dept./County Police Suburban	14,932	16,006	10.9	1,556.6
Sheriff's Dept. -- Rural	4,294	7,111	4.9	559.1
TOTAL	138,674	146,374	100.0	2,837.2

TABLE 4.6.1

THEFT BY VALUE OF STOLEN ITEMS

1989

AMOUNT	REPORTED	ESTIMATED	% OF TOTAL
\$200 AND OVER	41,153	44,515	32.5
\$50 TO \$200	31,901	34,545	25.2
UNDER \$50	55,169	58,021	42.3
UNKNOWN	10,451	9,293	-
TOTAL	138,674	146,374	100.0

TABLE 4.6.2

NATURE OF THEFT

1989

TYPE	REPORTED	ESTIMATED	% OF TOTAL	\$ LOSS/ INCIDENT
POCKET PICKING	278	299	0.2	\$296.93
PURSE SNATCHING	1,371	1,449	1.1	165.47
SHOPLIFTING	20,192	21,247	15.5	79.60
FROM MOTOR VEHICLE	24,064	25,932	18.9	410.23
MOTOR VEHICLE PARTS & ACC.	31,064	32,063	23.4	226.00
BICYCLES	4,633	5,087	3.7	168.96
FROM BUILDINGS	12,888	14,452	10.5	634.94
COIN OPERATED MACHINES	963	1,079	0.8	136.57
ALL OTHERS	32,775	35,472	25.9	536.95
UNKNOWN	10,446	9,294	-	-
TOTAL	138,674	146,374	100.0	354.97
1989 TOTAL STATE LOSS ESTIMATE² = \$51,958,379				

¹The dollar loss per incident was calculated using only those theft offenses for which law enforcement agencies reported an actual monetary loss.

²This estimate of property loss was calculated by multiplying the total dollar loss per offense by the estimated number of such offenses that occurred in 1989.

TABLE 4.6.3

THEFT CLEARANCE RATES

1988 - 1989

YEAR	PERCENT CLEARED	% OF CLEARED OFFENSES ONLY JUVENILES
1988	20.8	22.8
1989	20.2	19.7

TABLE 4.6.4

THEFT ARRESTS BY SEX AND AGE GROUP

1989

SEX	AGE GROUPS	REPORTED	% OF TOTAL THEFT ARRESTS
MALE	ADULTS	15,288	52.6
	JUVENILES	5,367	18.5
FEMALE	ADULTS	6,666	22.9
	JUVENILES	1,744	6.0
TOTAL		29,065	100.0

TABLE 4.6.5

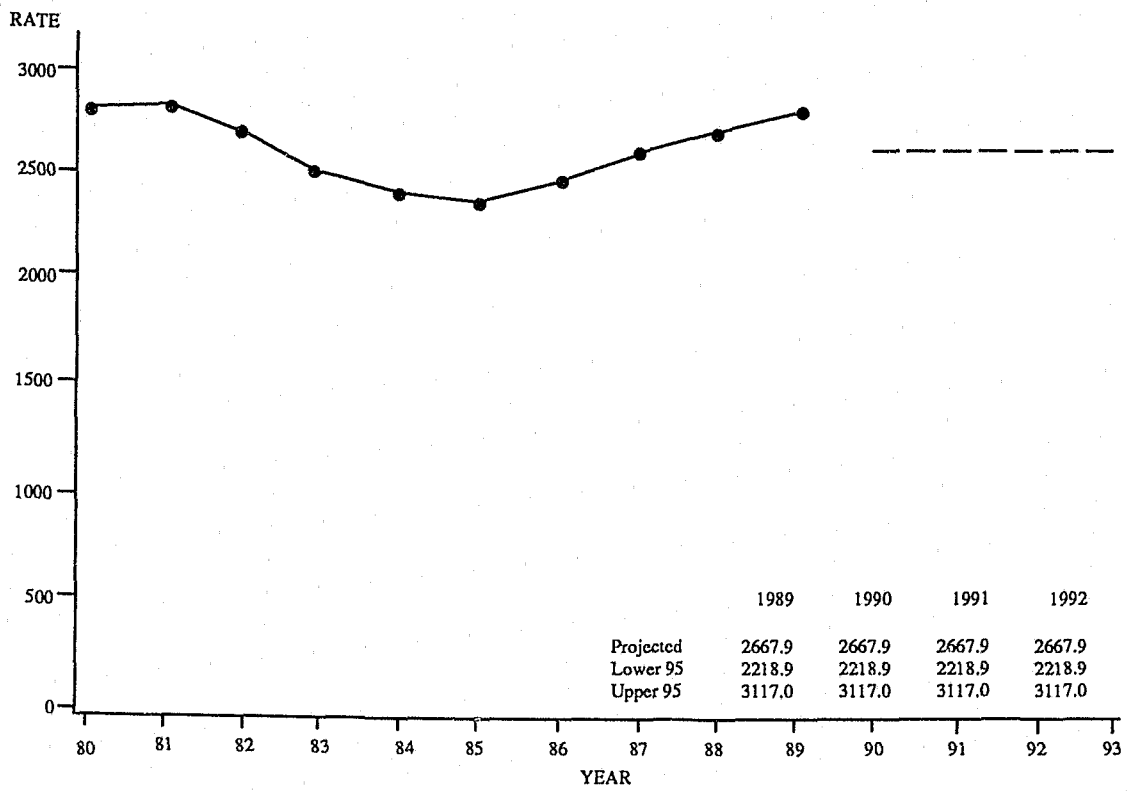
THEFT ARRESTS BY RACE AND AGE GROUP

1989

RACE	AGE GROUPS	REPORTED	% OF TOTAL THEFT ARRESTS
WHITE	ADULTS	10,833	37.6
	JUVENILES	4,617	16.0
BLACK	ADULTS	10,849	37.7
	JUVENILES	2,371	8.2
AMERICAN INDIAN	ADULTS	24	0.1
	JUVENILES	4	0.0
ASIAN	ADULTS	48	0.2
	JUVENILES	27	0.1
UNKNOWN		292	-
TOTAL		29,065	100.0

TABLE 4.6.6

THEFT OFFENSE RATES, STATE OF MISSOURI¹ TIME SERIES



¹Theft offense rates are based on estimated theft offenses occurring in the State of Missouri. They are computed on a per 100,000 population basis. See Glossary for an explanation of the computations used to obtain these rates.

FIGURE 4.6.1

4.7 MOTOR VEHICLE THEFT

DEFINITION

Motor vehicle theft is the theft or attempted theft of a motor vehicle. By definition, a motor vehicle is a self-propelled vehicle that runs on the surface and not on rails. Motor vehicles include automobiles, trucks, buses, motorcycles, motor scooters, snowmobiles, etc. Motor vehicle theft offenses are reported on a per vehicle basis.

1989 SUMMARY ANALYSIS

- There were 26,299 motor vehicle thefts reported during 1989. It is estimated that a total of 27,067 motor vehicle thefts actually occurred on a statewide basis. Based on this estimate, this was a 21.1 percent increase over 1988.
- It is estimated that one motor vehicle theft occurred every 19.4 minutes.
- Motor vehicle theft accounted for 10.1 percent of the Total Crime Index and 11.6 percent of all Property Index offenses.
- The motor vehicle theft rate per 100,000 population was 524.6 in 1989 compared to 434.9 in 1988.
- Of vehicles stolen in 1989, it is estimated that 77.4 percent were recovered.
- It is estimated that the cost of vehicles stolen in 1989 was \$133,744,272.
- In 1989, 16.1 of every 100 motor vehicle thefts were cleared by arrest or exceptional means.
- 3,417 persons were reported arrested for motor vehicle theft in 1989. Of these, 54.8 percent were adults and 45.2 percent were juveniles.

MOTOR VEHICLE THEFT SUMMARY: 1988 and 1989

Year	Number of Estimated Offenses	Rate per 100,000 Population
1988	22,351	434.9
1989	27,067	524.6
Percent of Change	+ 21.1	+ 20.6

MOTOR VEHICLE THEFT RATES BY POPULATION GROUP

1989

POPULATION GROUP	REPORTED	ESTIMATED	% OF TOTAL	RATE PER 100,000 POPULATION
<u>Police Agencies</u>				
250,000 +	18,007	18,007	66.5	2,129.7
100,000 - 249,999	1,407	1,407	5.2	544.0
50,000 - 99,999	472	472	1.7	237.1
25,000 - 49,999	1,343	1,357	5.0	300.8
10,000 - 24,999	1,708	1,770	6.5	318.6
2,500 - 9,999	1,064	1,307	4.8	264.8
Under 2,500	161	195	0.7	352.7
Sheriff's Dept./County Police Suburban	1,672	1,787	6.6	173.7
Sheriff's Dept. -- Rural	465	765	2.8	60.1
TOTAL	26,299	27,067	100.0	524.6

TABLE 4.7.1

TYPE OF VEHICLE STOLEN

1989

TYPE	REPORTED	ESTIMATED	% OF TOTAL
AUTOMOBILES	21,405	21,921	81.0
TRUCKS AND BUSES	3,336	3,493	12.9
OTHER VEHICLES	1,542	1,652	6.1
UNKNOWN	16	1	-
TOTAL	26,299	27,067	100.0

TABLE 4.7.2

MOTOR VEHICLE THEFT YEARLY LOSS

1988 - 1989

YEAR	\$ LOSS ¹ PER INCIDENT	ESTIMATED PERCENT ² RECOVERED
1988	\$4,944.72	79.1
1989	4,941.23	77.4
1989 TOTAL STATE LOSS ESTIMATE³ = \$133,744,272		

¹The dollar loss per incident was calculated using only those motor vehicle theft offenses for which law enforcement agencies reported an actual monetary loss.

²The estimated percent recovered was calculated using those motor vehicle theft offenses in which a motor vehicle was stolen locally and was recovered either locally or otherwise.

³This estimate of property loss was calculated by multiplying the total dollar loss per offense by the estimated number of such offenses that occurred in 1989.

TABLE 4.7.3

MOTOR VEHICLE THEFT CLEARANCE RATES

1988 - 1989

YEAR	PERCENT CLEARED	% OF CLEARED OFFENSES ONLY JUVENILES
1988	15.3	29.9
1989	16.1	30.6

TABLE 4.7.4

MOTOR VEHICLE THEFT ARRESTS BY SEX AND AGE GROUP

1989

SEX	AGE GROUPS	REPORTED	% OF TOTAL ARRESTS
MALE	ADULTS	1,654	48.4
	JUVENILES	1,428	41.8
FEMALE	ADULTS	218	6.4
	JUVENILES	117	3.4
TOTAL		3,417	100.0

TABLE 4.7.5

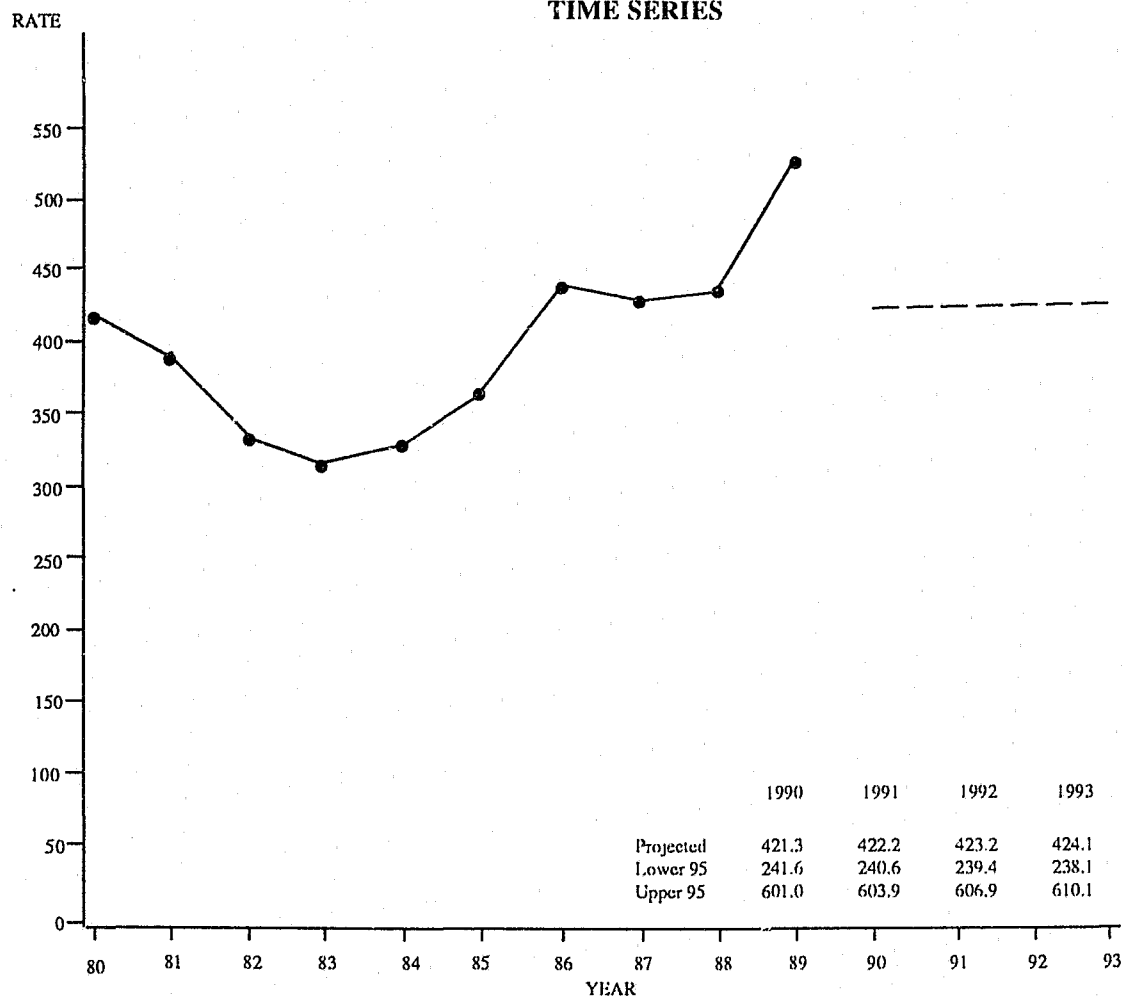
MOTOR VEHICLE THEFT ARRESTS BY RACE AND AGE GROUP

1989

RACE	AGE GROUPS	REPORTED	% OF TOTAL ARRESTS
WHITE	ADULTS	621	18.4
	JUVENILES	431	12.8
BLACK	ADULTS	1,219	36.2
	JUVENILES	1,093	32.4
AMERICAN INDIAN	ADULTS	2	0.1
	JUVENILES	0	0.0
ASIAN	ADULTS	0	0.0
	JUVENILES	4	0.1
UNKNOWN		47	-
TOTAL		3,417	100.0

TABLE 4.7.6

MOTOR VEHICLE THEFT OFFENSE RATES, STATE OF MISSOURI¹ **TIME SERIES**



¹Motor Vehicle Theft offense rates are based on estimated motor vehicle theft offenses occurring in the State of Missouri. They are computed on a per 100,000 population basis. See Glossary for an explanation of the computations used to obtain these rates.

FIGURE 4.7.1

4.8 ARSON

DEFINITION

Arson is defined by the Uniform Crime Reporting Program as any willful or malicious burning or attempt to burn, with or without intent to defraud, a dwelling house, public building, motor vehicle or aircraft, personal property of another, etc. Only fires determined through investigation to have been willfully or maliciously set are classified as arsons. Fires of suspicious or unknown origins are excluded. Arson offenses are reported on an incident-by-incident basis.

1989 SUMMARY ANALYSIS

- There were 1,971 arsons reported during 1989. It is estimated that a total of 2,110 arsons actually occurred on a statewide basis. Based on this estimate, this was a 9.2 percent decrease over 1988.
- It is estimated that one arson occurred every 4.2 hours.
- Arsons accounted for 0.8 percent of the Total Crime Index and 0.9 percent of all Property Index offenses.
- The arson rate per 100,000 population in 1989 was 40.9 compared to 45.2 in 1988.
- Residential dwellings accounted for an estimated 43.6 percent of all types of property destroyed by arson. Motor vehicles accounted for an estimated 23.3 percent.
- It is estimated that arson accounted for \$32,401,498 in property loss in 1989.
- In 1989, 20.6 of every 100 arsons were cleared by arrest or exceptional means.
- 328 persons were reported arrested for arson in 1989. Of these, 66.2 percent were adults and 33.8 percent were juveniles.

ARSON SUMMARY: 1988 and 1989

Year	Number of Estimated Offenses	Rate per 100,000 Population
1988	2,323	45.2
1989	2,110	40.9
Percent of Change	- 9.2	- 9.5

ARSON RATES BY POPULATION GROUP

1989

POPULATION GROUP	REPORTED	ESTIMATED	% OF TOTAL	RATE PER 100,000 POPULATION
<u>Police Agencies</u>				
250,000 +	1,078	1,078	51.1	127.5
100,000 - 249,999	173	173	8.2	66.9
50,000 - 99,999	63	63	3.0	31.7
25,000 - 49,999	118	124	5.9	27.6
10,000 - 24,999	122	127	6.0	22.8
2,500 - 9,999	99	125	5.9	25.3
Under 2,500	15	28	0.8	32.1
Sheriff's Dept./County Police Suburban	192	208	9.9	20.2
Sheriff's Dept. -- Rural	111	194	9.2	15.3
TOTAL	1,971	2,110	100.0	40.9

TABLE 4.8.1

ARSON LOSS BY TYPE OF PROPERTY

1989

PROPERTY	REPORTED	ESTIMATED	% OF TOTAL	\$ LOSS/ INCIDENT
STRUCTURES				
Single Occupancy Dwelling	554	603	28.6	\$18,734.89
Other Residential	310	317	15.0	16,702.00
Storage	127	141	6.7	10,883.20
Industrial/Manufacturing	9	10	0.5	217,166.67
Other Commercial	123	130	6.2	52,685.83
Community/Public	77	82	3.9	17,289.03
All Other Structures or Type of Structure Not Known	41	46	2.2	12,225.00
MOBILE				
Motor Vehicle	470	492	23.3	3,853.03
All Mobile Property or Type of Mobile Property Known	30	35	1.7	7,144.00
OTHER				
Other Property or Type of Property Not Known	230	254	12.1	450.67
TOTAL	1,971	2,110	100.0	15,356.16
1989 TOTAL STATE LOSS ESTIMATE² = \$32,401,498				

¹The dollar loss per incident was calculated using only those arson offenses for which law enforcement agencies reported an actual monetary loss.

²This estimate of property loss was calculated by multiplying the total dollar loss per offense by the total number of such offenses that were reported in 1989.

TABLE 4.8.2

ARSON CLEARANCE RATES

1988 - 1989

YEAR	PERCENT CLEARED	% OF CLEARED OFFENSES ONLY JUVENILES
1988	27.6	42.7
1989	20.6	43.5

TABLE 4.8.3

ARSON ARRESTS BY SEX AND AGE GROUP

1989

SEX	AGE GROUPS	REPORTED	% OF TOTAL ARSON ARRESTS
MALE	ADULTS	178	54.3
	JUVENILES	102	31.1
FEMALE	ADULTS	39	11.9
	JUVENILES	9	2.7
TOTAL		328	100.0

TABLE 4.8.4

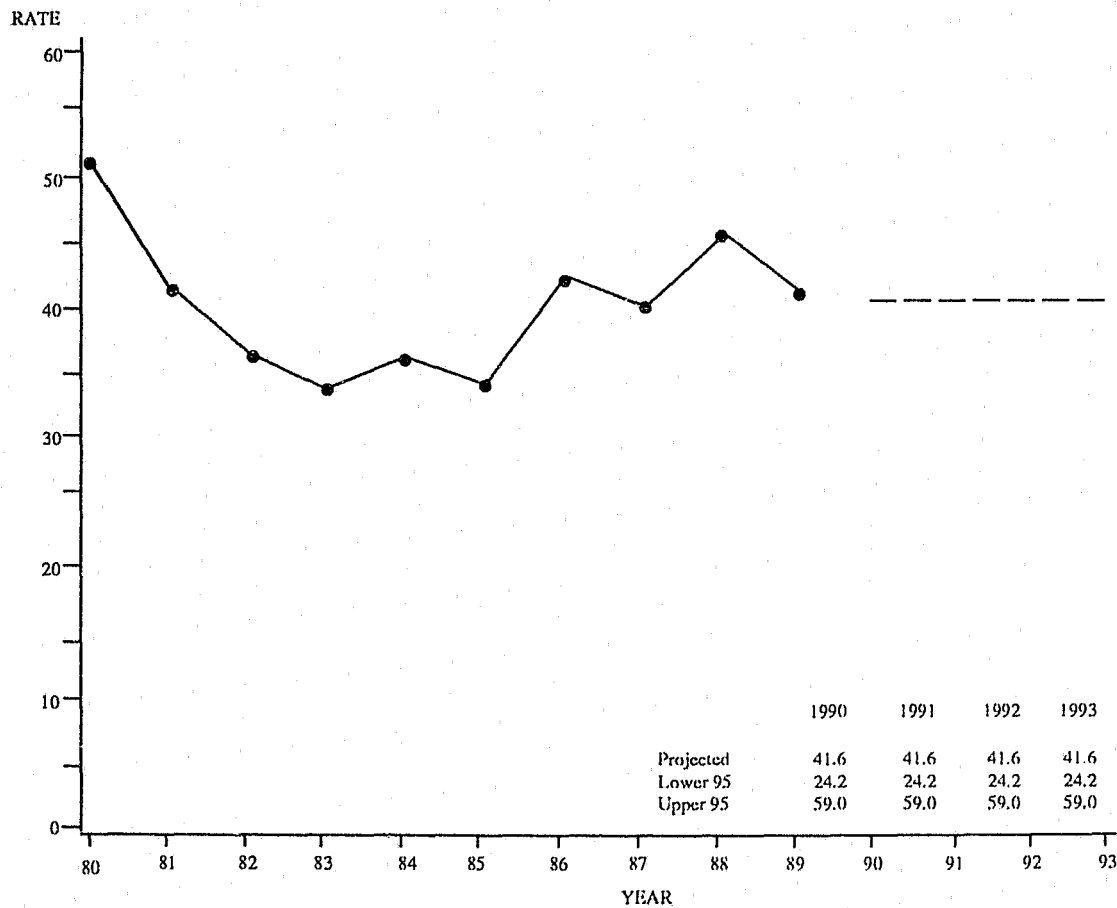
ARSON ARRESTS BY RACE AND AGE GROUP

1989

RACE	AGE GROUPS	REPORTED	% OF TOTAL ARSON ARRESTS
WHITE	ADULTS	124	38.6
	JUVENILES	75	23.4
BLACK	ADULTS	88	27.4
	JUVENILES	33	10.3
AMERICAN INDIAN	ADULTS	1	0.3
	JUVENILES	0	0.0
UNKNOWN		7	-
TOTAL		328	100.0

TABLE 4.8.5

ARSON OFFENSE RATES, STATE OF MISSOURI¹ **TIME SERIES**



¹Arson offense rates are based on estimated arson offenses occurring in the State of Missouri. They are computed on a per 100,000 population basis. See Glossary for an explanation of the computations used to obtain these rates.

FIGURE 4.8.1

5.0 MISSOURI LAW ENFORCEMENT AGENCY CRIME AND ARREST ANALYSIS

A SERIES OF TABLES SUMMARIZES CRIME INDEX OFFENSE AND ARREST ACTIVITY ASSOCIATED WITH LAW ENFORCEMENT JURISDICTIONS IN THE STATE OF MISSOURI. THESE DATA DISPLAYS PROVIDE AN OVERVIEW OF THE EXTENT OF THE CRIME PROBLEM WITHIN MISSOURI COMMUNITIES.

CRIME INDEX OFFENSES, MUNICIPALITIES 25,000 AND OVER

BY REPORTING AGENCY

1989

REPORTING AGENCY	MOS.	POPULATION	CRIME INDEX		VIOLENT CRIME					PROPERTY CRIME				
			TOTAL	RATE/100,000	TOTAL	MURDER	RAPE	ROBBERY	AGG. ASSAULT	TOTAL	BURGLARY	THEFT	M.V. THEFT	ARSON
BLUE SPRINGS	12	37787	1807	4782.1	57	0	1	23	33	1750	284	1360	91	15
CAPE GIRARDEAU	12	34376	2077	6042.0	30	0	6	21	3	2047	264	1735	45	3
CHESTERFIELD	7	30352	505	1663.8	20	0	0	3	17	485	94	367	20	4
COLUMBIA	12	64548	4505	6979.3	271	3	9	87	172	4234	661	3390	155	28
FLORISSANT	12	60765	1467	2414.2	90	0	8	36	46	1377	336	925	109	7
GLADSTONE	12	28968	973	3358.9	63	0	4	13	46	910	229	607	68	6
INDEPENDENCE	12	115479	7575	6559.6	488	4	17	106	361	7087	1539	4624	868	56
JEFFERSON CITY	12	34316	1827	5324.0	99	3	12	8	76	1728	274	1351	87	16
JOPLIN	12	41821	3634	8689.4	156	3	6	47	100	3478	663	2630	163	22
KANSAS CITY	12	440435	56505	12829.4	8996	140	507	3824	4525	47509	12104	25853	9075	477
KIRKWOOD	12	27272	877	3215.8	36	1	3	16	16	841	175	608	57	1
LEE'S SUMMIT	12	42393	1252	2953.3	47	1	8	13	25	1205	273	845	81	6
MARYLAND HEIGHTS	12	28346	1354	4776.7	64	1	2	6	55	1290	259	944	81	6
RAYTOWN	12	31155	1075	3450.5	86	0	5	36	45	989	224	656	105	4
SAINT CHARLES	12	42403	2154	5079.8	170	1	15	42	112	1984	392	1461	110	21
SAINT JOSEPH	12	73739	4353	5903.3	513	2	14	50	447	3840	861	2743	208	28
SAINT LOUIS	12	405066	62683	15474.8	12644	158	330	4220	7936	50039	13837	26669	8932	601
SAINT PETERS	12	30352	1847	6085.3	218	0	5	24	189	1629	275	1292	60	2
SPRINGFIELD	12	143173	13024	9096.7	605	7	61	192	345	12419	2612	9151	539	117
UNIVERSITY CITY	12	41741	2922	7000.3	263	1	19	123	120	2659	798	1474	375	12
TOTAL	--	1754487	172416	9827.1	24916	325	1032	8890	14669	147500	36154	88685	21229	1432

TABLE 5.0.1

CRIME INDEX OFFENSES, MUNICIPALITIES UNDER 25,000

BY REPORTING AGENCY

1989

REPORTING AGENCY	MOS.	POPULATION	CRIME INDEX		VIOLENT CRIME					PROPERTY CRIME				
			TOTAL	RATE/100,000	TOTAL	MURDER	RAPE	ROBBERY	AGG. ASSAULT	TOTAL	BURGLARY	THEFT	M.V. THEFT	ARSON
ARNOLD	12	21442	785	3661.0	40	2	6	10	22	745	195	516	32	2
AURORA	5	6974	120	1720.7	27	0	1	3	23	93	17	68	6	2
BALLWIN	12	24172	536	2217.4	35	0	2	4	29	501	99	388	12	2
BEL-NOR	12	1856	54	2909.5	4	0	0	0	4	50	16	29	5	0
BEL-RIDGE	12	3562	255	7158.9	30	0	1	6	23	225	59	130	36	0
BELLEFONTAINE NBRS	12	11338	407	3589.7	13	0	0	8	5	394	33	300	61	0
BELTON	12	17880	647	3618.6	62	1	5	3	53	585	95	457	30	3
BERKELEY	12	16456	823	5001.2	118	0	12	42	64	705	245	360	95	5
BOLIVAR	12	6432	159	2472.0	7	0	0	0	7	152	64	83	5	0
BONNE TERRE	12	4475	84	1877.1	31	1	1	0	29	53	15	33	3	2
BOONVILLE	12	7074	210	2968.6	16	1	1	2	12	194	40	140	10	4
BRANSON	12	4335	371	8558.2	11	1	3	0	7	360	37	312	10	1
BRECKENRIDGE HILLS	12	5739	301	5244.8	65	0	6	6	53	236	26	187	23	0
BRENTWOOD	12	8619	314	3643.1	11	0	0	4	7	303	50	232	19	2
BRIDGETON	12	18653	1457	7811.1	74	0	3	32	39	1383	217	1034	125	7
BROOKFIELD	12	5007	148	2955.9	4	0	1	0	3	144	31	108	5	0
BUTLER	12	4144	129	3112.9	11	0	1	1	9	118	21	91	5	1
CALVERTON PARK	12	1686	35	2075.9	1	0	0	0	1	34	12	21	1	0
CAMERON	12	9492	160	1685.6	23	0	2	0	21	137	21	112	4	0
CANTON	12	2308	27	1169.8	3	0	0	0	3	24	9	14	1	0
CARROLLTON	5	4294	55	1280.9	9	0	0	0	9	46	15	31	0	0
CARTHAGE	12	11549	504	4364.0	13	0	0	3	10	491	111	357	22	1
CENTRALIA	12	3351	75	2238.1	9	0	0	1	8	66	28	36	2	0
CHAFFEE	12	3080	94	3051.9	5	0	0	1	4	89	32	56	1	0
CHARLACK	12	1585	67	4227.1	9	0	0	2	7	58	18	30	10	0
CLARKSON VALLEY	12	1696	40	2358.5	6	0	2	0	4	34	8	25	0	1
CLAYCOMO	12	1646	146	8870.0	14	1	0	2	11	132	10	108	14	0
CLAYTON	12	13776	766	5560.4	35	1	1	11	22	731	206	469	55	1
CLINTON	12	8729	459	5258.3	23	0	0	3	20	436	81	334	18	3
COOL VALLEY	12	2388	146	6113.9	15	1	0	4	10	131	28	89	13	1
COUNTRY CLUB HILLS	10	1365	51	3736.3	16	0	0	3	13	35	14	18	3	0
CRESTWOOD	12	12081	485	4014.6	16	0	0	12	4	469	84	371	14	0
CREVE COEUR	12	11419	484	4238.5	23	0	0	11	12	461	51	368	42	0
CRYSTAL CITY	12	4274	300	7019.2	26	0	1	1	24	274	50	204	20	0
DE SOTO	12	7184	119	1656.5	3	0	0	1	2	116	25	81	10	0
DES PERES	12	8469	351	4144.5	13	0	0	3	10	338	58	269	11	0

TABLE 5.0.2

CRIME INDEX OFFENSES, MUNICIPALITIES UNDER 25,000

BY REPORTING AGENCY

1989

REPORTING AGENCY	MOS.	POPULATION	CRIME INDEX		VIOLENT CRIME					PROPERTY CRIME				
			TOTAL	RATE/100,000	TOTAL	MURDER	RAPE	ROBBERY	AGG. ASSAULT	TOTAL	BURGLARY	THEFT	M.V. THEFT	ARSON
EDMUNDSON	12	1465	64	4368.6	1	0	0	1	0	63	6	44	13	0
ELLISVILLE	12	8459	156	1844.2	22	0	0	1	21	134	20	101	13	0
EUREKA	12	4495	274	6095.7	12	0	0	1	11	262	65	180	16	1
EXCELSIOR SPRINGS	12	11158	429	3844.8	18	0	3	5	10	411	68	324	15	4
FARMINGTON	12	9763	429	4394.1	49	0	0	2	47	380	38	324	17	1
FAYETTE	12	2950	75	2542.4	23	0	2	0	21	52	8	44	0	0
FENTON	12	2629	315	11981.7	16	0	0	11	5	299	40	234	22	3
FERGUSON	12	23118	757	3274.5	65	2	1	44	18	692	257	353	81	1
FESTUS	12	9482	279	2942.4	23	0	1	2	20	256	37	203	16	0
FLAT RIVER	12	4636	115	2480.6	12	0	0	0	12	103	11	90	2	0
FLORDELL HILLS	12	803	61	7596.5	9	0	1	2	6	52	11	34	7	0
FRONTENAC	12	3853	143	3711.4	13	0	0	2	11	130	14	106	10	0
FULTON	12	10646	410	3851.2	76	2	8	5	61	334	39	279	16	0
GLENDALE	11	6191	35	565.3	3	0	0	2	1	32	7	21	4	0
GRAIN VALLEY	12	2107	101	4793.5	5	1	0	0	4	96	11	78	6	1
GRANDVIEW	12	24924	1635	6559.9	90	1	6	39	44	1545	338	1004	196	7
GREENDALE	12	943	10	1060.4	1	0	0	0	1	9	0	7	2	0
HANLEY HILLS	12	2609	31	1188.2	1	0	0	1	0	30	4	19	7	0
HANNIBAL	12	18834	906	4810.4	47	0	10	1	36	859	169	669	20	1
HARRISONVILLE	12	7435	447	6012.1	26	0	5	2	19	421	89	303	24	5
HAZELWOOD	12	16445	847	5150.5	37	0	3	21	13	810	147	558	99	6
HILLSDALE	12	2569	198	7707.3	64	0	4	17	43	134	72	33	29	0
IRONTON	12	11238	47	418.2	7	0	0	1	6	40	4	34	2	0
JACKSON	12	9301	172	1849.3	17	0	1	0	16	155	20	132	3	0
JENNINGS	12	17108	1168	6827.2	79	1	7	41	30	1089	196	748	141	4
KEARNEY	12	2228	54	2423.7	7	0	1	2	4	47	9	35	3	0
KENNETT	12	9542	835	8750.8	35	0	7	2	26	800	162	606	26	6
KIRKSVILLE	12	15432	775	5022.0	15	0	2	2	11	760	112	632	16	0
LADUE	12	9412	257	2730.6	6	0	0	3	3	251	67	170	14	0
LAKE LOTAWANA	12	2057	73	3548.9	4	0	0	0	4	69	25	40	4	0
LAKE SAINT LOUIS	12	6442	216	3353.0	23	0	0	3	20	193	49	134	10	0
LAMAR	12	3973	81	2038.8	10	0	0	0	10	71	16	49	4	2
LEBANON	12	10164	714	7024.8	23	2	4	4	13	691	174	470	43	4
LEXINGTON	12	4967	135	2717.9	7	0	0	3	4	128	51	71	6	0
MACON	12	5820	23	395.2	14	0	2	0	12	9	5	1	3	0
MANCHESTER	12	6933	236	3404.0	17	0	3	1	13	219	54	153	9	3

TABLE 5.0.2

CRIME INDEX OFFENSES, MUNICIPALITIES UNDER 25,000

BY REPORTING AGENCY

1989

REPORTING AGENCY	MOS.	POPULATION	CRIME INDEX		VIOLENT CRIME					PROPERTY CRIME				
			TOTAL	RATE/100,000	TOTAL	MURDER	RAPE	ROBBERY	AGG. ASSAULT	TOTAL	BURGLARY	THEFT	M.V. THEFT	ARSON
MAPLEWOOD	12	9562	634	6630.4	36	1	0	19	16	598	81	470	44	3
MARCELINE	12	2890	29	1003.5	9	0	1	1	7	20	13	6	1	0
MARSHALL	12	12753	382	2995.4	8	0	0	5	3	374	65	298	11	0
MARYVILLE	12	8970	410	4570.8	5	0	0	0	5	405	32	363	8	2
MEXICO	12	11689	229	1959.1	12	0	0	3	9	217	52	156	7	2
MOBERLY	12	12833	669	5213.1	52	0	8	1	43	617	95	477	43	2
MOLINE ACRES	12	2890	113	3910.0	23	0	0	4	19	90	19	47	20	4
NEOSHO	12	10054	558	5550.0	37	0	2	4	31	521	97	388	27	9
NEVADA	12	8990	473	5261.4	33	1	5	5	22	440	67	343	29	1
NORMANDY	12	4806	328	6824.8	74	0	3	19	52	254	65	135	54	0
NORTH KANSAS CITY	12	3903	597	15295.9	29	0	1	14	14	568	88	406	62	12
NORTHWOODS	12	5820	240	4123.7	31	0	0	21	10	209	50	108	51	0
O'FALLON	12	13425	831	6189.9	53	0	2	5	46	778	112	635	27	4
OAKLAND	12	1726	27	1564.3	6	3	0	0	3	21	9	9	3	0
OAKVIEW	6	642	6	934.6	0	0	0	0	0	6	0	5	1	0
ODESSA	12	3341	86	2574.1	2	0	0	1	1	84	14	61	9	0
OLIVETTE	12	7836	247	3152.1	43	0	0	4	39	204	38	153	13	0
OVERLAND	12	18111	986	5444.2	78	0	3	17	58	908	135	700	70	3
PACIFIC	12	4646	153	3293.2	7	0	0	0	7	146	31	101	10	4
PARKVILLE	12	2659	86	3234.3	5	0	0	0	5	81	17	58	4	2
PASADENA HILLS	12	1294	40	3091.2	1	0	0	1	0	39	14	14	11	0
PASADENA PARK	12	472	31	6567.8	0	0	0	0	0	31	8	21	2	0
PEVELY	12	3813	113	2963.5	4	0	1	0	3	109	23	80	6	0
PLATTSBURG	2	2147	11	512.3	3	0	0	0	3	8	5	3	0	-
PLEASANT HILL	12	3582	143	3992.2	14	0	1	1	12	129	10	114	5	0
POPLAR BLUFF	12	16736	1263	7546.6	69	0	3	10	56	1194	215	917	41	21
POTOSI	12	2679	88	3284.8	14	0	1	0	13	74	13	59	2	0
REPUBLIC	12	6512	241	3700.9	7	0	0	0	7	234	40	183	11	0
RICH HILL	4	1415	16	1130.7	4	0	0	0	4	12	10	0	1	1
RICHMOND	12	5709	223	3906.1	38	0	0	1	37	185	46	125	10	4
RICHMOND HEIGHTS	12	10465	808	7721.0	56	0	4	25	27	752	112	566	70	4
RIVERSIDE	12	3010	265	8804.0	25	0	6	5	14	240	48	161	29	2
RIVERVIEW	12	3171	105	3311.3	16	0	1	2	13	89	35	39	12	3
ROLLA	12	13124	652	4968.0	10	0	0	6	4	642	129	493	20	0
SAINT ANN	12	14609	834	5708.8	17	0	1	11	5	817	77	602	137	1
SAINT GEORGE	12	1565	35	2236.4	2	0	0	1	1	33	5	17	11	0

TABLE 5.0.2

CRIME INDEX OFFENSES, MUNICIPALITIES UNDER 25,000

BY REPORTING AGENCY

1989

REPORTING AGENCY	MOS.	POPULATION	CRIME INDEX		VIOLENT CRIME					PROPERTY CRIME				
			TOTAL	RATE/100,000	TOTAL	MURDER	RAPE	ROBBERY	AGG. ASSAULT	TOTAL	BURG-LARY	THEFT	M.V. THEFT	ARSON
SAINT JOHN	7	8117	142	1749.4	27	0	0	4	23	115	31	74	10	0
SAINT ROBERT	12	1826	245	13417.3	62	0	0	3	59	183	47	132	4	0
SAINT GENEVIEVE	12	4626	93	2010.4	12	0	1	1	10	81	33	47	1	0
SAVANNAH	12	4626	86	1859.1	8	0	0	0	8	78	16	61	1	0
SEDALIA	12	20439	1188	5812.4	61	2	1	5	53	1127	216	857	43	11
SHREWSBURY	12	5468	302	5523.0	10	0	1	2	7	292	46	228	16	2
SIKESTON	12	17710	936	5285.1	57	1	4	21	31	879	217	616	42	4
SLATER	12	2438	131	5373.3	26	0	2	0	24	105	30	71	3	1
SMITHVILLE	8	2428	6	247.1	1	0	0	0	1	5	3	0	2	0
SUGAR CREEK	12	4385	228	5199.5	17	0	5	1	11	211	52	130	24	5
SULLIVAN	12	5719	219	3829.3	17	1	1	1	14	202	29	165	8	0
SUNSET HILLS	12	4846	317	6541.5	29	0	0	14	15	288	49	223	15	1
TOWN AND COUNTRY	12	3903	211	5406.1	19	0	0	0	19	192	38	145	5	4
TRENTON	12	6000	192	3200.0	7	0	0	0	7	185	42	137	6	0
UNION	12	5709	246	4309.0	22	0	0	0	22	224	36	170	16	2
UNIV MO. COLUMBIA	12	0	716	-	11	1	3	2	5	705	117	578	1	9
UNIV MO. ST LOUIS	11	0	100	-	1	0	0	1	0	99	2	92	5	0
VALLEY PARK	12	3381	150	4436.6	36	0	2	3	31	114	26	75	13	0
VANDALIA	12	2659	62	2331.7	3	0	0	0	3	59	11	47	1	0
VELDA VILLAGE HILLS	12	1445	39	2699.0	8	0	1	2	5	31	13	3	15	0
VINTA PARK	12	2318	56	2415.9	6	0	0	3	3	50	18	28	4	0
WARRENSBURG	12	12813	946	7383.1	31	0	6	5	20	915	251	629	28	7
WARSON WOODS	12	2308	20	866.6	1	0	0	0	1	19	5	14	0	0
WASHINGTON	12	10505	469	4464.5	75	0	1	1	73	394	67	313	11	3
WASHINGTON UNIV.	12	0	176	-	7	0	0	6	1	169	9	147	13	0
WEBB CITY	12	7405	228	3079.0	2	0	1	0	1	226	56	163	3	4
WEBSTER GROVES	12	23078	500	2166.6	31	0	2	9	20	469	96	356	14	3
WELLSTON	12	4435	599	13506.2	130	1	3	16	110	469	117	281	69	2
WENTZVILLE	12	4786	443	9256.2	10	0	0	2	8	433	70	341	22	0
WEST PLAINS	12	8137	506	6218.5	24	0	2	2	20	482	52	400	25	5
WESTON	12	1575	36	2285.7	5	0	1	0	4	31	12	17	2	0
WESTWOOD	12	371	4	1078.2	1	0	0	0	1	3	1	1	1	0
WINCHESTER	12	1696	36	2122.6	4	0	0	1	3	32	10	21	0	1
WINDSOR	7	2900	57	1965.5	7	0	0	0	7	50	5	44	0	1
WOODSON TERRACE	12	5027	163	3242.5	11	1	1	5	4	152	26	100	26	0
TOTAL	--	1001686	45467	4539.0	3300	30	201	696	2373	42167	8235	30763	2933	236

TABLE 5.0.2

CRIME INDEX OFFENSES, SUBURBAN COUNTIES

BY REPORTING AGENCY

1989

REPORTING AGENCY	MOS.	POPULATION	CRIME INDEX		VIOLENT CRIME					PROPERTY CRIME				
			TOTAL	RATE/100,000	TOTAL	MURDER	RAPE	ROBBERY	AGG. ASSAULT	TOTAL	BURGLARY	THEFT	M.V. THEFT	ARSON
BOONE	9	38259	524	1369.6	113	0	2	1	110	411	95	294	17	5
BUCHANAN	12	11950	177	1481.2	28	0	1	2	25	149	67	80	2	0
CHRISTIAN	12	30503	251	822.9	8	0	5	0	3	243	110	127	4	2
CLAY	12	16425	253	1540.3	22	0	2	1	19	231	94	112	17	8
FRANKLIN	12	53511	1283	2397.6	173	0	16	4	153	1110	465	544	97	4
GREENE	12	54905	1574	2866.8	125	1	8	10	106	1449	423	956	57	13
JACKSON	12	25939	878	3384.9	59	0	8	7	44	819	297	455	66	1
JASPER	12	34958	564	1613.4	33	0	9	0	24	531	174	312	45	0
JEFFERSON	12	126788	3213	2534.2	274	1	31	22	220	2939	1301	1431	179	28
LAFAYETTE	12	23098	239	1034.7	23	1	3	2	17	216	89	113	14	0
PLATTE	12	28737	425	1478.9	38	0	4	4	30	387	126	241	20	0
RAY	11	16776	207	1233.9	19	0	3	0	16	188	90	82	8	8
SAINT CHARLES	12	107684	2096	1946.4	136	2	16	13	105	1960	472	1384	96	8
SAINT LOUIS POLICE	12	396526	14306	3607.8	1221	6	63	222	930	13085	3119	8801	1050	115
TOTAL	--	966059	25990	2690.3	2272	11	171	288	1802	23718	6922	14932	1672	192

TABLE 5.0.3

CRIME INDEX OFFENSES, RURAL COUNTIES

BY REPORTING AGENCY

1989

REPORTING AGENCY	MOS.	POPULATION	CRIME INDEX		VIOLENT CRIME					PROPERTY CRIME				
			TOTAL	RATE/100,000	TOTAL	MURDER	RAPE	ROBBERY	AGG. ASSAULT	TOTAL	BURGLARY	THEFT	M.V. THEFT	ARSON
ATCHISON	12	7826	80	1022.2	4	0	0	1	3	76	17	52	6	1
AUDRAIN	12	11038	158	1431.4	16	0	0	1	15	142	54	79	9	0
BARTON	12	7566	69	912.0	1	0	0	1	0	68	21	38	7	2
BATES	12	10395	118	1135.2	3	0	0	1	2	115	34	68	12	1
BENTON	12	13345	420	3147.2	43	0	2	2	39	377	163	196	14	4
BOLLINGER	12	11138	71	637.5	12	1	0	4	7	59	50	3	6	0
BUTLER	12	22095	69	312.3	10	0	4	1	5	59	34	23	1	1
CALDWELL	12	8328	58	696.4	6	0	2	0	4	52	18	32	2	0
CAMDEN	12	25887	516	1993.3	30	0	0	0	30	486	266	199	14	7
CAPE GIRARDEAU	12	18733	296	1580.1	10	0	0	3	7	286	81	194	11	0
CARROLL	12	6844	59	862.1	0	0	0	0	0	59	15	43	1	0
CEDAR	12	12442	155	1245.8	17	0	2	2	13	138	56	71	8	3
CHARITON	12	9833	83	844.1	16	0	0	1	15	67	26	41	0	0
COLE	12	27492	501	1822.3	32	0	2	4	26	469	124	315	27	3
COOPER	12	7575	27	356.4	1	1	0	0	0	26	18	4	2	2
CRAWFORD	12	18944	262	1383.0	29	0	3	0	26	233	122	102	5	4
DALLAS	12	13445	147	1093.3	7	1	1	2	3	140	73	61	6	0
DAVIESS	12	8529	81	949.7	4	0	1	0	3	77	25	48	3	1
DE KALB	12	3381	62	1833.8	2	0	0	0	2	60	27	29	3	1
DOUGLAS	12	12643	171	1352.5	25	1	1	0	23	146	100	3	10	33
DUNKLIN	12	19265	174	903.2	19	1	0	1	17	155	67	70	13	5
GASCONADE	1	11258	8	71.1	0	0	0	0	0	8	8	0	0	0
GENTRY	5	7124	16	224.6	0	0	0	0	0	16	3	13	0	0
GRUNDY	12	4937	47	952.0	0	0	0	0	0	47	22	24	0	1
HARRISON	12	9030	76	841.6	10	0	0	1	9	66	24	42	0	0
HENRY	12	8439	208	2464.7	24	1	1	0	22	184	76	98	6	4
HICKORY	12	7425	157	2114.5	16	0	1	0	15	141	56	77	7	1
HOLT	12	6321	51	806.8	1	0	1	0	0	50	24	22	4	0
HOWELL	1	22968	17	74.0	3	0	0	0	3	14	4	7	3	0
JOHNSON	6	26319	177	672.5	15	0	1	0	14	162	63	89	10	—
LACLEDE	1	16325	2	12.3	2	1	1	0	0	0	0	0	0	0
LAWRENCE	1	22165	14	63.2	2	0	0	0	2	12	8	4	0	0
LINN	9	6552	30	457.9	6	0	0	0	6	24	10	13	1	0
LIVINGSTON	12	6171	109	1766.3	9	4	1	0	4	100	45	53	2	0
MADISON	12	11539	91	788.6	6	0	1	0	5	85	70	7	4	4
MARIES	9	7927	56	706.4	5	1	0	0	4	51	20	28	3	0

TABLE 5.0.4

CRIME INDEX OFFENSES, RURAL COUNTIES

BY REPORTING AGENCY

1989

REPORTING AGENCY	MOS.	POPULATION	CRIME INDEX		VIOLENT CRIME					PROPERTY CRIME				
			TOTAL	RATE/100,000	TOTAL	MURDER	RAPE	ROBBERY	AGG. ASSAULT	TOTAL	BURGLARY	THEFT	M.V. THEFT	ARSON
MARION	12	9983	111	1111.9	16	0	4	2	10	95	31	56	6	2
MCDONALD	12	16456	73	443.6	11	0	2	1	8	62	28	23	7	4
MISSISSIPPI	12	10385	127	1222.9	31	1	0	1	29	96	33	52	9	2
MONROE	12	9432	48	508.9	8	0	3	0	5	40	15	24	1	0
MORGAN	12	15352	404	2631.6	36	0	9	1	26	368	169	186	8	5
NEW MADRID	11	18472	138	747.1	39	1	4	5	29	99	35	56	8	0
NODAWAY	12	11900	280	2352.9	13	1	0	0	12	267	73	185	6	3
OREGON	12	9833	12	122.0	5	0	2	0	3	7	7	0	0	0
OSAGE	12	11840	41	346.3	3	1	0	0	2	38	15	21	2	1
OZARK	12	9030	132	1461.8	15	1	1	0	13	117	50	52	14	1
PERRY	12	17158	130	757.7	15	1	0	1	13	115	35	70	10	0
PIKE	12	10003	93	929.7	7	0	0	0	7	86	31	50	5	0
POLK	12	14840	169	1138.8	4	0	2	1	1	165	56	98	11	0
PULASKI	12	39012	161	412.7	45	0	9	8	28	116	81	26	8	1
REYNOLDS	12	6723	120	1784.9	1	0	0	1	0	119	50	66	3	0
RIPLEY	11	13144	64	486.9	8	0	1	0	7	56	46	7	3	0
SAINT CLAIR	12	8428	238	2823.9	21	0	6	0	15	217	85	116	14	2
SAINT FRANCOIS	12	28787	242	840.7	8	0	0	1	7	234	73	153	8	0
SAINTE GENEVIEVE	12	11830	139	1175.0	1	0	0	1	0	138	49	81	8	0
SALINE	12	9292	100	1076.2	8	0	1	0	7	92	29	55	8	0
SCHUYLER	12	4415	54	1223.1	1	0	1	0	0	53	50	1	2	0
SCOTLAND	12	5017	25	498.3	0	0	0	0	0	25	25	0	0	0
SCOTT	12	20148	179	888.4	25	2	0	2	21	154	58	77	17	2
SHANNON	2	8027	10	124.6	4	0	1	2	1	6	4	0	2	1
SHELBY	12	7224	91	1259.7	3	0	1	0	2	88	28	55	3	2
STONE	1	19265	39	202.4	2	1	0	0	1	37	18	16	3	0
SULLIVAN	12	6723	43	639.6	1	0	1	0	0	42	27	14	1	0
TANEY	12	21151	364	1721.0	87	4	5	0	78	277	82	178	17	0
VERNON	12	10777	334	3099.2	55	1	2	0	52	279	84	169	25	1
WARREN	12	19666	278	1413.6	22	0	5	5	12	256	102	129	24	1
WASHINGTON	12	16887	346	2048.9	36	0	6	1	29	310	172	102	29	7
WAYNE	12	12442	122	980.5	14	0	1	1	12	108	81	24	3	0
WORTH	11	2609	14	536.6	2	0	0	2	0	12	8	4	0	0
TOTAL	--	887495	9357	1054.3	933	26	92	61	754	8424	3554	4294	465	111

TABLE 5.0.4

TOTAL PERSONS ARRESTED, MUNICIPALITIES 25,000 AND OVER
BY REPORTING AGENCY

1989

REPORTING AGENCY	MOS.	POPULATION	TOTAL ¹ ARRESTS	TOTAL PART I ARRESTS	MURDER	RAPE	ROBBERY	AGG. ASSAULT	BURGLARY	THEFT	MOTOR VEHICLE THEFT	ARSON	TOTAL ¹ PART II ARRESTS
BLUE SPRINGS	12	37787	1551	364	1	1	16	22	58	247	17	2	1187
CAPE GIRARDEAU	12	34376	3311	658	1	1	15	88	38	472	39	4	2653
CHESTERFIELD	7	30352	456	118	0	0	2	2	9	101	1	3	338
COLUMBIA	12	64548	3868	1393	1	1	35	149	100	1063	39	5	2475
FLORISSANT	12	60765	2256	426	0	9	16	33	116	215	35	2	1830
GLADSTONE	12	28968	779	55	0	1	1	6	12	23	12	0	724
INDEPENDENCE	12	115479	4720	1346	3	8	30	41	165	1024	69	6	3374
JEFFERSON CITY	12	34316	899	271	4	3	5	29	22	194	7	7	628
JOPLIN	12	41821	3239	697	4	2	15	13	87	543	22	11	2542
KANSAS CITY	12	440435	99787	13757	165	189	735	1707	1071	8165	1647	78	86030
KIRKWOOD	12	27272	1111	272	1	4	11	6	43	195	12	0	839
LEE'S SUMMIT	12	42393	2097	174	1	3	1	16	20	115	18	0	1923
MARYLAND HEIGHTS	12	28346	646	178	2	0	2	22	33	105	14	0	468
RAYTOWN	12	31155	897	177	0	0	16	8	28	91	33	1	720
SAINT CHARLES	12	42403	2999	632	1	9	25	88	100	389	15	5	2367
SAINT JOSEPH	12	73739	3203	728	3	6	6	240	53	416	1	3	2475
SAINT LOUIS	12	405066	40275	12894	222	266	1155	4231	2054	4365	532	69	27381
SAINT PETERS	12	30352	1057	375	0	2	12	100	53	207	0	1	682
SPRINGFIELD	12	143173	8148	2294	13	25	89	173	241	1720	29	4	5854
UNIVERSITY CITY	12	41741	2432	823	1	18	67	107	149	403	76	2	1609
TOTAL	--	1754487	183731	37632	423	548	2254	7081	4452	20053	2618	203	146099

¹Arrests for suspicion are not included in total.

TABLE 5.0.5

TOTAL PERSONS ARRESTED, MUNICIPALITIES UNDER 25,000

BY REPORTING AGENCY

1989

REPORTING AGENCY	MOS.	POPULATION	TOTAL ¹ ARRESTS	TOTAL PART I ARRESTS	MURDER	RAPE	ROBBERY	AGG. ASSAULT	BURG-LARY	THEFT	MOTOR VEHICLE THEFT	ARSON	TOTAL ¹ PART II ARRESTS
ARNOLD	12	21442	793	198	2	1	6	19	35	125	6	4	595
AURORA	5	6974	301	36	0	0	1	0	15	17	2	1	265
BALLWIN	12	24172	519	254	0	1	1	26	25	198	3	0	265
BEL-NOR	12	1856	219	8	0	0	0	1	4	3	0	0	211
BEL-RIDGE	12	3562	779	45	0	5	6	6	12	15	1	0	734
BELLEFONTAINE NBRS	12	11338	202	135	0	0	4	2	8	120	1	0	67
BELTON	12	17880	1931	182	0	2	0	9	34	127	6	4	1749
BERKELEY	12	16456	926	190	0	2	19	44	47	54	23	1	736
BOLIVAR	12	6432	43	28	0	0	0	4	7	17	0	0	15
BONNE TERRE	12	4475	177	38	1	0	0	25	0	12	0	0	139
BOONVILLE	12	7074	358	73	1	0	5	3	13	45	2	4	285
BRANSON	12	4335	450	58	1	0	0	2	3	48	2	2	392
BRECKENRIDGE HILLS	11	5739	310	52	0	3	1	6	3	34	5	0	258
BRENTWOOD	12	8619	183	88	0	0	3	2	13	62	7	1	95
BRIDGETON	12	18653	1972	659	0	2	23	38	86	465	45	0	1313
BROOKFIELD	12	5007	159	18	0	0	0	2	6	10	0	0	141
BUTLER	12	4144	319	29	0	0	0	12	7	8	2	0	290
CALVERTON PARK	12	1686	174	5	0	0	0	0	5	0	0	0	169
CAMERON	2	9492	0	0	0	0	0	0	0	0	0	0	0
CANTON	12	2308	69	6	0	0	0	2	2	2	0	0	63
CARROLLTON	5	4294	0	0	0	0	0	0	0	0	0	0	0
CARTHAGE	12	11549	886	100	0	0	2	8	8	77	5	0	786
CENTRALIA	12	3351	47	3	0	0	0	0	3	0	0	0	44
CHAFFEE	12	3080	89	17	0	0	0	2	7	6	2	0	72
CHARLACK	12	1585	500	23	0	0	2	9	6	3	3	0	477
CLARKSON VALLEY	12	1696	21	9	0	2	0	3	0	2	2	0	12
CLAYCOMO	12	1646	308	37	0	0	2	1	0	31	3	0	271
CLAYTON	12	13776	457	175	1	0	12	3	23	126	10	0	282
CLINTON	12	8729	616	107	0	0	0	7	14	83	3	0	509
COOL VALLEY	12	2388	200	32	0	0	0	3	3	20	6	0	168
COUNTRY CLUB HILLS	10	1365	193	33	1	0	2	4	3	19	4	0	160
CRESTWOOD	12	12081	428	190	0	0	5	3	14	168	0	0	238
CREVE COEUR	12	11419	826	162	0	0	9	9	15	112	17	0	664
CRYSTAL CITY	12	4274	0	0	0	0	0	0	0	0	0	0	0
DE SOTO	7	7184	93	4	0	0	0	1	1	2	0	0	89

TABLE 5.0.6

TOTAL PERSONS ARRESTED, MUNICIPALITIES UNDER 25,000

BY REPORTING AGENCY

1989

REPORTING AGENCY	MOS.	POPULATION	TOTAL ARRESTS	TOTAL PART I ARRESTS	MURDER	RAPE	ROBBERY	AGG. ASSAULT	BURG-LARY	THEFT	MOTOR VEHICLE THEFT	ARSON	TOTAL PART II ARRESTS
DES PERES	12	2469	307	104	0	0	3	8	4	89	0	0	203
EDMUNDSON	12	1465	79	8	0	0	1	0	1	0	6	0	71
ELLISVILLE	12	8459	127	39	0	0	2	9	7	17	4	0	88
EUREKA	12	4495	203	40	0	0	0	3	8	26	3	0	163
EXCELSIOR SPRINGS	12	11158	733	82	0	2	2	2	14	57	5	0	651
FARMINGTON	12	9763	277	81	0	0	2	17	6	56	0	0	196
FAYETTE	12	2950	97	22	0	1	0	12	2	7	0	0	75
FENTON	12	2629	348	99	0	0	9	4	11	71	3	1	249
FERGUSON	12	23118	1711	306	4	0	22	9	51	187	32	1	1405
FESTUS	12	9482	411	17	0	0	2	0	2	12	1	0	394
FLAT RIVER	12	4636	161	37	0	0	0	0	8	28	1	0	124
FLORDELL HILLS	12	803	47	11	0	1	0	6	1	2	1	0	36
FRONTENAC	11	3853	273	60	0	0	2	3	4	44	7	0	213
FULTON	12	10646	538	80	0	3	2	21	8	46	0	0	458
GLENDALE	11	6191	229	8	0	0	0	1	3	1	3	0	221
GRAIN VALLEY	12	2107	193	11	1	0	0	2	2	6	0	0	182
GRANDVIEW	12	24924	1346	373	1	2	10	20	52	252	35	1	973
GREENDALE	11	943	41	3	0	0	0	1	0	2	0	0	38
HANLEY HILLS	12	2609	73	12	0	0	1	0	3	5	3	0	61
HANNIBAL	12	18834	1543	199	0	3	1	0	50	140	5	0	1344
HARRISONVILLE	12	7435	697	58	0	1	0	5	13	27	6	6	639
HAZELWOOD	12	16445	895	224	0	1	12	9	43	121	36	2	671
HILLSDALE	12	2569	161	66	0	0	3	28	18	13	4	0	95
IRONTON	12	11238	53	27	0	0	0	5	3	19	0	0	26
JACKSON	12	9301	274	60	0	1	0	17	3	39	0	0	214
JENNINGS	12	17108	1143	529	2	3	24	15	60	412	11	2	614
KEARNEY	12	2228	89	23	0	1	1	3	5	12	0	1	66
KENNETT	12	9542	589	182	0	2	0	6	30	137	7	0	407
KIRKSVILLE	12	15432	641	128	0	0	1	10	12	100	0	5	513
LADUE	12	9412	150	55	0	0	0	2	18	32	3	0	95
LAKE LOTAWANA	12	2057	20	8	0	0	0	2	5	1	0	0	12
LAKE SAINT LOUIS	11	6442	188	40	0	0	0	9	16	11	4	0	148
LAMAR	12	3973	130	9	0	0	0	0	0	9	0	0	121
LEBANON	12	10164	997	242	2	1	2	6	29	190	12	0	755
LEXINGTON	9	4967	120	42	0	0	3	8	9	20	2	0	78
LIBERTY	1	19415	58	5	0	0	0	0	3	2	0	0	53

TABLE 5.0.6

TOTAL PERSONS ARRESTED, MUNICIPALITIES UNDER 25,000

BY REPORTING AGENCY

1989

REPORTING AGENCY	MOS.	POPULATION	TOTAL ¹ ARRESTS	TOTAL PART I ARRESTS	MURDER	RAPE	ROBBERY	AGG. ASSAULT	BURG-LARY	THEFT	MOTOR VEHICLE THEFT	ARSON	TOTAL ¹ PART II ARRESTS
MACON	12	5820	94	13	0	2	0	7	0	1	3	0	81
MANCHESTER	12	6933	158	52	0	2	0	5	6	35	4	0	106
MAPLEWOOD	12	9562	413	183	1	0	8	16	12	143	2	1	230
MARCELINE	12	2890	28	2	0	0	0	0	1	0	1	0	26
MARSHALL	12	12753	320	76	0	0	0	4	4	62	6	0	244
MARYVILLE	12	8970	542	48	0	0	0	4	1	43	0	0	494
MOBERLY	12	12833	387	130	0	4	0	6	14	101	5	0	257
MOLNE ACRES	12	2890	153	23	0	1	1	7	3	7	2	2	130
NEOSHO	12	10054	512	77	0	0	0	6	1	67	3	0	435
NEVADA	12	8990	996	93	1	2	1	1	22	60	6	0	903
NORMANDY	12	4806	372	109	0	3	10	43	17	28	8	0	263
NORTH KANSAS CITY	12	3903	427	79	0	0	2	3	6	61	7	0	348
NORTHWOODS	12	5820	220	97	0	0	8	12	15	58	4	0	123
O'FALLON	11	13425	785	172	0	0	2	54	13	100	3	0	613
OAKLAND	8	1726	93	26	1	0	0	2	7	14	2	0	67
OAKVIEW	6		17	0	0	0	0	0	0	0	0	0	17
ODESSA	12		126	25	0	0	2	1	7	12	3	0	101
OLIVETTE	12	7830	195	78	0	0	3	25	6	36	6	2	117
OVERLAND	12	18111	836	416	0	2	21	12	54	324	0	3	420
PACIFIC	12	4646	429	64	0	0	0	6	13	41	0	4	365
PARKVILLE	12	2659	185	13	0	0	0	0	0	9	4	0	172
PASADENA HILLS	12	1294	16	10	0	0	0	0	2	4	4	0	6
PASADENA PARK	10	472	7	7	0	0	0	0	4	3	0	0	0
PEVELY	12	3813	463	16	0	0	0	2	3	11	0	0	447
PLATTSBURG	2	2147	13	4	0	0	0	0	3	1	0	0	9
PLEASANT HILL	12	3582	244	40	0	0	0	14	3	18	5	0	204
POPLAR BLUFF	10	16736	1137	232	0	1	0	27	39	150	12	3	905
POTOSI	9	2679	119	29	0	1	0	11	0	17	0	0	90
REPUBLIC	12	6512	127	30	0	0	0	2	5	23	0	0	97
RICH HILL	2	1415	4	4	0	0	0	4	0	0	0	0	0
RICHMOND	12	5709	347	76	0	0	1	7	13	48	5	2	271
RICHMOND HEIGHTS	11	10465	849	201	0	4	14	17	24	127	15	0	648
RIVERSIDE	12	3010	558	9	0	0	0	0	0	9	0	0	549
RIVERVIEW	12	3171	168	51	0	1	0	12	9	27	2	0	117
ROLLA	12	13124	762	163	0	0	5	1	14	139	4	0	599
SAINT ANN	12	14609	1255	411	0	3	9	4	23	365	7	0	844

TABLE 5.0.6

TOTAL PERSONS ARRESTED, MUNICIPALITIES UNDER 25,000

BY REPORTING AGENCY

1989

REPORTING AGENCY	MOS.	POPULATION	TOTAL ¹ ARRESTS	TOTAL PART I ARRESTS	MURDER	RAPE	ROBBERY	AGG. ASSAULT	BURG-LARY	THEFT	MOTOR VEHICLE THEFT	ARSON	TOTAL ¹ PART II ARRESTS
SAINT GEORGE	12	1565	118	1	0	0	0	0	0	0	1	0	117
SAINT JOHN	7	8117	162	31	0	0	0	5	9	17	0	0	131
SAINT ROBERT	12	1826	425	45	0	0	0	2	4	39	0	0	380
SAINTE GENEVIEVE	12	4626	165	7	0	1	0	0	3	2	1	0	158
SAVANNAH	12	4626	117	26	0	0	0	4	4	16	2	0	91
SEDALIA	2	20439	153	16	0	0	0	3	1	12	0	0	137
SHREWSBURY	12	5468	334	74	0	0	2	2	1	67	1	1	260
SIKESTON	12	17710	590	149	2	0	4	25	23	90	3	2	441
SLATER	12	2438	156	46	0	1	0	10	11	22	1	1	110
SMITHVILLE	8	2428	1	0	0	0	0	0	0	0	0	0	1
SUGAR CREEK	12	4385	380	33	0	4	1	6	8	12	2	0	347
SULLIVAN	12	5719	308	24	0	0	2	2	2	18	0	0	284
SUNSET HILLS	12	4846	146	67	0	0	5	12	3	46	1	0	79
TOWN AND COUNTRY	12	3903	405	60	0	0	1	9	13	36	0	1	345
TRENTON	12	6000	102	9	0	0	0	0	3	6	0	0	93
UNION	12	5709	294	25	0	0	0	5	0	18	2	0	269
UNIV MO. COLUMBIA	12	0	363	54	0	0	1	1	8	44	0	0	309
UNIV MO. ST LOUIS	12	0	12	7	0	0	0	0	1	2	4	0	5
VALLEY PARK	12	3381	91	30	0	2	3	3	3	13	6	0	61
VANDALIA	12	2659	91	16	0	0	0	1	3	10	2	0	75
VELDA VILLAGE HILLS	12	1445	25	16	0	1	0	6	3	0	6	0	9
VINTA PARK	11	2318	79	18	0	0	2	0	7	5	4	0	61
WARRENSBURG	12	12813	1257	179	0	4	4	1	22	145	3	0	1078
WARSON WOODS	12	2308	16	5	0	0	0	0	0	5	0	0	11
WASHINGTON	12	10505	731	125	0	1	2	25	17	72	6	2	606
WASHINGTON UNIV.	8	0	0	0	0	0	0	0	0	0	0	0	0
WEBB CITY	12	7405	432	83	0	1	0	1	12	64	2	3	349
WEBSTER GROVES	12	23078	448	132	0	1	5	16	30	76	3	1	316
WELLSTON	3	4435	129	27	0	1	0	3	3	6	3	11	102
WENTZVILLE	12	4786	622	99	0	0	3	2	13	76	5	0	523
WEST PLAINS	12	8137	730	150	0	0	1	20	25	92	10	2	580
WESTON	10	1575	48	13	0	0	0	2	2	6	3	0	35
WESTWOOD	12	371	3	1	0	0	0	0	0	1	0	0	2
WINCHESTER	11	1696	82	7	0	0	1	2	2	2	0	0	75
WINDSOR	3	2900	0	0	0	0	0	0	0	0	0	0	0
WOODSON TERRACE	11	5027	548	53	1	0	3	7	9	23	10	0	495
TOTAL	--	1007315	52410	10971	23	83	335	989	1515	7391	558	77	41439

¹Arrests for suspicion are not included in total.

TABLE 5.0.6

TOTAL PERSONS ARRESTED, SUBURBAN COUNTIES

BY REPORTING AGENCY

1989

REPORTING AGENCY	MOS.	POPULATION	TOTAL ¹ ARRESTS	TOTAL PART I ARRESTS	MURDER	RAPE	ROBBERY	AGG. ASSAULT	BURGLARY	THEFT	MOTOR VEHICLE THEFT	ARSON	TOTAL ¹ PART II ARRESTS
BOONE	8	38259	232	93	0	2	0	44	11	28	3	5	139
BUCHANAN	12	11950	154	19	0	0	0	4	7	8	0	0	135
CHRISTIAN	12	30503	283	35	0	3	1	4	8	19	0	0	248
FRANKLIN	12	53511	862	168	3	2	6	13	54	80	4	6	694
GREENE	7	54905	928	210	5	6	13	5	57	124	0	0	718
JACKSON	12	25939	732	120	0	1	3	19	43	39	14	1	612
JASPER	11	34958	1420	273	0	8	9	19	77	159	0	1	1147
JEFFERSON	12	126788	1049	379	1	8	4	85	117	129	30	5	670
LAFAYETTE	12	23098	170	80	1	1	2	11	36	29	0	0	90
PLATTE	12	28737	490	138	3	5	3	22	34	56	15	0	352
RAY	11	16776	295	122	0	3	0	8	52	50	7	2	173
SAINT CHARLES	12	107684	1591	448	3	7	15	70	126	220	6	1	1143
TOTAL	--	553108	8206	2085	16	46	56	304	622	941	79	21	6121

¹Arrests for suspicion are not included in total.

TABLE 5.0.7

TOTAL PERSONS ARRESTED, RURAL COUNTIES

BY REPORTING AGENCY

1989

REPORTING AGENCY	MOS.	POPULATION	TOTAL ¹ ARRESTS	TOTAL PART I ARRESTS	MURDER	RAPE	ROBBERY	AGG. ASSAULT	BURGLARY	THEFT	MOTOR VEHICLE THEFT	ARSON	TOTAL ¹ PART II ARRESTS
ADAIR	2	8047	50	20	0	0	0	16	0	4	0	0	30
ATCHISON	12	7826	69	15	0	0	0	1	7	4	3	0	54
AUDRAIN	11	11038	206	38	0	0	0	4	9	21	4	0	168
BARTON	12	7566	114	14	0	0	1	1	3	5	4	0	100
BATES	12	10395	130	20	0	0	0	2	4	10	3	1	110
BENTON	11	13345	324	75	1	1	5	25	20	17	6	0	249
BOLLINGER	12	11138	125	28	0	0	2	13	8	0	5	0	97
BUTLER	11	22095	276	52	0	4	3	1	24	18	1	1	224
CALDWELL	12	8328	67	7	0	1	0	2	1	3	0	0	60
CAMDEN	12	25887	641	95	0	0	3	7	33	51	1	0	546
CAPE GIRARDEAU	12	18733	344	68	0	1	5	1	32	28	1	0	276
CARROLL	10	6844	100	63	0	0	0	2	13	31	17	0	37
CEDAR	12	12442	103	39	0	0	3	12	18	6	0	0	64
CHARITON	12	9833	60	15	0	0	1	1	1	12	0	0	45
COLE	12	27492	1338	183	3	7	6	16	144	1	5	1	1155
COOPER	11	7575	45	20	0	1	0	0	10	8	0	1	25
CRAWFORD	12	18944	268	54	0	1	1	15	24	10	2	1	214
DALLAS	12	13445	20	20	0	1	3	1	11	3	1	0	0
DAVIESS	12	8529	61	21	0	1	0	3	4	10	3	0	40
DE KALB	11	3381	91	4	0	0	0	1	1	1	1	0	87
DOUGLAS	12	12643	166	21	0	1	0	5	12	2	1	0	145
DUNKLIN	10	19265	161	32	1	2	0	2	15	10	0	2	129
GASCONADE	1	11258	0	0	0	0	0	0	0	0	0	0	0
GENTRY	1	7124	2	0	0	0	0	0	0	0	0	0	2
GRUNDY	12	4937	91	26	0	0	0	0	12	14	0	0	65
HARRISON	10	9030	37	16	0	0	0	8	2	6	0	0	21
HENRY	12	8439	129	36	1	0	2	9	13	11	0	0	93
HICKORY	6	7425	59	14	0	1	0	2	6	4	1	0	45
HOLT	12	6321	40	7	0	1	0	2	0	0	4	0	33
JOHNSON	1	26319	0	0	0	0	0	0	0	0	0	0	0
LAWRENCE	1	22165	61	14	0	0	0	0	5	9	0	0	47
LINN	8	6552	19	8	0	0	0	2	1	5	0	0	11
LIVINGSTON	12	6171	349	41	0	2	1	5	15	18	0	0	308
MADISON	12	11539	38	18	0	1	1	2	14	0	0	0	20
MARIES	8	7927	19	9	0	0	0	4	2	1	1	1	10

TABLE 5.0.8

TOTAL PERSONS ARRESTED, RURAL COUNTIES

BY REPORTING AGENCY

1989

REPORTING AGENCY	MOS.	POPULATION	TOTAL ¹ ARRESTS	TOTAL PART I ARRESTS	MURDER	RAPE	ROBBERY	AGG. ASSAULT	BURGLARY	THEFT	MOTOR VEHICLE THEFT	ARSON	TOTAL ¹ PART II ARRESTS
MARION	12	9983	195	34	0	4	1	4	12	10	1	2	161
MCDONALD	12	16456	417	47	0	0	1	7	16	12	8	3	370
MISSISSIPPI	12	10385	0	0	0	0	0	0	0	0	0	0	0
MONROE	12	9432	9	4	0	2	0	2	0	0	0	0	5
MORGAN	12	15352	439	86	0	5	2	6	34	17	22	0	353
NEW MADRID	4	18472	122	43	0	2	0	1	15	21	3	1	79
NODAWAY	12	11900	98	10	1	0	0	1	2	4	1	1	88
OREGON	12	9833	63	23	0	2	0	2	17	0	1	1	40
OSAGE	12	11840	55	20	0	0	0	5	7	5	2	1	35
OZARK	12	9030	123	41	1	0	1	13	13	9	3	1	82
PERRY	12	17158	131	11	0	0	1	4	2	2	2	0	120
PIKE	12	10003	200	38	0	1	0	10	10	17	0	0	162
POLK	8	14840	39	7	0	2	0	1	1	1	2	0	32
PULASKI	12	39012	414	83	0	14	1	10	27	16	11	4	331
REYNOLDS	10	6723	33	4	0	0	0	0	3	1	0	0	29
RIPLEY	11	13144	107	22	0	2	1	7	7	3	2	0	85
SAINT CLAIR	12	8428	222	50	0	9	0	9	12	9	8	3	172
SAINT FRANCOIS	12	28787	608	65	1	0	1	7	14	38	3	1	543
SAINTE GENEVIEVE	12	11830	71	26	0	2	0	1	18	5	0	0	45
SALINE	12	9292	283	58	0	4	0	25	13	14	2	0	225
SCHUYLER	12	4415	18	10	0	0	0	0	7	0	3	0	8
SCOTLAND	12	5017	1	1	0	0	0	0	1	0	0	0	0
SCOTT	12	20148	200	54	2	0	2	15	14	20	1	0	146
SHELBY	12	7224	68	12	0	1	0	1	4	2	4	0	56
SULLIVAN	12	6723	16	12	0	1	0	0	11	0	0	0	4
TANEY	12	21151	537	120	4	3	0	36	18	48	11	0	417
VERNON	12	10777	617	139	1	4	2	34	40	54	4	0	478
WARREN	12	19666	275	57	0	1	3	9	28	13	2	1	218
WASHINGTON	12	16887	530	68	0	4	0	16	33	14	1	0	462
WAYNE	12	12442	191	56	0	0	2	13	18	22	1	0	135
WORTH	11	2609	13	0	0	0	0	0	0	0	0	0	13
TOTAL	--	828957	11698	2294	16	89	55	404	861	680	162	27	9404

¹Arrests for suspicion are not included in total.

TABLE 5.0.8

GLOSSARY

ADULT: A person 18 years of age or older.

ARREST: Taking into physical or other legal custody for committing an offense in the local reporting jurisdiction. Arrests for all criminal offenses are scored. Arrests for ordinance violations are included. Arrests for traffic offenses, with the exception of driving under the influence of intoxicants and arrests in connection with negligent manslaughter in traffic accidents, are not scored. Included are those persons arrested but released without being formally charged.

CLEARANCE: The resolution of a criminal offense by the arrest, charging, and turning over to the court for prosecution one or more persons alleged to have committed a crime. An offense also can be cleared by exceptional means when the law enforcement agency has: 1) established the identity of the offender, 2) has enough information to support an arrest, charge, and prosecution in court, 3) the exact location of the offender is known so that he/she could be taken into custody, and 4) there is some reason outside law enforcement control that precludes arresting, charging, and prosecuting the offender, (Ex., offender dies).

CLEARED OFFENSES ONLY JUVENILES: The number of clearances for an offense in which only juveniles were arrested or were identified as the offender but for some valid reason could not be arrested divided by the total number of clearances for that offense expressed as a percentage. The formula is:

$$\frac{\text{Number of Offenses Cleared Involving Only Juveniles}}{\text{Number of Clearances}} \times 100$$

CLEARANCE RATES: The number of clearances divided by the total number of offenses, expressed as a percentage. The formula is:

$$\frac{\text{Number of Clearances}}{\text{Number of Offenses}} \times 100$$

CRIME INDEX: The Crime Index is the sum of the eight major offenses used to indicate the occurrence of crime in the United States. They were selected because of their frequency of occurrence and because they are most likely to be reported to a law enforcement agency. The eight offenses are: murder, forcible rape, robbery, aggravated assault, burglary, theft, motor vehicle theft, and arson. The first four make up the Violent Crime Index and the last four make up the Property Crime Index. Definitions of each of the offenses making up the Crime Index are provided in the section entitled "Missouri Detail Crime Index Analysis". In addition, refer to Crime Index Offense in this section for an explanation of how each type of offense is reported to the UCR Program.

CRIME INDEX OFFENSE: In the UCR Program, the offenses of murder, forcible rape, and aggravated assault are crimes against persons. For these crimes, one offense is counted for each victim. Robbery, burglary, theft, motor vehicle theft, and arson are crimes against property. For these crimes, with the exception of motor vehicle theft, one offense is counted for each distinct operation. In the case of motor vehicle theft, one offense is counted for each stolen vehicle.

CRIME INDEX OFFENSE ESTIMATES: Estimation routines were used in the Digest to identify the actual number of index crimes that occurred in the State on an annual basis. They are designed to compensate for non-reporting and incomplete reporting of such offenses by Missouri law enforcement agencies. The following procedures and formulas were used to obtain statewide crime index offense estimates:

- Law enforcement agencies in the State of Missouri were categorized into Groups. The following categories were used:

Municipal agency - 250,000 and over
 Municipal agency - population 100,000 - 249,999
 Municipal agency - population 50,000 - 99,999
 Municipal agency - population 25,000 - 49,999
 Municipal agency - population 10,000 - 24,999
 Municipal agency - population 2,500 - 9,999
 Municipal agency - population under 2,500
 Rural Sheriff's Department
 Suburban Sheriff's Department and County Police

- For those law enforcement agencies within a group that reported six months or more, a yearly estimate of their crime index offenses was obtained using the following formula:

$$\frac{\text{Crime Index Offenses Reported}}{\text{No. of Months Reported}} \times 12 = \text{Yearly Crime Index Offenses}$$

- For each group, the yearly crime index offenses for all law enforcement agencies reporting six months or more and their jurisdiction's population were summed and the following group crime index rate was computed.

$$\frac{\text{Sum of Rpt. Agency's Yearly Crime Index Offenses}}{\text{Sum of Rpt. Agency's Population}} = \text{Group Crime Index Rate}$$

- For those law enforcement agencies that reported less than six months or no activity at all within a group, their yearly crime index offenses were computed using the following formula:

$$\frac{\text{Law Enforcement Agency Population}}{\text{Group Crime Index Rate}} \times \text{Yearly Crime Index Offenses}$$

- Yearly crime index offenses computed above for all Missouri law enforcement agencies were then summed in order to obtain a statewide yearly crime index offense estimate for use in this Digest.

No estimation routines were used in data displays that identify specific law enforcement agency's yearly crime activity in the Digest. In these data displays, only crime activity that was reported into the UCR Program is displayed.

JUVENILE: A person under 18 years of age.

JUVENILE ARREST: Juvenile arrests do not include law enforcement contacts with juveniles where no offense has been committed. Juveniles taken into custody for their own protection, such as in neglect cases, are not scored since they have not committed any crime.

PERCENT CHANGE: The formula is:

$$\frac{\text{Value in Current Period} - \text{Value in Base Period}}{\text{Value in Base Period}} \times 100$$

POPULATION: The total number of persons residing in a jurisdiction based on United States Census data.

QUARTILE: The value that marks the boundary between two consecutive intervals in a frequency distribution of four intervals with each containing one quarter of the total population.

RATE PER 100,000 POPULATION: Rates per 100,000 population are indicators of activity standardized by the population of those law enforcement agencies associated with the activity. Three types of rates are provided: statewide crime index offense rates, reporting agency crime index offense rates, and arrest rates.

The statewide offense rate formula is:

$$\frac{\text{Number of Estimated Offenses Reported} \times 100,000}{\text{Population of all Agencies Used in Estimate}}$$

The reporting agency offense rate formula is:

$$\frac{\text{Number of Offenses Reported} \times 100,000}{\text{Population of Reporting Agency(ies)}}$$

The arrest rate formula is:

$$\frac{\text{Number of Arrests Reported} \times 100,000}{\text{Population of Reporting Agency(ies)}}$$

STRONG ARMED ROBBERY: A robbery wherein no weapons were used but tactics (limited to the use of personal weapons such as hands, arms, feet, fists, teeth, etc.) were employed to deprive the victim of his/her property.

TIME SERIES: Time-series analysis was used in the Digest to forecast future crime and arrest activity. With this technique, data for past periods were used as the basis for projecting levels of future activity. Ten years of past data normally were used to make these projections.

Crime and arrest rates on a per 100,000 population basis were used in making the forecasts. These rates reflect crime and arrest activity in relation to population.

The technique used to project crime and arrest activity was Exponential Smoothing (available through the SAS Econometrics and Time Series software package). Use of this technique took into consideration the limited number of data points in the time series, as well as whether or not the time series was best characterized as constant, linear, or non-linear. In applying the smoothing technique, greater weight was given to the more recent data values than to the earlier data values when projecting future levels of activity.