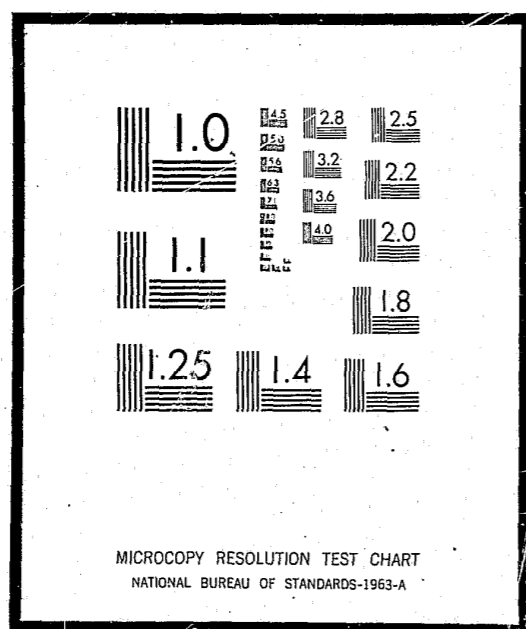


NCJRS

This microfiche was produced from documents received for inclusion in the NCJRS data base. Since NCJRS cannot exercise control over the physical condition of the documents submitted, the individual frame quality will vary. The resolution chart on this frame may be used to evaluate the document quality.



Microfilming procedures used to create this fiche comply with the standards set forth in 41CFR 101-11.504

Points of view or opinions stated in this document are those of the author(s) and do not represent the official position or policies of the U.S. Department of Justice.

U.S. DEPARTMENT OF JUSTICE
LAW ENFORCEMENT ASSISTANCE ADMINISTRATION
NATIONAL CRIMINAL JUSTICE REFERENCE SERVICE
WASHINGTON, D.C. 20531

Date filmed

2/18/76

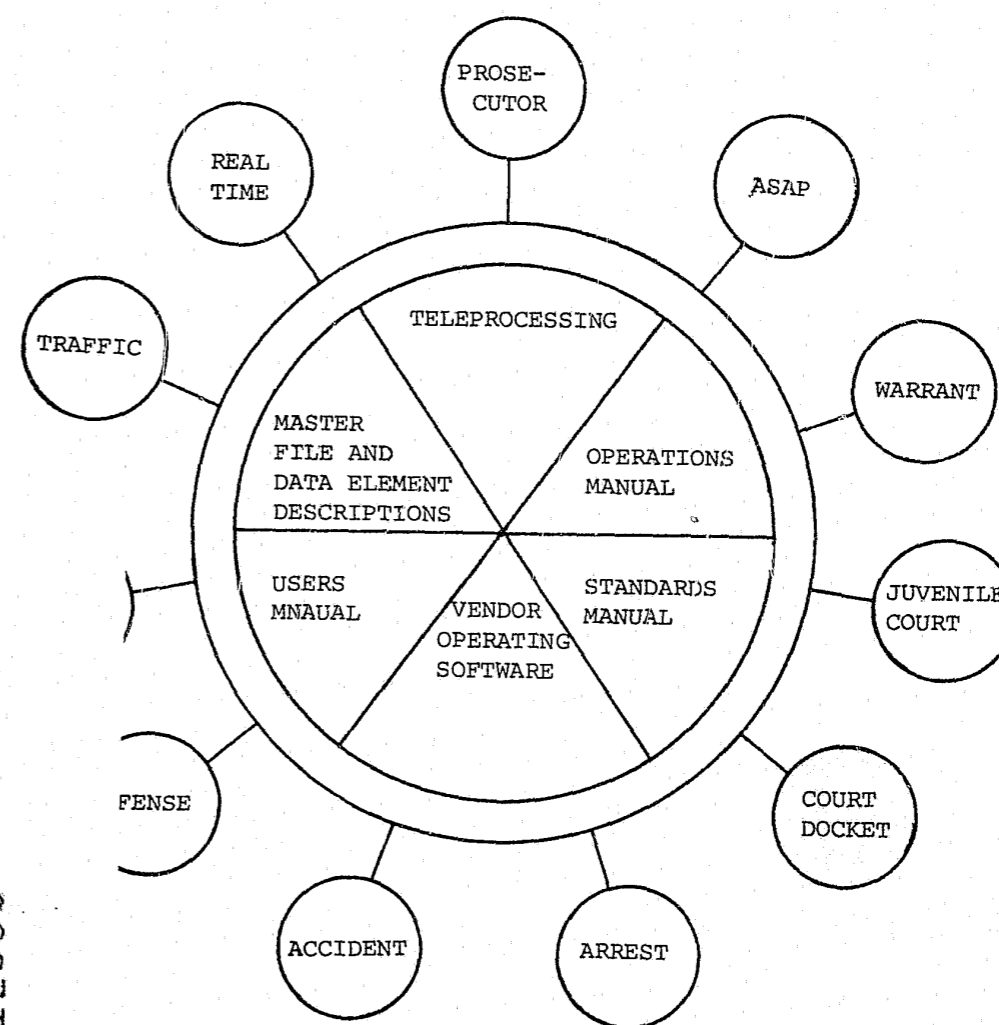
PREFACE

This documentation is one volume of a complete set of documentation for ALERT II under DOS. The documentation is modularized in order to minimize duplication of information and facilitate revisions. This modularization requires a brief understanding of each of the volumes for effective use.

The overall system concept of ALERT encompasses the use of three main files, a Name Index File, a General Purpose Index File and Master Data File. These files are utilized by the sub-systems as required and are therefore program independent.

ALERT II Documentation Relationships

The volume you are reading is represented by the shaded figure. The volumes contained in the large center circle serve all outlying sub-systems. The outlying sub-systems are independent of each other but are highly dependent on the center circle volumes.



012905

Systems and Programming Volumes

The systems and programming documentation is divided into 12 separate volumes. Normally these volumes represent an application, such as "Traffic." Two volumes represent special functions or groupings of support programs. An example of generalized support functions is Teleprocessing, in that it contains most of the TPD's used by the applications.

The sub-system volumes are made up of:

<u>Sub-System Name</u>	<u>Brief Description</u>	<u>Program I.D.</u>
Teleprocessing	TPD's and routines for other sub-systems	RA
Real Time	Background support programs and report preparation	RB, CB
Warrant	A Law Enforcement system that contains warrants, wants and warning information	JX
Traffic	A traffic ticket system that records the names of traffic violators as well as data about traffic incidences	CD
Dispatch	An information system for analysis of manpower workload and calls for service	CE
Arrest	A system that records individual arrests and provides statistical and historical information	CV
Accident	A vehicular accident system containing statistical and historical data about accidents	CJ, JJ
Offense	A system that records statistical and historical data about criminal incidences	CF
Court Docket	A Municipal Court docket system that prints the court dockets, officer notifications, and automatically generates warrants for failure to appear	JD

<u>Sub-System Name</u>	<u>Brief Description</u>	<u>Program I.D.</u>
Prosecutor	A Correction and Probation system allowing immediate access to case status	J3
Juvenile Court	An information system recording transactional data on juvenile offenders. This system involves highly restricted access of on-line data.	JM
ASAP	An information system serving the Alcohol Safety Action Program	JO

The systems and programming documentation is divided into two sections: (1) Systems documentation; (2) Program documentation for programs contained in the system. The table of contents directs the use of each volume. For ease of updating, the numbering scheme is modularized. Systems documentation will be referenced by SYS-XX with XX being page numbers within the systems documentation. Program documentation will be referenced by program number-XX, again the XX being pages within programs.

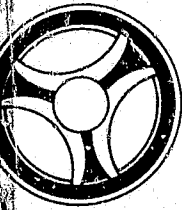
The program number is a critical reference tool. The first two digits represent which sub-system the program is included in (see above table). When a program creates a magnetic tape that tape is named "Program Number"-TX, with the X being "1" for the first tape it creates, "2" for a succeeding tape, etc. Reports are also numbered in the same manner using an "L" instead of a "T", "Program Number"-LX.

Two styles of record layouts are used in the documentation. One is a continuous single record layout (a Cobol FD is included) and the second is a multi-record, 132 character, layout.

The single record layout is for master files and the multi-record layout is for temporary work files. Typically, the work records are tape records that are used to write reports. The Master File layouts have detail data elements descriptions contained in the Master File and Data Element Description volume.

Operations Manual

The Operations Manual contains the Set-Up and Operating instruction for each program. Details of special control cards or date cards are described in the Special Instruction Section of the Set-Up document.



SECTION

DATE ISSUED

DATE REVISED

Users Manual

The Users Manual contains all information necessary for a user to use specific systems. It is important to know that CRT layouts and data element definitions and codes are contained in this Manual.

Standards Manual

The Standards Manual directs the creation, operation and modification of all systems, programs and documentation.

Master File and Data Element Descriptions

All records in the Master Files are represented by Record Layouts with Cobol FD statements. Data Element Descriptions for all Master File Data Elements are contained in this volume.

TABLE OF CONTENTS

SYSTEM DOCUMENTATION

INDEX NUMBER

Systems Overview

SYS-02

Systems Flowchart

SYS-05

System Record Layouts

SYS-09

SYSTEM PROGRAMS

SYS-15

Municipal Court Docket Tape Creation

JD100

Municipal Court Docket and Journal

JD101



SECTION

DATE ISSUED

DATE REVISED

MUNICIPAL COURT DOCKET SYSTEM

INDEX NUMBER
SYS-01



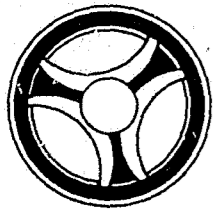
SECTION

DATE ISSUED

DATE REVISED

SYSTEMS OVERVIEW

INDEX NUMBER
SYS-02



SYSTEM DOCUMENTATION

SECTION
MUNICIPAL COURT DOCKET SYSTEM

DATE ISSUED
January 16, 1973

DATE REVISED



SYSTEM DOCUMENTATION

SECTION
MUNICIPAL COURT DOCKET SYSTEM

DATE ISSUED
January 16, 1973

DATE REVISED

MUNICIPAL COURT DOCKET SYSTEM

The computerized Municipal Court Docket System was designed to provide automated processing and handling of Municipal Court Docket information as well as provide listings in various sequences which notify officers and other department personnel of their obligation to appear before the court. Such automated identification, pickoff, and listing of Municipal Court cases to be heard insures not only the timely and accurate preparation of Court dockets but the optimal appearance of all concerned parties. This system encompasses all incidents and persons flagged on the ALERT General Index file as being scheduled to appear before the Municipal Court of Kansas City, Missouri. At this time the System is designed to handle only the Municipal Court scheduling procedures for the Kansas City, Missouri Police Department. The System is therefore available only to the Kansas City, Missouri Police Department, however, with modification it is adaptable to outside agency use.

The input data for the Kansas City, Missouri Police Department Municipal Court Docketing System is collected from the standard Traffic Citation Report form and standard Arrest Form completed by the officer in the field. This information is entered into the ALERT System through on-line CRTs in conjunction with the Traffic Ticket Reporting System and the Arrest Reporting System.

Comprised of two background programs, the Municipal Court Processing System, bi-weekly, reads the ALERT General Index file extracting Court Docket Index Records (Type A) and associated information from the ALERT Master file. As this information is found, the first of the Court Docket System programs (JD100) formats this information into 104 character records and creates a Court Docket Tape (JD100T1) which is exclusive input for the second program.

The second program of the Court Docket System (JD101) reads the tape just created and according to control card specifications, prints one of the four listings described below:

1. The Municipal Court Docket.
2. The Municipal Court Judges Journal.
3. The Master Docket Listing by Defendant's Name.
4. Master Docket Listing by Officer's Serial Number.

For all practical purposes, since all four listings are required of each run, JD101 is run four consecutive times under each control condition. Output from the System is distributed to the effected Municipal Court Offices and Police Stations such that appropriate personnel are advised of their obligation to appear before the Municipal Court.

INDEX NUMBER
SYS-03

INDEX NUMBER
SYS-04



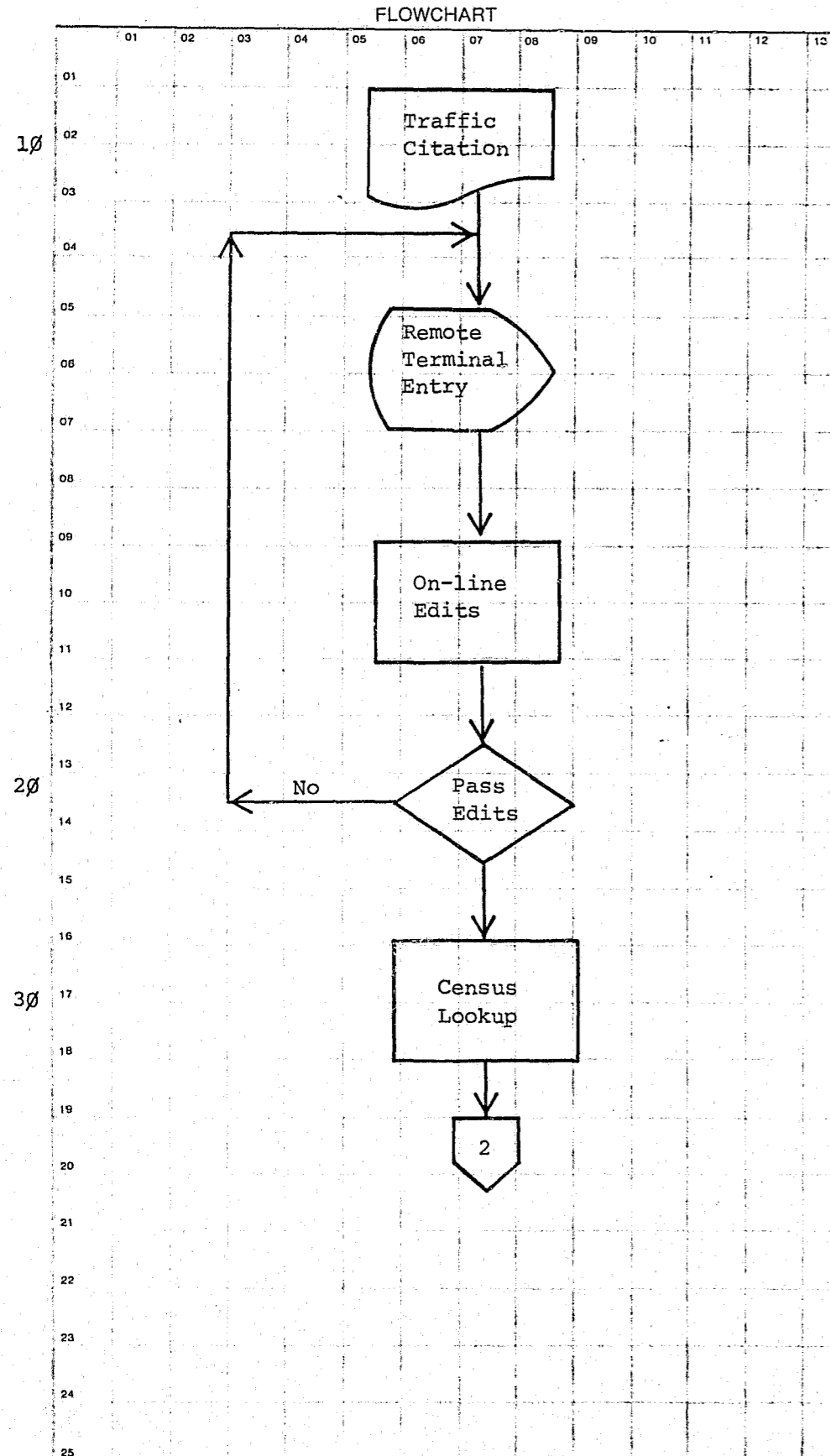
SECTION

DATE ISSUED

DATE REVISED

SYSTEMS FLOWCHART

INDEX NUMBER
SYS-05



10 - Traffic citation, moving or parking, issued by police officer, sent to Data Control for on-line entry.

20 - Entries passed through primary edits and all errors are redisplayed on screen for immediate correction.

30 - Census, track, and block retrieved from on-line file.

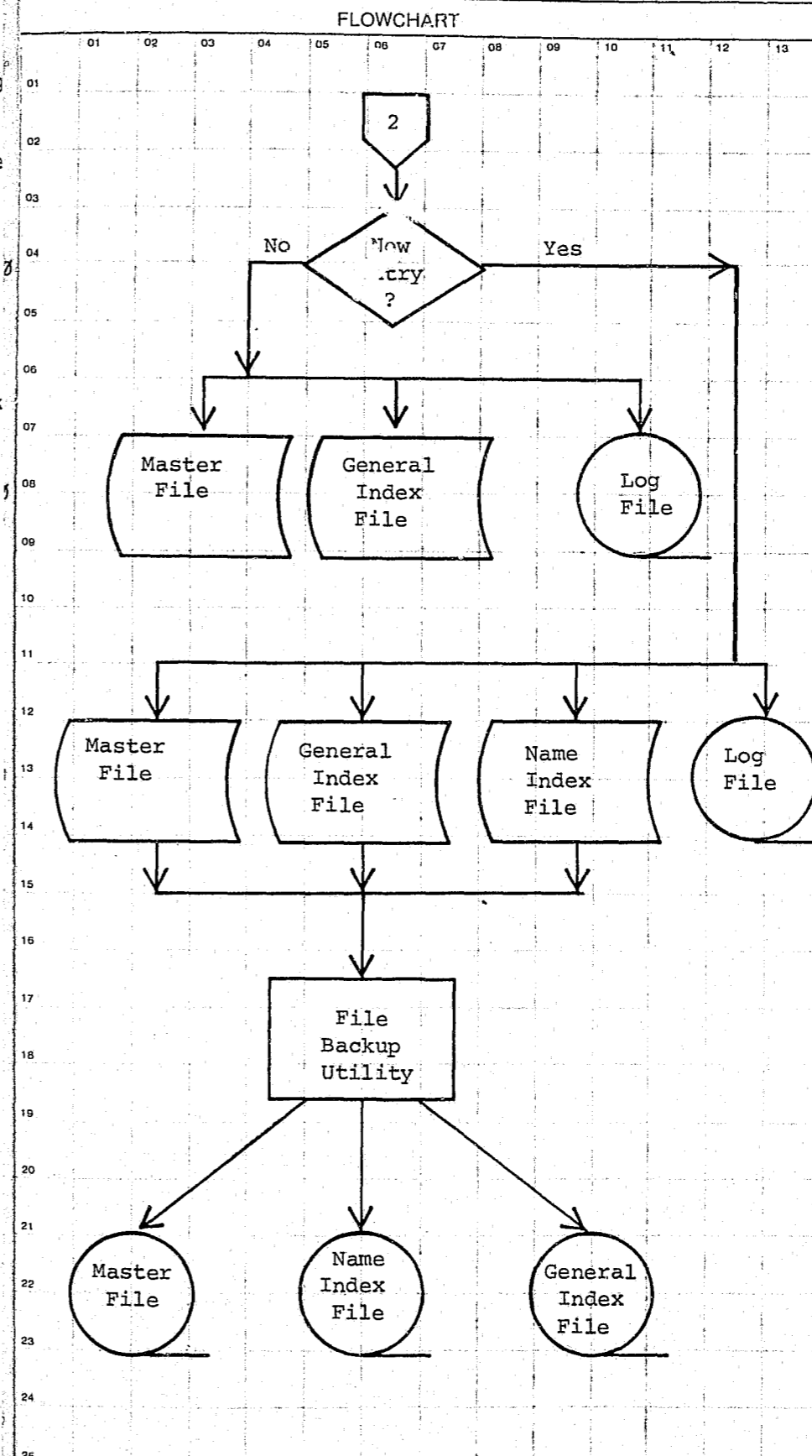
10

20

30

System No.	System Title:		
Date Prepared:	Prepared By:	Revision Date:	Revised By:
Date Approved:	Approved By:		

INDEX NUMBER
SYS-06



40 - The names and all other pertinent information of individuals receiving traffic citations from the Kansas City, Missouri Police Department are entered into the computer files in conjunction with the traffic citation report. At this point, the computer makes a determination as to whether the names have been previously entered as a result of some other police action (arrested, victim of offense, traffic accident, etc.) or rather that this is an entirely new name entry.

50 - If the data being processed concerns a previously entered name, new information is added to the Master file and the General Index file. The transaction is also entered on the Log file.

60 - If the entry being processed is entirely new, information is added to the Master file, General Index file and the Name Index file. The transaction is entered on the Log file.

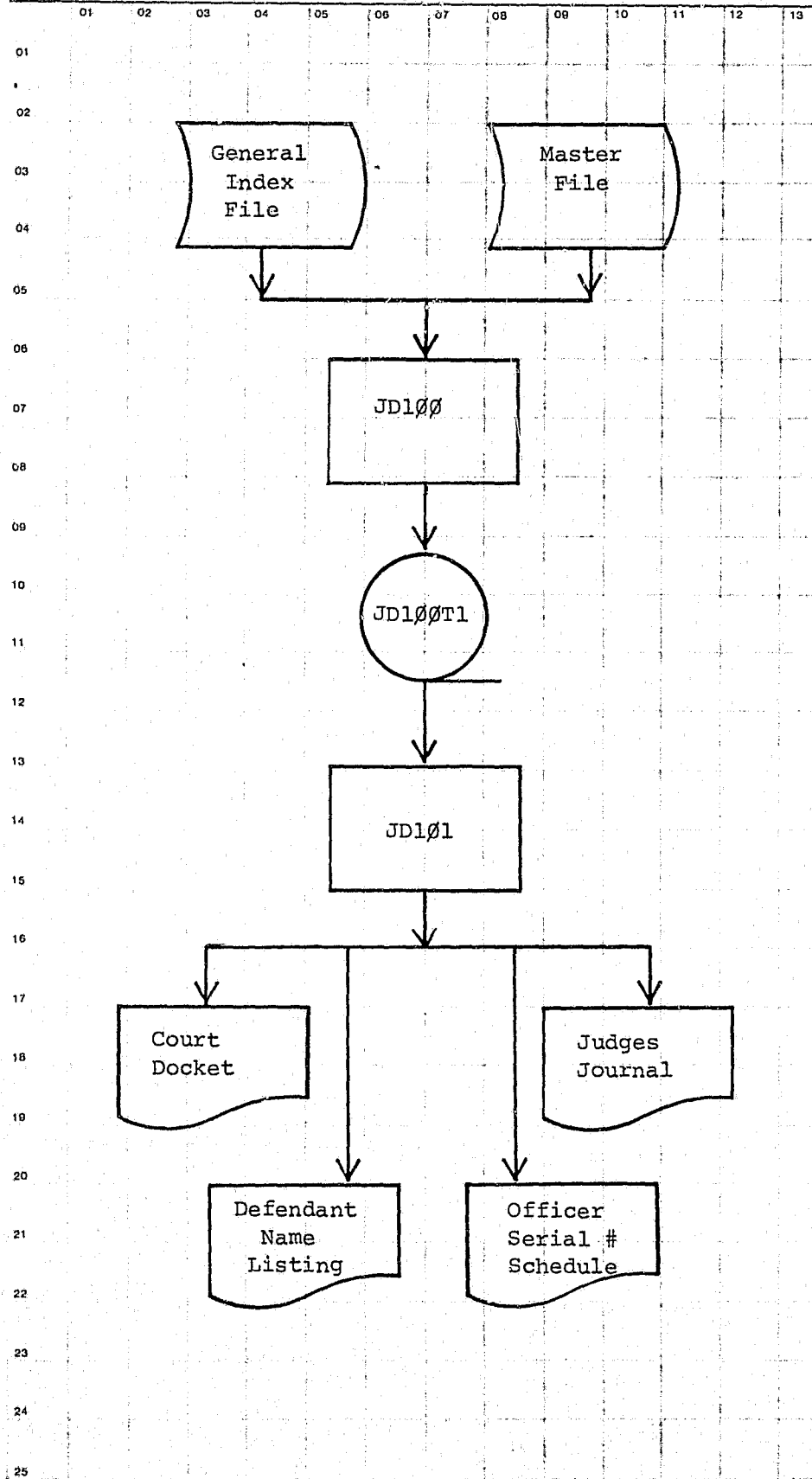
70 - For security purposes as well as input to other programs, the Master file, General Index file, and Name Index file are "backed up" on tape.

System No.	System Title:		
Date Prepared:	Prepared By:	Revision Date:	Revised By:
Date Approved:	Approved By:		

INDEX NUMBER
SYS-07

FLOWCHART

DESCRIPTION



80 - Twice a week, the ALERT General Index file is searched for Court Docket Index records (type A) and associated information is extracted from the Master file. As this information is found, the first of the Court Docket programs (JD100) formats this information into 104 character records and creates a Court Docket tape (JD100T1) which is exclusive input to the second program.

90 - The second program of the Court Docket System, JD101, reads the tape just created, and according to control card specifications, prints one of the four listings described below:

1. Municipal Court Docket
2. Municipal Court Judges Journal
3. Master Docket Listing by Defendant's Name
4. Master Docket Listing by officer serial number

NOTE - For all practical purposes, since all four listings are required of each run, JD101 is run four consecutive times under each control condition.

SYSTEM RECORD LAYOUTS

System No.	System Title:		
Date Prepared:	Prepared By:	Revision Date:	Revised By:
Date Approved:	Approved By:		

INDEX NUMBER
SYS-08

INDEX NUMBER
SYS-09

EDP RECORD LAYOUT	GD2 - 'A' ID TYPE RECORD
-------------------	--------------------------

KEY										S E R N O	F I L L E R
D F L A G	I D T Y P	C R T D T	C R T I D	C R T R M	C R T S Q	MASTK					
1	1	P7	5	1	2	P15				P5	4

```

01 GD2.
02 GD2DFLAG PIC X.
02 GD2IDTYP PIC X.
02 GD2CRTDT PIC 9(7) USAGE IS COMPUTATIONAL-3.
02 GD2CRTID PIC X(5).
02 GD2CRTRM PIC X.
02 GD2CRTSQ PIC X(2).
02 GD2MASTK PIC 9(15) USAGE IS COMPUTATIONAL-3.
02 GD2SERNO PIC 9(5) USAGE IS COMPUTATIONAL-3.
02 FILLER PIC X(4).
    
```

EDP RECORD LAYOUT	MB1 - MASTER NAME RECORD
-------------------	--------------------------

D F L A G	NAME																		
	MASTK							ORI				LNAME				FNAME			
1	P15							7				17				11			

PHSID														
M	J	R	S	DOB			B	H	W	H	E	C	T	T
I	R	A	E				I	G	G	A	Y	R	E	3
S	C	X					R	T	T	I	E	S	N	D
R	E						S			R	S	T	3	A
							T			S				T
1	1	1	1	P5			2	P3	P3	1	1	1	1	P5

```

01 MB1.
02 MB1DFLAG PIC X.
02 MB1MASTK PIC 9(15) COMP-3.
02 MB1ORI PIC X(7).
02 MB1NAME.
03 MB1LNAME PIC X(17).
03 MB1FNAME PIC X(11).
03 MB1MI PIC X.
03 MB1JRSR PIC X.
02 MB1PHSID.
03 MB1RACE PIC X.
03 MB1SEX PIC X.
03 MB1DOB PIC 9(5) COMP-3.
03 MB1IRST PIC XX.
03 MB1HGT PIC 9(3) COMP-3.
03 MB1WGT PIC 9(3) COMP-3.
03 MB1HAIR PIC X.
03 MB1EYES PIC X.
02 MB1CRSTS PIC X.
02 FILLER PIC XXXX.
    
```

EDP RECORD LAYOUT	MB1 - REDEFINITION
-------------------	--------------------

0	5	10	15	20	25	30	35	40
D F L A G	MASTK		ORI		BUSINESS NAME (LNAME)			
1	P15		7		43			

41	45	50	55	60	65	70	75	80
				FILLER				
				5				

NOTE: BUSINESS NAME RECORD USES THE MB1 RECORD FORMAT. INSTEAD OF USING A REDEFINE OF MB1 NAME AND MB1 PHSID THE RECORD IS MOVED TO A WORKING STORAGE AREA WHERE IT IS REDEFINED (PREVIOUS PAGE).

EDP RECORD LAYOUT	MB2 - NUMERICAL RECORD
-------------------	------------------------

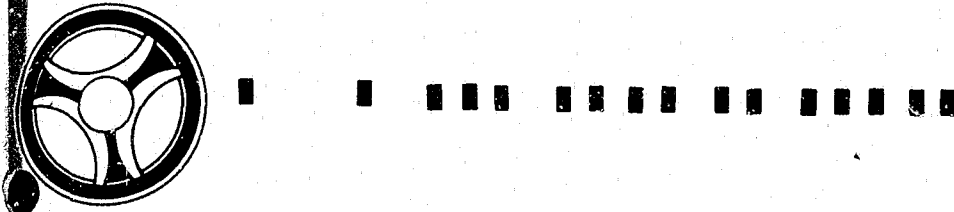
0	5	10	15	20	25	30	35	40	
D F L A G	MASTK		ORI		FBI		SOC		DRLIC
1	P15		7		9		P9		DRLNO 16

41	45	50	55	60	65	70	75	80
		NCIC		MULES		FILLER		
		D R L S T	D R L L Y R	N C L T R	NCNUM	M L N U M	MLPCK	
		2	1	1	P9	1	P12	

```

01 MB2.
02 MB2DFLAG          PIC X.
02 MB2MASTK          PIC 9(15)  COMP-3.
02 MB2ORI             PIC X(7).
02 MB2FBI             PIC X(9).
02 MB2SOC             PIC 9(9)   COMP-3.
02 MB2DRLIC.
03 MB2DRLNO          PIC X(16).
03 MB2DRLST          PIC XX.
03 MB2DRLYR          PIC X.
02 MB2NCLTR          PIC X(1).
02 MB2NCNUM          PIC 9(9)   COMP-3.
02 MB2MLNUM          PIC X.
02 MB2MLPCK          PIC 9(12)  COMP-3.
02 FILLER             PIC X.
    
```

EDP RECORD LAYOUT MD1 - TRAFFIC TICKET STATISTICAL RECORD



SECTION	
DATE ISSUED	DATE REVISED

0				5					10					15					20						25						30						35				40
D F L A G	MASTK				. ORI				CRN				TICK				ORDCD				TMOCC																				
1	P15				7				8				P7				6				P9																				

41				45				50					55					60						65						70						75				80
EDISP		CURCT		ORGCT																																				
	CDTHR		CURCT		ORGCT		CDTHR		CTR		S		U		D		W		R		S		R		D															
	P9		1		P9		1		P5		2		1		1		1		1		1		1		P5															

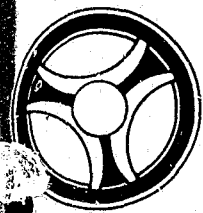
SYSTEM PROGRAMS

```

01 MD1.
02 MD1DFLAG PIC X.
02 MD1MASTK PIC 9(15) USAGE IS COMPUTATIONAL-3.
02 MD1ORI.
03 MD1ORIST PIC X(2).
03 MD1ORIRT.
04 MD1ORIRD PIC 9(5).
02 MD1CRN PIC X(8).
02 MD1TICK PIC 9(7) USAGE IS COMPUTATIONAL-3.
02 MD1ORDCD PIC X(6).
02 MD1TMOCC PIC 9(9) USAGE IS COMPUTATIONAL-3.
02 MD1EDISP.
03 MD1CURCT.
04 MD1CDTHR PIC IS 9(9) USAGE IS COMP-3.
04 MD1CCTRM PIC IS X.
03 MD1ORGCT.
04 MD1ODTHR PIC IS 9(9) USAGE IS COMP-3.
04 MD1DCTRM PIC IS X.
02 MD1SERNO PIC 9(5) USAGE IS COMPUTATIONAL-3.
02 MD1UNIT PIC XX.
02 MD1DISP PIC X.
02 MD1WKDAY PIC X.
02 MD1RACE PIC X.
02 MD1SEX PIC X.
02 MD1RESCD PIC X.
02 MD1DTRPT PIC 9(5) USAGE IS COMPUTATIONAL-3.
    
```

INDEX NUMBER
SYS-14

INDEX NUMBER
SYS-15



SECTION
COURT DOCKET PROGRAMS

PROGRAMMING DOCUMENTATION

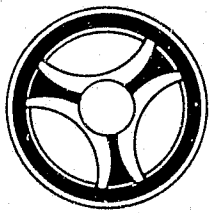
DATE ISSUED	DATE REVISED
January 16, 1973	

PROGRAM TITLE: MUNICIPAL COURT DOCKET TAPE CREATION

DATE OPERATIONAL: January 16, 1973

PURPOSE: To produce a statistical tape to be used as input for program JD1Ø1.

INDEX NUMBER
JD1ØØ-Ø1

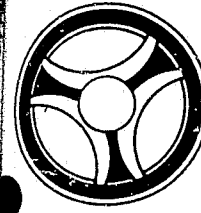


PROGRAMMING DOCUMENTATION

SECTION
COURT DOCKET PROGRAMS

DATE ISSUED
January 16, 1973

DATE REVISED



PROGRAMMING DOCUMENTATION

SECTION
COURT DOCKET PROGRAMS

DATE ISSUED
January 16, 1973

DATE REVISED

I. PROGRAM NARRATIVE

Input to this program is the ALERT General Index file and Master file, and output is a tape of 104-character records containing name and court statistical information. The General Index file is read sequentially and the court docket index records are extracted and a key is built so that the Master file can be read. The Master file is read and the necessary information is taken from the appropriate records, formatted and then written onto the output tape.

II. DETAILED DESCRIPTION

The input and output files are opened and a control card is accepted containing a high and low date that determines which records will be extracted from the General Index file.

SEQ-GEN-READ reads the General Index file sequentially and when the "A" type records (Court Docket Index) are exhausted control is transferred to the paragraph entitled END-OF-JOB. If the record is an "A" type record, various edits and date compares are performed against fields in the record and if they are failed control returns to the beginning of this paragraph. The records that pass the edits are used to generate a key so that the Master file can be read. A "Start" is performed on the Master file which sets the pointer at the beginning of the complement of records that corresponds to the index record used to generate the key. The Master file is then read sequentially and the first test on the record read is to determine if it is a name record. If it is not, a literal indicating that this is a "John Doe" warrant it is moved to the tape output area and control is transferred to the paragraph entitled SET-FOR-READ-45. If a name record is found it is then tested to see if it is a business name and if so the business name is moved to the tape output area and control is transferred to SET-FOR-READ-45 again. If the name record contains a real name it is moved to the tape output area and control falls through to the following paragraph.

CHK-ALIAS reads the Master file again to ascertain if the individual in question has either an alias or moniker name on file and if so as asterisk is moved to the tape output area as an indicator. Whether or not there is an alias or moniker name on file control falls through to the following paragraph.

SET-FOR-READ-45. Another "Start" is performed on the Master file - this time setting the pointer directly at the traffic ticket statistical record. If the invalid key option is taken control returns to SEQ-GEN-READ.

READ-45 reads the Master file sequentially with the at end option returning to SEQ-GEN-READ. It might be noted that all sequential Master file reads cause the at end option to return to SEQ-GEN-READ.

45-CHECKS. This paragraph performs various edits to ascertain that the record just read is a valid statistical type record and if so the necessary fields are moved from the record to the tape output area and control falls through to the following paragraph. If an invalid record is found control returns to READ-45.

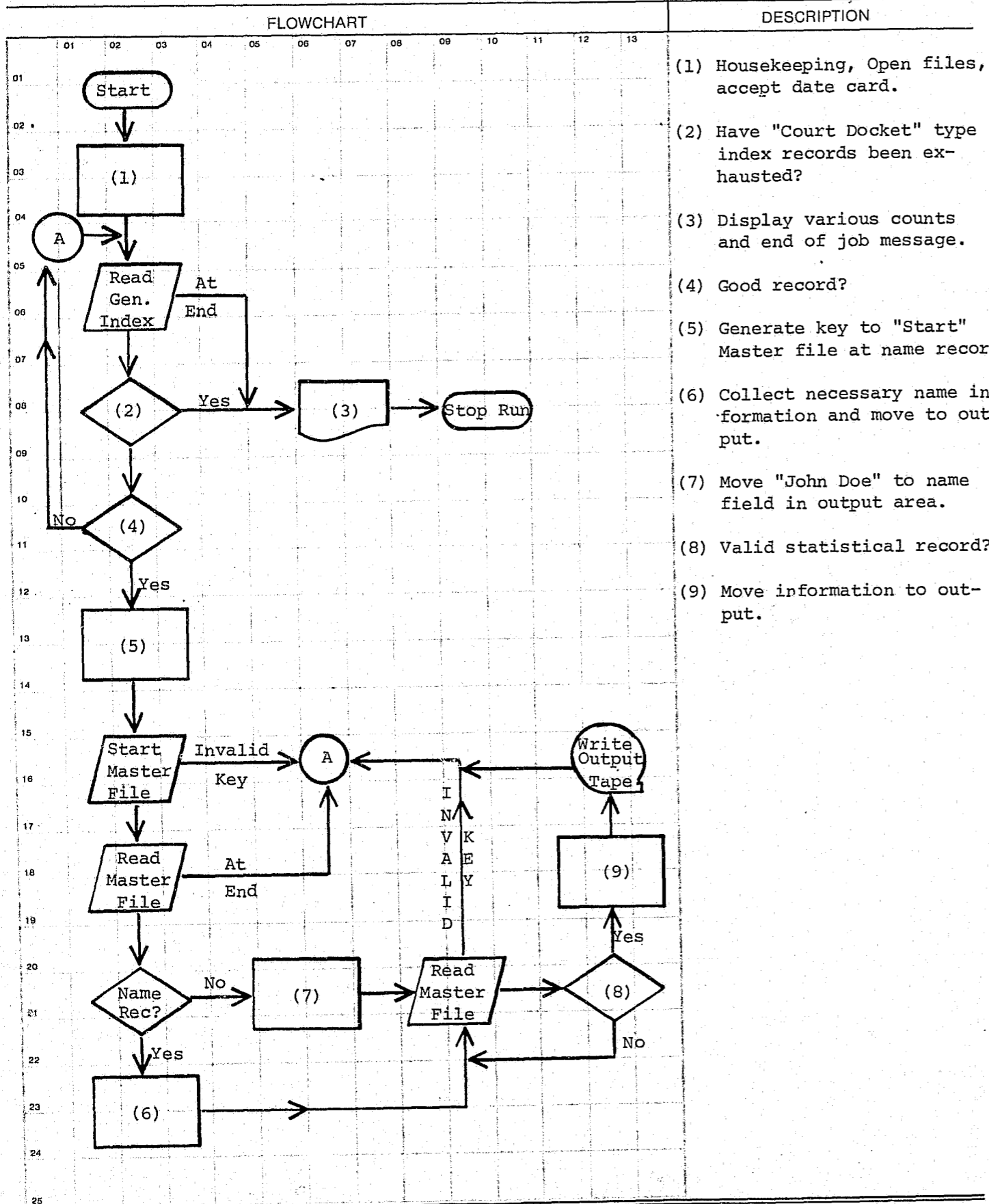
WRITE-TAPE is the paragraph that causes the tape record to be written and control is then transferred back to the beginning paragraph entitled SEQ-GEN-READ.

The above paragraphs are repeated and tape records continue to be written until the last "A" type record is encountered in the General Index file. At that time control is transferred to the following paragraph.

END-OF-JOB. This is the final paragraph in the program and causes a count of the number of General Index records read to be displayed upon the console, along with a normal end-of-job message. The input and output files are closed.

INDEX NUMBER
JD100-02

INDEX NUMBER
JD100-03



- (1) Housekeeping, Open files, accept date card.
- (2) Have "Court Docket" type index records been exhausted?
- (3) Display various counts and end of job message.
- (4) Good record?
- (5) Generate key to "Start" Master file at name record.
- (6) Collect necessary name information and move to output.
- (7) Move "John Doe" to name field in output area.
- (8) Valid statistical record?
- (9) Move information to output.

System No.	System Title:		
Date Prepared:	Prepared By:	Revision Date:	Revised By:
Date Approved:	Approved By:		

INDEX NUMBER
JD100-04

ED P RECORD LAYOUT

COURT DOCKET TAPE - JD00001

01	FILLER	001
02	FILLER	002
03	FILLER	003
04	FILLER	004
05	FILLER	005
06	FILLER	006
07	FILLER	007
08	FILLER	008
09	FILLER	009
10	FILLER	010
11	FILLER	011
12	FILLER	012
13	FILLER	013
14	FILLER	014
15	FILLER	015
16	FILLER	016
17	FILLER	017
18	FILLER	018
19	FILLER	019
20	FILLER	020
21	FILLER	021
22	FILLER	022
23	FILLER	023
24	FILLER	024
25	FILLER	025
26	FILLER	026
27	FILLER	027
28	FILLER	028
29	FILLER	029
30	FILLER	030
31	FILLER	031
32	FILLER	032
33	FILLER	033
34	FILLER	034
35	FILLER	035
36	FILLER	036
37	FILLER	037
38	FILLER	038
39	FILLER	039
40	FILLER	040
41	FILLER	041
42	FILLER	042
43	FILLER	043
44	FILLER	044
45	FILLER	045
46	FILLER	046
47	FILLER	047
48	FILLER	048
49	FILLER	049
50	FILLER	050
51	FILLER	051
52	FILLER	052
53	FILLER	053
54	FILLER	054
55	FILLER	055
56	FILLER	056
57	FILLER	057
58	FILLER	058
59	FILLER	059
60	FILLER	060
61	FILLER	061
62	FILLER	062
63	FILLER	063
64	FILLER	064
65	FILLER	065
66	FILLER	066
67	FILLER	067
68	FILLER	068
69	FILLER	069
70	FILLER	070
71	FILLER	071
72	FILLER	072
73	FILLER	073
74	FILLER	074
75	FILLER	075
76	FILLER	076
77	FILLER	077
78	FILLER	078
79	FILLER	079
80	FILLER	080
81	FILLER	081
82	FILLER	082
83	FILLER	083
84	FILLER	084
85	FILLER	085
86	FILLER	086
87	FILLER	087
88	FILLER	088
89	FILLER	089
90	FILLER	090
91	FILLER	091
92	FILLER	092
93	FILLER	093
94	FILLER	094
95	FILLER	095
96	FILLER	096
97	FILLER	097
98	FILLER	098
99	FILLER	099
00	FILLER	100

INDEX NUMBER
JD100-05



PROGRAMMING DOCUMENTATION

SECTION

COURT DOCKET PROGRAMS

DATE ISSUED

January 16, 1973

DATE REVISED

PROGRAM TITLE: MUNICIPAL COURT DOCKET AND JOURNAL

DATE OPERATIONAL: January 16, 1973

PURPOSE: The purpose of this program is to list the four following reports:

- A. Municipal Court Docket
- B. Municipal Court Judges Journal
- C. Officer's Serial Number Listing for Kansas City Police Department
- D. Work Sheet in Alphabetical Order for Municipal Court

INDEX NUMBER

JD101-01



PROGRAMMING DOCUMENTATION

SECTION
COURT DOCKET PROGRAMS

DATE ISSUED
January 16, 1973

DATE REVISED



PROGRAMMING DOCUMENTATION

SECTION
COURT DOCKET PROGRAMS

DATE ISSUED
January 16, 1973

DATE REVISED

I. PROGRAM NARRATIVE

Input to this program is the tape created by JD100 (JD100T1). Output is four individual listings. This program is run twice a week, and is executed four times for each run. There are four individual control cards that govern the output of the program, and these control cards are inserted in the job control deck by the computer operator.

The input tape is read, and based upon which control card has been read, the information is taken from the tape, formatted, and printed on the appropriate listing. There are also two Sorts involved in the running of this program; one by defendant's name in alphabetical order, and the other is sorted by Officer's Serial number into ascending sequence. These two Sorts are also "external" and the necessary control cards are inserted into the run deck by the computer operator.

The first of the four runs is sorted into Officer's Serial number sequence and the output is in the form of the Officer's Serial number listing for use by the Kansas City, Missouri Police Department. Upon completion of this run the input tape is rewound, and the necessary cards for the second Sort are inserted into the run deck by the computer operator. The second listing control card is also inserted and the second report that is printed by this program is the municipal court work sheet that is printed alphabetically by defendant's name. Upon completion of that report the input tape is once again rewound, the third control card inserted by the operator, and the information is once again sorted into alphabetical sequence so that the third listing (Judges Journal) can be printed. The information on the Judges Journal is identical to the municipal court run sheet with the exception that the date and time information are excluded. Upon completion of the third run, the input tape is rewound for the last time and the program is once again executed. This time the court docket is printed and it is identical in format to the second listing which is the municipal court run sheet. The only difference is that this listing is printed on special litho plate paper that is used for mass reproduction by the Kansas City, Missouri Police Department Print Shop.

II. DETAILED DESCRIPTION

A control card is accepted, the input and output files are opened, and spaces are moved to various work areas.

INDEX NUMBER
JD101-02

007040-READ reads the input tape and at end transfers control to the paragraph entitled 010100-EQJ.

007070-BRANCH is a one-time paragraph that is altered after its initial execution. The first time through it merely transfers control to the following paragraph.

007090-ONE-TIME causes the previous paragraph instruction to be altered so that control is transferred to the paragraph entitled 007120-CHECK. This paragraph also performs the paragraph entitled 009010-HEADERS.

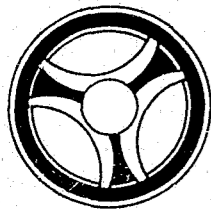
007120-CHECK compares the date contained in the tape record that was just read against a saved date and if they are not equal, control is transferred to the paragraph entitled 008200-CHANGE. It must be noted that the previous paragraph causes the header paragraph to be performed and in that paragraph the date is moved from the tape record to the save area. This paragraph also checks a switch entitled "SW-A" and if equal to the numeral 1 the paragraph entitled 009010-HEADERS is once again performed.

007160-MOVES moves the ticket number to the print area, and checks the alias switch for the value "B" and if that value is contained therein the indication is that the name area contains a business name and it is moved to the print area. Otherwise the person's name is moved to the print area and control falls through to the following paragraph.

NO-NAME-MOVES moves the various fields that are necessary to the print-out from the tape area to the print area. The alias switch is once again checked and if equal to an asterisk, the value of "1" is moved to the print alias switch. At this point the control card is checked to determine which of the four listings is to be printed. If the Judges Journal is to be printed control is transferred to the paragraph entitled 008090-WRITE. If other than that value is contained in the control card, the control falls through to the next sentence. The various date and time information is then checked on the tape record and the appropriate literal is moved to the print area. The reason for the bypass of this instruction if the control card contained "Judges Journal" is that this particular printout does not have any date or time information.

008090-WRITE. This paragraph causes the correct print line to be printed no matter which of the four listings is being accessed. It checks the control card and based on the value contained therein causes the correct listing to be printed. A line counter is checked and at the end of page the value of one is moved to "SW-A" so that the header can be performed

INDEX NUMBER
JD101-03



PROGRAMMING DOCUMENTATION

SECTION
COURT DOCKET PROGRAMS

DATE ISSUED
January 16, 1973

DATE REVISED

when that switch is checked in the paragraph entitled 007120-CHECK. Control is then returned back to the read paragraph (007040-READ).

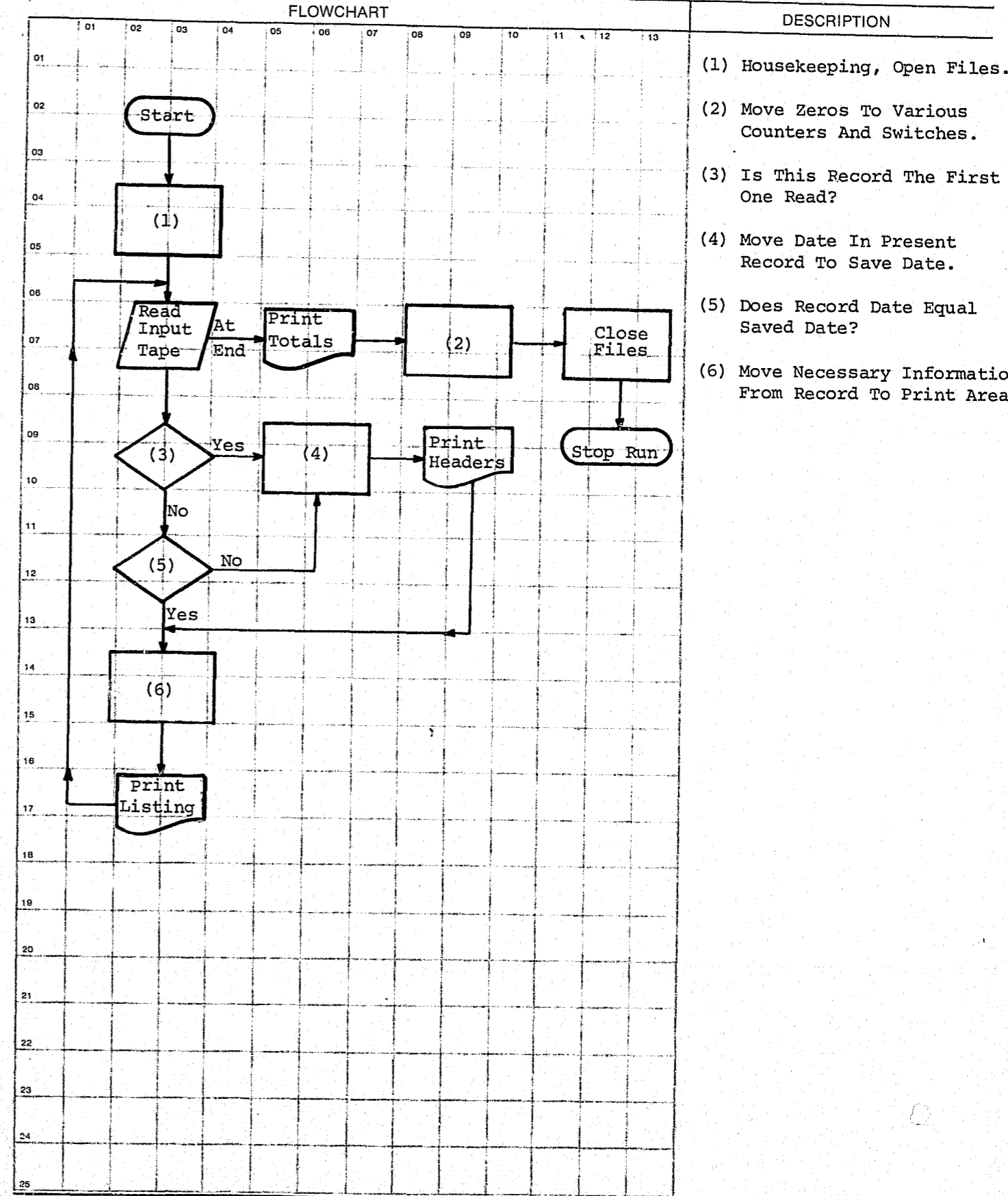
008200-CHANGE. Control is transferred to this paragraph when the date changes from one day to the next so that there will be an individual court docket or printout listed for each individual day. In other words this program is run two times a week but each individual day's court docket or listing must be printed separately. The function of this paragraph is to move the correct information to the header area so that the date and time and header information is reset to correspond with the following day. The header paragraph is then performed and control is transferred back to the paragraph entitled 007160-MOVES.

009010-HEADERS is a paragraph that actually prints the correct header information at the top of the page of each of the four listings. It is a fairly complex paragraph in that the control card is checked numerous times to ascertain which header is to be printed based upon which of the four listings will be the output for this run.

010100-EQJ is the final paragraph in this program and causes a total number of cases to be printed at the bottom of the listing and sets the various switches and counters to 0 making ready for the next run which ever it may be. The input and output files are closed and a normal end-of-job message is displayed upon the console.

INDEX NUMBER
JD101-04

SYSTEM FLOW CHART



System No.	System Title:		
Date Prepared:	Prepared By:	Revision Date:	Revised By:
Date Approved:	Approved By:		

INDEX NUMBER
JD101-05

DESCRIPTION OF COMPUTER REPORT OR LISTING

NEW REVISION—SHOW WHY IN 'COMMENTS'

DATE	ID NO.
------	--------

TITLE OF REPORT OR LISTING
DAILY MUNICIPAL COURT JOURNAL - JD101L1

PURPOSE OR FUNCTION IT SERVES
THIS OUTPUT PROVIDES THE MUNICIPAL COURT WITH A DAILY COURT JOURNAL CONTAINING ALL DOCKETED NAMES SUCH THAT ASSOCIATED DISPOSITIONS MAY BE RECORDED.

ORIGINATES FROM (SHOW COMPUTER RUN AND/OR MAIN FILE FROM WHICH DATA IS DEVELOPED AND SPAN OF TIME COVERED OR AGE OF DATA)
THIS INFORMATION IS EXTRACTED FROM THE MUNICIPAL COURT DOCKET TAPE - JD101T1.

NO. COPIES FREQUENCY ISSUED
 DAILY WEEKLY MONTHLY TWICE A WEEK

DESIGN FORMAT APPROVED BY DATE RELEASE PERIOD

DETAILED EXPLANATION OF DATA (WHEN PRINTED CAPTIONS ARE NOT SELF EXPLANATORY)

ALL HEADINGS ARE SELF-EXPLANATORY.

NOTE: "COMPLAINT NUMBER" IS THE SAME AS THE TRAFFIC TICKET NUMBER.

CONTINUE ON REVERSE SIDE

COPY DISTRIBUTION

SENT TO	RETENTION	DISPOSITION
1 MUNICIPAL COURT (3)		
2 FILE (1)		
3		
4		
5		
6		

COMMENTS

INDEX NUMBER
JD101-96

1033-015 A

PAGE NO.

CITY OF KANSAS CITY, MISSOURI - DAILY MUNICIPAL COURT JOURNAL

DATE 10/07 DIVISION A TIME 9:30 AM PAGE NO. 2

CLERK _____ DEPUTY CLERK _____

JUDGE _____ ASSISTANT CITY COUNSELOR _____

COMPLAINT NO. (CASE NO.)	DEFENDANT'S NAME	VIOLATION	OFFICER'S SERIAL NO.	OFFICER'S UNIT	PLEA	JUDGMENT		COSTS	DIS.	PHC.	STAY T.S.	STAY PAY	PAID	COM.	APPL.	B.F.	BOND NO.	WH.	CONTD.	REMARKS
						FINE	DAYS													
040005	H...		1014	10																
040006	I...MAN		1015	10																
040003	I...	L	1062	10																
040007	I...	L	1016	10																
040004	J...ON	R	1063	10																
040008	J...ON	R	1017	10																
040009	J...	D	1018	10																
040005	J...	D	1064	10																
040006	K...EY	R	1065	10																
040000	K...EY	R	1019	10																
040007	K...N	S	1066	10																
040001	K...N	S	1020	10																
040008	K...EY	B	1067	10																
040002	K...EY	B	1021	10																
040009	L...RIED	B	1068	10																
040003	L...RIED	B	1022	10																
040000	L...ANGER	W	1069	10																
040004	L...ANGER	W	1023	10																
040005	L...EIG	L	1024	10																
040001	L...EIG	L	1070	10																
040006	L...STRAND	J	1025	10																
040002	L...STRAND	J	1071	10																
040003	M...NEE	C	1072	10																
040007	M...NEE	C	1026	10																
040008	M...N	J	1027	10																
040004	M...N	J	1073	10																
040005	M...TY	B	1074	10																
040009	M...TY	B	1028	10																

INDEX NUMBER
JD101-97

DESCRIPTION OF COMPUTER REPORT OR LISTING

DATE	ID NO.
------	--------

NEW REVISION—SHOW WHY IN 'COMMENTS'

TITLE OF REPORT OR LISTING MUNICIPAL TRAFFIC COURT CASES - JD101L2		
PURPOSE OR FUNCTION IT SERVES THIS REPORT IS DESIGNED TO PROVIDE THE MUNICIPAL COURT WITH A MASTER DOCKET LIST OF CASES SCHEDULED TO BE HEARD.		
ORIGINATES FROM (SHOW COMPUTER RUN AND/OR MAIN FILE FROM WHICH DATA IS DEVELOPED AND SPAN OF TIME COVERED OR AGE OF DATA) THIS INFORMATION IS EXTRACTED FROM THE MUNICIPAL COURT DOCKET TAPE - JD100T1.		
NO. COPIES	FREQUENCY ISSUED <input type="checkbox"/> DAILY <input type="checkbox"/> WEEKLY <input type="checkbox"/> MONTHLY <input checked="" type="checkbox"/> TWICE A WEEK	
DESIGN FORMAT APPROVED BY	DATE	RELEASE PERIOD

DETAILED EXPLANATION OF DATA (WHEN PRINTED CAPTIONS ARE NOT SELF EXPLANATORY)

ALL HEADINGS ARE SELF-EXPLANATORY. THE REPORT IS ORGANIZED IN DEFENDANT'S NAME SEQUENCE.

CONTINUE ON REVERSE SIDE

COPY DISTRIBUTION

SENT TO	RETENTION	DISPOSITION
1 MUNICIPAL COURT (3)		
2 FILE (1)		
3		
4		
5		
6		
COMMENTS		

INDEX NUMBER
JD101-08

JD101L2

KANSAS CITY POLICE DEPARTMENT
RESTRICTED INFORMATION - FOR INTERNAL USE ONLY
MUNICIPAL TRAFFIC COURT CASES
PAGE 1

10/07 DIVISION A

9:30 AM

TICKET NUMBER	DATE ISSUED	VIOLATION	SER. NO.	OFF. NO.	OFF. UNIT	ORIGINAL COURT DATE	(BLANK IF 1ST SETTING)
*** MOVING VIOLATIONS							
0400	09/17/74	BANKS	112	1048	10	01/01 9:30 AM	A
0400	09/17/74	BANKS	113	1049	10	01/01 9:30 AM	A
0400	09/17/74	BANKS	111	1001	10	01/01 9:30 AM	A
0400	09/17/74	BANKS	112	1002	10	01/01 9:30 AM	A
0400	09/17/74	BANKS	114	1050	10	01/01 9:30 AM	A
0400	09/17/74	BANKS	113	1003	10	01/01 9:30 AM	A
0400	09/17/74	BANKS	115	1051	10	01/01 9:30 AM	A
0400	09/17/74	BANKS	114	1004	10	01/01 9:30 AM	A
0400	09/17/74	BANKS	112	1052	10	01/01 9:30 AM	A
0400	09/17/74	BANKS	113	1053	10	01/01 9:30 AM	A
0400	09/17/74	BANKS	115	1005	10	01/01 9:30 AM	A
0400	09/17/74	BANKS	114	1054	10	01/01 9:30 AM	A
0400	09/17/74	BANKS	111	1006	10	01/01 9:30 AM	A
0400	09/17/74	BANKS	112	1007	10	01/01 9:30 AM	A
0400	09/17/74	BANKS	115	1055	10	01/01 9:30 AM	A
0400	09/17/74	BANKS	112	1056	10	01/01 9:30 AM	A
0400	09/17/74	BANKS	113	1008	10	01/01 9:30 AM	A
0400	09/17/74	BANKS	113	1057	10	01/01 9:30 AM	A
0400	09/17/74	BANKS	114	1009	10	01/01 9:30 AM	A
0400	09/17/74	BANKS	114	1058	10	01/01 9:30 AM	A
0400	09/17/74	BANKS	115	1010	10	01/01 9:30 AM	A
0400	09/17/74	BANKS	115	1059	10	01/01 9:30 AM	A
0400	09/17/74	BANKS	111	1011	10	01/01 9:30 AM	A
0400	09/17/74	BANKS	112	1012	10	01/01 9:30 AM	A
0400	09/17/74	BANKS	113	1013	10	01/01 9:30 AM	A
0400	09/17/74	BANKS	112	1060	10	01/01 9:30 AM	A
0400	09/17/74	BANKS	113	1061	10	01/01 9:30 AM	A
0400	09/17/74	BANKS	114	1014	10	01/01 9:30 AM	A
0400	09/17/74	BANKS	115	1015	10	01/01 9:30 AM	A
0400	09/17/74	BANKS	114	1062	10	01/01 9:30 AM	A
0400	09/17/74	BANKS	111	1016	10	01/01 9:30 AM	A
0400	09/17/74	BANKS	115	1063	10	01/01 9:30 AM	A
0400	09/17/74	BANKS	112	1017	10	01/01 9:30 AM	A
0400	09/17/74	BANKS	113	1018	10	01/01 9:30 AM	A
0400	09/17/74	BANKS	112	1064	10	01/01 9:30 AM	A
0400	09/17/74	BANKS	113	1065	10	01/01 9:30 AM	A
0400	09/17/74	BANKS	114	1019	10	01/01 9:30 AM	A
0400	09/17/74	BANKS	114	1066	10	01/01 9:30 AM	A
0400	09/17/74	BANKS	115	1020	10	01/01 9:30 AM	A
0400	09/17/74	BANKS	115	1067	10	01/01 9:30 AM	A
0400	09/17/74	BANKS	111	1021	10	01/01 9:30 AM	A
0400	09/17/74	BANKS	112	1068	10	01/01 9:30 AM	A
0400	09/17/74	BANKS	112	1022	10	01/01 9:30 AM	A
0400	09/17/74	BANKS	113	1069	10	01/01 9:30 AM	A
0400	09/17/74	BANKS	113	1023	10	01/01 9:30 AM	A
0400	09/17/74	BANKS	111	1024	10	01/01 9:30 AM	A

INDEX NUMBER
JD101-09

DESCRIPTION OF COMPUTER REPORT OR LISTING

NEW REVISION—SHOW WHY IN 'COMMENTS'

DATE	ID NO.
------	--------

TITLE OF REPORT OR LISTING TRAFFIC COURT CASES - JD101L3	
PURPOSE OR FUNCTION IT SERVES THIS OUTPUT IS DESIGNED TO SERVE, ON SPECIAL FORMS, AS THE MUNICIPAL TRAFFIC COURT DOCKET.	
ORIGINATES FROM (SHOW COMPUTER RUN AND/OR MAIN FILE FROM WHICH DATA IS DEVELOPED AND SPAN OF TIME COVERED OR AGE OF DATA) THIS INFORMATION IS EXTRACTED FROM THE MUNICIPAL COURT DOCKET TAPE - JD101T1.	
NO. COPIES	FREQUENCY ISSUED <input type="checkbox"/> DAILY <input type="checkbox"/> WEEKLY <input type="checkbox"/> MONTHLY <input checked="" type="checkbox"/> TWICE A WEEK
DESIGN FORMAT APPROVED BY	DATE RELEASE PERIOD

DETAILED EXPLANATION OF DATA (WHEN PRINTED CAPTIONS ARE NOT SELF EXPLANATORY)

ALL HEADINGS ARE SELF-EXPLANATORY. THE REPORT IS ORGANIZED IN DEFENDANT'S NAME SEQUENCE WITH PAGE BREAKS BY COURT DIVISION AND COURT TIME.

CONTINUE ON REVERSE SIDE

COPY DISTRIBUTION

SENT TO	RETENTION	DISPOSITION
1		
2 MUNICIPAL COURT (3)		
3 FILE (1)		
4		
5		
6		

COMMENTS

INDEX NUMBER
JD101-10

JD101L3

TRAFFIC COURT CASES
KANSAS CITY, MISSOURI

DATE 10/07 DIVISION A TIME 9:30 AM PAGE No. 3

COMPLAINT NO.	DEFENDANT'S NAME	VIOLATION	OFFICER'S SERIAL NO.	OFFICERS UNIT
0400 2	S [REDACTED] ON	G [REDACTED] RT	J 09/17/74 113	1041 10
0400 3	T [REDACTED] E	H [REDACTED] N	C 09/17/74 111	1088 10
0400 3	T [REDACTED] E	H [REDACTED] N	C 09/17/74 114	1042 10
0400 4	T [REDACTED] LL	C [REDACTED] S	V 09/17/74 113	1089 10
0400 4	T [REDACTED] LL	C [REDACTED] S	V 09/17/74 115	1043 10
0400 5	V [REDACTED] TER	G [REDACTED] RD	09/17/74 111	1044 10
0400 5	V [REDACTED] TER	G [REDACTED] RD	09/17/74 115	1090 10
0400 6	V [REDACTED] D	G [REDACTED] D	09/17/74 117	1091 10
0400 6	V [REDACTED] D	G [REDACTED] D	09/17/74 112	1045 10
0400 7	W [REDACTED] S	J [REDACTED] S	K 09/17/74 111	1092 10
0400 7	W [REDACTED] S	J [REDACTED] S	K 09/17/74 113	1046 10
0400 8	Z [REDACTED] RA	B [REDACTED] A	A 09/17/74 114	1047 10
0400 8	Z [REDACTED] RA	B [REDACTED] A	A 09/17/74 113	1093 10
TOTAL CASES 94				

INDEX NUMBER
JD101-11

DESCRIPTION OF COMPUTER REPORT OR LISTING

DATE	ID NO.
------	--------

NEW REVISION—SHOW WHY IN 'COMMENTS'

TITLE OF REPORT OR LISTING MUNICIPAL TRAFFIC COURT CASES - JD101L4		
PURPOSE OR FUNCTION IT SERVES THIS OUTPUT IS DESIGNED TO NOTIFY OFFICERS IN THE FIELD OF THEIR SCHEDULED COURT APPEARANCES.		
ORIGINATES FROM (SHOW COMPUTER RUN AND/OR MAIN FILE FROM WHICH DATA IS DEVELOPED AND SPAN OF TIME COVERED OR AGE OF DATA) THIS INFORMATION IS EXTRACTED FROM THE MUNICIPAL COURT DOCKET TAPE - JD100T1.		
NO. COPIES	FREQUENCY ISSUED <input type="checkbox"/> DAILY <input type="checkbox"/> WEEKLY <input type="checkbox"/> MONTHLY <input checked="" type="checkbox"/> TWICE A WEEK	
DESIGN FORMAT APPROVED BY	DATE	RELEASE PERIOD

DETAILED EXPLANATION OF DATA (WHEN PRINTED CAPTIONS ARE NOT SELF EXPLANATORY)

ALL HEADINGS ARE SELF-EXPLANATORY. THE REPORT IS ORGANIZED IN OFFICER'S SERIAL NUMBER SEQUENCE.

CONTINUE ON REVERSE SIDE

COPY DISTRIBUTION

SENT TO	RETENTION	DISPOSITION
1 PATROL DIVISION (5)		
2 FILE (1)		
3		
4		
5		
6		

COMMENTS

INDEX NUMBER
JD101-12

JD101L4

KANSAS CITY POLICE DEPARTMENT
RESTRICTED INFORMATION - FOR INTERNAL USE ONLY
MUNICIPAL TRAFFIC COURT CASES
PAGE 1

10/07 DIVISION A

9:30 AM

PAGE 1

TICKET NUMBER	DATE	ISSUED VIOLATION	OFF. SER.NO.	OFF. UNIT	ORIGINAL COURT DATE (BLANK IF 1ST SETTING)
040001	09/17/74	110	1300	10	01/01 9:30 AM A
040002	09/17/74	111	1001	10	01/01 9:30 AM A
040003	09/17/74	112	1002	10	01/01 9:30 AM A
040004	09/17/74	113	1003	10	01/01 9:30 AM A
040005	09/17/74	114	1004	10	01/01 9:30 AM A
040006	09/17/74	115	1005	10	01/01 9:30 AM A
040007	09/17/74	111	1006	10	01/01 9:30 AM A
040008	09/17/74	112	1007	10	01/01 9:30 AM A
040009	09/17/74	113	1008	10	01/01 9:30 AM A
040010	09/17/74	114	1009	10	01/01 9:30 AM A
040011	09/17/74	115	1010	10	01/01 9:30 AM A
040012	09/17/74	111	1011	10	01/01 9:30 AM A
040013	09/17/74	112	1012	10	01/01 9:30 AM A
040014	09/17/74	113	1013	10	01/01 9:30 AM A
040015	09/17/74	114	1014	10	01/01 9:30 AM A
040016	09/17/74	115	1015	10	01/01 9:30 AM A
040017	09/17/74	111	1016	10	01/01 9:30 AM A
040018	09/17/74	112	1017	10	01/01 9:30 AM A
040019	09/17/74	113	1018	10	01/01 9:30 AM A
040020	09/17/74	114	1019	10	01/01 9:30 AM A
040021	09/17/74	115	1020	10	01/01 9:30 AM A
040022	09/17/74	111	1021	10	01/01 9:30 AM A
040023	09/17/74	112	1022	10	01/01 9:30 AM A
040024	09/17/74	113	1023	10	01/01 9:30 AM A
040025	09/17/74	111	1024	10	01/01 9:30 AM A
040026	09/17/74	112	1025	10	01/01 9:30 AM A
040027	09/17/74	113	1026	10	01/01 9:30 AM A
040028	09/17/74	114	1027	10	01/01 9:30 AM A
040029	09/17/74	115	1028	10	01/01 9:30 AM A
040030	09/17/74	111	1029	10	01/01 9:30 AM A
040031	09/17/74	112	1030	10	01/01 9:30 AM A
040032	09/17/74	113	1031	10	01/01 9:30 AM A
040033	09/17/74	114	1032	10	01/01 9:30 AM A
040034	09/17/74	115	1033	10	01/01 9:30 AM A
040035	09/17/74	111	1034	10	01/01 9:30 AM A
040036	09/17/74	112	1035	10	01/01 9:30 AM A
040037	09/17/74	113	1036	10	01/01 9:30 AM A
040038	09/17/74	114	1037	10	01/01 9:30 AM A
040039	09/17/74	115	1038	10	01/01 9:30 AM A
040040	09/17/74	111	1039	10	01/01 9:30 AM A
040041	09/17/74	112	1040	10	01/01 9:30 AM A
040042	09/17/74	113	1041	10	01/01 9:30 AM A
040043	09/17/74	114	1042	10	01/01 9:30 AM A
040044	09/17/74	115	1043	10	01/01 9:30 AM A
040045	09/17/74	111	1044	10	01/01 9:30 AM A
040046	09/17/74	112	1045	10	01/01 9:30 AM A
040047	09/17/74	113	1046	10	01/01 9:30 AM A

INDEX NUMBER
JD101-13