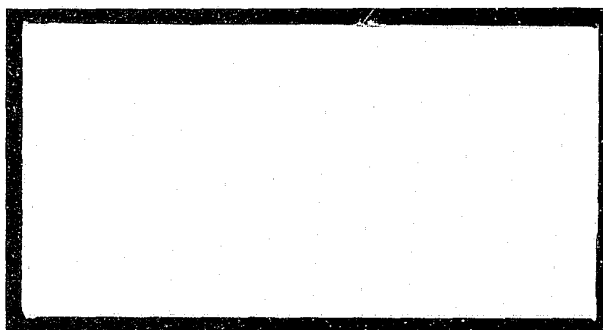


SAC Statistical Analysis Center



135672

ouri State Highway Patrol

A division of the

Department of Public Safety

135622

135622

**U.S. Department of Justice
National Institute of Justice**

This document has been reproduced exactly as received from the person or organization originating it. Points of view or opinions stated in this document are those of the authors and do not necessarily represent the official position or policies of the National Institute of Justice.

Permission to reproduce this [REDACTED] material has been granted by

Public Domain/BJS
U.S. Department of Justice

to the National Criminal Justice Reference Service (NCJRS).

Further reproduction outside of the NCJRS system requires permission of the [REDACTED] owner.

NCJRS

MAR 18 1992

ACQUISITIONS

1990

MISSOURI

CRIME AND ARREST

DIGEST

Principal Staff Researchers:

Phyllis Emmel, Research Analyst
Bill Aber, Data Processing Specialist

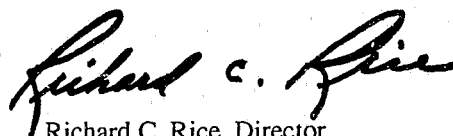
STATISTICAL ANALYSIS CENTER
1510 East Elm
Jefferson City, Missouri 65101
(314) 751-4026

FOREWORD

This 1990 edition of the *Missouri Crime and Arrest Digest* presents a detailed analysis of the incidence of crime in Missouri. After several years of minimal decreases in the rates of some types of crime, it appears that in 1990 crime is once again on the rise. Even more troubling is the projection of significant increases in violent crimes through 1994 now being reported by the Missouri State Highway Patrol, Statistical Analysis Center (SAC). It behooves all law enforcement administrators to study the crime rates for their immediate locale and to devise programs to increase citizen awareness of crime, to facilitate crime prevention, and to aggressively apprehend crime suspects.

As in the past, the data presented in the Digest are collected by the FBI as part of their national Uniform Crime Reporting System. At the end of each calendar year, the FBI provides these data to the SAC for analysis and interpretation. It is, therefore, extremely important that each law enforcement agency in Missouri participate in the FBI UCR Program and submit all required data.

Agencies which require additional statistics on crime or traffic safety should contact the Center directly. Also, any suggestions for improvements in the Digest or for additional statistics should be forwarded to my attention.

A handwritten signature in cursive script, reading "Richard C. Rice".

Richard C. Rice, Director
Missouri Department of Public Safety

ACKNOWLEDGEMENTS

The Federal Bureau of Investigation's Uniform Crime Reporting Section provided the data used in this publication. On a yearly basis, they submit computer tapes to the Missouri State Highway Patrol, Statistical Analysis Center containing all Missouri crime and arrest data reported to their Uniform Crime Reporting Program. In addition, they continually provide timely technical assistance in the interpretation and analysis of these data.

Most Missouri city/county police agencies and sheriff's departments voluntarily report their crime and arrest activity to the Federal Bureau of Investigation's Uniform Crime Reporting Program. The ability of the criminal justice community to analyze the State's crime problems and law enforcement activity levels is largely dependant on their active participation in this Program.

Finally, the U.S. Department of Justice, Bureau of Justice Statistics has, over the years, provided federal grant funds to support the development, printing, and dissemination of this report as well as other criminal justice publications produced by the Missouri Statistical Analysis Center.



Martin P. Carso Jr., Director
Missouri Statistical Analysis Center

CONTENTS

	PAGE
EXECUTIVE SUMMARY	ix
INTRODUCTION.....	1
1. MISSOURI CRIME CLOCK	3
2. MISSOURI CRIME INDEX COMPARISON ANALYSIS	7
3. MISSOURI ARREST ANALYSIS	17
4. MISSOURI DETAIL CRIME INDEX ANALYSIS	27
4.1 Murder	29
4.2 Forcible Rape	37
4.3 Robbery.....	43
4.4 Aggravated Assault.....	49
4.5 Burglary	55
4.6 Theft	61
4.7 Motor Vehicle Theft	67
4.8 Arson.....	73
5. MISSOURI LAW ENFORCEMENT AGENCY CRIME AND ARREST ANALYSIS..	79
GLOSSARY	101

TABLES

PAGE

MISSOURI CRIME INDEX COMPARISON ANALYSIS

2.0.1	Crime Index Offenses, State of Missouri, 1990	9
2.0.2	Actual Reported Crime Index Offenses, State of Missouri, 1981-1990	10
2.0.3	Estimated Crime Index Offenses, State of Missouri, 1981-1990	11
2.0.4	Crime Index Offense Rates, State of Missouri, 1981-1990	12
2.0.5	Property Crime Index Economic Analysis, 1990	13

MISSOURI ARREST ANALYSIS

3.0.1	Crime Index Clearance Rates, State of Missouri, 1981-1990	19
3.0.2	Crime Index Arrests, State of Missouri, 1981-1990	20
3.0.3	Crime Index Arrest Rates, State of Missouri, 1981-1990	21
3.0.4	Total Persons Arrested by Most Serious Offense, State of Missouri, 1990	22

MISSOURI DETAIL CRIME INDEX ANALYSIS

Murder

4.1.1	Murder Rates by Population Group, 1990	30
4.1.2	Murder Clearance Rates, 1989-1990	31
4.1.3	Murder Arrests by Sex and Age Group, 1990	31
4.1.4	Murder Arrests by Race and Age Group, 1990	31
4.1.5	Murder Victims by Sex and Age Group, 1990	32
4.1.6	Murder Victims by Race and Age Group, 1990	32
4.1.7	Type of Weapon Used by Offenders in Murders, 1990	33
4.1.8	Circumstances with Murders, 1990	34

Forcible Rape

4.2.1	Forcible Rape Rates by Population Group, 1990	38
4.2.2	Actual/Attempted Rape Offenses, 1990	39
4.2.3	Forcible Rape Clearance Rates, 1989-1990	39
4.2.4	Forcible Rape Arrests by Sex and Age Group, 1990	39
4.2.5	Forcible Rape Arrests by Race and Age Group, 1990	40

Robbery

4.3.1	Robbery Rates by Population Group, 1990	44
4.3.2	Type of Weapon Used in Robberies, 1990	45
4.3.3	Robbery Loss/Location, 1990	45
4.3.4	Robbery Clearance Rates, 1989-1990	46
4.3.5	Robbery Arrests by Sex and Age Group, 1990	46
4.3.6	Robbery Arrests by Race and Age Group, 1990	46

TABLES

	PAGE
Aggravated Assault	
4.4.1 Aggravated Assault Rates by Population Group, 1990	50
4.4.2 Type of Weapon Used in Aggravated Assaults, 1990	51
4.4.3 Aggravated Assault Clearance Rates, 1989-1990	51
4.4.4 Aggravated Assault Arrests by Sex and Age Group, 1990	52
4.4.5 Aggravated Assault Arrests by Race and Age Group, 1990	52
 Burglary	
4.5.1 Burglary Rates by Population Group, 1990	56
4.5.2 Type of Burglary, 1990	57
4.5.3 Burglary Loss/Location/Time, 1990	57
4.5.4 Burglary Clearance Rates, 1989-1990	58
4.5.5 Burglary Arrests by Sex and Age Group, 1990	58
4.5.6 Burglary Arrests by Race and Age Group, 1990	58
 Theft	
4.6.1 Theft Rates by Population Group, 1990	62
4.6.2 Theft by Value of Stolen Items, 1990	63
4.6.3 Nature of Theft, 1990	63
4.6.4 Theft Clearance Rates, 1989-1990	64
4.6.5 Theft Arrests by Sex and Age Group, 1990	64
4.6.6 Theft Arrests by Race and Age Group, 1990	64
 Motor Vehicle Theft	
4.7.1 Motor Vehicle Theft Rates by Population Group, 1990	68
4.7.2 Type of Vehicle Stolen, 1990	69
4.7.3 Motor Vehicle Theft Yearly Loss, 1989-1990	69
4.7.4 Motor Vehicle Theft Clearance Rates, 1989-1990	70
4.7.5 Motor Vehicle Theft Arrests by Sex and Age Group, 1990	70
4.7.6 Motor Vehicle Theft Arrests by Race and Age Group, 1990	70
 Arson	
4.8.1 Arson Rates by Population Group, 1990	74
4.8.2 Arson Loss by Type of Property, 1990	75
4.8.3 Arson Clearance Rates, 1989-1990	76
4.8.4 Arson Arrests by Sex and Age Group, 1990	76
4.8.5 Arson Arrests by Race and Age Group, 1990	76

TABLES

PAGE

MISSOURI LAW ENFORCEMENT AGENCY CRIME AND ARREST ANALYSIS

5.0.1	Crime Index Offenses, Municipalities 25,000 and Over by Reporting Agency, 1990	81
5.0.2	Crime Index Offenses, Municipalities Under 25,000 by Reporting Agency, 1990	83
5.0.3	Crime Index Offenses, Suburban Counties by Reporting Agency, 1990	87
5.0.4	Crime Index Offenses, Rural Counties by Reporting Agency, 1990	89
5.0.5	Total Persons Arrested, Municipalities 25,000 and Over by Reporting Agency, 1990	91
5.0.6	Total Persons Arrested, Municipalities Under 25,000 by Reporting Agency, 1990	93
5.0.7	Total Persons Arrested, Suburban Counties by Reporting Agency, 1990	97
5.0.8	Total Persons Arrested, Rural Counties by Reporting Agency, 1990	99

FIGURES

PAGE

MISSOURI CRIME INDEX COMPARISON ANALYSIS

2.0.1	Crime Index Offense Rates, State of Missouri, Time Series	14
2.0.2	Crime Index Offense Rates, State of Missouri by County, 1990	14
2.0.3	Violent Index Offense Rates, State of Missouri, Time Series	15
2.0.4	Violent Crime Offense Rates, State of Missouri by County, 1990	15
2.0.5	Property Index Offense Rates, State of Missouri, Time Series	16
2.0.6	Property Crime Offense Rates, State of Missouri by County, 1990	16

MISSOURI ARREST ANALYSIS

3.0.1	Crime Index Arrest Rates, State of Missouri, Time Series	23
3.0.2	Violent Index Arrest Rates, State of Missouri, Time Series	24
3.0.3	Property Index Arrest Rates, State of Missouri, Time Series	25

MISSOURI DETAIL CRIME INDEX ANALYSIS

Murder

4.1.1	Murder Offense Rates, State of Missouri, Time Series	35
-------	--	----

Forcible Rape

4.2.1	Rape Offense Rates, State of Missouri, Time Series	41
-------	--	----

Robbery

4.3.1	Robbery Offense Rates, State of Missouri, Time Series	47
-------	---	----

Aggravated Assault

4.4.1	Aggravated Assault Offense Rates, State of Missouri, Time Series	53
-------	--	----

Burglary

4.5.1	Burglary Offense Rates, State of Missouri, Time Series	59
-------	--	----

Theft

4.6.1	Theft Offense Rates, State of Missouri, Time Series	65
-------	---	----

Motor Vehicle Theft

4.7.1	Motor Vehicle Theft Offense Rates, State of Missouri, Time Series	71
-------	---	----

Arson

4.8.1	Arson Offense Rates, State of Missouri, Time Series	77
-------	---	----

EXECUTIVE SUMMARY

The Digest is produced annually by the Missouri State Highway Patrol, Statistical Analysis Center (SAC). The primary source of data for the Digest is the Federal Bureau of Investigation's (FBI) Uniform Crime Reporting System (UCR). Although this publication contains statistics on Missouri crime and arrest activity from 1981 through 1990, emphasis is placed on the most recent year (1990).

For statewide crime activity, estimation routines have been used to better identify the actual number of crimes that have occurred in the State. These estimation routines are designed to compensate for those law enforcement agencies that did not report their crime activity into the FBI UCR Program. Please note that no estimation routines were employed in the presentation of arrest activity.

The Crime Index is the sum of eight major offenses and is used to measure the magnitude of crime in the United States. The major offenses are included in the Index because of their frequency of occurrence and the fact that they are most likely to be reported to law enforcement agencies. These eight offenses are: murder, forcible rape, robbery, aggravated assault, burglary, theft, motor vehicle theft, and arson. The first four make up the Violent Crime Index and the last four make up the Property Crime Index.

1990 Crime Index Offenses - - - 0.9% Decrease From 1989

In 1990, a total of 251,200 Crime Index offenses were reported in the State of Missouri. It is estimated that a total of 264,359 Crime Index offenses actually occurred on a statewide basis. This was a 0.9 percent decrease from 1989. In 1990, one Index Crime was committed every 2.0 minutes. In 23.3 of every 100 Crime Index offenses, the cases were cleared by arrest or exceptional means.

1990 Violent Offenses - - - 12.2% Increase Over 1989

Violent offenses made up 13.9 percent of the total 1990 Missouri Crime Index. There were 35,357 Violent Index offenses reported in 1990. It is estimated that a total of 36,631 Violent Index offenses actually occurred on a statewide basis. This was an increase of 12.2 percent compared to 1989. A violent offense was committed in Missouri every 14.3 minutes. In 47.8 of every 100 Violent Index offenses, the cases were cleared by arrest or exceptional means. A brief analysis of each type of Violent Index offense is given below.

- There were 427 murders reported in 1990. It is estimated that a total of 449 murders actually occurred on a statewide basis. This was an increase of 9.2 percent compared to 1989. While murder is the most serious Index offense, it made up only 0.2 percent of the total 1990 Missouri Crime Index. One murder was committed in the State every 19.5 hours. In 82.6 of every 100 murders, the cases were cleared by arrest or exceptional means.
- There were 1,578 forcible rapes reported in 1990. It is estimated that a total of 1,667 rapes actually occurred on a statewide basis. This was an increase of 5.0 percent compared to 1989. Forcible rape accounted for 0.6 percent of the total 1990 Missouri Crime Index. One forcible rape was committed every 5.3 hours. In 59.8 of every 100 forcible rapes, the cases were cleared by arrest or exceptional means.

- There were 10,971 robberies reported in 1990. It is estimated that a total of 11,106 robberies actually occurred on a statewide basis. This was an increase of 10.3 percent compared to 1989. Robbery accounted for 4.2 percent of the total 1990 Missouri Crime Index. One robbery occurred every 47.3 minutes. In 25.7 of every 100 robberies, the cases were cleared by arrest or exceptional means.
- There were 22,381 aggravated assaults reported in 1990. It is estimated that a total of 23,409 aggravated assaults actually occurred on a statewide basis. This was an increase of 13.7 percent compared to 1989. Aggravated assault accounted for 8.9 percent of the total 1990 Missouri Crime Index. One aggravated assault occurred every 22.5 minutes. In 57.3 of every 100 aggravated assaults, the cases were cleared by arrest or exceptional means.

1990 Property Offenses - - - 2.8% Decrease From 1989

Property offenses made up 86.1 percent of the total 1990 Missouri Crime Index. There were 215,843 Property Index offenses reported in 1990. It is estimated that a total of 227,728 Property Index offenses actually occurred on a statewide basis. This was a decrease of 2.8 percent compared to 1989. It is estimated that property offenses accounted for \$290,375,988 in property stolen or destroyed. One such offense occurred every 2.3 minutes in the State. In 19.2 of every 100 Property Index offenses, the cases were cleared by arrest or exceptional means. A brief analysis of each type of Property Index offense is given below.

- There were 51,013 burglaries reported in 1990. It is estimated that a total of 54,412 burglaries actually occurred on a statewide basis. This was a decrease of 7.2 percent compared to 1989. Burglary accounted for 20.6 percent of the total 1990 Missouri Crime Index. One burglary occurred every 9.7 minutes and it is estimated that \$57,769,765 in property/cash was stolen in 1990 due to this offense. In 15.7 of every 100 burglaries, the cases were cleared by arrest or exceptional means.
- There were 135,811 thefts reported in 1990. It is estimated that a total of 143,472 thefts actually occurred on a statewide basis. This was a decrease of 2.0 percent compared to 1989. Theft accounted for 54.3 percent of the total 1990 Missouri Crime Index. One theft occurred every 3.7 minutes and it is estimated that \$65,388,799 in property/cash was stolen in 1990 due to this offense. In 21.3 of every 100 thefts, the cases were cleared by arrest or exceptional means.
- There were 26,942 motor vehicle thefts reported in 1990. It is estimated that a total of 27,655 motor vehicle thefts actually occurred on a statewide basis. This was an increase of 2.2 percent compared to 1989. Motor vehicle theft accounted for 10.5 percent of the total 1990 Missouri Crime Index. One motor vehicle theft occurred every 19.0 minutes and it is estimated that \$130,776,900 in property was stolen in 1990 due to this offense. In 15.4 of every 100 motor vehicle thefts, the cases were cleared by arrest or exceptional means.
- There were 2,077 arsons reported in 1990. It is estimated that a total of 2,189 arsons actually occurred on a statewide basis. This was an increase of 3.7 percent compared to 1989. Arson accounted for 0.8 percent of the total 1990 Missouri Crime Index. One arson occurred every 4.0 hours and it is estimated that \$36,440,524 in property was destroyed due to arson in 1990. In 20.8 of every 100 arsons, the cases were cleared by arrest or exceptional means.

INTRODUCTION

This Digest is the tenth in a series of publications prepared by the Missouri State Highway Patrol, Statistical Analysis Center (SAC). It is designed to present data on crime and arrest activity in Missouri from 1981 through 1990 with special emphasis on the most recent year's (1990) crime and arrest activity.

The crime and arrest data contained in this publication are segmented into five parts. The first section displays the Missouri Crime Clock. This clock offers an overview of the frequency of occurrence of Crime Index offenses committed in the State in relation to time. The Crime Index is the sum of the eight major offenses used to indicate the occurrence of crime in the United States. The eight offenses making up the total Crime Index are: murder, forcible rape, robbery, aggravated assault, burglary, theft, motor vehicle theft, and arson. The second section provides data related to Crime Index offenses committed in the State of Missouri. Its purpose is to provide a comparison of the various types of Crime Index offenses so that their relative importance can be assessed. In addition, Crime Index activity is displayed by geographical regions of the State and also over time to observe trends. The third section presents data on arrest activity and clearance rates associated with Crime Index offenses as well as arrest activity associated with other classes of criminal offenses. These data provide an appreciation of criminal enforcement activity being performed in the State of Missouri by class of crime. The fourth section provides a series of data and analysis related to each of the eight types of Crime Index offenses. Data are provided on crime activity, clearance rates, crime patterns, and arrest activity associated with each of these offenses. Finally, the last section provides summary data on Crime Index offenses and arrest activity for specific law enforcement jurisdictions in the State of Missouri.

The data contained in this Digest were provided on a voluntary basis by Missouri law enforcement agencies to the Federal Bureau of Investigation's (FBI), Uniform Crime Reporting (UCR) Program.

The national UCR Program was initiated in 1930 by the Committee on Uniform Crime Reports of the International Association of Chiefs of Police (IACP). This committee developed uniform offense and arrest classifications as well as reporting procedures which could be used by law enforcement agencies throughout the nation. The FBI was designated to administer the Program and became the national clearinghouse for UCR data. The Committee on Uniform Crime Reports of the IACP continues to serve the national Program in an advisory capacity. In 1966, the National Sheriff's Association also established a Committee on Uniform Crime Reports to act as an advisory body for this program and to promote reporting to the UCR Program.

Crime and arrest data are, for the most part, collected on a monthly basis in the UCR Program. The FBI provides report forms, tally sheets, and self-addressed envelopes to Missouri law enforcement agencies who complete and return them to the FBI.

The fact that this program is voluntary in nature in the State of Missouri increases the problems associated with the completeness and representativeness of the information being captured and analyzed. Certain Missouri law enforcement agencies either do not report to the program or they send incomplete data. In most states, reporting to this program is mandatory for law enforcement agencies through the enactment of state statute.

To reduce the problems associated with both non-reporting and incomplete reporting, a number of techniques have been used for displaying statewide crime and arrest activity. For statewide arrest activity, reliance has been placed on displaying arrest rates on a per 100,000 population basis. This type of data display identifies arrest activity in relation to the population of only those jurisdictions that reported the activity. For statewide crime activity, mathematical routines have been employed to estimate the actual number of crimes that occurred in the State. Crime rates on a per 100,000 population basis also are included. These rates are based on the estimates of actual crimes being committed rather than on those that were reported. Individual data displays in the Digest fully identify whether reported, estimated, or rates per 100,000 population data are used in the display.

Data displays identifying a specific law enforcement jurisdiction's crime and arrest activity contain only the activity reported into the UCR Program. No effort has been made to estimate individual law enforcement agency's crime and arrest activity.

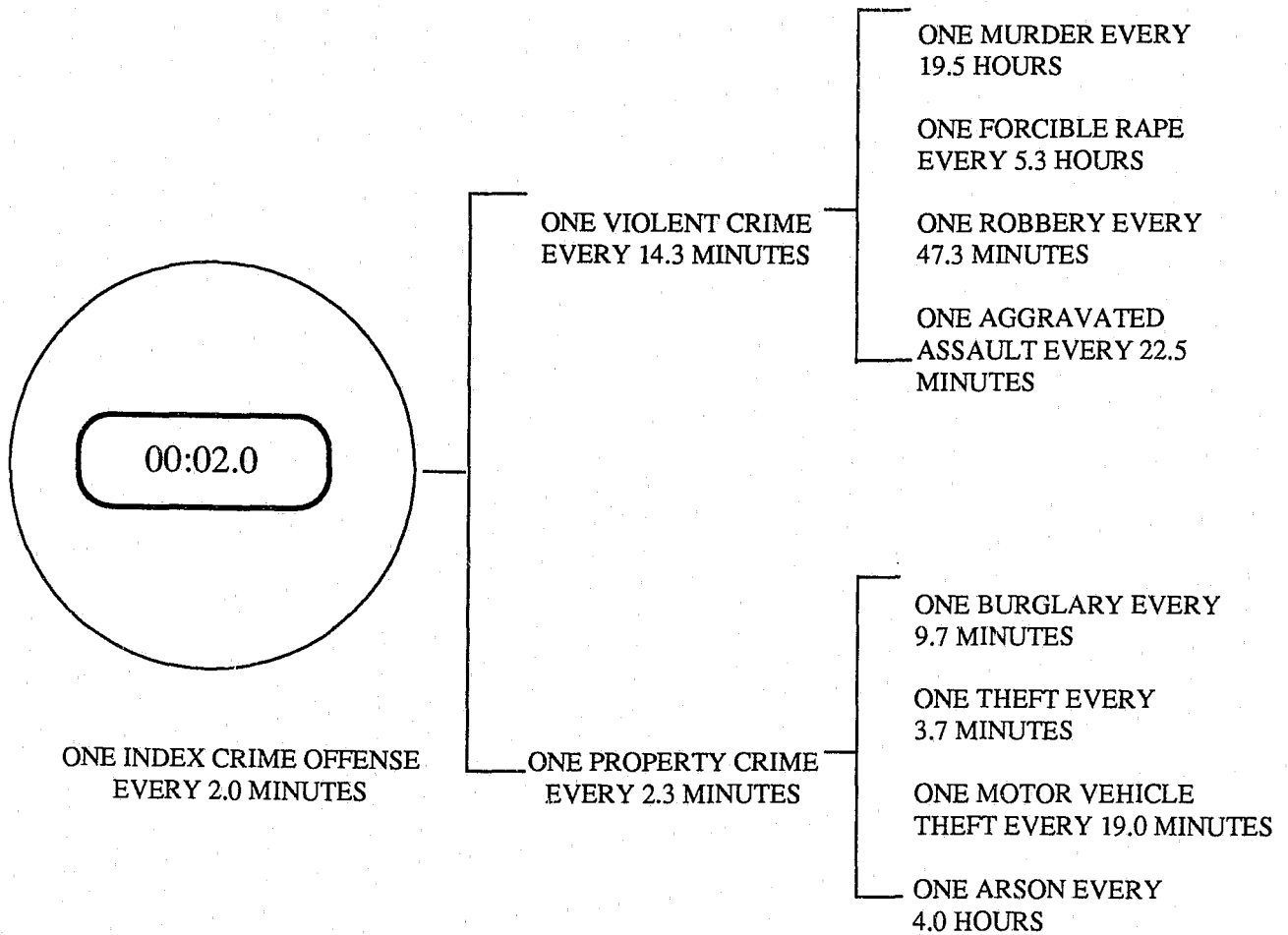
Slight discrepancies may be found if comparisons are made with FBI UCR publications and this Digest covering the same subject matter for the State of Missouri. Although similar, estimation routines and rates per 100,000 population calculations used by the FBI are not the same as those used in this Digest. Discrepancies also may be noted when examining actual reported figures. This is a result of updates having been made to the UCR files between the time the FBI data were processed and the time the SAC analysis was performed.

1.0 MISSOURI CRIME CLOCK

THE CRIME CLOCK SUMMARIZES ESTIMATED CRIMINAL ACTIVITY IN THE STATE OF MISSOURI DURING 1990 IN RELATION TO TIME. FROM THIS PERSPECTIVE, AN APPRECIATION OF THE RELATIVE FREQUENCY OF VARIOUS CRIMINAL OFFENSES CAN BE OBTAINED. THE CRIME CLOCK SHOULD BE VIEWED WITH CARE. IT IS DESIGNED TO CONVEY ANNUAL ESTIMATED CRIME EXPERIENCE BY SHOWING THE RELATIVE FREQUENCY OF OCCURRENCE OF THE INDEX OFFENSES. THIS MODE OF DISPLAY SHOULD NOT BE TAKEN TO IMPLY A REGULARITY IN THE COMMISSION OF CRIME; RATHER, IT REPRESENTS THE ANNUAL RATIO OF CRIME TO FIXED TIME INTERVALS.

MISSOURI CRIME CLOCK

1990



2.0 MISSOURI CRIME INDEX COMPARISON ANALYSIS

A SERIES OF TABLES AND FIGURES SUMMARIZES CRIME INDEX OFFENSES COMMITTED IN THE STATE OF MISSOURI. THE PURPOSE OF THESE DISPLAYS IS TO COMPARE THE VARIOUS TYPES OF CRIME INDEX OFFENSES BEING COMMITTED ACCORDING TO THEIR RELATIVE CONTRIBUTION TO THE CRIME INDEX. IN ADDITION, CRIME INDEX OFFENSE RATES ARE DISPLAYED BY GEOGRAPHICAL REGIONS OF THE STATE AND OVER TIME IN ORDER TO OBSERVE TRENDS.

CRIME INDEX OFFENSES, STATE OF MISSOURI

1990

OFFENSE	REPORTED	ESTIMATED ¹	% OF ESTIMATED TOTAL CRIME INDEX	% OF ESTIMATED VIOLENT CRIME INDEX	% OF ESTIMATED PROPERTY CRIME INDEX	RATE PER ² 100,000 POPULATION
TOTAL INDEX	251,200	264,359	100.0	--	--	5,166.2
VIOLENT INDEX	35,357	36,631	13.9	100.0	--	715.8
PROPERTY INDEX	215,843	227,728	86.1	--	100.0	4,450.4
MURDER	427	449	0.2	1.2	--	8.8
FORCIBLE RAPE	1,578	1,667	0.6	4.6	--	32.6
ROBBERY	10,971	11,106	4.2	30.3	--	217.0
AGGRAVATED ASSAULT	22,381	23,409	8.9	63.9	--	457.5
BURGLARY	51,013	54,412	20.6	--	23.9	1,063.3
THEFT	135,811	143,472	54.3	--	63.0	2,803.8
MOTOR VEHICLE THEFT	26,942	27,655	10.5	--	12.1	540.4
ARSON	2,077	2,189	0.8	--	1.0	42.8

¹See Glossary for an explanation of the computations used to obtain estimates of Missouri's Crime Index offenses.

²Crime Index Offense rates are based on estimated crime index offenses occurring in the State of Missouri. They are computed on a per 100,000 population basis. See Glossary for an explanation of the computations used to obtain these rates.

TABLE 2.0.1

ACTUAL REPORTED CRIME INDEX OFFENSES, STATE OF MISSOURI

1981 - 1990

OFFENSE	1981	1982	1983	1984	1985	1986	1987	1988	1989	1990
TOTAL INDEX	250,502	233,084	214,023	204,036	208,491	223,104	226,310	236,791	253,230	251,200
VIOLENT INDEX	25,667	24,233	22,884	22,027	24,247	27,998	26,504	27,228	31,421	35,357
PROPERTY INDEX	224,835	208,851	191,139	182,009	184,244	195,106	199,806	209,563	221,809	215,843
MURDER	495	454	379	333	381	437	394	388	392	427
FORCIBLE RAPE	1,395	1,228	1,266	1,243	1,389	1,382	1,372	1,404	1,496	1,578
ROBBERY	10,450	9,397	8,223	6,921	7,251	8,446	8,239	8,475	9,935	10,971
AGGRAVATED ASSAULT	13,327	13,154	13,016	13,530	15,226	17,733	16,499	16,961	19,598	22,381
BURGLARY	72,773	64,527	56,221	51,825	51,435	53,290	52,282	54,052	54,865	51,013
THEFT	132,332	126,868	118,295	112,760	113,623	118,486	124,824	131,774	138,674	135,811
MOTOR VEHICLE THEFT	17,869	15,767	15,055	15,776	17,576	21,358	20,811	21,557	26,299	26,942
ARSON	1,861	1,689	1,568	1,648	1,610	1,972	1,889	2,180	1,971	2,077
NUMBER OF REPORTING AGENCIES ¹	237	238	240	237	249	241	242	245	246	252

¹Number of law enforcement agencies that reported crime index offense activity to the UCR Program in a given year.

TABLE 2.0.2

ESTIMATED CRIME INDEX OFFENSES, STATE OF MISSOURI¹

1981 - 1990

OFFENSE	1981	1982	1983	1984	1985	1986	1987	1988	1989	1990
TOTAL INDEX	266,315	246,583	226,397	217,819	221,223	237,842	242,276	251,719	266,848	264,359
VIOLENT INDEX	26,731	25,117	23,795	23,083	25,311	29,362	27,862	28,519	32,658	36,631
PROPERTY INDEX	239,584	221,466	202,602	194,736	195,912	208,480	214,414	223,200	234,190	227,728
MURDER	514	481	409	362	411	467	426	412	411	449
FORCIBLE RAPE	1,468	1,292	1,327	1,322	1,484	1,476	1,470	1,500	1,588	1,667
ROBBERY	10,648	9,550	8,358	7,041	7,392	8,633	8,388	8,622	10,068	11,106
AGGRAVATED ASSAULT	14,101	13,794	13,701	14,358	16,024	18,786	17,578	17,985	20,591	23,409
BURGLARY	78,068	68,730	60,244	55,906	55,184	57,480	56,697	58,016	58,639	54,412
THEFT	140,536	134,296	124,895	120,415	120,642	126,550	133,957	140,510	146,374	143,472
MOTOR VEHICLE THEFT	18,911	16,618	15,756	16,582	18,353	22,315	21,723	22,351	27,067	27,655
ARSON	2,069	1,822	1,707	1,833	1,733	2,135	2,037	2,323	2,110	2,189

¹See Glossary for an explanation of the computations used to obtain estimates of Missouri's Crime Index offenses.

TABLE 2.0.3

CRIME INDEX OFFENSE RATES, STATE OF MISSOURI¹

1981 - 1990

OFFENSE	1981	1982	1983	1984	1985	1986	1987	1988	1989	1990
TOTAL INDEX	5,393.2	4,980.5	4,555.2	4,349.5	4,398.9	4,694.8	4,747.8	4,898.2	5,172.5	5,166.2
VIOLENT INDEX	541.4	507.3	478.8	460.9	503.3	579.6	546.0	554.9	633.0	715.8
PROPERTY INDEX	4,851.8	4,473.2	4,076.5	3,888.5	3,895.6	4,115.3	4,201.8	4,343.3	4,539.4	4,450.4
MURDER	10.4	9.7	8.2	7.2	8.2	9.2	8.4	8.0	8.0	8.8
FORCIBLE RAPE	29.7	26.1	26.7	26.4	29.5	29.1	28.8	29.2	30.8	32.6
ROBBERY	215.6	192.9	168.2	140.6	147.0	170.4	164.4	167.8	195.2	217.0
AGGRAVATED ASSAULT	285.6	278.6	275.7	286.7	318.6	370.8	344.5	350.0	399.1	457.5
BURGLARY	1,581.0	1,388.2	1,212.2	1,116.3	1,097.3	1,134.6	1,111.1	1,128.9	1,136.6	1,063.3
THEFT	2,846.0	2,712.5	2,513.0	2,404.5	2,398.9	2,498.0	2,625.1	2,734.2	2,837.2	2,803.8
MOTOR VEHICLE THEFT	383.0	335.7	317.0	331.1	365.0	440.5	425.7	434.9	524.6	540.4
ARSON	41.9	36.8	34.3	36.6	34.4	42.1	39.9	45.2	40.9	42.8

¹Crime Index offense rates are based on estimated crime index offenses occurring in the State of Missouri. They are computed on a per 100,000 population basis. See Glossary for an explanation of the computations used to obtain these rates.

TABLE 2.0.4

PROPERTY CRIME INDEX
ECONOMIC ANALYSIS
(PROPERTY STOLEN/DESTROYED)

1990

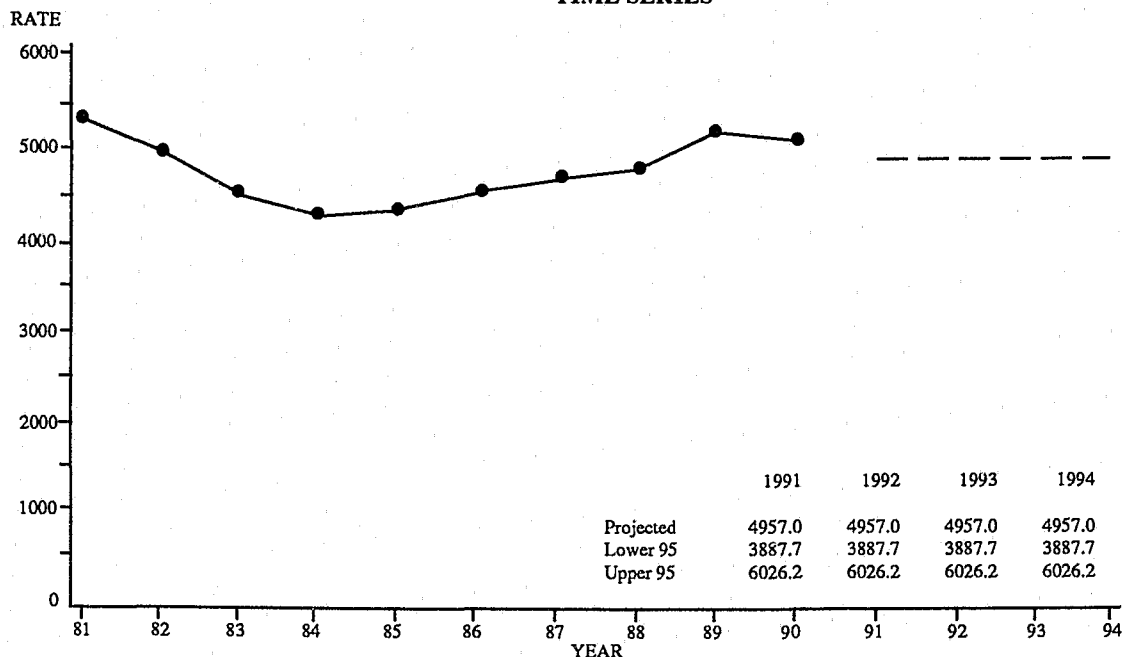
TYPE	LOSS PER ¹ OFFENSE	ESTIMATE ² TOTAL OFFENSES
BURGLARY	\$1,061.71	\$57,769,765
THEFT	455.76	65,388,799
MOTOR VEHICLE THEFT	4,728.87	130,776,900
ARSON	16,647.11	36,440,524
TOTAL	-	\$290,375,988

¹The dollar loss per offense was calculated using only those property offenses for which law enforcement agencies reported an actual dollar amount for the property stolen or destroyed.

²The estimate was calculated by multiplying the dollar loss per offense by the estimated number of such offenses that occurred in 1990.

TABLE 2.0.5

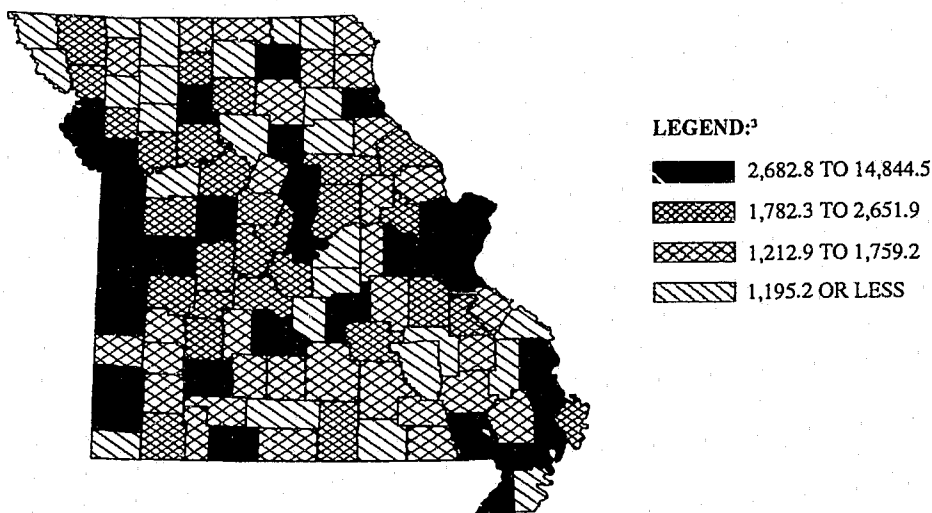
CRIME INDEX OFFENSE RATES, STATE OF MISSOURI¹ **TIME SERIES**



¹Crime Index offense rates are based on estimated crime index offenses occurring in the State of Missouri. They are computed on a per 100,000 population basis. See Glossary for an explanation of the computations used to obtain these rates.

FIGURE 2.0.1

CRIME INDEX OFFENSE RATES,¹ **STATE OF MISSOURI** **BY COUNTY / 1990²**

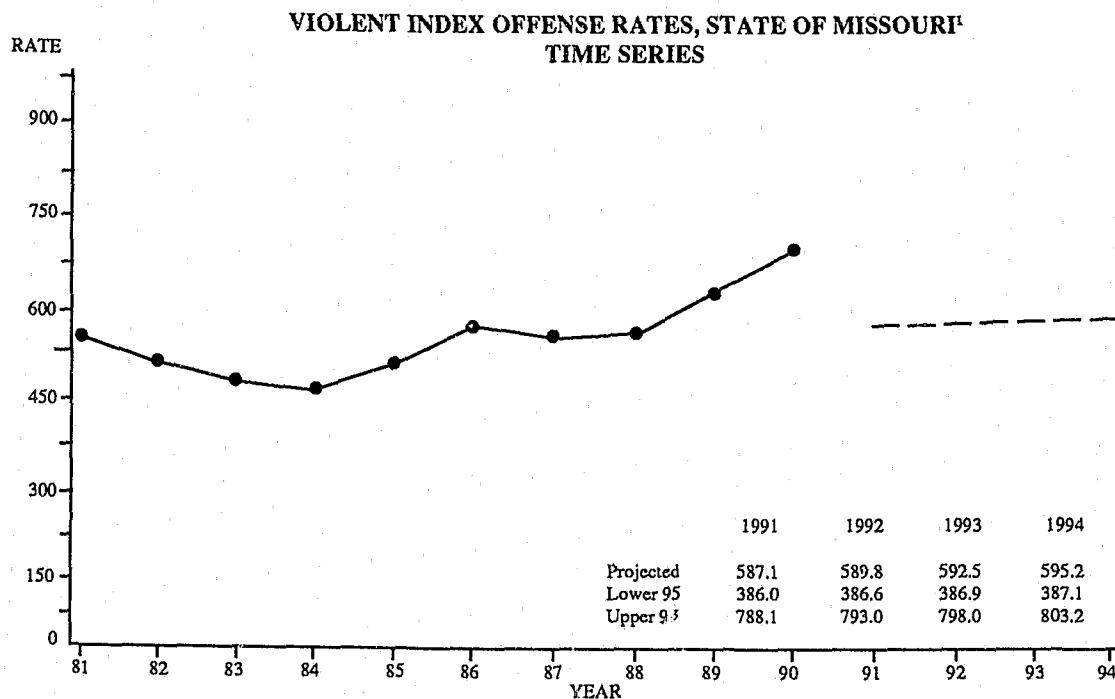


¹Crime Index offense rates are based on estimated crime index offenses occurring in the State of Missouri. They are computed on a per 100,000 population basis. See Glossary for an explanation of the computations used to obtain these rates.

²Because the jurisdictional boundaries of reporting agencies do not coincide with county boundaries in some instances, the following counties were combined: (Clay/Platte/Jackson) and (Scott/New Madrid).

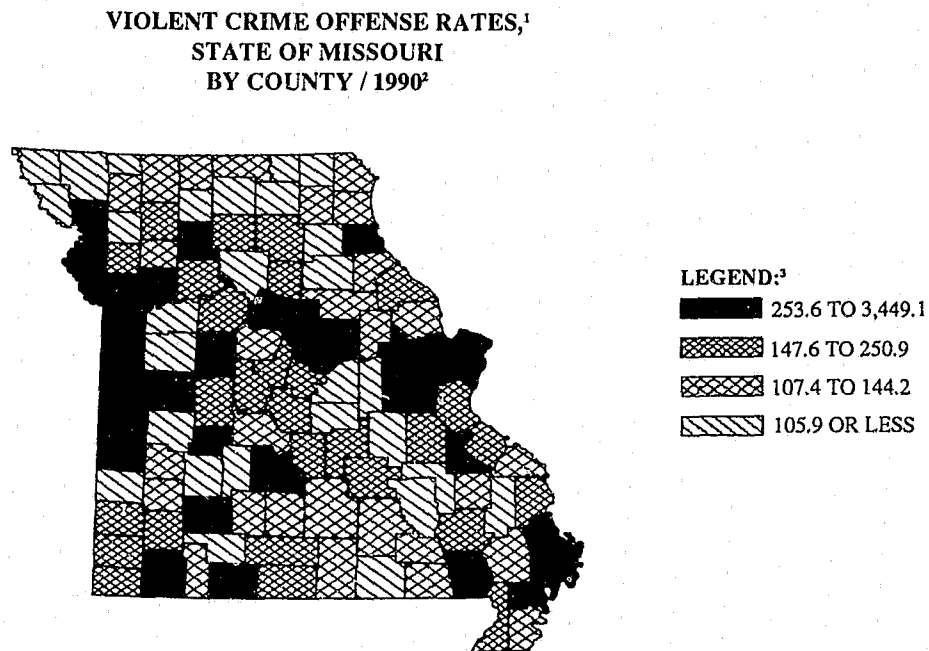
³Legend categories are based on quartiles of counties.

FIGURE 2.0.2



¹Violent Index offense rates are based on estimated violent index offenses occurring in the State of Missouri. They are computed on a per 100,000 population basis. See Glossary for an explanation of the computations used to obtain these rates.

FIGURE 2.0.3



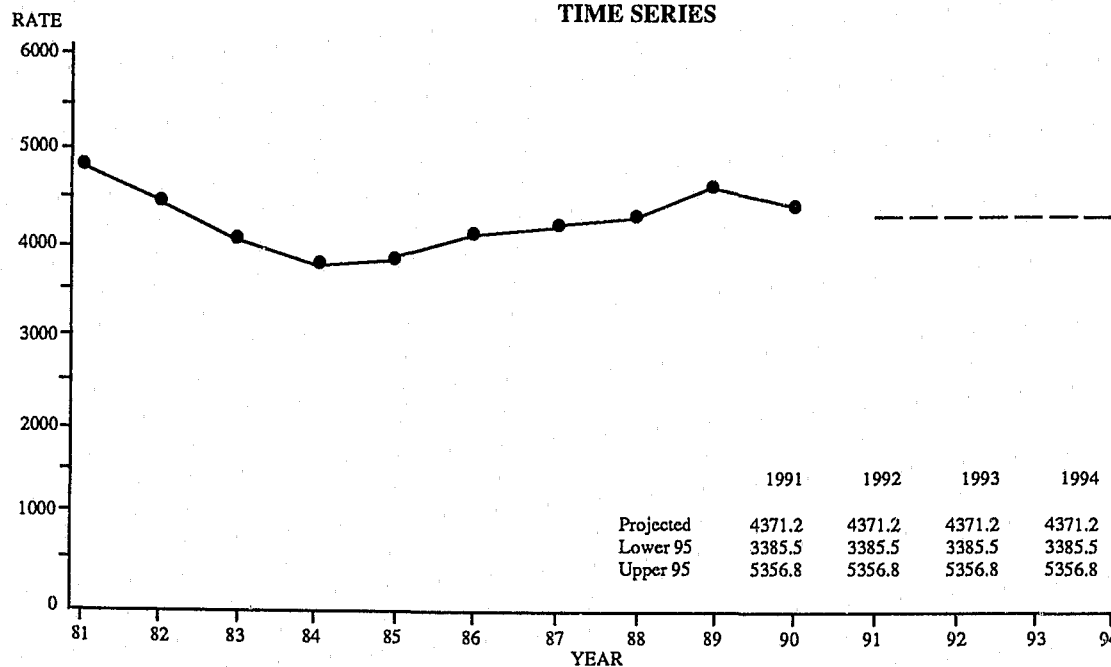
¹Violent Index offense rates are based on estimated violent index offenses occurring in the State of Missouri. They are computed on a per 100,000 population basis. See Glossary for an explanation of the computations used to obtain these rates.

²Because the jurisdictional boundaries of reporting agencies do not coincide with county boundaries in some instances, the following counties were combined: (Clay/Platte/Jackson) and (Scott/New Madrid).

³Legend categories are based on quartiles of counties.

FIGURE 2.0.4

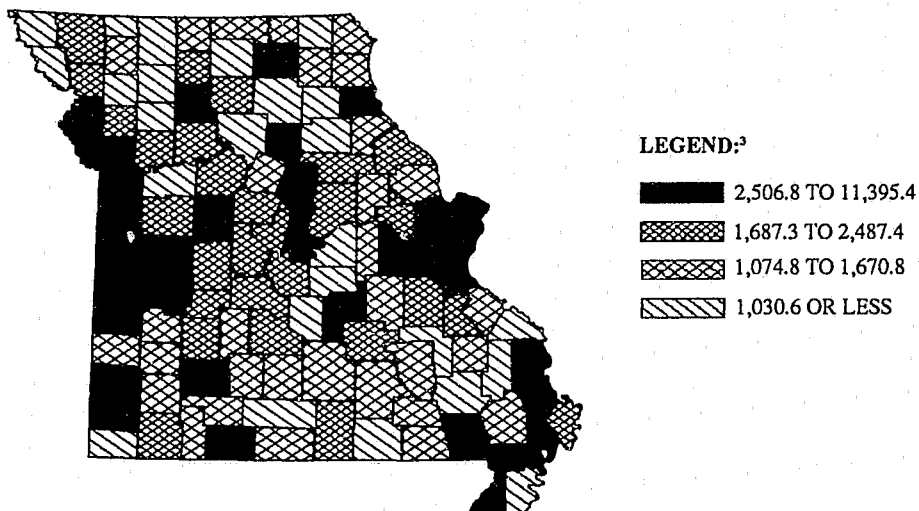
PROPERTY INDEX OFFENSE RATES, STATE OF MISSOURI¹ **TIME SERIES**



¹Property Index offense rates are based on estimated property index offenses occurring in the State of Missouri. They are computed on a per 100,000 population basis. See Glossary for an explanation of the computations used to obtain these rates.

FIGURE 2.0.5

PROPERTY CRIME OFFENSE RATES,¹ **STATE OF MISSOURI** **BY COUNTY / 1990²**



¹Property Index offense rates are based on estimated property index offenses occurring in the State of Missouri. They are computed on a per 100,000 population basis. See Glossary for an explanation of the computations used to obtain these rates.

²Because the jurisdictional boundaries of reporting agencies do not coincide with county boundaries in some instances, the following counties were combined: (Clay/Platte/Jackson) and (Scott/New Madrid).

³Legend categories are based on quartiles of counties.

FIGURE 2.0.6

3.0 MISSOURI ARREST ANALYSIS

A SERIES OF TABLES AND FIGURES SUMMARIZES MISSOURI CRIME INDEX ARREST CLEARANCE RATES, ACTUAL ARREST ACTIVITY ASSOCIATED WITH CRIME INDEX OFFENSES, AND ARREST ACTIVITY ASSOCIATED WITH ALL OTHER CLASSES OF CRIMINAL ACTIVITY REPORTED TO THE UCR SYSTEM. THE PURPOSE OF THESE DISPLAYS IS TO PROVIDE AN OVERVIEW OF CRIMINAL ENFORCEMENT ACTIVITY BEING PERFORMED IN THE STATE OF MISSOURI BY CLASS OF CRIME. IN ADDITION, ARREST RATES ARE DISPLAYED OVER TIME IN ORDER TO OBSERVE TRENDS.

CRIME INDEX CLEARANCE RATES, STATE OF MISSOURI¹

1981 - 1990

OFFENSE	1981	1982	1983	1984	1985	1986	1987	1988	1989	1990
TOTAL INDEX	20.1	20.1	21.7	21.6	22.3	22.3	22.4	22.7	22.4	23.3
VIOLENT INDEX	45.6	46.0	50.0	50.6	51.2	49.7	50.6	51.0	48.4	47.8
PROPERTY INDEX	17.2	17.1	18.3	18.0	18.4	18.4	18.7	19.0	18.8	19.2
MURDER	77.2	70.0	79.5	76.1	77.8	74.7	71.5	88.0	87.5	82.6
FORCIBLE RAPE	55.6	56.7	59.2	54.1	60.0	55.0	57.3	61.4	60.5	59.8
ROBBERY	26.2	25.0	31.0	28.5	28.5	26.6	29.1	28.8	27.3	25.7
AGGRAVATED ASSAULT	58.8	59.2	60.4	61.0	60.6	59.9	60.5	60.6	57.6	57.3
BURGLARY	16.4	14.9	16.9	15.8	15.1	14.6	14.6	16.0	16.2	15.7
THEFT	17.9	18.4	19.2	19.6	20.5	20.7	21.0	20.8	20.2	21.3
MOTOR VEHICLE THEFT	14.7	15.0	15.9	14.1	14.6	15.1	14.5	15.3	16.1	15.4
ARSON	16.8	14.4	22.5	20.7	18.3	19.0	20.9	27.6	20.6	20.8

¹Clearance rates indicate the percent of reported offenses that were cleared by arrest or exceptional means. See Glossary for a further explanation.

TABLE 3.0.1

CRIME INDEX ARRESTS, STATE OF MISSOURI

1981 - 1990

OFFENSE	1981	1982	1983	1984	1985	1986	1987	1988	1989	1990
TOTAL INDEX	50,882	50,845	44,024	43,820	43,650	44,095	43,513	45,372	52,982	55,830
VIOLENT INDEX	11,717	11,986	11,196	12,351	11,094	9,600	9,578	9,754	12,722	14,405
PROPERTY INDEX	39,165	38,859	32,828	31,469	32,556	34,495	33,935	35,618	40,260	41,425
MURDER	490	462	332	313	259	390	362	390	478	494
FORCIBLE RAPE	1,060	1,031	978	997	981	775	760	708	766	778
ROBBERY	2,958	2,901	2,535	2,161	2,028	2,116	2,296	2,218	2,700	2,936
AGGRAVATED ASSAULT	7,209	7,592	7,351	8,880	7,826	6,319	6,160	6,438	8,778	10,197
BURGLARY	10,906	10,374	8,189	7,056	6,717	7,034	6,696	6,697	7,450	7,224
THEFT	26,152	26,460	23,244	22,686	23,849	24,875	24,926	25,984	29,065	30,304
MOTOR VEHICLE THEFT	1,683	1,631	1,099	1,407	1,689	2,210	1,963	2,556	3,417	3,527
ARSON	424	394	296	320	301	376	350	381	328	370
NUMBER OF REPORTING AGENCIES ¹	215	226	228	226	241	233	231	238	241	240

¹Number of law enforcement agencies that reported arrest activity to the UCR Program in a given year.

TABLE 3.0.2

CRIME INDEX ARREST RATES, STATE OF MISSOURI¹

1981 - 1990

OFFENSE	1981	1982	1983	1984	1985	1986	1987	1988	1989	1990
TOTAL INDEX	1,206.7	1,189.3	1,158.1	1,158.6	1,106.1	1,152.2	1,130.9	1,112.6	1,278.6	1,349.8
VIOLENT INDEX	277.9	280.4	294.5	326.6	281.1	250.8	248.9	239.2	307.0	348.3
PROPERTY INDEX	928.8	909.0	863.6	832.1	824.9	901.3	882.0	873.4	971.6	1,001.5
MURDER	11.6	10.8	8.7	8.3	6.6	10.2	9.4	9.6	11.5	11.9
FORCIBLE RAPE	25.1	24.1	25.7	26.4	24.9	20.3	19.8	17.4	18.5	18.8
ROBBERY	70.2	67.9	66.7	57.1	51.4	55.3	59.7	54.4	65.2	71.0
AGGRAVATED ASSAULT	171.0	177.6	193.4	234.8	198.3	165.1	160.1	157.9	211.8	246.5
BURGLARY	258.6	242.7	215.4	186.6	170.2	183.8	174.0	164.2	179.8	174.7
THEFT	620.2	618.9	611.5	599.8	604.3	650.0	547.8	637.2	701.4	732.7
MOTOR VEHICLE THEFT	39.9	38.2	28.9	37.2	42.8	57.7	51.0	62.7	82.5	85.3
ARSON	10.1	9.2	7.8	8.5	7.6	9.8	9.1	9.3	7.9	8.9

¹Crime Index arrest rates relate to arrests made for crime index offenses reported by law enforcement agencies in the State of Missouri. They are computed on a per 100,000 population basis. See Glossary for a further explanation of the computations used to obtain these rates. Due to a change in computation methods, crime index arrest rates in this Digest will vary slightly when compared to arrest rates found in earlier editions.

TABLE 3.0.3

TOTAL PERSONS ARRESTED BY MOST SERIOUS OFFENSE, STATE OF MISSOURI

1990

OFFENSES CHARGED	TOTAL	JUVENILE	ADULT	MALES	FEMALES
TOTAL ¹	264,394	36,693	227,701	213,987	50,407
Murder & Non-negligent Manslaughter	494	91	403	441	53
Forcible Rape	778	144	634	764	14
Robbery	2,936	654	2,282	2,687	249
Aggravated Assault	10,197	1,289	8,908	8,578	1,619
Burglary	7,224	2,070	5,154	6,686	538
Theft	30,304	7,608	22,696	21,263	9,041
Motor Vehicle Theft	3,527	1,645	1,882	3,169	358
Arson	370	124	246	323	47
Violent Crime ²	14,405	2,178	12,227	12,470	1,935
Property Crime ³	41,425	11,447	29,978	31,441	9,984
CRIME INDEX TOTAL ⁴	55,830	13,625	42,205	43,911	11,919
Other Assaults	29,564	3,167	26,397	25,627	3,937
Forgery & Counterfeiting	1,859	133	1,726	1,178	681
Fraud	3,516	99	3,417	2,077	1,439
Embezzlement	28	3	25	19	9
Stolen Property	1,932	349	1,583	1,647	285
Vandalism	8,479	2,519	5,960	7,561	918
Weapons	6,588	901	5,687	5,901	687
Prostitution	2,775	39	2,736	1,637	1,138
Sex Offenses	2,634	377	2,257	2,500	134
Drug Abuse Violations	13,761	1,279	12,482	11,585	2,176
Gambling	259	17	242	250	9
Offenses Against Family and Children	1,991	42	1,949	1,600	391
Driving under Influence	25,130	332	24,798	21,910	3,220
Liquor Laws	9,294	1,878	7,416	7,839	1,455
Drunkenness	1,366	50	1,316	1,225	141
Disorderly Conduct	11,903	1,273	10,630	9,419	2,484
Vagrancy	361	30	331	308	53
Other Offenses (except Traffic)	81,746	5,202	76,544	64,926	16,820
Suspicion ⁴	966	137	829	809	157
Curfew and Loitering	1,811	1,811	0	1,260	551
Runaways	3,567	3,567	0	1,607	1,960

¹Arrests for suspicion are not included in Total.

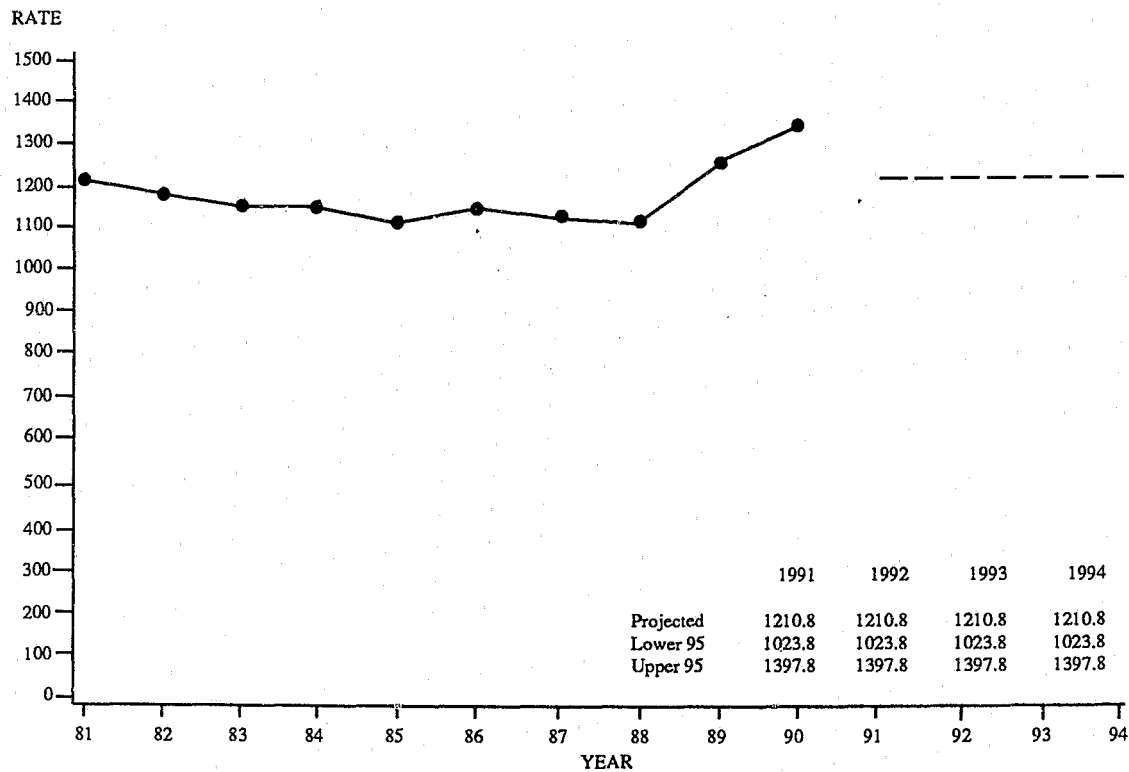
²Violent crimes include arrests for murder, forcible rape, robbery, and aggravated assault.

³Property crimes include arrests for burglary, theft, motor vehicle theft, and arson.

⁴Includes arson.

TABLE 3.0.4

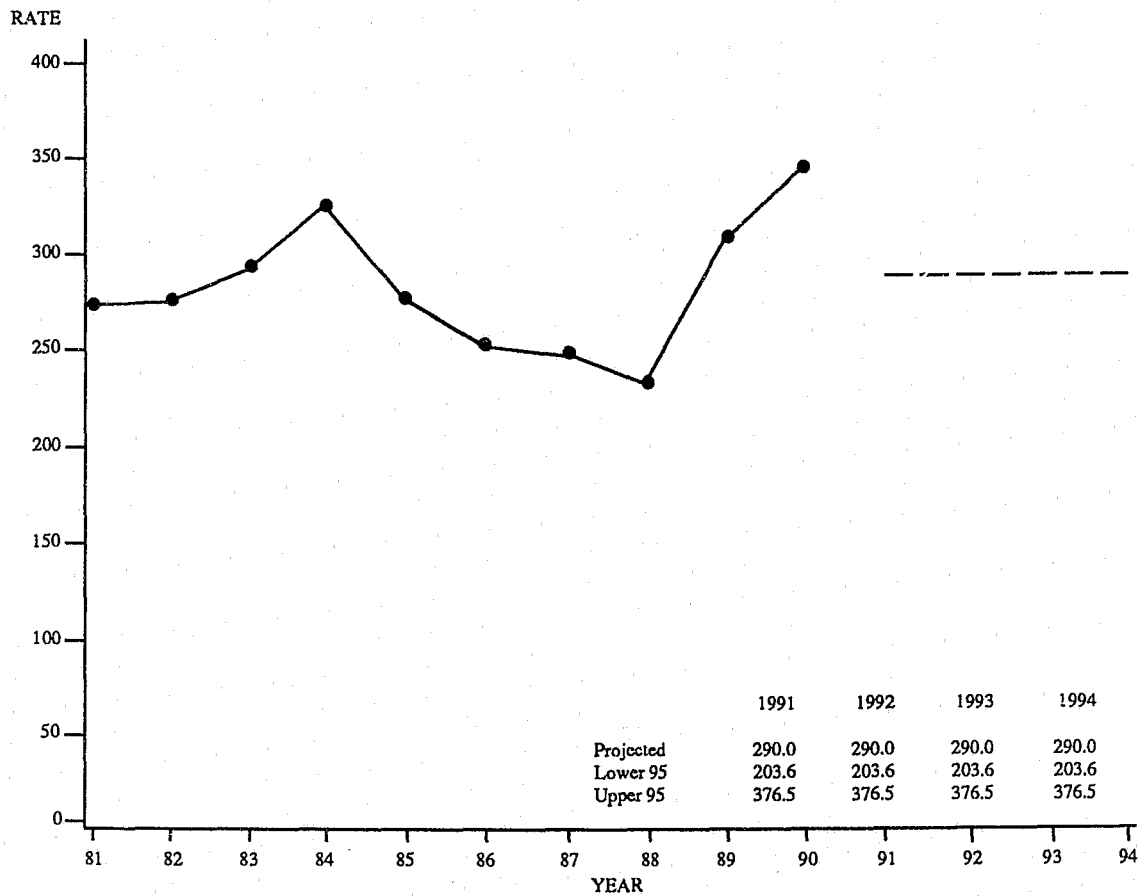
CRIME INDEX ARREST RATES, STATE OF MISSOURI TIME SERIES



¹Crime Index arrest rates relate to arrests made for crime index offenses reported by law enforcement agencies in the State of Missouri. They are computed on a per 100,000 population basis. See Glossary for an explanation of the computations used to obtain these rates.

FIGURE 3.0.1

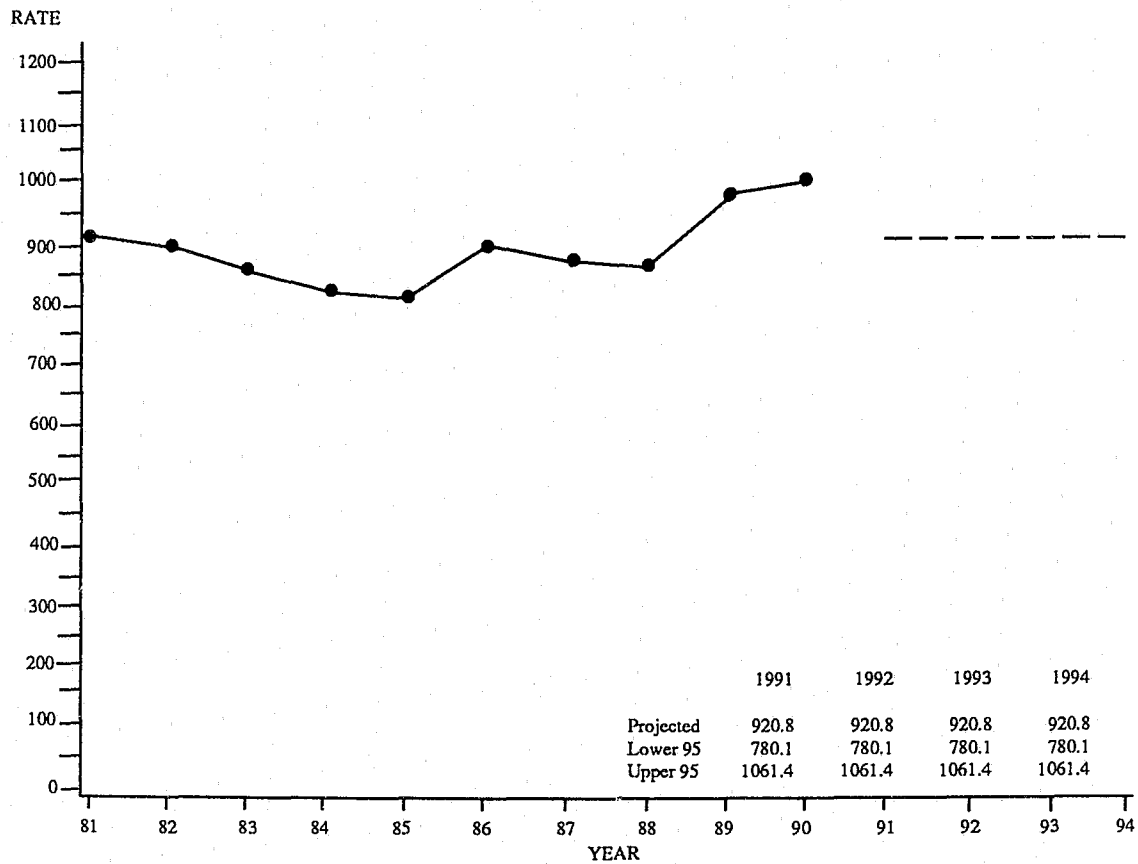
VIOLENT INDEX ARREST RATES, STATE OF MISSOURI¹ **TIME SERIES**



¹Violent Index arrest rates relate to arrests made for violent index offenses reported by law enforcement agencies in the State of Missouri. They are computed on a per 100,000 population basis. See Glossary for an explanation of the computations used to obtain these rates.

FIGURE 3.0.2

PROPERTY INDEX ARREST RATES, STATE OF MISSOURI¹ **TIME SERIES**



¹Property Index arrest rates relate to arrests made for property index offenses reported by law enforcement agencies in the State of Missouri. They are computed on a per 100,000 population basis. See Glossary for an explanation of the computations used to obtain these rates.

FIGURE 3.0.3

4.0 MISSOURI DETAIL CRIME INDEX ANALYSIS

A SERIES OF TABLES AND FIGURES SUMMARIZES CRIME ACTIVITY, CLEARANCE RATES, CRIME PATTERNS, AND ARREST ACTIVITY ASSOCIATED WITH SPECIFIC TYPES OF CRIME INDEX OFFENSES COMMITTED IN THE STATE OF MISSOURI. DETAIL ANALYSIS IS PROVIDED ON THE FOLLOWING TYPES OF CRIME:

- MURDER
- FORCIBLE RAPE
- ROBBERY
- AGGRAVATED ASSAULT
- BURGLARY
- THEFT
- MOTOR VEHICLE THEFT
- ARSON

4.1 MURDER

DEFINITION

Murder and non-negligent manslaughter are the willful killing of one human being by another. Not included in this offense classification are deaths caused by negligence, suicide, accident, justifiable homicide (the killing of a felon by a peace officer in the line of duty or a private citizen during the commission of a felony), and attempts to murder (these are classified as aggravated assaults). Murder offenses are reported on a per victim basis.

1990 SUMMARY ANALYSIS

- There were 427 murders reported during 1990. It is estimated that a total of 449 murders actually occurred on a statewide basis. Based on this estimate, this was a 9.2 percent increase from 1989.
- It is estimated that one murder occurred every 19.5 hours.
- Murder accounted for 0.2 percent of the Total Crime Index and 1.2 percent of all Violent Index offenses.
- The murder rate per 100,000 population was 8.8 in 1990 compared to 8.0 in 1989.
- In 1990, 82.6 of every 100 murders were cleared by arrest or exceptional means.
- 494 persons were reported arrested for murder in 1990. Of these, 81.6 percent were adults and 18.4 percent were juveniles.
- Of the murder victims reported, 75.8 percent were male and 24.2 percent were female. Of the total, 89.7 percent were adults, 9.6 percent were juveniles, and 0.7 percent had an unknown age.
- A firearm was used by 66.3 percent of the offenders associated with murders and 12.6% of the offenders used a knife.

MURDER SUMMARY: 1989 and 1990

Year	Number of Estimated Offenses	Rate per 100,000 Population
1989	411	8.0
1990	449	8.8
Percent of Change	+ 9.2	+10.0

MURDER RATES BY POPULATION GROUP

1990

POPULATION GROUP	REPORTED	ESTIMATED	% OF TOTAL	RATE PER 100,000 POPULATION
<u>Police Agencies</u>				
250,000 +	298	298	66.4	35.8
100,000 - 249,999	8	8	1.8	3.2
50,000 - 99,999	9	9	2.0	3.6
25,000 - 49,999	14	14	3.1	3.2
10,000 - 24,999	29	30	6.7	5.3
2,500 - 9,999	12	14	3.2	3.0
Under 2,500	2	3	0.6	5.8
Sheriff's Dept./County Police Suburban	27	29	6.4	2.8
Sheriff's Dept. -- Rural	28	44	9.8	3.5
TOTAL	427	449	100.0	8.8

TABLE 4.1.1

MURDER CLEARANCE RATES

1989 - 1990

YEAR	PERCENT CLEARED	% OF CLEARED OFFENSES ONLY JUVENILES
1989	87.5	11.2
1990	82.6	10.1

TABLE 4.1.2

MURDER ARRESTS BY SEX AND AGE GROUP

1990

SEX	AGE GROUPS	REPORTED	% OF TOTAL MURDER ARRESTS
MALE	ADULTS	353	71.5
	JUVENILES	88	17.8
FEMALE	ADULTS	50	10.1
	JUVENILES	3	0.6
TOTAL		494	100.0

TABLE 4.1.3

MURDER ARRESTS BY RACE AND AGE GROUP

1990

RACE	AGE GROUPS	REPORTED	% OF TOTAL MURDER ARRESTS
WHITE	ADULTS	104	21.3
	JUVENILES	17	3.5
BLACK	ADULTS	293	60.0
	JUVENILES	74	15.2
UNKNOWN		6	-
TOTAL		494	100.0

TABLE 4.1.4

MURDER VICTIMS BY SEX AND AGE GROUP

1990

SEX	AGE GROUPS	REPORTED ¹	% OF TOTAL
MALE	ADULTS	294	69.0
	JUVENILES	26	6.1
	UNKNOWN	3	0.7
FEMALE	ADULTS	88	20.7
	JUVENILES	15	3.5
	UNKNOWN	0	0.0
TOTAL		426	100.0

¹Victim data were obtained from the UCR Supplemental Homicide Report. The total number of victims in this table may not exactly correspond to the 427 murders reported in 1990 because law enforcement agencies report murder offenses on a separate form entitled the Return A. Discrepancies can occur as a result of an agency inadvertently updating or adjusting only one of these reports but not the other.

TABLE 4.1.5

MURDER VICTIMS BY RACE AND AGE GROUP

1990

RACE	AGE GROUPS	REPORTED ¹	% OF TOTAL
WHITE	ADULTS	152	35.7
	JUVENILES	8	1.9
	UNKNOWN	0	0.0
BLACK	ADULTS	227	53.3
	JUVENILES	33	7.7
	UNKNOWN	3	0.7
UNKNOWN	ADULTS	3	0.7
	JUVENILES	0	0.0
	UNKNOWN	0	-
TOTAL		426	100.0

¹Victim data were obtained from the UCR Supplemental Homicide Report. The total number of victims in this table may not exactly correspond to the 427 murders reported in 1990 because law enforcement agencies report murder offenses on a separate form entitled the Return A. Discrepancies can occur as a result of an agency inadvertently updating or adjusting only one of these reports but not the other.

TABLE 4.1.6

TYPE OF WEAPON USED BY OFFENDERS IN MURDERS

1990

TYPE	REPORTED ¹	% OF TOTAL
FIREARM	311	66.3
KNIFE	59	12.6
BLUNT OBJECT	21	4.5
PERSONAL WEAPONS (Hands, Feet, etc.)	24	5.1
POISON	1	0.2
FIRE	3	0.6
STRANGULATION	4	0.9
ASPHYXIATION	4	0.9
OTHER	42	9.0
TOTAL	469	100.0

¹The 469 offenders in this table are directly associated with 426 victims murdered in 1990. Victim and offender data were both obtained from the UCR Supplemental Homicide Report.

TABLE 4.1.7

CIRCUMSTANCES WITH MURDERS

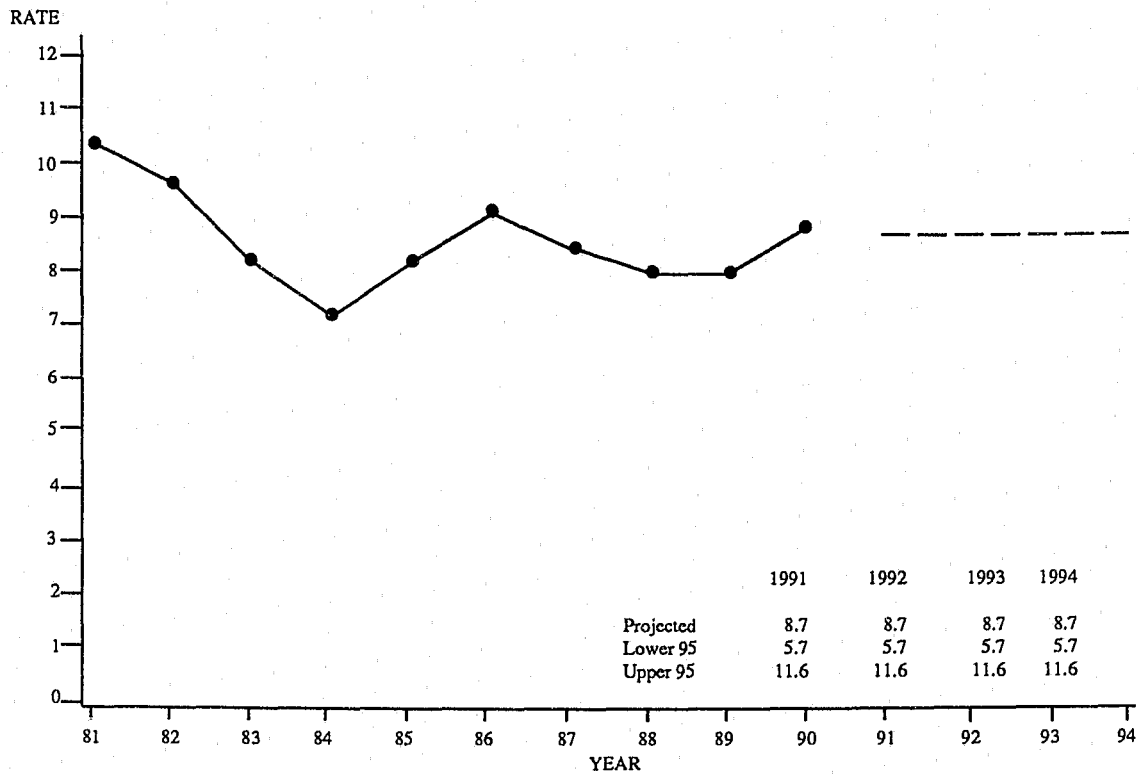
1990

TYPE	CIRCUMSTANCE	REPORTED ¹	% OF TOTAL
FELONY RELATED	RAPE	4	1.8
	ROBBERY	34	15.0
	BURGLARY	4	1.8
	MOTOR VEHICLE THEFT	1	0.4
	ARSON	1	0.4
	OTHER SEX	1	0.4
	NARCOTICS LAWS	9	4.0
	SUSPECTED FELONY TYPE UNKNOWN	3	1.3
NOT FELONY RELATED	LOVER'S TRIANGLE	1	0.4
	BRAWL INFLUENCED BY ALCOHOL	2	0.9
	BRAWL INFLUENCED BY DRUGS	1	0.4
	ARGUMENT OVER MONEY/PROPERTY	4	1.8
	OTHER ARGUMENTS	108	47.8
	GANGLAND KILLING	2	0.9
	INSTITUTIONAL KILLINGS	1	0.4
	OTHER	50	22.1
UNKNOWN		180	-
TOTAL		406	100.0

¹The 406 circumstances in this table are directly associated with the first victim and first offender in a murder incident. Victim and offender data were both obtained from the UCR Supplemental Homicide Report.

TABLE 4.1.8

MURDER OFFENSE RATES, STATE OF MISSOURI¹ **TIME SERIES**



¹Murder offense rates are based on estimated murder offenses occurring in the State of Missouri. They are computed on a per 100,000 population basis. See Glossary for an explanation of the computations used to obtain these rates.

FIGURE 4.1.1

4.2 FORCIBLE RAPE

DEFINITION

Forcible rape is the carnal knowledge of a female forcibly and against her will. Assaults or attempts to commit rape by force or threat of force also are included. However, statutory rape (without force), sex attacks on males, and other types of sex offenses are not included in this category. Forcible rape offenses are reported on a per victim basis.

1990 SUMMARY ANALYSIS

- There were 1,578 rapes reported during 1990. It is estimated that a total of 1,667 rapes actually occurred on a statewide basis. Based on this estimate, this was a 5.0 percent increase from 1989.
- It is estimated that one rape occurred every 5.3 hours.
- Rape accounted for 0.6 percent of the Total Crime Index and 4.6 percent of all Violent Index offenses.
- The rape rate per 100,000 population was 32.6 in 1990 compared to 30.8 in 1989.
- Rape by force constituted 83.1 percent of the estimated rapes while attempted rapes accounted for 16.9 percent.
- In 1990, 59.8 of every 100 rapes were cleared by arrest or exceptional means.
- 778 persons were reported arrested for rape in 1990.
- Of those persons arrested for rape in 1990, 81.5 percent were adults and 18.5 percent were juveniles.

FORCIBLE RAPE SUMMARY: 1989 and 1990

Year	Number of Estimated Offenses	Rate per 100,000 Population
1989	1,588	30.8
1990	1,667	32.6
Percent of Change	+ 5.0	+ 5.8

FORCIBLE RAPE RATES BY POPULATION GROUP

1990

POPULATION GROUP	REPORTED	ESTIMATED	% OF TOTAL	RATE PER 100,000 POPULATION
<u>Police Agencies</u>				
250,000 +	848	848	50.9	102.0
100,000 - 249,999	85	85	5.1	33.6
50,000 - 99,999	61	61	3.7	24.7
25,000 - 49,999	85	85	5.1	19.7
10,000 - 24,999	125	132	7.9	23.5
2,500 - 9,999	81	101	6.0	20.9
Under 2,500	18	24	1.4	49.7
Sheriff's Dept./County Police Suburban	196	209	12.6	20.6
Sheriff's Dept. -- Rural	79	122	7.3	9.8
TOTAL	1,578	1,667	100.0	32.6

TABLE 4.2.1

ACTUAL/ATTEMPTED RAPE OFFENSES

1990

TYPE	REPORTED	ESTIMATED	% OF TOTAL
FORCIBLE RAPE	1,311	1,383	83.1
ATTEMPTED RAPE	266	282	16.9
UNKNOWN	1	2	-
TOTAL	1,578	1,667	100.0

TABLE 4.2.2

FORCIBLE RAPE CLEARANCE RATES

1989 - 1990

YEAR	PERCENT CLEARED	% OF CLEARED OFFENSES ONLY JUVENILES
1989	60.5	11.2
1990	59.8	12.9

TABLE 4.2.3

FORCIBLE RAPE ARRESTS BY SEX AND AGE GROUP

1990

SEX	AGE GROUPS	REPORTED	% OF TOTAL RAPE ARRESTS
MALE	ADULTS	624	80.2
	JUVENILES	140	18.0
FEMALE	ADULTS	10	1.3
	JUVENILES	4	0.5
TOTAL		778	100.0

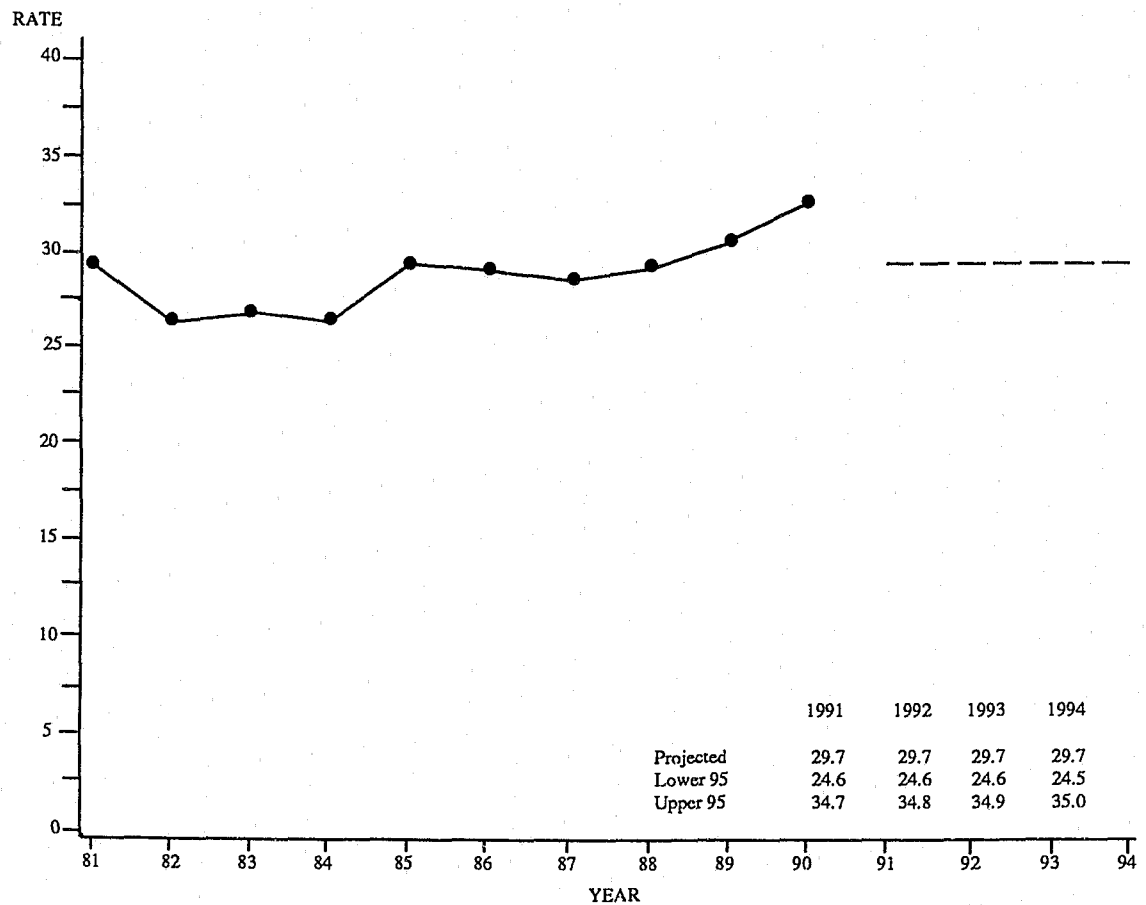
TABLE 4.2.4

FORCIBLE RAPE ARRESTS BY RACE AND AGE GROUP**1990**

RACE	AGE GROUPS	REPORTED	% OF TOTAL RAPE ARRESTS
WHITE	ADULTS	258	33.9
	JUVENILES	46	6.0
BLACK	ADULTS	360	47.3
	JUVENILES	95	12.5
AMERICAN INDIAN	ADULTS	2	0.3
	JUVENILES	0	0.0
UNKNOWN		17	-
TOTAL		778	100.0

TABLE 4.2.5

RAPE OFFENSE RATES, STATE OF MISSOURI¹ **TIME SERIES**



¹Rape offense rates are based on estimated rape offenses occurring in the State of Missouri. They are computed on a per 100,000 population basis. See Glossary for an explanation of the computations used to obtain these rates.

FIGURE 4.2.1

4.3 ROBBERY

DEFINITION

Robbery is the taking or attempting to take anything of value from the care, custody, or control of a person or persons by force or threat of force or violence and/or by putting the victim in fear. Robbery involves a theft or larceny but is aggravated by the element of force or threat of force. Robbery offenses are reported on an incident-by-incident basis.

1990 SUMMARY ANALYSIS

- There were 10,971 robberies reported during 1990. It is estimated that a total of 11,106 robberies actually occurred on a statewide basis. Based on this estimate, this was a 10.3 percent increase over 1989.
- It is estimated that one robbery occurred every 47.3 minutes.
- Robbery accounted for 4.2 percent of the Total Crime Index and 30.3 percent of all Violent Index offenses.
- The robbery rate per 100,000 population was 217.0 in 1990 compared to 195.2 in 1989.
- It is estimated that in 40.1 percent of all robberies, a firearm was used.
- Street robbery was the most prevalent class of robbery accounting for an estimated 69.2 percent of all such offenses.
- It is estimated that \$7,542,973 in property/cash was stolen in 1990 due to this offense.
- In 1990, 25.7 of every 100 robberies were cleared by arrest or exceptional means.
- 2,936 persons were reported arrested for robbery in 1990. Of these, 77.7 percent were adults and 22.3 percent were juveniles.

ROBBERY SUMMARY: 1989 and 1990

Year	Number of Estimated Offenses	Rate per 100,000 Population
1989	10,068	195.2
1990	11,106	217.0
Percent of Change	+ 10.3	+ 11.2

ROBBERY RATES BY POPULATION GROUP

1990

POPULATION GROUP	REPORTED	ESTIMATED	% OF TOTAL	RATE PER 100,000 POPULATION
<u>Police Agencies</u>				
250,000 +	9,200	9,200	82.8	1,106.6
100,000 - 249,999	243	243	2.2	96.1
50,000 - 99,999	171	171	1.5	69.3
25,000 - 49,999	305	305	2.7	70.8
10,000 - 24,999	455	484	4.4	86.0
2,500 - 9,999	233	278	2.5	57.7
Under 2,500	41	55	0.5	115.2
Sheriff's Dept./County Police Suburban	277	296	2.7	29.1
Sheriff's Dept. -- Rural	46	74	0.7	5.9
TOTAL	10,971	11,106	100.0	217.0

TABLE 4.3.1

TYPE OF WEAPON USED IN ROBBERIES

1990

TYPE	REPORTED	ESTIMATED	% OF TOTAL
FIREARMS	4,408	4,456	40.1
KNIVES OR CUTTING INSTRUMENTS	934	948	8.5
OTHER WEAPONS	998	1,007	9.1
STRONG ARMED (Hands, Feet, etc.)	4,631	4,693	42.3
UNKNOWN	0	2	-
TOTAL	10,971	11,106	100.0

TABLE 4.3.2

ROBBERY LOSS/LOCATION

1990

TYPE	REPORTED	ESTIMATED	% OF TOTAL	\$ LOSS/ INCIDENT
SERVICE STATION	310	325	3.0	\$299.30
CONVENIENCE STORE	391	415	3.8	214.23
BANK	58	60	0.5	4,005.92
OTHER COMMERCIAL	929	961	8.8	868.64
STREET/HIGHWAY	7,504	7,584	69.2	658.40
RESIDENCE	1,017	1,049	9.6	818.19
MISCELLANEOUS	541	565	5.2	669.47
UNKNOWN	221	147	-	-
TOTAL	10,971	11,106	100.0	679.18
1990 TOTAL STATE LOSS ESTIMATE² = \$7,542,973				

¹The dollar loss per incident was calculated using only those robbery offenses for which law enforcement agencies reported an actual monetary loss.

²This estimate of property loss was calculated by multiplying the total dollar loss per offense by the estimated number of such offenses that occurred in 1990.

TABLE 4.3.3

ROBBERY CLEARANCE RATES

1989 - 1990

YEAR	PERCENT CLEARED	% OF CLEARED OFFENSES ONLY JUVENILES
1989	27.3	12.7
1990	25.7	15.2

TABLE 4.3.4

ROBBERY ARRESTS BY SEX AND AGE GROUP

1990

SEX	AGE GROUPS	REPORTED	% OF TOTAL ROBBERY ARRESTS
MALE	ADULTS	2,062	70.2
	JUVENILES	625	21.3
FEMALE	ADULTS	220	7.5
	JUVENILES	29	1.0
TOTAL		2,936	100.0

TABLE 4.3.5

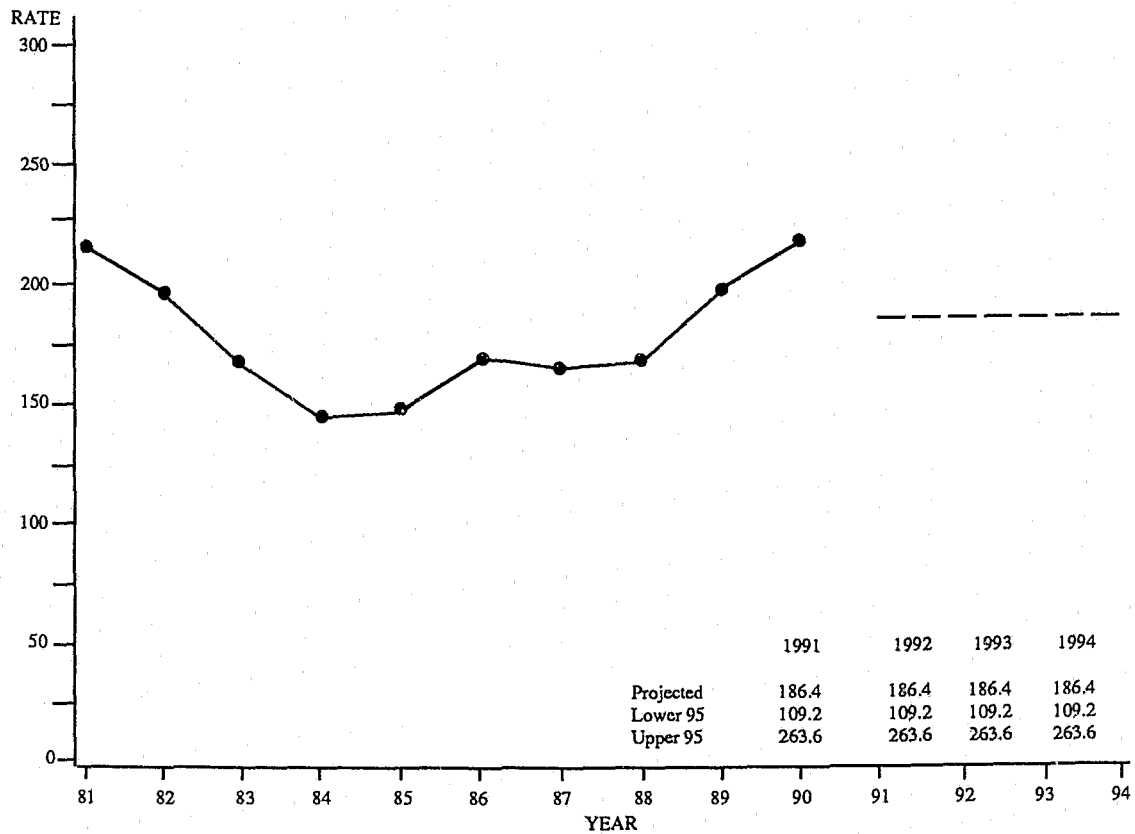
ROBBERY ARRESTS BY RACE AND AGE GROUP

1990

RACE	AGE GROUPS	REPORTED	% OF TOTAL ROBBERY ARRESTS
WHITE	ADULTS	549	18.8
	JUVENILES	118	4.0
BLACK	ADULTS	1,718	58.9
	JUVENILES	529	18.1
AMERICAN INDIAN	ADULTS	2	0.1
	JUVENILES	0	0.0
ASIAN	ADULTS	1	0.0
	JUVENILES	1	0.0
UNKNOWN		18	-
TOTAL		2,936	100.0

TABLE 4.3.6

ROBBERY OFFENSE RATES, STATE OF MISSOURI¹ **TIME SERIES**



¹Robbery offense rates are based on estimated robbery offenses occurring in the State of Missouri. They are computed on a per 100,000 population basis. See Glossary for an explanation of the computations used to obtain these rates.

FIGURE 4.3.1

4.4 AGGRAVATED ASSAULT

DEFINITION

Aggravated assault is an unlawful attack or attempted attack by one person upon another for the purpose of inflicting severe or aggravated bodily injury. This type of assault usually is accompanied by the use of a weapon or by means likely to produce death or great bodily harm. All assaults or attempted assaults by one person upon another with the intent to kill, maim, or inflict severe bodily injury with the use of any dangerous weapon are classified under this category of offense. Aggravated assault offenses are reported on a per victim basis.

1990 SUMMARY ANALYSIS

- There were 22,381 aggravated assaults reported in 1990. It is estimated that a total of 23,409 aggravated assaults actually occurred on a statewide basis. Based on this estimate, this was a 13.7 percent increase over 1989.
- It is estimated that one aggravated assault occurred every 22.5 minutes.
- Aggravated assault accounted for 8.9 percent of the Total Crime Index and 63.9 percent of all Violent Index offenses.
- The aggravated assault rate per 100,000 population was 457.5 in 1990 compared to 399.1 in 1989.
- It is estimated that a firearm was used in 32.3 percent of the cases.
- In 1990, 57.3 of every 100 aggravated assaults were cleared by arrest or exceptional means.
- 10,197 persons were reported arrested for aggravated assault in 1990. Of these, 87.3 percent were adults and 12.7 percent were juveniles.

AGGRAVATED ASSAULT SUMMARY: 1989 and 1990

Year	Number of Estimated Offenses	Rate per 100,000 Population
1989	20,591	399.1
1990	23,409	457.5
Percent of Change	+ 13.7	+ 14.6

AGGRAVATED ASSAULT RATES BY POPULATION GROUP

1990

POPULATION GROUP	REPORTED	ESTIMATED	% OF TOTAL	RATE PER 100,000 POPULATION
<u>Police Agencies</u>				
250,000 +	14,423	14,423	61.6	1,734.8
100,000 - 249,999	755	755	3.2	298.7
50,000 - 99,999	935	935	4.0	379.0
25,000 - 49,999	750	750	3.2	174.1
10,000 - 24,999	1,105	1,161	5.0	206.4
2,500 - 9,999	1,132	1,382	5.9	286.8
Under 2,500	234	305	1.3	637.4
Sheriff's Dept./County Police Suburban	2,067	2,218	9.5	218.0
Sheriff's Dept. -- Rural	980	1,480	6.3	118.8
TOTAL	22,381	23,409	100.0	457.5

TABLE 4.4.1

TYPE OF WEAPON USED IN AGGRAVATED ASSAULTS

1990

TYPE	REPORTED	ESTIMATED	% OF TOTAL
FIREARMS	7,430	7,562	32.3
KNIVES OR CUTTING INSTRUMENTS	3,758	3,851	16.4
OTHER WEAPONS	7,044	7,215	30.8
HANDS, FEET, ETC./ AGGRAVATED INJURY	4,134	4,781	20.4
UNKNOWN	15	0	-
TOTAL	22,381	23,409	100.0

TABLE 4.4.2

AGGRAVATED ASSAULT CLEARANCE RATES

1989 - 1990

YEAR	PERCENT CLEARED	% OF CLEARED OFFENSES ONLY JUVENILES
1989	57.6	13.0
1990	57.3	12.1

TABLE 4.4.3

AGGRAVATED ASSAULT ARRESTS BY SEX AND AGE GROUP

1990

SEX	AGE GROUPS	REPORTED	% OF TOTAL ASSAULT ARRESTS
MALE	ADULTS	7,499	73.5
	JUVENILES	1,079	10.6
FEMALE	ADULTS	1,409	13.8
	JUVENILES	210	2.1
TOTAL		10,197	100.0

TABLE 4.4.4

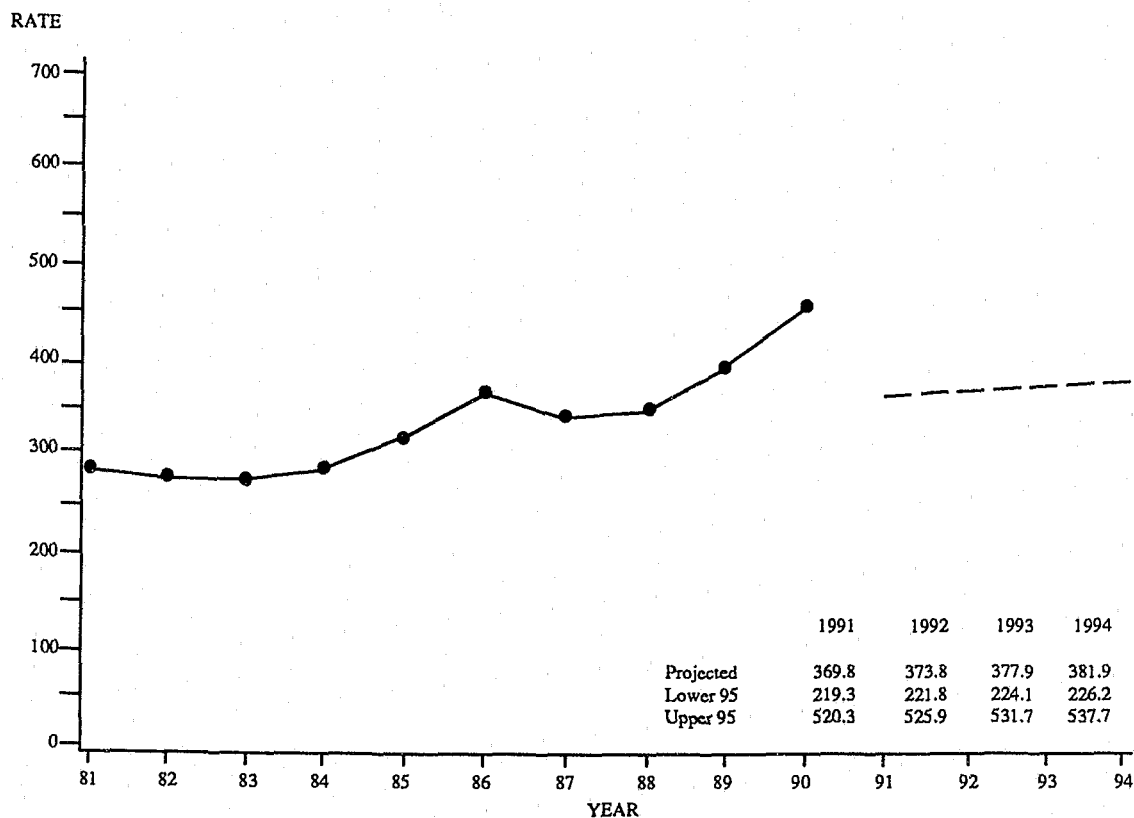
AGGRAVATED ASSAULT ARRESTS BY RACE AND AGE GROUP

1990

RACE	AGE GROUPS	REPORTED	% OF TOTAL ASSAULT ARRESTS
WHITE	ADULTS	3,597	35.8
	JUVENILES	426	4.2
BLACK	ADULTS	5,177	51.6
	JUVENILES	818	8.1
AMERICAN INDIAN	ADULTS	7	0.1
	JUVENILES	0	0.0
ASIAN	ADULTS	11	0.1
	JUVENILES	2	0.0
UNKNOWN		159	-
TOTAL		10,197	100.0

TABLE 4.4.5

AGGRAVATED ASSAULT OFFENSE RATES, STATE OF MISSOURI¹ **TIME SERIES**



¹Aggravated assault offense rates are based on estimated aggravated assault offenses occurring in the State of Missouri. They are computed on a per 100,000 population basis. See Glossary for an explanation of the computations used to obtain these rates.

FIGURE 4.4.1

4.5 BURGLARY

DEFINITION

Burglary is the unlawful entry or attempted unlawful entry of a structure to commit a felony or a theft. Burglary offenses are reported on an incident-by-incident basis.

1990 SUMMARY ANALYSIS

- There were 51,013 burglaries reported during 1990. It is estimated that a total of 54,412 burglaries actually occurred on a statewide basis. Based on this estimate, this was a 7.2 percent decrease over 1989.
- It is estimated that one burglary occurred every 9.7 minutes.
- Burglary accounted for 20.6 percent of the Total Crime Index and 23.9 percent of all Property Index offenses.
- The burglary rate per 100,000 population was 1,063.3 in 1990 compared to 1,136.6 in 1989.
- It is estimated that 69.2 percent of all burglaries involved a residential dwelling and 68.0 percent were accomplished by forcible entry.
- It is estimated that \$57,769,765 in property/cash was stolen in 1990 due to this offense.
- In 1990, 15.7 of every 100 burglaries were cleared by arrest or exceptional means.
- 7,224 persons were reported arrested for burglary in 1990. Of these, 71.3 percent were adults and 28.6 percent were juveniles.

BURGLARY SUMMARY: 1989 and 1990

Year	Number of Estimated Offenses	Rate per 100,000 Population
1989	58,639	1,136.6
1990	54,412	1,063.3
Percent of Change	- 7.2	- 6.4

BURGLARY RATES BY POPULATION GROUP

1990

POPULATION GROUP	REPORTED	ESTIMATED	% OF TOTAL	RATE PER 100,000 POPULATION
<u>Police Agencies</u>				
250,000 +	23,171	23,171	42.6	2,787.0
100,000 - 249,999	3,761	3,761	6.9	1,487.8
50,000 - 99,999	2,292	2,292	4.2	929.0
25,000 - 49,999	3,683	3,683	6.8	854.8
10,000 - 24,999	4,266	4,476	8.2	795.9
2,500 - 9,999	2,815	3,418	6.3	709.5
Under 2,500	540	700	1.3	1,462.0
Sheriff's Dept./County Police Suburban	6,718	7,206	13.2	708.0
Sheriff's Dept. -- Rural	3,767	5,705	10.5	458.0
TOTAL	51,013	54,412	100.0	1,063.3

TABLE 4.5.1

TYPE OF BURGLARY

1990

TYPE	REPORTED	ESTIMATED	% OF TOTAL
FORCIBLE ENTRY	34,566	36,895	68.0
UNLAWFUL ENTRY NO FORCE	12,231	13,076	24.1
ATTEMPTED FORCIBLE ENTRY	4,101	4,290	7.9
UNKNOWN	115	151	-
TOTAL	51,013	54,412	100.0

TABLE 4.5.2

BURGLARY LOSS/LOCATION/TIME

1990

TYPE	REPORTED	ESTIMATED	% OF TOTAL	\$ LOSS ¹ / INCIDENT
RESIDENCE				
NIGHT (6 p.m. to 6 a.m.)	9,616	10,576	21.0	\$879.24
DAY (6 a.m. to 6 p.m.)	9,930	10,658	21.2	1,163.74
TIME UNKNOWN	12,812	13,603	27.0	1,159.79
NON-RESIDENCE				
NIGHT (6 p.m. to 6 a.m.)	6,153	6,716	13.3	793.07
DAY (6 a.m. to 6 p.m.)	1,110	1,184	2.4	691.67
TIME UNKNOWN	7,115	7,590	15.1	1,267.99
UNKNOWN	4,277	4,085	-	-
TOTAL	51,013	54,412	100.0	1,061.71
1990 TOTAL STATE LOSS ESTIMATE² = \$57,769,765				

¹The dollar loss per incident was calculated using only those burglary offenses for which law enforcement agencies reported an actual monetary loss.

²This estimate of property loss was calculated by multiplying the total dollar loss per offense by the estimated number of such offenses that occurred in 1990.

TABLE 4.5.3

BURGLARY CLEARANCE RATES**1989 - 1990**

YEAR	PERCENT CLEARED	% OF CLEARED OFFENSES ONLY JUVENILES
1989	16.2	15.6
1990	15.7	18.2

TABLE 4.5.4**BURGLARY ARRESTS BY SEX AND AGE GROUP****1990**

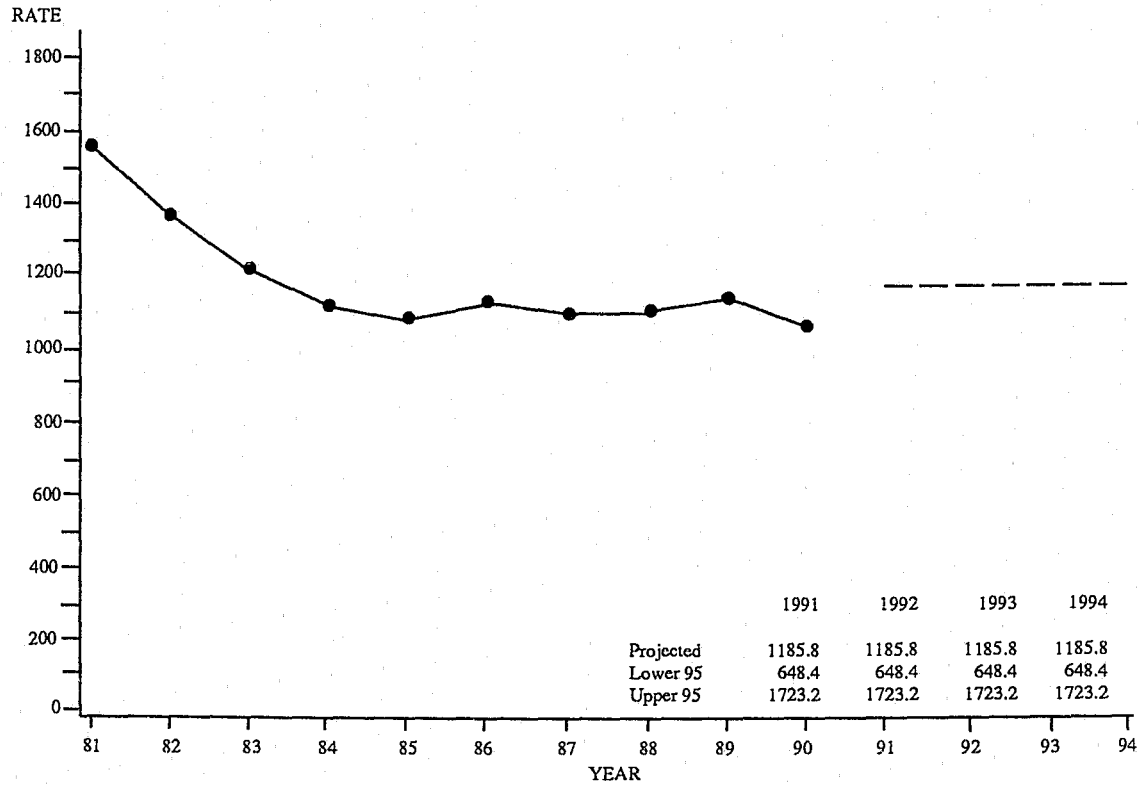
SEX	AGE GROUPS	REPORTED	% OF TOTAL BURGLARY ARRESTS
MALE	ADULTS	4,754	65.8
	JUVENILES	1,932	26.7
FEMALE	ADULTS	400	5.5
	JUVENILES	138	1.9
TOTAL		7,224	100.0

TABLE 4.5.5**BURGLARY ARRESTS BY RACE AND AGE GROUP****1990**

RACE	AGE GROUPS	REPORTED	% OF TOTAL BURGLARY ARRESTS
WHITE	ADULTS	2,818	40.1
	JUVENILES	1,282	18.2
BLACK	ADULTS	2,220	31.6
	JUVENILES	694	9.9
AMERICAN INDIAN	ADULTS	6	0.1
	JUVENILES	2	0.0
ASIAN	ADULTS	4	0.1
	JUVENILES	3	0.0
UNKNOWN		195	-
TOTAL		7,224	100.0

TABLE 4.5.6

BURGLARY OFFENSE RATES, STATE OF MISSOURI¹ **TIME SERIES**



¹Burglary offense rates are based on estimated burglary offenses occurring in the State of Missouri. They are computed on a per 100,000 population basis. See Glossary for an explanation of the computations used to obtain these rates.

FIGURE 4.5.1

4.6 THEFT

DEFINITION

Theft is the unlawful taking, carrying, leading, or riding away of property from the possession or constructive possession of another. Attempted thefts also are included. This category includes crimes such as shoplifting, pocket-picking, purse-snatching, thefts from motor vehicles, thefts of motor vehicle parts or accessories, bicycle thefts, etc., in which no use of force, violence, or fraud occurs. It does not include embezzlement, "con" games, forgery, or worthless checks. Motor vehicle theft also is excluded inasmuch as it is a separate crime index offense. Theft offenses are reported on an incident-by-incident basis.

1990 SUMMARY ANALYSIS

- There were 135,811 thefts reported during 1990. It is estimated that a total of 143,472 thefts actually occurred on a statewide basis. Based on this estimate, this was a 2.0 percent decrease over 1989.
- It is estimated that one theft occurred every 3.7 minutes.
- Theft accounted for 54.3 percent of the Total Crime Index and 63.0 percent of all Property Index offenses.
- The theft rate per 100,000 population in 1990 was 2,803.8 compared to 2,837.2 in 1989.
- It is estimated that 41.4 percent of all thefts involved the taking of vehicle parts/accessories or other types of property from a vehicle.
- It is estimated that \$65,388,799 in property/cash was stolen in 1990 due to this offense.
- In 1990, 21.3 of every 100 thefts were cleared by arrest or exceptional means.
- 30,304 persons were reported arrested for theft in 1990. Of these, 74.9 percent were adults and 25.1 percent were juveniles.

THEFT SUMMARY: 1989 and 1990

Year	Number of Estimated Offenses	Rate per 100,000 Population
1989	146,374	2,837.2
1990	143,472	2,803.8
Percent of Change	- 2.0	- 1.2

THEFT RATES BY POPULATION GROUP

1990

POPULATION GROUP	REPORTED	ESTIMATED	% OF TOTAL	RATE PER 100,000 POPULATION
<u>Police Agencies</u>				
250,000 +	47,793	47,793	33.3	5,748.5
100,000 - 249,999	13,643	13,643	9.5	5,396.9
50,000 - 99,999	8,308	8,308	5.8	3,367.5
25,000 - 49,999	14,471	14,471	10.1	3,358.7
10,000 - 24,999	18,210	19,205	13.4	3,414.6
2,500 - 9,999	11,554	14,188	9.9	2,945.4
Under 2,500	1,887	2,434	1.7	5,083.0
Sheriff's Dept./County Police Suburban	15,494	16,589	11.6	1,630.0
Sheriff's Dept. -- Rural	4,451	6,841	4.8	549.2
TOTAL	135,811	143,472	100.0	2,803.8

TABLE 4.6.1

THEFT BY VALUE OF STOLEN ITEMS

1990

AMOUNT	REPORTED	ESTIMATED	% OF TOTAL
\$200 AND OVER	41,811	45,444	33.6
\$50 TO \$200	30,728	33,405	24.7
UNDER \$50	53,104	56,382	41.7
UNKNOWN	10,168	8,241	-
TOTAL	135,811	143,472	100.0

TABLE 4.6.2

NATURE OF THEFT

1990

TYPE	REPORTED	ESTIMATED	% OF TOTAL	\$ LOSS/ INCIDENT
POCKET PICKING	237	258	0.2	\$241.72
PURSE SNATCHING	1,144	1,237	0.9	213.00
SHOPLIFTING	20,011	21,423	15.8	438.71
FROM MOTOR VEHICLE	23,598	25,577	18.9	585.02
MOTOR VEHICLE PARTS & ACC.	29,430	30,422	22.5	251.28
BICYCLES	4,120	4,501	3.3	180.00
FROM BUILDINGS	12,933	14,743	10.9	643.37
COIN OPERATED MACHINES	893	1,003	0.7	159.16
ALL OTHERS	33,275	36,068	26.7	533.94
UNKNOWN	10,170	8,240	-	-
TOTAL	135,811	143,472	100.0	455.76
1990 TOTAL STATE LOSS ESTIMATE² = \$65,388,799				

¹The dollar loss per incident was calculated using only those theft offenses for which law enforcement agencies reported an actual monetary loss.

²This estimate of property loss was calculated by multiplying the total dollar loss per offense by the estimated number of such offenses that occurred in 1990.

TABLE 4.6.3

THEFT CLEARANCE RATES

1989 - 1990

YEAR	PERCENT CLEARED	% OF CLEARED OFFENSES ONLY JUVENILES
1989	20.2	19.7
1990	21.3	21.1

TABLE 4.6.4

THEFT ARRESTS BY SEX AND AGE GROUP

1990

SEX	AGE GROUPS	REPORTED	% OF TOTAL THEFT ARRESTS
MALE	ADULTS	15,602	51.5
	JUVENILES	5,661	18.7
FEMALE	ADULTS	7,094	23.4
	JUVENILES	1,947	6.4
TOTAL		30,304	100.0

TABLE 4.6.5

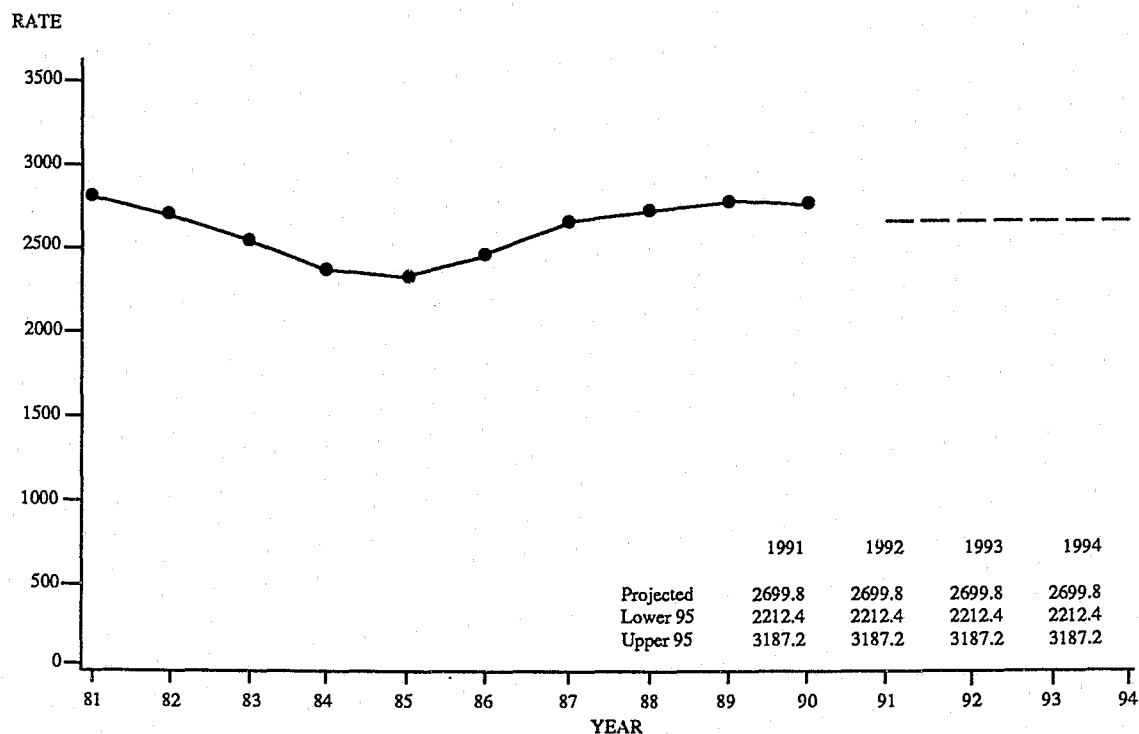
THEFT ARRESTS BY RACE AND AGE GROUP

1990

RACE	AGE GROUPS	REPORTED	% OF TOTAL THEFT ARRESTS
WHITE	ADULTS	11,375	37.9
	JUVENILES	4,991	16.6
BLACK	ADULTS	11,082	37.0
	JUVENILES	2,404	8.0
AMERICAN INDIAN	ADULTS	30	0.1
	JUVENILES	1	0.0
ASIAN	ADULTS	67	0.2
	JUVENILES	28	0.1
UNKNOWN		326	-
TOTAL		30,304	100.0

TABLE 4.6.6

THEFT OFFENSE RATES, STATE OF MISSOURI¹ TIME SERIES



¹Theft offense rates are based on estimated theft offenses occurring in the State of Missouri. They are computed on a per 100,000 population basis. See Glossary for an explanation of the computations used to obtain these rates.

FIGURE 4.6.1

4.7 MOTOR VEHICLE THEFT

DEFINITION

Motor vehicle theft is the theft or attempted theft of a motor vehicle. By definition, a motor vehicle is a self-propelled vehicle that runs on the surface and not on rails. Motor vehicles include automobiles, trucks, buses, motorcycles, motor scooters, snowmobiles, etc. Motor vehicle theft offenses are reported on a per vehicle basis.

1990 SUMMARY ANALYSIS

- There were 26,942 motor vehicle thefts reported during 1990. It is estimated that a total of 27,655 motor vehicle thefts actually occurred on a statewide basis. Based on this estimate, this was a 2.2 percent increase over 1989.
- It is estimated that one motor vehicle theft occurred every 19.0 minutes.
- Motor vehicle theft accounted for 10.5 percent of the Total Crime Index and 12.1 percent of all Property Index offenses.
- The motor vehicle theft rate per 100,000 population was 540.4 in 1990 compared to 524.6 in 1989.
- Of vehicles stolen in 1990, it is estimated that 78.3 percent were recovered.
- It is estimated that the cost of vehicles stolen in 1990 was \$130,776,900.
- In 1990, 15.4 of every 100 motor vehicle thefts were cleared by arrest or exceptional means.
- 3,527 persons were reported arrested for motor vehicle theft in 1990. Of these, 53.4 percent were adults and 46.6 percent were juveniles.

MOTOR VEHICLE THEFT SUMMARY: 1989 and 1990

Year	Number of Estimated Offenses	Rate per 100,000 Population
1989	27,067	524.6
1990	27,655	540.4
Percent of Change	+ 2.2	+ 3.0

MOTOR VEHICLE THEFT RATES BY POPULATION GROUP

1990

POPULATION GROUP	REPORTED	ESTIMATED	% OF TOTAL	RATE PER 100,000 POPULATION
<u>Police Agencies</u>				
250,000 +	18,774	18,774	67.9	2,258.1
100,000 - 249,999	1,248	1,248	4.5	493.7
50,000 - 99,999	534	534	1.9	216.4
25,000 - 49,999	1,310	1,310	4.7	304.1
10,000 - 24,999	1,700	1,820	6.6	323.6
2,500 - 9,999	1,091	1,292	4.7	268.2
Under 2,500	179	229	0.8	477.6
Sheriff's Dept./County Police Suburban	1,660	1,778	6.4	174.7
Sheriff's Dept. -- Rural	446	670	2.4	53.8
TOTAL	26,942	27,655	100.0	540.4

TABLE 4.7.1

TYPE OF VEHICLE STOLEN

1990

TYPE	REPORTED	ESTIMATED	% OF TOTAL
AUTOMOBILES	21,896	22,373	80.9
TRUCKS AND BUSES	3,499	3,640	13.2
OTHER VEHICLES	1,543	1,641	5.9
UNKNOWN	4	1	-
TOTAL	26,942	27,655	100.0

TABLE 4.7.2

MOTOR VEHICLE THEFT YEARLY LOSS

1989 - 1990

YEAR	\$ LOSS ¹ PER INCIDENT	ESTIMATED PERCENT ² RECOVERED
1989	\$4,941.23	77.4
1990	4,728.87	78.3
1990 TOTAL STATE LOSS ESTIMATE³ = \$130,776,900		

¹The dollar loss per incident was calculated using only those motor vehicle theft offenses for which law enforcement agencies reported an actual monetary loss.

²The estimated percent recovered was calculated using those motor vehicle theft offenses in which a motor vehicle was stolen locally and was recovered either locally or otherwise.

³This estimate of property loss was calculated by multiplying the total dollar loss per offense by the estimated number of such offenses that occurred in 1990.

TABLE 4.7.3

MOTOR VEHICLE THEFT CLEARANCE RATES**1989 - 1990**

YEAR	PERCENT CLEARED	% OF CLEARED OFFENSES ONLY JUVENILES
1989	16.1	30.6
1990	15.4	28.7

TABLE 4.7.4**MOTOR VEHICLE THEFT ARRESTS BY SEX AND AGE GROUP****1990**

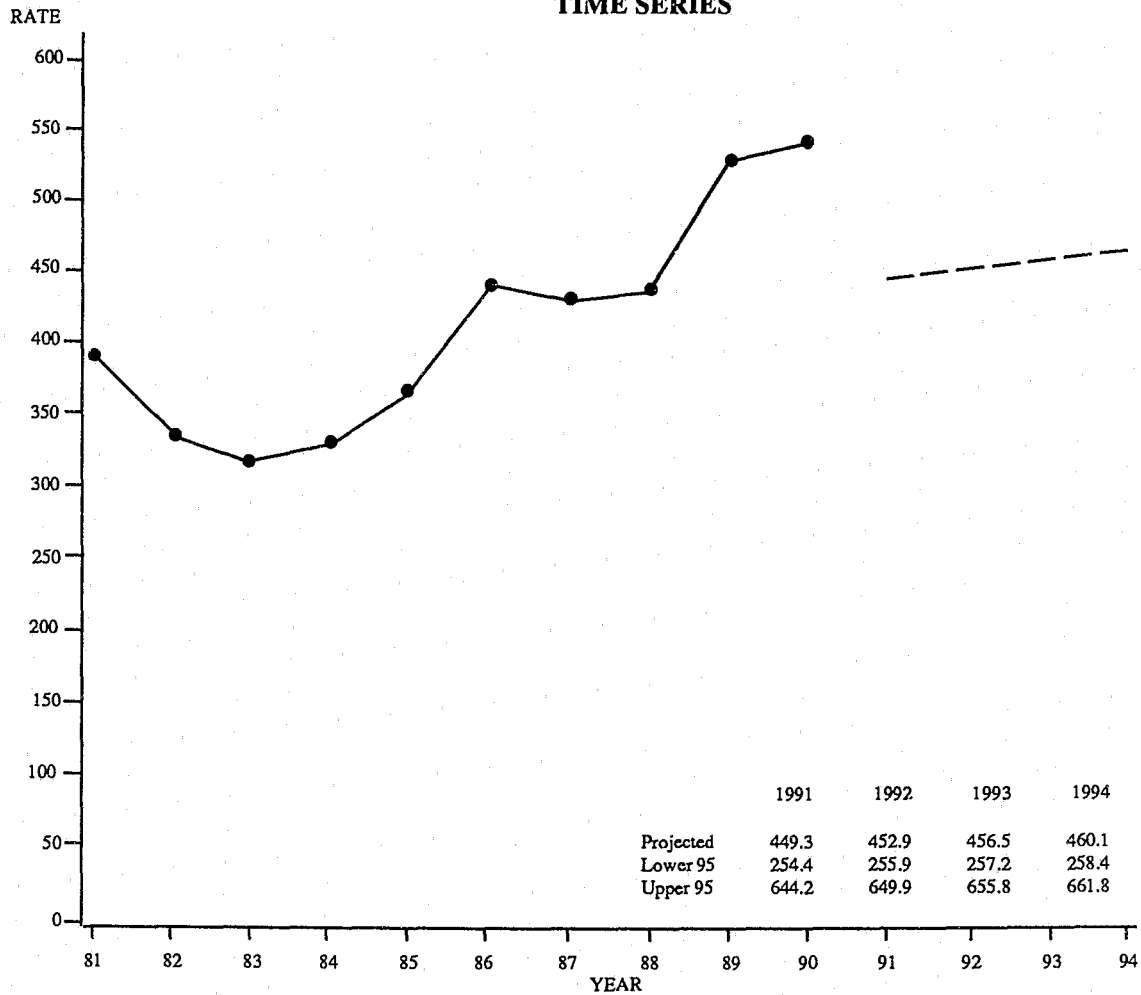
SEX	AGE GROUPS	REPORTED	% OF TOTAL ARRESTS
MALE	ADULTS	1,663	47.2
	JUVENILES	1,506	42.7
FEMALE	ADULTS	219	6.2
	JUVENILES	139	3.9
TOTAL		3,527	100.0

TABLE 4.7.5**MOTOR VEHICLE THEFT ARRESTS BY RACE AND AGE GROUP****1990**

RACE	AGE GROUPS	REPORTED	% OF TOTAL ARRESTS
WHITE	ADULTS	632	18.2
	JUVENILES	530	15.2
BLACK	ADULTS	1,219	35.1
	JUVENILES	1,088	31.3
ASIAN	ADULTS	3	0.1
	JUVENILES	5	0.1
UNKNOWN		50	-
TOTAL		3,527	100.0

TABLE 4.7.6

MOTOR VEHICLE THEFT OFFENSE RATES, STATE OF MISSOURI TIME SERIES



Motor Vehicle Theft offense rates are based on estimated motor vehicle theft offenses occurring in the State of Missouri. They are computed on a per 100,000 population basis. See Glossary for an explanation of the computations used to obtain these rates.

FIGURE 4.7.1

4.8 ARSON

DEFINITION

Arson is defined by the Uniform Crime Reporting Program as any willful or malicious burning or attempt to burn, with or without intent to defraud, a dwelling house, public building, motor vehicle or aircraft, personal property of another, etc. Only fires determined through investigation to have been willfully or maliciously set are classified as arsons. Fires of suspicious or unknown origins are excluded. Arson offenses are reported on an incident-by-incident basis.

1990 SUMMARY ANALYSIS

- There were 2,077 arsons reported during 1990. It is estimated that a total of 2,189 arsons actually occurred on a statewide basis. Based on this estimate, this was a 3.7 percent increase over 1989.
- It is estimated that one arson occurred every 4.0 hours.
- Arsons accounted for 0.8 percent of the Total Crime Index and 1.0 percent of all Property Index offenses.
- The arson rate per 100,000 population in 1990 was 42.8 compared to 40.9 in 1989.
- Residential dwellings accounted for an estimated 46.2 percent of all types of property destroyed by arson. Motor vehicles accounted for an estimated 25.8 percent.
- It is estimated that arson accounted for \$36,440,524 in property loss in 1990.
- In 1990, 20.8 of every 100 arsons were cleared by arrest or exceptional means.
- 370 persons were reported arrested for arson in 1990. Of these, 66.5 percent were adults and 33.5 percent were juveniles.

ARSON SUMMARY: 1989 and 1990

Year	Number of Estimated Offenses	Rate per 100,000 Population
1989	2,110	40.9
1990	2,189	42.8
Percent of Change	+ 3.7	+ 4.6

ARSON RATES BY POPULATION GROUP

1990

POPULATION GROUP	REPORTED	ESTIMATED	% OF TOTAL	RATE PER 100,000 POPULATION
<u>Police Agencies</u>				
250,000 +	1,196	1,196	54.6	143.9
100,000 - 249,999	153	153	7.0	60.5
50,000 - 99,999	64	64	2.9	25.9
25,000 - 49,999	133	133	6.1	30.9
10,000 - 24,999	128	136	6.2	24.1
2,500 - 9,999	83	100	4.6	20.8
Under 2,500	15	18	0.8	38.0
Sheriff's Dept./County Police Suburban	201	218	10.0	21.4
Sheriff's Dept. -- Rural	104	171	7.8	13.7
TOTAL	2,077	2,189	100.0	42.8

TABLE 4.8.1

ARSON LOSS BY TYPE OF PROPERTY

1990

PROPERTY	REPORTED	ESTIMATED	% OF TOTAL	\$ LOSS/ INCIDENT
STRUCTURES				
Single Occupancy Dwelling	643	686	31.3	\$20,632.57
Other Residential	318	325	14.9	25,295.19
Storage	110	118	5.4	12,514.81
Industrial/Manufacturing	11	13	0.6	26,790.00
Other Commercial	147	151	6.9	39,438.26
Community/Public	71	75	3.4	44,083.54
All Other Structures or Type of Structure Not Known	44	50	2.3	1,281.29
MOBILE				
Motor Vehicle	546	566	25.8	4,947.02
All Mobile Property or Type of Mobile Property Known	30	39	1.8	5,218.75
OTHER				
Other Property or Type of Property Not Known	157	166	7.6	314.98
TOTAL	2,077	2,189	100.0	16,647.11
1990 TOTAL STATE LOSS ESTIMATE² = \$36,440,524				

¹The dollar loss per incident was calculated using only those arson offenses for which law enforcement agencies reported an actual monetary loss.

²This estimate of property loss was calculated by multiplying the total dollar loss per offense by the total number of such offenses that were reported in 1990.

TABLE 4.8.2

ARSON CLEARANCE RATES

1989 - 1990

YEAR	PERCENT CLEARED	% OF CLEARED OFFENSES ONLY JUVENILES
1989	20.6	43.5
1990	20.8	40.0

TABLE 4.8.3

ARSON ARRESTS BY SEX AND AGE GROUP

1990

SEX	AGE GROUPS	REPORTED	% OF TOTAL ARSON ARRESTS
MALE	ADULTS	208	56.2
	JUVENILES	115	31.1
FEMALE	ADULTS	38	10.3
	JUVENILES	9	2.4
TOTAL		370	100.0

TABLE 4.8.4

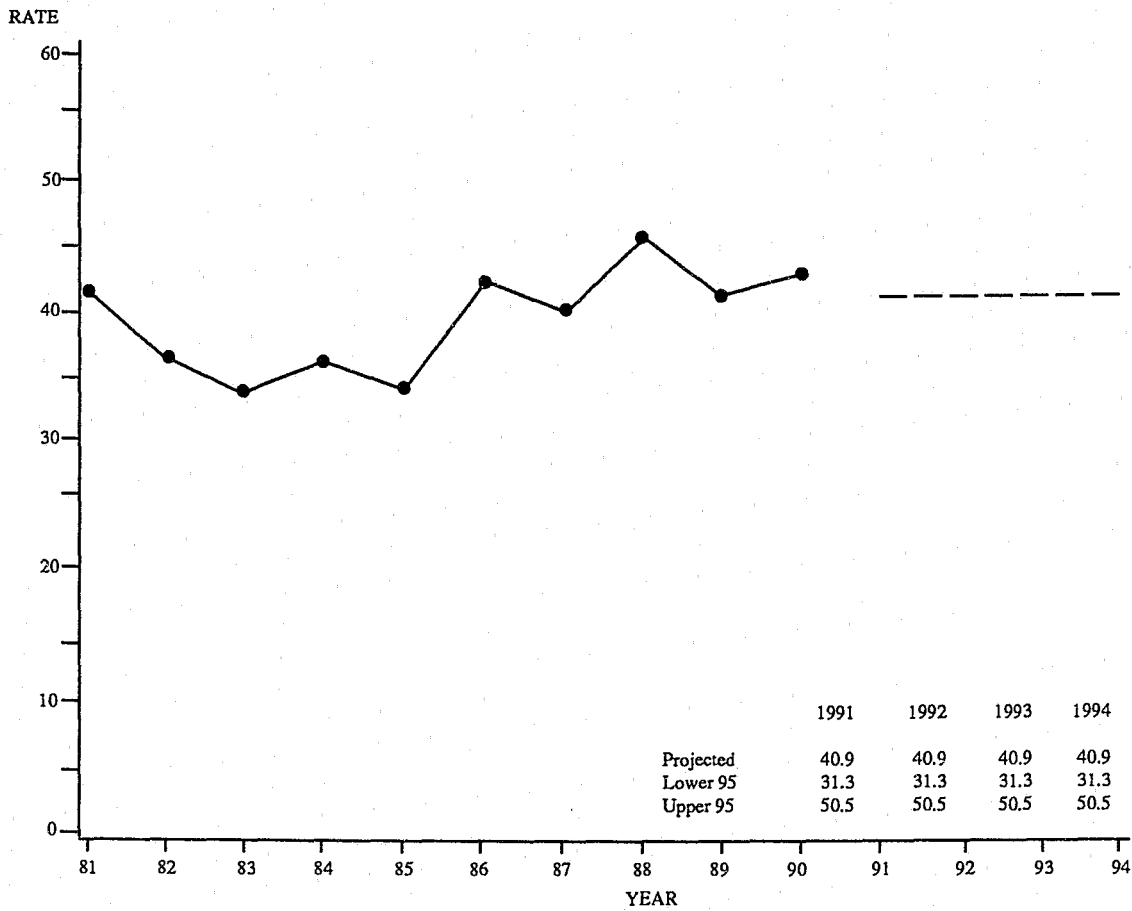
ARSON ARRESTS BY RACE AND AGE GROUP

1990

RACE	AGE GROUPS	REPORTED	% OF TOTAL ARSON ARRESTS
WHITE	ADULTS	145	40.4
	JUVENILES	87	24.2
BLACK	ADULTS	92	25.6
	JUVENILES	32	8.9
ASIAN	ADULTS	3	0.8
	JUVENILES	0	0.0
UNKNOWN		11	-
TOTAL		370	100.0

TABLE 4.8.5

ARSON OFFENSE RATES, STATE OF MISSOURI¹ **TIME SERIES**



¹Arson offense rates are based on estimated arson offenses occurring in the State of Missouri. They are computed on a per 100,000 population basis. See Glossary for an explanation of the computations used to obtain these rates.

FIGURE 4.8.1

5.0 MISSOURI LAW ENFORCEMENT AGENCY CRIME AND ARREST ANALYSIS

A SERIES OF TABLES SUMMARIZES CRIME INDEX OFFENSE AND ARREST ACTIVITY ASSOCIATED WITH LAW ENFORCEMENT JURISDICTIONS IN THE STATE OF MISSOURI. THESE DATA DISPLAYS PROVIDE AN OVERVIEW OF THE EXTENT OF THE CRIME PROBLEM WITHIN MISSOURI COMMUNITIES.

CRIME INDEX OFFENSES, MUNICIPALITIES 25,000 AND OVER

BY REPORTING AGENCY

1990

REPORTING AGENCY	MOS.	POPULATION	CRIME INDEX		VIOLENT CRIME					PROPERTY CRIME				
			TOTAL	RATE/100,000	TOTAL	MURDER	RAPE	ROBBERY	AGG. ASSAULT	TOTAL	BURGLARY	THEFT	M.V. THEFT	ARSON
BLUE SPRINGS	12	40153	1781	4435.5	83	1	3	21	58	1698	291	1299	103	5
CAPE GIRARDEAU	12	34438	2188	6353.4	93	2	9	19	63	2095	286	1744	62	3
CHESTERFIELD	12	37991	1045	2750.7	63	1	3	10	49	982	186	762	32	2
COLUMBIA	12	69101	4491	6499.2	344	1	20	75	248	4147	741	3242	142	22
FLORISSANT	12	51206	1525	2978.2	107	0	6	29	72	1418	294	1031	86	7
GLADSTONE	12	26243	998	3802.9	89	1	6	16	66	909	203	594	94	18
INDEPENDENCE	12	112301	7256	6461.2	520	1	27	104	388	6736	1407	4450	817	62
JEFFERSON CITY	12	35481	1722	4853.3	116	1	23	18	74	1606	256	1238	100	12
JOPLIN	12	40961	3926	9584.7	103	1	3	26	73	3823	748	2854	190	31
KANSAS CITY	12	434711	56817	13070.1	11087	121	517	4492	5957	45730	11640	23229	10352	509
KIRKWOOD	12	27291	801	2935.0	46	1	2	6	37	755	162	551	40	2
LEE'S SUMMIT	12	46418	1358	2925.6	67	0	9	10	48	1291	284	884	100	23
MARYLAND HEIGHTS	12	25407	1239	4876.6	73	2	4	15	52	1166	212	874	70	10
RAYTOWN	12	30601	1005	3284.2	80	2	2	37	39	925	168	660	93	4
SAINT CHARLES	12	54555	1961	3594.5	165	4	19	41	101	1796	349	1339	103	5
SAINT JOSEPH	12	71852	4397	6119.5	560	4	16	26	514	3837	908	2696	203	30
SAINT LOUIS	12	396685	58886	14844.5	13682	177	331	4708	8466	45204	11531	24564	8422	687
SAINT PETERS	12	45779	1945	4248.7	67	0	6	17	44	1878	250	1566	57	5
SPRINGFIELD	12	140494	12640	8996.8	571	7	58	139	367	12069	2354	9193	431	91
UNIVERSITY CITY	12	40087	2743	6842.6	274	2	15	110	147	2469	637	1445	369	18
TOTAL	-	1761755	168724	9577.0	28190	329	1079	9919	16863	140534	32907	84215	21866	1546

TABLE 5.0.1

CRIME INDEX OFFENSES, MUNICIPALITIES UNDER 25,000

BY REPORTING AGENCY

1990

REPORTING AGENCY	MOS.	POPULATION	CRIME INDEX		VIOLENT CRIME					PROPERTY CRIME				
			TOTAL	RATE/100,000	TOTAL	MURDER	RAPE	ROBBERY	AGG. ASSAULT	TOTAL	BURG-LARY	THEFT	M.V. THEFT	ARSON
ARNOLD	12	18828	867	4604.8	29	1	3	5	20	838	117	673	43	5
AURORA	12	6459	213	3297.7	18	0	0	2	16	195	28	157	9	1
BALLWIN	12	21816	499	2287.3	19	0	1	7	11	480	86	378	15	1
BEL-NOR	12	2935	43	1465.1	2	0	0	0	2	41	8	28	5	0
BEL-RIDGE	12	3199	243	7596.1	45	0	1	14	30	198	42	115	40	1
BELLEFONTAINE NBR	12	10922	422	3863.8	7	0	1	5	1	415	37	322	56	0
BELTON	12	18150	676	3724.5	60	2	3	3	52	616	83	479	51	3
BERKELEY	12	12450	832	6682.7	124	2	15	41	66	708	208	379	110	11
BOLIVAR	12	6845	176	2571.2	13	0	0	2	11	163	30	124	9	0
BONNE TERRE	12	3871	77	1989.2	23	0	0	0	23	54	19	29	4	2
BOONVILLE	7	7095	185	2607.5	11	0	1	1	9	174	19	148	6	1
BRANSON	12	3706	423	11413.9	9	0	1	3	5	414	53	350	10	1
BRECKENRIDGE HILLS	12	5404	311	5755.0	38	1	2	10	25	273	44	201	27	1
BRENTWOOD	12	8150	276	3386.5	15	0	1	8	6	261	42	202	16	1
BRIDGETON	12	17779	1248	7019.5	95	1	5	36	53	1153	138	914	100	1
BROOKFIELD	12	4888	204	4173.5	18	0	1	1	16	186	61	117	5	3
BUCKNER	3	2873	25	870.2	8	0	0	0	8	17	4	12	1	0
BUTLER	12	4099	215	5245.2	31	0	0	0	31	184	46	126	10	2
CALVERTON PARK	12	1404	29	2065.5	6	0	0	0	6	23	11	9	3	0
CAMERON	12	4832	174	3601.0	11	0	0	1	10	163	21	135	7	0
CANTON	12	2623	55	2096.8	2	0	0	0	2	53	12	36	3	2
CARROLLTON	3	4406	21	476.6	2	0	0	0	2	19	7	6	3	3
CARTHAGE	12	10747	546	5080.5	22	1	2	6	13	524	106	400	17	1
CENT. MO. ST. UNIV.	12	0	271	0.0	1	0	1	0	0	270	89	172	4	5
CENTRALIA	12	3414	98	2870.5	14	0	0	0	14	84	7	75	2	0
CHAFFEE	12	3059	118	3857.5	1	0	0	0	1	117	31	81	3	2
CHARLACK	12	1388	75	5403.5	13	0	0	1	12	62	27	26	9	0
CLARKSON VALLEY	12	2508	39	1555.0	1	0	0	0	1	38	13	24	1	0
CLAYCOMO	12	1668	138	8273.4	17	0	1	1	15	121	18	95	8	0
CLAYTON	12	13874	702	5059.8	42	0	1	14	27	660	149	450	56	5
CLINTON	12	8703	462	5308.5	19	0	4	0	15	443	64	357	20	2
COOL VALLEY	12	1407	115	8173.4	14	0	0	3	11	101	12	74	15	0
COUNTRY CLUB HILLS	12	1755	76	4330.5	34	0	1	9	24	42	17	23	2	0
CRESTWOOD	12	11234	465	4139.2	18	0	0	15	3	447	72	354	21	0
CREVE COEUR	12	12304	491	3990.6	17	2	1	4	10	474	71	356	47	0
CRYSTAL CITY	12	4088	361	8830.7	40	1	1	3	35	321	64	239	18	0

TABLE 5.0.2

CRIME INDEX OFFENSES, MUNICIPALITIES UNDER 25,000

BY REPORTING AGENCY

1990

REPORTING AGENCY	MOS.	POPULATION	CRIME INDEX		VIOLENT CRIME					PROPERTY CRIME				
			TOTAL	RATE/100,000	TOTAL	MURDER	RAPE	ROBBERY	AGG. ASSAULT	TOTAL	BURGLARY	THEFT	M.V. THEFT	ARSON
DE SOTO	12	5993	181	3020.2	16	0	9	0	7	165	32	118	12	5
DES PERES	12	8395	318	3788.0	25	0	1	8	16	293	52	227	14	0
EDMUNDSON	12	1111	55	4950.5	4	0	0	3	1	51	3	31	17	0
ELLISVILLE	12	7545	174	2306.2	18	0	0	0	18	156	18	124	14	0
EUREKA	12	4683	250	5338.5	11	0	1	1	9	239	39	183	17	0
EXCELSIOR SPRINGS	12	10354	503	4858.0	26	1	3	2	20	477	57	389	28	3
FARMINGTON	12	11598	593	5113.0	71	0	1	1	69	522	24	481	16	1
FAYETTE	12	2888	79	2735.5	18	0	2	0	16	61	18	38	5	0
FENTON	12	3346	346	10340.7	14	0	0	7	7	332	22	288	21	1
FERGUSON	12	22286	736	3302.5	69	1	4	33	31	667	210	373	79	5
FESTUS	12	8105	265	3269.6	3	0	0	3	0	262	47	197	18	0
FLAT RIVER	12	4823	142	2944.2	20	0	0	2	18	122	27	87	8	0
FLORDELL HILLS	12	950	22	2315.8	1	0	0	1	0	21	2	17	2	0
FRONTENAC	12	3374	128	3793.7	3	0	0	2	1	125	17	102	6	0
FULTON	12	10033	431	4295.8	80	0	6	7	67	351	78	260	13	0
GLENDALE	12	5945	35	588.7	2	0	0	0	2	33	11	21	1	0
GRAIN VALLEY	5	1898	40	2107.5	0	0	0	0	0	40	9	28	2	1
GRANDVIEW	12	24967	1789	7165.5	124	1	13	52	58	1665	399	1066	187	13
HANLEY HILLS	8	2325	29	1247.3	1	0	0	0	1	28	6	12	10	0
HANNIBAL	12	18004	863	4793.4	65	2	3	4	56	798	173	581	36	8
HARRISONVILLE	12	7683	408	5310.4	21	0	4	3	14	387	87	276	22	2
HAZELWOOD	12	15324	729	4757.2	37	0	4	20	13	692	127	498	62	5
HILLSDALE	11	1948	107	5492.8	21	1	2	14	4	86	47	16	23	0
IRONTON	12	10726	40	372.9	2	0	0	0	2	38	8	29	1	0
JACKSON	12	9256	176	1901.5	7	0	0	0	7	169	20	144	5	0
JENNINGS	12	15905	1286	8085.5	68	1	4	34	29	1218	214	806	182	16
KEARNEY	12	1790	87	4860.3	7	0	1	0	6	80	20	52	8	0
KENNETT	5	10941	290	2650.6	13	1	0	1	11	277	52	223	2	0
KIRKSVILLE	12	17152	735	4285.2	14	0	5	1	8	721	128	552	40	1
LADUE	12	8847	266	3006.7	4	0	0	3	1	262	66	190	6	0
LAKE LOTAWANA	12	2141	65	3036.0	9	0	0	0	9	56	15	35	6	0
LAKE SAINT LOUIS	12	7400	181	2445.9	10	0	0	1	9	171	36	127	7	1
LAMAR	12	4168	135	3239.0	6	0	0	0	6	129	34	90	2	3
LEBANON	12	9983	615	6160.5	34	0	3	2	29	581	142	397	36	6
LEXINGTON	12	4860	61	1255.1	0	0	0	0	0	61	10	48	3	0
MACON	12	5571	70	1256.5	24	0	0	0	24	46		22	21	30

TABLE 5.0.2

CRIME INDEX OFFENSES, MUNICIPALITIES UNDER 25,000

BY REPORTING AGENCY

1990

REPORTING AGENCY	MOS.	POPULATION	CRIME INDEX		VIOLENT CRIME					PROPERTY CRIME				
			TOTAL	RATE/100,000	TOTAL	MURDER	RAPE	ROBBERY	AGG. ASSAULT	TOTAL	BURG-LARY	THEFT	M.V. THEFT	ARSON
MANCHESTER	12	6542	267	4081.3	11	0	2	6	3	256	39	212	5	0
MAPLEWOOD	12	9962	637	6394.3	65	2	1	15	47	572	96	409	59	8
MARCELINE	12	2645	33	1247.6	2	0	0	0	2	31	13	15	1	2
MARSHALL	12	12711	334	2627.6	7	0	4	1	2	327	68	246	11	2
MARYVILLE	12	10663	331	3104.2	6	0	1	1	4	325	39	275	11	0
MEXICO	12	11290	232	2054.9	13	1	1	0	11	219	49	157	11	2
MOBERLY	12	12839	589	4587.6	43	0	8	6	29	546	99	425	15	7
MOLINE ACRES	7	2710	45	1660.5	9	1	2	1	5	36	15	13	8	0
NEOSHO	12	9254	580	6267.6	17	0	0	1	16	563	68	477	17	1
NEVADA	12	8597	455	5292.5	34	0	4	1	29	421	67	321	30	3
NORMANDY	12	4480	247	5513.4	37	1	2	11	23	210	37	123	50	0
NORTH KANSAS CITY	12	4130	605	14648.9	48	0	3	25	20	557	98	380	75	4
NORTHWOODS	12	5106	197	3858.2	21	0	2	11	8	176	44	91	41	0
O'FALLON	12	18698	803	4294.6	40	1	2	7	30	763	94	638	29	2
OAKLAND	12	1593	31	1946.0	0	0	0	0	0	31	8	21	2	0
OAKVIEW	12	351	14	3988.6	3	0	0	1	2	11	5	6	0	0
ODESSA	12	3695	70	1894.5	5	0	0	1	4	65	16	43	5	1
OLIVETTE	12	7573	244	3222.0	37	0	0	2	35	207	54	134	19	0
OVERLAND	12	17987	1083	6021.0	99	2	4	46	47	984	163	751	68	2
PACIFIC	12	4350	191	4390.8	15	0	0	1	14	176	37	127	9	3
PARKVILLE	12	2402	94	3913.4	7	0	3	0	4	87	11	73	3	0
PASADENA HILLS	12	1165	39	3347.6	1	0	0	0	1	38	11	17	10	0
PASADENA PARK	12	532	9	1691.7	0	0	0	0	0	9	3	3	3	0
PEVELY	12	2831	152	5369.1	7	0	1	0	6	145	31	103	10	1
PINE LAWN	3	5092	98	1924.6	12	0	0	8	4	86	24	18	43	1
PLEASANT HILL	12	3827	135	3527.6	0	0	0	0	0	135	10	121	4	0
POPLAR BLUFF	12	16996	1671	9831.7	118	3	7	13	95	1553	277	1223	49	4
POTOSI	4	2683	15	559.1	1	1	0	0	0	14	2	12	0	0
REPUBLIC	12	6292	205	3258.1	9	0	0	1	8	196	48	143	5	0
RICHMOND	12	5738	332	5786.0	59	0	2	3	54	272	79	176	16	2
RICHMOND HEIGHTS	12	10448	845	8087.7	51	0	4	18	29	794	90	650	49	5
RIVERSIDE	12	3010	302	10033.2	19	0	0	6	13	283	44	203	36	0
RIVERVIEW	12	3242	85	2621.8	22	0	0	1	21	63	26	28	9	0
ROCK HILL	10	5217	109	2089.3	13	0	2	1	10	96	25	68	3	0
ROLLA	12	14090	658	4670.0	23	0	3	9	11	635	118	497	18	2
SAINT ANN	10	14489	918	6335.8	23	1	0	13	9	895	62	730	103	0

TABLE 5.0.2

CRIME INDEX OFFENSES, MUNICIPALITIES UNDER 25,000

BY REPORTING AGENCY

1990

REPORTING AGENCY	MOS.	POPULATION	CRIME INDEX		VIOLENT CRIME					PROPERTY CRIME				
			TOTAL	RATE/100,000	TOTAL	MURDER	RAPE	ROBBERY	AGG. ASSAULT	TOTAL	BURGLARY	THEFT	M.V. THEFT	ARSON
SAINT GEORGE	12	1270	35	2755.9	2	0	0	0	2	33	2	27	4	0
SAINT JOHN	11	7466	298	3991.4	60	2	1	9	48	238	56	160	22	0
SAINT ROBERT	12	1730	246	14219.7	62	0	3	1	58	184	65	112	7	0
SAINTE GENEVIEVE	12	4411	117	2652.5	11	0	1	0	10	106	28	74	4	0
SAVANNAH	6	4352	35	804.2	2	0	0	1	1	33	3	25	5	0
SEDALIA	12	19800	1090	5505.1	74	0	4	9	61	1016	189	777	44	6
SHREWSBURY	12	6416	273	4255.0	5	0	0	2	4	267	16	238	13	0
SIKESTON	12	17641	1174	6655.0	77	2	6	30	39	1097	218	829	48	2
SLATER	12	2186	127	5809.7	35	1	0	1	33	92	24	68	0	0
SUGAR CREEK	12	3982	187	4696.1	15	0	1	2	12	172	44	108	16	4
SULLIVAN	12	5661	204	3603.6	8	0	0	0	8	196	16	175	5	0
SUNSET HILLS	12	4915	243	4944.0	26	0	0	5	21	217	33	175	9	0
TOWN AND COUNTRY	12	9519	229	2405.7	5	0	1	0	4	224	41	171	10	2
TRENTON	12	6129	151	2463.7	4	0	0	0	4	147	19	123	5	0
UNION	12	5909	279	4721.6	16	1	1	1	13	263	42	210	11	0
UNIV. MO. COLUMBIA	12	0	706	0.0	15	0	1	0	14	691	93	590	2	6
UNIV. MO. ST. LOUIS	12	0	88	0.0	2	0	1	1	0	86	1	81	4	0
VALLEY PARK	11	4165	132	3169.3	15	0	1	1	13	117	18	85	11	3
VANDALIA	12	2683	83	3093.6	1	0	1	0	0	82	10	71	1	0
VELDA VILLAGE HILLS	3	1315	14	1064.6	1	0	0	0	1	13	2	2	9	0
VINITA PARK	12	2001	63	3148.4	14	0	4	2	8	49	17	27	5	0
WARRENSBURG	12	15244	539	3535.8	18	1	2	4	11	521	110	375	28	8
WARRENTON	12	3564	231	6481.5	35	0	0	0	35	196	23	169	4	0
WARSON WOODS	12	2049	29	1415.3	3	0	0	2	1	26	1	22	3	0
WASHINGTON	12	10704	466	4353.5	72	1	0	1	70	394	55	322	16	1
WASHINGTON UNIV.	12	0	189	0.0	2	0	0	0	2	187	3	168	14	2
WEBB CITY	12	7449	262	3517.3	7	0	1	6	0	255	65	163	23	4
WEBSTER GROVES	12	22987	542	2357.9	48	1	4	6	37	494	98	352	38	6
WELLSTON	12	3612	553	15310.1	197	2	15	21	159	356	77	225	53	1
WENTZVILLE	12	5088	457	8981.9	28	0	2	10	16	429	62	348	18	1
WEST PLAINS	12	8913	549	6159.5	9	0	1	0	8	540	52	468	16	4
WESTON	12	1528	53	3468.6	9	0	0	0	9	44	5	35	3	1
WESTWOOD	12	309	2	647.2	0	0	0	0	0	2	1	1	0	0
WINCHESTER	12	1678	68	4052.4	11	0	0	1	10	57	12	44	1	0
WINDSOR	2	3044	18	591.3	1	0	1	0	0	17	5	11	1	0
WOODSON TERRACE	11	4362	147	3370.0	12	0	1	3	8	135	17	98	20	0
TOTAL	-	1019497	45935	4505.7	3467	43	224	729	2471	42468	7621	31651	2970	226

TABLE 5.0.2

CRIME INDEX OFFENSES, SUBURBAN COUNTIES

BY REPORTING AGENCY

1990

REPORTING AGENCY	MOS.	POPULATION	CRIME INDEX		VIOLENT CRIME					PROPERTY CRIME				
			TOTAL	RATE/100,000	TOTAL	MURDER	RAPE	ROBBERY	AGG. ASSAULT	TOTAL	BURGLARY	THEFT	M.V. THEFT	ARSON
BOONE	12	39864	735	1843.8	125	1	2	3	119	610	185	399	22	4
BUCHANAN	12	11231	148	1317.8	29	0	2	4	23	119	44	68	7	0
CHRISTIAN	12	32644	415	1271.3	6	1	2	1	2	409	159	234	15	1
CLAY	12	22536	188	834.2	24	0	5	1	18	164	59	90	15	0
FRANKLIN	12	55092	1305	2368.8	137	2	14	7	114	1168	487	581	100	0
GREENE	12	61163	1525	2493.3	62	0	6	14	42	1463	438	953	66	6
JACKSON	12	12170	807	6631.1	61	0	4	6	51	746	237	456	49	4
JASPER	12	34544	654	1893.2	22	4	15	1	2	632	214	377	41	0
JEFFERSON	12	131535	3474	2641.1	307	4	40	22	241	3167	1286	1653	177	51
LAFAYETTE	12	22552	129	572.0	9	2	0	1	6	120	44	61	15	0
PLATTE	12	30910	457	1478.5	49	0	5	0	44	408	150	229	27	2
RAY	7	16057	118	734.9	14	0	0	0	14	104	40	53	7	4
SAINT CHARLES	12	81387	2208	2713.0	376	4	18	9	345	1832	444	1273	103	12
SAINT LOUIS POLICE	12	401207	14477	3608.4	1346	9	83	208	1046	13131	2931	9067	1016	117
TOTAL	-	952892	26640	2795.7	2567	27	196	277	2067	24073	6718	15494	1660	201

TABLE 5.0.3

CRIME INDEX OFFENSES, RURAL COUNTIES

BY REPORTING AGENCY

1990

REPORTING AGENCY	MOS.	POPULATION	CRIME INDEX		VIOLENT CRIME					PROPERTY CRIME				
			TOTAL	RATE/100,000	TOTAL	MURDER	RAPE	ROBBERY	AGG. ASSAULT	TOTAL	BURGLARY	THEFT	M.V. THEFT	ARSON
ANDREW	12	10280	220	2140.1	36	0	1	0	35	184	43	132	5	4
ATCHISON	12	7457	52	697.3	1	0	0	0	1	51	14	31	3	3
AUDRAIN	12	9626	146	1516.7	18	2	2	0	14	128	26	94	5	3
BARRY	12	22885	441	1927.0	53	0	1	4	48	388	144	200	43	1
BARTON	12	7144	64	895.9	4	0	0	1	3	60	21	34	3	2
BENTON	12	13859	319	2301.8	33	0	5	0	28	286	83	180	14	9
BOLLINGER	6	10619	47	442.6	4	0	0	2	2	43	35	7	0	1
BUTLER	12	21769	154	707.4	41	1	8	0	32	113	56	55	2	0
CALDWELL	12	8380	69	823.4	9	0	0	0	9	60	23	33	1	3
CAMDEN	12	27495	499	1814.9	31	1	0	3	27	468	245	209	11	3
CAPE GIRARDEAU	12	17939	206	1148.3	13	0	0	1	12	193	76	104	13	0
CARROLL	12	6342	83	1308.7	3	0	0	0	3	80	13	61	4	2
CEDAR	4	12093	37	306.0	5	0	0	0	5	32	14	18	0	0
CHARITON	12	9202	65	706.4	6	0	0	0	6	59	14	43	2	0
COLE	12	28098	455	1619.3	35	1	3	2	29	420	123	272	22	3
COOPER	12	7740	25	323.0	1	0	1	0	0	24	19	3	0	2
CRAWFORD	12	18060	247	1367.7	19	1	3	0	15	228	89	125	9	5
DALLAS	12	12646	165	1304.8	6	0	1	1	4	159	40	100	18	1
DAVIESS	12	7865	94	1195.2	18	1	0	0	17	76	23	50	3	0
DE KALB	12	7551	71	940.3	0	0	0	0	0	71	31	36	4	0
DOUGLAS	12	11876	127	1069.4	18	1	1	0	16	109	101	2	5	1
DUNKLIN	12	17048	207	1214.2	21	1	5	4	11	186	65	113	8	0
GASCONADE	12	11252	99	879.8	0	0	0	0	0	99	97	2	0	0
GRUNDY	12	4407	52	1179.9	0	0	0	0	0	52	27	23	0	2
HARRISON	12	8469	81	956.4	12	0	0	0	12	69	31	36	2	0
HENRY	12	8297	212	2555.1	21	2	1	1	17	191	72	110	5	4
HICKORY	12	7335	153	2085.9	20	0	0	1	19	133	45	82	3	3
HOLT	12	6034	45	745.8	6	1	1	4	0	39	32	5	2	0
JOHNSON	12	27270	277	1015.8	11	0	1	0	10	266	121	129	16	0
LACLEDE	12	17175	113	657.9	39	3	4	1	31	74	27	39	5	3
LINN	12	6352	63	991.8	6	1	0	0	5	57	20	32	2	3
LIVINGSTON	12	5788	148	2557.0	12	0	1	0	11	136	47	87	2	0
MADISON	4	11127	27	242.7	2	0	0	0	2	25	21	1	1	2
MARIES	12	7976	85	1065.7	3	0	0	0	3	82	40	39	2	1
MARION	12	9894	153	1546.4	30	2	1	1	26	123	45	63	12	3
MCDONALD	12	16938	114	673.0	25	1	0	0	24	89	34	43	8	4

TABLE 5.0.4

CRIME INDEX OFFENSES, RURAL COUNTIES

BY REPORTING AGENCY

1990

REPORTING AGENCY	MOS.	POPULATION	CRIME INDEX		VIOLENT CRIME					PROPERTY CRIME				
			TOTAL	RATE/100,000	TOTAL	MURDER	RAPE	ROBBERY	AGG. ASSAULT	TOTAL	BURGLARY	THEFT	M.V. THEFT	ARSON
MERCER	3	3723	7	188.0	2	0	0	0	2	5	1	4	0	0
MISSISSIPPI	12	9357	111	1186.3	23	0	1	0	22	88	54	16	16	2
MONROE	12	9104	25	274.6	2	0	0	0	2	23	13	10	0	0
MORGAN	12	15574	413	2651.9	32	0	1	0	31	381	190	166	19	6
NEW MADRID	12	17578	145	824.9	45	1	5	2	37	100	52	43	5	0
NODAWAY	12	11046	193	1747.2	17	0	3	0	14	176	79	104	1	1
OREGON	10	9470	34	359.0	5	1	1	1	2	29	15	11	3	0
OSAGE	12	12018	90	748.9	8	0	1	1	6	82	41	38	1	2
OZARK	12	8598	128	1488.7	18	0	1	1	16	110	39	63	4	4
PEMISCOT	11	21921	117	533.7	27	1	1	3	22	90	37	40	10	3
PERRY	12	16648	129	774.9	24	1	1	0	22	105	25	76	4	0
PIKE	12	9026	90	997.1	11	0	1	1	9	79	29	45	4	1
POLK	12	14981	213	1421.8	6	0	0	1	5	207	79	120	8	0
PULASKI	12	39577	104	262.8	12	0	0	1	11	92	58	22	12	0
REYNOLDS	12	6661	78	1171.0	2	1	0	0	1	76	65	10	1	0
RIPLEY	1	12303	7	56.9	0	0	0	0	0	7	5	0	2	0
SAINT CLAIR	12	8457	220	2601.4	8	0	1	1	6	212	104	95	6	7
SAINT FRANCOIS	12	28612	212	740.9	10	1	0	0	9	202	80	104	18	0
SAINTE GENEVIEVE	12	11626	127	1092.4	18	0	1	1	16	109	42	58	9	0
SALINE	12	8626	116	1344.8	14	0	1	1	12	102	27	72	2	1
SCHUYLER	12	4236	48	1133.1	0	0	0	0	0	48	39	8	1	0
SCOTLAND	12	4822	24	497.7	0	0	0	0	0	24	24	0	0	0
SCOTT	6	13676	78	417.6	14	0	2	0	12	64	17	45	1	1
SHANNON	2	7613	5	65.7	0	0	0	0	0	5	4	0	1	0
SHELBY	12	6942	69	993.9	2	0	1	1	0	67	23	44	0	0
STODDARD	5	28895	110	380.7	11	0	2	1	8	99	54	37	8	0
STONE	3	19078	112	587.1	24	0	1	0	23	88	46	37	4	1
SULLIVAN	12	6326	43	679.7	2	1	0	0	1	41	16	24	0	1
TANEY	12	21855	409	1871.4	105	1	4	0	100	304	94	192	18	0
VERNON	12	10444	266	2546.9	43	0	2	1	40	223	102	109	12	0
WARREN	12	15970	238	1490.3	21	0	2	2	17	217	99	99	16	3
WASHINGTON	12	17697	350	1977.7	34	0	5	1	28	316	177	122	17	0
WAYNE	12	11543	141	1221.5	26	1	1	0	24	115	75	31	6	3
WEBSTER	1	23753	32	134.7	5	0	0	0	5	27	12	13	2	0
WORTH	12	2440	2	82.0	0	0	0	0	0	2	2	0	0	0
TOTAL	-	926332	9901	1068.8	1133	28	79	46	980	8768	3767	4451	446	104

TABLE 5.0.4

TOTAL PERSONS ARRESTED, MUNICIPALITIES 25,000 AND OVER

BY REPORTING AGENCY¹

1990

REPORTING AGENCY	MOS.	POPULATION	TOTAL ¹ ARRESTS	TOTAL PART I ARRESTS	MURDER	RAPE	ROBBERY	AGG. ASSAULT	BURG-LARY	THEFT	MOTOR VEHICLE THEFT	ARSON	TOTAL ¹ PART II ARRESTS
BLUE SPRINGS	12	40153	1471	437	0	0	19	19	57	322	14	6	1034
CAPE GIRARDEAU	12	34438	3307	591	3	8	9	12	31	495	31	2	2716
CHESTERFIELD	12	37991	859	238	1	2	6	9	20	174	26	0	621
COLUMBIA	12	69101	4530	1479	2	10	65	230	131	988	47	6	3051
FLORISSANT	12	51206	2401	447	0	6	24	33	69	280	34	1	1954
GLADSTONE	12	26243	701	128	0	6	4	10	14	75	19	0	573
INDEPENDENCE	12	112301	7096	1695	2	14	33	145	185	1195	111	10	5401
JEFFERSON CITY	12	35481	978	310	1	10	17	35	32	176	31	8	668
JOPLIN	12	40961	2960	714	1	2	6	5	107	557	29	7	2246
KANSAS CITY	12	434711	94833	13631	149	190	846	2070	976	7744	1591	65	81202
KIRKWOOD	12	27291	1322	292	1	2	4	15	37	211	21	1	1030
LEE'S SUMMIT	12	46418	2513	151	0	3	5	15	11	103	13	1	2362
MARYLAND HEIGHTS	11	25407	838	184	1	2	11	24	30	97	16	3	654
RAYTOWN	12	30601	878	158	2	0	14	1	16	100	24	1	720
SAINT CHARLES	12	54555	3807	640	1	13	36	75	110	386	15	4	3167
SAINT JOSEPH	12	71852	2995	774	3	1	3	256	59	446	2	4	2221
SAINT LOUIS	12	396685	40266	13376	240	237	1267	4594	1845	4524	579	90	26890
SAINT PETERS	12	45779	1055	491	0	4	6	135	47	296	3	0	564
SPRINGFIELD	12	140494	8701	2578	9	22	74	460	274	1696	33	10	6123
UNIVERSITY CITY	12	40087	2632	840	1	17	81	103	166	411	51	10	1792
TOTAL		1761755	184143	39154	417	549	2530	8246	4217	20276	2690	229	144989

¹Arrests for suspicion are not included in total.

TABLE 5.0.5

TOTAL PERSONS ARRESTED, MUNICIPALITIES UNDER 25,000

BY REPORTING AGENCY

1990

REPORTING AGENCY	MOS.	POPULATION	TOTAL ARRESTS	TOTAL PART I ARRESTS	MURDER	RAPE	ROBBERY	AGG. ASSAULT	BURG-LARY	THEFT	MOTOR VEHICLE THEFT	ARSON	TOTAL PART II ARRESTS
ARNOLD	12	18828	1092	273	1	1	5	10	30	209	14	3	819
AURORA	12	6459	557	55	0	0	0	11	2	35	6	1	502
BALLWIN	12	21816	505	216	1	0	3	17	20	165	10	0	289
BEL-NOR	11	2935	220	28	0	0	0	3	10	5	10	0	192
BEL-RIDGE	11	3199	796	40	0	0	1	6	8	17	8	0	756
BELLEFONTAINE NBRS	12	10922	208	143	0	1	0	0	5	136	1	0	65
BELTON	12	18150	2249	188	0	1	0	8	41	123	9	6	2061
BERKELEY	12	12450	1012	207	0	6	14	57	39	66	23	2	805
BOLIVAR	12	6845	81	21	0	0	2	3	1	13	2	0	60
BONNE TERRE	12	3871	207	52	0	0	0	23	12	15	2	0	155
BOONVILLE	7	7095	231	66	0	1	0	21	7	36	1	0	165
BRANSON	12	3706	556	99	0	0	1	2	10	79	6	1	457
BRECKENRIDGE HILLS	12	5404	621	113	1	1	7	19	11	70	4	0	508
BRENTWOOD	12	8150	157	69	0	0	2	4	10	45	8	0	88
BRIDGETON	12	17779	1963	566	1	1	20	42	45	437	20	0	1397
BROOKFIELD	12	4888	217	43	0	0	0	7	10	25	1	0	174
BUTLER	12	4099	448	91	0	0	0	18	9	56	5	3	357
CALVERTON PARK	12	1404	183	7	0	0	0	0	4	2	1	0	176
CANYON	11	2623	36	7	0	0	0	0	6	0	1	0	29
CARROLLTON	2	4406	8	8	0	0	0	0	1	3	2	2	0
CARTHAGE	12	10747	1060	104	0	1	0	6	37	56	4	0	956
CENT. MO. ST. UNIV.	12	0	333	31	0	0	0	0	3	24	3	1	302
CENTRALIA	4	3414	22	3	0	0	0	1	0	2	0	0	19
CHAFFEE	12	3059	94	21	0	0	0	1	12	6	2	0	73
CHARLACK	12	1388	538	24	0	0	1	11	5	6	1	0	514
CLARKSON VALLEY	12	2508	37	8	0	0	0	0	4	3	1	0	29
CLAYCOMO	12	1668	273	26	0	0	1	1	2	22	0	0	247
CLAYTON	12	13874	855	262	0	0	11	7	33	188	22	1	593
CLINTON	12	8703	539	95	0	1	0	4	9	80	1	0	444
COOL VALLEY	12	1407	278	43	0	0	0	6	6	29	2	0	235
COUNTRY CLUB HILLS	11	1755	131	32	0	0	3	15	4	10	0	0	99
CRESTWOOD	12	11234	538	235	0	0	16	1	8	210	0	0	303
CREVE COEUR	12	12304	858	155	0	0	1	9	12	119	14	0	703
CRYSTAL CITY	12	4088	23	9	0	0	0	0	0	8	0	1	14
DE SOTO	9	5993	125	30	0	2	0	0	11	13	4	0	95
DES PERES	12	8395	312	130	0	0	3	12	8	101	6	0	182

TABLE 5.0.6

TOTAL PERSONS ARRESTED, MUNICIPALITIES UNDER 25,000

BY REPORTING AGENCY

1990

REPORTING AGENCY	MOS.	POPULATION	TOTAL ARRESTS	TOTAL PART I ARRESTS	MURDER	RAPE	ROBBERY	AGG. ASSAULT	BURG-LARY	THEFT	MOTOR VEHICLE THEFT	ARSON	TOTAL PART II ARRESTS
EDMUNDSON	12	1111	90	9	0	0	0	0	6	0	3	0	81
ELLISVILLE	12	7545	159	52	0	0	0	12	5	29	6	0	107
EUREKA	12	4683	295	47	0	0	0	1	11	35	0	0	248
EXCELSIOR SPRINGS	12	10354	1184	129	0	1	1	2	12	93	20	0	1055
FARMINGTON	12	11598	496	150	0	0	2	28	3	115	2	0	346
FAYETTE	12	2888	97	33	0	2	0	15	3	10	3	0	64
FENTON	12	3346	323	72	0	0	4	2	3	61	2	0	251
FERGUSON	12	22286	2346	369	0	5	14	18	49	252	30	1	1977
FESTUS	12	8105	505	41	0	0	0	0	9	28	4	0	464
FLAT RIVER	12	4823	297	42	0	0	0	12	10	13	7	0	255
FLORDELL HILLS	12	950	29	5	0	0	0	0	0	5	0	0	24
FRONTENAC	12	3374	377	75	0	0	1	2	11	57	3	1	302
FULTON	12	10033	465	105	0	2	2	31	14	52	4	0	360
GLENDALE	12	5945	265	7	0	0	0	1	1	5	0	0	258
GRAIN VALLEY	5	1898	42	5	0	0	0	0	0	5	0	0	37
GRANDVIEW	12	24967	1557	405	1	4	24	21	69	240	40	6	1152
HANLEY HILLS	8	2325	64	10	0	0	0	2	1	4	3	0	54
HANNIBAL	12	18004	1969	231	1	1	2	4	39	170	6	8	1738
HARRISONVILLE	12	7683	698	67	0	1	0	1	3	62	0	0	631
HAZELWOOD	12	15324	1016	201	0	3	7	11	19	145	11	5	815
HILLSDALE	11	1948	87	38	0	1	4	15	9	7	2	0	49
IRONTON	12	10726	88	17	0	0	0	4	4	9	0	0	71
JACKSON	12	9256	283	47	0	1	0	9	0	37	0	0	236
JENNINGS	12	15905	1322	640	0	7	12	12	52	539	13	5	682
KEARNEY	12	1790	88	22	0	0	0	0	7	9	6	0	66
KENNETT	5	10941	195	82	1	0	0	4	8	68	0	1	113
KIRKSVILLE	12	17152	950	118	0	2	0	15	15	76	8	2	832
LADUE	11	8847	115	55	0	0	2	2	10	36	5	0	60
LAKE LOTAWANA	11	2141	61	12	0	0	0	6	1	4	1	0	49
LAKE SAINT LOUIS	12	7400	149	32	0	0	0	4	11	16	0	1	117
LAMAR	12	4168	193	15	0	0	0	0	0	15	0	0	178
LEBANON	12	9983	894	224	0	2	2	5	33	165	17	0	670
LEXINGTON	12	4860	5	5	0	0	0	0	0	4	1	0	0
MACON	12	5571	144	22	0	0	0	15	5	1	1	0	122
MANCHESTER	12	6542	216	108	0	1	2	2	11	90	2	0	108
MAPLEWOOD	12	9962	1164	189	1	1	4	31	25	115	11	1	975
MARCELINE	12	2645	39	4	0	0	0	0	1	3	0	0	35

TABLE 5.0.6

TOTAL PERSONS ARRESTED, MUNICIPALITIES UNDER 25,000

BY REPORTING AGENCY

1990

REPORTING AGENCY	MOS.	POPULATION	TOTAL ARRESTS	TOTAL PART I ARRESTS	MURDER	RAPE	ROBBERY	AGG. ASSAULT	BURG-LARY	THEFT	MOTOR VEHICLE THEFT	ARSON	TOTAL PART II ARRESTS
MARSHALL	12	12711	309	68	0	5	0	3	18	37	5	0	241
MARYVILLE	12	10663	640	56	0	0	0	1	7	48	0	0	584
MEXICO	1	11290	0	0	0	0	0	0	0	0	0	0	0
MOBERLY	12	12839	422	123	0	6	4	17	13	79	4	0	299
MOLINE ACRES	7	2710	74	11	1	1	0	4	2	1	2	0	63
NEOSHO	12	9254	526	90	0	0	0	0	4	86	0	0	436
NEVADA	12	8597	996	96	0	3	0	1	23	64	5	0	900
NORMANDY	12	4480	401	90	1	2	5	33	9	29	11	0	311
NORTH KANSASCITY	11	4130	247	36	0	0	6	7	4	17	2	0	211
NORTHWOODS	12	5106	250	75	1	5	6	6	15	39	3	0	175
O'FALLON	12	18698	760	193	1	2	3	69	12	106	0	0	567
OAKLAND	10	1593	13	3	0	0	0	0	1	2	0	0	10
OAKVIEW	11	351	31	7	0	0	0	1	1	5	0	0	24
ODESSA	12	3695	62	13	0	0	1	6	3	3	0	0	49
OLIVETTE	12	7573	216	86	0	0	1	21	15	30	19	0	130
OVERLAND	12	17987	941	416	3	2	21	9	47	333	0	1	525
PACIFIC	12	4350	496	75	0	0	0	6	9	58	0	2	421
PARKVILLE	12	2402	281	15	0	0	0	0	1	14	0	0	266
PASADENA HILLS	12	1165	11	6	0	0	0	2	0	0	4	0	5
PASADENA PARK	11	532	1	0	0	0	0	0	0	0	0	0	1
PEVELY	12	2831	452	28	0	0	0	6	4	14	4	0	424
PINE LAWN	2	5092	66	11	0	0	0	4	2	4	0	1	55
PLEASANT HILL	12	3827	234	28	0	0	0	0	0	28	0	0	206
POPLAR BLUFF	12	16996	2001	436	1	2	8	44	44	324	10	3	1565
POTOSI	4	2683	42	3	1	0	0	0	1	1	0	0	39
REPUBLIC	12	6292	120	40	0	0	0	3	1	33	3	0	80
RICHMOND	12	5738	272	76	0	2	1	15	24	26	7	1	196
RICHMOND HEIGHTS	12	10448	928	216	0	0	14	28	14	147	11	2	712
RIVERSIDE	12	3010	588	15	0	0	0	0	0	15	0	0	573
RIVERVIEW	12	3242	73	20	0	0	2	9	7	1	1	0	53
ROCK HILL	10	5217	714	47	0	0	0	16	2	25	4	0	667
ROLLA	12	14090	803	157	0	1	3	4	9	136	3	1	646
SAINT ANN	9	14489	972	420	1	0	5	6	14	384	8	2	552
SAINT GEORGE	12	1270	110	3	0	0	0	0	0	0	3	0	107
SAINT JOHN	11	7466	239	81	2	1	2	39	14	21	2	0	158
SAINT ROBERT	12	1730	349	37	0	1	0	6	4	24	2	0	312

TABLE 5.0.6

TOTAL PERSONS ARRESTED, MUNICIPALITIES UNDER 25,000

BY REPORTING AGENCY

1990

REPORTING AGENCY	MOS.	POPULATION	TOTAL ¹ ARRESTS	TOTAL PART I ARRESTS	MURDER	RAPE	ROBBERY	AGG. ASSAULT	BURG-LARY	THEFT	MOTOR VEHICLE THEFT	ARSON	TOTAL ¹ PART II ARRESTS
SAINTE GENEVIEVE	12	4411	238	38	0	0	0	1	3	34	0	0	200
SAVANNAH	6	4352	50	14	0	0	0	1	2	7	4	0	36
SEDALIA	4	19800	344	49	0	0	2	10	3	29	1	4	295
SHREWSBURY	12	6416	388	111	0	0	1	0	2	108	0	0	277
SIKESTON	12	17641	694	224	2	6	4	44	38	121	5	4	470
SLATER	12	2186	127	32	1	0	1	11	3	15	0	1	95
SMITHVILLE	4	2525	0	0	0	0	0	0	0	0	0	0	0
SUGAR CREEK	12	3982	469	35	0	0	1	5	7	22	0	0	434
SULLIVAN	12	5661	338	21	0	0	0	2	4	14	1	0	317
SUNSET HILLS	12	4915	184	81	0	0	4	13	8	56	0	0	103
TOWN AND COUNTRY	12	9519	701	49	0	0	0	7	4	35	3	0	652
TRENTON	12	6129	135	9	0	0	0	1	1	7	0	0	126
UNION	12	5909	301	33	1	0	0	3	5	24	0	0	268
UNIV. MO. COLUMBIA	12	0	510	62	0	0	0	2	13	45	0	2	448
UNIV. MO. ST. LOUIS	9	0	1	1	0	0	0	0	0	1	0	0	0
VALLEY PARK	11	4165	98	33	0	2	0	8	5	15	3	0	65
VANDALIA	12	2683	161	12	0	0	0	0	3	8	1	0	149
VELDA VILLAGE HILLS	3	1315	4	2	0	0	0	1	0	0	1	0	2
VINITA PARK	12	2001	117	19	0	2	1	4	5	4	3	0	98
WARRENSBURG	12	15244	1072	134	1	1	4	4	19	96	4	5	938
WARSON WOODS	12	2049	35	14	0	0	0	0	0	10	4	0	21
WASHINGTON	12	10704	745	96	2	0	0	19	13	58	4	0	649
WEBB CITY	12	7449	397	34	0	1	3	1	7	15	7	0	363
WEBSTER GROVES	12	22987	511	203	0	2	4	28	55	100	14	0	308
WENTZVILLE	12	5088	553	123	0	0	3	14	4	101	1	0	430
WEST PLAINS	12	8913	852	138	0	1	0	10	20	100	6	1	714
WESTON	12	1528	53	20	0	0	0	2	12	4	2	0	33
WESTWOOD	11	309	3	0	0	0	0	0	0	0	0	0	3
WINCHESTER	12	1678	126	18	0	0	0	8	4	4	2	0	108
WINDSOR	2	3044	2	0	0	0	0	0	0	0	0	0	2
WOODSON TERRACE	11	4362	543	51	0	1	4	2	4	23	17	0	492
TOTAL	-	984157	60022	11918	27	99	288	1179	1463	8179	601	82	48104

¹Arrests for suspicion are not included in total.

TABLE 5.0.6

TOTAL PERSONS ARRESTED, SUBURBAN COUNTIES

BY REPORTING AGENCY

1990

REPORTING AGENCY	MOS.	POPULATION	TOTAL ¹ ARRESTS	TOTAL PART I ARRESTS	MURDER	RAPE	ROBBERY	AGG. ASSAULT	BURGLARY	THEFT	MOTOR VEHICLE THEFT	ARSON	TOTAL ¹ PART II ARRESTS
BOONE	12	39864	438	171	2	0	0	84	35	37	13	0	267
BUCHANAN	12	11231	279	41	0	2	5	10	14	7	1	2	238
CHRISTIAN	12	32644	318	49	2	2	3	0	15	27	0	0	269
CLAY	5	22536	7	3	3	0	0	0	0	0	0	0	4
FRANKLIN	12	55092	957	182	5	4	3	19	61	87	1	2	775
GREENE	12	61163	998	219	1	8	23	8	46	130	2	1	779
JACKSON	12	12170	597	116	0	3	1	10	45	44	13	0	481
JASPER	12	34544	1633	272	5	7	1	6	107	145	0	1	1361
JEFFERSON	12	131535	1453	586	3	16	15	113	146	247	37	9	867
PLATTE	12	30910	521	170	2	4	3	47	35	68	11	0	351
RAY	7	16057	169	33	0	0	0	0	15	13	5	0	136
SAINT CHARLES	12	81387	1514	346	1	8	13	31	95	186	8	4	1168
TOTAL	-	529133	8884	2188	24	54	67	328	614	991	91	19	6696

¹Arrests for suspicion are not included in total.

TABLE 5.0.7

TOTAL PERSONS ARRESTED, RURAL COUNTIES

BY REPORTING AGENCY

1990

REPORTING AGENCY	MOS.	POPULATION	TOTAL ARRESTS	TOTAL PART I ARRESTS	MURDER	RAPE	ROBBERY	AGG. ASSAULT	BURG-LARY	THEFT	MOTOR VEHICLE THEFT	ARSON	TOTAL PART II ARRESTS
ANDREW	1	10280	13	4	0	0	0	0	2	2	0	0	9
ATCHISON	12	7457	75	10	0	0	0	2	2	3	1	2	65
AUDRAIN	12	9626	272	54	0	3	0	5	7	34	4	1	218
BARRY	1	22885	52	2	0	0	0	2	0	0	0	0	50
BARTON	12	7144	169	43	0	0	0	3	10	26	2	2	126
BENTON	11	13859	319	95	0	5	1	11	32	37	7	2	224
BOLLINGER	6	10619	103	13	0	0	0	2	9	0	0	2	90
BUTLER	12	21769	337	117	1	7	0	17	38	52	2	0	220
CALDWELL	12	8380	102	23	0	0	0	12	3	7	1	0	79
CAMDEN	2	27495	88	11	0	2	1	1	4	3	0	0	77
CAPE GIRARDEAU	12	17939	358	84	0	0	1	19	15	40	9	0	274
CARROLL	12	6342	69	35	0	0	0	6	7	12	7	3	34
CEDAR	4	12093	45	10	0	0	0	2	4	4	0	0	35
CHARITON	12	9202	21	12	0	0	0	1	4	6	1	0	9
COLE	12	28098	1733	244	2	11	13	20	181	2	9	6	1489
COOPER	11	7740	50	19	0	1	0	1	5	8	0	4	31
CRAWFORD	12	18060	233	63	1	1	3	11	8	36	2	1	170
DALLAS	11	12646	55	31	0	1	0	0	13	12	5	0	24
DAVIESS	12	7865	53	22	1	0	0	2	7	11	1	0	31
DE KALB	12	7551	97	11	0	0	0	3	3	3	2	0	86
DOUGLAS	12	11876	167	11	1	1	0	2	3	2	1	1	156
DUNKLIN	12	17048	204	67	0	9	7	13	23	11	3	1	137
GASCONADE	1	11252	0	0	0	0	0	0	0	0	0	0	0
GRUNDY	12	4407	94	39	0	0	0	0	18	18	1	2	55
HARRISON	12	8469	40	12	0	0	0	7	4	1	0	0	28
HENRY	12	8297	94	14	2	0	0	4	4	3	0	1	80
HOLT	12	6034	15	0	0	0	0	0	0	0	0	0	15
LACLEDE	12	17175	410	140	5	2	1	33	39	49	11	0	270
LINN	11	6352	45	5	0	0	0	1	3	0	0	1	40
LIVINGSTON	12	5788	276	42	0	1	0	7	21	12	1	0	234
MADISON	3	11127	8	1	0	0	0	1	0	0	0	0	7
MARIES	10	7976	23	15	0	0	0	1	5	7	1	1	8
MARION	12	9894	193	63	1	1	2	8	27	19	4	1	130
MCDONALD	11	16938	557	45	1	0	0	4	18	16	6	0	512
MERCER	3	3723	5	2	0	0	0	2	0	0	0	0	3
MISSISSIPPI	11	9357	0	0	0	0	0	0	0	0	0	0	0

TABLE 5.0.8

TOTAL PERSONS ARRESTED, RURAL COUNTIES

BY REPORTING AGENCY

1990

REPORTING AGENCY	MOS.	POPULATION	TOTAL ¹ ARRESTS	TOTAL PART I ARRESTS	MURDER	RAPE	ROBBERY	AGG. ASSAULT	BURG-LARY	THEFT	MOTOR VEHICLE THEFT	ARSON	TOTAL ¹ PART II ARRESTS
MONROE	12	9104	24	14	0	0	0	3	9	2	0	0	10
MORGAN	12	15574	346	43	1	3	1	1	14	13	10	0	303
NEW MADRID	5	17578	89	47	0	1	1	7	25	12	1	0	42
NODAWAY	12	11046	65	5	0	0	0	1	1	3	0	0	60
OREGON	9	9470	51	25	1	0	2	2	11	8	1	0	26
OSAGE	12	12018	21	4	0	0	0	2	0	2	0	0	17
OZARK	12	8598	86	34	0	1	0	14	12	4	3	0	52
PEMISCOT	3	21921	52	14	2	0	1	4	4	3	0	0	38
PERRY	10	16648	84	27	1	0	0	4	9	13	0	0	57
PIKE	11	9026	150	47	0	1	3	9	19	13	2	0	103
POLK	12	14981	90	14	0	0	1	4	5	3	1	0	76
PULASKI	12	39577	142	47	0	6	1	4	18	15	2	1	95
REYNOLDS	12	6661	48	19	1	0	5	6	2	3	2	0	29
RIPLEY	1	12303	19	8	0	0	0	0	8	0	0	0	11
SAINT CLAIR	12	8457	183	55	0	1	1	3	30	19	0	1	128
SAINT FRANCOIS	12	28612	785	88	2	0	1	6	25	49	5	0	697
SAINTE GENEVIEVE	12	11626	93	33	0	1	0	11	6	14	1	0	60
SALINE	12	8626	280	94	0	2	1	22	20	44	3	2	186
SCHUYLER	12	4236	23	2	0	0	0	0	0	1	1	0	21
SCOTLAND	12	4822	0	0	0	0	0	0	0	0	0	0	0
SCOTT	5	18676	58	21	0	2	0	7	4	8	0	0	37
SHANNON	3	7613	34	20	0	0	0	2	6	6	6	0	14
SHELBY	12	6942	63	9	0	0	0	0	4	5	0	0	54
STODDARD	4	28895	220	87	0	0	0	15	36	34	2	0	133
STONE	2	19078	50	17	0	0	0	5	5	7	0	0	33
SULLIVAN	12	6326	8	8	1	0	0	1	0	5	0	1	0
TANEY	10	21855	604	164	1	6	1	49	29	69	9	0	440
VERNON	12	10444	360	73	0	1	1	23	13	28	6	1	287
WARREN	12	15970	222	43	0	0	2	2	20	12	4	3	179
WASHINGTON	12	17697	486	77	0	3	0	12	53	8	1	0	409
WAYNE	12	11543	227	72	1	3	0	22	23	19	4	0	155
WORTH	12	2440	7	0	0	0	0	0	0	0	0	0	7
TOTAL	-	861126	11345	2570	26	76	51	444	930	858	145	40	8775

¹Arrests for suspicion are not included in total.

TABLE 5.0.8

GLOSSARY

ADULT: A person 18 years of age or older.

ARREST: Taking into physical or other legal custody for committing an offense in the local reporting jurisdiction. Arrests for all criminal offenses are scored. Arrests for ordinance violations are included. Arrests for traffic offenses, with the exception of driving under the influence of intoxicants and arrests in connection with negligent manslaughter in traffic accidents, are not scored. Included are those persons arrested but released without being formally charged.

CLEARANCE: The resolution of a criminal offense by the arrest, charging, and turning over to the court for prosecution one or more persons alleged to have committed a crime. An offense also can be cleared by exceptional means when the law enforcement agency has: 1) established the identity of the offender, 2) has enough information to support an arrest, charge, and prosecution in court, 3) the exact location of the offender is known so that he/she could be taken into custody, and 4) there is some reason outside law enforcement control that precludes arresting, charging, and prosecuting the offender, (Ex., offender dies).

CLEARED OFFENSES ONLY JUVENILES: The number of clearances for an offense in which only juveniles were arrested or were identified as the offender but for some valid reason could not be arrested divided by the total number of clearances for that offense expressed as a percentage. The formula is:

$$\frac{\text{Number of Offenses Cleared Involving Only Juveniles}}{\text{Number of Clearances}} \times 100$$

CLEARANCE RATES: The number of clearances divided by the total number of offenses, expressed as a percentage. The formula is:

$$\frac{\text{Number of Clearances}}{\text{Number of Offenses}} \times 100$$

CRIME INDEX: The Crime Index is the sum of the eight major offenses used to indicate the occurrence of crime in the United States. They were selected because of their frequency of occurrence and because they are most likely to be reported to a law enforcement agency. The eight offenses are: murder, forcible rape, robbery, aggravated assault, burglary, theft, motor vehicle theft, and arson. The first four make up the Violent Crime Index and the last four make up the Property Crime Index. Definitions of each of the offenses making up the Crime Index are provided in the section entitled "Missouri Detail Crime Index Analysis". In addition, refer to Crime Index Offense in this section for an explanation of how each type of offense is reported to the UCR Program.

CRIME INDEX OFFENSE: In the UCR Program, the offenses of murder, forcible rape, and aggravated assault are crimes against persons. For these crimes, one offense is counted for each victim. Robbery, burglary, theft, motor vehicle theft, and arson are crimes against property. For these crimes, with the exception of motor vehicle theft, one offense is counted for each distinct operation. In the case of motor vehicle theft, one offense is counted for each stolen vehicle.

CRIME INDEX OFFENSE ESTIMATES: Estimation routines were used in the Digest to identify the actual number of index crimes that occurred in the State on an annual basis. They are designed to compensate for non-reporting and incomplete reporting of such offenses by Missouri law enforcement agencies. The following procedures and formulas were used to obtain statewide crime index offense estimates:

- Law enforcement agencies in the State of Missouri were categorized into Groups. The following categories were used:

Municipal agency - 250,000 and over
 Municipal agency - population 100,000 - 249,999
 Municipal agency - population 50,000 - 99,999
 Municipal agency - population 25,000 - 49,999
 Municipal agency - population 10,000 - 24,999
 Municipal agency - population 2,500 - 9,999
 Municipal agency - population under 2,500
 Rural Sheriff's Department
 Suburban Sheriff's Department and County Police

- For those law enforcement agencies within a group that reported six months or more, a yearly estimate of their crime index offenses was obtained using the following formula:

$$\frac{\text{Crime Index Offenses Reported}}{\text{No. of Months Reported}} \times 12 = \text{Yearly Crime Index Offenses}$$

- For each group, the yearly crime index offenses for all law enforcement agencies reporting six months or more and their jurisdiction's population were summed and the following group crime index rate was computed.

$$\frac{\text{Sum of Rpt. Agency's Yearly Crime Index Offenses}}{\text{Sum of Rpt. Agency's Population}} = \text{Group Crime Index Rate}$$

- For those law enforcement agencies that reported less than six months or no activity at all within a group, their yearly crime index offenses were computed using the following formula:

$$\frac{\text{Law Enforcement Agency Population}}{\text{Group Crime Index Rate}} \times \text{Yearly Crime Index Offenses}$$

- Yearly crime index offenses computed above for all Missouri law enforcement agencies were then summed in order to obtain a statewide yearly crime index offense estimate for use in this Digest.

No estimation routines were used in data displays that identify specific law enforcement agency's yearly crime activity in the Digest. In these data displays, only crime activity that was reported into the UCR Program is displayed.

JUVENILE: A person under 18 years of age.

JUVENILE ARREST: Juvenile arrests do not include law enforcement contacts with juveniles where no offense has been committed. Juveniles taken into custody for their own protection, such as in neglect cases, are not scored since they have not committed any crime.

PERCENT CHANGE: The formula is:

$$\frac{\text{Value in Current Period} - \text{Value in Base Period}}{\text{Value in Base Period}} \times 100$$

POPULATION: The total number of persons residing in a jurisdiction based on United States Census data.

QUARTILE: The value that marks the boundary between two consecutive intervals in a frequency distribution of four intervals with each containing one quarter of the total population.

RATE PER 100,000 POPULATION: Rates per 100,000 population are indicators of activity standardized by the population of those law enforcement agencies associated with the activity. Three types of rates are provided: statewide crime index offense rates, reporting agency crime index offense rates, and arrest rates.

The statewide offense rate formula is:

$$\frac{\text{Number of Estimated Offenses Reported} \times 100,000}{\text{Population of all Agencies Used in Estimate}}$$

The reporting agency offense rate formula is:

$$\frac{\text{Number of Offenses Reported} \times 100,000}{\text{Population of Reporting Agency(ies)}}$$

The arrest rate formula is:

$$\frac{\text{Number of Arrests Reported} \times 100,000}{\text{Population of Reporting Agency(ies)}}$$

STRONG ARMED ROBBERY: A robbery wherein no weapons were used but tactics (limited to the use of personal weapons such as hands, arms, feet, fists, teeth, etc.) were employed to deprive the victim of his/her property.

TIME SERIES: Time-series analysis was used in the Digest to forecast future crime and arrest activity. With this technique, data for past periods were used as the basis for projecting levels of future activity. Ten years of past data normally were used to make these projections.

Crime and arrest rates on a per 100,000 population basis were used in making the forecasts. These rates reflect crime and arrest activity in relation to population.

The technique used to project crime and arrest activity was Exponential Smoothing (available through the SAS Econometrics and Time Series software package). Use of this technique took into consideration the limited number of data points in the time series, as well as whether or not the time series was best characterized as constant, linear, or non-linear. In applying the smoothing technique, greater weight was given to the more recent data values than to the earlier data values when projecting future levels of activity.