

137257

355

**Court Commitments to
Massachusetts County Facilities
During 1989**

Prepared by:

**Linda K. Holt
Manager of Operations Research**

**Sara Twyman
Research Intern**

Massachusetts Department of Correction

**George A. Vose
Commissioner**

October, 1990

**NCJRS
OCT 28 1990
ACQUISITIONS**

**PUBLICATION: #16,539-60 pgs.-250 cps.-12-18-90
APPROVED BY: State Purchasing Agent**

137257

**U.S. Department of Justice
National Institute of Justice**

This document has been reproduced exactly as received from the person or organization originating it. Points of view or opinions stated in this document are those of the authors and do not necessarily represent the official position or policies of the National Institute of Justice.

Permission to reproduce this copyrighted material has been granted by
Massachusetts Department
of Correction,

to the National Criminal Justice Reference Service (NCJRS).

Further reproduction outside of the NCJRS system requires permission of the copyright owner.

Abstract

This report provides a statistical description of the 13,117 offenders committed by the courts to Massachusetts county facilities (jails or houses of correction) during 1989. The report presents information on institution committed to, court committed from, month of commitment, offense, sentence length, sentence type, age, sex, race, marital status, education, place of birth and residence.

Some highlights of the statistics presented in this report are:

- In 1989 there were 13,117 commitments to county facilities. This represents an increase of 12 percent over the 11,753 commitments in 1988.
- In terms of general categories of offenses, 11 percent were committed for offenses against the person, 2 percent for sex offenses, 26 percent for property offenses, 14 percent for drug offenses, 19 percent for Operating Under the Influence (O.U.I.), and 28 percent for all other offenses.
- Specifically, the most common types of offenses for which offenders were committed were O.U.I. (19 percent), motor vehicle violations (14 percent), and burglary (9 percent).
- The median sentence length was three months. Fifteen percent were committed in lieu of payment of a fine. One percent were serving weekend sentences.
- The median age of offenders committed to county facilities was 27 years.
- Seventy-two percent of the offenders were white, 18 percent were black, 10 percent were Hispanic, and one percent were other races.
- The median educational level was 12th grade.
- Seventy-one percent of the offenders were single, 15 percent were married and 13 percent were separated, divorced or widowed.
- Sixty-eight percent were born in Massachusetts, 19 percent were born in other states, 9 percent were born in U.S. territories and 4 percent were foreign-born.

Table of Contents

Title	Page Number
<u>Abstract</u>	i
<u>Table of Contents</u>	ii
<u>Introduction</u>	1
<u>County Facilities in Massachusetts</u>	2
<u>Commitments to County Facilities, 1979 to 1989</u>	4
Figure 1. Commitments to County Correctional Facilities, 1979 to 1989	4
Table 1. Selected Characteristics of Offenders Committed to County Correctional Facilities, 1984 to 1989	7
<u>A Description of 1989 Commitments</u>	9
<u>Statistical Tables</u>	13
Month of Commitment	13
Court of Commitment	15
Present Offense: General Category	17
Present Offense: Person Offenses	19
Present Offense: Sex Offenses	21
Present Offense: Property Offenses	23
Present Offense: Drug Offenses	25
Present Offense: Other Offenses	27
Sentence Length	29
Jail or House Sentence	31
Weekend Sentences	33

Table of Contents

Title	Page Number
<u>Statistical Tables (Cont.)</u>	
Age at Commitment	35
Sex	37
Race	39
Marital Status	41
Last Grade Completed	43
Place of Birth	45
County of Residence	47
Appendix I. County Facilities in Massachusetts	49
Appendix II. Operating Expenditures for County Facilities, Fiscal Year Ending June 30, 1989	53
Appendix III. Population in County Correctional Facilities, January 1, 1989 to December 31, 1989	54
Glossary	55

Introduction

This report provides a statistical description of offenders committed to Massachusetts county facilities (jails and houses of correction) during 1989. Included here is information about the county facilities and their operating expenditures. Offenders are described in terms of institution committed to, month of commitment, court committed from, offense, sentence length, sentence type (weekend and jail sentences), sex, age, race, marital status, education, place of birth, and residence. Trends in court commitments to the county correctional system over the past decade are also presented. The tables were derived from information submitted by each county facility to the Operations Research Unit of the Research Division in the Department of Correction and were produced on the Regent's Computer Network.

Upon referring to the statistical tables, the reader should note the following: (1) the total population is sub-divided by committing institution, (2) the left number in each cell represents the total number of offenders committed to a particular institution who fall into the corresponding category in that row of the table; and (3) the right number in each cell (the number contained in parentheses) is the percentage of the number of individuals in the category to the total number of individuals from that institution (column percents). In the narrative percentages reflect only those cases where data were available and exclude cases where data were missing. For example, on pages fourteen and fifteen, Month of Commitment is presented and the following types of information can be obtained:

- (1) The total number of offenders is broken down by commitment institution, and these are labeled and presented horizontally across the top of the table;
- (2) The specific months are labeled and presented vertically;
- (3) Of the 13,117 offenders committed during 1989, 2,508 were committed to the Middlesex County facility;
- (4) Of the 2,508 offenders committed to Middlesex County, ten percent (N=244) were committed in January.

County Facilities in Massachusetts

There are fourteen counties in Massachusetts. All counties except for Nantucket County have at least one county correctional facility administered by the county sheriff. These facilities usually contain a jail, for pre-trial detainees, and a house of correction, for sentenced inmates. The location and administrators of all facilities are shown in Appendix I. Suffolk County has a separate facility for its jail (Charles Street) and its house of correction (Deer Island). The Deer Island House of Correction is administered by the Penal Commissioner of Boston. Middlesex County has two facilities, a combined jail and house of correction in Billerica and a jail in Cambridge. Essex County has two facilities that serve as jails and houses of correction, one in Lawrence and one in Salem. Four counties have specialized facilities for sentenced offenders: Essex County has the Correctional Alternative Center (CAC) in Lawrence; Hampden County has the Western Massachusetts Correctional Alcohol Center (WMCAC) facility in Springfield; Bristol County has the Eastern Massachusetts Correctional Alcohol Center (EMCAC); and Norfolk County has the Braintree Alternative Center. Individuals are not committed directly to these four facilities, but can be transferred from a house of correction or state correctional facility.

The twenty county facilities include ten 19th century facilities and ten built in the 20th century. The oldest facility is the Essex County facility in Salem built in 1813.

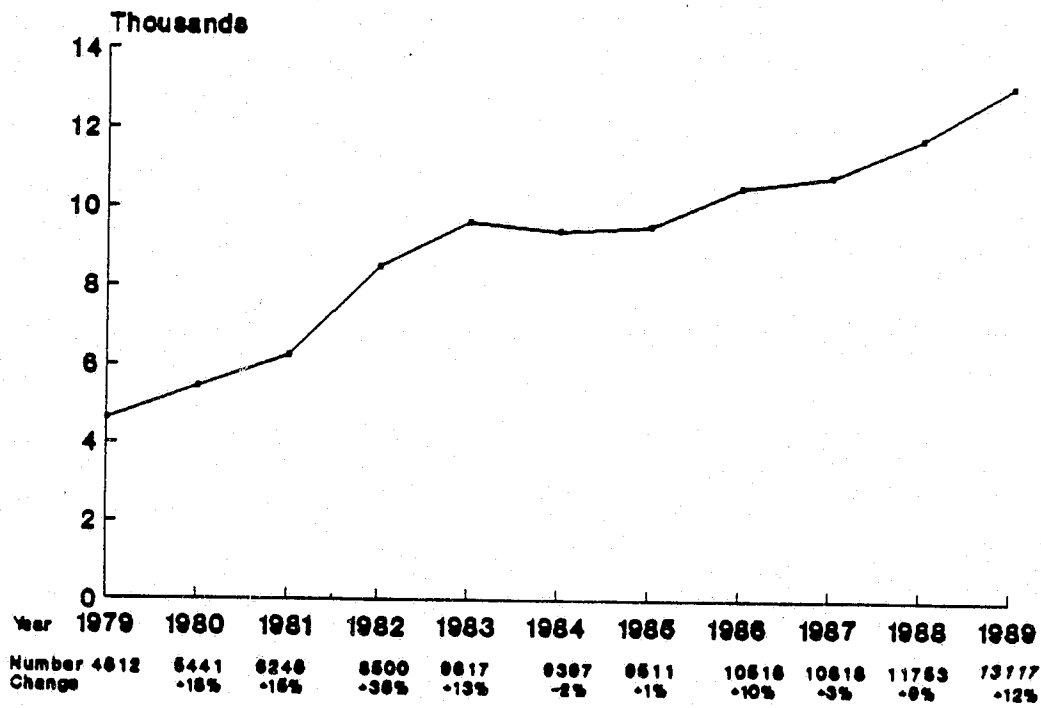
The operating expenditures for each county facility, for the fiscal year ending June 30, 1989, are shown in Appendix II. These include expenses for salaries, food, utilities and other expenses.

The population in county correctional facilities for the period January 1, 1989 to December 31, 1989 is shown in Appendix III. This includes the average daily population (ADP), beginning and ending population, design capacity, and average daily population divided by design capacity, which is an indicator of facility utilization.

Commitments to County Correctional Facilities,
1979 to 1989

During 1989 there were 13,117 commitments to county facilities. This is a 12 percent increase from the 11,753 commitments in 1988 and a 184 percent increase from the 4,612 commitments in 1979. Commitments to county facilities for the last eleven years are shown in Figure 1.

Figure 1.
Commitments 1979 to 1989



The largest increase in commitments came between 1981 and 1982 when there was an increase of 36 percent or 2,254 commitments. Much of this increase was due to O.U.I. offenders. Commitments for O.U.I. increased from 295 in 1981 to 1305 in 1982, an increase of 1,010.

Table 1 shows selected characteristics of offenders committed to the county correctional system during the six year period, 1984 to 1989. During this six year period, the number of commitments increased by 40 percent or 3,720 from 9,397 in 1984 to 13,117 in 1989. With the exceptions of the Dukes County, and Essex/Salem and Suffolk/Charles Street, all county facilities experienced increases in commitments from 1984 to 1989.

The offenses for which individuals were committed changed over the last six years. Between 1984 and 1989 increases occurred for all offense categories. Commitments for drug offenses increased by 188 percent (N=1,239); commitments for motor vehicle offenses increased by 70 percent (N=776); commitments for sex offenses increased by 36 percent (N=61); commitments for person offenses increased by 31 percent (N=348); commitments for other offenses increased by 38 percent (N=484) during the period; commitments for O.U.I. increased by 26 percent (N=513) during the period; and commitments for property offenses increased by 10 percent (N=309) during the period.

The distribution of sentence length shifted upward over the past six years. In 1984, 43 percent of commitments had a sentence of one month or less (including fines); and in 1989, 34 percent of all commitments had a sentence of one month or less. In 1984, 36 percent of all commitments had a sentence of six months or more; and in 1989, 42 percent of all commitments had a sentence of six months or more.

The age distribution of county commitments shifted upward over the last six

years. In 1984, 47 percent of the commitments were 24 years or younger and 53 percent were 25 years or older. In 1989, 37 percent of the commitments were 24 years or younger and 63 percent were 25 years or older.

Table 1.

**Selected Characteristics of Offenders Committed
to County Correctional Facilities,
1984 to 1989**

Offender Characteristic	1984	1985	1986	1987	1988	1989
<u>County Facility Committed To</u>						
Barnstable	379	370	412	386	411	470
Berkshire	357	370	390	370	422	400
Bristol	607	601	728	803	798	1111
Dukes	86	62	44	51	39	55
Essex/Lawrence	371	593	680	582	627	732
Essex/Salem	579	394	578	556	566	537
Franklin	121	144	159	197	191	217
Hampden	1066	930	1253	1136	1349	1431
Hampshire	230	232	251	313	316	361
Middlesex	1791	1916	2028	2041	2402	2508
Norfolk	740	699	702	707	761	1003
Plymouth	462	572	538	609	639	777
Suffolk-C.S.	114	112	129	86	86	0
Suffolk-Deer Island	979	1064	1069	1131	1191	1406
Worcester	1515	1452	1555	1850	1955	2109
TOTAL	9397	9511	10516	10818	11753	13117
<u>Present Offense: General Categories</u>						
Person	1134	1046	1133	1226	1362	1482
Property	3041	2960	2915	3062	3057	3350
Sex	171	220	229	191	252	232
Drug	659	745	922	1005	1476	1898
O.U.I.	2006	2118	2687	2607	2472	2519
Motor Vehicle	1107	1225	1370	1420	1608	1883
Other	1269	1197	1260	1307	1526	1753
Unknown	10	0	0	0	0	0
Total	9397	9511	10516	10818	11753	13117
<u>Sentence Length</u>						
Fine	940	1085	1234	1256	1573	1933
Less than 1 Month	2027	1894	1830	1391	1253	1328
1 Month	1044	1173	1253	1126	1148	1239
2 to 5 Months	1957	1968	2353	2719	2971	3063
6 to 11 Months	1511	1488	1784	1953	2165	2428
12 to 17 Months	1112	1117	1173	1363	1457	1779
18 to 23 Months	273	279	287	345	437	533
24 Months or More	529	507	602	665	749	814
Unknown	4	0	0	0	0	0
Total	9397	9511	10516	10818	11753	13117

Table 1 (Cont.)

Offender Characteristic	1984	1985	1986	1987	1988	1989
Age at Commitment						
19 or Younger	1407	1244	1197	1277	1243	1344
20 to 24	3053	2931	3086	3046	3218	3536
25 to 29	2079	2286	2585	2656	2957	3345
30 to 39	1977	2139	2580	2783	3186	3626
40 to 64	831	872	1019	1031	1126	1231
65 and Older	43	36	31	22	19	21
Unknown	7	3	18	3	4	14
Total	9397	9511	10516	10818	11753	13117

A Description of 1989 Commitments

In this section the 13,117 offenders committed to county facilities during 1989 will be described in more detail. Characteristics of the present offense will be discussed first; and personal background characteristics of the county offender population will be discussed second. Information for each institution for these variables can be found in the following tables.

Present Offense Characteristics

Institution Committed To. The number of commitments ranges from a low of 55 in Dukes County to a high of 2,508 in Middlesex County. Seven counties received over 1,000 commitments in 1989: Middlesex (N=2,508), Worcester (N=2,109), Hampden (N=1,431), Suffolk (N=1,406), Essex (N=1,269), Bristol (N=1,111), and Norfolk (N=1,003). These seven counties accounted for 83 percent of all county commitments in 1989.

Court from Which Committed. Most offenders committed to county facilities are sentenced by the lower courts in the county to which they are committed. Ninety-six percent were from lower courts and 4 percent were from superior courts.

Present Offense. Most offenders committed to county facilities were sentenced for non-violent offenses (87 percent); 13 percent were committed for violent offenses, those against the person or sex offenses.

Eleven percent of the commitments were for offenses against the person. Most of these were for unarmed assault (assault or assault and battery) or armed

assault (assault and battery with a dangerous weapon or assault with a dangerous weapon). There were 64 commitments for vehicular homicide.

Two percent of the commitments were for sex offenses including 29 for rape, 146 for assault with intent to rape (which includes indecent assault and battery), and 57 for other sex offenses (e.g., unnatural acts lewdness, indecent exposure and sexual misconduct). Of the 175 commitments for rapes and sexual assaults, 106 involved minors as victims and 69 involved adults as victims.

Twenty-six percent of the commitments were for property offenses. The most common property offenses were: burglary (N=1,128), larceny (N=596), receiving stolen goods (N=378), vehicle theft (N=306), stealing (N=274), and property injuries (N=216).

Fourteen percent of the commitments were for drug offenses. Eighty-two percent of these were for violation of the Controlled Substance Act with Class A, Class B, or Class D substances (N=1,550).

Forty-seven percent of all commitments were in the "other" offense category. Most of these commitments were for O.U.I. (N=2,515) and other motor vehicle violations (N=1,883). Other common offenses in this category were disturbing the peace (N=460), weapons (N=227), and non-support (N=206).

Sentence. The median sentence length for 1989 commitments was three months. In general, offenders sentenced for less than two months will serve their entire sentence, and offenders sentenced for two months or more will be eligible for parole after half their sentence is served. There were 1,933 (15 percent) commitments in lieu of payment of a fine. County sentences range up to two and one-half years, but in a small number of cases, offenders can serve consecutive sentences of two and one half years or less, such that the total length of sentence will be more than two and one half years.

Most offenders are sentenced to houses of correction, but some offenders are committed to jails. In 1989 there were only 2 such jail commitments (less than one percent of all commitments).

Some sentences are served only on weekends. One percent of all commitments were weekend sentences. Weekend sentences were used most extensively in Berkshire county where 10 percent of all commitments were served on weekends.

Personal Background Characteristics

Age. The age of offenders ranged from 16 years to 74 years. The median age was 27 years. There were 2,020 offenders (15 percent) age 20 years or younger and 59 (less than one percent) age 60 and over.

Sex. Of the 13,117 commitments to county facilities, there were 59 females and 13,058 males. Most females receiving a county sentence are sent to the state correctional facility for female offenders, MCI-Framingham.

Race. The majority of offenders were white (72 percent). Eighteen percent were black and 10 percent were Hispanic. There were 94 individuals (one percent) in other racial groups. At one facility, Suffolk County, the majority of commitments were not white: (57 percent black, 29 percent white, 13 percent Hispanic, and 1 percent other).

Marital Status. Most offenders were single (71 percent). Fifteen percent were married at the time of commitment and 13 percent were separated, divorced or widowed.

Education. The median educational level was 12th grade. Eight percent had only a grade school education (first through eighth grade), 41 percent completed some high school and 51 percent were at least high school graduates. Eight percent had at least some college education and 2 percent reported having a college degree.

Place of Birth. Sixty-eight percent of all county commitments were born in Massachusetts, 19 percent were born in other states, 9 percent were born in U.S. territories and 4 percent were foreign-born. Bristol County had the highest proportion of foreign-born (10 percent); Hampden County had the highest proportion of offenders born in U.S. territories (25 percent); Dukes County had the highest proportion born in other states (35 percent); and Berkshire County had the highest proportion born in the same county as the facility (72 percent).

Residence. As reported by the county facilities, all but 385 offenders committed to county facilities were residing in Massachusetts at the time of commitment. In most cases, the offenders were residing in the same county as the facility to which they were committed. Hampden County had the highest proportion of county residents (93 percent), and Hampshire County had the lowest proportion of county residents (56 percent).

Statistical Tables

Month of Commitment	Committing Institution															
	Barnstable		Berkshire		Bristol		Dukes		Essex-Lawrence		Essex-Salem		Franklin		Hampden	
	N	%	N	%	N	%	N	%	N	%	N	%	N	%	N	%
January	57	(12)	35	(9)	95	(9)	11	(20)	77	(11)	76	(14)	31	(14)	124	(9)
February	43	(9)	26	(6)	93	(8)	4	(7)	46	(6)	41	(8)	26	(12)	99	(7)
March	36	(8)	38	(9)	86	(8)	3	(5)	62	(8)	50	(9)	24	(11)	133	(9)
April	28	(6)	34	(8)	77	(7)	2	(4)	54	(7)	41	(9)	12	(6)	112	(8)
May	35	(7)	37	(9)	89	(9)	4	(7)	41	(6)	45	(8)	9	(4)	129	(9)
June	32	(7)	40	(10)	114	(10)	2	(4)	70	(10)	52	(10)	18	(8)	143	(10)
July	33	(7)	23	(6)	70	(6)	7	(13)	59	(8)	37	(7)	16	(7)	114	(8)
August	44	(9)	20	(5)	120	(11)	8	(15)	75	(10)	44	(8)	13	(6)	116	(8)
September	42	(9)	24	(6)	110	(10)	7	(13)	75	(10)	37	(7)	18	(8)	123	(9)
October	41	(9)	33	(8)	95	(9)	3	(5)	69	(9)	43	(8)	23	(11)	115	(8)
November	53	(11)	45	(11)	84	(9)	2	(4)	54	(7)	38	(7)	13	(6)	134	(9)
December	26	(6)	45	(11)	79	(7)	2	(4)	50	(7)	33	(6)	14	(6)	89	(6)
Total	470	(100)	400	(100)	1111	(100)	55	(100)	732	(100)	537	(100)	217	(100)	1431	(100)

(continued)

Month of Commitment	Hamshire		Middlesex		Committing Institution				Suffolk		Worcester		Total	
	N	%	N	%	Norfolk	Plymouth	N	%	N	%	N	%	N	%
					N	%	N	%						
January	32	(9)	244	(10)	118	(12)	74	(10)	157	(12)	226	(11)	1367	(10)
February	42	(12)	195	(8)	67	(7)	76	(10)	124	(9)	168	(8)	1050	(8)
March	33	(9)	254	(10)	80	(8)	67	(9)	123	(9)	172	(8)	1161	(9)
April	27	(7)	167	(7)	76	(8)	49	(6)	110	(8)	158	(7)	947	(7)
May	32	(9)	229	(9)	80	(8)	65	(8)	144	(10)	181	(9)	1120	(9)
June	23	(6)	201	(8)	82	(8)	72	(9)	135	(10)	176	(9)	1160	(9)
July	34	(9)	169	(7)	72	(7)	38	(5)	72	(5)	143	(7)	887	(7)
August	28	(8)	198	(8)	89	(9)	69	(9)	110	(8)	147	(7)	1081	(8)
September	28	(8)	181	(7)	86	(9)	63	(8)	122	(9)	190	(9)	1106	(8)
October	19	(5)	232	(9)	95	(9)	76	(10)	106	(8)	215	(10)	1165	(9)
November	30	(9)	238	(9)	79	(8)	70	(9)	112	(8)	180	(9)	1132	(9)
December	33	(9)	200	(8)	79	(8)	58	(7)	81	(6)	153	(7)	941	(7)
Total	361	(100)	2508	(100)	1003	(100)	777	(100)	1406	(100)	2109	(100)	13317	(100)

Court of Commitment	Barnstable		Berkshire		Bristol		Committing Institution				Essex-Salem		Franklin		Hampden	
	N	?	N	?	N	?	Dukes		Essex-Lawrence		N	?	N	?	N	?
							N	?	N	?						
Superior Courts	15	(3)	34	(8)	45	(4)	2	(4)	3	(0)	2	(0)	14	(6)	142	(10)
Barnstable D.C.	377	(91)	0	(0)	0	(0)	1	(2)	0	(0)	0	(0)	0	(0)	0	(0)
Berkshire D.C.	1	(0)	364	(91)	1	(0)	0	(0)	0	(0)	2	(0)	0	(0)	1	(0)
Bristol D.C.	7	(1)	0	(0)	1054	(95)	0	(0)	0	(0)	1	(0)	0	(0)	1	(0)
Dukes D.C.	0	(0)	0	(0)	0	(0)	50	(91)	0	(0)	0	(0)	0	(0)	0	(0)
Essex D.C.	28	(6)	0	(0)	0	(0)	1	(2)	725	(99)	532	(99)	1	(0)	1	(0)
Franklin D.C.	0	(0)	0	(0)	1	(0)	0	(0)	0	(0)	0	(0)	196	(91)	2	(0)
Hampden D.C.	0	(0)	2	(0)	0	(0)	0	(0)	0	(0)	0	(0)	1	(0)	1267	(89)
Hampshire D.C.	0	(0)	0	(0)	0	(0)	0	(0)	0	(0)	0	(0)	1	(0)	4	(0)
Middlesex D.C.	2	(0)	0	(0)	0	(0)	0	(0)	4	(1)	0	(0)	0	(0)	4	(0)
Nantucket D.C.	24	(5)	0	(0)	1	(0)	0	(0)	0	(0)	0	(0)	0	(0)	0	(0)
Norfolk D.C.	2	(0)	0	(0)	2	(0)	0	(0)	0	(0)	0	(0)	1	(0)	1	(0)
Plymouth D.C.	2	(2)	0	(0)	3	(0)	0	(0)	0	(0)	0	(0)	0	(0)	0	(0)
Suffolk M.C.	3	(1)	0	(0)	2	(0)	1	(2)	0	(0)	1	(0)	0	(0)	0	(0)
Worcester D.C.	2	(0)	0	(0)	2	(0)	0	(0)	0	(0)	1	(0)	1	(0)	8	(1)
Total	470	(100)	400	(100)	1111	(100)	55	(100)	732	(100)	537	(100)	217	(100)	1431	(100)

(continued)

Court of Commitment	Committing Institution												Total	
	Hampshire		Middlesex		Norfolk		Plymouth		Suffolk		Worcester		N	%
	N	%	N	%	N	%	N	%	N	%	N	%		
Superior Courts	16	(4)	71	(3)	64	(6)	7	(1)	76	(5)	22	(1)	513	(4)
Barnstable D.C.	0	(0)	0	(0)	0	(0)	1	(0)	0	(0)	0	(0)	381	(3)
Berkshire D.C.	0	(0)	0	(0)	0	(0)	0	(0)	0	(0)	0	(0)	367	(3)
Bristol D.C.	0	(0)	1	(0)	0	(0)	11	(1)	0	(0)	0	(0)	1075	(8)
Dukes D.C.	0	(0)	0	(0)	0	(0)	0	(0)	0	(0)	0	(0)	50	(0)
Essex D.C.	0	(0)	11	(0)	3	(0)	0	(0)	0	(0)	0	(0)	1392	(10)
Franklin D.C.	5	(1)	0	(0)	1	(0)	0	(0)	0	(0)	0	(0)	207	(2)
Hamden D.C.	7	(2)	0	(0)	0	(0)	0	(0)	0	(0)	1	(0)	1278	(10)
Hampshire D.C.	330	(91)	0	(0)	0	(0)	0	(0)	0	(0)	0	(0)	335	(3)
Middlesex D.C.	0	(0)	2309	(92)	5	(0)	1	(0)	2	(0)	10	(0)	2335	(18)
Nantucket D.C.	0	(0)	0	(0)	0	(0)	0	(0)	0	(0)	0	(0)	25	(0)
Norfolk D.C.	0	(0)	7	(0)	920	(92)	14	(2)	2	(0)	0	(0)	949	(7)
Plymouth D.C.	1	(0)	2	(0)	3	(0)	720	(93)	1	(0)	0	(0)	739	(6)
Suffolk H.C.	0	(0)	100	(4)	6	(1)	23	(3)	1325	(94)	2	(0)	1463	(11)
Worcester D.C.	2	(1)	7	(0)	1	(0)	0	(0)	0	(0)	2074	(98)	2098	(16)
Total	361	(100)	2508	(100)	1003	(100)	777	(100)	1406	(100)	2109	(100)	13117	(100)

Present Offense - General Category	Barnstable		Berkshire		Bristol		Committing Institution Dukes		Institution Essex- Lawrence		Essex- Salem		Franklin		Hampden	
	N	%	N	%	N	%	N	%	N	%	N	%	N	%	N	%
Person	54	(11)	37	(9)	91	(8)	3	(5)	76	(10)	101	(19)	39	(18)	128	(9)
Property	124	(26)	96	(24)	316	(28)	11	(20)	143	(20)	121	(23)	50	(23)	318	(22)
Sex	11	(2)	19	(5)	6	(1)	2	(4)	13	(2)	9	(2)	14	(6)	25	(2)
Drug	33	(7)	46	(11)	209	(19)	6	(11)	103	(14)	47	(9)	11	(5)	394	(28)
Other	249	(53)	202	(50)	482	(44)	33	(60)	397	(54)	259	(48)	103	(47)	566	(40)
Total	470	(100)	400	(100)	1111	(100)	55	(100)	732	(100)	537	(100)	217	(100)	1431	(100)

(continued)

Present Offense - General Category	Hampshire		Middlesex		Committing Institution				Suffolk		Worcester		Total	
	N	%	N	%	Norfolk N	%	Plymouth N	%	N	%	N	%	N	%
Person	39	(11)	321	(13)	120	(12)	81	(10)	194	(14)	198	(9)	1482	(11)
Property	96	(27)	630	(25)	265	(26)	250	(32)	478	(34)	452	(21)	3350	(26)
Sex	6	(2)	44	(2)	17	(2)	16	(2)	23	(2)	27	(1)	232	(2)
Drug	29	(8)	322	(13)	73	(7)	45	(6)	320	(23)	261	(12)	1898	(14)
Other	192	(53)	1193	(47)	528	(53)	385	(50)	391	(28)	1171	(56)	6155	(47)
Total	361	(100)	2508	(100)	1003	(100)	777	(100)	1406	(100)	2109	(100)	13117	(100)

	Barnstable		Berkshire		Bristol		Committing Institution Dukes		Essex- Lawrence		Essex- Salem		Franklin		Hampden	
	N	Z	N	Z	N	Z	N	Z	N	Z	N	Z	N	Z	N	Z
Person Offenses																
Not Applicable	416	(89)	363	(91)	1020	(92)	52	(95)	656	(90)	436	(91)	178	(92)	1303	(91)
Manslaughter	0	(0)	0	(0)	0	(0)	0	(0)	0	(0)	0	(0)	0	(0)	0	(0)
Vehicular Homicide	3	(1)	3	(1)	5	(0)	0	(0)	1	(0)	5	(1)	1	(0)	11	(1)
Asslt-Intent	1	(0)	1	(0)	1	(0)	0	(0)	2	(0)	1	(0)	0	(0)	1	(0)
Armed Robbery	0	(0)	0	(0)	4	(0)	0	(0)	3	(0)	4	(1)	0	(0)	0	(0)
Unarmed Robbery	0	(0)	1	(0)	5	(0)	0	(0)	1	(0)	11	(2)	0	(0)	4	(0)
Armed Assault	27	(6)	7	(2)	31	(3)	0	(0)	25	(3)	32	(6)	13	(6)	49	(3)
Unarmed Assault	21	(4)	22	(5)	45	(4)	3	(5)	49	(5)	43	(8)	25	(12)	60	(4)
Mayhem	0	(0)	0	(0)	0	(0)	0	(0)	0	(0)	1	(0)	0	(0)	0	(0)
Extortion	1	(0)	1	(0)	0	(0)	0	(0)	4	(1)	2	(0)	0	(0)	2	(0)
Kidnaping	1	(0)	1	(0)	0	(0)	0	(0)	0	(0)	2	(0)	0	(0)	0	(0)
Civil Rights	0	(0)	1	(0)	0	(0)	0	(0)	0	(0)	0	(0)	0	(0)	0	(0)
Conspiracy	0	(0)	0	(0)	0	(0)	0	(0)	0	(0)	0	(0)	0	(0)	1	(0)
Total	470	(100)	400	(100)	1111	(100)	55	(100)	732	(100)	537	(100)	217	(100)	1431	(100)

(continued)

	Hampshire		Middlesex		Committing Institution				Suffolk		Worcester		Total	
	N	%	N	%	Norfolk	Plymouth	N	%	N	%	N	%	N	%
Person Offenses														
Not Applicable	322	(89)	2187	(87)	883	(88)	696	(90)	1212	(86)	1911	(91)	11635	(89)
Manslaughter	0	(0)	0	(0)	0	(0)	1	(0)	0	(0)	0	(0)	1	(0)
Vehicular Homicide	3	(1)	7	(0)	7	(1)	4	(1)	2	(0)	12	(1)	64	(0)
Asslt-Intent	1	(0)	0	(0)	1	(0)	0	(0)	0	(0)	0	(0)	9	(0)
Armed Robbery	1	(0)	0	(0)	0	(0)	2	(0)	6	(0)	0	(0)	20	(0)
Unarmed Robbery	1	(0)	9	(0)	3	(0)	1	(0)	9	(1)	0	(0)	45	(0)
Armed Assault	19	(5)	121	(5)	44	(4)	45	(6)	95	(7)	60	(3)	568	(4)
Unarmed Assault	12	(3)	171	(7)	56	(6)	26	(3)	73	(5)	122	(6)	719	(5)
Mvhem	0	(0)	0	(0)	0	(0)	1	(0)	0	(0)	0	(0)	2	(0)
Extortion	1	(0)	8	(0)	6	(1)	1	(0)	8	(1)	4	(0)	38	(0)
Kidnapping	0	(0)	2	(0)	0	(0)	0	(0)	0	(0)	0	(0)	5	(0)
Civil Rights	0	(0)	2	(0)	1	(0)	0	(0)	1	(0)	0	(0)	5	(0)
Conspiracy	1	(0)	1	(0)	2	(0)	0	(0)	0	(0)	0	(0)	5	(0)
Total	361	(100)	2508	(100)	1003	(100)	777	(100)	1406	(100)	2109	(100)	13117	(100)

	Barnstable		Berkshire		Bristol		Committing Institution Dukes		Essex- Lawrence		Essex- Salem		Franklin		Hampden		
	N	%	N	%	N	%	N	%	N	%	N	%	N	%	N	%	
Sex Offenses																	
Not Applicable	459	(38)	391	(95)	1105	(39)	53	(96)	717	(98)	528	(98)	203	(94)	1406	(98)	
Rape	2	(0)	0	(0)	0	(0)	0	(0)	2	(0)	2	(0)	0	(0)	0	(0)	
Assault-Pape	3	(1)	1	(0)	2	(0)	1	(2)	0	(0)	1	(0)	1	(0)	8	(1)	
Rape-Minor	0	(0)	5	(1)	0	(0)	0	(0)	0	(0)	0	(0)	3	(1)	2	(0)	
Assault-Pape-Minor	4	(1)	5	(1)	1	(0)	0	(0)	8	(1)	4	(1)	9	(4)	7	(0)	
Unnatural Acts	1	(0)	1	(0)	1	(0)	1	(2)	1	(0)	1	(0)	1	(0)	1	(0)	
Leudness	1	(0)	0	(0)	1	(0)	0	(0)	1	(0)	1	(0)	0	(0)	4	(0)	
Indecent Exposure	0	(0)	5	(1)	0	(0)	0	(0)	0	(0)	0	(0)	0	(0)	3	(0)	
Sexual Misconduct	0	(0)	1	(0)	1	(0)	0	(0)	1	(0)	0	(0)	0	(0)	0	(0)	
Total	470	(100)	400	(100)	1111	(100)	55	(100)	732	(100)	537	(100)	217	(100)	1431	(100)	

(continued)

	Committing Institution												Total	
	Hampshire		Middlesex		Norfolk		Plymouth		Suffolk		Worcester		N	%
Sex Offenses														
Not Applicable	355	(98)	2464	(98)	986	(98)	761	(98)	1313	(98)	2087	(99)	12895	(98)
Rape	0	(0)	2	(0)	0	(0)	0	(0)	0	(0)	1	(0)	9	(0)
Assault-Rape	1	(0)	12	(0)	3	(0)	11	(1)	12	(1)	4	(0)	50	(0)
Rape-Minor	2	(1)	5	(0)	1	(0)	1	(0)	0	(0)	1	(0)	20	(0)
Assault-Rape-Minor	2	(1)	15	(1)	8	(1)	1	(0)	9	(1)	12	(1)	86	(1)
Unnatural Acts	0	(0)	1	(0)	2	(0)	0	(0)	1	(0)	3	(0)	15	(0)
Lewdness	1	(0)	6	(0)	3	(0)	2	(0)	0	(0)	4	(0)	24	(0)
Indecent Exposure	0	(0)	3	(0)	0	(0)	1	(0)	1	(0)	2	(0)	15	(0)
Sexual Misconduct	0	(0)	0	(0)	0	(0)	0	(0)	0	(0)	0	(0)	3	(0)
Total	361	(100)	2509	(100)	1003	(100)	777	(100)	1406	(100)	2109	(100)	13117	(100)

Property Offenses	Barnstable		Berkshire		Bristol		Committing Institution Dukes		Essex- Lawrence		Essex- Salem		Franklin		Hampden	
	N	%	N	%	N	%	N	%	N	%	N	%	N	%	N	%
Not Applicable	346	(74)	304	(76)	795	(72)	44	(90)	597	(80)	416	(77)	167	(77)	1113	(78)
Arson	3	(1)	1	(0)	4	(0)	0	(0)	1	(0)	3	(1)	1	(0)	5	(0)
Burglary-Armed	0	(0)	0	(0)	1	(0)	0	(0)	0	(0)	0	(0)	0	(0)	0	(0)
Burglary	61	(13)	33	(8)	119	(11)	5	(9)	57	(8)	51	(9)	22	(10)	111	(8)
Burglary Tools	0	(0)	0	(0)	4	(0)	0	(0)	2	(0)	1	(0)	0	(0)	4	(0)
Stealing	3	(1)	2	(0)	44	(4)	0	(0)	9	(1)	7	(1)	1	(0)	53	(4)
Larceny-Person	9	(2)	1	(0)	21	(2)	0	(0)	1	(0)	2	(0)	2	(1)	4	(0)
Larceny	15	(3)	18	(4)	42	(4)	4	(7)	13	(2)	18	(3)	13	(6)	65	(5)
Vehicle Theft	4	(1)	6	(1)	37	(3)	1	(2)	22	(3)	6	(1)	2	(1)	6	(0)
Use W.P. Authority	2	(0)	11	(3)	5	(0)	0	(0)	2	(0)	3	(1)	2	(1)	1	(0)
Forgery-Uttering	5	(1)	4	(1)	5	(0)	1	(2)	1	(0)	1	(0)	0	(0)	7	(0)
Fraud	3	(1)	1	(0)	0	(0)	0	(0)	2	(0)	1	(0)	0	(0)	0	(0)
Stolen Goods	11	(2)	9	(2)	14	(1)	0	(0)	22	(3)	17	(3)	1	(0)	53	(4)
Property Injuries	8	(2)	10	(2)	20	(2)	0	(0)	11	(2)	11	(2)	6	(3)	9	(1)
Total	470	(100)	400	(100)	1111	(100)	55	(100)	732	(100)	537	(100)	217	(100)	1431	(100)

(cont Inued)

	Hampshire		Middlesex		Committing Institution				Suffolk		Worcester		Total	
	N	%	N	%	N	%	N	%	N	%	N	%	N	%
Property Offenses														
Not Applicable	265	(73)	1878	(75)	738	(74)	527	(68)	928	(66)	1657	(79)	2767	(74)
Arson	0	(0)	6	(0)	1	(0)	1	(0)	7	(0)	0	(0)	33	(0)
Burglary-Armed	0	(0)	1	(0)	0	(0)	0	(0)	0	(0)	1	(0)	3	(0)
Burglary	33	(9)	192	(8)	90	(9)	104	(13)	120	(9)	130	(5)	1128	(9)
Burglary Tools	0	(0)	12	(0)	4	(0)	2	(0)	8	(1)	12	(1)	49	(0)
Stealing	7	(2)	35	(1)	19	(2)	8	(1)	7	(0)	79	(4)	274	(2)
Larceny-Person	4	(1)	15	(1)	4	(0)	21	(3)	92	(7)	10	(0)	185	(1)
Larceny	17	(5)	156	(6)	71	(7)	31	(4)	34	(2)	98	(5)	596	(5)
Vehicle Theft	5	(1)	72	(3)	30	(3)	42	(5)	58	(4)	15	(1)	306	(2)
Use V.O. Authority	1	(0)	16	(1)	5	(0)	5	(1)	10	(1)	9	(0)	72	(1)
Forgery-Uttering	11	(3)	24	(1)	9	(1)	9	(1)	4	(0)	8	(0)	89	(1)
Fraud	3	(1)	5	(0)	1	(0)	0	(0)	3	(0)	2	(0)	21	(0)
Stolen Goods	5	(1)	51	(2)	21	(2)	14	(2)	112	(8)	48	(2)	378	(3)
Property Injuries	10	(3)	45	(2)	10	(1)	13	(2)	23	(2)	40	(2)	215	(2)
Total	361	(100)	2508	(100)	1003	(100)	777	(100)	1406	(100)	2109	(100)	13117	(100)

Drug Offenses	Barnstable		Berksire		Aristol		Committing Institution				Franklin		Hamden			
							Dukes		Essex- Lawrence		Essex- Salem					
	N	%	N	%	N	%	N	%	N	%	N	%	N	%		
Not Applicable	437	(23)	354	(88)	902	(81)	49	(89)	629	(86)	490	(91)	206	(95)	1037	(72)
Being Near Narcotics	0	(0)	0	(0)	3	(0)	0	(0)	0	(0)	0	(0)	0	(0)	0	(0)
Possession-Syringe	2	(0)	0	(0)	37	(3)	0	(0)	0	(0)	1	(0)	0	(0)	12	(1)
PII-Narcotics	1	(0)	0	(0)	1	(0)	1	(2)	1	(0)	1	(0)	0	(0)	0	(0)
Conspiracy	0	(0)	0	(0)	5	(0)	0	(0)	0	(0)	0	(0)	0	(0)	1	(0)
Controlled Substance	5	(1)	1	(0)	4	(0)	0	(0)	51	(8)	19	(4)	0	(0)	6	(0)
Class-A	4	(1)	1	(0)	68	(6)	1	(2)	7	(1)	6	(1)	1	(0)	126	(9)
Class-B	15	(3)	28	(7)	69	(6)	3	(5)	26	(4)	14	(3)	5	(2)	201	(14)
Class-C	0	(0)	3	(1)	2	(0)	0	(0)	0	(0)	0	(0)	1	(0)	2	(0)
Class-D	6	(1)	13	(3)	20	(2)	1	(2)	8	(1)	6	(1)	4	(2)	46	(3)
Class-E	0	(0)	0	(0)	0	(0)	0	(0)	0	(0)	0	(0)	0	(0)	0	(0)
Total	470	(100)	400	(100)	1111	(100)	55	(100)	732	(100)	537	(100)	217	(100)	1431	(100)

(continued)

Drug Offenses	Hampshire		Middlesex		Committing Institution				Suffolk		Worcester		Total	
	N	%	N	%	N	%	N	%	N	%	N	%	N	%
Not Applicable	333	(92)	2196	(87)	930	(93)	732	(94)	1086	(77)	1848	(89)	11210	(86)
Being Near Narcotics	0	(0)	0	(0)	0	(0)	0	(0)	0	(0)	2	(0)	5	(0)
Possession-Syringe	1	(0)	17	(1)	0	(0)	3	(0)	15	(1)	25	(1)	113	(1)
OUI-Narcotics	0	(0)	9	(0)	1	(0)	0	(0)	0	(0)	0	(0)	15	(0)
Conspiracy	0	(0)	2	(0)	0	(0)	1	(0)	1	(0)	0	(0)	10	(0)
Controlled Substance	0	(0)	23	(1)	26	(3)	20	(3)	5	(0)	16	(1)	186	(1)
Class-A	1	(0)	73	(3)	14	(1)	7	(1)	81	(6)	72	(3)	462	(4)
Class-B	15	(4)	147	(6)	24	(2)	6	(1)	177	(13)	115	(5)	945	(6)
Class-C	1	(0)	4	(0)	1	(0)	0	(0)	0	(0)	4	(0)	18	(0)
Class-D	10	(3)	47	(2)	7	(1)	8	(1)	40	(3)	27	(1)	243	(2)
Class-E	0	(0)	0	(0)	0	(0)	0	(0)	1	(0)	0	(0)	1	(0)
Total	361	(100)	2508	(100)	1003	(100)	777	(100)	1406	(100)	2109	(100)	13117	(100)

	Barnstable		Berkshire		Bristol		Committing Institution Dukes		Essex- Lawrence		Essex- Salem		Franklin		Hamden	
	N	%	N	%	N	%	N	%	N	%	N	%	N	%	N	%
Other Offenses																
Not Applicable	222	(47)	178	(49)	622	(56)	22	(40)	335	(46)	279	(52)	114	(53)	865	(60)
Escape	0	(0)	0	(0)	2	(0)	0	(0)	2	(0)	1	(0)	0	(0)	4	(0)
Weapons Offenses	5	(1)	2	(0)	18	(2)	0	(0)	12	(2)	7	(1)	1	(0)	20	(1)
Nonsupport	12	(3)	1	(0)	1	(0)	1	(2)	27	(4)	6	(1)	1	(0)	5	(0)
Disturbing Peace	9	(2)	23	(6)	59	(5)	2	(4)	24	(3)	8	(1)	7	(3)	35	(2)
Prostitution	0	(0)	0	(0)	3	(0)	0	(0)	0	(0)	0	(0)	0	(0)	1	(0)
Illegitimacy	0	(0)	0	(0)	0	(0)	0	(0)	0	(0)	0	(0)	0	(0)	0	(0)
Gaming	0	(0)	0	(0)	0	(0)	0	(0)	1	(0)	0	(0)	0	(0)	1	(0)
Motor Vehicle Offense	91	(17)	49	(12)	195	(18)	8	(15)	96	(13)	75	(14)	32	(15)	240	(17)
Contempt	0	(2)	14	(3)	1	(0)	5	(9)	18	(2)	19	(4)	0	(0)	3	(0)
Violation Court Order	3	(1)	0	(0)	0	(0)	1	(2)	5	(1)	5	(1)	5	(2)	14	(1)
D.U.I.	101	(21)	91	(23)	147	(15)	10	(18)	188	(26)	116	(22)	50	(23)	199	(14)
Minor Possession Alcohol	3	(1)	0	(0)	6	(1)	0	(0)	1	(0)	0	(0)	1	(0)	3	(0)
Unlawful Possession Alcohol	0	(0)	0	(0)	14	(1)	0	(0)	2	(0)	1	(0)	0	(0)	7	(0)
Trespassing	4	(1)	4	(1)	10	(1)	0	(0)	1	(0)	10	(2)	1	(0)	9	(1)
False Alarm	0	(0)	0	(0)	0	(0)	0	(0)	0	(0)	0	(0)	0	(0)	0	(0)
Environmental	0	(0)	0	(0)	0	(0)	0	(0)	1	(0)	0	(0)	0	(0)	0	(0)
Cruelty to Animals	0	(0)	0	(0)	0	(0)	0	(0)	1	(0)	0	(0)	0	(0)	0	(0)
Other	11	(2)	19	(4)	13	(1)	6	(11)	18	(2)	11	(2)	5	(2)	25	(2)
Total	470	(100)	400	(100)	1111	(100)	55	(100)	732	(100)	537	(100)	217	(100)	1431	(100)

(continued)

Other Offenses	Hampshire		Middlesex		Committing Institution				Suffolk		Worcester		Total	
	N	%	N	%	Norfolk	Plymouth	N	%	N	%	N	%	N	%
Not Applicable	169	(47)	1317	(53)	475	(47)	392	(50)	1015	(72)	938	(44)	5962	(53)
Escape	2	(1)	12	(0)	2	(0)	4	(1)	7	(0)	2	(0)	38	(0)
Weapons Offenses	4	(1)	42	(2)	5	(0)	18	(2)	71	(5)	21	(1)	227	(2)
Nonsupport	2	(1)	59	(2)	4	(0)	24	(3)	37	(3)	26	(1)	206	(2)
Disturbing Peace	12	(3)	64	(3)	8	(1)	19	(2)	7	(0)	184	(9)	460	(4)
Prostitution	0	(0)	0	(0)	1	(0)	0	(0)	0	(0)	4	(0)	9	(0)
Illegitimacy	0	(0)	0	(0)	0	(0)	0	(0)	40	(3)	0	(0)	40	(0)
Gaming	0	(0)	2	(0)	0	(0)	0	(0)	0	(0)	3	(0)	7	(0)
Motor Vehicle Offense	74	(20)	352	(14)	114	(11)	93	(12)	55	(4)	409	(19)	1883	(14)
Contempt	1	(0)	33	(1)	4	(0)	20	(3)	25	(2)	13	(1)	165	(1)
Violation Court Order	1	(0)	22	(1)	5	(0)	1	(0)	23	(2)	17	(1)	102	(1)
D.U.I.	74	(20)	533	(21)	348	(35)	189	(24)	94	(7)	355	(17)	2515	(19)
Minor Possession Alcohol	2	(1)	6	(0)	1	(0)	2	(0)	2	(0)	6	(0)	33	(0)
Unlawful Possession Alcohol	1	(0)	12	(0)	2	(0)	2	(0)	0	(0)	10	(0)	51	(0)
Trespassing	6	(2)	18	(1)	3	(0)	0	(0)	6	(0)	51	(2)	123	(1)
False Alarm	1	(0)	2	(0)	0	(0)	0	(0)	0	(0)	2	(0)	5	(0)
Environmental	0	(0)	0	(0)	0	(0)	0	(0)	0	(0)	0	(0)	1	(0)
Cruelty to Animals	0	(0)	0	(0)	0	(0)	0	(0)	0	(0)	0	(0)	1	(0)
Other	12	(3)	34	(1)	31	(3)	13	(2)	24	(2)	68	(3)	289	(2)
Total	361	(100)	2508	(100)	1003	(100)	777	(100)	1406	(100)	2109	(100)	13117	(100)

Sentence Length	Committing Institution															
	Barnstable		Berkshire		Bristol		Dukes		Essex-Lawrence		Essex-Salem		Franklin		Hamden	
	N	%	N	%	N	%	N	%	N	%	N	%	N	%	N	%
Fine	110	(23)	34	(8)	335	(30)	11	(20)	106	(14)	36	(7)	13	(6)	284	(20)
Less Than 1 Month	48	(10)	69	(17)	89	(8)	7	(13)	115	(16)	57	(11)	52	(24)	46	(3)
1 Month	47	(10)	30	(7)	77	(7)	10	(18)	78	(11)	63	(12)	22	(10)	68	(5)
2 Months	39	(8)	29	(7)	39	(4)	0	(0)	57	(8)	43	(9)	25	(12)	73	(5)
3 Months	41	(9)	102	(25)	26	(2)	5	(9)	120	(16)	91	(17)	40	(18)	171	(12)
4 Months	35	(7)	9	(2)	14	(1)	1	(2)	8	(1)	4	(1)	6	(3)	12	(1)
5 Months	4	(1)	1	(0)	2	(0)	1	(2)	0	(0)	10	(2)	1	(0)	5	(0)
6 Months	55	(12)	45	(11)	149	(13)	6	(11)	94	(13)	97	(18)	21	(10)	208	(15)
7 Months	0	(0)	1	(0)	2	(0)	0	(0)	0	(0)	3	(1)	0	(0)	0	(0)
8 Months	4	(1)	2	(0)	4	(0)	0	(0)	4	(1)	2	(0)	0	(0)	1	(0)
9 to 11 Months	6	(1)	10	(2)	39	(3)	0	(0)	18	(2)	21	(4)	7	(3)	40	(3)
12 Months	43	(9)	35	(9)	119	(11)	3	(5)	86	(12)	74	(14)	17	(9)	214	(15)
13 to 17 Months	0	(0)	6	(1)	16	(1)	1	(2)	3	(0)	4	(1)	0	(0)	6	(0)
18 Months	9	(2)	11	(3)	63	(6)	3	(5)	17	(2)	12	(2)	2	(1)	103	(7)
19 to 23 Months	2	(0)	9	(0)	5	(0)	2	(4)	2	(0)	1	(0)	0	(0)	7	(0)
24 Months	15	(3)	7	(2)	55	(5)	2	(4)	19	(3)	10	(2)	5	(2)	127	(9)
25 Months or More	12	(3)	9	(2)	17	(2)	3	(5)	5	(1)	9	(2)	6	(3)	66	(5)
Total	470	(100)	400	(100)	1111	(100)	55	(100)	732	(100)	537	(100)	217	(100)	1431	(100)

(continued)

Sentence Length	Committing Institution										Total			
	Hampshire		Middlesex		Norfolk		Plymouth		Suffolk		Worcester		Total N	%
	N	%	N	%	N	%	N	%	N	%	N	%		
Fine	40	(11)	230	(9)	37	(4)	73	(9)	12	(1)	612	(29)	1933	(15)
Less Than 1 Month	64	(18)	312	(12)	177	(18)	46	(6)	71	(5)	175	(8)	1328	(10)
1 Month	32	(9)	284	(11)	115	(11)	96	(12)	134	(10)	183	(9)	1239	(9)
2 Months	30	(8)	217	(9)	91	(9)	42	(5)	53	(4)	134	(6)	872	(7)
3 Months	70	(19)	359	(14)	192	(19)	96	(12)	201	(14)	257	(12)	1841	(14)
4 Months	4	(1)	57	(3)	15	(1)	9	(1)	18	(1)	60	(3)	262	(2)
5 Months	3	(1)	25	(1)	5	(0)	3	(0)	5	(0)	23	(1)	88	(1)
6 Months	44	(12)	361	(14)	148	(15)	155	(20)	301	(21)	253	(12)	1937	(15)
7 Months	1	(0)	3	(0)	0	(0)	0	(0)	2	(0)	9	(0)	21	(0)
8 Months	1	(0)	10	(0)	4	(0)	4	(1)	8	(1)	4	(0)	48	(0)
9 to 11 Months	12	(3)	76	(3)	39	(4)	30	(4)	73	(5)	60	(3)	422	(3)
12 Months	29	(8)	315	(13)	93	(9)	119	(15)	330	(23)	194	(9)	1659	(13)
13 to 17 Months	2	(1)	25	(1)	4	(0)	16	(2)	15	(1)	12	(1)	110	(1)
18 Months	7	(2)	77	(3)	27	(3)	32	(4)	63	(4)	52	(2)	478	(4)
19 to 23 Months	2	(1)	10	(0)	4	(0)	7	(1)	7	(0)	6	(0)	55	(0)
24 Months	14	(4)	99	(4)	37	(4)	28	(4)	78	(6)	46	(2)	542	(4)
25 Months or More	7	(2)	38	(2)	15	(1)	21	(3)	35	(2)	29	(1)	272	(2)
Total	361	(100)	2508	(100)	1003	(100)	777	(100)	1406	(100)	2109	(100)	13117	(100)

Jail or House Sentence	Barnstable		Berkshire		Bristol		Committing Institution Dukes		Essex- Lawrence		Essex- Salem		Franklin		Hamden	
	N	Z	N	Z	N	Z	N	Z	N	Z	N	Z	N	Z	N	Z
Jail	1	(0)	0	(0)	0	(0)	0	(0)	0	(0)	0	(0)	0	(0)	0	(0)
House	469	(100)	400	(100)	1111	(100)	55	(100)	732	(100)	537	(100)	217	(100)	1431	(100)
Total	470	(100)	400	(100)	1111	(100)	55	(100)	732	(100)	537	(100)	217	(100)	1431	(100)

(continued)

Jail or House Sentence	Hamshire		Middlesex		Committing Institution Norfolk		Plymouth		Suffolk		Worcester		Total	
	N	%	N	%	N	%	N	%	N	%	N	%	N	%
Jail	0	(0)	0	(0)	1	(0)	0	(0)	0	(0)	0	(0)	2	(0)
House	361	(100)	2508	(100)	1002	(100)	777	(100)	1406	(100)	2109	(100)	13115	(100)
Total	361	(100)	2508	(100)	1003	(100)	777	(100)	1406	(100)	2109	(100)	13117	(100)

	Barnstable		Berkshire		Bristol		Committing Institution				Essex-Salem		Franklin		Hampden	
							Dukes		Essex-Lawrence							
	N	%	N	%	N	%	N	%	N	%	N	%	N	%	N	%
Weekend Sentences																
Weekend Sentence	0	(0)	39	(10)	3	(0)	0	(0)	2	(0)	2	(0)	2	(1)	0	(0)
Non-Weekend Sentence	470	(100)	351	(90)	1108	(100)	55	(100)	730	(100)	535	(100)	215	(99)	1431	(100)
Total	470	(100)	400	(100)	1111	(100)	55	(100)	732	(100)	537	(100)	217	(100)	1431	(100)

(continued)

	Hampshire		Middlesex		Norfolk		Plymouth		Suffolk		Worcester		Total	
	N	%	N	%	N	%	N	%	N	%	N	%	N	%
Weekend Sentences														
Weekend Sentence	0	(0)	18	(1)	1	(0)	0	(0)	2	(0)	13	(1)	82	(1)
Non-Weekend Sentence	361	(100)	2490	(99)	1002	(100)	777	(100)	1404	(100)	2096	(99)	13035	(99)
Total	361	(100)	2508	(100)	1003	(100)	777	(100)	1406	(100)	2109	(100)	13117	(100)

Age at Commitment	Committing Institution															
	Barnstable		Berkshire		Bristol		Dukes		Essex-Lawrence		Essex-Salem		Franklin		Hampden	
	N	%	N	%	N	%	N	%	N	%	N	%	N	%	N	%
Sixteen	0	(0)	0	(0)	0	(0)	0	(0)	0	(0)	1	(0)	0	(0)	0	(0)
Seventeen	10	(2)	10	(2)	11	(1)	1	(2)	12	(2)	10	(2)	5	(2)	17	(1)
Eighteen	15	(3)	18	(4)	51	(5)	2	(4)	22	(3)	23	(4)	11	(5)	72	(5)
Nineteen	19	(4)	27	(7)	57	(5)	2	(4)	29	(4)	13	(2)	12	(6)	89	(6)
Twenty	32	(7)	31	(8)	65	(6)	5	(9)	38	(5)	18	(3)	6	(3)	82	(6)
Twenty-One	30	(6)	21	(5)	73	(7)	1	(2)	37	(5)	27	(5)	9	(4)	80	(6)
Twenty-Two	32	(7)	25	(6)	65	(6)	1	(2)	45	(6)	28	(5)	13	(6)	64	(4)
Twenty-Three	31	(7)	22	(5)	54	(5)	2	(4)	41	(6)	31	(5)	12	(6)	77	(5)
Twenty-Four	26	(5)	21	(5)	58	(5)	5	(9)	49	(7)	27	(5)	12	(6)	77	(5)
Twenty-Five	22	(5)	22	(5)	59	(5)	2	(4)	47	(5)	37	(7)	11	(5)	73	(5)
26 to 29	93	(20)	65	(16)	235	(21)	11	(20)	154	(21)	110	(20)	49	(23)	288	(20)
30 to 39	119	(25)	109	(27)	295	(27)	14	(25)	176	(24)	158	(29)	54	(25)	361	(25)
40 to 64	39	(8)	28	(7)	87	(8)	8	(15)	81	(11)	50	(9)	23	(11)	145	(10)
65 and Older	1	(0)	1	(0)	0	(0)	1	(2)	1	(0)	1	(0)	0	(0)	2	(0)
Unknown	0	(0)	0	(0)	1	(0)	0	(0)	0	(0)	3	(1)	0	(0)	4	(0)
Total	470	(100)	400	(100)	1111	(100)	55	(100)	732	(100)	537	(100)	217	(100)	1431	(100)

(continued)

Age at Commitment	Hampshire		Middlesex		Committing Institution				Suffolk		Worcester		Total	
	N	%	N	%	Norfolk	%	Plymouth	%	N	%	N	%	N	%
Sixteen	0	(0)	0	(0)	0	(0)	0	(0)	0	(0)	0	(0)	1	(0)
Seventeen	5	(1)	29	(1)	6	(1)	10	(1)	21	(1)	35	(2)	182	(1)
Eighteen	21	(6)	106	(4)	24	(2)	22	(3)	69	(5)	64	(3)	521	(4)
Nineteen	18	(5)	119	(5)	43	(4)	35	(5)	82	(6)	95	(5)	640	(5)
Twenty	13	(4)	134	(5)	47	(5)	23	(3)	72	(5)	110	(5)	676	(5)
Twenty-One	11	(3)	108	(4)	43	(4)	35	(5)	86	(6)	92	(4)	653	(5)
Twenty-Two	23	(6)	147	(6)	49	(5)	52	(7)	65	(5)	114	(5)	723	(6)
Twenty-Three	23	(6)	139	(6)	56	(6)	38	(5)	93	(7)	111	(5)	730	(6)
Twenty-Four	25	(7)	133	(5)	63	(6)	49	(6)	75	(5)	134	(6)	754	(6)
Twenty-Five	26	(7)	163	(6)	47	(5)	33	(4)	65	(5)	133	(6)	740	(6)
26 to 29	79	(22)	489	(19)	190	(19)	165	(21)	296	(21)	380	(18)	2605	(20)
30 to 39	79	(22)	791	(28)	320	(32)	231	(30)	386	(27)	524	(30)	3626	(28)
40 to 64	39	(11)	237	(9)	109	(11)	84	(11)	94	(7)	208	(10)	1231	(9)
65 and Older	0	(0)	2	(0)	6	(1)	0	(0)	1	(0)	5	(0)	21	(0)
Unknown	0	(0)	1	(0)	0	(0)	0	(0)	1	(0)	4	(0)	14	(0)
Total	361	(100)	2508	(100)	1003	(100)	777	(100)	1406	(100)	2109	(100)	13117	(100)

Sex	Barnstable		Berkshire		Bristol		Committing Institution				Essex-Salem		Franklin		Hampden	
	N	%	N	%	N	%	Dukes		Essex-Lawrence		N	%	N	%	N	%
							N	%	N	%						
Male	470	(100)	377	(94)	1111	(100)	55	(100)	732	(100)	537	(100)	209	(96)	1408	(99)
Female	0	(0)	23	(6)	0	(0)	0	(0)	0	(0)	0	(0)	8	(4)	23	(2)
Total	470	(100)	400	(100)	1111	(100)	55	(100)	732	(100)	537	(100)	217	(100)	1431	(100)

(continued)

	Hampshire		Middlesex		Committing Institution				Suffolk		Worcester		Total	
	N	%	N	%	N	%	N	%	N	%	N	%	N	%
Sex														
Male	359	(79)	2508	(100)	1003	(100)	777	(100)	1406	(100)	2106	(100)	13058	(100)
Female	2	(1)	0	(0)	0	(0)	0	(0)	0	(0)	3	(0)	59	(0)
Total	361	(100)	2508	(100)	1003	(100)	777	(100)	1406	(100)	2109	(100)	13117	(100)

Race	Committing Institution															
	Barnstable		Berkshire		Bristol		Dukes		Essex-Lawrence		Essex-Salem		Franklin		Hampden	
	N	%	N	%	N	%	N	%	N	%	N	%	N	%	N	%
Black	14	(3)	41	(10)	129	(12)	8	(15)	25	(3)	42	(12)	0	(0)	383	(27)
White	456	(97)	353	(98)	787	(71)	47	(85)	522	(71)	446	(93)	215	(99)	1010	(71)
Hispanic	0	(0)	5	(1)	128	(12)	0	(0)	180	(25)	28	(5)	1	(0)	4	(0)
Other	0	(0)	0	(0)	16	(1)	0	(0)	3	(0)	0	(0)	1	(0)	1	(0)
Unknown	0	(0)	0	(0)	51	(5)	0	(0)	2	(0)	1	(0)	0	(0)	33	(2)
Total	470	(100)	400	(100)	1111	(100)	55	(100)	732	(100)	537	(100)	217	(100)	1431	(100)

(cont Inued)

Race	Hampshire		Middlesex		Committing Institution				Suffolk		Worcester		Total	
	N	%	N	%	N	%	N	%	N	%	N	%	N	%
Black	19	(5)	341	(14)	116	(12)	133	(17)	800	(57)	235	(11)	2306	(18)
White	317	(98)	1876	(75)	871	(87)	605	(78)	402	(29)	1415	(67)	9322	(71)
Hispanic	23	(6)	262	(10)	14	(1)	28	(4)	184	(13)	427	(20)	1285	(10)
Other	2	(1)	29	(1)	2	(0)	11	(1)	19	(1)	10	(0)	94	(1)
Unknown	0	(0)	0	(0)	0	(0)	0	(0)	1	(0)	22	(1)	110	(1)
Total	361	(100)	2508	(100)	1003	(100)	777	(100)	1406	(100)	2109	(100)	13117	(100)

Marital Status	Barnstable		Berkshire		Bristol		Committing Institution Dukes		Essex- Lawrence		Essex- Salem		Franklin		Hampden	
	N	%	N	%	N	%	N	%	N	%	N	%	N	%	N	%
Single	359	(76)	266	(66)	833	(75)	46	(84)	474	(65)	373	(69)	134	(62)	987	(69)
Married	56	(12)	54	(16)	137	(12)	6	(11)	150	(20)	87	(16)	42	(19)	234	(16)
Divorced	49	(10)	48	(12)	89	(8)	3	(5)	52	(7)	56	(10)	39	(18)	139	(10)
Separated	0	(0)	20	(5)	50	(5)	0	(0)	46	(6)	19	(4)	2	(1)	68	(5)
Widowed	3	(1)	2	(0)	1	(0)	0	(0)	0	(0)	0	(0)	0	(0)	3	(0)
Common-Law	3	(1)	0	(0)	1	(0)	0	(0)	0	(0)	0	(0)	0	(0)	0	(0)
Unknown	0	(0)	0	(0)	0	(0)	0	(0)	0	(0)	2	(0)	0	(0)	0	(0)
Total	470	(100)	400	(100)	1111	(100)	55	(100)	732	(100)	537	(100)	217	(100)	1431	(100)

(continued)

Marital Status	Committing Institution												Total	
	Hampshire		Middlesex		Norfolk		Plymouth		Suffolk		Worcester		N	%
	N	%	N	%	N	%	N	%	N	%	N	%		
Single	237	(56)	1788	(71)	690	(69)	567	(72)	1099	(78)	1276	(61)	7126	(70)
Married	52	(14)	296	(12)	160	(16)	126	(16)	229	(16)	308	(15)	1947	(15)
Divorced	44	(12)	294	(11)	110	(11)	83	(11)	71	(5)	173	(8)	1250	(10)
Separated	25	(7)	140	(6)	38	(4)	4	(1)	5	(0)	15	(1)	432	(3)
Widowed	1	(0)	0	(0)	5	(0)	1	(0)	1	(0)	1	(0)	18	(0)
Common-Law	0	(0)	0	(0)	0	(0)	0	(0)	0	(0)	0	(0)	4	(0)
Unknown	0	(0)	0	(0)	0	(0)	1	(0)	1	(0)	336	(16)	340	(3)
Total	361	(100)	2508	(100)	1003	(100)	777	(100)	1406	(100)	2109	(100)	13117	(100)

Last Grade Completed	Committing Institution															
	Barnstable		Berkshire		Bristol		Dukes		Essex-Lawrence		Essex-Salem		Franklin		Hamden	
	N	%	N	%	N	%	N	%	N	%	N	%	N	%	N	%
First or Less	0	(0)	0	(0)	2	(0)	0	(0)	0	(0)	0	(0)	0	(0)	2	(0)
Second	0	(0)	0	(0)	3	(0)	0	(0)	2	(0)	0	(0)	0	(0)	8	(1)
Third	0	(0)	0	(0)	3	(0)	0	(0)	2	(0)	0	(0)	1	(0)	8	(1)
Fourth	0	(0)	0	(0)	10	(1)	0	(0)	6	(1)	1	(0)	1	(0)	9	(1)
Fifth	1	(0)	0	(0)	7	(1)	0	(0)	2	(0)	0	(0)	0	(0)	15	(1)
Sixth	3	(1)	1	(0)	17	(2)	0	(0)	5	(1)	2	(0)	1	(0)	17	(1)
Seventh	0	(0)	2	(0)	25	(2)	1	(2)	17	(2)	11	(2)	2	(1)	32	(2)
Eighth	17	(4)	8	(2)	93	(9)	1	(2)	48	(7)	20	(4)	5	(2)	65	(5)
Ninth	27	(6)	18	(4)	153	(14)	3	(5)	85	(12)	47	(9)	14	(6)	183	(13)
Tenth	61	(13)	62	(15)	199	(18)	3	(5)	99	(14)	64	(12)	30	(14)	250	(17)
Eleventh	57	(12)	73	(18)	152	(14)	9	(16)	103	(14)	97	(18)	44	(20)	199	(14)
Twelfth	247	(53)	187	(47)	353	(32)	22	(40)	294	(40)	242	(45)	104	(48)	537	(39)
Some College	37	(9)	39	(9)	53	(5)	7	(13)	49	(7)	38	(7)	11	(5)	82	(6)
College Graduate	16	(3)	10	(2)	17	(2)	7	(13)	10	(1)	6	(1)	2	(1)	17	(1)
Graduate School	4	(1)	0	(0)	1	(0)	1	(2)	4	(1)	2	(0)	1	(0)	6	(0)
Unknown	0	(0)	1	(0)	23	(2)	1	(2)	5	(1)	7	(1)	1	(0)	1	(0)
Total	470	(100)	400	(100)	1111	(100)	55	(100)	732	(100)	537	(100)	217	(100)	1431	(100)

(continued)

Last Grade Completed	Committing Institution												Total	
	Hampshire		Middlesex		Norfolk		Plymouth		Suffolk		Worcester		N	%
	N	%	N	%	N	%	N	%	N	%	N	%		
First or Less	0	(0)	4	(0)	0	(0)	1	(0)	2	(0)	6	(0)	17	(0)
Second	0	(0)	2	(0)	0	(0)	1	(0)	1	(0)	2	(0)	19	(0)
Third	1	(0)	7	(0)	1	(0)	2	(0)	2	(0)	13	(1)	40	(0)
Fourth	1	(0)	4	(0)	1	(0)	1	(0)	9	(1)	19	(1)	62	(0)
Fifth	0	(0)	6	(0)	2	(0)	1	(0)	3	(0)	14	(1)	51	(0)
Sixth	3	(1)	13	(1)	4	(0)	7	(1)	22	(2)	18	(1)	114	(1)
Seventh	3	(1)	35	(1)	10	(1)	13	(2)	25	(2)	40	(2)	216	(2)
Eighth	11	(3)	104	(4)	19	(2)	29	(4)	52	(4)	101	(5)	573	(4)
Ninth	38	(11)	223	(9)	53	(5)	76	(10)	103	(7)	254	(12)	1277	(10)
Tenth	49	(14)	351	(14)	105	(10)	121	(16)	199	(14)	398	(19)	1991	(15)
Eleventh	55	(15)	350	(14)	133	(13)	141	(18)	259	(18)	371	(18)	2043	(16)
Twelfth	145	(40)	1301	(52)	583	(58)	320	(41)	574	(41)	652	(31)	5561	(42)
Some College	35	(10)	55	(2)	70	(7)	45	(6)	124	(9)	144	(7)	789	(6)
College Graduate	6	(2)	24	(1)	12	(1)	14	(2)	15	(1)	33	(2)	189	(1)
Graduate School	1	(0)	3	(0)	7	(1)	2	(0)	7	(0)	15	(1)	54	(0)
Unknown	13	(4)	25	(1)	3	(0)	3	(0)	9	(1)	20	(1)	121	(1)
Total	361	(100)	2509	(100)	1003	(100)	777	(100)	1406	(100)	2109	(100)	13117	(100)

Place of Birth	Barnstable		Berkshire		Bristol		Committing Institution				Essex-Salem		Franklin		Hampden	
	N	%	N	%	N	%	Dukes	Essex-Lawrence	N	%	N	%	N	%	N	%
Barnstable County	120	(26)	1	(0)	8	(1)	0	(0)	0	(0)	0	(0)	0	(0)	0	(0)
Berkshire County	4	(1)	285	(71)	0	(0)	0	(0)	1	(0)	0	(0)	6	(3)	5	(0)
Bristol County	33	(7)	0	(0)	566	(51)	0	(0)	2	(0)	2	(0)	2	(1)	2	(0)
Dukes County	0	(0)	0	(0)	1	(0)	3	(5)	0	(0)	0	(0)	0	(0)	0	(0)
Essex County	13	(3)	2	(0)	7	(1)	2	(4)	308	(42)	290	(54)	4	(2)	4	(0)
Franklin County	2	(0)	1	(0)	0	(0)	0	(0)	0	(0)	1	(0)	60	(28)	6	(0)
Hampden County	4	(1)	11	(3)	4	(0)	1	(2)	3	(0)	2	(0)	17	(8)	599	(42)
Hampshire County	4	(1)	2	(0)	0	(0)	1	(2)	1	(0)	0	(0)	8	(4)	12	(1)
Middlesex County	29	(6)	5	(1)	14	(1)	2	(4)	75	(10)	49	(9)	9	(4)	5	(0)
Nantucket County	7	(1)	0	(0)	0	(0)	0	(0)	0	(0)	0	(0)	0	(0)	0	(0)
Norfolk County	19	(4)	0	(0)	25	(2)	1	(2)	4	(1)	4	(1)	3	(1)	2	(0)
Plymouth County	41	(9)	1	(0)	36	(3)	0	(0)	1	(0)	1	(0)	0	(0)	2	(0)
Suffolk County	57	(12)	4	(1)	50	(5)	24	(44)	45	(6)	60	(11)	6	(3)	17	(1)
Worcester County	23	(5)	3	(1)	8	(1)	0	(0)	10	(1)	5	(1)	60	(28)	24	(2)
Mass-No County	0	(0)	0	(0)	0	(0)	1	(2)	0	(0)	0	(0)	0	(0)	0	(0)
Out of State	96	(20)	78	(19)	198	(18)	19	(35)	124	(17)	82	(15)	37	(17)	357	(25)
U.S. Territory	4	(1)	2	(0)	74	(7)	0	(0)	113	(15)	13	(2)	2	(1)	349	(24)
Foreign Country	11	(2)	3	(1)	112	(10)	1	(2)	45	(6)	24	(4)	3	(1)	37	(3)
Unknown	3	(1)	2	(0)	6	(1)	0	(0)	0	(0)	4	(1)	0	(0)	10	(1)
Total	470	(100)	400	(100)	1111	(100)	55	(100)	732	(100)	537	(100)	217	(100)	1431	(100)

(cont Inued)

Place of Birth	Committing Institution										Total			
	Hampshire		Middlesex		Norfolk		Plymouth		Suffolk		Worcester		N	%
	N	%	N	%	N	%	N	%	N	%	N	%		
Barnstable County	0	(0)	3	(0)	1	(0)	0	(0)	1	(0)	0	(0)	132	(1)
Berkshire County	0	(0)	4	(0)	0	(0)	0	(0)	1	(0)	0	(0)	306	(2)
Bristol County	0	(0)	11	(0)	30	(3)	0	(0)	5	(0)	7	(0)	660	(5)
Dukes County	0	(0)	0	(0)	0	(0)	0	(0)	0	(0)	0	(0)	4	(0)
Essex County	0	(0)	71	(3)	11	(1)	0	(0)	10	(1)	4	(0)	726	(6)
Franklin County	0	(0)	0	(0)	1	(0)	0	(0)	0	(0)	0	(0)	71	(1)
Hampden County	0	(0)	13	(1)	5	(0)	0	(0)	1	(0)	2	(0)	662	(5)
Hampshire County	0	(0)	1	(0)	0	(0)	0	(0)	0	(0)	4	(0)	33	(0)
Middlesex County	0	(0)	1117	(45)	81	(8)	1	(0)	64	(5)	32	(2)	1493	(11)
Nantucket County	0	(0)	0	(0)	0	(0)	0	(0)	0	(0)	1	(0)	8	(0)
Norfolk County	0	(0)	37	(1)	229	(23)	0	(0)	21	(1)	3	(0)	348	(3)
Plymouth County	0	(0)	13	(1)	43	(4)	0	(0)	4	(0)	1	(0)	143	(1)
Suffolk County	0	(0)	501	(20)	94	(9)	0	(0)	755	(54)	17	(1)	1630	(12)
Worcester County	0	(0)	59	(2)	17	(2)	0	(0)	7	(0)	322	(15)	538	(4)
Mass-No County	255	(71)	0	(0)	342	(34)	611	(79)	0	(0)	900	(43)	2109	(16)
Out of State	82	(23)	356	(15)	109	(11)	109	(14)	314	(22)	444	(21)	2415	(18)
U.S. Territory	13	(4)	179	(7)	6	(1)	8	(1)	112	(8)	282	(13)	1159	(9)
Foreign Country	11	(3)	130	(5)	30	(3)	22	(3)	105	(7)	47	(2)	581	(4)
Unknown	0	(0)	5	(0)	4	(0)	26	(3)	6	(0)	43	(2)	109	(1)
Total	361	(100)	2508	(100)	1003	(100)	777	(100)	1406	(100)	2109	(100)	13117	(100)

County of Residence	Committing Institution															
	Barnstable		Berkshire		Bristol		Dukes		Essex-Lawrence		Essex-Salem		Franklin		Hamden	
	N	%	N	%	N	%	N	%	N	%	N	%	N	%	N	%
Barnstable County	0	(0)	0	(0)	12	(1)	1	(2)	0	(0)	2	(0)	0	(0)	2	(0)
Berkshire County	0	(0)	362	(90)	0	(0)	0	(0)	0	(0)	0	(0)	2	(1)	2	(0)
Bristol County	0	(0)	0	(0)	207	(82)	1	(2)	2	(0)	1	(0)	1	(0)	0	(0)
Dukes County	0	(0)	0	(0)	0	(0)	35	(64)	0	(0)	0	(0)	0	(0)	0	(0)
Essex County	0	(0)	1	(0)	10	(1)	1	(2)	594	(81)	453	(84)	3	(1)	5	(0)
Franklin County	0	(0)	0	(0)	0	(0)	0	(0)	0	(0)	0	(0)	137	(63)	4	(0)
Hamden County	0	(0)	6	(1)	1	(0)	0	(0)	3	(0)	0	(0)	8	(4)	1309	(91)
Hampshire County	0	(0)	2	(0)	0	(0)	0	(0)	0	(0)	0	(0)	9	(4)	23	(2)
Middlesex County	0	(0)	0	(0)	9	(1)	1	(2)	55	(8)	31	(6)	0	(0)	2	(0)
Nantucket County	0	(0)	0	(0)	1	(0)	0	(0)	0	(0)	0	(0)	0	(0)	0	(0)
Norfolk County	0	(0)	1	(0)	19	(2)	0	(0)	4	(1)	2	(0)	0	(0)	1	(0)
Plymouth County	1	(0)	0	(0)	57	(5)	5	(9)	3	(0)	0	(0)	0	(0)	2	(0)
Suffolk County	0	(0)	0	(0)	23	(2)	1	(2)	13	(2)	26	(5)	0	(0)	5	(0)
Worcester County	0	(0)	3	(1)	3	(0)	0	(0)	2	(0)	2	(0)	49	(23)	16	(1)
Mass-No County	0	(0)	0	(0)	0	(0)	0	(0)	0	(0)	0	(0)	0	(0)	0	(0)
Out of State	0	(0)	23	(6)	61	(5)	10	(18)	52	(7)	17	(3)	8	(4)	24	(2)
U.S. Territory	0	(0)	0	(0)	1	(0)	0	(0)	0	(0)	0	(0)	0	(0)	5	(0)
Foreign Country	0	(0)	0	(0)	0	(0)	0	(0)	1	(0)	0	(0)	0	(0)	1	(0)
Unknown	469	(100)	2	(0)	7	(1)	0	(0)	3	(0)	3	(1)	0	(0)	30	(2)
Total	470	(100)	400	(100)	1111	(100)	55	(100)	732	(100)	517	(100)	217	(100)	1431	(100)

(continued)

County of Residence	Committing Institution												Total	
	Hampshire		Middlesex		Norfolk		Plymouth		Suffolk		Worcester		N	%
	N	%	N	%	N	%	N	%	N	%	N	%		
Barnstable County	0	(0)	7	(0)	7	(1)	10	(1)	0	(0)	4	(0)	45	(0)
Berkshire County	13	(4)	2	(0)	0	(0)	0	(0)	0	(0)	3	(0)	384	(3)
Bristol County	0	(0)	16	(1)	40	(4)	60	(8)	5	(0)	4	(0)	1037	(8)
Dukes County	0	(0)	0	(0)	0	(0)	0	(0)	0	(0)	0	(0)	35	(0)
Essex County	1	(0)	97	(4)	13	(1)	3	(0)	17	(1)	17	(1)	1215	(9)
Franklin County	22	(6)	2	(0)	1	(0)	0	(0)	0	(0)	2	(0)	169	(1)
Hampden County	100	(29)	3	(0)	2	(0)	1	(0)	3	(0)	7	(0)	1443	(11)
Hampshire County	200	(55)	6	(0)	0	(0)	0	(0)	0	(0)	4	(0)	244	(2)
Middlesex County	0	(0)	1841	(73)	34	(3)	12	(2)	55	(5)	63	(3)	2113	(16)
Nantucket County	0	(0)	0	(0)	0	(0)	1	(0)	0	(0)	0	(0)	2	(0)
Norfolk County	2	(1)	51	(2)	583	(58)	58	(7)	37	(3)	6	(0)	764	(6)
Plymouth County	0	(0)	24	(1)	113	(11)	566	(73)	19	(1)	4	(0)	794	(6)
Suffolk County	0	(0)	302	(12)	172	(17)	51	(7)	1242	(88)	118	(5)	1953	(15)
Worcester County	10	(3)	91	(3)	15	(1)	2	(0)	2	(0)	1812	(85)	1997	(15)
Mass-No County	0	(0)	1	(0)	0	(0)	0	(0)	0	(0)	2	(0)	3	(0)
Out of State	11	(3)	70	(3)	22	(2)	13	(2)	10	(1)	55	(3)	376	(3)
U.S. Territory	0	(0)	0	(0)	0	(0)	0	(0)	0	(0)	1	(0)	7	(0)
Foreign Country	0	(0)	0	(0)	0	(0)	0	(0)	0	(0)	0	(0)	2	(0)
Unknown	2	(1)	5	(0)	1	(0)	0	(0)	6	(0)	7	(0)	535	(4)
Total	361	(100)	2508	(100)	1903	(100)	777	(100)	1406	(100)	2109	(100)	13117	(100)

Appendix I.

County Facilities in Massachusetts

Barnstable County

Barnstable County Jail and House of Correction
Main Street
P.O. Box 397
Barnstable, MA 02630
Year Built - 1935
Sheriff John F. Demello

Berkshire County

Berkshire County Jail and House of Correction
264 Second Street
Pittsfield, MA 01201
Year Built - 1870
Sheriff Carmen C. Massimiano, Jr.

Bristol County

Bristol County Jail and House of Correction
226 Ash Street
New Bedford, MA 02740
Year Built - 1853
Sheriff David R. Nelson

Eastern Massachusetts Correctional Alcohol Center
593 Kempton Street
New Bedford, MA 02740
Year Opened - 1987
Sheriff David R. Nelson

Dukes County

Dukes County Jail and House of Correction
149 Main Street
P.O. Box 252
Edgartown, MA 02539
Year Built - 1863
Sheriff Christopher S. Look, Jr.

Essex County

Essex County Correctional Alternative Center
165 Marston Avenue
Lawrence, MA 01840
Year Built - 1893
Sheriff Charles H. Reardon

County Facilities in Massachusetts

Essex County (Cont.)

Essex County Jail and House of Correction (Lawrence)
81 Auburn Street
P.O. Box 1017
Lawrence, MA 01841
Year Built - 1850
Sheriff Charles H. Reardon

Essex County Jail and House of Correction (Salem)
58 St. Peter Street
P.O. Box 4446
Salem, MA 01970
Year Built - 1813
Sheriff Charles H. Reardon

Franklin County

Franklin County Jail and House of Correction
160 Elm Street
P.O. Box 780
Greenfield, MA 01302
Year Built - 1856
Sheriff Donald J. McQuade

Hampden County

Hampden County Jail and House of Correction
79 York Street
Springfield, MA 01105
Year Built - 1890
Sheriff Michael J. Ashe, Jr.

Western Massachusetts Correctional Alcohol Center
26 Howard Street
Springfield, MA 01105
Year Built - 1985
Sheriff Michael J. Ashe, Jr.

Hampshire County

Hampshire County Jail and House of Correction
205 Rockyhill Road
Northampton, MA 01060
Year Built - 1985
Sheriff Robert J. Garvey

County Facilities in Massachusetts

Middlesex County

Middlesex County Jail and House of Correction
P.O. Box 565
Billerica, MA 01821
Year Built - 1930
Sheriff John P. McGonigle

Middlesex County Jail
40 Thorndike Street
P. O. Box 97
Cambridge, MA 02141
Year Built - 1984
Sheriff John P. McGonigle

Nantucket County

Nantucket County
Sheriff's Department
Broad and Federal
P. O. Box 419
Nantucket, MA 02554
Sheriff Harry E. Clute, Sr.

Norfolk County

Norfolk County Jail and House of Correction
47 Village Avenue
P.O. Box 149
Dedham, MA 02026
Year Built - 1850
Sheriff Clifford H. Marshall

Braintree Alternative Center
2001 Washington Street
Braintree, MA 02184
Year Built - 1985
Sheriff Clifford H. Marshall

Plymouth County

Plymouth County Jail and House of Correction
Obery Heights
Plymouth, MA 02360
Year Built - 1910
Sheriff Peter Y. Flynn

County Facilities in Massachusetts

Suffolk County

Suffolk County Jail (Charles Street)
215 Charles Street
Boston, MA 02114
Year Built - 1849
Sheriff Robert C. Rufo

Suffolk County

Suffolk County House of Correction (Deer Island)
P.O. Box 112
Winthrop, MA 02152
Year Built - 1901
Penal Commissioner Robert G. Walsh

Worcester County

Worcester County Jail and House of Correction
5 Hospital Road
West Boylston, MA 01538
Year Built - 1973
Sheriff John M. Flynn

Appendix II.

Operating Expenditures for County Facilities,
Fiscal Year Ending June 30, 1989

<u>County</u>	<u>Facility</u>	<u>Total Expenditures</u>
Barnstable	House of Correction and Jail	\$ 2,415,699.00
Berkshire	House of Correction and Jail	\$ 1,696,067.52
Bristol	House of Correction and Jail	\$ 3,079,724.70
Dukes	House of Correction and Jail	\$ 496,733.80
Essex	House of Correction and Jail (Lawrence, Salem, and Lawrence Correctional Alternative Center)	\$ 4,804,948.73
Franklin	House of Correction and Jail	\$ 844,718.13
Hampden	House of Correction and Jail	\$ 7,856,226.89
Hampshire	House of Correction and Jail	\$ 5,070,276.26
Middlesex	House of Correction and Jail (Billerica) and Jail (Cambridge)	\$11,841,693.00
Norfolk	Braintree Alternative Center and House of Correction and Jail (Dedham)	\$ 5,801,432.90
Plymouth	House of Correction and Jail	\$ 4,233,265.00
Suffolk	Charles Street Jail Deer Island House of Correction	\$ 9,072,338.00 \$13,781,414.00
Worcester	House of Correction and Jail	\$ 9,865,738.18

Appendix III

Population in County Correctional Facilities, January 1, 1989 to December 31, 1989

Facility	Average Daily Population	Beginning Population	Ending Population	Design Capacity	%ADP Capacity
Barnstable	150	135	152	110	136%
Berkshire	144	128	141	97	148%
Bristol	415	319	499	286	145%
Dukes	19	14	19	13	148%
Essex-Lawrence	229	201	237	57	401%
Essex-LCAC	251	173	260	135	186%
Essex-Salem	216	266	162	120	180%
Franklin	73	68	68	63	116%
Hampden	522	549	533	312	167%
Hampden OUI	129	139	110	125	103%
Hampshire	250	253	250	148	169%
Middlesex	1026	989	1039	592	173%
Norfolk	266	266	256	149	178%
Plymouth	450	432	430	157	287%
Suffolk-C.S.	341	336	339	342	100%
Suffolk-D.I.	643	499	646	456	141%
Worcester	716	714	644	490	146%
Longwood	121	115	122	125	97%
TOTAL	5959	5596	5907	3777	158%

Glossary

ADP

Average Daily Population

Facilities

EMCAC

Eastern Massachusetts Correctional Alcohol Center

LCAC

Lawrence Correctional Alternative Center.

WMCAC

Western Massachusetts Correctional Alcohol Center.

Offenses:

Armed Assault

Includes armed assault with intent to rob, armed assault in a dwelling, assault and battery with a deadly weapon, and assault with a deadly weapon.

Assault on Female Under Sixteen with Intent to Commit Rape

Includes indecent assault and battery on child under 14.

Assault with Intent to Commit Rape

Includes indecent assault and battery on person over 14.

Assault with intent to Murder

Includes attempted murder and accessory to murder.

Controlled Substances:

Class A

Heroin, Morphine.

Class B

Amphetamines, barbiturates, cocaine.

Class C

LSD, Hash.

Class D

Marijuana.

Class E

Other prescription drugs.

Motor Vehicle Offenses

Includes leaving the scene.

Other

Includes violation of abuse prevention law, deriving support from prostitute, bribery, attempt to commit a crime.

O.U.I.

Operating under the influence.

Other Pornography or Obscenities

Includes other sex offenses.

Prostitution

Includes common night walker.

Rape

Includes aggravated rape.

Rape of a Child

Includes rape of a female under sixteen.

Receiving Stolen Goods (R.S.G.)

Includes common receiver of stolen goods.

Unarmed Assault

Includes unarmed assault with intent to rob, assault, assault and battery, and other assaults.

Unnatural and Lascivious Acts

Includes unnatural acts with child under 16.

Weapons Offenses

Includes weapons violation, Bartley-Fox Gun law.