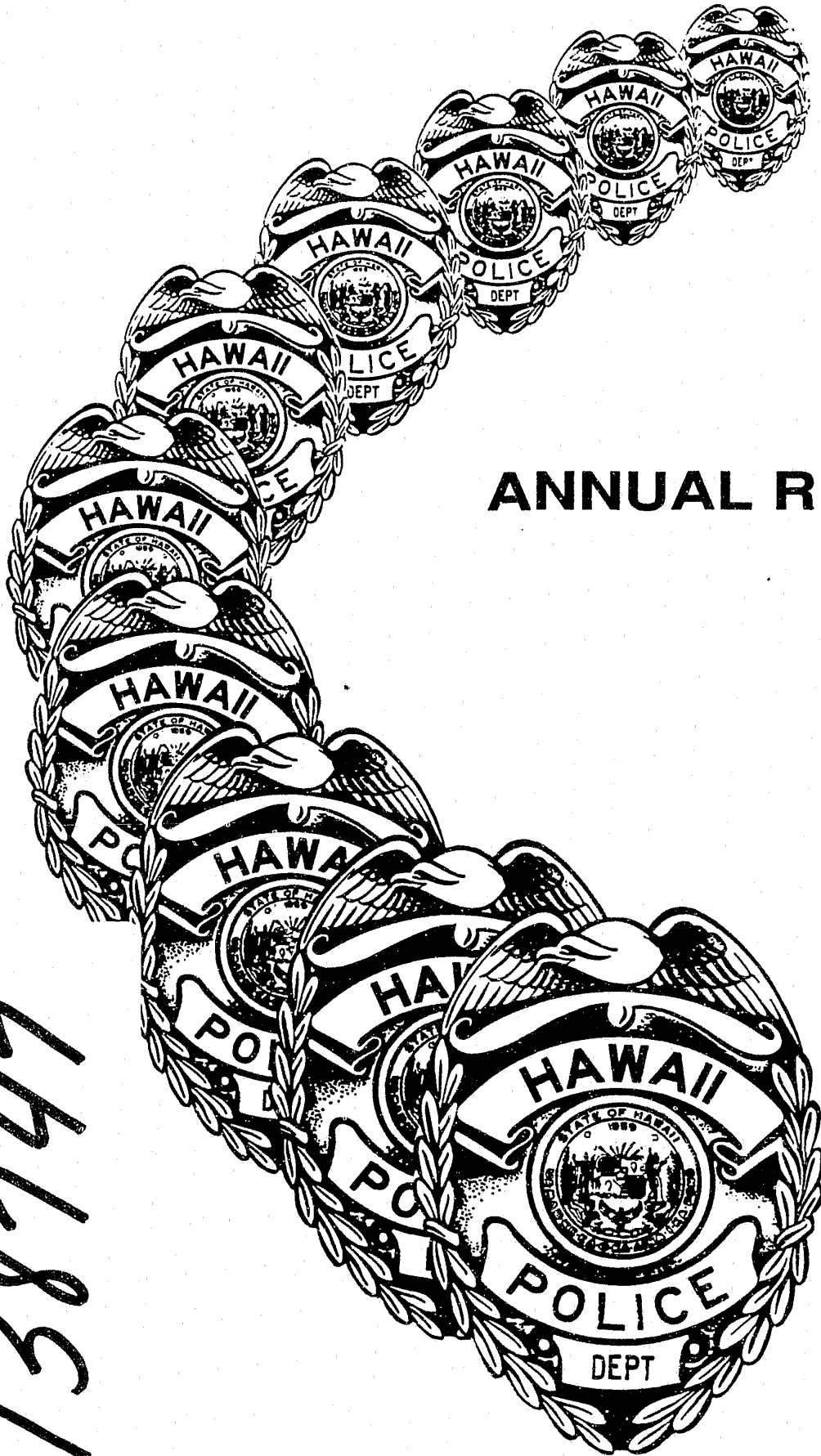


138747



# ANNUAL REPORT



**THE  
HAWAII  
COUNTY  
POLICE  
DEPARTMENT**

**ANNUAL REPORT**

**1989-90**

138747

**U.S. Department of Justice  
National Institute of Justice**

This document has been reproduced exactly as received from the person or organization originating it. Points of view or opinions stated in this document are those of the authors and do not necessarily represent the official position or policies of the National Institute of Justice.

Permission to reproduce this copyrighted material has been granted by  
Hawaii Police Department

to the National Criminal Justice Reference Service (NCJRS).

Further reproduction outside of the NCJRS system requires permission of the copyright owner.



**Victor V. Vierra**  
Chief of Police



## Police Department

349 Kapiolani Street • Hilo, Hawaii 96720-3998 • (808) 961-2244 • Fax (808) 961-2702

**Lorraine R. Inouye**  
Mayor

**Victor V. Vierra**  
Chief of Police

**Francis C. DeMorales**  
Deputy Chief of Police

Hawaii Police Commission  
County of Hawaii  
Hilo, Hawaii

Dear Commissioners:

I, and the men and women of the Hawaii County Police Department, would like to once again extend our sincere appreciation for the support extended to us by the members of the Police Commission.

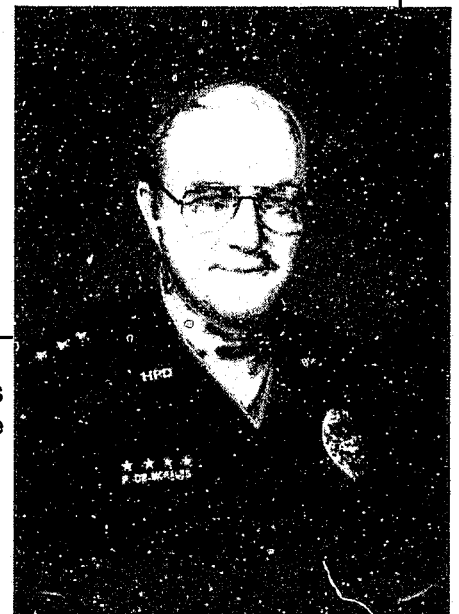
There has been an increase in our Part 1 offenses by 17.2 percent over 1988 - 8215 in 1989, compared to 7010 in 1988.

Part II crimes showed an increase of 13.7 percent over 1988 - totalling 8783 in 1989, compared to 7727 in 1988.

This has been a trying year for the Police Department with the constant changing criminal and social issues being addressed. The men and women of the department continue to strive to provide the finest police service to the community and share with me a sense of pride in the accomplishments of the past year.

Sincerely,

**Victor V. Vierra**  
Chief of Police



**Francis C. DeMorales**  
Deputy Chief of Police



### **HAWAII COUNTY POLICE COMMISSION**

**FIRST ROW:** Lois J. Keb, Chairman Reginald Morimoto, Vice-Chairman Jeffrey Choi,  
**SECOND ROW:** William W. Stearns, Gilbert Kahele, Lily Cariaga, Reiso Nakamoto.

---

The Hawaii Police Commission is made up of seven members, appointed by the Mayor and confirmed by the County Council. All members serve staggered terms and volunteer their services without compensation. The Commission elects its own Chair and Vice Chair each year from among its members.

The Police Commission has the following responsibilities:

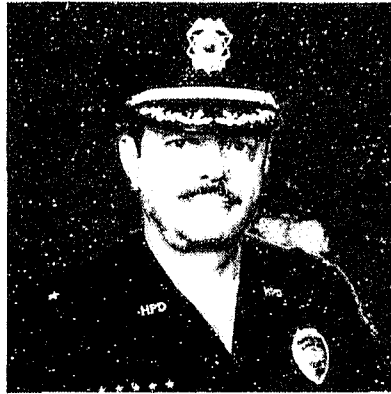
- Appoint (and may remove) the Chief of Police;

- Establish policies;
- Serve as liaison between the public, the police, and the County Administration;
- Review and support appropriate legislation and rules and regulations pertaining to law enforcement;
- Adopt rules necessary for the conduct of its business and regulation of matters committed to its charge by law.

# OPERATIONS



**Glenn Todd**  
Inspector, Administration



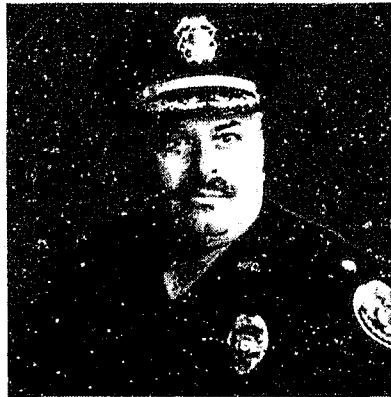
**Leroy Victorine**  
Inspector, Hilo Operations



**John DeSa**  
Inspector, Country Operations



**Richard Carter**  
Major, Hilo Patrol



**Henry Silva**  
Major, Kona Patrol



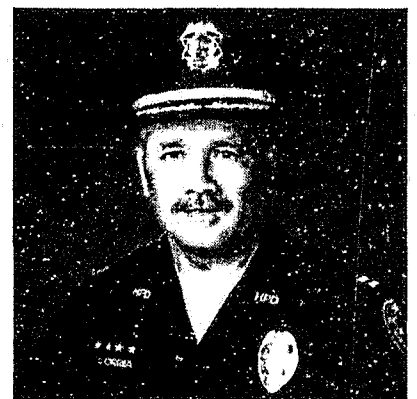
**Roland Pacheco**  
Captain, Administration



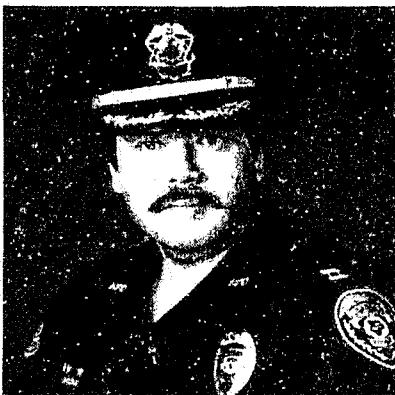
**Newton Lyman**  
Captain, C.I.D.



**Cheryl Reis**  
Captain, North Hilo



**Dennis Correa**  
Captain, Hamakua



**Lawrence Mahuna**  
Captain, N/S Kohala

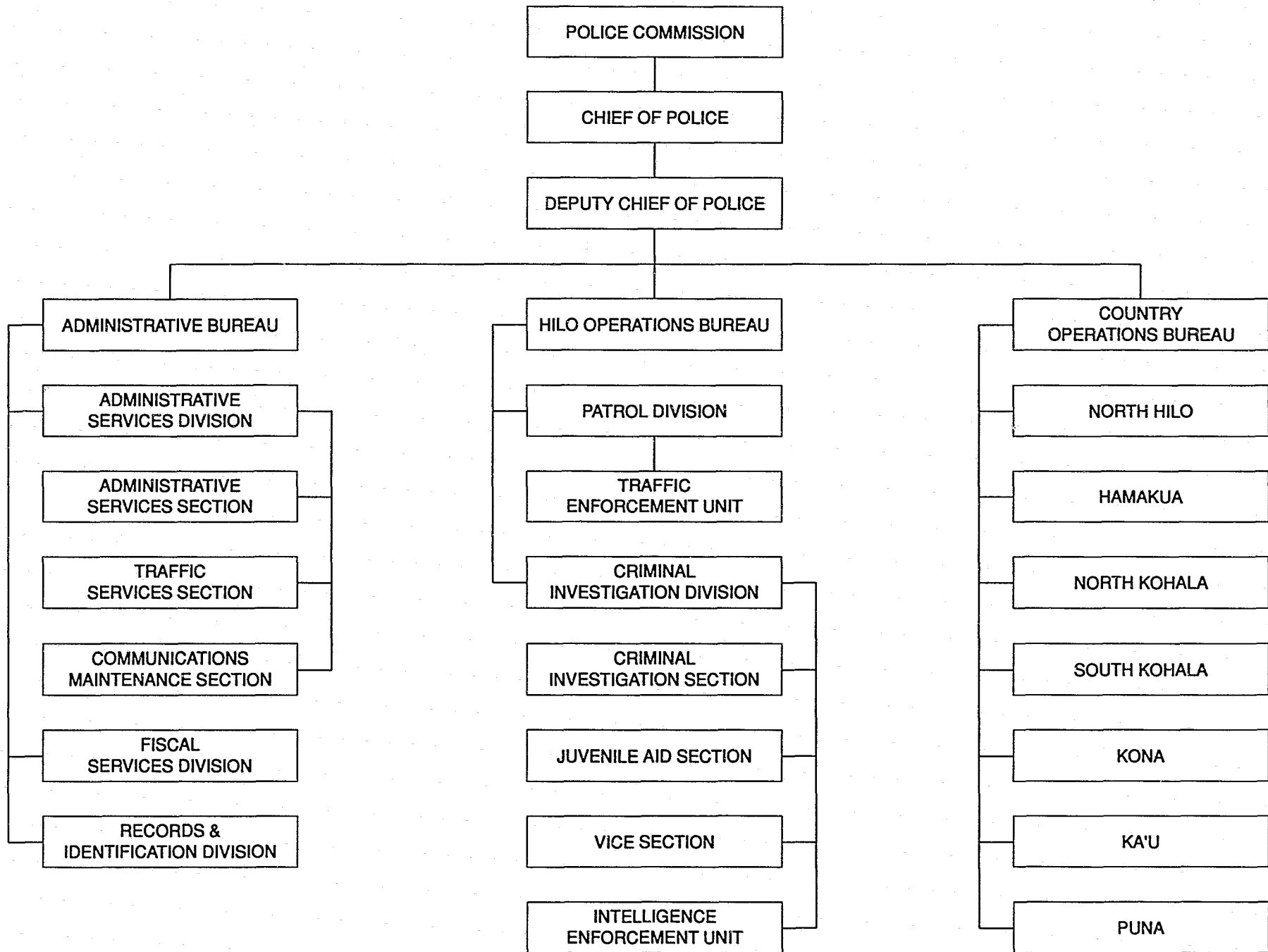


**James Correa**  
Captain, Kau



**Raymond Simao**  
Captain, Puna

# ORGANIZATION CHART HAWAII COUNTY POLICE DEPARTMENT



## IN MEMORIAM

On the night of May 6, 1990, South Hilo Police Officers responded to a report of a disturbance on Banyan Drive in the area known as Reeds Bay. The Officers found a large crowd, estimated to number in excess of two hundred persons, and several fights had broken out in the boisterous crowd.

The officers attempted to stop the fights and disperse the crowd, leading to a series of altercations between police and unruly mob members. While attempting to arrest a disorderly male, Officer Ronald Jitchaku was struck on the face causing him to fall backwards, striking his head on the pavement. Officer Jitchaku died on May 7, 1990, as a result of those injuries.

Officer Jitchaku was appointed a Jail Guard in June 1967; appointed to South Hilo Patrol in August of 1968. After working as a patrolman in Kau and North Hilo, he was assigned to the Criminal Intelligence Unit. He attended the Criminal Intelligence Data Collectors Course at the Western Training Institute in Sacramento, California. He received specialized training in gambling technology, surveillance equipment and organized crime investigations. During his career, Officer Jitchaku received numerous letters of commendation citing his professionalism in conducting investigations and helping people.





#### **POLICE CHAPLAINS:**

Father Robert Brodeur, Reverend Harold Teves, Reverend Orville Mathison,  
Reverend Oliver Shimaoka and Reverend Michael Reynolds.

---

Five members of the Hawaii Police Department's Chaplain program received their Oaths of Office. Chaplains volunteer their services to the County without compensation for an average of 40 hours monthly. They assist Police Officers, their families, and as needed, members of the community by counseling, making hospital and sick calls, handling funerals, weddings and by giving invocations and benedictions at various police functions. Chaplains also visit police stations within their jurisdictions on a weekly basis and while in police uniform ride along with patrol officers during their shifts.





### **POLICE RECRUIT GRADUATION**

---

The ranks of the Hawaii Police Department are nearly at full strength with the graduation of 28 members of the 44th Recruit Class. Third Circuit Court Judge Shunichi Kimura was the keynote speaker. Officer Lino Kamakau was honored as the Most Outstanding Recruit; Officer Patrick Menino received the top award in firearms proficiency; and Officer Nancy Robinson received the award for highest academic average.

Other class members included Officers Anthony Duarte, Raymond Childers, Thomas Lonokapu, Willie Collett, David Pearson, Michael Moniz, William Burke, Robert Almeida, Richard Antonio, Kenneth Bugado, Richard Carter Jr., Michael Dubberstein, Mark Farias, Stanley Haanio, Samuel Jelsma, Whitney Jenkins, Daniel Mlakar, Calvin Sasaki, William Souther, Gregory Trinidad, Leland Pa, Roger Kalua, Carl Milldrum, Benton Moreman and John Holley.

## HAWAII ISLE POLICE ACTIVITIES LEAGUE

Nearly 4,000 youngsters participated in baseball, basketball, volleyball, boxing and tennis during the past fiscal year. The program promotes a friendly relationship between youngsters and police officers and was formulated for young people between the ages of 6 through 17 years. It is intended to cultivate and improve the moral and civic standards of the youth in our community through sporting activities.



---

## DRUG ABUSE RESISTANCE EDUCATION



**Teaching Kids To Never Take Drugs.**

The Drug Abuse Resistance Education program is a joint project of the Hawaii Police Department and the Department of Education. The D.A.R.E. program emphasis is to help students to recognize and resist the many subtle pressures that influence them to experiment with alcohol and drugs. In addition, program strategies are planned to focus on feelings relating to self-esteem, interpersonal and communication skills, decision making, and positive alternatives to drug behavior.

The program content is organized into fifteen 45-minute sessions and conducted by a uniformed officer assigned to the school one day a week for one semester. In 33 public and private schools that are actively participating in this program, more than 3,000 fifth grade students are reached.

## CANINE COPS



Three new canines, Haku, Kaimi, and Mana with their handlers, Officer Dennis De Morales, Officer Leo Jitchaku, and Officer David Carter, respectively, were awarded certification by Chief Victor V. Vierra.

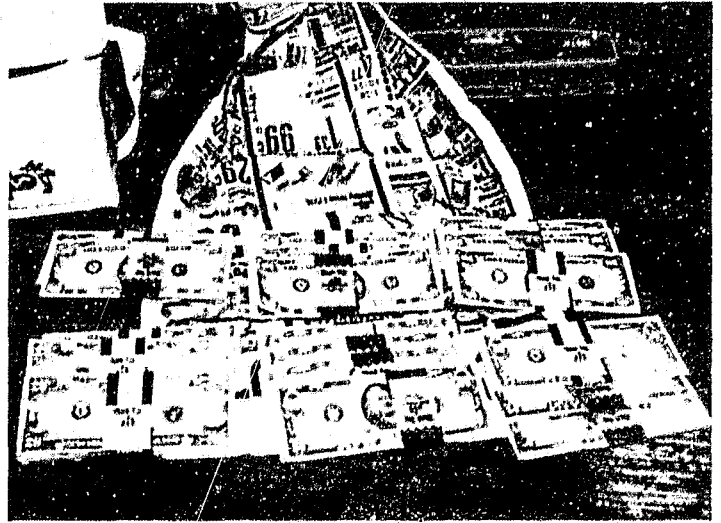
---

These three dogs were brought in from Germany and trained in Honolulu during the period of quarantine. They are now certified narcotics dogs and will be used in our narcotics interdiction programs.

The dogs were named in a recent contest with Kohala Mission School naming Kaimi which means "to search"; Pahoia Elementary School naming Haku which means "leader"; and Mana which means "powerful".

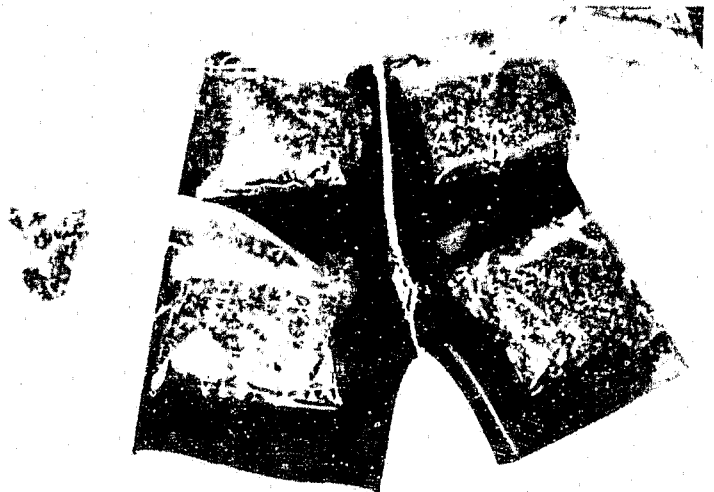
## DRUG SEIZURES

During our quest to control the drug problem, major seizures were made involving a large indoor greenhouse operation and a hashish producing laboratory. An estimated valuation of the property seized in these cases amounted to approximately \$550,000. Other seizures throughout the island resulted in over \$83,536 in U.S. currency and an additional \$450,000 in property and evidence.



The three-day operation netted 82 pounds of processed marijuana, 3.5 ounces of cocaine, 2.4 grams of hashish, 2.7 grams of hash oil, 26 grams of psilocybin (magic) mushrooms, a handgun, and U.S. currency. The Vice Section has continued to receive support from State and Federal agencies which have contributed to our successful projects.

An undercover project dubbed "Operation Uncle" netted processed marijuana, cocaine, hashish, crystal meth and LSD, and the forfeiture of six motor vehicles. The Hawaii Police Department, the Honolulu Police Department's Statewide Task Force, and the U.S. Postal Inspectors performed a joint project dubbed "Operation Big Eye" that was aimed at drug couriers and the transportation of contraband via parcels and passenger luggage.



## TRAFFIC SAFETY

Traffic fatalities remain a serious concern in the field of traffic safety. Traffic accidents account for thousands of injuries and millions of dollars in property damages each year. During 1989, there were 3,560 traffic accidents, 40 persons killed—of which were accidents where drinking was involved. There were 753 arrests for driving under the influence. As a result, the Hawaii Police Department continues its efforts to reduce traffic accidents through its expanded D.U.I. patrols, speeding and seat belt enforcement.



# OFFENSES KNOWN TO POLICE & CLEARANCES 1989

CLASSIFICATION OF OFFENSES	Reported or Known	Unfounded	Actual	Cleared by Arrest or Otherwise*	Per Cent Cleared	Cleared Cases Committed by Adults	Cleared Cases Committed by Juv.
<b>PART I CLASSES</b>							
1a. Murder/Nonnegligent Manslaughter .....	7	-	7	2	28.6	2	-
2. Rape .....	36	3	33	23	69.7	23	-
3. Robbery .....	48	1	47	28	59.6	26	2
4. Aggravated Assault .....	180	2	178	112	62.9	102	10
5. Burglary .....	1,635	22	1,613	270	16.7	149	121
6. Larceny .....	4,685	72	4,613	1,095	23.7	744	351
7. Auto Theft .....	392	52	340	101	29.7	58	43
Crime Index Total .....	6,983	152	6,831	1,631	23.9	1,104	527
Crime Index Last Year .....	6,064	155	5,909	1,457	24.7	971	486
Per Cent Change .....			+15.6	+12.0		+13.7	+8.4
1b. Manslaughter by Negligence .....	1	-	-	-	-	-	-
8. Other Assaults .....	1,391	7	1,384	919	66.4	795	124
PART I TOTALS .....	8,374	159	8,215	2,550	31.0	1,899	651
PART I LAST YEAR .....	7,167	157	7,010	2,210	31.5	1,640	570
PER CENT CHANGE .....			+17.2	+15.4		+15.8	+14.2
<b>PART II CLASSES</b>							
9. Arson .....	29	-	29	3	10.4	1	2
10. Forgery/Counterfeit .....	716	3	713	422	59.2	367	55
11. Fraud .....	752	11	741	403	54.4	385	18
12. Embezzlement .....	15	2	13	30	230.8	30	-
13. Rec. Stolen Property .....	25	-	26	13	50.0	10	3
14. Vandalism .....	1,748	9	1,739	265	15.2	177	88
15. Weapons .....	80	2	78	56	71.8	53	3
16. Prostitution .....	-	-	-	-	-	-	-
17. Sex Offenses .....	143	6	137	75	54.8	67	8
18. Narcotic Drug Laws .....	725	6	719	457	63.6	365	92
19. Gambling .....	46	-	46	7	15.2	5	2
20. Offenses vs. Family .....	17	-	17	8	47.1	8	-
21. Driving Under Influence .....	753	135	618	618	100.0	613	5
22. Liquor Laws .....	462	-	462	461	99.8	420	41
23.** Drunkenness .....	-	-	-	-	-	-	-
24. Disorderly Conduct .....	282	-	282	175	62.1	154	21
25. Vagrancy .....	-	-	-	-	-	-	-
26. All Other Offenses .....	2,556	21	2,535	1,875	74.0	1,613	262
27. Suspicion .....	-	-	-	-	-	-	-
28. Curfew .....	43	-	43	43	100.0	-	43
29. Runaways .....	588	3	585	529	90.4	-	529
PART II TOTALS .....	8,981	198	8,783	5,440	61.9	4,268	1,172
PART II LAST YEAR .....	7,920	193	7,727	4,755	61.5	3,826	929
PER CENT CHANGE .....			+13.7	+14.4		+11.6	+26.2
GRAND TOTAL This Year .....	17,355	357	16,998	7,990	47.0	6,167	1,823
GRAND TOTAL Last Year .....	15,087	350	14,737	6,965	47.3	5,466	1,499
PER CENT CHANGE .....			+15.4	+14.7		+12.8	+21.6

\*Includes clearances of cases from previous years.

\*\*Not a criminal offense as of 1969.

# PERSONS CHARGED AND DISPOSITIONS 1989

CLASSIFICATION OF OFFENSES	DISPOSITIONS*										
	Total Arrested	Adults Arrested	Juveniles Arrested	Released	Total Charged	Adults Guilty of Offense Charged	Adults Guilty of Lesser Offense	Bail Forfeited	Acquitted or Otherwise Dismissed	Referred to Juvenile Court	Pending
<b>PART I CLASSES</b>											
1a. Murder.....	3	3	-	-	3	2	4	-	1	-	2
b. Manslaughter by Negligence ....	12	11	1	3	9	8	1	-	-	-	-
2. Rape .....	15	15	-	8	7	2	-	-	2	-	3
3. Robbery .....	28	25	3	6	22	8	2	-	3	4	7
4. Aggravated Assault.....	75	63	12	20	55	17	9	-	10	7	18
5. Burglary.....	258	107	151	51	207	44	13	-	22	128	17
6a. Larceny - \$200 & over.....	105	60	45	24	81	28	-	-	11	38	11
b. Larceny - \$50 to \$200 .....	108	63	45	3	105	16	2	1	10	43	40
c. Larceny - Under \$50 .....	753	478	275	33	720	191	1	10	115	251	296
7. Auto Theft .....	121	46	75	37	84	16	-	-	5	61	6
8. Other Assaults .....	301	213	88	31	270	70	9	-	56	85	84
<b>PART I TOTAL.....</b>	<b>1,779</b>	<b>1,084</b>	<b>695</b>	<b>216</b>	<b>1,563</b>	<b>402</b>	<b>41</b>	<b>11</b>	<b>235</b>	<b>617</b>	<b>484</b>
<b>PART II CLASSES</b>											
9. Arson.....	-	-	-	-	-	-	-	-	-	-	-
10. Forgery/Counterfeiting .....	32	24	8	<1>	33	21	-	-	3	8	3
11. Fraud.....	51	46	5	3	48	33	-	2	19	5	8
12. Embezzlement .....	6	6	-	1	5	4	-	-	1	-	-
13. Receiving Stolen Property .....	11	8	3	2	9	3	-	-	4	2	1
14. Vandalism.....	191	89	102	21	170	35	-	-	27	90	38
15. Weapons .....	43	41	2	17	26	19	-	-	5	1	6
16. Prostitution .....	-	-	-	-	-	-	-	-	-	-	-
17. Sex Offenses.....	34	27	7	6	28	13	2	-	4	7	5
18. Narcotic Drug Laws.....	521	381	140	121	400	149	5	1	63	125	127
19. Gambling.....	17	12	5	<20>	37	24	-	-	17	3	-
20. Offenses vs. Family.....	2	2	-	-	2	1	-	-	-	-	1
21. Driving Under Influence .....	750	742	8	229	521	372	35	6	40	2	273
22. Liquor Laws.....	861	742	119	25	836	146	1	6	50	115	610
23.** Drunkenness .....	-	-	-	-	-	-	-	-	-	-	-
24. Disorderly Conduct .....	218	176	42	29	189	76	-	2	28	33	95
25. Vagrancy .....	-	-	-	-	-	-	-	-	-	-	-
26. All Other Offenses.....	1,615	1,224	391	83	1,532	439	2	13	351	371	678
27. Suspicion .....	-	-	-	-	-	-	-	-	-	-	-
28. Curfew.....	99	-	99	14	85	-	-	-	-	85	-
29. Runaways .....	454	-	454	8	446	-	-	-	-	446	-
<b>PART II TOTAL.....</b>	<b>4,905</b>	<b>3,520</b>	<b>1,385</b>	<b>538</b>	<b>4,367</b>	<b>1,335</b>	<b>45</b>	<b>30</b>	<b>612</b>	<b>1,293</b>	<b>1,845</b>
<b>GRAND TOTAL.....</b>	<b>6,684</b>	<b>4,604</b>	<b>2,080</b>	<b>754</b>	<b>5,930</b>	<b>1,737</b>	<b>86</b>	<b>41</b>	<b>847</b>	<b>1,910</b>	<b>2,329</b>
<b>TRAFFIC ARRESTS</b>											
Hazardous Violations .....	9,049	8,558	491	133	8,916	NOT RECORDED					
Other Violations .....	14,806	13,808	998	-	14,806	NOT RECORDED					
Parking Violations .....	4,382	4,378	4	-	4,382	NOT RECORDED					
<b>Traffic Arrests Total .....</b>	<b>28,237</b>	<b>26,744</b>	<b>1,493</b>	<b>133</b>	<b>28,104</b>	<b>NOT RECORDED</b>					

\*Includes dispositions of cases from previous years

\*\*Not a criminal offense as of 1969.

# OFFENSES AND COMPLAINTS KNOWN TO POLICE BY DISTRICT - COUNTY OF HAWAII 1989

CLASSIFICATION OF OFFENSES	Total	South Hilo	North Hilo	Hamakua	North Kohala	South Kohala	Kona	Ka'u	Puna
<b>PART I CLASSES</b>									
1a. Murder/Nonnegligent									
Manslaughter .....	7	2	-	-	-	-	2	-	3
1b. Manslaughter by Negligence .....	-	-	-	-	-	-	-	-	-
2. Rape .....	36	19	-	1	-	5	8	-	3
3. Robbery .....	48	28	1	-	-	-	10	-	9
4. Aggravated Assault .....	180	67	1	5	6	15	41	6	39
5. Burglary .....	1,635	662	17	57	13	78	283	52	473
6. Larceny .....	4,685	2,204	45	119	64	380	1,312	80	481
7. Auto Theft .....	392	131	1	10	4	23	158	8	57
8. Other Assaults .....	1,391	536	22	36	24	102	423	36	212
<b>PART I TOTALS .....</b>	<b>8,374</b>	<b>3,649</b>	<b>87</b>	<b>228</b>	<b>111</b>	<b>603</b>	<b>2,237</b>	<b>182</b>	<b>1,277</b>
<b>PART II CLASSES</b>									
9. Arson .....	29	11	-	1	-	2	5	-	10
10. Forgery/Counterfeiting .....	716	358	-	7	9	86	208	3	45
11. Fraud .....	752	411	-	3	1	35	227	5	70
12. Embezzlement .....	15	4	-	-	-	7	4	-	-
13. Receiving Stolen Property .....	26	4	-	1	1	1	16	1	2
14. Vandalism .....	1,748	855	21	48	23	95	412	68	226
15. Weapons .....	80	20	1	2	1	10	29	4	13
16. Prostitution .....	-	-	-	-	-	-	-	-	-
17. Sex Offenses .....	143	56	2	3	6	3	45	6	22
18. Narcotic Drug Laws .....	725	244	15	23	10	46	205	28	154
19. Gambling .....	46	45	-	-	-	-	1	-	-
20. Offenses vs. Family .....	17	7	-	1	-	2	3	-	4
21. Driving Under Influence .....	753	188	9	14	15	94	334	19	80
22. Liquor Laws .....	462	271	1	4	5	19	119	8	35
23.* Drunkenness .....	-	-	-	-	-	-	-	-	-
24. Disorderly Conduct .....	282	127	2	4	6	9	99	9	26
25. Vagrancy .....	-	-	-	-	-	-	-	-	-
26. All Other Offenses .....	2,556	932	22	69	52	139	918	107	317
27. Suspicion .....	-	-	-	-	-	-	-	-	-
28. Curfew .....	43	28	1	-	1	-	12	-	1
29. Runaways .....	588	347	5	20	8	12	102	9	85
<b>PART II TOTALS .....</b>	<b>8,981</b>	<b>3,908</b>	<b>79</b>	<b>200</b>	<b>138</b>	<b>560</b>	<b>2,739</b>	<b>267</b>	<b>1,090</b>
<b>PART I &amp; II TOTALS .....</b>	<b>17,355</b>	<b>7,557</b>	<b>166</b>	<b>428</b>	<b>249</b>	<b>1,163</b>	<b>4,976</b>	<b>449</b>	<b>2,367</b>
<b>TRAFFIC ENFORCEMENT</b>									
Hazardous Violations .....	9,049	2,339	325	472	260	781	3,272	620	980
Other Violations .....	14,806	4,597	371	447	307	1,443	4,985	996	1,660
Parking Violations .....	4,382	1,701	1	36	67	62	2,407	16	92
**Traffic Enforcement Totals .....	28,237	8,637	697	955	634	2,286	10,664	1,632	2,732
Traffic Accidents Totals .....	3,739	1,519	84	162	63	344	1,099	85	383
Numbered Misc. Public Reports Totals .....	39,471	14,332	794	1,766	1,282	3,123	11,470	1,027	5,677
<b>GRAND TOTALS .....</b>	<b>88,802</b>	<b>32,045</b>	<b>1,741</b>	<b>3,311</b>	<b>2,228</b>	<b>6,916</b>	<b>28,209</b>	<b>3,193</b>	<b>11,159</b>

\*Not a criminal offense as of 1969.

\*\*Includes Traffic Task Force Unit Totals.



# DISTRIBUTION OF ALL COMPLAINTS AND NUMBERED REPORTS BY DISTRICT AND WATCH 1989

FIRST WATCH (11 PM - 7 AM)	TOTAL	S. HILO	N. HILO	HAMAKUA	N. KOHALA	S. KOHALA	KONA	KA'U	PUNA
Part I Offenses .....	1,485	729	11	46	19	100	404	28	148
Part II Offenses .....	1,438	635	13	32	27	100	473	21	137
Traffic Violations.....	3,597	998	55	172	95	250	1,818	46	163
MV Accidents.....	581	201	18	40	14	77	156	12	63
Misc. Public Reports .....	9,004	3,665	132	335	130	689	2,941	111	1,001
<b>TOTAL.....</b>	<b>16,105</b>	<b>6,228</b>	<b>229</b>	<b>625</b>	<b>285</b>	<b>1,216</b>	<b>5,792</b>	<b>218</b>	<b>1,512</b>
<b>SECOND WATCH (7 AM - 3 PM)</b>									
Part I Offenses .....	4,177	1,807	46	131	65	293	1,028	89	718
Part II Offenses .....	4,387	1,913	37	105	72	250	1,298	163	549
Traffic Violations.....	12,797	3,639	354	409	362	1,213	4,526	1,034	1,260
MV Accidents.....	1,625	720	33	66	23	123	479	29	152
Misc. Public Reports .....	13,555	4,689	353	682	680	1,063	3,589	469	2,030
<b>TOTAL.....</b>	<b>36,541</b>	<b>12,768</b>	<b>823</b>	<b>1,393</b>	<b>1,202</b>	<b>2,942</b>	<b>10,920</b>	<b>1,784</b>	<b>4,709</b>
<b>THIRD WATCH (3 PM - 11 PM)</b>									
Part I Offenses .....	2,712	1,113	30	51	27	210	805	65	411
Part II Offenses .....	3,156	1,360	29	63	39	210	968	83	404
Traffic Violations.....	11,843	4,000	288	374	177	823	4,320	552	1,309
MV Accidents.....	1,533	598	33	56	26	144	464	44	168
Misc. Public Reports .....	16,912	5,978	309	749	472	1,371	4,940	447	2,646
<b>TOTAL.....</b>	<b>36,156</b>	<b>13,049</b>	<b>689</b>	<b>1,293</b>	<b>741</b>	<b>2,758</b>	<b>11,497</b>	<b>1,191</b>	<b>4,938</b>
<b>TOTAL ALL WATCHES</b>									
Part I Offenses .....	8,374	3,649	87	228	111	603	2,237	182	1,277
Part II Offenses .....	8,981	3,908	79	200	138	560	2,739	267	1,090
Traffic Violations.....	28,237	8,637	697	955	634	2,286	10,664	1,632	2,732
MV Accidents.....	3,739	1,519	84	162	63	344	1,099	85	383
Misc. Public Reports .....	39,471	14,332	794	1,766	1,282	3,123	11,470	1,027	5,677
<b>GRAND TOTAL.....</b>	<b>88,802</b>	<b>32,045</b>	<b>1,741</b>	<b>3,311</b>	<b>2,228</b>	<b>6,916</b>	<b>28,209</b>	<b>3,193</b>	<b>11,159</b>

# CRIMINAL OFFENSES CLEARED BY JUVENILE ARRESTS OR OTHERWISE\* BY DISTRICT 1989

DISTRICT	PART I	PART II	TOTAL OFFENSES
South Hilo .....	316	618	934
North Hilo .....	7	17	24
Hamakua.....	23	45	68
North Kohala .....	20	30	50
South Kohala .....	38	26	64
Kona.....	160	261	421
Ka'u.....	11	34	45
Puna.....	76	141	217
TOTAL	<u>651</u>	<u>1,172</u>	<u>1,823</u>

\*Warned or Reprimanded  
Lack of Prosecution

## JUVENILE ARRESTS BY DISTRICT (CRIMINAL OFFENSES) 1989

DISTRICT	PART I	PART II	TOTAL ARRESTS
South Hilo .....	362	713	1,075
North Hilo .....	-	21	21
Hamakua.....	26	53	79
North Kohala .....	23	47	70
South Kohala .....	37	40	77
Kona.....	167	339	506
Ka'u.....	11	45	56
Puna.....	69	127	196
<b>TOTAL</b>	<b>695</b>	<b>1,385</b>	<b>2,080</b>

# JUVENILE ARRESTS BY AGE & SEX (CRIMINAL OFFENSES) 1989

**CLASSIFICATION  
OF OFFENSES**

PART I CLASSES	Both Sexes	Total		Under 10		10-12		13-14		15		16		17	
		M	F	M	F	M	F	M	F	M	F	M	F	M	F
1a. Murder/Nonnegligent Manslaughter.....	-	-	-	-	-	-	-	-	-	-	-	-	-	-	-
1b. Manslaughter by Negligence.....	1	-	1	-	-	-	-	-	-	-	-	1	-	-	
2. Rape.....	-	-	-	-	-	-	-	-	-	-	-	-	-	-	
3. Robbery.....	3	3	-	-	-	-	-	-	3	-	-	-	-	-	
4. Aggravated Assault.....	12	12	-	-	-	-	-	-	2	-	3	-	7	-	
5. Burglary.....	151	133	18	4	13	2	34	9	29	2	27	4	26	1	
6a. Larceny - \$200 & Over.....	45	41	4	-	2	-	10	1	10	1	6	-	13	2	
6b. Larceny - \$50 to \$200.....	45	21	24	-	-	3	9	5	3	4	6	4	3	8	
6c. Larceny - Under \$50.....	275	170	105	3	2	33	13	56	33	29	25	21	15	28	17
7. Auto Theft.....	75	65	10	-	3	3	14	5	19	1	15	-	14	1	
8. Other Assaults.....	88	56	32	-	5	2	8	6	7	9	15	11	21	4	
<b>PART I TOTALS.....</b>	<b>695</b>	<b>501</b>	<b>194</b>	<b>7</b>	<b>2</b>	<b>56</b>	<b>23</b>	<b>131</b>	<b>59</b>	<b>102</b>	<b>42</b>	<b>93</b>	<b>35</b>	<b>112</b>	<b>33</b>
<b>PART II CLASSES</b>															
9. Arson.....	-	-	-	-	-	-	-	-	-	-	-	-	-	-	-
10. Forgery/Counterfeiting.....	8	4	4	-	-	-	-	1	2	-	-	1	2	2	
11. Fraud.....	5	2	3	-	-	-	-	1	1	-	-	-	1	2	
12. Embezzlement.....	-	-	-	-	-	-	-	-	-	-	-	-	-	-	
13. Receiving Stolen Property.....	3	2	1	-	1	1	-	-	-	-	-	-	1	-	
14. Vandalism.....	102	88	14	8	-	11	-	8	3	20	4	22	2	19	5
15. Weapons.....	2	2	-	-	-	-	-	-	-	-	-	-	-	2	-
16. Prostitution.....	-	-	-	-	-	-	-	-	-	-	-	-	-	-	-
17. Sex Offenses.....	7	7	-	-	2	-	4	-	-	-	1	-	-	-	-
18. Narcotic Drug Laws.....	140	89	51	-	1	7	4	17	11	20	18	27	8	18	9
19. Gambling.....	5	5	-	-	-	-	5	-	-	-	-	-	-	-	-
20. Offenses vs. Family.....	-	-	-	-	-	-	-	-	-	-	-	-	-	-	-
21. Driving Under Influence.....	8	8	-	-	-	-	-	-	-	-	1	-	7	-	
22. Liquor Laws.....	119	70	49	-	-	2	-	4	4	7	8	22	20	35	17
23.* Drunkenness.....	-	-	-	-	-	-	-	-	-	-	-	-	-	-	-
24. Disorderly Conduct.....	42	32	10	-	-	1	2	2	3	8	2	11	3	10	-
25. Vagrancy.....	-	-	-	-	-	-	-	-	-	-	-	-	-	-	-
26. All Other Offenses.....	391	253	138	1	1	31	11	65	39	56	34	50	31	50	22
27. Suspicion.....	-	-	-	-	-	-	-	-	-	-	-	-	-	-	-
28. Curfew.....	99	80	19	-	-	8	1	34	13	16	3	11	-	11	2
29. Runaways.....	454	206	248	-	-	9	10	45	89	77	51	43	60	32	38
<b>PART II TOTALS.....</b>	<b>1,385</b>	<b>848</b>	<b>537</b>	<b>9</b>	<b>2</b>	<b>72</b>	<b>29</b>	<b>184</b>	<b>164</b>	<b>207</b>	<b>120</b>	<b>188</b>	<b>125</b>	<b>188</b>	<b>97</b>
<b>GRAND TOTALS.....</b>	<b>2,080</b>	<b>1,349</b>	<b>731</b>	<b>16</b>	<b>4</b>	<b>128</b>	<b>52</b>	<b>315</b>	<b>223</b>	<b>309</b>	<b>162</b>	<b>281</b>	<b>160</b>	<b>300</b>	<b>130</b>

\*Not a criminal offense as of 1969.

# SIX YEAR COMPARISON OF JUVENILE ARRESTS COUNTY OF HAWAII 1984-1989

**CLASSIFICATION OF OFFENSES**

PART I CLASSES	1984	1985	1986	1987	1988	1989
1a. Murder/Nonnegligent Manslaughter.....	-	1	-	-	1	-
b. Manslaughter by Negligence .....	-	2	2	1	-	1
2. Rape .....	2	1	2	1	-	-
3. Robbery .....	5	10	2	1	5	3
4. Aggravated Assault.....	2	6	5	-	4	12
5. Burglary.....	99	147	165	95	118	151
6a. Larceny - \$50 & over.....	55	98	82	79	92	90
b. Larceny - Under \$50 .....	147	187	276	260	197	275
7. Auto Theft .....	37	35	80	32	49	75
8. Other Assaults .....	53	55	78	54	56	88
<b>Part I Totals .....</b>	<b>400</b>	<b>542</b>	<b>692</b>	<b>523</b>	<b>522</b>	<b>695</b>
<b>PART II CLASSES</b>						
9. Arson.....	3	2	1	-	1	-
10. Forgery/Counterfeiting .....	2	1	2	1	2	8
11. Fraud.....	6	3	7	1	4	5
12. Embezzlement .....	-	-	-	-	-	-
13. Receiving Stolen Property .....	1	4	2	5	2	3
14. Vandalism.....	42	81	64	66	49	102
15. Weapons .....	1	7	6	5	7	2
16. Prostitution.....	-	-	-	-	-	-
17. Sex Offenses.....	7	9	2	1	2	7
18. Narcotic Drug Laws.....	131	211	186	191	158	140
19. Gambling.....	16	15	12	2	-	5
20. Offenses vs. Family.....	-	-	-	-	-	-
21. Driving Under Influence .....	8	12	14	10	9	8
22. Liquor Laws.....	27	61	60	57	59	119
23.* Drunkenness.....	-	-	-	-	-	-
24. Disorderly Conduct .....	3	6	14	17	14	42
25. Vagrancy .....	-	-	-	-	-	-
26. All Other Offenses.....	116	146	316	300	311	391
27. Suspicion .....	-	-	-	-	-	-
28. Curfew.....	77	46	88	68	63	99
29. Runaways .....	215	226	326	294	322	454
<b>Part II Totals .....</b>	<b>655</b>	<b>830</b>	<b>1,100</b>	<b>1,018</b>	<b>1,033</b>	<b>1,385</b>
<b>GRAND TOTAL.....</b>	<b>1,055</b>	<b>1,372</b>	<b>1,792</b>	<b>1,541</b>	<b>1,525</b>	<b>2,080</b>

\*Not a criminal offense as of 1969

# MOTOR VEHICLE TRAFFIC ACCIDENTS BY DISTRICTS 1983 - 1989

DISTRICT	1983	1984	1985	1986	1987	1988	1989	1989			
								No. Fatal & Injury Acc.	No. Persons Killed	No. Persons Injured	Property Damage Only
S. Hilo.....	943	1,145	1,118	1,095	1,120	1,212	1,519	602	7	914	917
N. Hilo.....	44	54	58	84	66	87	84	32	3	59	52
Hamakua.....	76	74	87	109	105	113	162	69	2	114	93
N. Kohala.....	56	46	66	43	45	40	63	32	1	46	31
S. Kohala.....	145	147	173	175	180	243	344	160	8	228	184
Kona.....	478	567	589	655	762	794	1,099	410	11	595	689
Ka'u.....	53	54	65	73	71	75	85	34	2	49	51
Puna.....	232	254	270	256	296	312	383	162	3	249	221
<b>TOTAL.....</b>	<b>2,027</b>	<b>2,341</b>	<b>2,426</b>	<b>2,490</b>	<b>2,645</b>	<b>2,876</b>	<b>3,739</b>	<b>1,501</b>	<b>37</b>	<b>2,254</b>	<b>2,238</b>

# TRAFFIC ENFORCEMENT BY DISTRICTS

## 1989

OFFENSE	Total	Adult	Juv.	Reisd.	Total Arrested & Cited	S. Hilo	N. Hilo	Hamakua	North Kohala	South Kohala	Kona	Ka'u	Puna
Hazardous Viol. Total .....	9,049	8,558	491	133	8,916	2,339	325	472	260	781	3,272	620	980
Driving Under Influence .....	639	629	10	133	506	164	5	14	13	79	283	16	65
Speeding.....	6,567	6,253	314	-	6,567	1,226	229	416	233	646	2,396	538	838
Due Care .....	15	14	1	-	15	8	1	-	-	1	3	1	1
Reckless Driving .....	40	25	15	-	40	27	-	2	-	1	8	-	2
Traffic Signals .....	283	256	27	-	283	228	-	-	-	1	53	-	1
Stop Sign .....	584	511	73	-	584	387	5	14	5	11	114	8	40
Other Regulatory Sign .....	103	94	9	-	103	87	-	4	1	-	9	-	2
Improper Passing.....	353	337	16	-	353	28	81	12	3	34	164	9	22
Improper Turning .....	184	178	6	-	184	63	1	3	-	1	114	-	2
Right of Way-Vehicle.....	73	72	1	-	73	35	-	-	-	-	37	-	1
Right of Way-Pedestrian .....	5	3	2	-	5	1	-	-	1	-	3	-	-
Following Too Closely .....	8	7	1	-	8	1	-	-	-	-	5	2	-
No or Improper Signal.....	29	27	2	-	29	15	-	-	-	1	12	-	1
Improper Starting .....	-	-	-	-	-	-	-	-	-	-	-	-	-
Improper Backing.....	2	1	1	-	2	1	-	-	-	-	1	-	-
Improper Lane Usage .....	79	74	5	-	79	48	-	1	-	1	25	1	3
Failure to Drive-Right.....	49	45	4	-	49	9	1	4	-	3	31	-	1
Other Hazardous Violations.....	36	32	4	-	36	11	2	2	4	2	14	-	1
Other Violation .....	14,806	13,808	998	-	14,806	4,597	371	447	307	1,443	4,985	996	1,660
Parking Violation .....	4,382	4,378	4	-	4,382	1,701	1	36	67	62	2,407	16	92
<b>TOTAL.....</b>	<b>28,237</b>	<b>26,744</b>	<b>1,493</b>	<b>133</b>	<b>28,104</b>	<b>8,637</b>	<b>697</b>	<b>955</b>	<b>634</b>	<b>2,286</b>	<b>10,664</b>	<b>1,632</b>	<b>2,732</b>
Violator Contacts.....	8,558					1,763	284	461	199	1,220	3,311	261	1,059
Hazardous .....	6,226					1,190	211	407	157	937	2,438	156	730
Parking.....	3					-	-	-	1	-	2	-	-
Others .....	2,329					573	73	54	41	283	871	105	329
<b>GRAND TOTAL.....</b>	<b>36,795</b>					<b>10,400</b>	<b>981</b>	<b>1,416</b>	<b>833</b>	<b>3,506</b>	<b>13,975</b>	<b>1,893</b>	<b>3,791</b>

# ANALYSIS OF TRAFFIC ACCIDENTS BY POPULATION, LICENSED DRIVERS, MOTOR VEHICLES, AND GASOLINE CONSUMPTION 1985 - 1989

	1985	1986	1987	1988	1989
Accidents.....	2,426	2,490	2,645	2,876	3,739
Injuries .....	1,967	1,804	1,740	1,916	2,254
Killed .....	24	23	35	38	37
Population (Approximate).....	109,700	111,755	115,202	117,500	122,300
Number of Licensed Drivers.....	68,177	70,493	72,142	75,546	78,448
Registered Motor Vehicles .....	87,615	91,130	93,625	96,339	103,600
Fuel Consumption (Gallons).....	44,742,935	47,596,873	49,780,987	50,767,931	57,562,387
Gasoline.....	(41,872,370)	(44,480,318)	(46,497,587)	(47,519,262)	(53,194,392)
Diesel Oil & Liquid Petroleum Gas (Highway Use) .....	( 2,870,565)	( 3,116,555)	( 3,283,400)	( 3,248,669)	( 4,367,995)
<b>Rate Per 10,000 Population</b>					
Accidents .....	221.1	222.8	229.6	244.8	305.7
Injuries .....	179.3	161.4	151.0	163.1	184.3
Deaths.....	2.1	2.1	3.0	3.2	3.0
<b>Rate Per 1,000 Licensed Drivers</b>					
Accidents .....	35.9	35.3	36.7	38.1	49.5
Injuries .....	28.9	25.6	24.1	25.4	29.8
Deaths.....	0.35	0.32	0.49	0.50	0.47
<b>Rate Per 1,000 Motor Vehicles</b>					
Accidents .....	27.7	27.3	28.3	29.9	38.8
Injuries .....	22.5	19.8	18.6	19.9	23.4
Deaths.....	0.27	0.25	0.37	0.39	0.36
<b>Rate Per 1,000,000 Gallons Fuel Consumed</b>					
Accidents .....	54.2	52.3	53.1	56.6	65.0
Injuries .....	44.0	37.9	35.0	37.7	39.2
Deaths.....	0.53	0.48	0.70	0.75	0.64



# MISCELLANEOUS SERVICES AND REPORTS 1985 - 1989

	1985	1986	1987	1988	1989
Motor Vehicle Non-Traffic Accidents.....	369	327	398	463	651
Minor MV Non-Traffic Accidents .....	806	832	835	927	868
Minor MV Traffic Accidents .....	930	1,070	1,057	1,021	940
Lost, Found Property .....	1,547	1,586	1,540	1,487	1,584
Building Checks (Numbered).....	3,665	4,264	4,398	4,827	4,883
Doors, Windows Open.....	869	1,268	1,040	1,050	1,034
Persons Missing .....	50	44	43	47	51
Fires Reported .....	355	414	387	357	322
Safety.....	2,185	2,469	2,319	2,243	2,315
Arrests for Other Jurisdictions .....	140	194	271	222	231
Domestic Trouble.....	1,295	1,282	1,368	1,629	1,718
Transportation.....	132	119	94	101	95
Outside Assistance .....	232	249	243	186	210
A.W.O.L. ....	2	2	2	2	1
Unattended Deaths.....	170	195	166	172	191
Coroner's Inquest.....	114	109	137	118	135
Attempted Suicides.....	128	131	135	153	161
Suicidal Deaths.....	12	9	13	18	18
Strayed Animals.....	1,264	1,052	983	909	794
Minor Nuisances .....	6,058	6,529	6,877	8,205	9,052
Notifications .....	58	38	30	26	10
Civil Matter.....	144	145	147	103	90
Insanity Cases .....	69	63	49	67	46
Drunkenness Assistance .....	22	14	23	15	9
Other Personal Services.....	10,864	11,797	12,162	12,387	13,112
Public Accident Reports.....	325	387	595	488	521
Industrial Accident Reports.....	104	141	250	220	212
Home Accident Reports.....	159	180	273	238	217
Beat Condition Reports.....	1,468	1,341	1,451	1,184	442
Other Un-numbered Misc. Services.....	12,629	11,383	10,002	9,167	9,327
Violator Contacts.....	37,392	41,311	44,427	36,193	36,216
<b>TOTAL .....</b>	<b>83,557</b>	<b>88,945</b>	<b>91,715</b>	<b>84,225</b>	<b>85,456</b>

## HOW THE MONEY WAS SPENT 1989

SALARIES	AMOUNT	PERCENT
Administration and personnel .....	\$11,343,490.57	74.2%
<b>EQUIPMENT</b>		
Policing Equipment.....	\$ 117,834.00	0.8%
<b>EXPENSE</b>		
Contractual Services .....	\$ 2,619,304.12	
Materials & Supplies .....	487,996.92	
Other Charges .....	515,789.88	
1987 - 1988 Encumbrance .....	196,596.10	
Total .....	\$ <u>3,819,687.02</u>	25.0%
<b>GRAND TOTAL.....</b>	<b>\$15,281,011.59</b>	<b>100.0%</b>

## PER CAPITA COST OF POLICE SERVICE 1987 - 1989

	1987	1988	1989
Total Expenditures .....	\$14,203,073.00	\$14,427,023.00	\$15,281,011.59
Population* (Approximate) .....	115,202	117,500	122,300
Per Capita Cost.....	123.29	122.78	124.95

\*State Department of Business & Economic Development Estimate.

# RATIO OF POPULATION TO POLICE OFFICERS 1984 - 1989 (As of December 31)

	1984	1985	1986	1987	1988	1989
<b>SWORN</b>						
Authorized Strength .....	273	288	295	295	296	309
Vacancies.....	11	20	27	9	23	11
Actual Strength .....	262	268	268	286	273	298
<b>CIVILIAN*</b>						
Authorized Strength .....	82	83	83	83	83	88
Vacancies.....	11	2	4	3	5	4
Actual Strength .....	71	81	79	80	78	84
Population** .....	106,400	107,900	111,755	115,202	117,500	122,300
Number of Persons Per Police Officer .....	406	409	417	403	430	410

\*Does not include temporary, part-time, or short-term employees.

\*\*State Department of Business & Economic Development estimate.

# COMPARATIVE SUMMARY OF THE ANNUAL REPORT 1986 - 1989

ADMINISTRATION:	1986	1987	1988	1989
Total Numerical Strength, Dec. 31 .....	347	366	351	382
Appointments .....	20	39	10	50
Separations .....	22	20	25	19
Average Age of Police Officers .....	35.0	36.2	36.9	36.8
Average Length of Service, Years .....	10.2	10.4	10.8	10.5
Total General Orders Issued .....	6	9	1	-
Total Administrative Notices Issued .....	5	9	3	2
Total Memorandums Issued .....	125	124	107	141
Total Personnel Orders Issued .....	105	132	144	153
Total Disciplinary Orders Issued .....	9	12	15	8
<b>EXPENDITURES:</b>				
Actual Policing Expenses .....	\$12,817,608.00	\$14,203,073.00	\$14,427,023.00	\$15,281,011.59
Per Capita Cost .....	114.69	123.29	122.78	124.95
Total Patrol Mileage .....	3,779,448	3,653,001	3,878,220	3,841,009
Auto Patrol, Cost Per Mile .....	0.339	0.389	0.372	0.398
<b>OFFENSES AND ARRESTS:</b>				
<b>PART I OFFENSES</b>				
Actual Offenses .....	6,419	6,012	7,010	8,215
Cleared by Arrest or Otherwise .....	2,749	2,216	2,210	2,550
Per Cent Cleared .....	42.8	36.9	31.5	31.0
Persons Charged .....	1,440	1,232	1,232	1,563
<b>PART II OFFENSES (Excl. Traffic)</b>				
Actual Offenses .....	7,428	7,650	7,727	8,783
Cleared by Arrest or Otherwise .....	5,132	4,555	4,755	5,440
Per Cent Cleared .....	69.1	59.6	61.5	61.9
Persons Charged .....	3,481	3,347	3,681	4,367
<b>REPORTS AND COMPLAINTS RECEIVED:</b>				
Part I Offenses .....	6,617	6,159	7,167	8,374
Part II Offenses (Excl. Traf. Viol.) .....	7,610	7,812	7,920	8,981
Traffic Violations .....	24,978	28,169	34,276	28,237
MV Traffic Accidents .....	2,490	2,645	2,876	3,739
Misc. Reports (Numbered) .....	34,910	35,835	37,681	39,471
All Other Misc. Services .....	11,383	10,002	9,167	9,327
<b>TOTAL COMPLAINTS AND REPORTS .....</b>	<b>87,988</b>	<b>90,622</b>	<b>99,087</b>	<b>98,129</b>
<b>JUVENILES:</b>				
<b>PART I OFFENSES</b>				
Offenses Committed by Juveniles .....	812	573	570	651
Juveniles Warned & Reprimanded .....	201	110	101	108
Juveniles Referred to Other Depts. ....	2	-	2	-
Juveniles Arrested .....	692	523	522	695
Total Juveniles Handled .....	895	633	625	803
<b>PART II OFFENSES (Excl. Traffic)</b>				
Offenses Committed by Juveniles .....	1,079	893	929	1,172
Juveniles Warned & Reprimanded .....	132	96	89	121
Juveniles Referred to Other Depts. ....	3	4	-	3
Juveniles Arrested .....	1,100	1,018	1,003	1,385
Total Juveniles Handled .....	1,235	1,118	1,092	1,509
Juvenile Traffic Citations & Arrests .....	984	1,343	1,449	1,493

# COMPARATIVE SUMMARY OF THE ANNUAL REPORT

## (continued)

### 1986 - 1989

MOTOR VEHICLE TRAFFIC ACCIDENTS	1986	1987	1988	1989
Fatal Accidents .....	21	28	32	33
Injury Accidents.....	1,213	1,128	1,263	1,468
Property Damage Only Accidents.....	1,256	1,489	1,581	2,238
<b>TOTAL MOTOR VEHICLE TRAF. ACC.....</b>	<b>2,490</b>	<b>2,645</b>	<b>2,876</b>	<b>3,739</b>
Number of Persons Killed .....	23	35	38	37
Number of Persons Injured .....	1,804	1,740	1,916	2,254
Minor Traffic Accidents.....	1,070	1,057	1,021	940
<b>TRAFFIC ENFORCEMENT:</b>				
Citations & Arrests, Hazardous Traffic Violations .....	5,422	6,177	7,781	9,049
Citations & Arrests, Other Traffic Violations .....	12,216	17,096	18,706	14,806
Citations & Arrests, Parking Traffic Violations .....	7,340	4,896	7,789	4,382
<b>TOTAL TRAFFIC ENFORCEMENT .....</b>	<b>24,978</b>	<b>28,169</b>	<b>34,276</b>	<b>28,237</b>
<b>LICENSES &amp; PERMITS:</b>				
Operators' Licenses Issued.....	5,586	5,839	6,244	6,702
Operators' Licenses Renewed .....	15,452	19,997	21,926	18,982
Instruction Permits Issued.....	8,355	8,710	9,045	8,918
Duplicate License.....	3,118	3,423	3,531	3,822
Firearms Registered .....	2,622	2,848	2,648	3,846
Firearms Permits Issued .....	1,228	1,422	1,268	1,511
Fireworks Permits Issued.....	9	14	16	37
Permits to Drink at Public Parks Issued.....	507	522	578	488
Parade & Motorcade Permits Issued .....	287	304	278	269
Reconstructed Motor Vehicle Permits Issued ....	238	295	268	1,001
Revenues, Exam. of Drivers .....	\$ 279,177.00	\$ 339,896.00	\$ 369,043.00	\$ 339,497.00
Revenues, Other Police .....	\$ 50,197.29	\$ 50,918.77	\$ 46,709.26	\$ 95,920.30
<b>MISCELLANEOUS:</b>				
Number of Persons Killed				
Public Accident (Excl. Drowning) .....	8	7	2	9
Drowning .....	4	8	12	3
Industrial Accidents .....	-	1	1	-
Home Accidents .....	3	6	4	4
Identification Fingerprints on File .....	49,663	51,628	53,355	55,394
Identification Photographs on File.....	34,696	35,681	37,408	39,447
Value of Property Stolen .....	\$ 2,565,470.00	\$ 2,365,111.00	\$ 3,128,098.00	\$ 4,140,934.00
Value of Property Recovered .....	\$ 592,334.00	\$ 709,268.00	\$ 856,926.00	\$1,264,702.00
Per Cent of Property Recovered.....	23.1	30.0	27.4	30.6
Population, County of Hawaii (Approx.) .....	111,755	115,202	117,500	122,300
Area in Square Miles.....	4,015	4,015	4,015	4,015

\*State Dept. of Business & Economic Development estimate

## Law Enforcement Code of Ethics

**As a Law Enforcement Officer**, my fundamental duty is to serve mankind; to safeguard lives and property; to protect the innocent against deception, the weak against oppression or intimidation, and the peaceful against violence or disorder; and to respect the Constitutional rights of all men to liberty, equality and justice.

**I will** keep my private life unsullied as an example to all; maintain courageous calm in the face of danger, scorn, or ridicule; develop self-restraint; and be constantly mindful of the welfare of others. Honest in thought and deed in both my personal and official life, I will be exemplary in obeying the laws of the land and the regulations of my department. Whatever I see or hear of a confidential nature or that is confided to me in my official capacity will be kept ever secret unless revelation is necessary in the performance of my duty.

**I will** never act officiously or permit personal feelings, prejudices, animosities or friendships to influence my decisions. With no compromise for crime and with relentless prosecution of criminals, I will enforce the law courteously and appropriately without fear or favor, malice or ill will, never employing unnecessary force or violence and never accepting gratuities.

**I recognize** the badge of my office as a symbol of public faith, and I accept it as a public trust to be held so long as I am true to the ethics of the police service. I will constantly strive to achieve these objectives and ideals, dedicating myself before God to my chosen profession. . . law enforcement.

International Association of Chiefs of Police, Inc.

NOTES



first class

National Criminal Justice  
Reference Service  
Law Enforcement Assistance Adm.  
U.S. Dept. of Justice  
Washington, D.C. 20530