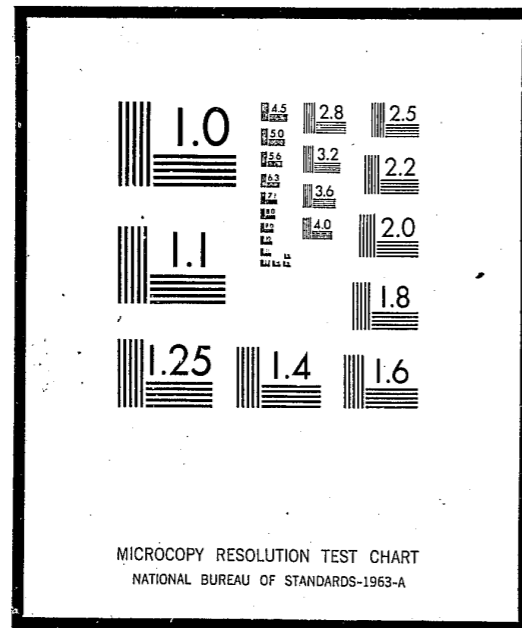


NCJRS

This microfiche was produced from documents received for inclusion in the NCJRS data base. Since NCJRS cannot exercise control over the physical condition of the documents submitted, the individual frame quality will vary. The resolution chart on this frame may be used to evaluate the document quality.



Microfilming procedures used to create this fiche comply with the standards set forth in 41CFR 101-11.504

Points of view or opinions stated in this document are those of the author(s) and do not represent the official position or policies of the U.S. Department of Justice.

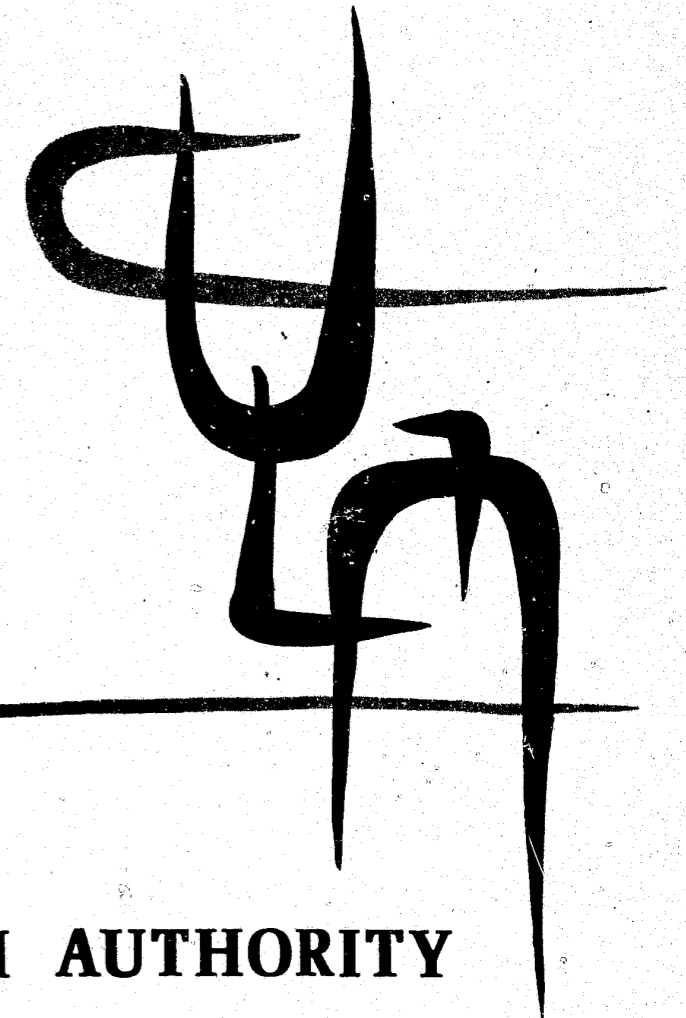
U.S. DEPARTMENT OF JUSTICE
LAW ENFORCEMENT ASSISTANCE ADMINISTRATION
NATIONAL CRIMINAL JUSTICE REFERENCE SERVICE
WASHINGTON, D.C. 20531

Date filmed

8/27/75

INSTITUTIONAL EXPERIENCE SUMMARY

1972 Parole Releases



ne, 1974

44213



CALIFORNIA YOUTH AUTHORITY

State of California

RONALD REAGAN
Governor

Health and Welfare Agency

JAMES E. JENKINS
Secretary



INTRODUCTION

The Institutional Experience Summary form was initiated in 1963 and revised in 1964 and 1969. This report presents the data obtained during calendar year 1972 and relates these data to parole performance for a 15-month period following release to parole.

This report of the 1972 parole release cohort uses the same approach as that used for previous reports. Each institution is treated as an entity and very few comparisons between schools are made. The tables allow for this type of cross comparison; however, such comparisons should be done with caution as there are selection factors in assignment that are not readily apparent in the data.

The reader is cautioned to interpret violation rates carefully because of small numbers. Percents of violators for groups of less than 25 were not calculated, and those for groups of less than 50 are considered unreliable for comparison purposes.

The report is organized into three sections. Part I presents the percentage distribution for the Institutional Experience Summary data by institution. Part II presents the violation rates by institution. Part III presents violation rates by living unit for each institution. The appendix contains a copy of the IES form.

Department of the
Youth Authority

KEITH S. GRIFFITHS
Chief of Research

GEORGE F. DAVIS
Supervisor, Information Systems

PEGGY L. PIKE
Assistant Social Research Analyst

HARMON L. ORSBORN
Assistant Statistician

LYNNE GUTTMANN
Assistant Social Research Analyst

LDA

ALLEN F. BREED,
DIRECTOR

GEORGE R. ROBERTS,
CHIEF DEPUTY DIRECTOR

JAMES C. BARNETT,
DEPUTY DIRECTOR
PLANNING, RESEARCH, EVALUATION
AND DEVELOPMENT BRANCH

YOUTH AUTHORITY BOARD

ALLEN F. BREED,
DIRECTOR AND CHAIRMAN

JULIO GONZALES,
VICE CHAIRMAN

ED BOWE
RICHARD W. CALVIN, JR.
PAUL A. MEANEY
WILLIAM L. RICHEY
GLADYS L. SANDERSON
JAMES E. STRATTEN

PART I

INSTITUTIONAL EXPERIENCE SUMMARY CHARACTERISTICS

Table 1 gives the basic characteristics and institutional experience of wards paroled from Youth Authority institutions during the 1972 calendar year.

Basic Characteristics

Most of the wards were juvenile court commitments (53 percent of the males and 79 percent of the females).

About 60 percent of both males and females were first admissions.

Fifty-eight percent of the males and 54 percent of the females were committed from the Southern California area.

About 60 percent of the females, but less than half of the males (48 percent) were white.

The median age for males paroled was 19.2; for females, 18.1 years.

More males were committed for burglary, theft, and forgery than for any other group of offenses (39 percent). Forty-five percent of the females were committed for violations of the Welfare and Institution Code.

Institutional Experience

Institutional Experience Summary forms were received for all females paroled in 1972 from institutions. There were 74 males for whom IES forms were not received.

I-levels were reported for most of the females (79 percent) but for only 40 percent of the males (YTS reported only 8 percent and Nelles only 2 percent). Twice as many females were classified I-4's than were classified I-3's. Among the males, there were also more I-4's than I-3's, but the difference was much smaller.

If reported accurately, the item on Special Institutional Programs shows only 6 percent of the males and 33 percent of the females involved in any special programs.

Male wards were initially sent to their own homes upon parole (72 percent). Most of the female wards were also placed in their own homes (57 percent), but an additional 26 percent were placed in foster or group homes.

Approximately 30 percent of males and females received work experience as part of their institutional training program.

Vocational training is offered mainly at Youth Training School, Preston, and, to a lesser degree, Ventura. Building trades, the culinary arts, and nursery and gardening account for most of the vocational training given at these three schools.

Forty percent of the males and 82 percent of the females were in full-time academic school programs.

The table below suggests that wards had the benefit of more than one program during their institutional stay, either concurrently or consecutively. Thus, although all wards at the camps were in a work experience program, 16 percent were also involved in an academic program. Similarly, 47 percent of the YTS parolees were in an academic program, mostly in addition to the vocational training in which 97 percent participated. Males at Ventura and Preston had a particularly rich fare in that substantial percents of their parolees were represented in all four types of program.

SUMMARY OF WARD INVOLVEMENT IN INSTITUTIONAL PROGRAM*

(In percents)

Institution of Release	Work Experience	Vocational Training	Full-time Academic	Other Academic
Nelles.....	19	-	66	19
O. H. Close.....	-	-	98	-
Karl Holton.....	20	-	84	-
DeWitt Nelson.....	61	-	39	16
Preston.....	31	50	33	45
Youth Trng. School.....	-	97	-	47
Ventura - Males.....	46	24	74	20
Camps.....	100	-	-	16
Ventura - Females.....	28	19	86	-

*Total may equal more than 100 percent.

Camps had the largest proportion of wards with an estimated grade level lower than the seventh grade at the time of their release (18 percent). Five schools awarded high school diplomas to more than 20 percent of their parolees in 1972, Ventura (males) leading with 38 percent. Another 10 percent of the wards had already fulfilled their requirements for high school graduation prior to this Youth Authority stay.

Most wards received no special incident reports during their institutional period, a somewhat higher percentage of females (24 percent) than males (18 percent) receiving such reports.

TABLE 1

INSTITUTIONAL EXPERIENCE SUMMARY ON 1972 PAROLE RELEASES FROM YOUTH AUTHORITY SCHOOLS AND CAMPS
(Showing percent of totals)

	Total Males*	Nelles	O. H. Close	Karl Holton	DeWitt Nelson	Preston	Y.T.S.	Ventura	Total Camps	Total Females*	Ventura
Total Wards Released.....	3,697	516	442	417	163	457	982	90	479	406	231
Percent.....	100.0	100.0	100.0	100.0	100.0	100.0	100.0	100.0	100.0	100.0	100.0
Court of Last Commitment											
Juvenile court.....	1,953	466	410	341	49	147	306	32	97	321	173
Percent.....	52.8	90.3	92.8	81.8	30.1	32.2	31.2	35.6	20.3	79.1	74.9
Criminal court.....	1,744	50	32	76	114	310	676	58	382	85	58
Percent.....	47.2	9.7	7.2	18.2	69.9	67.8	68.8	64.4	79.7	20.9	25.1
Last Admission Status											
First admission.....	2,271	312	327	282	100	249	555	58	281	239	122
Percent.....	61.4	60.5	74.0	67.6	61.4	54.5	56.5	64.4	58.7	58.9	52.8
First return.....	830	125	85	89	40	112	222	18	109	107	65
Percent.....	22.5	24.2	19.2	21.4	24.5	24.5	22.6	20.0	22.7	26.3	28.1
Two or more returns.....	596	79	30	46	23	96	205	14	89	60	44
Percent.....	16.1	15.3	6.8	11.0	14.1	21.0	20.9	15.6	18.6	14.8	19.1
Area of Commitment											
Southern California.....	2,142	510	70	55	53	118	914	90	242	221	219
Percent.....	57.9	98.8	15.8	13.2	32.5	25.9	93.1	100.0	50.5	54.4	94.8
Los Angeles.....	1,174	226	27	18	31	72	588	43	140	102	102
Percent.....	31.7	43.8	6.1	4.3	19.0	15.8	59.9	47.8	29.2	25.1	44.2
9 other counties.....	968	284	43	37	22	46	326	47	102	119	117
Percent.....	26.2	55.0	9.7	8.9	13.5	10.1	33.2	52.2	21.3	29.3	50.6
Bay Area counties.....	898	2	223	205	66	203	25	-	136	117	6
Percent.....	24.3	0.4	50.5	49.2	40.5	44.4	2.5	-	28.4	28.8	2.7
San Francisco.....	146	-	34	44	14	42	1	-	8	35	2
Percent.....	3.9	-	7.7	10.6	8.6	9.2	0.1	-	1.7	8.6	0.9
Alameda.....	254	-	80	50	24	59	6	-	24	15	2
Percent.....	6.9	-	18.1	12.0	14.7	12.9	0.6	-	5.0	3.7	0.9
7 other counties.....	498	2	109	111	28	102	18	-	104	67	2
Percent.....	13.5	0.4	24.7	26.6	17.2	22.3	1.8	-	21.7	16.5	0.9
10 Sacramento Valley counties.....	206	-	42	50	12	54	4	-	37	23	1
Percent.....	5.6	-	9.5	12.0	7.4	11.8	0.4	-	7.7	5.7	0.4
7 San Joaquin Valley counties.....	273	1	66	71	21	44	27	-	33	28	4
Percent.....	7.4	0.2	14.9	17.0	12.9	9.6	2.7	-	6.9	6.9	1.7

*Total includes 151 males and 175 females not shown in detail.

TABLE 1 (Continued)

INSTITUTIONAL EXPERIENCE SUMMARY ON 1972 PAROLE RELEASES FROM YOUTH AUTHORITY SCHOOLS AND CAMPS
(Showing percent of totals)

	Total Males*	Nelles	O. H. Close	Karl Holton	DeWitt Nelson	Preston	Y.T.S.	Ventura	Total Camps	Total Females*	Ventura
Total Wards Released.....	3,697	516	442	417	163	457	982	90	479	406	231
Percent.....	100.0	100.0	100.0	100.0	100.0	100.0	100.0	100.0	100.0	100.0	100.0
Area of Commitment (continued)											
22 other counties.....	178	3	41	36	11	38	12	-	31	17	1
Percent.....	4.8	0.6	9.3	8.6	6.7	8.3	1.2	-	6.5	4.2	0.4
Ethnic Group											
White.....	1,778	240	231	214	65	208	430	46	262	243	139
Percent.....	48.1	46.5	52.3	51.3	39.9	45.5	43.8	51.1	54.7	59.9	60.2
Mexican-American.....	747	120	65	60	27	74	230	22	119	61	38
Percent.....	20.2	23.3	14.7	14.4	16.6	16.2	23.4	24.4	24.8	15.0	16.5
Negro.....	1,078	147	134	122	68	163	302	21	84	91	49
Percent.....	29.2	28.5	30.3	29.3	41.7	35.7	30.8	23.3	17.5	22.4	21.2
Other.....	94	9	12	21	3	12	20	1	14	11	5
Percent.....	2.5	1.7	2.7	5.0	1.8	2.6	2.0	1.1	2.9	2.7	2.2
Age at Release											
Age 14 and under.....	72	25	37	-	-	-	-	-	-	6	2
Percent.....	1.9	4.8	8.4	-	-	-	-	-	-	1.5	0.9
Age 15.....	147	69	74	-	-	1	-	-	-	39	15
Percent.....	4.0	13.4	16.7	-	-	0.2	-	-	-	9.6	6.5
Age 16.....	299	110	143	28	-	4	2	-	-	63	30
Percent.....	8.1	21.3	32.4	6.7	-	0.9	0.2	-	-	15.5	13.0
Age 17.....	519	168	124	140	7	22	20	5	9	85	48
Percent.....	14.0	32.6	28.0	33.6	4.3	4.8	2.0	5.6	1.9	20.9	20.8
Age 18.....	650	86	28	153	24	80	150	21	67	72	33
Percent.....	17.6	16.7	6.3	36.7	14.7	17.5	15.3	23.3	14.0	17.7	14.3
Age 19.....	671	30	10	59	51	131	214	17	134	64	40
Percent.....	18.2	5.8	2.3	14.1	31.3	28.7	21.8	18.9	28.0	15.8	17.3
Age 20.....	733	21	11	27	49	131	291	27	151	49	41
Percent.....	19.8	4.1	2.5	6.5	30.1	28.7	29.6	30.0	31.5	12.1	17.7
Age 21 and over.....	606	7	15	10	32	88	305	20	118	28	22
Percent.....	16.4	1.4	3.4	2.4	19.6	19.3	31.1	22.2	24.6	6.9	9.5
Median age.....	19.2	17.3	16.8	18.3	20.0	19.9	20.4	20.1	20.2	18.1	18.6

*Total includes 151 males and 175 females not shown in detail.

TABLE 1 (Continued)

INSTITUTIONAL EXPERIENCE SUMMARY ON 1972 PAROLE RELEASES FROM YOUTH AUTHORITY SCHOOLS AND CAMPS
(Showing percent of totals)

	Total Males*	Nelles	O. H. Close	Karl Holton	DeWitt Nelson	Preston	Y.T.S.	Ventura	Total Camps	Total Females**	Ventura
Total Wards Released.....	3,697	516	442	417	163	457	982	90	479	406	231
Percent.....	100.0	100.0	100.0	100.0	100.0	100.0	100.0	100.0	100.0	100.0	100.0
Commitment Offense											
Homicide, robbery & assault...	852	81	78	76	44	135	316	16	70	53	26
Percent.....	23.1	15.7	17.6	18.2	27.0	29.5	32.2	17.8	14.6	13.1	11.3
Burglary, theft & forgery.....	1,432	199	182	169	70	190	321	30	220	68	34
Percent.....	38.7	38.6	41.2	40.5	42.9	41.6	32.7	33.3	45.9	16.7	14.7
Narcotics.....	590	45	29	50	25	63	183	27	136	61	42
Percent.....	16.0	8.7	6.6	12.0	15.3	13.8	18.6	30.0	28.4	15.0	18.2
W & I, co. camp fail. or esc..	504	141	118	86	11	28	82	8	13	184	99
Percent.....	13.6	27.3	26.7	20.6	6.7	6.1	8.4	8.9	2.7	45.3	42.9
All other.....	319	50	35	36	13	41	80	9	40	40	30
Percent.....	8.6	9.7	7.9	8.6	8.0	9.0	8.1	10.0	8.4	9.9	13.0
-7-											
Number of IES not received.....	74	5	16	6	2	30	11	1	1	-	-
Percent.....	2.0	1.0	3.6	1.4	1.2	6.6	1.1	1.1	0.2	-	-
Total IES Received.....	3,623	511	426	411	161	427	971	89	478	406	231
Percent.....	98.0	99.0	96.4	98.6	98.8	93.4	98.9	98.9	99.8	100.0	100.0

*Total includes 151 males and 175 females not shown in detail.

TABLE 1 (Continued)

INSTITUTIONAL EXPERIENCE SUMMARY ON 1972 PAROLE RELEASES FROM YOUTH AUTHORITY SCHOOLS AND CAMPS
(Showing percent of totals)

	Total Males*	Nelles	O. H. Close	Karl Holton	DeWitt Nelson	Preston	Y.T.S.	Ventura	Total Camps	Total Females*	Ventura
Total IES Received.....	3,623	511	426	411	161	427	971	89	478	406	231
Percent.....	100.0	100.0	100.0	100.0	100.0	100.0	100.0	100.0	100.0	100.0	100.0
I-Level and Subtype											
Not given.....	2,163	498	113	36	19	203	892	51	300	84	36
Percent.....	59.7	97.5	26.5	8.8	11.8	47.5	91.9	57.3	62.8	20.7	15.6
Total 1-2.....	64	4	20	21	2	4	5	1	5	17	9
Percent.....	1.8	0.8	4.7	5.1	1.2	0.9	0.5	1.1	1.0	4.2	3.9
Total 1-3.....	639	4	136	177	60	92	31	12	83	94	58
Percent.....	17.6	0.8	31.9	43.1	37.3	21.5	3.2	13.5	17.4	23.2	25.1
Cfm.....	325	3	63	101	27	44	16	8	42	44	26
Percent.....	9.0	0.6	14.8	24.6	16.8	10.3	1.6	9.0	8.8	10.8	11.3
Cfc.....	165	1	40	30	15	31	5	2	28	24	15
Percent.....	4.6	0.2	9.4	7.3	9.3	7.3	0.5	2.2	5.9	5.9	6.5
Mp.....	146	-	33	45	18	16	10	1	13	22	15
Percent.....	4.0	-	7.7	10.9	11.2	3.7	1.0	1.1	2.7	5.4	6.5
Other 1-3.....	3	-	-	1	-	1	-	1	-	4	2
Percent.....	0.1	-	-	0.2	-	0.2	-	1.1	-	1.0	0.9
Total 1-4.....	757	5	157	177	80	128	43	25	90	211	128
Percent.....	20.9	1.0	36.9	43.1	49.7	30.0	4.4	28.1	18.8	52.0	55.4
Na.....	320	1	75	74	34	46	20	12	36	111	55
Percent.....	8.8	0.2	17.6	18.0	21.1	10.8	2.1	13.5	7.5	27.3	23.8
Nx.....	397	4	82	92	44	75	22	9	46	90	66
Percent.....	11.0	0.8	19.2	22.4	27.3	17.6	2.3	10.1	9.6	22.2	28.6
Other 1-4.....	40	-	-	11	2	7	1	4	8	10	7
Percent.....	1.1	-	-	2.7	1.2	1.6	0.1	4.5	1.7	2.5	3.0
Total 1-5.....	-	-	-	-	-	-	-	-	-	-	-
Percent.....	-	-	-	-	-	-	-	-	-	-	-
Special Institution Programs											
No Participation.....	3,410	503	392	404	110	399	969	59	478	273	114
Percent.....	94.1	98.4	92.0	98.3	68.3	93.4	99.8	66.3	100.0	67.2	49.4
Participation.....	213	8	34	7	51	28	2	30	-	133	117
Percent.....	5.9	1.6	8.0	1.7	31.7	6.6	0.2	33.7	-	32.8	50.6

*Total includes 149 males and 175 females not shown in detail.

TABLE 1 (Continued)

INSTITUTIONAL EXPERIENCE SUMMARY ON 1972 PAROLE RELEASES FROM YOUTH AUTHORITY SCHOOLS AND CAMPS

(Showing percent of totals)

	Total Males*	Nelles	O. H. Close	Karl Holton	DeWitt Nelson	Preston	Y.T.S.	Ventura	Total Camps	Total Females*	Ventura
Total IES Received.....	3,623	511	426	411	161	427	971	89	478	406	231
Percent.....	100.0	100.0	100.0	100.0	100.0	100.0	100.0	100.0	100.0	100.0	100.0
Initial Placement on Parole											
Unknown or not given.....	36	-	6	2	1	7	10	1	7	12	1
Percent.....	1.0	-	1.4	0.5	0.6	1.6	1.0	1.1	1.5	3.0	0.4
Own home.....	2,602	353	326	323	108	260	711	64	355	231	136
Percent.....	71.8	69.1	76.5	78.6	67.1	60.9	73.2	71.9	74.3	56.9	58.9
Relatives home.....	416	67	44	31	20	87	112	8	35	38	23
Percent.....	11.5	13.1	10.3	7.5	12.4	20.4	11.5	9.0	7.3	8.6	10.0
Foster or group home.....	315	76	47	31	14	50	49	5	31	104	59
Percent.....	8.7	14.9	11.0	7.5	8.7	11.7	5.0	5.6	6.5	25.6	25.5
Independent.....	200	9	2	12	12	18	74	11	41	14	6
Percent.....	5.5	1.8	0.5	2.9	7.5	4.2	7.6	12.4	8.6	3.4	2.6
Other.....	54	6	1	12	6	5	15	-	9	7	6
Percent.....	1.5	1.2	0.2	2.9	3.7	1.2	1.5	-	1.9	1.7	2.6
Work Experience											
No.....	2,482	415	414	328	63	295	889	48	-	291	166
Percent.....	68.5	81.2	97.2	79.8	39.1	69.1	91.6	53.9	-	71.7	71.9
Yes.....	1,141	96	12	83	98	132	82	41	478	115	65
Percent.....	31.5	18.8	2.8	20.2	60.9	30.9	8.4	46.1	100.0	28.3	28.1
Vocational Training											
Not applicable.....	2,437	511	426	411	148	215	31	68	478	362	187
Percent.....	67.3	100.0	100.0	100.0	91.9	50.4	3.2	76.4	100.0	89.2	81.0
Building trades.....	297	-	-	-	1	44	252	-	-	-	-
Percent.....	8.2	-	-	-	0.6	10.3	26.0	-	-	-	-
Electrical occup.....	48	-	-	-	1	12	35	-	-	-	-
Percent.....	1.3	-	-	-	0.6	2.8	3.6	-	-	-	-
Auto repair.....	84	-	-	-	1	18	65	-	-	-	-
Percent.....	2.3	-	-	-	0.6	4.2	6.7	-	-	-	-
Mechanical.....	41	-	-	-	-	6	35	-	-	2	2
Percent.....	1.1	-	-	-	-	1.4	3.6	-	-	0.5	0.9
Welding.....	55	-	-	-	-	1	54	-	-	-	-
Percent.....	1.5	-	-	-	-	0.2	5.6	-	-	-	-

*Total includes 149 males and 175 females not shown in detail.

TABLE 1 (Continued)

INSTITUTIONAL EXPERIENCE SUMMARY ON 1972 PAROLE RELEASES FROM YOUTH AUTHORITY SCHOOLS AND CAMPS
(Showing percent of totals)

	Total Males*	Nelles	O. H. Close	Karl Holton	DeWitt Nelson	Preston	Y.T.S.	Ventura	Total Camps	Total Females*	Ventura
Total IES Received.....	3,623	511	426	411	161	427	971	89	478	406	231
Percent.....	100.0	100.0	100.0	100.0	100.0	100.0	100.0	100.0	100.0	100.0	100.0
Vocational Training (continued)											
Building maintenance - janitor	117	-	-	-	6	4	107	-	-	2	2
Percent.....	3.2	-	-	-	3.7	0.9	11.0	-	-	0.5	0.9
Cosmetology.....	5	-	-	-	-	-	4	1	-	2	2
Percent.....	0.1	-	-	-	-	-	0.4	1.1	-	0.5	0.9
Clerical.....	70	-	-	-	-	10	60	-	-	5	5
Percent.....	1.9	-	-	-	-	2.3	6.2	-	-	1.2	2.2
Culinary Arts.....	259	-	-	-	3	67	183	6	-	30	30
Percent.....	7.1	-	-	-	1.9	15.7	18.8	6.7	-	7.4	13.0
-10- Graphic Arts.....	56	-	-	-	-	10	46	-	-	-	-
Percent.....	1.5	-	-	-	-	2.3	4.7	-	-	-	-
Nursery and gardening.....	111	-	-	-	1	35	66	9	-	-	-
Percent.....	3.1	-	-	-	0.6	8.2	6.8	10.1	-	-	-
Power sewing.....	13	-	-	-	-	3	5	5	-	3	3
Percent.....	0.4	-	-	-	-	0.7	0.5	5.6	-	0.7	1.3
Shoe repair.....	14	-	-	-	-	1	13	-	-	-	-
Percent.....	0.4	-	-	-	-	0.2	1.3	-	-	-	-
Upholstery.....	16	-	-	-	-	1	15	-	-	-	-
Percent.....	0.4	-	-	-	-	0.2	1.5	-	-	-	-
Academic School Program											
None.....	1,207	80	6	30	73	95	512	5	397	26	12
Percent.....	33.3	15.7	1.4	7.3	45.3	22.2	52.7	5.6	83.1	6.4	5.2
Full-day.....	1,447	336	418	347	63	140	7	66	3	332	198
Percent.....	39.9	65.8	98.1	84.4	39.1	32.8	0.7	74.2	0.6	81.8	85.7
Half-day.....	414	36	2	6	12	115	168	1	1	26	3
Percent.....	11.4	7.0	0.5	1.5	7.5	26.9	17.3	1.1	0.2	6.4	1.3
Part-time.....	555	59	-	28	13	77	284	17	77	22	18
Percent.....	15.3	11.5	-	6.8	8.1	18.0	29.2	19.1	16.1	5.4	7.8

*Total includes 149 males and 175 females not shown in detail.

TABLE 1 (Continued)

INSTITUTIONAL EXPERIENCE SUMMARY ON 1972 PAROLE RELEASES FROM YOUTH AUTHORITY SCHOOLS AND CAMPS

(Showing percent of totals)

	Total Males*	Nelles	O. H. Close	Karl Holton	DeWitt Nelson	Preston	Y.T.S.	Ventura	Total Camps	Total Females**	Ventura
Total IES Received.....	3,623	511	426	411	161	427	971	89	478	406	231
Percent.....	100.0	100.0	100.0	100.0	100.0	100.0	100.0	100.0	100.0	100.0	100.0
Estimated Grade Level at Release											
Not given.....	27	2	2	-	1	2	11	1	7	11	6
Percent.....	0.7	0.4	0.5	-	0.6	0.5	1.1	1.1	1.5	2.7	2.6
6 or below.....	169	11	10	2	12	20	7	-	87	4	3
Percent.....	4.7	2.2	2.3	0.5	7.5	4.7	0.7	-	18.2	1.0	1.3
7 - 9.....	418	77	49	19	25	51	99	1	59	46	16
Percent.....	11.5	15.1	11.5	4.6	15.5	11.9	10.2	1.1	12.3	11.3	6.9
10 - 12.....	2,126	390	299	268	57	180	621	30	248	248	128
Percent.....	58.7	76.3	70.2	65.2	35.4	42.2	64.0	33.7	51.9	61.1	55.4
- High School Graduate this stay											
Percent.....	14.1	4.5	13.8	26.8	19.9	23.2	11.6	38.2	5.2	17.0	23.8
- High School Graduate prior....											
Percent.....	10.2	1.6	1.6	2.9	21.1	17.6	12.4	25.8	10.9	6.9	10.0
Number of Special Incident Reports											
None.....	2,964	412	347	336	145	277	791	81	448	310	179
Percent.....	81.8	80.6	81.5	81.8	90.1	64.9	81.5	91.0	93.7	76.4	77.5
One.....	347	70	61	53	11	65	41	5	20	52	14
Percent.....	9.6	13.7	14.3	12.9	6.8	15.2	4.2	5.6	4.2	12.8	6.1
Two.....	117	18	14	11	2	34	29	2	6	14	9
Percent.....	3.2	3.5	3.3	2.7	1.2	8.0	3.0	2.2	1.3	3.4	3.9
Three or more.....	195	11	4	11	3	51	110	1	4	30	29
Percent.....	5.4	2.2	0.9	2.7	1.9	11.9	11.3	1.1	0.8	7.4	12.6

*Total includes 149 males and 175 females not shown in detail.

PART II

VIOLATION RATES BY INSTITUTION

This section presents the most relevant violation rates by institution of release for recorded items on the Institutional Experience Summary. A violation, for purposes of this report, is a revocation of parole or a discharge under violation status within 15 months of the parole date. Table 2, following the narrative, presents violation rates for each of the recorded items.

Institution of Release

The total violation rate for male schools and camps was 34.5 percent; for female schools, 20.2 percent. Of the male schools, Nelles and O. H. Close had the highest percent violators (52.3 and 45.0 respectively). DeWitt Nelson, Ventura males, and camps had the lowest (20.2, 24.4, and 22.8 percent respectively). The difference in the violation rates of the two groups of schools at the extremes is to some extent a function of the ages of the wards, the group with the highest violation rates having the greatest proportion of wards under 18.

Court of Commitment

Historically, criminal court commitments have lower violation rates than juvenile court commitments, and, for the most part, this pattern holds for the 1972 releases from institutions. The extremely low violation rate for criminal court releases from O. H. Close reflects the selection factors operative in assignment of these older wards to the ward aide program at that school.

Admission Status

In general, wards whose current stay represents a first admission show a lower rate of violation than those who have been returned from parole.

Area of Commitment

Overall, Southern California wards had slightly higher violation rates than those from the rest of the state. The apparent exception is the group of O. H. Close wards from that area. This, again, may reflect the performance of ward aides, who are generally committed from Southern California to Youth Training School, where they are screened for the O. H. Close aide program.

Ethnic Group

For the males, whites generally had the lowest violation rates, Preston being a notable exception. Overall, the Mexican-Americans had the highest violation rates. However, only four of the eight schools for whom violation rates were calculated showed this pattern. The exceptions were Karl Holton, DeWitt Nelson, Preston, and the camps.

Age at Release

Overall violation rates for males show abrupt drops between ages 16 and 17 and again between ages 17 and 18.

Commitment Offense

Wards committed for narcotic offenses or for crimes against persons had the lowest violation rates. Highest violation rates were associated with Welfare and Institutions Code offenses and miscellaneous offenses.

I-Level

The least mature wards, I-2's, had the highest violation rates and the I-3 manipulators the lowest. Acting-out neurotics (Na's) had higher violation rates than the anxious neurotics (Nx's). Parole performance by I-level by individual schools is not advisable because of the small number of wards in the categories.

Special Institutional Programs

Wards in special programs consistently had a lower violation rate than the others, probably reflecting the type of ward selected for such special programs (e.g., O. H. Close ward aide program and the Ventura college program for females).

Initial Placement on Parole

Using totals only, it would appear that wards requiring foster or group home placement have higher violation rates than the rest.

Work Experience

Although most of the wards who had work experience in an institution also had lower violation rates than those who did not, parolees from Karl Holton and Youth Training School did not conform to this pattern. Perhaps no generalization should be made because work experience has different implications in different settings. For example, the best risks are assigned to camps, which have a 100 percent participation in work experience. Some of the parolees from YTS had both vocational training and work experience, but others (presumably the poorer risks) were unsuited for the vocational program and had work experience only.

Vocational Training

Preston and Youth Training School have the major vocational programs in the Youth Authority. Parolees from Preston who had been in the nursery and gardening program had above average violation rates. Those in the building trades and the culinary arts had violation rates below the Preston average. For YTS parolees, high violation rates were associated with wards who had participated in the building trade, culinary arts, or welding programs. Those learning mechanics or the graphic arts had the lowest violation rates.

Academic Program

Wards who had been in a full-time academic school program had the highest violation rates, most likely because these were also the youngest.

Estimated Grade Level at Release

Generally the high school graduates seemed to violate at a lower rate than the others and wards at the junior high school level (grades 7-9) at a higher rate.

Special Incident Reports

Wards who received more than one writeup for special incidents had a higher violation rate than the others.

TABLE 2

INSTITUTIONAL EXPERIENCE SUMMARY ON 1972 PAROLE RELEASES FROM YOUTH AUTHORITY SCHOOLS AND CAMPS

(Showing percent of violators)

	Total Males*	Nelles	O. H. Close	Karl Holton	DeWitt Nelson	Preston	Y.T.S.	Ventura	Total Camps	Total Females**	Ventura
Total Wards Released.....	3,697	516	442	417	163	457	982	90	479	406	231
Percent violators.....	34.5	52.3	45.0	28.3	20.2	33.3	33.2	24.4	22.8	20.2	23.4
Court of Last Commitment											
Juvenile court.....	1,953	466	410	341	49	147	306	32	97	321	173
Percent violators.....	43.6	54.7	48.3	31.4	28.6	45.6	44.1	21.9	24.7	21.5	27.2
Criminal court.....	1,744	50	32	76	114	310	676	58	382	85	58
Percent violators.....	24.3	30.0	3.1	14.5	16.7	27.4	28.3	25.9	22.3	15.3	12.1
Last Admission Status											
First admission.....	2,271	312	327	282	100	249	555	58	281	239	122
Percent violators.....	30.8	50.6	39.1	27.7	15.0	24.9	29.9	20.7	18.5	19.7	23.0
First return.....	830	125	85	89	40	112	222	18	109	107	65
Percent violators.....	38.3	55.2	64.7	29.2	22.5	39.3	31.5	**	29.4	22.4	29.2
Two or more returns.....	596	79	30	46	23	96	205	14	89	60	44
Percent violators.....	43.3	54.4	53.3	30.4	**	47.9	43.9	**	28.1	18.3	15.9
Area of Commitment											
Southern California.....	2,142	510	70	55	53	118	914	90	242	221	219
Percent violators.....	36.3	52.2	28.6	30.9	22.6	34.7	33.6	24.4	25.2	23.1	23.3
Los Angeles.....	1,174	226	27	18	31	72	588	43	140	102	102
Percent violators.....	35.7	53.1	22.2	**	22.6	37.5	33.5	27.9	22.9	21.6	21.6
9 other counties.....	968	284	43	37	22	46	326	47	102	119	117
Percent violators.....	37.1	51.4	32.6	32.4	**	30.4	33.7	21.3	28.4	24.4	24.8
Bay Area counties.....	898	2	223	205	66	203	25	-	136	117	6
Percent violators.....	33.3	**	50.7	28.8	18.2	35.0	**	-	19.9	16.2	**
San Francisco.....	146	-	34	44	14	42	1	-	8	35	2
Percent violators.....	36.3	-	61.8	36.4	**	23.8	**	-	**	20.0	**
Alameda.....	254	-	80	50	24	59	6	-	24	15	2
Percent violators.....	37.0	-	41.3	38.0	**	42.4	**	-	**	**	**
7 other counties.....	498	2	109	111	28	102	18	-	104	67	2
Percent violators.....	30.5	**	54.1	21.6	25.0	35.3	**	-	18.3	16.4	**
10 Sacramento Valley counties.....	206	-	42	50	12	54	4	-	37	23	1
Percent violators.....	31.1	-	47.6	24.0	**	35.2	**	-	21.6	**	**
7 San Joaquin Valley counties.....	273	1	66	71	21	44	27	-	33	28	4
Percent violators.....	28.2	**	37.9	31.0	**	20.5	25.9	-	18.2	14.3	**

*Total includes 151 males and 175 females not shown in detail.

**Percents not calculated for groups of 25 wards or less.

TABLE 2 (Continued)

INSTITUTIONAL EXPERIENCE SUMMARY ON 1972 PAROLE RELEASES FROM YOUTH AUTHORITY SCHOOLS AND CAMPS

(Showing percent of violators)

	Total Males*	Nelles	O. H. Close	Karl Holton	DeWitt Nelson	Preston	Y.T.S.	Ventura	Total Camps	Total Females*	Ventura
Total Wards Released.....	3,697	516	442	417	163	457	982	90	479	406	231
Percent violators.....	34.5	52.3	45.0	28.3	20.2	33.3	33.2	24.4	22.8	20.2	23.4
Area of Commitment (continued)											
22 other counties.....	178	3	41	36	11	38	12	-	31	17	1
Percent violators.....	32.6	**	51.2	22.2	**	31.6	**	-	22.6	**	**
Ethnic Group											
White.....	1,778	240	231	214	65	208	430	46	262	243	139
Percent violators.....	32.6	50.4	42.9	26.6	24.6	34.6	29.5	23.9	20.6	19.8	23.0
Mexican-American.....	747	120	65	60	27	74	230	22	119	61	38
Percent violators.....	37.2	55.8	47.7	28.3	11.1	33.8	38.7	**	25.2	23.0	26.3
Negro.....	1,078	147	134	122	68	163	302	21	84	91	49
Percent violators.....	35.9	51.7	46.3	31.1	19.1	31.9	34.4	**	28.6	19.8	24.5
Other.....	94	9	12	21	3	12	20	1	14	11	5
Percent violators.....	34.0	**	**	**	**	**	**	**	**	**	**
Age at Release											
Age 14 and under.....	72	25	37	-	-	-	-	-	-	6	2
Percent violators.....	58.3	**	56.8	-	-	-	-	-	-	**	**
Age 15.....	147	69	74	-	-	1	-	-	-	39	15
Percent violators.....	68.0	72.5	66.2	-	-	**	-	-	-	38.5	**
Age 16.....	299	110	143	28	-	4	2	-	-	63	30
Percent violators.....	56.5	65.5	50.3	46.4	-	**	**	-	-	25.4	36.7
Age 17.....	519	168	124	140	7	22	20	5	9	85	48
Percent violators.....	44.1	51.8	42.7	31.4	**	**	**	**	**	15.3	18.8
Age 18.....	650	86	28	153	24	80	150	21	67	72	33
Percent violators.....	34.2	34.9	10.7	30.1	**	37.5	48.0	**	26.9	16.7	24.2
Age 19.....	671	30	10	59	51	131	214	17	134	64	40
Percent violators.....	28.8	33.3	**	18.6	13.7	32.1	36.9	**	21.6	21.9	25.0
Age 20.....	733	21	11	27	49	131	291	27	151	49	41
Percent violators.....	22.2	**	**	11.1	18.4	25.2	27.1	18.5	19.2	16.3	14.6
Age 21 and over.....	606	7	15	10	32	88	305	20	118	28	22
Percent violators.....	26.1	**	**	**	21.9	31.8	27.2	**	25.4	10.7	**

*Total includes 151 males and 175 females not shown in detail.

**Percents not calculated for groups of 25 wards or less.

TABLE 2 (Continued)

INSTITUTIONAL EXPERIENCE SUMMARY ON 1972 PAROLE RELEASES FROM YOUTH AUTHORITY SCHOOLS AND CAMPS
(Showing percent of violators)

	Total Males*	Nelles	O. H. Close	Karl Holton	DeWitt Nelson	Preston	Y.T.S.	Ventura	Total Camps	Total Females*	Ventura
Total Wards Released.....	3,697	516	442	417	163	457	982	90	479	406	231
Percent violators.....	34.5	52.3	45.0	28.3	20.2	33.3	33.2	24.4	22.8	20.2	23.4
Commitment Offense											
Homicide, robbery & assault...	852	81	78	76	44	135	316	16	70	53	26
Percent violators.....	28.1	42.0	25.6	22.4	11.4	28.1	30.4	**	17.1	17.0	30.8
Burglary, theft & forgery.....	1,432	199	182	169	70	190	321	30	220	68	34
Percent violators.....	37.5	56.3	51.1	30.8	21.4	35.8	35.5	33.3	26.4	20.6	20.6
Narcotics.....	590	45	29	50	25	63	183	27	136	61	42
Percent violators.....	20.7	31.1	24.1	18.0	20.0	22.2	26.8	18.5	13.2	8.2	4.8
W & I, co. camp fail. or esc..	504	141	118	86	11	28	82	8	13	184	99
Percent violators.....	49.0	60.3	50.8	33.7	**	53.6	43.9	**	**	23.9	29.3
All other.....	319	50	35	36	13	41	80	9	40	40	30
Percent violators.....	41.1	50.0	54.3	30.6	**	41.5	38.8	**	47.5	25.0	26.7
-18- Number of IES not received.....	74	5	16	6	2	30	11	1	1	-	-
Percent violators.....	31.1	**	**	**	**	40.0	**	**	**	-	-
Total IES Received.....	3,623	511	426	411	161	427	971	89	478	406	231
Percent violators.....	34.6	52.4	45.3	28.2	19.9	32.8	33.6	24.7	22.8	20.2	23.4

*Total includes 151 males and 175 females not shown in detail.

**Percents not calculated for groups of 25 wards or less.

TABLE 2 (Continued)

INSTITUTIONAL EXPERIENCE SUMMARY ON 1972 PAROLE RELEASES FROM YOUTH AUTHORITY SCHOOLS AND CAMPS

(Showing percent of violators)

	Total Males*	Nelles	O. H. Close	Karl Holton	DeWitt Nelson	Preston	Y.T.S.	Ventura	Total Camps	Total Females*	Ventura
Total IES Received.....	3,623	511	426	411	161	427	971	89	478	406	231
Percent violators.....	34.6	52.4	45.3	28.2	19.9	32.8	33.6	24.7	22.8	20.2	23.4
I-Level and Subtype											
Not given.....	2,163	498	113	36	19	203	892	51	300	84	36
Percent violators.....	36.1	52.4	38.9	25.0	**	31.5	33.6	23.5	23.0	19.0	30.6
Total 1-2.....	64	4	20	21	2	4	5	1	5	17	9
Percent violators.....	42.2	**	**	**	**	**	**	**	**	**	**
Total 1-3.....	639	4	136	177	60	92	31	12	83	94	58
Percent violators.....	31.6	**	49.3	27.1	13.3	32.6	22.6	**	27.7	22.3	22.4
Cfm.....	325	3	63	101	27	44	16	8	42	44	26
Percent violators.....	30.5	**	52.4	24.8	11.1	27.3	**	**	26.2	20.5	11.5
Cfc.....	165	1	40	30	15	31	5	2	28	24	15
Percent violators.....	37.6	**	52.5	33.3	**	41.9	**	**	35.7	**	**
Mp.....	146	-	33	45	18	16	10	1	13	22	15
Percent violators.....	28.1	-	39.4	28.9	**	**	**	**	**	**	**
Other 1-3.....	3	-	-	1	-	1	-	1	-	4	2
Percent violators.....	**	-	-	**	-	**	--	**	-	**	**
Total 1-4.....	757	5	157	177	80	128	43	25	90	211	128
Percent violators.....	32.1	**	45.9	27.7	22.5	34.4	39.5	**	18.9	19.0	21.1
Na.....	320	1	75	74	34	46	20	12	36	111	55
Percent violators.....	35.3	**	46.7	31.1	26.5	43.5	**	**	16.7	19.8	21.8
Nx.....	397	4	82	92	44	75	22	9	46	90	66
Percent violators.....	31.0	**	45.1	25.0	20.5	29.3	**	**	21.7	17.8	21.2
Other 1-4.....	40	-	-	11	2	7	1	4	8	10	7
Percent violators.....	17.5	-	-	**	**	**	**	**	**	**	**
Total 1-5.....	-	-	-	-	-	-	-	-	-	-	-
Percent violators.....	-	-	-	-	-	-	-	-	-	-	-
Special Institution Programs											
No Participation.....	3,410	503	392	404	110	399	969	59	478	273	114
Percent violators.....	35.7	52.5	49.0	28.2	19.1	34.1	33.4	25.4	22.8	23.1	31.6
Participation.....	213	8	34	7	51	28	2	30	-	133	117
Percent violators.....	16.4	**	2.9	**	21.6	14.3	**	23.3	-	14.3	15.4

*Total includes 149 males and 175 females not shown in detail.

**Percents not calculated for groups of 25 wards or less.

TABLE 2 (Continued)

INSTITUTIONAL EXPERIENCE SUMMARY ON 1972 PAROLE RELEASES FROM YOUTH AUTHORITY SCHOOLS AND CAMPS

(Showing percent of violators)

	Total Males*	Nelles	O. H. Close	Karl Holton	DeWitt Nelson	Preston	Y.T.S.	Ventura	Total Camps	Total Females*	Ventura
Total IES Received.....	3,623	511	426	411	161	427	971	89	478	406	231
Percent violators.....	34.6	52.4	45.3	28.2	19.9	32.8	33.6	24.7	22.8	20.2	23.4
Initial Placement on Parole											
Unknown or not given.....	36	-	6	2	1	7	10	1	7	12	1
Percent violators.....	25.0	-	**	**	**	**	**	**	**	**	**
Own home.....	2,602	353	326	323	108	260	711	64	355	231	136
Percent violators.....	34.3	51.8	46.9	27.9	15.7	33.1	33.8	20.3	23.1	18.6	20.6
Relatives home.....	416	67	44	31	20	87	112	8	35	38	23
Percent violators.....	36.8	53.7	45.5	29.0	**	31.0	35.7	**	25.7	23.7	**
Foster or group home.....	315	76	47	31	14	50	49	5	31	104	59
Percent violators.....	41.9	59.2	40.4	41.9	**	32.0	32.7	**	16.1	20.2	25.4
Independent.....	200	9	2	12	12	18	74	11	41	14	6
Percent violators.....	25.5	**	**	**	**	**	33.8	**	22.0	**	**
-20- Other.....	54	6	1	12	6	5	15	-	9	7	6
Percent violators.....	27.8	**	**	**	**	**	**	-	**	**	**
Work Experience											
No.....	2,482	415	414	328	63	295	889	48	-	291	166
Percent violators.....	37.9	53.7	46.4	27.4	20.6	34.2	32.2	33.3	-	22.3	25.9
Yes.....	1,141	96	12	83	98	132	82	41	478	115	65
Percent violators.....	27.4	46.9	**	31.3	19.4	29.5	45.1	14.6	22.8	14.8	16.9
Vocational Training											
Not applicable.....	2,437	511	426	411	148	215	31	68	478	362	187
Percent violators.....	35.4	52.4	45.3	28.2	20.3	34.4	35.5	20.6	22.8	20.7	25.1
Building trades.....	297	-	-	-	1	44	252	-	-	-	-
Percent violators.....	26.9	-	-	-	**	22.7	27.8	-	-	-	-
Electrical occup.....	48	-	-	-	1	12	35	-	-	-	-
Percent violators.....	27.1	-	-	-	**	**	34.3	-	-	-	-
Auto repair.....	84	-	-	-	1	18	65	-	-	-	-
Percent violators.....	32.1	-	-	-	**	**	30.8	-	-	-	-
Mechanical.....	41	-	-	-	-	6	35	-	-	2	2
Percent violators.....	29.3	-	-	-	-	**	25.7	-	-	**	**
Welding.....	55	-	-	-	-	1	54	-	-	-	-
Percent violators.....	38.2	-	-	-	-	**	38.9	-	-	-	-

*Total includes 149 males and 175 females not shown in detail.

**Percents not calculated for groups of 25 wards or less.

TABLE 2 (Continued)

 INSTITUTIONAL EXPERIENCE SUMMARY ON 1972 PAROLE RELEASES FROM YOUTH AUTHORITY SCHOOLS AND CAMPS
 (Showing percent of violators)

	Total Males*	Nelles	O. H. Close	Karl Holton	DeWitt Nelson	Preston	Y.T.S.	Ventura	Total Camps	Total Females*	Ventura
Total IES Received.....	3,623	511	426	411	161	427	971	89	478	406	231
Percent violators.....	34.6	52.4	45.3	28.2	19.9	32.8	33.6	24.7	22.8	20.2	23.4
Vocational Training (continued)											
Building maintenance - janitor	117	-	-	-	6	4	107	-	-	2	2
Percent violators.....	41.9	-	-	-	**	**	42.1	-	-	**	**
Cosmetology.....	5	-	-	-	-	-	4	1	-	2	2
Percent violators.....	**	-	-	-	-	-	**	**	-	**	**
Clerical.....	70	-	-	-	-	10	60	-	-	5	5
Percent violators.....	30.0	-	-	-	-	**	30.0	-	-	**	**
Culinary Arts.....	259	-	-	-	3	67	183	6	-	30	30
Percent violators.....	35.5	-	-	-	**	25.4	39.3	**	-	23.3	23.3
-21- Graphic Arts.....	56	-	-	-	-	10	46	-	-	-	-
Percent violators.....	28.6	-	-	-	-	**	26.1	-	-	-	-
Nursery and gardening.....	111	-	-	-	1	35	66	9	-	-	-
Percent violators.....	40.5	-	-	-	**	48.6	36.4	**	-	-	-
Power sewing.....	13	-	-	-	-	3	5	5	-	3	3
Percent violators.....	**	-	-	-	-	**	**	**	-	**	**
Shoe repair.....	14	-	-	-	-	1	13	-	-	-	-
Percent violators.....	**	-	-	-	-	**	**	-	-	-	-
Upholstery.....	16	-	-	-	-	1	15	-	-	-	-
Percent violators.....	**	-	-	-	-	**	**	-	-	-	-
Academic School Program											
None.....	1,207	80	6	30	73	95	512	5	397	26	12
Percent violators.....	29.7	36.3	**	33.3	19.2	31.6	35.0	**	22.9	19.2	**
Full-day.....	1,447	336	418	347	63	140	7	66	3	332	198
Percent violators.....	39.5	58.9	45.5	28.0	22.2	29.3	**	24.2	**	20.5	23.2
Half-day.....	414	36	2	6	12	115	168	1	1	26	3
Percent violators.....	34.8	50.0	**	**	**	37.4	26.8	**	**	15.4	**
Part-time.....	555	59	-	28	13	77	284	17	77	22	18
Percent violators.....	32.3	39.0	-	28.6	**	33.8	35.2	**	22.1	**	**

*Total includes 149 males and 175 females not shown in detail.

**Percents not calculated for groups of 25 wards or less.

TABLE 2 (Continued)

INSTITUTIONAL EXPERIENCE SUMMARY ON 1972 PAROLE RELEASES FROM YOUTH AUTHORITY SCHOOLS AND CAMPS
(Showing percent of violators)

	Total Males*	Nelles	O. H. Close	Karl Holton	DeWitt Nelson	Preston	Y.T.S.	Ventura	Total Camps	Total Females*	Ventura
Total IES Received.....	3,623	511	426	411	161	427	971	89	478	406	231
Percent violators.....	34.6	52.4	45.3	28.2	19.9	32.8	33.6	24.7	22.8	20.2	23.4
Estimated Grade Level at Release											
Not given.....	27	2	2	-	1	2	11	1	7	11	6
Percent violators.....	29.6	**	**	-	**	**	**	**	**	**	**
6 or below.....	169	11	10	2	12	20	7	-	87	4	3
Percent violators.....	28.4	**	**	**	**	**	**	-	25.3	**	**
7 - 9.....	418	77	49	19	25	51	99	1	59	46	16
Percent violators.....	45.0	58.4	69.4	**	**	52.9	36.4	**	22.0	30.4	**
10 - 12.....	2,126	390	299	268	57	180	621	30	248	248	128
Percent violators.....	37.6	53.8	46.8	28.7	17.5	33.9	35.3	26.7	26.2	21.4	26.6
-22- High School Graduate this stay	512	23	59	110	32	99	113	34	25	69	55
Percent violators.....	23.2	**	18.6	24.5	15.6	24.2	23.9	23.5	**	11.6	14.5
High School Graduate prior....	371	8	7	12	34	75	120	23	52	28	23
Percent violators.....	24.3	**	**	**	26.5	29.3	33.3	**	9.6	14.3	**
Number of Special Incident Reports											
None.....	2,964	412	347	336	145	277	791	81	448	310	179
Percent violators.....	34.3	52.7	46.4	27.1	17.9	33.6	33.5	24.7	23.2	21.6	25.1
One.....	347	70	61	53	11	65	41	5	20	52	14
Percent violators.....	32.9	48.6	41.0	28.3	**	20.0	29.3	**	**	21.2	**
Two.....	117	18	14	11	2	34	29	2	6	14	9
Percent violators.....	38.5	**	**	**	**	35.3	37.9	**	**	**	**
Three or more.....	195	11	4	11	3	51	110	1	4	30	29
Percent violators.....	39.5	**	**	**	**	43.1	34.5	**	**	13.3	13.8

*Total includes 149 males and 175 females not shown in detail.

**Percents not calculated for groups of 25 wards or less.

PART III

VIOLATION RATES BY LIVING UNIT

This section presents the observed violation rates by institution and living unit. Institution totals vary slightly from those given in the previous two sections. Wards with less than four months in an institution are included in this section. Wards paroled more than once during the 1972 calendar year are included for the first parole only. Any ward paroled subsequently is excluded.

Table 3 shows the total wards released on parole and the observed non-violators and the violators, after 15 months of parole exposure. No interpretation of the data will be attempted, since each institution has its own selection criterion for placement by living unit.

TABLE 3

 INSTITUTIONAL EXPERIENCE SUMMARY ON 1972 PAROLE RELEASES
 FROM YOUTH AUTHORITY SCHOOLS AND CAMPS

(Showing observed violation rates by living unit)

	Total wards released		Observed non-violators		Observed violators	
	Number	Percent	Number	Percent	Number	Percent
	Nelles - Total	516	100.0	246	47.7	270
Unknown living unit	5	100.0	3	**	2	**
01 - Adams	54	100.0	27	50.0	27	50.0
04 - Taft	16	100.0	7	**	9	**
05 - Cleveland	71	100.0	35	49.3	36	50.7
06 - Kennedy	47	100.0	27	57.4	20	42.6
09 - Roosevelt	64	100.0	32	50.0	32	50.0
10 - Jackson	85	100.0	32	37.6	53	62.4
11 - Madison	33	100.0	17	51.5	16	48.5
12 - Washington	41	100.0	23	56.1	18	43.9
13 - Monroe	27	100.0	13	48.1	14	51.9
14 - Hayes	34	100.0	15	44.1	19	55.9
15 - Tyler	39	100.0	15	38.5	24	61.5
O. H. Close - Total	442	100.0	243	55.0	199	45.0
Unknown living unit	16	100.0	10	**	6	**
01 - Amador	51	100.0	31	60.8	20	39.2
02 - Butte	50	100.0	24	48.0	26	52.0
03 - Calaveras	53	100.0	32	60.4	21	39.6
04 - Del Norte	55	100.0	26	47.3	29	52.7
05 - El Dorado	56	100.0	26	46.4	30	53.6
06 - Fresno	34	100.0	33	97.1	1	2.9
07 - Glenn	52	100.0	29	55.8	23	44.2
08 - Humboldt	75	100.0	32	42.7	43	57.3
Karl Holton - Total	417	100.0	299	71.7	118	28.3
Unknown living unit	6	100.0	4	**	2	**
01 - Carson	57	100.0	42	73.7	15	26.3
02 - Donner	58	100.0	38	65.5	20	34.5
03 - Ebbets	55	100.0	37	67.3	18	32.7
04 - Mono	52	100.0	40	76.9	12	23.1
05 - Sonora	45	100.0	39	86.7	6	13.3
06 - Tejon	56	100.0	39	69.6	17	34.4
07 - Tioga	54	100.0	38	70.4	16	29.6
08 - Yuba	34	100.0	22	64.7	12	35.3

**Percents not calculated for groups of 25 wards or less.

TABLE 3 (Continued)

 INSTITUTIONAL EXPERIENCE SUMMARY ON 1972 PAROLE RELEASES
 FROM YOUTH AUTHORITY SCHOOLS AND CAMPS

(Showing observed violation rates by living unit)

	Total wards released		Observed non-violators		Observed violators	
	Number	Percent	Number	Percent	Number	Percent
	DeWitt Nelson - Total	163	100.0	130	79.8	33
Unknown living unit	2	100.0	1	**	1	**
01 - Lassen	45	100.0	37	82.2	8	17.8
02 - Modoc	39	100.0	31	79.5	8	20.5
04 - Angeles	1	100.0	1	**	-	-
05 - Yosemite	25	100.0	20	80.0	5	20.0
06 - Plumas	24	100.0	19	**	5	**
07 - Tahoe	27	100.0	21	77.8	6	22.2
Preston - Total	457	100.0	305	66.7	152	33.3
Unknown living unit	31	100.0	18	58.1	13	41.9
01 - Arbor	8	100.0	6	**	2	**
02 - Buckeye	70	100.0	52	74.3	18	25.7
05 - Evergreen	50	100.0	35	70.0	15	30.0
06 - Fir	55	100.0	34	61.8	21	38.2
07 - Greenbrier	19	100.0	9	**	10	**
08 - Hawthorne	10	100.0	4	**	6	**
09 - Ironwood	19	100.0	12	**	7	**
10 - Juniper	42	100.0	27	64.3	15	35.7
12 - Linden	48	100.0	34	70.8	14	29.2
13 - Manzanita	14	100.0	10	**	4	**
14 - Sequoia	34	100.0	26	76.5	8	23.5
15 - Oak	24	100.0	16	**	8	**
20 - Acacia	30	100.0	21	70.0	9	30.0
21 - Tamarack	3	100.0	1	**	2	**
Y.T.S. - Total	982	100.0	656	66.8	326	33.2
Unknown living unit	9	100.0	9	**	-	-
Unit I	382	100.0	245	64.1	137	35.9
11 - A-B Company	93	100.0	59	63.4	34	36.6
13 - C-D "	93	100.0	53	57.0	40	43.0
15 - E-F "	97	100.0	63	64.9	34	35.1
17 - G-H "	99	100.0	70	70.7	29	29.3
Unit II	275	100.0	183	66.5	92	33.5
21 - I-J Company	94	100.0	68	72.3	26	27.7
23 - K-L "	84	100.0	60	71.4	24	28.6
25 - M-N "	68	100.0	41	60.3	27	39.7
27 - O-R "	29	100.0	14	48.3	15	51.7
Unit III	316	100.0	219	69.3	97	30.7
31 - S-T Company	104	100.0	71	68.3	33	31.7
33 - U-V "	18	100.0	14	**	4	**
35 - W-X "	93	100.0	64	68.8	29	31.2
37 - Y-Z "	101	100.0	70	69.3	31	30.7

**Percents not calculated for groups of 25 wards or less.

TABLE 3 (Continued)

INSTITUTIONAL EXPERIENCE SUMMARY ON 1972 PAROLE RELEASES
FROM YOUTH AUTHORITY SCHOOLS AND CAMPS

(Showing observed violation rates by living unit)

	Total wards released		Observed non-violators		Observed violators	
	Number	Percent	Number	Percent	Number	Percent
Ben Lomond	125	100.0	107	85.6	18	14.4
Mt. Bullion	112	100.0	83	74.1	29	25.9
Oak Glen	1	100.0	1	100.0	-	-
Pine Grove	116	100.0	85	73.3	31	26.7
Washington Ridge	125	100.0	94	75.2	31	24.8
Ventura Males - Total	90	100.0	68	75.6	22	24.4
Unknown living unit	1	100.0	1	**	-	-
01 - Miramar	37	100.0	24	64.9	13	35.1
02 - Buena Ventura	26	100.0	22	84.6	4	15.4
03 - Casa Del Colegio	26	100.0	21	80.8	5	19.2
Ventura Females - Total	231	100.0	177	76.6	54	23.4
Unknown living unit	-	-	-	-	-	-
01 - Mira Loma	49	100.0	41	83.7	8	16.3
02 - El Mirasol	21	100.0	14	**	7	**
03 - El Toyon	55	100.0	36	65.5	19	34.5
05 - La Jolla	33	100.0	25	75.8	8	24.2
07 - Montecito	48	100.0	42	87.5	6	12.5
08 - Monte Vista	4	100.0	2	**	2	**
10 - Tiempo Corto	21	100.0	17	**	4	**

**Percents not calculated for groups of 25 wards or less.

APPENDIX A

INSTITUTIONAL EXPERIENCE SUMMARY

1-5	Y. A. Number	6-17	Name (Last name first)
18-21	Date of release	22-25	Facility / Living Unit
46	I-level and Subtype (at release)	47-48	Special Institution Program (See Manual for codes)
49	INITIAL PLACEMENT AT PAROLE	53	ACADEMIC SCHOOL PROG. (Inc. prevoc. trng.)
	1 Own home		0 None
	2 Relatives home		1 Full-day
	3 Foster or Group home		2 Half-day
	4 Independent		3 Part-time
	5 Other (Specify _____)	54	ESTIMATED GRADE LEVEL AT RELEASE
50	WORK EXPERIENCE		1 6th Grade or below
	0 No		2 Grades 7 to 9 4 H.S. Grad. this stay
	1 Yes		3 Grades 10 to 12 5 Prior H.S. Grad.
51-52	VOCATIONAL TRAINING (code type)	55	NUMBER OF SPECIAL INCIDENT REPORTS
			0 1 2 3 4 5 6 7 8 or more

YA 2.631 Rev. 2 (11-68)

END