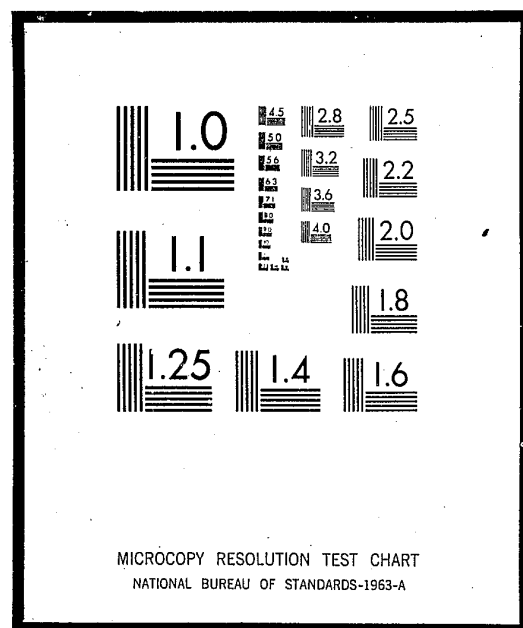


NCJRS

This microfiche was produced from documents received for inclusion in the NCJRS data base. Since NCJRS cannot exercise control over the physical condition of the documents submitted, the individual frame quality will vary. The resolution chart on this frame may be used to evaluate the document quality.



Microfilming procedures used to create this fiche comply with the standards set forth in 41CFR 101-11.504

Points of view or opinions stated in this document are those of the author(s) and do not represent the official position or policies of the U.S. Department of Justice.

U.S. DEPARTMENT OF JUSTICE
LAW ENFORCEMENT ASSISTANCE ADMINISTRATION
NATIONAL CRIMINAL JUSTICE REFERENCE SERVICE
WASHINGTON, D.C. 20531

Date filmed

8/27/75

PROFILE: THE DRUG OFFENDER

November, 1971

DIVISION OF RESEARCH STAFF

James E. Mabry, Director
Joe E. Reed, Assistant Director
Gerry McPherson, Research Analyst
Rodger W. Kloppe, Research Assistant
Johanna Kollert, Secretary
Jo Ann Bryant, Stenographer
Ralph Bryan, Research Intern
Judy Meade, Research Intern
Stephen Pipkin, Research Intern
Woods Swinburn, Research Intern
Tom Zuniga, Research Intern

TEXAS DEPARTMENT OF CORRECTIONS

P. O. BOX 99

HUNTSVILLE, TEXAS 77340

014248

TEXAS BOARD OF CORRECTIONS

H. H. COFFIELD
Chairman
Rockdale, Texas

JAMES M. WINDHAM
Vice-Chairman
Livingston, Texas

WALTER M. MISCHER
Secretary
Houston, Texas

LESTER BOYD
Member
Vernon, Texas

DAVID D. ALLEN
Member
Houston, Texas

W. ERVIN JAMES
Member
Houston, Texas

FRED W. SHIELD
Member
San Antonio, Texas

L. H. TRUE
Member
Wimberley, Texas

T. LOUIS AUSTIN, JR.
Member
Dallas, Texas

ADMINISTRATION

GEORGE J. BETO, Ph.D.
Director

SAMMIE D. BRADLEY
Assistant for Industry

BYRON W. FRIERSON
Assistant for Agriculture

A. G. McKAIN
Assistant for Construction

W. DEE KUTACH
Assistant for Treatment

JACK D. KYLE
Assistant for Business

PREFACE

The purpose of this study was to summarize and report statistical information on the drug offender incarcerated in the Texas Department of Corrections. Because of the public's awareness and recognition of the drug problem, it is believed that a summary of the basic characteristics and a criminal history of these individuals will be beneficial to those concerned with the drug offender.

The data presented in this report were compiled from the computer records maintained by the Data Processing Department of the Department of Corrections.

Valuable secretarial support was provided by Mrs. Jo Ann Bryant and Mrs. Debbie Faulkner.

The research contained in this document was funded under Texas Criminal Justice Council Grant Number 1-F4-310. The fact that the Criminal Justice Council furnished financial support to the activity described in this publication does not necessarily indicate the concurrence of the Criminal Justice Council in the statements or conclusions contained herein.

TABLE OF CONTENTS

	<u>Page</u>
Preface	i
List of Tables	iii
Introduction	1
Social Characteristics	3
Sex	3
Ethnic Group	3
Age	3
County of Residence	4
Marital Status	4
Military Record	4
Religion	4
Present Medical Classification	5
Education and Intelligence	6
Offense Information	7
Prior Criminal History	9
Institutional Behavior	11
"Typical" Drug Offender	13
Tables	15

LIST OF TABLES

<u>Table</u>	<u>Title</u>	<u>Page</u>
1	Sex	16
2	Ethnic Group	16
3	Age Groups	17
4	County of Residence Upon Incarceration	18
5	Present Marital Status	22
6	Military Record	23
7	Religious Affiliation	24
8	Present Medical Classification	26
9	Present Educational Achievement	27
10	Present Intelligence Quotient	28
11	Number of Offenses	29
12	Summary of Offenses Committed	30
13	Offenses Committed	32
14	Codefendants	36
15	Detainers	37
16	Length of Sentences	38
17	Suspended Sentences	39
18	Probated Sentences	40
19	Parole Violations	41
20	Summary of Prior Confinements	42
21	Confinements in Detention Homes	43
22	Confinements in Jails	44

LIST OF TABLES (Continued)

<u>Table</u>	<u>Title</u>	<u>Page</u>
23	Confinements in Reformatories	45
24	Confinements in Military Prisons	46
25	Confinements in Texas Department of Corrections	47
26	Confinements in Other Prisons	48
27	Segregative Classification	49
28	Trusty Status	50
29	Escapes Attempted and Completed	51
30	Number of Times in Solitary Confinement	52

INTRODUCTION

Today the drug offender is receiving more publicity than the other felon offenders. The drug offender has had an impact upon incarcerations in penal institutions in Texas and throughout the United States. Many believe that the drug offender is directly responsible for the increase in crime rates. For example, the most frequently committed offense by females in the Texas Department of Corrections is a drug related offense. Equally important, the drug offender frequently commits, in order to maintain his habit, other types of crimes, such as burglary, theft over \$50, and forgery, for which he is more likely to be apprehended and sentenced. Because the drug offender has had an impact upon the criminal justice process, it is important that the drug offender population be described and studied.

The purpose of this statistical study was to describe specific characteristics of all drug offenders incarcerated in the Department of Corrections as of August 21, 1971. The drug offenders in this study included any offense involving drugs, including use of, possession of, sale of, and other illegal involvements with drugs.

The statistical information in this study was derived from the Department's Inmate Information File. This file contains a variety of information on each inmate which is

collected, to large extent, upon admission, while a few variables are collected or changed during incarceration and discharge. The data were reduced from frequency distributions for each of the 99 variables contained in the Inmate Information File. These distributions were reviewed and studied to determine their respective reliability, validity, and significance with respect to the drug offender. Of the 99 variables, 65 were considered to be worthy of presentation and were grouped into five categories:

- (1) Social Characteristics, (2) Education and Intelligence,
- (3) Offense Information, (4) Prior Criminal History, and
- (5) Institutional Behavior.

PROFILE: THE DRUG OFFENDER

Steve Pipkin, Rodger Kloppe, and Joe Reed

SOCIAL CHARACTERISTICS

Sex

Of the drug offenders in this population, 1,780 or 92% were males and 156 or 8% were females. At the time of computer analysis, the females comprised only 3.5% of the total inmate population. However, 22.60% of the females incarcerated are confined for drug offenses (See Table 1).

Ethnic Group

In the drug offender population, 37% of the inmates were Caucasian, 32% were Mexican-American, and 30% were Negro (See Table 2).

Age

The age distributions of the drug offender population are illustrated in Table 3. The most frequent age group was the 26 to 35 years old age group with 33% of the drug offenders. This group was followed by the 22 to 25 age group with 20% and the 36 to 45 age group with 17%. It is interesting to note that 15.86% of the first offenders at Ferguson were drug offenders. Over 67.5% of the drug offenders were under 35 years old.

County of Residence

The county of residence at the time of incarceration is presented in Table 4. Over 24% of the drug offenders were from Harris County, while 23.8% were from Dallas County. Other counties having large numbers of drug offenders were Bexar with 11.2%, Travis with 7.8%, and Tarrant with 4%. Thus, over 71% of the drug offenders were from urban areas. Seventy percent, or 178 of the 254 Texas counties, had no drug offenders confined in TDC.

Marital Status

The present marital status for this population is presented in Table 5. Over 37% of the drug offenders were single, while 14.5% were divorced and 6.5% were separated. In comparison, 27% were married and 5% were involved in a common-law relationship. The only common-law relationships considered valid by TDC are those in which the birth of a child resulted.

Military Record

Table 6 reveals that over 69% of the drug offenders had not served in the military. In contrast, approximately 22% had served in some branch of the armed service.

Religion

The religious affiliation of the drug offender population is illustrated in Table 7. Approximately 35% of

the drug offenders claimed to be Baptist, while 35% stated they were Roman Catholic. Only 3.6% (7) of the inmates in this population claimed no religious affiliation.

Present Medical Classification

In Table 8, the present medical classification is presented. Approximately 86% of the drug offenders were qualified for some type of work. In contrast, 30 inmates (1.5%) required close medical attention and 107 (5.5%) were qualified for only light work.

EDUCATION AND INTELLIGENCE

The educational achievement was derived from scores on the Gray-Votaw-Rogers General Achievement Test. The educational achievement is expressed in terms of years and months. The years represent the grade the inmate has achieved, and the month represents the progress in that grade. The mean educational achievement for the drug offender population is 7 years and 4 months with a standard deviation of 2 years and 1 month. Over 14% of the drug offenders had an educational achievement between 7 years and 0 months and 7 years and 9 months; and 3.2% had an educational achievement of 12.0 years. Four percent of this population were illiterate. Approximately 71% of the inmates studied had an educational achievement of less than the ninth grade (See Table 9).

The intelligence quotient was determined by either the Otis Quick-Scoring Intelligence Test or the Revised Beta for literates and by the Chicago Non-Verbal Test of Mental Ability for illiterates. The mean intelligence quotient for the drug offender population was 92 with a standard deviation of 18. Table 10 shows that 48.18% of the offenders scored from 80 to 109. Over 10% of the offenders had an I.Q. score below 70, the mentally defective range. For a detailed breakdown of the various scores refer to Table 10.

OFFENSE INFORMATION

The number of offenses committed by the drug offender population is presented in Table 11. Over 46% of the drug offenders committed only one offense, while 31.45% had committed two offenses. Thirty-three inmates (1.68%) had committed 7 or more offenses.

A summary of offenses committed by the drug offender population is presented in Table 12. This table reveals that, other than drug offenses, the most frequently committed offenses were burglary (9.75%), theft over \$50 (7.26%), and robbery (3.8%).

Table 13 provides a detailed breakdown of the number of offenses committed for a specific offense. Approximately 10% of the drug offenders also committed one burglary, while 2% committed two burglaries.

In Table 14, the number of codefendants for the drug offenders is presented. Over 58% of the population had no codefendants, 19.62% had one codefendant, 10.79% had two codefendants, and 11.31% had three or more codefendants.

The number of detainers for the drug offenders are shown on Table 15. The jurisdictions considered were Texas, other states, federal, and immigration. Only 5.5% of the drug offenders had detainers from any jurisdiction.

The maximum sentences received by the drug offenders are illustrated in Table 16. Over 21% of the drug offenders

were serving two-year sentences. Eighty-three percent of this population had sentences of 10 years or less. In contrast, only 3.03% had sentences over sixty years.

PRIOR CRIMINAL HISTORY

Adult suspended sentences had been given to 5% of the drug offender population. Only two inmates had received suspended sentences as juveniles. This population received no federal adult or juvenile suspended sentences (See Table 17). Regarding probated sentences, the categories reported were federal adult, federal juvenile, state adult, and state juvenile. The most frequent jurisdictions granting probated sentences to drug offenders were state authorities. Over 39% of the drug offenders had received a state probated sentence as adults, while 12.38% had received state probated sentences as juveniles. In contrast, only 2.52% of the population had received federal adult probated sentences.

Table 19 lists the parole violations for the drug offender population. Only 20 (.98%) of the drug offenders had violated parole granted from other institutions. Parole provisions from TDC had been violated by 4.48% of this population. However, it should be noted that this was not necessarily a violated parole for a drug offense.

The number of prior confinements in various institutions is presented on Table 20. Over 40% of the drug offenders had been incarcerated in jails for other than the present offense. More than 20% of the drug offenders had been previously confined within TDC, while 24.98% had

previously been confined in reformatories or other prisons.

It is important to realize that many offenders have been incarcerated numerous times in various facilities. Tables 21 - 26 provide a detailed account of the number of confinements in the various types of institutions listed in Table 20.

INSTITUTIONAL BEHAVIOR

The trusty status for the drug offender population is presented in Table 28. Trustees fall into four categories illustrated in Table 28 as State Approved Trusty I, State Approved Trusty II, State Approved Trusty III, and State Approved Trusty III (Construction). Trusty status by law entitles the inmate to draw, in addition to his day for day time, commutation or "good time" at the rate of 30 days per month served. Each inmate is encouraged to achieve some level of trusty status because, by so doing, the time of his sentence is reduced and the inmate becomes eligible for parole in a shorter length of time. Lineman 1 and 2 are also time-earning categories. Lineman 1 will receive, in addition to his day for day time, 20 days for each month served, while Lineman 2 receives a total of 10 extra days each month. Lineman 3 receives no extra days per month and serves his sentence day for day. Lineman 3 is for those inmates who do not obey the rules and regulations of TDC. It is important to mention that any inmate can lose his good time for violations of the rules and regulations of TDC.

Over 40% of the drug offenders were State Approved Trustees. The majority (56.86%) of the drug offenders were Lineman 1. In contrast, only 2.73% were Lineman 3.

The current segregative classification is determined by the TDC Bureau of Classification by accumulating data in order to place like inmates together according to age and criminal experience. Table 27 indicates the segregative classification of the drug offender population. The drug offender population was composed of 40.16% first offenders, 40.17% recidivists, and 9.91% habituals.

The number of escapes attempted and completed are presented on Table 29. An escape attempted is defined as any individual who attempts to leave the confines of TDC, whose efforts were aborted, or who was captured while still on state property. Escapes completed are defined as those individuals who left the premises of TDC and may or may not have been captured.

Escapes attempted were most prevalent as juveniles and from other institutions. Likewise, escapes completed were most prevalent from juvenile and other institutions. Only 8 inmates from the drug offender population had attempted escapes while only 5 had completed escapes (See Table 29).

Table 30 lists the number of times each inmate of the drug offender population has been in solitary confinement. Approximately 78% of the drug offenders had not been confined in solitary. Over 21% had been confined in solitary.

"TYPICAL" DRUG OFFENDER

The characteristics of the "typical" drug offender in the Texas Department of Corrections are described below. This character description was derived from central tendency statistical data and is by no means representative of a known inmate.

The "typical" drug offender:

1. is a male
2. is Caucasian
3. is 29 years old
4. resides in an urban area -- either Harris or Dallas County
5. is presently single
6. has not served in a branch of military service
7. claims to be either Baptist or Roman Catholic
8. is in good physical condition
9. has an educational achievement of 7 years and 4 months
10. has an intelligence quotient of 97
11. was sentenced for a drug related offense
12. did not have a codefendant
13. is serving either a 5 year or a 10 year sentence
14. has not served a suspended sentence as an adult or a juvenile
15. has not served a probated sentence as an adult or a juvenile

16. has not violated parole
17. is a recidivist over 25 years of age
18. has not attempted escape while in the Department
of Corrections
19. has not served time in solitary confinement

T A B L E S

TABLE 1

SEX

SEX	NUMBER OF INMATES	PERCENT OF INMATES
Females	156	8.05
Males	1,780	91.94
TOTAL	1,936	100.00

TABLE 2

ETHNIC GROUPS

ETHNIC GROUP	NUMBER OF INMATES	PERCENT OF INMATES
Negro	587	30.32
Caucasian	721	37.24
Mexican or Latin	628	32.43
TOTAL	1,936	100.00

TABLE 3

AGE GROUPS

AGE GROUP IN YEARS	NUMBER OF INMATES	PERCENT OF INMATES
18 - 21	275	14.18
22 - 25	391	20.17
26 - 35	642	33.10
36 - 45	332	17.10
46 - 60	127	6.49
61 - 69	15	.75
Not Specified	154	7.95
TOTAL	1,936	100.00

TABLE 4

COUNTY OF RESIDENCE UPON INCARCERATION

COUNTY	NUMBER OF INMATES	PERCENT OF INMATES
Atascosa	2	.10
Bell	20	1.03
Bexar	218	11.26
Brazoria	1	.05
Brazos	1	.05
Burleson	3	.15
Cameron	6	.30
Cass	1	.05
Castro	2	.10
Coleman	1	.05
Collin	6	.30
Comal	1	.05
Coryell	1	.05
Dallas	461	23.81
Dawson	2	.10
Deaf Smith	2	.10
Denton	17	.87
Eastland	2	.10
Ector	14	.72

TABLE 4 (Continued)

COUNTY	NUMBER OF INMATES	PERCENT OF INMATES
El Paso	18	.92
Frio	1	.05
Galveston	35	1.80
Gonzales	2	.10
Grayson	2	.10
Gregg	3	.15
Hale	7	.36
Harris	481	24.84
Harrison	1	.05
Hays	2	.10
Henderson	1	.05
Hidalgo	5	.25
Howard	9	.46
Hunt	1	.05
Hutchinson	1	.05
Jasper	1	.05
Jefferson	31	1.60
Jim Wells	1	.05
Johnson	1	.05
Karnes	2	.10
Kerr	2	.10
Kleberg	2	.10

TABLE 4 (Continued)

COUNTY	NUMBER OF INMATES	PERCENT OF INMATES
Lamar	1	.05
Lamb	1	.05
Lubbock	10	.51
McLennan	9	.46
Matagorda	2	.10
Midland	15	.77
Montgomery	1	.05
Nacogdoches	3	.15
Nueces	32	1.65
Palo Pinto	3	.15
Parker	1	.05
Pecos	1	.05
Potter	12	.61
Rains	1	.05
Reeves	1	.05
Refugio	1	.05
Rusk	1	.05
San Patricio	7	.36
Tarrant	80	4.13
Taylor	4	.20
Titus	1	.05
Tom Green	8	.41
	20	

TABLE 4 (Continued)

COUNTY	NUMBER OF INMATES	PERCENT OF INMATES
Travis	151	7.79
Uvalde	1	.05
Val Verde	1	.05
Victoria	4	.20
Ward	1	.05
Webb	2	.10
Wheeler	1	.05
Wichita	3	.15
Wilbarger	3	.15
Williamson	1	.05
Wilson	1	.05
Wise	1	.05
Zavala	2	.10
Out of State	45	2.32
Not Specified	154	7.95
TOTAL	1,936	100.00
	21	

TABLE 5

PRESENT MARITAL STATUS

MARITAL STATUS	NUMBER OF INMATES	PERCENT OF INMATES
Common-law	99	5.11
Divorced	281	14.51
Married	523	27.01
Separated	126	6.50
Single	727	37.55
Widow	23	1.18
Not Specified	157	8.10
TOTAL	1,936	100.00

TABLE 6

MILITARY RECORD

MILITARY RECORD	NUMBER OF INMATES	PERCENT OF INMATES
Air Force	45	2.32
Coast Guard	3	.15
Army - Ground	273	14.10
National Guard	2	.10
Marine Corps	40	2.06
Navy	65	3.35
No Service Record	1,347	69.57
Multiple Records	7	.36
Not Specified	154	7.95
TOTAL	1,936	100.00

TABLE 7

RELIGIOUS AFFILIATION

RELIGION	NUMBER OF INMATES	PERCENT OF INMATES
Baha'I Faith	1	.05
Buddhist	3	.15
Atheist	2	.10
Roman Catholic	682	35.22
Hebrew or Jewish	1	.05
Union of Orthodox Jewish Congregation of America	6	.30
Muslim	1	.05
Orthodox	1	.05
Protestant - No Body Specified	16	.82
Adventist Bodies	5	.25
Assemblies of God	8	.41
Baptist Bodies	690	35.64
International Convention Christian Church	47	2.42
Christian Congregation - Evang. Association	9	.46
Christian Scientist	6	.30
Church of Christ	2	.10
Church of God	6	.30

TABLE 7 (Continued)

RELIGION	NUMBER OF INMATES	PERCENT OF INMATES
Church of the Living God	1	.05
Church of the Nazarene	3	.15
Congregational Christian Church National Assn.	1	.05
Episcopal Church	20	1.03
Holiness - Churches of God	6	.30
Jehovah's Witnesses	3	.15
Latter Day Saints - Mormons	5	.25
Lutheran Bodies	19	.98
Methodist Bodies	115	5.94
Pentecostal Assemblies	23	1.18
Presbyterian Bodies	28	1.44
Unitarian Universalist Association United in Christ - Brethren	1	.05
No Affiliation	70	3.61
Not Specified	155	8.00
TOTAL	1,936	100.00

TABLE 8

PRESENT MEDICAL CLASSIFICATION

MEDICAL CLASSIFICATION	NUMBER OF INMATES	PERCENT OF INMATES
Labor Work Acceptable	1,147	59.24
Restricted Labor Work	336	17.35
Light Work Acceptable	184	9.50
Light Work - No Line Assignment	107	5.52
Required Medical Attention (Hospital)	30	1.54
Not Specified	132	6.81
TOTAL	1,936	100.00

TABLE 9

PRESENT EDUCATIONAL ACHIEVEMENT

EDUCATIONAL ACHIEVEMENT IN YEARS AND MONTHS	NUMBER OF INMATES	PERCENT OF INMATES
Illiterate	78	4.02
3 Years, 0 Months - 3 Years, 9 Months	76	3.87
4 Years, 0 Months - 4 Years, 9 Months	160	8.21
5 Years, 0 Months - 5 Years, 9 Months	259	13.32
6 Years, 0 Months - 6 Years, 9 Months	290	14.93
7 Years, 0 Months - 7 Years, 9 Months	282	14.53
8 Years, 0 Months - 8 Years, 9 Months	251	12.91
9 Years, 0 Months - 9 Years, 9 Months	244	12.55
10 Years, 0 Months - 10 Years, 9 Months	109	5.58
11 Years, 0 Months - 11 Years, 9 Months	69	3.54
12 Years	62	3.20
Scores Not Available	56	2.88
TOTAL	1,936	100.00

TABLE 10

PRESENT INTELLIGENCE QUOTIENTS

TEST SCORES	NUMBER OF INMATES	PERCENT OF INMATES
40 - 49	32	1.64
50 - 59	46	2.33
60 - 69	126	6.45
70 - 79	238	12.25
80 - 89	293	15.09
90 - 99	306	15.74
100 - 109	337	17.35
110 - 119	214	11.00
120 - 129	88	4.49
130 - 139	14	.70
140 - 149	7	.35
Scores Not Available	235	12.13
TOTAL	1,936	100.00

TABLE 11

NUMBER OF OFFENSES

NUMBER OF OFFENSES	NUMBER OF INMATES	PERCENT OF INMATES
1	901	46.53
2	609	31.45
3	222	11.46
4	92	4.75
5	55	2.84
6	24	1.23
7	13	.67
8	7	.36
9	3	.15
10	2	.10
11	3	.15
12	1	.05
14	2	.10
15	1	.05
17	1	.05
TOTAL	1,936	100.00

TABLE 12

SUMMARY OF OFFENSES COMMITTED

OFFENSE	NUMBER OF COMMITMENTS	PERCENT OF COMMITMENTS
Murder	20	.75
Rape	8	.30
Robbery	102	3.80
Assault	3	.11
Burglary	262	9.75
Theft over \$50	195	7.26
Auto Theft	4	.15
Arson	3	.11
Forgery	60	2.23
Fraud	8	.30
Stolen Property	6	.22
Weapons	7	.26
Prostitution	2	.07
Sex Offenses	2	.07
Drugs	1,936	72.08
DWI	2	.07
Breaking and Entering Motor Vehicle	18	.67
Escapes	6	.22

30

TABLE 12

SUMMARY OF OFFENSES COMMITTED

OFFENSE	NUMBER OF COMMITMENTS	PERCENT OF COMMITMENTS
Murder	20	.75
Rape	8	.30
Robbery	102	3.80
Assault	3	.11
Burglary	262	9.75
Theft over \$50	195	7.26
Auto Theft	4	.15
Arson	3	.11
Forgery	60	2.23
Fraud	8	.30
Stolen Property	6	.22
Weapons	7	.26
Prostitution	2	.07
Sex Offenses	2	.07
Drugs	1,936	72.08
DWI	2	.07
Breaking and Entering Motor Vehicle	18	.67
Escapes	6	.22

30

TABLE 12 (Continued)

OFFENSE	NUMBER OF COMMITMENTS	PERCENT OF COMMITMENTS
Assault with Intent to Commit	32	1.19
Embezzlement	1	.04
Malicious Mischief	7	.26
Public Justice	2	.07
TOTAL	2,686	100.00

TABLE 13

OFFENSES COMMITTED

	MURDER		RAPE		ROBBERY		ASSAULT	
NUMBER OFFENSES	NUMBER INMATES	PERCENT INMATES	NUMBER INMATES	PERCENT INMATES	NUMBER INMATES	PERCENT INMATES	NUMBER INMATES	PERCENT INMATES
1	18	.92	8	.41	71	3.66	3	.15
2	2	.10	0	--	14	.72	0	--
3	0	--	0	--	5	.25	0	--
4	0	--	0	--	7	.36	0	--
5	0	--	0	--	5	.25	0	--
6	0	--	0	--	0	--	0	--
7	0	--	0	--	0	--	0	--
8	0	--	0	--	0	--	0	--
9	0	--	0	--	0	--	0	--
10	0	--	0	--	0	--	0	--
TOTAL	20	1.02	8	.41	102	5.24	3	.15

TABLE 13 (Continued)

BURGLARY			THEFT OVER \$50		AUTO THEFT		ARSON	
NUMBER OFFENSES	NUMBER INMATES	PERCENT INMATES	NUMBER INMATES	PERCENT INMATES	NUMBER INMATES	PERCENT INMATES	NUMBER INMATES	PERCENT INMATES
1	207	10.69	152	7.85	4	.20	2	.10
2	39	2.01	27	1.39	0	--	0	--
3	11	.56	11	.56	0	--	1	.05
4	1	.05	4	.20	0	--	0	--
5	2	.10	0	--	0	--	0	--
6	2	.10	1	.05	0	--	0	--
7	0	--	0	--	0	--	0	--
8	0	--	0	--	0	--	0	--
9	0	--	0	--	0	--	0	--
10	0	--	0	--	0	--	0	--
TOTAL	262	13.51	195	10.05	4	.20	3	.15

33

FORGERY			FRAUD		STOLEN PROPERTY		WEAPONS	
NUMBER OFFENSES	NUMBER INMATES	PERCENT INMATES	NUMBER INMATES	PERCENT INMATES	NUMBER INMATES	PERCENT INMATES	NUMBER INMATES	PERCENT INMATES
1	39	2.01	8	.41	6	.30	7	.36
2	14	.72	0	--	0	--	0	--
3	2	.10	0	--	0	--	0	--
4	2	.10	0	--	0	--	0	--
5	1	.05	0	--	0	--	0	--
6	0	--	0	--	0	--	0	--
7	0	--	0	--	0	--	0	--
8	1	.05	0	--	0	--	0	--
9	1	.05	0	--	0	--	0	--
10	0	--	0	--	0	--	0	--
TOTAL	60	3.08	8	.41	6	.30	7	.36

TABLE 13 (Continued)

PROSTITUTION			SEX OFFENSES		DRUGS		DWI	
NUMBER OFFENSES	NUMBER INMATES	PERCENT INMATES	NUMBER INMATES	PERCENT INMATES	NUMBER INMATES	PERCENT INMATES	NUMBER INMATES	PERCENT INMATES
1	2	.10	2	.10	1,443	74.53	2	.10
2	0	--	0	--	336	17.35	0	--
3	0	--	0	--	98	5.06	0	--
4	0	--	0	--	33	1.70	0	--
5	0	--	0	--	16	.82	0	--
6	0	--	0	--	4	.20	0	--
7	0	--	0	--	3	.15	0	--
8	0	--	0	--	0	--	0	--
9	0	--	0	--	2	.10	0	--
10	0	--	0	--	1	.05	0	--
TOTAL	2	.10	2	.10	1,936	99.96	2	.10

34

BREAKING & ENTERING MOTOR VEHICLE			ESCAPES		ASSAULT W/INTENT TO COMMIT		EMBEZZLEMENT	
NUMBER OFFENSES	NUMBER INMATES	PERCENT INMATES	NUMBER INMATES	PERCENT INMATES	NUMBER INMATES	PERCENT INMATES	NUMBER INMATES	PERCENT INMATES
1	18	.92	6	.30	27	1.39	0	--
2	0	--	0	--	5	.25	0	--
3	0	--	0	--	0	--	1	.05
4	0	--	0	--	0	--	0	--
5	0	--	0	--	0	--	0	--
6	0	--	0	--	0	--	0	--
7	0	--	0	--	0	--	0	--
8	0	--	0	--	0	--	0	--
9	0	--	0	--	0	--	0	--
10	0	--	0	--	0	--	0	--
TOTAL	18	.92	6	.30	32	1.64	1	.05

TABLE 13 (Continued)

MALICIOUS MISCHIEF			PUBLIC JUSTICE	
NUMBER OFFENSES	NUMBER INMATES	PERCENT INMATES	NUMBER INMATES	PERCENT INMATES
1	5	.25	2	.10
2	2	.10	0	--
3	0	--	0	--
4	0	--	0	--
5	0	--	0	--
6	0	--	0	--
7	0	--	0	--
8	0	--	0	--
9	0	--	0	--
10	0	--	0	--
TOTAL	7	.35	2	.10

TABLE 14

CODEFENDANTS

NUMBER OF CODEFENDANTS	NUMBER OF INMATES	PERCENT OF INMATES
0	1,127	58.21
1	380	19.62
2	209	10.79
3	92	4.75
4	43	2.22
5	30	1.54
6	18	.92
7	15	.77
8	9	.46
9	5	.25
10	1	.05
11	2	.10
12	2	.10
15	1	.05
19	1	.05
25	1	.05
TOTAL	1,936	100.00

TABLE 15

DETAINERS

NUMBER OF DETAINERS	NUMBER OF INMATES	PERCENT OF INMATES
Texas		
1	73	3.77
2	3	.15
Other States		
1	11	.56
Federal		
1	21	1.08
Immigration	None	--

TABLE 16

LENGTH OF SENTENCES

SENTENCES IN YEARS	MAXIMUM SENTENCES	
	NUMBER OF INMATES	PERCENT OF INMATES
0	0	--
2	414	21.38
4	501	25.86
6	163	8.41
8	117	6.03
10	342	17.63
15	152	7.82
20	75	3.86
25	52	2.67
30	61	3.12
60 ⁺	59	3.03
TOTAL	1,936	100.00

TABLE 17

SUSPENDED SENTENCES

NUMBER OF SUSPENDED SENTENCES	NUMBER OF INMATES	PERCENT OF INMATES
Adult		
1	96	4.95
2	1	.05
Juvenile		
1	2	.10

TABLE 18

PROBATED SENTENCES

NUMBER OF PROBATED SENTENCES	NUMBER OF INMATES	PERCENT OF INMATES
Federal - Adult		
1	46	2.37
2	3	.15
Federal - Juvenile		
1	4	.20
2	1	.05
State - Adult		
1	721	37.24
2	37	1.91
3	4	.20
4	3	.15
8	1	.05
State - Juvenile		
1	229	11.82
2	8	.41
3	2	.10
5	1	.05

TABLE 19

PAROLE VIOLATIONS

NUMBER OF PAROLE VIOLATIONS	NUMBER OF INMATES	PERCENT OF INMATES
Juvenile		
1	1	.05
Other Institutions		
1	1	.05
2	1	.05
TDC		
1	83	4.28
2	4	.20
Other Prisons		
1	16	.82
2	1	.05

TABLE 20

SUMMARY OF PRIOR CONFINEMENTS

PRIOR CONFINEMENTS	NUMBER OF CONFINEMENTS	PERCENT OF CONFINEMENTS
Detention Homes	422	13.64
Jails	1,257	40.63
Reformatories	359	11.60
Military Prisons	88	2.84
Texas Department of Corrections	642	20.75
Other Prisons	326	10.54
TOTAL	3,094	100.00

TABLE 21

CONFINEMENTS IN DETENTION HOMES

NUMBER OF CONFINEMENTS IN DETENTION HOMES	NUMBER OF INMATES	PERCENT OF INMATES
1	136	7.02
2	91	4.70
3	49	2.53
4	42	2.16
5	33	1.70
6	10	.51
7	7	.36
8	11	.56
9	6	.30
10	10	.51
11	4	.20
12	7	.36
15	7	.36
16	1	.05
20+	8	.40
TOTAL	422	21.72

TABLE 22

CONFINEMENTS IN JAILS

NUMBER OF CONFINEMENTS IN JAILS	NUMBER OF INMATES	PERCENT OF INMATES
1	348	17.97
2	209	10.79
3	156	8.05
4	90	4.64
5	100	5.16
6	65	3.35
7	32	1.65
8	51	2.63
9	17	.87
10	47	2.42
11	13	.67
12	16	.82
13	7	.36
14	4	.20
15	24	1.23
16	8	.41
17	3	.15
18	2	.10
19	2	.10
20+	63	3.19
TOTAL	1,257	64.76

TABLE 23

CONFINEMENTS IN REFORMATORIES

NUMBER OF CONFINEMENTS IN REFORMATORIES	NUMBER OF INMATES	PERCENT OF INMATES
1	200	10.33
2	103	5.32
3	38	1.96
4	9	.46
5	2	.10
6	2	.10
7	1	.05
10	1	.05
11	1	.05
15	2	.10
TOTAL	359	18.52

TABLE 24

CONFINEMENTS IN MILITARY PRISONS

NUMBER OF CONFINEMENTS IN MILITARY PRISONS	NUMBER OF INMATES	PERCENT OF INMATES
1	57	2.94
2	19	.98
3	9	.46
4	2	.10
5	1	.05
TOTAL	88	4.53

TABLE 25

CONFINEMENTS IN THE TEXAS DEPARTMENT OF CORRECTIONS

NUMBER OF CONFINEMENTS IN TDC	NUMBER OF INMATES	PERCENT OF INMATES
1	398	20.55
2	155	8.00
3	63	3.25
4	19	.98
5	4	.20
6	3	.15
TOTAL	642	33.13

TABLE 26

CONFINEMENTS IN OTHER PRISONS

NUMBER OF CONFINEMENTS IN OTHER PRISONS	NUMBER OF INMATES	PERCENT OF INMATES
1	215	11.10
2	67	3.46
3	32	1.65
4	9	.46
5	1	.05
6	2	.10
TOTAL	326	16.82

TABLE 27

SEGREGATIVE CLASSIFICATION

CLASSIFICATION	NUMBER OF INMATES	PERCENT OF INMATES
First Offender Age 17-21	313	16.16
First Offender Age 22-25	217	11.20
First Offender Age over 25	257	13.27
Recidivist Age 17-21	99	5.11
Recidivist Age 22-25	161	8.31
Recidivist Age over 25	518	26.75
Habitual	192	9.91
Malcontent, High Security Risk, or Agitator	22	1.13
Not Specified	157	8.10
TOTAL	1,936	100.00

TABLE 28

TRUSTY STATUS

TRUSTY STATUS	NUMBER OF INMATES	PERCENT OF INMATES
Lineman 1	1,101	56.86
Lineman 2	2	.10
Lineman 3	53	2.73
State Approved Trusty I	12	.61
State Approved Trusty II	68	3.51
State Approved Trusty III	661	34.14
State Approved Trusty III (Construction)	39	2.01
TOTAL	1,936	100.00

TABLE 29

ESCAPES ATTEMPTED AND COMPLETED

NUMBER OF ESCAPES	ATTEMPTED ESCAPES		COMPLETED ESCAPES	
	NUMBER OF INMATES	PERCENT OF INMATES	NUMBER OF INMATES	PERCENT OF INMATES
Juvenile				
1	10	.51	52	2.68
2	0	--	19	.98
3	1	.05	8	.41
4	1	.05	4	.20
5+	1	.05	5	.25
Other Institutions				
1	17	.87	78	4.02
2	3	.15	22	1.13
3	0	--	1	.05
4	1	.05	1	.05
5	0	--	1	.05
TDC				
1	8	.41	5	.25
Other Prisons				
1	1	.05	5	.25
2	0	--	2	.10
3+	1	.05	0	--
51				

TABLE 30

NUMBER OF TIMES IN SOLITARY CONFINEMENT

NUMBER OF TIMES IN SOLITARY CONFINEMENT	NUMBER OF INMATES	PERCENT OF INMATES
0	1,510	77.99
1	257	13.27
2	97	5.01
3	34	1.75
4	18	.92
5	7	.36
6	6	.30
7	2	.10
8	1	.05
9	2	.10
10	1	.05
11	1	.05
TOTAL	1,936	100.00

END