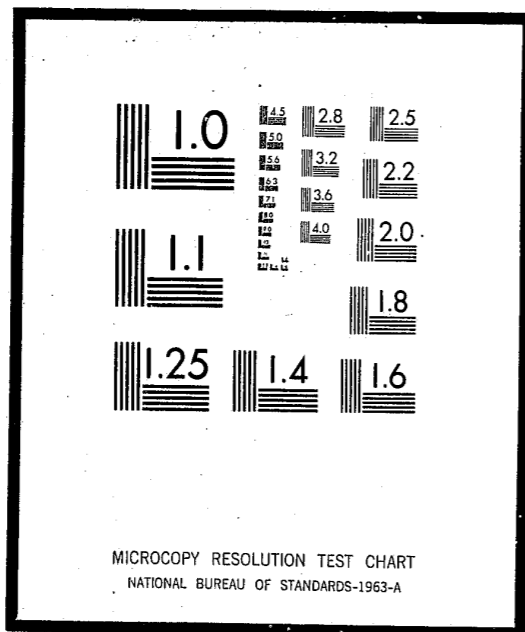


NCJRS

This microfiche was produced from documents received for inclusion in the NCJRS data base. Since NCJRS cannot exercise control over the physical condition of the documents submitted, the individual frame quality will vary. The resolution chart on this frame may be used to evaluate the document quality.



Microfilming procedures used to create this fiche comply with the standards set forth in 41CFR 101-11.504.

Points of view or opinions stated in this document are those of the author(s) and do not represent the official position or policies of the U.S. Department of Justice.

U.S. DEPARTMENT OF JUSTICE
LAW ENFORCEMENT ASSISTANCE ADMINISTRATION
NATIONAL CRIMINAL JUSTICE REFERENCE SERVICE
WASHINGTON, D.C. 20531

Date filmed

5/29/75

PROGRAM OF THE P.O.R.T. ANNUAL MEETING
Wednesday, November 15, 1972
Heritage Hall - Kahler Hotel - Rochester

-
- 5:30 p.m. - Social Hour
 - 6:30 p.m. - Dinner Mr. Leonard Ekstrand
Program Chairman
 - PORT Business Meeting
Judge Donald T. Franke, President
 - Invocation Rev. Joseph C. Cashman
 - Report of Nominating Committee
Mr. David Griffin, Chairman
 - Election of Board Members (13 to be
elected)
 - Other Business
 - Evaluation Committee Report
Dr. Francis A. Tyce, Co-Chairman
 - PORT Program Report -
Mr. Jay Lindgren
Executive Director, PORT
 - D.m. - Public Meeting
 - Introduction of the Speaker
Mr. Kenneth Schoen
Assistant Commissioner
Minnesota Department of Corrections
Former Executive Director of PORT
 - Address Dr. David Fogel
Commissioner
Minnesota Department of Corrections

895410

P.O.R.T. BOARD OF DIRECTORS

1971 - 72

Representatives from Criminal Justice System and Related Agencies

Sheriff* VonWald, Charles
 Chief of Police* Macken, James
 Judge of District Court Franke, Donald T.
 Judge of District Court Olson, O. Russell
 Judge of County Court--
 Juvenile Division* Neseth, Robert
 State Probation Officer Hagberg, Arvid
 County Probation Officer Griffin, David
 Attorneys: Defense Michaels, Franklin
 and/or Prosecution Brown, Frederic
 School Administrator* Wettergren, Dr. David
 State Vocational Rehabilitation* Allert, Donald
 Psychiatrist (or other related
 professional) Tyce, Dr. Francis
 Resident Representative
 (subject to change) Christopherson, Blake
 Volunteer Representative Farlow, Virgil
 (subject to change) Baudoin, Michael
 Kytola, Michael

Representatives from Public Sector

Committee on Evaluation and Monitoring
 Chairman Rome, Dr. Howard P.
 Vice-Chairman Thompson, Margaret
 Committee on Education
 Chairman Gillespie, Edward
 Vice-Chairman Wettergren, Dr. David*
 Committee on Employment
 Chairman Brunnette, John
 Vice-Chairman Reichert, William
 Committee on Finance
 Chairman Erickson, Odean "Gunn"
 Vice-Chairman Zubay, Kenneth P.
 Committee on Prevention
 Chairman Batchelder, Christopher
 Vice-Chairman Allert, Donald*
 Committee on Public Awareness
 Chairman Withers, Mrs. Charles
 Vice-Chairman Ring, Judge Gerard
 Committee on Social Involvement
 Chairman Winholtz, Howard
 Vice-Chairman Ekstrand, Leonard
 Committee on Admission
 Chairman Tyce, Dr. Francis *
 Vice-Chairman Bezoier, Robert

* Also filling positions on left hand side

* or his designate, as approved by the Board of Directors

EXECUTIVE COMMITTEE

Judge Donald T. Franke President
 Judge O. Russell Olson Immediate Past President
 Dr. Francis A. Tyce Vice President
 Mr. Frederic Brown Secretary
 Mr. Thomas Doyle Treasurer
 Mr. Jay G. Lindgren Director

PORT OF OLMSTED COUNTY

Annual Report to the Membership
 Third Annual Meeting
 November 15, 1972

INTRODUCTION

Consistent with our first two years, PORT's third year has been one of marked progress and growth and some problems. Time continues to place us in an improved position for objective evaluation, allowing for clarification of our successes and our failures. This report summarizes both successes and failures and offers goals for improvement in four major areas: the resident (offender), the structure of the residential program, the organization and interaction between the community and the program and residents, and PORT leadership in assisting other communities in the development of their own "PORT's".

THE RESIDENTS

Since the outset PORT has had three major goals: first, to effectively control the criminal behavior of the participating offenders; second, to reduce the commitments from our catchment area to the state correctional institutions; and third, to offer an alternative correctional program at less cost than traditional institutions. The last two goals are unquestionably being met. The first goal, and the most important goal, is a much more difficult goal to evaluate. What comparative measures we do have indicate that PORT is clearly controlling the behavior of the adult-age residents. (The last 12 pages of this report offer an individual summary of each resident who has entered and left the program since it began and descriptive statistics on the legal status of all the residents who have completed the program). Examining rates of contact with police, arrests and convictions, there is a definite decrease while the adult resident is in the program, and initial data indicates that the improvement lasts after completion of the program. This is particularly remarkable in light of the fact that virtually all of the referrals made from the adult district court have been accepted. Less than 20% of the district court referrals have been committed to institutions; of that 20%, 40% were not convicted of new offenses but were committed after running away (a technical violation of their probation) from the program.

The juvenile cases, however, are much more difficult to control while in the program. The "failure rate", if defined by commitment to an institution, has been consistently over 30% during PORT's first three years. One out of three juveniles accepted into the program have been committed to a state correctional institution. Of those cases committed to a state correctional institution, 75% were involved in new offenses; the most common offense involves running away and car theft.

PORT also has attempted to measure its success in areas other than legal status, such as employment, education, interpersonal relationships and financial responsibility. The results have ranged from dramatic improvement to continuation on a marginal level. (Again, the interested reader is referred to the final 12 pages of the report.) In these nonlegal areas, the juvenile again most often continues to have serious problems. In school, despite improvement while at the PORT program and serious efforts by the program to offer tutoring and motivation for educational progress, over half of the PORT residents enrolled in school have dropped out after leaving PORT. The younger past residents frequently are requesting voluntary returns to the program after successful discharge because they "can't make it in school" or because of "home problems".

There remain, however, many successes. We have seen several residents graduate from high school this past year, even in cases where there had seemed to be little hope for such an accomplishment when they entered the program. An interesting development in the educational area is that those residents who have enrolled in a more vocationally oriented program have done remarkably well. In the academic year, 1970-71, of six students starting out the year at the vocational school, five of them completed the year, all with above average grades. The one student who did not complete the year was enrolled at the vocational school longer than he had participated in any educational or vocational endeavor in the past eight years. Two of these six students have returned to take advanced second year training in their respective fields. Many of the residents have found jobs that they "like", where they have found meaning in the work and promise of advancement. Most have stayed with their jobs and have done extremely well.

The usual and obvious response when PORT residents have difficulty after they leave PORT, e.g., loss of job, marital or family problems, financial problems, or legal problems, is to suggest that the individual should have stayed in the program longer or that a "half-way" program be developed to respond to the residents in the community. There is little support for this contention in research. Usually "intensive community correctional support" takes the form of surveillance, and at best has no effect on the offender's adjustment, and more often has a negative effect on the offender's life. We need, however, to separate out those individuals who won't profit from program follow-up and do not desire this service and those who can profit from further help and will use it. It is clear that many of the younger former residents do need very general support. The Prevention Committee is now studying this problem, and group homes which will offer a more permanent home-like residence to the younger offender will be developed this coming year. A second program which will help provide help to past PORT residents will be the volunteer project. The help in the volunteer project will take a two-pronged approach: first, specialized services, e.g., financial counseling, job finding, legal counsel, academic tutoring, etc., and for those desiring it, the more traditional "big brother" approach involving a long-term, one-to-one interpersonal relationship.

It is expected that both the group home and the volunteer projects will improve the services available to the past PORT client, and in turn affect the over-all long-term successes, especially with the younger offenders. However, it is likely that dramatic improvement will also require modifications in the criminal-justice system's approach to the younger offender, especially in the area of non-criminal offenses, e.g., home incorrigibility, truancy, and run-away. It is essential that improved cooperation develop between PORT, court, welfare, parents, police and schools. PORT will be exploring with these groups more flexible and effective programs that can be offered and provide leadership for the development of such programs this coming year.

The central issue which is common to all the above comments and with which the Board and Staff have continually struggled is the question of "what is success?". The recent evaluation by the Mankato Urban Studies Institute, although helping to partially answer this question, also pointed out the difficulty in defining success, and the even more difficult problem of measurement. The Staff in conjunction with the Evaluation and Monitoring Committee need to further develop clear statements of what constitutes success and what constitutes failure and sophisticated methods of measure so that longitudinal data on what the program is doing and how it is doing are continually available.

THE PROGRAM

The most observable change during 1972 within the PORT program has been staff changes. The experience at PORT has proven to be a unique one for which few people are properly trained. During October, 1971, PORT added two staff trainees with the intention of offering a six-month training period which would orient them to the program and provide a "living-learning experience" for the development of skills necessary to a community-based corrections program. This brought to four the total number of direct program staff.

With the original director's departure in April, 1972, questions developed as to future staff organization. Five positions have been developed: the director, who is responsible for the total direction of the program and its relationship with the Board and the general community; two program assistants, who have direct responsibilities for half of the residential population each and separate specific job responsibilities within the PORT program in areas such as housekeeping supervision, recreation programs and other administrative duties; an administrative assistant, who assists the director in evaluation of program development and has direct responsibilities for liaison with some community groups and new programs, e.g., volunteers and family counseling; the secretary who handles clerical responsibilities and bookkeeping.

The director has been most fortunate in the individuals he has been able to place in these positions. Marion Jones, who has been the secretary since March, 1970, has done a remarkable job of clerical work and bookkeeping and has contributed concise organization when it has been sorely needed. Gay Urness, who began as a trainee in October, 1971, was appointed to the staff in April, 1972, as the first program assistant. He has weathered some of PORT's most difficult transitions, holding some of his early group sessions in the Olmsted County Jail. In July, 1972, Michael Weber was hired as administrative assistant

and already has made a sizeable contribution by developing and submitting a grant proposal to the Governor's Crime Commission for the volunteer program and in taking over as a temporary group leader. In October, 1972, Gary Nyquist was hired as a staff trainee and is being trained to fill the second program assistant position.

During the past year, PORT experimented with the possibility of serving female offenders at the PORT residence. The experiment was well publicized and ran from December, 1971, until February, 1972. Five female counselors resided in the program as the first step in a two-step process. They were to live in the program for several months prior to female residents' participation in the program. This plan was fraught with many problems. The female counselor's role was one that was very difficult and frustrating, partly because there were no female offenders. There were many other changes in the program concurrent with their introduction: staff trainees were accepting more direct program responsibilities, many residents had been introduced into the program within a short time span, several of the male counselors were gone because of vacation breaks from college, and Staff time was too limited to allow for adequate supervision of the female counselors. Despite some public concern, there was no problem of sexual morals. However, all of the problems discussed above contributed to increased problems of delinquency with the residents, and after two months it was decided that it was best, at least on a temporary basis, to phase out the female counselors. There still is a great need in the community for a responsive and responsible program for the female delinquent. It is planned that the group home program discussed above will at least partially serve this function.

The PORT program presently is experimenting with a formal written contract between the incoming resident and the PORT program. The contract attempts to put in writing what the resident expects to accomplish while in the program. The contract is expected to be expressed in specific and observable behavioral goals. The goals should relate directly to the problems that brought the resident to the program. As it now stands, this contract is a formal, written agreement between PORT and the resident and any community persons who are critical to the implementation of the plan. Advantages of the contract are that it forces early clarification of what needs to be done, both by the community and program resources and by the individual resident, and it offers a constant yardstick against which progress can be more clearly measured.

The program has continued to offer an active public relations program where PORT residents often have explained their own program. This has been of definite value, both in terms of the audience receiving a clearer picture of what the program involves and also has been helpful to the residents in developing pride in their own program. This past year there have been well over 50 talks to outside groups presented by PORT staff, counselors and residents. There also have been over 150 tour groups, ranging from grade-school-age Sunday school classes through senior citizens groups and visiting professionals. Most of the visitors have been from the Rochester area; however, there also has been increasing national interest.

COMMUNITY INTERACTION

Interaction with the community has gone far beyond public relations. After a series of meetings early in 1972, the PORT Board was restructured in two halves, the first half incorporating many of the original Board members who are ex-officio representatives of the criminal-justice system, e.g., sheriff, police chief, judges, attorneys, probation officers, and program participants, and related allied professions, e.g., psychiatry, vocational rehabilitation and education. The other half of the Board includes concerned citizens who have no direct professional relationship to the criminal-justice system, but, nevertheless, have demonstrated leadership and concern through involvement in the PORT citizens advisory committees. Each of these "lay directors" chairs a specific action committee. The actions of these committees continue to play a central and integral part in the success of the PORT program. Presently there are eight such committees:

The Evaluation and Monitoring Committee, which is chaired by Dr. Howard P. Rome of the Mayo Clinic and Margaret Thompson of the Mayo Medical School, will continue to see that responsible evaluation is made of the program and that information of the evaluation is submitted to the Board of Directors and to the general community.

The Education Committee, chaired by Edward Gillespie of the Rochester Methodist Hospital, and Dr. David Wettergren of the Rochester Public School System, is exploring the possibility of a training institute for community-based corrections. They also are developing a forum series for the local criminal-justice system to promote closer cooperation between law enforcement, the judicial system and corrections in the local community.

The Employment Committee, which has been chaired by John Brunette, of Northwestern Bell Telephone Company, and Jerry Reichert, of Reichert's Appliance Company, has actively sought jobs on an individual basis for PORT residents. They also have taken issue with company policies which are detrimental to the total integration of ex-offenders.

The Financial Committee, chaired by "Gunn" Erickson of the Mayo Clinic, and Kenneth P. Zubay of I.B.M., has overseen the program budget and handling of funds. They also have presented fund requests to the State Legislature and the county commissioners. Another project of this committee is the recruiting of financial experts from the community to help with one-to-one financial counseling with selected PORT residents.

The Prevention Committee, chaired by Chris Batchelder of the Mayo Clinic, and Donald Allert of the Division of Vocational Rehabilitation, has taken as its major responsibility the development of group homes in the Rochester area.

The Public Awareness Committee, chaired by Barbara Withers, a Rochester housewife, and Gerard Ring, County Court Judge, has promoted news of public interest and arranged various public meetings.

The Social Involvement Committee, chaired by Howard Winholtz of the Rochester Methodist Hospital, and Leonard Ekstrand, retired Rochester business man, will be helping to develop the volunteer program, playing the major role in recruitment and evaluation.

The Admissions Committee, chaired by Dr. Francis A. Tyce, Medical Director of the Rochester State Hospital, and Robert Bezoier, retired bank president, oversees all admissions to the program.

A review of these committees indicates the in-depth involvement of PORT's working Board. Each of these committees has been active and effective in a way that no "professional" could be. There is little question but that this kind of involvement has been one of the core ingredients essential to PORT's success.

EXPORTING PORT

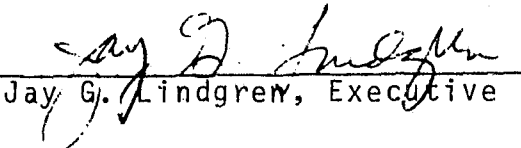
There is little doubt that the concepts involved in PORT can be exported successfully to other communities. Two communities have initiated programs because of direct involvement with Rochester's PORT. Columbia, Missouri, has a program that is now almost two years old; St. Paul, Minnesota, under the auspices of the Wilder Foundation, has a program which is beginning its second year. Brainerd, Minnesota, is currently in the final planning stages, and it is expected that several other Minnesota communities will follow suit this year. Bismarck, North Dakota, York, Pennsylvania, and the Oklahoma Department of Corrections have all shown a great deal of interest in the program. Recently two members of the Board, Margaret Thompson and Dr. David Wettergren, co-authored a handbook which will be sent to communities interested in "how to start and manage a PORT program". The handbook, in a clear and concise manner, captures the essential steps involved in the evolution of PORT and describes the program.

Currently there is serious discussion between PORT staff and directors, the Department of Corrections, and educators over the possibility of beginning an institute for training personnel for PORT programs. It is planned that this institute would be available not only to the people who would staff these programs but also to those who would be critical to the development of the program. This would include criminal-justice personnel, allied professionals and, most importantly, concerned citizens. Individuals would either be exposed through a two- or three-day seminar to PORT's basic principles or could receive an intensive on-site training experience which would develop the skills necessary for initiating and managing such a program.

SUMMARY

PORT's first three years clearly indicate the promise of community-based corrections. The community has not simply tolerated PORT but has actively and effectively helped to develop the program. The pro-

gram has served the majority of local offenders who have been in contact with the court over the past three years and has been a viable alternative to institutionalization. Virtually all offenders referred have been accepted, and the general outcome indicates that the program has effectively and economically controlled these offenders while in the program, and initial indications are that these discharged offenders do better than cases discharged from institutions. PORT has continued to receive state-wide and even national attention, and growing evidence is accumulating to show that the basic concepts involved in PORT can be implemented in other communities. Despite the obvious successes that PORT has had, there are obvious failures where improvement is necessary. Several recommendations are made for the immediate future: 1) the development of group homes, particularly for the younger male offender and the female offender; 2) the development of a volunteer program to serve the entire criminal-justice system in the PORT catchment area; 3) the study and development of alternative and flexible community programming for the juvenile offender who is involved in noncriminal offenses, perhaps taking the form of a court diversion project; 4) the development and implementation of a longitudinal research design which would further define and measure PORT's methodology and outcome; 5) the development of an institute of training for community-based corrections which would offer: a) orientation to the rationale behind PORT and the necessary planning for a PORT program, and b) intense training programs in all aspects of organizing and managing a community-based corrections program; 6) development of a forum series to enhance a closer working relationship between all elements of the local criminal-justice system; 7) continuation of periodic, open community seminar series on aspects of general interest in the area of criminal justice.


Jay G. Lindgren, Executive Director

P.O.R.T.
RESIDENT STATUS SUMMARY
October 1, 1969 to October 31, 1972

Number Who Are or Have Been In Residence

Total	110
Current Population	16
Short Term ¹	22
Discharged	72

Legal Status of Discharged Residents

Correctional Institution Commitments

<u>Adult²</u>	<u>Juvenile³</u>	<u>Total</u>
5 (N=28) 17.8%	13 (N=44) 29.5%	18 (N=72) 25%

Known Convictions Not Resulting In A Commitment

<u>Adult⁴</u>	<u>Juvenile⁵</u>	<u>Total</u>
9 (N=23) 39.1%	7 (N=31) 22.6%	16 (N=54) 29.8%

Average Length of Stay For Discharged Residents

7.9 Months (Range 2 - 19 months)

Footnotes--

- 1 Short term includes three basic types of referral decisions:
 - 1) Resident withdraws during provisional stay--six (6) cases, none placed in institution.
 - 2) Resident rejected during provisional stay--five (5) cases; three (3) of these five cases were subsequently placed in institutions.
 - 3) Resident entered with plans for temporary emergency placement at request of self, parents, probation or social service--twelve (12) cases; all returned home or were placed independently.
- 2 Two (2) of the four adult cases were not involved in any known new offenses beyond absconding (one of the four was committed to a state hospital).
- 3 Three (3) of the thirteen juvenile cases were not involved in any known new offenses beyond absconding.
- 4 Two (2) adults have been involved in felonies (one still pending), seven (7) in misdemeanors.
- 5 Two (2) juveniles have been involved in felonies (both still pending), five (5) in misdemeanors.

P.O.R.T. CLIENTELE WHO HAVE LEFT THE RESIDENCE
September, 1969 - October 31, 1972

ACCEPTED IN PROGRAM

Name	Age on Entry	Court	Offense	Alternative If PORT Were Not Available	Date of Entry To PORT	Present Progress & Prognosis
1. LG	32	Dist.	Larceny	Stillwater or State Hosp.	10/69	Discharged--satisfactory 10/70. Has had serious financial and employment problems and has returned periodically to PORT. One conviction of disorderly conduct; current whereabouts unknown.
2. BL	21	Dist.	Arson	St. Cloud	10/69	Discharged--satisfactory 1/71. Same job for third year.
3. LK	19	Dist.	Larceny	St. Cloud	12/69	Discharged--satisfactory 9/70. Graduated from high school 6/71. Continues to perform well; is maintaining employment.
4. HT	20	Dist.	Burgl.	St. Cloud	11/69	Discharged satisfactory--2/70. Working and living out of state. Discharged from probation; recently plead guilty to a misdemeanor drug charge.
5. FD	15	Juv.	Car Theft	Red Wing	12/69	Discharged--unsatisfactory. Sent to Red Wing because of deterioration at PORT and car theft. Returned to PORT for a 3 weeks' stay in May, 1971. Returned to Red Wing because of car theft in Nov., 1971. Recently entered service.
6. KG	28	Dist.	Burgl.	St. Cloud or Stillwater	1/70	Discharged--satisfactory 9/70. Continues to work for IBM. Has made satisfactory adjustment.
7. NJ	17	Juv.	Car Theft	State Commitment	5/70	Discharged--unsatisfactory 9/70. because of car theft--committed. Parents moved to Minneapolis, and, therefore, we will not see him back.
8. NR	17	Juv.	Violation of Parole	Return to State Institution	7/70	Discharged--unsatisfactory 10/70. Committed to state and was at Thistledeew Camp. Returned to Rochester, living independently. Committed self to Willmar State Hospital--back in legal trouble.

Accepted In Program (contd)

- 2 -

Name	Age On Entry	Court	Offense	Alternative If PORT Were Not Available	Date of Entry To PORT	Present Progress & Prognosis
9. TR	17	Juv.	Run Away	Red Wing	12/69	Discharged--satisfactory 2/71. Graduated from Mayo High 6/71. Convicted of a misdemeanor charge and was ordered to pay a \$100 fine. Living independently and working. Recently was charged with burglary.
10. ND	21	Mun./ Dist.	Theft/ Rape	Jail	1/70	Withdrew 8/70; returned 12/70 "to work on job problem"; withdrew 3/71. Has had misdemeanor problems and remains unemployed.
11. MR	15	Juv.	Burgl./ Truancy	Red Wing	4/70	Discharged 3/71 to home; first time he has lived there for several years. Finished 10th grade at John Marshall with very good reports from teachers. Dropped out of 11th grade and entered service. Recent correspondence indicated good adjustment.
12. SD	16	Juv.	Truancy Burgl. Car Theft	State Institution	10/70	Discharged--satisfactory 3/71. Dropped from school but has remained out of legal trouble.
13. KS	19	Dist.	Narct.	St. Cloud	9/70	Discharged--satisfactory 2/71. Attended junior college and living independently. Initial 3 months' adjustment seemed quite strong. Recently plead guilty on drug charge of selling.
14. EM	15	Juv.	Violation of Parole	Return to State Institution	9/70	Withdrew 1/71; returned home. Dropped from school, but has remained out of legal difficulty and is employed.
15. ZM	19	Dist./ Fed.	Burgl.	St. Cloud/Fed. Reformatory	4/70	Discharged--satisfactory 7/71. In second year of accounting at vocational school.
16. ZD	15	Juv.	Truancy	Red Wing	2/70	Discharged--satisfactory 7/71; returned home. Dropped out of school. Although remains out of legal trouble, extremely withdrawn from social relationships.

Accepted In Program (contd)

- 3 -

Name	Age On Entry	Court	Offense	Alternative If PORT Were Not Available	Date of Entry To PORT	Present Progress & Prognosis
17. KT	20	Dist.	Narct/ Theft	St. Cloud/ Jail	4/70	Discharged satisfactory 5/71. Finished full year at junior college with good grades. Living and working independently and seems to be functioning very well.
18. YD	17	Juv.	Drunk- enness	Commitment to State Institution	9/70	Withdrew 7/71; presently unemployed. Did graduate from high school 6/71. Still has not resolved alcohol problem and has no definite plans for future. Convicted of misdemeanor offenses around driving, drinking, and disorderly conduct--recently charged with felony theft.
19. CR	14	Juv.	Theft/ Forgery/ Incurrigibility	State Institution	9/70	Unsatisfactory discharge 5/71. Committed to State YCC after considerable school problems and car theft. Returned home and appears to be adjusting well.
20. LM	16	Juv.	Theft	State Institution	11/70	Withdrew--AWOL 5/71. Has recently returned to Rochester and was released from probation. Is married and employed.
21. KJ	15	Juv.	Theft	Probation to PORT from Lino Lakes	11/70	Discharged--satisfactory 6/71 to home. Passed 9th and 10th grades. To date legal and home adjustment has been satisfactory, but continues to have school attendance problem.
22. DD	15	None	Incorri- gibility	Adjudication of Delinquency	12/70	Discharged to foster placement 4/71. Graduated from high school this year.
23. JR	23	Dist.	Burgl.	St. Cloud	5/70	Withdrew--satisfactory 7/71, after severe employment problems and resulting inability to pay several bills. Now re-married, employed and adjusting well out of state.
24. SW	16	Juv.	Burgl/ Drug Taking	State Institution	11/70	Discharged--unsatisfactory 7/71. Continued irresponsibility and angry dependency upon the program; had gone AWOL on several occasions and continued problem with drugs and liquor. Committed to state institution for 4 months; has returned home Dropped school but remains out of legal trouble.

Accepted In Program (contd)

- 4 -

Name	Age On Entry	Court	Offense	Alternative If PORT Were Not Available	Date of Entry To PORT	Present Progress & Prognosis
25. SK	15	Juv.	Run Away	Return to State Institution	5/71	Withdrew--unsatisfactory 7/71. Committed to state after being arrested while AWOL. Recently returned home and has dropped school but has remained out of legal trouble.
26. HR	16	None	Run Away		2/71	Temporary placement by welfare at own request. Ran away back to mother in West Virginia--was allowed to stay.
27. CR	16	Juv.	Vandal.	Commitment	3/71	Satisfactory discharge 9/71. Did very well in school; went to summer school. Now in senior year. Recently returned home with ambivalence over leaving program. Dropped out of school; one conviction for driving violation.
28. GM	15	None	Truancy	Adjudication of Delinquency & Probation	4/70	Discharged satisfactory 6/70, and 12/71. A demonstration case. Would have been sent to court for truancy. Passed 9th & 10th grades with satisfactory grades. re-entered 7/71 because of home problems. Returned home on 12/71 after improving in relationship with parents, school grades, and finding a part-time job. Dropped out of school 4/72.
29. CW	23	Dist.	Robbery	St. Cloud	3/71	Discharged satisfactory 11/71. Completed year in vocational school; has returned to former dependent relationship on elderly parents; presently unemployed.
30. PA	47	Dist.	Forgery	Stillwater	3/71	Discharged satisfactory 10/71. Job and reports from home are positive.
31. LD	20	Dist.	Theft	St. Cloud	4/71	Discharged satisfactory 10/71. Enrolled at vocational school and doing well there in second year. One misdemeanor offense.

Accepted In Program (contd)

- 5 -

Name	Age On Entry	Court	Offense	Alternative If PORT Were Not Available	Date of Entry To PORT	Present Progress & Prognosis
32. CG	23	Dist.	Burgl.	St. Cloud	4/71	Discharged satisfactory 11/71. Entered program provisionally 4/71, withdrew 5/71; behavior very poor, arrested for misdemeanor after withdrawing and returned 6/71. Enrolled full-time at vocational school and worked part-time. Took job as cook in Montana. Recently returned to Rochester and re-married. Drinking continues to cause problems, but appears to be under best control in past years. Financial responsibility improved.
33. HL	22	Dist.	Burgl.	St. Cloud	6/71	Discharged--unsatisfactory 4/72. Returned to St. Cloud after repeated AWOL's, although no new offenses.
34. GM	16	Juv.	Burgl/ Drunkenness	Red Wing	6/70	Withdrew 2/72--originally was discharged 6/71; returned 8/71 after poor adjustment, drinking and fighting. Dropped out of high school--convicted of misdemeanor tampering with a motor vehicle.
35. OR	14	Juv.	Truancy Bicycle Theft	State Institution	7/70	Withdrew 2/72--committed to YCC 3/72; requested state commitment rather than return to PORT following a purse theft.
36. WD	19	Dist./ Fed.	Forgery/ Car Theft	St. Cloud/ Fed. Probation	7/70	Withdrew satisfactory 1/72--originally discharged satisfactory 4/71; was picked up on a misdemeanor charge of property damage. Re-entered 8/71 after reappearing in district court.
37. WH	24	Dist.	Burgl.	St. Cloud	10/70	Discharged satisfactory 2/72. Has done extremely well in financial and employment areas. Recently was married.
38. MR	15	Juv.	Assault	Return to State Institution	12/70	Discharged satisfactory 2/72. Has had difficulty in school but completed 10th grade, and is having a good beginning this year.

Accepted In Program (contd)

- 6 -

Name	Age On Entry	Court	Offense	Alternative If PORT Were Not Available	Date of Entry To PORT	Present Progress & Prognosis
39. YR	14	Juv.	Car Theft	Commitment	2/70	Discharged--unsatisfactory 4/72. Committed to YCC after several AWOL's and four car thefts while at PORT.
40. AJ	17	Juv.	Theft	State Commitment	5/71	Withdrew 6/72--completed 10th grade and has returned home. Recently dropped high school but has found full-time employment.
41. ER	17	Juv.	Burgl.	Return to State Institution	5/71	Discharged--satisfactory 1/72. Originally AWOL 7/71; returned on own 9/71. Is making attempt to return to school.
42. RW	21	Dist.	Burgl/ Violation of Probation	St. Cloud	5/71	Withdrew 2/72 after continued employment, alcohol and daily responsibilities problems. As a result of leaving PORT served 90 days in jail. Recently arrested on drug sale charge.
43. EM	15	Juv.	Run Away/ Burgl.	Commitment to State Institution	6/71	Withdrew 3/72 and returned home. Continues in school.
44. BD	13	Juv.	Car Theft	State Commitment	7/71	Discharged--satisfactory 1/72. Had made an extremely good adjustment to the program, did a good job as an 8th grader at Central Jr. High. Return to a large, disorganized family resulted in poor school work. Returned to PORT 9/72 at our request; returned home 10/72.
45. DM	15	Juv.	Drugs	State Commitment	8/71	Withdrew 4/72--committed self to Willmar, went AWOL and later returned to YCC commitment.
46. FH	16	Juv.	Car Theft/ Incurrigibility	State Commitment	9/71	Withdrew 3/72--dropped out of school.
47. PM	17	Juv.	Drugs	State Commitment	8/30	Discharged--satisfactory 1/72. Made an extremely good response to the program. Severe family problems necessitate placement away from home. Graduated from high school and probation. Recently requested PORT counselor position.

Accepted In Program (contd)

- 7 -

Name	Age On Entry	Court	Offense	Alternative If PORT Were Not Available	Date of Entry To PORT	Present Progress & Prognosis
48. CJ	19	Dist.	Forgery	Prob. Viol. Revocation	10/71	Withdrew 3/72--recently arrested in Missouri and then escaped for which he now faces charges.
49. RC	17	Juv.	Incorri-gibility	Foster Placement	11/71	Withdrew 4/72. Has returned home. Good adjustment at school and improved relationships at home.
50. SL	23	Dist.	Forgery	Commitment	11/71	Withdrew--AWOL 1/72. Committed to Stillwater; no new offense. Has corresponded with PORT requesting return.
51. SD	17	Juv.	Burgl/ Parole Violation	State Commitment	11/71	AWOL 1/72. Returned to YCC commitment.
52. DD	18	Juv.	Burgl/ Forgery/ Parole Violation		11/71	Withdrew 3/72 after finding employment. Job performance very good; recently was offered a promotion.
53. FM	15	Juv.	Car Theft/ Violation	State Commitment	7/71	Discharged--unsatisfactory 3/72. State commitment. Returned to PORT 4/72; then following repeated run-aways was recommitted to the state 8/72.
54. FK	26	Dist.	Burglary	Stillwater	6/71	Discharged--satisfactory 10/72. Consistently good job record; recently took advancement job in Twin City area.
55. SD	15	Juv.	Truancy	State Commitment	10/71	Withdrew satisfactory 9/72. School adjustment remains serious problem.
56. WD	16	Juv.	Drugs/ Violation	State Commitment	11/71	Withdrew satisfactory 9/72. Family has moved recently; picked up driving without license
57. SW	16	Juv.	Assault/ Burgl.	State Commitment	12/71	Discharged--unsatisfactory 2/72. State commitment. Returned 3/72 discharged satisfactory 9/72. Remains in school as senior.
58. TD	21	Dist.	Burgl/ Violation	St. Cloud or State Hosp.	1/72	Discharged--unsatisfactory 7/72. Returned to state hospital following shoplifting conviction.
59. TR	22	Dist.	Burgl/ Violation	St. Cloud	3/72	Discharged--satisfactory 9/72. Misdemeanant driving charge while at PORT. Currently in voc. school, taking care of debts, and planning marriage.

Accepted In Program (contd)

- 8 -

Name	Age On Entry	Court	Offense	Alternative If PORT Were Not Available	Date of Entry To PORT	Present Progress & Prognosis
60. LB	14	Juv.	Truancy Run-away V.O.P.	State Commitment	2/72	Withdrew satisfactory 11/72; Home and school improved but still problematic.
61. OM	18	Dist.	Burgl/V.O.P.	St. Cloud	2/72	Discharged--satisfactory 6/72. Attending vocational school and employed part-time by PORT--recent misdemeanor liquor violation.
62. TJ	19	Dist.	Burgl/V.O.P.	St. Cloud	3/72	Discharged--satisfactory 8/72. Attending vocational school, recently married; good job record.
63. TM	35	Dist.	Break/Entering (1 year)	County Jail	4/72	Discharged--satisfactory 9/72. Good employment record--took job at junior college.
64. BK	16	Juv.	Burgl/V.O.P.	State Commitment	4/72	Unsatisfactory withdrawal 7/72. State commitment after repeated AWOL's and verbal decision to leave.
65. GJ	17	Juv.	Intoxication/Lack of Placement	State Commitment or continue parole	5/72	Discharged--satisfactory 8/72. Controlled drinking; located foster home. Good job in summer school.
66. SL	14	Juv.	Theft/Incorrigibility Truancy V.O.P.	State Commitment	5/72	Discharged--satisfactory 10/72. Greatly improved school and home relationships.
67. PD	19	Dist.	Burgl.	St. Cloud	5/72	Discharged--satisfactory 9/72. One misdemeanor charge (driving while intoxicated) while at PORT Good job performance. Recently married.
68. GD	16	Juv.	Run-Away/V.O.P.	State Commitment	5/72	Withdrew satisfactory 8/72; returned home at own and parent's request. Dropped school recently.
69. LT	18	Juv.	Burgl/Property Damage/V.O.P.	State Commitment	6/72	Discharged--satisfactory 10/72. Excellent job performance. Living at home.
70. BM	13	none	Dept. of Soc.Serv. Ward/home incorrigibility		8/72	Discharged--satisfactory 10/72 after foster home was located.

Accepted In Program (contd)

- 9 -

Name	Age On Entry	Court	Offense	Alternative If PORT Were Not Available	Date of Entry To PORT	Present Progress & Prognosis
71. CD	17	Juv.	Run-away/Car Theft	State Commitment	9/72	Withdrew satisfactory 10/72; joined armed services with PORT and probation agreement.
72. NG	21	Dist.	Burgl.	St. Cloud	10/71	Discharged unsatisfactory 1/72. Committed to St. Cloud; repeated runaways and a shoplifting conviction resulted in decision.
73. PD	26	Dist.	Burgl.	Stillwater	4/71	Discharged satisfactory 8/72. Long history prior to PORT of correctional institutionalization. Currently in second year at junior college, receiving good grades. Recently became PORT counselor.
<u>SHORT TERM STAY ONLY</u>						
1. MM		Dist.			11/69	Probationer in need of short-term residence.
2. MD	16	Juv.	Incorrigibility/Burgl/Parole Viol.		1/70	Rejected during provisional stay. Received probation (outside of PORT geographical limits)
3. AM	21	Dist.	Burgl.		1/70	Used PORT as "half-way out" on return from St. Cloud; found job and "improved home" during stay.
4. KM	28	Dist.	Larceny		1/70	Withdrew during provisional stay; received probation.
5. HS	16	Juv.	Burgl.		4/70	Rejected during provisional stay; Committed.
6. TW	19	Dist.	Burgl.		1/70	Withdrew during provisional stay; received probation.
7. KL	16	Juv.	Burgl.		1/70	Rejected during provisional stay; committed (outside of PORT geographical limits).
8. CS	16	Juv.	Drugs		3/70	Withdrew during provisional stay; committed.
9. ED	16	Juv.			9/70	Placed at PORT twice for one-week stays while conflict developed at home as an alternative to jail or a foster placement. Returned to his home and remained in the community. Follow up on progress & adjustment has been very good.

Short Term Stay Only (contd)

- 10 -

Name	Age On Entry	Court	Offense	Alternative If PORT Were Not Available	Date of Entry To PORT	Present Progress & Prognosis
10. GL 21		Dist.	Burgl.		4/70	Rejected during provisional stay; received probation (outside PORT geographical limits).
11. FM 17		Juv.	Incorr- igibility	Jail (short term)	8/71	At PORT for a 4-day period as a result of being assaultive towards his own family. While at PORT was evaluated at Mental Health Center, and it was decided to let him return home.
12. LB 16				Adjudication or Children's Home	8/71	Entered provisionally with an alternative of being adjudicated a delinquent or being placed in a children's institution. After a short stay, he decided that another try at home was in order, this after a long history of foster placements.
13. GE 21		Dist.	Burgl/ Drugs		11/70	Short term "jacking-up" stay at request of probation officer after return from St. Cloud.
14. LM 17		Juv.	Drugs		5/71	At PORT for three-week evaluation because of request of probation officer--decided at that time that he had strengths and resources in the community to make it without a residential program.
15. SS 23		Dist.	Aggra- vated Damage	Jail	6/71	Came to PORT for a 4-day stay at the request of his probation officer following a serious fight with his wife. Was released from jail to PORT; during the brief stay, he and his wife were able to get some counseling and the result was that he was able to move back home.
16. MD 22		Dist.	Burgl.		8/71	Withdrew during provisional stay; county jail; PORT facilitated referral to veteran's hospital.
17. GP 17		Juv.			4/72	Probation officer requested stay at PORT while awaiting induction into armed services.
18. GG 35		Dist.	Att. Burgl.		4/72	Withdrew during provisional--received probation, was able to set up counseling, AA attendance and job during provisional stay.

Short Term Stay Only (contd)

- 11 -

Name	Age On Entry	Court	Offense	Alternative If PORT Were Not Available	Date of Entry To PORT	Present Progress & Prognosis
19. VH 14		Juv.	Home Incorri- gibility	Continue Probation	4/72	Short term stay at own request; returned home with parents' consent.
20. KT 15		Juv.	Home Incorri- gibility,	State Commit- ment Run-away	7/72	Withdrew satisfactory 8/20; AWOL. Referred himself to residential treatment center.
21. TM 16		Juv.	Burgl.	State Commit- ment	8/72	Withdrew AWOL 9/72
22. KH 16		Juv.	Run- away	Continue Pro- bation	9/72	Self referral; returned home with parents' agreement.

END