

THE JUDICIAL DEPARTMENT

STATE OF NORTH CAROLINA
NCJRS

JUL 29 1977

ACQUISITIONS



14573

ANNUAL REPORT

OF THE

ADMINISTRATIVE OFFICE OF THE COURTS

1973

THE JUDICIAL DEPARTMENT
STATE OF NORTH CAROLINA

ANNUAL REPORT

of the

ADMINISTRATIVE OFFICE OF THE COURTS

1973



ADMINISTRATIVE OFFICE OF THE COURTS
JUSTICE BUILDING
RALEIGH, NORTH CAROLINA

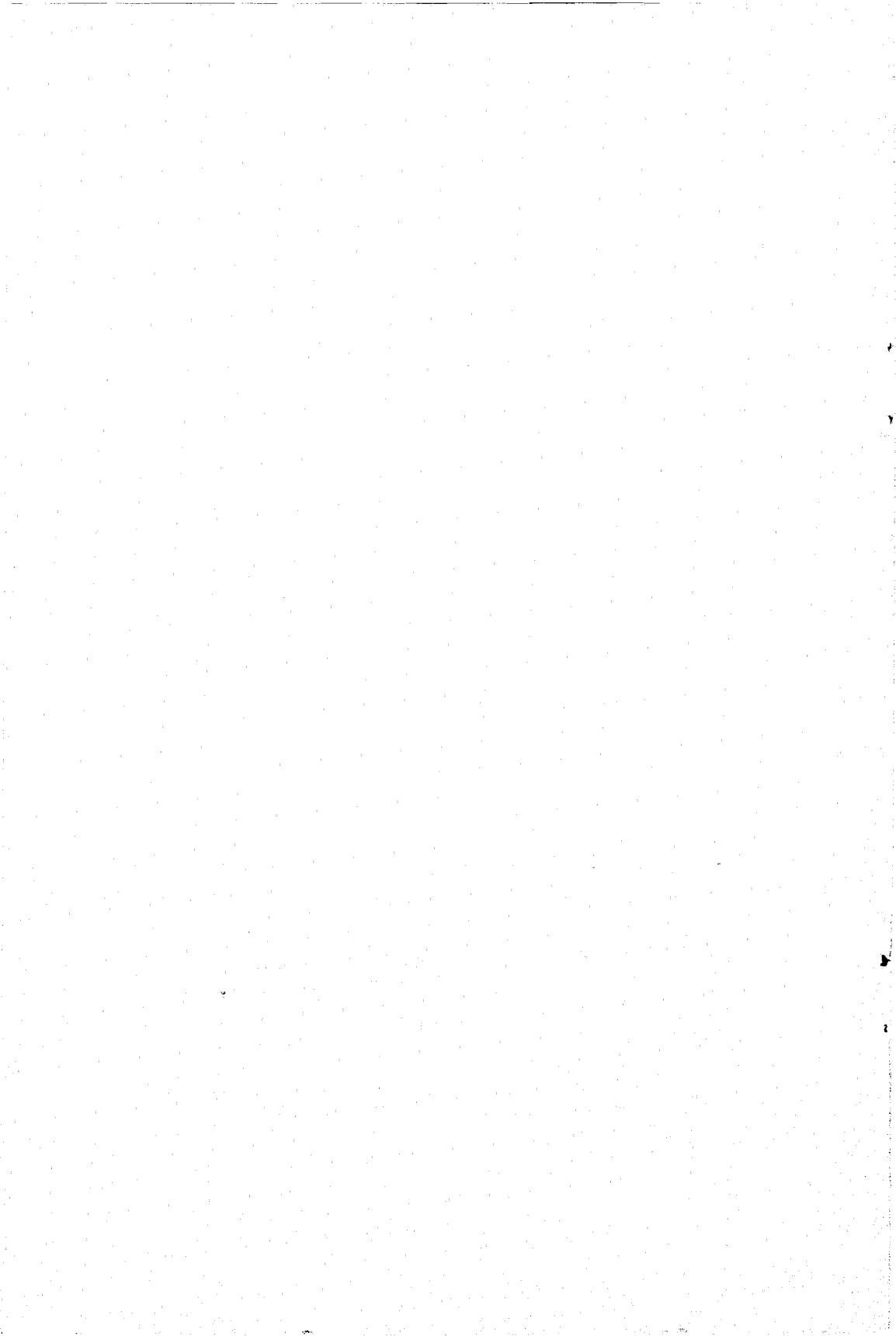
BERT M. MONTAGUE
Director

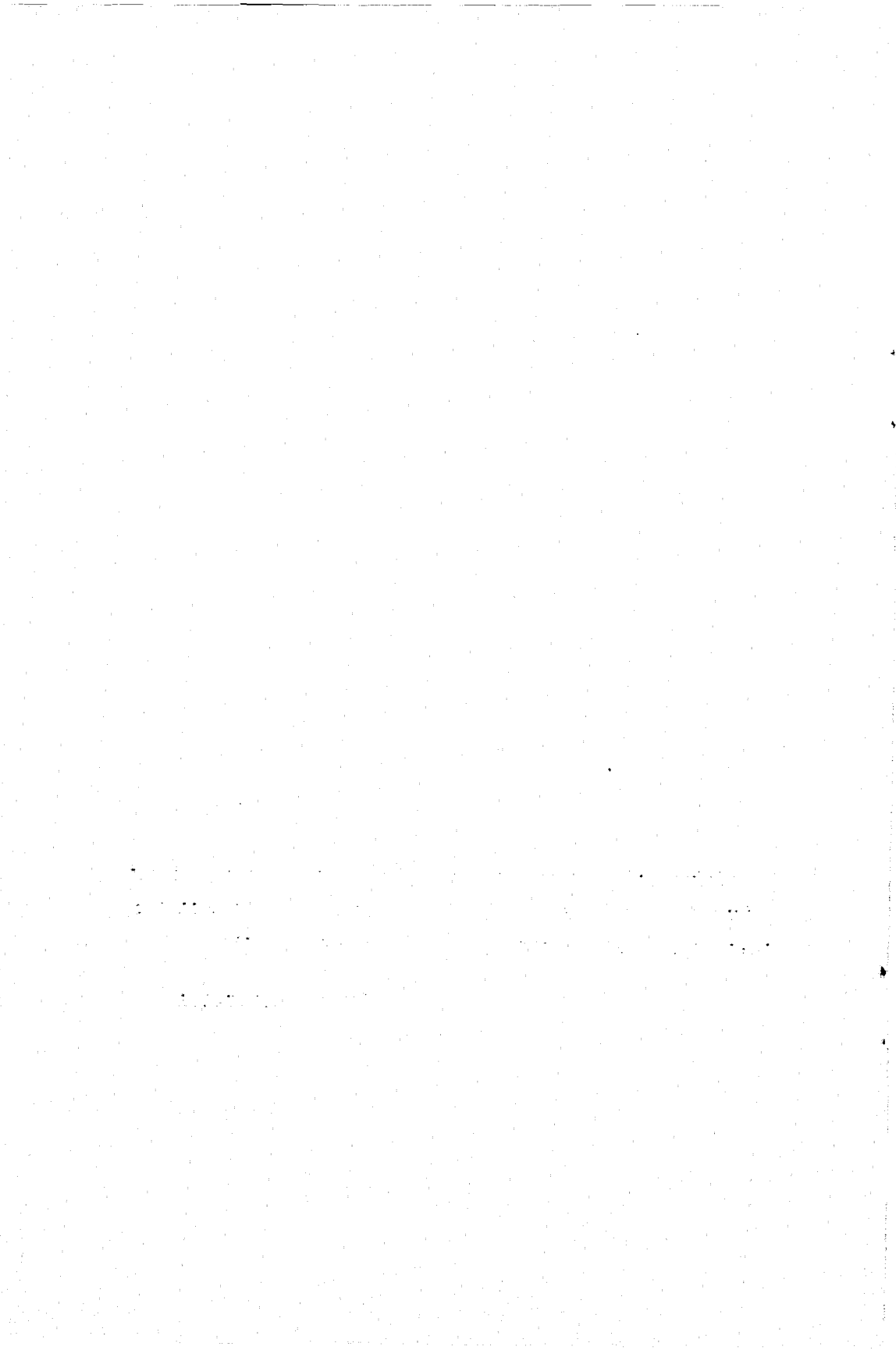
FRANKLIN E. FREEMAN, JR.
Assistant Director

*To The Honorable, The Chief Justice of
The Supreme Court of North Carolina*

Submitted herewith is the Eighth Annual Report of the Administrative Officer of the Courts. This Report, prepared pursuant to G.S. 7A-843, relates to the 1973 calendar year.

BERT M. MONTAGUE
Director





CONTENTS

Foreword	7
Map of North Carolina Judicial Divisions and Districts	10
The Appellate Division	11
The Supreme Court	11
The Court of Appeals	12
The Superior Court Division	13
Total Cases Added and Disposed of in the Superior Court	13
Total Cases Pending in the Superior Court	14
Utilization of Scheduled Court	14
Superior Court Civil Dockets	15
Civil Cases Added and Disposed of in the Superior Court	16
Civil Cases Pending in the Superior Court	16
Distribution of Pending Civil Cases among the Counties	17
Ten Counties with Largest Civil Dockets	17
Civil Cases Pending, Added, and Disposed of in the Superior Court	18
Utilization of Civil Superior Court Terms	25
Superior Court Criminal Dockets	29
Criminal Cases Added and Disposed of in the Superior Court	31
Criminal Cases Pending in the Superior Court	31
Distribution of Pending Criminal Cases among the Counties	32
Ten Counties with Largest Criminal Dockets	32
Ten Counties with Greatest Proportion of Cases Pending in Relation to Dispositions	33
Percent of Cases Tried in the District Court Which Were Appealed to the Superior Court for Trial <i>De Novo</i>	33
Percent of Superior Court Filings Which are Cases Appealed from the District Court for Trial <i>De Novo</i>	33
Criminal Cases Pending, Added, and Disposed of in the Superior Court	34
Utilization of Criminal Superior Court Terms	41
The District Court Division	45
District Court Civil Dockets	45
Civil Cases Added and Disposed of in the District Court	46

Civil Cases Pending in the District Court	46
Distribution of Pending Civil Cases among the Counties	47
Ten Counties with Largest Civil Dockets	47
Civil Cases Pending, Added and Disposed of in the District Court	48
District Court Criminal Dockets	56
Criminal Cases Added and Disposed of in the District Court	57
Criminal Cases Pending in the District Court	57
Distribution of Pending Criminal Cases among the Counties	57
Ten Counties with Largest Criminal Dockets	58
Criminal Cases Pending, Added, and Disposed of in the District Court	59
Offenses and Conditions Alleged in Juvenile Petitions and Number of Children Before Court for First Time	66
Juvenile Proceedings — Adjudicatory Hearings in the District Court	74
District Court Activity in Motor Vehicle and Small Claim Cases	81
Days of Court Held at Each Seat of the District Court	86
Fiscal Operations	91
Amounts of Fees, Fines and Forfeitures Collected and Distributed	92
Representation of Indigents	96
Assigned Counsel - Cases and Expenditures	97
Tables	
The Courts Commission	101
The Judicial Council	101
Superior Court Judges	102
District Court Judges	103
District Attorneys and Assistants	105
Public Defenders and Assistants	108
Clerks of the Superior Court	108

FOREWORD

The court reorganization movement in North Carolina began in the mid nineteen-fifties and culminated in the adoption of constitutional amendments in 1962 and 1965 and the enactment of the "Judicial Department Act of 1965." Yet, North Carolina's unified judicial system is still relatively young. The year 1973 marks only the third year during which all divisions of the General Court of Justice have operated in each of the State's 100 counties. The Judicial Department consists of an Appellate Division composed of the Supreme Court and the Court of Appeals (which has been fully operational since 1968), a Superior Court Division and a District Court Division. The system is unified for purposes of jurisdiction, operation and administration. All of the officers and personnel of the Judicial Department are employees of the State.

There are now 7 justices of the Supreme Court, 9 judges of the Court of Appeals, 49 full-time Superior Court judges, 112 District Court judges, 30 district attorneys and 112 assistant district attorneys, 3 public defenders and 11 assistant public defenders (serving in the 12th, 18th and 28th judicial districts), 100 clerks of the superior court, approximately 520 magistrates, approximately 200 juvenile counselors (serving in 29 judicial districts), 76 court reporters, and over 1,100 supporting personnel (primarily assistants, deputies, secretarial and clerical personnel in the offices of clerks of the superior court).

The Administrative Officer of the Courts is required to "submit an annual report on the work of the Judicial Department" to the Chief Justice and the members of the General Assembly. This *Annual Report* is based upon data supplied by the clerks of superior court on a monthly and quarterly basis. The data contained herein can most appropriately be used in making year-to-year comparisons for the entire system and in comparing the performance of different counties and judicial districts. The data is also the beginning point for independent analysis of the performance of the courts of each county and judicial district. Although caution should be used in generalizing about the performance of the entire General Court of Justice, this report does evaluate the status of the criminal and civil dockets of the Superior and District Court divisions. These evaluations are carefully grounded on the available data base, but they derive from *quantitative* rather than *qualitative* data and are based upon totals for groups of counties rather than a thoroughgoing analysis of each county.

As explained in the foreword to the 1971 and 1972 *Annual Reports* most of the comparative analysis for those years was based upon the data from the 83 counties where the court structure was constant throughout the period of comparison. Some of the bar graphs were based solely on a comparison of these

83 counties. This year the distinction between "Group I" and "Group II" counties has been eliminated, since all 100 counties have been under the new structure for three full years. All commentary, tables and graphs are based upon data from all 100 counties. Although Superior Court graphs permit a five year comparison, District Court graphs will thus permit only a three year comparison.

Although there are a number of statistical indicators that may be used in evaluating court performance, there is no single barometer that gives a weighted average of all factors. The more obvious factors to weigh in making year-to-year comparisons and relative rankings between counties and judicial districts are filings, dispositions, and the number of cases pending at the end of the year. Other useful measures are the *pending ratios* (the relation that the number of cases pending at year's end bears to the number of cases disposed of during the year) and the *rate of disposition* (the percentage of the year's filings which were disposed of during the year). Low *pending ratios* and high *rates of disposition* are positive measures.

The statistics contained herein are *case flow* statistics and none are "backlog" or "delay" statistics. This report uses "cases pending" as one unit of analysis, but the term "backlog" will not be found herein and it is inaccurate to apply that term to the cases which are properly described as "pending." A case which is pending may be two days or two years old. "Backlog" may be tentatively defined as those cases which have been pending disposition longer than an agreed upon standard of time for the average case of the same type in the same court. A "delayed" case would be any case which exceeded the agreed upon standard time-frame and such cases could also be described as "backlogged." Even if an agreed upon standard time-frame with supporting data was available, such data could only properly be used (as is the case with the data which is available) as a starting point for analysis.

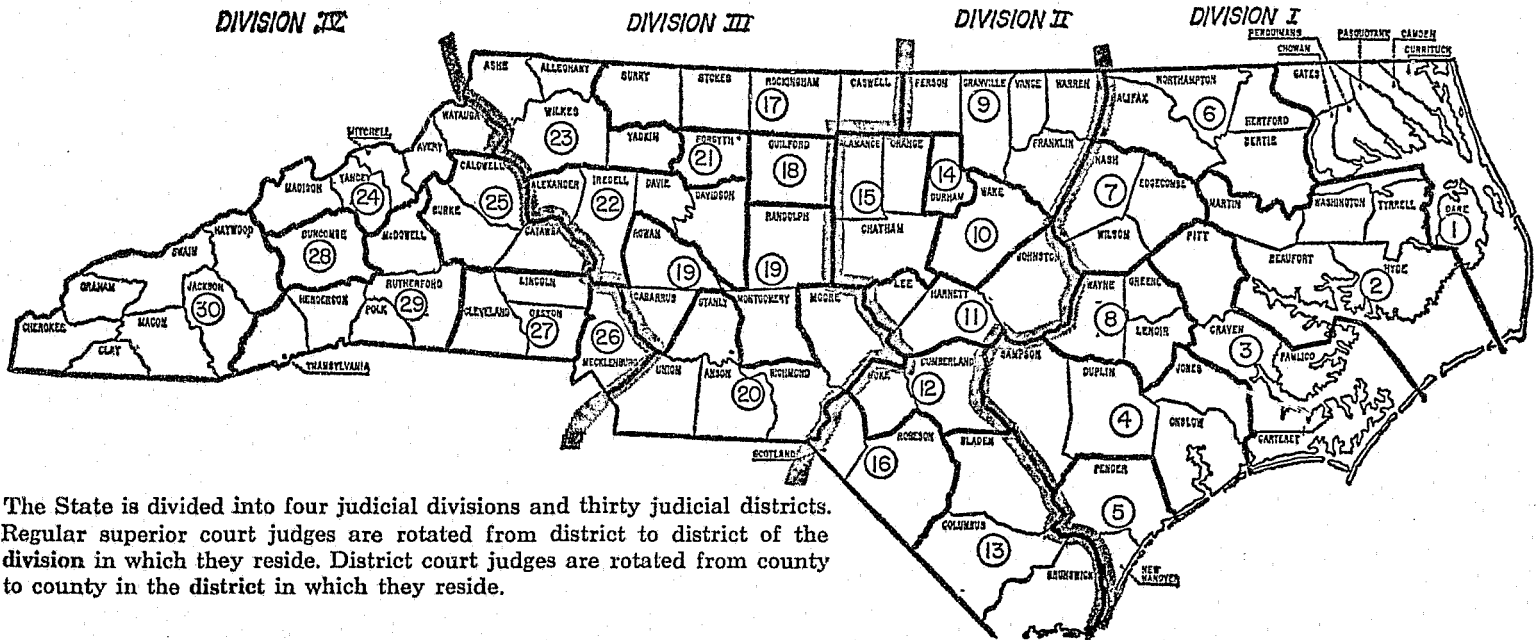
In any case, the Administrative Office does not now routinely collect data on the length of time required for the disposition of particular cases. However, this office commissioned a special study of cases filed in the Superior Court Criminal Division in 1971. The results of that study were published in December of 1973. Although the data for that study is somewhat outdated (there have been marked improvements in the performance of the Criminal Division of the Superior Court in both 1972 and 1973), it is valuable in that it makes available numerous types of data that have not been available in the past. Moreover, it makes a useful analytical contribution to the causes of docket congestion and delay. Copies of *Delay in The Superior Courts of North Carolina and an Assessment of Its Causes* may be obtained from the Administrative Office.

Whatever the unit of analysis, whether "cases pending," "delayed cases," or "pending ratios," a number of questions must be asked once the raw data is available. At what point in time is the data stated? Cases pending, for example, are stated as of December 31, 1973; are they generally higher during a holiday season? What effect do the customs and practices of the local bar have upon courtroom and trial delays? What are the policies of the court, the bar, and district attorneys with respect to continuances? Is there a well thought out system for the calendaring of cases? Are pre-trial release procedures working effectively? Is the waiver procedure for motor vehicle cases fully utilized? Are continuances caused by court congestion or are they sought after by the parties? What effect do sentencing practices have upon the rate of criminal appeals between the District and Superior Courts? How much court was held in the district and how often? (In some counties there are no more than two weeks of Superior Court each year.) What are the geographical dimensions of the judicial district? Are seats of court distant from one another, requiring a great deal of travel time by court officials? Are there sufficient courtrooms available when needed? Are the courtrooms located and designed so as to permit efficient dispatch of the court's business? How many cases counted as "pending" are essentially "dead" cases and will ultimately be *not prossed* or dismissed? (It may in fact be customary strategy to file a civil action knowing at the time that the case will never be tried; similarly, it may be good strategy for the district attorney not to *not pros* a case, although knowing that it will never be tried.) What is the extent of plea bargaining in the district? What is the settlement rate in the district? Has there been illness among court officials? Are there adequate investigatory resources? Are law enforcement and expert witnesses available when needed? The above list is not exhaustive but is illustrative of the types of questions that must be explored in analyzing the statistical data for each county and district.

The purpose of this foreword has not been to denigrate the statistical data reported herein, but to stress the subtlety and complexity of the variables which they reflect. All quantitative data must be read with care and this is especially true of court statistics. Too great a reliance on numbers alone gives credence to the concept of "mass justice." Court officials know that justice is administered to individuals.

May, 1974

NORTH CAROLINA JUDICIAL DIVISIONS AND DISTRICTS



The State is divided into four judicial divisions and thirty judicial districts. Regular superior court judges are rotated from district to district of the division in which they reside. District court judges are rotated from county to county in the district in which they reside.

THE APPELLATE DIVISION

THE SUPREME COURT

One hundred and forty-six opinions were filed by the Supreme Court in 1973. Full opinions were rendered in 136 cases and 10 opinions were *per curiam*. Of the total, 94 were criminal and 52 were civil cases. Sixty-nine percent (65 opinions) of the criminal appeals were affirmed and 35% (18 opinions) of the civil appeals were affirmed. In the remaining cases, the Supreme Court modified the decision from which the appeal was taken. As reported in the North Carolina Reports, the court disposed of 235 petitions for *certiorari*, 2 motions to dismiss, 2 motions to rehear, and 1 motion to withdraw.

JUSTICES OF THE SUPREME COURT

Chief Justice

WILLIAM H. BOBBITT

Associate Justices

CARLISLE W. HIGGINS

SUSIE SHARP

I. BEVERLY LAKE

JOSEPH BRANCH

J. FRANK HUSKINS

DAN K. MOORE

Emergency Justices

WILLIAM B. RODMAN, JR.

J. WILL PLESS, JR.

THE COURT OF APPEALS

Six hundred and sixty-four opinions were filed by the Court of Appeals in 1973. Of these 664, 363 were criminal cases and 301 were civil cases. The court determined and disposed of 317 motions and 452 petitions in 1973.

JUDGES OF THE COURT OF APPEALS

Chief Judge

WALTER E. BROCK

Associate Judges

HUGH B. CAMPBELL

R. A. HEDRICK

DAVID M. BRITT

EARL W. VAUGHN

NAOMI E. MORRIS

JAMES M. BAILEY, JR.

FRANK M. PARKER

JAMES H. CARSON, JR.

Emergency Judge

RAYMOND B. MALLARD

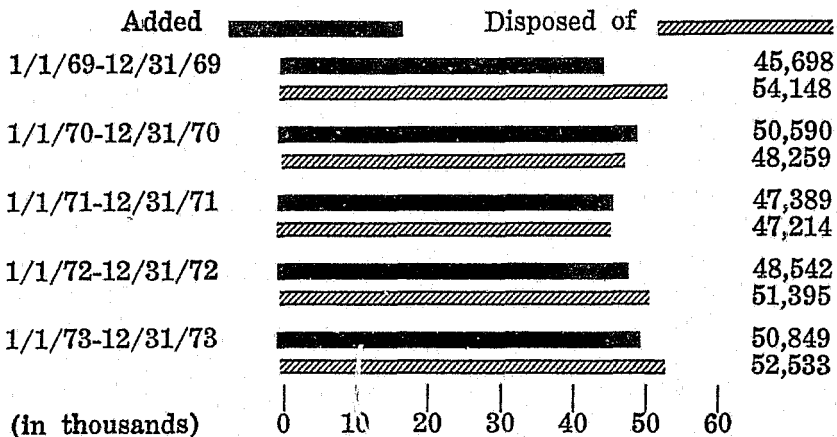
THE SUPERIOR COURT DIVISION

The performance of the superior court division of the General Court of Justice is adequately summarized in the sections on civil and criminal dockets which follow. Only a few items deserve highlighting in terms of the combined civil and criminal dockets. Total filings increased by 4.8% and dispositions increased by 2.2%. The number of cases pending at the end of the year decreased by 6.0%. The number of days of court scheduled increased by 4.1% and was followed by an increase of 2.9% in the number of days of court actually held. For all 100 counties the percentage of court utilization remained about the same, dropping by less than 1%. Significantly, the total number of cases pending is the lowest since court reorganization began in 1966.

It is especially encouraging to note that the pending ratio for the criminal division dropped from 50.9 in 1971 to 40.5 in 1972, and to 32.3 this year. It is discouraging to note that the ratio for the civil division rose from 131.3 in 1972 to 154.6 in 1973. Extrapolating these ratios, it may be estimated that it would require less than 4 months for the court to dispose of its pending criminal cases and over one year and six months to dispose of its civil cases.

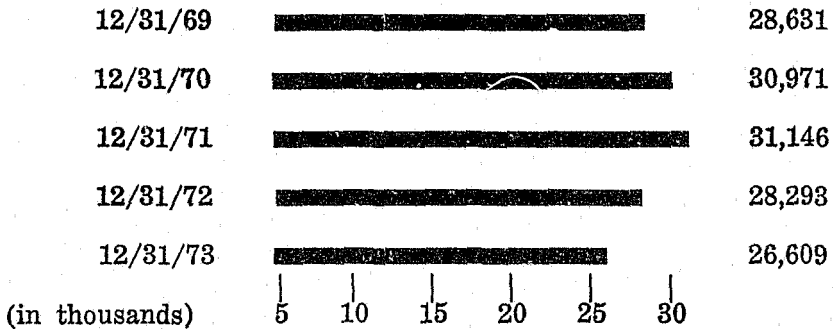
TOTAL CASES ADDED AND DISPOSED OF IN THE SUPERIOR COURT

January 1, 1969 - December 31, 1973



**TOTAL CASES PENDING
IN THE SUPERIOR COURT**

December 31, 1969 - December 31, 1973



UTILIZATION OF SCHEDULED COURT

January 1, 1969 - December 31, 1973

	<i>Days Scheduled</i>	<i>Days Held</i>	<i>Percentage</i>
1/1/69-12/31/69	9,061½	7,118	78.5
1/1/70-12/31/70	8,940½	7,178½	80.3
1/1/71-12/31/71	8,792	7,266½	82.6
1/1/72-12/31/72	9,170	7,496	81.7
1/1/73-12/31/73	9,542½	7,716	80.9

SUPERIOR COURT CIVIL DOCKETS

Although delay in the disposition of criminal cases and the resulting congestion that occurs has received considerable public attention in recent years, the problem of delay and congestion in the civil division of the superior court has been virtually ignored. As indicated in this space last year, there is room for much improvement in the disposition of superior court civil cases.

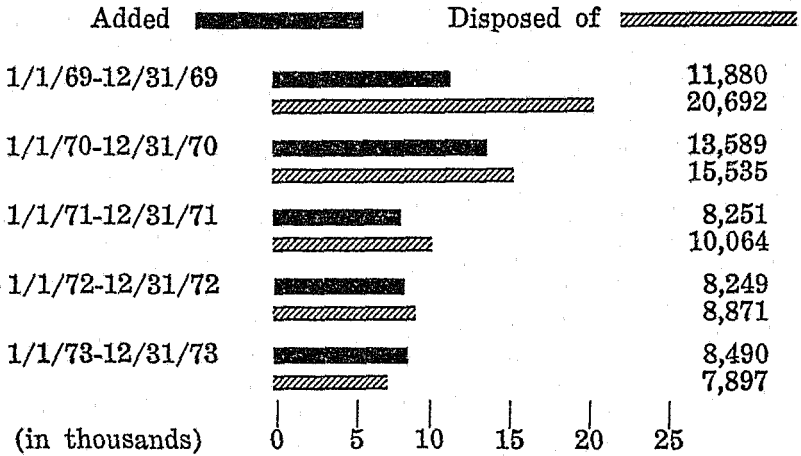
For the first time in the last seven years, the number of cases filed has exceeded the number of cases disposed of and the number of cases pending at the end of the year has shown an increase from the prior year. As has always been the case, the pending ratio for this division is higher than for any other division of the General Court of Justice. The 1972 ratio was 131.3, indicating that it would require approximately one year and four months for the superior court to dispose of all cases pending. Significantly, the 1973 ratio has increased to 154.6 which indicates that it would require over one year and six months to dispose of all civil cases pending.

Most performance indicators are not favorable when compared to 1972. Filings increased from 8,249 to 8,490 or 2.9%; dispositions decreased from 8,871 to 7,897 or 11.0%; and the number of cases pending at the end of the year increased from 11,617 to 12,210 or 5.1%. The rate of disposition dropped from 108.8% to 93.0%. There was improvement in court availability and utilization, the number of days scheduled increasing by 1.6% and the number of days held increasing by 4.3%. The percentage of court utilization increased from 73.3% to 74.9%.

Among all 100 counties, the 10 counties with the largest civil dockets accounted for 48.5% of the total pending cases. Sixty-eight counties had 100 or fewer cases pending and only 4 counties had more than 500 pending.

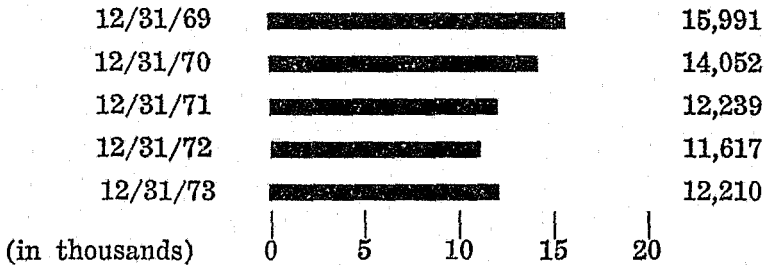
**CIVIL CASES ADDED AND DISPOSED OF
IN THE SUPERIOR COURT**

January 1, 1969 - December 31, 1973



**CIVIL CASES PENDING
IN THE SUPERIOR COURT**

December 31, 1969 - December 31, 1973



**DISTRIBUTION OF PENDING CIVIL CASES
AMONG THE COUNTIES**

Number of Cases	Less than 50	50-100	101-200	201-500	Over 500
Number of Counties 1972	42	30	15	9	4
1973	41	27	19	9	4

TEN COUNTIES WITH LARGEST CIVIL DOCKETS*

County	Pending 1-1-73	Added	Disposed of	Pending 12-31-73	Percent of Filings Disposed of
Mecklenburg	1,490	891	874	1,507	98.1
Wake	844	664	469	1,039	70.6
Guilford	693	695	580	808	83.5
Forsyth	576	758	707	627	93.3
Buncombe	407	297	303	401	102.0
Henderson	334	36	34	336	94.4
Franklin	305	54	24	335	44.4
Durham	374	212	288	298	135.8
Gaston	327	261	291	297	111.5
Cumberland	237	247	207	277	83.8
STATE MEAN	116	85	79	122	92.9

*All of these counties were listed in this table in the 1972 Annual Report.

**CIVIL CASES PENDING, ADDED, AND DISPOSED OF IN THE SUPERIOR COURTS
BY JUDICIAL DISTRICTS**

January 1, 1973 — December 31, 1973

	Pending 1/1/73	Cases Filed	Cases Disposed of				Pending 12/31/73	Gain or Loss
			Jury	Judge	Other	Total		
<u>1ST DISTRICT</u>								
Camden	5	5	0	0	5	5	5	0
Chowan	26	32	0	4	8	12	46	+ 20
Currituck	14	24	1	4	3	8	30	+ 16
Dare	36	43	0	10	12	22	57	+ 21
Gates	16	5	0	3	1	4	17	+ 1
Pasquotank	45	32	4	12	24	40	37	- 8
Perquimans	28	13	2	9	7	18	23	- 5
TOTAL	170	154	7	42	60	109	215	+ 45
<u>2ND DISTRICT</u>								
Beaufort	77	53	6	21	26	53	77	0
Hyde	11	6	0	4	4	8	9	- 2
Martin	30	22	0	11	12	23	29	- 1
Tyrrell	3	0	0	1	2	3	0	- 3
Washington	20	15	0	5	4	9	26	+ 6
TOTAL	141	96	6	42	48	98	141	0
<u>3RD DISTRICT</u>								
Carteret	88	52	7	14	23	44	96	+ 8
Craven	132	127	3	43	68	114	145	+ 13
Pamlico	17	9	0	1	4	5	21	+ 4
Pitt	125	94	4	23	27	54	165	+ 40
TOTAL	362	282	14	81	122	217	427	+ 65

	Pending 1/1/73	Cases Filed	Cases Disposed of				Pending 12/31/73	Gain or Loss
			Jury	Judge	Other	Total		
<u>4TH DISTRICT</u>								
Duplin	88	33	2	25	32	59	62	— 26
Jones	15	11	3	1	4	8	18	+ 3
Onslow	153	79	2	35	26	63	169	+ 16
Sampson	62	33	4	8	14	26	69	+ 7
TOTAL	318	156	11	69	76	156	318	0
<u>5TH DISTRICT</u>								
New Hanover	189	114	10	35	49	94	209	+ 20
Pender	54	15	1	8	8	17	52	— 2
TOTAL	243	129	11	43	57	111	261	+ 18
<u>6TH DISTRICT</u>								
61 Bertie	30	22	1	3	7	11	41	+ 11
Halifax	72	60	2	35	23	60	72	0
Hertford	30	23	5	10	12	27	26	— 4
Northampton	22	14	0	6	8	14	22	0
TOTAL	154	119	8	54	50	112	161	+ 7
<u>7TH DISTRICT</u>								
Edgecombe	19	72	1	15	24	40	51	+ 32
Nash	137	110	10	34	47	91	156	+ 19
Wilson	150	64	3	12	48	63	151	+ 1
TOTAL	306	246	14	61	119	194	358	+ 52
<u>8TH DISTRICT</u>								
Greene	54	24	7	6	26	39	39	— 15
Lenoir	164	76	4	28	49	81	159	— 5
Wayne	212	135	6	72	63	141	206	— 6
TOTAL	430	235	17	106	138	261	404	— 26

	Pending 1/1/73	Cases Filed	Cases Disposed of				Pending 12/31/73	Gain or Loss
			Jury	Judge	Other	Total		
<u>9TH DISTRICT</u>								
Franklin	305	54	6	9	9	24	335	+ 30
Granville	55	33	3	4	14	21	67	+ 12
Person	31	20	1	8	15	24	27	- 4
Vance	91	50	4	17	33	54	87	- 4
Warren	72	7	4	11	8	23	56	- 16
TOTAL	554	164	18	49	79	146	572	+ 18
<u>10TH DISTRICT</u>								
Wake	844	664	27	200	242	469	1,039	+195
<u>11TH DISTRICT</u>								
Harnett	182	115	7	32	87	126	171	- 11
Johnston	138	103	3	22	67	92	149	+ 11
Lee	96	78	8	17	16	41	133	+ 37
TOTAL	416	296	18	71	170	259	453	+ 37
<u>12TH DISTRICT</u>								
Cumberland	237	247	10	65	132	207	277	+ 40
Hoke	11	9	0	1	7	8	12	+ 1
TOTAL	248	256	10	66	139	215	289	+ 41
<u>13TH DISTRICT</u>								
Bladen	14	17	0	8	4	12	19	+ 5
Brunswick	156	26	1	9	52	62	120	- 36
Columbus	100	65	12	24	18	54	111	+ 11
TOTAL	270	108	13	41	74	128	250	- 20

	Pending 1/1/73	Cases Filed	Cases Disposed of				Pending 12/31/73	Gain or Loss
			Jury	Judge	Other	Total		
<u>14TH DISTRICT</u>								
Durham	374	212	24	18	246	288	298	— 76
<u>15TH DISTRICT</u>								
Alamance	148	89	2	31	58	91	146	— 2
Chatham	52	26	3	16	20	39	39	— 13
Orange	203	63	8	12	37	57	209	+ 6
TOTAL	403	178	13	59	115	187	394	— 9
<u>16TH DISTRICT</u>								
Robeson	132	124	14	132	36	182	74	— 58
Scotland	22	8	0	3	2	5	25	+ 3
TOTAL	154	132	14	135	38	187	99	— 55
<u>17TH DISTRICT</u>								
Caswell	10	12	2	5	7	14	8	— 2
Rockingham	105	109	11	41	57	109	105	0
Stokes	27	28	11	6	10	27	28	+ 1
Surry	128	54	13	7	58	78	104	— 24
TOTAL	270	203	37	59	132	228	245	— 25
<u>18TH DISTRICT</u>								
Guilford—								
Greensboro	561	481	48	202	189	439	603	+ 42
High Point	132	214	16	57	68	141	205	+ 73
TOTAL	693	695	64	259	257	580	808	+115

	Pending 1/1/73	Cases Filed	Cases Disposed of				Pending 12/31/73	Gain or Loss
			Jury	Judge	Other	Total		
<u>19TH DISTRICT</u>								
Cabarrus	98	82	10	46	30	86	94	- 4
Montgomery	26	36	1	3	20	24	38	+ 12
Randolph	206	69	13	42	61	116	159	- 47
Rowan	60	78	9	24	55	88	50	- 10
TOTAL	390	265	33	115	166	314	341	- 49
<u>20TH DISTRICT</u>								
Anson	36	31	8	12	4	24	43	+ 7
Moore	99	47	6	22	5	33	113	+ 14
Richmond	90	53	8	33	17	58	85	- 5
Stanly	25	18	3	3	15	21	22	- 3
Union	24	113	12	11	22	45	92	+ 68
TOTAL	274	262	37	81	63	181	355	+ 81
<u>21ST DISTRICT</u>								
Forsyth	576	758	78	462	167	707	627	+ 51
<u>22ND DISTRICT</u>								
Alexander	21	19	0	11	10	21	19	- 2
Davidson	146	175	10	78	58	146	175	+ 29
Davie	25	30	2	7	15	24	31	+ 6
Iredell	140	99	16	44	69	129	110	- 30
TOTAL	332	323	28	140	152	320	335	+ 3
<u>23RD DISTRICT</u>								
Alleghany	9	16	7	2	2	11	14	+ 5
Ashe	13	14	2	2	12	16	11	- 2
Wilkes	80	86	8	19	54	81	85	+ 5
Yadkin	66	26	5	15	18	38	54	- 12
TOTAL	168	142	22	38	86	146	164	- 4

	Pending 1/1/73	Cases Filed	Cases Disposed of				Pending 12/31/73	Gain or Loss
			Jury	Judge	Other	Total		
<u>24TH DISTRICT</u>								
Avery	30	21	8	23	7	33	18	- 12
Madison	26	47	2	9	14	25	48	+ 22
Mitchell	14	23	0	4	9	13	24	+ 10
Watauga	27	33	1	6	16	23	37	+ 10
Yancey	9	22	1	1	11	13	18	+ 9
TOTAL	106	146	7	43	57	107	145	+ 39
<u>25TH DISTRICT</u>								
Burke	105	91	59	10	43	112	84	- 21
Caldwell	63	76	4	10	64	78	61	- 2
Catawba	87	140	5	41	54	100	127	+ 40
TOTAL	255	307	68	61	161	290	272	+ 17
<u>26TH DISTRICT</u>								
Mecklenburg	1,490	891	39	246	589	874	1,507	+ 17
<u>27TH DISTRICT</u>								
Cleveland	116	116	11	36	42	89	143	+ 27
Gaston	327	261	45	126	120	291	297	- 30
Lincoln	50	58	7	12	16	35	73	+ 23
TOTAL	493	435	63	174	178	415	513	+ 20
<u>28TH DISTRICT</u>								
Buncombe	407	297	39	213	51	303	401	- 6

	Pending 1/1/73	Cases Filed	Cases Disposed of				Pending 12/31/73	Gain or Loss
			Jury	Judge	Other	Total		
<u>29TH DISTRICT</u>								
Henderson	334	36	5	16	13	34	336	+ 2
McDowell	25	28	5	1	11	17	36	+ 11
Polk	26	12	0	4	9	13	25	- 1
Rutherford	70	70	9	40	23	72	68	- 2
Transylvania	20	23	0	9	12	21	22	+ 2
TOTAL	475	169	19	70	68	157	487	+ 12
<u>30TH DISTRICT</u>								
Cherokee	15	15	0	8	8	16	14	- 1
Clay	7	5	2	2	3	7	5	- 2
Graham	15	33	0	4	12	16	32	+ 17
Haywood	57	43	5	17	13	35	65	+ 8
Jackson	58	29	3	8	6	17	70	+ 12
Macon	87	33	5	28	6	39	81	- 6
Swain	62	12	2	2	6	10	64	+ 2
TOTAL	301	170	17	69	54	140	331	+ 30
GRAND TOTAL	11,617	8,490	776	3,167	3,954	7,897	12,210	+593
Percent			9.8	40.1	50.1	100.0		

**UTILIZATION OF CIVIL SUPERIOR COURT TERMS
BY JUDICIAL DISTRICTS**

1973 Calendar Year

	Days Scheduled	Days Held	Days Unused	% Used
<u>1ST DISTRICT</u>				
Camden	5	1	4	20.0
Chowan	15	7½	7½	50.0
Currituck	10	5	5	50.0
Dare	7	4	3	57.1
Gates	5	2	3	40.0
Pasquotank	10	5	5	50.0
Perquimans	10	5	5	50.0
TOTAL	62	29½	32½	47.6
<u>2ND DISTRICT</u>				
Beaufort	30	24	6	80.0
Hyde	0	0	0	—
Martin	15	6	9	40.0
Tyrrell	0	0	0	—
Washington	10	3½	6½	35.0
TOTAL	55	33½	21½	60.9
<u>3RD DISTRICT</u>				
Carteret	15	8	7	53.3
Craven	29	23	6	79.3
Pamlico	3	3	0	100.0
Pitt	30	19	11	63.3
TOTAL	77	53	24	68.8
<u>4TH DISTRICT</u>				
Duplin	15	7½	7½	50.0
Jones	10	6	4	60.0
Onslow	20	13	7	65.0
Sampson	20	8	12	40.0
TOTAL	65	34½	30½	53.1
<u>5TH DISTRICT</u>				
New Hanover	85	56½	28½	66.5
Pender	5	4	1	80.0
TOTAL	90	60½	29½	67.2
<u>6TH DISTRICT</u>				
Bertie	21	12	9	57.1
Halifax	20	13½	6½	67.5
Hertford	15	9½	5½	63.3
Northampton	12	5	7	41.7
TOTAL	68	40	28	58.8
<u>7TH DISTRICT</u>				
Edgecombe	25	9½	15½	38.0
Nash	34	16½	17½	48.5
Wilson	29	15	14	51.7
TOTAL	88	41	47	46.6

8TH DISTRICT

	Days Scheduled	Days Held	Days Unused	% Used
Greene	5	3	2	60.0
Lenoir	33	21	12	63.6
Wayne	35	23	12	65.7
TOTAL	73	47	26	64.4

9TH DISTRICT

Franklin	10	9	1	90.0
Granville	25	12½	12½	50.0
Person	15	10	5	66.7
Vance	20	10	10	50.0
Warren	10	5	5	50.0
TOTAL	80	46½	33½	58.1

10TH DISTRICT

Wake	179	154	25	86.0
------	-----	-----	----	------

11TH DISTRICT

Harnett	49	32	17	65.3
Johnston	50	31	19	62.0
Lee	20	15	5	75.0
TOTAL	119	78	41	65.5

12TH DISTRICT

Cumberland	41	32	9	78.0
Hoke	25	21	4	84.0
TOTAL	66	53	13	80.3

13TH DISTRICT

Bladen	15	11	4	73.3
Brunswick	15	11½	3½	76.7
Columbus	35	25	10	71.4
TOTAL	65	47½	17½	73.1

14TH DISTRICT

Durham	69	63	6	91.3
--------	----	----	---	------

15TH DISTRICT

Alamance	43	34	9	79.1
Chatham	20	7½	12½	37.5
Orange	28	22½	5½	80.4
TOTAL	91	64	27	70.3

16TH DISTRICT

Robeson	40	30	10	75.0
Scotland	15	1	14	6.7
TOTAL	55	31	24	56.4

17TH DISTRICT

Caswell	6	4	2	66.7
Rockingham	53	39	14	73.6
Stokes	10	5½	4½	55.0
Surry	30	22	8	73.3
TOTAL	99	70½	28½	71.2

<u>18TH DISTRICT</u>	Days Scheduled	Days Held	Days Unused	% Used
Guilford	303	251	52	82.8
<u>19TH DISTRICT</u>				
Cabarrus	40	28	12	70.0
Montgomery	10	6	4	60.0
Randolph	80	53½	26½	66.9
Rowan	46	30	16	65.2
TOTAL	176	117½	58½	66.8
<u>20TH DISTRICT</u>				
Anson	15	10	5	66.7
Moore	15	8	7	53.3
Richmond	25	16	9	64.0
Stanly	10	8	2	80.0
Union	30	25	5	83.3
TOTAL	95	67	28	70.5
<u>21ST DISTRICT</u>				
Forsyth	229	208	21	90.8
<u>22ND DISTRICT</u>				
Alexander	9	4½	4½	50.0
Davidson	84	52½	31½	62.5
Davie	10	5½	4½	55.0
Iredell	44	35½	8½	80.7
TOTAL	147	98	49	66.7
<u>23RD DISTRICT</u>				
Alleghany	15	8	7	53.3
Ashe	8	5	3	62.5
Wilkes	50	39	11	78.0
Yadkin	20	12	8	60.0
TOTAL	93	64	29	68.8
<u>24TH DISTRICT</u>				
Avery	3½	3½	0	100.0
Madison	15	8	7	53.3
Mitchell	7	6	1	85.7
Watauga	10	10	0	100.0
Yancey	13	5	8	38.5
TOTAL	48½	32½	16	67.0
<u>25TH DISTRICT</u>				
Burke	50	39	11	78.0
Caldwell	45	28	17	62.2
Catawba	28	20½	7½	73.2
TOTAL	123	87½	35½	71.1
<u>26TH DISTRICT</u>				
Mecklenburg	389	350½	38½	90.1

<u>27TH DISTRICT</u>	Days Scheduled	Days Held	Days Unused	% Used
Cleveland	53	45½	7½	85.3
Gaston	75	68	7	90.7
Lincoln	15	14½	½	96.7
TOTAL	143	128	15	89.5
<u>28TH DISTRICT</u>				
Buncombe	210	186	24	88.6
<u>29TH DISTRICT</u>				
Henderson	30	23	7	76.7
McDowell	20	17	3	85.0
Polk	10	4	6	40.0
Rutherford	25	20	5	80.0
Transylvania	20	5	15	25.0
TOTAL	105	69	36	65.7
<u>30TH DISTRICT</u>				
Cherokee	12	2½	9½	20.8
Clay	7	6	1	85.7
Graham	0	0	0	—
Haywood	30	22	8	73.3
Jackson	17	11	6	64.7
Macon	18	12	6	66.7
Swain	17	10	7	58.8
TOTAL	101	63½	37½	62.9
GRAND TOTAL	3,563½	2,669	894½	74.9

SUPERIOR COURT CRIMINAL DOCKETS

Nineteen hundred and seventy-two does appear to have been a "turn around" year for the criminal division of the superior court. The favorable results reported in this space last year have continued into 1973 and it is hoped that a trend is being established which will result in further reductions in the number of criminal cases pending at year-end. While 1973 filings did increase by 5.1%, dispositions similarly increased by 5.0%. Most significantly, the number of cases pending at the end of the year *decreased* by 13.7% compared to a *decrease* of 9.9% in 1972 and *increases* of 28.3% in 1971 and 32.3% in 1970. The rate of disposition (the percentage of filings which were disposed of) exceeded 100% for only the second time since 1965. The rate of disposition for this year was 105.4%, compared to 104.7% in 1972, 89.3% in 1971, and 89.8% in 1970. Moreover, the pending ratio dropped from 40.5 in 1972 to 32.3 in 1973 indicating (all other things being equal) that the estimated amount of time for the court to dispose of all criminal cases pending has been reduced from less than 5 months to less than 4 months. This trend is more encouraging when it is remembered that the pending ratio in 1971 was 50.9, suggesting that more than 6 months would have been required to dispose of all criminal cases pending.

The number of days of superior court scheduled increased by 5.6% and there was a modest increase in the number of days actually held, 2.2%.

There is no single variable that can explain this continued improvement in superior court criminal dockets, but one factor deserves mention. The impact of appeals from the district court for trial *de novo* in the superior court was discussed in this space last year. It was indicated that any minor change in the number of cases being appealed from the district court (a high volume court) has a significant impact upon the superior court (a low volume court). The number of cases being appealed to the superior court has been further reduced in 1973, dropping from 20,899 to 20,268 or 3.0%. The 20,268 cases which were appealed constitute 5.3% of the total number of cases tried in the district court and amount to 47.8% of total superior court filings. The comparable percentages for 1972 were 5.5% and 51.9%. This marks the first year since the district court has been operating in all 100 counties of the State that misdemeanors have constituted less than one-half of superior court filings.

As was indicated in this space last year, the statistics demonstrate that the longer the district court is in operation, the lower the rate of appeals and the smaller the proportion of superior court filings which are appealed cases. For the 83 counties where the district court has been in operation for five or more years, the appeal rate from the district court is 4.8% and appeals constitute 44.9% of district court filings. This is in

marked contrast to the 17 counties which entered the system in December of 1970 where the appeal rate is 8.5% and appeals constitute 62.1% of superior court filings. It is hoped that the number of cases being appealed in these counties will be reduced in 1974.

The 10 counties with the largest criminal dockets accounted for 38.3% of the total cases pending at the end of the year. Fifty-four counties had 100 or fewer cases pending at the end of the year, and only 4 counties had more than 500 cases pending.

In the order named, Wake, Guilford, Mecklenburg, Cumberland and Forsyth had the largest number of cases filed in 1973. Among the counties that exceeded the statewide average for filings, the following counties had the largest percentage increases in filings between 1972 and 1973: Chowan (106.4%), Nash (59.2%), Caldwell (34.5%), Robeson (30.3%), and Alamance (25.3%).

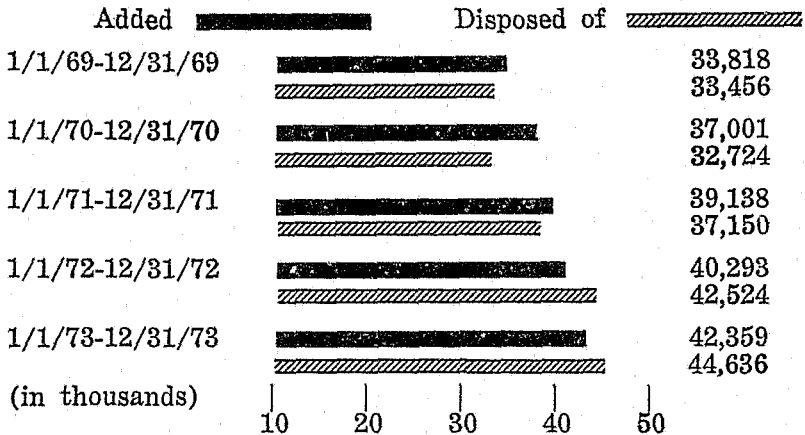
Wake County disposed of the most cases in 1973, followed in order by Guilford, Forsyth, Cumberland, and Mecklenburg. Among the counties that exceeded the statewide average for dispositions, the following counties made the most significant increases over 1972: Johnston (119.8%), Alamance (76.9%), Union (52.0%), Caldwell (51.6%), and Carteret (51.1%).

The highest number of jury trials, 243, was held in Wake in 1973; Mecklenburg held 227, Guilford held 193, Gaston held 171, and Durham held 161. As would be expected, Mecklenburg led the State in the number of days of criminal court held (442), followed by Wake (396), Guilford (255), Buncombe (220), and Cumberland (207).

The 1971 *Annual Report* utilized pending ratios as a barometer of court performance for the first time. As already indicated, the pending ratio for 1973 is 32.3, suggesting that it would require less than 4 months to dispose of all cases pending. The pending ratio, of course, varies from county to county, and it is useful to apply that test to each county. The table at page 33 lists the 10 counties with the highest pending ratios.

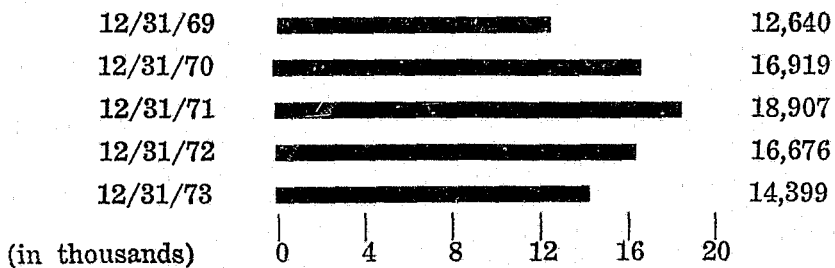
CRIMINAL CASES ADDED AND DISPOSED OF IN THE SUPERIOR COURT

January 1, 1969 - December 31, 1973



CRIMINAL CASES PENDING IN THE SUPERIOR COURT

December 31, 1969 - December 31, 1973



**DISTRIBUTION OF PENDING CRIMINAL CASES
AMONG THE COUNTIES**

Number of Cases	Less than 50	50-100	101-200	201-500	Over 500
Number of Counties 1972	28	23	27	15	7
1973	27	27	26	16	4

TEN COUNTIES WITH LARGEST CRIMINAL DOCKETS

County	Pending 1-1-73	Added	Disposed of	Pending 12-31-73	Percent of Filings Disposed of
*Mecklenburg	676	2,071	1,812	935	87.5
*Wake	1,511	2,989	3,658	842	122.4
*Alamance	763	921	1,070	614	116.2
*Guilford	561	2,378	2,373	566	99.8
*New Hanover	489	1,396	1,409	476	100.9
Wayne	364	796	684	476	85.9
*Pitt	671	820	1,035	456	126.2
*Forsyth	720	1,809	2,094	435	115.8
*Cumberland	486	1,836	1,955	367	106.5
Durham	346	1,023	1,023	346	100.0
STATE MEAN	167	424	446	144	105.2

*Counties which were listed in this table in the 1972 Annual Report.

**TEN COUNTIES WITH GREATEST PROPORTION OF
CASES PENDING IN RELATION TO DISPOSITIONS¹**

	Disposed of in 1973	Pending 12/31/73	Ratio
Person	115	166	144.3
McDowell	151	153	101.3
Wayne	684	476	69.6
Chowan	303	210	69.3
Columbus	367	245	66.8
Granville	217	145	66.8
Haywood	258	158	61.2
*Alamance	1,070	614	57.4
Mecklenburg	1,812	935	51.6
*Rowan	755	338	44.8
STATE MEAN	446	144	32.3

1—Excluding counties with less than the statewide average of 144 cases pending on December 31, 1973.

*Counties which were listed in this table in the 1972 Annual Report.

**PERCENT OF CASES TRIED IN THE DISTRICT
COURT WHICH WERE APPEALED TO THE
SUPERIOR COURT FOR TRIAL DE NOVO**

Total number of cases tried in the District Court (Includes only cases actually tried; excludes cases disposed of by waiver, preliminary hearing, <i>not pros</i> or otherwise.)	379,306
Total number of cases appealed from the District Court for trial <i>de novo</i> in the Superior Court	20,268
Percent of cases tried in the District Court which were appealed to the Superior Court for trial <i>de novo</i>	5.34%

**PERCENT OF SUPERIOR COURT FILINGS
WHICH ARE CASES APPEALED FROM THE
DISTRICT COURT FOR TRIAL DE NOVO**

Total number of cases filed in Superior Court within its original jurisdiction	22,091
Total number of cases filed in Superior Court upon appeal from District Court for trial <i>de novo</i>	20,268
Total number of cases filed in Superior Court	42,359
Percent of Superior Court Filings consisting of cases appealed from District Court for trial <i>de novo</i>	47.85%

**CRIMINAL CASES PENDING, ADDED, AND DISPOSED OF
IN THE SUPERIOR COURTS BY JUDICIAL DISTRICTS**

January 1, 1973 — December 31, 1973

	Pending 1/1/73	Cases Filed			Cases Disposed of				Pending 12/31/73	Gain or Loss	
		Misdemeanors ¹	Felonies ²	Total	Jury	Plea	Other	Total			
<u>1ST DISTRICT</u>											
Camden	33	51	5	56	12	30	6	48	41	+	8
Chowan	63	360	90	450	30	153	120	303	210	+	147
Currituck	58	104	45	149	11	75	14	100	107	+	49
Dare	57	183	52	235	22	110	108	240	52	-	5
Gates	32	43	6	49	5	19	28	52	29	-	3
Pasquotank	116	388	32	420	12	232	162	406	130	+	14
Perquimans	27	43	11	54	5	36	16	57	24	-	3
TOTAL	386	1,172	241	1,413	97	655	454	1,206	593	+	207
<u>2ND DISTRICT</u>											
Beaufort	102	121	127	248	75	116	76	267	83	-	19
Hyde	4	20	20	40	8	16	9	33	11	+	7
Martin	79	57	73	130	23	72	70	165	44	-	35
Tyrrell	10	18	0	18	7	6	4	17	11	+	1
Washington	30	40	35	75	16	29	19	64	41	+	11
TOTAL	225	256	255	511	129	239	178	546	190	-	35
<u>3RD DISTRICT</u>											
Carteret	349	280	259	539	57	226	409	692	196	-	153
Craven	226	300	261	561	59	253	265	577	210	-	16
Pamlico	27	47	26	73	6	31	13	50	50	+	23
Pitt	671	355	465	820	133	422	480	1,035	456	-	215
TOTAL	1,273	982	1,011	1,993	255	932	1,167	2,354	912	-	361

1. All cases on appeal from the district court for trial de novo.
2. All cases except those appealed from the district court for trial de novo.

	Pending 1/1/73	Cases Filed			Cases Disposed of				Pending 12/31/73	Gain or Loss	
		Misdemeanors ¹	Felonies ²	Total	Jury	Plea	Other	Total			
<u>4TH DISTRICT</u>											
Duplin	48	89	87	176	19	119	68	206	18	-	30
Jones	17	26	13	39	8	16	12	36	20	+	3
Onslow	105	263	390	653	83	307	258	648	110	+	5
Sampson	50	110	190	300	39	154	74	267	83	+	33
TOTAL	220	488	680	1,168	149	596	412	1,157	231	+	11
<u>5TH DISTRICT</u>											
New Hanover	489	435	961	1,396	85	831	493	1,409	476	-	13
Pender	87	61	97	158	11	104	74	189	56	-	31
TOTAL	576	496	1,058	1,554	96	935	567	1,598	532	-	44
<u>6TH DISTRICT</u>											
Bertie	13	39	50	89	9	33	32	74	28	+	15
Halifax	55	120	161	281	22	132	101	255	81	+	26
Hertford	37	66	78	144	14	76	53	143	38	+	1
Northampton	38	45	100	145	14	45	61	120	63	+	25
TOTAL	143	270	389	659	59	286	247	592	210	+	67
<u>7TH DISTRICT</u>											
Edgecombe	83	272	143	415	36	253	129	418	80	-	3
Nash	159	326	333	659	41	473	170	684	134	-	25
Wilson	126	268	278	546	48	293	170	511	161	+	35
TOTAL	368	866	754	1,620	125	1,019	469	1,613	375	+	7

32

1. All cases on appeal from the district court for trial de novo.
2. All cases except those appealed from the district court for trial de novo.

	Pending 1/1/73	Cases Filed			Cases Disposed of				Pending 12/31/73	Gain or Loss	
		Misdemeanors ¹	Felonies ²	Total	Jury	Plea	Other	Total			
<u>8TH DISTRICT</u>											
Greene	44	61	45	106	9	54	37	100	50	+	6
Lenoir	110	176	285	461	113	181	179	473	98	-	12
Wayne	364	343	453	796	59	339	286	684	476	+	112
TOTAL	518	580	783	1,363	181	574	502	1,257	624	+	106
<u>9TH DISTRICT</u>											
Franklin	215	246	53	299	32	230	106	368	146	-	69
Granville	103	139	120	259	8	156	53	217	145	+	42
Person	75	154	52	206	6	68	41	115	166	+	91
Vance	125	230	288	518	12	219	232	463	180	+	55
Warren	74	92	35	127	12	61	51	124	77	+	3
TOTAL	592	861	548	1,409	70	734	483	1,287	714	+	122
<u>10TH DISTRICT</u>											
Wake	1,511	1,565	1,424	2,989	243	1,810	1,605	3,658	842	-	669
<u>11TH DISTRICT</u>											
Harnett	103	85	175	260	14	134	181	329	34	-	69
Johnston	262	206	207	413	46	255	332	633	42	-	220
Lee	188	77	100	177	25	160	172	357	8	-	180
TOTAL	553	368	482	850	85	549	685	1,319	84	-	469
<u>12TH DISTRICT</u>											
Cumberland	486	607	1,229	1,836	125	892	938	1,955	367	-	119
Hoke	43	64	66	130	13	53	56	122	51	+	8
TOTAL	529	671	1,295	1,966	138	945	994	2,077	418	-	111

1. All cases on appeal from the district court for trial de novo.
2. All cases except those appealed from the district court for trial de novo.

	Pending 1/1/73	Cases Filed			Cases Disposed of				Pending 12/31/73	Gain or Loss	
		Misdemeanors ¹	Felonies ²	Total	Jury	Plea	Other	Total			
<u>13TH DISTRICT</u>											
Bladen	94	112	101	213	22	95	85	202	105	+	11
Brunswick	176	112	111	223	25	147	91	263	186	-	40
Columbus	150	194	268	462	43	206	118	367	245	+	95
TOTAL	420	418	480	898	90	448	294	832	486	+	66
<u>14TH DISTRICT</u>											
Durham	346	209	814	1,023	161	483	379	1,023	346		0
<u>15TH DISTRICT</u>											
Alamance	763	317	604	921	75	285	710	1,070	614	-	149
Chatham	101	88	171	259	15	86	168	269	91	-	10
Orange	172	238	344	582	40	162	386	588	166	-	6
TOTAL	1,036	643	1,119	1,762	130	533	1,264	1,927	871	-	165
<u>16TH DISTRICT</u>											
Robeson	137	336	481	817	116	394	164	674	280	+	143
Scotland	73	57	269	326	16	237	55	308	91	+	18
TOTAL	210	393	750	1,143	132	631	219	982	371	+	161
<u>17TH DISTRICT</u>											
Caswell	68	92	66	158	23	101	68	192	84	-	34
Rockingham	134	791	0	791	62	430	224	716	209	+	75
Stokes	108	110	57	167	78	99	14	191	84	-	24
Surry	144	324	135	459	54	285	132	471	132	-	12
TOTAL	454	1,317	258	1,575	217	915	438	1,570	459	+	5

37

1. All cases on appeal from the district court for trial de novo.
2. All cases except those appealed from the district court for trial de novo.

	Pending 1/1/73	Cases Filed			Cases Disposed of				Pending 12/31/73	Gain or Loss	
		Misdemeanors ¹	Felonies ²	Total	Jury	Plea	Other	Total			
<u>18TH DISTRICT</u>											
Guilford—											
Greensboro	417	566	1,132	1,698	149	922	691	1,762	353	—	64
High Point	144	162	518	680	44	335	232	611	213	+	69
TOTAL	561	728	1,650	2,378	193	1,257	923	2,373	566	+	5
<u>19TH DISTRICT</u>											
Cabarrus	390	439	441	880	49	530	494	1,073	197	—	193
Montgomery	103	131	119	250	21	107	123	251	102	—	1
Randolph	205	284	205	489	70	226	225	521	173	—	32
Rowan	488	305	300	605	54	310	391	755	338	—	150
TOTAL	1,186	1,159	1,065	2,224	194	1,173	1,233	2,600	810	—	376
<u>20TH DISTRICT</u>											
Anson	73	133	108	241	28	84	102	214	100	+	27
Moore	87	81	142	223	11	112	97	220	90	+	3
Richmond	235	139	208	347	23	204	212	444	138	—	97
Stanly	158	168	128	296	16	191	142	349	105	—	53
Union	475	234	237	471	97	245	357	699	247	—	228
TOTAL	1,028	755	823	1,578	180	836	910	1,926	680	—	348
<u>21ST DISTRICT</u>											
Forsyth	720	921	888	1,809	108	837	1,149	2,094	435	—	285

1. All cases on appeal from the district court for trial de novo.
2. All cases except those appealed from the district court for trial de novo.

	Cases Filed				Cases Disposed of				Pending 12/31/73	Gain or Loss	
	Pending 1/1/73	Misdemeanors ¹	Felonies ²	Total	Jury	Plea	Other	Total			
<u>22ND DISTRICT</u>											
Alexander	52	160	19	179	6	54	89	149	82	+	30
Davidson	195	482	322	804	32	541	253	826	173	—	22
Davie	67	170	31	201	12	111	80	203	65	—	2
Iredell	203	535	207	742	71	468	293	832	113	—	90
TOTAL	517	1,347	579	1,926	121	1,174	715	2,010	433	—	84
<u>23RD DISTRICT</u>											
Alleghany	6	18	26	44	14	10	5	29	21	+	15
Ash	19	36	52	88	2	54	31	87	20	+	1
Wilkes	52	225	116	341	73	97	182	352	41	—	11
Yadkin	24	47	29	76	7	26	30	63	37	+	13
TOTAL	101	326	223	549	96	187	248	531	119	+	18
<u>24TH DISTRICT</u>											
Avery	20	43	19	62	6	35	3	44	38	+	18
Madison	69	51	60	111	23	21	49	93	87	+	18
Mitchell	17	21	17	38	4	8	8	20	35	+	18
Watauga	60	45	73	118	5	50	51	106	72	+	12
Yancey	17	21	12	33	3	13	15	31	19	+	2
TOTAL	183	181	181	362	41	127	126	294	251	+	68
<u>25TH DISTRICT</u>											
Burke	151	123	108	231	39	120	165	324	58	—	93
Caldwell	136	247	221	468	53	199	218	470	134	—	2
Catawba	196	420	397	817	76	357	361	794	219	+	23
TOTAL	483	790	726	1,516	168	676	744	1,588	411	—	72
<u>26TH DISTRICT</u>											
Mecklenburg	676	976	1,095	2,071	227	781	804	1,812	935	+	259

1. All cases on appeal from the district court for trial de novo.
2. All cases except those appealed from the district court for trial de novo.

	Pending 1/1/73	Cases Filed			Cases Disposed of				Pending 12/31/73	Gain or Loss	
		Misdemeanors ¹	Felonies ²	Total	Jury	Plea	Other	Total			
<u>27TH DISTRICT</u>											
Cleveland	145	96	165	261	45	178	125	348	58	—	87
Gaston	592	257	417	674	171	388	504	1,063	203	—	389
Lincoln	88	144	190	334	19	145	119	283	139	+	51
TOTAL	825	497	772	1,269	235	711	748	1,694	400	—	425
<u>28TH DISTRICT</u>											
Buncombe	379	375	634	1,009	105	471	507	1,083	305	—	74
<u>29TH DISTRICT</u>											
Henderson	87	56	211	267	32	126	112	270	84	—	3
McDowell	122	115	67	182	50	48	53	151	153	+	31
Polk	28	19	66	85	9	38	47	94	19	—	9
Rutherford	100	110	224	334	59	133	138	330	104	+	4
Transylvania	31	28	66	94	12	34	24	70	55	+	24
TOTAL	368	328	634	962	162	379	374	915	415	+	47
<u>30TH DISTRICT</u>											
Cherokee	46	67	89	156	7	78	57	142	60	+	14
Clay	10	4	6	10	0	10	3	13	7	—	3
Graham	34	22	7	29	5	11	21	37	26	—	8
Haywood	117	132	167	299	9	158	91	258	158	+	41
Jackson	24	56	133	189	2	89	48	139	74	+	50
Macon	20	24	40	64	3	29	33	65	19	—	1
Swain	38	25	38	63	8	20	36	64	37	—	1
TOTAL	289	330	480	810	34	395	289	718	381	+	92
GRAND TOTAL	16,676	20,268	22,091	42,359	4,221	21,288	19,127	44,636	14,399	—	2,277
Percent		47.8	52.2	100.0	9.5	47.7	42.8	100.0			

1. All cases on appeal from the district court for trial de novo.
2. All cases except those appealed from the district court for trial de novo.

UTILIZATION OF CRIMINAL SUPERIOR COURT TERMS BY JUDICIAL DISTRICTS

1973 Calendar Year

	Days Scheduled	Days Held	Days Unused	% Used
<u>1ST DISTRICT</u>				
Camden	10	7	3	70.0
Chowan	34	28½	5½	83.8
Currituck	15	12	3	80.0
Dare	50	26½	23½	53.0
Gates	10	7	3	70.0
Pasquotank	45	33	12	73.3
Perquimans	15	11½	3½	76.7
TOTAL	179	125½	53½	70.1
<u>2ND DISTRICT</u>				
Beaufort	40	36	4	90.0
Hyde	15	10½	4½	70.0
Martin	20	17	3	85.0
Tyrrell	10	4	6	40.0
Washington	15	9½	5½	63.3
TOTAL	100	77	23	77.0
<u>3RD DISTRICT</u>				
Carteret	45	39½	5½	87.8
Craven	79	57	22	72.2
Pamlico	7	5	2	71.4
Pitt	120	90	30	75.0
TOTAL	251	191½	59½	76.3
<u>4TH DISTRICT</u>				
Duplin	79	57	22	72.2
Jones	20	10	10	50.0
Onslow	109	81½	27½	74.8
Sampson	54	37½	16½	69.4
TOTAL	262	186	76	71.0
<u>5TH DISTRICT</u>				
New Hanover	192	168½	23½	87.8
Pender	25	20	5	80.0
TOTAL	217	188½	28½	86.9
<u>6TH DISTRICT</u>				
Bertie	18	13	5	72.2
Halifax	30	26	4	86.7
Hertford	15	9	6	60.0
Northampton	23	19½	3½	84.8
TOTAL	86	67½	18½	78.5
<u>7TH DISTRICT</u>				
Edgecombe	44	40	4	90.9
Nash	65	57	8	87.7
Wilson	45	40	5	88.9
TOTAL	154	137	17	89.0

	Days Scheduled	Days Held	Days Unused	% Used
<u>8TH DISTRICT</u>				
Greene	15	13½	1½	90.0
Lenoir	75	69	6	92.0
Wayne	113	103½	9½	91.6
TOTAL	203	186	17	91.6
<u>9TH DISTRICT</u>				
Franklin	40	31	9	77.5
Granville	20	16	4	80.0
Person	20	20	0	100.0
Vance	29	25	4	86.2
Warren	19	14½	4½	76.3
TOTAL	128	106½	21½	83.2
<u>10TH DISTRICT</u>				
Wake	435	395½	39½	90.9
<u>11TH DISTRICT</u>				
Harnett	39	29½	9½	75.6
Johnston	73	69	4	94.5
Lee	30	25½	4½	85.0
TOTAL	142	124	18	87.3
<u>12TH DISTRICT</u>				
Cumberland	228	206½	21½	90.6
Hoke	15	13	2	86.7
TOTAL	243	219½	23½	90.3
<u>13TH DISTRICT</u>				
Bladen	15	15	0	100.0
Brunswick	30	28½	1½	95.0
Columbus	31	27½	3½	88.7
TOTAL	76	71	5	93.4
<u>14TH DISTRICT</u>				
Durham	192	174	18	90.6
<u>15TH DISTRICT</u>				
Alamance	103	91	12	88.3
Chatham	24	20½	3½	85.4
Orange	64	35	29	54.7
TOTAL	191	146½	44½	76.7
<u>16TH DISTRICT</u>				
Robeson	120	90	30	75.0
Scotland	20	19	1	95.0
TOTAL	140	109	31	77.9
<u>17TH DISTRICT</u>				
Caswell	24	19½	4½	81.3
Rockingham	74	67½	6½	91.2
Stokes	20	18	2	90.0
Surry	54	47	7	87.0
TOTAL	172	152	20	88.4

	Days Scheduled	Days Held	Days Unused	% Used
<u>18TH DISTRICT</u>				
Guilford	293	255	38	87.0
<u>19TH DISTRICT</u>				
Cabarrus	100	75	25	75.0
Montgomery	15	12	3	80.0
Randolph	70	54	16	77.1
Rowan	65	51½	13½	79.2
TOTAL	250	192½	57½	77.0
<u>20TH DISTRICT</u>				
Anson	35	22	13	62.9
Moore	30	22	8	73.3
Richmond	65	52	13	80.0
Stanly	30	25	5	83.3
Union	70	65	5	92.9
TOTAL	230	186	44	80.9
<u>21ST DISTRICT</u>				
Forsyth	214	180	34	84.1
<u>22ND DISTRICT</u>				
Alexander	12	9½	2½	79.2
Davidson	65	55½	9½	85.4
Davie	20	18	2	90.0
Iredell	79	69	10	87.3
TOTAL	176	152	24	86.4
<u>23RD DISTRICT</u>				
Alleghany	5	4½	½	90.0
Ashe	14	11	3	78.6
Wilkes	35	34	1	97.1
Yadkin	12	11	1	91.7
TOTAL	66	60½	5½	91.7
<u>24TH DISTRICT</u>				
Avery	5	2½	2½	50.0
Madison	10	8	2	80.0
Mitchell	8	6	2	75.0
Watauga	15	12	3	80.0
Yancey	10	4½	5½	45.0
TOTAL	48	33	15	68.8
<u>25TH DISTRICT</u>				
Burke	79	69	10	87.3
Caldwell	64	45	19	70.3
Catawba	105	82½	22½	78.6
TOTAL	248	196½	51½	79.2
<u>26TH DISTRICT</u>				
Mecklenburg	484	442	42	91.3

27TH DISTRICT

	Days Scheduled	Days Held	Days Unused	% Used
Cleveland	75	71	4	94.7
Gaston	208	183	25	88.0
Lincoln	38	34½	3½	90.8
TOTAL	321	288½	32½	89.9

28TH DISTRICT

Buncombe	238	219½	18½	92.2
----------	-----	------	-----	------

29TH DISTRICT

Henderson	40	37½	2½	93.8
McDowell	34	29	5	85.3
Polk	15	10½	4½	70.0
Rutherford	35	32	3	91.4
Transylvania	20	13½	6½	67.5
TOTAL	144	122½	21½	85.1

30TH DISTRICT

Cherokee	13	9½	3½	73.1
Clay	5	1½	3½	30.0
Graham	15	7	8	46.7
Haywood	24	15	9	62.5
Jackson	18	14½	3½	80.6
Macon	8	5	3	62.5
Swain	13	9½	3½	73.1
TOTAL	96	62	34	64.6
GRAND TOTAL	5,979	5,047	932	84.4

THE DISTRICT COURT DIVISION

The district court has now been operational in all 100 counties for three full years. It has operated in 83 counties for 5 years and in 22 counties for 7 years. The *total* of civil and criminal filings increased by 4.4% and *total* dispositions increased by 3.0%. The *total* number of cases pending increased by 12.0%. These figures appear to reflect normal growth trends for this high-volume court. Much of this increase is attributable to the civil dockets where filings increased by 15.2% affecting an increase of 22.8% in the number of civil cases pending. There has been no significant change from last year in the ratio between criminal cases pending at the end of the year and dispositions for the year. The ratio for criminal cases is 8.7 indicating that it would require about one month for the district court to dispose of its criminal docket. The ratio for civil cases increased from 28.3 to 33.5, the estimated time needed to dispose of all civil cases increasing from three and one-half months to four months.

The total number of days of district court held in 1973 increased by 2.2% over 1972, the number of civil days increasing from 5,404½ to 5,728½ and the number of criminal days increasing from 10,852½ to 10,893½. Upon assignment by the Chief Justice, district judges held 334½ days of court in judicial districts other than their own, up from 248 such days in 1972.

The tables relating to juvenile proceedings are found on pages 66 and 74. The number of new cases opened (children before the court for the first time) increased from 13,341 to 14,514 or 8.8%. The number of adjudicatory hearings increased from 23,796 to 25,818 or 8.5%. The composition of the caseload varies little from year to year: delinquency accounted for 62.1%, undisciplined for 22.4%, dependency for 6.7% and neglect for 8.8%. The bulk of delinquency charges were for misdemeanors (64.4%), 20.6% were for felonies, 14.7% were for violations of probation, and .3% were for capital felonies. The number of undisciplined charges which were for truancy dropped from 46.1% to 36.7%.

DISTRICT COURT CIVIL DOCKETS

Civil filings increased by 15.2% but dispositions increased by only 5.9%, resulting in an increase of 22.8% in the number of cases pending at the end of the year. The rate of disposition was 94.1% (fewer cases were disposed of than were filed).

Among all 100 counties, the 10 counties with the largest civil dockets accounted for 49.5% of the total civil cases pending. Fifty-three counties had 300 or fewer cases pending at the end of the year and 13 counties had more than 1,000 pending. As stated above, the ratio of pending cases to the year's disposi-

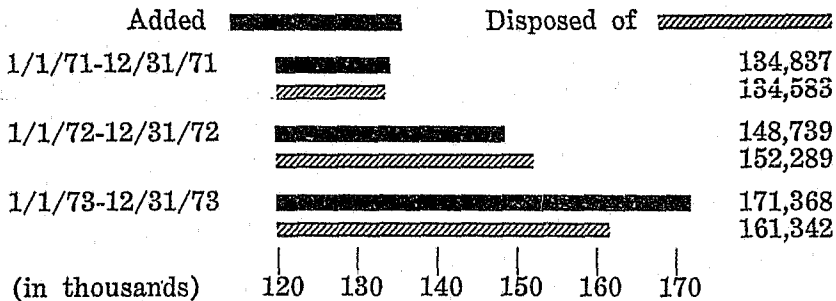
tions is 33.5, indicating that the docket could be disposed of in about four months.

Of the 171,368 cases filed in 1973, 64.9% were small claims, 13.5% were domestic cases, and 21.6% were regular civil actions in which a hearing before a district court judge was requested. Of the 161,342 cases which were disposed of, 19.6% were handled by a judge without a jury, a jury was impaneled in 1.3% of the cases, magistrates disposed of 63.6%, and the remaining 15.5% were disposed of by other means.

When the plaintiff so requests, claims for \$300 or less are subject to assignment to a magistrate. Magistrates continue to dispose of almost all of these small claims. In 1973, magistrates disposed of 92.1% of such claims.

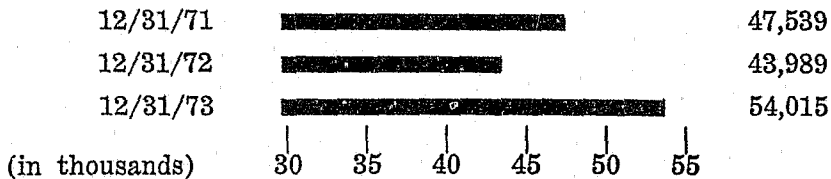
CIVIL CASES ADDED AND DISPOSED OF IN THE DISTRICT COURT

January 1, 1971 - December 31, 1973



CIVIL CASES PENDING IN THE DISTRICT COURT

December 31, 1971 - December 31, 1973



**DISTRIBUTION OF PENDING CIVIL CASES
AMONG THE COUNTIES**

Number of Cases	Less than 100	101-300	301-500	501-1000	Over 1000
Number of Counties 1972	30	28	18	17	7
1973	26	27	17	17	13

TEN COUNTIES WITH LARGEST CIVIL DOCKETS

County	Pending 1-1-73	Added	Disposed of	Pending 12-31-73	Percent of Filings Disposed of
*Mecklenburg	4,986	17,581	14,453	8,114	82.2
*Wake	3,260	11,452	10,683	4,029	93.3
*Guilford	3,490	15,874	15,876	3,488	100.0
*Surry	1,660	3,175	2,538	2,297	79.9
Durham	406	8,975	7,207	2,174	80.3
*Gaston	1,402	4,624	4,509	1,517	97.5
*Cumberland	1,563	5,365	5,593	1,335	104.2
*New Hanover	1,219	3,123	3,017	1,325	96.6
*Person	992	1,443	1,133	1,302	78.5
Robeson	854	3,220	2,898	1,176	90.0
STATE MEAN	440	1,713	1,613	540	94.2

*Counties which were listed in this table in the 1972 Annual Report.

**CIVIL CASES PENDING, ADDED, AND DISPOSED OF IN THE DISTRICT COURTS
BY TYPE OF CASE AND MANNER OF DISPOSITION**

January 1, 1973 — December 31, 1973

	Pending 1/1/73	Cases Filed				Cases Disposed of					Pending 12/31/73	Gain or Loss	
		Small Claims ¹	Domestic ²	Other	Total	By Jury	By Judge	By Magistrate	Other	Total			
<u>1ST DISTRICT</u>													
Camden	24	78	11	11	100	0	2	72	42	116	8	—	16
Chowan	62	184	0	118	302	3	58	174	61	296	68	+	6
Currituck	30	104	26	23	153	0	16	104	19	139	44	+	14
Dare	40	124	51	60	235	0	47	115	28	190	85	+	45
Gates	122	152	22	30	204	1	8	142	22	173	153	+	31
Pasquotank	190	638	126	183	947	23	104	683	163	973	164	—	26
Perquimans	23	96	9	20	125	6	10	92	9	117	31	+	8
TOTAL	491	1,376	245	445	2,066	33	245	1,382	344	2,004	553	+	62
<u>2ND DISTRICT</u>													
Beaufort	291	970	167	135	1,272	24	154	917	80	1,175	388	+	97
Hyde	10	44	11	13	68	0	10	47	10	67	11	+	1
Martin	211	731	63	106	900	10	98	721	68	897	214	+	3
Tyrrell	18	54	16	1	71	1	15	54	2	72	17	—	1
Washington	40	301	45	66	412	4	33	289	51	377	75	+	35
TOTAL	570	2,100	302	321	2,723	39	310	2,028	211	2,588	705	+	135

1. Includes claims for \$300 or less where the principal relief requested is one of those listed in G.S. 7A-210(2) and the plaintiff has requested assignment to a magistrate.

2. Includes domestic relations cases as defined by G.S. 7A-244.

	Pending 1/1/73	Cases Filed				Cases Disposed of					Pending 12/31/73	Gain or Loss	
		Small Claims ¹	Domestic ¹	Other	Total	By Jury	By Judge	By Magistrate	Other	Total			
<u>3RD DISTRICT</u>													
Carteret	378	404	241	182	827	19	260	439	208	926	279	—	99
Craven	707	782	402	383	1,567	30	524	742	410	1,706	568	—	139
Pamlico	30	159	2	39	200	0	21	148	19	188	42	+	12
Pitt	780	1,783	297	441	2,521	25	485	1,591	400	2,501	800	+	20
TOTAL	1,895	3,128	942	1,045	5,115	74	1,290	2,920	1,037	5,321	1,689	—	206
<u>4TH DISTRICT</u>													
Duplin	265	844	181	144	1,169	10	220	844	144	1,218	216	—	49
Jones	21	81	0	58	139	0	28	77	8	113	47	+	26
Onslow	747	1,909	566	143	2,618	21	576	1,617	185	2,399	966	+	219
Sampson	177	989	150	182	1,321	13	158	969	200	1,340	158	—	19
TOTAL	1,210	3,823	897	527	5,247	44	982	3,507	537	5,070	1,387	+	177
<u>5TH DISTRICT</u>													
New Hanover	1,219	1,918	663	542	3,123	57	1,003	1,513	444	3,017	1,325	+	106
Pender	306	398	67	117	582	9	107	374	105	595	293	—	13
TOTAL	1,525	2,316	730	659	3,705	66	1,110	1,887	549	3,612	1,618	+	93
<u>6TH DISTRICT</u>													
Bertie	149	428	18	142	588	11	52	405	100	568	169	+	20
Halifax	441	1,173	221	139	1,533	9	241	1,098	108	1,456	518	+	77
Hertford	371	225	87	121	433	11	113	232	125	481	323	—	48
Northampton	206	328	62	52	442	5	70	287	40	402	246	+	40
TOTAL	1,167	2,154	388	454	2,996	36	476	2,022	373	2,907	1,256	+	89

1. Includes claims for \$300 or less where the principal relief requested is one of those listed in G.S. 7A-210(2) and the plaintiff has requested assignment to a magistrate.
2. Includes domestic relations cases as defined by G.S. 7A-244.

	Pending 1/1/73	Cases Filed				Cases Disposed of					Pending 12/31/73	Gain or Loss	
		Small Claims ¹	Domestic ²	Other	Total	By Jury	By Judge	By Magistrate	Other	Total			
<u>7TH DISTRICT</u>													
Edgecombe	242	1,947	206	213	2,366	18	278	1,915	139	2,350	258	+	16
Nash	345	1,147	373	277	1,797	76	365	1,105	212	1,758	384	+	39
Wilson	350	2,118	261	244	2,623	22	268	2,099	202	2,591	362	+	32
TOTAL	937	5,212	840	734	6,786	116	911	5,119	553	6,699	1,024	+	87
<u>8TH DISTRICT</u>													
Greene	113	236	40	27	303	3	33	222	28	286	130	+	17
Lenoir	374	1,756	323	472	2,551	36	322	1,693	425	2,476	449	+	75
Wayne	852	1,451	540	938	2,929	40	535	1,449	673	2,697	1,084	+	232
TOTAL	1,339	3,443	903	1,437	5,783	79	890	3,364	1,126	5,459	1,663	+	324
<u>9TH DISTRICT</u>													
Franklin	496	471	111	117	699	2	85	452	82	621	574	+	78
Granville	180	808	94	63	965	0	90	780	35	905	240	+	60
Person	992	1,282	12	149	1,443	1	96	997	39	1,133	1,302	+	310
Vance	736	1,649	11	283	1,943	16	116	1,847	119	2,098	581	-	155
Warren	224	258	56	26	340	1	68	282	37	388	176	-	48
TOTAL	2,628	4,468	284	638	5,390	20	455	4,358	312	5,145	2,873	+	245
<u>10TH DISTRICT</u>													
Wake	3,260	6,375	1,585	3,492	11,452	74	2,371	6,075	2,163	10,683	4,029	+	769

1. Includes claims for \$300 or less where the principal relief requested is one of those listed in G.S. 7A-210(2) and the plaintiff has requested assignment to a magistrate.
2. Includes domestic relations cases as defined by G.S. 7A-244.

51

	Pending 1/1/73	Cases Filed				Cases Disposed of					Pending 12/31/73	Gain or Loss	
		Small Claims ¹	Domestic ²	Other	Total	By Jury	By Judge	By Magistrate	Other	Total			
<u>11TH DISTRICT</u>													
Harnett	667	1,004	263	274	1,541	27	252	969	326	1,574	634	-	33
Johnston	376	1,151	27	838	2,016	11	354	1,072	358	1,795	597	+	221
Lee	500	999	193	201	1,393	9	231	957	202	1,399	494	-	6
TOTAL	1,543	3,154	483	1,313	4,950	47	837	2,998	886	4,768	1,725	+	182
<u>12TH DISTRICT</u>													
Cumberland	1,563	3,033	1,549	733	5,365	98	1,480	3,141	874	5,593	1,335	-	228
Hoke	181	199	0	176	375	3	36	166	146	351	205	+	24
TOTAL	1,744	3,232	1,549	909	5,740	101	1,516	3,307	1,020	5,944	1,540	-	204
<u>13TH DISTRICT</u>													
Bladen	205	569	79	117	765	20	69	559	102	750	220	+	15
Brunswick	230	510	93	172	775	28	101	467	125	721	284	+	54
Columbus	581	858	282	297	1,437	29	361	760	203	1,353	665	+	84
TOTAL	1,016	1,937	454	586	2,977	77	531	1,786	430	2,824	1,169	+	153
<u>14TH DISTRICT</u>													
Durham	406	6,242	1,151	1,582	8,975	36	1,011	4,421	1,739	7,207	2,174	+	1,768
<u>15TH DISTRICT</u>													
Alamance	421	1,927	693	346	2,966	21	602	1,847	368	2,838	549	+	128
Chatham	55	1,250	102	72	1,464	9	122	1,141	174	1,446	73	+	18
Orange	207	504	245	241	990	7	127	380	128	642	555	+	348
TOTAL	683	3,721	1,040	659	5,420	37	851	3,368	670	4,926	1,177	+	494

1. Includes claims for \$300 or less where the principal relief requested is one of those listed in G.S. 7A-210(2) and the plaintiff has requested assignment to a magistrate.

2. Includes domestic relations cases as defined by G.S. 7A-244.

	Pending 1/1/73	Cases Filed				Cases Disposed of					Pending 12/31/73	Gain or Loss	
		Small Claims ¹	Domestic ²	Other	Total	By Jury	By Judge	By Magistrate	Other	Total			
<u>16TH DISTRICT</u>													
Robeson	854	2,243	58	919	3,220	50	508	2,077	263	2,898	1,176	+	322
Scotland	175	507	36	232	775	12	145	489	83	729	221	+	46
TOTAL	1,029	2,750	94	1,151	3,995	62	653	2,566	346	3,627	1,397	+	368
<u>17TH DISTRICT</u>													
Caswell	76	403	51	32	486	2	42	340	128	512	50	—	26
Rockingham	586	1,517	458	299	2,274	21	382	1,447	285	2,135	725	+	139
Stokes	82	528	102	54	684	6	91	473	41	611	155	+	73
Surry	1,660	2,312	269	294	3,175	38	207	1,950	343	2,538	2,297	+	637
TOTAL	2,404	5,060	880	679	6,619	67	722	4,210	797	5,796	3,227	+	823
<u>18TH DISTRICT</u>													
Guilford—													
Greensboro	3,009	7,064	1,415	2,473	10,952	134	1,949	7,135	1,986	11,204	2,757	—	252
High Point	481	3,766	728	428	4,922	53	874	3,423	322	4,672	731	+	250
TOTAL	3,490	10,830	2,143	2,901	15,874	187	2,823	10,558	2,308	15,876	3,488	—	2
<u>19TH DISTRICT</u>													
Cabarrus	653	1,318	460	652	2,430	25	401	1,148	950	2,524	559	—	94
Montgomery	77	478	0	84	562	2	60	453	18	533	106	+	29
Randolph	529	966	329	188	1,483	13	381	834	254	1,482	530	+	1
Rowan	683	1,155	425	287	1,867	35	315	1,072	217	1,639	911	+	228
TOTAL	1,942	3,917	1,214	1,211	6,342	75	1,157	3,507	1,439	6,178	2,106	+	164

1. Includes claims for \$300 or less where the principal relief requested is one of those listed in G.S. 7A-210(2) and the plaintiff has requested assignment to a magistrate.

2. Includes domestic relations cases as defined by G.S. 7A-244.

	Pending 1/1/73	Cases Filed				Cases Disposed of					Pending 12/31/73	Gain or Loss	
		Small Claims ¹	Domestic ²	Other	Total	By Jury	By Judge	By Magistrate	Other	Total			
<u>20TH DISTRICT</u>													
Anson	182	426	86	45	557	1	138	344	25	508	231	+	49
Moore	286	526	21	263	810	12	191	494	88	785	311	+	25
Richmond	377	606	258	124	988	30	215	567	87	899	466	+	89
Stanly	347	962	183	182	1,327	8	164	916	170	1,258	416	+	69
Union	547	824	315	245	1,384	26	295	806	226	1,353	578	+	31
TOTAL	1,739	3,344	863	859	5,066	77	1,003	3,127	596	4,803	2,002	+	263
<u>21ST DISTRICT</u>													
Forsyth	932	4,804	1,641	1,561	8,006	112	1,677	4,573	1,453	7,815	1,123	+	191
<u>22ND DISTRICT</u>													
Alexander	52	272	68	47	387	6	86	266	6	364	75	+	23
Davidson	394	935	0	934	1,869	47	509	1,023	348	1,927	336	-	58
Davie	87	137	0	129	266	3	81	134	9	227	126	+	39
Iredell	288	1,680	242	313	2,235	24	300	1,491	252	2,067	456	+	168
TOTAL	821	3,024	310	1,423	4,757	80	976	2,914	615	4,585	993	+	172
<u>23RD DISTRICT</u>													
Alleghany	35	397	38	97	532	6	82	359	51	498	69	+	34
Ashe	84	151	53	56	260	1	75	150	46	272	72	-	12
Wilkes	347	785	185	452	1,422	15	205	587	614	1,421	348	+	1
Yadkin	104	339	86	83	508	6	94	343	56	489	123	+	19
TOTAL	570	1,672	362	688	2,722	28	446	1,439	767	2,680	612	+	42

1. Includes claims for \$300 or less where the principal relief requested is one of those listed in G.S. 7A-210(2) and the plaintiff has requested assignment to a magistrate.
2. Includes domestic relations cases as defined by G.S. 7A-244.

	Pending 1/1/73	Cases Filed				Cases Disposed of					Pending 12/31/73	Gain or Loss	
		Small Claims ¹	Domestic ²	Other	Total	By Jury	By Judge	Magistrate	Other	Total			
<u>24TH DISTRICT</u>													
Avery	44	148	39	152	339	0	42	166	103	311	72	+	28
Madison	11	39	20	28	87	0	29	34	19	82	16	+	5
Mitchell	52	87	26	127	240	1	105	81	28	215	77	+	25
Watauga	68	132	56	114	302	2	73	127	103	305	65	-	3
Yancey	77	77	56	37	170	1	75	56	81	213	34	-	43
TOTAL	252	483	197	458	1,138	4	324	464	334	1,126	264	+	12
<u>25TH DISTRICT</u>													
Burke	385	522	359	237	1,118	48	339	517	154	1,058	445	+	60
Caldwell	272	1,138	28	321	1,487	25	202	1,055	128	1,410	349	+	77
Catawba	659	1,174	592	494	2,260	37	580	1,168	523	2,308	611	-	48
TOTAL	1,316	2,834	979	1,052	4,865	110	1,121	2,740	805	4,776	1,405	+	89
<u>26TH DISTRICT</u>													
Mecklenburg	4,986	10,799	461	6,321	17,581	162	2,957	9,179	2,155	14,453	8,114	+	3,128
<u>27TH DISTRICT</u>													
Cleveland	296	1,272	394	180	1,846	6	380	1,273	145	1,804	338	+	42
Gaston	1,402	2,955	54	1,615	4,624	44	1,136	2,978	351	4,509	1,517	+	115
Lincoln	89	566	96	130	792	4	172	473	117	766	115	+	26
TOTAL	1,787	4,793	544	1,925	7,262	54	1,688	4,724	613	7,079	1,970	+	183
<u>28TH DISTRICT</u>													
Buncombe	821	1,710	371	1,192	3,273	52	1,048	1,660	268	3,028	1,066	+	245

1. Includes claims for \$300 or less where the principal relief requested is one of those listed in G.S. 7A-210(2) and the plaintiff has requested assignment to a magistrate.
 2. Includes domestic relations cases as defined by G.S. 7A-244.

	Pending 1/1/73	Cases Filed				Cases Disposed of					Pending 12/31/73	Gain or Loss	
		Small Claims ¹	Domestic ²	Other	Total	By Jury	By Judge	Magistrate	Other	Total			
<u>29TH DISTRICT</u>													
Henderson	332	372	257	158	787	24	290	299	123	736	333	+	51
McDowell	118	259	164	67	490	17	118	237	80	452	156	+	38
Polk	36	75	35	7	117	0	43	61	25	129	24	-	12
Rutherford	157	806	294	153	1,253	20	226	688	85	1,019	391	+	234
Transylvania	273	207	110	92	409	12	127	292	55	486	196	-	77
TOTAL	916	1,719	860	477	3,056	73	804	1,577	368	2,822	1,150	+	234
<u>30TH DISTRICT</u>													
Cherokee	63	132	60	47	239	2	53	83	95	233	69	+	6
Clay	17	83	2	8	93	0	12	92	2	106	4	-	13
Graham	18	23	16	0	39	0	14	35	0	49	8	-	10
Haywood	215	322	197	65	584	19	268	310	47	644	155	-	60
Jackson	102	126	34	73	233	1	91	126	44	262	73	-	29
Macon	97	72	25	76	173	2	56	77	16	151	119	+	22
Swain	58	75	33	18	126	2	28	58	8	96	88	+	30
TOTAL	570	833	367	287	1,487	26	522	781	212	1,541	516	-	54
GRAND TOTAL	43,989	111,303	23,079	36,986	171,368	2,048	31,707	102,561	25,026	161,342	54,015	+	10,026
Percent		64.9	13.5	21.6	100.0	1.3	19.6	63.6	15.5	100.0			

1. Includes claims for \$300 or less where the principal relief requested is one of those listed in G.S. 7A-210(2) and the plaintiff has requested assignment to a magistrate.
2. Includes domestic relations cases as defined by G.S. 7A-244.

DISTRICT COURT CRIMINAL DOCKETS

Criminal filings were up from 1,000,893 in 1972 to 1,028,532 in 1973, an increase of 2.8%. Dispositions increased from 998,389 to 1,023,310 up 2.5%. The number of cases pending at the end of the year increased by 5,222 to 88,632, up 6.3%.

For the first time, both filings and dispositions in the criminal division have exceeded one million cases. Twenty-one of the 100 counties had more than 1,000 cases pending at the end of the year and 41 counties had 300 or fewer pending. The 10 counties with the largest criminal dockets accounted for 51.6% of the total number of criminal cases pending. The rate of disposition was 99.5%.

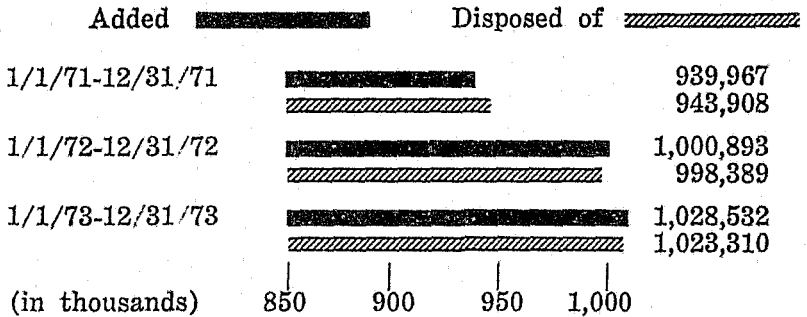
From year to year, the percentage breakdown for the types of cases handled and the manner of dispositions remains fairly constant. In 1973, 64.4% (662,545) of all criminal cases filed were for violations of the traffic laws. Other criminal offenses made up the remaining 35.6% (365,987). Only 9.5% of the cases disposed of were contested, requiring a full-fledged trial before a district court judge. A judge or magistrate disposed of 27.6% upon a plea of guilty or *nolo contendere*, and 45.1% were disposed of by a written appearance waiving trial and pleading guilty before a magistrate or clerk. Preliminary hearings constituted 1.9% of the criminal docket and the remaining 15.9% of total dispositions were terminated by other means.

Since mid-1971 the uniform traffic ticket and complaint has been in use by all law enforcement officials; the ticket contains detailed instructions on the use of the waiver procedure. In 1970, 63.0% of motor vehicle cases were disposed of by waiver; in 1971, 65.7%; in 1972, 69.4%; and in 1973, 69.6%. There are still a few counties where this procedure is still not fully utilized; greater use of the waiver in those counties would tend to alleviate some courtroom congestion and delay.

All statistical measures continue to indicate more than satisfactory performance by the criminal district court. As already indicated, the ratio of criminal cases pending at the end of the year to dispositions for the year is 8.7. This ratio indicates that it would require about one month for the court to dispose of its criminal docket.

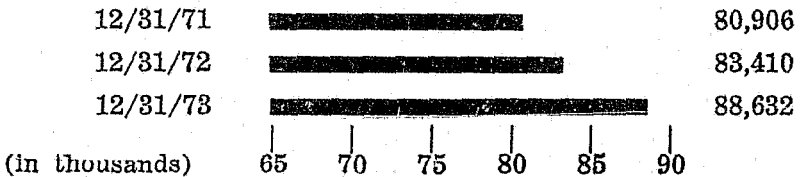
**CRIMINAL CASES ADDED AND DISPOSED OF
IN THE DISTRICT COURT**

January 1, 1971 - December 31, 1973



CRIMINAL CASES PENDING IN THE DISTRICT COURT

December 31, 1971 - December 31, 1973



**DISTRIBUTION OF PENDING CRIMINAL CASES
AMONG THE COUNTIES**

Number of Cases	Less than 100	101-300	301-500	501-1000	Over 1000
Number of Counties 1972	14	31	11	47	17
1973	11	30	14	24	21

TEN COUNTIES WITH LARGEST CRIMINAL DOCKETS

County	Pending 1-1-73	Added	Disposed of	Pending 12-31-73	Percent of Filings Disposed of
*Wake	10,853	75,399	75,565	10,687	100.2
*Mecklenburg	7,937	86,750	85,267	9,420	98.3
*Guilford	11,176	65,929	67,763	9,342	102.8
*New Hanover	1,381	21,861	19,980	3,262	91.4
*Cumberland	3,117	43,649	43,831	2,935	100.4
*Gaston	2,428	29,277	29,014	2,691	93.1
*Buncombe	1,767	28,015	27,463	2,319	98.0
*Forsyth	1,763	47,907	47,744	1,926	99.7
*Davidson	1,468	16,929	16,784	1,613	99.1
Caldwell	686	10,288	9,416	1,558	91.5
STATE MEAN	834	10,285	10,233	886	99.5

*Counties which were listed in this table in the *1972 Annual Report*.

**CRIMINAL CASES PENDING, ADDED, AND DISPOSED OF IN THE DISTRICT COURTS
BY TYPE OF CASE AND MANNER OF DISPOSITION**

January 1, 1973 — December 31, 1973

	Pending 1/1/73	Cases Filed			Cases Disposed of						Pending 12/31/73	Gain or Loss	
		Motor Vehicle	Other Criminal	Total	By Judge ¹	By Plea ²	By Wavler ³	Preliminary Hearing	Otherwise	Total			
<u>1ST DISTRICT</u>													
Camden	26	546	65	611	63	90	391	3	50	597	40	+	14
Chowan	212	1,068	906	1,974	172	512	658	384	229	1,955	231	+	19
Currituck	101	2,097	345	2,442	230	432	1,445	123	192	2,422	121	+	20
Dare	113	1,177	760	1,937	145	552	798	70	367	1,932	118	+	5
Gates	86	1,039	226	1,265	161	153	834	9	93	1,250	101	+	15
Pasquotank	145	2,403	967	3,370	249	738	1,659	417	291	3,354	161	+	16
Perquimans	54	735	168	903	90	147	558	10	66	871	86	+	32
TOTAL	737	9,065	3,437	12,502	1,110	2,624	6,343	1,016	1,288	12,381	858	+	121
<u>2ND DISTRICT</u>													
Beaufort	555	3,850	2,282	6,132	323	1,877	2,848	248	1,140	6,436	251	—	304
Hyde	20	347	281	628	239	131	210	10	22	612	36	+	16
Martin	203	2,869	1,507	4,376	459	818	2,183	69	881	4,410	169	—	34
Tyrrell	18	301	157	458	154	139	133	0	23	449	27	+	9
Washington	20	721	899	1,620	233	255	954	34	145	1,621	19	—	1
TOTAL	816	8,088	5,126	13,214	1,408	3,220	6,328	361	2,211	13,528	502	—	314

1. Includes cases tried before a District Court Judge upon a plea of not guilty.
2. Includes cases tried before a District Court Judge upon a plea of guilty or nolo contendere, and cases tried before a Magistrate upon a plea of guilty. The Magistrates' authority to accept guilty pleas and enter judgment is limited to misdemeanor cases, other than traffic offenses, in which the maximum punishment cannot exceed imprisonment for thirty days, or a fine of \$50 (G.S. 7A-275).
3. Includes traffic cases in which a written appearance waiving trial and pleading guilty is submitted to a Clerk of Superior Court or Magistrate.

	Pending 1/1/73	Cases Filed			Cases Disposed of						Pending 12/31/73	Gain or Loss
		Motor Vehicle	Other Criminal	Total	By Judge ¹	By Plea ²	By Wavier ³	Preliminary Hearing	Otherwise	Total		
<u>3RD DISTRICT</u>												
Carteret	327	4,655	3,445	8,100	370	2,786	3,038	307	1,422	7,923	504	+ 177
Craven	615	8,479	4,573	13,052	1,251	4,031	5,237	539	1,623	12,681	986	+ 371
Pamlico	73	877	450	1,327	301	496	468	27	20	1,312	88	+ 15
Pitt	1,374	11,477	6,864	18,341	1,274	6,147	7,492	377	3,179	18,469	1,246	- 128
TOTAL	2,389	25,488	15,332	40,820	3,196	13,460	16,235	1,250	6,244	40,385	2,824	+ 435
<u>4TH DISTRICT</u>												
Duplin	652	5,433	2,479	7,912	1,403	1,943	4,222	129	466	8,163	401	- 251
Jones	126	1,193	401	1,594	471	159	707	19	279	1,635	85	- 41
Onslow	1,168	11,185	9,552	20,737	1,175	9,152	4,825	335	4,949	20,436	1,469	+ 301
Sampson	607	6,257	2,699	8,956	559	1,936	4,946	157	939	8,537	1,026	+ 419
TOTAL	2,553	24,068	15,131	39,199	3,608	13,190	14,700	640	6,633	38,771	2,981	+ 428
<u>5TH DISTRICT</u>												
New Hanover	1,381	11,501	10,360	21,861	6,586	617	9,960	0	2,817	19,980	3,262	+1,881
Pender	436	2,580	1,222	3,802	453	1,316	1,610	129	611	4,119	119	- 317
TOTAL	1,817	14,081	11,582	25,663	7,039	1,933	11,570	129	3,428	24,099	3,381	+1,564
<u>6TH DISTRICT</u>												
Bertie	104	2,126	699	2,825	225	518	1,736	40	221	2,740	189	+ 85
Halifax	666	5,262	3,644	8,906	480	3,130	3,413	154	1,802	8,979	593	- 73
Hertford	199	2,457	1,273	3,730	181	955	1,679	70	830	3,715	214	+ 15
Northampton	71	2,821	953	3,774	181	1,074	1,876	116	484	3,731	114	+ 43
TOTAL	1,040	12,666	6,569	19,235	1,067	5,677	8,704	380	3,337	19,165	1,110	+ 70

1. Includes cases tried before a District Court Judge upon a plea of not guilty.
2. Includes cases tried before a District Court Judge upon a plea of guilty or nolo contendere, and cases tried before a Magistrate upon a plea of guilty. The Magistrates' authority to accept guilty pleas and enter judgment is limited to misdemeanor cases, other than traffic offenses, in which the maximum punishment cannot exceed imprisonment for thirty days, or a fine of \$50 (G.S. 7A-273).
3. Includes traffic cases in which a written appearance waiving trial and pleading guilty is submitted to a Clerk of Superior Court or Magistrate.

	Pending 1/1/73	Cases Filed			Cases Disposed of						Pending 12/31/73	Gain or Loss
		Motor Vehicle	Other Criminal	Total	By Judge ¹	By Plea ²	By Wavier ³	Preliminary Hearing		Otherwise		
<u>7TH DISTRICT</u>												
Edgecombe	536	7,514	3,865	11,379	851	3,588	5,296	143	1,389	11,267	648	+ 112
Nash	427	9,300	4,157	13,457	857	3,754	6,711	320	1,735	13,377	507	+ 80
Wilson	970	6,190	3,324	9,514	648	1,939	5,275	272	1,683	9,817	667	— 303
TOTAL	1,933	23,004	11,346	34,350	2,356	9,281	17,282	735	4,807	34,461	1,822	— 111
<u>8TH DISTRICT</u>												
Greene	91	1,608	679	2,287	185	625	1,092	86	303	2,241	137	+ 46
Lenoir	703	6,531	4,555	11,086	1,018	3,813	4,323	208	1,670	11,032	757	+ 54
Wayne	981	10,775	4,684	15,459	854	5,045	7,325	279	2,071	15,574	866	— 115
TOTAL	1,775	18,914	9,918	28,832	2,057	9,483	12,740	523	4,044	28,847	1,760	— 15
<u>9TH DISTRICT</u>												
Franklin	264	3,859	1,402	5,261	252	1,379	2,824	78	497	5,030	495	+ 231
Granville	463	3,624	1,647	5,271	364	1,836	2,423	118	499	5,240	494	+ 31
Person	251	2,952	1,291	4,243	373	1,138	2,134	48	416	4,109	385	+ 134
Vance	447	4,958	2,847	7,805	1,602	1,088	3,645	334	1,032	7,701	551	+ 104
Warren	143	1,620	930	2,550	186	740	1,219	51	330	2,526	167	+ 24
TOTAL	1,568	17,013	8,117	25,130	2,777	6,181	12,245	629	2,774	24,606	2,092	+ 524
<u>10TH DISTRICT</u>												
Wake	10,853	50,566	24,833	75,399	5,157	15,341	37,191	802	17,074	75,565	10,687	— 166
<u>11TH DISTRICT</u>												
Harnett	1,340	7,303	4,919	12,222	199	5,005	5,090	79	2,089	12,462	1,100	— 240
Johnston	1,176	9,163	4,596	13,759	2,032	3,684	6,092	92	2,171	14,071	864	— 312
Lee	775	4,725	3,475	8,200	301	2,202	4,417	147	1,244	8,311	664	— 111
TOTAL	3,291	21,191	12,990	34,181	2,532	10,891	15,599	318	5,504	34,844	2,628	— 663

1. Includes cases tried before a District Court Judge upon a plea of not guilty.
2. Includes cases tried before a District Court Judge upon a plea of guilty or nolo contendere, and cases tried before a Magistrate upon a plea of guilty. The Magistrates' authority to accept guilty pleas and enter judgment is limited to misdemeanor cases, other than traffic offenses, in which the maximum punishment cannot exceed imprisonment for thirty days, or a fine of \$50 (G.S. 7A-273).
3. Includes traffic cases in which a written appearance waiving trial and pleading guilty is submitted to a Clerk of Superior Court or Magistrate.

62

	Pending 1/1/73	Cases Filed			Cases Disposed of						Pending 12/31/73	Gain or Loss
		Motor Vehicle	Other Criminal	Total	By Judge ¹	By Plea ²	By Wavier ³	Preliminary Hearing	Otherwise	Total		
<u>12TH DISTRICT</u>												
Cumberland	3,117	29,525	14,124	43,649	2,708	13,005	19,020	420	8,678	43,831	2,935	— 182
Hoke	126	2,097	1,402	3,499	152	1,212	1,583	66	497	3,510	115	— 11
TOTAL	3,243	31,622	15,526	47,148	2,860	14,217	20,603	486	9,175	47,341	3,050	— 193
<u>13TH DISTRICT</u>												
Bladen	477	4,719	1,840	6,559	1,073	2,445	2,877	99	242	6,736	300	— 177
Brunswick	553	4,430	2,312	6,742	1,453	1,807	3,093	56	383	6,792	503	— 50
Columbus	707	7,011	3,352	10,363	1,180	4,225	3,462	246	971	10,084	986	+ 279
TOTAL	1,737	16,160	7,504	23,664	3,706	8,477	9,432	401	1,596	23,612	1,789	+ 52
<u>14TH DISTRICT</u>												
Durham	722	15,325	9,318	24,643	2,052	8,946	9,290	471	4,241	25,000	365	— 357
<u>15TH DISTRICT</u>												
Alamance	990	10,820	5,301	16,121	1,470	3,948	8,073	6	2,826	16,323	788	— 202
Chatham	333	3,636	1,390	5,026	511	1,631	2,310	62	545	5,059	300	— 33
Orange	454	7,300	2,940	10,240	1,385	2,093	4,896	64	1,703	10,141	553	+ 99
TOTAL	1,777	21,756	9,631	31,387	3,366	7,672	15,279	132	5,074	31,523	1,641	— 136
<u>16TH DISTRICT</u>												
Robeson	982	11,996	6,531	18,527	1,103	6,563	7,298	293	3,039	18,296	1,213	+ 231
Scotland	218	3,225	2,443	5,668	449	1,923	1,936	190	869	5,367	519	+ 301
TOTAL	1,200	15,221	8,974	24,195	1,552	8,486	9,234	483	3,908	23,663	1,732	+ 532

1. Includes cases tried before a District Court Judge upon a plea of not guilty.
2. Includes cases tried before a District Court Judge upon a plea of guilty or nolo contendere, and cases tried before a Magistrate upon a plea of guilty. The Magistrates' authority to accept guilty pleas and enter judgment is limited to misdemeanor cases, other than traffic offenses, in which the maximum punishment cannot exceed imprisonment for thirty days, or a fine of \$50 (G.S. 7A-273).
3. Includes traffic cases in which a written appearance waiving trial and pleading guilty is submitted to a Clerk of Superior Court or Magistrate.

	Pending 1/1/73	Cases Filed			Cases Disposed of						Pending 12/31/73	Gain or Loss
		Motor Vehicle	Other Criminal	Total	By Judge ¹	By Plea ²	By Wavler ³	Preliminary Hearing	Otherwise	Total		
<u>17TH DISTRICT</u>												
Caswell	250	1,818	708	2,526	241	523	1,343	72	385	2,564	212	— 38
Rockingham	1,158	8,228	4,966	13,194	1,212	3,647	5,486	789	1,941	13,075	1,277	+ 119
Stokes	172	1,695	1,546	3,241	491	1,186	1,032	59	445	3,213	200	+ 28
Surry	799	5,091	2,858	7,949	1,868	2,311	3,513	91	611	8,394	354	— 445
TOTAL	2,379	16,832	10,078	26,910	3,812	7,667	11,374	1,011	3,382	27,246	2,043	— 336
<u>18TH DISTRICT</u>												
Guilford—												
Greensboro	7,192	33,456	14,335	47,791	2,496	21,133	21,804	809	3,624	49,866	5,117	—2,075
High Point	3,984	11,463	6,675	18,138	997	6,295	8,739	456	1,410	17,897	4,225	+ 241
TOTAL	11,176	44,919	21,010	65,929	3,493	27,428	30,543	1,265	5,034	67,763	9,342	—1,834
<u>19TH DISTRICT</u>												
63 Cabarrus	772	8,994	5,082	14,076	1,671	3,535	6,759	417	1,723	14,105	743	— 29
Montgomery	654	3,581	2,561	6,142	732	803	2,836	213	1,406	5,990	806	+ 152
Randolph	843	9,342	3,649	12,991	1,120	3,259	6,624	198	1,774	12,975	859	+ 16
Rowan	778	9,829	3,658	13,487	1,374	2,603	7,305	299	1,161	12,742	1,523	+ 745
TOTAL	3,047	31,746	14,950	46,696	4,897	10,200	23,524	1,127	6,064	45,812	3,931	+ 884
<u>20TH DISTRICT</u>												
Anson	297	2,901	1,857	4,758	445	1,472	1,951	109	670	4,647	408	+ 111
Moore	364	4,419	2,459	6,878	362	1,519	3,729	142	1,075	6,827	415	+ 51
Richmond	998	5,285	2,438	7,723	74	2,418	3,444	349	1,460	7,745	976	— 22
Stanly	782	4,225	2,269	6,494	302	1,440	3,511	127	834	6,214	1,062	+ 280
Union	1,944	4,708	2,959	7,667	680	2,606	4,141	203	1,082	8,712	899	—1,045
TOTAL	4,385	21,538	11,982	33,520	1,863	9,455	16,776	930	5,121	34,145	3,760	— 625

1. Includes cases tried before a District Court Judge upon a plea of not guilty.
2. Includes cases tried before a District Court Judge upon a plea of guilty or nolo contendere, and cases tried before a Magistrate upon a plea of guilty. The Magistrates' authority to accept guilty pleas and enter judgment is limited to misdemeanor cases, other than traffic offenses, in which the maximum punishment cannot exceed imprisonment for thirty days, or a fine of \$50 (G.S. 7A-273).
3. Includes traffic cases in which a written appearance waiving trial and pleading guilty is submitted to a Clerk of Superior Court or Magistrate.

	Pending 1/1/73	Cases Filed			Cases Disposed of						Pending 12/31/73	Gain or Loss
		Motor Vehicle	Other Criminal	Total	By Judge ¹	By Plea ²	By Waiver ³	Preliminary Hearing	Otherwise	Total		
<u>21ST DISTRICT</u>												
Forsyth	1,763	31,852	16,055	47,907	5,155	8,033	23,457	736	10,363	47,744	1,926	+ 163
<u>22ND DISTRICT</u>												
Alexander	267	2,093	1,195	3,288	995	91	1,967	30	149	3,232	323	+ 56
Davidson	1,468	12,590	4,339	16,929	2,351	2,746	9,252	253	2,182	16,784	1,613	+ 145
Darke	185	3,217	460	3,677	285	654	2,245	56	396	3,636	226	+ 41
Iredell	770	8,472	3,720	12,192	4,116	0	5,257	204	2,602	12,179	783	+ 13
TOTAL	2,690	26,372	9,714	36,086	7,747	3,491	18,721	543	5,329	35,831	2,945	+ 255
<u>23RD DISTRICT</u>												
Alleghany	40	605	260	865	151	290	361	28	43	873	32	- 8
Ashe	118	1,565	637	2,202	355	691	830	61	194	2,131	189	+ 71
Wilkes	532	4,069	2,346	6,415	940	1,358	2,373	52	1,715	6,438	509	- 23
Yadkin	310	2,192	924	3,116	533	530	1,735	57	209	3,064	362	+ 52
TOTAL	1,000	8,431	4,167	12,598	1,979	2,869	5,299	198	2,161	12,506	1,092	+ 92
<u>24TH DISTRICT</u>												
Avery	122	1,684	585	2,269	451	219	1,352	41	43	2,106	285	+ 163
Madison	130	1,596	350	1,946	269	63	1,212	61	175	1,780	296	+ 166
Mitchell	47	1,031	440	1,471	344	369	700	32	11	1,456	62	+ 15
Watauga	100	2,607	1,173	3,780	181	949	2,059	73	492	3,754	126	+ 26
Yancey	68	1,203	570	1,773	108	190	1,227	15	221	1,761	80	+ 12
TOTAL	467	8,121	3,118	11,239	1,353	1,790	6,550	222	942	10,857	849	+ 332
<u>25TH DISTRICT</u>												
Burke	757	6,177	4,069	10,246	1,640	1,170	4,487	108	2,490	9,895	1,108	+ 351
Caldwell	686	6,419	3,869	10,288	1,246	3,481	3,612	429	648	9,416	1,558	+ 872
Catawba	1,305	12,310	8,940	21,250	1,005	6,773	9,564	397	3,692	21,431	1,124	- 181
TOTAL	2,748	24,906	16,878	41,784	3,891	11,424	17,663	934	6,830	40,742	3,790	+1,042

1. Includes cases tried before a District Court Judge upon a plea of not guilty.
2. Includes cases tried before a District Court Judge upon a plea of guilty or nolo contendere, and cases tried before a Magistrate upon a plea of guilty. The Magistrates' authority to accept guilty pleas and enter judgment is limited to misdemeanor cases, other than traffic offenses, in which the maximum punishment cannot exceed imprisonment for thirty days, or a fine of \$50 (G.S. 7A-273).
3. Includes traffic cases in which a written appearance waiving trial and pleading guilty is submitted to a Clerk of Superior Court or Magistrate.

	Pending 1/1/73	Cases Filed			Cases Disposed of						Pending 12/31/73	Gain or Loss
		Motor Vehicle	Other Criminal	Total	By Judge ¹	By Plea ²	By Waiver ³	Preliminary Hearing	Otherwise	Total		
<u>26TH DISTRICT</u>												
Mecklenburg	7,937	47,748	39,002	86,750	3,045	26,310	34,970	1,319	19,623	85,267	9,420	+ 1,463
<u>27TH DISTRICT</u>												
Cleveland	1,066	8,690	4,982	13,672	3,497	4,188	5,452	112	129	13,378	1,360	+ 294
Gaston	2,428	17,174	12,103	29,277	1,717	9,754	10,312	489	6,742	29,014	2,691	+ 263
Lincoln	270	4,475	1,980	6,455	791	1,592	2,483	224	1,470	6,560	165	- 102
TOTAL	3,764	30,339	19,065	49,404	6,005	15,534	18,247	825	8,341	48,952	4,216	+ 452
<u>28TH DISTRICT</u>												
Buncombe	1,767	18,595	9,420	28,015	1,768	8,647	12,874	716	3,458	27,463	2,319	+ 552
<u>29TH DISTRICT</u>												
Henderson	454	4,988	2,047	7,035	675	1,813	3,372	263	901	7,024	465	+ 11
McDowell	283	3,049	1,724	4,773	755	693	2,188	166	668	4,470	586	+ 303
Polk	105	1,421	435	1,856	257	321	1,122	41	87	1,828	133	+ 28
Rutherford	627	4,425	3,570	7,995	1,894	1,572	3,114	207	976	7,763	859	+ 232
Transylvania	152	1,411	923	2,334	310	856	1,041	22	106	2,335	151	- 1
TOTAL	1,621	15,294	8,699	23,993	3,891	5,255	10,837	699	2,738	23,420	2,194	+ 573
<u>30TH DISTRICT</u>												
Cherokee	208	1,608	832	2,440	145	357	1,303	10	451	2,266	382	+ 174
Clay	45	572	91	663	125	64	452	0	0	641	67	+ 22
Graham	235	823	255	1,078	330	199	618	0	0	1,147	166	+ 69
Haywood	232	4,585	2,374	6,959	791	2,274	2,904	180	782	6,931	260	+ 28
Jackson	153	1,463	1,281	2,744	489	796	875	42	391	2,593	304	+ 151
Macon	163	1,764	798	2,562	553	276	1,153	33	422	2,437	288	+ 125
Swain	179	809	884	1,693	120	863	533	12	228	1,756	116	- 63
TOTAL	1,215	11,624	6,515	18,139	2,553	4,829	7,838	277	2,274	17,771	1,583	+ 368
GRAND TOTAL	83,410	662,545	365,987	1,028,532	97,295	282,011	461,448	19,558	162,998	1,023,310	88,632	+5,222
Percent		64.4	35.6	100.0	9.5	27.6	45.1	1.9	15.9	100.0		

61

1. Includes cases tried before a District Court Judge upon a plea of not guilty.
2. Includes cases tried before a District Court Judge upon a plea of guilty or nolo contendere, and cases tried before a Magistrate upon a plea of guilty. The Magistrates' authority to accept guilty pleas and enter judgment is limited to misdemeanor cases, other than traffic offenses, in which the maximum punishment cannot exceed imprisonment for thirty days, or a fine of \$50 (G.S. 7A-273).
3. Includes traffic cases in which a written appearance waiving trial and pleading guilty is submitted to a Clerk of Superior Court or Magistrate.

**OFFENSES AND CONDITIONS ALLEGED IN JUVENILE PETITIONS AND
NUMBER OF CHILDREN BEFORE COURT FOR FIRST TIME***

January 1, 1973 — December 31, 1973

	Offenses					Conditions			Grand Total	Children Before Court For First Time		
	Delinquent				Total	Undisciplined		Dependent			Neglected	
	Capital	Other Felony	Misdemeanor	Probation Violation		Truancy	Other	Total				
<u>1ST DISTRICT</u>												
Camden	0	0	6	0	6	2	0	2	1	1	10	9
Chowan	0	5	129	3	137	1	1	2	0	2	141	111
Currituck	0	25	6	0	31	5	0	5	0	1	37	19
Dare	0	1	42	0	43	0	1	1	4	0	48	46
Gates	0	0	4	0	4	1	2	4	0	0	8	8
Pasquotank	0	1	45	10	69	6	1	7	5	4	85	63
Perquimans	0	0	6	0	6	0	1	1	0	5	12	10
TOTAL	0	45	238	13	296	15	7	22	10	13	341	266
<u>2ND DISTRICT</u>												
Beaufort	0	6	100	5	111	14	11	25	3	9	148	83
Hyde	0	0	0	0	0	0	2	2	0	3	5	5
Martin	0	2	44	10	56	11	4	15	0	13	84	45
Tyrrell	0	0	6	0	6	0	1	1	0	0	7	7
Washington	0	0	12	0	12	0	2	2	0	0	14	12
TOTAL	0	8	162	15	185	25	20	45	3	25	258	152

* The data in all columns but the last indicates the total number of offenses alleged to have been committed and conditions alleged to have existed during the year. This data does not indicate the actual number of children before the court, since one petition may include several offenses or conditions and more than one petition may have been filed against a child during the year.

The last column, entitled "Children Before Court for First Time," is included here for convenience of format, but it is not otherwise related to the data in the other columns. This column does indicate the actual number of children in all categories or jurisdiction who were before the court for the first time during 1973.

	Offenses					Conditions					Grand Total	Children Before Court For First Time
	Delinquent			Probation Violation	Total	Undisciplined			Dependent	Neglected		
	Capital	Other Felony	Misde- meanor			Truancy	Other	Total				
<u>3RD DISTRICT</u>												
Carteret	0	19	81	14	114	31	12	43	19	5	181	121
Craven	2	42	87	47	178	13	17	30	8	22	238	142
Pamlico	0	0	25	0	25	1	0	1	0	0	26	24
Pitt	0	10	243	55	308	34	29	63	9	23	403	237
TOTAL	2	71	436	116	625	79	58	137	36	50	848	524
<u>4TH DISTRICT</u>												
Duplin	0	48	63	2	113	19	9	28	11	2	154	81
Jones	0	1	5	0	6	0	1	1	3	2	12	12
Onslow	1	92	134	19	246	20	45	65	17	53	381	234
Sampson	0	2	75	20	97	16	6	22	1	4	124	105
TOTAL	1	143	277	41	462	55	61	116	32	61	671	432
<u>5TH DISTRICT</u>												
New Hanover	0	55	571	124	750	41	62	103	31	51	935	349
Pender	1	8	20	1	30	3	10	13	0	21	64	50
TOTAL	1	63	591	125	780	44	72	116	31	72	999	399
<u>6TH DISTRICT</u>												
Bertie	1	6	7	3	17	6	2	8	0	3	28	25
Halifax	0	34	81	23	138	19	26	45	15	13	211	107
Hertford	0	12	27	1	40	0	0	0	0	0	40	24
Northampton	1	2	38	2	43	10	0	10	0	3	56	38
TOTAL	2	54	153	29	238	35	28	63	15	19	335	194

82

	Offenses					Conditions					Grand Total	Children Before Court For First Time
	Delinquent			Probation Violation	Total	Undisciplined			Dependent	Neglected		
	Capital	Other Felony	Misde-meanor			Truancy	Other	Total				
<u>7TH DISTRICT</u>												
Edgecombe	1	20	148	22	191	9	24	33	2	21	247	155
Nash	1	46	82	16	145	24	45	69	23	19	261	161
Wilson	1	80	166	19	266	29	16	45	12	5	328	145
TOTAL	3	146	396	57	602	62	85	147	42	45	836	461
<u>8TH DISTRICT</u>												
Greene	0	6	19	2	33	6	1	7	1	5	46	33
Lenoir	0	20	176	63	259	32	48	80	12	39	390	189
Wayne	0	7	193	32	232	16	37	53	20	23	328	269
TOTAL	0	33	388	103	524	54	86	140	33	67	764	491
<u>9TH DISTRICT</u>												
Franklin	0	3	42	1	46	9	10	19	11	37	113	72
Granville	0	19	52	4	75	13	8	21	4	9	109	51
Person	0	7	9	9	25	22	10	32	7	8	72	37
Vance	0	8	133	12	153	3	12	15	12	4	184	154
Warren	2	4	19	0	25	0	2	2	2	4	33	34
TOTAL	2	41	255	26	324	47	42	89	36	62	511	348
<u>10TH DISTRICT</u>												
Wake	0	83	449	72	604	26	267	293	35	19	951	650
<u>11TH DISTRICT</u>												
Harnett	0	2	95	23	120	46	27	73	24	24	241	173
Johnston	0	8	107	24	139	43	22	65	63	44	311	148
Lee	0	11	109	33	153	57	43	100	65	12	335	145
TOTAL	0	21	311	80	412	146	97	243	152	80	887	466

	Offenses					Undisciplined		Conditions		Grand Total	Children Before Court For First Time	
	Delinquent			Total	Truancy	Other	Total	Dependent	Neglected			
	Capital	Other Felony	Misde- meanor									Probation Violation
<u>12TH DISTRICT</u>												
Cumberland	3	46	300	39	388	45	239	234	268	239	1,179	844
Hoke	1	24	36	7	68	10	7	17	2	14	101	54
TOTAL	4	70	336	46	456	55	246	301	270	253	1,280	898
<u>13TH DISTRICT</u>												
Bladen	0	2	65	0	67	14	4	18	0	8	93	85
Brunswick	0	14	61	0	75	2	18	20	0	5	100	101
Columbus	0	55	40	25	120	42	21	63	4	23	210	129
TOTAL	0	71	166	25	262	58	43	101	4	36	403	315
<u>14TH DISTRICT</u>												
Durham	0	20	190	58	268	34	64	98	57	40	463	168
<u>15TH DISTRICT</u>												
Alamance	0	72	175	44	291	60	56	116	26	104	537	212
Chatham	0	0	31	0	31	12	4	16	1	5	53	29
Orange	0	25	62	0	87	13	13	26	7	11	131	147
TOTAL	0	97	268	44	409	85	73	158	34	120	721	388
<u>16TH DISTRICT</u>												
Robeson	0	47	123	50	220	107	81	188	47	48	503	312
Scotland	0	11	55	6	72	5	28	33	9	7	121	92
TOTAL	0	58	178	56	292	112	109	221	56	55	624	404

70

	Offenses					Conditions					Children Before Court For First Time	
	Delinquent				Total	Undisciplined			Dependent	Neglected		Grand Total
	Capital	Other Felony	Misde- meanor	Probation Violation		Truancy	Other	Total				
<u>17TH DISTRICT</u>												
Caswell	0	7	4	1	12	9	5	14	3	5	34	30
Rockingham	3	79	116	15	213	27	43	70	14	71	368	194
Stokes	0	0	13	0	13	7	8	15	1	11	40	40
Surry	0	7	75	16	98	29	14	43	2	28	171	157
TOTAL	3	93	208	32	336	72	70	142	20	115	613	421
<u>18TH DISTRICT</u>												
Guilford--												
Greensboro	4	349	521	335	1,209	100	378	478	117	122	1,926	675
High Point	1	57	297	183	538	119	177	296	112	154	1,100	441
TOTAL	5	406	818	518	1,747	219	555	774	229	276	3,026	1,116
<u>19TH DISTRICT</u>												
Cabarrus	5	41	175	33	254	21	18	39	6	14	313	182
Montgomery	0	4	37	3	44	33	9	42	0	4	90	56
Randolph	0	2	107	27	136	16	54	70	2	15	223	166
Rowan	2	34	138	40	214	13	94	107	54	144	519	301
TOTAL	7	81	457	103	648	83	175	258	62	177	1,145	705
<u>20TH DISTRICT</u>												
Anson	0	0	46	9	55	17	7	24	0	7	86	68
Moore	0	11	58	14	83	16	20	36	4	24	147	73
Richmond	0	23	13	20	56	38	54	92	8	4	160	121
Stanly	0	2	138	3	143	33	11	44	9	14	210	116
Union	2	17	78	19	116	33	27	60	33	9	218	150
TOTAL	2	53	333	65	453	137	119	256	54	58	821	528

	Offenses					Undisciplined		Conditions		Grand Total	Children Before Court For First Time	
	Delinquent			Total	Truancy	Other	Total	Dependent	Neglected			
	Capital	Other Felony	Misde- meanor									Probation Violation
<u>21ST DISTRICT</u>												
Forsyth	0	33	363	52	448	79	171	250	54	48	800	452
<u>22ND DISTRICT</u>												
Alexander	0	0	21	0	21	7	5	12	1	6	40	41
Davidson	0	3	277	6	286	47	29	76	47	36	445	351
Davie	0	0	8	0	8	13	0	13	0	4	25	23
Iredell	0	37	129	11	177	40	59	99	19	45	340	272
TOTAL	0	40	435	17	492	107	93	200	67	91	850	687
<u>23RD DISTRICT</u>												
Alleghany	0	1	4	0	5	3	3	6	1	0	12	12
Ashe	0	3	20	1	24	4	4	8	1	6	39	37
Wilkes	0	1	61	10	72	65	16	81	20	52	225	210
Yadkin	0	0	23	7	30	2	2	4	15	13	62	43
TOTAL	0	5	108	18	131	74	25	99	37	71	338	302
<u>24TH DISTRICT</u>												
Avery	3	5	15	3	26	1	6	7	7	1	41	29
Madison	1	1	3	1	6	7	2	9	2	1	18	18
Mitchell	0	3	12	2	17	1	0	1	0	3	21	21
Watauga	0	3	25	1	29	2	2	4	0	1	34	22
Yancey	0	0	13	0	13	2	3	5	0	7	25	21
TOTAL	4	12	68	7	91	13	13	26	9	13	139	111

72

	Offenses					Conditions			Grand Total	Children Before Court For First Time		
	Delinquent				Total	Undisciplined		Dependent			Neglected	
	Capital	Other Felony	Misde- meanor	Probation Violation		Truancy	Other					Total
<u>25TH DISTRICT</u>												
Burke	0	41	82	27	150	28	22	50	8	34	242	46
Caldwell	0	3	71	14	88	31	31	62	3	12	165	160
Catawba	2	5	216	30	253	27	22	49	20	45	367	194
TOTAL	2	49	369	71	491	86	75	161	31	91	774	400
<u>26TH DISTRICT</u>												
Mecklenburg	4	1,082	1,060	321	2,467	78	451	529	168	27	3,191	1,064
<u>27TH DISTRICT</u>												
Cleveland	0	12	287	13	312	39	43	82	6	34	434	205
Gaston	0	157	416	31	604	45	167	212	74	33	923	456
Lincoln	1	11	57	14	83	27	16	43	12	11	149	85
TOTAL	1	180	760	58	999	111	226	337	92	78	1,506	746
<u>28TH DISTRICT</u>												
Buncombe	0	158	306	96	560	54	220	274	14	141	989	708
<u>29TH DISTRICT</u>												
Henderson	0	52	63	27	142	9	45	54	10	17	223	93
McDowell	0	9	26	25	60	27	18	45	20	13	138	125
Polk	0	3	4	0	7	11	11	22	2	2	33	33
Rutherford	0	5	34	38	77	12	9	21	2	4	104	105
Transylvania	1	2	16	17	36	10	11	21	12	4	73	50
TOTAL	1	71	143	107	322	69	94	163	46	40	571	406

	Offenses					Conditions					Grand Total	Children Before Court For First Time
	Delinquent			Total	Undisciplined			Dependent	Neglected	Grand Total		
	Capital	Other Felony	Misde-meanor		Probation Violation	Truancy	Other					
30TH DISTRICT												
Cherokee	0	26	19	0	45	3	7	10	0	11	66	65
Clay	0	9	21	0	30	1	0	1	0	1	32	32
Graham	0	0	21	0	21	2	0	2	0	0	23	23
Haywood	0	10	64	0	74	5	33	38	0	16	128	103
Jackson	0	5	12	0	17	6	1	7	1	2	27	27
Macon	0	0	30	2	32	4	3	7	0	2	41	42
Swain	0	0	7	1	8	2	3	5	6	1	20	20
TOTAL	0	50	174	3	227	23	47	70	7	33	337	312
GRAND TOTAL	44	3,337	10,396	2,374	16,151	2,137	3,692	5,829	1,736	2,276	25,992	14,514
Percent	3	20.6	64.4	14.7	100.0	36.7	63.3	100.0	6.7	8.8	100.0	
Percent					62.1			22.4				

73

JUVENILE PROCEEDINGS — ADJUDICATORY HEARINGS IN THE DISTRICT COURT*

January 1, 1973 — December 31, 1973

	<u>Delinquency Hearings</u>			<u>Undisciplined Hearings</u>			<u>Dependency Hearings</u>			<u>Neglect Hearings</u>			<u>Total Hearings</u>
	<u>Retained</u>	<u>Dismissed</u>	<u>Total</u>	<u>Retained</u>	<u>Dismissed</u>	<u>Total</u>	<u>Retained</u>	<u>Dismissed</u>	<u>Total</u>	<u>Retained</u>	<u>Dismissed</u>	<u>Total</u>	
<u>1ST DISTRICT</u>													
Camden	2	0	2	1	0	1	0	1	1	0	0	0	4
Chowan	32	32	64	1	0	1	0	0	0	1	0	1	66
Currituck	25	6	31	5	0	5	0	0	0	1	0	1	37
Dare	27	36	63	0	1	1	10	3	13	0	0	0	77
Gates	1	3	4	4	0	4	0	0	0	0	0	0	8
Pasquotank	64	14	78	7	1	8	5	1	6	3	0	3	95
Perquimans	4	2	6	0	0	0	0	0	0	5	1	6	12
TOTAL	155	93	248	18	2	20	15	5	20	10	1	11	299
<u>2ND DISTRICT</u>													
74 Beaufort	44	23	67	23	0	23	3	1	4	6	3	9	103
Hyde	1	4	5	1	0	1	1	0	1	0	3	3	10
Martin	39	13	52	9	2	11	0	0	0	9	1	10	73
Tyrrell	6	1	7	0	2	2	0	0	0	0	0	0	9
Washington	8	5	13	1	0	1	0	0	0	0	0	0	14
TOTAL	98	46	144	34	4	38	4	1	5	15	7	22	209
<u>3RD DISTRICT</u>													
Carteret	72	19	91	30	15	45	11	4	15	7	1	8	159
Craven	175	124	299	44	17	61	7	4	11	28	6	34	405
Pamlico	12	9	21	5	0	5	0	0	0	0	0	0	26
Pitt	375	103	478	111	43	154	17	7	24	81	0	81	737
TOTAL	634	255	889	190	75	265	35	15	50	116	7	123	1,327

* This table indicates the total number of adjudicatory hearings held in each category of juvenile jurisdiction during the year. Juvenile petitions may be dismissed either for failure to prove that the child is delinquent, undisciplined, dependent or neglected or, if he is found to be so, because the child is not in need of the care, protection or discipline of the State. All cases dismissed for either of these reasons are counted in the "dismissed" column; all other cases are counted in the "retained" column.

	Delinquency Hearings			Undisciplined Hearings			Dependency Hearings			Neglect Hearings			Total Hearings
	Retained	Dismissed	Total	Retained	Dismissed	Total	Retained	Dismissed	Total	Retained	Dismissed	Total	
<u>4TH DISTRICT</u>													
Duplin	40	72	112	24	9	33	9	18	27	6	1	7	179
Jones	0	6	6	0	1	1	1	2	3	1	1	2	12
Onslow	166	86	252	29	23	52	14	1	15	23	17	40	359
Sampson	31	85	116	13	22	35	1	2	3	4	3	7	161
TOTAL	237	249	486	66	55	121	25	23	48	34	22	56	711
<u>5TH DISTRICT</u>													
New Hanover	645	105	750	99	4	103	31	0	31	44	7	51	935
Pender	19	13	32	10	1	11	2	0	2	15	2	17	62
TOTAL	664	118	782	109	5	114	33	0	33	59	9	68	997
<u>6TH DISTRICT</u>													
95 Bertie	20	4	24	10	0	10	0	0	0	3	0	3	37
Halifax	99	24	123	36	3	39	12	2	14	13	2	15	191
Hertford	15	34	49	0	0	0	0	0	0	0	0	0	49
Northampton	28	13	41	9	0	9	0	0	0	0	1	1	51
TOTAL	162	75	237	55	3	58	12	2	14	16	3	19	328
<u>7TH DISTRICT</u>													
Edgecombe	143	34	177	30	4	34	3	0	3	14	2	16	230
Nash	81	44	125	45	27	72	7	5	12	22	4	26	235
Wilson	174	17	191	28	1	29	12	0	12	3	0	3	235
TOTAL	398	95	493	103	32	135	22	5	27	39	6	45	700
<u>8TH DISTRICT</u>													
Greene	30	4	34	7	0	7	1	0	1	5	0	5	47
Lenoir	188	60	248	65	12	77	6	0	6	30	15	45	376
Wayne	216	48	264	56	5	61	18	11	29	27	8	35	389
TOTAL	434	112	546	128	17	145	25	11	36	62	23	85	812

	<u>Delinquency Hearings</u>			<u>Undisciplined Hearings</u>			<u>Dependency Hearings</u>			<u>Neglect Hearings</u>			<u>Total Hearings</u>
	<u>Retained</u>	<u>Dismissed</u>	<u>Total</u>	<u>Retained</u>	<u>Dismissed</u>	<u>Total</u>	<u>Retained</u>	<u>Dismissed</u>	<u>Total</u>	<u>Retained</u>	<u>Dismissed</u>	<u>Total</u>	
<u>9TH DISTRICT</u>													
Franklin	23	12	35	12	2	14	10	0	10	31	0	31	90
Granville	30	2	32	11	5	16	3	0	3	3	2	5	56
Person	15	10	25	19	13	32	4	3	7	7	1	8	72
Vance	142	11	153	15	0	15	12	0	12	4	0	4	184
Warren	0	20	20	0	3	3	0	2	2	0	7	7	32
TOTAL	210	55	265	57	23	80	29	5	34	45	10	55	434
<u>10TH DISTRICT</u>													
Wake	630	125	755	187	26	213	35	3	38	17	5	22	1,028
<u>11TH DISTRICT</u>													
76 Harnett	75	94	169	47	85	132	14	18	32	22	20	42	375
Johnston	107	27	134	44	19	63	31	16	47	23	17	40	284
Lee	163	52	215	4	1	5	19	18	37	21	0	21	278
TOTAL	345	173	518	95	105	200	64	52	116	66	37	103	937
<u>12TH DISTRICT</u>													
Cumberland	308	96	404	226	65	291	244	65	309	161	89	250	1,254
Hoke	33	8	41	16	1	17	2	1	3	6	1	7	68
TOTAL	341	104	445	242	66	308	246	66	312	167	90	257	1,322
<u>13TH DISTRICT</u>													
Bladen	38	16	54	39	3	42	0	0	0	8	0	8	104
Brunswick	50	16	75	17	3	20	0	0	0	4	1	5	100
Columbus	104	23	127	69	39	108	4	1	5	42	20	62	302
TOTAL	201	55	256	125	45	170	4	1	5	54	21	75	506

77

	<u>Delinquency Hearings</u>			<u>Undisciplined Hearings</u>			<u>Dependency Hearings</u>			<u>Neglect Hearings</u>			<u>Total Hearings</u>
	<u>Retained</u>	<u>Dismissed</u>	<u>Total</u>	<u>Retained</u>	<u>Dismissed</u>	<u>Total</u>	<u>Retained</u>	<u>Dismissed</u>	<u>Total</u>	<u>Retained</u>	<u>Dismissed</u>	<u>Total</u>	
<u>14TH DISTRICT</u>													
Durham	98	174	272	47	41	88	44	4	48	33	13	46	454
<u>15TH DISTRICT</u>													
Alamance	180	29	209	69	8	77	18	5	23	54	4	58	367
Chatham	28	2	30	8	0	8	1	0	1	5	0	5	44
Orange	71	9	80	20	1	21	9	1	10	5	1	6	117
TOTAL	279	40	319	97	9	106	28	6	34	64	5	69	528
<u>16TH DISTRICT</u>													
Robeson	175	23	198	86	4	90	39	6	45	47	8	55	388
Scotland	60	9	69	23	2	25	4	1	5	7	1	8	107
TOTAL	235	32	267	109	6	115	43	7	50	54	9	63	495
<u>17TH DISTRICT</u>													
Caswell	8	3	11	11	7	18	3	0	3	6	0	6	38
Rockingham	96	21	117	39	9	48	18	0	18	71	13	84	267
Stokes	12	0	12	14	0	14	3	0	3	8	0	8	37
Surry	42	37	79	25	8	33	2	0	2	23	4	27	141
TOTAL	158	61	219	89	24	113	26	0	26	108	17	125	483
<u>18TH DISTRICT</u>													
Guilford—													
Greensboro	398	341	739	184	138	322	89	23	112	59	57	116	1,289
High Point	240	115	355	159	69	228	72	25	97	115	41	156	836
TOTAL	638	456	1,094	343	207	550	161	48	209	174	98	272	2,125

	<u>Delinquency Hearings</u>			<u>Undisciplined Hearings</u>			<u>Dependency Hearings</u>			<u>Neglect Hearings</u>			<u>Total Hearings</u>
	<u>Retained</u>	<u>Dismissed</u>	<u>Total</u>	<u>Retained</u>	<u>Dismissed</u>	<u>Total</u>	<u>Retained</u>	<u>Dismissed</u>	<u>Total</u>	<u>Retained</u>	<u>Dismissed</u>	<u>Total</u>	
<u>19TH DISTRICT</u>													
Cabarrus	228	65	293	30	6	36	7	0	7	16	2	18	354
Montgomery	36	36	72	68	13	81	1	0	1	5	0	5	159
Randolph	85	40	125	35	19	54	3	0	3	11	6	17	199
Rowan	155	70	225	120	72	192	88	27	115	178	34	212	744
TOTAL	504	211	715	253	110	363	99	27	126	210	42	252	1,456
<u>20TH DISTRICT</u>													
Anson	4	51	55	3	21	24	0	0	0	7	0	7	86
Moore	70	16	86	27	8	35	10	2	12	13	10	23	156
Richmond	39	5	44	83	42	125	7	2	9	2	6	8	186
Stanly	103	9	112	32	4	36	6	0	6	14	2	16	170
Union	53	114	167	39	25	64	6	21	27	4	8	12	270
TOTAL	269	195	464	184	100	284	29	25	54	40	26	66	868
<u>21ST DISTRICT</u>													
Forsyth	379	121	500	190	45	235	88	6	94	59	11	70	899
<u>22ND DISTRICT</u>													
Alexander	3	27	30	2	12	14	1	0	1	1	4	5	50
Davidson	219	49	268	69	9	78	29	8	37	36	6	42	425
Davie	9	9	18	32	5	37	5	0	5	18	0	18	78
Iredell	142	54	196	89	33	122	22	1	23	67	23	90	431
TOTAL	373	139	512	192	59	251	57	9	66	122	33	155	984
<u>23RD DISTRICT</u>													
Alleghany	5	0	5	6	0	6	1	0	1	4	2	6	18
Ashe	13	8	21	6	3	9	1	0	1	7	0	7	38
Wilkes	41	51	92	83	24	107	23	4	27	55	9	64	290
Yadkin	27	3	30	4	0	4	13	2	15	12	1	13	62
TOTAL	86	62	148	99	27	126	38	6	44	78	12	90	408

	Delinquency Hearings			Undisciplined Hearings			Dependency Hearings			Neglect Hearings			Total Hearings
	Retained	Dismissed	Total	Retained	Dismissed	Total	Retained	Dismissed	Total	Retained	Dismissed	Total	
<u>24TH DISTRICT</u>													
Avery	28	13	41	7	10	17	4	4	8	0	2	2	68
Madison	5	3	8	3	8	11	3	8	11	0	1	1	31
Mitchell	6	7	13	6	5	11	0	0	0	7	1	8	32
Watauga	14	12	26	4	1	5	0	0	0	0	0	0	31
Yancey	18	6	24	14	0	14	2	0	2	23	3	26	66
TOTAL	71	41	112	34	24	58	9	12	21	30	7	37	228

25TH DISTRICT

Burke	122	45	167	42	5	47	5	6	11	33	15	48	273
Caldwell	83	27	110	65	11	76	1	5	6	13	4	17	209
Catawba	237	68	305	39	11	50	16	4	20	44	9	53	428
TOTAL	442	140	582	146	27	173	22	15	37	90	28	118	910

79

26TH DISTRICT

Mecklenburg	2,398	151	2,549	363	103	466	167	2	169	13	1	14	3,198
-------------	-------	-----	-------	-----	-----	-----	-----	---	-----	----	---	----	-------

27TH DISTRICT

Cleveland	188	72	260	61	5	66	2	3	5	80	0	30	361
Gaston	225	83	308	155	9	164	67	1	68	33	2	35	575
Lincoln	50	20	70	35	8	43	11	1	12	7	2	9	134
TOTAL	463	175	638	251	22	273	80	5	85	70	4	74	1,070

28TH DISTRICT

Buncombe	450	269	719	133	87	220	7	1	8	83	93	176	1,123
----------	-----	-----	-----	-----	----	-----	---	---	---	----	----	-----	-------

08

	Delinquency Hearings			Undisciplined Hearings			Dependency Hearings			Neglect Hearings			Total Hearings
	Retained	Dismissed	Total	Retained	Dismissed	Total	Retained	Dismissed	Total	Retained	Dismissed	Total	
<u>29TH DISTRICT</u>													
Henderson	76	24	100	23	15	38	5	5	10	22	6	28	176
McDowell	12	43	55	9	51	60	4	30	34	3	8	11	160
Polk	7	5	12	17	5	22	2	0	2	3	0	3	39
Rutherford	108	18	126	31	0	31	2	0	2	7	1	8	167
Transylvania	21	6	27	12	4	16	9	5	14	2	5	7	64
TOTAL	224	96	320	92	75	167	22	40	62	37	20	57	606
<u>30TH DISTRICT</u>													
Cherokee	23	9	32	7	3	10	0	0	0	8	3	11	53
Clay	2	14	16	0	1	1	2	12	14	0	0	0	31
Graham	0	18	18	0	0	0	0	0	0	0	0	0	18
Haywood	32	88	120	8	47	55	0	4	4	3	18	21	200
Jackson	3	13	16	5	2	7	0	0	0	0	1	1	24
Macon	16	5	21	4	2	6	0	0	0	2	0	2	29
Swain	3	6	9	1	1	2	4	1	5	1	1	2	18
TOTAL	79	153	232	25	56	81	6	17	23	14	23	37	373
GRAND TOTAL	11,655	4,071	15,726	4,056	1,480	5,536	1,475	419	1,894	1,979	683	2,662	25,818
Percent	74.1	25.9	100.0	73.3	26.7	100.0	77.9	22.1	100.0	74.3	25.7	100.0	
Percent			60.9			21.5			7.3			10.3	100.0

DISTRICT COURT ACTIVITY IN MOTOR VEHICLE AND SMALL CLAIM CASES*

January 1, 1973 — December 31, 1973

	Percent of Motor Vehicle Cases Disposed of by Waiver ¹			Percent of Small Claim Cases Disposed of by Magistrate ¹		
	Motor Vehicle Cases Filed	Cases Disposed of By Waiver	Percent Disposed of by Waiver	Small Claims Filed	Disposed of by Magistrate	Percent Disposed of by Magistrate
<u>1ST DISTRICT</u>						
Camden	546	391	71.6	78	72	92.3
Chowan	1,068	658	61.6	184	174	94.6
Currituck	2,097	1,445	68.9	104	104	100.0
Dare	1,177	798	67.8	124	115	92.7
Gates	1,039	834	80.3	152	142	93.4
Pasquotank	2,403	1,659	69.0	638	683	107.1
Perquimans	735	558	75.9	96	92	95.8
TOTAL	9,065	6,343	70.0	1,376	1,382	100.4
<u>2ND DISTRICT</u>						
Beaufort	3,850	2,848	74.0	970	917	94.5
Hyde	347	210	60.5	44	47	106.8
Martin	2,869	2,183	76.1	731	721	98.6
Tyrrell	301	133	44.2	54	54	100.0
Washington	721	954	132.3	301	289	96.0
TOTAL	8,088	6,328	78.2	2,100	2,028	96.6
<u>3RD DISTRICT</u>						
Carteret	4,655	3,038	65.3	404	439	108.7
Craven	8,479	5,237	61.8	782	742	94.9
Pamlico	877	468	53.4	159	148	93.1
Pitt	11,477	7,492	65.3	1,783	1,591	89.2
TOTAL	25,488	16,235	63.7	3,128	2,920	93.4
<u>4TH DISTRICT</u>						
Duplin	5,433	4,222	77.7	844	844	100.0
Jones	1,193	707	59.3	81	77	95.1
Onslow	11,185	4,825	43.1	1,909	1,617	84.7
Sampson	6,257	4,946	79.0	989	969	98.0
TOTAL	24,068	14,700	61.1	3,823	3,507	91.7
<u>5TH DISTRICT</u>						
New Hanover	11,501	9,960	86.6	1,918	1,513	78.9
Pender	2,580	1,610	62.4	398	374	94.0
TOTAL	14,081	11,570	82.2	2,316	1,887	81.5

1. In some counties, the percent of cases disposed of exceeds one hundred percent because cases pending January 1, 1973 are not included in the "filed" column. The figures in both the "filed" and "disposed of" columns are for the calendar year 1973. Some of the cases filed in 1973 will not be disposed of until 1974 and some of the cases disposed of in 1973 were filed in 1972. Assuming a fairly constant rate of filing and disposition, the percentages are relatively accurate.

* These two tables are combined for convenience of format; they are not otherwise related.

	Percent of Motor Vehicle Cases Disposed of by Waiver ¹			Percent of Small Claim Cases Disposed of by Magistrate ¹		
	Motor Vehicle Cases Filed	Cases Disposed of By Waiver	Percent Disposed of by Waiver	Small Claims Filed	Disposed of by Magistrate	Percent Disposed of by Magistrate
<u>6TH DISTRICT</u>						
Bertie	2,126	1,736	81.7	428	405	94.6
Halifax	5,262	3,413	64.9	1,173	1,098	93.6
Hertford	2,457	1,679	68.3	225	232	103.1
Northampton	2,821	1,876	66.5	328	287	87.5
TOTAL	12,666	8,704	68.7	2,154	2,022	93.9
<u>7TH DISTRICT</u>						
Edgecombe	7,514	5,296	70.5	1,947	1,915	98.4
Nash	9,300	6,711	72.2	1,147	1,105	96.3
Wilson	6,190	5,275	85.2	2,118	2,099	99.1
TOTAL	23,004	17,282	75.1	5,212	5,119	98.2
<u>8TH DISTRICT</u>						
Greene	1,608	1,092	67.9	236	222	94.1
Lenoir	6,531	4,323	66.2	1,756	1,693	96.4
Wayne	10,775	7,325	68.0	1,451	1,449	99.9
TOTAL	18,914	12,740	67.4	3,443	3,364	97.7
<u>9TH DISTRICT</u>						
Franklin	3,859	2,824	73.2	471	452	96.0
Granville	3,624	2,423	66.9	808	780	96.5
Person	2,952	2,134	72.3	1,282	997	77.8
Vance	4,958	3,645	73.5	1,649	1,847	112.0
Warren	1,620	1,219	75.2	258	282	109.3
TOTAL	17,013	12,245	72.0	4,468	4,358	97.5
<u>10TH DISTRICT</u>						
Wake	50,566	37,191	73.5	6,375	6,075	95.3
<u>11TH DISTRICT</u>						
Harnett	7,303	5,090	69.7	1,004	969	96.5
Johnston	9,163	6,092	66.5	1,151	1,072	93.1
Lee	4,725	4,417	93.5	999	957	95.8
TOTAL	21,191	15,599	73.6	3,154	2,998	95.1
<u>12TH DISTRICT</u>						
Cumberland	29,525	19,020	64.4	3,083	3,141	101.9
Hoke	2,097	1,583	75.5	199	166	83.4
TOTAL	31,622	20,603	65.2	3,282	3,307	100.8

1. In some counties, the percent of cases disposed of exceeds one hundred percent because cases pending January 1, 1973 are not included in the "filed" column. The figures in both the "filed" and "disposed of" columns are for the calendar year 1973. Some of the cases filed in 1973 will not be disposed of until 1974 and some of the cases disposed of in 1973 were filed in 1972. Assuming a fairly constant rate of filing and disposition, the percentages are relatively accurate.

* These two tables are combined for convenience of format; they are not otherwise related.

	Percent of Motor Vehicle Cases Disposed of by Waiver ¹			Percent of Small Claim Cases Disposed of by Magistrate ¹		
	Motor Vehicle Cases Filed	Cases Disposed of By Waiver	Percent Disposed of by Waiver	Small Claims Filed	Disposed of by Magistrate	Percent Disposed of by Magistrate
<u>13TH DISTRICT</u>						
Bladen	4,719	2,877	61.0	569	559	98.2
Brunswick	4,430	3,093	69.8	510	467	91.6
Columbus	7,011	3,462	49.4	858	760	88.6
TOTAL	16,160	9,432	58.4	1,937	1,786	92.2
<u>14TH DISTRICT</u>						
Durham	15,325	9,290	60.6	6,242	4,421	70.8
<u>15TH DISTRICT</u>						
Alamance	10,820	8,073	74.6	1,927	1,847	95.8
Chatham	3,636	2,310	63.5	1,290	1,141	88.4
Orange	7,300	4,896	67.1	504	380	75.4
TOTAL	21,756	15,279	70.2	3,721	3,368	90.5
<u>16TH DISTRICT</u>						
Robeson	11,996	7,298	60.8	2,243	2,077	92.6
Scotland	3,225	1,936	60.0	507	489	96.4
TOTAL	15,221	9,234	60.7	2,750	2,566	93.3
<u>17TH DISTRICT</u>						
Caswell	1,818	1,343	73.9	403	340	84.4
Rockingham	8,228	5,436	66.7	1,517	1,447	95.4
Stokes	1,695	1,032	60.9	528	473	89.6
Surry	5,091	3,513	69.0	2,612	1,950	74.7
TOTAL	16,832	11,374	67.6	5,060	4,210	83.2
<u>18TH DISTRICT</u>						
Guilford—						
Greensboro	33,456	21,804	65.2	7,064	7,135	101.0
High Point	11,463	8,739	76.2	3,766	3,423	90.9
TOTAL	44,919	30,543	68.0	10,830	10,558	97.5
<u>19TH DISTRICT</u>						
Cabarrus	8,994	6,759	75.2	1,318	1,148	87.1
Montgomery	3,581	2,836	79.2	478	453	94.8
Randolph	9,342	6,624	70.9	966	834	86.3
Rowan	9,829	7,305	74.3	1,155	1,072	92.8
TOTAL	31,746	23,524	74.1	3,917	3,507	89.5

1. In some counties, the percent of cases disposed of exceeds one hundred percent because cases pending January 1, 1973 are not included in the "filed" column. The figures in both the "filed" and "disposed of" columns are for the calendar year 1973. Some of the cases filed in 1973 will not be disposed of until 1974 and some of the cases disposed of in 1973 were filed in 1972. Assuming a fairly constant rate of filing and disposition, the percentages are relatively accurate.

* These two tables are combined for convenience of format; they are not otherwise related.

	Percent of Motor Vehicle Cases Disposed of by Wavier ¹			Percent of Small Claim Cases Disposed of by Magistrate ¹		
	Motor Vehicle Cases Filed	Cases Disposed of By Waiver	Percent Disposed of by Waiver	Small Claims Filed	Disposed of by Magistrate	Percent Disposed of by Magistrate
<u>20TH DISTRICT</u>						
Anson	2,901	1,951	67.3	426	344	80.8
Moore	4,419	3,729	84.4	526	494	93.9
Richmond	5,285	3,444	65.2	606	567	93.6
Stanly	4,225	3,511	83.1	962	916	95.2
Union	4,708	4,141	88.0	824	806	97.8
TOTAL	21,538	16,776	77.9	3,344	3,127	93.5
<u>21ST DISTRICT</u>						
Forsyth	31,852	23,457	73.6	4,804	4,573	95.2
<u>22ND DISTRICT</u>						
Alexander	2,093	1,967	94.0	272	266	97.8
Davidson	12,590	9,252	73.5	935	1,023	109.4
Davie	3,217	2,245	69.8	137	134	97.8
Iredell	8,472	5,257	62.1	1,680	1,491	88.8
TOTAL	26,372	18,721	71.0	3,024	2,914	96.4
<u>23RD DISTRICT</u>						
Alleghany	605	361	59.7	397	359	90.4
Ashe	1,565	830	53.0	151	150	99.3
Wilkes	4,069	2,373	58.3	785	587	74.8
Yadkin	2,192	1,735	79.2	339	343	101.2
TOTAL	8,431	5,299	62.9	1,672	1,439	86.1
<u>24TH DISTRICT</u>						
Avery	1,684	1,352	80.3	148	166	112.2
Madison	1,596	1,212	75.9	39	34	87.2
Mitchell	1,031	700	67.9	87	81	93.1
Watauga	2,607	2,059	79.0	132	127	96.2
Yancey	1,203	1,227	102.0	77	56	72.7
TOTAL	8,121	6,550	80.7	483	464	96.1
<u>25TH DISTRICT</u>						
Burke	6,177	4,487	72.6	522	517	99.0
Caldwell	6,419	3,612	56.3	1,138	1,055	92.7
Catawba	12,310	9,564	77.7	1,174	1,168	99.5
TOTAL	24,906	17,663	70.9	2,834	2,740	96.7
<u>26TH DISTRICT</u>						
Mecklenburg	47,748	34,970	73.2	10,799	9,179	85.0

1. In some counties, the percent of cases disposed of exceeds one hundred percent because cases pending January 1, 1973 are not included in the "field" column. The figures in both the "filed" and "disposed of" columns are for the calendar year 1973. Some of the cases filed in 1973 will not be disposed of until 1974 and some of the cases disposed of in 1973 were filed in 1972. Assuming a fairly constant rate of filing and disposition, the percentages are relatively accurate.

* These two tables are combined for convenience of format; they are not otherwise related.

	Percent of Motor Vehicle Cases Disposed of by Waiver ¹			Percent of Small Claim Cases Disposed of by Magistrate ¹		
	Motor Vehicle Cases Filed	Cases Disposed of By Waiver	Percent Disposed of by Waiver	Small Claims Filed	Disposed of by Magistrate	Percent Disposed of by Magistrate
<u>27TH DISTRICT</u>						
Cleveland	8,690	5,452	62.7	1,272	1,273	100.1
Gaston	17,174	10,312	60.0	2,955	2,978	100.8
Lincoln	4,475	2,483	55.5	566	473	83.6
TOTAL	30,339	18,247	60.1	4,793	4,724	98.6
<u>28TH DISTRICT</u>						
Buncombe	18,595	12,874	69.2	1,710	1,660	97.1
<u>29TH DISTRICT</u>						
Henderson	4,988	3,372	67.6	372	299	80.4
McDowell	3,049	2,188	71.8	259	237	91.5
Polk	1,421	1,122	79.0	75	61	81.3
Rutherford	4,425	3,114	70.4	806	688	85.4
Transylvania	1,411	1,041	73.8	207	292	141.1
TOTAL	15,294	10,837	70.9	1,719	1,577	91.7
<u>30TH DISTRICT</u>						
Cherokee	1,608	1,303	81.0	132	83	62.9
Clay	572	452	79.0	83	92	110.8
Graham	823	618	75.1	23	35	152.2
Haywood	4,585	2,904	63.3	322	310	96.3
Jackson	1,463	875	59.8	126	126	100.0
Mason	1,764	1,153	65.4	72	77	106.9
Swain	809	533	65.9	75	58	77.3
TOTAL	11,624	7,838	67.4	833	781	93.8
GRAND TOTAL	662,545	461,448	69.6	111,303	102,561	92.1

1. In some counties, the percent of cases disposed of exceeds one hundred percent because cases pending January 1, 1973 are not included in the "filed" column. The figures in both the "filed" and "disposed of" columns are for the calendar year 1973. Some of the cases filed in 1973 will not be disposed of until 1974 and some of the cases disposed of in 1973 were filed in 1972. Assuming a fairly constant rate of filing and disposition, the percentages are relatively accurate.

* These two tables are combined for convenience of format; they are not otherwise related.

**DAYS OF COURT HELD AT EACH SEAT
OF THE DISTRICT COURT***

1973 Calendar Year

	Civil	Criminal	Total
<u>1ST DISTRICT (2 Judges)</u>			
Camden—Camden	1½	9½	10
Chowan—Edenton	26	43	69
Currituck—Currituck	3	24	27
Dare—Manteo	4	25	29
Gates—Gatesville	2½	14	16½
Pasquotank—Elizabeth City	13	36	49
Perquimans—Hertford	½	11½	12
TOTAL	49½	163	212½
<u>2ND DISTRICT (2 Judges)</u>			
Beaufort—Washington	24½	88	112½
Hyde—Swan Quarter	½	16½	17
Martin—Williamston	19½	53½	73
Tyrrell—Columbia	1½	12½	14
Washington—Plymouth	½	30½	31
TOTAL	46½	201	247½
<u>3RD DISTRICT (4 Judges)</u>			
Carteret—Beaufort	30½	98½	129
Craven—New Bern	101	175½	276½
Pamlico—Bayboro	4	23	27
Pitt—Greenville	80½	168	248½
Farmville	0	2½	2½
Ayden	0	2½	2½
TOTAL	216	512½	728½
<u>4TH DISTRICT (4 Judges)</u>			
Duplin—Kenansville	16	73½	89½
Jones—Trenton	3½	16	19½
Onslow—Jacksonville	41½	327½	369
Sampson—Clinton	25	84	109
TOTAL	86	501	587
<u>5TH DISTRICT (3 Judges)</u>			
New Hanover—Wilmington	98½	253	351½
Pender—Burgaw	20½	46	66½
TOTAL	119	299	418
<u>6TH DISTRICT (3 Judges)</u>			
Bertie—Windsor	8½	43½	52
Halifax—Halifax	20	92½	112½
Roanoke Rapids	7	37	44
Hertford—Winton	16	44½	60½
Northampton—Jackson	10	41	51
TOTAL	61½	258½	320

* All days of court at each seat were not necessarily held by a judge assigned to the designated judicial district. In 1973 District Court Judges held a total of 334½ days of court in judicial districts other than their own. A day of court is defined as at least a two hour session before lunch and at least a two hour session after lunch. Judicial hospitalization, juvenile and domestic relations cases are counted as civil court.

<u>7TH DISTRICT (4 Judges)</u>	Civil	Criminal	Total
Edgecombe—Tarboro	14½	71½	86
Rocky Mount	10	58½	68½
Nash—Nashville	46½	70	116½
Wilson—Wilson	36	109½	145½
TOTAL	107	309½	416½

<u>8TH DISTRICT (4 Judges)</u>	Civil	Criminal	Total
Greene—Snow Hill	5½	31½	37
Lenoir—Kinston	47½	151½	199
Wayne—Goldsboro	107½	149	256½
Mount Olive	0	23	23
TOTAL	160½	355	515½

<u>9TH DISTRICT (3 Judges)</u>	Civil	Criminal	Total
Franklin—Louisburg	6	42½	48½
Granville—Oxford	21	48½	69½
Person—Roxboro	12	50	62
Vance—Henderson	8	87	95
Warren—Warrenton	4½	27	31½
TOTAL	51½	255	306½

<u>10TH DISTRICT (5 Judges)</u>	Civil	Criminal	Total
Wake—Raleigh	306½	617½	924
Fuquay-Varina	19½	19½	39
Wendell	1	23½	24½
TOTAL	327	660½	987½

<u>11TH DISTRICT (4 Judges)</u>	Civil	Criminal	Total
Harnett—Lillington	42½	93½	136
Dunn	0	42½	42½
Johnston—Smithfield	49½	78	127½
Benson	0	40½	40½
Selma	0	31½	31½
Lee—Sanford	1	120	121
TOTAL	93	406	499

<u>12TH DISTRICT (4 Judges)</u>	Civil	Criminal	Total
Cumberland—Fayetteville	326	418	744
Hoke—Raeford	0	37	37
TOTAL	326	455	781

<u>13TH DISTRICT (2 Judges)</u>	Civil	Criminal	Total
Bladen—Elizabethtown	29½	61½	91
Brunswick—Southport	22	51	73
Shalotte	0	36	36
Columbus—Whiteville	73½	89½	163
Tabor City	0	23	23
TOTAL	125	261	386

	Civil	Criminal	Total
<u>14TH DISTRICT (3 Judges)</u>			
Durham—Durham	145	202	347
<u>15TH DISTRICT (4 Judges)</u>			
Alamance—Graham	178½	96	274½
Chatham—Pittsboro	17	30½	47½
Siler City	7½	29½	37
Orange—Hillsborough	27½	52	79½
Chapel Hill	8½	42	50½
TOTAL	239	250	489
<u>16TH DISTRICT (3 Judges)</u>			
Robeson—Lumberton	119	155½	274½
Fairmont	0	35	35
Maxton	0	47½	47½
Red Springs	0	32½	32½
Rowland	0	23½	23½
Saint Pauls	0	28½	28½
Scotland—Laurinburg	44½	85½	130
TOTAL	163½	408	571½
<u>17TH DISTRICT (4 Judges)</u>			
Caswell—Yanceyville	8	35½	43½
Rockingham—Wentworth	46	0	46
Reidsville	0	83	83
Eden	0	73½	73½
Madison	0	46	46
Stokes—Danbury	½	40	40½
Surry—Dobson	32	112½	144½
TOTAL	86½	390½	477
<u>18TH DISTRICT (7 Judges)</u>			
Guilford—Greensboro	300	400½	700½
High Point	114	146	260
TOTAL	414	546½	960½
<u>19TH DISTRICT (5 Judges)</u>			
Cabarrus—Concord	63½	91½	155
Kannapolis	½	51	51½
Montgomery—Troy	27½	61½	89
Randolph—Ashboro	54½	90½	145
Rowan—Salisbury	53½	119	172½
TOTAL	199½	413½	613
<u>20TH DISTRICT (4 Judges)</u>			
Anson—Wadesboro	17	74	91
Moore—Carthage	24½	40½	65
Southern Pines	4	15	19
Richmond—Rockingham	32½	68½	101
Stanly—Albemarle	39½	94	133½
Union—Monroe	56	87	143
TOTAL	173½	379	552½

	Civil	Criminal	Total
<u>21ST DISTRICT (5 Judges)</u>			
Forsyth—Winston-Salem	283	346½	629½
Kernersville	0	19½	19½
TOTAL	283	366	649
<u>22ND DISTRICT (4 Judges)</u>			
Alexander—Taylorsville	15	32	47
Davidson—Lexington	92	79½	171½
Thomasville	0	57	57
Davie—Mocksville	18	26	44
Iredell—Statesville	65½	94	159½
Mooresville	6½	28	34½
TOTAL	197	316½	513½
<u>23RD DISTRICT (2 Judges)</u>			
Alleghany—Sparta	12½	16½	29
Ashe—Jefferson	16	29	45
Wilkes—Wilkesboro	115	102	217
Yadkin—Yadkinville	12	44½	56½
TOTAL	155½	192	347½
<u>24TH DISTRICT (2 Judges)</u>			
Avery—Newland	13½	23½	37
Madison—Marshall	18	20½	38½
Mitchell—Bakersville	7½	25	32½
Watauga—Boone	21½	53½	75
Yancey—Burnsville	10½	23	33½
TOTAL	71	145½	216½
<u>25TH DISTRICT (4 Judges)</u>			
Burke—Morganton	44½	122½	167
Caldwell—Lenoir	52½	133½	186
Catawba—Newton	55½	76½	132
Hickory	52½	109½	162
TOTAL	205	442	647
<u>26TH DISTRICT (7 Judges)</u>			
Mecklenburg—Charlotte	699	602	1,301
<u>27TH DISTRICT (5 Judges)</u>			
Cleveland—Shelby	55½	129½	185
Gaston—Gastonia	164½	470	634½
Lincoln—Lincolnton	36	79½	115½
TOTAL	256	679	935
<u>28TH DISTRICT (4 Judges)</u>			
Buncombe—Asheville	434½	464	898½

<u>29TH DISTRICT (3 Judges)</u>	Civil	Criminal	Total
Henderson—Hendersonville	49½	59½	109
McDowell—Marion	19	53½	72½
Polk—Columbus	3½	19½	23
Rutherford—Rutherfordton	21½	67½	89
Transylvania—Brevard	30	43½	73½
TOTAL	123½	243½	367
<u>30TH DISTRICT (2 Judges)</u>			
Cherokee—Murphy	2½	28½	31
Clay—Hayesville	3½	9	12½
Graham—Robbinsville	½	16	16½
Haywood—Waynesville	71	71½	142½
Canton	0	16	16
Jackson—Sylva	11	30	41
Macon—Franklin	4½	24	28½
Swain—Bryson City	21½	21½	43
TOTAL	114½	216½	331
GRAND TOTAL	5,728½	10,893½	16,622

FISCAL OPERATIONS

1972 - 73

The total receipts of the Judicial Department exceeded State expenditures by more than three quarters of a million dollars in the 1972-73 fiscal year.

State Expenditures for the Judicial Department	\$28,946,343.80
State and Local Receipts from Court Operations	\$29,714,049.97

Receipts by classification and governmental unit receiving funds:

Superior and District Court Fees (State)	\$ 9,442,194.98
Supreme Court Fees (State)	6,517.25
Court of Appeals Fees (State)	15,472.83
Sale of Appellate Reports (State)	63,685.89
Law Enforcement Officers Benefit and Retirement Fund (State)	<u>2,299,876.30</u>
<i>Total State Receipts</i>	<u>\$11,827,747.25</u>
Facilities Fees (Counties)	\$ 2,123,878.57
Officer Fees (Counties)	1,145,664.79
Jail Fees (Counties)	425,530.96
Fines and Forfeitures (Counties)	<u>13,328,391.36</u>
<i>Total County Receipts</i>	<u>\$17,023,465.68</u>
Facilities Fees (Municipalities)	\$ 134,240.17
Officer Fees (Municipalities)	671,257.45
Jail Fees (Municipalities)	<u>57,339.42</u>
<i>Total Municipal Receipts</i>	<u>\$ 862,837.04</u>
<i>Total Receipts</i>	<u><u>\$29,714,049.97</u></u>

Of the total Judicial Department receipts, \$9,527,870.95 or 32.1% went into the State General Fund. The balance was distributed to the Law Enforcement Officers Benefit and Retirement Fund (7.8%) and the counties (57.2%) and municipalities (2.9%) of the State.

Receipts deposited in the State General Fund amounted to 32.9% of the State's expenditures for the Judicial Department. Total State receipts (General Fund and LEOB&RF) equaled 40.1% of Judicial Department expenditures.

The table which follows shows a breakdown of the fees for each county and the municipalities within each county.

CONTINUED

1 OF 2

**AMOUNTS OF FEES, FINES AND FORFEITURES COLLECTED AND
DISTRIBUTED TO COUNTIES AND MUNICIPALITIES**

FISCAL YEAR 1972-73

County	Facility Fees County	Officer Fees County	Jail Fees County	Fines and Forfeitures County	Facility Fees Municipality	Officer Fees Municipality	Jail Fees Municipality	Total
Alamance	\$ 35,727.75	\$ 19,085.00	\$ 4,681.00	\$ 233,289.27	\$ 0	\$ 11,376.00	\$ 0	\$ 304,159.02
Alexander	8,583.09	5,923.00	2,333.20	43,675.00	4.00	718.00	0	61,236.29
Alleghany	2,676.00	1,264.00	1,020.36	13,492.60	0	134.00	0	18,586.96
Anson	11,248.00	6,864.00	3,798.00	63,624.00	0	1,718.00	0	87,252.00
Ashe	4,214.00	3,561.00	1,262.00	27,357.17	0	162.00	0	36,556.17
Avery	5,272.90	5,026.00	1,510.50	22,997.00	0	26.00	0	34,832.40
Beaufort	14,558.00	11,383.00	1,926.00	73,316.50	0	3,984.00	48.00	105,215.50
Bertie	7,491.00	7,342.00	1,613.00	36,647.78	0	462.00	27.00	53,582.78
Bladen	11,314.00	11,170.05	4,220.50	88,006.34	1,770.00	1,008.00	0	117,488.89
Brunswick	11,487.00	9,890.00	3,944.00	106,162.00	2,885.00	764.00	0	135,132.00
Buncombe	56,413.50	30,299.00	7,740.00	256,487.78	0	20,992.00	0	371,932.28
Burke	23,588.00	12,332.00	1,593.00	115,516.84	0	5,250.00	21.00	158,300.84
Cabarrus	33,416.80	25,355.47	8,519.00	172,338.45	0	3,279.00	0	242,908.72
Caldwell	24,963.64	14,800.52	7,579.00	160,949.22	0	6,667.00	350.00	215,309.38
Camden	1,813.00	1,317.00	72.00	13,383.00	0	0	0	16,585.00
Carteret	14,800.00	8,172.00	2,500.75	125,384.20	0	3,362.00	0	154,218.95
Caswell	6,395.00	5,827.63	1,836.00	46,012.65	0	0	0	60,071.28
Catawba	21,400.10	17,379.00	6,816.00	316,896.67	23,456.00	17,116.00	6,863.00	409,926.77
Chatham	7,840.00	6,962.40	2,256.00	82,866.59	5,390.00	2,064.00	894.00	108,272.99
Cherokee	4,743.00	2,740.00	2,622.00	39,910.50	0	892.00	354.00	51,261.50
Chowan	6,129.00	2,564.00	1,158.00	40,221.28	0	2,026.00	0	52,098.28
Clay	1,234.00	1,200.00	354.00	9,267.75	0	0	0	12,055.75
Cleveland	28,555.00	17,947.00	11,784.00	192,493.31	0	8,794.00	1,068.00	260,641.31
Columbus	20,221.65	13,321.50	8,372.00	157,324.97	2,374.00	4,960.00	1,880.00	208,454.12
Craven	24,316.00	13,437.45	5,529.00	147,272.41	0	4,970.00	6.00	195,530.86
Cumberland	75,871.50	43,883.50	24,655.00	1,002,974.47	7,304.00	22,860.00	0	1,177,553.47

26

County	Facility Fees County	Officer Fees County	Jail Fees County	Fines and Forfeitures County	Facility Fees Municipality	Officer Fees Municipality	Jail Fees Municipality	Total
Currituck	5,276.00	4,710.00	1,238.00	53,793.25	0	0	0	65,017.25
Dare	6,081.00	3,556.00	832.00	63,987.01	0	726.00	0	75,182.01
Davidson	32,655.00	22,991.50	7,486.10	267,740.53	6,453.00	5,766.00	906.00	343,998.13
Davie	8,930.00	6,428.00	1,249.80	60,166.95	0	702.00	0	77,476.55
Duplin	19,024.00	11,332.00	1,573.00	134,773.80	0	3,286.00	3,031.00	173,019.80
Durham	57,771.53	18,817.00	6,877.00	265,755.25	0	25,531.50	0	374,752.28
Edgecombe	17,936.00	15,792.99	5,240.00	102,887.00	6,978.00	8,436.00	1,833.00	159,102.99
Forsyth	103,714.00	20,311.25	12,581.45	401,307.09	1,997.00	62,661.20	0	602,571.99
Franklin	14,038.00	9,257.00	1,680.10	70,320.90	0	1,580.00	484.00	97,360.00
Gaston	57,997.00	27,853.00	13,705.50	302,522.40	0	16,114.00	261.00	418,452.90
Gates	3,233.00	2,805.20	393.00	27,275.00	0	0	0	33,706.20
Graham	2,537.76	2,136.00	838.00	17,715.00	0	124.00	0	23,350.76
Granville	14,644.00	8,830.00	3,657.00	104,351.60	0	1,886.00	735.00	134,103.60
Greene	5,868.00	4,365.00	1,161.00	38,258.68	0	450.00	0	50,102.68
Guilford	150,526.50	37,281.00	21,933.50	556,827.26	0	73,851.50	0	840,424.76
Halifax	15,437.00	12,887.50	2,968.74	131,017.53	3,428.00	4,582.00	3,075.00	173,395.77
Harnett	17,138.35	13,088.00	2,233.00	125,123.05	7,629.00	5,934.00	3,936.42	175,086.82
Haywood	9,730.00	9,496.50	3,360.00	98,427.87	1,860.00	3,366.00	365.00	126,605.17
Henderson	13,221.50	8,737.19	4,202.00	77,983.00	340.00	2,278.00	0	106,761.69
Hertford	8,830.00	5,521.66	1,288.00	51,419.79	0	2,188.00	390.00	69,637.45
Hoke	7,720.00	5,684.00	2,835.00	77,767.32	0	560.00	0	94,566.32
Hyde	1,681.00	1,408.00	242.00	16,583.00	0	0	0	19,914.00
Iredell	30,141.00	18,388.80	6,023.60	232,728.81	3,670.00	5,587.00	1,149.00	297,688.21
Jackson	5,568.00	4,728.00	3,071.00	57,376.75	0	0	0	70,743.75
Johnston	26,425.50	20,389.00	8,179.20	199,300.65	4,507.00	5,884.00	2,681.00	267,366.35
Jones	3,350.00	2,891.00	620.00	14,958.00	0	102.00	0	21,921.00
Lee	18,914.00	13,505.70	7,617.00	100,367.05	0	5,384.00	0	145,787.75
Lenoir	28,198.00	14,483.00	6,234.00	178,738.70	0	6,569.00	4,097.00	238,319.70
Lincoln	12,857.00	10,610.00	4,079.00	86,845.00	0	1,226.00	0	115,617.00
Macon	4,777.00	3,163.00	1,377.00	48,099.00	0	1,216.00	66.00	58,693.00
Madison	4,156.00	3,589.00	809.00	22,975.00	0	256.00	0	31,785.00
Martin	10,573.00	8,284.00	868.00	56,966.70	0	1,166.00	0	77,857.70
McDowell	9,529.40	7,203.00	4,285.82	73,204.03	0	591.25	6.00	94,819.50

County	Facility Fees County	Officer Fees County	Jail Fees County	Fines and Forfeitures County	Facility Fees Municipality	Officer Fees Municipality	Jail Fees Municipality	Total
Mecklenburg	164,108.50	31,852.00	186.00	893,088.21	0	69,156.00	0	1,158,390.71
Mitchell	3,374.00	2,733.00	1,265.00	14,915.00	0	729.00	0	23,016.00
Montgomery	10,917.25	8,834.00	3,511.00	66,534.20	0	1,695.00	0	91,491.45
Moore	12,409.00	11,166.00	3,688.00	127,580.00	3,439.00	3,156.00	2,422.00	163,860.00
Nash	19,204.00	19,375.50	4,891.60	158,796.91	10,974.00	9,064.00	1,949.00	224,255.01
New Hanover	44,254.00	12,480.00	9,268.40	246,715.16	0	20,600.00	1,287.00	334,604.56
Northampton	6,330.00	5,902.41	1,857.00	37,954.00	0	394.00	0	52,937.41
Onslow	36,410.00	21,152.00	13,166.00	351,215.71	0	9,952.00	0	431,895.71
Orange	14,081.00	11,361.00	1,683.00	127,510.25	5,866.00	6,185.00	538.00	167,224.25
Pamlico	3,118.00	2,940.00	276.00	17,603.81	0	0	0	23,937.81
Pasquotank	11,159.00	5,146.00	1,410.00	75,037.00	0	2,290.00	0	95,042.00
Pender	8,742.00	6,671.00	2,604.00	65,006.20	0	872.00	0	83,895.20
Perquimans	2,584.00	1,941.00	276.00	20,968.00	0	204.00	0	25,973.00
Person	11,600.00	4,049.00	1,420.00	69,049.53	423.00	3,040.00	0	89,581.53
Pitt	33,439.00	16,403.00	8,418.00	198,158.80	6,672.00	12,419.00	2,742.00	278,251.80
Polk	3,541.00	2,891.00	2,507.50	28,695.00	0	152.00	0	37,786.50
Randolph	27,198.00	26,887.93	4,833.50	184,979.40	0	3,778.25	123.00	247,800.08
Richmond	17,855.00	12,929.50	3,450.00	131,373.81	0	2,203.00	1,089.00	168,900.31
Robeson	28,546.83	25,076.35	6,154.00	307,719.70	11,493.00	7,200.00	5,581.00	391,770.88
Rockingham	18,913.50	15,807.05	956.50	131,995.40	11,124.00	9,111.75	2,584.00	190,492.20
Rowan	30,610.30	23,964.53	5,181.00	179,611.32	0	6,355.50	0	245,722.65
Rutherford	16,420.00	9,341.50	6,231.00	90,905.30	0	2,814.00	258.00	125,969.80
Sampson	18,795.00	14,837.20	4,045.00	127,621.75	0	3,092.00	69.00	168,459.95
Scotland	11,111.00	7,359.00	4,737.00	90,426.70	0	2,040.00	0	115,673.70
Stanly	17,456.00	8,428.00	3,266.20	111,065.36	0	2,726.00	0	142,941.56
Stokes	8,182.00	6,557.50	2,246.50	32,489.00	0	524.00	0	49,999.00
Surry	23,970.04	20,202.95	2,228.34	144,601.55	0	5,195.00	1,794.00	197,991.88
Swain	3,941.00	2,989.00	3,833.00	39,899.50	0	274.00	0	50,936.50
Transylvania	5,234.00	3,863.67	3,451.00	27,431.65	0	920.00	0	40,906.32
Tyrrell	1,267.00	1,162.00	93.00	7,520.00	0	0	0	10,042.00
Union	20,087.40	13,387.00	7,906.00	137,482.06	0	1,963.00	0	180,825.46
Vance	18,428.10	7,910.00	5,413.00	93,639.20	0	4,282.00	0	129,672.30
Wake	164,028.30	46,566.01	15,447.50	667,965.66	3,472.17	87,583.50	1,924.00	986,987.14

County	Facility Fees County	Officer Fees County	Jail Fees County	Fines and Forfeitures County	Facility Fees Municipality	Officer Fees Municipality	Jail Fees Municipality	Total
Warren	6,896.28	4,676.50	2,997.00	38,088.50	0	744.00	6.00	53,408.28
Washington	4,582.00	3,194.00	609.00	24,777.38	0	1,018.00	0	34,180.38
Watauga	7,261.00	6,342.00	1,963.00	47,160.72	0	800.00	0	63,526.72
Wayne	39,325.00	19,804.00	9,114.00	208,543.61	732.00	9,751.00	399.00	287,668.61
Wilkes	19,200.00	11,795.50	5,339.00	86,750.83	0	1,176.00	0	124,261.33
Wilson	24,740.60	18,747.31	6,101.00	131,643.96	0	4,788.00	48.00	186,068.87
Yadkin	7,359.00	5,595.07	1,448.00	47,163.10	0	1,083.00	0	62,648.17
Yancey	3,950.00	3,769.50	1,623.00	33,272.60	0	340.00	0	42,955.10
TOTALS	\$2,123,878.57	\$1,145,664.79	\$425,530.96	\$13,328,391.36	\$134,240.17	\$671,257.45	\$ 57,339.42	\$17,886,302.72

REPRESENTATION OF INDIGENTS

Private counsel are appointed to represent indigent defendants in 27 of the State's judicial districts. In the 12th, 18th, and 28th judicial districts (Cumberland, Hoke, Guilford, and Buncombe Counties) indigents are normally represented by the public defender's office. The public defender's office of the 28th judicial district is not included in this report since it was not established until July of 1973. The costs of this program rose from \$1,962,719.59 in the 1971-72 fiscal year to \$2,624,378.41 in the 1972-73 fiscal year, an increase of 33.7%. The program constituted 8.8% of total Judicial Department expenditures in 1972-73. The cost of the program in 1972-73 is summarized as follows:

Assigned Counsel in Criminal Cases	\$ 2,159,508.30	
Assigned Counsel in Juvenile Cases	120,360.43	
Total		\$ 2,279,868.73
Public Defender's Office in		
12th Judicial District	110,617.53	
Public Defender's Office in		
18th Judicial District	119,421.26	
Total		230,038.79
Transcripts, Records and Briefs		112,915.89
Expert Witness Fees		1,555.00
TOTAL		\$ 2,624,378.41

The table at the end of this section compares the assigned counsel program in 1971-72 and 1972-73. The number of cases assigned rose from 11,278 to 16,304 or 44.6% and expenditures rose from \$1,655,837 to \$2,279,869 or 37.7%. Of the 16,304 assignments in 1972-73, 2,123 or 13% were in juvenile proceedings.

Court appearances represent only a portion of the activity of the public defenders, but the numbers do reflect the high level of activity in both of these offices:

Court Appearances

	12th District	18th District
District Court	644	1,221
Superior Court	454	493
Appellate Courts	14	58

The total cost of providing counsel to indigents in the two districts with public defenders was as follows:

	12th District	18th District
Public Defender	\$110,618	\$119,421
Assigned Counsel	19,296	14,735
	\$129,914	\$134,156

It is instructive to compare these costs with the cost of the assigned counsel in other urban areas: 10th District (Wake) \$155,234; 14th District (Durham) \$128,523; 21st District (Forsyth) \$107,979; and 26th District (Mecklenburg) \$254,207.

When private counsel or the public defender is assigned to represent an indigent, the court sets the money value of services rendered and enters judgment against the defendant for such amount. Receipts from payments on these judgments rose from \$57,624.79 in 1971-72 to \$86,104.84 in 1972-73. Receipts in 1972-73 amounted to 3.3% of the total cost of the indigent defendant program.

ASSIGNED COUNSEL Cases and Expenditures

	Cases			Expenditures		
	1971-72	1972-73	Percent Increase	1971-72	1972-73	Percent Increase
<u>1ST DISTRICT</u>						
Camden	8	4	(50.0)	2,199	650	(70.4)
Chowan	20	26	30.0	3,760	3,149	(16.2)
Currituck	9	19	111.1	820	2,637	221.6
Dare	15	3	(80.0)	1,570	970	(38.2)
Gates	9	7	(22.2)	905	535	(40.9)
Pasquotank	59	51	(13.6)	6,255	6,110	(2.3)
Perquimans	10	12	20.0	1,285	3,804	196.0
TOTAL	130	122	(6.2)	16,794	17,855	6.3
<u>2ND DISTRICT</u>						
Beaufort	97	123	26.8	14,743	16,145	9.5
Hyde	6	5	(16.7)	825	675	(18.2)
Martin	43	73	69.8	5,940	9,915	66.9
Tyrrell	13	4	(69.2)	1,310	300	(77.1)
Washington	42	44	4.8	3,770	5,100	35.3
TOTAL	201	249	23.9	26,588	32,135	20.9
<u>3RD DISTRICT</u>						
Carteret	71	152	114.1	10,908	22,227	103.8
Craven	208	310	49.0	34,684	38,905	12.2
Pamlico	9	8	(11.1)	975	1,350	38.5
Pitt	285	508	78.2	42,607	73,006	71.3
TOTAL	573	978	70.7	89,174	135,488	51.9
<u>4TH DISTRICT</u>						
Duplin	90	121	34.4	12,546	14,112	12.5
Jones	21	46	119.0	2,430	4,485	84.6
Onslow	166	384	131.3	17,925	45,124	151.7
Sampson	104	203	95.2	15,231	21,790	43.1
TOTAL	381	754	97.9	48,132	85,511	77.7
<u>5TH DISTRICT</u>						
New Hanover	205	343	67.3	34,370	66,837	94.5
Pender	14	40	185.7	1,775	13,915	683.9
TOTAL	219	383	74.9	36,145	80,752	123.4
<u>6TH DISTRICT</u>						
Bertie	34	55	61.8	4,950	4,950	0
Halifax	108	154	42.6	10,750	13,890	29.2
Hertford	34	71	108.8	3,679	6,135	66.8
Northampton	41	33	(19.5)	6,255	5,748	(8.1)
TOTAL	217	313	44.2	25,634	30,723	19.9

	Cases			Expenditures		
	1971-72	1972-73	Percent Increase	1971-72	1972-73	Percent Increase
<u>7TH DISTRICT</u>						
Edgecombe	128	171	33.6	15,790	23,393	48.2
Nash	107	129	20.6	17,951	21,160	17.9
Wilson	167	206	23.4	20,234	30,530	50.9
TOTAL	402	506	25.9	53,975	75,083	39.1
<u>8TH DISTRICT</u>						
Greene	12	37	208.3	1,860	4,860	161.3
Lenoir	93	200	115.1	12,185	29,750	144.2
Wayne	196	247	26.0	21,885	36,245	65.6
TOTAL	301	484	60.8	35,930	70,855	97.2
<u>9TH DISTRICT</u>						
Franklin	40	115	187.5	6,730	18,396	173.3
Granville	67	157	134.3	8,648	20,785	140.3
Person	51	60	17.6	8,435	8,455	.2
Vance	59	227	284.7	8,964	29,700	231.3
Warren	34	36	5.9	6,560	4,585	(30.1)
TOTAL	251	595	137.1	39,337	81,921	108.3
<u>10TH DISTRICT</u>						
Wake	1,119	1,262	12.8	146,492	155,234	6.0
<u>11TH DISTRICT</u>						
Harnett	91	128	40.7	11,685	16,425	40.6
Johnston	109	210	92.7	18,565	32,945	77.5
Lee	87	99	13.8	13,375	16,650	24.5
TOTAL	287	437	52.3	43,625	66,020	51.3
<u>12TH DISTRICT</u>						
Cumberland	37	54	45.9	12,160	17,746	45.9
Hoke	10	6	(40.0)	1,775	1,550	(12.7)
TOTAL	47	60	27.7	13,935	19,296	38.5
<u>13TH DISTRICT</u>						
Bladen	80	83	3.8	11,114	9,820	(11.6)
Brunswick	34	59	73.5	5,340	6,425	20.3
Columbus	69	171	147.8	13,181	23,192	76.0
TOTAL	183	313	71.0	29,635	39,437	33.1
<u>14TH DISTRICT</u>						
Durham	606	802	32.3	95,664	128,523	34.3
<u>15TH DISTRICT</u>						
Alamance	121	287	137.2	26,818	44,694	66.7
Chatham	46	58	26.1	6,475	8,310	28.3
Orange	122	188	54.1	23,653	37,455	58.4
TOTAL	289	533	84.4	56,946	90,459	58.9
<u>16TH DISTRICT</u>						
Robeson	223	211	(5.4)	37,663	40,012	6.2
Scotland	105	125	19.0	11,585	19,010	64.1
TOTAL	328	336	2.4	49,248	59,022	19.8

	Cases			Expenditures		
	1971-72	1972-73	Percent Increase	1971-72	1972-73	Percent Increase
<u>17TH DISTRICT</u>						
Caswell	38	39	2.6	5,927	5,235	(11.7)
Rockingham	149	266	78.5	25,184	45,107	79.1
Stokes	21	45	114.3	3,875	6,127	58.1
Surry	88	117	33.0	13,425	26,885	100.3
TOTAL	296	467	57.8	48,411	83,354	72.2
<u>18TH DISTRICT</u>						
Guilford	39	64	64.1	10,008	14,735	47.2
<u>19TH DISTRICT</u>						
Cabarrus	222	377	69.8	27,845	39,840	45.7
Montgomery	88	144	63.6	12,000	11,725	(2.3)
Randolph	119	191	60.5	16,785	21,260	26.7
Rowan	215	272	26.5	21,570	32,534	50.8
TOTAL	644	984	52.8	77,700	105,359	35.6
<u>20TH DISTRICT</u>						
Anson	58	79	36.2	11,275	8,885	(21.2)
Moore	101	115	13.9	11,365	14,045	23.6
Richmond	138	154	11.6	15,680	21,600	37.8
Stanly	110	134	21.8	17,463	22,057	26.3
Union	100	142	42.0	14,165	23,450	65.5
TOTAL	507	624	23.1	69,948	90,037	28.7
<u>21ST DISTRICT</u>						
Forsyth	368	621	68.8	70,416	107,979	53.3
<u>22ND DISTRICT</u>						
Alexander	47	50	6.4	5,600	4,675	(16.5)
Davidson	155	262	69.0	32,939	33,519	1.8
Davie	34	34	0	4,350	4,000	(8.0)
Iredell	126	183	45.2	22,903	23,565	2.9
TOTAL	362	529	46.1	65,792	65,759	(.1)
<u>23RD DISTRICT</u>						
Allegany	7	10	42.9	1,350	1,275	(5.6)
Ashe	20	58	190.0	3,925	6,740	71.7
Wilkes	83	70	(15.7)	10,525	13,010	23.6
Yadkin	12	31	158.3	2,050	3,910	90.7
TOTAL	122	169	38.5	17,850	24,935	39.7
<u>24TH DISTRICT</u>						
Avery	15	26	73.3	1,515	3,780	149.5
Madison	27	36	33.3	2,925	5,463	86.8
Mitchell	13	4	(69.2)	1,255	675	(46.2)
Watauga	63	62	(1.6)	5,917	8,029	35.7
Yancey	9	17	88.9	1,150	2,867	149.3
TOTAL	127	145	14.2	12,762	20,814	63.1
<u>25TH DISTRICT</u>						
Burke	126	138	9.5	20,030	14,955	(25.3)
Caldwell	121	186	53.7	20,540	21,060	2.5
Catawba	175	228	30.3	27,000	33,735	24.9
TOTAL	422	552	30.8	67,570	69,750	3.2

	Cases			Expenditures		
	1971-72	1972-73	Percent Increase	1971-72	1972-73	Percent Increase
<u>26TH DISTRICT</u>						
Mecklenburg	1,355	1,931	42.5	210,743	254,207	20.6
<u>27TH DISTRICT</u>						
Cleveland	149	179	20.1	22,310	24,458	7.2
Gaston	264	418	58.3	51,852	89,941	73.5
Lincoln	66	110	66.7	8,480	17,436	105.6
TOTAL	479	707	47.6	83,142	131,835	58.6
<u>28TH DISTRICT</u>						
Buncombe	616	796	29.2	64,720	75,694	17.0
<u>29TH DISTRICT</u>						
Henderson	74	101	36.5	10,155	11,605	14.3
McDowell	37	92	148.6	4,735	11,640	145.8
Polk	13	29	123.1	2,618	3,584	37.0
Rutherford	61	110	80.3	7,426	13,112	76.6
Transylvania	25	26	4.0	3,285	3,375	2.7
TOTAL	210	358	70.5	28,219	43,316	53.5
<u>30TH DISTRICT</u>						
Cherokee	57	70	22.8	5,975	5,960	(.3)
Clay	6	10	66.7	320	1,150	259.4
Graham	0	7	0	1,369
Haywood	59	77	30.5	7,105	6,355	(10.6)
Jackson	36	27	(25.0)	4,272	4,439	3.9
Macon	21	29	38.1	2,105	2,887	37.1
Swain	18	10	(44.4)	1,525	1,620	6.2
TOTAL	197	230	16.8	21,302	23,780	11.6
GRAND TOTAL	11,278	16,304	44.6	\$1,655,837	\$2,279,868	37.7

TABLE I
THE COURTS COMMISSION

1973

MR. J. RUFFIN BAILEY— <i>Chmn.</i> Raleigh	DEAN J. D. PHILLIPS School of Law University of North Carolina Chapel Hill
REP. R. LANE BROWN, III Albemarle	REP. H. HORTON ROUNTREE Greenville
REP. LAURENCE A. COBB Charlotte	SENATOR KENNETH C. ROYALL, JR. Durham
REP. HERSCHEL S. HARKINS Asheville	MR. W. MARCUS SHORT Greensboro
SENATOR J. J. HARRINGTON Lewiston	MR. LINDSAY C. WARREN, JR. Goldsboro
REP. L. SNEED HIGH Fayetteville	<i>Ex Officio Members:</i>
REP. HERBERT L. HYDE Asheville	MR. BERT M. MONTAGUE— <i>Director</i> Administrative Office of the Courts Raleigh
MR. WILBUR M. JOLLY Louisburg	MR. C. W. TEAGUE North Carolina State Bar Raleigh
SENATOR J. RUSSELL KIRBY Wilson	MR. HERBERT H. TAYLOR, JR. North Carolina Bar Association Tarboro
SENATOR H. EDWARD KNOX Charlotte	

TABLE II
THE JUDICIAL COUNCIL

1973

JUSTICE J. FRANK HUSKINS— <i>Chmn.</i> Raleigh	SENATOR LAMAR GUDGER Asheville
MR. W. DOUGLAS ALBRIGHT Greensboro	MR. KYLE HAYES North Wilkesboro
MR. W. MARION ALLEN Elkin	JUDGE HENRY A. MCKINNON, JR. Lumberton
JUDGE JULIUS L. BANZET Warrenton	MR. W. D. SABISTON, JR. Carthage
REP. DAVID BLACKWELL Reidsville	MR. ROBERT G. SANDERS Charlotte
JUDGE DAVID M. BRITT Raleigh	MR. CLAUD R. WHEATLY, JR. Beaufort
SENATOR LUTHER J. BRITT, JR. Lumberton	MR. R. BRUCE WHITE, JR. Deputy Attorney General of N. C. Raleigh
MR. LEON CORBETT Burgaw	MR. FRANKLIN E. FREEMAN, JR. Assistant Director of the Administrative Office of the Courts and Executive Secretary of Judicial Council
JUDGE SAM J. ERVIN, III Morganton	
MR. WILLIAM C. GRIFFIN, JR. Williamston	
REP. ROBERT L. FARMER Raleigh	

TABLE III
Trial Judges of the General Court of Justice
Superior Court Division *

District	Judge	City
1	Dewey W. Wells	Elizabeth City
2	Elbert S. Peel, Jr.	Williamston
3	Robert D. Rouse, Jr.	Farmville
4	Russell J. Lanier	Beulaville
5	Bradford Tillery	Wilmington
	Joshua S. James	Maple Hill
6	Perry Martin	Rich Square
7	George M. Fountain	Tarboro
8	Albert W. Cowper	Kinston
9	Hamilton H. Hobgood	Louisburg
10	James H. Pou Bailey	Raleigh
	Donald L. Smith	Cary
11	Harry E. Canaday	Benson
12	E. Maurice Braswell	Fayetteville
	Coy E. Brewer	Fayetteville
13	Edward B. Clark	Elizabethtown
14	Clarence W. Hall	Durham
15	D. Marsh McLelland	Burlington
16	Henry A. McKinnon, Jr.	Lumberton
17	James M. Long	Yanceyville
18	Walter E. Crissman	High Point
	James G. Exum, Jr.	Greensboro
	Charles T. Kivett	Greensboro
19	Frank M. Armstrong	Troy
	Thomas W. Seay, Jr.	Spencer
20	John D. McConnell	Southern Pines
21	Harvey A. Lupton	Winston-Salem
	William Z. Wood	Winston-Salem
22	Robert A. Collier, Jr.	Statesville
23	Julius A. Rousseau, Jr.	North Wilkesboro
24	W. E. Anglin	Burnsville
25	Sam J. Ervin, III	Morganton
26	Fred H. Hasty	Charlotte
	William T. Grist	Charlotte
	Frank W. Snepp, Jr.	Charlotte
27	B. T. Falls, Jr.	Shelby
	John R. Friday	Lincolnton
28	W. K. McLean	Asheville
	Harry C. Martin	Asheville
29	J. W. Jackson	Hendersonville
30	Lacy H. Thornburg	Webster

* In districts with more than one judge, the senior resident judge is listed first.

Special Judges, Superior Court

Judge	City
John Webb	Wilson
Dennis J. Winner	Asheville
J. William Copeland	Murfreesboro
Robert M. Martin	High Point
Sammie L. Chess, Jr.	High Point
A. Pilston Godwin, Jr.	Raleigh
Robert R. Browning	Greenville

Emergency Judges, Superior Court

Walter J. Bone	Nashville
W. H. S. Burgwyn	Woodland
Zeb V. Nettles	Asheville
George B. Patton	Franklin
F. Donald Phillips	Rockingham
Walter W. Cohoon	Elizabeth City
Francis O. Clarkson	Charlotte
P. C. Froneberger	Gastonia
Joseph W. Parker	Windsor
Robert M. Gambill	North Wilkesboro
William Y. Bickett	Raleigh

Conference of Superior Court Judges

President	J. William Copeland, Murfreesboro
President Elect	Edward B. Clark, Elizabethtown
Vice-President	Joshua S. James, Maple Hill
Secretary-Treasurer	John Webb, Wilson

Additional Executive Committee Members:

B. T. Falls, Jr., Shelby
Robert A. Collier, Jr., Statesville

District Court Division *

District	Judge	City
1	Fentress Horner	Elizabeth City
	Wilton F. Walker, Jr.	Currituck
2	Hallett S. Ward	Washington
	Charles H. Manning	Williamston
3	J. W. H. Roberts	Greenville
	Charles H. Whedbee	Greenville
	Herbert O. Phillips, III	Morehead City
	Robert D. Wheeler	Grifton
4	Harvey Boney	Jacksonville
	Paul M. Crumpler	Clinton
	Kenneth W. Turner	Rose Hill
	Walter P. Henderson	Trenton
5	Gilbert H. Burnett	Wilmington
	N. B. Barefoot	Wilmington
	John M. Walker	Wilmington
6	J. T. Maddrey	Weldon
	Joseph D. Blythe	Harrellsville
	Ballard S. Gay	Jackson
7	J. Phil Carlton	Pinetops
	Allen W. Harrell	Wilson
	Tom H. Matthews	Rocky Mount
	Ben H. Neville	Whitakers
8	W. Milton Nowell	Goldsboro
	Herbert W. Hardy	Mauzy
	Emmett R. Wooten	Kinston
	Lester W. Pate	Kinston
9	Julius Banzet	Warrenton
	Claude W. Allen, Jr.	Oxford
	Linwood T. Peoples	Henderson
10	George F. Bason	Raleigh
	Edwin S. Preston, Jr.	Raleigh
	S. Pretlow Winborne	Raleigh
	Henry V. Barnett, Jr.	Raleigh

* The chief district judge is listed first.

District	Judge	City
11	Robert B. Morgan, Sr.	Lillington
	W. Pope Lyon	Smithfield
	William I. Godwin	Selma
12	Woodrow Hill	Dunn
	Derb S. Carter	Fayetteville
	D. B. Herring, Jr.	Fayetteville
	Joseph E. Dupree	Raeeford
13	Seavy A. Carroll	Fayetteville
	Ray H. Walton	Southport
14	Giles R. Clark	Elizabethtown
	E. Lawson Moore	Durham
15	J. Milton Read, Jr.	Durham
	Thomas H. Lee	Durham
	Jasper B. Allen, Jr.	Burlington
16	Stanley Peele	Chapel Hill
	Coleman Cates	Burlington
	Donald Lee Paschal	Siler City
	Samuel E. Britt	Lumberton
	John S. Gardner	Lumberton
17	Charles G. McLean	Lumberton
	Leonard H. van Noppen	Danbury
	Foy Clark	Mount Airy
18	George M. Harris	Yanceyville
	Frank Freeman	Dobson
	E. D. Kuykendall, Jr.	Greensboro
	Byron Haworth	High Point
	Elreta M. Alexander	Greensboro
	Walter E. Clark, Jr.	Greensboro
	B. Gordon Gentry	Greensboro
	Edward K. Washington	Jamestown
19	Darl L. Fowler	Greensboro
	Hal H. Walker	Asheboro
	L. T. Hammond, Jr.	Asheboro
	Robert L. Warren	Concord
	Frank M. Montgomery	Salisbury
20	Odell Sapp	Salisbury
	F. Fetzer Mills	Wadesboro
	Edward E. Crutchfield	Albemarle
	Walter M. Lampley	Rockingham
21	A. A. Webb	Rockingham
	Abner Alexander	Winston-Salem
	Buford T. Henderson	Winston-Salem
	Robert K. Leonard	Winston-Salem
	John Clifford	Winston-Salem
	A. Lincoln Sherk	Winston-Salem
22	Hubert E. Olive, Jr.	Lexington
	L. Roy Hughes	Thomasville
	Preston Cornelius	Troutman
	C. H. Dearman	Statesville
23	Ralph Davis	North Wilkesboro
	Samuel L. Osborne	Wilkesboro
24	J. Ray Braswell	Newland
	Bruce B. Briggs	Mars Hill
25	Marshall E. Cline	Lenoir
	Wheeler Dale	Morganton
	Randy Dean Duncan	Hickory
	John David Ingle	Hickory

District	Judge	City
26	William H. Abernathy	Charlotte
	Kenneth A. Griffin	Charlotte
	William G. Robinson	Charlotte
	J. Edward Stukes	Charlotte
	Larry Thomas Black	Charlotte
	P. B. Beachum, Jr.	Charlotte
27	Clifton Johnson	Charlotte
	Lewis Bulwinkle	Gastonia
	Robert W. Kirby	Cherryville
	Oscar F. Mason, Jr.	Gastonia
	Arnold Max Harris	Ellenboro
	James Ralph Phillips	Gastonia
28	Cary Walter Allen	Asheville
	Zebulon Weaver, Jr.	Asheville
	William Marion Styles	Black Mountain
	James O. Israel, Jr.	Candler
29	Robert T. Gash	Brevard
	Ladson F. Hart	Brevard
	Wade B. Matheny	Forest City
30	Robert J. Leatherwood, III	Bryson City
	Charles J. McDarris	Waynesville

Conference of Chief District Judges

President George F. Bason, Raleigh

North Carolina Association of District Court Judges

President Tom H. Matthews, Rocky Mount
 Vice-President Derb S. Carter, Fayetteville
 Secretary-Treasurer John Clifford, Winston-Salem

TABLE IV

District Attorneys and Assistant District Attorneys

District	District Attorneys and Assistants	City
1	John H. Small	Elizabeth City
	Thomas S. Watts	Elizabeth City
	David K. Teague	Elizabeth City
2	William C. Griffin, Jr.	Williamston
	James W. Hardison	Williamston
	Samuel G. Grimes	Washington
3	Eli Bloom	Greenville
	Sam L. Whitehurst, Jr.	New Bern
	William H. Barker	Wildwood
	Rhodes C. Stokes	Greenville
4	Edwin B. Aycock, Jr.	Greenville
	Walter T. Britt	Clinton
	William H. Andrews	Jacksonville
	Evan A. Erwin, III	Jacksonville
	William G. King	Clinton
5	William M. Bacon, III	Clinton
	W. Allen Cobb	Wilmington
	James C. King	Wilmington
	Ernest H. Newman	Wilmington
	John E. Carriker	Wilmington

* The District Attorney is listed first.

District	District Attorneys and Assistants	City
6	W. H. S. Burgwyn, Jr.	Woodland
	W. E. Murphrey, III	Roanoke Rapids
7	Robert E. Williford	Lewiston
	Roy E. Koldford, Jr.	Wilson
	Franklin R. Brown	Tarboro
	C. David Williams, Jr.	Wilson
8	Sarah F. Patterson	Wilson
	F. Ogden Parker	Goldsboro
	D. M. Jacobs	Goldsboro
	John Patrick Exum	Snow Hill
9	Kenneth R. Ellis	Fremont
	Charles M. White, III	Warrenton
	Edward J. Crotty	Butner
	Ben U. Allen	Henderson
10	Burley B. Mitchell, Jr.	Raleigh
	Joseph A. Calder	Raleigh
	John R. Riley	Raleigh
	Kyle S. Hall	Raleigh
	Francis W. Crawley	Raleigh
	Russell G. Sherrill, III	Raleigh
	Stafford G. Bullock	Raleigh
	William B. Crumpler	Durham
	Louis W. Payne, Jr.	Raleigh
	John W. Twisdale	Smithfield
11	James E. Floors	Princeton
	James D. Moretz	Sanford
	Elton C. Pridgen	Smithfield
	Jack A. Thompson	Fayetteville
	David K. Fox, Jr.	Fayetteville
	Edward W. Grannis, Jr.	Fayetteville
	Duncan B. McFadyen	Raeford
	Wade E. Byrd	Fayetteville
	Randy S. Gregory	Buies Creek
	Thomas H. Finch, Jr.	Fayetteville
13	Lee J. Greer	Whiteville
	J. Wilton Hunt	Whiteville
	William E. Wood	Whiteville
	Anthony Brannon	Bahama
14	Eric C. Michaux	Durham
	Richard T. Rigsbee	Durham
	Robert L. Farb	Durham
	Herbert F. Pierce	Graham
15	William L. Long	Chapel Hill
	Q. Harold Caviness	Burlington
	Charles W. Wannamaker, III	Chapel Hill
	Edward Y. Brewer	Whitsett
	Joe Freeman Britt	Lumberton
	George D. Regan	Lumberton
16	William A. Hough	Fairmont
	Charles D. Ratley	Red Springs
	Allan D. Ivie, Jr.	Eden
	Ralph J. Scott	Danbury
	Alfred J. Ellington	Walnut Cove
17	Jerry Cash Martin	Mount Airy
	Douglas Albright	Greensboro
	Thomas F. Kastner	Greensboro
	Michael A. Schlosser	Greensboro
	Howard D. Cole	Greensboro
	Howard R. Greenson, Jr.	High Point
	Robert A. Franklin	Greensboro
	J. Samuel Pfaff	Greensboro

District	District Attorneys and Assistants	City
19	Joseph Robert John	Greensboro
	David H. Idol, II	High Point
	James E. Roberts	Kannapolis
	Timothy M. Hawkins	Concord
	Milton B. Shoaf, Jr.	Salisbury
20	Ronald J. Bowers	Salisbury
	Chapin P. Oldham	Asheboro
	Carroll R. Lowder	Monroe
	Donald R. Huffman	Wadesboro
	Kenneth W. Honeycutt	Monroe
21	Maurice A. Cawn	Monroe
	Warren B. Morgan, Jr.	Marshville
	Frank J. Yeager	Winston-Salem
	Alvin A. Thomas	Winston-Salem
	James C. Yeatts, III	Bethania
22	Richard R. Lyle	Winston-Salem
	Larry G. Reavis	Winston-Salem
	Michael A. Ashburn	Winston-Salem
	Gary B. Tash	Winston-Salem
	H. W. Zimmerman, Jr.	Lexington
23	Carroll C. Wall, III	Lexington
	Robert W. Johnson	Statesville
	James R. Foley	Statesville
	Samuel A. Cathey	Statesville
	J. Allie Hayes	Moravian Falls
24	Vaughn E. Jennings, Jr.	Taylorsville
	Clyde M. Roberts	Marshall
25	James T. Rusher	Boone
	Donald E. Greene	Hickory
	Benjamin Beach	Lenoir
	Bruce K. Caldwell	Maiden
	Samuel McD. Tate	Morganton
26	Joseph P. Edens, Jr.	Hickory
	Thomas F. Moore, Jr.	Charlotte
	H. Irwin Coffield, III	Charlotte
	Peter S. Gilchrist	Charlotte
	K. Shepherd Buckhalt, Jr.	Charlotte
	J. Gentry Caudill	Charlotte
	Chase B. Saunders	Charlotte
	Dennis L. Guthrie	Charlotte
	Kenneth N. Davis	Charlotte
	Barbara J. Dean	Charlotte
27	Walter J. Dozier, Jr.	Matthews
	Paul L. Pawlowski	Belmont
	W. Hampton Childs, Jr.	Lincolnton
	Berlin H. Carpenter, Jr.	Gastonia
	William L. Morris	Lincolnton
28	Charles D. Randall	Cherryville
	George W. Hill	Cherryville
	Michael K. Hodnett	Gastonia
	Robert D. Lewis	Asheville
	Robert W. Fisher	Asheville
29	Thomas E. L. Lipsey, II	Asheville
	Alton T. Cummings	Asheville
	James A. Freeman	Asheville
	M. Leonard Lowe	Rutherfordton
	Jack M. Freeman	Forest City
30	Sherrill L. Atkins	Rutherfordton
	Marcellus Buchanan, III	Sylva
	James H. Howell, Jr.	Waynesville
	John J. Snow, Jr.	Murphy

District Attorneys Conference

President	W. Hampton Childs, Jr., Lincolnton
Vice-President	W. Allen Cobb, Wilmington
Secretary-Treasurer	William C. Griffin, Jr., Williamston

TABLE V

Public Defenders and Assistant Public Defenders *		
District	Public Defender and Assistants	City
12	James D. Little	Fayetteville
	Deno G. Economou	Fayetteville
	Henry G. Beaver	Fayetteville
18	Wallace G. Harrelson	Greensboro
	Richard S. Towers	High Point
	Delmar L. Dowda	Greensboro
	Dallas C. Clark, Jr.	Greensboro
	Vaiden P. Kendrick	Greensboro
	William C. Ray	Greensboro
	Emmett S. Lupton, Jr.	High Point
28	Ellis J. Harrington, Jr.	High Point
	Peter L. Roda	Asheville
	Robert L. Harrell	Asheville
	J. Robert Hufstader	Asheville

* The Public Defender is listed first.

TABLE VI

Clerks of Superior Court

County	Clerk of Court
Alamance	William L. Durham
Alexander	Martha J. Adams
Alleghany	Glenn Busic
Anson	H. C. Tucker
Ashe	Virginia W. Johnson
Avery	Dean B. Eller
Beaufort	Bessie J. Cherry
Bertie	Thomas S. Speight
Bladen	Wanda S. Campbell
Brunswick	J. E. Brown
Buncombe	J. Ray Elingburg
Burke	T. G. Bumgarner
Cabarrus	Estus B. White
Caldwell	Mary H. Thompson
Camden	Caroline G. Halstead
Carteret	Mary G. Austin
Caswell	Julian P. Moore
Catawba	Eunice W. Mauney
Chatham	J. W. Drake
Cherokee	James C. Howse
Chowan	Lena M. Leary
Clay	Ralph A. Allison
Cleveland	Ruth S. Dedmon
Columbus	Lacy R. Thompson
Craven	Dorothy P. Pate
Cumberland	George T. Griffin
Currituck	R. E. Saunders
Dare	C. S. Meekins
Davidson	Elmer R. Everhart
Davie	Glenn L. Hammer

County
 Duplin
 Durham
 Edgecombe
 Forsyth
 Franklin
 Gaston
 Gates
 Graham
 Granville
 Greene
 Guilford
 Halifax
 Harnett
 Haywood
 Henderson
 Hertford
 Hoke
 Hyde
 Iredell
 Jackson
 Johnston
 Jones
 Lee
 Lenoir
 Lincoln
 Macon
 Madison
 Martin
 McDowell
 Mecklenburg
 Mitchell
 Montgomery
 Moore
 Nash
 New Hanover
 Northampton
 Onslow
 Orange
 Pamlico
 Pasquotank
 Pender
 Perquimans
 Person
 Pitt
 Polk
 Randolph
 Richmond
 Robeson
 Rockingham
 Rowan
 Rutherford
 Sampson
 Scotland
 Stanly
 Stokes
 Surry
 Swain
 Transylvania
 Tyrrell
 Union
 Vance
 Wake

Clerk of Court
 John A. Johnson
 Alton Knight
 Don Gilliam, Jr.
 A. E. Blackburn
 Ralph S. Knott
 Betty J. Jenkins
 S. Hayes Carter, Jr.
 O. W. Hooper, Jr.
 Mary C. Nelms
 Jimmie Lee Jones
 J. P. Shore
 J. C. Taylor
 Elizabeth F. Matthews
 J. B. Siler
 J. Seldon Osteen
 Arthur W. Greene
 E. E. Smith
 Walter Allen Credle
 Carl G. Smith
 Margaret W. Henson
 James C. Woodard
 F. Rogers Pollock
 Sion H. Kelly
 M. E. Creech
 M. L. Huggins
 A. W. Perry
 Judson Edwards
 Mary K. Davenport
 Ruth B. Williams
 Robert M. Blackburn
 Roger W. Ellis
 Charles M. Johnson
 C. M. McLeod
 Rachel M. Joyner
 James G. McKeithan
 R. J. White, Jr.
 Everitte Barbee
 Frank S. Frederick
 Sadie W. Edwards
 Naomi A. Chesson
 Frances N. Futch
 W. J. Ward
 Rama J. Williams
 H. L. Lewis, Jr.
 J. Thurston Arledge
 John H. Skeen
 Miriam F. Greene
 Ben G. Floyd
 Frankie C. Williams
 Francis C. Glover
 Edgar W. Tanner
 Charlie T. McCullen, Jr.
 J. M. McGregor
 Joe H. Lowder
 Robert Miller
 Martha O. Comer
 H. H. Sandlin
 Marian M. McMahan
 Jessie L. Spencer
 Ethel M. Gordon
 Henry W. Hight
 J. Russell Nipper

County

Warren
Washington
Watauga
Wayne
Wilkes
Wilson
Yadkin
Yancey

Clerk of Court

Robert S. Rodwell
Louise S. Allen
Orville H. Foster
Shelton Jordan
Wayne Yates
William A. Boone, Jr.
Harold J. Long
Arnold E. Higgins

Association of Clerks of Superior Court

President
First Vice-President
Second Vice-President
Treasurer
Secretary

Everitte Barbee, Onslow
James C. Woodard, Johnston
Ethel M. Gordon, Union
Harold J. Long, Yadkin
Eunice W. Mauney, Catawba

END