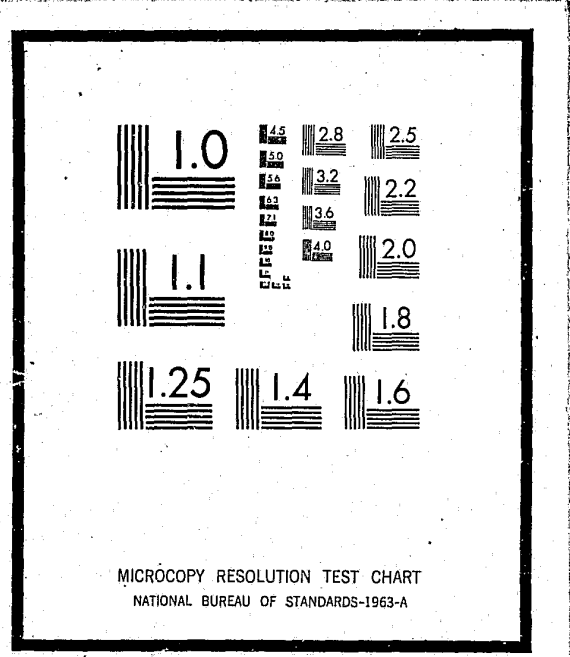


NCJRS

This microfiche was produced from documents received for inclusion in the NCJRS data base. Since NCJRS cannot exercise control over the physical condition of the documents submitted, the individual frame quality will vary. The resolution chart on this frame may be used to evaluate the document quality.



Microfilming procedures used to create this fiche comply with the standards set forth in 41CFR 101-11.504

Points of view or opinions stated in this document are those of the author(s) and do not represent the official position or policies of the U.S. Department of Justice.

U.S. DEPARTMENT OF JUSTICE
LAW ENFORCEMENT ASSISTANCE ADMINISTRATION
NATIONAL CRIMINAL JUSTICE REFERENCE SERVICE
WASHINGTON, D.C. 20531

Date filmed

9/3/75

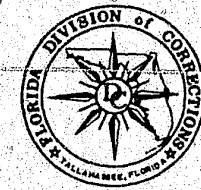
666410

4

DIVISION OF CORRECTIONS RESPONSE TO THE BABCOCK COMMISSION REPORT



J. KELLER,
SECRETARY



LOUIE L. WAINWRIGHT,
DIRECTOR

DEPARTMENT OF HEALTH AND REHABILITATIVE SERVICES

Florida
DIVISION OF CORRECTIONS

RESPONSE TO GENERAL SUMMARY REMARKS

AS DETAILED BY THE BABCOCK COMMISSION REPORT

April 5, 1974

DIVISION OF CORRECTIONS
- BABCOCK COMMISSION RESPONSE -

TABLE OF CONTENTS

| | |
|-------------------------------------|----------|
| General Remarks | Page 1 |
| Apalachee Correctional Institution | Page 8 |
| Avon Park Correctional Institution | Page 22 |
| Cross City Correctional Institution | Page 29 |
| DeSoto Correctional Institution | Page 33 |
| Florida Correctional Institution | Page 37 |
| Florida State Prison | Page 43 |
| Glades Correctional Institution | Page 50 |
| Lake Correctional Institution | Page 54 |
| Reception and Medical Center | Page 58 |
| Sumter Correctional Institution | Page 65 |
| Union Correctional Institution | Page 71 |
| Road Prisons and Vocational Centers | Page 83 |
| Community Correctional Centers | Page 103 |

DEPARTMENT OF HEALTH AND REHABILITATIVE SERVICES

- DIVISION OF CORRECTIONS -

Division of Corrections Response To General Summary Remarks As
Detailed by the Babcock Commission Report

The medical programs and facilities of the Florida Division of Corrections have come under constant attack and criticism in recent years. Although we feel many improvements have been made and are continuing to be made, we recognize that further improvements are necessary and desirable.

In responding to the Babcock Commission Report we have attempted to comment on all criticism and recommendations. Many of the recommendations have already been implemented or were in process of being implemented at the time of the Commission's review. Many of the recommendations will require additional funding and for that reason cannot be implemented until funds are available. In some isolated cases we do not agree with the Commission's recommendations and have attempted to justify the reasoning behind our disagreement.

It should be noted that in a meeting with Dr. Babcock on January 28, 1974, he made it perfectly clear that reported recommendations were only made with reference to existing programs. The Commission did not address itself to the needs for future full implementation of all medical programs in existing Division of Corrections institutions, especially as pertains to personnel needs. Please note copy of his letter to Mr. James A. Ball, III, Deputy Director for Personnel, (Attachment #1).

Page four of the Commission's report made reference to the Reception and Medical Center Hospital. We have been advised that of the fifty states, only two state correctional institution hospitals have ever achieved accreditation. It is agreed that health care should not be denied to inmates any more than other members of society. Our present posture is that we need to play "catch up" ball in providing this service.

What is humane medical treatment for prison inmates? We recommend that it should be of a standard equal to what is normally found in most community hospitals. Should the adoption of this definition be acceptable, the goal and mission of the Division of Corrections becomes very clear. We are working diligently toward the goal that the Reception and Medical Center Hospital will achieve accreditation. The opposite for a hospital that is not striving for accreditation is in fact saying "sub-standard practice will be used here".

The State of Florida has a considerable investment of nearly three-million dollars in the physical plant and furnishings of the Reception and Medical Center Hospital. The total bed capacity is 150. Previous staffing authorized permits the opening of only 90 of these beds. There is a sixty bed wing lying vacant and unused due to the lack of staffing. The American Hospital Association's "Hospital Guide" reveals that the staffing patterns of accredited hospitals is normally a ratio of 2.5 employees per operating bed. The RMC Hospital's presently authorized positions, plus the requested positions, would give us a staffing ratio of approximately 1.1 employee

per operating bed with no inmates being used in patient care areas. With this conservative personnel request approved, accreditation is possible. We do permit inmate labor in housekeeping, laundry, linen exchange, food preparation and food delivery. Even when including use of inmates in the above areas, our staffing ratio would only be approximately 2.0 persons per operating bed.

The Reception and Medical Center Hospital is the only hospital in the Division of Corrections for which we will seek accreditation. All facilities listed by the Commission on pages four and five are available at RMC and a policy that all major elective surgery will be done at the Reception and Medical Center Hospital has been initiated.

Dr. Babcock requested that we provide him with an outline and summary of the mission of the Union Correctional Institution, Florida State Prison and Reception and Medical Center medical facilities future use as they relate to the total Division medical program. This document was provided to Dr. Babcock (Attachment #2) to which we responded accordingly (Attachment #3). From his response we agreed that the 33 and 24 psychiatric beds at UCI and FSP respectively should not be designated as such. They are being referred to as "behavioral disorder beds" and Dr. Babcock agrees with the philosophy.

On page five the statement is made: "...the new medical-dental facilities at Lake and Cross City is atrocious." We disagree with this statement as it was apparent to us in discussion with Dr. Babcock that he had not been

fully advised as to the totally planned facilities and programs to be conducted at these two institutions. Some modifications to these programs were made, however, as a result of the Commission's recommendations. Present programs are outlined by institution later in this report.

On page six, the Commission's report has recommended that an ambulance study be made. We are in agreement that purchase of ambulances will be necessary in view of the decision to handle all major elective surgery at the Reception and Medical Center Hospital. Ambulance needs will be responded to in the institutional responses later in this report.

On page six of the report, it is stated that: "There must be appointed a medical director who has authority over all of the medical facilities and personnel in the System. He will be responsible directly to the Commissioner of Corrections." We do have a Medical and Surgical Director for the Division of Corrections and we are requesting that his office be properly staffed to allow him to supervise the total Division medical program. We are requesting the following positions to support the Medical and Surgical Director.

- Health Services Administrator - (1)
- Medical Services Coordinator - (1)
- Secretary III - (1)
- Clerk Typist II - (1)

This will allow for a total of five positions who can properly plan and implement necessary programs. It would be our recommendation that the

Medical and Surgical Director's office be located separate and apart from any one medical facility per se. We would recommend that this office be located in the administrative offices of the Reception and Medical Center in order that the staff could be in the best possible logistical position to supervise their responsibilities. The Director of the Division of Corrections has assured that there will be no problems of communications with the Medical and Surgical Director.

The Commission's comments with reference to affiliation with the University of Florida Medical School are well taken. We have been involved with the Shands Teaching Hospital for a number of years and would hope to expand this involvement. Please review the attached memorandum of March 5, 1974, which makes reference to this affiliation (Attachment #4).

The Division of Corrections supports the Commission's recommendations that a salary review of medical personnel is necessary. A request has been initiated to study this matter (Attachment #5).

On page nine of the Commission's report the statement was made that psychiatric and psychological care is unquestionably the weakest link in the health care program for prisoners. We concur with this observation and support the authorization of the positions necessary to implement an active program in this area. We also concur with the Commission's remark that part-time psychiatric assistance is nonsense and wasteful. For that reason we have recommended a full-time psychiatrist for Avon Park

Correctional Institution which is the only institution for which such a position was not recommended on a full-time basis by the Commission. This item has been discussed with Dr. Babcock, and we are certain that he would not have recommended a part-time psychiatrist for this institution had he been aware of the planned programs for this facility and the type of offenders which are housed at that location.

In response to the Commission's comments with reference to pharmacy departments, we have requested that Mr. Curtis Lee, Consulting Pharmacist for the Division of Corrections, prepare a written response as to what we feel the direction of the pharmacy programs should take. We additionally requested that Mr. Lee immediately review each Road Prison and Vocational Center's drug procedures and drug storage area. His reports are made a part of this response and are attached. (See Attachments #6 and #7.)

On pages 11 and 12 of the Commission's report, comments were made with reference to clinical laboratories and X-ray procedures. Our response to these areas are made individually and are noted in the institutional responses later in this report.

On page 12 of the Commission's report, comments were made with reference to medical records. We are already active in reviewing our medical records procedures. The result of this review will be standardization of all medical record forms and a standardized policy with reference to their use. (Please note Attachment #8.)

On pages 12 and 13 of the Commission's report, comments were made with reference to medical diets and diet kitchens. We presently have one dietician position authorized at the Reception and Medical Center Hospital. It has been impossible to attract an acceptable employee for this position due to the low salary. Hopefully we can correct this problem and the person to be selected will serve as our consulting dietician. Additionally, we have responded to the remarks concerning the Union Correctional Institution and Avon Park Correctional Institution dietary problems in our institutional responses.

On pages 13 and 14 the Commission made comments with reference to detention cells. Any criticism made by the Commission with reference to detention cells has been properly responded to in the institutional responses later in the report.

On pages 14 and 15 the Commission made comments with reference to sanitation. Each institution was given a sanitation inspection and a report prepared on each facility. We have responded to each report accordingly and our response can be found later in this report.

KENNETH B. BABCOCK, M.D.
HOSPITAL CONSULTANT
5742 N.E. 15TH AVE.
FORT LAUDERDALE, FLORIDA

February 1, 1974

Mr. James A. Ball, III
Deputy Director for Personnel
Division of Corrections
1311 Windwood Blvd.
Tallahassee, FL 32301

Dear Jim:

Enclosed please find my Fee and Expense Account for the meeting on the 28th.

Am sorry that there seemed to be some confusion as to Judge Scott's report. It must be understood, especially as far as personnel were concerned, that it dealt purely with matters as found and did not deal with personnel needs of the future as new facilities are added.

Of course, for the budget they had to be considered at the meeting.

If there is anything I can do to help further, please call or write.

Sincerely,

Kenneth B. Babcock

Kenneth B. Babcock, M.D.
Hospital Consultant
KBB:EIB
enc.

DATE: February 1, 1974
FROM: A. Gonzalez, M.D.
Medical & Surgical Director
TO: Mr. L.L. Wainwright
Director
ATTENTION: Mr. A.F. Cook
Deputy Director for Inmate Treatment

| | |
|--|---------|
| | ACI |
| | APCI |
| | DCI |
| | FSP |
| | GCI |
| | RMC |
| | SCI |
| | SFCF |
| | RP-Adm. |
| | RP-No. |

RE: CREATION OF A COMPREHENSIVE MEDICAL, SURGICAL & PSYCHIATRIC SERVICE

I enclose for your inspection the following which I hope will be the answer to our medical needs. With Dr. Babcock and his Commission's very excellent suggestions we have formulated what we believe to be the initial planning for a comprehensive medical, surgical and psychiatric service with a consolidated approach.

A. Gonzalez M.D.
A. Gonzalez, M.D.
Medical & Surgical Director

AG:lb

cc: file
Dr. Kenneth Babcock, Hospital Consultant
Dr. Joseph F. Alderete, Hospital Medical Director, U.S. Penitentiary Hospital

RECOMMENDATIONS FOR A CONSOLIDATED
COMPREHENSIVE MEDICAL CENTER FOR THE
DIVISION OF CORRECTIONS

The Reception and Medical Center Hospital, with its 150 bed inpatient facility, provided with adequate staffing, such as recommended by Dr. Babcock's Commission could provide the following services to the entire ill inmate population of the Division of Corrections.

POTENTIAL FOR RECEPTION AND MEDICAL CENTER HOSPITAL

OUTPATIENT CLINIC FACILITIES

The Outpatient Clinic has every capability of providing any inmate arriving at RMC with needed medical or psychiatric treatment. When an inmate is received at RMC he is routinely asked if he is taking any medication at that time, and/or if he is afflicted with, for instance epilepsy, a heart condition, diabetes, mental illness, etc. Any medical information relayed to the officers at that time is immediately passed on to the Medical Director's Office for further investigation and disposition in the Medical Area at once.

A complete physical examination is given to each new inmate within the first twenty-four hours of his arrival to include chest x-ray, VDRL and other tests as appropriate to his case.

Outpatient Clinics are held Monday through Friday by our medical staff which includes surgical and psychiatric consultation.

Psychiatric and Psychological screenings held on a routine basis, as also individual and group therapy with counseling, a much neglected program in the past, considered by experts as the only method of attacking the behavior problems which we must deal with, must be initiated immediately. We anticipate initiating regular drug counseling programs for our escalating percentage of drug offenders.

Each newly committed felon is given prophylactic immunizations before he leaves RMC for his permanent penal assignment.

We would be able to provide a complete range of medical, surgical and psychiatric care for all penal facilities in this state who do not have the benefits of the above services.

Shands Teaching Hospital is prepared to provide us with outpatient consultations at this facility for the overall advantage of the inmates of the entire Division. Arrangements for this type of consultation can be made by notifying the Medical and Surgical Director's Office and giving the pertinent medical information. Narrative summaries, prepared by the sending physician, are to accompany each referral for medical treatment.

Clinic Specialities are: ENT, Ophthalmology, Urology, Neurology and Orthopedics. Our medical staff and/or our Shands consultants in the above specialities make the medical decision with regard to the feasibility of referring our patients to Shands on an inpatient basis, where more complete evaluation and treatment can be offered than at this hospital, such as renal, cardiovascular, surgical treatment not available but at Shands Teaching Hospital. An EEG Instrument has been ordered and will further increase our investigatory capabilities.

A comprehensive medical, surgical and psychiatric service would be initiated for the entire population of the Division of Corrections by utilizing primarily the Reception and Medical Center Hospital, Union Correctional Institution's Medical Facility and Florida State Prison's Medical Department as a consolidation of one complete center to meet our patients needs.

With the understanding, cooperation and support of the Superintendents of these institutions, along with the custodial Departments and, in particular, professional and paraprofessional medical personnel, we hope to cultivate a program whereby each facility will unite and where we will find one working in harmony and helping the others.

BED DISTRIBUTION

| | Surgical | Medical | Psychiatric | Intensive Care |
|-----|-----------|-----------|-------------|----------------|
| RMC | 60 | 60 | 28 | 4 |
| UCI | 4 | 17 | 33* | 0 |
| FSP | 0 | 4 | 24* | 0 |
| | <u>64</u> | <u>81</u> | <u>85</u> | <u>4</u> |

*It should be noted that it was not the intention of the Medical and Surgical Director to designate these beds as "long-term psychiatric beds". After review and discussion of this proposal it was decided that these beds would be designated as "behavioral" beds (see Attachment #3).

EMERGENCY REFERRALS

Referral of acutely ill patients, in an emergency situation, is still left up to the discretion of the attending physician and the most available medical facility should be chosen. For the purpose of keeping accurate statistical records, the Medical and Surgical Director's Office should be made aware of the move by the doctor within a reasonable length of time.

RMC INPATIENT HOSPITAL

The Reception and Medical Center Inmate Population consists of both a transient and permanent complement, and of whom are entitled to the full time medical care and all of the medical and surgical benefits of the Reception and Medical Center Hospital.

UCI & FSP

Acute medical emergencies will be handled at RMC. An example of these would be myocardial infarction, diabetic coma and sepsis. The short distance, no more than a fifteen minute drive by auto, between these two institution and Reception and Medical Center would pose no real danger for the patient. In this way we can centralize and consolidate our medical capabilities as differentiated from the past when skeleton facilities have been maintained at each of these three institution.

ALL OF OUR OTHER PENAL INSTITUTIONS

Before an inmate is transferred to Reception and Medical Center for medical treatment two factors should be borne in mind: In the case of an emergency situation where a long trip to Reception and Medical Center would be medically unsound, the inmate can be taken to the nearest hospital for the acute care they require. When the acuteness of their condition subsides, they may be returned to Reception and Medical Center for further convalescence and follow up care.

ELECTIVE SURGERY THROUGHOUT THE DIVISION-TO INCLUDE FCI-FEMALE UNIT

All general surgery will be performed by the surgeons by the Division. Specialized surgery such as in ENT, Ophthalmology, Urology, Neurology and Orthopedics can most frequently be done in the Reception and Medical Center Hospital by our Shands consultant specialists. Only in rare cases or in extremely technical procedures will it be necessary to transport the patient to Shands for the operations they need. In those cases, however, we can expect and may receive excellent cooperation from our Shands consultants who will make all of the necessary arrangements at their end.

All elective surgery can be done at the Reception and Medical Center. Consideration has been given to the performance of all elective procedures on the female inmate population from Florida Correctional Institution. The Superintendent at FCI has agreed to provide around the clock supervision of all female patients housed here during their hospital confinement. Their rooms will be equipped with locks for security. They will be admitted one day prior to the surgery and can be kept for several days following the procedure. The Physician at Florida Correctional Institution, an experienced GYN Practitioner, has agreed to perform the various gynecological operations and follow up care as needed on all female patients. Where before these services were arranged with private doctors, this innovation will represent a savings of sixty thousand dollars (\$60,000) yearly to the Division of Corrections.

Union Correctional Institution must be maintained as a unit only with the capabilities of handling emergency surgery which may arise at either their institution or at FSP. We are approaching this situation as an extreme challenge. We would in effect consolidate our facility to attempt near total care of our acute medical problems. We hope thereby to achieve a greater degree of efficiency in medical capabilities Division-wide. We will care for the acute medical problems as well as all of the elective surgery from UCI, FSP and FIC at Reception and Medical Center Hospital.

Personnel recommended by Dr. Babcock's Commission in 1973

| | |
|----|----------------------------------|
| 1 | Asst. Hospital Administrator |
| 1 | Clerk V |
| 1 | Medical Supply Supervisor |
| 1 | Medical Supply Specialist |
| 1 | Medical Supply Storekeeper |
| 1 | Maintenance Mechanic |
| 1 | Linen Handler II |
| 1 | Linen Handler II |
| 1 | Laundry and Housekeeping Manager |
| 6 | Physicians Assistant |
| 1 | Clinical Social Worker II |
| 4 | Registered Nurse II |
| 3 | Registered Nurse III |
| 2 | Psychiatric Nurse I |
| 2 | Psychiatric Nurse II |
| 18 | Medical Technician |
| 1 | Optometrist |
| 1 | Medical Technologist II |
| 2 | Medical Technologist I |
| 4 | Nursing Service Supervisor |
| 1 | Asst. Nurse Director I |
| 1 | Medical Technologist Supervisor |
| 54 | TOTAL |

Personnel recommended by Dr. Babcock's Commission in 1974

| | |
|----|--------------------|
| 2 | Psychiatrist |
| 4 | Psychologist |
| 2 | General Physicians |
| 1 | Medical Secretary |
| 1 | General Typist |
| 6 | Counselors (Drugs) |
| 16 | TOTAL |

I submit the recommendation of another Internal Medicine Physician to make a total of five. Two of these physicians will take care of the entire hospital's medical ward as well as surgical-medical evaluations. They will handle all physical examinations and follow up of somatic problems on the psychiatric ward. Three of these physicians will handle the Outpatient Clinic, giving physical examinations and coverage in the emergency room.

With this augmenting of our medical staff to allow us to have five internal medicine men the after working hours coverage will be more aptly handled by them. I have in the past been very uncomfortable in knowing that over a weekend a psychiatrist or a surgeon was left vulnerable if a situation arose whereby he or she would have to treat myocardial infarction or a diabetic coma. They are not trained to handle such a condition and their total responsibility for this type of case is unwarranted and unadvisable.

We propose to drastically increase our surgical patient load with specialty surgery to be performed by ENT, Urology, Ophthalmology and Orthopedic Physicians. It is, therefore, not difficult to envision just how busy our Operating Room will become. We have one Nurse Anesthetist position filled at Reception and Medical Center and one Nurse Anesthetist position which has remained chronically vacant at Union Correctional Institution. We are asking for a third. Without all three of these indispensable paraprofessionals our planned operation schedules would be seriously impaired. With them we can offer twenty-four hour coverage to allow for emergencies at both Union Correctional Institution and Reception and Medical Center. If we are to attempt to recruit and enlist two Nurse Anesthetist, we must first formulate more realistic pay scales. Persons in this profession, in nearby Bradford County, are currently salaried in the \$18,000 year bracket. We may never realize the fulfillment of our two remaining vacancies until we up grade the beginning salary. Nurse Anesthetist I is currently in pay grade 24 and should be upgraded to pay grade 30.

We have been extremely fortunate to have had a team of enthusiastic paramedical personnel. Additionally we have attempted to kindle a workable relationship with the University of Florida School of Medicine and looking back upon the past year, we have been able to achieve remarkable feats if you contrasted it with medical progress within the Division up until that time. Such a liason is the basis for all of our future plans for increasing our medical capabilities and is therefore of prominent importance. It is an honor that this fine University has taken such a sincere interest in us and in the medical needs of our inmate patients. It is a good reflection upon all of them as individuals as well as upon the State of Florida as a whole. This team work is the only answer if we are ever to achieve the success that we envision as reality.

Dr. Babcock's recommendations are in essence a call to the Government of Florida to once and for all show where their sympathies lie with regard to legislative funding and the development of a comprehensive medical program of the Division of Corrections, a long neglected area of social development. It was the belief of Dr. Babcock and myself that it is far better to begin to solve problems created in long neglected areas before a crisis occurs and press publicity dictates immediate compliance. Now is the time for productive and quiet planning before the noterity of another Attica Tragedy forces this state into immediate compliance in all areas of penal development.

FUTURE OF UNION CORRECTIONAL INSTITUTION

The Division of Corrections cannot afford to construct a new hospital at Union Correctional Institution. The medical services can not afford to close this facility either. With the proper modifications we can envision Union Correctional Institution as a very necessary annex in our entire medical picture.

RENOVATION PROPOSAL

I believe that with making several inexpensive physical changes the innovation of a functional Emergency Room and Outpatient Clinic could be immediately undertaken. Further to this, a Psychiatric Intensive Care Area could be developed by utilizing the present Outpatient Clinic as areas for psychiatric and psychological counseling, adjacent to this is the former suite for Parke Davis Research which I am proposing to be a twelve bed Intensive Psychiatric Care Unit. Another innovation which I feel would also be meritorious would be to make the second floor east ward of the present Hospital allocated as follows: two rooms (a total of four beds), for emergency surgery and seventeen beds for other than acute medical illness cases. The West ward, with twenty-one beds, will be designed for intermediate psychiatric care, with four locked single cells (already in existence) to accommodate the agitated psychotic and dangerous patient.

BED CAPACITY

In recapitulation of the above, we would have the following:

| | |
|-----------|---|
| 4 | Emergency Surgical Beds |
| 17 | Beds for other than Acute Illness Cases |
| 33 | Psychiatric Service Beds |
| <u>54</u> | Total of Beds |

PERSONNEL

With regards to proposed increase in personnel of this facility. The present Union Correctional Institution is functioning with:

| | |
|-----------|--------------------------|
| 1 | Nurse I |
| 1 | Chief Medical Technician |
| 36 | Medical Technicians |
| 1 | Nurse III |
| 10 | Nurse II |
| <u>49</u> | Total Positions |

With the revisions proposed above the following would be the paramedical personnel requirements for initiating a workable program. In addition to their present allotted positions, as listed above, Union Correctional Institution would require the services of the following additional positions:

| | | | |
|---|---------------|-----------|----------------------------|
| 1 | Psychiatrist | 12 | Medical Technicians |
| 2 | Psychologists | 9 | Nurses |
| 3 | Counselors | <u>27</u> | Total Additional Positions |

I consider it mandatory that the Nursing service be recategorized to include the appointment of one Nursing Director, five Nursing Supervisor III's and fifteen Nurse II's.

With the modifications we will no longer find a situation whereby inmates will perform nursing duties as it has been of necessity in the past, irregardless of the unethical implications. We will be equipped with around the clock coverage in the hospital area. The Hospital will be equipped with the overall supervision and coordination of a Nurse Director as well as one nurse supervisor assigned to the outpatient clinic.

Due to the potential for a riot situation at Florida State Prison and Union Correctional Institution it is felt wise to retain and maintain surgical capabilities but only in emergency cases. Both the surgeons and the operating room crews at Union Correctional Institution will be closely associated and enveloped in the surgical procedures at the Reception and Medical Center Hospital since all of the elective surgery will take place there. A methodical rotation of our paraprofessional personnel will provide a great deal of professional exposure and varied experience and allow for an optimum of proficiency in all areas of their particular fields.

Union Correctional Institutions Medical Administrators have requested an additional ambulance necessary to transport their patients. In the past they have been burdened with the extra added transportation responsibilities for Florida State Prison patients also. Our rearrangement of medical procedures will require more transportation of patients where there was no need for it in the past, we are recommending this request.

These proposals were discussed thoroughly with the Chief Medical Officer, Dr. LalToo; the Hospital Administrator, Mr. G. A. Ragans; the Nurse Supervisor, Mrs. Mooneyham; and the Chief Medical Technician, Mr. Davis by the Medical and Surgical Director on January 30, 1974.

We will constantly strive for good relationships among medical personnel in all of our medical department. We must learn to think of each of our institutions as an integral part contributing to the success of the entire system. Each facility has its own peculiarities and weaknesses, as well as having laudible characteristics which cause it to exceed all of the others. Reception and Medical Center then without Union Correctional Institution, Florida State Prison and Florida Correctional Institution could not survive along and on its own merits. Each institution is not only necessary but is indispensable. We must strive not only to build with bricks and cement but also to implant attitudes reflective of good personnel morale and motivation. This is always the primary element in any human struggle.

FLORIDA STATE PRISON

This Institution houses the Division of Corrections most difficult and dangerous inmates in maximum security. A conservative estimate of the mentally ill at this facility would be one hundred, but there are numerous others who are in desperate need of intensive individual counseling.

Since these individuals pose a dangerous threat to society it would appear wise if we were to attempt to handle them within the confines of that institution. I am, therefore, suggesting that their Medical Department, comprised of two-twelve bed wards and four locked individual cells should be primarily dedicated to psychiatric care.

Florida State Prison is currently operating with the following medical personnel:

| | |
|----------|-----------------------------|
| 1 | Psychiatrist |
| 2 | Psychologist |
| 2 | Social Workers |
| 1 | Chief of Medical Technician |
| 10 | Medical Technicians |
| <u>1</u> | Surgeon |
| 17 | TOTAL |

Dr. Babcock's Commission recommended the following additions:

| | |
|-----------|---------------------|
| 1 | Psychiatrist |
| 3 | Psychologist |
| <u>13</u> | Medical Technicians |
| 17 | TOTAL |

To handle the added stenography, two secretarial positions and two general typists positions should be allocated to Florida State Prison.

Dr. Babcock's Commission suggest and Medical & Surgical Director concurs that, due to the increased amount of elective surgery planned for Reception and Medical Center Hospital, Dr. J. A. Acosta should be assigned to that institution where they can utilize his surgical talents. To replace him, 1 G.M. Physician from UCI can be reassigned there to take his place. Depending of the severity of the case, medical cases can be transferred to the appropriate penal location, either Union Correctional Institution or Reception and Medical Center. The locked cells in the medical area could be used for 24 hours observation, and surgical cases will be handled similarly to Union Correctional Institution patients.

One consideration where there is an apparent need is in the area of vehicle transportation of medical patients from Florida State Prison to other facilities. Where in the past Union Correctional Institution has been transporting their patients, due to a lack of suitable secure vehicles, I am recommending an ambulance be added to their fleet to facilitate prompt departure in the case of an emergency.

FLORIDA DIVISION OF CORRECTIONS
INTEROFFICE MEMORANDUM

February 15, 1974

Mr. L. L. Wainwright, Director
Florida Division of Corrections
1323 Winewood Blvd.
Tallahassee, FL 32301

Dear Mr. Wainwright:

This letter acknowledges receipt of Dr. N. Gonzalez's letter recommending "Recommendations for a Consolidated Comprehensive Medical Center for the Division of Corrections."

In my opinion it is an excellently thought-out plan and I heartily agree with it in principle. However, I do believe that there should be an early understanding concerning the allocation of beds at the three institutions mentioned on page 1 of the report. Specifically, the designation of 33 and 24 psychiatric beds at UCI and FSP respectively.

Perhaps I am fighting words, but under no circumstances should these beds be considered long-term psychiatric beds. It is not the purpose of the Correctional Division to have such beds. Rather, they should be designated as study or behavioral beds where more intensive study can be given before final classification. At the most these beds, if there is adequate personnel to serve them, should be limited to a 21- or 30-day stay or less.

These beds must not become a "dumping ground" for psychotics.

The use of R.M.C. for medical and surgical cases from F.C.I. also is an experiment that should be carefully watched and guarded, but should work out satisfactorily.

Again I congratulate Dr. Gonzalez on an excellent report.

Sincerely,

Kenneth B. Babcock

Kenneth B. Babcock, M.D.
Hospital Consultant
KBB:EIB

CC: Mr. A. F. Cook, Deputy Director

DATE:

March 5, 1974

FROM:

A. Gonzalez, M.D.
Medical & Surgical Director

TO:

L.L. Wainwright
Director
Division of Corrections

Mr. Dave Bachman

| | |
|--|---------|
| | ACI |
| | APCI |
| | DCI |
| | FSP |
| | GCI |
| | RMC |
| | SCI |
| | SFCF |
| | RP-Adm. |
| | RP-No. |

RE:

SHANDS TEACHING HOSPITAL & THEIR AFFILIATION WITH THE DIVISION OF CORRECTIONS

Eight months ago, following the resignation of our last remaining surgeon, Shands Teaching Hospital very generously furnished this hospital with the services of one of their resident surgeons until we were able to refill this position. In the meantime we had occasion to communicate regularly with this School of Medicine and, through various visits and other methods of communication, they began to see what the Division of Corrections needed in the way of medical specialty care. They gradually began to implement our medical program as a result. By their traveling here to hold clinics and perform surgery, we are able to keep the inmate patients within the confines of this institution and without jeopardizing civilian patients welfare at Shands Hospital.

Dr. Woodward, Professor & Chairman of the Department of Surgery, and Dr. George Singleton, Professor & Chief of Staff at Shands Teaching Hospital both visited the Reception and Medical Center Hospital and were delighted with our facility and with its potential. It wasn't long before ENT Specialists from Shands began to hold regular clinics at RMC and to perform surgical procedures here also. They paved the way for other specialties such as Neurology, Ophthalmology and Urology. Shortly thereafter Orthopedics Specialists followed them and have been screening our referrals intermittently, or as their busy and crowded schedules at Shands allows them to visit. Dr. Clyde Williams, a Radiologist, in the absence of the Division of Corrections engaging a Radiologist of its own at the present time, has very willingly been reading any x-rays we request of him at Shands for the past three months.

All of these doctors have been extremely cooperative and contributed greatly toward improving our medical capabilities. Within the last few weeks a team of Radiologists have been assisting RMC in reading x-rays and making the appropriate interpretations. These physicians have agreed to do likewise at UCI.

March 5, 1974
Page Two

Besides the fact that we can better assure the safety of free society by confining inmate patients at this Hospital, rather than sending them to Shands for their treatment, the Division of Corrections is saving a great deal of funds and has been doing so ever since this referral courtesy was initiated. I enclose a list, a prior submission to your office, which well clarifies this point. The presence of these well rounded, qualified medical doctors has allowed many of our paramedical and medical personnel to refresh their professional knowledge to their own personal benefit and that of their patients.

I enclose a list of equipment which is needed in order for our consultant doctors to operate and fully treat our patients at the Reception & Medical Center Hospital. Without these we are still having to refer our patients to their Hospital in Gainesville.

Conclusion

Shand's Officials have requested that the Division of Corrections refer all of their patients through the Reception and Medical Center Hospital in order to control the numbers and the types of referrals and to assure the protective security of their other patients. I recommended this by memo to you and you concurred with my findings in your directive to all superintendents on December 18, 1973. In spite of this directive, referrals are still being made at other institutions directly to Shands. They have been disappointed by this at their hospital so I am requesting that you re-emphasize this point to all medical officials. This of course does not include emergency situations, and I believe that I have made that point clear to all concerned administrators. Irregardless of the burden that this new system has and will create at RMC, with our limited staff, we cannot afford to jeopardize our relationship with Shands Teaching Hospital in the future.

GOAL

Within the next six months, given the requested equipment and instruments needed to implement our present hospital facility, and given the personnel we have requested for the next fiscal year 1974-75, the Reception and Medical Center feels confident that they will be enabled to provide at least 90% of all patient care to the Division of Corrections. With an eye on the more distant future we are further hopeful of permanently affiliating ourselves with the University of Florida School of Medicine whereby interns and residents in all fields of their medical program will be brought to our facility as a part of their training regime.

March 5, 1974
Page Three

I feel sure that we would be the first Correctional Hospital to ever have so complete and so well trained a Medical Staff while at the same time saving funds, we would be furthering the medical training of bright young professionals in the ever accelerating field of medicine.

Respectfully submitted,

A. Gonzalez M.D.
A. Gonzalez, M.D.

AG:slb

Enclosures (2)

cc: file
A.F. Cook, Deputy Director

Enclosure #1

In a sampling period, from 8/21/73 through 10/30/73, the E.N.T. Doctors from Shands held nine clinics at the RMC Hospital. Additionally, they performed twenty-seven operations at our hospital. Their fee for all of these consultations is \$150 per visit. They arranged to come one day per week. Their total fees for this sample period, which included their examining 141 inmate-patients along with the twenty-seven operations they performed at the same time, was \$1,350.00.

Contrasted to this, in the absence of this new consultation procedure, were it to be necessary for us to have one of our patients examined at a Shands Specialty Clinic, their initial fee per inmate would be \$35. This fee would not include even a single laboratory test or physician fee, which would be additional. Added to this expense, a vehicle is needed to transport each inmate-patient, as also one security guard and one medical technician.

To illustrate the savings we have been able to make since these specialists have been visiting our hospital regularly; had the 141 inmates whom the doctors have been examining for us at RMC had to be transported instead to STH for these consultations, the fee for all of them would have totalled \$3,935.00, rather than \$1,350. This does not reflect the savings we are realizing by their having performed in our own hospital twenty-seven operations, which has allowed us to keep these patients in RMCH for their pre-operative and recovery convalescence. Had these procedures taken place at Shands, the hospital fee alone per day, per patient, would have been \$129. A minimum of two days hospitalization is required, with some cases taking as long as nine or ten days total. At a minimum of two days in the hospital, our operative patients would have cost the Division of Corrections \$9,666.00 in hospital fees alone.

$$\begin{array}{r} \$129.00 \times 2 = \$358.00 \\ \quad \quad \quad \times 27 \text{ (Patients)} \\ \hline \$9,666.00 \end{array}$$

To summarize our savings, had all of the services the E.N.T. Specialists have provided at this hospital been performed at Shands, the total professional fees would have amounted to \$13,601.00.

$$\begin{array}{r} \$9,666.00 \\ \quad 3,935.00 \\ \hline \$13,601.00 \end{array}$$

Therefore, a savings of \$12,251.00 was realized in this sample two month period due to our E.N.T. visiting consultants from Shands.

RECEPTION AND MEDICAL CENTER
Lake Butler, Florida

MEMORANDUM: March 5, 1974

TO: Dr. Alberto Gonzalez, Medical & Surgical Director

FROM: Mr. A. P. Rodrigue, Hospital Administrator

1. The following request for additional equipment to support the visiting consultants from the University Hospital was submitted on November 28, 1973. The figures cited were only estimates at that time.

"In our negotiations with the School of Medicine to acquire visits from the specialities listed, even though this is a new hospital, some of our equipment was found to be obsolete, inadequate or insufficient. For example:

| <u>Speciality</u> | <u>Deficits Noted</u> |
|-------------------|--|
| Radiology | A major obstacle in that speciality in providing consultation coverage was the lack of our having an image intensifier on our x-ray unit. It was suggested that an expenditure of some nine thousand dollars would be required in order to update this piece of equipment. |
| Urology | Although this new hospital was equipped with a Cystoscopic Room, it had only basic equipment. None of the necessary scopes or instruments were previously provided. In order for this speciality to be of full benefit to this hospital, their recommendations would require an additional expenditure of five thousand dollars. |
| Orthopedics | Additional instruments are needed at a cost of approximately two thousand dollars. |
| Ear, Nose, Throat | Additional instruments are necessary at a cost of approximately five thousand dollars. |
| Laboratory | In order to increase the capabilities of the laboratory in order to support these additional specialities will require an expenditure of some five thousand dollars. |
| Nursing Service | Additional specialized equipment to support patients of the above specialities will require an expenditure of around fifteen thousand dollars." |

March 5, 1974
 Dr. Alberto Gonzalez
 Page 2

2. The following figures are more accurate, since they are either bids or catalogue prices:

| | | |
|------------------|--|--|
| RADIOLOGY | Image Intensifier | \$12,166 (See enclosure I) |
| UROLOGY | Surgical Instruments | \$ 4,055 |
| ORTHOPEDICS | 1-Ortho Bed. 2-Redi Vac Cast Cutter 3-Osteotome Set 4-Special Surgical Inst. | \$ 2,000 |
| E.N.T. | Instruments, Miscope O.R. | \$ 5,000 750 (See enclosure II) |
| LABORATORY | Needs to lease at a cost of approximate \$4,000 a month an SMA-12 or equivalent, and do all the div. out going lab work here. The state is spending approximately \$8,000 per month. Blood Bank Recorder | \$ 250 |
| NURSING SERVICES | 1-Examining Table with Stirrups 2-K-Thermia Unit 3-Medicine Carts-2 @ \$150 ea. 4-Crash Cart 5-Room Fogger 6-Stomach Suction Machine 7-Throat Suction Machine 8-Datascope Resurcitron 9-Portable Defibrillator 10-Datascope 11-Electrosurgical Unit 12-Miscellaneous Supplies | \$ 450 2,300 300 220 800 580 580 1,700 800 1,395 500 3,000 <u>\$12,625</u> |

Sincerely,

A. P. Rodrigue
 Mr. A. P. Rodrigue
 Hospital Administrator

APR:pd

Litton Medical Products, Inc.
 Executive Offices: 515 East Touhy Avenue, Des Plaines, Illinois 60018

Enclosure I

TO: Reception and Medical Center
 (Name of Customer)
 Lake Butler, Florida
 (Address)

Profexray Division, Litton Medical Products, Inc. submits the following quotation, conditions contained on the reverse side hereof.

| Quantity and Catalog No. | Description of Equipment and/or Materials (herein called "Equipment") | Price |
|--------------------------|---|-----------|
| 4G6M | 6" Cesium Iodide Image Intensifier including: Image Tube Tube Housing Power Supply FO .75/50mm Objective Lens Assembly Mounting Barrel 6" Mirror Viewer | \$ 11,464 |
| A-10542-1 | 6" I.I. Permanent Mount Adapter to Profexray A-12500 Tilt-Back Spot Film on Emperor 90/15 Table | 702 |
| Total - - - - - | | \$ 12,166 |

Purchaser or Lessee must indicate terms of purchase when placing order and initial his appropriate choice.

TERMS: All prices are FOB point of shipment. Additional terms or quotations appear on reverse side hereof.

- CASH - Cash - 10% on acceptance by Seller, 70% upon shipment, balance 30 days after delivery. 10% must accompany order, and refunded in event order is not accepted by Seller.
- CONDITIONAL SALES CONTRACT - Conditional Sales Contract - 10% upon acceptance by Seller, payment of balance to start 30 days after delivery. 10% must accompany order and will be refunded in event order is not accepted by Seller.
- LEASE - Lease - Initial payment upon acceptance by Lessor and to be applied to first payment of Lease Agreement. Lease must be at time of acceptance of order by Lessor, payment to begin 30 days after first use of equipment. Initial payment to be refunded in event order is not accepted by Seller or Lessor.
- RENTAL - Rental - Service Contract - Contract must be signed upon acceptance by Lessor, first payment to be made on first day after delivery. In event Lessor has delivered equipment and first use is delayed for convenience of Lessee, payments are to commence 45 days after delivery.

NOTE: When used above, first use is that point in the installation of the equipment where Lessee uses the equipment gainfully.

Installation at the above address desired commencing the week of _____
 If installation desired at different address, please specify: _____

Purchaser

Profexray Division, Litton Medical Products, Inc.
 2635 Powers Ave. - J
 Submitted By: _____

(Salesman) _____ (Date) _____
 ACCEPTED: Profexray Division,
 Litton Medical Products, Inc.

By: _____

Title _____

RECEPTION AND MEDICAL CENTER
Lake Butler, Florida

REQUEST FOR PURCHASE

Date _____

Department ENT

Please purchase the following items for this department as a _____

supply to be delivered not later than _____, 19__

Direct Issue Inventory Project _____

| Quantity | Description | Estimated Cost | | Usage Last 3, 6, 12 mo. |
|----------|---|----------------|-------|----------------------------|
| | | Unit | Total | |
| 4 Only | MX-21-90 COTTLE Tenaculum 5 1/2" angled | 9.20 | | |
| 1 Only | MX-20-640 STRUYKEN Nasal Cutting Forceps | 56.00 | | |
| 2 Only | MX-20-32 KILLIAN Septum Speculum 6" large | 29.00 | | |
| 1 Only | MX-21-176 NEIVERT Retractor, double ends | 19.80 | | |
| 1 Only | MX-20-544 BRUENING Septum Cutting Forceps 7 1/2" with 4 1/2" interlocking shaft 7mm jaw | 42.00 | | |
| 1 ONLY | MX-21-300 COTTLE Measuring Inst. | 11.00 | | |
| 1 Only | MX-21-304 CASTROVIEJO Caliper, 0 to 20 mm readings | 30.00 | | |
| 1 Only | MX 21-294 JOSEPH Saw Protector | | | |
| 1 Only | MX 21-220 FOMON Chisel 6 1/4" cutting edge | 18.00 | | |
| 1 Only | MX-21-222 FOMON Chisel 6 1/4 with 5mm edge | 18.00 | | |
| 1 Only | MX-21-224 Ditto 6mm edge | 18.00 | | |
| 1 Only | MX-21-226 " 7mm edge | 18.00 | | |
| 1 Only | MX-21-206 COTTLE Osteotome 6" rounded corners 7mm Wide | 14.00 | | |
| 1 Only | MX-21-208 Ditto " " " 12mm wide | 14.00 | | |
| 1 Only | MX-21-346 Aufricht Glabella Rasp forward | 18.00 | | |
| 1 Only | MX-21-348 " " " Backward | 18.00 | | |

R&M.C.-2

Materials are needed for: _____

Special Comments: _____

Requested by: _____ Approved by: _____

RECEPTION AND MEDICAL CENTER
Lake Butler, Florida

REQUEST FOR PURCHASE

Enclosure II

Date _____

Department ENT

Please purchase the following items for this department as a _____

supply to be delivered not later than _____, 19__

Direct Issue Inventory Project _____

| Quantity | Description | Estimated Cost | | Usage Last 3 6 12 mo. | In |
|----------|--|----------------|-------|--------------------------|----|
| | | Unit | Total | | |
| 1 Only | MX-21-330 Joseph Nasal Rasal Rasp Fine | 15.60 | | | |
| 1 Only | MX-21-368 FOMON Rasp fine & Coares teeth one end convex, other end flat | 18.00 | | | |
| 2 Only | MX-5-308 Iris Scissors 4 1/4" angular delicate | 12.00 | | | |
| 2 Only | MX-5-302 Iris scissors 4 1/2" straight | 10.00 | | | |
| 2 Only | MX-5-344 STEVENS Tenotomy Scissors 4 1/2 Curved long blades | 14.00 | | | |

R&M.C.-2

Materials are needed for: _____

Special Comments: _____

Requested by: _____ Approved by: _____

FLORIDA DIVISION OF CORRECTIONS
INTEROFFICE MEMORANDUM

March 7, 1974

ATTACHMENT No. 5

Honorable L. K. Ireland, Jr.
Secretary
Department of Administration
Carlton Building
Tallahassee, Florida 32304

Dear Mr. Ireland:

We are transmitting herewith the report of the Medical, Dental and Sanitary Surveys of the Florida Correctional System, which were ordered by the Honorable Charles R. Scott, United States District Judge. The surveys were conducted by a team of qualified experts headed by Kenneth B. Babcock, M. D., Hospital Consultant.

The Division's copy of the surveys was received January 3, 1974, and the Division is now completing review of the report and implementing what changes they can, while already working with your staff on long range plans for improvement.

One aspect of Dr. Babcock's report of great concern to us is the recurring reference to inadequate compensation for medical personnel, specifically: Physicians, Registered Nurses, and Medical Technicians. A glance at Pages 7-9, 87-88, 91-92, and 111-112 of the report will reveal the strong feelings by the survey team that salaries must be increased as well as provisions for medical malpractice insurance and additional housing.

We are therefore requesting at this time that the Division of Personnel staff conduct a survey of compensation of the Division of Corrections' medical positions, in order to pinpoint the problem areas and develop specific recommendations for improvement in this vital area.

Sincerely,

O. J. Keller
Secretary

OJK/de
Enclosure

RETYPE FOR REPRODUCTION LEGIBILITY

DATE: March 7, 1974
FROM: Curtis W. Lee,
DC Consultant Pharmacist
TO: A.F. Cook
Deputy Director for Inmate
Treatment
RE: REVIEW OF ROAD PRISON DRUG INVENTORIES & PROCEDURES

| |
|---------|
| ACI |
| APCI |
| DCI |
| FSP |
| GCI |
| RMC |
| SCI |
| SFCF |
| RP-Adm. |
| RP-No. |

By your memo of February 6, 1974 you ordered me to review each road prison and vocational center's drug procedures and make recommendations for improvements, if indicated.

In the interest of brevity, since all of the various institutions were basically alike, I will not report on each individually. If you wish, I will submit another report on each individual institution, however it will be of necessity quite repetitious.

Each institution had prescription drugs in the manufacturer's stock bottles on the premises. Several had only one or two; some as high as twenty different drugs ranging from one bottle to as high as eighteen. Most had several bottles of the same drug, same strength, opened and just a few tablets out of each bottle. Each had from a few to many prescription vials most of which were long past the effective date of the prescription as prescribed by the physician. The original inmates' name had been changed, some two or three times, on several vials. Most institutions had bottles of drugs which were misbranded according to the Federal Food, Drug & Cosmetic Act.

I removed everything except current prescriptions and OTC items from the various drug lockers and medicine cabinets. I picked up and brought with me to RMC everything I felt was useable, and received each captain's assurance that everything else would be immediately destroyed. When I left each institution there was nothing in the drug locker or medicine cabinet that was in any way illegal or medically objectionable. Again, the various captains assured me that they would remain that way.

I discussed with each institution the possibility of handling prescriptions as they are now handled in all of our major institutions- that is, by giving the prescriptions to the inmates. This would preclude the possibility in the future for old prescriptions to pile up in the medicine cabinet. Also, it would remove the temptation for the custodial officers to give medication prescribed for one inmate to another inmate whom they thought might have the same illness. Most

March 7, 1974
Mr. A.F. Cook
Page Two

of the captains were very much in favor of the system. However, since the Babcock Report cast some doubt as to the appropriateness of this system, I suggested to them that before starting this, perhaps they should wait until you or Mr. Griffith gave them the go-ahead on it. It is my strong recommendation that this be done.

Several captains were of the opinion that medical costs were going to skyrocket as a result of these procedures. However, I feel that they are unduly alarmed, since in the future they will not be purchasing bulk drugs. The total cost of prescriptions from the local drugstores will probably go up, but perhaps not, because the doctors will be prescribing smaller amounts than in the past.

The following is a summary of my recommendations for future procedures at the road prisons and vocational centers. If you concur, I would respectfully suggest that a memorandum be issued from Mr. Griffith's Office covering these:

1. No prescription drugs will be purchased except by individual prescriptions written by the physician and filled at the local drugstore by a registered pharmacist.
2. The prescription label shall have the following information on it:
 - (a) The inmate's name and number
 - (b) The date filled
 - (c) The length of time prescribed for
 - (d) The name and strength of the drug
 - (e) The number of capsules or tablets in the vial
 - (f) The name of the prescribing physician
3. If the prescription is not given to the inmate, any medication remaining after the time written for has elapsed, will be destroyed.
4. If the prescription is given to the inmate, have him sign some form acknowledging receipt of same.
5. The order for the prescription will be written in the inmate's medical record as well as on the prescription blank which is taken to the drugstore.

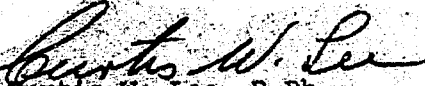
(Numbers four and five are becoming increasingly important due to the rising number of lawsuits being instituted by inmates.)

I received excellent cooperation from all of the personnel at each institution I visited.

March 7, 1974
Mr. A.F. Cook
Page Three

I would appreciate hearing from you as to whether you intended for this to be a one-time visit, or do you expect a follow-up routine along with my visits to the major institutions.

Respectfully submitted,


Curtis W. Lee, R.Ph.
Division Consultant Pharmacist

cc: ✓ L.W. Griffith, Superintendent of Road Prisons
A. Gonzalez, M.D., Medical & Surgical Director
file

CWL:slb

ATTACHMENT #7

FLORIDA DIVISION OF CORRECTIONS
INTEROFFICE MEMORANDUM

DATE: February 8, 1974

FROM: Curtis W. Lee, R.Ph.
Division Consultant Pharmacist

TO: A. Gonzalez, M.D.
Medical & Surgical Director

| | |
|--|---------|
| | ACI |
| | APCI |
| | DCI |
| | FSP |
| | GCI |
| | RMC |
| | SCI |
| | SFCF |
| | RP-Adm. |
| | RP-No. |
| | |

RE: PHARMACIST POSITION REQUIRED FOR THE DIVISION OF CORRECTIONS

There seems to be a definite lack of understanding by those who have the responsibility for requesting the establishment of pharmacist positions for the Division of Corrections Institutions.

In my conversations with you and Mr. Cook and others in Central Office I have felt there is a sincere desire to achieve compliance with existing Federal and State laws governing the practice of pharmacy. However, when I read proposed requests for positions, I find that this is not the case. Please allow me to explain once again that to me, these laws are very explicit in their requirements that all prescriptions be dispensed by a duly registered pharmacist. Also, that any institution which stocks drugs on the premises must have the services of a Consultant Pharmacist and all prescriptions must be dispensed by a Registered Pharmacist. These two categories may or may not be satisfied by one Registered Pharmacist. My position satisfies the first point- consultant- for all of the institutions. However, since each of our major institutions dispense prescriptions, this means that each must have a Registered Pharmacist other than myself to perform this act. Following then is a listing- institution by institution- of positions needed in order to achieve compliance. Please understand that this is a bare minimum. It leaves no leeway for sickness, vacations or any other reason for the pharmacist not being on-duty. As you are aware, Dr. Babcock has recommended a full time position for each institution of five hundred or more inmates. I feel that he did not go far enough in the case of UCI, FSP and RMC.

| | | |
|---------------------|-----------|-------|
| ACI - Pharmacist II | 1 | 906 * |
| APCI- Pharmacist II | 1 | 711 |
| DCI - Pharmacist II | 1 | 591 |
| FCI - Pharmacist II | 1 | 579 |
| FSP - Pharmacist II | 2 | 1356 |
| GCI - Pharmacist II | 1 | 631 |
| RMC - Pharmacist II | 2 | 1025 |
| SCI - Pharmacist II | 1 | 794 |
| UCI - Pharmacist II | 2 | 1707 |
| TOTAL | 12 | |

* Number of inmates as of February 1, 1974.

A. Gonzalez, M.D.
February 8, 1974
Page Two

If Lake Correctional Institution and Cross City Correctional Institution are to stock drugs, then a part-time pharmacist is needed at each institution.

This calls for a total of twelve Pharmacist II positions in addition to my position as Division Consultant as Pharmacist III.

At the present time we have three Pharmacist II positions and one Pharmacist I position.

As we have discussed in the past, creating these positions means nothing unless the salary range is increased to a more realistic figure in order to compete with private industry for qualified personnel to fill them.

As I see it, there are two alternatives.

1. Continue in almost total violation of existing laws
2. Send all prescriptions out to local drugstores for filling. The cost for this alternative is of course extremely prohibitive.

Respectfully submitted,

Curtis W. Lee
Curtis W. Lee, R.Ph.
Division Consultant Pharmacist

CWL:slb

cc: file

ATTACHMENT #8

DATE: March 4, 1974

MEMO TO: Dr. A. Gonzalez

FROM: Florence Galek, Medical Records Librarian

RE: Standardization of Medical Records

One of the immediately recognized weaknesses of Medical Records maintenance by the individual medical facilities in the Division of Corrections is the disparity of methods used. There are certain basic procedures for medical records management that have evolved along with the evolution of modern medicine. These procedures are approved by the American Medical Records Association and recommended by the Joint Commission on Accreditation of Hospitals. The Medical and Nursing Staff of the Division's Hospitals know the value of good medical records and most of the credit is theirs that our medical records are as good as they are. However, the medical staff needs the assistance of medical records personnel in assuring that the medical records meet the standards. Although there are many areas that need change and development, in the medical records area, there are two especially urgent needs.

A. Standardization of medical records.

There is no justification for each medical facility in the Division of Corrections to be individualistic in its selection of forms. If we are to have unity in the Division's Hospitals, a starting point is the creation of standard forms to be used throughout the Division. The following is one suggested method for accomplishing this:

- I. Create a Forms Committee to set up a packet of standard forms to be used. This committee should consist of representatives of the Medical, Nursing, and Medical Records Departments. Once the forms have become standardized, any future new form must have the approval of the committee before it can be printed and used.
- II. One of two methods could be utilized in the supply of forms.
 - a. A central forms depot would be set up at RMCH to stock all the approved forms. The initial cost would be borne by RMCH and the supplies of forms would be sold to the requesting hospitals.
 - b. Or each institution would print its own forms, but only those forms approved by the Committee.
- III. A periodic inspection of forms used throughout the Division must be made.

DATE: March 4, 1974

MEMO TO: Dr. A. Gonzalez

Page 2

- IV. Standard medical record folders should be used throughout the Division. The folders now in use are varied and none being used are medical records folders. Due to the constant handling of these records a heavier paper stock should be used. These folders should be obtained from one source and should conform in size, color and weight. The outpatient folder should be originated at RMCH and continued in use wherever the man is transferred. The present folders are lightweight correspondence folders and totally inadequate for the type of use being made of them.
- V. Standard medical records procedures need to be instituted throughout the Division. The minimum standards set by the JCAH, at least, should be followed wherever possible. These are only minimum standards and can be enlarged upon wherever the needs of the Division exist. One person at each institution should be made responsible for the maintenance of records and for the analysis of the records to be sure they conform to standards. One of the Medical Records Personnel at RMCH is now enrolled in the AMRA Correspondence Course for Art's. In addition, some thought should be given to creating a new job category - that of "Medical Records Clerk." A clerk-typist is expected to do typing and general clerical work, wherever she is placed. However, medical records work is a specialized field and there should be an opportunity for a girl to advance from the generalized "clerk-typist" to the specialized "medical records clerk." In addition, there should be greater scope for advancement of Medical Transcribers.
- VI. The foregoing outline will not cure all the ailments of the patient but this is the primary diagnosis and recommended treatment.

Florence Galek
Florence Galek, MRL

FG:jw

January 22, 1974

Mr. Joseph P. Cresse
Deputy Director
Division of Budgeting
Department of Administration
Carlton Building
Tallahassee, 32304

Re: Department of Health and
Rehabilitative Services
Hospital Licensure Costs

Dear Joe:

Based on the requirements of the Division of Health and the State Fire Marshal for licensing hospitals in this Department, listed below is out estimate of cost of the various facilities to comply with the Statutes, Rules and/or Regulations for Licensing:

| <u>Division of Corrections:</u> | <u>Cost</u> |
|---|--------------------|
| | \$ |
| Union Correctional Institution | 197,335 |
| Reception and Medical Center | 18,601 |
| <u>Division of Mental Health:</u> | |
| Florida State Hospital | 1,119,845 |
| Bureau of Alcoholic Rehabilitation | 58,500 |
| Northeast Florida State Hospital | 103,950 |
| South Florida State Hospital | 36,114 |
| C. Pierce Wood Memorial Hospital | 589,000 |
| <u>Division of Retardation:</u> | |
| Sunland Training Center, Marianna | 14,175 |
| Sunland Hospital, Orlando | 96,300 |
| Sunland Hospital, Tallahassee | 1,414 |
| Sunland Training Center, Gainesville | 1,018,000 |
| Sunland Training Center, Miami | 25,590 |
| Sunland Training Center, Fort Myers | 4,042 |
| Fees, Department of General Services and Contingencies | <u>656,573</u> |
| | \$ 3,939,439 |

RETYPE FOR REPRODUCTION LEGIBILITY

Mr. Joseph P. Cresse
Page Two

The above figures do not reflect any action at W. T. Edwards Hospital nor at A. G. Holley State Hospital since these are under discussion at this time as to their ultimate utilization.

The figures shown above were obtained by visits to each institution by architects and/or engineers or general contractors in conjunction with licensed professionals.

If there is any further information we can furnish you on this, please advise.

Sincerely,

O. J. Keller
Secretary

OJK:rss

RETYPE FOR REPRODUCTION LEGIBILITY

APALACHEE CORRECTIONAL INSTITUTION

- Babcock Commission Response -

MEDICAL

In the Preamble of Dr. Babcock's report he stated reference the new facility under construction, "It is too small and is totally inadequate for the institution's needs."

Plans are for a total of nine (9) beds, four (4) private rooms and an open ward for the other five (5). A dormitory is located next door and can be utilized in case of an epidemic. Present facility has been classified as an out-patient type and new facility is to be an out-patient type as well.

Modifications have been made in the plans seen by Dr. Babcock for adequate space for ancillary help, medical transcriber and typist in the records area. (See attached sketch.)

Personnel

A. Present authorized positions:

| | |
|-------------------------------|-----|
| Institutional Physician (45%) | |
| Medical Technician Supervisor | (1) |
| Medical Technician | (6) |
| Psychologist II | (1) |
| Consulting Pharmacist (OPS) | |

B. Additional personnel needed:

| | |
|---------------------|-----|
| Psychiatrist I | (1) |
| Psychologist II | (1) |
| Medical Transcriber | (1) |
| Clerk Typist II | (1) |
| Pharmacist II | (1) |

Pharmacy

Our planned pharmacy has one hundred nine (109) square feet of floor space with required element of plumbing and wiring to meet Florida Statutes. Mr. Curtis Lee, Division of Corrections Consulting Pharmacist, has reviewed the plan along with ACI's Consulting Pharmacist, Mr. Lamar Massey, and both felt this is adequate.

Dispensing medication to inmates on a weekly basis, except for controlled drugs, is in effect.

We presently have in use, in our warehouse, a drug storage area for bulk items. A full-time pharmacist could well be justified for Apalachee Correctional Institution - ordering supplies and drugs, inventories, record-keeping of controlled substances and inventories, etc.

Clinical Laboratory

A complete clinical laboratory was not planned for due to classification of out-patient facility, cost, staffing and the presence of a well equipped and well staffed laboratory at Florida State Hospital in Chattahoochee, Florida, three (3) miles away. We feel a working relationship with this laboratory could be established at a much reduced cost. An added laboratory technician at Florida State Hospital's laboratory to handle the work at Apalachee Correctional Institution would be less costly than equipping a complete laboratory at ACI. When considering the amount spent for contacted laboratory services for fiscal year 1972-73 (\$629.00), adding a laboratory technician at FSH or ACI does not sound practical. The institutional physician will continue to do microscope urinalysis in the planned laboratory.

Psychological Services

Modification in space utilization in our Multi-Treatment Complex Building for a psychiatrist and his secretary, two (2) psychologists and secretarial help, plus a counseling room has been accomplished.

Medical Technician Supervisor's Office Space

Modification of original plan has been done to provide office space for Medical Technician Supervisor and Technicians. A lounge for men and women has been provided in the dental area. There is a toilet adjacent to the doctor's office and each private bedroom has closet bowl with five (5) toilet bowls for patients in the open ward.

Inmate help is not allowed to do patient care or handle medical records. The only inmate help will be janitorial in nature. There are toilets provided for inmates in the building.

Planning Stage of Building

Plans were reviewed by Dr. Thompson, Institutional Physician, and Dr. Gonzalez. A number of meetings with Superintendent, Institution Maintenance and Construction Supervisor and the architects were held during the planning of the Multi-Treatment Complex Building.

APALACHEE CORRECTIONAL INSTITUTION

- Medical Equipment Needs -

Present Physical Plant

Present physical plant is inadequate. In-patients are kept in their rooms from 11:00 PM until 7:00 AM by means of a small slip-bolt type lock. There is a switch in each room that sounds a buzzer and turns on a light in the dormitory above the Infirmary as a warning system. When new positions are provided, 24-hour Medical Technician coverage will be provided.

Dietary

Diets are individualized, provided to food service and delivered to the Infirmary. We feel this program is adequate.

Medical Records

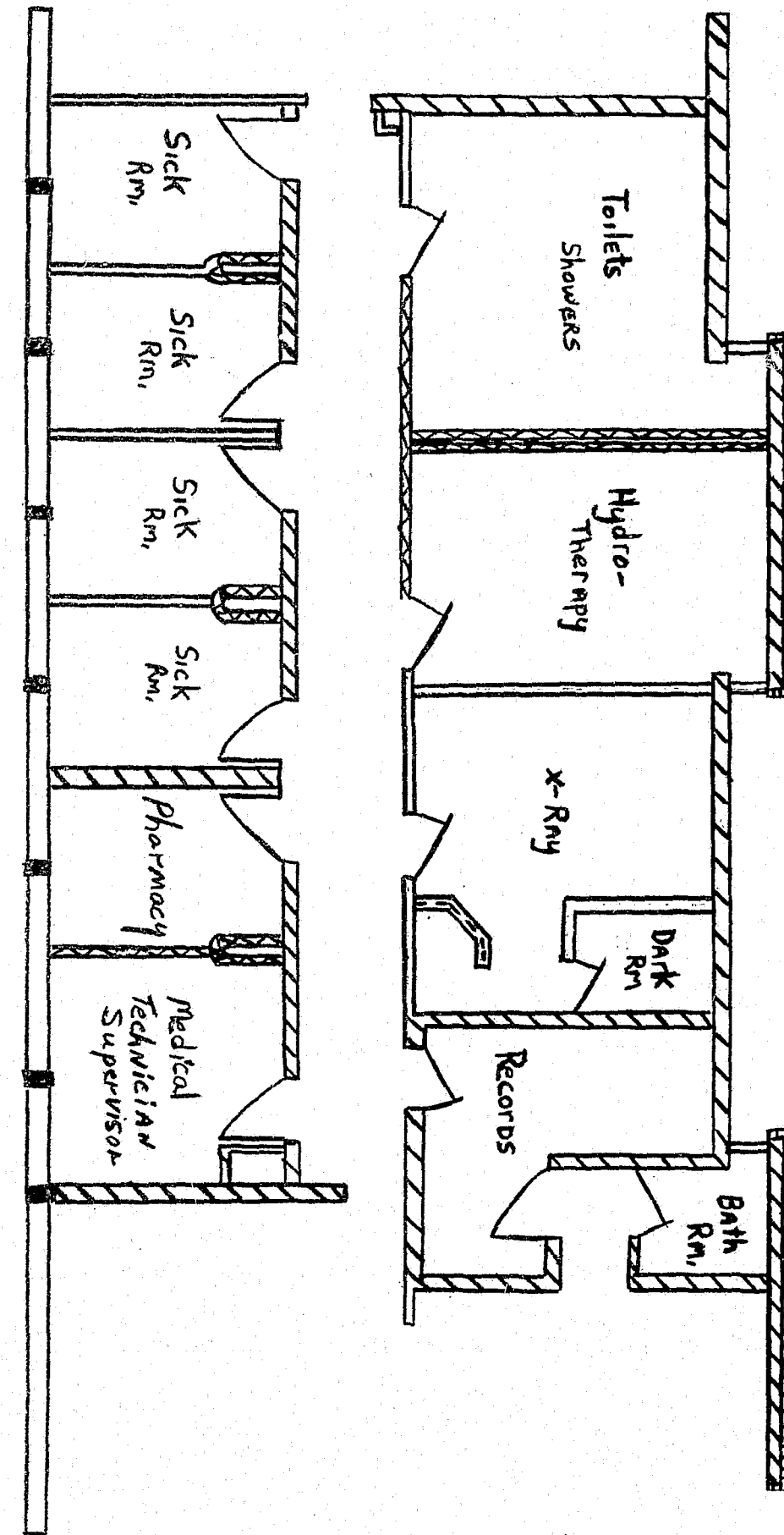
Please review Division of Corrections response in General Summary to total report.

| Quantity | Unit | Item | Price Each | Total |
|----------|------|--|------------|-----------|
| 2 | Only | Examination Table, 24" wide, 52" long, 31½" high and 68" long fully extended | \$480.00 | \$ 960.00 |
| 2 | Only | Treatment Cabinet, 28" wide, 18" deep, 34" high, formica top | 140.00 | 280.00 |
| 2 | Only | Stool, swivel, stainless steel, upholstered seat, adjustable, 19" to 25" high, with casters | 45.00 | 90.00 |
| 3 | Only | Bucket, kick, 5 qt., holder with casters and rubber bumper rim, stainless steel | 45.00 | 135.00 |
| 9 | Only | Bed, hospital, manual, standard Gatch, Manual 4-position high-low, overall size 36" x 84½", ball bearing casters | 194.75 | 1,752.75 |
| 9 | Only | Mattress, hinged, Supreme, innerspring, stop-check cover, 34" wide x 80" long, 6" thick | 76.50 | 688.50 |
| 9 | Only | Chest, bedside, three drawers 18" wide x 20" deep x 30" high | 105.00 | 945.00 |
| 2 | Only | Bedside rails, full length, use with Gatch springs bed | 55.00 | 110.00 |
| 4 | Only | Table, overbed, adjustable, end crank, single piece top, top size 14" x 30" | 90.00 | 360.00 |
| 9 | Only | Chair, bedside, wall saver legs, padded seat, back height 34", chrome finish | m 26.00 | 234.00 |
| 1 | Only | Light, examining, adjustable 42½" to 64" on casters | 79.00 | 79.00 |
| 1 | Only | Cart, food, insulated body, round corners, ball bearing rollers, shelves for trays, overall size 58" long, 30" wide by 40" high, stainless steel | | 1,800.00 |
| 1 | Only | Ambulance | | 10,000.00 |

APALACHEE CORRECTIONAL INSTITUTION

- Office Equipment -

| Quantity | Unit | Item | Price Each | Total |
|----------|------|---|------------|-----------|
| 2 | Only | Recorder, Lanier Edisette, Model ED-1977 | \$269.00 | \$ 538.00 |
| 2 | Only | Transcriber, Lanier Edisette, Model ET-1977 | 269.00 | 538.00 |
| 2 | Only | Typewriters with replaceable type element, 15½" width dual pitch, IBM Selectric II | 567.00 | 1,134.00 |
| 1 | Only | Executive desk with 6" overhang at end and back, overall 72" x 36", file drawers left and right | 173.25 | 173.25 |
| 3 | Only | Modular desk, 30" x 60" with 26" high right return; return top 20" x 30" with three drawers | 171.00 | 513.00 |
| 2 | Only | Secretarial posture chairs, wood 17½" wide x 20½" x 22½" adj. dept. x 31 - 33" adj. high, outside measurement | 79.00 | 158.00 |
| 2 | Only | Executive posture chair, wood, cushioned seat, back and arms. Height of back 18" - 20", seat width 20½", sitting depth 18-3/4", seat height 18", adjustable | 120.00 | 240.00 |
| 4 | Only | File cabinet, four drawer, letter size, steelcase | 75.00 | 300.00 |
| 1 | Only | Bookcase, wood, 30" high x 48" long, 11" deep, two shelves | 115.00 | 115.00 |



APALACHEE CORRECTIONAL INSTITUTION

- Babcock Commission Response -

DENTAL

Personnel

A. Present authorized positions:

Dentist I (1)
Dental Intern (1)

Based upon recommendations by the Babcock Commission Report, it is requested that the present Dentist I position be upgraded to a Dentist II position and that the Dental Intern position be reclassified to a Dentist I position.

B. Additional personnel needed:

Dental Assistant (2)
Clerk Typist (1)

As recommended by the Babcock Report, this would achieve employment of salaried personnel to work as Dental Assistants and Clerk as opposed to using inmates.

Manual of Operation

This document will be provided at all institutions by the Coordinator of Institutional Dental Programs.

APALACHEE CORRECTIONAL INSTITUTION

- Dental Equipment Needs -

| Quantity | Unit | Item | Total Price |
|----------|------|--|-------------|
| 4 | Only | Weber P-64 Un-Ette with multitray, complete with all standard equipment and features. Color: Biscayne Blue. Modified for Wispair air bearing handpiece; price to include installation tubing to jet Weber handpieces | \$8,780.00 |
| 4 | Only | Wispair Air Bearing Twin Pack, complete with cleaning attachments, burr pushers and lubricating oil | 1,133.00 |
| 4 | Only | Sylvestair High Torque Low Speed Drive Unit, straight attachment and tubing | 1,200.00 |
| 4 | Only | M-1 Miniature Handpiece | 500.00 |
| 4 | Only | Weber Skylight, Unit mount; Color: Biscayne Blue | 1,600.00 |
| 4 | Only | Helios Lounge Chair with improved dual pillow headrest; Color: Biscayne Blue | 8,780.00 |
| 4 | Only | Rubber chair mats, half-circle to fit Helios Loung Chairs; Color: Biscayne Blue | 90.00 |
| 1 | Only | Air compressor, DeVilbiss, Model 608, to run four (4) operatories | 400.00 |
| 8 | Only | Spartan Mobile Stool, OS-900G; Color: Biscayne Blue | 1,200.00 |
| 4 | Only | Wall cabinets, American Modular, #14D103, wall storage unit; Color: Biscayne Blue | 400.00 |
| 4 | Only | Corner sink units, with top, #14D52, with attachments, stainless steel group 90D23, American Modular | 700.00 |
| 4 | Only | Faucet, hot and cold, for corner sink units, double mix, single lever #14795, American Modular | 36.00 |
| 4 | Only | Storage drawers, #14D323, complete with accessories; Color: Biscayne Blue. Complete tops and attachments; American Modular | 500.00 |

APALACHEE CORRECTIONAL INSTITUTION

- Dental Equipment Needs -

| Quantity | Unit | Item | Total Price |
|----------|------|---|-------------|
| 4 | Only | Storage drawers, complete with tops and attachments, #14D321, complete; Color: Biscayne Blue; American Modular | \$ 500.00 |
| 4 | Only | Four (4) preparatory trays, #14D60, complete with tops and attachments; American Modular; Color: Biscayne Blue | 500.00 |
| 4 | Only | Two drawers, #14D3, complete with tops and attachments; American Modular; Color: Biscayne Blue | 225.00 |
| 4 | Only | Waste Receptables, 22K1; foot pedal, Color: Biscayne Blue; American Modular | 104.00 |
| 2 | Only | Autoclave, Pelton-Crane OCM | 450.00 |
| 1 | Only | Inlay Furnace, Kerr | 75.00 |
| 1 | Only | Casting Machine, inlay type, Jelenko | 125.00 |
| 1 | Only | Weber X-ray Unit (Ulton 90); Color: Biscayne Blue | 2,395.00 |
| 2 | Only | Wig-L-Bug Amalgamator; Color: Biscayne Blue | 110.00 |
| 1 | Only | Plaster bin, Coe; 2 compartments, Triplex 666 | 30.00 |
| 1 | Only | Quick release chuck fastener, right hand | 15.00 |
| 4 | Only | X-ray view boxes, GE, #5062D; Color: Biscayne Blue or Cream | 84.00 |
| 1 | Only | Hospital Bed - Adjustable | 250.00 |
| 1 | Only | Panorex - S. S. White; Color: Biscayne Blue | 6,500.00 |
| 1 | Only | Blow pipe, Model "D", high heat with tubing; Dixon | 8.00 |
| 1 | Only | Weber Central Evacuator System to supply four (4) operatories | 600.00 |
| 1 | Only | Dental X-ray film processor, automatic operation; Model P6 for all size entraoval, occusal and screen type film; Super Delux, daylight loading hood; Profexray type | 800.00 |

APALACHEE CORRECTIONAL INSTITUTION

- Dental Equipment Needs -

| Quantity | Unit | Item | Total Price |
|----------|-------|--|------------------|
| 1 | Only | Mixing valve for Profexray Automatic Dental Film processor, Model P6 | \$ 135.00 |
| 6 | Cases | Developer "A" and Fixer "B" for Profexray Dental Film processor, case of 2 each | 88.00 |
| 1 | Only | Dental film dispenser, Kodak Model #2 | 27.00 |
| 1 | Only | Mobile oral evacuator, solid state, motor speed control pilot light, motor control switch; Color: White Driftwood; dry clave Mono-Vac, Model M01 | 264.00 264.00 |
| 2 | Each | Lounge, 54" wide, 30½" high, 32" deep (overall measurements); completely upholstered with grade 4 Naugahyde | 550.00 |
| 4 | Each | Lounge Chair, 30" wide, 30½" high, 32" deep, (measurements overall); completely upholstered with grade 4 Naugahyde | 700.00 |
| 2 | Each | Table, rectangular top, four legs, 52" long, 20" wide, 15" high; walnut wood | 200.00 |
| 4 | Each | Table, square, four legs, walnut finish, 20" wide, 28" high, 20" long | 360.00 |
| 4 | Each | Lamps (for end tables) | 160.00 |
| 2 | Each | Chest, four drawers, 36" wide, 20" deep, 40" high | 150.00 |
| 2 | Each | Medicine cabinet, wall mount, bathroom model | 100.00 |
| 1 | Each | Desk, executive, 72" long, 36" wide, 6" overhang | 175.00 |
| 1 | Each | Chair, executive | 200.00 |
| 1 | Each | Modular desk, 30" x 60" | 210.00 |
| 1 | Each | Return section for above desk | 157.00 |
| 1 | Each | Chair, revolving, armless | 115.00 |

APALACHEE CORRECTIONAL INSTITUTION

- Dental Equipment Needs -

| Quantity | Unit | Item | Total Price |
|----------|------|---|-------------|
| 1 | Each | Bookcase, wood, 30" x 48" x 11" | \$ 115.00 |
| 1 | Each | Electric Typewriter | 425.00 |
| 1 | Each | Desk lamp | 45.00 |
| 2 | Each | File cabinets, Kardex, 24" x 10½" wide 24¼" high | 90.00 |
| 2 | Each | Side chairs with arms | 150.00 |
| 1 | Only | All-purpose table, round top | 125.00 |
| 8 | Only | Chairs | 600.00 |

APALACHEE CORRECTIONAL INSTITUTION

- Babcock Commission Response -

SANITATION

Housing

Comment - "Ventilation was poor in "E" and "F" units."

Response

This space is utilized on a very limited basis and is temporary until completion of Multi-Treatment Complex. No inmates have been housed recently in these confinement cells due to adequate cell space in two (2) other confinement areas. These factors, plus cost of installing a ventilation system, would appear to prohibit installation of same.

Food Service - East Unit

Item (1) - "No sneeze guards on serving line."

Response

These items were requested in the 1974-1975 Legislative Budget.

Item (2) - "Food should not be stored on floor in storage areas."

Response

This item can and will be corrected locally.

Item (3) - "Meat cutting table needs repair."

Response

This item has been corrected.

Item (4) - "Floor needs repair in meat cutting room."

Response

This item has been corrected.

Item (5) - "Hose bibb vacuum breaker needed in vegetable room and garbage area."

Response

This item will be corrected locally.

Item (6) - "Screen needed for inmate bathroom in kitchen."

Response

This item can and will be corrected locally.

Food Service - East Unit

Item (7) - "Need hand towels in bathroom."

Response

This item has been corrected.

Item (8) - "Walls need repair in some places."

Response

This item has been corrected.

Food Service - West Unit

Item (1) - "Vacuum breaker needed in garbage wash area."

Response

This item can and will be corrected locally.

Item (2) - "Toilet needs repair in food area."

Response

This item can and will be corrected locally.

Item (3) - "Screen needs repair in bathroom."

Response

This item can and will be corrected locally.

Item (4) - "Potato peeler has cross connection with water supply, also, spigot in steam kettle area."

Response

This item can and will be corrected locally.

Item (5) - "Work tables in poor repair."

Response

This item can and will be corrected locally.

Item (6) - "Excessive number of flies."

Response

This problem has been corrected.

Item (7) - "Intermittent pyrethrin dispensers should not be within 12 feet of food preparation or serving area."

Response

This item has been corrected.

Food Service - West Unit

Item (8) - "Ice machine lid needs repair."

Response

This item can and will be corrected.

Item (9) - "Need thermometer in refrigerator."

Response

This item can and will be corrected locally.

Item (10) - "Need filters in hoods."

Response

Not designed for filter exhaust fan.

Trash

Can and will be corrected locally with present resources.

AVON PARK CORRECTIONAL INSTITUTION

- Babcock Commission Response -

MEDICAL

Personnel

A. Present authorized positions:

| | |
|---------------------------------|-----|
| Physician | (1) |
| Psychologist II | (1) |
| Medical Technician Supervisor I | (1) |
| Medical Technician | (9) |
| Clerk Typist II | (2) |
| Nurse Anesthetist | (1) |
| Nurse II | (1) |
| Laboratory Technician II | (1) |
| Pharmacist II | (1) |
| Laboratory Technologist II | (1) |

B. Additional personnel needed:

| | |
|------------------|-----|
| *Physician II | (1) |
| *Psychiatrist II | (1) |
| Psychologist II | (1) |
| X-ray Technician | (1) |
| Clerk Typist II | (1) |

To comply with the above staff positions a total of \$12,000 is requested under Operating Capital Outlay to purchase a portable office complex to house the Psychiatrist II, two Psychologist II's and one Clerk Typist.

*We do not agree that a consulting psychiatrist would satisfy the needs of this population. We feel that a full-time psychiatrist is needed at this facility. This has been discussed with Dr. Babcock and we feel he generally agrees with our position. This same feeling exists with reference to need for a second physician.

Medical Plant

We concur that an entirely new medical facility should be constructed. Funds have been requested for a new medical complex.

Clinical Laboratory

We concur with this recommendation. The loss of time in a "farmed-out" specimen could be a life-or-death matter.

X-ray

We concur with this recommendation. A qualified X-ray technician is an absolute necessity.

Pharmacy

We concur with this recommendation. Due to the work involved in dispensing 1,400 routine monthly medications, as well as several hundred stat or individual doses, plus infirmary patients, a registered pharmacist is required. We have a position authorized but have been unsuccessful in filling it due to the low salary.

Kitchen-Dietary

We concur with recommendation. The infirmary patients do not receive special diets as such. A consulting dietician for the Division could assist in this area. Until this occurs and until proper facilities can be constructed limited improvement can be made.

Operating Capital Outlay

| | |
|-----------------------------------|----------|
| Medical Books (Miscellaneous) | \$ 400 |
| Cabinet, Filing, Prescription (1) | 60 |
| Cabinet, Filing, Vertical (1) | 150 |
| Cabinet, Filing, Horizontal (1) | 245 |
| Ambulance, Fully Equipped (1) | 10,000 |
| Electronic Thermometer (1) | 350 |
| Xerox Machine (1) | 850 |
| Desk, Executive (2) | 420 |
| Desk, Typist (1) | 150 |
| Chair, Executive (2) | 220 |
| Chair, Typist (1) | 90 |
| Chair, Office (6) | 450 |
| Typewriter, Electric (1) | 475 |
| Cabinet, Filing (4) | 460 |
| Portable Office Space (1) | 12,000 |
| Diathermy, Birtcher Bandmaster | 1,400 |
| Adding Machine | 200 |
| TOTAL | \$27,920 |

Expenses Needed to Comply with Babcock Report

| | |
|--|----------|
| Communication and Transportation | \$ 1,815 |
| Repairs and Maintenance | 1,408 |
| Care and Subsistence | 57,477 |
| Travel | 1,140 |
| Bedding and Other Textile Products | 1,320 |
| Educational, Medical and Agricultural Supplies | 27,204 |
| Maintenance and Heating Supplies | 870 |
| Office Materials and Supplies | 696 |
| Other Material and Supplies | 808 |
| TOTAL | \$92,733 |

AVON PARK CORRECTIONAL INSTITUTION

- Babcock Commission Response -

DENTAL

Personnel

A. Present authorized positions:

| | |
|------------------------|-----|
| Dentist I | (1) |
| Dental Intern (Vacant) | (1) |

B. Additional positions needed:

| | |
|---------------------|-----|
| Dental Assistant II | (2) |
| Clerk Typist II | (1) |

Recommendations for Improvement

- (1) "Dental Clinic Space - there is a need for a larger lab, a record office and private office for the dentists."

Response

We agree with this recommendation. This can be accomplished by renovation within the current facility at a cost of \$5,000. This cost is included in the project operating expense section of this report.

- (2) "Dental Equipment - replacement of old equipment in second operatory. It was noted that funds have been set aside in the budget for this purpose."

Response

We agree with this recommendation and have included funds in our operating budget request to comply with this.

- (3) "Dental Personnel - Dentist I position should be reclassified to a Dentist II. Dental intern position should be reclassified to a Dentist I position. Employment of two salaried individuals to work as dental assistants as opposed to using inmate trainees."

Response

We agree with this recommendation. The Central Office Personnel Section can request reclassification of the present Dentist I position to Dentist II and the Dental Intern position to Dentist I.

- (4) "Manual of Operation - should be developed and available for review by all personnel."

Response

This Manual is in the process of being issued by the Coordinator of Institutional Dental Programs.

AVON PARK CORRECTIONAL INSTITUTION

- Dental Equipment -

Operating Capital Outlay Needs to Comply with Babcock Commission Report

| <u>Quantity</u> | <u>Item</u> | <u>Total Price</u> |
|-----------------|---------------------------|--------------------|
| 1 | Dental Stool | \$ 285.00 |
| 1 | Hanks Articulated Model H | 125.00 |
| 1 | Ultrasonic Cleaner | 175.00 |
| 1 | Lab Motor with Rheostat | 270.00 |
| 1 | Typist Desk | 150.00 |
| 1 | Typist Chair | 90.00 |
| 1 | Executive Desk | 210.00 |
| 1 | Executive Chair | 110.00 |
| 1 | Electric Typewriter | 475.00 |
| 1 | File Cabinet | <u>115.00</u> |
| | TOTAL | \$2,005.00 |

Expense Needs to Comply with Babcock Commission Report

| | |
|---|-----------------|
| Medical Supplies (General) | \$4,971.00 |
| Building and Office Renovation (to provide office and lab addition) | <u>5,000.00</u> |
| TOTAL | \$9,971.00 |

AVON PARK CORRECTIONAL INSTITUTION

- Babcock Commission Response -

SANITATION

Response to Discrepancies

1. The latrine has been identified and lighting improved by increasing size of bulbs.
2. Because of the cost factor, 55-gallon drums are utilized throughout the institution. Cost for suitable replacements with covers would be approximately \$3,000.00. Makeshift lids will be provided for those in use.
3. The sewage treatment plant is 70% - 75% completed and will be utilized upon completion in an estimated sixty (60) days. This will eliminate dependence upon "polishing ponds" for treatment.
4. We are cognizant that the entire food service facility should be replaced and funds to do so have been requested under fixed capital outlay in the budget for 1974-1975. The present building is old and worn and does not lend itself to modernization or major renovation.

Items in the inspection which have been corrected are repair of walk-in coolers, thermometers, screens, and hoses stuck in sinks. The entire kitchen area has been intensively cleaned, and housekeeping is now under the supervision of a specially assigned employee. The equipment, such as stoves, mixers, ovens, and steam pots, are now subject to cleaning by the special sanitation squad. The general housekeeping has greatly improved in the past few months.

Silverware is now being dispensed from a standard cafeteria-type dispenser, and food is no longer stored in ice machines. Additional platforms are being constructed to eliminate storing staple goods and produce directly on the floor. Instructions have been issued to assure that food will be covered while stored in walk-in coolers.

Items in the report such as inadequate lighting and ventilation, poor condition of floors and walls, are noted but cannot be immediately rectified. The floors are not in good condition. They are poured concrete and, even when freshly cleaned and sanitized, appear to be dirty. We have recently done some maintenance on the walls and more is planned. We now have a policy that the electrical load, due to the energy crisis, will not be increased unless an emergency exists. We do not deem an increase in lighting in dining areas or improvement in ventilation as emergencies. If necessary, we can improve on both.

In summation, improvements in general housekeeping and sanitation have been made in the kitchen area since the inspection of August 27, 1973, and it is continuing to improve. The assignment of a sanitation officer has done much toward this improvement.

CROSS CITY CORRECTIONAL INSTITUTION

- Babcock Commission Response -

MEDICAL

Personnel

A. Present authorized positions:

| | |
|-------------------------------|-----|
| Registered Nurse II | (1) |
| Medical Technician Supervisor | (1) |
| Medical Technician | (3) |

B. Additional positions needed:

| | |
|---------------------------|-----|
| Physician II | (1) |
| Psychiatrist | (1) |
| Medical Technician | (1) |
| Clerk Typist II | (2) |
| Pharmacist II (OPS - 50%) | |

At the time of the Commission's visit to this facility, it had only recently been acquired by the Division of Corrections. Initial renovations were underway, however, total renovation and planning had not been completed. Dr. Babcock severely criticized the planning of the medical and dental facilities for this institution. As a result of his visit and advice, plans were reviewed and some additions made.

This facility will operate a six-bed infirmary with adequate pharmacy, X-ray room and medical records section.

Operating Capital Outlay needed to fully implement Babcock Commission Recommendations

| <u>Quantity</u> | <u>Item</u> | <u>Total Price</u> |
|-----------------|--------------------------|--------------------|
| 2 | Executive Desks | \$ 400.00 |
| 1 | Secretarial desk | 175.00 |
| 2 | Executive chairs | 300.00 |
| 1 | Secretarial chair | 75.00 |
| 7 | Side chairs | 245.00 |
| 4 | File cabinets | 600.00 |
| 1 | Electric typewriter | 620.00 |
| 1 | Transcriber and recorder | 500.00 |
| 1 | X-ray viewer | 44.00 |
| 1 | Ambulance | 10,000.00 |

Additional expense funds needed to fully implement Babcock Commission recommendations - \$ 7,500.00

This includes medical supplies to be used by the physician and psychiatrist, travel, uniforms, and othe related expense items.

CROSS CITY CORRECTIONAL INSTITUTION

- Babcock Commission Response -

DENTAL

Personnel

A. Present authorized positions:

None

B. New positions recommended by the Babcock Commission:

Dentist I (1)
Dental Assistant (1)

Equipment

Operating capital outlay needed to fully implement Babcock Commission Report:

| <u>Quantity</u> | <u>Item</u> | <u>Total Price</u> |
|-----------------|-------------------|--------------------|
| 1 | Executive desk | \$ 200.00 |
| 1 | Secretarial desk | 175.00 |
| 2 | File cabinets | 300.00 |
| 2 | Side chairs | 80.00 |
| 1 | Executive chair | 150.00 |
| 1 | Secretarial chair | 65.00 |

Additional expense funds needed to fully implement Babcock Commission recommendations - \$ 800.00

This includes funds for office materials and supplies, travel, and uniforms.

Fixed capital outlay needs to fully implement Babcock Commission Report:

As a result of new positions recommended by the Babcock Commission not planned for it will be necessary to renovate the existing medical facility for offices. Total cost will be \$1,200.

CROSS CITY CORRECTIONAL INSTITUTION

- Babcock Commission Response -

SANITATION

All discrepancies noted in the Babcock Commission Consultant's recommendations have been corrected as recommended.

DESOTO CORRECTIONAL INSTITUTION

- Babcock Commission Response -

MEDICAL

Personnel

A. Present authorized positions:

| | |
|-------------------------------|-----|
| Medical Technician | (5) |
| Medical Technician Supervisor | (1) |
| Clerk Typist II | (1) |
| Registered Nurse II | (2) |
| Registered Nurse III | (1) |
| Psychologist II | (1) |
| Physician III | (1) |

B. Additional positions needed:

| | |
|----------------------------|-----|
| Psychiatrist II | (1) |
| Psychologist II | (2) |
| Medical Technician | (2) |
| Laboratory Technologist II | (1) |
| Clerk Typist II | (1) |
| Pharmacist II | (1) |

Equipment

Major renovation has been completed and the medical facility is now located in the new area. Funds are available and purchase orders have been issued for necessary material and equipment for the complete air conditioning of the hospital. This project should be completed prior to summer.

Equipment Needs to Fully Implement Babcock Commission Recommendations

| | |
|-----------------------|-------------|
| Whirlpool Bath | \$ 1,000.00 |
| Beam Balance | 38.00 |
| Analytical Balance | 200.00 |
| Typewriter (Pharmacy) | 500.00 |
| Repeater Stamp | 100.00 |
| Desk and Chair | 250.00 |
| Security Door | 250.00 |
| Cabinets | 500.00 |
| Ultrasonic | 500.00 |

| | |
|-------------------------|-----------|
| Microscope | \$ 600.00 |
| Incubator | 150.00 |
| Serological bath | 150.00 |
| Filing Cabinet | 100.00 |
| Security Door | 250.00 |
| Miscellaneous Cabinets | 1,000.00 |
| Portable X-Ray Unit | 8,800.00 |
| Developing System | 400.00 |
| Miscellaneous | 500.00 |
| Desk and Chairs | 1,400.00 |
| File Cabinets | 500.00 |
| Book Cases | 300.00 |
| Dictaphones | 1,000.00 |
| Miscellaneous Chairs | 300.00 |
| Ambulance and Equipment | 10,000.00 |

Expense Funds Needed to Fully Implement Babcock Commission Recommendations

For Seven New Positions \$ 3,500.00

Fixed Capital Needs to Fully Implement Babcock Commission Recommendations

| | |
|--|-------------|
| Construction of one office and two detention cells | \$16,800.00 |
| Renovation of existing space to provide five offices and waiting areas | 8,000.00 |
| Major renovation of plumbing system | 5,000.00 |

DESOTO CORRECTIONAL INSTITUTION

- Babcock Commission Response -

DENTAL

Personnel

A. Present authorized positions:

Dentist I (1)

B. Additional positions needed:

Dental Assistant I (1)
Clerk Typist II (1)

Construction

Construction of a modern dental clinic will be started soon and this facility should be occupied by Fall of 1974.

Equipment Needs to Implement Babcock Commission Report

| | |
|--|-------------|
| Dental Chair and Operator Stools | \$ 2,100.00 |
| Surgical Instrument Cabinet | 300.00 |
| Monovac Oral Excavation Unit | 500.00 |
| Barton Diagnostic Set | 250.00 |
| McKesson Oxygen and Resuscitation Unit | 150.00 |
| Wigglebug Malagator | 75.00 |
| Bead Sterilizer | 75.00 |
| B D M Incubator | 75.00 |

Manual of Operation

This Manual will be developed by the Coordinator of Institutional Dental Programs.

DESOTO CORRECTIONAL INSTITUTION

- Babcock Commission Response -

SANITATION

All discrepancies noted in Mr. Poole's report of October 16, 1973, have been corrected except additional ventilation in the storeroom and sneeze guards on the serving lines. Necessary steps are being taken to provide the needed ventilation and sneeze guards are to be installed in the near future.

FLORIDA CORRECTIONAL INSTITUTION

- Babcock Commission Response -

MEDICAL

Personnel

A. Present authorized positions:

| | |
|-------------------------|-----|
| Physician II | (1) |
| Registered Nurse III | (1) |
| Registered Nurse II | (6) |
| Registered Nurse I | (3) |
| Medical Technician | (4) |
| Pharmacist II | (1) |
| Psychologist II | (1) |
| Medical Technologist II | (1) |
| Correctional Officer II | (2) |

It should be noted that this institution is a three-unit facility. The Male Unit is approximately two miles from the Female Unit and has a capacity for 250 men.

B. Additional personnel needed:

| | |
|---------------------|-----|
| Psychiatrist | (1) |
| Psychologist | (3) |
| Clerk Typist | (2) |
| Medical Technician* | (2) |
| Physical Therapist* | (1) |
| Physician II* | (1) |

*The two additional Medical Technicians are necessary to provide 24-hour coverage at the Male Unit. The nurses can provide 24-hour coverage at both Female Units but we feel 24-hour coverage for 250 men is necessary. The Commission only recommended a part-time Physical Therapist. It is doubtful that a part-time Physical Therapist could ever be employed at this facility due to the lack of such professionals in the adjoining communities. Additionally, the acute needs of females in the area of physio-therapy should dictate the need for a full-time Physician as opposed to a part-time one. Presently only one full-time Physician position is authorized for this entire facility. In other Division locations where only one position is authorized, males who require the services of a full-time Physician can be transferred to other locations when such position becomes vacant. This is not possible at FCI as all committed female felons must remain at that facility. Additionally, and probably most important is the fact that one Physician cannot adequately serve the needs of all three units. It is for these reasons that we are requested the addition of another full-time Physician.

Expense needs to fully implement Babcock Commission recommendations -
\$ 5,200.00

This additional expense would be needed to support the new positions requested in the areas of supplies, materials, travel, and uniforms.

Equipment needed to fully implement Babcock Commission recommendations -
\$34,500.00

Dr. Babcock made critical remarks with reference to the fact that construction at the men's facility had not started. Since the time of the Commission's visit, construction has been initiated and is well underway. Once it has been completed approximately \$15,000 of the above amount will be necessary to equip the new six-bed infirmary at the men's unit as well as provide support equipment for assigned medical staff. Approximately \$4,500 will be necessary to provide office equipment and program equipment for the new positions. In that the RMC Hospital plans to handle female surgery, there is a serious need for the purchase of an ambulance. Approximate cost of the vehicle equipped is \$10,000.

Fixed capital outlay needs to fully implement Babcock Commission recommendations

Should the new positions be approved it will be necessary to renovate the existing old laundry which is directly adjacent to the existing medical facility. The renovation would provide office and program space for the new positions. Total cost of this renovation would be approximately \$23,000.

FLORIDA CORRECTIONAL INSTITUTION

- Babcock Commission Response -

DENTAL

Personnel

A. Present authorized positions:

Dentist I (1)

B. Additional personnel needed:

Dentist I (1)

Dental Assistant* (2)

*Babcock Commission only recommended one Dental Assistant. However, to remain consistent with other institutional recommendations in providing one assistant per Dentist we have added one additional Dental Assistant.

Equipment needed to fully implement Babcock Commission recommendations -
\$ 5,026.00

Approximately \$2,200 of the above would be for replacement of existing equipment at the Female Unit. The remainder would be for support of the new positions at all units.

Expense needs to fully implement Babcock Commission Report - \$ 3,500.00

The above includes funds necessary to support the new positions in the areas of materials, office supplies, uniforms and travel.

FLORIDA CORRECTIONAL INSTITUTION

- Babcock Commission Response -

SANITATION

"Female Unit"

Food Service

Item (1) - "Meat cutting blocks need refinishing."

Response

Instructions were issued to the institutional maintenance department to refinish these blocks.

Item (2) - "Utilize all three compartments of sink to wash eating utensils - wash, rinse, sanitize."

Response

Instructions have been issued to the food service department to insure that this is being done.

Item (3) - "Cutting boards need replacing."

Response

New cutting boards will be purchased this fiscal year.

Item (4) - "No sneeze guards were on serving line (on order)."

Response

Sneeze guards are presently on order and will be installed when received.

Item (5) - "Sugar should be dispensed in proper containers or in individual packages."

Response

Sugar containers will be purchased this fiscal year.

Item (6) - "Need covered waste receptacle in ladies' restroom."

Response

This item will be purchased this fiscal year.

Item (7) - "Intermittent Pyrethrin Dispensers should be located at least twelve feet away from food preparation or serving area."

Response

This item has been corrected.

Item (8) - "Screens need repairing in kitchen and dining room."

Response

All screens will be repaired this fiscal year.

Item (9) - "Hose bib vacuum breaker needed in steam kettle area."

Response

This has been corrected.

"Male Unit"

Food Service

Item (1) - "Sneeze guards needed on serving line."

Response

These are on order and will be installed once they are received.

Item (2) - "The dish machine was in poor repair."

Response

This machine will be replaced when necessary.

Item (3) - "Hose bib vacuum breakers needed in several areas."

Response

This has been corrected.

Item (4) - "Cutting boards need replacing."

Response

New cutting boards will be purchased this fiscal year.

Item (5) - "Thermometer needed in cooler."

Response

Thermometer has been installed.

Item (6) - "Inmates' bathrooms need cleaning. Need hand towels."

Response

Bathrooms have been cleaned and hand towels are available.

Item (7) - "Screens need repair in dining room and kitchen."

Response

Correction is in process at this time as part of the existing renovation project.

Item (8) - "Walls and ceiling need cleaning and painting in several areas."

Response

Corrective measures have been taken in some areas and additional painting will be completed when construction is finished.

Equipment*

The cost of equipment needed to assure proper sanitation for all three units of this institution is \$1,925.00.

The amount above is requested for a fogger with 100-gallon spray cart.

*Not included by the Commission but justified as being a critical sanitation need.

FLORIDA STATE PRISON

- Babcock Commission Response -

MEDICAL

Personnel

A. Present authorized positions:

| | |
|--------------------------|------|
| Psychiatrist | (1) |
| Psychologist II | (2) |
| Social Worker | (2) |
| Chief Medical Technician | (1) |
| Medical Technician | (10) |
| Surgeon | (1) |

B. Additional positions needed:

| | |
|---------------------|------|
| Psychiatrist II | (1) |
| Psychologist II | (3) |
| Clerk Typist II | (2) |
| Medical Technician* | (13) |

*The 13 medical technicians were not included in the Babcock Commission Report and he did not concur with these positions until such time as the overall mission plan involving Union Correctional Institution, Florida State Prison and the Reception and Medical Center was presented to him. He did review the proposal at a later date and concurred with the mission as well as the positions.

The Commission made criticism with reference to the "0" Unit cell facilities. We concur with his criticism; however, the situation is due to our serious overpopulation problems and cannot be corrected at this time.

The Commission made critical remarks with reference to the psychiatric section operation of this facility. An immediate investigation of this situation was made by the Medical and Surgical Director for the Division of Corrections and the Chief of Psychiatry for the Division of Corrections. Corrections necessary to place the program at the same level of other psychiatric programs within the Division have been made. It will not be possible, however, to completely correct these deficiencies until such time as additional staff and equipment can be obtained.

FLORIDA STATE PRISON

- Medical Equipment Needs -
(OCO)

| <u>Quantity</u> | <u>Item</u> | <u>Total Price</u> |
|-----------------|--------------------------|--------------------|
| 4 | Double pedestal desks | \$ 728.00 |
| 2 | Secretarial desks | 588.00 |
| 10 | Posture back chairs | 760.00 |
| 12 | Office chairs | 447.00 |
| 2 | Typist chairs | 84.00 |
| 1 | Portable X-ray unit | 8,800.00 |
| 1 | Microscope | 1,100.00 |
| 2 | IBM electric typewriters | 1,282.00 |
| 4 | Transcribers | 1,060.00 |
| 4 | Recorders | 1,060.00 |
| 10 | File cabinets | 1,217.50 |
| 1 | Floor buffer | 381.00 |
| 1 | Vacuum cleaner | 330.00 |
| 27 | Hospital steel beds | 3,780.00 |
| 27 | Hospital bed mattresses | 594.00 |
| 1 | Sitz bath | 350.00 |
| 27 | Bedside cabinets | 1,215.00 |
| 4 | Bookcases | 235.00 |
| 1 | Small whirlpool | 600.00 |
| | TOTAL | \$24,611.50 |

Additional medical expense needed to fully implement the Babcock Report:

Total needed \$31,200.00

This included medical supplies, clothing, office supplies, travel and additional utilities.

Fixed capital outlay needs to fully implement the Babcock Report:

New construction will be necessary to provide for additional office space and program space as a result of the addition of psychiatric and dentist positions. Extensive planning will be necessary to determine specific construction needs in cost. For the purpose of this report, it has been roughly estimated that the needs for this new construction will amount to approximately \$128,000.

FLORIDA STATE PRISON

- Babcock Commission Response -

DENTAL

Personnel

A. Present authorized positions :

Dentist I (1)
Dental Intern (1)

B. Additional positions needed:

Dentist II (1)
Dental Assistant (3)
Clerk Typist II (1)

Although not specifically mentioned we would also interpret that it is the dental consultants recommendation that the existing intern position be upgraded to a Dentist I. Upgrading of this position will be reviewed and action taken accordingly.

Equipment needed to implement Babcock Commission Report

| <u>Quantity</u> | <u>Item</u> | <u>Total Price</u> |
|-----------------|----------------------------|--------------------|
| 3 | Dental Chairs | \$ 5,400.00 |
| 1 | Dental Unit | 2,500.00 |
| 3 | Slow Speed Drills | 975.00 |
| 1 | High Speed Pneumatic Drill | 289.00 |
| 3 | Mobile Instrument Cabinets | 1,650.00 |
| 1 | Auto X-ray Developer | 890.00 |
| 1 | Dental X-ray Unit | 2,000.00 |

This equipment list includes replacement items as recommended by the consultant as well as new items to support the additional positions.

Expense needs to support new positions - \$ 7,500.00

FLORIDA STATE PRISON

- Babcock Commission Response -

SANITATION

"Main Unit"

Food Service

Item (1) - "Need thermometers in all coolers and freezers."

Response

Thermometers have been installed in some coolers and freezers. The remaining coolers will have the thermometers installed as soon as those ordered are received.

Item (2) - "Rodent problem (in process of eliminating)."

Response

A custodial officer has been assigned as a sanitation officer and is endeavoring to cope with the rodent problem.

Item (3) - "Lighting needs to be improved in dish machine areas."

Response

The lighting in these areas has been improved.

Item (4) - "Need pre-rinse sink in main dish room."

Response

This is an item which is on our capital outlay, 1974-75 budget.

Item (5) - "Dish machines need to be checked to see that final rinse is 180° F."

Response

Has been referred to our Central Office Engineer and our Maintenance Department is continuing to work on this problem.

Item (6) - "Walls and floor tiles need to be replaced in several areas."

Response

This is a continuing maintenance problem and the work on the wall and floor tiles is continuing.

Item (7) - "Paint peeling on wall in dish machine area in employee dining room."

Response

The paint in these areas is in the process of being scraped.

Item (8) - "No sneeze shields on any serving lines (on order)."

Response

Measurements have been taken for the sneeze shields and they are requested in the 1974-75 budget.

Item (9) - "Appropriate racks needed for storing eating trays and pots and pans."

Response

Racks have been ordered for the storing of trays, pots and pans.

Item (10) - "Plywood cutting boards should be replaced with impervious hard material."

Response

Plywood cutting boards have been eliminated.

Item (11) - "Bakery equipment needed general cleaning at time of inspection."

Response

This discrepancy has been corrected and will continue to be reviewed.

Item (12) - "Some equipment in bakery needs repair."

Response

Equipment has been repaired..

Item (13) - "Pot and pan sink area is in process of being repaired."

Response

The repairs in the pot and pan sink area have been made.

Item (14) - "Several cross connections noted during the inspection."

Response

The maintenance department is now in the process of eliminating all cross connections.

"0" Unit

Food Service

Item (1) - "Need hoods over cooking equipment (ready to install)."

Response

Hoods have been installed over part of kitchen stoves. Additional hoods will be fabricated and installed.

Item (2) - "Floors eroded in places."

Response

The Maintenance Department is in the process of repairing the floor in the kitchen.

Item (3) - "No sneeze guards on serving line (on order)."

Response

Sneeze guards are requested in 1974-75 budget request.

Item (4) - "Storage rooms needs ventilation."

Response

The Maintenance Department will install a ventilation system in the storage rooms.

Item (5) - "Screens need repair."

Response

We are in the process of repairing screens.

Item (6) - "Racks for storing eating trays needed."

Response

Storage racks for food trays have been ordered.

Item (7) - "Sinks have hose bibb spigots. If these are used hose bibb vacuum breakers are necessary to protect the water supply."

Response

We are in the process of eliminating hose spigots.

Item (8) - "Outside doors in kitchen needs rodent proofing."

Response

A new screen door has been installed to help eliminate rodents from entering the kitchen.

GLADES CORRECTIONAL INSTITUTION

- Babcock Commission Response -

MEDICAL

Personnel

A. Present authorized positions:

| | |
|-----------------------|-----|
| Physician I | (1) |
| Clinical Psychologist | (1) |
| Medical Technician | (5) |

B. Additional positions needed:

| | |
|---------------------------|-----|
| Psychologist II | (1) |
| Psychiatrist | (1) |
| Clerk Typist II | (1) |
| Chief Medical Technician* | (1) |
| Medical Technologist II | (1) |
| Medical Secretary | (1) |
| Pharmacist II | (1) |

*Since the visit of the Babcock Commission the Chief Medical Technician position has been reclassified to a Physician I. This necessitates the need to request a new Medical Technician Supervisor position.

General Comments

The Babcock Commission emphasized the needs for full-time Physician services at this institution. This has been accomplished. The Commission also strongly recommended a buzzer system for the infirmary. An alarm system is in effect at this institution and if we are ever able to fill all Medical Technician positions, seven days a week, 24-hour a day coverage will be maintained by employee staff.

The Commission strongly indicated the need for a clinical laboratory and laboratory technician. These needs are covered in this response.

The Commission strongly pointed out the need for housing for medical personnel and requests for additional houses and trailer pads have been included in past legislative budget requests. We will continue to include these items; however, we have been unsuccessful in obtaining legislative approval.

Numerous comments were made by the Commission with reference to the need for improvement of the segregation unit, the need for psychiatric holding cells, and the need for adequate exercise area for those persons in confinement. We concur with the Commission's observations, but again funding would be necessary to make the desired improvements.

Equipment Needs to Fully Implement Babcock Commission Recommendations

\$26,877.00*

*A detailed list of this equipment is available in the Division of Corrections Central Office.

Expense Needs to Fully Implement the Babcock Commission Report

\$11,106.00*

*A detailed expense justification is available in the Division of Corrections Central Office.

Fixed Capital Outlay Needs to Fully Implement Babcock Commission Report

\$215,454.00*

*This total figure includes necessary renovations to existing medical facilities, construction of additional housing and trailer pads, the addition to the segregation unit (to include psychiatric cells and exercise yard). A detailed breakdown is available in the Division of Corrections Central Office.

GLADES CORRECTIONAL INSTITUTION

- Babcock Commission Response -

DENTAL

Personnel

A. Present authorized positions:

Dentist I (1)

B. Additional positions needed:

Dentist II (1)

Dental Assistant (2)

Clerk Typist II* (1)

*This position was not included in the dental consultant's specific personnel recommendations. We feel that this position was erroneously omitted as such a position was recommended at other facilities of this size.

Equipment needs to fully implement Commission recommendations - \$24,995.00

It was recommended that dental units and chairs in both existing operatories be replaced, an additional high-speed hand piece be purchased, and that new equipment for a third operatory be purchased.

Expense needs to fully implement Commission recommendations - \$ 5,000.00

This includes office materials and supplies, travel, uniforms and miscellaneous dental instruments necessary to support new positions.

Fixed Capital Outlay needs to fully implement Commission Report - \$12,144.00

This includes funds to renovate existing operatories and to add a third operatory as recommended.

Manual of Operations

This Manual will be issued by the Coordinator of Institutional Dental Services.

GLADES CORRECTIONAL INSTITUTION

- Babcock Commission Response -

SANITATION

Food Service

Item (1) - "Sneeze guards needed on serving line."

Response

Sneeze guards have been ordered and will be installed as soon as they are received.

Item (2) - "Pedestrian traffic should be routed out of dining room."

Response

This area has been reviewed and pedestrian traffic has been re-routed to the highest extent possible.

Item (3) - "Hose bib vacuum breakers needed in several areas."

Response

Valves can be used to prevent the backflow of water into the water supply system. Six valves are required at a total cost of approximately \$120.

Item (4) - "Bathroom facilities needed for inmates in food preparation area."

Response

Funds to provide these facilities have been approved and the facilities will be provided in the near future.

Item (5) - "Baker's tables are in poor repair (New ones on order.)."

Response

We concur that a new baker's table is needed. Cost of this table is \$1,000.

Total funds needed to fully implement sanitation recommendations - \$1,120.

LAKE CORRECTIONAL INSTITUTION

- Babcock Commission Response -

MEDICAL

Personnel

A. Present authorized positions:

Registered Nurse II (1)
Medical Technician Supervisor (1)
Medical Technician (3)

B. Additional positions needed:

Medical Technician (1)
Pharmacist II (OPS - 50%) (1)

The medical clinic at Lake Correctional Institution shall be located in the existing metal building designated as Building #7 in the institutional description of real property. It is proposed that the portion of this building to be utilized as a clinic be renovated according to the floor plan submitted for approval to the Florida Division of Corrections Architects. Added to this plan should be one office to be used by the visiting doctor and dentist.

Dr. Babcock's report has recommended that an additional physician and dentist be employed at Sumter Correctional Institution. If an additional physician and dentist is employed at Sumter Correctional Institution, arrangements have been made to allow these persons to work at Lake Correctional Institution two or three half-days per week. If these positions are not approved, we will have to attempt to employ professionals from the community. We have already determined that these persons are not available in the local community.

The scope of the Medical Department shall include the following routine services:

1. Sanitary inspection for the entire institution.
2. Supervision of the institutional clinic.
3. Supervision of the scheduled and emergency sick calls.
4. Issuing of medical lay-ins for inmates.

5. First aid for inmates and/or employees injured.
6. Issuing of non-prescription medicines.
7. Security of medicines.
8. Transportation of medical cases for treatment not available at the institution.
9. Prepare medical reports for inmate Progress Reports and recommendations for inmate transfers for medical reasons.
10. Maintain all inmate medical records at this institution.
11. Issuing of such medication as might be prescribed by a licensed physician and obtained from a licensed pharmacy.
12. Maintain a basic first aid station.
13. Examine all inmates who present a medical or health complaint.
14. Maintain a nine-bed in-patient clinic.

Emergency medical problems shall be handled by one or more of the following procedures:

1. Examination and treatment of the individual by a physician after emergency transportation of individual to the emergency room of Community Hospital, Leesburg; South Lake Memorial Hospital, Clermont; Orange Memorial Hospital, Orlando, or:
2. Emergency transportation of individual to Sumter Correctional Institution hospital or:
3. Emergency transportation of the individual to the hospital at the Reception and Medical Center, Lake Butler.

Lake Correctional Institution has two station wagons that are capable of short range transporting of ambulatory cases. One wagon can be equipped with necessary emergency equipment. Long range transportation will probably be handled by Sumter Correctional Institution ambulance staff.

Funds are available to purchase necessary equipment.

LAKE CORRECTIONAL INSTITUTION

- Babcock Commission Response -

DENTAL

As of this date this institution has no in-house facilities for dental care. All dental complaint cases are transported to Sumter Correctional Institution for treatment. The plan submitted for approval of the medical area includes a proposed dental area in order to avail this institution of in-house dental services.

Dr. Babcock's report has recommended that an additional dentist be employed at Sumter Correctional Institution. If an additional dentist is employed at Sumter Correctional Institution, arrangements have been made to allow this dentist to work at Lake Correctional Institution two or three half-days per week.

Funds are available to purchase necessary equipment.

LAKE CORRECTIONAL INSTITUTION

- Babcock Commission Response -

SANITATION

No extensive sanitation inspection of this facility was made as we had just purchased this facility and occupied it at time of the Babcock Commission visit. Minor discrepancies in the food service area were noted but planned renovation of the facility should correct these discrepancies. Sanitation inspections will be the responsibility of the Medical Department.

RECEPTION AND MEDICAL CENTER

- Babcock Commission Response -

MEDICAL

Personnel

A. Present authorized positions:

| | |
|---------------------------------|------|
| Physician II | (2) |
| Medical Technician Supervisor I | (1) |
| Medical Technician | (27) |
| Medical and Surgical Director | (1) |
| Secretary III | (1) |
| Hospital Administrator | (1) |
| Nurse Director I | (1) |
| Psychiatrist II | (3) |
| Medical Records Librarian | (1) |
| Medical Technologist II | (1) |
| Social Service Worker | (1) |
| Physical Therapist I | (1) |
| Pharmacist III | (1) |
| Pharmacist I | (1) |
| Nurse Anesthetist | (1) |
| Surgeon | (2) |
| Registered Nurse III | (5) |
| Registered Nurse II | (25) |
| Medical Technician (LPN) | (5) |
| Medical Transcriber I | (5) |
| Clerk Typist II | (3) |
| Dietician I | (1) |
| Vocational Instructor III | (1) |
| Correctional Officer I | (1) |

B. Additional medical personnel recommended by Dr. Babcock in 1973:

| | |
|----------------------------------|-----|
| Assistant Hospital Administrator | (1) |
| Clerk V | (1) |
| Medical Supply Supervisor | (1) |
| Medical Supply Specialist | (1) |
| Medical Supply Storekeeper | (1) |
| Maintenance Mechanic | (1) |
| Linen Handler II | (1) |
| Laundry and Housekeeping Manager | (1) |
| Physician Assistant | (6) |
| Clinical Social Worker II | (1) |
| Registered Nurse II | (4) |
| Registered Nurse III | (3) |

| | |
|---------------------------------|------|
| Psychiatric Nurse I | (2) |
| Psychiatric Nurse II | (2) |
| Medical Technician | (18) |
| Optometrist | (1) |
| Medical Technologist II | (1) |
| Medical Technologist I | (2) |
| Nursing Service Supervisor | (4) |
| Assistant Nurse Director I | (1) |
| Medical Technologist Supervisor | (1) |

C. Additional positions needed:

| | |
|--------------------|-----|
| Psychiatrist | (2) |
| Psychologist | (4) |
| General Physicians | (2) |
| Clerk Typist | (2) |
| Social Worker | (6) |

Those positions recommended in 1973 are still needed as noted in Attachment #2.
Dr. Babcock concurs.

RECEPTION AND MEDICAL CENTER

- Medical Equipment Needs -

| <u>Unit</u> | <u>Item</u> | <u>Total Price</u> |
|-------------|---------------------------|--------------------|
| 1 | Blood Gas Apparatus | \$ 3,295.00 |
| 1 | Microscope Operating Room | 5,000.00 |
| 1 | Aeration Cabinet | 1,000.00 |
| 1 | Datascope | 1,395.00 |
| 1 | Portable Defibrillator | 800.00 |
| 1 | Datascope Resurcitron | 1,700.00 |
| 1 | Electronic Thermometer | 790.00 |
| 1 | Throat Suction Machine | 580.00 |
| 1 | Stomach Suction Machine | 580.00 |
| 1 | Room Fogger | 800.00 |
| 1 | Crash Cart | 220.00 |
| 3 | Refrigerators | 900.00 |
| 1 | Advance Super Scrubber | 1,000.00 |
| 3 | Linen Carts | 675.00 |
| 1 | Ambulance Type Stretcher | 115.00 |
| 2 | Medicine Carts | 120.00 |
| 1 | CSR Cart | 200.00 |
| 2 | Ice Carts | 300.00 |
| 1 | Silver Recovery System | 800.00 |
| 1 | Automatic Processor | 9,000.00 |

| <u>Unit</u> | <u>Item</u> | <u>Total Price</u> |
|-------------|-----------------------------|--------------------|
| 1 | X-ray Intensifier and Mount | \$12,166.00 |
| 1 | Urology Equipment | 4,055.00 |
| 1 | ENT Equipment | 750.00 |
| - | Equipment for New Positions | <u>9,189.00</u> |
| | TOTAL | \$46,230.00 |

Operating Capital Outlay and Expense Needs to Correct State Fire Marshal
Discrepancies - Attachment #9

\$18,601.00

RECEPTION AND MEDICAL CENTER

- Babcock Commission Response -

DENTAL

Personnel

A. Present authorized positions:

| | |
|------------------------|-----|
| Dentist II | (1) |
| Dentist I | (1) |
| Dental Intern | (4) |
| Dental Assistant II | (1) |
| Dental Assistant I | (4) |
| Dental Hygienist | (1) |
| Correctional Officer I | (1) |

B. Additional positions needed:

| | |
|-----------------------|-----|
| Dental Lab Technician | (1) |
| Clerk Typist II | (1) |

It was also recommended that the Dental Intern positions be reclassified to Dentists I. All such dental reclassifications will be reviewed and pursued immediately.

CONTINUED

1 OF 2

RECEPTION AND MEDICAL CENTER

- Babcock Commission Reponse -

SANITATION

Food Service

Item (1) - "The hot water rinse on the dish machine should be 180° F. for effective sanitization of the eating utensils."

Response

The hot water rinse on the dish machine was below 180° F. because at the time of this inspection we were operating on a steam boiler too small to handle the steam load at this institution. However, during the first part of this year a new 250 h.p. boiler was installed. This new boiler has corrected the low steam going to the dishwasher machine.

Item (2) - "One small work table needs an impervious top."

Response

The work table's top was refinished.

Item (3) - "Needs hand towel dispenser in rest room."

Response

Hand towel dispenser has been placed in rest room.

General Kitchen

Item (1) - "Needs paper towels and paper towel dispenser in inmates rest room."

Response

Paper towels and dispenser have been placed in rest room.

Item (2) - "Prepared food left stored in coolers should be covered."

Response

This item has been corrected.

Item (3) - "Food containers should not be stored on floor in coolers."

Response

It is a standard rule that food would not be in containers on the floor. We have again instructed food service instructors and inmate cooks to store all food containers on racks that are in the coolers; also to cover all food that is to go in the cooler.

Item (4) - "Ice machine needed cleaning, food should not be stored in ice in ice machine."

Response

This has been corrected. The storing of food in ice machines is against the rules within the kitchen area. Instructions not to store food in the ice machine have been re-issued.

Item (5) - "Floor needs repair in dishwashing room."

Response

The repairs needed on the floor have been corrected.

Item (6) - "Intermittent Pyrethrin dispensers should be relocated to maintain a twelve foot distance between any food preparation or serving areas."

Response

These dispenser cans have been moved to the twelve foot distance as recommended.

Item (7) - "Several cross connections were noted in kitchen area. Hoses were attached to sink mixing valves and spigots. These should be removed after each use unless appropriate vacuum breakers are installed at each spigot."

Response

These cross connections and hoses are used when scrubbing the kitchen area and it had been a habit of leaving them hooked up all the time. Since we don't have vacuum breakers, the hoses are being removed after each scrub down.

SUMTER CORRECTIONAL INSTITUTION

- Babcock Commission Response -

MEDICAL

Personnel

A. Present authorized positions:

| | |
|--------------------------|-----|
| Physician | (1) |
| Psychologist | (1) |
| Registered Nurse | (2) |
| Chief Medical Technician | (1) |
| Medical Technician | (5) |
| Clerk Typist II* | (1) |

*The Commission noted that SCI currently has a medical secretary. This is an error. Sumter Correctional Institution has no position for a medical secretary. The position mentioned is that of a Clerk Typist II.

B. Additional positions needed:

| | |
|--------------------|-----|
| Physician | (1) |
| Psychiatrist | (1) |
| Psychologist II | (2) |
| Medical Technician | (3) |
| Secretary II | (1) |
| Clerk Typist II | (2) |
| Pharmacist II | (1) |

Equipment needed to implement Babcock Commission recommendations

| <u>Quantity</u> | <u>Item</u> | <u>Total Price</u> |
|-----------------|---|--------------------|
| 4 | Office tables | \$ 900.00 |
| 4 | Office chairs, arm/swivel | 300.00 |
| 8 | Chairs | 960.00 |
| 1 | Bookcase | 25.00 |
| 1 | X-ray view box | 80.00 |
| 1 | Dazor floating lamp | 50.00 |
| 1 | Otoscope Ophthalmoscope | 95.00 |
| 1 | Blood pressure apparatus with base | 150.00 |
| 1 | Examining table | 250.00 |
| 1 | Dressing carriage with bowl, tray | 175.00 |
| 1 | Instrument cabinet (with glass shelves) | 215.00 |
| 1 | Waste receptacle (with cover) | 25.00 |
| 1 | Tape recorder | 60.00 |
| 3 | Dictaphones | 1,200.00 |
| 2 | Transcribers | 800.00 |
| 5 | Waste baskets | 25.00 |
| 5 | Filing cabinets | 750.00 |
| 2 | Typist desks | 300.00 |
| 2 | Secretarial chairs | 120.00 |
| 2 | Electric typewriters | 1,000.00 |

Additional expense to support new positions -

\$12,000.00

Fixed capital request to implement Babcock Commission recommendations:

Currently, half of the infirmary rooms are not in use due to lack of personnel and inability to provide coverage in those areas. The rooms not in use are the ones originally designed as wards and a corresponding nurse's station. All in-patients are quartered in the area close to the out-patient clinic. Approval of recommended positions will entail providing offices and program space.

Two floor plans have been submitted. One plan shows current space usage. The other plan shows requested renovations to provide for expected new positions.

Expense for renovation -

\$ 1,858.00

General Comments

In general the Babcock Commission Report made favorable comments with reference to the medical program at Sumter Correctional Institution. It is planned that with the addition of the new Physician and Dentist positions, these positions will also be responsible for providing consulting medical services to Lake Correctional Institution which is located approximately 25 miles from this institution.

Quality controls for the clinical laboratory have been initiated. The Commission noted a need for a restraint room for acute psychotics. Such a room is presently available in the infirmary but is not acceptable in its present state. Funds to place this room in proper order are included in the fixed capital request for this facility.

SUMTER CORRECTIONAL INSTITUTION

- Babcock Commission Response -

DENTAL

Personnel

A. Present authorized positions:

Dentist I (1)

B. Additional positions needed:

Dentist I (1)

Dental Assistant (2)

Clerk Typist II* (1)

*In that the dental consultant recommended a Clerk Typist for all dental programs, it is our belief that such a recommendation for this facility was inadvertently deleted from the report. Additionally, should one new Dentist position be approved, it would be our intention to consider the reclassification of one of the positions to a Dentist II. The Dentist II would have management responsibilities for this program. As mentioned earlier in this report, it is planned that one of the Dentists would provide the dental services for Lake Correctional Institution.

Equipment needed to fully implement Babcock Commission recommendations

| <u>Quantity</u> | <u>Item</u> | <u>Total Price</u> |
|-----------------|---------------|--------------------|
| 2 | Dental chairs | \$ 2,400.00 |
| 2 | Dental units | \$ 4,680.00 |

Additional expense to support new positions and increased programs -
\$ 7,500.00

SUMTER CORRECTIONAL INSTITUTION

- Babcock Commission Response -

SANITATION

Food Service

Item (1) - "Intermittent Pyrethrin Dispensers should be twelve feet away from food preparation or serving area."

Response

The maintenance department is moving these dispensers.

Item (2) - "Floor is in the process of being replaced."

Response

We have a contract on this and are working on this at present.

Item (3) - "Sneeze guards needed on serving line."

Response

Funding is needed in the amount of \$2,250.

Item (4) - "Inadequate lighting in cooking area for personnel dining room."

Response

One-half of the lights were disconnected at that time. Funds in the amount of \$100 are needed for additional lights.

Item (5) - "Hose bib vacuum breakers needed on several spigots."

Response

Maintenance department can correct this with funds of \$50.00.

Item (6) - "Closer supervision may be needed in the dishwashing room. Inmates did not have final rinse water turned on machine while washing trays."

Response

Food Service Manager is correcting this by providing closer supervision.

Item (7) - "One battery of cooking equipment does not have a ventilation hood."

Response

Funds in the amount of \$100.00 are needed to correct this.

UNION CORRECTIONAL INSTITUTION

- Babcock Commission Response -

MEDICAL

Item (8) - "Containers of food should be stored off the floor."

Response

This has been corrected by providing flats.

Item (9) - "Ceiling needs repairing in one area of the kitchen."

Response

Construction project approved this year at time of flooring; will correct immediately.

Item (10) - "Cutting boards need replacing."

Response

Funding is need in the amount of \$40.00 to correct this item.

Item (11) - "Baker's tables need refinishing."

Response

Funding is needed in the amount of \$150.00 to correct this.

Item (12) - "Need racks for baker's refrigerator."

Response

Need funds in the amount of \$125.00 to correct this item.

Item (13) - "Back entrance to kitchen needs screening, or some other device installed which will control fly entrance."

Response

Funds in the amount of \$200.00 are needed in this area.

Personnel

A. Present authorized positions:

| | |
|---------------------------|------|
| Surgeon | (2) |
| Nurse Anesthetist | (1) |
| Pharmacist II | (1) |
| Medical Tech. Supv. II | (1) |
| Medical Technicians | (36) |
| Medical Technologist II | (1) |
| Clinical Psychologist | (1) |
| Psychologist II | (1) |
| Psychologist I | (1) |
| Optometrist | (1) |
| Hospital Administrator | (1) |
| Registered Nurse II | (10) |
| Registered Nurse I | (1) |
| Physician II | (1) |
| Medical Records Librarian | (1) |
| Clerk Typist III | (1) |
| Secretary II | (3) |
| Medical Transcriber | (4) |
| Social Services Worker | (3) |
| Psychiatrist I | (1) |

B. Additional positions needed:

| | |
|----------------------------|------|
| Nursing Director | (1) |
| Registered Nurse III | (3) |
| Registered Nurse II | (5) |
| Medical Technician | (10) |
| Food Service Instructor* | (3) |
| Psychiatrist II | (1) |
| Psychologist II | (2) |
| Psychologist I | (4) |
| Clerk Typist II** | (2) |
| X-Ray Technician II (MT) | (1) |
| Laboratory Technician (MT) | (1) |

Justification on Recommended Positions

*Although Dr. Babcock severely criticized the operation of the Union Correctional Hospital diet kitchen, he did not address the need for food service instructors to supervise this activity. Our plans are to have the dietitian from the Reception and Medical Center act as consultant. This would be on a limited part-time basis of two visits per week for approximately four hours. The diets ordered by the physicians for both inpatients and outpatients have to be considered as a prescription - and must be filled accurately. Therefore, we are requesting three food service instructor positions for the day-to-day supervision of the inmates who are preparing the regular and special diets in this area.

**The two clerk typists requested are to provide administrative and clerical support for the additional psychiatrist and psychologist staff recommended by Dr. Babcock.

NOTE: Please refer to intended mission of this institution's medical program as outlined in Attachment #2.

Funding Necessary to Implement Babcock Commission Recommendations

| | |
|---|--------------|
| Total Operating Capital Outlay to equip new positions | \$ 12,033.50 |
| Total Operating Capital Outlay to equip medical program | 12,682.90 |
| Total Operating Capital Outlay to equip diet kitchen | 12,140.00 |
| Total Fixed Capital to renovate diet kitchen | 20,000.00 |
| Total Expense for full operation for one year | 331,574.07 |

Clinical Laboratory

Discrepancies

1. No quality control measures being undertaken.

Response

1. Quality control has been implemented.

X-Ray Department

Discrepancies

1. Absence of qualified personnel to take x-rays and read them.
2. There has not been a routine chest film taken this year of inmates.

Response

1. One position for X-Ray Technologist has been requested. A Radiologist Consultant has been hired.
2. At the time of Dr. Babcock's survey, the Health Department had not taken yearly chest x-rays of the inmate population. However, since the time of survey, the TB Control from Jacksonville, Florida, has taken x-rays of all inmates.

Pharmacy

Discrepancies

1. Patients are maintained on certain drugs without any check-up or lab work to determine the effect on the patient's blood level or metabolism.

Response

1. This could satisfactorily be established with addition of one new position in the laboratory, which has been requested.

Medical Records

Discrepancies

1. Physician not signing orders.
2. Vital signs.
3. Discharge Summaries.
4. NP patients were admitted without history and physicals, without vital signs and on occasion, drugs were given with no signature as to who ordered them.

Response

1, 2, 3 and 4 - The medical records for the medical and surgical patients are now in an acceptable standard. The discharge summaries are being completed by the physicians. Doctors' orders are being signed and vital signs are being taken and charted. All NP patients admitted to the annex are given history and physicals by the admitting doctor. Any medication prescribed for them has a signed prescription and also it is noted in the chart for the time it was ordered and who ordered it.

Kitchen

Discrepancies

1. Crowded and untidy.
2. Dishwashing machine not operating.
3. The ice scoop was stored with the ice.
4. Food was being stored in the ice machine.
5. Inadequate storage space.

Response

1, 2, 3, 4 and 5 - We need a completely newly renovated kitchen facility and equipment to correct the discrepancies. However, we have corrected the dishwashing problem and removed the ice scoop and food from the ice machine.

Physical Plant Needs

Move the Psychiatric Department to what is now utilized as the Parke Davis unit.

Response

Plans are being made to accomplish this.

Establish definite criteria for housekeeping standards.

Response

Housekeeping standards have been accomplished.

Standardize medical records format uniformly with other institutions.

Response

The office of the Medical and Surgical Director, Division of Corrections, is planning to standardize all medical forms.

Discontinuation of all inhalation anaesthetics. Referring all major work to the Reception and Medical Center.

Response

Only emergency surgery will be done at Union Correctional Institution Hospital.

Use of Inmates

The comments made by the Commission regarding the reduction of inmate workers by replacing them with qualified free personnel is not valid. We currently are using only 30 inmates in the medical facility, seven of which are assigned housekeeping duties, and none provide direct inmate patient care. This is a reduction of 146 inmates in the medical facility since new medical positions were authorized in 1972. We hope to further reduce the number of inmates assigned, but there will always be some inmates working in the medical facility performing housekeeping duties.

UNION CORRECTIONAL INSTITUTION

- Babcock Commission Response -

DENTAL

Personnel

A. Present authorized positions:

| | |
|---------------|-----|
| Dentist II | (1) |
| Dental Intern | (1) |

B. Additional positions needed:

| | |
|--------------------|-----|
| Dentist I | (1) |
| Dental Assistant I | (3) |
| Clerk Typist II | (1) |

Dental Expense

Actual (July 1, 1973 to January 31, 1974 - 7 months)

| | |
|----------------|-------------|
| Allotment: | \$ 6,830.00 |
| Actual: | 11,884.04 |
| Variance: | 5,048.04 |
| Per diem cost: | .03375 |

Total number of patient visits to dental clinic from July 1, 1973 to January 31, 1973 - 2,621.

Dental Expenses Needed to Implement Babcock Commission Report

| | |
|---------------------|------------------|
| Dental Supplies | \$25,000.00 |
| Travel | 500.00 |
| Office | 350.00 |
| Dental Lab Expenses | <u>14,000.00</u> |
| Total | \$39,850.00 |

Dental Clinic Space

A new location for the Dental Clinic is needed. The location is still to be determined and should preferably be in a new building designed for this purpose. Second choice would be a location as an annex to the hospital.

The clinic should have five (5) treatment rooms: three for general denistry, one for oral surgery, and one for dental hygiene. Additional needs: a room for panarex radiology, a private office for each dentist and the secretary, a staff room, a supply room, a dark room, a dental laboratory, a business record office, a reception room, adequate rest rooms and a recovery room. Approximate area: 2,500 square feet. Approximate cost (at \$17 per square foot) - \$42,500.00.

Dental Equipment (OCO)

The three weber units (P-75) are no longer being manufactured and are in constant need of repair, which slows down our dental delivery system. The air technique compressor is adequate for three treatment rooms, but not for five. The autoclave and x-ray machines are satisfactory. New equipment needed is listed below:

| | |
|---|--------------|
| Five (5) dental units at \$2,400.00 each | \$ 12,000.00 |
| Five (5) dental chairs at \$1,995.00 each | 9,975.00 |
| Five (5) examination light at \$700.00 each | 3,500.00 |
| One (1) panarex | 9,500.00 |
| One (1) automatic x-ray developer | 895.00 |
| One (1) high volume air compressor | 1,395.00 |

| | |
|---|-----------------|
| Other equipment: Modular instrument cabinets, laboratory equipment, high and low speed hand pieces, dark room equipment | <u>7,500.00</u> |
|---|-----------------|

| | |
|-------|--------------|
| Total | \$ 44,765.00 |
|-------|--------------|

UNION CORRECTIONAL INSTITUTION

- Babcock Commission Response -

SANITATION

It was noted that: "The Main Kitchen at Union Correctional Institution is also totally unacceptable and should be replaced." Exception certainly cannot be made to this statement; however, the Master Plan, when totally implemented, will resolve the problem. In the interim, corrections will be made which should not only improve the general appearance of the area, but will improve the entire Food Service Program. Funds are presently available to accomplish the following:

1. Erect stainless steel hoods with fire preventive devices where applicable over each cooking area. (These are presently being installed.)
2. Install a stainless steel pan under the steam kettles to correct the deplorable condition of the floor in the pit. (This is awaiting installation.)
3. Lower the ceiling of the main dining room by using suspended acoustical tile.
4. Erect traffic control partitions (planters where feasible) and alter the present feeding line procedure.
5. Construct a soffit over the serving lines not only for an aesthetic effect, but to provide recessed lighting and a structure from which to hang the sneeze guards.
6. Install new lighting fixtures in the main dining room.

In addition to this, funds are being requested to provide additional and replacement of equipment as follows:

| <u>Item</u> | <u>Number of Units</u> | <u>Unit Price</u> | <u>Amount Requested 1974-75</u> |
|----------------------|------------------------|-------------------|---------------------------------|
| Place Settings | 1,200 | \$ 6 | \$ 7,200 |
| 50 Ration Pans | 72 | 12 | 864 |
| 100 Ration Pans | 72 | 18 | 1,296 |
| Transfer ladles | 4 | 70 | 280 |
| 20 gallon Stock Pans | 8 | 180 | 1,440 |
| Inserts | 30 | 25 | 750 |
| Bread Pans | 100 | 9 | 900 |
| Meat Slicer | 2 | 450 | 900 |
| Toaster | 3 | 250 | 750 |
| Bread Racks | 6 | 300 | 1,800 |

| <u>Item</u> | <u>Number of Units</u> | <u>Unit Price</u> | <u>Amount Requested 1974-75</u> |
|--------------------------|------------------------|-------------------|---------------------------------|
| Pastry Racks | 6 | \$ 300 | \$ 1,800 |
| Ice Machines | 2 | 1,400 | 2,800 |
| Coffee Pots | 4 | 800 | 3,200 |
| Steam Pots | 4 | 2,700 | 10,800 |
| Grills | 2 | 950 | 1,900 |
| Steam Tables | 4 | 3,600 | 14,000 |
| Sneeze Guards | 4 | 505 | 2,020 |
| Meat Saw | 1 | 700 | 700 |
| Stainless Tables | 4 | 450 | 1,800 |
| Freezer and Cooler Racks | 8 | 1,000 | 8,000 |
| Beverage Islands | 2 | 2,600 | 5,200 |
| Silverware Dispenser | 2 | 500 | 1,000 |
| Deep Fat Fryers | 2 | 650 | 1,300 |
| Meat Grinder | 1 | 350 | 350 |
| Garbage Disposal | 1 | 4,800 | 4,800 |
| Can Washer | 1 | 350 | 350 |
| Typewriter | 1 | 200 | 200 |
| Tray Conveyors | 2 | 3,800 | 7,800 |

The acquisition of these requested items should certainly go a long way toward bringing this facility up to par. The greatest need is the tray conveyors and garbage disposal. This system will enable the elimination of the unsanitary cans presently used. Of course, there are other items of equal importance which were not mentioned in the Report.

Response to Discrepancies in Main Kitchen

1. Not enough light in dish machine rooms.

Response

Defective bulbs have been replaced. If additional foot candle power is needed, this will be corrected when the new light are installed in the main dining room.

2. Dish machines are not in operation at time of inspection (the final rinse should be checked to see that it reaches and maintains 180° F since the operators of the machine did not know).

Response

The final rinse temperature on the big machine exceed 180° F. A close vigilance can insure the desired temperature in the rinse cycle.

3. Excessive number of flies in kitchen and dining room were noted. Back door should be kept closed since garbage cans are stored in this area.

Response

Since the inspection, new screens have been installed and instructions have been issued to keep the back doors closed. Screen replacement is a never ending task.

4. Several sinks were equipped with hose bibb spigots. Many had hoses attached and laying in a sink or on the floor. This creates a cross connection between the sewer and water systems.

Response

Instructions have been issued to discontinue the practice of leaving hoses connected and laying in the sink or on the floor.

5. Hoods have never been installed over any cooking equipment.

Response

They are presently being installed.

6. Need soap and hand towels in inmate bathrooms in food preparation area.

Response

Soap and paper towels have been supplied.

7. Floors need repair in areas such as the bakery.

Response

This discrepancy will be corrected in the near future.

8. Walls and ceilings need cleaning in bakery.

Response

The walls have been cleaned and the entire area is scheduled for repainting.

9. The bakery also has inadequate lighting and ventilation.

Response

Presently, the only feasible way to increase the foot candle power is to increase the wattage of the bulbs. Funds have been requested to air condition this area during the fiscal year 1974-75.

10. Ice machines need cleaning.

Response

They are clean now.

11. No sneeze guards on serving line equipment.

Response

These are requested in the 1974-75 Legislative Request.

12. Many metal eating trays are cracked and in poor repair.

Response

\$7,200 is requested to replace these during 1974-75.

Recent inspections solidify the fact that general housekeeping in this area has vastly improved.

Response to Discrepancies in Hospital Kitchen

1. Dishwashing machine did not maintain 180° F.

Response

Hospital has no control over amount of steam that is furnished to the Hospital kitchen. However, this problem is being corrected.

2. Food should not be stored in the ice machine.

Response

This has been corrected.

3. No screens in the kitchen area.

Response

This will be corrected at time of renovation.

4. Not enough storage space for food.

Response

This should be corrected at renovation time.

5. Food prepared in the kitchen was carried upstairs on an open cart and then served to the patients there.

Response

This is mainly due to the lack of an elevator and should be included in a total overall renovation program.

6. Refrigerator cleanliness and the fact that the temperature of the refrigerator was at 50° F and it should be 40°F or less.

Response

New sanitation procedures for the culinary department established to correct the cleanliness problem in the kitchen. The refrigerators are being run at a maximum to their capabilities and will require different refrigeration units for the kitchen. Replacement units have been included in our budget.

DC ROAD PRISONS AND VOCATIONAL CENTERS

BABCOCK COMMISSION REPORT

GENERAL SUMMARY REMARKS

Upon receipt and review of the Report, a memorandum was sent to all Road Prison Captains outlining those conditions existing which could be corrected by personnel and/or nominal cost with instructions to correct same immediately. Those conditions corrected are detailed specifically in this report under the respective facilities. Those recommendations and observations made by the Survey Team which would require considerable funding and approval by the Legislature, we have secured cost estimates and prepared a budget presentation as a part of this report.

There are currently fourteen Road Prisons in the Division of Corrections. While currently being operated as Road Prisons, four are presently being converted to Vocational Centers. The thrust of the Division is to eventually convert all remaining Road Prisons to Vocational Centers or to some other type treatment facility. Several of the Road Prisons were constructed many years ago and are old facilities in need of renovation at considerable cost.

The primary function of a Road Prison is to provide maintenance of highways. To be classified and transferred to a Road Prison to perform this type work, an inmate must be medically graded in good physical condition with no handicaps by the Medical Department. Inmates with existing medical problems or who require institutionalization under the direct supervision of a physician are not transferred to a Road Prison. When inmates confined in Road Prisons become ill or injured, they are taken to the physician's office or to the local hospital for immediate care. Any inmate determined by the physician to be unable to continue to perform road maintenance type work is reassigned to one of the major institutions.

For each Road Prison a local physician is retained under contract. They visit the Road Prison once or twice weekly and hold sick call. Salaries of physicians has been a problem, and some have resigned as a result of this. We thoroughly agree with the Survey Team's observations that the Road Prison physicians are underpaid for the services they perform. We are proposing that their salaries be elevated from \$250 a month to \$500 a month.

The Survey Team notes that each Road Prison has a "drug chest" containing over-the-counter drugs and home remedies. Also noted were obsolete drugs and pills. The medical supplies of our facilities are maintained in a lockable storage room equipped with shelving. Drugs have been purchased at the specific request of physicians in order for them to be available for their use during sick call. Noting the recommendations of the Survey Team and their observation that many of the drugs and pills are now obsolete, Mr. Curtis Lee, Consulting Pharmacist for the Division of Corrections, was contacted; and he has already completed a survey of our medical supplies and disposed of those various drugs, etc. which he felt to be obsolete.

In the future, only current prescription drugs that are prescribed by the physician for the individual inmate will be maintained for the period directed by the physician. We will maintain first aid supplies, aspirin, and other simple remedies recommended by the physician.

Road Prison Captains have been instructed to appoint an officer to be responsible for sanitation. Concerning definite sanitary rules and regulations, we are currently developing a standardized plan for the facilities.

The need to replace the sewage treatment plants at some of our older Road Prisons is certainly recognized, and we have requested funds for same in the 1974-75 budget. The cost of same is estimated at \$53,000 per facility.

We again concur with the Medical Survey Team that the Road Prison confinement facilities (detention cells) need to be modernized and upgraded. The only way to accomplish same is to abolish the old facilities and construct new ones, and our recommendation is described more specifically under each facility in this report.

Concerning observation of the Survey Team that rodent presence was found at many Road Prison facilities, we are recommending that funding be made available in order to secure the services of a pest control company. Orkin Exterminating Company was contacted and provided an estimate of \$21 for servicing one facility monthly. If approved by contract for all Road Prison facilities, this company would, in addition, provide a five percent discount from the estimate.

There is not an immediate solution to our overcrowded conditions within Road Prisons. This is a problem existing in all Division of Corrections institutions.

Following is a review of each facility with our response and recommendations regarding the observations and recommendations of the Medical Survey Team.

DC Road Prison #25

Arcadia, Florida

The Division of Corrections Road Prison #25, Arcadia, Florida, is a close custody Road Prison housing close, medium and minimum custody inmates. It is not a former prison. It was initially opened as a Road Prison and to date has been utilized in this capacity.

Below are the recommendations by the inspecting physicians and sanitation consultants with our comments concerning corrective action already implemented or recommendations for funding to correct same.

1. Push the new drainage system for the kitchen, with replacement as soon as possible. A new tank and drainage field has been ordered, and we are expediting this project. Chlorinator has been repaired.
2. The leaky plumbing in the sick bay has been repaired.
3. All three compartments of sink (wash, rinse, sanitize) are being utilized.
4. The filters over stove have been cleaned.
5. All prepared food, when stored in cooler, is being covered with meat wrapping paper; however, we are recommending that polyethylene covers be purchased for storage and proper coverage of foods. For a sufficient number of tupperware containers with covers, an estimate of \$75 per facility has been secured.
6. Thermometers have been secured and placed in the cooler.
7. Infestation of cockroaches - The facility has been exterminated in an effort to eliminate rodent presence. However, we are recommending funding to provide monthly professional services of an exterminating company.
8. The garbage cans have been removed away from the kitchen door and are being maintained with covers.
9. Garbage cans should be kept clean and covered - Instructions have been issued for garbage cans located in the kitchen to be cleaned daily. Garbage cans located outside to be cleaned every other day. Garbage cans are to be maintained with covers.
10. The inmates restroom is to be checked daily to insure supply of soap, towels, and tissue paper. The window screen has been replaced.
11. We are in the process of having the meat cutting block refinished.
12. The ice scoop on the serving line is covered at all times when not in use.

13. Need for proper ventilation in storeroom has been corrected.
14. A hose bib vacuum breaker has been ordered for this facility.
15. Construct a new confinement facility consisting of three cells 8' x 10' providing 240' for cells and providing a corridor 24' x 4'. An estimate of \$50 per square foot for 336 square feet totals \$16,800 and would include adequate lighting and ventilation.
16. Install dish washing machine estimated at \$4,000 per unit and a cost of \$500 for installation.
17. Install sneeze guard over steam table to prevent spread of infection.

DC Road Prison #27

Copeland, Florida

The Division of Corrections Road Prison #27, Copeland, Florida, is an honor Road Prison housing medium and minimum custody inmates. In the past, it has been utilized as a close custody Road Prison. However, it was initially opened as a Road Prison and to date has been utilized in this capacity.

Below are the recommendations by the inspecting physicians and sanitation consultants with our comments concerning corrective action already implemented or recommendations for funding to correct same.

1. The electric water pump has been repaired.
2. A new toilet has been ordered for the confinement cell but has not yet been received.
3. The facility has been exterminated in an effort to eliminate rodent presence. However, we are recommending funding to provide monthly professional services of an exterminating company.
4. The refrigerator motor on the cooler has been repaired and is operating at the proper temperature.
5. Pyrethrin dispensers have been located twelve feet away from the food preparation and serving area.
6. A hose bib vacuum breaker has been ordered for this facility.
7. Plywood cutting boards are no longer in use.
8. All three compartments of sink (wash, rinse, sanitize) are being utilized.
9. The back screen door has been repaired.
10. A pastry brush has been purchased and is being utilized to spread butter.
11. Containers of food are being stored on shelving or on pallets.
12. Construct a new confinement facility consisting of three cells consisting of 8' x 10' providing 240 square feet for cells and providing a corridor 24' x 4'. An estimate of \$50 per square foot for 336 square feet totals \$16,800 and would include adequate lighting and ventilation.
13. Install dish washing machine estimated at \$4,000 per unit and a cost of \$500 for installation.
14. Install sneeze guard over steam table to prevent spread of infection.

15. We are requesting funds for the installation of a new sewage treatment facility which meets water pollution control specifications.
16. The back of the stove needs encasing, and we are currently securing an estimate to have same repaired.

DC Road Prison #28

East Palatka, Florida

East Palatka Road Prison is an honor Road Prison housing medium and minimum custody inmates. Below are the recommendations by the inspecting physicians and sanitation consultants with our comments concerning corrective action already implemented or recommendations for funding to correct same.

1. Inadequate ventilation in storeroom has been corrected.
2. A thermometer is now located in the cooler.
3. A hardwood cutting board is now being utilized rather than a plywood cutting board.
4. All prepared food, when stored in cooler, is being covered with meat wrapping paper. However, we are recommending that polyethylene covers be purchased for storage and proper coverage of food.
5. Install dish washing machine estimated at \$4,000 per unit and a cost of \$500 for installation.
6. Construct a new confinement facility consisting of three cells 8' x 10' providing 240 square feet for cells and providing a corridor 24' x 4'. An estimate of \$50 per square foot for 336 square feet totals \$16,800 and would include adequate lighting and ventilation.
7. Install sneeze guard over steam table to prevent spread of infection.
8. We are requesting funds for installation of a new sewage treatment facility which meets water pollution control specifications.
9. Trash cans have been moved away from the kitchen property, and all garbage cans are now being covered.

DC Road Prison #29

Kissimmee, Florida

Kissimmee Road Prison is an honor Road Prison housing medium and minimum custody inmates. It was initially opened as a Road Prison and to date has been utilized in this capacity.

Below are the recommendations by the inspecting physicians and sanitation consultants with our comments concerning corrective action already implemented or recommendations for funding to correct same.

1. Screens over stove are to be cleaned weekly.
2. Grease on range has been removed.
3. Pyrethrin dispensers have been moved away from the food preparation and service areas.
4. A pastry brush has been purchased and is now being utilized to spread butter.
5. All three compartments of sink (wash, rinse, sanitize) are being utilized.
6. Mayonnaise is kept in cooler when not in use at mealtime.
7. Kitchen floor is eroded in some places - The kitchen floor at Kissimmee Road Prison is scrubbed regularly. However, due to acid being left on the floor when it was first installed, the floor has an eroded and used appearance.
8. A hose bib vacuum breaker has been ordered for this facility.
9. The bubbler water fountain, which was located in the dining room, has been removed and will not be used in the future.
10. Install dish washing machine estimated at \$4,000 per unit and a cost of \$500 for installation.
11. We are requesting funds for installation of a new sewage treatment facility which meets water pollution control specifications.
12. Install sneeze guard over steam table to prevent spread of infection.
13. We are not recommending that a new confinement facility be constructed as this facility will be converted to a Community Correctional Center.

DC Road Prison #30

LaBelle, Florida

The Division of Corrections Road Prison #30, LaBelle, Florida, is a close custody Road Prison housing close, medium, and minimum custody inmates. Below are the recommendations by the inspecting physicians and sanitation consultants with our comments concerning corrective action already implemented or recommendations for funding to correct same.

1. Replacement of plumbing - We certainly concur that the plumbing in the inmate shower and toilet area needs to be replaced, and we have secured an estimate of \$10,000 to renovate same.
2. We concur with the replacement of the tile in the inmate shower area and have secured an estimate of \$1,500 to accomplish same.
3. All prepared food, when stored in cooler, is being covered with meat wrapping paper. However, we are recommending that polyethylene containers and covers be purchased for proper storage of foods.
4. A hose bib vacuum breaker has been ordered for this facility.
5. A cover has been secured for the floor drainer in the cooler.
6. A thermometer is now located in the cooler.
7. All three compartments of sink (wash, rinse, sanitize) are being utilized.
8. Food containers are no longer being stored on the floor in the storeroom. Food containers are placed either on shelving or pallets.
9. Inmate beds have been arranged in order for inmates to sleep head to toe to decrease the possibility of the spread of infection.
10. The leak in the walk-in cooler is currently being repaired.
11. We are requesting funds for the installation of a new sewage treatment facility which meets water pollution control specifications.
12. Install dish washing machine estimated at \$4,000 per unit and a cost of \$500 for installation.
13. Install sneeze guard over steam table to prevent spread of infection.
14. Construct a new confinement facility consisting of three cells 8' x 10' providing 240 square feet for cells and providing a corridor 24' x 4'. An estimate of \$50 per square foot for 336 square feet totals \$16,800 and would include adequate lighting and ventilation.

DC Road Prison #31
Loxahatchee, Florida

Loxahatchee Road Prison is an honor Road Prison housing medium and minimum custody inmates. Below are the recommendations by the inspecting physicians and sanitation consultants with our comments concerning corrective action already implemented or our recommendations for funding to correct same.

1. The plumbing in the inmate shower and toilet area certainly needs to be replaced, and we have secured an estimate of \$10,000 to accomplish same.
2. The broken tiles in the inmate shower area also need to be replaced, and we have secured an estimate of \$800 to accomplish same.
3. The screens over the stove have been cleaned and will be cleaned regularly.
4. Foods being stored on the floor in the storeroom has been corrected, and same is now stored on shelving or on pallets.
5. The opening in the ceiling of the storeroom has been secured to prevent the possibility of rodents from entering same.
6. A hose bib vacuum breaker has been ordered for this facility.
7. All three compartments of the sink (wash, rinse, sanitize) are being utilized.
8. The walk-in cooler has been cleaned.
9. Inadequate lighting in the kitchen - This will be corrected by installing a new lighting system.
10. The meat slicer has been cleaned.
11. Thermometers have been placed in the coolers.
12. It is recommended that a new confinement facility be constructed consisting of three cells 8' x 10' providing 240 square feet for cells and providing a corridor 240 feet x 4 feet. An estimate of \$50 per square foot for 336 square feet totals \$16,800 and would include adequate lighting and ventilation.
13. Install a dish washing machine which is estimated at \$4,000 per unit and a cost of \$500 for installation.
14. Install a sneeze guard over steam table to prevent spread of infection.
15. We are also requesting that funds be made available for installation of a new sewage treatment facility which would meet water pollution control specifications.

DC Road Prison #32
Niceville, Florida

Niceville Road Prison is a close custody prison housing close, medium and minimum custody inmates.

Below are the recommendations by the inspecting physicians and sanitation consultants with our comments concerning corrective action already implemented or our recommendations for funding to correct same.

1. Screens over the stove have been cleaned.
2. Screens needed on the kitchen windows - Screens have now been obtained and placed on the kitchen windows.
3. Poisonous materials should not be stored in the kitchen area - Poisonous materials have been removed and are no longer stored in kitchen area.
4. A thermometer has been purchased and placed in the cooler.
5. In the storeroom, food is now being stored on shelving or on pallets.
6. All three compartments of the sink (wash, rinse, sanitize) are being utilized.
7. A pastry brush has been purchased for spreading butter.
8. We concur that the tiling needs to be replaced in the inmate shower room and have secured an estimate of \$1,500 to accomplish same.
9. We recommend that a new confinement facility be constructed consisting of three cells 8' x 10' providing 240 square feet for cells and providing a corridor 24' x 4'. An estimate of \$50 per square foot for 336 square feet totals \$16,800 and would include adequate lighting and ventilation.
10. Install a dish washing machine estimated at \$4,000 per unit and a cost of \$500 for installation.
11. Install sneeze guard over steam table to prevent spread of infection.
12. We are also requesting funds for installation of a new sewage treatment facility which meets water pollution control specifications.

DC Road Prison #33
Pompano Beach, Florida

The Division of Corrections Road Prison #33, Pompano Beach, Florida, is an honor Road Prison housing medium and minimum custody inmates.

Following are the recommendations by the inspecting physicians and sanitation consultants with our comments concerning corrective action already implemented or our recommendations for funding to correct same.

1. A thermometer has been placed in the walk-in refrigerator.
2. Supplies in the storeroom are now being placed on shelving or on pallets rather than on the floor.
3. The confinement cells have been thoroughly cleaned, and this will be done on a regular basis.
4. A hose bib vacuum breaker has been ordered for this facility.
5. We are in the process of having the meat cutting block refinished.
6. The safety latch on the cooler has been repaired.
7. Pastry brushes have been obtained for spreading butter.
8. All three compartments of sink (wash, rinse, sanitize) are being utilized.
9. We certainly concur that the plumbing in the inmate restroom and shower area needs to be replaced, and we have secured an estimate of \$10,000 to accomplish same.
10. We also concur that the tiles in the inmate shower room need to be replaced and have secured an estimate of \$1,500 to accomplish same.
11. We are not recommending that a new confinement facility be constructed as this facility will be converted to a Community Correctional Center.
12. Install dish washing machine estimated at \$4,000 per unit and a cost of \$500 for installation.
13. Install sneeze guard over steam table to prevent spread of infection.
14. We are requesting funds for the installation of a new sewage treatment facility which meets water pollution control specifications.

DC Road Prison #34
Tallahassee, Florida

Tallahassee Road Prison is a close custody Road Prison housing close, medium and minimum custody inmates. Below are the recommendations by the inspecting physicians and sanitation consultants with our comments concerning corrective action already implemented or our recommendations for funding to correct same.

1. Pyrethrin dispensers have now been relocated the proper distance away from the food preparation and service areas.
2. All three compartments of the sink (wash, rinse, sanitize) are now being utilized.
3. The restrooms are checked daily and hand towels and other items are being supplied as required.
4. A thermometer has been secured and is now in the cooler.
5. We are currently in the process of correcting the inadequate ventilation of the storeroom.
6. All food in the storeroom is now being placed on shelving or on pallets.
7. We are recommending that a dish washing machine be installed estimated at \$4,000 per unit and a cost of \$500 for installation.
8. We are also recommending that a sneeze guard over the steam table be installed to prevent infection.

DC Road Prison #35
Brooksville, Florida

The Brooksville Road Prison is a close custody Road Prison housing close, medium, and minimum custody inmates. This facility is currently being converted to a vocational training center for inmates and is to offer trade training in masonry, carpentry, and electric wiring.

Following are the recommendations of the Medical Survey Team with our comments concerning corrective action already implemented or our recommendations for funding to correct same.

1. The ice machine has been repaired.
2. The plywood cutting board is not being used and will not be used in the future.
3. A thermometer has been purchased and placed in the cooler.
4. All three compartments of the sink (wash, rinse, sanitize) are now being utilized.
5. The meat cutting block is currently in the process of being refinished.
6. Pyrethrin dispensers have been relocated and are not in the area of food preparation or serving areas.
7. We are recommending that a new confinement facility be constructed consisting of three cells 8' x 10' providing 240 square feet for cells and providing a corridor 24' x 4'.
8. In addition, we are recommending that a dish washing machine be installed estimated at \$4,000 per unit and a cost of \$500 for installation.
9. Install a sneeze guard over steam table to prevent spread of infection.
10. We are also requesting funds for the installation of a new sewage treatment facility which meets water pollution control specifications.

DC Road Prison #36
Caryville, Florida

The Division of Corrections Road Prison #36, Caryville, Florida, is an honor Road Prison housing medium and minimum custody inmates. This facility is currently in the process of being converted to a vocational training center for inmates, offering trade training in truck driving and heavy equipment maintenance and operation.

Below are the recommendations of the Medical Survey Team with our comments concerning corrective action already implemented or our recommendations for funding to correct same.

1. The dripping shower head has been repaired.
2. The confinement cells have been cleaned and will be cleaned on a regular basis.
3. A thermometer has been secured for the freezer.
4. Mayonnaise is now being refrigerated after opening.
5. Pastry brushes have been purchased for the spreading of butter.
6. We are in the process of installing a new lighting system in the kitchen.
7. All three compartments of the sink (wash, rinse, sanitize) are now being utilized.
8. It is recommended that a new confinement facility be constructed consisting of three cells 8' x 10' providing 240 square feet for cells and providing a corridor 24' x 4'.
9. Install a dish washing machine estimated at \$4,000 per unit and a cost of \$500 for installation.
10. Install a sneeze guard over steam table to prevent spread of infection.
11. We are requesting funds for the installation of a new sewage treatment facility which meets water pollution control specifications.
12. We concur that the tile needs to be replaced in the inmate dormitory and have secured an estimate of \$4,000 to accomplish same.
13. It is noted that the freezer was not cold enough at time of inspection. The problem appears to be a lack of insulation in the freezer and cooler. This will be corrected.

DC Road Prison #37
Doctors Inlet, Florida

The Doctors Inlet Road Prison is a close custody Road Prison housing close, medium, and minimum custody inmates. This facility is currently in the process of being converted to a Vocational Center for inmates with trade training in welding.

Following are the recommendations of the Medical Survey Team with our comments concerning corrective action already implemented or our recommendations for funding to correct same.

1. All toxic materials have been removed from the area of food items and are not stored together.
2. All prepared food, when stored in cooler, is being covered with meat wrapping paper. However, we are recommending that polyethylene containers and covers be purchased for storage and proper coverage of foods.
3. The two food preparation tables in the kitchen which are in poor repair will be replaced.
4. All three compartments of the sink (wash, rinse, sanitize) are now being utilized.
5. The back screen door has now been repaired.
6. We are recommending that a new confinement facility be constructed consisting of three cells 8' x 10' providing 240 square feet for cells and providing a corridor 24' x 4'.
7. Install dish washing machine estimated at \$4,000 per unit and a cost of \$500 for installation.
8. Install sneeze guard over steam table to prevent spread of infection.
9. We are requesting funds for the installation of a new sewage treatment facility which meets water pollution control specifications.

DC Road Prison #38
Gainesville, Florida

The Gainesville Road Prison is a close custody Road Prison housing close, medium, and minimum custody inmates. We are currently in the process of converting this facility to a specialized training facility for inmates who have tested in the mentally retarded range.

Below are the recommendations of the Medical Survey Team with our comments concerning corrective action already implemented or our recommendations for funding to correct same.

1. Trash is now being contained in a completely enclosed swill house.
2. A space in the ceiling of the storeroom has been repaired in order to prevent rodents from entering same.
3. In the storeroom, all food is now stored on shelves or on pallets.
4. Poor lighting in kitchen - The lighting fixtures have been cleaned and the ceiling has been repainted.
5. Thermometers have been secured and placed in the freezer.
6. Pastry brushes have been purchased as recommended.
7. The ice scoop is now being protected when in use on the serving line.
8. All three compartments of the sink (wash, rinse, sanitize) are now being utilized.
9. The potato peeler with plumbing cross connection has been corrected.
10. We are recommending that a new confinement facility be constructed consisting of three cells 8' x 10' providing 240 square feet for cells and providing a corridor 24' x 4'.
11. We are also recommending that a dish washing machine be installed and have secured an estimate of \$4,000 per unit and a cost of \$500 for installation.
12. Install sneeze guard over steam table to prevent spread of infection.
13. We are also requesting funds for a new sewage treatment facility which meets water pollution control specifications.

Quincy Vocational Center #39

Quincy, Florida

Quincy Vocational Center offers food service training and is a close custody facility housing close, medium, and minimum custody inmates.

1. The dormitory floors have now been tiled.
2. The tank supplying the dish washer with hot water also supplies the lavatories and showers. It is impossible to get the dish washer water up to the desired temperature. The dish washer should be on its own supply tank - We are currently studying a resolution to this problem. However, to temporarily relieve this problem, the staff is now instructing the inmate population to take their showers between 6:00 p.m. and 10:00 p.m. each evening, thus allowing the dish washer to maintain the desired and necessary temperature.
3. New lockers have been received and each inmate currently has his own assigned locker.
4. Enamel ware has been discontinued and china is now being used.
5. Plywood paddles are not now being used in the food service department. A paddle has been secured which is made of a smooth non-porous type wood.
6. A thermometer has been installed in both the cooler and the freezer.
7. Arrangements have been made in order for food to be stored on shelving or on pallets.
8. Insecticides are not now being stored in the kitchen area.
9. Hand paper towels have been made available in all rest rooms.
10. A light fixture has been purchased and placed over the pot and pan area in the kitchen.
11. The problem of inadequate ventilation in the storeroom has been resolved.

DC Road Prison #41

Big Pine Key, Florida

Big Pine Key Road Prison is an honor Road Prison housing medium and minimum custody inmates. It was initially opened as a Road Prison and to date has been utilized in this capacity. It is not a former CCC camp.

Below are the recommendations by the inspecting physicians and sanitation consultants with our comments concerning corrective action already implemented or recommendations for funding to correct same.

1. We concur with replacement of plumbing in dormitory and have secured an estimate of \$10,000 to accomplish same.
2. Air conditioning of the dormitory is under consideration.
3. All prepared food, when stored in cooler, is being covered with meat wrapping paper. However, we are recommending that polyethylene covers be purchased for storage and proper coverage of food.
4. All supplies are now being stored on shelves or on pallets.
5. The back door screen has been repaired.
6. The pyrethrin dispensers have been moved in order for them to be twelve feet away from the food preparation and serving area.
7. All three compartments of sink (wash, rinse, sanitize) are being utilized.
8. A hose bib vacuum breaker has been ordered for this facility.
9. A pastry brush is now being utilized to spread butter.
10. We are in the process of improving the lighting system in the kitchen.
11. We are in the process of securing an exhaust fan for the hood.
12. Install sneeze guard over steam table to prevent spread of infection.
13. Install dish washing machine estimated at \$4,000 per unit and a cost of \$500 for installation.
14. We are not recommending that a new confinement facility be constructed as it is our desire to close this facility entirely. This move is dependent upon total Division population being reduced.
15. We are not requesting funds for a new sewage treatment facility for reasons mentioned in item #14 above.
16. New mattresses for the already received new beds are on order.

FUNDING NEEDS NECESSARY TO IMPLEMENT BABCOCK COMMISSION REPORT

DC ROAD PRISONS AND VOCATIONAL CENTERS

Fixed and Operating Capital Outlay

| | |
|--|--------------|
| Replacement of 11 sewage treatment facilities | \$ 583,000 |
| Construction of 10 new confinement facilities (holding and segregation units) | 168,000 |
| Installation of 14 dishwashers | 63,000 |
| Replace plumbing in inmates' shower and restroom areas at LaBelle, Big Pine Key, Loxahatchee, and Pompano Beach Road Prisons | 40,000 |
| Replace tile in inmates' shower area at LaBelle, Niceville, and Pompano Beach Road Prisons | 4,500 |
| Replace broken tile in inmates' shower area at Loxahatchee Road Prison | 800 |
| Replace floor tile in dormitory at Caryville Road Prison | <u>4,000</u> |
| | \$ 863,300 |

Salaries

| | |
|---|-----------|
| Increase salaries of physicians from \$250 a month to \$500 a month for an annual salary per position of \$6,000 (15 positions) | \$ 90,000 |
|---|-----------|

Expense

| | |
|---|--------------|
| Professional pest control services on an annual basis | \$ 3,780 |
| Polyethylene food containers and covers for 15 facilities | 1,125 |
| Install sneeze guards at 15 facilities | <u>2,250</u> |
| | \$ 7,155 |

COMMUNITY CORRECTIONAL CENTERS

BABCOCK COMMISSION REPORT

GENERAL SUMMARY REMARKS

Medical Facilities

Consistent with the Community Centers philosophy of reintegrating the offender back into the community, we are stressing the importance of him taking care of his own medical and dental needs with necessary counseling and direction from an assigned Counselor. We encourage the resident to take care and use properly the medicine his personal physician recommends for him. In some cases where narcotics are prescribed we insist that proper supervision and control over them be maintained. Community doctors and dentists provide all medical care for inmates assigned to Community Correctional Centers.

Sanitation

On page 211 of this Report it was recommended that we take steps to improve cleanliness programs in our Centers through the Prison Inspectors. We concur in this recommendation and this activity will be coordinated with the Prison Inspectors Section.

The common faults referred to by Dr. Babcock on page 211 have been carefully evaluated and where funds were available, positive corrective action has been taken as follows:

1. Poor mop technique

Each Center has been instructed to construct a mop rack where mops, after use, can be properly aired and dried. We have also instructed each Center Chief to see that those responsible for floor maintenance be properly instructed in the use and cleaning of mops as necessary. Approximate total cost for all mop racks - \$150.00.

2. Dirty screens over stove

This is a sanitation problem that requires constant attention by the staff and in the past there has been a tendency to overlook it from time to time. We are requesting that the Inspection Section see that this item as well as overall kitchen and dining room examination is done each time an inspection is made and that deficiencies be reported immediately. Our Food Service Coordinator will give us his assistance in this area. This will be a major item on the agenda of the Superintendent of Community Correctional Centers whenever he visits the Centers.

3. Use of two instead of three sinks

With the exception of Lantana, Lawtey, Panama City, and Santa Fe, all Centers have three compartment sinks. We are issuing instructions to these Centers on the proper use of these sinks and will coordinate this with the Food Service Coordinator. We are also seeing that each Center is instructed on the proper use of the two compartment sinks. The Centers that do not have three compartment sinks at this time have been instructed to requisition them immediately. Approximately cost of complete installation of this item is \$150.00 at the four Centers.

4. Poor ice technique and faulty scoop technique

The principle problems here is that Food Service residents have been chilling open containers of liquids and foods in the ice machine and leaving the ice scoop in the ice machine instead of keeping the scoop in a sanitary place near the ice machine. Everyone concerned has been made aware of this problem and an improved technique has been implemented.

5. Dirty stoves and fryers

We are aware of this serious sanitation problem and it has been called to the attention of the Chiefs. We are taking positive steps to drastically improve the sanitation conditions throughout the Centers and with particular emphasis on the dining room - kitchen area.

6. Uncovered cooked food

This is a perpetual problem in the Centers and in all kitchens and requires the constant vigilance of our Center staffs. We are again emphasizing this problem to our Inspection personnel as well as the Center Chiefs.

7. Hose bib vacuum breakers on sink faucets with hose attachments

We have been advised that this item was supposed to be in the original plumbing for the Centers. We have not been advised anything to the contrary nor has any problems been reported due to its absence. We will request that the Food Service Coordinator review this situation and will follow his recommendation.

8. Storing external poisons (pyrethrum, etc.) too close to food dispensing

Instructions are being issued to all Centers regarding the control and use of all insecticides specifically requiring that poisonous supplies be stored in an area other than in the kitchen-dining room storerooms. This will be reviewed closely in the future.

Community Correctional Center #40

Bartow, Florida

The Division of Corrections Community Correctional Center #40 was initially operated as a Road Prison and on July 1, 1972, was converted to a Community Correctional Center.

Below are the recommendations by the inspecting physicians and sanitation consultants with our comments concerning corrective action already implemented or recommendations for funding to correct same.

1. Expedite the renovation program

Almost complete, less than a month from being complete.

2. Be sure screens over the stoves are obtained and cleaned regularly.

New screens purchased, being cleaned regularly.

Community Correctional Center #41

Cocoa, Florida

The Division of Corrections Community Correctional Center #41 was initially opened on December 1, 1972, and to date has been utilized in this capacity.

Below are the recommendations by the inspecting physicians and sanitation consultants with our comments concerning corrective action already implemented or recommendations for funding to correct same.

1. Check and standardize mop technique.

Mop rack constructed.

2. Cover all cooked food in refrigerator.

All prepared food when stored in cooler is being covered with meat wrapping paper. However, we are commending that polyethylene covers be purchased for storing and proper coverage of food.

Community Correctional Center #47

Jacksonville, Florida

The Division of Corrections Community Correctional Center #47 is on property formerly belonging to the Air National Guard. It was initially opened as a Community Correctional Center on August 28, 1970, and to date has been utilized in this capacity.

Below are the recommendations by the inspecting physicians and sanitation consultants with our comments concerning corrective action already implemented or recommendations for funding to correct same.

1. A dishwashing unit is essential to an institution of this size.

The cost of installing a dishwashing machine is estimated at \$4,000 per unit plus \$500 for installation. We recommend that this be done as soon as funds are available.

Community Correctional Center #49

Lake City, Florida

The Division of Corrections Community Correctional Center #49 was initially operated as a Road Prison and on July 1, 1972, the facility was converted to a Community Correctional Center.

Below are the recommendations by the inspecting physicians and sanitation consultants with our comments concerning corrective action already implemented or recommendations for funding to correct same.

1. Tighten up on general kitchen sanitation.

- (a) Screens over the stoves were not too clean.

Screens over stove are to be cleaned weekly.

- (b) The fryer had accumulated grease on it and should be kept cleaner.

Grease on fryer has been removed.

2. Request a dishwasher.

The cost of installing a dishwashing machine is estimated at \$4,000 per unit plus \$500 for installation. We recommend that this be done as soon as funds are available.

Community Correctional Center #51

Lantana, Florida

The Division of Corrections Community Correctional Center #51 was formerly used as a BOQ for A. G. Holley Hospital and on January 29, 1971, the facility was converted to a Community Correctional Center.

Below are the recommendations by the inspecting physicians and sanitation consultants with our comments concerning corrective action already implemented or recommendations for funding to correct same.

1. I have no suggestions for medical improvement in the two Community Centers.

2. In the Hospital, because of the diminishing number of T.B. patients, the institution should be studied to see if, with renovations, it could be adapted to some other usage. Without any study, several possibilities come to mind, such as moving the sick at Avon Park over here; develop it as a hospital for narcotic addicts; or a hospital for the criminally insane with the building of dormitories, it could be made into a reception and medical center for southern Florida.

The Secretary of the Department of Health and Rehabilitative Services now has a Task Force assigned to study A. G. Holley Hospital.

Community Correctional Center #53

Largo, Florida

The Division of Corrections Community Correctional Center #53 was initially operated as a Road Prison and on July 1, 1972, the facility was converted to a Community Correctional Center.

Below are the recommendations by the inspecting physicians and sanitation consultants with our comments concerning corrective action already implemented or recommendations for funding to correct same.

1. Pick up general housekeeping.

The Center has been thoroughly cleaned, and this will be done on a regular basis.

2. Put refrigeration food on platforms off the floor.

Food in the refrigerator is now being placed on shelving or on pallets rather than on the floor.

3. Cover food in refrigerator.

All prepared food, when stored in cooler, is being covered with meat wrapping paper. However, we are commending that polyethylene covers be purchased for storing and proper coverage of food.

4. Expedite renovation work.

Authorized renovation is now complete.

5. Like all of these institutions, a dishwasher would be helpful.

The cost of installing a dishwashing machine is estimated at \$4,000 per unit plus \$500 for installation. We recommend that this be done as soon as funds are available.

Community Correctional Center #55

Lawtey, Florida

The Division of Corrections Community Correctional Center #55 is on property formerly belonging to the Bradford County School Board. It was initially opened as a Community Correctional Center on June 16, 1973, and to date has been utilized in this capacity.

There were no recommendations by the inspecting physicians and sanitation consultants.

Community Correctional Center #56

Marianna, Florida

The Division of Corrections Community Correctional Center #56 was formerly operated as a Road Prison and was converted on August 8, 1972.

Below are the recommendations by the inspecting physicians and sanitation consultants with our comments concerning corrective action already implemented or our recommendation for funding to correct same.

1. The biggest problem here is the malfunctioning sewage system (pump). It has never functioned properly and a short time ago was hit by lightning, rendering the pump even more inefficient. It has been reported several times, with no action as yet. It should be fixed as soon as possible. If the hepatitis case had not given a prior history, this faulty system could well have been blamed.

We are also requesting funds for installation of a new sewage treatment facility which meets water pollution control specifications.

2. The kitchen and refrigerators were clean.
3. In the lavatories there were several badly stained bowls. There is no excuse for yellow bowls.

The bowls have been thoroughly cleaned, and a procedure has been established to maintain a high state of cleanliness in the future.

Community Correctional Center #58

Opa Locka Airport, Opa Locka, Florida

The Division of Corrections Community Correctional Center #58 was opened on April 23, 1973. Prior to the conversion of this facility it was used by the Federal Government as a Marine barracks. We are still in the process of renovating this facility.

Below are the recommendations by the inspecting physicians and sanitation consultants with our comments concerning corrective action already implemented or our recommendations for funding to correct same.

1. Pick up the general housekeeping.

The Center has been thoroughly cleaned. Specific instructions have been issued to the Chief on maintaining an excellent standard of cleanliness and sanitation.

2. Expedite getting hood over stove.

Has been requisitioned and will be purchased when funds are available.

3. Get a standardized routine for mop care.

Mop rack constructed and mops and brooms are cleaned and sanitized on a regular basis.

4. Try and expedite the entire renovation process.

The basic restrictions to expedition of the renovation process is available funds and skilled labor. Due to the limited funds, it is necessary to use resident labor. We are using our currently available resources to finish this project as quickly as possible.

5. Apply for a dishwasher.

The cost of installing a dishwashing machine is estimated at \$4,000 per unit plus \$500 for installation. We recommend that this be done as soon as funds are available.

Community Correctional Center #63

Panama City, Florida

The Division of Corrections Community Correctional Center #63 was converted from a Road Prison on July 1, 1972.

Below are the recommendations by the inspecting physicians and sanitation consultants with our comments concerning corrective action already implemented or our recommendations for funding to correct same.

1. One of the biggest troubles here is the water supply. It comes from a shallow well and the pump is too small and inefficient. The water stains the toilets, urinals and showers a dirty yellow. The water has an unpleasant taste. It is hoped that city water can be piped in but so far there has been no real positive action. The existing conditions are not good. If city water is not obtainable, a deep chemically treated well should be dug immediately. Both typhoid and hepatitis are possible under present conditions.

The Internal Improvement Board has been requested to apply for annexation of this property to the City of Panama City. They are in the process of getting together the legal work necessary.

2. Because of the painting and renovations going on, cleanliness is hard to maintain.

Painting and renovation is now complete and a sanitation and cleanliness program has been established.

3. Why the State persists in buying such small dishwashers is hard to understand. It is stated its purpose is sterilizing the dishes after a thorough hand washing. This is nonsense. Here it is not functioning, nor even hooked up.

The cost of installing a dishwashing machine is estimated at \$4,000 per unit plus \$500 for installation. We recommend that this be done as soon as funds are available.

4. The lavatories need new floor, and the showers badly need retiling.

Renovation is now complete on floor and the shower stalls have been installed.

5. The detention cells need cleaning up.

The detention cells have been thoroughly cleaned, and this will be done in the future on a regular basis.

Community Correctional Center #64

Pensacola, Florida

The Division of Corrections Community Correctional Center #64 was initially opened as a Community Correctional Center on July 20, 1973.

Below are the recommendations by the inspecting physicians and sanitation consultants with our comments concerning corrective action already implemented or our recommendations for funding to correct same.

1. The sewage system is part of the City's system. Water likewise is obtained from the City.
2. Everything is new and clean; very little to be done except to do some landscaping, which should keep down the dust.

We are also requesting funds for landscaping; the Center has a landscaping plan.

3. The same small, inefficient dishwasher sterilizer is present here.

Install a dishwashing machine estimated at \$4,000 per unit and a cost of \$500 for installation.

Community Correctional Center #66

Santa Fe, Florida

The Division of Corrections Community Correctional Center #66 was initially operated as a Farm Camp and on July 1, 1972, the facility was converted to a Community Correctional Center.

Below are the recommendations by the inspecting physicians and sanitation consultants with our comments concerning corrective action already implemented or our recommendations for funding to correct same.

1. This institution should not be left in limbo. Either fix it up or close it. If kept open:
 - (a) Requisition new mattresses and beds.
The beds are old and the mattresses are of the old cotton type.

Purchase Order has been issued for new mattresses; we recommend that beds be repainted.
 - (b) Repair floors.
The floors in the dormitory are old and worn badly in areas, and need replacing. The same is true of the toilet and shower area.

We concur. A new facility plan is now on the drawing board to replace this facility.
 - (c) Improve maintenance.

We are currently in the process of correcting the maintenance problems, until the new facility can be constructed.
 - (d) Install dishwasher.

The cost of installing a dishwashing machine is estimated at \$4,000 per unit plus \$400 for installation. We recommend that this be done as soon as funds are available.
 - (e) In the kitchen area the fryer was not clean and had thick grease on sides. The range and fryer have been cleaned and will be cleaned regularly.

Community Correctional Center #68

Tallahassee, Florida

The Division of Corrections Community Correctional Center #68 was initially opened as a Community Correctional Center on February 23, 1974.

Below are the recommendations by the inspecting physicians and sanitation consultants with our comments concerning corrective action already implemented or our recommendations for funding to correct same.

1. Purchase and install an adequate dishwasher.

Install a dishwashing machine estimated at \$4,000 per unit and a cost of \$500 for installation.
2. The institution is commended.

Community Correctional Center #70

Tampa, Florida

The Division of Corrections Community Correctional Center #70 was initially opened as a Community Correctional Center on July 5, 1972.

Below are the recommendations by the inspecting physicians and sanitation consultants with our comments concerning corrective action already implemented or our recommendations for funding to correct same.

1. Conditions in both units for the most part are excellent.
2. Again, it is hoped a standardized mop technique can be adopted.
Mop rack constructed. Mop cleaned and will be cleaned regularly.

3. Cooked food in the refrigerators should be covered.

All prepared food, when stored in cooler, is being covered with meat wrapping paper. However, we are recommending that polyethylene containers and covers be purchased for proper storage of foods.

Community Correctional Center #73

Zephyrhills, Florida

The Division of Corrections Community Correctional Center #73 was initially operated as a Road Prison and on July 1, 1972, the facility was converted to a Community Correctional Center.

Below are the recommendations by the inspecting physicians and sanitation consultants with our comments concerning corrective action already implemented or our recommendations for funding to correct same.

1. Study possibility of need for new sewage system.

We are also requesting that funds be made available for installation of a new sewage treatment facility which would meet water pollution control specifications.

2. Entire kitchen floor needs covering.

We are requesting adequate funds for covering of kitchen floor. Estimated cost is \$1.50 a square foot. Total cost \$1,260.00.

3. Kitchen needs painting.

We are requesting adequate funds for painting kitchen. Estimated cost is 25¢ a square foot. Total cost \$520.00.

4. Food in refrigerators should be covered.

All prepared food, when stored in cooler, is being covered with meat wrapping paper. However, we are recommending that polyethylene covers be purchased for storage and proper coverage of food.

5. Fly control and trash disposal acceptable.

FUNDING NEEDS NECESSARY TO IMPLEMENT BABCOCK COMMISSION REPORT

COMMUNITY CORRECTIONAL CENTERS

Fixed and Operating Capital Outlay

| | |
|--|-----------------|
| Replacement of 4 sewage treatment facilities Zephyrhills, Panama City, Marianna, Largo @ \$53,000 | \$ 212,000.00 |
| Installation of 20 dishwashers | 90,000.00 |
| Range hood w/fire extinguisher system for Opa Locka | 1,040.00 |
| New mattresses for Santa Fe | 1,188.88 |
| New beds for Santa Fe | <u>1,410.64</u> |
| | \$ 305,639.52 |

Salaries

None

Expense

| | |
|--|-----------------|
| Kitchen floor replaced at Zephyrhills | \$ 1,260.00 |
| Paint kitchen at Zephyrhills | 520.00 |
| Polyethylene food containers and covers for 20 facilities | <u>1,500.00</u> |
| | \$ 3,280.00 |

END