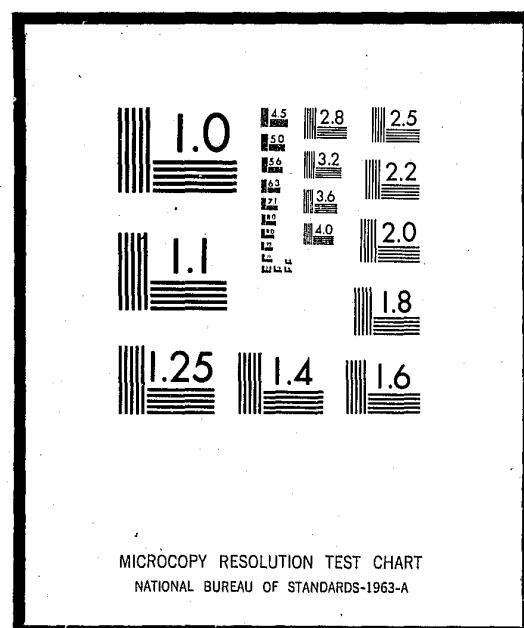


NCJRS

This microfiche was produced from documents received for inclusion in the NCJRS data base. Since NCJRS cannot exercise control over the physical condition of the documents submitted, the individual frame quality will vary. The resolution chart on this frame may be used to evaluate the document quality.



Microfilming procedures used to create this fiche comply with the standards set forth in 41CFR 101-11.504

Points of view or opinions stated in this document are those of the author(s) and do not represent the official position or policies of the U.S. Department of Justice.

U.S. DEPARTMENT OF JUSTICE
LAW ENFORCEMENT ASSISTANCE ADMINISTRATION
NATIONAL CRIMINAL JUSTICE REFERENCE SERVICE
WASHINGTON, D.C. 20531

DEMOCRATIC DATA SERIES
FLORIDA STATE PRISON POPULATION
AS OF DECEMBER 31, 1973

FEBRUARY 22, 1974

Date filmed

7/23/75

DHRS DATA CENTER
9E105 3PRT

DIVISION OF CORRECTIONS
DEMOGRAPHIC DATA SERIES
CURRENT AGE

INMATES IN CUSTODY
AS OF 12/31/73 FOR FLORIDA STATE PRISON

| AGE | WM | WF | NM | NF | DM | DF | UNKN | TOTAL | PERCENT |
|---------|-------|----|-------|----|----|----|------|-------|---------|
| 00 - 14 | 0 | 0 | 0 | 0 | 0 | 0 | 0 | 0 | .00 |
| 15 | 0 | 0 | 0 | 0 | 0 | 0 | 0 | 0 | .00 |
| 16 | 0 | 0 | 1 | 0 | 0 | 0 | 0 | 1 | .07 |
| 17 | 0 | 0 | 0 | 0 | 0 | 0 | 0 | 0 | .00 |
| 18 | 0 | 0 | 2 | 0 | 0 | 0 | 0 | 2 | .15 |
| 19 | 5 | 0 | 14 | 0 | 1 | 0 | 0 | 20 | 1.49 |
| 20 | 11 | 0 | 27 | 0 | 0 | 0 | 0 | 38 | 2.83 |
| 21 | 13 | 0 | 45 | 0 | 0 | 0 | 0 | 58 | 4.32 |
| 22 | 19 | 0 | 41 | 0 | 0 | 0 | 0 | 60 | 4.47 |
| 23 | 23 | 0 | 58 | 0 | 0 | 0 | 0 | 81 | 6.03 |
| 24 | 34 | 0 | 47 | 0 | 0 | 0 | 0 | 81 | 6.03 |
| 25 | 13 | 0 | 51 | 0 | 0 | 0 | 0 | 64 | 4.77 |
| 26 - 30 | 131 | 0 | 213 | 0 | 1 | 0 | 2 | 352 | 26.21 |
| 31 - 35 | 92 | 0 | 93 | 0 | 0 | 0 | 0 | 185 | 13.78 |
| 36 - 40 | 45 | 0 | 66 | 0 | 0 | 0 | 0 | 111 | 8.27 |
| 41 - 45 | 43 | 0 | 34 | 0 | 0 | 0 | 1 | 78 | 5.81 |
| 46 - 50 | 17 | 0 | 19 | 0 | 0 | 0 | 0 | 36 | 2.68 |
| 51 - 55 | 7 | 0 | 13 | 0 | 0 | 0 | 0 | 20 | 1.49 |
| 56 - 60 | 4 | 0 | 4 | 0 | 0 | 0 | 0 | 8 | .60 |
| 61 - 65 | 1 | 0 | 3 | 0 | 0 | 0 | 0 | 4 | .30 |
| 66 - 70 | 0 | 0 | 0 | 0 | 0 | 0 | 0 | 0 | .00 |
| OVER 70 | 2 | 0 | 1 | 0 | 0 | 0 | 0 | 3 | .22 |
| UNKNOWN | 59 | 0 | 80 | 0 | 0 | 0 | 2 | 141 | 10.48 |
| TOTALS | 524 | 0 | 812 | 0 | 2 | 0 | 5 | 1,343 | 100.00 |
| MEAN | 31.6 | 0 | 29.4 | 0 | | | | 30.3 | |
| MEDIAN | 26-30 | | 26-30 | | | | | 26-30 | |
| MODE | 26-30 | | 26-30 | | | | | 26-30 | |

DHRS DATA CENTER
 QE110 3PART1413

DIVISION OF CORRECTIONS
 DEMOGRAPHIC DATA SERIES
 ALCOHOL AND/OR NARCOTICS: USE OF

INMATES IN CUSTODY
 AS OF 12/31/73
 FOR FLORIDA STATE PRISON

| | WM | WF | NW | NF | OM | OF | UNKN | TOTAL | PERCENT |
|----------------------------------|-----|----|-----|----|----|----|------|-------|---------|
| NEITHER | 61 | 0 | 170 | 0 | 1 | 0 | 0 | 232 | 17.27 |
| LIGHT ALCOHOL (LH) | 112 | 0 | 233 | 0 | 0 | 0 | 2 | 347 | 25.34 |
| HEAVY ALCOHOL (HA) | 105 | 0 | 98 | 0 | 1 | 0 | 1 | 205 | 15.26 |
| LIGHT NARCOTIC -SOFT DRUGS- (LN) | 14 | 0 | 29 | 0 | 0 | 0 | 0 | 43 | 3.20 |
| HEAVY NARCOTIC -HARD DRUGS- (HN) | 32 | 0 | 50 | 0 | 0 | 0 | 0 | 82 | 6.11 |
| LH AND LV | 47 | 0 | 42 | 0 | 0 | 0 | 0 | 89 | 6.63 |
| LA AND HN | 16 | 0 | 29 | 0 | 0 | 0 | 0 | 45 | 3.35 |
| HA AND LN | 24 | 0 | 1 | 0 | 0 | 0 | 0 | 25 | 1.86 |
| HA AND H | 11 | 0 | 2 | 0 | 0 | 0 | 0 | 13 | .97 |
| UNKNOWN | 102 | 0 | 158 | 0 | 0 | 0 | 2 | 262 | 19.51 |
| TOTALS | 524 | 0 | 812 | 0 | 2 | 0 | 5 | 1343 | 100.00 |

HRS DATA CENTER
PROGRAM: 9E135 3PART1413

DIVISION OF CORRECTIONS
DEMOGRAPHIC DATA SERIES
CITIZENSHIP

INMATES IN CUSTODY
AS OF 12/31/73
FOR FLORIDA STATE PRISON

| TYPE | WM | WF | AM | NF | OM | OF | UNKN | TOTAL | PERCENT |
|--------------------------|-----|----|-----|----|----|----|------|-------|---------|
| BORN IN UNITED STATES | 422 | 0 | 674 | 0 | 1 | 0 | 3 | 1100 | 81.91 |
| NATURALIZED CITIZEN | 2 | 0 | 2 | 0 | 0 | 0 | 0 | 4 | .30 |
| ALIEN, LS THN 6 MO IN US | 1 | 0 | 0 | 0 | 0 | 0 | 0 | 1 | .07 |
| ALIEN, 6 MO TO ONE YR | 0 | 0 | 0 | 0 | 0 | 0 | 0 | 0 | .00 |
| ALIEN, ONE YR TO 5 YRS | 1 | 0 | 0 | 0 | 0 | 0 | 0 | 1 | .07 |
| ALIEN, 5 YRS TO 20 YRS | 2 | 0 | 2 | 0 | 1 | 0 | 0 | 5 | .37 |
| ALIEN, IN US OVR 20 YRS | 0 | 0 | 0 | 0 | 0 | 0 | 0 | 0 | .00 |
| UNKNOWN | 96 | 0 | 134 | 0 | 0 | 0 | 2 | 232 | 17.28 |
| TOTALS | 524 | 0 | 812 | 0 | 2 | 0 | 5 | 1343 | 100.00 |

| COUNTY | WM | WF | GM | WF | OM | OF | UNKNOWN | TOTAL | PERCENT |
|-----------|----|----|-----|----|----|----|---------|-------|---------|
| ALACHUA | 8 | 0 | 25 | 0 | 1 | 0 | 0 | 34 | 2.53 |
| BAKER | 0 | 0 | 2 | 0 | 0 | 0 | 0 | 2 | .14 |
| BAY | 7 | 0 | 7 | 0 | 0 | 0 | 0 | 14 | 1.04 |
| BRADFORD | 2 | 0 | 1 | 0 | 0 | 0 | 0 | 3 | .22 |
| BREVARD | 10 | 0 | 20 | 0 | 0 | 0 | 0 | 30 | 2.23 |
| BROWARD | 31 | 0 | 72 | 0 | 0 | 0 | 0 | 103 | 7.66 |
| CALHOUN | 3 | 0 | 0 | 0 | 0 | 0 | 0 | 3 | .22 |
| CHARLOTTE | 0 | 0 | 1 | 0 | 0 | 0 | 0 | 1 | .07 |
| CITRUS | 3 | 0 | 1 | 0 | 0 | 0 | 0 | 4 | .29 |
| CLAY | 1 | 0 | 2 | 0 | 0 | 0 | 0 | 3 | .22 |
| COLLIER | 3 | 0 | 1 | 0 | 0 | 0 | 0 | 4 | .29 |
| COLUMBIA | 6 | 0 | 5 | 0 | 0 | 0 | 0 | 11 | .81 |
| DADE | 65 | 0 | 164 | 0 | 0 | 0 | 0 | 229 | 17.05 |
| DE SOTO | 1 | 0 | 1 | 0 | 0 | 0 | 0 | 2 | .14 |
| DIXIE | 1 | 0 | 0 | 0 | 0 | 0 | 0 | 1 | .07 |
| DUVAL | 47 | 0 | 114 | 0 | 0 | 0 | 0 | 161 | 11.98 |
| ESCAMBIA | 17 | 0 | 19 | 0 | 0 | 0 | 0 | 36 | 2.68 |
| FLAGLER | 0 | 0 | 1 | 0 | 0 | 0 | 0 | 1 | .07 |
| FRANKLIN | 4 | 0 | 0 | 0 | 0 | 0 | 0 | 4 | .29 |
| GADSDEN | 0 | 0 | 4 | 0 | 0 | 0 | 0 | 4 | .29 |
| GILCHRIST | 4 | 0 | 0 | 0 | 0 | 0 | 0 | 4 | .29 |
| GLADES | 0 | 0 | 1 | 0 | 0 | 0 | 0 | 1 | .07 |
| GULF | 0 | 0 | 0 | 0 | 0 | 0 | 0 | 0 | .00 |
| HAMILTON | 0 | 0 | 1 | 0 | 0 | 0 | 0 | 1 | .07 |
| HARDEE | 1 | 0 | 0 | 0 | 0 | 0 | 0 | 1 | .07 |
| HENDRY | 1 | 0 | 0 | 0 | 0 | 0 | 0 | 1 | .07 |
| HERNANDO | 3 | 0 | 0 | 0 | 0 | 0 | 0 | 3 | .22 |

| COUNTY | WM | WF | NM | NF | OM | OF | UNKNOWN | TOTAL | PERCENT |
|--------------|----|----|----|----|----|----|---------|-------|---------|
| HIGHLANDS | 3 | 0 | 3 | 0 | 0 | 0 | 0 | 6 | .44 |
| HILLSBOROUGH | 41 | 0 | 70 | 0 | 0 | 0 | 0 | 111 | 8.26 |
| HOLMES | 1 | 0 | 0 | 0 | 0 | 0 | 0 | 1 | .07 |
| INDIAN RIVER | 4 | 0 | 2 | 0 | 0 | 0 | 0 | 6 | .44 |
| JACKSON | 4 | 0 | 5 | 0 | 0 | 0 | 0 | 9 | .67 |
| JEFFERSON | 0 | 0 | 0 | 0 | 0 | 0 | 0 | 0 | .00 |
| LAFAYETTE | 0 | 0 | 0 | 0 | 0 | 0 | 0 | 0 | .00 |
| LAKE | 3 | 0 | 10 | 0 | 0 | 0 | 0 | 13 | .96 |
| LEE | 8 | 0 | 6 | 0 | 0 | 0 | 0 | 14 | 1.04 |
| LEON | 9 | 0 | 22 | 0 | 0 | 0 | 0 | 31 | 2.30 |
| LEVY | 1 | 0 | 1 | 0 | 0 | 0 | 0 | 2 | .14 |
| LIBERTY | 1 | 0 | 1 | 0 | 0 | 0 | 0 | 2 | .14 |
| MADISON | 5 | 0 | 1 | 0 | 0 | 0 | 0 | 6 | .44 |
| MANATEE | 9 | 0 | 6 | 0 | 0 | 0 | 0 | 15 | 1.11 |
| MARION | 10 | 0 | 9 | 0 | 0 | 0 | 0 | 19 | 1.41 |
| MARTIN | 2 | 0 | 3 | 0 | 0 | 0 | 0 | 5 | .37 |
| MONROE | 2 | 0 | 3 | 0 | 0 | 0 | 0 | 5 | .37 |
| NASSAU | 2 | 0 | 1 | 0 | 0 | 0 | 0 | 3 | .22 |
| OKALOOSA | 6 | 0 | 1 | 0 | 1 | 0 | 0 | 8 | .59 |
| OKEECHOBEE | 0 | 0 | 0 | 0 | 0 | 0 | 0 | 0 | .00 |
| ORANGE | 23 | 0 | 28 | 0 | 0 | 0 | 0 | 51 | 3.79 |
| OSCEOLA | 2 | 0 | 3 | 0 | 0 | 0 | 0 | 5 | .37 |
| PALM BEACH | 27 | 0 | 41 | 0 | 0 | 0 | 0 | 68 | 5.06 |
| PASCO | 10 | 0 | 3 | 0 | 0 | 0 | 0 | 13 | .96 |
| PINELLAS | 25 | 0 | 41 | 0 | 0 | 0 | 0 | 66 | 4.91 |
| POLK | 30 | 0 | 25 | 0 | 0 | 0 | 0 | 55 | 4.09 |
| PUTNAM | 2 | 0 | 6 | 0 | 0 | 0 | 0 | 8 | .59 |

HRS DATA CENTER
PROGRAM 6E125

DEPARTMENT OF HEALTH AND REHABILITATIVE SERVICES
DEMOGRAPHIC DATA SERIES
COUNTY OF COMMITMENT

INMATES IN CUSTODY
AS OF 12/31/73
FOR FLORIDA STATE PRISON

| COUNTY | WA | DF | DA | DF | DA | DF | UNKNOWN | TOTAL | PERCENT |
|------------|-----|----|-----|----|----|----|---------|-------|---------|
| ST JOHNS | 7 | 0 | 5 | 0 | 0 | 0 | 0 | 13 | .96 |
| ST LUCIE | 2 | 0 | 11 | 0 | 0 | 0 | 0 | 13 | .96 |
| SANTA ROSA | 2 | 0 | 1 | 0 | 0 | 0 | 0 | 3 | .22 |
| SEASUTA | 0 | 0 | 7 | 0 | 0 | 0 | 0 | 10 | .74 |
| SEMINOLE | 10 | 0 | 8 | 0 | 0 | 0 | 0 | 18 | 1.34 |
| SUMTER | 0 | 0 | 0 | 0 | 0 | 0 | 0 | 2 | .14 |
| SUNNYSIDE | 0 | 0 | 0 | 0 | 0 | 0 | 0 | 5 | .37 |
| TAYLOR | 1 | 0 | 1 | 0 | 0 | 0 | 0 | 2 | .14 |
| UNION | 0 | 0 | 2 | 0 | 0 | 0 | 0 | 2 | .14 |
| VALUSTIA | 21 | 0 | 22 | 0 | 0 | 0 | 0 | 43 | 3.20 |
| WAKULLA | 0 | 0 | 0 | 0 | 0 | 0 | 0 | 0 | .00 |
| WALTON | 2 | 0 | 0 | 0 | 0 | 0 | 0 | 2 | .14 |
| WASHINGTON | 1 | 0 | 1 | 0 | 0 | 0 | 0 | 2 | .14 |
| OTHER | 18 | 0 | 17 | 0 | 0 | 0 | 5 | 40 | 3.31 |
| TOTAL | 524 | 0 | 812 | 0 | 2 | 0 | 5 | 1343 | 100.00 |

HRS DATA CENTER
PROGRAM: GE115 3PRT1413

DIVISION OF CORRECTIONS
DEMOGRAPHIC DATA SERIES
CRIMINAL HISTORY: PRIOR COMMITMENTS TO DIVISION

INMATES IN CUSTODY
AS OF 12/31/73
FOR FLORIDA STATE PRISON

| COUNT | WM | WF | NM | NF | OM | OF | UNKN | TOTAL | PERCENT |
|--------|-----|----|-----|----|----|----|------|-------|---------|
| 0 | 351 | 0 | 520 | 0 | 1 | 0 | 3 | 875 | 65.15 |
| 1 | 105 | 0 | 173 | 0 | 1 | 0 | 2 | 281 | 20.92 |
| 2 | 41 | 0 | 63 | 0 | 0 | 0 | 0 | 104 | 7.74 |
| 3 | 13 | 0 | 30 | 0 | 0 | 0 | 0 | 43 | 3.20 |
| 4 | 7 | 0 | 14 | 0 | 0 | 0 | 0 | 21 | 1.56 |
| 5 | 6 | 0 | 9 | 0 | 0 | 0 | 0 | 15 | 1.12 |
| 6 | 1 | 0 | 2 | 0 | 0 | 0 | 0 | 3 | .22 |
| 7 | 0 | 0 | 0 | 0 | 0 | 0 | 0 | 0 | .00 |
| 8 | 0 | 0 | 0 | 0 | 0 | 0 | 0 | 0 | .00 |
| 9+ | 0 | 0 | 1 | 0 | 0 | 0 | 0 | 1 | .07 |
| UNK | 0 | 0 | 0 | 0 | 0 | 0 | 0 | 0 | .02 |
| TOTALS | 524 | 0 | 812 | 0 | 2 | 0 | 5 | 1343 | 100.00 |

HRS DATA CENTER
PROGRAM: GE115 3PRT1413

DIVISION OF CORRECTIONS
DEMOGRAPHIC DATA SERIES
CRIMINAL HISTORY: PRIOR ESCAPES

INMATES IN CUSTODY
AS OF 12/31/73
FOR FLORIDA STATE PRISON

| COUNT | WM | WF | NM | NF | OM | OF | UNKN | TOTAL | PERCENT |
|--------|-----|----|-----|----|----|----|------|-------|---------|
| 0 | 316 | 0 | 545 | 0 | 1 | 0 | 3 | 865 | 64.41 |
| 1 | 52 | 0 | 50 | 0 | 0 | 0 | 0 | 102 | 7.59 |
| 2 | 16 | 0 | 8 | 0 | 0 | 0 | 0 | 24 | 1.79 |
| 3 | 4 | 0 | 5 | 0 | 1 | 0 | 0 | 10 | .74 |
| 4 | 0 | 0 | 2 | 0 | 0 | 0 | 0 | 2 | .15 |
| 5 | 1 | 0 | 2 | 0 | 0 | 0 | 0 | 3 | .22 |
| 6 | 0 | 0 | 0 | 0 | 0 | 0 | 0 | 0 | .00 |
| 7 | 0 | 0 | 0 | 0 | 0 | 0 | 0 | 0 | .00 |
| 8 | 0 | 0 | 0 | 0 | 0 | 0 | 0 | 0 | .00 |
| 9+ | 24 | 0 | 39 | 0 | 0 | 0 | 0 | 63 | 4.69 |
| UNK | 111 | 0 | 161 | 0 | 0 | 0 | 2 | 274 | 20.41 |
| TOTALS | 524 | 0 | 812 | 0 | 2 | 0 | 5 | 1,343 | 100.00 |

HRS DATA CENTER
PROGRAM: QE115 3PRT1413

DIVISION OF CORRECTIONS
DEMOGRAPHIC DATA SERIES
CRIMINAL HISTORY: PRIOR FELONY COMMITMENTS

INMATES IN CUSTODY
AS OF 12/31/73
FOR FLORIDA STATE PRISON

| COUNT | WM | WF | NW | NF | OM | OF | UNKN | TOTAL | PERCENT |
|--------|-----|----|-----|----|----|----|------|-------|---------|
| 0 | 171 | 0 | 366 | 0 | 1 | 0 | 2 | 540 | 40.21 |
| 1 | 82 | 0 | 109 | 0 | 0 | 0 | 1 | 192 | 14.30 |
| 2 | 50 | 0 | 40 | 0 | 1 | 0 | 0 | 91 | 6.78 |
| 3 | 27 | 0 | 28 | 0 | 0 | 0 | 0 | 55 | 4.10 |
| 4 | 16 | 0 | 6 | 0 | 0 | 0 | 0 | 22 | 1.64 |
| 5 | 6 | 0 | 7 | 0 | 0 | 0 | 0 | 13 | .97 |
| 6 | 3 | 0 | 3 | 0 | 0 | 0 | 0 | 6 | .45 |
| 7 | 2 | 0 | 1 | 0 | 0 | 0 | 0 | 3 | .22 |
| 8 | 1 | 0 | 0 | 0 | 0 | 0 | 0 | 1 | .07 |
| 9+ | 66 | 0 | 107 | 0 | 0 | 0 | 0 | 173 | 12.88 |
| UNK | 100 | 0 | 145 | 0 | 0 | 0 | 2 | 247 | 18.38 |
| TOTALS | 524 | 0 | 812 | 0 | 2 | 0 | 5 | 1343 | 100.00 |

MRS DATA CENTER
PROGRAM: OE115 3PRT1413

DIVISION OF CORRECTIONS
DEMOGRAPHIC DATA SERIES
CRIMINAL HISTORY: PRIOR FELONY PROBATIONS

INMATES IN CUSTODY
AS OF 12/31/73
FOR FLORIDA STATE PRISON

| COUNT | WM | WF | NM | NF | OM | OF | UNKN | TOTAL | PERCENT |
|--------|-----|----|-----|----|----|----|------|-------|---------|
| 0 | 231 | 0 | 329 | 0 | 1 | 0 | 2 | 563 | 41.92 |
| 1 | 49 | 0 | 70 | 0 | 1 | 0 | 1 | 121 | 9.01 |
| 2 | 15 | 0 | 10 | 0 | 0 | 0 | 0 | 25 | 1.86 |
| 3 | 2 | 0 | 0 | 0 | 0 | 0 | 0 | 2 | .15 |
| 4 | 0 | 0 | 1 | 0 | 0 | 0 | 0 | 1 | .07 |
| 5 | 0 | 0 | 0 | 0 | 0 | 0 | 0 | 0 | .00 |
| 6 | 0 | 0 | 0 | 0 | 0 | 0 | 0 | 0 | .00 |
| 7 | 1 | 0 | 0 | 0 | 0 | 0 | 0 | 1 | .07 |
| 8 | 0 | 0 | 0 | 0 | 0 | 0 | 0 | 0 | .00 |
| 9+ | 1 | 0 | 1 | 0 | 0 | 0 | 0 | 2 | .15 |
| UNK | 225 | 0 | 401 | 0 | 0 | 0 | 2 | 628 | 46.77 |
| TOTALS | 524 | 0 | 812 | 0 | 2 | 0 | 5 | 1343 | 100.00 |

HRS DATA CENTER
PROGRAM: GE115 3PRT1413

DIVISION OF CORRECTIONS.
DEMOGRAPHIC DATA SERIES
CRIMINAL HISTORY: PRIOR MISDEMEANORS

INMATES IN CUSTODY
AS OF 12/31/73
FOR FLORIDA STATE PRISON

| COUNT | WM | WF | NM | NF | OM | OF | UNKN | TOTAL | PERCENT |
|--------|-----|----|-----|----|----|----|------|-------|---------|
| 0 | 331 | 0 | 483 | 0 | 2 | 0 | 3 | 819 | 60.98 |
| 1 | 3 | 0 | 22 | 0 | 0 | 0 | 0 | 25 | 1.86 |
| 2 | 5 | 0 | 10 | 0 | 0 | 0 | 0 | 15 | 1.12 |
| 3 | 3 | 0 | 5 | 0 | 0 | 0 | 0 | 8 | .60 |
| 4 | 3 | 0 | 1 | 0 | 0 | 0 | 0 | 4 | .30 |
| 5 | 3 | 0 | 3 | 0 | 0 | 0 | 0 | 6 | .45 |
| 6 | 0 | 0 | 2 | 0 | 0 | 0 | 0 | 2 | .15 |
| 7 | 0 | 0 | 1 | 0 | 0 | 0 | 0 | 1 | .07 |
| 8 | 1 | 0 | 2 | 0 | 0 | 0 | 0 | 3 | .22 |
| 9+ | 67 | 0 | 129 | 0 | 0 | 0 | 0 | 196 | 14.59 |
| UNK | 108 | 0 | 154 | 0 | 0 | 0 | 2 | 264 | 19.66 |
| TOTALS | 524 | 0 | 812 | 0 | 2 | 0 | 5 | 1,343 | 100.00 |

HRAS DATA CENTER
PROGRAM: CE115 3PRT1413

DIVISION OF CORRECTIONS

INMATES IN CUSTODY
AS OF 12/31/73
FOR FLORIDA STATE PRISON

DEMOGRAPHIC DATA SERIES
CRIMINAL HISTORY: PRIOR MISDEMEANOR PROBATIONS

| COUNT | WM | WF | NM | NF | OM | OF | UNKN | TOTAL | PERCENT |
|--------|-----|----|-----|----|----|----|------|-------|---------|
| 0 | 280 | 0 | 383 | 0 | 2 | 0 | 3 | 668 | 49.74 |
| 1 | 12 | 0 | 19 | 0 | 0 | 0 | 0 | 31 | 2.31 |
| 2 | 5 | 0 | 1 | 0 | 0 | 0 | 0 | 6 | .45 |
| 3 | 0 | 0 | 1 | 0 | 0 | 0 | 0 | 1 | .07 |
| 4 | 0 | 0 | 1 | 0 | 0 | 0 | 0 | 1 | .07 |
| 5 | 0 | 0 | 0 | 0 | 0 | 0 | 0 | 0 | .00 |
| 6 | 0 | 0 | 0 | 0 | 0 | 0 | 0 | 0 | .00 |
| 7 | 0 | 0 | 0 | 0 | 0 | 0 | 0 | 0 | .00 |
| 8 | 0 | 0 | 0 | 0 | 0 | 0 | 0 | 0 | .00 |
| 9+ | 1 | 0 | 2 | 0 | 0 | 0 | 0 | 3 | .22 |
| UNK | 226 | 0 | 405 | 0 | 0 | 0 | 2 | 633 | 47.14 |
| TOTALS | 524 | 0 | 812 | 0 | 2 | 0 | 5 | 1,343 | 100.00 |

HRS DATA CENTER
PROGRAM: QE115 3PRT1413

DIVISION OF CORRECTIONS
DEMOGRAPHIC DATA SERIES
CRIMINAL HISTORY: PRIOR PAROLES

INMATES IN CUSTODY
AS OF 12/31/73
FOR FLORIDA STATE PRISON

| COUNT | W | AF | M | DF | DM | DF | UNKN | TOTAL | PERCENT |
|--------|-----|----|-----|----|----|----|------|-------|---------|
| 0 | 314 | 0 | 546 | 0 | 2 | 0 | 2 | 864 | 64.33 |
| 1 | 53 | 0 | 50 | 0 | 0 | 0 | 1 | 124 | 9.23 |
| 2 | 11 | 0 | 5 | 0 | 0 | 0 | 0 | 17 | 1.27 |
| 3 | 0 | 0 | 0 | 0 | 0 | 0 | 0 | 0 | .00 |
| 4 | 1 | 0 | 0 | 0 | 0 | 0 | 0 | 1 | .07 |
| 5 | 0 | 0 | 0 | 0 | 0 | 0 | 0 | 0 | .00 |
| 6 | 0 | 0 | 0 | 0 | 0 | 0 | 0 | 0 | .00 |
| 7 | 0 | 0 | 1 | 0 | 0 | 0 | 0 | 1 | .07 |
| 8 | 0 | 0 | 0 | 0 | 0 | 0 | 0 | 0 | .00 |
| 9+ | 22 | 0 | 38 | 0 | 0 | 0 | 0 | 60 | 4.47 |
| UNK | 113 | 0 | 161 | 0 | 0 | 0 | 2 | 276 | 20.56 |
| TOTALS | 524 | 0 | 812 | 0 | 2 | 0 | 5 | 1,343 | 100.00 |

CHRS DATA CENTER
 WE105 3PPT

DIVISION OF CORRECTIONS
 DEMOGRAPHIC DATA SERIES
 DEPENDENTS: NUMBER OF

INMATES IN CUSTODY
 AS OF 12/31/73
 FOR FLORIDA STATE PRISON

| DEPENDENTS | W | WF | M | MF | OW | OF | UNKN | TOTAL | PERCENT |
|------------|-----|----|-----|----|----|----|------|-------|---------|
| NONE | 250 | 0 | 453 | 0 | 1 | 0 | 2 | 725 | 53.99 |
| ONE | 53 | 0 | 74 | 0 | 1 | 0 | 1 | 134 | 9.99 |
| TWO | 44 | 0 | 68 | 0 | 0 | 0 | 0 | 112 | 8.34 |
| THREE | 25 | 0 | 40 | 0 | 0 | 0 | 0 | 65 | 4.84 |
| FOUR | 20 | 0 | 15 | 0 | 0 | 0 | 0 | 35 | 2.61 |
| FIVE | 7 | 0 | 12 | 0 | 0 | 0 | 0 | 19 | 1.41 |
| SIX | 2 | 0 | 7 | 0 | 0 | 0 | 0 | 9 | .67 |
| SEVEN | 1 | 0 | 1 | 0 | 0 | 0 | 0 | 2 | .15 |
| EIGHT | 1 | 0 | 4 | 0 | 0 | 0 | 0 | 5 | .37 |
| NINE/P | 1 | 0 | 0 | 0 | 0 | 0 | 0 | 1 | .07 |
| UNKNOWN | 95 | 0 | 138 | 0 | 0 | 0 | 2 | 236 | 17.57 |
| TOTAL | 524 | 0 | 812 | 0 | 2 | 0 | 5 | 1,343 | 100.00 |

DHS DATA CENTER
GE110 3PART1413

DIVISION OF CORRECTIONS
DEMOGRAPHIC DATA SERIES
DISABILITIES CONFIRMED: PHYSICAL AND/OR MENTAL

INMATES IN CUSTODY
AS OF 12/31/73
FOR FLORIDA STATE PRISON

| DISABILITY | WM | WF | NM | NF | DM | DF | UNKN | TOTAL | PERCENT |
|---|-----|----|-----|----|----|----|------|-------|---------|
| VISUAL IMPAIRMENT | 17 | 0 | 17 | 0 | 1 | 0 | 0 | 35 | 3.03 |
| HEARING IMPAIRMENT | 4 | 0 | 0 | 0 | 0 | 0 | 0 | 4 | .35 |
| ORTHOPEDIC IMPAIRMENT | 8 | 0 | 17 | 0 | 0 | 0 | 0 | 25 | 2.16 |
| ABSENCE OR AMPUTATIONS OF EXTREMITIES | 0 | 0 | 2 | 0 | 0 | 0 | 0 | 2 | .17 |
| UNDERNOURISHED | 2 | 0 | 1 | 0 | 0 | 0 | 0 | 3 | .26 |
| HAY FEVER AND/OR ASTHMA | 7 | 0 | 5 | 0 | 0 | 0 | 0 | 12 | 1.04 |
| OTHER ALLERGIES | 12 | 0 | 8 | 0 | 0 | 0 | 0 | 20 | 1.73 |
| DIABETES | 1 | 0 | 0 | 0 | 0 | 0 | 0 | 1 | .09 |
| EPILEPSY | 4 | 0 | 3 | 0 | 0 | 0 | 0 | 7 | .61 |
| HEART DISEASES | 3 | 0 | 10 | 0 | 0 | 0 | 0 | 13 | 1.12 |
| CIRCULATORY CONDITION | 0 | 0 | 3 | 0 | 0 | 0 | 0 | 3 | .26 |
| SKIN DISEASE | 1 | 0 | 0 | 0 | 0 | 0 | 0 | 1 | .09 |
| LUNG DISEASE | 1 | 0 | 1 | 0 | 0 | 0 | 0 | 2 | .17 |
| DIGESTIVE SYSTEM | 1 | 0 | 2 | 0 | 0 | 0 | 0 | 3 | .26 |
| CONDITIONS OF GENITO-URINARY SYSTEM | 1 | 0 | 10 | 0 | 0 | 0 | 0 | 11 | .95 |
| OTHER CONDITIONS NOT ELSEWHERE CLASSIFIED | 34 | 0 | 38 | 0 | 0 | 0 | 0 | 72 | 6.23 |
| ARTHRITIS, RHEUMATISM | 1 | 0 | 0 | 0 | 0 | 0 | 0 | 1 | .09 |
| OBESITY | 0 | 0 | 1 | 0 | 0 | 0 | 0 | 1 | .09 |
| AGING | 2 | 0 | 4 | 0 | 0 | 0 | 1 | 7 | .61 |
| BRAIN SYNDROME W/PSYCHOSIS | 1 | 0 | 0 | 0 | 0 | 0 | 0 | 1 | .09 |
| PERSONALITY DISORDER | 8 | 0 | 6 | 0 | 0 | 0 | 0 | 14 | 1.21 |
| BEHAVIOR DISORDER | 0 | 0 | 2 | 0 | 0 | 0 | 0 | 2 | .17 |
| TRANSIENT SITUATIONAL PERSONALITY | 0 | 0 | 0 | 0 | 1 | 0 | 0 | 1 | .09 |
| MENTAL CONDITION, TYPE NOT SPECIFIC | 10 | 0 | 3 | 0 | 0 | 0 | 0 | 13 | 1.12 |
| DRUG ADDICTION | 15 | 0 | 21 | 0 | 0 | 0 | 0 | 36 | 3.11 |
| ALCOHOLISM | 12 | 0 | 6 | 0 | 0 | 0 | 0 | 18 | 1.56 |
| MILD MENTAL RETARDATION | 0 | 0 | 1 | 0 | 0 | 0 | 0 | 1 | .09 |
| NO DISABILITIES CONFIRMED | 195 | 0 | 363 | 0 | 0 | 0 | 2 | 560 | 48.44 |
| UNKNOWN | 115 | 0 | 170 | 0 | 0 | 0 | 2 | 287 | 24.61 |
| TOTALS | 455 | 0 | 694 | 0 | 2 | 0 | 5 | 1156 | 100.00 |

CRS DATA CENTER
0E110 3PART1413

DIVISION OF CORRECTIONS
DEMOGRAPHIC DATA SERIES
EDUCATION CLAIMED

INMATES IN CUSTODY
AS OF 12/31/73
FOR FLORIDA STATE PRISON

| EDUCATION | W | AF | AM | HF | DM | DF | UNKN | TOTAL | PERCENT |
|--------------------|---------|----|------|----|----|----|------|-------|---------|
| NONE | 3 | 0 | 17 | 0 | 0 | 0 | 0 | 20 | 1.49 |
| 1ST GRADE | 7 | 0 | 9 | 0 | 0 | 0 | 0 | 16 | 1.19 |
| 2ND GRADE | 1 | 0 | 5 | 0 | 0 | 0 | 0 | 6 | .45 |
| 3RD GRADE | 4 | 0 | 4 | 0 | 0 | 0 | 0 | 8 | .60 |
| 4TH GRADE | 7 | 0 | 33 | 0 | 0 | 0 | 0 | 40 | 2.98 |
| 5TH GRADE | 4 | 0 | 11 | 0 | 0 | 0 | 0 | 15 | 1.12 |
| 6TH GRADE | 21 | 0 | 8 | 0 | 0 | 0 | 0 | 29 | 2.16 |
| 7TH GRADE | 31 | 0 | 26 | 0 | 1 | 0 | 0 | 58 | 4.32 |
| 8TH GRADE | 92 | 0 | 104 | 0 | 0 | 0 | 0 | 196 | 14.59 |
| 9TH GRADE | 55 | 0 | 74 | 0 | 1 | 0 | 2 | 132 | 9.83 |
| 10TH GRADE | 29 | 0 | 75 | 0 | 0 | 0 | 1 | 105 | 7.82 |
| 11TH GRADE | 60 | 0 | 212 | 0 | 0 | 0 | 0 | 272 | 20.25 |
| 12TH GRADE | 92 | 0 | 90 | 0 | 0 | 0 | 0 | 182 | 13.55 |
| 1ST YEAR COLLEGE | 9 | 0 | 3 | 0 | 0 | 0 | 0 | 12 | .89 |
| 2ND YEAR COLLEGE | 4 | 0 | 3 | 0 | 0 | 0 | 0 | 7 | .52 |
| 3RD YEAR COLLEGE | 1 | 0 | 0 | 0 | 0 | 0 | 0 | 1 | .07 |
| 4TH YEAR COLLEGE | 5 | 0 | 0 | 0 | 0 | 0 | 0 | 5 | .37 |
| 1ST YEAR GRAD SCHL | 0 | 0 | 0 | 0 | 0 | 0 | 0 | 0 | .00 |
| 2ND YEAR GRAD SCHL | 0 | 0 | 0 | 0 | 0 | 0 | 0 | 0 | .00 |
| 3RD YEAR GRAD SCHL | 0 | 0 | 0 | 0 | 0 | 0 | 0 | 0 | .00 |
| 4TH YEAR GRAD SCHL | 0 | 0 | 0 | 0 | 0 | 0 | 0 | 0 | .00 |
| UNKNOWN | 99 | 0 | 138 | 0 | 0 | 0 | 2 | 239 | 17.80 |
| TOTAL | 524 | 0 | 812 | 0 | 2 | 0 | 5 | 1,343 | 100.00 |
| MEAN | 9.3 | | 9.1 | | | | | 9.2 | |
| MEDIAN | 9th | ~ | 10th | | | | | 10th | |
| MODE | 8, 12th | | 11th | | | | | 11th | |

HRS DATA CENTER
PROGRAM QE140

DIVISION OF CORRECTIONS
DEMOGRAPHIC DATA SERIES
GRADE: TESTED AVERAGE

INMATES IN CUSTODY
AS OF 12/31/73
FOR FLORIDA STATE PRISON

| | WM | WF | MB | WT | UN | OF | UNKN | TOTAL | PERCENT |
|-----------------|-----|----|-----|----|----|----|------|-------|---------|
| BELOW 1ST GRADE | 36 | 0 | 50 | 0 | 0 | 0 | 1 | 87 | 6.48 |
| 1ST GRADE | 1 | 0 | 2 | 0 | 0 | 0 | 0 | 3 | .22 |
| 2ND GRADE | 2 | 0 | 7 | 0 | 0 | 0 | 1 | 10 | .74 |
| 3RD GRADE | 13 | 0 | 59 | 0 | 0 | 0 | 1 | 73 | 5.44 |
| 4TH GRADE | 33 | 0 | 110 | 0 | 0 | 0 | 0 | 143 | 10.65 |
| 5TH GRADE | 23 | 0 | 60 | 0 | 0 | 0 | 0 | 83 | 6.18 |
| 6TH GRADE | 28 | 0 | 51 | 0 | 0 | 0 | 0 | 79 | 5.88 |
| 7TH GRADE | 53 | 0 | 37 | 0 | 1 | 0 | 0 | 91 | 6.78 |
| 8TH GRADE | 48 | 0 | 18 | 0 | 0 | 0 | 0 | 66 | 4.91 |
| 9TH GRADE | 28 | 0 | 8 | 0 | 0 | 0 | 0 | 36 | 2.68 |
| 10TH GRADE | 19 | 0 | 6 | 0 | 0 | 0 | 0 | 25 | 1.86 |
| 11TH GRADE | 5 | 0 | 1 | 0 | 0 | 0 | 0 | 6 | .45 |
| 12TH GRADE | 6 | 0 | 3 | 0 | 0 | 0 | 0 | 9 | .67 |
| COLLEGE | 3 | 0 | 3 | 0 | 0 | 0 | 0 | 6 | .45 |
| NOT TESTED | 14 | 0 | 13 | 0 | 1 | 0 | 0 | 28 | 2.08 |
| UNKNOWN | 212 | 0 | 384 | 0 | 0 | 0 | 2 | 598 | 44.53 |
| TOTAL | 524 | 0 | 812 | 0 | 2 | 0 | 5 | 1343 | 100.00 |

MEAN
MEDIAN
MODE

6.4
7th
7th

4.5
5th
4th

5.1
5th
4th

DATA CENTER
QE110 3PART1413

DIVISION OF CORRECTIONS
DEMOGRAPHIC DATA SERIES
INTELLIGENCE: I.Q. TEST SCORES

INMATES IN CUSTODY
AS OF 12/31/73
FOR FLORIDA STATE PRISON

| I.Q. | WM | WF | MW | NF | OM | OF | UNKN | TOTAL | PERCENT |
|--------------|---------|----|-------|----|----|----|------|-------|---------|
| NOT TESTED | 107 | 0 | 157 | 0 | 0 | 0 | 2 | 266 | 19.79 |
| UNDER 70 | 21 | 0 | 58 | 0 | 0 | 0 | 1 | 80 | 5.96 |
| 70 " 79 | 15 | 0 | 100 | 0 | 0 | 0 | 0 | 115 | 8.56 |
| 80 " 89 | 46 | 0 | 153 | 0 | 0 | 0 | 2 | 201 | 14.97 |
| 90 " 99 | 76 | 0 | 182 | 0 | 1 | 0 | 0 | 259 | 19.29 |
| 100 - 109 | 121 | 0 | 114 | 0 | 0 | 0 | 0 | 235 | 17.50 |
| 110 - 119 | 84 | 0 | 41 | 0 | 0 | 0 | 0 | 125 | 9.31 |
| 120 - 129 | 43 | 0 | 7 | 0 | 1 | 0 | 0 | 51 | 3.80 |
| 130 - 139 | 6 | 0 | 0 | 0 | 0 | 0 | 0 | 6 | .45 |
| 140 AND OVER | 5 | 0 | 0 | 0 | 0 | 0 | 0 | 5 | .37 |
| TOTALS | 524 | 0 | 812 | 0 | 2 | 0 | 5 | 1,343 | 100.00 |
| MEAN | 103 | | 90. | | | | | 96. | |
| MEDIAN | 100-109 | ~ | 90-99 | ~ | ~ | ~ | ~ | 90-99 | |
| MODE | 100-109 | | 90-99 | | | | | 90-99 | |

| NAME | WM | WF | VM | NF | OM | GF | UNKNOWN | TOTAL | PERCENT |
|----------------------|-----|----|-----|----|----|----|---------|-------|---------|
| ALABAMA | 5 | 0 | 4 | 0 | 0 | 0 | 0 | 9 | .67 |
| ALASKA | 0 | 0 | 0 | 0 | 0 | 0 | 0 | 0 | .00 |
| ARIZONA | 0 | 0 | 0 | 0 | 0 | 0 | 0 | 0 | .00 |
| ARKANSAS | 0 | 0 | 1 | 0 | 0 | 0 | 0 | 1 | .07 |
| CALIFORNIA | 4 | 0 | 1 | 0 | 0 | 0 | 0 | 5 | .37 |
| COLORADO | 1 | 0 | 0 | 0 | 0 | 0 | 0 | 1 | .07 |
| CONNECTICUT | 1 | 0 | 0 | 0 | 0 | 0 | 0 | 1 | .07 |
| DELAWARE | 1 | 0 | 0 | 0 | 0 | 0 | 0 | 1 | .07 |
| DISTRICT OF COLUMBIA | 0 | 0 | 0 | 0 | 0 | 0 | 0 | 0 | .00 |
| FLORIDA | 330 | 0 | 642 | 0 | 1 | 0 | 3 | 976 | 72.67 |
| GEORGIA | 9 | 0 | 8 | 0 | 0 | 0 | 0 | 17 | 1.26 |
| GUAM | 0 | 0 | 0 | 0 | 0 | 0 | 0 | 0 | .00 |
| HAWAII | 0 | 0 | 0 | 0 | 0 | 0 | 0 | 0 | .00 |
| IDAHO | 0 | 0 | 0 | 0 | 0 | 0 | 0 | 0 | .00 |
| ILLINOIS | 3 | 0 | 1 | 0 | 0 | 0 | 0 | 4 | .29 |
| INDIANA | 2 | 0 | 1 | 0 | 0 | 0 | 0 | 3 | .22 |
| IOWA | 0 | 0 | 0 | 0 | 0 | 0 | 0 | 0 | .00 |
| KANSAS | 1 | 0 | 0 | 0 | 0 | 0 | 0 | 1 | .07 |
| KENTUCKY | 5 | 0 | 0 | 0 | 0 | 0 | 0 | 5 | .37 |
| LOUISIANA | 0 | 0 | 1 | 0 | 0 | 0 | 0 | 1 | .07 |
| MAINE | 1 | 0 | 0 | 0 | 0 | 0 | 0 | 1 | .07 |
| MARYLAND | 2 | 0 | 0 | 0 | 0 | 0 | 0 | 2 | .14 |
| MASSACHUSETTS | 3 | 0 | 0 | 0 | 0 | 0 | 0 | 3 | .22 |
| MICHIGAN | 5 | 0 | 1 | 0 | 0 | 0 | 0 | 6 | .44 |
| MINNESOTA | 1 | 0 | 0 | 0 | 0 | 0 | 0 | 1 | .07 |
| MISSISSIPPI | 0 | 0 | 2 | 0 | 0 | 0 | 0 | 2 | .14 |
| MISSOURI | 1 | 0 | 0 | 0 | 0 | 0 | 0 | 1 | .07 |

DEMOGRAPHIC DATA SERIES
LEGAL RESIDENCE: STATE OR COUNTRY OF

| NAME | WM | WF | NP | NF | OM | UF | UNKNOWN | TOTAL | PERCENT |
|----------------|----|----|----|----|----|----|---------|-------|---------|
| MONTANA | 0 | 0 | 0 | 0 | 0 | 0 | 0 | 0 | .00 |
| NEBRASKA | 1 | 0 | 0 | 0 | 0 | 0 | 0 | 1 | .07 |
| NEVADA | 0 | 0 | 0 | 0 | 0 | 0 | 0 | 0 | .00 |
| NEW HAMPSHIRE | 0 | 0 | 0 | 0 | 0 | 0 | 0 | 0 | .00 |
| NEW JERSEY | 5 | 0 | 4 | 0 | 0 | 0 | 0 | 9 | .67 |
| NEW MEXICO | 1 | 0 | 0 | 0 | 0 | 0 | 0 | 1 | .07 |
| NEW YORK | 12 | 0 | 1 | 0 | 0 | 0 | 0 | 13 | .96 |
| NORTH CAROLINA | 3 | 0 | 1 | 0 | 0 | 0 | 0 | 4 | .29 |
| NORTH DAKOTA | 0 | 0 | 0 | 0 | 0 | 0 | 0 | 0 | .00 |
| OHIO | 4 | 0 | 1 | 0 | 0 | 0 | 0 | 5 | .37 |
| OKLAHOMA | 1 | 0 | 0 | 0 | 0 | 0 | 0 | 1 | .07 |
| OREGON | 0 | 0 | 0 | 0 | 0 | 0 | 0 | 0 | .00 |
| PENNSYLVANIA | 1 | 0 | 0 | 0 | 0 | 0 | 0 | 1 | .07 |
| PUERTO RICO | 0 | 0 | 0 | 0 | 0 | 0 | 0 | 0 | .00 |
| RHODE ISLAND | 0 | 0 | 0 | 0 | 0 | 0 | 0 | 0 | .00 |
| SOUTH CAROLINA | 0 | 0 | 0 | 0 | 0 | 0 | 0 | 0 | .00 |
| SOUTH DAKOTA | 1 | 0 | 0 | 0 | 0 | 0 | 0 | 1 | .07 |
| TENNESSEE | 2 | 0 | 0 | 0 | 0 | 0 | 0 | 2 | .14 |
| TEXAS | 6 | 0 | 0 | 0 | 0 | 0 | 0 | 6 | .44 |
| UTAH | 1 | 0 | 0 | 0 | 0 | 0 | 0 | 1 | .07 |
| VERMONT | 0 | 0 | 0 | 0 | 0 | 0 | 0 | 0 | .00 |
| VIRGINIA | 3 | 0 | 0 | 0 | 0 | 0 | 0 | 3 | .22 |
| VIRGIN ISLANDS | 0 | 0 | 0 | 0 | 0 | 0 | 0 | 0 | .00 |
| WASHINGTON | 1 | 0 | 0 | 0 | 0 | 0 | 0 | 1 | .07 |
| WEST VIRGINIA | 0 | 0 | 0 | 0 | 0 | 0 | 0 | 0 | .00 |
| WISCONSIN | 1 | 0 | 1 | 0 | 0 | 0 | 0 | 2 | .14 |
| WYOMING | 0 | 0 | 0 | 0 | 0 | 0 | 0 | 0 | .00 |

HRS DATA CENTER
PROGRAM QE125

DEPARTMENT OF HEALTH AND REHABILITATIVE SERVICES
DIVISION OF CORRECTIONS

INMATES IN CUSTODY
AS OF 12/31/73
FOR FLORIDA STATE PRISON

DEMOGRAPHIC DATA SERIES

LEGAL RESIDENCE: STATE OR COUNTRY OF

| NAME | WM | AF | AM | NF | OM | OF | UNKNOWN | TOTAL | PERCENT |
|------------------------|-----|----|-----|----|----|----|---------|-------|---------|
| U S POSSESSIONS & TERR | 6 | 0 | 8 | 0 | 0 | 0 | 0 | 14 | 1.04 |
| CUBA | 0 | 0 | 0 | 0 | 0 | 0 | 0 | 0 | .00 |
| MEXICO | 0 | 0 | 0 | 0 | 0 | 0 | 0 | 0 | .00 |
| CANADA | 1 | 0 | 0 | 0 | 0 | 0 | 0 | 1 | .07 |
| CENTRAL AND SOUTH AMER | 0 | 0 | 0 | 0 | 0 | 0 | 0 | 0 | .00 |
| AFRICA | 0 | 0 | 0 | 0 | 0 | 0 | 0 | 0 | .00 |
| ASIA | 1 | 0 | 0 | 0 | 0 | 0 | 0 | 1 | .07 |
| EUROPE | 0 | 0 | 0 | 0 | 0 | 0 | 0 | 0 | .00 |
| OTHER | 98 | 0 | 134 | 0 | 1 | 0 | 2 | 235 | 17.68 |
| TOTAL | 524 | 0 | 812 | 0 | 2 | 0 | 5 | 1343 | 100.00 |

FELONY CASES RECEIVED FROM COURT

| SENTENCE | YEAR | -----FIXED SENTENCES----- | | | | | | | | | -----INDETERMINATE SENTENCES----- | | | | | | | | |
|----------------|---------|---------------------------|----|-----|----|----|----|------|-------|---------|-----------------------------------|----|----|----|----|----|------|--------|---------|
| | | WM | WF | NM | NF | OM | OF | UNKN | TOTAL | PERCENT | WM | WF | NM | NF | OM | OF | UNKN | TOTAL | PERCENT |
| UP TO 1 YEAR | 1973-73 | 9 | 0 | 2 | 0 | 0 | 0 | 0 | 11 | .88 | 0 | 0 | 0 | 0 | 0 | 0 | 0 | 0 | .00 |
| UP TO 2 YEARS | 1973-73 | 24 | 0 | 25 | 0 | 0 | 0 | 1 | 50 | 3.98 | 6 | 0 | 3 | 0 | 0 | 0 | 9 | 10.23 | |
| UP TO 3 YEARS | 1973-73 | 35 | 0 | 34 | 0 | 0 | 0 | 1 | 70 | 5.58 | 4 | 0 | 5 | 0 | 0 | 0 | 9 | 10.23 | |
| UP TO 4 YEARS | 1973-73 | 16 | 0 | 22 | 0 | 0 | 0 | 0 | 38 | 3.03 | 4 | 0 | 1 | 0 | 0 | 1 | 6 | 6.82 | |
| UP TO 5 YEARS | 1973-73 | 58 | 0 | 65 | 0 | 0 | 0 | 0 | 143 | 11.39 | 8 | 0 | 7 | 0 | 0 | 0 | 15 | 17.05 | |
| UP TO 6 YEARS | 1973-73 | 7 | 0 | 4 | 0 | 0 | 0 | 0 | 11 | .88 | 1 | 0 | 0 | 0 | 0 | 0 | 1 | 1.14 | |
| UP TO 7 YEARS | 1973-73 | 8 | 0 | 12 | 0 | 0 | 0 | 0 | 20 | 1.59 | 1 | 0 | 2 | 0 | 0 | 0 | 3 | 3.41 | |
| UP TO 8 YEARS | 1973-73 | 7 | 0 | 7 | 0 | 0 | 0 | 0 | 14 | 1.12 | 1 | 0 | 1 | 0 | 0 | 0 | 2 | 2.27 | |
| UP TO 9 YEARS | 1973-73 | 3 | 0 | 5 | 0 | 0 | 0 | 0 | 8 | .64 | 0 | 0 | 0 | 0 | 0 | 0 | 0 | .00 | |
| UP TO 10 YEARS | 1973-73 | 49 | 0 | 66 | 0 | 0 | 0 | 0 | 115 | 9.16 | 3 | 0 | 9 | 0 | 0 | 0 | 12 | 13.64 | |
| UP TO 12 YEARS | 1973-73 | 4 | 0 | 9 | 0 | 0 | 0 | 0 | 13 | 1.04 | 0 | 0 | 0 | 0 | 0 | 0 | 0 | .00 | |
| UP TO 15 YEARS | 1973-73 | 26 | 0 | 65 | 0 | 0 | 0 | 0 | 91 | 7.25 | 3 | 0 | 9 | 0 | 0 | 0 | 12 | 13.64 | |
| UP TO 20 YEARS | 1973-73 | 45 | 0 | 76 | 0 | 0 | 0 | 0 | 121 | 9.64 | 5 | 0 | 6 | 0 | 0 | 0 | 11 | 12.50 | |
| UP TO 30 YEARS | 1973-73 | 27 | 0 | 41 | 0 | 0 | 0 | 0 | 68 | 5.42 | 0 | 0 | 4 | 0 | 0 | 1 | 5 | 5.68 | |
| UP TO 40 YEARS | 1973-73 | 8 | 0 | 19 | 0 | 0 | 0 | 0 | 27 | 2.15 | 0 | 0 | 1 | 0 | 0 | 0 | 1 | 1.14 | |
| UP TO 50 YEARS | 1973-73 | 3 | 0 | 13 | 0 | 0 | 0 | 0 | 16 | 1.27 | 0 | 0 | 0 | 0 | 0 | 0 | 0 | .00 | |
| OVER 50 YEARS | 1973-73 | 4 | 0 | 25 | 0 | 0 | 0 | 0 | 29 | 2.31 | 0 | 0 | 0 | 0 | 0 | 0 | 0 | .00 | |
| LIFE | 1973-73 | 105 | 0 | 195 | 0 | 0 | 0 | 1 | 301 | 23.98 | 0 | 0 | 0 | 0 | 0 | 0 | 0 | .00 | |
| DEATH | 1973-73 | 0 | 0 | 0 | 0 | 0 | 0 | 0 | 0 | .00 | 0 | 0 | 0 | 0 | 0 | 0 | 0 | .00 | |
| INDEFINITE | 1973-73 | 0 | 0 | 0 | 0 | 0 | 0 | 0 | 0 | .00 | 0 | 0 | 0 | 0 | 0 | 0 | 0 | .00 | |
| UNKNOWN | 1973-73 | 49 | 0 | 58 | 0 | 0 | 0 | 2 | 109 | 8.69 | 1 | 0 | 1 | 0 | 0 | 0 | 2 | 2.25 | |
| TOTAL | 1973-73 | 487 | 0 | 763 | 0 | 0 | 0 | 5 | 1255 | 100.00 | 37 | 0 | 49 | 0 | 0 | 2 | 88 | 100.00 | |

MEAN
 MEDIAN
 MODE

11
 9
 LIFE

15
 10
 LIFE

14
 10
 LIFE

61010

12
 10

0715

DHRS DATA CENTER
QE105 3PRT

DIVISION OF CORRECTIONS
DEMOGRAPHIC DATA SERIES
MARITAL STATUS

INMATES IN CUSTODY
AS OF 12/31/73
FOR FLORIDA STATE PRISON

13

| MARITAL STATUS | WM | WF | NM | WF | OM | OF | UNKN | TOTAL | PERCENT |
|----------------|-----|----|-----|----|----|----|------|-------|---------|
| SINGLE | 216 | 0 | 427 | 0 | 1 | 0 | 2 | 646 | 48.10 |
| MARRIED | 92 | 0 | 170 | 0 | 1 | 0 | 0 | 263 | 19.58 |
| WIDOWED | 5 | 0 | 9 | 0 | 0 | 0 | 0 | 14 | 1.04 |
| DIVORCED | 64 | 0 | 17 | 0 | 0 | 0 | 0 | 81 | 6.03 |
| SEPARATED | 42 | 0 | 36 | 0 | 0 | 0 | 1 | 79 | 5.88 |
| UNKNOWN | 103 | 0 | 153 | 0 | 0 | 0 | 2 | 260 | 19.37 |
| TOTALS | 524 | 0 | 812 | 0 | 2 | 0 | 5 | 1,343 | 100.00 |

DHRS DATA CENTER
QE110 3PART1413

DIVISION OF CORRECTIONS
DEMOGRAPHIC DATA SERIES
MEDICAL GRADE ASSIGNED

INMATES IN CUSTODY
AS OF 12/31/73
FOR FLORIDA STATE PRISON

| | WM | WF | NM | NF | OM | OF | UNKN | TOTAL | PERCENT |
|---|-----|----|-----|----|----|----|------|-------|---------|
| GRADE 1 - CAPABLE OF HEAVY DUTY | 274 | 0 | 455 | 0 | 0 | 0 | 2 | 731 | 54.43 |
| GRADE 2 - CAPABLE OF MODERATE DUTY ONLY | 94 | 0 | 141 | 0 | 1 | 0 | 1 | 237 | 17.65 |
| GRADE 3 - CAPABLE OF LIGHT DUTY ONLY | 45 | 0 | 49 | 0 | 1 | 0 | 0 | 95 | 7.07 |
| GRADE 4 - UNABLE TO WORK | 0 | 0 | 2 | 0 | 0 | 0 | 0 | 2 | .15 |
| UNKNOWN | 111 | 0 | 165 | 0 | 0 | 0 | 2 | 278 | 20.70 |
| TOTALS | 524 | 0 | 812 | 0 | 2 | 0 | 5 | 1343 | 100.00 |

PROGRAM NO: GE130

HRS DATA CENTER

FLORIDA DIVISION OF CORRECTIONS

DEMOGRAPHIC DATA SERIES
MILITARY SERVICE: PREVIOUS

PROCESSING NO/07/74
INMATES IN CUSTODY
AS OF 12/31/73
FOR FLORIDA STATE PRISG

| | WM | WF | NM | NF | OM | OF | UNKN | TOTAL | PERCENT |
|--------------------------|-----|----|-----|----|----|----|------|-------|---------|
| ARMY | 80 | 0 | 48 | 0 | 0 | 0 | 0 | 128 | 9.53 |
| NAVY | 30 | 0 | 10 | 0 | 0 | 0 | 0 | 40 | 2.98 |
| AIRFORCE | 23 | 0 | 6 | 0 | 0 | 0 | 0 | 29 | 2.16 |
| NATIONAL GUARD | 3 | 0 | 0 | 0 | 0 | 0 | 0 | 3 | .22 |
| COAST GUARD | 0 | 0 | 0 | 0 | 0 | 0 | 0 | 0 | .00 |
| MARINE CORPS | 19 | 0 | 9 | 0 | 0 | 0 | 0 | 28 | 2.08 |
| MORE THAN ONE OF ABOVE | 0 | 0 | 0 | 0 | 0 | 0 | 0 | 0 | .00 |
| FOREIGN MILITARY SERVICE | 0 | 0 | 0 | 0 | 0 | 0 | 0 | 0 | .00 |
| NONE OR NOT APPLICABLE | 369 | 0 | 739 | 0 | 0 | 0 | 7 | 1,115 | 83.03 |
| * TOTAL * | 524 | 0 | 812 | 0 | 0 | 0 | 7 | 1,343 | 100.00 |

PROGRAM NO: CE130

FLORIDA DIVISION OF CORRECTIONS

INMATES IN CUSTODY
AS OF 12/31/73
FOR FLORIDA STATE PRISON

HRS DATA CENTER

DEMOGRAPHIC DATA SERIES
OCCUPATION: PRIMARY

| | WM | WF | NM | NF | DM | DF | UNKN | TOTAL | PERCENT |
|---|----|----|----|----|----|----|------|-------|---------|
| SURVEYOR | 1 | 0 | 0 | 0 | 0 | 0 | 0 | 1 | .07 |
| TEACHER, HIGH SCHOOL OR ELEMENTARY | 2 | 0 | 0 | 0 | 0 | 0 | 0 | 2 | .15 |
| ATTORNEY, LAWYER OR LEGAL LIBRARIAN | 1 | 0 | 0 | 0 | 0 | 0 | 0 | 1 | .07 |
| PHOTOGRAPHER | 1 | 0 | 0 | 0 | 0 | 0 | 0 | 1 | .07 |
| MUSICIAN | 0 | 0 | 1 | 0 | 0 | 0 | 0 | 1 | .07 |
| ACCOUNTING | 2 | 0 | 0 | 0 | 0 | 0 | 0 | 2 | .15 |
| PURCHASING AGENT | 1 | 0 | 0 | 0 | 0 | 0 | 0 | 1 | .07 |
| MANAGERS AND OFFICIALS | 3 | 0 | 4 | 0 | 0 | 0 | 0 | 7 | .52 |
| RADIO OPERATOR | 2 | 0 | 1 | 0 | 0 | 0 | 0 | 3 | .22 |
| MARITIME OCCUPATIONS | 0 | 0 | 1 | 0 | 0 | 0 | 0 | 1 | .07 |
| TYPIST | 1 | 0 | 0 | 0 | 0 | 0 | 0 | 1 | .07 |
| FILE CLERK | 1 | 0 | 0 | 0 | 0 | 0 | 0 | 1 | .07 |
| CLERK, GENERAL | 1 | 0 | 1 | 0 | 0 | 0 | 0 | 2 | .15 |
| CLERK, GENERAL OFFICE, PAYMASTER | 5 | 0 | 3 | 0 | 0 | 0 | 0 | 8 | .60 |
| STOCK CLERK | 0 | 0 | 1 | 0 | 0 | 0 | 0 | 1 | .07 |
| TELEGRAPH OPERATOR | 0 | 0 | 1 | 0 | 0 | 0 | 0 | 1 | .07 |
| SALESMAN, GENERAL | 6 | 0 | 1 | 0 | 0 | 0 | 0 | 7 | .52 |
| SALES CLERK | 0 | 0 | 1 | 0 | 0 | 0 | 0 | 1 | .07 |
| MANAGER, DEPARTMENT | 1 | 0 | 0 | 0 | 0 | 0 | 0 | 1 | .07 |
| BARTEENDER | 0 | 0 | 1 | 0 | 0 | 0 | 0 | 1 | .07 |
| COOKS (EXCEPT PRIVATE FAMILY) | 14 | 0 | 26 | 0 | 0 | 0 | 0 | 40 | 2.98 |
| BUTCHER AND MEAT CUTTER | 4 | 0 | 1 | 0 | 0 | 0 | 0 | 5 | .37 |
| KITCHEN HELPER AND WORKER | 1 | 0 | 2 | 0 | 0 | 0 | 0 | 3 | .22 |
| MAID AND HOUSEMAN FOR HOTEL OR RESTAURANT | 0 | 0 | 1 | 0 | 0 | 0 | 0 | 1 | .07 |
| BARBER | 3 | 0 | 4 | 0 | 0 | 0 | 0 | 7 | .52 |
| BEAUTICIAN, COSMETOLOGIST | 0 | 0 | 1 | 0 | 0 | 0 | 0 | 1 | .07 |
| WAITER AND WAITRESS | 3 | 0 | 5 | 0 | 0 | 0 | 0 | 8 | .60 |
| PRACTICAL NURSE, UNLICENSED | 1 | 0 | 0 | 0 | 0 | 0 | 0 | 1 | .07 |
| HOSPITAL ATTENDANT, ORDERLY, AIDE | 4 | 0 | 4 | 0 | 0 | 0 | 0 | 8 | .60 |
| LAUNDRY WORKER | 0 | 0 | 2 | 0 | 0 | 0 | 0 | 2 | .15 |
| DRY CLEANER | 0 | 0 | 3 | 0 | 0 | 0 | 0 | 3 | .22 |
| ARMED FORCES | 3 | 0 | 0 | 0 | 0 | 0 | 0 | 3 | .22 |
| GUARD | 0 | 0 | 1 | 0 | 0 | 0 | 0 | 1 | .07 |
| JANITOR | 1 | 0 | 2 | 0 | 0 | 0 | 0 | 3 | .22 |
| FRUIT FARMER OR FARM HAND | 2 | 0 | 5 | 0 | 0 | 0 | 0 | 7 | .52 |
| LABORER (NURSERY) | 0 | 0 | 1 | 0 | 0 | 0 | 0 | 1 | .07 |
| FARM EQUIPMENT OPERATOR OR FARM MANAGER | 0 | 0 | 1 | 0 | 0 | 0 | 0 | 1 | .07 |
| FARM HAND, LIVESTOCK | 0 | 0 | 1 | 0 | 0 | 0 | 0 | 1 | .07 |
| FARMER OR FARM HAND, GENERAL | 5 | 0 | 16 | 0 | 0 | 0 | 0 | 22 | 1.64 |
| FISHERMAN, GENERAL | 3 | 0 | 0 | 0 | 0 | 0 | 0 | 3 | .22 |
| LABORER (IRON AND STEEL) | 1 | 0 | 0 | 0 | 0 | 0 | 0 | 1 | .07 |
| METAL CASTING | 1 | 0 | 0 | 0 | 0 | 0 | 0 | 1 | .07 |
| FOUNDRYMAN OR FOUNDRY WORKER | 1 | 0 | 0 | 0 | 0 | 0 | 0 | 1 | .07 |
| BAKERY PRODUCTS | 1 | 0 | 0 | 0 | 0 | 0 | 0 | 1 | .07 |
| DAIRY HELPER, MAKER, PROCESSOR | 0 | 0 | 1 | 0 | 0 | 0 | 0 | 1 | .07 |
| MACHINIST, MACHINIST APPRENTICE | 2 | 0 | 2 | 0 | 0 | 0 | 0 | 4 | .30 |
| AUTO SERVICEMAN OR MECHANIC | 16 | 0 | 13 | 0 | 0 | 0 | 0 | 29 | 2.01 |
| DIESEL MECHANIC | 1 | 0 | 0 | 0 | 0 | 0 | 0 | 1 | .07 |
| LUMBER GRADER AND INSPECTOR OR WORKER | 1 | 0 | 0 | 0 | 0 | 0 | 0 | 1 | .07 |
| TEXTILES MAKER OR WEAVER | 0 | 0 | 1 | 0 | 0 | 0 | 0 | 1 | .07 |
| ENGRAVER | 0 | 0 | 1 | 0 | 0 | 0 | 0 | 1 | .07 |
| TELEVISION OR RADIO REPAIRMAN | 0 | 0 | 1 | 0 | 0 | 0 | 0 | 1 | .07 |
| FURNITURE FINISHER OR WICKER WORKER | 0 | 0 | 1 | 0 | 0 | 0 | 0 | 1 | .07 |
| DRESSMAKER OR TAILOR | 1 | 0 | 1 | 0 | 0 | 0 | 0 | 2 | .15 |
| SHEET METAL WORKER | 2 | 0 | 0 | 0 | 0 | 0 | 0 | 2 | .15 |

PROGRAM NO: OE130

FLORIDA DIVISION OF CORRECTIONS

MRS DATA CENTER

DEMOGRAPHIC DATA SERIES
OCCUPATION: PRIMARY

INMATES IN CUSTODY
AS OF 12/31/73
FOR FLORIDA STATE PRISON

| | WM | WF | NM | NF | OM | OF | UNKN | TOTAL | PERCENT |
|--|-----|----|-----|----|----|----|------|-------|---------|
| BOILER MAKER OR BOILER OPERATOR OR REPAIRMAN | 1 | 0 | 0 | 0 | 0 | 0 | 0 | 1 | 0.07 |
| FORGERY METAL FABRICATING | 0 | 0 | 1 | 0 | 0 | 0 | 0 | 1 | 0.07 |
| DEALER | 11 | 0 | 5 | 0 | 0 | 0 | 0 | 16 | 1.19 |
| LINEMAN (UTILITY) | 1 | 0 | 1 | 0 | 0 | 0 | 0 | 2 | 0.15 |
| ELECTRICIAN | 9 | 0 | 1 | 0 | 0 | 0 | 0 | 10 | 0.74 |
| CONSTRUCTION & MAINTENANCE PAINTER | 10 | 0 | 4 | 0 | 0 | 0 | 0 | 14 | 1.04 |
| PLASTERER | 0 | 0 | 1 | 0 | 0 | 0 | 0 | 1 | 0.07 |
| CONCRETE FINISHING MACHINE OPERATOR | 1 | 0 | 2 | 0 | 0 | 0 | 0 | 3 | 0.22 |
| CARPENTER | 2 | 0 | 8 | 0 | 0 | 0 | 0 | 10 | 0.74 |
| BRICKLAYER OR TILE SETTER | 23 | 0 | 7 | 0 | 0 | 0 | 0 | 30 | 2.23 |
| PLUMBER GAS OR STEAM FITTER | 6 | 0 | 6 | 0 | 0 | 0 | 0 | 12 | 0.89 |
| ACROBATS AND INSULATION WORKER | 5 | 0 | 2 | 0 | 0 | 0 | 0 | 7 | 0.52 |
| ROOFER | 0 | 0 | 1 | 0 | 0 | 0 | 0 | 1 | 0.07 |
| CONSTRUCTION WORKER, EQUIPMENT OPERATOR | 4 | 0 | 5 | 0 | 0 | 0 | 0 | 9 | 0.67 |
| TRUCK DRIVER | 16 | 0 | 14 | 0 | 0 | 0 | 0 | 30 | 2.23 |
| RAILROAD WORKER | 19 | 0 | 23 | 0 | 0 | 0 | 0 | 42 | 3.13 |
| LABORER, STEVEDORE | 0 | 0 | 5 | 0 | 0 | 0 | 0 | 5 | 0.37 |
| BUS OR TAXI DRIVER | 0 | 0 | 3 | 0 | 0 | 0 | 0 | 3 | 0.22 |
| FILLING STATION ATTENDANT | 2 | 0 | 0 | 0 | 0 | 0 | 0 | 2 | 0.15 |
| WAREHOUSEMAN AND STORES LABORER | 0 | 0 | 2 | 0 | 0 | 0 | 0 | 2 | 0.15 |
| LOGGER, GENERAL | 2 | 0 | 1 | 0 | 0 | 0 | 0 | 3 | 0.22 |
| PAINTER (ARTIST) | 0 | 0 | 2 | 0 | 0 | 0 | 0 | 2 | 0.15 |
| PRINTER | 0 | 0 | 1 | 0 | 0 | 0 | 0 | 1 | 0.07 |
| SILK SCREEN MAKER AND LAYOUT MAN | 0 | 0 | 1 | 0 | 0 | 0 | 0 | 1 | 0.07 |
| LABORER (GENERAL) | 0 | 0 | 1 | 0 | 0 | 0 | 0 | 1 | 0.07 |
| APPRENTICE, GENERAL | 176 | 0 | 410 | 0 | 0 | 0 | 4 | 590 | 43.93 |
| STUDENT | 1 | 0 | 1 | 0 | 0 | 0 | 0 | 2 | 0.15 |
| UNEMPLOYED | 0 | 0 | 11 | 0 | 0 | 0 | 0 | 11 | 0.82 |
| OTHER | 12 | 0 | 20 | 0 | 0 | 0 | 0 | 32 | 2.38 |
| | 126 | 0 | 160 | 0 | 0 | 0 | 2 | 288 | 21.65 |
| * TOTAL * | 524 | 0 | 812 | 0 | 0 | 0 | 7 | 1,343 | 100.00 |

| OFFENSE | WM | WF | NM | NF | OM | OF | UNKN | TOTAL | PERCENT |
|---|----|----|-----|----|----|----|------|-------|---------|
| 000 MURDER 1ST DEATH IMPOSED COMMU LIFE | 14 | 0 | 33 | 0 | 0 | 0 | 0 | 47 | 3.50 |
| 001 MURDER 1ST DEGREE, LIFE SENTENCE | 41 | 0 | 57 | 0 | 0 | 0 | 0 | 98 | 7.30 |
| 002 MURDER 2ND DEGREE, | 22 | 0 | 48 | 0 | 0 | 0 | 0 | 70 | 5.21 |
| 003 MANSLAUGHTER | 12 | 0 | 26 | 0 | 0 | 0 | 0 | 38 | 2.83 |
| 004 MURDER 1ST DEGREE, W/DEATH PENALTY | 0 | 0 | 0 | 0 | 0 | 0 | 0 | 0 | .00 |
| 019 MANSLAUGHTER-AUTO UNDR INFLU INTOX | 1 | 0 | 1 | 0 | 0 | 0 | 0 | 2 | .15 |
| 100 ROBBERY, ARMED | 98 | 0 | 205 | 0 | 0 | 0 | 0 | 303 | 22.56 |
| 101 ROBBERY, UNARMED | 18 | 0 | 53 | 0 | 0 | 0 | 0 | 71 | 5.29 |
| 200 AGGRAVATED ASSAULT | 18 | 0 | 32 | 0 | 0 | 0 | 0 | 50 | 3.72 |
| 201 ASSAULT W/INTENT TO KILL | 7 | 0 | 15 | 0 | 0 | 0 | 0 | 22 | 1.64 |
| 202 MAYHEM | 0 | 0 | 1 | 0 | 0 | 0 | 0 | 1 | .07 |
| 203 ASSAULTS O/T AGGRAVATED | 0 | 0 | 3 | 0 | 0 | 0 | 1 | 4 | .30 |
| 204 SHOOTING INTO BUILDING | 2 | 0 | 0 | 0 | 0 | 0 | 0 | 2 | .15 |
| 205 CHILDREN, CRUELTY TO | 0 | 0 | 0 | 0 | 0 | 0 | 0 | 0 | .00 |
| 206 UNCLASSIFIED OFF AGAINST THE PERSON | 0 | 0 | 0 | 0 | 0 | 0 | 0 | 0 | .00 |
| 207 UNCLASSIFIED OFF AGAINST PUB PEACE | 0 | 0 | 0 | 0 | 0 | 0 | 0 | 0 | .00 |
| 208 UNCLASSIFIED OFF AGAINST GEN WELFRE | 0 | 0 | 0 | 0 | 0 | 0 | 0 | 0 | .00 |
| 209 UNCLASSIFIED OFF AGAINST THE GOV'T | 0 | 0 | 0 | 0 | 0 | 0 | 0 | 0 | .00 |
| 210 UNCLS OFF AGAINST ADMIN PUB JUSTICE | 0 | 0 | 0 | 0 | 0 | 0 | 0 | 0 | .00 |
| 300 B&E, BUSINESS | 52 | 0 | 54 | 0 | 0 | 0 | 0 | 107 | 7.97 |
| 301 B&E, DWELLING | 16 | 0 | 12 | 0 | 0 | 0 | 0 | 28 | 2.08 |
| 302 B&E, SAFE | 0 | 0 | 0 | 0 | 0 | 0 | 0 | 0 | .00 |
| 303 B&E, OTHER | 5 | 0 | 5 | 0 | 0 | 0 | 0 | 10 | .74 |
| 304 ENTERING W/O BREAKING | 3 | 0 | 4 | 0 | 0 | 0 | 0 | 7 | .52 |
| 305 RECEIVING/CONCEALNG STOLEN PROPERTY | 7 | 0 | 7 | 0 | 0 | 0 | 0 | 14 | 1.04 |
| 400 GRAND LARCENY (VALUE \$50 OR MORE) | 19 | 0 | 20 | 0 | 0 | 0 | 0 | 39 | 2.90 |
| 430 AUTO THEFT | 13 | 0 | 11 | 0 | 0 | 0 | 0 | 24 | 1.79 |
| 431 B&E OR UNAUTHORIZED USE, AUTO | 5 | 0 | 3 | 0 | 0 | 0 | 0 | 8 | .60 |

| OFFENSE | WM | WF | NM | NF | OM | OF | UNKN | TOTAL | PERCENT |
|---|----|----|----|----|----|----|------|-------|---------|
| 432 UNAUTHORIZED USE OF PROPERTY | 0 | 0 | 0 | 0 | 0 | 0 | 0 | 0 | .00 |
| 435 BOOKMAKING | 0 | 0 | 0 | 0 | 0 | 0 | 0 | 0 | .00 |
| 436 GAMBLING | 0 | 0 | 0 | 0 | 0 | 0 | 0 | 0 | .00 |
| 437 GAMBLING, OPERATING HOUSE | 0 | 0 | 0 | 0 | 0 | 0 | 0 | 0 | .00 |
| 438 LOTTERY, PROMOTING OR OPERATING | 0 | 0 | 0 | 0 | 0 | 0 | 0 | 0 | .00 |
| 439 LOTTERY, POSS TICKETS/PARAPHERNALIA | 0 | 0 | 0 | 0 | 0 | 0 | 0 | 0 | .00 |
| 440 LOTTERY, SALE OF TICKETS | 0 | 0 | 0 | 0 | 0 | 0 | 0 | 0 | .00 |
| 441 RACETRACK RESULTS-ILLEGAL DISSEMNTN | 0 | 0 | 0 | 0 | 0 | 0 | 0 | 0 | .00 |
| 442 TOUTING | 0 | 0 | 0 | 0 | 0 | 0 | 0 | 0 | .00 |
| 460 EMBEZZLEMENT OF PRIVATE FUNDS | 0 | 0 | 0 | 0 | 0 | 0 | 0 | 0 | .00 |
| 461 EMBEZZLEMENT OF PUBLIC FUNDS | 0 | 0 | 0 | 0 | 0 | 0 | 0 | 0 | .00 |
| 462 OBTAINING MONEY/PROPTY FALSE PRETENSE | 0 | 0 | 0 | 0 | 0 | 0 | 0 | 0 | .00 |
| 463 SECURITIES LAW OFFENSES | 0 | 0 | 0 | 0 | 0 | 0 | 0 | 0 | .00 |
| 464 FORGED OR WORTHLESS DOCUMENT EX 503 | 1 | 0 | 1 | 0 | 0 | 0 | 0 | 2 | .15 |
| 465 IMPERSONATION OF PROFESSION | 0 | 0 | 0 | 0 | 0 | 0 | 0 | 0 | .00 |
| 467 IMPERSONATION OF OFFICIAL | 0 | 0 | 0 | 0 | 0 | 0 | 0 | 0 | .00 |
| 500 COUNTERFEITED MONEY | 0 | 0 | 2 | 0 | 0 | 0 | 0 | 2 | .15 |
| 501 COUNTERFEITED OFF STAMPS, TAGS, ETC | 0 | 0 | 0 | 0 | 0 | 0 | 0 | 0 | .00 |
| 502 COUNTERFEITED TICKETS | 0 | 0 | 0 | 0 | 0 | 0 | 0 | 0 | .00 |
| 503 FORGED OR WORTHLESS CHECKS | 18 | 0 | 12 | 0 | 0 | 0 | 0 | 30 | 2.23 |
| 600 RAPE, FORCIBLE-(ALL CAPITOL OFFENSE | 31 | 0 | 93 | 0 | 0 | 0 | 1 | 125 | 9.31 |
| 609 RAPE, STATUTORY-(N-CAPITOL OFFENSES | 2 | 0 | 4 | 0 | 0 | 0 | 0 | 6 | .45 |
| 630 INCEST | 2 | 0 | 0 | 0 | 0 | 0 | 0 | 2 | .15 |
| 631 LEWD SHOWS | 0 | 0 | 0 | 0 | 0 | 0 | 0 | 0 | .00 |
| 632 OBSCENE LITERATURE, PUBLISH & DIST | 0 | 0 | 0 | 0 | 0 | 0 | 0 | 0 | .00 |
| 633 PROSTITUTION | 0 | 0 | 0 | 0 | 0 | 0 | 0 | 0 | .00 |
| 634 PROSTITUTION, RUNNING HOUSE, ETC | 0 | 0 | 0 | 0 | 0 | 0 | 0 | 0 | .00 |
| 635 ADULTERY | 0 | 0 | 0 | 0 | 0 | 0 | 0 | 0 | .00 |

| OFFENSE | WM | WF | NM | NF | DM | DF | UNKN | TOTAL | PERCENT |
|---|----|----|----|----|----|----|------|-------|---------|
| 636 CRIME AGAINST NATURE - SODOMY | 5 | 0 | 7 | 0 | 0 | 0 | 0 | 12 | .89 |
| 637 FONDLING | 2 | 0 | 1 | 0 | 0 | 0 | 0 | 3 | .22 |
| 638 LEWD AND LASCIVIOUS BEHAVIOR | 5 | 0 | 0 | 0 | 0 | 0 | 0 | 5 | .37 |
| 639 INDECENT EXPOSURE | 0 | 0 | 0 | 0 | 0 | 0 | 0 | 0 | .00 |
| 640 OBSCENE LITERATURE, POSS OR SHOWING | 0 | 0 | 0 | 0 | 0 | 0 | 0 | 0 | .00 |
| 700 NARCOTICS, ADDICTION | 0 | 0 | 0 | 0 | 0 | 0 | 0 | 0 | .00 |
| 701 NARCOTICS, FRAUDULENTLY OBTAINED | 1 | 0 | 2 | 0 | 0 | 0 | 0 | 3 | .22 |
| 702 NARCOTICS, POSSESSION | 10 | 0 | 12 | 0 | 0 | 0 | 0 | 22 | 1.64 |
| 703 NARCOTICS, SALE | 10 | 0 | 10 | 0 | 0 | 0 | 0 | 20 | 1.49 |
| 750 EXPLOSIVES, POSSESSION OF | 1 | 0 | 0 | 0 | 0 | 0 | 0 | 1 | .07 |
| 751 ILLEGAL POSS FIREARMS/CONCLD WEAPNS | 8 | 0 | 12 | 0 | 1 | 0 | 1 | 22 | 1.64 |
| 780 ESCAPE, STATE | 12 | 0 | 3 | 0 | 0 | 0 | 0 | 15 | 1.12 |
| 781 ESCAPE, COUNTY | 10 | 0 | 3 | 0 | 0 | 0 | 0 | 13 | .97 |
| 782 RESISTING OFFICER | 2 | 0 | 1 | 0 | 0 | 0 | 0 | 3 | .22 |
| 800 ANIMALS, CRUELTY TO | 0 | 0 | 0 | 0 | 0 | 0 | 0 | 0 | .00 |
| 801 BURGLARY TOOLS, POSSESSION OF | 0 | 0 | 2 | 0 | 0 | 0 | 0 | 2 | .15 |
| 802 BASTARDY | 0 | 0 | 0 | 0 | 0 | 0 | 0 | 0 | .00 |
| 803 RIOT | 0 | 0 | 0 | 0 | 0 | 0 | 0 | 0 | .00 |
| 810 ABORTION | 0 | 0 | 0 | 0 | 0 | 0 | 0 | 0 | .00 |
| 815 ARSON | 1 | 0 | 2 | 0 | 0 | 0 | 0 | 3 | .22 |
| 816 WOODS BURNING | 0 | 0 | 0 | 0 | 0 | 0 | 0 | 0 | .00 |
| 820 BIGAMY | 0 | 0 | 0 | 0 | 0 | 0 | 0 | 0 | .00 |
| 825 BRIBERY | 0 | 0 | 0 | 0 | 0 | 0 | 0 | 0 | .00 |
| 826 ELECTION LAW OFFENSES | 0 | 0 | 0 | 0 | 0 | 0 | 0 | 0 | .00 |
| 831 EXTORTION | 0 | 0 | 0 | 0 | 0 | 0 | 0 | 0 | .00 |
| 840 KIDNAPPING | 1 | 0 | 0 | 0 | 0 | 0 | 0 | 1 | .07 |
| 845 BEVERAGE LIC PREMISES OFFENSES | 0 | 0 | 0 | 0 | 0 | 0 | 0 | 0 | .00 |
| 846 POSSESSION R/R SALE TAXPD BEVERAGES | 0 | 0 | 0 | 0 | 0 | 0 | 0 | 0 | .00 |

DATA CENTER
PROGRAM: OE115 3PRT1413

DIVISION OF CORRECTIONS
DEMOGRAPHIC DATA SERIES
OFFENSE: PRIMARY

INMATES IN CUSTODY
AS OF 12/31/73
FOR FLORIDA STATE PRISON

| OFFENSE | WM | WF | NM | NF | OM | OF | UNKN | TOTAL | PERCENT |
|---|-----|----|-----|----|----|----|------|-------|---------|
| 847 POSSESSION &/R SLE N-TAXPD BEV | 0 | 0 | 0 | 0 | 0 | 0 | 0 | 0 | .00 |
| 848 POSSESSION &/R OPERA OF STILL | 0 | 0 | 0 | 0 | 0 | 0 | 0 | 0 | .00 |
| 850 BOMBING | 0 | 0 | 0 | 0 | 0 | 0 | 0 | 0 | .00 |
| 851 DESTRUCTION OF PROPERTY EXC 815-830 | 0 | 0 | 0 | 0 | 0 | 0 | 0 | 0 | .00 |
| 852 ANIMALS, MALICIOUS KILLING | 0 | 0 | 0 | 0 | 0 | 0 | 0 | 0 | .00 |
| 853 UNCLASSIFIED OFF AGAINST HABITATION | 1 | 0 | 0 | 0 | 0 | 0 | 0 | 1 | .07 |
| 854 UNCLASSIFIED OFF AGAINST PROPERTY | 0 | 0 | 0 | 0 | 0 | 0 | 0 | 0 | .00 |
| 855 CONTRIBUTING TO DEPENDENCY OF MINOR | 0 | 0 | 0 | 0 | 0 | 0 | 0 | 0 | .00 |
| 856 DESERTION AND NONSUPPORT | 0 | 0 | 0 | 0 | 0 | 0 | 0 | 0 | .00 |
| 860 PERJURY | 0 | 0 | 0 | 0 | 0 | 0 | 0 | 0 | .00 |
| 870 CONTRIBUTING TO DELINQUENC OF MINOR | 0 | 0 | 0 | 0 | 0 | 0 | 0 | 0 | .00 |
| 888 FOURTH FELONY CONVICTION | 0 | 0 | 0 | 0 | 0 | 0 | 0 | 0 | .00 |
| 889 SECOND FELONY CONVICTION | 0 | 0 | 0 | 0 | 0 | 0 | 0 | 0 | .00 |
| 910 FORNICATION | 0 | 0 | 0 | 0 | 0 | 0 | 0 | 0 | .00 |
| 999 UNKNOWN | 48 | 0 | 55 | 0 | 0 | 0 | 2 | 105 | 7.84 |
| TOTALS | 524 | 0 | 812 | 0 | 2 | 0 | 5 | 1348 | 100.00 |

HRS DATA CENTER
PROGRAM: QE120 3PART1413

DIVISION OF CORRECTIONS
DEMOGRAPHIC DATA SERIES
PARENTAL HOME: AGE WHEN BROKEN

INMATES IN CUSTODY
AS OF 12/31/73
FOR FLORIDA STATE PRISON

| | WM | WF | NM | NF | DM | DF | UNKN | TOTAL | PERCENT |
|---------------|-----|----|-----|----|----|----|------|-------|---------|
| UNDER 4 YEARS | 131 | 0 | 265 | 0 | 1 | 0 | 0 | 397 | 29.56 |
| 4 - 6 YEARS | 18 | 0 | 45 | 0 | 0 | 0 | 0 | 63 | 4.69 |
| 6 - 8 YEARS | 20 | 0 | 45 | 0 | 0 | 0 | 1 | 66 | 4.91 |
| 8 - 10 YEARS | 18 | 0 | 47 | 0 | 0 | 0 | 0 | 65 | 4.84 |
| 10 - 12 YEARS | 10 | 0 | 24 | 0 | 0 | 0 | 0 | 34 | 2.53 |
| 12 - 14 YEARS | 20 | 0 | 17 | 0 | 0 | 0 | 0 | 37 | 2.76 |
| 14 - 16 YEARS | 24 | 0 | 41 | 0 | 0 | 0 | 0 | 65 | 4.84 |
| 16 - 21 YEARS | 33 | 0 | 52 | 0 | 0 | 0 | 0 | 85 | 6.33 |
| OVER 21 YEARS | 11 | 0 | 9 | 0 | 0 | 0 | 0 | 20 | 1.49 |
| NOT BROKEN | 121 | 0 | 103 | 0 | 1 | 0 | 2 | 227 | 16.90 |
| UNKNOWN | 118 | 0 | 164 | 0 | 0 | 0 | 2 | 284 | 21.15 |
| TOTALS | 524 | 0 | 812 | 0 | 2 | 0 | 5 | 1,343 | 100.00 |

MEAN
MEDIAN
MODE

8.7
12-14
UNDER 4

7.8
6-8
UNDER 4

8.1
8-10
UNDER 4

HRS DATA CENTER
PROGRAM: CE120 3PART1413

DIVISION OF CORRECTIONS
DEMOGRAPHIC DATA SERIES
PARENTAL HOME: HARMFUL INFLUENCES

INMATES IN CUSTODY
AS OF 12/31/73
FOR FLORIDA STATE PRISON

| | FF | WM | NM | NF | OM | OF | UNKN | TOTAL | PERCENT |
|--|-----|----|-----|----|----|----|------|-------|---------|
| NO APPARENT BAD INFLUENCES IN HOME DURING INMATES PUNITIVE YEARS | 115 | 0 | 146 | 0 | 2 | 0 | 2 | 265 | 19.73 |
| ALCOHOLISM | 7 | 0 | 13 | 0 | 0 | 0 | 0 | 20 | 1.49 |
| NARCOTICS USAGE | 1 | 0 | 3 | 0 | 0 | 0 | 0 | 4 | .30 |
| CHRONIC UNHAPPINESS | 8 | 0 | 4 | 0 | 0 | 0 | 0 | 12 | .89 |
| LITTLE SUPERVISION AND GUIDANCE | 36 | 0 | 90 | 0 | 0 | 0 | 0 | 126 | 9.38 |
| MENTAL DISORDER | 1 | 0 | 1 | 0 | 0 | 0 | 0 | 2 | .15 |
| LOW PARENTAL MORALITY | 2 | 0 | 13 | 0 | 0 | 0 | 0 | 15 | 1.12 |
| MEMBERS WITH CRIMINAL RECORD | 8 | 0 | 10 | 0 | 0 | 0 | 0 | 18 | 1.34 |
| COMBINATION OF ABOVE | 229 | 0 | 333 | 0 | 0 | 0 | 0 | 562 | 41.85 |
| OTHER | 20 | 0 | 58 | 0 | 0 | 0 | 1 | 79 | 5.88 |
| UNKNOWN | 97 | 0 | 141 | 0 | 0 | 0 | 2 | 240 | 17.87 |
| TOTALS | 524 | 0 | 812 | 0 | 2 | 0 | 5 | 1,343 | 100.00 |

HRS DATA CENTER
PROGRAM: GE120 3PART1413

DIVISION OF CORRECTIONS
DEMOGRAPHIC DATA SERIES
PARENTAL HOME: SIBLINGS IN

INMATES IN CUSTODY
AS OF 12/31/73
FOR FLORIDA STATE PRISON

| | WM | WF | NM | NF | OM | OF | UNKN | TOTAL | PERCENT |
|---------------------------|-----|----|-----|----|----|----|------|-------|---------|
| ONLY CHILD | 48 | 0 | 52 | 0 | 0 | 0 | 0 | 100 | 7.45 |
| ONE OTHER CHILD | 55 | 0 | 58 | 0 | 1 | 0 | 0 | 114 | 8.49 |
| TWO ADDITIONAL CHILDREN | 77 | 0 | 65 | 0 | 0 | 0 | 0 | 142 | 10.57 |
| THREE ADDITIONAL CHILDREN | 75 | 0 | 75 | 0 | 0 | 0 | 2 | 152 | 11.32 |
| FOUR ADDITIONAL CHILDREN | 46 | 0 | 76 | 0 | 0 | 0 | 0 | 122 | 9.08 |
| FIVE ADDITIONAL CHILDREN | 44 | 0 | 70 | 0 | 1 | 0 | 0 | 115 | 8.56 |
| SIX ADDITIONAL CHILDREN | 29 | 0 | 67 | 0 | 0 | 0 | 0 | 96 | 7.15 |
| SEVEN ADDITIONAL CHILDREN | 27 | 0 | 105 | 0 | 0 | 0 | 0 | 132 | 9.83 |
| EIGHT OR MORE ADDITIONAL | 21 | 0 | 85 | 0 | 0 | 0 | 1 | 107 | 7.97 |
| UNKNOWN | 102 | 0 | 159 | 0 | 0 | 0 | 2 | 263 | 19.58 |
| TOTALS | 524 | 0 | 812 | 0 | 2 | 0 | 5 | 1343 | 100.00 |

MEAN
MEDIAN
MODE

3
3
2

—

4
105
7

—

—

—

4
114
114

DIVISION OF CORRECTIONS
DEMOGRAPHIC DATA SERIES
PARENTAL HOME: STATUS OF

| | WF | WF | NM | NF | GM | OF | UNKN | TOTAL | PERCENT |
|---|-----|----|-----|----|----|----|------|-------|---------|
| PARENTS TOGETHER THROUGHOUT INMATES FORMATIVE YEARS | 189 | 0 | 176 | 0 | 1 | 0 | 2 | 368 | 27.40 |
| FATHER ABSENT PERMANENTLY OR FOR PERIOD OF AT LEAST A FEW YEARS (TYPE 1) | 58 | 0 | 116 | 0 | 0 | 0 | 0 | 174 | 12.96 |
| FATHER ABSENT BY DIVORCE SEPARATION, DESERTION OR OTHER PSYCHOLOGICALLY HARMFUL REASONS (TYPE 2) | 88 | 0 | 248 | 0 | 0 | 0 | 0 | 336 | 25.02 |
| MOTHER ABSENT BY CAUSES AS IN TYPE 1 INCLUDING PARTIAL ABSENCE 5 YEARS OR MORE | 18 | 0 | 15 | 0 | 0 | 0 | 0 | 33 | 2.46 |
| MOTHER ABSENT BY CAUSES AS IN TYPE 2 | 9 | 0 | 16 | 0 | 0 | 0 | 0 | 25 | 1.86 |
| BOTH PARENTS ABSENT BY CAUSES AS IN TYPE 1 | 14 | 0 | 27 | 0 | 0 | 0 | 0 | 41 | 3.05 |
| BOTH PARENTS ABSENT BY CAUSES AS IN TYPE 2 | 30 | 0 | 37 | 0 | 0 | 0 | 0 | 67 | 4.99 |
| MOTHER ABSENT AS IN TYPE 1 AND FATHER AS TYPE 2 | 1 | 0 | 29 | 0 | 0 | 0 | 0 | 30 | 2.23 |
| FATHER ABSENT AS IN TYPE 1 AND MOTHER AS IN TYPE 2 | 5 | 0 | 2 | 0 | 0 | 0 | 0 | 7 | .52 |
| OTHER | 15 | 0 | 7 | 0 | 1 | 0 | 1 | 24 | 1.79 |
| UNKNOWN | 97 | 0 | 139 | 0 | 0 | 0 | 2 | 238 | 17.72 |
| TOTALS | 524 | 0 | 812 | 0 | 2 | 0 | 5 | 1,343 | 100.00 |

DIVISION OF CORRECTIONS
 DEMOGRAPHIC DATA SERIES
 RELIGIOUS PREFERENCE

INMATES IN CUSTODY
 AS OF 12/31/73
 FOR FLORIDA STATE PRISON

| RELIGIOUS PREFERENCE | WM | WF | NM | NF | DM | DF | UNKN | TOTAL | PERCENT |
|-----------------------|-----|----|-----|----|----|----|------|-------|---------|
| NONE | 50 | 0 | 44 | 0 | 0 | 0 | 0 | 94 | 7.00 |
| BAPTIST | 101 | 0 | 241 | 0 | 1 | 0 | 2 | 345 | 25.69 |
| CATHOLIC | 62 | 0 | 20 | 0 | 0 | 0 | 0 | 82 | 6.11 |
| CHRISTIAN SCIENCE | 1 | 0 | 1 | 0 | 0 | 0 | 0 | 2 | .15 |
| CHURCH OF CHRIST | 3 | 0 | 2 | 0 | 0 | 0 | 0 | 5 | .37 |
| EPISCOPALIAN | 5 | 0 | 2 | 0 | 0 | 0 | 0 | 7 | .52 |
| HEBREW | 3 | 0 | 0 | 0 | 0 | 0 | 0 | 3 | .22 |
| HOLINESS | 15 | 0 | 26 | 0 | 0 | 0 | 0 | 41 | 3.05 |
| JEHOVAHS WITNESS | 2 | 0 | 1 | 0 | 0 | 0 | 0 | 3 | .22 |
| LUTHERAN | 3 | 0 | 0 | 0 | 0 | 0 | 0 | 3 | .22 |
| METHODIST | 12 | 0 | 22 | 0 | 1 | 0 | 0 | 35 | 2.61 |
| MORMON | 0 | 0 | 0 | 0 | 0 | 0 | 0 | 0 | .00 |
| PRESBYTERIAN | 3 | 0 | 1 | 0 | 0 | 0 | 1 | 5 | .37 |
| SEVENTH DAY ADVENTIST | 2 | 0 | 3 | 0 | 0 | 0 | 0 | 5 | .37 |
| OTHER CHRISTIAN | 16 | 0 | 14 | 0 | 0 | 0 | 0 | 30 | 2.23 |
| OTHER | 1 | 0 | 4 | 0 | 0 | 0 | 0 | 5 | .37 |
| UNKNOWN | 245 | 0 | 431 | 0 | 0 | 0 | 2 | 678 | 50.50 |
| TOTALS | 524 | 0 | 812 | 0 | 2 | 0 | 5 | 1343 | 100.00 |