

149150

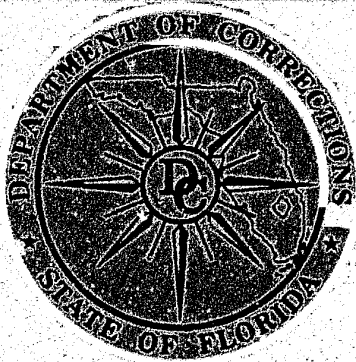
U.S. Department of Justice  
National Institute of Justice

This document has been reproduced exactly as received from the person or organization originating it. Points of view or opinions stated in this document are those of the authors and do not necessarily represent the official position or policies of the National Institute of Justice.

Permission to reproduce this copyrighted material has been  
granted by  
Florida Department of  
Corrections

to the National Criminal Justice Reference Service (NCJRS).

Further reproduction outside of the NCJRS system requires permission of the copyright owner.



Harry J. Singletary  
Secretary

# TIME SERVED IN PRISON

JANUARY 1994 TO MARCH 1994

Prepared by  
Florida Department of Corrections  
Bureau of Planning, Research and Statistics  
Criminologic Information and Analysis Section  
April 1993

# Prison Releases Quarterly Report

## January – March 1994

This report presents first quarter 1994 information on inmates released from Florida's prisons. Charts are included which provide changes in the release population.

### Executive Summary

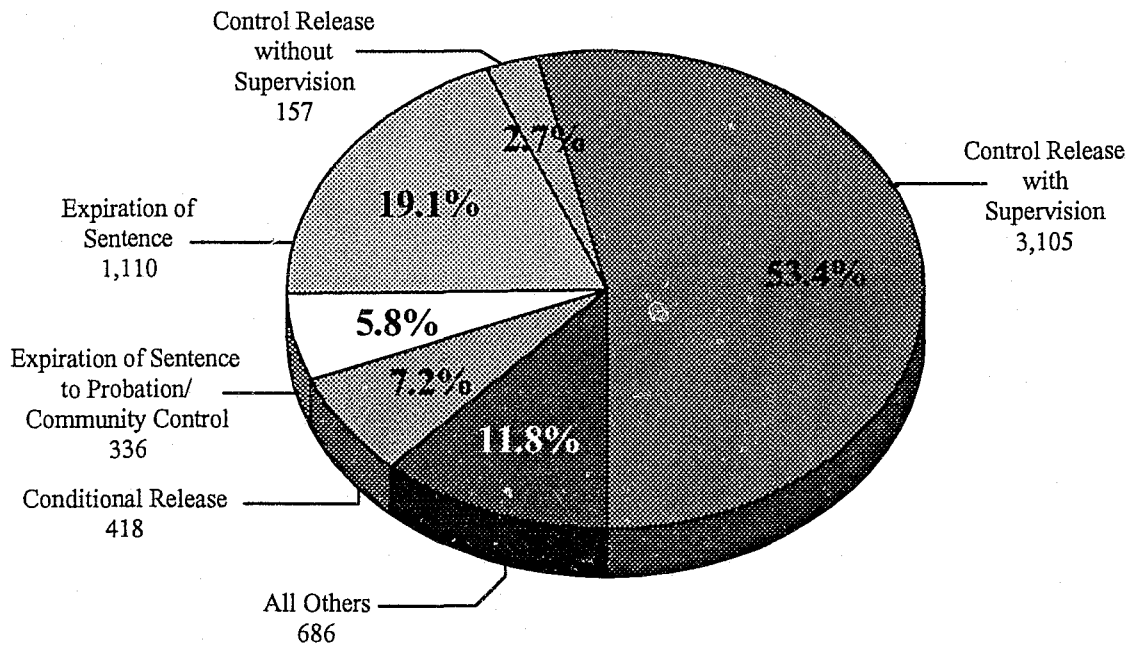
#### I. Overall Releases

- . 56.1% of offenders were released through control release during the first quarter.
- . There was a downward trend of those inmates released through Control Release since 1993 (69.5% in the first quarter of 1993 versus 56.1% in the first quarter of 1994).
- . Of those released through control release, 95.2% were supervised.
- . 73.7% of all releases were released with supervision to follow release.

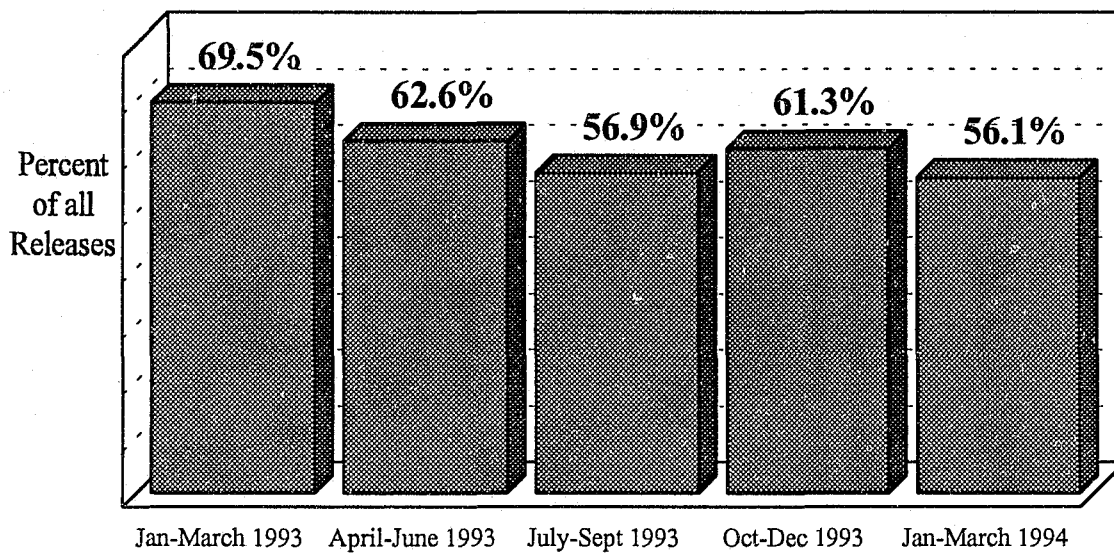
#### II. Time Served

- . Inmates released on average served 24.2 months.
- . Inmates released on average served 42.1% of their sentence.
- . The percentage of sentence served increased from 35.2% in March 1993 to 44.2% in March 1994.
- . Violent offenders released this quarter served an average of 52.9% of their sentence.
- . Percentage of sentence served for violent offenders increased from 45.9% in March 1993 to 53.6% in March 1994.
- . Male offenders released during the first quarter of 1994 served 42.8% of their sentence while females served 36.7%.

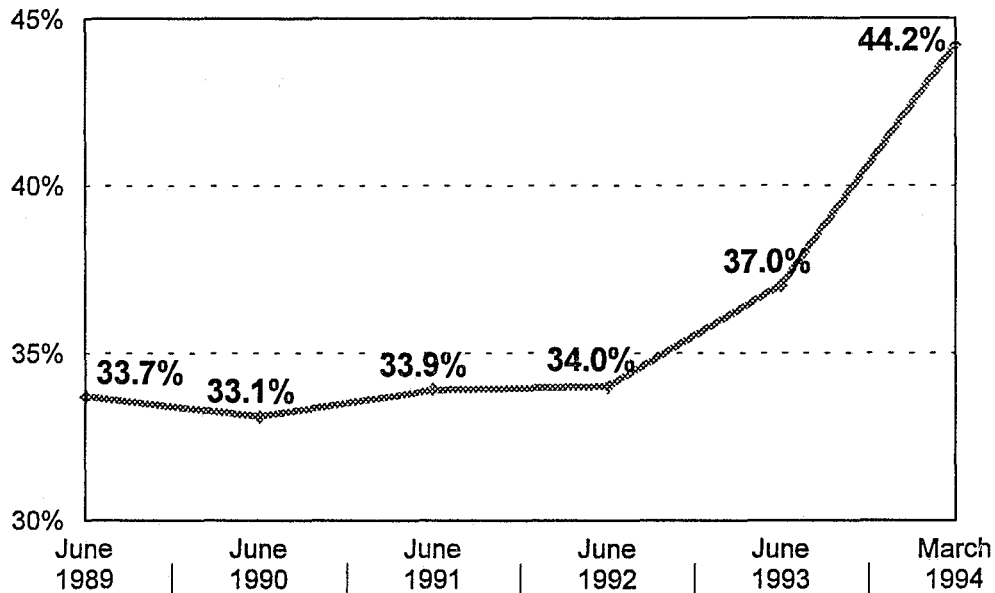
## Prison Release Types: Annual Totals (January - March 1994)



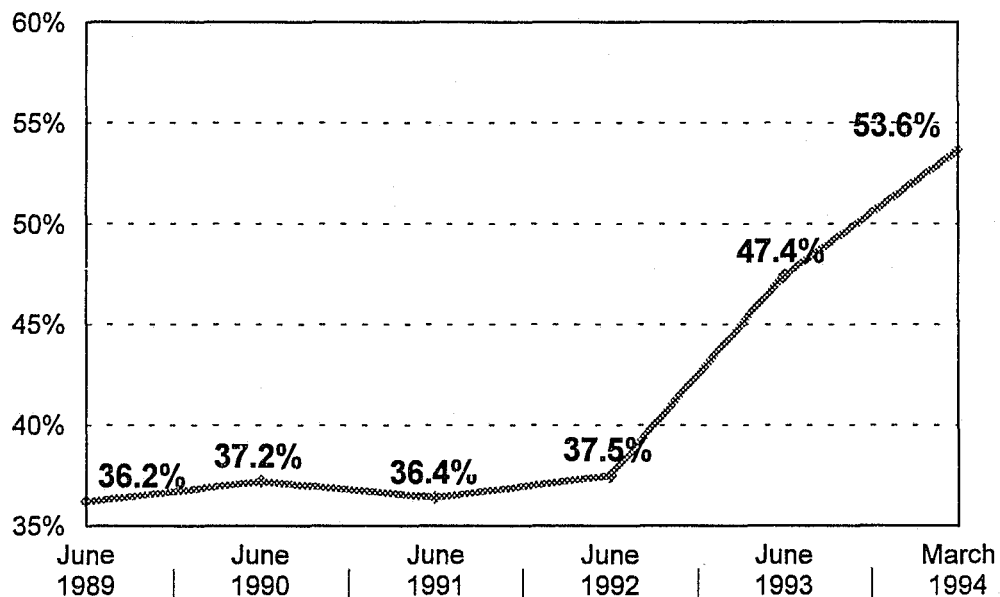
## Offenders Released by Control Release by Quarter



## Percentage of Sentence Served in Florida's Prisons All Offenders



## Percentage of Sentence Served in Florida's Prisons Violent Offenders

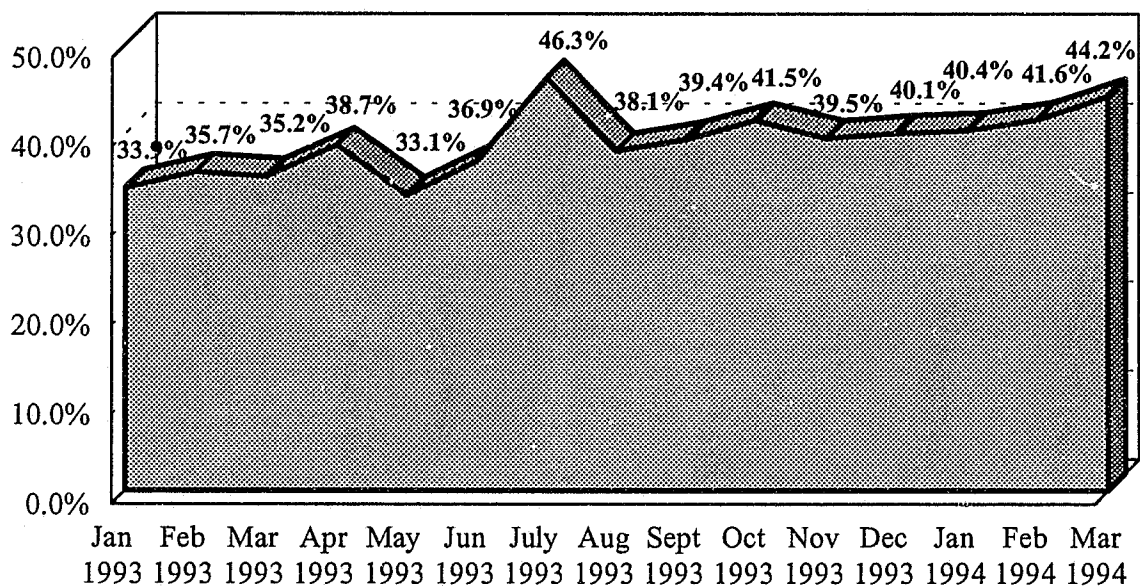


# AVERAGE TIME SERVED AND AVERAGE PERCENTAGE OF SENTENCE SERVED

| 1993      | Average Time Served |        | Percentage of Sentence Served |        |
|-----------|---------------------|--------|-------------------------------|--------|
|           | Months              | Change | Months                        | Change |
| January   | 17.5                |        | 33.9%                         |        |
| February  | 18.9                | 1.4    | 35.7%                         | 1.8%   |
| March     | 18.9                | 0.0    | 35.2%                         | -0.5%  |
| April     | 20.8                | 1.9    | 38.7%                         | 3.5%   |
| May       | 18.1                | -2.7   | 33.1%                         | -5.6%  |
| June      | 20.5                | 2.4    | 36.9%                         | 3.8%   |
| July      | 24.9                | 4.4    | 46.3%                         | 9.4%   |
| August    | 18.7                | -6.2   | 38.1%                         | -8.2%  |
| September | 20.3                | 1.6    | 39.4%                         | 1.3%   |
| October   | 22.3                | 2.0    | 41.5%                         | 2.1%   |
| November  | 21.5                | -0.8   | 39.5%                         | -2.0%  |
| December  | 22.7                | 1.2    | 40.1%                         | 0.6%   |
| 1994      |                     |        |                               |        |
| January   | 22.6                | -0.1   | 40.4%                         | 0.3%   |
| February  | 23.5                | 0.9    | 41.6%                         | 1.2%   |
| March     | 25.1                | 1.6    | 44.2%                         | 2.6%   |
| TOTAL     | 20.5                |        | 38.8%                         |        |

\*Life sentences are excluded from time served data.

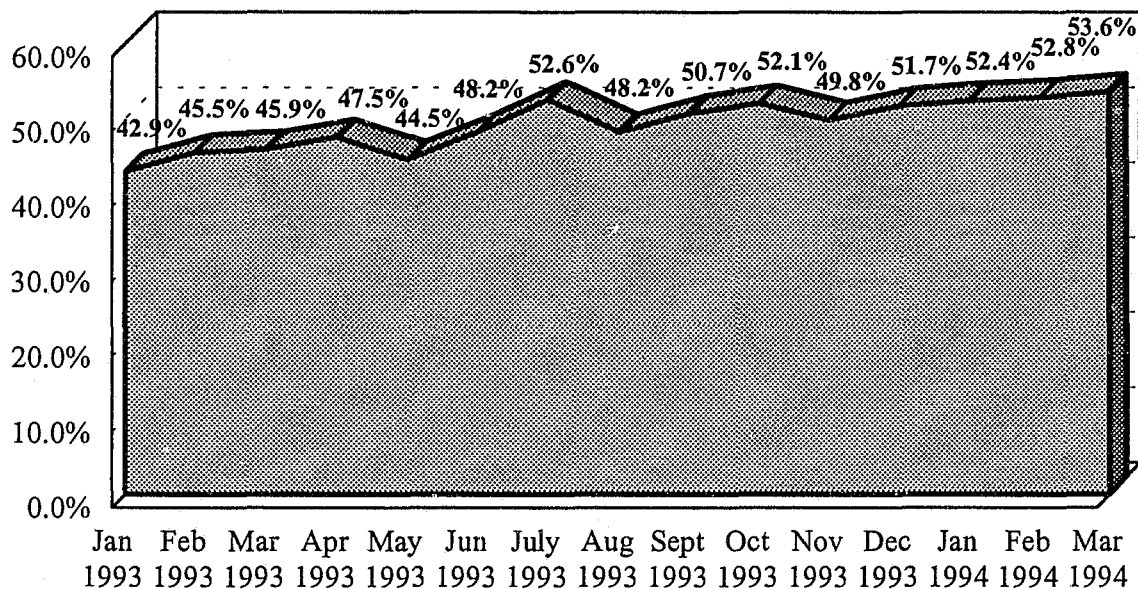
## Average Percentage of Sentence Served by Month



**VIOLENT OFFENDERS  
AVERAGE TIME SERVED AND AVERAGE  
PERCENTAGE OF SENTENCE SERVED**

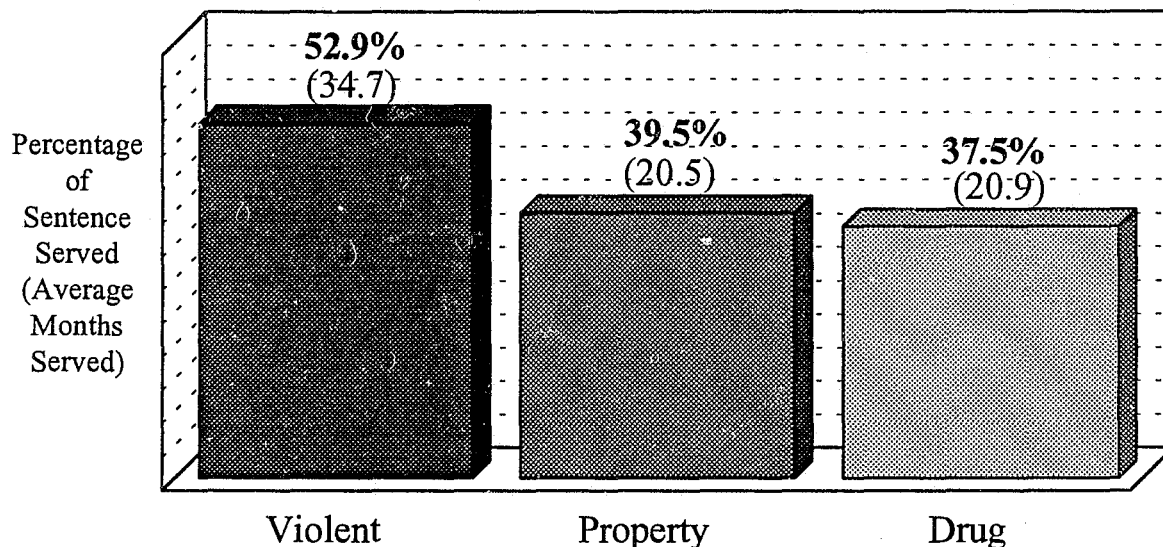
| 1993         | Average Time Served |        | Percentage of Sentence Served |        |
|--------------|---------------------|--------|-------------------------------|--------|
|              | Months              | Change | Months                        | Change |
| January      | 29.7                |        | 42.9%                         |        |
| February     | 29.8                | 0.1    | 45.5%                         | 2.6%   |
| March        | 30.0                | 0.2    | 45.9%                         | 0.4%   |
| April        | 30.8                | 0.8    | 47.5%                         | 1.6%   |
| May          | 30.0                | -0.8   | 44.5%                         | -3.0%  |
| June         | 32.5                | 2.5    | 48.3%                         | 3.8%   |
| July         | 32.8                | 0.3    | 52.6%                         | 4.3%   |
| August       | 29.6                | -3.2   | 48.2%                         | -4.4%  |
| September    | 31.4                | 1.8    | 50.7%                         | 2.5%   |
| October      | 32.3                | 0.9    | 52.1%                         | 1.4%   |
| November     | 33.0                | 0.7    | 49.8%                         | -2.3%  |
| December     | 33.4                | 0.4    | 51.7%                         | 1.9%   |
| <b>1994</b>  |                     |        |                               |        |
| January      | 32.5                | -0.9   | 52.4%                         | 0.7%   |
| February     | 33.2                | 0.7    | 52.8%                         | 0.4%   |
| March        | 36.4                | 3.2    | 53.6%                         | 0.8%   |
| <b>TOTAL</b> | <b>31.5</b>         |        | <b>49.2%</b>                  |        |

**Violent Offenders  
Average Percent of Sentence  
Served by Month**

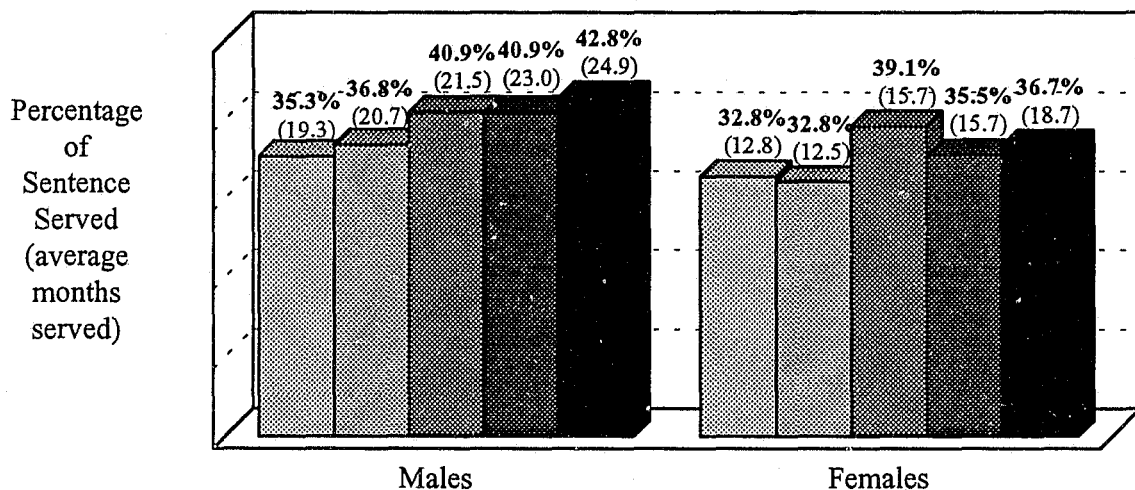




# Time Served and Percentage of Sentence Served by Offense Type: Violent, Property, Drug (January - March 1994)



# Time Served and Percentage of Sentence Served by Gender (January - March 1994)

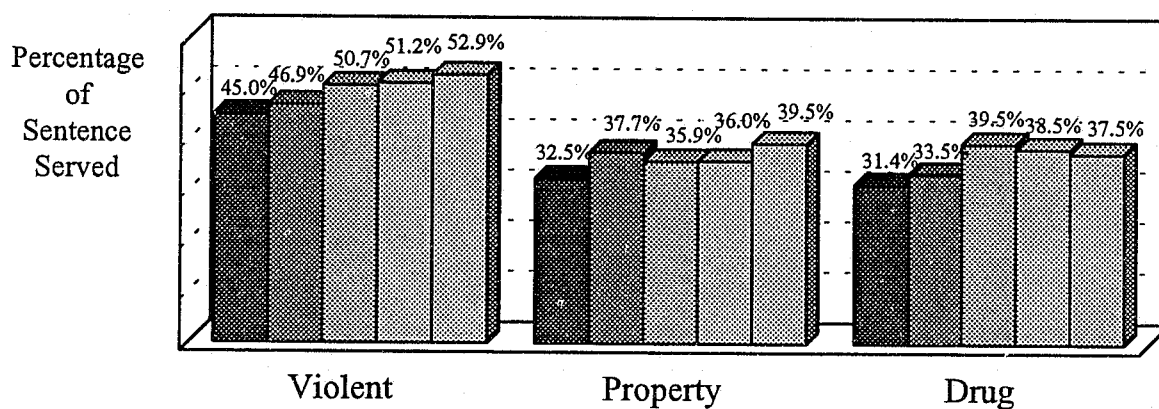


■ Q1=January-March 1993    ■ Q2=April-June 1993    ■ Q3=July-September 1993  
 ■ Q4=October-December 1993    ■ Q5=January-March 1994

**FREQUENCY OF PERCENTAGE OF TIME SERVED  
JANUARY – MARCH 1994**

| Percentage of Sentence Served | Annual Totals |       | Violent |       | Property |       | Drug |       |
|-------------------------------|---------------|-------|---------|-------|----------|-------|------|-------|
| 1 – 10%                       | 147           | 2.7%  | 16      | 1.2%  | 82       | 3.4%  | 49   | 2.8%  |
| 11 – 20%                      | 933           | 17.0% | 63      | 4.7%  | 510      | 21.2% | 360  | 20.4% |
| 21 – 30%                      | 824           | 15.0% | 84      | 6.3%  | 413      | 17.2% | 327  | 18.5% |
| 31 – 40%                      | 741           | 13.5% | 112     | 8.4%  | 329      | 13.7% | 300  | 17.0% |
| 41 – 50%                      | 1,229         | 22.3% | 454     | 34.1% | 398      | 16.5% | 377  | 21.4% |
| 51 – 60%                      | 645           | 11.7% | 251     | 18.8% | 261      | 10.9% | 133  | 7.5%  |
| 61 – 70%                      | 434           | 7.9%  | 129     | 9.7%  | 190      | 7.9%  | 115  | 6.5%  |
| 71 – 80%                      | 225           | 4.1%  | 56      | 4.2%  | 119      | 4.9%  | 50   | 2.8%  |
| 81 – 90%                      | 140           | 2.5%  | 74      | 5.6%  | 44       | 1.8%  | 22   | 1.2%  |
| 91 – 100%                     | 183           | 3.3%  | 93      | 7.0%  | 59       | 2.5%  | 31   | 1.8%  |

## Time Served and Percentage of Sentence Served by Offense Type by Quarter



■ Q1=January-March 1993    ■ Q2=April-June 1993    ■ Q3=July-September 1993  
 ■ Q4=October-December 1993    ■ Q5=January-March 1994



Direct any questions related to this report to:  
Florida Department of Corrections  
Bureau of Planning, Research and Statistics  
Dena Stephens, (904) 488-1801  
Bill Bales, (904) 488-1801