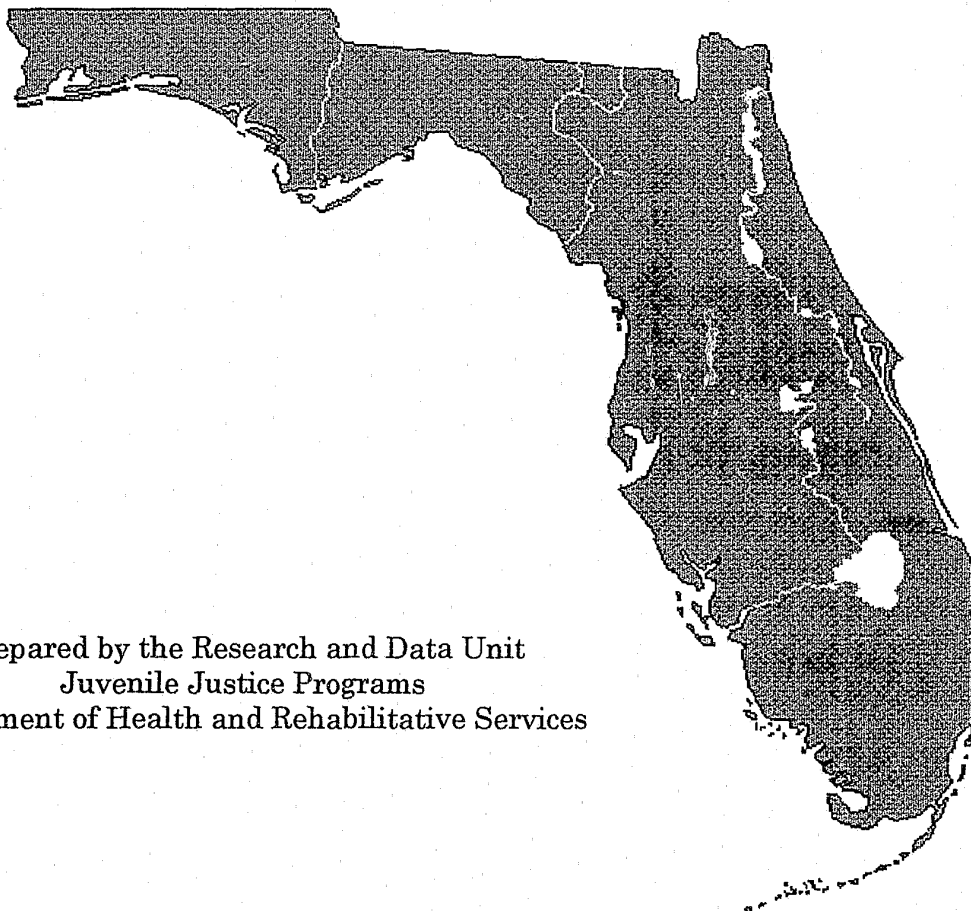


149517

# JUVENILE JUSTICE

## POINT IN TIME SURVEY OF ALL YOUTHS IN SECURE DETENTION



Prepared by the Research and Data Unit  
Juvenile Justice Programs  
Department of Health and Rehabilitative Services

October 1993

Lawton Chiles  
Governor



H. James Towey  
Secretary

149517

**U.S. Department of Justice  
National Institute of Justice**

This document has been reproduced exactly as received from the person or organization originating it. Points of view or opinions stated in this document are those of the authors and do not necessarily represent the official position or policies of the National Institute of Justice.

Permission to reproduce this copyrighted material has been  
granted by

Florida Dept. of Health  
and Rehabilitative Services

to the National Criminal Justice Reference Service (NCJRS).

Further reproduction outside of the NCJRS system requires permission of the copyright owner.

## One Day Survey of Youths Placed in Secure Detention Facilities

On August 23, 1993, all juvenile detention centers in Florida participated in a one day survey of youths being held in secure detention. This survey was completed for all youths residing in the detention centers at the 8:00 am detention count on that date. All 20 detention centers participated in the survey. Information collected in the survey included the number of youths, sex, race, age, length of stay during this detention placement, and most serious offense for this detention. Also surveyed was whether the youth was placed for contempt (direct or indirect), whether the youth was in detention because of a new law violation he committed while in detention or while on commitment status, risk assessment score and whether the offenses were felonies or misdemeanors. The following statistical information is presented to provide a one day composite of the type of youth in secure detention.

### *Number of Youths*

The following table represents the number of youths in secure detention placement by facility.

District	Center	# of Youths	% of Total
1	Escambia	59	4.2%
2	Bay	33	2.4%
2	Leon	29	2.1%
3	Alachua	64	4.6%
4	Duval	121	8.7%
5	Pinellas	82	5.9%
5	Pasco	31	2.2%
6	Hillsborough	143	10.2%
6	Manatee	35	2.5%
7	Orlando	95	6.8%
7	Seminole	32	2.3%
7	Brevard	39	2.8%
8	S.W. Florida	68	4.9%
9	Palm Beach	66	4.7%
10	Broward	76	5.4%
11	Dade	172	12.3%
12	Volusia	57	4.1%
13	Marion	80	5.7%
14	Polk	77	5.5%
15	St. Lucie	39	2.8%
	Total	1,398	100.0%

## ***Race and Gender***

The following tables represent the race and gender statistics of the youths in secure detention centers.

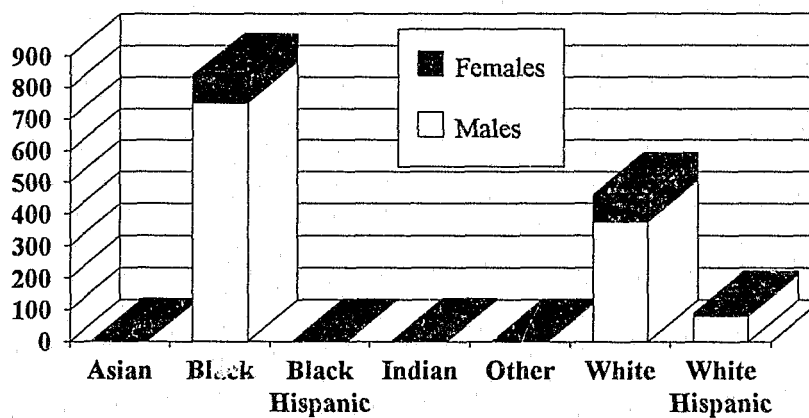
### **Gender**

Male	1,211	86.6%
Female	187	13.4%
<b>Total</b>	<b>1,398</b>	<b>100.0%</b>

### **Race**

Asian	4	0.3%
Black	838	59.9%
Black Hispanic	1	0.1%
Indian	3	0.2%
Other	1	0.1%
White	461	33.0%
White Hispanic	90	6.4%
<b>Total</b>	<b>1,398</b>	<b>100.0%</b>

**Detained Youths by Race and Gender**  
**August 23, 1993 Secure Detention**



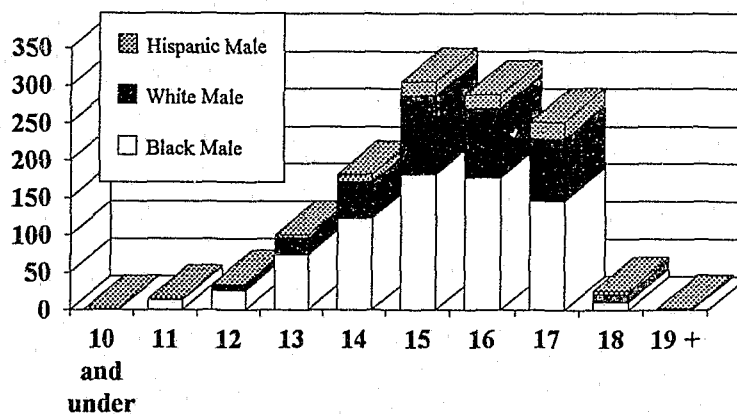
### Race by Gender

	Male	Female	Total
Asian	4		4
Black	750	88	838
Black Hispanic		1	1
Indian	2	1	3
Other	1		1
White	374	87	461
White Hispanic	80	10	90
<b>Total</b>	<b>1,211</b>	<b>187</b>	<b>1,398</b>

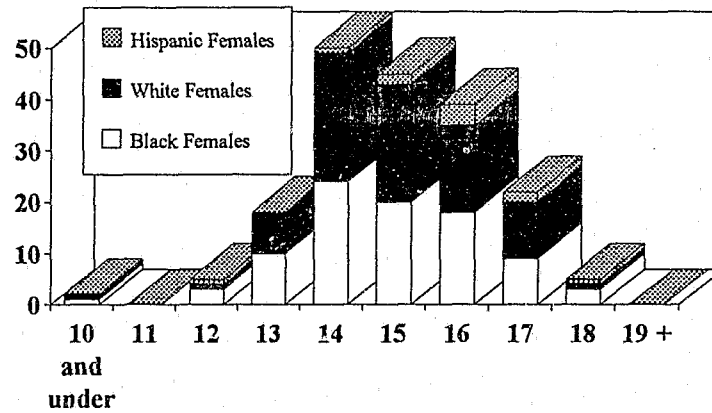
### Age

The age groups for youths detained range from 8 to 19 years of age. The youths who are 19 or older are awaiting disposition for adult offenses. Adult court judges may choose to have a youth await his adult disposition in a juvenile facility as opposed to adult jail. Currently, there are 15 youths who are awaiting adult dispositions in Dade Detention. The District 11 legal counsel is negotiating with the adult court judges to use this alternative only when absolutely necessary.

**Male Youths Detained by Age and Race**  
August 23, 1993 Secure Detention



**Female Youths Detained by Age and Race  
August 23, 1993 Secure Detention**



**By Race and Gender**

	Black Males	White Males	Hispanic Males	Other Males	Black Females	White Females	Hispanic Females	Other Females	Total
10 and under		1			1	1			3
11	13	2							15
12	26	8			3	1	1		39
13	74	22	4		10	8			118
14	122	49	10		24	25	1		231
15	181	105	19	1	20	23	2		351
16	177	92	19	5	18	17	4		332
17	145	83	23	1	9	11	2	1	275
18	11	11	4		3	1	1		31
19+	1	1	1						3
Totals	750	374	80	7	88	27	11	1	1,398

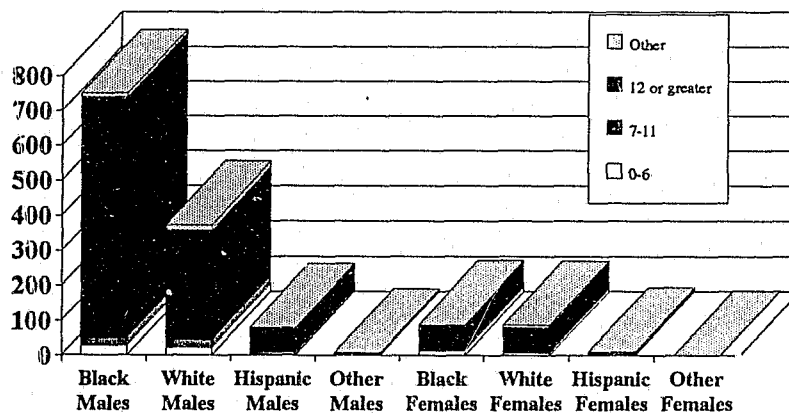
***Risk Assessment Scores***

All youths placed in detention should have a recorded risk assessment score which was completed at intake, unless they were placed in detention by an existing court order, capias, warrant, pick-up order or similar court order.

### By Risk Assessment Scores

Scores	Youths	%
0-6	74	5.3%
7-11	65	4.6%
12+	1,220	87.3%
Not Recorded	39	2.8%
Total	1,398	100.0%

### Youths Detained by Race, Gender and Risk Assessment Score August 23, 1993 Secure Detention



### Males

RAI Scores	Black Males	White Males	Hispanic Males	Other Males	Total
0-6	27	22	2		51
7-11	25	23	9	1	58
12+	687	312	67	6	1,072
Not Completed	11	15	2		28
Total	750	372	80	7	1,209

Two males did not have risk assessment scores

### Females

RAI Scores	Black Females	White Females	Hispanic Females	Other Females	Total
0-6	13	8	2		23
7-11	3	3	1		7
12+	69	70	8	1	148
Not Completed	3	6			9
<b>Total</b>	<b>88</b>	<b>87</b>	<b>11</b>	<b>1</b>	<b>187</b>

### *Youths Being Held in Contempt of Court*

The following tables represent the number of youths being held in secure detention for contempt of court. The youths are being held strictly on contempt of court, not for other court ordered reasons.

Indirect Contempt	18	1.3%
Not Contempt	1,380	98.7%
<b>Total</b>	<b>1,398</b>	<b>100.0%</b>

### *Most Serious Offense*

The following tables represent information on the most serious offense which was reported for this particular detention for each youth.

#### Felony or Misdemeanor

Felony	1153	82.5%
Misdemeanor	40	2.9%
Not Applicable	205	14.7%
<b>Total</b>	<b>1,398</b>	<b>100.0%</b>

Not applicable represents those youths who were detained based on a court order to take into custody, capias, an outstanding warrant, or pickup orders where the charge was not specified.



## Individual Offenses

The following table represents the most serious charge for the current detention of each individual youth. Some offenses have been combined in specific areas. For example, court orders include capiases, warrants, pickup orders, custody orders, and any other orders to take into custody. Attempted offenses are included in the main offense, e.g., attempted murder is included in the murder total.

### Males

	Black	White	Hispanic	Other	Total
Abscond	24	17	2		43
Aggravated Assault	35	19			54
Aggravated Battery	35	15	6		56
Armed Burglary	19	16	8		43
Armed Kidnapping	3	1			4
Armed Robbery	86	10	5		101
Armed Sexual Assault			1		1
Assault		1			1
Attempted Murder	18	10	1		29
Auto Theft	10	1	1		12
Battery	26	5	3		34
Burglary	102	72	8	1	183
Car Jacking	5				5
Carrying Concealed or Possession of Weapon	8	3			11
Felony Drugs	65	4	4		73
Escape	32	27	3		62
Grand Theft	10	6			16
Grand Theft Auto	83	38	16		137
Kidnapping	2	2			4
Murder	11	2	2		15
Other Sex Felony		2			2
Robbery	8	1			9
Sexual Assault/Battery	25	26	1	1	53
Strong Arm Burglary	28	1	4	1	34
Strong Arm Robbery	5				5
VOCC	6	17	3		26
Court Order*	60	42	9	2	113
Other Felonies	33	25		2	60
Other Misdemeanors	4	6	2		12
<b>Total</b>	<b>743</b>	<b>369</b>	<b>79</b>	<b>7</b>	<b>1198</b>

Thirteen males did not have a specific offense reported.

### Females

	Black	White	Hispanic	Other	Total
Abscond	4	13	2		19
Aggravated Assault	12	4			16
Aggravated Battery	9	7	1		17
Armed Burglary	1				1
Armed Kidnapping					0
Armed Robbery	3	1			4
Armed Sexual Assault					0
Assault		1			1
Attempted Murder	2	2			4
Auto Theft	1	1			2
Battery	7				7
Burglary	3	5	1		9
Car Jacking					0
Carrying Concealed or Possession of Weapon					0
Felony Drugs	4	1			5
Escape	6	9	2		17
Grand Theft	2	1			3
Grand Theft Auto	8	5	1		14
Kidnapping	1				1
Murder		2			2
Other Sex Felony					0
Robbery					0
Sexual Assault/Battery					0
Strong Arm Burglary		2			2
Strong Arm Robbery					0
VOCC	5	9			14
Court Order*	14	20			34
Other Felonies	2	4	2		8
Other Misdemeanors	2	1			3
<b>Total</b>	<b>86</b>	<b>88</b>	<b>9</b>	<b>0</b>	<b>183</b>

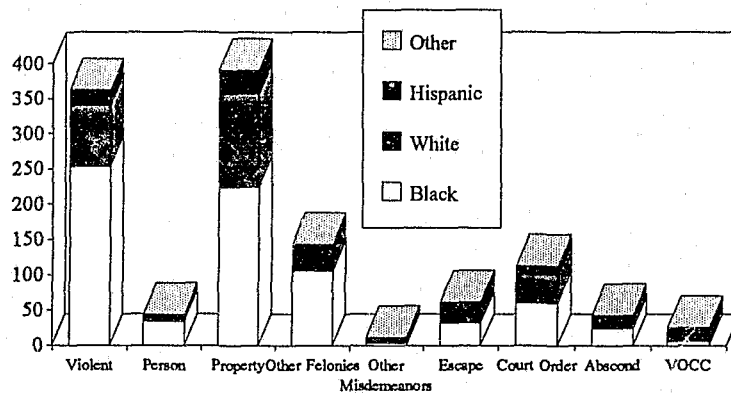
Four females did not have offense information reported.

### Offenses by Seriousness

The following table represents the most serious charges by groupings of offenses. Violent offenses include aggravated assault, aggravated battery, armed kidnapping, armed robbery, armed sexual assault, attempted murder, car jacking, kidnapping, murder, other sexual felony, robbery, sexual assault/battery, strong arm burglary and strong arm robbery. Person offenses include assault, and battery. Property offenses include armed burglary, auto theft, burglary, grand theft, and grand theft

auto. Other felonies include felony drug offenses, carrying a concealed weapon, possession of a weapon and all other felonies. Other misdemeanors includes all other misdemeanors. Escape includes all youths detained for felony escape charges. Court orders include capiases, warrants, custody orders, pick up orders and any other court order to take into custody. Abscond includes all youths detained for absconding from a commitment program, which is not an offense charge but meets criteria for secure detention. VOCC includes detentions for violations of community control orders which have been submitted by case managers.

**Male Youths Detained by Offense and Race**  
**August 23, 1993 Secure Detention**

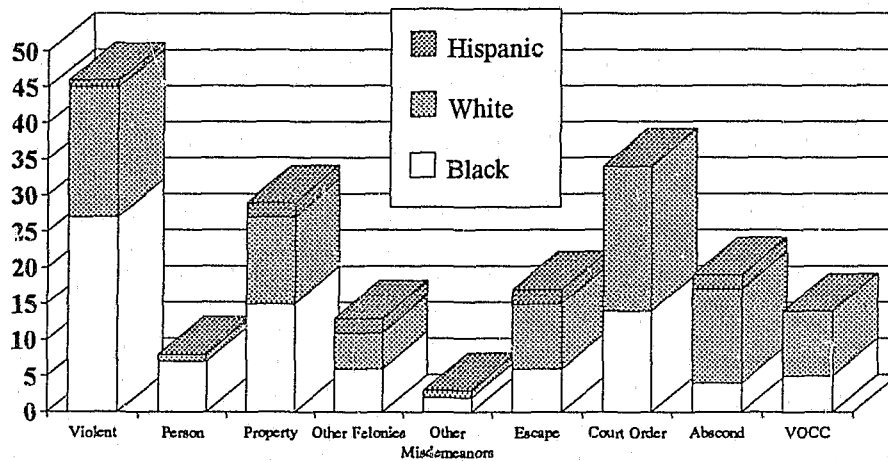


**Males by Race**

	Black Male	White Male	Hispanic Male	Other Male	Total	% of Total
Violent	261	89	20	2	372	31.1%
Person	26	6	3		35	2.9%
Property	224	133	33	1	391	32.6%
Other Felonies	106	32	4	2	144	12.0%
Other Misdemeanors	4	6	2		12	1.0%
Escape	32	27	3		62	5.2%
Court Order	60	42	9	2	113	9.4%
Abscond	24	17	2		43	3.6%
VOCC	6	17	3		26	2.2%
<b>Total</b>	<b>743</b>	<b>369</b>	<b>79</b>	<b>7</b>	<b>1198</b>	<b>100.0%</b>

Thirteen of the males did not have specific offense data reported.

**Female Youths Detained by Offense and Race  
August 23, 1993 Secure Detention**



**Females by Race**

	Black Female	White Female	Hispanic Female	Other Female	Total	% of Total
Violent	27	18	1		46	25.1%
Person	7	1			8	4.4%
Property	15	12	2		29	15.8%
Other Felonies	6	5	2		13	7.1%
Other Misdemeanors	2	1			3	1.6%
Escape	6	9	2		17	9.3%
Court Order	14	20			34	18.6%
Abscond	4	13	2		19	10.4%
VOCC	5	9			14	7.7%
<b>Total</b>	<b>86</b>	<b>88</b>	<b>9</b>	<b>0</b>	<b>183</b>	<b>100.0%</b>

### *Number of Current Charges*

When a youth is arrested, it is not unusual that the youth is charged with more than one offense. The following table represents the reported number of charges for the current detention.

Number of Current Charges	# of Youths	% of Total
0	19	1.4%
1	678	50.6%
2	315	23.5%
3	144	10.7%
4	84	6.3%
5	38	2.8%
6-10	47	3.5%
11-15	7	0.5%
16+	9	0.7%
Total	1,341	100.0%

Seventeen of the youths did not have recorded current charges. All youths who were being detained for contempt of court did not have current charges.

### *Number of Previous Detentions*

The following tables represent the number of previous detentions of youths. This factor is not considered in the risk assessment instrument.

Number of Previous Detentions	# of Youths	% of Total
0	436	31.6%
1	247	17.9%
2	230	16.7%
3	146	10.6%
4	101	7.3%
5	59	4.3%
6-10	134	9.7%
11-15	20	1.4%
16+	7	0.5%
Total	1,380	100.0%

Since these previous detentions were only for delinquency offenses for non-contempt admissions, the eighteen youths who were detained on contempt orders were not included.

### *New Law Violations*

The following table represents the number of youths currently in detention for offenses which were committed while they were on commitment status. This includes youths who were committed to non-residential as well as residential programs.

District	Center	Contempt	Yes	No	Total
1	Escambia		18	41	59
2	Bay			33	33
2	Leon		6	23	29
3	Alachua		13	51	64
4	Duval	8	22	91	121
5	Pinellas		9	73	82
5	Pasco		5	26	31
6	Hillsborough	1	34	108	143
6	Manatee	1	3	31	35
7	Orlando		32	63	95
7	Seminole	6	1	25	32
7	Brevard		20	19	39
8	S.W. Florida	1	8	59	68
9	Palm Beach		16	50	66
10	Broward		11	65	76
11	Dade		31	141	172
12	Volusia		14	43	57
13	Marion		21	59	80
14	Polk		26	51	77
15	St. Lucie		11	28	39
	<b>Total</b>	<b>17</b>	<b>301</b>	<b>1,080</b>	<b>1,398</b>

### *Returned to Secure Detention*

The following table represents those youths who were returned to secure detention from home detention or non-secure detention.

Yes	32	2.3%
No	1,366	97.7%
<b>Total</b>	<b>1,398</b>	<b>100.0%</b>