

150959



# **RAPE IN ARKANSAS 1993**

NCJRS

NOV 7 1994

ACQUISITIONS

**Arkansas Crime Information Center**

*Arkansas Crime Information Center*

**David Eberdt**

Director

**Charles Pruitt**

Deputy Director

**Larry Cockrell**

Special Services Manager

**Gary Vanderslice**

System Support Manager

*ACIC Supervisory Board*

**Jack Lassiter, Chairman**

Arkansas Bar Association

**Jack Gilleen, Vice Chairman**

Office of the Governor

**Sheriff David Baker**

Arkansas Sheriff's Association

**Paul Bosson**

Prosecuting Attorney's Association

**Victoria Fewell**

Attorney General's Office

**Cary Gaines**

Association of Arkansas Counties

**J.D. Gingerich**

Arkansas Supreme Court

**Colonel Tommy Goodwin**

Arkansas State Police

**David Guntharp**

Department of Correction

**Representative James Jordan**

General Assembly

**Captain Mike Mashburn**

Municipal Police Association

**Chief Paul Rivaldo**

Chiefs of Police Association

**J.R. Thomas**

Citizen-at-large

*Uniform Crime Reporting Staff*

**Lynn Bulloch**

UCR Supervisor

**Anita Jacobsen**

Quality Control, Data Input

**Julie Collier**

Distribution

**Berea Stennis**

DP Section, Data Input

## Introduction

*Rape In Arkansas* is an annual publication. Data in this report comes from the state Uniform Crime Reporting program and a special supplement that allows collection of additional information on each rape and attempted rape. It should be understood that only those incidents that are reported to law enforcement are contained in this publication.

150959

**U.S. Department of Justice  
National Institute of Justice**

This document has been reproduced exactly as received from the person or organization originating it. Points of view or opinions stated in this document are those of the authors and do not necessarily represent the official position or policies of the National Institute of Justice.

Permission to reproduce this ~~copyrighted~~ material has been granted by

Arkansas Crime Information Center/

BIS/US Dept. of Justice

to the National Criminal Justice Reference Service (NCJRS).

Further reproduction outside of the NCJRS system requires permission of the ~~copyright~~ owner.

All funding of this publication was made possible through cooperative agreement number 92-BJ-CX-K003 from the Bureau of Justice Statistics. Points of view or opinions expressed in this document do not necessarily represent the official position of the U.S. Department of Justice or the Bureau of Justice Statistics.

A Special Services Report

# **RAPE IN ARKANSAS 1993**

June, 1994

**Arkansas Crime Information Center**

One Capitol Mall  
Little Rock, AR 72201  
501/682-2222  
FAX 501/682-7444

## **Acknowledgement**

We thank all the law enforcement agencies in the state who participated in the Arkansas Uniform Crime Reporting Program during 1993. Without their support and cooperation, this publication and the resulting overview of crime would not be possible.

## **Dedication**

We are aware that numerous rapes occur that are not reported to law enforcement. This report is dedicated to rape victims who had the courage to report these offenses, and to all law enforcement officers endeavoring to uphold the laws and serve the people of Arkansas.

## Definitions of Rape

The definition of rape in Arkansas, according to Arkansas Code 5-14-103 and as amended by Act 935 is:

A person commits rape if he engages in sexual intercourse or deviate sexual activity with another person:

- A.
  - (1). *by forcible compulsion; or*
  - (2). *who is incapable of consent because he is physically helpless; or*
  - (3). *who is less than fourteen (14) years of age. It is an affirmative defense to prosecution under this Section that the actor was not more than two (2) years older than the victim; or*
  - (4). *who is not his spouse, less than sixteen (16) years of age and incapable of consent because of mental defect or mental incapacity.*
- B. *Rape is a class Y felony.*

**The definition of forcible rape in the Uniform Crime Reporting (UCR) Program is:**

*Forcible rape is the carnal knowledge of a female forcibly and against her will. Assaults to commit forcible rape are also included; however, statutory rape (without force) is not counted in this category.*

There is a wide disparity between these two definitions. **This report utilizes the Uniform Crime Reporting definition of rape.** The report includes all data collected, with the cooperation of law enforcement agencies from their offense reports, as reported to the Arkansas Crime Information Center in the UCR Program.

Throughout this report, except where noted, rape and attempted rape are combined for statistical purposes.

## Rape in Arkansas 1993

There were 1,026 rapes and attempted rapes in Arkansas reported through the Uniform Crime Reporting Program. Of these, 911 were rapes and 115 were attempted rapes reported by law enforcement agencies. This is a 4% decrease from 1992, but is still 32% higher than five years ago and 48% higher than in 1982.

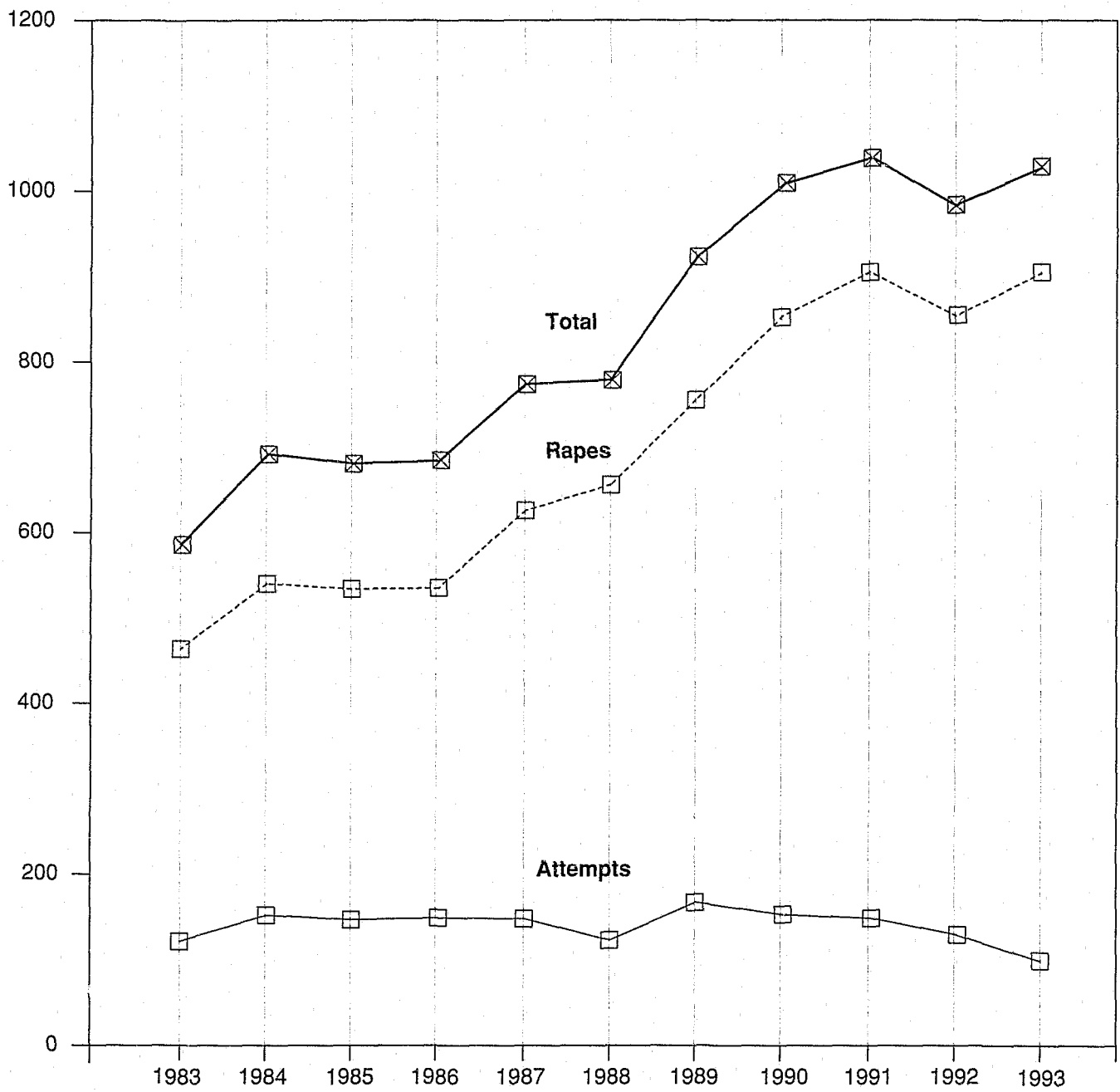
### Rape and Attempted Rape

Rape/Attempted Rape	Number	Percent Distribution
Rape	911	88.8
Attempted Rape	115	11.2
<b>Total</b>	<b>1,026</b>	<b>100</b>

### Trend

Year	Number of Offenses	Percent Change (Over Previous Year)	Rate Per 100,000	Percent Cleared
1988	779	+ 0.6	32.5	62.9
1989	922	+18.4	38.5	61.2
1990	1,009	+ 9.4	43.1	57.2
1991	1,052	+ 4.3	44.8	56.5
1992	988	- 6.0	41.9	58.9
<b>1993</b>	<b>1,026</b>	<b>+ 3.8</b>	<b>42.8</b>	<b>61.0</b>

# Comparison of Rapes and Attempted Rapes 1983 through 1993



## Rape by Time of Day

When time of day was known, almost half of all rapes (42%) occurred during the 6 hour period, between 10:00 p.m. and 4:00 a.m. The most common two hour period was from midnight to 2:00 a.m.

Only 9% of the rapes occurred during the 6 hour period between 6:00 a.m. and noon. The least likely two hour period was from 10:00 a.m. until noon.

Time of Day	Number	Percent Distribution
A.M. 12:01 - 2	141	13.8
2:01 - 4	104	10.1
4:01 - 6	53	5.2
6:01 - 8	30	2.9
8:01 - 10	28	2.7
10:01 - Noon	14	1.4
P.M. 12:01 - 2	64	6.2
2:01 - 4	62	6.0
4:01 - 6	61	6.0
6:01 - 8	72	7.0
8:01 - 10	90	8.8
10:01 -Midnight	100	9.8
Unknown	207	20.1

## Rape by Day of Week

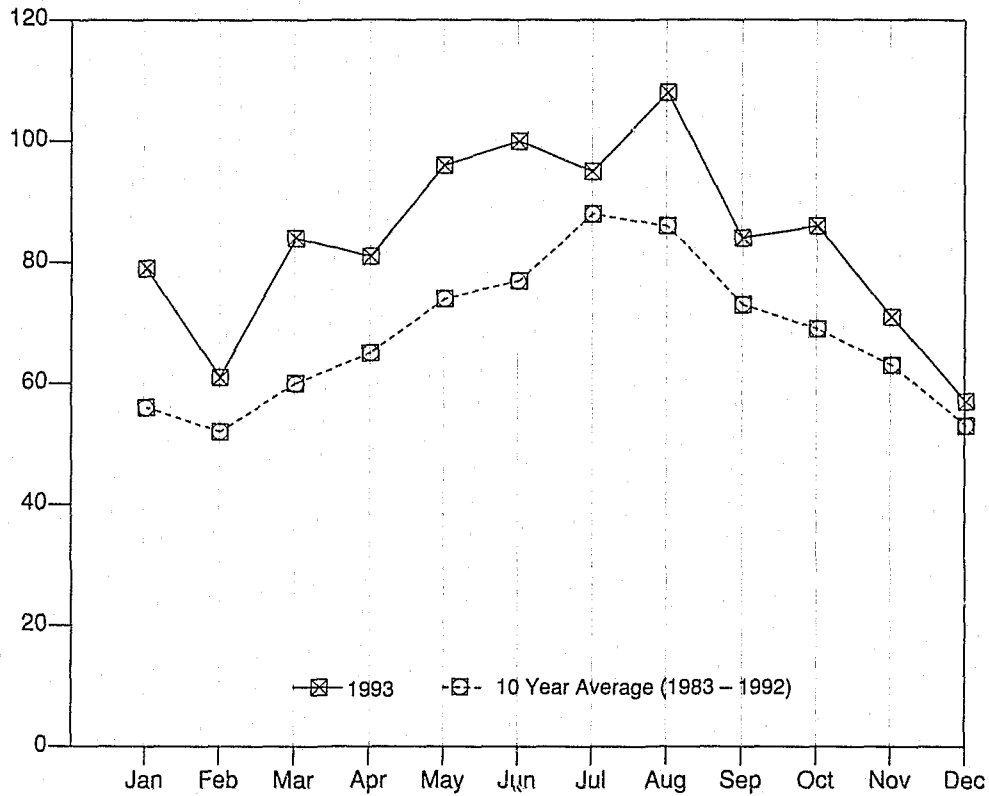
Where day of the week was known, 38% of the rapes were committed on Saturday or Sunday. For the first time since 1986 there were more rapes committed on Sunday than on Friday.

Day of Rape	Number	Percent Distribution
Sunday	153	14.9
Monday	100	9.7
Tuesday	114	11.1
Wednesday	119	11.6
Thursday	106	10.3
Friday	136	13.3
Saturday	193	18.8
Unknown	105	10.2

## Rapes by Month

(1993 compared to a ten year average – 1983 to 1992)

In 1993, more rapes occurred in August than any other month. From 1983 through 1992, the ten year average was highest for July and August.



Month	Number	Percent Distribution
January	79	7.7
February	61	5.9
March	84	8.2
April	81	7.9
May	96	9.4
June	100	9.7
July	95	9.3
August	108	10.5
September	84	8.2
October	86	8.4
November	71	6.9
December	57	5.6
Unknown	24	2.3
<b>Total</b>	<b>1,026</b>	<b>100</b>

## Victims of Rape

There were 12% more white victims of rape than black victims in 1993 than in 1992, and 46% more than five years ago. The number of black victims has increased 15% in the last five years.

The age distribution for victims has remained relatively constant over the past five years. Forty-four percent were younger than eighteen years old and two of every three victims were younger than 25. Two victims were less than a year old and the oldest victim was 93.

More rapes occurred in victims of age twelve through fifteen than in any other age range. Before 1993 the highest number of victims had always been among fourteen to seventeen year olds.

Victim Characteristics	Number	Percent Distribution
Race		
White	625	60.9
Black	397	38.7
Unknown	4	.4
Age		
5 & Under	37	3.7
6 - 9	74	7.2
10 - 13	145	14.2
14 - 17	195	19.1
18 - 20	116	11.3
21 - 24	99	9.5
25 - 29	118	11.3
30 - 34	105	10.3
35 - 39	44	4.3
40 - 49	49	4.8
50 - 59	15	1.5
60 & Over	29	2.8
<b>Total</b>	<b>1,026</b>	<b>100</b>

## Weapons Used to Exert Force Upon Victim

An external weapon (other than hands, fists, verbal threats) was used in only 15% of the rapes compared to 20% in 1992.

Weapon Used	Number	Percent Distribution
Firearm	74	7.2
Knife/Sharp Instrument	64	6.2
Club/Blunt Instrument	12	1.2
Verbal threats, fists, etc.	871	84.9
Unknown	5	0.5

## Victim-Offender Race Relationship

The first race listed is the race of the *victim*, and the second race is that of the *offender(s)*. For example: *white/black* means that the victim was white and the offender was black (1 or more). For offenses in which race is known, 83% of the rapes were between members of the same race.

Victim/Offender(s) Race	Number	Percent Distribution
White/White	464	45.2
Black/Black	377	36.7
Other/Other	1	0.1
Total Intraracial Rapes (same race)	842	82.0
White/Black	149	14.5
Black/White	14	1.4
White/Other	2	0.2
Black/Other	1	0.1
Other/White	2	0.2
Other/Black	1	0.1
White/White & Black*	3	0.3
Black/White & Black*	1	0.1
Total Interracial Rapes (different races)	173	16.9
White/Unknown	7	0.7
Black/Unknown	4	0.4
Total Unknown Rapes	12	1.1
<b>Total Rapes</b>	<b>1,026</b>	<b>100</b>

*\*Rapes involving victims and offenders of different races are counted as interracial.*

## Relationship of Offender to Victim

Almost three fourths of all rapes were committed by persons known to the victim.

Relationship	Number	Percent Distribution
Known to victim	550	53.6
Unknown to victim	284	27.7
Family member	192	18.7
Unknown	0	0

## Rapes Involving Family Members

Where the offender was known to the victim 26% of the rapes involved family members. Where the offender was a family member, 68 victims (35%) were age 10 or younger, and 120 victims (63%) were less than 14 years of age or younger.

Relationship	Number	Percent Distribution
Husband	18	9.3
Ex-Husband	8	4.1
Father	52	26.9
Stepfather	47	24.5
Grandfather	4	2.1
Stepgrandfather	2	1.1
Brother	11	5.7
Half Brother	3	1.6
Stepbrother	5	2.6
Uncle	26	13.5
Great Uncle	1	0.6
Cousin	8	4.1
Brother-in-law	6	3.1
Son	1	0.6
<b>Total</b>	<b>192</b>	<b>100</b>

## Location of Actual Rapes and Attempted Rapes

In 1993, 44% of all rapes occurred in the victim's residence and more than two-thirds of all rapes occurred in either the victim's, suspect's or another residence.

Location of Rape	Number	Percent Distribution
Victim's residence	449	43.9
Suspect's residence	162	15.9
Other residences	97	9.5
Automobiles	70	6.8
Public outdoor areas (streets, parks, etc.)	128	12.5
Fields, vacant lots, wooded areas, etc.	49	4.8
Motels/Hotels	36	3.5
Bar/Lounge	1	0.1
Place of Employment	6	0.5
School/playground	5	0.4
All other locations	5	0.4
Unknown	18	1.7

## Rape Reporting Time Lapse

Where time lapse was known 43% of the rapes were reported to law enforcement agencies within four hours of the commission of the offense. This has remained approximately the same since 1991. Before 1991, 50% to 60% of the reports were made to law enforcement within four hours.

In 11% of the offenses, the time lapse was unknown or could not be used because more than one rape occurred over a time period of a month or more.

Hours Reporting Time	Number	Percent Distribution
Less than 1	198	19.3
1 - 4	192	18.7
4 + - 8	84	8.2
8 + - 12	65	6.3
12 + - 24	131	12.8
More than 24	242	23.6
Unknown	114	11.1

## Number of Offenders Per Rape

There were two or more offenders in only 12% of the rapes or attempted rapes.

Offender(s) Per Offense	Number	Percent Distribution
One	896	87.3
Two	82	8.0
Three	28	2.7
Four	14	1.4
More than four	3	0.3
Unknown	3	0.3

## Rape Offenders (Suspects)

The number of white offenders increased 12% compared to 1992 while the number of black offenders decreased slightly (-4%).

Age of Offender	White	Black	Total
10 - 15	35	47	82
16 - 20	93	145	239
21 - 25	100	117	217
26 - 30	73	92	165
31 - 35	81	93	174
36 - 40	45	45	90
41 - 45	34	24	58
46 - 50	13	7	20
51 - 60	12	5	17
61 and over	14	2	16
Unknown	33	98	143
<b>Total</b>	<b>533 (43.7%)</b>	<b>675 (55.3%)</b>	<b>1,221 (100%)</b>

There were thirteen offenders of unknown age or race included only in the total. These offenders are only 1% of the total.

## Medical Attention for Victims

Of the 911 victims of actual rape, 583 (64%) received medical attention. Where medical information is known on actual rape victims, 77% received medical attention.

Type of Rape	Medical Attention			
	Received Medical Attention	No Medical Attention	Unknown	Total
Actual	583 (56.8%)	172 (16.9%)	156 (15.2%)	911 (88.9%)
Attempt	15 (1.5%)	85 (8.1%)	15 (1.5%)	115 (11.1%)
<b>Total</b>	<b>598 (58.3%)</b>	<b>257 (25.0%)</b>	<b>171 (16.7%)</b>	<b>1,026 (100%)</b>

**1993**  
**Number of Rapes and Attempted Rapes**  
 \*(By Reporting Agency)

AGENCY	RAPES	ATTEMPTED	AGENCY	RAPES	ATTEMPTED
<b>ARKANSAS COUNTY</b>	<b>4</b>	<b>0</b>	<b>CRAIGHEAD COUNTY</b>	<b>31</b>	<b>2</b>
DeWitt	2	0	Sheriff	4	0
Stuttgart	2	0	Jonesboro	27	2
<b>ASHLEY COUNTY</b>	<b>9</b>	<b>0</b>	<b>CRAWFORD COUNTY</b>	<b>10</b>	<b>1</b>
Sheriff	7	0	Sheriff	7	1
Crossett	1	0	Alma	1	0
Hamburg	1	0	Van Buren	2	0
<b>BAXTER COUNTY</b>	<b>1</b>	<b>1</b>	<b>CRITTENDEN COUNTY</b>	<b>33</b>	<b>1</b>
Sheriff	0	1	Sheriff	9	1
Mountain Home	1	0	West Memphis	24	0
<b>BENTON COUNTY</b>	<b>26</b>	<b>0</b>	<b>CROSS COUNTY</b>	<b>3</b>	<b>0</b>
Sheriff	15	0	Sheriff	2	0
Rogers	9	0	Wynne	1	0
Siloam Springs	2	0			
<b>BOONE COUNTY</b>	<b>2</b>	<b>0</b>	<b>DALLAS COUNTY</b>	<b>4</b>	<b>0</b>
Sheriff	2	0	Fordyce	4	0
<b>BRADLEY COUNTY</b>	<b>1</b>	<b>0</b>	<b>DESHA COUNTY</b>	<b>5</b>	<b>1</b>
Warren	1	0	Sheriff	2	0
			Dumas	3	1
<b>CALHOUN COUNTY</b>	<b>1</b>	<b>1</b>	<b>DREW COUNTY</b>	<b>3</b>	<b>0</b>
Sheriff	1	1	Sheriff	1	0
			Monticello	2	0
<b>CARROLL COUNTY</b>	<b>3</b>	<b>1</b>	<b>FAULKNER COUNTY</b>	<b>10</b>	<b>0</b>
Sheriff	3	1	Sheriff	1	0
<b>CHICOT COUNTY</b>	<b>7</b>	<b>0</b>	Conway	8	0
Sheriff	3	0	UCA	1	0
Dermott	4	0			
<b>CLARK COUNTY</b>	<b>2</b>	<b>0</b>	<b>FRANKLIN COUNTY</b>	<b>1</b>	<b>1</b>
Sheriff	2	0	Ozark	1	1
<b>CLEBURNE COUNTY</b>	<b>1</b>	<b>0</b>	<b>FULTON COUNTY</b>	<b>1</b>	<b>0</b>
Heber Springs	1	0	Sheriff	1	0
<b>COLUMBIA COUNTY</b>	<b>4</b>	<b>2</b>	<b>GARLAND COUNTY</b>	<b>27</b>	<b>2</b>
Sheriff	3	2	Sheriff	4	0
Magnolia	1	0	Hot Springs	23	2
<b>CONWAY COUNTY</b>	<b>5</b>	<b>1</b>	<b>GRANT COUNTY</b>	<b>5</b>	<b>0</b>
Sheriff	3	1	Sheriff	5	0
Morrilton	2	0	<b>GREENE COUNTY</b>	<b>16</b>	<b>0</b>
			Sheriff	7	0
			Paragould	9	0

\*Counties not listed in the table above have reported no rape or attempt for the year of 1993.

**1993**  
**Number of Rapes and Attempted Rapes**

AGENCY	RAPES	ATTEMPTED	AGENCY	RAPES	ATTEMPTED
<b>HEMPSTEAD COUNTY</b>	<b>10</b>	<b>0</b>	<b>MARION COUNTY</b>	<b>2</b>	<b>0</b>
Sheriff	3	0	Sheriff	2	0
Hope	7	0			
<b>HOT SPRING COUNTY</b>	<b>10</b>	<b>0</b>	<b>MILLER COUNTY</b>	<b>22</b>	<b>4</b>
Sheriff	7	0	Sheriff	3	2
Malvern	3	0	Texarkana	19	2
<b>HOWARD COUNTY</b>	<b>1</b>	<b>0</b>	<b>MISSISSIPPI COUNTY</b>	<b>27</b>	<b>7</b>
Sheriff	1	0	Sheriff	9	1
			Blytheville	14	4
			Osceola	4	2
<b>INDEPENDENCE COUNTY</b>	<b>9</b>	<b>0</b>	<b>MONROE COUNTY</b>	<b>5</b>	<b>0</b>
Sheriff	9	0	Sheriff	4	0
			Brinkley	1	0
<b>IZARD COUNTY</b>	<b>2</b>	<b>0</b>	<b>MONTGOMERY COUNTY</b>	<b>4</b>	<b>0</b>
Sheriff	2	0	Sheriff	4	0
<b>JACKSON COUNTY</b>	<b>6</b>	<b>0</b>	<b>NEVADA COUNTY</b>	<b>1</b>	<b>0</b>
Sheriff	2	0	Sheriff	1	0
Newport	4	0			
<b>JEFFERSON COUNTY</b>	<b>58</b>	<b>11</b>	<b>OUACHITA COUNTY</b>	<b>9</b>	<b>2</b>
Sheriff	8	1	Sheriff	3	0
Pine Bluff	49	10	Camden	6	2
U of A Pine Bluff	1	0			
<b>JOHNSON COUNTY</b>	<b>7</b>	<b>1</b>	<b>PERRY COUNTY</b>	<b>1</b>	<b>0</b>
Sheriff	6	1	Sheriff	1	0
Clarksville	1	0			
<b>LAFAYETTE COUNTY</b>	<b>5</b>	<b>0</b>	<b>PHILLIPS COUNTY</b>	<b>3</b>	<b>0</b>
Sheriff	5	0	Sheriff	2	0
			West Helena	1	0
<b>LAWRENCE COUNTY</b>	<b>1</b>	<b>0</b>	<b>POINSETT COUNTY</b>	<b>6</b>	<b>0</b>
Walnut Ridge	1	0	Sheriff	5	0
			Trumann	1	0
<b>LEE COUNTY</b>	<b>2</b>	<b>2</b>	<b>POLK COUNTY</b>	<b>6</b>	<b>0</b>
Sheriff	0	2	Sheriff	3	0
Marianna	2	0	Mena	3	0
<b>LITTLE RIVER COUNTY</b>	<b>1</b>	<b>0</b>	<b>POPE COUNTY</b>	<b>10</b>	<b>2</b>
Sheriff	1	0	Sheriff	4	0
			Russellville	6	2
<b>LONOKE COUNTY</b>	<b>7</b>	<b>0</b>	<b>PRAIRIE COUNTY</b>	<b>3</b>	<b>0</b>
Sheriff	1	0	Sheriff	1	0
Cabot	3	0	Des Arc	2	0
Carlisle	2	0			
Lonoke	1	0			
<b>MADISON COUNTY</b>	<b>1</b>	<b>0</b>			
Sheriff	1	0			

**1993**  
**Number of Rapes and Attempted Rapes**

AGENCY	RAPES	ATTEMPTED	AGENCY	RAPES	ATTEMPTED
<b>PULASKI COUNTY</b>	<b>284</b>	<b>55</b>	<b>STONE COUNTY</b>	<b>1</b>	<b>0</b>
Sheriff	24	7	Sheriff	1	0
Jacksonville	16	1			
Little Rock	174	41	<b>UNION COUNTY</b>	<b>12</b>	<b>5</b>
Maumelle	2	0	Sheriff	5	1
North Little Rock	66	5	El Dorado	7	4
Sherwood	2	1			
<b>ST. FRANCIS COUNTY</b>	<b>18</b>	<b>1</b>	<b>VAN BUREN COUNTY</b>	<b>1</b>	<b>0</b>
Sheriff	7	1	Sheriff	1	0
Forrest City	11	0			
<b>SALINE COUNTY</b>	<b>31</b>	<b>3</b>	<b>WASHINGTON COUNTY</b>	<b>41</b>	<b>3</b>
Sheriff	20	2	Sheriff	3	0
Benton	11	1	Fayetteville	26	3
			Springdale	9	0
			U of A Fayetteville	3	0
<b>SEBASTIAN COUNTY</b>	<b>70</b>	<b>1</b>	<b>WHITE COUNTY</b>	<b>8</b>	<b>2</b>
Sheriff	3	0	Sheriff	3	1
Fort Smith	65	1	Searcy	5	1
Greenwood	2	0			
<b>SEVIER COUNTY</b>	<b>5</b>	<b>2</b>	<b>YELL COUNTY</b>	<b>4</b>	<b>0</b>
Sheriff	4	1	Danville	1	0
DeQueen	1	1	Dardanelle	3	0
<b>SHARP COUNTY</b>	<b>2</b>	<b>0</b>	<b>STATE TOTAL</b>	<b>911</b>	<b>115</b>
Sheriff	2	0			

# ACIC Agent Staff Areas

