

BIAS INCIDENTS

(RACIAL, RELIGIOUS, ETHNIC, AND
SEXUAL ORIENTATION)

3-15-95

MPI

151315



"Integrity. . .fairness. . .service"

ANNUAL REPORT 1993

Prepared by:

Operations Bureau, Planning & Budget Unit
Office of Policy Analysis & Development
Services, Technical Resource Group

151315

**U.S. Department of Justice
National Institute of Justice**

This document has been reproduced exactly as received from the person or organization originating it. Points of view or opinions stated in this document are those of the authors and do not necessarily represent the official position or policies of the National Institute of Justice.

Permission to reproduce this copyrighted material has been granted by

Baltimore County Police Dept.

to the National Criminal Justice Reference Service (NCJRS).

Further reproduction outside of the NCJRS system requires permission of the copyright owner.

TABLE OF CONTENTS

	NCJRS	<u>PAGE</u>
EXECUTIVE SUMMARY		ii
ILLUSTRATIONS	NOV 29 1994	

<u>Figures</u>	ACQUISITIONS	<u>Page</u>
1. Reported Bias Incidents, Volume by Year (1984 - 1993)		1
2. Reported Bias Incidents By Precinct (1990 - 1993)		2
3. Verified Bias Incidents (1990 - 1993)		3
4. Verified Bias Incidents By Precincts (1990 - 1993)		4
5. Unfounded/Inconclusive/Inconclusive Name Calling/ Verified/Reported Bias Incidents By Precinct (1993)		5
6. Verified Bias Incidents By Patrol Area (1992, 1993)		6
7. Reported and Verified Bias Incidents, By Month (January 1990 to December 1993)		7

<u>Tables</u>	<u>Page</u>
1. Reported Bias Incidents Trends (1984 - 1993)	8
2. Verified & Reported Bias Incidents (1984 - 1993)	8
3. Verified Bias Incidents By Precinct (1993)	9
4. Verified Incidents Victim Data	10
5. Verified Incidents Suspect Data	11
6. Gender of Suspects and Victims	12
7. Age of Suspects and Victims	12
8. Type of Criminal Activity	13
9. Type of Location	13

CONCLUSION	14
------------------	----

EXECUTIVE SUMMARY

There were 297 reported Bias Incidents (Racial, Religious, Ethnic, and Sexual Orientation) in Baltimore County during 1993. This represents a decrease of 1 incident (0.3%) from the 298 reported in 1992. This is the third straight year Baltimore County has experienced a decrease in reported incidents.

Increases in reported incidents occurred in Precincts 07 (15/+36.4%), 12 (58/+26.1%), 09 (27/+8%), and 11 (42/+2.4%). Decreases were experienced in Precincts 08 (9/-40%), 01 (31/-13.9%), 02 (30/-9.1%), 03 (52/-7.1%), and 06 (33/-5.7%).

The highest number of incidents were reported during the months of May (34), followed by November (33). September had the fewest reported incidents with 17.

Of the 297 bias incidents reported during 1993, 193 (65%) were verified, 37 (12.5%) were inconclusive, 57 (19.2%) were inconclusive name calling, and 10 (3.4%) were unfounded.

Of the 193 verified bias incidents, 153 (79.3%) were motivated by racial prejudice. Thirty-two (16.6%) incidents were motivated by religious bias. Three (1.6%) incidents were motivated by a difference in ethnic origin. Five (2.6%) were motivated by a difference in sexual orientation.

Verified bias incidents are broken down into criminal and non-criminal categories. Of the 193 verified incidents, 173 (89.6%) were classified as criminal and 20 (10.4%) as non-criminal.

Males were more likely to be victims of bias incidents than females, 116 and 73 respectively. Black males were most frequently victimized (58), followed by white males (53), black females (36), white females (34), Asian males (5), and Asian females (3).

REPORTED BIAS INCIDENTS

VOLUME BY YEAR

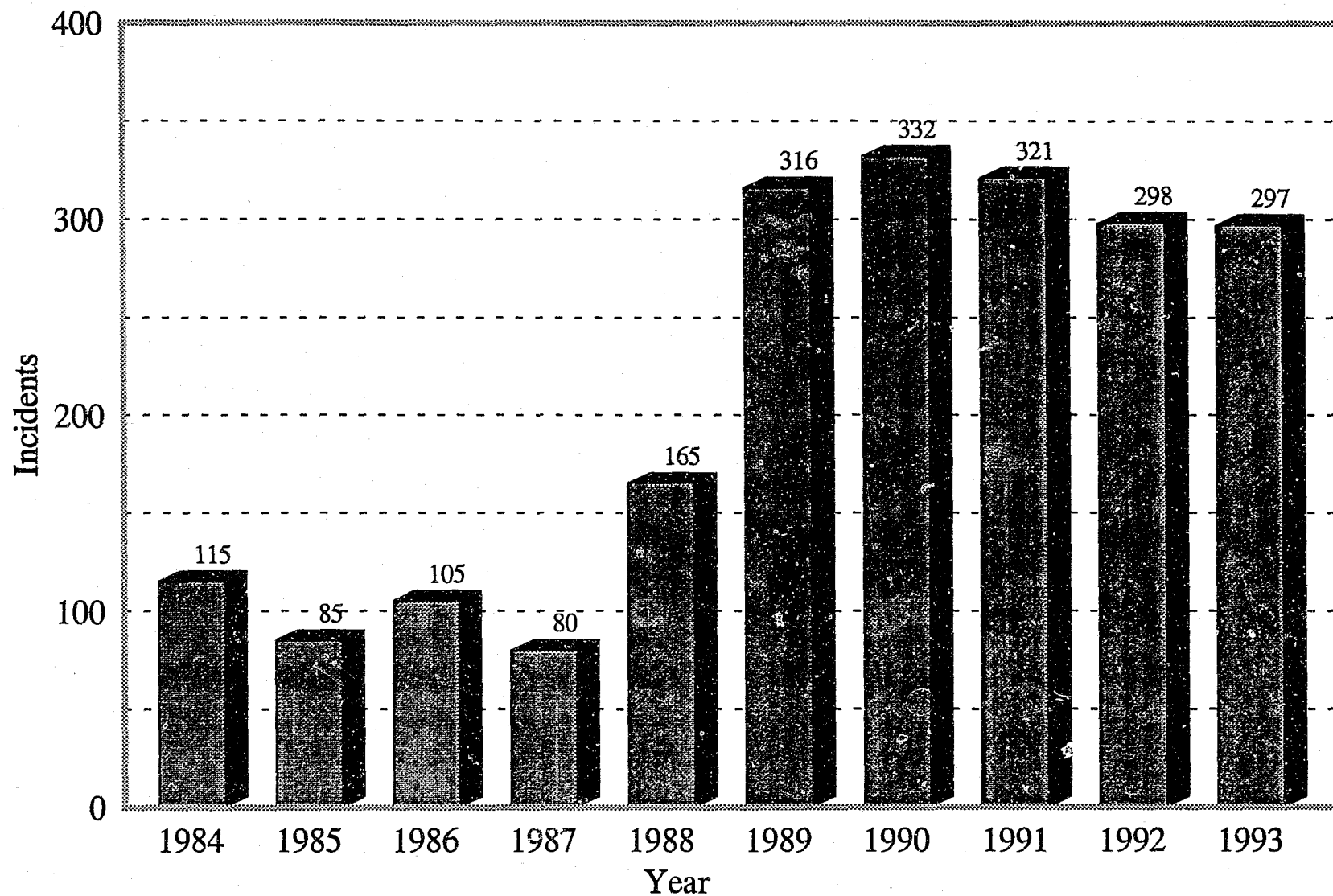


FIGURE 1

REPORTED BIAS INCIDENTS BY PRECINCT

1990, 1991, 1992, and 1993

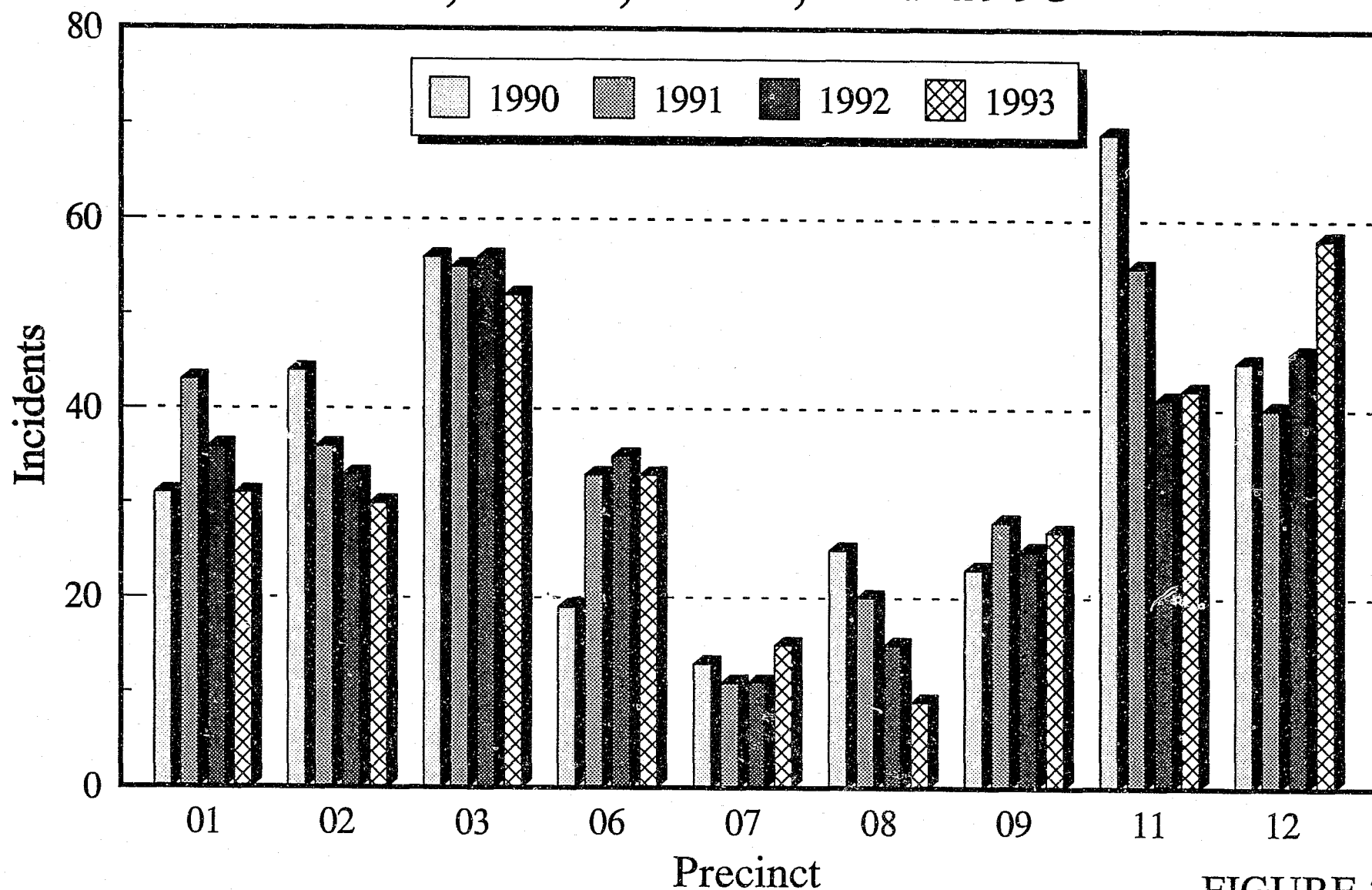
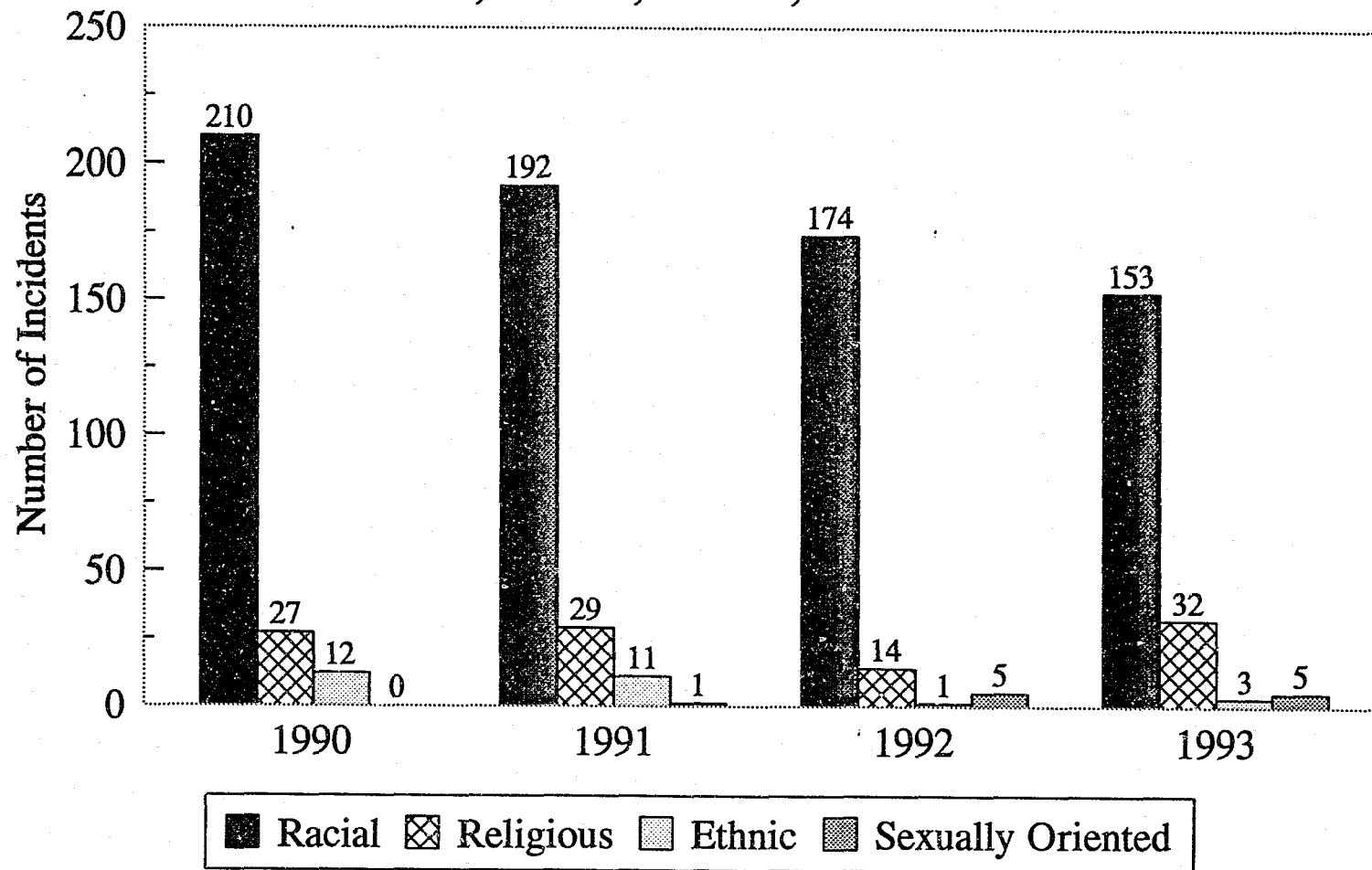


FIGURE 2

VERIFIED BIAS INCIDENTS

1990, 1991, 1992, and 1993



NOTE: During 1991, for the first time, incidents relating to sexual orientation were captured. Therefore no data is available for comparison to previous years.

FIGURE 3

VERIFIED BIAS INCIDENTS BY PRECINCT

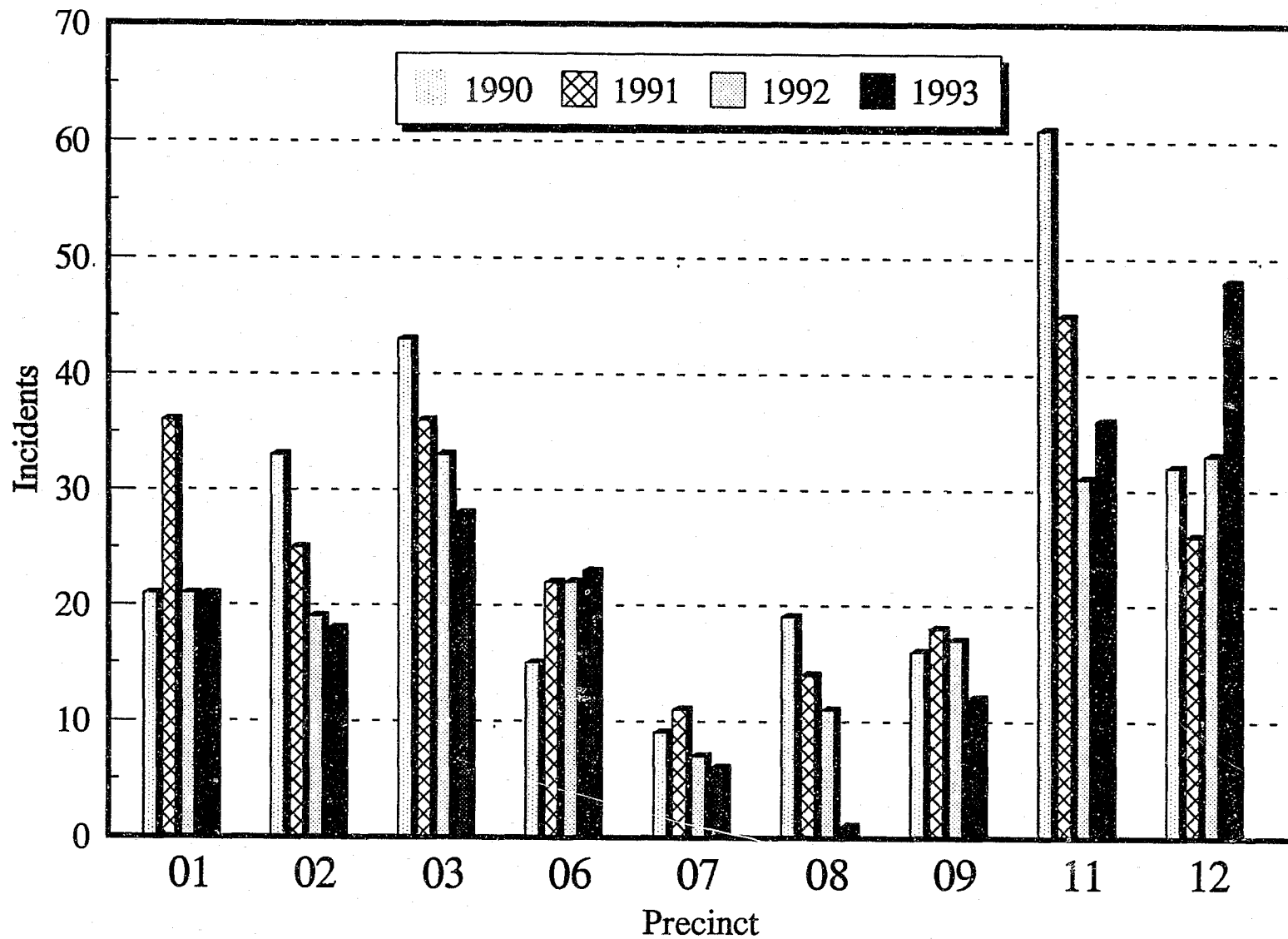


FIGURE 4

UNFOUNDED/INCONCLUSIVE/INCONCLUSIVE NAME CALLING/VERIFIED/REPORTED BIAS INCIDENTS BY PRECINCT (1993)

Incidents

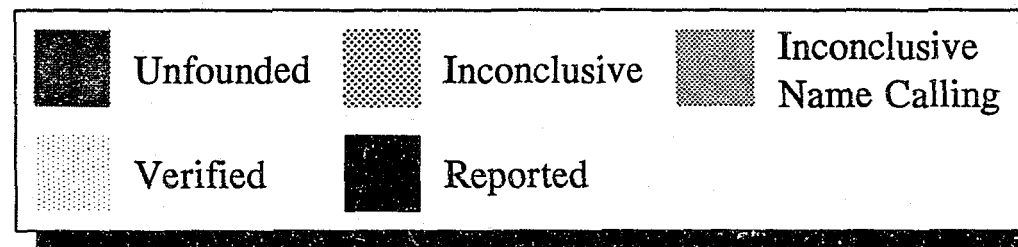
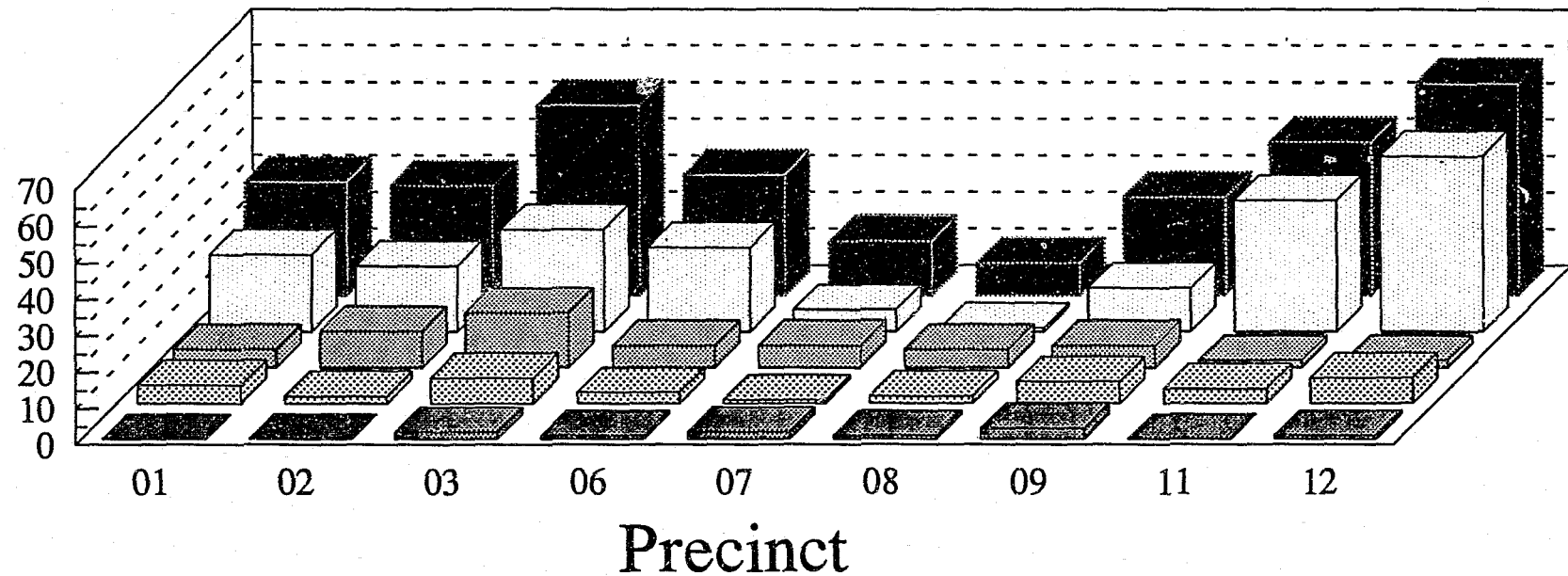


FIGURE 5

VERIFIED BIAS INCIDENTS BY PATROL AREA

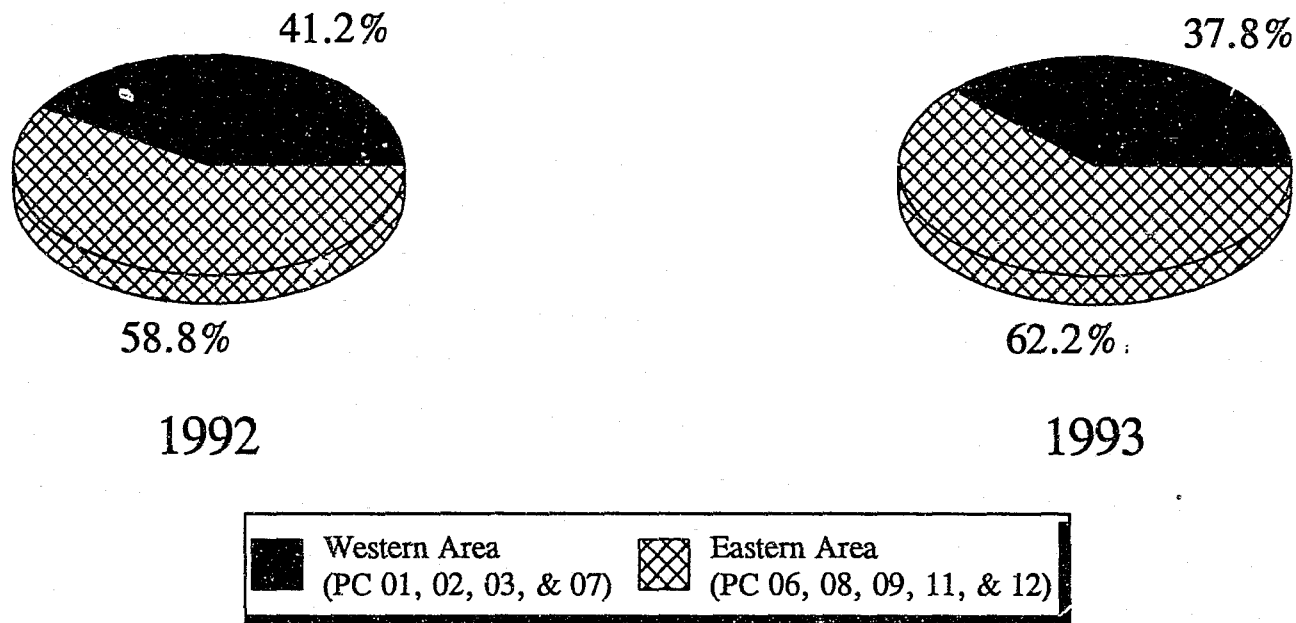


FIGURE 6

REPORTED AND VERIFIED BIAS INCIDENTS JANUARY 1990 TO DECEMBER 1993

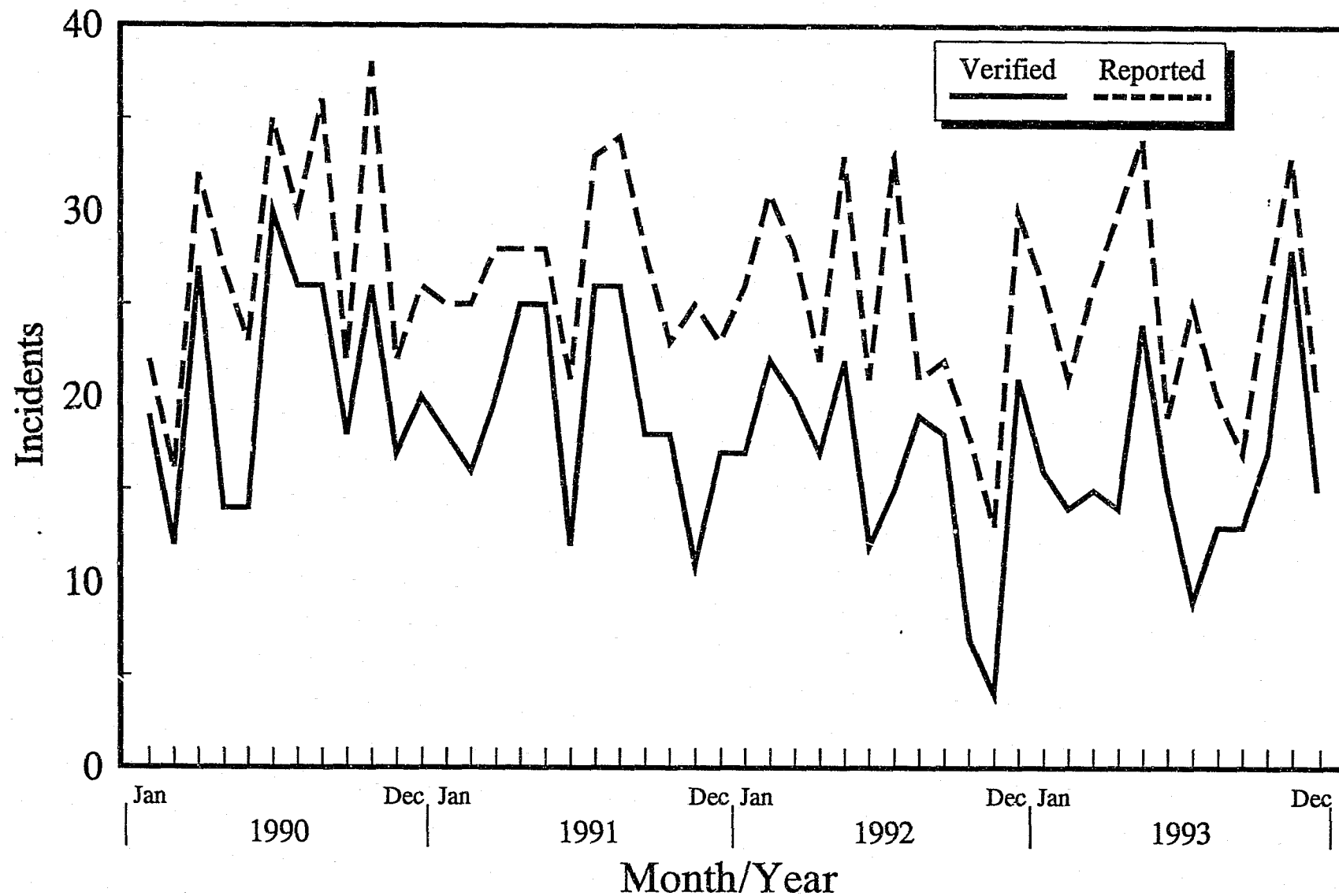


FIGURE 7

TABLE 1
REPORTED BIAS INCIDENTS TRENDS (1984 - 1993)

YEAR	REPORTED INCIDENTS	COMPARISON TO PREVIOUS YEARS NUMBER OF INCIDENTS	PERCENT CHANGE
1993	297	- 1	- .3%
1992	298	- 23	- 7.2
1991	321	- 11	- 3.3
1990	332	+ 16	+ 5.1
1989	316	+ 151	+ 91.5
1988	165	+ 85	+106.3
1987	80	- 25	- 23.8
1986	105	+ 20	+ 23.5
1985	85	- 30	- 26.1
1984	115	+ 33	+ 40.2

Table 2 should be viewed with caution because of the verification criteria changes that occurred in 1986 and 1989, and again in 1992.

TABLE 2
VERIFIED AND REPORTED BIAS INCIDENTS (1984 - 1993)

YEAR	NUMBER REPORTED	NUMBER VERIFIED	PERCENT VERIFIED
1993	297	194	65.3%
1992	298	194	65.1
1991	321	233	72.6
1990	332	249	75.0
1989	316	229	72.5
1988	165	96	58.2
1987	80	43	53.8
1986	105	58	55.2
1985	85	66	77.6
1984	115	76	66.1

The following table illustrates the distribution of verified bias incidents by precinct and by classification.

TABLE 3
VERIFIED BIAS INCIDENTS BY PRECINCT (1993)

PRECINCT	RACIAL	RELIGIOUS	ETHNIC	SEXUAL ORIENTATION	TOTAL
1	14	7	0	0	21
2	17	0	0	1	18
3	18	10	0	0	28
6	14	5	2	2	23
7	5	0	0	1	6
8	1	0	0	0	1
9	12	0	0	0	12
11	28	7	0	1	36
12	44	3	1	0	48
TOTAL	153 (79.3%)	32 (16.6%)	3 (1.6%)	5 (2.6%)	193

Table 4 illustrates the breakdown by race and age of victims of verified incidents.

TABLE 4
VERIFIED INCIDENTS VICTIM DATA

AGE GROUP	WHITE		WHITE/HISPANIC		BLACK		BLACK/HISPANIC		INDIAN		ASIAN		TOTAL
	MALE	FEMALE	MALE	FEMALE	MALE	FEMALE	MALE	FEMALE	MALE	FEMALE	MALE	FEMALE	
7-14	4	2	0	0	14	11	0	0	0	0	1	2	34
15-22	16	8	0	0	12	3	0	0	0	0	2	1	42
23-30	5	4	0	0	15	6	0	0	0	0	0	0	30
31-38	9	10	0	0	5	7	0	0	0	0	1	0	32
39-46	4	4	0	0	5	9	0	0	0	0	1	0	23
47-54	5	2	0	0	3	0	0	0	0	0	0	0	10
55-62	3	1	0	0	2	0	0	0	0	0	0	0	6
63 & UP	6	2	0	0	0	0	0	0	0	0	0	0	8
UNKNOWN	1	1	0	0	2	0	0	0	0	0	0	0	4
TOTALS	53 (28.0%)	34 (18.0%)	0 (0%)	0 (0%)	58 (30.7%)	36 (19.1%)	0 (0%)	0 (0%)	0 (0%)	0 (0%)	5 (2.7%)	3 (1.6%)	189

Table 5 illustrates the age and race breakdown of suspects. The most common age category for suspects in 1993 was 15 through 22 years of age.

TABLE 5
VERIFIED INCIDENTS SUSPECT DATA

AGE GROUP	UNK OR N/A	WHITE		WHITE/HISPANIC		BLACK		BLACK/HISPANIC		INDIAN		ASIAN		TOTAL
		MALE	FEMALE	MALE	FEMALE	MALE	FEMALE	MALE	FEMALE	MALE	FEMALE	MALE	FEMALE	
7-14	0	9	3	0	0	7	2	0	0	0	0	0	1	22
15-22	0	21	3	0	0	13	0	0	0	0	0	0	0	37
23-30	0	16	2	0	0	0	1	0	0	0	0	0	0	19
31-38	0	9	2	0	0	2	0	0	0	0	0	0	0	13
39-46	0	2	0	0	0	0	0	1	0	0	0	0	0	3
47-54	0	4	1	0	0	0	0	0	0	0	0	0	0	5
55-62	0	3	1	0	0	0	0	0	0	0	0	0	0	4
63 & UP	0	0	0	0	0	0	0	0	0	0	0	0	0	0
NOT KNOWN	99	23	4	0	0	12	0	0	0	0	0	0	0	138
TOTALS	99 (41.1%)	87 (36.1%)	16 (6.6%)	0 (0%)	0 (0%)	34 (14.1%)	3 (1.2%)	1 (.4%)	0 (0%)	0 (0%)	0 (0%)	0 (0%)	1 (.4%)	241

Table 6 compares the gender of victim and suspect for verified cases. Females were *much* less likely to be suspects than males and somewhat less likely to be victims.

TABLE 6
GENDER OF SUSPECTS AND VICTIMS

GENDER	SUSPECT	VICTIM
Male	122 (85.9%)	116 (61.4%)
Female	20 (14.1%)	73 (38.6%)

Table 7 illustrates the age of the suspects and victims for verified bias incidents. The largest age group for suspects and victims was 15-22 years of age, which has been consistent for the past seven years.

TABLE 7
AGE OF SUSPECTS AND VICTIMS

AGE GROUP	SUSPECT	VICTIM
Unknown	138 (57.3%)	4 (2.1%)
7-14	22 (9.1%)	34 (18.0%)
15-22	37 (15.4%)	42 (22.2%)
23-30	19 (7.9%)	30 (15.9%)
31-38	13 (5.4%)	32 (16.9%)
39-46	3 (1.2%)	23 (12.2%)
47-54	5 (2.1%)	10 (5.3%)
55-62	4 (1.7%)	6 (3.2%)
63 & Over	0 (0%)	8 (4.2%)
TOTAL	241	189

The 193 verified bias incidents in 1993 involved five crime categories and one non-criminal category. Table 8 lists the crimes and the number of incidents.

TABLE 8
TYPE OF CRIMINAL ACTIVITY

CATEGORY	NUMBER
Non-Criminal	20
Assault & Battery	41
Destruction of Property	83
Other	20
Harassment	9
Telephone Misuse	20
Bomb Threat	0

Table 9 provides a breakdown by type of location for reported and verified incidents in 1993.

TABLE 9
TYPE OF LOCATION

LOCATION	REPORTED	PERCENT OF ALL REPORTED	VERIFIED	PERCENT OF ALL VERIFIED
School	32	10.8	30	15.5
Religious Property	6	2.0	6	3.1
Home	97	32.7	60	31.1
Business	49	16.5	25	13.0
Street	67	22.6	44	22.8
Public Property	14	4.7	11	5.7
Cemetery	1	0.3	0	0.0
Other	31	10.4	17	8.8

CONCLUSION

During the year 1993, there were no significant trends noted in bias incidents reported in Baltimore County.

Incidents involving distribution of the newspaper "Racial Loyalty" were down by 18 (-75%) over the 24 incidents reported in 1992. It is believed that the arrest and incarceration of a local subject who is a key figure in "The Church of the Creator" was responsible for the decline.

Reported graffiti cases increased by 28 (50.9%) over the 55 cases reported in 1992. The increase was seen countywide. Public schools continue to be frequent targets.

The 32 school related incidents reflects an increase of 10 (45.5%) over 1992. It is thought that this increase is partially the result of increased awareness of bias incidents by school officials. The Police Department has been working closely with the Board of Education on bias incident policies, procedures, and awareness. As these efforts continue, the number of reported school related incidents can be expected to rise. Many bias incidents occurring in schools are not reported for a variety of reasons.

During 1993 the Religious and Ethnic Crimes Law (Article 27, Section 470A) was applied in only two cases.

Any inquiries or information requests relating to bias incidents can be made by contacting the Bias Incidents Coordinator in the Operations Bureau Planning and Budget Unit at 887-6728.