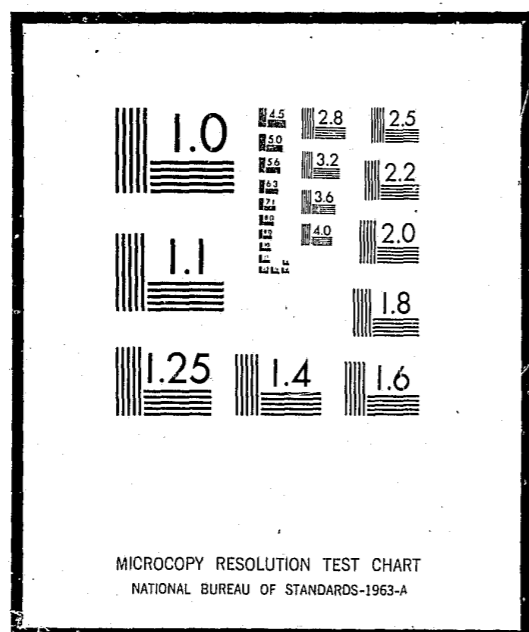


NCJRS

This microfiche was produced from documents received for inclusion in the NCJRS data base. Since NCJRS cannot exercise control over the physical condition of the documents submitted, the individual frame quality will vary. The resolution chart on this frame may be used to evaluate the document quality.



Microfilming procedures used to create this fiche comply with the standards set forth in 41CFR 101-11.504

Points of view or opinions stated in this document are those of the author(s) and do not represent the official position or policies of the U.S. Department of Justice.

U.S. DEPARTMENT OF JUSTICE
LAW ENFORCEMENT ASSISTANCE ADMINISTRATION
NATIONAL CRIMINAL JUSTICE REFERENCE SERVICE
WASHINGTON, D.C. 20531

CAPITAL PUNISHMENT 1971-72

National Prisoner Statistics Bulletin No. SD-NPS-CP-1

December 1974

NCJ-015274

Date filmed

9/12/75

PREFACE

This report provides information on the number of prisoners under sentence of death during calendar years 1971 and 1972 in State correctional institutions, there having been no such inmates in Federal prisons in either year. Inmates are categorized by age, sex, race, offense, and time spent on death row. The report gives information on the number of new death sentences meted out and the number of sentences disposed of by means other than execution, and it includes data charting annual trends in executions since the beginning of 1930. A brief summary of the legal status of capital punishment in the various States also is provided.

The present report is one of the series on Capital Punishment published periodically as part of the National Prisoner Statistics (NPS) program. The NPS was instituted to collect and interpret data on inmates of State and Federal correctional institutions, using a voluntary reporting system. It was initiated by the Bureau of the Census in 1926 and was transferred to the Bureau of Prisons in 1950 and to the Law Enforcement Assistance Administration (LEAA) in 1971. Since 1972, the Bureau of the Census, acting as collecting agent for LEAA, has had responsibility for compiling the statistical data required for the program. In addition to Capital Punishment, the NPS includes two other serial publications: Prisoners in State and Federal Institutions and State Prisoners: Admissions and Releases.

Two changes in format differentiate the present report from previous publications in the series. First, because differences in legal procedures and terminology among the States tended to limit comparability of the data on disposition of prisoners, the various types of transactions used to effect changes in sentences of death, including commutations, resentencings, new trials, and reversals of judgment, have been combined into a single category. Second, condemned persons who have escaped, been returned to the courts, or been transferred to such noncorrectional institutions as mental hospitals are now included in the count of inmates under sentence of death. Previously, such persons were dropped from the count of those awaiting execution, and were picked up again as "other admissions" if and when they were returned to prison. As in previous years, inmates under stay of execution or involved in the appeal process are included in the count.

TABLE OF CONTENTS

	Page
I. Preface.....	iii
II. General findings.....	1
Prisoners under sentence of death on December 31.....	1
Death sentences imposed.....	4
Dispositions from the death penalty.....	4
Executions.....	5
Legal status of the death penalty.....	6
III. Methodology.....	8
IV. Charts.....	9
1. Prisoners under sentence of death: December 31, 1971	10
2. Prisoners under sentence of death: December 31, 1972	11
3. Prisoners executed under civil authority in the United States: 1930-72.....	12
V. Tables.....	13
1. Prisoners executed under civil authority in the United States, by race, offense, and year: 1930-72..	14
2. Prisoners executed under civil authority in the United States, by State and year: 1930-72.....	16
3. Prisoners executed under civil authority in the United States, by offense, race, and State: 1930-72.	18
4. Movement of prisoners under sentence of death: 1961-72.....	20
5. Movement of prisoners under sentence of death, by offense and race: calendar year 1971.....	21
5a. Movement of prisoners under sentence of death, by offense and race: calendar year 1972.....	22
6. Movement of prisoners under sentence of death, by race and State: calendar year 1971.....	23
6a. Movement of prisoners under sentence of death, by race and State: calendar year 1972.....	25
7. Characteristics of prisoners received from court under sentence of death, by State: calendar year 1971.....	27
7a. Characteristics of prisoners received from court under sentence of death, by State: calendar year 1972.....	29

	Page
8. Dispositions from sentence of death, by offense, State, and method of disposition: calendar year 1971.....	31
8a. Dispositions from sentence of death, by offense, State, and method of disposition: calendar year 1972.....	33
9. Characteristics of prisoners disposed of by means other than execution, by State: calendar year 1971.	35
9a. Characteristics of prisoners disposed of by means other than execution, by State: calendar year 1972.	37
10. Characteristics of prisoners under sentence of death in the United States, by State: December 31, 1971.....	39
10a. Characteristics of prisoners under sentence of death in the United States, by State: December 31, 1972.....	41
11. Prisoners under sentence of death, by age and State: December 31, 1971.....	43
11a. Prisoners under sentence of death, by age and State: December 31, 1972.....	45
12. Elapsed time for prisoners under sentence of death, by State: December 31, 1971.....	47
12a. Elapsed time for prisoners under sentence of death, by State: December 31, 1972.....	49
13. Prisoners under sentence of death, by State, offense, and race; December 31, 1971.....	51
13a. Prisoners under sentence of death, by State, offense, and race: December 31, 1972.....	53
14. Women executed under civil authority in the United States, by year, offense, race, and State: 1930-72.....	55
15. Federal executions in the United States, by year, offense, race, and State: 1930-72.....	56
16. Legal status of the death penalty in the United States: 1846-1972.....	57

GENERAL FINDINGS

Between December 31, 1970, and December 31, 1971, the number of prisoners on death row rose slightly, a continuation of the annual upward trend that had been evident since at least the end of 1961. During the next 12 months, however, the prison population under sentence of death declined by 47 percent. The reversal of that trend and the unprecedented magnitude of the decline stemmed chiefly from widespread changes in the status of sentences following the U.S. Supreme Court finding in the case of Furman v. Georgia, June 29, 1972, that the death penalty, as imposed up to that time, amounted to "cruel and unusual punishment" in violation of the Eighth Amendment to the Constitution of the United States.

Prisoners under sentence of death on December 31

Although the number of prisoners under sentence of death decreased from 620 at the end of 1971 to 330 at the end of 1972, the latter figure was larger than that for December 31 of any year before 1965. The relatively large number of prisoners on death row at the end of 1972 can be attributed to an accumulation of inmates under sentence of death resulting from the gradual decrease in executions, beginning early in the 1960's, and to their complete cessation after June 1967. Moreover, during the 6-month interval between the Furman decision and the end of 1972, no State abolished the death penalty, and courts in some States continued to impose death sentences.

The geographical distribution of death row inmates at the end of both 1971 and 1972 revealed that such inmates were most heavily concentrated in the South. As shown in the following tabulation, in each of the 2 years both the South and the West had a higher proportion of total inmates under sentence of death than their share of the general civilian population.

	Percent of general civilian population	Percent of total death row population 1971	Percent of total death row population 1972
Northeast	24	7	13
North Central	28	16	13
South	31	54	44
West	17	23	30

The marked reduction between the end of 1971 and the end of 1972 in the South's share of the total death row population can be attributed mainly to the large number of commutations granted in Florida during 1972.

At the beginning of 1971, 31 States and the District of Columbia held inmates under sentence of death; 27 States and the District of Columbia held such prisoners at the end of 1972. During the 24-month period, the number of death row inmates increased in seven jurisdictions--Arkansas, District of Columbia, Kansas, Kentucky, Maryland, Massachusetts, and New York.¹ The figure remained the same in Connecticut, Delaware, and Indiana, and declined in 24 States, including six--Nebraska, Nevada, New Hampshire, New Jersey, Ohio, and Tennessee--in which it reached zero. California had the largest number of inmates under sentence of death at the end of both years--105 in 1971 and 81 in 1972--and accounted for 17 percent of the national total at the end of the first year and 25 percent at the end of the second. California was followed in 1971 by Florida (84) and Ohio (50) and in 1972 by Louisiana (31) and Illinois (28).

Prisoners under sentence of death in 1971 and 1972 were typically young, although ages ranged from 15 into the 70's. In both years, the median age of death row inmates was 30 years. Inmates in the Northeast were slightly older than those in the other three regions, where divergence from the national median was minimal. Among the States, however, there was substantial deviation, the median age ranging from 23 years to 45 years at the end of 1971 and from 21 years to 40 years at the end of 1972. A total of 14 prisoners in 1971 and 7 in 1972 were under age 20.

Males comprised 99 percent of the total number of inmates under sentence of death in both years, thus predominating overwhelmingly as they have in the past. A total of six women were under sentence of death at the end of 1971, five in California and one in Ohio. The number at the end of 1972 was four, three in California and one in Georgia. All had been sentenced for murder.

¹ Kansas and New York had no prisoners under sentence of death at the beginning of 1971.

Blacks historically have made up a proportion of the total death row population in excess of their representation in the national population. At the end of 1971, they accounted for 52 percent of the total; at the end of 1972, 51 percent. In both years, whites constituted the remainder, except for two American Indians, one Oriental, and one whose race was unreported in 1971 and one Oriental in 1972. On a regional basis, the proportion of blacks among prisoners under sentence of death was higher in the South than in the other regions, as noted in the tabulation below.

	Blacks as a percent of the general civilian population	Blacks as a percent of the total death row population	
		1971	1972
Northeast	10	48	53
North Central	8	47	47
South	19	66	68
West	5	25	24

When the share of blacks in the total population of each region was considered, however, black overrepresentation on death row was shown to be less pronounced in the South than in the other three regions.

Murder traditionally has accounted for a preponderance of death penalties handed down in the United States. In 1971, 538 prisoners, or 87 percent of those on death row, had been convicted of murder. Convicted murderers numbered 297 at yearend 1972 and constituted 90 percent of all inmates under sentence of death. Rape was the second most common offense charged to prisoners awaiting execution. All inmates under sentence of death for rape--72 at the end of 1971 and 26 at the end of 1972--had been sentenced in jurisdictions in the South. Blacks comprised 89 percent of those awaiting execution for rape at the end of 1971 and 85 percent at the end of 1972. Ten prisoners at the end of 1971 and seven at the end of 1972 had been convicted of crimes other than murder and rape. These offenses included kidnaping, robbery, and assault perpetrated by a prisoner sentenced to a life term.

The length of time condemned prisoners spend on death row has shown a marked increase since the early 1960's. At the end of 1961, the median

time was 14 months; it was 40 months at the end of 1971 and 37 months at the end of 1972. Regionally, the Northeast recorded the highest median in both 1971 and 1972, 61 months and 52 months, respectively; the lowest in each year was in the West, 28 months and 31 months, respectively. Among all inmates under sentence of death at the end of 1972, the longest period of time spent on death row was 18 years and 11 months.

Death sentences imposed

During 1971 and 1972, a total of 179 persons received sentences of death--104 during 1971 and 75 during 1972. The 1971 figure represented an 18 percent decrease from the total of 127 imposed during 1970, which was the highest number recorded since 1961. The even larger reduction during 1972, amounting to 28 percent, indicated the reluctance of courts in most States to impose the death penalty in the wake of the Supreme Court decision in the Furman case. Thus, courts in only five States invoked the death penalty during the last 6 months of 1972.

Of the total death sentences meted out during 1971, 96 were for murder, 7 for rape, and 1 for kidnaping; during 1972, there were 66 for murder, 8 for rape, and 1 for assault by a life prisoner. In both years, blacks constituted a majority of those receiving death sentences, accounting for 51 percent in 1971 and 60 percent in 1972. As a group, persons newly committed to death row were young. In 1971, 57 percent were under age 26; the corresponding proportion in 1972 was 45 percent. At the other extreme, in 1971, only nine persons over age 40 received death sentences; in 1972, the number was three.

Dispositions from the death penalty

The status of 467 death row inmates was changed during 1971-72, 102 in 1971 and 365 in 1972. The figure for 1972 was three times larger than that in any previous year. Of those whose status was changed, nine inmates (six in 1971 and three in 1972) died of natural causes; the remainder had their status changed as the result of such actions as commutations, new trials, resentencings, and reversals of judgment. In both years, changes in status were distributed by type of crime in more or less the same proportion in which each type of crime prevailed among the total death

row population. Similarly, distribution by race was fairly proportionate to that of the racial composition of the population under sentence of death. In each year, approximately half of those whose death sentences were put aside had spent at least 4 years on death row. The longest wait among those whose status was changed in 1971 was 15 years and 5 months; among those in 1972, it was 13 years and 9 months.

Executions

The year 1972 was the fifth in a row during which no one was executed in the United States, the last execution having taken place in Colorado on June 2, 1967. During the period 1930-67, 3,859 persons were executed under civil jurisdiction--3,826 by State authorities and 33 by the Federal Government.² Of the total executed, 3,334, or 86 percent, had been convicted of murder; 455, or 12 percent, had been sentenced for rape; and the remainder had been found guilty of such offenses as robbery, kidnaping, burglary, sabotage, aggravated assault, and espionage.

Some three-fifths of the executions in the United States during 1930-67 were carried out in the South, as shown below.

Total	100
Federal	1
State	99
Northeast	16
North Central	10
South	60
West	13

The largest single number of executions (366) took place in Georgia, followed by New York (329). Three other States--California, North Carolina, and Texas--each carried out more than 200 executions during the 1930-67 period.

² During this period, the U.S. Army (including the Air Force) carried out 160 executions--148 in 1942-50; 3 each in 1954, 1955, and 1957; and 1 each in 1958, 1959, and 1961. Of the total, 106 were for murder (including 21 involving rape), 53 were for rape, and 1 for desertion. The U.S. Navy has executed no one since 1849.

Over the 38-year period, blacks accounted for 54 percent of those executed, whites for 45 percent, and members of other races for 1 percent. The proportion of executions involving blacks varied significantly from year to year. Blacks made up some 72 percent of all those executed in the South during 1930-67; corresponding proportions for the Northeast, North Central Region, and the West were 29 percent, 36 percent, and 16 percent, respectively. The imbalance in the proportion of executions involving blacks was most pronounced with respect to rape. Whereas blacks accounted for 49 percent of those executed for murder during 1930-67 (and 44 percent of those executed for "other" offenses), they made up 89 percent of those put to death for rape. In 9 of the years during the 1930-67 period, blacks constituted all of those executed for rape, and only in 3 years did the proportion fall below 80 percent. With the exception of seven executions in Missouri, all executions of blacks for rape took place in the South.

Of the total of 42 executions involving members of races other than white and black, 19 concerned American Indians, 13, Filipinos; 8, Chinese; and 2, Japanese. Except for two American Indians executed for rape, all had been convicted of murder. During 1930-67, 32 women were executed, including 2 who were put to death by Federal civil authorities.

Legal status of the death penalty

At the beginning of 1971, capital punishment was illegal in 9 States-- Alaska, Hawaii, Iowa, Maine, Michigan, Minnesota, Oregon, West Virginia, and Wisconsin--whereas 41 States, the District of Columbia, and the Federal Government had statutory authority to impose the death penalty for certain crimes or in specified circumstances which varied among the jurisdictions. All of these latter jurisdictions had authority to impose capital punishment for murder, although in five States--New Mexico, New York, North Dakota, Rhode Island, and Vermont--the penalty was applicable only in those homicides meeting certain restrictive criteria.

During the first part of 1972, California and New Jersey abolished the death penalty, although California restored it later in the year. After the Furman decision, most States began the process of reviewing

their death penalty statutes in order to eliminate the arbitrary sentencing provisions that the Supreme Court had ruled unconstitutional. Florida's law, the first passed after the Furman decision, went into effect on December 8, 1972. The constitutionality of new laws and of revisions in old, as well as existing statutes under which prisoners awaiting execution were sentenced, will be decided by the courts as the appeal process takes place.

METHODOLOGY

This report is based upon information for 1971 and 1972 provided by correctional authorities in the 50 States and the District of Columbia in response to a mail canvass and upon historical data appearing in previous reports in the Capital Punishment series.

In the mail canvass, each jurisdiction was asked to list all prisoners under sentence of death during 1971 and 1972, to provide information on such characteristics as sex, race, date of birth, offense, for which sentenced, and date of first sentence to death, and to account for changes in inmates' status from the time they entered the jurisdiction's correctional system until death or other relief from capital sentence. Included in the count were condemned persons in States granting principal jurisdiction to the county of conviction if such persons had at any time entered a State correctional facility. Excluded were prisoners under sentence of death who remained within local correctional systems pending exhaustion of the appeals process or who for other reasons had not ever been committed to prison at the time of the canvass. If a capital sentence was imposed for more than one offense, only the most serious was tallied, although secondary offenses were footnoted. Multiple counts of the same offense were treated as a single offense. Incomplete data, as well as information inconsistent with earlier years, were augmented or clarified through telephone followups to the mail canvass. The final response rate was 100 percent.

CHARTS

Chart 1. Prisoners under sentence of death, December 31, 1971

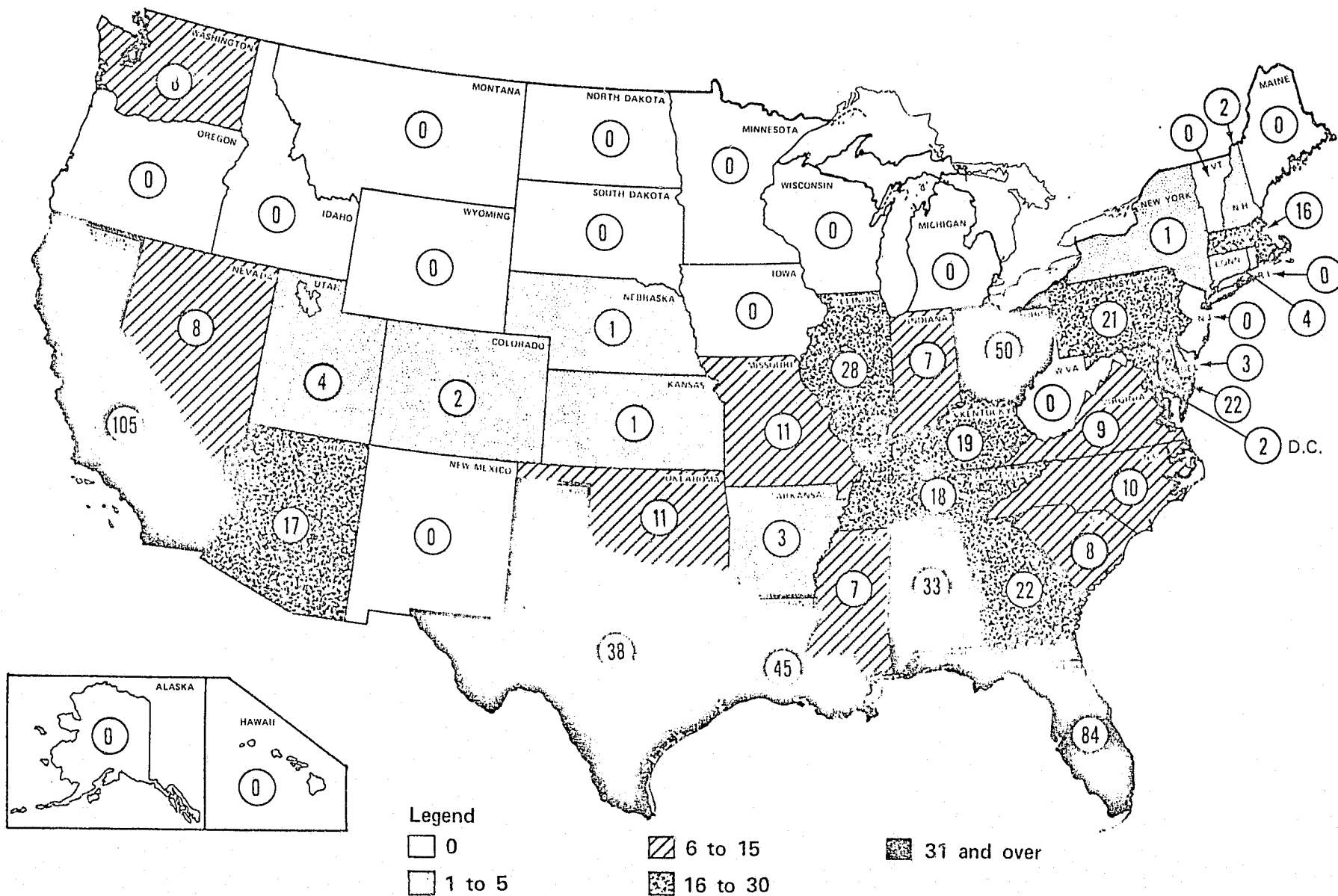


Chart 2. Prisoners under sentence of death, December 31, 1972

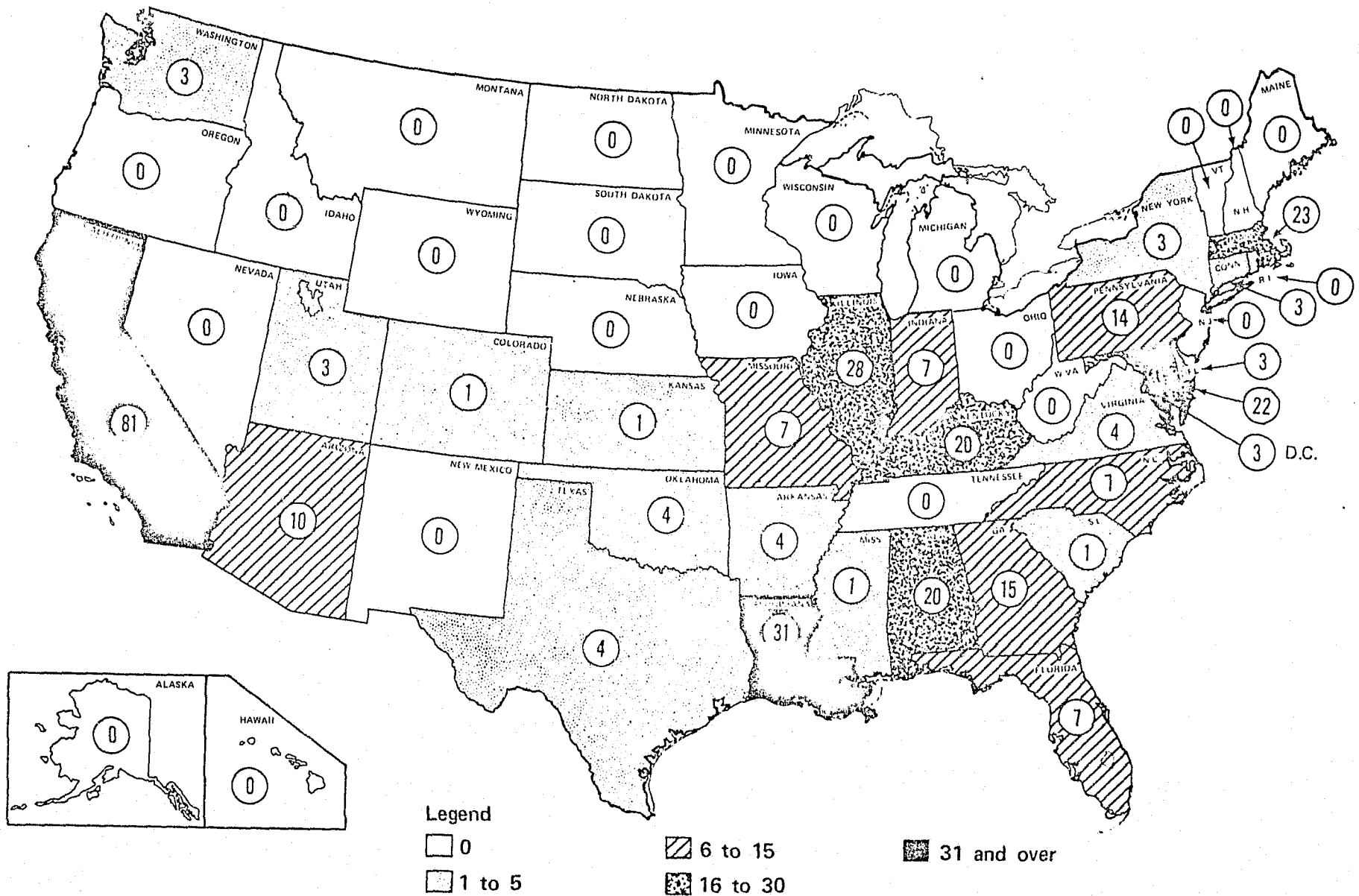
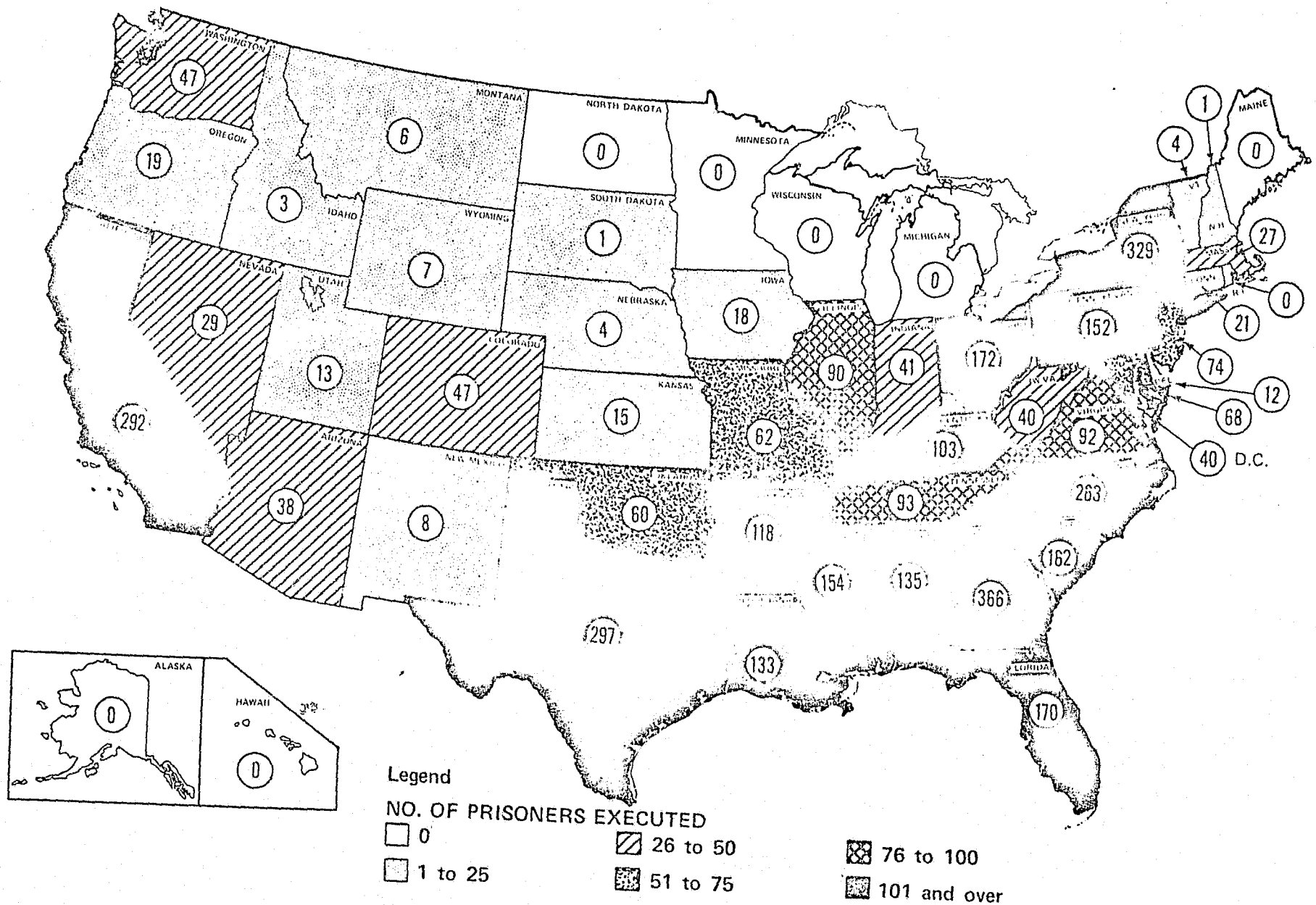


Chart 3. Prisoners executed under civil authority in the United States: 1930-72



TABLES

Table 1. Prisoners executed under civil authority in the United States, by race, offense and year: 1930-72

(For years 1930-59 excludes Alaska and Hawaii except for three Federal executions in Alaska: 1939, 1948, 1950)

Year	All offenses				Murder				Rape				Other offenses ¹		
	Total	White	Black	Other	Total	White	Black	Other	Total	White	Black	Other	Total	White	Black
All years	3,859	1,751	2,066	42	3,334	1,664	1,630	40	455	48	405	2	70	39	31
Percent	100.0	45.4	53.5	1.1	100.0	49.9	48.9	1.2	100.0	10.6	89.0	0.4	100.0	55.7	44.3
1972	0	0	0	0	0	0	0	0	0	0	0	0	0	0	0
1971	0	0	0	0	0	0	0	0	0	0	0	0	0	0	0
1970	0	0	0	0	0	0	0	0	0	0	0	0	0	0	0
1969	0	0	0	0	0	0	0	0	0	0	0	0	0	0	0
1968	0	0	0	0	0	0	0	0	0	0	0	0	0	0	0
1967	2	1	1	0	2	1	1	0	0	0	0	0	0	0	0
1966	1	1	0	0	1	1	0	0	0	0	0	0	0	0	0
1965	7	6	1	0	7	6	1	0	0	0	0	0	0	0	0
1964	15	8	7	0	9	5	4	0	6	3	3	0	0	0	0
1963	21	13	8	0	18	12	6	0	2	0	2	0	1	1	0
1962	47	28	19	0	41	26	15	0	4	2	2	0	2	0	2
1961	42	20	22	0	33	18	15	0	8	1	7	0	1	1	0
1960	56	21	35	0	44	18	26	0	8	0	8	0	4	3	1
1959	49	16	33	0	41	15	26	0	8	1	7	0	0	0	0
1958	49	20	28	1	41	20	20	1	7	0	7	0	1	0	1
1957	65	34	31	0	54	32	22	0	10	2	8	0	1	0	1
1956	65	21	43	1	52	20	31	1	12	0	12	0	1	1	0
1955	76	44	32	0	65	41	24	0	7	1	6	0	4	2	2
1954	81	38	42	1	71	37	33	1	9	1	8	0	1	0	1
1953	62	30	31	1	51	25	25	1	7	1	6	0	4	4	0
1952	83	36	47	0	71	35	36	0	12	1	11	0	0	0	0
1951	105	57	47	1	87	55	31	1	17	2	15	0	1	0	1
1950	82	40	42	0	68	36	32	0	13	4	9	0	1	0	1

Table 1. Prisoners executed under civil authority in the United States, by race, offense and year: 1930-72--continued

(For years 1930-59 excludes Alaska and Hawaii except for three Federal executions in Alaska: 1939, 1948, 1950)

Year	All offenses				Murder				Rape				Other offenses ¹		
	Total	White	Black	Other	Total	White	Black	Other	Total	White	Black	Other	Total	White	Black
1949	119	50	67	2	107	49	56	2	10	0	10	0	2	1	1
1948	119	35	82	2	95	32	61	2	22	1	21	0	2	2	0
1947	153	42	111	0	129	40	89	0	23	2	21	0	1	0	1
1946	131	46	84	1	107	45	61	1	22	0	22	0	2	1	1
1945	117	41	75	1	90	37	52	1	26	4	22	0	1	0	1
1944	120	47	70	3	96	45	48	3	24	2	22	0	0	0	0
1943	131	54	74	3	118	54	63	1	13	0	11	2	0	0	0
1942	147	67	80	0	115	57	58	0	25	4	21	0	7	6	1
1941	123	59	63	1	102	55	46	1	20	4	16	0	1	0	1
1940	124	49	75	0	105	44	61	0	15	2	13	0	4	3	1
1939	160	80	77	3	145	79	63	3	12	0	12	0	3	1	2
1938	190	96	92	2	154	89	63	2	25	1	24	0	11	6	5
1937	147	69	74	4	133	67	62	4	13	2	11	0	1	0	1
1936	195	92	101	2	181	86	93	2	10	2	8	0	4	4	0
1935	199	119	77	3	184	115	66	3	13	2	11	0	2	2	0
1934	168	65	102	1	154	64	89	1	14	1	13	0	0	0	0
1933	160	77	81	2	151	75	74	2	7	1	6	0	2	1	1
1932	140	62	75	3	128	62	63	3	10	0	10	0	2	0	2
1931	153	77	72	4	137	76	57	4	15	1	14	0	1	0	1
1930	155	90	65	0	147	90	57	0	6	0	6	0	2	0	2

¹ Includes 25 armed robbery, 20 kidnaping, 11 burglary, 6 sabotage, 6 aggravated assault, and 2 espionage.

Table 2. Prisoners executed under civil authority in the United States, by State and year: 1930-72

Region and State	Total	1972	1971	1970	1965-69	1960-64	1955-59	1950-54	1945-49	1940-44	1935-39	1930-34
United States	3,859	0	0	0	10	181	304	413	639	645	891	776
Federal	33	0	0	0	0	1	3	6	6	7	9	1
Total State	3,826	0	0	0	10	180	301	407	633	638	882	775
Northeast	608	0	0	0	0	17	51	56	74	110	145	155
Maine	xx	xx	xx	xx	xx	xx	xx	xx	xx	xx	xx	xx
New Hampshire	1	0	0	0	0	0	0	0	0	0	1	0
Vermont	4	0	0	0	0	0	0	2	1	0	0	1
Massachusetts	27	0	0	0	0	0	0	0	3	6	11	7
Rhode Island	0	0	0	0	0	0	0	0	0	0	0	0
Connecticut	21	0	0	0	0	1	5	0	5	5	3	2
New York	329	0	0	0	0	10	25	27	36	78	73	80
New Jersey	74	xx	0	0	0	3	9	8	8	6	16	24
Pennsylvania	152	0	0	0	0	3	12	19	21	15	41	41
North Central	403	0	0	0	5	16	16	42	64	42	113	105
Ohio	172	0	0	0	0	7	12	20	36	15	39	43
Indiana	41	0	0	0	0	1	0	2	5	2	20	11
Illinois	90	0	0	0	0	2	1	8	5	13	27	34
Michigan	0	xx	xx	xx	xx	0	0	0	0	0	0	0
Wisconsin	xx	xx	xx	xx	xx	xx	xx	xx	xx	xx	xx	xx
Minnesota	xx	xx	xx	xx	xx	xx	xx	xx	xx	xx	xx	xx
Iowa	18	xx	xx	xx	xx	2	0	1	4	3	7	1
Missouri	62	0	0	0	1	3	2	5	9	6	20	16
North Dakota	0	0	0	0	0	0	0	0	0	0	0	0
South Dakota	1	0	0	0	0	0	0	0	1	0	xx	xx
Nebraska	4	0	0	0	0	0	1	1	2	0	0	0
Kansas	15	0	0	0	4	1	0	5	2	3	0	xx

Table 2. Prisoners executed under civil authority in the United States, by State and year: 1930-72--continued

Region and State	Total	1972	1971	1970	1965-69	1960-64	1955-59	1950-54	1945-49	1940-44	1935-39	1930-34
South	2,306	0	0	0	2	102	183	244	419	413	524	419
Delaware	12	0	0	0	0	0	0	0	2	2	6	2
Maryland	68	0	0	0	0	1	4	2	19	26	10	6
District of Columbia	40	0	0	0	0	0	1	3	13	3	5	15
Virginia	92	0	0	0	0	6	8	15	22	13	20	8
West Virginia	40	xx	xx	xx	xx	0	4	5	9	2	10	10
North Carolina	263	0	0	0	0	1	5	14	62	50	80	51
South Carolina	162	0	0	0	0	8	10	16	29	32	30	37
Georgia	366	0	0	0	0	14	34	51	72	58	73	64
Florida	170	0	0	0	0	12	27	22	27	38	29	15
Kentucky	103	0	0	0	0	1	8	8	15	19	34	18
Tennessee	93	0	0	0	0	1	7	1	18	19	31	16
Alabama	135	0	0	0	1	4	6	14	21	29	41	19
Mississippi	154	0	0	0	0	10	21	15	26	34	22	26
Arkansas	118	0	0	0	0	9	7	11	18	20	33	20
Louisiana	133	0	0	0	0	1	13	14	23	24	19	39
Oklahoma	60	0	0	0	1	5	3	4	7	6	9	25
Texas	297	0	0	0	0	29	25	49	36	38	72	48
West	509	0	0	0	3	45	51	65	76	73	100	96
Montana	6	0	0	0	0	0	0	0	0	1	4	1
Idaho	3	0	0	0	0	0	1	2	0	0	0	0
Wyoming	7	0	0	0	1	0	0	0	0	2	1	3
Colorado	47	0	0	0	1	5	2	1	7	6	9	16
New Mexico	8	0	0	0	0	1	1	2	2	0	0	2
Arizona	38	0	0	0	0	4	6	2	3	6	10	7
Utah	13	0	0	0	0	1	4	2	1	3	2	0
Nevada	29	0	0	0	0	2	0	9	5	5	3	5
Washington	47	0	0	0	0	2	2	4	7	9	13	10
Oregon	19	xx	xx	xx	xx	1	0	4	6	6	1	1
California	292	xx	0	0	1	29	35	39	45	35	57	51
Alaska ¹	xx	xx	xx	xx	xx	xx	0	0	0	0	0	0
Hawaii ¹	xx	xx	xx	xx	xx	xx	0	0	0	0	0	0

NOTE: xx signifies that the death penalty was illegal.

¹ Alaska and Hawaii are included in series beginning January 1, 1960, except for three Federal executions in Alaska.

Table 3. Prisoners executed under civil authority in the United States, by offense, race, and State: 1930-72

Region and State	All offenses				Murder				Rape				Other offenses							
	Total	White	Black	Other	Total	White	Black	Other	Total	White	Black	Other	Total		Armed robbery		Kid-	Other ¹		
													White	Black	White	Black	napping	White	Black	
United States	3,859	1,751	2,066	42	3,334	1,664	1,630	40	455	48	405	2	70	39	31	6	19	20	13	12
Percent	100.0				86.4				11.8				1.8							
Federal	33	28	3	2	15	10	3	2	2	2	0	0	16	16	0	2	0	6	8	0
Total State	3,826	1,723	2,063	40	3,319	1,654	1,627	38	453	46	405	2	54	23	31	4	19	14	5	12
Northeast	608	424	177	7	606	422	177	7	0	0	0	0	2	2	0	0	0	2	0	0
Maine	xx	xx	xx	xx	xx	xx	xx	xx	xx	xx	xx	xx	xx	xx	xx	xx	xx	xx	xx	xx
New Hampshire	1	1	0	0	1	1	0	0	0	0	0	0	0	0	0	0	0	0	0	0
Vermont	4	4	0	0	4	4	0	0	0	0	0	0	0	0	0	0	0	0	0	0
Massachusetts	27	25	2	0	27	25	2	0	0	0	0	0	0	0	0	0	0	0	0	0
Rhode Island	0	0	0	0	0	0	0	0	0	0	0	0	0	0	0	0	0	0	0	0
Connecticut	21	18	3	0	21	18	3	0	0	0	0	0	0	0	0	0	0	0	0	0
New York	329	234	90	5	327	232	90	5	0	0	0	0	2	2	0	0	0	2	0	0
New Jersey	74	47	25	2	74	47	25	2	0	0	0	0	0	0	0	0	0	0	0	0
Pennsylvania	152	95	57	0	152	95	57	0	0	0	0	0	0	0	0	0	0	0	0	0
North Central	403	257	144	2	393	254	137	2	10	3	7	0	0	0	0	0	0	0	0	0
Ohio	172	104	67	1	172	104	67	1	0	0	0	0	0	0	0	0	0	0	0	0
Indiana	41	31	10	0	41	31	10	0	0	0	0	0	0	0	0	0	0	0	0	0
Illinois	90	59	31	0	90	59	31	0	0	0	0	0	0	0	0	0	0	0	0	0
Michigan ²	0	0	0	0	0	0	0	0	0	0	0	0	0	0	0	0	0	0	0	0
Wisconsin ²	0	0	0	0	0	0	0	0	0	0	0	0	0	0	0	0	0	0	0	0
Minnesota	xx	xx	xx	xx	xx	xx	xx	xx	xx	xx	xx	xx	xx	xx	xx	xx	xx	xx	xx	xx
Iowa ²	18	18	0	0	18	18	0	0	0	0	0	0	0	0	0	0	0	0	0	0
Missouri	62	29	33	0	52	26	26	0	10	3	7	0	0	0	0	0	0	0	0	0
North Dakota	0	0	0	0	0	0	0	0	0	0	0	0	0	0	0	0	0	0	0	0
South Dakota ²	1	1	0	0	1	1	0	0	0	0	0	0	0	0	0	0	0	0	0	0
Nebraska	4	3	0	1	4	3	0	1	0	0	0	0	0	0	0	0	0	0	0	0
Kansas ²	15	12	3	0	15	12	3	0	0	0	0	0	0	0	0	0	0	0	0	0

Table 3. Prisoners executed under civil authority in the United States, by offense, race, and State: 1930-72—continued

Region and State	All offenses				Murder				Rape				Other offenses							
	Total		Other		Total		Other		Total		Other		Total		Armed robbery		Kid-napping		Other ¹	
	White	Black	White	Black	White	Black	White	Black	White	Black	White	Black	White	Black	White	Black	White	Black	White	Black
South	2,306	637	1,659	10	1,824	585	1,231	8	443	43	398	2	39	9	30	4	19	5	0	11
Delaware ²	12	5	7	0	8	4	4	0	4	1	3	0	0	0	0	0	0	0	0	0
Maryland	68	13	55	0	44	7	37	0	24	6	18	0	0	0	0	0	0	0	0	0
District of Columbia	40	3	37	0	37	3	34	0	3	0	3	0	0	0	0	0	0	0	0	0
Virginia	92	17	75	0	71	17	54	0	21	0	21	0	0	0	0	0	0	0	0	0
West Virginia ²	40	31	9	0	36	28	8	0	1	0	1	0	3	3	0	0	0	3	0	0
North Carolina	263	59	199	5	207	55	149	3	47	4	41	2	9	0	9	0	0	0	0	9
South Carolina	162	35	127	0	120	30	90	0	42	5	37	0	0	0	0	0	0	0	0	0
Georgia	366	68	298	0	299	65	234	0	61	3	58	0	6	0	6	0	6	0	0	0
Florida	170	57	113	0	133	55	78	0	36	1	35	0	1	1	0	0	0	1	0	0
Kentucky	103	51	52	0	88	47	41	0	10	1	9	0	5	3	2	3	2	0	0	0
Tennessee	93	27	66	0	66	22	44	0	27	5	22	0	0	0	0	0	0	0	0	0
Alabama	135	28	107	0	106	26	80	0	22	2	20	0	7	0	7	0	5	0	0	2
Mississippi	154	30	124	0	130	30	100	0	21	0	21	0	3	0	3	0	3	0	0	0
Arkansas	118	27	90	1	99	25	73	1	19	2	17	0	0	0	0	0	0	0	0	0
Louisiana	133	30	103	0	116	30	86	0	17	0	17	0	0	0	0	0	0	0	0	0
Oklahoma	60	42	15	3	54	40	11	3	4	0	4	0	2	2	0	1	0	1	0	0
Texas	297	114	182	1	210	101	108	1	84	13	71	0	3	0	3	0	3	0	0	0
West	509	405	83	21	496	393	82	21	0	0	0	0	13	12	1	0	0	7	5	1
Montana	6	4	2	0	6	4	2	0	0	0	0	0	0	0	0	0	0	0	0	0
Idaho	3	3	0	0	3	3	0	0	0	0	0	0	0	0	0	0	0	0	0	0
Wyoming	7	6	1	0	7	6	1	0	0	0	0	0	0	0	0	0	0	0	0	0
Colorado	47	41	5	1	47	41	5	1	0	0	0	0	0	0	0	0	0	0	0	0
New Mexico	8	6	2	0	8	6	2	0	0	0	0	0	0	0	0	0	0	0	0	0
Arizona	38	28	10	0	38	28	10	0	0	0	0	0	0	0	0	0	0	0	0	0
Utah	13	13	0	0	13	13	0	0	0	0	0	0	0	0	0	0	0	0	0	0
Nevada	29	27	2	0	29	27	2	0	0	0	0	0	0	0	0	0	0	0	0	0
Washington	47	40	5	2	46	39	5	2	0	0	0	0	1	1	0	0	0	1	0	0
Oregon ²	19	16	3	0	19	16	3	0	0	0	0	0	0	0	0	0	0	0	0	0
California	292	221	53	18	280	210	52	18	0	0	0	0	12	11	1	0	0	6	5	1
Alaska ³	0	0	0	0	0	0	0	0	0	0	0	0	0	0	0	0	0	0	0	0
Hawaii ³	0	0	0	0	0	0	0	0	0	0	0	0	0	0	0	0	0	0	0	0

NOTE: xx signifies that the death penalty was illegal during the entire period covered by this table.
¹ In this category, the 8 Federal executions were for sabotage (6) and espionage (2). The 9 executions in North Carolina and the 2 in Alabama were for burglary. In California, the 6 executions were for aggravated assault committed by prisoners under a life sentence.
² See Table 16 for periods during which death penalty was in effect.
³ Alaska and Hawaii abolished capital punishment in 1957, while territories. As States, Alaska and Hawaii are included in the series beginning January 1, 1960.

Table 4. Movement of prisoners under sentence of death: 1961-72

Number of prisoners	1972	1971	1970	1969	1968	1967	1966	1965	1964	1963	1962	1961
Under sentence of death, January 1	620	¹ 607	524	479	434	415	351	322	298	268	266	219
Received death sentence during year	75	104	127	97	102	85	118	86	106	93	103	140
Other admissions ²	0	11	33	33	20	5	0	12	3	7	7	0
Executed during year	0	0	0	0	0	2	1	7	15	21	47	42
Median elapsed time (in months)	0	0	0	0	0	0	0	44.5	20.5	16.0	20.5	16.2
Other dispositions	365	102	76	85	77	69	53	62	70	49	61	51
Median elapsed time (in months) ³	46.6	52.2	54.4	35.7	32.6	40.8	31.7	33.3	23.5	22.4	16.6	18.7
Under sentence of death, December 31	330	620	608	524	479	434	415	351	322	298	268	266
Median elapsed time (in months)	37.0	39.7	36.7	39.2	33.2	28.9	29.5	30.8	26.8	24.0	16.7	14.4

¹ Figure revised from that of 12-31-70. See Table 6, footnote (3).

² Includes prisoners sentenced in previous years but reported late to the NPS program, and prisoners previously reported as transferred to a mental hospital or escaped who were subsequently returned to death sentence status.

³ Prior to 1968, includes those prisoners who were not reported to the NPS program until the following year.

Table 5. Movement of prisoners under sentence of death, by offense and race: calendar year 1971

Offense	Reported under sentence of death on 1-1-71	Received death sentence during year	Other admissions ¹	Dispositions			Reported under sentence of death on 12-31-71		
				Total	Removed from death sentence	Died	Total	Year received	
								1971	Prior
Total	² 607	104	11	102	96	6	620	98	522
White	279	49	4	41	37	4	291	46	245
Black	325	53	7	60	58	2	325	50	275
Other	3	2	0	1	1	0	4	2	2
Murder	518	96	11	87	82	5	538	91	447
White	263	45	4	37	33	4	275	42	233
Black	252	50	7	49	48	1	260	48	212
Other	3	1	0	1	1	0	3	1	2
Rape	78	7	0	13	12	1	72	6	66
White	7	3	0	2	2	0	8	3	5
Black	71	3	0	11	10	1	63	2	61
Other	0	1	0	0	0	0	1	1	0
Kidnaping	4	1	0	0	0	0	5	1	4
White	4	1	0	0	0	0	5	1	4
Black	0	0	0	0	0	0	0	0	0
Other	0	0	0	0	0	0	0	0	0
Robbery	3	0	0	0	0	0	3	0	3
White	2	0	0	0	0	0	2	0	2
Black	1	0	0	0	0	0	1	0	1
Other	0	0	0	0	0	0	0	0	0
Assault by life prisoner	4	0	0	2	2	0	2	0	2
White	3	0	0	2	2	0	1	0	1
Black	1	0	0	0	0	0	1	0	1
Other	0	0	0	0	0	0	0	0	0

¹ Includes prisoners sentenced in previous years but reported late to the NPS program, and prisoners previously reported as transferred to a mental hospital or escaped who were subsequently returned to death sentence status.

² Figure revised from that of 12-31-70. See Table 6 footnote (3).

Table 5a. Movement of prisoners under sentence of death, by offense and race: calendar year 1972

Offense	Reported under sentence of death on 1-1-72	Received death sentence during year	Other admissions ¹	Total	Dispositions		Reported under sentence of death on 12-31-72		
					Removed from death sentence status	Died	Total	Year received	
								1972	Prior
Total	620	75	0	365	362	3	330	42	288
White	291	30	0	159	158	1	162	15	147
Black	325	45	0	203	201	2	167	27	140
Other	4	0	0	3	3	0	1	0	1
Murder	538	66	0	307	305	2	297	40	257
White	274	26	0	147	146	1	153	14	139
Black	261	40	0	158	157	1	143	26	117
Other	3	0	0	2	2	0	1	0	1
Rape	72	8	0	54	53	1	26	1	25
White	8	3	0	7	7	0	4	0	4
Black	63	5	0	46	45	1	22	1	21
Other	1	0	0	1	1	0	0	0	0
Kidnaping	5	0	0	2	2	0	3	0	3
White	5	0	0	2	2	0	3	0	3
Black	0	0	0	0	0	0	0	0	0
Other	0	0	0	0	0	0	0	0	0
Robbery	3	0	0	2	2	0	1	0	1
White	2	0	0	2	2	0	0	0	0
Black	1	0	0	0	0	0	1	0	1
Other	0	0	0	0	0	0	0	0	0
Assault by life prisoner	2	1	0	0	0	0	3	1	2
White	1	1	0	0	0	0	2	1	1
Black	1	0	0	0	0	0	1	0	1
Other	0	0	0	0	0	0	0	0	0

¹ Includes prisoners sentenced in previous years but reported late to the NPS program, and prisoners previously reported as transferred to a mental hospital or escaped who were subsequently returned to death sentence status.

Table 6. Movement of prisoners under sentence of death, by race and State: calendar year 1971

Region and State	Prisoners reported under sentence of death: 1-1-71 ¹				Received death sentence during year				Other admissions ²				Dispositions				Prisoners reported under sentence of death: 12-31-71 ¹			
	Total	White	Black	Other	Total	White	Black	Other	Total	White	Black	Other	Total	White	Black	Other	Total	White	Black	Other
Total State	³ 607	279	325	3	104	49	53	2	11	4	7	0	102	41	60	1	620	291	325	4
Northeast	³ 70	31	39	0	4	2	2	0	2	1	1	0	32	11	21	0	44	23	21	0
Maine	xx	xx	xx	xx	xx	xx	xx	xx	xx	xx	xx	xx	xx	xx	xx	xx	xx	xx	xx	xx
New Hampshire	2	2	0	0	0	0	0	0	0	0	0	0	0	0	0	0	2	2	0	0
Vermont ⁴	0	0	0	0	0	0	0	0	0	0	0	0	0	0	0	0	0	0	0	0
Massachusetts	16	10	6	0	2	1	1	0	0	0	0	0	2	1	1	0	16	10	6	0
Rhode Island ⁴	0	0	0	0	0	0	0	0	0	0	0	0	0	0	0	0	0	0	0	0
Connecticut	3	1	2	0	0	0	0	0	1	1	0	0	0	0	0	0	4	2	2	0
New York ⁴	0	0	0	0	1	1	0	0	0	0	0	0	0	0	0	0	1	1	0	0
New Jersey	25	8	17	0	0	0	0	0	0	0	0	0	25	8	17	0	0	0	0	0
Pennsylvania	³ 24	10	14	0	1	0	1	0	1	0	1	0	5	2	3	0	21	8	13	0
North Central	94	50	44	0	18	9	9	0	1	0	1	0	15	7	8	0	98	52	46	0
Ohio	47	23	24	0	9	5	4	0	0	0	0	0	6	4	2	0	50	24	26	0
Indiana	7	7	0	0	1	1	0	0	0	0	0	0	1	1	0	0	7	7	0	0
Illinois	30	15	15	0	0	0	0	0	0	0	0	0	2	0	2	0	28	15	13	0
Michigan	xx	xx	xx	xx	xx	xx	xx	xx	xx	xx	xx	xx	xx	xx	xx	xx	xx	xx	xx	xx
Wisconsin	xx	xx	xx	xx	xx	xx	xx	xx	xx	xx	xx	xx	xx	xx	xx	xx	xx	xx	xx	xx
Minnesota	xx	xx	xx	xx	xx	xx	xx	xx	xx	xx	xx	xx	xx	xx	xx	xx	xx	xx	xx	xx
Iowa	xx	xx	xx	xx	xx	xx	xx	xx	xx	xx	xx	xx	xx	xx	xx	xx	xx	xx	xx	xx
Missouri	9	4	5	0	7	2	5	0	1	0	1	0	6	2	4	0	11	4	7	0
North Dakota ⁴	0	0	0	0	0	0	0	0	0	0	0	0	0	0	0	0	0	0	0	0
South Dakota	0	0	0	0	0	0	0	0	0	0	0	0	0	0	0	0	0	0	0	0
Nebraska	1	1	0	0	0	0	0	0	0	0	0	0	0	0	0	0	1	1	0	0
Kansas	0	0	0	0	1	1	0	0	0	0	0	0	0	0	0	0	1	1	0	0
South	³ 307	101	206	0	54	14	38	2	7	3	4	0	34	8	26	0	334	110	222	2
Delaware	3	2	1	0	0	0	0	0	0	0	0	0	0	0	0	0	3	2	1	0
Maryland	18	3	15	0	2	0	2	0	2	1	1	0	0	0	0	0	22	4	18	0
District of Columbia	1	1	0	0	1	0	1	0	0	0	0	0	0	0	0	0	2	1	1	0
Virginia	8	3	5	0	1	0	0	1	0	0	0	0	0	0	0	0	9	3	5	1
West Virginia	xx	xx	xx	xx	xx	xx	xx	xx	xx	xx	xx	xx	xx	xx	xx	xx	xx	xx	xx	xx
North Carolina	12	4	8	0	5	0	4	1	0	0	0	0	7	1	6	0	10	3	6	1
South Carolina	11	2	9	0	0	0	0	0	0	0	0	0	3	0	3	0	8	2	6	0

23

Table 6. Movement of prisoners under sentence of death, by race and State: calendar year 1971—continued

Region and State	Prisoners reported under sentence of death: 1-1-71 ¹				Received death sentence during year				Other admissions ²				Dispositions				Prisoners reported under sentence of death: 12-31-71 ¹			
	Total	White	Black	Other	Total	White	Black	Other	Total	White	Black	Other	Total	White	Black	Other	Total	White	Black	Other
	Georgia	³ 21	6	15	0	1	0	1	0	0	0	0	0	0	0	0	0	22	6	16
Florida	³ 73	19	54	0	18	7	11	0	0	0	0	0	7	1	6	0	84	25	59	0
Kentucky	17	11	6	0	2	0	2	0	0	0	0	0	0	0	0	0	19	11	8	0
Tennessee	11	2	9	0	6	1	5	0	1	0	1	0	0	0	0	0	18	3	15	0
Alabama	28	9	19	0	7	3	4	0	1	0	1	0	3	0	3	0	33	12	21	0
Mississippi	7	2	5	0	2	0	2	0	0	0	0	0	2	1	1	0	7	1	6	0
Arkansas	1	1	0	0	3	2	1	0	0	0	0	0	1	1	0	0	3	2	1	0
Louisiana	³ 46	6	40	0	3	0	3	0	3	2	1	0	7	2	5	0	45	6	39	0
Oklahoma	12	7	5	0	0	0	0	0	0	0	0	0	1	0	1	0	11	7	4	0
Texas	38	23	15	0	3	1	2	0	0	0	0	0	3	2	1	0	38	22	16	0
West	136	97	36	3	28	24	4	0	1	0	1	0	21	15	5	1	144	106	36	2
Montana	0	0	0	0	0	0	0	0	0	0	0	0	0	0	0	0	0	0	0	0
Idaho	0	0	0	0	0	0	0	0	0	0	0	0	0	0	0	0	0	0	0	0
Wyoming	0	0	0	0	0	0	0	0	0	0	0	0	0	0	0	0	0	0	0	0
Colorado	6	4	2	0	0	0	0	0	0	0	0	0	4	3	1	0	2	1	1	0
New Mexico ⁴	0	0	0	0	0	0	0	0	0	0	0	0	0	0	0	0	0	0	0	0
Arizona	13	9	4	0	5	3	2	0	0	0	0	0	1	0	1	0	17	12	5	0
Utah	4	4	0	0	0	0	0	0	0	0	0	0	0	0	0	0	4	4	0	0
Nevada	7	7	0	0	1	1	0	0	0	0	0	0	0	0	0	0	8	8	0	0
Washington	12	7	5	0	2	2	0	0	0	0	0	0	6	3	3	0	8	6	2	0
Oregon	xx	xx	xx	xx	xx	xx	xx	xx	xx	xx	xx	xx	xx	xx	xx	xx	xx	xx	xx	xx
California	94	66	25	3	20	18	2	0	1	0	1	0	10	9	0	1	105	75	28	2
Alaska	xx	xx	xx	xx	xx	xx	xx	xx	xx	xx	xx	xx	xx	xx	xx	xx	xx	xx	xx	xx
Hawaii	xx	xx	xx	xx	xx	xx	xx	xx	xx	xx	xx	xx	xx	xx	xx	xx	xx	xx	xx	xx

NOTE: xx signifies that the death penalty was illegal during the entire year.

¹ Unlike the counterpart table in previous NPS reports, this table includes prisoners who were transferred to mental institutions, distributed as follows: Awaiting execution on 1-1-71: Indiana (one white), and Louisiana (one black); Awaiting execution on 12-31-71: Indiana (one white); Louisiana (one black); and California (one white).

² Includes prisoners sentenced in previous years but reported late to the NPS program, and prisoners previously reported as transferred to a mental institution or escaped who were subsequently returned to death sentence status.

³ Total 1-1-71 was revised from that reported in NPS Bulletin, No. 46, August 1971, to exclude two prisoners in Florida, one in Louisiana, and one in Georgia who were incorrectly reported as awaiting execution on 12-31-70 and to include one prisoner in Louisiana and two in Pennsylvania who were incorrectly excluded from the count of those awaiting execution on 12-31-70.

⁴ Death penalty partially abolished; see Table 16 for provisions that apply.

Table 6a. Movement of prisoners under sentence of death, by race and State: calendar year 1972

Region and State	Prisoners reported under sentence of death: 1-1-72 ¹				Received death sentence during year				Other admissions ²				Dispositions				Prisoners reported under sentence of death: 12-31-72 ¹			
	Total	White	Black	Other	Total	White	Black	Other	Total	White	Black	Other	Total	White	Black	Other	Total	White	Black	Other
	Total State	620	291	325	4	75	30	45	0	0	0	0	0	365	159	203	3	330	162	167
Northeast	44	23	21	0	10	3	7	0	0	0	0	0	11	6	5	0	43	20	23	0
Maine	xx	xx	xx	xx	xx	xx	xx	xx	xx	xx	xx	xx	xx	xx	xx	xx	xx	xx	xx	xx
New Hampshire	2	2	0	0	0	0	0	0	0	0	0	0	2	2	0	0	0	0	0	0
Vermont ³	0	0	0	0	0	0	0	0	0	0	0	0	0	0	0	0	0	0	0	0
Massachusetts	16	10	6	0	8	3	5	0	0	0	0	0	1	1	0	0	23	12	11	0
Rhode Island ³	0	0	0	0	0	0	0	0	0	0	0	0	0	0	0	0	0	0	0	0
Connecticut	4	2	2	0	0	0	0	0	0	0	0	0	1	0	1	0	3	2	1	0
New York ³	1	1	0	0	2	0	2	0	0	0	0	0	0	0	0	0	3	1	2	0
New Jersey ⁴	0	0	0	0	0	0	0	0	0	0	0	0	0	0	0	0	0	0	0	0
Pennsylvania	21	8	13	0	0	0	0	0	0	0	0	0	7	3	4	0	14	5	9	0
North Central	98	52	46	0	13	4	9	0	0	0	0	0	68	33	35	0	43	23	20	0
Ohio	50	24	26	0	4	1	3	0	0	0	0	0	54	25	29	0	0	0	0	0
Indiana	7	7	0	0	2	0	2	0	0	0	0	0	2	2	0	0	7	5	2	0
Illinois	28	15	13	0	3	2	1	0	0	0	0	0	3	2	1	0	28	15	13	0
Michigan	xx	xx	xx	xx	xx	xx	xx	xx	xx	xx	xx	xx	xx	xx	xx	xx	xx	xx	xx	xx
Wisconsin	xx	xx	xx	xx	xx	xx	xx	xx	xx	xx	xx	xx	xx	xx	xx	xx	xx	xx	xx	xx
Minnesota	xx	xx	xx	xx	xx	xx	xx	xx	xx	xx	xx	xx	xx	xx	xx	xx	xx	xx	xx	xx
Iowa	xx	xx	xx	xx	xx	xx	xx	xx	xx	xx	xx	xx	xx	xx	xx	xx	xx	xx	xx	xx
Missouri	11	4	7	0	4	1	3	0	0	0	0	0	8	3	5	0	7	2	5	0
North Dakota ³	0	0	0	0	0	0	0	0	0	0	0	0	0	0	0	0	0	0	0	0
South Dakota	0	0	0	0	0	0	0	0	0	0	0	0	0	0	0	0	0	0	0	0
Nebraska	1	1	0	0	0	0	0	0	0	0	0	0	1	1	0	0	0	0	0	0
Kansas	1	1	0	0	0	0	0	0	0	0	0	0	0	0	0	0	1	1	0	0
South	334	110	222	2	46	18	28	0	0	0	0	0	234	82	150	2	146	46	100	0
Delaware	3	2	1	0	0	0	0	0	0	0	0	0	0	0	0	0	3	2	1	0
Maryland	22	4	18	0	1	0	1	0	0	0	0	0	1	0	1	0	22	4	18	0
District of Columbia	2	1	1	0	1	0	1	0	0	0	0	0	0	0	0	0	3	1	2	0
Virginia	9	3	5	1	4	1	3	0	0	0	0	0	9	2	6	1	4	2	2	0
West Virginia	xx	xx	xx	xx	xx	xx	xx	xxx	xx	xx	xx	xx	xx	xx	xx	xx	xx	xx	xx	xx
North Carolina	10	3	6	1	5	1	4	0	0	0	0	0	8	3	4	1	7	1	6	0
South Carolina	8	2	6	0	0	0	0	0	0	0	0	0	7	2	5	0	1	0	1	0

25

Table 6a. Movement of prisoners under sentence of death, by race and State: calendar year 1972—continued

Region and State	Prisoners reported under sentence of death: 1-1-72 ¹				Received death sentence during year				Other admissions ²				Dispositions				Prisoners reported under sentence of death: 12-31-72 ¹			
	Total	White	Black	Other	Total	White	Black	Other	Total	White	Black	Other	Total	White	Black	Other	Total	White	Black	Other
Georgia	22	6	16	0	5	3	2	0	0	0	0	0	12	2	10	0	15	7	8	0
Florida	84	25	59	0	14	8	6	0	0	0	0	0	91	31	60	0	7	2	5	0
Kentucky	19	11	8	0	2	0	2	0	0	0	0	0	1	1	0	0	20	10	10	0
Tennessee	18	3	15	0	4	2	2	0	0	0	0	0	22	5	17	0	0	0	0	0
Alabama	33	12	21	0	2	0	2	0	0	0	0	0	15	7	8	0	20	5	15	0
Mississippi	7	1	6	0	0	0	0	0	0	0	0	0	6	1	5	0	1	0	1	0
Arkansas	3	2	1	0	3	3	0	0	0	0	0	0	2	1	1	0	4	4	0	0
Louisiana	45	6	39	0	3	0	3	0	0	0	0	0	17	3	14	0	31	3	28	0
Oklahoma	11	7	4	0	0	0	0	0	0	0	0	0	7	6	1	0	4	1	3	0
Texas	38	22	16	0	2	0	2	0	0	0	0	0	36	18	18	0	4	4	0	0
West	144	106	36	2	6	5	1	0	0	0	0	0	52	38	13	1	98	73	24	1
Montana	0	0	0	0	0	0	0	0	0	0	0	0	0	0	0	0	0	0	0	0
Idaho	0	0	0	0	0	0	0	0	0	0	0	0	0	0	0	0	0	0	0	0
Wyoming	0	0	0	0	0	0	0	0	0	0	0	0	0	0	0	0	0	0	0	0
Colorado	2	1	1	0	0	0	0	0	0	0	0	0	1	0	1	0	1	1	0	0
New Mexico ³	0	0	0	0	0	0	0	0	0	0	0	0	0	0	0	0	0	0	0	0
Arizona	17	12	5	0	0	0	0	0	0	0	0	0	7	5	2	0	10	7	3	0
Utah	4	4	0	0	0	0	0	0	0	0	0	0	1	1	0	0	3	3	0	0
Nevada	8	8	0	0	0	0	0	0	0	0	0	0	8	8	0	0	0	0	0	0
Washington	8	6	2	0	0	0	0	0	0	0	0	0	5	3	2	0	3	3	0	0
Oregon	xx	xx	xx	xx	xx	xx	xx	xx	xx	xx	xx	xx	xx	xx	xx	xx	xx	xx	xx	xx
California ⁴	105	75	28	2	6	5	1	0	0	0	0	0	30	21	8	1	81	59	21	1
Alaska	xx	xx	xx	xx	xx	xx	xx	xx	xx	xx	xx	xx	xx	xx	xx	xx	xx	xx	xx	xx
Hawaii	xx	xx	xx	xx	xx	xx	xx	xx	xx	xx	xx	xx	xx	xx	xx	xx	xx	xx	xx	xx

NOTE: xx signifies that the death penalty was illegal during the entire year.

¹ Unlike the counterpart table in previous NPS reports, this table includes prisoners who have been transferred to mental institutions or who have escaped, distributed as follows: Awaiting execution on 1-1-72: Indiana (one white), Louisiana (one black), California (one white); Awaiting execution on 12-31-72: Indiana (one white), Louisiana (one black), District of Columbia (one black).

² Includes prisoners sentenced in previous years but reported late to the NPS program, and prisoners previously reported as transferred to a mental institution or escaped who were subsequently returned to death sentence status.

³ Death penalty partially abolished; see Table 16 for provisions that apply.

⁴ Death penalty abolished during part of year; see Table 16.

Table 7. Characteristics of prisoners received from court under sentence of death, by State: calendar year 1971

Region and State	Total received	Race			Offense			Age at time of sentencing					
		White	Black	Other	Murder ¹	Rape	Kidnaping	Under 21	21-25	26-30	31-40	Over 40	Unknown
Georgia	1	0	1	0	1	0	0	0	0	1	0	0	0
Florida	18	7	11	0	13	5	0	6	4	5	2	1	0
Kentucky	2	0	2	0	2	0	0	0	1	0	1	0	0
Tennessee	6	1	5	0	6	0	0	0	2	1	3	0	0
Alabama	7	3	4	0	7	0	0	0	4	0	0	3	0
Mississippi	2	0	2	0	2	0	0	1	1	0	0	0	0
Arkansas	3	2	1	0	3	0	0	1	0	0	2	0	0
Louisiana	3	0	3	0	3	0	0	2	0	1	0	0	0
Oklahoma	0	0	0	0	0	0	0	0	0	0	0	0	0
Texas	3	1	2	0	3	0	0	0	2	0	1	0	0
West	28	24	4	0	27	0	1	3	15	6	2	2	0
Montana	0	0	0	0	0	0	0	0	0	0	0	0	0
Idaho	0	0	0	0	0	0	0	0	0	0	0	0	0
Wyoming	0	0	0	0	0	0	0	0	0	0	0	0	0
Colorado	0	0	0	0	0	0	0	0	0	0	0	0	0
New Mexico ²	0	0	0	0	0	0	0	0	0	0	0	0	0
Arizona	5	3	2	0	5	0	0	2	3	0	0	0	0
Utah	0	0	0	0	0	0	0	0	0	0	0	0	0
Nevada	1	1	0	0	1	0	0	0	0	1	0	0	0
Washington	2	2	0	0	2	0	0	0	1	0	1	0	0
Oregon	xx	xx	xx	xx	xx	xx	xx	xx	xx	xx	xx	xx	xx
California	20	18	2	0	19	0	1	1	11	5	1	2	0
Alaska	xx	xx	xx	xx	xx	xx	xx	xx	xx	xx	xx	xx	xx
Hawaii	xx	xx	xx	xx	xx	xx	xx	xx	xx	xx	xx	xx	xx

NOTE: xx signifies that the death penalty was illegal during the entire year.

¹ Includes one murder aggravated assault in Kansas, two murder robberies in Maryland, and one murder kidnaping in Washington.

² Death penalty partially abolished; see Table 16 for provisions that apply.

Table 7a. Characteristics of prisoners received from court under sentence of death, by State: calendar year 1972—continued

Region and State	Total received	Race		Offense			Age at time of sentencing					
		White	Black	Murder ¹	Rape	Assault by life prisoner	Under 21	21-25	26-30	31-40	Over 40	Unknown
Georgia	5	3	2	5	0	0	0	4	1	0	0	0
Florida	14	8	6	8	6	0	3	1	5	5	0	0
Kentucky	2	0	2	2	0	0	1	1	0	0	0	0
Tennessee	4	2	2	4	0	0	0	3	1	0	0	0
Alabama	2	0	2	2	0	0	0	0	1	1	0	0
Mississippi	0	0	0	0	0	0	0	0	0	0	0	0
Arkansas	3	3	0	3	0	0	0	3	0	0	0	0
Louisiana	3	0	3	3	0	0	0	1	2	0	0	0
Oklahoma	0	0	0	0	0	0	0	0	0	0	0	0
Texas	2	0	2	2	0	0	0	1	0	1	0	0
West	6	5	1	5	0	1	0	1	3	1	1	0
Montana	0	0	0	0	0	0	0	0	0	0	0	0
Idaho	0	0	0	0	0	0	0	0	0	0	0	0
Wyoming	0	0	0	0	0	0	0	0	0	0	0	0
Colorado	0	0	0	0	0	0	0	0	0	0	0	0
New Mexico ²	0	0	0	0	0	0	0	0	0	0	0	0
Arizona	0	0	0	0	0	0	0	0	0	0	0	0
Utah	0	0	0	0	0	0	0	0	0	0	0	0
Nevada	0	0	0	0	0	0	0	0	0	0	0	0
Washington	0	0	0	0	0	0	0	0	0	0	0	0
Oregon	xx	xx	xx	xx	xx	xx	xx	xx	xx	xx	xx	xx
California ³	6	5	1	5	0	1	0	1	3	1	1	0
Alaska	xx	xx	xx	xx	xx	xx	xx	xx	xx	xx	xx	xx
Hawaii	xx	xx	xx	xx	xx	xx	xx	xx	xx	xx	xx	xx

NOTE: xx signifies that the death penalty was illegal during the entire year.

¹ Includes one murder burglary in North Carolina.

² Death penalty partially abolished; see Table 16 for provisions that apply.

³ Death penalty abolished during part of year; see Table 16.

Table 8. Dispositions from sentence of death, by offense, State, and method of disposition: calendar year 1971

Region and State	Total	Removed from death sentence status ¹			Died	
		Murder	Rape ²	Assault by life prisoner	Murder	Rape
Total State	102	82	12	2	5	1
Northeast	32	32	0	0	0	0
Maine	xx	xx	xx	xx	xx	xx
New Hampshire	0	0	0	0	0	0
Vermont ³	0	0	0	0	0	0
Massachusetts	2	2	0	0	0	0
Rhode Island ³	0	0	0	0	0	0
Connecticut	0	0	0	0	0	0
New York ³	0	0	0	0	0	0
New Jersey	25	25	0	0	0	0
Pennsylvania	5	5	0	0	0	0
North Central	15	14	0	0	1	0
Ohio	6	5	0	0	1	0
Indiana	1	1	0	0	0	0
Illinois	2	2	0	0	0	0
Michigan	xx	xx	xx	xx	xx	xx
Wisconsin	xx	xx	xx	xx	xx	xx
Minnesota	xx	xx	xx	xx	xx	xx
Iowa	xx	xx	xx	xx	xx	xx
Missouri	6	6	0	0	0	0
North Dakota ³	0	0	0	0	0	0
South Dakota	0	0	0	0	0	0
Nebraska	0	0	0	0	0	0
Kansas	0	0	0	0	0	0
South	34	21	12	0	0	1
Delaware	0	0	0	0	0	0
Maryland	0	0	0	0	0	0
District of Columbia	0	0	0	0	0	0
Virginia	0	0	0	0	0	0
West Virginia	xx	xx	xx	xx	xx	xx
North Carolina	7	5	2	0	0	0
South Carolina	3	2	1	0	0	0

Table 8. Dispositions from sentence of death, by offense, State, and method of disposition: calendar year 1971—continued

Region and State	Total	Removed from death sentence status ¹			Died	
		Murder	Rape ²	Assault by life prisoner	Murder	Rape
Georgia	0	0	0	0	0	0
Florida	7	3	4	0	0	0
Kentucky	0	0	0	0	0	0
Tennessee	0	0	0	0	0	0
Alabama	3	1	2	0	0	0
Mississippi	2	2	0	0	0	0
Arkansas	1	1	0	0	0	0
Louisiana	7	4	2	0	0	1
Oklahoma	1	1	0	0	0	0
Texas	3	2	1	0	0	0
West	21	15	0	2	4	0
Montana	0	0	0	0	0	0
Idaho	0	0	0	0	0	0
Wyoming	0	0	0	0	0	0
Colorado	4	2	0	0	2	0
New Mexico ³	0	0	0	0	0	0
Arizona	1	1	0	0	0	0
Utah	0	0	0	0	0	0
Nevada	0	0	0	0	0	0
Washington	6	6	0	0	0	0
Oregon	xx	xx	xx	xx	xx	xx
California	10	6	0	2	2	0
Alaska	xx	xx	xx	xx	xx	xx
Hawaii	xx	xx	xx	xx	xx	xx

NOTE: xx signifies that the death penalty was illegal during the entire year.

¹ Includes commutations, resentencings, reversals, and grants for new trials.

² Includes one rape and burglary in North Carolina.

³ Death penalty partially abolished; see Table 16 for provisions that apply.

Table 8a. Dispositions from sentence of death, by offense, State, and method of disposition: calendar year 1972

Region and State	Total	Removed from death sentence status ¹				Died	
		Murder	Rape	Kidnaping	Robbery	Murder	Rape
Total State	365	305	53	2	2	2	1
Northeast	11	9	0	2	0	0	0
Maine	xx	xx	xx	xx	xx	xx	xx
New Hampshire	2	0	0	2	0	0	0
Vermont ²	0	0	0	0	0	0	0
Massachusetts	1	1	0	0	0	0	0
Rhode Island ²	0	0	0	0	0	0	0
Connecticut	1	1	0	0	0	0	0
New York ²	0	0	0	0	0	0	0
New Jersey ²	0	0	0	0	0	0	0
Pennsylvania	7	7	0	0	0	0	0
North Central	68	67	0	0	0	1	0
Ohio	54	53	0	0	0	1	0
Indiana	2	2	0	0	0	0	0
Illinois	3	3	0	0	0	0	0
Michigan	xx	xx	xx	xx	xx	xx	xx
Wisconsin	xx	xx	xx	xx	xx	xx	xx
Minnesota	xx	xx	xx	xx	xx	xx	xx
Iowa	xx	xx	xx	xx	xx	xx	xx
Missouri	8	8	0	0	0	0	0
North Dakota ²	0	0	0	0	0	0	0
South Dakota	0	0	0	0	0	0	0
Nebraska	1	1	0	0	0	0	0
Kansas	0	0	0	0	0	0	0
South	234	177	53	0	2	1	1
Delaware	0	0	0	0	0	0	0
Maryland	1	1	0	0	0	0	0
District of Columbia	0	0	0	0	0	0	0
Virginia	9	6	3	0	0	0	0
West Virginia	xx	xx	xx	xx	xx	xx	xx
North Carolina	8	7	1	0	0	0	0
South Carolina	7	5	2	0	0	0	0

14. Executions from sentence of death, by offense, State, and method of disposition: calendar year 1972—continued

State	Total	Removed from death sentence status ¹				Died	
		Murder	Rape	Kidnaping	Robbery	Murder	Rape
Georgia	12	6	6	0	0	0	0
Florida	91	68	23	0	0	0	0
Kentucky	1	1	0	0	0	0	0
Tennessee	22	17	5	0	0	0	0
Alabama	15	13	1	0	0	0	0
Mississippi	6	6	0	0	0	0	1
Arkansas	2	2	0	0	0	0	0
Louisiana	17	9	7	0	0	0	0
Oklahoma	7	7	0	0	0	1	0
Texas	36	29	5	0	0	0	0
West	52	52	0	0	2	0	0
Montana	0	0	0	0	0	0	0
Idaho	0	0	0	0	0	0	0
Wyoming	0	0	0	0	0	0	0
Colorado	1	1	0	0	0	0	0
New Mexico ²	0	0	0	0	0	0	0
Arizona	7	7	0	0	0	0	0
Utah	1	1	0	0	0	0	0
Nevada	8	8	0	0	0	0	0
Washington	5	5	0	0	0	0	0
Oregon	xx	xx	xx	0	0	0	0
California ³	30	30	0	xx	xx	xx	xx
Alaska	xx	xx	xx	0	0	0	0
Hawaii	xx	xx	xx	xx	xx	xx	xx

NOTE: xx signifies that the death penalty was illegal during the entire year.
¹ Includes commutations, resentencings, reversals, and grants for new trials.
² Death penalty partially abolished; see Table 16 for provisions that apply.
³ Death penalty abolished during part of year; see Table 16.

Table 9. Characteristics of prisoners disposed of by means other than execution, by State: calendar year 1971

(Includes commutations, resentencings, reversals, grants for new trials, and deaths by natural causes)

Region and State	Total dispositions	Race			Offense			Age at time of disposition							Elapsed time (in months)					
		White	Black	Other	Murder	Rape ¹	Assault by life prisoner	Under 21	21-25	26-30	31-35	36-40	Over 40	Unknown	Under 12	12-23	24-35	36-47	48-71	Over 71
Total State	102	41	60	1	87	13	2	6	20	22	17	19	17	1	11	16	9	11	23	32
Northeast	32	11	21	0	32	0	0	3	4	5	10	8	2	0	3	8	2	2	7	10
Maine	xx	xx	xx	xx	xx	xx	xx	xx	xx	xx	xx	xx	xx	xx	xx	xx	xx	xx	xx	xx
New Hampshire	0	0	0	0	0	0	0	0	0	0	0	0	0	0	0	0	0	0	0	0
Vermont ²	0	0	0	0	0	0	0	0	0	0	0	0	0	0	0	0	0	0	0	0
Massachusetts	2	1	1	0	2	0	0	0	0	1	1	0	0	0	0	0	0	0	1	1
Rhode Island ²	0	0	0	0	0	0	0	0	0	0	0	0	0	0	0	0	0	0	0	0
Connecticut	0	0	0	0	0	0	0	0	0	0	0	0	0	0	0	0	0	0	0	0
New York ²	0	0	0	0	0	0	0	0	0	0	0	0	0	0	0	0	0	0	0	0
New Jersey	25	8	17	0	25	0	0	0	4	3	9	7	2	0	3	4	2	2	6	8
Pennsylvania	5	2	3	0	5	0	0	3	0	1	0	1	0	0	0	4	0	0	0	1
35 North Central	15	7	8	0	15	0	0	1	6	4	1	1	2	0	6	2	0	2	3	2
Ohio	6	4	2	0	6	0	0	0	1	3	1	0	1	0	2	0	0	0	2	2
Indiana	1	1	0	0	1	0	0	0	0	1	0	0	0	0	0	0	0	0	1	0
Illinois	2	0	2	0	2	0	0	0	2	0	0	0	0	0	0	0	0	2	0	0
Michigan	xx	xx	xx	xx	xx	xx	xx	xx	xx	xx	xx	xx	xx	xx	xx	xx	xx	xx	xx	xx
Wisconsin	xx	xx	xx	xx	xx	xx	xx	xx	xx	xx	xx	xx	xx	xx	xx	xx	xx	xx	xx	xx
Minnesota	xx	xx	xx	xx	xx	xx	xx	xx	xx	xx	xx	xx	xx	xx	xx	xx	xx	xx	xx	xx
Iowa	xx	xx	xx	xx	xx	xx	xx	xx	xx	xx	xx	xx	xx	xx	xx	xx	xx	xx	xx	xx
Missouri	6	2	4	0	6	0	0	1	3	0	0	1	1	0	4	2	0	0	0	0
North Dakota ²	0	0	0	0	0	0	0	0	0	0	0	0	0	0	0	0	0	0	0	0
South Dakota	0	0	0	0	0	0	0	0	0	0	0	0	0	0	0	0	0	0	0	0
Nebraska	0	0	0	0	0	0	0	0	0	0	0	0	0	0	0	0	0	0	0	0
Kansas	0	0	0	0	0	0	0	0	0	0	0	0	0	0	0	0	0	0	0	0
South	34	8	26	0	21	13	0	2	4	8	4	8	7	1	0	4	6	6	4	14
Delaware	0	0	0	0	0	0	0	0	0	0	0	0	0	0	0	0	0	0	0	0
Maryland	0	0	0	0	0	0	0	0	0	0	0	0	0	0	0	0	0	0	0	0
District of Columbia	0	0	0	0	0	0	0	0	0	0	0	0	0	0	0	0	0	0	0	0
Virginia	0	0	0	0	0	0	0	0	0	0	0	0	0	0	0	0	0	0	0	0
West Virginia	xx	xx	xx	xx	xx	xx	xx	xx	xx	xx	xx	xx	xx	xx	xx	xx	xx	xx	xx	xx
North Carolina	7	1	6	0	5	2	0	2	1	2	0	1	1	0	0	2	3	1	1	0
South Carolina	3	0	3	0	2	1	0	0	0	0	1	0	1	1	0	0	0	0	0	3

Table 9. Characteristics of prisoners disposed of by means other than execution, by State: calendar year 1971--continued

(Includes commutations, resentencings, reversals, grants for new trials, and deaths by natural causes)

Region and State	Total dispositions	Race			Offense			Age at time of disposition							Elapsed time (in months)					
		White	Black	Other	Murder	Rape ¹	Assault by life prisoner	Under 21	21-25	26-30	31-35	36-40	Over 40	Unknown	Under 12	12-23	24-35	36-47	48-71	Over 71
Georgia	0	0	0	0	0	0	0	0	0	0	0	0	0	0	0	0	0	0	0	0
Florida	7	1	6	0	3	4	0	0	1	1	1	4	0	0	0	0	1	1	0	5
Kentucky	0	0	0	0	0	0	0	0	0	0	0	0	0	0	0	0	0	0	0	0
Tennessee	0	0	0	0	0	0	0	0	0	0	0	0	0	0	0	0	0	0	0	0
Alabama	3	0	3	0	1	2	0	0	0	1	0	1	1	0	0	0	0	1	2	0
Mississippi	2	1	1	0	2	0	0	0	0	1	0	0	1	0	0	0	0	2	0	0
Arkansas	1	1	0	0	1	0	0	0	0	1	0	0	0	0	0	1	0	0	0	0
Louisiana	7	2	5	0	4	3	0	0	1	1	1	1	3	0	0	0	0	1	1	5
Oklahoma	1	0	1	0	1	0	0	0	0	0	1	0	0	0	0	1	0	0	0	0
Texas	3	2	1	0	2	1	0	0	1	1	0	1	0	0	0	0	2	0	0	1
West	21	15	5	1	19	0	2	0	6	5	2	2	6	0	2	2	1	1	9	6
Montana	0	0	0	0	0	0	0	0	0	0	0	0	0	0	0	0	0	0	0	0
Idaho	0	0	0	0	0	0	0	0	0	0	0	0	0	0	0	0	0	0	0	0
Wyoming	0	0	0	0	0	0	0	0	0	0	0	0	0	0	0	0	0	0	0	0
Colorado	4	3	1	0	4	0	0	0	1	0	0	1	2	0	1	0	0	0	0	3
New Mexico ²	0	0	0	0	0	0	0	0	0	0	0	0	0	0	0	0	0	0	0	0
Arizona	1	0	1	0	1	0	0	0	1	0	0	0	0	0	0	1	0	0	0	0
Utah	0	0	0	0	0	0	0	0	0	0	0	0	0	0	0	0	0	0	0	0
Nevada	0	0	0	0	0	0	0	0	0	0	0	0	0	0	0	0	0	0	0	0
Washington	6	3	3	0	6	0	0	0	3	2	1	0	0	0	1	0	0	1	1	3
Oregon	xx	xx	xx	xx	xx	xx	xx	xx	xx	xx	xx	xx	xx	xx	xx	xx	xx	xx	xx	xx
California	10	9	0	1	8	0	2	0	1	3	1	1	4	0	0	1	1	0	8	0
Alaska	xx	xx	xx	xx	xx	xx	xx	xx	xx	xx	xx	xx	xx	xx	xx	xx	xx	xx	xx	xx
Hawaii	xx	xx	xx	xx	xx	xx	xx	xx	xx	xx	xx	xx	xx	xx	xx	xx	xx	xx	xx	xx

NOTE: xx signifies that the death penalty was illegal during the entire year.

¹ Includes one rape burglary in North Carolina.

² Death penalty partially abolished; see Table 16 for provisions that apply.

Table 9a. Characteristics of prisoners disposed of by means other than execution, by State: calendar year 1972

(Includes commutations, resentencings, reversals, grants for new trials, and deaths by natural causes)

Region and State	Total dispositions	Race			Offense			Age at time of disposition						Elapsed time (in months)						
		White	Black	Other	Murder	Rape	Other	Under 21	21-25	26-30	31-35	36-40	Over 40	Unknown	Under 12	12-23	24-35	36-47	48-71	Over 71
Total State	365	159	203	3	307	54	4	14	91	90	75	34	59	2	40	48	52	48	77	100
Northeast	11	6	5	0	9	0	2	0	1	0	3	1	6	0	1	1	0	1	1	7
Maine	xx	xx	xx	xx	xx	xx	xx	xx	xx	xx	xx	xx	xx	xx	xx	xx	xx	xx	xx	xx
New Hampshire	2	2	0	0	0	0	2	0	0	0	0	0	2	0	0	0	0	0	0	2
Vermont ¹	0	0	0	0	0	0	0	0	0	0	0	0	0	0	0	0	0	0	0	0
Massachusetts	1	1	0	0	1	0	0	0	0	0	0	0	1	0	1	0	0	0	0	0
Rhode Island ¹	0	0	0	0	0	0	0	0	0	0	0	0	0	0	0	0	0	0	0	0
Connecticut	1	0	1	0	1	0	0	0	0	0	1	0	0	0	0	0	0	0	0	1
New York ¹	0	0	0	0	0	0	0	0	0	0	0	0	0	0	0	0	0	0	0	0
New Jersey ²	xx	xx	xx	xx	xx	xx	xx	xx	xx	xx	xx	xx	xx	xx	xx	xx	xx	xx	xx	xx
Pennsylvania	7	3	4	0	7	0	0	0	1	0	2	1	3	0	0	1	0	1	1	4
North Central	68	33	35	0	68	0	0	1	20	23	12	4	8	0	7	10	16	14	11	10
Ohio	54	25	29	0	54	0	0	1	15	18	11	3	6	0	6	9	15	8	9	7
Indiana	2	2	0	0	2	0	0	0	0	2	0	0	0	0	0	0	0	2	0	0
Illinois	3	2	1	0	3	0	0	0	1	1	0	0	1	0	0	0	0	1	1	1
Michigan	xx	xx	xx	xx	xx	xx	xx	xx	xx	xx	xx	xx	xx	xx	xx	xx	xx	xx	xx	xx
Wisconsin	xx	xx	xx	xx	xx	xx	xx	xx	xx	xx	xx	xx	xx	xx	xx	xx	xx	xx	xx	xx
Minnesota	xx	xx	xx	xx	xx	xx	xx	xx	xx	xx	xx	xx	xx	xx	xx	xx	xx	xx	xx	xx
Iowa	xx	xx	xx	xx	xx	xx	xx	xx	xx	xx	xx	xx	xx	xx	xx	xx	xx	xx	xx	xx
Missouri	8	3	5	0	8	0	0	0	3	2	1	1	1	0	1	1	1	3	0	2
North Dakota ¹	0	0	0	0	0	0	0	0	0	0	0	0	0	0	0	0	0	0	0	0
South Dakota	0	0	0	0	0	0	0	0	0	0	0	0	0	0	0	0	0	0	0	0
Nebraska	1	1	0	0	1	0	0	0	1	0	0	0	0	0	0	0	0	0	1	0
Kansas	0	0	0	0	0	0	0	0	0	0	0	0	0	0	0	0	0	0	0	0
South	234	82	150	2	178	54	2	13	64	58	47	21	29	2	30	35	32	23	48	66
Delaware	0	0	0	0	0	0	0	0	0	0	0	0	0	0	0	0	0	0	0	0
Maryland	1	0	1	0	1	0	0	0	0	1	0	0	0	0	0	1	0	0	0	0
District of Columbia	0	0	0	0	0	0	0	0	0	0	0	0	0	0	0	0	0	0	0	0
Virginia	9	3	5	1	6	3	0	2	2	4	1	0	0	0	3	1	2	0	3	0
West Virginia	xx	xx	xx	xx	xx	xx	xx	xx	xx	xx	xx	xx	xx	xx	xx	xx	xx	xx	xx	xx
North Carolina	8	3	4	1	7	1	0	1	5	1	1	0	0	0	1	3	1	3	0	0
South Carolina	7	2	5	0	5	2	0	0	2	3	1	0	0	1	0	0	1	0	4	2

Table 9a. Characteristics of prisoners disposed of by means other than execution, by State: calendar year 1972—continued

(Includes commutations, resentencings, reversals, grants for new trials, and deaths by natural causes)

Region and State	Total dispositions	Race			Offense			Age at time of disposition							Elapsed time (in months)					
		White	Black	Other	Murder	Rape	Other	Under			Over 40	Unknown	Under			Over 71				
								21	21-25	26-30			31-35	36-40	12		12-23	24-35	36-47	48-71
Georgia	12	2	10		6	6	0	1	3	3	0	2	3	0	1	0	2	0	7	2
Florida	91	31	60	0	68	23	0	9	25	21	15	9	12	0	18	17	15	5	10	26
Kentucky	1	0	1	0	1	0	0	0	0	0	0	1	0	0	0	0	0	0	1	0
Tennessee	22	5	17	0	17	5	0	0	8	4	6	2	2	0	4	6	3	3	0	6
Alabama	15	7	8	0	13	2	0	0	1	6	2	2	4	0	0	0	3	1	1	10
Mississippi	6	1	5	0	6	0	0	0	2	2	1	0	1	0	0	2	1	1	0	2
Arkansas	2	1	1	0	2	0	0	0	1	0	0	1	0	0	1	1	0	0	0	0
Louisiana	17	3	14	0	10	7	0	0	4	4	6	0	3	0	0	0	1	2	9	5
Oklahoma	7	6	1	0	7	0	0	0	3	2	2	0	0	0	0	1	2	2	2	0
Texas	36	18	18	0	29	5	2	0	8	7	12	4	4	1	2	3	1	6	11	13
West	52	38	13	1	52	0	0	0	6	9	13	8	16	0	2	2	4	10	17	17
Montana	0	0	0	0	0	0	0	0	0	0	0	0	0	0	0	0	0	0	0	0
Idaho	0	0	0	0	0	0	0	0	0	0	0	0	0	0	0	0	0	0	0	0
Wyoming	0	0	0	0	0	0	0	0	0	0	0	0	0	0	0	0	0	0	0	0
Colorado	1	0	1	0	1	0	0	0	0	0	1	0	0	0	0	0	0	0	0	1
New Mexico ¹	0	0	0	0	0	0	0	0	0	0	0	0	0	0	0	0	0	0	0	0
Arizona	7	5	2	0	7	0	0	0	2	0	2	1	2	0	0	0	1	1	1	4
Utah	1	1	0	0	1	0	0	0	0	1	0	0	0	0	0	0	1	0	0	0
Nevada	8	8	0	0	8	0	0	0	0	2	1	3	2	0	0	1	0	2	0	5
Washington	5	3	2	0	5	0	0	0	2	1	0	1	1	0	0	0	1	1	3	0
Oregon	xx	xx	xx	xx	xx	xx	xx	xx	xx	xx	xx	xx	xx	xx	xx	xx	xx	xx	xx	xx
California ²	30	21	8	1	30	0	0	0	2	5	9	3	11	0	2	1	1	6	13	7
Alaska	xx	xx	xx	xx	xx	xx	xx	xx	xx	xx	xx	xx	xx	xx	xx	xx	xx	xx	xx	xx
Hawaii	xx	xx	xx	xx	xx	xx	xx	xx	xx	xx	xx	xx	xx	xx	xx	xx	xx	xx	xx	xx

NOTE: xx signifies that the death penalty was illegal during the entire year.

¹ Death penalty partially abolished; see Table 16 for provisions that apply.

² Death penalty abolished during part of year; see Table 16.

Table 10. Characteristics of prisoners under sentence of death in the United States, by State: December 31, 1971

Region and State	Total	Race			Median age	Offense ¹						Median elapsed time (in months)
		White	Black	Other		Murder	Rape	Kidnaping	Robbery	Assault by life prisoner	Burglary	
Total State	² 620	291	325	4	30	538	72	5	3	2	0	40
Northeast	44	23	21	0	36	42	0	2	0	0	0	61
Maine	xx	xx	xx	xx	xx	xx	xx	xx	xx	xx	xx	xx
New Hampshire	2	2	0	0	45	0	0	2	0	0	0	145
Vermont ³	0	0	0	0	0	0	0	0	0	0	0	0
Massachusetts	16	10	6	0	37	16	0	0	0	0	0	41
Rhode Island ³	0	0	0	0	0	0	0	0	0	0	0	0
Connecticut	4	2	2	0	34	4	0	0	0	0	0	55
New York ³	1	1	0	0	35	1	0	0	0	0	0	12
New Jersey	0	0	0	0	0	0	0	0	0	0	0	0
Pennsylvania	21	8	13	0	34	21	0	0	0	0	0	74
North Central	98	52	46	0	29	98	0	0	0	0	0	34
Ohio	50	24	26	0	29	50	0	0	0	0	0	27
Indiana	7	7	0	0	35	7	0	0	0	0	0	110
Illinois	28	15	13	0	29	28	0	0	0	0	0	41
Michigan	xx	xx	xx	xx	xx	xx	xx	xx	xx	xx	xx	xx
Wisconsin	xx	xx	xx	xx	xx	xx	xx	xx	xx	xx	xx	xx
Minnesota	xx	xx	xx	xx	xx	xx	xx	xx	xx	xx	xx	xx
Iowa	xx	xx	xx	xx	xx	xx	xx	xx	xx	xx	xx	xx
Missouri	11	4	7	0	29	11	0	0	0	0	0	27
North Dakota ³	0	0	0	0	0	0	0	0	0	0	0	0
South Dakota	0	0	0	0	0	0	0	0	0	0	0	0
Nebraska	1	1	0	0	24	1	0	0	0	0	0	57
Kansas	1	1	0	0	23	1	0	0	0	0	0	5
South	334	110	222	2	29	259	72	0	3	0	0	45
Delaware	3	2	1	0	31	3	0	0	0	0	0	23
Maryland	22	4	18	0	35	17	5	0	0	0	0	67
District of Columbia	2	1	1	0	36	2	0	0	0	0	0	20
Virginia	9	3	5	1	28	7	2	0	0	0	0	58
West Virginia	xx	xx	xx	xx	xx	xx	xx	xx	xx	xx	xx	xx
North Carolina	10	3	6	1	23	8	2	0	0	0	0	11
South Carolina	8	2	6	0	28	5	3	0	0	0	0	50

39

Table 10. Characteristics of prisoners under sentence of death in the United States, by State: December 31, 1971--continued

Region and State	Total	Race			Median age	Offense ¹						Median elapsed time (in months)	
		White	Black	Other		Murder	Rape	Kidnaping	Robbery	Assault by life prisoner	Burglary		
Georgia	22	6	16	0	28	13	9	0	0	0	0	0	48
Florida	84	25	59	0	28	63	21	0	0	0	0	0	32
Kentucky	19	11	8	0	32	19	0	0	0	0	0	0	38
Tennessee	18	3	15	0	32	13	5	0	0	0	0	0	27
Alabama	33	12	21	0	30	27	5	0	1	0	0	0	42
Mississippi	7	1	6	0	29	7	0	0	0	0	0	0	23
Arkansas	3	2	1	0	32	3	0	0	0	0	0	0	2
Louisiana	45	6	39	0	29	31	14	0	0	0	0	0	57
Oklahoma	11	7	4	0	27	11	0	0	0	0	0	0	44
Texas	38	22	16	0	30	30	6	0	2	0	0	0	56
West	144	106	36	2	31	139	0	3	0	2	0	0	28
Montana	0	0	0	0	0	0	0	0	0	0	0	0	0
Idaho	0	0	0	0	0	0	0	0	0	0	0	0	0
Wyoming	0	0	0	0	0	0	0	0	0	0	0	0	0
Colorado	2	1	1	0	32	2	0	0	0	0	0	0	39
New Mexico ³	0	0	0	0	0	0	0	0	0	0	0	0	0
Arizona	17	12	5	0	24	17	0	0	0	0	0	0	31
Utah	4	4	0	0	30	4	0	0	0	0	0	0	56
Nevada	8	8	0	0	36	8	0	0	0	0	0	0	92
Washington	8	6	2	0	26	8	0	0	0	0	0	0	59
Oregon	xx	xx	xx	xx	xx	xx	xx	xx	xx	xx	xx	xx	xx
California	105	75	28	2	30	100	0	3	0	2	0	0	24
Alaska	xx	xx	xx	xx	xx	xx	xx	xx	xx	xx	xx	xx	xx
Hawaii	xx	xx	xx	xx	xx	xx	xx	xx	xx	xx	xx	xx	xx

NOTE: xx signifies that the death penalty was illegal during the entire year.

¹ Convictions for multiple offenses include one murder burglary in California; one murder aggravated battery in Illinois; one murder aggravated assault in Kansas; one murder assault, one murder rape robbery, and two murder robberies in Maryland; one rape burglary in North Carolina; and one murder kidnaping in Washington.

² Unlike the counterpart table in previous NPS reports, this table includes prisoners who were transferred to mental institutions, distributed as follows: Indiana (one white, sentenced for murder), Louisiana (one black, sentenced for murder), and California (one white, sentenced for murder).

³ Death penalty partially abolished; see Table 16 for provisions that apply.

Table 10a. Characteristics of prisoners under sentence of death in the United States, by State: December 31, 1972

Region and State	Total	Race			Median age	Offense ¹					Median elapsed time (in months)	
		White	Black	Other		Murder	Rape	Kidnaping	Robbery	Assault by life prisoner		Burglary
Total State	² 330	162	167	1	30	297	26	3	1	3	0	37
Northeast	43	20	23	0	33	43	0	0	0	0	0	52
Maine	xx	xx	xx	xx	xx	xx	xx	xx	xx	xx	xx	xx
New Hampshire	0	0	0	0	0	0	0	0	0	0	0	0
Vermont ³	0	0	0	0	0	0	0	0	0	0	0	0
Massachusetts	23	12	11	0	32	23	0	0	0	0	0	47
Rhode Island ³	0	0	0	0	0	0	0	0	0	0	0	0
Connecticut	3	2	1	0	37	3	0	0	0	0	0	61
New York ³	3	1	2	0	21	3	0	0	0	0	0	8
New Jersey ⁴	0	0	0	0	0	0	0	0	0	0	0	0
Pennsylvania	14	5	9	0	33	14	0	0	0	0	0	63
North Central	43	23	20	0	31	43	0	0	0	0	0	45
Ohio	0	0	0	0	0	0	0	0	0	0	0	0
Indiana	7	5	2	0	36	7	0	0	0	0	0	122
Illinois	28	15	13	0	30	28	0	0	0	0	0	48
Michigan	xx	xx	xx	xx	xx	xx	xx	xx	xx	xx	xx	xx
Wisconsin	xx	xx	xx	xx	xx	xx	xx	xx	xx	xx	xx	xx
Minnesota	xx	xx	xx	xx	xx	xx	xx	xx	xx	xx	xx	xx
Iowa	xx	xx	xx	xx	xx	xx	xx	xx	xx	xx	xx	xx
Missouri	7	2	5	0	30	7	0	0	0	0	0	14
North Dakota ³	0	0	0	0	0	0	0	0	0	0	0	0
South Dakota	0	0	0	0	0	0	0	0	0	0	0	0
Nebraska	0	0	0	0	0	0	0	0	0	0	0	0
Kansas	1	1	0	0	24	1	0	0	0	0	0	17
South	146	46	100	0	30	119	26	0	1	0	0	47
Delaware	3	2	1	0	32	3	0	0	0	0	0	35
Maryland	22	4	18	0	36	17	5	0	0	0	0	79
District of Columbia	3	1	2	0	32	3	0	0	0	0	0	21
Virginia	4	2	2	0	30	4	0	0	0	0	0	53
West Virginia	xx	xx	xx	xx	xx	xx	xx	xx	xx	xx	xx	xx
North Carolina	7	1	6	0	21	5	2	0	0	0	0	8
South Carolina	1	0	1	0	38	0	1	0	0	0	0	41

Table 10a. Characteristics of prisoners under sentence of death in the United States, by State: December 31, 1972

Region and State	Total	Race			Median age	Offense ¹						Median elapsed time (in months)
		White	Black	Other		Murder	Rape	Kidnaping	Robbery	Assault by life prisoner	Burglary	
Total State	² 330	162	167	1	30	297	26	3	1	3	0	37
Northeast	43	20	23	0	33	43	0	0	0	0	0	52
Maine	xx	xx	xx	xx	xx	xx	xx	xx	xx	xx	xx	xx
New Hampshire	0	0	0	0	0	0	0	0	0	0	0	0
Vermont ³	0	0	0	0	0	0	0	0	0	0	0	0
Massachusetts	23	12	11	0	32	23	0	0	0	0	0	47
Rhode Island ³	0	0	0	0	0	0	0	0	0	0	0	0
Connecticut	3	2	1	0	37	3	0	0	0	0	0	61
New York ³	3	1	2	0	21	3	0	0	0	0	0	8
New Jersey ⁴	0	0	0	0	0	0	0	0	0	0	0	0
Pennsylvania	14	5	9	0	33	14	0	0	0	0	0	63
North Central	43	23	20	0	31	43	0	0	0	0	0	45
Ohio	0	0	0	0	0	0	0	0	0	0	0	0
Indiana	7	5	2	0	36	7	0	0	0	0	0	122
Illinois	28	15	13	0	30	28	0	0	0	0	0	48
Michigan	xx	xx	xx	xx	xx	xx	xx	xx	xx	xx	xx	xx
Wisconsin	xx	xx	xx	xx	xx	xx	xx	xx	xx	xx	xx	xx
Minnesota	xx	xx	xx	xx	xx	xx	xx	xx	xx	xx	xx	xx
Iowa	xx	xx	xx	xx	xx	xx	xx	xx	xx	xx	xx	xx
Missouri	7	2	5	0	30	7	0	0	0	0	0	14
North Dakota ³	0	0	0	0	0	0	0	0	0	0	0	0
South Dakota	0	0	0	0	0	0	0	0	0	0	0	0
Nebraska	0	0	0	0	0	0	0	0	0	0	0	0
Kansas	1	1	0	0	24	1	0	0	0	0	0	17
South	146	46	100	0	30	119	26	0	1	0	0	47
Delaware	3	2	1	0	32	3	0	0	0	0	0	35
Maryland	22	4	18	0	36	17	5	0	0	0	0	79
District of Columbia	3	1	2	0	32	3	0	0	0	0	0	21
Virginia	4	2	2	0	30	4	0	0	0	0	0	53
West Virginia	xx	xx	xx	xx	xx	xx	xx	xx	xx	xx	xx	xx
North Carolina	7	1	6	0	21	5	2	0	0	0	0	8
South Carolina	1	0	1	0	38	0	1	0	0	0	0	41

Table 10a. Characteristics of prisoners under sentence of death in the United States, by State: December 31, 1972—continued

Region and State	Total	Race			Median age	Offense ¹						Median elapsed time (in months)
		White	Black	Other		Murder	Rape	Kidnaping	Robbery	Assault by life prisoner	Burglary	
Georgia	15	7	8	0	26	12	3	0	0	0	0	43
Florida	7	2	5	0	32	3	4	0	0	0	0	55
Kentucky	20	10	10	0	31	20	0	0	0	0	0	45
Tennessee	0	0	0	0	0	0	0	0	0	0	0	0
Alabama	20	5	15	0	29	16	3	0	1	0	0	33
Mississippi	1	0	1	0	22	1	0	0	0	0	0	12
Arkansas	4	4	0	0	25	4	0	0	0	0	0	13
Louisiana	31	3	28	0	29	24	7	0	0	0	0	49
Oklahoma	4	1	3	0	30	4	0	0	0	0	0	62
Texas	4	4	0	0	40	3	1	0	0	0	0	76
West	98	73	24	1	29	92	0	3	0	3	0	31
Montana	0	0	0	0	0	0	0	0	0	0	0	0
Idaho	0	0	0	0	0	0	0	0	0	0	0	0
Wyoming	0	0	0	0	0	0	0	0	0	0	0	0
Colorado	1	1	0	0	33	1	0	0	0	0	0	25
New Mexico ³	0	0	0	0	0	0	0	0	0	0	0	0
Arizona	10	7	3	0	25	10	0	0	0	0	0	27
Utah	3	3	0	0	34	3	0	0	0	0	0	68
Nevada	0	0	0	0	0	0	0	0	0	0	0	0
Washington	3	3	0	0	33	3	0	0	0	0	0	34
Oregon	xx	xx	xx	xx	xx	xx	xx	xx	xx	xx	xx	xx
California ⁴	81	59	21	1	29	75	0	3	0	3	0	30
Alaska	xx	xx	xx	xx	xx	xx	xx	xx	xx	xx	xx	xx
Hawaii	xx	xx	xx	xx	xx	xx	xx	xx	xx	xx	xx	xx

NOTE: xx signifies that the death penalty was illegal during the entire year.

¹ Convictions for multiple offenses include one murder burglary in California; one murder aggravated battery in Illinois; one murder aggravated assault in Kansas; one murder assault, one murder rape robbery, and two murder robberies in Maryland; one murder burglary in North Carolina; and one murder kidnaping in Washington.

² Unlike the counterpart table in previous NPS reports, this table includes prisoners who have been transferred to mental institutions or who have escaped, distributed as follows: Indiana (one white, sentenced for murder), Louisiana (one black, sentenced for murder), and District of Columbia (one black, sentenced for murder).

³ Death penalty partially abolished; see Table 16 for provisions that apply.

⁴ Death penalty abolished during part of year; see Table 16.

Table 11. Prisoners under sentence of death, by age and State: December 31, 1971

Region and State	Total	Age (in years)									Unknown	Median age
		Under 20	20-24	25-29	30-34	35-39	40-44	45-49	50-54	55 and over		
Total State	¹ 620	14	147	151	131	65	52	25	17	16	2	30
Northeast	44	0	4	7	10	9	9	2	2	1	0	36
Maine	xx	xx	xx	xx	xx	xx	xx	xx	xx	xx	xx	xx
New Hampshire	2	0	0	0	0	0	1	1	0	0	0	45
Vermont ²	0	0	0	0	0	0	0	0	0	0	0	0
Massachusetts	16	0	1	4	2	3	2	1	2	1	0	37
Rhode Island ²	0	0	0	0	0	0	0	0	0	0	0	0
Connecticut	4	0	0	0	2	1	1	0	0	0	0	34
New York ²	1	0	0	0	0	1	0	0	0	0	0	35
New Jersey	0	0	0	0	0	0	0	0	0	0	0	0
Pennsylvania	21	0	3	3	6	4	5	0	0	0	0	34
North Central	98	1	25	29	22	6	8	4	1	2	0	29
Ohio	50	1	12	16	13	2	3	1	1	1	0	29
Indiana	7	0	0	1	2	2	0	1	0	1	0	35
Illinois	28	0	8	8	6	1	4	1	0	0	0	29
Michigan	xx	xx	xx	xx	xx	xx	xx	xx	xx	xx	xx	xx
Wisconsin	xx	xx	xx	xx	xx	xx	xx	xx	xx	xx	xx	xx
Minnesota	xx	xx	xx	xx	xx	xx	xx	xx	xx	xx	xx	xx
Iowa	xx	xx	xx	xx	xx	xx	xx	xx	xx	xx	xx	xx
Missouri	11	0	3	4	1	1	1	1	0	0	0	29
North Dakota ²	0	0	0	0	0	0	0	0	0	0	0	0
South Dakota	0	0	0	0	0	0	0	0	0	0	0	0
Nebraska	1	0	1	0	0	0	0	0	0	0	0	24
Kansas	1	0	1	0	0	0	0	0	0	0	0	23
South	334	11	88	78	70	33	20	12	12	8	2	29
Delaware	3	0	0	1	1	0	1	0	0	0	0	31
Maryland	22	0	5	2	4	4	1	2	3	1	0	35
District of Columbia	2	0	0	1	0	0	1	0	0	0	0	36
Virginia	9	1	2	3	3	0	0	0	0	0	0	28
West Virginia	xx	xx	xx	xx	xx	xx	xx	xx	xx	xx	xx	xx
North Carolina	10	1	6	2	1	0	0	0	0	0	0	23
South Carolina	8	0	2	3	1	1	0	0	0	0	1	28

Number of Deaths, by Age and State: December 31, 1971—continued

State	Total	Age (in years)									Unknown	Median age
		Under 20	20-24	25-29	30-34	35-39	40-44	45-49	50-54	55 and over		
Georgia	22	1	6	7	1	4	2	1	0	0	0	28
Florida	84	5	25	16	16	8	7	2	3	2	0	28
Kentucky	19	0	5	2	7	1	1	1	1	1	0	32
Tennessee	18	0	5	3	6	2	1	1	0	0	0	32
Alabama	33	0	6	10	6	3	3	2	1	2	0	30
Mississippi	7	0	3	2	1	0	0	0	1	0	0	29
Arkansas	3	1	0	0	1	1	0	0	0	0	0	32
Louisiana	45	2	12	12	9	5	2	2	1	0	0	29
Oklahoma	11	0	4	6	1	0	0	0	0	0	0	27
Texas	38	0	7	8	12	4	1	1	2	2	1	30
West	144	2	30	37	29	17	15	7	2	5	0	31
Montana	0	0	0	0	0	0	0	0	0	0	0	0
Idaho	0	0	0	0	0	0	0	0	0	0	0	0
Wyoming	0	0	0	0	0	0	0	0	0	0	0	0
Colorado	2	0	0	0	2	0	0	0	0	0	0	32
New Mexico ²	0	0	0	0	0	0	0	0	0	0	0	0
Arizona	17	1	8	2	2	1	1	0	0	2	0	24
Utah	4	0	0	1	3	0	0	0	0	0	0	30
Nevada	8	0	0	2	1	3	0	2	0	0	0	36
Washington	8	0	3	2	1	1	1	0	0	0	0	26
Oregon	xx	xx	xx	xx	xx	xx	xx	xx	xx	xx	xx	xx
California	105	1	19	30	20	12	13	5	2	3	0	30
Alaska	xx	xx	xx	xx	xx	xx	xx	xx	xx	xx	xx	xx
Hawaii	xx	xx	xx	xx	xx	xx	xx	xx	xx	xx	xx	xx

NOTE: xx signifies that the death penalty was illegal during the entire year.

¹ Unlike the counterpart table in previous NPS reports, this table includes prisoners who have been transferred to mental institutions, distributed as follows: Indiana, Louisiana, and California.

² Death penalty partially abolished; see Table 16 for provisions that apply.

Table 11a. Prisoners under sentence of death, by age and State: December 31, 1972

Region and State	Total	Age (in years)									Unknown	Median age
		Under 20	20-24	25-29	30-34	35-39	40-44	45-49	50-54	55 and over		
Total State	¹ 330	7	56	99	72	40	24	15	8	9	0	30
Northeast	43	1	7	8	9	9	4	1	2	2	0	33
Maine	xx	xx	xx	xx	xx	xx	xx	xx	xx	xx	xx	xx
New Hampshire	0	0	0	0	0	0	0	0	0	0	0	0
Vermont ²	0	0	0	0	0	0	0	0	0	0	0	0
Massachusetts	23	1	4	4	5	3	1	1	2	2	0	32
Rhode Island ²	0	0	0	0	0	0	0	0	0	0	0	0
Connecticut	3	0	0	0	1	1	1	0	0	0	0	37
New York ²	3	0	2	0	0	1	0	0	0	0	0	21
New Jersey ³	0	0	0	0	0	0	0	0	0	0	0	0
Pennsylvania	14	0	1	4	3	4	2	0	0	0	0	33
North Central	43	0	7	12	11	4	5	3	0	1	0	31
Ohio	0	0	0	0	0	0	0	0	0	0	0	0
Indiana	7	0	1	1	1	1	1	1	0	1	0	36
Illinois	28	0	4	9	8	2	4	1	0	0	0	30
Michigan	xx	xx	xx	xx	xx	xx	xx	xx	xx	xx	xx	xx
Wisconsin	xx	xx	xx	xx	xx	xx	xx	xx	xx	xx	xx	xx
Minnesota	xx	xx	xx	xx	xx	xx	xx	xx	xx	xx	xx	xx
Iowa	xx	xx	xx	xx	xx	xx	xx	xx	xx	xx	xx	xx
Missouri	7	0	1	2	2	1	0	1	0	0	0	30
North Dakota ²	0	0	0	0	0	0	0	0	0	0	0	0
South Dakota	0	0	0	0	0	0	0	0	0	0	0	0
Nebraska	0	0	0	0	0	0	0	0	0	0	0	0
Kansas	1	0	1	0	0	0	0	0	0	0	0	24
South	146	5	27	42	34	14	7	8	5	4	0	30
Delaware	3	0	0	0	2	0	1	0	0	0	0	32
Maryland	22	0	2	5	3	5	1	2	2	2	0	36
District of Columbia	3	0	0	1	1	0	1	0	0	0	0	29
Virginia	4	0	0	2	2	0	0	0	0	0	0	30
West Virginia	xx	xx	xx	xx	xx	xx	xx	xx	xx	xx	xx	xx
North Carolina	7	3	3	1	0	0	0	0	0	0	0	21
South Carolina	1	0	0	0	0	1	0	0	0	0	0	38

Table 11a. Prisoners under sentence of death, by age and State: December 31, 1972—continued

Region and State	Total	Age (in years)									Unknown	Median age	
		Under 20	20-24	25-29	30-34	35-39	40-44	45-49	50-54	55 and over			
Georgia	15	0	2	9	2	0	2	0	0	0	0	0	26
Florida	7	0	1	2	2	2	0	0	0	0	0	0	32
Kentucky	20	1	4	3	6	2	0	2	1	1	0	0	31
Tennessee	20	0	0	0	0	0	0	0	0	0	0	0	0
Alabama	0	0	4	8	2	2	0	3	1	0	0	0	29
Mississippi	1	0	1	0	0	0	0	0	0	0	0	0	22
Arkansas	4	1	1	1	1	0	0	0	0	0	0	0	25
Louisiana	31	0	8	9	9	2	2	0	1	0	0	0	29
Oklahoma	4	0	1	0	3	0	0	0	0	0	0	0	30
Texas	4	0	0	1	1	0	0	1	0	1	0	0	40
West	98	1	15	37	18	13	8	3	1	2	0	0	29
Montana	0	0	0	0	0	0	0	0	0	0	0	0	0
Idaho	0	0	0	0	0	0	0	0	0	0	0	0	0
Wyoming	0	0	0	0	0	0	0	0	0	0	0	0	0
Colorado	1	0	0	0	1	0	0	0	0	0	0	0	33
New Mexico ²	0	0	0	0	0	0	0	0	0	0	0	0	0
Arizona	10	0	4	3	2	0	1	0	0	0	0	0	25
Utah	3	0	0	0	3	0	0	0	0	0	0	0	34
Nevada	0	0	0	0	0	0	0	0	0	0	0	0	0
Washington	3	0	1	0	1	1	0	0	0	0	0	0	33
Oregon	xx	xx	xx	xx	xx	xx	xx	xx	xx	xx	xx	xx	xx
California ³	81	1	10	34	11	12	7	3	1	2	0	0	29
Alaska	xx	xx	xx	xx	xx	xx	xx	xx	xx	xx	xx	xx	xx
Hawaii	xx	xx	xx	xx	xx	xx	xx	xx	xx	xx	xx	xx	xx

NOTE: xx signifies that the death penalty was illegal during the entire year.

¹ Unlike the counterpart table in previous NPS reports, this table includes prisoners who have been transferred to mental institutions or who have escaped, distributed as follows: Indiana, Louisiana, and the District of Columbia.

² Death penalty partially abolished; see Table 16 for provisions that apply.

³ Death penalty abolished during part of year; see Table 16.

Table 12. Elapsed time for prisoners under sentence of death, by State: December 31, 1971

Region and State	Total	Elapsed time (in months)											Median elapsed time (in months)	
		3 and under	4-6	7-12	13-18	19-24	25-36	37-48	49-60	61-72	73-84	85-96		97 and over
Total State	¹ 620	32	14	54	54	59	80	76	68	52	38	27	66	40
Northeast	44	1	0	3	4	1	3	7	3	3	3	5	11	61
Maine	xx	xx	xx	xx	xx	xx	xx	xx	xx	xx	xx	xx	xx	xx
New Hampshire	2	0	0	0	0	0	0	0	0	0	0	0	2	145
Vermont ²	0	0	0	0	0	0	0	0	0	0	0	0	0	0
Massachusetts	16	1	0	1	2	0	1	5	1	0	1	3	1	41
Rhode Island ²	0	0	0	0	0	0	0	0	0	0	0	0	0	0
Connecticut	4	0	0	0	1	0	0	0	1	1	0	0	1	55
New York ²	1	0	0	1	0	0	0	0	0	0	0	0	0	12
New Jersey	0	0	0	0	0	0	0	0	0	0	0	0	0	0
Pennsylvania	21	0	0	1	1	1	2	2	1	2	2	2	7	74
North Central	98	5	3	5	9	12	20	13	10	4	8	3	6	34
Ohio	50	2	2	4	8	6	9	6	6	2	5	0	0	27
Indiana	7	1	0	0	0	0	1	1	0	0	0	0	4	110
Illinois	28	0	0	0	0	5	7	5	3	1	2	3	2	41
Michigan	xx	xx	xx	xx	xx	xx	xx	xx	xx	xx	xx	xx	xx	xx
Wisconsin	xx	xx	xx	xx	xx	xx	xx	xx	xx	xx	xx	xx	xx	xx
Minnesota	xx	xx	xx	xx	xx	xx	xx	xx	xx	xx	xx	xx	xx	xx
Iowa	xx	xx	xx	xx	xx	xx	xx	xx	xx	xx	xx	xx	xx	xx
Missouri	11	2	0	1	1	1	3	1	0	1	1	0	0	27
North Dakota ²	0	0	0	0	0	0	0	0	0	0	0	0	0	0
South Dakota	0	0	0	0	0	0	0	0	0	0	0	0	0	0
Nebraska	1	0	0	0	0	0	0	0	1	0	0	0	0	57
Kansas	1	0	1	0	0	0	0	0	0	0	0	0	0	5
South	334	20	7	25	23	28	36	41	42	34	22	16	40	45
Delaware	3	0	0	0	1	1	0	0	0	0	1	0	0	23
Maryland	22	1	0	2	0	3	1	0	1	4	1	0	9	67
District of Columbia	2	0	0	1	0	0	1	0	0	0	0	0	0	20
Virginia	9	1	0	0	0	3	0	0	3	1	0	1	0	58
West Virginia	xx	xx	xx	xx	xx	xx	xx	xx	xx	xx	xx	xx	xx	xx
North Carolina	10	2	0	3	2	0	3	0	0	0	0	0	0	11
South Carolina	8	0	0	0	0	1	1	2	1	1	2	0	0	50

Table 12. Elapsed time for prisoners under sentence of death, by State: December 31, 1971--continued

Region and State	Total	Elapsed time (in months)											Median elapsed time (in months)	
		3 and under	4-6	7-12	13-18	19-24	25-36	37-48	49-60	61-72	73-84	85-96		97 and over
Georgia	22	1	0	0	0	2	3	5	5	1	5	0	0	48
Florida	84	8	3	7	6	10	10	6	5	7	6	2	14	32
Kentucky	19	0	0	0	5	1	2	6	2	0	0	0	3	38
Tennessee	18	0	0	6	1	2	2	1	0	5	1	0	0	27
Alabama	33	2	1	3	3	2	4	4	1	1	1	7	4	42
Mississippi	7	1	0	1	1	1	0	1	0	0	1	1	0	23
Arkansas	3	2	1	0	0	0	0	0	0	0	0	0	0	2
Louisiana	45	0	1	2	2	1	6	7	10	2	2	3	9	57
Oklahoma	11	0	0	0	2	1	0	5	2	1	0	0	0	44
Texas	38	2	1	0	0	0	3	4	12	11	2	2	1	56
West	144	6	4	21	18	18	21	15	13	11	5	3	9	28
Montana	0	0	0	0	0	0	0	0	0	0	0	0	0	0
Idaho	0	0	0	0	0	0	0	0	0	0	0	0	0	0
Wyoming	0	0	0	0	0	0	0	0	0	0	0	0	0	0
Colorado	2	0	0	0	1	0	0	0	0	1	0	0	0	39
New Mexico ²	0	0	0	0	0	0	0	0	0	0	0	0	0	0
Arizona	17	1	0	4	0	2	2	0	1	2	0	1	4	31
Utah	4	0	0	0	1	0	0	0	2	0	0	0	1	56
Nevada	8	0	1	0	0	0	2	0	0	0	1	0	4	92
Washington	8	0	0	1	1	0	3	1	2	0	0	0	0	59
Oregon	xx	xx	xx	xx	xx	xx	xx	xx	xx	xx	xx	xx	xx	xx
California	105	5	3	16	15	16	14	14	8	8	4	2	0	24
Alaska	xx	xx	xx	xx	xx	xx	xx	xx	xx	xx	xx	xx	xx	xx
Hawaii	xx	xx	xx	xx	xx	xx	xx	xx	xx	xx	xx	xx	xx	xx

NOTE: xx signifies that the death penalty was illegal during the entire year.

¹ Unlike the counterpart table in previous NPS reports, this table includes prisoners who have been transferred to mental institutions, distributed as follows: Indiana, Louisiana, and California.

² Death penalty partially abolished; see Table 16 for provisions that apply.

Table 12a. Elapsed time for prisoners under sentence of death, by State: December 31, 1972

Region and State	Total	Elapsed time (in months)											Median elapsed time (in months)	
		3 and under	4-6	7-12	13-18	19-24	25-36	37-48	49-60	61-72	73-84	85-96		97 and over
Total State	¹ 330	5	7	35	20	34	61	35	36	21	18	12	46	37
Northeast	43	0	1	8	2	3	4	2	6	4	1	3	9	52
Maine	xx	xx	xx	xx	xx	xx	xx	xx	xx	xx	xx	xx	xx	xx
New Hampshire	0	0	0	0	0	0	0	0	0	0	0	0	0	0
Vermont ²	0	0	0	0	0	0	0	0	0	0	0	0	0	0
Massachusetts	23	0	1	6	1	1	2	1	5	1	0	1	4	47
Rhode Island ²	0	0	0	0	0	0	0	0	0	0	0	0	0	0
Connecticut	3	0	0	0	0	0	1	0	0	1	0	0	1	61
New York ²	3	0	0	2	0	1	0	0	0	0	0	0	0	8
New Jersey ³	0	0	0	0	0	0	0	0	0	0	0	0	0	0
Pennsylvania	14	0	0	0	1	1	1	1	1	2	1	2	4	63
North Central	43	1	0	7	4	0	5	7	6	2	1	2	8	45
Ohio	0	0	0	0	0	0	0	0	0	0	0	0	0	0
Indiana	7	0	0	2	1	0	0	0	0	0	0	0	4	122
Illinois	28	1	0	2	0	0	5	6	5	2	1	2	4	48
Michigan	xx	xx	xx	xx	xx	xx	xx	xx	xx	xx	xx	xx	xx	xx
Wisconsin	xx	xx	xx	xx	xx	xx	xx	xx	xx	xx	xx	xx	xx	xx
Minnesota	xx	xx	xx	xx	xx	xx	xx	xx	xx	xx	xx	xx	xx	xx
Iowa	xx	xx	xx	xx	xx	xx	xx	xx	xx	xx	xx	xx	xx	xx
Missouri	7	0	0	3	2	0	0	1	1	0	0	0	0	14
North Dakota ²	0	0	0	0	0	0	0	0	0	0	0	0	0	0
South Dakota	0	0	0	0	0	0	0	0	0	0	0	0	0	0
Nebraska	0	0	0	0	0	0	0	0	0	0	0	0	0	0
Kansas	1	0	0	0	1	0	0	0	0	0	0	0	0	17
South	146	4	6	14	7	11	18	15	17	11	11	6	26	47
Delaware	3	0	0	0	0	0	2	0	0	0	0	1	0	35
Maryland	22	0	0	0	1	3	3	1	0	1	4	0	9	79
District of Columbia	3	0	1	0	0	1	0	1	0	0	0	0	0	21
Virginia	4	1	0	0	0	0	1	0	0	0	1	0	1	53
West Virginia	xx	xx	xx	xx	xx	xx	xx	xx	xx	xx	xx	xx	xx	xx
North Carolina	7	2	1	3	0	1	0	0	0	0	0	0	0	8
South Carolina	1	0	0	0	0	0	0	1	0	0	0	0	0	41

CONTINUED

1 OF 2

Table 12a. Elapsed time for prisoners under sentence of death, by State: December 31, 1972—continued

Region and State	Total	Elapsed time (in months)											Median elapsed time (in months)	
		3 and under	4-6	7-12	13-18	19-24	25-36	37-48	49-60	61-72	73-84	85-96		97 and over
Georgia	15	0	3	1	1	0	0	3	2	1	1	3	0	43
Florida	7	0	0	1	0	0	1	1	1	0	1	0	2	55
Kentucky	20	1	0	1	0	0	6	2	5	2	0	0	3	45
Tennessee	0	0	0	0	0	0	0	0	0	0	0	0	0	0
Alabama	20	0	0	3	2	4	3	1	3	1	0	0	3	33
Mississippi	1	0	0	1	0	0	0	0	0	0	0	0	0	12
Arkansas	4	0	0	2	2	0	0	0	0	0	0	0	0	13
Louisiana	31	0	1	2	1	2	2	5	4	3	2	2	7	49
Oklahoma	4	0	0	0	0	0	0	0	2	1	1	0	0	62
Texas	4	0	0	0	0	0	0	0	0	2	1	0	1	76
West	98	0	0	6	7	20	34	11	7	4	5	1	3	31
Montana	0	0	0	0	0	0	0	0	0	0	0	0	0	0
Idaho	0	0	0	0	0	0	0	0	0	0	0	0	0	0
Wyoming	0	0	0	0	0	0	0	0	0	0	0	0	0	0
Colorado	1	0	0	0	0	0	1	0	0	0	0	0	0	25
New Mexico ²	0	0	0	0	0	0	0	0	0	0	0	0	0	0
Arizona	10	0	0	0	1	4	2	0	0	0	2	0	1	27
Utah	3	0	0	0	0	0	0	0	0	2	0	0	1	68
Nevada	0	0	0	0	0	0	0	0	0	0	0	0	0	0
Washington	3	0	0	0	0	1	1	1	0	0	0	0	0	34
Oregon	xx	xx	xx	xx	xx	xx	xx	xx	xx	xx	xx	xx	xx	xx
California ³	81	0	0	6	6	15	30	10	7	2	3	1	1	30
Alaska	xx	xx	xx	xx	xx	xx	xx	xx	xx	xx	xx	xx	xx	xx
Hawaii	xx	xx	xx	xx	xx	xx	xx	xx	xx	xx	xx	xx	xx	xx

NOTE: xx signifies that the death penalty was illegal during the entire year.

¹ Unlike the counterpart table in previous NPS reports, this table includes prisoners who have been transferred to mental institutions or who have escaped, distributed as follows: Indiana, Louisiana, and the District of Columbia.

² Death penalty partially abolished; see Table 16 for provisions that apply.

³ Death penalty abolished during part of year; see Table 16.

Table 13. Prisoners under sentence of death, by State, offense, and race: December 31, 1971

Region and State	Total offenses ¹			Murder		Rape		Kidnaping		Robbery		Assault by life prisoner		Burglary		Year received				
	Total ²	White	Black	White	Black	White	Black	White	Black	White	Black	White	Black	White	Black	1971		Prior years		
																White	Black	White	Black	
Total State	³ 620	291	325	275	260	8	63	5	0	2	1	1	1	0	0	46	50	245	275	
Northeast	44	23	21	21	21	0	0	2	0	0	0	0	0	0	0	2	2	21	19	
Maine	xx	xx	xx	xx	xx	xx	xx	xx	xx	xx	xx	xx	xx	xx	xx	xx	xx	xx	xx	
New Hampshire	2	2	0	0	0	0	0	2	0	0	0	0	0	0	0	0	0	2	0	
Vermont ⁴	0	0	0	0	0	0	0	0	0	0	0	0	0	0	0	0	0	0	0	
Massachusetts	16	10	6	10	6	0	0	0	0	0	0	0	0	0	0	1	1	9	5	
Rhode Island ⁴	0	0	0	0	0	0	0	0	0	0	0	0	0	0	0	0	0	0	0	
Connecticut	4	2	2	2	2	0	0	0	0	0	0	0	0	0	0	0	0	2	2	
New York ⁴	1	1	0	1	0	0	0	0	0	0	0	0	0	0	0	1	0	0	0	
New Jersey	0	0	0	0	0	0	0	0	0	0	0	0	0	0	0	0	0	0	0	
Pennsylvania	21	8	13	8	13	0	0	0	0	0	0	0	0	0	0	0	1	8	12	
North Central	98	52	46	52	46	0	0	0	0	0	0	0	0	0	0	7	6	45	40	
Ohio	50	24	26	24	26	0	0	0	0	0	0	0	0	0	0	5	3	19	23	
Indiana	7	7	0	7	0	0	0	0	0	0	0	0	0	0	0	1	0	6	0	
Illinois	28	15	13	15	13	0	0	0	0	0	0	0	0	0	0	0	0	15	13	
Michigan	xx	xx	xx	xx	xx	xx	xx	xx	xx	xx	xx	xx	xx	xx	xx	xx	xx	xx	xx	xx
Wisconsin	xx	xx	xx	xx	xx	xx	xx	xx	xx	xx	xx	xx	xx	xx	xx	xx	xx	xx	xx	xx
Minnesota	xx	xx	xx	xx	xx	xx	xx	xx	xx	xx	xx	xx	xx	xx	xx	xx	xx	xx	xx	xx
Iowa	xx	xx	xx	xx	xx	xx	xx	xx	xx	xx	xx	xx	xx	xx	xx	xx	xx	xx	xx	xx
Missouri ⁵	11	4	7	4	7	0	0	0	0	0	0	0	0	0	0	0	3	4	4	
North Dakota ⁴	0	0	0	0	0	0	0	0	0	0	0	0	0	0	0	0	0	0	0	
South Dakota	0	0	0	0	0	0	0	0	0	0	0	0	0	0	0	0	0	0	0	
Nebraska	1	1	0	1	0	0	0	0	0	0	0	0	0	0	0	0	0	1	0	
Kansas	1	1	0	1	0	0	0	0	0	0	0	0	0	0	0	1	0	0	0	
South	³ 334	110	222	100	158	8	63	0	0	2	1	0	0	0	0	14	38	96	184	
Delaware	3	2	1	2	1	0	0	0	0	0	0	0	0	0	0	0	0	2	1	
Maryland	22	4	18	4	13	0	5	0	0	0	0	0	0	0	0	0	2	4	16	
District of Columbia	2	1	1	1	1	0	0	0	0	0	0	0	0	0	0	0	1	1	0	
Virginia	³ 9	3	5	3	3	0	2	0	0	0	0	0	0	0	0	0	0	3	5	
West Virginia	xx	xx	xx	xx	xx	xx	xx	xx	xx	xx	xx	xx	xx	xx	xx	xx	xx	xx	xx	
North Carolina	³ 10	3	6	3	5	0	1	0	0	0	0	0	0	0	0	0	4	3	2	
South Carolina	8	2	6	2	3	0	3	0	0	0	0	0	0	0	0	0	0	2	6	

Table 13. Prisoners under sentence of death, by State, offense, and race: December 31, 1971—continued

Region and State	Total offenses ¹		Murder		Rape		Kidnaping		Robbery		Assault by life prisoner		Burglary		Year received				
	Total ²	White	Black	White	Black	White	Black	White	Black	White	Black	White	Black	White	Black	1971		Prior years	
																White	Black	White	Black
Georgia	22	6	16	4	9	2	7	0	0	0	0	0	0	0	0	0	1	6	15
Florida	84	25	59	21	42	4	17	0	0	0	0	0	0	0	0	7	11	18	48
Kentucky	19	11	8	11	8	0	0	0	0	0	0	0	0	0	0	0	2	11	6
Tennessee	18	3	15	3	10	0	5	0	0	0	0	0	0	0	0	1	5	2	10
Alabama	33	12	21	12	15	0	5	0	0	0	1	0	0	0	0	3	4	9	17
Mississippi	7	1	6	1	6	0	0	0	0	0	0	0	0	0	0	0	2	1	4
Arkansas	3	2	1	2	1	0	0	0	0	0	0	0	0	0	0	2	1	0	0
Louisiana	45	6	39	6	25	0	14	0	0	0	0	0	0	0	0	0	3	6	36
Oklahoma	11	7	4	7	4	0	0	0	0	0	0	0	0	0	0	0	0	7	4
Texas	38	22	16	18	12	2	4	0	0	2	0	0	0	0	0	1	2	21	14
West	³ 144	106	36	102	35	0	0	3	0	0	0	1	1	0	0	23	4	83	32
Montana	0	0	0	0	0	0	0	0	0	0	0	0	0	0	0	0	0	0	0
Idaho	0	0	0	0	0	0	0	0	0	0	0	0	0	0	0	0	0	0	0
Wyoming	0	0	0	0	0	0	0	0	0	0	0	0	0	0	0	0	0	0	0
Colorado	2	1	1	1	1	0	0	0	0	0	0	0	0	0	0	0	0	1	1
New Mexico ⁴	0	0	0	0	0	0	0	0	0	0	0	0	0	0	0	0	0	0	0
Arizona	17	12	5	12	5	0	0	0	0	0	0	0	0	0	0	3	2	9	3
Utah	4	4	0	4	0	0	0	0	0	0	0	0	0	0	0	0	0	4	0
Nevada	8	8	0	8	0	0	0	0	0	0	0	0	0	0	0	1	0	7	0
Washington	8	6	2	6	2	0	0	0	0	0	0	0	0	0	0	1	0	5	2
Oregon	xx	xx	xx	xx	xx	xx	xx	xx	xx	xx	xx	xx	xx	xx	xx	xx	xx	xx	xx
California	³ 105	75	28	71	27	0	0	3	0	0	0	1	1	0	0	18	2	57	26
Alaska	xx	xx	xx	xx	xx	xx	xx	xx	xx	xx	xx	xx	xx	xx	xx	xx	xx	xx	xx
Hawaii	xx	xx	xx	xx	xx	xx	xx	xx	xx	xx	xx	xx	xx	xx	xx	xx	xx	xx	xx

NOTE: xx signifies that the death penalty was illegal during the entire year.

¹ Convictions for multiple offenses include one murder burglary in California; one murder aggravated battery in Illinois; one murder aggravated assault in Kansas; one murder assault, one murder rape robbery, and two murder robberies in Maryland; one rape burglary in North Carolina; and one murder kidnaping in Washington.

² Unlike the counterpart table in previous NPS reports, this table includes prisoners who have been transferred to mental institutions, distributed as follows: Indiana (one white, sentenced for murder), Louisiana (one black, sentenced for murder), and California (one white, sentenced for murder).

³ Black and white do not add to total because total column includes four members of other races distributed as follows; Virginia (one inmate sentenced for murder), North Carolina (one inmate sentenced for rape), California (two inmates sentenced for murder).

⁴ Death penalty partially abolished; see Table 16 for provisions that apply.

Table 13a. Prisoners under sentence of death, by State, offense, and race: December 31, 1972

Region and State	Total offenses ¹			Murder		Rape		Kidnaping		Robbery		Assault by life prisoner		Burglary		Year received			
	Total ²	White	Black	White	Black	White	Black	White	Black	White	Black	White	Black	White	Black	1972		Prior years	
																White	Black	White	Black
Total State	330	162	167	153	143	4	22	3	0	0	1	2	1	0	0	15	27	147	140
Northeast	43	20	23	20	23	0	0	0	0	0	0	0	0	0	0	2	7	18	16
Maine	xx	xx	xx	xx	xx	xx	xx	xx	xx	xx	xx	xx	xx	xx	xx	xx	xx	xx	xx
New Hampshire	0	0	0	0	0	0	0	0	0	0	0	0	0	0	0	0	0	0	0
Vermont ⁴	0	0	0	0	0	0	0	0	0	0	0	0	0	0	0	0	0	0	0
Massachusetts	23	12	11	12	11	0	0	0	0	0	0	0	0	0	0	2	5	10	6
Rhode Island ⁴	0	0	0	0	0	0	0	0	0	0	0	0	0	0	0	0	0	0	0
Connecticut	3	2	1	2	1	0	0	0	0	0	0	0	0	0	0	0	0	2	1
New York ⁴	3	1	2	1	2	0	0	0	0	0	0	0	0	0	0	0	2	1	0
New Jersey ⁵	0	0	0	0	0	0	0	0	0	0	0	0	0	0	0	0	0	0	0
Pennsylvania	14	5	9	5	9	0	0	0	0	0	0	0	0	0	0	0	0	5	9
North Central	43	23	20	23	20	0	0	0	0	0	0	0	0	0	0	3	5	20	15
Ohio	0	0	0	0	0	0	0	0	0	0	0	0	0	0	0	0	0	0	0
Indiana	7	5	2	5	2	0	0	0	0	0	0	0	0	0	0	0	2	5	0
Illinois	28	15	13	15	13	0	0	0	0	0	0	0	0	0	0	2	1	13	12
Michigan	xx	xx	xx	xx	xx	xx	xx	xx	xx	xx	xx	xx	xx	xx	xx	xx	xx	xx	xx
Wisconsin	xx	xx	xx	xx	xx	xx	xx	xx	xx	xx	xx	xx	xx	xx	xx	xx	xx	xx	xx
Minnesota	xx	xx	xx	xx	xx	xx	xx	xx	xx	xx	xx	xx	xx	xx	xx	xx	xx	xx	xx
Iowa	xx	xx	xx	xx	xx	xx	xx	xx	xx	xx	xx	xx	xx	xx	xx	xx	xx	xx	xx
Missouri	7	2	5	2	5	0	0	0	0	0	0	0	0	0	0	1	2	1	3
North Dakota ⁴	0	0	0	0	0	0	0	0	0	0	0	0	0	0	0	0	0	0	0
South Dakota	0	0	0	0	0	0	0	0	0	0	0	0	0	0	0	0	0	0	0
Nebraska	0	0	0	0	0	0	0	0	0	0	0	0	0	0	0	0	0	0	0
Kansas	1	1	0	1	0	0	0	0	0	0	0	0	0	0	0	0	0	1	0
South	146	46	100	42	77	4	22	0	0	0	1	0	0	0	0	7	14	39	86
Delaware	3	2	1	2	1	0	0	0	0	0	0	0	0	0	0	0	0	2	1
Maryland	22	4	18	4	13	0	5	0	0	0	0	0	0	0	0	0	0	4	18
District of Columbia	3	1	2	1	1	0	0	0	0	0	0	0	0	0	0	0	1	1	1
Virginia	4	2	2	2	2	0	0	0	0	0	0	0	0	0	0	0	1	2	1
West Virginia	xx	xx	xx	xx	xx	xx	xx	xx	xx	xx	xx	xx	xx	xx	xx	xx	xx	xx	xx
North Carolina	7	1	6	1	4	0	2	0	0	0	0	0	0	0	0	1	4	0	2
South Carolina	1	0	1	0	0	0	1	0	0	0	0	0	0	0	0	0	0	0	1

53

Table 13a. Prisoners under sentence of death, by State, offense, and race: December 31, 1972—continued

Region and State	Total offenses ¹			Murder		Rape		Kidnaping		Robbery		Assault by life prisoner		Burglary		Year received					
	Total ²	White	Black	White	Black	White	Black	White	Black	White	Black	White	Black	White	Black	1972		Prior years			
																White	Black	White	Black		
Georgia	15	7	8	5	7	2	1	0	0	0	0	0	0	0	0	0	3	1	4	7	
Florida	7	2	5	1	2	1	3	0	0	0	0	0	0	0	0	0	1	0	1	5	
Kentucky	20	10	10	10	10	0	0	0	0	0	0	0	0	0	0	0	0	2	10	8	
Tennessee	0	0	0	0	0	0	0	0	0	0	0	0	0	0	0	0	0	0	0	0	
Alabama	20	5	15	5	11	0	3	0	0	0	1	0	0	0	0	0	0	2	5	13	
Mississippi	1	0	1	0	1	0	0	0	0	0	0	0	0	0	0	0	0	0	0	1	
Arkansas	4	4	0	4	0	0	0	0	0	0	0	0	0	0	0	0	2	0	2	0	
Louisiana	31	3	28	3	21	0	7	0	0	0	0	0	0	0	0	0	0	3	3	25	
Oklahoma	4	1	3	1	3	0	0	0	0	0	0	0	0	0	0	0	0	0	1	3	
Texas	4	4	0	3	0	1	0	0	0	0	0	0	0	0	0	0	0	0	4	0	
West	³ 98	73	24	68	23	0	0	3	0	0	0	2	1	0	0	0	3	1	70	23	
Montana	0	0	0	0	0	0	0	0	0	0	0	0	0	0	0	0	0	0	0	0	
Idaho	0	0	0	0	0	0	0	0	0	0	0	0	0	0	0	0	0	0	0	0	
Wyoming	0	0	0	0	0	0	0	0	0	0	0	0	0	0	0	0	0	0	0	0	
Colorado	1	1	0	1	0	0	0	0	0	0	0	0	0	0	0	0	0	0	1	0	
New Mexico ⁴	0	0	0	0	0	0	0	0	0	0	0	0	0	0	0	0	0	0	0	0	
Arizona	10	7	3	7	3	0	0	0	0	0	0	0	0	0	0	0	0	0	7	3	
Utah	3	3	0	3	0	0	0	0	0	0	0	0	0	0	0	0	0	0	3	0	
Nevada	0	0	0	0	0	0	0	0	0	0	0	0	0	0	0	0	0	0	0	0	
Washington	3	3	0	3	0	0	0	0	0	0	0	0	0	0	0	0	0	0	3	0	
Oregon	xx	xx	xx	xx	xx	xx	xx	xx	xx	xx	xx	xx	xx	xx	xx	xx	xx	xx	xx	xx	xx
California ⁵	⁶ 81	59	21	54	20	0	0	3	0	0	0	2	1	0	0	0	3	1	56	20	
Alaska	xx	xx	xx	xx	xx	xx	xx	xx	xx	xx	xx	xx	xx	xx	xx	xx	xx	xx	xx	xx	
Hawaii	xx	xx	xx	xx	xx	xx	xx	xx	xx	xx	xx	xx	xx	xx	xx	xx	xx	xx	xx	xx	

NOTE: xx signifies that the death penalty was illegal during the entire year.

¹ Convictions for multiple offenses include one murder burglary in California; one murder aggravated battery in Illinois; one murder aggravated assault in Kansas; one murder assault, one murder rape robbery, and two murder robberies in Maryland; one murder burglary in North Carolina; and one murder kidnaping in Washington.

² Unlike the counterpart table in previous NPS reports, this table includes prisoners who have been transferred to mental institutions or who have escaped, distributed as follows: Indiana (one white, sentenced for murder), Louisiana (one black, sentenced for murder), and District of Columbia (one black, sentenced for murder).

³ Black and white do not add to total because total column indicates one oriental sentenced for murder in California.

⁴ Death penalty partially abolished; see Table 16 for provisions that apply.

⁵ Death penalty abolished during part of year; see Table 16.

Table 14. Women executed under civil authority in the United States, by year, offense, race and State: 1930-72*

(Includes State and Federal executions)

Year	Total	Offense		Race		State in which executed
		Murder	Other ¹	White	Black	
All years	32	30	2	20	12
1962	1	1	0	1	0	California
1957	1	1	0	1	0	Alabama
1955	1	1	0	1	0	California
1954	2	2	0	1	1	Ohio
1953	3	1	2	3	0	Alabama, Federal (Missouri and New York)
1951	1	1	0	1	0	New York
1947	2	2	0	1	1	California, South Carolina
1946	1	1	0	0	1	Pennsylvania
1945	1	1	0	0	1	Georgia
1944	3	3	0	0	3	Mississippi, New York, North Carolina
1943	3	3	0	1	2	South Carolina, Mississippi, North Carolina
1942	1	1	0	1	0	Louisiana
1941	1	1	0	1	0	California
1938	2	2	0	2	0	Illinois, Ohio
1937	1	1	0	0	1	Mississippi
1936	1	1	0	1	0	New York
1935	3	3	0	2	1	Delaware
1934	1	1	0	1	0	New York
1931	1	1	0	1	0	Pennsylvania
1930	2	2	0	1	1	Arizona, Alabama

¹ Includes one kidnaping and one espionage case (both Federal).

* No executions since 1962.

Table 15. Federal executions in the United States, by year, offense, race and State: 1930-72*

Year	Total	Offense			Race				State in which executed
		Murder	Kidnaping ¹	Other ²	White	Negro	American Indian		
All years	33	15	6	12	28	3	2	
1963	1	0	1	0	1	0	0	Iowa	
1957	2	0	0	2	2	0	0	Georgia	
1956	1	0	1	0	1	0	0	Missouri	
1954	1	1	0	0	1	0	0	New York	
1953	4	0	2	2	4	0	0	Missouri (2), New York (2)	
1950	1	1	0	0	0	1	0	Alaska	
1948	5	5	0	0	3	2	0	California (3), Alaska (1), Florida (1)	
1945	1	1	0	0	1	0	0	Wyoming	
1943	1	1	0	0	1	0	0	Tennessee	
1942	6	0	0	6	6	0	0	District of Columbia	
1939	1	1	0	0	0	0	1	Alaska	
1938	5	2	1	2	5	0	0	Kansas (2), Illinois (1), Indiana (1), Michigan (1)	
1936	3	2	1	0	2	0	1	Indiana (1), Arizona (1), Oklahoma (1)	
1930	1	1	0	0	1	0	0	Kansas	

¹ Under the Federal kidnaping statute prior to 1968, the death penalty could be imposed if the victim was not released unharmed. In all of the cases in this table but the one in 1936, the victim was killed by the kidnaper.

² Includes 2 cases of rape on a Federal reservation (1957), 2 cases of espionage (1953), 6 cases of sabotage (1942), and 2 cases of bank robbery, with homicide (1938).

* No executions since 1963.

Table 16. Legal status of the death penalty in the United States: 1846-1972

Region and State	Status on December 31, 1972	History of actions taken	Method of execution in 1972
Federal	Legal		1
Northeast			
Maine	Abolished	Abolished 1876; restored 1883; reabolished 1887	xx
New Hampshire	Legal		Hanging
Vermont	Partially abolished ²	Partially abolished 1965 ²	Electrocution
Massachusetts	Legal		Electrocution
Rhode Island	Partially abolished ³	Partially abolished 1852 ³	Hanging
Connecticut	Legal		Electrocution
New York	Partially abolished ⁴	Partially abolished 1969 ⁴	Electrocution
New Jersey	Abolished	Abolished January 1972	xx
Pennsylvania	Legal		Electrocution
North Central			
Ohio	Legal		Electrocution
Indiana	Legal		Electrocution
Illinois	Legal		Electrocution
Michigan	Abolished	Partially abolished 1847 ⁵ ; abolished 1963	xx
Wisconsin	Abolished	Abolished 1953	xx
Minnesota	Abolished	Abolished 1911	xx
Iowa	Abolished	Abolished 1872; restored 1878; reabolished 1965	xx
Missouri	Legal	Abolished 1917; restored 1919	Lethal gas
North Dakota	Partially abolished ⁶	Partially abolished 1915 ⁶	Hanging
South Dakota	Legal	Abolished 1915; restored 1939	Electrocution
Nebraska	Legal		Electrocution
Kansas	Legal	Abolished 1907; restored 1935	Hanging
South			
Delaware	Legal	Abolished 1958; restored 1961	Hanging
Maryland	Legal		Lethal gas
District of Columbia	Legal		Electrocution
Virginia	Legal		Electrocution
West Virginia	Abolished	Abolished 1965	xx
North Carolina	Legal		Lethal gas
South Carolina	Legal		Electrocution

Table 16. Legal status of the death penalty in the United States: 1846-1972--continued

Region and State	Status on December 31, 1972	History of actions taken	Method of execution in 1972
Georgia	Legal		Electrocution
Florida	Legal		Electrocution
Kentucky	Legal		Electrocution
Tennessee	Legal	Partially abolished 1915 ⁷ ; restored 1919	Electrocution
Alabama	Legal		Electrocution
Mississippi	Legal		Lethal gas
Arkansas	Legal		Electrocution
Louisiana	Legal		Electrocution
Oklahoma	Legal		Electrocution
Texas	Legal		Electrocution
West			
Montana	Legal		Hanging
Idaho	Legal		Hanging
Wyoming	Legal		Lethal gas
Colorado	Legal	Abolished 1897; restored 1901	Lethal gas
New Mexico	Partially abolished ^a	Partially abolished 1969 ⁸	Lethal gas
Arizona	Legal	Partially abolished 1916 ⁹ ; restored 1918	Lethal gas
Utah	Legal		Hanging or shooting
Nevada	Legal		Lethal gas
Washington	Legal	Abolished 1913; restored 1919	Hanging
Oregon	Abolished	Abolished 1914; restored 1920; reabolished 1964	xx
California	Legal	Abolished February 1972; restored November 1972	Lethal gas
Alaska	Abolished	Abolished 1957	xx
Hawaii	Abolished	Abolished 1957	xx

NOTE: xx signifies that the death penalty was illegal.

"Legal" designates that the death penalty may be imposed for murder.

¹ Prior to June 19, 1937, Federal law required that all Federal executions be carried out by hanging. From that date on, executions ordered by the Federal courts were carried out in accordance with the method used by the State in which the sentence is imposed. If the laws of that State prohibit capital punishment, the Federal court designates another State in which the sentence is to be carried out.

² Death penalty retained for persons convicted of first-degree murder who commit a second "unrelated" murder, and for the first-degree murder of any law enforcement officer or prison employee who is in the performance of the duties of his office.

³ Death penalty retained for persons convicted of committing murder while serving a life sentence for any offense.

⁴ Death penalty retained for persons found guilty of killing a peace officer who is acting in line of duty, and for prisoners under a life sentence who murder a guard or inmate while in confinement or while escaping from confinement.

⁵ Death penalty retained for treason. Partial abolition was voted in 1846, but was not put into effect until 1847.

⁶ Death penalty retained for treason and for first-degree murder committed by a prisoner who is serving a life sentence for first-degree murder.

⁷ Death penalty retained for rape.

⁸ Death penalty retained for the crime of killing a police officer or prison or jail guard while in the performance of his duties, and in cases where the jury recommends the death penalty and the defendant commits a second capital felony after time for due deliberation following commission of first capital felony.

⁹ Death penalty retained for treason.

END