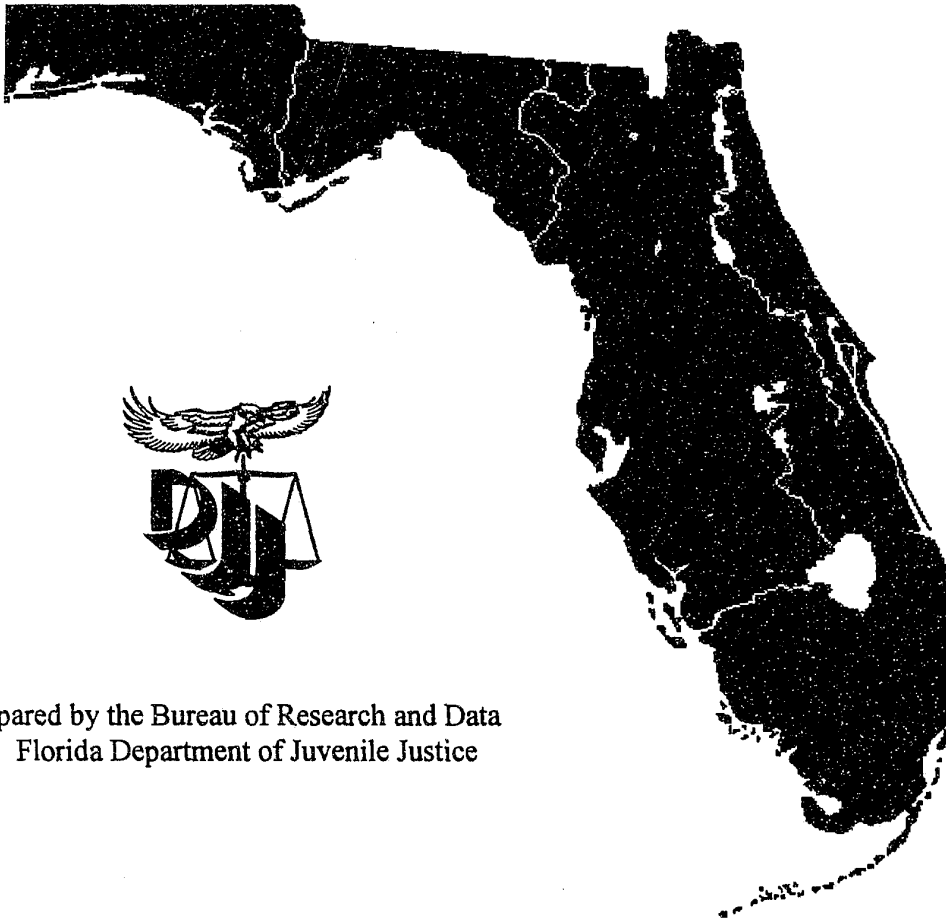




COMMUNITY CONTROL

1993-94

155936



Prepared by the Bureau of Research and Data
Florida Department of Juvenile Justice

June 1995

Lawton Chiles
Governor

Calvin Ross
Secretary

TABLE OF CONTENTS

	PAGE
Table of Contents	1
List of Tables	2
List of Charts	3
Executive Summary	4
Program Description	5
Population Profile	6
Program Data	13
Outcome Measurement	16
Program Cost	25
Program Effectiveness	25

NCJRS

AUG 31 1995

ACQUISITIONS

155936

U.S. Department of Justice
National Institute of Justice

This document has been reproduced exactly as received from the person or organization originating it. Points of view or opinions stated in this document are those of the authors and do not necessarily represent the official position or policies of the National Institute of Justice.

Permission to reproduce this copyrighted material has been
granted by
Florida Bureau of Research and Data

to the National Criminal Justice Reference Service (NCJRS).
Further reproduction outside of the NCJRS system requires permission
of the copyright owner.

LIST OF TABLES

TABLE NUMBER	NAME OF TABLE	PAGE NUMBER
1	POPULATION PROFILE BY DISTRICT FOR FY 1993-94	6
2	AGE BY DISTRICT FOR 1993-94	8
3	GENDER BY DISTRICT FOR 1993-94	9
4	RACE BY DISTRICT FOR 1993-94	10
5	NUMBER OF CASES AND YOUTH SERVED STATEWIDE FROM FY 1989-90 TO FY 1993-94	11
6	YOUTH PLACED STATEWIDE BY RACE AND SEX FROM FY 1989-90 TO FY 1993-94	12
7	LENGTH OF SERVICES BY DISTRICT FOR CLIENTS RELEASED DURING FY 1993-94	13
8	CASES PLACED STATEWIDE BY MOST SERIOUS OFFENSE: FELONIES, FROM FY 1989-90 TO FY 1993-94	14
9	CASES PLACED STATEWIDE BY MOST SERIOUS OFFENSE: MISDEMEANORS, FROM FY 1989-90 TO FY 1993-94	15
10	TYPE OF RELEASE BY DISTRICT FOR CLIENTS RELEASED DURING FY 1993-94	16
11	REASON FOR TERMINATION FOR CLIENTS RELEASED DURING FY 1993-94	17
12	JUVENILE JUSTICE SUBSEQUENT REFERRAL RATE FOR YOUTH RELEASED BETWEEN JANUARY AND JUNE 1993	18
13	JUVENILE JUSTICE AND ADULT SYSTEM SUBSEQUENT ADJUDICATION RATE FOR YOUTH RELEASED BETWEEN JANUARY AND JUNE 1993	20
14	SUBSEQUENT COMMITMENTS INTO THE JUVENILE SYSTEM AND ADULT D.O.C. FOR YOUTH RELEASED BETWEEN JANUARY AND JUNE 1993	23

LIST OF CHARTS

CHART NUMBER	NAME OF CHART	PAGE NUMBER
1A	NUMBER OF YOUTH SERVED, CASES SERVED AND YOUTH RELEASED BY DISTRICT DURING FY 1993-94	6
1B	AVERAGE DAILY POPULATION BY DISTRICT FOR FY 1993-94	7
1C	AVERAGE AGE AT 1ST DELINQUENCY REFERRAL AND AVERAGE AGE AT DISCHARGE BY DISTRICT FOR FY 1993-94	7
2	STATEWIDE AVERAGE AGE AT ENTRANCE FOR FY 1993-94	8
3	GENDER BY DISTRICT FOR FY 1993-94	9
4	RACE BY DISTRICT FOR FY 1993-94	10
5	CASES AND YOUTH PLACED ON COMMUNITY CONTROL STATEWIDE FROM FY 1989-90 TO FY 1993-94	11
6	YOUTH PLACED ON COMMUNITY CONTROL STATEWIDE BY RACE AND GENDER COMBINED FROM FY 1989-90 TO FY 1993-94	12
7	AVERAGE LENGTH OF SERVICES BY DISTRICT FOR FY 1993-94	13
8	FELONY CASES PLACED ON COMMUNITY CONTROL STATEWIDE FROM FY 1989-90 TO FY 1993-94	14
9	MISDEMEANOR CASES PLACED ON COMMUNITY CONTROL STATEWIDE FROM FY 1989-90 TO FY 1993-94	15
10	SUCCESSFUL/UNSUCCESSFUL COMPLETION RATE BY DISTRICT FOR FY 1993-94	16
12A	UNDULICATED SUBSEQUENT REFERRAL RATE BY DISTRICT AT 6 MONTHS	19
12B	UNDULICATED SUBSEQUENT REFERRAL RATE BY DISTRICT AT 1 YEAR	19
13A	DJJ UNDULICATED ADJUDICATION RATE BY DISTRICT AT 1 YEAR	21
13B	ADULT FELONY CONVICTION RATE BY DISTRICT AT 1 YEAR	21
13C	DJJ FELONY AND ADULT FELONY CONVICTION RATE BY DISTRICT AT 1 YEAR	22
13D	UNDULICATED DJJ ADJUDICATION AND ADULT FELONY CONVICTION RATE BY DISTRICT AT 1 YEAR	22
14A	SUBSEQUENT COMMITMENTS TO DJJ BY DISTRICT AT 1 YEAR	23
14B	SUBSEQUENT ADULT PROBATION RATE BY DISTRICT AT 1 YEAR	24
14C	SUBSEQUENT ADULT PRISON RATE BY DISTRICT AT 1 YEAR	24
14D	UNDULICATED RECIDIVISM RATE BY DISTRICT AT 1 YEAR	25

Executive Summary

Community Control is a probation type service provided to delinquent youth under the Department of Juvenile Justice supervision in the community as an alternative to commitment and placement in a residential program. This program served 33,533 youth in FY 1993-94. The average length of stay was 8.3 months, which is down from 9.7 months the previous year. The youth served consisted of 81.4 percent males and 19.6 percent females; 60.1 percent of the youth were white and 38.9 percent were black. Statewide, minorities made up 39.4 percent of cases on community control in FY 1993-94, which is down from 42.7 percent in FY 1989-90. This is nearly equal to the 39.8 percent who came into the system through intake. The average age of youth on community control was 16.6 years of age.

Demographic trends indicate that both the number of cases (30,795) disposed to and youth placed on (21,220) community control during FY 1993-94 were 16 percent higher than during FY 1989-90. Also of note is that in FY 1989-90, 49 percent of the youth placed on community control were white males, 34 percent were black males, 9 percent were white females, and 7 percent were black females. In 1993-94, 47 percent were white males, 33 percent were black males, 10 percent were white females, and 9 percent were black females.

Offense trends show that the most common, most serious offenses committed by youth served on community control are misdemeanors. Shoplifting continues to be the most common misdemeanor offense committed for which cases are disposed with placements to community control. Shoplifting comprises 10 percent of all cases disposed with placements to community control and 24 percent of the cases disposed with placements to community control that had misdemeanor offenses as their most serious offense committed. Of note is the trend away from felony placements toward misdemeanors and lesser offenses; for example, in FY 1989-90 of the cases served by community control, 50 percent were for felony charges, and by 1993-94 that had declined to 43 percent. Burglary continues to be the most common felony offense for which cases are disposed with placements to community control, comprising 16 percent of the total and 38 percent of the felony cases referred.

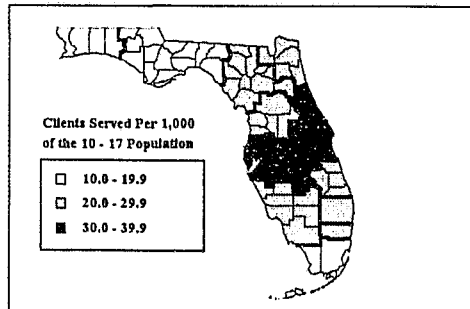
Of those released from community control, 79.9 percent successfully completed the program, which is down from the 82.1 percent successful completion rate the year before. District 15 had the lowest successful completion percentage with 58.6 percent, while District 10 had the highest with 87.3 percent. Those that comprised the 16.4 percent unsuccessful completions either violated their community control, received a new law violation, were sent to the adult system, or absconded. The remaining 3.7 percent of the releases were released for other reasons.

Statewide, 25.4 percent of the youth released from community control during the first 6 months of 1993 had subsequent referrals in the year following release. Over 19 percent had subsequent adjudications in the year following their release. Almost 10 percent had subsequent commitments to juvenile justice or were placed in the adult system in the year following their release.

Community control is part of the case management system and all costs and figures should be understood as part of this service until expenditures are broken out separately in the information system. The cost of community control, case management and intake combined was \$50,638,632 for FY 1993-94.

Program Description

The intent of the Community Control Program is to reduce the further incidence of juvenile delinquency of youth by means of supervision while they continue to reside in their communities. Youth enter either through the Delinquency Case Management System, or on recommendation of the state attorney, where judicial handling of their individual cases is recommended. The court decides that supervision in the community is an appropriate alternative to placement in a commitment program. Community Control also serves youth who are returning to the community from a commitment program. Community Control is authorized by Chapter 39 of the Florida Statutes. The program is funded through a state general revenue appropriation. Implementation of the new Delinquency Case Management system began on a limited geographic basis during the 1990-91 fiscal year and the system has functioned statewide since FY 1991-92. The Case Management system incorporates the service functions of both Community Control and Delinquency Intake.



Community Control is an individualized program of supervision. Delinquency case managers provide supervision and supportive services to juvenile offenders who have been placed on Community Control by circuit court judges. Case Managers are also responsible for a youth's compliance with court-ordered sanctions (or penalties) that are consistent with the seriousness of the offense for which the youth was adjudicated or had adjudication withheld. Termination from Community Control must be approved by the court.

A description of Post-Commitment Community Control and the Furlough programs can be found in the chapter on Post Placement Services.

Population Profile

Statewide, the total youth served (beginning count and admissions) during FY 1993-94 was 33,533. The Community Control caseload includes some youth who also receive day treatment services through Associated Marine Institute's non-residential programs and the TRY centers.

Demographic data, including age, sex and race, by district, are shown in Tables 1 through 4 and their accompanying charts. The average age at termination of Community Control is 16.6 years. The average age of community control client's first delinquency referral is 14.1. Statewide, minorities made up 39.4 percent of cases on Community Control in FY 1993-94, which is down from the 42 percent in FY 1992-93. This is nearly equal to the 39.8 percent minorities who came into the system through intake.

**TABLE 1:
COMMUNITY CONTROL
POPULATION PROFILE BY DISTRICT FOR FY 1993-94**

DISTRICT	# OF YOUTH SERVED	# OF CASES SERVED	# OF RESIDENT DAYS	AVERAGE DAILY POPULATION	# OF CLIENTS RELEASED	AVERAGE AGE AT DISCHARGE	AVG. AGE AT 1ST DELINQUENCY REFERRAL
1	1,204	1,282	200,662	549.4	671	16.9	14.5
2	1,152	1,212	176,759	483.9	528	16.3	13.9
3	1,019	1,051	177,980	487.3	537	16.6	13.8
4	2,678	2,809	423,819	1,160.4	1,408	16.2	14.0
5	3,150	3,254	607,321	1,662.8	1,162	16.4	13.9
6	3,659	3,831	603,164	1,651.4	1,930	16.4	13.7
7	5,391	5,904	912,374	2,497.9	2,704	16.5	14.4
8	1,743	1,815	262,950	719.9	1,038	16.6	14.0
9	2,181	2,234	419,383	1,148.2	709	16.9	14.1
10	3,007	3,258	528,003	1,445.6	1,635	16.7	14.1
11	2,894	2,995	510,767	1,398.4	1,275	17.1	14.0
12	1,302	1,358	213,595	584.8	496	17.1	14.3
13	1,679	1,758	283,238	775.5	902	16.5	14.1
14	1,751	1,817	306,634	839.5	916	16.6	14.0
15	723	743	135,727	371.6	256	16.5	13.8
STATEWIDE	33,533	35,321	5,762,376	15,776.5	16,167	16.6	14.1

CHART 1A

**NUMBER OF YOUTH SERVED, CASES SERVED AND YOUTH RELEASED
BY DISTRICT DURING FY 1993-94**

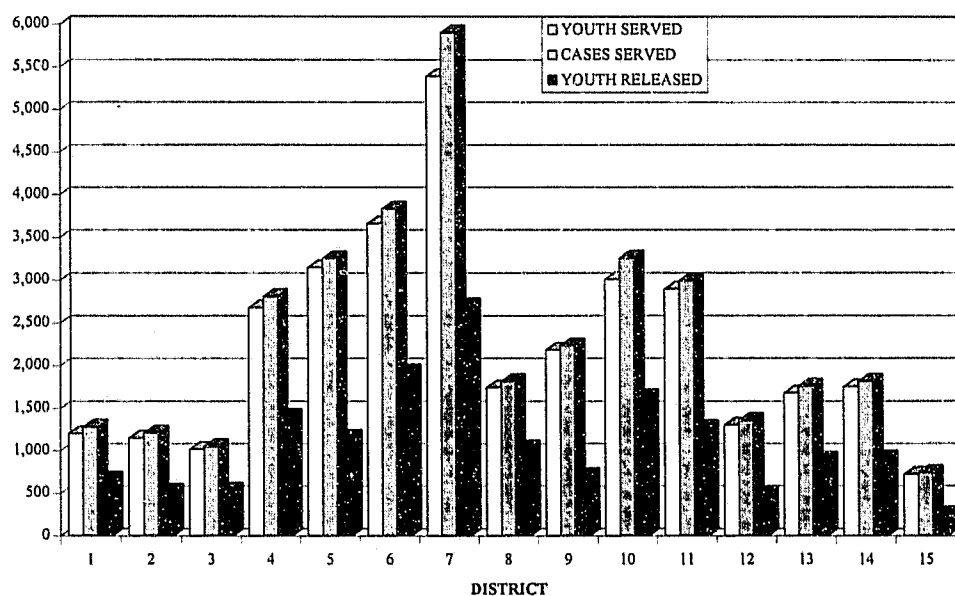


CHART 1B

AVERAGE DAILY POPULATION BY DISTRICT FOR FY 1993-94

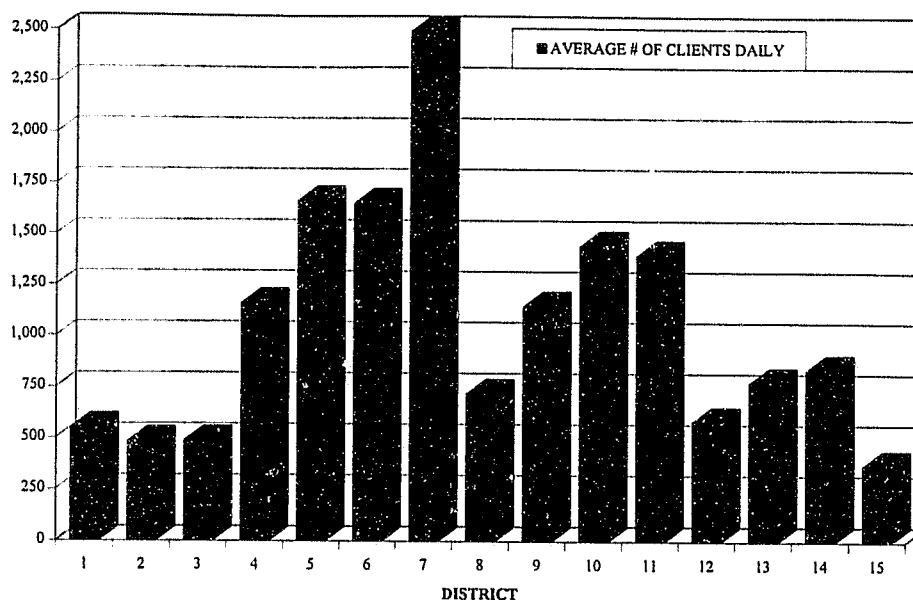
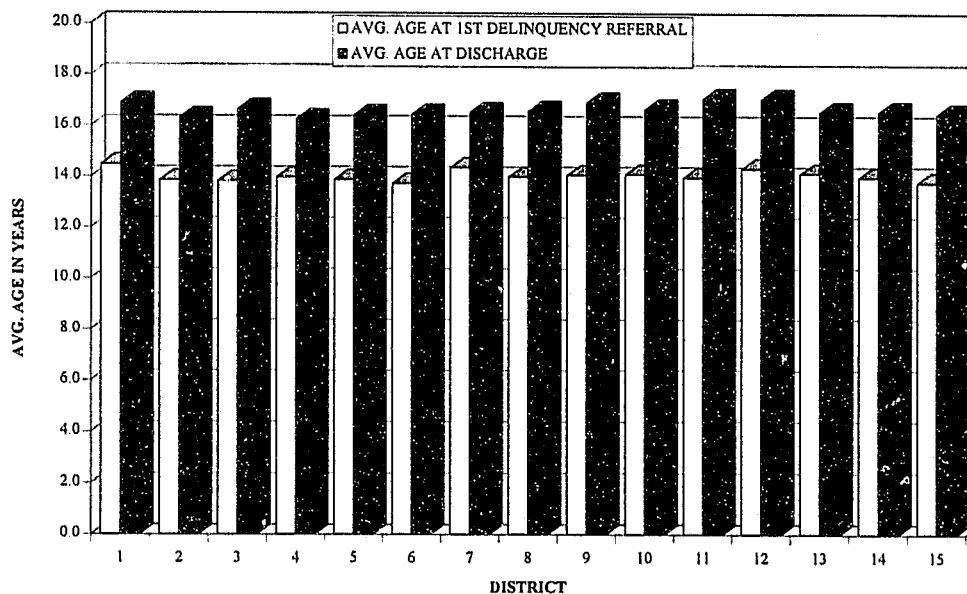


CHART 1C

AVG. AGE AT 1ST DELINQUENCY REFERRAL AND AVG. AGE AT DISCHARGE BY DISTRICT FOR FY 1993-94



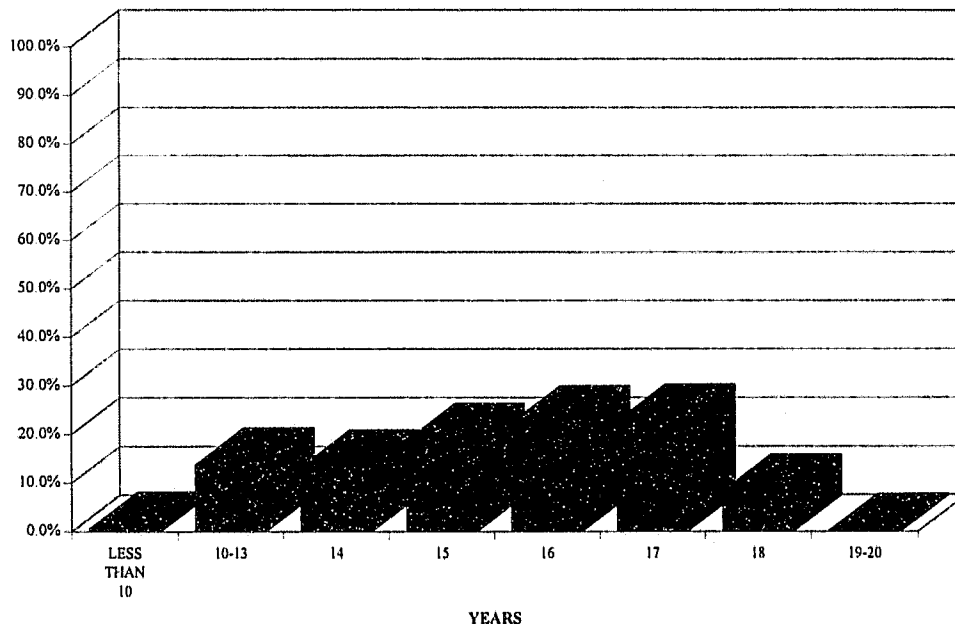
Source: Youth Served, Cases Served, Number of Resident Days and Average Daily Population (CIS/Demographic Provider Extract, February 1995). Youth Discharged, Average Age at Discharge and Average Age at 1st Delinquency Referral (CIS/OE extract, clients released during FY 1993-94).

**TABLE 2:
COMMUNITY CONTROL
AGE BY DISTRICT FOR FY 1993-94**

DISTRICT	PERCENT									NUMBER RELEASED
	LESS THAN 10	10-13	14	15	16	17	18	19-20	UNKNOWN	
1	0.6	8.8	10.1	18.6	23.7	24.3	13.3	0.6	0.0	671
2	1.1	14.2	15.3	21.6	21.8	21.6	4.4	0.0	0.0	528
3	0.2	14.7	15.1	19.4	23.5	19.4	7.6	0.2	0.0	537
4	0.6	16.1	14.4	20.5	20.0	22.6	5.8	0.0	0.0	1,408
5	1.8	19.3	13.5	18.4	18.9	19.2	8.6	0.3	0.0	1,162
6	0.8	14.0	13.5	18.2	23.2	21.9	8.1	0.3	0.0	1,930
7	0.6	13.4	13.4	19.1	21.9	23.3	8.4	0.1	0.0	2,704
8	0.4	15.1	13.1	18.7	22.7	22.9	7.0	0.0	0.0	1,038
9	0.3	14.2	13.5	14.0	22.3	27.2	8.2	0.3	0.0	709
10	0.3	11.9	12.1	18.8	24.0	24.2	8.5	0.2	0.1	1,635
11	0.2	9.6	12.0	19.1	23.8	25.5	9.6	0.1	0.0	1,275
12	0.0	6.0	10.9	16.1	23.4	23.6	19.8	0.2	0.0	496
13	0.3	17.6	14.1	19.7	24.1	18.6	5.3	0.2	0.0	902
14	0.7	13.9	14.2	18.1	21.9	23.3	7.8	0.2	0.0	916
15	0.4	14.5	17.2	23.8	19.5	18.4	5.5	0.8	0.0	256
STATEWIDE	0.6	13.8	13.3	18.8	22.4	22.7	8.3	0.2	0.0	16,167

CHART 2

STATEWIDE AVERAGE AGE AT ENTRANCE FOR FY 1993-94



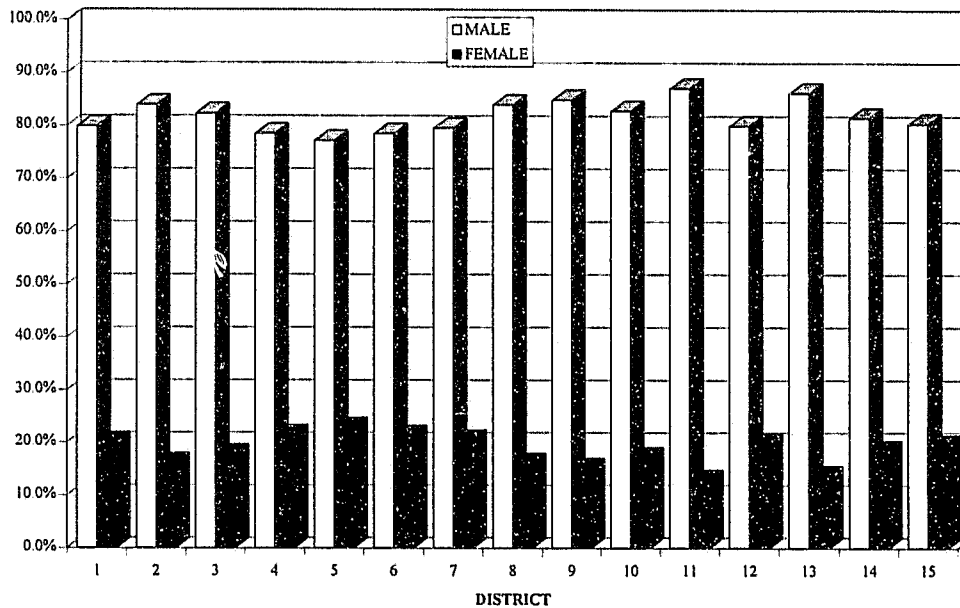
Source: CIS/OE extract, clients released during FY 1993-94.

**TABLE 3:
COMMUNITY CONTROL
GENDER BY DISTRICT FOR FY 1993-94**

DISTRICT	PERCENT			TOTAL
	MALES	FEMALES	UNKNOWN	
1	79.9	20.0	0.1	671
2	83.9	16.1	0.0	528
3	82.3	17.7	0.0	537
4	78.6	21.4	0.1	1,408
5	77.2	22.8	0.0	1,162
6	78.5	21.3	0.2	1,930
7	79.5	20.4	0.0	2,704
8	84.0	16.0	0.0	1,038
9	84.9	15.1	0.0	709
10	82.8	17.2	0.0	1,635
11	87.1	12.9	0.0	1,275
12	80.0	20.0	0.0	496
13	86.3	13.6	0.1	902
14	81.6	18.4	0.0	916
15	80.5	19.5	0.0	256
STATEWIDE	81.4	18.6	0.0	16,167

CHART 3

GENDER BY DISTRICT FOR FY 1993-94



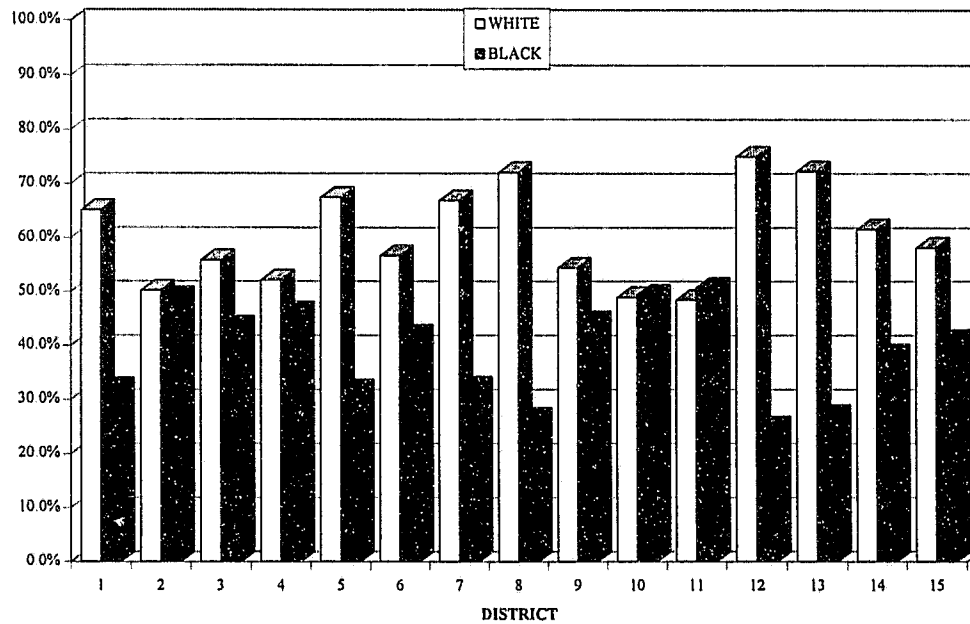
Source: CIS/OE extract, clients released during FY 1993-94.

**TABLE 4:
COMMUNITY CONTROL
RACE BY DISTRICT FOR FY 1993-94**

DISTRICT	PERCENT					NUMBER RELEASED
	WHITE	BLACK	ASIAN	NATIVE AMERICAN	UNKNOWN	
1	65.1	32.2	2.2	0.1	0.3	671
2	50.2	49.1	0.8	0.0	0.0	528
3	55.9	43.6	0.4	0.0	0.2	537
4	52.1	46.2	0.7	0.0	0.9	1,408
5	67.5	31.8	0.6	0.0	0.1	1,162
6	56.7	41.9	0.2	0.2	1.1	1,930
7	66.9	32.4	0.6	0.0	0.1	2,704
8	72.1	26.6	0.4	0.2	0.8	1,038
9	54.4	44.4	0.6	0.3	0.3	709
10	48.9	49.4	0.0	0.4	1.2	1,635
11	48.5	50.7	0.0	0.0	0.8	1,275
12	75.0	25.0	0.0	0.0	0.0	496
13	72.3	27.2	0.0	0.0	0.6	902
14	61.6	38.3	0.0	0.1	0.0	916
15	58.2	41.0	0.0	0.4	0.4	256
STATEWIDE	60.1	38.9	0.4	0.1	0.5	16,167

CHART 4

RACE BY DISTRICT FOR FY 1993-94



Source: CIS/OE extract, clients released during FY 1993-94.

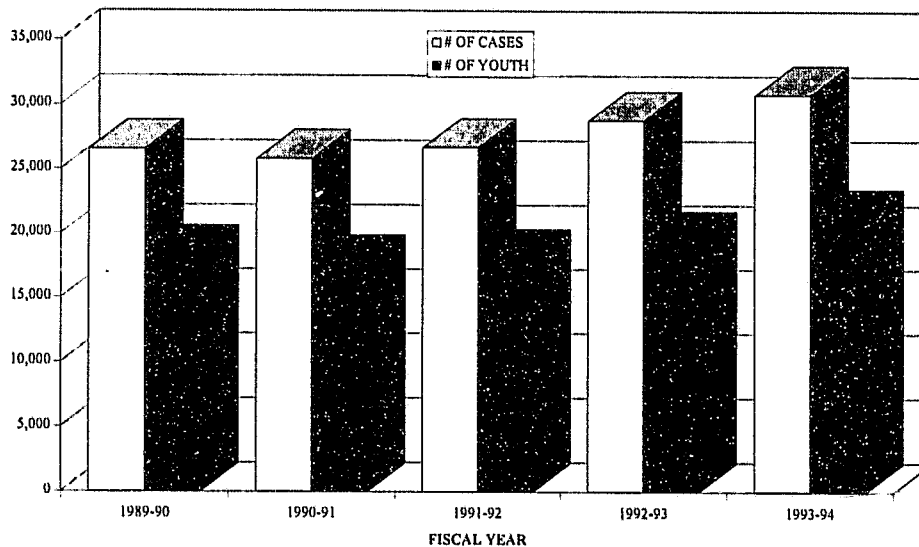
Table 5 and Chart 5 display the number of cases served and the number of youth served by community control over the past five years. The number of cases (30,795) disposed to community control during FY 1993-94 were 16 percent higher than those disposed to community control during FY 1989-90. The number of youth placed on (21,220) community control during FY 1993-94 were also 16 percent higher than the number of youth placed during FY 1989-90.

**TABLE 5:
COMMUNITY CONTROL
NUMBER OF CASES AND YOUTH SERVED STATEWIDE
FROM FY 1989-90 TO FY 1993-94**

FISCAL YEAR	# OF CASES	# OF YOUTH
1989-90	26,548	18,355
1990-91	25,805	17,615
1991-92	26,680	18,103
1992-93	28,791	19,509
1993-94	30,795	21,220
TOTAL	138,619	94,802

CHART 5

**CASES AND YOUTH PLACED ON COMMUNITY CONTROL STATEWIDE
FROM FY 1989-90 TO FY 1993-94**



Source: Profile of Delinquency Cases and Youths Referred at Each Stage of the Juvenile Justice System 1989-90 Through 1993-94.

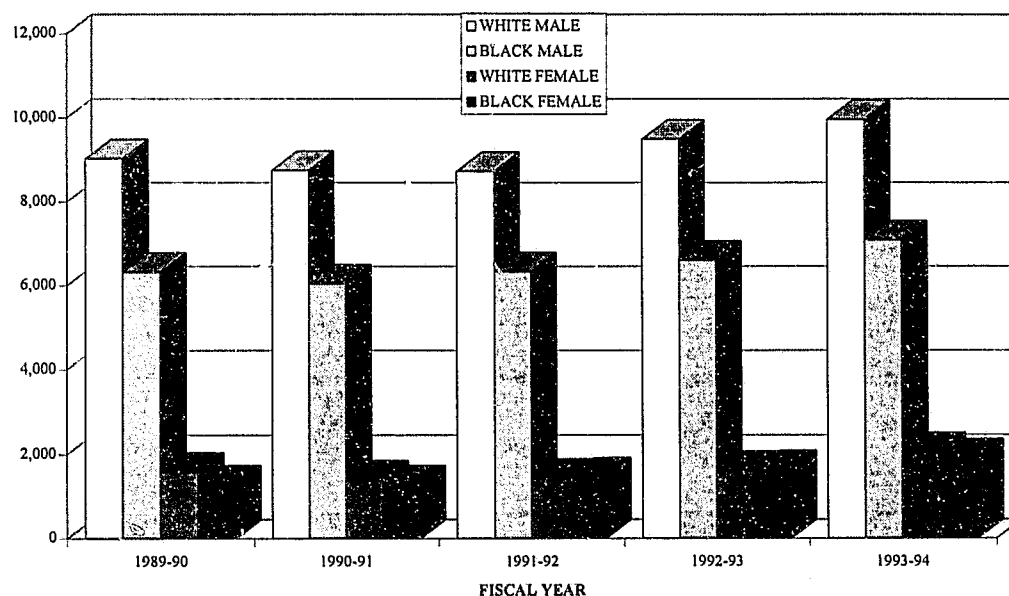
Table 6 and Chart 6 indicate the breakdown by race and sex of the youth placed in community control over the last five years. In 1989-90, 49 percent of the youth placed on community control were white males, 34 percent were black males, 9 percent were white females, and 7 percent were black females. In 1993-94, 47 percent were white males, 33 percent were black males, 10 percent were white females, and 9 percent were black females.

**TABLE 6:
COMMUNITY CONTROL
YOUTH PLACED STATEWIDE BY RACE AND SEX
FROM FY 1989-90 TO FY 1993-94**

RACE/SEX	1989-90	1990-91	1991-92	1992-93	1993-94
WHITE MALE	9,029	8,755	8,729	9,498	9,968
BLACK MALE	6,315	6,041	6,327	6,601	7,087
WHITE FEMALE	1,580	1,394	1,429	1,604	2,039
BLACK FEMALE	1,278	1,284	1,461	1,628	1,897
TOTAL	18,202	17,474	17,946	19,331	20,991

CHART 6

**YOUTH PLACED ON COMMUNITY CONTROL STATEWIDE
BY RACE AND GENDER COMBINED FROM FY 1989-90 TO FY 1993-94**



Source: *Profile of Delinquency Cases and Youths Referred at Each Stage of the Juvenile Justice System 1989-90 Through 1993-94.*

Program Data

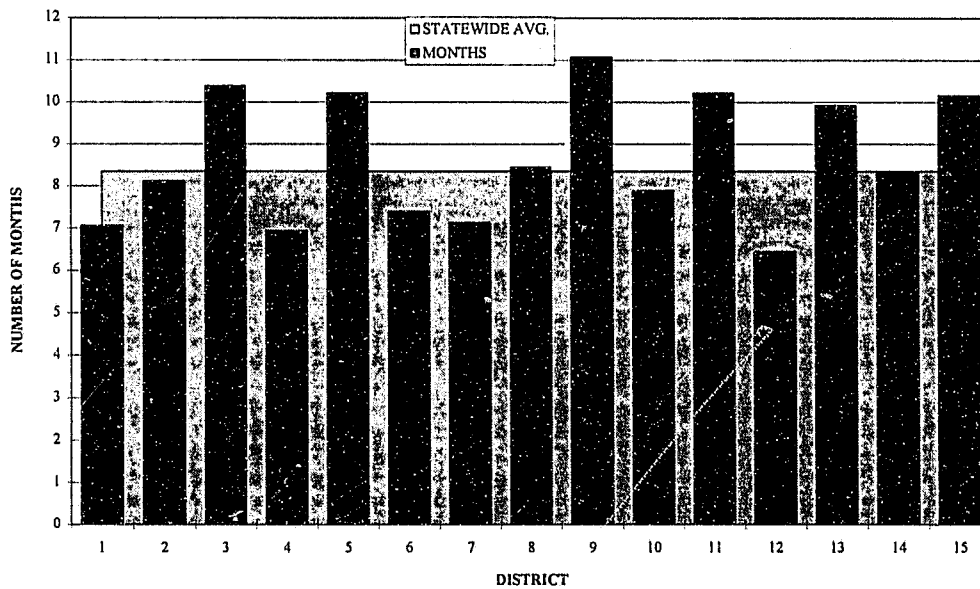
As shown in Table 7 and Chart 7, the average length of supervision for youth in Community Control during FY 1993-94 was 8.3 months, down from last year's 9.7 months.

**TABLE 7:
COMMUNITY CONTROL
LENGTH OF SUPERVISION BY DISTRICT
FOR CLIENTS RELEASED DURING FY 1993-94**

DISTRICT	AVG. LENGTH OF SUPERVISION (in months)
1	7.1
2	8.1
3	10.4
4	6.9
5	10.2
6	7.4
7	7.1
8	8.4
9	11.1
10	7.9
11	10.2
12	6.4
13	9.9
14	8.3
15	10.2
STATEWIDE	8.3

CHART 7

AVERAGE LENGTH OF SUPERVISION BY DISTRICT FOR FY 1993-94



Source: CIS (clients released during FY 1993-94)

Table 8 and Chart 8 indicate the number of cases placed statewide with a felony as the most serious offense committed. Table 9 and Chart 9 indicate the number of cases placed statewide with a misdemeanor as the most serious offense committed. Of note is the trend away from felony placements toward misdemeanors and lesser offenses; in 1989-90 of the cases served by community control, 50 percent were for felony charges, and by 1993-94 that had declined to 43 percent.

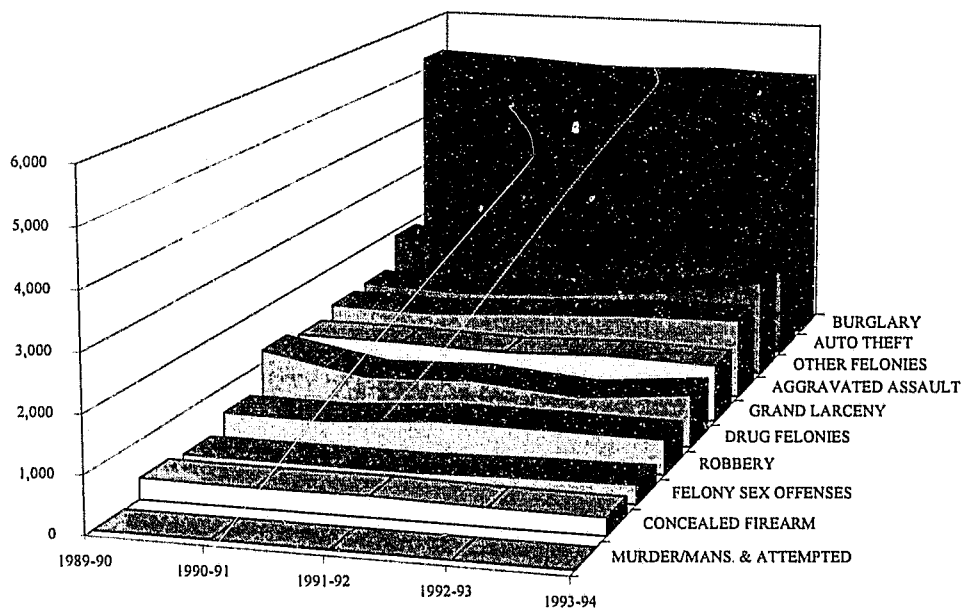
Burglary continues to be the most common felony offense for which cases are disposed with placements to community control, comprising 16 percent of the total and 38 percent of the felony cases referred.

TABLE 8:
COMMUNITY CONTROL
CASES PLACED STATEWIDE BY MOST SERIOUS OFFENSE: FELONIES,
FROM FY 1989-90 TO FY 1993-94

FELONY OFFENSE	1989-90	1990-91	1991-92	1992-93	1993-94
MURDER/MANS. & ATTEMPTED	8	8	9	4	7
CONCEALED FIREARM	367	350	359	320	304
FELONY SEX OFFENSES	281	273	265	316	339
ROBBERY	550	523	662	650	618
DRUG FELONIES	1,243	885	940	774	944
GRAND LARCENY	1,111	1,091	1,029	1,092	1,031
AGGRAVATED ASSAULT	1,267	1,226	1,335	1,425	1,452
OTHER FELONIES	1,303	1,231	1,295	1,480	1,784
AUTO THEFT	1,878	1,618	1,546	1,641	1,604
BURGLARY	5,230	5,134	5,004	5,087	5,008
TOTAL	13,238	12,339	12,444	12,789	13,091

CHART 8

FELONY CASES PLACED ON COMMUNITY CONTROL STATEWIDE
FROM FY 1989-90 TO FY 1993-94



Source: Profile of Delinquency Cases and Youths Referred at Each Stage of the Juvenile Justice System 1989-90 Through 1993-94.

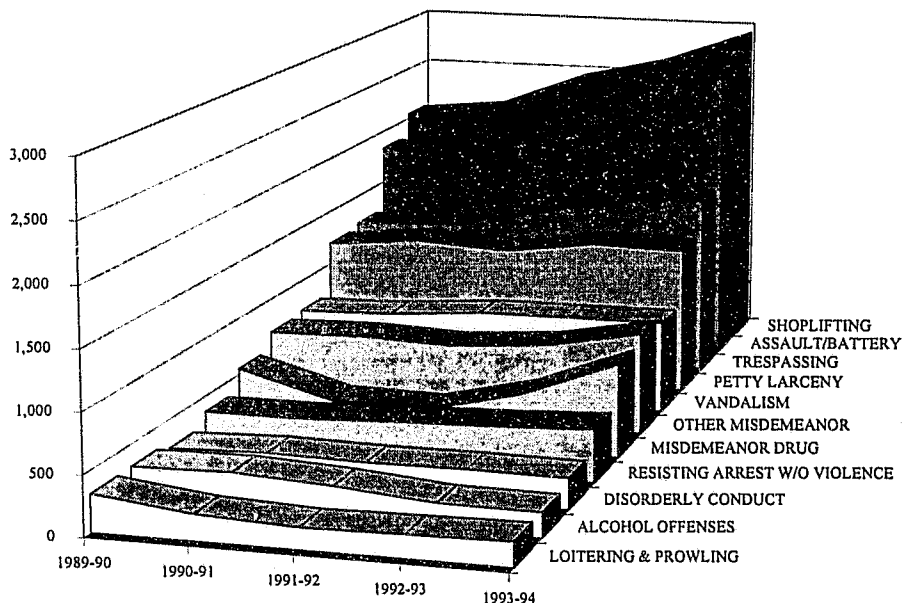
Table 9 and Chart 9 also show that shoplifting continues to be the most common misdemeanor offense for which cases are disposed with placements to community control. Shoplifting comprises 10 percent of all cases disposed with placements to community control and 24 percent of the cases disposed with placements to community control that had misdemeanor offenses as their most serious offense.

TABLE 9:
COMMUNITY CONTROL
CASES PLACED STATEWIDE BY MOST SERIOUS OFFENSE: MISDEMEANORS,
FROM FY 1989-90 TO FY 1993-94

MISDEMEANOR OFFENSE	1989-90	1990-91	1991-92	1992-93	1993-94
LOITERING & PROWLING	315	218	181	195	208
ALCOHOL OFFENSES	319	331	285	215	207
DISORDERLY CONDUCT	259	280	264	269	259
RESISTING ARREST W/O VIOLENCE	367	367	396	422	453
MISDEMEANOR DRUG	552	324	305	500	816
OTHER MISDEMEANOR	701	716	682	745	898
VANDALISM	725	741	807	812	814
PETTY LARCENY	1,196	1,276	1,224	1,333	1,310
TRESPASSING	1,234	1,280	1,419	1,590	1,630
ASSAULT/BATTERY	1,837	1,786	1,940	2,454	2,659
SHOPLIFTING	2,046	2,126	2,440	2,630	2,932
TOTAL	9,551	9,445	9,943	11,165	12,186

CHART 9

MISDEMEANOR CASES PLACED ON COMMUNITY CONTROL STATEWIDE
FROM FY 1989-90 TO FY 1993-94



Source: Profile of Delinquency Cases and Youths Referred at Each Stage of the Juvenile Justice System 1989-90 Through 1993-94.

Outcome Measurement

Outcome Goal 1

YOUTH WILL SUCCESSFULLY COMPLETE THE PROGRAM.

Definition: Cases considered successful were those discharges coded "honorable" or "required by law" terminations in the Client Information System. Program policy states that completion of sanctions is necessary for successful completion.

- 79.9 percent of Community Control youth successfully completed the program.

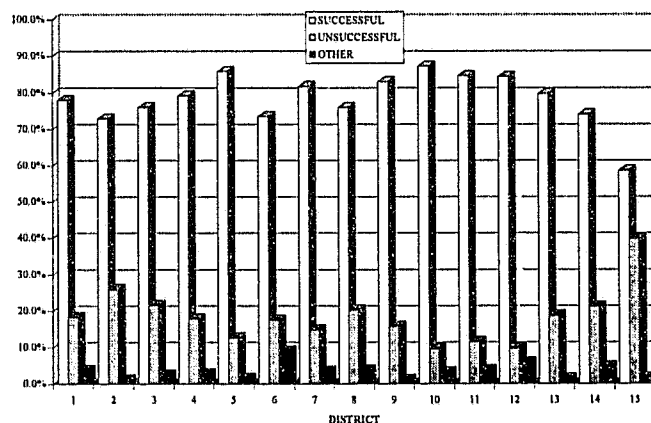
Table 10 and Chart 10 provide a breakdown by district of the percentage of successful completions for the fiscal year. The statewide successful completion rate was slightly less than last year's 82.1 percent. The rate varied across the districts, from 58.6 percent in District 15 to 87.3 percent in District 10.

**TABLE 10:
COMMUNITY CONTROL
TYPE OF RELEASE BY DISTRICT
FOR CLIENTS RELEASED DURING FY 1993-94**

DISTRICT	SUCCESSFUL COMPLETIONS		UNSUCCESSFUL COMPLETIONS		OTHER		NUMBER RELEASED
	#	%	#	%	#	%	
1	523	77.9	123	18.3	25	3.7	671
2	385	72.9	137	25.9	6	1.1	528
3	408	76.0	116	21.6	13	2.4	537
4	1,116	79.3	252	17.9	40	2.8	1,408
5	998	85.9	147	12.7	17	1.5	1,162
6	1,419	73.5	338	17.5	173	9.0	1,930
7	2,211	81.8	399	14.8	94	3.5	2,704
8	789	76.0	210	20.2	39	3.8	1,038
9	589	83.1	112	15.8	8	1.1	709
10	1,427	87.3	156	9.5	52	3.2	1,635
11	1,080	84.7	147	11.5	48	3.8	1,275
12	419	84.5	48	9.7	29	5.8	496
13	720	79.8	169	18.7	13	1.4	902
14	679	74.1	194	21.2	43	4.7	916
15	150	58.6	102	39.8	4	1.6	256
STATEWIDE	12,913	79.9	2,650	16.4	604	3.7	16,167

CHART 10

SUCCESSFUL/UNSUCCESSFUL COMPLETION RATE
BY DISTRICT FOR FY 1993-94



Source: CIS/Provider/TP3, OE Extract, FY 1993-94 (clients released during FY 1993-94)

Table 11 displays the termination reasons by type for each district. The most common reason for termination was honorable discharge, followed by "required by law," indicating that the period of Community Control supervision required by the court had ended, or the youth had turned 19.

**TABLE 11:
COMMUNITY CONTROL
REASON FOR TERMINATION
FOR CLIENTS RELEASED DURING FY 1993-94**

DISTRICT	PERCENT								NUMBER RELEASED
	HONORABLE RELEASE	RELEASE REQUIRED BY LAW	PLACED IN COMMITMENT/ NEW LAW VIOLATION	PLACED IN COMMITMENT/ NO NEW LAW VIOLATION	ADULT PROBATION	ADULT CORRECTIONS	ESCAPED/ ABSCONDED	DIED	
1	62.9	15.1	9.1	4.8	2.2	2.2	3.1	0.6	671
2	64.8	8.1	11.6	10.4	1.9	2.1	0.9	0.2	528
3	60.5	15.5	16.8	2.6	0.6	1.7	2.2	0.2	537
4	65.5	13.8	9.1	5.4	2.0	1.4	2.6	0.2	1,408
5	71.9	14.0	5.4	2.9	1.3	3.0	1.4	0.1	1,162
6	67.8	5.7	8.2	4.0	2.4	2.9	8.7	0.3	1,930
7	55.4	26.3	9.6	2.7	1.7	0.7	3.2	0.3	2,704
8	63.9	12.1	11.4	4.9	2.2	1.7	3.7	0.1	1,038
9	63.3	19.7	10.9	2.0	0.8	2.1	1.1	0.0	709
10	74.5	12.8	4.0	1.2	1.5	2.9	2.9	0.2	1,635
11	62.1	22.6	4.4	1.3	1.8	4.0	3.5	0.3	1,275
12	62.5	22.0	4.0	3.8	0.4	1.4	5.6	0.2	496
13	68.0	11.9	12.3	4.2	1.6	0.7	1.2	0.2	902
14	55.1	19.0	14.1	4.9	0.8	1.4	4.4	0.3	916
15	44.9	13.7	32.8	3.9	0.4	2.7	1.2	0.4	256
STATEWIDE	63.8	16.0	9.2	3.6	1.6	2.0	3.5	0.2	16,167

Source: CIS/Provider/TP3, OE Extract, FY 1993-94 (clients released during FY 1993-94)

Outcome Goal 2

THERE WILL BE NO SUBSEQUENT LAW VIOLATIONS BY YOUTH WITHIN ONE YEAR OF RELEASE FROM THE PROGRAM.

Definition: Many measures can be utilized as indications of recidivism, all related to subsequent law violations. A number of such measures are presented below. Re-referrals indicate that youth have been charged with another delinquent offense, but a subsequent referral is not necessarily evidence that the youth committed the offense charged. Determination of whether a subsequent law violation occurred is more accurately measured in Juvenile Justice data systems by whether there was an adjudication (or adjudication withheld) for one or more delinquent offenses following release. Such a finding by the court is a clearer measure than a subsequent referral. Adult felony convictions, for which youth were placed on adult probation or sentenced to adult prison, are also tabulated. A combined juvenile and adult felony conviction rate is also presented, as is a total of all juvenile adjudications and adult felony convictions. The operational definition of recidivism is, finally, the number of youth released from a program between January and June of 1993 who had been recommitted to Juvenile Justice, placed on adult probation or sent to prison within one year following release.

- 19.1 percent of Community Control releases were readjudicated during the year following release. This data includes follow-up into the adult Department of Corrections but does not include an adult misdemeanor conviction rate.

Table 12 and Charts 12A and 12B represent the percentage of referrals which were received after a youth was released from a program. The total number of releases includes only youth whose termination status was: terminated - satisfactory adjustment; or, terminated - unsatisfactory adjustment. Youth released between January 1 and June 30, 1993 are included in this table. Tables 13 and 14 and their accompanying charts provide a comparison of readjudication and recidivism rates for the population studied.

**TABLE 12:
COMMUNITY CONTROL
JUVENILE JUSTICE SUBSEQUENT REFERRAL RATE
FOR YOUTH RELEASED BETWEEN JANUARY AND JUNE 1993**

DISTRICT	TOTAL RELEASED	% RE-REFERRALS TO JUVENILE JUSTICE*							
		6 MONTHS				1 YEAR TOTAL			
		FELONY	MISD.	OTHER	TOTAL	FELONY	MISD.	OTHER	TOTAL
1	225	7.6	8.0	0.9	12.9	11.6	16.4	3.6	20.4
2	215	14.0	14.4	0.5	22.8	18.6	20.5	1.9	29.3
3	217	6.9	10.1	0.9	16.6	16.1	15.7	1.4	27.2
4	572	12.6	10.5	2.4	20.1	18.2	15.7	5.1	27.8
5	677	8.7	10.8	3.1	17.6	14.5	17.9	6.2	26.3
6	626	13.3	13.6	3.5	21.7	20.4	20.6	8.1	31.6
7	1,043	9.0	12.4	2.3	18.8	14.6	19.1	5.2	26.7
8	455	8.4	12.3	2.2	18.0	14.5	18.9	5.3	25.5
9	298	7.4	4.7	2.7	12.1	12.4	10.7	4.7	18.8
10	651	10.9	11.5	1.4	19.8	19.8	19.4	3.2	29.3
11	1,051	10.8	7.5	1.6	16.5	16.5	12.0	3.1	23.1
12	270	10.0	11.9	5.2	18.5	17.8	17.8	8.9	27.0
13	421	6.9	5.7	1.0	11.2	12.4	10.5	2.4	19.2
14	289	6.6	9.7	1.0	14.9	9.3	14.5	4.5	20.1
15	165	7.9	11.5	1.8	15.8	12.1	15.8	2.4	21.8
UNKNOWN	64	1.6	4.7	1.6	4.7	4.7	7.8	1.6	9.4
STATEWIDE	7,239	9.7	10.3	2.1	17.5	15.7	16.4	4.6	25.4

Source: CIS/Provider/TP1, OE Extract, FY 1993-94 (clients released between January and June 1993) and the Department of Corrections' FY 1993-94 probation and prison extract.

* 6 Months Total and 1 Year Total columns contain unduplicated re-referral percentages.

CHART 12A

UNDUPLICATED SUBSEQUENT REFERRAL RATE BY DISTRICT AT 6 MONTHS

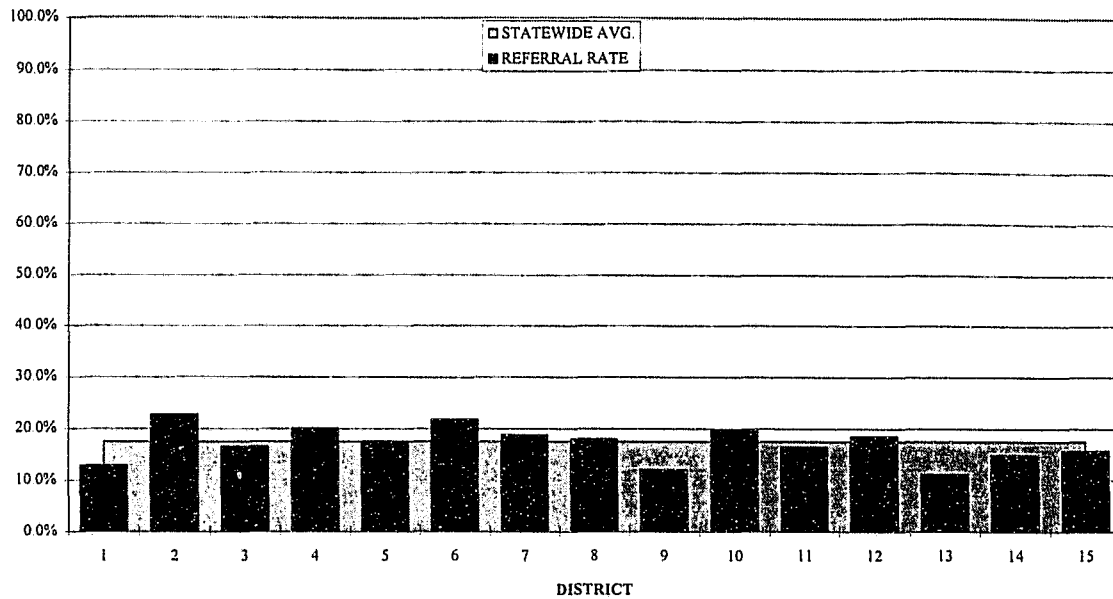
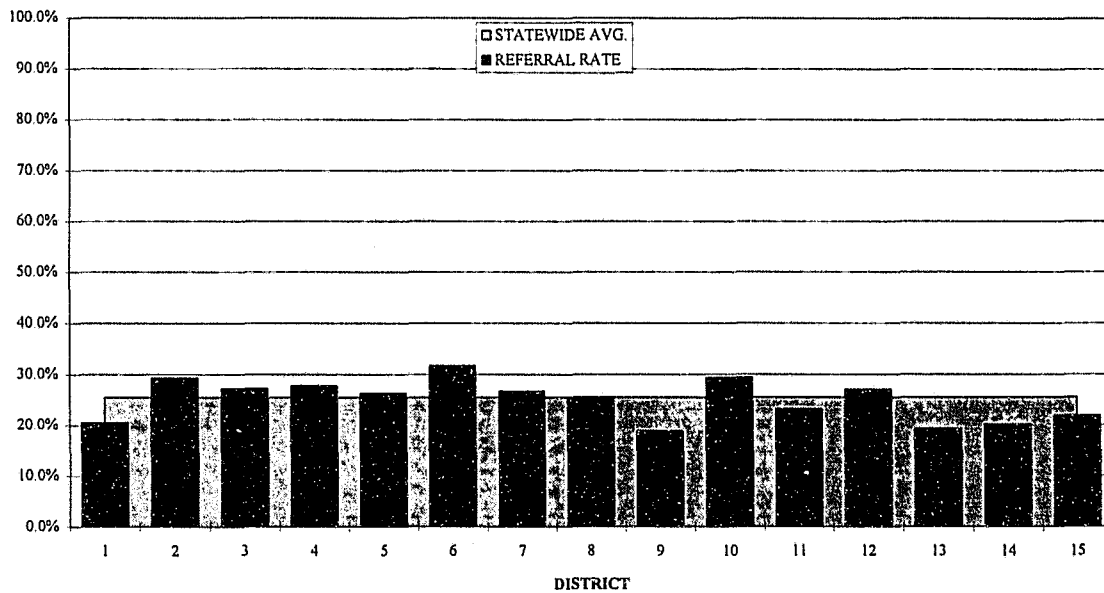


CHART 12B

UNDUPLICATED SUBSEQUENT REFERRAL RATE BY DISTRICT AT 1 YEAR



Source: CIS/Provider/TP1, OE Extract, FY 1993-94 (clients released between January and June 1993) and the Department of Corrections' FY 1993-94 probation and prison extract.

TABLE 13:
COMMUNITY CONTROL
JUVENILE JUSTICE AND ADULT SYSTEM SUBSEQUENT ADJUDICATION RATE
FOR YOUTH RELEASED BETWEEN JANUARY AND JUNE 1993

DISTRICT	TOTAL RELEASED	PERCENT SUBSEQUENT DELINQUENCY ADJUDICATIONS* (includes adjudications withheld)				ADULT SYSTEM FELONY CONVICTIONS AT 1 YEAR**		TOTAL PERCENT FELONY CONVICTIONS AT 1 YEAR**	TOTAL DELINQUENCY ADJUEICATIONS AND ADULT FELONY CONVICTIONS
		1 YEAR TOTAL				#	%		
		FELONY	MISD.	OTHER	TOTAL				
1	225	5.8	9.8	3.1	14.7	16	7.1	12.9	21.8
2	215	9.3	11.6	1.9	18.1	13	6.0	15.3	24.2
3	217	6.0	7.4	1.4	12.4	11	5.1	11.1	17.5
4	572	9.4	7.9	3.1	15.4	27	4.7	14.2	20.1
5	677	8.3	12.1	5.0	18.6	43	6.4	14.6	25.0
6	626	10.4	11.2	5.8	20.0	42	6.7	17.1	26.7
7	1,043	6.9	8.2	4.1	14.5	73	7.0	13.9	21.5
8	455	7.0	9.5	4.2	15.4	15	3.3	10.3	18.7
9	298	6.0	2.3	2.0	8.4	14	4.7	10.7	13.1
10	651	10.3	6.9	1.8	15.1	19	2.9	13.2	18.0
11	1,051	3.6	2.4	1.0	5.6	68	6.5	10.1	12.1
12	270	10.0	7.0	5.6	17.4	15	5.6	15.6	23.0
13	421	7.8	8.1	2.1	13.3	17	4.0	11.9	17.3
14	289	4.8	5.5	3.1	8.7	20	6.9	11.8	15.6
15	165	8.5	7.3	1.8	11.5	2	1.2	9.7	12.7
UNK.	64	1.6	1.6	1.6	3.1	1	1.6	3.1	4.7
STATEWIDE	7,239	7.4	7.6	3.2	13.7	396	5.5	12.9	19.1

Source: CIS/Provider/TP1, OE Extract, FY 1993-94 (clients released between January and June 1993) and the Department of Corrections' FY 1993-94 probation and prison extract.

* 1 Year Total columns contain unduplicated adjudication percentages, and youth with adult felony convictions are not included.

** Only felony data is available from the Department of Corrections.

CHART 13A

DJJ UNDUPLICATED ADJUDICATION RATE BY DISTRICT AT 1 YEAR

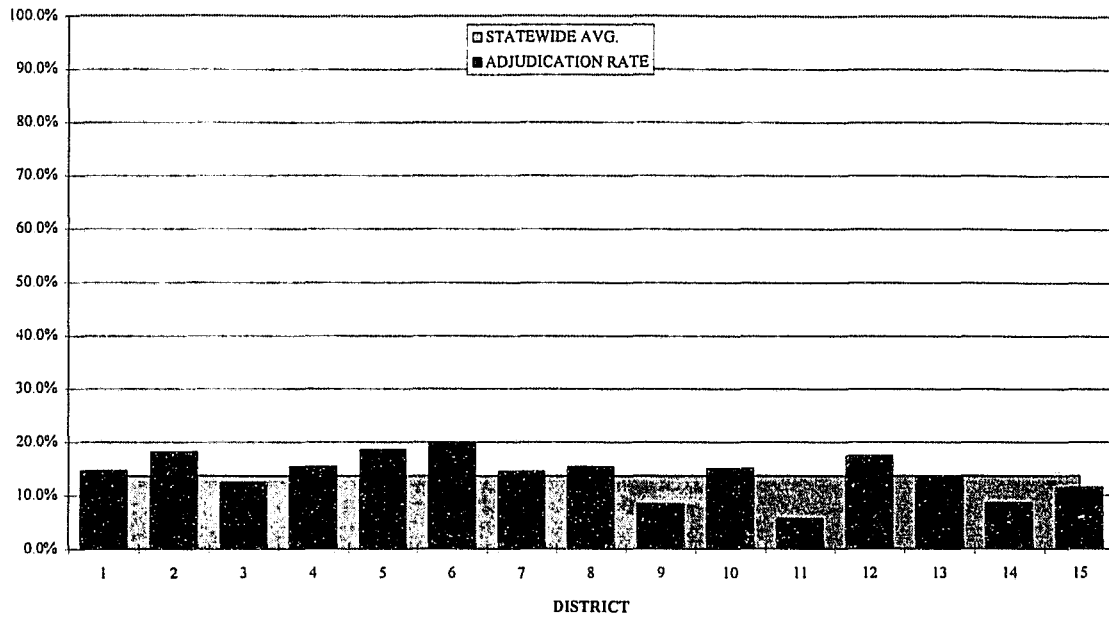


CHART 13B

ADULT FELONY CONVICTION RATE BY DISTRICT AT 1 YEAR

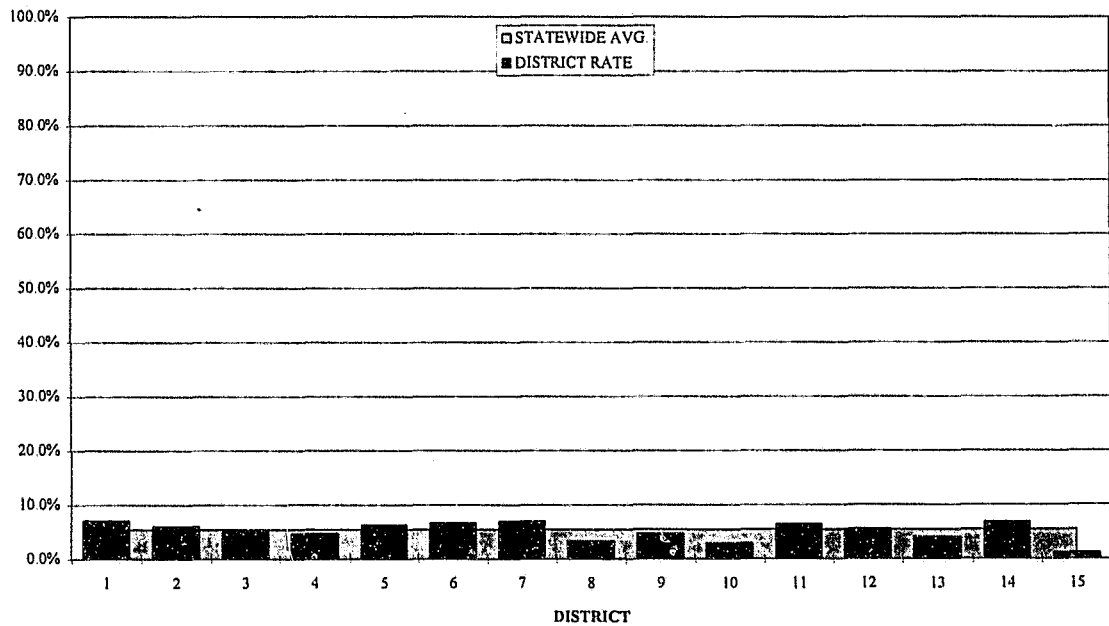


CHART 13C

DJJ FELONY AND ADULT FELONY CONVICTION RATE BY DISTRICT AT 1 YEAR
FOR FY 1993-94

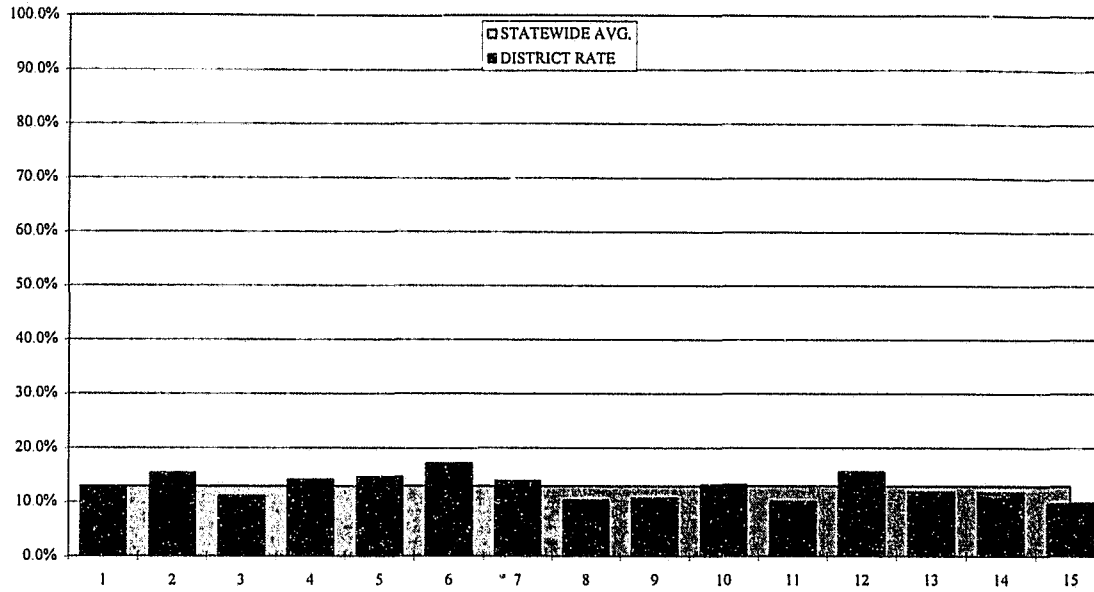
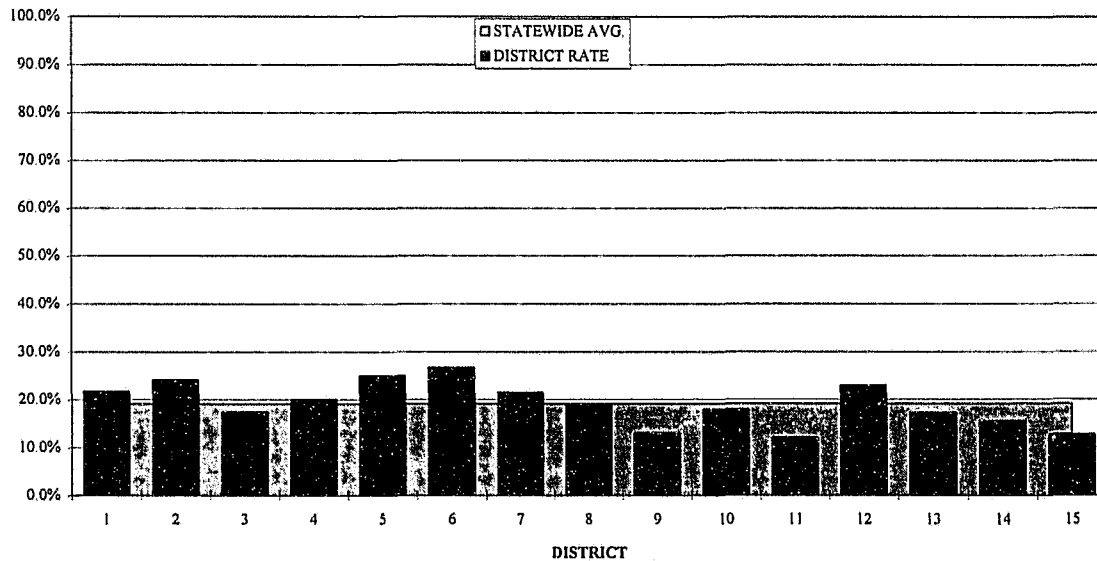


CHART 13D

UNDUPLICATED DJJ ADJUDICATION AND ADULT FELONY CONVICTION RATE
BY DISTRICT AT 1 YEAR FOR FY 1993-94



Source: CIS/Provider/TP1, OE Extract, FY 1993-94 (clients released between January and June 1993) and the Department of Corrections' FY 1993-94 probation and prison extract.
Note: Only felony data is available from the Department of Corrections.

TABLE 14:
COMMUNITY CONTROL
SUBSEQUENT COMMITMENTS INTO THE JUVENILE SYSTEM AND ADULT D.O.C.
FOR YOUTH RELEASED BETWEEN JANUARY AND JUNE 1993

DISTRICT	TOTAL RELEASED	% RECOMMITTED TO JUVENILE JUSTICE		% TO DEPARTMENT OF CORRECTIONS		PERCENT UNDUPLICATED TOTAL RECIDIVISM (Juvenile Justice Reccommitment, Adult Probation or Prison)
		6 MONTHS	1 YEAR TOTAL	PROBATION AT 1 YEAR	PRISON AT 1 YEAR	
1	225	3.6	7.1	6.2	0.9	14.2
2	215	4.7	7.0	5.1	0.9	13.0
3	217	3.7	6.5	3.2	1.8	11.5
4	572	2.8	6.3	4.5	0.2	11.0
5	677	2.8	6.5	4.4	1.9	12.9
6	626	2.1	4.8	5.3	1.4	11.5
7	1,043	1.9	4.8	5.4	1.6	11.8
8	455	2.9	4.2	2.2	1.1	7.5
9	298	3.0	4.0	3.7	1.0	8.7
10	651	0.6	1.8	1.7	1.2	4.8
11	1,051	0.9	1.6	3.4	3.0	8.1
12	270	2.6	4.1	4.1	1.5	9.6
13	421	3.3	5.7	2.4	1.7	9.7
14	289	1.7	3.5	4.5	2.4	10.4
15	165	3.6	7.3	1.2	0.0	8.5
UNKNOWN	64	0.0	0.0	1.6	0.0	1.6
STATEWIDE	7,239	2.2	4.4	3.9	1.6	9.9

Source: CIS/Provider/TP1, OE Extract, FY 1993-94 (clients released between January and June 1993) and the Department of Corrections' FY 1993-94 probation and prison extract.

CHART 14A

SUBSEQUENT COMMITMENTS TO DJJ BY DISTRICT AT 1 YEAR FOR FY 1993-94

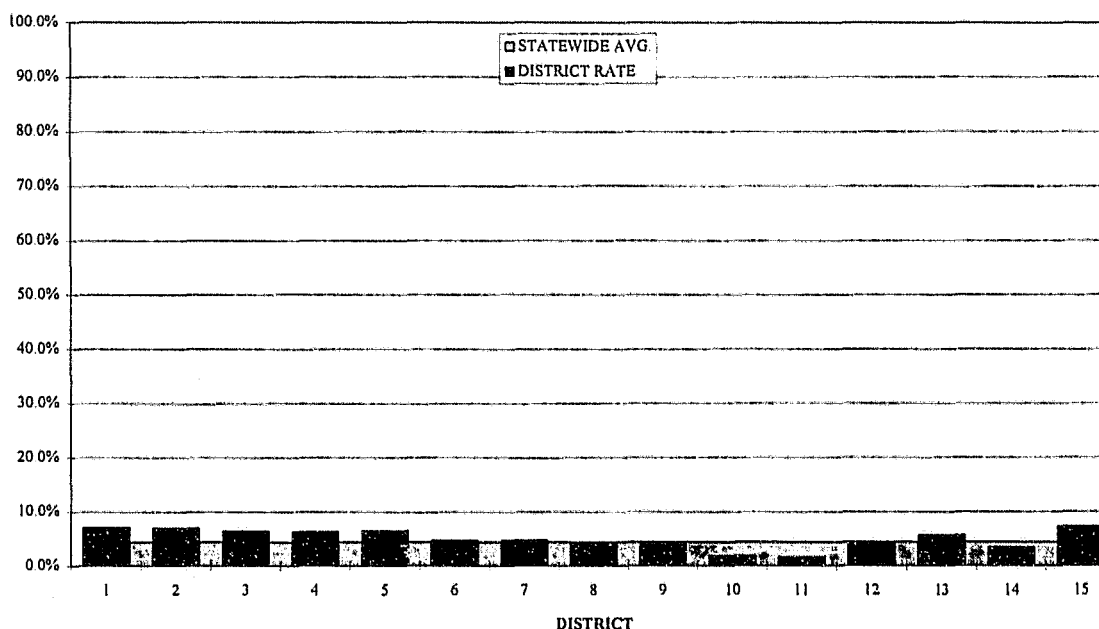


CHART 14B

SUBSEQUENT ADULT PROBATION RATE BY DISTRICT AT 1 YEAR
FOR FY 1993-94

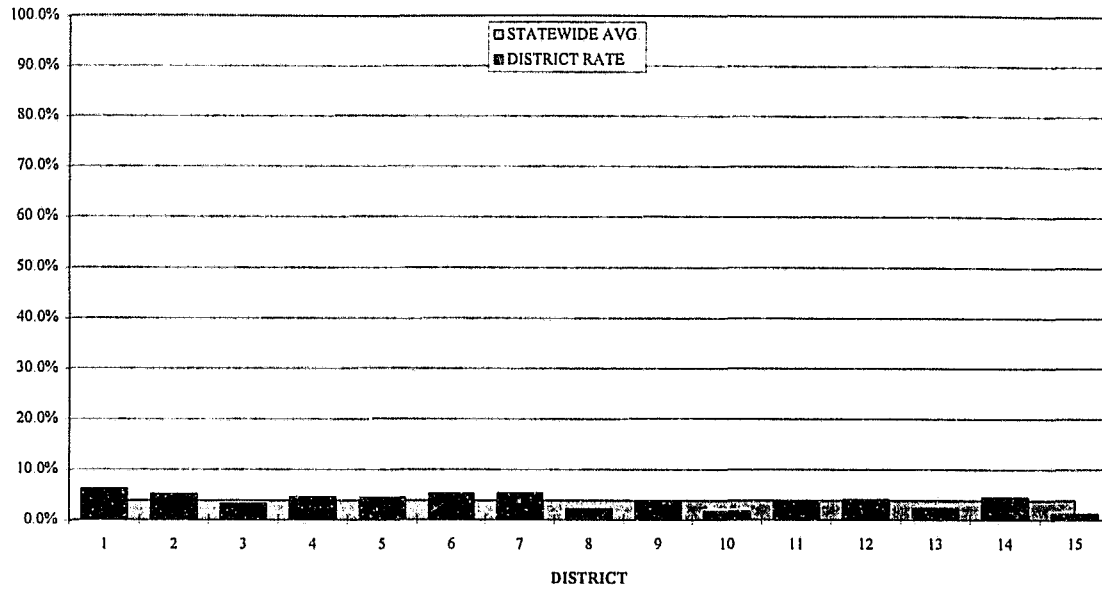


CHART 14C

SUBSEQUENT ADULT PRISON RATE BY DISTRICT AT 1 YEAR FOR FY 1993-94

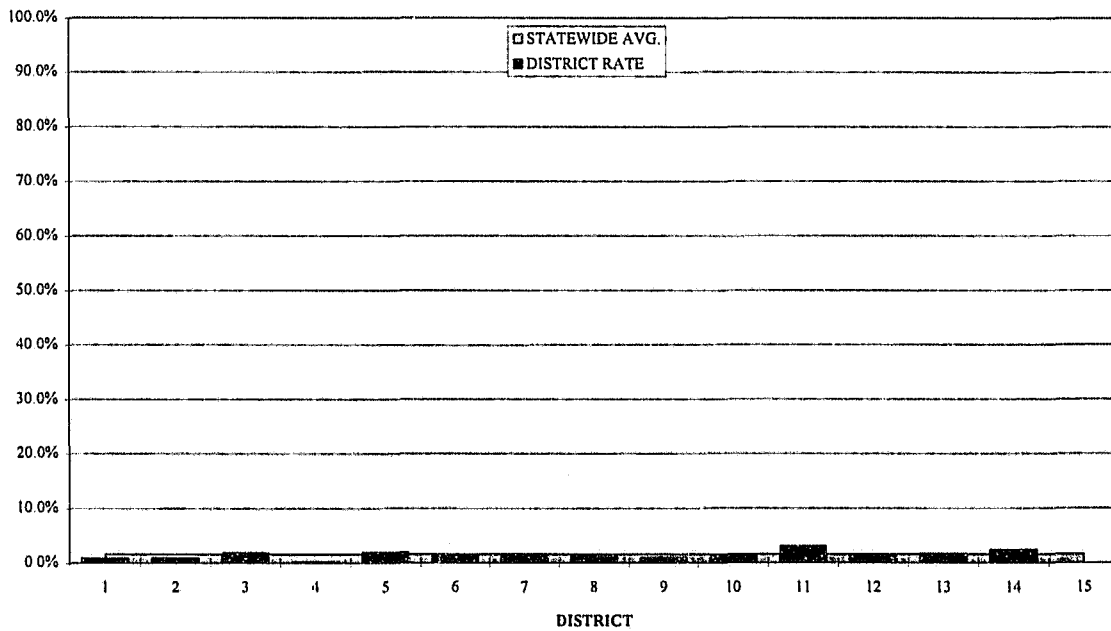
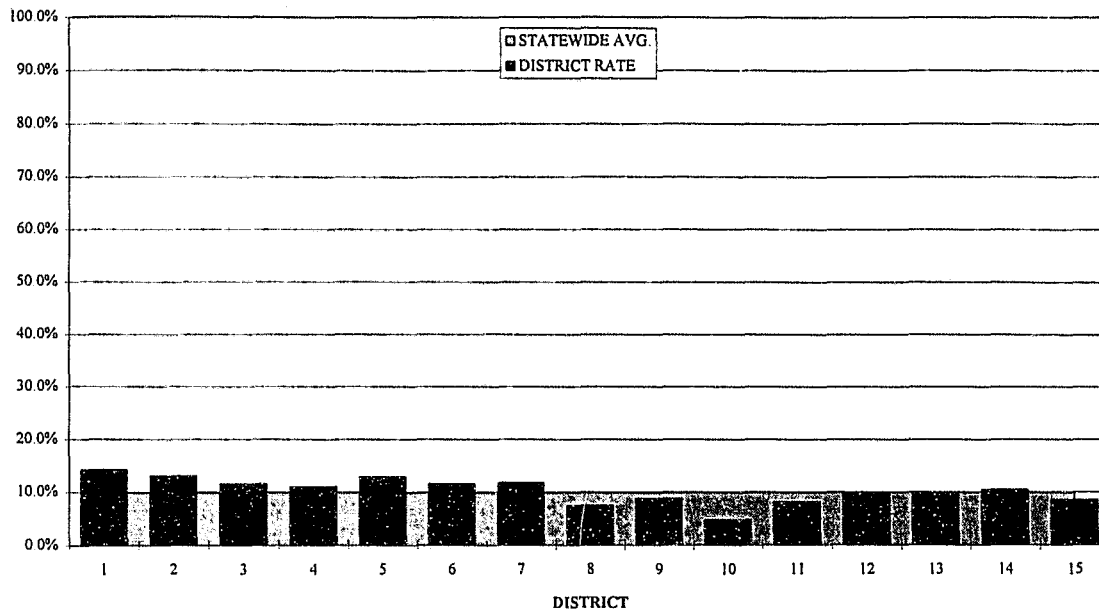


CHART 14D

UNDULICATED RECIDIVISM RATE BY DISTRICT AT 1 YEAR FOR FY 1993-94



Source: CIS/Provider/TP1, OE Extract, FY 1993-94 (clients released between January and June 1993) and the Department of Corrections' FY 1993-94 probation and prison extract.
Only felony data is available from the Department of Corrections.

The recidivism rate for youth released from Community Control between January and June 1993, is 9.9 percent, this includes youth who have been recommitted to Juvenile Justice, placed on adult probation or sent to prison within one year following release.

Program Cost

The expenditures for Community Control supervision during FY 1993-94 were a part of the cost for Intake and Case Management. The three functions together cost \$50,638,632 in FY 1993-94. They are reported together because the same budget category is used for all three programs. Expenditures cannot be separated for each program component at this time.

Program Effectiveness

Community Control appeared to achieve favorable results in FY 1993-94 on successful program completions, although there is some question about the criteria used and CIS coding used by some districts. Performance was slightly lower than the rates achieved in FY 1992-93. In Community Control, 79.9 percent of releases in FY 1993-94 successfully completed the program as compared to 82.1 percent in FY 1992-93.

Re-referrals, readjudications and recommitments are three follow-up measures provided. Over 19 percent were adjudicated for a new law violation during the year after supervision. The recidivism rate was 9.9 percent.

Some Community Control youth also receive AMI or TRY services. Identifying them is impossible unless data on noncommitted youth are entered in FACTS. The old manual tracking system no longer exists. Outcomes for these youth cannot be reported separately from the overall Community Control outcomes.