

COUNCIL OF EUROPE

CONSEIL DE L'EUROPE

EUROPEAN COMMITTEE ON CRIME PROBLEMS  
COMITÉ EUROPÉEN POUR LES PROBLÈMES CRIMINELS

INTERNATIONAL EXCHANGE OF INFORMATION  
ON CURRENT CRIMINOLOGICAL RESEARCH PROJECTS



EXCHANGE INTERNATIONAL D'INFORMATIONS  
SUR LES PROJETS DE RECHERCHES CRIMINOLOGIQUES

Bulletins n° 1 - 12

(1966-1972)

MICROFICHE

STRASBOURG

1973

16320

1st November 1973

DPC/PRC (73) Index

1er Novembre 1973

ECHANGE INTERNATIONAL D'INFORMATION  
SUR LES PROJETS DE RECHERCHE CRIMINOLOGIQUE

---

INTERNATIONAL EXCHANGE OF INFORMATION  
ON CRIMINOLOGICAL RESEARCH PROJECTS

---

INDEX CUMULATIF

(par pays) \*

CUMULATIVE INDEX

(by country) \*

---

- Bulletins n° 1-12 -

(1966-1972)

\* Les pays figurent par ordre alphabétique  
Countries are listed in alphabetical order.

30.367

05.4

AUTRICHE - AUSTRIA

Bulletin n° 1, 1966

- (1) Modifications in handwriting in alcoholic states.

Bulletin n° 5, 1968

- (299) Bestiality  
(300) The development of criminality in Austria  
from 1953 to 1964.

Bulletin n° 6, 1968

- (337) L'écriture et l'alcool.  
(338) Intentional bodily injury committed by juveniles.  
(339) Juvenile delinquency in Austria.  
Structure and trend, 1946-1965.

Bulletin n° 7, 1969

- (362) Extortion and compulsion, a criminological study.  
(363) Personality of the mother in relation to youth  
criminality

BELGIQUE - BELGIUM

Bulletin n° 1, 1966

- (2) Etude sur les jeunes délinquants âgés de 16 à  
18 ans.  
(3) Coup de sonde dans le problème du suicide en  
Belgique.  
(4) Monographie de la délinquance juvénile en Belgique  
en 1960, 1961 et 1962.  
(5) Introduction à l'étude du vagabondage, suivie  
d'une enquête socio-psychologique de 50 vagabonds  
masculins adultes.

BELGIQUE - BELGIUM (suite)

- (6) Criminalité et industrialisation dans la région de Zelzate.
- (7) Etude des hold-up commis en Belgique au cours des années 1961-1965 et de leurs auteurs.
- (8) La courbe de la délinquance belge au cours de l'année 1965.

Bulletin n° 3, 1967

- (211) Etude sur les provos.
- (212) Etude de la délinquance juvénile sur le littoral.

Bulletin n° 4, 1967

- (247) Structure et fonctionnement des Comités de protection de la jeunesse en Belgique.
- (248) Un sondage psychosociologique des équipes de probation.
- (249) Recherche sur le parallélisme entre la politique législative et la conscience sociale en Belgique.
- (250) Aspects criminologiques des ventes à tempérament.
- (251) Les délinquants de profession indéterminée en 1963.
- (252) Une catastrophe : étude de presse.

Bulletin n° 5, 1968

- (301) Le secret en tant que fonction sociale
- (302) Etude criminologique de la violence dans le monde actuel.
- (303) L'utilisation d'armes à feu en Belgique.
- (304) Cinq années de justice militaire.
- (305) Guerre et population des prisons.

Bulletin n° 6, 1968

- (340) Du "crime en col blanc" au "délit de chevalier".

BELGIQUE - BELGIUM (suite)

Bulletin n° 7, 1969

- (364) Etude des fluctuations de la criminalité en Belgique.
- (365) Socialisation et intégration sociale d'un groupe de jeunes délinquants - Une étude Follow-up.

Bulletin n° 8, 1969

- (388) Etude des résultats de la loi sur la probation.
- (389) Honoré de Balzac : étude de criminologie littéraire.
- (390) La détention préventive inopérante en Belgique.
- (391) Les femmes accouchées en prison.
- (392) Travail social et délinquance.

Bulletin n° 9, 1970

- (448) La dialectique "Loi - Justice - Opinion".
- (449) Motivations et rôles dans le monde judiciaire.
- (450) Sondage d'opinion sur l'attitude des jeunes vis-à-vis de la drogue.
- (451) L'inadaptation des Nord-Africains dans l'agglomération liégeoise.
- (452) Le droit de la jeunesse vu par de jeunes étudiants.
- (453) Etude des détenus qui subissent des peines de longue durée dans une communauté fermée et des problèmes qu'ils rencontrent du point de vue de leur resocialisation.
- (454) Etude fondamentale d'une extension et d'une systématisation des méthodes d'examen des cas individuels, appliquées en partie dans un centre d'orientation pénitentiaire et en partie dans un laboratoire universitaire pour l'étude de la personnalité.

BELGIQUE - BELGIUM (suite)

- (455) Description et analyse du chemin parcouru par le détenu dans les établissements pénitentiaires depuis le commencement de sa détention jusqu'à sa libération et éventuellement sa réadaptation ultérieure.
- (456) Etude des condamnés primaires et notamment examen de l'influence d'une première condamnation suivie de détention sur l'évolution ultérieure du délinquant.
- (457) Etude de l'influence exercée par les aspects institutionnels de la vie pénitentiaire sur le comportement des détenus subissant de longues peines dans une communauté fermée.
- (458) Etude comparée des délits de fraude dans les trois pays du Bénélux.
- (459) Medical and pseudo-medical experimentation in concentration camps during world war II.

Bulletin n° 12, 1972

- (606) Monographie de la délinquance juvénile en Belgique en 1966, 1967 et 1968.
- (607) L'image de la police chez les jeunes.
- (608) L'information de certains milieux au sujet des comités de protection de la jeunesse.

DANEMARK - DENMARK

Bulletin n° 1, 1966

- ( 9) Factors in recidivism.
- (10) Crime in the Welfare State (Kriminalitet i Velfærdsstaten).

Bulletin n° 2, 1966

- (111) Predicting the volume and structure of future criminality.
- (112) Socially handicapped families.
- (113) A study of juvenile delinquency in Copenhagen.
- (114) Offences among Danish naval personnel.
- (115) Various follow-up studies of offenders subjected to mental examinations by the psychiatric clinic of the Danish Ministry of Justice.
- (116) Project "Escape Test" (Youth prison inmates).
- (117) The Danish twin study.
- (118) Fraud and dishonesty in property affairs.
- (119) Study of self-reported crime in Denmark.
- (120) The temporal variations of criminality.
- (121) Inebriates in Copenhagen.
- (122) Criminality and mental retardation.
- (123) Recidivism among male collaborators in Denmark during the second world war.
- (124) A follow-up study of released male short-term prisoners.
- (125) Sentences to detention at a psychiatric hospital in Denmark during the years 1933-1958.
- (126) Criminal tendencies among 50-year old men in Denmark viewed in relation to an intensive health-examination.

DANEMARK - DENMARK (suite)

- (127) A description of the work at Herstedvester during 25 years.
- (128) Clinical study of the psychic (medical) background for criminal behaviour.
- (129) Clinical, medical study of 100 inmates in a prison for psychologically deviant offenders, sentenced to a fixed term.
- (130) An attempt to verify the hypothesis that criminality is a neurotically conditioned disturbance of behaviour.
- (131) Amnesia and crime.
- (132) A comparative study of the structure of two Danish centres for young offenders.
- (133) The use of pre-sentence and other social investigations in Scandinavian countries.
- (134) Phimosi and sexual deviations, especially sexual criminality.
- (135) Criminalistic typology.
- (136) Attitudes towards legal phenomena (sense of justice).

Bulletin n° 4, 1967

- (253) Project Metropolis. Section : Deviant Behaviour.
- (254) Heredity and environment in psychopathy.
- (255) Un-operated phimosi and its possible relation to sexual deviation and sexual criminality.
- (256) Some investigations on the effects of pornographic pictures.
- (257) 100 homosexual offenders at the Psychopathic Detention Centre, Herstedvester.
- (258) An investigation of clientele from the day-work school in Copenhagen.



DANEMARK - DENMARK (suite)

Bulletin n° 8, 1966

- (393) Project DUF : a study of Danish youth prisons (Borstals).
- (394) A follow-up study of former child welfare clients.
- (395) A socio-ecological description of criminality in Copenhagen.
- (396) Homicide in Denmark and Groenland 1946-1968.
- (397) DAN-68 : A new study of attitudes regarding legal phenomena.
- (398) Diagnostic and therapeutic study of "sniffin" among young psychiatric offender-patients.
- (399) Criminality among men with chromosome abnormalities.

Bulletin n° 10, 1970

- (527) Project Metropolit. Section : Deviant Behaviour.
- (528) Clinical examination of juvenile offenders with special reference to somatic diseases.
- (529) Factors in recidivism.
- (530) Criminological post-investigation of transgressions of the law ranging under Article 17 para. 1 of the Penal Code, and of transgressors of the law who have been in workhouse.
- (531) Criminals sentenced to life imprisonment in Denmark during the decade 1933-1942.
- (532) Drug users in the prisons of Copenhagen.

Bulletin n° 11, 1971

- (566) The maximum penalty in Denmark 1858 - 1957.
- (567) Sanctions and treatment of imbeciles and other criminals of low intelligence.

FRANCE

Bulletin n° 1, 1966

- (11) Etude des facteurs de la délinquance juvénile.
- (12) Etudes sur l'équipement neurologique des jeunes délinquants.
- (13) Vols et voleurs de véhicules à moteur.
- (14) L'expression plastique chez les jeunes délinquants placés en Centre d'Observation.
- (15) Eviction scolaire et délinquance juvénile.
- (16) Recherche pédagogique sur les groupes rééducatifs en institution publique d'éducation surveillée - Essais d'analyses de processus rééducatifs.
- (17) Développement économique et délinquance des jeunes.
- (18) La délinquance juvénile et la réalisation de soi. Les techniques de groupe dans le traitement des mineurs délinquants ; psychothérapie non directive du groupe.
- (19) Traitement du délinquant en milieu fermé par la psychothérapie de groupe. Place de ce traitement - technique - validation des résultats.
- (20) L'intégration des méthodes de traitement dans un pavillon de jeunes adultes.

Bulletin n° 2, 1966

- (137) Evolution de la délinquance juvénile de 1825 à 1958 (Etude statistique).
- (138) Etude biotypologique des mineurs délinquants.
- (139) Résultat des mesures de protection judiciaire de l'enfance (première phase de l'enquête).
- (140) La pratique de l'examen de personnalité par les juridictions françaises.

FRANCE (suite)

- (141) La réadaptation sociale des condamnés ayant passé par le Centre Pénitentiaire Agricole de Casabianda.

Bulletin n° 3, 1967

- (213) 1. Etude criminologique de 1.200 délinquants multirécidivistes au moyen des procédés électroniques de traitement des informations.  
2. Exploitation criminologique de 300 dossiers de criminels incarcérés à la Maison centrale d'Ensisheim (Haut-Rhin).
- (214) Enquête sur les caractéristiques actuelles des besoins sociopédagogiques dans les milieux de prévention.

Bulletin n° 4, 1967

- (259) Examen de sélection des candidats éducateurs.  
(260) Pré-enquête sur la délinquance des filles.

Bulletin n° 5, 1968

- (306) Etude du conditionnement E.E.G. et opérant chez les jeunes délinquants.
- (307) L'évolution de la délinquance dans une commune à industrialisation rapide (Feyzin) - Aspects psychologiques.
- (308) Les aspects sociologiques de l'évolution de la délinquance en milieu à industrialisation rapide (Feyzin).
- (309) Les conditions psychologiques du travail du surveillant pénitentiaire.

FRANCE (suite)

Bulletin n° 6, 1968

- (341) L'évolution de la criminalité à Aix-en-Provence.
- (342) 1. Etude criminologique des six cents détenus d'une Maison Centrale par deux types de questionnaires ;
2. Traitement de ces questionnaires par la méthode d'analyse statistique et informatique du Centre d'Etude des Méthodes Objectives.
- (343) Recherche opérationnelle statistique et informatique appliquée au traitement d'informations fournies par des études psychosociales portant sur l'ensemble des sujets examinés dans un internat pour mineurs délinquants afin de déterminer des méthodes de vérification de l'efficacité du traitement suivi dans ce Centre.
- (344) Recherche sur la criminalité dans les grands ensembles. Etude d'un quartier de Toulouse.

Bulletin n° 7, 1969

- (366) Recherche sur les perspectives d'évolution de la population des prisons dans les années à venir.
- (367) Application de l'Ordonnance de 1958 (protection judiciaire de l'enfance).
- (368) La criminalité à Aix-en-Provence.
- (369) L'incidence des données de la criminologie sur une nouvelle conception de la théorie générale de la responsabilité pénale.

Bulletin n° 8, 1969

- (400) Pré-recherche sur les viols collectifs.
- (401) Recherche prévisionnelle sur l'évolution de la criminalité.

FRANCE (suite)

- (402) Le traitement des condamnés en milieu libre dans le système français et hollandais.
- (403) Le sentiment que le public a du fonctionnement de la justice.

Bulletin n° 9, 1970

- (460) Le devenir des enfants de parents délinquants.
- (461) Elaboration d'un régime particulier de sécurité sociale pour les délinquants détenus.
- (462) Etude de la délinquance chez les travailleurs migrants.
- (463) Etude et adaptation du Dynamic Personality Inventory de Grygier.
- (464) Le coût du crime en France.
- (465) Alcoolisme et coût du crime.
- (466) Migrations de population et criminalité.

Bulletin n° 10, 1970

- (533) Image de la Justice criminelle.
- (534) Sous-recherche statistique sur la criminalité des jeunes adultes /portion d'une recherche sur les jeunes adultes délinquants/.
- (535) Sondage sur la drogue.
- (536) Droit pénal économique.

Bulletin n° 11, 1971

- (570) Sondage sur la drogue (2e phase)
- (571) Essai d'adaptation du Dynamic Personality Inventory (D.P.I.) à une population d'adolescents francophones ; application comparative à une population d'adolescents délinquants et d'adolescents non délinquants en vue d'étalonnages.

FRANCE (suite)

Bulletin n° 12, 1972

- (621) Projet d'enquête relative à la pratique judiciaire concernant l'application de certaines dispositions de l'Ordonnance du 2 février 1945.
- (622) Enquête sur les résultats des mesures de protection judiciaire de l'enfance.

FINLANDE - FINLAND

Bulletin n° 2, 1966

- (197) A study of drunkenness offenders.
- (198) An analysis of crime news and other crime material in Helsinki newspapers.
- (199) Shoplifting in Helsinki.
- (200) Relationships between members of families with delinquent boys.
- (201) Punishment in the regulation of crime.
- (202) A study of the criminality of Finnish immigrants in Sweden.
- (203) Juvenile delinquents : an interview study.
- (204) Public sense of justice and judicial practice.
- (205) Driving under the influence of alcohol in Helsinki.
- (206) Homicide in Helsinki, 1950 - 1965.
- (207) "Mordbrand" (Arson).
- (208) Car thefts in Turku, 1963 - 1966.
- (209) Criminality during military service.
- (210) Recidivism among youthful offenders.

FINLANDE - FINLAND (suite)

Bulletin n° 4, 1967

- (294) Driving while intoxicated and recidivism.
- (295) Tax offences and the social control of tax offences.
- (296) Problem drivers - characteristics and rehabilitation prognosis.
- (297) Intercommunal mobility of young people.
- (298) Variations in female criminality in Finland during the 20th century.

Bulletin n° 8, 1969

- (439) Drunkenness arrest as social control : a comparison between Helsinki and Copenhagen.
- (440) Criminality among Finnish gipsies.
- (441) Supervision of young offenders in Helsinki.
- (442) The prognostic value of the imposition of low marks for conduct and poor reports on neatness and attention in public and high schools.
- (443) Descriptive study of cannabis-use in Helsinki.
- (444) Cumulation of registration, comparison of penalty-, police-, and prisoner-registers.
- (445) Analysis of the rising trend in crimes of rape.
- (446) Drunkenness fines as a means of social control.

Bulletin n° 10, 1970

- (558) Trial release from the institutions in 1964.
- (559) The boys in Outamo reception home in 1961-1963 and their later criminality.
- (560) Protective supervision as a form of open care.
- (561) A personality analysis of youth prisoners.

FINLANDE - FINLAND (suite)

- (562) Aggressiveness as a feature in the personalities of criminals and policemen.
- (563) The loss of liberty on parole caused by misbehaviour.
- (564) Alcohol and aggression.

Bulletin n° 11, 1971

- (603) Police supervision of conditionally discharged prisoners.
- (604) Confinement of intoxicated persons.

REPUBLIQUE FEDERALE D'ALLEMAGNE - FEDERAL REPUBLIC OF GERMANY

Bulletin n° 1, 1966

- (21) Examen de la criminalité socio-économique "du col blanc" dans les différents domaines.
- (22) Recherches sur les manifestations et les causes de la délinquance contre la propriété des mineurs et des adultes.
- (23) Les présuppositions et les résultats des condamnations à durée indéterminée en Bavière.
- (24) La délinquance juvénile à Cologne.

Bulletin n° 2, 1966

- (142) Famille et délinquance juvénile.
- (143) Problèmes de la réforme pénitentiaire.
- (144) Jeunes incendiaires.



(suite)

- (145) Histoire de la criminologie.
- (146) Les causes de l'erreur judiciaire en procédure pénale.
- (147) Analyse de la structure et de l'évolution de l'Association de la Jeunesse Hanséatique pour la protection des jeunes délinquants ou en danger moral à Hambourg.

Bulletin n° 3, 1967

- (215) La criminalité des "cols blancs".
- (216) Problèmes criminologiques et théoriques du proxénétisme vis-à-vis du droit en vigueur et de la réforme du droit pénal.
- (217) Problèmes criminologiques du proxénétisme (exploitation de prostituées).
- (218) Criminalité des enfants. Catamnèse pour la recherche des pronostics.
- (219) Education et psychothérapie du délinquant.
- (220) Contribution à la phénoménologie des bandes de jeunes.
- (221) Le diagramme criminologique.
- (222) Délinquant young male adults.
- (223) Imprisoned male and female persons, that are convicted for imprisonment for life.
- (224) Véridicité des mineurs dans les témoignages.
- (225) Technique d'exploration (d'interrogation) dans le cadre d'une étude psychologique des dépositions.
- (226) Mise au point d'un test sur la nature influençable des personnes interrogées en justice (examen de la véridicité des témoins).

(suite)

Bulletin n° 4, 1967

- (261) Evaluation de la méthode statistique des pronostics dans le droit pénal applicable aux mineurs.
- (262) Enquêtes criminologiques sur les relégués.
- (263) Criminologie et politique criminelle.
- (264) L'obtention abusive de l'aide dite "Gasölbetriebsbeihilfe" - contribution à l'étude de la criminalité en matière de subventions.
- (265) Les ordres de grandeur intervenant dans la fixation des peines.
- (266) L'hostilité du délinquant lors de l'exécution de la peine, en tant qu'obstacle à la resocialisation.
- (267) L'escroquerie en matière de jeux de hasard et de pronostics en Allemagne - Enquête criminologique.
- (268) La sélection, la formation et le perfectionnement du personnel de surveillance dans le régime pénitentiaire allemand.
- (269) Différences d'interprétation dans la jurisprudence allemande en matière pénale.
- (270) Studies in criminology of motoring offences.
- (271) A contribution of criminology to the principles of sentencing policy by the example of the car-driving in drunkenness without consequences (§ 316 StGB) and the endangering of the road-traffic by drinking alcohol (§ 315 c I Nr. 1 a StGB).
- (272) Criminality in a group of socially deviant persons living in an industrial middle town. A criminological study.
- (273) The recidivism of juvenile delinquents.

(suite)

Bulletin n° 5, 1968

- (310) Pronostics dans le domaine de la criminalité : recherches déjà faites à l'étranger.
- (311) Etude institutionnelle d'un établissement pénitentiaire de Hambourg.
- (312) Etablissement de tables de prédiction de criminalité pour les délinquants appartenant au groupe d'âge de 14 à 24 ans.
- (313) Relations du détenu avec son groupe primaire.
- (314) Le procès à sensation.
- (315) Validation study de la table sociale des Glueck.

Bulletin n° 6, 1968

- (345) Workhouse training with special regard to Lower Saxony ; success and failure rates of inmates.
- (346) Trends in criminality in Lower Saxony, 1956-1965.
- (347) Criminological investigations on inmates of a Jugendarrest institution.
- (348) Success and failure after serving an indeterminate sentence of youth imprisonment.
- (349) Problems of open-style enforcement of youth imprisonment drawn from the conditions in the Falkenrott institution in Lower Saxony.

Bulletin n° 7, 1969

- (370) Formes d'évolution de l'agissement illicite et facteurs de modification.

(suite)

Bulletin n° 8, 1969

- (404) Attaques à main armée contre des instituts monétaires, des caisses publiques, des bureaux des Chemins de Fer fédéraux et des Postes fédérales.
- (405) Enquêtes criminologiques relatives aux articles 15 et 16 du Code de justice militaire.
- (406) L'inceste : enquête pénale et criminologique.

Bulletin n° 9, 1970

- (467) Le secret d'Etat illégal vu sous l'angle criminologique et dogmatique.
- (468) Les problèmes que posent les établissements socio-thérapeutiques considérés du point de vue criminologique.
- (469) La protection contre les indiscrétions de la presse dans le droit étranger et dans le futur droit allemand.

Bulletin n° 10, 1970

- (537) Les condamnés à perpétuité.
- (538) Vols commis par des jeunes - Etude criminologique de 150 cas fondée sur les dossiers de l'Institut de Criminologie de Tübingen.
- (539) Maffia : Puissance centrale et opposition locale.
- (540) Evolution du comportement criminel et facteurs changeants.
- (541) Le pronostic criminel.
- (542) Appréciation de la crédibilité des témoins mineurs.
- (543) Sellin-Wolfgang-Index Replication Study.

(suite)

Bulletin n° 11, 1971

- (568) Sources d'erreurs dans la procédure pénale.
- (569) Social control and deviant behaviour in industry (so called "Betriebsjustiz").

Bulletin n° 12, 1972

- (609) Daily schedule of delinquents and non-delinquents.
- (610) Criminovalent and criminoresistent patterns (Kriminovalente und kriminoresistente Konstellationen).
- (611) Social control in the family and its influence upon delinquency.
- (612) Occupational training : a comparative analysis of young delinquents' and a control group's behaviour during their occupational training.
- (613) Study of occupation, mobility and working behaviour of delinquents and non-delinquents.
- (614) Hidden criminality.
- (615) Le développement et la validation d'un test objectif et d'une échelle mesurant le comportement déviant.
- (616) Les loisirs et la criminalité.
- (617) Dark figure and criminal statistics (Dunkelfeld und Kriminalstatistik).
- (618) Motivation of drug consumption.
- (619) Methods and results of occupational training in correctional treatment.
- (620) Organisational structure in a penal institution - a system of interaction.

GRECE - GREECE

Bulletin n° 1, 1966

- (25) Géographie criminelle de la ville de Thessalonique par arrondissement et plan futur de la Grâce du Nord.
- (26) Géographie criminelle de la ville de Thessalonique par arrondissement en ce qui concerne la délinquance juvénile.
- (27) Criminogenic and criminodynamic factors in young adult offenders.

Bulletin n° 5, 1968

- (316) Géographie criminelle de l'arrondissement judiciaire de Thessalonique.

ISRAEL

Bulletin n° 7, 1969

- (381) Homicide in Israel.
- (382) The effect of institutionalisation on the time-sense of prisoners.
- (383) Old age and crime in Israel.
- (384) Suicide among young persons in Israel.
- (385) Leisure time activities and juvenile delinquency.
- (386) The General Amnesty, 1967.

Bulletin n° 8, 1969

- (433) Israeli institutions for juvenile delinquents.
- (434) Anomie in Kibbutzim.

ISRAEL (suite)

- (435) "Bnei Tovim" middle and upper class juvenile delinquency in Israel.
- (436) Group counselling for delinquent youth.
- (437) "Points of no return" - some situational aspects of violence.
- (438) Social change, deviation and control among Arab youth in Israel.

Bulletin n° 11, 1971

- (605) Suicide in a changing society.

Bulletin n° 12, 1972

- (658) A follow-up study on street groups.
- (659) Survey of attitudes as to the relationship between mass media and deviant behaviour with respect to two definers :
  - 1. violence, and
  - 2. offences against property.
- (660) Pre-trial detention.

ITALIE - ITALY

Bulletin n° 1, 1966

- (28) Evolution et traitement de la personnalité du délinquant récidiviste.
- (29) Psychodynamique de la conduite criminelle des jeunes adultes récidivistes. Efficacité du traitement de courte durée.

ITALIE - ITALY (suite)

- (30) Etude criminologique sur les aspects statistiques de la criminalité : comparaison entre vol et homicide.
- (31) L'imputabilité dans les infractions militaires.
- (32) Contribution à l'étude de la dynamique des infractions des mineurs.
- (33) Etude du paramètre (field dependance/field independence) chez les criminels.

Bulletin n° 2, 1966

- (148) La fréquence et les causes de la récidive chez les jeunes adultes.
- (149) Etude de la personnalité des délinquants condamnés avec la circonstance atténuante de démence partielle.
- (150) Enquête sur la personnalité des délinquants coupables d'escroquerie.
- (151) Etude des facteurs de la récidive, en particulier chez les criminels jeunes adultes.

Bulletin n° 3, 1967

- (227) Le traitement scolaire spécial et son apport dans la resocialisation des mineurs antisociaux.
- (228) Etude criminologique sur la personnalité des victimes de délits d'inceste.
- (229) La conception anthropo-criminologique du suicide.

Bulletin n° 4, 1967

- (274) Problèmes psychologiques du reclassement social des délinquants après l'expiration de la peine.
- (275) Motivations et aspects phénoménologiques dans la structuration de personnalités antisociales.



ITALIE - ITALY (suite)

Bulletin n° 5, 1968

- (317) The motor vehicles as an object, a tool or an occasion of crime. (Influence of the increase of the use of the motor vehicle on intentional criminality.)
- (318) Analysis of the characteristics of the whole correctional population and of trends in its variations in relation to the classification of correctional institutions.
- (319) Le concept d'autorité et les fonctions de la police par rapport à l'antisocialité des mineurs.
- (320) Projection thématique et agressivité des jeunes délinquants.
- (321) Les déficiences mentales chez les jeunes délinquants.
- (322) Immediate effects of aggressive content in mass media communications.

Bulletin n° 6, 1968

- (350) Analyse des modifications du test de Rorschach dans un groupe d'enfants inadaptés, après le passage à l'âge adulte.
- (351) Le contrôle de l'état dangereux et l'activité de la police.

Bulletin n° 9, 1970

- (470) Etude psycho-sociale des relations existant dans le milieu pénitentiaire.
- (471) Analyse stratifiée de la population détenue dans les asiles d'aliénés judiciaires et dans les établissements de traitement et de garde. Comparaison avec la stratification nosographique de la population des hôpitaux psychiatriques civils.

ITALIE - ITALY (suite)

- (472) Recherche sur la caractérisation du syndrome XYY.
- (473) Le suicide dans les prisons.
- (474) Genèse de la conduite criminelle et utilisation du travail pour la resocialisation des criminels.
- (475) Possibilité d'organisation d'un service de bénévoles pour la rééducation en liberté des délinquants.
- (476) Institutionalisme et criminalité.
- (477) La communauté thérapeutique. Perspectives de traitement dans un groupe de jeunes adultes délinquants.

Bulletin n° 10, 1970

- (544) Psychologie et psychopathologie des infractions.
- (545) Orientations actuelles de la recherche criminologique dans les pays européens.

PAYS-BAS - NETHERLANDS

Bulletin n° 1, 1966

- (34) Criminal law as a means of social control.
- (35) A pilot study about first offenders and their recidivism.
- (36) Prosecution of drunken driving.
- (37) Criminality and industrialization.
- (38) The general preventative value of punishment.
- (39) Research into sexual delinquency in the northern part of the province of Noord-Holland.

PAYS-BAS - NETHERLANDS (suite)

- (40) Blackmail-practices.
- (41) Adaptation of the school-child.
- (42) Structure de la famille et récidivisme.
- (43) Crime and its social distribution.
- (44) Comparative psychological study between recidivist-thieves and recidivist-embezzlers.
- (45) Weekend execution of short-term imprisonment.
- (46) Anti-social and criminal behaviour in a quickly expanding community (Pilot study).
- (47) Tensions in the prison-setting.
- (48) The position of behavioural observation in the field of juvenile delinquency.
- (49) Late consequences of imprisonment in German concentration camps.
- (50) Delinquent minors who have been placed at disposal of the Government.
- (51) Le rôle de l'éducateur.
- (52) Research on differentiation.
- (53) Personality traits of juvenile delinquents.

Bulletin n° 2, 1966

- (152) Adjustment of deviant boys and prediction of their adjustment by means of institutional observation.
- (153) Application and meaning of the Reform School as a punitive measure.
- (154) A study of factors associated with recidivism of male adult probationers and parolees.

Bulletin n° 3, 1967

- (230) Survey on criminal behaviour in traffic.

PAYS-BAS - NETHERLANDS (suite)

- (231) Research into the effectiveness of open prisons.

Bulletin n° 4, 1967

- (276) Roughness and foul play during football games.

Bulletin n° 6, 1968

- (352) The policy of the Prosecuting Counsel in cases of shoplifting.
- (353) The PTK research project : an evaluation of the results of penitentiary training in "De Corridor".
- (354) Attitude of inmates concerning intramural rehabilitation activities.

Bulletin n° 8, 1969

- (407) Comparative research of sentencing problems in cases of ordinary crimes against property and fiscal offences.
- (408) Personality factors of inmates as determinants of the effects of democratisation in prisons.
- (409) Recorded and unrecorded criminality among juveniles.

Bulletin n° 9, 1970

- (478) Inquiry into the personality attributes of inmates (social dispositions) who are favourable or detrimental to the successful functioning of small groups in prisons.
- (479) Criminality - 1966.
- (480) Remand in custody.
- (481) Evaluation of the effectiveness of penal sanctions with regard to drunken driving.

PAYS-BAS - NETHERLANDS (suite)

- (482) Evaluation of efficiency of Bankenbosch (= special prison for drunken drivers).
- (483) Data related to the sentencing of drunken driver and the effect on the offender of the penalties.

Bulletin n° 10, 1970

- (546) Victims of aggressive criminality.

Bulletin n° 11, 1971

- (572) Effects of detention on relationships of prisoners in the outside world.

Bulletin n° 12, 1972

- (623) Purpose and use of the presentence investigation reports.
- (624) Special preventive effect of prison sentences.
- (625) Prosecution policy.
- (626) Predictability of recidivism.
- (627) Analysis of presentence investigation reports.
- (628) Aggressiveness in Limburg.
- (629) Different types of delinquents.
- (630) Psychological and social consequences of remand in custody.
- (631) Types of juvenile delinquents.
- (632) Factors influencing police decisions to report juvenile delinquents.
- (633) Department store shoplifting.
- (634) The effect of housing conditions on aggression and aggressive criminality.

PAYS-BAS - NETHERLANDS (suite)

- (635) The impact of criminological research reports on the decision-making on all levels of the system.
- (636) Victims of crime - a dark number study.
- (637) A comparative study of the personal and social behaviour of registered and non-registered delinquents.

NORVEGE - NORWAY

Bulletin n° 2, 1966

- (155) A psychiatric, psychological and social comparison of different groups of youth (12 - 18 years old) with behaviour and adjustment difficulties (including asociality and criminality).
- (156) An account of the Probation Service in Norway.
- (157) Crime and social structure.
- (158) Prostitution in Norway.
- (159) Shoplifting in Oslo.
- (160) Conceptions of justice among school children.
- (161) An investigation into the problems of drunken driving.
- (162) The child welfare authorities in Norway. A communication and organisation analysis.
- (163) Analysing the later adjustment of 100 offenders treated in the Norwegian borstal during the nineteen-fifties.

NORVEGE - NORWAY (suite)

- (164) Study of offender twins.
- (165) Follow-up study of an alcoholic therapeutic centre.

Bulletin n° 4, 1967

- (277) Crime and social control in a small town in the north of Norway.
- (278) A study of self-reported crime.
- (279) Safe breakers.
- (280) Interaction with, and attitudes towards, the legal system.
- (281) Behavioural disorders among schoolchildren : a comparative study.
- (282) The role of a bandit in a peasant society.

Bulletin n° 8, 1969

- (410) A survey of investigations from several countries concerning the effectiveness of various forms of traffic supervision.
- (411) Investigation of the receiving of stolen goods in Norway.
- (412) A survey of legislation and the frequency and types of legal sanctions against drunken driving.
- (413) Study of the work of the Committee on Professional Ethics of the Press in Norway.
- (414) Study of 100 clients received in the Norwegian Work School for young offenders during the 1950's.
- (415) Crimes of violence in Norway.
- (416) Trends in registered criminality in Norway.
- (417) Study of Norwegian child welfare services.

NORVEGE - NORWAY (suite)

- (418) The clientele of the temperance boards.
- (419) An analysis of case material in narcotics cases in Oslo and neighbourhood 1965-1968.
- (420) A study of the use of marihuana and hashish among Oslo-youth.
- (421) Investigation of a sample of victims of violent offences in Oslo in 1967.
- (422) Drug abuse among young men in Oslo. Medical board investigation.
- (423) A clinical and institutional-sociological analysis of therapy processes in treatment homes for anti-social youth.
- (424) Policemen's choice of occupation, training and attitudes.
- (425) The criminal-administrative functions of the police.
- (426) Study of social background-data in relation to recidivism rates among the yearly probation clientele in the county of Västerbotten.
- (427) An etiological study of male clients from institutions for children and youth.
- (428) "Orebro-project" criminological part (concerning adjustment, conduct and performance).
- (429) Custodial staff in coercive organisations.
- (430) A study of background factors and personality variables of prognostic value in relation to vocational training of young clients during confinement and their activities of training 36 months after sentence.

Bulletin n° 10, 1970

- (547) An evaluation of the jury-system in criminal cases.



NORVEGE - NORWAY (suite)

- (548) Youth in Oslo 1968. A pedagogical and sociological investigation.
- (549) Female Delinquency.

Bulletin n° 11, 1971

- (573) A sociological analysis of the organisational structure of a social unit for Youth in the centre of Oslo.
- (574) The emergence of the Child Welfare System in Norway.
- (575) Violence in Norway - its quality.

SUEDE - SWEDEN

Bulletin n° 2, 1965

The 1956 clientele study of juvenile delinquents

- (166) General report.
- (167) Sociological aspects.
- (168) Psychological aspects.
- (169) Child-psychiatric aspects.
- (170) A study of prison escapes.
- (171) The influence of the dark number on criminal statistics.
- (172) Clientele research projects concerning pupils at the State Youth Welfare Schools.
- (173) Recidivism among young offenders who were granted suspension of prosecution for serious crime in 1961.

SUEDE - SWEDEN (suite)

- (174) A socio-medical study of the venereal clientele in Stockholm 1966.
- (175) A socio-medical intensive study of drug addicts among the clientele of the Stockholm police.
- (176) Effects of the Swedish legislation concerning drunken driving.
- (177) The social structure of a training school for girls.
- (178) Conditions of socialisation for youth prison inmates.
- (179) Changes of attitudes among youth prisoners.
- (180) The effect of group-counselling in an institution for juvenile delinquents.
- (181) Criminological study of rape.
- (182) Thefts in Gothenburg, 1960-1961.
- (183) A study of the illegal sale of alcohol in Gothenburg during 1960-1961.
- (184) Studies in personality : a bio-psychological and experimental approach to problems of human adaptation in modern society.
- (185) The Swedish narcotics' criminality 1954-1965.
- (186) Some processes in group psychotherapy : different approaches to a content analysis.
- (187) Self-reported criminality in Sweden.

Bulletin n° 4, 1967

- (283) An analysis of escape statistics and an attempt to characterize the habitual absconder.

Bulletin n° 10, 1970

- (550) Socialisation in correctional institutions.

82

SUEDE - SWEDEN (suite)

Bulletin n° 11, 1971

- (576) Intravenous drug abuse in the Stockholm population of arrests.
- (577) Delinquency and conformity - a longitudinal study.
- (578) The diffusion of results of research ; a comparative study with examples from criminological, sociological and medical research.
- (579) The project for the reinforcement of non-institutional care.
- (580) Criminological investigation within the Orebro Project.
- (581) Criminological differential research.
- (582) Criminality among foreigners in 1967.
- (583) Research Committee of 1956 on juvenile delinquency.

SUISSE - SWITZERLAND

Bulletin n° 2, 1966

- (188) The punishment of indecent assaults on children with special consideration of the attitude and personality of the victim.
- (189) Follow-up study of the persons convicted 1950 for the first time.
- (190) New methods of crime prevention in the mass delinquency of traffic road by strengthening the role of personal responsibility of the drivers.
- (191) Criminology and criminal law.

SUISSE - SWITZERLAND (suite)

Bulletin n° 4, 1967

- (284) La soustraction de marchandises par les clients des grands magasins.

Bulletin n° 6, 1968

- (355) L'homicide par négligence et la circulation routière.

Bulletin n° 9, 1970

- (484) Pratique de la détention préventive dans différents systèmes de procédure pénale.

TURQUIE - TURKEY

Bulletin n° 1, 1966

- (54) L'urbanisation causée par l'industrialisation d'une petite ville à structure traditionnelle et le développement de la criminalité.

Bulletin n° 7, 1969

- (371) Recherche sur le fonctionnement de la Maison de Correction d'Ankara.  
(372) Recherche sur l'efficacité du traitement dans la prison semi-ouverte d'Ankara.

Bulletin n° 9, 1970

- (485) La criminalité routière.

Bulletin n° 1, 1966

- (55) Prediction and classification techniques.
- (56) Continuous Borstal prediction.
- (57) Comparative study of offenders serving first and second prison sentences.
- (58) Pentonville Project (prisoners' social attitudes).
- (59) Probation research.
- (60) National survey of Child Health and Development.
- (61) Maladjustment in thirteen year old Approved School boys.
- (62) Reconviction study of the 1956 Approved School intake.
- (63) Study of an Approved School Hostel.
- (64) An investigation of certain typologies with reference to their use in classifying Approved School boys.
- (65) Vocational training study.
- (66) Studies of criminal histories.
- (67) Study of prison pre-release hostels.
- (68) Crawley Juvenile Research project.
- (69) West Ham Juvenile Liaison Scheme.
- (70) Study of girls sentenced to Borstal or Detention Centre Training.
- (71) Research into women's prisons.
- (72) Use of the Gibbons-Garrity typology of offenders at Ashford Remand Centre.
- (73) A study of sentencing practice.
- (74) Social consequences of conviction.
- (75) The cost of crime.
- (76) State of crime in England and Wales.

ROYAUME-UNI - UNITED KINGDOM (suite)

- (77) A long term study of the origins and development of behaviour problems in schoolboys.
- (78) Evaluation of changes in techniques of training in a closed borstal.
- (79) Short studies and reports arising out of the state of crime research.
  - (i) Patterns of specialisation among recidivists.
  - (ii) Ways of measuring the criminality of the recidivist.
- (80) Unemployment and juvenile delinquency.
- (81) The sentencing of serious motoring offenders in Magistrates' Courts in England.
- (82) The state of crime in Scotland.
- (83) The effect of the opening of special institutions for young offenders in Scotland on the disposal of young male offenders aged 17 to 21.
- (84) Police methods of recording crimes for statistical purposes.
- (85) Study of group size and group processes in Approved Schools.
- (86) Adolescent offenders - A comparative study of treatment.
- (87) Long-term results of Borstal training.
- (88) The criminality of the hospital psychopath.
- (89) Long-term recidivism of delinquents treated at a child guidance clinic (Portman Clinic, London).
- (90) Adult criminality of adolescent, wayward or delinquent girls.
- (91) Short-term offenders : aspects of after-care.
- (92) Research into voluntary after-care conducted under the Blackfriars Settlement Scheme.

ROYAUME-UNI - UNITED KINGDOM (suite)

- (93) Study of delinquency - Series of studies of methodology in criminological research.
- (94) Sentencing policy of the Court of Criminal Appeal.
- (95) Study of Blackburn and Accrington Juvenile Liaison Officer Schemes.
- (96) Sociological study of a women's prison.
- (97) Use of Part V of the Mental Health Act 1959.
- (98) Reaction of boys to approved Schools.
- (99) Victims of crime.
- (100) A study of the effects and effectiveness of sentencing in serious motoring cases in three areas of England.
- (101) A study of the attitudes towards disqualification from driving among Borstal inmates who have been so treated.
- (102) Social anxiety reactions.
- (103) National Child Development Study.
- (104) Prevention of juvenile delinquency.
- (105) Methods of predicting delinquent behaviour.
- (106) Pooled Allocation research project : Jesness-Fisher testing phase.
- (107) Social support and social control in a changing society.

Bulletin n° 2, 1966

- (192) A study of social and emotional behaviour of delinquents with reference to their home backgrounds and sibling relationships.
- (193) Central Lancashire Family and Community Project.
- (194) Sociological study of a women's prison.

ROYAUME-UNI - UNITED KINGDOM (suite)

- (195) A study of social maladjustment as a factor in serious motoring offences and serious traffic accidents.
- (196) A study of social class and education in relation to juvenile delinquency.

Bulletin n° 3, 1967

- (232) The relation between social factors and criminal histories of juveniles.
- (233) Comparison of the effects of different sentences.
- (234) A further study of time spent awaiting trial.
- (235) The use of remands.
- (236) Comparison of boys in Senior Approved Schools and Borstals.
- (237) Validation of the Jesness Inventory.
- (238) Study on the classification of crime.
- (239) Classification and transfer of prisoners in the English prison system.
- (240) Men imprisoned for non-payment of fines.
- (241) Survey of the population of a local prison.
- (242) Comparative study of the social attitude of juvenile offenders and non-offenders.
- (243) Criminal behaviour and attitudes among girl adolescents in a high delinquency area.
- (244) A study of the psycho-social basis of drug addiction.
- (245) A pilot study of family advice services.
- (246) Accommodation for homeless discharged prisoners.

Bulletin n° 4, 1967

- (285) A study of girls and boys appearing before the Greenwich Juvenile Court.



ROYAUME-UNI - UNITED KINGDOM (suite)

- (286) Detention Centres : An investigation of different lengths of sentence.
- (287) The enforcement of fines.
- (288) Study of the administration of justice relating to juveniles.
- (289) Homicide - Scotland 1950-1970.
- (290) Relations between the police and the public.
- (291) Criminality and penal treatment of epileptics.
- (292) Women offenders in Holloway Prison, London.
- (293) The Constructive Education Project.

Bulletin n° 5, 1968

- (323) Description of the female prison population.
- (324) Parole Project.
- (325) Borstal girls as a focus for studying anti-social deviance in women.
- (326) The reform of Scottish prison administration in the 19th Century.
- (327) Effects of imprisonment on prisoners.
- (328) The use made by juvenile court magistrates of the idea of welfare in their court dispositions.
- (329) The development of criminal organisation.
- (330) The enforcement of factory legislation - a case-study in the enforcement of laws relating to white-collar crime.
- (331) Developments in the use of probation : a critical examination of principles, practice and trends in the probation service.
- (332) Nominal penal measures : a study of measures for offenders which involve no punishment, supervision or restraint.

ROYAUME-UNI - UNITED KINGDOM (suite)

- (333) Legal aid in criminal cases : a comparative study.
- (334) Contested trials in higher courts.
- (335) Reconviction rate of offenders committed to detention centres compared with a control sample of other offenders.
- (336) Pilot study to categorize different styles of interpretative group work by probation officers. At a later stage an attempt will be made to assess effectiveness of these styles when marched with different types of offenders.

Bulletin n° 6, 1968

- (356) An investigation into the enforcement of credit.
- (357) Social structure and social relationships of boys in an English Approved School.
- (358) Study of runaway girls.
- (359) A comparison of the effectiveness of "open" and "closed" prisons.
- (360) Female delinquency : a theoretical study of deviance and role perception.
- (361) A national study of adoption.

Bulletin n° 7, 1969

- (373) The effect of the imprisonment of women upon their families.
- (374) Juvenile drug offenders.
- (375) A controlled trial of a shared responsibility regime in an approved school.
- (376) The estimation of reconviction among prisoner groups.
- (377) Research on psychomotor behaviour.

ROYAUME-UNI - UNITED KINGDOM (suite)

- (378) A study of selection for parole.
- (379) General Title - Petty Delinquency.  
Prevention  
Specific Title - Police Juvenile Liaison  
Schemes with particular reference to Scotland.  
A continuing study.
- (380) Drug-taking among school leavers.

Bulletin n° 8, 1969

- (431) Full-time criminals and criminal networks.
- (432) The attitudes to drugs and drug takers of  
students at the University and Colleges of  
higher education in an English midland city.

Bulletin n° 9, 1970

- (486) Fine enforcement in magistrates' courts.
- (487) Remand practices at selected magistrates' courts.
- (488) Study of sentencing practice.
- (489) Studies of criminal histories.
- (490) Detention centre : an evaluation of three-month  
and six-month sentences.
- (491) Girls appearing before a juvenile court.
- (492) The West Ham Juvenile Liaison Scheme of the  
Metropolitan Police.
- (493) An experiment in personality assessment of young  
men remanded in custody.
- (494) Absconding from approved schools.
- (495) Study of organisation problems of prison welfare.
- (496) An assessment of the hostel scheme for long  
sentence prisoners.
- (497) Probation after-care and parole supervision :  
After-care units.

ROYAUME-UNI - UNITED KINGDOM (suite)

- (498) Probation after-care and parole supervision :  
After-care hostels.
- (499) Probation after-care and parole supervision :  
Probation hostels.
- (500) Probation after-care and parole supervision :  
Interpersonal perception.
- (501) Probation after-care and parole supervision :  
Interaction in probation interviews.
- (502) Probation after-care and parole supervision :  
Types of offender.
- (503) Probation after-care and parole supervision :  
Types of offender and types of treatment.
- (504) Probation after-care and parole supervision :  
Environment and personality.
- (505) Parole supervision.
- (506) Prediction methods in criminology, with special  
reference to a study of young men on probation.
- (507) Study of social work with men serving short  
sentences.
- (508) An experiment in social work in prisons.
- (509) Heroin addiction and criminality.
- (510) Girls sentenced to borstal or detention centre  
training.
- (511) Prison industry.
- (512) Men escaping from closed, and absconding from  
open prisons.
- (513) The effects and effectiveness of sentencing in  
serious motoring cases in three areas of England.
- (514) Physiological and psychological correlates of  
aggressive behaviour.
- (515) Remands for medical reports.

ROYAUME-UNI - UNITED KINGDOM (suite)

- (516) Action project on intermediate treatment with youth in a community setting.
- (517) National study of illegitimately born children.
- (518) Personality and psychopathology in relation to criminal behaviour.
- (519) The opinions of several categories of criminal, and their attitudes to several categories of crime.
- (520) The hypothesised process of "prisonisation" reflected by levels of criminal information in relation to criminal behaviour.
- (521) The appropriate aims of "after-care" and their achievement in relation to criminal behaviour.

Bulletin n° 10, 1970

- (551) Fines project.
- (552) Homicide in Scotland 1950-1968.
- (553) A study of violent assaults in the city of Glasgow during 1968.
- (554) A study of truancy in the City of Glasgow 1970-71.
- (555) Delinquent Development
- (556) Crimes of violence Survey.
- (557) Complaints against the Police.

Bulletin n° 11, 1971

- (584) Juvenile Court - sociological perspectives.
- (585) Sociology of crime reporting in newspapers.
- (586) The role of the Approved School under the 1969 Act : an investigation into the attitude of child care officers to residential treatment.

ROYAUME-UNI - UNITED KINGDOM (suite)

- (587) The role of the prison officer.
- (588) The use of remand on bail or in custody for medical reports to court.
- (589) A study of chromosome abnormalities in a random sample of Borstal boys and a control group of factory employees.
- (590) Physiological and psychological characteristics of aggressive offenders, adult and young adult.
- (591) Referral of prisoners for psychiatric treatment.
- (592) Reconvictions and hospital treatment of shoplifters convicted in 1959.
- (593) Approved Schools and their effects.
- (594) The psychological consequences of long term imprisonment.
- (595) Prison regimes.
- (596) Communication in the juvenile courts.
- (597) Some aspects of parole.
- (598) Mentally abnormal offenders.
- (599) Drug dependence and crime.
- (600) Deviance among adolescent girls in Stockport.
- (601) Sexual offences in Edinburgh and the Lothians
- (602) Parole system in Edinburgh.

Bulletin n° 12, 1972

- (638) Education in prisons.
- (639) A study of crime in Guyana.
- (640) Police powers in Scotland.
- (641) Offence histories of persons given suspended sentences.
- (642) Penal treatment of drugs users.

ROYAUME-UNI - UNITED KINGDOM (suite)

- (643) Comparative study of addicts first identified at hospital drug treatment clinics or in prison.
- (644) Probation and after-care treatment of drug users.
- (645) Self-mutilation among Borstal girls.
- (646) "Impact" Experiment (intensive matched probation and after-care treatment).
- (647) Role of the senior probation officer.
- (648) Homeless offenders.
- (649) Time factors in social enquiries.
- (650) Offenders sentenced to life imprisonment.
- (651) Survey of the prison population.
- (652) Decision-making by defendants in criminal cases.
- (653) Institutional treatment of young offenders.
- (654) Nottingham prisoners' families project.
- (655) Study of criminal victimisation, perceptions of crime and attitudes to criminal justice.
- (656) Evaluation of parole for women.
- (657) Personality of offenders.

SOCIETE INTERNATIONALE DE CRIMINOLOGIE

Bulletin n° 1, 1966

- (108) Bibliographie choisie de criminologie.
- (109) Etat actuel des recherches en criminologie.
- (110) Les statistiques criminelles et l'évolution de la criminalité au cours des deux dernières décades.

COUNCIL OF EUROPE'S CO-ORDINATED CRIMINOLOGICAL RESEARCH FELLOWSHIP

BOURSE DE RECHERCHES CRIMINOLOGIQUES COORDONNEES DU CONSEIL DE L'EUROPE

Bulletin n° 7, 1969

- (387) Aspects of the prison community

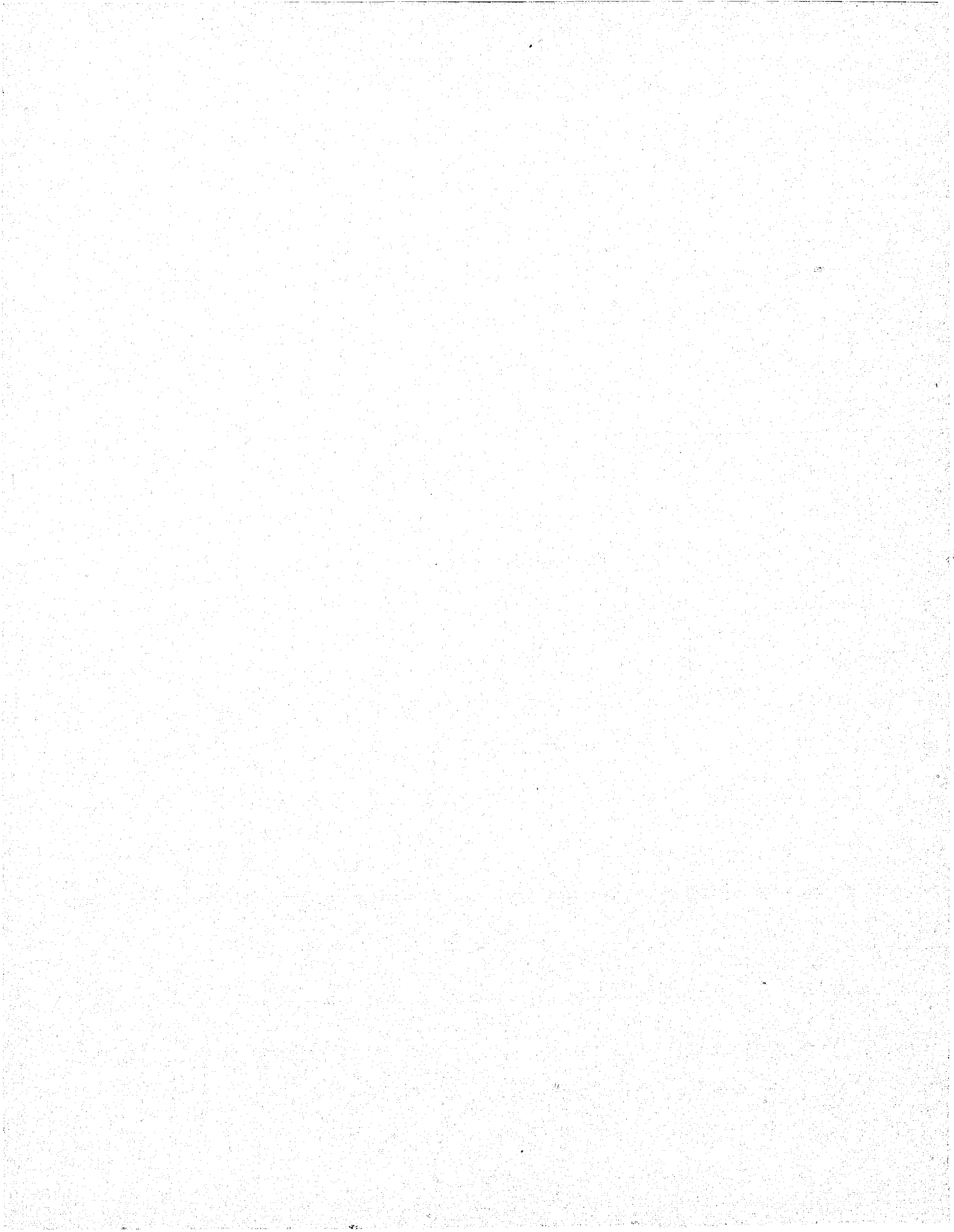
Bulletin n° 8, 1969

- (447) Le rôle de l'école dans la prévention de la délinquance juvénile.

Bulletin n° 10, 1970

- (565) La criminalité organisée et professionnelle.





**END**