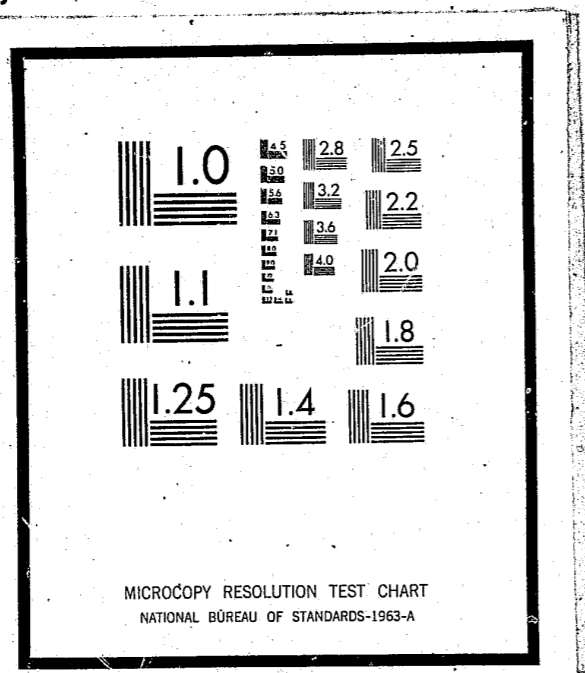


NCJRS

This microfiche was produced from documents received for inclusion in the NCJRS data base. Since NCJRS cannot exercise control over the physical condition of the documents submitted, the individual frame quality will vary. The resolution chart on this frame may be used to evaluate the document quality.



Microfilming procedures used to create this fiche comply with the standards set forth in 41CFR 101-11.504

Points of view or opinions stated in this document are those of the author(s) and do not represent the official position or policies of the U.S. Department of Justice.

U.S. DEPARTMENT OF JUSTICE
LAW ENFORCEMENT ASSISTANCE ADMINISTRATION
NATIONAL CRIMINAL JUSTICE REFERENCE SERVICE
WASHINGTON, D.C. 20531

Date filmed

10/23/75

16613

X
A DESCRIPTION OF RESIDENTS RELEASED
ON GOOD CONDUCT DISCHARGES DURING 1973

Massachusetts-Department of Correction

Frank A. Hall
Commissioner

June, 1974

Produced by:

Division of Research and
Planning

Correction/Parole Information
System Unit

During 1973 the Massachusetts Department of Correction had 1042 sentenced prisoners released on parole and 111 on discharge. Parole releases have been described in detail in three companion reports issued by the Parole Board.¹ The present report (a) presents the relative numbers of dischargees and parolees by year and by committing and releasing institution, then (b) describes dischargees and compares them to parolees on several variables.

Table I presents the numbers of dischargees and parolees during each of the last ten years, as well as the proportion of releasees who were released on discharge.

TABLE I

NUMBERS OF PAROLEES AND DISCHARGEES BY YEAR: 1964-1973

| <u>YEAR</u> | <u>DISCHARGEES</u> | <u>PAROLEES</u> | <u>DISCHARGEES AS % OF TOTAL RELEASEES</u> |
|-------------|--------------------|-----------------|--|
| 1963 | 426 | 787 | 35% |
| 1964 | 452 | 862 | 34% |
| 1965 | 452 | 815 | 35% |
| 1966 | 391 | 869 | 31% |
| 1967 | 296 | 775 | 27% |
| 1968 | 341 | 759 | 31% |
| 1969 | 291 | 735 | 28% |
| 1970 | 242 | 759 | 24% |
| 1971 | 238 | 949 | 20% |
| 1972 | 155 | 1366 | 10% |
| 1973 | 111 | 1042 | 10% |

From 1964-68 about one-third of releasees were discharged. Subsequent years (1969-72) saw a decline in the proportion of releasees who were discharged, from one-third to one-tenth. This decline now seems to have bottomed out; during both 1972 and 1973 dischargees constituted 10% of the total number of releasees.

Further, not only were few residents released on discharge, but also most dischargees were parole violators previously paroled then returned to serve out the balance of their sentence until discharge. Of the 111 dischargees during 1973, 63 had been previously paroled on the present sentence, and only 48 were discharged without ever having been paroled. (One result of most dischargees being parole violators is that the typical (median) length of incarceration for dischargees was six months). The central conclusion to be drawn is that at present virtually all releasees are paroled. During 1973 only 4% of the releasees (48 of 1153) were discharged without having been paroled at some point in their present sentence.

Tables II and III present the numbers of dischargees and parolees by committing and releasing institutions.

¹ "Report on State Commitments Released to Parole During 1973." "Report on Time-Related Variables on 1973 Releases to Parole Supervision." "Background Characteristics of State Case Openings to Parole Supervision During 1973." The three reports focus on, respectively, release processes and trends, time periods and trends therein, and background characteristics.

TABLE II

NUMBERS OF PAROLEES AND DISCHARGEES, BY INSTITUTION COMMITTED TO

| <u>INSTITUTION COMMITTED TO</u> | <u>DISCHARGEES</u> | <u>PAROLEES</u> | <u>DISCHARGEES AS % OF TOTAL RELEASEES</u> |
|-------------------------------------|--------------------|-----------------|--|
| Walpole | 44 | 446 | 9% |
| Concord | 41 | 521 | 7% |
| Framingham | <u>26</u> | <u>75</u> | <u>26%</u> |
| TOTAL | 111 | 1042 | 10% |

TABLE III

NUMBERS OF PAROLEES AND DISCHARGEES, BY INSTITUTION RELEASED FROM

| <u>INSTITUTION COMMITTED TO</u> | <u>DISCHARGEES</u> | <u>PAROLEES</u> | <u>DISCHARGEES AS % OF TOTAL RELEASEES</u> |
|-------------------------------------|--------------------|-----------------|--|
| Walpole | 29 | 137 | 18% |
| Norfolk | 20 | 209 | 9% |
| Forestry | 1 | 86 | 1% |
| Concord | 31 | 337 | 8% |
| Pre-Release | 2 | 122 | 2% |
| Framingham | <u>28</u> | <u>98</u> | <u>22%</u> |
| TOTAL | 111 | 989 | 10% |

These tables reveal two patterns worth noting. First, a larger proportion of females are released on discharges than was the case for males. Second, among institutions holding males, commitment institutions (i.e. Walpole and Concord) released proportionately more discharges than was the case for other institutions. Thus the proportion of releases who were discharged was 18% for Walpole and 9% for Concord, but only 1% for Forestry and 2% for Pre-Release. This apparently reflects a pattern of parole violators who were close to their discharge date, being held until release at the commitment institution to which they were returned.

The Appendix to the report presents the characteristics of parolees and discharges on a selected set of thirteen variables. In terms of these variables, the central differences between the groups is that discharges are more likely to have:

- been committed from the lower courts (29% for discharges vs 9% for parolees)
- served 6 months or less on the present incarceration (54% for discharges vs 31% for parolees)
- been previously sentenced to correctional institutions as an adult (81% for discharges vs 60% for parolees)

The greater likelihood of commitment from the lower courts is related to the larger number of women who are discharged, and the shorter length of incarceration is related to the fact that most discharges are parole violators. Other statistically significant differences include that discharges are more likely to have been committed on shorter Walpole sentences, to be older at release, and to be divorced or separated.

A P P E N D I X

| A1. LENGTH OF INCARCERATION | DISCHARGEES | | PAROLEES | |
|-----------------------------|-------------|----------|----------|----------|
| | <u>N</u> | <u>%</u> | <u>N</u> | <u>%</u> |
| 0-3 months | 16 | (15) | 135 | (13) |
| 4-6 months | 43 | (39) | 190 | (18) |
| 7 months - 1 year | 18 | (17) | 278 | (27) |
| 13 months - 2 years | 11 | (10) | 232 | (23) |
| 25 months - 3 years | 5 | (5) | 64 | (6) |
| 37 months - 4 years | 6 | (6) | 65 | (6) |
| Over 4 years | 10 | (8) | 68 | (7) |
| KNOWN TOTAL | 109 | (100) | 1032 | (100) |
| UNKNOWN | 2 | | 10 | |
| A2. AREA RELEASED TO | | | | |
| Greater Boston | 66 | (64) | 556 | (61) |
| Boston (City) | { 45 | { (43) | { 416 | { (46) |
| Northern Suburbs | { 11 | { (11) | { 58 | { (6) |
| Remaining Suburbs | { 10 | { (10) | { 82 | { (9) |
| Greater Springfield | 10 | (10) | 56 | (6) |
| Greater Worcester | 5 | (5) | 43 | (5) |
| New Bedford/Fall River Area | 2 | (2) | 38 | (4) |
| Lowell/Lawrence Area | 7 | (7) | 36 | (4) |
| Other Mass. Communities | 8 | (8) | 55 | (6) |
| Out of State | 4 | (4) | 131 | (14) |
| KNOWN TOTAL | 102 | (100) | 915 | (100) |
| UNKNOWN | 9 | | 127 | |
| A3. AGE AT RELEASE | | | | |
| Under 20 | 2 | (2) | 91 | (9) |
| 20-24 | 32 | (30) | 402 | (39) |
| 25-29 | 35 | (32) | 250 | (24) |
| 30-39 | 22 | (20) | 208 | (20) |
| 40-49 | 15 | (14) | 56 | (5) |
| 50 or More | 2 | (2) | 35 | (3) |
| KNOWN TOTAL | 108 | (100) | 1042 | (100) |
| UNKNOWN | 3 | | 0 | |
| (Median Age) | 27 | | 25 | |

| A4. RACE | DISCHARGEES | | PAROLEES | |
|--------------------------|-------------|----------|----------|----------|
| | <u>N</u> | <u>%</u> | <u>N</u> | <u>%</u> |
| White | 68 | (62) | 692 | (68) |
| Black | 41 | (38) | 330 | (32) |
| KNOWN TOTAL | 109 | (100) | 1022 | (100) |
| UNKNOWN | 2 | | 20 | |
| A5. MILITARY STATUS | | | | |
| No | 86 | (82) | 761 | (75) |
| Yes | 19 | (18) | 250 | (25) |
| KNOWN TOTAL | 105 | (1-0) | 1011 | (100) |
| UNKNOWN | 6 | | 31 | |
| A6. MARITAL STATUS | | | | |
| Single | 57 | (53) | 594 | (58) |
| Married | 22 | (21) | 245 | (24) |
| Separated | 7 | (7) | 47 | (5) |
| Divorced | 19 | (18) | 112 | (11) |
| Widowed | 1 | (1) | 16 | (2) |
| KNOWN TOTAL | 106 | (100) | 1014 | (100) |
| UNKNOWN | 5 | | 28 | |
| A7. LAST GRADE COMPLETED | | | | |
| 0-5 | 11 | (10) | 56 | (5) |
| 6-8 | 37 | (35) | 302 | (30) |
| 9-11 | 42 | (39) | 459 | (45) |
| High School Grad or More | 17 | (16) | 203 | (20) |
| KNOWN TOTAL | 107 | (100) | 1020 | (100) |
| UNKNOWN | 4 | | 22 | |
| A8. PRESENT OFFENSE | | | | |
| Person | 49 | (45) | 478 | (46) |
| Property | 28 | (26) | 261 | (26) |
| Sex | 2 | (2) | 58 | (6) |
| Narcotics | 7 | (6) | 169 | (17) |
| Other | 23 | (21) | 48 | (5) |
| KNOWN TOTAL | 109 | (100) | 1014 | (100) |
| UNKNOWN | 2 | | 28 | |

| | <u>DISCHARGEES</u> | | <u>PAROLEES</u> | |
|---|--------------------|----------|-----------------|----------|
| | <u>N</u> | <u>%</u> | <u>N</u> | <u>%</u> |
| A9. MINIMUM SENTENCE | | | | |
| No Minimum | 64 | (58) | 581 | (58) |
| 2-4 Years | 27 | (25) | 178 | (17) |
| 5-9 Years | 16 | (15) | 196 | (18) |
| 10 or More | 2 | (2) | 69 | (7) |
| KNOWN TOTAL | 109 | (100) | 1024 | (100) |
| UNKNOWN | 2 | | 18 | |
| A10. FIRST OFFENDER? | | | | |
| Yes | 20 | (19) | 409 | (40) |
| No | 87 | (81) | 604 | (60) |
| KNOWN TOTAL | 107 | (100) | 1013 | (100) |
| UNKNOWN | 4 | | 29 | |
| A11. COURT COMMITTED FROM | | | | |
| Superior | 41 | (71) | 609 | (90) |
| Lower | 17 | (29) | 60 | (9) |
| Courts Outside Mass. | 0 | (0) | 2 | (1) |
| KNOWN TOTAL | 58 | (100) | 671 | (100) |
| UNKNOWN | 53 | | 371 | |
| A12. PRIOR JUVENILE INCARCERATIONS | | | | |
| None | 72 | (67) | 706 | (70) |
| 1-2 | 24 | (23) | 222 | (21) |
| 3 or More | 11 | (10) | 85 | (9) |
| KNOWN TOTAL | 107 | (100) | 1013 | (100) |
| UNKNOWN | 4 | | 19 | |
| A13. PRIOR HOUSE OF CORRECTION INCARCERATION | | | | |
| None | 45 | (43) | 565 | (56) |
| 1-2 | 36 | (34) | 312 | (31) |
| 3 or More | 24 | (23) | 136 | (13) |
| KNOWN TOTAL | 105 | (100) | 1013 | (100) |
| UNKNOWN | 6 | | 19 | |

| | <u>DISCHARGEES</u> | | <u>PAROLEES</u> | |
|---|--------------------|----------|-----------------|----------|
| | <u>N</u> | <u>%</u> | <u>N</u> | <u>%</u> |
| A14. PRIOR STATE OR FEDERAL INCARCERATIONS | | | | |
| None | 41 | (38) | 601 | (59) |
| 1 | 31 | (29) | 234 | (23) |
| 2 | 19 | (18) | 94 | (9) |
| 3 or More | 16 | (15) | 84 | (8) |
| KNOWN TOTAL | 107 | (100) | 1013 | (100) |
| UNKNOWN | 4 | | 29 | |

END