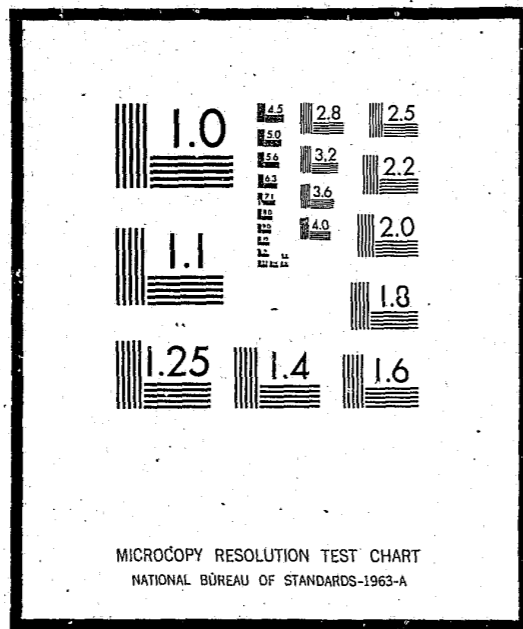


# NCJRS

This microfiche was produced from documents received for inclusion in the NCJRS data base. Since NCJRS cannot exercise control over the physical condition of the documents submitted, the individual frame quality will vary. The resolution chart on this frame may be used to evaluate the document quality.



Microfilming procedures used to create this fiche comply with the standards set forth in 41CFR 101-11.504

Points of view or opinions stated in this document are those of the author(s) and do not represent the official position or policies of the U.S. Department of Justice.

U.S. DEPARTMENT OF JUSTICE  
LAW ENFORCEMENT ASSISTANCE ADMINISTRATION  
NATIONAL CRIMINAL JUSTICE REFERENCE SERVICE  
WASHINGTON, D.C. 20531

*Mesa (Az.) Public Schools -  
Vandalism and Theft Analysis,  
(1973-74)*

Frank L. Vicino  
Don Peterson

Dr. George N. Smith  
Superintendent

Dr. James K. Zaharis  
Assistant Superintendent  
Educational Services

September 1974  
Mesa Public Schools  
Mesa, Arizona

RR-10

Date filmed

10/23/75

## FOREWORD

The major function of the Mesa Public Schools Department of Research and Evaluation is to provide information to decision makers. This data should be timely, valid, reliable and of sufficient depth, yet concise enough to speak squarely to the issues at hand.

In line with the above function this report by the Department of Research and Evaluation presents data and recommendations concerning theft and vandalism events in our school district.

The major effort in the development of this report was the responsibility of Research and Evaluation under the direction of Mr. Frank Vicino and Dr. James DeGracie. Members of the Research and Evaluation staff who made significant contributions in data summarization, formatting of the report and in typing the manuscript were Miss Susan Woods, Miss Donna Replogle, and Mrs. Diana Melius.

Research and Evaluation is a department in the Educational Services Division, functioning under Assistant Superintendent Dr. James Zaharis.

Dr. George N. Smith  
Superintendent  
Mesa Public Schools

## Introduction

After examining this year's (1973-74) vandalism data we found that Mesa's per pupil cost (\$1.29) in vandalism and theft is still considerably below the national average; it is, though, significantly higher than last year's \$0.53 per pupil cost. At this point a modified version of the refrain from "The Music Man" comes to mind "We may have trouble, right here in River City" --only Mesa could be River City. While national vandalism costs have been substantially cut (more than half)<sup>1</sup> Mesa has seen a substantial increase (72%).

We can only arrive at one conclusion: that vandalism, the willful and often pointless destruction or defacing of school property is growing worse in Mesa.

The following sections of this report will attempt to present a consolidation of the data as presently collected.

## Methods and Procedures

This is the second consecutive year that the Department of Research and Evaluation has had an opportunity to collect and analyze school vandalism/theft data, and therefore the first time we can legitimately examine changes and trends.

School property loss or damage report forms for the period July, 1973 through June, 1974 were examined for costs associated with vandalism events. In addition, costs associated with labor and materials expended on vandalism events were obtained from a computer printout kept updated for the maintenance department. Any discrepancies in the figures were noted,

<sup>1</sup>Slaybaugh, D.J. "School Security Survey," School Product News, 1974.

examined, and corrected. The vandalism and theft data were then compiled and summarized by school and by month. These data then served as the basic data for the analyses which follow.

## Results

### A. Vandalism and Theft

1. The total district cost for work order vandalism (vandalism data collected from maintenance work orders) and theft during the 1973-74 school year amounted to \$34,230.95, with the elementary schools accounting for \$25,269.79 (74%), junior highs \$6,162.51 (18%) and senior highs \$2,798.65 (8%). This represents a 71.5% increase over the vandalism and theft costs in 1972-73.
2. The cost per pupil for vandalism and theft in the district (26,446 students) was \$1.29 with \$1.70 for elementary, \$0.94 for junior highs and \$0.52 for senior high schools. This represents an increase of 65% in per pupil costs over 1972-73.
3. Of the total vandalism and theft, vandalism accounted for 79% (\$27,049.23) and theft amounted to 21% (\$7,145.00).

### B. Vandalism

1. The total cost for work order vandalism in the Mesa Public Schools was \$27,085.95 with \$18,838.79 for elementary, \$5,718.51 for junior highs, and \$2,528.65 for senior high schools. This total represents an increase of 82.2% over 1972-73.

2. The overall cost per pupil for vandalism was \$1.02 with \$1.27 for elementary schools, \$0.87 for junior highs, and \$0.48 for senior highs. This represents an increase in per pupil costs for vandalism of 76%.

### C. Theft

1. Total cost for theft in the district was \$7,145.00 with \$6,431.00 for elementary, \$464.00 for junior highs, and \$250.00 for senior highs. This represents an increase in theft of 40.3% for 1972-73.
2. The overall cost per pupil for theft was \$0.27 with \$0.43 for elementary schools, \$0.07 for junior high schools, and \$0.04 for high schools. This represents an increase in per pupil costs for theft of 35%.

### D. Data Breakdown

Table I presents data representing comparisons in vandalism costs from 1972-73 to 1973-74. It can be noted that with very few exceptions vandalism increased for most schools.

TABLE I  
Work Order Vandalism for  
1972-73, 1973-74  
Elementary Schools

Schools	Work Order Vandalism 1972-73	Work Order Vandalism 1973-74	(Decrease) or Increase
Adams*	671.76	6293.30	5621.54
Alma	112.74	214.63	101.89
Edison	108.21	316.77	208.56
Eisenhower	15.75	282.87	267.12
Emerson	547.72	330.67	(217.05)
Field	N/A	16.95	.00
Franklin	117.50	582.37	464.87
Hale	181.70	265.31	83.61
Hawthorne	1320.88	1225.66	(95.22)
Holmes	661.33	609.95	(51.38)
Irving	315.63	164.39	(151.24)
Jefferson	376.14	1176.42	800.28
Lehi	539.05	345.82	(193.23)
Lincoln	683.38	690.27	6.89
Lindbergh	40.19	159.81	119.62
Longfellow	241.28	322.16	80.88
Lowell	264.65	441.49	176.84
Redbird	N/A	87.66	.00
Roosevelt	66.81	322.94	256.13
Salk	72.87	116.29	43.42
Taft	258.03	1103.23	845.20
Webster	1202.63	2008.60	805.97

\*The inordinate vandalism costs incurred at Adams are primarily due to a fire which occurred on November 19, 1973.

TABLE I (Continued)

Schools	Work Order Vandalism 1972-73	Work Order Vandalism 1973-74	(Decrease) or Increase
Whitman	413.48	566.16	152.68
Whittier	491.26	1195.07	703.81
All Elementary	9056.77	18838.79	9745.30

Secondary Schools

Schools	Work Order Vandalism 1972-73	Work Order Vandalism 1973-74	(Decrease) or Increase
Carson	833.53	1374.78	541.25
Fremont	652.17	1488.45	836.28
Kino	690.55	730.56	40.01
Mesa Jr. & Poston	1040.56	1174.71	134.15
Powell	698.13	950.01	251.88
Mesa High	1179.73	1182.81	3.09
Westwood High	697.82	1345.84	648.02
Total Secondary	5792.49	8247.16	2454.67
Total Schools	14849.26	27049.23	12204.97

In Table II, the elementary schools and secondary schools were ranked according to the total cost of work order vandalism, with a rank of 1 being given to the school with the highest work order vandalism cost.

TABLE II  
RANKING ON VANDALISM COST  
Elementary

1973-74 Rank	1972-73 Rank	School	Amount
1	4	Adams	\$6,293.30
2	2	Webster	2,008.60
3	1	Hawthorne	1,225.66
4	8	Whittier	1,195.07
5	10	Jefferson	1,176.42
6	13	Taft	1,103.23
7	3	Lincoln	690.27
8	5	Holmes	609.95
9	16	Franklin	582.37
10	9	Whitman	566.16
11	12	Lowell	441.49
12	7	Lehi	345.82
13	6	Emerson	330.67
14	20	Roosevelt	322.94
15	14	Longfellow	321.44
16	18	Edison	316.77
17	22	Eisenhower	282.87
18	15	Hale	265.31
19	17	Alma	214.63
20	11	Irving	164.39
21	21	Lindbergh	159.81
22	19	Salk	116.29
23	--	Redbird	51.66
24	--	Field	16.95

TABLE II (Continued)

## Secondary

1973-74 Rank	1972-73 Rank	School	Amount
1	7	Fremont Jr.	\$1,488.45
2	3	Carson Jr.	1,374.78
3	5	Westwood High	1,345.84
4	1	Mesa High	1,182.81
5	2	Mesa and Poston Jr.	1,174.71
6	4	Powell Jr.	950.01
7	6	Kino	690.55

In addition, the schools were also ranked according to their per-student vandalism cost (Table III), since it could be argued that the schools with larger student populations present increased opportunities for vandalism. The per-student cost was calculated by dividing the school's vandalism costs by the average membership during the respective periods.

TABLE III  
Vandalism  
COST PER STUDENT RANKING  
Elementary

1973-74 Rank	1972-73 Rank	School	1973-74 Per Student Cost
1	9	Adams	\$8.28
2	1	Webster	3.78
3	5	Whittier	2.50
4	13	Franklin	2.13
5	2	Hawthorne	1.51
6	14	Taft	1.30
7	12	Jefferson	1.27
8	6	Lincoln	1.01
9	3	Lehi	.97
10	7	Holmes	.89
11	10	Whitman	.79
12	11	Lowell	.75
13	17	Alma	.69
14	8	Emerson	.51
15	4	Irving	.48
16	21	Roosevelt	.45
17	22	Eisenhower	.44
18	16	Hale	.43
19	19	Edison	.39
20	18	Longfellow	.37
21	20	Lindbergh	.20
22	15	Salk	.17
23	--	Redbird	.07
24	--	Field	.06
		All (Elementary)	1.27

TABLE III (Continued)

Secondary

1973-74 Rank	1972-73 Rank	School	1973-74 Per Student Cost
1	2	Fremont Junior	\$1.42
2	3	Carson Junior	1.03
3	4	Powell Junior	.80
4	1	Mesa Jr. and Poston	.72
5	6	Kino Junior	.55
6	7	Westwood High	.52
7	5	Mesa High	.45
		All (Secondary)	1.35

Table IV presents the combined vandalism and theft costs and ranking for each of the schools.

TABLE IV  
RANKING ON VANDALISM AND THEFT COST  
Elementary

1973-74 Rank	1972-73 Rank	School	1973-74 Cost
1	6	Adams	\$7,683.30
2	3	Webster	2,798.60
3	8	Whittier	1,652.07
4	2	Hawthorne	1,275.66
5	1	Lincoln	1,270.27
6	10	Jefferson	1,216.42
7	9	Whitman	1,146.16
8	13	Taft	1,103.23
9	4	Holmes	921.95
10	16	Franklin	852.37
11	12	Lowell	650.49
12	18	Edison	611.77
13	15	Hale	515.31
14	5	Lehi	412.82
15	7	Emerson	422.67
16	22	Eisenhower	335.87
17	20	Roosevelt	322.94
18	14	Longfellow	321.44
19	17	Alma	214.63
20	11	Irving	164.39
21	21	Lindbergh	159.81
22	19	Salk	116.29
23	--	Redbird	51.66
24	--	Field	16.95



TABLE IV  
RANKING ON VANDALISM AND THEFT COST  
Secondary

1973-74 Rank	1972-73 Rank	School	1973-74 Cost
1	7	Fremont Junior	\$1,568.45
2	2	Mesa High	1,432.81
3	4	Carson Junior	1,429.78
4	5	Westwood High	1,345.84
5	3	Mesa Jr. and Poston	1,342.71
6	6	Powell	971.01
7	1	Kino Junior	880.56

Table V presents costs and increases in costs for vandalism, theft, and vandalism and theft combined over the two year period. It can be noted that vandalism increased approximately \$12,205 and theft \$2,053 over the last year.

TABLE V  
VANDALISM AND THEFT INCREASES FROM FY1972-73 to FY1973-74

COSTS

A. Vandalism

	1972-73	1973-74	\$ Increase (Decrease)
Elementary	\$ 9,056.77	\$18,838.79	9,782.02
Secondary	5,792.49	8,247.16	2,459.67
Total	14,849.26	27,085.95	12,241.69

B. Theft

	1972-73	1973-74	\$ Increase (Decrease)
Elementary	\$ 2,656.40	\$ 6,431.00	\$ 3,774.60
Secondary	2,435.50	714.00	(1,721.50)
Total	\$ 5,091.90	\$ 7,145.00	2,053.10

C. Vandalism and Theft

	1972-73	1973-74	\$ Increase (Decrease)
Elementary	\$11,713.17	25,269.79	\$13,556.62
Secondary	8,227.99	8,961.16	738.17
Total	19,941.16	34,230.95	14,294.79



### Conclusions and Recommendations

It is obvious from the data collected that vandalism in the Mesa Public Schools is on the rise. Whether this increase is temporary or reflects a significant and frightening trend, anti-vandalism measures must be immediately implemented. In the department's last vandalism report a list of anti-vandalism measures were presented in the area of Student Action, Community Action, Police/Watchmen, and School Planning and Maintenance activities (refer to RR-5 Vandalism and Theft Analysis, October 1973).

In recent discussions with district personnel a number of these measures have been proposed and are presently being implemented. These attempts at vandalism reduction will have to be documented along with planned analyses of future vandalism/theft data to determine the effectiveness, if any, of the various anti-vandalism measures.

### APPENDIX I

#### THEFT AND VANDALISM Statistics for Individual Schools

ADAMS

<u>Months</u>	<u>Vandalism</u>	<u>Theft</u>	<u>Total</u>
July/August	\$ 24.86	\$ 0	\$ 24.86
September	58.65	0	58.65
October	0	0	0
November	394.93	0	394.93
December	2,842.83	450.50	3,293.33
January	2,609.84	939.50	3,549.34
February	134.97	0	134.97
March	69.05	0	69.05
April	31.46	0	31.46
May	126.71	0	126.71
June	0	0	0
<b>Total</b>	<b>\$6,293.30</b>	<b>\$1,390.00</b>	<b>\$7,683.30</b>
<b>Cost/Student (760)</b>	<b>\$8.28</b>	<b>\$1.82</b>	<b>\$10.10</b>

ALMA

<u>Months</u>	<u>Vandalism</u>	<u>Theft</u>	<u>Total</u>
July/August	\$ 0	0	\$ 0
September	0	0	0
October	0	0	0
November	0	0	0
December	23.77	0	23.77
January	11.80	0	11.80
February	21.76	0	21.76
March	0	0	0
April	32.12	0	32.12
May	25.97	0	25.97
June	99.21	0	99.21
<b>Total</b>	<b>\$214.63</b>	<b>0</b>	<b>\$214.63</b>
<b>Cost/Student (307)</b>	<b>\$0.69</b>	<b>0</b>	<b>\$0.69</b>

EDISON

<u>Months</u>	<u>Vandalism</u>	<u>Theft</u>	<u>Total</u>
July/August	\$ 0	\$ 0	\$ 0
September	2.36	0	2.36
October	0	0	0
November	21.92	0	21.92
December	10.26	0	10.26
January	10.26	0	10.26
February	65.80	295.00	360.80
March	100.71	0	100.71
April	5.16	0	5.16
May	37.19	0	37.19
June	63.11	0	63.11
<b>Total</b>	<b>\$316.77</b>	<b>\$295.00</b>	<b>\$611.77</b>
<b>Cost/Student (808)</b>	<b>\$0.39</b>	<b>\$0.36</b>	<b>\$0.75</b>

EISENHOWER

<u>Months</u>	<u>Vandalism</u>	<u>Theft</u>	<u>Total</u>
July/August	\$ 0	\$ 0	\$ 0
September	0	0	0
October	0	0	0
November	0	53.00	53.00
December	6.28	0	6.28
January	6.28	0	6.28
February	0	0	0
March	35.64	0	35.64
April	0	0	0
May	0	0	0
June	234.67	0	234.67
<b>Total</b>	<b>\$282.87</b>	<b>\$53.00</b>	<b>\$335.87</b>
<b>Cost/Student (642)</b>	<b>\$0.44</b>	<b>\$0.08</b>	<b>\$0.52</b>

## EMERSON

<u>Months</u>	<u>Vandalism</u>	<u>Theft</u>	<u>Total</u>
July/August	\$ 15.09	\$ 0	\$ 15.09
September	0	0	0
October	0	0	0
November	40.24	2.00	42.24
December	0	0	0
January	0	0	0
February	0	0	0
March	38.49	0	38.49
April	86.22	70.00	156.22
May	65.96	20.00	85.96
June	84.67	0	84.67
<u>Total</u>	<u>\$330.67</u>	<u>\$92.00</u>	<u>\$422.67</u>
<u>Cost/Student (639)</u>	<u>\$0.51</u>	<u>\$0.14</u>	<u>\$0.65</u>

## FIELD

<u>Months</u>	<u>Vandalism</u>	<u>Theft</u>	<u>Total</u>
July/August	\$ 0	0	\$ 0
September	0	0	0
October	0	0	0
November	0	0	0
December	0	0	0
January	0	0	0
February	0	0	0
March	0	0	0
April	16.95	0	16.95
May	0	0	0
June	0	0	0
<u>Total</u>	<u>\$16.95</u>	<u>0</u>	<u>\$16.95</u>
<u>Cost/Student (286)</u>	<u>\$0.05</u>	<u>0</u>	<u>\$0.05</u>

FRANKLIN

<u>Months</u>	<u>Vandalism</u>	<u>Theft</u>	<u>Total</u>
July/August	\$ 32.76	\$ 0	\$ 32.76
September	0	0	0
October	0	0	0
November	18.52	0	18.52
December	0	0	0
January	0	0	0
February	132.09	0	132.09
March	127.94	270.00	397.94
April	84.58	0	84.58
May	0	0	0
June	186.48	0	186.48
<b>Total</b>	<b>\$582.37</b>	<b>\$270.00</b>	<b>\$852.37</b>
<b>Cost/Student (273)</b>	<b>\$2.13</b>	<b>\$0.98</b>	<b>\$3.11</b>

HALE

<u>Months</u>	<u>Vandalism</u>	<u>Theft</u>	<u>Total</u>
July/August	\$ 35.16	\$110.00	\$145.16
September	0	0	0
October	0	0	0
November	0	0	0
December	9.80	0	9.80
January	9.80	0	9.80
February	0	0	0
March	55.14	140.00	195.14
April	56.58	0	56.58
May	36.12	0	36.12
June	62.71	0	62.71
<b>Total</b>	<b>\$265.31</b>	<b>\$250.00</b>	<b>\$515.31</b>
<b>Cost/Student (615)</b>	<b>\$0.43</b>	<b>\$0.40</b>	<b>\$0.83</b>

HAWTHORNE

<u>Months</u>	<u>Vandalism</u>	<u>Theft</u>	<u>Total</u>
July/August	\$ 87.60	\$ 0	\$ 87.60
September	14.80	0	14.80
October	0	0	0
November	63.81	0	63.81
December	21.68	0	21.68
January	14.28	0	14.28
February	37.76	0	37.76
March	61.82	0	61.82
April	31.76	0	31.76
May	206.20	0	206.20
June	685.95	50.00	735.95
<b>Total</b>	<b>\$1,225.66</b>	<b>\$50.00</b>	<b>\$1,275.66</b>
<b>Cost/Student (811)</b>	<b>\$1.51</b>	<b>\$0.06</b>	<b>\$1.57</b>

HOLMES

<u>Months</u>	<u>Vandalism</u>	<u>Theft</u>	<u>Total</u>
July/August	\$ 0	\$ 0	\$ 0
September	100.38	0	100.38
October	0	0	0
November	48.80	0	48.80
December	0	0	0
January	117.48	22.00	139.48
February	45.87	290.00	335.87
March	70.79	0	70.79
April	65.50	0	65.50
May	45.54	0	45.54
June	115.59	0	115.59
<b>Total</b>	<b>\$609.95</b>	<b>\$312.00</b>	<b>\$921.95</b>
<b>Cost/Student (681)</b>	<b>\$0.89</b>	<b>\$0.45</b>	<b>\$1.34</b>

IRVING

<u>Months</u>	<u>Vandalism</u>	<u>Theft</u>	<u>Total</u>
July/August	\$ 28.48	0	\$ 28.48
September	3.54	0	3.54
October	16.99	0	16.99
November	0	0	0
December	9.52	0	9.52
January	0	0	0
February	18.88	0	18.88
March	8.90	0	8.90
April	0	0	0
May	41.83	0	41.83
June	36.25	0	36.25
Total	\$164.39	0	\$164.39
Cost/Student (339)	\$0.48	0	\$0.48

JEFFERSON

<u>Months</u>	<u>Vandalism</u>	<u>Theft</u>	<u>Total</u>
July/August	\$ 4.72	0	\$ 4.72
September	11.86	0	11.86
October	106.19	0	106.19
November	19.66	40.00	59.66
December	5.08	0	5.08
January	40.76	0	40.76
February	128.66	0	128.66
March	27.72	0	27.72
April	127.53	0	127.53
May	29.53	0	29.53
June	674.71	0	674.71
Total	\$1,176.42	\$40.00	\$1,216.42
Cost/Student (924)	\$1.27	\$0.04	\$1.31



LEHI

<u>Months</u>	<u>Vandalism</u>	<u>Theft</u>	<u>Total</u>
July/August	\$ 5.70	\$ 0	\$ 5.70
September	17.96	0	17.96
October	0	0	0
November	9.09	0	9.09
December	51.52	0	51.52
January	9.38	45.00	54.38
February	11.53	0	11.53
March	61.92	22.00	83.92
April	10.87	0	10.87
May	0	0	0
June	167.85	0	167.85
<b>Total</b>	<b>\$345.82</b>	<b>\$67.00</b>	<b>\$412.82</b>
<b>Cost/Student (356)</b>	<b>\$0.97</b>	<b>\$0.18</b>	<b>\$1.15</b>

LINCOLN

<u>Months</u>	<u>Vandalism</u>	<u>Theft</u>	<u>Total</u>
July/August	\$ 26.92	\$ 0	\$ 26.92
September	22.78	0	22.78
October	23.57	0	23.57
November	0	0	0
December	39.98	0	39.98
January	11.04	0	11.04
February	55.13	578.00	633.13
March	90.03	2.00	92.03
April	16.75	0	16.75
May	187.94	0	187.94
June	216.13	0	216.13
<b>Total</b>	<b>\$690.27</b>	<b>\$580.00</b>	<b>\$1,270.27</b>
<b>Cost/Student (682)</b>	<b>\$1.01</b>	<b>\$0.85</b>	<b>\$1.86</b>

LINDBERGH

<u>Months</u>	<u>Vandalism</u>	<u>Theft</u>	<u>Total</u>
July/August	\$ 2.36	0	\$ 2.36
September	0	0	0
October	0	0	0
November	0	0	0
December	0	0	0
January	12.96	0	12.96
February	31.84	0	31.84
March	4.72	0	4.72
April	0	0	0
May	0	0	0
June	107.93	0	107.93
<b>Total</b>	<b>\$159.81</b>	<b>0</b>	<b>\$159.81</b>
<b>Cost/Student (773)</b>	<b>\$0.20</b>	<b>0</b>	<b>\$0.20</b>

LONGFELLOW

<u>Months</u>	<u>Vandalism</u>	<u>Theft</u>	<u>Total</u>
July/August	\$ 10.68	0	\$ 10.68
September	10.70	0	10.70
October	0	0	0
November	14.80	0	14.80
December	16.17	0	16.17
January	24.26	0	24.26
February	15.76	0	15.76
March	27.46	0	27.46
April	88.55	0	88.55
May	0	0	0
June	113.78	0	113.78
<b>Total</b>	<b>\$322.16</b>	<b>0</b>	<b>\$322.16</b>
<b>Cost/Student (851)</b>	<b>\$0.37</b>	<b>0</b>	<b>\$0.37</b>

LOWELL

<u>Months</u>	<u>Vandalism</u>	<u>Theft</u>	<u>Total</u>
July/August	\$ 3.54	\$ 0	\$ 3.54
September	13.50	0	13.50
October	0	0	0
November	0	0	0
December	0	209.00	209.00
January	0	0	0
February	13.42	0	13.42
March	56.96	0	56.96
April	64.60	0	64.60
May	151.86	0	151.86
June	137.61	0	137.61
<b>Total</b>	<b>\$441.49</b>	<b>\$209.00</b>	<b>\$650.49</b>
<b>Cost/Student (584)</b>	<b>\$0.75</b>	<b>\$0.35</b>	<b>\$1.10</b>

REDBIRD

<u>Months</u>	<u>Vandalism</u>	<u>Theft</u>	<u>Total</u>
July/August	\$ 51.08	0	\$15.08
September	0	0	0
October	0	0	0
November	0	0	0
December	8.46	0	8.46
January	0	0	0
February	0	0	0
March	0	0	0
April	0	0	0
May	13.14	0	13.14
June	14.98	0	14.98
<b>Total</b>	<b>\$87.66</b>	<b>0</b>	<b>\$87.66</b>
<b>Cost/Student (537)</b>	<b>\$0.16</b>	<b>0</b>	<b>\$0.16</b>

ROOSEVELT

<u>Months</u>	<u>Vandalism</u>	<u>Theft</u>	<u>Total</u>
July/August	\$ 0	0	\$ 0
September	12.30	0	12.30
October	0	0	0
November	0	0	0
December	6.47	0	6.47
January	14.96	0	14.96
February	27.60	0	27.60
March	149.53	0	149.53
April	0	0	0
May	0	0	0
June	112.04	0	112.04
Total	\$322.94	0	\$322.94
Cost/Student (708)	\$0.45	0	\$0.45

SALK

<u>Months</u>	<u>Vandalism</u>	<u>Theft</u>	<u>Total</u>
July/August	\$ 0	0	\$ 0
September	0	0	0
October	0	0	0
November	0	0	0
December	0	0	0
January	0	0	0
February	0	0	0
March	71.00	0	71.00
April	38.86	0	38.86
May	0	0	0
June	6.43	0	6.43
Total	\$116.29	0	\$116.29
Cost/Student (647)	\$0.17	0	\$0.17

TAPT

<u>Months</u>	<u>Vandalism</u>	<u>Theft</u>	<u>Total</u>
July/August	\$ 9.80	0	\$ 9.80
September	53.04	0	53.04
October	58.04	0	53.04
November	111.95	0	111.95
December	66.38	0	66.38
January	90.78	0	90.78
February	113.92	0	113.92
March	85.75	0	85.75
April	0	0	0
May	166.70	0	166.70
June	346.87	0	346.87
<b>Total</b>	<b>\$1,103.23</b>	<b>0</b>	<b>\$1,103.23</b>
<b>Cost/Student (846)</b>	<b>\$1.30</b>	<b>0</b>	<b>\$1.30</b>

WEBSTER

<u>Months</u>	<u>Vandalism</u>	<u>Theft</u>	<u>Total</u>
July/August	\$ 167.57	\$ 0	\$ 167.57
September	30.11	0	30.11
October	86.58	0	86.58
November	92.59	112.00	204.59
December	190.98	50.00	240.98
January	130.90	65.00	195.90
February	49.29	0	49.29
March	115.39	155.00	270.39
April	95.92	0	95.92
May	204.22	4.00	208.22
June	845.05	400.00	1,245.05
<b>Total</b>	<b>\$2,008.60</b>	<b>\$790.00</b>	<b>\$2,798.60</b>
<b>Cost/Student (530)</b>	<b>\$3.78</b>	<b>\$1.49</b>	<b>\$5.27</b>



WHITMAN

<u>Months</u>	<u>Vandalism</u>	<u>Theft</u>	<u>Total</u>
July/August	\$ 44.14	\$ 0	\$ 44.14
September	7.62	0	7.62
October	0.88	0	0.88
November	76.22	280.00	356.22
December	21.24	300.00	321.24
January	11.80	0	11.80
February	0	0	0
March	87.21	0	87.21
April	9.32	0	9.32
May	20.90	0	20.90
June	286.83	0	286.83
<b>Total</b>	<b>\$566.16</b>	<b>\$580.00</b>	<b>\$1,146.16</b>
<b>Cost/Student (710)</b>	<b>\$0.79</b>	<b>\$0.81</b>	<b>\$1.60</b>

WHITTIER

<u>Months</u>	<u>Vandalism</u>	<u>Theft</u>	<u>Total</u>
July/August	\$ 7.54	\$ 0	\$ 7.54
September	33.98	0	33.98
October	4.72	0	4.72
November	6.72	0	6.72
December	23.00	307.00	330.00
January	23.00	0	23.00
February	73.31	0	73.31
March	82.98	0	82.98
April	193.89	150.00	343.89
May	235.06	0	253.06
June	510.87	0	510.87
<b>Total</b>	<b>\$1,195.07</b>	<b>\$457.00</b>	<b>\$1,652.07</b>
<b>Cost/Student (478)</b>	<b>\$2.50</b>	<b>\$0.95</b>	<b>\$3.45</b>

TOTAL ELEMENTARY

<u>Months</u>	<u>Vandalism</u>	<u>Theft</u>	<u>Total</u>
July/August	\$ 558.00	\$ 110.00	\$ 668.00
September	393.58	0	393.58
October	296.97	0	296.97
November	919.36	487.00	1,406.36
December	3,353.42	1,316.50	4,669.92
January	3,149.58	1,071.50	4,221.08
February	977.59	1,163.00	2,140.59
March	1,429.15	1,589.00	3,018.15
April	1,056.62	220.00	1,276.62
May	1,594.87	24.00	1,618.87
June	5,109.65	450.00	5,559.65
<b>Total</b>	<b>\$18,838.79</b>	<b>\$6,431.00</b>	<b>\$25,269.79</b>
Cost/Student (14,782)	\$1.27	\$0.43	\$1.70

CARSON

<u>Months</u>	<u>Vandalism</u>	<u>Theft</u>	<u>Total</u>
July/August	\$ 66.58	\$ 0	\$ 66.58
September	160.63	0	160.63
October	25.73	0	25.73
November	78.40	0	78.40
December	77.38	0	77.38
January	77.39	0	77.39
February	116.43	0	116.43
March	171.59	0	171.59
April	105.55	45.00	150.55
May	27.59	0	27.59
June	467.51	0	467.51
<b>Total</b>	<b>\$1,374.78</b>	<b>\$45.00</b>	<b>\$1,419.78</b>
Cost/Student (1325)	\$1.03	\$0.03	\$1.06



FREMONT

<u>Months</u>	<u>Vandalism</u>	<u>Theft</u>	<u>Total</u>
July/August	\$ 0	\$ 0	\$ 0
September	0	0	0
October	58.59	0	58.59
November	126.22	80.00	206.22
December	119.42	0	119.42
January	119.43	0	119.43
February	36.86	0	36.86
March	45.56	0	45.56
April	640.51	0	640.51
May	68.89	0	68.89
June	272.97	0	272.97
Total	\$1,488.45	\$80.00	\$1,568.45
Cost/Student (1,043)	\$1.42	\$0.07	\$1.49

## KINO

<u>Months</u>	<u>Vandalism</u>	<u>Theft</u>	<u>Total</u>
July/August	\$ 26.82	\$ 0	\$ 26.82
September	5.47	0	5.47
October	14.15	0	14.15
November	85.06	0	85.06
December	27.75	0	27.75
January	13.58	0	13.58
February	58.13	150.00	208.13
March	154.94	0	154.94
April	19.02	0	19.02
May	61.28	0	61.28
June	264.36	0	264.36
Total	\$730.56	\$150.00	\$880.56
Cost/Student (1323)	\$0.55	\$0.11	\$0.66

MESA JR. AND POSTON

<u>Months</u>	<u>Vandalism</u>	<u>Theft</u>	<u>Total</u>
July/August	\$ 4.72	\$ 0	\$ .0
September	23.61	0	23.61
October	127.04	0	127.04
November	26.30	0	26.30
December	73.35	8.00	81.35
January	73.53	0	73.53
February	212.86	5.00	217.86
March	73.66	0	73.66
April	66.62	0	66.62
May	31.68	0	31.68
June	461.34	155.00	616.34
<b>Total</b>	<b>\$1,174.71</b>	<b>\$168.00</b>	<b>\$1,342.71</b>
<b>Cost/Student (1630)</b>	<b>\$0.72</b>	<b>\$0.10</b>	<b>\$0.82</b>

POWELL

<u>Months</u>	<u>Vandalism</u>	<u>Theft</u>	<u>Total</u>
July/August	\$ 10.81	0	\$ 10.81
September	59.02	0	59.02
October	19.94	0	19.94
November	25.95	0	25.95
December	110.38	0	110.38
January	130.47	21.00	151.47
February	119.64	0	119.64
March	114.22	0	114.22
April	15.63	0	15.63
May	241.90	0	241.90
June	102.05	0	102.05
<b>Total</b>	<b>\$950.01</b>	<b>\$21.00</b>	<b>\$971.01</b>
<b>Cost/Student (1180)</b>	<b>\$0.80</b>	<b>\$0.01</b>	<b>\$0.81</b>

JUNIOR HIGH

<u>Months</u>	<u>Vandalism</u>	<u>Theft</u>	<u>Total</u>
July/August	\$ 108.93	\$ 0	\$ 108.93
September	248.73	0	248.73
October	245.45	0	245.45
November	341.93	80.00	421.93
December	408.28	8.00	416.28
January	414.40	21.00	435.40
February	543.97	155.00	698.97
March	559.97	0	559.97
April	847.33	45.00	892.33
May	431.34	0	431.34
June	1,568.18	155.00	1,723.18
<b>Total</b>	<b>\$5,718.51</b>	<b>\$464.00</b>	<b>\$6,182.51</b>
<b>Cost/Student (6501)</b>	<b>\$0.87</b>	<b>\$0.07</b>	<b>\$0.94</b>

MESA HIGH

<u>Months</u>	<u>Vandalism</u>	<u>Theft</u>	<u>Total</u>
July/August	\$ 11.81	\$ 0	\$ 11.81
September	199.28	0	199.28
October	107.08	0	107.08
November	101.70	0	101.70
December	39.84	0	39.84
January	46.92	0	46.92
February	103.01	0	103.01
March	74.10	0	74.10
April	186.53	250.00	436.53
May	234.68	0	234.68
June	77.86	0	77.86
<b>Total</b>	<b>\$1,182.81</b>	<b>\$250.00</b>	<b>\$1,432.81</b>
<b>Cost/Student (2623)</b>	<b>\$0.45</b>	<b>\$0.09</b>	<b>\$0.54</b>

WESTWOOD HIGH

<u>Months</u>	<u>Vandalism</u>	<u>Theft</u>	<u>Total</u>
July/August	\$ 0	0	\$ 0
September	84.69	0	84.69
October	16.04	0	16.04
November	0	0	0
December	44.93	0	44.93
January	25.52	0	25.52
February	68.70	0	68.70
March	209.83	0	209.83
April	0	0	0
May	63.01	0	63.01
June	833.12	0	833.12
<b>Total</b>	<b>\$1,345.84</b>	<b>0</b>	<b>\$1,345.84</b>
<b>Cost/Student (2540)</b>	<b>\$0.52</b>	<b>0</b>	<b>\$0.52</b>

HIGH SCHOOL

<u>Months</u>	<u>Vandalism</u>	<u>Theft</u>	<u>Total</u>
July/August	\$ 11.81	\$ 0	\$ 11.81
September	283.97	0	283.97
October	123.12	0	123.12
November	101.70	0	101.70
December	84.77	0	84.77
January	72.44	0	72.44
February	171.71	0	171.71
March	283.93	0	283.93
April	186.53	250.00	436.53
May	297.69	0	297.69
June	910.98	0	910.98
<b>Total</b>	<b>\$2,528.65</b>	<b>\$250.00</b>	<b>\$2,778.65</b>
<b>Cost/Student (5163)</b>	<b>\$0.48</b>	<b>\$0.04</b>	<b>\$0.52</b>

ALL SCHOOLS COMBINED 1973-74

<u>Months</u>	<u>Vandalism</u>	<u># of Schools/ Incidents</u>	<u>Theft</u>	<u>Total</u>
July/August	\$ 442.74	22	\$ 110.00	552.74
September	926.28	21	0	926.28
October	665.54	14	0	665.54
November	1,362.16	19	567.00	1,929.16
December	3,846.47	24	1,324.50	5,170.97
January	3,636.42	24	1,092.50	4,728.92
February	1,693.22	24	1,318.00	3,011.22
March	2,273.05	28	1,589.00	3,862.05
April	2,090.48	24	515.00	2,605.48
May	2,323.90	23	24.00	2,347.90
June	7,788.97	29	605.00	8,393.97
<b>Total</b>	<b>\$27,085.95</b>		<b>\$7,145.00</b>	<b>\$34,230.95</b>
<b>Cost/Student (26446)</b>	<b>\$1.02</b>		<b>\$0.27</b>	<b>\$1.29</b>

**END**