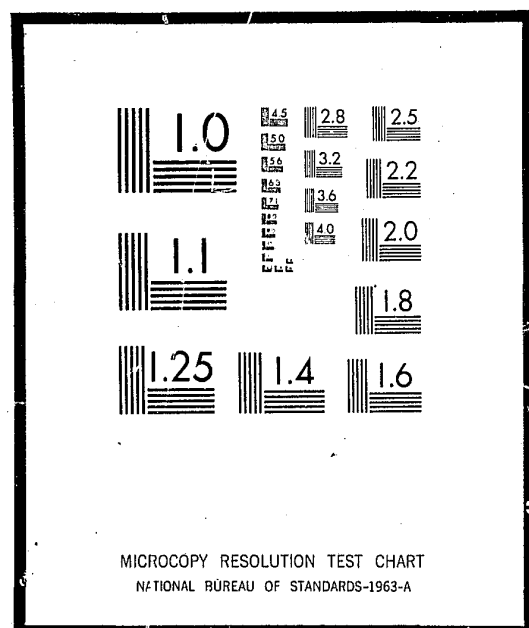


NCJRS

This microfiche was produced from documents received for inclusion in the NCJRS data base. Since NCJRS cannot exercise control over the physical condition of the documents submitted, the individual frame quality will vary. The resolution chart on this frame may be used to evaluate the document quality.



Microfilming procedures used to create this fiche comply with the standards set forth in 41CFR 101-11.504

Points of view or opinions stated in this document are those of the author(s) and do not represent the official position or policies of the U.S. Department of Justice.

U.S. DEPARTMENT OF JUSTICE
LAW ENFORCEMENT ASSISTANCE ADMINISTRATION
NATIONAL CRIMINAL JUSTICE REFERENCE SERVICE
WASHINGTON, D.C. 20531

Date filmed

11/7/75

REFERENCE
TABLES

State of California Department of Justice
Division of Law Enforcement Bureau of Criminal Statistics
CRIME AND DELINQUENCY IN CALIFORNIA, 1971



FELONY DEFENDANTS DISPOSED OF IN CALIFORNIA COURTS

16802

STATE OF CALIFORNIA
DEPARTMENT OF JUSTICE

EVELLE J. YOUNGER, Attorney General
CHARLES A. BARRETT, Chief Deputy Attorney General

DIVISION OF LAW ENFORCEMENT

ROBERT A. HOUGHTON, Director
ORVILLE J. HAWKINS, Assistant Director

BUREAU OF CRIMINAL STATISTICS

RONALD H. BEATTIE, Chief

FELONY DEFENDANTS DISPOSED OF IN CALIFORNIA COURTS - 1971
WALTER K. GIESECKE
DAVID G. MILLER

BCS

7/72 1.5M

3301 C STREET P.O. BOX 13427
SACRAMENTO, CA. 95813

FOREWORD

To insure the earliest possible release of annual data to criminal justice agency administrators, the Bureau of Criminal Statistics presents its annual statistical information in two separate reports.

The first report is made up of standardized reference material. Jurisdictional detail is shown to provide information needed by local contributors. Reference reports are published on crimes and arrests, felony defendants disposed of in California courts, adult and juvenile probation, adult criminal detention and other major criminal justice subject matter.

The second report is more analytical and is the annual presentation of crime and delinquency in the state. The data in this publication provide less jurisdictional detail but emphasize trends in offenses and how offenders are handled in various types of agencies administering criminal justice. This annual presentation is entitled "Crime and Delinquency in California."

The annual report may be purchased from the Department of Justice Fiscal Office, 1530 Capitol Avenue, Sacramento, California 95814. The reference tables may be requested directly from the Bureau of Criminal Statistics, P. O. Box 13427, Sacramento, California 95813.

TABLE OF CONTENTS

	Page
Foreword	i
Chart A - Felony Defendants Disposed of in California by Proceedings in Superior Court and Lower Court, 1966-1971	vi
Chart B - Commitments of Felony Defendants Convicted in California Superior Courts, 1966-1971	vii
Introduction	1

TABLES

Table

1	Felony Filings on Defendants in California Superior Courts, 1970-1971, by Offense and Type of Proceeding	5
2	Dispositions of Felony Defendants in California Superior Courts, 1970-1971, by Offense Charged and Type of Disposition	6
3	Commitments of Felony Defendants Convicted and Sentenced, 1970-1971, by Charged Offense and Type of Sentence	7
4	Felony Defendants Convicted and Sentenced, 1970-1971, by Charged Offense and Level of Conviction	8
Felony Complaints Terminated in Lower Courts		
5	Offense and Reason for Termination	9
6	County and Reason for Termination	10
Felony Filings on Defendants in California Superior Courts		
7	Charged Offense and Type of Proceeding	13
8	County and Type of Proceeding	14

TABLES - Continued

Table	Page
Felony Defendants Disposed of in California Superior Courts	
9 Charged Offense and Disposition	16
10 County and Disposition	17
Commitments of Felony Defendants Convicted and Sentenced	
11 Charged Offense and Type of Sentence	20
12 County and Type of Sentence	21
Level of Conviction of Felony Defendants Convicted and Sentenced	
13 Charged Offense	24
14 County	25
Felony Defendants Convicted in California Superior Courts, Time in Months from Filing Date to Sentencing Date	
15 Charged Offense	27
16 County	28
Felony Defendants Disposed of in California Superior Courts	
17 Charged Offense and Prior Record	30
18 County and Prior Record	31
19 Charged Offense and Existing Criminal Status	33
20 County and Existing Criminal Status	34
21 Charged Offense and Race	36
22 County and Race	37
23 Charged Offense and Age	39
24 County and Age	40

TABLES - Continued

Table	Page
Commitments of Felony Defendants Convicted and Sentenced in California Superior Courts	
25 Convicted Offense and Type of Sentence	42
26 Charged Offense, Convicted Offense and Sentence	46
Commitments of Felony Defendants Convicted and Sentenced in California Superior Courts after Return to Calendar or Following Revocation of Probation	
27 Convicted Offense	54
28 County	55

Chart A

FELONY DEFENDANTS DISPOSED OF IN CALIFORNIA SUPERIOR COURT AND LOWER COURT 1966 - 1971

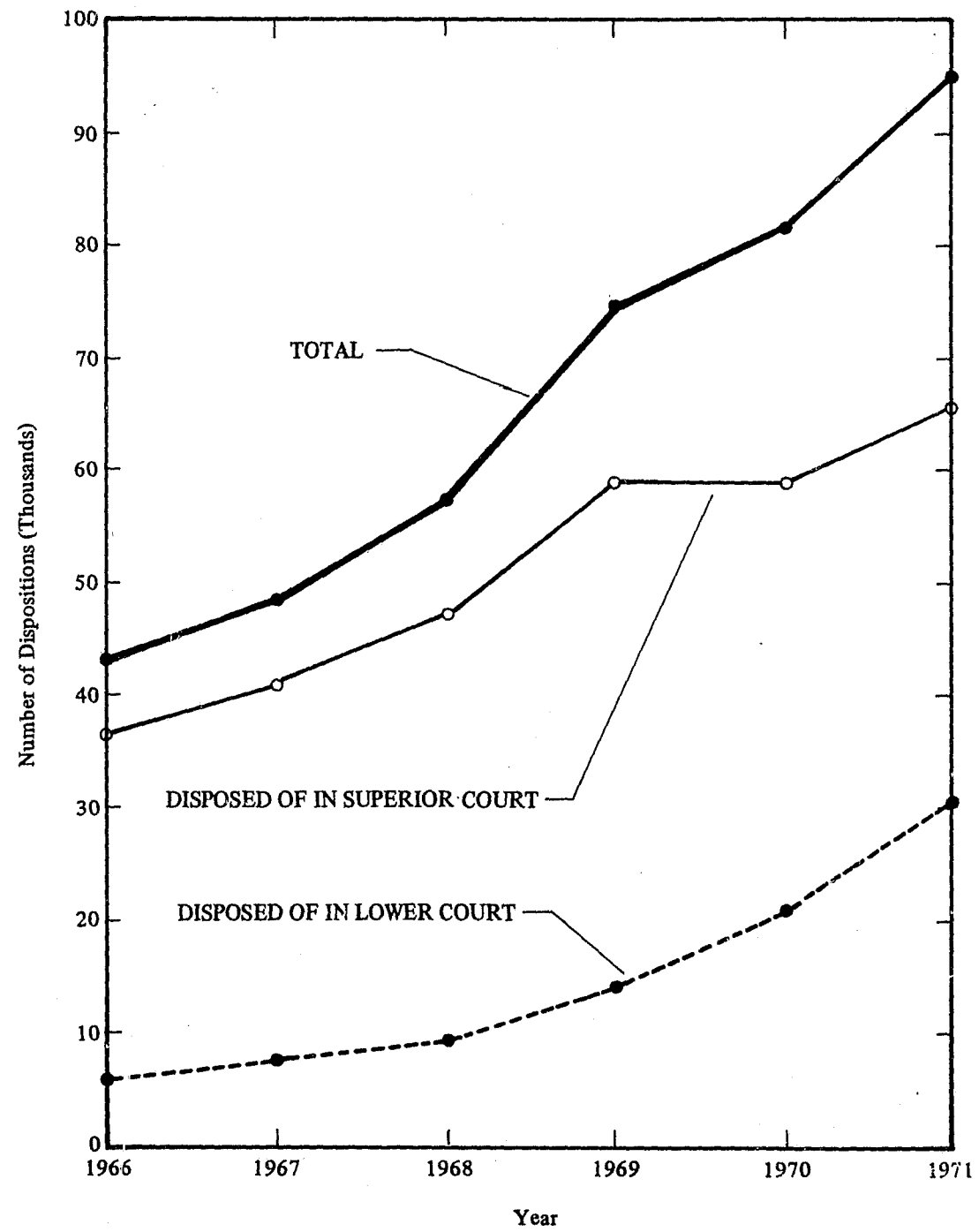
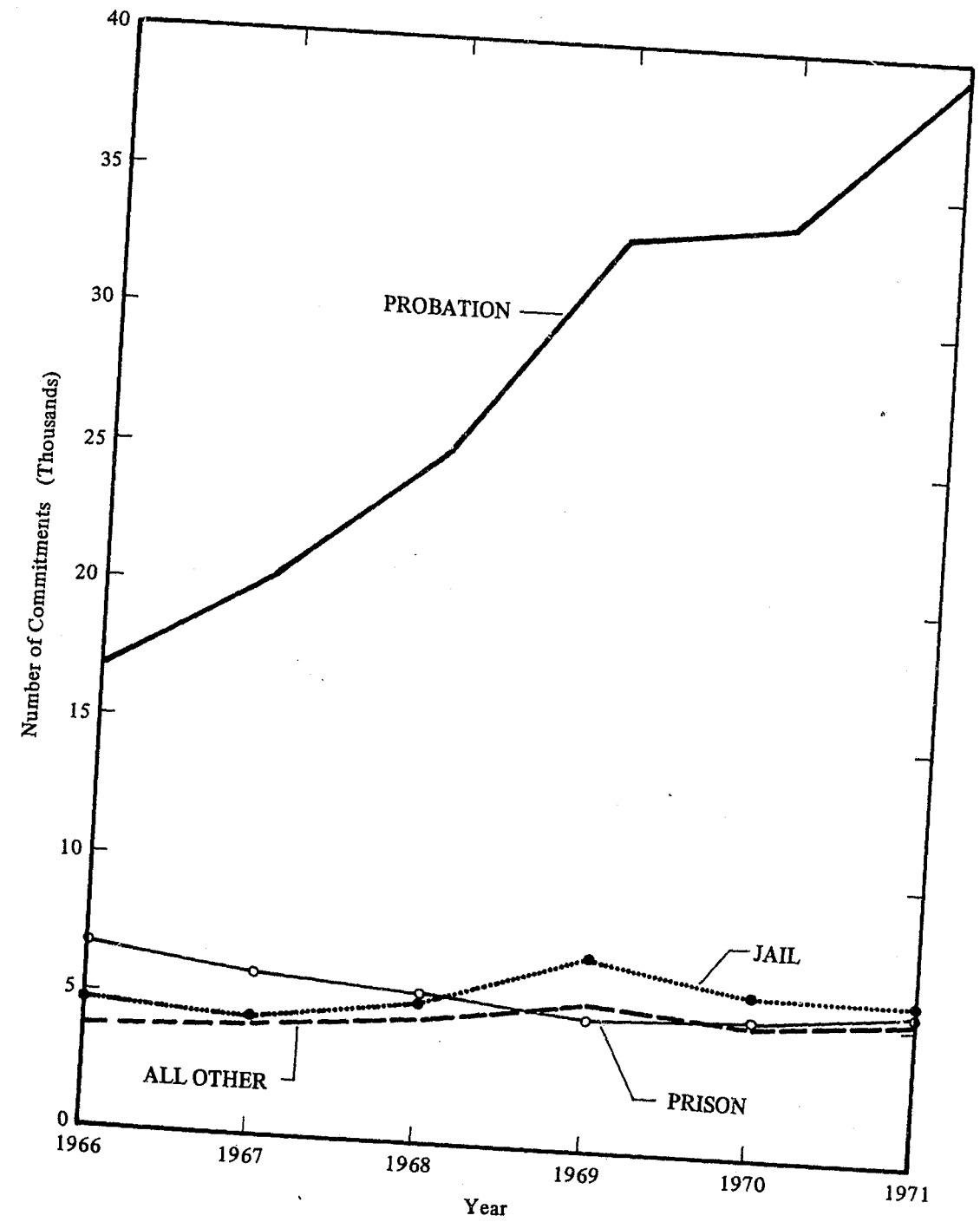


Chart B

COMMITMENTS OF FELONY DEFENDANTS CONVICTED IN CALIFORNIA SUPERIOR COURTS 1966-1971



1971 CRIME AND DELINQUENCY IN CALIFORNIA – REFERENCE TABLES

FELONY DEFENDANTS DISPOSED OF IN CALIFORNIA COURTS

Introduction

Tables 1 through 4 show comparative information relating to superior court prosecutions for 1970 and 1971. Tables 5 through 28 show the detailed data for 1971 only. Statewide totals for the years 1966 through 1970 are shown on all offense tables for which historical data are available.

The unit of count in all of the following tables is the individual defendant. Multiple charges against one defendant have been limited to the offense carrying the most severe penalty. Defendants turned over to other courts, agencies or counties for further prosecution prior to superior court disposition have been eliminated from the defendant count.

Defendants disposed of in superior court after having been taken from the trial calendar or whose probation was revoked are shown in detail in Tables 27 and 28. These defendants are not included in the other tables since each was already counted as an initial disposition in prior years' statistics published by the Bureau.

Court Activity

The number of felony defendants prosecuted in California courts during 1971 totaled more than 95,000, around 14,000 or 17 percent over the 1970 total. Superior court dispositions totaled 65,236, for a 10 percent increase over 1970, while lower court felony prosecutions reached 30,052 for an increase of 8,200 or nearly 38 percent. Trends in superior and lower court prosecutions from 1966 through 1971 are shown in Chart A.

The relatively large increase in lower court prosecutions was due primarily to the greater use of Penal Code Section 17(b)(5) which allows the conviction and sentencing of felony defendants at the preliminary hearing in lower court. In 1971, there were 22,234 such dispositions in the lower courts, for an increase of 7,500 or 50 percent over 1970. It is estimated that in 1971 around 10,000 felony dispositions were shifted from superior court to lower court as a result of the 1969 amendment to Section 17 of the Penal Code. In 1970, the shift from superior court to lower court dispositions amounted to nearly 6,000.

Summary of Superior Court Prosecutions

In 1971, the proportion of defendants disposed of in California superior courts who were convicted reached the highest level since 1964, nearly 86 percent. In Los Angeles County, the proportion of defendants convicted jumped more than two percentage points in 1971 from the prior year level while all other counties as a group showed an increase of around one-half of a percentage point for the same period. Because of a relatively large shift from transcript trials to pleas of guilty in Los Angeles County, where over one-half of superior court defendants in the state were disposed of, the statewide proportion of superior court defendants convicted by guilty plea reached over 68 percent, the highest level in nearly 20 years.

The trend toward probation sentences, which has been established for over a decade, continued in 1971. Over 70 percent of the defendants convicted were placed on probation in 1971. This compares with 68 percent in 1970. Around 400 more convicted defendants were sentenced to prison in 1971 than in 1970, but the proportion of convicted defendants who were sentenced to prison fell slightly. Chart B shows the trend during the latest six-year period of the types of commitments received by convicted superior court defendants.

A greater proportion of convicted superior court defendants received felony level sentences in 1971, 58.6 percent, than during the prior year, 56.4 percent. In Los Angeles County, the proportion of defendants receiving felony sentences increased by nearly two percentage points to 42.5 percent in 1971 over the 1970 level, but still trailed the nearly 75 percent figure in all other counties as a group.

TABLE 1

FELONY FILINGS ON DEFENDANTS IN CALIFORNIA SUPERIOR COURTS, 1970-1971

By Offense and Type of Proceeding

Offense	1970				1971			
	Total	Percent distribution			Total	Percent distribution		
		Information	Indictment	Certification		Information	Indictment	Certification
Total	71,850	88.6	3.6	7.8	70,663	87.8	4.1	8.1
Homicide	1,201	78.3	17.5	4.2	1,377	81.3	15.5	3.2
Robbery	4,375	92.7	2.2	5.1	5,123	93.9	1.6	4.5
Assault	4,083	92.9	3.1	4.0	4,016	95.2	1.6	3.2
Burglary	11,336	90.0	1.3	8.7	12,460	91.5	0.5	8.0
Theft, except auto	5,574	85.7	2.7	11.6	5,452	83.3	3.3	13.4
Auto theft	3,023	90.2	0.1	9.7	2,897	89.6	0.1	10.3
Forgery and checks	5,465	81.0	1.1	17.9	5,097	81.8	1.5	16.7
Rape	871	94.1	2.5	3.4	931	94.1	3.0	2.9
Other sex offenses	1,751	87.4	4.4	8.2	1,784	88.3	4.5	7.2
Drug law violations	29,030	89.7	4.9	5.4	26,461	86.6	7.0	6.4
All other	5,141	83.8	5.8	10.4	5,065	83.7	4.9	11.4
Los Angeles County	38,526	98.9	0.5	0.6	34,979	98.6	0.6	0.8
State less Los Angeles County	33,324	76.5	7.3	16.2	35,684	77.3	7.5	15.2

TABLE 2

DISPOSITIONS OF FELONY DEFENDANTS IN CALIFORNIA SUPERIOR COURTS, 1970-1971

By Charged Offense and Type of Disposition

Charged offense	1970					1971				
	Total defendants	Percent distribution				Total defendants	Percent distribution			
		Dismissed	Acquitted	Convicted on guilty plea	Convicted by trial		Dismissed	Acquitted	Convicted on guilty plea	Convicted by trial
Total	59,257	8.9	6.8	60.9	23.4	65,236	8.2	6.0	68.1	17.7
Homicide	1,110	5.8	9.1	52.8	32.3	1,237	5.4	9.5	52.5	32.6
Robbery	3,707	6.7	6.8	57.7	28.8	4,566	6.2	6.9	64.1	22.8
Assault	3,442	7.9	9.7	55.6	26.8	3,710	7.3	9.4	58.0	25.3
Burglary	9,477	5.5	4.6	66.4	23.5	11,112	4.8	4.0	75.0	16.2
Theft, except auto	4,397	11.6	8.4	60.3	19.7	4,694	9.0	7.7	69.9	13.4
Auto theft	2,611	6.9	8.3	61.5	23.3	2,613	5.0	7.4	71.6	16.0
Forgery and checks	4,574	3.7	3.8	77.5	15.0	4,538	3.6	3.4	83.7	9.3
Rape	780	11.0	12.1	51.8	25.1	888	8.6	12.1	58.1	21.2
Other sex offenses	1,539	8.0	10.4	55.5	26.1	1,707	5.5	8.4	64.0	22.1
Drug law violations	23,411	12.0	6.9	57.1	24.0	25,518	11.6	5.5	65.0	17.9
All other	4,209	7.6	6.2	65.3	20.9	4,653	7.0	6.7	69.8	16.5
Los Angeles County	31,571	8.5	10.2	47.6	33.7	33,509	7.5	9.1	57.7	25.7
State less Los Angeles County	27,686	9.4	2.8	76.2	11.6	31,727	8.9	2.7	79.1	9.3

TABLE 3

COMMITMENTS OF FELONY DEFENDANTS CONVICTED AND SENTENCED IN CALIFORNIA SUPERIOR COURTS, 1970-1971

By Charged Offense and Type of Sentence

Charged offense	1970					1971				
	Total defendants sentenced	Percent distribution				Total defendants sentenced	Percent distribution			
		Prison	Probation	Jail only	Other		Prison	Probation	Jail only	Other
Total	49,950	10.1	67.7	12.2	10.0	56,018	9.7	70.4	10.3	9.6
Homicide	945	51.4	41.9	2.0	4.7	1,053	48.7	44.2	1.6	5.5
Robbery	3,206	31.4	42.6	8.5	17.5	3,967	30.6	47.0	6.6	15.8
Assault	2,837	10.3	71.1	13.3	5.3	3,089	9.4	75.8	10.1	4.7
Burglary	8,516	9.8	62.2	16.6	11.4	10,130	8.3	65.3	14.7	11.7
Theft, except auto	3,516	6.4	70.6	17.5	5.5	3,909	5.7	73.3	14.7	6.3
Auto theft	2,216	5.3	64.4	22.9	7.4	2,290	4.8	67.3	20.4	7.5
Forgery and checks	4,230	10.1	70.1	12.2	7.6	4,220	8.5	73.1	11.3	7.1
Rape	600	21.8	54.9	10.8	12.5	704	20.7	54.1	8.7	16.5
Other sex offenses	1,256	8.8	64.4	8.6	18.2	1,469	5.4	66.0	6.7	21.9
Drug law violations	19,000	4.0	77.0	9.0	10.0	21,173	4.1	80.0	7.0	8.9
All other	3,628	17.6	57.2	14.5	10.7	4,014	19.1	58.9	13.3	8.7
Los Angeles County	25,642	6.0	70.0	14.8	9.2	27,959	5.4	73.4	13.1	8.1
State less Los Angeles County	24,308	14.4	65.2	9.6	10.8	28,059	13.9	67.4	7.5	11.2

TABLE 4

FELONY DEFENDANTS CONVICTED AND SENTENCED IN CALIFORNIA SUPERIOR COURTS, 1970-1971
By Charged Offense and Level of Conviction

Charged offense	1970				1971					
	Total defendants sentenced	Felony sentence	Percent		Total defendants sentenced	Felony sentence	Percent			
			Felony	Misdemeanor			Misdemeanor sentence	Misdemeanor		
Total	49,950	28,181	21,769	56.4	43.6	56,018	32,819	23,199	58.6	41.4
Homicide	945	838	107	88.7	11.3	1,053	944	109	89.6	10.4
Robbery	3,206	2,627	579	81.9	18.1	3,967	3,304	663	83.3	16.7
Assault	2,837	1,283	1,554	45.2	54.8	3,089	1,500	1,589	48.6	51.4
Burglary	8,516	4,977	3,539	58.4	41.6	10,130	6,089	4,041	60.1	39.9
Theft, except auto	3,516	1,929	1,587	54.9	45.1	3,909	2,111	1,798	54.0	46.0
Auto theft	2,216	1,019	1,197	46.0	54.0	2,290	1,007	1,283	44.0	56.0
Forgery and checks	4,230	2,701	1,529	63.9	36.1	4,220	2,668	1,552	63.2	36.8
Rape	600	393	207	65.5	34.5	704	481	223	68.3	31.7
Other sex offenses	1,256	683	573	54.4	45.6	1,469	760	709	51.7	48.3
Drug law violations	19,000	9,926	9,074	52.2	47.8	21,173	11,782	9,391	55.6	44.4
All other	3,628	1,805	1,823	49.8	50.2	4,014	2,173	1,841	54.1	45.9
Los Angeles County	25,642	10,449	15,193	40.7	59.3	27,959	11,891	16,068	42.5	57.5
State less Los Angeles County	24,308	17,732	6,576	72.9	27.1	28,059	20,928	7,131	74.6	25.4

TABLE 5
FELONY COMPLAINTS TERMINATED IN CALIFORNIA LOWER COURTS, 1971
By Offense and Reason for Termination

Offense	Total	Prosecuted in lower court			Dismissed			
		Total	Refiled or plea to misdemeanor	Felony prosecuted as misdemeanor (Sec. 17 PC)	No subsequent prosecution	Subsequent prosecution		
						Total	Juvenile court	Other jurisdiction
Total	50,657	30,052	7,818	22,234	18,272	2,333	1,686	647
Willful homicide	99	7	2	5	84	8	4	4
Manslaughter, vehicle	92	71	43	28	17	4	-	2
Robbery	1,625	419	175	244	1,110	96	51	45
Assault	3,791	2,257	1,163	1,094	1,449	85	48	37
Burglary	6,944	4,126	1,274	2,852	2,314	504	408	96
Theft, except auto	5,022	2,948	949	1,999	1,869	205	114	91
Auto theft	2,194	1,257	322	935	803	134	87	47
Forgery and checks	4,240	2,943	273	2,670	1,144	153	46	107
Rape, forcible	397	131	69	62	254	12	11	1
Other sex offenses	931	568	349	219	344	19	14	5
Total drug law violations	21,028	12,446	2,312	10,134	7,570	1,012	869	143
Opiates	1,602	460	205	255	1,088	54	27	27
Marijuana	11,809	7,247	1,457	5,790	3,896	666	617	49
Dangerous drugs	7,340	4,552	615	3,937	2,508	280	218	62
Other drug law violations	277	187	35	152	78	12	7	5
Deadly weapons	819	520	126	394	282	17	7	7
Drunk driving	975	817	480	337	145	13	6	10
Hit and run	154	126	47	79	25	3	2	7
Escape	426	242	16	226	143	41	3	1
Kidnapping	157	59	40	19	92	6	-	41
Bookmaking	1,053	770	8	762	283	-	-	3
All other	710	345	170	175	344	21	14	7
Annual total 1966-1971								
1966	15,389	6,430	6,430	-	7,616	1,343	791	552
1967	17,812	7,199	7,195	-	8,653	1,964	1,331	633
1968	21,740	9,955	9,955	-	9,663	2,122	1,737	385
1969	32,219	14,696	13,751	945	14,586	2,937	2,341	596
1970	40,393	21,853	7,095	14,758	16,101	2,439	1,923	516
1971	50,657	30,052	7,818	22,234	18,272	2,333	1,686	647

TABLE 6
 FELONY COMPLAINTS TERMINATED IN CALIFORNIA LOWER COURTS, 1971
 By County and Reason for Termination

Area and county	Total	Prosecuted in lower court			Dismissed			
		Total	Refiled or plea to misdemeanor	Felony prosecuted as misdemeanor (Sec. 17 PC)	No subsequent prosecution	Subsequent prosecution		
						Total	Juvenile court	Other jurisdiction
Total	50,657	30,052	7,818	22,234	18,272	2,333	1,686	647
Southern California								
Los Angeles	12,974	5,533	506	5,027	6,983	458	357	101
State less Los Angeles	37,683	24,519	7,312	17,207	11,289	1,875	1,329	546
Imperial	194	128	30	98	60	6	4	2
Orange	6,345	4,509	1,559	2,950	1,721	115	18	7
Riverside	1,053	710	144	566	312	31	24	18
San Bernardino	1,083	611	172	439	333	139	121	20
San Diego	1,083	611	172	439	333	272	252	8
San Bernardino	4,139	2,805	716	2,089	1,062	19	11	15
San Diego	396	277	102	175	100	49	34	
Santa Barbara	701	394	61	333	258			
Ventura								
San Francisco Bay Area								
Alameda	4,155	2,980	1,058	1,922	955	220	147	73
San Francisco	3,351	2,390	341	2,049	916	45	28	17
Contra Costa	954	581	191	390	219	154	120	34
Marin	337	140	59	81	145	52	46	6
Napa	165	117	32	85	30	18	17	1
San Mateo	1,542	799	363	436	616	127	107	20
Santa Clara	1,658	1,294	285	1,009	305	59	54	5
Solano	639	427	157	270	188	24	14	10
Sonoma	476	318	99	219	112	46	22	24
San Joaquin Valley								
Fresno	1,389	858	238	620	486	45	17	28
Kern	653	456	119	337	161	36	8	28
Kings	135	93	37	56	36	6	1	5
Madera	63	49	33	16	11	3	-	3
Merced	210	126	50	76	70	14	11	8
San Joaquin	1,069	669	165	504	369	31	23	4
Stanislaus	747	399	135	264	337	11	7	3
Tulare	559	340	97	243	193	26	23	3

10

TABLE 6 - Continued
 FELONY COMPLAINTS TERMINATED IN CALIFORNIA LOWER COURTS, 1971
 By County and Reason for Termination

Area and county	Total	Prosecuted in lower court			Dismissed			
		Total	Refiled or plea to misdemeanor	Felony prosecuted as misdemeanor (Sec. 17 PC)	No subsequent prosecution	Subsequent prosecution		
						Total	Juvenile court	Other jurisdiction
Sacramento Valley								
Butte	129	76	44	32	48	5	4	1
Colusa	18	10	6	4	5	3	2	1
Glenn	7	3	1	2	3	1	1	-
Placer	9	4	1	3	5	-	-	-
Sacramento	2,772	1,476	428	1,048	1,211	85	82	3
Shasta	97	31	22	9	37	29	20	9
Sutter	116	80	26	54	26	10	9	1
Tehama	36	15	12	3	20	1	-	1
Yolo	472	337	123	214	112	23	12	11
Yuba	142	114	55	59	24	4	3	1
Central Coast								
Monterey	521	230	59	171	247	44	19	25
San Benito	19	9	4	5	8	2	1	1
San Luis Obispo	214	147	52	95	52	15	10	5
Santa Cruz	327	153	70	83	164	10	2	8
North Coast and Mountain								
Alpine	2	2	2	-	-	-	-	-
Amador	38	23	8	15	13	2	1	1
Calaveras ^a	-	-	-	-	-	-	-	-
Del Norte	16	5	3	2	9	2	2	-
El Dorado	151	81	28	53	54	16	11	5
Humboldt	193	95	39	56	61	37	32	5
Inyo	23	17	7	10	6	-	-	-
Lake	41	12	10	2	22	7	5	2
Lassen	56	17	9	8	31	8	-	8
Mariposa	21	18	2	16	-	3	-	3
Mendocino	54	7	7	-	43	4	-	4
Modoc	25	9	8	1	13	3	3	-
Mono ^a	-	-	-	-	-	-	-	-
Nevada	37	16	4	12	19	2	-	2
Plumas	31	16	10	6	11	4	-	4

11

TABLE 6 - Continued
 FELONY COMPLAINTS TERMINATED IN CALIFORNIA LOWER COURTS, 1971
 By County and Reason for Termination

Area and county	Prosecuted in lower court			Dismissed		
	Total	Refiled or plea to misdemeanor	Felony prosecuted as misdemeanor (Sec. 17 PC)	No subsequent prosecution	Subsequent prosecution	
					Total	Juvenile court
North Coast and Mountain - Continued						
Sierra	2	-	1	1	-	-
Siskiyou	62	9	13	35	-	5
Trinity	-	-	-	-	-	-
Tuolumne	39	20	3	14	1	1
Total						

aNo data reported for 1971.

TABLE 7
 FELONY FILINGS ON DEFENDANTS IN CALIFORNIA SUPERIOR COURTS, 1971
 By Charged Offense and Type of Proceeding

Charged offense	Total	Information		Indictment		Certification	
		Number	Percent	Number	Percent	Number	Percent
Total	70,663	62,070	87.8	2,889	4.1	5,704	8.1
Willful homicide	1,163	926	79.7	212	18.2	25	2.1
Manslaughter, vehicle	214	194	90.6	1	0.5	19	8.9
Robbery	5,123	4,815	93.9	80	1.6	228	4.5
Assault	4,016	3,824	95.2	64	1.6	128	3.2
Burglary	12,460	11,394	91.5	63	0.5	1,003	8.0
Theft, except auto.	5,452	4,541	83.3	179	3.3	732	13.4
Auto theft	2,897	2,597	89.6	2	0.1	298	10.3
Forgery and checks	5,097	4,171	81.8	76	1.5	850	16.7
Rape, forcible	931	876	94.1	28	3.0	27	2.9
Other sex offenses	1,784	1,576	88.3	80	4.5	128	7.2
Total drug law violations	26,461	22,915	86.6	1,858	7.0	1,688	6.4
Opiates	4,635	3,802	82.1	604	13.0	229	4.9
Marijuana	10,545	9,094	86.2	747	7.1	704	6.7
Dangerous drugs	10,871	9,690	89.1	487	4.5	694	6.4
Other drug law violations	410	329	80.2	20	4.9	61	14.9
Deadly weapons	883	816	92.4	20	2.3	47	5.3
Drunk driving	828	744	89.9	5	0.6	79	9.5
Hit and run	163	155	95.1	-	-	8	4.9
Escape	1,181	813	68.8	26	2.2	342	29.0
Kidnapping	361	345	95.6	13	3.6	3	0.8
Bookmaking	580	515	88.8	42	7.2	23	4.0
All other	1,069	853	79.8	140	13.1	76	7.1
Annual total 1966-1971							
1966	41,959	35,837	85.4	1,404	3.4	4,718	11.2
1967	48,389	41,762	86.3	1,683	3.5	4,944	10.2
1968	58,514	50,474	86.3	2,548	4.3	5,492	9.4
1969	71,313	61,754	86.6	2,525	3.5	7,034	9.9
1970	71,850	63,630	88.6	2,610	3.6	5,610	7.8
1971	70,663	62,070	87.8	2,889	4.1	5,704	8.1

TABLE 8
FELONY FILINGS ON DEFENDANTS IN CALIFORNIA SUPERIOR COURTS, 1971
By County and Type of Proceeding

Area and county	Total	Information		Indictment		Certification	
		Number	Percent	Number	Percent	Number	Percent
Total	70,663	62,070	87.8	2,889	4.1	5,704	8.1
Southern California							
Los Angeles	34,979	34,494	98.6	210	0.6	275	0.8
State less Los Angeles . .	35,684	27,576	77.3	2,679	7.5	5,429	15.2
Imperial	248	246	99.2	2	0.8	-	-
Orange	2,869	1,774	61.8	379	13.2	716	25.0
Riverside	1,335	971	72.7	144	10.8	220	16.5
San Bernardino	2,199	1,281	58.3	232	10.6	686	31.2
San Diego	4,065	2,791	68.7	451	11.1	823	20.2
Santa Barbara	755	593	78.5	108	14.3	54	7.2
Ventura	445	342	76.9	50	11.2	53	11.9
San Francisco Bay Area							
Alameda	3,044	2,577	84.7	31	1.0	436	14.3
San Francisco	3,267	3,069	94.0	155	4.7	43	1.3
Contra Costa	860	654	76.0	66	7.7	140	16.3
Marin	342	275	80.4	27	7.9	40	11.7
Napa	139	117	84.2	20	14.4	2	1.4
San Mateo	1,361	1,094	80.4	26	1.9	241	17.7
Santa Clara	3,133	2,290	73.1	312	10.0	531	16.9
Solano	419	276	65.9	75	17.9	68	16.2
Sonoma	306	261	85.3	6	2.0	39	12.7
San Joaquin Valley							
Fresno	936	657	70.2	6	0.6	273	29.2
Kern	717	423	59.0	105	14.6	189	26.4
Kings	108	92	85.2	15	13.9	1	0.9
Madera	122	99	99.0	1	1.0	-	-
Merced	305	305	100.0	-	-	-	-
San Joaquin	1,149	1,027	89.4	41	3.6	81	7.0
Stanislaus	900	777	86.4	29	3.2	94	10.4
Tulare	531	508	95.7	1	0.2	22	4.1
Sacramento Valley							
Butte	215	147	68.3	4	1.9	64	29.8
Colusa	45	42	-	1	-	2	-
Glenn	64	47	73.4	17	26.6	-	-
Placer	206	114	55.3	24	11.7	68	33.0
Sacramento	1,645	1,327	80.7	82	5.0	236	14.3
Shasta	340	316	92.9	18	5.3	6	1.8
Sutter	65	34	52.3	11	16.9	20	30.8
Tehama	130	91	70.0	38	29.2	1	0.8
Yolo	197	120	60.9	8	4.1	69	35.0
Yuba	98	63	64.3	1	1.0	34	34.7
Central Coast							
Monterey	1,030	989	96.0	35	3.4	6	0.6
San Benito	38	38	-	-	-	-	-
San Luis Obispo	179	169	94.4	8	4.5	2	1.1
Santa Cruz	359	285	79.4	13	3.6	61	17.0
North Coast and Mountain							
Alpine	2	2	-	-	-	-	-
Amador	43	42	-	1	-	-	-
Calaveras	146	135	92.5	-	-	11	7.5

TABLE 8 - Continued
FELONY FILINGS ON DEFENDANTS IN CALIFORNIA SUPERIOR COURTS, 1971
By County and Type of Proceeding

Area and county	Total	Information		Indictment		Certification	
		Number	Percent	Number	Percent	Number	Percent
North Coast and Mountain - Continued							
Del Norte	41	39	-	2	-	-	-
El Dorado	135	120	88.9	15	11.1	-	-
Humboldt	257	211	82.1	9	3.5	-	-
Inyo	72	68	94.4	4	5.6	37	14.4
Lake	106	58	54.7	3	2.8	-	-
Lassen	66	46	69.7	20	30.3	45	42.5
Mariposa	9	7	-	2	-	-	-
Mendocino	322	279	86.6	36	11.2	7	2.2
Modoc	25	25	-	-	-	-	-
Mono ^a	-	-	-	-	-	-	-
Nevada	47	40	-	7	-	-	-
Plumas	32	31	-	1	-	-	-
Sierra	2	1	-	1	-	-	-
Siskiyou	102	85	83.3	15	14.7	2	2.0
Trinity	24	17	-	1	-	6	-
Tuolumne	109	89	81.7	20	18.3	-	-

^aNo data reported for 1971.
Note: Percentages not shown wherever base is less than 50.

TABLE 10 - Continued

FELONY DEFENDANTS DISPOSED OF IN CALIFORNIA SUPERIOR COURTS, 1971

By County and Disposition

Area and county	Total	Disposed of without conviction						Convicted						Percent distribution					
		Total	Dis- missed	Acquitted by trial				Total	On guilty plea	By trial				Not convicted		Convicted			
				Total	Jury	Court	Court on trans- cript			Total	Jury	Court	Court on trans- cript	Dis- missed	Ac- quitted	Total	By plea	By trial	
Sacramento Valley																			
Butte	179	27	17	10	7	3	-	152	119	33	24	6	3	9.5	5.6	84.9	66.5	18.4	
Colusa	32	2	2	-	-	-	-	30	26	4	2	1	1	-	-	-	-	-	
Glenn	46	6	5	1	1	-	-	40	33	1	1	-	-	-	-	-	-	-	
Placer	180	31	24	7	7	-	-	149	133	16	16	-	-	13.3	3.9	82.8	73.9	8.9	
Sacramento	1,416	245	210	35	32	3	-	1,171	1,041	130	116	11	3	14.8	2.5	82.7	73.5	9.2	
Shasta	286	12	10	2	1	1	-	274	259	15	7	8	-	3.5	0.7	95.8	90.6	5.2	
Sutter	79	1	-	1	1	-	-	78	72	6	4	-	2	0.0	1.3	98.7	91.1	7.6	
Tehama	108	6	4	2	2	-	-	102	91	11	8	3	-	3.7	1.9	94.4	84.2	10.2	
Yolo	191	13	11	2	1	1	-	178	174	4	4	-	-	5.8	1.0	93.2	91.1	2.1	
Yuba	77	3	3	-	-	-	-	74	68	6	4	-	2	3.9	0.0	96.1	88.3	7.8	
Central Coast																			
Monterey	883	126	112	14	8	6	-	757	701	56	41	15	-	12.7	1.6	85.7	79.4	6.3	
San Benito	39	3	2	1	1	-	-	36	31	5	5	-	-	-	-	-	-	-	
San Luis Obispo	188	20	12	8	7	1	-	168	130	38	34	4	-	6.4	4.3	89.3	69.1	20.2	
Santa Cruz	334	31	26	5	5	-	-	303	254	49	22	9	18	7.8	1.5	90.7	76.0	14.7	
North Coast and Mountain																			
Alpine	2	-	-	-	-	-	-	2	2	-	-	-	-	-	-	-	-	-	
Amador	45	4	2	2	1	1	-	41	39	2	2	-	-	-	-	-	-	-	
Calaveras	129	26	20	6	6	-	-	103	90	13	12	1	-	15.5	4.7	79.8	69.8	10.0	
Del Norte	43	6	6	-	-	-	-	37	31	6	5	1	-	-	-	-	-	-	
El Dorado	102	16	14	2	2	-	-	86	77	9	8	1	-	13.7	2.0	84.3	75.5	8.8	
Humboldt	226	17	11	6	6	-	-	209	188	21	20	1	-	4.8	2.7	92.5	83.2	9.3	
Inyo	71	11	10	1	-	1	-	60	57	3	2	1	-	14.1	1.4	84.5	80.3	4.2	
Lake	85	7	6	1	1	-	-	78	74	4	4	-	-	7.0	1.2	91.8	87.1	4.7	
Lassen	61	11	9	2	2	-	-	50	49	1	1	-	-	14.8	3.3	81.9	80.3	1.6	
Mariposa	11	2	-	2	2	-	-	9	7	2	1	1	-	-	-	-	-	-	
Mendocino	294	40	28	12	8	4	-	254	237	17	14	2	1	9.5	4.1	86.4	80.6	5.8	
Modoc	20	1	1	-	-	-	-	19	17	2	2	-	-	-	-	-	-	-	
Mono ^a	-	-	-	-	-	-	-	-	-	-	-	-	-	-	-	-	-	-	
Nevada	44	3	2	1	-	1	-	41	32	9	5	4	-	-	-	-	-	-	
Plumas	18	5	4	1	-	1	-	13	12	1	-	-	1	-	-	-	-	-	

18

TABLE 10 - Continued

FELONY DEFENDANTS DISPOSED OF IN CALIFORNIA SUPERIOR COURTS, 1971

By County and Disposition

Area and county	Total	Disposed of without conviction						Convicted						Percent distribution					
		Total	Dis- missed	Acquitted by trial				Total	On guilty plea	By trial				Not convicted		Convicted			
				Total	Jury	Court	Court on trans- cript			Total	Jury	Court	Court on trans- cript	Dis- missed	Ac- quitted	Total	By plea	By trial	
North Coast and Mountain - Continued																			
Sierra	1	1	-	1	1	-	-	-	-	-	-	-	-	-	-	-	-	-	-
Siskiyou	95	21	19	2	1	1	-	-	-	-	-	-	-	-	-	-	-	-	
Trinity	26	3	1	2	-	2	-	74	66	8	7	1	-	20.0	2.1	77.9	69.5	8.4	
Tuolumne	121	13	12	1	-	1	-	108	96	12	7	5	-	10.0	0.8	89.2	79.3	9.9	

^aNo data reported for 1971.
Note: Percentages not shown wherever base is less than 50.

19

TABLE 11
COMMITMENTS OF FELONY DEFENDANTS CONVICTED AND SENTENCED IN CALIFORNIA SUPERIOR COURTS, 1971
By Charged Offense and Type of Sentence

Charged offense	Total	Criminal commitment									Civil commitment		Percent			
		Dept. of Corrections		Youth Authority	Probation			Jail	Fine	CRC	Mental Hygiene	Dept. of Corrections	Probation	Jail	All other	
		Death	Prison		Total	Straight	With jail									
		Death	Prison	Total	Straight	With jail	Jail	Fine	CRC	Mental Hygiene	Dept. of Corrections	Probation	Jail	All other		
Total	56,018	22	5,386	1,973	39,441	21,738	17,703	5,771	704	2,350	371	9.7	70.4	10.3	9.6	
Willful homicide . .	848	21	483	48	289	116	173	4	-	2	1	59.4	34.1	0.5	6.0	
Manslaughter, vehicle . .	205	-	9	5	176	68	108	13	2	-	-	4.4	85.9	6.3	3.4	
Robbery	3,967	-	1,212	414	1,869	566	1,303	260	2	203	7	30.6	47.0	6.6	15.8	
Assault	3,089	-	290	88	2,340	1,316	1,024	313	40	12	6	9.4	75.8	10.1	4.7	
Burglary	10,130	-	841	500	6,612	2,910	3,702	1,487	33	644	13	8.3	65.3	14.7	11.7	
Theft, except auto	3,909	-	222	109	2,866	1,563	1,303	576	26	109	1	5.7	73.3	14.7	6.3	
Auto theft	2,290	-	111	136	1,539	791	748	468	11	24	1	4.8	67.3	20.4	7.5	
Forgery and checks	4,220	-	358	66	3,088	1,717	1,371	475	18	215	-	8.5	73.1	11.3	7.1	
Rape, forcible	704	-	146	44	381	190	191	61	2	-	70	20.7	54.1	8.7	16.5	
Other sex offenses . .	1,469	-	80	10	969	726	241	99	47	2	262	5.4	66.0	6.7	21.9	
Total drug law violations . .	21,173	-	868	458	16,947	10,332	6,615	1,481	339	1,078	2	4.1	80.0	7.0	8.9	
Opiates	3,218	-	361	49	1,902	878	1,024	110	6	790	-	11.2	59.1	3.4	26.3	
Marijuana	8,607	-	173	154	7,438	4,908	2,530	522	231	88	1	2.0	86.4	6.1	5.5	
Dangerous drugs . . .	9,029	-	322	253	7,351	4,388	2,963	821	99	182	1	3.6	81.4	9.1	5.9	
Other drug law violations . .	319	-	12	2	256	158	98	28	3	18	-	3.8	80.2	8.8	7.2	
Deadly weapons	617	-	83	5	382	245	137	123	14	9	1	13.5	61.9	19.9	4.7	
Drunk driving	754	-	19	4	623	315	308	82	13	13	-	2.5	82.6	10.9	4.0	
Hit and run	167	-	5	3	139	86	53	13	7	-	-	3.0	83.2	7.8	6.0	
Escape	964	-	467	36	199	81	118	232	-	30	-	48.5	20.6	24.1	6.8	
Kidnapping	340	1	111	27	175	88	87	17	-	2	7	32.9	51.5	5.0	10.6	
Bookmaking	484	-	-	-	347	329	18	13	124	-	-	-	71.7	2.7	25.6	
All other	688	-	81	20	500	297	203	54	26	7	-	11.8	72.7	7.8	7.7	
Annual total 1966-1971																
1966	32,000	20	6,711	1,831	16,754	9,883	6,871	4,777	596	961	350	21.9	54.6	15.6	7.9	
1967	34,683	18	5,972	1,993	20,335	11,070	9,265	4,335	570	1,195	265	17.3	58.7	12.5	11.5	
1968	40,477	19	5,473	2,056	25,060	13,536	11,524	5,283	919	1,389	278	13.6	61.9	13.0	11.5	
1969	50,568	9	4,931	2,197	33,188	19,470	13,718	7,020	1,112	1,855	256	9.8	65.6	13.9	10.7	
1970	49,950	19	5,006	1,873	33,813	19,249	14,564	6,118	988	1,903	230	10.1	67.7	12.2	10.0	
1971	56,018	22	5,386	1,973	39,441	21,738	17,703	5,771	704	2,350	371	9.7	70.4	10.3	9.6	

TABLE 12
COMMITMENTS OF FELONY DEFENDANTS CONVICTED AND SENTENCED IN CALIFORNIA SUPERIOR COURTS, 1971
By County and Type of Sentence

Area and county	Total	Criminal commitment										Percent			
		Dept. of Corrections		Youth Authority	Probation			Jail	Fine	Civil commitment	Dept. of Corrections	Probation	Jail	All other	
		Death	Prison		Total	Straight	With jail								
		Death	Prison	Total	Straight	With jail	Jail	Fine	CRC	Mental Hygiene	Dept. of Corrections	Probation	Jail	All other	
Total	56,018	22	5,386	1,973	39,441	21,738	17,703	5,771	704	2,350	371	9.7	70.4	10.3	9.6
Southern California	27,959	11	1,502	837	20,534	14,002	6,532	3,656	477	801	141	5.4	73.4	13.1	8.1
Los Angeles	28,059	10	3,885	1,136	18,907	7,736	11,171	2,115	227	1,549	230	13.9	67.4	7.5	11.2
State less	196	-	27	20	94	71	23	28	1	23	3	13.8	47.9	14.3	24.0
Imperial	2,487	1	255	89	1,989	492	1,497	26	1	90	36	10.3	80.0	1.0	8.7
Orange	1,021	2	130	30	695	188	507	44	5	105	10	12.9	68.1	4.3	14.7
Riverside	1,877	-	413	105	1,026	727	299	168	2	150	13	22.0	54.6	9.0	14.4
San Bernardino . . .	3,186	-	308	95	2,415	1,285	1,130	184	42	112	30	9.7	75.7	5.8	8.8
San Diego	695	-	87	23	430	236	194	94	4	55	2	12.5	61.9	13.5	12.1
Santa Barbara	374	-	39	14	218	59	159	57	16	24	6	10.4	58.4	15.2	16.0
Ventura	2,207	-	328	84	1,496	633	863	126	2	158	13	14.9	67.8	5.7	11.6
San Francisco Bay Area	2,599	1	284	55	2,027	794	1,233	45	6	174	7	11.0	78.0	1.7	9.3
Alameda	753	2	93	40	519	164	355	35	-	60	4	12.6	69.0	4.6	13.8
San Francisco	280	-	22	9	218	54	164	17	3	10	1	7.9	77.8	6.1	8.2
Contra Costa	112	-	8	9	72	21	51	8	-	6	9	7.1	64.4	7.1	21.4
Marin	1,235	-	127	50	936	503	433	52	7	53	10	10.3	75.8	4.2	9.7
Napa	2,353	-	376	146	1,452	401	1,051	201	18	153	7	16.0	61.7	8.5	13.8
San Mateo	319	-	48	9	194	106	88	44	6	16	2	15.0	60.9	13.8	10.3
Santa Clara	244	-	21	2	139	66	73	71	4	5	2	8.6	57.0	29.1	5.3
Solano	714	-	95	24	517	105	412	31	5	38	4	13.3	72.5	4.3	9.9
Sonoma	576	-	102	31	299	153	146	78	1	59	5	17.9	51.9	13.5	16.7
San Joaquin Valley	72	-	8	13	33	2	31	4	-	9	5	11.1	45.8	5.6	37.5
Fresno	77	-	16	1	37	11	26	15	1	7	7	20.8	48.1	19.4	11.7
Kern	260	-	32	15	188	28	160	23	-	2	-	12.3	72.4	8.8	6.5

TABLE 12 - Continued

COMMITMENTS OF FELONY DEFENDANTS CONVICTED AND SENTENCED IN CALIFORNIA SUPERIOR COURTS, 1971

By County and Type of Sentence

Area and county	Total	Criminal commitment						Jail	Fine	Civil commitment		Percent			
		Dept. of Corrections		Youth Authority	Probation					CRC	Mental Hygiene	Dept. of Corrections	Probation	Jail	All other
		Death	Prison		Total	Straight	With jail								
San Joaquin Valley - Continued															
San Joaquin.	774	-	103	28	466	322	144	122	3	48	4	13.3	60.2	15.8	10.7
Stanislaus .	495	-	124	40	278	12	266	15	1	32	5	25.1	56.1	3.0	15.8
Tulare . . .	434	-	36	16	313	47	266	29	1	33	6	8.3	72.1	6.7	12.9
Sacramento Valley															
Butte	152	-	44	15	80	44	36	10	-	3	-	28.9	52.7	6.6	11.8
Colusa	30	-	2	2	23	11	12	2	-	1	-	-	-	-	-
Glenn	40	-	4	-	34	19	15	1	-	1	-	-	-	-	-
Placer	149	-	37	6	84	19	65	17	-	3	2	24.8	56.4	11.4	7.4
Sacramento .	1,171	-	239	41	737	217	520	99	1	37	17	20.4	62.9	8.5	8.2
Shasta	274	-	27	8	180	68	112	52	1	5	1	9.9	65.6	19.0	5.5
Sutter	78	-	6	2	43	34	9	25	1	-	1	7.7	55.1	32.1	5.1
Tehama	102	-	18	9	67	14	53	7	-	-	1	17.6	65.7	6.9	9.8
Yolo	178	-	18	10	125	50	75	14	-	8	3	10.1	70.2	7.9	11.8
Yuba	74	-	15	1	40	20	20	17	-	-	1	20.3	54.0	23.0	2.7
Central Coast															
Monterey . . .	757	-	82	20	506	287	219	123	7	18	1	10.8	66.9	16.2	6.1
San Benito . .	36	-	5	3	20	13	7	6	-	2	-	-	-	-	-
San Luis Obispo .	168	3	55	5	88	50	38	10	2	3	2	34.5	52.4	6.0	7.1
Santa Cruz . .	303	1	61	14	193	49	144	10	1	20	3	20.5	63.7	3.3	12.5
North Coast and Mountain															
Alpine	2	-	1	-	1	1	-	-	-	-	-	-	-	-	-
Amador	41	-	7	14	16	8	8	2	-	1	1	-	-	-	-
Calaveras . . .	103	-	14	1	77	14	63	7	1	2	1	13.6	74.7	6.8	4.9
Del Norte . . .	37	-	11	-	10	3	7	13	-	-	3	-	-	-	-
El Dorado . . .	86	-	16	5	41	16	25	22	-	2	-	18.6	47.7	25.6	8.1
Humboldt . . .	209	-	29	6	128	86	42	40	-	4	2	13.9	61.3	19.1	5.7
Inyo	60	-	6	1	50	32	18	2	1	-	-	10.0	83.4	3.3	3.3
Lake	78	-	7	6	49	37	12	6	9	-	1	9.0	62.8	7.7	20.5

22

TABLE 12 - Continued

COMMITMENTS OF FELONY DEFENDANTS CONVICTED AND SENTENCED IN CALIFORNIA SUPERIOR COURTS, 1971

By County and Type of Sentence

Area and county	Total	Criminal commitment						Jail	Fine	Civil commitment		Percent			
		Dept. of Corrections		Youth Authority	Probation					CRC	Mental Hygiene	Dept. of Corrections	Probation	Jail	All other
		Death	Prison		Total	Straight	With jail								
North Coast and Mountain - Continued															
Lassen	50	-	26	1	21	5	16	2	-	-	-	-	-	-	-
Mariposa . . .	9	-	-	-	4	3	1	3	-	-	-	-	-	-	-
Mendocino . . .	254	-	21	3	78	56	22	71	1	-	-	52.0	42.0	4.0	2.0
Modoc	19	-	2	2	12	10	2	3	-	8	3	8.3	30.7	28.0	33.0
Mono	-	-	-	-	-	-	-	-	-	-	-	-	-	-	-
Nevada	41	-	6	-	28	8	-	-	-	-	-	-	-	-	-
Plumas	13	-	-	-	13	5	-	4	-	-	-	-	-	-	-
Sierra	-	-	-	-	-	-	-	-	-	-	-	-	-	-	-
Siskiyou	74	-	-	-	-	-	-	-	-	1	2	-	-	-	-
Trinity	23	-	10	2	36	32	4	19	-	-	-	-	-	-	-
Tuolumne . . .	108	-	32	11	52	31	21	9	3	6	1	13.5	48.6	25.7	12.2
										1	-	29.6	48.2	8.3	13.9

^aNo data reported for 1971
 Note: Percentages not shown wherever base is less than 50.

23

TABLE 13
LEVEL OF CONVICTION OF FELONY DEFENDANTS CONVICTED AND SENTENCED IN CALIFORNIA SUPERIOR COURTS, 1971
By Charged Offense

Charged offense	Total	Felony as charged		Lesser felony		Misde-meanor	Percent	
		Felony sentence	Misde-meanor sentence	Felony sentence	Misde-meanor sentence		Felony sentence	Misde-meanor sentence
Total	56,018	25,391	15,277	7,428	3,690	4,232	58.6	41.4
Willful homicide.	848	379	4	432	24	9	95.6	4.4
Manslaughter, vehicle	205	133	34	-	-	38	64.9	35.1
Robbery	3,967	2,509	55	795	432	176	83.3	16.7
Assault	3,089	993	644	507	181	764	48.6	51.4
Burglary	10,130	5,018	2,468	1,071	740	833	60.1	39.9
Theft, except auto.	3,909	1,780	1,187	331	244	367	54.0	46.0
Auto theft.	2,290	572	304	435	873	106	44.0	56.0
Forgery and checks.	4,220	2,525	1,433	143	75	44	63.2	36.8
Rape, forcible.	704	269	36	212	103	84	68.3	31.7
Other sex offenses.	1,469	670	229	90	49	431	51.7	48.3
Total drug law violations	21,173	8,674	7,519	3,108	881	991	55.6	44.4
Opiates	3,218	2,022	51	828	157	160	88.6	11.4
Marijuana	8,607	2,929	3,580	1,215	345	538	48.1	51.9
Dangerous drugs	9,029	3,542	3,776	1,059	373	279	51.0	49.0
Other drug law violations	319	181	112	6	6	14	58.6	41.4
Deadly weapons.	617	248	259	40	18	52	46.7	53.3
Drunk driving	754	381	241	-	1	131	50.5	49.5
Hit and run	167	76	62	-	-	29	45.5	54.5
Escape.	964	679	275	2	4	4	70.6	29.4
Kidnapping.	340	57	1	212	37	33	79.1	20.9
Bookmaking.	484	70	407	-	-	7	14.5	85.5
All other	688	358	119	50	28	133	59.3	40.7
Annual total 1966-1971								
1966.	32,000	17,087	6,946	2,620	1,615	3,732	61.6	38.4
1967.	34,683	18,676	6,200	3,470	1,597	4,740	63.9	36.1
1968.	40,477	19,679	7,874	4,427	2,283	6,214	59.6	40.4
1969.	50,568	22,447	14,507	5,212	2,775	5,627	54.7	45.3
1970.	49,950	22,469	14,494	5,712	3,115	4,160	56.4	43.6
1971.	56,018	25,391	15,277	7,428	3,690	4,232	58.6	41.4

24

TABLE 14
LEVEL OF CONVICTION OF FELONY DEFENDANTS CONVICTED AND SENTENCED IN CALIFORNIA SUPERIOR COURTS, 1971
By Area and County

Area and county	Total	Felony as charged		Lesser felony		Misde-meanor	Percent	
		Felony sentence	Misde-meanor sentence	Felony sentence	Misde-meanor sentence		Felony sentence	Misde-meanor sentence
Total	56,018	25,391	15,277	7,428	3,690	4,232	58.6	41.4
Southern California								
Los Angeles	27,959	9,060	11,140	2,831	2,638	2,290	42.5	57.5
State less Los Angeles.	28,059	16,331	4,137	4,597	1,052	1,942	74.6	25.4
Imperial.	196	82	50	23	19	22	53.6	46.4
Orange.	2,487	1,541	102	635	69	140	87.5	12.5
Riverside	1,021	700	93	144	22	62	82.7	17.3
San Bernardino.	1,877	1,152	346	254	64	61	74.9	25.1
San Diego	3,186	1,524	485	711	146	320	70.2	29.8
Santa Barbara	695	340	108	122	70	55	66.5	33.5
Ventura	374	168	88	87	28	3	68.2	31.8
San Francisco Bay area								
Alameda	2,207	1,402	148	433	82	142	83.1	16.9
San Francisco	2,599	1,785	243	399	40	132	84.0	16.0
Contra Costa.	753	509	53	142	17	32	86.5	13.5
Marin	280	180	41	33	6	20	76.1	23.9
Napa.	112	77	8	15	2	10	82.1	17.9
San Mateo	1,235	747	165	168	26	129	74.1	25.9
Santa Clara	2,353	1,308	356	457	89	143	75.0	25.0
Solano.	319	165	61	31	16	46	61.4	38.6
Sonoma.	244	98	74	32	17	23	53.3	46.7
San Joaquin Valley								
Fresno.	714	479	79	99	16	41	81.0	19.0
Kern.	576	319	108	80	26	43	69.3	30.7
Kings	72	51	10	4	5	2	76.4	23.6
Madera.	77	45	11	12	4	5	74.0	26.0
Merced.	260	137	54	36	12	21	66.5	33.5
San Joaquin	774	369	248	73	33	51	57.1	42.9
Stanislaus.	495	339	34	102	15	5	89.1	10.9
Tulare.	434	328	47	33	2	24	83.2	16.8
Sacramento Valley								
Butte	152	118	20	7	3	4	82.2	17.8
Colusa.	30	17	7	2	-	4	-	-
Glenn	40	37	2	-	-	1	-	-
Placer.	149	100	34	11	2	2	74.5	25.5

25

TABLE 14 - Continued
 LEVEL OF CONVICTION OF FELONY DEFENDANTS CONVICTED AND SENTENCED IN CALIFORNIA SUPERIOR COURTS, 1971
 By Area and County

Area and county	Total	Felony as charged		Lesser felony		Misde-meanor	Percent	
		Felony sentence	Misde-meanor sentence	Felony sentence	Misde-meanor sentence		Felony sentence	Misde-meanor sentence
Sacramento Valley - Continued								
Sacramento	1,171	723	163	175	42	68	76.7	23.3
Shasta	274	145	83	20	13	13	60.2	39.8
Sutter	78	35	28	1	3	11	46.2	53.8
Tehama	102	76	13	4	1	8	78.4	21.6
Yolo	178	110	35	18	7	11	71.9	28.1
Yuba	74	35	17	7	4	11	56.8	43.2
Central Coast								
Monterey	757	200	292	88	55	122	38.0	62.0
San Benito	36	6	23	1	2	4	73.2	26.8
San Luis Obispo	168	104	29	19	11	5	88.8	11.2
Santa Cruz	303	238	25	31	4	5	-	-
North Coast and Mountain								
Alpine	2	2	-	-	1	8	-	-
Amador	41	10	18	4	4	8	47.6	52.4
Calaveras	103	43	42	6	2	2	-	-
Del Norte	37	16	16	1	4	1	61.6	38.4
El Dorado	86	46	28	7	7	28	51.2	48.8
Humboldt	209	92	58	15	16	4	76.7	23.3
Inyo	60	43	8	3	2	8	62.8	37.2
Lake	78	45	20	4	1	5	64.0	36.0
Lassen	50	29	7	3	1	4	-	-
Mariposa	9	2	1	1	29	53	33.5	66.5
Mendocino	254	58	87	27	1	1	-	-
Modoc	19	9	8	-	-	-	-	-
Mono ^a	-	-	7	-	1	1	-	-
Nevada	41	33	-	1	-	-	-	-
Plumas	13	9	-	-	8	12	44.6	55.4
Sierra	-	-	27	8	-	4	-	-
Siskiyou	74	25	3	1	-	4	66.7	33.3
Trinity	23	15	24	7	8	4	-	-
Tuolumne	108	65	-	-	-	-	-	-

^aNo data reported for 1971.
 Note: Percentages not shown wherever base is less than 50.

TABLE 15
 FELONY DEFENDANTS CONVICTED IN CALIFORNIA SUPERIOR COURTS, 1971
 By Charged Offense and Time in Months from Filing Date to Sentencing Date

Charged offense	Total defendants	Less than 1	Months						Median (months)
			1.0-1.9	2.0-2.9	3.0-5.9	6.0-11.9	12.0-23.9	24.0 or more	
Total	56,018	9,657	11,360	12,801	14,864	6,057	1,022	257	2.5
Willful homicide . . .	848	31	70	167	354	188	35	3	4.3
Manslaughter, vehicle .	205	27	32	47	64	33	2	-	2.9
Robbery	3,967	439	808	1,271	1,030	343	67	9	2.6
Assault	3,089	262	532	755	982	432	108	18	3.0
Burglary	10,130	1,920	2,483	2,508	2,284	767	124	44	2.3
Theft, except auto . . .	3,909	890	842	790	887	405	75	20	2.3
Auto theft	2,290	559	592	546	403	142	32	16	2.0
Forgery and checks . . .	4,220	1,125	994	801	845	362	53	40	2.0
Rape, forcible	704	37	81	173	284	108	17	4	3.6
Other sex offenses . . .	1,469	173	248	318	456	231	33	10	3.0
Total drug law violations									
Opiates	21,173	3,110	3,871	4,637	6,416	2,647	412	80	2.8
Marijuana	3,218	277	564	723	1,001	527	116	10	3.1
Dangerous drugs	8,607	1,353	1,504	1,859	2,638	1,058	155	40	2.8
Other drug law violations	9,029	1,408	1,730	2,001	2,702	1,026	133	29	2.7
319	72	73	54	75	36	8	1	2.3	
Deadly weapons	617	124	136	137	145	64	9	2	2.4
Drunk driving	754	109	143	183	226	82	11	-	2.7
Hit and run	167	17	36	40	52	17	5	-	2.8
Escape	964	611	205	87	46	9	3	3	a
Kidnapping	340	18	39	106	110	57	8	2	3.2
Bookmaking	484	100	127	105	106	44	1	1	2.1
All other	688	105	121	130	174	126	27	5	2.9

^aLess than one month.

TABLE 16

FELONY DEFENDANTS CONVICTED IN CALIFORNIA SUPERIOR COURTS, 1971

By County and Time in Months From Filing Date to Sentencing Date

Area and county	Total defendants	Less than 1	Months						Median (months)
			1.0-1.9	2.0-2.9	3.0-5.9	6.0-11.9	12.0-23.9	24.0 or more	
Total	56,018	9,657	11,360	12,801	14,864	6,057	1,022	257	2.5
Southern California									
Los Angeles	27,959	3,356	5,349	6,483	8,609	3,526	487	149	2.8
State less Los Angeles	28,059	6,301	6,011	6,318	6,255	2,531	535	108	2.3
Imperial	196	80	37	22	37	18	1	1	1.5
Orange	2,487	1,019	358	265	553	274	18	-	1.6
Riverside	1,021	207	224	238	249	78	19	6	2.3
San Bernardino	1,877	292	385	281	541	338	28	12	2.9
San Diego	3,186	679	428	1,139	749	164	20	7	2.4
Santa Barbara	695	86	194	152	158	89	13	3	2.4
Ventura	374	64	57	144	82	20	7	-	2.5
San Francisco Bay Area									
Alameda	2,207	349	393	489	500	343	120	13	2.7
San Francisco	2,599	155	761	418	576	466	196	27	2.9
Contra Costa	753	110	133	205	235	55	9	6	2.7
Marin	280	14	44	45	79	58	34	6	4.4
Napa	112	22	36	21	25	6	2	-	1.9
San Mateo	1,235	232	156	261	432	133	16	5	2.9
Santa Clara	2,353	450	553	772	473	88	10	7	2.2
Solano	319	37	106	75	82	13	3	3	2.2
Sonoma	244	86	49	37	52	18	1	1	1.7
San Joaquin Valley									
Fresno	714	226	165	172	117	31	1	2	1.8
Kern	576	172	97	112	136	53	6	-	2.2
Kings	72	25	25	11	9	2	-	-	1.4
Madera	77	34	17	14	9	3	-	-	1.3
Merced	260	83	107	53	14	3	-	-	1.4
San Joaquin	774	152	239	162	169	45	7	-	2.0
Stanislaus	495	112	61	221	84	13	3	1	2.3
Tulare	434	76	117	83	124	27	6	1	2.3
Sacramento Valley									
Butte	152	65	39	21	20	4	1	2	1.3
Colusa	30	6	14	2	5	3	-	-	1.6
Glenn	40	21	10	7	2	-	-	-	a
Placer	149	63	35	24	21	6	-	-	1.3
Sacramento	1,171	159	447	367	169	27	2	-	2.0

28

TABLE 16 - Continued

FELONY DEFENDANTS CONVICTED IN CALIFORNIA SUPERIOR COURTS, 1971

By County and Time in Months from Filing Date to Sentencing Date

Area and county	Total defendants	Less than 1	Months						Median (months)
			1.0-1.9	2.0-2.9	3.0-5.9	6.0-11.9	12.0-23.9	24.0 or more	
Sacramento Valley-Continued									
Shasta	274	123	62	41	46	2	-	-	1.2
Sutter	78	34	17	9	9	9	-	-	1.3
Tehama	102	51	32	13	6	-	-	-	a
Yolo	178	81	27	22	31	17	-	-	1.3
Yuba	74	36	8	16	9	5	-	-	1.1
Central Coast									
Monterey	757	281	169	144	140	19	3	1	1.6
San Benito	36	22	9	4	1	-	-	-	a
San Luis Obispo	168	78	32	26	26	5	-	1	1.2
Santa Cruz	303	95	64	49	60	32	2	1	1.9
North Coast and Mountain									
Alpine	2	2	-	-	-	-	-	-	a
Amador	41	28	3	3	4	3	-	-	a
Calaveras	103	25	17	22	34	5	-	-	2.4
Del Norte	37	10	11	4	10	2	-	-	1.8
El Dorado	86	27	30	6	18	5	-	-	1.5
Humboldt	209	65	52	56	30	5	1	-	1.8
Inyo	60	23	12	4	15	5	1	-	1.6
Lake	78	34	16	10	13	3	1	-	1.3
Lassen	50	34	5	3	8	-	-	1	a
Mariposa	9	4	1	2	1	-	-	-	a
Mendocino	254	80	84	36	28	26	-	1	a
Modoc	19	9	4	3	3	-	-	-	1.6
Mono ^b	-	-	-	-	-	-	-	-	1.1
Nevada	41	17	14	3	5	2	-	-	-
Plumas	13	1	4	1	7	-	-	-	1.3
Sierra	-	-	-	-	-	-	-	-	3.2
Siskiyou	74	17	25	9	20	1	2	-	-
Trinity	23	5	10	5	2	1	-	-	1.8
Tuolumne	108	43	16	14	27	6	2	-	1.7

^aLess than one month.^bNo data reported for 1971.

29

TABLE 17
FELONY DEFENDANTS DISPOSED OF IN CALIFORNIA SUPERIOR COURTS, 1971
By Charged Offense and Prior Record

Charged offense	Total defendants	Prior record				Percent of total known			
		None	Minor	Major	Prison	None	Minor	Major	Prison
Total	65,236	14,305	19,585	20,929	10,417	21.9	30.0	32.1	16.0
Willful homicide.	1,027	237	307	304	179	23.1	29.9	29.6	17.4
Manslaughter, vehicle	210	73	77	52	8	34.8	36.6	24.8	3.8
Robbery	4,566	671	1,230	1,705	960	14.7	26.9	37.4	21.0
Assault	3,710	871	1,252	1,130	457	23.5	33.7	30.5	12.3
Burglary.	11,112	1,681	2,986	4,001	2,444	15.1	26.9	36.0	22.0
Theft, except auto.	4,694	1,074	1,287	1,425	908	22.9	27.4	30.4	19.3
Auto theft.	2,613	451	747	934	481	17.3	28.6	35.7	18.4
Forgery and checks.	4,538	842	1,236	1,529	931	18.6	27.2	33.7	20.5
Rape, forcible.	888	198	246	294	150	22.3	27.7	33.1	16.9
Other sex offenses.	1,707	533	538	438	198	31.2	31.5	25.7	11.6
Total drug law violations	25,518	6,835	8,561	7,670	2,452	26.8	33.5	30.1	9.6
Opiates	3,792	579	968	1,430	815	15.3	25.5	37.7	21.5
Marijuana	10,854	3,977	3,859	2,455	563	36.6	35.6	22.6	5.2
Dangerous drugs	10,527	2,215	3,635	3,650	1,027	21.0	34.5	34.7	9.8
Other drug law violations.	345	64	99	135	47	18.6	28.7	39.1	13.6
Deadly weapons.	784	97	137	201	349	12.4	17.5	25.6	44.5
Drunk driving	797	171	260	248	118	21.5	32.6	31.1	14.8
Hit and run	184	62	55	49	18	33.7	29.9	26.6	9.8
Escape.	1,002	28	33	424	517	2.8	3.3	42.3	51.6
Kidnapping.	378	82	97	110	89	21.7	25.7	29.1	23.5
Bookmaking.	623	129	273	178	43	20.7	43.8	28.6	6.9
All other	885	270	263	237	115	30.5	29.7	26.8	13.0
Annual total 1966-1971									
1966.	38,401	16,330	6,149	9,097	6,825	42.5	16.0	23.7	17.8
1967.	41,027	9,031	11,529	12,660	7,807	22.0	28.1	30.9	19.0
1968.	47,277	9,801	14,701	14,576	8,199	20.7	31.1	30.8	17.4
1969.	59,497	13,663	19,129	18,104	8,601	23.0	32.1	30.4	14.5
1970.	59,257	13,411	18,855	18,148	8,843	22.6	31.9	30.6	14.9
1971.	65,236	14,305	19,585	20,929	10,417	21.9	30.0	32.1	16.0

TABLE 18
FELONY DEFENDANTS DISPOSED OF IN CALIFORNIA SUPERIOR COURTS, 1971
By County and Prior Record

Area and county	Total defendants	Prior record				Percent of total known			
		None	Minor	Major	Prison	None	Minor	Major	Prison
Total	65,236	14,305	19,585	20,929	10,417	21.9	30.0	32.1	16.0
Southern California									
Los Angeles	33,509	6,985	10,593	10,576	5,355	20.8	31.6	31.6	16.0
State less Los Angeles.	31,727	7,320	8,992	10,353	5,062	23.1	28.3	32.6	16.0
Imperial.	221	66	78	48	29	29.9	35.3	21.7	13.1
Orange.	2,754	773	853	862	266	28.1	31.0	31.2	9.7
Riverside	1,204	217	293	488	206	18.0	24.3	40.6	17.1
San Bernardino.	1,990	344	549	618	479	17.3	27.6	31.0	24.1
San Diego	3,756	1,018	1,026	1,284	428	27.1	27.3	34.2	11.4
Santa Barbara	731	230	217	190	94	31.4	29.7	26.0	12.9
Ventura	400	70	141	129	60	17.5	35.2	32.3	15.0
San Francisco Bay Area									
Alameda	2,502	359	649	1,051	443	14.3	26.0	42.0	17.7
San Francisco	2,932	682	770	988	492	23.3	26.3	33.6	16.8
Contra Costa.	800	106	278	288	128	13.3	34.7	36.0	16.0
Marin	305	83	108	71	43	27.2	35.4	23.3	14.1
Napa.	129	43	39	31	16	33.4	30.2	24.0	12.4
San Mateo	1,352	362	408	429	153	26.8	30.2	31.7	11.3
Santa Clara	2,642	572	790	930	350	21.7	29.9	35.2	13.2
Solano.	352	111	90	101	50	31.5	25.6	28.7	14.2
Sonoma.	276	65	102	71	38	23.6	36.9	25.7	13.8
San Joaquin Valley									
Fresno.	802	202	213	239	148	25.2	26.5	29.8	18.5
Kern.	617	109	154	225	129	17.7	25.0	36.4	20.9
Kings	92	26	27	31	8	28.3	29.3	33.7	8.7
Madera.	105	26	30	32	17	24.8	28.5	30.5	16.2
Merced.	284	87	84	84	29	30.6	29.6	29.6	10.2
San Joaquin	943	161	158	409	215	17.1	16.8	43.3	22.8
Stanislaus.	596	122	193	173	108	20.5	32.4	29.0	18.1
Tulare.	510	88	184	154	84	17.3	36.0	30.2	16.5
Sacramento Valley									
Butte	179	46	71	32	30	25.7	39.6	17.9	16.8
Colusa.	32	13	11	5	3	-	-	-	-
Glenn	46	21	12	6	7	-	-	-	-
Placer.	180	43	66	39	32	23.9	36.6	21.7	17.8
Sacramento.	1,416	235	305	515	361	16.6	21.5	36.4	25.5
Shasta.	286	74	112	60	40	25.9	39.1	21.0	14.0
Sutter.	79	19	28	25	7	24.1	35.4	31.6	8.9
Tehama.	108	40	31	21	16	37.1	28.7	19.4	14.8
Yolo.	191	52	53	50	36	27.2	27.8	26.2	18.8
Yuba.	77	15	25	22	15	19.5	32.4	28.6	19.5
Central Coast									
Monterey.	883	268	265	206	144	30.4	30.0	23.3	16.3
San Benito.	39	11	16	10	2	-	-	-	-
San Luis Obispo	188	45	44	42	57	24.0	23.4	22.3	30.3
Santa Cruz.	334	88	96	102	48	26.3	28.8	30.5	14.4

TABLE 18 - Continued
 FELONY DEFENDANTS DISPOSED OF IN CALIFORNIA SUPERIOR COURTS, 1971

Area and county	Total defendants	By County and Prior Record				Percent of total known				
		None	Minor	Major	Prison	None	Minor	Major	Prison	
North Coast and Mountain	2	1	1	-	-	-	-	-	-	
Alpine	45	6	15	16	8	27.9	31.0	27.1	14.0	
Amador	129	36	40	35	18	-	-	-	-	
Calaveras	43	8	14	10	11	21.6	35.2	32.4	10.8	
Del Norte	102	22	36	33	11	21.2	28.8	21.2	28.8	
El Dorado	226	48	65	48	65	42.2	28.2	15.5	14.1	
Humboldt	71	30	20	11	11	32.9	36.6	17.6	12.9	
Inyo	85	28	31	15	25	14.8	26.2	18.0	41.0	
Lake	11	3	3	2	3	41.9	28.6	20.7	8.8	
Lassen	11	7	4	3	26	-	-	-	-	
Mariposa	294	123	84	61	4	-	-	-	-	
Mendocino	20	7	6	3	4	-	-	-	-	
Modoc	-	-	13	10	5	-	-	-	-	
Nevada	44	16	7	5	1	-	-	-	-	
Plumas	18	5	1	5	1	43.2	26.3	12.6	17.9	
Sierra	1	41	12	5	3	32.2	28.1	12.4	-	
Stikilyou	95	6	34	15	33	-	-	-	-	
Trinity	26	39	12	15	3	-	-	-	-	
Tuolumne	121	39	34	15	33	-	-	-	-	

No data reported for 1971.
 Note: Percentages not shown wherever base is less than 50.

TABLE 19
 FELONY DEFENDANTS DISPOSED OF IN CALIFORNIA SUPERIOR COURTS, 1971

By Charged Offense and Existing Criminal Status

Charged offense	Total ^a known	Total not under commitment	Total under commitment	Total parole	Department of Corrections parole	Youth Authority parole	CRC parole	Total probation	Serving time in jail or prison	Percent under commitment
Total	63,694	41,178	22,516	7,337	2,962	3,009	1,366	13,971	1,208	35.4
Willful homicide	1,005	699	306	116	56	54	6	176	14	30.4
Manslaughter, vehicle	202	163	39	7	2	5	-	32	-	19.3
Robbery	4,501	2,458	2,043	864	329	449	86	1,134	45	45.4
Assault	3,580	2,611	969	266	94	149	23	651	52	27.1
Burglary	10,959	6,135	4,824	2,027	784	778	465	2,745	52	44.0
Theft, except auto	4,518	2,960	1,558	573	272	197	104	973	12	34.5
Auto theft	2,562	1,440	1,122	447	131	283	33	653	22	43.8
Forgery and checks	4,447	2,840	1,607	571	322	130	119	1,018	18	36.1
Rape, forcible	868	589	279	99	47	46	6	178	2	32.1
Other sex offenses	1,645	1,306	339	88	51	30	7	245	6	20.6
Total drug law violations	24,918	17,486	7,432	1,861	643	781	437	5,501	70	29.8
Opiates	3,730	2,237	1,493	605	279	100	226	863	25	40.0
Marijuana	10,573	8,320	2,253	454	107	271	76	1,783	16	21.3
Dangerous drugs	10,276	6,723	3,553	759	238	400	121	2,767	27	34.6
Other drug law violations	339	206	133	43	19	10	14	88	2	39.2
Deadly weapons	762	407	355	163	123	29	11	158	34	46.6
Drunk driving	766	528	238	106	44	18	44	132	-	31.1
Hit and run	175	131	44	12	6	5	1	32	-	25.1
Escape	978	51	927	33	11	9	13	68	826	94.8
Kidnapping	366	231	135	61	29	30	2	68	6	36.9
Bookmaking	604	536	68	6	3	1	2	62	-	11.3
All other	838	607	231	37	15	15	7	145	49	27.6
Annual total 1966-1971										
1966	27,777	18,113	9,664	3,935	1,871	1,813	251	5,137	592	34.8
1967	39,808	26,671	13,137	4,843	1,840	2,699	304	7,518	776	33.0
1968	46,296	31,585	14,711	5,022	1,818	2,768	436	8,806	883	31.8
1969	57,537	39,857	17,680	5,458	1,957	2,945	556	11,392	830	30.7
1970	57,854	39,076	18,778	5,944	2,216	2,953	775	11,968	866	32.5
1971	63,694	41,178	22,516	7,337	2,962	3,009	1,366	13,971	1,208	35.4

^aOf 65,236 total defendants disposed of, status was not reported for 1,542.

TABLE 20
 FELONY DEFENDANTS DISPOSED OF IN CALIFORNIA SUPERIOR COURTS, 1971
 By County and Existing Criminal Status

Area and county	Total known ^a	Existing criminal status							Serving time in jail or prison	Percent under commitment
		Total not under commitment	Total under commitment	Total parole	Department of Corrections parole	Youth Authority parole	CRC parole	Total probation		
Total	63,694	41,178	22,516	7,337	2,962	3,009	1,366	13,971	1,208	35.4
Southern California										
Los Angeles	32,486	21,330	11,156	3,911	1,521	1,592	798	7,124	121	34.3
State less Los Angeles	31,208	19,848	11,360	3,426	1,441	1,417	568	6,847	1,087	36.4
Imperial	214	169	45	19	7	8	4	21	5	21.0
Orange	2,703	1,769	934	231	75	97	59	661	42	34.6
Riverside	1,175	647	528	154	44	57	53	282	92	44.9
San Bernardino	1,974	1,094	880	268	104	115	49	386	226	44.6
San Diego	3,734	2,390	1,344	369	161	162	46	935	40	36.0
Santa Barbara	705	521	184	84	29	27	28	97	3	26.1
Ventura	397	302	95	43	11	16	16	46	6	23.9
San Francisco Bay Area										
Alameda	2,476	1,283	1,193	328	163	125	40	814	51	48.2
San Francisco	2,806	1,867	939	308	126	119	63	622	9	33.5
Contra Costa	799	481	318	110	46	47	17	201	7	39.8
Marin	303	225	78	26	9	15	2	42	10	25.7
Napa	128	102	26	5	3	2	-	21	-	20.3
San Mateo	1,343	908	435	106	46	50	10	314	15	32.4
Santa Clara	2,621	1,719	902	238	87	102	49	566	98	34.4
Solano	349	232	117	30	16	12	2	76	11	33.5
Sonoma	270	204	66	25	10	13	2	31	10	24.4
San Joaquin Valley										
Fresno	789	506	283	127	58	45	24	142	14	35.9
Kern	611	377	234	92	42	36	14	105	37	38.3
Kings	89	66	23	6	-	4	2	16	1	25.8
Madera	104	81	23	6	4	2	-	15	2	22.1
Merced	283	196	87	25	9	14	2	53	9	30.7
San Joaquin	932	464	468	116	53	47	16	279	73	50.2
Stanislaus	593	381	212	72	35	28	9	125	15	35.8
Tulare	496	337	159	46	10	24	12	93	20	32.1
Sacramento Valley										
Butte	179	141	38	15	7	7	1	19	4	21.2
Colusa	31	24	7	3	2	1	-	4	-	-
Glenn	46	35	11	7	3	4	-	4	-	-
Placer	178	135	43	11	6	4	1	24	8	24.2

34

TABLE 20 - Continued
 FELONY DEFENDANTS DISPOSED OF IN CALIFORNIA SUPERIOR COURTS, 1971
 By County and Existing Criminal Status

Area and county	Total known ^a	Existing criminal status							Serving time in jail or prison	Percent under commitment
		Total not under commitment	Total under commitment	Total parole	Department of Corrections parole	Youth Authority parole	CRC parole	Total probation		
Sacramento Valley - Continued										
Sacramento	1,402	699	703	264	140	106	18	374	65	50.1
Shasta	284	232	52	28	17	9	2	24	-	18.3
Sutter	78	56	22	8	2	6	-	13	1	28.2
Tehama	104	77	27	11	1	9	1	9	7	26.0
Yolo	182	114	68	24	13	7	4	40	4	37.4
Yuba	77	54	23	10	4	6	-	12	1	29.9
Central Coast										
Monterey	859	619	240	64	29	23	12	122	54	27.9
San Benito	39	35	4	-	-	-	-	4	-	-
San Luis Obispo	184	103	81	11	5	5	1	30	40	44.0
Santa Cruz	329	227	102	31	14	12	5	58	13	31.0
North Coast and Mountain										
Alpine	2	2	-	-	-	-	-	-	-	-
Amador	44	25	19	7	7	7	-	9	3	-
Calaveras	120	92	28	8	3	4	1	16	4	23.3
Del Norte	43	27	16	4	3	1	-	6	6	-
El Dorado	96	63	33	8	2	6	-	23	2	34.4
Humboldt	225	152	73	32	24	8	-	32	9	32.4
Inyo	60	51	9	3	3	-	-	6	-	15.0
Lake	83	59	24	6	3	3	-	13	5	28.9
Lassen	57	28	29	4	1	3	-	2	23	50.9
Mariposa	11	8	3	1	1	-	-	2	-	-
Mendocino	292	241	51	14	6	8	-	30	7	17.5
Modoc	18	15	3	2	-	2	-	1	-	-
Mono ^b	-	-	-	-	-	-	-	-	-	-
Nevada	44	39	5	3	1	1	1	2	-	-
Plumas	18	13	5	-	-	-	-	4	1	-
Sierra	1	1	-	-	-	-	-	-	-	-
Siskiyou	93	73	20	8	3	4	1	6	6	21.5
Trinity	25	18	7	1	-	1	-	6	-	-
Tuolumne	110	69	41	4	-	3	1	9	28	37.3

^aOf the total 65,236 defendants disposed of, status was not reported for 1,542.

^bNo data reported for 1971.

Note: Percentages not shown wherever base is less than 50.

35

TABLE 21

FELONY DEFENDANTS DISPOSED OF IN CALIFORNIA SUPERIOR COURTS, 1971

By Charged Offense and Race

Charged offense	Total known ^a	Race				Percent of total known			
		White	Mexican-American	Negro	Other	White	Mexican-American	Negro	Other
Total	64,581	37,896	8,744	17,042	899	58.7	13.5	26.4	1.4
Willful homicide	1,016	419	125	443	29	41.2	12.3	43.6	2.9
Manslaughter, vehicle	209	138	41	28	2	66.0	19.6	13.4	1.0
Robbery	4,535	1,844	492	2,110	89	40.7	10.8	46.5	2.0
Assault	3,661	1,723	646	1,208	84	47.1	17.6	33.0	2.3
Burglary	11,056	5,853	1,770	3,274	159	53.0	16.0	29.6	1.4
Theft, except auto.	4,621	2,737	499	1,326	59	59.2	10.8	28.7	1.3
Auto theft	2,594	1,234	372	958	30	47.6	14.3	36.9	1.2
Forgery and checks	4,508	2,850	302	1,302	54	63.2	6.7	28.9	1.2
Rape, forcible	879	384	163	305	27	43.7	18.5	34.7	3.1
Other sex offenses	1,667	1,223	176	241	27	73.3	10.6	14.5	1.6
Total drug law violations	25,256	16,840	3,535	4,629	252	66.7	14.0	18.3	1.0
Opiates	3,763	1,857	805	1,068	33	49.3	21.4	28.4	0.9
Marijuana	10,721	7,919	991	1,703	108	73.9	9.2	15.9	1.0
Dangerous drugs	10,431	6,799	1,721	1,807	104	65.2	16.5	17.3	1.0
Other drug law violations	341	265	18	51	7	77.6	5.3	15.0	2.1
Deadly weapons	774	380	76	306	12	49.1	9.8	39.5	1.6
Drunk driving	793	518	138	127	10	65.3	17.4	16.0	1.3
Hit and run	180	96	41	36	7	53.3	22.8	20.0	3.9
Escape	986	652	207	109	18	66.1	21.0	11.1	1.8
Kidnapping	374	187	36	147	4	50.0	9.6	39.3	1.1
Bookmaking	614	245	27	331	11	39.9	4.4	53.9	1.8
All other	858	573	98	162	25	66.8	11.4	18.9	2.9
Annual total 1966-1971									
1966	29,253	18,162	3,529	7,070	492	62.0	12.1	24.2	1.7
1967	40,230	24,204	4,910	10,453	663	60.2	12.2	26.0	1.6
1968	46,742	28,167	5,442	12,378	755	60.3	11.6	26.5	1.6
1969	58,309	34,978	7,120	15,391	820	60.0	12.2	26.4	1.4
1970	58,569	34,740	7,058	15,955	816	59.3	12.1	27.2	1.4
1971	64,581	37,896	8,744	17,042	899	58.7	13.5	26.4	1.4

^aOf the total 65,236 defendants disposed of, race was not reported for 655.

TABLE 22

FELONY DEFENDANTS DISPOSED OF IN CALIFORNIA SUPERIOR COURTS, 1971

By County and Race

Area and county	Total known ^a	Race				Percent of total known			
		White	Mexican-American	Negro	Other	White	Mexican-American	Negro	Other
Total	64,581	37,896	8,744	17,042	899	58.7	13.5	26.4	1.4
Southern California									
Los Angeles	33,064	16,770	4,943	10,987	364	50.8	14.9	33.2	1.1
State less Los Angeles	31,517	21,126	3,801	6,055	535	67.0	12.1	19.2	1.7
Imperial	220	111	86	17	6	50.5	39.1	7.7	2.7
Orange	2,735	2,330	275	108	22	85.2	10.1	3.9	0.8
Riverside	1,196	782	232	171	11	65.4	19.4	14.3	0.9
San Bernardino	1,985	1,337	398	241	9	67.3	20.1	12.1	0.5
San Diego	3,753	2,643	399	680	31	70.5	10.6	18.1	0.8
Santa Barbara	721	525	117	71	8	72.9	16.2	9.8	1.1
Ventura	400	260	116	17	7	64.9	29.0	4.3	1.8
San Francisco Bay Area									
Alameda	2,485	1,100	160	1,204	21	44.3	6.4	48.5	0.8
San Francisco	2,864	1,338	87	1,330	109	46.7	3.0	46.5	3.8
Contra Costa	799	499	31	263	6	62.4	3.9	32.9	0.8
Marin	305	255	11	36	3	83.6	3.6	11.8	1.0
Napa	129	120	7	2	-	93.0	5.4	1.6	-
San Mateo	1,351	981	65	279	26	72.6	4.8	20.7	1.9
Santa Clara	2,628	1,805	510	279	34	68.7	19.4	10.6	1.3
Solano	350	226	9	112	3	64.5	2.6	32.0	0.9
Sonoma	276	231	11	21	13	83.7	4.0	7.6	4.7
San Joaquin Valley									
Fresno	794	468	184	135	7	58.9	23.2	17.0	0.9
Kern	616	366	112	131	7	59.4	18.2	21.3	1.1
Kings	92	41	34	15	2	44.5	37.0	16.3	2.2
Madera	105	64	22	16	3	60.9	21.0	15.2	2.9
Merced	284	165	61	54	4	58.1	21.5	19.0	1.4
San Joaquin	937	546	158	223	10	58.2	16.9	23.8	1.1
Stanislaus	594	500	59	28	7	84.2	9.9	4.7	1.2
Tulare	507	310	171	16	10	61.1	33.7	3.2	2.0
Sacramento Valley									
Butte	179	150	16	11	2	83.9	8.9	6.1	1.1
Colusa	32	27	3	2	-	-	-	-	-
Glenn	46	42	1	1	2	-	-	-	-
Placer	179	160	8	9	2	89.4	4.5	5.0	1.1
Sacramento	1,411	902	156	329	24	63.9	11.1	23.3	1.7
Shasta	285	250	11	8	16	87.7	3.9	2.8	5.6
Sutter	78	64	7	5	2	82.0	9.0	6.4	2.6
Tehama	107	104	-	1	2	97.2	-	0.9	1.9
Yolo	189	141	34	12	2	74.6	18.0	6.3	1.1
Yuba	77	64	2	11	-	83.1	2.6	14.3	-
Central Coast									
Monterey	871	592	117	148	14	68.0	13.4	17.0	1.6
San Benito	39	27	9	2	1	-	-	-	-
San Luis Obispo	185	141	27	13	4	76.2	14.6	7.0	2.2
Santa Cruz	334	265	50	12	7	79.3	15.0	3.6	2.1

TABLE 22 - Continued
 FELONY DEFENDANTS DISPOSED OF IN CALIFORNIA SUPERIOR COURTS, 1971
 By County and Race

Area and county	Total known ^a	Race				Percent of total known			
		White	Mexican-American	Negro	Other	White	Mexican-American	Negro	Other
North Coast and Mountain	2	2	-	-	-	-	-	-	-
Alpine	44	33	3	6	2	-	-	2.4	
Amador	126	119	4	-	3	94.4	3.2	-	
Calaveras	43	39	1	-	3	-	-	1.0	
Del Norte	99	93	4	1	1	94.0	4.0	9.3	
El Dorado	226	177	6	22	21	78.3	2.7	9.7	
Humboldt	69	63	1	-	5	91.4	1.4	7.2	
Inyo	85	74	4	3	4	87.1	4.7	4.7	
Lake	60	54	1	2	3	90.0	1.7	3.3	
Lassen	11	10	-	-	1	-	-	14.3	
Mariposa	294	239	9	4	42	81.2	3.1	1.4	
Mendocino	19	16	1	-	2	-	-	-	
Modoc	-	-	-	-	-	-	-	-	
Mono ^b	44	43	1	-	-	-	-	-	
Nevada	18	18	-	-	-	-	-	-	
Plumas	1	1	-	-	2	96.8	-	1.1	
Sierra	94	91	-	-	2	-	-	2.5	
Siskiyou	26	24	-	3	7	83.1	8.5	5.9	
Tuolumne	118	98	10	-	-	-	-	-	

^aOf the total 65,236 defendants disposed of, race was not reported for 655.
^bNo data reported for 1971.
 Note: Percentages not shown wherever base is less than 50.

TABLE 23
 FELONY DEFENDANTS DISPOSED OF IN CALIFORNIA SUPERIOR COURTS, 1971
 By Charged Offense and Age

Charged offense	Total known ^a	Age								Percent of total known		
		Under 20	20-24	25-29	30-34	35-39	40-44	45-49	50 and over	Under 25	25-39	40 and over
Total	64,703	6,546	26,665	13,186	7,040	4,231	3,016	1,934	2,085	51.3	37.8	10.9
Willful homicide	1,017	90	313	213	128	96	64	43	70	39.6	43.0	17.4
Manslaughter, vehicle	209	15	51	47	22	18	17	13	26	31.6	41.6	26.8
Robbery	4,538	579	2,143	938	416	199	138	79	46	60.0	34.2	5.8
Assault	3,661	316	1,229	743	436	284	254	163	236	42.2	40.0	17.8
Burglary	11,069	1,644	4,585	2,188	1,157	635	437	220	203	56.2	36.0	7.8
Theft, except auto	4,626	405	1,494	866	588	411	352	249	261	41.1	40.3	18.6
Auto theft	2,597	517	1,180	436	193	112	77	50	32	65.4	28.5	6.1
Forgery and checks	4,513	221	1,422	1,020	671	431	312	242	194	36.4	47.0	16.6
Rape, forcible	880	82	315	213	120	73	43	17	17	45.1	46.2	8.7
Other sex offenses	1,671	54	296	286	266	221	167	130	251	20.9	46.3	32.8
Total drug law violations	25,333	2,403	12,499	5,369	2,340	1,273	752	379	318	58.8	35.5	5.7
Opiates	3,770	163	1,364	852	517	366	261	135	112	40.5	46.0	13.5
Marijuana	10,767	1,185	6,062	2,201	701	306	173	77	62	67.3	29.8	2.9
Dangerous drugs	10,455	1,026	4,965	2,245	1,071	569	293	152	134	57.3	37.2	5.5
Other drug law violations	341	29	108	71	51	32	25	15	10	40.2	45.1	14.7
Deadly weapons	774	42	193	169	163	82	66	33	26	30.4	53.5	16.1
Drunk driving	795	30	180	138	125	85	84	63	90	26.4	43.8	29.8
Hit and run	180	13	48	34	20	17	15	17	16	33.9	39.4	26.7
Escape	987	42	319	238	159	97	65	43	24	36.6	50.0	13.4
Kidnapping	373	37	141	86	56	25	12	10	6	47.7	44.8	7.5
Bookmaking	620	7	13	27	76	97	102	123	175	3.2	32.3	64.5
All other	860	49	244	175	104	75	59	60	94	34.1	41.1	24.8
Annual total 1966-1971												
1966	31,084	3,695	9,922	5,712	3,827	2,888	2,094	1,293	1,653	43.8	40.0	16.2
1967	40,248	9,101	12,241	6,385	4,126	3,164	2,262	1,307	1,662	53.0	34.0	13.0
1968	46,740	6,113	17,968	8,503	4,868	3,237	2,434	1,635	1,982	51.5	35.5	13.0
1969	58,307	7,666	24,136	10,726	5,555	3,784	2,762	1,717	1,961	54.6	34.4	11.0
1970	58,602	6,677	24,634	11,137	6,039	3,757	2,718	1,771	1,869	53.4	35.7	10.9
1971	64,703	6,546	26,665	13,186	7,040	4,231	3,016	1,934	2,085	51.3	37.8	10.9

^aOf the total 65,236 defendants disposed of, age was not reported for 533.

TABLE 24
FELONY DEFENDANTS DISPOSED OF IN CALIFORNIA SUPERIOR COURTS, 1971
By County and Age

Area and county	Total known ^a	Age								Percent of total known		
		Under 20	20-24	25-29	30-34	35-39	40-44	45-49	50 and over	Under 25	25-39	40 and over
Total	64,703	6,546	26,665	13,186	7,040	4,231	3,016	1,934	2,085	51.3	37.8	10.9
Southern California												
Los Angeles	33,163	3,088	13,124	6,889	3,901	2,405	1,667	1,062	1,027	48.9	39.8	11.3
State less Los Angeles.	31,540	3,458	13,541	6,297	3,139	1,826	1,349	872	1,058	53.9	35.7	10.4
Imperial	220	27	84	33	24	15	16	4	17	50.5	32.7	16.8
Orange	2,745	354	1,319	527	219	119	73	59	75	61.0	31.5	7.5
Riverside	1,197	114	491	271	122	76	52	26	45	50.5	39.2	10.3
San Bernardino	1,985	161	819	443	251	123	72	57	95	49.4	41.1	9.5
San Diego	3,753	469	1,807	665	296	202	135	84	95	60.6	31.0	8.4
Santa Barbara	722	60	357	150	53	27	24	19	32	57.7	31.9	10.4
Ventura	400	38	170	84	39	22	16	18	13	51.9	36.3	11.8
San Francisco Bay Area												
Alameda	2,485	193	1,016	588	307	132	104	67	78	48.7	41.3	10.0
San Francisco	2,863	177	1,038	657	374	223	174	101	119	42.4	43.8	13.8
Contra Costa	799	61	375	187	76	45	27	13	15	54.6	38.5	6.9
Marin	305	31	121	78	30	15	17	9	4	49.9	40.3	9.8
Napa	129	17	47	28	8	9	5	4	11	49.6	34.9	15.5
San Mateo	1,351	173	581	280	132	77	46	31	31	55.8	36.2	8.0
Santa Clara	2,636	329	1,173	486	249	158	103	76	62	57.0	33.9	9.1
Solano	351	41	171	71	34	13	7	10	4	60.4	33.6	6.0
Sonoma	276	24	125	42	29	12	16	7	21	54.0	30.1	15.9
San Joaquin Valley												
Fresno	795	101	320	144	87	46	46	28	23	53.0	34.8	12.2
Kern	614	64	245	107	64	39	43	29	23	50.3	34.2	15.5
Kings	92	18	29	15	7	9	4	5	5	51.1	33.7	15.2
Madera	105	12	41	23	10	8	6	2	3	50.5	39.0	10.5
Merced	284	49	133	41	27	10	9	8	7	64.0	27.5	8.5
San Joaquin	937	86	427	168	78	61	45	28	44	54.7	32.8	12.5
Stanislaus	594	62	236	140	65	40	18	10	23	50.2	41.2	8.6
Tulare	507	66	225	87	55	31	14	12	17	57.4	34.1	8.5
Sacramento Valley												
Butte	179	24	83	27	17	5	6	4	13	59.8	27.4	12.8
Colusa	32	7	12	6	2	-	1	2	2	-	-	-
Glenn	46	8	24	4	2	4	1	1	9	52.5	30.7	16.8
Placer	179	29	65	29	23	3	10	11	2	-	-	-

40

TABLE 24 - Continued
FELONY DEFENDANTS DISPOSED OF IN CALIFORNIA SUPERIOR COURTS, 1971
By County and Age

Area and county	Total known ^a	Age								Percent of total known		
		Under 20	20-24	25-29	30-34	35-39	40-44	45-49	50 and over	Under 25	25-39	40 and over
Sacramento Valley - Continued												
Sacramento	1,408	155	563	243	153	100	88	39	67	51.0	35.2	13.8
Shasta	285	33	128	52	23	15	14	10	10	56.5	31.6	11.9
Sutter	78	10	37	16	3	3	5	2	2	60.3	28.2	11.5
Tehama	107	35	40	16	7	2	3	1	3	70.1	23.4	6.5
Yolo	189	20	76	34	16	12	16	9	6	50.8	32.8	16.4
Yuba	77	15	27	12	3	3	11	1	5	54.5	23.4	22.1
Central Coast												
Monterey	880	116	380	176	74	51	35	23	25	56.4	34.2	9.4
San Benito	39	13	13	5	4	2	1	1	-	-	-	-
San Luis Obispo	185	8	74	48	22	11	6	8	8	44.3	43.8	11.9
Santa Cruz	334	40	137	83	26	15	15	9	9	53.0	37.1	9.9
North Coast and Mountain												
Alpine	2	-	-	1	1	-	-	-	-	-	-	-
Amador	45	11	21	1	4	3	1	3	1	-	-	-
Calaveras	126	31	46	15	15	7	4	4	4	61.1	29.4	9.5
Del Norte	43	6	16	7	5	2	2	1	4	-	-	-
El Dorado	99	19	36	23	9	3	2	1	6	55.5	35.4	9.1
Humboldt	226	15	76	36	31	21	20	10	17	40.3	38.9	20.8
Inyo	66	9	21	12	2	4	5	6	7	45.4	27.3	27.3
Lake	85	22	35	9	2	5	6	4	2	67.1	18.8	14.1
Lassen	61	6	28	9	8	5	-	-	5	55.7	36.1	8.2
Mariposa	11	2	2	2	2	-	1	-	2	-	-	-
Mendocino	294	46	124	52	18	19	14	10	11	57.8	30.3	11.9
Modoc	19	-	7	4	4	1	1	1	1	-	-	-
Mono ^b	-	-	-	-	-	-	-	-	-	-	-	-
Nevada	44	6	13	8	6	5	3	1	2	-	-	-
Plumas	18	2	8	5	-	-	-	-	3	-	-	-
Sierra	1	-	-	-	-	-	-	-	1	-	-	-
Siskiyou	93	21	35	14	10	5	3	2	3	60.2	31.2	8.6
Trinity	26	7	10	4	4	1	-	-	-	-	-	-
Tuolumne	118	15	54	29	7	7	3	1	2	58.5	36.4	5.1

^aOf the total 65,236 defendants disposed of, age was not reported for 533.
^bNo data reported for 1971
Note: Percentages not shown wherever base is less than 50.

41

TABLE 25
 COMMITMENTS OF FELONY DEFENDANTS CONVICTED AND SENTENCED IN CALIFORNIA SUPERIOR COURTS, 1971
 By Convicted Offense and Type of Sentence

Convicted offense	Total	Department of Corrections		Youth Authority	Probation		Jail	Fine	Civil commitment	
		Death	Prison		Straight	With jail			CRC	Mental Hygiene
Total	56,018	22	5,386	1,973	21,738	17,703	5,771	704	2,350	371
Homicide										
Murder 1st.	113	21	92	-	-	-	-	-	-	-
Murder 2nd.	213	-	196	11	1	4	-	-	-	1
Manslaughter.	435	-	172	21	99	139	2	-	2	-
Manslaughter, vehicle	182	-	10	5	61	90	14	2	-	-
Robbery										
Robbery 1st	1,327	-	814	171	49	200	1	-	90	2
Robbery 2nd	1,192	-	312	158	114	511	19	-	75	3
Attempt or assault to rob	210	-	54	31	30	77	6	-	11	1
Assault										
Attempt to murder	4	-	2	-	-	2	-	-	-	-
Assault to murder	65	-	32	3	11	13	4	-	1	1
Assault with deadly weapon.	1,898	-	208	82	683	743	156	5	7	14
Mayhem.	4	-	2	-	2	-	-	-	-	-
Assault on peace officer with deadly weapon.	109	-	36	6	25	39	2	-	1	-
Battery on peace officer.	318	-	23	9	124	131	27	-	2	-
Assault by peace officer.	2	-	-	-	1	1	-	-	-	-
Assault or resistance to peace officer	272	-	6	2	124	83	47	9	1	-
Assault and battery by inmate	16	-	15	-	-	1	-	-	-	-
Sale or possession of destructive device.	45	-	4	2	18	18	3	1	-	1
Wife or child beating.	136	-	12	1	70	43	9	-	-	-
Shooting at a dwelling.	68	-	6	3	34	23	2	-	-	1
Simple assault.	221	-	-	2	112	42	57	7	-	1
Battery	390	-	-	3	207	73	98	8	-	-
Displaying deadly weapon.	83	-	-	2	56	9	15	1	-	1
Other assault	42	-	5	-	15	15	5	1	-	-

42

TABLE 25 - Continued
 COMMITMENTS OF FELONY DEFENDANTS CONVICTED AND SENTENCED IN CALIFORNIA SUPERIOR COURTS, 1971
 By Convicted Offense and Type of Sentence

Convicted offense	Total	Department of Corrections		Youth Authority	Probation		Jail	Fine	Civil commitment	
		Death	Prison		Straight	With jail			CRC	Mental Hygiene
Burglary										
Burglary 1st.	389	-	134	43	42	122	7	-	37	4
Burglary 2nd.	6,828	-	569	384	1,779	2,689	872	10	517	8
Attempted burglary.	410	-	20	16	133	145	81	-	15	-
Burglary with explosives.	1	-	-	-	-	1	-	-	-	-
Unlawful entry or trespassing	304	-	-	2	180	26	85	11	-	-
Theft, auto theft and forgery										
Grand theft	2,529	-	193	91	881	971	317	5	70	1
Attempted grand theft	176	-	8	8	64	64	30	1	1	-
Petty theft with a prior.	315	-	17	4	69	78	126	-	21	-
Petty theft	713	-	-	9	315	101	266	16	6	-
Receiving stolen property	2,599	-	121	81	1,018	959	310	20	90	-
Grand theft auto.	200	-	18	19	53	75	32	-	3	-
Taking auto without consent	2,340	-	126	134	779	795	467	9	29	1
Forgery and checks.	3,353	-	303	54	1,312	1,106	379	8	191	-
Credit card frauds.	771	-	45	14	339	255	88	5	25	-
Other frauds.	73	-	3	-	45	18	6	1	-	-
Forcible rape										
Forcible rape	260	-	93	20	46	58	7	-	-	36
Assault to rape	76	-	26	4	16	19	1	-	-	10
Attempted rape.	28	-	7	1	5	10	1	-	-	4
Other sex offenses										
Statutory rape.	241	-	15	10	94	84	27	1	-	10
Lewd and lascivious conduct with child	385	-	37	2	115	53	2	-	1	175
Sex perversion.	289	-	26	2	166	29	18	18	1	29
Contributing.	97	-	-	1	55	20	16	-	-	5
Sodomy.	25	-	5	1	7	5	2	-	-	5
Incest.	32	-	3	1	11	3	-	-	-	14
Pimping and pandering	33	-	1	1	15	14	2	-	-	-
Indecent exposure (felony).	82	-	4	-	41	21	2	-	-	14
Indecent exposure (misdemeanor)	28	-	-	-	22	1	3	1	-	1

43

TABLE 25 - Continued
 COMMITMENTS OF FELONY DEFENDANTS CONVICTED AND SENTENCED IN CALIFORNIA SUPERIOR COURTS, 1971
 By Convicted Offense and Type of Sentence

Convicted offense	Total	Department of Corrections		Youth Authority	Probation		Jail	Fine	Civil commitment	
		Death	Prison		Straight	With jail			CRC	Mental Hygiene
Other sex offenses - continued										
Annoy or molest child (felony)	17	-	1	-	5	3	1	1	-	6
Annoy or molest child (misdemeanor)	124	-	-	-	66	26	15	3	-	14
All other	43	-	-	-	28	9	2	4	-	-
Drug law violations										
Opiates										
Sale	815	-	145	20	105	254	5	-	286	-
Possession for sale	304	-	77	6	32	97	2	-	90	-
Possession	1,528	-	123	20	426	516	45	1	397	-
Addict	40	-	-	-	7	13	17	-	3	-
Visiting premises	61	-	-	2	35	12	10	-	2	-
Marijuana										
Furnishing to minor	9	-	3	-	3	3	-	-	-	-
Sale	816	-	66	44	201	472	10	2	21	-
Possession for sale	584	-	49	13	148	357	6	-	11	-
Possession	6,875	-	59	102	4,255	1,758	467	171	63	-
Visiting premises	387	-	-	1	296	25	28	36	1	-
Dangerous drugs										
Sale to minor	15	-	3	-	1	10	-	-	1	-
Sale	977	-	122	55	209	535	10	-	45	1
Possession for sale	570	-	78	28	126	301	13	-	24	-
Possession	7,308	-	130	170	4,002	2,056	764	77	109	-
Under influence	74	-	-	1	41	9	9	14	-	-
Visiting premises	43	-	-	-	33	5	4	1	-	-
Other drug law violations										
Planting, cultivating peyote	6	-	-	-	5	1	-	-	-	-
Sale in lieu	130	-	3	2	36	67	10	-	12	-
Unauthorized prescriptions	211	-	11	-	116	53	18	1	12	-
Maintaining place	49	-	1	-	24	20	3	-	1	-
Paraphernalia	93	-	-	1	43	22	15	5	7	-

44

TABLE 25 - Continued
 COMMITMENTS OF FELONY DEFENDANTS CONVICTED AND SENTENCED IN CALIFORNIA SUPERIOR COURTS, 1971
 By Convicted Offense and Type of Sentence

Convicted offense	Total	Department of Corrections		Youth Authority	Probation		Jail	Fine	Civil commitment	
		Death	Prison		Straight	With jail			CRC	Mental Hygiene
Weapons										
Possession by prisoner	23	-	21	-	-	1	1	-	-	-
Possession by ex-prisoner	278	-	51	-	88	75	57	1	6	-
Prohibited weapons	244	-	11	6	122	50	44	9	1	1
Concealed weapons (felony)	23	-	1	-	12	8	2	-	-	-
Concealed weapons (misdemeanor)	45	-	-	-	19	10	14	2	-	-
Possession-sale tear gas	24	-	-	-	16	2	6	-	-	-
Altering marks on gun	8	-	1	-	4	1	2	-	-	-
Possession loaded weapon	41	-	-	1	22	6	8	4	-	-
Drunk driving (felony)	457	-	14	1	167	250	24	1	-	-
Drunk driving (misdemeanor)	188	-	-	-	121	22	24	21	-	-
Driving under influence narcotics (felony)	237	-	5	4	92	71	50	1	14	-
Driving under influence non-narcotic drug	69	-	-	-	46	9	10	3	1	-
Hit and run with injury	158	-	7	3	79	58	9	2	-	-
Hit and run (misdemeanor)	35	-	-	-	24	4	4	2	1	-
Escape	972	-	472	36	80	122	232	-	30	-
Kidnap to rob or ransom	21	1	19	1	-	-	-	-	-	-
All other kidnapping	69	-	23	9	16	16	-	-	-	5
Bookmaking	486	-	-	-	336	18	10	122	-	-
Accessory	157	-	13	6	65	57	12	-	4	-
Abortion	5	-	1	-	3	1	-	-	-	-
Arson and burning	199	-	27	14	74	72	9	2	1	-
Bigamy	4	-	-	-	2	2	-	-	-	-
Bribery	19	-	3	-	12	4	-	-	-	-
Conspiracy to commit a misdemeanor	153	-	10	5	52	63	8	13	2	-
Extortion	30	-	5	1	15	9	-	-	-	-
Neglect or non-support	5	-	-	-	5	-	-	-	-	-
Perjury	33	-	3	1	15	12	1	1	-	-
Contraband into jail	107	-	39	2	17	34	8	-	7	-
Miscellaneous felonies	160	-	14	1	72	50	17	4	1	1
Miscellaneous misdemeanors	766	-	-	3	481	73	151	58	-	-

45

TABLE 26
 COMMITMENTS OF FELONY DEFENDANTS CONVICTED AND SENTENCED IN CALIFORNIA SUPERIOR COURTS, 1971
 By Charged Offense, Convicted Offense and Sentence

Charged	Offense Convicted	Total	Prison	Youth Authority	Probation		Jail	Fine	CRC	Mental Hygiene
					Straight	With jail				
		783	487	47	91	151	4	-	2	1
Murder		113	113	-	-	-	-	-	-	-
	Murder 1st	213	196	11	1	4	-	-	2	1
	Murder 2nd	378	155	20	76	123	2	-	-	-
	Manslaughter	4	2	-	2	-	-	-	-	-
	Manslaughter, vehicle	12	10	1	-	1	-	-	-	-
	Robbery	1	1	-	-	11	2	-	-	-
	Attempted murder	27	2	7	5	1	-	-	-	-
	Assault	9	4	2	2	1	-	-	-	-
	Burglary and theft	2	1	-	1	-	-	-	-	-
	Drug law violations	2	-	-	1	1	-	-	-	-
	Weapons	1	-	-	-	1	-	-	-	-
	Kidnapping	21	3	6	3	9	-	-	-	-
	Other	65	17	1	25	22	-	-	-	-
Manslaughter		57	17	1	23	16	-	-	-	-
	Manslaughter	2	-	-	-	2	-	-	-	-
	Manslaughter, vehicle	4	-	-	2	2	-	-	-	-
	Assault	2	-	-	-	2	-	-	-	-
	Other	205	9	5	68	108	13	2	-	-
Manslaughter, vehicle		130	8	4	38	72	6	2	-	-
	Manslaughter, vehicle (felony)	36	-	-	18	12	6	-	-	-
	Manslaughter, vehicle (misdemeanor)	31	-	1	10	20	-	-	-	-
	Drunk driving	8	1	-	2	4	1	-	-	-
	Hit and run	3,967	1,212	414	566	1,303	260	2	203	7
Robbery		1,268	769	162	47	198	1	-	90	1
	Robbery 1st	1,141	294	148	109	495	19	-	73	3
	Robbery 2nd	205	53	31	28	75	6	-	11	1
	Attempted robbery or assault with intent to rob	248	20	7	67	97	56	-	1	-
	Assault	927	50	55	263	378	159	1	21	-
	Theft, except auto	21	-	-	6	12	2	-	1	-
	Auto theft	12	1	2	5	3	1	-	-	1
	Forgery	6	3	1	-	1	-	-	-	-
	Rape	9	5	-	3	-	1	-	-	-
	Other sex offenses									

46

TABLE 26 - Continued
 COMMITMENTS OF FELONY DEFENDANTS CONVICTED AND SENTENCED IN CALIFORNIA SUPERIOR COURTS, 1971
 By Charged Offense, Convicted Offense and Sentence

Charged	Offense Convicted	Total	Prison	Youth Authority	Probation		Jail	Fine	CRC	Mental Hygiene
					Straight	With jail				
Robbery - Continued										
	Drug law violations	23	3	4	6	5	3	-	2	-
	Weapons	15	5	1	2	5	2	-	-	-
	Kidnapping	6	1	1	-	3	-	-	-	1
	Other	86	8	2	30	31	10	1	4	-
Assault		3,082	290	88	1,316	1,024	313	40	12	6
	Attempted murder	3	1	-	-	2	-	-	-	-
	Assault to murder	61	31	3	10	13	3	-	1	-
	Assault with deadly weapon	1,435	157	55	553	549	105	5	6	5
	Assault on peace officer	480	59	15	176	193	31	2	4	-
	Resisting police officer	149	-	1	72	42	28	6	-	-
	Assault by prisoner	14	13	-	-	1	-	-	-	-
	Possession or sale of destructive device	41	4	2	16	16	2	1	-	-
	Wife or child beating	130	12	1	66	42	8	-	-	1
	Misdemeanor assault and battery	409	-	4	230	75	86	14	-	-
	Display deadly weapon	67	-	1	45	9	11	1	-	-
	Shooting at dwelling	60	4	2	30	22	2	-	-	-
	Other assaults	32	5	-	14	10	2	1	-	-
	Other	208	4	4	104	50	35	10	1	-
Burglary		10,130	841	500	2,910	3,702	1,487	33	644	13
	Burglary 1st	382	131	40	42	122	7	-	37	3
	Burglary 2nd	6,822	566	384	1,778	2,687	872	10	517	8
	Attempted burglary	409	20	15	133	145	81	-	15	-
	Burglary, safe	8	4	1	1	2	-	-	-	-
	Assault	85	9	3	25	36	11	-	-	1
	Theft	1,540	61	34	544	520	317	11	53	-
	Auto theft	111	10	7	27	38	25	-	4	-
	Forgery and checks	103	12	2	30	35	18	-	6	-
	Rape	5	4	-	-	-	-	-	-	1
	Drug law violations	134	9	7	44	48	14	1	11	-
	Trespassing	283	-	2	168	24	79	10	-	-
	Other	248	15	5	118	45	63	1	1	-

47

TABLE 26 - Continued
 COMMITMENTS OF FELONY DEFENDANTS CONVICTED AND SENTENCED IN CALIFORNIA SUPERIOR COURTS, 1971
 By Charged Offense, Convicted Offense and Sentence

Charged	Offense Convicted	Total	Prison	Youth Authority	Probation		Jail	Fine	CRC	Mental Hygiene
					Straight	With jail				
		3,909	222	109	1,563	1,303	576	26	109	1
Theft		1,538	114	38	598	563	179	3	42	1
	Grand theft.	76	4	1	30	29	10	1	1	-
	Attempted grand theft.	249	10	2	58	54	110	-	15	-
	Petty theft with a prior	237	-	3	103	27	95	7	2	-
	Petty theft.	1,403	74	50	594	500	127	12	46	-
	Receiving stolen property.	53	1	-	32	15	5	-	-	-
	Fraud.	224	17	14	67	88	34	1	3	-
	Auto theft	129	2	1	81	27	16	2	-	-
	Other.								24	1
Auto theft.		2,290	111	136	791	748	468	11	24	-
	Grand theft, auto.	138	12	16	39	48	21	-	2	-
	Taking auto (felony)	1,914	97	113	655	641	380	7	20	1
	Taking auto (misdemeanor)	53	-	-	19	9	24	1	-	-
	Theft.	133	2	6	55	41	26	1	2	-
	Other.	52	-	1	23	9	17	2	-	-
Forgery and checks.		4,220	358	66	1,717	1,371	475	18	215	-
	Forgery.	2,459	222	48	890	821	302	5	171	-
	Fictitious checks.	7	2	-	3	1	-	-	1	-
	Insufficient funds	807	66	4	394	261	64	4	14	-
	Credit cards	724	43	12	323	237	81	4	24	-
	Theft.	105	20	2	50	23	8	1	1	-
	Receiving stolen property.	49	-	-	21	14	10	3	1	-
	Other.	69	5	-	36	14	10	1	3	-
Rape, forcible.		704	146	44	190	191	61	2	-	70
	Rape, forcible	253	89	19	46	56	7	-	-	36
	Assault or attempted rape.	75	18	3	18	23	2	-	-	11
	Unlawful sexual intercourse.	87	5	5	25	37	14	-	-	1
	Assault.	195	15	12	75	54	30	1	-	8
	Contributing	14	-	-	7	3	3	-	-	1
	Other sex offenses	36	6	2	6	7	3	-	-	12
	Other.	44	13	3	13	11	2	1	-	1

48

TABLE 26 - Continued
 COMMITMENTS OF FELONY DEFENDANTS CONVICTED AND SENTENCED IN CALIFORNIA SUPERIOR COURTS, 1971
 By Charged Offense, Convicted Offense and Sentence

Charged	Offense Convicted	Total	Prison	Youth Authority	Probation		Jail	Fine	CRC	Mental Hygiene
					Straight	With jail				
Unlawful sexual intercourse		140	11	5	55	45	16	1	-	7
	Unlawful sexual intercourse.	114	9	4	43	39	11	1	-	7
	Contributing	17	-	1	9	3	4	-	-	-
	Other sex offenses	3	1	-	1	1	-	-	-	-
	Other.	6	1	-	2	2	1	-	-	-
Lewd acts with child.		614	36	2	239	114	22	1	1	199
	Lewd acts with child	369	33	1	113	51	2	-	1	168
	Sex perversion	30	1	-	7	10	1	-	-	11
	Contributing	49	-	-	28	10	8	-	-	3
	Annoy or molest child.	80	-	-	40	21	6	1	-	12
	Other sex offenses	48	1	1	29	10	3	-	-	4
	Other offenses	38	1	-	22	12	2	-	-	1
Sex perversion.		391	15	-	281	20	27	33	1	14
	Sex perversion	226	15	-	153	13	15	18	1	11
	Annoy or molest child.	29	-	-	16	5	6	1	-	1
	Other sex offenses	75	-	-	63	2	2	7	-	1
	Other offenses	61	-	-	49	-	4	7	-	1
Other sex felonies.		324	18	3	153	62	34	12	-	42
	Sodomy	20	4	1	6	3	2	-	-	4
	Incest	32	3	1	11	3	-	-	-	14
	Pandering and pimping.	30	-	1	15	12	2	-	-	-
	Indecent exposure (felony)	81	4	-	41	21	2	-	-	13
	Indecent exposure (misdemeanor).	17	-	-	14	-	2	-	-	1
	Annoy or molest child (felony)	14	1	-	2	3	1	1	-	6
	Annoy or molest child (misdemeanor).	11	-	-	9	-	1	1	-	-
	Other sex offenses	37	5	-	18	9	-	2	-	3
	Other offenses	82	1	-	37	11	24	8	-	1

49

TABLE 26 - Continued

COMMITMENTS OF FELONY DEFENDANTS CONVICTED AND SENTENCED IN CALIFORNIA SUPERIOR COURTS, 1971

By Charged Offense, Convicted Offense and Sentence

Charged Offense	Convicted Offense	Total	Prison	Youth Authority	Probation		Jail	Fine	CRC	Mental Hygiene
					Straight	With jail				
Drug law violations		21,173	868	458	10,332	6,615	1,481	339	1,078	2
Opiates		3,218	361	49	878	1,024	110	6	790	-
	Opiates - Sale	1,095	218	23	133	344	7	-	370	-
	Possession	1,485	117	19	419	506	40	1	383	-
	Other	95	3	3	41	22	21	-	5	-
	Marijuana - Sale	23	3	1	3	12	1	-	3	-
	Possession	158	3	-	96	44	7	2	6	-
	Other	4	-	-	3	-	-	1	-	-
	Dangerous drugs - Sale	27	2	1	4	16	-	-	4	-
	Possession	159	5	-	95	39	12	-	8	-
	Other	6	-	-	3	1	2	-	-	-
	Other drug law violations	90	2	1	45	22	10	1	9	-
	Other offenses	76	8	1	36	18	10	1	2	-
Marijuana		8,607	173	154	4,908	2,530	522	231	88	1
	Opiates	11	1	1	1	7	-	-	1	-
	Marijuana - Sale	1,315	103	52	336	782	14	2	26	-
	Possession	6,408	51	93	4,020	1,589	436	166	53	-
	Other	384	3	1	291	26	28	34	1	-
	Dangerous drugs - Sale	34	6	2	8	15	1	-	2	-
	Possession	211	5	2	121	62	16	3	2	-
	Other	19	-	-	14	1	1	3	-	-
	Other drug law violations	50	-	-	24	19	2	4	1	-
	Other offenses	175	4	3	93	29	24	19	2	1

TABLE 26 - Continued

COMMITMENTS OF FELONY DEFENDANTS CONVICTED AND SENTENCED IN CALIFORNIA SUPERIOR COURTS, 1971

By Charged Offense, Convicted Offense and Sentence

Charged Offense	Convicted Offense	Total	Prison	Youth Authority	Probation		Jail	Fine	CRC	Mental Hygiene
					Straight	With jail				
Dangerous drugs		9,029	322	253	4,388	2,963	821	99	182	1
	Opiates	15	-	1	3	5	-	-	6	-
	Marijuana	302	10	8	128	135	14	2	5	-
	Dangerous drugs - Sale	1,496	192	80	323	814	22	-	64	1
	Possession	6,819	111	161	3,731	1,922	724	74	96	-
	Other	91	-	1	56	12	10	12	-	-
	Other drug law violations	57	2	-	14	27	10	-	4	-
	Other offenses	249	7	2	133	48	41	11	7	-
Other drug law violations		319	12	2	158	98	28	3	18	-
	Marijuana	4	-	-	3	-	-	1	-	-
	Dangerous drugs	13	1	-	9	1	2	-	-	-
	Other drugs	294	11	2	141	97	24	1	18	-
	Other offenses	8	-	-	5	-	2	1	-	-
Deadly weapons		617	83	5	245	137	123	14	9	1
	Ex-convict in possession	254	40	-	85	66	56	1	6	-
	Unlawful possession	270	10	4	140	51	52	11	1	1
	Possession by prisoner	22	20	-	-	1	1	-	-	-
	Other	71	13	1	20	19	14	2	2	-
Drunk driving		754	19	4	315	308	82	13	13	-
	Manslaughter, vehicle	3	-	-	1	2	-	-	-	-
	Drunk driving with injury	417	14	1	155	224	22	1	-	-
	Drunk driving	77	-	-	48	13	7	9	-	-
	Driving under influence drugs	211	3	3	87	58	48	-	12	-
	Driving under influence alcohol or drugs with injury	18	1	-	9	6	2	-	-	-
	Hit and run	11	1	-	6	4	-	-	-	-
	Reckless driving	3	-	-	3	-	-	-	-	-
	Other	14	-	-	6	1	3	3	1	-

TABLE 26 - Continued

COMMITMENTS OF FELONY DEFENDANTS CONVICTED AND SENTENCED IN CALIFORNIA SUPERIOR COURTS, 1971

By Charged Offense, Convicted Offense and Sentence

Offense		Total	Prison	Youth Authority	Probation		Jail	Fine	CRC	Mental Hygiene
Charged	Convicted				Straight	With jail				
Hit and run		167	5	3	86	53	13	7	-	-
	Hit and run (felony)	132	5	3	67	47	8	2	-	-
	Hit and run (misdemeanor)	15	-	-	12	2	-	1	-	-
	Drunk driving	10	-	-	4	3	2	1	-	-
	Other	10	-	-	3	1	3	3	-	-
Escape		964	467	36	81	118	232	-	30	-
	Escape	958	466	36	79	117	230	-	30	-
	Other	6	1	-	2	1	2	-	-	-
Kidnapping		340	112	27	88	87	17	-	2	7
	Kidnapping 209 PC	21	20	1	-	-	-	-	-	2
	Kidnapping 207 PC	38	10	5	11	10	-	-	2	1
	Robbery	101	54	18	8	18	-	-	-	1
	Assault	88	9	-	39	29	10	-	-	-
	Sex offenses	21	11	3	2	5	-	-	-	-
	Theft	13	2	-	3	8	-	-	-	3
	Other	58	6	-	25	17	7	-	-	-
Bookmaking		484	-	-	329	18	13	124	-	-
	Bookmaking	477	-	-	327	18	10	122	-	-
	Other	7	-	-	2	-	3	2	-	-
All other felony offenses		688	81	20	297	203	54	26	7	-
	Accessory	26	2	2	11	7	4	-	-	-
	Abortion	4	1	-	2	1	-	-	-	-
	Arson	182	24	12	71	63	9	2	1	-
	Bigamy	4	-	-	2	2	-	-	-	-
	Conspiracy to commit misdemeanor	78	5	2	26	34	-	11	-	-
	Extortion	23	4	-	12	7	-	-	-	-
	Perjury	21	3	1	8	8	1	-	-	-

52

TABLE 26 - Continued

COMMITMENTS OF FELONY DEFENDANTS CONVICTED AND SENTENCED IN CALIFORNIA SUPERIOR COURTS, 1971

By Charged Offense, Convicted Offense and Sentence

Offense		Total	Prison	Youth Authority	Probation		Jail	Fine	CRC	Mental Hygiene
Charged	Convicted				Straight	With jail				
All other felony offenses - Continued . . .										
	Bribery	19	3	-	12	4	-	-	-	-
	Injury to jail or other	24	4	-	7	6	5	2	-	-
	Failure to appear	29	1	-	9	11	7	-	1	-
	Contraband to jail or prison	77	29	2	11	24	6	-	5	-
	Other felony offenses	68	5	1	41	15	3	3	-	-
	Other misdemeanor offenses	133	-	-	85	21	19	8	-	-

53

TABLE 27

COMMITMENTS OF FELONY DEFENDANTS CONVICTED AND SENTENCED IN CALIFORNIA SUPERIOR COURTS, 1971
AFTER RETURN TO CALENDAR OR FOLLOWING REVOCATION OF PROBATION

By Convicted Offense

Offense	Total	Criminal commitment							Civil commitment	
		Prison	Youth Authority	Probation			Jail	Fine	CRC	Mental Hygiene
				Total	Straight	With jail				
Total	3,474	1,010	130	650	457	193	1,444	7	228	5
Willful homicide	36	23	1	8	5	3	4	-	-	-
Manslaughter, vehicle	7	3	-	1	1	-	3	-	-	-
Robbery	159	105	4	31	17	14	12	-	7	-
Assault	192	53	9	26	17	9	94	2	7	1
Burglary	541	176	29	67	42	25	224	-	45	-
Theft, except auto	304	95	11	24	15	9	158	2	14	-
Auto theft	177	52	8	10	7	3	101	-	6	-
Forgery and checks	334	111	5	34	24	10	160	1	23	-
Rape, forcible	39	18	-	12	12	-	8	-	-	1
Other sex offenses	234	51	2	163	150	13	14	1	-	3
Total drug law violations	1,263	266	60	252	152	100	567	-	118	-
Opiates	350	124	5	138	82	56	34	-	49	-
Marijuana	422	56	17	64	41	23	260	-	25	-
Dangerous drugs	437	77	37	42	25	17	247	-	34	-
Other drug law violations	54	9	1	8	4	4	26	-	10	-
Deadly weapons	30	10	-	4	3	1	15	-	1	-
Drunk driving	58	11	-	8	5	3	36	-	3	-
Hit and run	14	3	-	-	-	-	11	-	-	-
Escape	18	5	-	2	1	1	9	-	2	-
Kidnapping	7	4	-	2	2	-	1	-	-	-
Bookmaking	9	-	-	3	2	1	5	1	-	-
All other	52	24	1	3	2	1	22	-	2	-

54

TABLE 28

COMMITMENTS OF FELONY DEFENDANTS CONVICTED AND SENTENCED IN CALIFORNIA SUPERIOR COURTS, 1971
AFTER RETURN TO CALENDAR OR FOLLOWING REVOCATION OF PROBATION

By County

Area and county	Total	Prison	Youth Authority	Probation			Jail	Fine	Civil commitment	
				Total	Straight	With jail			CRC	Mental Hygiene
Total	3,474	1,010	130	650	457	193	1,444	7	228	5
Southern California										
Los Angeles	1,662	307	47	342	249	93	891	5	66	4
State less Los Angeles	1,812	703	83	308	208	100	553	2	162	1
Imperial	12	5	1	2	2	-	4	-	-	-
Orange	165	58	8	48	36	12	38	-	13	-
Riverside	68	21	3	10	8	2	26	-	8	-
San Bernardino	147	49	11	25	23	2	46	-	16	-
San Diego	187	41	4	40	28	12	91	2	8	1
Santa Barbara	37	13	3	3	3	-	14	-	4	-
Ventura	70	14	4	11	8	3	36	-	5	-
San Francisco Bay Area										
Alameda	133	52	1	19	13	6	38	-	23	-
San Francisco	203	138	3	21	5	16	18	-	23	-
Contra Costa	76	39	4	18	8	10	3	-	12	-
Marin	13	4	1	3	1	2	4	-	1	-
Napa	7	1	1	4	4	-	-	-	1	-
San Mateo	90	34	11	4	3	1	36	-	5	-
Santa Clara	136	35	3	15	8	7	79	-	4	-
Solano	22	8	2	3	3	-	7	-	2	-
Sonoma	11	5	-	1	1	-	4	-	1	-
San Joaquin Valley										
Fresno	71	36	9	16	7	9	4	-	6	-
Kern	27	8	1	6	5	1	7	-	5	-
Kings	3	2	-	1	-	1	-	-	-	-
Madera	6	1	1	-	-	-	3	-	1	-
Merced	9	2	1	1	1	-	5	-	-	-
San Joaquin	35	10	3	3	2	1	13	-	6	-
Stanislaus	37	25	-	3	1	2	8	-	1	-
Tulare	20	5	-	8	5	3	4	-	3	-
Sacramento Valley										
Butte	10	7	-	-	-	-	3	-	-	-
Colusa	1	1	-	-	-	-	-	-	-	-
Glenn	2	2	-	-	-	-	-	-	-	-

55

TABLE 28 - Continued

COMMITMENTS OF FELONY DEFENDANTS CONVICTED AND SENTENCED IN CALIFORNIA SUPERIOR COURTS, 1971
AFTER RETURN TO CALENDAR OR FOLLOWING REVOCATION OF PROBATION

By County

Area and county	Total	Prison	Youth Authority	Probation			Jail	Fine	Civil commitment	
				Total	Straight	With jail			CRC	Mental Hygiene
Sacramento Valley - Continued										
Placer	5	4	-	1	-	1	-	-	-	-
Sacramento	71	39	1	15	10	5	11	-	5	-
Shasta	3	2	-	1	1	-	-	-	-	-
Sutter	1	-	-	-	-	-	1	-	-	-
Tehama	7	1	1	1	-	1	4	-	-	-
Yolo	6	5	-	-	-	-	1	-	-	-
Yuba	1	-	-	-	-	-	1	-	-	-
Central Coast										
Monterey	40	8	2	10	10	-	14	-	6	-
San Benito	-	-	-	-	-	-	-	-	-	-
San Luis Obispo	14	6	-	2	2	-	6	-	-	-
Santa Cruz	19	9	-	2	1	1	7	-	1	-
North Coast and Mountain										
Alpine	-	-	-	-	-	-	-	-	-	-
Amador	-	-	-	-	-	-	-	-	-	-
Calaveras	1	1	-	-	-	-	-	-	-	-
Del Norte	2	1	-	1	1	-	-	-	-	-
El Dorado	8	1	-	3	2	1	4	-	-	-
Humboldt	8	2	1	1	1	-	3	-	1	-
Inyo	1	-	-	-	-	-	1	-	-	-
Lake	4	4	-	-	-	-	-	-	-	-
Lassen	1	-	-	1	1	-	-	-	-	-
Mariposa	-	-	-	-	-	-	-	-	-	-
Mendocino	10	2	1	3	2	1	4	-	-	-
Modoc	1	-	1	-	-	-	-	-	-	-
Mono ^a	-	-	-	-	-	-	-	-	-	-
Nevada	1	1	-	-	-	-	-	-	-	-
Plumas	-	-	-	-	-	-	-	-	-	-
Sierra	-	-	-	-	-	-	-	-	-	-
Siskiyou	4	1	-	1	1	-	2	-	-	-
Trinity	1	-	-	-	-	-	1	-	-	-
Tuolumne	5	-	1	1	1	-	2	-	1	-

^aNo data reported for 1971.

56

END