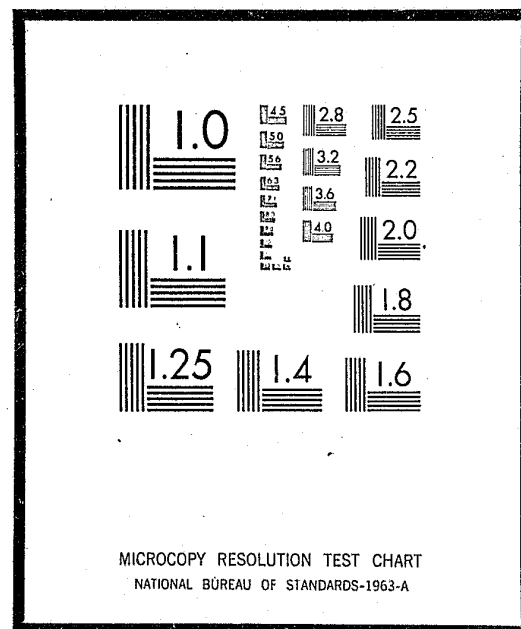


NCJRS

This microfiche was produced from documents received for inclusion in the NCJRS data base. Since NCJRS cannot exercise control over the physical condition of the documents submitted, the individual frame quality will vary. The resolution chart on this frame may be used to evaluate the document quality.



Microfilming procedures used to create this fiche comply with the standards set forth in 41CFR 101-11.504

Points of view or opinions stated in this document are those of the author(s) and do not represent the official position or policies of the U.S. Department of Justice.

U.S. DEPARTMENT OF JUSTICE
LAW ENFORCEMENT ASSISTANCE ADMINISTRATION
NATIONAL CRIMINAL JUSTICE REFERENCE SERVICE
WASHINGTON, D.C. 20531

Date filmed

11/18/75



4
7
El Paso (Tx) - Police Department -
Annual Report, 1973

1973 Police Annual Report

17208

Law Enforcement Code of Ethics

As a Law Enforcement Officer, my fundamental duty is to serve mankind; to safeguard lives and property; to protect the innocent against deception, the weak against oppression or intimidation, and the peaceful against violence or disorder; and to respect the Constitutional rights of all men to liberty, equality and justice.

I will keep my private life unsullied as an example to all; maintain courageous calm in the face of danger, scorn, or ridicule; develop self-restraint; and be constantly mindful of the welfare of others. Honest in thought and deed in both my personal and official life, I will be exemplary in obeying the laws of the land and the regulations of my department. Whatever I see or hear of a confidential nature or that is confided to me in my official capacity will be kept ever secret unless revelation is necessary in the performance of my duty.

I will never act officiously or permit personal feelings, prejudices, animosities or friendships to influence my decisions. With no compromise for crime and with relentless prosecution of criminals, I will enforce the law courteously and appropriately without fear or favor, malice or ill will, never employing unnecessary force or violence and never accepting gratuities.

I recognize the badge of my office as a symbol of public faith, and I accept it as a public trust to be held so long as I am true to the ethics of the police service. I will constantly strive to achieve these objectives and ideals, dedicating myself before God to my chosen profession . . . law enforcement.

TABLE OF CONTENTS

Information on El Paso.....	1
Mayor & Councilmen.....	2
Civil Service Commission.....	3
Chiefs of Police of El Paso.....	4
Robert E. Minnie, Chief of Police.....	5
Assistant Chiefs of Police.....	6
Police Inspectors and Chief's Aide.....	7
Police Captains.....	8
Police & Fire Pension Board.....	10
Uniform Operations Bureau.....	12
Patrol Division.....	13
Foot Patrol Section.....	14
Accident Investigation Section.....	18
Criminal Investigation Bureau.....	28
Crimes Against Persons Division.....	29
Juvenile Division.....	34
Crimes Against Property Division.....	38
1973 Statistics.....	41
Narcotics Division.....	42
Vice Division.....	46
Auto Theft Division.....	48
Forgery-Bunco-Fugitive Division.....	52

Administrative Bureau.....	54
Training Division.....	55
Planning & Research Division.....	63
Community Relations Division.....	65
Inspection & Internal Affairs Division.....	71
Service Bureau.....	73
Identification & Records Activity Report.....	75
Data Processing Section.....	79
Communications Division.....	86
Transportation Division.....	90
Full-time Law Enforcement as of December 31, 1973.....	93
Distribution of Police Personnel.....	94
Distribution of Civilian Personnel.....	95
Minimum Requirements for Patrolman.....	97
Budget Summary.....	100

FRED HERVEY
MAYOR
NESTOR VALENCIA
EXECUTIVE ASSISTANT
ROBERT H. GABEL
ADMINISTRATIVE OFFICER
WILLIAM L. RIEGER, JR.
CITY CLERK



POLICE DEPARTMENT

ALDERMEN
RUBEN SCHAEFFER
MAYOR PRO TEM
DON HENDERSON
E. H. BAEZA
MANNY C. MORALES

The Honorable Fred Hervey, Mayor
Honorable Members, City Council
City of El Paso, Texas

Gentlemen:

Throughout the past year the El Paso Police Department has continued to provide our City with the best law enforcement possible, and with this in mind I herewith submit the Annual Report for 1973.

It has been a year of change and progress for the Department, as the following pages will illustrate, and we look forward to your continuing support and assistance toward our goal of increasing the amount and quality of police service to the citizens of El Paso.

Through the tireless efforts of the men and women of the El Paso Police Department, the City benefits from the services of some of the best trained and most dedicated people in the law enforcement profession who will continue to serve our citizens and will provide protection of life and property to a rapidly increasing City populace.

Respectfully,

Robert E. Minnie
Chief of Police

REM:egg



EL PASO The International City

1973

HONORABLE FRED HERVEY

MAYOR

COUNCILMEN

RUBEN SCHAEFFER, MAYOR PRO TEM

Department of Finance
Airport and Personnel

E. H. BAEZA

Public Works

WILLIAM L. RIEGER

City Clerk

CIVIL SERVICE COMMISSION

DR. EVERETT DILLMAN

Chairman

ROBERT HOY JR.

Vice Chairman

WELLINGTON CHEW

Commissioner

RICHARD SOLANO

Secretary

MUNICIPAL COURT

#1 HONORABLE ARMANDO PERALTA

#2 HONORABLE HERBERT MARSH JR.

#3 HONORABLE GLENN SUTHERLAND

CHIEFS OF POLICE OF THE CITY OF EL PASO

T. C. Lyons.....	Appointed August 16, 1889
William Caples.....	Appointed June 5, 1891
J. B. Payne.....	Appointed November 17, 1893
J. D. Milton.....	Appointed August 10, 1894
E. M. Fink.....	Appointed January 17, 1896
H. R. Hilderbrand.....	Appointed July 16, 1896
C. K. Lockhart.....	Appointed August 10, 1899
James H. White.....	Appointed August 16, 1901
Peyton J. Edwards.....	Appointed April 3, 1903
W. A. Mitchell.....	Appointed November 8, 1906
B. F. Jenkins.....	Appointed January 21, 1909
I. N. Davis.....	Appointed March 14, 1912
Don Johnson.....	Appointed May 4, 1915
B. J. Zabriski.....	Appointed June 6, 1916
C. E. Pollock.....	Appointed October 11, 1917
H. P. Phoenix.....	Appointed January 9, 1919
J. A. Montgomery.....	Appointed July 3, 1919
Peyton J. Edwards.....	Appointed December 2, 1920
B. F. Jenkins.....	Appointed December 7, 1922
J. D. Reeder.....	Appointed May 31, 1923
T. C. Armstrong.....	Appointed October 12, 1925
L. T. Robey.....	Appointed August 1, 1928
Thomas G. Lackland.....	Appointed June 7, 1937
J. W. Fitzgerald.....	Appointed January 24, 1938
L. T. Robey.....	Appointed August 16, 1939
R. D. Drennan.....	Appointed November 1, 1943
L. T. Robey.....	Appointed August 16, 1945
J. W. Fitzgerald.....	Appointed December 12, 1948
W. C. Woolverton.....	Appointed April 14, 1949
W. R. Vinson.....	Appointed May 1, 1951
J. C. Risinger.....	Appointed October 1, 1953
Howard Jones.....	Appointed November 16, 1957
C. J. Horak.....	Appointed May 1, 1959
E. L. Chokiski.....	Appointed November 24, 1965
Robert E. Minnie.....	Appointed February 25, 1971



ROBERT E. MINNIE
CHIEF OF POLICE

ASSISTANT CHIEF OF POLICE
LLOYD C. PETERSON



ASSISTANT CHIEF OF POLICE
HARRIS T. VOGEL





INSPECTOR PETER E. WOLESAGLE
UNIFORM OPERATIONS BUREAU



INSPECTOR ARTURO ISLAS
SERVICE BUREAU



CAPTAIN ALFONSO HIJAR
TRAINING DIVISION



CAPTAIN RONALD O. EDWARDS
TRAFFIC DIVISION



INSPECTOR GEORGE M. WAGON
CRIMINAL INVESTIGATION BUREAU



SERGEANT DENNIS P. WERSICH
ADMINISTRATIVE AIDE



CAPTAIN NICK CHRISTENSEN
IDENTIFICATION & RECORDS DIVISION



CAPTAIN M.V. MENDEZ
CRIMINAL INVESTIGATION BUREAU



CAPTAIN ORBO TRAST
TRANSPORTATION DIVISION



CAPTAIN ARTHUR H. WOODLEY
PATROL DIVISION



CAPTAIN I. ESTORGA
INSPECTION & INTERNAL AFFAIRS DIVISION



CAPTAIN JAMES H. PARKS
PLANNING & RESEARCH DIVISION

FIRE & POLICE PENSION BOARD OF TRUSTEES MEMBERS

Mayor Fred Hervey
Phone: 6060

Victor M. Blanco
2101 N. Oregon
Suite B
El Paso, Texas 79902
Phone: 533-5519

Chief M. L. Coleman, Chairman
El Paso Fire Department
Phone: 3852

Dist Fire Chief P. E. Adams
8612 Hopewell, El Paso, 79925
Phone: 772-4449
Office: 598-9564 (Station #18)

Chief R. E. Minnie
El Paso Police Department
Phone: 4223

Gene Slape
Administrative Chief
El Paso Fire Department
Central Fire Station
Office: 3870

Sgt Robert Barnett, Vice Chairman
El Paso Police Department
Phone: 6046, 6047

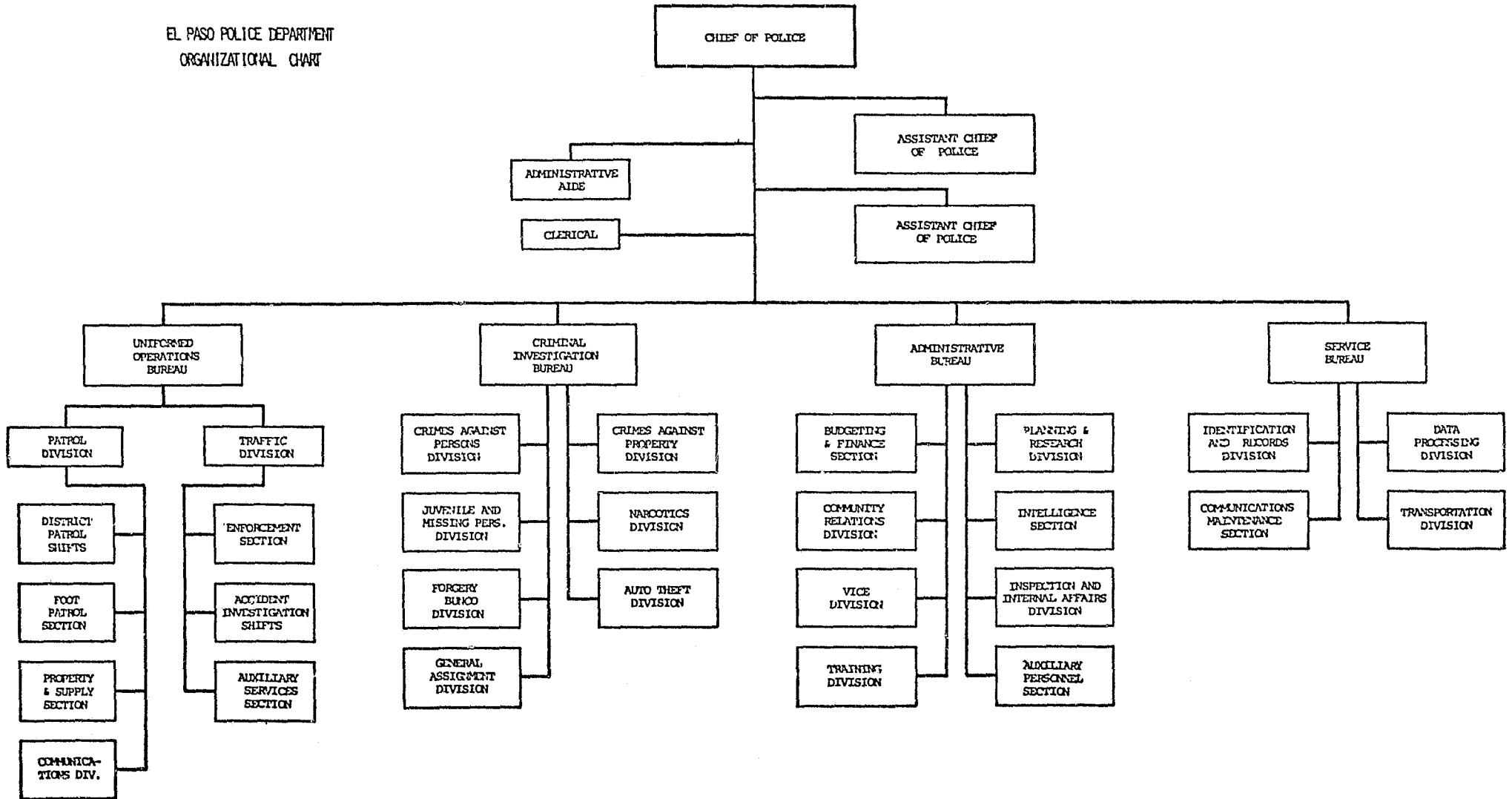
Guillermo Garcia
El Paso Fire Department
3109 Erica, El Paso, 79925
Phone: 591-0739 (Station #18)

Lt William E. Rodriguez
El Paso Police Department
Phone: 6026

Leonard A. Yanez
H.A.P. Mechanical and
Maintenance Corporation
4413 Durazno Avenue
El Paso, Texas, 79905
Phone: 532-6253

Sgt. Luis Barba
El Paso Police Department
Phone: 4235
Home: 566-9710

EL PASO POLICE DEPARTMENT
ORGANIZATIONAL CHART



UNIFORMED

OPERATION

BUREAU

PATROL DIVISION

The Patrol Division, a part of the Uniform Operations Bureau, is the largest division within the Police Department; nearly half of the Department's 519 sworn officers are assigned to Patrol. The division is composed of the following sections in addition to the basic patrol shift officers: Foot Patrol Section, Communications Section, Property and Supply Section and City Jail Booking Officers; approximately thirty percent of the division's officers work out of the Valley Substation at 7958 San Paulo Drive.

Over ninety percent of new officers entering service with the Department begin their police careers in the Patrol Division, and the responsibility for furnishing protection for 360,000 citizens within 158.8 square miles provides basic law enforcement experience second to none. Patrol officers are usually the first to arrive at the scene of any crime or incident requiring police service, and responded to over 125,000 calls for assistance during 1973.

On September 30th, nine Parking Enforcement Aides (Meter Maids) were transferred to Patrol Division from the Department of Traffic and Transportation, and were assigned to the Foot Patrol Section in order to relieve sworn officers from the responsibility of parking meter enforcement in the Downtown area.

FOOT PATROL SECTION

The Foot Patrol Section of the Uniform Operations Bureau, originally organized in November of 1972, utilized off-duty officers on overtime pay until February of 1973. At this time, the Department established a permanent foot beat patrol, with 18 patrolmen and four supervisors.

In August of 1973, expansion funding through the West Texas Council of Governments was obtained, in the amount of \$203,086.00 for equipment, supplies and salaries for 17 additional officers. The present strength of the section stands at 34 foot patrol officers, nine three-wheel motorcycle officers, four Sergeants and one Lieutenant.

The focus of particular concern to this section is the central business district of downtown El Paso, measuring approximately two square miles, which historically has been an area high in person-to-person crime. Due to the density of population, plus the 112,000 daily border crossings and the daily influx of up to 4,000 tourists, the incidence of car burglaries, muggings, thefts-from-the-person, assaults and narcotics traffic was found to be too difficult to control by two or three patrol crews in automobiles. Added to this were the continuing problems posed by shop-lifters, illegal aliens, beggar gangs and street drunks, thus imposing almost impossible conditions on the Department in its effort to provide adequate police services to the central city.

In order to solve some of these problems, the Section is divided into three shifts: 8:00 AM to 4:00 PM, 11:00 AM to 7:00 PM, and 3:00 PM to 11:00 PM. This manning procedure places more officers on the street during the hours when the downtown shopping and business population is the heaviest, and it appears that this system is working very effectively.

The original expectation proposed in the WTCOG grant application was to increase the number of arrests by 10% monthly and to reduce the crime rate by 5% during the first two years; the realization, however, has been much higher.

It is now felt that an overall reduction of better than 20%, over a five-year period, will be accomplished.

A further effect of the program, felt to be one of the highest benefits to the community, is that the presence of uniformed Police Officers on the streets acts as a very real deterrent to criminal activity while helping to increase understanding and cooperation between Police and citizenry.

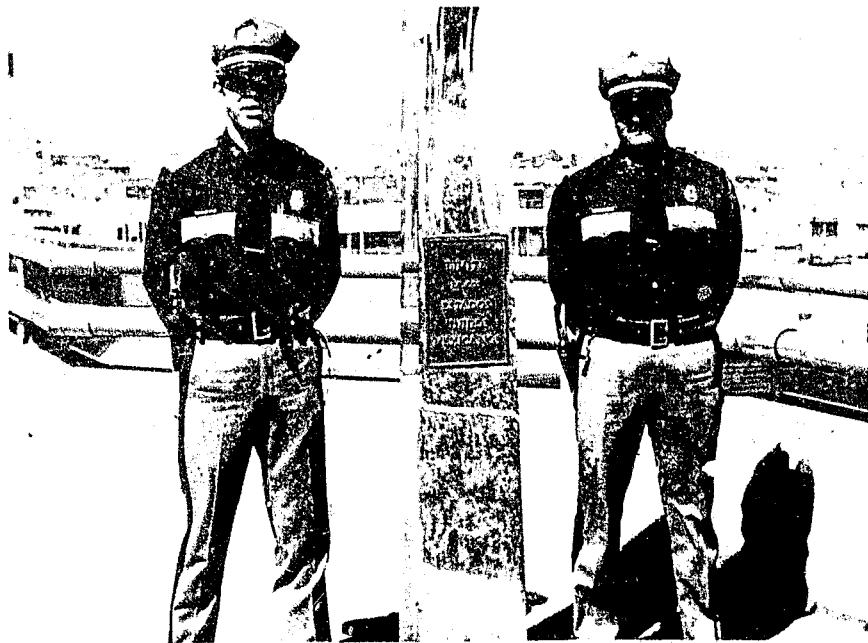
PROPERTY AND SUPPLY SECTION

This Section of the Uniform Operations Bureau is headed by a Sergeant and is staffed by one Patrolman and three Policewomen. The Section is responsible for all property and supply items for the Department.

Approximately 50,000 pieces of evidence are stored and safeguarded for the Police Department, Sheriff's Office, County Attorney and District Attorney by this Section, whose responsibility for any evidence does not terminate until the case is completely disposed of by the Courts. Property officers also testify in court cases where chain of evidence continuity is questioned.

The Supply function of this Section consists of supplying the Department with forms and stationery items, uniforms and other equipment.

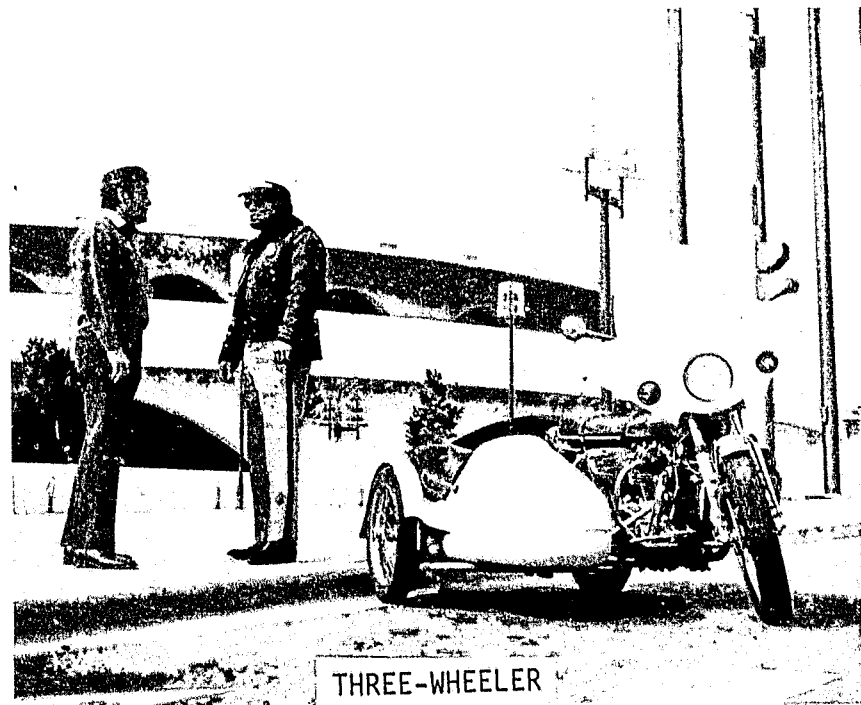
The Section currently is utilizing five rooms in various parts of the City-County Building, but plans have been approved for the relocation of the Property and Supply functions to the Fifth Floor of the old City Jail, early in 1974.



BOUNDARY LINE BETWEEN UNITED STATES AND MEXICO



DOWNTOWN FOOT PATROL



THREE-WHEELER



PASO DEL NORTE BRIDGE FOOT PATROL

ACCIDENT INVESTIGATION SECTION

Twenty-seven officers are assigned to the Traffic Division. Of these 27 officers, 22 are assigned as accident investigators, four are assigned to the Freeway Patrol and one is assigned to Radar. These officers are assigned at the time and in the area of occurrence of accidents. They are trained and equipped to conduct any type of accident investigation, with their training also placing emphasis on courtesy and public relations.

The four officers who are assigned to Freeway Patrol have specially equipped vehicles which allow them to assist disabled vehicles on the freeway. They are able to boost a dead battery, pump gas, or push the vehicle off the freeway. The officers not only assist on the freeway but investigate all traffic mishaps on Interstate 10, and Gateway East, West, North, and South.

The officer assigned to the Radar car works trouble areas on a complaint basis.

In addition to investigating accidents, the officers assist in the youth-rider program, where youths ride in a patrol car for four hours on Friday or Saturday nights as a penalty assessed by Juvenile Court for a traffic violation.

1973 Citations Issued as Follows:

Hazardous Violation Citations	57,689
Non-Hazardous Violation Citations	29,376
Parking Violation Citations	146,750

1973 Accident Data

Total Number of Accidents	13,033
Total Number of Citations Issued in Accident	9,014
Total Number of Injuries	5,324
Total Number of Persons Killed	67

EL PASO ACCIDENT EXPERIENCE 1973

Hour of Day	No. of Accidents	% of Accidents	Day of Week	No. of Accidents	% of Accidents
12-1 AM	432	3.3	Monday	1,735	13.3
1-2	338	2.6	Tuesday	1,745	13.4
2-3	364	2.8	Wednesday	1,806	13.9
3-4	130	.9	Thursday	1,661	12.7
4-5	132	1.0	Friday	2,210	17.0
5-6	110	.8	Saturday	2,320	17.8
6-7	193	1.5	Sunday	<u>1,556</u>	<u>11.9</u>
7-8	633	4.9		13,033	100.0
8-9	565	4.3	<u>Month</u>		
9-10	418	3.2	January	1,168	9.0
10-11	473	3.6	February	1,096	8.4
11-12 N	607	4.7	March	1,160	8.9
12-1 PM	697	5.3	April	1,052	8.1
1-2	659	5.1	May	1,118	8.6
2-3	595	4.7	June	1,038	8.0
3-4	906	7.0	July	1,057	8.1
4-5	1,120	8.6	August	1,093	8.4
5-6	1,062	8.1	September	1,060	8.1
6-7	818	6.3	October	1,112	8.5
7-8	662	5.1	November	1,021	7.8
8-9	509	3.9	December	<u>1,058</u>	<u>8.1</u>
9-10	568	4.4		13,033	100.0
10-11	520	3.9			
11-12 M	522	4.0			
	<u>13,033</u>	<u>100.0</u>			

FOLLOW-UP INVESTIGATIONS ON MAJOR TRAFFIC OFFENSES

Total cases transferred to District and County Courts	891
DWI transfers	793
DUID transfers	4
Negligent Homicide transfers	7
Aggravated Assault with Motor Vehicle transfers	27
Fail to Stop and Render Aid transfers	9
Murder while DWI transfers	9
DWLS transfers	7
Fleeing or Attempting to Elude transfers	36

BREATHALYZER TESTS

Total Breath Tests administered	627
Total Breath Tests refused	174
Percent of Breath Tests offered and refused	22%
Average (mode) blood alcohol reading of Breathalyzer Tests....	0.15 to 0.24

TRAFFIC ANALYST

The Traffic Analyst works within the Traffic Division. In order to plan and effectively evaluate the impact of a traffic enforcement program, it is essential that complete and accurate records be compiled and tabulated. This, and the presentation of these statistics in the form of reports, graphs and charts, is the prime function of the Traffic Analyst. During 1972 and 1973, the Traffic Analyst worked primarily with the Selective Traffic Enforcement Program.

TRAFFIC DIVISION OPERATIONAL JULY, 1973

Total Number of Accidents, July to December 6,401
 Total Number Investigated by Traffic 4,538
 Total Number Investigated by Patrol 1,836
 Traffic Investigated 70.9% of all Accidents since July.

Total Miles Driven by Accident Investigation Cars 262,474

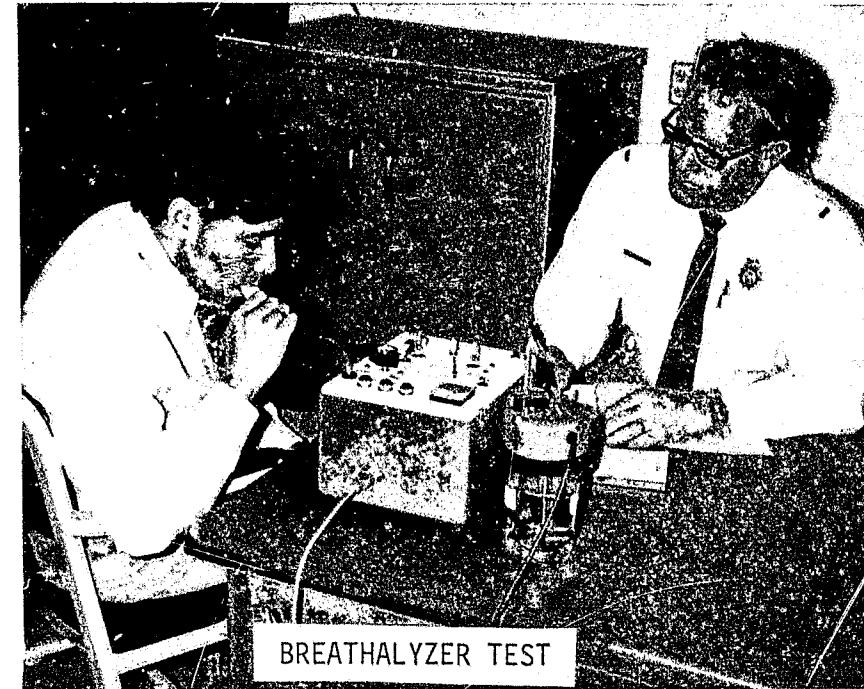
HIT AND RUN DETAIL

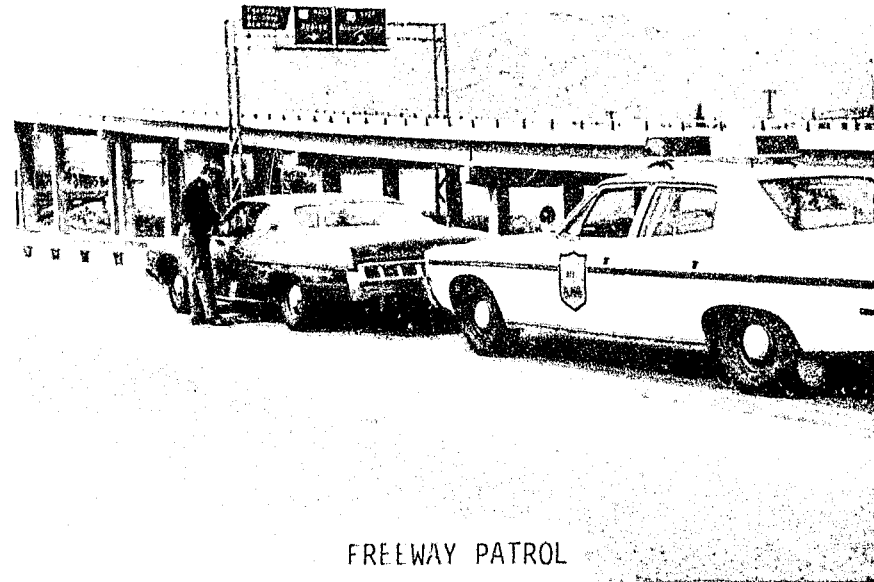
The Hit and Run Detail is comprised of five uniformed patrolmen who function as the follow-up investigative unit of the Traffic Division. In addition to routine hit-and-run investigations, the Detail is responsible for investigation of all traffic-related criminal offenses involving the use of motor vehicles, as well as final case preparation and transfers to the appropriate prosecuting authority.

These officers are subject to call on all major accidents supplementary to normal duty assignments.

SUMMARY OF ACTIVITY - HIT AND RUN DETAIL

Total Hit and Run cases investigated..... 2,325
 Total Hit and Run cases completed..... 1,081
 Percent of cases cleared..... 46%
 Total citations issued..... 726
 Charges filed by Complainants..... 29
 Stolen vehicles involved in Hit and Run cases..... 68
 Proven false stolen vehicle reports made by Hit-and-Run drivers 15





FREELWAY PATROL



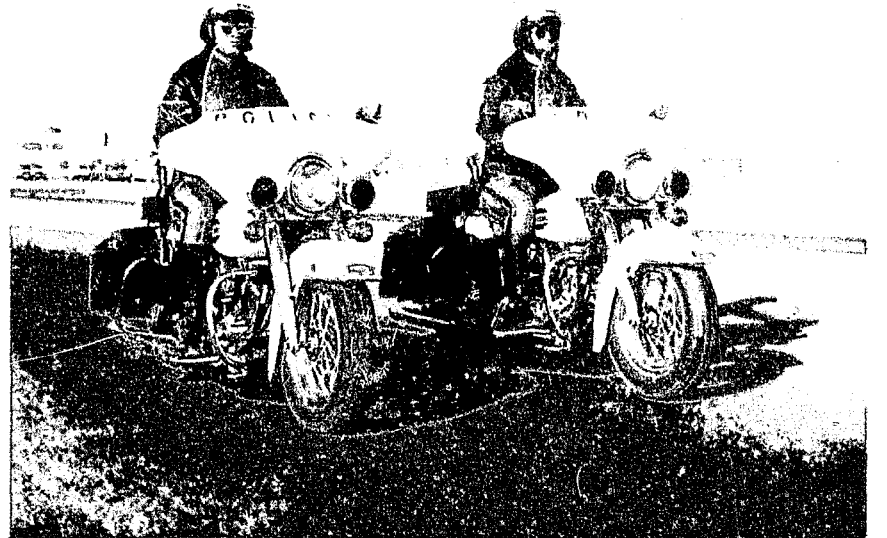
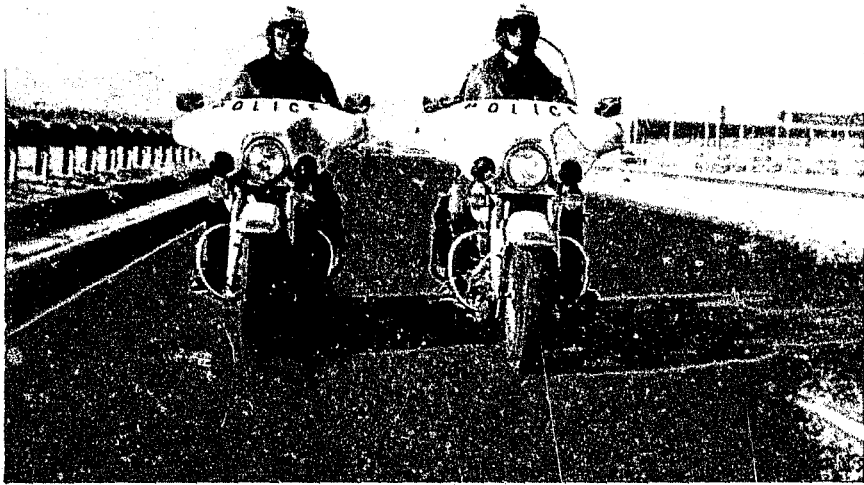
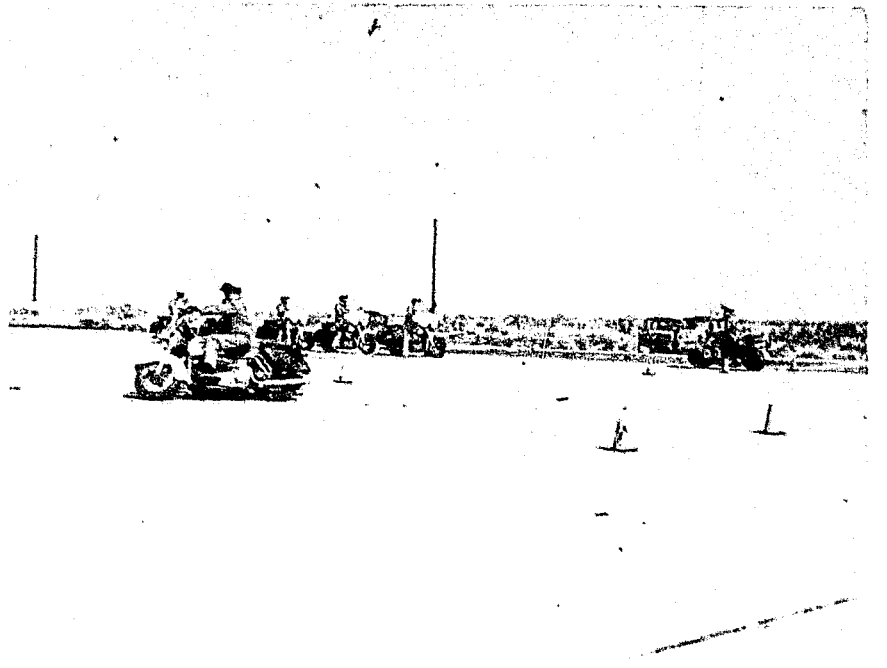
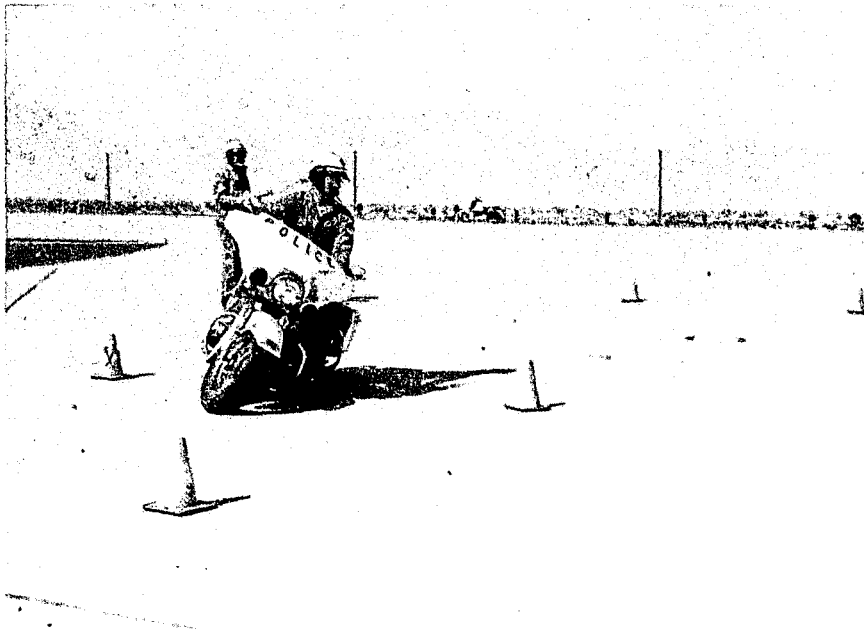
TRAFFIC INVESTIGATION

SOLO MOTORCYCLE SECTION

During the entire year of 1973, all solo motorcycles were totally involved in a federal and state funded program designated the Selective Traffic Enforcement Program (S.T.E.P.). This S.T.E.P. Task Force was strategically assigned at high-motor-vehicle-crash locations. These locations were each comprised of several miles of high-traffic-volume arterials. The primary responsibility of these officers is enforcement of traffic laws with major emphasis on reduction of serious injury and fatal crashes. Present plans call for the continuance of this S.T.E.P. activity through June 30, 1974. This section is made up of twenty-seven motorcycle patrolmen and two sergeants. Planning and evaluation of the task force's activities is carried out by an assistant-chief, and implementation of his plans is directed by a lieutenant-coordinator assigned to the Traffic Division.

Past year records reveal the following citations issued:

Hazardous Violation Citations.....	32,998
Non-Hazardous Violation Citations.....	13,469
Warning Violation Citations.....	2,628
Total Violator Contacts.....	49,095



SAFETY EDUCATION DETAIL

The Safety Education Detail is made up of one Sergeant and five Patrolmen. This Detail is concerned chiefly with maintenance and enforcement of safety in and around the city's schools, and education of children and adults toward that end.

Officers of the Detail presented scheduled pedestrian, bicycle and movie safety programs to the 95 public and parochial elementary schools in El Paso, including "Friendly Stranger", a film on child molestation. They also handle initial investigations in incidents of Rudely Accosting, Indecent Exposure and Child Molesting cases occurring near the schools or along the route home. Safety Detail officers also are responsible for resolving traffic problems around schools and in school zones.

Officers participated in 84 unscheduled safety presentations or projects, cooperating with civic and professional organizations, church groups, YMCA, YWCA, Boy Scouts, Girl Scouts, Brownies, Cub Scouts, 4-H Clubs, Youth Centers and others. They also supervised 14 civilian Crossing Guards employed by the city and trained, equipped and inspected approximately 4,000 students serving as Patrol Boys and Girls during the school year. Detail officers appeared in 40 television programs honoring Patrol Boys of the Week in various schools, and prepared traffic safety spot announcements for radio and television stations.

Safety Detail personnel contributed 186 man-hours supervising "Safety Town" for pre-schoolers during the summer months and assisted in training programs at the Police Academy for officers and recruits.

WARRANT SECTION

Executing traffic warrants is a function of the Traffic Division which is handled by a regular staff of one Sergeant, four Patrolmen, and four civilians. One of the patrolmen is also assigned to act as bailiff for Municipal Court. The four civilians are basically office personnel who process each warrant received from the Traffic Violations Bureau and attempt to contact the violator by telephone. The use of telephone, city and "criss-cross" directories facilitate the locating of residence and/or employment of the violator. If such contact fails or produces a negative response, the warrant is then assigned to the patrolmen for execution. During the year of 1973, a total of 29,928 warrants were received. Of this total, 27,102 were cleared. Field officers served, or attempted to serve, 28,938 of the total.

MONTH	ISSUED WARRANTS	CLEARED WARRANTS	MONTHLY BALANCE	WARRANTS WORKED BY OFFICERS	MILEAGE	TOTAL COLLECTIONS
January	2,184	2,402	20,552	2,778	4,723	\$ 9,927.00
February	2,125	1,974	20,703	2,626	4,731	\$ 8,024.00
March	2,521	2,224	21,000	2,832	5,188	\$ 10,111.50
April	2,169	2,708	20,215	2,658	5,019	\$ 10,459.50
May	2,088	2,349	19,954	2,119	4,283	\$ 10,235.50
June	2,660	2,562	20,052	2,679	4,870	\$ 9,962.50
July	2,814	2,171	20,713	2,565	5,005	\$ 10,955.50
August	2,787	1,786	21,696	1,660	3,093	\$ 9,605.50
September	2,431	1,850	22,277	1,554	2,885	\$ 9,761.50
October	3,397	2,252	23,422	2,691	5,322	\$ 11,779.50
November	2,454	3,025	22,851	2,503	4,805	\$ 10,457.50
December	<u>2,298</u>	<u>1,799</u>	<u>22,914</u>	<u>2,273</u>	<u>3,987</u>	<u>\$ 9,818.51</u>
Totals:	29,928	27,102	22,914	28,938	53,911	\$121,098.01

Monies collected on the warrants totaled \$121,098.01. (Exclusive of the judicially assessed fine of the traffic violations.)

CRIMINAL

INVESTIGATION

BUREAU

CRIMES AGAINST PERSONS DIVISION

The Crimes Against Persons Division is staffed by one Lieutenant, three Sergeants and eleven Detectives. The Division is divided into three Sections: Homicide, Robbery and Sex Crimes.

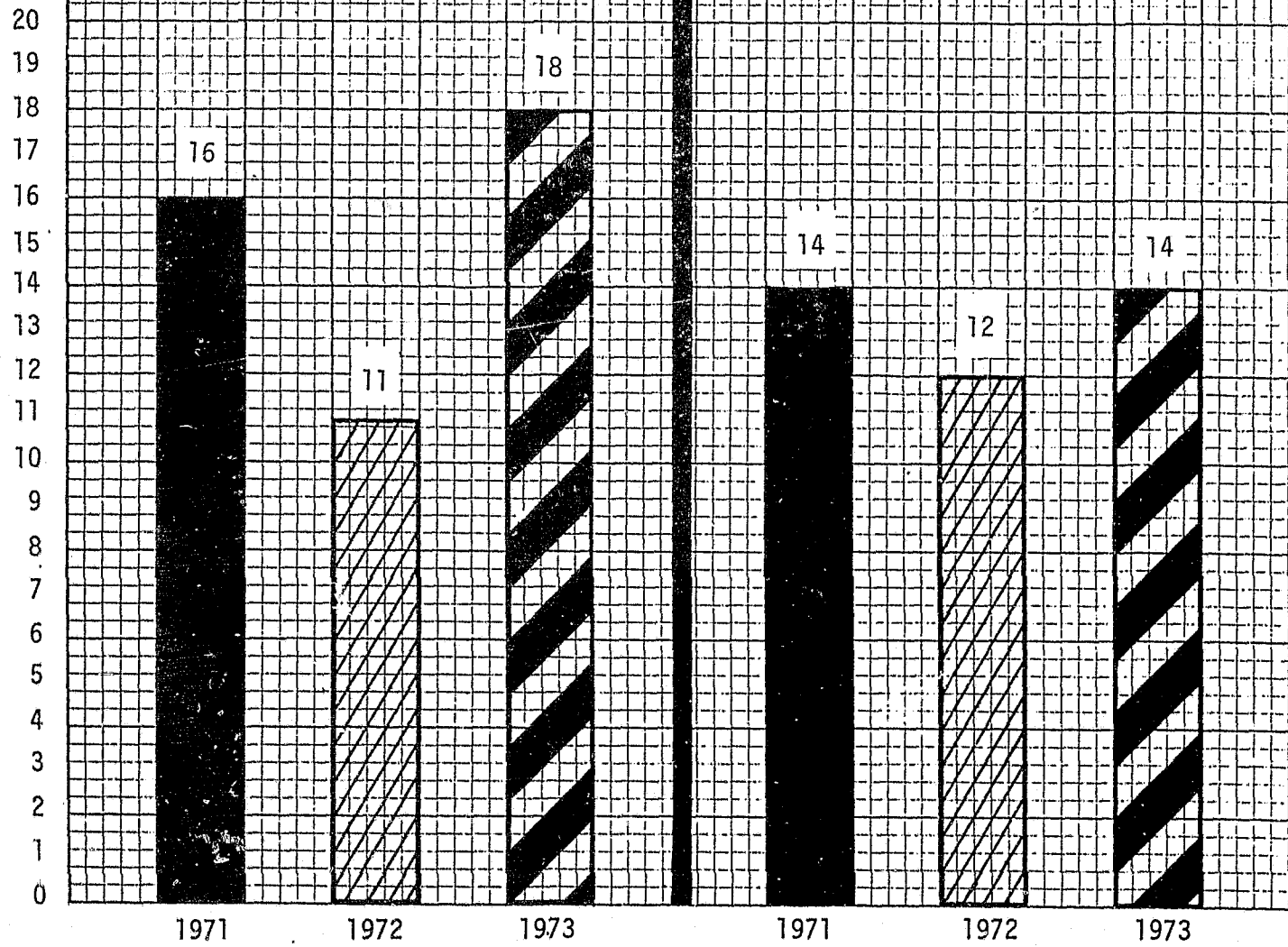
The Homicide Section consists of one Sergeant and six Detectives. This Section is responsible for the investigation of all Murders, all Suicides, Deaths Unattended, Assaults and Carrying of Prohibited Weapons. The Section handled a total of 4,162 cases in 1973, of which Murders and Assaults were the major crimes investigated. This Section investigated 18 Murders in 1973, an increase of 63.6 per cent over 1972. Fourteen of these Murders were cleared by arrest in 1973 and another one was cleared by arrest in early 1974. This Section handled 1,404 Assaults in 1973, an increase of 15 per cent over 1972. A total of 887 of these Assaults were cleared by arrest.

The Robbery Section consists of one Sergeant and two Detectives. This Section is charged with the responsibility of investigation of all Aggravated Robberies, other Robberies, Kidnappings, and Impersonating Police Officers. During 1973, this Section investigated 586 Robberies, of which 217 were cleared by arrest, with a clearance rate of 37 per cent for the year.

The Sex Crimes Section consists of one Sergeant and three Detectives, and is charged with the responsibility of investigating all Rapes, Fondlings, Indecent Exposures and related offenses. During 1973, 1,339 such cases were handled. Fondlings, Exposures and Molestings, mostly involving children, totaled 258 to lead in sex offenses. Rapes and Attempted Rapes totaled 137, an increase of 2.9 per cent over 1972.

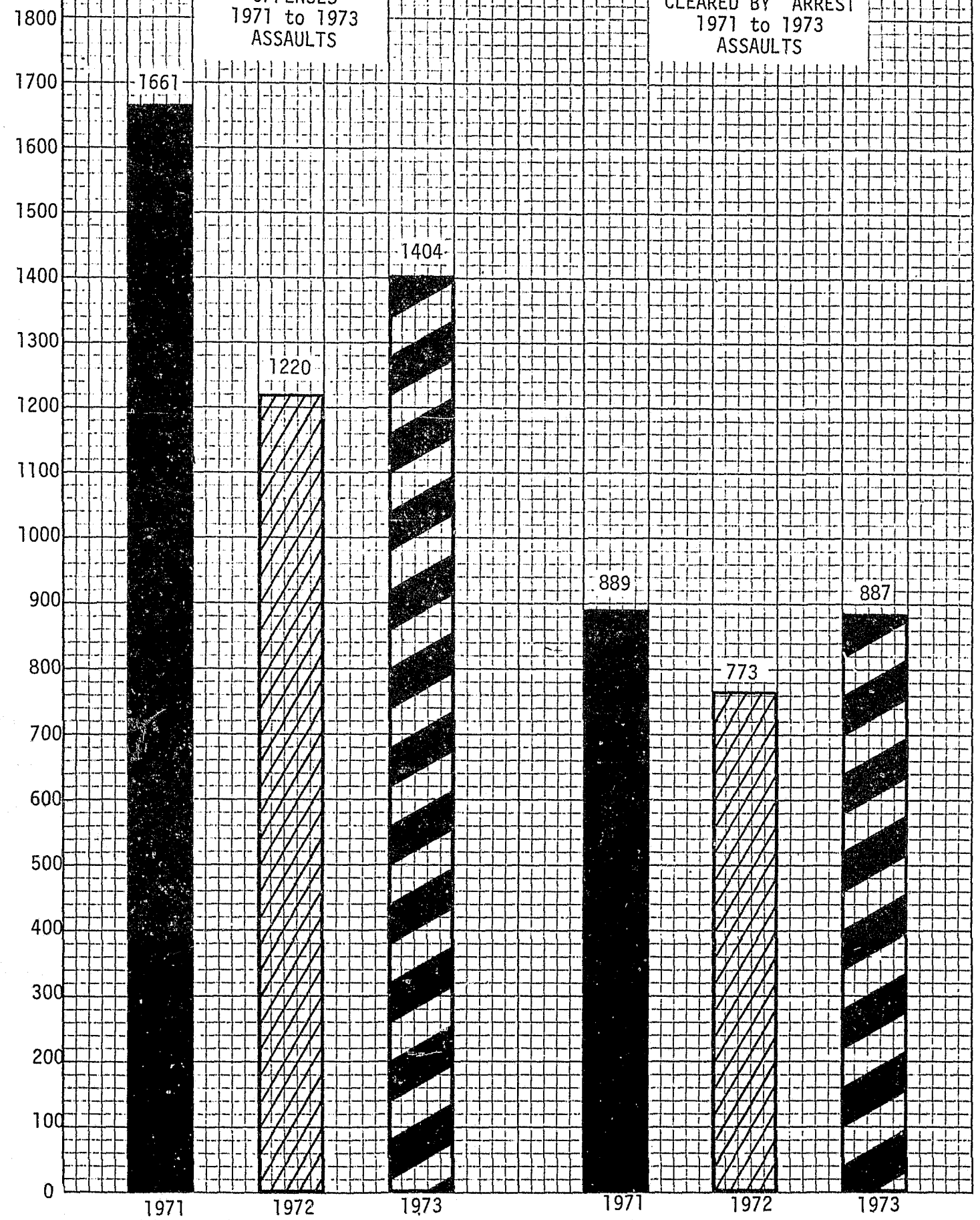
NUMBER OF ACTUAL
OFFENSES
1971 to 1973
MURDERS

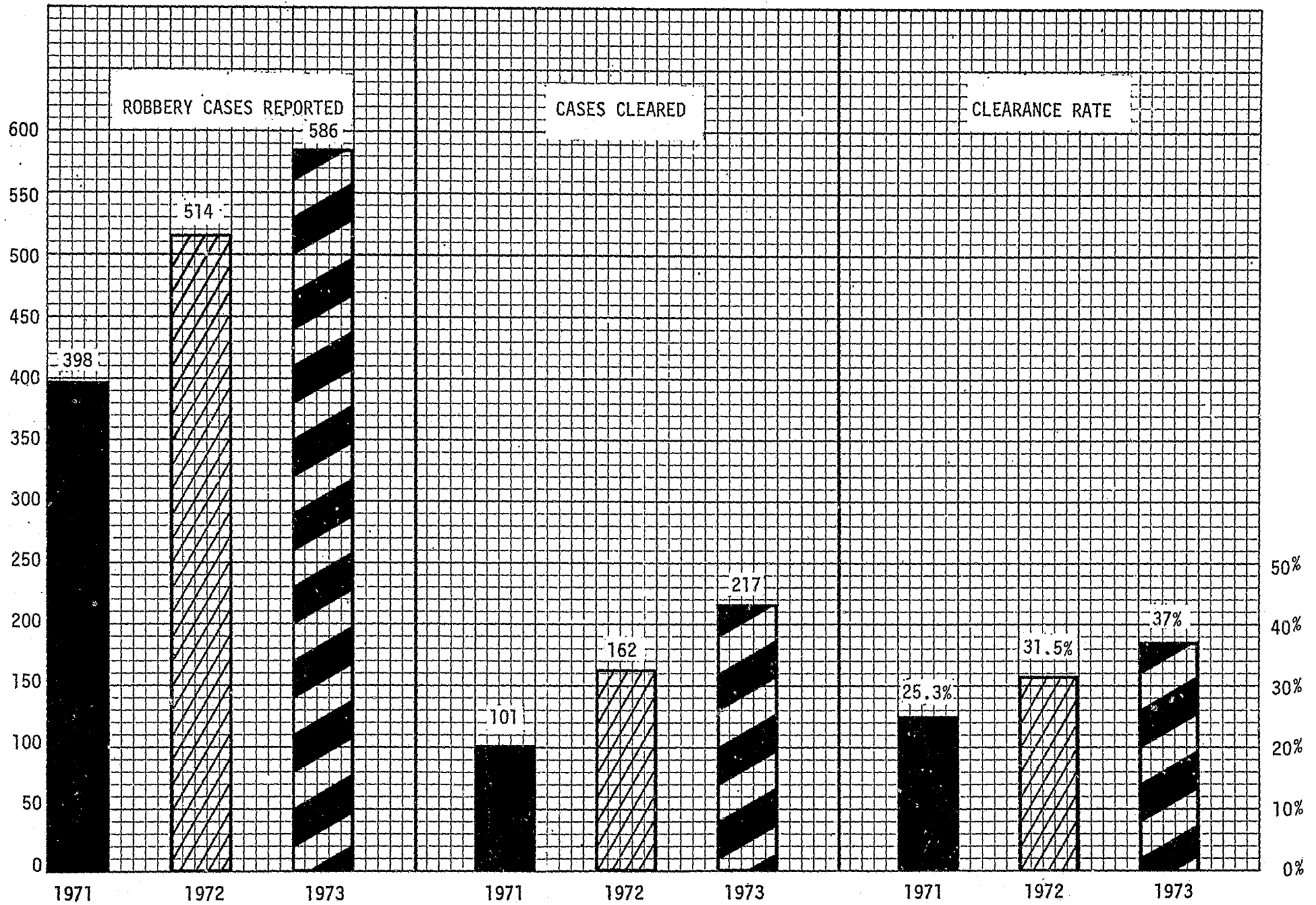
NUMBER OF OFFENSES
CLEARED BY ARREST
1971 to 1973
MURDERS



NUMBER OF ACTUAL
OFFENSES
1971 to 1973
ASSAULTS

NUMBER OF OFFENSES
CLEARED BY ARREST
1971 to 1973
ASSAULTS

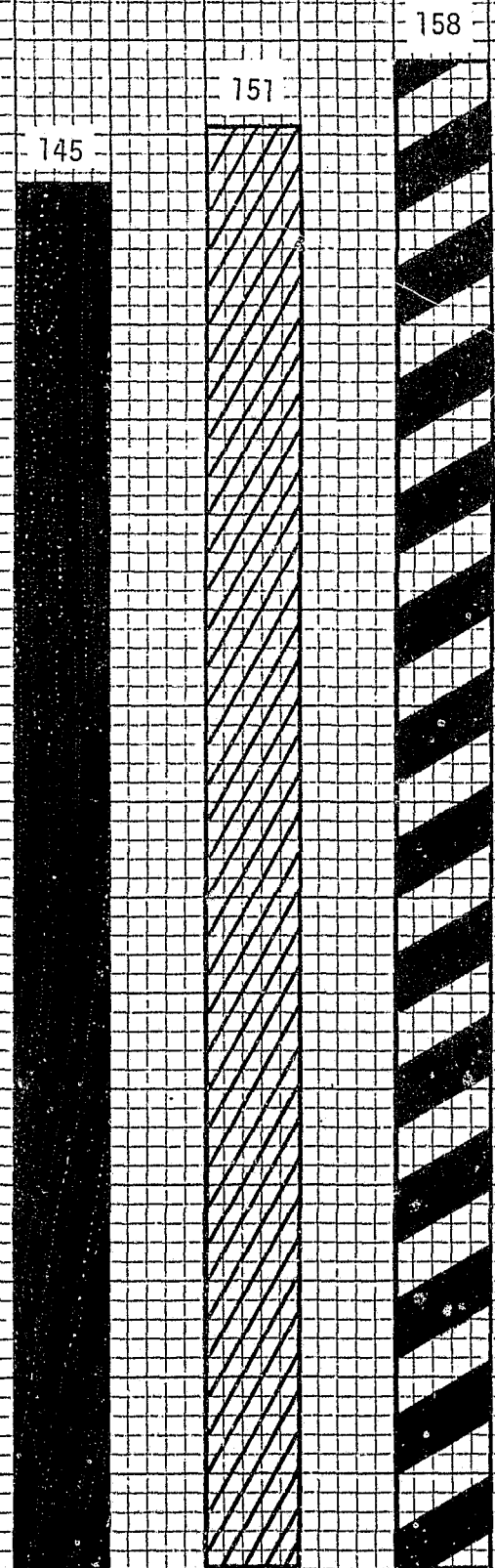
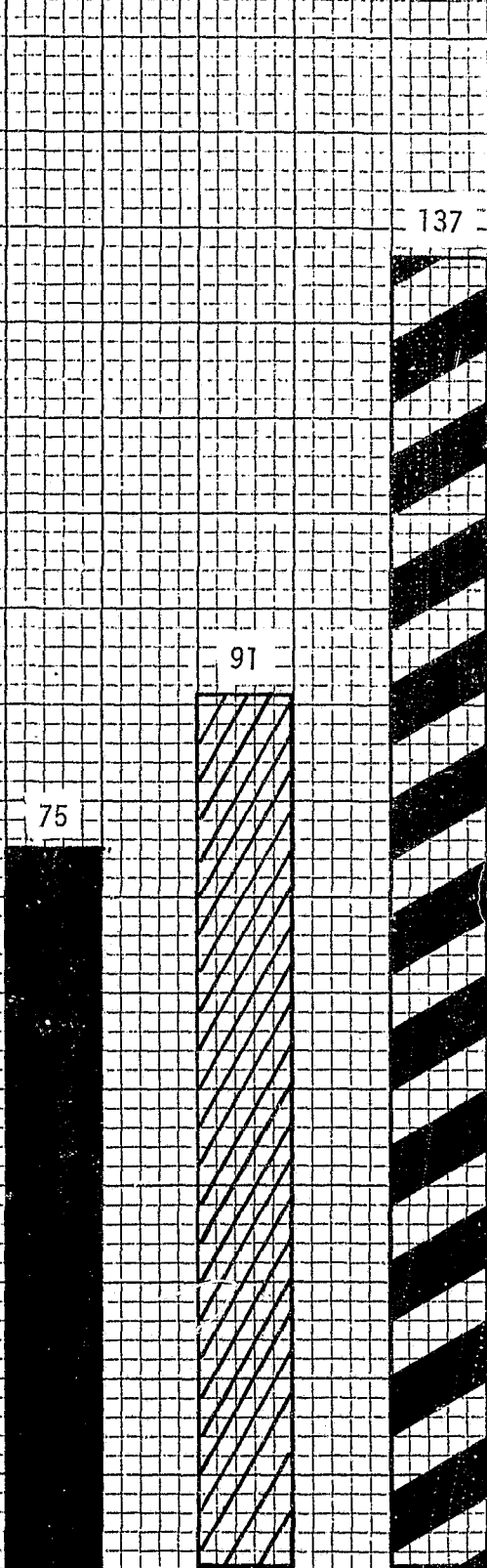




R A P E

I N D E C E N T E X P O S U R E

160
150
140
130
120
110
100
90
80
70
60
50
40
30
20
10



1971

1972

1973

1971

1972

1973

JUVENILE DIVISION

The Juvenile Division, headed by a Sergeant and with five Detectives, is responsible for the investigation of all runaways reports and minor offenses involving juveniles that are not handled by other specialized divisions within the Criminal Investigation Bureau. This division also investigates all missing persons reports, all bicycle theft reports, and most of the vandalism cases. There are 8,881 cases assigned to the Juvenile Division during 1973.

Juvenile Officers spend a great deal of their time in counseling youngsters and their parents in an effort to resolve family problems which prevail during adolescence. The schools are assisted with many problems that cannot be resolved by school authorities. Except for the serious juvenile offender, every effort is made to keep youngsters out of the Juvenile Justice System.

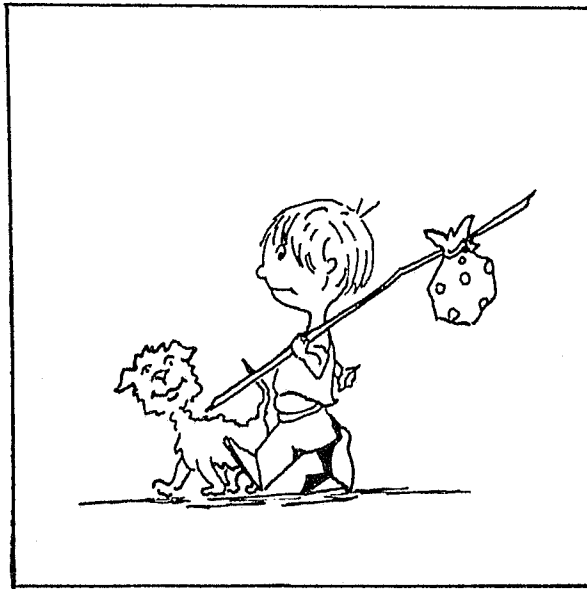
In an effort to educate the public to the problem of Juvenile Delinquency, talks are made to PTA groups, Civic and Service Clubs, Church groups and educational institutions.

On September 1, 1973, a new Family Code became effective. The implementation of many of the provisions of this new law has created problems and much confusion for not only the Police Officer, but for the juvenile probation people and the juvenile courts.

The Family Code now defines a child as any person between the ages of 10 and 17, and establishes two classes of conduct that brings a child within the jurisdiction of the Juvenile Court. Delinquent conduct is that which violates any penal law that is punishable by confinement in jail or prison. Conduct indicating a need for supervision is conduct which violates, on three or more occasions, a penal law or city ordinance punishable by fine only, or

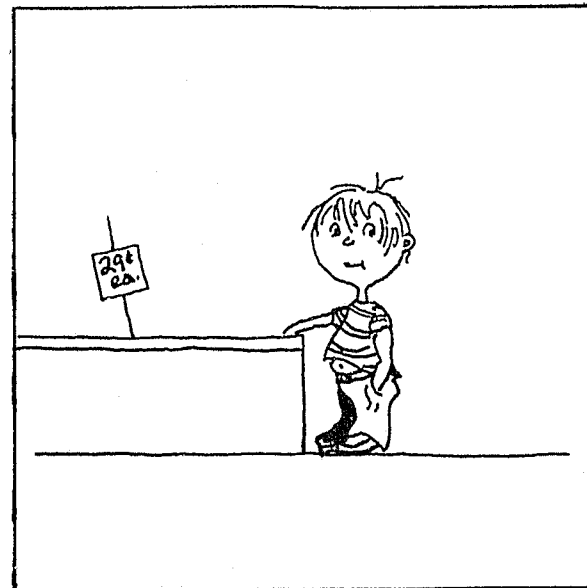
the violation of the school attendance law, or the absence from home without parental consent. The primary thrust of the Family Code is to keep as many youngsters as possible out of the Texas Youth Council facilities, and place more responsibility on local communities for solving the problems presented by the youthful offender.

Very few communities in the State of Texas were prepared for operation under the new Family Code and it is likely to be some time before the operation becomes the simple judicial procedure through which the provisions of this title are executed and enforced as provided for in the new Family Code.



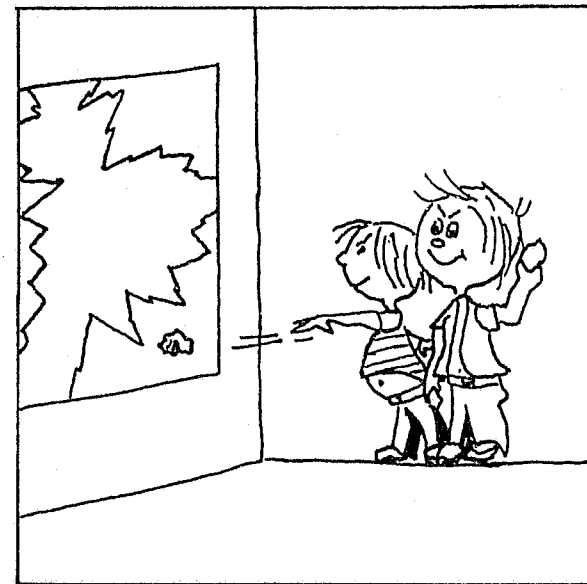
RUNAWAYS

THERE WERE 1915 CHILDREN REPORTED TO THE POLICE DEPARTMENT AS RUNAWAYS DURING 1973. OVER HALF OF THOSE REPORTED WERE FEMALE. THERE WERE 122 MALES AND 165 FEMALES PLACED IN THE DETENTION HOME FOR THIS OFFENSE.



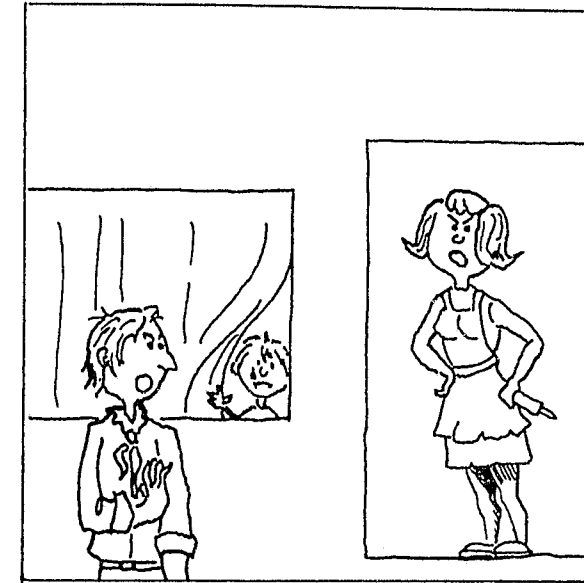
SHOPLIFTING

A TOTAL OF 641 CHILDREN OF JUVENILE COURT AGE WERE ARRESTED FOR SHOPLIFTING IN 1973. WHILE THERE ARE NO RECORDS AVAILABLE, IT IS LIKELY THAT TEN TIMES THIS NUMBER OF YOUNG PEOPLE WERE RESPONSIBLE FOR THE THEFT OF SOME ARTICLE FROM A STORE. DISCOUNT STORES HAVE BECOME A FAVORITE TARGET FOR SHOPLIFTERS.



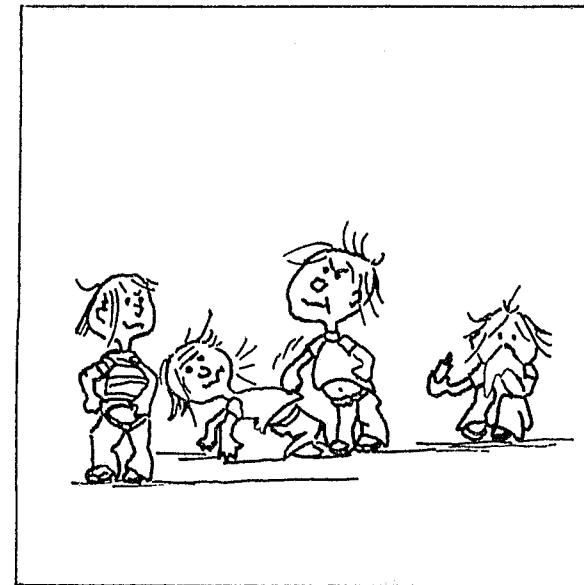
VANDALISM

VANDALISM CONTINUES TO PLAGUE OUR CITY. THERE WERE 3003 CASES OF VANDALISM REPORTED TO THE JUVENILE DIVISION THIS PAST YEAR. THERE WERE ONLY 88 BOYS AND 5 GIRLS ARRESTED FOR THIS OFFENSE IN 1973. THE CLEARANCE RATE FOR VANDALISM IS VERY SMALL, PRIMARILY BECAUSE PEOPLE WHO OBSERVE THESE ACTS OF DESTRUCTION REFUSE TO BECOME INVOLVED.



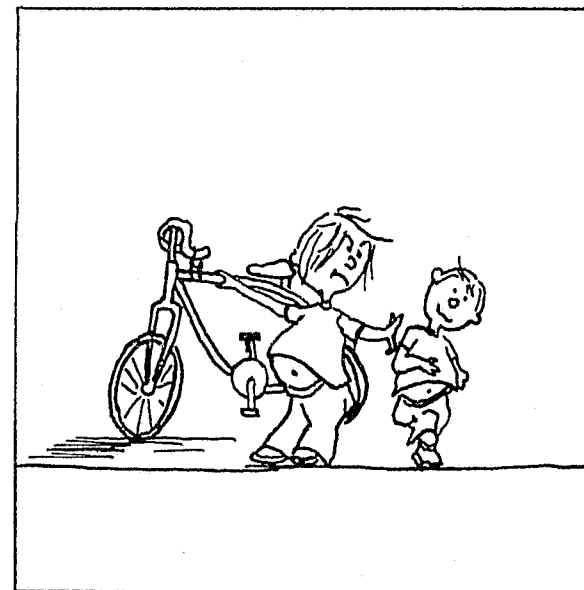
MISSING PERSONS

912 ADULTS WERE REPORTED AS MISSING PERSONS IN 1973. MOST PERSONS REPORTED MISSING LEAVE HOME AS THE RESULT OF A FAMILY FIGHT, AND MOST OF THEM RETURN HOME WITHIN THREE DAYS.



MISCELLANEOUS OFFENSES

658 MISCELLANEOUS OFFENSES WERE HANDLED BY THE JUVENILE DIVISION. THESE OFFENSES INCLUDE GLUE AND PAINT SNIFFING, DRUNK, TRUANCY, FIGHTING, AND CURFEW VIOLATIONS. MOST OF THESE OFFENSES ARE HANDLED BY THE POLICE OFFICER WITHOUT REFERRAL TO THE JUVENILE COURT.



BICYCLE THEFTS

THE THEFT OF BICYCLES CONTINUES TO BE A MAJOR PROBLEM IN EL PASO. LAST YEAR THERE WERE 1752 BIKES REPORTED STOLEN, MOST OF THEM THE TEN-SPEED BIKE THAT HAS BECOME SO POPULAR. DURING THE LAST FEW MONTHS OF 1973 THERE WERE MANY CASES REPORTED WHERE OLDER BOYS RIDING AROUND IN CARS WOULD APPROACH YOUNGER CHILDREN WHO WERE RIDING TEN-SPEED BIKES, AND TAKE THE BIKE AWAY WITH THE THREAT OF BODILY INJURY IF THERE WAS ANY RESISTANCE ON THE PART OF THE YOUNGSTER.

CRIMES AGAINST PROPERTY

The Burglary Division consists of one Lieutenant, three Sergeants, twenty-three Detectives and two Clerk-Typists. This Division is responsible for the investigation of all residential, business, vehicle and coin-operated machine burglaries, all thefts, (except auto theft and theft of auto parts), and all willful destruction of property cases.

For operational purposes, the Division is divided into the Pawnshop, Burglary Prevention, Tactical and Investigations Sections.

PAWNSHOP SECTION

This section consists of one Detective and one Clerk-Typist (civilian). This section is responsible for checking the operations of the 21 local pawnshops and maintaining records of all items pawned. This section also maintains files on all property reported stolen. During 1973, this section was able to identify and recover \$8,000.00 worth of stolen property that had been pawned, and assisted in identifying stolen property recovered elsewhere.

BURGLARY PREVENTION SECTION

This section consists of one Detective assigned full-time, plus assistance from other members of the Division when the work load permits. The detective assigned is responsible for all burglary prevention education as well as the administration of all burglary prevention programs now in operation.

OPERATION IDENTIFICATION--This program was initiated in October, 1971, and involves the marking of valuable and removeable property with the owner's driver's license number. We now have a total of 124 electric engravers located at the 22 local fire stations to be used in marking. Approximately 6,500 home owners have joined this program. Since 1972, a total of 11 individuals have been arrested and charged as a result of Police Officers having been able to identify property in their possession as being stolen. To date, we are maintaining a 75% recovery rate on stolen property that has been marked.

BUSINESS BURGLARY PREVENTION--This program was started in June, 1973, and involves the education of business owners on burglary prevention and also the physical inspection of the premises for security weaknesses, and recommendations made on methods of correction. Due to the lack of manpower, inspections are conducted only on request. A total of 37 inspections were conducted during the year and none was burglarized.

RESIDENTIAL BURGLARY PREVENTION--This program was also initiated during June, 1973. A total of 38 meetings were conducted on home security as well as neighborhood awareness. Home owners requesting home security lectures were asked to invite all adults living in the same block and the meeting was held in one of the homes. We feel that in this manner the neighbors can get acquainted and at the same time get educated on preventive measures. A total of 1,163 individual home owners attended these meetings.

VISUAL AIDS--During 1973, this section acquired films on residential and business burglary prevention. A lock display and several burglar alarms were also acquired.

TACTICAL SECTION

This section consists of one Sergeant and five Detectives. Their primary duty is the gathering of information on all known and suspected burglars. A file is maintained on names, addresses, vehicle license numbers, areas, method of operations, and other pertinent information. All information is passed on to the Patrol Division.

CASE INVESTIGATION SECTION

This section consists of two Sergeants, sixteen Detectives and one Clerk. The primary responsibility of this section is the follow-up investigation of all business and residential burglaries, and all other cases containing workable information. All minor cases are assigned to one detective working in the office. This detective also takes all witness statements, thus allowing the field investigator more time to work on major cases.

BURGLARY BUREAU MONTHLY AUTO-BUSINESS-RESIDENCE BURGLARY REPORT

BURGLARY OF AUTO

YEAR	JAN	FEB	MAR	APR	MAY	JUN	JUL	AUG	SEP	OCT	NOV	DEC	TOTAL	increase decrease	%
1970	313	407	507	348	251	320	310	291	325	362	451	424	4309	+752	+ 17%
1971	433	398	364	328	340	361	373	408	338	372	390	403	4508	+199	+ 5%
1972	412	457	348	287	314	311	265	311	306	319	287	271	3888	-620	- 14%
1973	167	175	168	153	131	121	243	138	129	155	161	177	1745	-2133	- 54%

BURGLARY OF BUSINESS

YEAR	JAN	FEB	MAR	APR	MAY	JUN	JUL	AUG	SEP	OCT	NOV	DEC	TOTAL	increase decrease	%
1970	130	131	198	171	151	165	158	135	139	171	192	167	1908	+320	+ 17%
1971	193	177	263	230	300	248	279	230	165	155	169	222	2630	+722	+ 37%
1972	191	215	189	127	164	132	154	108	142	115	111	130	1778	-853	- 33%
1973	133	107	159	210	160	148	182	167	165	176	175	177	1959	+181	+ 10%

BURGLARY OF RESIDENCE

YEAR	JAN	FEB	MAR	APR	MAY	JUN	JUL	AUG	SEP	OCT	NOV	DEC	TOTAL	increase decrease	%
1970	198	201	216	224	253	193	307	284	223	244	272	304	2919	+453	+ 16%
1971	271	297	386	416	501	492	544	419	433	367	463	402	4991	+2072	+ 70%
1972	372	295	268	255	278	283	273	249	236	247	218	242	3216	-1775	- 35%
1973	232	274	235	250	270	267	361	411	332	322	344	330	3628	+412	+ 12%

1973 STATISTICS

<u>OFFENSE</u>	<u>1972</u>	<u>1973</u>	<u>COMPARISON</u>	<u>PERCENTAGE</u>
B & E MOTOR VEHICLE	3888	1745	-2143	55% decrease
BURGLARY OF BUSINESS	1778	1959	+ 181	10% increase
BURGLARY OF RESIDENCE	3216	3628	+ 412	12% increase
MISC. THEFT	2338	2916	+ 578	25% increase
B & E COIN MACHINES	78	102	+ 24	26% increase
SHOPLIFTING	1452	1331	- 121	9% decrease
PICKPOCKETS	370	166	- 204	56% decrease
PURSE SNATCHING	108	98	- 10	10% decrease
<u>TOTAL CASES</u>	13,228	11,945	-1283	<u>10% TOTAL DECREASE</u>

	<u>1972 PERCENTAGE</u>		<u>1973 PERCENTAGE</u>	
<u>BURGLARY TOTAL (BASE)</u>	4994	100%	5587	100%
Forcible Entry	3073	62%	3694	66%
Unlawful Entry (no force)	1418	28%	1353	24%
Attempted Forcible Entry	503	10%	540	10%

CASES CLEARED BY ARREST

<u>OFFENSE</u>	<u>TOTAL CASES</u>		<u>CASES CLEARED</u>		<u>PERCENTAGE</u>	
	<u>1972</u>	<u>1973</u>	<u>1972</u>	<u>1973</u>	<u>1972</u>	<u>1973</u>
BURGLARY	4994	5587	719	764	14.4%	13.6%
THEFT OVER \$50	2067	1960	204	184	9.9%	9.3%
THEFT UNDER \$50	8875	8493	1838	2185	20.7%	25.7%

SUMMARY

Although the burglary rate (business and residential) increased 11% over 1972, it is still 23% below the 1971 total. The case load has also been reduced by 30% since 1971. The case load decrease has enabled the investigators to spend more time on individual cases, and this has resulted in an increase of cases cleared from 6.3% in 1971 to 13.6% in 1973.

NARCOTIC DIVISION

The Narcotic Division consists of one (1) Lieutenant, one (1) Sergeant, five (5) Detectives and one (1) Clerk Typist. This Division is responsible for detection and arrest of persons who illegally use, sell, distribute, or manufacture narcotics and dangerous drugs within its community, regardless of the sophistication of the operation.

Narcotic traffic was on the upward trend during the year 1973. A total of 1,339 narcotic arrests were made, an increase of 5% over 1972.

TOTAL ARRESTS 1964 - 1973

1964	95
1965	81
1966	51
1967	73
1968	204
1969	341
1970	884
1971	1183
1972	1271
1973	1339 (5% increase over 1972)

VIOLATIONS

	<u>1973</u>	<u>1972</u>
Sale of Narcotics	80	21
Possession of Narcotics	108	21
Possession of Narcotic Paraphernalia	157	107
Sale and Possession of Dangerous Drugs	78	143
Possession of Marihuana	852	936
Narcotic Prescriptions and Forgeries	6	1
Others	54	42

RACE OF OFFENDERS

Anglo	857	(710 males and 147 females)
Negro	87	(68 males and 19 females)
Mexican American	395	(355 males and 40 females)

AGE OF OFFENDERS

	<u>1973</u>	<u>1972</u>
16 and Under	161	166
17 to 20	624	673
21 to 25	370	318
26 to 30	106	70
31 to 40	54	29
41 and Up	24	15

RESIDENCE OF OFFENDERS

	<u>1973</u>	<u>1972</u>
LOCAL	1049	1059
OUT OF TOWN	164	136
MILITARY	126	76

PROFITS IN SALE OF:

LYSERGIC ACID DIETHYLAMIDE
(L S D)

1 oz. = 280,000 doses
 80 - 100 micrograms = 1 dose
 1000 micrograms = 1 milligram
 300 milligrams = 1 aspirin
 1 tab. = \$4.00

METHAMPHETAMINE
(METH, CRANK, SPEED, CRYSTAL)

1 gram (spoon) 5 - 7 shots
 \$25.00 gram
 7/10 gram = 1 bindle \$10.00
 1 oz. = \$200.00 - \$240.00
 1 lb. = \$3,520.00

MARIJUANA

1 Kilo = 2.2 lbs.
 1 Kilo = 32 oz. or lids
 1 Lid = 15 - 30 cigarets (joints)
 1 Kilo = 480 - 960 cigarets (joints)

1 Kilo = \$15.00 - \$35.00
 In Mazatlan, Sinaloa, Mexico
 1 Kilo = \$50.00 - \$75.00
 At Border, Mexican side
 1 Kilo = \$115.00 - \$125.00
 At Border, U. S. side
 1 Lid = \$5.00 - \$10.00

COCAINE

1 Bundle = \$ 10.00
1 ounce = \$ 950.00
1 Kilo = \$30,400.00
1 Kilo = \$40,000.00 - \$45,000.00 (retail)

PROFITS IN SALE OF HEROIN (MEXICAN HEROIN)

One ounce of heroin bought from a clandestine laboratory in Mexico, (80%-85% pure), will sell for \$75.00--\$100.00.

One ounce brought to the border will be cut with milk sugar "Lactose" and made into two ounces, (40%-45% pure). The two ounces will sell at the border for \$400.00 each or \$800.00 for both.

Two ounces are crossed into the United States, and cut again to make four ounces, (20% pure). This heroin will now sell for \$800.00 an ounce, or \$3,200.00 for the four ounces. This is done by the "IMPORTER", (the one that imports the heroin from Mexico into the United States).

Four ounces are now sold to the "WHOLESALER" in the United States, who cuts them again, and makes eight ounces, (10% pure). Heroin that is 10% pure is too strong for the street addicts. The "WHOLESALER" cuts each ounce into grams or "spoons" (25 grams or spoons in one ounce--addict measurement). Each gram sells for \$35.00. Eight ounces cut into grams, will sell for \$7,000.00. The pusher or dealer buys by the spoon or gram. Eight ounces = two hundred grams or spoons.

Two hundred grams are cut again by the pusher (3%-5% pure), and made into bindles or caps. There are seventeen bindles, caps, or hits to a gram. Four hundred grams = 6,800.00 bindles at \$4.00 each = \$27,200.00. FROM ONE OUNCE, YOU NOW HAVE SIXTEEN OUNCES. FROM \$75.00 INVESTMENT, YOU NOW HAVE \$27,200.00.

NOTE: European Heroin is better quality. It can be cut five or even six times. From one ounce you can make twenty ounces. From \$75.00 investment, you can get \$32,000.00. One ounce of heroin bought in the Orient, will cost approximately \$75.00 in black market.

ARREST BY THE MONTH 1973

JANUARY	104
FEBRUARY	149
MARCH	151
APRIL	102
MAY	100
JUNE	114
JULY	117
AUGUST	109
SEPTEMBER	112
OCTOBER	106
NOVEMBER	88
DECEMBER	87

TOTAL 1339

ARREST NARCOTICS CASES

CASES TO DPS LABORATORY 175

NARCOTICS DESTROYED FOR
REASON OF DISMISSAL OR
GUILTY PLEAS 188

ABANDONED NARCOTICS DISPOSITION

ALL ABANDONED NARCOTICS DESTROYED
ACCORDING TO LAW.

NARCOTICS CONFISCATED 1973

<u>ABANDONED</u>	<u>VALUE</u>
MARIJUANA 15 lbs. 10 oz. 12 gms.	\$855.
ASSORTED PILLS & CAPSULES (463)	463.
ASSORTED NEEDLES & SYRINGES (53)	100.
HEROIN (19) BINDLES	190.
WATER PIPES (4)	100.
ASSORTED PARAPHERNALIA	100.
TOTAL	\$1718.

BY ARREST

MARIJUANA 1286 lbs. 11 oz. 11 gms.	\$64,313.
HEROIN 1 lb. 1 oz. (Street Value)	150,000.
COCAINE 1 lb. 10 oz. (Street Value)	28,000.
PILLS & CAPSULES (3089)	3,089.
CAPSULES OF LSD (281)	2,810.
ASSORTED NEEDLES & SYRINGES	1,000.
TOTAL	\$249,212.

EL PASO POLICE DEPARTMENT NARCOTICS DIVISION

1-LIEUTENANT
1-SERGEANT
5-DETECTIVES
1-CLERK(Civilian)

VICE DIVISION

The Vice Division consists of one (1) Lieutenant, one (1) Sergeant and five (5) Detectives. This Division is responsible for the enforcement of all laws pertaining to, and the investigation of, violations in the categories of gambling, prostitution, lewd and obscene acts, liquor violations and bookmaking.

In addition, the Vice Division is responsible for the inspection of all Bars, Pool Halls and Private Clubs. The Division checks and investigates the showing of alleged lewd or obscene movies, both walk-in and drive-in theaters.

Since the reorganization of the Vice Division, arrests have increased. These arrests were for gambling, prostitution, health ordinances violations, liquor violations and showing obscene movies.

EL PASO POLICE DEPARTMENT
VICE SQUAD
ANNUAL REPORT

JANUARY 1, 1973 thru DECEMBER 31, 1973

CHARGE	AGE GROUP						RACE & SEX						DISPOSITION					RESIDENCE				TOTAL	
	16	17	21	26	31	41	ANGLO		BLACK		MEX		DA	CA	MUN CT	IMM	DET HME	L O C A L	O U T O F T W N	M I L	A L I E N		
	& UND	TO 20	TO 25	TO 30	TO 40	& OVR	M	F	M	F	M	F											
GAMING		1	2	10	12	26	4		28		19				51			51					51
PROSTITUTION	18	22	9	4	8	4				6		59			26	39		6			59		65
DRUNK	1	8	10	1	13	9	8	3			28	3			41		1	39	1	2			42
LIQUOR VIOLATIONS	3	2				1	2				4				2		4	6					6
PORNOGRAPHY		1	1		7		8	1						9				9					9
LEWD ACTS OR PLAYS					1			1							1			1					1
ILLEGAL ALIENS	15	11	3	1	1						2	29			4	27					31		31
DISORDERLY CONDUCT		1	2			1		1			3				4			3	1				4
HEALTH VIOLATIONS		6	6	7		1					20				17	3		1			19		20
OTHER	12	20	19	11	12	11	25	12	13	13	11	11	70	7	6		2	42	15	15	13		85
TOTAL	49	72	52	34	54	53	47	18	41	19	67	122	70	16	152	69	7	158	17	17	122		314

HOURS SPENT ON PORNOGRAPHY CASES 480
HOURS SPENT ON BAR INSPECTIONS 540

AUTO THEFT DIVISION

The Auto Theft Division consists of one Lieutenant, one Sergeant, nine Detectives and one Clerk. One of the nine Detectives in the Auto Theft Division works out of the Juarez Liaison Section. The Abandoned Auto Section also works out of this Division and their personnel consists of one Detective, one Patrolman, one Wrecker-driver and one Clerk.

The Auto Theft Division is responsible for the investigation of all Theft of Vehicles, Theft By Bailee, Theft of Auto Parts, Attempt to Locate for Owners, Theft of License Plates, Fraudulent Motor Vehicle Titles, and Manufacturer's Numbers.

During the year 1973, the Auto Theft Division investigated 2,945 Auto Theft reports. Follow-up investigations revealed that 353 of the 2,945 reports were unfounded Auto Theft cases, thus revising the amount of actual Auto Theft cases to 2,592. Of the 2,592 cases, the Auto Theft Division cleared 153 cases or 6 per cent in 1973 as compared to 3.4 per cent in 1972. There was an increase of + .5 per cent in 1973 compared to + 20.7 per cent in 1972 or 13 more vehicles stolen in 1973 than in 1972.

The Auto Theft Division made a total of 379 arrests in 1973 and of this total, 237 arrests were for Auto Thefts.

The total dollar value of the 2,592 stolen vehicles amounted to \$1,380,160.00 and of this total we recovered 2,311 vehicles or 88 per cent for a total dollar value of \$973,660.00. The Auto Theft Division also recovered 65 vehicles that were stolen from areas out of their jurisdiction.

The goal of the Auto Theft Division for 1973 was to try and reduce the number of vehicles stolen during 1972, however, as reported above, 13 more vehicles were stolen in 1973 as compared to 1972. In our goal accomplishment column we can report that 260 more vehicles were recovered over the 1972 year-end total. We also were able to clear twice as many cases as were cleared in 1972. The Auto Theft Division also broke up three major Auto Theft rings during the year 1973. The overall statistics show a much better all-around average for 1973.

Finally, the Auto Theft Division also handled approximately 2,500 other cases ranging from Theft by Bailee, Theft of Auto Parts and/or other offenses not in the Auto Theft Division's bailiwick, making an aggregate total of 5,100 cases for the year 1973.

ABANDONED AUTO SECTION

The Abandoned Auto Section of the Auto Theft Bureau is responsible for enforcing what is commonly referred to as the "Texas Abandoned Motor Vehicle Act", which was signed by the Governor of Texas on June 8, 1971, and became effective August 30, 1971. This Act empowers certain law enforcement officers in the State of Texas, including the El Paso Police Department, to take certain abandoned vehicles into custody which have been left unattended on public or private property for more than 48 hours without consent of the property owners. During 1973, 1,840 abandoned auto reports have been investigated by this detail, and 601 abandoned autos were stored by the El Paso City Wrecker. Of these abandoned vehicles, 265 were released to owners after they were sent registered letters notifying them of the storage of their vehicles in accordance with this Act.

Of the 1,840 autos, 905 were stored at the El Paso Wrecker Service and investigated by this detail. There were an additional 553 vehicles checked from information received from citizens and Abandoned Auto Detail Uniform officers.

A total of 309 vehicles unclaimed from the City Pound were sold at public auction for \$22,836.50. An additional \$6,645.00 was paid into the city for vehicles which were released to the owners or lien holders, making a grand total of \$29,481.50 received by the city from the Abandoned Auto Detail.

JUAREZ LIAISON SECTION

The Juarez Liaison Section of the Auto Theft Bureau has the duty of maintaining liaison between the El Paso Police Department and all enforcement agencies in the City of Juarez, as well as the Republic of Mexico. Considering the geographical character of the El Paso---Juarez metropolitan area, it is imperative to maintain an excellent working relationship between the law enforcement agencies of this community and those of our neighbors to the South.

Through this relationship and mutual understanding, the El Paso Police Department has effected desired results in securing an exchange of relevant information, the recovery of stolen vehicles and property, effecting fugitive arrests, and the return of both stolen property and felons to the United States.

A total of 24 felons, 153 vehicles recovered with a value of \$137,700.00 and stolen property with a value of \$17,000.00 has been returned to the United States by this jurisdiction.

FORGERY-BUNCO-FUGITIVE DIVISION

The Forgery-Bunco-Fugitive Division consists of one (1) Lieutenant, one (1) Sergeant and five (5) Detectives. This division is responsible for the investigation of all worthless check violations, forgeries, credit card frauds, embezzlement, confidence games, defrauding motel-hotel inn-keepers and fugitives.

STATISTICS FOR FORGERY DIVISION

January 1, 1973 - December 31, 1973

WORTHLESS CHECKS

SWINDLE BY WORTHLESS CHECK UNDER \$50.00

Number of offenses reported in 1973.....	32
Number of offenses cleared in 1973.....	24
Percentage of offenses cleared in 1973.....	75%

Amount of money involved in 1973 offenses.....	\$701.39
Amount in money of offenses cleared.....	\$454.94

SWINDLE BY WORTHLESS CHECK OVER \$50.00

Number of offenses reported in 1973.....	192
Number of offenses cleared in 1973.....	109
Percentage of offenses cleared in 1973.....	56.7%

Amount of money involved in 1973 offenses.....	\$49,736.41
Amount in money of offenses cleared.....	\$31,120.76

FORGERY

Number of offenses reported in 1973.....	343
Number of offenses cleared in 1973.....	202
Percentage of offenses cleared in 1973.....	58.8%

Amount of money involved in 1973 offenses.....	\$41,602.24
Amount in money of offenses cleared.....	\$23,188.04

CREDIT CARD

Number of offenses reported in 1973.....	308
Number of offenses cleared in 1973.....	171
Percentage of offenses cleared in 1973.....	55.5%

Amount of money involved in 1973.....	\$7,199.79
Amount in money of offenses cleared.....	\$4,307.87

EMBEZZLEMENT

Number of offenses reported in 1973.....	22
Number of offenses cleared in 1973.....	10
Percentage of offenses cleared in 1973.....	45.4%

Amount of money involved in 1973 offenses.....	\$156,312.75
Amount in money of offenses cleared.....	\$22,811.83

ASSORTED THEFTS CASES

Number of offenses reported in 1973.....	14
Number of offenses cleared in 1973.....	13
Percentage of offenses cleared in 1973.....	92.8%

Number of fugitives handled by the division that were transferred to out of state agencies.....	29
---	----

Number of arrests made by this division.....	105
--	-----

ADMINISTRATIVE

BUREAU

TRAINING DIVISION

The Training Division is commanded by one Captain, with one Lieutenant, responsible for department in-service training, and one Lieutenant in charge of the Police Academy and recruit training. The Police Academy and recruit training section includes a detective/instructor and a firing range technician. One secretary serves for all elements of the Training Division.

The Lieutenant and detective are the only full time instructors for the Police Academy. Police personnel from other Divisions present much of the Academy instruction, supplemented by outside professionals and experts on law, psychology, sociology and criminology. In addition, the Police Academy section directs the firearms training program, including qualification firing of the department and maintenance of the firing range and the department arsenal. Approximately 350,000 rounds of ammunition were reloaded in conjunction with the firearms training.

During the 1973 fiscal year the Academy concluded 2400 hours of basic police instruction, graduating 106 men as El Paso Police Officers.

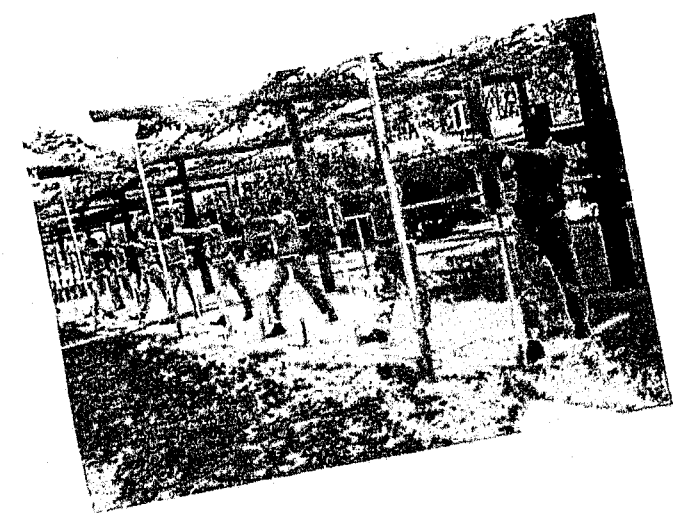
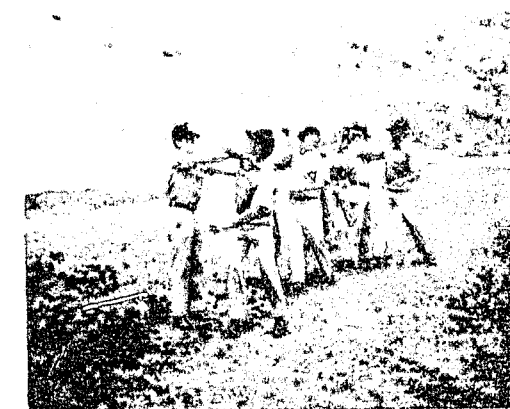
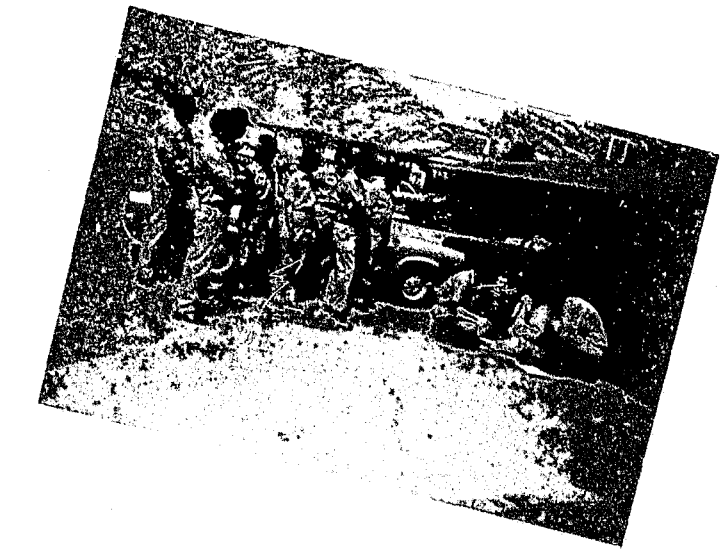
The El Paso Police Academy is certified by the Texas Commission on Law Enforcement Officers Standards and Education and the curriculum of the Academy has been approved by the Texas Board of Education as appropriate for Veteran's Education.

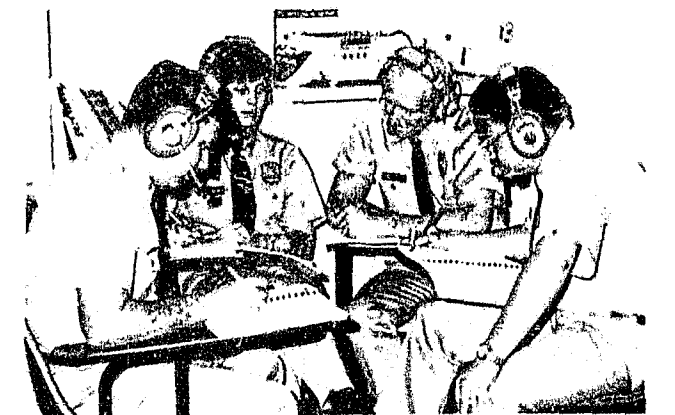
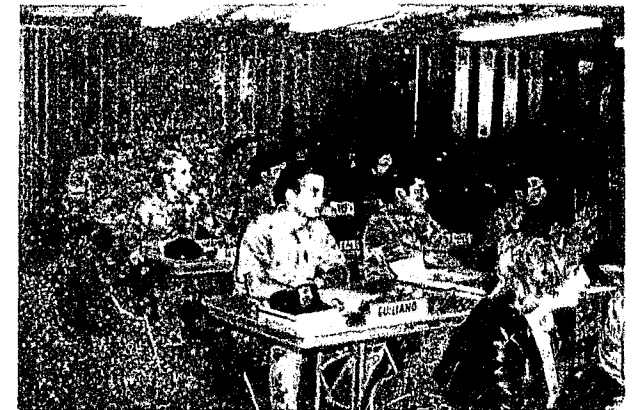
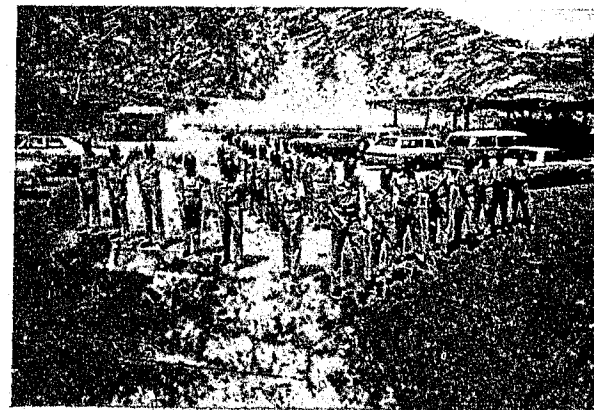
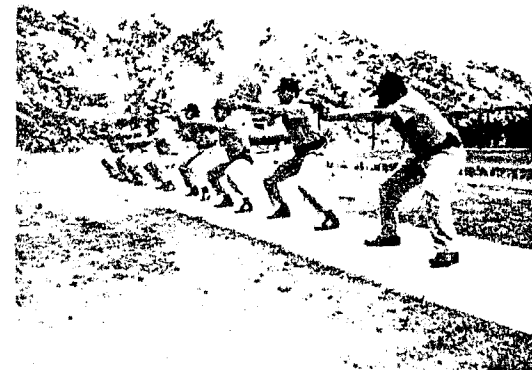
EL PASO POLICE DEPARTMENT RECRUIT TRAINING SCHOOL

<u>SUBJECT</u>	<u>HOURS</u>	<u>SUBJECT</u>	<u>HOURS</u>
Abnormal Psychology	8	Culture and Environment	2
Accident Investigation and Reports	22	Defensive driving, Part I	8
Agency Organization E.P.P.D.	1	Defensive driving, Part II	16
Arrest, search and seizure	24	Defensive Driving Test	4
Auto Theft investigation and arson of autos	4	Dental first aid	2
Auto Theft, abandoned motor vehicle	2	Department Rules and Orders	4
Behavioral Science	2	Disaster operation	1
Border Patrol, Functions of	2	Directing traffic	3
Burglaries	10	Directing traffic field problem	8
		Drill and use of Police baton	4
		Driver License law	2
Civil Service Rules and Regulations	4	El Paso City Code	10
Classroom note taking	2	El Paso Police Internal Affairs	1
Community Relations for Police	16	Emergency maternity procedure	2
Constitutional law and Police liability	6	Emergency vehicle operations Code 1, 2, 3	2
Conversational Spanish	100	Examinations	8
Court Room orientation	8	Extra (outside) employment	1
Crime in America	1	Explosives and home-made bombs	2
Crime scene (protection and search)	4	F. B. I., Functions of	2
Criminal Investigation field operation	8	Federal firearms law	2
Crowd and riot control formation	8	Field problems	24
		Fingerprints	6

Firearms nomenclature, Police weapons and the use of chemical weapons	4	Measurements for uniforms	1
Firearms training	82	Mechanics of arrest	16
First Aid	10	Medical Examiner	5
Fire Department, Functions of	2	Missing Persons	1
General patrol procedure and observation	10	Motor vehicle inspection	1
Group Interaction	2	Moral responsibilities	2
Handling of Juveniles	4	Narcotics and dangerous drugs	12
History and philosophy of law enforcement	4	Night firearms training	16
History of the El Paso Police	2	Normal psychology	2
Hit and Run investigation	4	Offensive and defensive tactics	10
How to study	1	Officer speaks in public	8
ID of Civil procedure	2	Operation of the Police radio	1
Information development, interviews and interrogation	3	Organized crime and vice	2
Injury and death cases, assault cases, investigation and statements (witness)	3	Physical evidence, theft and related cases	3
Interviewing traffic violator	4	Police certification program	1
Introduction	1	Police Duty Manual	1
Introduction to criminal law	2	Police ethics and professional demeanor	4
Investigation of arson	1	Police Officer's Association and insurance	2
Investigation, statements, subjects and witness	3	Police public relations	1
Investigation of worthless checks, forgery and confidence games	4	Postal inspectors, Function of	2
Jail procedures	2	Preliminary investigation and case preparation	3
Law enforcement careers	1	Rabies and animal control	2
		Radio communications procedure	2
		Racial crises in crowd control	4
		Recognition of certain medical conditions affecting driving	6

Report writing	20	Texas Department of Public Safety, Function of	2
Revolver and police weapons maintenance	4	Texas Criminal Law	40
Robbery investigation and crime scene	4	Texas Liquor Law, Part I	2
Rules of evidence	12	Texas Liquor Law, Part II	2
Safety Responsibility Act	2	Texas registration requirements	2
Secret Service, Functions of	2	The Criminal Justice System	2
Sex crimes and deviant behavior	2	The nature and control of civil disorder and crowd and riot control operation	4
Sheriff's Department, Functions of	2	Traffic law and traffic law enforcement	18
Social Psychology	4	Traffic ticket writing	4
Stopping and approaching the traffic violator	4	Traffic transportation, Function of	2
Structure of government	2	Use of typewriter	5
Supervisor and supervised relationship	1	U.T.E.P. Police, Function of	2
Testimony and Court Room demeanor	4	Vehicle maintenance and care	1
		TOTAL HOURS	720





IN SERVICE TRAINING

During 1973, various In Service Training schools were set up for the men of this department.

<u>NAME</u>	<u>HOURS</u>	<u>ATTENDING</u>
DEFENSIVE DRIVING	32	80
ACCIDENT INVESTIGATION AND TRAFFIC ENFORCEMENT	4	26
POLICE COMMUNITY RELATIONS	40	29
SHOTGUN TRAINING	4	29
MIDDLE MANAGEMENT	40	28
INSTRUCTORS SCHOOL	40	7
MEDICAL CONDITIONS AFFECTING DRIVING	6	26
FIRST-AID INSTRUCTOR	12	3
TOTAL	178	228

PLANNING AND RESEARCH DIVISION

This division, a function of the Administrative Bureau, is commanded by a Captain and is comprised of two Lieutenants, a Sergeant, a Detective and a Patrolman. Founded in 1970, with two officers, the division was reorganized and expanded to its present size in October of 1973.

Planning and Research assists the police mission by planning for long range departmental goals, by performing survey research work and data gathering, by assisting other police departments and law enforcement agencies with informational and statistical requests, by performing planning projects for internal elements of the department, and by publishing manuals, orders, bulletins and annual reports. The division also disseminates information about the department's functions, history and operation to civic groups, students and others interested in police matters.

A summary of division activities for the year includes research projects conducted nationally and statewide, as well as questionnaires and information requests from countries in all parts of the world.

Major projects undertaken included planning work in the following areas:

- Floorplans and architectural drawings for the remodeling of the City-County Building;
- A survey of the formal educational level of all departmental employees;
- Survey work for the 1975 Criminal Justice Plan;
- A proposed operational procedure for policing the City's parks;
- A restructuring and improvement proposal for the Department's vehicle maintenance facility;
- A survey and proposal for the redeployment of field personnel (Uniform Operations Bureau);

A relocation and remodeling of the Department's property section;

A survey and proposal for changing the allocation of the Department's Radio Frequency Channels;

A planning survey and organizational work for the Department's Horse Mounted Patrol Section.

Twenty-eight questionnaires from other Police and Law Enforcement Agencies were researched, evaluated and answered.

Forty-two inquiries were received from individual police officers of various departments throughout the United States and foreign countries, and others interested in the Department's operations, that were responded to.

COMMUNITY RELATIONS DIVISION

The Police-Community Relations Division is under the Administrative Bureau and is directly responsible to the Chief of Police. This division is composed of one Lieutenant, three Community Relations Supervisors, six Community Relations officers, six youth-aides and one Clerk-Typist. Officers selected for this division are carefully picked by the Chief of Police and the Division Commander; basic criteria used for selection is their ability to get along with people, their past record on the Police Department, and their interest in helping people with problems, along with other necessary attitudes for this type of work.

Our main operation is the "Storefront" concept. This operation is basically placing police officers in the community, as informally as is feasible, to create an atmosphere of trust and understanding with the community. This center is operated out of a building in selected areas of the city. These centers bring the police department to the people who cannot come to headquarters for whatever reasons, but who have a problem that they are unable to resolve. The main goals of these sites are to promote police and community involvement, to open lines of communication between the public, the police and administrative leaders, and to attempt to provide communication when conflicts or confrontations arise. These centers also serve to help make police personnel more aware of the public's point of view and more sensitive and responsive to the need, feelings and attitudes of the community as they pertain to police services.

These centers also serve as a vital medium for public education and problem solving by interpretation to the community of the police function, techniques and police problems.

We have three storefront sites in operation at this time and plan to open a fourth site in 1974. They are located as follows:

#1 Storefront - 807 E. Sixth St. 543-4510 or 543-4228

#2 Storefront - 9100 Alameda 859-4197 or 859-4198

#3 Storefront - 9888 Taj Mahal 755-1330 or 755-1339

Each storefront has a supervisor, two Community Relations officers and two youth-aides. Hours of operation at each storefront site are 2:00 PM to 10:00 PM, seven days a week. The hours at the Central Station are 8:00 AM to 5:00 PM, Monday thru Friday. Youth-aides are selected from areas near the storefronts and they have provided the officers with the necessary rapport with certain segments of the community, especially the young.

The Division is also responsible for assigning all lectures, tours, and dialogue sessions that may be requested by the community. There have been numerous programs set up by the division in an effort to bring about positive communication between the police and the community.

TYPES OF PROGRAMS

Lectures

The Community Relations Division is responsible for all lectures given by police officers on the department.

Assignments for the various requests are funneled through the respective divisions that are more familiar with the topic and thus involves the entire Department in the program.

Dialogues (Rap-Sessions)

In an effort to bring more of the problems facing the police and the community to a focal point for possible solution, we have held rap-sessions with policemen and citizens attending on a one-to-one basis. The officers normally attend in plain clothes and there has been some good interchange of attitudes in these sessions.

Youth Ride-along Program

This division is charged with coordinating a youth ride-along program with the Uniform Division. This program allows youths between the ages of 15 and 18 years of age to ride in a patrol car on Friday and Saturday evenings. We have had good participation in this program and our officers in the patrol cars have had some good two-way communication with the youth involved.

Sentenced Youth Riders

The Municipal Court of the City of El Paso has sponsored a Youth Advisory Court. Youth between the ages of 14 and 19 may request a hearing before this court if they have received not more than one moving violation in the previous twelve month period. The fines range from monetary to a four hour ride in one of our police traffic units. When the tour is over the youth fills out an evaluation of what he has learned during his ride, which must be turned over to the court to complete his or her sentence.

Tours

This division is responsible for scheduling all tours of the department and they are conducted mainly by the Uniform Bureau. We have had numerous people involved in this program over the past years.

In-Service Training

During 1973, this division was able to bring in two agents from the F.B.I. Academy to hold an in-service school for forty hours on Police-Community Relations. This was an excellent school and was received with high regard by those officers attending. There is a similar in-service school scheduled for February, 1974.

Drivers License Program

During 1973, this division started a drivers license program for citizens who might need some assistance in passing the written portion of the exam.

Schools have been set up in various neighborhoods and information on the schools is advertised in the local news media. There are handouts in English and Spanish that are distributed by our Bond Office to all citizens receiving citations for driving without a drivers license. Once the sites are selected and the information as to dates are made known to the public, the Texas Department of Public Safety responds by holding the classes and then testing those who complete the school at these neighborhood sites. There has been tremendous response from the community for this program, and it also serves to better the police image in the community.

Film Library

This division is responsible for maintaining a small film library which contains films on police-community relations, traffic safety, riot control, burglary, patrol, etc. These films are available to all officers on the department and to civic groups within the community.

STOREFRONT ACTIVITY FOR 1973

	<u>Storefront #1</u>	<u>Storefront #2</u>	<u>Storefront #3</u>	<u>Totals</u>
Number of Cases	564	286	284	<u>1,134</u>
Follow-ups	191	111	162	<u>464</u>
Visitors	5,695	5,213	4,676	<u>15,584</u>
Telephone Calls	3,617	3,701	2,544	<u>9,862</u>
Meetings	30	19	2	<u>51</u>

TOTAL NUMBER OF YOUTH PATROL RIDERS FOR 1973 = 292

PRESENTATIONS FOR 1973

	<u>Number of Programs</u>	<u>Number of People</u>
1. American Youth in Israel	1	20
2. Auto Theft	1	14
3. Behavior	1	40
4. Bicycle Safety	6	432
5. Burglary & Theft	2	54
6. Child Abuse	1	100
7. Crime Prevention	2	1030
8. Criminal Justice	4	285
9. Community Relations	33	886
10. Fingerprinting	1	20
11. Fraudulent Checks	5	193
12. Function of the Police Department	1	104
13. Halloween Safety	1	30
14. Homicide	1	14
15. Judge-Orator Contest	1	50
16. Juvenile Delinquency	5	105
17. Law Enforcement	21	1132
18. Mental Health Seminars	1	20
19. Narcotics	46	2771
20. Pedestrian Safety	1	28
21. Qualifications for becoming a police officer	2	862
22. Rap-Sessions	4	185
23. Role of Policewomen in the Police Department	1	100
24. Role of Policemen in Society	1	40

	<u>Number of Programs</u>	<u>Number of People</u>
25. Shooting Exhibition	1	50
26. Shoplifting	4	378
27. Tours	75	1547
28. Traffic Safety	19	1303
29. Vehicle Display	29	1520
30. Church Bus Drivers Seminar	1	30
	<hr/>	<hr/>
TOTALS	272	13,343
25 cancellations (for 1973)		

INSPECTION AND INTERNAL AFFAIRS DIVISION

The Inspection and Internal Affairs Division personnel consist of one Captain, two Lieutenants, one Detective and one Clerk-Typist.

INSPECTIONS:

The Inspection Division was established in October, 1973, and functions in a staff capacity to and under the direct supervision of the Chief of Police.

The mission of this Division is to inquire into and to report upon the efficiency of management, the economy of operations, the effectiveness in performing assigned responsibilities, the state of discipline, the adequacy of facilities and the compliance with Departmental Regulations, Orders and other directives issued by the Chief of Police. Inspections and inquiries are made with reference to the Department's mission to service the community.

INTERNAL AFFAIRS:

The Internal Affairs Division functions in a staff capacity to and under the direct supervision of the Chief of Police.

This Division coordinates and exercises staff supervision in behalf of the Chief of Police over investigations involving alleged personnel misconduct, and is responsible to the Chief of Police as regards all aspects of the disciplinary process. As discipline is a function of command, the responsibility for the conduct of personnel investigations rests within the normal chain of command and is not assumed by Internal Affairs Division unless special circumstances require it.

Surveys conducted for Chief of Police		2
Investigations involving City Police Officers		
Jan. 1 to Sept. 31		75
Oct. 1 to Dec. 31		43
	<u>Total</u>	<u>118</u>
Investigations involving other Dept. employees		
Jan. 1 to Sept. 31		9
Oct. 1 to Dec. 31		0
	<u>Total</u>	<u>9</u>
Background checks of applicants for out-of-town agencies		
Jan. 1 to Sept. 31		27
Oct. 1 to Dec. 31		7
	<u>Total</u>	<u>34</u>
Background checks of Police applicants		
Jan. 1 to Sept. 31		58
Oct. 1 to Dec. 31		76
	<u>Total</u>	<u>134</u>
Subpoenas served for Civil Service		
Jan. 1 to Sept. 31		60
Oct. 1 to Dec. 31		0
	<u>Total</u>	<u>60</u>
	<u>GRAND TOTAL</u>	<u>357</u>

Internal Affairs Division also processed separation forms on all terminations and suspensions.

SERVICE

BUREAU

CONTINUED

1 OF 2

INSPECTOR
SERVICES BUREAU

CAPTAIN
IDENTIFICATION & RECORDS
and DATA PROCESSING

LIEUTENANT
ID & R DIVISION

LIEUTENANT
DP DIVISION

1 SERGEANT
8 AM to 4 PM

1 SERGEANT
4 PM to 12 MN

12 MN to 8 AM

1 SERGEANT
RELIEF

TAB EQUIPMENT
SUPERVISOR

STATIS-
TICIAN

ID OFFICER
1 I

ID OFFICER
1 I

PHOTO LAB
TECH I

TAB EQUIP
OPR I

ID OFFICER
3 II

PATROLMAN
2

PATROLMAN
2

3 CLERK
TYPIST II

KEYPUNCH
OPRS 6

ID OFFICER
3 I

7 CLERK
TYPIST II

3 CLERK
TYPIST II

1 CLERK
TYPIST II

PATROLMAN
1

1 CLERK
II

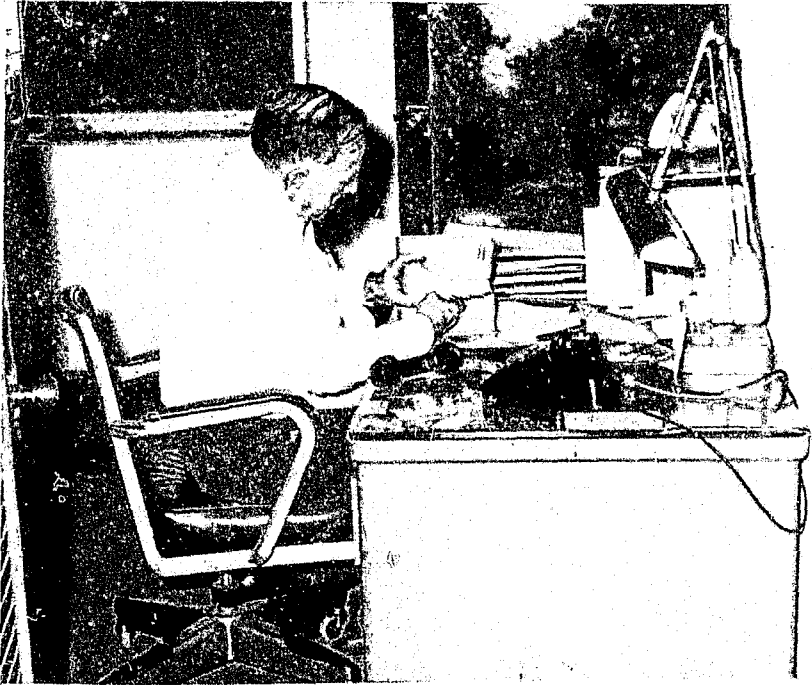
COMPLAINT
2 CLERK

10 CLERK
TYPIST II

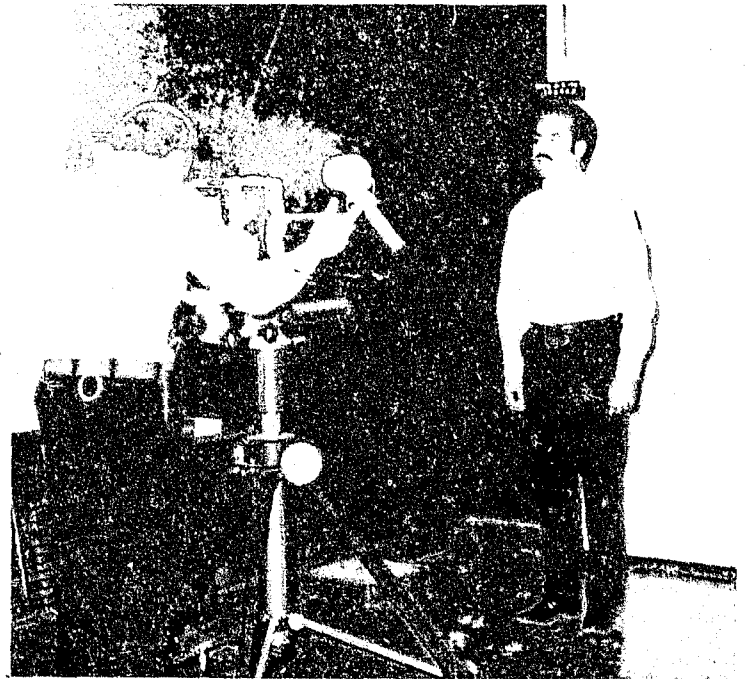
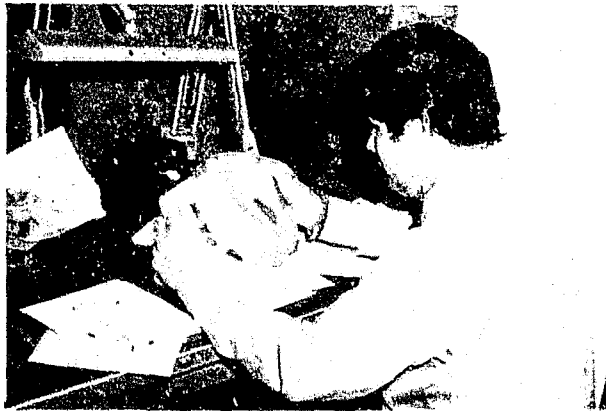
IDENTIFICATION AND RECORDS DIVISION
Activity Report for Year 1973

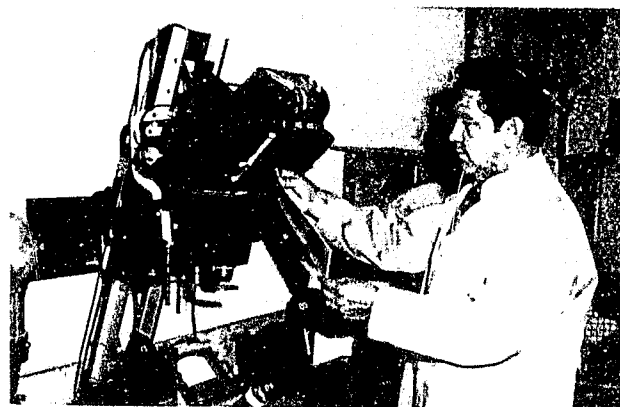
Fingerprints on file December 31, 1973	240,694
Fingerprints taken and filed	5,103
New prisoners fingerprinted and photographed	3,222
Repeat prisoners fingerprinted and photographed	943
New applicants fingerprinted and photographed	1,881
Applicants brought up to date	1,037
Persons fingerprinted for other agencies	478
Latent fingerprints processed	1,969
Repeaters rapped with previous records	75
Criminal transcripts received and filed (D.P.S.).....	4,795
Criminal transcripts received and filed (F.B.I.).....	4,285
Field calls answered by Identification Personnel	1,160
Laboratory calls performed by Identification Personnel	381
Crime scene photographs taken.....	6,171
Polaroid color system I.D. cards processed.....	2,279
Color negatives developed	10,204
Black & White negatives developed	424
Color negative rolls developed	604
Black & White negative rolls developed	92
Color photographs printed	3,391
Black & White photographs printed	977
Foto-Rite prints enlargements made	2,082
Polaroid photos made	276
Pola-Color polaroid photos made	28
Positive-Negative polaroid photos made	210

Mug-shot photos furnished Police agencies.....	9,258
Complaint reports received, processed and filed.....	45,970
Supplementary reports received, processed and filed.....	50,567
Traffic accident reports processed and filed.....	13,033
Traffic accident index cards typed and filed.....	30,747
Criminal index cards typed and filed.....	9,380
Complaint index cards typed and filed.....	140,526
Index cards combined.....	25,063
Wanted index cards typed and filed (D.P.S.).....	487
Cancellation cards purged from file (D.P.S.).....	471
History sheets typed and filed.....	6,046
Jail dockets processed, tabulated and filed.....	12,548
Record checks made over counter.....	58,760
Record checks made by mail.....	1,583
Other inquiries processed by mail.....	877
Evidence packed and sent to laboratories.....	446
Monies turned in to Comptrollers Office.....	\$12,528.45



77





DATA PROCESSING DIVISION

The El Paso Police Department's "Data Processing System" is an Electrical Accounting Machine (EAM) Division, operated by:

- 1 Police Lieutenant
- 1 Tabulating Equipment Supervisor
- 1 Tabulating Equipment Operator I
- 6 Keypunch Machine Operators
- 1 Clerk Typist II
- 1 Clerk II

This Division is equipped with:

- 1 IBM 402 Alphabetic Accounting Machine
- 2 IBM 029 Keypunch Machines
- 1 IBM 082 Sorter
- 1 IBM 056 Verifier
- 1 IBM 059 Verifier
- 1 IBM 077 Collator
- 1 IBM 514 Reproducing Machine

and generates report on

1. TRAFFIC
 - A. Management Reports
 - B. National Safety Council Reports
 - C. Selective Traffic Enforcement Program Reports
2. UNIFORM CRIME REPORTS
 - A. Return A, B, and C
 - B. Supplements to Return A
 - C. Age, Race, Sex
 - 1) Under 18 years
 - 2) Over 18 years
3. MANAGEMENT REPORTING
 - A. Radio Calls Information
 - B. Offenses Reported Information
 - C. Arrest Reports
 - D. Evaluated by:
 - 1) Police Districts
 - 2) Census Tracts
 - 3) Specific hour or hour of day
 - 4) Specific day or day of week
 - E. Vehicle Maintenance cost and mileage
 - F. Special reports on the above or on any combination thereof

Source documents used for the collection of data, by this division includes:

1. Traffic Accident Reports
2. Traffic Citations
3. Complaint Reports
4. Supplementary Reports
5. Stolen Vehicle Recovery Reports
6. Arrest Dockets
7. Radio Dispatched Call Cards
8. Vehicle Work Orders
9. Vehicle Mileage Records
10. Gasoline and Oil Tickets
11. Personal History Sheet Forms of Persons Arrested

The El Paso Police Department started using EAM in 1959, and in 1967 the current equipment was installed.

PERSONNEL SCHEDULE
IDENTIFICATION & RECORDS DIVISION
AND
DATA PROCESSING DIVISION

JOB TITLE	CLASS GRADE	ACTUAL	AUTHORIZED
Captain	28	1	1
Lieutenant	25	2	2
Sergeant	23	3	3
Statistician	23	1	1
I.D. Officer II	22	3	3
I.D. Officer I	21	7	7
Patrolman	19	3	3
Tab Equipment Supervisor	17	1	1
Photo Lab Tech. I	15	1	1
Complaint Clerk	13	2	2
Tab Equipment Operator I	11	1	1
Key Punch Operator	11	6	6
Clerk Typist II	9	23	24
Clerk II	9	1	1
TOTALS		55	56

CRIME COMPARISON

CITY OF EL PASO

1968 - 1973

	1968	1969	1970	1971	1972	1973
Homicide	18	16	13	16	11	18
Rape	55	46	43	75	91	104
Robbery	224	231	310	398	514	586
Aggravated Assault	436	404	418	588	655	451
<hr/>						
Crimes Against Persons	733	697	784	1,077	1,271	1,159
Percentage of Increase Base		-4.9%	+12.5%	+37.4%	+18.0%	-8.8%
<hr/>						
Burglary	3,824	4,104	4,827	7,621	4,994	5,587
Theft - Over \$50	1,555	2,045	2,146	2,240	2,067	1,960
Auto Theft	1,586	1,867	1,581	2,136	2,579	2,592
<hr/>						
Total Index Crimes	7,698	8,713	9,338	13,074	10,911	11,298
Percentage of Increase Base		+13.9%	+7.2%	+40.0%	-16.5%	+3.6%

COMPARISON OF PART I CRIMES
(Increase or Decrease)

PART I CRIMES	1971	1972	% + or -	1973	% + or -
Murder	16	11	-31.2%	18	+63.6%
Manslaughter-Neg.	43	35	-18.6%	39	+11.4%
Rape	75	91	+21.3%	104	+14.2%
Robbery	398	514	+29.1%	586	+14.0%
Assaults (all)	1661	1220	-26.5%	1404	+15.0%
Burglary	7621	4994	-34.4%	5587	+11.8%
Theft - Over \$50	2240	2067	- 7.7%	1960	- 5.1%
Theft - Under \$50	9590	8875	- 7.4%	8493	- 4.3%
Auto Theft	2136	2579	+20.7%	2592	+ .5%

RETURN B

ANNUAL RETURN OF OFFENSES KNOWN TO THE POLICE

City EL PASO State TEXAS

County EL PASO For year ending December 31, 19 73

1 CLASSIFICATION OF OFFENSES (Part I classes)	2 OFFENSES Reported or Known to Police (include "Unfounded" and Attempts)	3 Unfounded, i.e., False or Baseless Complaints	4 Number of Actual OFFENSES (Column 2 Minus Column 3) (include attempts)	5 Number of OFFENSES Cleared by Arrest This Year	
				a Total Offenses Cleared	b By Arrest of Persons Under 18 (included in 5a)
1. CRIMINAL HOMICIDE					
a. Murder and Nonnegligent Manslaughter	23	5	18	14	-
b. Manslaughter by Negligence	65	26	39	32	-
2. FORCIBLE RAPE TOTAL	108	4	104	64	2
a. Rape by Force	72	4	68	43	2
b. Assault to Rape - Attempts	36	-	36	21	-
3. ROBBERY TOTAL	592	6	586	217	9
a. Armed - Any Weapon	345	3	342	122	4
b. Strong-arm - No Weapon	247	3	244	95	5
4. ASSAULT TOTAL	1411	7	1404	887	61
a. Gun	61	4	57	37	2
b. Knife or Cutting Instrument	192	-	192	124	6
c. Other Dangerous Weapon	141	1	140	79	7
d. Hands, Fists, Feet, etc. - Aggravated	287	1	286	211	14
e. Other Assaults - Not Aggravated	730	1	729	436	32
5. BURGLARY TOTAL	5656	69	5587	764	220
a. Forcible Entry	3724	30	3694	513	157
b. Unlawful Entry - No Force	1387	34	1353	197	53
c. Attempted Forcible Entry	545	5	540	54	10
6. LARCENY - THEFT (except auto theft)					
a. \$50 and Over in Value	1986	26	1960	184	37
b. Under \$50 in Value	8530	37	8493	2185	774
7. AUTO THEFT	2945	353	2592	153	55
GRAND TOTAL	21316	533	20783	4500	1158

RETURN C. -- ANNUAL RETURN OF PERSONS CHARGED

Classification of Offenses (1)	Persons Charged by Police			Disposition				
	Arrested (Held for prosecu- tion) (2)	Summoned, Notified or Cited (3)	Total Persons Charged (Columns 2 and 3) (4)	Adults Guilty of offense charged (5)	of lesser offense (6)	Acquitted or Otherwise Dismissed (7)	Referred to Juvenile Court Jurisdiction (8)	Other (Include pending, prosecuted else- where in lieu of your jurisdiction, etc.) (9)
Part I Classes								
1. Criminal Homicide:								
(a) Murder and Nonnegligent Manslaughter	13	-	13	-	-	-	1	12
(b) Manslaughter by Negligence	17	-	17	-	-	-	-	17
2. Forcible Rape	32	-	32	-	-	-	3	29
3. Robbery	107	-	107	-	-	-	14	90
4. Aggravated Assault (Return B - 4a-d)	314	-	314	-	-	-	37	273
5. Burglary -- Breaking or Entering	533	-	533	-	-	-	227	287
6. Larceny -- Theft (except auto theft)	2133	-	2133	113	-	18	1015	949
7. Auto Theft	237	-	237	-	-	-	139	93
TOTAL, Part I Classes	3386	-	3386	113	-	18	1436	1750
Part II Classes								
8. Other Assaults (Return B - 4e)	252	-	252	27	-	21	43	158
9. Arson	2	-	2	-	-	-	-	2
10. Forgery and Counterfeiting	26	-	26	-	-	-	-	26
11. Fraud	67	-	67	-	-	-	3	62
12. Embezzlement	5	-	5	-	-	-	-	5
13. Stolen Property; Buying, Receiving, Possessing	93	-	93	-	-	-	28	77
14. Vandalism	171	-	171	-	-	-	73	88
15. Weapons; Carrying, Possessing, etc.	128	-	128	-	-	-	10	113
16. Prostitution and Commercialized Vice	25	-	25	18	-	4	-	4
17. Sex Offenses (except 2 and 16)	39	-	39	13	-	2	2	21
18. Narcotic Drug Laws	912	-	912	-	-	-	108	784
19. Gambling	55	-	55	54	-	1	-	-
20. Offenses Against the Family and Children								
21. Driving Under the Influence	782	-	782	-	-	-	3	779
22. Liquor Laws	88	-	88	30	-	8	48	-
23. Drunkenness	3456	-	3456	2565	-	501	219	103
24. Disorderly Conduct	802	-	802	186	-	96	418	77
25. Vagrancy	9	-	9	3	-	6	-	-
26. All Other Offenses (except traffic)	681	-	681	289	-	47	19	294
TOTAL, Part II Classes	7593	-	7593	3185	-	686	974	2593
GRAND TOTAL	10979	-	10979	3298	-	704	2410	4343

AGE, SEX AND RACE OF PERSONS ARRESTED
under 18 years of age
(Include those released without having been formally charged)

CLASSIFICATION OF OFFENSES	SEX	AGE							Total Under 18	RACE								
		10 and Under	11-12	13-14	15	16	17	White		Negro	Indian	Chinese	Japanese	All Other				
Murder and Nonnegligent Manslaughter	01a	Male					1	1	1									
		Female																
Manslaughter by Negligence	01b	Male					3	3	3									
		Female																
Forcible Rape	02	Male				2	1	4	7	7								
		Female						1	1	1								
Robbery	03	Male				6	7	6	19	18	1							
		Female																
Aggravated Assault (Return B-4a-d)	04	Male	1		7	7	18	27	60	58	2							
		Female			3		1	4	4	4								
Burglary--Breaking or Entering	05	Male	27	43	63	50	45	66	294	287	7							
		Female		2	3	2	2	4	13	13								
Larceny-Theft (Except Auto Theft)	06	Male	39	114	210	121	166	110	760	746	14							
		Female	16	48	151	74	88	37	414	405	9							
Auto Theft	07	Male	1	11	35	43	44	23	157	150	7							
		Female			4	3	3	2	12	12								
Other Assaults (Return B - 4e)	08	Male		3	5	6	14	4	32	31	1							
		Female		1	8	3	2	1	15	15								
Arson	09	Male																
		Female																
Forgery and Counterfeiting	10	Male				2	1	1	4	4								
		Female																
Fraud	11	Male																
		Female																
Embezzlement	12	Male																
		Female																
Stolen Property; Buying, Receiving, Possessing	13	Male		2	5	6	3	11	27	25	2							
		Female				1	1	1	3	2	1							
Vandalism	14	Male	5	26	23	10	9	14	87	86	1							
		Female		1	5	1	1	1	8	7	1							
Weapons; Carrying, Possessing, etc.	15	Male				3	5	11	22	21	1							
		Female																
Prostitution and Commercialized Vice	16	Male																
		Female																
Sex Offenses (Except Forcible Rape and Prostitution)	17	Male				2		2	4	4								
		Female																
Narcotic Drug Laws Total	18	Male		8	34	56	65	153	153	159	4							
		Female		1	1	5	6	13	26	26								
Opium or Cocaine and Their Derivatives (Morphine, Heroin, Codeine)	a	Male				1	1	2	2	2								
		Female						2	2	2								
Marijuana	b	Male		7	33	47	48	135	135	133	2							
		Female		1	3	4	8	16	16	16								
Synthetic Narcotics - Manufactured Narcotics Which Can Cause True Drug Addiction (Demerol, Methadones)	c	Male						1	1	1								
		Female																
Other - Dangerous Non-Narcotic Drugs (Barbiturates, Benzadrine)	d	Male		1	1	8	15	25	25	23	2							
		Female		1	2	2	3	8	8	8								
Gambling Total	19	Male																
		Female																
Bookmaking (Horse and Sport Book)	a	Male																
		Female																
Numbers and Lottery	b	Male																
		Female																
All Other Gambling	c	Male																
		Female																
Offenses Against Family and Children	20	Male																
		Female																
Driving Under The Influence	21	Male					1	12	13	13								
		Female						1	1	1								
Liquor Laws	22	Male		2	3	13	20	13	51	48	3							
		Female			2	5	3	1	11	9	2							
Drunkenness	23	Male	3	17	51	59	81	158	369	365	4							
		Female			7	6	7	7	27	27								
Disorderly Conduct	24	Male	3	11	47	44	55	56	216	209	7							
		Female			19	11	16	4	50	46	4							
Vagrancy	25	Male																
		Female																
All Other Offenses (Except Traffic)	26	Male		2	5	4	4	44	59	58	1							
		Female			1	1	1	1	4	4								
Suspicion	27	Male																
		Female																
Curfew and Loitering Law Violations	28	Male			3	6	7		16	15	1							
		Female																
Run-Aways	29	Male	2	8	26	29	27		92	91	1							
		Female		3	44	30	32		109	106	3							
TOTAL			97	295	742	589	728	703	3154	3077	77							

INSTRUCTIONS

1. Show in this report all persons under 18 years of age taken into custody during the past calendar year for committing an offense of the indicated types within the local jurisdiction. (Include those released without having been formally charged.)
2. The offenses are taken from the uniform classification of offenses and cover all the Part I and Part II offenses **except traffic**. In compiling the data, follow definitions of offenses in Uniform Crime Reporting Handbook.
3. Enter opposite each offense the number of persons taken into custody listing them according to age and sex of the persons arrested and according to race without regard to sex.
4. **Juveniles.** For purposes of Uniform Crime Reporting, a juvenile should be counted as "arrested" when the circumstances are such that if he or she were an adult, an arrest would be tallied. Juveniles taken into custody should be listed opposite the classification of the offense for which they were taken into custody. For example, if a juvenile is arrested for committing an offense of larceny he should be listed opposite the larceny-theft classification on this report, even though the technical charge placed against him is "juvenile delinquency." Police "contacts" with juveniles where no offense has been committed should not be scored as arrests. Instances where a juvenile is taken into custody for his own protection, such as "neglect," and no crime committed, should not be listed as arrests. Enter on page 1 **your** disposition of all juveniles arrested. Arrests of persons 18 years of age and over are tallied on the **white** age, sex and race reporting form.
5. **Race.** It should be noted that persons of Mexican birth or ancestry who are not definitely Indian or of other nonwhite race should be counted as members of the white race. This conforms to the procedure followed by the Bureau of the Census in compiling race information in a decennial census.
6. Total all columns.

AGE, SEX AND RACE OF PERSONS ARRESTED
 under 18 years of age

City _____

County _____

State _____

For year ending December 31, 19 ____

POLICE DISPOSITION OF JUVENILES--NOT TO INCLUDE NEGLECT OR TRAFFIC CASES (Follow your State age definition for juveniles)	
TOTAL	_____
1. Handled within Department and released. (Warning, released to parents, etc.)	_____
2. Referred to juvenile court or probation department.	_____
3. Referred to welfare agency.	_____
4. Referred to other police agency.	_____
5. Referred to criminal or adult court.	_____

Prepared By _____ Title _____

Chief, Sheriff, Commissioner or Superintendent

Date _____, 19 ____

DO NOT WRITE IN THESE SPACES	
Recorded	_____
Reviewed	_____
Punched	_____
Verified	_____

To be forwarded to:
UNIFORM CRIME REPORTS
FEDERAL BUREAU OF INVESTIGATION
UNITED STATES DEPARTMENT OF JUSTICE
WASHINGTON, D. C. 20535
 by January 22

COMMUNICATIONS

Communications section consists of one Lieutenant, four Sergeants, fifteen Dispatchers and fourteen patrolmen. All in-coming telephone calls from the public, requesting assistance, are handled by this section. Whenever a call is received, an IBM card is made by the telephone operator (patrolman) and is sent via conveyer belt into the Dispatch Room and the Dispatcher assigns the call to the proper unit.

There is an average of about 1400 dispatched calls handled on a 24 hour basis. This office also handles all tele-type operations and is manned 24 hours a day.

Radio equipment is Motorola MOD-COM and we are currently broadcasting on three (3) seperate channels with a fourth channel to be added in the near future. One channel handles Radio Patrol calls, one channel handles Traffic calls, one channel handles Detective calls and the fourth channel will be for "chase" and "information" use.

Police Radio Station KUB 990

Channel	Operation	Emission	Authorized Power
F1	Mobile Relay	20-F3	500 watts
F1a	Mobile	20-F3	240 watts
F2	Mobile Relay	20-F3	500 watts
F2a	Mobile	20-F3	240 watts
F3	Mobile Relay	20-F3	500 watts
F3a	Mobile	20-F3	240 watts
F4	Mobile Relay	20-F3	500 watts
F4a	Mobile	20-F3	240 watts
F5	Radio Positioning	0.1A0	3 watts

Four automatic mobile relay units are located at Ranger Peak. All units operate on the Public Safety U.H.F. band using 20-F3 emission and are controlled by dispatchers located in the City-County Building. The four channels can be controlled by any or all of the four control consoles.

An emergency gasoline power plant is installed at the Ranger Peak site for operation during power failures.

A completely independent emergency base station is installed in Police Headquarters for use in case of total system failure.

The following equipment is in operation at this time:

Automotive Mobile Units	140
Solo Motorcycle Units	31
Hand Carried Units	56
Dispatch Consoles	4
Mobile Repeaters	4
Monitor Receivers	10
Emergency Base Stations	1
Remote Dispatch Points	3
Four Track Tape Recorders (Radio)	2
Four Track Tape Recorders (Telephone)	2
Total	253

During the year 1973, the Radio Equipment operated a total of 3,126.53 hours.

RADIO CALLS FOR 1973

MONTH	MONTHLY TOTALS	YEAR TO DATE
JANUARY	10,706	10,706
FEBRUARY	8,967	19,673
MARCH	12,428	32,101
APRIL	10,099	42,200
MAY	12,370	54,570
JUNE	11,774	66,344
JULY	12,363	78,707
AUGUST	13,125	91,832
SEPTEMBER	12,638	104,470
OCTOBER	11,238	115,708
NOVEMBER	11,845	127,553
DECEMBER	11,302	138,855
TOTAL FOR THE YEAR		138,855

DISPATCHERS OFFICE



TRANSPORTATION DIVISION

The Division maintains and repairs the Department's 183 vehicle fleet, and is staffed by twenty-one people under the command of a Captain of Police.

During 1973, an improved Preventive Maintenance system was initiated which appears to be operating very efficiently, and an automatic carwash machine was purchased and installed.

The repair shop operation has been expanded to include mechanics on duty until eleven o'clock at night and on weekends, thereby reducing the workload formerly handled by the daytime shop personnel.

Maintenance and fuel costs for 1973 were as follows:

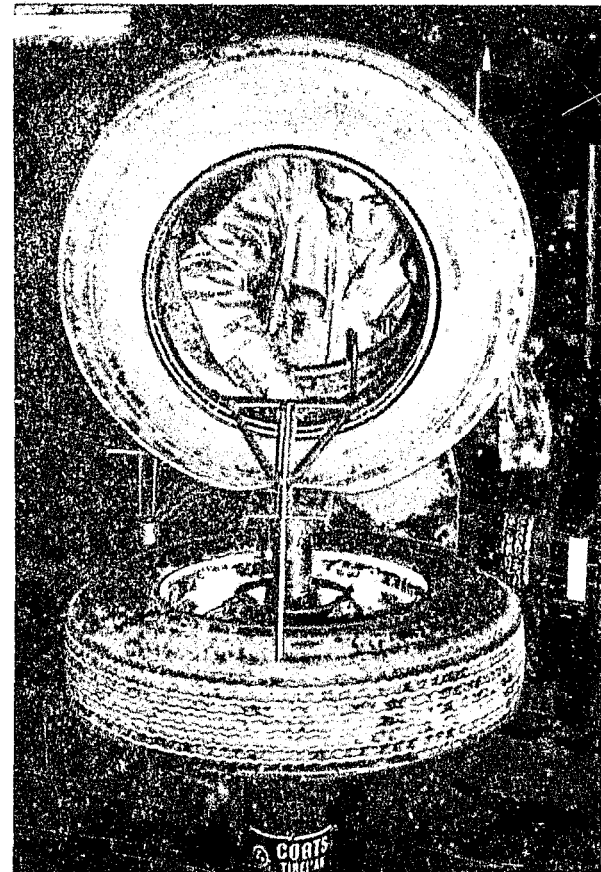
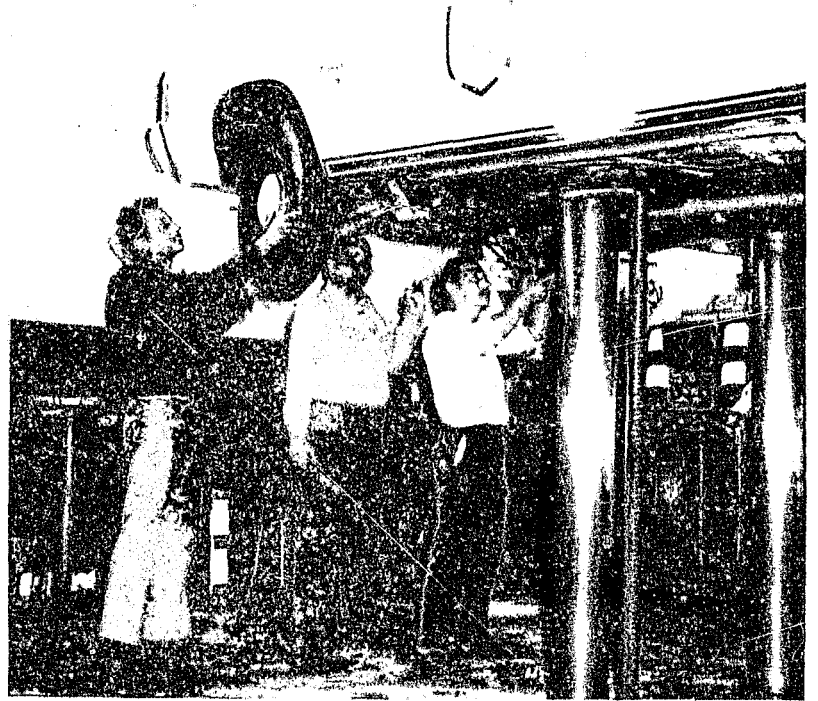
Automobiles and trucks	\$156,787.48
Motorcycles.....	19,642.01
	<hr/>
TOTAL.....	\$176,429.49

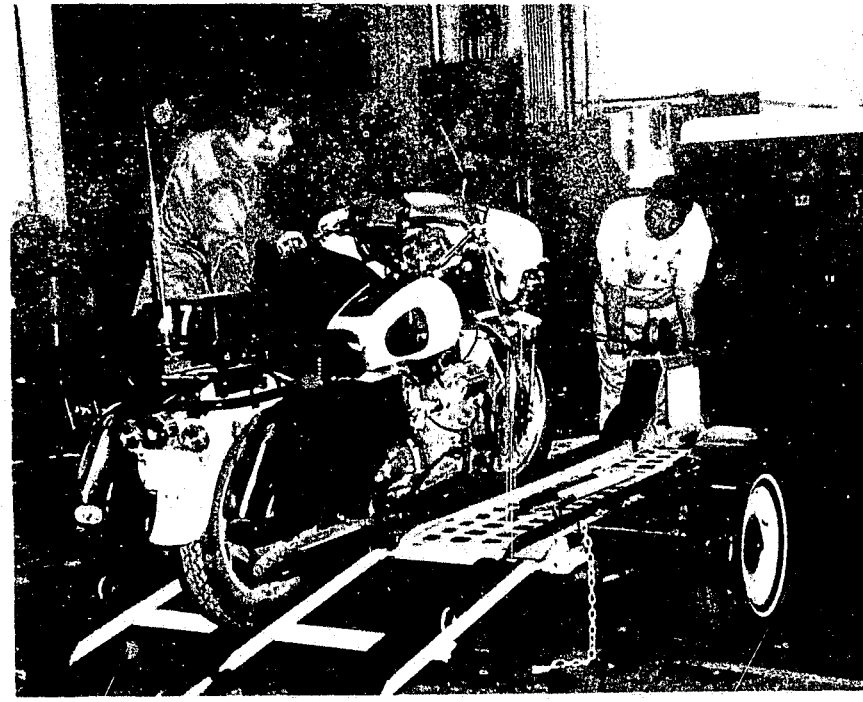
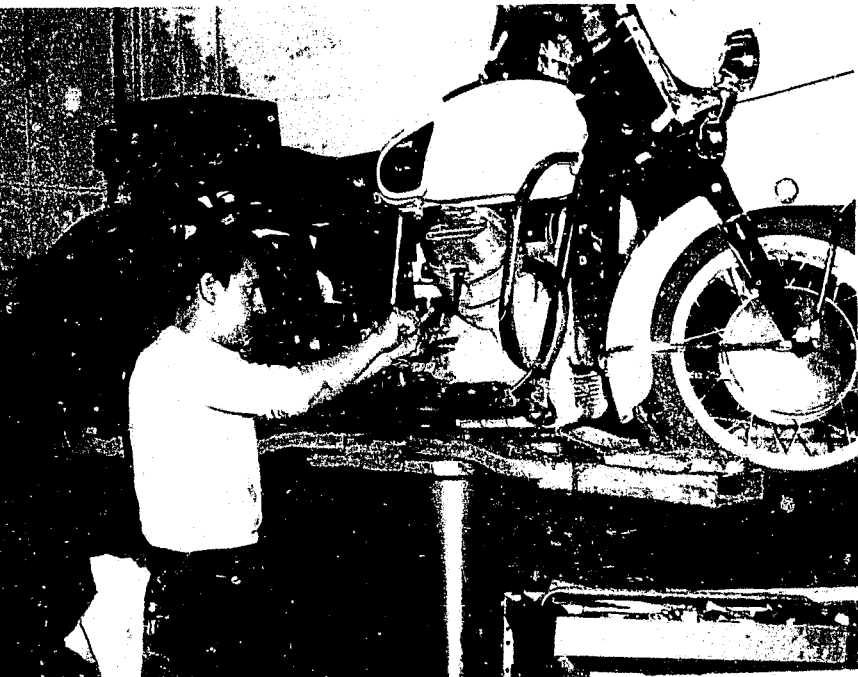
Automobiles and trucks were driven a total of 3,857,559 miles, and averaged 8.1 miles per gallon of fuel. Motorcycles were driven a total of 391,787 miles at an average fuel consumption rate of 28.4 miles per gallon.

EL PASO POLICE DEPARTMENT
SUMMARY OF RADIO CALLS DISPATCHED FOR 1973

HOUR OF DAY	TOTAL	MONDAY	TUESDAY	WEDNESDAY	THURSDAY	FRIDAY	SATURDAY	SUNDAY
12:MN to 12:59 AM	7250	1058	802	844	784	959	1374	1429
1:00 to 1:59 AM	5763	778	618	625	588	699	1186	1269
2:00 to 2:59 AM	4428	579	445	473	496	537	917	981
3:00 to 3:59 AM	2784	349	285	304	281	279	607	679
4:00 to 4:59 AM	1814	247	190	204	194	207	368	404
5:00 to 5:59 AM	1427	196	162	171	158	176	257	307
6:00 to 6:59 AM	1443	221	200	186	191	207	224	214
7:00 to 7:59 AM	3501	633	523	529	539	557	416	304
8:00 to 8:59 AM	5172	868	825	883	769	748	594	485
9:00 to 9:59 AM	4884	816	733	737	766	748	633	451
10:00 to 10:59 AM	5061	808	750	730	736	771	736	530
11:00 to 11:59 AM	5390	872	783	760	764	843	749	619
12: N to 12:59 PM	4779	756	661	630	671	721	764	576
1:00 to 1:59 PM	5321	818	816	701	728	787	813	658
2:00 to 2:59 PM	4194	591	619	587	598	630	648	521
3:00 to 3:59 PM	5923	842	818	869	878	958	929	629
4:00 to 4:59 PM	7782	1173	1170	1161	1095	1253	1121	809
5:00 to 5:59 PM	6757	952	1005	1020	946	1069	949	816
6:00 to 6:59 PM	6401	857	936	967	875	996	982	788
7:00 to 7:59 PM	7212	992	984	1073	1007	1076	1154	926
8:00 to 8:59 PM	6824	886	870	1007	930	1100	1064	967
9:00 to 9:59 PM	7501	955	1011	964	1058	1221	1215	1077
10:00 to 10:59 PM	6108	747	814	765	839	1131	953	859
11:00 to 11:59 PM	6298	783	771	699	858	1149	1158	880
During the Night								
Time Unknown	14838	2143	2208	2443	2309	2418	1668	1649
TOTALS	138855	19920	18999	19332	19058	21240	21479	18827

3/7/74





FULL-TIME LAW ENFORCEMENT AS OF DECEMBER

	Male	Female	Total
1. Full-time sworn law enforcement officers	514	5	519
2. Full-time civilian employees	32	49	81
3. Total full-time law enforcement officers and civilian employees	546	54	600
4. OFFICERS KILLED - Number of law enforcement officers who were killed in the line of duty during the year			<u>0</u>

5. OFFICERS ASSAULTED - Number of full-time law enforcement officers who were assaulted in the line of duty during the year by use of the following weapons:

	Injury	No Injury	Total
a. Firearm	<u>1</u>	<u>2</u>	<u>3</u>
b. Knife or cutting instrument	<u> </u>	<u>3</u>	<u>3</u>
c. Other dangerous weapon	<u> </u>	<u>3</u>	<u>3</u>
d. Hands, fists, feet, etc.....	<u>16</u>	<u>26</u>	<u>42</u>
Total	<u>17</u>	<u>34</u>	<u>51</u>

6. Number of patrols used by department

Type of Patrol	Day Shift	Evening Shift	Night Shift	Other Shifts	Total
One-man vehicle	<u>19</u>	<u>19</u>	<u> </u>	<u> </u>	<u>38</u>
Two-man vehicle	<u>13</u>	<u>22</u>	<u>21</u>	<u> </u>	<u>56</u>
One-man foot	<u>6</u>	<u> </u>	<u> </u>	<u> </u>	<u>6</u>
Two-man foot	<u> </u>	<u>4</u>	<u> </u>	<u> </u>	<u>4</u>
3-wheel motors	<u>5</u>	<u>5</u>	<u> </u>	<u> </u>	<u>10</u>
Solo motors	<u>13</u>	<u>14</u>	<u> </u>	<u> </u>	<u>27</u>
Total Patrols	<u>56</u>	<u>64</u>	<u>21</u>	<u> </u>	<u>141</u>

DISTRIBUTION OF POLICE PERSONNEL

	CHIEF	ASSISTANT CHIEF	INSPECTOR	CAPTAIN	LIEUTENANT	SERGEANT	DETECTIVE	PATROLMAN	STATISTICIAN	ID OFFICER I	ID OFFICER II	FOREMAN	DISPATCHERS
ADMINISTRATIVE BUREAU	1	1											
Planning & Research			1	2	1	1	1						
Community Relations				1			6						
Internal Affairs			1	2		1							
Training			1	2		1	1						
Budget & Finance				1									
Vice				1	1	5							
Aux. Personnel Section				1			1						
Chief's Aide					1								
INVESTIGATION BUREAU		1	1										
General Assignments				1	3	5							
Forgery-Bunco-Fugitive					1	5							
Transfer						2							
Liaison-Juarez						1							
Narcotics				1	1	5							
Crimes Against Persons				1	3	10							
Auto Theft				1	1	7	1						
Juvenile-Missing Persons						1	5						
Burglary-Theft-Pawn Shop				1	3	25							
Crime Unit-D.A.'s Office						2							
Intelligence						2							
SERVICES BUREAU		1	1										
I.D. & Records Division				2	3		3	1	7	3			
Communications Maintenance												1	
Garage			1										
UNIFORMED OPERATIONS BUREAU		1											
Traffic Division			1	1	4		21						
Hit & Run Detail							5						
School Safety Patrol							5						
Traffic Warrants							4						
Radar Units							1						
Freeway Units							4						
Foot Patrol & 3 Wheel Motors				1	4		28						
Radio Communications				1	3		14						15
Solo Motors-STEP Program		1		1	2		27						
Patrol Division			1	9	22		181						
Jail Section							8						
Property Custodians					1		4						
Traffic Analyst							1						
TOTALS:	1	2	3	8	30	55	77	316	1	7	3	1	15

GRAND TOTAL: 519

DISTRIBUTION OF CIVILIAN PERSONNEL

	CHIEF'S OFFICE	UNIFORMED OPERATIONS	INVESTIGATION DIVISION	TRAINING	AUXILIARY AND INTERNAL AFFAIRS	AUXILIARY PERSONNEL SECTION	SERVICE DIVISION	TOTALS
CLERK STENOGRAPHER II	1		1					2
SECRETARY II	1							1
SECRETARY I	1	1	1					3
PERSONNEL AND PAYROLL CLERK	1							1
CLERK II						1		1
CLERK III	1							1
CLERK TYPIST I						1		1
CLERK TYPIST II		4	3	1	1	23	32	
CLERK TYPIST III			1					1
POLICE COMPLAINT CLERK						2	2	
TAB MACHINE OPERATOR I						1	1	
TAB MACH. OPERATOR SUPERVISOR						1	1	
KEY PUNCH OPERATOR						6	6	
AUTO MECHANIC SUPERVISOR						1	1	
AUTO MECHANIC I						7	7	
AUTO MECHANIC II						2	2	
AUTO MECHANIC HELPERS						7	7	
PHOTO LAB TECHNICIAN						1	1	
CLERK I								0
METER MAIDS		8						8
FIRING RANGE ATTENDANT				1				1
CUSTODIAL WORKER I		1						1
GRAND TOTAL	5	14	6	2	1	53	81	

POLICE PERSONNEL TURNOVER

	<u>Police Officers</u>	<u>Civilians</u>	<u>School Crossing Guards</u>
Authorized Strength for 1973	566	89	14
Actual Strength January 1, 1973	492	76	14
Actual Strength December 31, 1973	519	81	14
<u>Separation from Service</u>			
Death	1	0	0
Killed in Motor Vehicle Accident	0	0	0
Resigned	15	15	0
Pensioned	4	0	0
Leave of Absence	5	0	0
Military Leave of Absence	0	0	0
Discharged	4	0	0
Terminated	5	7	2
Transferred	<u>0</u>	<u>14</u>	<u>0</u>
Total Separations	34	36	2
<u>Appointment to Service</u>			
Appointed since January 1, 1973	49	24	0
Reappointed since January 1, 1973	6	1	0
Temporary Appointment	0	5	0
Emergency Appointment	<u>0</u>	<u>0</u>	<u>0</u>
Total Appointments	55	30	0
Percentage of Turnover	6.7%	45.9%	14.3%

MINIMUM REQUIREMENTS FOR PATROLMAN

All Patrolmen are hired from an eligible list created by a written examination. Listed below are the basic requirements you must meet before taking this examination:

1. Must be a high school graduate. Must be at least 20 years of age and not more than 29 years of age at time of examination.
2. Weight must be proportional to height.
3. Eyes must test at least 20/70 in each eye without glasses; correctable to 20/20 with glasses. Must not be color blind.
4. Must be of good character and reputation; able to pass rigid background investigation; good credit and work history. Conviction of a serious offense; repeated or numerous convictions for minor offenses or conviction of an offense that would indicate lack of character or judgment, or discharge from military service under other than honorable, are disqualifying.
5. Must furnish this office with a copy of your DD 214, birth certificate or naturalization certificate, and high school diploma or GED transcript.

All applicants who pass the written examination must take a rigid medical examination before the examining physician of the Civil Service Commission.

The annual starting salary is \$7,882.00; or \$657.00 per month.

If you feel that you meet all the above requirements, please complete an application and return it to City Personnel, 500 E. San Antonio, El Paso, Texas 79901.

Thank you for your interest in our City.

Personnel Department

EL PASO POLICE DEPARTMENT PAY SCHEDULE

	1st STEP	2nd STEP	3rd STEP	4th STEP	5th STEP	6th STEP	7th STEP
Patrolmen	7,882	8,274	8,665	9,057	9,500		
Motorcycle Patrolmen, ID Officer I, Dispatcher, & Detectives	8,665	9,057	9,500	9,970	10,492	10,989	
ID Officer II	9,057	9,500	9,970	10,492	10,989	11,588	
Sergeants	9,500	9,970	10,492	10,989	11,588	12,189	
Lieutenants	10,492	10,989	11,588	12,189	12,841	13,483	
Captains	12,189	12,841	13,483	14,198	14,880	15,634	
Inspectors	13,483	14,198	14,880	15,634	16,417	17,278	
Asst. Chief	14,198	14,880	15,634	16,417	17,278	18,166	
Chief	16,756	17,618	18,453	19,392	20,358	21,376	22,472

STEPS:

- 1st Step - From date of appointment through 1 year of service
- 2nd Step - Upon completion of 1 year of service
- 3rd Step - Upon completion of 2 years of service
- 4th Step - Upon completion of 3 years of service
- 5th Step - Upon completion of 4 years of service

LONGEVITY PAY: \$3.50 per month per each year of service

Step Raises are given on your anniversary date, which is the day you were appointed.

PERSONNEL SCHEDULE

Police - 36

JOB TITLE	CLASS GRADE	SALARY RANGE	ACTUAL 2-1-74	AUTHORIZED 1972-73	AUTHORIZED 1973-74
Police Chief	33	16,756-22,472	1	1	1
Ass't. Police Chief	31	14,198-18,166	2	1	2
Police Inspector	30	13,483-17,278	3	3	3
Police Captain	28	12,189-15,634	8	5	8
Electronic Supervisor	28	12,189-15,634	1	1	1
Police Lieutenant	25	10,492-13,483	30	28	30
Police Sergeant	23	9,500-12,189	56	57	56
Police Statistics Clerk	23	9,500-12,189	1	1	1
Police Identification Officer II	22	8,561-11,014	3	2	3
Automotive Mechanic Foreman	21	8,665-10,989	1	1	1
Police Dispatcher	21	8,665-10,989	15	15	15
Detective	21	8,665-10,989	77	72	77
Photo Lab Technician II	21	8,665-10,989	0	1	1
Motorcycle Patrolman	20	8,274- 9,970	28	30	28
Police Identification Officer I	20	8,274- 9,970	7	5	7
Police Patrolman	19	7,882- 9,500	337	296	339
Automotive Mechanic II	18	7,517- 9,057	2	2	2
Personnel & Payroll Clerk	17	7,204- 8,665	1	1	1
Secretary II	16	6,890- 8,274	1	1	1
Jail Cook	16	6,890- 8,274	1	1	1
Automotive Mechanic I	16	6,890- 8,274	7	7	8
Tabulating Equipment Operator	15	6,629- 7,882	1	1	1
Photo Lab Technician	15	6,629- 7,882	1	1	1
Secretary I	13	6,107- 7,204	3	2	2
Police Complaint Clerk	13	6,107- 7,204	2	2	2
Police Typist III	13	6,107- 7,204	1	1	1
Clerk III	13	6,107- 7,204	1	1	1
Firing Range Technician	12	5,873- 6,890	1	1	1
Automotive Shop Helper	11	5,664- 6,629	6	6	6
Clerk Steno II	11	5,664- 6,629	2	2	3
Tabulating Equipment Operator I	11	5,664- 6,629	1	1	1
Keypunch Operator	11	5,664- 6,629	6	6	6
Clerk Typist II	9	5,246- 6,107	32	32	32
Clerk II	9	5,246- 6,107	1	1	1
Clerk Typist I	6	4,698- 5,455	1	1	3
Custodian Worker	5	4,541- 5,246	1	1	1
School Crossing Guards	-	-	14	14	14
Youth Representative	-	-	5	5	4

STEP Grant - 27 Motorcycle Patrolmen & 2 Sergeants
 Community Relations Grant - 9 Patrolmen, 1 Clerk Typist II, and 5 Youth Representatives
 EEA Grant - 10 Patrolmen, 1 Secretary I
 Organized Criminal Grant - 2 Detectives

BUDGET SUMMARY

Police - 36

ACCOUNT NUMBER	ACCOUNT TITLE	EXPENDITURES 1971-72	ADJUSTED 1972-73	APPROVED 1973-74
800	Salaries and Wages	4,427,622	4,894,325	5,450,130
	Operating Expense			
801	Auto Allowance	2,038	2,700	1,835
811-2	Damages - Personal	650		1,200
813-1	Forage			2,400
814-1	Food for Prisoners	2,787		
814-2	Supplies for Prisoners	1,818		
814-3	Prisoner Custody - County	29,167	50,000	50,000
817	Medical Expense	6,124	2,000	6,000
818-1	Maintenance - Automotive	87,577	70,000	93,825
818-2	Maintenance - Building	7,450	8,500	11,255
818-3	Maintenance - Pistol Range	2,862	3,000	3,095
818-4	Maintenance - Furn & Equip	7,314	10,000	10,380
822-3	Rental - Equipment	18,512	19,700	30,145
822-4	Rental - Other	1,200	3,600	3,600
825	Membership Dues	97	95	95
826	Special Services	6,514		
826-1	City Data Processing		3,000	3,000
826-3	Service Agreements		7,000	7,000
826-5	Custodial Fee		4,000	
830-1	Books & Publications	983	2,000	3,135
830-2	Ammunition	4,994	6,500	7,545
830-4	Clinical Supplies	131	500	
830-5	Photographic Supplies	10,062	9,500	11,575
830-7	Janitorial Supplies	9,034	3,200	2,835
830-8	Gas & Oil	85,877	10,000	99,365
830-9	Expendable Tools	7,876	10,000	10,575
830-10	Office Supplies	22,837	17,500	20,865
830-11	Shop Supplies	638	1,000	1,020
835	Uniforms	31,204	45,000	66,215
839	Technical Schooling	9,115	3,000	3,000
840	Travel & Per Diem	3,505	3,000	3,500
841	Undercover Expense	2,000	2,000	4,000
842-1	Electricity	4,567	5,000	5,670
842-2	Gas	1,146	1,600	1,880
842-3	Water	990	1,300	1,360
842-5	Telephone & Telegraph	24,624	22,000	24,015
	Total Operating Expense	393,693	326,695	490,385
900	Capital Expense			
-1	Automotive	221,715	224,000	21,000
-3	Buildings	28,000	22,000	
-4	Furniture & Equipment	43,681	30,000	2,390
-8	Communications	71,656	20,000	13,245
-9	Major Tools	1,575	400	155
	Total Capital Expense	366,627	296,400	36,790
	Total Department Expense	5,187,942	5,517,420	5,977,305



END