

174076



RAPE IN ARKANSAS 1996

Arkansas Crime Information Center

State of Arkansas

Mike Huckabee
Governor

Arkansas Crime Information Center

David Eberdt
Director

Charles Pruitt
Operations Administrator

Larry Cockrell
Criminal History Administrator

Ken Hall
Information Services Administrator

Richard Thomas
Special Services Administrator

ACIC Supervisory Board

Jack Lassiter, Chairman
Arkansas Bar Association

Paul Bosson, Vice Chairman
Prosecuting Attorney's Association

Colonel John Bailey
Arkansas State Police

J.D. Gingerich
Arkansas Supreme Court

David Guntharp
Department of Correction

Rick Hogan
Attorney General's Office

Representative James Jordan
General Assembly

Lieutenant Jim Montgomery
Municipal Police Association

Sheriff Jess Odom
Arkansas Sheriff's Association

Olan Reeves
Office of the Governor

Vicki Rima
Association of Arkansas Counties

J.R. Thomas
Citizen-at-large

Chief Kyn Wilson
Chiefs of Police Association

Uniform Crime Reporting Staff

Lynn Bulloch
UCR Supervisor

Reba Watson
Quality Control, Data Input

Julle Collier
Distribution

Berea Stennis
Data Input

Introduction

Rape In Arkansas is an annual publication. Data in this report comes from the state Uniform Crime Reporting program and a special supplement that allows collection of additional information on each rape and attempted rape. It should be understood that only those incidents that are reported to law enforcement are contained in this publication.

A Special Services Report

RAPE IN ARKANSAS 1996

July, 1997

**Arkansas Crime Information Center
One Capitol Mall
Little Rock, AR 72201
501/682-2222
FAX 501/682-7444**

PROPERTY OF
National Criminal Justice Reference Service (NCJRS)
Box 6000
Rockville, MD 20849-6000



Rape in Arkansas 1996

There were 1,041 rapes and attempted rapes in Arkansas reported through the Uniform Crime Reporting Program. Of these, 949 were rapes and 92 were attempted rapes reported by law enforcement agencies. This represents an increase of 13% from 1995, a slight decrease (1%) from five years ago, but 50% higher than ten years ago.

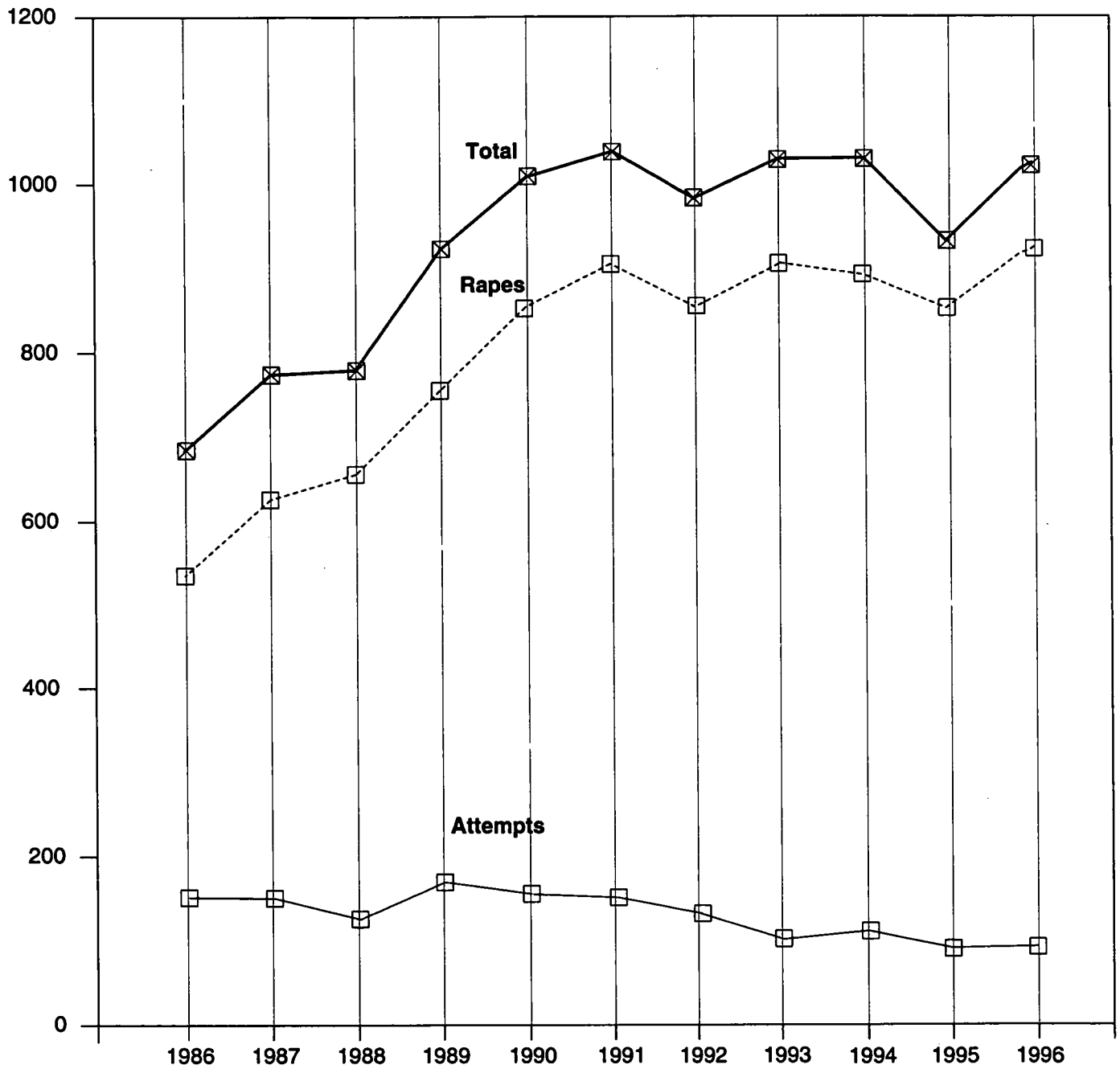
Rape and Attempted Rape

Rape/Attempted Rape	Number	Percent Distribution
Rape	949	91.2
Attempted Rape	92	8.8
Total	1,041	100

Trend

Year	Number of Offenses	Percent Change (Over Previous Year)	Rate Per 100,000	Percent Cleared
1991	1,052	+ 4.3	44.8	56.5
1992	988	- 6.0	41.9	58.9
1993	1,026	+ 3.8	42.8	61.0
1994	1,026	0.0	42.3	51.8
1995	923	-10.0	37.6	61.1
1996	1,041	+12.8	41.7	63.1

Comparison of Rapes and Attempted Rapes 1986 through 1996



Rape by Time of Day

When time of day was known, almost half of all rapes (44%) occurred during the 6 hour period between 8:00 p.m. and 2:00 a.m. The most common two hour period was from midnight to 2:00 a.m. Only 18% of the rapes occurred during the 8 hour period between 6:00 a.m. and 2:00 p.m., and only one-fourth occurred during the day time hours of 6:00 a.m. to 6:00 p.m. The least likely period was from 10:00 a.m. until noon (2%).

Time of Day	Number	Percent Distribution
A.M. 12:01 - 2	140	13.4
2:01 - 4	83	8.0
4:01 - 6	60	5.8
6:01 - 8	30	2.9
8:01 - 10	29	2.8
10:01 - Noon	24	2.3
P.M. 12:01 - 2	56	5.4
2:01 - 4	44	4.2
4:01 - 6	51	4.9
6:01 - 8	71	6.8
8:01 - 10	104	10.0
10:01 -Midnight	101	9.7
Unknown	248	23.8

Rape by Day of Week

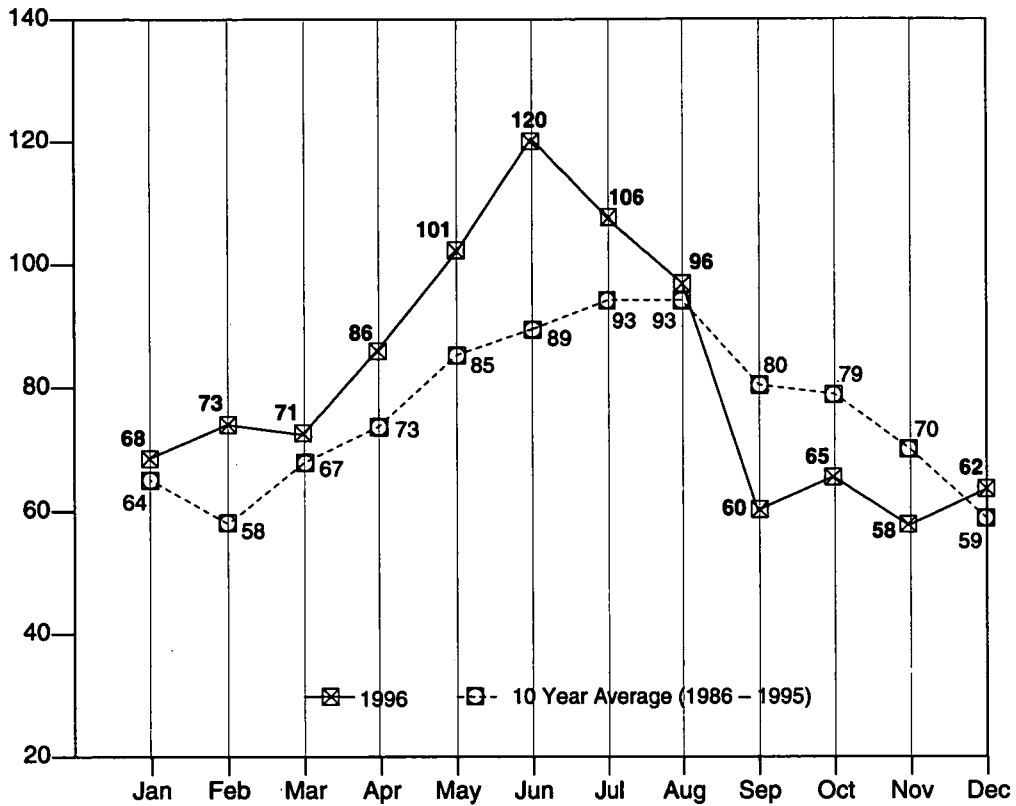
Where day of the week was known, 47% of the rapes were committed on weekend days (Friday, Saturday or Sunday) and 19% were committed on Saturday alone.

Day of Rape	Number	Percent Distribution
Sunday	133	12.8
Monday	129	12.4
Tuesday	120	11.5
Wednesday	125	12.0
Thursday	114	11.0
Friday	127	12.2
Saturday	172	16.5
Unknown	121	11.6

Rapes by Month

(1996 compared to a ten year average – 1986 through 1995)

In 1996, more rapes occurred in June than any other month. From 1986 through 1995, the ten year average was highest for July and August.



Note: due to rounding some totals won't be exactly 100%.

Month	Number	Percent Distribution
January	68	6.5
February	73	7.0
March	71	6.8
April	86	8.3
May	101	9.7
June	120	11.5
July	106	10.2
August	96	9.2
September	60	5.8
October	65	6.2
November	58	5.6
December	62	6.0
Unknown	75	7.2
Total	1,041	100

Victims of Rape

Almost two-thirds of the victims were white. White victims have increased 17% compared to 1995, black victims have increased 6%. Compared to five years ago, white victims have increased 10%, black victims have decreased 14%.

The age distribution for victims has remained relatively constant over the past five years. Forty-eight percent were younger than eighteen years old and 71% were younger than 25. Four victims were only two years old and the oldest victim was 95.

More rapes occurred in victims of age fourteen through seventeen than in any other age range (24%). Almost 10% of the victims were 12 or 13 years of age, and 20% were age 14 through 16.

Victim Characteristics

Age of Victim	White	Black	Other	Total
5 & Under	40	10	0	50
6 – 9	43	30	0	73
10 – 13	100	36	0	136
14 – 17	162	88	0	250
18 – 20	71	57	0	128
21 – 24	57	48	2	107
25 – 29	46	33	0	79
30 – 34	51	30	0	81
35 – 39	33	26	0	59
40 – 49	29	20	0	49
50 – 59	10	3	0	13
60 & Over	11	4	0	15
Unknown	1	0	0	1
Total	654	385	2	1,041

Weapons Used to Exert Force Upon Victim

An external weapon (other than hands, fists, verbal threats) was used in 13% of the rapes compared to 15% in 1995.

Weapon Used	Number	Percent Distribution
Firearm	64	6.2
Knife/Sharp Instrument	55	5.3
Club/Blunt Instrument	14	1.3
Verbal threats, fists, etc.	906	87.0
Unknown	2	0.2

Victim-Offender Race Relationship

The first race listed is the race of the *victim*, and the second race is that of the *offender(s)*. For example: *white/black* means that the victim was white and the offender was black (1 or more). For offenses in which race is known, 84% of the rapes were between members of the same race.

Victim/Offender(s) Race	Number	Percent Distribution
White/White	480	46.1
Black/Black	369	35.5
Total Intraracial Rapes (same race)	849	81.6
White/Black	149	14.3
Black/White	10	1.0
White/Other	3	0.3
White/White & Black*	6	0.6
Total Interracial Rapes (different races)	168	16.1
White/Unknown	18	1.7
Black/Unknown	6	0.6
Total Unknown Rapes	24	2.3
Total Rapes	1,041	100

**Rapes involving offenders of more than one race are counted as interracial.*

Relationship of Offender to Victim

Approximately three-fourths of all rapes were committed by persons known to the victim.

Relationship	Number	Percent Distribution
Known to victim	574	55.1
Unknown to victim	265	25.5
Family member	200	19.2
Unknown	2	0.2

Rapes Involving Family Members

Where the offender was known to the victim 35% of the rapes involved family members. Where the offender was a family member, 62 victims (31%) were younger than 10 years of age, and 112 victims (56%) were 14 years of age or younger.

Relationship	Number	Percent Distribution
Husband	19	9.0
Ex-Husband	11	5.2
Father	40	18.8
Stepfather	40	18.8
Grandfather	5	2.4
Stepgrandfather	1	0.5
Brother	14	6.6
Half Brother	1	0.5
Stepbrother	5	2.3
Uncle	39	18.4
Nephew	1	0.5
Cousin	29	13.7
Father-in-law	1	0.5
Brother-in-law	6	2.8
Total	212*	100

**In twelve rape incidents above, there were two family members involved as offenders.*

Location of Actual Rapes and Attempted Rapes

In 1996, 40% of all rapes occurred in the victim's residence and more than two-thirds of all rapes occurred in either the victim's, suspect's or another residence.

Location of Rape	Number	Percent Distribution
Victim's residence	417	40.1
Suspect's residence	190	18.3
Other residences	133	12.8
Automobiles	48	4.6
Public outdoor areas (streets, parks, etc.)	82	7.9
Fields, vacant lots, wooded areas, etc.	47	4.5
Motels/Hotels	37	3.6
Bar/Lounge	3	0.3
Place of Employment	6	0.6
School/playground	12	1.2
All other locations	23	2.2
Unknown	43	4.1

Rape Reporting Time Lapse

Where time lapse was known, 41% of the rapes were reported to law enforcement agencies within four hours of the commission of the offense. This has remained approximately the same since 1991. Before 1991, 50% to 60% of the reports were made to law enforcement within four hours.

In 17% of the offenses, the time lapse was unknown or could not be used because more than one rape occurred over a time period of a month or more.

Hours Reporting Time	Number	Percent Distribution
Less than 1	183	17.6
1 - 4	171	16.4
4 + - 8	94	9.0
8 + - 12	65	6.3
12 + - 24	129	12.4
More than 24	220	21.1
Unknown	179	17.2

Number of Offenders Per Rape

There were two or more offenders in only 10% of the rapes or attempted rapes. This percentage has not changed significantly since we began reporting these figures in 1978.

Offender(s) Per Offense	Number	Percent Distribution
One	938	90.1
Two	77	7.4
Three	12	1.1
Four	9	0.9
More than four	4	0.4
Unknown	1	0.1

Rape Offenders (Suspects)

The number of white offenders increased 16% compared to 1995 while the number of black offenders increased 4% from 1995. Suspects age 16 to 21 are the largest age group of offenders, and include 22% of known offenders. The white offenders in this group increased 29% compared to 1995, but black offenders of this age group decreased 21%.

Age of Offender	White	Black	Unknown	Total
10 – 15	35	44	0	79
16 – 20	121	135	0	256
21 – 25	63	92	0	155
26 – 30	74	76	1	151
31 – 35	66	64	0	130
36 – 40	49	53	1	103
41 – 45	21	18	0	39
46 – 50	17	10	0	27
51 – 60	19	4	0	23
61 and over	7	5	0	12
Unknown	59	126	22	207
Total	531 (44.9%)	627 (53.1%)	24 (2.0%)	*1,182 (100%)

**The number of offenders doesn't equal the number of victims. In some cases there are multiple offenders per victim.*

Medical Attention for Victims

Of the 949 victims of actual rape, 617 (59%) received medical attention. Where medical information is known on actual rape victims, 80% received medical attention.

Type of Rape	Medical Attention			
	Received Medical Attention	No Medical Attention	Unknown	Total
Actual	617 (59.3%)	166 (15.9%)	166 (16.0%)	949 (91.2%)
Attempt	15 (1.4%)	55 (5.3%)	22 (2.1%)	92 (8.8%)
Total	632 (60.7%)	221 (21.2%)	188 (18.1%)	1,041 (100%)

1996
Number of Rapes and Attempted Rapes
 *(By Reporting Agency)

AGENCY	RAPES	ATTEMPTED	AGENCY	RAPES	ATTEMPTED
ARKANSAS COUNTY	7	0	CONWAY COUNTY	3	0
Sheriff	2	0	Sheriff	1	0
DeWitt	2	0	Morrilton	2	0
Stuttgart	3	0			
ASHLEY COUNTY	9	0	CRAIGHEAD COUNTY	27	0
Sheriff	8	0	Sheriff	5	0
Crossett	1	0	Jonesboro	22	0
BENTON COUNTY	35	3	CRAWFORD COUNTY	2	0
Sheriff	13	0	Sheriff	1	0
Bentonville	3	3	Van Buren	1	0
Rogers	18	0			
Siloam Springs	1	0	CRITTENDEN COUNTY	31	3
BOONE COUNTY	4	0	Sheriff	1	0
Sheriff	1	0	Earle	1	0
Harrison	3	0	Marion	1	0
			West Memphis	28	3
BRADLEY COUNTY	2	0	CROSS COUNTY	8	1
Sheriff	1	0	Sheriff	6	1
Warren	1	0	Wynne	2	0
CARROLL COUNTY	10	1	DALLAS COUNTY	3	0
Sheriff	6	0	Fordyce	3	0
Eureka Springs	0	1			
Green Forest	4	0	DESHA COUNTY	10	2
CHICOT COUNTY	4	0	Dumas	9	2
Sheriff	2	0	McGehee	1	0
Eudora	1	0			
Lake Village	1	0	DREW COUNTY	5	0
CLARK COUNTY	4	0	Sheriff	3	0
Sheriff	3	0	Monticello	2	0
Arkadelphia	1	0			
CLAY COUNTY	2	0	FAULKNER COUNTY	23	0
Sheriff	2	0	Conway	22	0
CLEBURNE COUNTY	1	0	UCA	1	0
Sheriff	1	0			
CLEVELAND COUNTY	1	0	FRANKLIN COUNTY	2	0
Sheriff	1	0	Sheriff	1	0
COLUMBIA COUNTY	7	1	Ozark	1	0
Sheriff	4	0			
Magnolia	3	1	FULTON COUNTY	2	0
			Sheriff	2	0
			GARLAND COUNTY	26	5
			Sheriff	5	0
			Hot Springs	21	5
			GREENE COUNTY	7	0
			Sheriff	4	0
			Paragould	3	0

*Counties, sheriffs offices or police departments not listed in the tables have reported no rape or attempt for the year of 1996.

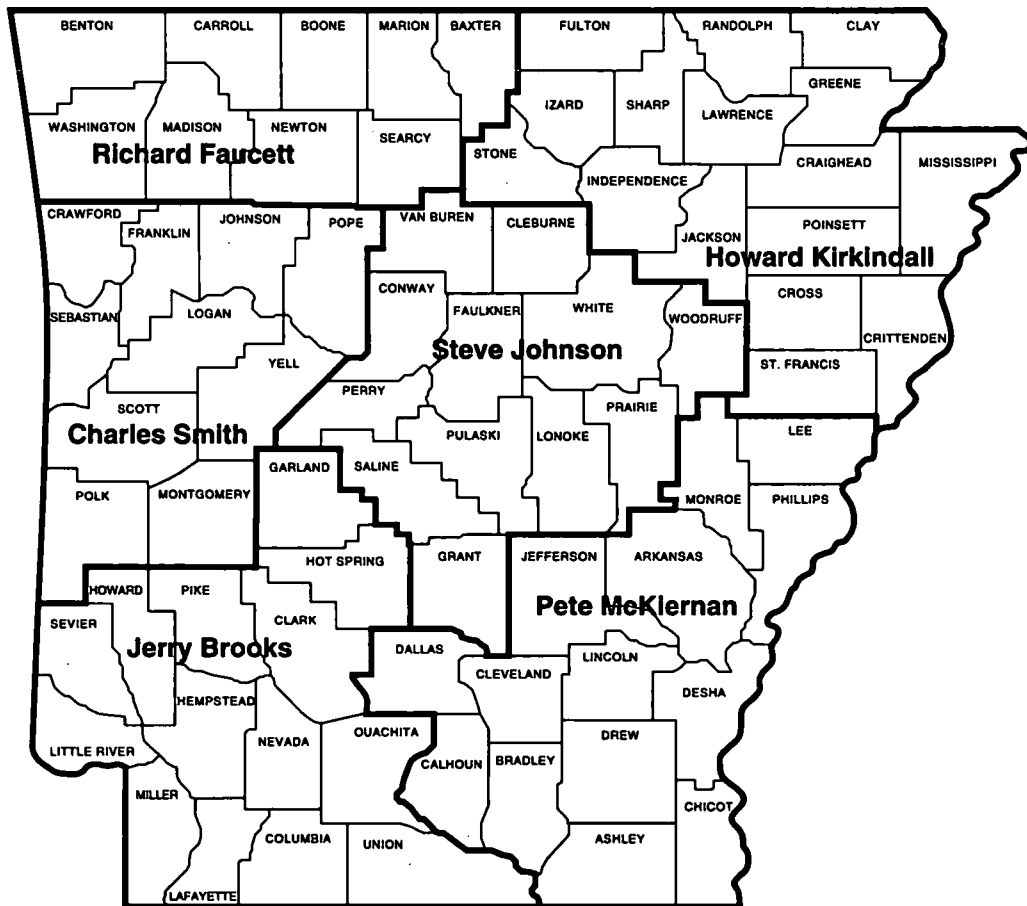
1996
Number of Rapes and Attempted Rapes

AGENCY	RAPES	ATTEMPTED	AGENCY	RAPES	ATTEMPTED
HEMPSTEAD COUNTY	9	0	NEWTON COUNTY	1	0
Sheriff	3	0	Sheriff	1	0
Hope	6	0			
HOT SPRING COUNTY	4	0	OUACHITA COUNTY	19	2
Sheriff	1	0	Sheriff	10	0
Malvern	3	0	Camden	9	2
HOWARD COUNTY	2	0	PERRY COUNTY	1	0
Sheriff	2	0	Sheriff	1	0
INDEPENDENCE COUNTY	9	1	PHILLIPS COUNTY	8	4
Sheriff	9	1	Sheriff	0	1
			Helena	5	3
JACKSON COUNTY	4	0	West Helena	3	0
Sheriff	1	0			
Newport	3	0	PIKE COUNTY	1	0
JEFFERSON COUNTY	77	15	Sheriff	1	0
Sheriff	7	1			
Pine Bluff	70	14	POINSETT COUNTY	3	1
LAFAYETTE COUNTY	2	1	Sheriff	3	0
Sheriff	2	1	Trumann	0	1
LEE COUNTY	3	0	POLK COUNTY	4	0
Sheriff	2	0	Sheriff	2	0
Marianna	1	0	Mena	2	0
LITTLE RIVER COUNTY	3	0	POPE COUNTY	9	0
Sheriff	3	0	Sheriff	3	0
LONOKE COUNTY	1	2	Russellville	6	0
Cabot	1	1			
Lonoke	0	1	PRAIRIE COUNTY	1	0
MILLER COUNTY	27	6	Sheriff	1	0
Sheriff	2	2			
Texarkana	25	4	PULASKI COUNTY	318	23
MISSISSIPPI COUNTY	30	6	Sheriff	52	4
Sheriff	9	1	Jacksonville	14	0
Blytheville	13	4	Little Rock	151	15
Osceola	8	1	North Little Rock	96	4
MONROE COUNTY	1	0	Sherwood	5	0
Sheriff	1	0			
NEVADA COUNTY	1	0	RANDOLPH COUNTY	4	0
Prescott	1	0	Sheriff	3	0
			Pocahontas	1	0
			ST. FRANCIS COUNTY	3	1
			Sheriff	1	0
			Forrest City	2	1
			SALINE COUNTY	16	1
			Sheriff	8	0
			Benton	8	1

1996
Number of Rapes and Attempted Rapes

AGENCY	RAPES	ATTEMPTED	AGENCY	RAPES	ATTEMPTED
SEARCY COUNTY	1	0	VAN BUREN COUNTY	2	0
Sheriff	1	0	Sheriff	2	0
SEBASTIAN COUNTY	58	4	WASHINGTON COUNTY	50	1
Sheriff	1	0	Sheriff	2	0
Fort Smith	54	4	Fayetteville	36	1
Greenwood	3	0	Springdale	12	0
SEVIER COUNTY	5	0	WHITE COUNTY	13	3
Sheriff	4	0	Sheriff	10	2
DeQueen	1	0	Searcy	3	1
SHARP COUNTY	5	1	YELL COUNTY	5	1
Sheriff	5	1	Danville	1	0
			Dardanelle	4	1
STONE COUNTY	1	0	STATE TOTAL	949	92
Sheriff	1	0			
UNION COUNTY	13	3			
Sheriff	3	0			
El Dorado	9	3			
Smackover	1	0			

ACIC Agent Staff Areas



PROPERTY OF
 National Criminal Justice Reference Service (NCJRS)
 Box 6000
 Rockville, MD 20849-6000

