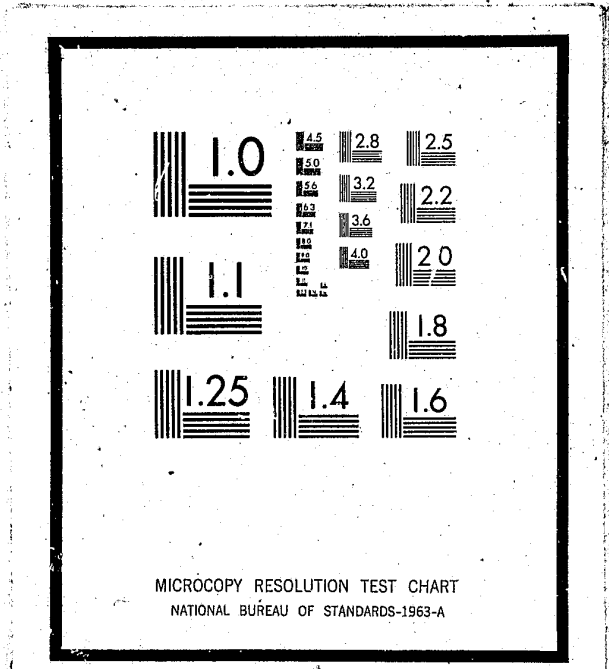


# NCJRS

This microfiche was produced from documents received for inclusion in the NCJRS data base. Since NCJRS cannot exercise control over the physical condition of the documents submitted, the individual frame quality will vary. The resolution chart on this frame may be used to evaluate the document quality.



Microfilming procedures used to create this fiche comply with the standards set forth in 41CFR 101-11.504

Points of view or opinions stated in this document are those of the author(s) and do not represent the official position or policies of the U.S. Department of Justice.

U.S. DEPARTMENT OF JUSTICE  
LAW ENFORCEMENT ASSISTANCE ADMINISTRATION  
NATIONAL CRIMINAL JUSTICE REFERENCE SERVICE  
WASHINGTON, D.C. 20531

Date filmed 9/30/75

17486



## THE JUDICIAL COUNCIL

OF

## THE SUPREME COURT

OF

## LOUISIANA

ANNUAL REPORT 1974

With

1974 STATISTICS

AND RELATED DATA

TABLE OF CONTENTS

1974 ANNUAL REPORT OF THE JUDICIAL COUNCIL

SUPREME COURT OF LOUISIANA  
301 Loyola Avenue  
New Orleans, Louisiana 70112

Eugene J. Murret  
Judicial Administrator

	Page
Letter of Transmittal . . . . .	5
Report of the Judicial Administrator . . . . .	7
Membership of the Judicial Council . . . . .	8
THE LOUISIANA JUDICIARY	
Supreme Court . . . . .	11
Courts of Appeal . . . . .	13
District Courts . . . . .	15
City Courts . . . . .	21
STATISTICAL SECTION	
Introduction . . . . .	24
Supreme Court . . . . .	25
Courts of Appeal . . . . .	28
District Courts . . . . .	32
Family and Juvenile Courts . . . . .	53
City Courts . . . . .	58



THE HONORABLE JOE W. SANDERS  
Chief Justice  
Supreme Court of Louisiana



Supreme Court  
STATE OF LOUISIANA  
New Orleans  
70112

CHIEF JUSTICE  
JOE W. SANDERS  
ASSOCIATE JUSTICES  
FRANK W. SUMMERS  
MACK E. BARHAM  
ALBERT TATE, JR.  
JOHN A. DIXON, JR.  
PASCAL F. CALOGERO, JR.  
WALTER F. MARCUS, JR.  
JUDICIAL ADMINISTRATOR  
EUGENE J. MURRET

December 1, 1974

To the Members of the Supreme Court of Louisiana  
and the Board of Governors of the  
Louisiana State Bar Association

Gentlemen:

In accordance with the provisions of subsection (e) of Section 5 of Rule XXII of the Revised Rules of the Louisiana Supreme Court, I am pleased to submit herewith the twentieth annual report of the Judicial Council of the Supreme Court of Louisiana. Since the last report several events affecting the court system and this Court have occurred.

With respect to the Supreme Court, the number of opinions written by the Justices has increased by 14% since last year and by almost 100% since 1972. In the court year just ended, 404 written opinions were handed down by the seven Justices of the Court, for an average of 58 opinions for each Justice, as compared to an average of 30 opinions per Justice only two years ago. The total number of cases filed in the Supreme Court has increased by 17% over the previous year and by 23% since 1972. The total number of cases filed during the past year was 1,380, twice the number filed five years ago.

Despite the increasing workload, I am happy to report that the Supreme Court is current in its work. All cases filed are immediately docketed and scheduled for oral argument within two to three months. Following argument, a decision is handed down in approximately five weeks. The Court is able to keep the docket current by scheduling hearings throughout the year and increasing the number of cases heard at each sitting.

REPORT OF THE JUDICIAL ADMINISTRATOR

Rules for the exemption of jurors, effective January 1, 1975, were adopted by the Supreme Court as required by the Constitution of 1974. Women are no longer automatically exempt. The number of special exemption categories has been decreased. Excuses for hardship, of course, can be granted by trial judges under the Code of Procedure.

The Judicial Council held two important meetings during the past year. Some of the principal actions taken were: 1) approved an additional judgeship for the Twenty-Sixth Judicial District (Bossier and Webster Parishes), 2) adoption of a model rule for cases under advisement, 3) establishment of a procedure by which the legislature will consult with the Council on legislation affecting the courts, 4) drafting of legislation to control the late filing of pretrial criminal motions.

I wish to thank the many judges who served on assignment by the Supreme Court during the past year. Approximately 61 judges voluntarily contributed some 2000 man hours of service on courts other than their own. Of these 47 were District Judges, 4 were Court of Appeal Judges, and 9 were retired Judges. In addition, five attorneys served on assignment by the Supreme Court to juvenile and municipal courts.

Looking to the future, the problems confronting the Louisiana court system are considerable. An increasing workload is expected. The new Constitution will place greater burdens on judges and court personnel at every level. The challenge calls for ingenuity and cooperation. I am sure that all judges of Louisiana can and will meet the challenge.

Respectfully submitted,

*Joe W. Sanders*  
JOE W. SANDERS  
Chief Justice

Since my last report on December 1, 1973, the activities of my office staff have increased and expanded in several ways. First, under a grant from the Law Enforcement Assistance Administration, we have assisted the Louisiana Citizens Educational Foundation for Criminal Justice in sponsoring regional citizens conferences on the courts. The first conference under the grant was held for citizens of Shreveport in March, followed by conferences in Lafayette, Lake Charles and Alexandria. Conferences for citizens in the Houma region and the New Orleans region are contemplated for the future. Feedback from the participants who attended these conferences indicates that the learning experience is beneficial for them and for the public image of the courts.

Next, we have received a \$200,000 grant from the Law Enforcement Assistance Administration to assist the Louisiana Criminal Justice Information System in obtaining data about the flow of felony criminal cases through the court system and to create a court information system which will provide data necessary for the Chief Justice and the Supreme Court to exercise their administrative functions as required by the new constitution. A special advisory committee, chaired by Associate Justice Mack E. Barham, has been appointed by the Chief Justice to supervise this project. The following representatives of the various levels of the court system are on the committee: Judge John T. Hood, Jr. of Lake Charles, representing the Louisiana Conference of Court of Appeal Judges; Judge G. William Swift, Jr. of Lake Charles, representing the Louisiana District Judges Association; and Judge Kaliste J. Saloom, Jr. of Lafayette, representing the Louisiana City Judges Association. Other members of the committee are: Clyde R. Webber, Jr., of Vidalia, representing the Louisiana Clerks of Court Association; Robert Pugh of Shreveport, president-elect of the Louisiana State Bar Association; Gene Freeman of Baton Rouge, director of the Attorney General's Criminal Justice Information System; Colonel Donald J. Thibodeaux of Baton Rouge, superintendent of state police; Jack E. Yelverton of Baton Rouge, executive director of the Louisiana District Attorneys Association; and Mrs. Elayn Hunt of Baton Rouge, director of the Louisiana Department of Corrections. James A. Gainey, Deputy Judicial Administrator, is the director of the project.

Finally, I am happy to report that a long-standing difficulty regarding some trial cases being held under advisement for excessive periods has been substantially ameliorated. As the result of efforts and planning by the Judiciary Commission of Louisiana, monthly reports of cases under advisement are more accurate and complete, thereby permitting a realistic time table for the disposition of cases under advisement and for forestalling excessive delays. I wish to personally thank district judges for the cooperation and understanding which they have shown in this matter over the past year.

*Eugene J. Murret*  
EUGENE J. MURRET

MEMBERSHIP OF THE JUDICIAL COUNCIL OF THE  
SUPREME COURT OF LOUISIANA

Honorable Joe W. Sanders, Chairman  
Chief Justice, Supreme Court of Louisiana

Honorable Frank W. Summers, Vice-Chairman  
Associate Justice, Supreme Court of Louisiana

Honorable James E. Bolin, Judge  
Second Circuit Court of Appeal,  
Chairman, Conference of Court of Appeal Judges

Honorable L. Julian Samuel, Judge  
Fourth Circuit Court of Appeal

Honorable Edward A. de la Houssaye, III, Judge, Sixteenth Judicial District  
President, Louisiana District Judges Association

Honorable G. William Swift, Jr., Judge  
Fourteenth Judicial District Court

Honorable Oliver S. Delery, Judge, New Orleans Traffic Court  
President, Louisiana City Judges Association

Honorable Edward G. Gillin, Orleans Parish Juvenile Court  
President, Louisiana Council of Juvenile Court Judges

Mr. Kent Breard, President  
Louisiana State Bar Association

Mr. H. F. Sockrider, Jr., Chairman  
Young Lawyers Section, Louisiana State Bar Association

Mr. James J. Davidson, President  
Louisiana State Law Institute

Honorable Thomas A. Casey  
State Representative

Honorable Edgar G. Mouton, Jr.  
State Senator

Mr. Leander H. Perez, Jr., President  
Louisiana District Attorneys Association

Mr. Marlin Risinger, Jr.  
Attorney at Law

Mr. Robert Lowe, President  
Louisiana Clerks of Court Association

Mr. Joe D. Smith, Jr., Publisher  
Alexandria Daily Town Talk

Honorable J. Cleveland Fruge  
Judge, Third Circuit Court of Appeal

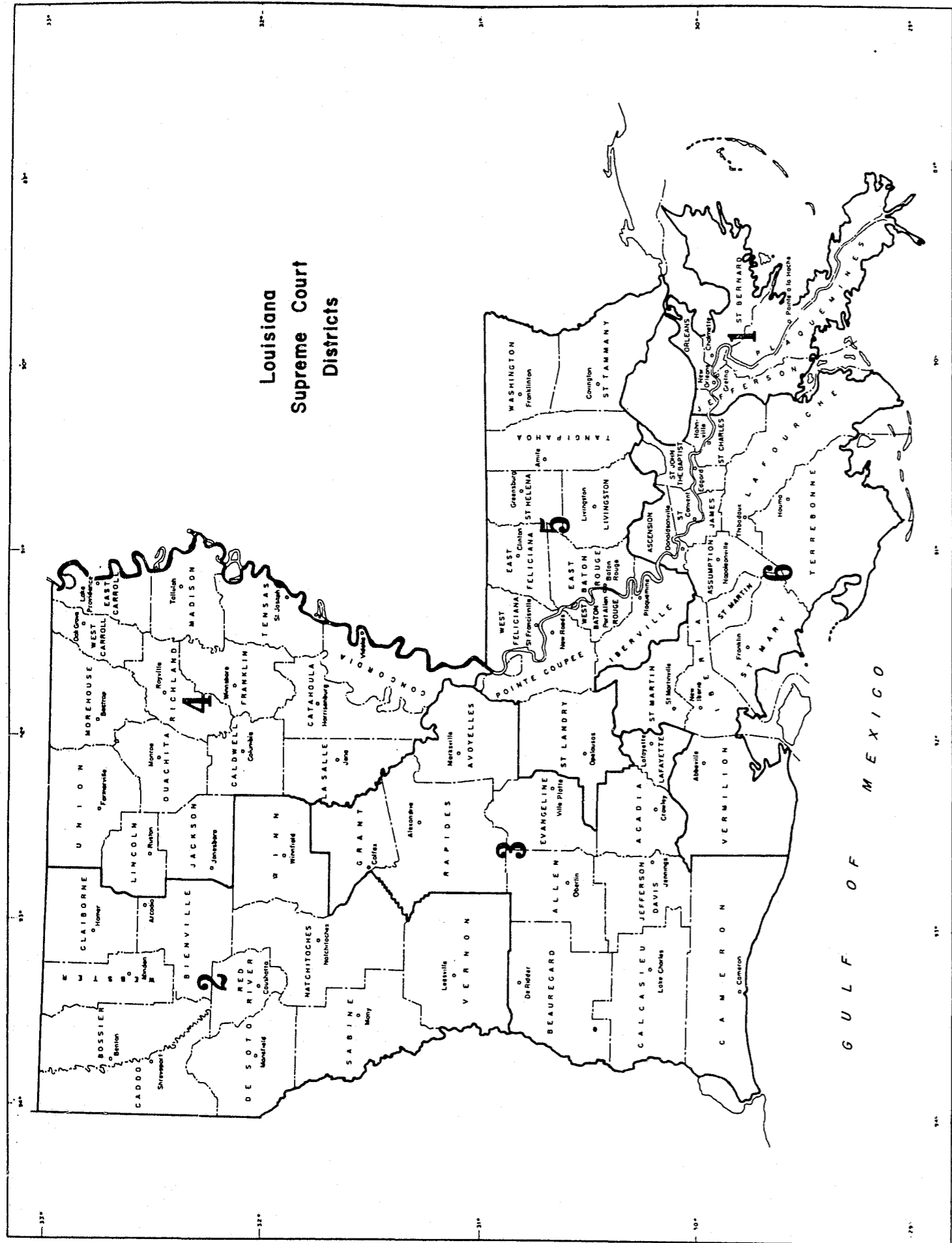
Honorable Mack E. Barham, ex officio  
Associate Justice, Supreme Court of Louisiana

Honorable Albert Tate, Jr., ex officio  
Associate Justice, Supreme Court of Louisiana

Honorable John A. Dixon, Jr., ex officio  
Associate Justice, Supreme Court of Louisiana

Honorable Pascal F. Calogero, Jr., ex officio  
Associate Justice, Supreme Court of Louisiana

Honorable Walter F. Marcus, Jr., ex officio  
Associate Justice, Supreme Court of Louisiana



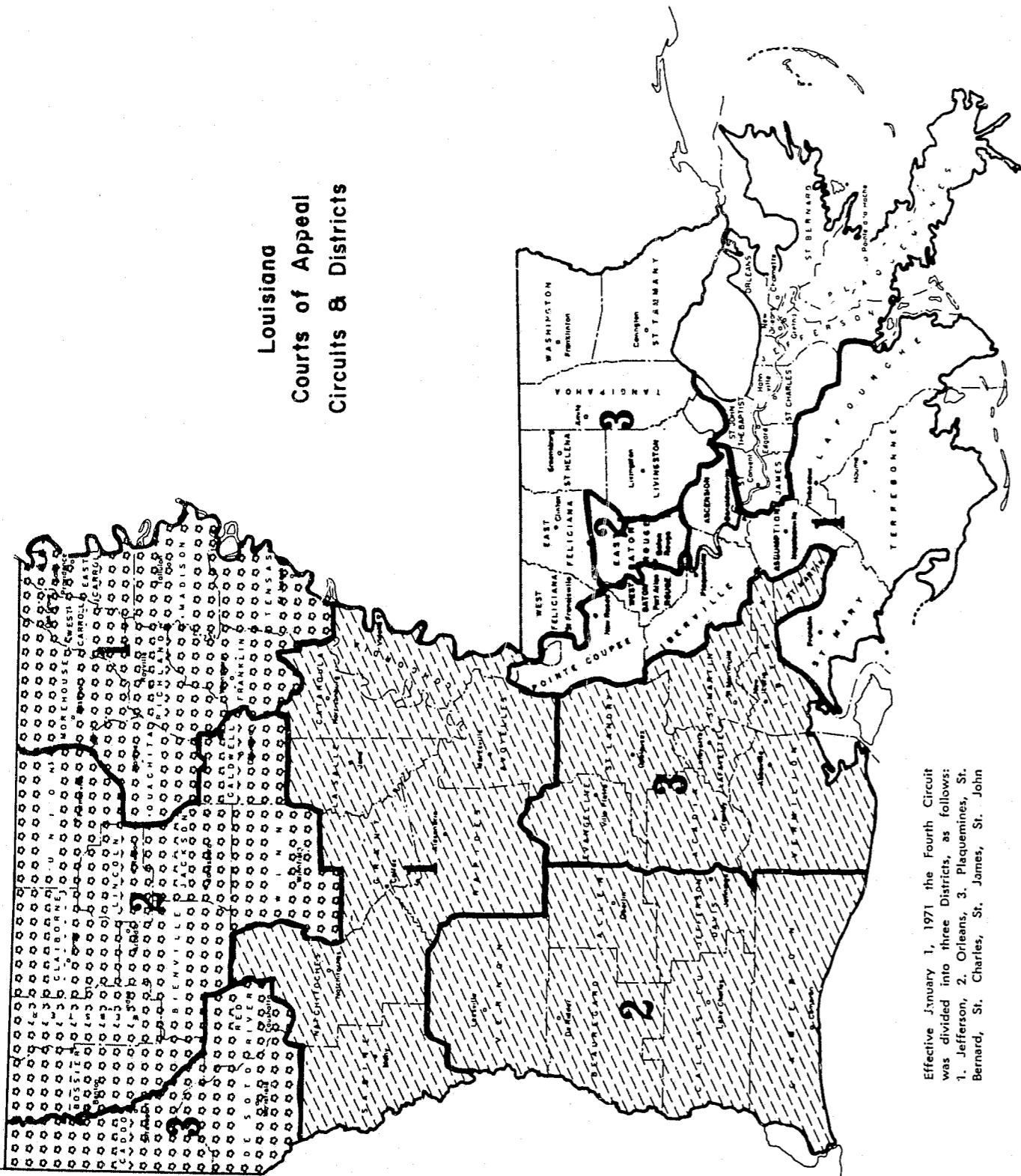
Louisiana  
Supreme Court  
Districts

THE SUPREME COURT OF LOUISIANA

<u>Domicile</u>		<u>District</u>
	CHIEF JUSTICE	
Baton Rouge	The Honorable Joe W. Sanders	Fifth
	ASSOCIATE JUSTICES	
Abbeville	The Honorable Frank W. Summers	Sixth
Bastrop	The Honorable Mack E. Barham	Fourth
Ville Platte	The Honorable Albert Tate, Jr.	Third
Shreveport	The Honorable John A. Dixon, Jr.	Second
New Orleans	The Honorable Pascal F. Calogero, Jr.	First
New Orleans	The Honorable Walter F. Marcus, Jr.	First
	CLERK OF COURT	
	The Honorable Harold A. Moise, Jr.	

The Honorable Frank W. Hawthorne, Associate Justice, Retired, has been assigned to serve as a Judge in any court of record in the Fourth Louisiana Supreme Court District.

Louisiana  
Courts of Appeal  
Circuits & Districts

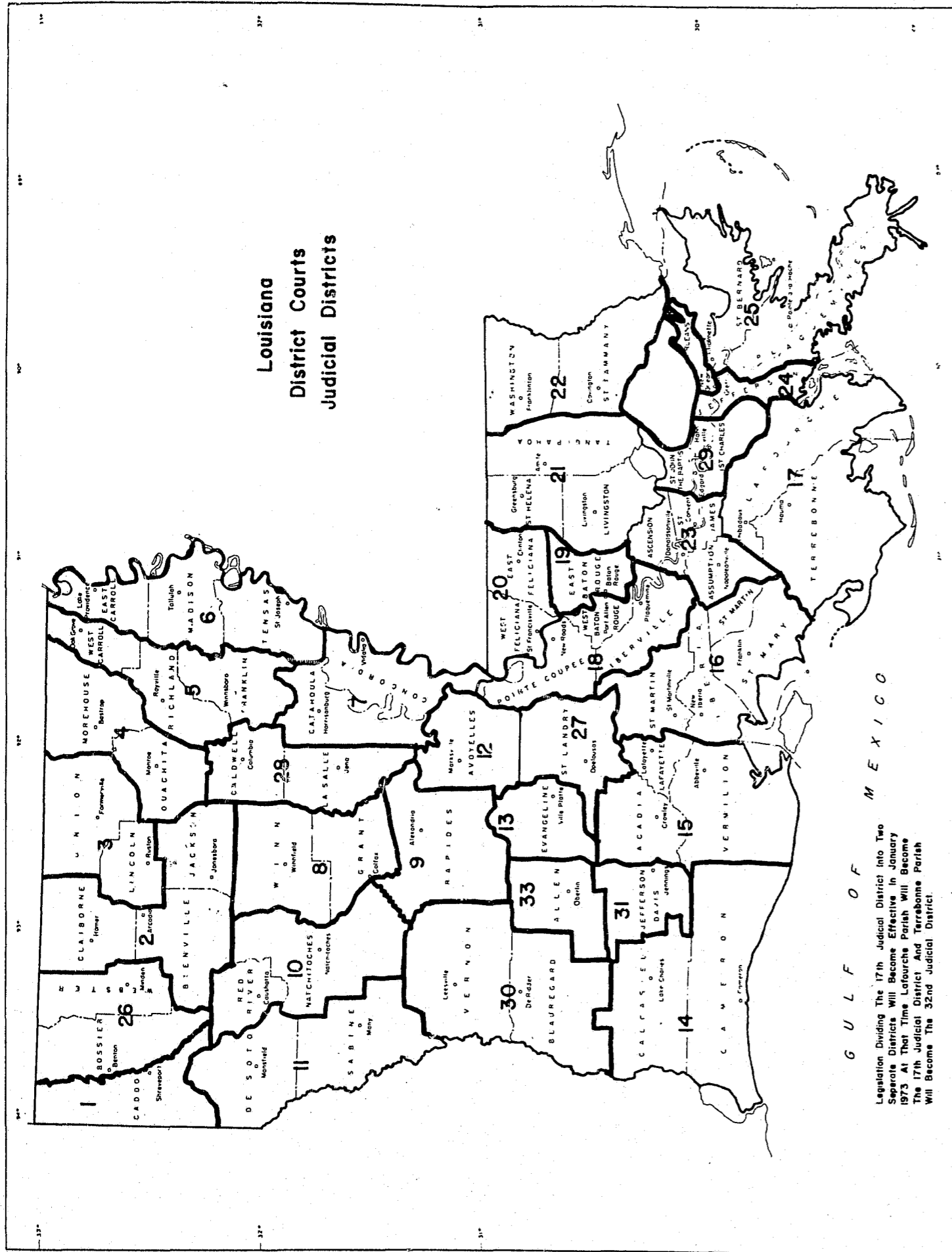


Effective January 1, 1971 the Fourth Circuit was divided into three Districts, as follows:  
1. Jefferson, 2. Orleans, 3. Plaquemines, St. Bernard, St. Charles, St. James, St. John

Circuits:  
I [Dotted] II [Diagonal] III [Cross-hatched] IV [Horizontal]

THE LOUISIANA COURTS OF APPEAL

	<u>Domicile</u>	<u>District</u>
<b>FIRST CIRCUIT (Baton Rouge)</b>		
Morris A. Lottinger, Presiding	Houma	First
Paul B. Landry, Jr.	Port Allen	First
Frederick S. Ellis	Covington	Third
C. Lenton Sartain	Baton Rouge	Second
Fred A. Blanche, Jr.	Baton Rouge	Second
Grover L. Covington	Hammond	Third
Julian E. Bailes (Assigned)	Natchitoches	
Clerk: Michael H. Nelson		
<b>SECOND CIRCUIT (Shreveport)</b>		
H. W. Ayres, Presiding	Jonesboro	Second
James E. Bolin	Minden	At Large
O. E. Price	Bossier City	At Large
Pike Hall, Jr.	Shreveport	Third
James L. Dennis	Monroe	First
Clerk: Harold L. Booth		
<b>THIRD CIRCUIT (Lake Charles)</b>		
J. Cleveland Frugé, Presiding	Ville Platte	Third
John T. Hood, Jr.	Lake Charles	Second
W. A. Culpepper	Alexandria	First
Minos D. Miller	Jennings	At Large
Jerome E. Domengeaux	Lafayette	At Large
Jack C. Watson	Lake Charles	At Large
Clerk: Kenneth J. deBlanc		
<b>FOURTH CIRCUIT (New Orleans)</b>		
L. Julian Samuel	Gretna	First
William V. Redmann	New Orleans	Second
Harry T. Lemmon	Hahnville	Third
James C. Gulotta	New Orleans	Second
Edward J. Stoulig	Kenner	First
John C. Boutall	Metairie	First
Patrick M. Schott	New Orleans	Second
Ernest N. Morial	New Orleans	Second
Peter H. Beer	New Orleans	Second
Clerk: Marjorie R. Cambre		



**Louisiana  
District Courts  
Judicial Districts**

**DISTRICT COURTS OF LOUISIANA**

**Roster of Judges and Clerks**

JUDGES	Parishes within District	Parish Seats	Clerks of Court
<b>FIRST DISTRICT</b>			
William J. Fleniken James R. Alexander C. J. Bolin, Jr. John F. Fant James E. Clark Judge-Elect - Fred C. Sexton, Jr. — newly-created judgeship	Caddo	Shreveport	D. D. Pyburn
<b>CADDO PARISH JUVENILE COURT</b>			
Gorman E. Taylor			
<b>SECOND DISTRICT</b>			
Frank M. Dougherty David T. Caldwell	Bienville Claiborne Jackson	Arcadia Homer Jonesboro	H. R. Sledge J. J. Smith Arvel Walsworth
<b>THIRD DISTRICT</b>			
Fred W. Jones, Jr.	Lincoln Union	Ruston Farmerville	L. C. Ledbetter Joe A. Brantley
<b>FOURTH DISTRICT</b>			
Robert T. Farr Fred Fudickar, Jr. Lemmie O. Hightower	Morehouse Ouachita	Bastrop Monroe	J. C. Green Bill Downey
<b>FIFTH DISTRICT</b>			
John C. Morris, Jr. B. I. Berry	Franklin Richland West Carroll	Winnsboro Rayville Oak Grove	Robert Lowe D. B. McKay Marvin N. Oldham
<b>SIXTH DISTRICT</b>			
Cliff C. Adams A. Mulhearn Smith	East Carroll Madison Tensas	Lake Providence Tallulah St. Joseph	E. B. Brock J. K. Post, Jr. J. A. Kitchen
<b>SEVENTH DISTRICT</b>			
Richard P. Boyd, Jr.	Catahoula Concordia	Harrisonburg Vidalia	W. A. Book C. R. Webber, Jr.
<b>EIGHTH DISTRICT</b>			
Hiram J. Wright	Grant Winn	Colfax Winnfield	O. H. Gray J. O. Anders



DISTRICT COURT ROSTER (Continued)

JUDGES	Parishes within District	Parish Seats	Clerks of Court
<b>NINTH DISTRICT</b>			
Guy E. Humphries, Jr. Jules L. Davidson, Jr. Martin L. Laird, III Jimmy M. Stoker Robert P. Jackson	Rapides	Alexandria	P. M. Dyer, Jr.
<b>TENTH DISTRICT</b>			
Richard B. Williams W. Peyton Cunningham, Jr.	Natchitoches Red River	Natchitoches Coushatta	I. L. Knotts, Jr. E. V. Womack
<b>ELEVENTH DISTRICT</b>			
Jack E. Burgess John S. Pickett, Jr.	DeSoto Sabine	Mansfield Many	W. P. Porter, Jr. J. E. Wright
<b>TWELFTH DISTRICT</b>			
Earl H. Edwards	Avoyelles	Marksville	G. H. Couvillon
<b>THIRTEENTH DISTRICT</b>			
J. Burton Foret	Evangeline	Ville Platte	Walter Lee
<b>FOURTEENTH DISTRICT</b>			
G. William Swift, Jr. Cecil C. Cutrer Earl E. Veron Henry L. Yelverton Warren E. Hood, Jr.	Calcasieu Cameron	Lake Charles Cameron	A. Hillebrandt J. B. Daigle
<b>FIFTEENTH DISTRICT</b>			
Carrol L. Spell Charles T. Everett Lucien C. Bertrand, Jr. Douglass J. Nehrbass Allen M. Babineaux	Acadia Lafayette Vermilion	Crowley Lafayette Abbeville	J. A. Barousse Dan Guillot Irby Hebert
<b>SIXTEENTH DISTRICT</b>			
Edw. A. de la Houssaye, III Edmond L. Guidry, Jr. Robert M. Fleming Robert E. Johnson	Iberia St. Martin St. Mary	New Iberia St. Martinville Franklin	Orres Le Blanc M. A. Barras B. A. Blakeman
<b>SEVENTEENTH DISTRICT</b>			
Remy Chiasson Bernard L. Knobloch P. Davis Martinez, (Retired, assigned)	Lafourche	Thibodaux	A. H. Landry

DISTRICT COURT ROSTER (Continued)

JUDGES	Parishes within District	Parish Seats	Clerks of Court
<b>EIGHTEENTH DISTRICT</b>			
Daniel P. Kimball Edward N. Engolio Ian W. Claiborne	W. Baton Rouge Pointe Coupee Iberville	Port Allen New Roads Plaquemines	T. J. LeBlanc I. G. Olinde T. J. Delacroix
<b>NINETEENTH DISTRICT</b>			
Elmo E. Lear Luther F. Cole Lewis S. Doherty, III Donovan W. Parker Melvin A. Shortess John S. Covington Elven E. Ponder Daniel W. LeBlanc Eugene W. McGehee Steve Alford Jess Johnson (Retired, assigned)	E. Baton Rouge	Baton Rouge	P. M. Johnson, Jr.
<b>E. B. R. FAMILY COURT</b>			
Thomas B. Pugh E. Donald Moseley (on assignment from the Nineteenth District)			
<b>TWENTIETH DISTRICT</b>			
William T. Bennett	E. Feliciana W. Feliciana	Clinton St. Francisville	I. M. Durham R. P. Daniel
<b>TWENTY-FIRST DISTRICT</b>			
William M. Dawkins Gordon E. Causey Leon E. Ford Burrel J. Carter	Livingston St. Helena Tangipahoa	Livingston Greensburg Amite	A. Addison C. L. Johnson Estelle Stire
<b>TWENTY-SECOND DISTRICT</b>			
Wallace A. Edwards Hillary J. Crain Thomas W. Tanner	St. Tammany Washington	Covington Franklinton	R. Fitzmorris Dewaine Seal
<b>TWENTY-THIRD DISTRICT</b>			
J. Adolph Menuet Leon J. LeSueur Penrose St. Amant	Ascension Assumption St. James	Donaldsonville Napoleonville Convent	K. H. Bourque R. J. Marquette Edmond E. Kinler, Jr.
<b>TWENTY-FOURTH DISTRICT</b>			
Fred Bowes Frank V. Zaccaria H. Charles Gaudin Floyd W. Newlin Gordon L. Bynum Nestor L. Currault, Jr. Louis G. DeSonier, Jr. Thomas C. Wicker, Jr. Wallace C. LeBrun	Jefferson	Gretna	W. M. Justice, Jr.

DISTRICT COURT ROSTER (Continued)

<u>JUDGES</u>	<u>Parishes within District</u>	<u>Parish Seats</u>	<u>Clerks of Court</u>
<b>JEFFERSON PARISH JUVENILE COURT</b>			
Sol Gothard Thomas P. McGee			
<b>TWENTY-FIFTH DISTRICT</b>			
August A. Nobile Richard H. Gauthier Eugene E. Leon, Jr. Preston H. Hufft	Plaquemines St. Bernard	Pointe-a-la-Hache Chalmette	A. L. Lobrano S. D. Torres
<b>TWENTY-SIXTH DISTRICT</b>			
Enos C. McClendon, Jr. Monty M. Wyche Louis H. Padgett, Jr.	Bossier Webster	Benton Minden	Wilna Mabry C. D. Wiley
<b>TWENTY-SEVENTH DISTRICT</b>			
Joseph A. LaHaye H. Garland Pavy Isom J. Guillory, Jr. Lessley P. Gardiner (Retired, assigned)	St. Landry	Opelousas	H. Sylvester
<b>TWENTY-EIGHTH DISTRICT</b>			
Edwin R. Hughes	Caldwell La Salle	Columbia Jena	A. L. Darden J. D. Nugent
<b>TWENTY-NINTH DISTRICT</b>			
C. William Bradley Ruche J. Marino Thomas J. Malik	St. Charles St. John	Hahnville Edgard	E. Dufrensne, Jr. H. L. Montegut
<b>THIRTIETH DISTRICT</b>			
James C. Terrell, Jr. Stuart S. Kay	Vernon Beauregard	Leesville DeRidder	C. N. Hyde R. B. Nichols
<b>THIRTY-FIRST DISTRICT</b>			
Walter C. Peters	Jefferson Davis	Jennings	J. W. Pitre
<b>THIRTY-SECOND DISTRICT</b>			
Baron B. Bourg Cleveland J. Marcel, Sr. Ashby W. Pettigrew, Jr. Wilmore J. Broussard, Jr.	Terrebonne	Houma	I. R. Boudreaux
<b>THIRTY-THIRD DISTRICT</b>			
Edward M. Mouser	Allen	Oberlin	P. A. Cole

DISTRICT COURT ROSTER (Continued)

ORLEANS PARISH CIVIL DISTRICT COURT

Thomas A. Early, Jr.  
Adrian G. Duplantier  
Richard J. Garvey  
S. Sanford Levy  
Gerald P. Fedoroff  
Henry J. Roberts, Jr.  
Paul P. Garofalo  
Oliver P. Carriere  
Melvin J. Duran  
George C. Connolly, Jr.  
Charles L. Rivet  
John M. Holahan

Division  
A  
B  
C  
D  
E  
F  
G  
H  
I  
J  
Commissioner  
Commissioner

Clerk: Richard J. Ganuchau

ORLEANS PARISH CRIMINAL DISTRICT COURT

Charles R. Ward  
Matthew S. Braniff  
Jerome M. Winsberg  
Frank A. Marullo, Jr.  
Rudolph F. Becker, III  
Oliver P. Schulingkamp  
Frank J. Shea, Jr.  
Bernard J. Bagert  
Israel M. Augustine, Jr.  
Alvin V. Oser  
Robert F. Collins  
Gerard J. Hansen  
Nils R. Douglas  
Anthony J. Russo, Jr.

Section  
A  
B  
C  
D  
E  
F  
G  
H  
I  
J  
Magistrate  
Commissioner  
Commissioner  
Commissioner

Clerk: Edwin A. Lombard

ORLEANS PARISH JUVENILE COURT

Joan Armstrong  
Leo B. Blessing  
James P. O'Connor  
Edward G. Gillin

Section  
A  
B  
C  
D

Clerk: Joseph L. Peyton

NOTE: With the exception of the Orleans Parish Civil and Criminal District Court and the Orleans Parish Juvenile Court, the Judges in each District are listed according to their seniority within their respective Districts. The Judges of Orleans Parish are listed by their Division and Section Numbers.



CITY COURTS OF LOUISIANA (Continued)

CITIES	PARISHES	JUDGES
Natchitoches	Natchitoches	Marvin F. Cahagan
New Iberia	Iberia	Ward L. Tilly
New Orleans:	Orleans	
First City Court		Dominic C. Grieshaber
First City Court		Arthur J. O'Keefe, Jr.
First City Court		Marion G. Seeber
Second City Court		Lorain F. Wingerter
Municipal Court		Andrew G. Bucaro
Municipal Court		Joseph R. Bossetta
Municipal Court		W. Blair Lancaster, Jr.*
Municipal Court		James E. Glancey, Jr.
Traffic Court		Lambert J. Hassinger
Traffic Court		Thomas L. Giraud
Traffic Court		Oliver S. Delery
Traffic Court		Louis P. Trent
Oakdale	Allen	John P. Navarre
Opelousas	St. Landry	Kenneth Boagni, Jr.
Pineville	Rapides	Richard E. Lee
Plaquemine	Iberville	Joseph B. Dupont, Sr.
Fort Allen	West Baton Rouge	Philip N. Pecquet
Rayne	Acadia	Denaïd A. Beslin
Ruston	Lincoln	Kenneth W. Campbell
Slidell	St. Tammany	Gus A. Fritchie, Jr.
Shreveport:	Caddo	
Division A		Garner R. Miller
Division B		John R. Ballard
Division C		H. Dan Sawyer
Springhill	Webster	N. J. McConnell
Sulphur	Calcasieu	Ellis W. Thompson
Thibodaux	Lafourche	Walter I. Lanier
Vidalia	Concordia	Patrick A. McDonough, III
Ville Platte	Evangeline	Joseph E. Coreil
West Monroe	Ouachita	William Norris, III
Winnfield	Winn	Martin S. Sanders, Jr.
Winnsboro	Franklin	E. Rudolph McIntyre
Zachary	East Baton Rouge	Russell Bankston

\*Term expires December 31, 1974, to be succeeded by Judge Elect Edgar L. Sapir

STATISTICAL SECTION

1974 ANNUAL REPORT  
of the  
JUDICIAL COUNCIL  
of the  
SUPREME COURT OF LOUISIANA

Prepared by:

Mrs. Fay T. Courville  
Mr. William V. Courtney  
Mr. James H. Laird

Statistical Data for the 1974 court year  
on the following:

Supreme Court  
Courts of Appeal  
District Courts  
Family and Juvenile Courts  
City and Parish Courts

## INTRODUCTION

The statistical tables in this section are organized principally to encourage each court to evaluate its own activities. Much of the information has been summarized for a three year period, and each court may discover something about the trends and changes in its own workload and performance by selecting from each table the data pertaining to itself. In addition, several new tables have been added this year which recap certain figures over the last ten years.

Some interesting trends are indicated by a comparison of the 1974 data with that of prior years. In the Supreme Court, total filings (including appeals, writs, rehearing applications, and original jurisdiction petitions) were up 17% over last year and 69% over 1970. The number of written opinions handed down by the Supreme Court increased 16% over last year and 135% over 1970. The 404 written opinions handed down during the 1974 court year represent an average of 58 opinions written by each of the seven Supreme Court Justices, an increase of eight opinions per Justice over last year and 33 opinions per Justice over 1970.

In the four Courts of Appeal, the number of appeals and writs filed during the 1974 court year decreased slightly (less than 1%) over last year but increased 12% over 1970. The number of judgments rendered by the Courts of Appeal increased 6% over last year and 21% over 1970.

In the District Courts, total filings (both civil and criminal cases) were up 7% over last year while terminations were up 8%. The number of jury trials in the District Courts reported during the 1974 court year represents an increase of 24% over last year and 63% over 1970.

## SUPREME COURT OF LOUISIANA STATISTICAL DATA - 1972 through 1974

	1972	1973	1974
<b>APPEALS:</b>			
Appeals Filed	214	204	235
Appeals Dismissed	11	9	10
Opinions Rendered on Appeals	191	229	240
<b>WRITS:</b>			
Writ Applications Filed	822	873	1,014
Writs Granted	182	169	204
Writ Applications Dismissed	1	3	2
Writ Applications Not Considered	5	23	23
Writs Denied	687	674	774
Opinions Rendered on Writs Granted	91	106	152
<b>REHEARINGS:</b>			
Rehearings Applied for	123	139	175
Rehearings Granted	11	20	16
Rehearings Denied	108	116	148
Opinions Rendered on Rehearings	6	8	9
<b>OTHER:</b>			
Original Jurisdiction Petitions Filed	8	6	9
Opinions Rendered on Original Jurisdiction Petitions	3	4	3

SUPREME COURT OF LOUISIANA  
TEN YEAR RECAP OF FILINGS

	<u>APPEALS FILED</u>	<u>WRITS FILED</u>	<u>REHEARING APPLICATIONS FILED</u>	<u>ORIGINAL JURISDICTION PETITIONS FILED</u>	<u>TOTAL FILINGS</u>	<u>FILINGS PER JUSTICE*</u>
1965	45	416	66	8	535	76
1966	54	388	58	2	502	72
1967	71	443	49	1	564	81
1968	74	455	66	3	598	85
1969	74	523	64	4	665	95
1970	105	646	92	4	847	121
1971	151	699	96	13	959	137
1972	214	822	123	8	1,167	167
1973	204	873	139	6	1,222	175
1974	235	1,014	175	9	1,433	205

\*Figures rounded to nearest whole number

TABLE I-B

SUPREME COURT OF LOUISIANA  
TEN YEAR RECAP OF OPINIONS RENDERED

	OPINIONS RENDERED ON:				<u>TOTAL OPINIONS RENDERED</u>	<u>OPINIONS RENDERED PER JUSTICE*</u>
	<u>APPEALS</u>	<u>WRITS</u>	<u>REHEARING APPLICATIONS</u>	<u>ORIGINAL JURISDICTION PETITIONS</u>		
1965	44	64	7	7	122	17
1966	62	43	4	1	110	16
1967	55	55	2	2	114	16
1968	55	65	4	2	126	18
1969	79	56	4	2	141	20
1970	76	88	7	1	172	25
1971	99	79	4	3	185	26
1972	191	91	6	3	291	42
1973	229	106	8	4	347	50
1974	240	152	9	3	404	58

\*Figures rounded to nearest whole number

TABLE I-C

**LOUISIANA COURTS OF APPEAL – STATISTICAL DATA BY CIRCUITS**  
For the Period July 1, 1973 through June 30, 1974

	<u>First</u>	<u>Second</u>	<u>Third</u>	<u>Fourth</u>	<u>Total</u>
Appeals Filed	388	252	339	428	1,407
Writs Filed	40	23	28	81	172
Judgments Rendered	391	189	344	534	1,458
Writs Refused	29	15	23	48	115
Writs Granted	3	8	3	18	32
Cases Dismissed	54	20	13	48	135
Rehearings Acted Upon	174	80	194	237	685
Cases Pending:					
Argued but not decided	2	30	13	74	119
To be argued	96	95	71	126	388

TABLE II-A

**LOUISIANA COURTS OF APPEAL – STATISTICAL DATA BY CIRCUITS**  
1972 through 1974

	<u>Appeals Filed</u>	<u>Writs Filed</u>	<u>Judgments Rendered</u>	<u>Writs Refused</u>	<u>Writs Granted</u>	<u>Cases Dismissed</u>	<u>Rehearings Acted Upon</u>
<u>FIRST CIRCUIT</u>							
1972	436	36	394	28	7	58	234
1973	458	48	457	38	10	28	248
1974	388	40	391	29	3	54	174
<u>SECOND CIRCUIT</u>							
1972	267	19	220	17	2	9	92
1973	224	17	230	13	4	10	98
1974	252	23	189	15	8	20	80
<u>THIRD CIRCUIT</u>							
1972	352	25	372	18	6	19	183
1973	333	17	326	16	1	13	165
1974	339	28	344	23	3	13	194
<u>FOURTH CIRCUIT</u>							
1972	518	60	381	44	7	23	171
1973	414	78	361	53	21	37	199
1974	428	81	534	48	18	48	237
<u>TOTALS: ALL CIRCUITS</u>							
1972	1,573	140	1,367	107	22	109	680
1973	1,429	160	1,374	120	36	88	710
1974	1,407	172	1,458	115	32	135	685

TABLE II-B

LOUISIANA COURTS OF APPEAL  
TEN YEAR RECAP

	<u>Appeals Filed</u>	<u>Writs Filed</u>	<u>Judgments Rendered</u>	<u>Rehearings Acted Upon</u>
1965	1,040	101	955	512
1966	1,187	117	1,035	524
1967	1,226	110	1,138	563
1968	1,312	118	1,162	591
1969	1,282	124	1,147	591
1970	1,262	154	1,204	584
1971	1,318	137	1,143	581
1972	1,573	140	1,367	680
1973	1,429	160	1,374	710
1974	1,407	172	1,458	685

TABLE II-C

LOUISIANA COURTS OF APPEAL  
STATISTICAL DATA PRESENTED ON A PER JUDGE BASIS  
July 1, 1973 through June 30, 1974

<u>Circuits</u>	<u>Writs Filed</u>	<u>Rehearings Acted Upon</u>	<u>Judgments Rendered</u>	<u>PENDING CASES</u>	
				<u>Argued</u>	<u>To be Argued</u>
First	4	19	43	0	11
Second	5	16	38	6	19
Third	5	32	57	2	12
Fourth	8	24	53	7	13
Statewide Average	6	23	49	4	13

TABLE II-D

NUMBER OF WRITS FILED, REHEARINGS ACTED UPON AND JUDGMENTS RENDERED  
PER JUDGE IN THE COURTS OF APPEAL OVER THREE YEAR PERIOD, 1972 - 1974

<u>Circuits</u>	<u>Writs Filed</u>			<u>Rehearings Acted Upon</u>			<u>Judgments Rendered</u>		
	<u>1972</u>	<u>1973</u>	<u>1974</u>	<u>1972</u>	<u>1973</u>	<u>1974</u>	<u>1972</u>	<u>1973</u>	<u>1974</u>
First	4	5	4	26	28	19	44	51	43
Second	4	3	5	18	20	16	44	46	38
Third	4	3	5	31	28	32	62	54	57
Fourth	7	9	8	19	22	24	42	40	53
Statewide Average	5	6	6	23	24	23	47	47	49

(All figures rounded to the nearest whole number)

TABLE II-E



DISTRICT COURTS — STATE OF LOUISIANA  
NUMBER OF CASES PROCESSED  
October 1, 1973 through September 30, 1974

Judicial District	Parishes	CIVIL CASES		CRIMINAL CASES		TOTAL CASES	
		Filed	Term.	Filed	Term.	Filed	Term.
1	Caddo	7,436	7,430	6,298	6,138	13,734	13,568
2	Bienville	575	350	950	761	1,525	1,111
	Claiborne	419	258	1,246	1,156	1,665	1,414
	Jackson	875	707	1,599	1,946	2,474	2,653
		<u>1,869</u>	<u>1,315</u>	<u>3,795</u>	<u>3,863</u>	<u>5,664</u>	<u>5,178</u>
3	Lincoln	883	582	1,561	1,680	2,444	2,262
	Union	542	104	629	870	1,171	974
		<u>1,425</u>	<u>686</u>	<u>2,190</u>	<u>2,550</u>	<u>3,615</u>	<u>3,236</u>
4	Morehouse	791	722	1,212	1,154	2,003	1,876
	Ouachita	3,829	3,725	10,116	9,185	13,945	12,910
		<u>4,620</u>	<u>4,447</u>	<u>11,328</u>	<u>10,399</u>	<u>15,948</u>	<u>14,786</u>
5	Franklin	749	552	526	678	1,275	1,230
	Richland	599	298	1,459	1,266	2,058	1,564
	West Carroll	435	215	808	697	1,243	912
		<u>1,783</u>	<u>1,065</u>	<u>2,793</u>	<u>2,641</u>	<u>4,576</u>	<u>3,706</u>
6	East Carroll	284	236	632	667	916	903
	Madison	361	167	1,830	1,805	2,191	1,972
	Tensas	189	150	650	671	839	821
		<u>834</u>	<u>553</u>	<u>3,112</u>	<u>3,143</u>	<u>3,946</u>	<u>3,696</u>
7	Catahoula	260	182	1,954	1,821	2,214	2,003
	Concordia	641	321	2,944	2,379	3,585	3,200
		<u>901</u>	<u>503</u>	<u>4,898</u>	<u>4,700</u>	<u>5,799</u>	<u>5,203</u>
8	Grant	433	405	1,258	1,852	1,691	2,257
	Winn	843	331	868	945	1,711	1,276
		<u>1,276</u>	<u>736</u>	<u>2,126</u>	<u>2,797</u>	<u>3,402</u>	<u>3,533</u>

TABLE III-A

Page 2 — Number of Cases Processed — District Courts

Judicial District	Parishes	CIVIL CASES		CRIMINAL CASES		TOTAL CASES	
		Filed	Term.	Filed	Term.	Filed	Term.
9	Rapides	5,033	2,870	12,310	10,798	17,343	13,668
10	Natchitoches	1,252	888	1,805	1,550	3,057	2,438
	Red River	288	226	1,217	1,257	1,505	1,483
		<u>1,540</u>	<u>1,114</u>	<u>3,022</u>	<u>2,807</u>	<u>4,562</u>	<u>3,921</u>
11	DeSoto	750	488	2,145	1,778	2,895	2,266
	Sabine	656	459	1,463	1,538	2,119	1,997
		<u>1,406</u>	<u>947</u>	<u>3,608</u>	<u>3,316</u>	<u>5,014</u>	<u>4,263</u>
12	Avoyelles	1,155	1,027	1,195	1,244	2,350	2,271
13	Evangeline	1,078	751	1,231	1,056	2,309	1,807
14	Calcasieu	5,282	4,081	10,040	8,388	15,322	12,469
	*Cameron	261	218	568	543	829	761
		<u>5,543</u>	<u>4,299</u>	<u>10,608</u>	<u>8,931</u>	<u>16,151</u>	<u>13,230</u>
15	*Acadia	194	163	78	350	272	513
	Lafayette	3,546	1,545	7,297	1,316	10,843	2,861
	Vermilion	1,102	573	326	335	1,428	908
		<u>4,842</u>	<u>2,281</u>	<u>7,701</u>	<u>2,001</u>	<u>12,543</u>	<u>4,282</u>
16	Iberia	1,452	555	2,560	2,522	4,012	3,077
	St. Martin	1,075	852	4,045	3,647	5,120	4,499
	St. Mary	1,795	1,009	4,757	4,475	6,552	5,484
		<u>4,322</u>	<u>2,416</u>	<u>11,362</u>	<u>10,644</u>	<u>15,684</u>	<u>13,060</u>
17	Lafourche	1,593	1,018	6,369	5,204	7,962	6,222

\*Incomplete statistical data submitted for the 1974 Court Year

TABLE III-A

Judicial District	Parishes	CIVIL CASES		CRIMINAL CASES		TOTAL CASES	
		Filed	Term.	Filed	Term.	Filed	Term.
18	Iberville	906	517	2,388	2,140	3,294	2,657
	Pointe Coupee	594	485	3,275	2,706	3,869	3,191
	West Baton Rouge	531	300	4,246	4,070	4,777	4,370
		<u>2,031</u>	<u>1,302</u>	<u>9,909</u>	<u>8,916</u>	<u>11,940</u>	<u>10,218</u>
19	East Baton Rouge	10,001	7,570	6,026	14,863	16,027	22,433
20	East Feliciana	521	390	771	684	1,292	1,074
	West Feliciana	317	167	548	577	865	744
		<u>838</u>	<u>557</u>	<u>1,319</u>	<u>1,261</u>	<u>2,157</u>	<u>1,818</u>
21	Livingston	1,389	1,095	2,468	1,927	3,857	3,022
	St. Helena	306	184	282	291	588	475
	Tangipahoa	2,415	1,123	1,980	2,991	4,395	4,114
		<u>4,110</u>	<u>2,402</u>	<u>4,730</u>	<u>5,209</u>	<u>8,840</u>	<u>7,611</u>
22	St. Tammany	2,979	2,028	3,993	3,371	6,972	5,399
	*Washington	1,620	1,143	1,046	843	2,666	1,986
		<u>4,599</u>	<u>3,171</u>	<u>5,039</u>	<u>4,214</u>	<u>9,638</u>	<u>7,385</u>
23	Ascension	923	687	3,294	3,176	4,217	3,863
	Assumption	419	222	1,490	1,289	1,909	1,511
	St. James	437	230	892	841	1,329	1,071
		<u>1,779</u>	<u>1,139</u>	<u>5,676</u>	<u>5,306</u>	<u>7,455</u>	<u>6,445</u>
24	Jefferson	11,256	9,465	1,718	2,644	12,974	12,109
25	Plaquemines	888	738	3,136	3,012	4,024	3,750
	St. Bernard	2,013	1,342	4,549	3,866	6,562	5,208
		<u>2,901</u>	<u>2,080</u>	<u>7,685</u>	<u>6,878</u>	<u>10,586</u>	<u>8,958</u>

\*Incomplete Statistical data submitted for the 1974 Court Year

TABLE III-A

Judicial District	Parishes	CIVIL CASES		CRIMINAL CASES		TOTAL CASES	
		Filed	Term.	Filed	Term.	Filed	Term.
26	Bossier	2,326	1,072	5,675	5,057	8,001	6,129
	Webster	1,164	881	2,195	2,152	3,359	3,033
		<u>3,490</u>	<u>1,953</u>	<u>7,870</u>	<u>7,209</u>	<u>11,360</u>	<u>9,162</u>
27	St. Landry	1,949	832	3,704	4,547	5,653	5,379
28	Caldwell	282	213	891	917	1,173	1,130
	La Salle	590	455	1,349	1,429	1,939	1,884
		<u>872</u>	<u>668</u>	<u>2,240</u>	<u>2,346</u>	<u>3,112</u>	<u>3,014</u>
29	St. Charles	1,097	360	7,383	6,069	8,480	6,429
	St. John	723	630	4,811	3,701	5,534	4,331
		<u>1,820</u>	<u>990</u>	<u>12,194</u>	<u>9,770</u>	<u>14,014</u>	<u>10,760</u>
30	Beauregard	747	942	2,570	2,507	3,317	3,449
	Vernon	1,102	665	4,688	4,100	5,790	4,765
		<u>1,849</u>	<u>1,607</u>	<u>7,258</u>	<u>6,607</u>	<u>9,107</u>	<u>8,214</u>
31	Jefferson Davis	768	1,523	1,622	1,595	2,390	3,118
32	Terrebonne	2,849	4,536	5,771	9,379	8,620	13,915
33	Allen	630	492	1,441	1,242	2,071	1,734
Orleans	Civil District Court	18,174	15,438	0	0	18,174	15,438
	*Criminal District Court	0	0	6,821	11,824	6,821	11,824
STATEWIDE TOTALS		116,572	89,183	184,969	185,982	301,541	275,165

\*Incomplete statistical data submitted for the 1974 Court Year

TABLE III-A

DISTRICT COURTS – STATE OF LOUISIANA  
NUMBER OF CASES PROCESSED OVER THREE YEAR PERIOD

Judicial District	Parishes	TOTAL CASES FILED			TOTAL CASES TERMINATED		
		1972	1973	1974	1972	1973	1974
1	Caddo	14,130	12,735	13,734	14,532	12,204	13,568
2	Bienville	1,465	1,371	1,525	1,182	1,127	1,111
	Claiborne	1,602	1,143	1,665	1,386	1,093	1,414
	Jackson	2,092	1,991	2,474	1,910	1,919	2,653
		<u>5,159</u>	<u>4,505</u>	<u>5,664</u>	<u>4,478</u>	<u>4,139</u>	<u>5,178</u>
3	Lincoln	1,936	1,921	2,444	1,456	1,932	2,262
	Union	812	851	1,171	378	590	974
		<u>2,748</u>	<u>2,772</u>	<u>3,615</u>	<u>1,834</u>	<u>2,522</u>	<u>3,236</u>
4	Morehouse	2,495	2,026	2,003	2,508	1,897	1,876
	Ouachita	11,712	11,146	13,945	10,167	9,876	12,910
		<u>14,207</u>	<u>13,172</u>	<u>15,948</u>	<u>12,675</u>	<u>11,773</u>	<u>14,786</u>
5	Franklin	1,410	2,042	1,275	1,066	1,284	1,230
	Richland	1,506	2,167	2,058	1,232	1,611	1,564
	West Carroll	1,083	1,213	1,243	722	698	912
		<u>3,999</u>	<u>5,422</u>	<u>4,576</u>	<u>3,020</u>	<u>3,593</u>	<u>3,706</u>
6	East Carroll	921	1,041	916	796	941	903
	Madison	1,856	1,999	2,191	1,607	1,665	1,972
	Tensas	928	1,064	839	856	1,125	821
	<u>3,705</u>	<u>4,104</u>	<u>3,946</u>	<u>3,259</u>	<u>3,731</u>	<u>3,696</u>	
7	Catahoula	1,016	1,692	2,214	850	1,332	2,003
	Concordia	3,162	3,737	3,585	2,973	1,722	3,200
		<u>4,178</u>	<u>5,429</u>	<u>5,799</u>	<u>3,823</u>	<u>3,054</u>	<u>5,203</u>
8	Grant	2,002	1,193	1,691	2,631	1,877	2,257
	Winn	1,667	1,539	1,711	1,068	1,058	1,276
		<u>3,669</u>	<u>2,732</u>	<u>3,402</u>	<u>3,699</u>	<u>2,935</u>	<u>3,533</u>

TABLE III-B

Page 2 – DISTRICT COURTS – Number of Cases Processed over three year period

Judicial District	Parishes	TOTAL CASES FILED			TOTAL CASES TERMINATED		
		1972	1973	1974	1972	1973	1974
9	Rapides	13,418	15,198	17,343	13,100	11,534	13,668
10	Natchitoches	2,864	2,868	3,057	2,448	2,600	2,438
	Red River	1,796	1,599	1,505	1,411	1,510	1,483
		<u>4,660</u>	<u>4,467</u>	<u>4,562</u>	<u>3,859</u>	<u>4,110</u>	<u>3,921</u>
11	DeSoto	1,970	2,669	2,895	1,382	2,390	2,266
	Sabine	2,246	2,879	2,119	1,971	2,220	1,997
		<u>4,216</u>	<u>5,548</u>	<u>5,014</u>	<u>3,353</u>	<u>4,610</u>	<u>4,263</u>
12	Avoyelles	2,173	2,413	2,350	1,693	2,112	2,271
13	Evangeline	1,915	2,282	2,309	1,441	1,972	1,807
14	Calcasieu	12,447	12,608	15,322	9,588	10,160	12,469
	*Cameron	885	814	829	811	810	761
		<u>13,332</u>	<u>13,422</u>	<u>16,151</u>	<u>10,399</u>	<u>10,970</u>	<u>13,230</u>
15	*Acadia	3,170	1,724	272	2,485	2,698	513
	Lafayette	3,995	10,055	10,843	5,476	4,066	2,861
	Vermilion	1,768	1,413	1,428	886	825	908
	<u>8,933</u>	<u>13,192</u>	<u>12,543</u>	<u>8,847</u>	<u>7,589</u>	<u>4,282</u>	
16	Iberia	5,023	4,540	4,012	3,667	3,719	3,077
	St. Martin	3,845	4,216	5,120	3,639	4,172	4,499
	St. Mary	8,762	7,411	6,552	5,496	6,952	5,484
	<u>17,630</u>	<u>16,167</u>	<u>15,684</u>	<u>12,802</u>	<u>14,843</u>	<u>13,060</u>	
17	Lafourche	6,493	6,152	7,962	5,573	4,699	6,222

\*Incomplete statistical data submitted for the 1974 Court Year

TABLE III-B

Page 3 — DISTRICT COURTS — Number of Cases Processed over three year period

Judicial District	Parishes	TOTAL CASES FILED			TOTAL CASES TERMINATED		
		1972	1973	1974	1972	1973	1974
18	Iberville	2,309	3,851	3,294	1,961	3,283	2,657
	Pointe Coupee	2,565	4,342	3,869	2,362	4,051	3,191
	West Baton Rouge	2,606	2,426	4,777	2,347	2,057	4,370
		<u>7,480</u>	<u>10,619</u>	<u>11,940</u>	<u>6,670</u>	<u>9,391</u>	<u>10,218</u>
19	East Baton Rouge	13,547	14,466	16,027	21,440	22,117	22,433
20	East Feliciana	2,083	1,404	1,292	1,831	1,824	1,074
	West Feliciana	940	855	865	841	891	744
		<u>3,023</u>	<u>2,259</u>	<u>2,157</u>	<u>2,672</u>	<u>2,715</u>	<u>1,818</u>
21	Livingston	3,417	3,481	3,857	3,437	4,643	3,022
	St. Helena	362	412	588	176	299	475
	Tangipahoa	4,292	5,635	4,395	2,928	4,151	4,114
		<u>8,071</u>	<u>9,528</u>	<u>8,840</u>	<u>6,541</u>	<u>9,093</u>	<u>7,611</u>
22	St. Tammany	5,620	6,551	6,972	4,896	5,404	5,399
	*Washington	3,010	3,441	2,666	2,401	2,880	1,986
		<u>8,630</u>	<u>9,992</u>	<u>9,638</u>	<u>7,297</u>	<u>8,284</u>	<u>7,385</u>
23	Ascension	3,182	3,483	4,217	2,520	3,345	3,863
	Assumption	1,343	1,608	1,909	919	1,364	1,511
	St. James	942	1,234	1,329	758	1,088	1,071
		<u>5,467</u>	<u>6,325</u>	<u>7,455</u>	<u>4,197</u>	<u>5,797</u>	<u>6,445</u>
24	Jefferson	10,162	11,311	12,974	8,119	9,754	12,109
25	Plaquemines	3,954	4,510	4,024	4,007	3,946	3,750
	St. Bernard	4,308	5,146	6,562	3,140	4,409	5,208
		<u>8,262</u>	<u>9,656</u>	<u>10,586</u>	<u>7,147</u>	<u>8,355</u>	<u>8,958</u>

\*Incomplete statistical data submitted for the 1974 Court Year

TABLE III-B

Page 4 — DISTRICT COURTS — Number of Cases Processed over three year period

Judicial District	Parishes	TOTAL CASES FILED			TOTAL CASES TERMINATED		
		1972	1973	1974	1972	1973	1974
26	Bossier	6,538	8,332	8,001	6,165	7,487	6,129
	Webster	3,211	3,066	3,359	2,624	2,701	3,033
		<u>9,749</u>	<u>11,398</u>	<u>11,360</u>	<u>8,789</u>	<u>10,188</u>	<u>9,162</u>
27	St. Landry	10,538	9,124	5,653	7,654	6,414	5,379
28	Caldwell	1,326	1,326	1,173	1,289	1,307	1,130
	LaSalle	1,435	1,310	1,939	1,232	1,146	1,884
		<u>2,761</u>	<u>2,636</u>	<u>3,112</u>	<u>2,521</u>	<u>2,453</u>	<u>3,014</u>
29	St. Charles	5,430	5,882	8,480	5,035	5,705	6,429
	St. John	2,794	4,408	5,534	2,313	3,048	4,331
		<u>8,224</u>	<u>10,290</u>	<u>14,014</u>	<u>7,348</u>	<u>8,753</u>	<u>10,760</u>
30	Beauregard	2,086	2,856	3,317	1,834	2,355	3,449
	Vernon	5,410	5,931	5,790	3,804	4,823	4,765
		<u>7,496</u>	<u>8,787</u>	<u>9,107</u>	<u>5,638</u>	<u>7,178</u>	<u>8,214</u>
31	Jefferson Davis	2,249	2,346	2,390	2,538	2,090	3,118
32	Terrebonne	5,728	8,134	8,620	7,364	11,513	13,915
33	Allen	2,427	2,219	2,071	2,209	1,858	1,734
Orleans	Civil District Court	15,724	15,994	18,174	14,221	13,651	15,438
Orleans	*Criminal District Court	6,753	7,853	6,821	8,096	9,278	11,824
STATEWIDE TOTALS		260,865	282,649	301,541	238,848	255,272	275,165

\*Incomplete statistical data submitted for the 1974 Court Year

TABLE III-B

LOUISIANA DISTRICT COURTS  
TEN YEAR RECAP OF CASES PROCESSED

	CIVIL CASES		CRIMINAL CASES		TOTAL CASES	
	Filed	Term.	Filed	Term.	Filed	Term.
1965	79,328	58,174	74,641	74,695	153,969	132,869
1966	86,484	62,303	95,748	91,252	182,232	153,555
1967	91,441	66,570	110,671	104,124	202,112	170,694
1968	90,287	65,014	119,947	115,650	210,234	180,664
1969	94,717	66,766	164,216	166,410	258,933	233,176
1970	100,881	74,568	181,602	178,471	282,483	253,039
1971	98,612	79,736	167,188	164,288	265,800	244,024
1972	97,970	81,790	162,895	157,058	260,865	238,848
1973	104,106	82,615	178,543	172,657	282,649	255,272
1974	116,572	89,183	184,969	185,982	301,541	275,165

TABLE III-C

LOUISIANA JUDICIAL DISTRICTS  
Population Data Based on 1974 (Estimated) Census

District	Parishes within District	Population	No. of Judges	Population per Judge
1	Caddo	235,258	5	47,052
2	Bienville, Claiborne, Jackson	49,466	2	24,733
3	Lincoln, Union	52,969	1	52,969
4	Morehouse, Ouachita	151,646	4	37,912
5	Franklin, Richland, West Carroll	59,849	2	29,925
6	East Carroll, Madison, Tensas	38,415	1	38,415
7	Catahoula, Concordia	34,972	1	34,972
8	Grant, Winn	30,423	1	30,423
9	Rapides	120,489	4	30,122
10	Natchitoches, Red River	45,185	2	22,593
11	DeSoto, Sabine	41,929	2	20,965
12	Avoyelles	38,416	1	38,416
13	Evangeline	32,485	1	32,485
14	Calcasieu, Cameron	157,581	5	31,516
15	Acadia, Lafayette, Vermilion	212,017	5	42,403
16	Iberia, St. Martin, St. Mary	155,021	4	38,755
17	Lafourche	70,805	2	35,403
18	Iberville, W. Baton Rouge, Pointe Coupee	71,162	3	23,721
19	East Baton Rouge	292,930	10	29,293
20	East Feliciana, West Feliciana	29,480	1	29,480
21	Livingston, St. Helena, Tangipahoa	114,894	3	38,298
22	Washington, St. Tammany	107,495	3	35,832
23	Ascension, Assumption, St. James	78,630	3	26,210
24	Jefferson	348,161	9	38,685
25	Plaquemines, St. Bernard	78,680	4	19,670
26	Bossier, Webster	106,572	3	35,524
27	St. Landry	82,298	3	27,433
28	Caldwell, La Salle	2,881	1	2,881
29	St. Charles, St. John	54,871	3	18,290
30	Beauregard, Vernon	77,615	2	38,808
31	Jefferson Davis	30,080	1	30,080
32	Terrebonne	78,602	3	26,201
33	Allen	21,184	1	21,184
-	Orleans	601,881	20	30,094
STATEWIDE TOTALS		3,724,342	116	32,106

TABLE III-D

**LOUISIANA DISTRICT COURTS**  
**NUMBER OF CASES FILED PER 1000 POPULATION OVER THREE YEAR PERIOD**  
(1972 and 1973 figures based on 1970 census. 1974 figures based on 1974 estimated census.)

JUDICIAL DISTRICT	PARISHES	CIVIL CASES FILED PER 1000 POPULATION			CRIMINAL CASES FILED PER 1000 POPULATION		
		1972	1973	1974	1972	1973	1974
1	Caddo	28	29	32	33	26	27
2	Bienville	30	31	36	61	54	59
	Claiborne	20	21	24	74	46	73
	Jackson	49	40	54	92	85	99
3	Lincoln	22	24	26	35	33	45
	Union	22	21	29	22	26	34
4	Morehouse	23	21	24	54	41	36
	Ouachita	27	29	32	74	68	85
5	Franklin	32	44	31	27	42	22
	Richland	26	26	27	44	73	66
	West Carroll	32	32	33	52	61	61
6	East Carroll	22	24	22	50	56	48
	Madison	21	24	23	102	108	119
	Tensas	19	19	19	77	90	66
7	Catahoula	17	18	22	51	96	163
	Concordia	26	22	28	114	143	128
8	Grant	24	25	31	122	63	91
	Winn	39	42	51	63	52	52
9	Rapides	31	33	42	82	96	102
10	Natchitoches	26	28	35	55	53	50
	Red River	27	27	31	170	146	130
11	DeSoto	28	30	33	58	88	93
	Sabine	26	32	35	95	123	77

TABLE III-E

Page 2 — Number of Cases Filed per 1000 Population over three year period

JUDICIAL DISTRICT	PARISHES	CIVIL CASES FILED PER 1000 POPULATION			CRIMINAL CASES FILED PER 1000 POPULATION		
		1972	1973	1974	1972	1973	1974
12	Avoyelles	32	30	30	26	34	31
13	Evangeline	34	29	33	26	42	38
14	Calcasieu	32	33	35	53	54	67
	*Cameron	31	28	31	77	71	68
15	*Acadia	17	20	4	44	13	1
	Lafayette	17	26	31	18	64	63
	Vermilion	27	25	25	14	7	7
16	Iberia	24	24	25	63	55	43
	St. Martin	27	31	32	92	99	121
	St. Mary	31	24	29	113	98	76
17	Lafourche	22	21	22	72	69	90
18	Iberville	26	25	29	49	100	76
	Pointe Coupee	19	26	27	98	172	146
	West Baton Rouge	27	32	31	127	112	244
19	East Baton Rouge	25	32	34	22	18	21
20	East Feliciana	35	34	29	83	46	43
	West Feliciana	19	22	28	63	53	48
21	Livingston	33	38	37	61	57	66
	St. Helena	26	26	30	11	15	28
	Tangipahoa	30	30	36	35	55	29
22	St. Tammany	35	37	46	54	66	61
	*Washington	36	40	38	36	42	25

\*Incomplete statistical data submitted for the 1974 Court Year

TABLE III-E

JUDICIAL DISTRICT	PARISHES	CIVIL CASES FILED PER 1000 POPULATION			CRIMINAL CASES FILED PER 1000 POPULATION		
		1972	1973	1974	1972	1973	1974
23	Ascension	26	23	24	60	71	86
	Assumption	19	18	21	50	63	74
	St. James	17	17	22	31	46	44
24	Jefferson	25	29	32	5	5	5
25	Plaquemines	37	34	34	120	144	120
	St. Bernard	29	32	38	55	68	87
26	Bossier	24	27	35	33	104	86
	Webster	27	27	29	53	50	54
27	St. Landry	34	30	24	97	84	45
28	Caldwell	32	36	30	110	106	94
	La Salle	42	37	44	65	62	101
29	St. Charles	24	27	36	160	172	243
	St. John	19	21	30	99	164	197
30	Beauregard	20	20	32	44	67	110
	Vernon	17	16	20	84	94	86
31	Jefferson Davis	24	27	26	52	52	54
32	Terrebonne	28	32	36	47	75	73
33	Allen	30	32	30	87	75	68
—	Orleans — Civil	28	27	30	0	0	0
	*Orleans — Criminal	<u>0</u>	<u>0</u>	<u>0</u>	<u>25</u>	<u>13</u>	<u>11</u>
STATE WIDE AVERAGE		27	29	31	48	49	50

\*Incomplete statistical data submitted for the 1974 Court Year  
(All figures rounded to the nearest whole number)

TABLE III-E

LOUISIANA DISTRICT COURTS  
NUMBER OF CASES TERMINATED PER JUDGE OVER THREE YEAR PERIOD

Judicial District	Civil Cases Terminated per Judge			Criminal Cases Terminated per Judge		
	1972	1973	1974	1972	1973	1974
1	1,332	1,333	1,486	1,575	1,108	1,228
2	564	572	658	1,675	1,498	1,932
3	470	547	686	1,364	1,975	2,550
4	864	957	1,112	2,305	1,987	2,585
5	448	462	533	1,063	1,335	1,321
6	460	503	553	2,799	3,228	3,143
7	586	533	503	3,237	2,521	4,700
8	583	723	736	3,116	2,212	2,797
9	1,373	691	718	2,993	2,192	2,700
10	420	508	557	1,510	1,547	1,404
11	396	443	474	1,281	1,863	1,658
12	889	848	1,027	804	1,264	1,244
13	601	635	751	840	1,337	1,056
**14	755	772	860	1,325	1,422	1,786
**15	690	595	456	1,521	923	400
16	593	498	604	2,608	3,211	2,661
17	911	565*	509	1,676	1,785*	2,602
18	320	418	434	1,903	2,712	2,972
19	911	914	757	1,232	1,298	1,486
20	712	805	557	1,960	1,910	1,261
21	788	751	801	1,393	2,280	1,736
**22	924	992	1,057	1,508	1,769	1,405
23	276	345	380	1,123	1,587	1,769
24	931	879	1,052	299	205	294
25	564	500	520	1,818	1,589	1,720
26	649	639	651	2,280	2,757	2,403
27	834	253	277	2,993	1,885	1,516
28	719	769	668	1,802	1,684	2,346
29	276	315	330	2,173	2,603	3,257
30	1,006	556	804	4,632	3,033	3,304
31	968	781	1,523	1,570	1,309	1,595
32*	—*	1,298*	1,512	—*	2,539*	3,126
33	529	441	492	1,680	1,417	1,242
Orleans — Civil	1,422	1,365	1,544	—	—	—
**Orleans — Criminal	—	—	—	810	928	1,182
STATEWIDE AVERAGE	750	779	769	1,441	1,629	1,603

\*The former 17th Judicial District, composed of Lafourche and Terrebonne Parishes, was split on January 1, 1973 into the 17th District (Lafourche) and the 32nd District (Terrebonne).

\*\*Incomplete statistical data submitted for the 1974 Court Year

TABLE III-F

LOUISIANA DISTRICT COURTS  
NUMBER OF CASES TERMINATED BY JUDGE TRIAL OVER THREE YEAR PERIOD

Judicial District	Parishes	Civil Cases Terminated by Judge Trial			Criminal Cases Terminated by Judge Trial		
		1972	1973	1974	1972	1973	1974
1	Caddo	1,849	1,850	1,927	203	145	143
2	Bienville	174	183	157	20	41	42
	Claiborne	26	46	36	57	8	9
	Jackson	253	233	333	81	129	159
3	Lincoln	31	20	71	19	24	31
	Union	0	0	46	4	0	44
4	Morehouse	442	381	301	170	162	143
	Ouachita	646	794	851	288	330	331
5	Franklin	179	47	69	82	43	19
	Richland	82	86	95	2	7	7
	West Carroll	128	67	0	0	30	0
6	East Carroll	86	74	17	163	64	21
	Madison	107	60	27	18	21	13
	Tensas	80	92	83	11	17	3
7	Catahoula	179	209	171	98	75	156
	Concordia	144	78	0	22	3	13
8	Grant	102	132	139	149	159	180
	Winn	64	31	44	37	46	73
9	Rapides	161	171	137	175	77	178
10	Natchitoches	515	715	266	176	330	362
	Red River	34	36	44	58	69	56
11	DeSoto	0	0	12	31	57	80
	Sabine	16	19	22	14	17	21

TABLE III-G

Page 2 — Number of Cases Terminated in District Courts by Judge Trial over Three Year Period

Judicial District	Parishes	Civil Cases Terminated by Judge Trial			Criminal Cases Terminated by Judge Trial		
		1972	1973	1974	1972	1973	1974
12	Avoyelles	151	231	230	58	70	86
13	Evangeline	4	0	564	20	6	35
14	Calcasieu	256	225	262	65	59	78
	*Cameron	11	10	16	48	0	0
15	*Acadia	453	464	107	0	820	60
	Lafayette	1,363	1,294	700	1,838	227	67
	Vermilion	400	482	399	467	340	331
16	Iberia	93	120	38	29	13	23
	St. Martin	66	90	74	51	39	21
	St. Mary	1,216	766	979	1,524	1,936	98
17	Lafourche	111	184	137	183	298	17
	Terrebonne	1,690			321		
18	Iberville	356	523	313	715	655	466
	Pointe Coupee	184	264	193	42	38	57
	West Baton Rouge	210	237	132	231	240	248
19	East Baton Rouge	1,728	1,566	918	943	871	637
20	East Feliciana	239	322	122	61	56	30
	West Feliciana	5	4	6	6	12	10
21	Livingston	88	117	58	121	114	70
	St. Helena	37	47	84	28	39	61
	Tangipahoa	170	180	142	55	29	37
22	St. Tamanny	171	161	180	69	91	131
	*Washington	578	783	159	26	42	36

\*Incomplete statistical data submitted for the 1974 Court Year

TABLE III-G



Judicial District	Parishes	Civil Cases Terminated by Judge Trial			Criminal Cases Terminated by Judge Trial		
		1972	1973	1974	1972	1973	1974
23	Ascension	382	440	387	76	110	89
	Assumption	116	239	87	73	103	96
	St. James	125	154	107	6	27	63
24	Jefferson	976	1,106	1,713	55	35	292
25	Plaquemines	93	104	157	28	32	32
	St. Bernard	152	76	88	127	114	148
26	Bossier	523	416	406	253	170	60
	Webster	248	305	293	13	35	29
27	St. Landry	982	527	282	818	429	529
28	Caldwell	244	262	139	302	288	203
	La Salle	96	145	168	43	30	70
29	St. Charles	39	36	56	75	110	128
	St. John	58	45	53	26	9	26
30	Beauregard	255	319	266	93	267	34
	Vernon	350	345	320	36	32	178
31	Jefferson Davis	89	18	48	25	26	25
32	Terrebonne		1,574	1,824		1,189	1,551
33	Allen	160	121	128	148	114	102
Orleans	Civil District Court	5,586	5,371	4,460	—	—	—
	*Criminal District Court	—	—	—	1,036	992	920
STATEWIDE TOTALS		25,352	24,997	21,643	12,012	11,961	9,258

\*Incomplete statistical data submitted for the 1974 Court Year

TABLE III-G

LOUISIANA DISTRICT COURTS  
NUMBER OF CASES TERMINATED BY JURY TRIAL OVER THREE YEAR PERIOD

Judicial District	Civil Cases Terminated by Jury Trial			Criminal Cases Terminated by Jury Trial		
	1972	1973	1974	1972	1973	1974
1	7	7	8	12	26	35
2	0	0	0	12	9	17
3	3	0	4	0	2	2
4	3	2	4	35	41	59
5	1	0	0	3	11	5
6	0	0	3	2	12	23
7	0	0	0	1	1	3
8	0	0	0	0	4	11
9	1	3	7	12	15	8
10	2	0	0	4	6	13
11	1	0	1	10	3	12
12	1	1	1	3	6	6
13	0	0	0	0	5	5
*14	28	38	29	33	22	28
*15	24	14	12	20	13	27
16	8	4	6	5	20	15
17	4	1	0	7	7	3
18	0	0	1	4	27	19
19	15	13	31	91	94	95
20	0	7	0	10	7	15
21	1	2	0	7	5	6
*22	5	0	0	11	13	17
23	1	1	1	6	5	2
24	14	13	11	33	62	110
25	1	1	1	4	3	8
26	1	2	1	12	31	30
27	2	0	4	8	30	16
28	1	8	1	0	1	5
29	1	3	0	2	8	18
30	0	20	13	0	2	9
31	0	0	0	1	3	4
32	—	3	1	—	49	31
33	0	0	0	4	1	2
Orleans — Civil	31	38	24	—	—	—
*Orleans — Criminal	—	—	—	171	243	306
STATEWIDE TOTALS	156	169	164	523	738	965

\*Incomplete statistical data submitted for the 1974 Court Year

TABLE III-H

LOUISIANA DISTRICT COURTS  
TEN YEAR RECAP OF CASES TERMINATED BY JURY TRIAL

	CIVIL JURY TRIALS	CRIMINAL JURY TRIALS	TOTAL JURY TRIALS
1965	133	356	489
1966	160	379	539
1967	106	384	490
1968	129	404	533
1969	115	450	565
1970	162	530	692
1971	178	648	826
1972	156	523	679
1973	169	738	907
1974	164	965	1,129

TABLE III-I.

LOUISIANA DISTRICT COURTS  
PERCENTAGE OF CRIMINAL CASES TERMINATED BY PLEAS OF GUILTY OVER THREE YEAR PERIOD

Judicial District	Parishes	1972 % Guilty Pleas	1973 % Guilty Pleas	1974 % Guilty Pleas
1	Caddo	84	81	83
2	Bienville	49	35	27
	Claiborne	83	79	91
	Jackson	13	16	13
3	Lincoln	77	81	83
	Union	93	83	86
4	Morehouse	71	67	63
	Ouachita	78	83	84
5	Franklin	50	41	29
	Richland	83	94	98
	West Carroll	91	22	0
6	East Carroll	60	79	78
	Madison	82	83	80
	Tensas	72	79	76
7	Catahoula	66	79	74
	Concordia	76	72	83
8	Grant	78	50	58
	Winn	21	18	17
9	Rapides	48	41	67
10	Natchitoches	12	12	17
	Red River	2	7	7
11	DeSoto	80	72	76
	Sabine	86	83	80

TABLE III-J

Page 2 — Percentage of Criminal Cases Terminated in District Courts by Pleas of Guilty over Three Year Period

Judicial District	Parishes	1972 % Guilty Pleas	1973 % Guilty Pleas	1974 % Guilty Pleas
12	Avoyelles	82	77	78
13	Evangeline	96	45	69
14	Calcasieu	69	70	78
	*Cameron	71	65	65
15	*Acadia	*	12	83
	Lafayette	32	21	49
	Vermilion	19	0	0
16	Iberia	13	17	12
	St. Martin	15	15	15
	St. Mary	52	45	43
17	Lafourche	75	65	45
18	Iberville	38	12	27
	Pointe Coupee	92	92	91
	West Baton Rouge	83	89	89
19	East Baton Rouge	88	84	91
20	East Feliciana	46	46	86
	West Feliciana	49	39	50
21	Livingston	15	7	12
	St. Helena	17	33	25
	Tangipahoa	11	10	12
22	St. Tammany	95	94	81
	*Washington	16	19	21

\*Incomplete statistical data submitted for the 1974 Court Year

TABLE III-J

Page 3 — Percentage of Criminal Cases Terminated in District Courts by Pleas of Guilty over Three Year Period

Judicial District	Parishes	1972 % Guilty Pleas	1973 % Guilty Pleas	1974 % Guilty Pleas
23	Ascension	72	73	70
	Assumption	91	91	93
	St. James	91	87	79
24	Jefferson	46	37	37
25	Plaquemines	68	79	76
	St. Bernard	85	81	78
26	Bossier	71	77	81
	Webster	72	80	82
27	St. Landry	79	79	58
28	Caldwell	68	63	51
	LaSalle	88	85	86
29	St. Charles	79	66	72
	St. John	66	57	66
30	Beauregard	70	69	79
	Vernon	6	5	8
31	Jefferson Davis	89	90	84
32	Terrebonne	44	41	37
33	Allen	88	86	85
—	*Orleans	50	49	34
STATEWIDE AVERAGE		62	58	62

\*Incomplete statistical data submitted for the 1974 Court Year

TABLE III-J

LOUISIANA FAMILY AND JUVENILE COURTS\*  
NUMBER OF CASES PROCESSED – October 1, 1973 through September 30, 1974

COURT	Civil Cases		Criminal Cases		Total Cases	
	Filed	Term.	Filed	Term.	Filed	Term.
Caddo Juvenile	706	537	3,460	3,285	4,166	3,822
East Baton Rouge Family	2,963	3,879	3,055	3,770	6,018	7,649
Jefferson Juvenile	1,287	2,882	3,939	4,448	5,226	7,330
Orleans Juvenile	808	976	9,355	11,747	10,163	12,723
TOTALS	5,764	8,274	19,809	23,250	25,573	31,524

TABLE IV-A

LOUISIANA FAMILY AND JUVENILE COURTS\*  
NUMBER OF CASES PROCESSED OVER THREE YEAR PERIOD – 1973 through 1974

COURT	Total Cases Filed			Total Cases Terminated		
	1972	1973	1974	1972	1973	1974
Caddo Juvenile	4,184	3,935	4,166	3,815	3,426	3,822
East Baton Rouge Family	4,990	5,702	6,018	8,507	7,964	7,649
Jefferson Juvenile	3,751	3,619	5,226	3,230	6,654	7,330
Orleans Juvenile	8,775	8,959	10,163	11,743	12,507	12,723
TOTALS	21,700	22,215	25,573	27,295	30,551	31,524

\*These courts do not have identical jurisdiction.

TABLE IV-B

LOUISIANA FAMILY AND JUVENILE COURTS  
TEN YEAR RECAP OF CASES PROCESSED

	CIVIL CASES		CRIMINAL CASES		TOTAL CASES	
	Filed	Term.	Filed	Term.	Filed	Term.
1965	3,339	3,649	9,367	15,951	12,706	19,600
1966	3,672	4,002	11,260	16,422	14,932	20,424
1967	3,944	4,877	13,670	18,248	17,614	23,125
1968	4,310	5,171	12,676	18,400	16,986	23,571
1969	4,353	5,923	12,546	18,572	16,899	24,495
1970	4,558	7,002	14,568	19,142	19,126	26,144
1971	4,967	6,936	15,575	19,510	20,542	26,446
1972	5,025	7,415	16,675	19,880	21,700	27,295
1973	6,815	11,365	15,400	19,186	22,215	30,551
1974	5,764	8,274	19,809	23,250	25,573	31,524

TABLE IV-C

**LOUISIANA FAMILY AND JUVENILE COURTS\***  
**NUMBER OF CASES FILED PER 1,000 POPULATION**  
**over Three Year Period, 1972 through 1974\*\***

COURT	Civil Cases Filed per 1,000 Population			Criminal Cases Filed per 1,000 Population		
	1972	1973	1974	1972	1973	1974
Caddo Juvenile	3	4	3	15	14	15
East Baton Rouge Family	9	10	10	8	10	10
Jefferson Juvenile	2	7	4	9	4	11
Orleans Juvenile	2	1	1	13	14	16
AVERAGE:	4	5	4	11	11	13

TABLE IV-D

**NUMBER OF FAMILY AND JUVENILE CASES\* TERMINATED PER JUDGE**  
**Over Three Year Period, 1972 through 1974\*\***

COURT	Civil Cases Terminated per Judge			Criminal Cases Terminated per Judge		
	1972	1973	1974	1972	1973	1974
Caddo Juvenile	543	555	537	3,272	2,871	3,285
East Baton Rouge Family	5,430	2,332	1,940	3,077	1,651	1,885
Jefferson Juvenile	286	5,152	2,882	2,944	3,182	4,448
Orleans Juvenile	289	249	195	2,647	2,878	2,349
AVERAGE:	1,059	1,421	919	2,840	2,398	2,583

\*These courts do not have identical jurisdiction.  
\*\*All figures rounded to the nearest whole number

TABLE IV-E

**NUMBER OF FAMILY AND JUVENILE CASES\* TERMINATED BY JUDGE TRIAL**  
**over Three Year Period 1972 through 1974**

COURT	Civil Cases Terminated by Judge Trial			Criminal Cases Terminated by Judge Trial		
	1972	1973	1974	1972	1973	1974
Caddo Juvenile	239	224	537	926	919	3,175
East Baton Rouge Family	5,148	2,194	3,682	365	189	431
Jefferson Juvenile	245	342	1,036	513	303	2,440
Orleans Juvenile	289	249	976	2,647	2,878	11,747
TOTALS	5,921	3,009	6,231	4,451	4,289	17,793

TABLE IV-F

**NUMBER OF FAMILY AND JUVENILE CASES\* TERMINATED BY "OTHER TERMINATIONS"**  
**OVER Three Year Period 1972 through 1974**

COURT	Civil Cases Terminated by "Other Terminations"			Criminal Cases Terminated by "Other Terminations"		
	1972	1973	1974	1972	1973	1974
Caddo Juvenile	304	331	0	2,262	1,362	0
East Baton Rouge Family	282	276	197	2,712	2,324	3,339
Jefferson Juvenile	41	4,810	1,846	477	278	719
Orleans Juvenile	0	0	0	0	0	0
TOTALS	627	5,417	2,043	5,451	5,064	4,058

\*These courts do not have identical jurisdiction.

TABLE IV-G

LOUISIANA CITY AND PARISH COURTS  
NUMBER OF CASES PROCESSED - October 1, 1973 through September 30, 1974

City Court	Civil		Criminal		Traffic		Juvenile		Total Cases	
	Filed	Term.	Filed	Term.	Filed	Term.	Filed	Term.	Filed	Term.
Abbeville	171	179	431	429	850	848	167	166	1,619	1,622
Alexandria	1,325	446	2,241	2,020	5,982	5,662	1,014	1,014	10,562	9,142
Baker	128	104	470	433	321	302	42	32	961	871
Bastrop	748	758	520	537	1,145	1,063	271	286	2,684	2,644
Baton Rouge	2,736	2,402	7,183	0	56,380	55,690	2,040	0	68,339	58,092
Bogalusa	717	497	753	752	1,462	1,544	324	304	3,256	3,097
*Bossier City	705	155	862	846	2,375	2,306	339	332	4,281	3,639
Bunkie	59	59	933	933	2,289	2,289	211	152	3,492	3,433
Crowley	178	59	643	654	2,621	2,753	312	319	3,754	3,785
Denham Springs	136	124	1,247	1,087	2,032	1,992	223	200	3,638	3,403
DeRidder	6	4	258	258	998	995	182	163	1,444	1,420
Eunice	38	362	664	614	2,045	1,984	252	252	3,341	3,212
Franklin	5	2	292	286	362	392	83	86	742	766
Hammond	583	94	1,571	1,382	3,562	3,474	607	323	6,323	5,273
Houma	96	84	1,413	802	1,920	1,809	250	202	3,679	2,897
Jeanerette	78	66	338	277	677	503	153	155	1,248	1,001
Jefferson										
First Parish Court	3,670	3,016	2,175	2,100	26,341	27,102	0	0	32,186	32,218
Second Parish Court	2,792	2,151	1,628	2,087	7,745	8,252	0	0	12,165	12,490
Jennings	53	39	149	150	509	500	107	107	818	796
Kaplan	100	63	219	204	745	719	62	60	1,126	1,046
Lafayette	1,028	939	1,541	1,490	7,352	7,331	819	815	10,740	10,575
Lake Charles	1,491	884	1,484	950	15,078	11,225	643	643	18,696	13,702
Leesville	75	39	1,324	978	1,398	1,270	188	180	2,985	2,467
Marksville	106	106	94	94	577	577	132	132	909	909
Minden	374	373	205	203	680	676	64	85	1,323	1,337

\*Incomplete statistical data submitted for the 1974 Court Year

TABLE V-A

Page 2 - Cases Processed by Louisiana City Courts - October 1, 1973 through September 30, 1974

City Court	Civil		Criminal		Traffic		Juvenile		Total Cases	
	Filed	Term.	Filed	Term.	Filed	Term.	Filed	Term.	Filed	Term.
Monroe	2,200	1,795	7,776	4,479	9,198	9,182	1,154	889	20,328	16,345
Morgan City	39	46	1,229	1,168	1,891	1,836	207	180	3,366	3,230
Natchitoches	345	345	1,169	819	2,649	1,938	132	149	4,295	3,251
New Iberia	583	589	1,748	1,725	3,464	3,437	400	399	6,195	6,150
New Orleans										
First City Court	23,077	13,468	0	0	0	0	0	0	23,077	13,468
Second City Court	1,683	760	0	0	0	0	0	0	1,683	760
Municipal	0	0	35,241	34,123	0	0	0	0	35,241	34,123
Traffic	0	0	0	0	117,941	80,288	0	0	117,941	80,288
Oakdale	256	232	396	385	513	486	145	138	1,310	1,241
*Opelousas	399	365	2,349	1,912	6,226	5,339	1,520	1,431	10,494	9,047
Pineville	264	264	256	256	529	529	206	206	1,255	1,255
Plaquemine	5	1	121	122	724	721	83	85	933	929
Port Allen	12	12	506	506	670	670	154	154	1,342	1,342
Rayne	144	110	373	340	563	570	139	118	1,219	1,138
Ruston	435	89	676	613	642	585	82	39	1,835	1,326
Shreveport	3,539	3,071	7,044	6,200	25,488	27,835	0	0	36,071	37,106
*Slidell	176	18	1,411	1,173	1,508	1,299	440	440	3,535	2,930
Springhill	418	433	400	400	333	332	93	97	1,244	1,262
**Sulphur	0	0	0	0	0	0	0	0	0	0
Thibodeaux	34	45	646	480	1,694	1,468	167	88	2,541	2,081
Ville Platte	224	105	500	394	417	392	242	240	1,383	1,131
*West Monroe	875	725	1,205	1,039	2,280	2,276	545	529	4,905	4,569
*Winnfield	34	8	195	158	57	60	91	75	377	301
TOTALS	52,482	35,486	91,879	75,858	322,233	280,501	14,287	11,265	480,881	403,110

\*Incomplete statistical data submitted for the 1974 Court Year

\*\*No statistical data submitted for the 1974 Court Year

TABLE V-A

LOUISIANA CITY AND PARISH COURTS  
NUMBER OF CRIMINAL CASES PROCESSED — October 1, 1973 through September 30, 1974

CITY COURT	State Misdemeanors		Ordinance Violations	
	Filed	Term.	Filed	Term.
Abbeville	30	30	401	399
Alexandria	447	404	1,794	1,616
Baker	370	380	100	53
Bastrop	0	0	520	537
Baton Rouge	0	0	7,183	0
Bogalusa	98	298	455	463
*Bossier City	238	218	624	628
Bunkie	48	48	885	885
Crowley	197	211	446	443
Denham Springs	25	11	1,222	1,076
DeRidder	0	0	258	258
Eunice	153	129	511	485
Franklin	14	0	278	272
Hamond	991	867	580	515
Houma	688	281	725	521
Jeanerette	334	273	4	4
Jefferson Parish				
First Parish Court	2,025	1,945	150	155
Second Parish Court	1,601	2,042	27	45
Jennings	1	1	148	149
Kaplan	133	131	86	73
Lafayette	743	697	798	793
Lake Charles	0	0	1,484	950
Leesville	101	80	1,223	898
Marksville	83	83	11	11
Minden	23	25	182	178

\*Incomplete statistical data submitted for the 1974 Court Year

TABLE V-B

Page 2 — Criminal Cases Processed by Louisiana City Courts — October 1, 1973 through September 30, 1974

CITY COURT	State Misdemeanors		Ordinance Violations	
	Filed	Term.	Filed	Term.
Monroe	239	163	7,537	4,316
Morgan City	991	931	238	237
Natchitoches	0	0	1,169	819
New Iberia	87	86	1,661	1,639
New Orleans				
First City Court	0	0	0	0
Second City Court	0	0	0	0
Municipal	0	0	35,241	34,123
Traffic	0	0	117,941	80,288
Oakdale	168	159	228	226
*Opelousas	1,335	1,010	1,014	902
Pineville	5	5	251	251
Plaquemine	121	122	0	0
Port Allen	402	402	104	104
Rayne	141	119	232	221
Ruston	434	398	242	215
*Slidell	1,404	1,167	7	6
Shreveport	3,584	2,864	3,460	3,336
Springhill	17	17	383	383
**Sulphur	0	0	0	0
Thibodaux	344	233	302	247
Ville Platte	136	102	364	292
*West Monroe	0	0	1,205	1,039
*Winnfield	14	2	181	156

\*Incomplete statistical data submitted for the 1974 Court Year

\*\*No statistical data submitted for the 1974 Court Year

TABLE V-B

**LOUISIANA CITY AND PARISH COURTS**  
**NUMBER OF TRAFFIC CASES PROCESSED – October 1, 1973 through September 30, 1974**

CITY COURTS	State Cases		Ordinances Cases	
	Filed	Term.	Filed	Term.
Abbeville	211	211	639	637
Alexandria	0	0	5,982	5,662
Baker	265	249	56	53
Bastrop	0	0	1,145	1,063
Baton Rouge	9,376	8,599	47,004	47,091
Bogalusa	661	728	801	816
*Bossier City	633	668	1,742	1,638
Bunkie	1,432	1,432	857	857
Crowley	820	744	1,801	2,009
Denham Springs	1,067	953	965	1,039
DeRidder	0	0	998	995
Eunice	1,169	1,100	876	884
Franklin	23	16	339	376
Hammond	1,648	1,594	1,914	1,880
Houma	245	158	1,675	1,651
Jeanerette	350	259	327	244
Jefferson Parish				
First Parish Court	26,320	26,963	21	139
Second Parish Court	7,745	8,252	0	0
Jennings	27	30	482	470
Kaplan	648	625	97	94
Lafayette	494	507	6,858	6,824
Lake Charles	0	0	15,078	11,225
Leesville	13	10	1,385	1,260
Marksville	438	438	139	139
Minden	60	58	620	618

\* Incomplete statistical data submitted for the 1974 Court Year

TABLE V-C

Page 2 – Traffic Cases Processed by Louisiana City Courts – October 1, 1973 through September 30, 1974

CITY COURTS	State Cases		Ordinances Cases	
	Filed	Term.	Filed	Term.
Monroe	2	2	9,196	9,180
Morgan City	647	622	1,244	1,214
Natchitoches	206	116	2,443	1,822
New Iberia	288	270	3,176	3,167
New Orleans				
First City Court	0	0	0	0
Second City Court	0	0	0	0
Municipal	0	0	0	0
Traffic	0	0	117,941	80,288
Oakdale	179	163	334	323
*Opelousas	4,730	4,081	1,496	1,258
Pineville	141	141	388	388
Plaquemine	724	721	0	0
Port Allen	171	171	499	499
Rayne	384	376	179	194
Ruston	396	373	246	212
*Slidell	139	101	1,369	1,198
Shreveport	3,457	3,545	22,031	24,290
Springhill	30	29	303	303
**Sulphur	0	0	0	0
Thibodaux	39	0	1,655	1,410
Ville Platte	192	187	225	205
*West Monroe	234	241	2,046	2,035
*Winnfield	28	28	29	32

\* Incomplete statistical data submitted for the 1974 Court Year  
\*\* No statistical data submitted for the 1974 Court Year

TABLE V-C



**LOUISIANA CITY AND PARISH COURTS  
WORKLOAD CALCULATED AS A PERCENTAGE OF TOTAL TERMINATIONS**

CITY COURT	CIVIL %	CRIMINAL		TRAFFIC		JUVENILE CASES				
		State	Ord.	State	Ord.	Juv. Del.	Crim. Neg.	Special Proceedings	Traffic (City)	Traffic (State)
		%	%	%	%	%	%	%	%	%
Abbeville	11	1	24	13	39	7	0	0	3	0
Alexandria	4	4	17	0	61	8	0	0	2	0
Baker	11	43	6	28	6	0	0	0	1	1
Bastrop	28	0	20	0	40	5	0	0	3	1
Baton Rouge	4	0	0	14	81	0	0	0	0	0
Bogalusa	16	9	14	23	26	5	1	0	0	2
*Bossier City	4	5	17	18	45	5	0	0	2	1
Bunkie	1	1	25	41	24	2	0	0	1	0
Crowley	1	5	11	19	53	2	1	0	2	1
Denham Springs	3	0	31	28	30	2	0	0	1	1
DeRidder	0	0	18	0	70	2	0	0	8	0
Eunice	11	4	15	34	27	4	0	0	2	0
Franklin	0	0	35	2	49	6	0	0	4	0
Hammond	1	16	9	30	35	3	0	0	1	0
Houma	2	9	17	5	56	5	1	0	0	0
Jeanerette	6	27	0	25	24	10	4	0	0	0
Jefferson Parish										
First Parish Court	9	6	0	83	0	0	0	0	0	0
Second Parish Court	17	16	0	66	0	0	0	0	0	0
Jennings	4	0	18	3	59	4	0	0	7	1
Kaplan	6	12	6	59	8	2	0	0	1	1
Lafayette	8	6	7	4	64	2	0	0	3	0
Lake Charles	6	0	6	0	81	0	0	0	3	0
Leesville	1	3	36	0	51	5	0	0	1	0
Marksville	11	9	1	48	15	3	0	0	9	1
Minden	27	1	13	4	46	3	0	2	2	0

\* Incomplete statistical data submitted for the 1974 Court Year

TABLE V-D

Page 2 — Workload of each City Court according to cases terminated and calculated as a percentage of total terminations.

CITY COURT	CIVIL %	CRIMINAL		TRAFFIC		JUVENILE CASES				
		State	Ord.	State	Ord.	Juv. Del.	Crim. Neg.	Special Proceedings	Traffic (City)	Traffic (State)
		%	%	%	%	%	%	%	%	%
Monroe	10	0	26	0	56	1	0	0	3	0
Morgan City	1	28	7	19	37	3	0	0	0	0
Natchitoches	10	0	25	3	56	2	0	0	2	0
New Iberia	9	1	26	4	51	0	0	1	3	0
New Orleans										
First City Court	100	0	0	0	0	0	0	0	0	0
Second City Court	100	0	0	0	0	0	0	0	0	0
Municipal	0	0	100	0	0	0	0	0	0	0
Traffic	0	0	0	0	100	0	0	0	0	0
Oakdale	18	12	18	13	26	7	2	0	0	0
*Opelousas	4	11	9	45	13	2	0	0	5	6
Pineville	21	0	20	11	30	5	0	0	5	5
Plaquemine	0	13	0	77	0	6	0	0	0	1
Port Allen	0	29	7	12	37	7	0	0	3	0
Rayne	9	10	19	33	17	4	3	0	1	1
Ruston	6	32	16	28	15	4	3	0	0	0
*Slidell	0	39	0	3	40	9	0	0	5	0
Shreveport	8	7	8	9	65	0	0	0	0	0
Springhill	34	1	30	2	24	4	0	0	2	0
**Sulphur	0	0	0	0	0	0	0	0	0	0
Thibodaux	2	11	11	0	67	3	0	0	0	0
Ville Platte	9	9	25	16	18	11	4	0	1	2
*West Monroe	15	0	22	5	44	4	0	0	4	2
*Winnfield	2	0	51	9	10	11	0	0	4	8

\* Incomplete statistical data submitted for the 1974 Court Year  
\*\* No statistical data submitted for the 1974 Court Year

TABLE V-D

**LOUISIANA CITY AND PARISH COURTS  
CASES PENDING BY MONTHS  
during the October 1, 1973 through September 30, 1974 period**

CITY COURTS	Oct.	Nov.	Dec.	Jan.	Feb.	Mar.	Apr.	May	June	July	Aug.	Sept.	Monthly Average of Cases Pending
Abbeville	16	17	17	9	5	8	15	13	15	10	10	9	12
Alexandria	27	55	14	19	48	50	71	45	60	60	42	51	45
Baker	49	67	183	177	185	141	163	178	184	189	201	185	158
Bastrop	211	245	66	66	92	102	125	105	130	111	127	125	125
Baton Rouge	0	0	0	0	0	0	0	0	0	0	0	0	0
Bogalusa	1,414	1,489	1,485	1,437	1,400	1,467	1,473	1,536	1,587	1,557	1,565	1,572	1,498
*Bossier City	182	164	275	2,918	2,944	3,124	3,261	3,145	3,202	0	0	0	1,601
Bunkie	127	134	141	145	146	154	159	158	161	174	181	185	155
Crowley	718	620	698	643	527	507	487	651	511	507	644	621	594
Denham Springs	55	38	46	57	49	54	41	57	74	99	90	100	63
DeRidder	11	13	1	17	15	5	5	6	10	7	5	1	8
Eunice	56	112	75	78	74	106	106	111	120	116	109	135	99
Franklin	113	85	88	114	91	96	80	96	94	109	223	101	107
Hammond	18	46	44	89	57	67	32	48	42	49	81	88	55
Houma	0	88	111	119	124	153	142	175	152	137	216	278	141
Jeanerette	102	45	109	55	85	57	62	26	29	27	14	19	52
Jefferson Parish													
First Parish Court	1,187	1,157	1,246	1,480	1,122	1,375	1,462	1,588	1,517	1,628	1,933	1,760	1,454
Second Parish Court	0	0	0	0	0	0	0	0	0	0	0	0	0
Jennings	6	16	26	45	35	37	31	19	31	27	24	30	27
Kaplan	98	120	120	123	147	132	148	167	156	146	161	165	140
Lafayette	229	249	200	194	216	190	231	176	218	184	164	190	203
Lake Charles	0	0	0	0	0	0	0	0	0	0	0	0	0
Leesville	0	0	0	0	0	0	0	0	0	0	0	0	0
Leesville	121	20	24	20	37	24	50	28	23	58	39	23	38
Marksville	0	0	0	0	0	0	0	0	0	0	0	0	0
Minden	16	11	16	11	18	15	15	17	16	19	20	17	15

\* Incomplete statistical data submitted for the 1974 Court Year

TABLE V-E

Page 2 — Cases Pending in City and Parish Courts by Months during the October 1, 1973 through September 30, 1974 period

CITY COURTS	Oct.	Nov.	Dec.	Jan.	Feb.	Mar.	Apr.	May	June	July	Aug.	Sept.	Monthly Average of Cases Pending
Monroe	396	445	633	457	356	374	390	494	279	444	424	381	422
Morgan City	206	228	229	246	229	246	257	290	271	280	305	299	257
Natchitoches	0	0	0	0	0	0	0	0	0	0	0	0	0
New Iberia	238	243	240	254	255	259	295	283	283	145	157	144	233
New Orleans													
First City Court	1,108	1,129	942	1,489	1,172	1,313	1,249	1,615	1,104	1,097	883	1,154	1,187
Second City Court	0	0	0	0	0	0	0	0	0	0	0	0	0
Municipal	2,383	1,750	2,078	2,064	2,140	2,302	2,398	2,147	2,174	2,258	2,098	2,111	2,158
Traffic	0	0	0	0	0	0	0	0	0	0	0	0	0
Oakdale	48	85	97	135	103	116	116	120	140	115	0	83	96
*Opelousas	71	174	147	65	161	76	251	74	76	259	93	0	120
Pineville	0	0	0	0	0	0	0	0	0	0	0	0	0
Plaquemine	0	0	0	0	1	4	8	3	6	9	9	9	4
Port Allen	0	0	0	0	0	0	0	0	0	0	0	0	0
Rayne	102	110	97	104	114	96	88	88	95	100	106	80	98
Ruston	58	28	29	35	43	44	36	57	44	40	30	46	40
*Slidell	30	46	38	41	52	54	59	68	51	76	90	0	50
Shreveport	4,495	4,037	3,634	3,767	3,774	3,823	3,806	4,209	4,078	4,222	3,481	4,632	3,996
Springhill	20	6	2	0	5	4	5	8	2	4	5	1	5
**Sulphur	0	0	0	0	0	0	0	0	0	0	0	0	0
Thibodaux	82	73	77	130	73	86	68	82	66	65	82	86	80
Ville Platte	75	75	77	76	82	i	0	1	8	0	0	0	32
*West Monroe	713	819	851	829	864	925	907	914	914	1,043	0	0	731
*Winfield	47	93	59	51	64	0	0	0	0	0	0	0	26

\* Incomplete statistical data submitted for the 1974 Court Year  
\*\* No statistical data submitted for the 1974 Court Year

TABLE V-E

LOUISIANA CITY AND PARISH COURTS  
NUMBER OF JUVENILE CASES PROCESSED — October 1, 1973 through September 30, 1974

CITY COURT	Juvenile Delinquency		Criminal Neglect		Special Proceedings		Traffic (City)		Traffic (State)	
	Filed	Term.	Filed	Term.	Filed	Term.	Filed	Term.	Filed	Term.
Abbeville	116	115	0	0	0	0	51	51	0	0
Alexandria	801	801	0	0	0	0	213	213	0	0
Baker	8	7	0	0	0	0	10	9	24	16
Bastrop	138	141	0	0	0	0	89	98	44	47
Baton Rouge	0	0	0	0	0	0	1,760	0	280	0
Bogalusa	173	172	74	59	15	11	0	0	62	62
*Bossier City	189	183	3	3	10	10	76	75	61	61
Bunkie	135	76	0	0	0	0	47	47	29	29
Crowley	98	97	64	70	0	0	87	87	63	65
Denham Springs	94	82	22	20	7	8	61	54	39	36
DeRidder	61	42	0	0	0	0	121	121	0	0
Eunice	151	151	0	0	0	0	89	89	12	12
Franklin	43	49	2	3	0	0	38	34	0	0
Hammond	427	175	0	0	8	8	127	102	45	38
Houma	172	171	78	31	0	0	0	0	0	0
Jeanerette	107	104	47	50	0	0	1	1	0	0
Jefferson Parish										
First Parish Court	0	0	0	0	0	0	0	0	0	0
Second Parish Court	0	0	0	0	0	0	0	0	0	0
Jennings	34	34	5	4	0	0	59	59	9	10
Kaplan	30	27	1	1	0	0	15	14	16	18
Lafayette	297	290	67	64	29	35	400	400	26	26
Lake Charles	0	0	0	0	0	0	520	520	123	123
Leesville	148	140	0	0	0	0	37	37	3	3
Marksville	33	33	0	0	0	0	84	84	15	15
Minden	22	43	0	0	0	0	35	35	7	7

\*Incomplete statistical data submitted for the 1974 Court Year

TABLE V-F

Page 2 — Juvenile Cases Processed by Louisiana City and Parish Courts — October 1, 1973 through September 30, 1974

CITY COURT	Juvenile Delinquency		Criminal Neglect		Special Proceedings		Traffic (City)		Traffic (State)	
	Filed	Term.	Filed	Term.	Filed	Term.	Filed	Term.	Filed	Term.
Monroe	562	301	3	3	2	2	587	583	0	0
Morgan City	146	126	25	18	4	5	0	0	32	31
Natchitoches	61	78	0	0	0	0	71	71	0	0
New Iberia	54	54	1	1	95	95	244	243	6	6
New Orleans										
First City Court	0	0	0	0	0	0	0	0	0	0
Second City Court	0	0	0	0	0	0	0	0	0	0
Municipal	0	0	0	0	0	0	0	0	0	0
Traffic	0	0	0	0	0	0	0	0	0	0
Oakdale	96	96	31	26	4	4	10	8	4	4
*Opelousas	260	260	87	87	38	38	536	496	599	550
Pineville	68	68	0	0	0	0	73	73	65	65
Plaquemine	59	58	3	3	7	6	0	4	14	14
Port Allen	104	104	0	0	2	2	45	45	3	3
Rayne	61	50	47	37	3	1	15	17	13	13
Ruston	81	38	1	1	0	0	0	0	0	0
*Slidell	288	288	0	0	0	0	152	152	0	0
Shreveport	0	0	0	0	0	0	0	0	0	0
Springhill	49	53	5	5	3	3	33	33	3	3
**Sulphur	0	0	0	0	0	0	0	0	0	0
Thibodaux	93	80	66	0	0	0	8	8	0	0
Ville Platte	133	131	55	55	8	8	20	20	26	26
*West Monroe	223	220	0	0	0	0	220	212	102	97
*Winnfield	29	35	0	0	2	0	38	14	22	26

\*Incomplete statistical data submitted for the 1974 Court Year

\*\*No statistical data submitted for the 1974 Court Year

TABLE V-F

**END**