



NORTH DAKOTA
Office of Attorney General
Bureau of Criminal Investigation



Crime in North Dakota, 1998

180530

Attorney General
Heidi Heitkamp

Office of Attorney General

Bureau of Criminal Investigation

Crime in North Dakota, 1998

A Summary of Uniform Crime Report Data

**Heidi Heitkamp
Attorney General**

**Prepared by
Judith H. Volk
Research Analyst
1999**

Data collection, report preparation and publication of this report are supported by a grant from the Bureau of Justice Statistics, U.S. Department of Justice

INTRODUCTION

The North Dakota Uniform Crime Reporting (UCR) program involves the collection, compilation, and analysis of crime and arrest statistics reported by the various local law enforcement agencies throughout the state. Forty-six sheriffs' departments and 43 police departments reported to the UCR program in 1998.

Law enforcement agencies may report UCR data in two ways:

INCIDENT-BASED REPORTING: Law enforcement agencies use a standard incident form to collect data on each incident reported to their respective agencies. This form collects much more detailed information than is collected using summary reporting. Data collected includes: type of incident, where and when the incident took place, victim characteristics, suspect/arrestee characteristics, property involved in the incident, etc. Eighty-three agencies reported incident data for all or part of 1998.

In order to continue the statistical time-series begun with summary reporting, computer programs were written to extract summary data from the incident data reported. Crime in North Dakota, 1998 is a report on summary data. A separate report on incident-based data is being prepared.

SUMMARY REPORTING: Law enforcement agencies use a tally system to report the number of crime index offenses and arrests for each month. Six law enforcement agencies reported summary data in 1998.

The federal counterpart of the North Dakota UCR program is the National UCR program under the direction of the Federal Bureau of Investigation (FBI). The UCR program has been used nationally and in North Dakota for many years to measure the extent, distribution and fluctuation of crime through the crime index. The crime index is not an absolute measure, but rather an indication of the amount and type of crime occurring in any given jurisdiction. The index is composed of seven crimes that are sub-classified as follows:

VIOLENT CRIME: Murder/Non-Negligent Manslaughter
 Forcible Rape
 Robbery
 Aggravated Assault

PROPERTY CRIME: Burglary
 Larceny/Theft
 Motor Vehicle Theft

A Modified Crime Index is also calculated at the federal level. This includes arson as the fourth property crime and the eighth index offense. Data on arson is not included in this report.

Prior to an offense becoming recorded in the UCR program, it must first be brought to the attention of local law enforcement officials and then must be reported by the local agency to the UCR program. Therefore, the UCR program can only reflect crime indirectly in its reports as the statistics gathered in the program are based on reported crimes only. No one can state precisely how much crime goes unreported each year. Reporting of crimes depends on several factors,

including actual perception of an act as a crime, the probability of loss of status for reporting (as in cases of rape), and the perceived probability of action on the part of the law enforcement agency contacted.

Several types of data are gathered, including:

Offense data

- Number of known crime index offenses
- Type and value of stolen property
- Additional information on homicides and arson
- Law enforcement officers killed or assaulted

Arrest and Clearance Data

- Number and type of offenses cleared
- Number and type of index offenses involving juveniles cleared
- Number of persons arrested, by offense
- Characteristics of persons arrested (age, sex, race)

To allow for comparison among several geographic or jurisdictional areas with differing populations or to allow comparisons across time in an area undergoing population fluctuations, the UCR program provides for the calculation of crime rates to remove any potential biases created by population differences. Because a rate relates the incidence of activity to population, it is possible to measure annual fluctuations in criminal activity by comparing rates of crime reported in any given year with those reported in other years. National publications report crime rates calculated based on the number of reported offenses per 100,000 population. This publication provides crime rate information calculated in the same manner.

TABLE OF CONTENTS

Introduction	i
Table of Contents	iii
North Dakota Crime Summary, 1998	v
Crime Index Offense Analysis	1
Violent Crime	7
Murder/Non-Negligent Manslaughter	9
Forcible Rape	11
Robbery	13
Aggravated Assault	16
Property Crime	18
Burglary	20
Larceny/Theft	23
Motor Vehicle Theft	26
Crime Index Offenses by Reporting Jurisdiction	29
Crime Rates by County	33
Arrest Analysis	35
Arrests in 1998	37
Arrest Analysis by Reporting Jurisdiction	43
Arrests 1989-1998	46
Drug Arrest Analysis	52
DUI Arrest Analysis	56
UCR Offense Definitions	59
Full-Time Law Enforcement Employees	65

(This page intentionally left blank.)

NORTH DAKOTA CRIME SUMMARY, 1998

In 1998, 16,537 crime index offenses were reported by local law enforcement agencies. This is a decrease of 3.4 percent from the total of 17,122 reported in 1997.

Crime index offenses include: murder/non-negligent manslaughter, forcible rape, robbery, aggravated assault, burglary, larceny/theft, and motor vehicle theft.

The Census Bureau estimate of North Dakota's population for 1998 is 638,000. The index crime rate per 100,000 population for 1998 was 2592.0. The index crime rate for 1997 was 2671.1 per 100,000 population. This is a three percent decrease in the crime rate.

The total number of reported violent index crimes (murder, rape, robbery, and aggravated assault) was 566. This represents an increase of 3.1 percent from the total of 549 reported in 1997.

Violent crime accounted for 3.4 percent of total index crimes reported in 1998.

Collectively, property crimes (burglary, larceny/theft and motor vehicle theft) decreased by 3.6 percent from 16,573 reported in 1997 to 15,971 reported in 1998.

Property crime accounted for 96.6 percent of total crime index offenses reported in 1998.

The 12,704 larceny/theft offenses reported in 1998 accounted for nearly 77 percent of total index crimes.

Over \$11.4 million worth of property was reported stolen in 1998, with approximately 31 percent of that amount reported as recovered by law enforcement officials.

North Dakota law enforcement agencies reported 33,548 arrests in 1998. A total of 33,634 arrests were reported in 1997.

Approximately 27 percent of total arrests in 1998 were arrests of juveniles. Fifty percent of arrests for crime index offenses were arrests of juveniles.

Juveniles were arrested most often for liquor law violations, while adults were arrested most often for driving under the influence (DUI).

The number of arrests for DUI increased 8.6 percent from 4,777 reported in 1997 to 5,187 reported in 1998.

Arrests for drug offenses increased 22.1 percent from a 1997 total of 1,242 to 1,517 in 1998.

(This page intentionally left blank.)

CRIME INDEX OFFENSE ANALYSIS

(This page intentionally left blank.)

Crime Index Offenses

Crime index offenses include the violent crimes of murder/non-negligent manslaughter, forcible rape, robbery, and aggravated assault, and the property crimes of burglary, larceny/theft, and motor vehicle theft.

In 1998, 16,537 crime index offenses were reported by local law enforcement agencies. This is a decrease of 3.4 percent from the total of 17,122 reported in 1997.

The Census Bureau estimate of North Dakota's population for 1998 is 638,000. The index crime rate per 100,000 population for 1998 was 2592.0, as compared to 2671.1 for 1997. See the crime index offense summary on page 5 for crime rate information for the period 1989-1998.

Approximately 27 percent of crime index offenses were reported as cleared by arrest or exceptional means. The UCR program defines an offense as "cleared" by law enforcement when at least one person is arrested, charged with the commission of the offense, and turned over to the court for prosecution. Several crimes may be cleared by the arrest of one person, while the arrests of many persons may clear only one offense. Law enforcement agencies may clear a crime by exceptional means when some element beyond law enforcement control precludes the placing of formal charges against the offender. Examples of circumstances that allow such clearances are the death of the offender (suicide, justifiably killed by police or private citizen, etc.); the victim's refusal to cooperate with prosecution after the offender has been identified; or the denial of extradition.

In 1998, 3,628 arrests were reported for crime index offenses. Fifty percent of that total were arrests of juveniles.

Over \$11.4 million worth of property was reported stolen in 1998, with 30.8 percent of that amount reported as recovered by law enforcement officials.

Crime Index Offenses Reported, 1998

Crime Index Offense	Number Reported	Percent of Total Index Offenses
Murder/Non-Negligent Manslaughter	7	0.0 %
Forcible Rape	169	1.0
Robbery	78	0.5
Aggravated Assault	312	1.9
Violent Crime Subtotal	566	3.4
Burglary	2,194	13.3
Larceny/Theft	12,704	76.8
Motor Vehicle Theft	1,073	6.5
Property Crime Subtotal	15,971	96.6
Crime Index Offense Total	16,537	100.0

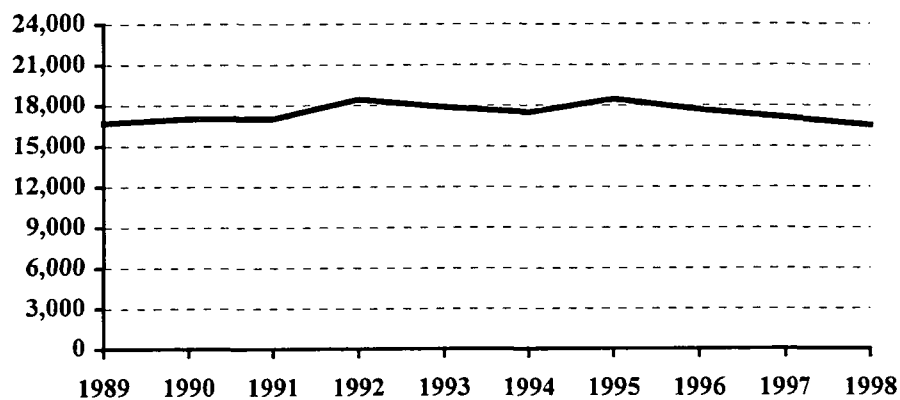
Comparison of Crime Index Offenses Reported, 1997-1998

Crime Index Offense	1997	1998	Percent Change
Murder/Non-Negligent Manslaughter	10	7	-30.0 %
Forcible Rape	150	169	12.7
Rape by Force	143	160	11.9
Attempts to Rape	7	9	28.6
Robbery	45	78	73.3
Firearm	5	14	180.0
Knife or Cutting Instrument	7	9	28.6
Other Dangerous Weapon	12	17	41.7
Strong Arm – No Weapon	21	38	81.0
Aggravated Assault	344	312	-9.3
Firearm	25	8	-68.0
Knife or Cutting Instrument	53	45	-15.1
Other Dangerous Weapon	129	94	-27.1
Hands, Fists, Feet, Etc.	137	165	20.4
Violent Crime Subtotal	549	566	3.1
Burglary	2,271	2,194	-3.4
Forcible Entry	1,319	1,288	-2.4
Unlawful Entry – No Force	736	725	-1.5
Attempted Forcible Entry	216	181	-16.2
Larceny/Theft	13,163	12,704	-3.5
Motor Vehicle Theft	1,139	1,073	-5.8
Autos	907	850	-6.3
Trucks and Buses	138	106	-23.2
Other Vehicles	94	117	24.5
Property Crime Subtotal	16,573	15,971	-3.6
Crime Index Offense Total	17,122	16,537	-3.4

Crime Index Offenses, 1989-1998

Crime Index Offense	1989	1990	1991	1992	1993	1994	1995	1996	1997	1998
Murder/Non-Neg. Mansl.	9	8	11	15	22	5	9	12	10	7
Forcible Rape	78	98	120	162	150	154	151	175	150	169
Robbery	61	36	47	52	54	70	64	72	45	78
Aggravated Assault	266	223	223	349	332	299	360	335	344	312
Burglary	2341	2357	2305	2440	2346	2080	2275	2008	2271	2194
Larceny/Theft	13215	13505	13543	14390	14031	13898	14435	13898	13163	12704
Motor Vehicle Theft	734	794	772	1023	940	981	1164	1182	1139	1073
Crime Index Offense Total	16704	17021	17021	18431	17875	17487	18458	17682	17122	16537

Crime Index Offense Totals, 1989-1998



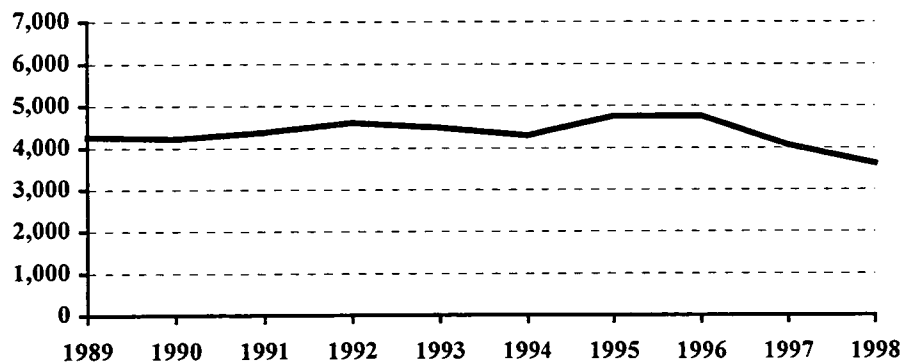
Crime Index Offense Summary

Year	Population	Crime Index Offense Total	% Change in Number from Previous Year	Crime Rate per 100,000 Population	% Change in Rate from Previous Year	Percent Cleared
1989	660,000	16,704	-7.6 %	2530.9	-7.2 %	25.1 %
1990	638,800	17,021	1.9	2664.5	5.3	29.5
1991	635,000	17,021	0.0	2680.5	0.6	26.2
1992	636,000	18,431	8.3	2898.0	8.1	25.9
1993	635,000	17,875	-3.0	2815.0	-2.9	26.7
1994	638,000	17,487	-2.2	2740.9	-2.6	25.7
1995	641,000	18,458	5.6	2879.6	5.1	28.1
1996	644,000	17,682	-4.2	2745.7	-4.6	29.9
1997	641,000	17,122	-3.2	2671.1	-2.7	29.0
1998	638,000	16,537	-3.4	2592.0	-3.0	26.5

Arrests for Crime Index Offenses, 1989-1998

Year	Juvenile	Adult	Age Not Reported	Total
1989	1,965	2,298		4,263
1990	1,977	2,241		4,218
1991	2,332	2,007	33	4,372
1992	2,506	2,063	28	4,597
1993	2,393	2,051	33	4,477
1994	2,324	1,926	43	4,293
1995	2,642	2,083	21	4,746
1996	2,523	2,221	11	4,755
1997	2,252	1,783	26	4,061
1998	1,803	1,813	12	3,628

Arrests for Crime Index Offenses, 1989-1998



Property Loss Due to Crime Index Offenses, 1989-1998

Year	Population	Total Property Loss	% Change from Previous Year	Property Loss per Capita	Percent Recovered
1989	660,000	\$ 8,251,241	-10.6 %	\$ 12.50	40.0 %
1990	638,800	11,115,640	34.7	17.40	31.0
1991	635,000	8,443,034	-24.0	13.30	32.0
1992	636,000	11,216,943	32.9	17.64	22.8
1993	635,000	9,439,645	-15.8	14.87	33.6
1994	638,000	9,696,414	2.7	15.20	48.2
1995	641,000	11,070,248	14.2	17.27	32.2
1996	644,000	11,022,665	-0.4	17.12	34.4
1997	641,000	12,507,812	13.5	19.51	33.3
1998	638,000	11,429,270	-8.6	17.91	30.8

Violent Crime

Violent crime includes the offenses of murder/non-negligent manslaughter, forcible rape, robbery, and aggravated assault. (See the UCR offense definitions section beginning on page 59 of this publication for definitions of these and other offenses.)

In 1998, 566 violent crimes were reported in North Dakota. This is a 3.1 percent increase from the 1997 total of 549 violent offenses.

Violent crime comprised 3.4 percent of reported crime index offenses in North Dakota in 1998.

The violent crime rate for 1998 is 88.7 per 100,000, as compared to 85.6 per 100,000 in 1997. This is a 3.6 percent increase in the violent crime rate.

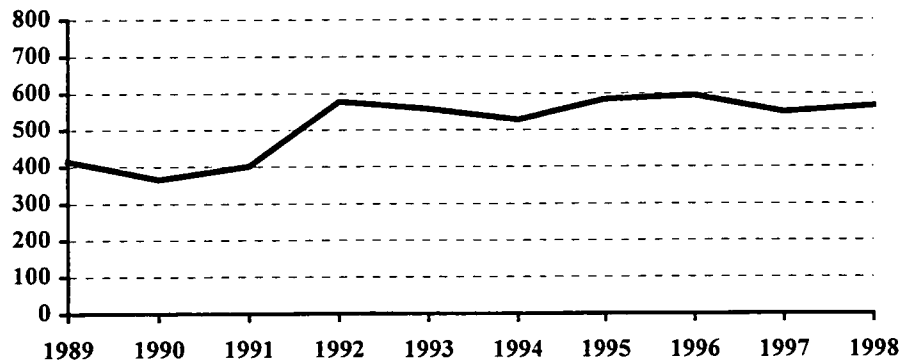
Approximately 62 percent of violent crimes were reported as cleared by arrest or exceptional means in 1998.

A total of 245 arrests was reported for violent crimes. Of those, 28 percent were arrests of juveniles.

Violent Crime Summary

Year	Population	Violent Index Offenses	% Change in Number from Previous Year	Rate per 100,000 Population	% Change in Rate from Previous Year	Percent Cleared
1989	660,000	414	5.6 %	62.7	6.1 %	70.5 %
1990	638,800	365	-11.8	57.1	-8.9	62.2
1991	635,000	401	9.9	63.1	10.5	56.1
1992	636,000	578	44.1	90.9	44.1	59.0
1993	635,000	558	-3.5	87.9	-3.3	64.0
1994	638,000	528	-5.4	82.8	-5.8	55.9
1995	641,000	584	10.6	91.1	10.0	67.6
1996	644,000	594	1.7	92.2	1.2	73.2
1997	641,000	549	-7.6	85.6	-7.2	66.8
1998	638,000	566	3.1	88.7	3.6	61.7

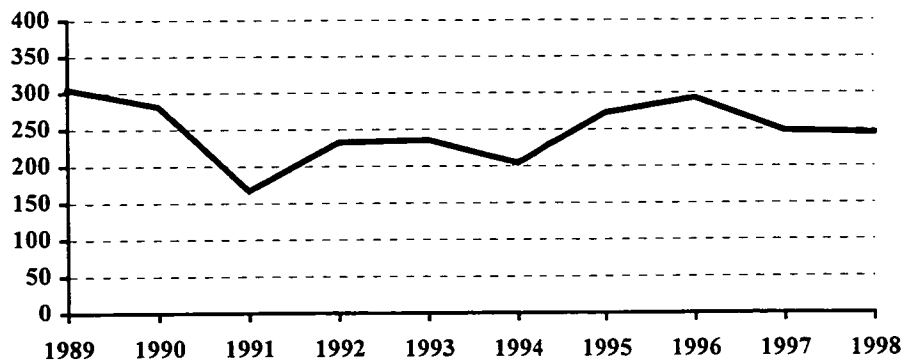
Violent Crime Totals, 1989-1998



Arrests for Violent Crimes, 1989-1998

Year	Juvenile	Adult	Age Not Reported	Total
1989	51	254		305
1990	44	237		281
1991	41	121	5	167
1992	51	178	3	232
1993	71	162	2	235
1994	58	144	2	204
1995	106	164	2	272
1996	68	224	1	293
1997	54	193	1	248
1998	68	177		245

Arrests for Violent Crimes, 1989-1998



Murder/Non-Negligent Manslaughter

The UCR program defines Murder/Non-Negligent Manslaughter as the "willful killing of one human being by another." Attempts to murder, assaults to murder, suicides, accidental deaths, justifiable homicides, and deaths caused by gross negligence are not included in this category.

Seven murder/non-negligent manslaughter deaths were known to the North Dakota UCR program in 1998.

Six of the victims were adults. "Adult" is defined as a person aged 18 years or older.

Five of the victims were male.

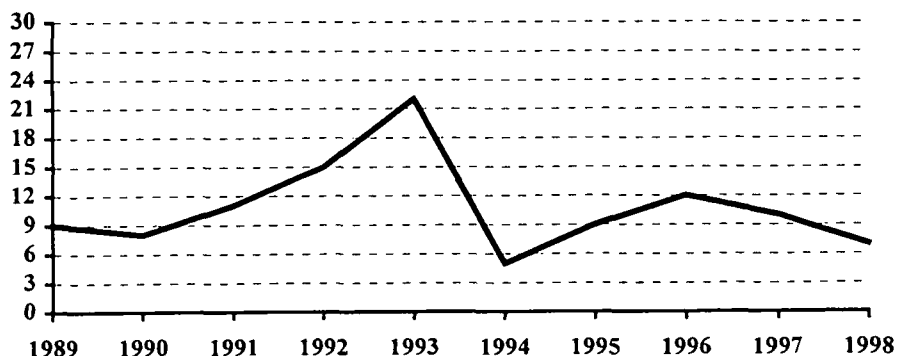
Three victims died as the result of gunshot wounds. (See the summary of homicide incidents and the weapons involved on page 10.)

The Office of Attorney General publishes a detailed report titled Homicide in North Dakota. The report provides an analysis of homicides for the period 1978-1998 and is available by request.

Murder/Non-Negligent Manslaughter Summary

Year	Population	Offense Total	% Change in Number from Previous Year	Rate per 100,000 Population	% Change in Rate from Previous Year	Percent Cleared
1989	660,000	9	-25.0 %	1.4	-22.2 %	88.9 %
1990	638,800	8	-11.1	1.3	-7.1	87.5
1991	635,000	11	37.5	1.7	30.8	81.8
1992	636,000	15	36.4	2.4	41.2	100.0
1993	635,000	22	46.7	3.5	45.8	100.0
1994	638,000	5	-77.3	0.8	-77.1	100.0
1995	641,000	9	80.0	1.4	75.0	100.0
1996	644,000	12	33.3	1.9	35.7	100.0
1997	641,000	10	-16.7	1.6	-15.8	100.0
1998	638,000	7	-30.0	1.1	-31.3	85.7

Murder/Non-Negligent Manslaughter Totals, 1989-1998



Summary of Murder/Non-Negligent Manslaughter Incidents, 1998

Date and Location of Incident	Victims		Assailants		Weapon Used	Relationship of Victim to Assailant	Circumstances
	Age	Sex	Age	Sex			
02/01/98 Fort Ransom Ransom County	22	M	22	F	Shotgun	Boyfriend	Victim and assailant had planned to shoot each other.
06/18/98 Stanton Mercer County	4	M	14	F	Suffocation	Half-brother	Victim was found in a city park.
07/23/98 Burleigh County	27	F	24	M	Fall from moving vehicle	Wife	Victim died as a result of head injuries sustained in a fall from a moving vehicle.
08/04/98 Rural Wilton Burleigh County	19	M	23	M	Rifle	Acquaintance	Victim was found shot to death in a rural area. The assailant committed suicide at a later date.
09/16/98 Bismarck	53 49	M F	18 27	M M	Knives	Victims were the parents of the 18-year-old assailant.	Victims were killed in their home. The bodies were moved to a remote site on the Standing Rock Reservation. The assailants fled to Texas, where they were apprehended.
11/04/98 Rural Reynolds Grand Forks County	43	M	Unknown		Rifle	Unknown	Victim died as a result of a gunshot wound to the head.

Forcible Rape

The UCR program defines Forcible Rape as "the carnal knowledge of a female forcibly and against her will." Assaults to rape, attempts to commit rape by force or threat of force are included. Carnal abuse, statutory offenses (no force -- victim under age of consent), and other sex offenses are not included.

In 1998, 169 forcible rapes were reported to local law enforcement in North Dakota. This is an increase of 12.7 percent from the 1997 total of 150 offenses.

Because the UCR definition states that victims of rape must be female, the rate of occurrence for reported rapes is calculated based only on the female population. The Census Bureau's 1998 population estimate for North Dakota is 638,000. The number of females is approximately half of that figure. The resulting rate for 1998 is 53.0 reported rapes per 100,000 females, compared with 46.8 rapes per 100,000 females in 1997.

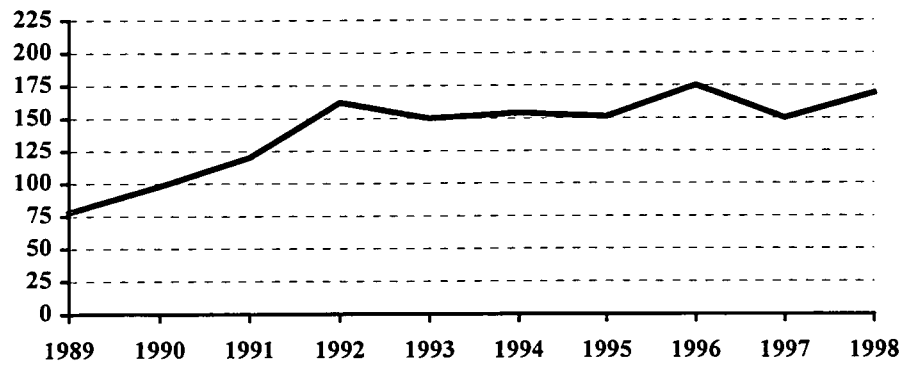
Approximately 52 percent of reported rapes were cleared by arrest or exceptional means in 1998.

Forty-four arrests for forcible rape were reported in 1998. Seventy percent of those arrested were adults. In 1997, 35 arrests for rape were reported.

Forcible Rape Summary

Year	Population	Offense Total	% Change in Number from Previous Year	Rate per 100,000 Females	% Change in Rate from Previous Year	Percent Cleared
1989	660,000	78	5.4 %	23.6	5.8 %	74.4 %
1990	638,800	98	25.6	30.7	30.1	59.2
1991	635,000	120	22.4	37.8	23.1	42.5
1992	636,000	162	35.0	50.9	34.7	44.4
1993	635,000	150	-7.4	47.2	-7.3	56.0
1994	638,000	154	2.7	48.3	2.3	47.4
1995	641,000	151	-1.9	47.1	-2.5	68.2
1996	644,000	175	15.9	54.3	15.3	76.6
1997	641,000	150	-14.3	46.8	-13.8	57.3
1998	638,000	169	12.7	53.0	13.2	51.5

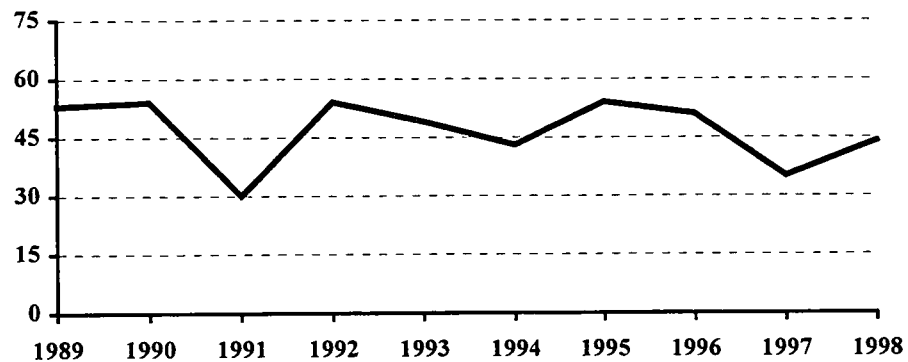
Forcible Rape Totals, 1989-1998



Arrests for Forcible Rape, 1989-1998

Year	Juvenile	Adult	Age Not Reported	Total
1989	10	43		53
1990	8	46		54
1991	6	23	1	30
1992	13	40	1	54
1993	8	40	1	49
1994	13	29	1	43
1995	16	36	2	54
1996	12	39		51
1997	6	29		35
1998	13	31		44

Arrests for Forcible Rape, 1989-1998



Robbery

Robbery is defined by the UCR program as “the taking or attempting to take anything of value from the care, custody, or control of a person or persons by force or threat of force or violence and/or by putting the victim in fear.”

Seventy-eight robberies were reported in North Dakota in 1998, an increase of 73.3 percent from the total of 45 reported in 1997. In 1996, 72 robberies were reported.

The 1998 robbery rate was 12.2 per 100,000 population, as compared with 7.0 per 100,000 population in 1997. This is a 74.3 percent increase in the robbery rate.

Forty-one percent of reported robberies were cleared by arrest or exceptional means.

Twenty-eight arrests for robbery were reported in 1998. Of those, 8 were arrests of juveniles.

Firearms were used in 18 percent of the reported robberies in 1998. Nearly half were strong-arm robberies where no weapon was used.

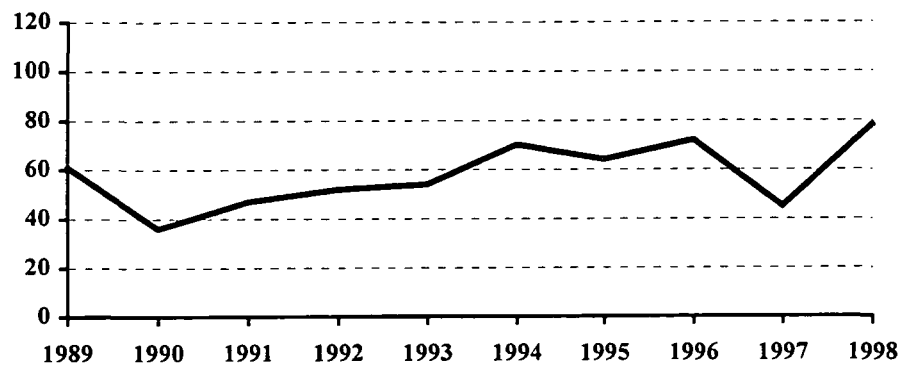
The value of property stolen in robbery incidents increased from \$7,029 in 1997 to \$19,393 in 1998.

The average robbery in 1998 involved \$249 worth of property.

Robbery Summary

Year	Population	Offense Total	% Change in Number from Previous Year	Rate per 100,000 Population	% Change in Rate from Previous Year	Percent Cleared
1989	660,000	61	13.0 %	9.2	13.6 %	41.0 %
1990	638,800	36	-41.0	5.6	-39.1	44.4
1991	635,000	47	30.6	7.4	32.1	40.4
1992	636,000	52	10.6	8.2	10.8	53.8
1993	635,000	54	3.8	8.5	3.7	33.3
1994	638,000	70	29.6	11.0	29.4	44.3
1995	641,000	64	-8.6	10.0	-9.1	42.2
1996	644,000	72	12.5	11.2	12.0	48.6
1997	641,000	45	-37.5	7.0	-37.5	64.4
1998	638,000	78	73.3	12.2	74.3	41.0

Robbery Totals, 1989-1998



Robbery by Type of Weapon Involved, 1998

Type of Weapon	Number Reported	Percent of Total Offenses
Firearm	14	18.0 %
Knife or Cutting Instrument	9	11.5
Other Dangerous Weapon	17	21.8
Hands, Fists, Feet, etc.	38	48.7
Robbery Total	78	100.0

Robbery by Place of Occurrence and Value of Property, 1998

Place of Occurrence	Number Reported	Value of Property	Average Value per Robbery
Highway	14	\$ 231	\$ 16.50
Commercial House	22	7,683	349.23
Gas or Service Station	1	250	250.00
Convenience Store	9	630	70.00
Residence	17	1,625	95.59
Bank	2	8,000	4,000.00
Other	13	974	74.92
Robbery Total	78	19,393	248.63

Arrests for Robbery, 1989-1998

Year	Juvenile	Adult	Age Not Reported	Total
1989	7	25		32
1990	8	14		22
1991	1	16	1	18
1992	8	21		29
1993	14	8		22
1994	8	23		31
1995	13	18		31
1996	10	28		38
1997	13	17		30
1998	8	20		28

Property Loss Due to Robbery, 1989-1998

Year	Offense Total	Property Loss	Average Loss per Robbery
1989	61	\$ 54,648	\$ 895.87
1990	36	12,893	358.14
1991	47	22,989	489.13
1992	52	31,341	602.71
1993	54	37,608	696.44
1994	70	14,030	200.43
1995	64	20,515	320.55
1996	72	11,734	162.97
1997	45	7,029	156.20
1998	78	19,393	248.63

Aggravated Assault

The UCR program defines Aggravated Assault as “an unlawful attack by one person upon another for the purpose of inflicting severe or aggravated bodily injury. This type of assault is usually accompanied by the use of a weapon or by means likely to produce death or great bodily harm. Attempts are included because it is not necessary that an injury result when a gun, knife, or other weapon is used which could and probably would result in serious personal injury if the crime were successfully completed.”

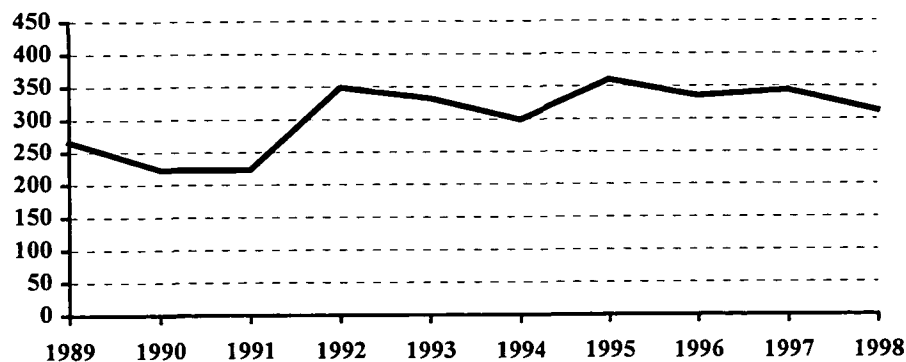
In 1998, 312 aggravated assaults were reported in North Dakota, a decrease of 9.3 percent from the 344 aggravated assaults reported in 1997.

The aggravated assault rate for North Dakota declined 8.9 percent from 53.7 per 100,000 population in 1997 to 48.9 per 100,000 population in 1998.

Aggravated Assault Summary

Year	Population	Offense Total	% Change in Number from Previous Year	Rate per 100,000 Population	% Change in Rate from Previous Year	Percent Cleared
1989	660,000	266	5.1 %	40.3	5.5 %	75.6 %
1990	638,800	223	-16.2	34.9	-13.4	65.5
1991	635,000	223	0.0	35.1	0.6	65.5
1992	636,000	349	56.5	54.9	56.4	64.8
1993	635,000	332	-4.9	52.3	-4.7	70.2
1994	638,000	299	-9.9	46.9	-10.3	62.2
1995	641,000	360	20.4	56.2	19.8	71.1
1996	644,000	335	-6.9	52.0	-7.5	75.8
1997	641,000	344	2.7	53.7	3.3	70.3
1998	638,000	312	-9.3	48.9	-8.9	71.8

Aggravated Assault Totals, 1989-1998



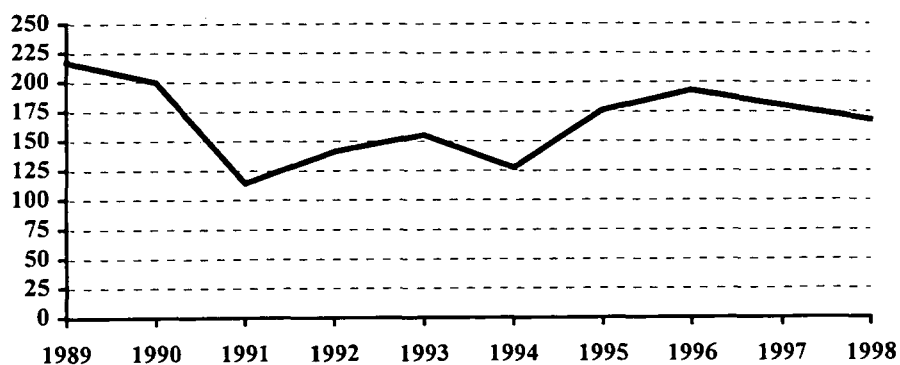
Aggravated Assault by Type of Weapon Involved, 1998

Type of Weapon	Number Reported	Percent of Total Offenses
Firearm	8	2.6 %
Knife or Cutting Instrument	45	14.4
Other Dangerous Weapon	94	30.1
Hands, Fists, Feet, etc.	165	52.9
Aggravated Assault Total	312	100.0

Arrests for Aggravated Assault, 1989-1998

Year	Juvenile	Adult	Age Not Reported	Total
1989	34	183		217
1990	28	172		200
1991	34	77	3	114
1992	30	110	1	141
1993	47	107	1	155
1994	37	89	1	127
1995	68	108		176
1996	45	147	1	193
1997	35	144	1	180
1998	47	121		168

Arrests for Aggravated Assault, 1989-1998



Property Crime

Property crime includes the offenses of burglary, larceny/theft, and motor vehicle theft.

In 1998, the total number of property crimes reported was 15,971. This is a decrease of 3.6 percent from the 1997 total of 16,573.

Property crime accounted for 96.6 percent of the index offenses reported in North Dakota.

The property crime rate declined 3.2 percent from 2585.5 per 100,000 population in 1997 to 2503.3 per 100,000 in 1998.

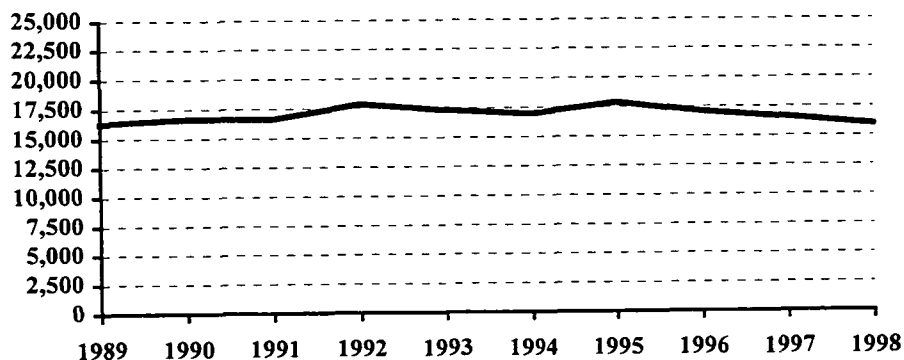
Approximately 25 percent of property crimes were cleared by arrest or exceptional means in 1998.

A total of 3,383 arrests was reported for property crimes. Of those, 51 percent were arrests of juveniles.

Property Crime Summary

Year	Population	Property Index Offenses	% Change in Number from Previous Year	Rate per 100,000 Population	% Change in Rate from Previous Year	Percent Cleared
1989	660,000	16,290	-7.9 %	2468.2	-7.5 %	23.9 %
1990	638,800	16,656	2.2	2607.4	5.6	28.7
1991	635,000	16,620	-0.2	2617.3	0.4	25.5
1992	636,000	17,853	7.4	2807.1	7.3	24.8
1993	635,000	17,317	-3.0	2727.1	-2.8	25.5
1994	638,000	16,959	-2.1	2658.2	-2.5	24.7
1995	641,000	17,874	5.4	2788.5	4.9	26.8
1996	644,000	17,088	-4.4	2653.4	-4.8	28.4
1997	641,000	16,573	-3.0	2585.5	-2.6	27.7
1998	638,000	15,971	-3.6	2503.3	-3.2	25.2

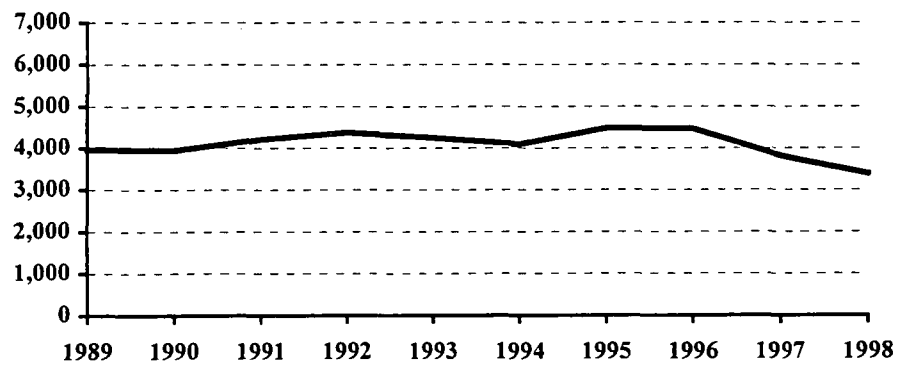
Property Crime Totals, 1989-1998



Arrests for Property Crimes, 1989-1998

Year	Juvenile	Adult	Age Not Reported	Total
1989	1,914	2,044		3,958
1990	1,933	2,004		3,937
1991	2,291	1,886	28	4,205
1992	2,455	1,885	25	4,365
1993	2,322	1,889	31	4,242
1994	2,266	1,782	41	4,089
1995	2,536	1,919	19	4,474
1996	2,455	1,997	10	4,462
1997	2,198	1,590	25	3,813
1998	1,735	1,636	12	3,383

Arrests for Property Crimes, 1989-1998



Burglary

The UCR program defines Burglary as the "unlawful entry of a structure to commit a felony or theft. The use of force to gain entry is not required to classify an offense as burglary." Burglaries are classified into three categories: forcible entry, unlawful entry where no force is used, and attempted forcible entry.

In 1998, 2,194 burglaries were reported to the UCR program. This represents a decrease of 3.4 percent from the total of 2,271 burglaries reported in 1997.

The rate of burglaries based on population was 343.9 per 100,000 inhabitants for 1998. This is a 2.9 percent reduction from the rate of 354.3 per 100,000 population in 1997.

Approximately 20 percent of burglaries were cleared by arrest or exceptional means in 1998.

A total of 426 arrests for burglary was reported in 1998. Of these, 47 percent were juveniles.

The UCR program classifies burglaries by time of day and location of the incident. Approximately 47 percent were burglaries of residences. Fifty-seven percent of burglaries were known to have been committed at night.

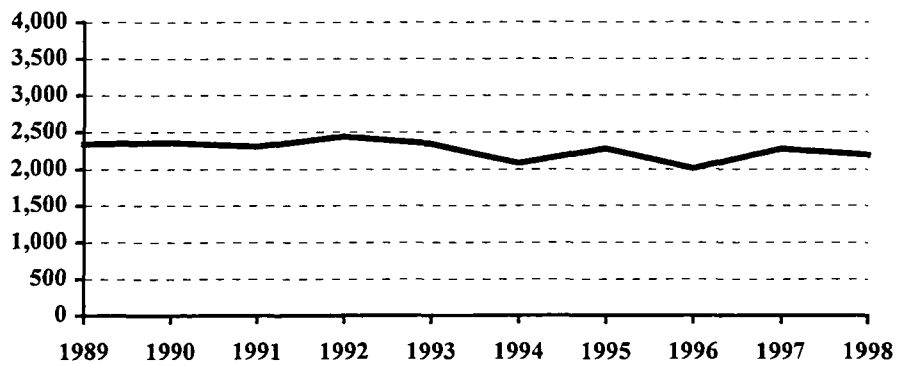
About 59 percent of burglaries involved forcible entry.

Property loss due to burglary is substantial. Over 1.6 million dollars worth of property was reported stolen in burglary incidents in 1998. The average burglary involved \$743 worth of property.

Burglary Summary

Year	Population	Offense Total	% Change in Number from Previous Year	Rate per 100,000 Population	% Change in Rate from Previous Year	Percent Cleared
1989	660,000	2,341	-18.9 %	354.7	-18.5 %	17.3 %
1990	638,800	2,357	0.7	369.0	4.0	22.4
1991	635,000	2,305	-2.2	363.0	-1.6	17.6
1992	636,000	2,440	5.9	383.6	5.7	17.6
1993	635,000	2,346	-3.9	369.4	-3.7	19.8
1994	638,000	2,080	-11.3	326.0	-11.7	17.7
1995	641,000	2,275	9.4	354.9	8.9	18.7
1996	644,000	2,008	-11.7	311.8	-12.1	20.7
1997	641,000	2,271	13.1	354.3	13.6	19.8
1998	638,000	2,194	-3.4	343.9	-2.9	19.5

Burglary Totals, 1989-1998



Burglary by Type of Entry, 1998

Type of Entry	Number Reported	Percent of Total Offenses
Forcible Entry	1,288	58.7 %
Unlawful Entry - No Force	725	33.0
Attempted Forcible Entry	181	8.3
Burglary Total	2,194	100.0

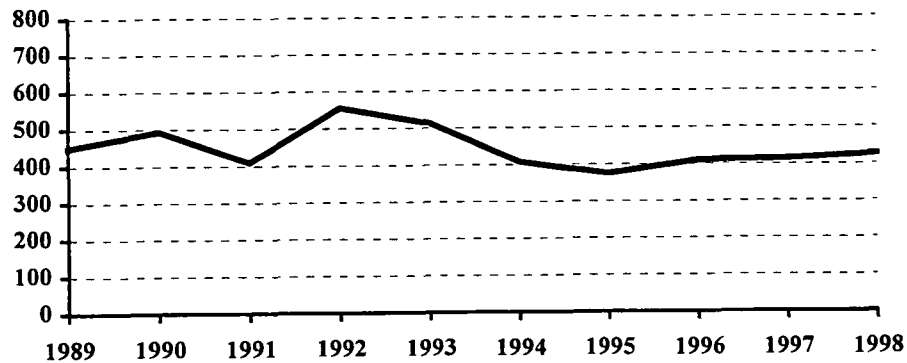
Burglary by Location and Value of Property, 1998

Location/Time	Number Reported	Value of Property	Average Value per Burglary
Residence - Night	503	\$ 322,731	\$ 641.61
Residence - Day	413	375,126	908.30
Residence - Unknown	116	57,508	495.76
Residence Subtotal	1,032	755,365	731.94
Non-Residence - Night	753	594,374	789.34
Non-Residence - Day	355	242,698	683.66
Non-Residence - Unknown	54	38,465	712.31
Non-Residence Subtotal	1,162	875,537	753.47
Burglary Total	2,194	1,630,902	743.35

Arrests for Burglary, 1989-1998

Year	Juvenile	Adult	Age Not Reported	Total
1989	216	233		449
1990	171	322		493
1991	166	240	3	409
1992	272	280	3	555
1993	226	283	4	513
1994	197	204	6	407
1995	208	164	2	374
1996	201	208	1	410
1997	222	185	6	413
1998	201	220	5	426

Arrests for Burglary, 1989-1998



Property Loss Due to Burglary, 1989-1998

Year	Offense Total	Property Loss	Average Loss per Burglary
1989	2,341	\$ 1,470,610	\$ 628.20
1990	2,357	2,204,614	935.35
1991	2,305	1,545,064	670.31
1992	2,440	2,101,987	861.47
1993	2,346	1,571,149	669.71
1994	2,080	1,696,717	815.73
1995	2,275	1,939,595	852.57
1996	2,008	1,404,087	699.25
1997	2,271	2,114,489	931.08
1998	2,194	1,630,902	743.35

Larceny/Theft

The UCR program defines Larceny/Theft as the “unlawful taking, carrying, leading, or riding away of property from the possession or constructive possession of another. It includes crimes such as shoplifting, pocket-picking, purse-snatching, thefts from motor vehicles, thefts of motor vehicle parts and accessories, bicycle thefts, etc., in which no use of force, violence or fraud occurs. In the Uniform Crime Reporting program, this crime category does not include embezzlement, confidence games, forgery, and worthless checks. Motor vehicle theft is also excluded from this category inasmuch as it is a separate crime index offense.”

A total of 12,704 larceny/theft offenses was reported in North Dakota in 1998. This is a 3.5 percent decrease from the 1997 total of 13,163.

The larceny/theft rate per 100,000 population was 1991.2 compared with 2053.5 in 1997, a three percent reduction in the rate.

Twenty-five percent of larceny/theft offenses were cleared by arrest or exceptional means in 1998.

The number of arrests for this offense decreased from 3,093 in 1997 to 2,671 in 1998. Fifty-one percent of those arrested for larceny/theft in 1998 were juveniles.

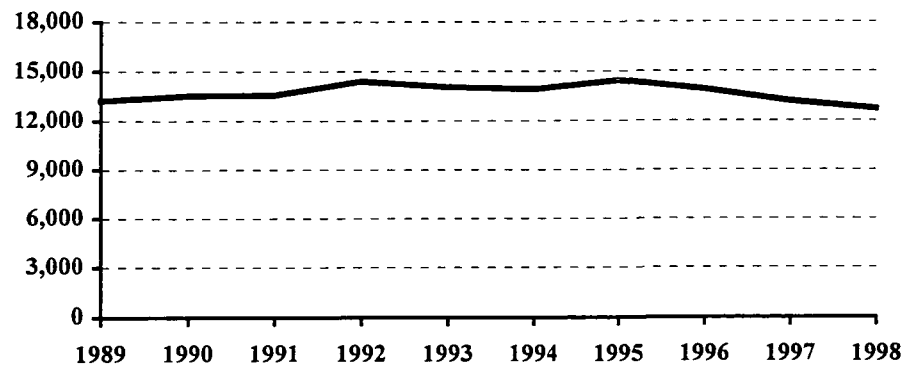
Over 5.8 million dollars worth of property was reported stolen as the result of larceny/theft offenses in the state. The average dollar value per offense increased from \$432 in 1997 to \$461 in 1998.

Larceny/theft accounted for 76.8 percent of the total index offenses reported and amounted to approximately 51 percent of the total value of stolen property.

Larceny/Theft Summary

Year	Population	Offense Total	% Change in Number from Previous Year	Rate per 100,000 Population	% Change in Rate from Previous Year	Percent Cleared
1989	660,000	13,215	-5.7 %	2002.3	-5.3 %	23.8 %
1990	638,800	13,505	2.2	2114.1	5.6	28.8
1991	635,000	13,543	0.3	2132.8	0.9	25.9
1992	636,000	14,390	6.3	2262.6	6.1	25.0
1993	635,000	14,031	-2.5	2209.6	-2.3	25.6
1994	638,000	13,898	-0.9	2178.4	-1.4	25.0
1995	641,000	14,435	3.9	2252.0	3.4	27.2
1996	644,000	13,898	-3.7	2158.1	-4.2	28.6
1997	641,000	13,163	-5.3	2053.5	-4.8	28.3
1998	638,000	12,704	-3.5	1991.2	-3.0	25.4

Larceny/Theft Totals, 1989-1998



Monetary Value of Larceny/Theft, 1998

Value of Larceny/Theft	Number Reported	Percent of Total Offenses
Under \$50	4,808	37.8 %
\$50 to \$200	2,795	22.0
Over \$200	5,101	40.2
Larceny/Theft Total	12,704	100.0

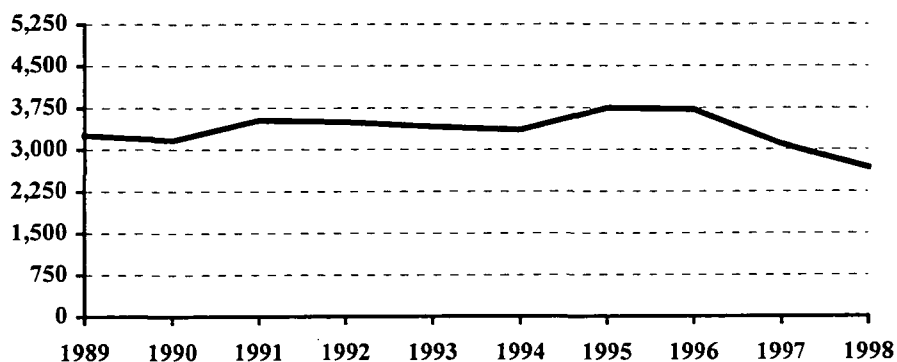
Larceny/Theft by Type and Value, 1998

Type of Larceny/Theft	Number Reported	Value of Property	Average Value per Larceny/Theft
From Motor Vehicle	3,031	\$ 1,383,124	\$ 456.33
From Building	1,799	1,221,891	679.21
Shoplifting	1,678	202,344	120.59
Bicycles	1,183	284,347	240.36
Motor Vehicle Parts, Accessories	721	224,660	311.60
From Coin-Operated Machine	56	10,774	192.39
Pocket Picking	24	4,468	186.17
Purse Snatching	22	2,022	91.91
All Other	4,190	2,525,283	602.69
Larceny/Theft Total	12,704	5,858,913	461.19

Arrests for Larceny/Theft, 1989-1998

Year	Juvenile	Adult	Age Not Reported	Total
1989	1,535	1,720		3,255
1990	1,602	1,560		3,162
1991	1,947	1,555	22	3,524
1992	1,972	1,505	15	3,492
1993	1,900	1,485	24	3,409
1994	1,846	1,472	28	3,346
1995	2,066	1,662	14	3,742
1996	2,056	1,656	6	3,718
1997	1,771	1,306	16	3,093
1998	1,372	1,292	7	2,671

Arrests for Larceny/Theft, 1989-1998



Property Loss Due to Larceny/Theft, 1989-1998

Year	Offense Total	Property Loss	Average Loss per Larceny/Theft
1989	13,215	\$ 4,149,548	\$ 314.00
1990	13,505	6,474,966	479.45
1991	13,543	4,713,264	348.02
1992	14,390	6,283,654	436.67
1993	14,031	4,819,935	343.52
1994	13,898	4,842,899	348.46
1995	14,435	5,394,911	373.74
1996	13,898	5,118,818	368.31
1997	13,163	5,680,026	431.51
1998	12,704	5,858,913	461.19

Motor Vehicle Theft

Motor Vehicle Theft is defined by the UCR program as "the theft or attempted theft of a motor vehicle; the offense category includes the stealing of automobiles, trucks, buses, motorcycles, motorscooters, snowmobiles, etc. The definition excludes the taking of a motor vehicle for temporary use by those persons having lawful access."

A total of 1,073 motor vehicle thefts was reported in 1998. This is a decrease of 5.8 percent from the 1997 total of 1,139.

Based on a Census Bureau population estimate of 638,000 for North Dakota, the resulting motor vehicle theft rate is 168.2 per 100,000 population.

Thirty-five percent of reported motor vehicle thefts were cleared by arrest or exceptional means in 1998.

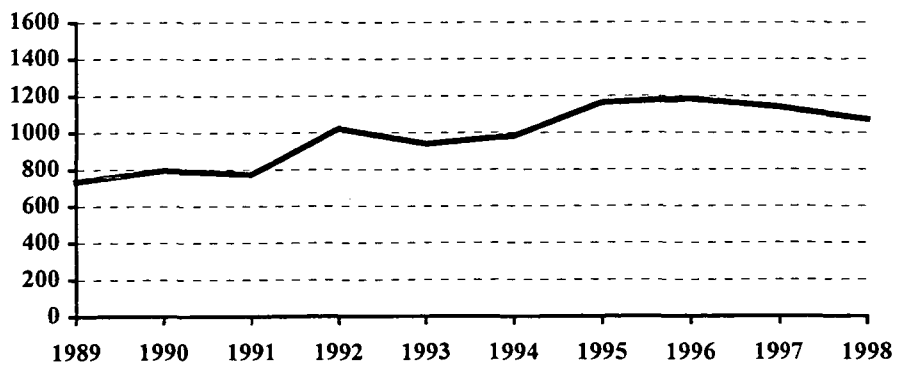
The number of arrests for motor vehicle theft decreased from 307 in 1997 to 286 in 1998.

The average value per motor vehicle theft was approximately \$3,644.

Motor Vehicle Theft Summary

Year	Population	Offense Total	% Change in Number from Previous Year	Rate per 100,000 Population	% Change in Rate from Previous Year	Percent Cleared
1989	660,000	734	-6.3 %	111.2	-5.8 %	46.6 %
1990	638,800	794	8.2	124.3	11.8	45.8
1991	635,000	772	-2.8	121.6	-2.2	41.8
1992	636,000	1,023	32.5	160.8	32.2	39.4
1993	635,000	940	-8.1	148.0	-8.0	38.3
1994	638,000	981	4.4	153.8	3.9	34.8
1995	641,000	1,164	18.7	181.6	18.1	37.3
1996	644,000	1,182	1.5	183.5	1.0	40.1
1997	641,000	1,139	-3.6	177.7	-3.2	37.1
1998	638,000	1,073	-5.8	168.2	-5.3	35.3

Motor Vehicle Theft Totals, 1989-1998



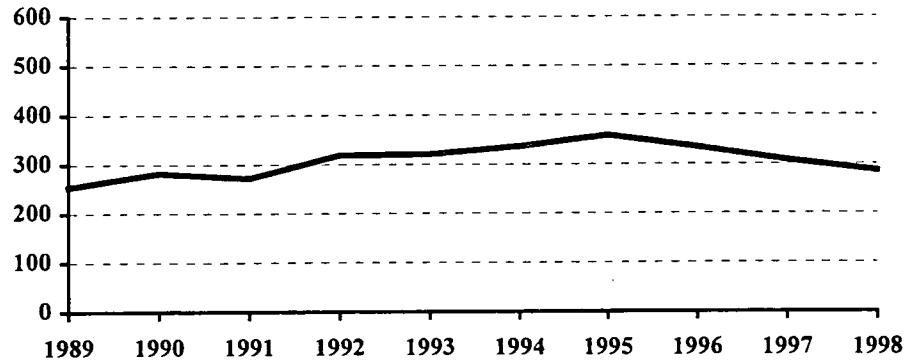
Type of Vehicle Stolen, 1998

Type of Vehicle	Number Reported	Percent of Total Offenses
Automobiles	850	79.2 %
Trucks and Buses	106	9.9
Other Vehicles	117	10.9
Motor Vehicle Theft Total	1,073	100.0

Arrests for Motor Vehicle Theft, 1989-1998

Year	Juvenile	Adult	Age Not Reported	Total
1989	163	91		254
1990	160	122		282
1991	178	91	3	272
1992	211	100	7	318
1993	196	121	3	320
1994	223	106	7	336
1995	262	93	3	358
1996	198	133	3	334
1997	205	99	3	307
1998	162	124		286

Arrests for Motor Vehicle Theft, 1989-1998



Property Loss Due to Motor Vehicle Theft, 1989-1998

Year	Offense Total	Property Loss	Average Loss per Offense
1989	734	\$ 2,576,423	\$ 3,510.11
1990	794	2,401,562	3,024.64
1991	772	2,161,717	2,800.15
1992	1,023	2,799,939	2,736.99
1993	940	3,010,954	3,203.14
1994	981	3,142,478	3,203.34
1995	1,164	3,714,582	3,191.22
1996	1,182	4,488,026	3,796.98
1997	1,139	4,706,068	4,131.75
1998	1,073	3,909,583	3,643.60

Crime Index Offenses by Reporting Jurisdiction

The rate per 100,000 population is shown immediately below the actual number of crime index offenses reported by each jurisdiction. A county total is also shown for each of those counties that have more than one reporting jurisdiction within its geographic boundaries. The rate is reported per 100,000 for easy comparison to national publications.

Number and Rate of Index Offenses, 1998

County	Reporting Jurisdiction	Population	Murder/ Non-Negligent Manslaughter	Forcible Rape	Robbery	Aggravated Assault	Burglary	Larceny/ Theft	Motor Vehicle Theft	Total Index Offenses
Adams	County SO	2,735					5 182.8	18 658.1	1 36.6	24 877.5
Barnes	County SO	5,119					4 78.1	3 58.6	2 39.1	9 175.8
	Valley City PD	6,891		1 14.5		1 14.5	16 232.2	74 1073.9	5 72.6	97 1407.6
	County Total	12,010		1 8.3		1 8.3	20 166.5	77 641.1	7 58.3	106 882.6
Benson	County SO	6,763	DID NOT REPORT IN 1998							
Billings	County SO	1,104	DID NOT REPORT IN 1998							
Bottineau	County SO	7,448		1 13.4			20 268.5	53 711.6	7 94.0	81 1087.5
Bowman	County SO	1,668	DID NOT REPORT IN 1998							
	Bowman PD	1,607		3 186.7			2 124.5	6 373.4		11 684.5
Burke	County SO	2,321							1 43.1	1 43.1
Burlleigh	County SO	12,379	2 16.2	3 24.2		6 48.5	30 242.3	49 395.8	6 48.5	96 775.5
	Bismarck PD	53,956	2 3.7	7 13.0	18 33.4	21 38.9	235 435.5	1859 3445.4	100 185.3	2242 4155.2
	County Total	66,335	4 6.0	10 15.1	18 27.1	27 40.7	265 399.5	1908 2876.3	106 159.8	2338 3524.5
Cass	County SO	14,192		1 7.0		5 35.2	49 345.3	144 1014.7	20 140.9	219 1543.1
	Casselton PD	1,612				1 62.0	1 62.0	9 558.3	1 62.0	12 744.4
	Fargo PD*	84,662		48 56.7	18 21.3	82 96.9	320 378.0	2579 3046.2	221 261.0	3268 3860.1
	West Fargo PD	13,691		9 65.7	2 14.6	5 36.5	49 357.9	214 1563.1	27 197.2	306 2235.0
	County Total	114,157		58 50.8	20 17.5	93 81.5	419 367.0	2946 2580.7	269 235.6	3805 3333.1
Cavalier	County SO	5,121					10 195.3	38 742.0	2 39.1	50 976.4
Dickey	County SO	3,964		2 50.5		1 25.2	16 403.6	45 1135.2	3 75.7	67 1690.2
	Oakes PD	1,646					2 121.5	6 364.5		8 486.0
	County Total	5,610		2 35.7		1 17.8	18 320.9	51 909.1	3 53.5	75 1336.9
Divide	County SO	1,340					5 373.1	6 447.8	2 149.3	13 970.1
	Crosby PD	1,065					3 281.7	3 281.7	1 93.9	7 657.3
	County Total	2,405					8 332.6	9 374.2	3 124.7	20 831.6

* Includes 198 index offenses reported by the NDSU PD.

County	Reporting Jurisdiction	Population	Murder/ Non-Negligent Manslaughter	Forcible Rape	Robbery	Aggravated Assault	Burglary	Larceny/ Theft	Motor Vehicle Theft	Total Index Offenses
Dunn	County SO	3,624					1 27.6			1 27.6
Eddy	County SO	2,854		1 35.0			11 385.4	25 876.0	3 105.1	40 1401.5
Emmons	County SO	3,095					8 258.5	22 710.8	4 129.2	34 1098.5
	Linton PD	1,257					3 238.7	5 397.8	1 79.6	9 716.0
	County Total	4,352					11 252.8	27 620.4	5 114.9	43 988.1
Foster	County SO	1,650					8 484.8	3 181.8		11 666.7
	Carrington PD	2,104				1 47.5	3 142.6	3 142.6		7 332.7
	County Total	3,754				1 26.6	11 293.0	6 159.8		18 479.5
Golden Valley	County SO	1,892	DID NOT REPORT FOR FULL YEAR OF 1998							
Grand Forks	County SO	15,933	1 6.3	7 43.9		1 6.3	54 338.9	180 1129.7	21 131.8	264 1656.9
	Emerado PD	471	DID NOT REPORT IN 1998							
	Grand Forks PD*	49,435		23 46.5	15 30.3	28 56.6	360 728.2	2472 5000.5	199 402.5	3097 6264.8
	Larimore PD	1,375					2 145.5	2 145.5	1 72.7	5 363.6
	Northwood PD	1,122					4 356.5	5 445.6	1 89.1	10 891.3
	Thompson PD	947					4 422.4	5 528.0	2 211.2	11 1161.6
	Reporting Agency Totals	68,812	1 1.5	30 43.6	15 21.8	29 42.1	424 616.2	2664 3871.4	224 325.5	3387 4922.1
Grant	County SO	2,050					3 146.3	5 243.9		8 390.2
	Carson PD	323						2 619.2		2 619.2
	Elgin PD	656	DID NOT REPORT IN 1998							
	Reporting Agency Totals	2,373					3 126.4	7 295.0		10 421.4
Griggs	County SO	2,821	DID NOT REPORT IN 1998							
Hettinger	County SO	2,952			1 33.9					1 33.9
Kidder	County SO	2,262					4 176.8	9 397.9	1 44.2	14 618.9
	Steele PD	653					2 306.3	16 2450.2		18 2756.5
	County Total	2,915					6 205.8	25 857.6	1 34.3	32 1097.8
LaMoure	County SO	4,272			1 23.4		14 327.7	6 140.4	3 70.2	24 561.8
	Edgeley PD	612						5 817.0		5 817.0
	County Total	4,884			1 20.5		14 286.7	11 225.2	3 61.4	29 593.8
Logan	County SO	1,617					1 61.8	8 494.7	4 247.4	13 804.0
	Napoleon PD	789	DID NOT REPORT IN 1998							
McHenry	County SO	6,139				2 32.6	17 276.9	35 570.1	5 81.4	59 961.1
McIntosh	County SO	2,528					5 197.8	12 474.7		17 672.5
	Wishek PD	1,024					2 195.3			2 195.3
	County Total	3,552					7 197.1	12 337.8		19 534.9

* Includes 198 index offenses reported by the UND PD.

County	Reporting Jurisdiction	Population	Murder/ Non-Negligent Manslaughter	Forcible Rape	Robbery	Aggravated Assault	Burglary	Larceny/ Theft	Motor Vehicle Theft	Total Index Offenses
McKenzie	County SO	4,151			1 24.1	1 24.1	17 409.5	18 433.6	3 72.3	40 963.6
	Watford City PD	1,593						6 376.6	1 62.8	7 439.4
	County Total	5,744			1 17.4	1 17.4	17 296.0	24 417.8	4 69.6	47 818.2
McLean	County SO	9,707					31 319.4	107 1102.3	5 51.5	143 1473.2
Mercer	County SO	3,128	1 32.0			1 32.0	7 223.8	16 511.5	1 32.0	26 831.2
	Beulah PD	3,168					16 505.1	86 2714.6	2 63.1	104 3282.8
	Hazen PD	2,623					1 38.1	11 419.4	1 38.1	13 495.6
	Stanton PD	477					1 209.6	2 419.3		3 628.9
	County Total	9,396	1 10.6			1 10.6	25 266.1	115 1223.9	4 42.6	146 1553.9
Morton	County SO	8,692		6 69.0		9 103.5	13 149.6	93 1069.9	10 115.0	131 1507.1
	Mandan PD	15,591		5 32.1		63 404.1	35 224.5	497 3187.7	54 346.4	654 4194.7
	County Total	24,283		11 45.3		72 296.5	48 197.7	590 2429.7	64 263.6	785 3232.7
Mountrail	County SO	5,702		1 17.5		1 17.5	11 192.9	37 648.9	3 52.6	53 929.5
	Parshall PD	917						3 327.2	1 109.1	4 436.2
	County Total	6,619		1 15.1		1 15.1	11 166.2	40 604.3	4 60.4	57 861.2
Nelson	County SO	2,993	DID NOT REPORT IN 1998							
	Lakota PD	800						1 125.0		1 125.0
Oliver	County SO	2,207					1 45.3	11 498.4	1 45.3	13 589.0
Pembina	County SO	7,150		1 14.0			34 475.5	32 447.6	5 69.9	72 1007.0
	Cavalier PD	1,427					10 700.8	36 2522.8	2 140.2	48 3363.7
	County Total	8,577		1 11.7			44 513.0	68 792.8	7 81.6	120 1399.1
Pierce	County SO	1,859				1 53.8	5 269.0	16 860.7	4 215.2	26 1398.6
	Rugby PD	2,687				1 37.2	4 148.9	54 2009.7	9 334.9	68 2530.7
	County Total	4,546				2 44.0	9 198.0	70 1539.8	13 286.0	94 2067.8
Ramsey	County SO	4,727				2 42.3	7 148.1	60 1269.3	5 105.8	74 1565.5
	Devils Lake PD	7,591		1 13.2	1 13.2	8 105.4	20 263.5	419 5519.7	37 487.4	486 6402.3
	County Total	12,318		1 8.1	1 8.1	10 81.2	27 219.2	479 3888.6	42 341.0	560 4546.2
Ransom	County SO	3,634	1 27.5				20 550.4	37 1018.2	3 82.6	61 1678.6
	Lisbon PD	2,165	DID NOT REPORT IN 1998							
Renville	County SO	2,839					5 176.1	17 598.8	2 70.4	24 845.4
Richland	County SO	9,162		2 21.8		4 43.7	36 392.9	76 829.5	8 87.3	126 1375.2
	Wahpeton PD	8,975		3 33.4		5 55.7	20 222.8	231 2573.8	16 178.3	275 3064.1
	County Total	18,137		5 27.6		9 49.6	56 308.8	307 1692.7	24 132.3	401 2210.9

County	Reporting Jurisdiction	Population	Murder/ Non-Negligent Manslaughter	Forcible Rape	Robbery	Aggravated Assault	Burglary	Larceny/ Theft	Motor Vehicle Theft	Total Index Offenses
Rolette	County SO	14,064		1 7.1		1 7.1	30 213.3	86 611.5	10 71.1	128 910.1
Sargent	County SO	4,409					21 476.3	46 1043.3	4 90.7	71 1610.3
Sheridan	County SO	1,776			1 56.3	1 56.3	8 450.5	3 168.9	2 112.6	15 844.6
Sioux	County SO	4,069	DID NOT REPORT IN 1998							
Slope	County SO	842								0 0.0
Stark	County SO	6,523		2 30.7		2 30.7	9 138.0	42 643.9	3 46.0	58 889.2
	Dickinson PD	16,068			5 31.1	4 24.9	67 417.0	386 2402.3	25 155.6	487 3030.9
	County Total	22,591		2 8.9	5 22.1	6 26.6	76 336.4	428 1894.6	28 123.9	545 2412.5
Steele	County SO	2,241	DID NOT REPORT IN 1998							
Stutsman	County SO	6,171		1 16.2			28 453.7	40 648.2	9 145.8	78 1264.0
	Jamestown PD	14,847		13 87.6	2 13.5	5 33.7	66 444.5	341 2296.8	23 154.9	450 3030.9
	County Total	21,018		14 66.6	2 9.5	5 23.8	94 447.2	381 1812.7	32 152.3	528 2512.1
Towner	County SO	1,734					1 57.7	8 461.4		9 519.0
	Cando PD	1,329				2 150.5	10 752.4	8 602.0	1 75.2	21 1580.1
	County Total	3,063				2 65.3	11 359.1	16 522.4	1 32.6	30 979.4
Traill	County SO	3,663					6 163.8	15 409.5	6 163.8	27 737.1
	Mayville PD	2,078					1 48.1	15 721.8	1 48.1	17 818.1
	Hatton PD	774					1 129.2			1 129.2
	Hillsboro PD	1,448	DID NOT REPORT IN 1998							
	Portland PD	627						2 319.0		2 319.0
	Reporting Agency Totals	7,142					8 112.0	32 448.1	7 98.0	47 658.1
Walsh	County SO	8,181		1 12.2		4 48.9	26 317.8	62 757.9	12 146.7	105 1283.5
	Grafton PD	5,426		2 36.9	1 18.4	3 55.3	39 718.8	170 3133.1	17 313.3	232 4275.7
	County Total	13,607		3 22.0	1 7.3	7 51.4	65 477.7	232 1705.0	29 213.1	337 2476.7
Ward	County SO	23,190		3 12.9		5 21.6	52 224.2	155 668.4	14 60.4	229 987.5
	Minot PD	35,282		18 51.0	10 28.3	26 73.7	195 552.7	1247 3534.4	86 243.8	1582 4483.9
	County Total	58,472		21 35.9	10 17.1	31 53.0	247 422.4	1402 2397.7	100 171.0	1811 3097.2
Wells	County SO	2,665					18 675.4	10 375.2	1 37.5	29 1088.2
	Harvey PD	2,002		1 50.0			6 299.7	4 199.8		11 549.5
	Fessenden PD	569					2 351.5	1 175.7		3 527.2
	County Total	5,236		1 19.1			26 496.6	15 286.5	1 19.1	43 821.2
Williams	County SO	7,708		1 13.0			25 324.3	49 635.7	9 116.8	84 1089.8
	Williston PD	12,608		1 7.9	1 7.9	9 71.4	15 119.0	217 1721.1	31 245.9	274 2173.2
	County Total	20,316		2 9.8	1 4.9	9 44.3	40 196.9	266 1309.3	40 196.9	358 1762.2

Crime Rates by County

Rankings of counties by crime rate per 100,000 population for 1998 are provided below. The index crime total for each county includes offenses reported by the sheriff's office and any reporting police departments within the county.

Rankings of Crime Rates by County, 1998

Rank	County	Reporting Population	Index Total	Rate/100,000
1	Grand Forks	68,812	3,387	4922.1
2	Ramsey	12,318	560	4546.2
3	Burleigh	66,335	2,338	3524.5
4	Cass	114,157	3,805	3333.1
5	Morton	24,283	785	3232.7
6	Ward	58,472	1,811	3097.2
7	Stutsman	21,018	528	2512.1
8	Walsh	13,607	337	2476.7
9	Stark	22,591	545	2412.5
10	Richland	18,137	401	2210.9
11	Pierce	4,546	94	2067.8
12	Williams	20,316	358	1762.2
13	Ransom	3,634	61	1678.6
14	Sargent	4,409	71	1610.3
15	Mercer	9,396	146	1553.9
16	McLean	9,707	143	1473.2
17	Eddy	2,854	40	1401.5
18	Pembina	8,577	120	1399.1
19	Dickey	5,610	75	1336.9
20	Kidder	2,915	32	1097.8
21	Bottineau	7,448	81	1087.5
22	Emmons	4,352	43	988.1
23	Towner	3,063	30	979.4
24	Cavalier	5,121	50	976.4
25	McHenry	6,139	59	961.1
26	Rolette	14,064	128	910.1
27	Barnes	12,010	106	882.6
28	Adams	2,735	24	877.5
29	Mountrail	6,619	57	861.2
30	Renville	2,839	24	845.4
31	Sheridan	1,776	15	844.6
32	Divide	2,405	20	831.6
33	Wells	5,236	43	821.2
34	McKenzie	5,744	47	818.2
35	Logan	1,617	13	804.0
36	Traill	7,142	47	658.1
37	LaMoure	4,884	29	593.8
38	Oliver	2,207	13	589.0
39	McIntosh	3,552	19	534.9
40	Foster	3,754	18	479.5
41	Grant	2,373	10	421.4
42	Burke	2,321	1	43.1
43	Hettinger	2,952	1	33.9
44	Dunn	3,624	1	27.6
45	Slope	842	0	0.0
	Benson	6,763	***	
	Billings	1,104	***	
	Bowman	3,275	***	
	Golden Valley	1,892	***	
	Griggs	2,821	***	
	Nelson	3,793	***	
	Sioux	4,069	***	
	Steele	2,241	***	

*** County crime rates could not be calculated due to a lack of data from the Sheriff's Office in 1998.

(This page intentionally left blank.)

ARREST ANALYSIS

(This page intentionally left blank.)

Arrests in 1998

Although primarily an indication of law enforcement activity, the number of arrests reported does provide a limited profile of the perpetrators of crime, especially for those crimes which have high clearance rates. Differing arrest practices, policies and enforcement emphases among agencies influence the volume of arrests for various offenses, particularly those against public order such as vagrancy, disorderly conduct, and related violations. However, arrests for serious crimes, e.g., robbery or burglary, are more likely to be consistent and uniform throughout all jurisdictions across the state.

The UCR program requires that an arrest be counted for each separate occasion an individual is taken into custody. Although several charges may be lodged against a person at the time of the arrest, one arrest is counted for each separate time the person is taken into custody.

North Dakota law enforcement agencies reported 33,548 arrests in 1998. A total of 33,634 arrests were reported in 1997.

In 1998, approximately 27 percent of total arrests were arrests of juveniles.

Seventy-three percent of total arrests were males.

Juveniles were arrested most often for liquor law violations.

Adults were arrested most often for the offense of DUI.

Approximately 11 percent of the reported arrests were arrests for crime index offenses. Fifty percent of the arrests for crime index offenses were arrests of juveniles. In 1997, 55 percent of arrests for crime index offenses were arrests of juveniles.

The total of 11,418 reported arrests for DUI and liquor law violations represents approximately 34 percent of the total arrests reported in the state of North Dakota in 1998. Arrests for DUI increased 8.6 percent from 4,777 in 1997 to 5,187 in 1998. Liquor law violation arrests increased 12.9 percent from 5,521 in 1997 to 6,231 reported in 1998.

Approximately 86 percent of total arrests were white; about 12 percent were Native American.

These statistics are provided by local law enforcement agencies that contribute to the North Dakota UCR program. No arrest figures for reservations in the state are included in these totals. Tribal law enforcement agencies do not participate in the state UCR program.

Total Arrests Reported, 1998

Offense Classification	Number Reported	Percent of Total Arrests
Murder/Non-Negligent Manslaughter	5	*
Negligent Manslaughter	2	*
Forcible Rape	44	0.1 %
Robbery	28	0.1
Aggravated Assault	168	0.5
Burglary	426	1.3
Larceny/Theft	2,671	8.0
Motor Vehicle Theft	286	0.9
Other Assaults	1,567	4.7
Arson	33	0.1
Forgery and Counterfeiting	191	0.6
Fraud	4,291	12.8
Embezzlement	6	*
Stolen Property Offenses	150	0.4
Vandalism	774	2.3
Weapons Offenses	102	0.3
Prostitution	7	*
Other Sex Offenses	82	0.2
Drug Abuse Violations	1,517	4.5
Gambling	6	*
Offenses Against Family and Children	401	1.2
Driving Under the Influence	5,187	15.5
Liquor Law Violations	6,231	18.6
Disorderly Conduct	1,783	5.3
Vagrancy	2	*
All Other Offenses	6,392	19.1
Suspicion	0	0.0
Curfew and Loitering	347	1.0
Runaways	849	2.5
Arrest Total	33,548	100.0

* Less than 0.1 percent of total arrests.

Comparison of Reported Arrests, 1997-1998

Offense Classification	1997	1998	Percent Change
Murder/Non-Negligent Manslaughter	3	5	66.7 %
Negligent Manslaughter	1	2	100.0
Forcible Rape	35	44	25.7
Robbery	30	28	-6.7
Aggravated Assault	180	168	-6.7
Burglary	413	426	3.1
Larceny/Theft	3,093	2,671	-13.6
Motor Vehicle Theft	307	286	-6.8
Other Assaults	1,550	1,567	1.1
Arson	36	33	-8.3
Forgery and Counterfeiting	189	191	1.1
Fraud	5,491	4,291	-21.9
Embezzlement	5	6	20.0
Stolen Property Offenses	159	150	-5.7
Vandalism	855	774	-9.5
Weapons Offenses	119	102	-14.3
Prostitution	0	7	----
Other Sex Offenses	99	82	-17.2
Drug Abuse Violations	1,242	1,517	22.1
Gambling	1	6	500.0
Offenses Against Family and Children	327	401	22.6
Driving Under the Influence	4,777	5,187	8.6
Liquor Law Violations	5,521	6,231	12.9
Disorderly Conduct	1,487	1,783	19.9
Vagrancy	4	2	-50.0
All Other Offenses	6,164	6,392	3.7
Suspicion	17	0	-100.0
Curfew and Loitering	486	347	-28.6
Runaways	1,043	849	-18.6
Arrest Total	33,634	33,548	-0.3

Juvenile and Adult Arrests, 1998

Offense Classification	Juvenile	Adult	Age Not Reported	Total
Murder/Non-Negligent Manslaughter		5		5
Negligent Manslaughter		2		2
Forcible Rape	13	31		44
Robbery	8	20		28
Aggravated Assault	47	121		168
Burglary	201	220	5	426
Larceny/Theft	1372	1292	7	2671
Motor Vehicle Theft	162	124		286
Other Assaults	420	1136	11	1567
Arson	23	10		33
Forgery and Counterfeiting	42	148	1	191
Fraud	28	4173	90	4291
Embezzlement		6		6
Stolen Property Offenses	81	68	1	150
Vandalism	532	242		774
Weapons Offenses	30	72		102
Prostitution		7		7
Other Sex Offenses	32	49	1	82
Drug Abuse Violations	269	1248		1517
Gambling		6		6
Offenses Against Family and Children	110	291		401
Driving Under the Influence	114	5051	22	5187
Liquor Law Violations	2169	4033	29	6231
Disorderly Conduct	762	1017	4	1783
Vagrancy		2		2
All Other Offenses	1564	4814	14	6392
Suspicion				0
Curfew and Loitering	347			347
Runaways	849			849
Arrest Total	9175	24188	185	33548

Arrests by Gender, 1998

Offense Classification	Male	Female	Total
Murder/Non-Negligent Manslaughter	4	1	5
Negligent Manslaughter	2		2
Forcible Rape	44		44
Robbery	28		28
Aggravated Assault	136	32	168
Burglary	388	38	426
Larceny/Theft	1791	880	2671
Motor Vehicle Theft	230	56	286
Other Assaults	1236	331	1567
Arson	30	3	33
Forgery and Counterfeiting	116	75	191
Fraud	2598	1693	4291
Embezzlement	4	2	6
Stolen Property Offenses	122	28	150
Vandalism	664	110	774
Weapons Offenses	97	5	102
Prostitution	1	6	7
Other Sex Offenses	78	4	82
Drug Abuse Violations	1260	257	1517
Gambling	5	1	6
Offenses Against Family and Children	311	90	401
Driving Under the Influence	4185	1002	5187
Liquor Law Violations	4362	1869	6231
Disorderly Conduct	1401	382	1783
Vagrancy	1	1	2
All Other Offenses	4887	1505	6392
Suspicion			0
Curfew and Loitering	212	135	347
Runaways	345	504	849
Arrest Total	24538	9010	33548

Arrests by Race, 1998

Offense Classification	White	Black	Native American	Asian	Total
Murder/Non-Negligent Manslaughter	4		1		5
Negligent Manslaughter	2				2
Forcible Rape	30	6	8		44
Robbery	16	3	9		28
Aggravated Assault	111	10	46	1	168
Burglary	347	4	75		426
Larceny/Theft	2178	55	417	21	2671
Motor Vehicle Theft	219	1	61	5	286
Other Assaults	1200	51	304	12	1567
Arson	28		4	1	33
Forgery and Counterfeiting	164	5	19	3	191
Fraud	4084	64	134	9	4291
Embezzlement	6				6
Stolen Property Offenses	112	2	35	1	150
Vandalism	634	7	132	1	774
Weapons Offenses	94	1	7		102
Prostitution	4	3			7
Other Sex Offenses	72		10		82
Drug Abuse Violations	1339	46	127	5	1517
Gambling	6				6
Offenses Against Family and Children	327	20	49	5	401
Driving Under the Influence	4542	46	587	12	5187
Liquor Law Violations	5685	39	487	20	6231
Disorderly Conduct	1367	46	366	4	1783
Vagrancy	2				2
All Other Offenses	5347	134	873	38	6392
Suspicion					0
Curfew and Loitering	275	7	64	1	347
Runaways	720	17	111	1	849
Arrest Total	28915	567	3926	140	33548

Arrest Analysis by Reporting Jurisdiction

The table below contains arrest totals for each reporting agency in 1998. Juvenile and adult arrests as well as arrests reported without age information are included.

Arrests by Reporting Jurisdiction, 1998

Agency	Murder/Non-Neg. Mansl.	Negligent Manslaughter	Forcible Rape	Robbery	Aggravated Assault	Burglary	Larceny/Theft	Motor Vehicle Theft	Other Assault	Arson	Forgery/Counterfeiting	Fraud	Embezzlement	Stolen Property Offenses	Vandalism	Weapons Offenses	Prostitution	Other Sex Offenses	Drug Abuse Violations	Gambling Violations	Offt. Against Fam & Children	DUI	Liquor Law Violations	Disorderly Conduct	Vagrancy	All Other Offenses	Curfew/Littering	Runaway	Total
Adams SO							2	1	6			19			3				2			15	46	3		5			102
Barnes SO						6	3		1			58			1											2			71
Valley City PD					1	3	12	1	20	1					14	1		3	16			52	151	17		62	8	8	370
Benson SO	Did not report in 1998																												
Billings SO	Did not report in 1998																												
Bottineau SO							7	3	6			1			5				3							3			28
Bowman SO	Did not report in 1998																												
Bowman PD						1	2		2														31						36
Burke SO							1					1				1			27			3	7		1	20			61
Burleigh SO	2		12		4	5	2		17			796							35		1	77	126			1		15	1093
Bismarck PD	2			11	21	54	429	36	194		24	13	3	41	76	8		23	110	2	2	505	465	285		475	55	165	2999
Cass SO					4	3	3	1	9			1285		1		1			27		4	112	194	9		37		4	1694
Casselton PD							2	1	1										1			1	6					1	13
Fargo PD		1	10	6	42	56	568	37	128	7	21	19		25	43	20		5	263	259	820	466	155		336		41	3328	
West Fargo PD			2	1	1	17	32	5	48	1	5	1		15	7	3		4	73	21	134	143	42	1	145	46	23	770	
NDSU PD							1		1						2	1		1	1		2	17	18			2			46
Cavalier SO						3	3	2	2						2							1							13
Dickey SO					4	5	4	2	3			30			1				3			4	15	2		3		1	77
Oakes PD																													0
Divide SO						2	4	1				13							1				1						22
Crosby PD							2		2						3								8			6			21
Dunn SO										1												11							12
Eddy SO						8	7	2	2	2	2	45			5							6							79
Emmons SO					1	2	6		1	2		7			2			2	2				28			10			63
Linton PD									2																				2
Foster SO																													0
Carrington PD					1		2								1							9	18	1		2			34
Golden Valley SO*							3		2															2					7
Grand Forks SO					1	8	86	1	40	2	2	365			13	1			20		18	25	50	18		949		45	1644
Emerado PD	Did not report in 1998																												
Grand Forks PD		1	3	2	7	15	346	39	169	4	27	9	1	7	48	15		5	110	1	17	504	356	285		317	21	200	2509
Larimore PD							5		1													2	9	5		18		1	41
Northwood PD																			2			1					1		4
Thompson PD								5	2										1							2		3	13

* Partial Year

Agency	Murder/Non-Neg. Mansl.	Negligent Manslaughter	Forcible Rape	Robbery	Aggravated Assault	Burglary	Larceny/Theft	Motor Vehicle Theft	Other Assault	Arson	Forgery/Counterfeiting	Fraud	Embezzlement	Stolen Property Offenses	Vandalism	Weapons Offenses	Prostitution	Other Sex Offenses	Drug Abuse Violations	Gambling Violations	Off. Against Fam & Children	DUI	Liquor Law Violations	Disorderly Conduct	Vagrancy	All Other Offenses	Curfew/Littering	Runaway	Total
UND PD								1	7						3	2			10			98	286	2		50			459
Grant SO						4	1		5													1	10						21
Carson PD																							1						1
Elgin PD	Did not report in 1998																												
Griggs SO	Did not report in 1998																												
Hettinger SO																													0
Kidder SO							3		1			25											5						34
Steele PD							2		2						3							2	2			2			13
LaMoure SO						6	1	1							3														11
Edgeley PD							2																						2
Logan SO																			1			6	8			5			20
Napoleon PD	Did not report in 1998																												
McHenry SO					1		3	2	3			1				1			5			28	59	4		27			134
McIntosh SO							1											1				5							7
Wishek PD																													0
McKenzie SO						2		1	1						2				3			11	6			1			27
Watford City PD							4	2	3		1				4							3	1	2		1			21
McLean SO						3			4													16	12	3		8			46
Mercer SO						4			2										3			21	38	1		4			73
Beulah PD						10	28	1	14						8				3			20	12	1		24		3	124
Hazen PD								1							1							1	6	1					10
Stanton PD																							3						3
Morton SO					4	14	10		12		3			1	2	7			26			66	209	11		127			492
Mandan PD			4		40	12	122	23	100		1			10	60	2		3	89		3	378	211	85		441			1584
Mountrail SO					1		3	2	1		1	17			1							6	1			5		1	39
Parshall PD																													0
Nelson SO	Did not report in 1998																												
Lakota PD							1		2					1															4
Oliver SO																													0
Pembina SO			1		1	16	3	4	21					1	2	2			1			31	32	3		24		2	144
Cavalier PD					1	4	20		5						4	2		1	4			22	66	7		39	3		178
Pierce SO					1	2	3		4			9							1		1	28	4	1		52			106
Rugby PD					1	1	5	1	1			2										1	2	1		9			24
Ramsey SO					1	2	2	1	2		1	2			8	1		3	6			37	23			34			123
Devils Lake PD					5	27	107	19	58		10			12	85	2		4	31		6	84	290	250		134	41	2	1167
Ransom SO	1						2	1	2		1	53			5	1			3		1	13	33	7		13			136
Lisbon PD	Did not report in 1998																												
Renville SO								1	3			11			3				2			6				27			53
Richland SO			1		1	6	7		18			178			9			2	3			32	158	15		9	4	2	445
Wahpeton PD					1	5	29	2	23	1	1	2			29	2		2	13		1	51	175	16		36	17	10	416
Rolette SO			1		1	3	34	7	32		6	1		1	16			2	4		1	1	28	8		19	29		194
Sargent SO						9	13	1	5	3	1	37		1	10	1			2		1	47	101	12		78			322
Sheridan SO						3	5	2	2						1								6	3		1		1	24
Sioux SO	Did not report in 1998																												
Slope SO																													0

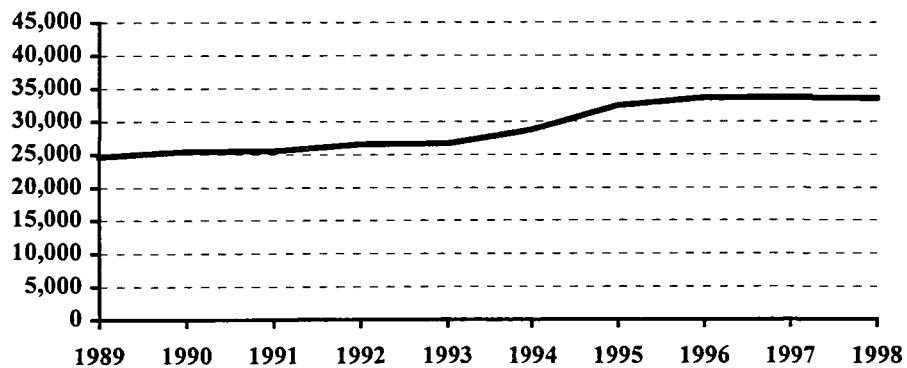
Agency	Murder/Non-Neg. Mansl.	Negligent Manslaughter	Forcible Rape	Robbery	Aggravated Assault	Burglary	Larceny/Theft	Motor Vehicle Theft	Other Assault	Arson	Forgery/Counterfeiting	Fraud	Embezzlement	Stolen Property Offenses	Vandalism	Weapons Offenses	Prostitution	Other Sex Offenses	Drug Abuse Violations	Gambling Violations	Off. Against Fam. & Children	DUI	Liquor Law Violations	Disorderly Conduct	Vagrancy	All Other Offenses	Curfew/Loitering	Runaway	Total
Stark SO							8		3			406			6				3			19	51	3		301			800
Dickinson PD				2	1	5	82	3	56	4	18	25		7	26	3	1	4	26		16	94	241	106		203	4	88	1015
Steele SO	Did not report in 1998																												
Stutsman SO						13	6	2	11			163			10				4			38	62			8		2	319
Jamestown PD			4	1	3	13	134	13	133	1	6	5		2	48	13		1	16	1		117	225	60		421	24	26	1267
Towner SO																													0
Cando PD					1	2	1	1	7		1				1							1	1			5			21
Trail SO						4	8	5	8		3	136						1	4			7	4	3		9			192
Mayville PD						1	3	1	5	1	3							1				12	15	2		2			46
Hatton PD																						1							1
Hillsboro PD	Did not report in 1998																												
Portland PD							1		3		1								1			2	7						15
Walsh SO			1		2	7	7	8	12		2	2		3	30			1	3			13	34	6		10		2	143
Grafton PD				1	3	6	25		19		4				22	3			11		6	24	49	22		48		6	249
Ward SO			2		1	5	7		23			159										19	118	27		133		29	523
Minot PD			3	3	11	41	342	31	219	4	36	10	1	13	101	3		4	63	2	29	234	446	262		1212	46	133	3249
Wells SO						1	2		7			41			14							3	15			9			92
Harvey PD							1											1											2
Fessenden PD																		2					8				1		11
Williams SO						3	13		12			341		2	4	1		4	3		5	17	104	2		169		4	684
Williston PD						4	87	12	56		8	1	1	5	27	1	1	2	5		7	48	168	32		118	47	31	661
Highway Patrol																			182			1224	757			70			2233
Drug Task Forces				1			1				2	2		2		4	5		289					1		109			416
Total	5	2	44	28	168	426	2671	286	1567	33	191	4291	6	150	774	102	7	82	1517	6	401	5187	6231	1783	2	6392	347	849	33548

Arrests 1989-1998

Arrest Summary

Year	Population	Arrest Total	% Change from Previous Year	Rate per 100,000 Pop.
1989	660,000	24,700	-5.6 %	3742.4
1990	638,800	25,508	3.3	3993.1
1991	635,000	25,532	0.1	4020.8
1992	636,000	26,571	4.1	4177.8
1993	635,000	26,670	0.4	4200.0
1994	638,000	28,737	7.8	4504.2
1995	641,000	32,399	12.7	5054.4
1996	644,000	33,614	3.8	5219.6
1997	641,000	33,634	0.1	5247.1
1998	638,000	33,548	-0.3	5258.3

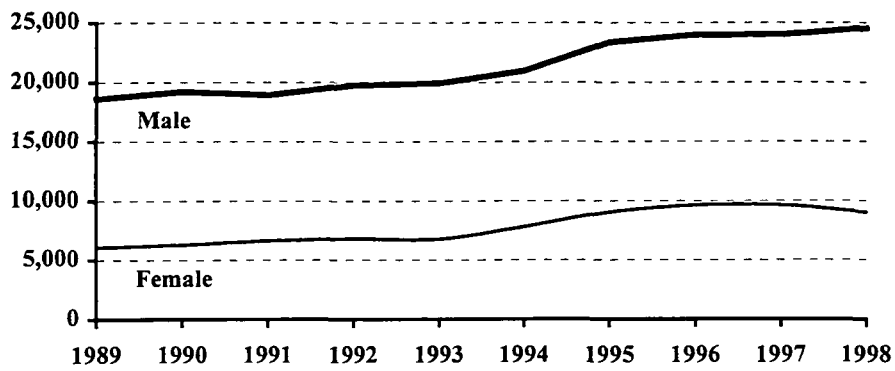
Arrest Totals, 1989-1998



Arrests by Gender, 1989-1998

Year	Male	% of Total	Female	% of Total	Total
1989	18,617	75.4 %	6,083	24.6 %	24,700
1990	19,219	75.3	6,289	24.7	25,508
1991	18,919	74.1	6,613	25.9	25,532
1992	19,768	74.4	6,803	25.6	26,571
1993	19,913	74.7	6,757	25.3	26,670
1994	20,931	72.8	7,806	27.2	28,737
1995	23,363	72.1	9,036	27.9	32,399
1996	23,992	71.4	9,622	28.6	33,614
1997	24,011	71.4	9,623	28.6	33,634
1998	24,538	73.1	9,010	26.9	33,548

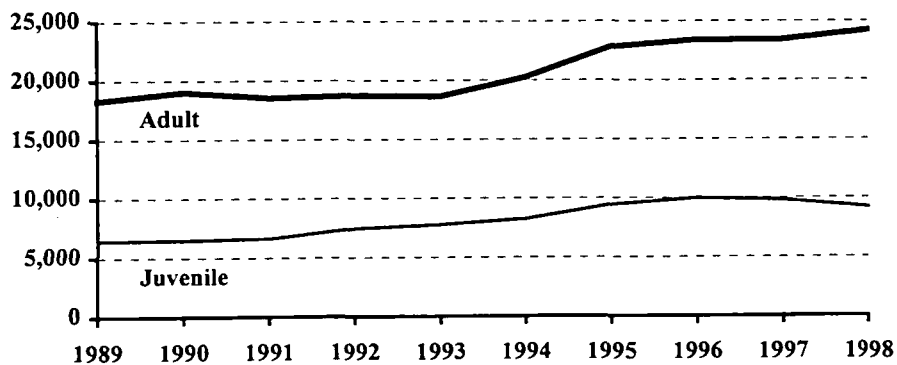
Arrests by Gender, 1989-1998



Juvenile and Adult Arrests, 1989-1998

Year	Juvenile	Percent of Total	Adult	Percent of Total	Age Not Reported	Percent of Total	Total
1989	6,432	26.0 %	18,268	74.0 %			24,700
1990	6,500	25.5	19,008	74.5			25,508
1991	6,625	25.9	18,514	72.5	393	1.5 %	25,532
1992	7,441	28.0	18,685	70.3	445	1.7	26,571
1993	7,743	29.0	18,617	69.8	310	1.2	26,670
1994	8,246	28.7	20,227	70.4	264	0.9	28,737
1995	9,432	29.1	22,820	70.4	147	0.5	32,399
1996	9,938	29.6	23,409	69.6	267	0.8	33,614
1997	9,780	29.1	23,428	69.7	426	1.3	33,634
1998	9,175	27.3	24,188	72.1	185	0.6	33,548

Juvenile and Adult Arrests, 1989-1998



Arrests by Age Group, 1989-1998

Age Group	1989	1990	1991	1992	1993	1994	1995	1996	1997	1998
Under 10	213	213	217	200	207	199	281	208	204	205
10-12	602	573	713	809	754	765	895	881	953	758
13-14	1311	1486	1677	1784	1827	2137	2396	2433	2429	2165
15	1209	1272	1223	1461	1395	1609	1796	2077	1980	1775
16	1412	1370	1340	1501	1873	1646	2044	2138	2115	2034
17	1685	1586	1455	1686	1687	1890	2020	2201	2099	2238
18	1777	1763	1906	1887	1810	1828	2306	2238	2210	2610
19	1703	2072	1878	2110	1783	2143	2238	2279	2330	2611
20	1495	1779	1777	1749	1753	1774	1997	1991	2170	2366
21	1059	1138	1081	1086	1057	1200	1320	1304	1240	1385
22	891	970	902	1029	1057	1057	1149	1163	1166	1063
23	772	860	768	809	858	930	940	1026	922	1040
24	823	839	703	703	677	859	951	929	911	821
25-29	3239	3340	3104	2830	2841	3002	3242	3506	3451	3390
30-34	2308	2204	2214	2258	2347	2542	2910	3023	2709	2642
35-39	1506	1460	1587	1624	1711	1854	2278	2264	2494	2497
40-44	971	935	1012	1029	1046	1244	1431	1633	1710	1689
45-49	655	613	579	592	659	717	901	918	958	967
50-54	378	359	379	373	378	463	485	516	523	513
55-59	260	280	243	213	226	225	262	251	266	270
60-64	201	169	132	149	122	126	154	143	153	103
65 +	230	227	249	244	292	263	256	225	215	221
Age Not Reported			393	445	310	264	147	267	426	185
Arrest Total	24700	25508	25532	26571	26670	28737	32399	33614	33634	33548

Arrests by Offense, 1989-1998

Offense Classification	1989	1990	1991	1992	1993	1994	1995	1996	1997	1998
Murder/Non-Neg. Manslaughter	3	5	5	8	9	3	11	11	3	5
Negligent Manslaughter	5	7	3	3	2	2	1	1	1	2
Forcible Rape	53	54	30	54	49	43	54	51	35	44
Robbery	32	22	18	29	22	31	31	38	30	28
Aggravated Assault	217	200	114	141	155	127	176	193	180	168
Burglary	449	493	409	555	513	407	374	410	413	426
Larceny/Theft	3255	3162	3524	3492	3409	3346	3742	3718	3093	2671
Motor Vehicle Theft	254	282	272	318	320	336	358	334	307	286
Other Assaults	603	788	931	1067	1227	1337	1536	1671	1550	1567
Arson	15	25	55	31	19	25	34	24	36	33
Forgery and Counterfeiting	260	353	204	247	214	286	261	223	189	191
Fraud	2723	2649	4252	4205	4255	5661	5839	6006	5491	4291
Embezzlement	2	6	4		6	5	5	14	5	6
Stolen Property Offenses	231	279	196	176	172	140	156	204	159	150
Vandalism	522	610	678	819	874	844	806	631	855	774
Weapons Offenses	90	102	85	116	143	157	139	121	119	102
Prostitution	1	5	2	3	1	1	4	2		7
Other Sex Offenses	110	126	95	85	85	72	89	103	99	82
Drug Abuse Violations	682	745	461	517	643	779	799	1106	1242	1517
Gambling	4	24	9	16	2	3	0	3	1	6
Off. Against Family & Children	214	210	167	334	271	229	344	283	327	401
Driving Under the Influence	4124	4322	4607	4781	4418	4206	4439	4467	4777	5187
Liquor Law Violations	4309	4641	4448	4475	4188	4401	5109	5260	5521	6231
Disorderly Conduct	1201	1013	1132	1139	1253	1253	1579	1468	1487	1783
Vagrancy	6	2		6		1	20		4	2
All Other Offenses	4037	4243	2750	2722	3060	3509	4970	5602	6164	6392
Suspicion	20	15	38	6					17	
Curfew and Loitering	400	359	337	364	409	495	414	561	486	347
Runaways	878	766	706	862	951	1038	1109	1109	1043	849
Arrest Total	24700	25508	25532	26571	26670	28737	32399	33614	33634	33548

Juvenile Arrests by Offense, 1989-1998

Offense Classification	1989	1990	1991	1992	1993	1994	1995	1996	1997	1998
Murder/Non-Neg. Manslaughter					2		9	1		
Negligent Manslaughter			2			1				
Forcible Rape	10	8	6	13	8	13	16	12	6	13
Robbery	7	8	1	8	14	8	13	10	13	8
Aggravated Assault	34	28	34	30	47	37	68	45	35	47
Burglary	216	171	166	272	226	197	208	201	222	201
Larceny/Theft	1535	1602	1947	1972	1900	1846	2066	2056	1771	1372
Motor Vehicle Theft	163	160	178	211	196	223	262	198	205	162
Other Assaults	146	193	247	316	368	379	467	517	424	420
Arson	7	17	47	26	13	19	24	20	25	23
Forgery and Counterfeiting	62	77	49	52	51	77	65	54	46	42
Fraud	11	12	11	13	23	19	16	28	20	28
Embezzlement					1		1			
Stolen Property Offenses	132	159	132	93	109	86	83	138	105	81
Vandalism	377	444	455	551	605	609	569	420	654	532
Weapons Offenses	34	42	40	56	64	61	62	50	34	30
Prostitution								2		
Other Sex Offenses	38	30	28	28	34	25	31	30	32	32
Drug Offenses	48	94	26	27	63	84	136	205	229	269
Gambling		1								
Off. Against Family/Children	17	3	41	155	126	97	142	109	96	110
Driving Under the Influence	79	90	83	86	85	77	77	62	104	114
Liquor Law Violations	1179	1279	1143	1297	1291	1426	1712	1900	1976	2169
Disorderly Conduct	311	315	346	315	356	454	579	575	611	762
Vagrancy	1			2						
All Other Offenses	737	636	571	689	801	975	1303	1635	1643	1564
Suspicion	10	6	30	3						
Curfew and Loitering	400	359	337	364	409	495	414	561	486	347
Runaways	878	766	705	862	951	1038	1109	1109	1043	849
Juvenile Arrest Total	6432	6500	6625	7441	7743	8246	9432	9938	9780	9175

Juvenile Arrests by Gender, 1989-1998

Year	Male	% of Total	Female	% of Total	Total
1989	4,508	70.1 %	1,924	29.9 %	6,432
1990	4,531	69.7	1,969	30.3	6,500
1991	4,782	72.2	1,843	27.8	6,625
1992	5,241	70.4	2,200	29.6	7,441
1993	5,452	70.4	2,291	29.6	7,743
1994	5,726	69.4	2,520	30.6	8,246
1995	6,423	68.1	3,009	31.9	9,432
1996	6,512	65.5	3,426	34.5	9,938
1997	6,363	65.1	3,417	34.9	9,780
1998	6,129	66.8	3,046	33.2	9,175

Adult Arrests by Offense, 1989-1998

Offense Classification	1989	1990	1991	1992	1993	1994	1995	1996	1997	1998
Murder/Non-Neg. Manslaughter	3	5	5	7	7	3	2	10	3	5
Negligent Manslaughter	5	7	1	2	2	1	1	1	1	2
Forcible Rape	43	46	23	40	40	29	36	39	29	31
Robbery	25	14	16	21	8	23	18	28	17	20
Aggravated Assault	183	172	77	110	107	89	108	147	144	121
Burglary	233	322	240	280	283	204	164	208	185	220
Larceny/Theft	1720	1560	1555	1505	1485	1472	1662	1656	1306	1292
Motor Vehicle Theft	91	122	91	100	121	106	93	133	99	124
Other Assaults	457	595	675	742	849	946	1067	1151	1106	1136
Arson	8	8	8	5	6	5	10	4	11	10
Forgery and Counterfeiting	198	276	152	189	157	207	195	169	140	148
Fraud	2712	2637	4058	3995	4108	5542	5771	5874	5354	4173
Embezzlement	2	6	3		5	5	4	13	5	6
Stolen Property Offenses	99	120	63	82	54	54	71	66	53	68
Vandalism	145	166	210	260	260	230	235	209	190	242
Weapons Offenses	56	60	44	60	78	96	77	69	83	72
Prostitution	1	5	2	3	1	1	4			7
Other Sex Offenses	72	96	67	54	49	46	58	73	66	49
Drug Offenses	634	651	433	459	572	684	660	894	998	1248
Gambling	4	23	7	16	2	3		3	1	6
Off. Against Family/Children	197	207	123	174	144	132	202	174	230	291
Driving Under the Influence	4045	4232	4494	4632	4289	4102	4351	4364	4629	5051
Liquor Law Violations	3130	3362	3241	3139	2884	2942	3370	3323	3462	4033
Disorderly Conduct	890	698	778	820	893	792	995	891	866	1017
Vagrancy	5	2		4		1	20		4	2
All Other Offenses	3300	3607	2140	1983	2213	2512	3646	3910	4429	4814
Suspicion	10	9	8	3					17	
Adult Arrest Total	18268	19008	18514	18685	18617	20227	22820	23409	23428	24188

Adult Arrests by Gender, 1989-1998

Year	Male	% of Total	Female	% of Total	Total
1989	14,109	77.2 %	4,159	22.8 %	18,268
1990	14,688	77.3	4,320	22.7	19,008
1991	13,845	74.8	4,669	25.2	18,514
1992	14,204	76.0	4,481	24.0	18,685
1993	14,225	76.4	4,392	23.6	18,617
1994	15,004	74.2	5,223	25.8	20,227
1995	16,828	73.7	5,992	26.3	22,820
1996	17,283	73.8	6,126	26.2	23,409
1997	17,354	74.1	6,074	25.9	23,428
1998	18,280	75.6	5,908	24.4	24,188

Drug Arrest Analysis

Drug offense arrests increased approximately 22 percent from 1,242 in 1997 to 1,517 in 1998. The arrest totals shown should not be interpreted as the number of individuals arrested for drug offenses because it is possible that some individuals may have been arrested on more than one occasion for this offense.

Eighty-three percent of drug arrests in 1998 were arrests of males.

Juveniles, persons under the age of 18, comprised approximately 18 percent of the total in 1998.

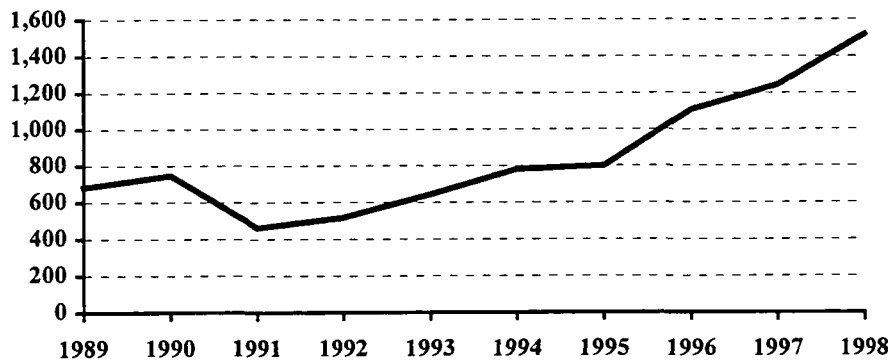
Approximately 79 percent of the drug arrests during the 10-year period were arrests for possession of drugs.

Eighty-one percent of the arrests for drug offenses during the period 1989-1998 involved marijuana.

Arrests for Drug Offenses, 1989-1998

Year	Total	Percent Change from Previous Year
1989	682	-7.5 %
1990	745	9.2
1991	461	-38.1
1992	517	12.1
1993	643	24.4
1994	779	21.2
1995	799	2.6
1996	1,106	38.4
1997	1,242	12.3
1998	1,517	22.1

Arrests for Drug Offenses, 1989-1998



Drug Arrests by Gender, 1989-1998

Year	Male	% of Total	Female	% of Total	Total
1989	563	82.6 %	119	17.4 %	682
1990	612	82.1	133	17.9	745
1991	380	82.4	81	17.6	461
1992	446	86.3	71	13.7	517
1993	546	84.9	97	15.1	643
1994	659	84.6	120	15.4	779
1995	646	80.9	153	19.1	799
1996	888	80.3	218	19.7	1,106
1997	1,035	83.3	207	16.7	1,242
1998	1,260	83.1	257	16.9	1,517

Drug Arrests by Age Category, 1989-1998

Year	Juvenile	Percent of Total	Adult	Percent of Total	Age Not Reported	Percent of Total	Total
1989	48	7.0 %	634	93.0 %			682
1990	94	12.6	651	87.4			745
1991	26	5.6	433	93.9	2	0.4 %	461
1992	27	5.2	459	88.8	31	6.0	517
1993	63	9.8	572	89.0	8	1.2	643
1994	84	10.8	684	87.8	11	1.4	779
1995	136	17.0	660	82.6	3	0.4	799
1996	205	18.5	894	80.8	7	0.6	1,106
1997	229	18.4	998	80.4	15	1.2	1,242
1998	269	17.7	1,248	82.3			1,517

Drug Arrests by Age Group, 1989-1998

Age Group	1989	1990	1991	1992	1993	1994	1995	1996	1997	1998
Under 10										1
10-12		2		3		1	3	1	4	6
13-14	2	18	2	5	14	11	19	38	35	27
15	9	19	2	3	10	14	26	33	44	49
16	14	28	12	4	21	21	39	67	55	75
17	23	27	10	12	18	37	49	66	91	111
18	32	50	25	20	32	53	72	106	122	158
19	36	50	22	27	35	54	74	109	105	133
20	50	54	27	26	48	40	66	79	102	97
21	22	42	17	21	24	29	38	46	52	87
22	33	49	17	25	29	44	29	45	50	60
23	22	23	15	22	20	34	18	29	38	54
24	30	29	26	22	31	32	23	42	46	37
25-29	201	166	116	108	126	131	79	139	143	185
30-34	121	116	96	116	126	119	111	134	116	150
35-39	57	45	40	46	65	84	101	99	127	154
40-44	23	14	16	17	22	47	32	36	66	84
45-49	7	5	8	6	10	14	9	24	24	33
50-54		1	3	1	4	1	7	3	6	10
55-59		3	1			2		2	1	5
60-64		3	4	1			1	1		1
65 +		1		1						
No Age Data			2	31	8	11	3	7	15	
Total	682	745	461	517	643	779	799	1106	1242	1517

Drug Arrests by Type of Offense, 1989-1998

Year	Sale or Manufacture	% of Total	Possession	% of Total	Total
1989	260	38.1 %	422	61.9 %	682
1990	303	40.7	442	59.3	745
1991	124	26.9	337	73.1	461
1992	137	26.5	380	73.5	517
1993	132	20.5	511	79.5	643
1994	200	25.7	579	74.3	779
1995	92	11.5	707	88.5	799
1996	183	16.5	923	83.5	1106
1997	109	8.8	1133	91.2	1242
1998	257	16.9	1260	83.1	1517

Drug Arrests by Type of Drug, 1989-1998

Year	Opiates, Cocaine or Derivatives	Percent of Total	Marijuana	Percent of Total	Other Drugs or Narcotics	Percent of Total	Total
1989	59	8.7 %	529	77.6 %	94	13.8 %	682
1990	99	13.3	438	58.8	208	27.9	745
1991	23	5.0	352	76.4	86	18.7	461
1992	23	4.4	457	88.4	37	7.2	517
1993	23	3.6	585	91.0	35	5.4	643
1994	37	4.7	672	86.3	70	9.0	779
1995	21	2.6	684	85.6	94	11.8	799
1996	59	5.3	914	82.6	133	12.0	1106
1997	39	3.1	1050	84.5	153	12.3	1242
1998	96	6.3	1189	78.4	232	15.3	1517

Drug Arrests by Age Category and Type of Drug, 1989-1998

Year	Juvenile			Adult			Age Not Reported		
	Opiates, Cocaine or Deriv.	Marijuana	Other Drugs or Narcotics	Opiates, Cocaine or Deriv.	Marijuana	Other Drugs or Narcotics	Opiates, Cocaine or Deriv.	Marijuana	Other Drugs or Narcotics
1989	2	39	7	57	490	87			
1990	11	45	38	88	393	170			
1991	1	20	5	22	331	80		1	1
1992	1	20	6	22	409	28		28	3
1993		61	2	23	518	31		6	2
1994	8	68	8	29	593	62		11	
1995		122	14	21	562	77			3
1996	2	186	17	56	722	116	1	6	
1997	2	197	30	37	842	119		11	4
1998	5	227	37	91	962	195			

DUI Arrest Analysis

DUI arrests increased 8.6 percent from 4,777 in 1997 to 5,187 in 1998. The arrest totals should not be interpreted as the number of individuals arrested for DUI offenses because it is possible that some individuals may have been arrested on more than one occasion.

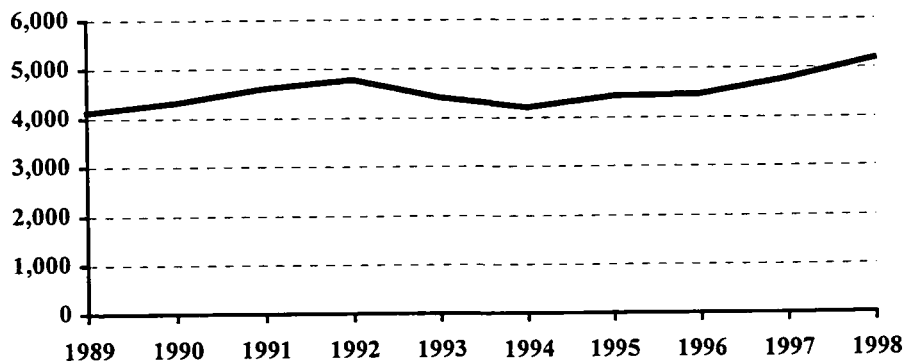
Eighty-one percent of the DUI arrests in 1998 were arrests of males.

Juveniles, persons under the age of 18, made up about 2 percent of the total in 1998. No information on the age of the arrestee was reported for 22 DUI arrests in 1998.

DUI Arrests, 1989-1998

Year	DUI Arrests Reported	Percent Change from Previous Year
1989	4,124	-7.0 %
1990	4,322	4.8
1991	4,607	6.6
1992	4,781	3.8
1993	4,418	-7.6
1994	4,206	-4.8
1995	4,439	5.5
1996	4,467	0.6
1997	4,777	6.9
1998	5,187	8.6

DUI Arrests, 1989-1998



DUI Arrests by Gender, 1989-1998

Year	Male	% of Total	Female	% of Total	Total
1989	3,491	84.7 %	633	15.3 %	4,124
1990	3,639	84.2	683	15.8	4,322
1991	3,830	83.1	777	16.9	4,607
1992	3,987	83.4	794	16.6	4,781
1993	3,651	82.6	767	17.4	4,418
1994	3,481	82.8	725	17.2	4,206
1995	3,672	82.7	767	17.3	4,439
1996	3,652	81.8	815	18.2	4,467
1997	3,917	82.0	860	18.0	4,777
1998	4,185	80.7	1,002	19.3	5,187

DUI Arrests by Age Category, 1989-1998

Year	Juvenile	Percent of Total	Adult	Percent of Total	Age Not Reported	Percent of Total	Total
1989	79	1.9 %	4,045	98.1 %			4,124
1990	90	2.1	4,232	97.9			4,322
1991	83	1.8	4,494	97.5	30	0.7 %	4,607
1992	86	1.8	4,632	96.9	63	1.3	4,781
1993	85	1.9	4,289	97.1	44	1.0	4,418
1994	77	1.8	4,102	97.5	27	0.6	4,206
1995	77	1.7	4,351	98.0	11	0.2	4,439
1996	62	1.4	4,364	97.7	41	0.9	4,467
1997	104	2.2	4,629	96.9	44	0.9	4,777
1998	114	2.2	5,051	97.4	22	0.4	5,187

DUI Arrests by Age Group, 1989-1998

Age Group	1989	1990	1991	1992	1993	1994	1995	1996	1997	1998
Under 10									1	
10-12					1		1			
13-14		1	4	1	1	1	2	2	3	2
15	4	4	6	10	10	9	9	10	8	10
16	19	27	21	22	22	12	16	13	40	42
17	56	58	52	53	51	55	49	37	52	60
18	127	137	160	116	104	100	94	107	103	158
19	161	175	170	162	130	123	121	112	143	174
20	144	167	191	166	151	139	143	144	180	181
21	206	215	231	231	224	222	205	214	234	272
22	173	198	187	237	226	195	203	212	225	203
23	182	196	192	186	183	175	163	195	156	234
24	173	187	156	193	141	143	189	185	162	194
25-29	866	875	875	868	760	670	690	702	755	777
30-34	645	670	772	812	778	751	756	713	711	713
35-39	454	449	542	587	575	565	617	624	717	752
40-44	287	306	372	416	375	383	435	475	506	566
45-49	239	227	250	238	255	262	313	295	293	396
50-54	131	142	154	145	149	162	173	159	191	188
55-59	96	129	101	100	88	86	111	88	110	107
60-64	91	81	64	73	54	52	59	56	69	58
65 +	70	78	77	102	96	74	79	83	74	78
No Age Data			30	63	44	27	11	41	44	22
Total	4124	4322	4607	4781	4418	4206	4439	4467	4777	5187

UCR OFFENSE DEFINITIONS

(This page intentionally left blank.)

UNIFORM CRIME REPORTING OFFENSE DEFINITIONS

Offenses in Uniform Crime Reporting are divided into two groups designated as Part I and Part II crimes. Information on the number of Part I offenses known to law enforcement, the number cleared by arrest or exceptional means, and the number of persons arrested is reported monthly. Arrest data are reported for Part I and Part II offenses. The Crime Index is composed of offenses 1-7 with the exception as noted in item 1 below.

NOTE: The classifications of these offenses for UCR reporting purposes are based on law enforcement investigation as opposed to determination by a court, medical examiner, jury, or other judicial hearing.

PART I OFFENSES:

1. CRIMINAL HOMICIDE

a. Murder and Non-Negligent Manslaughter

The willful (non-negligent) killing of one human being by another. Deaths caused by negligence, attempts to kill, assaults to kill, suicides, accidental deaths, and justifiable homicides are excluded. Justifiable homicides are limited to: (1) the killing of a felon by a law enforcement officer in the line of duty, and (2) the killing of a felon by a private citizen.

b. Manslaughter by Negligence

The killing of another person through gross negligence. Excludes traffic fatalities. While manslaughter by negligence is a Part I crime, it is not included in the Crime Index.

2. FORCIBLE RAPE

The carnal knowledge of a female forcibly and against her will. Included are rapes by force and attempts or assaults to rape. Statutory offenses (no force used -- victim under age of consent) are excluded.

3. ROBBERY

The taking or attempting to take anything of value from the care, custody, or control of a person or persons by force or threat of force or violence, or putting the victim in fear.

4. AGGRAVATED ASSAULT

An unlawful act by one person upon another for the purpose of inflicting severe or aggravated bodily injury. This type of assault usually is accompanied by the use of a weapon or by a means likely to produce death or great bodily harm. Simple assaults are excluded.

5. BURGLARY

Breaking or entering. The unlawful entry of a structure to commit a felony or theft. Attempted forcible entry is included.

6. LARCENY/THEFT

The unlawful taking, carrying, leading, or riding away of property from the possession or constructive possession of another. Examples are thefts of bicycles or automobile accessories, shoplifting, pocket-picking, or the stealing of any property or article which is not taken by force and violence or by fraud. Attempted larcenies are included. Embezzlement, "con" games, forgery, worthless checks, etc., are excluded.

7. MOTOR VEHICLE THEFT

The theft or attempted theft of a motor vehicle. A motor vehicle is self-propelled and runs on the surface and not on rails. Specifically excluded from this category are motorboats, construction equipment, airplanes, and farming equipment.

8. ARSON

Any willful or malicious burning or attempting to burn, with or without intent to defraud, a dwelling house, public building, motor vehicle, personal property of another, etc.

PART II OFFENSES:

9. OTHER ASSAULTS (SIMPLE)

Assaults or attempted assaults where no weapon was used or which did not result in serious or aggravated injury to the victim.

10. FORGERY AND COUNTERFEITING

Making, altering, uttering, or possessing, with the intent to defraud, anything false which is made to appear true. Attempts are included.

11. FRAUD

Fraudulent conversion and obtaining money or property by false pretenses. Included are larceny by bailee and bad checks except forgeries and counterfeiting. Attempts are included.

12. EMBEZZLEMENT

Misappropriation or misapplication of money or property entrusted to one's care, custody or control. Attempts are included.

13. STOLEN PROPERTY -- BUYING, RECEIVING, POSSESSING

Buying, receiving, or possessing stolen property, including attempts.

14. VANDALISM

Willful or malicious destruction, injury, disfigurement, or defacement of any public or private property, real or personal, without consent of the owner or person having custody or control. Attempts are included.

15. WEAPON OFFENSES – CARRYING, POSSESSING, ETC.

All violations of regulations or statutes controlling the carrying, using, possessing, furnishing, and manufacturing of deadly weapons or silencers. Attempts are included.

16. PROSTITUTION AND COMMERCIALIZED VICE

Sex offenses of a commercialized nature, such as prostitution, keeping a bawdy house, procuring, or transporting women for immoral purposes. Attempts are included.

17. OTHER SEX OFFENSES (except forcible rape, prostitution and commercialized vice)

Statutory rape and offenses against chastity, common decency, morals and the like. Attempts are included.

18. DRUG ABUSE VIOLATIONS

State and local offenses relating to narcotic and non-narcotic drugs, such as unlawful possession, sale, use, growing and manufacturing of narcotic and non-narcotic drugs. Attempts are included.

19. GAMBLING

Promoting, permitting, or engaging in illegal gambling.

20. OFFENSES AGAINST FAMILY AND CHILDREN

Non-support, neglect, desertion, or abuse of family and children.

21. DRIVING UNDER THE INFLUENCE

Driving or operating any vehicle or common carrier while drunk or under the influence of liquor or drugs.

22. LIQUOR LAWS

State or local liquor law violations, except “drunkenness” (offense 23) and “driving under the influence” (offense 21).

23. DRUNKENNESS

Drunkenness or intoxication. Excluded is “driving under the influence” (offense 21). This is not a crime in North Dakota, but is included in the national program.

24. DISORDERLY CONDUCT

Breach of peace.

25. VAGRANCY

Vagabondage, begging, loitering, etc.

26. ALL OTHER OFFENSES

All violations of state or local laws, except offenses 1-25 and traffic offenses.

27. SUSPICION

No specific offense; suspect released without formal charges being placed.

28. CURFEW AND LOITERING

Offenses relating to violation of local curfew and loitering ordinances where such laws exist.

29. RUNAWAYS

Limited to juveniles taken into protective custody under provisions of local statutes.

**FULL-TIME LAW
ENFORCEMENT EMPLOYEES**

(This page intentionally left blank.)

**NUMBER OF FULL-TIME LAW ENFORCEMENT EMPLOYEES
REPORTED BY UCR AGENCIES
AS OF OCTOBER 31, 1998**

Agency	Law Enforcement Officers		Civilian Personnel		Total Full-Time			Population
	Male	Female	Male	Female	Male	Female	Total	
Adams SO	3			1	3	1	4	2,735
Barnes SO	6			1	6	1	7	5,119
Valley City PD	11	1	2	3	13	4	17	6,891
Benson SO	4				4		4	6,763
Billings SO	3			1	3	1	4	1,104
Bottineau SO	9		3	1	12	1	13	7,448
Bowman SO	1				1		1	1,668
Bowman PD	3				3		3	1,607
Burke SO	3	1			3	1	4	2,321
Burleigh SO	29	5	15	6	44	11	55	12,379
Bismarck PD	71	6	5	17	76	23	99	53,956
Cass SO	37	9	9	12	46	21	67	14,192
Casselton PD	2				2		2	1,612
Fargo PD	88	14	4	27	92	41	133	84,662
West Fargo PD	20	1	1	7	21	8	29	13,691
NDSU PD	9	1			9	1	10	
Cavalier SO	4		3	1	7	1	8	5,121
Dickey SO	3			1	3	1	4	3,964
Oakes PD	2				2		2	1,646
Divide SO	3			1	3	1	4	1,340
Crosby PD	3				3		3	1,065
Dunn SO	2			1	2	1	3	3,624
Eddy SO	4	1			4	1	5	2,854
Emmons SO	3				3		3	3,095
Linton PD	2				2		2	1,257
Foster SO	2				2		2	1,650
Carrington PD	4				4		4	2,104
Golden Valley SO	3			1	3	1	4	1,892
Grand Forks SO	22			6	22	6	28	15,933
Grand Forks PD	71	6	4	9	75	15	90	49,435
Larimore PD	2				2		2	1,375
Northwood PD	2				2		2	1,122
Emerado PD	2				2		2	471
Thompson PD	1				1		1	947
UND PD	10	1	2	4	12	5	17	
Grant SO	2				2		2	2,050
Carson PD	1				1		1	323
Elgin PD	1				1		1	656
Griggs SO	2				2		2	1,717
Cooperstown PD	1				1		1	1,104
Hettinger SO	3				3		3	2,952
Kidder SO	2			1	2	1	3	2,262
Steele PD	1				1		1	653
LaMoure SO	3	1		1	3	2	5	4,272
LaMoure PD	1				1		1	612
Logan SO	2				2		2	1,617
Napoleon PD	1				1		1	789
McHenry SO	5			1	5	1	6	6,139
McIntosh SO	3				3		3	2,528
Wishek PD	1				1		1	1,024
McKenzie SO	5			4	5	4	9	4,151
Watford City PD	4				4		4	1,593
McLean SO	20		2	1	22	1	23	9,707
Mercer SO	7		5	6	12	6	18	3,128
Beulah PD	6			1	6	1	7	3,168
Hazen PD	4				4		4	2,623
Stanton PD	1				1		1	477
Morton SO	18		6	6	24	6	30	8,692
Mandan PD	25	2	1	6	26	8	34	15,591
Mountrail SO	4			4	4	4	8	5,702
Parshall PD	1				1		1	917

Agency	Law Enforcement Officers		Civilian Personnel		Total Full-Time			Population
	Male	Female	Male	Female	Male	Female	Total	
Nelson SO	3			1	3	1	4	2,993
Lakota PD	1				1		1	800
Oliver SO	3			1	3	1	4	2,207
Pembina SO	13	2	1	5	14	7	21	7,150
Cavalier PD	4				4		4	1,427
Pierce SO	3		1	3	4	3	7	1,859
Rugby PD	4				4		4	2,687
Ramsey SO	5		1		6		6	4,727
Devils Lake PD	13	2		2	13	4	17	7,591
Ransom SO	4	1			4	1	5	3,634
Lisbon PD	2	1			2	1	3	2,165
Renville SO	3	1			3	1	4	2,839
Richland SO	10		7	2	17	2	19	9,162
Wahpeton PD	15			2	15	2	17	8,975
Rolette SO	8		2	1	10	1	11	14,064
Sargent SO	3			1	3	1	4	4,409
Sheridan SO	3				3		3	1,776
Sioux SO	1				1		1	4,069
Slope SO	1				1		1	842
Stark SO	9			3	9	3	12	6,523
Dickinson PD	23	1	1	10	24	11	35	16,068
Steele SO	3				3		3	2,241
Stutsman SO	8			2	8	2	10	6,171
Jamestown PD	28			4	28	4	32	14,847
Towner SO	2			1	2	1	3	1,734
Cando PD	3				3		3	1,329
Trall SO	4			4	4	4	8	3,663
Hillsboro PD	2				2		2	1,448
Mayville/Portland PD	3				3		3	2,705
Hatton PD	2				2		2	774
Walsh SO	8		3	3	11	3	14	8,181
Grafton PD	10		1		11		11	5,426
Ward SO	18	1	11	11	29	12	41	23,190
Minot PD	51	4	6	16	57	20	77	35,282
Wells SO	2				2		2	2,665
Harvey PD	3				3		3	2,002
Fessenden PD	1				1		1	569
Williams SO	17	2	4	2	21	4	25	7,708
Williston PD	20	1	1	7	21	8	29	12,608
Highway Patrol	119	4	34	25	153	29	182	
Total	1,003	69	135	237	1,138	306	1,444	638,000

