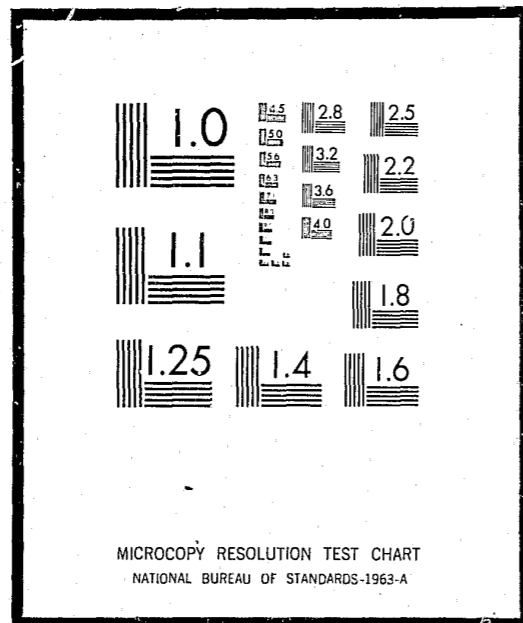


# NCJRS

This microfiche was produced from documents received for inclusion in the NCJRS data base. Since NCJRS cannot exercise control over the physical condition of the documents submitted, the individual frame quality will vary. The resolution chart on this frame may be used to evaluate the document quality.



Microfilming procedures used to create this fiche comply with the standards set forth in 41CFR 101-11.504

Points of view or opinions stated in this document are those of the author(s) and do not represent the official position or policies of the U.S. Department of Justice.

U.S. DEPARTMENT OF JUSTICE  
LAW ENFORCEMENT ASSISTANCE ADMINISTRATION  
NATIONAL CRIMINAL JUSTICE REFERENCE SERVICE  
WASHINGTON, D.C. 20531

Date filmed

7/16/76

LAW ENFORCEMENT ASSISTANCE ADMINISTRATION



## CRIMINAL JUSTICE AGENCIES IN WASHINGTON 1971

NATIONAL INSTITUTE OF LAW ENFORCEMENT AND CRIMINAL JUSTICE  
STATISTICS DIVISION

WASHINGTON, D. C.

ISSUED FEBRUARY 1972

LAW ENFORCEMENT ASSISTANCE  
ADMINISTRATION

Jerris Leonard  
*Administrator*

Richard W. Velde  
Clarence M. Coster  
*Associate Administrators*

NATIONAL INSTITUTE OF LAW ENFORCEMENT  
AND CRIMINAL JUSTICE

Martin B. Danziger, *Acting Assistant Administrator*

STATISTICS DIVISION

George E. Hall, *Director*

Statistical Programs  
Anthony G. Turner, *Chief*

ACKNOWLEDGEMENTS

Preparation of this report was the responsibility of the Statistics Division, National Institute of Law Enforcement and Criminal Justice, Law Enforcement Assistance Administration. The original planning was the responsibility of Linda Wells. This report was prepared by Karen Joerg. A statement covering definitions and limitations of data was prepared by the Bureau of the Census. Under LEAA design specifications, the Bureau of the Census conducted the directory survey and prepared the tabulations. The Federal Bureau of Investigation provided valuable assistance in the development of the code identifiers, and in the verification of some entries, particularly in the law enforcement sector.

LEAA-NILECJ STAT DIVISION PUBLICATION SD-D-49

Library of Congress Card Number 70-185037

For sale by the Superintendent of Documents, U.S. Government Printing Office  
Washington, D.C. 20402 - Price 50 cents  
Stock Number 2700-0100

TABLE OF CONTENTS

Section	Page
FOREWORD . . . . .	v
NATIONAL SUMMARY . . . . .	1
LIMITATIONS OF DATA . . . . .	3
DEFINITIONS OF LEVELS OF GOVERNMENT . . . . .	4
DEFINITIONS OF TYPES OF CRIMINAL JUSTICE AGENCIES . . . . .	6
CODE IDENTIFIERS . . . . .	10
SUMMARY TABLES . . . . .	11
LISTINGS OF ADDRESSES OF AGENCIES . . . . .	13
Prosecutors . . . . .	13
Defenders . . . . .	18
Enforcement Agencies . . . . .	18
Courts . . . . .	23
Probation and Parole Agencies . . . . .	30
Adult Correctional Institutions . . . . .	31
Juvenile Correctional Institutions . . . . .	33
All Other Agencies . . . . .	34

## FOREWORD

Under Title I of Public Law 90-351, the Law Enforcement Assistance Administration is authorized "to collect, evaluate, publish, and disseminate statistics and other information on the condition and progress of law enforcement in the several States". In partial response to this authorization, LEAA's Statistics Division of the National Institute of Law Enforcement and Criminal Justice entered into an inter-agency agreement with the U.S. Bureau of the Census to conduct a survey in January of 1970 to develop a National Criminal Justice Directory.

The primary emphasis of the directory survey was to obtain the names and addresses of all criminal justice agencies and institutions in the United States. This report presents the individual names and addresses of enforcement agencies, courts (civil as well as criminal), prosecutors' offices, defenders' offices, adult correction agencies, juvenile correction agencies, probation offices, and "other" agencies in Washington, and counts of agencies by level of government and sector (enforcement, courts, corrections, etc.). While summary national statistics are given in this report, more detailed national findings and a description of the survey methodology may be found in the report "Criminal Justice Agencies in the United States - 1970 - Summary Report" (LEAA - Statistics Division, Report SD-D-1).

The directory is periodically updated. The counts that appear in this volume are as of October 1971 and therefore differ somewhat from those in the Summary Report.

## NATIONAL SUMMARY

According to the national directory survey of criminal justice agencies, there are 46,197 public agencies in the criminal justice system which are administered at the state or local government level. This total was based on a census of all publicly financed agencies dealing with crime, criminals, or the administration of criminal justice. The census was conducted in January of 1970 in each state and county of the United States, plus all municipalities and townships with a 1960 population of 1,000 or more persons. The figures and list of agencies in this report represent the most recent update of the directory--October 1971. The numbers therefore may differ somewhat from the counts cited in the Summary Report which provided data as of January 1970.

The results indicate the dispersion within the criminal justice community of the various types of agencies. For example, there are 14,901 <sup>1/</sup> enforcement agencies in the United States, of which over 14,000 are operated at the local level of government. It should be noted, however, from other available evidence <sup>2/</sup> that state-operated agencies are about 11 times larger on the average than local agencies, in terms of full-time personnel.

There are almost as many courts (13,033) as there are enforcement agencies (14,901). Not all courts, however, address all levels of crime, as do the general police agencies. This survey contains information, for example, about a number of courts which are not technically in the criminal justice system, such as probate courts and family relation courts. About seven-eighths of the courts surveyed are operated at the local level of government.

---

<sup>1/</sup> According to the 1967 President's Commission on Law Enforcement and Administration of Justice, Task Force Report: The Police, page 7, there may be as many as 25,000 other police agencies in jurisdictions not covered by the directory survey, that is in townships, boroughs, or villages of under 1,000 population. More recent efforts place this number closer to 10,000, and the Statistics Division is planning to survey this sector of the criminal justice system.

<sup>2/</sup> See, U. S. Department of Justice, Law Enforcement Assistance Administration and U. S. Department of Commerce, Bureau of the Census, Expenditure and Employment Data for the Criminal Justice System, 1968-69.

About one-fifth of the agencies identified deal with prosecution and defense. Prosecutors' offices, however, outnumber defenders' offices by a factor of 22 to 1; 8,487 to 378. Almost 30 percent of the defenders' offices are state operated but only 7 percent of the prosecutors' offices are operated by state governments.

There are 5,312 (11%) corrections agencies, including 4,503 for adults and 809 for juveniles. Probation offices account for another five percent (2,444 agencies), with the remaining four percent (1,642) of the "other" agencies consisting of such diverse functions as police academies, courts administration, state planning agencies, juvenile boards, and others. Local administration handles about nine in every ten of the adult correction facilities and three in every four of the probation offices.

In general, the concentration of agencies at the local level of government spans the range of criminal justice activities. Only those specialized agencies in the "other" category are more likely to be found at the state level of administration. Sixty-nine percent of the "other" agencies are state operated.

## LIMITATIONS OF DATA

Readers should be cautious in interpretations of these counts, keeping in mind that this survey did not include agencies of those municipal governments with a 1960 population of less than 1,000. The figures in this report reflect the October 1971 update of the directory, particularly in the courts sector and the juvenile corrections sector, and consequently may differ from the figures presented in the Summary Report (Statistics Division Report SD-D-1). Moreover, in deciding whether an agency belonged in the directory or not, the general rule was to be inclusive rather than exclusive.

While numbers will help describe the scope and diversity of the system, the size and range of activity of criminal justice agencies within a state may not always be reflected by simple counts of agencies. Organizational complexity varies considerably from one governmental unit to another, even within a single state. Of the categories enumerated in the directory, the counts of local adult correctional facilities are the most reliable due to the refinement of this sector through the National Jail Census conducted in the Spring of 1970.

## DEFINITIONS OF LEVELS OF GOVERNMENT

The criminal justice agencies reported were classified by type of government (state, county, municipality or township) according to Census Bureau definitions as summarized below:

### Counties

Organized county governments are found throughout Washington, the total of such governments being 39.

### Cities

This category includes all active governmental units officially designated as cities, villages, boroughs, and towns. This concept generally corresponds to the "incorporated places" that are recognized in Census Bureau reporting of population and housing statistics. Municipalities which are governmentally inactive were excluded from the survey.

### Townships

This category includes governmental units officially designated as towns in the six New England States, New York, and Wisconsin, and governments called townships in other areas.

Townships range widely in scope of governmental powers and operations. Most of them, particularly in the North Central States, perform only a very limited range of services for predominantly rural areas. However, in New England, New Jersey, Pennsylvania and to some degree in New York, Michigan, and Wisconsin, townships (or "towns") are vested with relatively broad powers, and where they include closely settled territory, perform functions commonly associated with municipal governments.

Approximately one-half of the townships canvassed in the survey returned their questionnaires indicating they had no criminal justice agencies.

There are only two counties in Washington which have township governments -- Spokane and Whatcom.

## Regional Agencies

An agency serving more than one local government was generally assigned to either the largest government involved or to the next highest level of government depending on the type of agency involved. However, classification was often based on the unique factors involved in the particular case and a complete explanation of procedures would be impractical.

## DEFINITIONS OF TYPES OF CRIMINAL JUSTICE AGENCIES

Names of criminal justice agencies were collected and classified under the following headings:

1. Courts
2. Enforcement agencies
3. Correctional institutions
4. Probation and parole agencies
5. Prosecutors
6. Public defenders
7. All other criminal justice agencies

Following is a more detailed explanation covering the types of agencies included in these categories and some comments concerning their limitations.

### Courts

The survey included appellate courts, major trial courts of general jurisdiction, special courts (probate, juvenile, family, domestic relations courts) as well as other courts of limited jurisdiction (county, municipal, justice, magistrate, mayor, traffic and police courts).

Specifically excluded from the survey were minor courts of nominal participation in the criminal justice system where the judge's compensation was exclusively on a fee basis (unsalaried). Also excluded were Workmen's Compensation Boards, Bank, Tax, and Industrial Review Boards and Land Courts.

The counts for the "courts" sector include only independent court systems. Sub-units (divisions, departments, bureaus or branches), regardless of function or importance, were excluded.

Courts were classified by level of government based primarily on the geographical boundaries of the district served by the court. In Washington, the Supreme Court and the Superior Courts are counted at the state level of government. Justice Courts in which the justice is salaried are counted at the county level of government. Municipal Courts, and Police Courts in which the justice is salaried are counted at the municipal level of government.

### Enforcement Agencies

Included in this sector are state, county, and municipal police or law enforcement agencies with sworn police officers.

Included are all major law enforcement agencies, including the state police, state bureau of investigation in some cases, the county sheriff and police department and county detectives, as well as municipal police departments. Included also are all identifiable and independently administered Park Ranger, Harbor Police, Airport Police, Housing Police, and Transit Police agencies with 50 or more sworn officers, and some smaller forces. Excluded are branches, divisions, or departments of a main law enforcement agency. For example, the Juvenile Division of a sheriff's department would not be counted as an independent law enforcement agency.

Those counties, cities, towns, and villages whose police services are provided for under a contractual agreement with another government or private agency were not considered to have a police department.

Marshals and constables whose primary duties are the serving of warrants were excluded from the survey where they were identifiable. Regulatory agencies were not included in most instances. Game Wardens, Alcoholic Beverage Control Boards, Bingo Boards, Gambling Boards and the like were excluded unless they operate a force of 50 or more sworn police officers.

It should be noted that state, county and municipal medical examiners and coroners were included in this sector.

### Correctional Institutions

General Definition -- An individual facility, such as a prison, jail, farm, or annex, which is either separately administered or administratively dependent upon a parent institution and located in a separate geographical area. Hospitals for the criminally insane and halfway houses for narcotic addicts and alcoholics were not counted in this sector but in the "all other criminal justice agencies" sector.

Juvenile Correctional Facilities -- Included are those facilities which detain juveniles only, for 48 hours or more. This includes detention centers, reception and diagnostic centers, some halfway houses and other probation or work-release type facilities; that is, institutions detaining juveniles for court disposition as well as those holding juveniles for rehabilitation after court disposition. At the local level of government an agency was considered to be a juvenile agency if the administrator considered it as such. At the state level, facilities were assigned juvenile status if they were administered by the state juvenile corrections agency (the Division of Juvenile Rehabilitation).

Adult Correctional Facilities -- Included are those institutions which detain adults only or a combination of prisoner populations. Drunk tanks, lock-ups and other facilities which detain persons for less than 48 hours are excluded.

#### Probation and Parole Agencies

Included are probation and parole departments, commissions, boards or agencies operated by the state or local government, including those administratively dependent on the courts. The assignment of a probation officer to a particular level of government was an involved process related to both the type of area served and administrative responsibility. As a rule, a probation department serving more than one county was assigned to the state level of government. Probation services provided on a contractual basis were not included.

#### Prosecutors

Included are agencies giving legal counsel to the county, municipal, or state government, most of whom have at least minimal prosecutorial responsibility.

In Washington, the Attorney General is a state level official. County Attorneys are assigned to the county, and City Attorneys to the city level of government.

Deputy prosecutors or deputy district attorneys and deputy circuit solicitors were not included separately, but were considered a part of the main prosecutor's office. Many city attorneys were included though they may prosecute few cases. It is virtually impossible to verify the prosecutorial nature of each city attorney's duties due to the large numbers of agencies involved. Consequently, city attorneys were included unless it was specifically stated that the attorney does not prosecute cases.

Wherever possible, welfare fraud investigators and similar activities were excluded from this category.

#### Public Defenders

Included in this category are state or city-dependent law schools with legal aid clinics, as well as public defender offices in the government. Court-appointed attorneys were not included.

Public defender offices are included where these are publicly financed and administered as a department of government. Any organization administered by a non-governmental body (Legal aid society, bar association) was excluded even though supported entirely by public funds.

#### Other Criminal Justice Agencies

Included are any other criminal justice agencies operated by a government which could not be assigned to other categories, such as: police academies, crime commissions, grand juries, some identification bureaus, juvenile boards, court administrators, state planning agencies and regions where available, separate detention facilities or hospitals for the criminally insane, institutions, commissions, boards, or clinics for drug addicts and alcoholics, and administrative agencies such as a department of corrections or a department of public safety.

No attempt was made to include departments of colleges or universities with organized programs in fields of criminal justice.



CODE IDENTIFIERS

A seven or nine-digit code identifier was assigned to each agency in the Directory. Police agencies which have National Crime Information Center (NCIC) identifiers have retained this seven-digit number. All other agencies in the Directory were assigned a nine-digit identifier in accordance with the following scheme:

Digits 1-2	Two-letter state abbreviation
Digits 3-5	County number as designated by the NCIC Manual
	Exception - For Michigan, digits 3 and 4 are the county number; digit 5 is "0"
Digits 6-7	Unit number of agency by type within each level of government and county
Digit 8	Level of Government
	0 ....Special District
	1 ....City, town, or township
	3 ....County
	5 ....State
Digit 9	Type of Agency
	A - Prosecutor
	D - Defender
	M - Coroner or Medical Examiner
	C - Correctional Institution
	J - Court
	G - Probation or Parole
	Y - All other agencies
	E - State Planning Agency
	Z - Police agency not in NCIC

A description of the seven-digit identifiers used in the NCIC may be found in the NCIC Operating Manual, which is maintained by the Federal Bureau of Investigation.

The code identifier is found on the last line of each agency's address in the directory.

Table 1.--WASHINGTON CRIMINAL JUSTICE AGENCIES BY FUNCTION AND LEVEL OF GOVERNMENT: OCTOBER 1971

Level of government	Total agencies	Enforcement agencies	Courts	Prosecutor's offices	Defender's offices	Adult corrections	Juvenile corrections	Probation and parole	All other agencies
Total . . . . .	809	206	238	183	2	90	30	30	30
State . . . . .	86	1	31	1	1	7	16	3	26
Local . . . . .	723	205	207	182	1	83	14	27	4
County . . . . .	242	57	74	39	1	35	13	22	1
City, township, and special district . . . . .	481	148	133	143	0	48	1	5	3

Table 2.--NUMBER AND PERCENT OF WASHINGTON CRIMINAL JUSTICE AGENCIES BY LEVEL OF GOVERNMENT: OCTOBER 1971

Type of agency	Total number in Washington	Percent at state or local level	
		Total	Percent at local level
All agencies . . . . .	809	100.0%	89.4%
Enforcement . . . . .	206	100.0	99.5
Courts . . . . .	238	100.0	87.0
Prosecutors . . . . .	183	100.0	99.5
Defenders . . . . .	2	100.0	50.0
Adult corrections . . . . .	90	100.0	7.8
Juvenile corrections . . . . .	30	100.0	53.3
Probation and parole . . . . .	30	100.0	90.0
All other agencies . . . . .	30	100.0	13.3

PROSECUTORS' OFFICES

STATE LEVEL

ATTORNEY GENERAL  
TEMPLE OF JUSTICE  
OLYMPIA WA 98501  
WA034015A

OFFICE OF CITY ATTORNEY  
ATTORNEY  
CITY HALL  
RICHLAND WA 99352  
WA003051A

CITY ATTORNEYS OFC  
ATTORNEY  
CITY HALL  
CAMAS WA 98607  
WA006021A

LOCAL LEVEL

PROSECUTING ATTORNEY OFF  
ATTORNEY  
WILBUR WA 99185  
WA001013A

COUNTY PROSECUTORS OFC  
PROSECUTING ATTY  
P O BOX 596  
103 S MISSION ST  
WENATCHEE WA 98801  
WA004013A

CITY ATTORNEYS OFFICE  
CITY ATTORNEY  
CITY HALL  
210 E 13TH ST  
VANCOUVER WA 98660  
WA006031A

CITY ATTORNEY OFC  
ATTORNEY  
CITY HALL  
OTHELLO WA 99344  
WA001011A

TOWN PROSECUTORS OFFICE  
TOWN PROSECUTOR  
VALE BUILDING  
NORTH DIVISION STREET  
CASHMERE WA 98815  
WA004011A

CITY ATTORNEYS OFC  
ATTORNEY  
CITY HALL  
WASHOUGAL WA 98671  
WA006041A

CITY ATTORNEY OFC  
ATTORNEY  
CITY HALL  
RITZVILLE WA 99169  
WA001021A

CITY ATTORNEYS OFC  
ATTORNEY  
CITY HALL  
CHELAN WA 98816  
WA004021A

CO PROS ATTY OFFICE  
PROS ATTORNEY  
338 E MAIN  
DAYTON WA 99328  
WA007013A

COUNTY PROSECUTORS OFC  
PROSECUTING ATTY  
ASOTIN WA 99402  
WA002013A

CITY ATTORNEYS OFC  
ATTORNEY  
CITY HALL  
LEAVENWORTH WA 98826  
WA004031A

CITY ATTORNEY S OFF  
CITY ATTORNEY  
303 E MAIN ST  
DAYTON WA 99328  
WA007011A

CITY ATTORNEY S OFFICE  
CITY ATTORNEY  
517 SYCAMORE  
CLARKSTON WA 99403  
WA002011A

POLICE COURT  
JUDGE  
CITY HALL  
WENATCHEE WA 98801  
WA004041A

PROSECUTOR S OFFICE  
PROSECUTOR  
COURT HOUSE  
KELSO WA 98626  
WA008013A

PROS ATTORNEY S OFF  
ATTORNEY  
1112 MEADE AVE  
PROSSER WA 99350  
WA003013A

PROS ATTY OFF  
ATTORNEY  
P A SAV LOAN BLD  
FRONT LAUREL  
PORT ANGELES WA 98362  
WA005013A

CITY ATTORNEYS OFC  
ATTORNEY  
CITY HALL  
CASTLE ROCK WA 98611  
WA008011A

CITY ATTORNEY OFC  
ATTORNEY  
CITY HALL  
BENTON CITY WA 99320  
WA003011A

TOWN ATTORNEYS OFC  
ATTORNEY  
CITY HALL  
FORK WA 98331  
WA005011A

CITY ATTORNEYS OFC  
ATTORNEY  
CITY HALL  
KALAMA WA 98625  
WA008021A

CITY ATTORNEY OFFICE  
CITY ATTORNEY  
15 NO CASCADE ST  
KENNEWICK WA 99336  
WA003021A

CITY ATTORNEYS OFC  
ATTORNEY  
CITY HALL  
PORT ANGELES WA 98362  
WA005021A

KELSO ATTORNEY S OFFICE  
PROSECUTOR  
104 S PACIFIC  
KELSO WA 98626  
WA008031A

CITY ATTORNEYS OFC  
ATTORNEY  
CITY HALL  
PROSSER WA 99350  
WA003031A

CITY ATTORNEYS OFC  
ATTORNEY  
CITY HALL  
SEGUIM WA 98382  
WA005031A

CITY ATTORNEYS OFC  
ATTORNEY  
CITY HALL  
LONGVIEW WA 98632  
WA008041A

CITY ATTORNEYS OFC  
ATTORNEY  
CITY HALL  
WEST RICHLAND WA 99352  
WA003041A

PROSECUTING ATTORNEY OFC  
PROSECUTING ATTY  
COURTHOUSE  
VANCOUVER WA 98600  
WA006013A

CITY ATTORNEYS OFC  
ATTORNEY  
CITY HALL  
WOODLAND WA 98674  
WA008051A

CITY ATTORNEYS OFC  
ATTORNEY  
CITY HALL  
BATTLE GROUND WA 98604  
WA006011A

CO PROSECUTOR S OFF  
PROSECUTING ATTY  
WATERVILLE WA 98858  
WA009013A

CITY ATTORNEYS OFC ATTORNEY CITY HALL WATERVILLE WA009011A	WA 98858	CITY ATTORNEYS OFC ATTORNEY CITY HALL SOAP LAKE WA013051A	WA 98851	PROSECUTING ATTY S OFF ATTORNEY MT BAKER BLOCK FORT TOWNSEND WA016013A	WA 98368	CITY ATTORNEYS OFC ATTORNEY CITY HALL NORTH BEND WA017101A	WA 98045	PROSECUTING ATTY S OFF PROSECUTOR 823 BAY ST PORT ORCHARD WA018013A	WA 98366	PROSECUTING ATTY S OFF PROSECUTOR CHEHALIS WA021013A	WA 98532
COUNTY PROSECUTORS OFC PROSECUTING ATTY REPUBLIC WA010013A	WA 99166	CITY ATTORNEYS OFC ATTORNEY CITY HALL WARDEN WA013061A	WA 98857	CITY ATTORNEY OFFICE ATTORNEY MT BAKER BLK PORT TOWNSEND WA016011A	WA 98368	PROSECUTORS OFFICE PROSECUTING ATTY 29 1ST NE AUBURN WA017111A	WA 98002	CITY ATTORNEY OFFICE ATTORNEY 245 FOURTH ST BLDG BREMERTON WA018011A	WA 98310	CITY ATTORNEYS OFC ATTORNEY CITY HALL CENTRALIA WA021011A	WA 98531
CITY ATTORNEYS OFC ATTORNEY CITY HALL REPUBLIC WA010011A	WA 99166	CO PROSECUTOR S OFC PROSECUTING ATTY 123 1ST S MONTESANO WA014013A	WA 98563	PROSECUTING ATTORNEY OFF KING COUNTY PROS ATTORNEY KING CO COURTHOUSE SEATTLE WA017013A	WA 98104	REDMOND CITY ATTORNEY ATTORNEY CITY HALL REDMOND WA017121A	WA 98052	CITY ATTORNEY S OFFICE CITY ATTORNEY 1515 WASHINGTON BL TACOMA WA018021A	WA 98402	CITY ATTORNEY S OFFICE ATTORNEY SECURITY BANK BLDG CHEHALIS WA021021A	WA 98532
PROSECUTING ATTY S OFC PROSECUTING ATTY PASCO WA011013A	WA 99301	CITY ATTORNEY S OFFICE CITY ATTORNEY BECKER BLDG ABERDEEN WA014011A	WA 98520	CITY ATTORNEYS OFFICE PROSECUTOR PO BOX 37 AUBURN WA017011A	WA 98002	CITY ATTORNEY S OFFICE CITY ATTORNEY 200 MILL AVE 50 RENTON WA017131A	WA 98055	CITY ATTORNEY S OFFICE CITY ATTORNEY 204 MED DENTAL BLD BREMERTON WA018031A	WA 98310	CITY ATTORNEYS OFC ATTORNEY CITY HALL MORTON WA021031A	WA 98356
CITY ATTORNEY S OFF CITY ATTORNEY P O BOX 293 PASCO WA011011A	WA 99301	CITY ATTORNEYS OFC ATTORNEY CITY HALL COSMOPOLIS WA014021A	WA 98537	CITY ATTORNEY S OFF ATTORNEY 20 A ST N W AUBURN WA017021A	WA 98002	CORPORATION COUNSEL SEATTLE LAH DEPT SEATTLE MUN BLDG 600 4TH AVE SEATTLE WA017141A	WA 98104	CITY ATTORNEYS OFC ATTORNEY CITY HALL WINSLOW WA018041A	WA 98110	PROSECUTING ATTORNEY OFF ATTORNEY DAVENPORT WA022013A	WA 99122
PROSECUTING ATTY S OFF PROSECUTOR POMEROY WA012013A	WA 99347	ATTORNEY S OFFICE ATTORNEY 1111 1/2 W MARTIN ELMA WA014031A	WA 98541	ATTORNEYS OFFICE PROSECUTOR 1122 DENNY BLDG SEATTLE WA017031A	WA 98121	CITY ATTORNEYS OFC ATTORNEY CITY HALL SNOQUALMIE WA017151A	WA 98065	COUNTY PROSECUTORS OFC PROS ATTY LAND TITLE BLDG ELLENSBURG WA019013A	WA 98926	CITY ATTORNEYS OFC ATTORNEY CITY HALL DAVENPORT WA022011A	WA 99122
CITY ATTORNEYS OFC ATTORNEY CITY HALL POMEROY WA012011A	WA 99347	CITY ATTORNEYS OFC ATTORNEY CITY HALL HOGUIAM WA014041A	WA 98550	TOWN ATTORNEY OFFICE ATTORNEY 7871 NE 21ST ST BELLEVUE WA017041A	WA 98004	CITY ATTORNEYS OFC ATTORNEY CITY HALL TUKWILA WA017161A	WA 98067	CITY ATTORNEY OFFICE ATTORNEY 123 1/2 EAST 1ST S CLE ELUM WA019011A	WA 98922	CITY ATTORNEYS OFC ATTORNEY CITY HALL ODESSA WA022021A	WA 99159
PROSECUTING ATTORNEY OFC PROS ATTORNEY COURTHOUSE EPHRATA WA013013A	WA 98823	CITY ATTORNEYS OFC ATTORNEY CITY HALL MCCLARY WA014051A	WA 98557	CITY ATTORNEYS OFC ATTORNEY CITY HALL ENJUMCLAW WA017051A	WA 98022	TOWNS ATTORNEY OFC ATTORNEY CITY HALL BLACK DIAMOND WA017171A	WA 98010	ATTORNEY OFFICE ATTORNEY 1016 LARSON BUILDI YAKIMA WA019021A	WA 98901	CITY ATTORNEYS OFC ATTORNEY CITY HALL WILBUR WA022031A	WA 99185
EPHRATA CITY ATTORNEY ATTORNEY CITY HALL EPHRATA WA013011A	WA 98823	CITY ATTORNEYS OFC ATTORNEY CITY HALL MONTESANO WA014061A	WA 98563	CITY ATTORNEYS OFC ATTORNEY CITY HALL KENT WA017061A	WA 98031	OFFICE OF CITY ATTORNEY CITY ATTORNEY 730 S 225TH ST DES MOINES WA017181A	WA 98016	CITY ATTORNEYS OFC ATTORNEY CITY HALL ROSLYN WA019031A	WA 98941	PROSECUTING S ATTY S OFF PROSECUTOR TITLE INS BLDG SHELTON WA023013A	WA 98584
CITY ATTORNEY OFFICE ATTORNEY WILBUR WA013021A	WA 99185	CITY ATTORNEYS OFC ATTORNEY CITY HALL WESTPORT WA014071A	WA 98585	CITY ATTORNEYS OFFICE ATTORNEY 127 STATE STREET KIRKLAND WA017071A	WA 98033	CITY ATTORNEYS OFC ATTORNEY CITY HALL YARROW POINT WA017191A	WA 98004	CO PROSECUTOR S OFF ATTORNEY 116-A WEST MAIN GOLDENDALE WA020013A	WA 98620	SHELTON CITY ATTYS OFC CITY ATTORNEY ANGLE BUILDING SHELTON WA023011A	WA 98584
CITY ATTORNEYS OFC ATTORNEY CITY HALL MOSES LAKE WA013031A	WA 98837	PROSECUTING ATTY S OFF PROS ATTORNEY COUPEVILLE WA015013A	WA 98239	CITY PROSECUTOR OFFICE CITY ATTORNEY 501 EVERGREEN PT R MEDINA WA017081A	WA 98039	CITY ATTORNEYS OFC ATTORNEY CITY HALL MERCER ISLAND WA017201A	WA 98040	CITY ATTORNEY S OFF ATTORNEY 120 W MAIN ST GOLDENDALE WA020011A	WA 98620	COUNTY PROSECUTORS OFC PROSECUTING ATTY OKANOGAN WA024013A	WA 98840
CITY ATTORNEY OFFICE ATTORNEY P O BOX 596 QUINCY WA013041A	WA 98848	CITY ATTORNEYS OFC ATTORNEY CITY HALL OAK HARBOR WA015011A	WA 98277	CITY ATTORNEYS OFC ATTORNEY CITY HALL SEATTLE WA017091A	WA 98166	PROSECUTOR S OFF PROSECUTOR 245 S W 152ND ST SEATTLE WA017211A	WA 98166	CITY ATTORNEY S OFF ATTORNEY BOX 1 WHITE SALMON WA020021A	WA 98672	BREWSTER CITY ATTORNEY ATTORNEY CITY HALL BREWSTER WA024011A	WA 98812

CITY ATTORNEYS OFC ATTORNEY CITY HALL OKANOGAN WA 98840 WA024021A	TOWN PROSECUTOR ATTORNEY TOWN OF FIRCREST 113 RAMSDELL TACOMA WA 98466 WA027031A	ATTORNEY S OFFICE CITY ATTORNEY FIRST AND MYRTLE S MOUNT VERNON WA 98273 WA029031A	CITY ATTORNEYS OFC ATTORNEY CITY HALL STANWOOD WA 98292 WA031091A	ATTORNEYS OFFICE ATTORNEY CHEWELAH WA 99109 WA033011A	CITY ATTORNEYS OFFICE CITY ATTORNEY CITY HALL 210 LOTTIE ST BELLINGHAM WA 98225 WA037011A
CITY ATTORNEYS OFC ATTORNEY CITY HALL OMAK WA 98841 WA024031A	TOWN ATTORNEY S OFFICE TOWN ATTORNEY GIG HARBOR WA 98335 WA027041A	SEDRO WOOLLEY ATTY S OFC CITY ATTORNEY 120 WOODWORTH SEDRO WOOLLEY WA 98284 WA029041A	SULTAN CITY ATTORNEY ATTORNEY CITY HALL SULTAN WA 98294 WA031101A	CITY ATTORNEYS OFC ATTORNEY CITY HALL COLVILLE WA 99114 WA033021A	CITY ATTORNEYS OFC ATTORNEY CITY HALL BLAINE WA 98230 WA037021A
CITY ATTORNEYS OFC ATTORNEY CITY HALL OROVILLE WA 98844 WA024041A	TOWN ATTORNEYS OFFICE ATTORNEY PO BOX 578 MILTON WA 98354 WA027051A	PROSECUTING ATTY S OFF ATTORNEY STEVENSON WA 98648 WA030013A	CITY ATTORNEYS OFC ATTORNEY CITY HALL LYNNWOOD WA 98036 WA031111A	CO PROS ATTY S OFFICE PROS ATTY COURTHOUSE OLYMPIA WA 98501 WA034013A	CITY ATTORNEY OFFICE CITY ATTORNEY PO BOX 936 FERNDALE WA 98248 WA037031A
CITY ATTORNEYS OFC ATTORNEY CITY HALL COULFE DAM WA 99116 WA024051A	CITY ATTORNEYS OFC ATTORNEY CITY HALL ORTING WA 98360 WA027061A	PROSECUTING ATTY S OFC PROSECUTING ATTY COURT HOUSE EVERETT WA 98201 WA031013A	CITY ATTORNEYS OFC ATTORNEY CITY HALL LAKE STEVENS WA 98258 WA031121A	CITY ATTORNEYS OFC ATTORNEY CITY HALL OLYMPIA WA 98501 WA034011A	CITY ATTORNEYS OFC ATTORNEY CITY HALL LYNDEN WA 98264 WA037041A
PROSECUTING ATTY OFF ATTORNEY RAYMOND WA 98577 WA025013A	CITY ATTORNEY OFFICE CITY ATTORNEY PUYALLUP CITY HALL 218 W PIONEER PUYALLUP WA 98371 WA027071A	CITY ATTORNEYS OFC ATTORNEY CITY HALL ARLINGTON WA 98223 WA031011A	ATTORNEY S OFFICE PROSECUTOR 912 LEGAN BLDG SEATTLE WA 98101 WA031131A	CITY ATTORNEYS OFFICE CITY ATTORNEY CITY HALL TUNWATER WA 98501 WA034021A	CO PROS ATTY S OFFICE ATTORNEY E 116 SPRING ST COLFAX WA 99111 WA038013A
CITY ATTORNEY S OFFICE CITY ATTORNEY P O BOX 151 RAYMOND WA 98577 WA025011A	ATTORNEY S OFFICE ATTORNEY 5920 100TH ST S W TACOMA WA 98499 WA027081A	CITY ATTORNEY OFFICE ATTY 250 5TH AVE N EDMONDS WA 98020 WA031021A	COUNTY ATTORNEY S OFF CHIEF DEPUTY W 1116 BROADWAY SPOKANE WA 99201 WA032013A	CITY ATTORNEYS OFC CITY ATTORNEY 4515 LACEY BLVD LACEY WA 98501 WA034031A	CITY ATTORNEYS OFC ATTORNEY CITY HALL GOLFAX WA 99111 WA038011A
CITY ATTORNEYS OFC ATTORNEY CITY HALL SOUTH BEND WA 98586 WA025021A	CITY ATTORNEY S OFFICE ATTORNEY 1104 MAPLE STREET SUMNER WA 98390 WA027091A	CITY ATTORNEYS OFC ATTORNEY CITY HALL EVERETT WA 98201 WA031031A	CITY PROSECUTORS OFFICE PROSECUTOR 1322 FIRST STREET CHENEY WA 99004 WA032011A	COUNTY PROSECUTORS OFC PROSECUTING ATTY CATHLAMET WA 98612 WA035013A	CITY ATTORNEY OFFICE CITY ATTORNEY OLD NATIONAL BANK BLDG PULLMAN WA 99163 WA038021A
PROSECUTING ATTY S OFF ATTORNEY IONE WA 99139 WA026013A	CITY ATTORNEY S OFFICE CITY ATTORNEY 345 COUNTY CITY BL TACOMA WA 98402 WA027101A	CITY ATTORNEYS OFC ATTORNEY CITY HALL MARYSVILLE WA 98270 WA031041A	CITY ATTORNEYS OFC ATTORNEY CITY HALL DEER PARK WA 99006 WA032021A	COUNTY PROSECUTORS OFC PROSECUTING ATTY DRUMHELLEN BLDG WALLA WALLA WA 99362 WA036013A	CO PROS ATTY S OFFICE ATTORNEY CO COURTHOUSE YAKIMA WA 98902 WA039013A
CITY ATTORNEYS OFC ATTORNEY CITY HALL NEWPORT WA 99156 WA026011A	PROSECUTING ATTY S OFF ATTORNEY FRIDAY HARBOR WA 98250 WA028013A	CITY ATTORNEY ATTORNEY 113 N LEWIS ST MONROE WA 98272 WA031051A	CITY ATTORNEYS OFC ATTORNEY CITY HALL MEDICAL LAKE WA 99022 WA032031A	CITY ATTORNEYS OFC ATTORNEY CITY HALL COLLEGE PLACE WA 99324 WA036011A	CITY ATTORNEY S OFFICE CITY ATTORNEY S BOX 489 GRANDVIEW WA 98930 WA039011A
COUNTY PROSECUTORS OFC PROSECUTING ATTY COUNTY CITY BLDG TACOMA WA 98402 WA027013A	PROSECUTING ATTY S OFF PROSECUTOR LEGAL BUILDING MOUNT VERNON WA 98273 WA029013A	CITY ATTORNEY OFFICE CITY MANAGER CIVIC CENTER BLDG MOUNTLAKE TERRACE WA 98043 WA031061A	CITY ATTORNEYS OFC ATTORNEY CITY HALL MILLWOOD WA 99206 WA032041A	CITY ATTORNEYS OFC ATTORNEY CITY HALL WAITSBURG WA 99361 WA036021A	CITY ATTORNEYS OFC ATTORNEY CITY HALL GRANGER WA 98932 WA039021A
CITY ATTORNEYS OFC ATTORNEY CITY HALL BONNEY LAKE WA 98390 WA027011A	CITY ATTORNEYS OFC ATTORNEY CITY HALL ANACORTES WA 98221 WA029011A	CITY ATTORNEYS OFC ATTORNEY CITY HALL MUKILTEO WA 98275 WA031071A	CITY LEGAL DEPT CITY PROSECUTOR 501 CITY HALL SPOKANE WA 99201 WA032051A	CITY ATTORNEYS OFFICE ATTORNEY BAKER BUILDING WALLA WALLA WA 99362 WA036031A	CITY ATTORNEYS OFC ATTORNEY CITY HALL SELAH WA 98942 WA039031A
TOWN ATTORNEY S OFFICE PROSECUTING ATTY TOWN HALL BUCKLEY WA 98321 WA027021A	CITY ATTORNEYS OFC ATTORNEY CITY HALL BURLINGTON WA 98233 WA029021A	CITY ATTORNEYS OFC ATTORNEY CITY HALL SNOHOMISH WA 98290 WA031081A	CO PROS ATTY S OFFICE PROS ATTORNEY BOX 390 COLVILLE WA 99114 WA033013A	CO PROS ATTORNEY S OFF ATTORNEY COURTHOUSE 311 GRAND AVENUE BELLINGHAM WA 98225 WA037013A	CITY ATTORNEYS OFC ATTORNEY CITY HALL SUNNYSIDE WA 98944 WA039041A

CITY ATTORNEYS OFC ATTORNEY CITY HALL TOPPENISH WA 98948 WA039051A	BENTON SHERIFF S OFF SHERIFF COURTHOUSE PROSSER WA 99350 WA00300	CLALLAM CO CORONER OFF PROS ATTORNEY P A SAV LOAN BLDG FRONT LAUREL PORT ANGELES WA 98362 WA005013M	CO CORONOR S OFFICE CORONOR 338 E MAIN DAYTON WA 99328 WA007013M	FERRY CO SHERIFFS OFC SHERIFF REPUBLIC WA 99166 WA01000	QUINCY POLICE DEPT CHIEF P O BOX 426 QUINCY WA 98848 WA01303
WAPATO CITY ATTORNEY ATTORNEY CITY HALL WAPATO WA 98951 WA039061A	BENTON CITY POLICE DEPT CHIEF OF POLICE BENTON CITY WA 99320 WA00304	CLALLAM CO SHERIFF OFF SHERIFF 319 SO LINCOLN PORT ANGELES WA 98362 WA00500	CO SHERIFF S DEPT SHERIFF 341 E MAIN DAYTON WA 99328 WA00700	REPUBLIC POLICE DEPT MARSHAL REPUBLIC WA 99166 WA01001	SOAP LAKE POLICE DEPT CHIEF OF POLICE BOX 187 SOAP LAKE WA 98851 WA01304
CITY ATTORNEY S OFFICE CITY ATTORNEY 129 NORTH 2ND ST YAKIMA WA 98900 WA039071A	TOWN OF BENTON CITY TOWN MARSHALL BENTON CITY WA 99320 WA00304	FORKS POLICE DEPT CHIEF OF POLICE FORKS WA 98331 WA00502	DAYTON POLICE DEPT CHIEF OF POLICE DAYTON WA 99328 WA00701	FRANKLIN CO CORONER CORONER P O BOX 951 PASCO WA 99301 WA011013M	POLICE DEPARTMENT CHIEF OF POLICE CITY HALL WARDEN WA 98857 WA01311
CITY ATTORNEY S OFFICE CITY ATTORNEY MILB BLDG ZOKINS WA 89801 WA039081A	KENNEWICK POLICE DEPT CHIEF OF POLICE 210 W 6TH AVE KENNEWICK WA 99336 WA00301	TOWN OF FORKS MARSHALL PO BOX 28 FORKS WA 98331 WA00502	COWLITZ CO CORONER OFF CORONER COWLITZ CO CT HOUS KELSO WA 98626 WA008013M	SHERIFF S OFFICE SHERIFF PASCO WA 99301 WA01100	COUNTY CORONER S OFC CORONER MONTESANO WA 98563 WA014013M
DEFENDERS' OFFICES STATE LEVEL UNIV OF WASH LAW SCHOOL LEGAL AID CLINIC DIRECTOR SEATTLE WA 98111 WA017015D	POLICE DEPARTMENT CHIEF OF POLICE CITY HALL 601 7TH ST PROSSER WA 99350 WA00303	POLICE DEPT CHIEF OF POLICE 120 N OAK ST PORT ANGELES WA 98362 WA00501	COWLITZ CO SHERIFF OFF SHERIFF COWLITZ CO CT HOUS KELSO WA 98626 WA00800	PASCO POLICE DEPT CHIEF OF POLICE P O BOX 293 PASCO WA 99301 WA01102	COUNTY SHERIFFS DEPT SHERIFF MONTESANO WA 98563 WA01400
LOCAL LEVEL PUBLIC DEFENDER S OFF PUBLIC DEFENDER 1177 JADWIN BLDG RICHLAND WA 99352 WA003013D	POLICE DEPARTMENT CHIEF OF POLICE 1122 GROSSCUP BLVD WEST RICHLAND WA 99352 WA00305	SEQUIM POLICE DEPT CHIEF OF POLICE P O BOX 142 SEQUIM WA 98382 WA00503	POLICE DEPARTMENT CHIEF OF POLICE CITY HALL CASTLE ROCK WA 98611 WA00803	SHERIFF S OFFICE SHERIFF POMEROY WA 99347 WA01200	POLICE DEPARTMENT CHIEF OF POLICE PUBLIC SAFETY BLDG ABERDEEN WA 98520 WA01401
ENFORCEMENT AGENCIES STATE LEVEL PUBLIC SAFETY REGULATION STATE PATROL SUPERINTENDENT HOTRS GEN ADMIN BLDG OLYMPIA WA 98501 WAWSP00	POLICE DEPARTMENT POLICE CHIEF CITY HALL RICHLAND WA 99352 WA00302	CLARK CO CORONER S OFC CO CORONER 110 EAST 12TH ST VANCOUVER WA 98600 WA006013M	POLICE DEPT POLICE CHIEF N E 1ST AND GERANI BOX 862 KALAMA WA 98625 WA00804	POLICE DEPARTMENT CHIEF OF POLICE N 80 7TH ST POMEROY WA 99347 WA01201	COSMOPOLIS POLICE DEPT MARSHAL CORNER 1ST F STS COSMOPOLIS WA 98537 WA01406
LOCAL LEVEL COUNTY SHERIFF S OFFICE SHERIFF 210 W BROADWAY RITZVILLE WA 99169 WA00100	CHELAN CO SHERIFFS OFC SHERIFF COURTHOUSE 4TH FL WENATCHEE WA 98801 WA00400	COUNTY SHERIFFS DEPT SHERIFF VANCOUVER WA 98600 WA00600	KELSO POLICE DEPT CHIEF KELSO CITY HALL KELSO WA 98626 WA00801	GRANT CO CORONERS OFC COUNTY CORONER EPHRATA WA 98823 WA013013M	POLICE DEPT MARSHALL 902 N YOUNG ST ELMA WA 98541 WA01402
POLICE DEPARTMENT CHIEF OF POLICE 500 E MAIN OTHELLO WA 99344 WA00101	CASHMERE POLICE DEPT CHIEF OF POLICE C/O TOWN HALL 101 WOODRING STREET CASHMERE WA 98815 WA00401	POLICE DEPARTMENT CHIEF OF POLICE CITY HALL BATTLE GROUND WA 98604 WA00601	LONGVIEW POLICE DEPT CHIEF CITY HALL P O BOX 128 LONGVIEW WA 98632 WA00802	GRANT CO SHERIFFS OFC SHERIFF EPHRATA WA 98823 WA01300	HOQUIAM POLICE DEPT CHIEF OF POLICE 607 8TH ST HOQUIAM WA 98550 WA01403
RITZVILLE POLICE DEPT CHIEF 215 N ADAMS ST RITZVILLE WA 99169 WA00102	CHELAW POLICE DEPT CHIEF OF POLICE C/O CITY HALL CHELAN WA 98816 WA00402	POLICE DEPARTMENT CHIEF OF POLICE 323 W E FRANKLIN CAMAS WA 98607 WA00602	WOODLAND POLICE DEPT POLICE CHIEF WOODLAND WA 98674 WA00805	EPHRATA POLICE DEPT CHIEF OF POLICE CITY HALL EPHRATA WA 98823 WA01301	MCCLEARY POLICE DEPT MARSHAL BOX 360 MCCLEARY WA 98557 WA01404
ASOTIN CO SHERIFFS OFC SHERIFF ASOTIN WA 99402 WA00200	LEAVONWORTH POLICE DEPT CHIEF OF POLICE LEAVONWORTH WA 98826 WA00403	VANCOUVER POLICE DEPT CHIEF OF POLICE 300 E 13TH ST VANCOUVER WA 98660 WA00603	CO SHERIFF S DEPARTMENT COUNTY SHERIFF BOX 665 WATERVILLE WA 98858 WA00900	CITY POLICE DEPT CHIEF OF POLICE P O BOX 180 GRAND COULEE WA 99133 WA01307	POLICE DEPT CHIEF CITY HALL MONTESANO WA 98563 WA01405
POLICE DEPARTMENT CHIEF OF POLICE CITY HALL CLARKSTON WA 99403 WA00201	CITY POLICE DEPT CHIEF P O BOX 519 WENATCHEE WA 98801 WA00404	WASHOUGAL POLICE DEPT CHIEF OF POLICE 1622 B ST WASHOUGAL WA 98671 WA00604	POLICE DEPARTMENT MARSHAL WATERVILLE WA 98858 WA00905	POLICE DEPARTMENT CHIEF OF POLICE MOSES LAKE WA 98837 WA01302	CORONER S OFFICE PROS ATTORNEY COUPEVILLE WA 98239 WA015013M
BENTON CO CORONER OFF CORONER MEDICAL ARTS BLDG RICHLAND WA 99352 WA003013M					

CO SHERIFF S OFFICE SHERIFF COUPEVILLE WA 98239 WA01500	HOUGHTON POLICE DEPT CHIEF OF POLICE HOUGHTON WA 00000 WA01705	POLICE DEPARTMENT CHIEF OF POLICE 730 S 225TH ST DES MOINES WA 98016 WA01717	ROSLYN POLICE DEPARTMENT CHIEF OF POLICE CITY HALL ROSLYN WA 98941 WA01904	CO SHERIFF S DEPT SHERIFF MASON CO COURTHOUS SHELTON WA 98584 WA02300	CO CORNER S OFFICE CORNER IONE WA 99139 WA026013M
OAK HARBOR POLICE DEPT CHIEF OF POLICE 3084 300 WEST OAK HARBOR WA 98277 WA01501	ISSAQUAH POLICE DEPT CHIEF OF POLICE ISSAQUAH WA 98027 WA01706	POLICE DEPARTMENT CHIEF OF POLICE CITY HALL YARROW POINT WA 98004 WA01731	SHERIFF S OFFICE GOLDENDALE WA 98620 WA02000	SHELTON POLICE DEPT CHIEF OF POLICE SHELTON WA 98584 WA02304	CO SHERIFF S DEPT SHERIFF 418 SOUTH SCOTT NEWPORT WA 99156 WA02600
CO SHERIFF S OFFICE SHERIFF COURTHOUSE PORT TOWNSEND WA 98368 WA01600	KENT POLICE DEPT CHIEF OF POLICE KENT WA 98031 WA01707	POLICE DEPARTMENT POLICE CHIEF 3505 88TH AVE S E MERCER ISLAND WA 98040 WA01709	CITY POLICE DEPT CHIEF OF POLICE BOX 66 GOLDENDALE WA 98620 WA02001	SHELTON POLICE DEPT CHIEF POLICE DEPARTMENT SHELTON WA 98584 WA02301	NEWPORT POLICE DEPT MARSHAL PO BOX 546 NEWPORT WA 99156 WA02602
PORT TOWNSEND POLICE DPT CHIEF 1310 LAWRENCE ST PORT TOWNSEND WA 98368 WA01601	KIRKLAND POLICE DEPT CHIEF OF POLICE 210 MAIN ST KIRKLAND WA 98033 WA01708	KITSAP CO CORONER S OFF CORONER 1207 11TH ST BREMERTON WA 98310 WA018013M	CITY POLICE DEPT CHIEF OF POLICE BOX 1 WHITE SALMON WA 98672 WA02006	COUNTY SHERIFFS OFC SHERIFF OKANOGAN WA 98840 WA02400	PIERCE CO CORONERS OFC COUNTY CORONER CO CITY BLDG RM 73 TACOMA WA 98402 WA027013M
MEDICAL EXAMINER S OFF KING COUNTY MED EXAMINER 100 CROCKETT SEATTLE WA 98109 WA017013M	MEDINA POLICE DEPT CHIEF 501 EVERGREEN PT R MEDINA WA 98039 WA01720	KITSAP CO SHERIFF S OFF UNDER SHERIFF 614 DIVISION ST PORT ORCHARD WA 98366 WA01800	LEWIS CO SHERIFF S DEPT SHERIFF CHEHALIS WA 98532 WA02100	POLICE DEPARTMENT CHIEF OF POLICE CITY HALL BREWSTER WA 98812 WA02401	PIERCE CO SHERIFFS OFC COUNTY SHERIFF CO CITY BLDG RM 16 TACOMA WA 98402 WA02700
KING CO SHERIFF S OFF SHERIFF KING CO COURTHOUSE 516 3RD AVE SEATTLE WA 98104 WA01700	POLICE DEPARTMENT CHIEF OF POLICE CITY HALL NORTH BEND WA 98045 WA01711	BREMERTON POLICE DEPART CHIEF 239 FOURTH ST BREMERTON WA 98310 WA01801	CENTRALIA POLICE DEPT CHIEF OF POLICE CENTRALIA WA 98531 WA02101	OKANOGAN POLICE DEPT POLICE CHIEF P O BOX 529 OKANOGAN WA 98840 WA02402	POLICE DEPARTMENT CHIEF OF POLICE CITY HALL BONNEY LAKE WA 98390 WA02714
POLICE DEPARTMENT POLICE CHIEF 308 FIRST AVENUE ALGONA WN 98002 WA01714	PACIFIC POLICE DEPT CHIEF OF POLICE 2014 73RD AVE NE PACIFIC WA 98371 WA01721	CITY POLICE DEPT CHIEF OF POLICE CITY HALL PORT ORCHARD WA 98366 WA01804	CHEHALIS POLICE DEPT CHIEF OF POLICE 1021 PARK ST CHEHALIS WA 98532 WA0210	OMAK CITY POLICE DEPT CHIEF OF POLICE OMAK WA 98841 WA02403	BUCKLEY POLICE DEPT CHIEF TOWN HALL BUCKLEY WA 98321 WA02704
AUBURN POLICE DEPARTMENT CHIEF OF POLICE 20 A ST N W AUBURN WA 98002 WA01701	REDMOND CITY POLICE DEPT CHIEF OF POLICE REDMOND WA 98052 WA01712	POULSBO POLICE DEPT CHIEF P O BOX 98 POULSBO WA 98370 WA01805	MORTON POLICE DEPT CHIEF OF POLICE MORTON WA 98356 WA02103	OROVILLE POLICE DEPT CHIEF OF POLICE 1822 JUNIPER OROVILLE WA 98844 WA02404	FIRCREST POLICE DEPT CHIEF OF POLICE 115 RAMSDELL TACOMA WA 98466 WA02717
BELLEVUE POLICE DEPT CHIEF OF POLICE 111 116TH AVE SE BELLEVUE WA 98004 WA01702	RENTON POLICE DEPT CHIEF OF POLICE 200 HILL AVE SO RENTON WA 98055 WA01713	POLICE DEPARTMENT CHIEF OF POLICE CITY HALL WINSLOW WA 98110 WA01807	CO SHERIFF S DEPT SHERIFF DAVENPORT WA 99122 WA02200	POLICE DEPARTMENT POLICE CHIEF 1106 CAMAS COULEE DAM WA 99116 WA02407	GIG HARBOR POLICE DEPT CHIEF OF POLICE PO BOX GIG HARBOR WA 98335 WA02718
BOTHELL POLICE DEPT CHIEF OF POLICE BOTHELL CITY HALL BOTHELL WA 98011 WA01703	SEATTLE POLICE DEPT CHIEF OF POLICE PUBLIC SAFETY BLDG 610 3RD AVE SEATTLE WA 98104 WASPD00	COUNTY SHERIFFS OFC SHERIFF COURTHOUSE ELLENSBURG WA 98926 WA01900	CITY OF DAVENPORT POLICE CHIEF OF POLICE DAVENPORT WA 99122 WA02201	SHERIFF S DEPT SHERIFF SOUTH BEND WA 98586 WA02500	MILTON POLICE DEPT CHIEF OF POLICE PO BOX 578 MILTON WA 98354 WA02709
CLYDE HILL POLICE DEPT CHIEF OF POLICE 9615 NE 24TH ST BELLEVUE WA 98004 WA01725	SNOQUALMIE POLICE DEPT TOWN MARSHAL TOWN HALL SNOQUALMIA WA 98065 WA01722	CLE ELUM POLICE DEPT CHIEF OF POLICE CLE ELUM WA 98922 WA01902	POLICE DEPARTMENT CHIEF OF POLICE BOX 218 ODESSA WA 99159 WA02206	POLICE DEPARTMENT CHIEF OF POLICE 126 COMMERCIAL ST RAYMOND WA 98677 WA02501	ORTING POLICE DEPT CHIEF OFFICER P O BOX 665 100 N TRAIN AVE ORTING WA 98360 WA02713
POLICE DEPT CHIEF OF POLICE CITY HALL 1339 GRIFFIN AVE ENUMCLAW WA 98022 WA01704	POLICE DEPT MARSHAL BLACK DIAMOND WA 98010 WA01715	POLICE DEPT CHIEF OF POLICE 1ST AVE PEARL ST ELLENSBURGH WA 98926 WA01901	POLICE DEPARTMENT CHIEF OF POLICE WILBUR WA 99185 WA02202	POLICE DEPARTMENT CHIEF OF POLICE CITY HALL SOUTH BEND WA 98586 WA02502	PUYALLUP POLICE DEPT POLICE CHIEF 311 W PIONEER AVE PUYALLUP WA 98371 WA02701

POLICE DEPT MARSHAL BOX M STEILACOOH WA02711 WA 98388	COUNTY SHERIFF S OFC SHERIFF 4TH FLOOR COURTHOU EVERETT WA03100 WA 98201	LYNNWOOD POLICE DEPT CHIEF OF POLICE 19424 56TH AVE W LYNNWOOD WA03104 WA 98036	CO SHERIFF S DEPT SHERIFF COURTHOUSE OLYMPIA WA03400 WA 98501	BELLINGHAM POLICE DEPT CHIEF OF POLICE CITY HALL 210 LOTTIE ST BELLINGHAM WA03701 WA 98225	SELAH POLICE DEPT CHIEF OF POLICE 115 W NACHES AVE SELAH WA03911 WA 98942
SUMNER POLICE DEPARTMENT CHIEF 1104 MAPLE ST SUMNER WA02702 WA 98390	POLICE DEPARTMENT CHIEF ARLINGTON WA03101 WA 98223	BRIER POLICE DEPT M W PEARSON 23303 BRIER RD BRIER WA03108 WA 98036	OLYMPIA POLICE DEPT CHIEF OF POLICE CITY HALL 8TH PLUM OLYMPIA WA03401 WA 98501	BLAINE POLICE DEPARTMENT CHIEF BOX 490 BLAINE WA03702 WA 98230	SUNNYSIDE POLICE DEPT CHIEF OF POLICE SUNNYSIDE WA03902 WA 98944
POLICE DEPARTMENT CHIEF OF POLICE 272 COUNTY CITY BL TACOMA WA02703 WA 98402	POLICE DEPT CHIEF OF POLICE DARRINGTON WA03109 WA 98241	COUNTY CORONER S OFFICE CORONER W 1116 BROADWAY SPOKANE WA032013M WA 99201	TUMWATER POLICE DEPT CHIEF OF POLICE TUMWATER WA03402 WA 98501	FERNDALE POLICE DEPT CHIEF P O BOX 936 FERNDALE WA03704 WA 98248	POLICE DEPARTMENT CHIEF OF POLICE W 1ST AVE S DIV ST TOPPENISH WA03903 WA 98948
FIFE POLICE DEPARTMENT CHIEF OF POLICE CITY HALL FIFE WA02707 WA 98424	EDMONDS POLICE DEPT CHIEF 250 5TH AVE N EDMONDS WA03102 WA 98020	SHERIFF S DEPT CHIEF DEPUTY W 1116 BROADWAY SPOKANE WA03200 WA 99201	LACEY POLICE DEPARTMENT CHIEF P O DRAWER 8 LACEY WA03404 WA 98501	LYNDEN POLICE DEPARTMENT CHIEF OF POLICE CITY HALL LYNDEN WA03705 WA 98264	UNION GAP POLICE DEPT CHIEF OF POLICE 102 W AHTANUM RD UNION GAP WA03904 WA 98903
CO SHERIFF S DEPT SHERIFF FRIDAY HARBOR WA02800 WA 98250	EVERETT POLICE DEPT CHIEF CITY HALL EVERETT WA03103 WA 98201	CHENEY POLICE DEPARTMENT CHIEF 609 SECOND STREET CHENEY WA03201 WA 99004	COUNTY CORONERS OFC CORONER CATHLAMET WA035013M WA 98612	CO CORONER S OFFICE CORONER E 116 SPRING ST COLFAX WA038013M WA 99111	WAPATO CITY POLICE DEPT CHIEF OF POLICE WAPATO WA03913 WA 98951
CORONER S OFFICE CORONER 208 KINCAID MOUNT VERNON WA029013M WA 98273	MARYSVILLE POLICE DEPT CHIEF OF POLICE MARYSVILLE WA03105 WA 98270	DEER PARK POL DEPT CHIEF OF POLICE BOX 205 DEER PARK WA03202 WA 99006	COUNTY SHERIFFS OFC SHERIFF CATHLAMET WA03500 WA 98612	CO SHERIFF S DEPT SHERIFF COURTHOUSE COLFAX WA03800 WA 99111	YAKIMA POLICE DEPT CHIEF OF POLICE YAKIMA WA03905 WA 98900
SKAGIT CO SHERIFF S DEPT SHERIFF COURT HOUSE ANNEX MOUNT VERNON WA02900 WA 98273	MONROE POLICE DEPT CHIEF OF POLICE E MAIN ST MONROE WA03112 WA 98272	MEDICAL LAKE POLICE DEPT CHIEF OF POLICE TOWN HALL MEDICAL LAKE WA03203 WA 99022	COUNTY SHERIFFS OFC SHERIFF 315 W MAIN WALLA WALLA WA03600 WA 99362	COLFAX POLICE DEPT CHIEF OF POLICE N 400 MILL ST COLFAX WA03801 WA 99111	ZILLAH POLICE DEPT MARSHAL BOX 475 ZILLAH WA03906 WA 98953
ANACORTES POLICE DEPT CHIEF OF POLICE 1011 12TH ST ANACORTES WA02901 WA 98221	POLICE DEPT CHIEF OF POLICE CIVIC CENTER BLDG MOUNTLAKE TERRACE WA03106 WA 98043	POLICE DEPARTMENT CHIEF OF POLICE CITY HALL MILLWOOD WA03208 WA 99206	COLLEGE PLACE POL DEPT TOWN MARSHAL CITY HALL COLLEGE PLACE WA03602 WA 99324	CITY POLICE DEPT CHIEF OF POLICE 110 OLSON ST PULLMAN WA03803 WA 99163	COURTS STATE LEVEL SUPREME COURT CHIEF JUSTICE TEMPLE OF JUSTICE OLYMPIA WA034015J WA 98501
BURLINGTON POLICE DEPT CHIEF OF POLICE BURLINGTON WA02904 WA 98233	MUKILTEO POLICE DEPT CHIEF OF POLICE P O BOX 178 MUKILTEO WA03113 WA 98275	SPOKANE POLICE DEPT CHIEF OF POLICE W 242 RIVERSIDE AV SPOKANE WA03204 WA 99201	POLICE DEPT CHIEF OF POLICE 212 MAIN ST WAITSBURG WA03603 WA 99361	POLICE DEPARTMENT CHIEF SECURITY DIV SAFETY BUILDING STATE UNIV PULLMAN WA03805 WA 99163	SUPERIOR CT OF ASOTIN COLUMBIA GARFIELD JUDGE COURTHOUSE POMEROY WA012015J WA 99347
POLICE DEPT CHIEF OF POLICE 910 CLEVELAND AVE MOUNT VERNON WA02902 WA 98273	POLICE DEPT POLICE CHIEF 1009 FIRST ST SNOHOMISH WA01307 WA 98290	CO SHERIFF S DEPT SHERIFF BOX 186 COLVILLE WA03300 WA 99114	POLICE DEPARTMENT CHIEF OF POLICE P O BOX 666 WALLA WALLA WA03601 WA 99362	CO SHERIFF S DEPT SHERIFF COURTHOUSE YAKIMA WA03900 WA 98901	SUPERIOR COURT OF BENTON FRANKLIN JUDGE COURTHOUSE PASCO WA011015J WA 99301
SEDRO WOOLLEY POL DEPT CHIEF OF POLICE WOODWORTH MURDOCK MUNICIPAL BLDG SEDRO WOOLLEY WA02903 WA 98284	POLICE DEPARTMENT CHIEF OF POLICE CITY HALL STANWOOD WA03114 WA 98292	CHEWELAH POLICE DEPT CHIEF OF POLICE CHEWELAH WA03301 WA 99109	CO CORONER S OFFICE CORONER 1800 C STREET BELLINGHAM WA037013M WA 98225	GRANDVIEW POLICE DEPT CHIEF OF POLICE GRANDVIEW WA03901 WA 98930	CHELAN CO SUPERIOR CT JUDGE COURTHOUSE WENATCHEE WA004015J WA 98801
CO SHERIFF S OFFICE SHERIFF STEVENSON WA03000 WA 98648	SULTAN POLICE DEPART CHIEF OF POLICE CITY HALL SULTAN WA03115 WA 98294	POLICE DEPARTMENT CHIEF OF POLICE CITY HALL 170 S OAK COLVILLE WA03302 WA 99114	CO SHERIFF S DEPT SHERIFF COURTHOUSE 311 GRAND AVENUE BELLINGHAM WA03700 WA 98225	GRANGER POLICE DEPT CHIEF OF POLICE P O BOX 514 GRANGER WA03907 WA 98932	SUPERIOR CT OF CLALLAM JEFFERSON JUDGE COURTHOUSE PORT ANGELES WA005015J WA 98362

CLARK CO SUPERIOR CT JUDGE COURTHOUSE VANCOUVER WA 98660 WA006015J	SUPERIOR CT OF HASON THURSTON JUDGE COURTHOUSE OLYMPIA WA 98501 WA034025J	COURT OF APPEALS DISTRICT 2 CHIEF JUDGE TACOMA WA 98400 WA027025J	MUNICIPAL POLICE COURT JUDGE CITY HALL RICHLAND WA 99352 WA003051J	MUNICIPAL COURT MUNICIPAL JUDGE CITY HALL BATTLE GROUND WA 98604 WA006011J	JUSTICE COURT DIST 1 JUSTICE OF PEACE REPUBLIC WA 99166 WA010013J
SUPERIOR COURT OF COWLITZ JUDGE COURTHOUSE KELSO WA 98626 WA008015J	SUPERIOR COURT OF PACIFIC WAHIAKUM JUDGE COURTHOUSE SOUTH BEND WA 98586 WA025015J	COURT OF APPEALS DISTRICT 3 CHIEF JUDGE SPOKANE WA 99200 WA032025J	CHELAN CO JUSTICE COURT JUDGE COURTHOUSE WENATCHEE WA 98801 WA004013J	CAMAS MUNICIPAL COURT JUDGE 631 N E FOURTH AVE CAMAS WA 98607 WA006021J	POLICE COURT POLICE JUDGE CITY HALL REPUBLIC WA 99166 WA010011J
SUPERIOR CT OF DOUGLAS GRANT JUDGE COURTHOUSE EPHRATA WA 98823 WA013015J	SUPERIOR COURT OF PEND OREILLE STNS JUDGE COURTHOUSE COLVILLE WA 99114 WA033015J	LOGAL LEVEL MUNICIPAL COURT JUDGE 500 E MAIN OTHELLO WA 99344 WA001011J	CASHMERE POLICE COURT POLICE JUDGE C/O TOWN HALL 101 WOODRING STREET CASHMERE WA 98815 WA004011J	MUNICIPAL COURT JUDGE CITY HALL 210 E 13TH ST VANCOUVER WA 98660 WA006031J	EPHRATA POLICE COURT POL JUDGE CITY HALL EPHRATA WA WA010021J
SUPERIOR CT OF FERRY OKANOGAN JUDGE COURTHOUSE OKANOGAN WA 98840 WA024015J	SUPERIOR COURT OF PIERCE COUNTY JUDGE COURTHOUSE TACOMA WA 98402 WA027015J	POLICE COURT JUDGE 516 W BROADWAY AVE RITZVILLE WA 99169 WA001021J	TOWN POLICE COURT JUDGE CHELAN WA 98816 WA004021J	WASHOUGAL POLICE COURT JUDGE 1622 B ST WASHOUGAL WA 98671 WA006041J	JUSTICE COURT PASCO WA 99301 WA011013J
SUPERIOR COURT OF GRAYS HARBOR JUDGE COURTHOUSE MONTESANO WA 98563 WA014015J	SUPERIOR CT OF SAN JUAN WHATCOM JUDGE COURTHOUSE BELLINGHAM WA 98225 WA037015J	ASOTIN CO JUSTICE COURT JUSTICE OF PEACE CLARKSTON WA 99403 WA002013J	POLICE COURT POLICE JUDGE 409 ASH STREET LEAVENWORTH WA 98826 WA004031J	CITY POLICE COURT JUDGE COUNTY COURTHOUSE DAYTON WA 99328 WA007011J	POLICE COURT POLICE JUDGE CITY HALL PASCO WA 99301 WA011011J
SUPERIOR COURT OF ISLAND SKAGIT JUDGE COURTHOUSE MOUNT VERNON WA 98273 WA029015J	SUPERIOR CT OF SNOHOMISH COUNTY JUDGE COURTHOUSE EVERETT WA 98201 WA031015J	CLARKSTON POLICE COURT JUDGE CITY HALL CLARKSTON WA 99403 WA002011J	CLALLAM CO DIST JUS CT JUDGE 134 WEST FRONT PORT ANGELES WA 98362 WA005013J	COWLITZ CO JUSTICE COURT JUDGE KELSO WA 98626 WA008013J	JUSTICE COURT JUSTICE OF PEACE POMEROY WA 99347 WA012013J
SUPERIOR CT OF KING JUDGE COURTHOUSE SEATTLE WA 98104 WA017015J	SUPERIOR CT OF SPOKANE COUNTY JUDGE COURTHOUSE SPOKANE WA 99201 WA032015J	JUSTICE OF PEACE COURT JUSTICE CITY HALL KENNEWICK WA 99336 WA003013J	MUNICIPAL COURT MUNICIPAL JUDGE CITY HALL FORKS WA 98331 WA005011J	MUNICIPAL COURT JUDGE CITY HALL CASTLE ROCK WA 98611 WA008011J	POLICE COURT POLICE JUDGE N 80 7TH ST POMEROY WA 99347 WA012011J
SUPERIOR COURT OF KITSAP COUNTY JUDGE COURTHOUSE PORT ORCHARD WA 98366 WA018015J	SUPERIOR CT OF WALLA WALLA JUDGE COURTHOUSE WALLA WALLA WA 99362 WA036015J	JUSTICE OF PEACE COURT JUSTICE CITY HALL RICHLAND WA 99352 WA003023J	MUNICIPAL COURT COURT CLERK 140 W FRONT STREET PORT ANGELES WA 98362 WA005021J	MUNICIPAL COURT COURT JUDGE N E 1ST AND GERNIUI BOX 453 KALAMA WA 98625 WA008021J	EPHRATA JUSTICE COURT JUSTICE EPHRATA WA 98823 WA013013J
SUPERIOR COURT OF KITITAS COUNTY JUDGE COURTHOUSE ELLENSBURG WA 98926 WA019015J	SUPERIOR CT OF WHITMAN COUNTY JUDGE COURTHOUSE COLFAX WA 99111 WA038015J	TOWN OF BENTON CITY JUDGE BENTON CITY WA 99320 WA003011J	MUNICIPAL COURT MUNICIPAL JUDGE CITY HALL SEGUIM WA 98382 WA005031J	KELSO MUNICIPAL COURT JUDGE CITY HALL KELSO WA 98626 WA008031J	WESTLAKE JUSTICE COURT JUSTICE WESTLAKE WA 00000 WA013023J
SUPERIOR COURT OF KLIKITAT SKAMANIA JUDGE COURTHOUSE GOLDENDALE WA 98620 WA020015J	SUPERIOR CT OF YAKIMA COUNTY JUDGE COURTHOUSE YAKIMA WA 98901 WA039015J	KENNEWICK MUNICIPAL CT POLICE COURT JUDGE 210 W 6TH AVE KENNEWICK WA 99336 WA003021J	FAMILY JUVENILE COURT JUDGE 11TH AND ESTHER VANCOUVER WA 98600 WA006013J	LONGVIEW MUNICIPAL CT JUDGE COWLITZ CO CTHOUSE KELSO WA 98626 WA008041J	CITY POLICE COURT JUDGE P O BOX 180 GRAND COULEE WA 99133 WA013011J
SUPERIOR CT OF LEWIS JUDGE COURTHOUSE CHEHALIS WA 98532 WA021015J	SUPERIOR COURT OF ADAMS COUNTY CLERK COURTHOUSE RITZVILLE WA 99169 WA001025J	POLICE COURT POLICE JUDGE CITY HALL 601 7TH ST PROSSER WA 99350 WA003031J	DISTRICT JUSTICE COURT JUSTICE VANCOUVER WA 98600 WA006023J	WOODLAND MUNICIPAL COURT JUDGE P O BOX 337 WOODLAND WA 98674 WA008051J	MUNICIPAL COURTS JUDGE MOSES LAKE WA 98837 WA013021J
SUPERIOR COURT OF LINCOLN COUNTY JUDGE COURTHOUSE DAVENPORT WA 99122 WA022015J	COURT OF APPEALS DISTRICT 1 CHIEF JUDGE WA 98100 WA017035J	POLICE COURT JUDGE 963 NORTH 59TH AVE WEST RICHLAND WA 99352 WA003041J	DISTRICT JUSTICE COURT JUSTICE WASHOUGAL WA 98671 WA006033J	POLICE COURT CHIEF WATERVILLE WA 98858 WA009011J	QUINCY POLICE COURT JUDGE P O BOX 605 QUINCY WA 98848 WA013031J



MUNICIPAL COURT JUDGE BOX 187 SOAP LAKE WA013041J	WA	98851	MUNICIPAL COURT MUNICIPAL JUDGE CITY HALL WESTPORT WA014071J	WA	98585	KING CO JUSTICE COURT NORTH EAST DIST JUSTICE 16625 REDMOND WAY REDMOND WA017083J	WA	98052	POLICE COURT POLICE JUDGE CITY HALL NORTH BEND WA017081J	WA	98045	POLICE COURT POLICE JUDGE CITY HALL PORT ORCHARD WA018021J	WA	98366	DIST JUSTICE COURT JUDGE CHEHALIS WA021013J	WA	98532
POLICE COURT POLICE JUDGE CITY HALL WARDEN WA013051J	WA	98857	ISLAND CO JUSTICE COURT JUSTICE OF PEACE COUPEVILLE WA015013J	WA	98239	KING CO JUSTICE COURT ROXBURY DIST JUSTICE 111 S 138TH SEATTLE WA017093J	WA	98178	MUNICIPAL COURT JUDGE 615 1ST AVE E PACIFIC WA017091J	WA	98047	POULSBO MUNICIPAL COURT JUDGE P O BOX 98 POULSBO WA018031J	WA	98370	MUNICIPAL COURT JUDGE CENTRALIA WA021011J	WA	98531
JUSTICE COURT JUSTICE OAKVILLE WA014013J	WA	98568	MUNICIPAL COURT MUNICIPAL JUDGE 3084-300 WEST OAK HARBOR WA015011J	WA	98277	KING CO JUSTICE COURT RENTON DIST JUSTICE MUN BLDG 6TH FLOOR RENTON WA017103J	WA	98055	RENTON POLICE COURT POLICE JUDGE 200 MILL AVE SO RENTON WA017101J	WA	98055	POLICE COURT POLICE JUDGE CITY HALL WINSLOW WA018041J	WA	98110	CHEHALIS MUNICIPAL COURT JUDGE 1107 PARK STREET CHEHALIS WA021021J	WA	98532
JUSTICE COURT JUSTICE MCCLEARY WA014023J	WA	98557	CO JUSTICE COURT JUDGE 112 TAYLOR ST PORT TOWNSEND WA016013J	WA	98368	KING CO JUSTICE COURT SHORELINE DIST JUSTICE 1124 N 183RD SEATTLE WA017113J	WA	98133	SEATTLE MUNICIPAL COURT PRESIDING JUDGE PUBLIC SAFETY BLDG 610 3RD AVE SEATTLE WA017111J	WA	98104	UPPER COUNTY JUSTICE CT JUSTICE OF PEACE CLE ELUM WA019013J	WA	98922	MORTON POLICE COURT JUDGE MORTON WA021031J	WA	98356
JUSTICE COURT JUSTICE MONTESANO WA014033J	WA	98563	POLICE COURT JUDGE CITY HALL PORT TOWNSEND WA016011J	WA	98368	KING CO JUSTICE COURT VASHON DIST JUSTICE P O BOX 111 VASHON WA017123J	WA	98070	POLICE COURT POLICE COURT JUDGE P O BOX 480 SNOQUALMIE WA017121J	WA	98065	LOWER COUNTY JUSTICE CT JUSTICE OF PEACE ELLENSBURG WA019023J	WA	98926	NORTHERN DISTRICT COURT JUDGE WILBUR WA022013J	WA	99185
JUSTICE COURT JUSTICE CENTRAL PARK WA014043J	WA	98520	KING CO JUSTICE COURT SEATTLE DIST JUSTICE KING CO COURTHOUSE SEATTLE WA017013J	WA	98104	MUNICIPAL COURT MUNICIPAL JUDGE 308 FIRST AVENUE ALGONA WA017011J	WA	98002	MUNICIPAL COURT JUDGE BOX 456 BLACK DIAMOND WA017131J	WA	98010	CLE ELUM POLICE COURT POLICE JUDGE 105 W 2ND ST CLE ELUM WA019011J	WA	98922	SOUTHERN DISTRICT COURT JUDGE SPRAGUE WA022023J	WA	99032
ABERDEEN POLICE COURT JUDGE 311 E HERON ST ABERDEEN WA014011J	WA	98520	KING CO JUSTICE COURT AIRPORT DIST JUSTICE 19925 1ST S SEATTLE WA017023J	WA	98148	AUBURN MUNICIPAL COURT JUDGE 20 A ST N W AUBURN WA017021J	WA	98002	MUNICIPAL COURT COURT CLERK 730 S 225TH ST DES MOINES WA017141J	WA	98016	MUNICIPAL COURT JUDGE 406 N PEARL ST ELLENSBURGH WA019021J	WA	98926	POLICE COURT JUDGE CITY HALL DAVENPORT WA022011J	WA	99122
COSMOPOLIS COURT POLICE JUDGE CORNER 1ST F STS COSMOPOLIS WA014021J	WA	98537	KING CO JUSTICE COURT AUKEEN DIST JUSTICE CITY HALL 20 A ST AUBURN WA017033J	WA	98002	MUNICIPAL COURT JUDGE 1339 GRIFFIN AVE CITY HALL ENUMCLAW WA017031J	WA	98022	MUNICIPAL COURT MUNICIPAL JUDGE CITY HALL MERCER ISLAND WA017151J	WA	98040	POLICE COURT JUDGE CITY HALL ROSLYN WA019031J	WA	98941	MUNICIPAL COURT JUDGE BOX 95 SPRAGUE WA022021J	WA	99032
POLICE COURT POLICE JUDGE 112 E NALDRIP ST ELMA WA014031J	WA	98541	KING CO JUSTICE COURT BELLEVUE DIST JUSTICE 111-116 SE BELLEVUE SEATTLE WA017043J	WA	98122	POLICE COURT POLICE JUDGE CITY HALL ISSAQUAH WA017041J	WA	98027	MUNICIPAL COURT JUDGE 17711 BALLINGER WA SEATTLE WA017161J	WA	98155	E KLICKITAT JUSTICE CT JUSTICE COURTHOUSE GOLDENDALE WA020013J	WA	98620	MUNICIPAL COURT MUNICIPAL JUDGE CITY HALL WILBUR WA022031J	WA	99185
HOQUIAM POLICE COURT JUDGE 205 8TH ST HOQUIAM WA014041J	WA	98550	KING CO JUSTICE COURT FED WAY DIST JUSTICE 1640A S 312TH FEDERAL WAY WA017053J	WA	98002	POLICE COURT JUDGE CITY HALL KENT WA017051J	WA	98031	CO DIST JUST COURT 1 JUDGE COURTHOUSE PORT ORCHARD WA018013J	WA	98366	W KLICKITAT JUSTICE CT JUSTICE CITY HALL BINGEN WA020023J	WA	98605	CO JUSTICE COURT JUSTICE OF PEACE MASON CO COURTHOUSE SHELTON WA023013J	WA	98584
MCCLEARY MUNICIPAL COURT POLICE JUDGE BOX 360 MCCLEARY WA014051J	WA	98557	KING CO JUSTICE COURT ISSAQUAH DIST JUSTICE 318 10TH AVE N ISSAQUAH WA017063J	WA	98027	MEDINA MUNICIPAL COURT JUDGE 501 EVERGREEN PT R MEDINA WA017061J	WA	98039	CO DIST JUST COURT 2 JUDGE CITY HALL BREMERTON WA018023J	WA	98310	MUNICIPAL COURT JUDGE GOLDENDALE WA020011J	WA	98620	SHELTON MUNICIPAL COURT JUDGE POLICE DEPARTMENT SHELTON WA023011J	WA	98584
POLICE COURT JUDGE P O BOX 748 MONTESANO WA014061J	WA	98563	KING CO JUSTICE COURT MERCER IS DIST JUSTICE 3505 88TH SE MERCER ISLAND WA017073J	WA	98040	POLICE COURT JUDGE CITY HALL SEATTLE WA017071J	WA	98166	BREMERTON MUNICIPAL CT JUDGE 239 FOURTH ST BREMERTON WA018011J	WA	98310	MUNICIPAL COURT JUDGE BOX 455 WHITE SALMON WA020021J	WA	98672	OKANOGAN CO JUSTICE CT JUSTICE OF PEACE OKANOGAN WA024013J	WA	98840

MUNICIPAL COURT MUNICIPAL JUDGE CITY HALL DREWSTER WA 98012 WA024011J	JUSTICE COURT DIST 3 JUSTICE OF PEACE P O BOX 104 EATONVILLE WA 98320 WA027033J	FIVE POLICE COURT POLICE JUDGE CITY HALL FIFE WA 98424 WA027111J	EVERGREEN DIST COURT JUDGE MONROE WA 98272 WA031033J	CO JUSTICE COURT JUSTICE OF PEACE CHENEY WA 99004 WA032033J	POLICE COURT POLICE JUDGE CITY HALL 8TH PLUM OLYMPIA WA 98501 WA034011J
POLICE COURT POLICE JUDGE CITY HALL BOX 529 OKANOGAN WA 98040 WA024021J	JUSTICE COURT DIST 4 JUSTICE OF PEACE CITY HALL DUCKLEY WA 98321 WA027043J	JUSTICE COURT DIST 1 JUSTICE OF PEACE CITY HALL ANACORTES WA 98221 WA029013J	MUNICIPAL COURT CITY JUDGE BOX 927 DARRINGTON WA 98241 WA031011J	CO JUSTICE COURT JUSTICE OF PEACE DEER PARK WA 99006 WA032043J	TUMWATER MUN COURT JUDGE 614 CAPITOL CENTER BLDG OLYMPIA WA 98501 WA034021J
OMAK PUBLIC COURT POLICE JUDGE OMAK WA 98041 WA024031J	MUNICIPAL COURT MUNICIPAL JUDGE CITY HALL DONNEY LAKE WA 98390 WA027011J	JUSTICE COURT DIST 2 JUSTICE OF PEACE CITY HALL MOUNT VERNON WA 98273 WA029023J	EDMONDS MUNICIPAL COURT JUDGE WILSON 250 5TH AVE N EDMONDS WA 98020 WA031021J	CO JUSTICE COURT JUSTICE OF PEACE MILLWOOD WA 99212 WA032053J	LACEY MUNICIPAL COURT JUDGE P O DRAWER D LACEY WA 98501 WA034031J
OROVILLE POLICE COURT JUDGE 1621 GOLDEN OROVILLE WA 98044 WA024041J	BUCKLEY MUNICIPAL COURT MUNICIPAL JUDGE TOWN HALL BUCKLEY WA 98321 WA027021J	JUSTICE COURT DIST 3 JUSTICE OF PEACE CITY HALL SEDRO WOOLLEY WA 98204 WA029033J	POLICE COURT POLICE JUDGE CITY HALL MARYSVILLE WA 98270 WA031031J	CO JUSTICE COURT 3 CHIEF CLERK W 1116 BROADWAY SPOKANE WA 99201 WA032063J	WAHIAKUM CO JUSTICE CT JUDGE SKAMOKAWA WA 98647 WA034013J
POLICE COURT JUDGE 202 COLUMBIA COULEE DAM WA 99116 WA024051J	FIRCREST MUNICIPAL CT POLICE JUDGE 113 RAMSOELL TACOMA WA 98466 WA027031J	ANACORTES POLICE COURT POLICE COURT JUDGE 1007 8TH ST ANACORTES WA 98221 WA029011J	MUNICIPAL COURT MUNICIPAL JUDGE CIVIC CENTER BLDG MOUNTLAKE TERRACE WA 98043 WA031041J	MUNICIPAL COURT JUDGE 609 SECOND STREET CHENEY WA 99004 WA032011J	JUSTICE COURT JUSTICE OF PEACE COURTHOUSE WALLA WALLA WA 99362 WA036013J
NORTH DISTRICT COURT JUDGE SOUTH BEND WA 98506 WA025013J	MUNICIPAL COURT JUDGE PO BOX 107 GIG HARBOR WA 98335 WA027041J	BURLINGTON POLICE COURT JUDGE 404 FAIRHAVEN BURLINGTON WA 98233 WA029021J	EVERETT JUSTICE COURT COURT COMMISSIONER P O BOX 304 MUKILTEO WA 98275 WA031051J	MUNICIPAL POLICE CT JUSTICE OF PEACE BOX 205 DEER PARK WA 99006 WA032021J	DISTRICT JUSTICE COURT JUSTICE OF PEACE COLLEGE PLACE WA 99324 WA036023J
SOUTH DISTRICT COURT JUDGE LONG BEACH WA 98631 WA025023J	MILTON MUNICIPAL COURT MUNICIPAL JUDGE PO BOX 578 MILTON WA 98354 WA027051J	MUNICIPAL COURT JUDGE MATHESON BLDG MOUNT VERNON WA 98273 WA029031J	POLICE COURT JUDGE CITY HALL SNOHOMISH WA 98290 WA031061J	MEDICAL LAKE POLICE CT JUDGE TOWN HALL MEDICAL LAKE WA 99022 WA032031J	COLLEGE PLACE POLICE CT POLICE JUDGE CITY HALL COLLEGE PLACE WA 99324 WA036011J
POLICE COURT POLICE JUDGE C/O POLICE DEPARTM 126 COMMERCIAL ST RAYMOND WA 98577 WA025011J	MUNICIPAL COURT COURT CLERK P O BOX 665 100 N TRAIN AVE ORTING WA 98360 WA027061J	SEDRO WOOLLEY MUNICIP CT JUDGE 116 WOODWORTH SEDRO WOOLLEY WA 98284 WA029041J	MUNICIPAL COURT MUNICIPAL JUDGE CITY HALL LYNNWOOD WA 98036 WA031071J	POLICE COURT POLICE JUDGE CITY HALL MILLWOOD WA 99206 WA032041J	POLICE COURT JUDGE 312 MAIN ST WATTSBURG WA 99361 WA036021J
POLICE COURT POLICE JUDGE CITY HALL SOUTH BEND WA 98586 WA025021J	MUNICIPAL COURT MUNICIPAL JUDGE 311 W PIONEER AVE PUYALLUP WA 98371 WA027071J	EVERETT DISTRICT JUSTICE JUDGE COURTHOUSE EVERETT WA 98201 WA031013J	TOWN OF LAKE STEVENS CT MARSHAL P O BOX 257 LAKE STEVENS WA 98258 WA031081J	SPOKANE MUNICIPAL COURT JUDGE W 242 RIVERSIDE AV SPOKANE WA 99201 WA032051J	MUNICIPAL COURT JUDGE DRUMHELLER BLDG WALLA WALLA WA 99362 WA036031J
NEWPORT POLICE COURT POLICE JUDGE PO BOX 546 NEWPORT WA 99156 WA026011J	MUNICIPAL COURT JUDGE BOX M STEILACOOM WA 98388 WA027081J	ALDERWOOD DIST COURT DISTRICT JUSTICE LYNNWOOD WA 98036 WA031023J	MUNICIPAL COURT JUDGE CITY HALL BRIER WA 98036 WA031091J	CHEWELAH POLICE COURT JUDGE CHEWELAH WA 99109 WA033011J	DISTRICT JUSTICE COURT JUDGE COURTHOUSE 311 GRAND AVE BELLINGHAM WA 98225 WA037013J
JUSTICE COURT DIST 1 ADMINISTRATOR CO CITY BLDG RM 93 TACOMA WA 98402 WA027013J	SUMNER MUNICIPAL COURT JUDGE 1104 MAPLE STREET SUMNER WA 98399 WA027091J	CASCADE DIST COURT DISTRICT JUSTICE ARLINGTON WA 98223 WA031033J	COUNTY JUSTICE COURT 2 CHIEF CLERK W 1116 BROADWAY SPOKANE WA 99201 WA032013J	COLVILLE POLICE COURT POLICE JUDGE COURTHOUSE COLVILLE WA 99114 WA033021J	MUNICIPAL COURT JUDGE CITY HALL 210 LOTTIE ST BELLINGHAM WA 98225 WA037011J
JUSTICE COURT DIST 2 JUSTICE OF PEACE P O BOX 125 GIG HARBOR WA 98335 WA027023J	MUNICIPAL COURT JUDGE 134 COUNTY CITY BL TACOMA WA 98402 WA027101J	EDMOND DIST COURT JUDGE EDMONDS WA 98020 WA031043J	COUNTY JUSTICE COURT 4 CHIEF CLERK W 1116 BROADWAY SPOKANE WA 99201 WA032023J	DISTRICT JUSTICE COURT DISTRICT JUSTICE COURTHOUSE OLYMPIA WA 98501 WA034013J	FERNDALE POLICE COURT POLICE JUDGE P O BOX 936 FERNDALE WA 98248 WA037021J

MUNICIPAL COURT JUDGE CITY HALL LYNDEN WA 98264 WA037031J	MUNICIPAL COURT MUNICIPAL JUDGE 917 EDISON AVE SUNNYSIDE WA 98944 WA039041J	EX-INC MANAGER 503 ASH STREET KELSO WA 98626 WA008023G	SEATTLE MUNICIPAL COURT PROBATION DEPT CH PROBATION OFCR PUBLIC SAFETY BLDG SEATTLE WA 98104 WA017021G	LARCH MOUNTAIN HONOR CAMP SUPERVISOR STAR ROUTE YACOLT WA 98675 WA006015C	CITY POLICE DEPT CHIEF P O BOX 519 WENATCHEE WA 98801 WA00404
PULLMAN DIST JUSTICE CT DIST JUSTICE 111 OLSON PULLMAN WA 99163 WA038013J	POLICE COURT JUDGE W 1ST AVE S DIV ST TOPPENISH WA 98948 WA039091J	SWARF LONGVIEW HOUSE MANAGER 1226 11TH AVE LONGVIEW WA 98632 WA008033G	KITSAP CO JUVENILE OFF PROBATION OFFICER 614 DIVISION ST PORT ORCHARD WA 98366 WA018013G	OKANOGAN HONOR CAMP SUPERVISOR LOOMIS WA 98827 WA024015C	CLALLAM CO SHERIFF OFF SHERIFF 319 50 LINCOLN PORT ANGELES WA 98362 WA00500
COLFAX DIST JUSTICE CT DIST JUSTICE 5 115 1/2 MAIN COLFAX WA 99111 WA038023J	UNION GAP MUNICIPAL CT MUNICIPAL JUDGE 102 W AHTANUM RD UNION GAP WA 98903 WA039061J	MUNIC PROBATION OFFICE PROBATION OFFICER COWLITZ CO CT HSE ANNEX KELSO WA 98626 WA008011G	JUV PROBATION OFFICE PROBATION OFFICER COURTHOUSE GOLDENDALE WA 98620 WA020013G	STATE PENITENTIARY SUPERINTENDENT P O BOX 520 WALLA WALLA WA 99362 WA036015C	POLICE DEPT CHIEF OF POLICE 120 N OAK ST PORT ANGELES WA 98362 WA00501
COLFAX POLICE COURT JUDGE N MILL ST COLFAX WA 99111 WA038011J	YAKIMA MUNICIPAL COURT JUDGE 129 N 2ND ST YAKIMA WA 98900 WA039071J	ALCOHOLIC EDUCATION SC OFFICER LOWER COL COLLEGE RM M 13 LONGVIEW WA 98632 WA008021G	JUVENILE PROBATION DEPT PROBATION OFFICER CHEHALIS WA 98532 WA021013G	STATE REFORMATORY P O BOX 777 MONROE WA 98272 WA031015C	SEQUIM POLICE DEPT CHIEF OF POLICE P O BOX 142 SEQUIM WA 98382 WA00503
PULLMAN MUNICIPAL COURT JUDGE 110 OLSON ST PULLMAN WA 99163 WA038021J	MUNICIPAL COURT JUDGE BOX 475 ZILLAH WA 98953 WA039081J	TRAFFIC SCHOOL OFFICER CATLIN HALL KELSO WA 98626 WA008031G	JUVENILE PROBATION DEPT PROBATION OFFICER SOUTH BEND WA 98586 WA025013G	WA CORRECTIONS CENTER SUPERINTENDENT P O BOX 900 SHELTON WA 98584 WA024025C	COUNTY SHERIFFS DEPT SHERIFF VANCOUVER WA 98600 WA00600
JUSTICE CT JUDGE P O BOX 697 SUNNYSIDE WA 98944 WA039013J	PROBATION and PAROLE AGENCIES STATE LEVEL DEPT OF INSTITUTIONS PROB AND PAROLE DI DIRECTOR INSTITUTIONS BLDG OLYMPIA WA 98501 WA034015G	CO JUV PROBATION S OFF JUV PROR OFFICER 110 3RD N E EAST WENATCHEE WA 98858 WA009013G	SKAGIT CO JUVENILE DEPT PROBATION DIRECTOR COURT HOUSE ANNE MOUNT VERNON WA 98273 WA029013G	WASHOUGAL HONOR CAMP SUPERVISOR ROUTE 2 BOX 444 WASHOUGAL WA 98671 WA006025C	VANCOUVER POLICE DEPT CHIEF OF POLICE 300 E 13TH ST VANCOUVER WA 98060 WA00603
JUSTICE CT JUDGE P O BOX 6 TOPPENISH WA 98948 WA039023J	DEPT OF INSTITUTIONS JUV PAROLE SERVICE DIRECTOR PO BOX 764 OLYMPIA WA 98501 WA034025G	CO JUVENILE PROBATION CH PROBATION OFCR 4 CYROS RD EPHRATA WA 98823 WA013013G	JUVENILE DEPT CHIEF OF PROBATION W 1116 BROADWAY SPOKANE WA 99201 WA032013G	LOCAL LEVEL POLICE DEPARTMENT CHIEF OF POLICE CITY HALL CLARKSTON WA 99403 WA00201	CO SHERIFF S DEPT SHERIFF 341 E MAIN DAYTON WA 99328 WA00700
JUSTICE CT JUDGE COURTHOUSE YAKIMA WA 98901 WA039033J	OFFICE OF ATTORNEY GEN OF PRISON TERMS AND PAROLE BLDG CAPITOL CENTR OLYMPIA WA 98501 WA034035G	CO JUVENILE PROBATION OFC PROBATION OFCR BOX 23 MONTESANO WA 98563 WA014013G	JUV PROBATION OFFICE PROBATION OFFICER COURTHOUSE OLYMPIA WA 98501 WA034013G	BENTON SHERIFF S OFF SHERIFF COURTHOUSE COORSSER WA 99350 WA00300	COWLITZ CO SHERIFF OFF SHERIFF COWLITZ CO CT HOU5 KELSO WA 98626 WA00800
JUSTICE CT JUDGE COURTHOUSE YAKIMA WA 98901 WA039043J	LOCAL LEVEL ASOTIN CO JUVENILE DEPT JUVENILE OFFICER CLARKSTON WA 99403 WA002013G	JUVENILE PROBATION DEPT PROBATION OFFICER COUPEVILLE WA 98239 WA015013G	CO PROBATION DEPT JUV PROBATION OFCR COURTHOUSE WALLA WALLA WA 99362 WA036013G	KENNEWICK POLICE DEPT CHIEF OF POLICE 210 W 6TH AVE KENNEWICK WA 99336 WA00301	KELSO POLICE DEPT CHIEF KELSO CITY HALL KELSO WA 98626 WA00801
MUNICIPAL COURT JUDGE P O BOX 188 GRANDVIEW WA 98930 WA039011J	JUVENILE PROBATION DEPT PROBATION OFFICER P O BOX 6997 KENNEWICK WA 99336 WA003013G	JUVENILE PROBATION DEPT KING COUNTY CH PROBATION OFCR 1211 E ALDER SEATTLE WA 98122 WA017013G	CO DIST PROBATION OFFICE PROBATION OFFICER COURTHOUSE 311 GRAND AVENUE BELLINGHAM WA 98225 WA037013G	POLICE DEPARTMENT POLICE CHIEF CITY HALL RICHLAND WA 99352 WA00302	LONGVIEW POLICE DEPT CHIEF CITY HALL P O BOX 128 LONGVIEW WA 98632 WA00802
GRANGER POLICE COURT JUDGE 117 SO 2ND ST GRANGER WA 98932 WA039021J	CO PROBATION DEPT PROBATION OFCR 1106 1/2 ESTHER ST VANCOUVER WA 98660 WA006013G	JUSTICE COURTS PROBATION AND PAROLE DEPT CH PROBATION OFCR KING CO COURTHOUSE SEATTLE WA 98104 WA017023G	CO JUV PROBATION OFFICE DIRECTOR COURTHOUSE 311 GRAND AVENUE BELLINGHAM WA 98225 WA037023G	CHELAN CO SHERIFFS OFC SHERIFF COURTHOUSE 4TH FL WENATCHEE WA 98801 WA00400	CO SHERIFF S DEPARTMENT COUNTY SHERIFF BOX 665 WATERVILLE WA 98858 WA00900
SELAH MUNICIPAL COURT JUDGE 115 W NACHES AVE SELAH WA 98942 WA039031J	PROBATION OFFICE PROBATION OFFICER COURT HOUSE ANNEX KELSO WA 98626 WA008013G	PROBATION OFFICE CHIEF OF POLICE 200 HILL AVE SO RENTON WA 98055 WA017011G	ADULT CORRECTIONAL INSTITUTIONS STATE LEVEL CLEARWATER HONOR CAMP SUPERVISOR FORKS WA 98331 WA005015C	CHELAW POLICE DEPT CHIEF OF POLICE C/O CITY HALL CHELAN WA 98816 WA00402	FERRY CO SHERIFFS OFC SHERIFF REPUBLIC WA 99166 WA01000

SHERIFF S OFFICE SHERIFF PASCO WA01100	WA 99301	KING COUNTY JAIL COUNTY SHERIFF COUNTY COURTHOUSE SEATTLE WA017013C	WA 98104	LEWIS CO SHERIFF S DEPT SHERIFF CHEHALIS WA02100	WA 98532
PASCO POLICE DEPT CHIEF OF POLICE P O BOX 293 PASCO WA01102	WA 99301	AUBURN POLICE DEPARTMENT CHIEF OF POLICE 20 A ST N W AUBURN WA01701	WA 98002	CENTRALIA POLICE DEPT CHIEF OF POLICE CENTRALIA WA02101	WA 98531
SHERIFF S OFFICE SHERIFF POMEROY WA01200	WA 99347	POLICE DEPT CHIEF OF POLICE CITY HALL 1339 GRIFFIN AVE ENUMCLAW WA01704	WA 98022	CHEHALIS POLICE DEPT CHIEF OF POLICE 1021 PARK ST CHEHALIS WA0210	WA 98532
GRANT CO SHERIFFS OFC SHERIFF EPHRATA WA01300	WA 98823	KENT POLICE DEPT CHIEF OF POLICE KENT WA01707	WA 98031	CO SHERIFF S DEPT SHERIFF DAVENPORT WA02200	WA 99122
EPHRATA POLICE DEPT CHIEF OF POLICE CITY HALL EPHRATA WA01301	WA 98823	KIRKLAND POLICE DEPT CHIEF OF POLICE 210 MAIN ST KIRKLAND WA01708	WA 98033	CO SHERIFF S DEPT SHERIFF MASON CO COURTHOUSE SHELTON WA02300	WA 98584
CITY POLICE DEPT CHIEF OF POLICE P O BOX 180 GRA J COULEE WA01307	WA 99133	RENTON POLICE DEPT CHIEF OF POLICE 200 MILL AVE SO RENTON WA01713	WA 98055	SHELTON POLICE DEPT CHIEF OF POLICE SHELTON WA02304	WA 98584
POLICE DEPARTMENT CHIEF OF POLICE MOSES LAKE WA01302	WA 98837	SEATTLE CITY JAIL CHIEF OF POLICE PUB SAFETY BLDG SEATTLE WA017011C	WA 98104	COUNTY SHERIFFS OFC SHERIFF OKANOGAN WA02400	WA 98840
COUNTY SHERIFFS DEPT SHERIFF MONTESANO WA01400	WA 98563	KITSAP CO SHERIFF S OFF UNDER SHERIFF 614 DIVISION ST PORT ORCHARD WA01800	WA 98366	OKANOGAN POLICE DEPT POLICE CHIEF P O BOX 529 OKANOGAN WA02402	WA 98840
POLICE DEPARTMENT CHIEF OF POLICE PUBLIC SAFETY BLDG ABERDEEN WA01401	WA 98520	BREHERTON POLICE DEPART CHIEF 239 FOURTH ST BREHERTON WA01801	WA 98310	OROVILLE POLICE DEPT CHIEF OF POLICE 1822 JUNIPER OROVILLE WA02404	WA 98844
HOQUIAM POLICE DEPT CHIEF OF POLICE 607 8TH ST HOQUIAM WA01403	WA 98550	COUNTY SHERIFFS OFC SHERIFF COURTHOUSE ELLENSBURG WA01900	WA 98926	SHERIFF S DEPT SHERIFF SOUTH BEND WA02500	WA 98586
CO SHERIFF S OFFICE SHERIFF COUPEVILLE WA01500	WA 98239	SHERIFF S OFFICE SHERIFF GOLDENDALE WA02000	WA 98620	CO SHERIFF S DEPT SHERIFF 418 SOUTH SCOTT NEWPORT WA02600	WA 99156
OAK HARBOR POLICE DEPT CHIEF OF POLICE 3084 300 WEST OAK HARBOR WA01501	WA 98277	CITY POLICE DEPT CHIEF OF POLICE BOX 1 WHITE SALMON WA02006	WA 98672	PIERCE CO SHERIFFS OFC COUNTY SHERIFF CO CITY BLDG RM 16 TACOMA WA02700	WA 98402

BUCKLEY POLICE DEPT CHIEF TOWN HALL BUCKLEY WA02704	WA 98321	SPOKANE POLICE DEPT CHIEF OF POLICE W 242 RIVERSIDE AV SPOKANE WA03204	WA 99201	GRANDVIEW POLICE DEPT CHIEF OF POLICE GRANDVIEW WA03901	WA 98930
PUYALLUP POLICE DEPT POLICE CHIEF 311 W PIONEER AVE PUYALLUP WA02701	WA 98371	CO SHERIFF S DEPT SHERIFF BOX 186 COLVILLE WA03300	WA 99114	GRANGER POLICE DEPT CHIEF OF POLICE P O BOX 514 GRANGER WA03907	WA 98932
SUMNER POLICE DEPARTMENT CHIEF 1104 MAPLE ST SUMNER WA02702	WA 98390	CHEWELAH POLICE DEPT CHIEF OF POLICE CHEWELAH WA03301	WA 99109	SUNNYSIDE POLICE DEPT CHIEF OF POLICE SUNNYSIDE WA03902	WA 98944
POLICE DEPARTMENT CHIEF OF POLICE 272 COUNTY CITY BL TACOMA WA02703	WA 98402	CO SHERIFF S DEPT SHERIFF COURTHOUSE OLYMPIA WA03400	WA 98501	POLICE DEPARTMENT CHIEF OF POLICE W 1ST AVE S DIV ST TOPPENISH WA03903	WA 98948
SKAGIT CO SHERIFF S DEPT SHERIFF COURT HOUSE ANNEX MOUNT VERNON WA02900	WA 98273	OLYMPIA POLICE DEPT CHIEF OF POLICE CITY HALL 8TH PLUM OLYMPIA WA03401	WA 98501	YAKIMA POLICE DEPT CHIEF OF POLICE YAKIMA WA03905	WA 98900
ANACORTES POLICE DEPT CHIEF OF POLICE 1011 12TH ST ANACORTES WA02901	WA 98221	COUNTY SHERIFFS OFC SHERIFF CATHLAMET WA03500	WA 98612	JUVENILE CORRECTIONAL INSTITUTIONS STATE LEVEL CEDAR CREEK YOUTH FORESTRY CAMP SUPERVISOR P O BOX 38 LITTLEROCK WA034015C	WA 98556
POLICE DEPT CHIEF OF POLICE 910 CLEVELAND AVE MOUNT VERNON WA02902	WA 98273	COUNTY SHERIFFS OFC SHERIFF 315 W MAIN WALLA WALLA WA03600	WA 99362	INDIAN RIDGE YOUTH CAMP SUPERVISOR P O BOX 398 ARLINGTON WA031025C	WA 98223
CO SHERIFF S OFFICE SHERIFF STEVENSON WA03000	WA 98648	POLICE DEPARTMENT CHIEF OF POLICE P O BOX 666 WALLA WALLA WA03601	WA 99362	MISSION CK YTH FORESTRY CAMP SUPERVISOR P O BOX 288 BELFAIR WA023015C	WA 98528
COUNTY SHERIFF S OFC SHERIFF 4TH FLOOR COURTHOU EVERETT WA03100	WA 98201	CO SHERIFF S DEPT SHERIFF COURTHOUSE 311 GRAND AVENUE BELLINGHAM WA03700	WA 98225	NASELLE YOUTH FOREST CP SUPERVISOR P O BOX 45 NASELLE WA025015C	WA 98638
POLICE DEPT CHIEF OF POLICE CIVIC CENTER BLDG MOUNTLAKE TERRACE WA03106	WA 98043	BELLINGHAM POLICE DEPT CHIEF OF POLICE CITY HALL 210 LOTTIE ST BELLINGHAM WA03701	WA 98225	SPRUCE CANYON YOUTH FORESTRY CAMP SUPERVISOR TIGER STAR ROUTE COLVILLE WA033015C	WA 99114
LYNNWOOD POLICE DEPT CHIEF OF POLICE 19424 56TH AVE W LYNNWOOD WA03104	WA 98036	CO SHERIFF S DEPT SHERIFF COURTHOUSE COLFAX WA03800	WA 99111	CASCADIA JUV RECEPTION DIAGNOSTIC CENTER SUPERINTENDENT 2002 E 28TH STREET TACOMA WA027015C	WA 98404
SHERIFF S DEPT CHIEF DEPUTY W 1116 BROADWAY SPOKANE WA03200	WA 99201	CO SHERIFF S DEPT SHERIFF COURTHOUSE YAKIMA WA03900	WA 98901	ECHO GLEN CHILDREN S CTR SUPERINTENDENT ROUTE 1 BOX 499 SNOQUALMIE WA017015C	WA 98065

FORT WARDEN SCHOOL SUPERINTENDENT P O BOX 581 PORT TOWNSEND WA 98368 WA016015C	CHILDREN S HALL SUPERINTENDENT 11061/2 ESTHER VANCOUVER WA 98660 WA006013C	MILITARY DEPT ADJUTANT GENERAL CAMP MURRAY TACOMA WA 98430 WA027015Y
GREEN HILL SCHOOL SUPERINTENDENT P O BOX 600 CHEHALIS WA 98532 WA021015C	JUVENILE DETENTION CNTR PROBATION OFFICER 206 CROY STREET KELSO WA 98626 WA008011C	STATE PATROL ACADEMY DIRECTOR SHELTON WA 98584 WA023015Y
MAPLE LANE SCHOOL SUPERINTENDENT ROUTE 1 BOX 300 CENTRALIA WA 98531 WA021025C	JUVENILE COURT YOUTH SERVICE CTR SUPT 1121 E ALDER SEATTLE WA 98122 WA017023C	ADMINISTRATOR FOR COURTS STATE OF WASH TEMPLE OF JUSTICE OLYMPIA WA 98501 WA034025Y
RIVERSIDE GROUP HOME SUPERVISOR 2002 E 28TH STREET TACOMA WA 98404 WA027025C	JUVENILE COURT DETENTION SUPERINTENDENT 622 DIVISION STREE PORT ORCHARD WA 98366 WA018013C	JUDICIAL COUNCIL SUPREME COURT TEMPLE OF JUSTICE OLYMPIA WA 98501 WA034035Y
WOODINVILLE GROUP HOME SUPERVISOR 14521 124TH N E WOODINVILLE WA 98072 WA017025C	REMANN JUVENILE HALL CHIEF PROB OFCR 5601 6TH AVENUE TACOMA WA 98406 WA027013C	UNIFORM LAW COMMISSION CHAIRMAN TEMPLE OF JUSTICE OLYMPIA WA 98501 WA034045Y
SUNRISE GROUP HOME SUPERVISOR 1421 EAST DIVISION EPHRATA WA 98823 WA013025C	SNOHOMISH CO JUVENILE CT DENNY YOUTH CENTER DIRECTOR 2801 10TH ST EVERETT WA 98201 WA031013C	DEPT OF INSTITUTION DIRECTOR BOX 768 INSTITUTIONS BLDG OLYMPIA WA 98501 WA034055Y
OAKRIDGE GROUP HOME SUPERVISOR 8701 STEILACOOM BL TACOMA WA 98498 WA027035C	DETENTION HOME SUPERINTENDENT 1208 W MALLON SPOKANE WA 99201 WA032013C	DEPT OF INSTITUTIONS ADULT CORRECTN DIV DIRECTOR PO BOX 768 OLYMPIA WA 98501 WA034065Y
CANYON VIEW GROUP HOME SUPERVISOR 260 N GEORGIA AVE EAST WENATCHEE WA 98801 WA004025C	THURSTON CO JUVENILE DETENTION HOME DIRECTOR 4 FLOOR COURTHOUSE ANNEX OLYMPIA WA 98501 WA034013C	DEPT OF INSTITUTIONS FOREST HONOR CAMPS DIRECTOR PO BOX 768 OLYMPIA WA 98501 WA034075Y
PIONEER GROUP HOME SUPERVISOR 2002 E 28 ST TACOMA WA 98404 WA027045C	JUVENILE DEPT JUVENILE OFFICER COURTHOUSE WALLA WALLA WA 99362 WA036013C	DEPT OF INSTITUTIONS JUV REHABILATN DIV DIRECTOR PO BOX 768 OLYMPIA WA 98501 WA034085Y
LOCAL LEVEL		
BENTON FRANKLIN JUV HOME CHIEF OF JUVENILE P O BOX 6897 KENNEWICK WA 99336 WA003013C	JUVENILE DETENTION CNTR DIRECTOR COURTHOUSE 311 GRAND AVENUE BELLINGHAM WA 98225 WA037013C	JUVENILE DELINQ PREVENTN AND CONTROL DIRECTOR PO BOX 768 OLYMPIA WA 98501 WA034095Y
CHELAN CO JUVENILE DEPT DIRECTOR 316 WASHINGTON ST WENATCHEE WA 98801 WA004013C	CO DETENTION HOME JUV PROB OFFICER 1728 JEROME YAKIMA WA 98902 WA039013C	DEPT OF INSTITUTIONS FARM INDUSTRIES DIRECTOR INSTITUTIONS BLDG OLYMPIA WA 98501 WA034015Y
CHILDRENS HALL SUPERINTENDENT 3RD AND LINCOLN ST PORT ANGELES WA 98362 WA005013C	ALL OTHER AGENCIES STATE LEVEL LAW ENFORCEMET OFFICERS TRAINING COMSN CHAIRMAN 1101 S EASTSIDE OLYMPIA WA 98501 WA034015Y	BENTON FRANKLIN GOVERNMENTAL CONF DIRECTOR 906 JADWIN AVENUE RICHLAND WA 99352 WA003015E

CHELAN DOUGLAS REGIONAL PLANNING COUNCIL DIRECTOR CO COURTHOUSE ANNEX WENATCHEE WA 98801 WA004015E	PLANNING AND COMM AFFR AGY, LAW AND JUSTICE OF ADMINISTRATOR 1306 CAPITOL WAY OLYMPIA WA 98501 WA034025E
COWLITZ WAHIAKUM REG PLANNING COMSN DIRECTOR COWLITZ CO COURTHOUSE KELSO WA 98626 WA008015E	LOCAL LEVEL KING CO CRIME LAB DIRECTOR KING CO COURTHOUSE 516 3RD AVE SEATTLE WA 98104 WA017013Y
LEWIS REG PLANG COMSN ACTING DIRECTOR P O BOX 708 CHEHALIS WA 98532 WA021015E	POLICE ACADEMY CHIEF OF POLICE 111 116TH AVE BELLEVUE WA 98004 WA017011Y
PUGET SOUND GOVERNMENTAL CONF DIRECTOR SEATTLE FERRY TERM PI 52 SEATTLE WA 98104 WA017015E	ALCOHOLIC TREATMENT CNTR SEATTLE HEALTH DPT DIRECTOR 2120 1ST N SEATTLE WA 98109 WA017021Y
SOUTHEASTERN WA REG PLANNING COMSN 435 FIFTH STREET CLARKSTON WA 99403 WA002015E	POLICE ACADEMY CHIEF OF POLICE W 242 RIVERSIDE AV SPOKANE WA 99201 WA032011Y
SPOKANE REGIONAL PLANNING CONF DIRECTOR CO COURTHOUSE SPOKANE WA 99201 WA032015E	
THURSTON REG PLANG COUN DIRECTOR CO COURTHOUSE OLYMPIA WA 98501 WA034015E	
WALLA WALLA REG PLANG CO DIRECTOR P O BOX 478 CITY HALL WALLA WALLA WA 99362 WA036015E	
WHATCOM COUNTY COUNCIL OF GOVERN DIRECTOR CO COURTHOUSE BELLINGHAM WA 98225 WA037015E	
WHITMAN CO REGIONAL PLANNING COUNCIL DIRECTOR OLD NATIONAL BK BLDG COLFAX WA 99111 WA038015E	
KLICKITAT REG PLANG COMM DIRECTOR CO COURTHOUSE GOLDFENDEALE WA 98620 WA020015E	
GRAYS HARBOR REGIONAL PLANNING COMSN ACTING DIRECTOR 207 1/2 EAST MARKET ST ABERDEEN WA 98520 WA014015E	

**END**