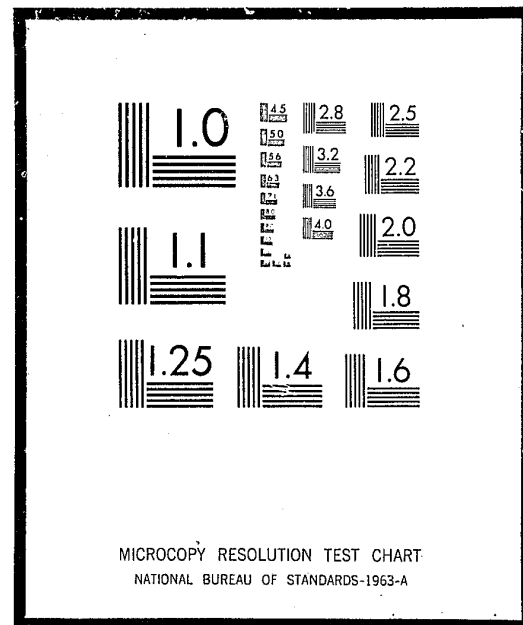


# NCJRS

This microfiche was produced from documents received for inclusion in the NCJRS data base. Since NCJRS cannot exercise control over the physical condition of the documents submitted, the individual frame quality will vary. The resolution chart on this frame may be used to evaluate the document quality.



Microfilming procedures used to create this fiche comply with the standards set forth in 41CFR 101-11.504

Points of view or opinions stated in this document are those of the author(s) and do not represent the official position or policies of the U.S. Department of Justice.

U.S. DEPARTMENT OF JUSTICE  
LAW ENFORCEMENT ASSISTANCE ADMINISTRATION  
NATIONAL CRIMINAL JUSTICE REFERENCE SERVICE  
WASHINGTON, D.C. 20531

Date filmed

7/20/76

LAW ENFORCEMENT ASSISTANCE ADMINISTRATION



## CRIMINAL JUSTICE AGENCIES IN VERMONT 1971

NATIONAL INSTITUTE OF LAW ENFORCEMENT AND CRIMINAL JUSTICE  
STATISTICS DIVISION

WASHINGTON, D. C.

ISSUED FEBRUARY 1972

**LAW ENFORCEMENT ASSISTANCE  
ADMINISTRATION**

Jerris Leonard  
*Administrator*

Richard W. Velde  
Clarence M. Coster  
*Associate Administrators*

**NATIONAL INSTITUTE OF LAW ENFORCEMENT  
AND CRIMINAL JUSTICE**

Martin B. Danziger, *Acting Assistant Administrator*

**STATISTICS DIVISION**  
George E. Hall, *Director*

Statistical Programs  
Anthony G. Turner, *Chief*

**ACKNOWLEDGEMENTS**

Preparation of this report was the responsibility of the Statistics Division, National Institute of Law Enforcement and Criminal Justice, Law Enforcement Assistance Administration. The original planning was the responsibility of Linda Wells. This report was prepared by Karen Joerg. A statement covering definitions and limitations of data was prepared by the Bureau of the Census. Under LEAA design specifications, the Bureau of the Census conducted the directory survey and prepared the tabulations. The Federal Bureau of Investigation provided valuable assistance in the development of the code identifiers, and in the verification of some entries, particularly in the law enforcement sector.

**LEAA-NILECJ STAT DIVISION PUBLICATION SD-D-47**

Library of Congress Card Number 70-185037

For sale by the Superintendent of Documents, U.S. Government Printing Office  
Washington, D.C. 20402 - Price 30 cents  
Stock Number 2700-0133

**TABLE OF CONTENTS**

Section	Page
FOREWORD . . . . .	v
NATIONAL SUMMARY . . . . .	1
LIMITATIONS OF DATA . . . . .	3
DEFINITIONS OF LEVELS OF GOVERNMENT . . . . .	4
DEFINITIONS OF TYPES OF CRIMINAL JUSTICE AGENCIES . . . . .	6
CODE IDENTIFIERS . . . . .	10
SUMMARY TABLES . . . . .	11
LISTINGS OF ADDRESSES OF AGENCIES . . . . .	13
Prosecutors . . . . .	13
Enforcement Agencies . . . . .	13
Courts . . . . .	15
Probation and Parole Agencies . . . . .	16
Adult Correctional Institutions . . . . .	16
Juvenile Correctional Institutions . . . . .	16
All Other Agencies . . . . .	16

## FOREWORD

Under Title I of Public Law 90-351, the Law Enforcement Assistance Administration is authorized "to collect, evaluate, publish, and disseminate statistics and other information on the condition and progress of law enforcement in the several States". In partial response to this authorization, LEAA's Statistics Division of the National Institute of Law Enforcement and Criminal Justice entered into an inter-agency agreement with the U. S. Bureau of the Census to conduct a survey in January of 1970 to develop a National Criminal Justice Directory.

The primary emphasis of the directory survey was to obtain the names and addresses of all criminal justice agencies and institutions in the United States. This report presents the individual names and addresses of enforcement agencies, courts (civil as well as criminal), prosecutors' offices, defenders' offices, adult correction agencies, juvenile correction agencies, probation offices, and "other" agencies in Vermont, and counts of agencies by level of government and sector (enforcement, courts, corrections, etc.). While summary national statistics are given in this report, more detailed national findings and a description of the survey methodology may be found in the report "Criminal Justice Agencies in the United States - 1970 - Summary Report" (LEAA - Statistics Division, Report SD-D-1).

The directory is periodically updated. The counts that appear in this volume are as of October 1971 and therefore differ somewhat from those in the Summary Report.

## NATIONAL SUMMARY

According to the national directory survey of criminal justice agencies, there are 46,197 public agencies in the criminal justice system which are administered at the state or local government level. This total was based on a census of all publicly financed agencies dealing with crime, criminals, or the administration of criminal justice. The census was conducted in January of 1970 in each state and county of the United States, plus all municipalities and townships with a 1960 population of 1,000 or more persons. The figures and list of agencies in this report represent the most recent update of the directory-- October 1971. The numbers therefore may differ somewhat from the counts cited in the Summary Report which provided data as of January 1970.

The results indicate the dispersion within the criminal justice community of the various types of agencies. For example, there are 14,901 <sup>1/</sup> enforcement agencies in the United States, of which over 14,000 are operated at the local level of government. It should be noted, however, from other available evidence <sup>2/</sup> that state-operated agencies are about 11 times larger on the average than local agencies, in terms of full-time personnel.

There are almost as many courts (13,033) as there are enforcement agencies (14,901). Not all courts, however, address all levels of crime, as do the general police agencies. This survey contains information, for example, about a number of courts which are not technically in the criminal justice system, such as probate courts and family relation courts. About seven-eighths of the courts surveyed are operated at the local level of government.

---

<sup>1/</sup> According to the 1967 President's Commission on Law Enforcement and Administration of Justice, Task Force Report: The Police, page 7, there may be as many as 25,000 other police agencies in jurisdictions not covered by the directory survey, that is in townships, boroughs, or villages of under 1,000 population. More recent efforts place this number closer to 10,000, and the Statistics Division is planning to survey this sector of the criminal justice system.

<sup>2/</sup> See, U. S. Department of Justice, Law Enforcement Assistance Administration and U. S. Department of Commerce, Bureau of the Census, Expenditure and Employment Data for the Criminal Justice System, 1968-69.

About one-fifth of the agencies identified deal with prosecution and defense. Prosecutors' offices, however, outnumber defenders' offices by a factor of 22 to 1; 8,487 to 378. Almost 30 percent of the defenders' offices are state operated but only 7 percent of the prosecutors' offices are operated by state governments.

There are 5,312 (11%) corrections agencies, including 4,503 for adults and 809 for juveniles. Probation offices account for another five percent (2,444 agencies), with the remaining four percent (1,642) of the "other" agencies consisting of such diverse functions as police academies, courts administration, state planning agencies, juvenile boards, and others. Local administration handles about nine in every ten of the adult correction facilities and three in every four of the probation offices.

In general, the concentration of agencies at the local level of government spans the range of criminal justice activities. Only those specialized agencies in the "other" category are more likely to be found at the state level of administration. Sixty-nine percent of the "other" agencies are state operated.

#### LIMITATIONS OF DATA

Readers should be cautious in interpretations of these counts, keeping in mind that this survey did not include agencies of those municipal governments with a 1960 population of less than 1,000. The figures in this report reflect the October 1971 update of the directory, particularly in the courts sector and the juvenile corrections sector, and consequently may differ from the figures presented in the Summary Report (Statistics Division Report SD-D-1). Moreover, in deciding whether an agency belonged in the directory or not, the general rule was to be inclusive rather than exclusive.

While numbers will help describe the scope and diversity of the system, the size and range of activity of criminal justice agencies within a state may not always be reflected by simple counts of agencies. Organizational complexity varies considerably from one governmental unit to another, even within a single state. Of the categories enumerated in the directory, the counts of local adult correctional facilities are the most reliable due to the refinement of this sector through the National Jail Census conducted in the Spring of 1970.

## DEFINITIONS OF LEVELS OF GOVERNMENT

The criminal justice agencies reported were classified by type of government (state, county, municipality or township) according to Census Bureau definitions as summarized below:

### Counties

Organized county governments are found throughout Vermont, the total of such governments being 14.

### Cities

This category includes all active governmental units officially designated as cities, villages, and boroughs. This concept generally corresponds to the "incorporated places" that are recognized in Census Bureau reporting of population and housing statistics. Municipalities which are governmentally inactive were excluded from the survey.

### Townships

This category includes governmental units officially designated as towns in the six New England States, New York, and Wisconsin, and governments called townships in other areas.

Townships range widely in scope of governmental powers and operations. Most of them, particularly in the North Central States, perform only a very limited range of services for predominantly rural areas. However in New England, New Jersey, Pennsylvania and to some degree in New York, Michigan, and Wisconsin, townships (or "towns") are vested with relatively broad powers, and where they include closely settled territory, perform functions commonly associated with municipal governments.

Approximately one-half of the townships canvassed in the survey returned their questionnaires indicating they had no criminal justice agencies.

## Regional Agencies

An agency serving more than one local government was generally assigned to either the largest government involved or to the next highest level of government depending on the type of agency involved. However, classification was often based on the unique factors involved in the particular case and a complete explanation of procedures would be impractical.

## DEFINITIONS OF TYPES OF CRIMINAL JUSTICE AGENCIES

Names of criminal justice agencies were collected and classified under the following headings:

1. Courts
2. Enforcement agencies
3. Correctional institutions
4. Probation and parole agencies
5. Prosecutors
6. Public defenders
7. All other criminal justice agencies

Following is a more detailed explanation covering the types of agencies included in these categories and some comments concerning their limitations.

### Courts

The survey included appellate courts, major trial courts of general jurisdiction, special courts (probate, juvenile, family, domestic relations courts) as well as other courts of limited jurisdiction (county, municipal, justice, magistrate, mayor, traffic and police courts).

Specifically excluded from the survey were minor courts of nominal participation in the criminal justice system where the judge's compensation was exclusively on a fee basis (unsalaried). Also excluded were Workmen's Compensation Boards, Bank, Tax, and Industrial Review Boards and Land Courts.

The counts for the "courts" sector include only independent court systems. Sub-units (divisions, departments, bureaus or branches), regardless of function or importance, were excluded.

Courts were classified by level of government based primarily on the geographical boundaries of the district served by the court. In Vermont, the Supreme Court and the Superior County Court were included at the state level of government. Probate Courts and District Courts were reported at the county level.

### Enforcement Agencies

Included in this sector are state, county, and municipal police or law enforcement agencies with sworn police officers.

Included are all major law enforcement agencies, including the state police, state bureau of investigation in some cases, the county sheriff and police department and county detectives, as well as municipal police departments. Included also are all identifiable and independently administered Park Ranger, Harbor Police, Airport Police, Housing Police, and Transit Police agencies with 50 or more sworn officers, and some smaller forces. Excluded are branches, divisions, or departments of a main law enforcement agency. For example, the Juvenile Division of a sheriff's department would not be counted as an independent law enforcement agency.

Those counties, cities, towns, and villages whose police services are provided for under a contractual agreement with another government or private agency were not considered to have a police department.

Marshals and constables whose primary duties are the serving of warrants were excluded from the survey where they were identifiable. Regulatory agencies were not included in most instances. Game Wardens, Alcoholic Beverage Control Boards, Bingo Boards, Gambling Boards and the like were excluded unless they operate a force of 50 or more sworn police officers.

It should be noted that state, county and municipal medical examiners and coroners were included in this sector.

### Correctional Institutions

General Definition--An individual facility, such as a prison, jail, farm, or annex, which is either separately administered or administratively dependent upon a parent institution and located in a separate geographical area. Hospitals for the criminally insane and halfway houses for narcotic addicts and alcoholics were not counted in this sector but in the "all other criminal justice agencies" sector.

Juvenile Correctional Facilities--Included are those facilities which detain juveniles only, for 48 hours or more. This includes detention centers, reception and diagnostic centers, some halfway houses and other probation or work-release type facilities; that is, institutions detaining juveniles for court disposition as well as those holding juveniles for rehabilitation after court disposition. At the local level of government an agency was considered to be a juvenile agency if the administrator considered it as such. At the state level, facilities were assigned juvenile status if they were administered by the state juvenile corrections agency.

Adult Correctional Facilities--Included are those institutions which detain adults only or a combination of prisoner populations. Drunk tanks, lock-ups and other facilities which detain persons for less than 48 hours are excluded.

#### Probation and Parole Agencies

Included are probation and parole departments, commissions, boards or agencies operated by the state or local government, including those administratively dependent on the courts. The assignment of a probation officer to a particular level of government was an involved process related to both the type of area served and administrative responsibility. As a rule, a probation department serving more than one county was assigned to the state level of government. Probation services provided on a contractual basis were not included.

#### Prosecutors

Included are agencies giving legal counsel to the county, municipal, or state government, most of whom have at least minimal prosecutorial responsibility.

In Vermont, the Office of the Attorney General and the office for the State's Attorneys were reported at the state level of government. State's Attorneys were included at the county level of government. Municipal prosecutors were counted at the city or township level of government.

Deputy prosecutors or deputy district attorneys and deputy circuit solicitors were not included separately, but were considered a part of the main prosecutor's office. Many city attorneys were included though they may prosecute few cases. It is virtually impossible to verify the prosecutorial nature of each city attorney's duties due to the large numbers of agencies involved. Consequently, city attorneys were included unless it was specifically stated that the attorney does not prosecute cases.

Wherever possible, welfare fraud investigators and similar activities were excluded from this category.

#### Public Defenders

Included in this category are state or city-dependent law schools with legal aid clinics, as well as public defender offices in the government. Court-appointed attorneys were not included.

Public defender offices are included where these are publicly financed and administered as a department of government. Any organization administered by a non-governmental body (legal aid society, bar association) was excluded even though supported entirely by public funds.

#### Other Criminal Justice Agencies

Included are any other criminal justice agencies operated by a government which could not be assigned to other categories, such as: police academies, crime commissions, grand juries, some identification bureaus, juvenile boards, court administrators, state planning agencies and regions where available, separate detention facilities or hospitals for the criminally insane, institutions, commissions, boards, or clinics for drug addicts and alcoholics, and administrative agencies such as a department of corrections or a department of public safety.

No attempt was made to include departments of colleges or universities with organized programs in fields of criminal justice.



CODE IDENTIFIERS

A seven or nine-digit code identifier was assigned to each agency in the Directory. Police agencies which have National Crime Information Center (NCIC) identifiers have retained this seven-digit number. All other agencies in the Directory were assigned a nine-digit identifier in accordance with the following scheme:

Digits 1-2	Two-letter state abbreviation
Digits 3-5	County number as designated by the NCIC Manual
	Exception - For Michigan, digits 3 and 4 are the county number; digit 5 is "0"
Digits 6-7	Unit number of agency by type within each level of government and county
Digit 8	Level of Government
	0 ....Special District 1 ....City, town, or township 3 ....County 5 ....State
Digit 9	Type of Agency
	A - Prosecutor D - Defender M - Coroner or Medical Examiner C - Correctional Institution J - Court G - Probation or Parole Y - All other agencies E - State Planning Agency Z - Police agency not in NCIC

A description of the seven-digit identifiers used in the NCIC may be found in the NCIC Operating Manual, which is maintained by the Federal Bureau of Investigation.

The code identifier is found on the last line of each agency's address in the directory.

Table 1.--VERMONT CRIMINAL JUSTICE AGENCIES BY FUNCTION AND LEVEL OF GOVERNMENT: OCTOBER 1971

Level of government	Total agencies	Enforcement agencies	Courts	Prosecutor's offices	Defender's offices	Adult corrections	Juvenile corrections	Probation and parole	All other agencies
Total . . . . .	154	60	36	21	0	13	2	6	16
State . . . . .	35	1	2	2	0	7	2	5	16
Local . . . . .	119	59	34	19	0	6	0	1	0
County . . . . .	66	14	33	14	0	5	0	0	0
City, township, and special district . . . . .	53	45	1	5	0	1	0	1	0

Table 2.--NUMBER AND PERCENT OF VERMONT CRIMINAL JUSTICE AGENCIES BY LEVEL OF GOVERNMENT: OCTOBER 1971

Type of agency	Total number in Vermont	Percent at state or local level	
		Total	Percent at state level
All agencies . . . . .	154	100.0%	22.7%
Enforcement . . . . .	60	100.0	1.7
Courts . . . . .	36	100.0	5.6
Prosecutors . . . . .	21	100.0	9.5
Defenders . . . . .	0	-	-
Adult corrections . . . . .	13	100.0	53.8
Juvenile corrections . . . . .	2	100.0	100.0
Probation and parole . . . . .	6	100.0	83.3
All other agencies . . . . .	16	100.0	100.0
			77.3%
			98.3
			94.4
			90.5
			46.2
			16.7
			-

PROSECUTORS' OFFICES

STATE LEVEL			STATE S ATTORNEY S OFF			BRISTOL POLICE DEPT		
ATTORNEY GENERALS OFFICE			ATTORNEY			CHIEF OF POLICE		
STATE CAPITOL			RANDOLPH			BRISTOL		
VT	05602		VT	05060		VT	05443	
VT012015A			VT009013A			VT00101		
DEPT OF JUSTICE			STATE S ATT Y OFFICE			MIDDLEBURY POLICE DEPT		
STATES ATTORNEYS			STATE S ATTORNEY			CHIEF OF POLICE		
STATE ADM BLDG			NEWPORT			MUNICIPAL BLDG		
MONTPELIER			VT			MIDDLEBURY		
VT	05602		VT	05855		VT	05753	
VT012025A			VT010013A			VT00102		
LOCAL LEVEL			STATE S ATTORNEY S OFC			COUNTY SHERIFF S DEPT		
STATES ATTORNEY			STATES ATTY			SHERIFF		
COUNTY COURTHOUSE			82 MERCHANTS ROW			COURTHOUSE		
MIDDLEBURY			RUTLAND			BENNINGTON		
VT	05753		VT	05701		VT	05201	
VT001013A			VT011013A			VT00200		
CO STATE S ATTY S OFF			TOWN ATTORNEY			OLD BENNINGTON POLICE		
STATES ATTY			ATTORNEY			CHIEF OF POLICE		
COURTHOUSE			TOWN OFFICE BLDG			BENNINGTON		
MANCHESTER			CASTLETON			VT		
VT	05254		VT	05735		VT	05201	
VT002013A			VT011011A			VT00202		
CO STATE S ATTY S OFF			CO STATE S ATTY S OFF			POLICE DEPT		
STATES ATTY			STATE S ATTORNEY			CHIEF OF POLICE		
83 EASTERN AVE			43 STATE ST			205 SOUTH ST		
ST JOHNSBURY			MONTPELIER			BENNINGTON		
VT	05819		VT	05602		VT	05201	
VT003013A			VT012013A			VT00201		
CO STATES ATTY S OFF			ATTORNEY S OFFICE			MANCHESTER POLICE DEPT		
STATES ATTORNEY			ATTORNEY			POLICE CHIEF		
CO BLDG 59 PEARL S			MONTPELIER			MANCHESTER		
BURLINGTON			VT			VT		
VT	05401		VT	05602		VT	05254	
VT004013A			VT012011A			VT00203		
CITY ATTORNEYS OFFICE			STATE S ATTORNEY S OFF			COUNTY SHERIFF S DEPT		
CITY ATTORNEY			STATE S ATTORNEY			SHERIFF		
203 MAIN ST			114 MAIN STREET			60 PLEASANT ST		
BURLINGTON			BRATTLEBORO			ST JOHNSBURY		
VT	05401		VT	05345		VT	05819	
VT004011A			VT013013A			VT00300		
CO STATE S ATTY S OFF			TOWN AGENT OFFICE			HARDWICK POLICE DEPT		
STATE S ATTORNEY			ATTORNEY			CHIEF OF POLICE		
CANAAN			67 MAIN ST			HARDWICK		
VT	05903		VT	05301		VT	05843	
VT005013A			VT013011A			VT00301		
STATE S ATTORNEY S OFC			CO STATES ATTY S OFF			POLICE DEPARTMENT		
STATE S ATTY			STATE S ATTORNEY			CHIEF OF POLICE		
KINGMAN			WHITE RIVER JCT			MAIN STREET		
ST ALBANS			VT			LYNDONVILLE		
VT	05478		VT	05001		VT	05851	
VT006013A			VT014013A			VT00302		
CO STATE S ATTY S OFF			ENFORCEMENT AGENCIES			POLICE DEPT		
STATE S ATTORNEY			STATE LEVEL			CHIEF OF POLICE		
SOUTH HERO			DEPT OF PUBLIC			46 PEARL ST		
VT	05486		VT	05602		VT	05819	
VT007013A			VT00300			VT00303		
STATES ATTORNEYS OFC			LOCAL LEVEL			CO SHERIFF S DEPT		
ATTORNEY			COUNTY SHERIFF S DEPT			SHERIFF		
BOX 38			SHERIFF			BURLINGTON		
HYDE PARK			35 COURT ST			VT		
VT	05655		VT	05753		VT	05401	
VT008013A			VT00100			VT00400		
PROSECUTOR S OFFICE			POLICE DEPARTMENT			POLICE DEPT		
PROSECUTOR			CHIEF OF POLICE			CHIEF		
MAIN ST			P O BOX 121			50 WINOOSKI AVE		
STOWE			VERGENNES			BURLINGTON		
VT	05672		VT	05491		VT	05401	
VT008011A			VT00103			VT00401		

POLICE DEPT CHIEF ESSEX JUNCTION VT 05452 VT00402	COUNTY SHERIFF S DEPT SHERIFF GRAND ISLE VT 05458 VT00700	BRANDON TOWN POLICE DEPT CHIEF OF POLICE VT 05733 VT01101
WINDOOSKI POLICE DEPT POLICE CHIEF WINDOOSHI VT 05404 VT00404	LAMOILLE CO SHERIFFS OFC SHERIFF HYDE PARK VT 05655 VT00800	POLICE DEPARTMENT CHIEF OF POLICE CASTLETON VT 05735 VT01103
POLICE DEPT CHIEF OF POLICE COLCHESTER VT 05446 VT00405	MORRISVILLE POLICE DEPT CHIEF OF POLICE MORRISVILLE VT 05661 VT00801	FAIR HAVEN POLICE DEPT CHIEF OF POLICE MUNICIPAL BUILDING FAIR HAVEN VT 05743 VT01104
MILTON POLICE DEPT CHIEF OF POLICE MAIN ST MILTON VT 05468 VT00406	POLICE DEPT SENIOR OFFICER STOWE VT 05672 VT00802	POULTNEY POLICE DEPT CHIEF OF POLICE DEPOT ST POULTNEY VT 05764 VT01105
SHELburne POLICE DEPT CHIEF WEBSTER ROAD SHELburne VT 05482 VT00407	ORANGE CO SHERIFF S DEPT SHERIFF CHELSEA VT 05038 VT00900	PROCTOR POLICE DEPT POLICE OFFICER PROCTOR VT 05765 VT01106
S BURLINGTON POL DEPT CHIEF 805 WILLISTON RD SO BURLINGTON VT 05401 VT00403	VILLAGE POLICE DEPT CHIEF OF POLICE RANDOLPH VT 05060 VT00901	CO SHERIFF S DEPT SHERIFF MONTPELIER VT 05602 VT01200
ESSEX CO SHERIFF S DEPT SHERIFF GUILDHALL VT 05905 VT00500	POLICE DEPT POLICE OFFICER BRADFORD VT 05033 VT00902	BARRE POLICE DEPT CHIEF OF POLICE BARRE VT 05641 VT01201
COUNTY SHERIFFS DEPT SHERIFF ST ALBANS VT 05478 VT00600	CO SHERIFF S DEPT SHERIFF NEWPORT VT 05855 VT01000	MONTPELIER POLICE DEPT CHIEF MONTPELIER VT 05602 VT01202
POLICE DEPT SHERIFF ENDSBURG FALLS VT 05450 VT00604	POLICE DEPARTMENT POLICE CHIEF BARTON VT 05822 VT01002	CITY POLICE DEPT CHIEF OF POLICE S MAIN ST WATERBURY VT 05671 VT01204
RICHFORD POLICE DEPT CHIEF OF POLICE RICHFORD VT 05476 VT00602	POLICE DEPT CHIEF OF POLICE 74 MAIN ST NEWPORT VT 05855 VT01001	BORO POLICE DEPT CHIEF OF POLICE WEBSTERVILLE VT 05678 VT01205
ST ALBANS POLICE DEPT CHIEF OF POLICE ST ALBANS VT 05478 VT00601	COUNTY SHERIFFS DEPT SHERIFF RUTLAND VT 05702 VT01100	NORTHFIELD TOWN POL DEPT CHIEF OF POLICE VT 05663 VT01203
SWANTON POLICE DEPT CHIEF OF POLICE SWANTON VT 05488 VT00603	RUTLAND CITY POLICE DEPT CHIEF OF POLICE RUTLAND VT 05701 VT01102	CO SHERIFF S DEPARTMENT SHERIFF 230 MAIN STREET BRATTLEBORO VT 05345 VT01300

BELLOWS FALLS POL DEPT CHIEF OF POLICE BELLOWS FALLS VT 05101 VT01301	LOCAL LEVEL ADDISON PROBATE COURT PROBATE JUDGE COUNTY COURTHOUSE MIDDLEBURY VT 05753 VT001013J	DISTRICT CT FRANKLIN CIR DISTRICT CLERK ST ALBANS VT 05478 VT006013J
BRATTLEBORO POLICE DEPT CHIEF OF POLICE 230 MAIN ST BRATTLEBORO VT 05301 VT01302	DISTRICT COURT ADDISON CIRCUIT DISTRICT CLERK 3 COURT SQ MIDDLEBURY VT 05753 VT001023J	FRANKLIN CO PROBATE CT JUDGE CHURCH VT 05748 VT006023J
WILMINGTON POLICE DEPT CHIEF OF POLICE WILMINGTON VT 05363 VT01303	BENNINGTON PROBATE CT JUDGE COURTHOUSE BENNINGTON VT 05201 VT002013J	COUNTY PROBATE COURT JUDGE SOUTH HERO VT 05486 VT007013J
CO SHERIFF S DEPT SHERIFF WOODSTOCK VT 05091 VT01400	MANCHESTER PROBATE CT JUDGE COURTHOUSE MANCHESTER VT 05254 VT002023J	DISTRICT COURT GRAND ISLE CIRCUIT DISTRICT JUDGE ST ALBANS VT 05478 VT007023J
POLICE DEPARTMENT CHIEF WOODSTOCK VT 05091 VT01405	DISTRICT COURT BENNINGTON CIRCUIT DISTRICT JUDGE 505 MAIN ST BENNINGTON VT 05201 VT002033J	LAMOILLE CO PROBATE CT JUDGE HYDE PARK VT 05655 VT008013J
TOWN OF CHESTER POLICE DEPT CHIEF CHESTER VT 05143 VT01406	CO PROBATE COURT JUDGE ST JOHNSBURY VT 05819 VT003013J	DISTRICT COURT LAMOILLE CIRCUIT DISTRICT JUDGE HYDE PARK VT 05655 VT008023J
LULOW POLICE DEPT CHIEF DRAWER B LULOW VT 05149 VT01401	DISTRICT COURT CALEDONIA CIRCUIT DISTRICT CLERK 27 MAIN ST ST JOHNSBURY VT 05819 VT003023J	PROBATE CT RANDOLPH DIST JUDGE CHELSEA VT 05038 VT009013J
SPRINGFIELD TOWN POL DEP CHIEF OF POLICE VT 05156 VT01402	COUNTY PROBATE COURT JUDGE CO COURTHOUSE BURLINGTON VT 05401 VT004013J	PROBATE COURT BRADFORD DIST JUDGE WELLS RIVER VT 05081 VT009023J
WINDSOR POLICE DEPARTMENT CHIEF OF POLICE 147 MAIN ST WINDSOR VT 05089 VT01404	DISTRICT COURT CHITTENDEN CIRCUIT DISTRICT JUDGE 125 SO WINDOOSKI AVE BURLINGTON VT 05401 VT004023J	DISTRICT COURT ORANGE CIRCUIT DISTRICT JUDGE CHELSEA VT 05038 VT009033J
COURTS STATE LEVEL SUPREME COURT CHIEF JUSTICE SUPREME COURT BLDG MONTPELIER VT 05602 VT012015J	S BURLINGTON POL COURT JUDGE 555 DORSET ST SO BURLINGTON VT 05401 VT004021J	COUNTY PROBATE COURT JUDGE NEWPORT VT 05855 VT010013J
SUPERIOR COUNTY COURT CHF SUPERIOR JUDGE SUPREME COURT BLDG MONTPELIER VT 05602 VT012025J	ESSEX CO PROBATE CT JUDGE ISLAND POND VT 05846 VT005013J	DISTRICT COURT ORLEANS CIRCUIT DISTRICT JUDGE NEWPORT VT 05855 VT010023J
	DISTRICT COURT ESSEX CIRCUIT DISTRICT JUDGE 27 MAIN ST ST JOHNSBURY VT 05819 VT005023J	DISTRICT CT RUTLAND CIVC DISTRICT JUDGE COURTHOUSE RUTLAND VT 05701 VT011013J

RUTLAND CO PROBATE CT FAIRHAVEN DIS JUDGE N PARK PLACE FAIRHAVEN VT 05743 VT011023J	DEPT OF INSTITUTIONS ADVISORY PAROLE BD CHAIRMAN STATE OFFICE BLDG MONTPELIER VT 05602 VT012035G	COUNTY SHERIFFS DEPT SHERIFF ST ALBANS VT 05478 VT00600	DRUG REHABILITATION COMM VERMONT STATE HOSP CHAIRMAN WATERBURY VT 05676 VT012055Y
RUTLAND CO PROBATE CT RUTLAND DIST JUDGE 83 CENTER ST RUTLAND VT 05701 VT011033J	DISTRICT PROBATION AND PAROLE CHF PROBATION OFCR BOX 175 RUTLAND VT 05701 VT011015G	LAMOILLE CO SHERIFFS OFC SHERIFF HYDE PARK VT 05655 VT00800	ALCOHOLIC REHABILITATION BOARD EXEC DIRECTOR MONTPELIER VT 05401 VTC12065Y
COUNTY PROBATE COURT JUDGE BOX 15 MONTPELIER VT 05602 VT012013J	DISTRICT PROBATION AND PAROLE CHF PROBATION OFCR 59 PEARL ST CURLINGTON VT 05401 VT004015G	ORANGE CO SHERIFF S DEPT SHERIFF CHELSEA VT 05038 VT00900	VERMONT STATE HOSPITAL ALCOHOLISM CLINIC SUPERINTENDENT MAIN ST WATERBURY VT 05676 VT012075Y
DISTRICT COURT WASHINGTON CIRCUIT DISTRICT JUDGE BARRE VT 05641 VT012023J	LOCAL LEVEL PROBATION DEPT PROBATION OFFICER 106 SCHOOL ST BENNINGTON VT 05201 VT002011G	COUNTY SHERIFFS DEPT SHERIFF RUTLAND VT 05702 VT01100	ALCOHOLIC REHABILITATION HALF WAY HOUSE DIRECTOR 34 ELMWOOD AVE BURLINGTON VT 05401 VT004025Y
PROB CT MARLBORO DIST JUDGE BRATTLEBORO VT 05301 VT013013J	ADULT CORRECTIONAL INSTITUTIONS STATE LEVEL STATE PRISON AND HOUSE OF CORREC FOR MEN WARDEN 65 STATE ST WINDSOR VT 05089 VT014015C	BELLOWS FALLS POL DEPT CHIEF OF POLICE BELLOWS FALLS VT 05101 VT01301	UNIFORM LAWS COMMSN CHAIRMAN SUPREME COURT BLDG MONTPELIER VT 05602 VT012085Y
PROB CT WESTMINSTER DIST JUDGE BELLOWS FALLS VT 05101 VT013023J	VERMONT YOUTH CENTER SUPERINTENDENT PO BOX B ST ALBANS VT 05478 VT006015C	JUVENILE CORRECTIONAL INSTITUTIONS STATE LEVEL LAKESIDE CENTER SUPERINTENDENT BOX 715 BURLINGTON VT 05401 VT004025C	LAW ENFORCE TRAININ COUN DIRECTOR 126 STATE STREET MONTPELIER VT 05602 VT012095Y
DISTRICT COURT WINDHAM CIRCUIT DISTRICT JUDGE 230 MAIN ST BRATTLEBORO VT 05301 VT013033J	COMMUNITY CORRECTNAL CTR DIRECTOR RUTLAND VT 05701 VT011015C	WEEKS SCHOOL SUPERINTENDENT 100 MACDONOUGH DRI VERGENNES VT 05491 VT001015C	GOV CRIME CONTROL AND PREVENTION COMMN EXECUTIVE DIRECTOR 43 STATE ST MONTPELIER VT 05602 VT012015E
PROBATE CT HARTFORD DIST JUDGE WOODSTOCK VT 05091 VT014013J	COMMUNITY CORRECTNAL CTR DIRECTOR WOODSTOCK VT 05091 VT014025C	ALL OTHER AGENCIES STATE LEVEL STATE MILITARY DEPT ADJUTANT GENERAL BLDG 5 CAMP JOHNSON WINOOSKI VT 05404 VT004015Y	DEPT OF JUSTICE COUNTY SHERIFF S DEPT OF ADMINISTRA MONTPELIER VT 05602 VT012115Y
PROBATE CT WINDSOR DIST JUDGE WINDSOR VT 05091 VT014023J	COMMUNITY CORRECTNAL CTR DIRECTOR ST JOHNSBURY VT 05819 VT003015C	JUDICIARY DEPARTMENT COUR ADMINISTRATOR SUPREME COURT BLDG MONTPELIER VT 05602 VT012015Y	VT DEPT OF CORRECTIONS COMMISSIONER STATE OFFICE BLDG MONTPELIER VT 05602 VT012125Y
DISTRICT COURT WINDSOR CIRCUIT DISTRICT JUDGE HARTFORD VT 05047 VT014033J	COMMUNITY CORRECTIONAL CENTER DIRECTOR VT 05401 VT004015C	JUDICIAL COUNCIL PRESIDENT SUPREME COURT BLDG MONTPELIER VT 05602 VT012025Y	DEPT OF INSTITUTIONS INSTITUTN INDSTRY SUPERINTENDENT STATE OFFICE BLDG MONTPELIER VT 05602 VT012135Y
PROBATION and PAROLE AGENCIES STATE LEVEL DEPT OF INSITUTIONS PROBATN AND PAROLE DIRECTOR STATE OFFICE BLDG MONTPELIER VT 05602 VT012015G	ST ALBANS CORRECTIONAL FACILITY DIRECTOR VT 05478 VT006015C	DEPT OF PUBLIC SAFETY IDENT AND RECD DIV SUPERINTENDENT TERRACE MONTPELIER VT 05602 VT012035Y	DEPT OF INSTITUTIONS COMMISSIONER STATE OFFICE BLDG MONTPELIER VT 05602 VT012145Y
DEPT OF SOCIAL WELFARE JUV PROBATN SERV DIRECTOR STATE OFFICE BLDG MONTPELIER VT 05602 VT012025G	LOCAL LEVEL COUNTY SHERIFF S DEPT SHERIFF 35 COURT ST MIDDLEBURY VT 05753 VT00100	DEPT OF PUBLIC SAFETY COMMISSIONER TERRACE MONTPELIER VT 05602 VT012045Y	

**END**