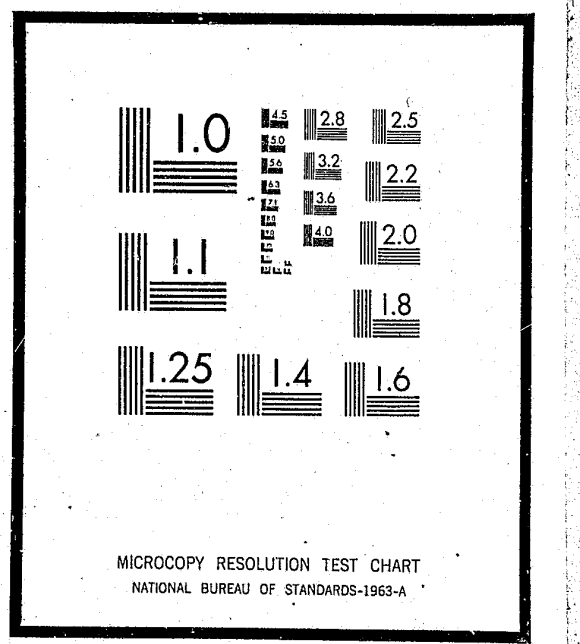


NCJRS

This microfiche was produced from documents received for inclusion in the NCJRS data base. Since NCJRS cannot exercise control over the physical condition of the documents submitted, the individual frame quality will vary. The resolution chart on this frame may be used to evaluate the document quality.



Microfilming procedures used to create this fiche comply with the standards set forth in 41CFR 101-11.504

Points of view or opinions stated in this document are those of the author(s) and do not represent the official position or policies of the U.S. Department of Justice.

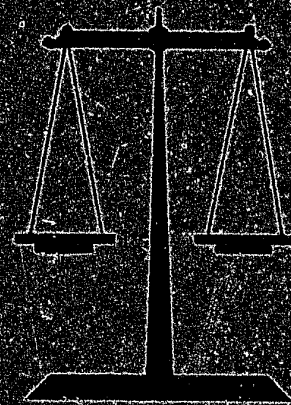
U.S. DEPARTMENT OF JUSTICE
LAW ENFORCEMENT ASSISTANCE ADMINISTRATION
NATIONAL CRIMINAL JUSTICE REFERENCE SERVICE
WASHINGTON, D.C. 20531

Date filmed

2/17/76

SO C. L. FOL

NE G



CRIME IN WISCONSIN PRELIMINARY ANNUAL RELEASE 1974

19137

CRIME INFORMATION BUREAU

STATE OF WISCONSIN
DEPARTMENT OF JUSTICE

DIVISION OF LAW ENFORCEMENT SERVICES

HOWARD G. BJORKLUND

administrator

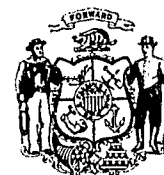


CRIME INFORMATION BUREAU

LARRY J. QUAMME

director

STATE CAPITOL
MADISON, WISCONSIN 53702
TELEPHONE: 608/266-7314



The State of Wisconsin
Department of Justice
Madison

DIVISION OF LAW ENFORCEMENT SERVICES
CRIME INFORMATION BUREAU
LARRY J. QUAMME, DIRECTOR
STATE CAPITOL
MADISON, WIS. 53702
608/266-7314

BRONSON C. LA FOLLETTE
ATTORNEY GENERAL

DAVID J. HASE
DEPUTY ATTORNEY GENERAL

HOWARD G. BJORKLUND
DIVISION ADMINISTRATOR

CRIME INFORMATION BUREAU
CRIME IN WISCONSIN: 1974

(PRELIMINARY ANNUAL RELEASE)

SUMMARY

Statewide, law enforcement agencies reported 166,247 Crime Index offenses for 1974, an increase of 15 percent from last year. Violent Crime increased 22 percent for the year to 6,412 offenses statewide. There were 139 murders reported in the state during 1974, an 18 percent increase from one year ago. Forcible rape increased during 1974, 4 percent, with 514 reported statewide. Robbery and aggravated assault both increased during 1974--36 percent (3,025 reported offenses) and 12 percent (2,734 reported offenses), respectively.

Property Crime increased 14 percent across the state in 1974, with 159,835 reported offenses. There were 38,210 burglaries, an increase of 18 percent. Thefts increased 14 percent to a reported 110,393. There was a 7 percent increase in motor vehicle thefts with 11,232 offenses reported statewide during 1974.

In making comparisons of the data in this report with the data contained in previous reports for comparable periods, the possibility exists that certain figures may appear to be unreconcilable. When this does occur it is because adjustments have been made in the data due to one or more of the following circumstances:

- When a law enforcement agency has incomplete reporting during the current period, the agency's data are omitted from the current totals and the current period/preceding period percent change calculations.
- Requests by law enforcement agencies to delete or amend the classifications of an offense that had been reported for a previous period.
- Shifting of a law enforcement agency from one population category to another based on annual reestimation of the jurisdiction's population.
- On occasion, the federal government designates an additional Wisconsin county as being included in a Standard Metropolitan Statistical Area. This shifts a Sheriff's Office from the Rural Areas category to the Suburban Sheriff's group and shifts the cities within the county from Non-Suburban Cities to Suburban Cities, providing adjusted base figures for both classifications.

A total of 188,614 arrests were reported by Wisconsin law enforcement agencies during 1974, an increase of 2 percent from last year. Arrests of adults showed a decrease of 3 percent from a year ago with 98,489 reported during 1974. Arrests of juveniles increased 7 percent statewide to a total of 90,125 in 1974.

Crime Index offenses, Violent Crimes and Property Crimes increased in all five major population categories. The individual offenses of aggravated assault, burglary and theft also displayed increases in all major population groups.

The greatest increase in Milwaukee for 1974 as compared to last year was for robbery, up 52 percent, and the greatest decrease reported by the city was for murder, down 6 percent. In cities with a population of 50,000-250,000, murder accounted for the greatest increase (77 percent), with forcible rape showing the only decrease (14 percent) for 1974 in comparison to 1973. Murder constituted the greatest increase in the state's Suburban Areas with a rise of 57 percent. Forcible rape was the only offense displaying a decrease for these agencies, a drop of 16 percent. The state's Non-Suburban Cities reported increases in all seven Index crimes ranging from an increase of 48 percent in the number of forcible rapes to a rise of 11 percent in reported aggravated assaults. The increase of 48 percent in forcible rape for the state's Rural Areas was the greatest increase reported by these agencies, with robbery the only offense showing a decrease (9 percent).

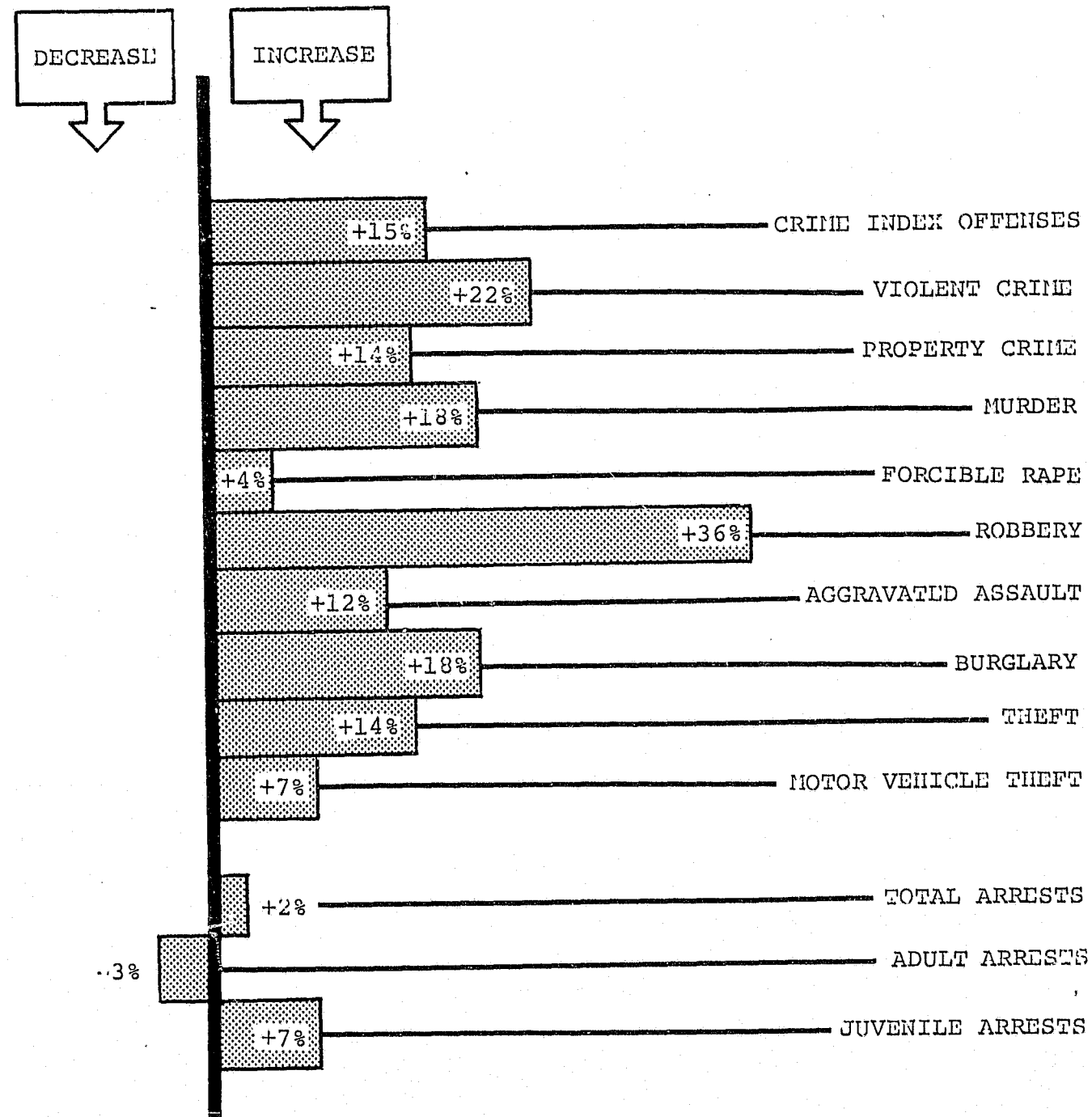
The greatest increase in any offense for any of the five major population categories occurred in the Suburban Areas where murder increased 77 percent in 1974 as compared to one year ago. The greatest decrease in any offense for any of the categories was the drop of 16 percent in forcible rape reported in the state's Suburban Areas.

Milwaukee showed a decrease in two of the seven Index crimes which constituted the greatest number of offense decreases in any of the five major population categories. This category along with cities with 50,000 to 250,000 population, also had the lowest increase (11 percent) in the number of Crime Index offenses reported during 1974 as compared with 1973.

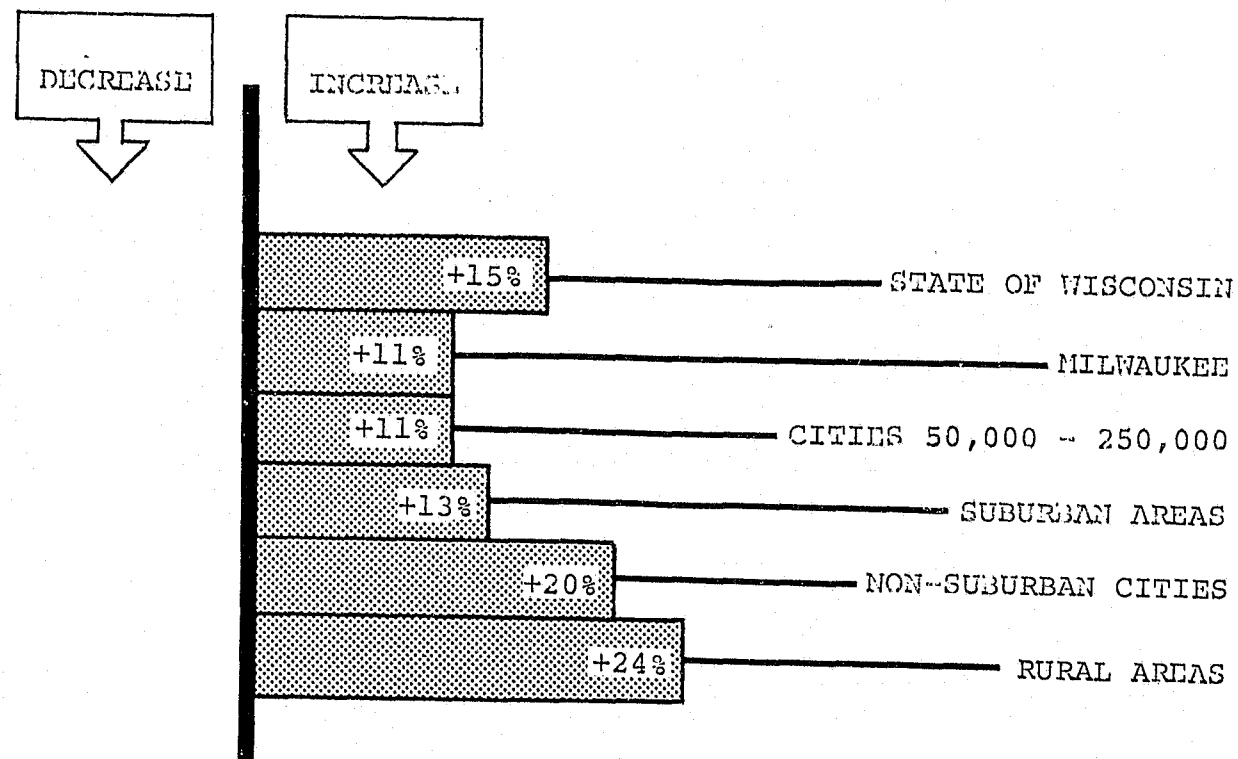
Arrests reported by the City of Milwaukee decreased 13 percent from last year. The remaining four population categories displayed increases in total arrests ranging from a high of 8 percent in the Suburban Areas to a low increase of 5 percent in the Rural Areas.

Fluctuations in adult arrests varied from a 21 percent decrease in Milwaukee to an 8 percent increase in the Suburban Areas. Juvenile arrests changes ranged from a high increase of 10 percent in cities 50,000 to 250,000 in population to a low increase of 2 percent in Milwaukee.

STATE OF WISCONSIN
1974 vs. 1973
PERCENT CHANGE



CRIME INDEX OFFENSES
 WISCONSIN MAJOR POPULATION CATEGORIES
 1974 vs. 1973
 PERCENT CHANGE



PRELIMINARY ANNUAL RELEASE

This report has been developed from a review of Uniform Crime Reports data as contributed to the Crime Information Bureau by Wisconsin's local and state law enforcement agencies. Offenses are reported as they become known to these agencies. Arrests are recorded as persons are cited or taken into custody for committing various offenses.

Statewide experience is presented, along with data relative to five major population components of Wisconsin:

- *MILWAUKEE* (the only city in the state with more than 250,000 inhabitants).
- *CITIES BETWEEN 50,000 and 250,000 IN POPULATION.*
- *SUBURBAN AREAS* which are all city, village and township Police Departments serving jurisdictions of under 50,000 population, University Police Departments (UW - Madison, UW - Milwaukee and UW - Parkside) and all Sheriffs' Offices in Brown, Calumet, Dane, Douglas, Kenosha, La Crosse, Milwaukee, Outagamie, Ozaukee, Racine, St. Croix, Washington, Waukesha and Winnebago Counties (Standard Metropolitan Statistical Area, or SMSA, Counties).
- *NON-SUBURBAN CITIES* which are city, village and township Police Departments in non-Standard Metropolitan Statistical Area (non-SMSA) counties.
- *RURAL AREAS* which are Sheriffs' Offices in non-Standard Metropolitan Statistical Area (non-SMSA) counties.

The analysis pertains to the overall statistics for each of these five population divisions. Throughout the report, state total figures include offenses and arrests reported by the Wisconsin State Patrol. Returns submitted by Sheriffs' Offices reflect consolidated data for smaller agencies not reporting directly to the Crime Information Bureau, as well as the activity of the Sheriffs' Office. The numbers of offenses and arrests for Wisconsin and the various population categories reflect totals of all agencies reporting for the entire twelve month period in 1974. Percentage changes are based on data reported by comparable units, with data submitted by new direct contributors included.

City, village and township Police Departments are assigned to population categories based on their estimated July 1, 1974, populations. University Police Departments are assigned to population categories based on student enrollment.

The "Crime Index", which is the total number of certain serious

offenses which becomes known to law enforcement agencies, is employed to measure crime in general. As in 1973, it includes all thefts, regardless of value.

All 1974 data are preliminary. Final figures for the year will be published in *Wisconsin Criminal Justice Information, Crime and Arrests - 1974*. Individuals using these data are cautioned against drawing conclusions by making direct comparisons between agencies because of the existence of numerous factors which affect the amount and type of crime from place to place. It is important to remember that crime is a social problem and, therefore, a concern of the entire community. The efforts of law enforcement agencies are limited to factors within their control. Questions relating to the offenses and arrests reported by a specific agency should be addressed to that department.

CRIME INDEX OFFENSES

The occurrence of seven offenses, as known to law enforcement agencies, is customarily used to measure the general extent, fluctuation and distribution of crime. These seven offenses are murder and nonnegligent manslaughter, forcible rape, robbery, aggravated assault, burglary, theft and motor vehicle theft. Wisconsin law enforcement agencies in 1974 recorded 166,247 Index offenses, an increase of 15 percent from last year. Crime Index offenses increased in all of the five major population categories with the Rural Area Sheriffs reporting the highest percentage increase, 24 percent. Milwaukee, and cities 50,000 to 250,000 in population, had the lowest increase in Index crimes, 11 percent.

CRIME INDEX OFFENSES

	Number In 1974	Percent Change From 1973
STATE OF WISCONSIN	166,247	+15%
MILWAUKEE	33,748	+11%
CITIES 50,000-250,000	36,745	+11%
SUBURBAN AREAS	45,764	+13%
NON-SUBURBAN CITIES	29,486	+20%
RURAL AREAS	20,500	+24%

VIOLENT CRIME

Statewide, a total of 6,412 murders, forcible rapes, robberies and aggravated assaults were reported by law enforcement agencies during 1974. This was an increase of 22 percent from the previous year. All of the five major population categories recorded more Violent Crimes in 1974 than in 1973, ranging from a 33 percent increase in Milwaukee to a 5 percent rise in the Suburban Areas.

VIOLENT CRIME

	Number In 1974	Percent Change From 1973
STATE OF WISCONSIN	6,412	+22%
MILWAUKEE	2,732	+33%
CITIES 50,000-250,000	1,505	+17%
SUBURBAN AREAS	1,172	+ 5%
NON-SUBURBAN CITIES	515	+23%
RURAL AREAS	484	+24%

PROPERTY CRIME

A total of 159,835 burglaries, thefts and motor vehicle thefts were reported by Wisconsin law enforcement agencies during 1974. This was a 14 percent increase from last year. Property Crimes increased in all of the five major population categories with the Rural Area Sheriffs reporting the highest percentage increase, 24 percent. Milwaukee reported a 9 percent rise in Property Crimes during 1974 as compared to last year.

PROPERTY CRIME

	Number In 1974	Percent Change From 1973
STATE OF WISCONSIN	159,835	+14%
MILWAUKEE	31,016	+ 9%
CITIES 50,000-250,000	35,240	+11%
SUBURBAN AREAS	44,592	+13%
NON-SUBURBAN CITIES	28,971	+20%
RURAL AREAS	20,016	+24%

MURDER

One hundred and thirty-nine murders were recorded in the state during 1974, an increase of 18 percent from the preceding year. Four of the five major population categories reported increases in murders, ranging from a high of 77 percent in cities with 50,000 to 250,000 population to a low of 18 percent in the Non-Suburban Cities. Milwaukee was the only major category showing a decline (6 percent) in the number of murders.

MURDER

	Number In 1974	Percent Change From 1973
STATE OF WISCONSIN	139	+18%
MILWAUKEE	62	- 6%
CITIES 50,000-250,000	23	+77%
SUBURBAN AREAS	22	+57%
NON-SUBURBAN CITIES	13	+18%
RURAL AREAS	19	+36%

FORCIBLE RAPE

In Wisconsin, 514 forcible rapes were reported during 1974, up 4 percent from the year before. Three of the five major population categories had increases in reported forcible rapes with the greatest increase occurring in the Non-Suburban Cities and the Rural Areas (up 48 percent) and the lowest increase (12 percent) recorded by Milwaukee. The remaining two population categories reported decreases in this crime with the Suburban Areas showing a drop of 16 percent and cities with 50,000 to 250,000 population recording a decline of 14 percent.

FORCIBLE RAPE

	Number In 1974	Percent Change From 1973
STATE OF WISCONSIN	514	+ 4%
MILWAUKEE	196	+12%
CITIES 50,000-250,000	95	-14%
SUBURBAN AREAS	109	-16%
NON-SUBURBAN CITIES	43	+48%
RURAL AREAS	71	+48%

ROBBERY

Statewide, law enforcement agencies reported 3,025 robberies during 1974, 36 percent more than were reported in the previous year. Four of the five population categories experienced increases in the number of robberies with the City of Milwaukee reporting the sharpest increase, 52 percent, while agencies in the Suburban Areas indicated a 17 percent rise in these crimes. Sheriffs in the state's Rural Area counties reported 9 percent fewer robberies during 1974 as compared with last year.

ROBBERY

	Number In 1974	Percent Change From 1973
STATE OF WISCONSIN	3,025	+36%
MILWAUKEE	1,647	+52%
CITIES 50,000-250,000	806	+22%
SUBURBAN AREAS	296	+17%
NON-SUBURBAN CITIES	198	+37%
RURAL AREAS	78	- 9%

AGGRAVATED ASSAULT

The number of aggravated assaults increased 12 percent in the state to a total of 2,734 during 1974. All of the five major population categories displayed increases in the volume of aggravated assaults with Sheriffs in the Rural Areas indicating the highest increase (30 percent). Law enforcement agencies in the Suburban Areas reported the lowest increase in this offense, a rise of 3 percent.

AGGRAVATED ASSAULT

	Number In 1974	Percent Change From 1973
STATE OF WISCONSIN	2,734	+12%
MILWAUKEE	827	+13%
CITIES 50,000-250,000	581	+16%
SUBURBAN AREAS	745	+ 3%
NON-SUBURBAN CITIES	261	+11%
RURAL AREAS	316	+30%

BURGLARY

The number of burglaries in Wisconsin increased 18 percent from last year to a total of 38,210. All of the five major population categories reported increases in the number of burglaries ranging from a 27 percent rise in the Non-Suburban Cities to an increase of 12 percent in the Suburban Areas.

BURGLARY

	Number In 1974	Percent Change From 1973
STATE OF WISCONSIN	38,210	+18%
MILWAUKEE	6,672	+19%
CITIES 50,000-250,000	8,164	+13%
SUBURBAN AREAS	9,149	+12%
NON-SUBURBAN CITIES	5,523	+27%
RURAL AREAS	8,702	+23%

THEFT

Statewide, thefts were up 14 percent from last year to a total of 110,393. Increases occurred in all of the major population categories led by the Rural Areas with a rise of 26 percent as compared to an increase of 9 percent reported in the City of Milwaukee.

THEFT

	Number In 1974	Percent Change From 1973
STATE OF WISCONSIN	110,393	+14%
MILWAUKEE	19,251	+ 9%
CITIES 50,000-250,000	24,903	+11%
SUBURBAN AREAS	33,424	+13%
NON-SUBURBAN CITIES	22,313	+17%
RURAL AREAS	10,502	+26%

MOTOR VEHICLE THEFT

In Wisconsin, the number of motor vehicle thefts went up 7 percent from last year, to a total of 11,232 in 1974. Milwaukee experienced a decrease of 2 percent, while other major population categories experienced increases. Non-Suburban Cities reported the highest proportionate increase 38 percent. Police Departments in cities with 50,000 to 250,000 population indicated a rise of 7 percent.

MOTOR VEHICLE THEFT

	Number In 1974	Percent Change From 1973
STATE OF WISCONSIN	11,232	+ 7%
MILWAUKEE	5,093	- 2%
CITIES 50,000-250,000	2,173	+ 7%
SUBURBAN AREAS	2,019	+15%
NON-SUBURBAN CITIES	1,135	+38%
RURAL AREAS	812	+26%

ARRESTS

Effective August 1, 1974, the offense of drunkenness was eliminated pursuant to Wisconsin Chapter 198, Laws of 1973.

Arrests are reported by Wisconsin law enforcement agencies according to the type of offense for which a person is cited or taken into custody. Arrests for all criminal offenses are scored. Traffic arrests are not recorded, with the exception of driving under the influence.

A "juvenile" is a person under eighteen years of age. Juveniles are scored as having been "arrested" for purposes of the Uniform Crime Reporting Program, although under Wisconsin Statutes law enforcement custody of a child shall not be legally considered an arrest. Arrests of young people for curfew/loitering violations and for running away are included in this analysis.

Statewide, a total of 188,614 arrests were reported by law enforcement agencies for 1974, a 2 percent increase from one year

ago. Four of the five major population categories recorded increases in arrests, ranging from a 5 percent rise in the Rural Areas to an 8 percent increase in the Suburban Areas. Milwaukee reported a drop of 13 percent in total arrests.

TOTAL ARRESTS

	Number In 1974	Percent Change From 1973
STATE OF WISCONSIN	188,614	+ 2%
MILWAUKEE	43,454	-13%
CITIES 50,000-250,000	27,770	+ 7%
SUBURBAN AREAS	58,191	+ 8%
NON-SUBURBAN CITIES	35,756	+ 7%
RURAL AREAS	20,885	+ 5%

Law enforcement agencies arrested more adults than juveniles during 1974. For Milwaukee, the ratio was approximately 5-to-3. Agencies in cities with between 50,000 and 250,000 population, Suburban Areas and Non-Suburban Cities, however, recorded more juvenile arrests than adult arrests.

ARRESTS OF ADULTS

A total of 98,489 adult arrests were recorded during 1974. Statewide, there was a decrease of 3 percent in arrests of adults for 1974 as opposed to last year. Four of the five major population categories recorded increases in adult arrests ranging from a 2 percent increase in the Rural Areas to an 8 percent rise reported in the Suburban Areas. Milwaukee reported a decrease of 21 percent in arrests of adults.

ARRESTS OF ADULTS

	Number In 1974	Percent Change From 1973
STATE OF WISCONSIN	98,489	- 3%
MILWAUKEE	27,007	-21%
CITIES 50,000-250,000	13,264	+ 4%
SUBURBAN AREAS	26,695	+ 8%
NON-SUBURBAN CITIES	16,825	+ 6%
RURAL AREAS	12,289	+ 2%

ARRESTS OF JUVENILES

Juvenile arrests increased 7 percent during 1974, to a total of 90,125. All population categories showed increases in juvenile arrests, ranging from a 10 percent rise in cities 50,000-250,000 in population to a 2 percent increase in Milwaukee.

ARRESTS OF JUVENILES

	Number In 1974	Percent Change From 1973
STATE OF WISCONSIN	90,125	+ 7%
MILWAUKEE	16,447	+ 2%
CITIES 50,000-250,000	14,506	+10%
SUBURBAN AREAS	31,496	+ 8%
NON-SUBURBAN CITIES	18,931	+ 8%
RURAL AREAS	8,596	+ 9%

Attached are detailed statistical tables showing the numbers of offenses and arrests reported. The arrangement is as follows:

Pages T- 1 - T-11

CRIME INDEX OFFENSES (Sum of murder, forcible rape, robbery, aggravated assault, burglary, theft and motor vehicle theft)

PROPERTY CRIMES (Sum of burglary, theft and motor vehicle theft)

BURGLARY

THEFT

MOTOR VEHICLE THEFT

Pages T-12 - T-22

VIOLENT CRIMES (Sum of murder, forcible rape, robbery and aggravated assault)

MURDER

FORCIBLE RAPE

ROBBERY

AGGRAVATED ASSAULT

Pages T-23 - T-33

TOTAL ARRESTS

ARRESTS OF ADULTS

ARRESTS OF JUVENILES

For assistance or additional copies of this Release, call or write:

Director
 Crime Information Bureau
 Division of Law Enforcement Services
 Wisconsin Department of Justice
 State Capitol
 Madison, Wisconsin 53702
 (608) 266-7314

CRIME INFORMATION BUREAU
CRIME IN WISCONSIN: JANUARY-DECEMBER, 1974

(PRELIMINARY ANNUAL RELEASE)

	CRIME INDEX OFFENSES		PROPERTY CRIMES		BURGLARY		THEFT		MOTOR VEHICLE THEFT	
	NUMBER IN 1974	% CHANGE FROM 1973	NUMBER IN 1974	% CHANGE FROM 1973	NUMBER IN 1974	% CHANGE FROM 1973	NUMBER IN 1974	% CHANGE FROM 1973	NUMBER IN 1974	% CHANGE FROM 1973
STATE OF WISCONSIN	166,247	+ 15%	159,835	+ 14%	38,210	+ 18%	110,393	+ 14%	11,232	+ 7%
TOTAL FOR ALL CITIES	132,969	+ 13%	127,578	+ 13%	25,995	+ 17%	91,844	+ 12%	9,739	+ 6%
CITIES OVER 250,000 (MILWAUKEE)	33,748	+ 11%	31,016	+ 9%	6,672	+ 19%	19,251	+ 9%	5,093	- 2%
CITIES 50,000-250,000										
APPLETON	2,376	+ 19%	2,310	+ 20%	423	+ 18%	1,832	+ 21%	55	- 5%
GREEN BAY	2,115	- 9%	2,083	- 10%	649	- 18%	1,324	- 3%	110	- 28%
KENOSHA	5,575	+ 29%	5,368	+ 31%	1,018	+ 37%	3,542	+ 26%	808	+ 44%
MADISON	10,222	+ 5%	9,956	+ 4%	2,226	- 2%	7,287	+ 9%	443	- 20%
OSHKOSH	3,016	+ 9%	3,000	+ 9%	407	+ 21%	2,523	+ 8%	70	- 9%
RACINE	8,206	+ 28%	7,408	+ 28%	2,499	+ 54%	4,477	+ 16%	432	+ 35%
WAUWATOSA	2,493	+ 5%	2,434	+ 5%	416	0%	1,904	+ 8%	114	- 13%
WEST ALLIS	2,742	- 10%	2,681	- 10%	526	- 21%	2,014	- 6%	141	- 16%
50,000-250,000 TOTAL	36,745	+ 11%	35,240	+ 11%	8,164	+ 13%	24,903	+ 11%	2,173	+ 7%
CITIES 25,000-50,000										
BELOIT	3,188	+ 28%	3,072	+ 27%	651	+ 48%	2,304	+ 22%	117	+ 39%
BROOKFIELD (S)	1,417	- 3%	1,411	- 4%	188	+ 3%	1,176	- 5%	47	+ 24%
EAU CLAIRE	826	+ 8%	815	+ 10%	238	+ 57%	533	- 2%	44	- 8%
FOND DU LAC	727	- 4%	717	- 4%	211	+ 64%	455	- 21%	51	+ 9%
GREENFIELD (S)	1,328	+ 7%	1,308	+ 6%	254	+ 8%	940	+ 2%	114	+ 43%
JANESVILLE	2,066	+ 27%	2,020	+ 26%	373	- 1%	1,577	+ 35%	70	+ 9%
LA CROSSE (S)	2,790	+ 4%	2,745	+ 3%	360	+ 2%	2,251	+ 2%	134	+ 44%
MANITOWOC	1,743	+ 29%	1,740	+ 29%	415	+ 36%	1,291	+ 26%	34	+ 70%
MENOMONEE FALLS (S)	920	+ 40%	906	+ 39%	132	+ 31%	741	+ 39%	33	+ 94%
NEW BERLIN (S)	784	+ 9%	770	+ 10%	319	+ 51%	432	- 4%	19	- 54%

(S) = Suburban City

T-1

CRIME INFORMATION BUREAU
CRIME IN WISCONSIN: JANUARY-DECEMBER, 1974

(PRELIMINARY ANNUAL RELEASE)

	CRIME INDEX OFFENSES		PROPERTY CRIMES		BURGLARY		THEFT		MOTOR VEHICLE THEFT	
	NUMBER IN 1974	% CHANGE FROM 1973	NUMBER IN 1974	% CHANGE FROM 1973	NUMBER IN 1974	% CHANGE FROM 1973	NUMBER IN 1974	% CHANGE FROM 1973	NUMBER IN 1974	% CHANGE FROM 1973
SHEBOYGAN	2,343	+ 7%	2,329	+ 7%	333	+ 2%	1,943	+ 8%	53	- 9%
SUPERIOR (S)	1,916	- 11%	1,866	- 11%	375	- 17%	1,344	- 10%	147	- 1%
UW-MADISON (S)	1,139	+ 6%	1,135	+ 7%	145	- 18%	981	+ 13%	9	- 44%
UW-MILWAUKEE (S)	797	- 4%	785	- 2%	44	- 15%	731	- 2%	10	0%
WAUKESHA (S)	1,447	+ 14%	1,429	+ 14%	207	+ 15%	1,154	+ 12%	68	+ 28%
WAUSAU	1,075	+ 4%	1,039	+ 3%	116	- 18%	886	+ 7%	37	+ 9%
25,000-50,000 TOTAL	24,506	+ 10%	24,087	+ 10%	4,361	+ 14%	18,739	+ 8%	987	+ 16%
CITIES OVER 25,000 TOTAL	94,999	+ 11%	90,343	+ 10%	19,197	+ 15%	62,893	+ 10%	8,253	+ 2%
CITIES 10,000-25,000										
BEAVER DAM	477	+ 20%	477	+ 20%	57	+104%	405	+ 11%	15	+275%
BROWN DEER (S)	421	- 13%	409	- 14%	45	- 18%	350	- 15%	14	+180%
CALEDONIA TOWN (S)	521	+ 30%	514	+ 31%	154	+ 50%	332	+ 20%	28	+100%
CHIPPEWA FALLS	669	+ 50%	664	+ 49%	101	+ 46%	533	+ 46%	30	+173%
CUDAHY (S)	862	+ 13%	840	+ 12%	146	+ 18%	644	+ 12%	50	- 6%
DE PERE (S)	636	+ 22%	634	+ 23%	111	- 2%	495	+ 29%	28	+ 65%
FRANKLIN (S)	414	+ 23%	401	+ 25%	107	+ 43%	266	+ 15%	28	+115%
GLENDALE (S)	988	+ 4%	962	+ 3%	87	- 17%	827	+ 6%	48	- 6%
GREENDALE (S)	905	- 8%	900	- 8%	36	- 20%	822	- 8%	42	+ 8%
KAUKAUNA (S)	343	+ 13%	334	+ 12%	73	+ 22%	251	+ 12%	10	- 29%
MARINETTE	662	+ 39%	648	+ 39%	82	+ 24%	549	+ 41%	17	+ 55%
MARSHFIELD	287	+ 13%	279	+ 12%	69	+ 73%	191	- 3%	19	+ 46%
MENASHA (S)	831	- 14%	801	- 14%	160	- 36%	616	- 4%	25	- 36%
MENOMONIE	404	+ 41%	397	+ 41%	56	+ 22%	322	+ 44%	19	+ 58%
MEQUON (S)	305	+ 67%	288	+ 61%	103	+115%	178	+ 40%	7	+ 75%

(S) = Suburban City

T-2

CRIME INFORMATION BUREAU
CRIME IN WISCONSIN: JANUARY-DECEMBER, 1974

(PRELIMINARY ANNUAL RELEASE)

	CRIME INDEX OFFENSES		PROPERTY CRIMES		BURGLARY		THEFT		MOTOR VEHICLE THEFT	
	NUMBER IN 1974	% CHANGE FROM 1973	NUMBER IN 1974	% CHANGE FROM 1973	NUMBER IN 1974	% CHANGE FROM 1973	NUMBER IN 1974	% CHANGE FROM 1973	NUMBER IN 1974	% CHANGE FROM 1973
MIDDLETON (S)	465	+ 38%	462	+ 38%	60	+ 18%	378	+ 39%	24	+ 85%
MT. PLEASANT TOWN (S)	355	+103%	345	+101%	110	+144%	216	+ 76%	19	+375%
MUSKEGO (S)	242	+ 18%	236	+ 20%	45	+ 7%	182	+ 19%	9	+350%
NEENAH (S)	1,481	+ 7%	1,467	+ 7%	169	- 30%	1,263	+ 15%	35	+ 6%
OAK CREEK (S)	543	+ 16%	537	+ 16%	148	+ 5%	367	+ 24%	22	- 15%
SHOREWOOD (S)	568	- 4%	554	- 3%	70	- 8%	465	- 4%	19	+ 27%
SOUTH MILWAUKEE (S)	901	+ 27%	887	+ 27%	108	+ 11%	753	+ 33%	26	- 28%
STEVENS POINT	1,384	+ 9%	1,369	+ 10%	247	+ 28%	1,088	+ 6%	34	+ 10%
SUN PRAIRIE (S)	528	+ 8%	514	+ 10%	114	+133%	378	- 5%	22	+ 22%
TWO RIVERS	373	+ 18%	367	+ 21%	69	+ 30%	287	+ 21%	11	- 8%
WATERTOWN	387	+ 16%	383	+ 15%	88	+ 1%	280	+ 19%	15	+ 36%
WEST BEND (S)	753	+ 24%	741	+ 22%	82	+ 91%	637	+ 16%	22	+ 57%
WHITEFISH BAY (S)	413	- 13%	405	- 13%	35	- 20%	365	- 12%	5	- 17%
WHITEWATER	460	+ 3%	455	+ 2%	53	+ 33%	387	- 2%	15	+ 50%
WISCONSIN RAPIDS	1,061	+ 14%	1,028	+ 14%	161	+ 81%	824	+ 6%	43	+ 34%
10,000-25,000 TOTAL	18,639	+ 13%	18,298	+ 13%	2,946	+ 17%	14,651	+ 12%	701	+ 25%
CITIES 5,000-10,000										
ANTIGO	372	+ 17%	370	+ 17%	110	+ 64%	247	+ 2%	13	+117%
ASHLAND	658	+ 16%	642	+ 15%	145	- 12%	448	+ 17%	49	+513%
BARABOO	411	+ 67%	408	+ 67%	85	+ 93%	311	+ 59%	12	+200%
BELOIT TOWN	334	+ 66%	311	+ 70%	117	+125%	180	+ 43%	14	+180%
BERLIN	108	+ 19%	102	+ 20%	21	0%	77	+ 43%	4	- 60%
BURLINGTON (S)	389	+ 46%	385	+ 45%	30	+ 50%	345	+ 42%	10	+400%
BURLINGTON TOWN (S)	157	+ 44%	151	+ 44%	34	+ 48%	113	+ 47%	4	- 20%
CEDARBURG (S)	180	+112%	178	+109%	39	+129%	139	+114%	0	-100%
DELAVAN	310	+ 30%	307	+ 30%	108	+200%	190	+ 3%	9	- 44%

(S) = Suburban City

T-3

CRIME INFORMATION BUREAU
CRIME IN WISCONSIN: JANUARY-DECEMBER, 1974

(PRELIMINARY ANNUAL RELEASE)

	CRIME INDEX OFFENSES		PROPERTY CRIMES		BURGLARY		THEFT		MOTOR VEHICLE THEFT	
	NUMBER IN 1974	% CHANGE FROM 1973	NUMBER IN 1974	% CHANGE FROM 1973	NUMBER IN 1974	% CHANGE FROM 1973	NUMBER IN 1974	% CHANGE FROM 1973	NUMBER IN 1974	% CHANGE FROM 1973
ELM GROVE (S)	39	- 33%	38	- 32%	20	+ 18%	16	- 56%	2	- 33%
FITCHBURG TOWN (S)	310	NDC	306	NDC	94	NDC	200	NDC	12	NDC
FORT ATKINSON	357	+ 45%	352	+ 47%	41	+ 3%	299	+ 56%	12	+ 71%
FOX POINT (S)	133	+ 15%	128	+ 11%	14	+250%	111	+ 2%	3	+ 50%
GERMANTOWN (S)	194	+ 11%	193	+ 12%	36	0%	147	+ 10%	10	+233%
GRAFTON (S)	180	+ 30%	178	+ 32%	21	- 36%	149	+ 46%	8	*
HALES CORNERS (S)	296	+ 6%	290	+ 7%	38	- 28%	243	+ 15%	9	+ 80%
HARTFORD (S)	170	- 21%	166	- 22%	35	+ 9%	122	- 29%	9	+ 13%
HUDSON (S)	278	+ 28%	275	+ 34%	52	+ 37%	208	+ 36%	15	+ 7%
JEFFERSON	237	+ 35%	230	+ 31%	27	- 13%	195	+ 40%	8	+ 60%
KIMBERLY (S)	192	+ 56%	189	+ 58%	42	+ 91%	147	+ 52%	0	-100%
LAKE GENEVA	392	- 1%	387	- 1%	54	+ 29%	316	- 5%	17	+ 13%
LITTLE CHUTE (S)	176	- 7%	175	- 7%	43	+ 10%	130	- 7%	2	- 78%
MADISON TOWN (S)	532	+ 36%	511	+ 35%	177	+ 17%	312	+ 61%	22	- 33%
MENASHA TOWN (S)	130	+ 33%	125	+ 34%	38	+ 31%	85	+ 39%	2	- 33%
MERRILL	268	+ 36%	268	+ 39%	40	+ 60%	219	+ 36%	9	+ 29%
MONONA (S)	877	+ 35%	834	+ 36%	139	- 3%	670	+ 48%	25	+ 56%
MONROE	244	+ 9%	237	+ 8%	38	0%	192	+ 14%	7	- 42%
NEW LONDON	411	+ 7%	411	+ 7%	37	- 8%	369	+ 10%	5	- 44%
OCONOMOWOC (S)	389	+ 28%	372	+ 25%	54	+ 54%	308	+ 18%	10	+233%
OCONOMOWOC TOWN (S)	127	+ 30%	124	+ 32%	33	+ 74%	89	+ 24%	2	- 33%
ONALASKA (S)	233	+396%	220	+400%	26	+ 73%	187	+593%	7	+250%
PLATTEVILLE	253	+ 42%	252	+ 42%	45	+221%	202	+ 25%	5	+150%
PLYMOUTH	149	+ 31%	148	+ 33%	23	+130%	118	+ 19%	7	+250%
PORT WASHINGTON (S)	276	+ 9%	270	+ 8%	54	- 4%	211	+ 16%	5	- 55%

(S) = Suburban City .

NDC = New direct contributing agency.

* = Zero in 1973.

T-4

CRIME INFORMATION BUREAU
CRIME IN WISCONSIN: JANUARY-DECEMBER, 1974

(PRELIMINARY ANNUAL RELEASE)

	CRIME INDEX OFFENSES		PROPERTY CRIMES		BURGLARY		THEFT		MOTOR VEHICLE THEFT	
	NUMBER IN 1974	% CHANGE FROM 1973	NUMBER IN 1974	% CHANGE FROM 1973	NUMBER IN 1974	% CHANGE FROM 1973	NUMBER IN 1974	% CHANGE FROM 1973	NUMBER IN 1974	% CHANGE FROM 1973
PORTAGE	168	+ 32%	168	+ 35%	36	- 20%	127	+ 72%	5	0%
PRAIRIE DU CHIEN	294	+ 9%	291	+ 10%	40	+100%	240	+ 3%	11	0%
RHINELANDER	279	+ 17%	274	+ 17%	54	+ 50%	193	+ 3%	27	+170%
RICE LAKE	402	+ 17%	391	+ 17%	96	+ 33%	270	+ 6%	25	+213%
RIPON	151	+ 40%	151	+ 41%	11	- 56%	138	+ 75%	2	- 33%
RIVER FALLS	218	+ 7%	214	+ 5%	9	+ 13%	199	+ 8%	6	- 40%
ST. FRANCIS (S)	458	+ 2%	451	+ 2%	94	+ 24%	335	+ 2%	22	- 42%
SHAWANO	314	+ 27%	313	+ 27%	38	+192%	262	+ 15%	13	+ 86%
SHEBOYGAN FALLS	70	+ 9%	67	+ 6%	11	0%	52	+ 4%	4	+100%
SPARTA	206	+ 78%	205	+ 78%	46	+109%	150	+ 67%	9	+200%
STOUGHTON (S)	297	+ 43%	287	+ 47%	83	+ 77%	188	+ 37%	16	+ 45%
STURGEON BAY	305	+ 3%	305	+ 3%	43	+ 43%	248	- 1%	14	- 7%
TOMAH	151	+ 16%	146	+ 12%	17	- 39%	124	+ 29%	5	- 17%
WAUPUN	116	+119%	116	+119%	22	+ 29%	88	+159%	6	+200%
WESTON TOWN	195	+ 2%	193	+ 3%	36	+ 57%	146	- 8%	11	+ 57%
5,000-10,000 TOTAL	13,376	+ 28%	13,105	+ 28%	2,546	+ 35%	10,055	+ 26%	504	+ 35%
CITIES UNDER 5,000										
ALGOMA	53	+ 96%	53	+ 96%	25	+317%	28	+ 47%	0	-100%
ALTOONA	75	+ 9%	75	+ 10%	6	- 25%	64	+ 10%	5	+150%
BAYSIDE (S)	64	- 26%	63	- 28%	19	- 37%	44	- 23%	0	0%
BLACK RIVER FALLS	146	- 2%	144	0%	20	- 41%	118	+ 12%	6	+ 20%
BLOOMER	99	+ 25%	99	+ 25%	14	+ 75%	80	+ 19%	5	+ 25%
BRILLION (S)	24	- 29%	24	- 27%	7	- 36%	17	- 19%	0	-100%
BRODHEAD	55	- 20%	55	- 15%	4	- 84%	48	+ 45%	3	- 57%
CHILTON (S)	22	+ 5%	22	+ 10%	3	- 25%	19	+ 19%	0	0%

(S) = Suburban City

T-5

CRIME INFORMATION BUREAU
CRIME IN WISCONSIN: JANUARY-DECEMBER, 1974

(PRELIMINARY ANNUAL RELEASE)

	CRIME INDEX OFFENSES		PROPERTY CRIMES		BURGLARY		THEFT		MOTOR VEHICLE THEFT	
	NUMBER IN 1974	% CHANGE FROM 1973	NUMBER IN 1974	% CHANGE FROM 1973	NUMBER IN 1974	% CHANGE FROM 1973	NUMBER IN 1974	% CHANGE FROM 1973	NUMBER IN 1974	% CHANGE FROM 1973
CLINTONVILLE	118	+ 27%	118	+ 30%	38	0%	77	+ 60%	3	- 40%
COLUMBUS	91	+ 36%	87	+ 32%	35	+133%	51	+ 2%	1	0%
COMBINED LOCKS (S)	106	+112%	105	+119%	21	+250%	83	+102%	1	0%
DELAFIELD (S)	118	+ 19%	116	+ 18%	39	+ 34%	73	+ 11%	4	+ 33%
DELAVAN TOWN	176	- 17%	175	- 17%	77	- 13%	96	- 19%	2	- 33%
DODGEVILLE	63	+215%	61	+205%	11	+267%	49	+188%	1	*
EDGERTON	147	+ 14%	145	+ 13%	17	- 55%	121	+ 42%	7	+ 40%
ELKHORN	165	+ 8%	161	+ 13%	37	+ 48%	118	+ 4%	6	+100%
EVANSVILLE	65	+110%	65	+117%	5	- 29%	49	+188%	11	+ 83%
HARTLAND (S)	128	+ 75%	126	+ 75%	26	+333%	98	+ 58%	2	- 50%
HORICON	120	+ 41%	115	+ 46%	13	+ 8%	61	- 8%	41	+400%
KEWAUNEE	56	+ 27%	55	+ 25%	18	0%	31	+ 24%	6	+500%
KIEL	17	- 35%	17	- 35%	2	+100%	15	- 38%	0	-100%
LADYSMITH	75	+ 23%	74	+ 23%	10	- 9%	63	+ 31%	1	0%
LAKE MILLS	84	+ 20%	84	+ 20%	36	+ 16%	46	+ 24%	2	0%
LANCASTER	47	+ 15%	47	+ 15%	15	+ 15%	32	+ 28%	0	-100%
MAUSTON	124	+182%	122	+177%	28	+600%	90	+143%	4	+ 33%
MAYVILLE	73	+ 59%	73	+ 62%	25	+ 56%	47	+ 81%	1	- 67%
MEDFORD	72	+ 11%	72	+ 18%	13	- 19%	57	+ 33%	2	0%
MILTON	127	+ 7%	118	+ 1%	44	+ 7%	70	- 4%	4	+ 33%
MINOCQUA	242	+ 16%	238	+ 18%	85	+ 20%	141	+ 14%	12	+100%
MONTELLLO	40	+ 5%	40	+ 5%	9	- 18%	29	+ 16%	2	0%
MOSINEE	31	NDC	31	NDC	14	NDC	15	NDC	2	NDC
MUKWONAGO (S)	55	- 38%	54	- 36%	11	- 8%	41	- 43%	2	*

(S) = Suburban City

NDC = New direct contributing agency.

* = Zero in 1973.

T-6

CRIME INFORMATION BUREAU
CRIME IN WISCONSIN: JANUARY-DECEMBER, 1974

(PRELIMINARY ANNUAL RELEASE)

	CRIME INDEX OFFENSES		PROPERTY CRIMES		BURGLARY		THEFT		MOTOR VEHICLE THEFT	
	NUMBER IN 1974	% CHANGE FROM 1973	NUMBER IN 1974	% CHANGE FROM 1973	NUMBER IN 1974	% CHANGE FROM 1973	NUMBER IN 1974	% CHANGE FROM 1973	NUMBER IN 1974	% CHANGE FROM 1973
NEILLSVILLE	49	+ 20%	49	+ 20%	5	- 44%	43	+ 59%	1	- 80%
NEW GLARUS ¹	70	NDC	65	NDC	3	NDC	60	NDC	2	NDC
NEW HOLSTEIN (S)	55	- 10%	55	- 7%	18	+100%	37	- 24%	0	-100%
NEW RICHMOND (S)	109	+ 45%	109	+ 49%	26	+ 86%	81	+ 65%	2	- 80%
NORTH FOND DU LAC	3	*	2	*	1	*	1	*	0	0%
OCONTO	7	- 53%	7	- 53%	7	- 13%	0	-100%	0	-100%
OCONTO FALLS	43	+ 30%	38	+ 15%	6	+ 20%	31	+ 24%	1	- 67%
OREGON (S)	63	+ 19%	62	+ 17%	20	+ 5%	40	+ 18%	2	*
PARK FALLS	68	+106%	66	+100%	12	- 33%	52	+271%	2	+100%
PESHTIGO	89	+ 17%	87	+ 18%	13	+ 86%	72	+ 9%	2	+100%
PEWAUKEE (S)	93	- 14%	92	- 8%	25	- 22%	64	- 4%	3	+200%
REEDSBURG	222	- 1%	218	- 3%	13	- 35%	203	+ 4%	2	- 78%
RICHLAND CENTER	107	+ 18%	106	+ 22%	24	+ 4%	78	+ 24%	4	+300%
ROTHSCHILD	79	+ 61%	77	+ 64%	15	+200%	59	+ 44%	3	+200%
SAUK-PRAIRIE	161	- 7%	161	- 6%	24	+100%	126	- 18%	11	+ 83%
SCHOFIELD	47	+176%	47	+176%	9	+ 80%	30	+200%	8	+300%
STANLEY	49	NDC	47	NDC	8	NDC	31	NDC	8	NDC
STURTEVANT (S)	190	+ 43%	183	+106%	39	+ 70%	132	+100%	12	*
SUMMIT TOWN (S)	90	+ 29%	89	+ 33%	35	+ 75%	52	+ 18%	2	- 33%
THIENSVILLE (S)	113	+ 31%	112	+ 32%	24	+ 33%	83	+ 24%	5	*
TOMAHAWK	108	+ 2%	108	+ 2%	11	- 31%	89	+ 1%	8	+300%
TWIN LAKES (S)	248	NDC	224	NDC	55	NDC	159	NDC	10	NDC
UNION GROVE (S)	134	+ 79%	130	+ 88%	34	+ 89%	93	+102%	3	- 40%
UW-PARKSIDE (S)	99	NDC	99	NDC	2	NDC	97	NDC	0	NDC
VIROQUA	103	- 14%	102	- 12%	23	- 8%	75	- 11%	4	- 43%

(S) = Suburban City

NDC = New direct contributing agency.

* = Zero in 1973.

1 = Reported 9 months only.

T-7

CRIME INFORMATION BUREAU
CRIME IN WISCONSIN: JANUARY-DECEMBER, 1974

(PRELIMINARY ANNUAL RELEASE)

	CRIME INDEX OFFENSES		PROPERTY CRIMES		BURGLARY		THEFT		MOTOR VEHICLE THEFT	
	NUMBER IN 1974	% CHANGE FROM 1973	NUMBER IN 1974	% CHANGE FROM 1973	NUMBER IN 1974	% CHANGE FROM 1973	NUMBER IN 1974	% CHANGE FROM 1973	NUMBER IN 1974	% CHANGE FROM 1973
WASHBURN	66	+ 78%	64	+ 78%	20	+ 33%	41	+116%	3	+ 50%
WATERFORD (S)	23	+ 53%	22	+ 57%	5	+150%	13	+ 8%	4	*
WAUPACA	130	+ 26%	129	+ 25%	22	- 50%	100	+ 82%	7	+ 75%
WEST MILWAUKEE (S)	240	+ 7%	232	+ 12%	44	+110%	161	+ 2%	27	- 4%
WISCONSIN DELLS	219	- 4%	216	- 1%	36	- 16%	171	+ 1%	9	+ 80%
UNDER 5,000 TOTAL	5,955	+ 28%	5,832	+ 30%	1,306	+ 22%	4,245	+ 32%	281	+ 58%
NON-SUBURBAN CITIES TOTAL	29,486	+ 20%	28,971	+ 20%	5,523	+ 27%	22,313	+ 17%	1,135	+ 38%
SUBURBAN CITIES TOTAL	32,990	+ 13%	32,351	+ 13%	5,636	+ 14%	25,377	+ 12%	1,338	+ 17%
SUBURBAN AREA SHERIFFS										
BROWN CO SO	1,205	+ 9%	1,187	+ 9%	272	- 3%	867	+ 13%	48	+ 7%
CALUMET CO SO	177	- 18%	170	- 19%	51	- 24%	114	- 10%	5	- 69%
DANE CO SO	1,588	+ 8%	1,510	+ 9%	501	+ 7%	927	+ 17%	82	- 33%
DOUGLAS CO SO	356	+ 14%	350	+ 16%	121	+ 8%	211	+ 23%	18	0%
KENOSHA CO SO	1,889	+ 11%	1,789	+ 11%	535	+ 6%	1,098	+ 10%	156	+ 39%
LA CROSSE CO SO	632	+ 1%	621	+ 8%	213	- 1%	394	+ 14%	14	+ 8%
MILWAUKEE CO SO	473	+ 25%	452	+ 25%	19	+ 46%	378	+ 20%	55	+ 62%
OUTAGAMIE CO SO	865	+ 7%	856	+ 8%	256	+ 4%	573	+ 14%	27	- 34%
OZAUKEE CO SO	304	+ 16%	300	+ 15%	81	+ 25%	210	+ 15%	9	- 31%
RACINE CO SO	1,483	+ 28%	1,363	+ 27%	345	+ 15%	916	+ 27%	102	+ 76%
ST. CROIX CO SO	539	+ 13%	533	+ 13%	147	+ 6%	366	+ 20%	20	- 26%
WASHINGTON CO SO	810	+ 31%	802	+ 33%	272	+ 24%	480	+ 33%	50	+138%
WAUKESHA CO SO	1,291	+ 16%	1,271	+ 17%	319	+ 14%	911	+ 20%	41	- 13%

(S) = Suburban City

* = Zero in 1973.

T-8

CRIME INFORMATION BUREAU
CRIME IN WISCONSIN: JANUARY-DECEMBER, 1974

(PRELIMINARY ANNUAL RELEASE)

	CRIME INDEX OFFENSES		PROPERTY CRIMES		BURGLARY		THEFT		MOTOR VEHICLE THEFT	
	NUMBER IN 1974	% CHANGE FROM 1973	NUMBER IN 1974	% CHANGE FROM 1973	NUMBER IN 1974	% CHANGE FROM 1973	NUMBER IN 1974	% CHANGE FROM 1973	NUMBER IN 1974	% CHANGE FROM 1973
WINNEBAGO CO SO	1,162	+ 11%	1,037	+ 11%	381	+ 10%	602	+ 9%	54	+ 38%
SUBURBAN AREA SHERIFFS TOTAL	12,774	+ 13%	12,241	+ 14%	3,513	+ 8%	8,047	+ 17%	681	+ 12%
SUBURBAN AREAS TOTAL	45,764	+ 13%	44,592	+ 13%	9,149	+ 12%	33,424	+ 13%	2,019	+ 15%
RURAL AREA SHERIFFS										
ADAMS CO SO	617	+ 36%	605	+ 33%	408	+ 28%	189	+ 41%	8	+700%
ASHLAND CO SO	188	+ 30%	170	+ 21%	103	+ 43%	64	0%	3	- 25%
BARRON CO SO	162	- 15%	149	- 20%	83	+ 30%	57	- 42%	9	- 63%
BAYFIELD CO SO	246	+ 14%	233	+ 11%	140	+ 19%	90	+ 9%	3	- 63%
BUFFALO CO SO	64	- 34%	64	- 31%	16	- 11%	43	- 40%	5	+ 67%
BURNETT CO SO	627	+ 58%	624	+ 58%	409	+ 58%	198	+ 64%	17	+ 21%
CHIPPEWA CO SO	542	+ 16%	533	+ 16%	234	+ 46%	252	- 7%	47	+ 81%
CLARK CO SO	526	+ 38%	524	+ 38%	146	+ 7%	347	+ 58%	31	+ 29%
COLUMBIA CO SO	527	+ 28%	521	+ 29%	220	+ 29%	282	+ 34%	19	- 21%
CRAWFORD CO SO	126	+ 37%	124	+ 39%	33	+136%	90	+ 27%	1	- 75%
DODGE CO SO	418	+ 31%	401	+ 25%	153	+ 68%	228	+ 10%	20	- 5%
DOOR CO SO	310	- 1%	310	0%	159	+ 26%	143	- 20%	8	+ 33%
DUNN CO SO	328	+ 61%	319	+ 59%	122	+ 63%	193	+ 58%	4	0%
EAU CLAIRE CO SO	406	+ 22%	400	+ 23%	120	+ 85%	266	+ 7%	14	+ 27%
FLORENCE CO SO	128	+ 36%	123	+ 38%	56	- 18%	64	+220%	3	+200%
FOND DU LAC CO SO	277	+115%	258	+155%	101	+146%	145	+142%	12	*
FOREST CO SO	291	+ 40%	278	+ 40%	139	+ 36%	132	+ 52%	7	- 30%
GRANT CO SO	328	+ 87%	323	+ 88%	93	+151%	217	+ 67%	13	+160%
GREEN CO SO	223	+ 72%	212	+ 64%	63	+117%	140	+ 57%	9	- 18%
GREEN LAKE CO SO	203	- 2%	200	- 3%	73	- 15%	122	+ 7%	5	- 17%

* = Zero in 1973.

T-9

CRIME INFORMATION BUREAU
CRIME IN WISCONSIN: JANUARY-DECEMBER, 1974

(PRELIMINARY ANNUAL RELEASE)

	CRIME INDEX OFFENSES		PROPERTY CRIMES		BURGLARY		THEFT		MOTOR VEHICLE THEFT	
	NUMBER IN 1974	% CHANGE FROM 1973	NUMBER IN 1974	% CHANGE FROM 1973	NUMBER IN 1974	% CHANGE FROM 1973	NUMBER IN 1974	% CHANGE FROM 1973	NUMBER IN 1974	% CHANGE FROM 1973
IOWA CO SO	368	+ 93%	365	+ 96%	85	+136%	264	+ 87%	16	+ 78%
IRON CO SO	121	+ 36%	117	+ 33%	61	+ 15%	53	+ 61%	3	+ 50%
JACKSON CO SO	205	+ 42%	199	+ 41%	96	+ 14%	95	+ 79%	8	+100%
JEFFERSON CO SO	518	+ 20%	506	+ 32%	158	+ 14%	314	+ 39%	34	+ 79%
JUNEAU CO SO	342	+ 51%	331	+ 49%	163	+ 92%	155	+ 19%	13	+ 86%
KEWAUNEE CO SO	81	+ 11%	81	+ 11%	40	+ 3%	33	+ 3%	8	+300%
LAFAYETTE CO SO	183	- 5%	176	- 4%	39	- 38%	127	+ 15%	10	0%
LANGLADE CO SO	278	+ 9%	263	+ 14%	160	+ 52%	102	- 16%	1	- 67%
LINCOLN CO SO	236	0%	234	0%	104	- 21%	125	+ 25%	5	+ 67%
MANITOWOC CO SO	321	+ 34%	314	+ 35%	106	- 8%	199	+ 73%	9	+200%
MARATHON CO SO	595	+ 20%	575	+ 18%	173	+ 24%	376	+ 18%	26	- 7%
MARINETTE CO SO	590	+ 3%	581	+ 2%	275	- 25%	286	+ 53%	20	+ 67%
MARQUETTE CO SO	301	+ 43%	293	+ 42%	176	+ 38%	115	+ 49%	2	+100%
MENOMINEE CO SO	79	- 6%	76	- 5%	71	- 7%	0	-100%	5	+ 67%
MONROE CO SO	315	+ 37%	303	+ 39%	120	+ 33%	171	+ 44%	12	+ 33%
OCONTO CO SO	331	+ 18%	329	+ 18%	210	+ 21%	105	+ 14%	14	+ 8%
ONEIDA CO SO	553	+ 10%	550	+ 12%	227	- 11%	296	+ 33%	27	+ 69%
PEPIN CO SO	90	- 19%	89	- 16%	20	- 35%	62	- 10%	7	+ 17%
PIERCE CO SO	420	+ 15%	416	+ 16%	137	+ 28%	256	+ 8%	23	+ 64%
POLK CO SO	434	- 10%	427	- 9%	250	+ 21%	138	- 41%	39	+ 26%
PORTAGE CO SO	344	- 5%	338	- 6%	152	+ 6%	177	- 11%	9	- 50%
PRICE CO SO	355	+ 25%	350	+ 24%	198	+ 31%	148	+ 19%	4	- 43%
RICHLAND CO SO	237	+101%	229	+ 94%	81	+286%	135	+ 41%	13	+1200%
ROCK CO SO	728	+ 30%	681	+ 24%	218	- 2%	430	+ 46%	33	- 3%
RUSK CO SO	222	+ 34%	220	+ 34%	119	+ 65%	99	+ 10%	2	0%
SAUK CO SO	425	+ 49%	424	+ 51%	156	+ 64%	252	+ 41%	16	+167%
SAWYER CO SO	383	+ 80%	375	+ 78%	183	+ 49%	188	+121%	4	+ 33%
SHAWANO CO SO	475	+ 13%	465	+ 11%	200	+ 4%	242	+ 19%	23	0%

T-10

CRIME INFORMATION BUREAU
CRIME IN WISCONSIN: JANUARY-DECEMBER, 1974

(PRELIMINARY ANNUAL RELEASE)

	CRIME INDEX OFFENSES		PROPERTY CRIMES		BURGLARY		THEFT		MOTOR VEHICLE THEFT	
	NUMBER IN 1974	% CHANGE FROM 1973	NUMBER IN 1974	% CHANGE FROM 1973	NUMBER IN 1974	% CHANGE FROM 1973	NUMBER IN 1974	% CHANGE FROM 1973	NUMBER IN 1974	% CHANGE FROM 1973
SHEBOYGAN CO SO	643	+ 2%	636	+ 3%	240	+ 1%	370	+ 4%	26	+ 24%
TAYLOR CO SO	170	+ 55%	170	+ 55%	0	0%	167	+ 52%	3	*
TREMPEALEAU CO SO	324	+ 89%	316	+ 87%	88	+ 44%	207	+113%	21	+ 91%
VERNON CO SO	170	- 8%	262	- 10%	86	- 16%	160	- 6%	16	- 20%
VILAS CO SO	613	+ 57%	606	+ 59%	359	+ 81%	232	+ 34%	15	+ 36%
WALWORTH CO SO	782	+ 5%	755	+ 5%	302	+ 14%	401	+ 1%	52	- 5%
WASHBURN CO SO	294	+ 43%	285	+ 40%	134	- 16%	139	+321%	12	+ 20%
WAUPACA CO SO	516	+ 24%	499	+ 25%	239	+ 7%	233	+ 40%	27	+200%
WAUSHARA CO SO	425	+ 22%	420	+ 21%	212	+ 23%	205	+ 21%	3	- 57%
WOOD CO SO	396	+ 6%	389	+ 5%	193	+ 12%	183	- 5%	13	+160%
RURAL AREA SHERIFFS TOTAL	20,500	+ 24%	20,016	+ 24%	8,702	+ 23%	10,502	+ 26%	812	+ 26%
TOTAL FOR ALL SHERIFFS	33,274	+ 20%	32,257	+ 20%	12,215	+ 18%	18,549	+ 22%	1,493	+ 19%
STATE PATROL	4	+300%	0	0%	0	0%	0	0%	0	0%

T-11

CRIME INFORMATION BUREAU
CRIME IN WISCONSIN: JANUARY-DECEMBER, 1974

(PRELIMINARY ANNUAL RELEASE)

	VIOLENT CRIMES		MURDER		FORCIBLE RAPE		ROBBERY		AGGRAVATED ASSAULT	
	NUMBER IN 1974	% CHANGE FROM 1973	NUMBER IN 1974	% CHANGE FROM 1973	NUMBER IN 1974	% CHANGE FROM 1973	NUMBER IN 1974	% CHANGE FROM 1973	NUMBER IN 1974	% CHANGE FROM 1973
STATE OF WISCONSIN	6,412	+ 22%	139	+ 18%	514	+ 4%	3,025	+ 36%	2,734	+ 12%
TOTAL FOR ALL CITIES	5,391	+ 24%	107	+ 13%	397	+ 3%	3,852	+ 40%	2,035	+ 11%
CITIES OVER 250,000 (MILWAUKEE)	2,732	+ 33%	62	- 6%	196	+ 12%	1,647	+ 52%	827	+ 13%
CITIES 50,000-250,000										
APPLETON	66	- 10%	1	- 50%	3	- 25%	10	+ 11%	52	- 10%
GREEN BAY	32	+ 45%	1	*	5	0%	22	+120%	4	- 43%
KENOSHA	207	- 8%	6	+100%	7	0%	129	- 16%	65	+ 7%
MADISON	266	+ 50%	6	+100%	31	- 35%	198	+ 78%	31	+107%
OSHKOSH	16	- 33%	1	- 50%	2	- 33%	11	- 39%	2	+100%
RACINE	798	+ 25%	6	+200%	37	+ 37%	377	+ 36%	378	+ 15%
WAUWATOSA	59	- 11%	1	*	7	- 13%	33	- 15%	18	- 5%
WEST ALLIS	61	+ 2%	1	0%	3	- 63%	26	- 35%	31	+182%
50,000-250,000 TOTAL	1,505	+ 17%	23	+ 77%	95	- 14%	806	+ 22%	581	+ 16%
CITIES 25,000-50,000										
BELOIT	116	+ 55%	1	0%	8	+ 60%	81	+ 80%	26	+ 8%
BROOKFIELD (S)	6	+500%	1	*	0	0%	5	+400%	0	0%
EAU CLAIRE	11	- 42%	0	-100%	4	+300%	4	- 56%	3	- 63%
FOND DU LAC	10	+ 25%	0	-100%	1	*	6	+ 20%	3	+ 50%
GREENFIELD (S)	20	+150%	2	*	1	*	11	+ 38%	6	*
JANESVILLE	46	+ 92%	2	+100%	6	+ 50%	33	+154%	5	- 17%
LA CROSSE (S)	45	+275%	0	0%	11	+175%	9	+125%	25	+525%
MANITOWOC	3	- 50%	0	0%	1	*	2	- 50%	0	-100%
MENOMONEE FALLS (S)	14	+133%	0	0%	1	*	5	+ 67%	8	+167%

(S) = Suburban City

* = Zero in 1973.

T-12

CRIME INFORMATION BUREAU
CRIME IN WISCONSIN: JANUARY-DECEMBER, 1974

(PRELIMINARY ANNUAL RELEASE)

	VIOLENT CRIMES		MURDER		FORCIBLE RAPE		ROBBERY		AGGRAVATED ASSAULT	
	NUMBER IN 1974	% CHANGE FROM 1973	NUMBER IN 1974	% CHANGE FROM 1973	NUMBER IN 1974	% CHANGE FROM 1973	NUMBER IN 1974	% CHANGE FROM 1973	NUMBER IN 1974	% CHANGE FROM 1973
NEW BERLIN (S)	14	- 30%	0	0%	4	+ 33%	4	0%	6	- 54%
SHEBOYGAN	14	+ 40%	3	*	0	-100%	8	+ 33%	3	0%
SUPERIOR (S)	50	- 33%	0	0%	8	- 33%	36	+ 13%	6	- 81%
UW-MADISON (S)	4	- 67%	0	0%	3	- 25%	1	- 75%	0	-100%
UW-MILWAUKEE (S)	12	- 45%	0	0%	1	- 75%	4	- 43%	7	- 36%
WAUKESHA (S)	18	+ 38%	0	-100%	3	- 25%	4	+ 33%	11	+120%
WAUSAU	36	+ 33%	0	0%	1	0%	3	- 40%	32	+ 52%
25,000-50,000 TOTAL	419	+ 24%	9	+ 80%	53	+ 23%	216	+ 41%	141	+ 3%
CITIES OVER 25,000 TOTAL	4,656	+ 27%	94	+ 12%	344	+ 5%	2,669	+ 41%	1,549	+ 13%
CITIES 10,000-25,000										
BEAVER DAM	0	-100%	0	0%	0	0%	0	0%	0	-100%
BROWN DEER (S)	12	+ 9%	0	0%	2	+100%	0	-100%	10	+ 25%
CALEDONIA TOWN (S)	7	- 22%	0	-100%	1	*	2	*	4	- 50%
CHIPPEWA FALLS	5	*	0	0%	0	0%	1	*	4	*
CUDAHY (S)	22	+100%	0	0%	2	- 50%	12	+100%	8	+700%
DE PERE (S)	2	- 60%	0	0%	0	-100%	0	-100%	2	- 33%
FRANKLIN (S)	13	- 19%	1	*	3	- 70%	7	+ 40%	2	+100%
GLENDALE (S)	26	+100%	1	*	0	-100%	14	+250%	11	+ 38%
GREENDALE (S)	5	- 29%	0	0%	0	0%	3	0%	2	- 50%
KAUKAUNA (S)	9	+ 80%	0	0%	1	*	2	*	6	+ 20%
MARINETTE	14	+ 75%	0	0%	0	-100%	0	0%	14	+100%
MARSHFIELD	8	+100%	0	0%	0	0%	1	0%	7	+133%
MENASHA (S)	30	+ 3%	0	0%	0	-100%	6	+200%	24	- 8%

(S) = Suburban City

* = Zero in 1973.

T-13

CRIME INFORMATION BUREAU
CRIME IN WISCONSIN: JANUARY-DECEMBER, 1974

(PRELIMINARY ANNUAL RELEASE)

	VIOLENT CRIMES		MURDER		FORCIBLE RAPE		ROBBERY		AGGRAVATED ASSAULT	
	NUMBER IN 1974	% CHANGE FROM 1973	NUMBER IN 1974	% CHANGE FROM 1973	NUMBER IN 1974	% CHANGE FROM 1973	NUMBER IN 1974	% CHANGE FROM 1973	NUMBER IN 1974	% CHANGE FROM 1973
MENOMONIE	7	+ 40%	0	0%	2	*	3	0%	2	0%
MEQUON (S)	17	+325%	0	-100%	4	+300%	2	+100%	11	+1000%
MIDDLETON (S)	3	+ 50%	0	0%	0	0%	0	-100%	3	+200%
MT. PLEASANT TOWN (S)	10	+233%	1	0%	1	*	3	*	5	+150%
MUSKEGO (S)	6	- 25%	0	0%	2	+100%	1	0%	3	- 50%
NEENAH (S)	14	+100%	1	*	0	0%	9	+200%	4	0%
OAK CREEK (S)	6	20%	0	0%	0	-100%	4	+100%	2	+100%
SHOREWOOD (S)	14	- 26%	1	*	0	0%	5	- 44%	8	- 20%
SOUTH MILWAUKEE (S)	14	+ 40%	0	0%	2	0%	9	+ 80%	3	0%
STEVENS POINT	15	0%	0	0%	4	*	4	- 20%	7	- 30%
SUN PRAIRIE (S)	14	- 33%	0	0%	1	*	1	- 50%	12	- 37%
TWO RIVERS	6	- 54%	1	*	0	0%	1	*	4	- 69%
WATERTOWN	4	+300%	0	0%	0	0%	3	+200%	1	*
WEST BEND (S)	12	+300%	0	0%	2	*	0	0%	10	+233%
WHITEFISH BAY (S)	8	- 11%	0	0%	0	0%	4	+ 33%	4	- 33%
WHITEWATER	5	+150%	0	0%	0	0%	2	0%	3	*
WISCONSIN RAPIDS	33	+ 14%	0	0%	0	-100%	1	- 75%	32	+ 33%
10,000-25,000 TOTAL	341	+ 24%	6	+100%	27	+ 4%	100	+ 52%	208	+ 16%
CITIES 5,000-10,000										
ANTIGO	2	0%	0	0%	0	0%	1	- 50%	1	*
ASHLAND	16	+ 60%	0	0%	0	-100%	3	- 25%	13	+160%
BARABOO	3	+ 50%	0	0%	0	0%	1	*	2	0%
BELOIT TOWN	23	+ 28%	0	-100%	3	*	12	+200%	8	- 38%
BERLIN	6	0%	0	0%	1	*	2	+100%	3	- 40%
BURLINGTON (S)	4	+100%	0	0%	0	0%	2	+100%	2	+100%
BURLINGTON TOWN (S)	6	+ 50%	0	-100%	0	0%	0	0%	6	+100%

(S) = Suburban City

* = Zero in 1973.

T-14

CRIME INFORMATION BUREAU
CRIME IN WISCONSIN: JANUARY-DECEMBER, 1974

(PRELIMINARY ANNUAL RELEASE)

	VIOLENT CRIMES		MURDER		FORCIBLE RAPE		ROBBERY		AGGRAVATED ASSAULT	
	NUMBER IN 1974	% CHANGE FROM 1973	NUMBER IN 1974	% CHANGE FROM 1973	NUMBER IN 1974	% CHANGE FROM 1973	NUMBER IN 1974	% CHANGE FROM 1973	NUMBER IN 1974	% CHANGE FROM 1973
CEDARBURG (S)	2	*	0	0%	0	0%	1	*	1	*
DELAVAN	3	+200%	0	0%	0	0%	3	+200%	0	0%
ELM GROVE (S)	1	- 50%	0	0%	1	*	0	-100%	0	0%
FITCHBURG TOWN (S)	4	NDC	0	NDC	1	NDC	0	NDC	3	NDC
FORT ATKINSON	5	- 29%	0	0%	1	- 50%	0	-100%	4	0%
FOX POINT (S)	5	+400%	0	0%	0	0%	3	*	2	+100%
GERMANTOWN (S)	1	- 50%	0	0%	0	-100%	0	0%	1	*
GRAFTON (S)	2	- 33%	0	0%	1	0%	1	0%	0	-100%
HALES CORNERS (S)	6	- 25%	0	0%	1	*	2	- 50%	3	- 25%
HARTFORD (S)	4	+100%	0	0%	0	0%	1	0%	3	+200%
HUDSON (S)	3	- 77%	0	0%	1	- 50%	1	- 50%	1	- 89%
JEFFERSON	7	*	0	0%	2	*	0	0%	5	*
KIMBERLY (S)	3	0%	0	0%	0	0%	1	*	2	- 33%
LAKE GENEVA	5	- 38%	0	-100%	1	- 50%	2	- 60%	2	*
LITTLE CHUTE (S)	1	- 50%	0	0%	0	-100%	0	0%	1	*
MADISON TOWN (S)	21	+ 50%	0	0%	3	+ 50%	5	- 38%	13	+225%
MENASHA TOWN (S)	5	0%	0	0%	0	0%	1	0%	4	0%
MERRILL	0	-100%	0	-100%	0	0%	0	-100%	0	0%
MONONA (S)	43	+ 5%	0	0%	1	0%	6	+100%	36	- 3%
MONROE	7	+ 75%	0	0%	0	-100%	1	- 50%	6	+500%
NEW LONDON	0	0%	0	0%	0	0%	0	0%	0	0%
OCONOMOWOC (S)	17	+183%	0	0%	0	0%	0	-100%	17	+325%
OCONOMOWOC TOWN (S)	3	- 25%	0	0%	0	0%	0	-100%	3	0%
ONALASKA (S)	3	+200%	0	0%	0	0%	1	*	2	+100%
PLATTEVILLE	1	0%	0	0%	0	0%	1	*	0	-100%
PLYMOUTH	1	- 67%	0	0%	0	0%	0	-100%	1	- 50%
PORT WASHINGTON (S)	6	+ 50%	0	0%	1	*	1	0%	4	+ 33%

(S) = Suburban City

NDC = New direct contributing agency.

* = Zero in 1973.

T-15

CRIME INFORMATION BUREAU
CRIME IN WISCONSIN: JANUARY-DECEMBER, 1974

(PRELIMINARY ANNUAL RELEASE)

	VIOLENT CRIMES		MURDER		FORCIBLE RAPE		ROBBERY		AGGRAVATED ASSAULT	
	NUMBER IN 1974	% CHANGE FROM 1973	NUMBER IN 1974	% CHANGE FROM 1973	NUMBER IN 1974	% CHANGE FROM 1973	NUMBER IN 1974	% CHANGE FROM 1973	NUMBER IN 1974	% CHANGE FROM 1973
PORTAGE	0	-100%	0	0%	0	0%	0	-100%	0	-100%
PRAIRIE DU CHIEN	3	- 40%	0	0%	0	0%	0	0%	3	- 40%
RHINELANDER	5	+ 25%	1	0%	0	0%	3	+ 50%	1	0%
RICE LAKE	11	+ 22%	0	0%	0	0%	1	0%	10	+ 25%
RIPON	0	-100%	0	0%	0	0%	0	-100%	0	0%
RIVER FALLS	4	+300%	0	0%	2	+100%	1	*	1	*
ST. FRANCIS (S)	7	0%	0	0%	0	-100%	3	*	4	0%
SHAWANO	1	0%	0	0%	0	0%	1	0%	0	0%
SHEBOYGAN FALLS	3	+200%	3	*	0	0%	0	0%	0	-100%
SPARTA	1	0%	1	*	0	0%	0	-100%	0	0%
STOUGHTON (S)	10	- 23%	0	0%	0	0%	0	0%	10	- 23%
STURGEON BAY	0	-100%	0	0%	0	-100%	0	0%	0	0%
TOMAH	5	*	0	0%	0	0%	3	*	2	*
WAUPUN	0	0%	0	0%	0	0%	0	0%	0	0%
WESTON TOWN	2	- 33%	0	0%	1	*	0	0%	1	- 67%
5,000-10,000 TOTAL	271	+ 16%	5	- 17%	21	- 5%	64	+ 10%	181	+ 22%
CITIES UNDER 5,000										
ALGOMA	0	0%	0	0%	0	0%	0	0%	0	0%
ALTOONA	0	-100%	0	0%	0	0%	0	0%	0	-100%
BAYSIDE (S)	1	*	0	0%	0	0%	0	0%	1	*
BLACK RIVER FALLS	2	- 60%	0	-100%	0	0%	0	-100%	2	0%
BLOOMER	0	0%	0	0%	0	0%	0	0%	0	0%
BRILLION (S)	0	-100%	0	0%	0	0%	0	0%	0	-100%
BRODHEAD	0	-100%	0	0%	0	0%	0	0%	0	-100%
CHILTON (S)	0	-100%	0	0%	0	0%	0	0%	0	-100%
CLINTONVILLE	0	-100%	0	0%	0	0%	0	-100%	0	0%

(S) = Suburban City

* = Zero in 1973.

T-16

CRIME INFORMATION BUREAU
CRIME IN WISCONSIN: JANUARY-DECEMBER, 1974

(PRELIMINARY ANNUAL RELEASE)

	VIOLENT CRIMES		MURDER		FORCIBLE RAPE		ROBBERY		AGGRAVATED ASSAULT	
	NUMBER IN 1974	% CHANGE FROM 1973	NUMBER IN 1974	% CHANGE FROM 1973	NUMBER IN 1974	% CHANGE FROM 1973	NUMBER IN 1974	% CHANGE FROM 1973	NUMBER IN 1974	% CHANGE FROM 1973
COLUMBUS	4	+300%	1	*	0	0%	1	*	2	+100%
COMBINED LOCKS (S)	1	- 50%	0	0%	0	0%	0	0%	1	- 50%
DELAFIELD (S)	2	+100%	0	0%	0	0%	0	0%	2	+100%
DELAVAN TOWN	1	- 67%	0	0%	0	0%	0	0%	1	- 67%
DODGEVILLE	2	*	0	0%	0	0%	1	*	1	*
EDGERTON	2	+100%	0	0%	0	0%	0	0%	2	+100%
ELKHORN	4	- 64%	0	0%	0	0%	3	+ 50%	1	- 89%
EVANSVILLE	0	-100%	0	0%	0	0%	0	0%	0	-100%
HARTLAND (S)	2	+100%	0	0%	0	0%	1	*	1	0%
HORICON	5	- 17%	0	0%	0	0%	0	0%	5	- 17%
KEWAUNEE	1	*	0	0%	0	0%	1	*	0	0%
KIEL	0	0%	0	0%	0	0%	0	0%	0	0%
LADYSMITH	1	0%	0	0%	0	0%	0	0%	1	0%
LAKE MILLS	0	0%	0	0%	0	0%	0	0%	0	0%
LANCASTER	0	0%	0	0%	0	0%	0	0%	0	0%
MAUSTON	2	*	0	0%	0	0%	0	0%	2	*
MAYVILLE	0	-100%	0	0%	0	0%	0	0%	0	-100%
MEDFORD	0	-100%	0	0%	0	0%	0	0%	0	-100%
MILTON	9	+350%	0	0%	3	*	0	0%	6	+200%
MINOCQUA	4	- 50%	0	0%	2	0%	0	-100%	2	- 33%
MONTELLO	0	0%	0	0%	0	0%	0	0%	0	0%
MOSINEE	0	NDC	0	NDC	0	NDC	0	NDC	0	NDC
MUKWONAGO (S)	1	- 80%	0	0%	0	0%	0	0%	1	- 80%
NEILLSVILLE	0	0%	0	0%	0	0%	0	0%	0	0%
NEW GLARUS ¹	5	NDC	0	NDC	0	NDC	1	NDC	4	NDC
NEW HOLSTEIN (S)	0	-100%	0	0%	0	-100%	0	0%	0	-100%
NEW RICHMOND (S)	0	-100%	0	0%	0	0%	0	-100%	0	0%

(S) = Suburban City

NDC = New direct contributing agency.

* = Zero in 1973.

1 = Reported 9 months only.

T-17

CRIME INFORMATION BUREAU
CRIME IN WISCONSIN: JANUARY-DECEMBER, 1974

(PRELIMINARY ANNUAL RELEASE)

	VIOLENT CRIMES		MURDER		FORCIBLE RAPE		ROBBERY		AGGRAVATED ASSAULT	
	NUMBER IN 1974	% CHANGE FROM 1973	NUMBER IN 1974	% CHANGE FROM 1973	NUMBER IN 1974	% CHANGE FROM 1973	NUMBER IN 1974	% CHANGE FROM 1973	NUMBER IN 1974	% CHANGE FROM 1973
NORTH FOND DU LAC	1	*	0	0%	0	0%	0	0%	1	*
OCONTO	0	0%	0	0%	0	0%	0	0%	0	0%
OCONTO FALLS	5	*	0	0%	0	0%	0	0%	5	*
OREGON (S)	1	*	0	0%	0	0%	0	0%	1	*
PARK FALLS	2	*	0	0%	0	0%	1	*	1	*
PESHTIGO	2	0%	0	0%	0	0%	0	0%	2	0%
PEWAUKEE (S)	1	- 88%	0	0%	0	-100%	0	-100%	1	- 83%
REEDSBURG	4	+300%	0	0%	0	0%	0	0%	4	+300%
RICHLAND CENTER	1	- 75%	0	0%	0	-100%	0	0%	1	0%
ROTHSCHILD	2	0%	0	0%	0	0%	2	*	0	-100%
SAUK-PRAIRIE	0	-100%	0	0%	0	0%	0	0%	0	-100%
SCHOFIELD	0	0%	0	0%	0	0%	0	0%	0	0%
STANLEY	2	NDC	0	NDC	0	NDC	0	NDC	2	NDC
STURTEVANT (S)	7	- 84%	0	0%	0	-100%	1	*	6	- 86%
SUMMIT TOWN (S)	1	- 67%	0	0%	0	0%	0	0%	1	- 67%
THIENSVILLE (S)	1	0%	0	0%	0	0%	0	0%	1	0%
TOMAHAWK	0	0%	0	0%	0	0%	0	0%	0	0%
TWIN LAKES (S)	24	NDC	1	NDC	0	NDC	3	NDC	20	NDC
UNION GROVE (S)	4	- 33%	0	0%	0	0%	0	0%	4	- 33%
UW-PARKSIDE (S)	0	NDC	0	NDC	0	NDC	0	NDC	0	NDC
VIROQUA	1	- 75%	0	-100%	0	0%	0	-100%	1	0%
WASHBURN	2	+100%	0	0%	0	0%	0	0%	2	+100%
WATERFORD (S)	1	0%	0	0%	0	-100%	0	0%	1	*
WAUPACA	1	*	0	0%	0	0%	0	0%	1	*
WEST MILWAUKEE (S)	8	- 53%	0	0%	0	0%	4	- 60%	4	- 43%
WISCONSIN DELLS	3	- 67%	0	0%	0	-100%	0	0%	3	- 63%

(S) = Suburban City

NDC = New direct contributing agency.

* = Zero in 1973.

T-18

CRIME INFORMATION BUREAU
CRIME IN WISCONSIN: JANUARY-DECEMBER, 1974

(PRELIMINARY ANNUAL RELEASE)

	VIOLENT CRIMES		MURDER		FORCIBLE RAPE		ROBBERY		AGGRAVATED ASSAULT	
	NUMBER IN 1974	% CHANGE FROM 1973	NUMBER IN 1974	% CHANGE FROM 1973	NUMBER IN 1974	% CHANGE FROM 1973	NUMBER IN 1974	% CHANGE FROM 1973	NUMBER IN 1974	% CHANGE FROM 1973
UNDER 5,000 TOTAL	123	- 28%	2	0%	5	- 55%	19	- 21%	97	- 28%
NON-SUBURBAN CITIES TOTAL	515	+ 23%	13	+ 18%	43	+ 48%	198	+ 37%	261	+ 11%
SUBURBAN CITIES TOTAL	639	+ 7%	9	+ 80%	63	- 14%	201	+ 29%	366	+ 1%
SUBURBAN AREA SHERIFFS										
BROWN CO SO	18	+ 64%	1	*	2	0%	7	+ 40%	8	+100%
CALUMET CO SO	7	+ 40%	0	0%	0	-100%	1	*	6	+100%
DANE CO SO	78	- 11%	0	-100%	18	+157%	9	+ 13%	51	- 29%
DOUGLAS CO SO	6	- 45%	1	0%	1	- 75%	0	0%	4	- 33%
KENOSHA CO SO	100	+ 11%	3	+200%	8	- 43%	32	0%	57	+ 33%
LA CROSSE CO SO	11	- 78%	0	-100%	1	- 67%	4	0%	6	- 85%
MILWAUKEE CO SO	21	+ 31%	1	*	0	-100%	4	- 20%	16	+ 60%
OUTAGAMIE CO SO	9	- 53%	0	0%	0	-100%	1	0%	8	- 38%
OZAUKEE CO SO	4	+300%	1	*	2	*	1	*	0	-100%
RACINE CO SO	120	+ 48%	4	+100%	2	- 33%	18	- 31%	96	+ 92%
ST. CROIX CO SO	6	+ 20%	0	0%	2	0%	0	-100%	4	+100%
WASHINGTON CO SO	8	- 47%	0	-100%	2	*	1	- 50%	5	- 58%
WAUKESHA CO SO	20	- 9%	1	0%	5	- 17%	6	- 33%	8	+ 33%
WINNEBAGO CO SO	125	+ 14%	1	0%	3	- 63%	11	+267%	110	+ 12%
SUBURBAN AREA SHERIFFS TOTAL	533	+ 2%	13	+ 44%	46	- 19%	95	- 1%	379	+ 5%
SUBURBAN AREAS TOTAL	1,172	+ 5%	22	+ 57%	109	- 16%	296	+ 17%	745	+ 3%
RURAL AREA SHERIFFS										
ADAMS CO SO	12	+1100%	2	*	2	*	1	*	7	+600%

* = Zero in 1973.

T-19

CRIME INFORMATION BUREAU
CRIME IN WISCONSIN: JANUARY-DECEMBER, 1974

(PRELIMINARY ANNUAL RELEASE)

	VIOLENT CRIMES		MURDER		FORCIBLE RAPE		ROBBERY		AGGRAVATED ASSAULT	
	NUMBER IN 1974	% CHANGE FROM 1973	NUMBER IN 1974	% CHANGE FROM 1973	NUMBER IN 1974	% CHANGE FROM 1973	NUMBER IN 1974	% CHANGE FROM 1973	NUMBER IN 1974	% CHANGE FROM 1973
ASHLAND CO SO	18	+260%	0	0%	0	0%	0	0%	18	+260%
BARRON CO SO	13	+225%	0	-100%	2	+100%	2	*	9	+350%
BAYFIELD CO SO	13	+ 86%	2	*	1	0%	1	0%	9	+ 80%
BUFFALO CO SO	0	-100%	0	-100%	0	0%	0	0%	0	-100%
BURNETT CO SO	3	- 25%	0	0%	0	0%	3	+200%	0	-100%
CHIPPEWA CO SO	9	0%	0	0%	0	-100%	0	0%	9	+ 13%
CLARK CO SO	2	+100%	0	-100%	0	0%	1	*	1	*
COLUMBIA CO SO	6	0%	0	0%	2	- 60%	2	*	2	+100%
CRAWFORD CO SO	2	- 33%	0	0%	1	*	0	0%	1	- 67%
DODGE CO SO	17	*	1	*	2	*	2	*	12	*
DOOR CO SO	0	-100%	0	0%	0	0%	0	0%	0	-100%
DUNN CO SO	9	+200%	1	*	0	0%	0	-100%	8	*
EAU CLAIRE CO SO	6	- 33%	0	0%	2	*	2	*	2	- 78%
FLORENCE CO SO	5	0%	0	0%	0	0%	0	-100%	5	+ 67%
FOND DU LAC CO SO	19	- 32%	0	0%	0	0%	3	- 89%	16	*
FOREST CO SO	13	+ 44%	0	-100%	0	-100%	0	0%	13	+117%
GRANT CO SO	5	+ 67%	1	*	0	0%	1	*	3	0%
GREEN CO SO	11	+1000%	0	0%	6	*	1	*	4	+300%
GREEN LAKE CO SO	3	+200%	1	*	0	0%	1	*	1	0%
IOWA CO SO	3	- 40%	0	0%	0	0%	0	-100%	3	0%
IRON CO SO	4	+300%	0	0%	0	0%	0	0%	4	+300%
JACKSON CO SO	6	+100%	0	0%	2	*	1	*	3	0%
JEFFERSON CO SO	12	- 74%	1	*	3	- 25%	0	-100%	8	- 80%
JUNEAU CO SO	11	+175%	1	*	0	0%	3	+200%	7	+133%
KEWAUNEE CO SO	0	0%	0	0%	0	0%	0	0%	0	0%
LAFAYETTE CO SO	7	- 30%	0	0%	0	0%	1	*	6	- 40%
LANGLADE CO SO	15	- 42%	0	0%	0	0%	0	-100%	15	- 40%
LINCOLN CO SO	2	- 33%	0	-100%	0	-100%	0	0%	2	+100%

*= Zero in 1973.

T-20

CRIME INFORMATION BUREAU
CRIME IN WISCONSIN: JANUARY-DECEMBER, 1974

(PRELIMINARY ANNUAL RELEASE)

	VIOLENT CRIMES		MURDER		FORCIBLE RAPE		ROBBERY		AGGRAVATED ASSAULT	
	NUMBER IN 1974	% CHANGE FROM 1973	NUMBER IN 1974	% CHANGE FROM 1973	NUMBER IN 1974	% CHANGE FROM 1973	NUMBER IN 1974	% CHANGE FROM 1973	NUMBER IN 1974	% CHANGE FROM 1973
MANITOWOC CO SO	7	0%	0	0%	3	+200%	0	-100%	4	0%
MARATHON CO SO	20	+122%	0	-100%	6	*	4	+100%	10	+ 67%
MARINETTE CO SO	9	+ 29%	0	-100%	0	-100%	1	- 67%	8	+300%
MARQUETTE CO SO	8	+ 60%	0	0%	0	0%	0	0%	8	+ 60%
MENOMINEE CO SO	3	- 25%	3	*	0	-100%	0	0%	0	-100%
MONROE CO SO	12	0%	0	0%	1	- 50%	0	-100%	11	+ 57%
OCONTO CO SO	2	0%	0	0%	0	0%	1	0%	1	0%
ONEIDA CO SO	3	- 70%	0	0%	0	0%	2	- 33%	1	- 86%
PEPIN CO SO	1	- 80%	0	0%	0	0%	0	-100%	1	- 75%
PIERCE CO SO	4	- 33%	0	-100%	2	+100%	0	-100%	2	- 33%
POLK CO SO	7	- 42%	0	0%	2	- 33%	0	-100%	5	+ 67%
PORTAGE CO SO	6	+ 50%	0	-100%	4	*	1	0%	1	- 50%
PRICE CO SO	5	+ 67%	0	0%	0	-100%	1	*	4	+300%
RICHLAND CO SO	8	*	0	0%	0	0%	1	*	7	*
ROCK CO SO	47	+327%	2	+100%	10	*	15	+275%	20	+233%
RUSK CO SO	2	0%	0	0%	0	0%	2	+100%	0	-100%
SAUK CO SO	1	- 80%	0	0%	1	- 75%	0	-100%	0	0%
SAWYER CO SO	8	+300%	0	0%	2	*	1	0%	5	+400%
SHAWANO CO SO	10	+900%	0	0%	0	0%	5	+400%	5	*
SHEBOYGAN CO SO	7	- 53%	0	-100%	3	- 40%	0	-100%	4	- 43%
TAYLOR CO SO	0	0%	0	0%	0	0%	0	0%	0	0%
TREMPEALEAU CO SO	8	+300%	0	0%	0	0%	1	- 50%	7	*
VERNON CO SO	8	+167%	0	0%	1	- 67%	1	*	6	*
VILAS CO SO	7	- 13%	0	-100%	2	*	1	0%	4	- 33%
WALWORTH CO SO	27	- 7%	2	0%	6	- 25%	11	+ 83%	8	- 38%

* = Zero in 1973.

T-21

CRIME INFORMATION BUREAU
CRIME IN WISCONSIN: JANUARY-DECEMBER, 1974

(PRELIMINARY ANNUAL RELEASE)

	VIOLENT CRIMES		MURDER		FORCIBLE RAPE		ROBBERY		AGGRAVATED ASSAULT	
	NUMBER IN 1974	% CHANGE FROM 1973	NUMBER IN 1974	% CHANGE FROM 1973	NUMBER IN 1974	% CHANGE FROM 1973	NUMBER IN 1974	% CHANGE FROM 1973	NUMBER IN 1974	% CHANGE FROM 1973
WASHBURN CO SO	9	+200%	0	0%	2	+100%	3	+ 50%	4	*
WAUPACA CO SO	17	0%	0	0%	0	0%	0	0%	17	0%
WAUSHARA CO SO	5	+400%	1	*	1	*	2	*	1	0%
WOOD CO SO	7	+133%	1	*	2	+100%	0	-100%	4	*
RURAL AREA SHERIFFS TOTAL	484	+ 24%	19	+ 36%	71	+ 48%	78	- 9%	316	+ 30%
TOTAL FOR ALL SHERIFFS	1,017	+ 11%	32	+ 39%	117	+ 11%	173	- 5%	695	+ 15%
STATE PATROL	4	+300%	0	0%	0	0%	0	0%	4	+300%

* = Zero in 1973.

T-22

CRIME INFORMATION BUREAU
CRIME IN WISCONSIN: JANUARY-DECEMBER, 1974

(PRELIMINARY ANNUAL RELEASE)

	TOTAL ARRESTS		ARRESTS OF ADULTS		ARRESTS OF JUVENILES	
	NUMBER IN 1974	PERCENT/NUMERICAL CHANGE FROM 1973*	NUMBER IN 1974	PERCENT/NUMERICAL CHANGE FROM 1973*	NUMBER IN 1974	PERCENT/NUMERICAL CHANGE FROM 1973*
STATE OF WISCONSIN	188,614	+ 2%	98,489	- 3%	90,125	+ 7%
TOTAL FOR ALL CITIES	145,615	0%	73,040	- 7%	72,575	+ 7%
CITIES OVER 250,000 (MILWAUKEE)	43,454	-13%	27,007	-21%	16,447	+ 2%
CITIES 50,000-250,000						
APPLETON	3,070	+584	901	+116	2,169	+468
GREEN BAY	4,208	+771	1,759	+183	2,449	+588
KENOSHA	2,592	-217	1,169	-292	1,423	+ 75
MADISON	6,133	+ 77	3,273	+379	2,860	-302
OSHKOSH	1,400	+312	977	+193	423	+119
RACINE	5,475	+657	2,748	+ 26	2,727	+631
WAUWATOSA	1,905	- 55	887	+ 1	1,018	- 56
WEST ALLIS	2,987	-284	1,550	-112	1,437	-172
50,000-250,000 TOTAL	27,770	+ 7%	13,264	+ 4%	14,506	+10%
CITIES 25,000-50,000						
BELOIT	1,976	-372	956	-194	1,020	-178
BROOKFIELD (S)	1,243	+ 78	380	- 28	863	+106
EAU CLAIRE	2,948	+352	1,585	+181	1,363	+171
FOND DU LAC	1,756	+125	1,040	- 39	716	+164
GREENFIELD (S)	967	+ 32	533	+ 89	434	- 57
JANESVILLE	2,201	+288	1,238	+ 36	963	+252
LA CROSSE (S)	2,805	+278	1,505	+150	1,300	+128

* = Changes for individual agencies are numerical changes. Changes for Population Categories are percentage changes.

(S) = Suburban City

T-23

CRIME INFORMATION BUREAU
CRIME IN WISCONSIN: JANUARY-DECEMBER, 1974

(PRELIMINARY ANNUAL RELEASE)

	TOTAL ARRESTS		ARRESTS OF ADULTS		ARRESTS OF JUVENILES	
	NUMBER IN 1974	PERCENT/NUMERICAL CHANGE FROM 1973*	NUMBER IN 1974	PERCENT/NUMERICAL CHANGE FROM 1973*	NUMBER IN 1974	PERCENT/NUMERICAL CHANGE FROM 1973*
MANITOWOC	2,412	+ 70	865	+124	1,547	- 54
MENOMONEE FALLS (S)	1,697	+ 44	575	- 47	1,122	+ 91
NEW BERLIN (S)	1,258	+190	511	+ 1	747	+189
SHEBOYGAN	2,578	+ 84	1,111	+108	1,467	- 24
SUPERIOR (S)	2,387	-451	871	-331	1,516	-120
UW-MADISON (S)	334	- 4	274	- 8	60	+ 4
UW-MILWAUKEE (S)	401	+ 21	273	+ 15	128	+ 6
WAUKESHA (S)	3,024	- 46	1,232	- 99	1,792	+ 53
WAUSAU	1,547	- 44	714	+125	833	-169
25,000-50,000 TOTAL	29,534	+ 2%	13,663	+ 1%	15,871	+ 4%
CITIES OVER 25,000 TOTAL	100,758	- 4%	53,934	-11%	46,824	+ 5%
CITIES 10,000-25,000						
BEAVER DAM	366	+ 3	210	- 2	156	+ 5
BROWN DEER (S)	621	+ 19	241	+ 52	380	- 33
CALEDONIA TOWN (S)	541	+279	108	+ 55	433	+224
CHIPPEWA FALLS	413	- 29	239	+ 10	174	- 39
CUDAHY (S)	908	-147	468	- 46	440	-101
DE PERE (S)	572	+194	137	+ 52	435	+142
FRANKLIN (S)	445	-106	230	- 6	215	-100
GLENDALE (S)	650	-119	320	- 50	330	- 69
GREENDALE (S)	1,320	- 48	442	+ 22	878	- 70
KAUKAUNA (S)	138	- 14	32	- 20	106	+ 6
MARINETTE	1,345	+332	442	+ 77	903	+255
MARSHFIELD	600	+111	220	- 44	380	+155

* = Changes for individual agencies are numerical changes. Changes for Population Categories are percentage changes.

(S) = Suburban City

T-24

CRIME INFORMATION BUREAU
CRIME IN WISCONSIN: JANUARY-DECEMBER, 1974

(PRELIMINARY ANNUAL RELEASE)

	TOTAL ARRESTS		ARRESTS OF ADULTS		ARRESTS OF JUVENILES	
	NUMBER IN 1974	PERCENT/NUMERICAL CHANGE FROM 1973*	NUMBER IN 1974	PERCENT/NUMERICAL CHANGE FROM 1973*	NUMBER IN 1974	PERCENT/NUMERICAL CHANGE FROM 1973*
MENASHA (S)	800	+203	269	+ 57	531	+146
MENOMONIE	400	+ 90	311	+120	89	- 30
MEQUON (S)	620	+195	306	+ 98	314	+ 97
MIDDLETON (S)	248	+ 43	100	- 14	148	+ 57
MT. PLEASANT TOWN (S)	103	+ 38	34	+ 4	69	+ 34
MUSKEGO (S)	634	+145	218	+ 61	416	+ 84
NEENAH (S)	1,291	+149	351	+ 98	940	+ 51
OAK CREEK (S)	513	- 30	264	+ 42	249	- 72
SHOREWOOD (S)	348	+ 64	164	+ 16	184	+ 48
SOUTH MILWAUKEE (S)	1,003	-543	564	-527	439	- 16
STEVENS POINT	788	+164	451	+112	337	+ 52
SUN PRAIRIE (S)	627	+134	134	+ 38	493	+ 96
TWO RIVERS	465	+ 87	281	+ 74	184	+ 13
WATERTOWN	993	+ 55	249	+ 42	744	+ 13
WEST BEND (S)	1,003	+146	444	+112	559	+ 34
WHITEFISH BAY (S)	495	-228	167	- 38	328	-190
WHITEWATER	452	-152	330	-148	122	- 4
WISCONSIN RAPIDS	932	- 44	270	- 61	662	+ 17
10,000-25,000 TOTAL	19,634	+ 5%	7,996	+ 2%	11,638	+ 7%
CITIES 5,000-10,000						
ANTIGO	398	+121	185	+ 54	213	+ 67
ASHLAND	550	+ 13	317	+ 1	233	+ 12
BARABOO	309	+ 13	118	+ 6	191	+ 7
BELOIT TOWN	345	+206	154	+ 75	191	+131
BERLIN	215	+ 65	176	+ 65	39	0
BURLINGTON (S)	898	+235	392	+ 93	506	+142
BURLINGTON TOWN (S)	482	+ 52	184	- 10	298	+ 62

* = Changes for individual agencies are numerical changes. Changes for Population Categories are percentage changes.

(S) = Suburban City

T-25

CRIME INFORMATION BUREAU
CRIME IN WISCONSIN: JANUARY-DECEMBER, 1974

(PRELIMINARY ANNUAL RELEASE)

	TOTAL ARRESTS		ARRESTS OF ADULTS		ARRESTS OF JUVENILES	
	NUMBER IN 1974	PERCENT/NUMERICAL CHANGE FROM 1973*	NUMBER IN 1974	PERCENT/NUMERICAL CHANGE FROM 1973*	NUMBER IN 1974	PERCENT/NUMERICAL CHANGE FROM 1973*
CEDARBURG (S)	260	+117	107	+ 14	153	+103
DELAVAN	637	- 58	167	+ 30	470	- 88
ELM GROVE (S)	278	+ 65	10	- 9	268	+ 74
FITCHBURG TOWN (S)	142	NDC	32	NDC	110	NDC
FORT ATKINSON	515	+ 13	258	+104	257	- 91
FOX POINT (S)	202	- 53	65	- 30	137	- 23
GERMANTOWN (S)	298	+ 35	127	+ 39	171	- 4
GRAFTON (S)	408	+ 17	118	- 26	290	+ 43
HALES CORNERS (S)	165	+ 56	88	+ 41	77	+ 15
HARTFORD (S)	298	- 2	130	- 6	168	+ 4
HUDSON (S)	918	- 64	658	- 52	260	- 12
JEFFERSON	509	- 18	193	- 33	316	+ 15
KIMBERLY (S)	187	+109	82	+ 39	105	+ 70
LAKE GENEVA	618	-425	358	-366	260	- 59
LITTLE CHUTE (S)	398	+ 36	98	- 8	300	+ 44
MADISON TOWN (S)	128	+ 48	83	+ 21	45	+ 27
MENASHA TOWN (S)	87	+ 38	39	+ 21	48	+ 17
MERRILL	563	+169	175	+ 15	388	+154
MONONA (S)	758	+ 67	182	+ 61	576	+ 6
MONROE	250	- 5	142	+ 5	108	- 10
NEW LONDON	319	+ 84	103	- 5	216	+ 89
OCONOMOWOC (S)	514	+144	233	+ 91	281	+ 53
OCONOMOWOC TOWN (S)	54	- 17	24	+ 6	30	- 23
ONALASKA (S)	137	+ 16	40	+ 10	97	+ 6
PLATTEVILLE	213	+ 37	125	- 2	88	+ 39
PLYMOUTH	112	- 10	52	+ 8	60	- 18
PORT WASHINGTON (S)	480	+ 5	200	+ 21	280	- 16

* = Changes for individual agencies are numerical changes. Changes for Population Categories are percentage changes.

(S) = Suburban City

NDC = New direct contributing agency.

T-26

CRIME INFORMATION BUREAU
CRIME IN WISCONSIN: JANUARY-DECEMBER, 1974

(PRELIMINARY ANNUAL RELEASE)

	TOTAL ARRESTS		ARRESTS OF ADULTS		ARRESTS OF JUVENILES	
	NUMBER IN 1974	PERCENT/NUMERICAL CHANGE FROM 1973*	NUMBER IN 1974	PERCENT/NUMERICAL CHANGE FROM 1973*	NUMBER IN 1974	PERCENT/NUMERICAL CHANGE FROM 1973*
PORTAGE	194	- 37	121	- 12	73	- 25
PRAIRIE DU CHIEN	321	+ 56	136	- 25	185	+ 81
RHINELANDER	303	+ 90	184	+ 68	119	+ 22
RICE LAKE	251	-103	141	- 15	110	- 88
RIPON	105	- 35	62	- 34	43	- 1
RIVER FALLS	419	+106	213	+ 17	206	+ 89
ST. FRANCIS (S)	825	+ 42	388	+ 41	437	+ 1
SHAWANO	393	+137	163	+ 16	230	+121
SHEBOYGAN FALLS	90	- 23	48	- 17	42	- 6
SPARTA	356	+115	119	- 10	237	+125
STOUGHTON (S)	303	+ 1	60	+ 10	243	- 9
STURGEON BAY	238	+ 74	168	+ 36	70	+ 38
TOMAH	206	+ 11	109	+ 18	97	- 7
WAUPUN	180	+ 35	45	- 1	135	+ 36
WESTON TOWN	283	+ 60	109	+ 8	174	+ 52
5,000-10,000 TOTAL	17,112	+11%	7,481	+ 5%	9,631	+15%
CITIES UNDER 5,000						
ALGOMA	31	+ 15	22	+ 16	9	- 1
ALTOONA	57	+ 10	29	+ 1	28	+ 9
BAYSIDE (S)	195	- 13	83	- 4	112	- 9
BLACK RIVER FALLS	157	+ 43	82	+ 20	75	+ 23
BLOOMER	52	+ 16	22	+ 5	30	+ 11
BRILLION (S)	38	- 2	27	- 11	11	+ 9
BRODHEAD	96	+ 39	84	+ 54	12	- 15
CHILTON (S)	186	+ 57	63	+ 21	123	+ 36
CLINTONVILLE	108	0	46	- 1	62	+ 1

* = Changes for individual agencies are numerical changes. Changes for Population Categories are percentage changes.

(S) = Suburban City

T-27

CRIME INFORMATION BUREAU
CRIME IN WISCONSIN: JANUARY-DECEMBER, 1974

(PRELIMINARY ANNUAL RELEASE)

	TOTAL ARRESTS		ARRESTS OF ADULTS		ARRESTS OF JUVENILES	
	NUMBER IN 1974	PERCENT/NUMERICAL CHANGE FROM 1973*	NUMBER IN 1974	PERCENT/NUMERICAL CHANGE FROM 1973*	NUMBER IN 1974	PERCENT/NUMERICAL CHANGE FROM 1973*
COLUMBUS	98	+ 29	56	+ 9	42	+ 20
COMBINED LOCKS (S)	162	+ 46	51	- 1	111	+ 47
DELAFIELD (S)	112	+ 25	44	+ 6	68	+ 19
DELAVAN TOWN	96	- 15	64	+ 21	32	- 36
DODGEVILLE	14	- 24	0	- 16	14	- 8
EDGERTON	435	+ 67	305	+121	130	- 54
ELKHORN	217	+ 48	61	+ 8	156	+ 40
EVANSVILLE	85	- 18	41	- 10	44	- 8
HARTLAND (S)	161	+ 38	87	+ 40	74	- 2
HORICON	73	+ 24	18	+ 5	55	+ 19
KEWAUNEE	78	+ 24	23	- 2	55	+ 26
KIEL	30	- 6	11	- 1	19	- 5
LADYSMITH	74	- 25	27	- 4	47	- 21
LAKE MILLS	99	- 3	57	- 8	42	+ 5
LANCASTER	103	+ 41	46	+ 13	57	+ 28
MAUSTON	111	+ 54	36	- 8	75	+ 62
MAYVILLE	98	- 15	39	- 3	59	- 12
MEDFORD	19	- 40	16	- 17	3	- 23
MILTON	211	+ 75	67	+ 43	144	+ 32
MINOCQUA	191	+ 21	87	+ 12	104	+ 9
MONTELLO	72	+ 14	31	+ 4	41	+ 10
MOSINEE	45	NDC	16	NDC	29	NDC
MUKWONAGO (S)	72	- 62	29	- 16	43	- 46
NEILLSVILLE	18	+ 4	7	+ 5	11	- 1
NEW GLARUS ¹	175	NDC	82	NDC	93	NDC
NEW HOLSTEIN (S)	85	+ 31	49	+ 32	36	- 1

* = Changes for individual agencies are numerical changes. Changes for Population Categories are percentage changes.

(S) = Suburban City

NDC = New direct contributing agency.

1 = Reported 9 months only.

T-28

CRIME INFORMATION BUREAU
CRIME IN WISCONSIN: JANUARY-DECEMBER, 1974

(PRELIMINARY ANNUAL RELEASE)

	TOTAL ARRESTS		ARRESTS OF ADULTS		ARRESTS OF JUVENILES	
	NUMBER IN 1974	PERCENT/NUMERICAL CHANGE FROM 1973*	NUMBER IN 1974	PERCENT/NUMERICAL CHANGE FROM 1973*	NUMBER IN 1974	PERCENT/NUMERICAL CHANGE FROM 1973*
NEW RICHMOND (S)	87	+ 22	29	- 9	58	+ 31
NORTH FOND DU LAC	48	+ 21	42	+ 17	6	+ 4
OCONTO	29	- 4	24	+ 1	5	- 5
OCONTO FALLS	103	+ 32	32	+ 16	71	+ 16
OREGON (S)	57	+ 5	33	+ 10	24	- 5
PARK FALLS	25	- 24	16	+ 1	9	- 25
PESHIGO	72	- 33	22	- 20	50	- 13
PEWAUKEE (S)	248	- 78	76	- 7	172	- 71
REEDSBURG	252	+ 38	102	+ 40	150	- 2
RICHLAND CENTER	75	+ 6	37	+ 2	38	+ 4
ROTHSCHILD	148	+ 28	60	+ 7	88	+ 21
SAUK-PRAIRIE	149	+ 5	53	+ 12	96	- 7
SCHOFIELD	44	+ 33	29	+ 21	15	+ 12
STANLEY	102	NDC	27	NDC	75	NDC
STURTEVANT (S)	799	- 49	273	- 12	526	- 37
SUMMIT TOWN (S)	42	+ 12	13	+ 1	29	+ 11
THIENSVILLE (S)	162	+ 3	75	- 3	87	+ 6
TOMAHAWK	149	+ 43	100	+ 46	49	- 3
TWIN LAKES (S)	262	NDC	133	NDC	129	NDC
UNION GROVE (S)	258	+ 76	94	+ 3	164	+ 73
UW-PARKSIDE (S)	28	NDC	16	NDC	12	NDC
VIROQUA	114	- 50	68	- 8	46	- 42
WASHBURN	67	+ 27	25	+ 12	42	+ 15
WATERFORD (S)	148	+ 73	94	+ 50	54	+ 23
WAUPACA	226	+ 14	60	+ 17	166	- 3
WEST MILWAUKEE (S)	317	+ 92	188	+ 52	129	+ 40
WISCONSIN DELLS	246	+ 54	100	+ 7	146	+ 47

* = Changes for individual agencies are numerical changes. Changes for Population Categories are percentage changes.

(S) = Suburban City

NDC = New direct contributing agency.

T-29

CRIME INFORMATION BUREAU
CRIME IN WISCONSIN: JANUARY-DECEMBER, 1974

(PRELIMINARY ANNUAL RELEASE)

	TOTAL ARRESTS		ARRESTS OF ADULTS		ARRESTS OF JUVENILES	
	NUMBER IN 1974	PERCENT/NUMERICAL CHANGE FROM 1973*	NUMBER IN 1974	PERCENT/NUMERICAL CHANGE FROM 1973*	NUMBER IN 1974	PERCENT/NUMERICAL CHANGE FROM 1973*
UNDER 5,000 TOTAL	8,111	+12%	3,629	+19%	4,482	+ 6%
NON-SUBURBAN CITIES TOTAL	35,756	+ 7%	16,825	+ 6%	18,931	+ 8%
SUBURBAN CITIES TOTAL	38,635	+ 5%	15,944	+ 2%	22,691	+ 7%
SUBURBAN AREA SHERIFFS						
BROWN CO SO	1,772	+471	545	+106	1,227	+365
CALUMET CO SO	80	+ 11	64	+ 15	16	- 4
DANE CO SO	1,611	+ 26	1,256	+ 92	355	- 66
DOUGLAS CO SO	598	- 34	220	- 19	378	- 15
KENOSHA CO SO	1,300	- 2	561	- 39	739	+ 37
LA CROSSE CO SO	373	-187	184	- 72	189	-115
MILWAUKEE CO SO	4,452	+940	4,151	+859	301	+ 81
OUTAGAMIE CO SO	716	+ 20	437	+ 86	279	- 66
OZAUKEE CO SO	2,016	+ 71	450	- 35	1,566	+106
RACINE CO SO	1,909	+373	1,033	+293	876	+ 80
ST. CROIX CO SO	579	-133	314	-101	265	- 32
WASHINGTON CO SO	1,493	+271	365	+132	1,128	+139
WAUKESHA CO SO	2,028	+665	964	+379	1,064	+286
WINNEBAGO CO SO	629	+ 92	207	+ 41	422	+ 51
SUBURBAN AREA SHERIFFS TOTAL	19,556	+15%	10,751	+19%	8,805	+11%
SUBURBAN AREAS TOTAL	58,191	+ 8%	26,695	+ 8%	31,496	+ 8%

* = Changes for individual agencies are numerical changes. Changes for Population Categories are percentage changes.

T-30

CRIME INFORMATION BUREAU
 CRIME IN WISCONSIN: JANUARY-DECEMBER, 1974

(PRELIMINARY ANNUAL RELEASE)

	TOTAL ARRESTS		ARRESTS OF ADULTS		ARRESTS OF JUVENILES	
	NUMBER IN 1974	PERCENT/NUMERICAL CHANGE FROM 1973*	NUMBER IN 1974	PERCENT/NUMERICAL CHANGE FROM 1973*	NUMBER IN 1974	PERCENT/NUMERICAL CHANGE FROM 1973*
RURAL AREA SHERIFFS						
ADAMS CO SO	230	- 5	190	+ 22	40	- 27
ASHLAND CO SO	154	+ 22	116	+ 17	38	+ 5
BARRON CO SO	233	- 30	167	- 33	66	+ 3
BAYFIELD CO SO	188	+ 44	98	0	90	+ 44
BUFFALO CO SO	113	- 19	90	+ 9	23	- 28
BURNETT CO SO	219	+ 11	174	+ 39	45	- 28
CHIPPEWA CO SO	262	+ 12	170	- 24	92	+ 46
CLARK CO SO	703	+480	175	+ 5	528	+475
COLUMBIA CO SO	466	+ 81	258	+ 38	208	+ 43
CRAWFORD CO SO	185	- 22	116	- 18	69	- 4
DODGE CO SO	516	+ 26	331	- 66	185	+ 92
DOOR CO SO	390	+ 19	230	- 25	160	+ 44
DUNN CO SO	113	-144	65	+ 4	48	-148
EAU CLAIRE CO SO	342	+ 8	323	+ 59	19	- 51
FLORENCE CO SO	124	+ 37	71	+ 34	53	+ 3
FOND DU LAC CO SO	357	+ 79	256	+ 44	101	+ 35
FOREST CO SO	353	+ 12	178	- 6	175	+ 18
GRANT CO SO	579	+ 18	345	- 2	234	+ 20
GREEN CO SO	205	+ 77	120	+ 14	85	+ 63
GREEN LAKE CO SO	151	+ 85	112	+ 57	39	+ 28
IOWA CO SO	287	- 5	104	- 55	183	+ 50
IRON CO SO	221	+ 39	170	+ 22	51	+ 17
JACKSON CO SO	188	- 5	150	- 7	38	+ 2
JEFFERSON CO SO	512	- 21	404	+ 4	108	- 25
JUNEAU CO SO	377	- 10	203	+ 13	174	- 23

* = Changes for individual agencies are numerical changes. Changes for Population Categories are percentage changes.

T-31

CRIME INFORMATION BUREAU
 CRIME IN WISCONSIN: JANUARY-DECEMBER, 1974

(PRELIMINARY ANNUAL RELEASE)

	TOTAL ARRESTS		ARRESTS OF ADULTS		ARRESTS OF JUVENILES	
	NUMBER IN 1974	PERCENT/NUMERICAL CHANGE FROM 1973*	NUMBER IN 1974	PERCENT/NUMERICAL CHANGE FROM 1973*	NUMBER IN 1974	PERCENT/NUMERICAL CHANGE FROM 1973*
KEWAUNEE CO SO	157	- 18	134	- 1	23	- 17
LAFAYETTE CO SO	175	+ 23	128	+ 14	47	+ 9
LANGLADE CO SO	247	+ 11	72	+ 24	175	- 13
LINCOLN CO SO	105	+ 6	71	- 2	34	+ 8
MANITOWOC CO SO	355	+ 4	199	+ 37	156	- 33
MARATHON CO SO	1,307	+105	407	- 95	900	+200
MARINETTE CO SO	248	-111	190	- 79	58	- 32
MARQUETTE CO SO	129	+ 15	88	+ 9	41	+ 6
MENOMINEE CO SO	288	+ 75	131	+ 23	157	+ 52
MONROE CO SO	592	+110	405	+ 91	187	+ 19
OCONTO CO SO	294	+142	223	+ 71	71	+ 71
ONEIDA CO SO	373	-107	288	- 76	85	- 31
PEPIN CO SO	111	- 72	43	- 9	68	- 63
PIERCE CO SO	451	-246	205	-124	246	-122
POLK CO SO	427	+ 57	250	+ 11	177	+ 46
PORTAGE CO SO	243	-225	143	-109	100	-116
PRICE CO SO	151	+ 12	79	- 3	72	+ 15
RICHLAND CO SO	118	+ 24	100	+ 24	18	0
ROCK CO SO	1,024	+ 52	722	+ 68	302	- 16
RUSK CO SO	69	- 57	42	- 56	27	- 1
SAUK CO SO	575	+ 26	257	+ 38	318	- 12
SAWYER CO SO	403	+ 16	219	- 23	184	+ 39
SHAWANO CO SO	605	+131	461	+ 70	144	+ 61
SHEBOYGAN CO SO	805	- 55	409	- 15	396	- 40
TAYLOR CO SO	126	+ 68	116	+ 60	10	+ 8
TREMPEALEAU CO SO	373	+ 65	331	+ 51	42	+ 14

* = Changes for individual agencies are numerical changes. Changes for Population Categories are percentage changes.

T-32

CRIME INFORMATION BUREAU
 CRIME IN WISCONSIN: JANUARY-DECEMBER, 1974

(PRELIMINARY ANNUAL RELEASE)

	TOTAL ARRESTS		ARRESTS OF ADULTS		ARRESTS OF JUVENILES	
	NUMBER IN 1974	PERCENT/NUMERICAL CHANGE FROM 1973*	NUMBER IN 1974	PERCENT/NUMERICAL CHANGE FROM 1973*	NUMBER IN 1974	PERCENT/NUMERICAL CHANGE FROM 1973*
VERNON CO SO	177	- 13	118	- 26	59	+ 13
VILAS CO SO	746	+110	326	+ 41	420	+ 69
WALWORTH CO SO	1,466	- 33	812	+ 58	654	- 91
WASHBURN CO SO	215	+ 30	148	- 7	67	+ 37
WAUPACA CO SO	214	-104	96	- 32	118	- 72
WAUSHARA CO SO	354	+ 46	127	+ 19	227	+ 27
WOOD CO SO	494	+ 73	333	+ 56	161	+ 17
RURAL AREA SHERIFFS TOTAL	20,885	+ 5%	12,289	+ 2%	8,596	+ 9%
TOTAL FOR ALL SHERIFFS	40,441	+10%	23,040	+ 9%	17,401	+10%
STATE PATROL	2,558	+ 8%	2,409	+ 8%	149	- 1%

* = Changes for individual agencies are numerical changes. Changes for Population Categories are percentage changes.

2245-AA66898-75

T-33

END