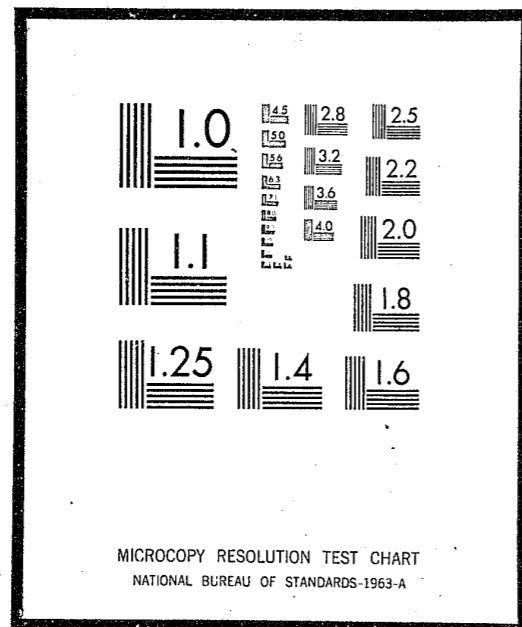


# NCJRS

This microfiche was produced from documents received for inclusion in the NCJRS data base. Since NCJRS cannot exercise control over the physical condition of the documents submitted, the individual frame quality will vary. The resolution chart on this frame may be used to evaluate the document quality.



Microfilming procedures used to create this fiche comply with the standards set forth in 41CFR 101-11.504

Points of view or opinions stated in this document are those of the author(s) and do not represent the official position or policies of the U.S. Department of Justice.

U.S. DEPARTMENT OF JUSTICE  
LAW ENFORCEMENT ASSISTANCE ADMINISTRATION  
NATIONAL CRIMINAL JUSTICE REFERENCE SERVICE  
WASHINGTON, D.C. 20531

Date filmed,

2/18/76

Model  
Volunteer  
Project

1974

## SURVEY & DIRECTORY

CALIFORNIA VOLUNTEER SERVICES  
IN CORRECTIONS

19521

**State of California**

RONALD REAGAN  
Governor

**Health and Welfare Agency**

JAMES E. JENKINS  
Secretary



**Department of the  
Youth Authority**

Robert L. Smith, Deputy Director  
PREVENTION AND COMMUNITY  
CORRECTIONS BRANCH

**MODEL VOLUNTEER PROJECT**

A Grant Program Funded by The  
Office of Criminal Justice Planning

Pearldean Golightly  
Volunteer Services Administrator

Anne Lassiter  
Volunteer Services Consultant

Judith Maxwell  
Volunteer Services Consultant

Elizabeth Yost  
Volunteer Services Consultant

John Taylor  
Administrative Assistant

Christopher Kimble  
Resource and Information Assistant

Shirley Houser, Senior Stenographer  
Deborah Fisher, Library Coordinator

Leslie Nishimura, Stenographer  
Laura Viglione, Clerk Typist

LDA

ALLEN F. BREED,  
DIRECTOR

GEORGE R. ROBERTS,  
CHIEF DEPUTY DIRECTOR

JAMES C. BARNETT,  
DEPUTY DIRECTOR

PLANNING, RESEARCH, EVALUATION  
AND DEVELOPMENT BRANCH

**YOUTH AUTHORITY BOARD**

ALLEN F. BREED,  
DIRECTOR AND CHAIRMAN

JULIO GONZALES,  
VICE CHAIRMAN

ED BOWE  
RICHARD W. CALVIN, JR.  
MAURINE B. CROSBY  
PAUL A. MEANEY  
WILLIAM L. RICHEY  
JAMES E. STRATTEN

FOREWORD

The Model Volunteer Project has prepared this publication as a resource for correctional and law enforcement agencies interested in the use of volunteer manpower.

The 1974 Survey and Directory revises and expands the list of volunteer programs published in the Project's 1973 Survey and Directory, and presents new statistical data on the extent and nature of correctional volunteer efforts in California.

The Model Volunteer Project, initiated in 1972 by a grant from the California Office of Criminal Justice Planning, has participated in extensive research of volunteer services in California in addition to providing resource and consultative services to interested agencies and organizations throughout the state.

I hope that correctional and law enforcement agencies will make full use of the Project's services, and that this document will promote the continuing development of effective volunteer services.

Allen F. Breed, Director

October 1974

TABLE OF CONTENTS

Foreword. . . . . i

Introduction. . . . . iv

I. Directory of Volunteer Programs in California

    a) North Central Region. . . . . 2

    b) North Coastal Region. . . . . 9

    c) Southern Region. . . . . 16

    Volunteer Activity Charts

        a) North Central Region. . . . . 25

        b) North Coastal Region. . . . . 29

        c) Southern Region. . . . . 33

II. Survey Summary

    Introduction. . . . . 40

    Table I: Survey Responses. . . . . 41

    Youth Authority, Corrections, Probation. . . . . 41

    Police and Sheriffs' Departments. . . . . 43

    Tables II & III: Volunteer Utilization. . . . . 44

    Tables IV & V: Volunteer Programs. . . . . 45

    Tables VI & VII: Volunteer Coordinators. . . . . 46

III. Categorical Distribution of Volunteer Utilization

    Table VIII: Fall, 1972 Survey. . . . . 48

    Table IX: Youth Authority, Corrections, Probation. . . . . 49

    Table X: Probation. . . . . 50

    Table XI: Youth Authority Institutions. . . . . 51

    Table XI: Youth Authority Parole Units. . . . . 51

Table XII: Corrections Institutions. . . . .	52
Table XII: Corrections Parole Units. . . . .	52
Table XIII: Police Departments. . . . .	53
Table XIII: Sheriffs' Departments. . . . .	53

## INTRODUCTION

The 1974 Survey and Directory presents new statistical data on correctional volunteer efforts in the state of California and a list of 137 correctional and law enforcement agencies actively utilizing volunteers in the delivery of services. Although similar in purpose and format, this publication differs from the Project's 1973 Survey and Directory in survey design and in the inclusion of law enforcement agencies.

The brief, eight-item survey used in this study is considerably less extensive than the 233-item form completed in 1972. Information presented in this publication has been restricted to the extent of volunteer services, the numbers of agencies operating formal programs, the utilization of volunteer coordinators, the current stages of development and future plans of respondents, and the types of volunteer roles utilized by each agency.

Due to the apparent increased use of volunteers by law enforcement agencies, these organizations have been polled and the resulting data presented in the following pages. Police and Sheriff's Departments accounted for 170 responses.

We hope that the list of volunteer programs on pages 2-24 will facilitate communication of interested readers with the listed program representatives. Readers may thereby request information concerning specific aspects of a program.

Much credit and my sincere thanks are due the agencies and programs who cooperated by their responses to the survey and to the following Project staff members for their labors in the production of this publication:  
 John Taylor, Administrative Assistant--survey design;  
 Chris Kimble, Resource and Information Assistant--tabulation, narrative, tables and charts, publication design;  
 Shirley Houser, Senior Stenographer; Deborah Fisher, Library Coordinator; and Leslie Nishimura, Stenographer; clerical detail and especially Laura Viglione--numerous hours of typing.

This publication is a public document and may be reproduced without permission. Copies may be ordered, however, from the Model Volunteer Project Resource Library.

*V. Pearldean Golightly*

V. Pearldean Golightly  
 Volunteer Services Administrator

October 1974

I. DIRECTORY OF VOLUNTEER PROGRAMS IN CALIFORNIA

List of Agencies and Volunteer Activities Charts

The following pages list the names and addresses of volunteer programs located throughout the state of California, and the types of services provided by volunteers in each program. It is hoped that this list will serve as a contact sheet by which these agencies may be reached for information concerning specific aspects of their individual programs.

NORTH CENTRAL REGION

County Probation Departments

Colusa County Probation Department  
146 Seventh Street  
Colusa, California 95932  
Telephone: (916) 458-5806  
Jack E. Hanstein

El Dorado County Probation Department  
295 Fair Lane  
Placerville, California 95667  
Telephone: (916) 626-2325  
Thomas L. Martin, Superintendent

Fresno County Probation Department  
Room 700-Courthouse  
Fresno, California 93720  
Telephone: (215) 488-3425  
Roger Palomino, Volunteer Coordinator

Kern County Probation Department  
P.O. Box 3309, Station A  
Bakersfield, California 93305  
Telephone: (805) 861-3162  
Augie Flores, Volunteer Coordinator

Kings County Probation Department  
Courthouse Box C  
Hanford, California 93230  
Telephone: (209) 582-3211 Ext. 475  
Lynn Bowness, Volunteer Coordinator

Madera County Probation Department  
209 W. Yosemite Avenue  
Madera, California 93637  
Telephone: (209) 674-4641  
Nash Gurrola, Senior Probation Officer

NORTH CENTRAL REGION

County Probation Departments  
(continued)

Merced County Probation Department  
670 W. 22nd Street  
Merced, California 95340  
Telephone: (209) 722-7411 Ext. 261  
Murl Silvey, Deputy Probation Officer II

Placer County Probation Department  
360 Elm Avenue  
Auburn, California 95603  
Telephone: (916) 823-4681  
James H. Beattie, Assistant Probation Officer

Plumas County Probation Department  
P.O. Box 258  
Quincy, California 95971  
Telephone: (916) 283-1860  
Lee Hennes, Deputy Probation Officer

Sacramento County Probation Department  
9601 Kiefer Boulevard  
Sacramento, California 95827  
Telephone: (916) 363-3161  
Frank Young, Volunteer Coordinator

San Joaquin County Probation Department  
222 E. Weber Avenue  
Stockton, California 95202  
Telephone: (209) 944-2313  
Mary Bava, Volunteer Coordinator

NORTH CENTRAL REGION

County Probation Departments  
(continued)

Shasta County Probation Department  
1545 West Street  
Redding, California 96001  
Telephone: (916) 246-5681  
Frank E. Sauer, Assistant Probation Officer

Siskiyou County Probation Department  
P.O. Box 780  
Yreka, California 96097  
Telephone: (916) 842-3531 Ext. 52  
Mike Stone, Volunteer Coordinator

Solano County Probation Department  
P.O. Box 969  
Fairfield, California 94533  
Telephone: (707) 422-2010 Ext. 341  
Alice T. Grayewski, Supervising Probation Officer

Stanislaus County Probation Department  
P.O. Box 732  
Modesto, California 95353  
Telephone: (209) 526-6526  
Larry Owens, Volunteer Coordinator

Tehama County Probation Department  
P.O. Box 99  
Red Bluff, California 96080  
Telephone: (916) 527-4052  
Peter J. Capovilla, Chief Probation Officer

Tulare County Probation Department  
Room #206-Courthouse  
Visalia, California 93277  
Telephone: (209) 732-5511 Ext. 409  
Jim Judd, Volunteer Coordinator

NORTH CENTRAL REGION

County Probation Departments  
(continued)

Tuolumne County Probation Department  
Courthouse Annex  
Sonora, California 95370  
Telephone: (209) 532-3451  
Paul S. J. Wallace, Chief Probation Officer

Yolo County Probation Department  
P.O. Box 239  
Woodland, California 95695  
Telephone: (916) 666-8256  
Walter Blohm, Deputy Probation Officer II

Yuba County Probation Department  
Courthouse  
Marysville, California 95901  
Telephone: (916) 743-1511 Ext. 224  
Jim Curry, Deputy Probation Officer II

Department of Corrections

California Medical Facility  
Vacaville, California 95688  
Telephone: (707) 448-6841  
Sgt. Brown, Volunteer Coordinator

California Correctional Institution - Tehachapi  
P.O. Box 1031  
Tehachapi, California 93561  
Telephone: (805) 822-4402  
G.L. Shellcross, Correctional Counselor III

Deuel Vocational Institution  
P.O. Box 400  
Tracy, California 95376  
Telephone: (209) 466-5115  
John E. Hacker, Associate Superintendent  
James Brower, Volunteer Coordinator

NORTH CENTRAL REGION

Department of the Youth Authority

Bakersfield Parole  
516 Kentucky Street  
Bakersfield, California 93305  
Telephone: (805) 325-8691  
Harold L. Edwards

Fresno Parole  
2550 Mariposa Street  
Fresno, California 93721  
Telephone: (209) 488-5241  
Joseph F. Spencer

Region II Parole - Sacramento  
2955 Ramona Avenue  
Sacramento, California 95826  
Telephone: (916) 452-1419  
Harvey James, Training Officer

Stockton Community Parole Center  
609 S. San Joaquin Street  
Stockton, California 95202  
Telephone: (209) 948-7663  
Frank Bumps (or) King Morris

Stockton Parole  
1325 N. Center Street  
Stockton, California 95202  
Telephone: (209) 948-7669  
R.J. Ackerman, Supervising Parole Agent

DeWitt Nelson Training Center  
7650 Newcastle Road  
Stockton, California 95206  
Telephone: (209) 944-6150 (or 6113)  
Perry Graves, Volunteer Coordinator



NORTH CENTRAL REGION

Department of the Youth Authority  
(continued)

Karl Holton School for Boys  
P.O. Box 6600  
Stockton, California 95206  
Telephone: (209) 944-6193  
Bruce O'Neal

Mt. Bullion Youth Conservation Camp  
Mariposa, California 95338  
Telephone: (209) 966-2121  
Melvin R. Gebhardt, Superintendent

Northern Reception Center-Clinic  
3001 Ramona Avenue  
Sacramento, California 95826  
Telephone: (916) 452-1411  
John Holland, Volunteer Coordinator

O. H. Close School for Boys  
6500 Newcastle Road  
Stockton, California 95202  
Telephone: (209) 944-6321  
Jack Kelley, Volunteer Coordinator

Pine Grove Youth Conservation Camp  
P.O. Box 438  
Pine Grove, California 95665  
Telephone: (209) 296-7581  
Richard E. Burns, Volunteer Coordinator

Preston School of Industry  
Box 5  
Ione, California 95640  
Telephone: (209) 274-2421  
Arthur J. Belton

NORTH CENTRAL REGION

Department of the Youth Authority  
(continued)

Washington Ridge Youth Conservation Camp  
Washington Star Route  
Nevada City, California 95959  
Telephone: (916) 265-4623  
Carl Hutton, Superintendent

Law Enforcement Agencies

California City Police Department  
8190 California City Boulevard  
California City, California 93505  
Telephone: (714) 373-4895  
Officer Thomas Snowney, Volunteer Coordinator

Davis Police Department  
708 3rd Street  
Davis, California 95616  
Telephone: (916) 758-3600  
Ron Whitehead

Etna Police Department  
P.O. Box 460  
Etna, California 96027  
Telephone: (916) 467-3400  
D. C. Schwinn

Sacramento Police Department  
813 6th Street  
Sacramento, California 95814  
Telephone: (916) 449-5745  
Lt. J. Carey, Youth Services Division

NORTH COASTAL REGION

County Probation Departments

Alameda County Probation Department  
400 Broadway  
Oakland, California 94607  
Telephone: (415) 874-6961  
Arne Hove, Volunteer Services Specialist

Del Norte County Probation Department  
938 K Street  
Crescent City, California 95531  
Telephone: (707) 464-2010  
Barbara Hibner, Volunteer Coordinator

Humboldt County Probation Department  
2002 Harrison Avenue  
Eureka, California 95501  
Telephone: (707) 445-7401  
Thomas M. Patmore, Volunteer Coordinator

Marin County Probation Department  
Room 163 Civic Center  
San Rafael, California 94903  
Telephone: (415) 479-1100 Ext. 2821  
Gloria Melbostad, Volunteer Coordinator

Mendocino County Probation Department  
P.O. Box 303  
Ukiah, California 95482  
Telephone: (707) 462-6514  
James Kolesar, Probation Officer

Monterey County Probation Department  
1200 Aquajito Road  
Monterey, California 93940  
Telephone: (408) 373-1688  
William W. Pshide

NORTH COASTAL REGION

County Probation Departments  
(continued)

San Francisco Adult Probation Department  
850 Bryant Street, Room 200  
San Francisco, California 94103  
Telephone: (415) 553-1494  
Richard Gross, Volunteer Coordinator

San Francisco Juvenile Probation Department  
375 Woodside Avenue  
San Francisco, California 94127  
Telephone: (415) 731-5740  
Warren Cain, Volunteer Coordinator  
Ethel Fitzgerald, Volunteer Coordinator

San Mateo County Probation Department  
21 Tower Road  
Belmont, California 94002  
Telephone: (415) 573-2173  
Vernon D. Johnson, Director of Probation Volunteers  
Janet Moore, Volunteer Coordinator

Santa Clara County Probation Department  
1955 The Alameda  
San Jose, California 95126  
Telephone: (408) 299-3350  
Ray L. Clark

Santa Cruz County Probation Department  
P.O. Box 1299  
Santa Cruz, California 95061  
Telephone: (408) 335-5361  
Bob Hulsey (or) George Fitzgerald

Sonoma County Probation Department  
Hall of Justice, 104-J  
2555 Mendocino Avenue  
Santa Rosa, California 95401  
Telephone: (707) 527-2256  
Darrell K. Basore

NORTH COASTAL REGION

Department of Corrections

Oakland Parole - District Office  
568 West Grand Avenue  
Oakland, California 94612  
Telephone: (415) 464-0380  
William Elliot, District Administrator

San Jose District-Parole & Community Services  
237 Race Street  
San Jose, California 95126  
Telephone: (408) 277-1825  
Anthony C. Smith, District Administrator

San Quentin State Prison  
Tamal, California 94964  
Telephone: (415) 454-1460  
K. D. Britt

Department of the Youth Authority

Oakland Parole  
235 12th Street, Room 1008  
Oakland, California 94607  
Telephone: (415) 464-1315  
William McCord, Supervising Parole Agent

Regional Parole-Oakland  
3756 Grand Avenue, Suite 6  
Oakland, California 94610  
Telephone: (415) 464-0933  
Price King

Richmond Parole  
12730 San Pablo Avenue  
Richmond, California 94805  
Telephone: (415) 232-2279  
Eugene Ansell, Supervising Parole Agent

San Francisco Parole  
333 Randolph Street  
San Francisco, California 94132  
Telephone: (415) 587-2271  
John W. Pendleton, Supervising Parole Agent

NORTH COASTAL REGION

Department of the Youth Authority  
(continued)

San Francisco Community Parole Center  
865 Page Street  
San Francisco, California 94117  
Telephone: (415) 597-2637  
Bill Hayes, Assistant Supervising Parole Agent

San Jose Parole  
1661 W. San Carlos Street, Room 205  
San Jose, California 95128  
Telephone: (408) 277-1226  
Sue Sullivan, Volunteer Coordinator

Santa Cruz Parole  
55 River Street, Suite 201  
Santa Cruz, California 95060  
Telephone: (408) 427-1420  
Vernon R. Pearce, Supervising Parole Agent

Santa Rosa Parole  
800 College Avenue  
Santa Rosa, California 95404  
Telephone: (707) 528-4010  
Everett J. McVey

Ben Lomond Youth Conservation Camp  
13575 Empire Grade  
Santa Cruz, California 95060  
Telephone: (408) 423-1652  
Frank White, Superintendent

Law Enforcement Agencies

Arcata Police Department  
530 7th Street  
Arcata, California 95521  
Telephone: (707) 822-2424  
N. J. Gibson, Jr., Chief of Police

NORTH COASTAL REGION

Law Enforcement Agencies  
(continued)

Berkeley Police Department  
2171 McKinley Avenue  
Berkeley, California 94703  
Telephone: (415) 644-6654 (or 6730)  
Sgt. Mower, Volunteer Coordinator  
Officer M. Moran, Volunteer Coordinator

Eureka Police Department  
4th & J Streets  
Eureka, California 95501  
Telephone: (707) 442-4546  
Detective C. Taylor, Youth Services

Foster City Police Department  
1040 East Hillside Boulevard  
Foster City, California 94404  
Telephone: (415) 574-5555  
Sgt. McClenahan, Volunteer Coordinator

Fremont Police Department  
39710 Civic Center Drive  
Fremont, California 94538  
Telephone: (415) 796-3232  
John Fabbri, Chief of Police

Hayward Police Department  
22738 Mission Boulevard  
Hayward, California 94541  
Telephone: (415) 581-1700  
Bill Cook, Volunteer Coordinator  
Frank J. Schley, Volunteer Coordinator

Milpitas Youth Service Bureau  
777 South Main Street  
Milpitas, California 95035  
Telephone: (408) 263-4800  
Jackie Gee, Volunteer Coordinator

NORTH COASTAL REGION

Law Enforcement Agencies  
(continued)

Mountain View Police Department  
947 Villa Street  
Mountain View, California 94041  
Telephone: (415) 968-8540  
Lt. Nicholas B. Galiotto, Commander, Juvenile Bureau

Piedmont Police Department  
120 Vista Avenue  
Piedmont, California 94611  
Telephone: (415) 653-7200  
H. R. Koelsch, Juvenile Officer

Pleasant Hill Police Department  
1900 Pleasant Hill Road  
Pleasant Hill, California 94523  
Telephone: (415) 933-7770  
Lt. Jim Nunes (or) Sgt. Mike Phalen

St. Helena Police Department  
1480 Main Street  
St. Helena, California 94574  
Telephone: (707) 963-3636  
Arnold J. Harrison, Chief of Police

Santa Clara Police Department  
1541 Civic Center Drive  
Santa Clara, California 95050  
Telephone: (408) 984-3175  
Lt. Joseph Ledesma, Commander, Juvenile Bureau

Sunnyvale Police Department  
Department of Public Safety  
650 West Olive Street  
Sunnyvale, California 94088  
Telephone: (408) 736-3466  
Howard A. Shipley, Commander

NORTH COASTAL REGION

Law Enforcement Agencies  
(continued)

Union City Police Department  
1154 Whipple Road  
Union City, California 94587  
Telephone: (415) 471-1365  
Sgt. John Nanty, Volunteer Coordinator

Monterey County Jail  
P.O. Box 809  
Salinas, California 93901  
Telephone: (408) 424-0352 (or 7345)  
W. A. Jack Davenport, Sheriff

San Francisco Sheriff's Department  
Room 333 City Hall  
San Francisco, California 94102  
Telephone: (415) 558-2411  
Joan Mills, Volunteer Coordinator

San Mateo County Sheriff's Department  
Hall of Justice  
Redwood City, California 94063  
Telephone: (415) 364-1811 Ext. 2271  
Tom Weir, Rehabilitation Officer

Santa Clara County Sheriff's Department  
180 West Hedding Street  
San Jose, California 95110  
Telephone: (408) 299-2831  
George Williams, Volunteer Coordinator

Santa Rita Rehabilitation Center  
Social Services Department  
P.O. Box 37  
Pleasanton, California 94566  
Telephone: (415) 828-1075  
Mason C. Layman, Supervisor

Sonoma County Sheriff's Department  
2555 Mendocino Avenue, Room 103-J  
Santa Rosa, California 95401  
Telephone: (707) 527-2511  
Don Striepeke, Sheriff

SOUTHERN REGION

County Probation Departments

Los Angeles County Probation Department  
9150 E. Imperial Highway  
Downey, California 90242  
Telephone: (213) 923-7721  
Ann Roberts, Volunteer Coordinator

Orange County Probation Department  
P.O. Box 10260  
Santa Ana, California 92711  
Telephone: (719) 532-7908  
James G. Husset, Volunteer Coordinator

Riverside County Probation Department  
P.O. Box 833  
Riverside, California 92502  
Telephone: (714) 787-2000  
Earl Chapin, Delinquency Prevention Coordinator

San Diego County Probation Department  
P.O. Box 23096  
San Diego, California 92123  
Telephone: (714) 565-3209  
Beverly DiGregorio, Volunteer Coordinator

Santa Barbara County Probation Department  
P.O. Box 1379  
Santa Barbara, California 93102  
Telephone: (805) 966-4164  
John Casken, Delinquency Prevention Officer

Ventura County Probation Department  
501 Poli Street  
Ventura, California 93001  
Telephone: (805) 648-6131 Ext. 2154  
Kathy Rogers, Volunteer Coordinator

SOUTHERN REGION

Department of Corrections

Santa Ana District Parole & Community Services  
1427 S. Sycamore Street  
Santa Ana, California 92707  
Telephone: (714) 835-3550  
Max Greenwald, District Administrator

California Institution for Women  
16756 Chino-Corona Road  
Frontera, California 91720  
Telephone: (714) 597-1771  
Virginia C. Carlson, Superintendent

Department of the Youth Authority

Community Centered Drug Project  
11400 South Norwalk Boulevard, Bldg. 209-211  
Norwalk, California 90650  
Telephone: (213) 868-4708  
Ted C. Tillmanns, Administrator

Culver City Parole  
11261 W. Washington Boulevard  
Culver City, California 90230  
Telephone: (213) 620-2450  
William Skully

Esperanza Community Parole Center  
3665 E. Whittier Boulevard  
Los Angeles, California 90023  
Telephone: (213) 269-7351  
William F. Carlson, Volunteer Coordinator

La Mesa Parole  
8265 Commercial Street, Suite 11  
La Mesa, California 92024  
Telephone: (714) 753-7276  
Lealand Purvis, Supervising Parole Agent

SOUTHERN REGION

Department of the Youth Authority  
(continued)

Long Beach Parole  
230 East 4th Street  
Long Beach, California 90802  
Telephone: (213) 435-8334  
J. Plains, Volunteer Coordinator

Los Angeles North Parole  
2440 South Main Street  
Los Angeles, California 90007  
Telephone: (213) 620-4974  
Roy Bishop, Supervising Parole Agent

Park Centre Settlement House  
4082 Centre  
San Diego, California 92103  
Telephone: (714) 236-7421  
Arthur M. Dorsey, Supervising Parole Agent

Project S.P.A.C.E.  
1151 North Madison Avenue  
Los Angeles, California 90029  
Telephone: (213) 620-5942  
Tom Pederson, Volunteer Coordinator

Region IV Parole  
18002 Irvine Boulevard, Suite B-3  
Tustin, California 92680  
Telephone: (714) 838-3708  
Ken Jenkins, Volunteer Coordinator

Region V Parole  
2440 South Main Street  
Los Angeles, California 90007  
Telephone: (213) 620-3447  
Barbara Schack

SOUTHERN REGION

Department of the Youth Authority  
(continued)

Region VI Parole  
512 E. Wilson Avenue, Room 201  
Glendale, California 91206  
Telephone: (213) 620-4675  
Henry T. Corrales, Regional Supervisor

San Diego Parole  
2139 5th Avenue  
San Diego, California 92101  
Telephone: (714) 236-7401  
Bill Baer

San Fernando Valley Parole  
8737 Van Nuys Boulevard  
Panorama City, California 91402  
Telephone: (213) 894-9181  
Carol Reid

Ujima Community Parole Center  
10323 South Figueroa Street  
Los Angeles, California 90003  
Telephone: (213) 757-8228  
Levan Bell, Supervising Parole Agent

Fred C. Nelles School  
11850 East Whittier Boulevard  
Whittier, California 90601  
Telephone: (213) 698-6781  
Lou Betancourt, Volunteer Coordinator

Oak Glen Youth Conservation Camp  
41100 Pine Bench Road  
Yucaipa, California 92399  
Telephone: (714) 797-0196  
Floyd Wightman, Assistant Superintendent

SOUTHERN REGION

Department of the Youth Authority  
(continued)

Southern Reception Center-Clinic  
13200 South Bloomfield Avenue  
Norwalk, California 90650  
Telephone: (213) 863-5711  
Erma Savage, Coordinator of Special Activities

Ventura School  
3100 Wright Road  
Camarillo, California 93010  
Telephone: (805) 485-7951  
Sarah Ruth Carpenter, Parole Agent II

Youth Training School  
P.O. Box 800  
Ontario, California 91764  
Telephone: (714) 597-1861  
Barney Lampe, Community Resources Coordinator

Law Enforcement Agencies

Banning Police Department  
133 East Hays Street  
Banning, California 92220  
Telephone: (714) 849-4774  
Captain Donald Chance, Volunteer Coordinator

Bell Gardens Police Department  
Youth Services Bureau  
7100 Garfield Avenue  
Bell Gardens, California 90201  
Telephone: (213) 773-8681  
Lt. Richard C. Brug, Volunteer Coordinator

Burbank Police Department  
272 East Olive Avenue  
Burbank, California 91502  
Telephone: (213) 846-9933 Ext. 331  
R. C. Loranger, Chief of Police



SOUTHERN REGION

Law Enforcement Agencies  
(continued)

Covina Police Department  
141 East College Street  
Covina, California 91722  
Telephone: (213) 331-3391  
Frank Burke, Police Sergeant

El Cajon Police Department  
100 Fletcher Parkway  
El Cajon, California 92020  
Telephone: (714) 442-3351 Ext. 69  
R. G. Yount, Volunteer Coordinator  
Shari David, Volunteer Coordinator

Escondido Police Department  
100 Valley Boulevard  
Escondido, California 92025  
Telephone: (714) 745-6150  
Lt. H. J. Hewlett, Volunteer Coordinator

Garden Grove Police Department  
11301 Acacia Parkway  
Garden Grove, California 92640  
Telephone: (714) 638-6829  
Sgt. D. Antoine

Glendale Police Department  
140 N. Isable Street  
Glendale, California 91206  
Telephone: (213) 956-4944  
Sergeant Frank Ross, Administrative Aide

Glendora Police Department-Counseling Program  
150 South Glendora Avenue  
Glendora, California 91740  
Telephone: (213) 963-5941  
Tim Keane (or) Lois Wurmbrand

SOUTHERN REGION

Law Enforcement Agencies  
(continued)

Los Alamitos Police Department  
3201 Katella Avenue  
Los Alamitos, California 90720  
Telephone: (213) 431-1344  
Corporal Orville Lewis, Volunteer Coordinator

Los Angeles Police Department  
150 North Los Angeles Street  
Los Angeles, California 90012  
Telephone: (213) 485-3281  
Lt. Q. Villanueva

Montclair Police Department  
5111 Benito  
Montclair, California 91763  
Telephone: (714) 621-4771 (or 624-8056)  
Russ Bragg, Volunteer Coordinator  
Fred Drury, Volunteer Coordinator

Monterey Park Police Department  
300 West Newmark Avenue  
Monterey Park, California 91754  
Telephone: (213) 573-1311  
Captain Elder, Volunteer Coordinator

Paso Robles Personal Guidance Council  
1030 Vine Street  
Paso Robles, California 93446  
Telephone: (805) 238-0911  
John Spinaz

Riverside Police Department  
4102 Orange Street  
Riverside, California 92501  
Telephone: (714) 787-7540  
Lt. Leroy Gren

SOUTHERN REGION

Law Enforcement Agencies  
(continued)

San Clemente Police Department  
100 Avenida Presidio  
San Clemente, California 92672  
Telephone: (714) 492-5101  
Clifford G. Murray, Chief of Police

San Diego Police Department  
801 West Market Street  
San Diego, California 92101  
Telephone: (714) 236-6198  
Sgt. G. A. Haddock, Volunteer Coordinator

San Luis Obispo Police Department  
P.O. Box 1328  
San Luis Obispo, California 93401  
Telephone: (805) 544-5151  
E. L. Rodgers, Chief of Police

Sierra Madre Police Department  
55 West Sierra Madre Boulevard  
Sierra Madre, California 91024  
Telephone: (213) 355-1414  
Thomas C. Kendra, Chief of Police

West Covina Police Department  
1444 West Garvey Avenue  
West Covina, California 91790  
Telephone: (213) 962-8631  
C. L. Meacham, Deputy Chief of Police

Los Angeles County Sheriff Department  
211 West Temple  
Los Angeles, California 90012  
Telephone: (213) 974-4916  
Watch Commander--Central Jail

Riverside County Jail  
Courthouse  
Riverside, California 92501  
Telephone: (714) 787-2768  
Harry McKinney, Superintendent

SOUTHERN REGION

Law Enforcement Agencies  
(continued)

San Diego County Sheriff's Department  
222 West C Street  
San Diego, California 92101  
Telephone: (714) 236-2940  
Thomas A. Reed, Volunteer Coordinator

Orange County Sheriff's Department  
P.O. Box 449  
Santa Ana, California 92702  
Telephone: (714) 834-3089  
Lt. Robert E. Griffeth, Commander, Juvenile Bureau

Santa Barbara County Sheriff's Department (Jail Division)  
4436 Calle Real  
Santa Barbara, California 93111  
Telephone: (805) 964-6725 Ext. 228  
Inspector Fritz C. Patterson

### VOLUNTEER ACTIVITIES

NORTH CENTRAL REGION  YOUTH AUTHORITY <u>Institutions</u>	ADMINISTRATION			EDUCATION			COUNSELING							TRANSPORTATION			PROF.		MISCELLANEOUS																	
	ADVISORY	CLERICAL	COMMUNITY RESOURCES	INTERVIEWER	PUBLIC RELATIONS	RESEARCH/EVALUATION	SUPERVISION	REMEDIAL	VOCATIONAL	SKILLS	INDIVIDUAL	GROUP	DRUG	ALCOHOL	EMPLOYMENT	FAMILY	FINANCIAL	HOMEMAKING	FAMILY PLANNING	VOCATIONAL	EDUCATIONAL	RECREATION	INSTITUTIONAL	FIELD	FAMILY OF CLIENT	JAIL INMATES	MEDICAL	LEGAL	CASE AIDE	COUNSELOR AIDE	JAIL VISITOR	INTERPRETER	RECREATION			
DeWitt Nelson Training Center										*	*	*	*	*								*														
Karl Holton School		*											*	*	*																					
Mt. Bullion Youth Conservation Camp										*					*	*																				*
Northern California Reception Center-Clinic	*	*	*					*		*	*	*	*		*		*											*	*	*	*	*	*	*	*	*
								*		*	*	*																								*
Pine Grove Youth Conservation Camp										*	*	*																								
Preston School of Industry								*		*	*	*																					*			
Washington Ridge Youth Conservation Camp										*					*						*															
<u>Parole Offices</u>																																				
Region II Headquarters								*		*		*		*	*						*	*														
Stockton Parole										*		*	*	*	*					*	*	*	*	*	*	*	*	*								
Stockton CPC								*									*			*	*	*														
Fresno Parole				*	*					*	*	*	*	*	*	*					*	*	*	*	*	*	*	*	*	*	*	*	*	*	*	*
Bakersfield Parole										*	*	*	*	*	*	*				*	*	*	*	*	*	*	*	*	*	*	*	*	*	*	*	*

VOLUNTEER ACTIVITIES

Table with columns: ADMINISTRATION, EDUCATION, COUNSELING, TRANSPORTATION, PROF., MISCELLANEOUS. Rows include: NORTH CENTRAL REGION (cont.), DEPARTMENT OF CORRECTIONS (California, Colusa, El Dorado, Fresno, Kern, Kings, Merced, Placer, Plumas, Sacramento, San Joaquin).

VOLUNTEER ACTIVITIES

Table with columns: ADMINISTRATION, EDUCATION, COUNSELING, TRANSPORTATION, PROF., MISCELLANEOUS. Rows include: NORTH CENTRAL REGION (cont.), COUNTY PROBATION DEPARTMENTS (cont.) (Shasta, Siskiyou, Solano, Stanislaus, Tehama, Tulare, Tuolumne, Yolo, Yuba).

VOLUNTEER ACTIVITIES

POLICE DEPARTMENTS	ADMINISTRATION						EDUCATION				COUNSELING								TRANSPORTATION				PROF.		MISCELLANEOUS											
	POLICE RESERVES	ADVISORY	CLERICAL	COMMUNITY RESOURCES	INTERVIEWER	PUBLIC RELATIONS	RESEARCH/EVALUATION	SUPERVISION	REMEDIAL	VOCATIONAL	SKILLS	INDIVIDUAL	GROUP	DRUG	ALCOHOL	EMPLOYMENT	FAMILY	FINANCIAL	HOMEMAKING	FAMILY PLANNING	VOCATIONAL	EDUCATIONAL	RECREATION	INSTITUTIONAL	FIELD	FAMILY OF CLIENT	JAIL INMATES	MEDICAL	LEGAL	CASE AIDE	COUNSELOR AIDE	JAIL VISITOR	INTERPRETER	RECREATION		
California City				*							*	*	*	*																						
Davis																												*								
Etna																																				
Grass Valley																																				
Mendota																																				

VOLUNTEER ACTIVITIES

NORTH COASTAL REGION	ADMINISTRATION						EDUCATION				COUNSELING								TRANSPORTATION				PROF.		MISCELLANEOUS											
	ADVISORY	CLERICAL	COMMUNITY RESOURCES	INTERVIEWER	PUBLIC RELATIONS	RESEARCH/EVALUATION	SUPERVISION	REMEDIAL	VOCATIONAL	SKILLS	INDIVIDUAL	GROUP	DRUG	ALCOHOL	EMPLOYMENT	FAMILY	FINANCIAL	HOMEMAKING	FAMILY PLANNING	VOCATIONAL	EDUCATIONAL	RECREATION	INSTITUTIONAL	FIELD	FAMILY OF CLIENT	JAIL INMATES	MEDICAL	LEGAL	CASE AIDE	COUNSELOR AIDE	JAIL VISITOR	INTERPRETER	RECREATION			
Ben Lomond Youth Conservation Camp										*																										
Oak Glen Youth Conservation Camp												*	*	*	*	*	*	*	*	*	*															
Parole Offices																																				
San Francisco Parole										*	*	*	*	*	*	*	*	*	*	*	*															
San Francisco CPC								*																												
Santa Rosa Parole															*	*	*	*	*	*	*															
San Jose Parole							*	*	*	*	*	*	*	*	*	*	*	*	*	*	*															
Santa Cruz Parole										*	*	*	*	*	*	*	*	*	*	*	*															
Region III Headquarters										*	*	*	*	*	*	*	*	*	*	*	*															
Richmond Parole										*	*	*	*	*	*	*	*	*	*	*	*															

# VOLUNTEER ACTIVITIES

-30-

	ADMINISTRATION						EDUCATION						COUNSELING						TRANSPORTATION			PROF.			MISCELLANEOUS												
	ADVISORY	CLERICAL	COMMUNITY RESOURCES	INTERVIEWER	PUBLIC RELATIONS	RESEARCH/EVALUATION	SUPERVISION	REMEDIATION	VOCATIONAL	SKILLS	INDIVIDUAL	GROUP	DRUG	ALCOHOL	EMPLOYMENT	FAMILY	FINANCIAL	HOMEMAKING	FAMILY PLANNING	VOCATIONAL	EDUCATIONAL	RECREATION	INSTITUTIONAL	FIELD	FAMILY OF CLIENT	JAIL INMATES	MEDICAL	LEGAL	CASE AIDE	COUNSELOR AIDE	JAIL VISITOR	INTERPRETER	RECREATION				
NORTH COASTAL REGION (cont.)																																					
DEPARTMENT OF CORRECTIONS			*	*	*	*					*		*	*	*	*	*	*	*	*	*	*	*	*	*	*	*				*		*				
California State Prison at San Quentin	*									*	*	*	*	*	*	*	*	*	*	*	*	*	*	*	*	*	*	*				*		*			
Oakland Parole and Community Services		*	*	*	*	*	*	*	*	*	*	*	*	*	*	*	*	*	*	*	*	*	*	*	*	*	*	*	*	*	*	*	*	*	*	*	*
San Jose Parole and Community Services		*	*	*	*	*	*	*	*	*	*	*	*	*	*	*	*	*	*	*	*	*	*	*	*	*	*	*	*	*	*	*	*	*	*	*	
COUNTY PROBATION DEPARTMENTS																																					
Alameda		*	*	*	*	*	*	*	*	*	*	*	*	*	*	*	*	*	*	*	*	*	*	*	*	*	*	*	*	*	*	*	*	*	*	*	*
Del Norte		*	*	*	*	*	*	*	*	*	*	*	*	*	*	*	*	*	*	*	*	*	*	*	*	*	*	*	*	*	*	*	*	*	*	*	*
Humboldt		*	*	*	*	*	*	*	*	*	*	*	*	*	*	*	*	*	*	*	*	*	*	*	*	*	*	*	*	*	*	*	*	*	*	*	*
Marin		*	*	*	*	*	*	*	*	*	*	*	*	*	*	*	*	*	*	*	*	*	*	*	*	*	*	*	*	*	*	*	*	*	*	*	*
Mendocino		*	*	*	*	*	*	*	*	*	*	*	*	*	*	*	*	*	*	*	*	*	*	*	*	*	*	*	*	*	*	*	*	*	*	*	*
San Francisco adult		*	*	*	*	*	*	*	*	*	*	*	*	*	*	*	*	*	*	*	*	*	*	*	*	*	*	*	*	*	*	*	*	*	*	*	*
San Francisco juvenile		*	*	*	*	*	*	*	*	*	*	*	*	*	*	*	*	*	*	*	*	*	*	*	*	*	*	*	*	*	*	*	*	*	*	*	*
Santa Clara adult		*	*	*	*	*	*	*	*	*	*	*	*	*	*	*	*	*	*	*	*	*	*	*	*	*	*	*	*	*	*	*	*	*	*	*	*
Santa Cruz		*	*	*	*	*	*	*	*	*	*	*	*	*	*	*	*	*	*	*	*	*	*	*	*	*	*	*	*	*	*	*	*	*	*	*	*
Sonoma		*	*	*	*	*	*	*	*	*	*	*	*	*	*	*	*	*	*	*	*	*	*	*	*	*	*	*	*	*	*	*	*	*	*	*	*

# VOLUNTEER ACTIVITIES

-31-

	ADMINISTRATION			EDUCATION				COUNSELING					TRANSPORTATION				PROF.			MISCELLANEOUS																			
	POLICE RESERVES	ADVISORY	CLERICAL	COMMUNITY RESOURCES	INTERVIEWER	PUBLIC RELATIONS	RESEARCH/EVALUATION	SUPERVISION	REMEDIATION	VOCATIONAL	SKILLS	INDIVIDUAL	GROUP	DRUG	ALCOHOL	EMPLOYMENT	FAMILY	FINANCIAL	HOMEMAKING	FAMILY PLANNING	VOCATIONAL	EDUCATIONAL	RECREATION	INSTITUTIONAL	FIELD	FAMILY OF CLIENT	JAIL INMATES	MEDICAL	LEGAL	CASE AIDE	COUNSELOR AIDE	JAIL VISITOR	INTERPRETER	RECREATION					
NORTH COASTAL REGION (cont.)																																							
POLICE DEPARTMENTS																																							
Arcata	*										*																									*	*	*	
Berkeley	*						*				*																										*	*	*
Cloverdale	*						*				*																										*	*	*
Eureka	*						*				*																										*	*	*
Foster City	*						*				*																										*	*	*
Fremont	*						*				*																										*	*	*
Hayward	*						*				*																										*	*	*
Milpitas	*						*				*																										*	*	*
Mountain View	*						*				*																										*	*	*
Piedmont	*						*				*																										*	*	*
Pleasant Hill	*						*				*																										*	*	*
Sacramento	*						*				*																										*	*	*
Saint Helena	*						*				*																										*	*	*
Santa Clara	*						*				*																										*	*	*
Santa Rosa	*						*				*																										*	*	*









VOLUNTEER ACTIVITIES

SHERIFFS' DEPARTMENTS	ADMINISTRATION										EDUCATION				COUNSELING								TRANSPORTATION				PROF.			MISCELLANEOUS							
	POLICE RESERVES	ADVISORY	CLERICAL	COMMUNITY RESOURCES	INTERVIEWER	PUBLIC RELATIONS	RESEARCH/EVALUATION	SUPERVISION	REMEDIAL	VOCATIONAL	SKILLS	INDIVIDUAL	GROUP	DRUG	ALCOHOL	EMPLOYMENT	FAMILY	FINANCIAL	HOMEMAKING	FAMILY PLANNING	VOCATIONAL	EDUCATIONAL	RECREATION	INSTITUTIONAL	FIELD	FAMILY OF CLIENT	JAIL INMATES	MEDICAL	LEGAL	CASE AIDE	COUNSELOR AIDE	JAIL VISITOR	INTERPRETER	RECREATION			
Los Angeles County																																					
Orange County				*																																	
Riverside County																																					
San Diego County			*																																		
Santa Barbara Co.		*																																			

11. SURVEY SUMMARY

## INTRODUCTION

This survey of Youth Authority and Department of Corrections agencies, sheriffs' and police departments, and county probation departments was conducted by the Model Volunteer Project during February of 1974. Responses were accepted during a four-month period ending in May. The brief eight-item survey was designed to measure the extent and nature of volunteer utilization by these agencies.

Survey cards were mailed in early February to 575 agencies; 49% of these organizations responded. Police and sheriffs' departments accounted for 61% of all responses and 73% of all organizations asked to respond. Although there were many notable exceptions, responses by law enforcement agencies frequently concerned "police reserve" or "police cadet" volunteers; as utilization of this type of volunteer is not consistent with the focus of the survey, responses of law enforcement agencies have been considered separately in the tabulation of this summary.

Exclusive of law enforcement agencies, 107 of 153 correctional agencies responded; a rate of 70%. A breakdown of response rates follows for Youth Authority Institutions (YI), Youth Authority parole units (YP), Department of Corrections institutions (CI), Department of Corrections parole units (CP), county probation departments (P), police departments (POL) and sheriffs' departments (SHF):

TABLE I

SURVEY RESPONSES

agency	# asked to respond	# of responses	percentage
YI	14	14	100%
YP	49	36	73%
CI	12	5	42%
CP	18	6	33%
P	<u>60</u>	<u>46</u>	<u>77%</u>
SUBTOTAL	153	107	70%
POL	364	153	42%
SHF	<u>58</u>	<u>17</u>	<u>29%</u>
SUBTOTAL	<u>422</u>	<u>170</u>	<u>40%</u>
TOTAL	575	277	49%

Department of Youth Authority, Corrections, Probation Departments

Seventy-five percent (80) of these 107 respondents indicated that they used volunteers as of December 31, 1973 (see Tables II, IV and VI). Of those agencies using volunteers, 76% (61) reported volunteer programs, which were defined for survey purposes as being "formalized, planned, supervised as opposed to occasional, unstructured." Fifty-five percent (44) of the programs reported a volunteer coordinator, a position defined as "one functioning within prescribed management expectations, having administrative responsibility for the program." Forty-seven of the 61 programs indicated plans to expand their programs. Ten agencies reported plans for establishing a program.

Of the 27 agencies not using volunteers, eight reported plans for utilizing them in the future; the remaining 19 agencies (16% of all respondents) indicated they did not use volunteers and had no plans for their future use.

Correctional respondents reported a total of 5,743 volunteers, an average of 72 per organization; however, the median number of volunteers per agency falls in the 1-25 range. Eight of the groups account for 65% of the total number of volunteers.

"Individual counseling" was the most frequently named category of volunteer activity. Categories somewhat less frequently reported were remedial education, employment counseling, group counseling, skills education, drug counseling and case aide.

Some comparisons may be made with data from a survey conducted by MVP during the fall of 1972. Eighty-one percent (56) of the 69 correctional respondents to that survey reported volunteer utilization, whereas 75% (80) of the 107 respondents to the Spring 1974 survey indicated volunteer use. Data on the numbers of agencies reporting structured, formal programs showed an increase of 12%. Data on the number of programs planning expansion increased by seven percent.

Seventy-eight percent (54) of the respondents to the original survey reported having either a full- or part-time volunteer coordinator, whereas only 41% (44) of the correctional respondents to the Spring 1974 survey reported a coordinator. This disparity may be due to the more refined definition of "volunteer coordinator" used in the Spring survey.

The numbers of correctional agencies using volunteers from each

service category has been tabulated and each category ranked by frequency of agency use. A comparison of such rank-orderings for both surveys indicates that use of volunteers in the categories of group counselor, drug counselor, and case aide has become relatively more frequent. Categorical distributions for both surveys may be found on pages 48-53.

Police and Sheriffs' Departments

Of the 364 police departments that received survey cards, 153 responded--a response rate of 42%. Seventeen of the 58 county sheriffs' departments responded to the survey.

Eleven of the departments that indicated volunteer utilization reported using only police reserve or police auxiliary volunteers. Forty-nine law enforcement agencies reported volunteer services to clients such as counseling, tutoring, and transportation. In Tables III, V, VII these categories are denoted "reserve" and "other", respectively. Agencies categorized as "other" may use police reserves in addition to volunteers more directly serving clients (see Volunteer Activities Charts).

Law enforcement agencies reported 190 police reserve volunteers and 2,084 volunteers in other categories, a total of 2,274.

VOLUNTEER UTILIZATION  
YOUTH AUTHORITY, CORRECTIONS, PROBATION

TABLE II

	no.	utilizing volunteers	planning utilization	nr*	number of volunteers	nr*	number of volunteers per agency			
							1-25	26-50	51-100	101-500
YI	14	14	100%	-	1189	2	3	1	5	-
YP	36	24	67%	4	111	10	13	1	-	-
CI	5	4	80%	1	315	2	1	-	1	-
CP	6	3	50%	1	28	1	2	-	-	-
P	46	35	76%	2	4100	1	15	4	8	4
TOTAL	107	80	75%	8	5743	16	34	8	9	10

POLICE AND SHERIFFS' DEPARTMENTS

TABLE III

	no.	utilizing volunteers	planning utilization	nr*	number of volunteers	nr*	number of volunteers per agency			
							1-25	26-50	51-100	101-500
reserves	153	11	72%	-	190	3	6	1	1	-
other		38	25%	13	993	10	15	2	4	2
SHERIFF	17	11	65%	2	1091	-	5	3	1	1
TOTAL	170	60	36%	15	2274	13	26	6	6	3

\* nr - no response  
 YI - Youth Authority institutions  
 YP - Youth Authority parole units  
 CI - Department of Corrections institutions  
 CP - Department of Corrections parole units  
 P - county probation departments

VOLUNTEER PROGRAMS

YOUTH AUTHORITY, CORRECTIONS, PROBATION

TABLE IV

	no.	having program		nr*	plan	current stage of program			dimin	nr*	foresee expansion	nr*	plan future program		nr*
						begin	expand	well-estab							
YI	14	14	100%	-	-	3	8	3	-	-	12	1	-	-	
YP	36	12	33%	1	2	3	3	3	1	-	7	1	5	8	
CI	5	2	40%	-	-	-	-	2	-	-	2	-	-	3	
CP	6	2	33%	-	-	2	-	-	-	-	1	-	1	1	
P	46	31	70%	-	1	5	14	10	1	-	25	1	4	5	
TOTAL	107	61	57%	1	3	13	25	18	2	-	47	3	10	17	

-45-

POLICE AND SHERIFFS' DEPARTMENTS

TABLE V

	no.	having program		nr*	plan	current stage of program			dimin	nr*	foresee expansion	nr*	plan future program		nr*
						begin	expand	well-estab							
<u>POLICE</u>															
reserves	153	10	7%	1	-	-	3	7	-	-	4	1	-	-	
other		30	20%	-	1	6	4	18	1	-	23	4	17	32	
<u>SHERIFF</u>	17	10	59%	-	-	1	6	3	-	-	8	1	2	4	
TOTAL	170	50	29%	1	1	7	13	28	1	-	35	6	19	36	

\* nr - no response

YI - Youth Authority institutions  
YP - Youth Authority parole units

CP - Department of Corrections parole units  
P - county probation departments

VOLUNTEER COORDINATORS

YOUTH AUTHORITY, CORRECTIONS, PROBATION

TABLE VI

	no.	having coordinator		nr*	full time	part time	nr*	more than 1 coordinator	total # of coordinators	nr*
YI	14	6	43%	-	2	4	1	-	6	1
YP	36	8	28%	1	-	3	5	-	3	5
CI	5	3	60%	-	-	2	1	1	4	1
CP	6	-	-	-	-	-	-	-	-	-
P	46	27	59%	3	14	12	4	7	48	3
TOTAL	107	44	41%	4	16	21	11	8	61	10

-46-

POLICE AND SHERIFFS' DEPARTMENT

TABLE VII

	no.	having coordinator		nr*	full time	part time	nr*	more than 1 coordinator	total # of coordinators	nr*
<u>POLICE</u>										
reserves	153	-	-	3	-	-	-	-	-	-
other		16	10%	1	4	12	3	8	38	1
<u>SHERIFF</u>	17	4	24%	-	2	2	1	2	9	1
TOTAL	170	20	11%	4	6	14	4	10	47	2

\* nr - no response

YI - Youth Authority institutions  
YP - Youth Authority parole units

CP - Department of Corrections parole units  
P - county probation departments

CI - Department of Corrections institutions

III: CATEGORICAL DISTRIBUTIONS OF VOLUNTEER UTILIZATION

Categorical distributions represent the numbers of agencies utilizing volunteers in the listed service categories.

A comparison of distributions with the distribution for the Fall 1972 survey (page 48) seems to indicate a decrease in all service categories. This disparity is due to the more complete response to this section of the 1972 survey, and does not indicate an actual decline in the numbers of agencies using volunteers in these roles. Proportionate changes in the relative frequency of use of each service category may be readily seen, however.

MVP SURVEY: FALL, 1972

TABLE VIII

YOUTH AUTHORITY, CORRECTIONS, PROBATION (N=69)

<u>Administration</u>		
Advisory -----	(30)	-----@
Clerical -----	(24)	-----@
Community Resources -----	(47)	-----@
Interviewer -----	(27)	-----@
Public Relations -----	(33)	-----@
Research/Evaluation -----	(18)	-----@
Supervision -----	(25)	-----@
<u>Education</u>		
Remedial -----	(49)	-----@
Vocational -----	(37)	-----@
Skills -----	(53)	-----@
<u>Counseling</u>		
Individual -----	(58)	-----@
Group -----	(41)	-----@
Drug -----	(40)	-----@
Alcohol -----	(37)	-----@
Employment -----	(50)	-----@
Family -----	(37)	-----@
Financial -----	(30)	-----@
Homemaking -----	(32)	-----@
Family Planning -----	(28)	-----@
Vocational -----	(43)	-----@
Educational -----	(45)	-----@
<u>Transportation</u>		
Recreation -----	(41)	-----@
Institutional -----	(18)	-----@
Field -----	(30)	-----@
Family of Client -----	(26)	-----@
Jail Inmates -----	(9)	-----@
<u>Professional</u>		
Medical -----	(11)	-----@
Legal -----	(18)	-----@
<u>Miscellaneous</u>		
Case Aide -----	(40)	-----@
Counselor Aide -----	(40)	-----@
Jail Visitor -----	(21)	-----@
Interpreter -----	(22)	-----@
Recreation -----	(55)	-----@
Other -----		

YOUTH AUTHORITY, CORRECTIONS, PROBATION (N=80)

<u>Administration</u>		
Advisory	(17)	-----@
Clerical	(21)	-----@
Community Resources	(27)	-----@
Interviewer	(17)	-----@
Public Relations	(19)	-----@
Research/Evaluation	(6)	-----@
Supervision	(16)	-----@
<u>Education</u>		
Remedial	(37)	-----@
Vocational	(17)	-----@
Skills	(34)	-----@
<u>Counseling</u>		
Individual	(60)	-----@
Group	(35)	-----@
Drug	(34)	-----@
Alcohol	(22)	-----@
Employment	(36)	-----@
Family	(25)	-----@
Financial	(9)	-----@
Homemaking	(8)	-----@
Family Planning	(9)	-----@
Vocational	(23)	-----@
Educational	(20)	-----@
<u>Transportation</u>		
Recreation	(31)	-----@
Institutional	(15)	-----@
Field	(23)	-----@
Family of Client	(12)	-----@
Jail Inmates	(12)	-----@
<u>Professional</u>		
Medical	(3)	-----@
Legal	(9)	-----@
<u>Miscellaneous</u>		
Case Aide	(34)	-----@
Counselor Aide	(15)	-----@
Jail Visitor	(16)	-----@
Interpreter	(15)	-----@
Recreation	(32)	-----@
Other	(27)	-----@

-49-

COUNTY PROBATION DEPARTMENTS (N=35)

<u>Administration</u>		
Advisory	(10)	-----@
Clerical	(14)	-----@
Community Resources	(14)	-----@
Interviewer	(14)	-----@
Public Relations	(11)	-----@
Research/Evaluation	(5)	-----@
Supervision	(12)	-----@
<u>Education</u>		
Remedial	(19)	-----@
Vocational	(11)	-----@
Skills	(22)	-----@
<u>Counseling</u>		
Individual	(27)	-----@
Group	(16)	-----@
Drug	(13)	-----@
Alcohol	(12)	-----@
Employment	(16)	-----@
Family	(12)	-----@
Financial	(6)	-----@
Homemaking	(5)	-----@
Family Planning	(5)	-----@
Vocational	(9)	-----@
Educational	(10)	-----@
<u>Transportation</u>		
Recreation	(15)	-----@
Institutional	(11)	-----@
Field	(12)	-----@
Family of Client	(6)	-----@
Jail Inmates	(6)	-----@
<u>Professional</u>		
Medical	(3)	-----@
Legal	(4)	-----@
<u>Miscellaneous</u>		
Case Aide	(24)	-----@
Counselor Aide	(10)	-----@
Jail Visitor	(7)	-----@
Interpreter	(10)	-----@
Recreation	(18)	-----@
Other	(14)	-----@

-50-



YOUTH AUTHORITY INSTITUTIONS (N=14)

YOUTH AUTHORITY PAROLE UNITS (N=24)

<u>Administration</u>		
Advisory	(1)	@
Clerical	(3)	--@
Community Resources	(3)	--@
Interviewer	(1)	@
Public Relations	(3)	--@
Research/Evaluation		
Supervision	(1)	@
<u>Education</u>		
Remedial	(5)	---@
Vocational	(2)	-@
Skills	(5)	---@
<u>Counseling</u>		
Individual	(10)	-----@
Group	(7)	-----@
Drug	(8)	-----@
Alcohol	(4)	---@
Employment	(5)	---@
Family	(3)	--@
Financial		
Homemaking	(1)	@
Family Planning		
Vocational	(3)	--@
Educational	(2)	-@
<u>Transportation</u>		
Recreation	(2)	-@
Institutional	(2)	-@
Field	(1)	@
Family of Client	(1)	@
Jail Inmates	(1)	@
<u>Professional</u>		
Medical	(2)	-@
Legal		
<u>Miscellaneous</u>		
Case Aide	(2)	-@
Counselor Aide	(2)	-@
Jail Visitor	(2)	-@
Interpreter	(1)	@
Recreation	(4)	---@
Other	(6)	---@

<u>Administration</u>		
Advisory	(4)	---@
Clerical	(3)	--@
Community Resources	(5)	---@
Interviewer	(1)	@
Public Relations	(2)	-@
Research/Evaluation	(1)	@
Supervision	(2)	-@
<u>Education</u>		
Remedial	(11)	-----@
Vocational	(2)	-@
Skills	(6)	---@
<u>Counseling</u>		
Individual	(21)	-----@
Group	(8)	-----@
Drug	(11)	-----@
Alcohol	(3)	---@
Employment	(10)	-----@
Family	(7)	-----@
Financial	(2)	-@
Homemaking	(2)	-@
Family Planning	(2)	-@
Vocational	(8)	-----@
Educational	(6)	---@
<u>Transportation</u>		
Recreation	(13)	-----@
Institutional	(3)	--@
Field	(8)	---@
Family of Client	(3)	--@
Jail Inmates	(4)	---@
<u>Professional</u>		
Medical		
Legal	(3)	--@
<u>Miscellaneous</u>		
Case Aide	(6)	---@
Counselor Aide	(2)	-@
Jail Visitor	(6)	---@
Interpreter	(3)	--@
Recreation	(10)	-----@
Other	(6)	---@

-51-

DEPARTMENT OF CORRECTIONS INSTITUTIONS (N=4)

DEPARTMENT OF CORRECTIONS PAROLE UNITS (N=3)

<u>Administration</u>		
Advisory	(1)	@
Clerical	(1)	@
Community Resources	(2)	--@
Interviewer	(1)	@
Public Relations	(1)	@
Research/Evaluation		
Supervision		
<u>Education</u>		
Remedial	(1)	@
Vocational	(2)	-@
Skills	(1)	@
<u>Counseling</u>		
Individual		
Group	(3)	--@
Drug	(1)	@
Alcohol	(3)	--@
Employment	(3)	--@
Family	(2)	-@
Financial	(1)	@
Homemaking		
Family Planning	(2)	-@
Vocational	(1)	@
Educational	(2)	-@
<u>Transportation</u>		
Recreation		
Institutional	(1)	@
Field	(1)	@
Family of Client	(2)	-@
Jail Inmates	(1)	@
<u>Professional</u>		
Medical		
Legal		
<u>Miscellaneous</u>		
Case Aide	(1)	@
Counselor Aide		
Jail Visitor	(1)	@
Interpreter	(1)	@
Recreation		
Other	(1)	@

<u>Administration</u>		
Advisory	(1)	@
Clerical		
Community Resources	(3)	--@
Interviewer		
Public Relations	(2)	-@
Research/Evaluation		
Supervision	(1)	@
<u>Education</u>		
Remedial	(1)	@
Vocational		
Skills		
<u>Counseling</u>		
Individual	(2)	-@
Group	(1)	@
Drug	(1)	@
Alcohol		
Employment	(2)	-@
Family	(1)	@
Financial		
Homemaking		
Family Planning		
Vocational	(2)	-@
Educational		
<u>Transportation</u>		
Recreation	(1)	@
Institutional		
Field	(1)	@
Family of Client		
Jail Inmates		
<u>Professional</u>		
Medical		
Legal		
<u>Miscellaneous</u>		
Case Aide	(1)	@
Counselor Aide	(1)	@
Jail Visitor		
Interpreter		
Recreation		
Other		

-52-

POLICE DEPARTMENTS (N=49)		SHERIFFS' DEPARTMENTS (N=11)	
<u>Administration</u>		<u>Administration</u>	
Advisory ----- (3)	--@	Advisory ----- (2)	-@
Clerical ----- (12)	-----@	Clerical ----- (4)	---@
Community Resources ----- (13)	-----@	Community Resources ----- (4)	---@
Interviewer -----		Interviewer ----- (4)	---@
Public Relations ----- (11)	-----@	Public Relations ----- (3)	---@
Research/Evaluation ----- (3)	--@	Research/Evaluation ----- (2)	-@
Supervision ----- (3)	--@	Supervision ----- (2)	-@
<u>Education</u>		<u>Education</u>	
Remedial ----- (4)	---@	Remedial ----- (4)	---@
Vocational ----- (12)	-----@	Vocational ----- (4)	---@
Skills ----- (4)	---@	Skills ----- (6)	-----@
<u>Counseling</u>		<u>Counseling</u>	
Individual ----- (16)	-----@	Individual ----- (4)	---@
Group ----- (8)	-----@	Group ----- (5)	---@
Drug ----- (10)	-----@	Drug ----- (5)	---@
Alcohol ----- (7)	-----@	Alcohol ----- (8)	-----@
Employment ----- (5)	---@	Employment ----- (5)	---@
Family ----- (11)	-----@	Family ----- (5)	---@
Financial -----		Financial ----- (1)	@
Homemaking -----		Homemaking ----- (2)	-@
Family Planning ----- (2)	-@	Family Planning ----- (3)	---@
Vocational ----- (7)	-----@	Vocational ----- (3)	---@
Educational ----- (7)	-----@	Educational ----- (4)	---@
<u>Transportation</u>		<u>Transportation</u>	
Recreation ----- (6)	-----@	Recreation ----- (1)	@
Institutional ----- (2)	-@	Institutional -----	
Field ----- (5)	-----@	Field ----- (1)	@
Family of Client ----- (2)	-@	Family of Client ----- (3)	---@
Jail Inmates ----- (2)	-@	Jail Inmates ----- (3)	---@
<u>Professional</u>		<u>Professional</u>	
Medical ----- (6)	-----@	Medical ----- (2)	-@
Legal ----- (2)	-@	Legal ----- (3)	---@
<u>Miscellaneous</u>		<u>Miscellaneous</u>	
Case Aide ----- (4)	---@	Case Aide ----- (2)	-@
Counselor Aide ----- (6)	-----@	Counselor Aide ----- (3)	---@
Jail Visitor -----		Jail Visitor ----- (5)	-----@
Interpreter ----- (4)	---@	Interpreter ----- (2)	-@
Recreation ----- (7)	-----@	Recreation ----- (3)	---@
Police Reserve ----- (19)	-----@	Other ----- (12)	-----@

-53-

END