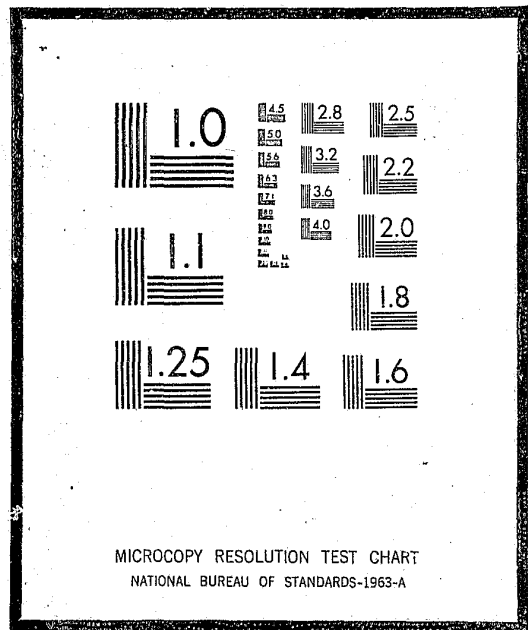


NCJRS

This microfiche was produced from documents received for inclusion in the NCJRS data base. Since NCJRS cannot exercise control over the physical condition of the documents submitted, the individual frame quality will vary. The resolution chart on this frame may be used to evaluate the document quality.



Microfilming procedures used to create this fiche comply with the standards set forth in 41CFR 101-11.504

Points of view or opinions stated in this document are those of the author(s) and do not represent the official position or policies of the U.S. Department of Justice.

U.S. DEPARTMENT OF JUSTICE
LAW ENFORCEMENT ASSISTANCE ADMINISTRATION
NATIONAL CRIMINAL JUSTICE REFERENCE SERVICE
WASHINGTON, D.C. 20531

Date filmed

6/9/76

Fifth

Annual Report, 5th, 1974

on

Pennsylvania - Court of Common Pleas - Judicial Report on

JUDICIAL CASE VOLUME *5th, 1974*



1974

ADMINISTRATIVE OFFICE of
PENNSYLVANIA COURTS

Room 317 — Three Penn Center Plaza
Philadelphia, Pennsylvania 19102

ALEXANDER F. BARBIERI
Court Administrator

CARLILE E. KING
Deputy Court Administrator for Court Operations

GERALD W. SPIVACK
Deputy Court Administrator for the Minor Judiciary

ROBERT F. KENT
Deputy Court Administrator for Fiscal Affairs

SUPREME COURT OF PENNSYLVANIA



ADMINISTRATIVE OFFICE OF PENNSYLVANIA COURTS
317 THREE PENN CENTER PLAZA
PHILADELPHIA, PENNSYLVANIA 19102
(215) 597-3071 - 686-3578

ALEXANDER F. BARBIERI
JUDGE
COURT ADMINISTRATOR OF PENNSYLVANIA

DEPUTY COURT ADMINISTRATORS
CARLILE E. KING, ESQUIRE
GERALD W. SPIVACK, ESQUIRE
ROBERT F. KENT, ESQUIRE

To the Honorable Chief Justice and Justices
of the Supreme Court:

Submitted herewith is the Annual Report of the Judicial Case Volume as reported by the courts of common pleas for the calendar year 1974. It is commendable that the number of dispositions has remained current with the ever-increasing number of new case filings. In some instances the criminal case inventories have been substantially reduced.

It is the purpose of this report to serve as a reference source for a comparative analysis of the statistical information reported monthly by each of the 59 judicial districts. It is a factual representation of the activity of the trial courts of Pennsylvania and an indicator of the future requirements of our judicial system. All members of the judiciary and court-related personnel are encouraged to submit their suggestions and advice concerning the reporting procedure to the Administrative Office.

I take this opportunity, as the newly appointed Court Administrator of Pennsylvania, to note my recognition of the ready and willing assistance and cooperation extended to the Administrative Office by the trial-judges, by their court administrators, and by their other court-related personnel. This report is the product of the efforts extended to us by all of these members of the judicial systems.

Respectfully submitted,

A handwritten signature in cursive script, appearing to read "A. F. Barbieri".

Alexander F. Barbieri
Court Administrator of Pennsylvania

TABLE OF CONTENTS

	Page
I A REPORT ON THE CASE VOLUME	
Courts of Initial Jurisdiction	1
Court Administration	2
Analysis of Statistical Information	3
An Overview of the State's Judicial Case Volume	5
Methodology — Uniform Standards and Procedure Used for Reporting Case Volume	8
Report of Judicial Criminal Proceedings (GJC-301)	10
Monthly Criminal Report (SCA-101)	11
Monthly Civil Report (SCA-102)	12
Monthly Miscellaneous Report (SCA-103)	13
II STATE TABLE = JUDICIAL CASE VOLUME	15
CASE VOLUME BY JUDICIAL DISTRICT	
Criminal & Civil	16-19
Arbitration, Divorce, Juvenile, Domestic Relations, Orphans' Court, Miscellaneous	20-23
III INDIVIDUAL JUDICIAL DISTRICTS	
1971-72-73-74 Caseload Comparison Alphabetically Arranged	24-28
IV ROSTER OF JUDGES	34-37
V COURTS OF COMMON PLEAS = JUDGES	38-93
VI DISTRICT COURTS = COUNTIES	93
VII JUDICIAL DISTRICT MAP	94

A REPORT ON THE CASE VOLUME OF THE COURTS OF COMMON PLEAS OF THE COMMONWEALTH OF PENNSYLVANIA

The Pennsylvania Constitution underwent major revisions in 1968, including, for the first time, a provision in Article V, the "Judiciary Article," for a statewide unified judicial system. Basically, provision is made for three levels of Pennsylvania courts — the courts of initial jurisdiction, courts of general trial jurisdiction and appellate courts.

Courts of Initial Jurisdiction

At the first level are the courts of initial jurisdiction, also referred to as justices of the peace or district justice courts. There is one court for each district, and the number and boundaries of the districts are established by the Supreme Court on the basis of population and population density. These courts have criminal jurisdiction in cases involving offenses carrying a maximum potential sentence of ninety days and \$300 in fines, or both, and civil jurisdiction up to \$1,000. District justices also hold felony and misdemeanor preliminary hearings, and may try summary cases and landlord-and-tenant disputes.

Philadelphia's initial jurisdiction is in its Municipal Court, with 22 authorized judgeships. It has broader jurisdiction for its present eleven law-trained judges, including offenses punishable by imprisonment of not more than five years, indictable offenses under the motor-vehicle laws, civil jurisdiction up to \$500, code enforcement, landlord-and-tenant actions and private complaints. The Municipal Court also conducts all preliminary arraignments and hearings for persons arrested and charged with an offense.

There are no jury trials at the first-level courts. Appeals from courts of initial jurisdiction are to the courts of common pleas and heard *de novo*.

Approximately 575 district justices outside of Philadelphia are authorized, with about 525 serving during 1974.

Common Pleas Courts

In Pennsylvania, the court of unlimited trial jurisdiction in all areas is the court of common pleas. These are contained in 59 judicial dis-

tricts, 51 of the districts consisting of one of the state's 67 counties, with eight dual districts comprising two counties each. Statewide, there are 285 authorized judges for the courts of common pleas.

Appellate Court Systems

The third level of the judiciary actually contains two appellate levels: (1) the intermediate appeals courts, consisting of the Superior Court and the Commonwealth Court; and (2) the Supreme Court, the state's court of last resort. Each of these three appellate courts has seven members. The Supreme Court, since the 1968 amendments, as implemented by the "Appellate Court Jurisdiction Act,"¹ has certain plenary appellate jurisdiction, basically exercisable within its discretion. Appeals to it from trial and intermediate appeals courts are of right in limited classes of cases. Decisions in most areas of litigation, however, whether by trial courts or intermediate appeals courts, are reviewable by the Supreme Court solely in its discretion. This report will not consider the performance of appellate courts, since their activities will be covered in the Annual Report of the Administrative Office.

The Commonwealth Court

The Commonwealth Court is an innovative judicial body, authorized by the constitutional amendments of 1968. It is mainly an appellate court, but also has trial court jurisdiction. It is the court of expertise in government litigation, having generally either original or appellate jurisdiction in contests involving issues between citizens and their government, state or local, and between governmental units. Because of its very special area of competence, its trial experience is not treated in this report, but is included in the Annual Report of the Administrative Office.

¹ Act of July 31, 1970, P.L. 673, 17 P.S. § 211.101 *et seq.*

COURT ADMINISTRATION

Section 10 of Article V of the amended Constitution provides as follows:

"(a) The Supreme Court shall exercise general supervisory and administrative authority over all the courts and justices of the peace, including authority to temporarily assign judges and justices of the peace from one court or district to another as it deems appropriate.

"(b) The Supreme Court shall appoint a court administrator and may appoint such subordinate administrators and staff as may be necessary and proper for the prompt and proper disposition of the business of all courts and justices of the peace.

"(c) The Supreme Court shall have the power to prescribe general rules governing practice, procedure and the conduct of all courts . . . and the administration of all courts and supervision of all officers of the judicial branch . . ."

Pursuant to these constitutional provisions, the following pertinent Rules of Judicial Administration were promulgated:

Rule 501. Court Administrator of Pennsylvania

"(a) The Court Administrator of Pennsylvania shall serve at the pleasure of the Supreme Court. The Court Administrator shall be responsible for the prompt and proper disposition of the business of all courts and justices of the peace . . ."

Rule 504. General Functions of the Administrative Office

"The Administrative Office shall have the power and its duties shall be:

(1) To review the operation and efficiency of the system and of all offices related to and serving the system and, when necessary, to report to the Supreme Court or the Judicial Council with respect thereto.

(2) To formulate and submit to the Supreme Court or the Judicial Council recommendations for the improvement of the system and offices related to and serving the system.

(3) To represent the system before the General Assembly and other legislative bodies with respect to matters

affecting the system and offices related to and serving the system.

(4) To examine the administrative and business methods employed in the office of the prothonotaries and clerks of court and other offices within or related to and serving the system and make recommendations for necessary improvement.

(5) To collect and compile financial and other statistical data and other information on the business of the courts and the justices of the peace and on the work of all offices related to and serving the system, to publish periodic reports with respect thereto and to furnish to the Judicial Council such information as may be requested by it.

(6) To examine the state of the dockets and practices and procedures of the courts and of the justices of the peace and make recommendations for the expedition of litigation.

(7) To prepare and submit to the Judicial Council for review and approval a tentative budget request for the system and to appear before the Budget Secretary and the General Assembly in support of the final budget request of the system.

(8) To disburse and to approve or disapprove requests for permission to spend or encumber funds appropriated to the system within the limits established under Rule 314(a).

(9) To procure and to make available to the personnel of the system entitled thereto, accommodations, goods and services secured through funds appropriated to the system."

Rule 505. Cooperation with Administrative Office

"(a) All system and related personnel shall comply with all standing and special requests or directives made by the Administrative Office for information and statistical data relative to the work of the system and of the offices related to and serving the system and relative to the expenditure of public monies for their maintenance and operation.

(b) The Court Administrator shall report any case of neglect or refusal to comply with requests or directives made

under subdivision (a) of this rule to the Judicial Council at its first meeting following such neglect or refusal, giving full particulars, including the names of the personnel involved, the nature of the request or directive and the degree of neglect or refusal. The Council may require the attendance of the personnel involved, and for this purpose the Prothonotary of the Supreme Court for the Eastern District shall, upon the order of the Chief Justice, issue subpoenas to such personnel returnable at the next meeting of the Council. After opportunity for hearing before the Council or a committee thereof the Chief Justice may enter such order as may be recommended by the Council or such committee and appropriate to the circumstances of the case."

As stated in the above-quoted rules, the Administrative Office is charged with the responsibility of reviewing and furthering the operation and efficiency of the judicial system. This includes the examination of the administrative and business methods employed in the offices of the prothonotaries, clerks of courts and other officers serving the system. The following definitions in Rule 102 of the Pennsylvania Rules of Judicial Administration are pertinent:

"'System.' The unified judicial system of this Commonwealth.

"'System and related personnel.' Personnel of the system and related staff. The term includes district attorneys, public defenders, sheriffs and other officers serving process or enforcing orders, register of wills, prothonotaries, excluding prothonotaries of the Supreme Court, Superior Court and the Commonwealth Court of Pennsylvania, clerks of the courts, clerks of the orphans' court division, prison and correctional officials, and the personnel of all of the foregoing."

The collection of statistical data on the case volume of the business of the courts is only one of the many and varied duties performed by the Administrative Office under the state's unified court system.

The Administrative Office has published these annual reports on the judicial case volume of the trial courts since 1970. This statistical information is essential to ascertain the caseloads of each judicial district and determine whether the trial courts are capable of

meeting and handling the current court problems posed by our present-day society.

The statistics set forth in this report were compiled by representatives in each of the 67 counties. Monthly report forms covering the criminal, civil and miscellaneous case volume of each trial court are submitted to the Administrative Office. These forms are prepared by court administrators, clerks of courts, prothonotaries and their staffs. Much of the information, however, is obtained from other related personnel, such as juvenile court officers, adult probation personnel, district attorneys, domestic relations court staffs, judges' secretaries, and frequently from the judges themselves. (Copies of the forms may be found on pages 10 to 13.) It is through the cooperative efforts of these many individuals that this report is made possible.

ANALYSIS OF STATISTICAL INFORMATION

An analysis of this statistical information is of inestimable value to all trial courts, their administrators and supporting personnel. It highlights many of the problem areas requiring further attention and possible remedial action.

Each court should periodically evaluate its own statistics, as to both their reliability and usefulness. They should be maintained as an aid to efficient court administration and planning, particularly the monitoring and control of the court's flow of work and the management of its personnel and financing².

Several counties publish detailed statistical information as to their individual courts. This practice is commendable and is encouraged by the Administrative Office as being a most effective tool in improving the efficiency of the court system, the proper utilization of judicial personnel, and providing a better informed public.

For example, in Philadelphia, because of the tremendous buildup of the criminal backlog during the early 1970s, with greater emphasis on speedy trials, priority had to be given to the criminal side of the court. In the past two years, Philadelphia's criminal case inventory has been drastically reduced by more than 1,300 cases.

In defining the term "backlog" it is important to remember that there will always be a certain number of undisposed cases not yet ready for trial. Time parameters were established for the movement of such cases through the judicial system. Thus in Philadelphia the presently acceptable limit is 3,410 defendant case records from arrest to sentence.

² See ABA Standard 1.63 Relating to Court Organization.

The chart below reflects the breakdown of this total at each step of the judicial process.

	Total Defendant Case Records	Number Within Acceptable Limits	Actual "Inventory"
Defendants Awaiting Indictment	828	400 ^a	428
Defendants Awaiting "Listings"	2,088	1,440 ^b	648
Defendants Awaiting Trial	570	750 ^c	- 180
Homicide Cases	256	220 ^d	36
Deferred Sentences	529	600 ^e	- 71
	4,271	3,410	861

^a Based upon present arrest rates, and with two weeks from arrest to indictment, there will always be 400 defendants in this category.

^b Indicted defendants are given their first trial listing within one month. On this basis, with twenty trial days, using six courtrooms each listing twelve cases daily, there will be an average of 1,440 defendants at this stage of the trial stream (20 x 6 x 12 = 1,440).

^c A one-month wait from listing to trial is estimated, and an average of 750 defendants are in this category.

^d Homicide cases take four months to bring to trial, and, at an average of 55 new cases per month, the acceptable limit is 220 cases.

^e There is usually a delay of ninety days after conviction before sentence is imposed, and, with 200 cases per month, there are normally 600 defendants with deferred sentences.

The same principle is, of course, equally applicable in all other trial court systems. For this reason, the term "inventory" is generally preferred to the term "backlog" in defining undisposed cases.

The Administrative Office strongly urges that all trial judges carefully review the procedures used in their individual judicial districts for the disposition of all criminal and civil matters, weighing their performances with those of courts having comparable volume and with the statewide averages. One example of such variances can be found in Philadelphia, where guilty pleas account for only 36 percent of the court's total dispositions, but the statewide average is 46 percent; jury waivers, one-third of the total dispositions, but the statewide average is only 13 percent.

Where the statistics show a high percentage of dismissals by grand jury, this might possibly be remedied by better case screening at the time of arrest or preliminary hearing. The same is true if a county has an unusually high number of cases that must be nolle prossed due to lack of evidence. Extended use of the ARD (Accelerated Rehabilitative Disposition) program may be effective when employed with regard to large numbers of first offenders charged with non-violent offenses, who may be informally placed on probation in pretrial proceedings.

Analysis of monetary judgments rendered in civil cases establishes that saving of judicial time is achieved by the transfer of the lesser of such cases to arbitration.

While it is generally true that "justice delayed is justice denied," time-saving devices must always operate with due-process requirements in mind, so that justice is not denied in efforts to expedite and make efficient the disposition of an increasing case volume.

A statistical analysis is an essential function of any efficiently managed court system. It permits a constant review and planning of the court's operations, including case intake and disposition over periods ranging from one day to a year; workload analysis in terms of case type, time intervals between stages in the dispositional process, and other relevant factors; availability and assignment of judicial and non-judicial personnel; and budget and fiscal review and projection. Statistics accurately compiled and properly analyzed can reveal a total picture of the operations of the court, in a form that permits study of influential factors or variables affecting court workload and efficiency. They reflect the vitality of our court structure and form the basis upon which any inadequacies in the system can be diagnosed.

Appreciation is expressed to all court-related personnel for their cooperation in furnishing the statistical data contained in this report.

Only through their continued cooperation and participation can future reports be meaningful and complete.

AN OVERVIEW OF THE STATE'S JUDICIAL CASE VOLUME

The Pennsylvania Constitution was amended in 1974 to permit abolition of the indicting grand jury and authorize process by information. However, while elimination of the indicting grand jury is optional, the amendment required each county wishing to discontinue the grand jury to first obtain the approval of the Supreme Court. At this time the petition of only one county³ has been approved pending determination of its constitutionality. State-

wide statistics on grand-jury dismissals are not available prior to 1972, but the chart below shows they are less than 6 percent and declining.⁴ Of the undisposed defendant case records, 38% consist of those awaiting grand-jury action. Abolition of this procedure should greatly expedite the judicial process and reduce present inventories.

	1972	1973	1974
Grand Jury Dispositions	3,652	3,454	2,973
Percent of Total Dispositions	6%	6%	4.92%

CRIMINAL CASES

	1970	1971	1972	1973	1974
New Cases	61,753	60,125	61,086	56,995	60,618
Dispositions	55,926	54,978	57,035	57,492	60,393
Inventory	26,401	28,941	32,829	27,853	26,864

From 1970 through 1972 the criminal case input exceeded the dispositions. The result was a steady increase in the criminal inventory of undisposed cases. Finally, in 1973 the trend was reversed. This past year new cases and dispositions were almost equal.⁵ Inventories were reduced by implementation of Pa. R.J.A. 1901, which requires termination of inactive cases, thus giving a more accurate count of "active" undisposed matters.

In actuality, the courts are not completely responsible for the total inventory of 26,864 "active undisposed defendant case records" because 38 percent of this number, or 10,209 cases, represents defendants that have not been indicted and therefore are not yet in the "trial stream" as shown below:

Defendants not indicted	10,209	38%
Defendants indicted - not tried	13,232	49%
Defendants tried - not sentenced	3,323	13%
	26,764	

The thirteen judicial districts shown on page 6 have 68 percent of the state's undisposed criminal inventory and the trial status of the defendants in each of these thirteen counties is startlingly different. Defendants awaiting grand-jury indictment vary from 14 percent in Bucks County to 65 percent in Delaware; those indicted and awaiting trial from 28 percent in Delaware to 71 percent in Bucks; and defendants tried but not sentenced from 6 percent in Allegheny to 30 percent in York.

³ Centre County, 49th Judicial District.

⁴ Grand jury dismissals exceeded 10 percent of the total dispositions in the following counties: Allegheny (12%); Bradford (12%); Lackawanna (42%); Lawrence (16%); Luzerne (17%); Mercer (14%); Washington (12%); Sullivan (11%).

⁵ In 1974 criminal dispositions exceeded input in only the ten following judicial districts: Armstrong, Bucks, Butler, Clinton, Fayette, Lawrence, Philadelphia, Potter, Venango, Snyder/Union.

Judicial District	Defendants Not Indicted		Defendants Indicted Not Tried		Defendants Tried Not Sentenced		Total
Philadelphia	828	(19%)	2,914	(68%)	529	(13%)	4,271
Allegheny	2,054	(50%)	1,802	(44%)	254	(6%)	4,109
Montgomery	613	(32%)	1,155	(60%)	171	(8%)	1,939
Chester	397	(31%)	832	(64%)	63	(5%)	1,292
Bucks	157	(14%)	773	(71%)	166	(15%)	1,096
Delaware	617	(65%)	271	(28%)	64	(7%)	952
Lancaster	416	(44%)	474	(50%)	50	(6%)	940
Lackawanna	209	(31%)	367	(55%)	97	(14%)	673
York	196	(30%)	263	(40%)	201	(30%)	660
Dauphin	264	(46%)	241	(42%)	73	(12%)	578
Westmoreland	334	(58%)	201	(35%)	39	(7%)	574
Washington	123	(22%)	359	(65%)	71	(13%)	553
Berks	180	(36%)	185	(37%)	188	(27%)	503
State Average		38%		49%		13%	

Disposition of Criminal Cases by Category

	1970	1971	1972	1973	1974
Guilty Pleas	23,889 43%	27,006 50%	26,843 47%	23,874 41%	27,751 46%
Jury Waived	15,523 28%	11,261 21%	12,448 22%	11,257 20%	7,848 13%
Nolle Prossed	8,482 16%	8,036 14%	7,643 13%	9,076 16%	8,891 14½%
A.R.D.	—	—	1,402 3%	4,265 ^(b) 7%	6,556 ^(b) 11%
Tried by Jury	2,470 4%	2,397 5%	2,878 5%	2,738 5%	2,937 5%
Grand Jury Dismissal	—	—	3,652 6%	3,454 6%	2,973 5%
Disposition in Lieu of Trial	—	—	—	—	321 ½%
Other "Dispositions"	5,562 ^(a) 9%	6,278 ^(a) 10%	2,169 4%	2,828 5%	3,127 5%
Totals	55,926	54,978	57,035	57,492	60,420

(a) Includes Grand Jury Dismissals.

(b) Exclusive of Philadelphia Municipal Court.

CIVIL CASES

	1970	1971	1972	1973	1974
New Cases	23,941	22,201	22,235	19,293	19,546
Dispositions	20,277	29,967	20,145	20,478	19,098
Inventory	26,019	18,037	20,127	18,486	18,934

The number of civil cases entering the system has diminished slightly, due to the increase in arbitration limits. The new arbitration cases represented 59 percent of the total number of new civil cases placed "at issue."

The number of civil cases coming into the system and the dispositions are about equal on the state level: 19,597 to 19,134.⁶ Inventories in the past four years have not been reduced,

due mainly to concentration on the criminal cases.

The vast majority of civil cases reaching trial level are settled either before trial or before verdict (53 percent), and less than ten percent are tried with a jury. Frequently the philosophy of an individual court is revealed by the manner in which it disposes of its civil cases and whether emphasis is placed on settlement or trial.

Disposition of Civil Cases by Category

	1970	1971	1972	1973	1974
Settlement	10,748 53%	9,293 31%	10,031 50%	9,662 47%	9,083 47%
Non Jury	1,829 9%	3,837 13%	2,678 13%	2,157 11%	2,317 12%
Jury Trial	2,002 10%	1,993 7%	2,113 10%	1,905 9%	1,857 10%
Settled Before Verdict	1,550 7%	1,409 5%	1,233 6%	1,241 6%	1,075 6%
Stricken	1,745 9%	972 3%	1,335 7%	1,075 5%	959 5%
Transferred to Arbitration	—	—	1,452 7%	1,538 8%	1,532 8%
Other "Dispositions"	2,403 12%	12,463 ^a 42%	1,503 7%	2,935 14%	2,275 12%
Total	20,277	29,967	20,345	20,513	19,134

(a) Reflects a transfer of 10,655 cases in Philadelphia from the civil trial list to arbitration as the result of the increase to \$10,000 in arbitration limits.

⁶ Civil case dispositions exceeded the input in twenty-one judicial districts. (In York county there were 294 new civil cases placed at issue, but only 93 dispositions.)

ARBITRATION CASES

	1970	1971	1972	1973	1974
New Cases	20,340	34,463	27,985	27,782	27,812
Dispositions	15,735	27,797	29,756	28,467	30,392
Inventory	13,836	20,200	18,429	17,720	15,140

Pennsylvania has been in the forefront in its efforts to remove the cases with little monetary value from the general trial stream through arbitration, and thus allow the courts to devote their attention to the more complex and difficult matters. Arbitration of civil cases had its beginning in Pennsylvania in 1836. At the present time, jurisdiction for compulsory arbitration is fixed at \$10,000 in counties of the first and second class and at \$5,000 in all other counties. A few counties by local rule still limit arbitration to \$3,000. While adoption of local arbitration rules is optional, only Adams, Forest, Lackawanna, Sullivan and Susquehanna Counties have failed to take advantage of this expeditious method of diverting such cases; courts in these counties still hear all cases regardless of monetary value.

METHODOLOGY

UNIFORM STANDARDS AND PROCEDURE USED FOR REPORTING CASE VOLUME

Criminal Cases

In compiling the criminal statistics, the Administrative Office has collaborated with the Bureau of Criminal Justice Statistics in Harrisburg. That bureau and its predecessor have collected criminal dispositions of the Pennsylvania courts since 1848. The form used by the bureau requires that a report be filed on each defendant at the time the criminal transcript is received from the district justice and docketed in the clerk of courts' office (see page 10). The additional portions of the form relate to the manner in which the defendant is tried, the verdict and the sentence. There is a detailed report on each defendant which permits the bureau to analyze such information as age, sex, color, offense, representation, commitment, and time lapse between arrest, trial and sentencing. The authorization for the collection of this information by the bureau is set forth in Act 236 of July 31, 1968, P.L. 757, 17 P.S. §416.

The criminal report form designed by the Administrative Office (see page 11) does not require the above detailed information. It is intended to reflect only the number of defendants, with indictable offenses, brought into the judicial system, the manner in which they are tried, and the inventory of active defendant case records at the end of each month.

One of the earliest functions of the Administrative Office was to design the three monthly report forms which appear on the following pages. The purpose was to reflect the case volume of the courts of common pleas. Many courts had established local reporting procedures and were reluctant to change. The unit of measure must, of course, be uniform, and the providing of the time when a case is initiated and when it is terminated must be in accordance with standard established reporting procedures.

The methodology used for preparing the three monthly reporting forms — criminal, civil and miscellaneous — is explained as follows:

The unit of count used for tabulation is the defendant. Each defendant involved in a single trial is a separate unit of count, regardless of the number of indictments or charges. The inception of the case for reporting purposes is the docketing of the transcript in the clerk of courts' office. The case is reported as a disposition when the defendant is sentenced, or, when defendant is acquitted, his case dismissed by the grand jury, or nolle prossed. The sentence is part of the disposition and the report form is intended to reflect the manner in which the defendant was tried, not the result. Information as to trial dates, offenses, representation, prior record, fines and costs, probation, commitment, etc., are contained in the individual defendant disposition report filed monthly with the Bureau of Criminal Justice Statistics (Form JCJS-301).

If during the month the same defendant is brought into the system under separate transcripts and counted as two cases, but subse-

quently both cases are disposed in a single trial, the adjustment is made on Line 4. This line is also used to remove defendants who cannot be indicted, tried or sentenced within a reasonable period of time (e.g., those who are fugitives, in military service or committed to mental institutions), and thus periodically removed from the inventory of "active" open undisposed cases. (See Pa. R.J.A. 1901 and Pa. R. Crim. P. 1100.)

At the end of each month the number of undisposed "active" defendants is divided into three categories: (a) defendants not indicted, (b) defendants indicted but not tried, and (c) defendants tried but not sentenced.

The monthly criminal report form also reflects the number of judges in the report month who were assigned to try criminal cases, as well as the number of visiting or senior judges so assigned. Each county is required to report the number of "trial days" in the report month, that is, an evidentiary hearing of record, as distinguished from judicial time on arguments, motions, pre-trial and post-trial petitions and sentencing. THE REPORT IS NOT INTENDED TO REFLECT TOTAL JUDICIAL TIME SPENT.

The criminal report form (SCA-101), together with the civil (SCA-102) and miscellaneous (SCA-103) report forms, is filed with the Administrative Office by the tenth day of the following month.

Civil Cases

The only statewide compilation of civil case-loads is made by the Administrative Office. The monthly civil report form (see page 12) covers specific types of action, such as assumpsit, general trespass, trespass involving motor vehicles, equity and other miscellaneous civil actions (e.g., ejectment, condemnation, mandamus, statutory civil appeals). In addition, arbitration and divorce actions are included on this form.

Since the vast majority of civil actions commenced never reach the trial stream, docketed cases are not counted until praeciped, or certified as being ready for trial. Once a case has been so placed at issue, it remains open and part of the "active" case inventory until it is tried, settled or transferred to an inactive status. The report reflects only the manner in which the case was disposed of, i.e., settled, tried by jury, stricken, or tried by court without jury. A case initially counted as ready for trial and transferred to an arbitration panel is considered

as a "disposed" civil matter and re-entered as a "new" arbitration case.

Pa. R.J.A. 1901 requires all cases in which there has been no action for a period of two or more years to be terminated pursuant to local rules of court. Thus if a civil case is placed at issue and no action is taken after a prescribed period, it is removed from the "active" inventory. Docketed cases so removed which were never "at issue" have no effect on the inventory since they were not counted initially.

The civil report form also reflects the number of judges assigned and the civil trial days in the same manner as provided in the criminal report form.

Miscellaneous Cases

This form covers post-conviction appeals, juvenile court cases, domestic relations court cases, custody court cases, mental health and adoption petitions, orphans' court audits and other miscellaneous court actions, including criminal appeals from district justices (see page 13). While the form and reporting procedure is simple, the application and interpretation by several reporting counties for comparison purposes is not entirely satisfactory. A new case or defendant is counted when the matter is scheduled for an evidentiary court hearing. It is only counted once, despite the fact that there may be other related ancillary proceedings.

The Bureau of Criminal Justice Statistics, in cooperation with the Juvenile Court Judges' Commission, has been collecting and compiling data on juveniles since January 1969. That program reflects the activities of each juvenile division of the court of common pleas. It includes "unofficial" cases as well as "official" cases. The Administrative Office reporting procedure includes only "official" cases, which are those instituted with petition and which require an evidentiary hearing and final adjudication hearing. It is considered and counted as one case.

The same reporting procedure applies to other miscellaneous actions where the case is reported when first scheduled for a court hearing. The local county probation offices — adult, juvenile and domestic relations — are encouraged to maintain detailed statistics and information regarding their internal operations, but only the judicial caseload is reflected in this report.

The miscellaneous form also requires that the number of judges assigned to hear "miscellaneous" matters be reported each month along with the total number of "court days."

REPORT OF JUDICIAL CRIMINAL PROCEEDINGS

GJC-301 (5-73)
 (JCJS-301)

FOR OFFICIAL USE ONLY

THE SUPREME COURT OF PENNSYLVANIA
 OFFICE OF THE STATE COURT ADMINISTRATOR

CRIMINAL REPORT

Report covers month of _____ 197__

Court of Common Pleas _____ County

1. IDENTIFICATION

NAME (Last)	(First)	MALE	WHITE	AGE	DATE TRANSCRIPT
		FEMALE	NON-WHITE		
DATE	CHARGES	INDICTMENT NO.	TERM OF COURT	CRIMINAL CASE NO. - OF YEAR	LEAVE BLANK

2. PROCEEDINGS

DATE	STEP	DETAILS (Give degree where applicable)	LEAVE BLANK
	DISMISSALS	<input type="checkbox"/> NOLLE PROSSED <input type="checkbox"/> QUASHED OR DISMISSED <input type="checkbox"/> DEMURRER SUSTAINED <input type="checkbox"/> BILL IGNORED - DISMISSED BY GRAND JURY <input type="checkbox"/> OTHER (Specify)	
	FINAL PLEA	<input type="checkbox"/> NOT GUILTY <input type="checkbox"/> NOLO CONTENDERE <input type="checkbox"/> GUILTY OF _____	
	TRIAL COMMENCED	<input type="checkbox"/> BY JURY <input type="checkbox"/> BY COURT <input type="checkbox"/> GUILTY PLEA ACCEPTED	
	VERDICT	<input type="checkbox"/> NOT GUILTY <input type="checkbox"/> NOT GUILTY DIRECTED BY CT. <input type="checkbox"/> GUILTY OF _____	
	OTHER "NO-PENALTY" DISPOSITIONS	<input type="checkbox"/> OFF CALENDAR BUT FURTHER PROSECUTION <input type="checkbox"/> MENTAL HOSPITAL WITHOUT TRIAL COMMENCED OR COMPLETED <input type="checkbox"/> PRE-TRIAL INTERVENTION <input type="checkbox"/> OTHER (Specify)	

3. SENTENCE

DATE	TYPE	DETAILS	TERM	FINES	COSTS	LEAVE BLANK
	STATE IMPRISONMENT	<input type="checkbox"/> REGIONAL DIAGNOSTIC CLASSIFICATION CENTER <input type="checkbox"/> REGIONAL CORRECTIONAL FACILITY <input type="checkbox"/> CAMP HILL <input type="checkbox"/> MUNCY <input type="checkbox"/> OTHER (Specify)	MIN. YRS MOS DAYS MAX. YRS MOS DAYS	Y/N	Y/N	
	COUNTY IMPRISONMENT	<input type="checkbox"/> LOCAL JAIL <input type="checkbox"/> OTHER (Specify)	MIN. YRS MOS DAYS MAX. YRS MOS DAYS	Y/N	Y/N	
	PROBATION	<input type="checkbox"/> STRAIGHT PROBATION <input type="checkbox"/> SUSPENDED SENT. SPECIAL PROBATION (Specify) <input type="checkbox"/> PROBATION WITHOUT VERDICT	OR YRS MOS DAYS OTHER:	Y/N	Y/N	
	FINES AND COSTS ONLY	<input type="checkbox"/> FINES ONLY <input type="checkbox"/> COSTS ONLY <input type="checkbox"/> FINES & COSTS <input type="checkbox"/> FINES & COSTS SUSPENDED		Y/N	Y/N	
	MISCELLANEOUS	<input type="checkbox"/> DEATH PENALTY <input type="checkbox"/> OTHER (Specify) <input type="checkbox"/> MENTAL HOSPITAL		Y/N	Y/N	
	SENTENCE	<input type="checkbox"/> CONSECUTIVE <input type="checkbox"/> CONCURRENT		Y/N	Y/N	

4. MISC.

DEFENSE COUNSEL	REMARKS
<input type="checkbox"/> COURT APPOINTED <input type="checkbox"/> PUBLIC DEFENDER <input type="checkbox"/> PRIVATELY RETAINED <input type="checkbox"/> SELF REPRESENTED	
PRESIDING JUDGE	

NAME REPORTER	TITLE	COUNTY	DATE OF REPORT

- Defendants pending from last report _____
- Add - defendant transcripts received (indictable offenses only) _____
- Total (lines 1 and 2) _____
- Corrections or adjustments (Explain under Remarks) (_____)
- BALANCE active defendants pending (line 3 plus or minus line 4)
- LESS - defendants disposed by
 - Guilty plea (and sentenced) _____
 - Jury trial waived (and sentenced) _____
 - Trial by jury (and sentenced) _____
 - Nolle Pros _____
 - Dismissed by Grand Jury _____
 - Accelerated Rehabilitative Disposition _____
 - Disposition in Lieu of Trial (Section 18 Drug Act) _____
 - Other (explain under remarks) _____
 Total (lines 6 (a) through (h))
- BALANCE defendants pending (Forward to next month) (line 5 less line 6)
 - Defendants not indicted _____
 - Defendants indicted - not tried _____
 - Defendants tried - not sentenced _____
 (Total of lines (a), (b), (c) equal balance on line 7)
- Number of regular Judges assigned criminal trials (exclude visiting or senior judges) _____
- Total TRIAL days for all regular judges _____
- Number of visiting or senior judges assigned for criminal trials. _____
- Total TRIAL days for visiting and senior judges _____

REMARKS: _____

Print Name _____

Print Title _____

THE SUPREME COURT OF PENNSYLVANIA
OFFICE OF THE STATE COURT ADMINISTRATOR

CIVIL REPORT

Report covers month of _____

197__

Court of Common Pleas

_____ County

ACTIVE CASES	Trespass (General)	Trespass (Motor Vehicle)	Assumpsit	Equity	Miscellaneous	TOTAL	Arbitration	Divorce
1. Cases pending from last report								
2. ADD new cases ordered for trial or pre-trial								
3. LESS cases disposed (explain under section 5)								
4. BALANCE of active cases (forward to next month)								
EXPLANATION OF DISPOSED CASES (from line 3)								
5. a) Settled before trial								
b) Settled before verdict								
c) Trial by jury								
d) Trial without jury								
e) Stricken								
f) Transferred to Arbitration								
g) Other (explain under remarks)								
TOTAL (lines 5(a) through 5(g) same as line 3)								
6. Number of <u>regular</u> Judges assigned for civil trials (exclude visiting and senior judges) _____			8. Number of <u>visiting and senior judges</u> assigned for civil trials _____					
7. Total TRIAL days for all <u>regular</u> judges _____			9. Total TRIAL days for <u>visiting and senior judges</u> _____					

REMARKS: _____

Print Name

Print Title

THE SUPREME COURT OF PENNSYLVANIA
OFFICE OF THE STATE COURT ADMINISTRATOR

MISCELLANEOUS REPORT

Report covers month of _____

197__

Court of Common Pleas

_____ County

	Post Conviction Appeals	Juvenile Court Cases	Domestic Relations Court Cases	Custody Court Cases	Mental Health Petitions	Adoption Petitions	Orphans Court Audits	Miscellaneous
1. Cases pending from last report								
2. PLUS new cases added this report month								
3. LESS cases disposed								
4. BALANCE of active cases (forward to next month)								
5. Total Judges assigned								
6. Total court days for all judges (report partial days as half days)								

REMARKS: _____

Print Name

Print Title

COMMONWEALTH OF PENNSYLVANIA COURTS OF COMMON PLEAS

JUDICIAL CASE VOLUME — 1970 — 1974

	NEW CASES					DISPOSITIONS				
	1970	1971	1972	1973	1974	1970	1971	1972	1973	1974
CRIMINAL	61753	60125	61086	56995	60638	55926	54978	57035	57492	60420
CIVIL	23941	22201	22235	19293	19597	20277	29967	20145	20478	19134
ARBITRATION	20340	34463	27985	27782	27812	15735	27797	29756	28467	30392
DIVORCE	26098	28574	31320	33957	35465	22581	26206	28016	33593	33621
JUVENILE	28643	29242	24770	27094	35120	27847	28798	24342	27483	33990
DOMESTIC RELATIONS	40744	44874	35597	37614	41806	37216	41231	35788	36927	42133
ORPHANS' COURT AUDITS	15221	15558	18043	21127	21662	14840	15275	17908	20963	21756
POST CONV. APPEALS	—	—	678	547	778	—	—	686	500	594
CUSTODY	—	—	1716	2224	2605	—	—	1758	2069	2538
MENTAL HEALTH	—	—	5448	5505	5655	—	—	5480	5412	5575
ADOPTIONS	—	—	6344	6641	6860	—	—	6322	6578	6688
MISCELLANEOUS	4213	4162	5466	4536	5361	4150	3942	5263	4700	4888
TOTALS	220953	239199	240688	243315	263359	198572	228194	232499	244662	261729

	INVENTORY					CHANGE	
	1970	1971	1972	1973	1974	73/74	%
CRIMINAL	26401	28941	32829	27853	26804	-1049	3.77
CIVIL	26019	18037	20127	18486	18949	463	2.50
ARBITRATION	13836	20200	18429	17720	15140	-2580	14.56
DIVORCE	7251	9512	12816	11805	13649	1844	15.62
JUVENILE	3555	3284	3712	3258	4388	1130	34.68
DOMESTIC RELATIONS	6691	5215	5024	5632	5305	-327	5.81
ORPHANS' COURT AUDITS	1054	1420	1555	1490	1396	-94	6.31
POST CONV. APPEALS	—	—	186	217	401	184	84.79
CUSTODY	—	—	208	354	421	67	18.93
MENTAL HEALTH	—	—	117	208	288	80	38.46
ADOPTIONS	—	—	611	670	842	172	25.67
MISCELLANEOUS	1494	2261	1282	1129	1602	473	41.90
TOTALS	86301	88870	96896	88822	89185	363	.41

CRIMINAL CASE VOLUME BY

COUNTY	PHILADELPHIA	ALLEGHENY	MONTGOMERY	DELAWARE	BUCKS	WESTMORELAND	LUZERNE	LANCASTER	BERKS	CHESTER	YORK	ERIE	LEHIGH
AUTHORIZED JUDGESHIPS	81	39	12	12	9	6	7	4	5	6	5	5	5
POPULATION	1,948,609	1,605,016	623,799	600,035	415,056	376,935	342,301	319,693	296,382	278,311	272,603	263,654	255,304
CRIMINAL CASES													
Defendant Records Received	9003	8423	3686	2776	3725	1562	1045	2473	1261	1666	1709	1367	1177
Defendant Records Disposed	11119	8059	3158	1993	3836	1072	782	2419	900	1563	1328	1222	961
by Guilty Pleas	4027	2344	2028	888	1974	427	432	1788	503	602	920	739	637
Tried by Jury	373	203	176	43	122	44	26	186	104	91	145	72	80
Jury Waived	3638	2537	104	206	139	62	87	65	0	12	46	2	27
Noi Pros	2332	645	513	351	544	170	61	338	43	457	152	135	69
A.R.D.	724	912	89	505	1016	267	102	1	154	285	14	207	128
Disposition in lieu of trial	25	19	121	0	8	0	1	0	2	9	0	45	0
Other "Dispositions"	0	1399	127	0	33	102	73	41	94	107	51	22	20
Adjustments	1117	2290	-569	-635	-466	-328	-67	-106	-600	-1065	-161	-35	-93
Grand Jury	127	942	150	34	80	87	130	18	29	74	76	45	36
1974 Inventory Cases	4271	4109	1939	952	1096	574	159	940	503	1292	660	430	470
1973 Inventory Cases	5397	2397	2130	838	1753	499	93	1010	771	2328	516	365	383
Inventory Change	-1126	1712	-191	114	-657	75	66	-70	-268	-1036	144	65	87
CIVIL CASES (Trespass, Assumpsit, Equity & Misc.)													
New Cases Praeciped for Trial	4304	5026	991	596	676	566	730	59	367	590	294	294	295
Dispositions	3788	4061	617	502	533	665	1133	108	343	496	93	300	364
by Non-jury	296	478	47	106	117	33	32	14	147	96	3	14	91
Jury Verdict	238	245	124	83	58	63	106	34	48	78	13	94	44
Settlement	2567	2143	377	242	309	427	152	48	110	263	54	140	112
Hearing - settled before verdict	292	226	19	61	7	130	17	4	13	11	13	32	13
Stricken	395	53	50	8	31	0	0	0	15	47	0	19	102
Other "Dispositions"	0	916	0	2	11	12	826	8	10	1	10	1	2
Transfer to ARBITRATION	0	832	76	53	74	28	77	0	1	22	1	26	25
1974 Inventory of Cases	8415	4500	927	393	676	160	228	14	70	226	453	106	33
1973 Inventory of Cases	7899	4367	629	352	607	287	708	63	47	154	253	138	127
Inventory Change	516	133	298	41	69	-127	-480	-49	23	72	200	-32	-94

AND CIVIL JUDICIAL DISTRICTS

	LACKAWANNA	DAUPHIN	NORTHAMPTON	WASHINGTON	BEAVER	CAMBRIA	SCHUYLKILL	CUMBERLAND	FAYETTE	BLAIR	BUTLER	MERCER	LYCOMING	FRANKLIN FULTON	LAWRENCE	LEBANON	CENTRE
	5	6	4	5	5	4	5	2	4	2	2	2	2	2	2	2	1
	234,107	223,834	214,368	210,876	208,418	186,785	160,089	158,177	154,667	135,356	127,941	127,175	113,296	111,609	107,374	99,665	99,267
	818	1836	967	938	727	787	812	930	671	754	558	565	686	608	337	561	639
	447	1769	854	934	647	761	735	761	1107	695	579	459	637	588	361	481	552
	292	948	430	630	264	404	402	559	321	350	280	230	336	345	190	357	319
	43	83	99	19	103	53	44	31	44	52	28	88	94	42	24	29	24
	2	151	21	45	17	46	5	4	15	61	12	7	80	43	2	7	55
	89	25	106	131	171	197	112	130	646	77	24	93	31	79	86	36	78
	18	183	132	105	52	44	171	0	47	29	216	10	60	54	43	35	72
	0	6	2	0	0	1	0	2	30	1	0	1	7	0	0	0	0
	3	373	64	4	40	16	1	35	4	125	19	30	29	25	16	17	4
	-22	0	29	-74	13	-25	3	-27	181	33	-36	0	-64	0	0	0	-98
	189	81	14	115	41	26	28	31	40	33	19	77	37	21	58	29	4
	673	578	386	553	293	264	455	349	310	348	148	237	355	204	61	372	163
	513	592	258	738	241	289	403	238	605	289	224	208	407	205	143	321	178
	160	-14	128	-185	52	-25	52	111	-295	59	-76	29	-52	-1	-82	51	-15
	444	335	436	210	233	209	127	200	177	77	173	148	139	28	40	98	149
	410	337	340	220	260	244	124	235	174	114	138	125	82	55	40	82	122
	95	154	42	69	60	142	0	19	4	6	35	4	6	2	11	4	25
	66	50	31	22	43	9	64	14	16	10	24	22	22	0	1	10	14
	167	112	245	111	93	63	7	56	102	83	58	51	42	53	24	2	66
	79	11	9	18	17	27	3	10	5	1	14	0	5	0	4	0	1
	0	2	13	0	25	3	39	28	17	14	0	4	7	0	0	7	16
	3	8	0	0	22	0	11	108	30	0	7	44	0	0	0	59	0
	0	5	89	4	7	10	2	11	26	5	3	6	9	0	1	6	35
	319	27	126	83	61	64	1	64	187	21	101	100	273	23	31	45	13
	285	34	119	97	95	109	0	110	210	63	69	83	225	50	32	35	21
	34	-7	7	-14	-34	-45	1	-46	-23	-42	32	17	48	-27	-1	10	-8

CRIMINAL CASE VOLUME BY

COUNTY	NORTHUMBERLAND	CRAWFORD	INDIANA	SOMERSET	ARMSTRONG	CLEARFIELD	COLUMBIA MONTGOMERY	VENANGO	BRADFORD	SNYDER UNION	MONROE PIKE	ADAMS	FORREST WARREN
	AUTHORIZED JUDGESHIPS	2	2	2	2	1	1	1	1	1	1	2	1
POPULATION	99,190	81,342	79,451	76,037	75,590	74,619	71,622	62,353	57,962	57,872	57,240	56,937	52,608
CRIMINAL CASES													
Defendant Records Received	451	608	342	343	287	463	391	256	290	227	346	313	264
Defendant Records Disposed	346	445	316	336	307	378	317	307	195	254	308	279	245
by Guilty Pleas	222	286	149	132	174	274	195	37	136	82	182	187	184
Tried by Jury	15	36	11	12	27	20	19	21	2	15	23	30	9
Jury Waived	1	3	48	13	2	1	4	7	0	9	34	16	10
NoI Pros	85	40	40	45	68	57	53	101	7	79	23	20	20
A.R.D.	22	78	35	115	31	23	22	131	33	61	27	15	16
Disposition in lieu of trial	0	0	0	8	0	0	0	2	0	1	4	0	2
Other "Dispositions"	1	2	33	11	5	3	24	8	17	7	15	11	4
Adjustments	-94	-11	-17	-39	-3	-13	13	-45	-2	-22	-75	-15	-21
Grand Jury	12	8	18	12	24	22	21	5	23	12	16	4	3
1974 Inventory Cases	333	392	124	139	106	185	114	279	231	139	63	87	120
1973 Inventory Cases	334	248	133	183	153	135	48	380	161	200	116	72	125
Inventory Change	-1	144	-9	-44	-47	50	66	-101	70	-61	-53	15	-5
CIVIL CASES (Trespass, Assumpsit, Equity & Misc.)													
New Cases Praeciped for Trial	45	67	54	118	82	100	118	37	105	59	89	44	42
Dispositions	31	74	72	106	53	153	87	36	100	40	96	50	28
by Non-jury	0	19	4	10	2	8	4	4	10	3	18	10	1
Jury Verdict	4	22	12	10	7	17	7	5	5	0	18	15	9
Settlement	27	30	52	40	44	111	59	1	78	20	22	19	12
Hearing - settled before verdict	0	3	3	4	0	7	0	0	2	0	1	0	0
Stricken	0	0	0	4	0	0	2	2	2	6	4	6	4
Other "Dispositions"	0	0	1	38	0	10	15	24	3	11	33	0	2
Transfer to ARBITRATION	3	3	5	10	5	2	10	3	25	1	9	0	3
1974 Inventory of Cases	41	26	40	85	69	16	66	29	70	80	33	26	70
1973 Inventory of Cases	30	36	63	83	45	71	33	31	90	62	49	32	59
Inventory Change	11	-10	-23	2	24	-55	33	-2	-20	18	-16	-6	11

AND CIVIL JUDICIAL DISTRICTS

	McKEAN	CARBON	JUNIATA PERRY	MIFFLIN	CAMERON ELK	JEFFERSON	BEDFORD	TIOGA	HUNTINGDON	CLARION	CLINTON	GREENE	SUSQUEHANNA	WAYNE	SULLIVAN WYOMING	POTTER
		1	1	1	1	1	1	1	1	1	1	1	1	1	1	1
	51,915	50,573	45,327	45,268	44,866	43,695	42,353	39,691	39,108	38,414	37,721	36,090	34,344	29,581	25,043	16,395
	208	147	205	288	147	167	211	270	197	211	185	246	105	148	195	60
	190	120	182	229	132	135	164	235	186	210	192	237	93	116	151	63
	126	53	67	158	56	99	98	111	103	137	128	139	63	94	91	37
	10	6	12	9	1	10	0	10	16	8	8	15	9	3	12	3
	20	17	38	21	9	3	38	13	9	3	5	1	6	1	15	4
	17	14	33	19	32	12	13	33	25	36	35	16	7	14	18	8
	17	23	12	14	19	6	3	46	9	19	15	64	5	0	10	10
	0	0	3	0	5	0	0	12	0	3	0	0	0	0	1	0
	0	7	17	8	10	5	12	10	24	4	1	2	3	4	4	1
	-1	0	-2	4	-2	-1	0	-1	-33	-60	-9	9	0	-10	-9	-3
	18	8	7	12	0	3	3	9	4	4	5	17	12	8	12	0
	48	90	59	186	55	153	146	130	64	77	71	51	0	83	108	27
	49	71	45	135	42	125	102	105	90	140	92	50	0	69	85	33
	-1	19	14	51	13	28	44	25	-26	-63	-21	1	0	14	23	-6
	40	42	74	16	120	21	16	13	41	52	53	21	32	39	20	26
	39	38	57	20	119	27	20	14	38	39	41	21	29	32	15	22
	0	14	10	0	56	0	0	1	19	0	5	0	1	1	0	1
	0	1	7	5	7	10	2	1	5	0	18	1	6	11	0	6
	39	18	26	11	40	5	18	12	11	34	11	20	21	7	8	8
	0	0	7	0	2	0	0	0	0	0	1	0	1	0	0	2
	0	2	4	3	0	0	0	0	1	5	1	0	0	10	6	2
	0	3	3	1	14	12	0	0	2	0	5	0	0	3	1	3
	0	3	7	0	2	2	0	0	0	0	0	1	0	0	2	2
	99	22	83	13	75	16	25	8	12	29	27	18	33	72	16	10
	98	21	73	17	76	24	29	9	9	16	15	19	30	65	13	8
	1	1	10	-4	4	-8	-4	-1	3	13	12	-1	3	7	3	2

ARBITRATION, DIVORCE, JUVENILE, DOMESTIC RELATIONS, ORPHANS COURT AND MISCELLANEOUS CASE VOLUME BY JUDICIAL DISTRICTS

COUNTY	PHILADELPHIA	ALLEGHENY	MONTGOMERY	DELAWARE	BUCKS	WESTMORELAND	LUZERNE	LANCASTER	BERKS	CHESTER	YORK	ERIE	LEHIGH
AUTHORIZED JUDGESHIP POPULATION	81 1,948,609	39 1,605,016	12 623,799	12 600,035	9 415,056	6 376,935	7 342,301	4 319,693	5 296,382	6 278,311	5 272,603	5 263,654	5 255,304
ARBITRATION													
New Cases Added	10956	9325	1169	983	635	369	138	189	203	376	274	281	283
Dispositions	12370	10716	1173	961	610	342	257	183	182	352	2	247	281
1974 Inventory of Cases	4256	7411	570	171	519	44	38	58	77	72	587	63	142
1973 Inventory of Cases	5668	8802	574	149	494	17	157	52	56	48	315	29	140
Inventory Change	-1412	-1391	-4	22	25	27	-119	6	21	24	272	34	2
JUVENILE													
New Cases Added	19201	3785	759	918	916	337	270	323	294	274	237	489	316
Dispositions	17495	3812	754	952	1216	325	268	363	286	250	237	489	316
1974 Inventory of Cases	2742	501	26	213	121	27	12	102	16	36	0	0	1
1973 Inventory of Cases	1036	528	21	247	421	15	10	142	8	12	0	0	1
Inventory Change	1706	-27	5	-34	-300	12	2	-40	8	24	0	0	0
DOMESTIC RELATIONS													
New Cases Added	12897	5772	2706	2146	1185	396	243	1016	681	812	1675	349	644
Dispositions	13815	5827	2747	1904	836	431	246	1037	620	729	1676	346	633
1974 Inventory of Cases	1579	319	404	373	445	94	5	77	120	559	10	3	49
1973 Inventory of Cases	2497	374	445	131	96	129	8	98	59	476	11	0	38
Inventory Change	-918	-55	-41	242	349	-35	-3	-21	61	83	-1	3	11
DIVORCE													
New Cases Added	6588	4403	1653	1328	1097	1076	831	1031	945	811	1174	1068	711
Dispositions	5377	4477	1603	1323	1085	1014	807	1062	957	965	895	975	685
1974 Inventory of Cases	5354	351	929	768	502	152	348	134	34	73	746	269	440
1973 Inventory of Cases	4143	425	879	763	490	90	324	165	46	227	467	176	414
Inventory Change	1211	-74	50	5	12	62	24	-31	-12	-154	279	93	26
ORPHANS' COURT													
Audits Filed	7976	3035	974	515	193	757	490	465	616	219	361	600	341
Audits Concluded	7985	3069	974	582	171	819	483	451	601	208	361	595	329
1974 Inventory of Cases	40	152	0	67	65	183	81	77	39	38	3	6	42
1973 Inventory of Cases	49	186	0	134	43	245	74	63	24	27	3	1	30
Inventory Change	-9	-34	0	-67	22	-62	7	14	15	11	0	5	12
MISCELLANEOUS (Includes Mental, Health, Adoptions, Custody and P.C. Appeals)													
New Cases Added	3608	1702	1743	1059	1096	665	451	488	626	593	722	728	449
Dispositions	3458	1266	1683	1023	926	667	451	456	603	595	639	732	471
1974 Inventory of Cases	306	585	186	105	511	167	7	74	45	61	187	18	11
1973 Inventory of Cases	156	149	126	69	341	169	7	42	22	63	104	22	33
Inventory Change	150	436	60	36	170	-2	0	32	23	-2	83	-4	-22

	LACKAWANNA	DAUPHIN	NORTHAMPTON	WASHINGTON	BEAVER	CAMBRIA	SCHUYLKILL	CUMBERLAND	FAYETTE	BLAIR	BUTLER	MERCER	LYCOMING	FRANKLIN FULTON	LAWRENCE	LEBANON	CENTRE
	5 234,107	6 223,834	4 214,368	5 210,876	5 208,418	4 186,785	5 160,089	2 158,177	4 154,667	2 135,356	2 127,941	2 127,175	2 113,296	2 111,609	2 107,374	2 99,665	1 99,267
	0	195	252	188	211	133	65	83	100	144	147	56	165	12	78	49	90
	0	206	212	221	217	110	87	117	88	195	140	49	129	11	77	48	109
	0	37	125	43	55	51	2	18	16	100	29	27	188	2	20	16	46
	0	48	85	76	61	28	24	52	4	151	22	20	152	1	19	15	65
	0	-11	40	-33	-6	23	-22	-34	12	-51	7	7	36	1	1	1	-19
	211	476	547	407	146	161	139	249	194	702	263	375	274	237	21	78	53
	211	504	547	424	135	161	133	249	194	851	268	370	323	230	22	77	53
	0	27	0	11	23	0	21	0	0	43	6	5	58	36	1	3	0
	0	55	0	28	12	0	15	0	0	192	11	0	107	29	2	2	0
	0	-28	0	-17	11	0	6	0	0	-149	-5	5	-49	7	-1	1	0
	41	1319	543	180	342	443	260	209	365	586	443	328	387	310	91	447	101
	45	1319	532	169	336	519	262	226	394	581	432	330	377	260	91	426	100
	2	0	27	87	61	12	0	0	9	57	30	3	42	89	0	62	9
	6	0	16	76	55	88	2	17	38	52	19	5	32	39	0	41	8
	-4	0	11	11	6	-76	-2	-17	-29	5	11	-2	10	50	0	21	1
	519	1084	759	568	532	414	357	462	319	325	336	394	556	295	325	330	267
	505	1079	742	556	576	385	352	421	347	310	308	386	422	268	336	348	253
	42	129	87	105	143	98	156	158	186	168	59	96	415	28	27	96	90
	28	124	70	93	187	69	151	117	214	153	31	88	281	1	38	114	76
	14	5	17	12	-44	29	5	41	-28	15	28	8	134	27	-11	-18	14
	161	380	177	464	368	203	210	414	235	17	299	2	2	170	234	192	139
	156	381	185	512	364	203	199	409	235	18	299	5	1	171	234	193	142
	17	10	19	163	4	23	30	55	117	0	0	1	4	5	4	3	11
	12	11	27	211	0	23	19	50	117	1	0	4	3	6	4	4	14
	5	-1	-8	-48	4	0	11	5	0	-1	0	-3	1	-1	0	-1	-3
	247	464	369	197	351	215	294	415	221	205	268	212	295	130	247	202	180
	247	473	376	202	354	220	319	402	231	211	263	224	294	131	252	188	182
	0	5	56	38	51	38	158	80	109	0	44	72	39	37	2	26	1
	0	14	63	43	54	43	183	67	119	6	39	84	38	38	7	12	3
	0	-9	-7	-5	-3	-5	-25	13	-10	-6	5	-12	1	-1	-5	14	-2

ARBITRATION, DIVORCE, JUVENILE, DOMESTIC CASE VOLUME BY

COUNTY	NORTHUMBERLAND	CRAWFORD	INDIANA	SOMERSET	ARMSTRONG	CLEARFIELD	COLUMBIA MONTGOMERY	VENANGO	BRADFORD	SNYDER UNION	MONROE PIKE	ADAMS	FORREST WARREN
AUTHORIZED JUDGESHIP POPULATION	2 99,190	2 81,342	2 79,451	2 76,037	1 75,590	1 74,619	1 71,622	1 62,353	1 57,962	1 57,872	2 57,240	1 56,937	1 52,608
ARBITRATION													
New Cases Added	46	57	36	63	31	38	40	29	40	28	40	0	26
Dispositions	45	51	32	130	36	35	32	26	30	28	34	0	24
1974 Inventory of Cases	13	22	30	27	19	8	34	18	12	18	13	0	10
1973 Inventory of Cases	12	16	26	94	24	5	26	15	2	18	7	0	8
Inventory Change	1	6	4	-67	-5	3	8	3	10	0	6	0	2
JUVENILE													
New Cases Added	173	240	154	88	33	128	101	52	146	33	179	159	59
Dispositions	149	240	157	139	29	134	92	114	146	53	140	145	60
1974 Inventory of Cases	36	0	3	0	4	14	9	0	0	15	41	31	1
1973 Inventory of Cases	12	0	6	51	0	20	0	62	0	35	2	17	2
Inventory Change	24	0	-3	-51	4	-6	9	-62	0	-20	39	14	-1
DOMESTIC RELATIONS													
New Cases Added	210	257	173	12	251	232	240	312	102	70	246	154	107
Dispositions	219	258	173	12	251	255	223	398	102	81	242	155	124
1974 Inventory of Cases	4	6	2	0	0	9	31	80	0	27	28	23	5
1973 Inventory of Cases	13	7	2	0	0	32	14	166	0	38	24	24	22
Inventory Change	-9	-1	0	0	0	-23	17	-86	0	-11	4	-1	-17
DIVORCE													
New Cases Added	325	296	177	194	204	204	238	201	191	165	300	94	213
Dispositions	329	288	163	199	220	201	242	224	210	151	250	84	216
1974 Inventory of Cases	270	91	35	32	41	9	34	46	9	66	171	11	32
1973 Inventory of Cases	274	83	21	37	35	6	38	69	28	52	121	1	35
Inventory Change	-4	8	14	-5	6	3	-4	-23	-19	14	50	10	-3
ORPHANS' COURT													
Audits Filed	180	148	2	119	2	0	7	9	156	78	27	171	19
Audits Concluded	172	148	2	114	1	0	7	4	155	77	17	174	20
1974 Inventory of Cases	23	1	0	5	1	0	0	10	2	16	19	15	0
1973 Inventory of Cases	15	1	0	0	0	0	0	5	1	15	9	18	1
Inventory Change	8	0	0	5	1	0	0	5	1	1	10	-3	-1
MISCELLANEOUS (Includes Mental, Health, Adoptions, Custody and P.C. Appeals)													
New Cases Added	152	183	207	132	153	119	151	127	143	125	92	59	92
Dispositions	129	170	207	140	136	126	142	111	141	154	76	69	89
1974 Inventory of Cases	60	19	5	22	34	39	15	28	7	43	25	13	11
1973 Inventory of Cases	37	6	5	30	17	46	6	12	5	72	9	23	8
Inventory Change	23	13	0	-8	17	-7	9	16	2	-29	16	-10	3

RELATIONS, ORPHANS COURT AND MISCELLANEOUS JUDICIAL DISTRICTS

	McKEAN	CARBON	JUNIATA PERRY	MIFFLIN	CAMERON ELK	JEFFERSON	BEDFORD	TIOGA	HUNTINGDON	CLARION	CLINTON	GREENE	SUSQUEHANNA	WAYNE	SULLIVAN WYOMING	POTTER
	1 51,915	1 50,573	1 45,327	1 45,268	1 44,866	1 43,695	1 42,353	1 39,691	1 39,108	1 38,414	1 37,721	1 36,090	1 34,344	1 29,581	1 25,043	1 16,395
	18	36	10	6	25	14	10	14	7	4	11	9	0	0	14	9
	18	42	10	1	24	22	13	14	2	3	13	15	0	1	11	8
	7	3	11	43	18	10	7	0	14	3	0	0	0	8	4	5
	7	9	11	38	17	18	10	0	9	2	2	6	0	9	1	4
	0	-6	0	5	1	-8	-3	0	5	1	-2	-6	0	-1	3	1
	51	115	81	41	65	15	29	134	42	23	20	94	59	100	36	18
	26	115	81	46	63	15	35	126	42	18	19	87	80	69	37	18
	29	1	21	4	5	1	3	33	0	17	12	27	4	44	0	2
	4	1	21	9	3	1	9	25	0	12	11	20	25	13	1	2
	25	0	0	-5	2	0	-6	8	0	5	1	7	-21	31	-1	0
	206	382	144	382	78	73	97	281	164	100	140	111	117	91	59	98
	136	392	130	377	82	62	110	277	164	88	140	90	99	96	53	98
	100	5	81	37	24	56	45	44	0	60	0	44	34	17	12	4
	30	15	67	32	28	45	58	40	0	48	0	23	16	22	6	4
	70	-10	14	5	-4	11	-13	4	0	12	0	21	18	-5	6	0
	268	129	119	140	104	116	129	188	119	60	146	137	137	119	99	73
	216	123	133	141	111	101	116	176	121	69	149	128	168	102	109	62
	119	47	47	39	45	55	33	17	61	0	24	9	1	78	18	26
	67	41	61	40	52	40	20	5	63	9	27	0	32	61	28	15
	52	6	-14	-1	-7	15	13	12	-2	-9	-3	9	-31	17	-10	11
	0	33	1	126	95	0	0	65	123	0	65	2	0	0	25	0
	1	32	1	127	97	0	0	64	120	0	65	0	0	0	23	0
	0	1	1	2	2	0	0	4	24	0	0	3	0	0	8	0
	1	0	1	3	4	0	0	3	21	0	0	1	0	0	6	0
	-1	1	0	-1	-2	0	0	1	3	0	0	2	0	0	2	0
	51	73	86	86	118	76	52	94	104	30	67	86	27	52	35	45
	46	76	88	85	125	72	45	83	104	28	64	82	28	46	38	44
	9	5	10	13	2	29	33	21	0	10	14	31	2	23	6	6
	4	8	12	12	9	25	26	10	0	8	11	27	3	17	9	5
	5	-3	-2	1	-7	4	7	11	0	2	3	4	-1	6	-3	1

ADAMS COUNTY^(a)
51st Judicial District

Population — 56,937

Authorized Judges — 1

	1971	1972	1973	1974	Change 1973-74
CRIMINAL CASES					
Defendant Records Received	249	252	217	313	96
Defendant Records Disposed	213	213	207	279	72
by Guilty Pleas	163	150	132	187	
Tried by Jury	20	21	26	30	
Jury Waived	12	17	11	16	
Nol Pros	18	22	15	20	
ARD	—	0	14	15	
Other "Dispositions"	15	3	9	11	
Disposition in lieu of trial	—	—	—	0	
Adjustments	—	-17	-11	-15	
Grand Jury Dismissals	—	5	7	4	
Inventory of Cases	63	80	72	87	15
Trial days	—	65	58	57	
Visiting Judge — trial days	—	7	0	1	
CIVIL CASES (Trespass, Assumpsit, Equity & Misc.)					
New cases praeciped for trial	22	32	43	44	1
Dispositions	27	19	38	50	12
by Non-Jury	0	1	6	10	
Jury verdict	11	11	8	15	
Settlement	8	2	15	19	
Settled before verdict	5	4	3	0	
Stricken	3	1	3	6	
Other "Dispositions"	0	0	3	0	
Transfer to Arbitration	—	0	0	0	
Inventory of Cases	14	27	32	26	-6
Trial days	—	33	33	55	
Visiting Judge — trial days	—	6	6	2	
ARBITRATION					
New cases added	—				
Dispositions	—				
Inventory	—				
JUVENILE					
New cases scheduled	220	212	158	159	1
Dispositions	217	214	146	145	-1
Inventory	7	5	17	31	14
DOMESTIC RELATIONS					
New cases scheduled	129	143	105	154	49
Dispositions	64	120	98	155	57
Inventory	—	17	24	23	-1

(a) Combined with Fulton County until 1971.

ALLEGHENY COUNTY
5th Judicial District

Population — 1,605,016

Authorized Judges — 39

	1971	1972	1973	1974	Change 1973-74
CRIMINAL CASES					
Defendant Records Received	9280	11172	8448	8423	-25
Defendant Records Disposed	6485 ^(a)	9171 ^(a)	11150	8059	-3091
by Guilty Pleas	1718	2428	1995	2344	
Tried by Jury	187	204	205	203	
Jury Waived	3913	5356	3877	2537	
Nol Pros	667	646	2050	645	
ARD	—	0	1584	912	
Other "Dispositions"	579	537	1439	1399	
Disposition in lieu of trial	—	—	—	19	
Adjustments	—	-1174	-114	2290 ^(c)	
Grand Jury Dismissals	—	1288	935	942	
Inventory of Cases	6609 ^(b)	6148 ^(b)	2397	4109	1712
Trial days	—	1699	2303	2661	
Visiting Judge — trial days	—	376	52	214	
CIVIL CASES (Trespass, Assumpsit, Equity & Misc.)					
New cases praeciped for trial	5314	5066	4800	5026	226
Dispositions	5231	4494	4711	4061	-650
by Non-Jury	1936	607	463	478	
Jury verdict	302	188	245	245	
Settlement	2679	2578	2632	2143	
Settled before verdict	299	259	323	226	
Stricken	15	19	28	53	
Other "Dispositions"	879	844	1020	916 ^(d)	
Transfer to Arbitration	—	669	1011	832	
Inventory of Cases	5386	5289	4367	4500	133
Trial days	—	1636	1323	1339	
Visiting Judge — trial days	—	34	149	0	
ARBITRATION					
New cases added	8943	8656	8843	9325	482
Dispositions	10471	7430	8072	10716 ^(e)	2644
Inventory	6805	8031	8802	7411	-1391
JUVENILE					
New cases scheduled	3119	3701	3741	3785	44
Dispositions	3248	3757	3707	3812	105
Inventory	550	494	528	501	-27
DOMESTIC RELATIONS					
New cases scheduled	4762	3069	4357	5772	1415
Dispositions	5221	3298	4235	5827	1592
Inventory	481	252	374	319	-55

(a) Includes defendants tried but not sentenced.

(b) Includes only indicted defendants.

(c) Includes 2952 defendants transferred from inactive to active status less multiple defendants and 1973 dispositions.

(d) Includes 868 cases transferred to inactive status, summary and statutory appeals transferred to Form SCA-103.

(e) Includes 3310 inactive cases dismissed.

GENERAL NOTE: Allegheny's statistical reporting procedures prior to 1974 did not conform with the established requirements of the Administrative Office. For comparison purposes the information submitted is inconsistent.

ARMSTRONG COUNTY
33rd Judicial District

Population — 75,590

Authorized Judges — 1

	1971 ^(a)	1972 ^(a)	1973	1974	Change 1973-74
CRIMINAL CASES					
Defendant Records Received	275	257	356	287	-69
Defendant Records Disposed by Guilty Pleas	253	199	286	307	21
Tried by Jury	117	129	169	174	
Jury Waived	25	11	26	27	
Nol Pros	0	0	1	2	
ARD	108	46	58	68	
Other "Dispositions"	3	13	30	31	
Disposition in lieu of trial	0	0	2	5	
Adjustments	—	—	—	0	
Grand Jury Dismissals	0	0	0	-3	
Inventory of Cases	17	17	28	24	
Trial days	70	111	153	106	-47
Visiting Judge — trial days	—	43	49	73	
	1	14	11	33	
CIVIL CASES (Trespass, Assumpsit, Equity & Misc.)					
New cases praeciped for trial	44	57	63	82	19
Dispositions	29	40	61	53	-8
by Non-Jury	4	11	5	2	
Jury verdict	17	7	9	7	
Settlement	8	21	44	44	
Settled before verdict	0	0	0	0	
Stricken	0	1	0	0	
Other "Dispositions"	0	0	3	0	
Transfer to Arbitration	3	3	0	5	
Inventory of Cases	29	43	45	69	24
Trial days	—	13	52	36	
Visiting Judge — trial days	0	11	29	41	
ARBITRATION					
New cases added	35	37	43	31	-12
Dispositions	32	36	41	36	-5
Inventory	21	22	24	19	-5
JUVENILE					
New cases scheduled	10	10	26	33	7
Dispositions	10	10	26	29	3
Inventory	0	0	0	4	4
DOMESTIC RELATIONS					
New cases scheduled	143	128	166	251	85
Dispositions	148	130	173	251	78
Inventory	9	7	0	0	0

^(a) 1971 and 1972 statistics were revised in 1973.

BEAVER COUNTY
36th Judicial District

Population — 208,418

Authorized Judges — 5

	1971	1972	1973	1974	Change 1973-74
CRIMINAL CASES					
Defendant Records Received	853	837	696	727	31
Defendant Records Disposed by Guilty Pleas	678	845	780	647	-133
Tried by Jury	341	408	299	264	
Jury Waived	127	131	127	103	
Nol Pros	25	28	18	17	
ARD	185	221	197	171	
Other "Dispositions"	—	0	87	52	
Disposition in lieu of trial	109	57	52	40 ^(a)	
Adjustments	—	—	—	0	
Grand Jury Dismissals	-16	-19	-129	13 ^(b)	
Inventory of Cases	—	54	37	41	
Trial days	572	491	241	293	52
Visiting Judge — trial days	—	110	141	123	
	—	3	0	21	
CIVIL CASES (Trespass, Assumpsit, Equity & Misc.)					
New cases praeciped for trial	184	168	241	233	-8
Dispositions	186	232	203	260	57
by Non-Jury	11	30	21	60	
Jury verdict	37	51	38	43	
Settlement	85	107	105	93	
Settled before verdict	16	7	3	17	
Stricken	37	31	17	25	
Other "Dispositions"	3	6	19	22	
Transfer to Arbitration	—	22	22	7	
Inventory of Cases	165	79	95	61	-34
Trial days	—	125	97	143	
Visiting Judge — trial days	—	0	0	11	
ARBITRATION					
New cases added	147	194	251	211	-40
Dispositions	123	254	257	217	-40
Inventory	127	67	61	55	-6
JUVENILE					
New cases scheduled	80	142	135	146	11
Dispositions	97	151	140	135	-5
Inventory	26	17	12	23	11
DOMESTIC RELATIONS					
New cases scheduled	961 ^(a)	429	369	342	-27
Dispositions	693	405	349	336	-13
Inventory	11	35	55	61	6

^(a) Includes non-court hearings.

^(b) Includes cases withdrawn, quashed and returned to District Justice.

^(c) Includes defendants reapprehended in violation of ARD and 10 cases removed under Pa. R.J.A. 1901.

BEDFORD COUNTY
57th Judicial District

Population — 42,353

Authorized Judges — 1

	1971	1972	1973	1974	Change 1973-74
CRIMINAL CASES					
Defendant Records Received	211	178	254	211	-43
Defendant Records Disposed by Guilty Pleas	182	194	230	164	-66
Tried by Jury	146	151	117	98	
Tried by Jury	2	0	2	0	
Jury Waived	11	26	51	38	
Nol Pros	23	14	44	13	
ARD	—	0	4	3	
Other "Dispositions"	6	3	12	12	
Disposition in lieu of trial	—	—	—	0	
Adjustments	—	-4	0	0	
Grand Jury Dismissals	—	10	3	3	
Inventory of Cases	111	81	102	146	44
Trial days	—	36	54	46	
Visiting Judge — trial days	—	4	1	0	
CIVIL CASES (Trespass, Assumpsit, Equity & Misc.)					
New cases praeciped for trial	13	25	19	16	-3
Dispositions	10	15	22	20	-2
by Non-Jury	0	0	0	0	
Jury verdict	4	0	2	2	
Settlement	2	14	19	18	
Settled before verdict	0	0	0	0	
Stricken	1	1	0	0	
Other "Dispositions"	3	0	1	0	
Transfer to Arbitration	—	6	0	0	
Inventory of Cases	26	32	29	25	-4
Trial days	—	0	6	6	
Visiting Judge — trial days	—	1	0	0	
ARBITRATION					
New cases added	6	22	1	10	9
Dispositions	7	11	3	13	10
Inventory	1	12	10	7	-3
JUVENILE					
New cases scheduled	22	25	32	29	-3
Dispositions	34	27	28	35	7
Inventory	7	5	9	3	-6
DOMESTIC RELATIONS					
New cases scheduled	159	125	135	97	-38
Dispositions	139	123	128	110	-18
Inventory	49	51	58	45	-13

BERKS COUNTY
23rd Judicial District

Population — 296,382

Authorized Judges — 5

	1971	1972	1973	1974	Change 1973-74
CRIMINAL CASES					
Defendant Records Received	814	934	1283	1261	-22
Defendant Records Disposed by Guilty Pleas	647	721	797	900	103
Tried by Jury	545	411	453	503	
Tried by Jury	23	59	60	104	
Jury Waived	4	6	5	0	
Nol Pros	75	72	50	43	
ARD	—	119	98	154	
Other "Dispositions"	148	54	131	94 ^(a)	
Disposition in lieu of trial	—	—	—	2	
Adjustments	—	-46	-161	-600 ^(b)	
Grand Jury Dismissals	—	65	39	29	
Inventory of Cases	383	485	771	503	-268
Trial days	—	147	194	263	
Visiting Judge — trial days	—	8	27	80	
CIVIL CASES (Trespass, Assumpsit, Equity & Misc.)					
New cases praeciped for trial	355	251	236	367	131
Dispositions	302	376	267	343	76
by Non-Jury	81	96	60	147	
Jury verdict	66	64	61	48	
Settlement	124	148	97	110	
Settled before verdict	12	13	6	13	
Stricken	19	30	11	15	
Other "Dispositions"	36	25	32	10	
Transfer to Arbitration	—	7	7	1	
Inventory of Cases	217	85	47	70	23
Trial days	—	126	151	130	
Visiting Judge — trial days	—	0	3	37	
ARBITRATION					
New cases added	197	203	190	203	13
Dispositions	166	186	176	182	6
Inventory	25	42	56	77	21
JUVENILE					
New cases scheduled	206	177	296	294	-2
Dispositions	213	179	290	286	-4
Inventory	4	2	8	16	8
DOMESTIC RELATIONS					
New cases scheduled	1678	3318	929	681	-248
Dispositions	1725	3314	882	620	-262
Inventory	8	12	59	120	61

^(a) Includes dismissals by court, motions to suppress and demurrers.

^(b) Includes multiple defendants, removal of inactive cases under Pa. R.J.A. 1901, transfer to Juvenile Court and remands to District Justice.

BLAIR COUNTY 24th Judicial District

Population — 135,356

Authorized Judges — 2

	1971	1972	1973	1974	Change 1973-74
CRIMINAL CASES					
Defendant Records Received	799	830	719	754	35
Defendant Records Disposed by Guilty Pleas	663	584	520	695	175
Tried by Jury	486	447	351	350	
Jury Waived	29	20	27	52	
No! Pros	77	48	41	61	
ARD	71	63	97	77	
Other "Dispositions"	—	0	3	29	
Disposition in lieu of trial	43	6	1	125(c)	
Adjustments	—	—	—	1	
Grand Jury Dismissals	—	0	-636(a)	33(a)	
Inventory of Cases	518	744	289	348	59
Trial days	—	162	142	256	
Visiting Judge — trial days	—	21	34	4	
CIVIL CASES (Trespass, Assumpsit, Equity & Misc.)					
New cases praeciped for trial	167	153	92	77(d)	-15
Dispositions	143	146	114	114	0
by Non-Jury	34	74	28	6	
Jury verdict	7	4	15	10	
Settlement	81	64	67	83	
Settled before verdict	9	0	2	1	
Stricken	12	0	2	14	
Other "Dispositions"	4	4	0	0	
Transfer to Arbitration	—	0	0	5	
Inventory of Cases	78	85	63	21	-42
Trial days	—	130	115	130	
Visiting Judge — trial days	—	4	8	5	
ARBITRATION					
New cases added	165	134	138	144	6
Dispositions	93	108	130	195	65
Inventory	117	143	151	100	-51
JUVENILE					
New cases scheduled	539	527	450	702	252
Dispositions	241	179	631(b)	851	220(b)
Inventory	25	373	192	43	-149
DOMESTIC RELATIONS					
New cases scheduled	592	591	632	586	-46
Dispositions	621	593	646	581	-65
Inventory	68	66	52	57	5

(a) Reflects cases removed under Pa. R.J.A. 1901 and reconciliation with District Attorney's records.
 (b) Reflects adjustments and removal of unofficial and inactive cases (257 removed in 1974).
 (c) Includes remands to District Justice, transfers to Juvenile Court and miscellaneous matters which should have been reported as "adjustments" rather than dispositions.
 (d) No new cases were reported "at issue" for seven months.

BRADFORD COUNTY 42nd Judicial District

Population — 57,962

Authorized Judges — 1

	1971	1972	1973	1974	Change 1973-74
CRIMINAL CASES					
Defendant Records Received	259	240	273	290	17
Defendant Records Disposed by Guilty Pleas	203	188	227	195	-32
Tried by Jury	186	145	148	136	
Jury Waived	2	0	1	2	
No! Pros	0	0	0	0	
ARD	15	17	26	7	
Other "Dispositions"	—	0	26	33	
Disposition in lieu of trial	45	26	26	17	
Adjustments	—	—	—	0	
Grand Jury Dismissals	—	-17	-6	-2	
Inventory of Cases	—	17	18	23	
Trial days	121	139	161	231	70
Visiting Judge — trial days	—	NOT REPORTED	11	52	
CIVIL CASES (Trespass, Assumpsit, Equity & Misc.)					
New cases praeciped for trial	89	94	151	105	-46
Dispositions	63	85	140	100	-40
by Non-Jury	18	16	9	10	
Jury verdict	0	8	2	5	
Settlement	45	57	52	78	
Settled before verdict	0	4	3	2	
Stricken	0	0	17	2	
Other "Dispositions"	4	0	57	3	
Transfer to Arbitration	—	0	13	25	
Inventory of Cases	83	92	90	70	-20
Trial days	—	76	47	38	
Visiting Judge — trial days	—	0	4	0	
ARBITRATION					
New cases added	8	43	41	40	-1
Dispositions	3	39	48	30	-18
Inventory	5	9	2	12	10
JUVENILE					
New cases scheduled	244	210	201	146	-55
Dispositions	244	241	331	146	-185
Inventory	161	130	0	0	0
DOMESTIC RELATIONS					
New cases scheduled	96	82	114	102	-12
Dispositions	93	85	114	102	-12
Inventory	3	0	0	0	0

BUCKS COUNTY
7th Judicial District

Population — 415,056

Authorized Judges — 9

	1971	1972	1973	1974	Change 1973-74
CRIMINAL CASES					
Defendant Records Received	2571	2660	2537	3725	1188
Defendant Records Disposed	2015	2480	2347	3836	1489
by Guilty Pleas	1456	1477	1244	1974	
Tried by Jury	75	110	80	122	
Jury Waived	52	137	128	139	
Nol Pros	432	374	378	544	
ARD	—	382	516	1016	
Other "Dispositions"	225	0	1	33	
Disposition in lieu of trial	—	—	—	8	
Adjustments	—	-432	-287	-466(a)	
Grand Jury Dismissals	—	161	103	80	
Inventory of Cases	2366	1953	1753	1096	-657
Trial days	—	457	464	315	
Visiting Judge — trial days	—	0	0	0	
CIVIL CASES (Trespass, Assumpsit, Equity & Misc.)					
New cases praeciped for trial	921	859	698	676	-22
Dispositions	755	716	540	533	-7
by Non-Jury	345	243	114	117	
Jury verdict	71	106	72	58	
Settlement	267	277	314	309	
Settled before verdict	20	16	6	7	
Stricken	42	27	16	31	
Other "Dispositions"	38	47	18	11	
Transfer to Arbitration	—	104	49	74	
Inventory of Cases	459	498	607	676	69
Trial days	—	201	243	246	
Visiting Judge — trial days	—	0	0	0	
ARBITRATION					
New cases added	479	704	633	635	2
Dispositions	364	512	569	610	41
Inventory	238	430	494	519	25
JUVENILE					
New cases scheduled	484	521	729	916	187
Dispositions	426	416	496	1216(b)	720
Inventory	83	188	421	121	-300
DOMESTIC RELATIONS					
New cases scheduled	1528	710	386	1185	799
Dispositions	1041	1051	616	836	220
Inventory	667	326	96	445	349

(a) Fugitive defendants removed under Pa. R.J.A. 1901.
(b) Inventory adjusted and 375 cases removed.

BUTLER COUNTY
50th Judicial District

Population — 127,941

Authorized Judges — 2

	1971	1972	1973	1974	Change 1973-74
CRIMINAL CASES					
Defendant Records Received	450	366	546	558	12
Defendant Records Disposed	386	414	422	579	157
by Guilty Pleas	283	223	205	280	
Tried by Jury	39	30	31	28	
Jury Waived	14	12	23	12	
Nol Pros	50	36	48	24	
ARD	—	88	93	216	
Other "Dispositions"	73	25	22	19	
Disposition in lieu of trial	—	—	—	0	
Adjustments	—	-95	-26	-36(a)	
Grand Jury Dismissals	—	38	25	19	
Inventory of Cases	332	151	224	148	-76
Trial days	—	42	86	80	
Visiting Judge — trial days	—	7	5	18	
CIVIL CASES (Trespass, Assumpsit, Equity & Misc.)					
New cases praeciped for trial	130	166	165	173	8
Dispositions	141	183	174	138	-36
by Non-Jury	26	17	23	35	
Jury verdict	32	41	35	24	
Settlement	82	75	71	58	
Settled before verdict	1	21	18	14	
Stricken	0	3	5	0	
Other "Dispositions"	25	26	22	7	
Transfer to Arbitration	—	14	16	3	
Inventory of Cases	125	94	69	101	32
Trial days	—	89	102	74	
Visiting Judge — trial days	—	5	2	9	
ARBITRATION					
New cases added	83	82	105	147	42
Dispositions	80	93	90	140	50
Inventory	18	7	22	29	7
JUVENILE					
New cases scheduled	129	189	251	263	12
Dispositions	127	187	247	268	21
Inventory	5	7	11	6	-5
DOMESTIC RELATIONS					
New cases scheduled	493	471	579	443	-136
Dispositions	496	469	598	432	-166
Inventory	37	38	19	30	21

(a) Cases removed under Pa. R.J.A. 1901.

CAMBRIA COUNTY
47th Judicial District

Population — 186,785

Authorized Judges — 4

	1971	1972	1973	1974	Change 1973-74
CRIMINAL CASES					
Defendant Records Received	611	841	763	787	24
Defendant Records Disposed	752	593	785	761	-24
by Guilty Pleas	374	380	442	404	
Tried by Jury	28	37	45	53	
Jury Waived	10	27	54	46	
Nol Pros	340	147	210	197	
ARD	—	0	20	44	
Other "Dispositions"	22	2	14	16	
Disposition in lieu of trial	—	—	—	1	
Adjustments	—	-70 ^(a)	-53 ^(a)	-25 ^(a)	
Grand Jury Dismissals	—	26	30	26	
Inventory of Cases	242	394	289	264	-25
Trial days	—	134	311	269	
Visiting Judge — trial days	—	1	0	8	
CIVIL CASES (Trespass, Assumpsit, Equity & Misc.)					
New cases praeciped for trial	244	173	268	209	59
Dispositions	208	310	218	244	26
by Non-Jury	0	115	94	142	
Jury verdict	17	43	34	9	
Settlement	163	99	37	63	
Settled before verdict	0	27	35	27	
Stricken	28	0	1	3	
Other "Dispositions"	0	26	17	0	
Transfer to Arbitration	—	2	1	10	
Inventory of Cases	199	60	109	64	-45
Trial days	—	113	229	162	
Visiting Judge — trial days	—	0	21	0	
ARBITRATION					
New cases added	116	144	148	133	-15
Dispositions	124	171	144	110	-34
Inventory	51	24	28	51	23
JUVENILE					
New cases scheduled	235	142 ^(b)	151	161	10
Dispositions	259	301	174	161	-13
Inventory	182	23	0	0	0
DOMESTIC RELATIONS					
New cases scheduled	508	452	534	443	-91
Dispositions	477	470	601	519	-82
Inventory	173	155	88	12 ^(c)	-76

^(a) Reflects fugitives and inactive cases removed from inventory.

^(b) Reflects a change in reporting procedure in 1972 and adjustments.

^(c) Reflects a change in reporting procedure and cases informally adjusted and removed from inventory.

CAMERON-ELK COUNTY
59th Judicial District

Population — 44,866

Authorized Judges — 1

	1971	1972	1973	1974	Change 1973-74
CRIMINAL CASES					
Defendant Records Received	168	141	163	147	-16
Defendant Records Disposed	152	129	152	132	-20
by Guilty Pleas	110	88	99	56	
Tried by Jury	6	5	3	1	
Jury Waived	3	1	2	9	
Nol Pros	33	26	30	32	
ARD	—	9	16	19	
Other "Dispositions"	3	0	2	10	
Disposition in lieu of trial	—	—	—	5	
Adjustments	—	0	-2	-2	
Grand Jury Dismissals	—	0	0	0	
Inventory of Cases	21	33	42	55	13
Trial days	—	44	49	57	
Visiting Judge — trial days	—	1	2	0	
CIVIL CASES (Trespass, Assumpsit, Equity & Misc.)					
New cases praeciped for trial	122	151	132	120	-12
Dispositions	122	110	121	119	-2
by Non-Jury	29	27	50	56	
Jury verdict	3	4	0	7	
Settlement	88	77	66	40	
Settled before verdict	2	0	1	2	
Stricken	0	1	1	0	
Other "Dispositions"	0	1	3	14 ^(a)	
Transfer to Arbitration	—	7	1	2	
Inventory of Cases	32	66	76	75	-1
Trial days	—	48	54	71	
Visiting Judge — trial days	—	3	1	2	
ARBITRATION					
New cases added	30	35	30	25	-5
Dispositions	26	33	28	24	-4
Inventory	13	15	17	18	1
JUVENILE					
New cases scheduled	49	35	71	65	-6
Dispositions	49	35	68	63	-5
Inventory	0	0	3	5	2
DOMESTIC RELATIONS					
New cases scheduled	93	75	86	78	-8
Dispositions	84	76	76	82	6
Inventory	19	18	28	24	-4

^(a) Cases removed under Pa. R.J.A. 1901 (Cameron).

CARBON COUNTY 56th Judicial District

Population — 50,573

Authorized Judges — 1

	1971	1972	1973	1974	Change 1973-74
CRIMINAL CASES					
Defendant Records Received	145	115	129	147	18
Defendant Records Disposed	138	105	94	120	26
by Guilty Pleas	82	59	43	53	
Tried by Jury	21	9	15	6	
Jury Waived	12	6	10	17	
Nol Pros	23	10	8	14	
ARD	—	11	17	23	
Other "Dispositions"	14	10	1	7	
Disposition in lieu of trial	—	—	—	0	
Adjustments	—	-18	-10	0	
Grand Jury Dismissals	—	9	8	8	
Inventory of Cases	71	54	71	90	19
Trial days	—	29	36	52	
Visiting Judge — trial days	—	2	0	2	
CIVIL CASES (Trespass, Assumpsit, Equity & Misc.)					
New cases praeciped for trial	48	42	58	42	-16
Dispositions	28	52	41	38	-3
by Non-Jury	2	9	1	14	
Jury verdict	3	7	5	1	
Settlement	3	21	18	18	
Settled before verdict	12	0	0	0	
Stricken	8	9	4	2	
Other "Dispositions"	4	6	13	3	
Transfer to Arbitration	—	9	4	3	
Inventory of Cases	27	8	21	22	1
Trial days	—	16	28	19	
Visiting Judge — trial days	—	0	0	2	
ARBITRATION					
New cases added	53	56	58	36	-22
Dispositions	51	55	56	42	-14
Inventory	6	7	9	3	-6
JUVENILE					
New cases scheduled	95	91	133	115	-18
Dispositions	95	93	132	115	-17
Inventory	2	0	1	1	0
DOMESTIC RELATIONS					
New cases scheduled	375	329	368	382	14
Dispositions	385	322	364	392	28
Inventory	4	11	15	5	-10

CENTRE COUNTY 49th Judicial District

Population — 99,267

Authorized Judges — 1

	1971	1972	1973	1974	Change 1973-74
CRIMINAL CASES					
Defendant Records Received	620	554	579	639	60
Defendant Records Disposed	524	480	475	552	77
by Guilty Pleas	382	329	293	319	
Tried by Jury	15	21	17	24	
Jury Waived	62	46	60	55	
Nol Pros	65	58	76	78	
ARD	—	18	25	72	
Other "Dispositions"	26	8	4	4	
Disposition in lieu of trial	—	—	—	0	
Adjustments	—	-68	-51	-98 ^(a)	
Grand Jury Dismissals	—	6	7	4	
Inventory of Cases	132	132	178	163	-15
Trial days	—	45	31	56	
Visiting Judge — trial days	—	4	7	7	
CIVIL CASES (Trespass, Assumpsit, Equity & Misc.)					
New cases praeciped for trial	78	102	124	149	25
Dispositions	62	96	87	122	35
by Non-Jury	13	20	11	25	
Jury verdict	8	13	9	14	
Settlement	37	48	50	66	
Settled before verdict	2	10	2	1	
Stricken	2	5	15	16	
Other "Dispositions"	12	0	0	0	
Transfer to Arbitration	—	9	26	35	
Inventory of Cases	13	10	21	13	-8
Trial days	—	28	13	19	
Visiting Judge — trial days	—	14	15	18	
ARBITRATION					
New cases added	54	53	51	90	39
Dispositions	54	49	39	109	70
Inventory	49	53	65	46	-19
JUVENILE					
New cases scheduled	34	50	40	53	13
Dispositions	34	53	40	53	13
Inventory	3	0	0	0	0
DOMESTIC RELATIONS					
New cases scheduled	238	104	83	101	18
Dispositions	259	96	89	100	11
Inventory	6	14	8	9	1

(a) Multiple transcripts on defendants disposed at same time.

CHESTER COUNTY
15th Judicial District

Population — 278,311

Authorized Judges — 6

	1971	1972	1973	1974	Change 1973-74
CRIMINAL CASES					
Defendant Records Received	1604	1733	1489	1666	177
Defendant Records Disposed	839	958	972	1563	591
by Guilty Pleas	656	710	522	602	
Tried by Jury	75	100	79	91	
Jury Waived	26	22	19	12	
Nol Pros	82	108	285	457	
ARD	—	0	43	285	
Other "Dispositions"	55	18	24	107 ^(b)	
Disposition in lieu of trial	—	—	—	9	
Adjustments	—	198	-482 ^(a)	-1065 ^(a)	
Grand Jury Dismissals	—	25	23	74	
Inventory of Cases	1368	2316	2328	1292	-1036
Trial days	—	305	319	634	
Visiting Judge — trial days	—	101	36	30	
CIVIL CASES (Trespass, Assumpsit, Equity & Misc.)					
New cases praeciped for trial	439	701	540	590	50
Dispositions	363	640	817	496	-321
by Non-Jury	45	146	131	96	
Jury verdict	66	59	57	78	
Settlement	189	332	269	263	
Settled before verdict	4	10	25	11	
Stricken	59	91	153	47	
Other "Dispositions"	36	2	182 ^(a)	1	
Transfer to Arbitration	—	21	14	22	
Inventory of Cases	405	445	154	226	72
Trial days	—	152	76	106	
Visiting Judge — trial days	—	44	27	20	
ARBITRATION					
New cases added	183	215	231	376	145
Dispositions	222	245	264	352	88
Inventory	111	81	48	72	24
JUVENILE					
New cases scheduled	248	253	226	274	48
Dispositions	234	263	238	250	12
Inventory	34	24	12	36	24
DOMESTIC RELATIONS					
New cases scheduled	597	682	698	812	114
Dispositions	497	547	947 ^(a)	729	-218
Inventory	590	725	476	559	83

(a) Reflects cases removed under Pa. R.J.A. 1901.
(b) Includes demurrers and dismissals by court.

CLARION COUNTY
18th Judicial District

Population — 38,414

Authorized Judges — 1

	1971	1972	1973	1974	Change 1973-74
CRIMINAL CASES					
Defendant Records Received	302	278	179	211	32
Defendant Records Disposed	251	210	148	210	62
by Guilty Pleas	222	188	118	137	
Tried by Jury	7	8	1	8	
Jury Waived	2	1	1	3	
Nol Pros	20	9	16	36	
ARD	—	0	5	19	
Other "Dispositions"	26	4	7	4	
Disposition in lieu of trial	—	—	—	3	
Adjustments	—	-3	-26	-60 ^(a)	
Grand Jury Dismissals	—	6	6	4	
Inventory of Cases	82	141	140	77	-63
Trial days	—	30	14	12	
Visiting Judge — trial days	—	1	0	17	
CIVIL CASES (Trespass, Assumpsit, Equity & Misc.)					
New cases praeciped for trial	44	33	33	52	19
Dispositions	23	15	64	39	-25
by Non-Jury	21	0	0	0	
Jury verdict	0	6	6	0	
Settlement	0	2	32	34	
Settled before verdict	0	1	9	0	
Stricken	2	2	8	5	
Other "Dispositions"	19	4	9	0	
Transfer to Arbitration	—	0	0	0	
Inventory of Cases	29	47	16	29	13
Trial days	—	26	30	12	
Visiting Judge — trial days	—	18	0	0	
ARBITRATION					
New cases added	7	3	4	4	0
Dispositions	2	1	9	3	-6
Inventory	5	7	2	3	1
JUVENILE					
New cases scheduled	96	79	11	23	12
Dispositions	91	59	30	18	-12
Inventory	11	31	12	17	5
DOMESTIC RELATIONS					
New cases scheduled	72	63	87	100	13
Dispositions	66	33	85	88	3
Inventory	16	46	48	60	12

(a) Reflects cases removed under Pa. R.J.A. 1901.

CLEARFIELD COUNTY
46th Judicial District

Population — 74,619

Authorized Judges — 1

	1971	1972	1973	1974	Change 1973-74
CRIMINAL CASES					
Defendant Records Received	446	467	408	453	55
Defendant Records Disposed	400	446	335	378	43
by Guilty Pleas	314	359	242	274	
Tried by Jury	18	10	21	20	
Jury Waived	6	0	6	1	
Nol Pros	62	70	66	57	
ARD	—	0	0	23	
Other "Dispositions"	34	7	0	3	
Disposition in lieu of trial	—	—	—	0	
Adjustments	—	-18	-19	-13	
Grand Jury Dismissals	—	18	21	22	
Inventory of Cases	117	102	135	185	50
Trial days	—	65	76	59	
Visiting Judge — trial days	—	6	11	57	
CIVIL CASES (Trespass, Assumpsit, Equity & Misc.)					
New cases praeciped for trial	69	218	159	100	-59
Dispositions	62	192	162	153	-9
by Non-Jury	8	11	10	8	
Jury verdict	15	18	18	17	
Settlement	29	136	88	111	
Settled before verdict	9	17	4	7	
Stricken	1	2	5	0	
Other "Dispositions"	3	8	37	10	
Transfer to Arbitration	—	10	5	2	
Inventory of Cases	63	79	71	16	-55
Trial days	—	65	53	65	
Visiting Judge — trial days	—	5	18	23	
ARBITRATION					
New cases added	14	25	46	38	-8
Dispositions	16	26	44	35	-9
Inventory	4	3	5	8	3
JUVENILE					
New cases scheduled	116	105	81	128	47
Dispositions	76	88	156	134	-22
Inventory	78	95	20	14	-6
DOMESTIC RELATIONS					
New cases scheduled	95	174	233	232	-1
Dispositions	110	197	275	255	-20
Inventory	97	74	32	9	-23

CLINTON COUNTY
25th Judicial District

Population — 37,721

Authorized Judges — 1

	1971	1972	1973	1974	Change 1973-74
CRIMINAL CASES					
Defendant Records Received	229	212	204	185	-19
Defendant Records Disposed	179	172	186	192	6
by Guilty Pleas	144	114	110	128	
Tried by Jury	2	6	8	8	
Jury Waived	8	17	10	5	
Nol Pros	25	24	48	35	
ARD	—	0	3	15	
Other "Dispositions"	31	11	7	1	
Disposition in lieu of trial	—	—	—	0	
Adjustments	—	-2	-10	-9	
Grand Jury Dismissals	—	16	5	5	
Inventory of Cases	67	89	92	71	-21
Trial days	—	41	32	52	
Visiting Judge — trial days	—	5	0	5	
CIVIL CASES (Trespass, Assumpsit, Equity & Misc.)					
New cases praeciped for trial	14	46	52	53	1
Dispositions	31	14	70	41	-29
by Non-Jury	0	0	0	5	
Jury verdict	1	1	1	18	
Settlement	30	12	6	11	
Settled before verdict	0	0	2	1	
Stricken	1	0	4	1	
Other "Dispositions"	1	1	57	5	
Transfer to Arbitration	—	0	0	0	
Inventory of Cases	1	33	15	27	12
Trial days	—	3	5	24	
Visiting Judge — trial days	—	4	2	10	
ARBITRATION					
New cases added	14	7	10	11	1
Dispositions	17	6	9	13	4
Inventory	0	1	2	0	-2
JUVENILE					
New cases scheduled	12	18	22	20	-2
Dispositions	26	17	12	19	7
Inventory	0	1	11	12	1
DOMESTIC RELATIONS					
New cases scheduled	36	86	92	140	48
Dispositions	56	86	92	140	48
Inventory	0	0	0	0	0

COLUMBIA-MONTOUR COUNTY
26th Judicial District

Population — 71,622

Authorized Judges — 1

	1971	1972	1973	1974	Change 1973-74
CRIMINAL CASES					
Defendant Records Received	237	312	350	391	41
Defendant Records Disposed	234	302	248	317	69
by Guilty Pleas	215	256	164	195	
Tried by Jury	3	10	9	19	
Jury Waived	3	5	2	4	
Not Pros	13	21	48	53	
ARD	—	2	14	22	
Other "Dispositions"	11	8	11	24	
Disposition in lieu of trial	—	—	—	0	
Adjustments	—	-15	-66	13(a)	
Grand Jury Dismissals	—	11	8	21	
Inventory of Cases	39	20	48	114	66
Trial days	—	71	53	77	
Visiting Judge — trial days	—	11	18	9	
CIVIL CASES (Trespass, Assumpsit, Equity & Misc.)					
New cases praeciped for trial	42	124	117	118	1
Dispositions	22	156	90	87	-3
by Non-Jury	0	0	1	4	
Jury verdict	12	11	1	7	
Settlement	10	136	67	59	
Settled before verdict	0	0	6	0	
Stricken	0	6	1	2	
Other "Dispositions"	0	3	14	15	
Transfer to Arbitration	—	6	3	10	
Inventory of Cases	59	21	45	66	21
Trial days	—	31	34	31	
Visiting Judge — trial days	—	0	21	5	
ARBITRATION					
New cases added	24	21	44	40	-4
Dispositions	22	23	25	32	7
Inventory	9	7	26	34	8
JUVENILE					
New cases scheduled	42	60	128	101	-27
Dispositions	42	59	129	92	-37
Inventory	0	1	0	9	9
DOMESTIC RELATIONS					
New cases scheduled	151	84	161	240	79
Dispositions	152	81	150	223	73
Inventory	0	-3	14	31	17

(a) In Columbia County, 37 case records removed due to multiple transcripts and 50 case records added as a result of inventory count.

CRAWFORD COUNTY
30th Judicial District

Population — 81,342

Authorized Judges — 2

	1971	1972	1973	1974	Change 1973-74
CRIMINAL CASES					
Defendant Records Received	452	505	420	608	188
Defendant Records Disposed	424	449	374	445	71
by Guilty Pleas	345	278	228	286	
Tried by Jury	20	24	32	36	
Jury Waived	4	5	2	3	
Not Pros	55	84	40	40	
ARD	—	38	68	78	
Other "Dispositions"	19	20	4	2	
Disposition in lieu of trial	—	—	—	0	
Adjustments	—	-12	-10	-11	
Grand Jury Dismissals	—	8	13	8	
Inventory of Cases	189	225	248	392	144
Trial days	—	41	62	95	
Visiting Judge — trial days	—	4	0	0	
CIVIL CASES (Trespass, Assumpsit, Equity & Misc.)					
New cases praeciped for trial	68	58	84	67	-17
Dispositions	65	60	63	74	11
by Non-Jury	16	10	7	19	
Jury verdict	28	17	18	22	
Settlement	15	24	25	30	
Settled before verdict	6	3	6	3	
Stricken	0	3	5	0	
Other "Dispositions"	8	3	2	0	
Transfer to Arbitration	—	3	2	3	
Inventory of Cases	22	17	36	26	-10
Trial days	—	39	54	59	
Visiting Judge — trial days	—	0	0	3	
ARBITRATION					
New cases added	25	27	45	57	12
Dispositions	28	24	35	51	16
Inventory	3	6	16	22	6
JUVENILE					
New cases scheduled	380	222	196	240	44
Dispositions	380	222	196	240	44
Inventory	0	0	0	0	0
DOMESTIC RELATIONS					
New cases scheduled	442	362	233	257	24
Dispositions	436	375	265	258	-7
Inventory	52	39	7	6	-1

CUMBERLAND COUNTY 9th Judicial District

Population — 158,177

Authorized Judges — 2

	1971	1972	1973	1974	Change 1973-74
CRIMINAL CASES					
Defendant Records Received	845	834	860	930	70
Defendant Records Disposed by Guilty Pleas	628	851	750	761	11
Tried by Jury	529	640	500	559	
Jury Waived	33	54	43	31	
Nol Pros	1	9	21	4	
ARD	65	105	139	130	
Other "Dispositions"	—	0	0	0	
Disposition in lieu of trial	114	43	47	35 ^(b)	
Adjustments	—	—	—	2	
Grand Jury Dismissals	—	-5	-22	-27 ^(c)	
Inventory of Cases	—	5	46	31	111
Trial days	223	196	238	349	
Visiting Judge — trial days	—	49	55	50	
	—	33	82	28	
CIVIL CASES (Trespass, Assumpsit, Equity & Misc.)					
New cases praeciped for trial	146	173	207	200	-7
Dispositions	124	141	148	235	87
by Non-Jury	2	3	8	19	
Jury verdict	25	34	24	14	
Settlement	53	50	67	56	
Settled before verdict	12	9	12	10	
Stricken	32	11	13	28	
Other "Dispositions"	17	34	24	108 ^(d)	
Transfer to Arbitration	—	6	4	11	
Inventory of Cases	29	55	110	64	-46
Trial days	—	54	41	39	
Visiting Judge — trial days	—	45	61	27	
ARBITRATION					
New cases added	87	108	78	83	5
Dispositions	79	90	74	117	43
Inventory	30	48	52	18	-34
JUVENILE					
New cases scheduled	184	191	205	249	44
Dispositions	184	191	205	249	44
Inventory	0	0	0	0	0
DOMESTIC RELATIONS					
New cases scheduled	524	148 ^(a)	91	209 ^(a)	118
Dispositions	524	169 ^(a)	76	226 ^(a)	150
Inventory	23	2 ^(a)	17	0	-17

(a) Reflects correction in reporting procedure.
 (b) Includes cases quashed and dismissed by court.
 (c) Reflects inactive cases removed under Pa. R.J.A. 1901.
 (d) Includes 92 equity cases reviewed and removed.

DAUPHIN COUNTY 12th Judicial District

Population — 223,834

Authorized Judges — 6

	1971	1972	1973	1974	Change 1973-74
CRIMINAL CASES					
Defendant Records Received	1855	1659	1776	1836	60
Defendant Records Disposed by Guilty Pleas	1268	1795	1631	1769	138
Tried by Jury	835	925	908	948	
Jury Waived	46	65	86	83	
Nol Pros	182	332	243	151	
ARD	205	64	46	25	
Other "Dispositions"	—	0	0	183	
Disposition in lieu of trial	404 ^(a)	409 ^(a)	348 ^(a)	373 ^(a)	
Adjustments	—	—	—	6	
Grand Jury Dismissals	—	-5	-5	0	
Inventory of Cases	—	56	69	81	-14
Trial days	718	521	592	578	
Visiting Judge — trial days	—	228	298	341	
	—	0	0	18	
CIVIL CASES (Trespass, Assumpsit, Equity & Misc.)					
New cases praeciped for trial	240	193	281	335	54
Dispositions	224	197	278	337	59
by Non-Jury	85	55	81	154	
Jury verdict	43	32	54	50	
Settlement	89	82	111	112	
Settled before verdict	7	12	13	11	
Stricken	0	5	3	2	
Other "Dispositions"	12	1	16	8	
Transfer to Arbitration	—	5	5	5	
Inventory of Cases	35	36	34	27	-7
Trial days	—	134	176	194	
Visiting Judge — trial days	—	1	0	2	
ARBITRATION					
New cases added	118	138	134	195	61
Dispositions	98	111	165	206	41
Inventory	52	79	48	37	-11
JUVENILE					
New cases scheduled	273	259	347	476	129
Dispositions	300	242	331	504	173
Inventory	22	39	55	27	-28
DOMESTIC RELATIONS					
New cases scheduled	494	442	960	1319	359
Dispositions	494	442	960	1319	359
Inventory	0	0	0	0	0

(a) Includes cases quashed, dismissed by court and capias.

DELAWARE COUNTY
32nd Judicial District

Population — 600,035

Authorized Judges — 12

	1971	1972	1973	1974	Change 1973-74
CRIMINAL CASES					
Defendant Records Received	2442	2609	2268	2776	508
Defendant Records Disposed	1586	2052	1776	1993	217
by Guilty Pleas	863	986	831	888	
Tried by Jury	158	132	85	43	
Jury Waived	227	247	252	206	
Nol Pros	338	289	277	351	
ARD	—	203	330	505	
Other "Dispositions"	552	195	1	0	
Disposition in lieu of trial	—	—	—	0	
Adjustments	—	-262	-1206 ^(a)	-635 ^(a)	
Grand Jury Dismissals	—	24	73	34	
Inventory of Cases	1354	1625	838	952	114
Trial days	—	611	510	501	
Visiting Judge — trial days	—	26	31	91	
CIVIL CASES (Trespass, Assumpsit, Equity & Misc.)					
New cases praeciped for trial	1072	1013 ^(b)	521	596	75
Dispositions	679	562	691	502	-189
by Non-Jury	68	71	65	106	
Jury verdict	118	79	121	83	
Settlement	309	296	225	242	
Settled before verdict	158	47	40	61	
Stricken	26	50	7	8	
Other "Dispositions"	72	19	233 ^(a)	2	
Transfer to Arbitration	—	48	30	53	
Inventory of Cases	149	552	352	393	41
Trial days	—	268	399	321	
Visiting Judge — trial days	—	18	0	6	
ARBITRATION					
New cases added	704	697	766	983	217
Dispositions	360	546	925	961	36
Inventory	157	308	149	171	22
JUVENILE					
New cases scheduled	1031	820	894	918	24
Dispositions	950	726	822	952	130
Inventory	81	175	247	213	-34
DOMESTIC RELATIONS					
New cases scheduled	2173	1307	1249	2146 ^(c)	897
Dispositions	2173	1041	1384	1904 ^(c)	520
Inventory	0	266	131	373	242

^(a) Includes inactive cases removed under Pa. R.J.A. 1901.
^(b) Reflects correction in reporting procedure.
^(c) Includes 931 cases scheduled for court hearings and disposed informally.

ERIE COUNTY
6th Judicial District

Population — 263,654

Authorized Judges — 5

	1971	1972	1973	1974	Change 1973-74
CRIMINAL CASES					
Defendant Records Received	1326	1456	1376	1367	-9
Defendant Records Disposed	871	1104	1124	1222	98
by Guilty Pleas	641	696	736	739	
Tried by Jury	59	128	80	72	
Jury Waived	0	63	14	2	
Nol Pros	171	204	205	135	
ARD	—	0	61	207	
Other "Dispositions"	362	13	28	22	
Disposition in lieu of trial	—	—	—	45	
Adjustments	—	-93	-426 ^(a)	-35	
Grand Jury Dismissals	—	56	40	45	
Inventory of Cases	376	579	365	430	65
Trial days	—	183	183	136	
Visiting Judge — trial days	—	3	0	0	
CIVIL CASES (Trespass, Assumpsit, Equity & Misc.)					
New cases praeciped for trial	248	467	262	294	32
Dispositions	237	367	262	300	38
by Non-Jury	0	73	27	14	
Jury verdict	80	65	54	94	
Settlement	121	135	141	140	
Settled before verdict	25	28	42	32	
Stricken	11	25	8	19	
Other "Dispositions"	8	41	0	1	
Transfer to Arbitration	—	94	26	26	
Inventory of Cases	168	174	138	106	-32
Trial days	—	127	138	134	
Visiting Judge — trial days	—	7	5	0	
ARBITRATION					
New cases added	225	202	224	281	57
Dispositions	211	217	204	247	43
Inventory	24	9	29	63	34
JUVENILE					
New cases scheduled	550	585	519	489	-30
Dispositions	534	475	694	489	-205
Inventory	65	175	0	0	0
DOMESTIC RELATIONS					
New cases scheduled	740 ^(b)	368	331	349	18
Dispositions	721 ^(b)	391	343	346	3
Inventory	35 ^(b)	12	0	3	3

^(a) Includes removal of 364 bench warrants.
^(b) Prior to correction in reporting procedures.

FAYETTE COUNTY 14th Judicial District

Authorized Judges — 4

Population — 154,667

	1971	1972	1973	1974	Change 1973-74
CRIMINAL CASES					
Defendant Records Received	647	606	584	671	87
Defendant Records Disposed	482	438	529	1107	578
by Guilty Pleas	294	272	324	321	
Tried by Jury	33	28	50	44	
Jury Waived	7	6	16	15	
Nol Pros	146	120	127	646	
ARD	—	1	1	47	
Other "Dispositions"	80	11	11	4	
Disposition in lieu of trial	—	—	—	30	
Adjustments	—	-65	-12	181(b)	
Grand Jury Dismissals	—	48	97	40	
Inventory of Cases	604	659	605	310	-295
Trial days	—	75	130	146	
Visiting Judge — trial days	—	0	0	0	
CIVIL CASES (Trespass, Assumpsit, Equity & Misc.)					
New cases praeciped for trial	122	136	148	177	29
Dispositions	109	110	111	174	63
by Non-Jury	10	12	10	4	
Jury verdict	24	25	10	16	
Settlement	69	47	74	102	
Settled before verdict	4	5	6	5	
Stricken	2	16	8	17	
Other "Dispositions"	8	5	3	30(c)	
Transfer to Arbitration	—	2	21	26	
Inventory of Cases	170	194	210	187	-23
Trial days	—	130	78	56	
Visiting Judge — trial days	—	0	3	0	
ARBITRATION					
New cases added	46	50	68	100	32
Dispositions	49	68	88	88	0
Inventory	42	24	4	16	12
JUVENILE					
New cases scheduled	196	157	162	194	32
Dispositions	198	157	162	194	32
Inventory	0	0	0	0	0
DOMESTIC RELATIONS					
New cases scheduled	532	321	370	365	-5
Dispositions	402	293	372	394	22
Inventory	270	40(a)	38	9	-29

(a) Reflects an adjusted removal of 258 cases.
 (b) Reflects recount of inventory.
 (c) Reflects cases removed under Pa. R.J.A. 1901.

FOREST-WARREN COUNTY 37th Judicial District

Population — 52,608

Authorized Judges — 1

	1971	1972	1973	1974	Change 1973-74
CRIMINAL CASES					
Defendant Records Received	310	242	327	264	-63
Defendant Records Disposed	284	217	290	245	-45
by Guilty Pleas	246	152	204	184	
Tried by Jury	19	24	19	9	
Jury Waived	0	12	7	10	
Nol Pros	19	21	45	20	
ARD	—	0	6	16	
Other "Dispositions"	16	8	9	4	
Disposition in lieu of trial	—	—	—	2	
Adjustments	—	-5	-16	-21	
Grand Jury Dismissals	—	6	6	3	
Inventory of Cases	96	110	125	120	-5
Trial days	—	33	41	37	
Visiting Judge — trial days	—	7	10	10	
CIVIL CASES (Trespass, Assumpsit, Equity & Misc.)					
New cases praeciped for trial	51	62	66	42	-24
Dispositions	40	30	52	28	-24
by Non-Jury	1	0	0	1	
Jury verdict	8	12	9	9	
Settlement	11	17	29	12	
Settled before verdict	1	0	0	0	
Stricken	19	0	0	4	
Other "Dispositions"	0	1	14	2	
Transfer to Arbitration	—	1	1	3	
Inventory of Cases	15	46	59	70	11
Trial days	—	105	38	25	
Visiting Judge — trial days	—	4	20	10	
ARBITRATION (a)					
New cases added	20	14	15	26	11
Dispositions	22	12	13	24	11
Inventory	4	6	8	10	2
JUVENILE					
New cases scheduled	36	22	18	59	41
Dispositions	35	22	20	60	40
Inventory	4	4	2	1	-1
DOMESTIC RELATIONS					
New cases scheduled	162	85	206	107	-99
Dispositions	103	81	204	124	-80
Inventory	16	20	22	5	-17

(a) No arbitration in Forest County.

FRANKLIN-FULTON COUNTY
39th Judicial District

Population — 111,609

Authorized Judges — 2

	1971	1972	1973	1974	Change 1973-74
CRIMINAL CASES					
Defendant Records Received	539	624	619	608	-11
Defendant Records Disposed	434	572	533	588	+55
by Guilty Pleas	323	391	361	345	
Tried by Jury	36	38	26	42	
Jury Waived	9	16	36	43	
Nol Pros	66	59	52	79	
ARD	—	10	31	54	
Other "Dispositions"	45	58	27	25	
Disposition in lieu of trial	—	—	—	0	
Adjustments	—	0	-142 ^(a)	0	
Grand Jury Dismissals	—	39	17	21	
Inventory of Cases	265	278	205	204	-1
Trial days	—	77	71	81	
Visiting Judge — trial days	—	3	13	14	
CIVIL CASES (Trespass, Assumpsit, Equity & Misc.)					
New cases praeciped for trial	37	40	37	28	-9
Dispositions	46	11	35	55	20
by Non-Jury	22	1	3	2	
Jury verdict	6	1	6	0	
Settlement	15	8	22	53	
Settled before verdict	3	0	2	0	
Stricken	0	0	0	0	
Other "Dispositions"	2	1	2	0	
Transfer to Arbitration	—	0	1	0	
Inventory of Cases	20	49	50	23	-27
Trial days	—	103	93	115	
Visiting Judge — trial days	—	2	10	4	
ARBITRATION					
New cases added	8	9	11	12	1
Dispositions	7	9	11	11	0
Inventory	1	1	1	2	1
JUVENILE					
New cases scheduled	237	259	231	237	6
Dispositions	258	230	244	230	-14
Inventory	13	42	29	36	7
DOMESTIC RELATIONS					
New cases scheduled	325	210	269	310	41
Dispositions	252	196	262	260	-2
Inventory	18	32	39	89	50

^(a) Reflects 90 inactive cases removed.

GREENE COUNTY
13th Judicial District

Population — 36,090

Authorized Judges — 1

	1971	1972	1973	1974	Change 1973-74
CRIMINAL CASES					
Defendant Records Received	174	188	184	246	62
Defendant Records Disposed	147	141	167	237	70
by Guilty Pleas	111	101	106	139	
Tried by Jury	21	8	11	15	
Jury Waived	6	1	2	1	
Nol Pros	9	15	18	16	
ARD	—	14	26	64	
Other "Dispositions"	19	2	4	2	
Disposition in lieu of trial	—	—	—	0	
Adjustments	—	-23	-14	9	
Grand Jury Dismissals	—	11	8	17	
Inventory of Cases	42	55	50	51	1
Trial days	—	163	128	25	
Visiting Judge — trial days	—	0	8	3	
CIVIL CASES (Trespass, Assumpsit, Equity & Misc.)					
New cases praeciped for trial	13	49	78	21	-57
Dispositions	41	41	70	21	-49
by Non-Jury	0	1	0	0	
Jury verdict	9	3	4	1	
Settlement	31	32	37	20	
Settled before verdict	1	0	5	0	
Stricken	0	0	13	0	
Other "Dispositions"	10	5	11	0	
Transfer to Arbitration	—	11	5	1	
Inventory of Cases	19	16	19	18	-1
Trial days	—	35	208	217	
Visiting Judge — trial days	—	1	1	0	
ARBITRATION					
New cases added	18	17	15	9	-6
Dispositions	15	18	12	15	3
Inventory	4	3	6	0	-6
JUVENILE					
New cases scheduled	63	53	74	94	20
Dispositions	47	69	63	87	24
Inventory	25	9	20	27	7
DOMESTIC RELATIONS					
New cases scheduled	108	83	93	111	18
Dispositions	96	78	110	90	-20
Inventory	35	40	23	44	21

HUNTINGDON COUNTY 20th Judicial District

Population — 39,108

Authorized Judges — 1

	1971	1972	1973	1974	Change 1973-74
CRIMINAL CASES					
Defendant Records Received	216	170	197	197	0
Defendant Records Disposed	202	191	175	186	11
by Guilty Pleas	146	119	106	103	
Tried by Jury	17	16	10	16	
Jury Waived	0	2	2	9	
Nol Pros	39	28	32	25	
ARD	—	17	22	9	
Other "Dispositions"	10	9	3	24	
Disposition in lieu of trial	—	—	—	0	
Adjustments	—	0	-19	-33	
Grand Jury Dismissals	—	4	5	4	
Inventory of Cases	117	92	90	64	-26
Trial days	—	63	57	91	
Visiting Judge — trial days	—	8	0	1	
CIVIL CASES (Trespass, Assumpsit, Equity & Misc.)					
New cases praeciped for trial	15	24	36	41	5
Dispositions	16	22	30	38	8
by Non-Jury	0	1	12	19	
Jury verdict	5	1	2	5	
Settlement	8	18	4	11	
Settled before verdict	3	2	0	0	
Stricken	0	0	2	1	
Other "Dispositions"	0	0	10	2	
Transfer to Arbitration	—	2	2	0	
Inventory of Cases	5	5	9	12	3
Trial days	—	1	12	21	
Visiting Judge — trial days	—	2	1	1	
ARBITRATION					
New cases added	5	6	6	7	1
Dispositions	5	4	6	2	-4
Inventory	7	9	9	14	5
JUVENILE					
New cases scheduled	18	14	18	42	24
Dispositions	18	17	18	42	24
Inventory	3	0	0	0	0
DOMESTIC RELATIONS					
New cases scheduled	86	92	116	164	48
Dispositions	98	97	135	164	29
Inventory	24	19	0	0	0

INDIANA COUNTY 40th Judicial District

Population — 79,451

Authorized Judges — 2

	1971	1972	1973	1974	Change 1973-74
CRIMINAL CASES					
Defendant Records Received	361	307	286	342	56
Defendant Records Disposed	308	278	299	316	17
by Guilty Pleas	255	185	201	149	
Tried by Jury	17	10	25	11	
Jury Waived	14	24	26	48	
Nol Pros	22	50	25	40	
ARD	—	0	4	35	
Other "Dispositions"	34	9	18	33	
Disposition in lieu of trial	—	—	—	0	
Adjustments	—	13	12	-17	
Grand Jury Dismissals	—	26	13	18	
Inventory of Cases	157	147	133	124	-9
Trial days	—	83	99	88	
Visiting Judge — trial days	—	0	2	0	
CIVIL CASES (Trespass, Assumpsit, Equity & Misc.)					
New cases praeciped for trial	69	63	69	54	-15
Dispositions	45	76	70	72	2
by Non-Jury	1	3	1	4	
Jury verdict	10	13	18	12	
Settlement	32	48	44	52	
Settled before verdict	2	12	0	3	
Stricken	0	0	0	0	
Other "Dispositions"	5	0	7	1	
Transfer to Arbitration	—	1	1	5	
Inventory of Cases	79	65	63	40	-23
Trial days	—	43	42	37	
Visiting Judge — trial days	—	4	7	2	
ARBITRATION					
New cases added	41	42	35	36	1
Dispositions	27	25	42	32	-10
Inventory	16	33	26	30	4
JUVENILE					
New cases scheduled	117	77	92	154	62
Dispositions	117	79	90	157	67
Inventory	6	4	6	3	-3
DOMESTIC RELATIONS					
New cases scheduled	238	222	213	173	-40
Dispositions	243	221	230	173	-57
Inventory	18	19	2	2	0

JEFFERSON COUNTY 54th Judicial District

Authorized Judges — 1

Population — 43,695

	1971	1972	1973	1974	Change 1973-74
CRIMINAL CASES					
Defendant Records Received	339	150	167	167	0
Defendant Records Disposed	282	141	135	135	0
by Guilty Pleas	238	122	115	99	
Tried by Jury	17	3	4	10	
Jury Waived	9	2	0	3	
Nol Pros	18	10	13	12	
ARD	—	0	3	6	
Other "Dispositions"	32	4	0	5	
Disposition in lieu of trial	—	—	—	0	
Adjustments	—	-3	-14	-1	
Grand Jury Dismissals	—	1	6	3	
Inventory of Cases	108	113	125	153	28
Trial days	—	35	26	35	
Visiting Judge — trial days	—	0	1	0	
CIVIL CASES (Trespass, Assumpsit, Equity & Misc.)					
New cases praeciped for trial	23	27	30	21	-9
Dispositions	13	27	22	27	5
by Non-Jury	0	0	0	0	
Jury verdict	3	5	12	10	
Settlement	10	10	8	5	
Settled before verdict	0	0	0	0	
Stricken	0	6	0	0	
Other "Dispositions"	3	6	2	12	
Transfer to Arbitration	—	6	3	2	
Inventory of Cases	25	19	24	16	-8
Trial days	—	9	26	30	
Visiting Judge — trial days	—	0	0	2	
ARBITRATION					
New cases added	19	15	17	14	-3
Dispositions	15	10	17	22	5
Inventory	13	18	18	10	-8
JUVENILE					
New cases scheduled	10	15	1	15	14
Dispositions	9	15	1	15	14
Inventory	1	1	1	1	0
DOMESTIC RELATIONS					
New cases scheduled	42	62	59	73	14
Dispositions	34	75	40	62	22
Inventory	39	26	45	56	11

JUNIATA-PERRY COUNTY 41st Judicial District

Population — 45,327

Authorized Judges — 1

	1971	1972	1973	1974	Change 1973-74
CRIMINAL CASES					
Defendant Records Received	184	283	146	205	59
Defendant Records Disposed	171	257	162	182	20
by Guilty Pleas	122	120	61	67	
Tried by Jury	14	8	6	12	
Jury Waived	6	49	35	38	
Nol Pros	29	55	35	33	
ARD	—	5	10	12	
Other "Dispositions"	19	20	15	17	
Disposition in lieu of trial	—	—	—	3	
Adjustments	—	0	32	-2	
Grand Jury Dismissals	—	15	5	7	
Inventory of Cases	23	34	45	59	14
Trial days	—	104	83	143	
Visiting Judge — trial days	—	31	2	2	
CIVIL CASES (Trespass, Assumpsit, Equity & Misc.)					
New cases praeciped for trial	37	95	71	74	3
Dispositions	29	57	64	57	-7
by Non-Jury	0	17	20	10	
Jury verdict	9	2	1	7	
Settlement	20	15	15	26	
Settled before verdict	0	2	1	7	
Stricken	0	3	2	4	
Other "Dispositions"	0	18	25	3	
Transfer to Arbitration	—	1	5	7	
Inventory of Cases	34	71	73	83	10
Trial days	—	61	45	36	
Visiting Judge — trial days	—	21	1	2	
ARBITRATION					
New cases added	12	2	7	10	3
Dispositions	6	2	3	10	7
Inventory	7	7	11	11	0
JUVENILE					
New cases scheduled	66	46	61	81	20
Dispositions	66	40	48	81	33
Inventory	2	8	21	21	0
DOMESTIC RELATIONS					
New cases scheduled	73	127	153	144	9
Dispositions	69	91	138	130	-8
Inventory	16	52	67	81	14

LACKAWANNA COUNTY 45th Judicial District

Population — 234,107

Authorized Judges — 5

	1971	1972	1973	1974	Change 1973-74
CRIMINAL CASES					
Defendant Records Received	790	778	629	818	189
Defendant Records Disposed	442	478	318	447	129
by Guilty Pleas	295	298	199	292	
Tried by Jury	24	49	25	43	
Jury Waived	8	6	7	2	
Nol Pros	115	121	78	89	
ARD	—	0	5	18	
Other "Dispositions"	273	4	4	3	
Disposition in lieu of trial	—	—	—	0	
Adjustments	—	0	0	-22	
Grand Jury Dismissals	—	261	215	189	
Inventory of Cases	378	417	513	673	160
Trial days	—	128	112	116	
Visiting Judge — trial days	—	12	0	0	
CIVIL CASES (Trespass, Assumpsit, Equity & Misc.)					
New cases praeciped for trial	730	627	382	444	62
Dispositions	643	585	412	410	-2
by Non-Jury	183	161	80	95	
Jury verdict	113	86	78	66	
Settlement	122	191	162	167	
Settled before verdict	224	144	91	79	
Stricken	1	1	0	0	
Other "Dispositions"	0	2	1	3	
Transfer to Arbitration	—	0	0	0	
Inventory of Cases	273	315	285	319	34
Trial days	—	227	234	243	
Visiting Judge — trial days	—	20	0	0	
ARBITRATION					
New cases added	NONE				
Dispositions	NONE				
Inventory	NONE				
JUVENILE					
New cases scheduled	274	261	187	211	24
Dispositions	274	261	187	211	24
Inventory	0	0	0	0	0
DOMESTIC RELATIONS					
New cases scheduled	474	82 ^(a)	31	41	10
Dispositions	474	79	28	45	17
Inventory	0	3	6	2	-4

^(a) Reflects correction in reporting procedure.

LANCASTER COUNTY 2nd Judicial District

Population — 319,693

Authorized Judges — 4

	1971	1972	1973	1974	Change 1973-74
CRIMINAL CASES					
Defendant Records Received	2207	2134	2245	2473	228
Defendant Records Disposed	1319	2065	2030	2419	389
by Guilty Pleas	1011	1452	1522	1788	
Tried by Jury	108	150	133	186	
Jury Waived	4	10	84	65	
Nol Pros	196	309	266	338	
ARD	—	123	3	1	
Other "Dispositions"	24	21	22	41	
Disposition in lieu of trial	—	—	—	0	
Adjustments	—	-874	-90	-106 ^(b)	
Grand Jury Dismissals	—	17	17	18	
Inventory of Cases	1724	902	1010	940	-70
Trial days	—	342	323	357	
Visiting Judge — trial days	—	0	1	0	
CIVIL CASES (Trespass, Assumpsit, Equity & Misc.)					
New cases praeciped for trial	161	170	158	59 ^(c)	-99
Dispositions	120	149	184	108	-76
by Non-Jury	8	0	9	14	
Jury verdict	33	40	36	34	
Settlement	72	80	76	48	
Settled before verdict	7	2	22	4	
Stricken	0	0	2	0	
Other "Dispositions"	1	27	39	8 ^(b)	
Transfer to Arbitration	—	0	3	0	
Inventory of Cases	71	92	63	14	-49
Trial days	—	48	64	76	
Visiting Judge — trial days	—	0	0	0	
ARBITRATION					
New cases added	152	188	160	189	29
Dispositions	138	168	164	183	19
Inventory	36	56	52	58	6
JUVENILE					
New cases scheduled	625	372 ^(a)	330	323	-7
Dispositions	583	438	370	363	-7
Inventory	248	182	142	102	-40
DOMESTIC RELATIONS					
New cases scheduled	977	1074	1152	1016	-136
Dispositions	799	1395	1084	1037	-47
Inventory	351	30	98	77	-21

^(a) Reflects correction in reporting procedures.

^(b) Includes removal of inactive cases under Pa. R.J.A. 1901.

^(c) No new cases were placed "at issue" for seven months.

LAWRENCE COUNTY
53rd Judicial District

Population — 107,374

Authorized Judges — 2

	1971	1972	1973	1974	Change 1973-74
CRIMINAL CASES					
Defendant Records Received	323	329	288	337	49
Defendant Records Disposed	308	281	255	361	106
by Guilty Pleas	194	175	152	190	
Tried by Jury	25	28	20	24	
Jury Waived	0	0	0	2	
Nol Pros	89	57	70	86	
ARD	—	0	5	43	
Other "Dispositions"	93	21	8	16	
Disposition in lieu of trial	—	—	—	0	
Adjustments	—	0	-10	0	
Grand Jury Dismissals	—	47	50	58	
Inventory of Cases	169	170	143	61	-82
Trial days	—	61	89	83	
Visiting Judge — trial days	—	0	0	1	
CIVIL CASES (Trespass, Assumpsit, Equity & Misc.)					
New cases praeciped for trial	184	72	88	40	-48
Dispositions	159	100	94	40	-54
by Non-Jury	9	8	24	11	
Jury verdict	24	14	9	1	
Settlement	111	69	50	24	
Settled before verdict	15	7	6	4	
Stricken	0	0	0	0	
Other "Dispositions"	4	2	5	0	
Transfer to Arbitration	—	11	15	1	
Inventory of Cases	92	53	32	31	-1
Trial days	—	74	47	14	
Visiting Judge — trial days	—	0	0	3	
ARBITRATION					
New cases added	45	50	72	78	6
Dispositions	39	56	77	77	0
Inventory	30	24	19	20	1
JUVENILE					
New cases scheduled	27	24	18	21	3
Dispositions	23	27	18	22	4
Inventory	5	2	2	1	-1
DOMESTIC RELATIONS					
New cases scheduled	227	153	122	91	-31
Dispositions	227	153	122	91	-31
Inventory	0	0	0	0	0

LEBANON COUNTY
52nd Judicial District

Population — 99,665

Authorized Judges — 2

	1971	1972	1973	1974	Change 1973-74
CRIMINAL CASES					
Defendant Records Received	424	422	466	561	95
Defendant Records Disposed	352	392	318	481	163
by Guilty Pleas	260	292	227	357	
Tried by Jury	52	34	27	29	
Jury Waived	10	19	12	7	
Nol Pros	30	30	27	36	
ARD	—	7	15	35	
Other "Dispositions"	39	10	10	17	
Disposition in lieu of trial	—	—	—	0	
Adjustments	—	-31	2	0	
Grand Jury Dismissals	—	3	4	29	
Inventory of Cases	179	175	321	372	51
Trial days	—	79	85	99	
Visiting Judge — trial days	—	0	3	0	
CIVIL CASES (Trespass, Assumpsit, Equity & Misc.)					
New cases praeciped for trial	118	105	97	98	1
Dispositions	106	99	73	82	9
by Non-Jury	35	9	9	4	
Jury verdict	37	29	17	10	
Settlement	16	12	8	2	
Settled before verdict	4	4	0	0	
Stricken	14	23	16	7	
Other "Dispositions"	13	22	23	59 ^(a)	
Transfer to Arbitration	—	1	4	6	
Inventory of Cases	10	15	35	45	10
Trial days	—	60	44	29	
Visiting Judge — trial days	—	4	0	0	
ARBITRATION					
New cases added	58	26	60	49	-11
Dispositions	57	26	53	48	-5
Inventory	8	8	15	16	1
JUVENILE					
New cases scheduled	47	33	63	78	15
Dispositions	46	34	61	77	16
Inventory	1	0	2	3	1
DOMESTIC RELATIONS					
New cases scheduled	372	281	396	447	51
Dispositions	354	303	370	426	56
Inventory	37	15	41	62	21

^(a) Includes cases dismissed and discontinued.

LEHIGH COUNTY
31st Judicial District

Population — 255,304

Authorized Judges — 5

	1971	1972	1973	1974	Change 1973-74
CRIMINAL CASES					
Defendant Records Received	1126	1011	1063	1177	114
Defendant Records Disposed by Guilty Pleas	784	1004	908	961	53
Tried by Jury	607	616	546	637	
Jury Waived	41	78	88	80	
Not Pros	26	34	31	27	
ARD	110	153	107	69	
Other "Dispositions"	—	81	112	128	
Disposition in lieu of trial	77	42	24	20	
Adjustments	—	—	—	0	
Grand Jury Dismissals	—	-99 ^(a)	-109 ^(a)	-93 ^(a)	
Inventory of Cases	565	410	383	470	87
Trial days	—	346	318	391	
Visiting Judge — trial days	—	22	29	19	
CIVIL CASES (Trespass, Assumpsit, Equity & Misc.)					
New cases praeciped for trial	218	318	289	295	6
Dispositions	200	268	264	364	100
by Non-Jury	8	11	65	91	
Jury verdict	46	51	38	44	
Settlement	54	82	70	112	
Settled before verdict	15	14	10	13	
Stricken	77	93	54	102	
Other "Dispositions"	17	17	27	2	
Transfer to Arbitration	—	18	30	25	
Inventory of Cases	100	132	127	33	-94
Trial days	—	101	85	127	
Visiting Judge — trial days	—	5	0	4	
ARBITRATION					
New cases added	300	233	308	283	-25
Dispositions	248	297	285	281	-4
Inventory	181	117	140	142	2
JUVENILE					
New cases scheduled	175	203	197	316	119
Dispositions	172	204	198	316	118
Inventory	3	2	1	1	0
DOMESTIC RELATIONS					
New cases scheduled	243	289	470	644	174
Dispositions	202	332	454	633	179
Inventory	55	22	38	49	11

^(a) Includes fugitives and inactive cases removed under Pa. R.J.A. 1901.

LUZERNE COUNTY
11th Judicial District

Population — 342,301

Authorized Judges — 7

	1971	1972	1973	1974	Change 1973-74
CRIMINAL CASES					
Defendant Records Received	755	818	832	1045	213
Defendant Records Disposed by Guilty Pleas	586	848	738	782	44
Tried by Jury	388	377	344	432	
Jury Waived	43	39	12	26	
Not Pros	86	168	112	87	
ARD	69	118	78	61	
Other "Dispositions"	—	32	110	102	
Disposition in lieu of trial	28	114 ^(a)	82 ^(a)	73 ^(a)	
Adjustments	—	—	—	1	
Grand Jury Dismissals	—	-72	-2	-67 ^(b)	
Inventory of Cases	457	185	184	130	66
Trial days	—	169	300	122	
Visiting Judge — trial days	—	20	0	0	
CIVIL CASES (Trespass, Assumpsit, Equity & Misc.)					
New cases praeciped for trial	784	537	493	730	237
Dispositions	487	416	934	1133	199
by Non-Jury	133	158	117	32	
Jury verdict	123	87	100	106	
Settlement	204	99	164	152	
Settled before verdict	27	52	43	17	
Stricken	0	3	3	0	
Other "Dispositions"	0	17	507 ^(c)	826 ^(c)	
Transfer to Arbitration	—	4	0	77 ^(d)	
Inventory of Cases	1032	1149	708	228	-480
Trial days	—	204	291	325	
Visiting Judge — trial days	—	30	0	1	
ARBITRATION					
New cases added	298	299	118	138	20
Dispositions	271	178	235	257	22
Inventory	153	274	157	38	-119
JUVENILE					
New cases scheduled	332	275	377	270	-107
Dispositions	329	277	376	268	-108
Inventory	11	9	10	12	2
DOMESTIC RELATIONS					
New cases scheduled	317	203	247	243	-4
Dispositions	316	195	248	246	-2
Inventory	1	9	8	5	-3

^(a) Includes cases dismissed by court and demurrers sustained.

^(b) Includes multiple transcripts, fugitives and inactive cases removed under Pa. R.J.A. 1901.

^(c) Reflects inactive cases removed under Pa. R.J.A. 1901.

^(d) Includes 75 general trespass cases transferred to trespass "motor vehicle".

LYCOMING COUNTY
29th Judicial District

Authorized Judges — 2

Population — 113,296

	1971	1972	1973	1974	Change 1973-74
CRIMINAL CASES					
Defendant Records Received	652	734	725	686	-39
Defendant Records Disposed by Guilty Pleas	490	518	492	637	145
Tried by Jury	395	376	317	336	
Jury Waived	49	67	59	94	
Not Pros	19	27	53	80	
ARD	27	30	9	31	
Other "Dispositions"	—	0	51	60	
Disposition in lieu of trial	68	18	3	29	
Adjustments	—	—	—	7	
Grand Jury Dismissals	—	-69	-65	-64	
Inventory of Cases	—	60	100	37	
Trial days	252	339	407	355	-52
Visiting Judge — trial days	—	145	135	140	
	—	0	47	54	
CIVIL CASES (Trespass, Assumpsit, Equity & Misc.)					
New cases praeciped for trial	174	128	130	139	9
Dispositions	91	96	91	82	-9
by Non-Jury	1	9	5	6	
Jury verdict	14	22	15	22	
Settlement	28	31	58	42	
Settled before verdict	13	8	6	5	
Stricken	35	19	7	7	
Other "Dispositions"	6	7	0	0	
Transfer to Arbitration	—	26	2	9	
Inventory of Cases	182	188	225	273	48
Trial days	—	80	54	79	
Visiting Judge — trial days	—	0	4	22	
ARBITRATION					
New cases added	107	122	106	165	59
Dispositions	89	77	82	129	47
Inventory	83	128	152	188	36
JUVENILE					
New cases scheduled	185	359	308	274	-34
Dispositions	165	211	380 ^(a)	323	-57
Inventory	31	179	107	58	-49
DOMESTIC RELATIONS					
New cases scheduled	423	301	399	387	-12
Dispositions	403	306	395	377	-18
Inventory	33	28	32	42	10

(*) Reflects 150 cases removed after up-dating files.

McKEAN COUNTY
48th Judicial District

Population — 51,915

Authorized Judges — 1

	1971	1972	1973	1974	Change 1973-74
CRIMINAL CASES					
Defendant Records Received	224	231	187	208	21
Defendant Records Disposed by Guilty Pleas	195	210	142	190	48
Tried by Jury	137	139	99	126	
Jury Waived	11	14	7	10	
Not Pros	8	6	1	20	
ARD	39	46	25	17	
Other "Dispositions"	—	0	7	17	
Disposition in lieu of trial	23	5	3	0	
Adjustments	—	—	—	0	
Grand Jury Dismissals	—	-3	-23	-1	
Inventory of Cases	—	13	4	18	
Trial days	26	31	49	48	-1
Visiting Judge — trial days	—	49	51	48	
	—	14	39	24	
CIVIL CASES (Trespass, Assumpsit, Equity & Misc.)					
New cases praeciped for trial	56	25	137 ^(a)	40	-97
Dispositions	31	39	74 ^(a)	39	-35
by Non-Jury	1	0	3	0	
Jury verdict	7	12	13	0	
Settlement	23	21	28	39	
Settled before verdict	0	3	9	0	
Stricken	0	1	0	0	
Other "Dispositions"	1	2	21	0	
Transfer to Arbitration	—	0	1	0	
Inventory of Cases	50	36	98 ^(a)	99	1
Trial days	—	89	53	33	
Visiting Judge — trial days	—	6	44	39	
ARBITRATION					
New cases added	26	29	25	18	-7
Dispositions	16	48	28	18	-10
Inventory	29	10	7	7	0
JUVENILE					
New cases scheduled	58	44	58	51	-7
Dispositions	62	40	58	26	-32
Inventory	0	4	4	29	25
DOMESTIC RELATIONS					
New cases scheduled	143	139	195	206	11
Dispositions	139	133	181	136	-45
Inventory	10	16	30	100	70

(a) Reflects revisions in reporting procedure September 1973.

MERCER COUNTY
35th Judicial District

Population — 127,175

Authorized Judges — 2

	1971	1972	1973	1974	Change 1973-74
CRIMINAL CASES					
Defendant Records Received	584	444	541	565	24
Defendant Records Disposed by Guilty Pleas	424	441	486	459	-27
Tried by Jury	282	244	208	230	
Jury Waived	38	80	78	88	
Nol Pros	4	11	6	7	
ARD	100	77	162	93	
Other "Dispositions"	—	12	11	10	
Disposition in lieu of trial	68	17	21	30	
Adjustments	—	—	—	1	
Grand Jury Dismissals	—	0	-4	0	
Inventory of Cases	—	50	60	77	
Trial days	264	217	208	237	29
Visiting Judge — trial days	—	106	111	152	
	—	2	0	20	
CIVIL CASES (Trespass, Assumpsit, Equity & Misc.)					
New cases praeciped for trial	227	149	115	148	33
Dispositions	149	161	122	125	3
by Non-Jury	2	0	0	4	
Jury verdict	30	27	14	22	
Settlement	114	88	86	51	
Settled before verdict	0	0	2	0	
Stricken	3	0	0	4	
Other "Dispositions"	50	46	20	44	
Transfer to Arbitration	—	4	1	6	
Inventory of Cases	107	91	83	100	17
Trial days	—	69	45	56	
Visiting Judge — trial days	—	1	3	16	
ARBITRATION					
New cases added	49	41	49	56	7
Dispositions	46	39	51	49	-2
Inventory	20	22	20	27	7
JUVENILE					
New cases scheduled	311	358	408	375	-33
Dispositions	311	358	408	370	-38
Inventory	0	0	0	5	5
DOMESTIC RELATIONS					
New cases scheduled	333	307	352	328	-24
Dispositions	342	304	351	330	-21
Inventory	1	4	5	3	-2

MIFFLIN COUNTY
58th Judicial District

Population — 45,268

Authorized Judges — 1

	1971	1972	1973	1974	Change 1973-74
CRIMINAL CASES					
Defendant Records Received	227	231	231	288	57
Defendant Records Disposed by Guilty Pleas	243	186	172	229	57
Tried by Jury	195	164	133	158	
Jury Waived	13	4	6	9	
Nol Pros	0	0	0	21	
ARD	35	11	20	19	
Other "Dispositions"	—	0	6	14	
Disposition in lieu of trial	13	7	7	8	
Adjustments	—	—	—	0	
Grand Jury Dismissals	—	41	-4	4	
Inventory of Cases	—	7	9	12	
Trial days	10	89	135	186	51
Visiting Judge — trial days	—	34	57	95	
	—	2	4	13	
CIVIL CASES (Trespass, Assumpsit, Equity & Misc.)					
New cases praeciped for trial	19	23	26	16	-10
Dispositions	25	15	24	20	-4
by Non-Jury	2	1	0	0	
Jury verdict	1	3	1	5	
Settlement	18	8	10	11	
Settled before verdict	2	1	3	0	
Stricken	0	0	1	3	
Other "Dispositions"	2	2	9	1	
Transfer to Arbitration	0	0	0	0	
Inventory of Cases	7	15	17	13	-4
Trial days	—	5	16	39	
Visiting Judge — trial days	—	3	5	8	
ARBITRATION					
New cases added	4	3	1	6	5
Dispositions	4	5	3	1	-2
Inventory	42	40	38	43	5
JUVENILE					
New cases scheduled	62	52	36	41	5
Dispositions	62	52	27	46	19
Inventory	0	0	9	4	-5
DOMESTIC RELATIONS					
New cases scheduled	353	209	318	382	64
Dispositions	354	182	313	377	64
Inventory	0	27	32	37	5

MONROE-PIKE COUNTY
43rd Judicial District

Population — 57,240

Authorized Judges — 2

	1971	1972	1973	1974	Change 1973-74
CRIMINAL CASES					
Defendant Records Received	354	246	311	346	35
Defendant Records Disposed	271	272	214	308	94
by Guilty Pleas	220	143	118	182	
Tried by Jury	18	20	17	23	
Jury Waived	0	5	5	34	
Nol Pros	33	93	30	23	
ARD	—	1	28	27	
Other "Dispositions"	28	10	16	15	
Disposition in lieu of trial	—	—	—	4	
Adjustments	—	0	-66 ^(a)	-75 ^(b)	
Grand Jury Dismissals	—	16	31	16	
Inventory of Cases	158	116	116	63	-53
Trial days	—	86	140	190	
Visiting Judge — trial days	—	2	0	6	
CIVIL CASES (Trespass, Assumpsit, Equity & Misc.)					
New cases praeciped for trial	131	93	111	89	-22
Dispositions	95	79	141	36	-45
by Non-Jury	0	11	4	18	
Jury verdict	19	9	22	18	
Settlement	46	37	62	22	
Settled before verdict	5	0	0	1	
Stricken	25	1	1	4	
Other "Dispositions"	105	21	52 ^(a)	33 ^(a)	
Transfer to Arbitration	—	0	0	9	
Inventory of Cases	65	79	49	33	-16
Trial days	—	103	141	144	
Visiting Judge — trial days	—	13	18	22	
ARBITRATION					
New cases added	41	39	35	40	5
Dispositions	37	27	54	34	-20
Inventory	14	26	7	13	6
JUVENILE					
New cases scheduled	91	82	85	179	94
Dispositions	118	73	94	140	46
Inventory	2	11	2	41	39
DOMESTIC RELATIONS					
New cases scheduled	230	208	193	246	53
Dispositions	164	209	242	242	0
Inventory	74	73	24	28	4

^(a) Reflects inactive cases removed under Pa. R.J.A. 1901.
^(b) Includes fugitives and 16 dismissals under Pa. R. Crim. P. 1100.

MONTGOMERY COUNTY
38th Judicial District

Population — 623,799

Authorized Judges — 12

	1971	1972	1973	1974	Change 1973-74
CRIMINAL CASES					
Defendant Records Received	3278	3144	3459	3686	227
Defendant Records Disposed	2460	3201	2778	3158	380
by Guilty Pleas	1933	2283	1923	2028	
Tried by Jury	173	230	156	176	
Jury Waived	60	37	36	104	
Nol Pros	294	603	521	513	
ARD	—	7	86	89	
Other "Dispositions"	212	41	56	127	
Disposition in lieu of trial	—	—	—	121	
Adjustments	—	-816 ^(a)	-377 ^(a)	-569 ^(a)	
Grand Jury Dismissals	—	173	204	150	
Inventory of Cases	3076	2030	2130	1939	-191
Trial days	—	830	789	958	
Visiting Judge — trial days	—	0	176	34	
CIVIL CASES (Trespass, Assumpsit, Equity & Misc.)					
New cases praeciped for trial	1327	922	1193	991	-202
Dispositions	477	1116	1006	617	-389
by Non-Jury	45	46	51	47	
Jury verdict	88	228	130	124	
Settlement	272	680	463	377	
Settled before verdict	66	63	92	19	
Stricken	6	99	73	50	
Other "Dispositions"	147	0	197	0	
Transfer to Arbitration	—	203	117	76	
Inventory of Cases	956	559	629	927	298
Trial days	—	576	411	295	
Visiting Judge — trial days	—	1	55	5	
ARBITRATION					
New cases added	1120 ^(b)	1088 ^(b)	1105 ^(b)	1169 ^(b)	64
Dispositions	614	1299	1162	1173	11
Inventory	842	631	574	570	-4
JUVENILE					
New cases scheduled	520	539	681	759	78
Dispositions	521	546	694	754	60
Inventory	41	34	21	26	5
DOMESTIC RELATIONS					
New cases scheduled	2545	2267	2542	2706	164
Dispositions	2358	2373	2394	2747	353
Inventory	405	297	445	404	-41

^(a) Reflects quarterly purge of inactive cases under Pa. R.J.A. 1901.
^(b) Compulsory arbitration limit \$5,000.

NORTHAMPTON COUNTY 3rd Judicial District

Population — 214,368

Authorized Judges — 4

	1971	1972	1973	1974	Change 1973-74
CRIMINAL CASES					
Defendant Records Received	699	782	728	967	239
Defendant Records Disposed	566	673	856	854	-2
by Guilty Pleas	345	319	363	430	
Tried by Jury	93	82	58	99	
Jury Waived	29	38	29	21	
Nol Pros	99	107	129	106	
ARD	—	52	194	132	
Other "Dispositions"	62	75	83	64	
Disposition in lieu of trial	—	—	—	2	
Adjustments	—	0	-107 ^(a)	29	
Grand Jury Dismissals	—	3	15	14	
Inventory of Cases	402	508	258	386	128
Trial days	—	152	80	114	
Visiting Judge — trial days	—	52	28	33	
CIVIL CASES (Trespass, Assumpsit, Equity & Misc.)					
New cases praeciped for trial	385	442	377	436	59
Dispositions	269	376	339	340	1
by Non-Jury	50	33	35	42	
Jury verdict	48	47	50	31	
Settlement	150	223	223	245	
Settled before verdict	15	45	13	9	
Stricken	6	28	15	13	
Other "Dispositions"	45	0	3	0	
Transfer to Arbitration	—	47	58	89	
Inventory of Cases	120	139	119	126	7
Trial days	—	151	140	127	
Visiting Judge — trial days	—	38	59	38	
ARBITRATION					
New cases added	257	235	238	252	14
Dispositions	242	194	212	212	0
Inventory	18	59	85	125	40
JUVENILE					
New cases scheduled	347	402	508	547	39
Dispositions	347	402	508	547	39
Inventory	0	0	0	0	0
DOMESTIC RELATIONS					
New cases scheduled	752	482 ^(a)	497	543	46
Dispositions	776	479	515	532	17
Inventory	31	34	16	27	11

^(a) Reflects correction in reporting procedures.

NORTHUMBERLAND COUNTY 8th Judicial District

Population — 99,190

Authorized Judges — 2

	1971	1972	1973	1974	Change 1973-74
CRIMINAL CASES					
Defendant Records Received	437	585	487	451	36
Defendant Records Disposed	399	270	340	346	6
by Guilty Pleas	327	256	257	222	
Tried by Jury	12	8	11	15	
Jury Waived	0	2	0	1	
Nol Pros	60	2	55	85	
ARD	—	0	14	22	
Other "Dispositions"	32	2	3	1	
Disposition in lieu of trial	—	—	—	0	
Adjustments	—	-81 ^(a)	-108 ^(a)	-94 ^(a)	
Grand Jury Dismissals	—	8	15	12	
Inventory of Cases	84	310	334	333	-1
Trial days	—	91	113	97	
Visiting Judge — trial days	—	0	0	0	
CIVIL CASES (Trespass, Assumpsit, Equity & Misc.)					
New cases praeciped for trial	27	26	35	45	10
Dispositions	30	20	35	31	-4
by Non-Jury	0	0	1	0	
Jury verdict	5	0	4	4	
Settlement	3	16	29	27	
Settled before verdict	0	2	0	0	
Stricken	22	0	1	0	
Other "Dispositions"	0	2	0	0	
Transfer to Arbitration	—	0	4	3	
Inventory of Cases	28	34	30	41	11
Trial days	—	15	38	37	
Visiting Judge — trial days	—	0	0	0	
ARBITRATION					
New cases added	24	35	28	46	18
Dispositions	23	32	32	45	13
Inventory	13	16	12	13	1
JUVENILE					
New cases scheduled	81	113	124	173	49
Dispositions	59	151	120	149	29
Inventory	46	8	12	36	24
DOMESTIC RELATIONS					
New cases scheduled	381	223	200	210	10
Dispositions	330	293	192	219	27
Inventory	75	5	13	4	-9

^(a) Reflects fugitives and inactive cases removed from inventory.

**PHILADELPHIA COUNTY
1st Judicial District**

Population — 1,948,609

Authorized Judges — 81

	1971	1972	1973	1974	Change 1973-74
CRIMINAL CASES					
Defendant Records Received	11724	10809	9945	9003	-942
Defendant Records Disposed	12492	10373	10721	11119	398
by Guilty Pleas	4065	3001	2961	4027	
Tried by Jury	205	294	462	373	
Jury Waived	6037	5288	5697	3638	
Nol Pros	2185	1790	1601	2332	
ARD	MUNICIPAL COURT			724 ^(a)	
Other "Dispositions"	24	0	0	0	
Disposition in lieu of trial	—	—	—	25	
Adjustments	—	240	732	1117 ^(b)	
Grand Jury Dismissals	—	156	137	127	
Inventory of Cases	5058	5578	5397	4271 ^(c)	-1126
Trial days	—	6067	6178	7018	
Visiting Judge — trial days	—	423	290	58	
CIVIL CASES (Trespass, Assumpsit, Equity & Misc.)					
New cases praeciped for trial	5463	5730	4197	4304	107
Dispositions	3816	3978	3731	3788	57
by Non-Jury	478	483	386	296	
Jury verdict	132	320	254	238	
Settlement	2578	2612	2431	2567	
Settled before verdict	268	288	263	292	
Stricken	360	275	397	395	
Other "Dispositions"	—	0	0	0	
Transfer to Arbitration	10655	0	0	0	
Inventory of Cases	5681	7433	7899	8415	516
Trial days	—	3575	2232	2125	
Visiting Judge — trial days	—	802	670	830	
ARBITRATION					
New cases added	19183	12862	11987	10958	-1029
Dispositions	12557	16190	13163	12370	-793
Inventory	10172	6844	5668	4256	-1412
JUVENILE					
New cases scheduled	14503	10814	12476	19201 ^(d)	6725
Dispositions	14554	10785	12502	17495	4993
Inventory	1033	1062	1036	2742	1706
DOMESTIC RELATIONS					
New cases scheduled	13421	11199	12360	12897 ^(e)	537
Dispositions	10793	10909	11380	13815	2435
Inventory	1227	1517	2497	1579	-918

(a) Defendants scheduled for C.P. hearing and placed in A.R.D. program — See also Municipal Court.
 (b) Defendant records reinstated and deferred.
 (c) Includes 828 defendants held for indictment.
 (d) Change in reporting procedure to include delinquents, deprived adults, enforcement cases and reinstated bench warrants.
 (e) Change in reporting procedure for open cases and excludes outgoing reciprocal and procedural petitions not heard by Family Division.

**PHILADELPHIA COUNTY
Municipal Court**

Authorized Judges — 22^(a)

	1971	1972	1973	1974	Change 1973-74
CRIMINAL CASES					
Defendant Records Received	19785	24563	28306	28676	370
Defendant Records Disposed ^(b)	12494	25988	26850	33385	6535
by Guilty Pleas	1329	3881	3246	3621	
Tried by Jury	NA	NA	NA	NA	
Jury Waived ^(c)	8124	17023	15629	8550	
Nol Pros	2570	0	0	9796	
ARD	471	5084	7975	11418	
Other "Dispositions"	—	—	—	—	
Disposition in lieu of trial	NA	NA	NA	NA	
Adjustments ^(d)	—	-483	-718	1687 ^(f)	
Grand Jury Dismissals	NA	NA	NA	NA	
Inventory of Cases	8777	6869	7607	4585	-3022
Trial days	NA	869	736	1133	
Visiting Judge — trial days	NA	1455 ^(e)	1783 ^(e)	1161	

Act No. 45 approved July 14, 1971 extended the jurisdiction of the law-trained judges of the Municipal Court to include all criminal offenses which are punishable by imprisonment of not more than five years, including indictable offenses under the motor-vehicle laws.

- (a) Of the 22 authorized judgeships for the Philadelphia Municipal Court, only eleven judges are presently members of the Bar of the Supreme Court. Only these "law judges" may exercise jurisdiction in the criminal cases listed above. The Trial Division of the Court of Common Pleas also has concurrent jurisdiction over such matters until there are sufficient number of judges who are members of the Municipal Court to handle such matters.
 (b) These criminal cases are all trial cases and do not include preliminary hearings or summary proceedings.
 (c) Under the Municipal Court Jurisdiction Act, there is no right of trial by jury but the defendant has the right of appeal for trial de novo, including the right of trial by jury to the Trial Division of the Court of Common Pleas.
 (d) Includes fugitives, mental health transfers to inactive and adjustments.
 (e) Common Pleas Judges assigned to Municipal Court.
 (f) Includes deferred indictments activated and transfers of active indictments to inactive.

POTTER COUNTY
55th Judicial District

Population — 16,395

Authorized Judges — 1

	1971	1972	1973	1974	Change 1973-74
CRIMINAL CASES					
Defendant Records Received	76	86	78	60	-18
Defendant Records Disposed	75	70	78	63	-15
by Guilty Pleas	50	38	32	37	
Tried by Jury	10	14	14	3	
Jury Waived	0	1	1	4	
Nol Pros	15	14	23	8	
ARD	—	0	2	10	
Other "Dispositions"	3	3	6	1	
Disposition in lieu of trial	—	—	—	0	
Adjustments	—	0	-4	-3	
Grand Jury Dismissals	—	7	1	0	
Inventory of Cases	29	38	33	27	-6
Trial days	—	27	28	15	
Visiting Judge — trial days	—	16	7	10	
CIVIL CASES (Trespass, Assumpsit, Equity & Misc.)					
New cases praeciped for trial	24	29	26	26	0
Dispositions	18	21	36	22	-14
by Non-Jury	1	0	4	1	
Jury verdict	8	2	4	6	
Settlement	6	16	12	8	
Settled before verdict	3	2	3	2	
Stricken	1	1	0	2	
Other "Dispositions"	5	0	13 ^(a)	3 ^(a)	
Transfer to Arbitration	—	0	1	2	
Inventory of Cases	11	19	8	10	2
Trial days	—	18	13	15	
Visiting Judge — trial days	—	2	6	6	
ARBITRATION					
New cases added	11	5	9	9	0
Dispositions	12	7	8	8	0
Inventory	5	3	4	5	1
JUVENILE					
New cases scheduled	16	46	22	18	-4
Dispositions	19	25	46	18	-28
Inventory	5	26	2	2	0
DOMESTIC RELATIONS					
New cases scheduled	49	57	61	98	37
Dispositions	44	31	92	98	6
Inventory	9	35	4	4	0

^(a) Reflects cases removed under Pa. R.J.A. 1901.

SCHUYLKILL COUNTY
21st Judicial District

Population — 160,089

Authorized Judges — 5

	1971	1972	1973	1974	Change 1973-74
CRIMINAL CASES					
Defendant Records Received	585	585	575	812	237
Defendant Records Disposed	402	513	503	735	232
by Guilty Pleas	270	308	260	402	
Tried by Jury	29	34	37	44	
Jury Waived	3	26	14	5	
Nol Pros	100	107	95	112	
ARD	—	34	94	171	
Other "Dispositions"	36	4	3	1	
Disposition in lieu of trial	—	—	—	0	
Adjustments	—	0	-142 ^(a)	3	
Grand Jury Dismissals	—	34	25	28	
Inventory of Cases	460	498	403	455	52
Trial days	—	139	196	247	
Visiting Judge — trial days	—	0	0	0	
CIVIL CASES (Trespass, Assumpsit, Equity & Misc.)					
New cases praeciped for trial	125	181	196	127	-69
Dispositions	121	325	193	124	-69
by Non-Jury	36	0	7	0	
Jury verdict	20	66	39	64	
Settlement	17	23	18	7	
Settled before verdict	47	15	6	3	
Stricken	1	220	118	39	
Other "Dispositions"	1	1	5	11	
Transfer to Arbitration	—	7	3	2	
Inventory of Cases	151	0	0	1	
Trial days	—	61	44	99	
Visiting Judge — trial days	—	7	10	40	
ARBITRATION					
New cases added	56	81	66	65	-1
Dispositions	56	92	106	87	-19
Inventory	75	64	24	2	-22
JUVENILE					
New cases scheduled	234	276	213	139	-74
Dispositions	194	383	260	133	-127
Inventory	169	62	15	21	6
DOMESTIC RELATIONS					
New cases scheduled	235	271	317	260	-57
Dispositions	231	276	321	262	-59
Inventory	11	6	2	0	-2

^(a) Reflects cases removed under Pa. R.J.A. 1901.

SNYDER-UNION COUNTY 17th Judicial District

Population — 57,872

Authorized Judges — 1

	1971	1972	1973	1974	Change 1973-74
CRIMINAL CASES					
Defendant Records Received	216	237	205	227	22
Defendant Records Disposed	153	183	179	254	75
by Guilty Pleas	104	111	86	82	
Tried by Jury	17	9	7	15	
Jury Waived	1	2	3	9	
Nol Pros	31	40	58	79	
ARD	—	11	14	61	
Other "Dispositions"	13	10	11	7	
Disposition in lieu of trial	—	—	—	1	
Adjustments	—	-4	-1	-22	
Grand Jury Dismissals	—	19	14	12	
Inventory of Cases	158	189	200	139	-61
Trial days	—	47	109	66	
Visiting Judge — trial days	—	2	27	28	
CIVIL CASES (Trespass, Assumpsit, Equity & Misc.)					
New cases praeciped for trial	26	49	51	59	8
Dispositions	17	28	56	40	-16
by Non-Jury	0	3	3	3	
Jury verdict	0	3	0	0	
Settlement	9	17	36	20	
Settled before verdict	8	0	2	0	
Stricken	0	0	4	6	
Other "Dispositions"	0	5	11	11	
Transfer to Arbitration	—	5	3	1	
Inventory of Cases	54	70	62	80	18
Trial days	—	20	4	7	
Visiting Judge — trial days	—	0	4	10	
ARBITRATION					
New cases added	18	15	10	28	18
Dispositions	18	11	7	28	21
Inventory	11	15	18	18	0
JUVENILE					
New cases scheduled	33	38	57	33	-24
Dispositions	30	39	50	53	3
Inventory	29	28	35	15	-20
DOMESTIC RELATIONS					
New cases scheduled	105	94	70	70	0
Dispositions	80	100	69	81	12
Inventory	43	37	38	27	-11

SOMERSET COUNTY 16th Judicial District

Population — 76,037

Authorized Judges — 2

	1971	1972	1973	1974	Change 1973-74
CRIMINAL CASES					
Defendant Records Received	409	374	348	343	-5
Defendant Records Disposed	425	319	235	336	101
by Guilty Pleas	279	247	148	132	
Tried by Jury	39	23	24	12	
Jury Waived	6	8	2	13	
Nol Pros	101	22	49	45	
ARD	—	16	0	115	
Other "Dispositions"	43	3	12	11	
Disposition in lieu of trial	—	—	—	8	
Adjustments	—	-18	-42 ^(a)	-39	
Grand Jury Dismissals	—	12	16	12	
Inventory of Cases	103	128	183	139	-44
Trial days	—	43	72	76	
Visiting Judge — trial days	—	0	0	0	
CIVIL CASES (Trespass, Assumpsit, Equity & Misc.)					
New cases praeciped for trial	51	109	106	118	12
Dispositions	36	47	123	106	-17
by Non-Jury	0	2	2	10	
Jury verdict	1	3	3	10	
Settlement	35	35	30	40	
Settled before verdict	0	0	2	4	
Stricken	0	1	2	4	
Other "Dispositions"	1	6	84 ^(a)	38	
Transfer to Arbitration	—	2	5	10	
Inventory of Cases	45	105	83	85	2
Trial days	—	19	27	40	
Visiting Judge — trial days	—	1	0	0	
ARBITRATION					
New cases added	70	80	95	63	-32
Dispositions	35	70	64	130	66
Inventory	53	63	94	27	-67
JUVENILE					
New cases scheduled	364	365	197	88 ^(b)	-109
Dispositions	346	373	163	139	-24
Inventory	25	17	51	0	-51
DOMESTIC RELATIONS					
New cases scheduled	201	170	71	12	-59
Dispositions	201	160	101	12	-89
Inventory	20	30	0	0	0

^(a) Reflects correction in reporting procedures.

^(b) Reflects change in reporting procedure, 71 cases removed — no open cases scheduled for court and inventory reduced to zero.

SULLIVAN-WYOMING COUNTY
44th Judicial District

Population — 25,043

Authorized Judges — 1

	1971	1972	1973	1974	Change 1973-74
CRIMINAL CASES					
Defendant Records Received	164	161	137	195	58
Defendant Records Disposed	123	164	124	151	27
by Guilty Pleas	75	68	71	91	
Tried by Jury	14	26	11	12	
Jury Waived	18	13	14	15	
Nol Pros	16	41	12	18	
ARD	—	4	9	10	
Other "Dispositions"	8	12	7	4	
Disposition in lieu of trial	—	—	—	1	
Adjustments	—	3	11	-9	
Grand Jury Dismissals	—	10	4	12	
Inventory of Cases	75	65	85	108	23
Trial days	—	67	45	36	
Visiting Judge — trial days	—	0	1	0	
CIVIL CASES (Trespass, Assumpsit, Equity & Misc.)					
New cases praeciped for trial	24	20	26	20	-6
Dispositions	6	28	24	15	-9
by Non-Jury	0	0	0	0	
Jury verdict	0	4	1	0	
Settlement	6	18	5	8	
Settled before verdict	0	0	0	0	
Stricken	0	5	14	6	
Other "Dispositions"	2	1	4	1	
Transfer to Arbitration	—	2	0	2	
Inventory of Cases	21	11	13	16	3
Trial days	—	20	8	7	
Visiting Judge — trial days	—	3	3	0	
ARBITRATION (a)					
New cases added	4	4	2	14	12
Dispositions	4	4	1	11	10
Inventory	0	0	1	4	3
JUVENILE					
New cases scheduled	93	111	57	36	-21
Dispositions	93	109	58	37	-21
Inventory	0	2	1	0	-1
DOMESTIC RELATIONS					
New cases scheduled	53	23	24	59	35
Dispositions	45	29	24	53	29
Inventory	12	6	6	12	6

(a) No arbitration in Sullivan County.

SUSQUEHANNA COUNTY
34th Judicial District

Population — 34,344

Authorized Judges — 1

	1971	1972	1973	1974	Change 1973-74
CRIMINAL CASES					
Defendant Records Received	161	85	96	105	9
Defendant Records Disposed	144	79	89	93	4
by Guilty Pleas	111	63	66	63	
Tried by Jury	23	7	2	9	
Jury Waived	0	0	0	6	
Nol Pros	10	8	17	7	
ARD	—	1	3	5	
Other "Dispositions"	18	0	1	3	
Disposition in lieu of trial	—	—	—	0	
Adjustments	—	0	0	0	
Grand Jury Dismissals	—	8	7	12	
Inventory of Cases	2	0	0	0	0
Trial days	—	23	19	29	
Visiting Judge — trial days	—	7	0	0	
CIVIL CASES (Trespass, Assumpsit, Equity & Misc.)					
New cases praeciped for trial	53	35	29	32	3
Dispositions	28	34	24	29	5
by Non-Jury	12	0	2	1	
Jury verdict	2	6	6	6	
Settlement	5	22	16	21	
Settled before verdict	0	0	0	1	
Stricken	9	0	0	0	
Other "Dispositions"	6	6	0	0	
Transfer to Arbitration	—	0	0	0	
Inventory of Cases	24	25	30	33	3
Trial days	—	32	30	30	
Visiting Judge — trial days	—	6	0	0	
ARBITRATION					
New cases added	— NONE —				
Dispositions	— NONE —				
Inventory	— NONE —				
JUVENILE					
New cases scheduled	53	81	53	59	6
Dispositions	41	94	34	80 (a)	46
Inventory	19	6	25	4	-21
DOMESTIC RELATIONS					
New cases scheduled	73	62	74	117	43
Dispositions	64	74	62	99 (a)	37
Inventory	16	4	16	34	18

(a) Reflects inactive cases removed under Pa. R.J.A. 1901.

TIOGA COUNTY
4th Judicial District

Population — 36,691

Authorized Judges — 1

	1971	1972	1973	1974	Change 1973-74
CRIMINAL CASES					
Defendant Records Received	231	205	276	270	-6
Defendant Records Disposed	173	214	213	235	22
by Guilty Pleas	103	114	74	111	
Tried by Jury	4	5	5	10	
Jury Waived	17	26	17	13	
Not Pros	49	38	72	33	
ARD	—	8	41	46	
Other "Dispositions"	26	23	4	10	
Disposition in lieu of trial	—	—	—	12	
Adjustments	—	10	-6	-1	
Grand Jury Dismissals	—	3	13	9	
Inventory of Cases	63	61	105	130	25
Trial days	—	35	49	61	
Visiting Judge — trial days	—	27	15	15	
CIVIL CASES (Trespass, Assumpsit, Equity & Misc.)					
New cases praeciped for trial	18	34	16	13	-3
Dispositions	10	34	11	14	3
by Non-Jury	0	0	0	1	
Jury verdict	3	6	4	1	
Settlement	6	22	1	12	
Settled before verdict	0	0	2	0	
Stricken	0	0	0	0	
Other "Dispositions"	9	6	4	0	
Transfer to Arbitration	—	0	1	0	
Inventory of Cases	5	5	9	8	-1
Tria, days	—	18	33	34	
Visiting Judge — trial days	—	9	23	7	
ARBITRATION					
New cases added	21	16	9	14	5
Dispositions	20	19	9	14	5
Inventory	3	0	0	0	0
JUVENILE					
New cases scheduled	76	72	126	134	8
Dispositions	81	61	126	126	0
Inventory	14	25	25	33	8
DOMESTIC RELATIONS					
New cases scheduled	182	229	218	281	63
Dispositions	154	259	246	277	31
Inventory	98	68	40	44	4

VENANGO COUNTY
28th Judicial District

Population — 62,353

Authorized Judges — 1

	1971	1972	1973	1974	Change 1973-74
CRIMINAL CASES					
Defendant Records Received	286	235	246	256	10
Defendant Records Disposed	165	139	307	307	0
by Guilty Pleas	104	48	46	37	
Tried by Jury	5	9	12	21	
Jury Waived	4	6	15	7	
Not Pros	52	61	167	101	
ARD	—	13	66	131	
Other "Dispositions"	22	2	1	8	
Disposition in lieu of trial	—	—	—	2	
Adjustments	—	9	-2	-45 ^(a)	
Grand Jury Dismissals	—	15	12	5	
Inventory of Cases	365	455	380	279	-101
Trial days	—	26	51	92	
Visiting Judge — trial days	—	0	1	0	
CIVIL CASES (Trespass, Assumpsit, Equity & Misc.)					
New cases praeciped for trial	32	16	45	37	-8
Dispositions	34	17	29	36	7
by Non-Jury	4	1	4	4	
Jury verdict	11	2	10	5	
Settlement	16	0	2	1	
Settled before verdict	0	0	0	0	
Stricken	3	0	0	2	
Other "Dispositions"	7	14	13	24	
Transfer to Arbitration	—	0	0	3	
Inventory of Cases	16	15	31	29	-2
Trial days	—	21	42	28	
Visiting Judge — trial days	—	4	0	1	
ARBITRATION					
New cases added	17	9	21	29	8
Dispositions	8	14	16	26	10
Inventory	15	10	15	18	3
JUVENILE					
New cases scheduled	81	39	94	52	-42
Dispositions	82	11	61	114 ^(b)	53
Inventory	1	29	62	0	-62
DOMESTIC RELATIONS					
New cases scheduled	188	240	270	312	42
Dispositions	182	184	235	398 ^(b)	163
Inventory	75	131	166	80	-86

^(a) Reflects inactive cases removed under Pa. R.J.A. 1901.

^(b) Reflects changes in reporting procedures.

WASHINGTON COUNTY 27th Judicial District

Population — 210,876

Authorized Judges — 5

	1971	1972	1973	1974	Change 1973-74
CRIMINAL CASES					
Defendant Records Received	1163	1078	1047	938	-109
Defendant Records Disposed	730	818	738	934	196
by Guilty Pleas	531	653	551	630	
Tried by Jury	28	26	22	19	
Jury Waived	8	19	23	45	
Nol Pros.	163	93	109	131	
ARD	—	1	20	105	
Other "Dispositions"	188	26	13	4	
Disposition in lieu of trial	—	—	—	0	
Adjustments	—	-125 ^(a)	-111 ^(a)	-74 ^(a)	
Grand Jury Dismissals	—	95	135	115	
Inventory of Cases	635	675	738	553	-185
Trial days	—	220	146	104	
Visiting Judge — trial days	—	0	12	0	
CIVIL CASES (Trespass, Assumpsit, Equity & Misc.)					
New cases praeciped for trial	406	232	147	210	63
Dispositions	299	387	178	220	42
by Non-Jury	33	40	28	69	
Jury verdict	5	68	12	22	
Settlement	207	127	118	111	
Settled before verdict	2	8	8	18	
Stricken	52	4	7	0	
Other "Dispositions"	75	140	5	0	
Transfer to Arbitration	—	15	5	4	
Inventory of Cases	303	133	97	83	-14
Trial days	—	147	57	39	
Visiting Judge — trial days	—	0	5	0	
ARBITRATION					
New cases added	165	192	224	188	-36
Dispositions	59	158	337	221	-116
Inventory	155	189	76	43	-33
JUVENILE					
New cases scheduled	347	127	168	407	239
Dispositions	342	96	176	424	248
Inventory	5	36	28	11	-17
DOMESTIC RELATIONS					
New cases scheduled	651	277	266	180	-86
Dispositions	686	264	235	169	-66
Inventory	32	45	76	87	-11

^(a) Reflects fugitives, inactive cases and multiple indictment adjustments.

WAYNE COUNTY 22nd Judicial District

Population — 29,581

Authorized Judges — 1

	1971	1972	1973	1974	Change 1973-74
CRIMINAL CASES					
Defendant Records Received	124	159	170	148	-22
Defendant Records Disposed	134	133	159	116	-43
by Guilty Pleas	103	100	71	94	
Tried by Jury	10	2	1	3	
Jury Waived	8	0	0	1	
Nol Pros	13	22	43	14	
ARD	—	0	0	0	
Other "Dispositions"	14	9	44	4	
Disposition in lieu of trial	—	—	—	0	
Adjustments	—	0	0	-10	
Grand Jury Dismissals	—	4	19	8	
Inventory of Cases	55	77	69	83	14
Trial days	—	8	2	21	
Visiting Judge — trial days	—	0	0	4	
CIVIL CASES (Trespass, Assumpsit, Equity & Misc.)					
New cases praeciped for trial	38	50	48	39	-9
Dispositions	28	41	40	32	-8
by Non-Jury	0	2	3	1	
Jury verdict	5	15	14	11	
Settlement	19	2	2	7	
Settled before verdict	2	5	1	0	
Stricken	2	14	8	10	
Other "Dispositions"	9	3	12	3	
Transfer to Arbitration	—	0	0	0	
Inventory of Cases	48	57	65	72	7
Trial days	—	33	27	12	
Visiting Judge — trial days	—	0	1	2	
ARBITRATION					
New cases added	1	0	2	0	-2
Dispositions	1	0	3	1	-2
Inventory	10	10	9	8	-1
JUVENILE					
New cases scheduled	46	84	72	100	28
Dispositions	48	80	64	69	5
Inventory	1	5	13	44	31
DOMESTIC RELATIONS					
New cases scheduled	78	82	77	91	14
Dispositions	55	96	81	96	15
Inventory	40	26	52	17	-5

WESTMORELAND COUNTY
10th Judicial District

Population — 376,935

Authorized Judges — 6

	1971	1972	1973	1974	Change 1973-74
CRIMINAL CASES					
Defendant Records Received	1509	1488	1325	1562	237
Defendant Records Disposed	1169	1281	1066	1072	6
by Guilty Pleas	631	617	431	427	
Tried by Jury	47	109	44	44	
Jury Waived	174	102	91	62	
Nol Pros	317	316	232	170	
ARD	—	82	208	267	
Other "Dispositions"	117 ^(a)	55 ^(a)	60 ^(a)	102 ^(a)	
Disposition in lieu of trial	—	—	—	0	
Adjustments	—	-357 ^(b)	-73 ^(b)	-328 ^(b)	
Grand Jury Dismissals	—	86	164	87	
Inventory of Cases	713	477	499	574	75
Trial days	—	241	191	149	
Visiting Judge — trial days	—	0	4	0	
CIVIL CASES (Trespass, Assumpsit, Equity & Misc.)					
New cases praeciped for trial	552	869	650	566	-84
Dispositions	566	639	661	665	4
by Non-Jury	22	36	46	33	
Jury verdict	68	60	68	63	
Settlement	404	483	480	427	
Settled before verdict	68	43	67	130	
Stricken	4	0	0	0	
Other "Dispositions"	33	17	0	12	
Transfer to Arbitration	—	39	6	28	
Inventory of Cases	113	304	287	160	-127
Trial days	—	248	200	278	
Visiting Judge — trial days	—	0	8	0	
ARBITRATION					
New cases added	298	298	537 ^(a)	369	-168
Dispositions	212	382	615	342	-273
Inventory	179	95	17	44	27
JUVENILE					
New cases scheduled	134	290	285	337	52
Dispositions	110	253	335	325	-10
Inventory	28	65	15	27	12
DOMESTIC RELATIONS					
New cases scheduled	1418 ^(c)	362	666	396	-270
Dispositions	1435 ^(c)	353	574	431	-143
Inventory	28	37	129	94	-35

^(a) Includes cases dismissed by court and quashed.

^(b) Includes multiple transcript adjustments, fugitives and inactive cases removed.

^(c) Reflects incorrect reporting procedures.

YORK COUNTY
19th Judicial District

Population — 272,603

Authorized Judges — 5

	1971	1972	1973	1974	Change 1973-74
CRIMINAL CASES					
Defendant Records Received	1584	1587	1552	1709	157
Defendant Records Disposed	1356	1310	1273	1328	55
by Guilty Pleas	979	915	842	920	
Tried by Jury	97	107	140	145	
Jury Waived	18	26	29	46	
Nol Pros	262	219	217	152	
ARD	—	0	1	14	
Other "Dispositions"	223	43	44	51	
Disposition in lieu of trial	—	—	—	0	
Adjustments	—	-271 ^(a)	-346 ^(a)	-161 ^(a)	
Grand Jury Dismissals	—	187	207	76	
Inventory of Cases	971	790	516	660	144
Trial days	—	247	332	338	
Visiting Judge — trial days	—	10	5	3	
CIVIL CASES (Trespass, Assumpsit, Equity & Misc.)					
New cases praeciped for trial	226	184	244 ^(b)	294 ^(b)	50
Dispositions	136	162	195	93	-102
by Non-Jury	0	8	8	3	
Jury verdict	52	14	12	13	
Settlement	52	122	136	54	
Settled before verdict	0	12	15	13	
Stricken	32	0	0	0	
Other "Dispositions"	11	6	24	10	
Transfer to Arbitration	—	0	1	1	
Inventory of Cases	183	205	253	453	200
Trial days	—	152	386	337	
Visiting Judge — trial days	—	13	0	1	
ARBITRATION					
New cases added	254	156	227	274	47
Dispositions	205	52	101	2	-99
Inventory	85	189	315	587	272
JUVENILE					
New cases scheduled	865	315	194	237	43
Dispositions	856	433	194	237	43
Inventory	18	0	0	0	0
DOMESTIC RELATIONS					
New cases scheduled	2066	1372	1569	1675	106
Dispositions	2042	1290	1581	1676	95
Inventory	59	23	11	10	-1

^(a) Reflects multiple indictment adjustments and removal of inactive cases.

^(b) Reflects correction in reporting procedure.

GENERAL NOTE: The reported dispositions of criminal, civil and arbitration cases do not conform to the reporting procedures established by the Administrative Office and therefore uncertainty exists as to the compatibility of the information submitted.

JUDGES OF COURTS OF RECORD IN PENNSYLVANIA
AS OF FEBRUARY 1975

SUPREME COURT

Chief Justice BENJAMIN R. JONES, Wilkes-Barre
Justice MICHAEL J. EAGEN, Scranton
Justice HENRY X. O'BRIEN, Pittsburgh
Justice SAMUEL J. ROBERTS, Erie
Justice THOMAS W. POMEROY, JR., Pittsburgh
Justice ROBERT N.C. NIX, JR., Philadelphia
Justice LOUIS L. MANDERINO, Monessen

SUPERIOR COURT

President Judge G. HAROLD WATKINS, Ashland
Judge ROBERT LEE JACOBS, Carlisle
Judge J. SYDNEY HOFFMAN, Philadelphia
Judge WILLIAM F. CERCONE, Pittsburgh
Judge GWILYM A. PRICE, JR., Pittsburgh
Judge ROBERT VAN der VOORT, Pittsburgh
Judge EDMUND B. SPAETH, JR., Philadelphia

COMMONWEALTH COURT

President Judge JAMES S. BOWMAN, Harrisburg
Judge JAMES C. CRUMLISH, JR., Philadelphia
Judge HARRY A. KRAMER, Pittsburgh
Judge ROY WILKINSON, JR., Bellefonte
Judge GLENN E. MENCER, Smethport
Judge THEODORE O. ROGERS, West Chester
Judge GENEVIEVE BLATT, Harrisburg

COURTS OF COMMON PLEAS

1st Judicial District — City of Philadelphia
D. Donald Jamieson — President Judge

TRIAL DIVISION

Ethan Allen Doty — Administrative Judge

Leo Weinrott
Juanita Kidd Stout
John J. McDevitt, III
Stanley M. Greenberg
James T. McDermott
Edward J. Bradley
Theodore B. Smith, Jr.
Jay H. Eiseman
James R. Cavanaugh
G. Fred DiBona
Ned L. Hirsh
John A. Geisz
Paul M. Chalfin
Thomas N. Shiomos
Matthew W. Bullock, Jr.
Jacob Kalish
Robert W. Williams, Jr.

Charles P. Mirarchi, Jr.
Levy Anderson
George J. Ivins
Alexander F. Barbieri
Merna B. Marshall
Alex Bonavita
Edwin S. Malmed
Robert A. Latrone
Lois G. Forer
Marvin R. Halbert
Curtis C. Carson, Jr.
Eugene Gelfand
Francis A. Biunno
Samuel Smith
Lisa A. Richette
David N. Savitt
Charles A. Lord

Norman A. Jenkins
Paul Ribner
Edward Rosenwald
Edward J. Blake
Angelo A. Guarino
Albert F. Sabo
Stanley L. Kubacki
Calvin T. Wilson
Armand Della Porta
Julian F. King
William Porter
Harry A. Takiff
Paul J. Cody
Lawrence Prattis
Berel Caesar
Evelyn M. Trommer
Charles L. Durham

ORPHANS' COURT DIVISION

Charles Klein — Administrative Judge

Theodore S. Gutowicz
Joseph C. Bruno

Edmund S. Pawelec

Judith J. Jamison
Paul Silverstein

FAMILY COURT DIVISION

Frank J. Montemuro, Jr. — Administrative Judge

James L. Stern
Jerome A. O'Neill
Gregory G. Lagakos
Charles Wright
John R. Meade
Samuel H. Rosenberg

Vito F. Canuso
William A. Dwyer, Jr.
Herbert R. Cain, Jr.
Nicholas A. Cipriani
Joseph T. Murphy
Paul A. Tranchitella
Edward B. Rosenberg

Jerome A. Zaleski
William J. Lederer
Harvey N. Schmidt
Paul A. Dandridge
Doris M. Harris
Vito N. Pisciotta

MUNICIPAL COURT

*Joseph R. Glancey — President Judge

*Michael J. Conroy
*Charles J. Margiotti, Jr.
*J. Earl Simmons, Jr.
*Maxwell L. Ominsky
*Joseph Patrick McCabe
*Lynwood F. Blount

*Edward G. Mekel
*Francis P. Cosgrove
*Samuel M. Lehrer
*Levan Gordon
William D. Markert
Edward S. Cox
Joseph A. Murphy

Edward T. Quinn
George J. Woods
Ralph M. Dennis
Thomas Marotta
Harry Melton
John J. Poserina
Matthew Zagorski

*Judges Learned In The Law

2nd Judicial District — Lancaster County

William G. Johnstone, Jr., P.J. Wilson Bucher
W. Hensel Brown Anthony R. Appel — Orphans' Court Division

3rd Judicial District — Northampton County

Clinton Budd Palmer, P.J. Richard D. Grifo
Alfred T. Williams, Jr. Michael V. Franciosa

4th Judicial District — Tioga County

Robert M. Kemp, P.J.

5th Judicial District — Allegheny County

Henry Ellenbogen — President Judge

CIVIL DIVISION

John J. McLean, Jr. — Administrative Judge

Homer S. Brown	Silvestri Silvestri	I. Martin Wekselman
Ralph H. Smith, Jr.	Robert A. Doyle	Francis A. Barry
Frederic G. Weir	Marion K. Finkelhor	George H. Ross
John P. Hester	Michael J. O'Malley	S. Louis Farino
J. Warren Watson	John P. Flaherty, Jr.	

CRIMINAL DIVISION

Samuel Strauss — Administrative Judge

Joseph H. Ridge	John W. O'Brien	Zoran Popovich
Albert A. Fiok	Maurice Louik	Livingstone M. Johnson
Arthur Wessel, Jr.	Thomas A. Harper	Nathan Schwartz
Henry R. Smith, Jr.	Donald E. Ziegler	Robert E. Dauer
	James F. Clarke	

FAMILY DIVISION

John G. Brosky — Administrative Judge

Maurice B. Cohill, Jr.	Rolf Larsen	Louis J. Sparvero
Patrick R. Tamilia	Eunice Ross	James R. McGregor

ORPHANS' COURT DIVISION

J. Frank McKenna, Jr. — Administrative Judge
Paul R. Zavarella

6th Judicial District — Erie County

Edward H. Carney, P.J. Fred P. Anthony
Lindley R. McClelland William E. Pfadt

James B. Dwyer — Orphans' Court Division

7th Judicial District — Bucks County

Lawrence A. Monroe, P.J.	Isaac S. Garb	Arthur B. Walsh, Jr.
Paul R. Beckert	Edmund V. Ludwig	William Hart Rufe, III
John Justus Bodley	Robert M. Mountenay	Edwin H. Satterthwaite, — Orphans' Court Division

8th Judicial District — Northumberland County

Michael Kivko, P.J. Frank S. Moser

9th Judicial District — Cumberland County

Dale F. Shughart, P.J. Clinton R. Weidner

10th Judicial District — Westmoreland County

David H. Weiss, P.J.	Richard E. McCormick	Gilbert M. Mihalich
L. Alexander Sculco	Robert H. Rial	Earl S. Keim — Orphans' Court Division

11th Judicial District — Luzerne County

Bernard C. Brominski, P.J.	Robert J. Hourigan	Arthur D. Dalessandro
Richard L. Bigelow	Peter Paul Olszewski	Edward W. Lopatto — Orphans' Court Division
	Bernard J. Podcasy	

12th Judicial District — Dauphin County

Lee F. Swope, P.J.	William W. Caldwell	Richard B. Wickersham
William W. Lipsitt	Warren G. Morgan	Lee F. Swope — Orphans' Court Division
	John C. Dowling	

13th Judicial District — Greene County

Glenn Toothman, P.J.

14th Judicial District — Fayette County

James A. Reilly, P.J. Richard D. Cicchetti
John I. Munson Fred C. Adams

James A. Reilly — Orphans' Court Division

15th Judicial District — Chester County

John M. Kurtz, Jr., P.J.	Thomas A. Pitt, Jr.	Leonard Sugerman
Dominic T. Marrone	John E. Stively, Jr.	John M. Kurtz, Jr. — Orphans' Court Division
	John M. Wajert	

16th Judicial District — Somerset County

Charles H. Coffroth, P.J. Norman A. Shaulis

17th Judicial District — Union and Snyder Counties

A. Thomas Wilson, P.J.

18th Judicial District — Clarion County

Robert B. Filson, P.J.

19th Judicial District — York County

Robert I. Shadle, P.J. Albert G. Blakey, III
James E. Buckingham Joseph E. Erb

Richard E. Kohler, — Orphans' Court Division

20th Judicial District — Huntingdon County

Morris M. Terrizzi, P.J.

21st Judicial District — Schuylkill County

James J. Curran, P.J.
George W. Heffner

John W. Walesky
John E. Lavelle

Guy A. Bowe, Jr. — Orphans' Court Division

22nd Judicial District — Wayne County

James Rutherford, P.J.

23rd Judicial District — Berks County

W. Richard Eshelman, P.J.
James W. Bertolet

Frederick Edenharter
Dawson H. Muth, —
Orphans' Court Division

24th Judicial District — Blair County

Robert C. Haberstroh, P.J.

Paul S. Foreman

25th Judicial District — Clinton County

Carson V. Brown, P.J.

26th Judicial District — Columbia and Montour Counties

Jay W. Myers, P.J.

27th Judicial District — Washington County

Charles G. Sweet, P.J.
Richard DiSalle

Thomas D. Gladden
George K. Hanna

Paul A. Simmons — Orphans' Court Division

28th Judicial District — Venango County

William E. Breene, P.J.

29th Judicial District — Lycoming County

Charles F. Greevy, P.J.

Thomas C. Raup

30th Judicial District — Crawford County

P. Richard Thomas, P.J.

F. Joseph Thomas

31st Judicial District — Lehigh County

Kenneth H. Koch, P.J.
Donald E. Wieand

John E. Backenstoe
Maxwell E. Davison

Martin J. Coyne — Orphans' Court Division

32nd Judicial District — Delaware County

John V. Diggins, P.J.
Francis J. Catania
Louis A. Bloom
Edwin E. Lippincott, II

Joseph W. deFuria
Howard F. Reed, Jr.
Robert A. Wright
Domenic D. Jerome

Donald J. Orlowsky
Clement J. McGovern, Jr.
William R. Toal, Jr.
John V. Diggins —
Orphans' Court Division

33rd Judicial District — Armstrong County

Roy A. House, P.J.

34th Judicial District — Susquehanna County

Donald O'Malley, P.J.

35th Judicial District — Mercer County

John Q. Stranahan, P.J.

Albert E. Acker

36th Judicial District — Beaver County

John N. Sawyer, P.J.
J. Quint Salmon

H. Beryl Klein
Robert C. Reed

James E. Rowley — Orphans' Court Division

37th Judicial District — Warren and Forest Counties

Robert L. Wolfe, P.J.

38th Judicial District — Montgomery County

David E. Groshens, P.J.
Robert W. Honeyman
Frederick B. Smillie

William W. Vogel
Richard S. Lowe
A. Benjamin Scirica
Vincent A. Cirillo

Robert W. Tredinnick
Louis D. Stefan
Joseph H. Stanziani

Alfred L. Taxis, Jr., — Orphans' Court Division

39th Judicial District — Franklin and Fulton Counties

George C. Eppinger, P.J.

John W. Keller

40th Judicial District — Indiana County

Edwin M. Clark, P.J.

Earl R. Handler

41st Judicial District — Juniata and Perry Counties

Charles W. Kugler, P.J.

42nd Judicial District — Bradford County

Evan S. Williams, P.J.

43rd Judicial District — Monroe and Pike Counties

Arlington W. Williams, P.J.

James R. Marsh

44th Judicial District — Wyoming and Sullivan Counties

Roy A. Gardner, P.J.

45th Judicial District — Lackawanna County

Otto P. Robinson, P.J.
Richard P. Conaboy

Edwin M. Kosik
James J. Walsh

Daniel L. Penetar — Orphans' Court Division

46th Judicial District — Clearfield County

John K. Reilly, Jr., P.J.

47th Judicial District — Cambria County

Alton A. McDonald, P.J.
H. Clifton McWilliams, Jr.

Joseph F. O'Kicki
Arnold D. Smorto, —
Orphans' Court Division

48th Judicial District — McKean County

William F. Potter, P.J.

49th Judicial District — Centre County

R. Paul Campbell, P.J.

50th Judicial District — Butler County

George P. Kiester, P.J.

John C. Dillon

51st Judicial District — Adams County

John A. MacPhail, P.J.

52nd Judicial District — Lebanon County

G. Thomas Gates, P.J.

53rd Judicial District — Lawrence County

John F. Henderson, P.J.

Howard W. Lyon

54th Judicial District — Jefferson County

Edwin L. Snyder, P.J.

55th Judicial District — Potter County

Walter P. Wells, P.J.

56th Judicial District — Carbon County

Albert H. Heimbach, P.J.

57th Judicial District — Bedford County

(Vacancy)*

58th Judicial District — Mifflin County

R. Lee Ziegler, P.J.

59th Judicial District — Cameron and Elk Counties

Paul B. Greiner, P.J.

CONTINUED

1 OF 2

*E. William Van Horn, Jr., P.J.
as of April 8, 1975

46th Judicial District — Clearfield County

John K. Reilly, Jr., P.J.

47th Judicial District — Cambria County

Alton A. McDonald, P.J.
H. Clifton McWilliams, Jr.

Joseph F. O'Kicki
Arnold D. Smorto, —
Orphans' Court Division

48th Judicial District — McKean County

William F. Potter, P.J.

49th Judicial District — Centre County

R. Paul Campbell, P.J.

50th Judicial District — Butler County

George P. Kiester, P.J.

John C. Dillon

51st Judicial District — Adams County

John A. MacPhail, P.J.

52nd Judicial District — Lebanon County

G. Thomas Gates, P.J.

53rd Judicial District — Lawrence County

John F. Henderson, P.J.

Howard W. Lyon

54th Judicial District — Jefferson County

Edwin L. Snyder, P.J.

55th Judicial District — Potter County

Walter P. Wells, P.J.

56th Judicial District — Carbon County

Albert H. Heimbach, P.J.

57th Judicial District — Bedford County

(Vacancy)*

58th Judicial District — Mifflin County

R. Lee Ziegler, P.J.

59th Judicial District — Cameron and Elk Counties

Paul B. Greiner, P.J.

**JUDGES OF THE
COURTS OF COMMON PLEAS**

	Judicial District	Judicial District	
Acker, Albert E., Mercer	35	DiSalle, Richard, Washington	27
Adams, Fred C., Uniontown	14	Doty, Ethan Allen, Phila.	1
Anderson, Levy, Phila.	1	Dowling, John C., Harrisburg	12
Anthony, Fred P., Erie	6	Doyle, Robert A., Pittsburgh	5
Appel, Anthony R., Lancaster	2	Durham, Charles L., Phila.	1
Backenstoe, John E., Allentown	31	Dwyer, James B., Erie	6
Barbieri, Alexander F., Phila.	1	Dwyer, William A., Jr., Phila.	1
Barry, Francis A., Pittsburgh	5	Edenharter, Frederick, Reading	23
Beckert, Paul R., Doylestown	7	Eiseman, Jay H., Phila.	1
Bertolet, James W., Reading	23	Ellenbogen, Henry, Pittsburgh	5
Bigelow, Richard L., Wilkes-Barre	11	Eppinger, George C., Chambersburg	39
Biunno, Francis A., Phila.	1	Erb, Joseph E., York	19
Blake, Edward J., Phila.	1	Eshelman, W. Richard, Reading	23
Blakey, Albert G., III, York	19	Farino, S. Louis, Pittsburgh	5
Bloom, Louis A., Media	32	Filson, Robert B., Clarion	18
Blount, Lynwood F., Phila.	1	Finkelhor, Marion K., Pittsburgh	5
Bodley, John Justus, Doylestown	7	Fiok, Albert A., Pittsburgh	5
Bonavitacola, Alex, Phila.	1	Flaherty, John P., Jr., Pittsburgh	5
Bowe, Guy A., Jr., Pottsville	21	Foreman, Paul S., Hollidaysburg	24
Bradley, Edward J., Phila.	1	Forer, Lois G., Phila.	1
Breene, William E., Franklin	23	Franciosa, Michael V., Easton	3
Brominski, Bernard C., Wilkes-Barre	11	Garb, Isaac S., Doylestown	7
Brosky, John G., Pittsburgh	5	Gardner, Roy A., Tunkhannock	44
Brown, Carson V., Lock Haven	25	Gates, G. Thomas, Lebanon	52
Brown, Homer S., Pittsburgh	5	Geisz, John A., Phila.	1
Brown W. Hensel, Lancaster	2	Gelfand, Eugene, Phila.	1
Bruno, Joseph C., Phila.	1	Gladden, Thomas D., Washington	27
Bucher, Wilson, Lancaster	2	Glancey, Joseph R., Phila.	1
Buckingham, James E., York	19	Gordon, Levan, Phila.	1
Bullock, Matthew W., Jr., Phila.	1	Greenberg, Stanley M., Phila.	1
Caesar, Berel, Phila.	1	Greevy, Charles F., Williamsport	29
Cain, Herbert R., Jr., Phila.	1	Greiner, Paul B., Ridgway	59
Caldwell, William W., Harrisburg	12	Grifo, Richard D., Easton	3
Campbell, R. Paul, Bellefonte	49	Groshens, David E., Norristown	38
Canuso, Vito F., Phila.	1	Guarino, Angelo A., Phila.	1
Carney, Edward H., Erie	6	Gutowicz, Theodore S., Phila.	1
Carson, Curtis C., Jr., Phila.	1	Haberstroh, Robert C., Hollidaysburg	24
Catania, Francis J., Media	32	Halbert, Marvin R., Phila.	1
Cavanaugh, James R., Phila.	1	Handler, Earl R., Indiana	40
Chalfin, Paul M., Phila.	1	Hanna, George K., Washington	27
Cicchetti, Richard D., Uniontown	14	Harper, Thomas A., Pittsburgh	5
Cipriani, Nicholas A., Phila.	1	Harris, Doris M., Phila.	1
Cirillo, Vincent A., Norristown	38	Heffner, George W., Pottsville	21
Clark, Edwin M., Indiana	40	Heimbach, Albert H., Jim Thorpe	56
Clarke, James F., Pittsburgh	5	Henderson, John F., New Castle	53
Cody, Paul J., Phila.	1	Hester, John P., Pittsburgh	5
Coffroth, Charles H., Somerset	16	Hirsh, Ned L., Phila.	1
Cohill, Maurice B., Jr., Pittsburgh	5	Honeyman, Robert W., Norristown	38
Conaboy, Richard P., Scranton	45	Hourigan, Robert J., Wilkes-Barre	11
Conroy, Michael J., Phila.	1	House, Roy A., Kittanning	33
Cosgrove, Francis P., Phila.	1	Ivins, George J., Phila.	1
Cox, Edward S., Phila.	1	Jamieson, D. Donald, Phila.	1
Coyle, Martin J., Allentown	31	Jamison, Judith J., Phila.	1
Curran, James J., Pottsville	21	Jenkins, Norman A., Phila.	1
Dalessandro, Arthur D., Wilkes-Barre	11	Jerome, Domenic D., Media	32
Dandridge, Paul A., Phila.	1	Johnson, Livingstone M., Pittsburgh	5
Dauer, Robert E., Pittsburgh	5	Johnstone, William G., Jr., Lancaster	2
Davison, Maxwell E., Allentown	31	Kalish, Jacob, Phila.	1
deFuria, Joseph W., Media	32	Keim, Earl S., Greensburg	10
Della Porta, Armand, Phila.	1	Keller, John W., Chambersburg	39
Dennis, Ralph M., Phila.	1	Kemp, Robert M., Wellsboro	4
DiBona, G. Fred, Phila.	1	Kiester, George P., Butler	50
Diggins, John V., Media	32	King, Julian F., Phila.	1
Dillon, John C., Butler	50	Kivko, Michael, Sunbury	8

*E. William Van Horn, Jr., P.J.
as of April 8, 1975

	Judicial District		Judicial District
Klein, Charles, Phila.	1	Palmer, Clinton Budd, Easton	3
Klein, H. Beryl, Beaver	36	Pawelec, Edmund S., Phila.	1
Koch, Kenneth H., Allentown	31	Pfadt, William E., Erie	6
Kohler, Richard E., York	19	Penetar, Daniel L., Scranton	45
Kosik, Edwin M., Scranton	45	Pisciotta, Vito N., Phila.	1
Kubacki, Stanley L., Phila.	1	Pitt, Thomas A., Jr., West Chester	15
Kugler, Charles W., New Bloomfield	41	Podcasy, Bernard J., Wilkes-Barre	11
Kurtz, John M., Jr., West Chester	15	Popovich, Zoran, Pittsburgh	5
Lagakos, Gregory G., Phila.	1	Porter, William, Phila.	1
Latrone, Robert A., Phila.	1	Poserina, John J., Phila.	1
Larsen, Rolf, Pittsburgh	5	Potter, William F., Smethport	48
Lavelle, John E., Pottsville	21	Prattis, Lawrence, Phila.	1
Lederer, William J., Phila.	1	Quinn, Edward T., Phila.	1
Lehrer, Samuel M., Phila.	1	Raup, Thomas C., Williamsport	29
Lippincott, Edwin E., II, Media	32	Reed, Howard F., Jr., Media	32
Lipsitt, William W., Harrisburg	12	Reed, Robert C., Beaver	36
Lopatto, Edward W., Wilkes-Barre	11	Reilly, James A., Uniontown	14
Lord, Charles A., Phila.	1	Reilly, John K., Jr., Clearfield	46
Louik, Maurice, Pittsburgh	5	Rial, Robert H., Greensburg	10
Lowe, Richard S., Norristown	38	Ribner, Paul, Phila.	1
Ludwig, Edmund V., Doylestown	7	Richette, Lisa A., Phila.	1
Lyon, Howard W., New Castle	53	Ridge, Joseph H., Pittsburgh	5
MacPhail, John A., Gettysburg	51	Robinson, Otto P., Scranton	45
Malmed, Edwin S., Phila.	1	Rosenberg, Edward B., Phila.	1
Margiotti, Charles J., Jr., Phila.	1	Rosenberg, Samuel H., Phila.	1
Markert, William D., Phila.	1	Rosenwald, Edward, Phila.	1
Marotta, Thomas, Phila.	1	Ross, Eunice, Pittsburgh	5
Marrone, Dominic T., West Chester	15	Ross, George H., Pittsburgh	5
Marsh, James R., Stroudsburg	43	Rowley, James E., Beaver	36
Marshall, Merna B., Phila.	1	Rufe, William Hart, III, Doylestown	7
McCabe, Joseph Patrick, Phila.	1	Rutherford, James, Honesdale	22
McClelland, Lindley R., Erie	6	Sabo, Albert F., Phila.	1
McCormick, Richard E., Greensburg	10	Salmon, J. Quint, Beaver	36
McDermott, James T., Phila.	1	Satterthwaite, Edwin H., Doylestown	7
McDevitt, John J., III, Phila.	1	Savitt, David N., Phila.	1
McDonald, Alton A., Ebensburg	47	Sawyer, John N., Beaver	36
McGovern, Clement J., Media	32	Schmidt, Harvey N., Phila.	1
McGregor, James R., Pittsburgh	5	Schwartz, Nathan, Pittsburgh	5
McKenna, J. Frank, Jr., Pittsburgh	5	Scirica, A. Benjamin, Norristown	38
McLean, John J., Jr., Pittsburgh	5	Sculco, L. Alexander, Greensburg	10
McWilliams, H. Clifton, Jr., Ebensburg	47	Shadle, Robert I., York	19
Meade, John R., Phila.	1	Shaulis, Norman A., Somerset	16
Mekel, Edward G., Phila.	1	Shiomos, Thomas N., Phila.	1
Melton, Harry, Phila.	1	Shughart, Dale F., Carlisle	9
Mihalich, Gilfert M., Greensburg	10	Silverstein, Paul, Phila.	1
Mirarchi, Charles P., Jr., Phila.	1	Silvestri, Silvestri, Pittsburgh	5
Monroe, Lawrence A., Doylestown	7	Simmons, J. Earl, Jr., Phila.	1
Montemuro, Frank J., Jr., Phila.	1	Simmons, Paul A., Washington	27
Morgan, Warren G., Harrisburg	12	Smillie, Frederick B., Norristown	38
Moser, Frank S., Sunbury	8	Smith, Henry R., Jr., Pittsburgh	5
Mountenay, Robert M., Doylestown	7	Smith, Ralph H., Jr., Pittsburgh	5
Munson, John I., Uniontown	14	Smith, Samuel, Phila.	1
Murphy, Joseph A., Phila.	1	Smith, Theodore B., Jr., Phila.	1
Murphy, Joseph T., Phila.	1	Smorto, Arnold D., Ebensburg	47
Muth, Dawson H., Reading	23	Snyder, Edwin L., Brookville	54
Myers, Jay W., Bloomsburg	26	Sparvero, Louis J., Pittsburgh	5
O'Brien, John W., Pittsburgh	5	Stanziani, Joseph H., Norristown	38
O'Kicki, Joseph F., Ebensburg	47	Stefan, Louis D., Norristown	38
Olszewski, Peter Paul, Wilkes-Barre	11	Stern, James L., Phila.	1
O'Malley, Donald, Montrose	34	Stively, John E., Jr., West Chester	15
O'Malley, Michael J., Pittsburgh	5	Stout, Juanita Kidd, Phila.	1
Ominsky, Maxwell L., Phila.	1	Stranahan, John Q., Mercer	35
O'Neill, Jerome A., Phila.	1	Strauss, Samuel, Pittsburgh	5
Orlowsky, Donald J., Media	32	Sugerman, Leonard, West Chester	15

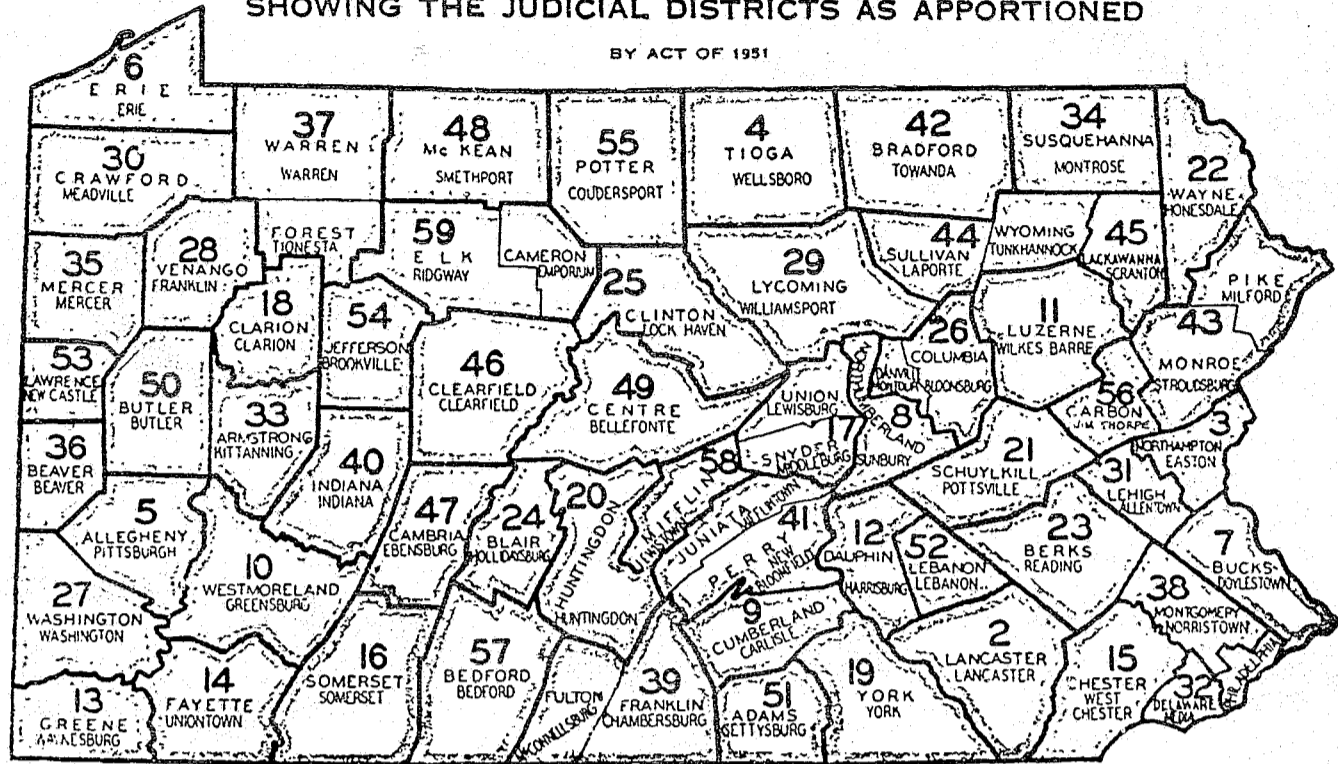
	Judicial District		Judicial District
Sweet, Charles G., Washington	27	Weiss, David H., Greensburg	10
Swope, Lee F., Harrisburg	12	Wells, Walter P., Coudersport	55
Takiff, Harry A., Phila.	1	Wessell, Arthur, Jr., Pittsburgh	5
Tamilia, Patrick R., Pittsburgh	5	Wekselman, I. Martin, Pittsburgh	5
Taxis, Alfred L., Jr., Norristown	38	Wickersham, Richard B., Harrisburg	12
Terrizzi, Morris M., Huntingdon	20	Wieand, Donald E., Allentown	31
Thomas, F. Joseph, Meadville	30	Williams, Alfred T., Jr., 38 W. Market St. Bethlehem	3
Thomas, P. Richard, Meadville	30	Williams, Arlington W., Stroudsburg	43
Toal, William R., Jr., Media	32	Williams, Evan S., Towanda	42
Toothman, Glenn, Waynesburg	13	Williams, Robert W., Jr., Phila.	1
Tranchitella, Paul A., Phila.	1	Wilson, A. Thomas, Lewisburg	17
Tredinnick, Robert W., Norristown	38	Wilson, Calvin T., Phila.	1
Trommer, Evelyn M., Phila.	1	Wolfe, Robert L., Warren	37
Vogel, William W., Norristown	38	Woods, George J., Phila.	1
Wajert, John M., West Chester	15	Wright, Charles, Phila.	1
Walesky, John W., Pottsville	21	Wright, Robert A., Media	32
Walsh, Arthur B., Jr., Doylestown	7	Zagorski, Matthew, Phila.	1
Walsh, James J., Scranton	45	Zaleski, Jerome A., Phila.	1
Watson, J. Warren, Pittsburgh	5	Zavarella, Paul R., Pittsburgh	5
Weidner, Clinton R., Carlisle	9	Ziegler, Donald E., Pittsburgh	5
Weinrott, Leo, Phila.	1	Ziegler, R. Lee, Lewistown	58
Weir, Frederic G., Pittsburgh	5		

JUDICIAL DISTRICTS

	Judicial District		Judicial District
Adams	51	Lackawanna	45
Allegheny	5	Lancaster	2
Armstrong	33	Lawrence	53
Beaver	36	Lebanon	52
Bedford	57	Lehigh	31
Berks	23	Luzerne	11
Blair	24	Lycoming	29
Bradford	42	McKean	48
Bucks	7	Mercer	35
Butler	50	Mifflin	58
Cambria	47	Monroe-Pike	43
Cameron-Elk	59	Montgomery	38
Carbon	56	Montour — See Columbia	
Centre	49	Northampton	3
Chester	15	Northumberland	8
Clarion	18	Perry — See Juniata	
Clearfield	46	Philadelphia	1
Clinton	25	Pike — See Monroe	
Columbia-Montour	26	Potter	55
Crawford	30	Schuylkill	21
Cumberland	9	Snyder-Union	17
Dauphin	12	Somerset	16
Delaware	32	Sullivan-Wyoming	44
Elk — See Cameron		Susquehanna	34
Erie	6	Tioga	4
Fayette	14	Union — See Snyder	
Forest — See Warren		Venango	28
Franklin-Fulton	39	Warren-Forest	37
Fulton — See Franklin		Washington	27
Greene	13	Wayne	22
Huntingdon	20	Westmoreland	10
Indiana	40	Wyoming — See Sullivan	
Jefferson	54	York	19
Juniata-Perry	41		

MAP OF PENNSYLVANIA
SHOWING THE JUDICIAL DISTRICTS AS APPORTIONED

BY ACT OF 1951



94

END