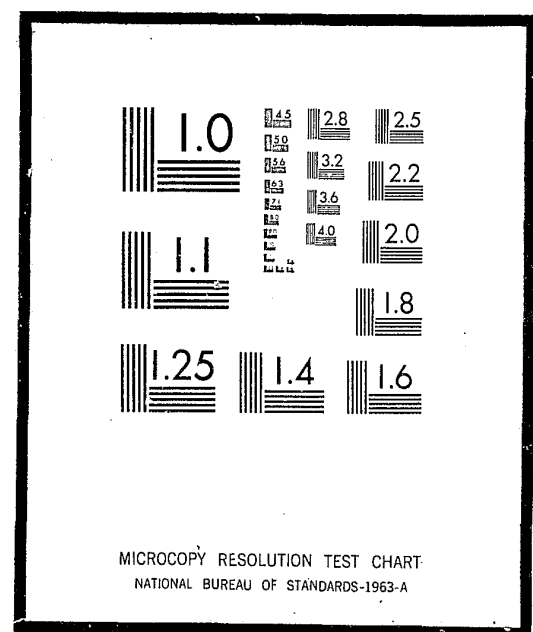


02100

# NCJRS

This microfiche was produced from documents received for inclusion in the NCJRS data base. Since NCJRS cannot exercise control over the physical condition of the documents submitted, the individual frame quality will vary. The resolution chart on this frame may be used to evaluate the document quality.



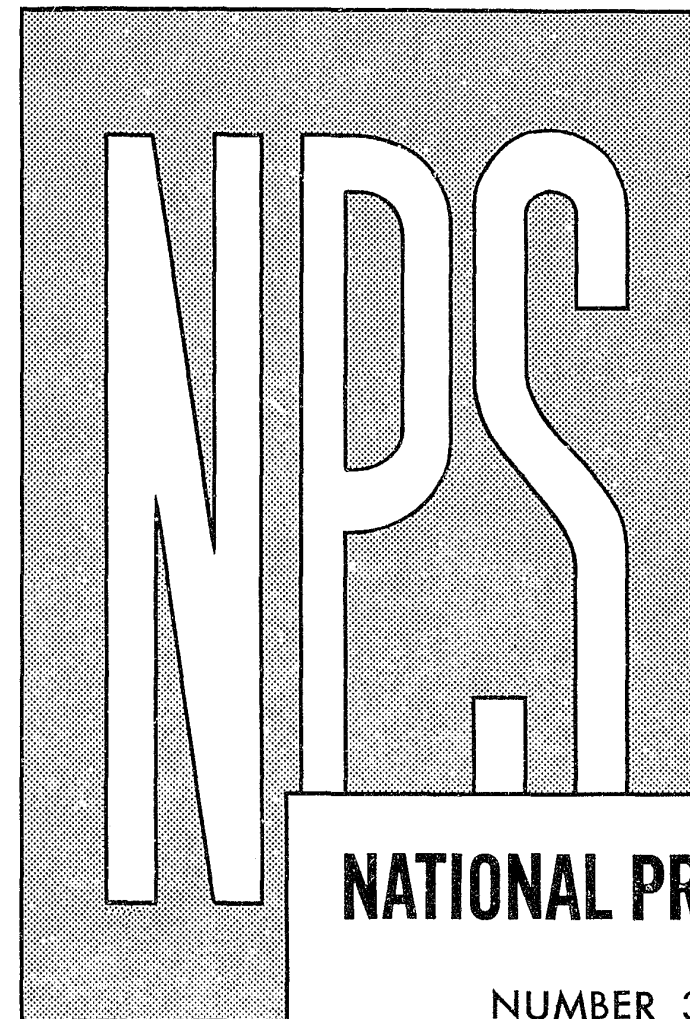
Microfilming procedures used to create this fiche comply with the standards set forth in 41CFR 101-11.504

Points of view or opinions stated in this document are those of the author(s) and do not represent the official position or policies of the U.S. Department of Justice.

U.S. DEPARTMENT OF JUSTICE  
LAW ENFORCEMENT ASSISTANCE ADMINISTRATION  
NATIONAL CRIMINAL JUSTICE REFERENCE SERVICE  
WASHINGTON, D.C. 20531

Date filmed

7/20/76



## NATIONAL PRISONER STATISTICS

NUMBER 30 · AUGUST 1962

**PRISONERS IN STATE AND  
FEDERAL INSTITUTIONS  
1961**

02160

UNITED STATES DEPARTMENT OF JUSTICE  
ROBERT F. KENNEDY, ATTORNEY GENERAL  
BUREAU OF PRISONS  
JAMES V. BENNETT, DIRECTOR  
WASHINGTON 25, D. C.

## PRISONERS IN STATE AND FEDERAL INSTITUTIONS: 1961

### PRISON POPULATION REACHES RECORD HIGH

On December 31, 1961 there were 220,329 prisoners confined in Federal and State institutions for adult offenders in the United States. This was the greatest number of prisoners confined on record, and represented a 3.4 percent increase over the 1960 figure of 213,125. Although this was a record high number of prisoners confined, the ratio of prisoners to the general civilian population (121.7 per 100,000) was not as high as in the years immediately before World War II. In 1939 there were 137.6 prisoners per 100,000 civilian population with the ratio dropping sharply to a low of 101.2 in 1946. These ratios can be compared to the 1961 rate of 121.7 prisoners per 100,000 civilian population. (See table 1)

### PRISONER RATES AMONG STATES

Among the States, Rhode Island, with 262 prisoners confined on December 31, 1961, had the lowest ratio of prisoners, 31.0 per 100,000 civilian population. The District of Columbia led the nation with a high rate of 287.7. This high ratio reflects in large part the District of Columbia's totally urban community which is surrounded by densely populated suburbs. Maryland, with a rate of 183.4, ranked next to the District of Columbia in the proportion of prisoners confined. Maryland's high rate reflects the confinement of a substantial number of prisoners sentenced to less than one year, in the State's largest penal institution, the Maryland House of Correction.

In comparing rates among the States, it is to be noted that these ratios are based on a one-day prison population figure, that is December 31, and that there are wide variations between States in sentencing policies and the types of institutions to which prisoners are committed. For example, although probation is widespread, its use varies. Also, whether prisoners are sentenced to institutions for adult offenders administered by the State or to local jails, workhouses or county penitentiaries varies considerably from State to State.

Thirty-eight States and the District of Columbia showed an increase in prison population in 1961 as compared to 1960. The highest increase, 18.6 percent, occurred in Vermont where the year-end prison population rose from 269 in 1960 to 319 in 1961. Other States with marked increases were Utah, 15.4 percent; Kansas, 13.6 percent; California, 10.5 percent; Iowa, 9.7 percent and Connecticut, 9.5 percent.

All four major geographical regions recorded an increase in year-end prison population. The increases were:

Region	December 31 Population		Percent Increase
	1960	1961	
ALL STATES	189,907	196,633	3.5
Northeast	34,164	35,343	3.5
North Central	50,255	51,406	2.3
South	71,720	73,490	2.5
West	33,768	36,394	7.8

### INCREASE IN COURT COMMITMENTS

One factor which contributed to the rise in prison population was the marked increase in court commitments in 1961. In 1961 there were 80,073 offenders committed to State institutions, a 6.8 percent increase over the 74,952 commitments in 1960. Seven States: Florida, Georgia, Maryland, Michigan, Ohio, Pennsylvania, and Texas accounted for over half of the actual increase.

Nine States with more than 15 percent increase in court commitments in 1961 were:

State	Court Commitments		Percent Increase
	1960	1961	
Vermont	217	290	33.6
District of Columbia	578	742	28.4
Iowa	845	1,060	25.4
Rhode Island	104	128	23.1
West Virginia	511	614	20.2
Connecticut	675	805	19.3
Pennsylvania	2,101	2,498	18.9
South Dakota	363	428	17.9
Minnesota	633	745	17.7

### VIOLATORS INCREASE 9.1 PERCENT

The number of releasees returned to prison after violating the terms of their parole or conditional release increased 9.1 percent in 1961 over 1960. This increase in violators returned had a significant effect in the increase of the 1961 prisoner population. In 1960, 13,586 violators were returned to prison and in 1961 the total rose to 14,822. Six States: California, Michigan, New York, Ohio, Pennsylvania and Wisconsin accounted for over half of the 14,822 violators returned. Rhode Island was the only State that did not return a parole violator in 1961. The returned violators comprised 13.6 percent of the total of 108,593 admissions (excluding transfers) to State institutions in 1961. (See table 3)

### RELEASES INCREASE

State institutions recorded a 4.9 percent increase in conditional and unconditional releases in 1961; however, this increase was not sufficient to offset the increase in court commitments and the increase in parole and conditional release violators returned. Thus, in 1961, there were 86,205 conditional and unconditional releases compared to 82,166 in 1960. The 4,039 increase in releases fell short of the 5,121 increase in court commitments in 1961 and the 1,236 increase in parole and conditional release violators returned.

### PRISONERS PAROLED UP 6.2 PERCENT

In 1961, approximately six out of each ten prisoners conditionally and unconditionally released left the institution to continue their sentence under supervision in the community. A total of 51,445 or 59.7 percent of the prisoners released from State institutions were placed on parole. The use of parole among the States rose 6.2 percent from 1960 to 1961. It is to be remembered in this connection that wherever the indeterminate form of sentence is in effect the method of release is determined by a Parole Board or Adult Authority or some similar body. Since about fifty-five percent of all prisoners are serving indeterminate terms the increase in the parole rate may merely reflect the increase in this category of offenders. This is also shown by the fact that the reported increase in parole

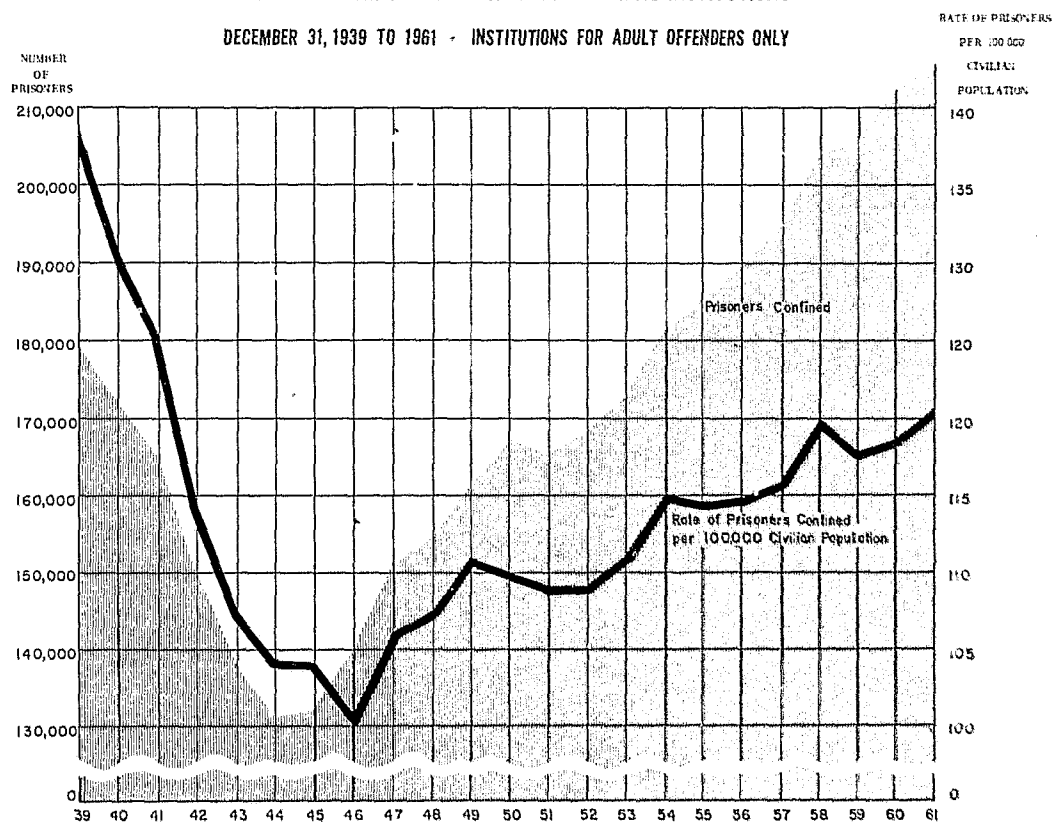
occurs in those areas where the use of the indeterminate feature is growing, as follows:

Region	Released on Parole		Percent Change
	1960	1961	
ALL STATES	48,457	51,445	6.2
Northeast	11,038	10,796	-2.2
North Central	15,243	16,035	5.2
South	12,127	13,576	11.9
West	10,049	11,038	9.8

Individual States showing an increase or decrease in parole of more than 25 percent were:

State	Released by Parole		Percent Change
	1960	1961	
Increase:			
Vermont	27	56	107.4
Georgia	656	1,110	69.2
New Mexico	257	383	49.0
Louisiana	895	1,327	48.3
New Hampshire	70	99	41.4
West Virginia	581	820	41.1
Decrease:			
Nevada	41	29	-29.3
Kansas	987	703	-28.3
South Dakota	194	141	-27.3

CHART 1  
PRISONERS CONFINED IN STATE AND FEDERAL INSTITUTIONS  
DECEMBER 31, 1939 TO 1961 - INSTITUTIONS FOR ADULT OFFENDERS ONLY



**STATES USE PARDONS SPARINGLY**

State institutions granted only 14 pardons in 1961, all to male prisoners. Seven pardons were granted in Louisiana, and three in West Virginia. One pardon was granted in each of the following States: Maryland, South Carolina, Indiana, and Oklahoma.

**FEMALES IN STATE INSTITUTIONS**

On December 31, 1961 there were 6,988 females confined in State Institutions, up 2.4 percent over the 6,825 confined on January 1, 1961. Female prisoners represented 3.6 of the 196,633 prisoners confined at the close of 1961. Connecticut had the highest percentage (9.0) of female prisoners, 147 females in an inmate population of 1,639. Twenty-one States showed a drop in the number of women confined in 1961 as compared to 1960.

There were 4,059 females received from court in 1961 or 310 more females received than in 1960. This is an 8.3 increase in court commitments in 1961 as compared to the 6.8 percent increase for men.

Proportionately, there were more women paroled in 1961 than men, 65.7 percent as compared to 59.3 percent. Washington paroled 97.5 percent or 39 of its 40 female releases, the highest percentage for 1961. Rhode Island paroled the fewest proportionately, 6.5 percent or two of its 31 female releases.

**COVERAGE OF THIS REPORT**

The National Prisoner Statistics series initiated in 1926 is a voluntary reporting program involving all State and Federal correctional institutions for adult offenders in the United States. Since 1939, all such institutions or correctional systems responsible for administering adult institutions have provided a complete report on prison population movement. The separate correctional systems or institutions, which participate, appear, in table 6.

For calendar year 1961, statistics on prisoners reported as escaped and returned were dropped primarily because of the lack of comparability among the States in the reporting of escapes. In certain States, the definition of escape is determined by State law. In other States, an escape is defined by administrative regulations. Such regulations vary from institution to institution depending upon institutional facilities and grounds. Because of these variations, reported figures on escapes are not comparable and, therefore, are of such doubtful value on a State basis that they are not being published this year. However, we plan to revise our definition of an "escape" to include only those prisoners who are unaccounted for over a period of twenty-four hours and ask that only these be reported as an "escape."

CHART II

**PERCENT OF RELEASES FROM STATE INSTITUTIONS WHICH WERE BY PAROLE**  
Calendar Year 1961

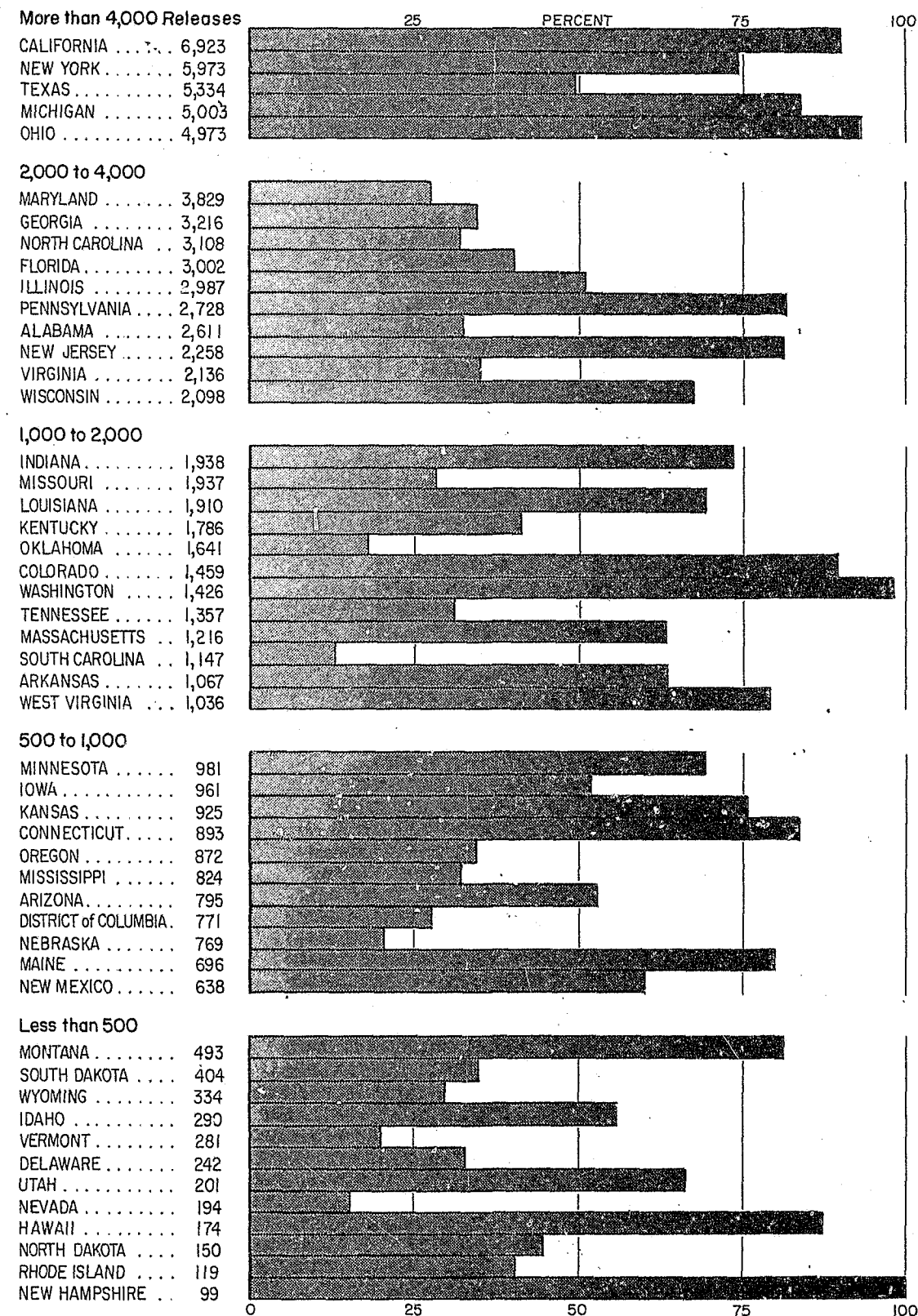


TABLE 1. -- SENTENCED PRISONERS RECEIVED FROM COURT AND PRESENT AT END OF YEAR  
BY TYPE OF INSTITUTION, FOR THE UNITED STATES: 1939 TO 1961

(For Federal institutions for all years includes a few prisoners committed from the Federal courts in Alaska and Hawaii. Beginning in 1960 State institutions in Hawaii are included; those in Alaska are excluded. This table supersedes corresponding table appearing in National Prisoner Statistics Bulletin No. 27.)

Year	Present at end of year			Received from court		
	All institutions	Federal institutions	State institutions	All institutions	Federal institutions	State institutions
1961 .....	220,329	23,696	196,633	93,590	13,517	80,073
1960 .....	213,125 (a)	23,218	189,907 (a)	88,675	13,723	74,952
1959 .....	207,513	22,492	185,021	87,266	13,872	73,394
1958 .....	205,643	21,549	184,094	88,725	13,803	74,922
1957 .....	195,414	20,420	174,994	80,557	13,305	67,252
1956 .....	189,565	20,134	169,431	77,988	13,454	64,534
1955 .....	185,915	20,088	165,827	78,479	15,286	63,193
1954 .....	182,901	20,003	162,898	80,962	16,685	64,277
1953 .....	173,579	19,363	154,216	74,274	16,376	57,898
1952 .....	168,233	18,014	150,219	70,922	15,305	55,617
1951 .....	165,680	17,395	148,285	67,211	14,120	53,091
1950 .....	166,165	17,134	149,031	69,515	14,237	55,278
1949 .....	163,749	16,868	146,881	68,925	13,130	55,795
1948 .....	155,977	16,328	139,649	63,777	12,430	51,347
1947 .....	151,304	17,146	134,158	64,804	12,948	51,856
1946 .....	140,079	17,622	122,457	61,338	14,950	46,388
1945 .....	133,649	18,538	115,011	53,212	14,171	39,041
1944 .....	132,456	18,139	114,317	50,162	14,047	36,115
1943 .....	137,220	16,113	121,107	50,082	12,203	37,879
1942 .....	150,384	16,623	133,761	58,858	13,725	45,133
1941 .....	165,439	18,465	146,974	68,700	15,350	53,350
1940 .....	173,706	19,260	154,446	73,104	15,109	57,995
1939 .....	179,818	19,730	160,088	(b)	(b)	(b)

Rate per 100,000 of the estimated civilian population (c)

1961 .....	121.7	13.1	108.7	51.7	7.5	44.3
1960 .....	119.8	13.0	106.7	49.8	7.7	42.1
1959 .....	118.8	12.9	105.9	49.9	7.9	42.0
1958 .....	120.0	12.6	107.4	51.8	8.1	43.7
1957 .....	116.1	12.1	103.9	47.8	7.9	39.9
1956 .....	114.7	12.2	102.5	47.2	8.1	39.0
1955 .....	114.5	12.4	102.4	48.4	9.4	38.9
1954 .....	115.0	12.6	102.2	50.9	10.5	40.4
1953 .....	111.2	12.4	98.8	47.6	10.5	37.1
1952 .....	109.7	11.7	97.9	46.2	10.0	36.3
1951 .....	109.7	11.5	98.1	44.5	9.3	35.1
1950 .....	110.6	11.4	99.2	46.3	9.5	36.8
1949 .....	111.0	11.4	99.5	46.7	8.9	37.8
1948 .....	107.4	11.2	96.2	43.9	8.6	35.4
1947 .....	106.1	12.0	94.1	45.5	9.1	36.4
1946 .....	101.2	12.7	89.5	44.3	10.8	33.5
1945 .....	104.8	14.6	90.2	41.7	11.1	30.6
1944 .....	104.5	14.3	90.2	39.6	11.1	28.5
1943 .....	107.6	12.6	95.0	39.3	9.6	29.7
1942 .....	114.8	12.7	102.2	44.9	10.5	34.5
1941 .....	125.7	14.0	111.7	52.2	11.7	40.5
1940 .....	131.9	14.6	117.3	55.5	11.5	44.0
1939 .....	137.6	15.1	122.5	(b)	(b)	(b)

(a) Figures are slightly lower than those appearing in National Prisoner Statistics bulletin, No. 27. See Table 3 for affected States.  
(b) Comparable Data not available.  
(c) Source of civilian population figures, Bureau of the Census, 1939-1959, Statistical Abstract of the United States, 1961, table 2, 1960 and 1961, Current Population Report, No. 239 (Provisional).

TABLE 2. -- MOVEMENT OF SENTENCED PRISONERS, BY TYPE OF INSTITUTION AND SEX, FOR THE UNITED STATES: 1961

Movement of sentenced prisoners	All institutions			Federal institutions			State institutions		
	Total	Male	Female	Total	Male	Female	Total	Male	Female
<b>Prisoners present:</b>									
January 1, 1961 (a) .....	213,125	205,425	7,700	23,218	22,343	875	189,907	183,082	6,825
December 31, 1961 .....	220,329	212,451	7,878	23,696	22,806	890	196,633	189,645	6,988
Percent change .....	3.4	3.4	2.3	2.1	2.1	1.7	3.5	3.6	2.4
<b>Admissions, total .....</b>	<b>175,824</b>	<b>169,070</b>	<b>6,754</b>	<b>23,947</b>	<b>23,041</b>	<b>906</b>	<b>151,877</b>	<b>146,029</b>	<b>5,848</b>
Admitted, except transfers .....	125,809	119,487	6,322	17,216	16,492	724	108,593	102,995	5,598
Received from court .....	93,590	88,932	4,658	13,517	12,918	599	80,073	76,014	4,059
Returned as a parole or conditional- release violator .....	16,409	15,609	800	1,587	1,547	40	14,822	14,062	760
Other admissions (b) .....	15,810	14,946	864	2,112	2,027	85	13,698	12,919	779
Transferred from other institutions .....	50,015	49,583	432	6,731	6,549	182	43,284	43,034	250
<b>Departures, total .....</b>	<b>168,620</b>	<b>162,044</b>	<b>6,576</b>	<b>23,469</b>	<b>22,578</b>	<b>891</b>	<b>145,151</b>	<b>139,466</b>	<b>5,685</b>
Discharged, except transfer .....	118,935	112,796	6,139	16,813	16,107	706	102,122	96,689	5,433
Releases .....	100,724	95,513	5,211	14,519	13,914	605	86,205	81,599	4,606
Conditional .....	63,083	59,572	3,511	8,235	7,901	334	54,848	51,671	3,177
Parole .....	55,825	52,602	3,223	4,380	4,184	196	51,445	48,418	3,027
Conditional pardon .....	32	32	-	-	-	-	32	32	-
Other conditional release .....	7,226	6,938	288	3,855	3,717	138	3,371	3,221	150
Unconditional .....	37,641	35,941	1,700	6,284	6,013	271	31,357	29,928	1,429
Expiration of sentence .....	34,143	32,716	1,427	6,284	6,013	271	27,859	26,703	1,156
Pardon .....	14	14	-	-	-	-	14	14	-
Commutation .....	3,484	3,211	273	-	-	-	3,484	3,211	273
Death, except execution .....	756	743	13	46	45	1	710	698	12
Executions .....	42	42	-	-	-	-	42	42	-
Other discharges (b) .....	17,413	16,498	915	2,248	2,148	100	15,165	14,350	815
Transferred to other institutions .....	49,685	49,248	437	6,656	6,471	185	43,029	42,777	252

(a) Figures are slightly lower than those appearing in National Prisoner Statistics bulletin, No. 27. See table 3 for affected States.  
(b) Other Admissions and Discharges included escapes, court orders, and authorized temporary absences.



TABLE 3.--MOVEMENT OF SENTENCED PRISONERS IN STATE INSTITUTIONS, BY REGION AND STATE: 1961

(Statistics on transfers which bring this table into balance are excluded)

Region and State	Prisoner Population				Admissions during the year				Departures during the year							
	Present Jan. 1, 1961 (a)	Present Dec. 31, 1961	Percent Change Jan. 1 to Dec. 31, 1961	Rate per 100,000 of the est. civilian population Dec. 31 (b)	Total	Received from Court	Violators returned	Other admissions (c)	Total	Releases					Death including execution (d)	Other discharges (e)
										All re-releases	Parole		Conditional except by parole	Unconditional		
United States .....	189,907	196,633	3.5	108.7	108,593	80,073	14,822	13,698	102,122	86,205	51,445	59.7			3,403	31,357
NORTHEAST.....	34,164	35,343	3.5	78.1	17,148	12,757	3,382	1,009	15,861	14,263	10,796	75.7	132	3,335	138	1,460
New England:																
Maine.....	750	766	2.1	78.6	737	567	148	22	738	696	557	80.0	-	139	2	40
New Hampshire.....	180	191	6.1	31.2	117	89	25	3	100	99	99	100.0	-	-	-	1
Vermont.....	269	319	18.6	80.8	329	290	38	1	285	281	56	19.9	128	97	-	4
Massachusetts.....	1,920	1,978	3.0	38.1	1,519	1,011	333	175	1,433	1,216	768	63.2	1	447	14	203
Rhode Island.....	255	262	2.7	31.0	128	128	-	-	121	119	48	40.3	-	71	-	2
Connecticut.....	1,497	1,639	9.5	63.0	1,098	805	203	90	951	893	749	83.9	3	141	5	53
Middle Atlantic:																
New York.....	17,207	17,569	2.1	103.4	6,723	4,998	1,715	10	6,233	5,973	4,447	74.5	-	1,526	80	180
New Jersey.....	4,284	4,572	6.7	73.7	3,246	2,371	323	552	2,990	2,258	1,837	81.4	-	421	10	722
Pennsylvania.....	7,802	8,047	3.1	70.3	3,251	2,498	597	156	3,010	2,728	2,235	81.9	-	493	27	255
NORTH CENTRAL.....	50,255	51,406	2.3	98.5	27,132	20,028	4,458	2,546	26,389	23,126	16,035	69.3	527	6,564	197	3,066
East North Central:																
Ohio.....	11,111	11,155	0.4	113.2	5,080	4,024	966	90	5,127	4,973	4,655	93.6	-	318	46	108
Indiana.....	5,429	5,372	-1.0	114.2	3,426	1,410	594	1,422	3,472	1,938	1,428	73.7	4	506	22	1,512
Illinois.....	9,064	9,611	6.0	94.1	3,460	2,741	456	263	3,314	2,987	1,522	51.0	-	1,465	40	287
Michigan.....	9,550	9,197	-3.7	115.9	5,361	4,123	832	406	5,662	5,003	4,210	84.1	-	793	40	619
Wisconsin.....	2,784	2,953	6.1	73.5	2,392	1,494	743	155	2,258	2,098	1,419	67.6	372	307	5	155
West North Central:																
Minnesota.....	2,059	2,016	-2.1	58.2	1,010	745	237	28	1,027	981	680	69.3	7	294	4	42
Iowa.....	2,204	2,418	9.7	87.0	1,271	1,060	121	90	1,070	951	499	51.9	-	462	13	96
Missouri.....	3,698	3,930	6.3	90.3	2,278	2,062	114	102	2,075	1,937	556	28.7	-	1,381	16	122
North Dakota.....	248	228	8.1	36.1	133	116	17	-	153	150	67	44.7	-	83	3	-
South Dakota.....	526	571	8.6	83.2	274	428	26	10	416	404	141	34.9	46	217	-	12
Nebraska.....	1,269	1,328	4.6	93.9	901	788	50	63	837	769	155	20.2	-	614	-	68
Kansas.....	2,313	2,627	13.6	121.7	1,356	1,037	302	17	978	925	703	76.0	98	124	8	45
SOUTH.....	71,720	73,490	2.5	133.2	42,287	34,907	3,139	4,241	40,440	35,017	13,576	38.8	2,691	18,750	282	5,141
South Atlantic:																
Delaware (e).....	226	240	6.2	53.3	277	268	7	2	262	242	79	32.6	1	162	2	18
Maryland.....	5,316	5,745	8.1	183.4	5,036	4,708	220	108	4,442	3,829	1,050	27.4	-	2,779	12	601
Dist. of Col. ....	2,037	2,132	4.7	287.7	1,064	742	170	152	975	771	212	27.5	343	216	4	200
Virginia.....	5,775	5,734	0.7	146.2	2,475	1,953	613	359	2,505	2,136	745	34.9	21	1,370	25	344
West Virginia.....	2,407	2,207	-8.3	119.4	938	614	219	105	1,126	1,036	820	79.2	6	210	7	83
North Carolina.....	5,977	5,875	-1.7	129.6	3,490	2,783	273	434	3,592	3,108	994	32.0	-	2,114	19	465
South Carolina.....	2,080	2,144	3.1	91.0	1,182	1,017	144	21	1,191	1,147	149	13.0	152	846	13	31
Georgia.....	6,985	6,851	1.9	174.9	3,313	2,901	269	143	3,447	3,216	1,110	34.5	1,138	968	28	203
Florida.....	7,084	7,615	7.5	148.2	4,526	3,352	226	948	4,000	3,002	1,204	40.1	-	1,798	30	968
East South Central:																
Kentucky.....	3,603	3,708	2.9	122.3	1,924	1,779	130	15	1,823	1,786	736	41.2	989	61	17	20
Tennessee.....	3,134	3,144	0.3	87.4	1,456	1,288	95	73	1,455	1,357	421	31.0	-	936	16	82
Alabama.....	5,369	5,540	3.2	168.9	2,929	2,547	262	120	2,753	2,611	841	32.2	-	1,770	29	113
Mississippi.....	1,975	2,068	4.7	94.4	1,844	866	70	908	1,750	824	264	32.0	35	525	7	919
West South Central:																
Arkansas.....	2,016	2,076	3.0	116.1	1,171	1,032	128	11	1,111	1,067	678	63.5	-	389	9	35
Louisiana.....	3,749	3,828	2.1	115.9	2,045	1,832	188	25	1,988	1,910	1,327	69.5	6	577	16	62
Oklahoma.....	2,679	2,693	0.5	115.6	1,758	1,627	63	68	1,743	1,641	292	17.8	-	1,349	17	85
Texas.....	11,308	11,890	5.1	123.7	6,859	5,598	512	749	6,277	5,334	2,654	49.8	-	2,680	31	912
WEST.....	33,768	36,394	7.8	127.7	22,026	12,381	3,843	5,802	19,432	13,799	11,038	80.0	53	2,708	135	5,498
Mountain:																
Montana.....	602	648	7.6	96.1	554	448	101	5	500	493	402	81.5	-	91	1	6
Idaho.....	549	552	0.5	81.4	330	265	35	30	327	290	162	55.9	-	128	4	33
Wyoming.....	431	425	-1.4	126.9	359	324	15	20	358	334	99	29.6	1	234	2	22
Colorado.....	2,078	2,149	3.4	122.5	1,558	1,158	340	60	1,530	1,459	1,308	89.7	-	151	7	64
New Mexico.....	1,243	1,243	-	129.2	655	553	99	3	655	638	383	60.0	-	255	-	17
Arizona.....	1,516	1,592	5.0	116.1	920	870	19	31	845	795	419	52.7	-	376	10	40
Utah.....	553	638	15.4	70.0	300	269	28	3	213	201	133	66.2	29	39	1	11
Nevada.....	413	431	4.4	148.6	229	206	10	13	208	194	29	14.9	-	165	2	12
Pacific:																
Washington.....	2,455	2,401	-2.2	84.5	1,541	1,049	327	165	1,602	1,426	1,400	98.2	23	3	7	169
Oregon.....	1,710	1,805	5.6	100.7	1,595	881	111	603	1,499	872	300	34.4	-	572	11	616
California.....	21,660	23,927	10.5	148.7	13,755	6,214	2,681	4,860	11,488	6,923	6,251	90.3	-	672	90	4,475
Hawaii.....	558	583	4.5	97.7	230	144	77	9	207	174	152	87.4	-	22	-	33

(a) January 1, 1961 Prisoners Present figures are slightly lower than the previously published, December 31, 1960, figures appearing in National Prisoner Statistics bulletin, No. 27. Affected States are: Delaware and New York (higher); New Jersey, South Dakota, and Wyoming (lower).

(b) Based on provisional estimates of the civilian population for July 1, 1961 appearing in Bureau of the Census, Current Population Reports, Series P-25, No. 239.

(c) Other Admissions and Discharges include escapes, court orders, and authorized temporary absences.

(d) Includes 42 executions. Detailed data on executions are presented in National Prisoner Statistics bulletin, No. 28 of April, 1962.

TABLE 4.--MOVEMENT OF SENTENCED FEMALE PRISONERS IN STATE INSTITUTIONS, BY REGION AND STATE: 1961  
( Statistics on transfers which bring this table into balance are excluded)

Region and State	Prisoner Population			Admissions during the year				Departures during the year							
	Present Jan. 1 1961 (a)	Present Dec. 31 1961 (b)	Percent Change Jan. 1 to Dec. 31 1961 (c)	Total	Received from Court	Violators returned	Other admissions (d)	Total	Releases				Death	Other discharges (d)	
									All Re-releases	Parole		Conditional except by Parole			Un-Conditional
									Number	Percent of all re-releases (e)					
United States .....	6,825	6,988	2.4	5,598	4,059	760	779	5,433	4,606	3,027	65.7	150	1,429	12	815
NORTHEAST .....	1,803	1,849	2.6	1,705	1,148	291	266	1,654	1,400	1,037	74.1	1	362	1	253
New England:															
Maine.....	69	46	-33.3	40	33	5	2	64	60	52	86.7	-	8	-	4
New Hampshire.....	2	2	-	1	1	-	-	1	1	1	-	-	-	-	-
Vermont.....	11	13	-	18	18	-	-	17	16	10	-	-	6	-	1
Massachusetts.....	188	171	-9.0	399	271	42	86	411	320	141	44.1	1	178	1	90
Rhode Island.....	17	20	-	36	36	-	-	33	31	2	6.5	-	29	-	2
Connecticut.....	119	147	23.5	235	128	52	55	203	192	175	91.1	-	17	-	11
Middle Atlantic:															
New York.....	851	873	2.6	564	429	135	-	532	517	421	81.4	-	96	-	15
New Jersey.....	279	312	11.8	301	138	42	121	276	148	133	89.9	-	15	-	128
Pennsylvania.....	267	265	-0.7	111	94	15	2	117	115	102	88.7	-	13	-	2
NORTH CENTRAL.....	1,471	1,478	0.5	1,226	863	179	184	1,242	1,021	695	68.1	55	271	4	217
East North Central:															
Ohio.....	370	353	-4.6	217	187	30	-	241	237	194	81.9	-	43	1	3
Indiana.....	63	74	17.5	65	47	9	9	57	40	38	95.0	2	-	1	16
Illinois.....	296	309	4.4	149	127	9	13	138	122	47	38.5	-	75	1	15
Michigan.....	312	269	-13.8	220	138	39	43	265	206	175	85.0	-	31	1	58
Wisconsin.....	155	175	12.9	268	148	67	33	251	197	127	64.5	40	30	-	54
West North Central:															
Minnesota.....	60	51	-15.0	40	18	10	12	49	36	29	80.6	-	7	-	13
Iowa.....	69	79	14.5	115	60	4	51	107	53	20	37.7	-	33	-	54
Missouri.....	58	64	10.3	42	37	3	2	41	41	21	51.2	-	20	-	-
North Dakota.....	2	1	-	3	3	-	-	4	4	-	-	-	4	-	-
South Dakota.....	6	7	-	8	8	-	-	7	7	3	-	-	4	-	-
Nebraska.....	33	31	-6.1	31	30	-	1	33	32	10	31.3	-	22	-	1
Kansas.....	47	65	38.3	68	60	8	-	49	46	31	67.4	13	2	-	3
SOUTH.....	2,477	2,528	2.1	1,742	1,492	76	174	1,665	1,420	590	41.5	93	737	4	241
South Atlantic:															
Delaware.....	9	8	-	13	13	-	-	14	10	5	-	-	5	-	4
Maryland.....	165	187	13.3	304	295	6	3	268	229	80	34.9	-	149	-	39
Dist. of Columbia.....	100	97	-3.0	57	42	7	8	59	43	14	32.6	29	-	-	16
Virginia.....	160	153	-4.4	79	69	6	4	84	80	30	37.5	-	50	-	4
West Virginia.....	44	37	-15.9	19	14	4	1	26	25	22	88.0	1	2	-	1
North Carolina.....	351	365	4.0	129	121	7	1	115	113	51	45.1	-	62	-	2
South Carolina.....	119	101	-15.1	86	75	7	4	97	97	16	16.5	10	71	-	-
Georgia.....	222	231	4.1	106	100	4	2	97	96	45	46.9	27	24	-	1
Florida.....	314	323	2.9	260	188	2	70	254	176	67	38.1	-	109	1	77
East South Central:															
Kentucky.....	59	54	-8.5	37	35	2	-	42	42	22	52.4	19	1	-	-
Tennessee.....	76	75	-1.3	56	53	1	2	55	53	27	50.9	-	26	-	2
Alabama.....	218	213	-2.3	89	84	5	-	92	89	30	33.7	-	59	1	2
Mississippi.....	61	72	18.0	60	36	4	20	49	29	9	31.0	6	14	-	20
West South Central:															
Arkansas.....	56	58	3.6	55	50	5	-	53	52	32	61.5	-	20	-	1
Louisiana.....	93	91	-2.2	62	57	4	1	63	61	38	62.3	1	22	-	2
Oklahoma.....	71	56	-21.1	31	29	2	-	46	44	8	18.2	-	36	2	-
Texas.....	359	407	13.4	299	231	10	58	251	181	94	51.9	-	87	-	70
WEST.....	1,074	1,133	5.5	925	556	214	155	872	765	705	92.2	1	59	3	104
Mountain:															
Montana.....	7	8	-	13	11	2	-	12	12	10	-	-	2	-	-
Idaho.....	13	4	-	4	2	1	1	13	10	3	-	-	7	-	3
Wyoming.....	3	9	-	9	9	-	-	3	3	-	-	-	3	-	-
Colorado.....	30	33	10.0	28	22	6	-	30	29	27	93.1	-	2	-	1
New Mexico.....	29	23	-20.7	16	12	4	-	22	22	19	-	-	3	-	-
Arizona.....	39	41	5.1	42	35	-	7	41	35	22	62.9	-	13	-	6
Utah.....	10	15	-	8	7	1	-	3	3	3	-	-	-	-	-
Nevada.....	11	12	-	8	7	1	-	7	6	2	-	-	4	1	-
Pacific:															
Washington.....	56	66	17.9	52	43	6	3	42	40	39	97.5	1	-	-	2
Oregon.....	37	44	18.9	68	34	3	31	61	30	16	53.3	-	14	-	31
California.....	829	869	4.8	674	372	189	113	634	572	562	98.3	-	10	2	60
Hawaii.....	10	9	-	3	2	1	-	4	3	2	-	-	1	-	1

(a) The number of female prisoners and the State boarding elsewhere are: Two from New Hampshire in Vermont; six from South Dakota, one in Colorado and five in Nebraska; and three from Wyoming in Nebraska. Figures are slightly lower than those appearing in National Prisoner Statistics bulletin, No. 27. Affected States are: Delaware and New York (higher); New Jersey (lower).

(b) The number of female prisoners and the State boarding elsewhere are: Seven from South Dakota in Nebraska, nine from Wyoming in Nebraska, and two from New Hampshire in Vermont.

(c) Percent change not shown where January 1 or December 31 figure is less than 25.

(d) Other admissions and discharges include escapes, court orders, and authorized temporary absences.

(e) Percent not shown where number of all releases is less than 25.

TABLE 5 -- FIRST RELEASES AND RE-RELEASES FROM STATE INSTITUTIONS, BY REGION AND STATE: 1961

(This table divides "All Releases" shown in table 3 into two classes: First releases, and re-releases of prisoners returned as violators of parole and other forms of conditional release. Data are provisional)

Region and State	All releases	First releases						Re-releases				
		Total		Parole		Conditional, except by parole	Unconditional	Total	Parole		Conditional except by parole	Unconditional
		Number	Percent of all releases	Number	Percent of all first releases				Number	Percent of total releases (a)		
						Number	Percent of all first releases	Number			Percent of total releases (a)	
United States .....	86,205	73,110	84.8	44,993	61.5	2,904	25,213	13,095	6,452	49.3	499	6,144
NORTHEAST .....	14,263	10,778	75.6	9,215	85.5	129	1,434	3,485	1,581	45.4	3	1,901
New England:												
Maine .....	69	538	77.3	469	87.2	-	69	158	88	55.7	-	70
New Hampshire .....	93	79	79.8	79	100.0	-	-	20	20	-	-	-
Vermont .....	281	245	87.2	44	18.0	125	76	36	12	33.3	3	21
Massachusetts .....	1,216	798	65.6	618	77.4	1	179	418	150	35.9	-	268
Rhode Island .....	119	114	95.8	48	42.1	-	66	5	-	-	-	5
Connecticut .....	893	654	73.2	602	92.0	3	49	239	147	61.5	-	92
Middle Atlantic:												
New York (b) .....	5,973	4,362	73.0	3,804	87.2	-	558	1,611	643	39.9	-	968
New Jersey (c) .....	2,258	1,845	81.7	1,618	87.7	-	227	413	219	53.0	-	194
Pennsylvania .....	2,728	2,143	78.6	1,933	90.2	-	210	585	302	51.6	-	283
NORTH CENTRAL .....	23,126	18,987	82.1	13,881	73.1	293	4,813	4,139	2,154	52.0	234	1,751
East North Central:												
Ohio .....	4,973	4,167	83.8	3,983	95.6	-	184	806	672	83.4	-	134
Indiana .....	1,938	1,309	67.5	1,135	86.7	4	170	629	293	46.6	-	336
Illinois .....	2,987	2,602	87.1	1,379	53.0	-	1,223	385	143	37.1	-	242
Michigan .....	5,003	4,091	81.8	3,679	89.9	-	412	912	531	58.2	-	381
Wisconsin .....	2,098	1,485	70.8	1,210	81.5	183	92	613	209	34.1	189	215
West North Central:												
Minnesota .....	981	691	70.4	537	77.7	-	148	290	143	49.3	1	146
Iowa .....	961	879	91.5	495	56.3	-	384	82	4	4.9	-	78
Missouri .....	1,937	1,835	94.7	543	29.6	-	1,292	102	13	12.7	-	89
North Dakota .....	190	130	68.7	62	47.7	-	68	20	5	-	-	15
South Dakota .....	404	377	93.3	148	36.6	46	193	27	3	11.1	-	24
Nebraska .....	769	745	96.9	153	20.5	-	592	24	2	-	-	22
Kansas .....	925	676	73.1	567	83.9	54	55	249	136	54.6	44	69
SOUTH .....	35,017	32,284	92.2	12,800	40.0	2,432	16,952	2,733	676	24.7	259	1,793
South Atlantic:												
Delaware .....	242	236	97.5	75	31.8	1	160	6	4	-	-	2
Maryland .....	3,829	3,639	95.0	1,025	28.2	-	2,614	190	25	13.2	-	165
Dist. of Columbia .....	771	563	73.0	180	31.0	246	131	208	26	12.5	97	85
Virginia .....	2,136	1,973	92.4	727	36.8	15	1,231	163	18	11.0	6	139
West Virginia .....	1,036	738	71.2	655	88.8	4	79	298	165	55.4	2	131
North Carolina .....	3,108	3,042	97.9	994	32.7	-	2,048	66	-	-	-	66
South Carolina .....	1,147	1,065	92.7	133	12.5	143	78	84	16	19.0	9	59
Georgia .....	3,216	2,895	90.0	1,043	36.0	1,056	796	321	67	20.9	82	172
Florida (b) .....	3,002	2,767	92.2	1,110	40.1	-	1,657	235	94	40.0	-	141
East South Central:												
Kentucky .....	1,786	1,668	93.4	695	41.7	927	44	120	41	34.2	62	17
Tennessee .....	1,387	1,259	90.7	380	31.2	-	860	107	31	29.0	-	76
Alabama .....	2,611	2,400	91.9	786	32.8	-	1,614	211	55	26.1	-	156
Mississippi .....	824	757	91.9	241	31.0	34	502	47	23	48.9	1	23
West South Central:												
Arkansas .....	1,067	942	88.3	657	69.7	-	285	125	21	16.8	-	104
Louisiana .....	1,910	1,779	93.1	1,287	72.3	6	486	131	40	30.5	-	91
Oklahoma .....	1,641	1,592	97.0	280	17.6	-	1,312	49	12	26.5	-	37
Texas .....	5,334	4,962	93.0	2,616	52.7	-	2,346	372	38	10.2	-	334
WEST .....	13,799	11,061	80.2	8,997	81.3	50	2,014	2,738	2,041	74.5	3	694
Mountain:												
Montana .....	493	416	84.4	375	96.1	-	41	77	27	35.1	-	50
Idaho .....	290	261	90.0	153	58.5	-	108	29	9	31.0	-	20
Wyoming .....	334	319	95.8	82	26.5	1	227	24	17	-	-	7
Colorado .....	1,459	1,170	80.2	1,130	98.6	-	40	289	178	61.6	-	111
New Mexico .....	638	567	88.8	373	66.6	-	187	178	10	12.8	-	68
Arizona .....	795	775	97.5	418	53.9	-	357	20	1	-	-	19
Utah .....	201	181	90.0	121	66.9	29	31	20	12	-	-	8
Nevada .....	194	180	92.9	29	15.3	-	161	4	-	-	-	4
Pacific:												
Washington .....	1,426	1,153	80.9	1,132	98.2	21	1	273	268	98.2	3	2
Oregon .....	872	775	88.9	287	37.0	-	488	97	13	13.4	-	84
California .....	6,923	5,175	74.8	4,817	93.7	-	358	1,748	1,434	82.0	-	314
Hawaii .....	174	95	54.6	80	84.2	-	15	79	72	91.1	-	7

(a) Percent not shown where total number of Re-releases is less than 25.  
 (b) Unconditional first releases estimated.  
 (c) First releases estimated.

TABLE 6 -- SENTENCED PRISONERS RECEIVED FROM COURT AND PRESENT AT END OF YEAR, BY INSTITUTION AND SEX, FOR THE UNITED STATES: 1961

Region, State, and Institution	Received from court (a)		Present Dec. 31, 1961		Region, State, and Institution	Received from court (a)		Present Dec. 31, 1961	
	Male	Female	Male	Female		Male	Female	Male	Female
United States .....	88,932	4,658	212,451	7,878	Connecticut .....	677	128	1,492	147
FEDERAL INSTITUTIONS .....	12,918	599	22,806	890	Prison, Wethersfield .....	406	-	1,156	-
Penitentiaries:					Ref., Cheshire .....	271	-	336	-
Alcatraz, Calif. ....	9	-	258	-	Farm and Prison for Women, Niantic .....	-	128	-	147
Atlanta, Ga. ....	928	-	2,588	-	Middle Atlantic:				
Leavenworth, Kan. ....	661	-	2,480	-	New York .....	4,569	429	16,696	873
Lewisburg, Pa. ....	671	-	1,536	-	Attica Prison, Attica .....	416	-	2,046	-
McNeil Island, Wash. ....	507	-	1,180	-	Auburn Prison, Auburn .....	9	-	1,678	-
Terre Haute, Ind. ....	708	-	1,358	-	Clinton Prison, Dannemora .....	130	-	2,088	-
Reformatories:					Green Haven Prison, Green Haven .....	2	-	2,301	-
Alderson, W. Va. ....	-	388	-	577	Sing Sing Prison, Ossining .....	1,637	-	1,794	-
Chillicothe, Ohio .....	544	-	1,229	-	Walkkill Prison, Walkkill .....	-	-	489	-
El Reno, Okla. ....	687	-	1,061	-	Elmira Ref., Elmira .....	427	-	1,385	-
Lumpoc, Calif. ....	593	-	1,140	-	Westfield State Farm (Ref.) .....	-	-	-	-
Petersburg, Va. ....	471	-	607	-	Bedford Hills .....	-	217	-	314
Youth Offender Institutions:					Westfield State Farm (Prison) .....	-	-	-	-
Ashland, Ky. ....	241	-	497	-	Bedford Hills .....	-	132	-	331
Englewood, Colo. ....	345	-	460	-	Western Ref. for Women, Albion .....	-	77	-	155
Correctional Institutions:					Great Meadow Correctional Inst., Comstock .....	-	-	1,150	-
Danbury, Conn. ....	607	-	680	-	New York State Vocational Inst., West Coxsacke .....	-	-	545	-
La Tuna, Tex. ....	912	-	653	-	Eastern Correctional Inst., Napanoch .....	35	-	1,099	-
Milan, Mich. ....	431	-	675	-	Woodbourne Correctional Inst., Woodbourne .....	-	-	579	-
Sandstone, Minn. ....	272	-	486	-	State Training School, Albion .....	-	3	-	73
Seagoville, Tex. ....	385	-	574	-	Dannemora State Hospital, Dannemora .....	-	-	1,230	-
Tallahassee, Fla. ....	997	-	730	-	Reception Center, Elmira .....	1,913	-	331	-
Terminal Island, Calif. ....	507	101	712	192	Camps .....	-	-	281	-
Texarkana, Tex. ....	325	-	494	-	New Jersey .....	2,233	138	4,260	312
Prison Camps:					Trenton Prison, Trenton .....	958	-	2,754	-
Allenwood, Pa. ....	190	-	249	-	Ref. for Males, Annandale .....	696	-	833	-
Florence, Ariz. ....	326	-	198	-	Ref. for Women, Clinton .....	-	138	-	312
Greenville, S. C. ....	376	-	307	-	Pennsylvania .....	2,404	94	7,782	265
McNeil Island, Wash. ....	28	-	241	-	Diagnostic and Classification Center:				
Montgomery, Ala. ....	453	-	278	-	Eastern Philadelphia .....	911	-	386	-
Safford, Ariz. ....	1	-	233	-	Western Pittsburgh .....	438	-	172	-
Tucson, Ariz. ....	32	-	101	-	Correctional Institution:				
Pre-release Guidance Centers (opened Oct. 1) .....	-	-	42	-	Camp Hill .....	876	-	1,355	-
Detection Headquarters:					Dallas .....	178	-	967	-
New York, N. Y. ....	141	-	54	-	Graterford .....	-	-	1,693	-
Medical Center for Federal Prisoners:					Huntingdon .....	-	-	771	-
Springfield, Mo. ....	236	-	943	-	Philadelphia .....	-	-	703	-
Public Health Service Hospitals:					Pittsburgh .....	-	-	866	-
Fort Worth, Tex. ....	166	-	327	-	Rockyview .....	1	-	869	-
Lexington, Ky. ....	168	50	3						

TABLE 6. -- SENTENCED PRISONERS RECEIVED FROM COURT AND PRESENT AT END OF YEAR, BY INSTITUTION AND SEX, FOR THE UNITED STATES: 1961 (continued)

Region, State, and Institution	Received from Court (a)		Present Dec. 31, 1961		Region, State, and Institution	Received from Court (a)		Present Dec. 31, 1961	
	Male	Female	Male	Female		Male	Female	Male	Female
Michigan .....	3,985	138	8,928	269	Florida .....	3,164	188	7,292	323
Reception Center, Jackson .....	3,985	-	489	-	Prison, Ralford and Branch Units .....	3,164	-	7,292	-
Prison of Southern Michigan .....	-	-	4,505	-	Correctional Inst., for Women, Lowell .....	-	188	-	323
House of Correction and Branch Prison, Marquette .....	-	-	944	-	East South Central:				
Reformatory, Ionia .....	-	-	1,284	-	Kentucky .....	1,744	35	3,654	54
Cassidy Lake Technical School, Chelsen .....	-	-	228	-	Pen., Eddyville .....	314	-	1,191	-
Detroit House of Correction, Plymouth .....	-	138	79	269	Ref., La Grange .....	1,430	-	2,463	-
Medium Security Correctional Inst., Ionia .....	-	-	231	-	Ref., Women's Division Pewee Valley .....	-	35	-	54
Camps .....	-	-	1,168	-	Tennessee .....	1,235	53	3,069	75
Wisconsin .....	1,346	148	2,778	175	Pen., Nashville .....	1,235	53	1,757	75
Prison, Waupun .....	772	-	1,705	-	Brushy Mountain Penitentiary .....	-	-	793	-
Ref., Green Bay .....	574	-	1,073	-	Pen., Petros .....	-	-	793	-
Home for Women, Taycheedah .....	-	148	-	175	Fort Pillow Farm, Fort Pillow .....	-	-	519	-
West North Central:					Alabama:				
Minnesota .....	727	18	1,965	51	Board of Corrections, Montgomery (c) .....	2,463	84	5,327	213
Prison, Stillwater .....	249	-	1,182	-	Mississippi:				
Ref., for Men, St. Cloud .....	478	-	783	-	Pen., Parchman .....	830	36	1,996	72
Ref., for Women, Shakopee .....	-	18	-	51	West South Central:				
Iowa .....	1,000	60	2,339	79	Arkansas:				
Pen., Ft. Madison .....	590	-	1,369	-	Pen., Gould .....	982	50	2,018	58
Men's Ref., Anamosa .....	410	-	970	-	Louisiana .....	1,775	57	3,737	91
Women's Ref., Rockwell City .....	-	60	-	79	Pen., Angola .....	1,775	57	3,343	91
Missouri .....	2,025	37	3,866	64	Correctional Inst., Dequincy .....	-	-	394	-
Pen., Jefferson City .....	1,689	-	3,244	-	Oklahoma .....	1,598	29	2,637	56
Reception Center (Opened 10-61) Intermediate Ref. for Young Men, Jefferson City .....	336	-	106	-	Pen., McAlester .....	1,584	29	2,141	56
Men, Jefferson City .....	-	-	516	-	Ref., Granite .....	14	-	496	-
Pen., for Women, Tipton .....	-	37	-	64	Texas:				
North Dakota:					Prison System, Huntsville .....	5,367	231	11,483	407
Pen., Bismarck .....	113	3	227	1	WEST .....	11,825	556	35,270	1,124
South Dakota .....	420	8	571	(c)	Mountain:				
Pen., Sioux Falls .....	343	8	507	(c)	Montana:				
Ref., Sioux Falls .....	77	-	64	-	Prison, Deer Lodge .....	437	11	640	8
Nebraska .....	758	30	1,281	47	Idaho:				
Pen., Lincoln .....	510	-	957	-	Pen., Boise City .....	263	2	548	4
Ref., for Men, Lincoln .....	248	-	344	-	Wyoming .....	315	9	425	(f)
Ref., for Women, York .....	-	30	-	47	Pen., Rawlins .....	238	9	329	(f)
Kansas .....	977	60	2,562	65	Industrial Inst., Worland .....	77	-	96	-
Pen., Lansing .....	582	-	1,892	-	Colorado .....	1,136	22	2,116	33
Industrial Ref., Hutchinson .....	395	-	670	-	Pen., Cannon City .....	749	22	1,689	35
Industrial Farm for Women, Lansing .....	-	60	-	65	Ref., Buena Vista .....	387	-	427	-
SOUTH .....	33,415	1,492	70,962	2,528	New Mexico:				
South Atlantic:					Pen., Santa Fe .....	541	12	1,220	23
Delaware:					Arizona:				
State Board of Correction, Wilmington .....	255	13	232	8	Prison, Florence .....	835	35	1,551	41
Maryland .....	4,413	295	5,558	187	Utah:				
Pen., Baltimore .....	454	-	1,601	-	Prison, Propper .....	262	7	623	15
House of Correction (Includes Correction Camps) Jessup .....	2,989	-	2,699	-	Nevada:				
Ref., for Males, Hagerstown .....	970	-	1,258	-	Prison, Carson City .....	199	7	419	12
Ref., for Women, Jessup .....	-	295	-	187	Pacific:				
District of Columbia .....	700	42	2,035	97	Washington .....	1,006	43	2,335	66
Ref., Lorton, Va. .....	560	-	1,757	-	Pen., Walla Walla .....	496	43	1,343	66
Ref., for Women, Occoquan, Va. .....	-	42	-	97	Ref., Monroe .....	510	-	787	-
Youth Center, Lorton, Va. .....	140	-	278	-	Washougal Honor Camp .....	-	-	60	-
Virginia:					Clallam Bay Honor Camp, Clallam Bay .....	-	-	57	-
Division of Correction, Richmond .....	1,884	69	5,581	153	Larch Mountain Honor Camp, Yacolt .....	-	-	88	-
West Virginia .....	600	14	2,170	37	Oregon .....	847	34	1,761	44
Pen., Moundsville .....	609	-	1,587	-	Pen., Salem .....	591	34	1,464	44
Medium Security Prison, Hutonsville .....	-	-	583	-	Correctional Inst., Salem .....	256	-	297	-
Prison for Women, Pence Spring .....	-	14	-	37	California .....	5,842	372	23,058	869
North Carolina:					Prison, San Quentin .....	17	-	5,481	-
Prison Department, Raleigh (d) .....	2,662	121	5,510	365	Prison, Folsom .....	1	-	3,418	-
South Carolina:					Correctional Training Facility, Soledad .....	1	-	3,894	-
Pen., Columbia and Branch Units .....	942	75	2,043	101	Inst. for Men, Chino and Tehachapi Branch .....	5,819	-	3,391	-
Georgia:					Mens Colony, Los Padres .....	-	-	2,929	-
State Board of Corrections, Atlanta .....	2,801	100	6,620	231	Deuel Vocational Institution, Tracy .....	3	-	1,727	-
					Medical Facility, Vacaville .....	1	-	2,218	-
					Inst., for Women, Corona .....	-	372	-	869
					Hawaii:				
					Prison System .....	142	2	574	9

(a) The Institutions shown as receiving no court commitments receive prisoners mainly by transfer from other Institutions.  
 (b) Two prisoners boarded in Women's Reformatory, Vermont.  
 (c) Seven prisoners boarded in Women's Reformatory, Nebraska.

(d) Includes Highway Road Camp felony prisoners.  
 (e) Board of Correction provides single report covering all State Correctional Institutions and Highway Road Camps.  
 (f) Nine prisoners boarded in Women's Reformatory, Nebr.

END