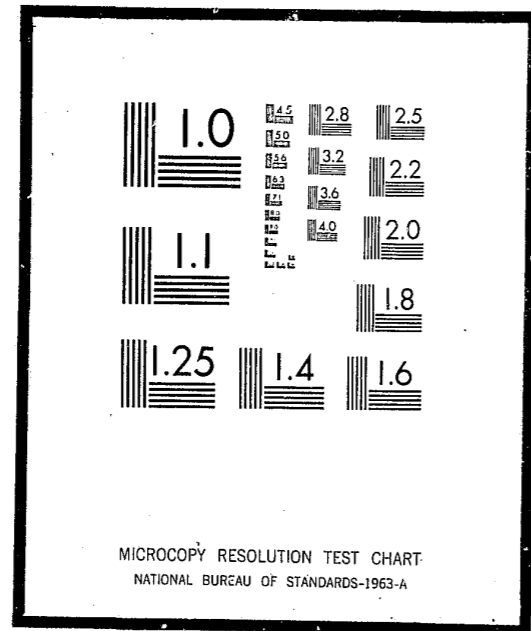


# NCJRS

This microfiche was produced from documents received for inclusion in the NCJRS data base. Since NCJRS cannot exercise control over the physical condition of the documents submitted, the individual frame quality will vary. The resolution chart on this frame may be used to evaluate the document quality.



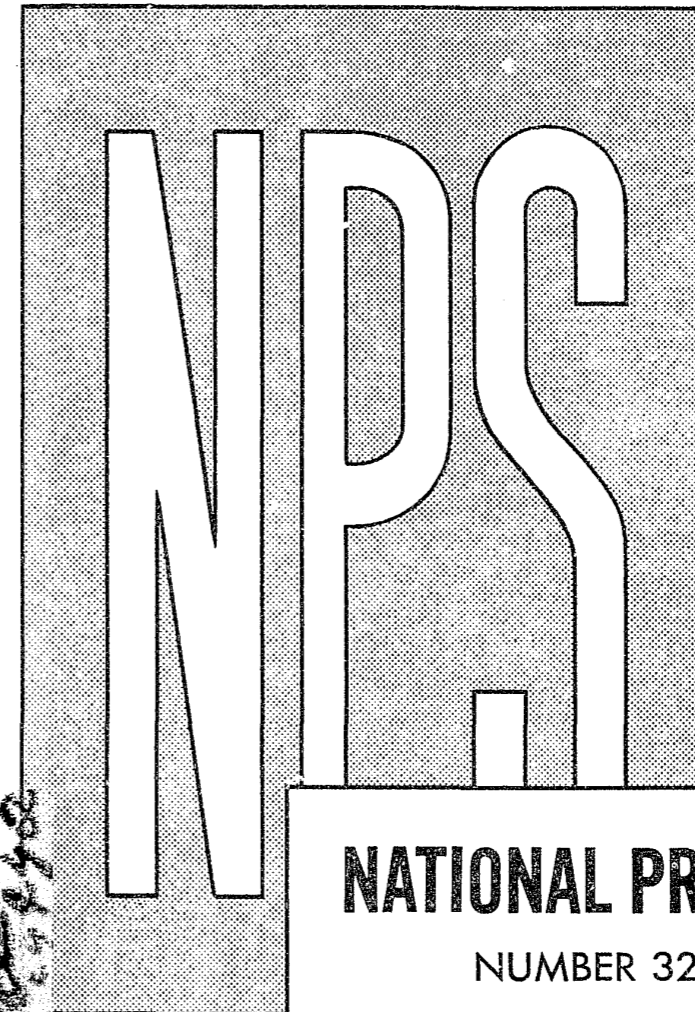
Microfilming procedures used to create this fiche comply with the standards set forth in 41CFR 101-11.504

Points of view or opinions stated in this document are those of the author(s) and do not represent the official position or policies of the U.S. Department of Justice.

U.S. DEPARTMENT OF JUSTICE  
LAW ENFORCEMENT ASSISTANCE ADMINISTRATION  
NATIONAL CRIMINAL JUSTICE REFERENCE SERVICE  
WASHINGTON, D.C. 20531

Date filmed

7/20/76



cat 1

## NATIONAL PRISONER STATISTICS

NUMBER 32 • APRIL, 1963

### EXECUTIONS

1962

NCJRS-00021118

UNITED STATES DEPARTMENT OF JUSTICE  
ROBERT F. KENNEDY, ATTORNEY GENERAL  
BUREAU OF PRISONS  
JAMES V. BENNETT, DIRECTOR  
WASHINGTON 25, D. C.

# EXECUTIONS 1962

## COVERAGE

This report covers the 44 civil jurisdictions in the United States where capital punishment may be legally imposed. These jurisdictions include 42 States, the District of Columbia and the Federal government.

Figures are included on all prisoners executed, or pardoned or whose sentence was otherwise modified during 1962 and all known by officials cooperating in the National Prisoner Statistics program to be under sentence of death as of December 31, 1962. The data were obtained primarily from State prison officials, Also contributing were Federal officials and the administrators of the Cook County, Illinois, and the District of Columbia Jails (the only local institutions in this country where executions are carried out). Prisoners under sentence of death who may still be held in local or county jails ordinarily are not included in NPS figures. Exceptions would be in a few States where prisoners awaiting execution may be transferred to State prisons but subsequently returned to a local jail pending outcome of an appeal or other legal action.

The "under sentence of death" term begins when the court first pronounces the sentence of death for a capital offense and ends with the final disposition of the case, either by execution or otherwise. Many prisoners "under sentence of death" at the close of 1962 had received short stays or reprieves granted by State governors. Also, a large number had appeals before State and/or Federal courts. The remaining 12 their date of execution set for sometime in 1963; these prisoners, however, could still appeal or receive executive or judicial stays.

## EXECUTIONS RISE IN 1962

Forty-seven prisoners were executed by civil authority in the United States during calendar year 1962. This represents a 12 percent increase over the 42 executed in 1961. Calendar year 1962 had the second lowest number of executions on record since 1930 when this national series began.

## EXECUTING JURISDICTIONS

One or more executions were carried out in 18 of the 44 jurisdictions whose statutes provide for legal capital punishment. Eleven of these jurisdictions also had executions in 1961. Among the other seven with executions in 1962, New Jersey (2) had had none since 1956, Illinois (2) none since 1958, Iowa (2) none since 1952, Kansas (1) none since 1954, Kentucky (1) none since 1956, Oklahoma (1) none since 1960 and Oregon (1) none since 1953.

California, with 11, had the most executions, followed by Texas with 9 and Florida with 5. These three States accounted for 25, or 53 percent, of the 47 executions carried out during the year.

Among the States with no executions in 1962, but one or more in 1961, were New York with 2 in 1961 and Arizona, Indiana, Louisiana, Maryland, Nevada and North Carolina with one each in 1961.

## METHOD OF EXECUTION

Fifteen of the 1962 executions were carried out in the lethal gas chamber. This method was used 32 percent of the time in 1962 as compared with 43 percent in 1961. Twenty-nine executions were by electrocution and the remaining three by hanging. Sixty-two

percent of the prisoners executed in 1962 were electrocuted—in 1961, 57 percent were electrocuted. There were no hangings in 1961.

## OFFENSE, SEX AND AGE

Of the 47 executed in 1962, one was a woman—the first to be executed in this country since 1957—executed for murder in California. Of the 46 males executed, 40 were for murder, 4 for rape, 1 for assault by a life prisoner (California) and 1 for armed robbery (Texas).

The age of the 47 executed ranged from a 19-year-old executed in Texas for murder to the 58-year-old female executed in California for murder. The median age of the 47 prisoners was 28 years, a drop from the 31.2 median age for the 42 executed in 1961.

## ELAPSED TIME FROM FIRST SENTENCE OF DEATH TO EXECUTION

Elapsed time—the period between the first imposition of the death sentence for the instant offense and the day of execution—ranged from 1 month for a robbery offender in Texas to 7 years, 1 month and 20 days for a murderer executed in Illinois. The median elapsed time was 20.5 months which is 4.3 months longer than the 16.2 months recorded in 1961.

Among the prisoners executed in 1962, only 6 (13 percent) of the 47 were received that year. Fourteen (30 percent) were received in 1961, 15 (32 percent) were received in 1960, 8 (17 percent) were received in 1959, 3 (6 percent) in 1958 and 1 (2 percent) in 1955.

There are many reasons for the wide range in elapsed time between the first sentence to death and execution. Appeals which in a few States are automatic following the sentence of the court are made at all levels of the State courts as well as the Federal courts. These together with judicial and executive orders which grant short or long stays or reprieves account for the variation in elapsed time periods.

## PRISONERS SENTENCED TO DEATH IN 1962

During calendar year 1962, a total of 99 prisoners received death sentences, 37 less than were reported in 1961. Of the 99, 86 (87 percent) were convicted for murder, 11 (11 percent) for rape and 1 (1 percent) each for armed robbery and assault committed by a life prisoner. All were males, excepting one female convicted of murder in Florida.

At calendar year's end, 87 (88 percent) were still under the sentence of death, 6 (6 percent) had been executed and 6 (6 percent) had their cases disposed of by means other than execution—3 were commuted to life, 2 were granted new trials and 1 had his sentence reversed by the Circuit Court of Appeals.

## PRISONERS UNDER SENTENCE OF DEATH AT CLOSE OF 1962

At the beginning of 1962, there were 273 prisoners under sentence of death. By including the 99 received from court during the year, the grand total of prisoners under sentence of death sometime during the

FIGURE A.—MOVEMENT OF PRISONERS UNDER SENTENCE OF DEATH BY OFFENSE: 1962

| Offense                       | Reported under sentence of death on 1-1-62 | Received from court during 1962 | Executed       |                  | Other disposition not resulting in execution * |                           |           | Reported under sentence of death 12-31-62 |      |             |
|-------------------------------|--|---------------------------------|----------------|------------------|--|---------------------------|-----------|---|------|-------------|
|                               |  |                                 | Present 1-1-62 | Received in 1962 | Commutations (a)                               | Trans. to mental hospital | Other (b) | Total                                     | 1962 | Prior years |
| Total-----                    | 273  | 99                              | 41             | 6                | 27   | 4                         | 27        | 267                                       | 97   | 180         |
| Murder-----                   | 214  | 86                              | 37             | 4                | 16   | 3                         | 21        | 216                                       | 74   | 139         |
| Rape-----                     | 52   | 11                              | 3              | 1                | 11   | 1                         | 1         | 46  | 9    | 37          |
| Robbery-----                  | 2  | 1                               | -              | 1                | -  | -                         | -         | -   | -    | -           |
| Kidnaping-----                | 3  | -                               | -              | -                | -  | -                         | -         | 3   | -    | 3           |
| Assault by life prisoner----- | 1  | 1                               | 1              | -                | -  | -                         | -         | 1   | 1    | -           |
| Burglary-----                 | 1  | -                               | -              | -                | -  | -                         | -         | 1   | -    | 1           |

\* Six prisoners received in 1962 - 5 for murder and 1 for rape. Three were committed to life (includes the rapist), two were granted new trials and one had his sentence reversed by the Circuit Court of Appeals.  
 (a) Seventeen committed to life, one committed in 1953 committed to 99 years, three committed in 1959 committed to 20 years, five committed in 1960 - 4 committed to 99 years and one to 80 years, one committed in 1961 committed to 99 years.  
 (b) Reversals of judgment, vacated sentences and grants for new trials. Also includes one received in 1959 who committed suicide.

year was 372. Of these 372, 47 were executed during the year and 58 cases were disposed of by means other than execution, leaving a total of 267 awaiting execution at year's end. Thus, there were six less prisoners awaiting execution at the end of 1962 than at year's end 1961 since 99 were received and 105 were disposed of during the year.

Of the 267 awaiting execution at year's end, 216 were "under sentence of death" for murder, 46 for rape, 3 for kidnaping (1 Federal and 2 from New Hampshire), 1 for assault by a life prisoner (California), and 1 for burglary (Alabama).

Over half (52 percent) of the prisoners awaiting execution were distributed among five States—Florida had 38 awaiting, California had 35, Louisiana had 27, Maryland had 22 and New York had 18.

The age of those awaiting execution ranged from a 16-year-old committed for murder in Florida to a 61-year-old murderer in New Jersey. One 17-year-old murderer was awaiting in Georgia, one 18-year-old murderer in Florida, and four 19-year-old murderers—one each in Arkansas, Kansas, New Jersey and South Carolina.

The longest period of elapsed time recorded for those awaiting execution was 9 years, 10 months and 4 days for two prisoners committed for aggravated rape in Louisiana. Elapsed time is figured from date of sentence to 12-31-62. The median elapsed time for the total group was 16.7 months.

## OTHER DISPOSITION NOT RESULTING IN EXECUTION

There were 58 prisoners disposed of by means other than execution in 1962. This indicates that 23 percent more "other dispositions" occurred than executions in 1962. Of these 58, 27 had their sentences commuted—17 to life, 1 to 199 years, 5 to 99 years, 1 to 80 years and 3 to 20 years. Four of the 59 were committed or transferred to mental hospitals and, of the remaining 27, 26 had their death sentence reversed or vacated by the courts (many were retried and resentenced) and 1 committed suicide.

Of this group, 43 (74 percent) had been sentenced for murder, 13 (22 percent) had been sentenced for rape and 2 (3 percent) had been sentenced for armed robbery. The elapsed time from sentence of death to disposition ranged from 27 days for a rapist commuted to life in Texas to 9 years, 1 month and 13 days for a murderer commuted to 199 years in Illinois. The median elapsed time for the group was 16.8 months.

## MILITARY EXECUTIONS

Excluded from this report are executions carried out by the armed forces. For the 33 year period,

1930 through 1962, the Army (including Air Force) carried out 160 executions, 148 of these during the period 1942-1950, three each in 1954, 1955 and 1957 and one each in 1958, 1959 and 1961. Of the 160 executions, 106 were for murder (including 21 involving rape), 53 were for rape and 1 was for desertion. The Navy has carried out no executions since 1849.

FIGURE B.—COMPARISON OF PRISONERS EXECUTED IN 1962, DISPOSED OF BY OTHER MEANS IN 1962 AND UNDER SENTENCE OF DEATH DECEMBER 31, 1962 (Figures in parentheses show number of females included)

| Item                                  | Executed in 1962 | Other disposition 1962 | Under sentence of death Dec. 31, 1962 |
|---------------------------------------|------------------|------------------------|---------------------------------------|
| Total-----                            | (1) 47           | 58                     | (2) 267                               |
| Age (in years)                        |                  |                        |                                       |
| Median age-----                       | 28.0             | 27.5                   | 30.3                                  |
| 16 to 19-----                         | 1                | 6                      | 8                                     |
| 20 to 24-----                         | 13               | 18                     | (1) 56                                |
| 25 to 29-----                         | 16               | 19                     | 66                                    |
| 30 to 34-----                         | 5                | 5                      | 58                                    |
| 35 to 39-----                         | 1                | 1                      | 58                                    |
| 40 to 44-----                         | 1                | 1                      | (1) 15                                |
| 45 to 49-----                         | 1                | 1                      | 8                                     |
| 50 and over-----                      | (1) 1            | 1                      | 1                                     |
| Unknown-----                          | -                | 1                      | 1                                     |
| Marital status                        |                  |                        |                                       |
| Single-----                           | 20               | 27                     | (1) 112                               |
| Married-----                          | 18               | 21                     | (1) 90                                |
| Separated-----                        | 4                | 4                      | 17                                    |
| Divorced-----                         | (1) 4            | 4                      | 19                                    |
| Widowed-----                          | -                | -                      | 13                                    |
| Common-law-----                       | -                | -                      | 2                                     |
| Unknown-----                          | 1                | 4                      | 16                                    |
| Offense                               |                  |                        |                                       |
| Murder-----                           | (1) 41           | 43                     | (2) 216                               |
| Rape-----                             | 4                | 13                     | 46                                    |
| Robbery-----                          | 1                | 2                      | -                                     |
| Kidnaping-----                        | -                | -                      | 3                                     |
| Burglary-----                         | -                | -                      | 1                                     |
| Assault by life prisoner-----         | 1                | -                      | 1                                     |
| Elapsed time (in months)              |                  |                        |                                       |
| Median-----                           | 20.5             | 16.6                   | 16.7                                  |
| 3 and under-----                      | 7                | 2                      | 26                                    |
| 4 to 6-----                           | 1                | 4                      | 27                                    |
| 7 to 12-----                          | 3                | 11                     | (1) 54                                |
| 13 to 18-----                         | 11               | 20                     | (1) 43                                |
| 19 to 24-----                         | 6                | 7                      | 28                                    |
| 25 to 30-----                         | 11               | 6                      | 47                                    |
| 31 to 36-----                         | (1) 5            | 3                      | 20                                    |
| 37 to 42-----                         | 2                | 2                      | 5                                     |
| 43 to 48-----                         | -                | 1                      | 8                                     |
| 49 to 54-----                         | -                | 1                      | 5                                     |
| 55 to 60-----                         | 1                | -                      | 1                                     |
| 61 to 66-----                         | -                | 1                      | 3                                     |
| 67 and over-----                      | -                | 1                      | 1                                     |
| Year first received sentence of death |                  |                        |                                       |
| 1953-----                             | -                | 1                      | 3                                     |
| 1954-----                             | -                | -                      | -                                     |
| 1955-----                             | 1                | -                      | 2                                     |
| 1956-----                             | -                | -                      | 5                                     |
| 1957-----                             | -                | 2                      | 8                                     |
| 1958-----                             | -                | -                      | 6                                     |
| 1959-----                             | (1) 3            | 9                      | 20                                    |
| 1960-----                             | 15               | 11                     | 53                                    |
| 1961-----                             | 14               | 28                     | (1) 81                                |
| 1962-----                             | 6                | 6                      | (1) 87                                |

TABLE 1.--PRISONERS EXECUTED UNDER CIVIL AUTHORITY IN THE UNITED STATES, BY RACE AND OFFENSE: 1930 TO 1962

(The figures in parentheses show the number of females. For years 1930-1959 excludes Alaska and Hawaii except for the Federal executions in Alaska, one in 1948 and one in 1950. For coverage see table 3.)

| Year           | All offenses |       |       |       | Murder |       |       |       | Rape  |       |       |       | Other offenses (a) |       |       |
|----------------|--------------|-------|-------|-------|--------|-------|-------|-------|-------|-------|-------|-------|--------------------|-------|-------|
|                | Total        | White | Negro | Other | Total  | White | Negro | Other | Total | White | Negro | Other | Total              | White | Negro |
| All years..... | 3,812        | 1,702 | 2,049 | 41    | 3,298  | 1,640 | 1,619 | 39    | 446   | 45    | 399   | 2     | 68                 | 37    | 31    |
| Percent.....   | 100.0        | -     | -     | -     | 86.5   | -     | -     | -     | 11.7  | -     | -     | -     | 1.8                | -     | -     |
| Percent.....   | 100.0        | 45.2  | 53.7  | 1.1   | 100.0  | 49.7  | 49.1  | 1.2   | 100.0 | 10.1  | 89.5  | 0.4   | 100.0              | 54.4  | 45.6  |

(a) 24 armed robbery, 19 kidnaping, 11 burglary, 8 espionage (6 in 1942 and 2 in 1953), 6 aggravated assault.

TABLE 2.--PRISONERS EXECUTED UNDER CIVIL AUTHORITY IN THE UNITED STATES, BY AGE, RACE, OFFENSE, AND STATE: 1962

(The figures in parentheses show the included executions for rape. All others were for murder except one robbery with firearms (R) in Texas and one assault by life convict (A) in California.)

| State and race | Median age | All ages   | 19 years only | 20 to 24 years | 25 to 29 years | 30 to 34 years | 35 to 44 years | 45 and over |
|----------------|------------|------------|---------------|----------------|----------------|----------------|----------------|-------------|
|                |            | Total..... | 28.0          | 47             | 1              | 13             | 16             | 5           |
| White....      | 27.8       | 28         | -             | 9              | 9              | 3              | 5              | 2           |
| Negro... 28.2  | 19         | 1          | 1             | 4              | 7              | 2              | 5              | -           |

TABLE 3.--PRISONERS EXECUTED UNDER CIVIL AUTHORITY IN THE UNITED STATES, BY STATE: 1930 TO 1962

(Method of Execution in 1962: b-Electrocution, G-Lethal Gas, H-Hanging, S-Shooting or hanging. For years 1930-1959, excludes Alaska and Hawaii except for two Federal executions in Alaska, one in 1948 and one in 1950)

| Region and State   | Total | 1962 | 1961 | 1960 | 1959 | 1958 | 1957 | 1956 | 1955 | 1950-54 | 1945-49 | 1940-44 | 1935-39 | 1930-34 |
|--------------------|-------|------|------|------|------|------|------|------|------|---------|---------|---------|---------|---------|
| United States..... | 3812  | 47   | 42   | 56   | 49   | 49   | 65   | 65   | 76   | 413     | 639     | 645     | 890     | 776     |
| FEDERAL.....       | 31    | -    | -    | -    | -    | -    | 2    | 1    | -    | 6       | 6       | 7       | 8       | 1       |
| NORTHEAST.....     | 605   | 4    | 3    | 7    | 9    | 4    | 4    | 9    | 25   | 56      | 74      | 110     | 145     | 155     |

(a) Carried out in the following States: 1957: Georgia (2); 1956: Missouri; 1954: New York; 1953: Missouri (2), New York (2); 1950: Alaska; 1948: Alaska, Florida, California (3); 1945: Wyoming; 1943: Tennessee; 1942: District of Columbia (6); 1938: Indiana, Illinois, Michigan, Kansas (2); 1936: Indiana, Oklahoma, Arizona; 1930: Kansas. The 3 in Kansas and the 1 in Michigan were carried out in Federal prisons; the others, in State, territorial, or local facilities.  
 (b) Death penalty illegal as indicated (AX), except that Michigan and North Dakota prescribe the death penalty for treason; North Dakota also permits the death penalty for first-degree murder committed by a prisoner serving a life sentence for first-degree murder; and Rhode Island makes the death penalty mandatory for murder committed by a prisoner serving a life sentence.  
 (c) Death penalty illegal: South Dakota, 1930-1938; Kansas, 1930-1934; and Delaware beginning April 2, 1958, to December 18, 1961.  
 (d) Alaska and Hawaii when territories abolished capital punishment in 1957. As States, Alaska and Hawaii are included in this series beginning January 1, 1960.



**END**

U. S. DEPARTMENT OF JUSTICE  
BUREAU OF PRISONS  
WASHINGTON 25, D. C.

OFFICIAL BUSINESS

POSTAGE AND FEES PAID  
U. S. DEPARTMENT OF JUSTICE

If you do NOT desire to continue receiving this material, please check here  and return this cover to above address.

If your address has changed, please indicate hereon and return this cover to above address.