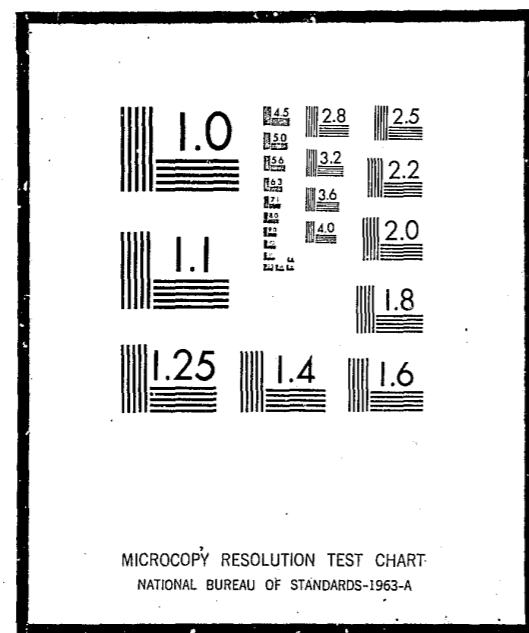


NCJRS

This microfiche was produced from documents received for inclusion in the NCJRS data base. Since NCJRS cannot exercise control over the physical condition of the documents submitted, the individual frame quality will vary. The resolution chart on this frame may be used to evaluate the document quality.



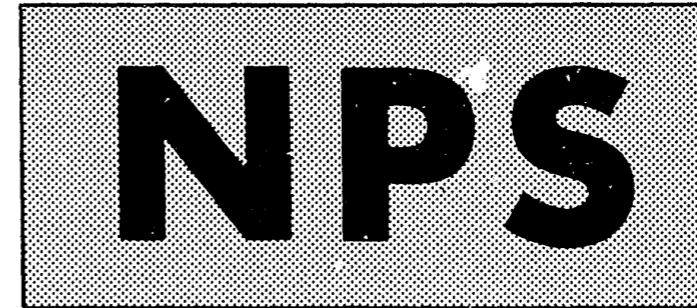
Microfilming procedures used to create this fiche comply with the standards set forth in 41CFR 101-11.504

Points of view or opinions stated in this document are those of the author(s) and do not represent the official position or policies of the U.S. Department of Justice.

U.S. DEPARTMENT OF JUSTICE
LAW ENFORCEMENT ASSISTANCE ADMINISTRATION
NATIONAL CRIMINAL JUSTICE REFERENCE SERVICE
WASHINGTON, D.C. 20531

Date filmed

7/20/76



BULLETIN

cat 1

NATIONAL PRISONER STATISTICS

NUMBER 42 JUNE, 1968

EXECUTIONS

1930 - 1967

UNITED STATES DEPARTMENT OF JUSTICE
RAMSEY CLARK, ATTORNEY GENERAL

BUREAU OF PRISONS
Myrl E. Alexander, Director

NCJ-002170

LISTING OF TABLES

- Table 1. Prisoners Executed Under Civil Authority in the United States, By Race, Offense and Year: 1930-1967
- Table 2. Prisoners Executed Under Civil Authority in the United States, By State and Year: 1930-1967
- Table 3. Prisoners Executed Under Civil Authority in the United States, By Offense, Race, and State: 1930-1967
- Table 4. Movement of Prisoners Under Sentence of Death: 1961-1967
- Table 5. Movement of Prisoners Under Sentence of Death, By Offense and Race: Calendar Year 1967
- Table 6. Movement of Prisoners Under Sentence of Death, By Race and State: Calendar Year 1967
- Table 7. Characteristics of Prisoners Received from Court Under Sentence of Death, By State: Calendar Year 1967
- Table 8. Executions and Other Dispositions from Sentence of Death, By Offense, State, and Method of Disposition: Calendar Year 1967
- Table 9. Characteristics of Prisoners Disposed of by Means Other Than Execution, By State: Calendar Year 1967
- Table 10. Characteristics of Prisoners Under Sentence of Death in the United States on December 31, 1967, By State
- Table 11. Prisoners Under Sentence of Death, By Age and State, December 31, 1967
- Table 12. Elapsed Time for Prisoners Under Sentence of Death, By State: December 31, 1967
- Table 13. Women Executed Under Civil Authority in the United States, By Year, Offense, Race and State: 1930-1967
- Table 14. Federal Executions in the United States, By Year, Offense, Race and State: 1930-1967
- Table 15. Capital Offenses in the United States, By State
- Table 16. Abolition of the Death Penalty in the United States: 1846-1967

EXECUTIONS 1930 - 1967

COVERAGE

This report presents information on the use of the death penalty by civil authorities in the United States during calendar year 1967. Also included are trend data on executions by civil authorities during the period 1930-1967,¹ and on movement of prisoners under sentence of death on December 31 for the years 1961-1967.

The National Prisoner Statistics program is a voluntary reporting system initiated by the Bureau of the Census in 1926, and transferred to the Federal Bureau of Prisons in 1950. In addition to the annual series of which this bulletin is a part, the NPS program also publishes an annual bulletin on the movement of prisoners in State and Federal institutions for adult felons, and occasional detailed reports on court commitments to, and first releases from, State institutions.²

Recipients of the 1966 bulletin in this series will note several changes in the current issue, the most important of which is the inclusion of several new tables providing additional data on movement of prisoners under sentence of death. Other new tables provide increased background and historical data.

We welcome comments on changes made in this report, and invite suggestions for improving future bulletins.

EXECUTIONS (Tables 1-3, 13, 14; Charts 1, 3; Figure A)

Two men were executed during 1967. On April 12, a 38 year-old Negro was sent to the gas chamber in California, two years, six months, and 16 days after being sentenced to death for murder. In Colorado, another convicted murderer, white, age 49, was executed by lethal gas on June 2, after three years, five months, and 16 days under sentence of death.³

During the period 1930-1967, a total of 3,859 persons have been executed—3,826 by State authorities, and 33 under Federal jurisdiction. Of the total executions, 3,334, or 86.4 percent, were for murder, 455 (11.8 percent) were for rape, and 70 (1.8 percent) were for other offenses. Negroes accounted for 53.5 percent; of the remainder, 45.4 percent were white, and 1.1 percent were of other races. Thirty-two women were executed during this 38-year span.

In recent years, both the number of executions and the number of jurisdictions implementing the death penalty have been steadily declining.

PRISONERS RECEIVED WITH DEATH SENTENCES (Tables 4-7)

New court commitments received under sentence of death during 1967 totaled 85, of whom 74 had been sentenced for murder, seven for rape, two for assault by a Life prisoner, and one each for kidnapping and robbery. The median age of the new commitments was 26.4 years; 45 were Negro and 40 were white. All were male.

At the end of 1967, 84 of the 85 prisoners committed during the year were still under sentence of death. The remaining prisoner was granted a new trial, and was resentenced to a term of 30 years.

DISPOSITIONS OTHER THAN BY EXECUTION (Tables 4-6, 8, 9)

During 1967, the sentences of 68 prisoners (67 males and one female) were disposed of by means other than execution. Of these, 31 were ordered resentenced, or had their death sentences reversed or vacated and were granted new trials; 13 had their death sentences commuted to Life; seven were resentenced (five to Life and two to terms of years); three were transferred to mental hospitals; two died (one suicide and one natural death); and in 12 cases indictments were dismissed or judgments reversed.

Fifty-seven of those whose sentences were disposed of had been sentenced for murder, and 11 for rape. The median age for the group was 33.8 years, and the median of the elapsed time they served while under sentence of death was 41.1 months. Twenty-seven were white, and 41 were Negro.

PRISONERS UNDER SENTENCE OF DEATH AT CLOSE OF 1967⁴ (Tables 4-6, 10-12; Charts 2, 3)

On December 31, 1967, there were 435 persons reported as under sentence of death,⁵ the highest figure since the National Prisoner Statistics program began keeping such records in 1953, and twice the December 31, 1960 figure of 219.⁶

Of the 435 prisoners, 357, or 82.1 percent, had been sentenced for murder, 65 (14.9 percent) for rape, and 13 (3.0 percent) for other offenses, including five for kidnapping, four for robbery, three for assault by a prisoner serving a Life sentence, and one for burglary.

The median age for this group was 30 years, the ages ranging from one 17-year-old sentenced for murder in Maryland, to a 68-year-old convicted murderer in Florida. Fifty-five percent (219) of the prisoners were Negro; of the remainder, 194 were white and two were American Indians. All were male.

Elapsed time for the year-end population under sentence of death was computed from the first imposition of the death sentence to December 31, 1967. The median elapsed time for the group was 29 months, with a Negro prisoner convicted of murder in Illinois having served the longest -- 12 years, 8 months, and 28 days.

Figure A. - AMERICAN INDIANS AND ORIENTALS EXECUTED IN THE UNITED STATES, BY STATE: 1930-1967 (a)

State	Total	American Indian	Filipino	Chinese	Japanese
United States ...	42	19	13	8	2
FEDERAL	2	2	-	-	-
STATE	40	17	13	8	2
Arkansas	1	1	-	-	-
California	18	3	11	3	1
Colorado	1	-	-	-	1
Nebraska	1	1	-	-	-
New Jersey	2	1	1	-	-
New York	5	1	1	3	-
North Carolina	5	5	-	-	-
Ohio	1	-	-	1	-
Oklahoma	3	3	-	-	-
Texas	1	1	-	-	-
Washington	2	1	-	1	-

(a) All executed for murder, except for 2 American Indians executed for rape in North Carolina.

LEGAL STATUS OF THE DEATH PENALTY IN THE UNITED STATES (Tables 15, 16)

With no additional States abolishing the death penalty during 1967, at the close of the year capital punishment was illegal in nine States, and had been almost totally abolished by law in another four. Among the jurisdictions which still retained capital punishment, 23 prescribed electrocution, 10 lethal gas, eight hanging, and one either shooting or hanging.⁷

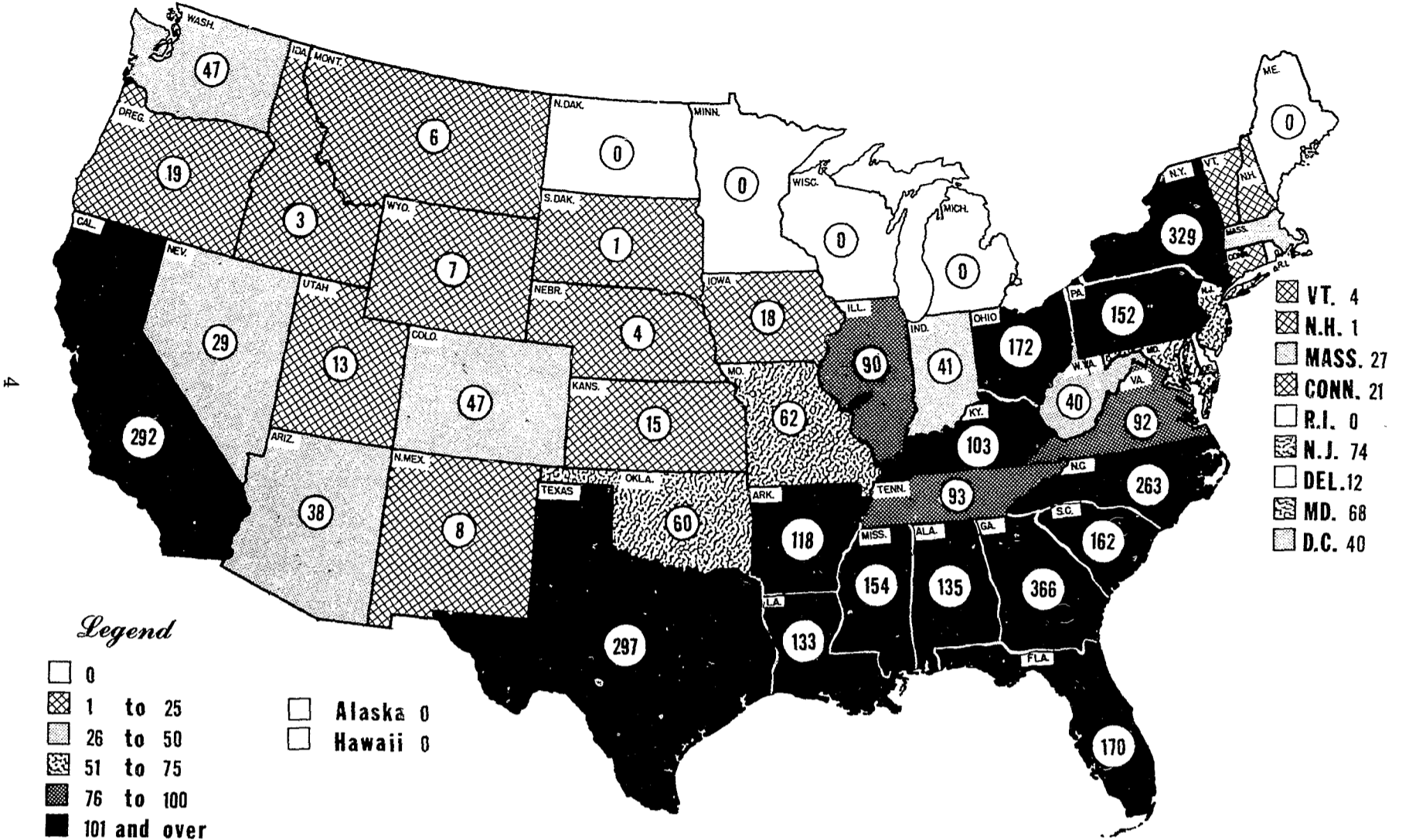
State laws provided for the possible imposition of the death penalty for murder in 38 jurisdictions, and for killing only under special circumstances (such as a killing by a prisoner who is serving a Life sentence for murder) in another four. Kidnapping could bring the death sentence in 31 jurisdictions, treason in 20, train wrecking or train robbery in 17, rape in 16, and aggravated or armed robbery or burglary in 7. See Table 15 for a complete State-by-State breakdown of the capital offenses, and for a listing of capital offenses under Federal law.

FOOTNOTES

1. During this period the Army (Air Force included) carried out 160 executions -- 148 from 1942-1950, three each in 1954, 1955, and 1957, and one each in 1958, 1959, and 1961. Of the total, 106 were for murder (including 21 involving rape), 53 were for rape, and one was for desertion. The Navy has executed no one since 1849.
2. A third annual series, "Personnel in State and Federal Institutions", was discontinued after publication of the 1962 report.
3. The elapsed time from sentencing to date of execution varies according to several factors. In addition to State laws governing the date of execution, there are appeals -- which may be made at all levels of the State courts as well as to the United States Supreme Court -- and judicial and executive orders granting stays or reprieves.
4. Many of the prisoners "under sentence of death" at the close of 1967 received short stays or reprieves granted by State governors. In addition, a large number had appeals before State or Federal courts. The dates of execution for the remainder were set for sometime in 1968 -- although these prisoners, too, could still appeal or receive executive or judicial stays.
5. It is possible, as has happened many times in the past, that the actual number of prisoners under sentence of death may be slightly higher, as new commitments are sometimes not brought to the attention of the National Prisoner Statistics program until the following reporting period.
6. It should be noted here that prisoners under sentence of death who are being held in local or county jails are not ordinarily included in National Prisoner Statistics figures. Two exceptions to this are: (1) prisoners held in the Cook County, Illinois Jail and the District of Columbia Jail (the only local institutions in which executions are carried out), and (2) a few cases in States where prisoners awaiting execution in State prisons are subsequently returned to a local jail pending outcome of an appeal or other legal action.
7. Executions ordered by the Federal courts are carried out in accordance with the method used by the State in which the death sentence is imposed.

CHART 1 - EXECUTIONS 1930 - 1967

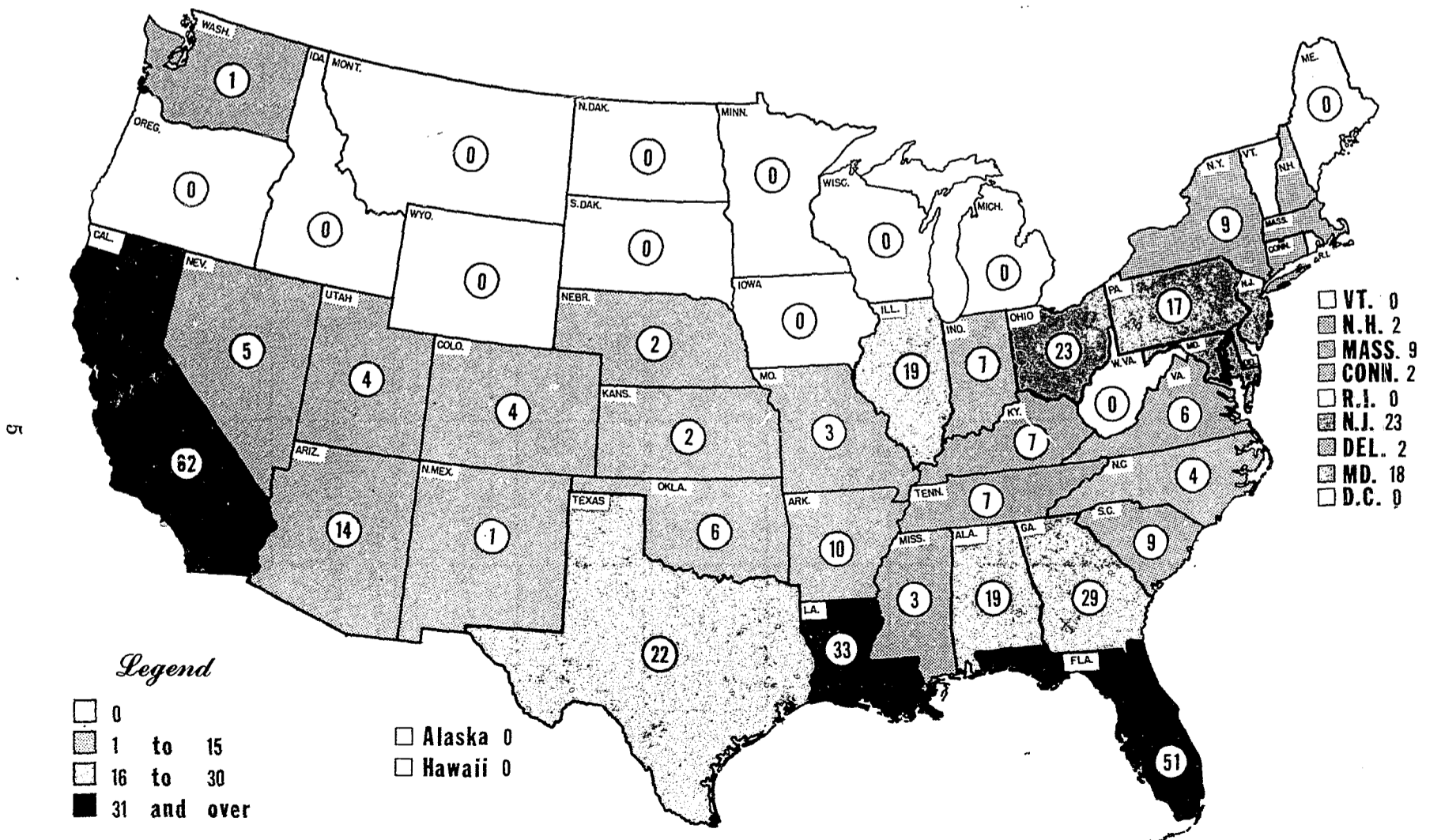
Prisoners Executed Under Civil Authority In The United States, By State



NOTE: Excludes 33 Federal executions carried out in the United States during the period covered.

Source: Table 3

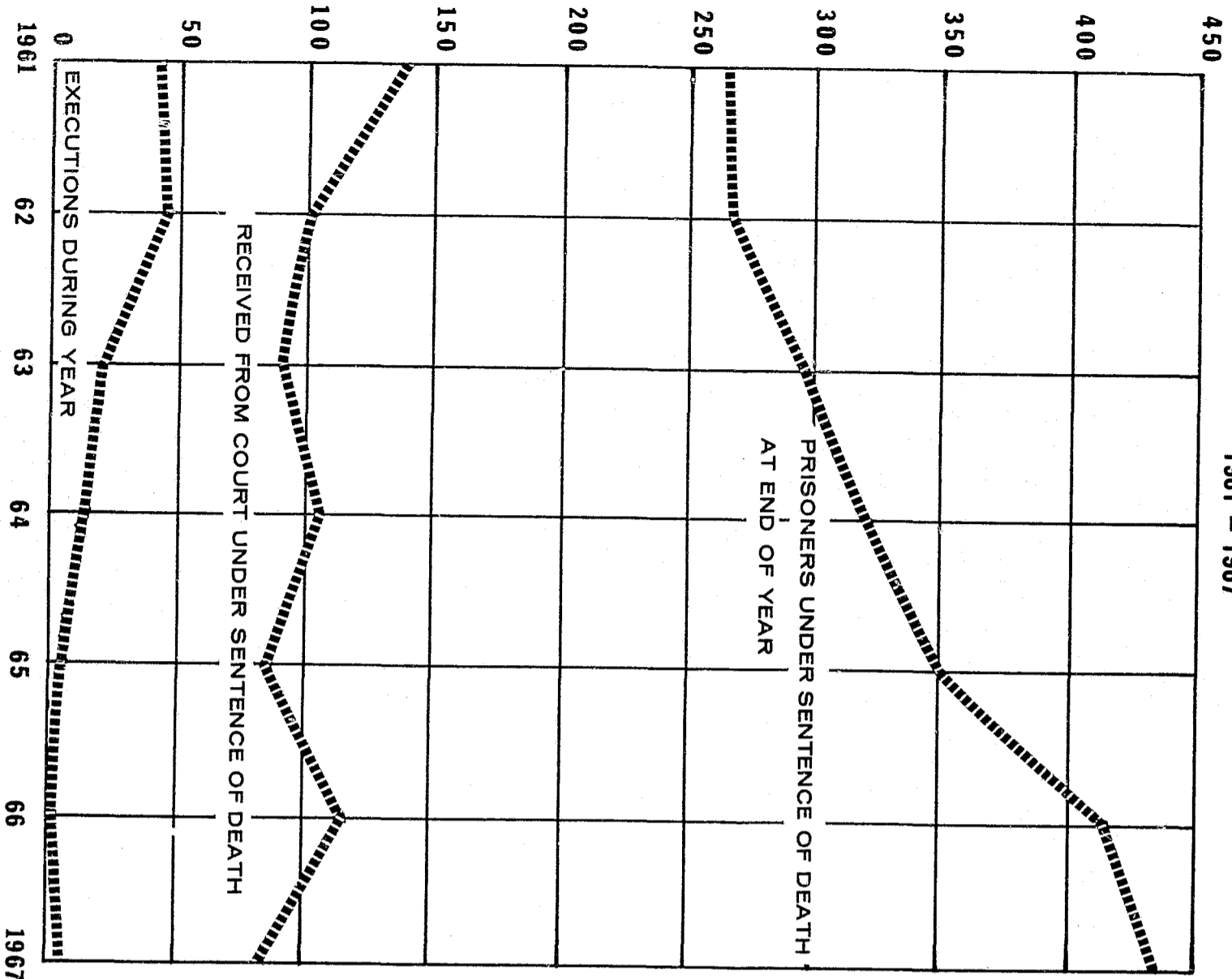
CHART 2 - PRISONERS UNDER SENTENCE OF DEATH, BY STATE, DECEMBER 31, 1967



NOTE: Includes two Federal prisoners, one in Nebr. and one in Ga.

Source: Table 6

CHART 3 - PRISONERS EXECUTED AND PRISONERS UNDER SENTENCE OF DEATH: 1961 - 1967



Source: Table 4

Table 1. - PRISONERS EXECUTED UNDER CIVIL AUTHORITY IN THE UNITED STATES BY RACE, OFFENSE AND YEAR: 1930-1967
(For years 1930-1959 excludes Alaska and Hawaii except for three Federal executions in Alaska: 1939, 1948, 1950)

Year	All offenses				Murder				Rape				Other offenses (a)		
	Total	White	Negro	Other	Total	White	Negro	Other	Total	White	Negro	Other	Total	White	Negro
All years (b)	3,859	1,751	2,066	42	3,334	1,664	1,630	40	455	48	405	2	70	39	31
Percent	100.0	45.4	53.5	1.1	100.0	49.9	48.9	1.2	100.0	10.6	85.0	0.4	100.0	55.7	44.3
1967	2	1	1	-	2	1	1	-	-	-	-	-	-	-	-
1966	1	1	-	-	1	1	-	-	-	-	-	-	-	-	-
1965	7	6	1	-	7	6	1	-	-	-	-	-	-	-	-
1964	15	8	7	-	9	5	4	-	6	3	3	-	-	-	-
1963	21	13	8	-	18	12	6	-	2	-	2	-	1	1	-
1962	47	28	19	-	41	26	15	-	4	2	2	-	2	-	2
1961	42	20	22	-	33	18	15	-	8	1	7	-	1	1	-
1960	56	21	35	-	44	18	26	-	8	-	8	-	4	3	1
1959	49	16	33	-	41	15	26	-	8	1	7	-	-	-	-
1958	49	20	28	1	41	20	20	1	7	-	7	-	1	-	1
1957	65	34	31	-	54	32	22	-	10	2	8	-	1	1	1
1956	65	21	43	1	52	20	31	1	12	-	12	-	1	1	-
1955	76	44	32	-	65	41	24	-	7	1	6	-	4	2	2
1954	81	38	42	1	71	37	33	1	9	1	8	-	1	-	1
1953	62	30	31	1	51	25	25	1	7	1	6	-	4	4	-
1952	83	36	47	-	71	35	36	-	12	1	11	-	-	-	-
1951	105	57	47	1	87	55	31	1	17	2	15	-	1	-	1
1950	82	40	42	-	68	36	32	-	13	4	9	-	1	-	1
1949	119	50	67	2	107	49	56	2	10	-	10	-	2	1	1
1948	119	35	82	2	95	32	61	2	22	1	21	-	2	2	-
1947	153	42	111	-	129	40	89	-	23	2	21	-	1	1	1
1946	131	46	84	1	107	45	61	1	22	-	22	-	2	1	1
1945	117	41	75	1	90	37	52	1	26	4	22	-	1	-	1
1944	120	47	70	3	96	45	48	3	24	2	22	-	-	-	-
1943	131	54	74	3	118	54	63	1	13	-	11	2	-	-	-
1942	147	67	80	-	115	57	58	-	25	4	21	-	7	6	1
1941	123	59	63	1	102	55	46	1	20	4	16	-	1	-	1
1940	124	49	75	-	105	44	61	-	15	2	13	-	4	3	1
1939	160	80	77	3	145	79	63	3	12	-	12	-	3	1	2
1938 (b)	190	96	92	2	154	89	63	2	25	1	24	-	11	6	5
1937	147	69	74	4	133	67	62	4	13	2	11	-	4	-	1
1936	195	92	101	2	181	86	93	2	10	2	8	-	4	4	-
1935	199	119	77	3	184	115	66	3	13	2	11	-	2	2	-
1934	168	65	102	1	154	64	89	1	14	1	13	-	-	1	-
1933	170	77	81	2	151	75	74	2	7	1	6	-	-	1	-
1932	140	62	75	3	128	62	63	3	10	-	10	-	2	-	2
1931	153	77	72	4	137	76	57	4	15	1	14	-	1	-	1
1930	155	90	65	-	147	90	57	-	6	-	6	-	2	-	2

(a) Includes 23 armed robbery, 20 kidnapping, 11 burglary, 6 sabotage, 6 aggravated assault, and 2 espionage.
(b) Figures revised to reflect one white Federal bank robber who was erroneously carried in previous bulletins as a murderer.

Table 2. - PRISONERS EXECUTED UNDER CIVIL AUTHORITY IN THE UNITED STATES, BY STATE AND YEAR: 1930-1967

Region and State	Total	1967	1966	1965	1964	1963	1962	1961	1960	1955-1959	1950-1954	1945-1949	1940-1944	1935-1939	1930-1934
United States	3,859	2	1	7	15	21	47	42	56	304	413	639	645	891	776
FEDERAL (a)	33	-	-	-	-	1	-	-	-	3	6	6	7	9	1
TOTAL STATE	3,826	2	1	7	15	20	47	42	56	301	407	633	638	882	775
NORTHEAST	608	-	-	-	-	3	4	3	7	51	56	74	110	145	155
Maine (b)	XX	XX	XX	XX	XX	XX	XX	XX	XX	XX	XX	XX	XX	XX	XX
New Hampshire	1	-	-	-	-	-	-	-	-	-	-	-	-	1	-
Vermont	4	-	-	-	-	-	-	-	-	-	2	1	-	-	1
Massachusetts	27	-	-	-	-	-	-	-	-	-	-	3	6	11	7
Rhode Island	-	-	-	-	-	-	-	-	-	-	-	-	-	-	-
Connecticut	21	-	-	-	-	-	-	-	1	5	-	5	5	3	2
New York	329	-	-	-	-	2	-	2	6	25	27	36	78	73	80
New Jersey	74	-	-	-	-	1	2	-	-	9	8	8	6	16	24
Pennsylvania	152	-	-	-	-	-	2	1	-	12	19	21	15	41	41
NORTH CENTRAL	403	-	-	5	2	3	7	2	2	16	42	64	42	113	105
Ohio	172	-	-	-	-	2	2	1	2	12	20	36	15	39	43
Indiana	41	-	-	-	-	-	-	1	-	-	2	5	2	20	11
Illinois	90	-	-	-	-	-	2	-	-	1	8	5	13	27	34
Michigan (b)	XX	XX	XX	XX	XX	XX	XX	XX	XX	XX	XX	XX	XX	XX	XX
Wisconsin (b)	XX	XX	XX	XX	XX	XX	XX	XX	XX	XX	XX	XX	XX	XX	XX
Minnesota (b)	XX	XX	XX	XX	XX	XX	XX	XX	XX	XX	XX	XX	XX	XX	XX
Iowa (b)	18	XX	XX	-	-	-	2	-	-	-	1	4	3	7	1
Missouri	62	-	-	1	2	1	-	-	-	2	5	9	6	20	16
North Dakota	-	-	-	-	-	-	-	-	-	-	-	-	-	-	-
South Dakota (b)	1	-	-	-	-	-	-	-	-	-	-	1	-	XX	XX
Nebraska	4	-	-	-	-	-	-	-	-	1	1	2	-	-	-
Kansas (b)	15	-	-	4	-	-	1	-	-	-	5	2	3	-	XX

Region and State	Total	1967	1966	1965	1964	1963	1962	1961	1960	1955-1959	1950-1954	1945-1949	1940-1944	1935-1939	1930-1934
SOUTH	2,306	-	1	1	12	10	22	26	32	183	244	419	413	524	419
Delaware (b)	12	-	-	-	-	-	-	-	XX	-	-	2	2	6	2
Maryland	68	-	-	-	-	-	-	1	-	4	2	19	26	10	6
Dist. of Columbia	40	-	-	-	-	-	-	-	-	1	3	13	3	5	15
Virginia	92	-	-	-	-	-	1	4	1	8	15	22	13	20	8
West Virginia (b)	40	XX	XX	-	-	-	-	-	-	4	5	9	2	10	10
North Carolina	263	-	-	-	-	-	-	1	-	5	14	62	50	80	51
South Carolina	162	-	-	-	-	-	2	5	1	10	16	29	32	30	37
Georgia	366	-	-	-	2	2	1	3	6	34	51	72	58	73	64
Florida	170	-	-	-	2	1	5	2	2	27	22	27	38	29	15
Kentucky	103	-	-	-	-	-	1	-	-	8	8	15	19	34	18
Tennessee	93	-	-	-	-	-	-	-	1	7	1	18	19	31	16
Alabama	135	-	-	1	1	-	1	1	1	6	14	21	29	41	19
Mississippi	154	-	-	-	1	2	1	5	1	21	15	26	34	22	26
Arkansas	118	-	-	-	1	-	-	-	8	7	11	18	20	33	20
Louisiana	133	-	-	-	-	-	-	1	-	13	14	23	24	19	39
Oklahoma	60	-	1	-	-	1	1	-	3	3	4	7	6	9	25
Texas	297	-	-	-	5	4	9	3	8	25	49	36	38	72	48
WEST	509	2	-	1	1	4	14	11	15	51	65	76	73	100	96
Montana	6	-	-	-	-	-	-	-	-	-	-	-	1	4	1
Idaho	3	-	-	-	-	-	-	*	-	1	2	-	-	-	-
Wyoming	7	-	-	1	-	-	-	-	-	-	-	-	2	1	3
Colorado	47	1	-	-	1	-	2	1	1	2	1	7	6	9	16
New Mexico	8	-	-	-	-	-	-	-	1	1	2	2	3	6	7
Arizona	38	-	-	-	-	2	-	1	1	6	2	3	6	10	7
Utah	13	-	-	-	-	-	-	-	1	4	2	1	3	2	-
Nevada	29	-	-	-	-	-	-	1	1	-	9	5	5	3	5
Washington	47	-	-	-	-	1	-	-	1	2	4	7	9	13	10
Oregon (b)	19	XX	XX	XX	-	-	1	-	-	-	4	6	6	1	1
California	292	1	-	-	-	1	11	8	9	35	39	45	35	57	51
Alaska (c)	XX	XX	XX	XX	XX	XX	XX	XX	XX
Hawaii (c)	XX	XX	XX	XX	XX	XX	XX	XX	XX

(a) See Table 14 for the States and years in which the 33 Federal executions occurred.

(b) Death penalty is illegal as indicated (XX) (see Table 16).

(c) Alaska and Hawaii, when territories, abolished capital punishment in 1957. As States, Alaska and Hawaii are included in series beginning January 1, 1960.

Table 3. - PRISONERS EXECUTED UNDER CIVIL AUTHORITY IN THE UNITED STATES, BY OFFENSE, RACE, AND STATE: 1930-1967
(For years 1930-1959, excludes Alaska and Hawaii except for three Federal executions in Alaska; one each in 1939, 1948 and 1950)

Region and State	All offenses				Murder				Rape				Other offenses							
													Total		Armed robbery		Kid-napping	Other ^(a)		
	Total	White	Negro	Other	Total	White	Negro	Other	Total	White	Negro	Other	Total	White	Negro	White	Negro	White	White	Negro
United States ^(b)	3,859	1,751	2,066	42	3,334	1,664	1,630	40	455	48	405	2	70	39	31	6	19	20	13	12
Percent	100.0	86.4	11.8	1.8
FEDERAL ^(b)	33	29	3	2	15	10	3	2	2	2	-	-	16	16	-	2	-	6	8	-
TOTAL STATE	3,826	1,723	2,063	40	3,319	1,654	1,627	38	453	46	405	2	54	23	31	4	19	14	5	12
NORTHEAST	608	424	177	7	606	422	177	7	-	-	-	-	2	2	-	-	-	2	-	-
Maine ^(c)	XX	XX	XX	XX	XX	XX	XX	XX	XX	XX	XX	XX	XX	XX	XX	XX	XX	XX	XX	XX
New Hampshire	1	1	-	-	1	1	-	-	-	-	-	-	-	-	-	-	-	-	-	-
Vermont	4	4	-	-	4	4	-	-	-	-	-	-	-	-	-	-	-	-	-	-
Massachusetts	27	25	2	-	27	25	2	-	-	-	-	-	-	-	-	-	-	-	-	-
Rhode Island	-	-	-	-	-	-	-	-	-	-	-	-	-	-	-	-	-	-	-	-
Connecticut	21	18	3	-	21	18	3	-	-	-	-	-	-	-	-	-	-	-	-	-
New York	329	234	90	5	327	232	90	5	-	-	-	-	2	2	-	-	-	2	-	-
New Jersey	74	47	25	2	74	47	25	2	-	-	-	-	-	-	-	-	-	-	-	-
Pennsylvania	152	95	57	-	152	95	57	-	-	-	-	-	-	-	-	-	-	-	-	-
NORTH CENTRAL	403	257	144	2	393	254	137	2	10	3	7	-	-	-	-	-	-	-	-	-
Ohio	172	104	67	1	172	104	67	1	-	-	-	-	-	-	-	-	-	-	-	-
Indiana	41	31	10	-	41	31	10	-	-	-	-	-	-	-	-	-	-	-	-	-
Illinois	90	59	31	-	90	59	31	-	-	-	-	-	-	-	-	-	-	-	-	-
Michigan ^(c)	XX	XX	XX	XX	XX	XX	XX	XX	XX	XX	XX	XX	XX	XX	XX	XX	XX	XX	XX	XX
Wisconsin ^(c)	XX	XX	XX	XX	XX	XX	XX	XX	XX	XX	XX	XX	XX	XX	XX	XX	XX	XX	XX	XX
Minnesota ^(c)	XX	XX	XX	XX	XX	XX	XX	XX	XX	XX	XX	XX	XX	XX	XX	XX	XX	XX	XX	XX
Iowa ^(d)	18	18	-	-	18	18	-	-	-	-	-	-	-	-	-	-	-	-	-	-
Missouri	62	29	33	-	52	26	26	-	10	3	7	-	-	-	-	-	-	-	-	-
North Dakota	-	-	-	-	-	-	-	-	-	-	-	-	-	-	-	-	-	-	-	-
South Dakota ^(d)	1	1	-	-	1	1	-	-	-	-	-	-	-	-	-	-	-	-	-	-
Nebraska	4	3	-	1	4	3	-	1	-	-	-	-	-	-	-	-	-	-	-	-
Kansas ^(d)	15	12	3	-	15	12	3	-	-	-	-	-	-	-	-	-	-	-	-	-

10

Region and State	All offenses				Murder				Rape				Other offenses							
													Total		Armed robbery		Kid-napping	Other ^(a)		
	Total	White	Negro	Other	Total	White	Negro	Other	Total	White	Negro	Other	Total	White	Negro	White	Negro	White	White	Negro
SOUTH	2,306	637	1,659	10	1,824	585	1,231	8	443	43	398	2	39	9	30	4	19	5	-	11
Delaware ^(d)	12	5	7	-	8	4	4	-	4	1	3	-	-	-	-	-	-	-	-	-
Maryland	68	13	55	-	44	7	37	-	24	6	18	-	-	-	-	-	-	-	-	-
Dist. of Columbia	40	3	37	-	37	3	34	-	3	-	3	-	-	-	-	-	-	-	-	-
Virginia	92	17	75	-	71	17	54	-	21	-	21	-	-	-	-	-	-	-	-	-
West Virginia ^(d)	40	31	9	-	36	28	8	-	1	-	1	-	3	3	-	-	-	-	-	9
North Carolina	263	59	199	5	207	55	149	3	47	4	41	2	9	-	9	-	-	-	-	-
South Carolina	162	35	127	-	120	30	90	-	42	5	37	-	6	-	6	-	6	-	-	-
Georgia	366	68	298	-	299	65	234	-	61	3	58	-	1	-	-	-	1	-	-	-
Florida	170	57	113	-	133	55	78	-	36	1	35	-	1	1	-	-	-	-	-	-
Kentucky	103	51	52	-	88	47	41	-	10	1	9	-	5	3	2	3	2	-	-	-
Tennessee	93	27	66	-	66	22	44	-	27	5	22	-	7	-	7	-	5	-	-	2
Alabama	135	28	107	-	106	26	80	-	22	2	20	-	3	-	3	-	3	-	-	-
Mississippi	154	30	124	-	130	30	100	-	21	-	21	-	3	-	3	-	-	-	-	-
Arkansas	118	27	90	1	99	25	73	1	19	2	17	-	-	-	-	-	-	-	-	-
Louisiana	133	30	103	-	115	30	86	-	17	-	17	-	2	2	-	1	-	1	-	-
Oklahoma	60	42	15	3	54	40	11	3	4	-	4	-	3	-	3	-	3	-	-	-
Texas	297	114	182	1	210	101	108	1	84	13	71	-	3	-	3	-	-	-	-	-
WEST	509	405	83	21	496	393	82	21	-	-	-	-	13	12	1	-	-	7	5	1
Montana	6	4	2	-	6	4	2	-	-	-	-	-	-	-	-	-	-	-	-	-
Idaho	3	3	-	-	3	3	-	-	-	-	-	-	-	-	-	-	-	-	-	-
Wyoming	7	6	1	-	7	6	1	-	-	-	-	-	-	-	-	-	-	-	-	-
Colorado	47	41	5	1	47	41	5	1	-	-	-	-	-	-	-	-	-	-	-	-
New Mexico	8	6	2	-	8	6	2	-	-	-	-	-	-	-	-	-	-	-	-	-
Arizona	38	28	10	-	38	28	10	-	-	-	-	-	-	-	-	-	-	-	-	-
Utah	13	13	-	-	13	13	-	-	-	-	-	-	-	-	-	-	-	-	-	-
Nevada	29	27	2	-	29	27	2	-	-	-	-	-	-	-	-	-	-	-	-	-
Washington	47	40	5	2	46	39	5	2	-	-	-	-	1	1	-	-	-	1	-	-
Oregon ^(d)	19	16	3	-	19	16	3	-	-	-	-	-	12	11	1	-	-	6	5	1
California	292	221	53	18	280	210	52	18	-	-	-	-	12	11	1	XX	XX	XX	XX	XX
Alaska ^(e)	XX	XX	XX	XX	XX	XX	XX	XX	XX	XX	XX	XX	XX	XX	XX	XX	XX	XX	XX	XX
Hawaii ^(e)	XX	XX	XX	XX	XX	XX	XX	XX	XX	XX	XX	XX	XX	XX	XX	XX	XX	XX	XX	XX

11

(a) In this category, the 8 Federal executions were for sabotage (6) and espionage (2). The 9 executions in North Carolina and the 2 in Alabama were for burglary. In California, the 6 executions were for aggravated assault committed by prisoners under a Life sentence.
 (b) Figures revised to reflect one white Federal bank robber, who was erroneously carried in previous bulletins as a murderer.
 (c) Death penalty abolished by law during entire period covered by this table.
 (d) See Table 16 for periods during which death penalty was in effect.
 (e) Alaska and Hawaii, when territories, abolished capital punishment in 1957. As States, Alaska and Hawaii are included in this series beginning Jan. 1, 1960.

Table 4. - MOVEMENT OF PRISONERS UNDER SENTENCE OF DEATH: 1961-1967

(Supersedes Figure F, National Prisoner Statistics Bulletin Number 41)

Number of prisoners	1967	1966	1965	1964	1963	1962	1961
Under sentence of death, Jan. 1 ^(a)	415	351	322	298	268	266	219
Received death sentence during year ^(b)	85	118	86	106	93	103	140
Other admissions ^(c)	5	-	12	3	7	7	-
Executed during year	2	1	7	15	21	47	42
Median elapsed time (in months)	-	-	44.5	20.5	16.0	20.5	16.2
Other dispositions ^(d)	68	53	62	70	49	61	51
Median elapsed time (in months) ^(e)	41.1	31.7	33.3	23.5	22.4	16.6	18.7
Commutations	13	17	19	9	16	27	17
Transfer to mental hospital	3	3	4	3	1	4	3
Other ^(f)	52	33	39	58	32	30	31
Under sentence of death, Dec. 31 ^(g)	435	415	351	322	298	268	266
Median elapsed time (in months) ^(e)	29.0	29.5	30.8	26.8	24.0	16.7	14.4

12

- (a) Figures have been revised from those in previously published bulletins to agree with revised December 31 figures.
- (b) Figures have been revised from those in previously published bulletins to include a few prisoners in each year who received the death sentence during a given year, but were not reported to the NPS program until the following year.
- (c) Includes those prisoners previously reported as being "disposed of by other means" as a result of being granted a new trial or being transferred to a mental hospital, who were returned to "death row" during the following or subsequent year.
- (d) Figures have been revised from those in previously published bulletins to include a few prisoners disposed of by means other than execution during a given year, but not reported to the NPS program until the following year.
- (e) Excludes those prisoners who were not reported to the NPS program until the following year.
- (f) Includes 12 reversals of judgment, 31 grants for new trials, 7 resentencings, 1 suicide, and 1 natural death.
- (g) Figures have been revised for each year from those in previously published bulletins to reflect movement data not reported to the NPS program until the following or subsequent year.

Table 5. - MOVEMENT OF PRISONERS UNDER SENTENCE OF DEATH, BY OFFENSE AND RACE: CALENDAR YEAR 1967

Offense	Reported under sentence of death on 1-1-67	Received from court	Other admissions (a)	Executed (b)	Other dispositions							Reported under death sentence on 12-31-67 (f)		
					Total	Indictment dismissed or judgment reversed	Sentence commuted to Life	Re-sentenced to Life or term of years (c)	New trial granted or resentencing ordered (d)	Transferred to mental hospital	Died (e)	Total	Year received	
													1967	Prior years
Total	415	85	5	2	68	12	13	7	31	3	2	435	84	351
White	181	40	2	1	27	9	2	-	12	3	1	195	40	155
Non-white	234	45	3	1	41	3	11	7	19	-	1	240	44	196
Murder	338	74	4	2	57	12	9	6	27	2	1	357	73	284
White	167	36	1	1	24	9	1	-	11	2	1	179	36	143
Non-white	171	38	3	1	33	3	8	6	16	-	-	178	37	141
Rape	68	7	1	-	11	-	4	1	4	1	1	65	7	58
White	8	1	1	-	3	-	1	-	1	1	-	7	1	6
Non-white	60	6	-	-	8	-	3	1	3	-	1	58	6	52
Kidnapping	4	1	-	-	-	-	-	-	-	-	-	5	1	4
White	2	1	-	-	-	-	-	-	-	-	-	3	1	2
Non-white	2	-	-	-	-	-	-	-	-	-	-	2	-	2
Robbery	3	1	-	-	-	-	-	-	-	-	-	4	1	3
White	3	-	-	-	-	-	-	-	-	-	-	3	-	3
Non-white	-	1	-	-	-	-	-	-	-	-	-	1	1	-
Assault by life prisoner	1	2	-	-	-	-	-	-	-	-	-	3	2	1
White	1	2	-	-	-	-	-	-	-	-	-	3	2	1
Non-white	-	-	-	-	-	-	-	-	-	-	-	-	-	-
Burglary	1	-	-	-	-	-	-	-	-	-	-	1	-	1
White	-	-	-	-	-	-	-	-	-	-	-	-	-	-
Non-white	1	-	-	-	-	-	-	-	-	-	-	1	-	1

13

- (a) Includes those prisoners previously reported as being "disposed of by other means" as a result of being granted a new trial or being transferred to a mental hospital, who were returned to "death row" during the following or subsequent year.
- (b) Both prisoners executed were received prior to 1967.
- (c) All were resented to Life except one prisoner sentenced for murder and one sentenced for rape, who were resented to terms of 30 and 33 years, respectively.
- (d) Includes one white female sentenced for murder.
- (e) Includes one death by suicide (sentenced for murder) and one death by natural causes (sentenced for rape).
- (f) Includes prisoners reported with appeals or other judicial or executive actions pending.

Table 6. - MOVEMENT OF PRISONERS UNDER SENTENCE OF DEATH, BY RACE AND STATE: CALENDAR YEAR 1967

Region and State	Prisoners reported under sentence of death: 1-1-67 ^(a)			Received from court			Other admissions ^(c)			Executed			Other dispositions ^(d)			Prisoners reported under sentence of death: 12-31-67 ^(e)		
	Total	White	Non-White (b)	Total	White	Non-White	Total	White	Non-White	Total	White	Non-White	Total	White	Non-White	Total	White	Non-White
United States ..	415	181	234	85	40	45	5	2	3	2	1	1	68	27	41	435	195	240
FEDERAL	2	1	1	-	-	-	-	-	-	-	-	-	-	-	-	2	1	1
TOTAL STATE	413	180	233	85	40	45	5	2	3	2	1	1	68	27	41	433	194	239
NORTHEAST	63	31	32	6	-	6	-	-	-	-	-	-	7	2	5	62	29	33
Maine ^(f)	XX	XX	XX	XX	XX	XX	XX	XX	XX	XX	XX	XX	XX	XX	XX	XX	XX	XX
New Hampshire	2	2	-	-	-	-	-	-	-	-	-	-	-	-	-	2	2	-
Vermont ^(g)	-	-	-	-	-	-	-	-	-	-	-	-	-	-	-	-	-	-
Massachusetts	8	4	4	1	-	1	-	-	-	-	-	-	-	-	-	-	-	-
Rhode Island ^(g)	-	-	-	-	-	-	-	-	-	-	-	-	-	-	-	9	4	5
Connecticut	1	-	1	1	-	1	-	-	-	-	-	-	-	-	2	-	-	
New York ^(g)	14	9	5	-	-	-	-	-	-	-	-	-	5	2	3	9	7	2
New Jersey	19	8	11	4	-	4	-	-	-	-	-	-	-	-	23	8	15	
Pennsylvania	19	8	11	-	-	-	-	-	-	-	-	-	2	-	2	17	8	9
NORTH CENTRAL	39	23	16	20	11	9	2	-	2	-	-	-	6	3	3	55	31	24
Ohio	15	8	7	9	3	6	-	-	-	-	-	-	1	1	-	23	10	13
Indiana	7	5	2	1	1	-	-	-	-	-	-	-	-	-	-	7	6	1
Illinois	13	7	6	9	6	3	1	-	1	-	-	-	1	2	1	19	11	8
Michigan ^(f)	XX	XX	XX	XX	XX	XX	XX	XX	XX	XX	XX	XX	XX	XX	XX	XX	XX	XX
Wisconsin ^(f)	XX	XX	XX	XX	XX	XX	XX	XX	XX	XX	XX	XX	XX	XX	XX	XX	XX	XX
Minnesota ^(f)	XX	XX	XX	XX	XX	XX	XX	XX	XX	XX	XX	XX	XX	XX	XX	XX	XX	XX
Iowa ^(f)	XX	XX	XX	XX	XX	XX	XX	XX	XX	XX	XX	XX	XX	XX	XX	XX	XX	XX
Missouri	2	1	1	-	-	-	1	-	1	-	-	-	-	-	-	3	1	2
North Dakota ^(g)	-	-	-	-	-	-	-	-	-	-	-	-	-	-	-	-	-	-
South Dakota	-	-	-	-	-	-	-	-	-	-	-	-	-	-	-	-	-	-
Nebraska	-	-	-	1	1	-	-	-	-	-	-	-	-	-	-	1	1	-
Kansas	2	2	-	-	-	-	-	-	-	-	-	-	-	-	-	2	2	-

14

Region and State	Prisoners reported under sentence of death: 1-1-67 ^(a)			Received from court			Other admissions ^(c)			Executed			Other dispositions ^(d)			Prisoners reported under sentence of death: 12-31-67 ^(e)		
	Total	White	Non-White (b)	Total	White	Non-White	Total	White	Non-White	Total	White	Non-White	Total	White	Non-White	Total	White	Non-White
SOUTH	220	62	158	34	9	25	3	2	1	-	-	-	32	7	25	225	66	159
Delaware	2	-	2	-	-	-	-	-	-	-	-	-	-	-	-	2	-	2
Maryland	19	3	16	1	1	-	-	-	-	-	-	-	2	-	2	18	4	14
Dist. of Col.	-	-	-	-	-	-	-	-	-	-	-	-	-	-	-	-	-	-
Virginia	4	3	1	3	-	3	-	-	-	-	-	-	1	1	-	6	2	4
West Virginia ^(f) ..	XX	XX	XX	XX	XX	XX	XX	XX	XX	XX	XX	XX	XX	XX	XX	XX	XX	XX
North Carolina ...	4	2	2	1	-	1	-	-	-	-	-	-	1	1	4	4	2	2
South Carolina ...	11	1	10	1	-	1	-	-	-	-	-	-	3	-	3	9	1	8
Georgia	23	9	14	7	1	6	-	-	-	-	-	-	2	2	28	8	20	
Florida	51	15	36	6	1	5	-	-	-	-	-	-	6	-	6	51	16	35
Kentucky	8	4	4	2	1	1	1	-	1	-	-	-	4	1	3	7	4	3
Tennessee	6	-	6	1	-	1	-	-	-	-	-	-	-	-	7	7	-	7
Alabama	19	6	13	3	1	2	-	-	-	-	-	-	3	-	3	19	7	12
Mississippi	3	1	2	-	-	-	-	-	-	-	-	-	-	-	3	3	1	2
Arkansas	11	-	11	-	-	-	1	1	-	-	-	-	2	-	2	10	1	9
Louisiana	35	5	30	3	1	2	-	-	-	-	-	-	5	1	4	33	5	28
Oklahoma	2	-	2	5	3	2	-	-	-	-	-	-	1	-	1	6	3	3
Texas	22	13	9	1	-	1	1	1	-	-	-	-	2	2	-	22	12	10
WEST	91	64	27	25	20	5	-	-	-	2	1	1	23	15	8	91	68	23
Montana	-	-	-	-	-	-	-	-	-	-	-	-	-	-	-	-	-	-
Idaho	-	-	-	-	-	-	-	-	-	-	-	-	-	-	-	-	-	-
Wyoming	1	1	-	-	-	-	-	-	-	-	-	-	1	1	-	-	-	-
Colorado	5	3	2	-	-	-	-	-	-	-	-	-	-	-	4	2	2	-
New Mexico	-	-	-	1	1	-	-	-	-	-	-	-	-	-	1	1	-	-
Arizona	15	14	1	2	2	-	-	-	-	-	-	-	3	3	-	14	13	1
Utah	2	2	-	2	2	-	-	-	-	-	-	-	-	-	4	4	-	-
Nevada	6	5	1	-	-	-	-	-	-	-	-	-	1	1	-	5	4	1
Washington	2	1	1	-	-	-	-	-	-	-	-	-	1	-	1	1	1	-
Oregon ^(f)	XX	XX	XX	XX	XX	XX	XX	XX	XX	XX	XX	XX	XX	XX	XX	XX	XX	XX
California	60	38	22	20	15	5	-	-	-	1	-	1	17	10	7	62	43	19
Alaska ^(f)	XX	XX	XX	XX	XX	XX	XX	XX	XX	XX	XX	XX	XX	XX	XX	XX	XX	XX
Hawaii ^(f)	XX	XX	XX	XX	XX	XX	XX	XX	XX	XX	XX	XX	XX	XX	XX	XX	XX	XX

15

(a) Figures are higher than those previously published in National Prisoner Statistics Bulletin No. 41, due to the inclusion of 9 prisoners who were sentenced to death during 1966, but were not reported to the NPS program until the following year (Georgia - 4, Louisiana - 4, Pennsylvania - 1).
 (b) Includes 2 American Indians in the State of California.
 (c) Includes those prisoners previously reported as being "disposed of by other means" as a result of being granted a new trial or being transferred to a mental hospital, who were returned to "death row" during the following or subsequent year.
 (d) Includes commutations, transfers to mental hospitals, reversals of judgment, resentencings, grants for new trials, suicides, and deaths from natural causes.
 (e) Includes prisoners with appeals or other judicial or executive actions pending.
 (f) Death penalty abolished by law.
 (g) Death penalty partially abolished: see Table 16 for provisions which still apply.

Table 7. - CHARACTERISTICS OF PRISONERS RECEIVED FROM COURT UNDER SENTENCE OF DEATH, BY STATE: CALENDAR YEAR 1967

Region and State	Total received	Race		Offense			Age (in years)				
		White	Negro	Murder	Rape	Other ^(a)	Under 21	21-25	26-30	31-40	Over 40
United States	85	40	45	74	7	4	16	25	21	14	9
FEDERAL	-	-	-	-	-	-	-	-	-	-	-
TOTAL STATE	85	40	45	74	7	4	16	25	21	14	9
NORTHEAST	6	-	6	6	-	-	2	2	-	1	1
Maine ^(b)	XX	XX	XX	XX	XX	XX	XX	XX	XX	XX	XX
New Hampshire	-	-	-	-	-	-	-	-	-	-	-
Vermont ^(c)	-	-	-	-	-	-	-	-	-	-	-
Massachusetts	1	-	1	1	-	-	-	1	-	-	-
Rhode Island ^(c)	-	-	-	-	-	-	-	-	-	-	-
Connecticut	1	-	1	1	-	-	-	-	-	1	-
New York ^(c)	-	-	-	-	-	-	-	-	-	-	-
New Jersey	4	-	4	4	-	-	2	1	-	-	1
Pennsylvania	-	-	-	-	-	-	-	-	-	-	-
NORTH CENTRAL	20	11	9	20	-	-	4	4	9	3	-
Ohio	9	3	6	9	-	-	2	2	4	1	-
Indiana	1	1	-	1	-	-	-	1	-	-	-
Illinois	9	6	3	9	-	-	1	1	5	2	-
Michigan ^(b)	XX	XX	XX	XX	XX	XX	XX	XX	XX	XX	XX
Wisconsin ^(b)	XX	XX	XX	XX	XX	XX	XX	XX	XX	XX	XX
Minnesota ^(b)	XX	XX	XX	XX	XX	XX	XX	XX	XX	XX	XX
Iowa ^(b)	XX	XX	XX	XX	XX	XX	XX	XX	XX	XX	XX
Missouri	-	-	-	-	-	-	-	-	-	-	-
North Dakota ^(c)	-	-	-	-	-	-	-	-	-	-	-
South Dakota	-	-	-	-	-	-	-	-	-	-	-
Nebraska	1	1	-	1	-	-	1	-	-	-	-
Kansas	-	-	-	-	-	-	-	-	-	-	-

16

Region and State	Total received	Race		Offense			Age (in years)				
		White	Negro	Murder	Rape	Other ^(a)	Under 21	21-25	26-30	31-40	Over 40
SOUTH	34	9	25	26	7	1	7	11	5	6	5
Delaware	-	-	-	-	-	-	-	-	-	-	-
Maryland	1	1	-	1	-	-	1	-	-	-	-
Dist. of Columbia	-	-	-	-	-	-	-	-	-	-	-
Virginia	3	-	3	1	2	-	1	2	-	-	-
West Virginia ^(b)	XX	XX	XX	XX	XX	XX	XX	XX	XX	XX	XX
North Carolina	1	-	1	1	-	-	-	-	1	-	-
South Carolina	1	-	1	1	-	-	1	-	-	-	-
Georgia	7	1	6	3	4	-	1	3	1	1	1
Florida	6	1	5	6	-	-	-	1	2	2	1
Kentucky	2	1	1	2	-	-	-	-	-	1	1
Tennessee	1	-	1	-	1	-	-	-	1	-	-
Alabama	3	1	2	3	-	-	2	1	-	-	-
Mississippi	-	-	-	-	-	-	-	-	-	-	-
Arkansas	-	-	-	-	-	-	-	-	-	-	-
Louisiana	3	1	2	3	-	-	-	2	-	-	1
Oklahoma	5	3	2	5	-	-	1	2	-	1	1
Texas	1	-	1	-	-	1	-	-	-	1	-
WEST	25	20	5	22	-	3	3	8	7	4	3
Montana	-	-	-	-	-	-	-	-	-	-	-
Idaho	-	-	-	-	-	-	-	-	-	-	-
Wyoming	-	-	-	-	-	-	-	-	-	-	-
Colorado	-	-	-	-	-	-	-	-	-	-	-
New Mexico	1	1	-	1	-	-	-	-	1	-	-
Arizona	2	2	-	2	-	-	1	1	-	-	-
Utah	2	2	-	2	-	-	-	-	2	-	-
Nevada	-	-	-	-	-	-	-	-	-	-	-
Washington	-	-	-	-	-	-	-	-	-	-	-
Oregon ^(b)	XX	XX	XX	XX	XX	XX	XX	XX	XX	XX	XX
California	20	15	5	17	-	3	2	7	4	4	3
Alaska ^(b)	XX	XX	XX	XX	XX	XX	XX	XX	XX	XX	XX
Hawaii ^(b)	XX	XX	XX	XX	XX	XX	XX	XX	XX	XX	XX

17

(a) Includes 2 cases of aggressive assault by a prisoner serving a Life sentence (California), 1 case of armed robbery (Texas), and 1 case of kidnapping (California).

(b) Death penalty abolished by law.

(c) Death penalty partially abolished. See Table 16 for provisions which still apply.

Table 8. - EXECUTIONS AND OTHER DISPOSITIONS FROM SENTENCE OF DEATH, BY OFFENSE, STATE, AND METHOD OF DISPOSITION: CALENDAR YEAR 1967

Region and State	Total	Indictment dismissed or judgment reversed		Commutated to Life		Resentenced to Life or term of years (a)		New trial granted or resentencing ordered (b)		Transferred to mental hospital		Died (c)		Executed	
		Murder	Rape	Murder	Rape	Murder	Rape	Murder	Rape	Murder	Rape	Murder	Rape	Murder	Rape
United States	70	12	-	9	4	6	1	27	4	2	1	1	1	2	-
FEDERAL	-	-	-	-	-	-	-	-	-	-	-	-	-	-	-
STATE	70	12	-	9	4	6	1	27	4	2	1	1	1	2	-
NORTHEAST	7	1	-	3	-	3	-	-	-	-	-	-	-	-	-
Maine (d)	XX	XX	XX	XX	XX	XX	XX	XX	XX	XX	XX	XX	XX	XX	XX
New Hampshire	-	-	-	-	-	-	-	-	-	-	-	-	-	-	-
Vermont (e)	-	-	-	-	-	-	-	-	-	-	-	-	-	-	-
Massachusetts	-	-	-	-	-	-	-	-	-	-	-	-	-	-	-
Rhode Island (e)	-	-	-	-	-	-	-	-	-	-	-	-	-	-	-
Connecticut	-	-	-	-	-	-	-	-	-	-	-	-	-	-	-
New York (e)	5	1	-	3	-	1	-	-	-	-	-	-	-	-	-
New Jersey	-	-	-	-	-	-	-	-	-	-	-	-	-	-	-
Pennsylvania	2	-	-	-	-	2	-	-	-	-	-	-	-	-	-
NORTH CENTRAL	6	1	-	-	-	-	-	4	-	-	-	1	-	-	-
Ohio	1	-	-	-	-	-	-	-	-	-	-	1	-	-	-
Indiana	1	-	-	-	-	-	-	1	-	-	-	-	-	-	-
Illinois	4	1	-	-	-	-	-	3	-	-	-	-	-	-	-
Michigan (d)	XX	XX	XX	XX	XX	XX	XX	XX	XX	XX	XX	XX	XX	XX	XX
Wisconsin (d)	XX	XX	XX	XX	XX	XX	XX	XX	XX	XX	XX	XX	XX	XX	XX
Minnesota (a)	XX	XX	XX	XX	XX	XX	XX	XX	XX	XX	XX	XX	XX	XX	XX
Iowa (d)	XX	XX	XX	XX	XX	XX	XX	XX	XX	XX	XX	XX	XX	XX	XX
Missouri	-	-	-	-	-	-	-	-	-	-	-	-	-	-	-
North Dakota (e)	-	-	-	-	-	-	-	-	-	-	-	-	-	-	-
South Dakota	-	-	-	-	-	-	-	-	-	-	-	-	-	-	-
Nebraska	-	-	-	-	-	-	-	-	-	-	-	-	-	-	-
Kansas	-	-	-	-	-	-	-	-	-	-	-	-	-	-	-

18

Region and State	Total	Indictment dismissed or judgment reversed		Commutated to Life		Resentenced to Life or term of years (a)		New trial granted or resentencing ordered (b)		Transferred to mental hospital		Died (c)		Executed	
		Murder	Rape	Murder	Rape	Murder	Rape	Murder	Rape	Murder	Rape	Murder	Rape	Murder	Rape
SOUTH	32	1	-	5	4	3	1	11	4	1	1	-	1	-	-
Delaware	-	-	-	-	-	-	-	-	-	-	-	-	-	-	-
Maryland	2	1	-	-	1	-	-	-	-	-	-	-	-	-	-
Dist. of Columbia	-	-	-	-	-	-	-	-	-	-	-	-	-	-	-
Virginia	1	-	-	-	-	-	-	-	-	1	-	-	-	-	-
West Virginia (d)	XX	XX	XX	XX	XX	XX	XX	XX	XX	XX	XX	XX	XX	XX	XX
North Carolina	1	-	-	-	-	1	-	-	-	-	-	-	-	-	-
South Carolina	3	-	-	-	-	-	1	2	-	-	-	-	-	-	-
Georgia	2	-	-	-	1	-	-	-	-	-	1	-	-	-	-
Florida	6	-	-	1	-	-	-	4	1	-	-	-	-	-	-
Kentucky	4	-	-	3	-	-	-	1	-	-	-	-	-	-	-
Tennessee	-	-	-	-	-	-	-	-	-	-	-	-	-	-	-
Alabama	3	-	-	-	-	1	-	2	-	-	-	-	-	-	-
Mississippi	-	-	-	-	-	-	-	-	-	-	-	-	-	-	-
Arkansas	2	-	-	-	-	1	-	-	-	-	-	1	-	-	-
Louisiana	5	-	-	-	2	-	-	1	2	-	-	-	-	-	-
Oklahoma	1	-	-	1	-	-	-	-	-	-	-	-	-	-	-
Texas	2	-	-	-	-	-	-	1	1	-	-	-	-	-	-
WEST	25	9	-	1	-	-	-	12	-	1	-	-	-	2	-
Montana	-	-	-	-	-	-	-	-	-	-	-	-	-	-	-
Idaho	-	-	-	-	-	-	-	-	-	-	-	-	-	-	-
Wyoming	1	-	-	-	-	-	-	1	-	-	-	-	-	-	-
Colorado	1	-	-	-	-	-	-	-	-	-	-	-	-	1	-
New Mexico	-	-	-	-	-	-	-	-	-	-	-	-	-	-	-
Arizona	3	-	-	-	-	-	-	2	-	1	-	-	-	-	-
Utah	-	-	-	-	-	-	-	-	-	-	-	-	-	-	-
Nevada	1	-	-	-	-	-	-	1	-	-	-	-	-	-	-
Washington	1	-	-	-	-	-	-	1	-	-	-	-	-	-	-
Oregon (d)	XX	XX	XX	XX	XX	XX	XX	XX	XX	XX	XX	XX	XX	XX	XX
California	18	9	-	1	-	-	-	7	-	-	-	-	-	1	-
Alaska (d)	XX	XX	XX	XX	XX	XX	XX	XX	XX	XX	XX	XX	XX	XX	XX
Hawaii (d)	XX	XX	XX	XX	XX	XX	XX	XX	XX	XX	XX	XX	XX	XX	XX

19

(a) All resentenced to Life except 1 resentenced to 30-year term (for murder) and 1 resentenced to 33-year term (for rape). (b) Includes 1 female sentenced for murder (Illinois). (c) Includes 1 death by suicide (sentenced for murder), and 1 death by natural causes (sentenced for rape). (d) Death penalty abolished by law. (e) Death penalty partially abolished. See Table 16 for provisions which still apply.

Table 9. - CHARACTERISTICS OF PRISONERS DISPOSED OF BY MEANS OTHER THAN EXECUTION, BY STATE: CALENDAR YEAR 1967

(Includes commutations, transfers to mental hospitals, reversals of judgment, grants for new trials, resentencings, suicides, and natural deaths)

Region and State	Total dispositions	Race		Offense		Age (in years)					Elapsed Time (in months)					
		White	Negro	Murder	Rape	21-25	26-30	31-35	36-40	Over 40	Under 12	12-23	24-35	36-47	48-71	Over 71
United States	68	27	41	57	11	9	16	16	15	12	2	15	11	14	14	12
FEDERAL	-	-	-	-	-	-	-	-	-	-	-	-	-	-	-	-
TOTAL STATE	68	27	41	57	11	9	16	16	15	12	2	15	11	14	14	12
NORTHEAST	7	2	5	7	-	-	-	4	2	1	-	-	-	2	2	3
Maine (a)	XX	XX	XX	XX	XX	XX	XX	XX	XX	XX	XX	XX	XX	XX	XX	XX
New Hampshire	-	-	-	-	-	-	-	-	-	-	-	-	-	-	-	-
Vermont (b)	-	-	-	-	-	-	-	-	-	-	-	-	-	-	-	-
Massachusetts	-	-	-	-	-	-	-	-	-	-	-	-	-	-	-	-
Rhode Island (b)	-	-	-	-	-	-	-	-	-	-	-	-	-	-	-	-
Connecticut	-	-	-	-	-	-	-	-	-	-	-	-	-	-	-	-
New York (b)	5	2	3	5	-	-	-	3	1	1	-	-	-	2	2	1
New Jersey	-	-	-	-	-	-	-	-	-	-	-	-	-	-	-	-
Pennsylvania	2	-	2	2	-	-	-	1	1	-	-	-	-	-	-	2
NORTH CENTRAL	6	3	3	6	-	-	1	1	3	1	-	1	2	1	1	1
Ohio	1	1	-	1	-	-	-	1	-	-	-	-	-	1	-	-
Indiana	1	-	1	1	-	-	-	-	1	-	-	-	-	-	1	-
Illinois (c)	4	2	2	4	-	-	1	-	2	1	-	1	2	-	-	1
Michigan (a)	XX	XX	XX	XX	XX	XX	XX	XX	XX	XX	XX	XX	XX	XX	XX	XX
Wisconsin (a)	XX	XX	XX	XX	XX	XX	XX	XX	XX	XX	XX	XX	XX	XX	XX	XX
Minnesota (a)	XX	XX	XX	XX	XX	XX	XX	XX	XX	XX	XX	XX	XX	XX	XX	XX
Iowa (a)	XX	XX	XX	XX	XX	XX	XX	XX	XX	XX	XX	XX	XX	XX	XX	XX
Missouri	-	-	-	-	-	-	-	-	-	-	-	-	-	-	-	-
North Dakota (b)	-	-	-	-	-	-	-	-	-	-	-	-	-	-	-	-
South Dakota	-	-	-	-	-	-	-	-	-	-	-	-	-	-	-	-
Nebraska	-	-	-	-	-	-	-	-	-	-	-	-	-	-	-	-
Kansas	-	-	-	-	-	-	-	-	-	-	-	-	-	-	-	-

20

Region and State	Total dispositions	Race		Offense		Age (in years)					Elapsed time (in months)					
		White	Negro	Murder	Rape	21-25	26-30	31-35	36-40	Over 40	Under 12	12-23	24-35	36-47	48-71	Over 71
SOUTH	32	7	25	21	11	5	10	8	5	4	2	7	3	6	7	7
Delaware	-	-	-	-	-	-	-	-	-	-	-	-	-	-	-	-
Maryland	2	-	2	1	1	-	-	1	-	1	-	-	-	1	-	1
Dist. of Columbia ..	-	-	-	-	-	-	-	-	-	-	-	-	-	-	-	-
Virginia	1	1	-	1	-	-	-	-	1	-	-	-	-	-	1	-
West Virginia (a)	XX	XX	XX	XX	XX	XX	XX	XX	XX	XX	XX	XX	XX	XX	XX	XX
North Carolina	1	-	1	1	-	-	1	-	-	-	1	-	-	-	-	-
South Carolina	3	-	3	2	1	3	-	-	-	-	-	-	1	-	2	-
Georgia	2	2	-	-	2	-	2	-	-	-	-	2	-	-	-	-
Florida	6	-	6	5	1	1	2	2	1	-	-	3	-	-	2	1
Kentucky	4	1	3	4	-	-	1	1	1	1	-	-	1	1	1	1
Tennessee	-	-	-	-	-	-	-	-	-	-	-	-	-	-	-	-
Alabama	3	-	3	3	-	-	-	3	-	-	-	-	1	2	-	-
Mississippi	-	-	-	-	-	-	-	-	-	-	-	-	-	-	-	-
Arkansas	2	-	2	1	1	1	-	-	-	1	-	1	-	-	-	1
Louisiana	5	1	4	1	4	-	2	1	1	1	-	-	-	1	1	3
Oklahoma	1	-	1	1	-	-	1	-	-	-	-	1	-	-	-	-
Texas	2	2	-	1	1	-	1	-	1	-	1	-	-	1	-	-
WEST	23	15	8	23	-	4	5	3	5	6	-	7	6	5	4	1
Montana	-	-	-	-	-	-	-	-	-	-	-	-	-	-	-	-
Idaho	-	-	-	-	-	-	-	-	-	-	-	-	-	-	-	-
Wyoming	1	1	-	1	-	-	-	-	-	1	-	-	-	1	-	-
Colorado	-	-	-	-	-	-	-	-	-	-	-	-	-	-	-	-
New Mexico	-	-	-	-	-	-	-	-	-	-	-	-	-	-	-	-
Arizona	3	3	-	3	-	-	-	-	1	2	-	-	-	1	2	-
Utah	-	-	-	-	-	-	-	-	-	-	-	-	-	-	-	-
Nevada	1	1	-	1	-	-	-	-	1	-	-	-	-	-	1	-
Washington	1	-	1	1	-	-	1	-	-	-	-	-	-	-	-	1
Oregon (a)	XX	XX	XX	XX	XX	XX	XX	XX	XX	XX	XX	XX	XX	XX	XX	XX
California	17	10	7	17	-	4	4	3	3	3	-	7	6	3	1	-
Alaska (a)	XX	XX	XX	XX	XX	XX	XX	XX	XX	XX	XX	XX	XX	XX	XX	XX
Hawaii (a)	XX	XX	XX	XX	XX	XX	XX	XX	XX	XX	XX	XX	XX	XX	XX	XX

21

(a) Death penalty abolished by law. (b) Death penalty partially abolished. See Table 16 for provisions which still apply. (c) Includes one white female, sentenced for murder, age 36, elapsed time 17 months, for whom resentencing was ordered.

Table 10. - CHARACTERISTICS OF PRISONERS UNDER SENTENCE OF DEATH IN THE UNITED STATES ON DECEMBER 31, 1967, BY STATE

Region and State	Total (a)	Race			Median age (c)	Offense						Median elapsed time (in months) (d)
		White	Negro	Other (b)		Murder	Rape	Kidnaping	Robbery	Assault by life prisoner	Burglary	
United States	435	195	238	2	30.0	357	65	5	4	3	1	29.0
FEDERAL	2	1	1	-	-	2	-	-	-	-	-	-
TOTAL STATE	433	194	237	2	30.1	355	65	5	4	3	1	29.1
NORTHEAST	62	29	33	-	32.1	60	-	2	-	-	-	44.5
Maine(e)	XX	XX	XX	XX	XX	XX	XX	XX	XX	XX	XX	XX
New Hampshire	2	2	-	-	-	-	-	2	-	-	-	-
Vermont(f)	-	-	-	-	-	-	-	-	-	-	-	-
Massachusetts	9	4	5	-	32.5	9	-	-	-	-	-	39.0
Rhode Island(f)	-	-	-	-	-	-	-	-	-	-	-	-
Connecticut	2	-	2	-	-	2	-	-	-	-	-	-
New York(f)	9	7	2	-	34.4	9	-	-	-	-	-	56.5
New Jersey	23	8	15	-	28.9	23	-	-	-	-	-	32.5
Pennsylvania	17	8	9	-	32.9	17	-	-	-	-	-	46.0
NORTH CENTRAL	55	31	24	-	29.3	55	-	-	-	-	-	25.5
Ohio	23	10	13	-	27.8	23	-	-	-	-	-	19.8
Indiana	7	6	1	-	36.3	7	-	-	-	-	-	70.0
Illinois	19	11	8	-	30.8	19	-	-	-	-	-	28.0
Michigan(e)	XX	XX	XX	XX	XX	XX	XX	XX	XX	XX	XX	XX
Wisconsin(e)	XX	XX	XX	XX	XX	XX	XX	XX	XX	XX	XX	XX
Minnesota(e)	XX	XX	XX	XX	XX	XX	XX	XX	XX	XX	XX	XX
Iowa(e)	XX	XX	XX	XX	XX	XX	XX	XX	XX	XX	XX	XX
Missouri	3	1	2	-	-	3	-	-	-	-	-	-
North Dakota(f)	-	-	-	-	-	-	-	-	-	-	-	-
South Dakota	-	-	-	-	-	-	-	-	-	-	-	-
Nebraska	1	1	-	-	-	1	-	-	-	-	-	-
Kansas	2	2	-	-	-	2	-	-	-	-	-	-

22

Region and State	Total (a)	Race			Median age (c)	Offense						Median elapsed time (in months) (d)
		White	Negro	Other (b)		Murder	Rape	Kidnaping	Robbery	Assault by life prisoner	Burglary	
SOUTH	225	66	159	-	29.8	156	64	-	4	-	1	33.5
Delaware	2	-	2	-	-	2	-	-	-	-	-	-
Maryland	18	4	14	-	30.8	13	5	-	-	-	-	69.0
Dist. of Columbia	-	-	-	-	-	-	-	-	-	-	-	-
Virginia	6	2	4	-	20.0	3	3	-	-	-	-	7.0
West Virginia(e)	XX	XX	XX	XX	XX	XX	XX	XX	XX	XX	XX	XX
North Carolina	4	2	2	-	-	3	-	-	-	-	1	-
South Carolina	9	1	8	-	37.5	6	3	-	-	-	-	34.0
Georgia	28	8	20	-	25.0	18	10	-	-	-	-	28.0
Florida	51	16	35	-	31.0	36	15	-	-	-	-	36.4
Kentucky	7	4	3	-	47.5	7	-	-	-	-	-	55.0
Tennessee	7	-	7	-	25.8	1	6	-	-	-	-	21.5
Alabama	19	7	12	-	29.4	13	5	-	1	-	-	40.8
Mississippi	3	1	2	-	-	3	-	-	-	-	-	-
Arkansas	10	1	9	-	27.5	6	4	-	-	-	-	53.0
Louisiana	33	5	28	-	30.3	23	10	-	-	-	-	55.0
Oklahoma	6	3	3	-	27.5	6	-	-	-	-	-	8.7
Texas	22	12	10	-	29.2	16	3	-	3	-	-	21.5
WEST	91	68	21	2	29.7	84	1	3	-	3	-	19.6
Montana	-	-	-	-	-	-	-	-	-	-	-	-
Idaho	-	-	-	-	-	-	-	-	-	-	-	-
Wyoming	-	-	-	-	-	-	-	-	-	-	-	-
Colorado	4	2	2	-	-	4	-	-	-	-	-	-
New Mexico	1	1	-	-	-	1	-	-	-	-	-	-
Arizona	14	13	1	-	29.2	14	-	-	-	-	-	19.0
Utah	4	4	-	-	-	4	-	-	-	-	-	-
Nevada	5	4	1	-	27.5	4	1	-	-	-	-	52.0
Washington	1	1	-	-	-	1	-	-	-	-	-	-
Oregon(e)	XX	XX	XX	XX	XX	XX	XX	XX	XX	XX	XX	XX
California	62	43	17	2	30.5	56	-	3	-	3	-	16.9
Alaska(e)	XX	XX	XX	XX	XX	XX	XX	XX	XX	XX	XX	XX
Hawaii(e)	XX	XX	XX	XX	XX	XX	XX	XX	XX	XX	XX	XX

23

(a) All prisoners under sentence of death were male. (b) Both were American Indians. (c) Median age not computed for less than 5 cases. (d) Median elapsed time not computed for less than 5 cases. (e) Death penalty abolished by law. (f) Death penalty partially abolished. See Table 16 for provisions which still apply.

Table 11. - PRISONERS UNDER SENTENCE OF DEATH, BY AGE AND STATE, DECEMBER 31, 1967

24

Region and State	Total	Age (in years)										Median age (a)
		16-19	20-24	25-29	30-34	35-39	40-44	45-49	50-54	55 and over	Unknown	
United States	435	10	84	123	81	59	33	15	9	19	2	30.0
FEDERAL	2	-	1	1	-	-	-	-	-	-	-	-
TOTAL STATE	433	10	83	122	81	59	33	15	9	19	2	30.1
NORTHEAST	62	-	11	12	19	11	6	2	-	1	-	32.1
Maine (b)	XX	XX	XX	XX	XX	XX	XX	XX	XX	XX	XX	XX
New Hampshire	2	-	-	-	-	1	1	-	-	-	-	-
Vermont (c)	-	-	-	-	-	-	-	-	-	-	-	-
Massachusetts	9	-	2	1	3	1	1	1	-	-	-	32.5
Rhode Island (c)	-	-	-	-	-	-	-	-	-	-	-	-
Connecticut	2	-	-	1	1	-	-	-	-	-	-	-
New York (c)	9	-	-	1	4	2	2	-	-	-	-	34.4
New Jersey	23	-	6	7	5	3	1	-	-	1	-	28.9
Pennsylvania	17	-	3	2	6	4	1	1	-	-	-	32.9
NORTH CENTRAL	55	2	9	19	8	7	6	2	-	2	-	29.3
Ohio	23	1	5	10	3	1	2	-	-	1	-	27.8
Indiana	7	-	1	-	2	2	1	-	-	1	-	36.3
Illinois	19	1	1	7	3	4	2	1	-	-	-	30.8
Michigan (b)	XX	XX	XX	XX	XX	XX	XX	XX	XX	XX	XX	XX
Wisconsin (b)	XX	XX	XX	XX	XX	XX	XX	XX	XX	XX	XX	XX
Minnesota (b)	XX	XX	XX	XX	XX	XX	XX	XX	XX	XX	XX	XX
Iowa (b)	XX	XX	XX	XX	XX	XX	XX	XX	XX	XX	XX	XX
Missouri	3	-	-	2	-	-	1	-	-	-	-	-
North Dakota (c)	-	-	-	-	-	-	-	-	-	-	-	-
South Dakota	-	-	-	-	-	-	-	-	-	-	-	-
Nebraska	1	-	1	-	-	-	-	-	-	-	-	-
Kansas	2	-	1	-	-	-	-	1	-	-	-	-

25

Region and State	Total	Age (in years)										Median age (a)
		16-19	20-24	25-29	30-34	35-39	40-44	45-49	50-54	55 and over	Unknown	
SOUTH	225	7	42	66	42	25	15	10	6	10	2	29.8
Delaware	2	-	-	1	-	-	1	-	-	-	-	-
Maryland	18	1	2	5	6	1	-	1	1	1	-	30.8
Dist. of Columbia	-	-	-	-	-	-	-	-	-	-	-	-
Virginia	6	1	2	2	-	-	1	-	-	-	-	20.0
West Virginia (b)	XX	XX	XX	XX	XX	XX	XX	XX	XX	XX	XX	XX
North Carolina	4	-	-	1	1	2	-	-	-	-	-	-
South Carolina	9	-	2	2	-	1	-	1	1	2	-	37.5
Georgia	28	1	10	3	3	6	3	2	-	-	2	25.0
Florida	51	-	7	16	13	8	3	2	-	2	-	31.0
Kentucky	7	-	-	1	1	-	1	1	2	1	-	47.5
Tennessee	7	1	2	3	1	-	-	-	-	-	-	25.8
Alabama	19	2	4	4	4	2	-	2	1	-	-	29.4
Mississippi	3	-	2	1	-	-	-	-	-	-	-	-
Arkansas	10	-	4	2	2	1	-	-	-	1	-	27.5
Louisiana	33	-	5	11	8	2	4	-	1	2	-	30.3
Oklahoma	6	1	1	2	-	1	-	-	-	1	-	27.5
Texas	22	-	1	12	3	1	2	2	-	1	-	29.2
WEST	91	1	21	25	12	16	6	1	3	6	-	29.7
Montana	-	-	-	-	-	-	-	-	-	-	-	-
Idaho	-	-	-	-	-	-	-	-	-	-	-	-
Wyoming	-	-	-	-	-	-	-	-	-	-	-	-
Colorado	4	-	-	1	-	1	-	-	-	2	-	-
New Mexico	1	-	-	1	-	-	-	-	-	-	-	-
Arizona	14	1	1	6	-	3	1	-	1	1	-	29.2
Utah	4	-	-	3	-	1	-	-	-	-	-	-
Nevada	5	-	2	1	1	-	1	-	-	-	-	27.5
Washington	1	-	-	1	-	-	-	2	-	-	-	-
Oregon (b)	XX	XX	XX	XX	XX	XX	XX	XX	XX	XX	XX	XX
California	62	-	18	12	11	11	4	1	2	3	-	30.5
Alaska (b)	XX	XX	XX	XX	XX	XX	XX	XX	XX	XX	XX	XX
Hawaii (b)	XX	XX	XX	XX	XX	XX	XX	XX	XX	XX	XX	XX

(a) Median age not computed for less than 5 cases. (b) Death penalty abolished by law. (c) Death penalty partially abolished. See Table 16 for provisions which still apply.

Table 12. - ELAPSED TIME FOR PRISONERS UNDER SENTENCE OF DEATH, BY STATE: December 31, 1967

Region and State	Total	Elapsed Time (in months)												Median elapsed time (in months) (a)
		3 and under	4-6	7-12	13-18	19-24	25-36	37-48	49-60	61-72	73-84	85-96	97 and over	
United States	435	25	21	41	50	59	64	49	34	22	26	25	19	29.0
FEDERAL	2	-	-	-	-	1	1	-	-	-	-	-	-	-
TOTAL STATE	433	25	21	41	50	58	63	49	34	22	26	25	19	29.1
NORTHEAST	62	1	2	4	8	4	7	8	8	6	5	2	7	44.5
Maine (b)	XX	XX	XX	XX	XX	XX	XX	XX	XX	XX	XX	XX	XX	XX
New Hampshire	2	-	-	-	-	-	-	-	-	-	-	-	2	-
Vermont (c)	-	-	-	-	-	-	-	-	-	-	-	-	-	-
Massachusetts	9	-	-	1	1	1	1	3	1	-	1	-	-	39.0
Rhode Island (c)	-	-	-	-	-	-	-	-	-	-	-	-	-	-
Connecticut	2	1	-	-	1	-	-	-	-	-	-	-	-	-
New York (c)	9	-	-	-	-	-	-	2	4	1	-	1	1	56.5
New Jersey	23	-	2	3	1	3	4	1	1	2	2	1	3	32.5
Pennsylvania	17	-	-	-	5	-	2	2	2	3	2	-	1	46.0
NORTH CENTRAL	55	12	4	5	3	3	12	6	-	4	1	3	2	25.5
Ohio	23	7	-	3	1	3	7	2	-	-	-	-	-	19.8
Indiana	7	-	-	1	-	-	1	-	-	2	1	1	1	70.0
Illinois	19	5	4	-	-	-	2	4	-	1	-	2	1	28.0
Michigan (b)	XX	XX	XX	XX	XX	XX	XX	XX	XX	XX	XX	XX	XX	XX
Wisconsin (b)	XX	XX	XX	XX	XX	XX	XX	XX	XX	XX	XX	XX	XX	XX
Minnesota (b)	XX	XX	XX	XX	XX	XX	XX	XX	XX	XX	XX	XX	XX	XX
Iowa (b)	XX	XX	XX	XX	XX	XX	XX	XX	XX	XX	XX	XX	XX	XX
Missouri	3	-	-	-	1	-	1	-	-	1	-	-	-	-
North Dakota (c)	-	-	-	-	-	-	-	-	-	-	-	-	-	-
South Dakota	-	-	-	-	-	-	-	-	-	-	-	-	-	-
Nebraska	1	-	-	1	-	-	-	-	-	-	-	-	-	-
Kansas	2	-	-	-	1	-	1	-	-	-	-	-	-	-

26

Region and State	Total	Elapsed Time (in months)												Median elapsed time (in months) (a)
		3 and under	4-6	7-12	13-18	19-24	25-36	37-48	49-60	61-72	73-84	85-96	97 and over	
SOUTH	225	6	7	21	20	38	29	30	16	11	19	19	9	33.5
Delaware	2	-	-	-	-	1	1	-	-	-	-	-	-	-
Maryland	18	-	1	-	2	3	-	-	1	3	5	1	2	69.0
Dist. of Columbia ..	-	-	-	-	-	-	-	-	-	-	-	-	-	-
Virginia	6	-	-	3	1	-	-	1	-	-	-	-	1	7.0
West Virginia (b) ...	XX	XX	XX	XX	XX	XX	XX	XX	XX	XX	XX	XX	XX	XX
North Carolina	4	-	-	-	2	-	1	-	1	-	-	-	-	-
South Carolina	9	-	-	1	2	-	2	2	-	2	-	-	-	34.0
Georgia	28	-	3	5	3	1	8	2	2	-	-	3	1	28.0
Florida	51	3	-	3	-	10	10	6	4	3	4	8	-	36.4
Kentucky	7	-	1	1	-	1	-	-	1	1	-	2	-	55.0
Tennessee	7	-	1	-	-	5	1	-	-	-	-	-	-	21.5
Alabama	19	-	1	2	2	2	-	8	1	1	-	1	1	40.8
Mississippi	3	-	-	-	1	1	-	1	-	-	-	-	-	-
Arkansas	10	-	-	-	-	-	-	4	3	1	-	1	1	53.0
Louisiana	33	-	-	3	2	3	4	3	3	-	9	3	3	55.0
Oklahoma	6	2	-	3	-	1	-	-	-	-	-	-	-	8.7
Texas	22	1	-	-	5	10	2	3	-	-	1	-	-	21.5
WEST	91	6	8	11	19	13	15	5	10	1	1	1	1	19.6
Montana	-	-	-	-	-	-	-	-	-	-	-	-	-	-
Idaho	-	-	-	-	-	-	-	-	-	-	-	-	-	-
Wyoming	-	-	-	-	-	-	-	-	-	-	-	-	-	-
Colorado	4	-	-	-	1	-	-	-	2	-	-	1	-	-
New Mexico	1	1	-	-	-	-	-	-	-	-	-	-	-	-
Arizona	14	-	1	1	3	2	-	1	5	1	-	-	-	19.0
Utah	4	-	-	2	-	1	-	-	-	-	1	-	-	-
Nevada	5	-	-	-	1	-	1	-	2	-	-	-	1	52.0
Washington	1	-	-	-	-	-	1	-	-	-	-	-	-	-
Oregon (b)	XX	XX	XX	XX	XX	XX	XX	XX	XX	XX	XX	XX	XX	XX
California	62	5	7	8	14	10	13	4	1	-	-	-	-	16.9
Alaska (b)	XX	XX	XX	XX	XX	XX	XX	XX	XX	XX	XX	XX	XX	XX
Hawaii (b)	XX	XX	XX	XX	XX	XX	XX	XX	XX	XX	XX	XX	XX	XX

27

(a) Medians not computed for totals less than 5. (b) Death penalty abolished by law. (c) Death penalty partially abolished. See Table 16 for provisions which still apply.

Table 13. - WOMEN EXECUTED UNDER CIVIL AUTHORITY IN THE UNITED STATES, BY YEAR, OFFENSE, RACE AND STATE: 1930-1967

Year	Total	Offense		Race		State in which executed
		Murder	Other ^(a)	White	Negro	
All years ...	32	30	2	20	12	...
1962	1	1	-	1	-	California
1957	1	1	-	1	-	Alabama
1955	1	1	-	1	-	California
1954	2	2	-	1	1	Ohio
1953	3	1	2	3	-	Alabama, Federal (Missouri and New York)
1951	1	1	-	1	-	New York
1947	2	2	-	1	1	California; S. Carolina
1946	1	1	-	-	1	Pennsylvania
1945	1	1	-	-	1	Georgia
1944	3	3	-	-	3	Mississippi, New York, N. Carolina
1943	3	3	-	1	2	S. Carolina; Mississippi, N. Carolina
1942	1	1	-	1	-	Louisiana
1941	1	1	-	1	-	California
1938	2	2	-	2	-	Illinois, Ohio
1937	1	1	-	-	1	Mississippi
1936	1	1	-	1	-	New York
1935	3	3	-	2	1	Delaware, New York; Louisiana
1934	1	1	-	1	-	New York
1931	1	1	-	1	-	Pennsylvania
1930	2	2	-	1	1	Arizona, Alabama

(a) Includes one kidnapper and one espionage case (both Federal).

Table 14. - FEDERAL EXECUTIONS IN THE UNITED STATES, BY YEAR, OFFENSE, RACE AND STATE: 1930-1967

Year	Total	Offense			Race			State in which executed (d)
		Murder	Kidnap- ping(a)	Other (b)	White (c)	Negro	Ameri- can Indian	
All years ..	33	15	6	12	28	3	2	...
1963	1	-	1	-	1	-	-	Iowa
1957	2	-	-	2	2	-	-	Georgia
1956	1	-	1	-	1	-	-	Missouri
1954	1	1	-	-	1	-	-	New York
1953	4	-	2	2	4	-	-	Missouri(2), New York(2)
1950	1	1	-	-	-	1	-	Alaska
1948	5	5	-	-	3	2	-	California(3), Alaska(1), Florida(1)
1945	1	1	-	-	1	-	-	Wyoming
1943	1	1	-	-	1	-	-	Tennessee
1942	6	-	-	6	6	-	-	Dist. of Columbia
1939	1	1	-	-	-	-	1	Alaska
1938	5	2	1	2	5	-	-	Kansas(2), Illinois(1), Indiana(1), Michigan(1)
1936	3	2	1	-	2	-	1	Indiana(1), Arizona(1), Oklahoma(1)
1930	1	1	-	-	1	-	-	Kansas

(a) Under the Federal Kidnapping statute, the death penalty may be imposed if the victim is not released unharmed. In all of the cases in this table but the one in 1936, the victim was killed by the kidnapper.

(b) Includes 2 cases of rape on a Federal reservation (1957), 2 cases of espionage (1953), 6 cases of sabotage (1942), and 2 cases of bank robbery, with homicide (1938).

(c) Includes one Mexican (California, 1948).

(d) Prior to June 19, 1937, Federal law required that all Federal executions be carried out by hanging. From that date on, executions ordered by the Federal courts are carried out in accordance with the method used by the State in which the sentence is imposed. If the laws of that State prohibit capital punishment, the Federal court designates another State in which the sentence is to be carried out.

Table 15. - CAPITAL OFFENSES IN THE UNITED STATES, BY STATE

Region and State	Murder	Killing in a duel	Lynch-ing	Killing a woman by abortion	Killing or serious injury inflicted by a prisoner	Perjury or corruption of a witness causing death sentence and execution	Rape	Kidnap-ing of a minor (for ransom in most cases)	Train robbery, train wrecking	Dyna-miting causing death or creating danger of death	Arson causing death	Aggra-vated robbery, armed robbery, burglary	Treason	Homicide during a riot or insur-rection	Attempt to kill the President or Vice President of the U. S. or Governor or Lieut. Governor of the State	Method of execution (a)
FEDERAL ^(b)	Yes	-	-	-	-	-	Yes	Yes	-	Yes	Yes	Yes	Yes	-	-	(c)
STATE:																
NORTHEAST:																
Maine ^(d)	XX	XX	XX	XX	XX	XX	XX	XX	XX	XX	XX	XX	XX	XX	XX	XX
New Hampshire	Yes	-	-	-	-	-	-	-	-	-	-	-	-	-	-	H
Vermont ^(e)	-	-	-	-	Yes	-	-	-	-	-	-	-	-	-	-	E
Massachusetts	Yes	Yes	-	-	-	-	-	-	-	-	-	-	-	-	-	E
Rhode Island	-	-	-	-	Yes	-	-	-	-	-	-	-	-	-	-	H
Connecticut	Yes	-	-	-	-	-	-	Yes	-	-	-	-	Yes	-	Yes	E
New York	Yes	-	-	-	Yes	-	-	-	-	-	-	-	-	-	-	E
New Jersey	(e)	-	-	-	-	-	-	Yes	-	-	-	-	Yes	-	Yes	E
Pennsylvania	Yes	-	Yes	-	-	-	-	-	Yes	-	-	-	-	-	-	E
NORTH CENTRAL:																
Ohio	Yes	-	-	-	-	-	-	Yes	Yes	-	-	-	-	-	Yes	E
Indiana	Yes	Yes	Yes	-	-	-	-	Yes	Yes	-	Yes	-	Yes	-	-	E
Illinois	Yes	-	-	Yes	-	Yes	-	Yes	-	-	-	-	Yes	-	-	E
Michigan ^(d)	XX	XX	XX	XX	XX	XX	XX	XX	XX	XX	XX	XX	XX	XX	XX	XX
Wisconsin ^(d)	XX	XX	XX	XX	XX	XX	XX	XX	XX	XX	XX	XX	XX	XX	XX	XX
Minnesota ^(d)	XX	XX	XX	XX	XX	XX	XX	XX	XX	XX	XX	XX	XX	XX	XX	XX
Iowa ^(d)	XX	XX	XX	XX	XX	XX	XX	XX	XX	XX	XX	XX	XX	XX	XX	XX
Missouri	Yes	-	-	-	-	Yes	Yes	Yes	-	Yes	-	Yes	Yes	-	-	G
North Dakota	-	-	-	-	Yes	-	-	-	-	-	-	-	Yes	-	-	H
South Dakota	Yes	Yes	-	-	-	-	-	Yes	-	-	-	-	-	-	-	E
Nebraska	Yes	Yes	-	-	-	Yes	-	Yes	Yes	-	-	-	-	-	-	E
Kansas	Yes	-	Yes	-	-	-	-	-	-	-	-	-	Yes	-	-	H

Region and State	Murder	Killing in a duel	Lynch-ing	Killing a woman by abortion	Killing or serious injury inflicted by a prisoner	Perjury or corruption of a witness causing death sentence and execution	Rape	Kidnap-ing of a minor (for ransom in most cases)	Train robbery, train wrecking	Dyna-miting causing death or creating danger of death	Arson causing death	Aggra-vated robbery, armed robbery, burglary	Treason	Homicide during a riot or insur-rection	Attempt to kill the President or Vice President of the U. S. or Governor or Lieut. Governor of the State	Method of execution (a)
SOUTH:																
Delaware	Yes	-	-	-	-	-	-	-	-	-	-	-	-	-	-	H
Maryland	Yes	-	-	-	-	-	Yes	Yes	Yes	-	-	-	Yes	-	-	G
Dist. of Columbia	Yes	-	-	-	-	-	Yes	-	Yes	-	-	-	-	-	-	E
Virginia	Yes	Yes	Yes	-	-	-	Yes	Yes	Yes	-	Yes	Yes	Yes	-	-	E
West Virginia ^(d)	XX	XX	XX	XX	XX	XX	XX	XX	XX	XX	XX	XX	XX	XX	XX	XX
North Carolina	Yes	Yes	-	-	-	-	Yes	-	-	-	Yes	-	-	-	-	G
South Carolina	Yes	Yes	-	-	-	-	Yes	Yes	-	-	-	-	-	-	-	E
Georgia	Yes	Yes	Yes	-	-	Yes	Yes	Yes	Yes	Yes	Yes	-	Yes	Yes	-	E
Florida	Yes	Yes	-	-	-	-	Yes	Yes	Yes	-	-	-	-	-	-	E
Kentucky	Yes	-	Yes	Yes	-	-	Yes	Yes	Yes	-	-	Yes	-	Yes	-	E
Tennessee	Yes	-	-	-	-	-	-	Yes	-	-	-	-	-	-	-	E
Alabama	Yes	-	Yes	-	-	-	Yes	Yes	Yes	Yes	Yes	Yes	Yes	-	-	E
Mississippi	Yes	Yes	-	-	-	-	Yes	Yes	-	Yes	-	Yes	Yes	-	-	G
Arkansas	Yes	Yes	Yes	-	-	-	Yes	Yes	-	-	Yes	-	-	-	-	E
Louisiana	Yes	-	-	-	-	-	Yes	Yes	-	-	-	-	Yes	-	-	E
Oklahoma	Yes	Yes	-	-	-	-	Yes	Yes	-	-	-	-	-	Yes	-	E
Texas	Yes	Yes	-	-	-	-	Yes	Yes	-	-	-	Yes	Yes	-	-	E
WEST:																
Montana	Yes	-	-	-	-	Yes	-	Yes	Yes	-	-	-	Yes	-	-	H
Idaho	Yes	-	-	-	-	Yes	-	Yes	Yes	-	-	-	-	-	-	H
Wyoming	Yes	Yes	-	-	-	-	-	Yes	Yes	-	-	-	-	-	-	G
Colorado	Yes	-	-	-	-	Yes	-	Yes	-	-	-	-	-	Yes	-	G
New Mexico	Yes	-	-	-	-	-	-	Yes	Yes	-	-	-	-	-	-	G
Arizona	Yes	-	-	-	Yes	Yes	-	Yes	Yes	-	-	-	Yes	-	-	G
Utah	Yes	Yes	-	-	-	-	-	Yes	-	-	-	-	-	-	-	S
Nevada	Yes	Yes	-	-	-	Yes	Yes	Yes	-	-	-	-	Yes	-	-	G
Washington	Yes	-	-	-	-	-	-	Yes	-	-	-	-	Yes	-	-	H
Oregon ^(d)	XX	XX	XX	XX	XX	XX	XX	XX	XX	XX	XX	XX	XX	XX	XX	XX
California	Yes	-	-	-	Yes	Yes	-	Yes	Yes	-	-	-	Yes	-	-	G
Alaska ^(d)	XX	XX	XX	XX	XX	XX	XX	XX	XX	XX	XX	XX	XX	XX	XX	XX
Hawaii ^(d)	XX	XX	XX	XX	XX	XX	XX	XX	XX	XX	XX	XX	XX	XX	XX	XX

(a) E - Electrocution; G - Lethal Gas; H - Hanging; S - Shooting or Hanging.
 (b) In addition to offenses shown, death penalty may be imposed for espionage; sabotage; sale of narcotics to minor; assassination or kidnapping (causing death) of President, President-elect, Vice-President, or (if no Vice-President) the officer next in succession.
 (c) See footnote d, Table 14.
 (d) Death penalty abolished by law.
 (e) Death penalty partially by law. See Table 16 for provisions which still apply.

Table 16. - ABOLITION OF THE DEATH PENALTY IN THE UNITED STATES: 1846-1967

(States are listed according to year most recent action was taken)

State	Year of partial abolition	Year of complete abolition	Year of restoration	Year of reabolition
New York	1965(a)	-	-	-
Vermont	1965(b)	-	-	-
West Virginia	-	1965	-	-
Iowa	-	1872	1878	1965
Oregon	-	1914	1920	1964
Michigan	1917(c)	1963	-	-
Delaware	-	1958	1961	-
Alaska	-	1957	-	-
Hawaii	-	1957	-	-
South Dakota	-	1915	1939	-
Kansas	-	1907	1935	-
Missouri	-	1917	1919	-
Tennessee	1915(d)	-	1919	-
Washington	-	1913	1919	-
Arizona	1916(e)	-	1918	-
North Dakota	1915(f)	-	-	-
Minnesota	-	1911	-	-
Colorado	-	1897	1901	-
Maine	-	1876	1883	1887
Wisconsin	-	1853	-	-
Rhode Island	1852(g)	-	-	-

(a) Death penalty retained for persons found guilty of killing a peace officer who is acting in line of duty, and for prisoners under a Life sentence who murder a guard or inmate while in confinement or while escaping from confinement.

(b) Death penalty retained for persons convicted of first-degree murder who commit a second "unrelated" murder, and for the first-degree murder of any law enforcement officer or prison employee who is in the performance of the duties of his office.

(c) Death penalty retained for treason. Partial abolition was voted in 1846, but was not put into effect until 1847.

(d) Death penalty retained for rape.

(e) Death penalty retained for treason.

(f) Death penalty retained for treason, and for first-degree murder committed by a prisoner who is serving a Life sentence for first-degree murder.

(g) Death penalty retained for persons convicted of committing murder while serving a Life sentence for any offense.

Source: Information in the files of the National Prisoner Statistics program.

END