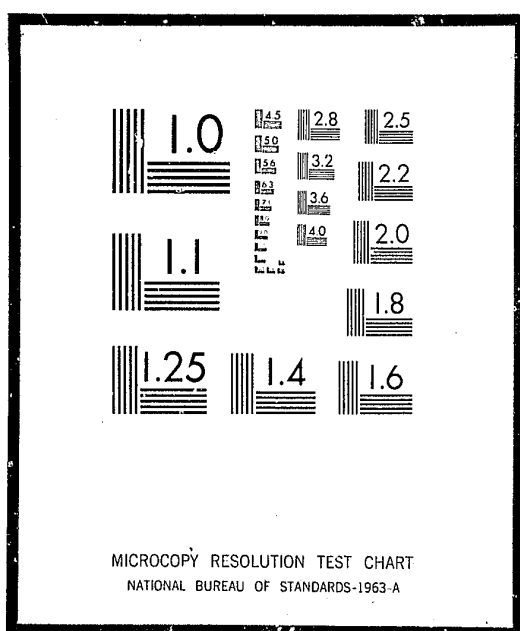


NCJRS

This microfiche was produced from documents received for inclusion in the NCJRS data base. Since NCJRS cannot exercise control over the physical condition of the documents submitted, the individual frame quality will vary. The resolution chart on this frame may be used to evaluate the document quality.



Microfilming procedures used to create this fiche comply with the standards set forth in 41CFR 101-11.504

Points of view or opinions stated in this document are those of the author(s) and do not represent the official position or policies of the U.S. Department of Justice.

U.S. DEPARTMENT OF JUSTICE
LAW ENFORCEMENT ASSISTANCE ADMINISTRATION
NATIONAL CRIMINAL JUSTICE REFERENCE SERVICE
WASHINGTON, D.C. 20531

Date filmed

7/20/76

cat 1

NPS

BULLETIN

NCJ-002173

NATIONAL PRISONER STATISTICS

NUMBER 45 AUGUST, 1969

CAPITAL PUNISHMENT

1930 - 1968

UNITED STATES DEPARTMENT OF JUSTICE
JOHN N. MITCHELL, ATTORNEY GENERAL

BUREAU OF PRISONS
MYRL E. ALEXANDER, DIRECTOR

CAPITAL PUNISHMENT

1930-1968¹

LISTING OF TABLES

Table 1.	Prisoners Executed Under Civil Authority in the United States, By Race, Offense and Year: 1930-1968
Table 2.	Prisoners Executed Under Civil Authority in the United States, By State and Year: 1930-1968
Table 3.	Prisoners Executed Under Civil Authority in the United States, By Offense, Race, and State: 1930-1968
Table 4.	Movement of Prisoners Under Sentence of Death: 1961-1968
Table 5.	Movement of Prisoners Under Sentence of Death, By Offense and Race: Calendar Year 1968
Table 6.	Movement of Prisoners Under Sentence of Death, By Race and State: Calendar Year 1968
Table 7.	Characteristics of Prisoners Received from Court Under Sentence of Death, By State: Calendar Year 1968
Table 8.	Dispositions from Sentence of Death, By Offense, State, and Method of Disposition: Calendar Year 1968
Table 9.	Characteristics of Prisoners Disposed of by Means Other Than Execution, By State: Calendar Year 1968
Table 10.	Characteristics of Prisoners Under Sentence of Death In the United States on December 31, 1968, By State
Table 11.	Prisoners Under Sentence of Death, By Age and State, December 31, 1968
Table 12.	Elapsed Time for Prisoners Under Sentence of Death, By State: December 31, 1968
Table 13.	Women Executed Under Civil Authority in the United States, By Year, Offense, Race and State: 1930-1968
Table 14.	Federal Executions in the United States, By Year, Offense, Race and State: 1930-1968
Table 15.	Abolition of the Death Penalty in the United States: 1846-1968

COVERAGE

This report presents information on the use of the death penalty by civil authorities in the United States during calendar year 1968. Also included are trend data on executions by civil authorities during the period 1930-1968,² and on movement of prisoners under sentence of death for the years 1961-1968.

The National Prisoner Statistics program is a voluntary reporting system initiated by the Bureau of the Census in 1926, and transferred to the Federal Bureau of Prisons in 1950. In addition to the annual series of which this bulletin is a part, the NPS program also publishes an annual bulletin on the movement of prisoners in State and Federal institutions for adult felons, and occasional detailed reports on court commitments to, and first releases from, State institutions.³

We welcome comments on this report, and invite suggestions for improving future bulletins.

EXECUTIONS (Tables 1-3; Charts 1,3; Figure A)

There were no executions during 1968. This is the first year since the Federal Bureau of Prisons began its annual survey (in 1930) that the death penalty has not been implemented in the United States.

During the period 1930-1968, a total of 3,859 persons have been executed -- 3,826 by

1. This is not a new series, but a retitling of the "Executions" series of National Prisoner Statistics bulletins.
2. During this period the Army (Air Force included) carried out 160 executions - 148 from 1942-1950, three each in 1954, 1955, and 1957, and one each in 1958, 1959, and 1961. Of the total, 106 were for murder (including 21 involving rape), 53 were for rape, and one was for desertion. The Navy has executed no one since 1849.
3. A third annual series, "Personnel in State and Federal Institutions", was discontinued after publication of the 1962 report.

State authorities, and 33 under Federal jurisdiction. Of the total executions, 3,334, or 86.4 percent, were for murder, 455 (11.8 percent) were for rape, and 70 (1.8 percent) were for other offenses. Negroes accounted for 53.5 percent; of the remainder, 45.4 percent were white, and 1.1 percent were of other races. Thirty-two women were executed during this 39-year span.

PRISONERS RECEIVED WITH DEATH SENTENCES

New court commitments received under sentence of death during 1968 totaled 102, of whom 96 had been sentenced for murder, three for rape, and three for assault by a Life prisoner. The median age of the new commitments was 27.8 years; 47 were Negro, 54 were white, and 1 was an Indian. Two were female.

At the end of 1968, 98 of the 102 prisoners committed during the year were still under sentence of death. Of the remaining four prisoners, three were granted new trials, and one was resentenced to Life.

DISPOSITIONS OTHER THAN BY EXECUTION (Tables 4-6,8,9)

During 1968, the sentences of 77 prisoners (all male) were disposed of by means other than execution. Of these, 21 were ordered resentenced or were granted new trials; 16 had their death sentences commuted to Life; 18 were resentenced (15 to Life and three to terms of years); two were transferred to mental hospitals; one died (natural death); and in 19 cases indictments were dismissed, or judgments reversed.

Sixty-five of those whose sentences were disposed of had been sentenced for murder, 10 for rape, and 2 for assault by a Life pris-

Figure A. - AMERICAN INDIANS AND ORIENTALS EXECUTED IN THE UNITED STATES,
BY STATE: 1930-1968 (a)

State	Total	American Indian	Filipino	Chinese	Japanese
United States ...	42	19	13	8	2
FEDERAL	2	2	-	-	-
STATE	40	17	13	8	2
Arkansas	1	1	-	-	-
California	18	3	11	3	1
Colorado	1	-	-	-	1
Nebraska	1	1	-	-	-
New Jersey	2	1	1	-	-
New York	5	1	1	3	-
North Carolina	5	5	-	-	-
Ohio	1	-	-	1	-
Oklahoma	3	3	-	-	-
Texas	1	1	-	-	-
Washington	2	1	-	1	-

(a) All executed for murder, except for 2 American Indians executed for rape in North Carolina.

oner. The median age for the group was 31.6 years, and the median of the elapsed time they served while under sentence of death was 32.6 months. Thirty-four were white, and 43 were Negro.

PRISONERS UNDER SENTENCE OF DEATH AT CLOSE OF 1968⁴
(Tables 4-6; 10-12; Charts 2,3)

On December 31, 1968, there were 479 prisoners reported as being under sentence of death,⁵ the highest figure since the National Prisoner Statistics program began keeping such records in 1953.⁶

4. Many of the prisoners "under sentence of death" at the close of 1968 received short stays or reprieves granted by State governors. In addition, a large number had appeals before State or Federal courts. The dates of execution for the remainder were set for sometime in 1968 -- although these prisoners, too, could still appeal or receive executive or judicial stays.

Of the 479 prisoners, 405, or 84.6 percent, had been sentenced for murder, 60 (12.5 percent) for rape, and 14 (2.9 percent) for other offenses, including five for kidnapping, four for robbery, four for assault by a prisoner serving a Life sentence, and one for burglary.

5. It is possible, as has happened many times in the past, that the actual number of prisoners under sentence of death may be slightly higher, as new commitments are sometimes not brought to the attention of the National Prisoner Statistics program until the following reporting period.

6. It should be noted here that prisoners under sentence of death who are being held in local or county jails are not ordinarily included in National Prisoner Statistics figures. Two exceptions to this are: (1) prisoners held in the Cook County, Illinois Jail and the District of Columbia Jail (the only local institutions in which executions are carried out), and (2) a few cases in States where prisoners awaiting execution in State prisons are subsequently returned to a local jail pending outcome of an appeal or other legal action.

The median age for this group was 30.5 years, the ages ranging from one 17-year-old sentenced for murder in Ohio, to a 69-year-old convicted murderer in Florida. Fifty-two percent (251) of the prisoners were Negro; of the remainder, 225 were white and three were American Indians. There were 3 women.

Elapsed time for the year-end population under sentence of death was computed from the first imposition of the death sentence to December 31, 1968. The median elapsed time for the group was 33.1 months, with a Negro prisoner convicted of murder in Illinois having served the longest -- 13 years, 8 months, and 28 days.

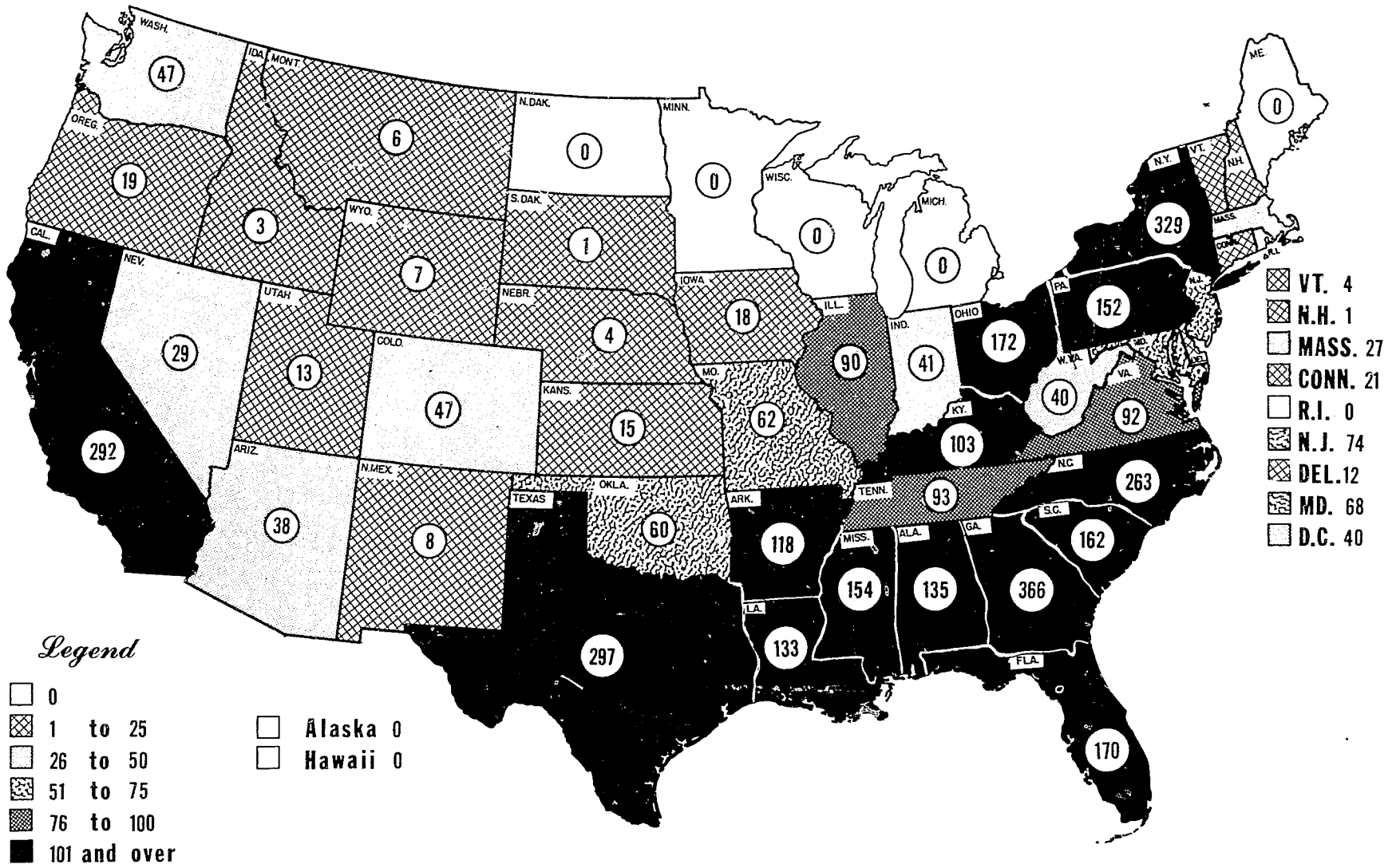
LEGAL STATUS OF THE DEATH PENALTY IN THE UNITED STATES
(Table 15)

With no additional States abolishing the death penalty during 1968, at the close of the year capital punishment was illegal in nine States, and had been almost totally abolished by law in another four. Among the jurisdictions which still retained capital punishment, 23 prescribed electrocution, 10 lethal gas, eight hanging, and one shooting or hanging.⁷

7. Executions ordered by the Federal courts are carried out in accordance with the method used by the State in which the death sentence is imposed.

CHART 1 - EXECUTIONS 1930 - 1968

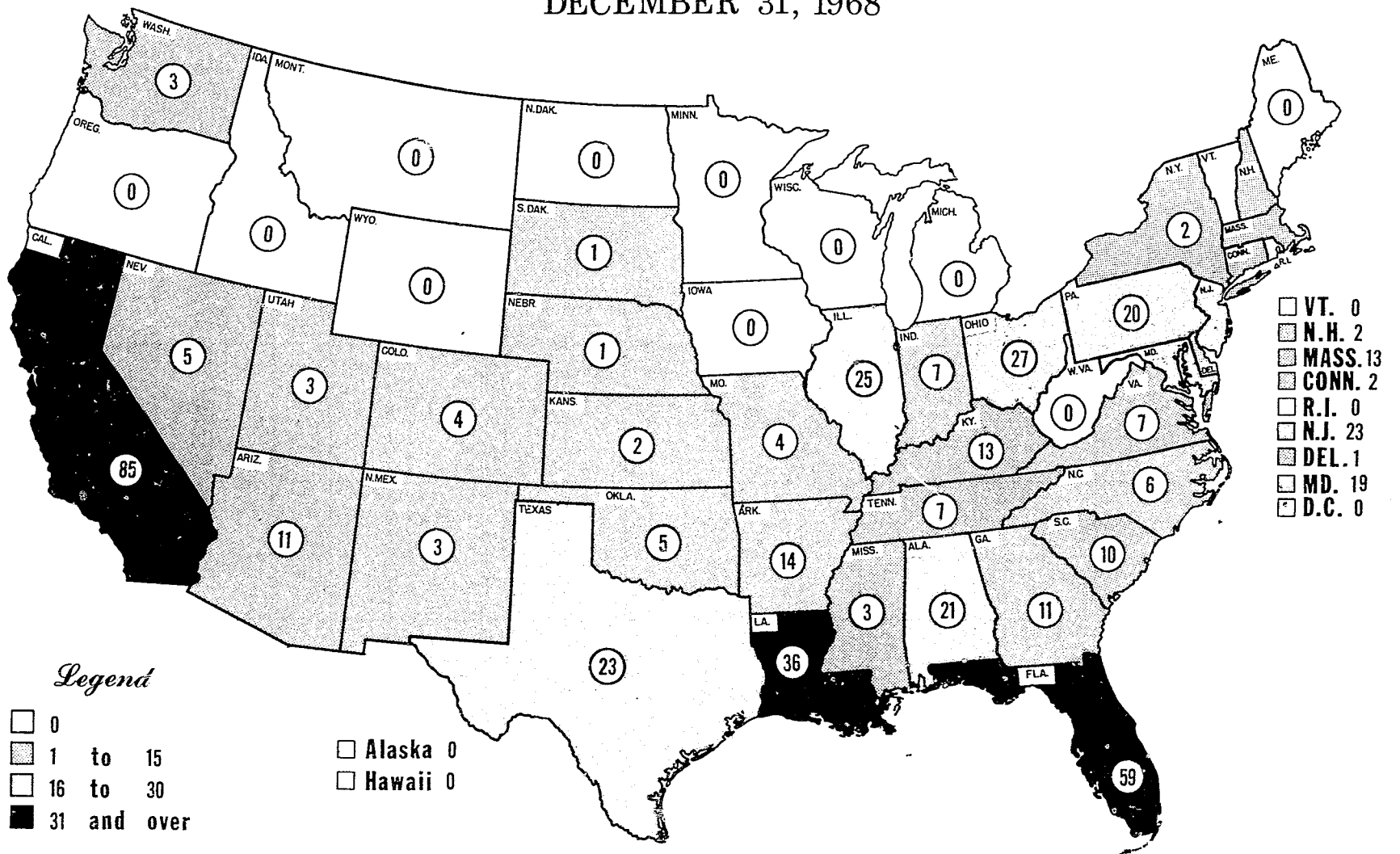
Prisoners Executed Under Civil Authority In The United States, By State



NOTE: Excludes 33 Federal executions carried out in the United States during the period covered.

Source: Table 3

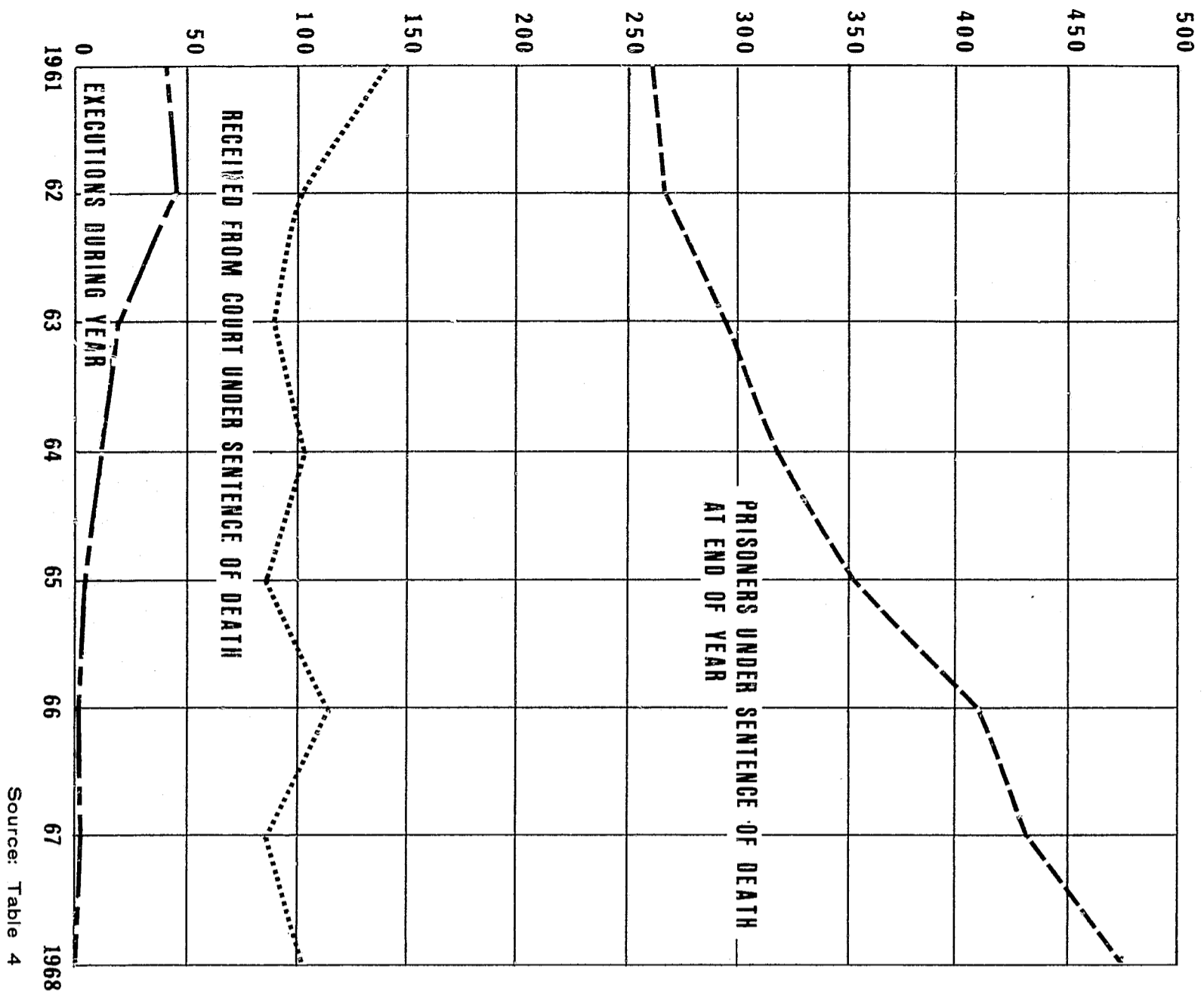
CHART 2 - PRISONERS UNDER SENTENCE OF DEATH, BY STATE DECEMBER 31, 1968



Note: Includes 1 Federal prisoner in Georgia.

Source: Table 6

**CHART 3 - PRISONERS RECEIVED FROM COURT,
AND PRISONERS UNDER SENTENCE OF DEATH: 1961 - 1968**



Source: Table 4

Table 1. - PRISONERS EXECUTED UNDER CIVIL AUTHORITY IN THE UNITED STATES BY RACE, OFFENSE AND YEAR: 1930-1968
(For years 1930-1959 excludes Alaska and Hawaii except for three Federal executions in Alaska: 1939, 1948, 1950)

Year	All offenses				Murder				Rape				Other offenses ^(a)		
	Total	White	Negro	Other	Total	White	Negro	Other	Total	White	Negro	Other	Total	White	Negro
All years	3,859	1,751	2,066	42	3,334	1,664	1,630	40	455	48	405	2	70	39	31
Percent	100.0	45.4	53.5	1.1	100.0	49.9	48.9	1.2	100.0	10.5	89.0	0.4	100.0	55.7	44.3
1968	-	-	-	-	-	-	-	-	-	-	-	-	-	-	-
1967	1	1	-	-	2	1	-	-	-	-	-	-	-	-	-
1966	7	6	1	-	7	6	1	-	-	-	-	-	-	-	-
1965	15	8	7	-	9	5	4	-	6	3	3	-	-	-	-
1964	21	13	8	-	18	12	6	-	2	-	2	-	1	1	-
1963	47	28	19	-	41	26	15	-	4	2	2	-	2	1	2
1962	42	20	22	-	33	18	15	-	8	1	7	-	1	1	-
1961	56	21	35	-	44	18	26	-	8	-	8	-	4	3	1
1959	49	16	33	-	41	15	26	-	8	1	7	-	-	-	-
1958	49	20	28	1	41	20	20	1	7	-	7	-	1	-	1
1957	65	34	31	-	54	22	32	-	10	2	8	-	1	1	-
1956	65	21	43	1	52	20	31	1	12	-	12	-	1	1	-
1955	76	44	32	-	65	41	24	-	7	1	6	-	4	2	2
1954	81	38	42	1	71	37	33	1	9	1	8	-	1	1	-
1953	62	30	31	1	51	25	25	1	7	1	6	-	4	4	-
1952	83	36	47	-	71	35	36	-	12	1	11	-	1	-	1
1951	105	57	47	-	87	55	31	-	17	2	15	-	1	-	1
1950	82	40	42	-	68	35	32	-	13	4	9	-	1	-	1
1949	119	50	67	2	107	49	56	2	10	-	10	-	2	1	1
1948	119	35	82	2	95	32	61	2	22	1	21	-	2	2	-
1947	153	42	111	-	129	40	89	-	23	2	21	-	1	1	1
1946	131	46	84	1	107	45	61	1	22	-	22	-	2	1	-
1945	117	41	75	1	90	37	52	1	26	4	22	-	1	-	1
1944	120	47	70	3	96	45	48	3	24	2	22	-	-	-	-
1943	131	54	74	3	118	54	63	1	13	-	11	2	-	-	-
1942	147	67	80	-	115	57	58	-	25	4	21	-	7	6	1
1941	123	59	63	1	102	55	46	1	20	4	16	-	1	-	1
1940	124	59	75	-	105	44	61	-	15	2	13	-	4	3	1
1939	160	80	77	3	145	79	63	3	12	-	12	-	3	1	2
1938	190	96	92	2	154	89	63	2	25	1	24	-	11	6	5
1937	147	69	74	4	133	67	62	4	13	2	11	-	4	4	1
1936	195	92	101	2	181	86	93	2	10	2	8	-	2	-	-
1935	199	119	77	3	184	115	66	3	13	2	11	-	4	2	-
1934	168	65	102	1	154	64	89	1	14	1	13	-	-	-	-
1933	160	77	81	2	151	75	74	2	7	1	6	-	2	1	1
1932	140	62	75	3	128	62	63	3	10	-	10	-	2	-	2
1931	153	77	72	4	137	76	57	4	15	1	14	-	1	-	-
1930	155	90	65	-	147	90	57	-	6	-	6	-	2	-	2

(a) Includes 25 armed robbery, 20 kidnaping, 11 burglary, 6 sabotage, 6 aggravated assault, and 2 espionage.

Table 2. - PRISONERS EXECUTED UNDER CIVIL AUTHORITY IN THE UNITED STATES, BY STATE AND YEAR: 1930-1968

Region and State	Total	1968	1967	1966	1965	1964	1963	1962	1961	1960	1955-1959	1950-1954	1945-1949	1940-1944	1935-1939	1930-1934	Method of execution in 1968 (a)
United States ...	3,859	-	2	1	7	15	21	47	42	56	304	413	639	645	891	776	...
FEDERAL ^(b)	33	-	-	-	-	-	1	-	-	-	3	6	6	7	9	1	(c)
TOTAL STATE	3,826	-	2	1	7	15	20	47	42	56	301	407	633	638	882	775	...
NORTHEAST	608	-	-	-	-	-	3	4	3	7	51	56	74	110	145	155	...
Maine ^(d)	XX	XX	XX	XX	XX	XX	XX	XX	XX	XX	XX	XX	XX	XX	XX	XX	XX
New Hampshire	1	-	-	-	-	-	-	-	-	-	-	-	-	-	1	-	H
Vermont	4	-	-	-	-	-	-	-	-	-	-	-	1	-	-	1	E
Massachusetts	27	-	-	-	-	-	-	-	-	-	-	-	3	6	11	7	E
Rhode Island	-	-	-	-	-	-	-	-	-	-	-	-	-	-	-	-	H
Connecticut	21	-	-	-	-	-	-	-	-	1	5	-	5	5	3	2	E
New York	329	-	-	-	-	-	2	-	2	6	25	27	36	78	73	80	E
New Jersey	74	-	-	-	-	-	1	2	-	-	9	8	8	6	16	24	E
Pennsylvania	152	-	-	-	-	-	-	2	1	-	12	19	21	15	41	41	E
NORTH CENTRAL	403	-	-	-	5	2	3	7	2	2	16	42	64	42	113	105	...
Ohio	172	-	-	-	-	-	2	2	1	2	12	20	36	15	39	43	E
Indiana	41	-	-	-	-	-	-	-	1	-	-	2	5	2	20	11	E
Illinois	90	-	-	-	-	-	-	2	-	-	1	8	5	13	27	34	E
Michigan ^(d)	XX	XX	XX	XX	XX	XX	XX	XX	XX	XX	XX	XX	XX	XX	XX	XX	XX
Wisconsin ^(d)	XX	XX	XX	XX	XX	XX	XX	XX	XX	XX	XX	XX	XX	XX	XX	XX	XX
Minnesota ^(d)	XX	XX	XX	XX	XX	XX	XX	XX	XX	XX	XX	XX	XX	XX	XX	XX	XX
Iowa ^(d)	18	XX	XX	XX	-	-	-	2	-	-	-	1	4	7	1	-	XX
Missouri	62	-	-	-	1	2	1	-	-	-	2	5	9	3	20	16	G
North Dakota	-	-	-	-	-	-	-	-	-	-	-	-	-	-	-	-	H
South Dakota ^(d)	1	-	-	-	-	-	-	-	-	-	-	-	1	-	XX	XX	E
Nebraska	4	-	-	-	-	-	-	-	-	-	1	1	-	-	-	-	E
Kansas ^(d)	15	-	-	-	4	-	-	1	-	-	-	5	2	-	XX	-	H

Region and State	Total	1968	1967	1966	1965	1964	1963	1962	1961	1960	1955-1959	1950-1954	1945-1949	1940-1944	1935-1939	1930-1934	Method of execution in 1968 (a)
SOUTH	2,306	-	-	1	1	12	10	22	26	32	183	244	419	413	524	419	...
Delaware ^(d)	12	-	-	-	-	-	-	-	-	XX	-	-	2	2	6	2	H
Maryland	68	-	-	-	-	-	-	-	1	-	4	2	19	26	10	6	G
Dist. of Columbia	40	-	-	-	-	-	-	-	-	-	1	3	13	3	5	15	E
Virginia	92	-	-	-	-	-	-	1	4	1	8	15	22	13	20	8	E
West Virginia ^(d)	40	XX	XX	XX	-	-	-	-	-	-	4	5	9	2	10	10	XY
North Carolina	263	-	-	-	-	-	-	-	1	1	5	14	62	50	80	51	G
South Carolina	162	-	-	-	-	-	-	2	5	1	10	16	29	32	30	37	E
Georgia	366	-	-	-	-	2	2	1	3	6	34	51	72	58	73	64	E
Florida	170	-	-	-	-	2	1	5	2	2	27	22	27	38	29	15	E
Kentucky	103	-	-	-	-	-	-	1	-	-	8	8	15	19	34	18	E
Tennessee	93	-	-	-	-	-	-	-	-	1	7	1	18	19	31	16	E
Alabama	135	-	-	-	1	1	-	1	1	1	6	14	21	29	41	19	E
Mississippi	154	-	-	-	-	1	2	1	5	1	21	15	26	34	22	26	G
Arkansas	118	-	-	-	-	1	-	-	-	8	7	11	18	20	33	20	E
Louisiana	133	-	-	-	-	-	-	-	1	-	13	14	23	24	19	39	E
Oklahoma	60	-	-	1	-	-	1	1	-	3	3	4	7	6	9	25	E
Texas	297	-	-	-	-	5	4	9	3	8	25	49	36	38	72	48	E
WEST	509	-	2	-	1	1	4	14	11	15	51	65	76	73	100	96	...
Montana	6	-	-	-	-	-	-	-	-	-	-	-	-	1	4	1	H
Idaho	3	-	-	-	-	-	-	-	-	-	1	2	-	-	-	-	H
Wyoming	7	-	-	-	1	-	-	-	-	-	-	-	-	2	1	3	G
Colorado	47	-	1	-	-	1	-	2	-	1	2	1	7	6	-	16	G
New Mexico	8	-	-	-	-	-	-	-	-	1	1	2	2	-	-	2	G
Arizona	38	-	-	-	-	-	2	-	1	1	6	2	3	6	10	7	G
Utah	13	-	-	-	-	-	-	-	-	1	4	2	1	3	2	-	S
Nevada	29	-	-	-	-	-	-	-	1	1	-	9	5	5	3	5	G
Oregon	47	-	-	-	-	-	1	-	-	1	2	4	7	9	13	10	H
Oregon ^(d)	19	XX	XX	XX	XX	-	-	-	-	-	-	4	6	6	1	1	XX
California	292	-	1	-	-	-	1	11	8	9	35	39	45	35	57	51	G
Hawaii ^(e)	XX	XX	XX	XX	XX	XX	XX	XX	XX	XX	XX
Alaska ^(e)	XX	XX	XX	XX	XX	XX	XX	XX	XX	XX	XX

(a) E - Electrocution; G - Lethal Gas; H - Hanging; S - Shooting or Hanging.

(b) See Table 14 for the States and years in which 33 Federal executions occurred.

(c) See footnote d, Table 14.

(d) Death penalty illegal as indicated.

(e) Alaska and Hawaii, when territories, abolished capital punishment in 1959. As States, Alaska and Hawaii are included in series beginning January 1, 1960.

Table 3. - PRISONERS EXECUTED UNDER CIVIL AUTHORITY IN THE UNITED STATES, BY OFFENSE, RACE, AND STATE: 1930-1968
 (For years 1930-1959, excludes Alaska and Hawaii except for three Federal executions in Alaska: one each in 1939, 1948 and 1950)

Region and State	All offenses				Murder				Rape				Other offenses							
													Total			Armed robbery		Kid-napping	Other(a)	
	Total	White	Negro	Other	Total	White	Negro	Other	Total	White	Negro	Other	Total	White	Negro	White	Negro	White	White	Negro
United States	3,859	1,751	2,066	42	3,334	1,664	1,630	40	455	48	405	2	70	39	31	6	19	20	13	12
Percent	100.0	86.4	11.8	1.8
FEDERAL	33	23	3	2	15	10	3	2	2	2	-	-	16	16	-	2	-	6	8	-
TOTAL STATE	3,826	1,728	2,063	40	3,319	1,654	1,627	38	453	46	405	2	54	23	31	4	19	14	5	12
NORTHEAST	608	424	177	7	606	422	177	7	-	-	-	-	2	2	-	-	-	2	-	-
Maine(b)	1	XX	XX	XX	XX	XX	XX	XX	XX	XX	XX	XX	XX	XX	XX	XX	XX	XX	XX	XX
New Hampshire	1	1	-	-	1	1	-	-	-	-	-	-	-	-	-	-	-	-	-	-
Vermont	4	4	-	-	4	4	-	-	-	-	-	-	-	-	-	-	-	-	-	-
Massachusetts	27	25	2	-	27	25	2	-	-	-	-	-	-	-	-	-	-	-	-	-
Rhode Island	-	-	-	-	-	-	-	-	-	-	-	-	-	-	-	-	-	-	-	-
Connecticut	21	18	3	-	21	18	3	-	-	-	-	-	-	-	-	-	-	-	-	-
New York	329	234	90	5	327	232	90	5	-	-	-	-	2	2	-	-	-	2	-	-
New Jersey	74	47	25	2	74	47	25	2	-	-	-	-	-	-	-	-	-	-	-	-
Pennsylvania	152	95	57	-	152	95	57	-	-	-	-	-	-	-	-	-	-	-	-	-
NORTH CENTRAL	403	257	144	2	393	254	137	2	10	3	7	-	-	-	-	-	-	-	-	-
Ohio	172	104	67	1	172	104	67	1	-	-	-	-	-	-	-	-	-	-	-	-
Indiana	41	31	10	-	41	31	10	-	-	-	-	-	-	-	-	-	-	-	-	-
Illinois	90	59	31	-	90	59	31	-	-	-	-	-	-	-	-	-	-	-	-	-
Michigan(b)	XX	XX	XX	XX	XX	XX	XX	XX	XX	XX	XX	XX	XX	XX	XX	XX	XX	XX	XX	XX
Wisconsin(b)	XX	XX	XX	XX	XX	XX	XX	XX	XX	XX	XX	XX	XX	XX	XX	XX	XX	XX	XX	XX
Minnesota(b)	XX	XX	XX	XX	XX	XX	XX	XX	XX	XX	XX	XX	XX	XX	XX	XX	XX	XX	XX	XX
Iowa(c)	18	18	-	-	18	18	-	-	-	-	-	-	-	-	-	-	-	-	-	-
Missouri	62	29	33	-	52	26	26	-	10	3	7	-	-	-	-	-	-	-	-	-
North Dakota	-	-	-	-	-	-	-	-	-	-	-	-	-	-	-	-	-	-	-	-
South Dakota(c)	1	1	-	-	1	1	-	-	-	-	-	-	-	-	-	-	-	-	-	-
Nebraska	4	3	-	1	4	3	-	1	-	-	-	-	-	-	-	-	-	-	-	-
Kansas(c)	15	12	3	-	15	12	3	-	-	-	-	-	-	-	-	-	-	-	-	-

10

Region and State	All Offenses				Murder				Rape				Other offenses							
													Total			Armed robbery		Kid-napping	Other Offenses(a)	
	Total	White	Negro	Other	Total	White	Negro	Other	Total	White	Negro	Other	Total	White	Negro	White	Negro	White	White	Negro
SOUTH	2,306	637	1,659	10	1,824	585	1,241	8	443	43	38	2	39	9	30	4	19	5	-	11
Delaware(c)	12	5	7	-	8	4	4	-	4	1	3	-	-	-	-	-	-	-	-	-
Maryland	63	13	55	-	44	7	37	-	24	6	18	-	-	-	-	-	-	-	-	-
Dist. of Columbia	40	3	37	-	37	3	34	-	3	-	3	-	-	-	-	-	-	-	-	-
Virginia	92	17	75	-	71	17	54	-	21	-	21	-	-	-	-	-	-	-	-	-
West Virginia(c)	40	31	9	-	36	28	8	-	1	-	1	-	3	3	-	-	-	3	-	-
North Carolina	263	59	199	5	207	55	149	3	47	4	41	2	9	-	9	-	-	-	-	9
South Carolina	162	35	127	-	120	30	90	-	42	5	37	-	-	-	-	-	-	-	-	-
Georgia	366	68	298	-	299	65	234	-	61	3	58	-	6	-	6	-	6	-	-	-
Florida	170	57	113	-	133	55	78	-	36	1	35	-	1	1	-	-	-	1	-	-
Kentucky	103	51	52	-	88	47	41	-	20	1	9	-	5	3	2	3	2	-	-	-
Tennessee	93	27	66	-	66	22	44	-	17	5	22	-	-	-	-	-	-	-	-	-
Alabama	135	28	107	-	106	26	80	-	22	2	20	-	7	-	7	-	5	-	-	2
Mississippi	154	30	124	-	130	30	100	-	21	-	21	-	3	-	3	-	3	-	-	-
Arkansas	113	27	90	1	99	35	73	1	19	2	17	-	-	-	-	-	-	-	-	-
Louisiana	133	30	103	-	116	40	86	-	17	-	17	-	-	-	-	-	-	-	-	-
Oklahoma	60	42	15	3	54	40	11	3	4	-	4	-	2	2	-	1	-	1	-	-
Texas	297	114	182	1	210	101	108	1	84	13	71	-	3	-	3	-	3	-	-	-
WEST	509	405	83	21	496	393	82	21	-	-	-	-	13	12	1	-	-	7	5	1
Montana	6	4	2	-	6	4	2	-	-	-	-	-	-	-	-	-	-	-	-	-
Idaho	3	3	-	-	3	3	-	-	-	-	-	-	-	-	-	-	-	-	-	-
Wyoming	7	6	1	-	7	6	1	-	-	-	-	-	-	-	-	-	-	-	-	-
Colorado	47	41	5	1	47	41	5	1	-	-	-	-	-	-	-	-	-	-	-	-
New Mexico	8	6	2	-	8	6	2	-	-	-	-	-	-	-	-	-	-	-	-	-
Arizona	28	28	10	-	38	28	10	-	-	-	-	-	-	-	-	-	-	-	-	-
Utah	13	13	-	-	13	13	-	-	-	-	-	-	-	-	-	-	-	-	-	-
Nevada	29	27	2	-	29	27	2	-	-	-	-	-	-	-	-	-	-	-	-	-
Washington	47	40	5	2	46	39	5	2	-	-	-	-	1	1	-	-	-	1	-	-
Oregon(c)	19	16	3	-	19	16	3	-	-	-	-	-	-	-	-	-	-	-	-	-
California	292	221	53	18	280	210	52	18	-	-	-	-	12	11	1	-	-	6	5	1
Alaska(a)	XX	XX	XX	XX	XX	XX	XX	XX	XX	XX	XX	XX	XX	XX	XX	XX	XX	XX	XX	XX
Hawaii(a)	XX	XX	XX	XX	XX	XX	XX	XX	XX	XX	XX	XX	XX	XX	XX	XX	XX	XX	XX	XX

11

(a) In this category, the 8 Federal executions were for sabotage (6) and espionage (2). The 9 executions in North Carolina and the 2 in Alabama were for burglary. In California, the 6 executions were for aggravated assault committed by prisoners under a life sentence.
 (b) Death penalty abolished by law during entire period covered by this table.
 (c) See Table 15 for periods during which death penalty was in effect.
 (d) Alaska and Hawaii, when territories, abolished capital punishment in 1957. As States, Alaska and Hawaii are included in this series beginning Jan. 1, 1960.

Table 4. - MOVEMENT OF PRISONERS UNDER SENTENCE OF DEATH: 1961-1968

(Supersedes Table 4, National Prisoner Statistics Bulletin Number 42)

Number of prisoners	1968	1967	1966	1965	1964	1963	1962	1961
Under sentence of death, Jan. 1	434	415	351	322	298	268	266	219
Received death sentence during year	102	85	118	86	106	93	103	140
Other admissions ^(a)	20	5	-	12	3	7	7	-
Executed during year	-	2	1	7	15	21	47	42
Median elapsed time (in months)	-	-	-	44.5	20.5	16.0	20.5	16.2
Other dispositions ^(b)	77	69	53	62	70	49	61	51
Median elapsed time (in months) ^(c)	32.6	40.8	31.7	33.3	23.5	22.4	16.6	18.7
Commutations	16	13	17	19	9	16	27	17
Transfer to mental hospitals	2	3	3	4	3	1	4	3
Other ^{(b)(d)}	59	53	33	39	58	32	30	31
Under sentence of death, Dec. 31 ^(b)	479	434	415	351	322	298	268	266
Median elapsed time (in months) ^(c)	33.2	28.9	29.5	30.8	26.8	24.0	16.7	14.4

(a) Includes those prisoners previously reported as being "disposed of by other means" as a result of being granted a new trial or being transferred to a mental hospital, who were returned to "death row" during the following or subsequent year.

(b) 1967 figures revised to remove California prisoner who was counted twice in last year's report.

(c) Excludes those prisoners who were not reported to the NPS program until the following year.

(d) 1969 figure includes 19 reversals of judgment, 21 grants for new trials, 18 resentencings, and 1 natural death.

Table 5. - MOVEMENT OF PRISONERS UNDER SENTENCE OF DEATH, BY OFFENSE AND RACE: CALENDAR YEAR 1968

Offense	Reported under sentence of death on 1-1-68	Received from court	Other admissions (a)	Dispositions							Reported under death sentence on 12-31-68 (d)		
				Total	Indictment dismissed or judgment reversed	Sentence commuted	Re-sentenced to Life or term of years (b)	New trial granted or resentencing ordered	Transferred to mental hospital	Died (c)	Total	Year received	
												1968	Prior years
Total	434	102	20	77	19	16	18	21	2	1	479	98	381
White	194	54	11	34	6	9	5	14	-	-	225	51	174
Non-white	240	48	9	43	13	7	13	7	2	1	254	47	207
Murder	356	96	18	65	17	14	13	18	2	-	405	92	313
White	178	51	10	29	6	8	4	11	-	-	210	48	162
Non-white	178	45	8	36	11	6	9	7	2	1	195	44	151
Rape	65	3	2	10	2	2	5	1	-	-	60	3	57
White	7	-	1	3	-	1	1	1	-	-	5	-	5
Non-white	58	3	1	7	2	1	4	-	-	-	55	3	52
Kidnapping	5	-	-	-	-	-	-	-	-	-	5	-	5
White	3	-	-	-	-	-	-	-	-	-	3	-	3
Non-white	2	-	-	-	-	-	-	-	-	-	2	-	2
Robbery	4	-	-	-	-	-	-	-	-	-	4	-	4
White	3	-	-	-	-	-	-	-	-	-	3	-	3
Non-white	1	-	-	-	-	-	-	-	-	-	1	-	1
Assault by Life prisoner	3	3	-	2	-	-	-	2	-	-	4	3	1
White	3	3	-	2	-	-	-	2	-	-	4	3	1
Non-white	-	-	-	-	-	-	-	-	-	-	-	-	-
Burglary	1	-	-	-	-	-	-	-	-	-	1	-	1
White	-	-	-	-	-	-	-	-	-	-	-	-	-
Non-white	1	-	-	-	-	-	-	-	-	-	1	-	1

(a) Includes those prisoners previously reported as being "disposed of by other means" as a result of being granted a new trial or being transferred to a mental hospital, who were returned to "death row" during the following or subsequent year.

(b) All were resentenced to Life except three prisoners: two sentenced to terms of 50 to 100 years and 42 years, 2 months, respectively, and one prisoner sentenced for rape who was sentenced to 20 years to Life.

(c) Death was by natural causes.

(d) Includes prisoners reported with appeals or other judicial or executive actions pending.

Table 6. - MOVEMENT OF PRISONERS UNDER SENTENCE OF DEATH, BY RACE AND STATE: CALENDAR YEAR 1968

Region and State	Prisoners reported under sentence of death: 1-1-68 ^(a)			Received from court			Other admissions ^(d)			Dispositions ^(e)			Prisoners reported under sentence of death: 12-31-68 ^(a)		
	Total	White	Non-White (b)	Total	White	Non-White (c)	Total	White	Non-White	Total	White	Non-White	Total	White	Non-White (f)
United States ^(g)	434	194	240	102	54	48	20	11	9	77	34	43	479	225	254
FEDERAL	2	1	1	-	-	-	-	-	-	1	1	-	1	-	1
TOTAL STATE ^(g)	432	193	239	102	54	48	20	11	9	76	33	43	478	225	253
NORTHEAST	62	29	33	9	4	5	3	2	1	12	7	5	62	28	34
Maine ^(h)	XX	XX	XX	XX	XX	XX	XX	XX	XX	XX	XX	XX	XX	XX	XX
New Hampshire	2	2	-	-	-	-	-	-	-	-	-	-	2	2	-
Vermont ⁽ⁱ⁾	-	-	-	-	-	-	-	-	-	-	-	-	-	-	-
Massachusetts	9	4	5	5	4	1	-	-	-	1	1	-	13	7	6
Rhode Island ⁽ⁱ⁾	-	-	-	-	-	-	-	-	-	-	-	-	-	-	-
Connecticut	2	-	2	-	-	-	-	-	-	-	-	-	2	-	2
New York ⁽ⁱ⁾	9	7	2	-	-	-	1	1	-	8	6	2	2	2	-
New Jersey	23	8	15	2	-	2	-	-	-	2	-	2	23	8	15
Pennsylvania	17	8	9	2	-	2	2	1	1	1	-	1	20	9	11
NORTH CENTRAL	55	31	24	21	8	13	1	1	-	10	2	8	67	38	29
Ohio	23	10	13	10	5	5	-	-	-	6	1	5	27	14	13
Indiana	7	6	1	1	1	-	-	-	-	1	1	1	7	7	-
Illinois	19	11	8	8	2	6	1	1	-	3	1	2	25	13	12
Michigan ^(h)	XX	XX	XX	XX	XX	XX	XX	XX	XX	XX	XX	XX	XX	XX	XX
Wisconsin ^(h)	XX	XX	XX	XX	XX	XX	XX	XX	XX	XX	XX	XX	XX	XX	XX
Minnesota ^(h)	XX	XX	XX	XX	XX	XX	XX	XX	XX	XX	XX	XX	XX	XX	XX
Iowa ^(h)	XX	XX	XX	XX	XX	XX	XX	XX	XX	XX	XX	XX	XX	XX	XX
Missouri	3	1	2	1	-	1	-	-	-	-	-	-	4	1	3
North Dakota ⁽ⁱ⁾	-	-	-	-	-	-	-	-	-	-	-	-	-	-	-
South Dakota	-	-	-	1	-	1	-	-	-	-	-	-	1	-	1
Nebraska	1	1	-	-	-	-	-	-	-	-	-	-	1	1	-
Kansas	2	2	-	-	-	-	-	-	-	-	-	-	2	2	-

14

Region and State	Prisoners reported under sentence of death: 1-1-68 ^(a)			Received from court			Other admissions ^(d)			Dispositions ^(e)			Prisoners reported under sentence of death: 12-31-68 ^(a)		
	Total	White	Non-White (b)	Total	White	Non-White (c)	Total	White	Non-White	Total	White	Non-White	Total	White	Non-White (f)
SOUTH	225	66	159	42	20	22	12	6	6	44	16	28	235	76	159
Delaware	2	-	2	-	-	-	-	-	-	1	-	1	1	-	1
Maryland	18	4	14	2	-	2	-	-	-	1	-	1	19	4	15
Dist. of Columbia	-	-	-	-	-	-	-	-	-	-	-	-	-	-	-
Virginia	6	2	4	1	-	1	-	-	-	-	-	-	7	2	5
West Virginia ^(h)	XX	XX	XX	XX	XX	XX	XX	XX	XX	XX	XX	XX	XX	XX	XX
North Carolina	4	2	2	2	1	1	-	-	-	-	-	-	6	3	3
South Carolina	9	1	8	2	1	1	-	-	-	1	-	1	10	2	8
Georgia	28	8	20	2	1	1	2	1	1	21	4	17	11	6	5
Florida	51	16	35	9	1	8	1	-	1	2	1	1	59	16	43
Kentucky	7	4	3	6	6	-	-	-	-	-	-	-	13	10	3
Tennessee	7	-	7	1	-	1	-	-	-	1	-	1	7	-	7
Alabama	19	7	12	4	1	3	-	-	-	2	1	1	21	7	14
Mississippi	3	1	2	1	1	-	-	-	-	1	1	-	3	1	2
Arkansas	10	1	9	4	2	2	-	-	-	-	-	-	14	3	11
Louisiana	33	5	28	1	-	1	6	2	4	4	1	3	36	6	30
Oklahoma	6	3	3	1	1	-	-	-	-	2	1	1	5	3	2
Texas	22	12	10	6	5	1	3	3	-	8	7	1	23	13	10
WEST ^(g)	90	67	23	30	22	8	4	2	2	10	8	2	114	83	31
Montana	-	-	-	-	-	-	-	-	-	-	-	-	-	-	-
Idaho	-	-	-	-	-	-	-	-	-	-	-	-	-	-	-
Wyoming	-	-	-	-	-	-	-	-	-	-	-	-	-	-	-
Colorado	4	2	2	-	-	-	-	-	-	-	-	-	4	2	2
New Mexico	1	1	-	2	2	-	-	-	-	-	-	-	3	3	-
Arizona	14	13	1	1	1	-	-	-	-	4	4	-	11	10	1
Utah	4	4	-	-	-	-	-	-	-	1	1	-	3	3	-
Nevada	5	4	1	-	-	-	1	1	-	1	-	1	5	5	-
Washington	1	1	-	-	-	-	2	-	2	-	-	-	3	1	2
Oregon ^(h)	XX	XX	XX	XX	XX	XX	XX	XX	XX	XX	XX	XX	XX	XX	XX
California ^(g)	61	42	19	27	19	8	1	1	-	4	3	1	85	59	26
Alaska ^(h)	XX	XX	XX	XX	XX	XX	XX	XX	XX	XX	XX	XX	XX	XX	XX
Hawaii ^(h)	XX	XX	XX	XX	XX	XX	XX	XX	XX	XX	XX	XX	XX	XX	XX

15

(a) Includes prisoners with appeals or other judicial or executive actions pending.
 (b) Includes two American Indians in the State of California.
 (c) Includes one American Indian in the State of South Dakota.
 (d) Includes those prisoners previously reported as being "disposed of by other means" as a result of being granted a new trial or being transferred to a mental hospital, who were returned to "death row" during the following or subsequent year.
 (e) Includes commutations, transfers to mental hospitals, reversals of judgment, resentencings, grants for new trials, and death from natural causes.
 (f) Includes three American Indians: two in the State of California, and one in the State of South Dakota.
 (g) January 1, 1968 figures revised to exclude one California prisoner who was counted twice in last year's report.
 (h) Death penalty abolished by law.
 (i) Death penalty partially abolished. See Table 15 for provisions which still apply.

Table 7. - CHARACTERISTICS OF PRISONERS RECEIVED FROM COURT UNDER SENTENCE OF DEATH, BY STATE: CALENDAR YEAR 1968

Region and State	Total received (a)	Race		Offense			Age (in years)				
		White	Non-White ^(b)	Murder	Rape	Other ^(c)	Under 21	21-25	26-30	31-40	Over 40
United States	102	54	48	96	3	3	16	28	19	25	14
FEDERAL	-	-	-	-	-	-	-	-	-	-	-
TOTAL STATE	102	54	48	96	3	3	16	28	19	25	14
NORTHEAST	9	4	5	9	-	-	-	2	1	4	2
Maine ^(d)	XX	XX	XX	XX	XX	XX	XX	XX	XX	XX	XX
New Hampshire	-	-	-	-	-	-	-	-	-	-	-
Vermont ^(e)	-	-	-	-	-	-	-	-	-	-	-
Massachusetts	5	4	1	5	-	-	-	-	1	2	2
Rhode Island ^(e)	-	-	-	-	-	-	-	-	-	-	-
Connecticut	-	-	-	-	-	-	-	-	-	-	-
New York ^(e)	-	-	-	-	-	-	-	-	-	-	-
New Jersey	2	-	2	2	-	-	-	1	-	1	-
Pennsylvania	2	-	2	2	-	-	-	1	-	1	-
NORTH CENTRAL	21	8	13	21	-	-	5	4	7	3	2
Ohio	10	5	5	10	-	-	2	2	4	2	-
Indiana	1	1	-	1	-	-	-	1	-	-	-
Illinois	8	2	6	8	-	-	2	1	2	1	2
Michigan ^(d)	XX	XX	XX	XX	XX	XX	XX	XX	XX	XX	XX
Wisconsin ^(d)	XX	XX	XX	XX	XX	XX	XX	XX	XX	XX	XX
Minnesota ^(d)	XX	XX	XX	XX	XX	XX	XX	XX	XX	XX	XX
Iowa ^(d)	XX	XX	XX	XX	XX	XX	XX	XX	XX	XX	XX
Missouri	1	-	1	1	-	-	-	-	1	-	-
North Dakota ^(e)	-	-	-	-	-	-	-	-	-	-	-
South Dakota	1	-	1	1	-	-	1	-	-	-	-
Nebraska	-	-	-	-	-	-	-	-	-	-	-
Kansas	-	-	-	-	-	-	-	-	-	-	-

16

Region and State	Total received (a)	Race		Offense			Age (in years)				
		White	Non-White ^(b)	Murder	Rape	Other ^(c)	Under 21	21-25	26-30	31-40	Over 40
SOUTH	42	20	22	39	3	-	7	15	8	7	5
Delaware	-	-	-	-	-	-	-	-	-	-	-
Maryland	2	-	2	2	-	-	-	1	-	-	1
Dist. of Columbia	-	-	-	-	-	-	-	-	-	-	-
Virginia	1	-	1	1	-	-	-	1	-	-	-
West Virginia ^(d)	XX	XX	XX	XX	XX	XX	XX	XX	XX	XX	XX
North Carolina	2	1	1	2	-	-	-	1	1	-	-
South Carolina	2	1	1	2	-	-	1	-	1	-	-
Georgia	2	1	1	2	-	-	-	2	-	-	-
Florida	9	1	8	9	-	-	3	1	2	3	-
Kentucky	6	6	-	6	-	-	-	-	3	2	1
Tennessee	1	-	1	1	-	-	-	-	-	1	-
Alabama	4	1	3	3	1	-	3	1	-	-	-
Mississippi	1	1	-	1	-	-	-	-	-	-	1
Arkansas	4	2	2	4	-	-	-	3	-	-	1
Louisiana	1	-	1	-	1	-	-	-	-	1	-
Oklahoma	1	1	-	1	-	-	-	1	-	-	-
Texas	6	5	1	5	1	-	-	4	1	-	1
WEST	30	22	8	27	-	3	4	7	3	11	5
Montana	-	-	-	-	-	-	-	-	-	-	-
Idaho	-	-	-	-	-	-	-	-	-	-	-
Wyoming	-	-	-	-	-	-	-	-	-	-	-
Colorado	-	-	-	-	-	-	-	-	-	-	-
New Mexico	2	2	-	2	-	-	-	1	-	1	-
Arizona	1	1	-	1	-	-	1	-	-	-	-
Utah	-	-	-	-	-	-	-	-	-	-	-
Nevada	-	-	-	-	-	-	-	-	-	-	-
Washington	-	-	-	-	-	-	-	-	-	-	-
Oregon ^(d)	XX	XX	XX	XX	XX	XX	XX	XX	XX	XX	XX
California	27	19	8	24	-	3	3	6	3	10	5
Hawaii ^(d)	XX	XX	XX	XX	XX	XX	XX	XX	XX	XX	XX
Alaska ^(d)	XX	XX	XX	XX	XX	XX	XX	XX	XX	XX	XX

17

(a) Includes two female prisoners, both committed for murder: one from Florida (Negro, age 35), and one from California (White, age 36).
 (b) Includes one American Indian from South Dakota (age 19, committed for murder).
 (c) Includes three assaults by prisoners serving Life sentences (California).
 (d) Death penalty abolished by law.
 (e) Death penalty partially abolished. See Table 15 for provisions which still apply.

Table 8. - DISPOSITIONS FROM SENTENCE OF DEATH, BY OFFENSE, STATE, AND METHOD OF DISPOSITION: CALENDAR YEAR 1968

Region and State	Total	Indictment dismissed or judgment reversed		Commutated to Life		Resentenced to Life or term of years (a)		New trial granted or resentencing ordered			Transferred to mental hospital		Died (c)	
		Murder	Rape	Murder	Rape	Murder	Rape	Murder	Rape	Other (b)	Murder	Rape	Murder	Rape
United States	77	14	2	14	2	13	5	21	1	2	2	-	1	-
FEDERAL	1	-	-	-	-	-	-	1	-	-	-	-	-	-
TOTAL STATE	76	14	2	14	2	13	5	20	1	2	2	-	1	-
NORTHEAST	12	2	-	9	-	-	-	1	-	-	-	-	-	-
Maine ^(d)	XX	XX	XX	XX	XX	XX	XX	XX	XX	XX	XX	XX	XX	XX
New Hampshire	-	-	-	-	-	-	-	-	-	-	-	-	-	-
Vermont ^(e)	-	-	-	-	-	-	-	-	-	-	-	-	-	-
Massachusetts	1	-	-	-	-	-	-	1	-	-	-	-	-	-
Rhode Island ^(e)	-	-	-	-	-	-	-	-	-	-	-	-	-	-
Connecticut	-	-	-	-	-	-	-	-	-	-	-	-	-	-
New York ^(e)	8	-	-	8	-	-	-	-	-	-	-	-	-	-
New Jersey	2	2	-	-	-	-	-	-	-	-	-	-	-	-
Pennsylvania	1	-	-	1	-	-	-	-	-	-	-	-	-	-
NORTH CENTRAL	10	4	-	1	-	1	-	1	-	-	2	-	1	-
Ohio	6	4	-	1	-	-	-	-	-	-	1	-	-	-
Indiana	1	-	-	-	-	-	-	1	-	-	-	-	-	-
Illinois	3	-	-	-	-	1	-	-	-	-	1	-	1	-
Michigan ^(d)	XX	XX	XX	XX	XX	XX	XX	XX	XX	XX	XX	XX	XX	XX
Wisconsin ^(d)	XX	XX	XX	XX	XX	XX	XX	XX	XX	XX	XX	XX	XX	XX
Minnesota ^(d)	XX	XX	XX	XX	XX	XX	XX	XX	XX	XX	XX	XX	XX	XX
Iowa ^(d)	XX	XX	XX	XX	XX	XX	XX	XX	XX	XX	XX	XX	XX	XX
Missouri	-	-	-	-	-	-	-	-	-	-	-	-	-	-
North Dakota ^(e)	-	-	-	-	-	-	-	-	-	-	-	-	-	-
South Dakota	-	-	-	-	-	-	-	-	-	-	-	-	-	-
Nebraska	-	-	-	-	-	-	-	-	-	-	-	-	-	-
Kansas	-	-	-	-	-	-	-	-	-	-	-	-	-	-

18

Region and State	Total	Indictment dismissed or judgment reversed		Commutated to Life		Resentenced to Life or term of years (a)		New trial granted or resentencing ordered			Transferred to mental hospital		Died (c)	
		Murder	Rape	Murder	Rape	Murder	Rape	Murder	Rape	Other (b)	Murder	Rape	Murder	Rape
SOUTH	44	5	2	4	2	12	4	14	1	-	-	-	-	-
Delaware	1	-	-	-	-	1	-	-	-	-	-	-	-	-
Maryland	1	-	-	-	-	1	-	-	-	-	-	-	-	-
Dist. of Columbia	-	-	-	-	-	-	-	-	-	-	-	-	-	-
Virginia	-	-	-	-	-	-	-	-	-	-	-	-	-	-
West Virginia ^(d)	XX	XX	XX	XX	XX	XX	XX	XX	XX	XX	XX	XX	XX	XX
North Carolina	1	-	-	-	-	-	-	-	-	-	-	-	-	-
South Carolina	1	-	-	-	-	-	-	1	-	-	-	-	-	-
Georgia	21	-	-	3	1	8	4	4	1	-	-	-	-	-
Florida	2	-	1	-	-	1	-	-	-	-	-	-	-	-
Kentucky	-	-	-	-	-	-	-	-	-	-	-	-	-	-
Tennessee	1	-	1	-	-	-	-	-	-	-	-	-	-	-
Alabama	2	2	-	-	-	-	-	-	-	-	-	-	-	-
Mississippi	1	-	-	-	-	-	-	1	-	-	-	-	-	-
Arkansas	-	-	-	-	-	-	-	-	-	-	-	-	-	-
Louisiana	4	3	-	1	-	-	-	-	-	-	-	-	-	-
Oklahoma	2	-	-	-	-	1	-	1	-	-	-	-	-	-
Texas	8	-	-	-	1	-	-	7	-	-	-	-	-	-
WEST	10	3	-	-	-	-	1	4	-	2	-	-	-	-
Montana	-	-	-	-	-	-	-	-	-	-	-	-	-	-
Idaho	-	-	-	-	-	-	-	-	-	-	-	-	-	-
Wyoming	-	-	-	-	-	-	-	-	-	-	-	-	-	-
Colorado	-	-	-	-	-	-	-	-	-	-	-	-	-	-
New Mexico	-	-	-	-	-	-	-	-	-	-	-	-	-	-
Arizona	4	2	-	-	-	-	-	2	-	-	-	-	-	-
Utah	1	-	-	-	-	-	-	1	-	-	-	-	-	-
Nevada	1	-	-	-	-	-	1	-	-	-	-	-	-	-
Washington	-	-	-	-	-	-	-	-	-	-	-	-	-	-
Oregon ^(d)	XX	XX	XX	XX	XX	XX	XX	XX	XX	XX	XX	XX	XX	XX
California	4	1	-	-	-	-	-	1	-	2	-	-	-	-
Hawaii ^(d)	XX	XX	XX	XX	XX	XX	XX	XX	XX	XX	XX	XX	XX	XX
Alaska ^(d)	XX	XX	XX	XX	XX	XX	XX	XX	XX	XX	XX	XX	XX	XX

19

(a) All resentenced to Life except three prisoners: two sentenced to terms of 50 to 100 years and 42 years, 2 months, for murder, and one sentenced to a term of 20 years to Life, for rape.
 (b) Both prisoners sentenced to Life for aggravated assault.
 (c) Death was by natural causes.
 (d) Death penalty abolished by law.
 (e) Death penalty partially abolished. See Table 15 for provisions which still apply.

Table 9. - CHARACTERISTICS OF PRISONERS DISPOSED OF BY MEANS OTHER THAN EXECUTION, BY STATE: CALENDAR YEAR 1968

(Include: commutations, transfers to mental hospitals, reversals of judgment, grants for new trials, resentencings and death by natural causes)

Region and State	Total dispositions	Race		Offense			Age (in years)					Elapsed Time (in months)					
		White	Negro	Murder	Rape	Other (a)	21-25	26-30	31-35	36-40	Over 40	Under 12	12-23	24-35	36-47	48-71	Over 71
United States	77	34	43	65	10	2	17	20	12	12	16	8	19	16	8	11	15
FEDERAL	1	1	-	1	-	-	1	-	-	-	-	-	-	1	-	-	-
TOTAL STATE	76	33	43	64	10	2	16	20	12	12	16	8	19	15	8	11	15
NORTHEAST	12	7	5	12	-	-	2	1	3	4	2	-	2	1	1	4	4
Maine ^(b)	XX	XX	XX	XX	XX	XX	XX	XX	XX	XX	XX	XX	XX	XX	XX	XX	XX
New Hampshire	-	-	-	-	-	-	-	-	-	-	-	-	-	-	-	-	-
Vermont ^(c)	-	-	-	-	-	-	-	-	-	-	-	-	-	-	-	-	-
Massachusetts	1	1	-	1	-	-	-	-	-	1	-	-	-	1	-	-	-
Rhode Island ^(c)	-	-	-	-	-	-	-	-	-	-	-	-	-	-	-	-	-
Connecticut	-	-	-	-	-	-	-	-	-	-	-	-	-	-	-	-	-
New York ^(c)	8	6	2	8	-	-	-	1	3	2	2	-	-	-	1	4	3
New Jersey	2	-	2	2	-	-	2	-	-	-	-	-	2	-	-	-	-
Pennsylvania	1	-	1	1	-	-	-	-	-	1	-	-	-	-	-	-	1
NORTH CENTRAL	10	2	8	10	-	-	-	5	-	2	3	1	1	2	1	2	3
Ohio	6	1	5	6	-	-	-	5	-	-	1	1	1	2	1	1	-
Indiana	1	-	1	1	-	-	-	-	-	1	-	-	-	-	-	-	1
Illinois	3	1	2	3	-	-	-	-	-	1	2	-	-	-	-	1	2
Michigan ^(b)	XX	XX	XX	XX	XX	XX	XX	XX	XX	XX	XX	XX	XX	XX	XX	XX	XX
Wisconsin ^(b)	XX	XX	XX	XX	XX	XX	XX	XX	XX	XX	XX	XX	XX	XX	XX	XX	XX
Minnesota ^(b)	XX	XX	XX	XX	XX	XX	XX	XX	XX	XX	XX	XX	XX	XX	XX	XX	XX
Iowa ^(b)	XX	XX	XX	XX	XX	XX	XX	XX	XX	XX	XX	XX	XX	XX	XX	XX	XX
Missouri	-	-	-	-	-	-	-	-	-	-	-	-	-	-	-	-	-
North Dakota ^(c)	-	-	-	-	-	-	-	-	-	-	-	-	-	-	-	-	-
South Dakota	-	-	-	-	-	-	-	-	-	-	-	-	-	-	-	-	-
Nebraska	-	-	-	-	-	-	-	-	-	-	-	-	-	-	-	-	-
Kansas	-	-	-	-	-	-	-	-	-	-	-	-	-	-	-	-	-

20

Region and State	Total dispositions	Race		Offense			Age (in years)					Elapsed time (in months)					
		White	Negro	Murder	Rape	Other (a)	21-25	26-30	31-35	36-40	Over 40	Under 12	12-23	24-35	36-47	48-71	Over 71
SOUTH	44	16	28	35	9	-	12	11	7	5	9	7	12	10	5	2	8
Delaware	1	-	1	1	-	-	-	-	-	-	1	-	1	-	-	-	-
Maryland	1	-	1	1	-	-	1	-	-	-	-	1	-	-	-	-	-
Dist. of Columbia	-	-	-	-	-	-	-	-	-	-	-	-	-	-	-	-	-
Virginia	-	-	-	-	-	-	-	-	-	-	-	-	-	-	-	-	-
West Virginia ^(b)	XX	XX	XX	XX	XX	XX	XX	XX	XX	XX	XX	XX	XX	XX	XX	XX	XX
North Carolina	-	-	-	-	-	-	-	-	-	-	-	-	-	-	-	-	-
South Carolina	1	-	1	1	-	-	-	-	-	1	-	-	-	1	-	-	-
Georgia	21	4	17	15	6	-	8	4	2	3	4	2	6	3	4	2	4
Florida	2	1	1	1	1	-	-	1	1	-	-	-	-	1	-	-	1
Kentucky	-	-	-	-	-	-	-	-	-	-	-	-	-	-	-	-	-
Tennessee	1	-	1	-	1	-	-	1	-	-	-	-	-	-	-	-	-
Alabama	2	1	1	2	-	-	2	-	-	-	-	-	2	-	-	-	-
Mississippi	1	1	-	1	-	-	-	-	-	-	1	1	-	-	-	-	-
Arkansas	-	-	-	-	-	-	-	-	-	-	-	-	-	-	-	-	-
Louisiana	4	1	3	4	-	-	-	-	4	-	-	-	-	1	-	-	3
Oklahoma	2	1	1	2	-	-	1	-	-	1	-	1	1	-	-	-	-
Texas	8	7	1	7	1	-	-	5	-	-	3	2	1	4	1	-	-
WEST	10	8	2	7	1	2	2	3	2	1	2	-	4	2	1	3	-
Montana	-	-	-	-	-	-	-	-	-	-	-	-	-	-	-	-	-
Idaho	-	-	-	-	-	-	-	-	-	-	-	-	-	-	-	-	-
Wyoming	-	-	-	-	-	-	-	-	-	-	-	-	-	-	-	-	-
Colorado	-	-	-	-	-	-	-	-	-	-	-	-	-	-	-	-	-
New Mexico	-	-	-	-	-	-	-	-	-	-	-	-	-	-	-	-	-
Arizona	4	4	-	4	-	-	-	2	-	-	2	-	-	1	-	3	-
Utah	1	1	-	1	-	-	-	-	-	1	-	-	-	1	-	-	-
Nevada	1	-	1	-	1	-	-	1	-	-	-	-	1	-	-	-	-
Washington	-	-	-	-	-	-	-	-	-	-	-	-	-	-	-	-	-
Oregon ^(b)	XX	XX	XX	XX	XX	XX	XX	XX	XX	XX	XX	XX	XX	XX	XX	XX	XX
California	4	3	1	2	-	2	2	-	2	-	-	-	3	-	1	-	-
Hawaii ^(b)	XX	XX	XX	XX	XX	XX	XX	XX	XX	XX	XX	XX	XX	XX	XX	XX	XX
Alaska ^(b)	XX	XX	XX	XX	XX	XX	XX	XX	XX	XX	XX	XX	XX	XX	XX	XX	XX

21

(a) Aggravated assault by a Life prisoner.
 (b) Death penalty abolished by law.
 (c) Death penalty partially abolished. See Table 15 for provisions which still apply.

Table 10. - CHARACTERISTICS OF PRISONERS UNDER SENTENCE OF DEATH IN THE UNITED STATES ON DECEMBER 31, 1968, BY STATE

Region and State	Total (a)	Race			Median age (c)	Offense						Median elapsed time (in months) (d)
		White	Negro	Other (b)		Murder	Rape	Kidnaping	Robbery	Assault by Life prisoner	Burglary	
United States	479	225	251	3	30.5	405	60	5	4	4	1	33.1
FEDERAL	1	-	1	-	-	1	-	-	-	-	-	-
TOTAL STATE	478	225	250	3	30.5	404	60	5	4	4	1	33.1
NORTHEAST	62	28	34	-	32.7	60	-	2	-	-	-	45.6
Maine ^(e)	XX	XX	XX	XX	XX	XX	XX	XX	XX	XX	XX	XX
New Hampshire	2	2	-	-	-	-	-	2	-	-	-	-
Vermont ^(f)	-	-	-	-	-	-	-	-	-	-	-	-
Massachusetts	13	7	6	-	34.4	13	-	-	-	-	-	31.0
Rhode Island ^(f)	-	-	-	-	-	-	-	-	-	-	-	-
Connecticut	2	-	2	-	-	2	-	-	-	-	-	-
New York ^(f)	2	2	-	-	-	2	-	-	-	-	-	-
New Jersey	23	8	15	-	30.5	23	-	-	-	-	-	44.5
Pennsylvania	20	9	11	-	33.8	20	-	-	-	-	-	49.0
NORTH CENTRAL	67	38	28	1	29.6	67	-	-	-	-	-	18.3
Ohio	27	14	13	-	28.2	27	-	-	-	-	-	16.0
Indiana	7	7	-	-	33.8	7	-	-	-	-	-	76.0
Illinois	25	13	12	-	30.8	25	-	-	-	-	-	16.4
Michigan ^(e)	XX	XX	XX	XX	XX	XX	XX	XX	XX	XX	XX	XX
Wisconsin ^(e)	XX	XX	XX	XX	XX	XX	XX	XX	XX	XX	XX	XX
Minnesota ^(e)	XX	XX	XX	XX	XX	XX	XX	XX	XX	XX	XX	XX
Iowa ^(e)	XX	XX	XX	XX	XX	XX	XX	XX	XX	XX	XX	XX
Missouri	4	1	3	-	-	4	-	-	-	-	-	-
North Dakota ^(f)	-	-	-	-	-	-	-	-	-	-	-	-
South Dakota	1	-	-	1	-	1	-	-	-	-	-	-
Nebraska	1	1	-	-	-	1	-	-	-	-	-	-
Kansas	2	2	-	-	-	2	-	-	-	-	-	-

22

Region and State	Total (a)	Race			Median age (c)	Offense						Median elapsed time (in months) (d)
		White	Negro	Other (b)		Murder	Rape	Kidnaping	Robbery	Assault by Life prisoner	Burglary	
SOUTH	235	76	159	-	30.0	170	60	-	4	-	1	37.2
Delaware	1	-	1	-	-	1	-	-	-	-	-	-
Maryland	19	4	15	-	34.2	14	5	-	-	-	-	79.0
Dist. of Columbia	7	2	-	-	-	4	-	-	-	-	-	-
Virginia	7	2	5	-	25.8	4	3	-	-	-	-	24.0
West Virginia ^(e)	XX	XX	XX	XX	XX	XX	XX	XX	XX	XX	XX	XX
North Carolina	6	3	3	-	32.5	5	-	-	-	-	1	31.0
South Carolina	10	2	8	-	30.0	7	3	-	-	-	-	43.0
Georgia	11	6	5	-	27.5	7	4	-	-	-	-	23.5
Florida	59	16	43	-	30.9	45	14	-	-	-	-	42.4
Kentucky	13	10	3	-	34.5	13	-	-	-	-	-	16.0
Tennessee	7	-	7	-	30.6	2	5	-	-	-	-	31.0
Alabama	21	7	14	-	29.6	14	6	-	1	-	-	51.3
Mississippi	3	1	2	-	-	3	-	-	-	-	-	-
Arkansas	14	3	11	-	27.5	10	4	-	-	-	-	58.0
Louisiana	36	5	30	-	29.6	24	12	-	-	-	-	53.0
Oklahoma	5	3	2	-	27.5	5	-	-	-	-	-	20.5
Texas	23	13	10	-	29.2	16	4	-	3	-	-	29.9
WEST	114	83	29	2	31.2	107	-	3	-	4	-	27.1
Montana	-	-	-	-	-	-	-	-	-	-	-	-
Idaho	-	-	-	-	-	-	-	-	-	-	-	-
Wyoming	-	-	-	-	-	-	-	-	-	-	-	-
Colorado	4	2	2	-	-	4	-	-	-	-	-	-
New Mexico	3	3	-	-	-	3	-	-	-	-	-	-
Arizona	11	10	1	-	28.1	11	-	-	-	-	-	32.5
Utah	3	3	-	-	-	3	-	-	-	-	-	-
Nevada	5	5	-	-	32.5	5	-	-	-	-	-	70.0
Washington	3	1	2	-	-	3	-	-	-	-	-	-
Oregon ^(e)	XX	XX	XX	XX	XX	XX	XX	XX	XX	XX	XX	XX
California	85	XX	XX	2	32.0	78	-	3	-	4	-	23.7
Hawaii ^(e)	XX	XX	XX	XX	XX	XX	XX	XX	XX	XX	XX	XX
Alaska ^(e)	XX	XX	XX	XX	XX	XX	XX	XX	XX	XX	XX	XX

23

(a) Includes 3 female prisoners, one each in Illinois, Florida, and California -- all sentenced to death for murder. (b) All were American Indians. (c) Median age not computed for less than 5 cases. (d) Median elapsed time not computed for less than 5 cases. (e) Death penalty abolished by law. (f) Death penalty partially abolished. See Table 15 for provisions which still apply.

Table 11. - PRISONERS UNDER SENTENCE OF DEATH, BY AGE AND STATE, DECEMBER 31, 1968

Region and State	Total	Age (in years)										Median age (a)
		16-19	20-24	25-29	30-34	35-39	40-44	45-49	50-54	55 and Over	Unknown	
United States	479	10	93	127	91	69	36	21	8	22	2	30.5
FEDERAL	1	-	-	1	-	-	-	-	-	-	-	-
TOTAL STATE	478	10	93	126	91	69	36	21	8	22	2	30.5
NORTHEAST	62	-	10	13	15	14	4	3	1	2	-	32.7
Maine ^(b)	XX	XX	XX	XX	XX	XX	XX	XX	XX	XX	XX	XX
New Hampshire	2	-	-	-	-	-	2	-	-	-	-	-
Vermont ^(c)	-	-	-	-	-	-	-	-	-	-	-	-
Massachusetts	13	-	2	1	4	2	1	1	1	1	-	34.4
Rhode Island ^(c)	-	-	-	-	-	-	-	-	-	-	-	-
Connecticut	2	-	-	1	1	-	-	-	-	-	-	-
New York ^(c)	2	-	-	1	1	-	-	-	-	-	-	-
New Jersey	23	-	4	7	5	5	1	-	-	1	-	30.5
Pennsylvania	20	-	4	3	4	7	-	2	-	-	-	33.8
NORTH CENTRAL	67	4	13	18	13	8	5	3	-	3	-	29.6
Ohio	27	3	6	7	7	1	2	-	-	1	-	28.2
Indiana	7	-	1	1	2	1	1	-	-	1	-	33.8
Illinois	25	1	3	8	3	5	2	2	-	1	-	30.8
Michigan ^(b)	XX	XX	XX	XX	XX	XX	XX	XX	XX	XX	XX	XX
Wisconsin ^(b)	XX	XX	XX	XX	XX	XX	XX	XX	XX	XX	XX	XX
Minnesota ^(b)	XX	XX	XX	XX	XX	XX	XX	XX	XX	XX	XX	XX
Iowa ^(b)	XX	XX	XX	XX	XX	XX	XX	XX	XX	XX	XX	XX
Missouri	4	-	-	2	1	1	-	-	-	-	-	-
North Dakota ^(c)	-	-	-	-	-	-	-	-	-	-	-	-
South Dakota	1	-	1	-	-	-	-	-	-	-	-	-
Nebraska	1	-	1	-	-	-	-	-	-	-	-	-
Kansas	2	-	1	-	-	-	-	1	-	-	-	-

24

Region and State	Total	Age (in years)										Median age (a)
		16-19	20-24	25-29	30-34	35-39	40-44	45-49	50-54	55 and over	Unknown	
SOUTH	235	5	44	69	46	28	16	9	6	10	2	30.0
Delaware	1	-	-	1	-	-	-	-	-	-	-	-
Maryland	19	-	2	4	3	-	1	2	1	-	-	34.2
Dist. of Columbia	-	-	-	-	-	-	-	-	-	-	-	-
Virginia	7	-	3	3	-	-	1	-	-	-	-	25.8
West Virginia ^(b)	XX	XX	XX	XX	XX	XX	XX	XX	XX	XX	XX	XX
North Carolina	6	-	-	2	2	2	-	-	-	-	-	32.5
South Carolina	10	1	1	3	1	-	-	-	1	1	2	30.0
Georgia	11	-	5	1	1	3	1	-	-	-	-	27.5
Florida	59	2	10	15	14	11	3	2	-	2	-	30.9
Kentucky	13	-	-	2	5	-	1	2	2	1	-	34.5
Tennessee	7	-	2	1	4	-	-	-	-	-	-	30.6
Alabama	21	-	5	6	5	2	-	2	1	-	-	29.6
Mississippi	3	-	1	2	-	-	-	-	-	-	-	-
Arkansas	14	-	5	4	1	2	1	-	-	1	-	27.5
Louisiana	36	1	5	13	5	3	6	-	1	2	-	29.6
Oklahoma	5	-	1	3	-	-	-	-	-	1	-	27.5
Texas	23	-	4	9	5	1	2	1	-	1	-	29.2
WEST	114	1	26	26	17	19	11	6	1	7	-	31.2
Montana	-	-	-	-	-	-	-	-	-	-	-	-
Idaho	-	-	-	-	-	-	-	-	-	-	-	-
Wyoming	-	-	-	-	-	-	-	-	-	-	-	-
Colorado	4	-	-	1	-	1	-	-	-	2	-	-
New Mexico	3	-	1	1	-	1	-	-	-	-	-	-
Arizona	11	-	3	4	-	3	-	1	-	-	-	28.1
Utah	3	-	-	1	2	-	-	-	-	-	-	-
Nevada	5	-	1	1	1	-	2	-	-	-	-	32.5
Washington	3	-	2	1	-	-	-	-	-	-	-	-
Oregon ^(b)	XX	XX	XX	XX	XX	XX	XX	XX	XX	XX	XX	XX
California	85	1	19	17	14	14	9	5	1	5	-	32.0
Hawaii ^(b)	XX	XX	XX	XX	XX	XX	XX	XX	XX	XX	XX	XX
Alaska ^(b)	XX	XX	XX	XX	XX	XX	XX	XX	XX	XX	XX	X

25

(a) Median age not computed for less than 5 cases. (b) Death penalty abolished by law. (c) Death penalty partially abolished. See Table 15 for provisions which still apply.

Table 12. - ELAPSED TIME FOR PRISONERS UNDER SENTENCE OF DEATH, BY STATE: DECEMBER 31, 1968

Region and State	Total	Elapsed Time (in months)												Median elapsed time (in months) (a)
		3 and under	4-6	7-12	13-18	19-24	25-36	37-48	49-60	61-72	73-84	85-96	97 and over	
United States ...	479	33	21	48	36	38	94	61	42	25	22	24	35	33.1
FEDERAL	1	-	-	-	-	-	1	-	-	-	-	-	-	-
TOTAL STATE	478	33	21	48	36	38	93	61	42	25	22	24	35	33.1
NORTHEAST	62	2	4	4	2	3	11	7	6	5	5	5	8	45.6
Maine ^(b)	XX	XX	XX	XX	XX	XX	XX	XX	XX	XX	XX	XX	XX	XX
New Hampshire	2	-	-	-	-	-	-	-	-	-	-	-	2	-
Vermont ^(c)	-	-	-	-	-	-	-	-	-	-	-	-	-	-
Massachusetts	13	-	4	1	-	1	1	1	3	1	-	1	-	31.0
Rhode Island ^(c)	-	-	-	-	-	-	-	-	-	-	-	-	-	-
Connecticut	2	-	-	1	-	-	1	-	-	-	-	-	-	-
New York ^(c)	2	-	-	-	-	-	-	-	-	1	1	-	-	-
New Jersey	23	1	-	1	2	1	4	4	1	1	2	2	4	44.5
Pennsylvania	20	1	-	1	-	1	5	2	2	2	2	2	2	49.0
NORTH CENTRAL	67	9	2	11	13	6	5	11	4	-	3	1	2	18.3
Ohio	27	6	1	4	5	3	2	5	1	-	-	-	-	16.0
Indiana	7	1	-	-	-	1	-	1	-	-	2	1	1	76.0
Illinois	25	1	1	6	8	1	1	3	3	-	-	-	1	16.4
Michigan ^(b)	XX	XX	XX	XX	XX	XX	XX	XX	XX	XX	XX	XX	XX	XX
Wisconsin ^(b)	XX	XX	XX	XX	XX	XX	XX	XX	XX	XX	XX	XX	XX	XX
Minnesota ^(b)	XX	XX	XX	XX	XX	XX	XX	XX	XX	XX	XX	XX	XX	XX
Iowa ^(b)	XX	XX	XX	XX	XX	XX	XX	XX	XX	XX	XX	XX	XX	XX
Missouri	4	1	-	-	-	-	1	1	-	-	1	-	-	-
North Dakota ^(c)	-	-	-	-	-	-	-	-	-	-	-	-	-	-
South Dakota	1	-	-	1	-	-	-	-	-	-	-	-	-	-
Nebraska	1	-	-	-	-	1	-	-	-	-	-	-	-	-
Kansas	2	-	-	-	-	-	1	1	-	-	-	-	-	-

26

Region and State	Total	Elapsed Time (in months)												Median elapsed time (in months) (a)
		3 and under	4-6	7-12	13-18	19-24	25-36	37-48	49-60	61-72	73-84	85-96	97 and over	
SOUTH	235	16	8	14	11	19	49	25	28	13	13	16	23	37.2
Delaware	1	-	-	-	-	-	-	1	-	-	-	-	-	-
Maryland	19	1	-	-	1	-	5	-	-	1	3	5	3	79.0
Dist. of Columbia	-	-	-	-	-	-	-	-	-	-	-	-	-	-
Virginia	7	-	-	1	-	3	1	-	1	-	-	-	1	24.0
West Virginia ^(b)	XX	XX	XX	XX	XX	XX	XX	XX	XX	XX	XX	XX	XX	XX
North Carolina	6	-	1	1	-	-	2	1	1	1	-	-	-	31.0
South Carolina	10	2	-	-	-	1	1	2	2	-	2	-	-	43.0
Georgia	11	1	-	1	2	2	-	5	-	-	-	-	-	23.5
Florida	59	2	-	6	4	3	10	10	6	4	3	4	7	42.4
Kentucky	13	6	-	-	1	1	1	-	-	1	1	-	2	16.0
Tennessee	7	1	-	-	-	-	5	1	-	-	-	-	-	31.0
Alabama	21	1	1	2	-	1	4	-	8	1	1	-	2	51.3
Mississippi	3	-	-	-	-	-	2	-	1	-	-	-	-	-
Arkansas	14	1	3	-	-	-	-	-	4	3	1	-	2	58.0
Louisiana	36	-	-	1	1	5	6	4	3	2	2	6	6	53.0
Oklahoma	5	-	-	1	1	2	1	-	-	-	-	-	-	20.5
Texas	23	1	3	1	1	1	11	1	3	-	-	1	-	29.9
WEST	114	6	7	19	10	10	28	18	4	7	1	2	2	27.1
Montana	-	-	-	-	-	-	-	-	-	-	-	-	-	-
Idaho	-	-	-	-	-	-	-	-	-	-	-	-	-	-
Wyoming	-	-	-	-	-	-	-	-	-	-	-	-	-	-
Colorado	4	-	-	-	-	-	1	-	-	2	-	-	1	-
New Mexico	3	1	-	1	1	-	-	-	-	-	-	-	-	-
Arizona	11	-	-	1	1	1	4	-	-	3	1	-	-	32.5
Utah	3	-	-	-	-	2	-	-	-	-	-	1	-	-
Nevada	5	-	-	-	-	-	-	1	-	2	-	1	1	70.0
Washington	3	-	-	-	-	-	-	3	-	-	-	-	-	-
Oregon ^(b)	XX	XX	XX	XX	XX	XX	XX	XX	XX	XX	XX	XX	XX	XX
California	85	5	7	17	8	7	23	14	4	-	-	-	-	23.7
Hawaii ^(b)	XX	XX	XX	XX	XX	XX	XX	XX	XX	XX	XX	XX	XX	XX
Alaska ^(b)	XX	XX	XX	XX	XX	XX	XX	XX	XX	XX	XX	XX	XX	XX

27

(a) Medians not computed for totals less than 5. (b) Death penalty abolished by law. (c) Death penalty partially abolished. See Table 15 for provisions which still apply.

Table 13. - WOMEN EXECUTED UNDER CIVIL AUTHORITY IN THE UNITED STATES, BY YEAR, OFFENSE, RACE AND STATE: 1930-1968

Year	Total	Offense		Race		State in which executed
		Murder	Other(a)	White	Negro	
All years	32	30	2	20	12	...
1962	1	1	-	1	-	California
1957	1	1	-	1	-	Alabama
1955	1	1	-	1	-	California
1954	2	2	-	1	1	Ohio
1953	3	1	2	3	-	Alabama, Federal (Missouri and New York)
1951	1	1	-	1	-	New York
1947	2	2	-	1	1	California, S. Carolina
1946	1	1	-	-	-	Pennsylvania
1945	1	1	-	-	-	Georgia
1944	3	3	-	-	-	Mississippi, New York, N. Carolina
1943	3	3	-	1	2	S. Carolina, Mississippi, N. Carolina
1942	1	1	-	1	-	Louisiana
1941	1	1	-	1	-	California
1938	2	2	-	2	-	Illinois, Ohio
1937	1	1	-	-	1	Mississippi
1936	1	1	-	1	-	New York
1935	3	3	-	2	1	Delaware, New York, Louisiana
1934	1	1	-	1	-	New York
1931	1	1	-	1	-	Pennsylvania
1930	2	2	-	1	1	Arizona, Alabama

(a) Includes one kidnapper and one espionage case (both Federal).

Table 14. - FEDERAL EXECUTIONS IN THE UNITED STATES, BY YEAR, OFFENSE, RACE AND STATE: 1930-1968

Year	Total	Offense			Race			State in which executed (d)
		Murder	Kidnaping(a)	Other (b)	White (c)	Negro	American Indian	
All years ...	33	15	6	12	28	3	2	...
1963	1	-	1	-	1	-	-	Iowa
1957	2	-	-	2	2	-	-	Georgia
1956	1	-	1	-	1	-	-	Missouri
1954	1	1	-	-	1	-	-	New York
1953	4	-	2	2	4	-	-	Missouri (2), New York (2)
1950	1	1	-	-	-	1	-	Alaska
1948	5	5	-	-	3	2	-	California (3), Alaska (1), Florida (1)
1945	1	1	-	-	1	-	-	Wyoming
1943	1	1	-	-	1	-	-	Tennessee
1942	6	-	-	6	6	-	-	Dist. of Columbia
1939	1	1	-	-	-	-	1	Alaska
1938	5	2	1	2	5	-	-	Kansas (2), Illinois (1), Indiana (1), Michigan (1)
1936	3	2	1	-	2	-	1	Indiana (1), Arizona (1), Oklahoma (1)
1930	1	1	-	-	1	-	-	Kansas

(a) Under the Federal Kidnapping statute, the death penalty may be imposed if the victim is not released unharmed. In all of the cases in this table but the one in 1936, the victim was killed by the kidnapper.
 (b) Includes 2 cases of rape on a Federal reservation (1957), 2 cases of espionage (1953), 6 cases of sabotage (1942), and 2 cases of bank robbery, with homicide (1938).
 (c) Includes one Mexican (California, 1948).
 (d) Prior to June 19, 1937, Federal law required that all Federal executions be carried out by hanging. From that date on, executions ordered by the Federal courts are carried out in accordance with the method used by the State in which the sentence is imposed. If the laws of that State prohibit capital punishment, the Federal court designates another State in which the sentence is to be carried out.

Table 15. - ABOLITION OF THE DEATH PENALTY IN THE UNITED STATES: 1846-1968

(States are listed according to year most recent action was taken)

State	Year of partial abolition	Year of complete abolition	Year of restoration	Year of reabolition
New York	1965 ^(a)	-	-	-
Vermont	1965 ^(b)	-	-	-
West Virginia	-	1965	-	-
Iowa	-	1872	1878	1965
Oregon	-	1914	1920	1964
Michigan	1847 ^(c)	1963	-	-
Delaware	-	1958	1961	-
Alaska	-	1957	-	-
Hawaii	-	1957	-	-
South Dakota	-	1915	1939	-
Kansas	-	1907	1935	-
Missouri	-	1917	1919	-
Tennessee	1915 ^(d)	-	1919	-
Washington	-	1913	1919	-
Arizona	1916 ^(e)	-	1918	-
North Dakota	1915 ^(f)	-	-	-
Minnesota	-	1911	-	-
Colorado	-	1897	1901	-
Maine	-	1876	1883	1887
Wisconsin	-	1853	-	-
Rhode Island	1852 ^(g)	-	-	-

80

- (a) Death penalty retained for persons found guilty of killing a peace officer who is acting in line of duty, and for prisoners under a Life sentence who murder a guard or inmate while in confinement or while escaping from confinement.
- (b) Death penalty retained for persons convicted of first-degree murder who commit a second "unrelated" murder, and for the first-degree murder of any law enforcement officer or prison employee who is in the performance of the duties of his office.
- (c) Death penalty retained for treason. Partial abolition was voted in 1846, but was not put into effect until 1847.
- (d) Death penalty retained for rape.
- (e) Death penalty retained for treason.
- (f) Death penalty retained for treason, and for first-degree murder committed by a prisoner who is serving a Life sentence for first-degree murder.
- (g) Death penalty retained for persons convicted of committing murder while serving a Life sentence for any offense.

Source: Information in the files of the National Prisoner Statistics program.

END