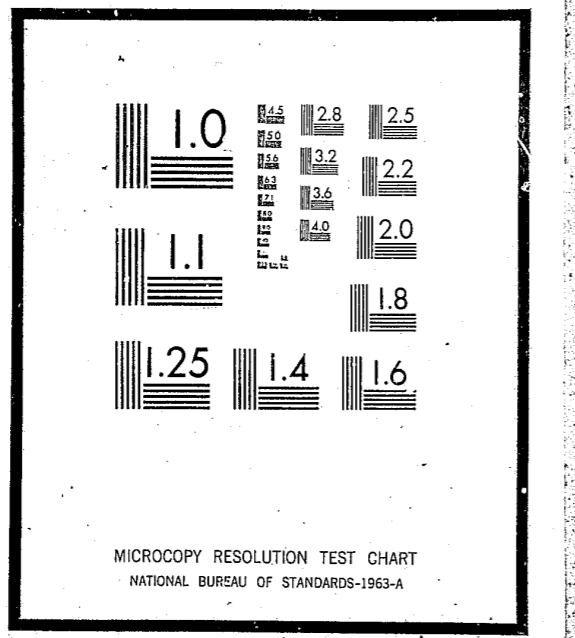


# NCJRS

This microfiche was produced from documents received for inclusion in the NCJRS data base. Since NCJRS cannot exercise control over the physical condition of the documents submitted, the individual frame quality will vary. The resolution chart on this frame may be used to evaluate the document quality.



Microfilming procedures used to create this fiche comply with the standards set forth in 41CFR 101-11.504

Points of view or opinions stated in this document are those of the author(s) and do not represent the official position or policies of the U.S. Department of Justice.

**U.S. DEPARTMENT OF JUSTICE  
LAW ENFORCEMENT ASSISTANCE ADMINISTRATION  
NATIONAL CRIMINAL JUSTICE REFERENCE SERVICE  
WASHINGTON, D.C. 20531**

Date filmed

6/16/76

Pennsylvania

A

## First Report on Dispositions of Cases Filed in Courts of Initial Jurisdiction

— ~~First~~ Report 1st



ADMINISTRATIVE OFFICE OF PENNSYLVANIA COURTS  
Room 317 - Three Penn Center Plaza  
Philadelphia, Pennsylvania 19102

ALEXANDER F. BARBIERI  
Court Administrator of Pennsylvania

CARLILE E. KING  
GERALD W. SPIVACK  
ROBERT F. KENT  
Deputy Court Administrators

JOSEPH F. RIGGIONE  
Director Program Support, Governor's Justice Commission

BARBARA G. BOUSE  
PATRICIA A. DORT  
SUZANNE G. SHELLENBERGER  
Judicial Statistics Division



ADMINISTRATIVE OFFICE OF PENNSYLVANIA COURTS  
317 THREE PENN CENTER PLAZA  
PHILADELPHIA, PENNSYLVANIA 19102  
(215) 567-3071 - 686-3578

ALEXANDER F. BARBIERI  
JUDGE  
COURT ADMINISTRATOR OF PENNSYLVANIA

DEPUTY COURT ADMINISTRATORS  
CARLILE E. KING, ESQUIRE  
GERALD W. SPIVACK, ESQUIRE  
ROBERT F. KENT, ESQUIRE

To the Honorable Chief Justice and Justices  
of the Supreme Court:

Submitted herewith is the First Report of the Administrative Office of Pennsylvania Courts containing the statistical compilation of the dispositions of our courts of initial jurisdiction as reported to the Administrative Office of Pennsylvania Courts for the period of July 1 through December 31, 1974.

This report is intended to serve as a reference source for statistical information concerning the operation of our courts of initial jurisdiction. It is not designed to furnish current data on the status of the calendars of those courts. Moreover, it is not designed as the sole measuring rod of the workloads of each of those courts.

We again take this opportunity to acknowledge the fine assistance and cooperation extended to the Administrative Office by district justices of the peace, president judges, court administrators, and other court-related personnel whose cooperation enabled this report to be produced.

Respectfully submitted,

A handwritten signature in cursive script, appearing to read "Alexander F. Barbieri".

Alexander F. Barbieri  
Court Administrator of Pennsylvania

# Table of Contents

	Page
INTRODUCTION .....	9
UNIT OF COUNT .....	10
DEFINITIONS .....	10
DISPOSITIONS .....	11
TABLE A: DISPOSITIONS OF TRAFFIC CITATIONS .....	11
TABLE B: DISPOSITIONS OF NON-TRAFFIC CITATIONS .....	11
TABLE C: DISPOSITIONS OF SUMMARY COMPLAINTS .....	11
TABLE D: DISPOSITIONS OF MISDEMEANOR/FELONY COMPLAINTS .....	12
TABLE E: DISPOSITIONS OF CIVIL COMPLAINTS .....	12
ANALYSIS OF TABLES .....	12

# Tables

Number	Titles	Page
1.	TRAFFIC AND NON-TRAFFIC CITATIONS FILED AND DISPOSED, BY COUNTY, JULY THROUGH DECEMBER, 1974 .....	14
2.	SUMMARY, MISDEMEANOR AND FELONY COMPLAINTS FILED AND DISPOSED, BY COUNTY, JULY THROUGH DECEMBER, 1974 .....	15
3.	CIVIL COMPLAINTS FILED AND DISPOSED, BY COUNTY, JULY THROUGH DECEMBER, 1974 .....	16
4.	FILINGS AND DISPOSITIONS, BY MAGISTERIAL DISTRICT BY COUNTY, JULY THROUGH DECEMBER, 1974 .....	17

## Introduction

In April, 1974, the Administrative Office of Pennsylvania Courts, in co-operation with the Department of Justice, Office of Criminal Justice Statistics, initiated a judicial statistics program to collect aggregate data from each of the 563 district justices of the peace. The reports are prepared in the offices of the district justices, and are submitted monthly to the Administrative Office of Pennsylvania Courts.

Prior to the origination of the Report of Proceedings in the offices of the district justices of the peace (200-74, 201-74, 202-74 forms), no program existed for the systematic collection of data regarding defendants processed through courts of initial jurisdiction. Programs for the collection and analysis of data have been developed for each of the other com-

ponents of the criminal justice system (institutions, probation and parole, common pleas courts), while courts of initial jurisdiction, the component that processes the largest number of defendants, had not been addressed.

The Administrative Office of Pennsylvania Courts recognized the need for data on all defendants processed by courts of initial jurisdiction as a vital link in the Comprehensive Data System and as a valuable tool for management. Although the reports are not intended to measure all of the work that is performed by the judges of our courts of initial jurisdiction, it is one element of the Comprehensive Data System and will aid us in analyzing our judicial system.

## DISPOSITIONS

The tables below indicate the percentages of the various manners of disposition for each category.

TABLE A: DISPOSITIONS OF TRAFFIC CITATIONS

Total Citations Disposed	Manner of Disposition			
	Guilty Plea	Trial	Withdrawal of Prosecution	Other
448,649	396,261	29,213	21,786	1,389
100.0%	88.3%	6.5%	4.9%	0.3%

The total Traffic Citations disposed during the six months was 448,649. A guilty plea was entered for 88.3% of the cases, a trial was held for 6.5% of the cases, the prosecution was withdrawn for 4.9% of the cases, and 0.3% of the cases were disposed by other means.

TABLE B: DISPOSITIONS OF NON-TRAFFIC CITATIONS

Total Citations Disposed	Manner of Disposition			
	Guilty Plea	Trial	Withdrawal of Prosecution	Other
70,699	55,713	8,998	5,373	615
100.0%	78.8%	12.7%	7.6%	0.9%

The total Non-Traffic Citations disposed during the six months was 70,699. A guilty plea was entered for 78.8% of the cases, a trial was held for 12.7% of the cases, the prosecution was withdrawn for 7.6% of the cases, and 0.9% of the cases were disposed by other means.

TABLE C: DISPOSITIONS OF SUMMARY COMPLAINTS

Total Citations Disposed	Manner of Disposition			
	Guilty Plea	Trial	Withdrawal of Prosecution	Other
46,790	27,440	11,590	7,275	485
100.0%	58.7%	24.8%	15.5%	1.0%

The total Summary Complaints disposed during the six months was 46,790. A guilty plea was entered for 58.7% of the cases, a trial was held for 24.8% of the cases, the prosecution was withdrawn for 15.5% of the cases, and 1.0% of the cases were disposed by other means.

## Unit of Count

The unit of count used for tabulation is the defendant and is reported as a "case filed" on the report for the month the pleading (citation or complaint) was filed in the office of the justice of the peace. The defendant is counted as a "case disposed" on the report for the month it was disposed by the district justice and is reflected in the proper category for its specific manner of disposition.

## Definitions

The following are examples of the category "other" as a manner of disposition. When referring to Traffic and Non-Traffic Citations and Summary, Misdemeanor or Felony Complaints the category of "other" indicates the following:

1. Death of a defendant or affiant
2. Expiration of the statute of limitations
3. A citation or complaint that had been filed in the wrong magisterial district.
4. A juvenile who is sent directly to juvenile authorities
5. Cases discharged under PA R.Crim. P-145 or 315

When referring to the manner of disposition for Civil Complaints, the category of "other" indicates the following:

1. Dismissed without prejudice
2. Withdrawal of complaint
3. Closed, no service
4. Judgement by default

Although the statistical program began in April, 1974, this report covers only the six month period from July through December, 1974. This report is *not* intended to measure the workload of each office nor the amount of judicial time spent on each case, but is designed to give an accurate count of the number of cases filed and disposed by courts of initial jurisdiction.

On the following tables it may appear that the "number of cases pending" could be obtained by subtracting the number of cases disposed from the number of cases filed. As a word of caution, in this report it is possible to have a larger number of "cases disposed" than "cases filed" as a result of the disparity of reporting procedure on the April report. Thus, no effort will be made at this time to determine the number of open cases in courts of initial jurisdiction, although future reports may include such information.

This report does not include cases processed by Philadelphia Municipal Court, Philadelphia Traffic Court and Pittsburgh Police Magistrates.

TABLE D: DISPOSITIONS OF MISDEMEANOR/FELONY COMPLAINTS

Total Complaints Disposed	Manner of Disposition			
	Preliminary Hearing	Waiver of Preliminary Hearing	Withdrawal of Prosecution	Other
45,055	25,650	9,780	8,897	728
100.0%	56.9%	21.7%	19.8%	1.6%

The total Misdemeanor and Felony Complaints disposed during the six months was 45,055. A preliminary hearing was held for 56.9% of the cases, the preliminary hearing was waived for 21.7% of the cases, the prosecution was withdrawn for 19.8% of the cases, and 1.6% of the cases were disposed by other means.

TABLE E: DISPOSITIONS OF CIVIL COMPLAINTS

Total Complaints Disposed	Manner of Disposition		
	Trial	Settlement	Other
56,710	26,338	18,541	11,831
100.0%	46.4%	32.7%	20.9%

The total Civil Complaints disposed during the six months was 56,710. A trial was held for 46.4% of the cases, a settlement was obtained for 32.7% of the cases and 20.9% of the cases were disposed by other means.

The following tables are self-explanatory in nature. Tables 1, 2, and 3 represent the total number of filings and dispositions by county. Table 4 reflects the total number of cases filed and disposed in the individual district justice offices for the six month period as reported to the Judicial Statistics Unit of the Administrative Office of Pennsylvania Courts.

ANALYSIS OF TABLES

The statewide total number of citations and complaints disposed in courts of initial jurisdiction during six months of 1974 was 765,745. Traffic Citations comprised 65.2% (499,102) of all cases filed, while 11.7% (89,377) were Non-Traffic Citations, 8.2% (62,709) were Summary Complaints, 6.5% (50,101) were Misdemeanor or Felony Complaints and 8.4% (64,456) were Civil Complaints.

The statewide total number of citations and complaints disposed in courts of initial jurisdiction during the six month period was 677,903. Traffic Citations comprised 67.2% (488,649) of all cases disposed, while 10.6% (70,699) were Non-Traffic Citations, 7.0% (46,790) were Summary Complaints, 6.7% (45,055) were Misdemeanor or Felony Complaints and 8.5% (56,710) were Civil Complaints.

TABLE 1: TRAFFIC AND NON-TRAFFIC CITATIONS FILED AND DISPOSED, BY COUNTY, JULY THROUGH DECEMBER, 1974

County	Traffic Citations Filed and Disposed						Non-Traffic Citations Filed and Disposed					
	Number of Traffic Citations Filed	Number of Traffic Citations Disposed	Manner of Disposition:				Number of Non-Traffic Citations Filed	Number of Non-Traffic Citations Disposed	Manner of Disposition:			
			Guilty Plea	Trial	Withdrawal of Prosecution	Other			Guilty Plea	Trial	Withdrawal of Prosecution	Other
TOTAL....	499,102	448,649	396,261	29,213	21,786	1,389	89,377	70,699	55,713	8,998	5,373	615
Adams.....	2,486	2,357	2,170	98	87	2	713	532	473	32	26	1
Allegheny <sup>b</sup>	41,525	36,929	29,622	5,467	1,724	116	10,327 <sup>a</sup>	8,255	5,485	2,023	643	104
Armstrong.....	2,032	2,070	1,811	185	57	0	677	675	563	61	41	10
Beaver.....	8,389	7,716	6,581	565	570	0	2,289	1,713	1,330	153	227	3
Bedford.....	8,465	8,256	7,507	129	622	0	239	171	144	17	10	0
Berks.....	8,763	8,055	7,289	408	340	8	1,919	1,758	1,476	170	104	8
Blair.....	4,944	4,333	4,052	152	112	7	819	588	523	27	27	11
Bradford.....	2,178	2,036	1,888	77	56	15	322	289	237	19	5	7
Bucks.....	28,448	32,659	26,721	2,520	2,970	448	5,028	5,862	4,692	452	624	94
Butler.....	6,663	6,075	5,546	334	192	3	1,362	1,204	1,047	102	55	0
Cambria.....	5,700	5,287	4,654	499	116	18	1,399	1,098	847	148	85	18
Cameron.....	312	322	295	16	11	0	83	75	69	4	2	0
Carbon.....	4,809	4,823	4,548	198	72	5	472	405	305	76	21	3
Centre.....	9,773	9,123	8,559	469	95	0	2,904	2,052	1,521	347	182	2
Chester.....	14,037	12,728	11,260	833	624	11	3,604	2,949	2,522	194	206	27
Clarion.....	3,154	3,010	2,908	83	19	0	334	313	267	22	24	0
Clearfield.....	3,862	4,000	3,627	184	189	0	538	451	369	69	14	0
Clinton.....	3,297	3,072	2,765	176	131	0	307	257	197	37	23	0
Columbia.....	3,130	2,750	2,560	95	64	31	446	374	320	30	22	2
Crawford.....	8,023	7,505	7,145	223	134	3	1,254	1,117	953	26	136	2
Cumberland.....	13,984	12,794	11,941	363	489	1	1,255	1,159	1,078	48	33	0
Dauphin.....	9,710	9,002	7,983	536	478	5	6,585	2,778	1,825	411	541	1
Delaware.....	34,843	21,031	16,856	1,932	2,181	62	9,117	5,728	4,236	899	458	145
Elk.....	1,038	1,078	998	63	18	0	148	153	138	12	2	0
Erie.....	16,149	14,773	13,354	896	513	10	2,321	1,901	1,448	418	21	14
Fayette.....	3,353	3,134	2,889	133	111	0	673	531	444	47	34	6
Forest.....	608	577	554	11	9	3	168	159	143	14	1	1
Franklin.....	6,213	5,716	5,448	131	135	2	937	792	704	44	31	13
Fulton.....	2,354	2,251	2,081	43	127	0	85	69	60	9	0	0
Greene.....	1,772	1,610	1,517	75	18	0	177	145	109	21	8	7
Huntingdon.....	1,768	1,630	1,545	64	21	0	405	212	186	16	10	0
Indiana.....	2,160	2,066	1,751	188	23	104	240	207	132	47	14	14
Jefferson.....	2,928	2,717	2,558	105	52	2	308	281	208	61	12	0
Juniata.....	639	611	576	33	2	0	68	56	11	0	0	0
Lackawanna.....	8,442	7,452	6,283	217	942	10	569	392	100	45	0	0
Lancaster.....	21,244	17,930	16,496	826	567	41	2,932	2,331	1,959	255	109	8
Lawrence.....	4,219	4,195	3,884	194	117	0	390	330	21	32	0	0
Lebanon.....	7,380	6,827	6,230	283	309	5	1,472	1,263	1,086	104	60	13
Lehigh.....	9,313	8,591	7,761	520	285	25	970	749	652	60	28	9
Luzerne.....	13,414	12,370	11,608	590	164	8	2,132	1,708	1,476	184	43	5
Lycoming.....	8,992	7,365	5,792	512	3,060	1	471	416	331	45	39	1
McKean.....	2,027	1,931	1,746	114	71	0	657	634	525	44	65	0
Mercer.....	7,916	7,590	7,113	317	157	3	927	848	736	54	58	0
Mifflin.....	1,551	1,391	1,339	29	23	0	219	213	193	12	8	0
Monroe.....	6,335	5,992	5,675	201	108	9	806	474	362	78	32	2
Montgomery.....	43,732	37,179	30,447	3,932	2,519	281	7,122	5,749	4,414	871	445	19
Montour.....	1,584	1,318	1,277	31	10	0	46	31	28	0	0	1
Northampton.....	7,897	7,122	6,369	566	186	1	2,365	1,947	1,497	194	253	3
Northumberland.....	3,716	3,362	3,124	165	70	3	1,215	875	714	93	68	0
Perry.....	1,321	1,276	1,182	54	40	0	176	159	145	6	8	0
Pike.....	974	974	903	23	48	0	155	164	154	7	3	0
Potter.....	700	688	645	25	17	1	178	170	131	30	8	1
Schuylkill.....	5,891	5,692	4,936	288	467	1	746	673	562	80	26	5
Snyder.....	1,049	1,060	961	68	28	3	100	72	65	2	3	2
Somerset.....	4,925	4,904	4,308	144	441	11	276	235	206	16	9	4
Sullivan.....	415	407	387	18	0	2	79	61	6	2	2	0
Susquehanna.....	2,086	2,016	1,959	47	10	0	144	120	99	18	3	0
Tioga.....	2,662	2,476	2,243	120	113	0	280	205	161	34	9	1
Union.....	2,982	2,733	2,689	16	28	0	110	101	87	6	8	0
Venango.....	5,415	5,290	4,941	143	196	10	775	707	600	51	49	7
Warren.....	3,211	2,653	2,476	130	42	5	351	327	264	32	28	3
Washington.....	14,729	12,611	11,729	593	279	10	1,851	1,462	1,130	196	120	16
Wayne.....	957	867	802	23	38	4	150	134	123	7	1	3
Westmoreland.....	16,688	15,702	13,822	1,001	839	40	1,775	1,539	1,228	180	119	12
Wyoming.....	1,338	1,285	1,103	142	40	0	115	112	73	34	5	0
York.....	18,088	15,302	14,462	597	212	31	2,340	1,990	1,822	120	44	4

<sup>a</sup>One magisterial district not reporting one month or more  
<sup>b</sup>Two magisterial districts not reporting one month or more

TABLE 2: SUMMARY, MISDEMEANOR AND FELONY COMPLAINTS FILED AND DISPOSED, BY COUNTY, JULY THROUGH DECEMBER, 1974

County	Summary Complaint Filed and Disposed						Misdemeanor and Felony Complaints Filed and Disposed					
	Number of Summary Complaints Filed	Number of Summary Complaints Disposed	Manner of Disposition:				Number of Misdemeanor and Felony Complaints Filed	Number of Misdemeanor and Felony Complaints Disposed	Manner of Disposition:			
			Guilty Plea	Trial	Withdrawal of Prosecution	Other			Preliminary Hearing	Waiver of Preliminary Hearing	Withdrawal of Prosecution	Other
TOTAL....	62,709	46,780	27,440	11,590	7,275	485	50,101	45,055	25,650	9,780	8,897	728
Adams.....	338	258	207	15	35	1	343	299	147	77	73	2
Allegheny <sup>b</sup>	5,945	5,014	1,997	2,285	710	22	5,019	4,780	3,614	467	644	55
Armstrong.....	306	288	213	56	17	2	273	248	122	72	53	1
Beaver.....	1,626	1,366	693	433	239	1	1,017	84	123	179	7	2
Bedford.....	277	212	168	17	27	0	195	169	89	48	25	0
Berks.....	1,689	1,240	656	356	227	1	1,235	1,061	668	189	178	25
Blair.....	1,039	819	671	64	56	28	803	659	301	226	110	22
Bradford.....	316	190	129	29	30	2	201	171	54	91	25	0
Bucks.....	4,515	1,665	1,067	399	184	15	4,742	4,804	1,413	1,295	1,995	101
Butler.....	1,151	859	634	130	95	0	717	604	281	217	106	0
Cambria.....	1,301	9C2	587	182	124	9	1,043	902	388	304	190	20
Cameron.....	19	13	11	0	2	0	35	30	7	4	16	3
Carbon.....	239	181	48	98	35	0	155	148	91	38	18	1
Centre.....	1,846	1,701	1,141	458	101	1	435	471	279	85	57	0
Chester.....	1,805	1,540	876	371	201	92	1,723	1,550	1,077	143	289	41
Clarion.....	215	190	166	16	8	0	176	161	70	53	23	15
Clearfield.....	669	538	381	108	48	1	440	391	179	173	37	2
Clinton.....	334	260	151	81	27	1	230	172	104	27	32	9
Columbia.....	637	343	258	51	29	5	444	327	183	65	72	7
Crawford.....	815	662	494	48	113	7	596	568	186	211	153	18
Cumberland.....	642	588	388	74	95	1	794	711	361	196	153	1
Dauphin.....	4,243	2,723	1,761	539	340	63	1,571	1,357	875	246	213	23
Delaware.....	3,023	2,574	2,574	897	800	103	3,145	2,703	2,150	135	382	36
Elk.....	108	89	62	18	7	2	128	123	83	23	13	4
Erie.....	1,554	1,164	723									



Table 3: CIVIL COMPLAINTS FILED AND DISPOSED, BY COUNTY, JULY THROUGH DECEMBER, 1974

County	Number of Civil Complaints Filed	Number of Civil Complaints Disposed	Manner of Disposition:		
			Trial	Settlement	Other
<b>TOTAL</b>	<b>64,456</b>	<b>56,710</b>	<b>26,338</b>	<b>18,541</b>	<b>11,831</b>
Adams.....	376	414	191	115	108
Allegheny.....	7,986	7,443	4,415	1,405	1,623
Armstrong.....	240	224	138	68	18
Beaver.....	1,117	1,026	698	320	8
Bedford.....	241	192	20	115	57
Berks.....	1,345	1,263	860	347	56
Blair.....	691	573	254	270	49
Bradford.....	768	656	94	297	265
Bucks.....	5,658	5,382	1,489	601	3,292
Butler.....	1,473	1,366	542	467	357
Cambria.....	855	773	389	213	171
Cameron.....	54	62	23	20	19
Carbon.....	252	222	102	97	23
Centre.....	1,194	1,024	473	538	13
Chester.....	2,933	2,797	1,114	980	703
Clarion.....	270	279	61	173	45
Clearfield.....	680	540	186	323	31
Clinton.....	320	286	187	99	0
Columbia.....	594	615	104	248	263
Crawford.....	1,392	1,351	163	407	781
Cumberland.....	1,028	1,014	427	399	188
Dauphin.....	1,728	1,226	499	552	175
Delaware.....	3,422	2,887	1,784	814	289
Elk.....	177	170	73	58	39
Erie.....	2,763	1,588	990	417	181
Fayette.....	334	219	125	64	30
Forest.....	44	44	19	24	1
Franklin.....	715	653	171	417	65
Fulton.....	47	49	24	18	3
Greene.....	68	56	32	21	1
Huntingdon.....	123	114	68	45	1
Indiana.....	243	243	77	77	89
Jefferson.....	267	213	107	104	2
Juniata.....	53	41	20	21	0
Lackawanna.....	1,325	1,269	506	293	470
Lancaster.....	2,743	2,115	537	1,315	263
Lawrence.....	295	266	173	83	10
Lebanon.....	695	797	488	185	124
Lehigh.....	1,885	1,578	738	478	362
Luzerne.....	1,245	1,107	544	526	37
Lycoming.....	1,119	812	421	358	33
McKean.....	542	502	280	213	9
Mercer.....	808	812	220	334	258
Mifflin.....	172	178	59	34	85
Monroe.....	543	495	238	224	33
Montgomery.....	3,903	3,292	1,521	1,179	592
Montour.....	67	32	2	24	6
Northampton.....	1,297	1,038	575	456	7
Northumberland.....	452	414	266	134	14
Perry.....	242	199	132	132	37
Pike.....	104	117	25	32	60
Potter.....	191	128	54	69	5
Schuylkill.....	176	180	124	53	3
Snyder.....	258	269	138	65	66
Somerset.....	401	406	238	120	48
Sullivan.....	38	35	20	14	1
Susquehanna.....	106	116	100	16	0
Tioga.....	432	363	125	238	0
Union.....	222	206	98	108	0
Venango.....	319	300	197	73	30
Warren.....	172	162	42	75	45
Washington.....	877	828	438	293	97
Wayne.....	379	202	52	99	51
Westmoreland.....	1,597	1,547	1,113	357	77
Wyoming.....	171	135	20	88	27
York.....	2,229	1,805	1,037	739	29

<sup>a</sup>One magisterial district not reporting one month or more  
<sup>b</sup>Two magisterial districts not reporting one month or more

Table 4: FILINGS AND DISPOSITIONS, BY MAGISTERIAL DISTRICT, BY COUNTY, JULY THROUGH DECEMBER, 1974

County	Traffic		Non-Traffic		Summary		Misdemeanor and Felony		Civil	
	Citations Filed	Citations Disposed	Citations Filed	Citations Disposed	Complaints Filed	Complaints Disposed	Complaints Filed	Complaints Disposed	Complaints Filed	Complaints Disposed
<b>Adams.....</b>	<b>2,486</b>	<b>2,357</b>	<b>713</b>	<b>532</b>	<b>338</b>	<b>258</b>	<b>343</b>	<b>299</b>	<b>376</b>	<b>414</b>
51-3-01.....	658	603	413	281	106	62	101	101	102	100
51-3-02.....	551	490	131	105	84	57	79	57	165	238
51-3-03.....	342	342	42	34	37	31	39	36	33	19
51-3-04.....	166	193	65	54	10	13	22	23	17	14
51-3-05.....	191	180	25	24	66	67	51	41	21	15
51-3-06.....	578	549	37	34	35	28	51	41	38	28
<b>Allegheny.....</b>	<b>41,525</b>	<b>36,929</b>	<b>10,327</b>	<b>8,255</b>	<b>5,945</b>	<b>5,014</b>	<b>5,019</b>	<b>4,780</b>	<b>7,986</b>	<b>7,443</b>
05-2-01.....	1,349	1,121	129	110	28	23	125	104	140	89
05-2-02.....	1,776	1,459	209	191	79	67	214	199	143	140
05-2-03.....	730	560	134	98	40	33	65	56	101	92
05-2-04.....	777	778	521	570	81	78	50	40	81	63
05-2-05.....	548	536	271	260	40	40	59	59	85	83
05-2-06.....	875	802	225	163	79	94	194	199	189	160
05-2-07.....	1,358	1,153	273	249	84	45	159	123	168	160
05-2-08.....	1,046	1,021	268	291	59	39	117	116	79	50
05-2-09.....	210	167	131	124	30	24	196	143	173	179
05-2-10.....	3,193	1,876	147	148	141	94	142	116	206	189
05-2-11.....	766	562	379	319	103	95	94	89	92	68
05-2-12.....	185	123	66	66	4	3	11	12	23	37
05-2-13.....	4	4	485	417	52	75	173	179	344	352
05-2-14.....	935	791	214	115	186	73	49	50	75	67
05-2-15.....	1,038	943	182	197	78	83	103	121	73	69
05-2-16.....	575	478	251	200	258	267	145	143	178	157
05-2-17.....	1,100	964	562	430	170	130	109	110	196	193
05-2-18.....	758	578	819	487	41	41	49	48	136	130
05-2-19.....	2,150	2,076	146	107	72	61	70	71	182	173
05-2-20.....	1,402	1,333	340	306	209	146	132	109	141	118
05-2-21.....	1,641	1,153	241	222	189	203	233	219	165	157
05-2-22.....	924	935	89	89	52	54	124	118	128	130
05-2-23.....	746	705	246	238	296	240	160	153	90	101
05-2-24.....	107	893	195	197	32	32	72	88	71	124
05-2-25.....	1,531	1,497	961	610	259	234	72	71	124	115
05-2-26.....	231	177	58	69	25	23	49	48	47	51
05-2-27.....	3,023	3,087	0	0	38	14	115	80	169	165
05-2-28.....	0	0	0	0	17	15	12	12	15	14
05-2-29.....	4	4	2	1	151	170	30	30	250	258
05-2-30.....	2	2	2	2	75	89	24	36	134	161
05-2-31.....	23	26	0	0	199	130	55	41	304	305
05-2-32.....	18	14	1	1	20	20	30	26	94	90
05-2-33.....	0	0	0	0	104	103	3	3	288	348
05-2-34.....	3	4	0	0	38	27	6	4	166	84
05-2-35.....	0	0	0	0	66	55	38	30	138	115
05-2-36.....	3	3	0	0	357	274	46	49	252	193
05-2-37.....	4	3	0	0	100	95	90	81	216	227
05-2-38.....	13	0	14	14	51	44	46	25	84	73
05-2-39.....	11	11	3	3	90	55	71	74	147	116
05-2-40.....	797	728	7	7	99	99	4	4	201	201
05-2-41.....	0	0	6	4	49	49	57	49	115	125
05-2-42.....	0	0	0	0	21	20	14	10	29	24
05-2-43.....	0	0	0	0	25	22	32	30	100	102
05-2-44.....	76	76	9	9	172	122	111	94	146	141
05-2-45.....	537	434	937	405	108	108	133	137	124	102
05-2-46.....	1,466	1,496	146	158	228	114	83	83	241	82
05-3-01.....	1,166	624	174	138	102	38	35	35	59	57
05-3-02.....	1,145	988	78	64	32	34	118	92	80	64
05-3-03.....	1,094	929	227	173	46	26	40	40	49	47
05-3-04.....	274	245	46	41	17	6	26	26	17	17
05-3-05.....	240	271	89	81	22	22	52	53	49	40
05-3-06.....	454	305	100	98	147	150	83	82	55	56
05-3-07.....	285	276	105	78	29	30	77	78	40	36
05-3-08.....	547	493	105	78	26	26	83	82	55	56
05-3-09.....	236	133	11	14	260	266	121	126	49	48
05-3-10.....	1,466	1,357	55	48	42	32	27	25	54	29
05-3-11.....	0	0	10	9	187	219	131	257	411	443
05-3-12.....	2	2	1	0	278	151	46	44	140	135
05-4-01.....	189	194	107	118	24	25	51	52	46	46
05-4-02.....	239	234	220	191	19	12	32	36	41	39
05-4-03.....	828	774	145	126	11	8	68	61	49	52
05-4-04.....	308	303	97	96	67	39	70	59	33	30
05-4-05.....	1,316	1,228	192	102	40	24	33	32	91	91
<b>Armstrong.....</b>	<b>2,032</b>	<b>2,070</b>	<b>677</b>	<b>675</b>	<b>306</b>	<b>288</b>	<b>273</b> </			

TABLE 4: FILINGS AND DISPOSITIONS, BY MAGISTERIAL DISTRICT, BY COUNTY, JULY THROUGH DECEMBER, 1974 (Cont'd)

County	Traffic		Non-Traffic		Summary		Misdemeanor and Felony		Civil	
	Citations Filed	Citations Disposed	Citations Filed	Citations Disposed	Complaints Filed	Complaints Disposed	Complaints Filed	Complaints Disposed	Complaints Filed	Complaints Disposed
Berks.....	8,763	8,055	1,919	1,758	1,689	1,240	1,235	1,061	1,345	1,263
23-1-01.....	54	36	0	0	155	139	211	237	96	90
23-1-02.....	21	16	3	0	80	60	104	76	74	65
23-1-03.....	32	20	2	2	174	74	63	25	151	154
23-1-04.....	20	15	11	8	63	49	73	61	84	73
23-1-05.....	33	34	6	4	124	127	98	58	107	108
23-1-06.....	647	609	148	148	130	104	71	68	49	60
23-2-01.....	387	337	120	110	61	52	29	22	37	23
23-2-02.....	746	564	148	127	350	168	70	55	78	67
23-2-03.....	287	272	71	76	202	116	40	24	73	56
23-2-04.....	243	249	74	77	38	31	46	39	51	62
23-3-01.....	1,101	1,103	214	181	100	93	66	43	93	67
23-3-02.....	344	346	148	97	43	38	63	70	42	35
23-3-03.....	408	337	66	57	45	76	79	73	71	58
23-3-04.....	474	391	78	62	27	26	45	55	70	59
23-3-05.....	958	906	131	136	42	29	71	50	63	61
23-3-06.....	1,151	1,151	75	75	35	38	51	52	142	151
23-3-07.....	497	498	46	40	13	9	10	15	20	33
23-3-08.....	361	331	100	88	7	11	45	38	44	41
Reading District Court.....	909	840	478	470	-	-	-	-	-	-
Blair.....	4,944	4,333	819	588	1,039	819	803	659	691	573
24-1-01.....	811	623	0	0	282	232	129	100	138	135
24-1-02.....	265	245	17	16	43	33	31	34	23	27
24-1-03.....	406	269	250	64	116	48	145	79	90	57
24-1-04.....	268	251	32	19	83	53	83	107	100	100
24-3-01.....	695	617	86	99	74	75	114	101	69	56
24-3-02.....	912	775	267	232	301	240	80	75	99	43
24-3-03.....	985	936	98	102	75	63	145	120	66	47
24-3-04.....	602	617	69	56	65	75	76	67	99	108
Bradford.....	2,178	2,036	322	269	316	190	201	171	768	656
42-2-01.....	302	269	57	46	33	21	34	23	162	160
42-3-01.....	484	472	66	48	44	35	30	24	198	161
42-3-02.....	374	361	57	47	16	12	39	39	118	119
42-3-03.....	585	497	80	78	86	45	52	37	111	76
42-3-04.....	433	437	62	50	137	97	46	48	179	140
Bucks.....	28,448	32,659	5,028	5,862	4,515	1,605	4,742	4,804	5,658	5,382
07-1-01.....	3,461	4,267	338	343	184	121	566	782	613	1,108
07-1-02.....	2,922	2,196	336	290	2,187	81	386	240	428	317
07-1-03.....	1,509	1,495	398	486	114	74	308	384	278	196
07-1-04.....	1,224	1,334	295	323	146	267	393	299	73	73
07-1-05.....	1,044	1,589	259	390	105	56	169	172	195	116
07-1-06.....	906	980	234	232	85	63	153	145	332	701
07-1-07.....	2,696	3,099	298	312	115	77	273	161	231	136
07-1-08.....	1,973	2,420	550	652	292	155	405	439	294	234
07-1-09.....	1,928	2,491	290	400	435	354	416	538	619	740
07-2-01.....	1,288	2,087	318	432	161	101	273	327	471	543
07-2-02.....	961	1,332	276	294	150	100	365	338	272	277
07-3-01.....	1,061	1,468	493	630	80	58	188	125	236	138
07-3-02.....	1,500	1,759	307	391	109	59	272	264	575	235
07-3-03.....	3,054	2,692	295	293	50	35	144	150	178	132
07-3-04.....	508	598	78	100	139	112	169	101	156	155
07-3-05.....	1,906	2,197	160	185	97	44	236	146	354	233
07-3-06.....	506	655	103	109	50	29	152	99	130	49
Butler.....	6,663	6,075	1,362	1,204	1,151	859	717	604	1,473	1,366
50-1-01.....	1,998	1,643	559	481	506	360	244	200	694	828
50-3-01.....	1,625	1,560	493	421	111	72	99	87	193	189
50-3-02.....	874	853	47	46	137	85	95	83	129	43
50-3-03.....	550	556	64	53	165	123	106	95	293	142
50-3-04.....	1,616	1,463	199	203	232	219	173	139	164	164
Cambria.....	5,700	5,287	1,399	1,098	1,301	902	1,043	902	855	773
47-1-01.....	1,063	732	157	157	377	208	226	190	236	186
47-1-02.....	245	239	83	78	124	121	100	85	120	112
47-2-01.....	434	425	18	18	208	111	26	14	87	81
47-2-02.....	265	248	156	124	237	154	96	96	83	76
47-3-01.....	589	598	84	81	42	41	98	73	28	23
47-3-02.....	170	175	9	13	24	26	22	23	13	11
47-3-03.....	212	235	130	127	32	32	48	43	102	103
47-3-04.....	911	903	103	96	40	29	132	122	17	14
47-3-05.....	230	217	201	183	51	62	53	77	77	84
47-3-06.....	395	361	78	51	36	33	48	44	32	36
47-3-07.....	1,121	1,085	147	124	114	109	167	139	47	37
47-3-08.....	65	69	50	46	16	17	18	20	13	10
Cameron.....	312	322	83	75	19	13	35	30	54	62
59-3-01.....	312	322	83	75	19	13	35	30	54	62
Carbon.....	4,809	4,823	472	405	239	181	155	148	252	222
56-3-01.....	3,474	3,524	158	132	107	95	76	63	103	123
56-3-02.....	913	905	163	132	58	27	24	24	120	73
56-3-03.....	131	122	92	80	17	21	16	17	16	17
56-3-04.....	291	272	59	61	57	38	39	44	13	9

TABLE 4: FILINGS AND DISPOSITIONS, BY MAGISTERIAL DISTRICT, BY COUNTY, JULY THROUGH DECEMBER, 1974 (Cont'd)

County	Traffic		Non-Traffic		Summary		Misdemeanor and Felony		Civil	
	Citations Filed	Citations Disposed	Citations Filed	Citations Disposed	Complaints Filed	Complaints Disposed	Complaints Filed	Complaints Disposed	Complaints Filed	Complaints Disposed
Centre.....	9,773	9,123	2,904	2,052	1,846	1,701	435	421	1,194	1,024
49-3-01.....	5,441	4,718	2,569	1,783	1,604	1,492	242	231	1,011	886
49-3-02.....	2,280	2,409	88	62	187	159	116	107	109	74
49-3-03.....	757	769	158	137	8	6	18	15	33	26
49-3-04.....	410	376	24	12	34	34	13	20	28	22
49-3-05.....	505	476	36	38	4	3	11	14	4	4
49-4-01.....	380	375	29	20	5	7	35	34	9	12
Chester.....	14,037	12,728	3,604	2,949	1,805	1,540	1,723	1,550	2,933	2,797
15-2-01.....	971	996	611	341	176	235	178	225	285	328
15-2-02.....	1,577	1,386	254	213	185	75	160	126	389	390
15-2-03.....	2,760	2,344	507	397	172	34	260	198	396	349
15-2-04.....	1,551	1,448	1,070	1,052	313	452	240	247	342	302
15-3-01.....	580	531	64	44	163	79	58	58	184	190
15-3-02.....	1,283	1,126	218	127	64	57	98	86	316	277
15-3-03.....	1,378	1,247	279	210	278	185	163	131	417	382
15-3-04.....	1,427	1,203	156	173	177	174	191	173	214	243
15-3-05.....	1,338	1,267	159	146	132	123	197	174	189	200
15-3-07.....	1,172	1,180	286	246	145	126	178	132	201	136
Clarion.....	3,154	3,010	334	313	215	190	176	161	270	279
18-3-01.....	701	611	187	185	89	73	66	66	85	74
18-3-02.....	381	383	41	41	11	11	22	13	49	72
18-3-03.....	1,793	1,744	41	36	36	31	27	29	27	28
18-3-04.....	155	159	27	25	45	31	17	7	76	83
18-3-05.....	124	113	28	24	34	44	33	36	33	22
Clearfield...	3,862	4,000	538	451	669	538	440	391	680	540
46-3-01.....	143	123	7	4	26	23	6	5	18	11
46-3-02.....	266	241	89	37	97	30	94	48	122	80
46-3-03.....	958	825	53	36	60	53	54	54	228	113
46-3-05.....	2,434	2,775	364	365	425	410	264	278	295	328
46-3-06.....	61									

TABLE 4: FILINGS AND DISPOSITIONS, BY MAGISTERIAL DISTRICT, BY COUNTY, JULY THROUGH DECEMBER, 1974 (Cont'd)

County	Traffic		Non-Traffic		Summary		Misdemeanor and Felony		Civil	
	Citations Filed	Citations Disposed	Citations Filed	Citations Disposed	Complaints Filed	Complaints Disposed	Complaints Filed	Complaints Disposed	Complaints Filed	Complaints Disposed
Delaware cont.										
32-1-11.....	1,226	1,003	164	117	66	55	158	117	172	143
32-1-12.....	555	372	607	381	46	39	106	102	156	148
32-1-13.....	504	407	421	267	28	31	123	116	120	112
32-1-14.....	1,305	992	473	206	99	37	113	44	128	35
32-1-15.....	11,265	4,180	494	292	87	48	250	195	150	138
32-1-16.....	596	334	113	102	91	76	81	78	191	176
32-1-17.....	912	708	68	53	51	52	113	160	198	205
32-1-18.....	-	-	-	-	-	-	-	-	-	-
32-1-19.....	393	374	232	171	95	95	129	126	98	98
32-2-01.....	650	387	145	101	13	11	79	85	68	35
32-2-02.....	446	407	218	165	29	20	117	94	27	21
32-2-04.....	588	338	250	115	21	20	71	62	132	123
32-2-05.....	231	217	75	89	33	33	99	98	98	98
32-2-06.....	1,220	936	148	128	26	35	108	81	57	52
32-2-07.....	876	504	223	143	41	30	84	72	138	120
32-2-10.....	228	229	143	180	16	14	36	29	58	64
32-2-11.....	1,059	808	195	167	24	13	102	77	126	123
32-2-12.....	363	218	64	33	21	15	40	35	11	11
32-2-13.....	423	360	131	104	14	15	96	97	40	66
32-2-14.....	624	428	127	113	74	38	82	56	92	51
32-2-15.....	786	742	130	89	44	37	69	53	69	61
32-3-01.....	785	704	63	46	13	20	117	95	42	74
32-4-01.....	336	316	69	61	13	2	45	32	37	34
Elk.....	1,038	1,078	148	153	108	89	128	123	177	170
59-3-02.....	518	542	68	73	47	41	69	64	73	64
59-3-03.....	520	536	80	80	61	48	59	59	104	106
Erie.....	16,149	14,773	2,321	1,901	1,554	1,164	1,892	1,701	2,763	1,588
06-1-01.....	-	-	203	245	97	112	112	108	148	183
06-1-02.....	-	-	153	144	45	46	203	175	192	169
06-1-03.....	-	-	95	40	105	58	117	94	138	101
06-1-04.....	-	-	168	126	302	242	263	231	104	107
06-1-05.....	-	-	140	84	6	7	195	182	228	236
06-2-01.....	-	-	232	214	58	53	142	141	48	48
06-2-02.....	1,533	1,266	613	466	90	78	187	148	189	139
06-2-03.....	308	266	27	26	15	12	86	75	37	30
06-2-04.....	344	303	81	67	33	24	59	61	53	46
06-3-01.....	1,568	1,501	64	52	94	56	42	36	29	27
06-3-02.....	1,555	1,385	77	63	102	60	66	58	87	92
06-3-03.....	715	776	75	66	52	34	44	49	50	52
06-3-04.....	315	294	91	53	25	19	69	53	44	35
06-3-05.....	1,047	1,002	68	84	41	42	55	67	43	60
06-3-06.....	1,873	1,794	111	72	248	181	100	103	132	123
06-3-07.....	1,802	1,902	92	60	145	92	99	65	105	84
06-3-08.....	427	479	31	39	96	48	53	55	57	46
Erie Traffic Court.....	4,625	3,805	-	-	-	-	-	-	-	-
Fayette.....	3,353	3,134	673	531	771	597	754	701	334	219
14-1-01.....	286	260	170	99	71	57	121	139	61	51
14-1-02.....	430	409	118	108	66	64	75	70	14	12
14-2-01.....	283	264	18	13	32	37	33	38	25	25
14-2-02.....	551	525	43	26	59	41	108	71	48	41
14-2-03.....	153	154	69	66	22	18	66	59	10	12
14-3-01.....	186	180	15	8	57	44	56	53	87	15
14-3-02.....	368	368	90	79	18	27	81	71	10	11
14-3-03.....	128	118	19	9	28	8	42	36	7	0
14-3-04.....	78	75	37	42	11	11	15	14	5	6
14-3-05.....	361	267	32	22	49	21	17	17	4	1
14-3-06.....	233	237	13	7	128	134	43	38	21	19
14-3-07.....	182	166	35	31	207	112	78	74	21	13
14-3-08.....	114	111	14	21	23	23	19	21	13	13
Forest.....	608	577	168	159	22	22	46	43	44	44
37-4-02.....	278	261	105	103	10	8	26	26	16	16
37-4-03.....	330	316	63	56	12	14	20	17	28	28
Franklin.....	6,213	5,716	937	792	607	627	439	372	715	653
39-1-01.....	736	660	311	231	220	218	101	103	442	345
39-2-01.....	798	744	170	170	45	71	55	54	125	162
39-3-01.....	815	776	53	35	2	5	12	10	27	47
39-3-02.....	999	927	93	74	78	57	118	64	40	29
39-3-03.....	397	359	20	19	18	6	30	23	7	7
39-3-04.....	1,342	1,260	57	52	175	211	67	69	27	30
39-3-05.....	888	771	148	120	35	34	36	36	22	17
39-3-06.....	238	219	85	91	34	25	20	22	9	16
Fulton.....	2,354	2,251	85	69	55	45	51	52	47	49
39-4-01.....	1,174	1,134	16	15	8	8	7	8	5	5
39-4-02.....	256	234	62	47	32	23	30	30	29	31
39-4-03.....	924	883	7	7	15	14	14	14	13	13
Greene.....	1,772	1,610	177	145	121	65	237	131	68	56
13-3-01.....	1,336	1,209	71	73	111	55	157	61	31	21
13-3-02.....	436	401	106	72	10	10	80	70	37	35

TABLE 4: FILINGS AND DISPOSITIONS, BY MAGISTERIAL DISTRICT, BY COUNTY, JULY THROUGH DECEMBER, 1974 (Cont'd)

County	Traffic		Non-Traffic		Summary		Misdemeanor and Felony		Civil	
	Citations Filed	Citations Disposed	Citations Filed	Citations Disposed	Complaints Filed	Complaints Disposed	Complaints Filed	Complaints Disposed	Complaints Filed	Complaints Disposed
Huntingdon.....	1,768	1,630	405	212	150	120	154	147	123	114
20-3-01.....	161	188	1	1	3	4	10	12	0	1
20-3-02.....	1,038	920	326	157	111	80	82	70	97	89
20-3-03.....	569	522	78	54	36	36	62	65	26	24
20-3-04.....	-	-	-	-	-	-	-	-	-	-
Indiana.....	2,160	2,066	240	207	330	235	384	323	243	243
40-2-01.....	898	809	78	75	132	77	72	68	51	56
40-3-01.....	394	371	52	48	53	47	98	88	77	89
40-3-02.....	300	336	41	47	61	60	96	79	57	58
40-3-03.....	568	550	69	37	84	51	118	88	58	40
Jefferson.....	2,928	2,717	308	281	289	215	140	109	267	213
54-3-01.....	725	660	105	94	169	128	54	50	108	109
54-3-02.....	1,746	1,612	92	67	48	31	36	21	62	55
54-3-03.....	457	445	111	120	72	56	50	38	97	49
Juniata.....	639	611	68	67	63	69	24	22	53	41
41-3-01.....	330	345	17	16	50	59	20	18	30	29
41-3-02.....	309	266	51	51	13	10	4	4	23	12
Lackawanna.....	8,842	7,452	569	537	1,461	1,278	989	927	1,325	1,269
45-1-01.....	300	281	12	9	154	68	36	34	57	56
45-1-02.....	5,321	4,058	37	34	272	275	249	242	370	375
45-1-03.....	304	271	0	0	70	81	85	80	89	81
45-1-04.....	136	113	19	20	132	131	84	89	151	134
45-1-05.....	135	116	17	17	102	74	99	81	81	81
45-1-06.....	115	143	19	19	98	70	49	38	56	62
45-1-07.....	168	150	124	105	127	121	178	197	94	81
45-1-08.....	121	126	56	53	144	122	47	33	63	49
45-2-01.....	67	61	9	7	26	15	20	14	59	66
45-2-02.....	301	317	111	116	142	136	27	27	56	51
45-2-03.....	259	269	41	37	32	23	37	33	63	49
45-3-01.....	1,064	925	78	78	146	143	43	33	149	147
45-3-02.....	551	622	46	42	16	19	35	26	37	37
Lancaster.....	21,244	17,930	2,932	2,331	2,547	1,772	1,765	1,481	2,743	2,115
02-1-01.....	1,615	754	216	123	332	184	181	113	271	257
02-1-02.....	925	600	159	81	195	132	152	124	100	94
02-2-01.....	1,364	732	207	84	193	109	157	128	195	112
02-2-02.....	1,907	1,190	302	196	388	254	114	106	214	112
02-2-03.....	715	422	59	32	165	67	140	105	155	101
02-2-04.....	1,276	1,323	83	51	148	84	97	86	283	143
02-2-05.....	1,107	1,076	68	66	131	89	85	66	208	203
02-2-06.....	347	340	360	365	59	71	95	68	106	67
02-3-01.....	1,011	979	143	119	96	70	114	61	93	72
02-3-02.....	1,680	1,605	137	94	127	89	118	142	128	98
02-3-03.....	288	242	87	55	52	45	20	20	102	65
02-3-04.....	494									

TABLE 4: FILINGS AND DISPOSITIONS, BY MAGISTERIAL DISTRICT, BY COUNTY, JULY THROUGH DECEMBER, 1974 (Cont'd)

County	Traffic		Non-Traffic		Summary		Misdemeanor and Felony		Civil	
	Citations Filed	Citations Disposed	Citations Filed	Citations Disposed	Complaints Filed	Complaints Disposed	Complaints Filed	Complaints Disposed	Complaints Filed	Complaints Disposed
Lehigh cont....										
31-3-03.....	558	460	46	42	72	42	29	22	63	45
31-3-04.....	2,009	1,901	55	45	250	136	94	63	100	68
Luzerne.....	13,414	12,370	2,132	1,708	1,535	1,157	1,537	1,467	1,245	1,107
11-1-01.....	226	237	56	43	181	108	115	131	127	121
11-1-02.....	301	295	137	137	0	0	241	273	67	67
11-1-03.....	269	271	46	50	99	104	69	72	141	152
11-1-04.....	207	174	130	125	76	43	119	93	78	73
11-1-05.....	429	388	115	89	59	41	58	52	38	32
11-1-06.....	418	425	197	153	43	36	48	49	118	108
11-1-07.....	658	639	225	183	94	67	52	38	49	30
11-1-08.....	290	186	83	47	124	115	66	71	85	86
11-2-01.....	670	623	238	188	51	37	152	103	72	60
11-2-02.....	1,299	1,209	72	29	122	107	125	124	107	102
11-2-03.....	1,003	951	131	120	49	43	74	61	72	45
11-3-01.....	528	535	65	45	20	14	61	59	26	20
11-3-02.....	710	699	51	50	84	15	42	40	32	9
11-3-03.....	2,259	1,830	33	32	50	52	49	51	28	32
11-3-04.....	808	758	61	58	136	118	60	59	53	54
11-3-05.....	2,021	1,943	35	36	27	17	38	45	35	45
11-3-06.....	18	6	4	0	0	0	0	0	0	0
11-3-07.....	513	558	45	37	132	129	67	56	36	28
11-3-08.....	337	246	318	242	122	68	67	64	82	41
11-3-09.....	450	397	90	39	66	43	25	29	28	30
Lycoming.....	8,992	7,362	471	416	1,000	805	609	549	1,119	812
29-1-01.....	4,347	3,173	141	150	184	182	39	39	158	101
29-1-02.....	653	538	111	81	129	111	239	225	306	242
29-3-01.....	1,529	1,495	0	21	380	293	118	97	348	156
29-3-02.....	1,421	1,207	127	85	132	67	77	69	102	89
29-3-03.....	1,042	952	92	79	175	152	136	119	205	224
McKean.....	2,027	1,931	657	634	354	217	297	282	542	502
48-1-01.....	329	370	157	172	136	55	107	95	171	190
48-3-01.....	143	138	40	38	7	5	26	28	65	66
48-3-02.....	419	371	66	61	129	111	66	58	159	91
48-3-03.....	671	603	157	143	35	18	60	50	70	70
48-3-04.....	465	449	237	220	47	28	38	41	83	85
Mercer.....	7,916	7,590	927	848	999	1,052	632	623	808	812
35-2-01.....	343	409	219	226	53	60	146	155	75	92
35-2-02.....	1,067	1,120	294	255	461	545	204	231	259	196
35-3-01.....	3,611	3,492	59	57	135	78	73	59	70	85
35-3-02.....	1,802	1,506	99	86	104	86	59	49	55	83
35-3-03.....	1,093	1,063	256	224	246	283	150	129	349	356
Mifflin.....	1,551	1,391	219	213	320	247	259	209	172	178
58-3-01.....	905	782	134	138	198	155	143	111	91	93
58-3-02.....	646	609	85	75	122	92	116	98	81	85
Monroe.....	6,335	5,992	806	474	556	332	387	294	543	495
43-2-01.....	319	261	343	192	151	84	45	41	134	115
43-2-02.....	345	305	49	34	213	62	135	76	83	116
43-3-01.....	2,243	2,144	140	45	54	50	34	74	59	59
43-3-02.....	327	329	122	14	72	22	71	42	41	41
43-3-03.....	2,327	2,188	18	11	31	23	33	29	58	45
43-3-04.....	168	152	13	22	22	22	22	39	39	39
43-4-01.....	414	419	8	4	2	2	2	2	32	32
43-4-02.....	197	184	63	49	57	47	28	23	39	56
Montgomery.....	43,732	37,179	7,122	5,749	2,590	1,725	3,349	3,013	3,903	3,292
38-1-01.....	360	313	280	237	122	41	77	90	114	126
38-1-02.....	1,575	1,297	114	104	33	33	114	81	75	78
38-1-03.....	3,165	1,684	411	213	12	11	183	140	127	86
38-1-04.....	1,227	1,063	180	125	142	118	169	165	150	124
38-1-05.....	927	896	133	121	64	66	130	153	136	134
38-1-06.....	6,505	5,592	368	332	131	134	131	138	215	243
38-1-07.....	9,074	8,243	462	356	25	23	177	152	111	93
38-1-08.....	667	667	177	161	39	30	67	53	69	63
38-1-09.....	-	-	-	-	-	-	-	-	-	-
38-1-10.....	1,244	985	271	239	119	134	152	116	133	94
38-1-11.....	1,124	1,126	148	129	101	51	128	98	188	88
33-1-12.....	712	592	97	73	101	81	63	50	96	52
38-2-02.....	482	474	84	92	112	95	45	41	145	152
38-2-04.....	2,013	1,842	497	457	61	62	222	244	394	402
38-2-05.....	631	614	172	140	47	22	99	72	122	126
38-2-06.....	629	611	373	275	36	26	59	59	124	118
38-2-07.....	646	574	270	222	56	45	105	94	101	71
38-2-08.....	801	803	231	239	0	0	63	52	35	9
38-2-09.....	1,950	1,719	212	206	38	23	65	58	194	137
38-2-10.....	1,091	970	217	186	23	16	54	48	62	57
38-2-13.....	1,366	1,126	432	296	60	50	238	230	235	172
38-2-14.....	1,734	1,416	643	539	24	26	189	161	161	161
38-2-16.....	715	595	309	221	34	23	114	96	142	76
38-2-17.....	1,804	1,488	219	162	7	6	87	71	63	39
38-2-18.....	1,082	524	163	62	766	358	257	213	148	97
38-2-19.....	297	225	245	107	77	22	75	63	97	79
38-2-20.....	282	258	74	144	4	10	67	101	101	67
38-3-01.....	266	238	166	155	104	76	84	90	152	196
38-3-02.....	144	125	55	46	69	49	38	30	65	60
38-3-03.....	1,199	1,119	119	110	183	104	99	88	148	138

TABLE 4: FILINGS AND DISPOSITIONS, BY MAGISTERIAL DISTRICT, BY COUNTY, JULY THROUGH DECEMBER, 1974 (Cont'd)

County	Traffic		Non-Traffic		Summary		Misdemeanor and Felony		Civil	
	Citations Filed	Citations Disposed	Citations Filed	Citations Disposed	Complaints Filed	Complaints Disposed	Complaints Filed	Complaints Disposed	Complaints Filed	Complaints Disposed
Montour.....	1,584	1,318	46	31	60	49	47	20	67	32
26-3-04.....	1,584	1,318	46	31	60	49	47	20	67	32
Northampton...	7,897	7,122	2,365	1,947	1,267	1,001	1,005	822	1,297	1,038
03-1-01.....	705	384	69	27	15	11	117	77	21	16
03-1-02.....	494	417	251	116	55	56	77	71	65	57
03-1-03.....	198	196	471	495	108	74	81	58	154	50
03-2-01.....	1,237	1,178	400	413	96	97	54	52	78	76
03-2-02.....	417	418	39	35	28	19	45	23	49	52
03-2-03.....	775	736	102	82	86	58	23	27	54	47
03-2-04.....	354	345	54	44	24	19	63	45	31	34
03-2-05.....	305	292	108	96	111	97	147	139	91	100
03-2-06.....	180	156	22	25	242	177	80	74	213	198
03-2-07.....	432	408	141	121	22	14	42	34	75	64
03-2-08.....	541	524	74	64	58	46	78	77	111	103
03-2-09.....	766	745	417	258	277	218	88	49	78	41
03-3-01.....	313	314	76	70	59	52	24	27	77	88
03-3-02.....	424	423	20	22	37	39	33	35	67	50
03-3-03.....	756	586	121	79	49	24	53	34	133	62
Northumberland	3,716	3,362	1,215	875	236	195	408	366	452	414
08-2-01.....	839	836	118	132	67	59	64	67	66	67
08-3-01.....	1,171	975	173	115	89	56	116	87	95	33
08-3-02.....	761	617	767	482	32	32	148	128	194	180
08-3-03.....	945	934	157	146	48	48	80	84	97	134
Perry.....	1,321	1,276	176	159	345	274	101	92	242	199
41-3-03.....	824	812	93	81	152	125</				

TABLE 4: FILINGS AND DISPOSITIONS, BY MAGISTERIAL DISTRICT, BY COUNTY, JULY THROUGH DECEMBER, 1974 (Cont'd)

County	Traffic		Non-Traffic		Summary		Misdemeanor and Felony		Civil	
	Citations Filed	Citations Disposed	Citations Filed	Citations Disposed	Complaints Filed	Complaints Disposed	Complaints Filed	Complaints Disposed	Complaints Filed	Complaints Disposed
Venango.....	5,415	5,290	775	707	273	216	212	255	319	300
28-3-01.....	341	372	67	51	18	11	39	30	12	14
28-3-02.....	818	816	437	410	52	55	85	106	131	141
28-3-03.....	2,028	2,029	251	228	179	138	77	101	143	125
28-3-04.....	2,228	2,073	20	18	24	12	11	18	33	20
Warren.....	3,211	2,653	351	327	46	37	200	165	172	162
37-2-01.....	1,833	1,318	156	150	15	9	62	44	69	59
37-3-01.....	710	687	114	100	17	13	61	46	45	46
37-3-02.....	542	522	54	62	10	11	56	55	37	37
37-3-03.....	-	-	-	-	-	-	-	-	-	-
37-4-01.....	126	126	27	15	4	4	21	20	21	20
Washington...	14,729	12,611	1,851	1,461	1,617	1,302	760	732	877	828
27-1-01.....	1,575	483	483	304	278	200	152	151	137	97
27-1-02.....	425	414	191	176	145	131	50	48	78	67
27-1-03.....	313	286	167	154	154	98	105	77	145	139
27-2-01.....	527	525	73	74	81	55	67	67	62	132
27-3-01.....	845	820	178	163	247	260	77	92	94	111
27-3-02.....	2,019	1,519	84	73	97	97	24	29	28	20
27-3-03.....	441	337	91	98	41	42	21	23	26	28
27-3-04.....	151	154	29	27	41	48	47	48	24	27
27-3-05.....	2,529	2,394	200	134	123	65	65	52	128	87
27-3-06.....	1,274	1,189	56	87	107	72	16	14	36	23
27-3-07.....	481	466	97	98	105	66	43	31	35	17
27-3-08.....	284	292	17	9	44	21	0	0	12	7
27-3-09.....	402	405	36	22	88	95	58	57	31	31
27-3-10.....	3,463	3,317	30	29	39	26	46	43	41	42
Wayne.....	957	867	150	134	111	92	151	131	379	202
22-3-01.....	371	348	108	104	29	16	33	27	176	106
22-3-02.....	413	341	6	4	44	41	74	65	155	51
22-3-03.....	66	70	23	13	7	6	18	20	18	18
22-3-04.....	107	108	13	13	31	29	26	25	28	27
Westmoreland.	16,688	15,702	1,775	1,539	2,123	1,581	1,959	1,715	1,597	1,547
10-1-01.....	178	159	42	18	70	64	112	97	144	133
10-1-03.....	78	64	71	55	118	66	79	75	71	48
10-2-01.....	992	996	31	27	251	116	135	124	74	63
10-2-02.....	283	247	95	104	24	23	42	42	15	13
10-2-03.....	1,479	1,308	64	53	25	16	28	35	21	21
10-2-04.....	454	373	133	111	86	58	69	50	72	63
10-2-05.....	418	341	75	75	131	104	198	147	100	85
10-2-06.....	1,846	1,649	133	96	114	84	107	95	37	37
10-2-07.....	31	31	27	24	234	205	239	210	147	154
10-2-08.....	237	240	46	47	91	44	56	57	33	34
10-2-09.....	505	416	117	78	22	20	79	60	46	55
10-2-10.....	413	436	136	112	132	63	84	65	70	76
10-3-01.....	775	710	327	258	358	256	265	146	269	256
10-3-02.....	778	689	61	67	67	41	58	65	64	66
10-3-03.....	2,000	1,862	22	17	55	49	71	66	50	54
10-3-05.....	543	519	41	56	27	17	20	24	13	9
10-3-07.....	555	529	28	22	77	69	59	55	43	44
10-3-08.....	870	819	46	44	29	28	28	32	22	25
10-3-09.....	592	593	161	115	32	38	36	43	26	21
10-3-10.....	2,315	2,358	40	50	153	126	87	80	36	53
10-3-11.....	1,346	1,363	79	110	118	94	97	124	244	237
Wyoming.....	1,338	1,285	115	112	243	180	115	103	171	135
44-3-01.....	965	926	78	81	143	101	64	60	141	110
44-3-02.....	109	97	22	17	42	37	17	18	12	10
44-4-01.....	264	262	15	14	58	42	34	25	18	15
York.....	18,088	15,302	2,340	1,990	2,636	1,824	1,479	1,225	2,229	1,805
19-1-01.....	4,097	3,158	231	152	355	338	399	251	273	225
19-1-02.....	3,336	2,001	216	98	502	310	193	185	320	57
19-1-03.....	662	631	224	243	425	246	114	94	778	735
19-2-01.....	1,819	1,837	446	373	77	33	107	114	128	112
19-2-02.....	1,154	1,100	182	185	142	113	119	107	73	73
19-2-03.....	533	575	167	162	31	31	30	33	21	25
19-3-01.....	458	446	125	123	55	50	46	45	93	89
19-3-02.....	146	142	30	28	15	16	16	13	74	55
19-3-03.....	148	150	24	21	26	20	10	11	27	26
19-3-04.....	1,198	1,152	66	61	38	28	27	27	79	69
19-3-05.....	202	200	97	88	36	34	20	12	24	20
19-3-06.....	160	156	57	34	68	45	16	19	13	31
19-3-07.....	522	522	86	87	126	119	49	48	66	63
19-3-08.....	1,585	1,363	166	116	433	226	177	110	83	79
19-3-09.....	1,458	1,401	81	77	73	52	109	110	105	90
19-3-10.....	510	468	142	142	234	163	47	46	72	56

\*Report sent for five months  
 bReport sent for four months  
 cReport sent for three months  
 dReport sent for two months  
 eReport sent for one month  
 fNo reports sent  
 gErie Traffic Court

END