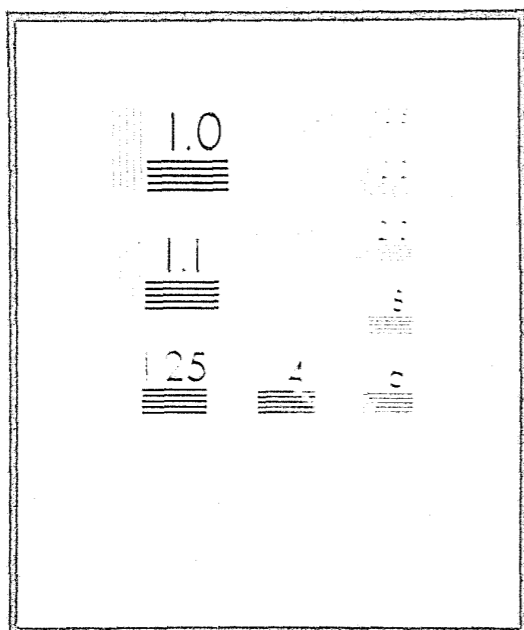


NCJRS

This microfiche was produced from documents received for inclusion in the NCJRS data base. Since NCJRS cannot exercise control over the physical condition of the documents submitted, the individual frame quality will vary. The resolution chart on this frame may be used to evaluate the document quality.



Microfilming procedures used to create this fiche comply with the standards set forth in 41CFR 101-11.504

Points of view or opinions stated in this document are those of the author(s) and do not represent the official position or policies of the U.S. Department of Justice.

U.S. DEPARTMENT OF JUSTICE
LAW ENFORCEMENT ASSISTANCE ADMINISTRATION
NATIONAL CRIMINAL JUSTICE REFERENCE SERVICE
WASHINGTON, D.C. 20531

U.S. G
Dated and Filmed

JUVENILE COURT CASES

1972-73



SPECIAL REPORT NUMBER 24

NORTH CAROLINA
DEPARTMENT OF HUMAN RESOURCES
Division of Social Services
Reports and Program Analysis

25872

T

North Carolina -
Juvenile Court Cases Referred to Courts, 1972-73

North Carolina Department of Human Resources
Division of Social Services
Special Report Number 24
April 1974

David T. Flaherty, Secretary
State Department of Human Resources

Renee P. Hill, Director
Division of Social Services

Fred L. Scroggs, Chief
Comptroller Section

Raymond L. Riddle, Jr., Assistant Chief
Comptroller Section/Reports and Program Analysis

Editor: Anne Wimbish
Raleigh, North Carolina

INTRODUCTION

The data derived from the preparation of this special report were obtained from the Juvenile Court Statistical Report, DSS-R&S-60. In North Carolina the county director of social services served as chief juvenile probation officer for 66 counties by virtue of General Statute 110-21. In 27 counties where the district court district had a county with a population of 84,000 or more, the chief district judge and the Administrative Officer of the Courts appointed a chief counselor and assistants to provide investigative, supervisory and other related services (General Statute 7A-134). In 7 counties where family counselor services were not available the chief district court judge designated persons other than government employees to act as juvenile probation officers (General Statute 110-23-1).

Although there are 100 counties in North Carolina, only 76 counties reported delinquent, undisciplined behavior, neglect, and dependency cases during 1972. One county reported cases for two months, eight counties reported only those cases referred to the County Department of Social Services and five counties reported only delinquency and undisciplined cases.

The incomplete data was the result of a non-mandatory reporting system in North Carolina, a non-uniform system of reporting and an insufficient number of staff members to maintain the necessary information. Therefore, the data in this report cannot be indicative of the actual number of cases that appeared before juvenile courts during the calendar year 1972. The reader should note that the unit of count is case, not children, and that a child may have been referred more than once during 1972.

SELECTED CONCEPTS DEFINED

Child

A child is defined as "any minor under 16 years of age, and any minor 16 years of age and upward as to whom the court is exercising jurisdiction acquired before his attainment of that age" (Administrative Office of Courts, 1970).

Delinquent Behavior

Delinquent behavior is any behavior that constitutes a criminal offense under State law and under an ordinance of local government, including violation of the motor vehicle laws, or behavior that violates the condition of his probation (Administrative Office of the Courts, 1970).

Specific Delinquent Acts or Offenses:

Murder and manslaughter

Robbery

Assault

Burglary

Auto-theft

Larceny

Weapons (carrying, possession)

Sex offense (including forcible rape)

Violation of drug laws

Disorderly conduct (drunkenness)

Vandalism

Violation of probation

Traffic offenses

Trespassing

Undisciplined Child

An undisciplined child "includes any child who: (1) is unlawfully absent from school, or (2) is regularly disobedient to his parents or guardian or custodian and beyond their control, or (3) is regularly found in places where it is unlawful for a child to be, or (4) has run away from home" (Administrative Office of the Courts, 1970).

Specific Undisciplined Acts:

Running away

Truancy

Violation of curfew

Ungovernable behavior

Possessing or drinking liquor

Neglected Child

A neglected child "is any child who: (1) does not receive proper care or supervision or discipline from his parent, guardian, custodian or other person acting as a parent, or (2) is not provided necessary medical care or other remedial care recognized under State law, or (3) lives in an environment injurious to his welfare, or (4) has been placed for care or adoption in violation of laws" (Administrative Office of the Courts, 1970).

Dependent Child

A dependent child is defined as a child "who is in need of placement, special care or treatment because such child has no parent, guardian or custodian to be responsible for his supervision or care, or whose parent, guardian or custodian is unable to provide for his supervision or care" (Administrative Office of the Courts, 1970).

Disposition

Disposition of a court case refers to what was actually done or to what was intended to be done, rather than to the formal wording of the court order. For example, if a child was to be committed to a public institution for delinquents, but during the course of the action it was decided to suspend the commitment with the intention that the child be supervised by a probation officer, the child would be counted as "probation officer to supervise."

Specific Dispositions:

Waived to criminal court

Complaint not substantiated:

Dismissed: Not proved or found not involved.

Complaint substantiated:

No transfer of legal custody:

Dismissed: Warned, adjusted, counselled
Held open without further action
Probation officer to supervise
Referred to another agency or individual for supervision or service
Runaway returned
Other

Transfer of legal custody to:

Public institution for delinquents
Other public institution
Public agency or department (including court)
Private agency or Institution
Individual
Other

Family Income

The approximate annual income of the juvenile's family, as estimated by the worker who completed the Juvenile Court Statistical card, is considered to be Family Income.

JUVENILE CASES REFERRED TO COURTS: 1972

A total of 9,317 cases were reported to the North Carolina Division of Social Services during 1972. This total represents a decrease of 316 cases from the year 1971. This decrease is reflected in the decline in the number of counties and district courts who reported juvenile court cases to the Reports and Program Analysis Branch of the North Carolina Division of Social Services and the non-mandatory reporting system in North Carolina.

Delinquency and Undisciplined Cases

Table I. Frequency of Court Hearings:

	<u>Total Cases</u>	<u>Male</u>	<u>Female</u>
Number of Hearings	7,122	5,202	1,920
1	5,973	4,409	1,564
2	903	624	279
3	179	120	59
4	39	26	13
5 and over	28	23	5

Table I summarizes the number of times a juvenile offender appeared in court on a new referral during 1972. Of the total 7,122 delinquent and undisciplined behavior cases, 83.9% were heard in court once and 16.1% appeared two or more times. There were 2,330 juveniles referred to court during 1972 on a new referral of delinquency or undisciplined behavior who had appeared in court prior to 1972. This figure is significant in that it shows 32.7% of the total number of children (7,122) were repeated offenders. Of the 7,122 delinquent and undisciplined behavior cases, 1340 or 18.6% were involved in more than one offense. Truancy was the primary reason for referral accounting for 15.6% of all juveniles heard on two or more offenses in juvenile court. (Table C-2). Of the 7,122 juveniles who appeared in juvenile court on delinquency and undisciplined referrals, 2,886 or 40.5% were

of the black race. However, of the 200 children involved in a violation of conditional release there were 125 or 62.5% of the black race.

In 51.4% of the juvenile court cases heard, juveniles were living in a home with one or both parents present. It is significant to note that of the 456 youths who were living in a home with a step-parent present there were 386 or 84.7% more referrals when the child was living in a home with the mother and step-father as opposed to the 70 youths or 15.3% who lived with the father and step-mother.

Selected Characteristics

Most frequent age: 15

Most frequent referral: Larceny

Most frequent disposition: Probation officer to supervise

Delinquency Cases

During 1972, 5,084 delinquency cases were reported to the Reports and Program Analysis Branch. This is a decrease of 108 cases from the year 1971. No attempt will be made to interpret the decrease due to the incompleteness of reporting. However, a useful and meaningful comparison of the ratio of delinquency cases to undisciplined behavior cases during the two years can be made. In 1971 the ratio of reported delinquency cases to be reported undisciplined behavior cases was 2.11 to 1.00. During 1972 the ratio increased to 2.49 to 1.00. The increase may be indicative of the rise in juvenile delinquents as "repeaters", the increased use of drugs, and the upsurge of larcenous acts committed in North Carolina by juveniles, whereas the juveniles involved in an act of undisciplined behavior may have used means other than court procedures (such as social agencies and school officials) to dispose of the problems. Almost three-quarters (71.4%) of the total number of referrals (7,122) were

for juvenile delinquency which was an increase of 3.5% over 1971, (67.9%). It was observed that male delinquents outnumbered females 4.5 to 1.00, and whites were shown to have 7.7 more cases in this category than blacks.

Disposition of Delinquency Cases

In almost 87% of the cases the complaints were substantiated. In 13.1% of the delinquent cases were either waived to criminal court or proved not to be involved. (See Table E)

Presented in Table 2 is a percentage distribution of the delinquency cases by type disposition.

<u>Disposition</u>	<u>Total</u>	<u>Males</u>	<u>Females</u>
	100%	100%	100%
Waived to criminal court	.5	.6	.3
Complaint not substantiated	12.5	12.5	12.8
Complaint substantiated	68.9	70.6	60.9
Transfer of legal custody	18.1	16.3	26.0

In over 15% of the cases, the youths were committed to public institutions for delinquents and 41% of the cases a probation officer was designated to supervise.

Undisciplined Behavior Cases

A total of 2,038 cases were reported during 1972 for undisciplined behavior. This is a decrease of 421 cases from the number reported during 1971. Females very nearly equaled the males in frequency of referrals and whites were observed to show 17.2% more cases than blacks.

Truancy accounted for almost 53% of the undisciplined behavior cases and was the most frequent reason for referral for both boys and girls. It was noted that there was a 4% increase in the percentage rate in truancy between 1971 and 1972.

Disposition of Undisciplined Behavior Cases

In 96.5% of the reported cases of undisciplined behavior, the complaint was substantiated with 88.4% of these cases having no transfer of custody. Only 2.7% of the juveniles involved in undisciplined behavior problems were sent to a public institution for delinquents. Juveniles shown in this category were proven to have had a prior court record. Presented in Table 3 is a percentage distribution of the undisciplined behavior cases by type of disposition.

<u>Disposition</u>	<u>Total</u>	<u>Males</u>	<u>Females</u>
	100.0	100.0	100.0
Complaint Not Substantiated	3.4	3.4	3.5
Complaint Substantiated	88.4	90.1	86.7
Transfer of Legal Custody	8.1	6.5	9.8

Selected Characteristics

Most frequent Age: 15

Most frequent Reason for Referral: Truancy

Most frequent Disposition: Probation officer to supervise

NEGLECT AND DEPENDENCY

During the year 1972 County Departments of Social Services and Juvenile Courts reported 1,411 neglect cases and 784 dependency cases.

In comparison to 1971 there was a decrease of 83 neglect referrals and an increase of 299 (61.6%) referrals in dependency cases. Available data as shown on the DSS-R&S-60, Juvenile Court Report suggested that many juveniles were reported to be dependent rather than neglected children. On further examination of these reports through the Protective Services Program Supervisor of the Division of Social Services and county social workers, this office was able to validate the following information. The removal of a child from the home on a dependency petition rather than a neglect petition was judicially less complicated. The separation of child from parent proves to be more socially and psychologically beneficial when removal comes about "without a finding of parental fault" (dependency) as opposed to "with parental fault" (neglect). Therefore, it is possible to assume that the dramatic increase in dependency referrals and decrease in neglect referrals may have been effected by an adjudication made in the child's best interests.

JUVENILE COURT CASES: 1973

Effective September 1, 1973 the General Assembly (House Bill 1358) authorized the Administrative Office of the Courts to be responsible for all probation and after-care services for delinquent and undisciplined behavior cases heard in juvenile courts throughout the State. As a result of this legislature the Report and Program Analysis Branch of the Division of Social Services no longer has responsibility for the Statistical reporting of these cases. Therefore, the following tables reflect only the first eight months of 1973 and no attempt is being made to analyze the data.

In 1973 there were 72 counties reporting all juvenile court cases. One county reported for one month. One county reported for two months, four counties reporting, only cases referred to the County Department of Social Services and five counties reporting neglected and dependent children only.

For the first seven months of 1973 there were 5,449 cases reported to the Report and Program Analysis Branch. This compares with 5,649 reported cases for the first seven months of 1972.

The decline of 200 cases is reflected in the number of counties reporting in 1973 as opposed to 1972. The following table shows the breakdown by type of case and percentages' distribution on juvenile court cases reported to the North Carolina Division of Social Services during the first seven months of 1972 and 1973

<u>Category</u>	<u>1972</u> <u>Cases</u>	<u>1972</u> <u>Percent</u>	<u>1973</u> <u>Cases</u>	<u>1973</u> <u>Percent</u>
Delinquent	3,056	54.1	2,928	53.7
Undisciplined	1,302	23.1	1,294	23.7
Neglected	850	15.0	712	13.1
Dependent	441	7.8	515	9.4

The decrease of 130 (15.3%) neglect cases in comparison to the increase of 101 (22.9%) dependency cases can again be noted for the first seven months of 1972 and 1973. (See Neglect and Dependency Cases 1972).

Prepared by Doris Dworsky

TABLES FOR 1972 DATA

TABLE A - TYPE OF CASE BY RACE OF CHILD, 1972

Race	Total Hearings	Delinquency		Undisciplined Child		Neglect	Dependency
		Boys	Girls	Boys	Girls		
Total	9,317	4,171	913	1,031	1,007	1,411	784
White	5,342	2,317	501	619	642	825	438
Black	3,712	1,756	396	388	346	524	302
Indian	234	90	9	24	13	58	40
Other	4	1	-	-	-	2	1
Not Specified .	25	7	7	-	6	2	3

TABLE A-1 - TYPE OF CASE, BY RACE OF CHILD, 1972

Race	Number of Hearings					Percentage of Hearings				
	Total	Delinquent	Undisciplined	Neglect	Dependency	Total	Delinquent	Undisciplined	Neglect	Dependency
Total	9,317	5,084	2,038	1,411	784	100%	100%	100%	100%	100%
White	5,342	2,818	1,261	825	438	57.3	55.5	61.9	58.5	55.9
Black	3,712	2,152	734	524	302	39.8	42.3	36.1	37.2	38.5
Indian	234	99	37	58	40	2.5	1.9	1.8	1.1	5.1
Other	4	1	0	2	1	.1	.0	.0	.1	.1
Not Specified	25	14	6	2	3	.3	.3	.2	.1	.4

TABLE B - SEX OF CHILD INVOLVED IN DELINQUENCY CASES, BY AGE, 1972

Age in Years	Number of Hearings		Percentage of Hearings	
	Total	Boys	Total	Girls
Total	5,084	4,171	913	913
Under 8	27	20	7	7
8	44	43	1	1
9	101	93	8	8
10	181	164	17	17
11	270	240	30	30
12	408	340	68	68
13	777	617	160	160
14	1,311	1,054	257	257
15	1,843	1,509	334	334
16 & Over	122	91	31	31
Not Specified	-	-	-	-

TABLE B-1 - SEX OF CHILD INVOLVED IN UNDISCIPLINED CASES, BY AGE, 1972

Age in Years	Number of Hearings		Percentage of Hearings	
	Total	Boys	Total	Girls
Total	2,038	1,031	1,007	1,007
Under 8	23	13	10	10
8	20	15	5	5
9	31	21	10	10
10	54	32	22	22
11	89	59	30	30
12	180	88	92	92
13	356	179	174	174
14	566	260	306	306
15	699	353	346	346
16 or Over	20	11	9	9
Not Specified	-	-	-	-

TABLE B-2 CHILDREN INVOLVED IN CASES OF NEGLECT AND DEPENDENCY, BY AGE, 1972

Age in Years	Total Hearings	Neglect	Dependency
Total	2,195	1,411	784
Under 02	329	215	114
02	159	111	48
03	119	79	40
04	148	97	51
05	143	90	53
06	131	87	44
07	140	94	46
08	136	98	38
09	146	93	53
10	146	94	52
11	142	100	42
12	116	70	46
13	118	64	54
14	94	57	37
15	119	59	60
16 & Over	7	3	4
Not Specified	2	-	2

TABLE C - DELINQUENCY CASES: SEX OF CHILD BY REASON OF REFERRAL, 1972

Reason for Referral	Number			Percent		
	Total	Boys	Girls	Total	Boys	Girls
Total	5,084	4,171	913	100%	100%	100%
Murder	2	2	-	.1	.1	-
Robbery	36	32	4	.7	.8	.4
Assault	534	406	128	10.5	9.7	14.0
Burglary	547	530	17	10.8	12.7	1.9
Breaking and entering	311	285	26	6.1	6.8	2.8
Auto Theft	123	114	9	2.4	2.7	1.0
Larceny	515	330	185	10.1	7.9	20.3
Larceny - Shoplifting	698	643	55	13.7	15.4	6.0
Weapons (carrying, possessing etc.)	35	34	1	.7	.8	.1
Sex Offenses (including forcible rape)	43	38	5	.8	.9	.5
Violations of Drug Laws	90	69	21	1.8	1.7	2.3
Disorderly Conduct	69	51	18	1.4	1.2	2.0
Drunkenness (possessing or drinking liquor)	75	63	12	1.5	1.5	1.3
Vandalism	435	407	28	8.6	9.8	3.1
Violation of Probation	785	487	298	15.4	11.7	32.6
Traffic Offenses	510	451	59	10.0	10.8	6.5
Trespassing	99	79	20	1.9	1.9	2.2
Other	177	150	27	3.5	3.6	3.0

TABLE C-1 UNDISCIPLINED CHILD CASES: SEX OF CHILD
BY REASON FOR REFERRAL, 1972

Reason for Referral	Total	No.		Total	%	
		Boys	Girls		Boys	Girls
Total.....	2,038	1,031	1,007	100%	100%	100%
<u>Offenses applicable to juveniles only:</u>						
Running Away	506	147	359	24.8	14.3	35.7
Truancy	1,073	657	416	52.6	63.6	41.3
Ungovernable Behavior ..	440	212	228	21.7	20.6	22.6
Other	19	15	4	.9	1.5	.4

TABLE C-2 - DELINQUENT AND UNDISCIPLINED CASES JUVENILES INVOLVED IN MORE THAN ONE OFFENSE, 1972

Reason for Referral	Number			Percent		
	Total	Boys	Girls	Total	Boys	Girls
Total	1,340	987	353	100%	100%	100%
Total ... Delinquency Only ...	719	659	60	53.7	66.8	17.0
Murder	-	-	-	-	-	-
Robbery	10	10	-	.7	1.0	-
Assault	-	-	-	-	-	-
Burglary	111	108	3	8.3	11.0	.8
Breaking and Entering - Non-burglarious	46	42	4	3.3	4.3	1.2
Auto Theft	24	22	2	1.8	2.2	.6
Larceny.....	37	33	4	2.8	3.3	1.2
Larceny - Shoplifting	128	124	4	9.5	12.6	1.2
Weapons - Carrying or Possession Of	14	12	2	1.1	1.2	.5
Sex Offenses (including forcible rape) ..	5	5	-	.4	.5	-
Violations of Drug Laws	11	9	2	.8	.9	.6
Disorderly Conduct	17	12	5	1.3	1.2	1.4
Drunkenness (possession or Drinking Liquor	17	15	2	1.3	1.5	.6
Vandalism	77	67	10	5.8	6.8	2.8
Violation of Probation	47	37	10	3.5	3.7	2.8
Traffice Offenses	113	111	2	8.4	11.3	.5
Trespassing	25	20	5	1.9	2.0	1.4
Other	37	32	5	2.8	3.3	1.4
Total ... Undisciplined Only .	621	328	293	46.3	33.2	83.0
Running Away	151	68	83	11.3	6.9	23.5
Truancy	254	154	100	19.0	15.6	28.3
Ungovernable Behavior	207	101	106	15.4	10.2	30.1
Other	9	5	4	.6	.5	1.1

TABLE D - DELINQUENCY AND UNDISCIPLINED CASES: JUVENILES IN VIOLATION OF CONDITIONAL RELEASE BY SEX AND RACE, 1972

Race	Total	Male	Female	Total	Male	Female
Total	200	153	47	100%	100%	100%
White	70	53	17	35.0	34.6	36.2
Negro	125	95	30	62.5	62.1	63.8
Indian	5	5	-	2.5	3.3	-

TABLE E - DELINQUENCY CASES: SEX OF CHILD BY DISPOSITION OF CASE, 1972

Disposition	Number			Percent		
	Total	Boys	Girls	Total	Boys	Girls
Total	5,084	4,171	913	100%	100%	100%
Waived criminal court	27	24	3	.5	.6	.3
<u>Complaint not substantiated:</u>						
Dismissed: Not proved or found involved	637	520	117	12.5	12.5	12.8
<u>Complaint substantiated:</u>						
<u>No transfer of legal custody:</u>						
Total	3,502	2,946	556	68.9	70.6	60.9
Dismissed: Warned, adjusted, counselled	893	740	153	17.6	17.7	16.8
Held open without further action ...	302	245	57	5.9	5.9	6.2
Probation officer to supervise	2,080	1,769	311	40.9	42.4	34.1
Referred to another agency or individual for supervision or service	188	155	33	3.7	3.7	3.6
Runaway returned	12	12	-	.2	.3	-
Other	27	25	2	.5	.6	.2
<u>Transfer of legal custody to:</u>						
Total	918	681	237	18.1	16.3	26.0
Public institution for delinquents	763	565	198	15.0	13.5	21.7
Other public institution	12	12	-	.2	.3	-
Public agency or department (including court)	111	79	32	2.2	1.9	3.5
Private agency or Institution	5	5	-	.1	.1	-
Individual	27	20	7	.5	.5	.8
Other	-	-	-	-	-	-

TABLE E-1 UNDISCIPLINED CHILD CASES: SEX OF CHILD BY DISPOSITION OF CASE, 1972

Disposition	Number			Percent		
	Total	Boys	Girls	Total	Boys	Girls
Total	2,038	1,031	1,007	100%	100%	100%
Waived to criminal court	-	-	-	-	-	-
<u>Complaint not substantiated:</u>						
Dismissed: Not proved or found involved	70	35	35	3.4	3.4	3.5
<u>Complaint substantiated:</u>						
<u>No transfer of legal custody:</u>						
Total	1,802	929	873	88.4	90.1	86.7
Dismissed: Warned, adjusted, counselled	230	110	120	11.3	10.7	11.8
Held open without further action ..	126	60	66	6.2	5.8	6.6
Probation officer to supervise ...	1,304	689	615	64.0	66.8	61.1
Referred to another agency or individual for supervision or service	119	63	56	5.8	6.1	5.6
Runaway returned	19	4	15	.9	.4	1.5
Other	4	3	1	.2	.3	.1
<u>Transfer of legal custody to:</u>						
Total	166	67	99	8.1	6.5	9.8
Public institution for delinquents*	55	30	25	2.7	2.9	2.5
Other public institution	2	2	-	.1	.2	-
Public agency or department (including court)	86	29	57	4.2	2.8	5.7
Private agency or institution	2	-	2	.1	-	.2
Individual	21	6	15	1.0	.6	1.5
Other	-	-	-	-	-	-

*Juveniles sent to training schools on an undisciplined referral were involved in either a violation of probation or violation of conditional release.

TABLE F - DELINQUENCY CASES: FAMILY INCOME BY DISPOSITION, 1972

DISPOSITION	RECEIVING PUBLIC ASSISTANCE	UNDER \$3,000	\$3,000-\$4,999	\$5,000-\$9,999	\$10,000 & Over	Unknown
Total 5,084	686	441	956	1,326	363	1,312
Waived to Criminal Court .	4	4	7	3	2	7
Dismissed, Not Proved or Found Involved	45	27	70	130	30	335
Dismissed; Warned, Adjusted, Counseled	58	50	120	227	86	352
Held Open Without Further Action	20	20	39	81	36	106
Probation Officer to Supervise	328	201	453	631	164	303
Referred to Another Agency	17	12	26	49	15	69
Runaway Returned	-	-	1	3	1	7
Other	4	2	4	4	-	13
Public Institution for Delinquents	175	108	202	166	74	88
Other Public Institutions.	2	1	3	3	-	3
Public Agency, Department or Court	25	14	27	18	5	22
Private Agency or Institution	-	2	-	2	-	1
Individual	8	-	4	9	-	6

TABLE F-1 - UNDISCIPLINED CASES: FAMILY INCOME BY DISPOSITION, 1972

DISPOSITION	RECEIVING PUBLIC ASSISTANCE	UNDER \$3,000	\$3,000-\$4,999	\$5,000-\$9,999	\$10,000 & Over	Unknown
Total 2,038	346	248	447	412	83	502
Waived to Criminal Court.....	-	-	-	-	-	1
Dismissed, Not Proved or Found Involved.....	6	10	7	7	2	38
Dismissed; Warned, Adjusted Counseled.....	26	17	35	50	12	89
Held open Without Further Action.....	16	15	31	26	5	33
Probation Officer to Supervise.	217	183	310	269	49	276
Referred to Another Agency.....	28	9	33	20	5	24
Runaway Returned.....	1	-	-	5	1	12
Other.....	-	-	2	1	-	1
Public Institution for Delinquents.....	13	6	19	11	1	5
Other Public Institutions.....	-	-	-	1	-	1
Public Agency, Department or Court.....	29	8	7	16	8	18
Private Agency or Institution..	-	-	1	1	-	-
Individual.....	10	-	2	5	-	4

TABLE G - TYPE OF CASE BY MARITAL STATUS OF NATURAL PARENTS OF CHILDREN, 1972

MARITAL STATUS	Total Cases	Delinquency		Undisciplined Child		Neglect	Dependency
		Boys	Girls	Boys	Girls		
Total	9,317	4,171	913	1,031	1,007	1,411	784
Parents Living Together ...	3,547	1,913	355	408	365	412	94
Parents Divorced	1,789	747	210	219	259	194	160
Parents Separated	671	199	48	72	59	193	100
Parents Deserted	555	171	39	62	32	153	98
Parents Not Married to Each Other	1,050	316	90	84	107	290	163
Both Parents Dead	110	40	9	10	11	4	36
Father Dead	781	337	90	111	108	98	37
Mother Dead	325	106	36	34	39	38	72
Other Status	80	20	5	9	9	17	20
Not Reported	409	322	31	22	18	12	4

TABLE H - LIVING ARRANGEMENT OF CHILD AT TIME OF REFERRAL, 1972

Living Arrangement	Total	Delinquency		Undisciplined Child		Neglect	Dependency
		Boys	Girls	Boys	Girls		
	9,317	4,171	913	1,031	1,007	1,411	784
With Both Parents	3,390	1,866	338	403	337	383	63
With Mother and Stepfather	681	310	76	85	112	73	25
With Father and Stepmother	136	53	17	24	20	16	6
With Mother Only	2,764	1,089	302	342	336	523	172
With Father Only	361	122	29	37	28	105	40
In Home of Relatives	1,128	332	83	79	101	196	337
In Foster Family Home	326	45	30	27	38	83	103
In Institution	86	37	5	8	12	8	16
In Independent Living Arrangements	56	16	7	5	6	8	14
In Other Place	33	10	2	2	4	8	7
Not Specified	356	291	24	19	13	8	1

TABLE J - JUVENILE CASES REPORTED TO NORTH CAROLINA DIVISION OF SOCIAL SERVICES: BY COUNTY AND TYPE OF CASE - 1972

TABLE I - DELINQUENCY AND UNDISCIPLINED CASES: RACE OF CHILD BY DISPOSITION OF CASE, 1972

Disposition	White	Black	Indian	Other	Unknown
Total 7,122	4,079	2,886	136	1	20
Waived to criminal court	15	13	-	-	-
<u>Complaint not substantiated:</u>					
Dismissed: Not proved or found involved	384	317	3	-	3
<u>Complaint substantiated:</u>					
<u>No transfer of legal custody:</u>					
Total	3,151	2,044	92	1	15
Dismissed: Warned, Adjusted, counselled	675	439	6	-	2
Held open without further action	325	94	8	-	1
Probation officer to supervise	1,910	1,385	78	1	10
Referred to another agency or individual for supervision or service	196	109	-	-	2
Runaway returned.....	24	7	-	-	-
Other.....	21	10	-	-	-
<u>Transfer of legal custody to:</u>					
Total	529	512	41	-	2
Public institution for delinquents *.....	361	415	40	-	2
Other public institution	11	3	-	-	-
Public agency or department (including court)	126	70	1	-	-
Private agency or institution ..	3	4	-	-	-
Individual	28	20	-	-	-
Other.....	-	-	-	-	-

County	Total Cases	Delinquency		Undisciplined Child		Neglect	Dependency
		Boys	Girls	Boys	Girls		
State Total	9,317	4,171	913	1,031	1,007	1,411	784
Alamance *	128	39	6	8	16	53	6
Alexander	2	-	-	-	1	1	-
Alleghany	12	6	4	1	-	-	1
Anson	47	19	6	13	8	1	-
Ashe	41	20	3	4	-	13	1
Avery	48	20	4	5	5	13	1
Beaufort	111	55	9	12	13	22	-
Bertie	42	27	3	10	2	-	-
Bladen	34	18	6	5	5	-	-
Brunswick **	-	-	-	-	-	-	-
Camden **	-	-	-	-	-	-	-
Curry	73	18	3	14	12	25	1
Dare ***	29	-	-	-	1	15	13
Dawson	174	64	13	51	27	12	7
DeWitt **	-	-	-	-	-	-	-
Dobson **	28	11	1	11	4	-	1
Durham	46	7	1	6	6	23	3
Edgecombe	264	125	31	22	39	38	9
Forsyth	53	27	9	8	6	1	2
Franklin	24	13	1	-	1	9	-
Gaston	20	14	3	-	-	2	1
Wayne	6	6	-	-	-	-	-
Guilford	145	66	19	12	29	14	5
Hertford	79	18	1	21	13	22	4
Johnston	180	113	13	16	21	16	1
Lee ***	375	2	3	14	13	172	171
Lenoir	22	9	-	4	2	-	7
Liberty	11	7	1	-	-	-	3
Martin ***	10	1	-	3	4	1	1
McCracken ****	5	4	1	-	-	-	-
Mecklenburg	90	34	8	12	15	12	9
Mooresville **	-	-	-	-	-	-	-
Northampton	101	61	6	11	6	15	2
Onslow	657	288	81	58	99	69	62
Orange	58	26	2	1	2	27	-
Randolph	464	193	54	45	59	57	56
Richmond	14	5	2	-	-	6	1
Rockingham ****	13	11	-	-	2	-	-
Rowan	85	42	11	7	10	13	2
Salem	5	1	-	1	-	3	-
Stokes **	-	-	-	-	-	-	-
Tarboro	179	97	14	19	15	28	6
Taylorsville	57	18	7	14	13	4	1
Tobacco	54	36	8	5	5	-	-
Union	179	54	31	33	44	12	5
Wake	18	13	2	2	1	-	-
Watauga ***	12	-	-	-	-	1	11
Wayne	10	5	2	2	-	-	1
Yadkin ***	36	-	-	-	-	31	5

*Juvenciles sent to training schools on an undisciplined referral were involved in either a violation of probation or violation of conditional release

County	Total Cases	Delinquency		Undisciplined Child		Neglect	Dependency
		Boys	Girls	Boys	Girls		
Jackson	44	16	2	2	-	19	5
Johnston ****	37	23	2	9	3	-	-
Jones **	-	-	-	-	-	-	-
Lee	144	54	19	43	22	6	-
Lenoir ***	17	-	-	1	-	15	1
Lincoln	92	36	8	13	12	22	1
Macon ****	16	13	-	1	2	-	-
Madison	17	4	-	2	3	2	6
Martin	104	31	7	28	11	22	5
McDowell	75	29	7	8	11	16	4
Mecklenburg	1,350	788	158	105	127	18	154
Mitchell	12	3	-	2	3	4	-
Montgomery **	-	-	-	-	-	-	-
Moore	99	50	4	22	15	8	-
Nash	147	66	29	20	15	6	11
New Hanover	514	277	75	40	53	51	18
Northampton	57	33	5	11	2	6	-
Onslow	44	14	1	5	5	19	-
Orange **	-	-	-	-	-	-	-
Pamlico	25	21	2	2	-	-	-
Pasquotank	82	56	12	4	8	1	1
Pender	29	12	2	-	1	12	2
Perquimans	4	-	-	-	-	4	-
Person	45	26	2	7	2	4	4
Pitt	284	146	28	47	31	23	9
Polk	27	10	-	3	-	11	3
Randolph **	-	-	-	-	-	-	-
Richmond	67	16	4	11	21	14	1
Robeson	408	143	27	48	30	110	50
Rockingham	248	92	18	22	20	59	37
Rowan	111	2	-	2	10	66	31
Rutherford	110	61	8	10	10	19	2
Sampson	87	56	10	13	7	1	-
Scotland ****	111	79	13	10	9	-	-
Stanly	78	39	10	13	9	7	-
Stokes	6	2	2	-	1	1	-
Surry	84	54	5	11	6	8	-
Swain	6	3	1	-	2	-	-
Transylvania	26	6	1	11	3	4	1
Tyrrell	9	1	2	1	4	1	-
Union	120	66	17	11	5	15	6
Vance	86	39	13	10	5	14	5
Wake **	-	-	-	-	-	-	-
Warren ***	8	-	-	-	-	8	-
Washington	39	20	4	3	-	11	1
Watauga	45	22	4	5	6	3	5
Wayne ***	46	4	-	1	4	30	7
Wilkes	116	38	13	18	16	23	8
Wilson	129	83	24	5	9	5	3
Yadkin	41	34	3	-	4	-	-
Yancey	30	10	2	1	1	12	4

TABLES FOR 1973 DATA

* County reporting 2 months
 ** County not reporting
 *** County reporting cases only referred to Department of Social Services
 **** County reporting delinquent and undisciplined cases only

TABLE A - TYPE OF CASE BY RACE OF CHILD, 1973

Race	Total Hearings	Delinquency		Undisciplined Child		Neglect	Dependency
		Boys	Girls	Boys	Girls		
Total	6,049	2,619	669	654	721	826	560
White	3,598	1,526	391	423	488	486	284
Black	2,277	1,060	271	222	226	277	221
Indian	130	13	2	9	7	58	41
Other	10	2	-	-	-	4	4
Not Specified .	34	18	5	-	-	1	10

TABLE A-1 - TYPE OF CASE, BY RACE OF CHILD, 1973

Race	Number of Hearings					Percentage of Hearings				
	Total	Delinquent	Undisciplined	Neglect	Dependency	Total	Delinquent	Undisciplined	Neglect	Dependency
Total	6049	3,288	1,375	826	560	100%	100%	100%	100%	100%
White	3,598	1,917	911	486	284	59.5	58.3	66.3	58.9	50.7
Black	2,277	1,331	448	277	221	37.6	40.5	32.6	33.5	39.5
Indian	130	15	16	58	41	2.1	.5	1.1	7.0	7.3
Other	10	2	-	4	4	.2	.1	-	.5	.7
Not Specified	34	23	-	1	10	.6	.7	-	.1	1.8

TABLE B - SEX OF CHILD INVOLVED IN DELINQUENCY CASES, BY AGE, 1973

Age in Years	Number of Hearings			Percentage of Hearings		
	Total	Boys	Girls	Total	Boys	Girls
Total	3,288	2,619	669	100%	100%	100%
Under 8	10	9	1	.3	.3	.1
8	26	26	-	.8	1.0	-
9	58	53	5	1.8	2.0	.8
10	97	82	15	3.0	3.1	2.3
11	151	130	21	4.6	5.0	3.2
12	283	227	56	8.6	8.7	8.4
13	508	398	110	15.5	15.2	16.4
14	843	650	193	25.6	24.8	28.8
15	1,229	984	245	37.4	37.6	36.6
16 & Over ...	83	60	23	2.5	2.3	3.4
Not Specified	-	-	-	-	-	-

TABLE B-1 - SEX OF CHILD INVOLVED IN UNDISCIPLINED CASES, BY AGE, 1973

Age in Years	Number of Hearings			Percentage of Hearings		
	Total	Boys	Girls	Total	Boys	Girls
Total	1,375	654	721	100%	100%	100%
Under 8	5	4	1	.4	.6	.1
8	8	5	3	.6	.8	.4
9	12	9	3	.9	1.4	.4
10	28	20	8	2.0	3.1	1.1
11	54	31	23	3.9	4.7	3.2
12	115	62	53	8.4	9.5	7.4
13	225	103	122	16.4	15.7	16.9
14	419	193	226	30.5	29.5	31.3
15	472	218	254	34.3	33.3	35.2
16 or Over ..	37	9	28	2.7	1.4	3.9
Not Specified	-	-	-	-	-	-

TABLE B-2 - CHILDREN INVOLVED IN CASES OF NEGLIGENCE AND DEPENDENCY, BY AGE, 1973

Age in Years	Total Hearings	Neglect	Dependency
Total.....	1,386	826	560
Under 02.....	205	133	72
02.....	114	71	43
03.....	82	48	34
04.....	76	51	25
05.....	85	49	36
06.....	79	51	28
07.....	95	60	35
08.....	88	51	37
09.....	79	51	28
10.....	88	54	34
11.....	82	47	35
12.....	85	48	37
13.....	73	45	28
14.....	70	33	37
15.....	76	32	44
16 & Over.....	9	2	7
Not Specified.....	-	-	-

TABLE C - DELINQUENCY CASES: SEX OF CHILD BY REASON OF REFERRAL, 1973

Reason for Referral	Total	Number		Total	Percent	
		Boys	Girls		Boys	Girls
Total.....	3,288	2,619	669	100%	100%	100%
Murder.....	4	2	2	.1	.1	.3
Robbery.....	17	16	1	.5	.6	.1
Assault.....	270	208	62	8.2	7.9	9.3
Burglary.....	361	337	24	11.0	12.9	3.6
Breaking and Entering.....	182	165	17	5.5	6.3	2.6
Auto Theft.....	87	84	3	2.6	3.2	.4
Larceny.....	356	198	158	10.8	7.6	23.6
Larceny - Shoplifting.....	377	353	24	11.5	13.5	3.6
Weapons, Carrying, Possessing, etc.....	16	16	-	.5	.6	-
Sex Offenses (including forcible rape).....	30	27	3	.9	1.0	.4
Violations of Drug Laws.....	118	91	27	3.6	3.5	4.1
Disorderly Conduct.....	53	44	9	1.6	1.7	1.4
Drunkenness (possessing or drinking liquor)...	51	43	8	1.6	1.6	1.2
Vandalism.....	229	206	23	7.0	7.9	3.4
Violation of Probation.....	615	385	230	18.7	14.7	34.4
Traffic Offenses.....	313	278	35	9.5	10.6	5.2
Trespassing.....	64	51	13	1.9	1.9	1.9
Other.....	145	115	30	4.4	4.4	4.5

TABLE C-1 - UNDISCIPLINED CHILD CASES: SEX OF CHILD BY REASON FOR REFERRAL, 1973

Reason for Referral	Total	Number		Total	Percent	
		Boys	Girls		Boys	Girls
Total.....	1,375	654	721	100%	100%	100%
<u>Offenses applicable to juveniles only:</u>						
Running Away.....	442	132	310	32.1	20.2	43.0
Truancy.....	629	370	259	45.7	56.6	35.9
Ungovernable Behavior.....	300	148	152	21.8	22.6	21.1
Other.....	4	4	-	.3	.6	-

TABLE D - DELINQUENCY CASES: SEX OF CHILD BY DISPOSITION OF CASE, 1973

Disposition	Total	Number		Total	Percent	
		Boys	Girls		Boys	Girls
Total.....	3,288	2,619	669	100%	100%	100%
Waived criminal court.....	18	15	3	.5	.6	.4
<u>Complaint not substantiated:</u> Dismissed: Not proved or found involved.....	395	328	67	12.0	12.5	10.0
<u>Complaint substantiated:</u> <u>No transfer of legal custody: Total.....</u>	2,325	1,875	450	70.8	71.6	67.3
Dismissed: Warned, adjusted, counselled.....	539	427	112	16.4	16.3	16.7
Held open without further action--- Probation officer to supervise----	216	173	43	6.6	6.6	6.4
Referred to another agency or individual for supervision or service.....	1,442	1,177	265	43.9	44.9	39.6
Runaway returned.....	111	86	25	3.4	3.3	3.8
Other.....	7	5	2	.2	.2	.3
<u>Transfer of legal custody to:</u> <u>Total.....</u>	10	7	3	.3	.3	.4
Public institution for delinquents--	580	401	149	16.7	15.3	22.3
Other public institution.....	451	330	121	13.7	12.6	18.1
Public agency or department (including court).....	12	9	3	.4	.3	.4
Private agency or Institution	68	49	19	2.1	1.9	2.9
Individual.....	8	5	3	.2	.2	.4
Other.....	8	6	2	.2	.2	.3
	3	2	1	.1	.1	.1

TABLE D-1-UNDISCIPLINED CHILD CASES: SEX OF CHILD BY DISPOSITION OF CASE, 1973

Disposition	Number			Percent		
	Total	Boys	Girls	Total	Boys	Girls
Total	1,375	654	721	100%	100%	100%
Waived to ciminal court	-	-	-	-	-	-
Complaint not substantiated:	62	29	33	4.5	4.4	4.6
Dismissed: Not proved or found involved						
Complaint substantiated:						
<u>No transfer of legal custody:</u> Total	1,188	561	627	86.4	85.7	86.9
Dismissed: Warned, adjusted, counselled	138	53	85	10.1	8.1	11.8
Held open without further action .	94	50	44	6.8	7.6	6.1
Probation officer to supervise ...	858	410	448	62.4	62.7	62.1
Referred to another agency or individual for supervision or service	72	33	39	5.2	5.0	5.4
Runaway returned	21	13	8	1.5	2.0	1.1
Other	5	2	3	.4	.3	.4
<u>Transfer of legal custody to:</u> Total	125	64	61	9.1	9.8	8.5
Public institution for delinquents *.....	43	26	17	3.1	4.0	2.4
Other public institution	4	2	2	.3	.3	.3
Public agency or department (including court).....	63	27	36	4.6	4.1	5.0
Private agency or institution	3	3	-	.2	.5	-
Individual	10	4	6	.8	.6	.8
Other	2	2	-	.1	.3	-

*Juveniles sent to training schools on an undisciplined referral were involved in either a violation of probation or a violation of conditional release.

END

7 10/10/73