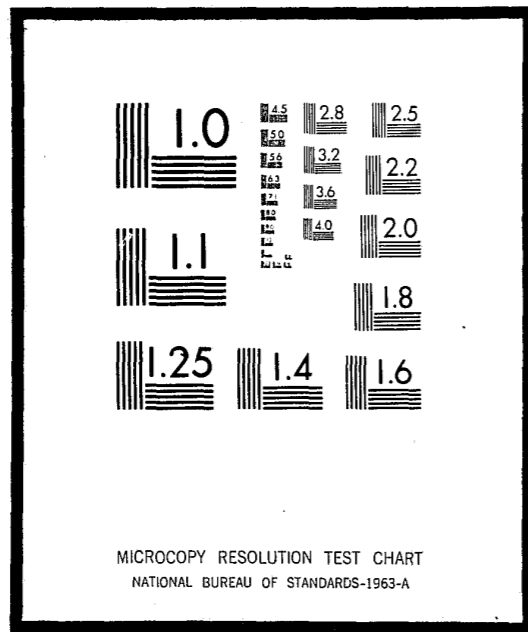


# NCJRS

This microfiche was produced from documents received for inclusion in the NCJRS data base. Since NCJRS cannot exercise control over the physical condition of the documents submitted, the individual frame quality will vary. The resolution chart on this frame may be used to evaluate the document quality.



Microfilming procedures used to create this fiche comply with the standards set forth in 41CFR 101-11.504

Points of view or opinions stated in this document are those of the author(s) and do not represent the official position or policies of the U.S. Department of Justice.

**U.S. DEPARTMENT OF JUSTICE  
LAW ENFORCEMENT ASSISTANCE ADMINISTRATION  
NATIONAL CRIMINAL JUSTICE REFERENCE SERVICE  
WASHINGTON, D.C. 20531**

Date filmed

7/9/76

*with letter request*

STATISTICAL TABLES DESCRIBING THE CHARACTERISTICS AND RECIDIVISM RATES OF MEN  
RELEASED DURING 1966 FROM M.C.I. NORFOLK, M.C.I. WALPOLE, M.C.I. CONCORD

AND THE  
MASSACHUSETTS FORESTRY CAMPS

Massachusetts Department of Correction

John J. Fitzpatrick  
Commissioner

January, 1971

Compiled by:

Edward F. Callahan

First Printing: January, 1971  
Second Printing: October, 1971

Carroll T. Miller, Acting Social Science Research Specialist

Publication of the Document approved by Alfred C. Holland, State Purchasing Agent

No. 5460

NCJ-003019

## INTRODUCTION \*

Correctional personnel are frequently faced with factual questions about the characteristics of inmates and about recidivism rates. The following statistical tables are designed to answer many of these questions arising in one's work, in planning, or in contacts with the public. They contain more descriptive information than previously available.

The statistical tables contain two types of information. First, they describe the characteristics of men released during 1966 from these Massachusetts Correctional Institutions: Norfolk, Walpole, Concord, and the Forestry Camps. Second, they describe the recidivism rates of 1966 releasees, for different types of men and for different institutions.

As with all such studies, the definition of the term, recidivism, is crucial since recidivism rates can vary tremendously depending upon how a recidivist is defined and upon the length of the follow-up period. In these studies a man was defined as a recidivist if within two years after release he was reincarcerated for 30 days or more in a House of Correction or in a state or federal prison. This definition includes parole violators as well as those who received new sentences from the court. (In regard to the follow-up period, a rule of thumb is that approximately three-quarters of the eventual recidivism has occurred after two years.)

---

\* The data on which these tables are based were collected by Alvin Youman, Michael Kelly, John Gardner and Marian Hyler, supervised by Francis J. Carney.

Variable	Norfolk Releasees			Walpole Releasees			Concord Releasees			Forestry Releasees			Total Releasees		
	N	(%)	Recid. R.	N	(%)	Recid. R.	N	(%)	Recid. R.	N	(%)	Recid. R.	N	(%)	Recid. R.
TOTAL	298	(100.0)	41.3%	194	(100.0)	45.4%	306	(100.0)	44.8%	120	(100.0)	34.2%	918	(100.0)	42.4%

A. Background Factors

1. Birthplace

Boston	69	( 23.2)	46.4%	62	( 32.0)	50.0%	79	( 25.8)	46.8%	31	( 25.8)	32.2%	241	( 26.3)	45.6%
Springfield	4	( 1.3)	50.0%	6	( 3.1)	50.0%	10	( 3.3)	30.0%	8	( 6.7)	50.0%	28	( 3.1)	42.9%
New Bedford-Fall River	15	( 5.0)	33.3%	16	( 8.2)	31.3%	9	( 2.9)	55.6%	2	( 1.6)	50.0%	42	( 4.6)	38.1%
Worcester	8	( 2.7)	0.0%	7	( 3.6)	57.1%	14	( 4.6)	14.3%	11	( 9.1)	27.3%	40	( 4.4)	22.5%
75,000-99,999 (pop.-Mass.)	39	( 13.1)	48.7%	16	( 8.2)	25.5%	39	( 12.7)	51.3%	9	( 7.5)	55.5%	103	( 11.2)	46.7%
50,000-74,999	18	( 6.0)	16.7%	15	( 7.7)	46.7%	26	( 8.5)	44.4%	7	( 5.8)	37.5%	66	( 7.2)	36.6%
25,000-49,999	15	( 5.0)	60.0%	13	( 6.7)	46.2%	31	( 10.1)	54.8%	12	( 10.0)	8.3%	71	( 7.7)	46.5%
Under 25,000	30	( 10.1)	43.3%	13	( 6.7)	46.2%	32	( 10.5)	46.9%	17	( 14.1)	41.1%	92	( 10.0)	44.6%
Southern States	37	( 12.4)	37.8%	22	( 11.3)	50.0%	22	( 7.2)	45.5%	6	( 5.0)	16.7%	87	( 9.5)	41.4%
Other than Mass. or South	63	( 21.1)	41.2%	24	( 12.4)	45.8%	44	( 14.4)	45.5%	17	( 14.1)	35.2%	148	( 16.1)	42.5%

2. Age at Incarceration

	Average Age = 30			Average Age = 31.8			Average Age = 23.1			Average Age = 28.5			Average Age = 27.9		
19 or younger	22	( 7.4)	59.1%	9	( 4.6)	33.3%	77	( 25.2)	57.1%	14	( 11.7)	57.1%	122	( 13.3)	55.7%
20-29	154	( 51.7)	39.0%	84	( 43.3)	50.0%	199	( 65.0)	40.7%	61	( 50.8)	41.0%	498	( 54.2)	41.8%
30-39	71	( 23.8)	45.1%	64	( 33.3)	45.3%	26	( 8.5)	42.3%	32	( 26.7)	25.0%	193	( 21.0)	41.5%
40 or older	51	( 17.1)	35.3%	37	( 19.1)	37.8%	4	( 1.3)	25.0%	13	( 10.8)	0.0%	105	( 11.4)	31.4%

3. Race

White	220	( 73.8)	39.5%	143	( 73.7)	44.1%	248	( 81.0)	44.0%	100	( 83.4)	33.0%	711	( 77.5)	41.1%
Black	77	( 25.8)	46.8%	50	( 25.8)	48.0%	55	( 18.0)	49.1%	19	( 15.8)	40.0%	201	( 21.9)	47.1%
Other	1	( 0.3)	0.0%	1	( 0.5)	100.0%	3	( 1.0)	33.3%	1	( .8)	0.0%	6	( 0.6)	33.3%

4. Marital Status

Single	114	( 38.2)	42.1%	96	( 49.5)	41.7%	209	( 68.3)	47.4%	48	( 40.0)	50.0%	467	( 50.9)	45.2%
Married	114	( 38.2)	40.4%	48	( 24.7)	50.0%	56	( 18.3)	39.3%	48	( 40.0)	20.8%	266	( 29.0)	38.4%
Div., Wid., Sep.	70	( 23.5)	41.4%	50	( 25.8)	48.0%	41	( 13.4)	39.0%	24	( 20.0)	29.2%	185	( 20.1)	41.1%

5. Religion

Catholic	182	( 61.1)	42.8%	133	( 68.5)	47.4%	203	( 66.3)	46.3%	85	( 70.9)	36.8%	603	( 65.7)	44.1%
Protestant	111	( 37.2)	37.8%	61	( 31.4)	41.0%	99	( 32.4)	42.4%	30	( 25.0)	33.3%	301	( 32.8)	39.5%
Jewish	2	( 0.6)	0.0%	-	-	-	3	( 1.0)	33.3%	3	( 2.5)	0.0%	8	( 0.9)	12.5%
Greek Orthodox	2	( 0.6)	100.0%	-	-	-	1	( .3)	0.0%	1	( .8)	0.0%	4	( 0.4)	50.0%
None	1	( 0.3)	100.0%	-	-	-	-	-	-	1	( .8)	0.0%	2	( 0.2)	50.0%

Variable	Norfolk Releasees			Walpole Releasees			Concord Releasees			Forestry Releasees			Total Releasees		
	N	(%)	Recid. R.	N	(%)	Recid. R.	N	(%)	Recid. R.	N	(%)	Recid. R.	N	(%)	Recid. R.
TOTAL	298	(100.0)	41.3%	194	(100.0)	45.4%	306	(100.0)	44.8%	120	(100.0)	34.2%	918	(100.0)	42.4%

6. Military Service Date

never Served	152	( 52.0)	40.0%	105	( 54.1)	58.1%	221	( 72.2)	46.2%	62	( 51.7)	40.3%	543	( 59.2)	46.2%
Honorable Discharge	83	( 27.8)	45.8%	44	( 22.7)	31.8%	38	( 12.4)	36.8%	34	( 28.3)	17.6%	199	( 21.7)	36.2%
Dishonorable Discharge	6	( 2.0)	66.7%	10	( 5.2)	30.0%	4	( 1.3)	25.0%	1	( .8)	0.0%	21	( 2.3)	38.1%
Bad Condition or other than Honorable	21	( 7.0)	42.9%	15	( 7.7)	40.0%	24	( 7.8)	50.0%	8	( 6.8)	25.0%	68	( 7.4)	42.7%
Gen., Undes., Med., etc.,	21	( 7.0)	19.0%	10	( 5.2)	20.0%	17	( 5.6)	47.1%	12	( 10.0)	50.0%	60	( 6.5)	33.3%
Hon. then Dishon. (2 Dischs.)	6	( 2.0)	0.0%	1	( 0.5)	0.0%	2	( .7)	0.0%	0	-	-	9	( 1.0)	0.0%
Hon., then B.C.U. or O.I.H. (2 Dischs.)	4	( 1.3)	75.0%	2	( 1.0)	0.0%	-	-	-	1	( .8)	100.0%	7	( 0.8)	57.1%
Hon. then Gen., etc. (2 Dischs.)	1	( 0.3)	100.0%	2	( 1.0)	50.0%	-	-	-	0	-	-	3	( 0.3)	66.7%
Gen., then other than Hon. (2 Dischs.)	1	( 0.3)	100.0%	1	( 0.5)	0.0%	-	-	-	0	-	-	2	( 0.2)	50.0%
Dis., B.C.D., O.I.H. then any other Disch. other than Hon. (2 Dischs.)	0	-	-	2	( 1.0)	0.0%	-	-	-	2	( 1.6)	50.0%	4	( 0.4)	25.0%
Unknown	0	-	-	2	( 1.0)	50.0%	-	-	-	0	-	-	2	( 0.2)	50.0%

7. Last Civilian Address

Boston	109	( 36.6)	40.4%	84	( 43.3)	50.0%	100	( 32.7)	54.0%	39	( 32.6)	30.8%	332	( 36.2)	47.3%
Springfield	15	( 5.0)	53.3%	11	( 5.7)	36.4%	12	( 3.9)	25.0%	7	( 5.8)	57.1%	45	( 4.9)	42.2%
New Bedford-Fall River	10	( 3.4)	30.0%	14	( 7.2)	28.6%	14	( 4.6)	71.4%	1	( .8)	0.0%	39	( 4.2)	43.6%
Worcester	10	( 3.4)	20.0%	10	( 5.2)	50.0%	19	( 6.2)	36.8%	8	( 6.7)	25.0%	47	( 5.1)	34.0%
75,000-99,999 (pop.-Mass.)	45	( 15.1)	48.9%	20	( 10.4)	30.0%	39	( 12.7)	53.8%	20	( 16.7)	40.0%	124	( 13.5)	46.0%
50,000-74,999	30	( 10.1)	26.7%	19	( 9.8)	57.9%	23	( 7.5)	26.1%	7	( 5.8)	42.8%	79	( 8.6)	35.5%
25,000-49,999	18	( 6.0)	50.0%	11	( 5.7)	36.4%	39	( 12.7)	41.0%	13	( 10.8)	23.1%	81	( 8.8)	39.5%
Under 25,000	44	( 14.8)	45.5%	15	( 7.7)	40.0%	40	( 15.7)	35.4%	10	( 13.3)	37.5%	123	( 13.4)	39.8%
Southern States	2	( 0.7)	0.0%	2	( 1.0)	0.0%	0	-	-	0	-	-	4	( 0.4)	0.0%
Other than Mass. or South	15	( 5.0)	40.7%	7	( 3.6)	14.3%	12	( 3.9)	25.0%	9	( 7.5)	33.3%	43	( 4.7)	32.6%
Unknown	0	-	-	1	( 0.5)	0.0%	0	-	-	0	-	-	1	( 0.1)	0.0%

8. Relation of Emergency Addressee

Father	29	( 9.7)	46.3%	20	( 10.4)	35.0%	77	( 25.2)	40.3%	11	( 9.2)	18.2%	137	( 14.9)	39.4%
Mother	96	( 32.2)	43.7%	65	( 43.8)	49.4%	150	( 49.0)	46.7%	45	( 37.5)	51.1%	376	( 41.0)	47.1%
Wife	86	( 29.5)	30.0%	38	( 19.6)	55.3%	45	( 14.7)	40.0%	40	( 33.4)	25.0%	211	( 23.0)	39.3%
Other relative	62	( 20.8)	37.1%	26	( 14.4)	25.0%	29	( 9.5)	51.7%	16	( 13.3)	18.8%	135	( 14.7)	35.6%
Non-relative	13	( 4.4)	53.0%	14	( 7.2)	50.0%	1	( .3)	100.0%	8	( 6.6)	37.5%	36	( 3.9)	50.0%
None	6	( 2.0)	33.3%	4	( 2.1)	50.0%	1	( .3)	0.0%	0	-	-	11	( 1.2)	36.3%
Not Available	4	( 1.3)	25.0%	5	( 2.6)	40.0%	3	( 1.0)	66.7%	0	-	-	12	( 1.3)	41.7%

Variable	Norfolk releasees			Walpole releasees			Concord releasees			Forestry Releasees			Total Releasees		
	N	(%)	Recid. R	N	(%)	Recid. R	N	(%)	Recid. R	N	(%)	Recid. R	N	(%)	Recid. R
TOTAL	298	(100.0)	41.3%	194	(100.0)	45.4%	306	(100.0)	44.8%	120	(100.0)	34.2%	918	(100.0)	42.4%
<b>9. Education (last grade completed)</b>															
H.S. Grad or better	22	( 7.4)	31.8%	13	( 6.7)	38.5%	23	( 7.5)	47.8%	21	( 17.5)	28.6%	79	( 8.6)	36.7%
9-11 grades	73	( 24.5)	28.8%	48	( 24.7)	31.3%	119	( 38.9)	42.9%	47	( 39.2)	36.2%	287	( 31.3)	36.3%
6-7 grades	119	( 39.9)	47.4%	79	( 40.7)	49.4%	103	( 33.7)	44.7%	38	( 31.7)	36.8%	339	( 36.9)	46.0%
5 or less (incl. Sp. Cl)	83	( 27.9)	44.6%	51	( 26.3)	50.7%	61	( 19.9)	47.5%	14	( 11.6)	28.6%	209	( 22.8)	47.3%
Unknown	1	( 0.3)	100.0%	3	( 1.5)	0.0%	-	-	-	-	-	-	4	( 0.4)	25.0%
<b>10. Occupational Status</b>															
Unskilled (incl. General Serv.)	207	( 69.5)	45.4%	147	( 75.8)	47.6%	272	( 88.9)	46.0%	88	( 73.3)	39.8%	714	( 77.8)	45.4%
Semi-skilled	42	( 14.1)	26.2%	28	( 14.4)	42.9%	19	( 6.2)	15.8%	20	( 16.7)	20.0%	109	( 11.9)	27.5%
Skilled	6	( 2.0)	16.7%	3	( 1.5)	33.3%	1	( 0.3)	0.0%	4	( 3.3)	0.0%	14	( 1.5)	14.3%
Prof. or Managerial	15	( 5.0)	33.3%	2	( 1.0)	0.0%	2	( 0.7)	50.0%	4	( 3.3)	0.0%	23	( 2.5)	26.1%
Farming or Fishing	6	( 2.0)	16.7%	2	( 1.0)	0.0%	0	-	-	1	( 0.8)	0.0%	9	( 1.0)	11.1%
Student	2	( 0.6)	50.0%	3	( 1.5)	100.0%	1	( 0.3)	100.0%	2	( 1.7)	50.0%	8	( .9)	75.0%
Unknown	17	( 5.7)	52.9%	2	( 1.0)	50.0%	10	( 3.3)	80.0%	1	( .8)	100.0%	30	( 3.3)	63.3%
In Armed Forces	3	( 1.0)	33.3%	7	( 3.6)	14.3%	0	-	-	-	-	-	10	( 1.1)	20.0%
<b>11. Job Stability*</b>															
Regular, Irregular, in Armed Forces	104	( 34.9)	27.9%	75	( 38.7)	34.7%	69	( 22.5)	30.4%	68	( 56.7)	22.0%	316	( 34.4)	28.8%
Casual, Student															
Never Worked	185	( 62.1)	47.6%	106	( 55.7)	53.7%	236	( 77.1)	49.2%	50	( 41.7)	52.0%	579	( 63.0)	49.8%
Unknown	9	( 3.0)	66.7%	11	( 5.7)	36.4%	1	( 0.3)	0.0%	2	( 1.6)	0.0%	23	( 2.5)	43.5%
<b>12. Longest Period on One Job</b>															
Less than 6 mos.	121	( 40.6)	47.9%	56	( 28.9)	57.1%	139	( 45.4)	47.5%	34	( 28.3)	50.0%	350	( 38.1)	49.4%
6 mos. up to 1 yr.	52	( 17.4)	34.6%	37	( 19.1)	40.5%	86	( 28.1)	44.2%	19	( 15.9)	63.2%	194	( 21.1)	42.8%
1 yr. or more	75	( 25.2)	26.7%	74	( 38.1)	39.2%	64	( 20.9)	29.7%	54	( 45.0)	14.8%	267	( 29.1)	28.5%
Unknown	50	( 16.8)	54.0%	27	( 13.9)	44.4%	17	( 5.6)	70.6%	13	( 10.8)	30.8%	107	( 11.7)	51.4%

\* Several of the types of job stability need to be defined more specifically. Regular: A person who has worked steadily all of his working life at one or only a few jobs. Irregular: A man who does not hold a job for any length of time, but shows fairly continuous employment. He must have held a job for one year or more in a working life of five years or more, or for six months or more in a working life of less than five years. Casual: A man who cannot hold a job more than a few months at a time, and who is generally discharged or quits because of his indifferent attitude toward work in general.

Variable	Norfolk releasees			Walpole Releasees			Concord Releasees			Forestry Releasees			Total Releasees		
	N	(%)	Recid.R	N	(%)	Recid.R	N	(%)	Recid.R	N	(%)	Recid.R	N	(%)	Recid.R
TOTAL	298	(100.0)	41.3%	194	(100.0)	45.4%	306	(100.0)	44.8%	120	(100.0)	34.2%	918	(100.0)	42.4%

## B. Criminal History

### 1. Age at First Arrest

14 or younger	104	( 34.9)	52.9%	84	( 43.3)	51.2%	120	( 39.2)	45.8%	29	( 24.1)	51.7%	337	( 36.7)	49.8%
15-19	114	( 38.2)	36.0%	56	( 29.9)	46.6%	154	( 50.3)	47.4%	60	( 50.0)	33.3%	386	( 42.0)	41.7%
20-24	48	( 16.1)	47.9%	34	( 17.5)	32.4%	26	( 8.5)	30.8%	18	( 15.0)	27.7%	126	( 13.7)	37.3%
25 or older	32	( 10.7)	12.5%	17	( 8.8)	35.3%	6	( 2.0)	16.7%	13	( 10.8)	7.6%	68	( 7.4)	17.6%
Unknown	-	-	-	1	( 0.5)	100.0%	-	-	-	-	-	-	1	( 0.1)	100.0%

### 2. No. of Prior Arrests

5 or fewer	99	( 33.2)	23.2%	36	( 18.6)	25.0%	106	( 34.6)	40.6%	43	( 35.8)	20.9%	284	( 30.9)	29.6%
6 or more	199	( 66.8)	50.2%	158	( 81.4)	50.0%	200	( 65.4)	47.0%	77	( 64.2)	41.6%	634	( 69.1)	48.1%

### 3. No. Prior Arrests for Offense vs. Persons

None	144	( 48.3)	36.8%	88	( 45.4)	43.2%	151	( 49.3)	46.4%	63	( 52.5)	25.3%	446	( 48.6)	39.7%
Some	154	( 51.7)	45.5%	103	( 53.1)	47.6%	155	( 50.7)	43.2%	57	( 47.5)	43.8%	469	( 51.1)	45.0%
Unknown	-	-	-	3	( 1.5)	33.3%	-	-	-	-	-	-	3	( 0.3)	33.3%

### 4. No. Prior Arrest for Offense vs. Sex

None	250	( 83.9)	40.8%	142	( 73.2)	44.4%	256	( 83.7)	43.8%	112	( 93.3)	33.3%	760	( 82.8)	41.4%
Some	48	( 16.1)	43.8%	49	( 25.3)	46.9%	50	( 16.3)	50.0%	8	( 6.7)	50.0%	155	( 16.9)	47.1%
Unknown	-	-	-	3	( 1.5)	66.7%	-	-	-	-	-	-	3	( 0.3)	66.7%

### 5. No. Prior Arrests for Offense vs. Property

None	75	( 25.2)	18.7%	20	( 10.3)	30.0%	39	( 12.7)	17.9%	28	( 23.3)	10.7%	162	( 17.6)	18.5%
1-5	132	( 44.3)	43.2%	95	( 49.0)	37.9%	193	( 63.1)	48.2%	62	( 51.7)	40.3%	482	( 52.5)	43.8%
6 or more	91	( 30.5)	57.1%	76	( 39.2)	57.9%	74	( 24.2)	50.0%	30	( 25.0)	43.3%	271	( 29.5)	53.9%
Unknown	-	-	-	3	( 1.5)	66.7%	-	-	-	-	-	-	3	( 0.3)	66.7%

### 6. No. Prior Arrests for Narcotic Offense

None	297	( 99.7)	41.4%	166	( 85.6)	44.6%	296	( 96.7)	44.3%	119	( 99.2)	34.4%	878	( 95.6)	42.0%
Some	1	( 0.3)	0.0%	25	( 12.9)	46.0%	10	( 3.3)	60.0%	1	( .8)	0.0%	37	( 4.0)	48.6%
Unknown	-	-	-	3	( 1.5)	66.7%	-	-	-	-	-	-	3	( 0.3)	66.7%

Variable	Norfolk Releasees			Walpole Releasees			Concord Releasees			Forestry Releasees			Total Releasees		
	N	(%)	Recid. R	N	(%)	Recid. R	N	(%)	Recid. R	N	(%)	Recid. R	N	(%)	Recid. R
TOTAL	296	(100.0)	41.3%	194	(100.0)	45.4%	306	(100.0)	44.8%	120	(100.0)	34.2%	918	(100.0)	42.4%
<u>7. No Prior Arrest for Drunkenness</u>															
None	146	(48.9)	34.9%	100	(51.5)	44.0%	152	(49.7)	43.4%	52	(43.3)	19.2%	450	(49.0)	37.9%
Some	152	(51.1)	47.4%	91	(46.9)	47.3%	154	(50.3)	46.1%	68	(56.7)	45.6%	465	(50.7)	46.7%
Unknown	-	-	-	3	(1.5)	33.3%	-	-	-	-	-	-	3	(0.3)	33.3%
<u>8. No Prior State or Federal Incarceration</u>															
None	172	(57.7)	41.8%	53	(27.3)	39.6%	159	(52.0)	47.2%	79	(65.8)	34.2%	463	(50.4)	42.1%
Some	126	(42.3)	40.5%	141	(72.6)	47.5%	147	(48.0)	42.2%	41	(34.2)	34.1%	455	(49.6)	42.6%
<u>9. Total Time Incarcerated (State or Federal)</u>															
None	172	(57.7)	41.8%	53	(27.3)	39.6%	159	(52.0)	47.2%	79	(65.8)	34.2%	463	(50.4)	42.1%
1-39 mos.	64	(21.3)	32.8%	53	(27.3)	52.8%	122	(39.9)	44.3%	26	(21.7)	45.4%	265	(28.9)	43.3%
40 mos. or more	62	(20.8)	48.4%	88	(45.4)	44.3%	25	(8.1)	32.0%	15	(12.5)	26.6%	190	(20.7)	42.6%
<u>10. No Prior House of Correction Incarceration</u>															
None	115	(38.6)	33.9%	56	(28.9)	28.6%	133	(43.5)	41.4%	55	(45.8)	29.1%	359	(39.1)	35.1%
Some	183	(61.4)	45.9%	138	(71.1)	52.2%	173	(56.7)	47.4%	65	(54.2)	38.5%	559	(60.9)	47.1%
<u>11. Total Time Incarcerated (House of Correction)</u>															
None	115	(38.6)	33.9%	56	(28.9)	28.6%	133	(43.5)	41.4%	55	(45.8)	29.1%	359	(39.1)	35.1%
Less than 6 mos.	73	(24.5)	45.2%	30	(15.5)	40.0%	51	(16.7)	29.4%	25	(20.8)	32.0%	179	(19.5)	37.9%
6 mos. up to 18 mos.	62	(20.6)	41.9%	53	(27.3)	49.1%	82	(26.8)	57.3%	27	(22.5)	44.4%	224	(24.4)	49.5%
18 mos. or more	48	(16.1)	52.1%	55	(28.4)	61.8%	40	(13.1)	50.0%	13	(10.6)	38.5%	156	(17.0)	53.8%
<u>12. No Prior Juvenile Incarceration</u>															
None	205	(68.8)	35.6%	115	(59.3)	39.1%	167	(54.6)	40.7%	84	(70.0)	27.4%	571	(62.2)	36.6%
Some	93	(31.2)	53.8%	79	(40.7)	54.4%	139	(45.4)	49.6%	36	(30.0)	50.0%	347	(37.8)	51.9%

Variable	Norfolk Releasees			Walpole Releasees			Concord Releasees			Forestry Releasees			Total Releasees		
	N	(%)	Recid.R	N	(%)	Recid.R	N	(%)	Recid.R	N	(%)	Recid.R	N	(%)	Recid.R
TOTAL	296	(100.0)	41.3%	194	(100.0)	45.4%	306	(100.0)	44.8%	120	(100.0)	34.2%	918	(100.0)	42.4%
<u>13. Total Time Incarcerated (Juvenile)</u>															
None	205	(68.8)	35.6%	115	(59.3)	39.1%	167	(54.6)	40.7%	84	(70.0)	27.4%	571	(62.2)	36.6%
1-11 mos	26	(9.4)	53.6%	25	(12.9)	48.0%	50	(15.3)	52.0%	10	(8.3)	40.0%	113	(12.3)	50.4%
12 mos or more	64	(21.8)	53.1%	51	(26.3)	58.8%	89	(29.1)	48.3%	26	(21.7)	53.8%	230	(25.1)	52.6%
Unknown	1	(0.3)	100.0%	3	(1.5)	33.3%	-	-	-	-	-	-	4	(0.4)	50.0%
<u>14. Overall Time Incarcerated</u>															
None	72	(24.2)	27.8%	19	(9.8)	36.8%	49	(16.0)	34.7%	36	(30.0)	16.7%	176	(19.2)	28.4%
1-19 mos.	83	(27.9)	44.6%	30	(15.5)	33.3%	98	(32.0)	48.0%	40	(33.3)	32.5%	251	(27.3)	42.6%
20-59 mos.	78	(26.2)	51.3%	52	(26.8)	48.1%	129	(42.2)	47.3%	29	(24.2)	62.1%	288	(31.4)	50.0%
60-89 mos.	34	(11.4)	26.5%	41	(21.1)	48.8%	19	(6.2)	42.1%	6	(5.0)	33.3%	100	(10.9)	39.0%
90 or more mos.	31	(10.4)	54.8%	52	(26.8)	50.0%	11	(3.6)	36.4%	9	(7.5)	22.2%	103	(11.2)	47.6%
<u>15. Probation</u>															
Never on Juvenile or Adult Probation	90	(32.9)	30.6%	33	(17.0)	27.3%	60	(26.1)	31.3%	48	(40.0)	20.8%	259	(28.2)	28.6%
Juvenile Probation but, no Adult	26	(9.4)	60.7%	23	(11.9)	52.2%	51	(16.7)	54.9%	18	(15.0)	61.1%	120	(13.1)	56.7%
Adult Probation but, no Juvenile	110	(36.9)	41.8%	77	(39.7)	46.8%	120	(39.2)	49.2%	33	(27.5)	39.4%	340	(37.0)	45.3%
Both Juvenile and Adult Probation	62	(20.8)	48.4%	59	(30.4)	50.8%	55	(18.0)	45.5%	21	(17.5)	33.3%	197	(21.5)	46.7%
Unknown	-	-	-	2	(1.0)	50.0%	-	-	-	-	-	-	2	(0.2)	50.0%
<u>16. Number of Prior Incarcerations (State, Federal, House of Correction)</u>															
None	62	(27.5)	30.5%	20	(10.3)	35.0%	76	(24.8)	44.7%	45	(37.5)	28.9%	223	(24.3)	35.4%
Some	216	(72.5)	45.4%	174	(89.7)	46.6%	230	(75.2)	44.8%	75	(62.5)	37.3%	695	(75.7)	44.6%



VARIABLE	Norfolk Releases			Walpole Releases			Concord Releases			Forestry Releases			Total Releases		
	N	(%)	Recid.R	N	(%)	Recid.R	N	(%)	Recid.R	N	(%)	Recid.R	N	(%)	Recid.R
TOTAL	298	(100.0)	41.3%	194	(100.0)	45.4%	306	(100.0)	44.8%	120	(100.0)	34.2%	918	(100.0)	42.4%

C. Data on Present Incarceration

1. Institution Committed

Walpole	264	( 88.6)	41.3%	185	( 95.4)	46.5%	38	( 12.4)	39.5%	80	( 66.7)	25.0%	567	( 61.8)	40.6%
Charlestown	11	( 3.7)	9.1%	8	( 4.1)	12.5%	2	( 0.7)	0.0%	2	( 11.7)	0.0%	23	( 2.5)	8.7%
Concord	23	( 7.7)	56.5%	1	( 0.5)	100.0%	235	( 76.7)	47.2%	34	( 28.3)	58.8%	293	( 31.9)	49.5%
House of Correction	-	-	-	-	-	-	31	( 10.1)	35.5%	4	( 3.3)	25.0%	35	( 3.8)	34.3%

2. Type of Offense

<u>Person</u>	147	( 49.3)	36.0%	79	( 40.7)	49.4%	122	( 39.9)	44.3%	71	( 59.2)	35.2%	419	( 45.6)	40.8%
Murder, 2nd Degree	12	( 4.0)	6.3%	6	( 3.1)	0.0%	-	-	-	-	-	-	18	( 2.0)	5.5%
Manslaughter	15	( 5.0)	53.3%	9	( 4.6)	77.8%	3	( 1.0)	66.7%	5	( 4.2)	0.0%	32	( 3.5)	53.1%
Armed Robbery	77	( 25.8)	33.7%	36	( 18.6)	50.0%	48	( 15.7)	37.5%	36	( 30.0)	44.4%	197	( 21.5)	39.6%
Unarmed Robbery	11	( 3.7)	36.3%	7	( 3.6)	71.4%	27	( 8.8)	37.0%	5	( 4.2)	20.0%	50	( 5.4)	39.9%
Aggravated Assault	21	( 7.0)	47.6%	12	( 6.2)	66.7%	18	( 5.9)	44.4%	19	( 15.8)	31.5%	70	( 7.6)	45.7%
Other Assault	8	( 2.7)	37.5%	6	( 3.1)	16.7%	26	( 8.5)	61.5%	6	( 5.0)	33.3%	46	( 5.0)	47.8%
Abortion	3	( 1.0)	33.3%	0	( 0.0)	-	-	-	-	-	-	-	3	( 0.3)	33.3%
Kidnapping	-	-	-	3	( 1.5)	0.0%	-	-	-	-	-	-	3	( 0.3)	0.0%
<u>Sex</u>	51	( 17.1)	25.5%	27	( 13.9)	33.3%	32	( 10.5)	28.1%	0	-	-	110	( 12.0)	28.2%
Rape	20	( 6.7)	40.0%	8	( 4.1)	50.0%	10	( 3.3)	30.0%	-	-	-	38	( 4.1)	39.5%
Carnal Abuse (Ind. A&B)	23	( 7.7)	13.0%	10	( 5.2)	20.0%	14	( 4.6)	21.4%	-	-	-	47	( 5.1)	17.0%
Incest	6	( 2.0)	33.3%	2	( 1.0)	50.0%	1	( 0.3)	100.0%	-	-	-	9	( 1.0)	44.4%
Unnatural Act	2	( 0.7)	0.0%	-	-	-	4	( 1.3)	25.0%	-	-	-	6	( 0.7)	16.7%
Indecent A&B on an Adult	-	-	-	4	( 2.1)	25.0%	2	( 0.7)	50.0%	-	-	-	6	( 0.7)	33.3%
Sodomy	-	-	-	3	( 1.5)	33.3%	-	-	-	-	-	-	3	( 0.3)	33.3%
Open and Gross Lewdness	-	-	-	-	-	-	1	( 0.3)	0.0%	-	-	-	1	( 0.1)	0.0%

VARIABLE	Norfolk Releasees			Welpole Releasees			Concord Releasees			Forestry Releasees			Total Releasees		
	N	(%)	Recid.R	N	(%)	Recid.R	N	(%)	Recid.R	N	(%)	Recid.R	N	(%)	Recid.R
TOTAL	298	(100.0)	41.3%	194	(100.0)	45.4%	306	(100.0)	44.8%	120	(100.0)	34.2%	918	(100.0)	42.4%
<u>Property</u>	88	(29.5)	56.8%	88	(35.1)	44.1%	105	(34.3)	46.7%	45	(37.5)	33.3%	306	(33.3)	47.1%
burglary	51	(17.1)	52.9%	41	(21.1)	41.5%	72	(23.5)	40.1%	21	(17.5)	38.0%	185	(20.2)	43.7%
Larceny	12	(4.0)	66.7%	2	(1.0)	50.0%	18	(5.9)	66.7%	7	(5.8)	42.9%	39	(4.2)	61.6%
Forgery and Uttering	7	(2.3)	57.1%	9	(4.6)	55.6%	3	(1.0)	100.0%	3	(2.5)	33.3%	22	(2.4)	59.1%
Common and Notorious Thief	7	(2.3)	71.4%	7	(3.6)	42.9%	1	(0.3)	0.0%	5	(4.2)	20.0%	20	(2.2)	45.0%
Breaking a safe	4	(1.3)	0.0%	2	(1.0)	50.0%	-	-	-	-	-	-	6	(0.7)	16.7%
Embezzlement	1	(0.3)	0.0%	-	-	-	-	-	-	1	(0.8)	0.0%	2	(0.2)	0.0%
Possession of Burg. Tools	2	(0.7)	100.0%	1	(0.5)	0.0%	3	(1.0)	33.3%	3	(2.5)	33.3%	9	(1.0)	44.4%
Receiving Stolen Goods	3	(1.0)	100.0%	1	(0.5)	100.0%	2	(0.7)	50.0%	-	-	-	6	(0.7)	83.3%
Stealing	1	(0.3)	100.0%	-	-	-	-	-	-	-	-	-	1	(0.1)	100.0%
Arson	-	-	-	2	(1.0)	50.0%	5	(1.6)	40.0%	1	(0.8)	0.0%	8	(0.9)	37.5%
Extortion	-	-	-	1	(0.5)	0.0%	-	-	-	-	-	-	1	(0.1)	0.0%
Acc. before & after the Fact to:	-	-	-	2	(1.0)	50.0%	-	-	-	3	(2.5)	33.3%	5	(0.5)	40.0%
Mal. dest. of Property	-	-	-	-	-	-	1	(0.3)	100.0%	1	(0.8)	0.0%	2	(0.2)	50.0%
<u>Other Offenses</u>	12	(4.0)	50.3%	20	(10.3)	50.0%	47	(15.4)	53.2%	4	(3.3)	25.0%	83	(9.0)	51.8%
Unauthorized Use of M.V	9	(3.0)	66.7%	4	(2.1)	50.0%	26	(8.5)	53.8%	3	(2.5)	33.3%	42	(4.6)	54.7%
Escape and Attempted Escape	2	(0.7)	50.0%	4	(2.1)	75.0%	1	(0.3)	100.0%	1	(0.8)	0.0%	8	(0.9)	62.5%
Non-Support	1	(0.3)	0.0%	-	-	-	1	(0.3)	0.0%	-	-	-	2	(0.2)	0.0%
Narcotic (Sale & Possession)	-	-	-	11	(5.7)	45.5%	6	(2.0)	66.7%	-	-	-	17	(1.9)	53.0%
Acc. After Fact - Escape	-	-	-	1	(0.5)	0.0%	-	-	-	-	-	-	1	(0.1)	0.0%
Weapons Offense (Carrying & possession)	-	-	-	-	-	-	3	(1.0)	66.7%	-	-	-	3	(0.3)	66.7%
Earnings from Prostituc	-	-	-	-	-	-	1	(0.3)	0.0%	-	-	-	1	(0.1)	0.0%
Other Motor Vehicles Offenses	-	-	-	-	-	-	8	(2.6)	37.5%	-	-	-	8	(0.9)	37.5%
Conspiracy	-	-	-	-	-	-	1	(0.3)	100.0%	-	-	-	1	(0.1)	100.0%

VARIABLE	Norfolk Releases			Walpole Releases			Concord Releases			Forestry Releases			Total Releases		
	N	(%)	Recid.R	N	(%)	Recid.R	N	(%)	Recid.R	N	(%)	Recid.R	N	(%)	Recid.R
TOTAL	298	(100.0)	41.3%	194	(100.0)	45.4%	306	(100.0)	44.8%	120	(100.0)	34.2%	918	(100.0)	42.4%
<u>3. Parole Violation (present incarceration)</u>															
Not a P.V.	230	(77.2)	42.6%	106	(54.6)	49.1%	188	(61.4)	47.9%	94	(78.3)	35.4%	618	(67.3)	44.2%
Present incarceration result of P.V.	68	(22.8)	36.8%	88	(45.4)	40.9%	118	(38.6)	39.8%	26	(21.7)	30.8%	300	(32.7)	38.7%
(P.V. & New Commitment P.V. Time Served)	(10)	(3.3)	(40.0%)	(13)	(6.7)	(53.8%)	(23)	(7.5)	(30.4%)	(8)	(6.7)	(0.0%)	(54)	(5.9)	33.3%
(P.V. & New Commitment No P.V. Time Served)	(9)	(3.3)	(22.2%)	(2)	(1.0)	(50.0%)	(0)	-	-	(4)	(3.3)	(25.0%)	(15)	(1.6)	26.7%
<u>4. Sentence (minimum)</u>															
6 mos. to 30 mos. (H. of C.)	1	(0.3)	0.0%	0	-	-	31	(10.1)	35.5%	0	-	-	32	(3.5)	34.4%
2 yrs. Ind.	0	-	-	0	-	-	10	(3.3)	50.0%	0	-	-	10	(1.1)	50.0%
2½ yrs.	77	(25.8)	50.6%	37	(19.1)	56.8%	7	(2.3)	42.9%	17	(14.2)	11.8%	138	(15.0)	47.1%
3 yrs.	72	(24.2)	40.3%	47	(24.2)	38.3%	8	(2.6)	12.5%	24	(20.0)	41.7%	151	(16.4)	38.4%
4 yrs.	33	(11.1)	45.5%	18	(9.3)	55.6%	6	(2.0)	50.0%	15	(12.5)	20.0%	72	(7.8)	43.1%
5 yrs.	27	(9.1)	29.6%	35	(18.0)	48.6%	10	(3.3)	50.0%	12	(10.0)	33.3%	84	(9.2)	40.5%
5 yrs. Ind., 5 yrs. & 1 day	19	(6.4)	63.2%	1	(0.5)	100.0%	224	(73.2)	47.8%	32	(26.7)	59.4%	276	(30.1)	50.4%
6 yrs.	12	(4.0)	25.0%	11	(5.7)	36.4%	2	(0.7)	0.0%	3	(2.5)	0.0%	28	(3.1)	25.0%
7 yrs.	8	(2.7)	37.5%	6	(3.1)	33.3%	1	(0.3)	0.0%	5	(4.2)	20.0%	20	(2.2)	29.9%
8 yrs.	14	(4.7)	35.7%	7	(3.6)	28.6%	3	(1.0)	33.3%	6	(5.0)	33.3%	30	(3.3)	33.3%
9 yrs.	6	(2.0)	50.0%	5	(2.6)	80.0%	1	(0.3)	100.0%	0	-	-	12	(1.3)	66.7%
10-14 yrs.	10	(3.3)	40.0%	13	(6.7)	53.8%	2	(0.7)	0.0%	4	(3.3)	0.0%	29	(3.2)	37.9%
15 yrs. or more	9	(3.0)	11.1%	8	(4.1)	25.0%	0	-	-	2	(1.6)	0.0%	19	(2.1)	15.8%
Life	10	(3.3)	10.0%	0	(3.1)	0.0%	1	(0.3)	0.0%	0	-	-	17	(1.9)	5.9%
<u>5. Jail Time Credited to Sentence</u>															
None	86	(28.9)	34.9%	113	(58.2)	48.7%	151	(49.3)	41.1%	36	(31.6)	26.3%	388	(42.3)	40.5%
1-29 days	61	(20.5)	52.5%	9	(4.6)	22.2%	57	(19.3)	45.8%	30	(25.0)	66.6%	159	(17.3)	51.0%
30-59 days	55	(18.4)	38.2%	26	(13.4)	53.8%	32	(10.5)	46.9%	29	(24.2)	44.8%	142	(15.5)	44.4%
60-89 days	34	(11.4)	50.0%	15	(7.7)	60.0%	27	(8.8)	63.0%	12	(10.0)	50.0%	88	(9.6)	55.7%
90 days or more	62	(20.8)	37.1%	31	(16.0)	25.8%	37	(12.1)	43.2%	11	(9.2)	18.2%	141	(15.4)	34.7%

Variable	Norfolk Releasees			Walpole Releasees			Concord Releasees			Forestry Releasees			Total Releasees		
	N	(%)	Recid.R	N	(%)	Recid.R	N	(%)	Recid.R	N	(%)	Recid.R	N	(%)	Recid.R
TOTAL	296	(100.0)	41.3%	194	(100.0)	45.4%	306	(100.0)	44.8%	120	(100.0)	34.2%	918	(100.0)	42.4%
<u>6. Length of Incarceration</u>	ave. Length=28.9 mos			ave. Length=26.1 mos.			ave. Length=15.8 mos.			ave. Length=20.8 mos.			ave. Length=22.9 mos		
Less than 1 yr.	51	(17.1)	54.9%	75	(38.7)	50.7%	144	(47.0)	37.5%	21	(17.5)	66.7%	291	(31.7)	46.1%
1 up to 2 yrs.	136	(45.6)	44.1%	55	(28.9)	37.5%	112	(36.6)	59.8%	67	(55.8)	29.9%	371	(40.4)	45.3%
2 up to 3 yrs.	57	(19.1)	40.3%	26	(13.4)	53.8%	28	(9.2)	32.1%	20	(16.7)	15.0%	131	(14.3)	37.4%
3 yrs. or more	54	(18.1)	22.2%	31	(19.1)	40.5%	22	(7.2)	31.8%	12	(10.0)	33.3%	125	(13.6)	30.4%
<u>7. Type of Release</u>															
Parole	233	(78.2)	45.9%	130	(67.0)	46.5%	195	(63.7)	54.4%	105	(87.5)	34.3%	663	(72.2)	47.1%
Discharge or Expiration	65	(21.8)	24.6%	64	(33.0)	39.1%	111	(36.3)	27.9%	15	(12.5)	33.3%	255	(27.8)	30.2%
<u>8. Court</u>															
Suffolk Superior	116	(38.9)	41.4%	68	(45.4)	55.7%	86	(28.1)	48.8%	47	(39.2)	27.7%	337	(36.7)	45.1%
Middlesex Sup.	55	(18.4)	49.1%	22	(11.3)	31.8%	55	(18.1)	34.5%	19	(15.8)	36.8%	151	(16.4)	39.7%
Worcester Sup.	26	(8.7)	34.6%	12	(6.2)	50.0%	41	(13.4)	31.7%	17	(14.2)	29.4%	96	(10.5)	34.4%
Hampden Sup.	25	(8.4)	48.0%	19	(9.8)	42.1%	22	(7.2)	31.8%	11	(9.2)	54.5%	77	(8.4)	42.8%
Essex Sup.	20	(6.7)	20.0%	13	(6.7)	30.8%	30	(9.8)	53.3%	7	(5.8)	28.6%	70	(7.6)	37.1%
Bristol Sup.	17	(5.7)	47.0%	21	(10.8)	33.3%	13	(4.2)	69.2%	1	(.8)	0.0%	52	(5.7)	46.1%
All other Courts	39	(13.1)	38.5%	18	(9.3)	38.9%	59	(19.3)	52.5%	18	(15.0)	44.4%	134	(14.6)	45.5%
Unknown	-	-	-	1	(0.5)	0.0%	-	-	-	-	-	-	1	(0.1)	0.0%
<u>9. Trial or Plea</u>															
Conviction by Guilty Plea	215	(72.1)	42.3%	116	(59.8)	46.6%	202	(66.0)	47.0%	93	(77.5)	35.4%	626	(68.2)	43.6%
Conviction by Trial	69	(23.1)	36.2%	40	(20.6)	32.5%	77	(25.2)	33.8%	27	(22.5)	29.6%	213	(23.2)	33.8%
Not Available	14	(4.7)	50.0%	38	(19.6)	55.3%	27	(8.8)	59.3%	0	-	-	79	(8.6)	55.7%
<u>10. Number of CoDefendants</u>															
None	163	(54.7)	44.8%	81	(41.8)	50.6%	125	(40.8)	37.6%	46	(38.3)	36.7%	415	(45.2)	42.9%
One	81	(27.2)	40.7%	59	(30.4)	32.2%	92	(30.1)	48.9%	37	(30.8)	35.1%	269	(29.3)	40.9%
2 or more	54	(18.1)	31.5%	53	(27.3)	50.9%	89	(29.1)	50.6%	37	(30.8)	29.7%	233	(25.4)	42.9%
Unknown	-	-	-	1	(0.5)	100.0%	-	-	-	0	-	-	1	(0.1)	100.0%

Variable	Norfolk releasees			Walpole Releasees			Concord Releasees			Forestry Releasees			Total Releasees		
	N	(%)	Recid.R	N	(%)	Recid.R	N	(%)	Recid.R	N	(%)	Recid.R	N	(%)	Recid.R
TOTAL	298	(100.0)	41.3%	194	(100.0)	45.4%	306	(100.0)	44.8%	120	(100.0)	34.2%	918	(100.0)	42.4%
<u>11. Sexually Dangerous Person Data</u>															
Not Applicable	225	( 75.5)	43.5%	162	( 83.5)	46.9%	237	( 77.5)	44.7%	112	( 93.3)	33.0%	736	( 80.2)	43.0%
Screened, not processed	59	( 19.8)	33.9%	20	( 10.3)	30.0%	42	( 13.7)	50.0%	8	( 6.7)	50.0%	129	( 14.1)	39.5%
Screened, Processed	11	( 3.7)	27.3%	12	( 6.2)	50.0%	24	( 7.8)	41.7%	-	-	-	47	( 5.1)	40.4%
Processed, adjudged S.U.P. overtured by Court; screened not S.D.P.	3	( 1.0)	66.7%	0	-	-	3	( 1.0)	0.0%	-	-	-	6	( 0.7)	33.3%
<u>12. Inmate Version of Present Offense, as Compared to Official Version</u>															
Agrees	182	( 61.1)	39.6%	67	( 34.5)	40.3%	211	( 68.9)	44.5%	82	( 68.3)	37.8%	542	( 59.0)	42.1%
Agrees with Qualifications	23	( 7.7)	60.9%	17	( 8.8)	35.3%	28	( 9.2)	53.6%	14	( 11.7)	14.3%	82	( 8.9)	45.1%
Disagrees	76	( 25.5)	40.8%	40	( 20.6)	35.0%	48	( 15.7)	43.8%	21	( 17.5)	33.3%	185	( 20.2)	39.5%
Refuses to say anything	2	( 0.7)	0.0%	-	-	-	-	-	-	2	( 1.6)	50.0%	4	( 0.4)	25.0%
Not Available	15	( 5.0)	40.0%	70	( 36.1)	52.9%	19	( 6.2)	36.8%	1	( .8)	0.0%	105	( 11.4)	47.6%
<u>13. Total No. of Disciplinary Reports</u>															
None	172	( 57.7)	41.8%	133	( 68.6)	45.9%	155	( 50.7)	34.8%	106	( 88.3)	33.9%	566	( 61.7)	39.4%
1 or more	126	( 42.3)	40.5%	61	( 31.4)	44.3%	151	( 49.3)	55.0%	14	( 11.7)	35.7%	352	( 38.3)	47.8%
<u>14. No. for Threats, Asslts., etc.</u>															
None	251	( 84.2)	41.0%	189	( 97.4)	45.5%	266	( 86.9)	44.4%	116	( 96.7)	33.6%	822	( 89.5)	42.1%
1 or more	47	( 15.8)	42.6%	5	( 2.6)	0.0%	40	( 13.1)	47.5%	4	( 3.3)	50.0%	96	( 10.5)	44.8%
<u>15. No. for Disturbance, Mal. Misch.</u>															
None	284	( 95.3)	41.2%	169	( 87.1)	43.8%	272	( 88.9)	43.4%	117	( 97.5)	35.0%	842	( 91.7)	41.6%
1 or more	14	( 4.7)	42.8%	25	( 12.9)	56.0%	34	( 11.1)	55.9%	3	( 2.5)	0.0%	76	( 8.3)	51.3%
<u>16. No. for Damaging State Property</u>															
None	290	( 97.3)	41.4%	184	( 94.8)	44.0%	282	( 92.2)	44.0%	119	( 99.2)	33.6%	875	( 95.3)	41.7%
1 or more	8	( 2.7)	37.5%	10	( 5.2)	70.0%	24	( 7.0)	54.2%	1	( .8)	100.0%	43	( 4.7)	55.8%
<u>17. No. for Disobedience, Insol., etc.</u>															
None	220	( 73.8)	41.4%	145	( 74.7)	47.6%	191	( 62.4)	37.7%	113	( 94.2)	33.6%	669	( 72.9)	40.4%
1 or more	78	( 26.2)	41.0%	49	( 25.3)	38.8%	115	( 37.6)	56.5%	7	( 5.8)	42.9%	249	( 27.1)	47.8%

Variable	Norfolk Releasees			Walpole Releasees			Concord Releasees			Forestry Releasees			Total Releasees		
	N	(%)	Recid. R	N	(%)	Recid. R	N	(%)	Recid. R	N	(%)	Recid. R	N	(%)	Recid. R
TOTAL	298	(100.0)	41.3%	194	(100.0)	45.4%	306	(100.0)	44.8%	120	(100.0)	34.2%	918	(100.0)	42.4%
<u>18. No. For Dangerous Weapon</u>															
None	297	(99.7)	41.4%	193	(99.5)	45.6%	305	(99.7)	44.6%	120	(100.0)	34.2%	915	(99.7)	42.4%
One	1	(0.3)	0.0%	1	(0.5)	0.0%	1	(0.3)	100.0%	0	(0.0)	0.0%	3	(0.3)	33.3%
<u>19. No. for Under the Influence, etc.</u>															
None	291	(97.6)	40.9%	179	(92.3)	45.3%	297	(97.1)	44.8%	118	(98.3)	34.7%	885	(96.4)	42.3%
1 or more	7	(2.4)	57.1%	15	(7.7)	46.7%	9	(2.9)	44.4%	2	(1.7)	0.0%	33	(3.6)	45.4%
<u>20. No. for Contraband, Stealing</u>															
None	257	(86.2)	42.4%	170	(87.6)	45.9%	268	(87.6)	42.9%	117	(97.5)	34.2%	812	(88.5)	42.1%
1 or more	41	(13.8)	34.1%	24	(12.4)	41.7%	38	(12.4)	57.9%	3	(2.5)	33.3%	106	(11.5)	44.3%
<u>21. No. of Good Conduct Days withheld</u>															
None	211	(70.8)	41.7%	149	(76.8)	46.3%	230	(75.2)	40.4%	114	(95.0)	33.3%	704	(76.7)	40.9%
Some	87	(29.2)	40.2%	45	(23.2)	42.2%	76	(24.8)	57.9%	6	(5.0)	50.0%	214	(23.3)	47.2%
<u>D. Recidivism Data</u>															
1. Non-Recidivists	175	(58.7)		106	(54.6)		169	(55.2)		79	(65.8)		529	(57.6)	
2. Recidivists	123	(41.3)		88	(45.4)		137	(44.8)		41	(34.2)		389	(42.4)	
Parole Violators	95	(31.9)		44	(22.7)		84	(27.5)		29	(24.2)		252	(27.5)	
(a) No New Arrest	51	(17.1)		22	(11.4)		46	(15.0)		11	(9.2)		130	(14.2)	
(b) New Arrest	44	(14.8)		22	(11.4)		38	(12.5)		18	(15.0)		122	(13.3)	
New Bridgewater Commits. (Drunkenness)	1	(0.3)		3	(1.5)		0			-	-		4	(0.4)	
New House of Correction Commits.	11	(3.7)		18	(9.3)		18	(5.8)		2	(1.7)		49	(5.3)	
New State or Federal Commt.	16	(5.4)		23	(11.8)		35	(11.4)		10	(8.3)		84	(9.2)	
TOTAL	298	(100.0)		194	(100.0)		306	(100.0)		120	(100.0)		918	(100.0)	

Variable	Norfolk Releasees			Wolpole Releasees			Concord Releasees			Forestry Releasees			Total Releasees		
	N	(%)	Recid. R.	N	(%)	Recid. R.	N	(%)	Recid. R.	N	(%)	Recid. R.	N	(%)	Recid. R.
TOTAL	298	(100.0)	41.3%	194	(100.0)	45.4%	306	(100.0)	44.8%	120	(100.0)	34.2%	918	(100.0)	42.4%
3. Length of Time before Re-incarceration *															
Less than 1 month	8	( 2.7)	2.7%	5	( 2.6)	2.6%	3	( 1.0)	1.0%	0	-	-	16	( 1.7)	1.7%
1 up to 3 mos.	14	( 4.7)	7.4%	14	( 7.2)	9.8%	9	( 2.9)	3.9%	4	( 3.3)	3.3%	41	( 4.5)	6.2%
3 up to 6 mos.	22	( 7.4)	14.8%	25	( 12.9)	22.7%	39	( 12.7)	16.6%	12	( 10.0)	13.3%	98	( 10.7)	16.7%
6 up to 9 mos.	22	( 7.4)	22.2%	9	( 4.6)	27.3%	24	( 7.9)	24.5%	6	( 5.0)	18.3%	61	( 6.6)	23.5%
9 up to 12 mos.	17	( 5.7)	27.9%	11	( 5.7)	33.0%	16	( 5.2)	29.7%	10	( 8.3)	26.6%	54	( 5.9)	29.4%
12 up to 15 mos.	12	( 4.0)	31.9%	9	( 4.6)	37.6%	20	( 6.5)	36.2%	3	( 2.5)	29.1%	44	( 4.8)	34.2%
15 up to 18 mos.	7	( 2.3)	34.2%	8	( 4.1)	41.7%	12	( 3.9)	40.1%	1	( 0.9)	30.0%	28	( 3.1)	37.3%
18 up to 21 mos.	12	( 4.0)	38.2%	3	( 1.5)	43.2%	3	( 1.0)	41.1%	4	( 3.3)	33.3%	22	( 2.4)	39.7%
21 up to 24 mos.	9	( 3.1)	41.3%	4	( 2.2)	45.4%	11	( 3.7)	44.8%	1	( 0.8)	34.2%	25	( 2.7)	42.4%
At large or No Re-Incarceration	175	( 58.7)		106	( 54.6)		169	( 55.2)		79	( 65.8)		529	( 57.6)	
TOTAL	298	(100.0)		194	(100.0)		306	(100.0)		120	(100.0)		918	(100.0)	

\* The recidivism rates for this factor are cumulative. Let us take the Norfolk releasees as an example. Within one month 2.7% of the releasees have been reincarcerated. Within three months a total of 7.4% of the releasees have been reincarcerated. Within six months a total of 14.8% of the releasees have been reincarcerated. And so on.

**END**