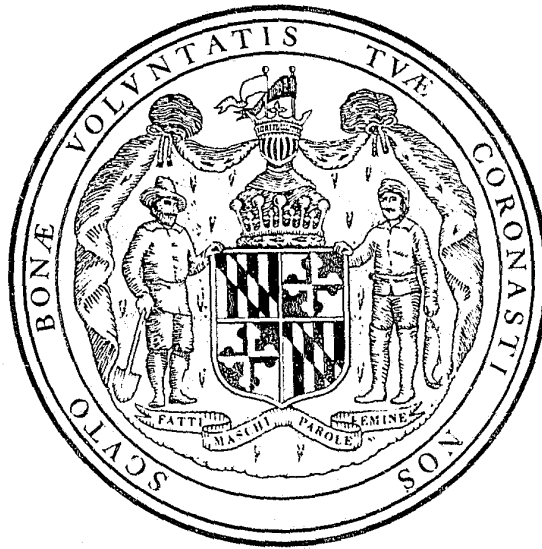


7

MARYLAND DEPARTMENT OF HEALTH
AND MENTAL HYGIENE
DEPARTMENT
OF
JUVENILE SERVICES

ANNUAL REPORT,



1975
FISCAL YEAR

32001

STATE OF MARYLAND
DEPARTMENT OF HEALTH AND MENTAL HYGIENE
Neil Solomon, M.D., Ph.D., Secretary

Annual Statistical Report
Fiscal Year 1975
JUVENILE SERVICES ADMINISTRATION
Robert C. Hilson, Director

Prepared by
Division of Special Services
— Research and Analysis —



JUVENILE SERVICES ADMINISTRATION
DEPARTMENT OF HEALTH AND MENTAL HYGIENE

201 WEST PRESTON STREET • BALTIMORE, MARYLAND 21201 • AREA CODE 301
383-3773

Neil Solomon, M.D., Ph.D., Secretary

December 8, 1975

THE HONORABLE MARVIN MANDEL
GOVERNOR OF THE STATE OF MARYLAND

THE HONORABLE NEIL SOLOMON, M.D., Ph. D.
SECRETARY, DEPARTMENT OF HEALTH AND MENTAL HYGIENE

I am pleased to submit herewith the report of the Department of Juvenile Services for the 1975 fiscal year.

As you will note, the Department experienced a 19.3 percent increase in its total workload during fiscal 1975. This increase is reflective of the trend which has been evident since the creation of the Department in 1967. The number of cases coming to our attention has now reached an unprecedented high and has taxed our resources to give quality service to its limits. It is, indeed, a tribute to the many dedicated staff within this Department that they have done the outstanding job that has been done under the most trying of circumstances.

As has been stated on several prior occasions, the needs of the troubled youth, and the youth in trouble, in Maryland must receive a higher priority within State government if we are to have any impact upon reducing the ever increasing incidents of juvenile crime and thereby make our society a safer place in which to live. Not only must adequate funds for programs necessary to meet the needs of children who have already come to our attention be provided, but equally as important, greater emphasis must be given to programs and services of a delinquency prevention nature. A step has been made in that direction, but such programs are in need of expansion in terms of increasing the quality, the quantity, and the diversification.

It is recognized that funding of programs running in somewhat parallel lines would be expensive, but I submit that this is a move which the State cannot afford not to make.

In spite of the many needs within Juvenile Services, Maryland is still recognized as a national leader because of its innovative approaches in youth services delivery. We are deeply grateful for the support given by the Executive, Legislative, and Judicial branches of government and for the concern, interest, and support of the many persons in the community who have diligently strived to improve the juvenile justice system in Maryland.

ROBERT C. HILSON
Director

TABLE OF CONTENTS

| | |
|---|------|
| | page |
| Major Program Organization Chart | 1 |
| Definition of Terms | 2 |
| Juvenile Services Administration Flow Chart. | 3 |
| Highlights: Juvenile Court Activities | 10 |
| Community Based Services | 32 |
| Maryland's Training Schools and Forestry Camps | 38 |
| Maryland's Children Centers | 40 |
| Appendix: Federal Grants in Operation During Fiscal 1975. | 56 |

STATISTICS

Budget Expenditures

| | |
|--|---|
| Figure 1: Juvenile Services Administration Fiscal 1975 Budget | 7 |
| Table 1: Juvenile Services Administration, Summary of Budget Expenditures by Major Program, Fiscal 1968-1975 | 8 |

Division of Juvenile Court Services

| | |
|---|----|
| Table 2: Summary of Juvenile Probation and Court Service Expenditures and Services Rendered, Fiscal 1968-1975 | 12 |
| Table 3: Total Cases Handled by the Juvenile Services Administration by County and Region, Formal, Informal, Change in Disposition & Disapproved/Closed at Intake Cases, 1968-1975 Fiscal Years | 13 |
| Table 4: Formal Juvenile Court Dispositions by County and Region, 1968-1975 Fiscal Years | 14 |
| Table 5: Total Number of Cases Handled Informally by the Juvenile Services Administration by County and Region, 1968-1975 Fiscal Years | 15 |
| Table 6: Total Number of Juvenile Cases Disapproved or Closed at Intake by County and Region, Fiscal Years 1970-1975 | 16 |
| Table 7: Total Offense Case Rate and Total Delinquent Case Rate Per 1,000 Juveniles by County and Region, Fiscal 1975 | 17 |
| Table 8: Disposition by County & Region, Fiscal 1975 | 18 |
| Table 9: Manner of Handling Cases by County, Region and Type of Offense, Fiscal 1975 | 20 |
| Table 10: Manner of Handling Cases by County, Region and Sex, Fiscal 1975 | 21 |
| Table 11: Manner of Handling Cases by County, Region and Race, Fiscal 1975 | 22 |
| Table 12: Total Cases Handled by the Juvenile Services Administration by County, Region and Source of Referral, Fiscal 1975. | 23 |
| Table 13: Total Cases Handled by the Juvenile Services Administration by County, Region and Age at Time of Referral, Fiscal 1975 | 24 |
| Table 14: Total Cases Handled by the Juvenile Services Administration by County, Region and Major Reason Referred, Fiscal 1975. | 25 |
| Table 15: Total Cases Handled by the Juvenile Services Administration by Major Reason and Age at Time of Referral, Fiscal 1975 | 27 |
| Table 16: Formal Cases Handled by the Juvenile Services Administration by Major Reason and Disposition, Fiscal 1975 | 28 |

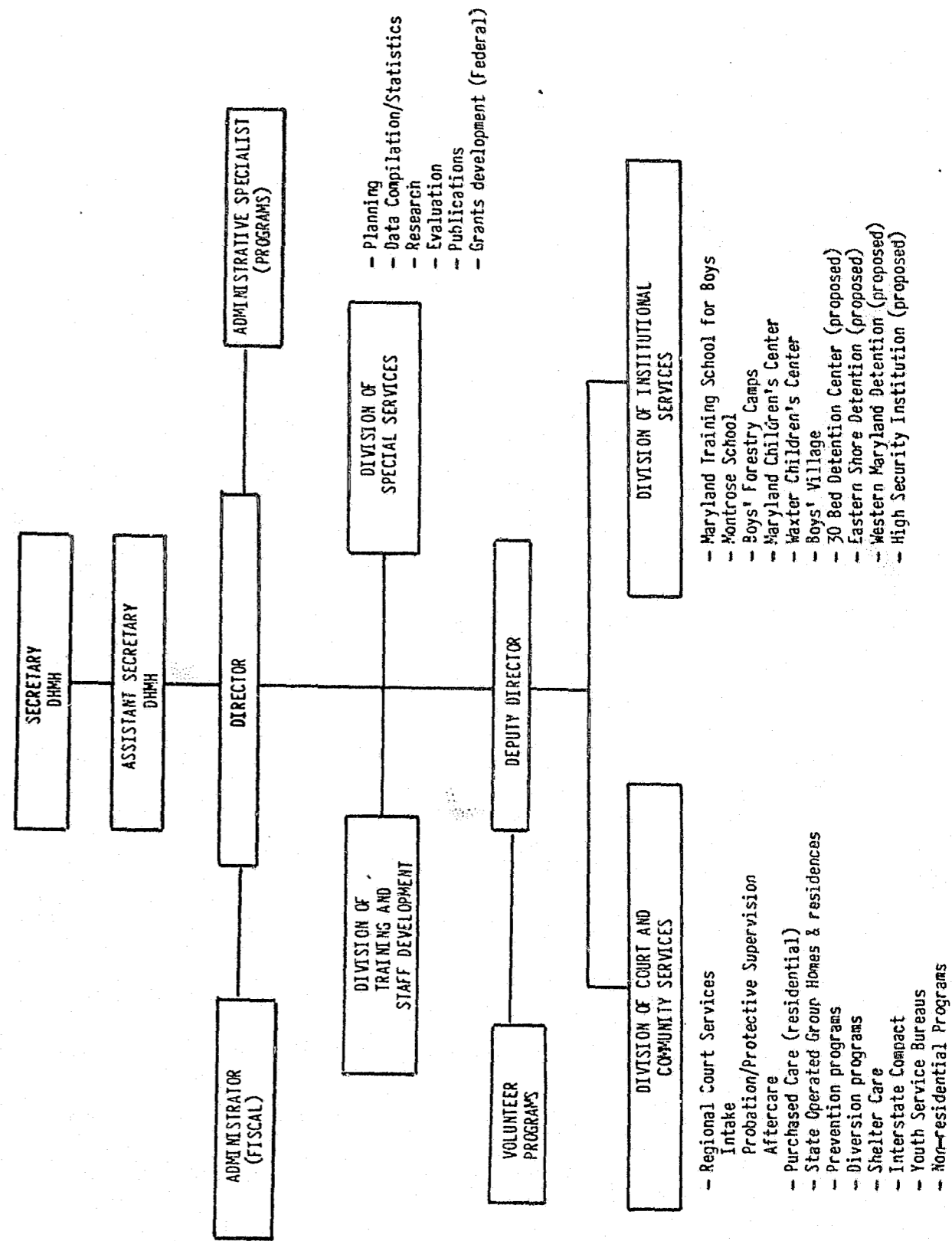
Division of Community Services

| | |
|--|----|
| Table 17: Community and Residential Services Expenditures, Fiscal 1968-1975 | 33 |
| Table 18: Community and Residential Placements, Number of Juveniles Served, Fiscal 1968-1975 | 33 |
| Table 19: Residential and Emergency Placements by Sex and County, Fiscal 1975. | 34 |
| Table 20: Residential and Emergency Placements by Race and County, Fiscal 1975. | 35 |
| Table 21: Community and Residential Placements by Race, Fiscal 1975 | 36 |
| Table 22: Youth Service Center Admissions by Race and Sex, Fiscal 1975 | 36 |

Division of Institutional Services

| | | |
|-----------|--|----|
| Table 23: | Juvenile Services Administration, Summary of Institution Expenditures, Fiscal 1968-1975 | 41 |
| Table 24: | Summary of Institution Admissions, Fiscal 1968-1975 | 41 |
| Figure 2: | State Institution Admissions, Fiscal Years 1968-1975 | 42 |
| Table 25: | Training School and Forestry Camp Admissions, Fiscal Year Comparisons, 1974-1975 | 43 |
| Table 26: | Detention Center Admissions, Fiscal Year Comparisons, 1974-1975 | 43 |
| Table 27: | Number of Juveniles Admitted to Maryland's Training Schools, Forestry Camps and Detention Centers by County of Residence, Fiscal 1975 | 44 |
| Table 28: | Juveniles Admitted to State Training Schools by Type of Admission and Training School, Fiscal 1968-1975 | 45 |
| Table 29: | Number of Juveniles Admitted to Maryland's Training Schools and Forestry Camps by County of Residence and County of Admitting Court, Fiscal 1975 | 46 |
| Figure 3: | Juveniles Admitted to Maryland's Institutions by Age Percents, Fiscal 1975 | 47 |
| Table 30: | Juveniles Admitted to Maryland's Training Schools and Forestry Camps by Offense and Age, Fiscal 1975 | 48 |
| Table 31: | Juveniles Admitted to Maryland's Training Schools and Forestry Camps by Age and Race, Fiscal 1975 | 49 |
| Table 32: | Commitments to Maryland's Training Schools and Forestry Camps by Length of Stay (Based on Releases), Fiscal 1975 | 50 |
| Table 33: | Detention Center Admissions by Institution and Sex, Fiscal 1968-1975 | 51 |
| Table 34: | Admissions to Maryland's Children Centers by County of Residence and County of Admitting Court, Fiscal 1975 | 52 |
| Table 35: | Maryland's Children Center Admissions and Training School Detentions by Offense, Fiscal 1975 | 53 |
| Table 36: | Admissions to Maryland's Children Centers by Age and Race, Fiscal 1975 | 54 |

TABLE OF ORGANIZATION
JUVENILE SERVICES ADMINISTRATION



Definition of Terms

THE UNIT OF COUNT is a case referred to the Juvenile Services Administration. Such a case is counted each time a child is referred during the year on a new referral.

MANNER OF HANDLING CASES is classified as FORMAL, INFORMAL, or DISAPPROVED OR CLOSED AT INTAKE.

DISAPPROVED CASES are those referrals which are determined as lacking legal sufficiency.

CLOSED AT INTAKE CASES are those referrals which are resolved by the Intake office through minimum involvement of staff when the facts and circumstances of the offense and the child's background indicate that no supervision or further counseling from Juvenile Services or intervention by the court is necessary or desirable for effecting a positive adjustment by the child.

INFORMAL ADJUSTMENT involves those referrals which are resolved by the Intake office by giving informal supervision and/or referral to another agency when it appears that the child and his/her parent need assistance in preventing further violations of the law, but may not require nor benefit from judicial proceedings.

FORMAL CASES are those cases in which a petition has been authorized and filed requiring formal court action.

DELINQUENCY CASES are those cases referred to the Department for acts defined in the statutes of the State of Maryland as the violation of a State law or municipal ordinance by persons who have not reached their 18th birthday.

CHILDREN IN NEED OF SUPERVISION (CINS) are those cases referred to the Juvenile Services Administration involving children who are in need of guidance, treatment, or rehabilitation because they are habitually truant; habitually disobedient, ungovernable or beyond control; deport themselves so as to injure or endanger themselves or others; or commit an offense applicable only to children.

CHILDREN IN NEED OF ASSISTANCE (CINA) are those cases referred to the Juvenile Services Administration which involve children who need the assistance of the court because of dependency, neglect or mental handicaps.

DEPENDENCY CASES are those cases involving a child who has been deprived of adequate support or care by reason of the death, continued absence from the home, or physical, mental or emotional incapacity or disability of his parent, guardian or other custodian.

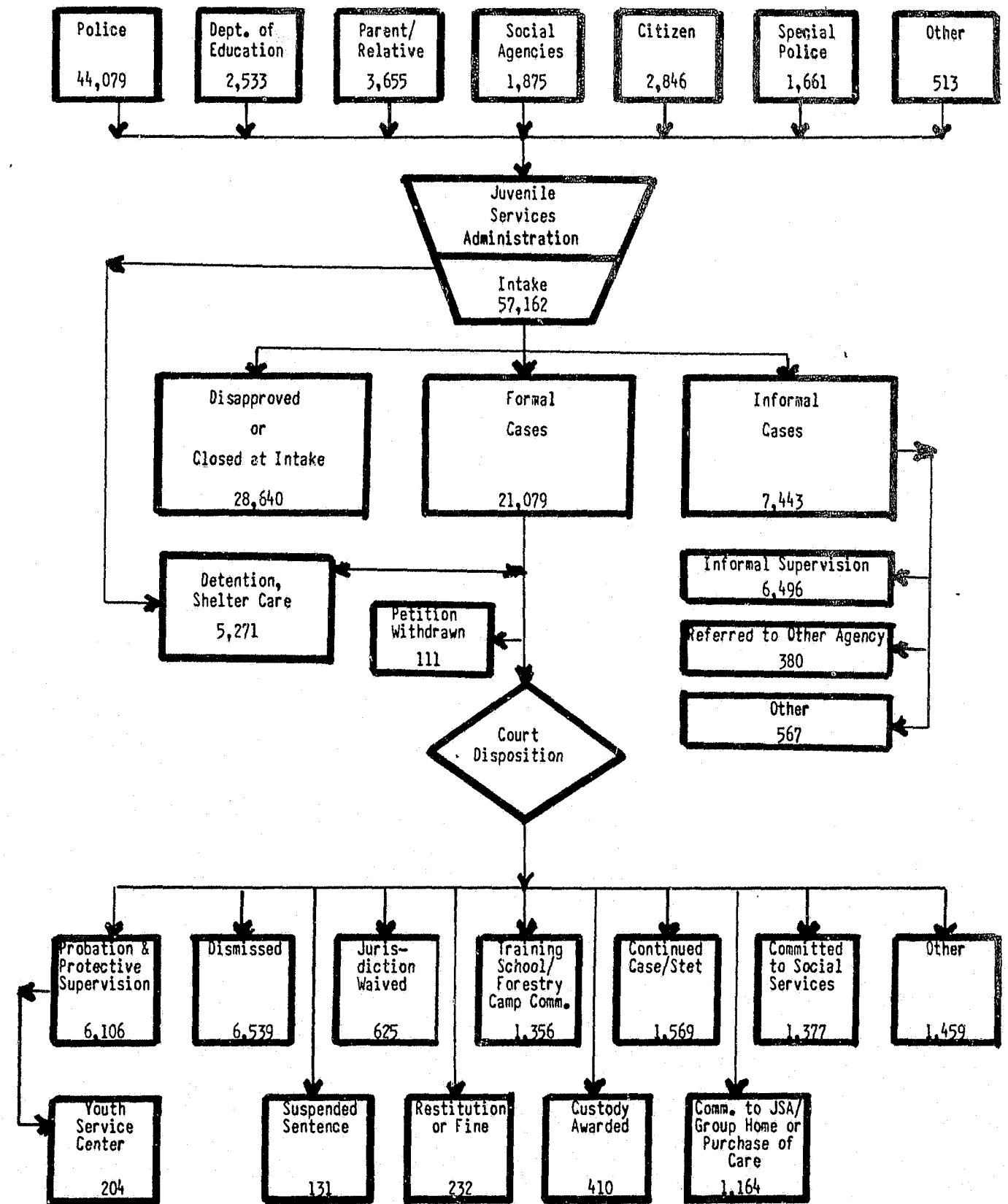
NEGLECT CASES are those cases involving a child who requires the aid of the court and either has been abandoned or deserted by his parents, guardian or other custodian; whose parent, guardian or other custodian does not adequately care for him although financially able, or offered the financial means to do so; or who suffers or is likely to suffer serious harm from an improper home environment or guardianship, including the lack of moral supervision or guidance, of his parents, guardian or custodian.

MENTALLY HANDICAPPED include those cases in which a mentally handicapped child is brought into court for the determination of proper care.

SPECIAL PROCEEDINGS includes guardianship or custody cases or application for permission to marry, or to enlist in the armed forces, etc.

JUVENILE SERVICES ADMINISTRATION

FLOW CHART
FISCAL 1975



STATISTICS

FIGURE 1
JUVENILE SERVICES ADMINISTRATION
FISCAL 1975 BUDGET

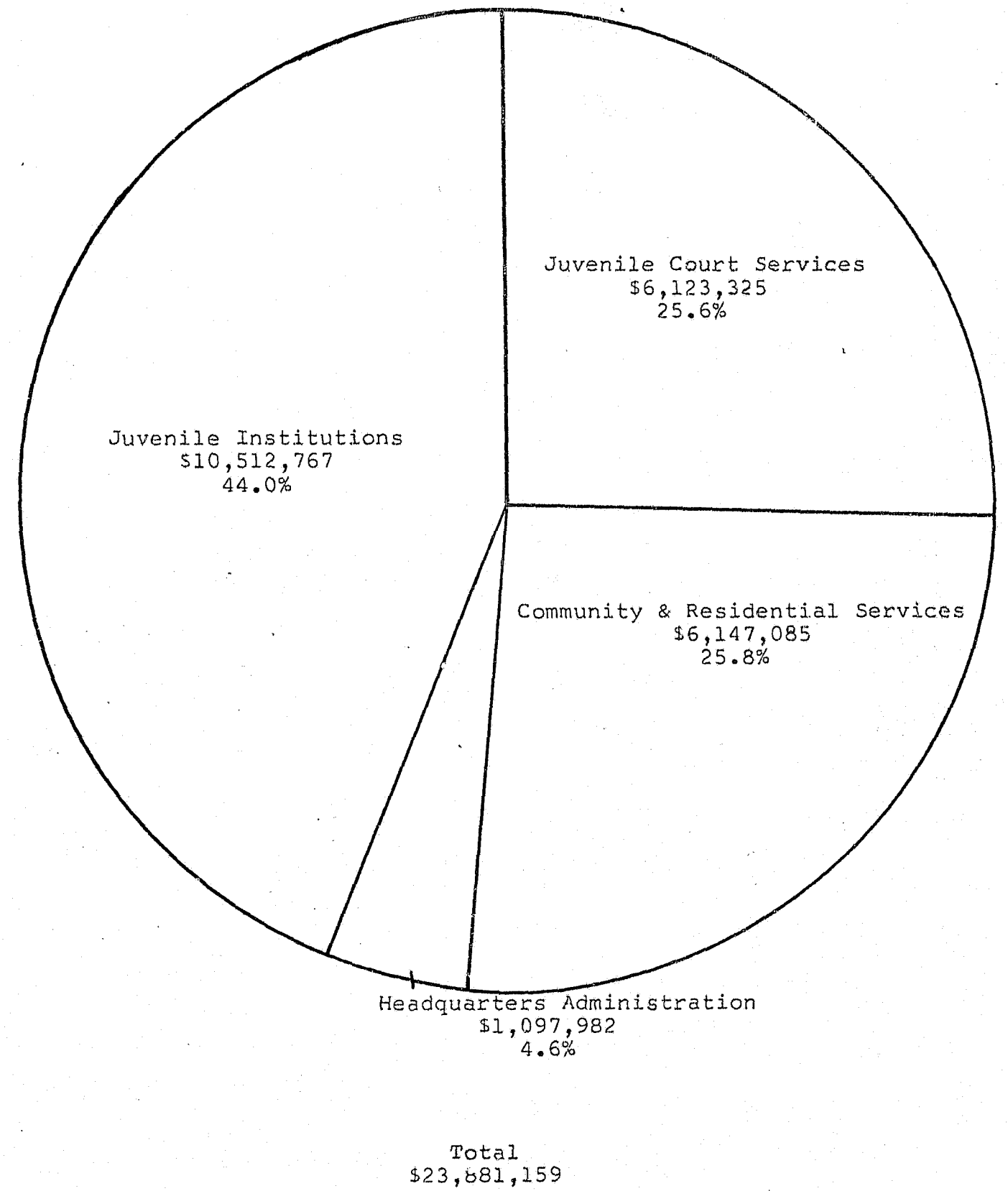


TABLE 1: JUVENILE SERVICES ADMINISTRATION
SUMMARY OF BUDGET EXPENDITURES BY MAJOR PROGRAM
FISCAL 1968 - 1975

| Year (Fiscal) | Juvenile Institutions | Juvenile Court Services | Community and Residential Services* | Administration Headquarters | Total |
|---------------|-----------------------|-------------------------|-------------------------------------|-----------------------------|--------------|
| 1968 | \$ 7,261,782 | \$ 2,187,060 | | \$ 456,824 | \$ 9,905,666 |
| 1969 | \$ 7,344,951 | \$ 2,130,139 | \$ 380,242 | \$ 458,217 | \$10,313,549 |
| 1970 | \$ 8,539,963 | \$ 2,686,603 | \$ 651,649 | \$ 541,877 | \$12,420,092 |
| 1971 | \$10,222,861 | \$ 3,755,940 | \$ 1,439,488 | \$ 598,619 | \$16,016,908 |
| 1972 | \$11,364,651 | \$ 4,793,753 | \$ 2,315,750 | \$ 805,298 | \$19,279,452 |
| 1973 | \$11,330,290 | \$ 4,916,722 | \$ 3,075,350 | \$ 740,626 | \$20,062,988 |
| 1974 | \$10,644,860 | \$ 5,112,801 | \$ 4,260,249 | \$ 1,081,863 | \$21,099,733 |
| 1975 | \$10,512,767 | \$ 6,123,325 | \$ 6,147,085 | \$ 1,097,982 | \$23,881,159 |

* Community and Residential services were not separately budgeted for fiscal 1968

DIVISION OF
JUVENILE COURT
SERVICES

8

9

HIGHLIGHTS OF JUVENILE COURT SERVICES

Source of Referral

Consistent with previous experience, a majority of the 57,162 cases that were handled during fiscal 1975 were referred by the police (77.1%). Parents and relatives referred 6.4%, followed by citizens with 5.0%, the Department of Education with 4.4%, the Department of Social Services with 3.1%, Special Police with 2.9% and "other" referrals with 1.1%.

Manner of Handling Cases

Of the 57,162 cases disposed of during fiscal 1975 by the Juvenile Services Administration, 50.1% were disapproved or closed at intake, 13.0% were handled informally by Intake and 36.9% received formal court action. The number of cases that were disapproved or closed at intake increased 23.8% over fiscal 1974. Similarly, the number of cases that were handled informally increased 23.1% over fiscal 1974 and the number of cases that were handled formally by the courts increased 12.5%.

Disposition

Of the 21,079 cases that were handled formally by the courts, 32.0% were "withdrawn", "dismissed", or "warned, adjusted or counselled"; 30.7% were placed on "probation", "protective supervision", or "probation without verdict"; 8.4% had "custody awarded" or were "committed to the Department of Social Services"; 7.4% were "continued without finding", or "Stet"; 6.5% were "committed to a training school or forestry camp"; 5.2% were "committed to the Juvenile Services Administration"; 3.0% had "jurisdiction waived"; 0.4% were "committed to a group home" or "purchase of care"; and 6.4% were disposed of in other ways.

Juvenile Court Trends

The total number of cases handled by the Juvenile Services Administration has steadily increased from the 19,782 cases disposed of during fiscal 1968 to the 57,162 cases disposed of during fiscal 1975. This represents a 189.0% increase during the seven year period and a 19.3% increase from fiscal 1974 to fiscal 1975. The number of cases that were handled formally by the courts, while increasing 31.4% from fiscal 1968, has not shown any consistent trend over this seven year period. The number of cases that were handled informally increased between fiscal 1968 and fiscal 1971, fell off sharply between fiscal 1971 and fiscal 1974 and then increased again during fiscal 1975. The trend for disapproved or closed at intake cases, a screening category which did not exist prior to fiscal 1970, has been a rapid increase since fiscal 1970.

Juvenile referrals in Maryland continue to be urban oriented. Five political subdivisions with 1970 populations of 250,000 or more each; Baltimore City, Montgomery, Prince George's, Baltimore and Anne Arundel Counties, reported 82.9% of the juvenile cases handled during fiscal 1975, with 47,397 of the 57,162 cases. This compares with 80.7% in fiscal 1970, 80.9% in fiscal 1971, 82.4% in fiscal 1972, 82.6% in fiscal 1973 and 81.7% in fiscal 1974.

Juvenile Case Rates

The total juvenile case rate for Maryland during fiscal 1975 was 56 cases per 1,000 juveniles, five through seventeen years of age, up from the 46 cases per 1,000 juveniles reported during fiscal 1974. This ranged from a low of 19 cases per 1,000 juveniles in Garrett County to a high of 99 cases per 1,000 juveniles for Baltimore City. Although Worcester County had the highest case rate with 117 cases per 1,000 juveniles, this was due primarily to the summer influx of visitors to Ocean City. Looking only at the cases that involved delinquent offenses, the case rate was 47 cases per 1,000 juveniles, up from the 37 cases per 1,000 juveniles reported during fiscal 1974. This ranged from a low of 12 cases per 1,000 juveniles in Garrett County to a high of 87 cases per 1,000 juveniles in Baltimore City.

Major Reason for Referral

A majority of the cases that were handled by the Juvenile Services Administration during fiscal 1975 involved delinquent offenses (84.6%). Of these cases, 14.1% involved "burglary breaking and entering", followed by "assault" with 13.7%, "shoplifting" with 11.4% and "larceny" with 11.2%. Over half of the cases that were referred for delinquent offenses were disapproved or closed at intake (51.3%), 35.6% were handled formally and 13.1% were handled informally.

Cases involving Children in Need of Supervision accounted for 11.3% of the total number of cases handled during fiscal 1975. Of these cases 41.1% involved "run-aways", "truancy" accounted for 17.9% and 41.0% involved "ungovernable" behavior. A majority of these cases were disapproved or closed at intake (57.0%), 26.4% were handled formally and 16.6% were handled informally.

Only 4.0% of the cases handled by the Juvenile Services Administration during fiscal 1975 involved Children in Need of Assistance. Referrals for "dependency" accounted for 47.5% of these cases, 28.6% involved "neglect", a combination of "neglect and dependency" accounted for 21.8% and 2.1% involved "mental handicaps." A majority of these cases were handled formally (92.0%), while 6.1% were disapproved or closed at intake and 1.9% were handled informally.

Sex Ratio

The sex ratio of cases disposed of by the Juvenile Services Administration during fiscal 1975 was 3.8 males to every female with 79.2% of the cases involving males and 20.8% involving females. Of the cases that were handled formally, however, the sex ratio was 4.6 males to every female with 82.3% of the formal cases involving males and 17.7% involving females. The ratio for both informal cases and cases that were disapproved or closed at intake was 3.4 males to every female with 77.5% of the cases involving males and 22.5% involving females.

A majority of the cases involving females were disapproved or closed at intake (54.4%), 14.1% were handled informally and 31.5% received formal court action. Of those cases involving males, 49.0% were disapproved or closed at intake, 12.7% were handled informally and 38.3% received formal court action.

Race

A majority of the cases handled by the Juvenile Services Administration during fiscal 1975 involved whites (57.8%), while 41.5% involved blacks and 0.7% were classified as "other" or race information was not recorded. Of the 33,061 cases involving whites, 48.5% were disapproved or closed at intake, 17.4% were handled informally and 34.1% were handled formally. A majority of the 23,721 cases involving blacks were disapproved or closed at intake (52.4%),

7.0% were handled informally and 40.6% received formal court action.

Age of Juvenile

A majority of the cases that were handled by the Juvenile Services Administration during fiscal 1975 involved juveniles between fifteen and seventeen years of age (60.3%). In general, the number of cases increased proportionately with an increase in age up to the age of sixteen, decreasing thereafter with the sixteen year old group comprising the largest single age group with 20.7% of the cases. The average age of juveniles referred to Juvenile Services, however, was 14.6 years.

Age by Major Reason

Of the total number of delinquency cases handled by the Juvenile Services Administration during fiscal 1975, a majority involved juveniles who were between the ages of fifteen and seventeen (63.5%) with juveniles sixteen years of age accounting for the largest percentage of such cases (21.9%). A majority of the cases involving Children in Need of Supervision, on the other hand, consisted of juveniles who were between the ages of fourteen and sixteen (65.5%) with the largest group comprising the fifteen year olds (25.4%). Juveniles under the age of ten (57.0%) accounted for over half of the cases involving Children in Need of Assistance.

TABLE 2
SUMMARY OF JUVENILE PROBATION & COURT SERVICE EXPENDITURES
AND SERVICES RENDERED
FISCAL 1968 - 1975

| Year | Budget Expenditures | Juvenile Dispositions* | Probation, Probation Without Verdict & Protective Supervision Cases | Aftercare Cases |
|------|---------------------|------------------------|---|-----------------|
| 1968 | \$ 2,187,060 | 19,782 | 4,274 | 1,518 |
| 1969 | \$ 2,130,139 | 25,270 | 5,080 | 1,835 |
| 1970 | \$ 2,686,603 | 26,236 | 4,671 | 1,911 |
| 1971 | \$ 3,755,940 | 32,703 | 5,226 | 1,920 |
| 1972 | \$ 4,793,753 | 37,242 | 6,019 | 1,888 |
| 1973 | \$ 4,916,722 | 41,949 | 5,638 | 1,800 |
| 1974 | \$ 5,112,801 | 47,905 | 5,064 | 1,409 |
| 1975 | \$ 6,123,325 | 57,162 | 6,468 | 1,601 |

* Includes formal, informal, change in disposition and disapproved/closed at intake cases

TABLE 3
TOTAL CASES HANDLED BY THE JUVENILE SERVICES ADMINISTRATION BY COUNTY AND REGION
FORMAL, INFORMAL, CHANGE IN DISPOSITION & DISAPPROVED/CLOSED AT INTAKE CASES
1968 - 1975 FISCAL YEARS

| | 1968* | | 1969 | | 1970 | | 1971 | | 1972 | | 1973 | | 1974 | | 1975 | | Percent Change 74-75 |
|--------------------------|--------|-------|--------|-------|--------|-------|--------|-------|--------|-------|--------|-------|--------|-------|--------|-------|----------------------|
| | N | % | N | % | N | % | N | % | N | % | N | % | N | % | N | % | |
| Region 1. Dorchester | 168 | .8 | 170 | .7 | 119 | .5 | 209 | .6 | 199 | .5 | 308 | .7 | 317 | .7 | 300 | .5 | - 5.4 |
| Somerset | 98 | .5 | 103 | .4 | 94 | .4 | 120 | .4 | 118 | .3 | 148 | .4 | 123 | .3 | 144 | .3 | + 17.1 |
| Wicomico | 209 | 1.0 | 321 | 1.3 | 242 | .9 | 233 | .7 | 288 | .8 | 338 | .8 | 437 | .9 | 413 | .7 | - 5.5 |
| Worcester | 287 | 1.5 | 307 | 1.2 | 517 | 2.0 | 818 | 2.5 | 694 | 1.9 | 610 | 1.4 | 656 | 1.4 | 750 | 1.3 | + 14.3 |
| Region 2. Caroline | 63 | .3 | 128 | .5 | 83 | .3 | 123 | .4 | 129 | .3 | 108 | .2 | 150 | .3 | 206 | .4 | + 37.3 |
| Cecil | 245 | 1.2 | 371 | 1.5 | 267 | 1.0 | 428 | 1.3 | 483 | 1.3 | 533 | 1.3 | 481 | 1.0 | 472 | .6 | - 1.9 |
| Kent | 114 | .6 | 116 | .4 | 138 | .5 | 128 | .4 | 139 | .4 | 151 | .4 | 214 | .4 | 210 | .4 | - 1.9 |
| Queen Anne's | 91 | .5 | 117 | .4 | 118 | .4 | 245 | .7 | 163 | .4 | 163 | .4 | 181 | .4 | 129 | .2 | - 28.7 |
| Talbot | 114 | .6 | 63 | .2 | 115 | .4 | 181 | .5 | 144 | .4 | 175 | .4 | 195 | .4 | 254 | .4 | + 30.3 |
| Region 3. Baltimore | 1,939 | 9.8 | 2,929 | 11.6 | 3,080 | 11.7 | 3,521 | 10.8 | 3,709 | 10.0 | 4,373 | 10.4 | 5,531 | 11.6 | 6,838 | 12.0 | + 23.6 |
| Harford | 443 | 2.2 | 627 | 2.5 | 695 | 2.6 | 916 | 2.8 | 1,058 | 2.8 | 904 | 2.2 | 915 | 1.9 | 998 | 1.7 | + 9.1 |
| Region 4. Allegany | 553 | 2.8 | 346 | 1.4 | 327 | 1.2 | 422 | 1.3 | 380 | 1.0 | 464 | 1.1 | 516 | 1.1 | 560 | 1.0 | + 8.5 |
| Garrett | 94 | .5 | 89 | .4 | 36 | .1 | 120 | .4 | 110 | .3 | 135 | .3 | 108 | .2 | 115 | .2 | + 0.5 |
| Washington | 833 | 4.2 | 416 | 1.6 | 559 | 2.1 | 511 | 1.6 | 471 | 1.3 | 750 | 1.8 | 691 | 1.4 | 842 | 1.5 | + 21.9 |
| Region 5. Anne Arundel | 931 | 4.7 | 1,261 | 5.0 | 1,559 | 6.0 | 2,618 | 8.0 | 2,408 | 6.5 | 2,815 | 6.7 | 3,706 | 7.7 | 5,296 | 9.3 | + 42.9 |
| Carroll | 130 | .7 | 163 | .6 | 223 | .9 | 372 | 1.1 | 231 | .6 | 330 | .8 | 549 | 1.1 | 669 | 1.2 | + 21.9 |
| Howard | 226 | 1.1 | 546 | 2.2 | 486 | 1.9 | 301 | .9 | 416 | 1.1 | 468 | 1.1 | 789 | 1.6 | 942 | 1.6 | + 19.4 |
| Region 6. Frederick | 367 | 1.9 | 354 | 1.4 | 441 | 1.7 | 362 | 1.1 | 450 | 1.2 | 567 | 1.4 | 760 | 1.6 | 800 | 1.4 | + 5.3 |
| Montgomery | 2,091 | 10.6 | 2,724 | 10.8 | 2,590 | 9.9 | 2,950 | 9.0 | 3,677 | 9.8 | 3,031 | 7.2 | 3,532 | 7.4 | 5,253 | 9.2 | + 48.7 |
| Region 7. Calvert | 47 | .2 | 129 | .5 | 134 | .5 | 191 | .6 | 213 | .6 | 248 | .6 | 284 | .6 | 433 | .8 | + 52.5 |
| Charles | 115 | .6 | 162 | .6 | 324 | 1.2 | 381 | 1.2 | 582 | 1.6 | 531 | 1.3 | 953 | 2.0 | 987 | 1.7 | + 3.6 |
| Prince George's | 3,268 | 16.5 | 5,101 | 20.2 | 5,550 | 21.2 | 5,977 | 18.3 | 6,823 | 18.3 | 6,717 | 16.0 | 8,592 | 17.9 | 9,320 | 16.3 | + 8.5 |
| St. Mary's | 75 | .4 | 218 | .9 | 148 | .6 | 192 | .6 | 281 | .8 | 379 | .9 | 456 | 1.0 | 541 | .9 | + 18.6 |
| Region 8. Baltimore City | 7,281 | 36.8 | 8,509 | 33.7 | 8,391 | 32.0 | 11,384 | 34.8 | 14,076 | 37.8 | 17,703 | 42.2 | 17,769 | 37.1 | 20,690 | 36.2 | + 16.4 |
| STATE | 19,782 | 100.0 | 25,270 | 100.0 | 25,236 | 100.0 | 32,703 | 100.0 | 37,242 | 100.0 | 41,949 | 100.0 | 47,905 | 100.0 | 57,162 | 100.0 | + 19.3 |

* Includes non-support cases and cases involving adults contributing to the delinquency of a minor

TABLE 4
 FORMAL JUVENILE COURT DISPOSITIONS BY COUNTY AND REGION
 1968 - 1975 FISCAL YEARS

| | 1968* | | 1969 | | 1970 | | 1971 | | 1972 | | 1973 | | 1974 | | 1975 | | Percent Change 74-75 |
|--------------------------|--------|-------|--------|-------|--------|-------|--------|-------|--------|-------|--------|-------|--------|-------|--------|-------|----------------------|
| | N | % | N | % | N | % | N | % | N | % | N | % | N | % | N | % | |
| Region 1. Dorchester | 120 | .8 | 144 | .8 | 93 | .6 | 101 | .6 | 86 | .5 | 140 | .7 | 176 | .9 | 142 | .7 | - 19.3 |
| Somerset | 63 | .4 | 55 | .3 | 49 | .3 | 74 | .5 | 57 | .3 | 81 | .4 | 73 | .4 | 59 | .3 | - 19.2 |
| Wicomico | 133 | .8 | 223 | 1.2 | 158 | 1.0 | 158 | 1.0 | 201 | 1.1 | 243 | 1.3 | 266 | 1.4 | 214 | 1.0 | - 19.5 |
| Worcester | 98 | .6 | 88 | .5 | 100 | .6 | 102 | .7 | 124 | .7 | 108 | .6 | 90 | .5 | 144 | .7 | + 60.0 |
| Region 2. Caroline | 58 | .4 | 96 | .5 | 45 | .3 | 61 | .4 | 64 | .3 | 52 | .3 | 46 | .2 | 50 | .2 | + 8.7 |
| Cecil | 120 | .7 | 120 | .7 | 86 | .6 | 160 | 1.0 | 141 | .8 | 148 | .8 | 163 | .9 | 121 | .6 | - 25.8 |
| Kent | 106 | .7 | 100 | .6 | 99 | .6 | 77 | .5 | 63 | .3 | 87 | .4 | 87 | .5 | 73 | .3 | - 16.1 |
| Queen Anna's | 90 | .6 | 117 | .7 | 115 | .7 | 178 | 1.1 | 106 | .6 | 113 | .6 | 105 | .6 | 72 | .3 | - 31.4 |
| Talbot | 94 | .6 | 52 | .3 | 41 | .3 | 87 | .6 | 73 | .4 | 61 | .3 | 91 | .5 | 61 | .3 | - 33.0 |
| Region 3. Baltimore | 1,887 | 11.8 | 1,881 | 10.6 | 1,564 | 9.8 | 1,362 | 8.8 | 1,661 | 9.0 | 1,513 | 7.9 | 1,515 | 8.1 | 1,751 | 8.3 | + 15.6 |
| Harford | 436 | 2.7 | 486 | 2.7 | 359 | 2.3 | 340 | 2.2 | 347 | 1.9 | 313 | 1.6 | 374 | 2.0 | 404 | 1.9 | + 8.0 |
| Region 4. Allegany | 488 | 3.0 | 309 | 1.7 | 309 | 2.0 | 398 | 2.6 | 348 | 1.9 | 333 | 1.7 | 391 | 2.1 | 463 | 2.2 | + 18.4 |
| Garrett | 92 | .6 | 86 | .5 | 31 | .2 | 91 | .6 | 77 | .4 | 70 | .4 | 65 | .3 | 83 | .4 | + 27.7 |
| Washington | 744 | 4.6 | 383 | 2.2 | 498 | 3.1 | 491 | 3.2 | 419 | 2.3 | 513 | 2.7 | 544 | 2.9 | 609 | 2.9 | + 11.9 |
| Region 5. Anne Arundel | 631 | 3.9 | 906 | 5.1 | 665 | 4.2 | 1,164 | 7.5 | 999 | 5.4 | 1,049 | 5.4 | 1,384 | 7.4 | 1,514 | 7.2 | + 9.4 |
| Carroll | 128 | .8 | 163 | .9 | 102 | .6 | 126 | .8 | 124 | .7 | 107 | .5 | 161 | .8 | 223 | 1.1 | + 38.5 |
| Howard | 181 | 1.1 | 320 | 1.8 | 268 | 1.7 | 181 | 1.2 | 237 | 1.3 | 205 | 1.1 | 296 | 1.6 | 329 | 1.6 | + 11.1 |
| Region 6. Frederick | 43 | .3 | 63 | .4 | 135 | .8 | 120 | .8 | 150 | .8 | 131 | .7 | 175 | .9 | 166 | .8 | - 5.1 |
| Montgomery | 1,262 | 7.9 | 1,475 | 8.3 | 1,417 | 8.9 | 1,218 | 7.9 | 1,485 | 8.1 | 1,212 | 6.3 | 1,230 | 6.6 | 2,076 | 9.8 | + 68.8 |
| Region 7. Calvert | 45 | .3 | 106 | .6 | 49 | .3 | 56 | .4 | 85 | .5 | 72 | .4 | 93 | .5 | 168 | .8 | + 80.6 |
| Charles | 115 | .7 | 145 | .8 | 98 | .6 | 109 | .7 | 173 | .9 | 119 | .6 | 251 | 1.3 | 288 | 1.4 | + 14.7 |
| Prince George's | 3,228 | 20.1 | 3,540 | 19.9 | 3,129 | 19.7 | 2,800 | 18.1 | 3,002 | 16.4 | 2,867 | 14.9 | 3,259 | 17.4 | 3,473 | 16.5 | + 6.6 |
| St. Mary's | 69 | .4 | 215 | 1.2 | 96 | .6 | 87 | .6 | 107 | .6 | 148 | .8 | 199 | 1.1 | 219 | 1.0 | + 10.1 |
| Region 8. Baltimore City | 5,812 | 36.2 | 6,715 | 37.7 | 6,395 | 40.2 | 5,892 | 38.2 | 8,213 | 44.8 | 9,529 | 49.6 | 7,701 | 41.1 | 8,377 | 39.7 | + 8.8 |
| STATE | 16,043 | 100.0 | 17,788 | 100.0 | 15,901 | 100.0 | 15,433 | 100.0 | 18,340 | 100.0 | 19,214 | 100.0 | 18,735 | 100.0 | 21,079 | 100.0 | + 12.5 |

* Includes non-support cases and cases involving adults contributing to the delinquency of a minor

TABLE 5
 TOTAL NUMBER OF CASES HANDLED INFORMALLY
 BY THE JUVENILE SERVICES ADMINISTRATION BY COUNTY AND REGION
 1968 - 1975 FISCAL YEARS

| | 1968* | | 1969 | | 1970 | | 1971 | | 1972 | | 1973 | | 1974 | | 1975 | | Percent Change 74-75 |
|--------------------------|-------|-------|-------|-------|-------|-------|--------|-------|--------|-------|-------|-------|-------|-------|-------|-------|----------------------|
| | N | % | N | % | N | % | N | % | N | % | N | % | N | % | N | % | |
| Region 1. Dorchester | 41 | 1.3 | 23 | .3 | 20 | .2 | 103 | .8 | 73 | .7 | 67 | .8 | 31 | .5 | 57 | .8 | + 83.9 |
| Somerset | 35 | 1.1 | 48 | .7 | 45 | .5 | 43 | .4 | 39 | .4 | 9 | .1 | 1 | .0 | 1 | .0 | N/C |
| Wicomico | 74 | 2.3 | 93 | 1.4 | 83 | 1.0 | 70 | .6 | 71 | .7 | 6 | .1 | 7 | .1 | 1 | .1 | - 85.7 |
| Worcester | 187 | 5.9 | 214 | 3.2 | 378 | 4.4 | 701 | 5.7 | 281 | 2.7 | | | 1 | .0 | 5 | .1 | +400.0 |
| Region 2. Caroline | 124 | 3.9 | 31 | .5 | 13 | .2 | 56 | .5 | 35 | .3 | 16 | .2 | 25 | .4 | 20 | .3 | - 20.0 |
| Cecil | 8 | .2 | 247 | 3.7 | 181 | 2.1 | 248 | 2.0 | 166 | 1.6 | 55 | .7 | 33 | .6 | 27 | .4 | - 18.2 |
| Kent | 1 | .0 | 16 | .2 | 8 | .1 | 14 | .1 | 55 | .5 | 23 | .3 | 21 | .4 | 19 | .2 | - 9.5 |
| Queen Anne's | | | | | | | 66 | .5 | 48 | .5 | 41 | .5 | 76 | 1.3 | 57 | .8 | - 25.0 |
| Talbot | | | 11 | .2 | 14 | .2 | 65 | .5 | 41 | .4 | 32 | .4 | 76 | 1.3 | 165 | 2.2 | +117.1 |
| Region 3. Baltimore | 1 | .0 | 1,016 | 15.4 | 1,308 | 15.2 | 1,558 | 12.7 | 1,614 | 15.6 | 1,781 | 21.3 | 1,149 | 19.0 | 3,513 | 47.2 | +205.7 |
| Harford | | | 139 | 2.1 | 272 | 3.2 | 510 | 4.2 | 653 | 6.3 | 489 | 5.8 | 430 | 7.1 | 34 | .4 | - 92.1 |
| Region 4. Allegany | 65 | 2.0 | 36 | .6 | 17 | .2 | 17 | .1 | 27 | .3 | 52 | .6 | 6 | .1 | 6 | .1 | N/C |
| Garrett | 1 | .0 | | | 4 | .0 | 2 | .0 | 29 | .3 | 50 | .6 | 34 | .6 | 24 | .3 | - 29.4 |
| Washington | 89 | 2.8 | 33 | .5 | 55 | .6 | 20 | .2 | 13 | .1 | 46 | .5 | 25 | .4 | 97 | 1.3 | +288.0 |
| Region 5. Anne Arundel | 121 | 3.8 | 143 | 2.2 | 702 | 8.1 | 1,189 | 9.7 | 1,038 | 10.0 | 216 | 2.6 | 81 | 1.3 | 865 | 11.6 | +967.9 |
| Carroll | 1 | .0 | | | 44 | .5 | 28 | .2 | 22 | .2 | 34 | .4 | 25 | .4 | 131 | 1.7 | +424.0 |
| Howard | | | | | 46 | .5 | 81 | .7 | 93 | .9 | 2 | .0 | 1 | .0 | 12 | .2 | +1100.0 |
| Region 6. Frederick | 324 | 10.1 | 291 | 4.5 | 183 | 2.1 | 67 | .5 | 111 | 1.1 | 98 | 1.2 | 72 | 1.2 | 112 | 1.5 | + 55.6 |
| Montgomery | 791 | 24.7 | 1,184 | 17.9 | 1,164 | 13.5 | 1,378 | 11.2 | 1,961 | 19.0 | 1,293 | 15.5 | 1,858 | 30.7 | 770 | 10.3 | - 58.6 |
| Region 7. Calvert | 2 | .1 | 23 | .3 | 85 | 1.0 | 134 | 1.1 | 114 | 1.1 | 173 | 2.1 | 184 | 3.1 | 258 | 3.5 | + 40.2 |
| Charles | | | 16 | .2 | 226 | 2.6 | 244 | 2.0 | 262 | 2.5 | 78 | .9 | 39 | .6 | 66 | .9 | + 69.2 |
| Prince George's | 1 | .0 | 1,513 | 22.9 | 2,385 | 27.6 | 2,983 | 24.2 | 2,175 | 21.0 | 2,243 | 26.8 | 903 | 14.9 | 557 | 7.5 | - 38.3 |
| St. Mary's | 3 | .2 | 3 | .0 | 21 | .2 | 102 | .8 | 148 | 1.4 | 176 | 2.1 | 22 | .4 | 1 | .0 | - 95.5 |
| Region 8. Baltimore City | 1,332 | 41.6 | 1,536 | 23.2 | 1,378 | 16.0 | 2,623 | 21.3 | 1,284 | 12.4 | 1,378 | 16.5 | 945 | 15.6 | 645 | 8.7 | - 31.7 |
| STATE | 3,201 | 100.0 | 6,616 | 100.0 | 8,632 | 100.0 | 12,302 | 100.0 | 10,353 | 100.0 | 8,358 | 100.0 | 6,045 | 100.0 | 7,443 | 100.0 | + 23.1 |

* Includes non-support cases and cases involving adults contributing to the delinquency of a minor

TABLE 6
TOTAL NUMBER OF JUVENILE CASES DISAPPROVED OR CLOSED AT INTAKE BY COUNTY AND REGION
FISCAL YEARS 1970 - 1975

| | 1970 | | 1971 | | 1972 | | 1973 | | 1974 | | 1975 | | Percent Change 1974-1975 |
|---|-------|-------|-------|-------|-------|-------|--------|-------|--------|-------|--------|-------|-----------------------------|
| | N | % | N | % | N | % | N | % | N | % | N | % | |
| Region 1. Dorchester Somerset Wicomico Worcester | | | 2 | .1 | 40 | .5 | 101 | .7 | 110 | .5 | 101 | .4 | - 8.2 |
| | | | | | 22 | .3 | 58 | .4 | 49 | .2 | 84 | .3 | + 71.4 |
| | | | | | 16 | .2 | 89 | .6 | 164 | .7 | 198 | .7 | + 20.7 |
| | 33 | 2.7 | 15 | .3 | 289 | 3.4 | 502 | 3.5 | 565 | 2.4 | 601 | 2.1 | + 6.4 |
| Region 2. Caroline Cecil Kent Queen Anne's Talbot | 24 | 2.0 | 3 | .1 | 30 | .3 | 40 | .3 | 79 | .4 | 136 | .5 | + 72.2 |
| | | | 13 | .3 | 176 | 2.1 | 330 | 2.3 | 285 | 1.2 | 324 | 1.1 | + 13.7 |
| | 31 | 2.6 | 37 | .8 | 21 | .2 | 41 | .3 | 106 | .5 | 118 | .4 | + 11.3 |
| | 3 | .3 | 1 | .0 | 9 | .1 | 9 | .1 | | | | | |
| | 60 | 4.9 | 27 | .6 | 30 | .3 | 82 | .6 | 28 | .1 | 28 | .1 | N/C |
| Region 3. Baltimore Harford | 108 | 8.9 | 492 | 11.0 | 434 | 5.1 | 1,079 | 7.5 | 2,867 | 12.4 | 1,574 | 5.5 | - 45.1 |
| | 63 | 5.2 | 63 | 1.4 | 58 | .7 | 102 | .7 | 111 | .5 | 560 | 2.0 | + 404.5 |
| Region 4. Allegany Garrett Washington | 1 | .1 | 20 | .5 | 7 | .1 | 79 | .5 | 119 | .5 | 91 | .3 | - 23.5 |
| | | | | | 4 | .0 | 15 | .1 | 9 | .0 | 8 | | - 11.1 |
| | 4 | .3 | | | 39 | .5 | 191 | 1.3 | 122 | .5 | 136 | .5 | + 11.5 |
| Region 5. Anne Arundel Carroll Howard | 27 | 2.2 | 68 | 1.5 | 371 | 4.3 | 1,550 | 10.8 | 2,241 | 9.7 | 2,917 | 10.2 | + 30.2 |
| | 77 | 6.3 | 218 | 4.9 | 85 | 1.0 | 189 | 1.3 | 363 | 1.6 | 315 | 1.1 | - 13.2 |
| | 1 | .1 | 9 | .2 | 86 | 1.0 | 261 | 1.8 | 492 | 2.1 | 601 | 2.1 | + 22.2 |
| Region 6. Frederick Montgomery | 123 | 10.1 | 172 | 3.9 | 189 | 2.2 | 338 | 2.3 | 513 | 2.2 | 522 | 1.8 | + 1.8 |
| | | | 354 | 7.9 | 231 | 2.7 | 526 | 3.7 | 444 | 1.9 | 2,407 | 8.4 | + 442.1 |
| Region 7. Calvert Charles Prince George's St. Mary's | | | | | 14 | .2 | 3 | .0 | 7 | .0 | 7 | | N/C |
| | | | 28 | .6 | 147 | 1.7 | 334 | 2.3 | 663 | 2.9 | 633 | 2.2 | - 4.5 |
| | 21 | 1.7 | 194 | 4.4 | 1,646 | 19.2 | 1,607 | 11.2 | 4,430 | 19.2 | 5,290 | 18.5 | + 19.4 |
| | 31 | 2.6 | 3 | .1 | 26 | .3 | 55 | .4 | 235 | 1.0 | 321 | 1.1 | + 36.6 |
| Region 8. Baltimore City | 607 | 50.0 | 2,740 | 61.4 | 4,579 | 53.6 | 6,796 | 47.3 | 9,123 | 39.5 | 11,668 | 40.7 | + 27.9 |
| STATE | 1,214 | 100.0 | 4,459 | 100.0 | 8,549 | 100.0 | 14,377 | 100.0 | 23,125 | 100.0 | 28,640 | 100.0 | + 23.8 |

TABLE 7
TOTAL OFFENSE CASE RATE AND TOTAL DELINQUENT CASE RATE
PER 1,000 JUVENILES BY COUNTY AND REGION - FISCAL 1975

| | Population Estimate 5 through 17 years July 1, 1973* | Total Cases Handled by Juvenile Services Administration | Total Case Rate Per 1,000 Juveniles | Total Delinquent Cases Handled by Juvenile Services Administration | Delinquent Case Rate Per 1,000 Juveniles |
|---|--|--|--|---|--|
| REGION 1. DORCHESTER SOMERSET WICOMICO WORCESTER** | 6,690 4,490 13,890 6,410 | 300 144 413 750 | 45 32 30 117 | 253 109 356 538 | 38 24 26 84 |
| REGION 2. CAROLINE CECIL KENT QUEEN ANNE'S TALBOT | 5,400 14,710 4,010 4,810 5,680 | 206 472 210 129 254 | 38 32 52 27 45 | 175 435 180 80 206 | 32 30 45 17 36 |
| REGION 3. BALTIMORE HARFORD | 154,200 35,060 | 6,838 998 | 44 28 | 5,876 816 | 38 23 |
| REGION 4. ALLEGANY GARRETT WASHINGTON | 18,990 6,190 25,730 | 560 115 842 | 29 19 33 | 354 77 671 | 19 12 26 |
| REGION 5. ANNE ARUNDEL CARROLL HOWARD | 87,410 19,110 23,010 | 5,296 669 942 | 61 35 41 | 4,348 547 856 | 50 29 37 |
| REGION 6. FREDERICK MONTGOMERY | 23,550 145,770 | 800 5,253 | 34 36 | 664 4,115 | 28 28 |
| REGION 7. CALVERT CHARLES PRINCE GEORGE'S ST. MARY'S | 6,800 17,780 175,560 14,040 | 433 987 9,320 541 | 64 56 53 39 | 311 716 7,930 479 | 46 40 45 34 |
| REGION 8. BALTIMORE CITY | 209,140 | 20,690 | 99 | 18,268 | 87 |
| STATE | 1,028,430 | 57,162 | 56 | 48,360 | 47 |

* Population data supplied by the Maryland Center for Health Statistics

**The high case rates for Worcester County are due primarily to the summer influx of visitors to Ocean City

TABLE 8
DISPOSITION BY COUNTY & REGION
FISCAL 1975

| | Petition Withdrawn | Dismissed | Referred, Adjusted or Counselled | Jurisdiction Waived | Continue Case without Finding | Custody Awarded | Committed to Department of Social Services | Committed to Training School | Probation | Referred to Other Agency | Restitution or Fine | Support Ordered or Revised | Suspended Sentence | Other |
|---|-----------------------|---------------------------|-------------------------------------|------------------------|----------------------------------|-----------------------|--|---------------------------------|---------------------------|-----------------------------|------------------------|-------------------------------|--------------------|-------------------|
| REGION 1. DORCHESTER SOMERSET WICOMICO WORCESTER | 5 6 1 | 16 6 23 | 2 3 1 | 31 17 43 32 | 7 6 | 14 5 15 4 | 13 33 22 6 | 12 6 16 2 | 35 3 65 60 | 5 2 | | | | 3 1 9 1 |
| REGION 2. CAROLINE CECIL KENT QUEEN ANNE'S TALBOT | 8 1 4 | 6 21 74 20 15 | 1 1 2 | 3 15 7 7 6 | | 3 1 1 1 1 | 3 3 6 12 7 | 1 11 4 5 4 | 15 43 9 10 17 | 1 | | 10 | | 9 5 1 |
| REGION 3. BALTIMORE HARFORD | 6 5 | 279 88 | 6 3 | 78 3 | 2 7 | 8 3 | 183 56 | 152 13 | 751 131 | 7 | 4 | 5 | | 45 9 |
| REGION 4. ALLEGANY GARRETT WASHINGTON | 11 3 6 | 12 8 45 | 21 4 18 | 5 32 | 4 6 | 67 14 | 4 5 42 | 27 7 28 | 98 20 36 | 1 3 4 | 16 60 | | 13 53 | 74 3 50 |
| REGION 5. ANNE ARUNDEL CARROLL HOWARD | 10 | 273 42 175 | 1 3 | 3 1 | 289 17 6 | 74 1 10 | 101 33 17 | 1 1 | 279 51 66 | 1 2 | 2 3 | | | 289 6 6 |
| REGION 6. FREDERICK MONTGOMERY | 5 1 | 19 480 | 1 | 2 12 | 1 14 | 3 5 | 19 146 | 11 67 | 46 645 | 7 | 116 | 4 | 59 | 25 203 |
| REGION 7. CALVERT CHARLES PRINCE GEORGE'S ST. MARY'S | 19 2 | 30 14 709 40 | 1 21 | 4 15 | 1 | 14 4 159 | 5 21 260 12 | 11 2 146 11 | 66 143 963 132 | 7 6 | 10 | | 5 1 | 4 1 27 3 |
| REGION 8. BALTIMORE CITY | 20 | 4,187 | 16 | 309 | 1 | 3 | 388 | 696 | 1,915 | | 21 | | | 26 |
| STATE | 111 | 6,539 | 104 | 625 | 361 | 410 | 1,377 | 1,234 | 5,599 | 46 | 232 | 19 | 131 | 800 |

TABLE 8
(continued)

| | Committed to Mental Inst. or Referred to Psychiatric Care | Stot | Probation without Verdict | Committed to Department of Juvenile Services | Purchase of Care | Group Home | Protective Supervision | Committed to Forestry Camps | Referred to Mental Retardation Administration | Total Formal | Total Informal | Total Disapproved/ Closed at Intake | Grand Total |
|---|--|----------------------|------------------------------|--|------------------|------------------|---------------------------|--------------------------------|---|-----------------------------|-----------------------------|--|---------------------------------|
| REGION 1. DORCHESTER SOMERSET WICOMICO WORCESTER | 1 | 1 | | 5 | | 2 6 4 | | 1 | | 142 59 214 144 | 57 1 1 5 | 101 84 198 601 | 300 144 413 750 |
| REGION 2. CAROLINE CECIL KENT QUEEN ANNE'S TALBOT | 2 1 1 | | | 1 | 1 1 | 3 4 6 4 | 6 1 3 | 1 5 2 1 | | 50 121 73 72 61 | 20 27 39 57 165 | 136 324 118 28 | 206 472 210 129 254 |
| REGION 3. BALTIMORE HARFORD | 11 4 | 136 6 | 1 42 | 73 21 | | 3 | 5 14 | 3 12 | | 1,751 404 | 3,513 34 | 1,574 560 | 6,838 998 |
| REGION 4. ALLEGANY GARRETT WASHINGTON | 5 1 2 | 6 20 | 59 6 168 | 30 5 11 | 1 | 5 | 11 3 6 | 4 4 8 | | 463 83 609 | 6 24 97 | 91 8 136 | 560 115 842 |
| REGION 5. ANNE ARUNDEL CARROLL HOWARD | 8 2 1 | 33 12 | 3 1 | 93 17 19 | | | 92 5 3 | 5 9 | | 1,514 223 329 | 865 131 12 | 2,917 315 601 | 5,296 669 942 |
| REGION 6. FREDERICK MONTGOMERY | 10 | 1 | 79 | 7 189 | 3 9 | 7 | 21 | 4 21 | | 166 2,076 | 112 770 | 522 2,407 | 800 5,253 |
| REGION 7. CALVERT CHARLES PRINCE GEORGE'S ST. MARY'S | 2 3 7 | 18 57 908 8 | | 3 201 5 | | 1 1 | 2 16 42 | 3 2 | | 168 288 3,473 219 | 258 66 557 1 | 7 633 5,290 321 | 433 987 9,320 541 |
| REGION 8. BALTIMORE CITY | 48 | 1 | | 410 | | 12 | 269 | 37 | 18 | 8,377 | 645 | 11,668 | 20,690 |
| STATE | 109 | 1,208 | 362 | 1,091 | 15 | 58 | 507 | 122 | 19 | 21,079 | 7,443 | 28,640 | 57,162 |

TABLE 9
MANNER OF HANDLING CASES BY COUNTY, REGION AND TYPE OF OFFENSE
FISCAL 1975

| | Formal | | | | Informal | | | Disapproved/Closed at Intake | | |
|---|-----------------------------|-----------------------|-------------------------|---------------------|-----------------------------|------------------------|------|------------------------------|------------------------|-------------------|
| | Delinquent | CINS | CINA | Special Proceedings | Delinquent | CINS | CINA | Delinquent | CINS | CINA |
| REGION 1. DORCHESTER SOMERSET WICOMICO WORCESTER | 110 37 164 125 | 5 5 2 9 | 27 17 43 10 | 5 | 51 1 1 4 | 6 1 | | 92 71 191 409 | 6 13 7 190 | 3 2 |
| REGION 2. CAROLINE CECIL KENT QUEEN ANNE'S TALBOT | 35 108 56 31 46 | 9 5 5 3 6 | 6 8 12 38 9 | | 17 23 10 49 141 | 3 4 9 8 24 | | 123 304 114 19 | 13 19 4 9 | 1 |
| REGION 3. BALTIMORE HARFORD | 1,356 299 | 203 42 | 185 63 | 7 | 3,154 29 | 339 5 | 20 | 1,366 488 | 196 72 | 12 |
| REGION 4. ALLEGANY GARRETT WASHINGTON | 268 55 511 | 62 14 24 | 77 14 74 | 56 | 3 15 50 | 3 9 29 | 18 | 83 7 110 | 8 1 25 | 1 |
| REGION 5. ANNE ARUNDEL CARROLL HOWARD | 993 150 270 | 296 25 31 | 225 46 26 | 2 2 | 817 116 10 | 48 15 2 | | 2,538 281 576 | 377 33 24 | 2 1 1 |
| REGION 6. FREDERICK MONTGOMERY | 112 1,787 | 26 137 | 28 151 | 1 | 86 648 | 26 117 | 5 | 466 1,680 | 56 727 | |
| REGION 7. CALVERT CHARLES PRINCE GEORGE'S ST. MARY'S | 133 213 2,788 197 | 3 36 241 7 | 32 39 444 15 | | 171 59 477 1 | 87 7 80 | | 7 444 4,665 281 | 181 618 38 | 8 7 2 |
| REGION 8. BALTIMORE CITY | 7,348 | 503 | 526 | | 401 | 243 | 1 | 10,519 | 1,048 | 101 |
| STATE | 17,192 | 1,699 | 2,115 | 73 | 6,334 | 1,065 | 44 | 24,834 | 3,665 | 141 |

TABLE 10
MANNER OF HANDLING CASES BY COUNTY, REGION AND SEX
FISCAL 1975

| | Formal | | | Informal | | | Disapproved/Closed at Intake | | |
|---|-----------------------------|----------------------------|-----------------------------|-----------------------------|------------------------|-----------------------------|------------------------------|-------------------------|-----------------------------|
| | Male | Female | Total | Male | Female | Total | Male | Female | Total |
| REGION 1. DORCHESTER SOMERSET WICOMICO WORCESTER | 104 45 156 114 | 38 14 58 30 | 142 59 214 144 | 50 1 1 4 | 7 1 | 57 1 1 5 | 80 71 141 415 | 21 13 57 186 | 101 84 198 601 |
| REGION 2. CAROLINE CECIL KENT QUEEN ANNE'S TALBOT | 36 103 54 50 45 | 14 18 19 22 16 | 50 121 73 72 61 | 18 20 11 50 126 | 2 7 8 7 39 | 20 27 19 57 165 | 116 266 94 21 | 20 58 24 7 | 136 324 118 28 |
| REGION 3. BALTIMORE HARFORD | 1,432 332 | 319 72 | 1,751 404 | 2,754 27 | 759 7 | 3,513 34 | 1,250 446 | 324 114 | 1,574 560 |
| REGION 4. ALLEGANY GARRETT WASHINGTON | 323 65 465 | 140 18 144 | 463 83 609 | 5 18 65 | 1 6 32 | 6 24 97 | 76 4 93 | 15 4 43 | 91 8 136 |
| REGION 5. ANNE ARUNDEL CARROLL HOWARD | 1,150 172 270 | 364 51 59 | 1,514 223 329 | 700 90 8 | 165 41 4 | 865 131 12 | 2,314 261 469 | 603 54 132 | 2,917 315 601 |
| REGION 6. FREDERICK MONTGOMERY | 114 1,807 | 52 269 | 166 2,076 | 82 635 | 30 135 | 112 770 | 406 1,735 | 116 672 | 522 2,407 |
| REGION 7. CALVERT CHARLES PRINCE GEORGE'S ST. MARY'S | 134 212 2,781 188 | 34 76 692 31 | 168 288 3,473 219 | 184 43 458 1 | 74 23 99 | 258 66 557 1 | 4 424 3,991 231 | 3 209 1,299 90 | 7 633 5,290 321 |
| REGION 8. BALTIMORE CITY | 7,187 | 1,190 | 8,377 | 418 | 227 | 645 | 9,281 | 2,387 | 11,668 |
| STATE | 17,339 | 3,740 | 21,079 | 5,769 | 1,674 | 7,443 | 22,189 | 6,451 | 28,640 |

TABLE 11
MANNER OF HANDLING CASES BY COUNTY, REGION AND RACE
FISCAL 1975

| | Formal | | | Informal | | | Disapproved/Closed at Intake | | |
|---|-----------------------------|---------------------------|-----------------------------------|-----------------------------|-------------------------|-----------------------------------|------------------------------|-------------------------|-----------------------------------|
| | White | Black | Information Not Recorded or Other | White | Black | Information Not Recorded or Other | White | Black | Information Not Recorded or Other |
| REGION 1. DORCHESTER SOMERSET WICOMICO WORCESTER | 60 39 145 109 | 82 20 69 35 | | 30 1 5 | 27 1 | | 33 49 146 562 | 68 35 51 38 | 1 1 |
| REGION 2. CAROLINE CECIL KENT QUEEN ANNE'S TALBOT | 22 114 46 42 45 | 28 5 27 27 15 | 2 3 2 | 13 26 13 46 115 | 7 1 6 11 49 | 1 | 94 313 81 21 | 41 10 37 7 | 1 1 |
| REGION 3. BALTIMORE HARFORD | 1,489 349 | 247 50 | 15 5 | 2,906 32 | 591 2 | 16 | 1,289 497 | 275 62 | 10 1 |
| REGION 4. ALLEGANY GARRETT WASHINGTON | 432 82 558 | 31 1 43 | 8 | 6 24 90 | 5 | 2 | 88 8 127 | 3 9 | |
| REGION 5. ANNE ARUNDEL CARROLL HOWARD | 1,212 188 245 | 283 34 84 | 19 1 | 723 129 10 | 139 2 2 | 3 | 2,418 285 467 | 490 30 131 | 9 3 |
| REGION 6. FREDERICK MONTGOMERY | 113 1,716 | 52 344 | 1 16 | 84 672 | 28 89 | 9 | 409 2,018 | 109 376 | 4 13 |
| REGION 7. CALVERT CHARLES PRINCE GEORGE'S ST. MARY'S | 76 200 1,981 156 | 92 87 1,479 60 | 1 13 3 | 211 45 399 1 | 46 21 156 | 1 2 | 4 474 3,187 219 | 3 153 2,065 96 | 6 38 6 |
| REGION 8. BALTIMORE CITY | 1,848 | 6,446 | 83 | 164 | 476 | 5 | 3,260 | 8,332 | 76 |
| STATE | 11,267 | 9,641 | 171 | 5,745 | 1,659 | 39 | 16,049 | 12,421 | 170 |

TABLE 12
TOTAL CASES HANDLED BY THE JUVENILE SERVICES ADMINISTRATION
BY COUNTY, REGION AND SOURCE OF REFERRAL - FISCAL 1975

| | Source of Referral | | | | | | | | | TOTAL |
|---|-------------------------------|--------------------------|--------------------------|-------------------------------|---------------------|-----------------|-------------------|---------------------------|-----------------|---------------------------------|
| | Police | Department of Education | Parent/Relative | Department of Social Services | Other Social Agency | Court/Probation | Other | Citizen | Special Police | |
| REGION 1. DORCHESTER SOMERSET WICOMICO WORCESTER | 250 91 335 702 | 5 3 2 11 | 22 14 16 21 | 14 13 32 11 | 1 | 1 10 1 | 3 2 5 1 | 5 20 13 3 | | 300 144 413 750 |
| REGION 2. CAROLINE CECIL KENT QUEEN ANNE'S TALBOT | 136 402 92 69 184 | 18 2 39 9 22 | 8 14 12 22 8 | 4 8 12 18 11 | 1 1 | 1 | 20 5 1 2 | 20 22 44 6 26 | 22 6 4 | 206 472 210 129 254 |
| REGION 3. BALTIMORE HARFORD | 6,422 808 | 58 33 | 50 77 | 170 66 | 26 3 | 17 | 93 10 | 2 | 1 | 6,838 998 |
| REGION 4. ALLEGANY GARRETT WASHINGTON | 250 57 571 | 13 12 20 | 150 11 48 | 72 27 31 | 5 3 2 | 24 6 | 7 1 5 | 24 4 108 | 15 51 | 560 115 842 |
| REGION 5. ANNE ARUNDEL CARROLL HOWARD | 4,106 497 760 | 497 20 5 | 398 49 55 | 240 42 11 | 6 2 1 | 4 1 | 26 13 11 | 11 37 58 | 12 5 40 | 5,296 669 942 |
| REGION 6. FREDERICK MONTGOMERY | 611 4,810 | 61 5 | 50 317 | 26 97 | 11 | 6 4 | 9 6 | 25 3 | 12 | 800 5,253 |
| REGION 7. CALVERT CHARLES PRINCE GEORGE'S ST. MARY'S | 351 887 5,596 486 | 28 26 243 | 20 35 494 24 | 30 10 393 17 | 1 2 27 1 | 19 68 2 | 2 2 80 5 | 1 1 954 5 | 5 1,465 1 | 433 987 9,323 541 |
| REGION 8. BALTIMORE CITY | 15,606 | 1,401 | 1,740 | 402 | 25 | 9 | 31 | 1,454 | 22 | 20,690 |
| STATE | 44,079 | 2,533 | 3,655 | 1,757 | 118 | 173 | 340 | 2,846 | 1,661 | 57,162 |

TABLE 13

TOTAL CASES HANDLED BY THE JUVENILE SERVICES ADMINISTRATION
BY COUNTY, REGION AND AGE AT TIME OF REFERRAL - FISCAL 1975

| | Under 10 years | 10 years | 11 years | 12 years | 13 years | 14 years | 15 years | 16 years | 17 years | 18 years | Over 18 or Unknown | Total |
|---|----------------------------|-----------------------|------------------------|---------------------------|----------------------------|----------------------------|----------------------------|-----------------------------|----------------------------|-----------------------|--------------------------|---------------------------------|
| REGION 1. DORCHESTER SOMERSET WICOMICO WORCESTER | 43 16 33 21 | 13 2 7 2 | 13 5 12 7 | 21 4 13 20 | 29 12 22 40 | 33 24 54 105 | 45 25 69 144 | 43 25 82 198 | 55 29 105 198 | 1 2 14 14 | 4 2 2 1 | 300 144 413 750 |
| REGION 2. CAROLINE CECIL KENT QUEEN ANNE'S TALBOT | 11 22 13 24 14 | 3 9 4 5 5 | 8 11 6 3 6 | 7 13 10 10 24 | 15 35 13 13 15 | 36 69 31 11 29 | 42 98 46 23 55 | 36 119 40 21 42 | 39 83 45 17 56 | 5 5 2 2 4 | 4 8 2 2 4 | 206 472 210 129 254 |
| REGION 3. BALTIMORE HARFORD | 181 58 | 77 15 | 148 33 | 263 64 | 537 92 | 979 152 | 1,406 168 | 1,559 190 | 1,547 202 | 132 19 | 9 5 | 6,838 998 |
| REGION 4. ALLEGANY GARRETT WASHINGTON | 69 13 60 | 3 2 20 | 20 26 | 36 1 42 | 33 14 83 | 54 15 128 | 100 29 138 | 92 25 186 | 88 13 145 | 7 3 11 | 58 3 3 | 560 115 842 |
| REGION 5. ANNE ARUNDEL CARROLL HOWARD | 241 49 21 | 94 15 7 | 137 14 23 | 252 21 39 | 522 36 56 | 836 66 96 | 1,133 121 183 | 1,021 129 234 | 926 177 261 | 90 13 20 | 44 28 2 | 5,296 669 942 |
| REGION 6. FREDERICK MONTGOMERY | 37 114 | 26 43 | 22 74 | 58 171 | 88 349 | 106 755 | 164 1,212 | 170 1,252 | 117 1,160 | 10 99 | 2 24 | 800 5,253 |
| REGION 7. CALVERT CHARLES PRINCE GEORGE'S ST. MARY'S | 23 63 399 20 | 3 16 161 5 | 11 25 271 8 | 30 61 431 29 | 36 108 845 65 | 60 164 1,435 70 | 81 195 1,862 100 | 98 176 1,902 112 | 81 165 1,816 95 | 10 10 146 9 | 4 52 28 | 433 987 9,320 541 |
| REGION 8. BALTIMORE CITY | 778 | 377 | 614 | 1,073 | 2,052 | 3,242 | 3,981 | 4,082 | 3,814 | 414 | 263 | 20,690 |
| STATE | 2,323 | 914 | 1,497 | 2,693 | 5,110 | 8,550 | 11,420 | 11,834 | 11,234 | 1,042 | 545 | 57,162 |

24

TABLE 14

TOTAL CASES HANDLED BY THE JUVENILE SERVICES ADMINISTRATION
BY COUNTY, REGION AND MAJOR REASON REFERRED - FISCAL 1975

| | Arson | Assault | Auto Theft/ Unauth. Use | Burglary/B & E | Larceny | Robbery | Disorderly Conduct | Sex Offense | Vandalism | Narcotics Violation | Glue Sniffing | Alcoholic Beverage Violation | Shoplifting | Purse Snatching | Firearms Violation | Rec/Poss of Stolen Goods |
|---|-------------------|---------------------------|----------------------------|---------------------------|----------------------------|---------------|--------------------------|--------------------|---------------------------|--------------------------|------------------|------------------------------------|---------------------------|--------------------|-----------------------|-----------------------------|
| REGION 1. DORCHESTER SOMERSET WICOMICO WORCESTER | 11 2 2 4 | 13 5 17 13 | 3 2 19 18 | 63 12 47 62 | 47 21 56 38 | 5 1 | 12 21 9 24 | 1 1 2 | 7 10 47 18 | 11 15 27 173 | 2 | 3 8 32 | 51 3 55 64 | 7 | 3 2 9 5 | 2 3 9 |
| REGION 2. CAROLINE CECIL KENT QUEEN ANNE'S TALBOT | 4 5 | 12 36 17 5 34 | 11 21 5 6 6 | 24 63 23 3 23 | 24 72 28 20 33 | 1 | 14 14 21 2 2 | 1 | 11 2 12 16 17 | 6 45 27 5 22 | | 3 39 12 6 13 | 13 40 10 5 25 | 1 1 1 | 3 2 1 1 | 9 1 7 |
| REGION 3. BALTIMORE HARFORD | 35 3 | 756 58 | 321 52 | 931 178 | 590 107 | 50 3 | 377 14 | 26 5 | 364 77 | 518 101 | 12 1 | 134 10 | 941 109 | 9 | 48 1 | 61 10 |
| REGION 4. ALLEGANY GARRETT WASHINGTON | 3 6 | 12 7 51 | 19 15 29 | 39 17 77 | 38 12 80 | 1 1 | 2 2 39 | 2 1 | 16 49 | 17 4 45 | 2 9 | 35 54 | 81 2 140 | 5 1 | 6 6 | 1 6 |
| REGION 5. ANNE ARUNDEL CARROLL HOWARD | 41 11 14 | 588 34 65 | 191 26 40 | 633 83 114 | 427 73 77 | 12 4 | 360 18 58 | 22 2 | 70 87 68 | 465 71 63 | 7 | 161 27 24 | 345 25 146 | 1 | 41 6 16 | 63 3 18 |
| REGION 6. FREDERICK MONTGOMERY | 9 33 | 37 331 | 21 279 | 60 631 | 60 818 | 11 96 | 11 158 | 23 | 34 246 | 67 261 | 1 | 33 228 | 135 38 | 1 | 2 54 | 9 39 |
| REGION 7. CALVERT CHARLES PRINCE GEORGE'S ST. MARY'S | 5 3 89 6 | 20 66 858 50 | 7 11 354 13 | 81 57 1,102 66 | 58 113 704 79 | 4 1 172 | 18 58 274 10 | 1 3 28 12 | 10 64 404 18 | 29 49 542 40 | 4 13 | 15 17 100 15 | 16 175 1,683 95 | 2 5 | 6 5 184 11 | 2 1 105 12 |
| REGION 8. BALTIMORE CITY | 91 | 3,542 | 881 | 2,420 | 1,839 | 410 | 1,578 | 58 | 427 | 1,463 | 354 | 212 | 1,295 | 202 | 388 | 211 |
| STATE | 377 | 6,627 | 2,350 | 6,809 | 5,414 | 772 | 3,096 | 188 | 2,074 | 4,066 | 405 | 1,181 | 5,492 | 235 | 794 | 572 |

25

TABLE 14
(continued)

| | Trespassing | False Fire Alarm | Violation of Supervision | Other | TOTAL DELINQUENT | Runaway | Truancy | Ungovernable | TOTAL CINS | Neglect | Dependency | Dependency and Neglect | Mentally Handicapped | TOTAL CINA | Special Proceedings | GRAND TOTAL |
|--------------------------|-------------|------------------|--------------------------|-------|------------------|---------|---------|--------------|------------|---------|------------|------------------------|----------------------|------------|---------------------|-------------|
| REGION 1. DORCHESTER | 2 | 5 | 1 | 15 | 23 | 4 | 8 | 5 | 17 | 9 | 14 | 7 | | 30 | | 300 |
| SOMERSET | 2 | | | 11 | 109 | 6 | 3 | 9 | 18 | 12 | 4 | 1 | | 17 | | 144 |
| WICOMICO | 9 | | 5 | 33 | 356 | 7 | | 2 | 9 | 10 | 27 | 6 | | 43 | 5 | 413 |
| WORCESTER | 15 | | 1 | 60 | 538 | 171 | 9 | 20 | 200 | 4 | | 8 | | 12 | | 750 |
| REGION 2. CAROLINE | 2 | 2 | | 46 | 175 | 4 | 14 | 7 | 25 | | 5 | 1 | | 6 | | 206 |
| CECIL | 6 | | | 82 | 435 | 12 | 8 | 8 | 28 | 3 | 1 | 5 | | 9 | | 472 |
| KENT | 11 | | | 10 | 180 | 7 | 4 | 7 | 18 | 4 | 7 | | 1 | 12 | | 210 |
| QUEEN ANNE'S | 2 | | | 9 | 80 | 2 | 5 | 4 | 11 | 10 | 28 | | | 38 | | 129 |
| TALBOT | 4 | 1 | | 16 | 206 | 9 | 18 | 12 | 39 | 3 | 3 | 2 | 1 | 9 | | 254 |
| REGION 3. BALTIMORE | 263 | 5 | 20 | 415 | 5,876 | 351 | 89 | 298 | 738 | 43 | 107 | 66 | 1 | 217 | 7 | 6,838 |
| HARFORD | 27 | 4 | | 56 | 816 | 22 | 34 | 63 | 119 | 31 | 16 | 16 | | 63 | | 998 |
| REGION 4. ALLEGANY | | | 4 | 77 | 354 | 18 | 14 | 41 | 73 | 46 | 11 | 20 | | 77 | 56 | 560 |
| GARRETT | | | | 18 | 77 | 7 | 10 | 7 | 24 | 2 | 1 | 11 | | 14 | | 115 |
| WASHINGTON | 27 | 4 | 3 | 43 | 671 | 28 | 16 | 34 | 78 | 40 | 25 | 28 | | 93 | | 842 |
| REGION 5. ANNE ARUNDEL | 179 | 2 | | 740 | 4,348 | 132 | 283 | 306 | 721 | 99 | 106 | 16 | 6 | 227 | | 5,296 |
| CARROLL | 21 | | 1 | 61 | 547 | 18 | 24 | 31 | 73 | 21 | 21 | 5 | | 47 | 2 | 669 |
| HOWARD | 77 | | | 70 | 856 | 23 | 5 | 29 | 57 | 6 | 16 | 3 | 2 | 27 | 2 | 942 |
| REGION 6. FREDERICK | 31 | 4 | 5 | 135 | 664 | 20 | 49 | 39 | 108 | 20 | 7 | 1 | | 28 | | 800 |
| MONTGOMERY | 133 | 3 | 4 | 738 | 4,115 | 740 | 5 | 236 | 981 | 1 | 122 | 33 | | 156 | 1 | 5,253 |
| REGION 7. CALVERT | 5 | | | 30 | 311 | 44 | 22 | 24 | 90 | 3 | 4 | 21 | 4 | 32 | | 433 |
| CHARLES | 8 | 2 | | 81 | 716 | 134 | 49 | 41 | 224 | 11 | 14 | 21 | 1 | 47 | | 987 |
| PRINCE GEORGE'S | 356 | 24 | | 933 | 7,930 | 382 | 149 | 408 | 939 | 159 | 281 | 5 | 6 | 451 | | 9,320 |
| ST. MARY'S | 10 | 2 | | 40 | 479 | 28 | | 17 | 45 | 14 | 2 | | 1 | 17 | | 541 |
| REGION 8. BALTIMORE CITY | 1,034 | 93 | 1 | 1,769 | 18,268 | 474 | 330 | 990 | 1,794 | 107 | 270 | 225 | 26 | 628 | | 20,690 |
| STATE | 2,224 | 151 | 45 | 5,488 | 48,360 | 2,643 | 1,148 | 2,638 | 6,429 | 658 | 1,092 | 501 | 49 | 2,300 | 73 | 57,162 |

26

TABLE 15
TOTAL CASES HANDLED BY THE JUVENILE SERVICES ADMINISTRATION
BY MAJOR REASON AND AGE AT TIME OF REFERRAL - FISCAL 1975

| Major Reason | Under 10 years | 10 years | 11 years | 12 years | 13 years | 14 years | 15 years | 16 years | 17 years | 18 years | Over 18 or Unknown | Total |
|--------------------------|----------------|----------|----------|----------|----------|----------|----------|----------|----------|----------|--------------------|--------|
| Arson | 45 | 11 | 21 | 34 | 43 | 59 | 63 | 47 | 45 | 2 | 7 | 377 |
| Assault | 166 | 122 | 226 | 378 | 665 | 1,069 | 1,268 | 1,294 | 1,185 | 122 | 132 | 6,627 |
| Auto Theft/Unauth. Use | 7 | 7 | 23 | 37 | 153 | 338 | 607 | 634 | 508 | 31 | 5 | 2,350 |
| Burglary/B & E | 121 | 110 | 205 | 354 | 652 | 1,110 | 1,382 | 1,485 | 1,224 | 138 | 28 | 6,809 |
| Larceny | 78 | 84 | 153 | 290 | 492 | 765 | 1,031 | 1,209 | 1,150 | 121 | 41 | 5,414 |
| Robbery | 3 | 6 | 19 | 23 | 58 | 122 | 171 | 150 | 187 | 29 | 4 | 772 |
| Disorderly Conduct | 26 | 32 | 31 | 98 | 211 | 370 | 608 | 774 | 854 | 74 | 18 | 3,096 |
| Sex Offense | 3 | 5 | 8 | 15 | 17 | 30 | 33 | 28 | 39 | 5 | 5 | 188 |
| Vandalism | 120 | 83 | 131 | 158 | 262 | 285 | 349 | 332 | 304 | 23 | 27 | 2,074 |
| Narcotics Violation | 6 | | 9 | 29 | 127 | 324 | 725 | 1,177 | 1,487 | 171 | 11 | 4,066 |
| Glue Sniffing | 6 | 9 | 8 | 18 | 45 | 80 | 97 | 77 | 56 | 3 | 6 | 405 |
| Alcoholic Bev. Viol. | 2 | | 1 | 4 | 14 | 88 | 186 | 359 | 496 | 27 | 4 | 1,181 |
| Shoplifting | 98 | 113 | 179 | 341 | 557 | 854 | 1,083 | 1,081 | 1,072 | 85 | 29 | 5,492 |
| Purse Snatching | 3 | 2 | 5 | 13 | 28 | 42 | 53 | 48 | 36 | 5 | | 235 |
| Firearms Violation | | 5 | 8 | 12 | 48 | 102 | 142 | 208 | 232 | 28 | 9 | 794 |
| Rec/Poss of Stolen Goods | 2 | 1 | 8 | 27 | 38 | 87 | 127 | 120 | 137 | 21 | 4 | 572 |
| Trespassing | 29 | 30 | 46 | 102 | 237 | 343 | 469 | 484 | 428 | 32 | 24 | 2,224 |
| False Fire Alarm | 22 | 7 | 7 | 8 | 26 | 28 | 21 | 15 | 15 | 1 | 1 | 151 |
| Violation of Supervision | | | 1 | | 5 | 12 | 8 | 14 | 5 | | | 45 |
| Other | 173 | 98 | 135 | 290 | 456 | 873 | 1,207 | 1,032 | 1,053 | 92 | 79 | 5,488 |
| TOTAL DELINQUENT | 910 | 725 | 1,224 | 2,231 | 4,134 | 6,981 | 9,630 | 10,568 | 10,513 | 1,010 | 434 | 48,360 |
| Runaway | 24 | 18 | 40 | 87 | 293 | 588 | 712 | 549 | 304 | 17 | 11 | 2,643 |
| Truancy | 38 | 26 | 43 | 104 | 228 | 315 | 303 | 72 | 14 | | 5 | 1,148 |
| Ungovernable | 39 | 31 | 60 | 141 | 332 | 539 | 621 | 516 | 327 | 12 | 20 | 2,638 |
| TOTAL CINS | 101 | 75 | 143 | 332 | 853 | 1,442 | 1,636 | 1,137 | 645 | 29 | 36 | 6,429 |
| Neglect | 395 | 31 | 33 | 33 | 36 | 29 | 42 | 29 | 24 | | 6 | 658 |
| Dependency | 604 | 51 | 65 | 61 | 59 | 60 | 77 | 72 | 35 | 2 | 6 | 1,092 |
| Dependency & Neglect | 299 | 30 | 30 | 30 | 25 | 27 | 26 | 20 | 7 | 1 | 6 | 501 |
| Mentally Handicapped | 12 | 1 | 2 | 2 | 1 | 8 | 7 | 8 | 8 | | | 49 |
| TOTAL CINA | 1,310 | 113 | 130 | 126 | 121 | 124 | 152 | 129 | 74 | 3 | 18 | 2,300 |
| Special Proceedings | 2 | 1 | | 4 | 2 | 3 | 2 | | 2 | | | 73 |
| Grand Total | 2,323 | 914 | 1,497 | 2,693 | 5,110 | 8,550 | 11,420 | 11,834 | 11,234 | 1,042 | 545 | 57,162 |

27

TABLE 16
 FORMAL CASES HANDLED BY THE JUVENILE SERVICES ADMINISTRATION
 BY MAJOR REASON AND DISPOSITION
 FISCAL 1975

| Major Reason | Petition Withdrawn | Dismissed | Warred, Adjusted or Counsel | Jurisdiction Waived | Continue Case without Finding | Custody Awarded To | Com. by Dept. of Social Services | Com. to Training School | Probation | Referred to Other Agency | Restitution or Fine | Support Ordered or Revised |
|--------------------------|--------------------|--------------|-----------------------------|---------------------|-------------------------------|--------------------|----------------------------------|-------------------------|--------------|--------------------------|---------------------|----------------------------|
| Arson | | 62 | | 8 | 5 | 2 | 1 | 13 | 47 | 3 | | |
| Assault | 10 | 1,310 | 15 | 106 | 33 | 5 | 4 | 160 | 741 | 2 | 14 | |
| Auto Theft/Unauth. Use | 1 | 422 | 4 | 59 | 19 | 4 | 5 | 155 | 457 | 2 | 16 | 1 |
| Burglary/B & E | 6 | 1,133 | 12 | 126 | 126 | 24 | 21 | 330 | 1,654 | 2 | 19 | |
| Larceny | 7 | 695 | 4 | 63 | 38 | 3 | 5 | 146 | 658 | 5 | 20 | |
| Robbery | 3 | 233 | 3 | 47 | 1 | 1 | 2 | 84 | 178 | | 1 | |
| Disorderly Conduct | 1 | 269 | 3 | 2 | 17 | 1 | | 22 | 127 | 1 | 2 | |
| Sex Offense | 1 | 27 | | 5 | 5 | | | 7 | 31 | | | |
| Vandalism | 3 | 292 | 5 | 6 | 15 | | | 23 | 155 | 3 | 11 | |
| Narcotics Violation | 1 | 245 | 2 | 38 | 30 | 2 | 2 | 22 | 257 | | 3 | |
| Glue Sniffing | | 60 | | 1 | 1 | | | 11 | 41 | | | |
| Alcoholic Beverage Viol. | 4 | 31 | 3 | 3 | 2 | | 2 | 4 | 44 | | 10 | |
| Shoplifting | 4 | 314 | 9 | 15 | 5 | 4 | 3 | 48 | 342 | | 19 | |
| Purse Snatching | 5 | 70 | 1 | 11 | | 1 | | 35 | 48 | | 1 | |
| Firearms Violation | | 158 | 1 | 25 | 3 | 1 | 1 | 28 | 97 | | | |
| Rec/Poss of Stolen Goods | | 62 | | 9 | 4 | | | 6 | 67 | | 4 | |
| Trespassing | 1 | 134 | 6 | 3 | 5 | | | 21 | 79 | | | |
| False Fire Alarm | | 12 | | | | | 1 | | 17 | | | |
| Violation of Supervision | | 1 | | | 1 | | | 17 | 5 | | | |
| Other | 3 | 472 | 6 | 31 | 39 | 23 | 6 | 64 | 344 | 1 | 112 | 2 |
| Total Delinquent | 50 | 6,123 | 75 | 624 | 319 | 61 | 54 | 1,196 | 5,400 | 18 | 252 | 3 |
| Runaway | 9 | 60 | 3 | | 3 | 16 | 15 | 14 | 57 | 4 | | 1 |
| Truancy | 3 | 22 | 3 | | 4 | 4 | 13 | 1 | 17 | 3 | | 1 |
| Unmanageable | 17 | 104 | 5 | 1 | 11 | 35 | 54 | 18 | 107 | 3 | | 2 |
| Total CIMS | 29 | 186 | 11 | 1 | 18 | 55 | 82 | 33 | 181 | 10 | | 4 |
| Neglect | 8 | 68 | 13 | | 12 | 46 | 358 | | 1 | 1 | | 3 |
| Dependency | 13 | 92 | | | 8 | 215 | 607 | 2 | 8 | 2 | | 7 |
| Dependency & Neglect | 11 | 58 | 5 | | 3 | 31 | 274 | 2 | 3 | 14 | | 2 |
| Mentally Handicapped | | 5 | | | | 1 | 2 | 1 | 2 | 1 | | |
| Total CINA | 32 | 223 | 18 | | 23 | 293 | 1,241 | 5 | 14 | 18 | | 12 |
| Special Proceedings | | 7 | | | 1 | 1 | | | 4 | | | |
| GRAND TOTAL | 111 | 6,539 | 104 | 625 | 361 | 410 | 1,377 | 1,234 | 5,599 | 46 | 252 | 19 |

TABLE 16
 (continued)

| Major Reason | Suspended Sentence | Other | Com. to Mental Inst. | Referred to Psychiatric Care | Stet | Probation without Verdict | Committed to Dept. of Juvenile Services | Purchase of Care | Group Home | Protective Supervision | Committed to Forestry Camp | Referred to Mental Retardation Admin. | Total |
|--------------------------|--------------------|------------|----------------------|------------------------------|--------------|---------------------------|---|------------------|------------|------------------------|----------------------------|---------------------------------------|---------------|
| Arson | 2 | 7 | 1 | | 17 | 1 | 5 | | | | 1 | | 175 |
| Assault | 11 | 47 | 11 | | 101 | 23 | 78 | 1 | 5 | 4 | 16 | 2 | 2,693 |
| Auto Theft/Unauth. Use | 10 | 59 | 7 | | 91 | 16 | 60 | 1 | 8 | 1 | 21 | 1 | 1,510 |
| Burglary/B & E | 36 | 119 | 12 | | 247 | 33 | 160 | 2 | 9 | 2 | 38 | 4 | 4,185 |
| Larceny | 28 | 45 | 4 | | 163 | 44 | 79 | 1 | 10 | | 19 | 1 | 2,038 |
| Robbery | 4 | 7 | 4 | | 31 | | 23 | | 1 | | 8 | | 631 |
| Disorderly Conduct | 5 | 14 | 1 | | 30 | 7 | 15 | | | | | | 523 |
| Sex Offense | | 3 | 2 | | 4 | | 9 | | | 1 | | | 90 |
| Vandalism | 2 | 20 | 3 | 1 | 77 | 26 | 26 | | 1 | 2 | 4 | | 676 |
| Narcotics Violation | 5 | 34 | | | 74 | 36 | 22 | | | 1 | 2 | | 783 |
| Glue Sniffing | 1 | | 1 | | 1 | 4 | 9 | | | | 1 | | 130 |
| Alcoholic Beverage Viol. | 2 | 4 | | | 4 | 25 | 4 | | | 3 | | 1 | 146 |
| Shoplifting | 14 | 15 | 1 | | 161 | 96 | 31 | | 3 | 1 | 2 | | 1,087 |
| Purse Snatching | | | 1 | | | 1 | 9 | | | | 1 | | 184 |
| Firearms Violation | 1 | 3 | | | 20 | 2 | 10 | | | 1 | | | 351 |
| Rec/Poss of Stolen Goods | 1 | 6 | | | 22 | | 7 | | | | 1 | | 190 |
| Trespassing | 1 | 11 | | | 29 | 6 | 6 | | | | 2 | | 304 |
| False Fire Alarm | | 3 | | | 2 | 1 | 5 | | | | | | 41 |
| Violation of Supervision | | 2 | 1 | | | | 8 | | 1 | | 1 | | 37 |
| Other | 6 | 134 | 5 | | 70 | 36 | 53 | 1 | | 9 | 5 | | 1,418 |
| Total Delinquent | 129 | 533 | 54 | 1 | 1,144 | 357 | 619 | 6 | 38 | 25 | 122 | 9 | 17,192 |
| Runaway | | 24 | 5 | | 8 | | 143 | 1 | 2 | 103 | | | 468 |
| Truancy | 2 | 28 | 3 | | 7 | 5 | 29 | | 2 | 89 | | 1 | 237 |
| Unmanageable | | 71 | 17 | | 27 | | 271 | 8 | 15 | 228 | | | 994 |
| Total CIMS | 2 | 123 | 25 | | 42 | 5 | 443 | 9 | 19 | 420 | | 1 | 1,699 |
| Neglect | | 51 | | | 7 | | 3 | | | 22 | | | 593 |
| Dependency | | 23 | 5 | | 8 | | 17 | | | 17 | | 3 | 1,027 |
| Dependency & Neglect | | 10 | 1 | 2 | 6 | | 7 | | 1 | 19 | | 6 | 449 |
| Mentally Handicapped | | 2 | 20 | 1 | 1 | | | | | 4 | | | 46 |
| Total CINA | | 86 | 26 | 3 | 22 | | 27 | | 1 | 62 | | 9 | 2,115 |
| Special Proceedings | | 58 | | | | | 2 | | | | | | 73 |
| GRAND TOTAL | 131 | 800 | 105 | 4 | 1,208 | 362 | 1,091 | 15 | 58 | 507 | 122 | 19 | 21,079 |

DIVISION OF
COMMUNITY SERVICES

COMMUNITY BASED SERVICES

The number of admissions to community based services has steadily increased from the 116 community residential placements during fiscal 1968 to the 4,019 placements during fiscal 1975. These placements include admissions to the Maryland Youth Residence Center, Good Shepherd Center, three group homes operated by the Juvenile Services Administration, and care purchased from various group homes and residences operated by private agencies. In addition, there were 204 admissions to the Youth Service Center, a day program which was federally funded during fiscal 1975.

Of the total number of community residential placements during fiscal 1975, 69.5% were purchase of care emergency placements, 26.6% involved purchase of care residential placements, 2.3% were admissions to Good Shepherd Center, 1.1% were State owned group home admissions and 0.5% involved admissions to the Maryland Youth Residence Center.

Purchase of Care

Placements in Purchase of Care facilities, which include private group homes or specialized institutions and short-term shelter care provided by private families in their own homes, increased 21.8% from fiscal 1974. Emergency placements accounted for 72.4% of these placements during fiscal 1975, while private residential placements accounted for 27.6%.

A majority of the private residential placements involved males (66.6%), while females accounted for 33.4%. Of these placements, 76.2% involved whites, 23.5% involved blacks, and in 0.3% of the cases race was classified as "other" or was not reported. Baltimore City accounted for the greatest number of placements with 26.7% of the total, followed by Prince George's County with 19.6% and Montgomery County with 11.2%.

Of the 2,794 emergency placements, 46.3% involved males while 53.7% involved females. A majority of these admissions involved whites (72.0%), with blacks accounting for 27.5% of the cases. In 0.5% of the cases race was classified as "other" or was not reported. Prince George's

County accounted for the largest number of placements with 36.4% of the total. This was followed by Baltimore City with 30.0% and Montgomery County with 11.6%.

Good Shepherd Center

Good Shepherd Center, which is a therapeutic residential facility for girls, reported 91 admissions during fiscal 1975, an increase of 5.8% over fiscal 1974. Of these, a majority involved whites (73.6%), while blacks accounted for 24.2% and in 2.2% of the cases race was classified as "other" or was not reported. Baltimore City accounted for the largest number of admissions with 33.0% of the total, followed by Baltimore County with 17.6% and Prince George's County with 13.2%.

State-Owned Group Homes

Admissions to the three state-owned group homes during fiscal 1975 decreased 40.8% from the 76 admissions reported during fiscal 1974. All of the admissions to the two group homes for boys involved blacks. Of the 21 admissions to the girls' group home, 85.7% involved blacks, while whites accounted for 14.3%.

Maryland Youth Residence Center

Maryland Youth Residence Center, which is a residential treatment facility for boys twelve years of age and younger, reported 22 admissions during fiscal 1975. This represents a decrease of 37.1% from fiscal 1974. Of these, a majority involved blacks (72.7%), while whites accounted for 27.3%.

Youth Service Center

The Youth Service Center, which is a day program offering specialized service to delinquent youth, reported 204 admissions during fiscal 1975. A majority of these admissions involved males (79.9%), while 20.1% involved females. Of the 163 admissions involving males, blacks accounted for 96.9%, while 3.1% involved whites. All of the female admissions involved blacks.

TABLE 17
COMMUNITY AND RESIDENTIAL SERVICES EXPENDITURES
FISCAL 1968 - 1975

| Type | 1968 | 1969 | 1970 | 1971 | 1972 | 1973 | 1974 | 1975 |
|----------------------------|------------------------|-----------|-----------|-------------|--------------------------|-------------|-------------|--------------------------|
| Good Shepherd Center | \$292,872 | \$288,091 | \$398,156 | \$ 475,629 | \$ 666,710 | \$ 742,802 | \$ 758,149 | \$ 809,205 |
| Purchase of Care | | \$ 92,151 | \$182,959 | \$ 740,271 | \$1,389,901 ² | \$1,819,199 | \$2,825,064 | \$4,238,650 ⁴ |
| State-Owned Group Homes | | | \$ 70,534 | \$ 223,588 | \$ 208,979 | \$ 201,154 | \$ 236,514 | \$ 238,570 |
| Md. Youth Residence Center | | | | | \$ 50,160 ³ | \$ 254,169 | \$ 364,168 | \$ 346,831 |
| Program Direction | | | | | | \$ 58,026 | \$ 76,354 | \$ 77,240 |
| Youth Service Bureaus | | | | | | | | \$ 436,589 |
| Total | \$292,872 ¹ | \$380,242 | \$651,649 | \$1,439,488 | \$2,315,750 | \$3,075,350 | \$4,260,249 | \$6,147,085 |

¹Not included in Operating Budget for 1968.

²\$100,000 included in this figure for initial payments to establish private Group Homes.

³This amount does not include \$34,924 in Federal Funds which the department received from the Governor's Commission on Law Enforcement and the Administration of Justice to facilitate implementing the Maryland Youth Residence Center.

⁴This amount includes \$25,000 for initial payment to establish a Group Home.

TABLE 18
COMMUNITY AND RESIDENTIAL PLACEMENTS
NUMBER OF JUVENILES SERVED
FISCAL 1968 - 1975

| Type | 1968 | 1969 | 1970 | 1971 | 1972 | 1973 | 1974 | 1975 |
|--------------------------------|------|------|------|------|-------|-------|-------|-------|
| Good Shepherd Center | 116 | 105 | 88 | 131 | 87 | 85 | 86 | 91 |
| Private Residential Placements | | 16 | 130 | 276 | 601 | 850 | 1,184 | 1,067 |
| Emergency Placements | | | | | 539 | 1,068 | 1,987 | 2,794 |
| State-Owned Group Homes | | | 22 | 46 | 60 | 82 | 76 | 45 |
| Md. Youth Residence Center | | | | | 36 | 35 | 35 | 22 |
| Total | 116 | 121 | 240 | 453 | 1,323 | 2,120 | 3,368 | 4,019 |

TABLE 19
RESIDENTIAL AND EMERGENCY PLACEMENTS BY SEX AND COUNTY
FISCAL 1975

| | Residential Placements | | | Emergency Placements | | |
|---|------------------------|------------------|-------------------------|----------------------|-------------------------|-------------------------|
| | Male | Female | Total | Male | Female | Total |
| REGION 1. DORCHESTER SOMERSET WICOMICO WORCESTER | 9 3 8 6 | 1 3 2 | 10 3 11 8 | | | |
| REGION 2. CAROLINE CECIL KENT QUEEN ANNE'S TALBOT | 2 22 7 8 | 3 5 2 5 | 5 27 7 10 5 | 4 30 1 5 | 3 40 5 2 10 | 7 70 5 3 15 |
| REGION 3. BALTIMORE HARFORD | 61 26 | 32 6 | 93 32 | 37 7 | 53 13 | 90 20 |
| REGION 4. ALLEGANY GARRETT WASHINGTON | 18 12 13 | 12 7 9 | 30 19 22 | 6 4 5 | 19 8 5 | 25 12 10 |
| REGION 5. ANNE ARUNDEL CARROLL HOWARD | 61 12 8 | 27 11 3 | 88 23 11 | 108 7 12 | 114 14 2 | 222 21 14 |
| REGION 6. FREDERICK MONTGOMERY | 13 82 | 8 38 | 21 120 | 20 134 | 24 190 | 44 324 |
| REGION 7. CALVERT CHARLES PRINCE GEORGE'S ST. MARY'S | 1 9 121 11 | 5 88 2 | 1 14 209 13 | 1 27 490 5 | 2 20 528 | 3 47 1,018 5 |
| REGION 8. BALTIMORE CITY | 198 | 87 | 285 | 390 | 449 | 839 |
| STATE | 711 | 356 | 1,067 | 1,293 | 1,501 | 2,794 |

TABLE 20
RESIDENTIAL AND EMERGENCY PLACEMENTS BY RACE AND COUNTY
FISCAL 1975

| | Private Residential Placements | | | | Emergency Placements | | | | Good Shepherd Center | | | |
|---|--------------------------------|-------------------|-----------------------|-------------------------|-------------------------|---------------|-----------------------|-------------------------|----------------------|-------|-----------------------|-------------|
| | White | Black | Other or Not Recorded | Total | White | Black | Other or Not Recorded | Total | White | Black | Other or Not Recorded | Total |
| REGION 1. DORCHESTER SOMERSET WICOMICO WORCESTER | 5 2 10 5 | 5 1 1 3 | | 10 3 11 8 | | | | | 1 1 | | | 1 1 |
| REGION 2. CAROLINE CECIL KENT QUEEN ANNE'S TALBOT | 2 27 4 9 4 | 3 3 1 1 | | 5 27 7 10 5 | 3 70 4 3 13 | 4 1 2 | | 7 70 5 3 15 | 2 | | | 2 |
| REGION 3. BALTIMORE HARFORD | 91 28 | 2 4 | | 93 32 | 85 20 | 4 | 1 | 90 20 | 14 4 | | 2 | 16 4 |
| REGION 4. ALLEGANY GARRETT WASHINGTON | 30 19 22 | | | 30 19 22 | 24 12 10 | 1 | | 25 12 10 | 1 3 | | | 1 3 |
| REGION 5. ANNE ARUNDEL CARROLL HOWARD | 84 21 9 | 4 2 2 | | 88 23 11 | 209 20 9 | 13 1 5 | | 222 21 14 | 6 2 | | 1 | 6 2 1 |
| REGION 6. FREDERICK MONTGOMERY | 16 111 | 5 9 | | 21 120 | 39 294 | 5 30 | | 44 324 | 3 9 | | | 3 9 |
| REGION 7. CALVERT CHARLES PRINCE GEORGE'S ST. MARY'S | 8 174 11 | 1 6 33 2 | 2 | 1 14 209 13 | 3 42 864 4 | 5 142 1 | 12 | 3 47 1,018 5 | 10 | 2 | | 12 |
| REGION 8. BALTIMORE CITY | 121 | 163 | 1 | 285 | 283 | 556 | | 839 | 11 | 19 | | 30 |
| STATE | 813 | 251 | 3 | 1,067 | 2,011 | 770 | 13 | 2,794 | 67 | 22 | 2 | 91 |

TABLE 21
COMMUNITY AND RESIDENTIAL PLACEMENTS BY RACE
FISCAL 1975

| Placement | White | | Black | | Other or Not Recorded | | Total | |
|---|--------|---------|--------|---------|-----------------------|---------|--------|---------|
| | Number | Percent | Number | Percent | Number | Percent | Number | Percent |
| Good Shepherd Center | 67 | 73.6 | 22 | 24.2 | 2 | 2.2 | 91 | 100.0 |
| Purchase of Care Residential Placements | 813 | 76.2 | 251 | 23.5 | 3 | 0.3 | 1,067 | 100.0 |
| Purchase of Care Emergency Placements | 2,011 | 72.0 | 770 | 27.5 | 13 | 0.5 | 2,794 | 100.0 |
| State-Owned Group Homes | | | | | | | | |
| Males | | | 24 | 100.0 | | | 24 | 100.0 |
| Females | 3 | 14.3 | 18 | 85.7 | | | 21 | 100.0 |
| Maryland Youth Residence Center | 6 | 27.3 | 16 | 72.7 | | | 22 | 100.0 |
| Total | 2,900 | 72.2 | 1,101 | 27.4 | 18 | 0.4 | 4,019 | 100.0 |

DIVISION OF
INSTITUTIONAL
SERVICES

TABLE 22
YOUTH SERVICE CENTER ADMISSIONS BY RACE AND SEX *
FISCAL 1975

| Sex | White | | Black | | Not Recorded | | Total | |
|--------|--------|---------|--------|---------|--------------|---------|--------|---------|
| | Number | Percent | Number | Percent | Number | Percent | Number | Percent |
| Male | 5 | 3.1 | 158 | 96.9 | | | 163 | 100.0 |
| Female | | | 41 | 100.0 | | | 41 | 100.0 |
| Total | 5 | 2.5 | 199 | 97.5 | | | 204 | 100.0 |

*The Youth Service Center is a day program offering specialized services to delinquent youth. This program was federally funded during fiscal 1975.

ADMISSIONS TO
MARYLAND'S TRAINING SCHOOLS
AND FORESTRY CAMPS

Maryland Training School

The 3,707 admissions to Maryland Training School during fiscal 1975 represents an increase of 28.9% over the number of admissions during fiscal 1974. The number of detentions, which accounted for 82.2% of the total number of admissions during fiscal 1975 increased 23.3%. In addition, the number of commitments, which accounted for 17.8% of the total number of admissions, increased 63.5%.

Although juveniles were admitted to the training school from twenty-two of Maryland's counties, from Baltimore City, and from out-of-state, it is significant to note that Baltimore City accounted for 66.8% of the commitments and 82.9% of the detentions.

A majority of the 3,707 admissions involved blacks (68.2%), 31.7% involved whites and 0.1% were either classified as "other" or race was not indicated.

Of the total number of admissions to the training school, a majority involved juveniles between fifteen and seventeen years of age (78.9%). In general, the number of admissions increased proportionately with an increase in age up to the age of sixteen, decreasing thereafter. Juveniles under fifteen years of age accounted for 18.3% of the admissions, 22.0% involved juveniles fifteen years of age, 28.9% involved sixteen year olds, 27.9% were seventeen years of age and 2.8% involved juveniles eighteen years of age. The largest single age group for blacks involved sixteen year olds with 29.1% of the admissions. Of those admissions involving whites, on the other hand, seventeen year olds comprised the largest single age group with 31.4%.

A majority of the admissions to the training school involved delinquent offenses (95.4%), Children in Need of Supervision accounted for 4.5%, two admissions involved dependency and one involved Special Proceedings. The largest single offense category was "assault" with 23.1% of the admissions. This was followed by "burglary-breaking and entering" with 22.8% and "auto theft-unauthorized use" with 10.8%. Of the commitments, the largest single offense category was "burglary-breaking and entering" with 27.2% of the admissions. This was followed by "assault" with 17.6% and "auto theft-unauthorized use" with 13.7%. Of the detentions, the largest single offense category was "assault" with 24.3% of the admissions, followed by "burglary-breaking and entering" with 21.9% and "auto theft-unauthorized use" with 12.5%.

Of the 561 juveniles released from commitments to Maryland Training School during fiscal 1975, the average length of stay was 4.8 months. This represents a decrease of 1.1 months from fiscal 1974.

Montrose School

The number of admissions to Montrose School during fiscal 1975 decreased 2.0% from the 946 admissions during fiscal 1974. This decrease was due to the 31.9% decrease in the number of detentions, which accounted for 44.0% of the total number of admissions. The number of commitments, on the other hand, which accounted for 56.0% of the total number of admissions, increased 49.6%.

Although juveniles were admitted to Montrose from twenty-one counties of Maryland, from Baltimore City and from out-of-state, it is significant to note that 59.8% of the admissions involved juveniles from Baltimore City. Of the commitments, 63.4% involved juveniles from Baltimore City and of the detentions, 55.1% were from Baltimore City.

A majority of the admissions to Montrose involved blacks (58.5%), while whites accounted for 40.3% and 1.2% were classified as "other" or race was not recorded.

Of the total number of admissions, a majority involved juveniles between thirteen and fifteen years of age (71.3%). Juveniles fourteen years of age comprised the largest single group with 29.3% of the admissions. Juveniles under thirteen years accounted for 6.4% of the admissions, while juveniles over fifteen accounted for 21.8%. Of those admissions involving blacks, however, the largest single age group involved fifteen year olds with 30.6% of the admissions, while juveniles fourteen years of age comprised the largest single age group for admissions involving whites with 28.3%.

A vast majority of the admissions to Montrose during fiscal 1975 involved delinquent offenses (97.3%), while Children in Need of Supervision accounted for 2.6% and one case involved Special Proceedings. The largest single offense category was "burglary-breaking and entering" with 18.1% of the admissions. This was followed by "assault" with 14.5% and "violation of supervision, probation and aftercare" with 11.2%. Of the commitments to Montrose, "burglary-breaking and entering" accounted for 25.8%, followed by "assault" with 16.2% and "larceny" with 9.4%. Of the detentions, the largest single offense category was "assault" with 12.3%, followed by "larceny" with 11.3% and "shoplifting" with 10.5%.

Of the 385 juveniles released from commitments during fiscal 1975, the average length of stay was 6.2 months. This represents a decrease of 1.3 months from fiscal 1974.

Boys' Village

During fiscal 1975, the number of admissions to Boys' Village decreased 11.1% from the 1,310 admissions during fiscal 1974. This decrease was due to the 78.0% decrease in the number of commitments, which accounted for 6.6% of the total number of admissions during fiscal 1975. In contrast, the number of detentions, which accounted for 93.4% of the admissions, increased 13.3%.

Although juveniles were admitted to Boys' Village from thirteen counties in Maryland, from Baltimore City and from out-of-state, Prince George's County and Baltimore City together accounted for 83.7% of the admissions. Baltimore City accounted for 71.4% of the commitments and 4.5% of the detentions, while Prince George's County was responsible for 18.2% of the commitments and 78.8% of the detentions.

Of the total number of admissions to Boys' Village during fiscal 1975, 50.9% involved blacks, whites accounted for 48.9% and 0.2% were either classified as "other" or race was not indicated.

A majority of the admissions to Boys' Village involved juveniles between the ages of fifteen and seventeen (76.1%). Juveniles under fifteen years of age accounted for 20.3% of the admissions, juveniles fifteen years of age accounted for 27.3%, sixteen year olds accounted for 25.6%, 23.2% involved seventeen year olds and 2.9% were eighteen years of age.

A vast majority of the admissions to Boys' Village during fiscal 1975 involved delinquent offenses (95.2%), while Children in Need of Supervision accounted for 4.1% and 0.7% involved Children in Need of Assistance. The single largest offense category was "burglary-breaking and entering" with 21.5% of the admissions. This was followed by "larceny" with 10.6% and "shoplifting" with 10.5%. Of the commitments to Boys' Village, the largest offense categories were "auto theft-unauthorized use" and "burglary-breaking and entering" with each accounting for 16.9% of the admissions, followed by "assault" with 13.0%. Of the detentions, the largest single offense category was

"burglary-breaking and entering" with 21.8%, followed by "shoplifting" with 10.9% and "larceny" with 10.5%.

Of the 196 juveniles released from commitments to Boys' Village during fiscal 1975, the average length of stay was 7.1 months. This represents an increase of 0.3 months from fiscal 1974.

Boys' Forestry Camps

The number of admissions to the Forestry Camps during fiscal 1975 increased 24.5% over the total number of admissions during fiscal 1974. Of the 346 admissions during fiscal 1975, 167 or 48.3% were direct commitments to the Forestry Camps, 177 or 51.1% were transfers from other institutions and 2 or 0.6% returned from leave.

Juveniles were admitted to the Forestry Camps from twenty-two counties of Maryland, from Baltimore City and from out-of-state. Over half of the admissions, however, involved juveniles from Prince George's County (22.8%), Baltimore City (22.3%), and Montgomery County (14.2%).

A majority of the admissions involved whites (67.3%), while blacks accounted for 32.4% and 0.3% were classified as "other"

Of the 346 admissions during fiscal 1975, 19.7% involved juveniles under sixteen years of age, sixteen year olds accounted for 37.0%, 38.4% were seventeen years of age and 4.9% involved juveniles eighteen years of age.

During fiscal 1975, a vast majority of the admissions involved delinquent offenses (98.8%) while Children in Need of Supervision accounted for 1.2%. The largest single offense category was "burglary-breaking and entering" with 28.9% of the admissions. This was followed by "auto theft-unauthorized use" with 15.6% and "assault" with 11.0%.

The average length of stay was 6.2 months for the 346 juveniles released from commitments to the Forestry Camps during fiscal 1975. This represents a decrease of 0.8 months from fiscal 1974.

ADMISSIONS TO
MARYLAND'S CHILDREN CENTERS

The number of admissions to Maryland's children centers during fiscal 1975 increased 1.5% from the 2,440 admissions during fiscal 1974. This increase, however, was due to the 6.9% increase in the number of admissions to Maryland Children's Center, which is a diagnostic facility, since the number of admissions to Waxter Children's Center, which is a State Regional Detention facility, decreased 4.0%.

While juveniles were admitted to Maryland Children's Center from every county in Maryland and Baltimore City, over half of the admissions were from Baltimore City (54.9%). This was followed by Prince George's County with 14.9% and Montgomery County with 8.5%. Juveniles were admitted to Waxter Children's Center from fifteen counties in Maryland and Baltimore City. Prince George's County, however, was responsible for 34.4% of the admissions, followed by Montgomery County with 24.9% and Anne Arundel County with 21.0%.

A majority of the admissions to Maryland's children centers involved males (76.1%), while 23.9% involved females. Of the admissions to Maryland Children's Center, 74.4% involved males while 25.6% involved females. Of the admissions to Waxter Children's Center, 78.2% involved males while 21.8% involved females.

Of the total number of admissions to Maryland's children centers, 59.9% involved whites, 39.1% involved blacks and 1.0% of the cases were classified as "other" or race was not recorded. Whites accounted for 50.1% of Mary-

land Children's Center admissions and 71.0% of Waxter Children's Center admissions, while blacks accounted for 48.9% of the admissions to Maryland Children's Center and 28.0% of the admissions to Waxter Children's Center.

A majority of the admissions to Maryland's children centers involved juveniles between the ages of fifteen and seventeen (66.0%). Juveniles under twelve years of age accounted for 2.9% of the admissions, while 29.5% were between twelve and fourteen years of age. In general, the number of admissions increased proportionately with an increase in age up to fifteen years of age, decreasing thereafter. While a majority of juveniles admitted to Maryland Children's Center (56.2%) and Waxter Children's Center (77.2%) were between fifteen and seventeen years of age, Maryland Children's Center admitted a larger proportion of younger juveniles with 43.3% under fifteen years of age compared to 20.0% for Waxter Children's Center.

A majority of the admissions to Maryland's children centers involved delinquent offenses (77.2%), while Children in Need of Supervision accounted for 22.6%, two cases involved Children in Need of Assistance and two cases involved Special Proceedings. The largest single offense category for Maryland Children's Center was "ungovernable" with 22.5%. This was followed by "burglary-breaking and entering" with 14.6% and "assault" with 13.0%. The largest single offense category for Waxter Children's Center was "burglary-breaking and entering" with 15.5%. This was followed by "runaway" with 12.5% and "auto theft-unauthorized use" with 10.5%.

TABLE 23
JUVENILE SERVICES ADMINISTRATION
SUMMARY OF INSTITUTION EXPENDITURES
FISCAL 1968 - 1975

| Year | Training Schools | Detention Centers | Forestry Camps | Total |
|------|------------------|-------------------|----------------|---------------|
| 1968 | \$ 5,632,139 | \$ 1,039,728 | \$ 589,915 | \$ 7,261,782 |
| 1969 | \$ 5,633,399 | \$ 1,138,951 | \$ 572,601 | \$ 7,344,951 |
| 1970 | \$ 6,513,389 | \$ 1,342,038 | \$ 684,536 | \$ 8,539,963 |
| 1971 | \$ 7,916,373 | \$ 1,577,667 | \$ 768,821 | \$ 10,222,861 |
| 1972 | \$ 8,700,095 | \$ 1,782,315 | \$ 882,241 | \$ 11,364,651 |
| 1973 | \$ 8,741,551 | \$ 1,752,665 | \$ 836,074 | \$ 11,330,290 |
| 1974 | \$ 7,981,170 | \$ 1,832,283 | \$ 831,407 | \$ 10,644,860 |
| 1975 | \$ 7,426,182 | \$ 2,095,326 | \$ 991,259 | \$ 10,512,767 |

TABLE 24
SUMMARY OF INSTITUTION ADMISSIONS
FISCAL 1968 - 1975

| Year | Training School Admissions | | | Detention Center Admissions | Forestry Camp Admissions |
|------|----------------------------|------------|-------|-----------------------------|--------------------------|
| | Commitments | Detentions | Total | | |
| 1968 | 1,648 | 949 | 2,597 | 3,303 | 266 |
| 1969 | 1,833 | 923 | 2,756 | 3,868 | 291 |
| 1970 | 1,822 | 912 | 2,734 | 4,441 | 318 |
| 1971 | 1,790 | 1,190 | 2,980 | 4,652 | 348 |
| 1972 | 1,801 | 1,843 | 3,644 | 4,131 | 288 |
| 1973 | 1,439 | 2,807 | 4,246 | 3,323 | 276 |
| 1974 | 1,131 | 4,118 | 5,249 | 2,440 | 278 |
| 1975 | 1,255 | 4,544 | 5,799 | 2,477 | 346 |

FIGURE 2
STATE INSTITUTION ADMISSIONS
FISCAL YEARS 1968 - 1975

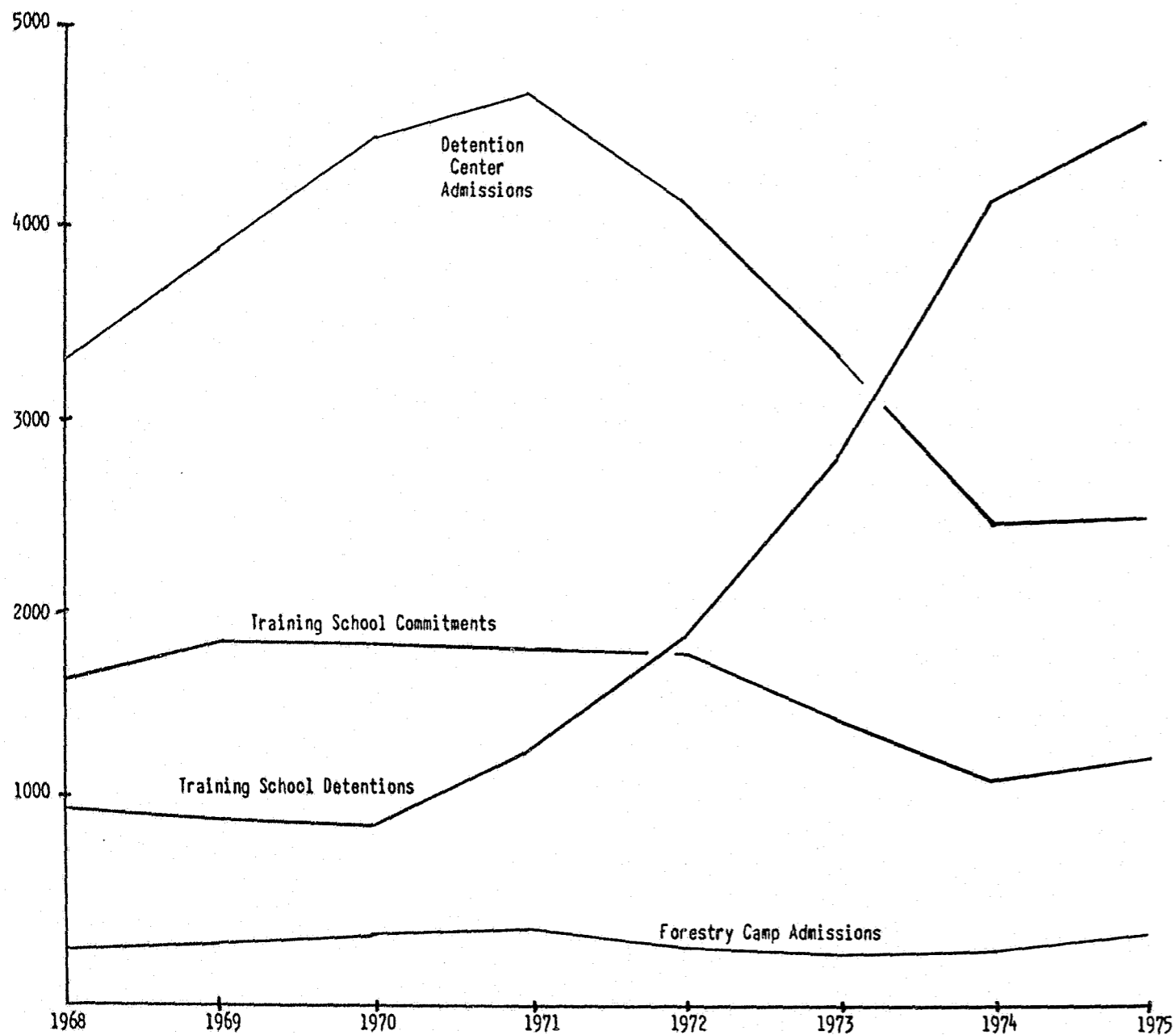


TABLE 25
TRAINING SCHOOL AND FORESTRY CAMP ADMISSIONS
FISCAL YEAR COMPARISONS
1974 - 1975

| School | Fiscal 1974 | Fiscal 1975 | Percent Change |
|---|-------------|-------------|----------------|
| Maryland Training School Commitments | 403 | 659 | + 63.5 |
| Detentions | 2,472 | 3,048 | + 23.3 |
| Montrose School Commitments | 347 | 519 | + 49.6 |
| Detentions | 599 | 408 | - 31.9 |
| Boys' Village Commitments | 350 | 77 | - 78.0 |
| Detentions | 960 | 1,088 | + 13.3 |
| Victor Cullen Commitments | 31 | - | |
| Detentions | 87 | - | |
| Total Training Schools Commitments | 1,131 | 1,255 | + 11.0 |
| Detentions | 4,118 | 4,544 | + 10.3 |
| Forestry Camps Commitments | 278 | 346 | + 24.5 |

TABLE 26
DETENTION CENTER ADMISSIONS
FISCAL YEAR COMPARISONS
1974 - 1975

| Center | Fiscal 1974 | Fiscal 1975 | Percent Change |
|----------------------------|-------------|-------------|----------------|
| Maryland Children's Center | 1,233 | 1,318 | + 6.9 |
| Waxter Children's Center | 1,207 | 1,159 | - 4.0 |
| Total | 2,440 | 2,477 | + 1.5 |

TABLE 27
NUMBER OF JUVENILES ADMITTED TO MARYLAND'S TRAINING SCHOOLS,
FORESTRY CAMPS AND DETENTION CENTERS BY COUNTY OF RESIDENCE
FISCAL 1975

| | Maryland Training School | | Montrose School | | Boys' Village | | Total for Training Schools | | Forestry Camp Admissions | Detention Center Admissions |
|---|--------------------------|-------------------|------------------|--------------|---------------|-----------------------|----------------------------|------------------------|--------------------------|-----------------------------|
| | Committed | Detained | Committed | Detained | Committed | Detained | Committed | Detained | | |
| | | | | | | | | | | |
| REGION 1. DORCHESTER SOMERSET WICOMICO WORCESTER | 6 1 10 2 | 5 7 6 | 8 5 8 | 2 | 1 2 | | 15 6 20 2 | 5 7 8 | 3 2 | 10 1 4 10 |
| REGION 2. CAROLINE CECIL KENT QUEEN ANNE'S TALBOT | 1 2 4 4 7 | 5 25 5 5 | 7 1 1 3 | 4 1 | 1 | | 1 10 5 5 10 | 5 29 1 5 5 | 2 7 3 2 2 | 3 12 3 1 3 |
| REGION 3. BALTIMORE HARFORD | 58 6 | 107 26 | 35 6 | 23 1 | 3 | | 93 12 | 133 27 | 9 16 | 56 27 |
| REGION 4. ALLEGANY GARRETT WASHINGTON | 5 3 20 | 5 13 | 9 2 11 | 2 9 | 3 | 2 | 14 5 34 | 7 24 | 12 5 18 | 22 5 20 |
| REGION 5. ANNE ARUNDEL CARROLL HOWARD | 2 3 | 4 52 11 | 5 | 8 2 | | 32 3 | 7 3 | 44 57 11 | 14 9 3 | 256 12 60 |
| REGION 6. FREDERICK MONTGOMERY | 5 20 | 12 164 | 8 18 | 1 40 | | 2 2 | 13 38 | 15 206 | 8 49 | 25 327 |
| REGION 7. CALVERT CHARLES PRINCE GEORGE'S ST. MARY'S | 12 41 1 | 4 33 1 | 3 54 3 | 2 4 37 | | 14 28 857 28 | 15 109 5 | 20 32 927 29 | 4 10 79 6 | 13 22 512 17 |
| REGION 8. BALTIMORE CITY | 440 | 2,526 | 329 | 225 | 55 | 49 | 824 | 2,800 | 77 | 792 |
| OUT-OF-STATE | 6 | 32 | 3 | 47 | | 68 | 9 | 147 | 6 | 264 |
| STATE | 659 | 3,048 | 519 | 408 | 77 | 1,088 | 1,255 | 4,544 | 346 | 2,477 |

TABLE 28
JUVENILES ADMITTED TO STATE TRAINING SCHOOLS BY
TYPE OF ADMISSION AND TRAINING SCHOOL
FISCAL 1968 - 1975

| Year | Maryland Training School | Boys' Village | Montrose School | Victor Cullen | Total |
|-------------|--------------------------|---------------|-----------------|---------------|-------|
| 1968 | | | | | |
| Commitments | 782 | 381 | 291 | 194 | 1,648 |
| Detentions | 530 | 208 | 211 | | 949 |
| Total | 1,312 | 589 | 502 | 194 | 2,597 |
| 1969 | | | | | |
| Commitments | 818 | 466 | 308 | 241 | 1,833 |
| Detentions | 493 | 219 | 211 | | 923 |
| Total | 1,311 | 685 | 519 | 241 | 2,756 |
| 1970 | | | | | |
| Commitments | 761 | 406 | 336 | 319 | 1,822 |
| Detentions | 429 | 181 | 302 | | 912 |
| Total | 1,190 | 587 | 638 | 319 | 2,734 |
| 1971 | | | | | |
| Commitments | 872 | 311 | 308 | 299 | 1,790 |
| Detentions | 655 | 173 | 362 | | 1,190 |
| Total | 1,527 | 484 | 670 | 299 | 2,980 |
| 1972 | | | | | |
| Commitments | 498 | 420 | 402 | 481 | 1,801 |
| Detentions | 759 | 535 | 437 | 112 | 1,843 |
| Total | 1,257 | 955 | 839 | 593 | 3,644 |
| 1973 | | | | | |
| Commitments | 336 | 382 | 326 | 395 | 1,439 |
| Detentions | 1,019 | 1,158 | 466 | 164 | 2,807 |
| Total | 1,355 | 1,540 | 792 | 559 | 4,246 |
| 1974 | | | | | |
| Commitments | 403 | 350 | 347 | 31 | 1,131 |
| Detentions | 2,472 | 960 | 599 | 87 | 4,118 |
| Total | 2,875 | 1,310 | 946 | 118 | 5,249 |
| 1975 | | | | | |
| Commitments | 659 | 77 | 519 | | 1,255 |
| Detentions | 3,048 | 1,088 | 408 | | 4,544 |
| Total | 3,707 | 1,165 | 927 | | 5,799 |

TABLE 29
 NUMBER OF JUVENILES ADMITTED TO MARYLAND'S TRAINING SCHOOLS AND FORESTRY CAMPS
 BY COUNTY OF RESIDENCE AND COUNTY OF ADMITTING COURT
 FISCAL 1975

| | Maryland Training School | | Montrose School | | Boys' Village | | Forestry Camps | |
|---|--------------------------|--------------------------|---------------------|--------------------|-----------------------|-----------------------|-----------------------|-----------------------|
| | County of Residence | Admitting Court | County of Residence | Admitting Court | County of Residence | Admitting Court | County of Residence | Admitting Court |
| REGION 1. DORCHESTER SOMERSET WICOMICO WORCESTER | 11 8 16 2 | 10 7 16 2 | 8 5 10 | 9 5 10 | 1 2 | 1 2 | 3 2 | 3 2 |
| REGION 2. CAROLINE CECIL KENT QUEEN ANNE'S TALBOT | 6 27 4 9 12 | 4 29 4 12 15 | 11 2 1 3 | 13 2 2 5 | 1 | 1 | 2 7 3 2 2 | 2 7 3 2 2 |
| REGION 3. BALTIMORE HARFORD | 165 32 | 176 30 | 58 7 | 59 7 | 3 | 3 | 9 16 | 8 14 |
| REGION 4. ALLEGANY GARRETT WASHINGTON | 10 3 33 | 12 9 33 | 11 2 20 | 10 2 20 | 5 | 5 | 12 5 18 | 13 5 20 |
| REGION 5. ANNE ARUNDEL CARROLL HOWARD | 6 55 11 | 3 55 14 | 13 2 | 14 3 1 | 32 3 | 34 3 | 14 9 3 | 12 10 4 |
| REGION 6. FREDERICK MONTGOMERY | 17 184 | 17 194 | 9 58 | 9 75 | 2 2 | 2 2 | 8 49 | 7 53 |
| REGION 7. CALVERT CHARLES PRINCE GEORGE'S ST. MARY'S | 16 74 2 | 15 81 2 | 5 4 91 3 | 5 4 102 3 | 14 28 871 29 | 14 26 946 29 | 4 10 79 6 | 4 11 76 7 |
| REGION 8. BALTIMORE CITY | 2,966 | 2,967 | 554 | 567 | 104 | 97 | 77 | 81 |
| OUT-OF-STATE | 38 | | 50 | | 68 | | 6 | |
| STATE | 3,707 | 3,707 | 927 | 927 | 1,165 | 1,165 | 346 | 346 |

46

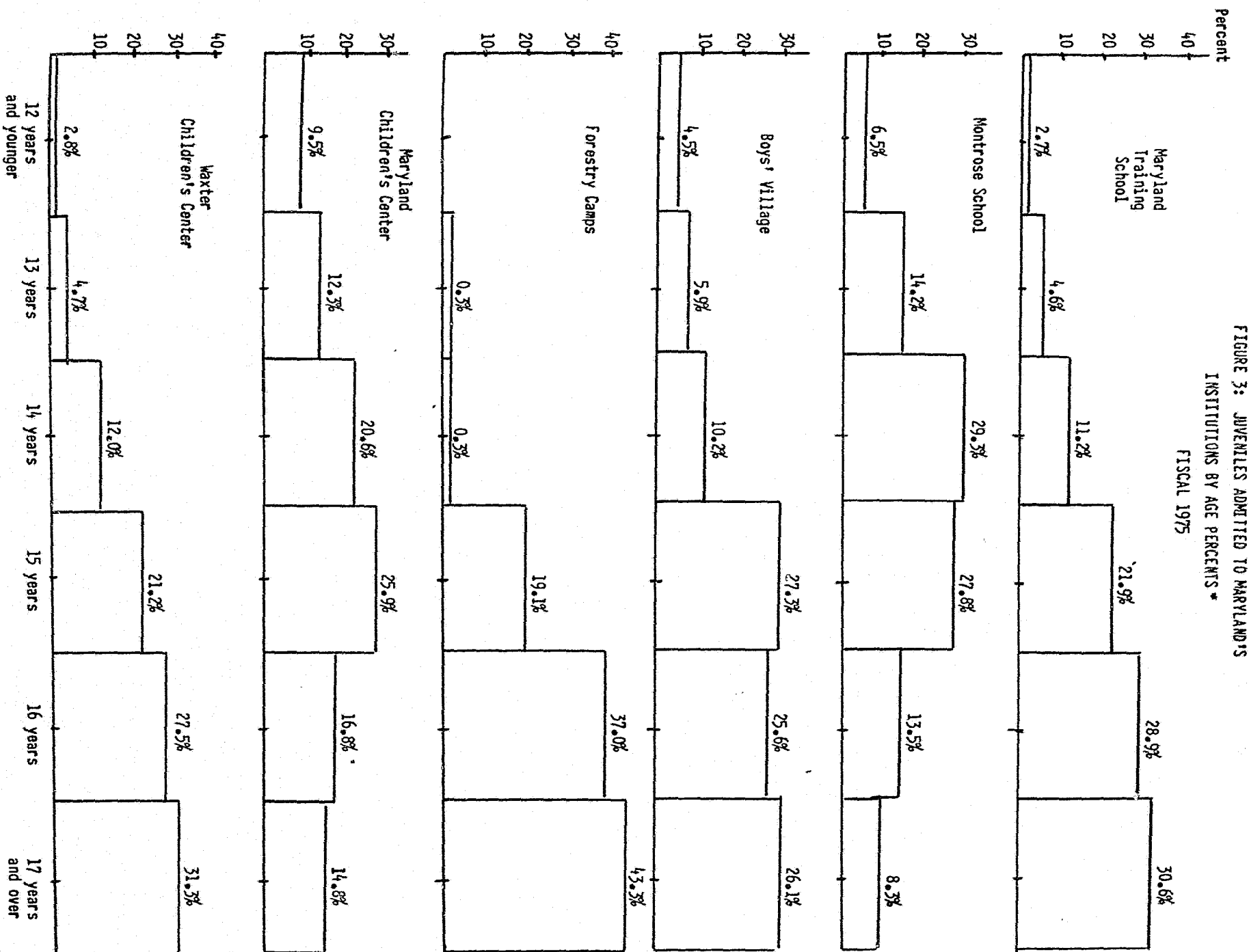


FIGURE 3: JUVENILES ADMITTED TO MARYLAND'S INSTITUTIONS BY AGE PERCENTS * FISCAL 1975

* Percents do not add to 100.0 since "Age Unknown" is not included

TABLE 30
 JUVENILES ADMITTED TO MARYLAND'S TRAINING SCHOOLS
 AND FORESTRY CAMPS BY OFFENSE AND AGE
 FISCAL 1975

| Offense | Maryland Training School | | | Montrose School | | | Boys' Village | | | Forestry Camps | | |
|------------------------------|--------------------------|--------------|--------------|--------------------|-------------|------------|--------------------|-------------|--------------|--------------------|-------------|------------|
| | 15 years & younger | 16-18 years | Total | 15 years & younger | 16-18 years | Total | 15 years & younger | 16-18 years | Total | 15 years & younger | 16-18 years | Total |
| Arson | 7 | 10 | 17 | 5 | 1 | 6 | 6 | 6 | 12 | | 1 | 1 |
| Assault | 348 | 508 | 856 | 110 | 24 | 134 | 60 | 50 | 110 | 9 | 29 | 38 |
| Auto Theft/Unauthorized Use | 159 | 240 | 399 | 49 | 5 | 54 | 56 | 48 | 104 | 11 | 43 | 54 |
| Burglary/Breaking & Entering | 338 | 509 | 847 | 155 | 13 | 168 | 125 | 125 | 250 | 12 | 88 | 100 |
| Larceny | 160 | 186 | 346 | 73 | 22 | 95 | 57 | 66 | 123 | 6 | 28 | 34 |
| Robbery | 62 | 110 | 172 | 37 | 9 | 46 | 38 | 46 | 84 | 5 | 13 | 18 |
| Disorderly Conduct | 33 | 71 | 104 | 18 | 7 | 25 | 12 | 28 | 40 | 1 | 3 | 4 |
| Sex Offense | 12 | 10 | 22 | 1 | 1 | 2 | 6 | 1 | 7 | 2 | | 2 |
| Vandalism | 28 | 44 | 72 | 11 | | 11 | 16 | 17 | 33 | 2 | 6 | 8 |
| Narcotics Violation | 24 | 60 | 84 | 5 | 12 | 17 | 10 | 36 | 46 | 4 | 8 | 12 |
| Glue Sniffing | 32 | 33 | 65 | 5 | 3 | 8 | 5 | | 5 | 1 | 4 | 5 |
| Alcoholic Beverage Violation | 1 | 4 | 5 | | | | 1 | 7 | 8 | 1 | 1 | 2 |
| Shoplifting | 40 | 53 | 93 | 58 | 22 | 80 | 55 | 67 | 122 | 1 | 5 | 6 |
| Purse Snatching | 30 | 40 | 70 | 9 | | 9 | 4 | 1 | 5 | 2 | 7 | 9 |
| Firearms Violation | 36 | 69 | 105 | 14 | 1 | 15 | 18 | 16 | 34 | | 5 | 5 |
| Rec/Poss of Stolen Goods | 3 | 12 | 15 | 2 | 1 | 3 | 4 | 9 | 13 | | 3 | 3 |
| Trespassing | 30 | 13 | 43 | 11 | | 11 | 17 | 12 | 29 | 3 | 4 | 7 |
| False Fire Alarm | 3 | 2 | 5 | 1 | | 1 | | | | | 2 | 2 |
| Violation of Supervision | 43 | 72 | 115 | 85 | 19 | 104 | 27 | 22 | 49 | 5 | 18 | 23 |
| Other | 36 | 64 | 100 | 57 | 56 | 113 | 13 | 22 | 35 | 2 | 7 | 9 |
| Total Delinquent | 1,425 | 2,110 | 3,535 | 706 | 196 | 902 | 530 | 579 | 1,109 | 67 | 275 | 342 |
| Runaway | 64 | 95 | 159 | 13 | 9 | 22 | 17 | 24 | 41 | 1 | 3 | 4 |
| Truancy | 3 | | 3 | | | | 1 | 1 | 2 | | | |
| Ungovernable | 2 | 5 | 7 | 2 | | 2 | 2 | 3 | 5 | | | |
| Total CINS | 69 | 100 | 169 | 15 | 9 | 24 | 20 | 28 | 48 | 1 | 3 | 4 |
| Neglect | | | | | | | | | | | | |
| Dependency | | 2 | 2 | | | | 5 | | 5 | | | |
| Dependency & Neglect | | | | | | | 2 | | 2 | | | |
| Mentally Handicapped | | | | | | | 1 | | 1 | | | |
| Total CINA | | 2 | 2 | | | | 8 | | 8 | | | |
| Special Proceedings | | 1 | 1 | 1 | | 1 | | | | | | |
| GRAND TOTAL | 1,494 | 2,213 | 3,707 | 722 | 205 | 927 | 558 | 607 | 1,165 | 68 | 278 | 346 |

48

TABLE 31
 JUVENILES ADMITTED TO MARYLAND'S TRAINING SCHOOLS
 AND FORESTRY CAMPS BY AGE AND RACE
 FISCAL 1975

| Race by Institutions | Age of Juvenile | | | | | | | | | | Total | | |
|---------------------------------|-----------------|-----------|-----------|------------|------------|------------|--------------|--------------|--------------|------------|-----------|--------------|--------------|
| | 9 years | 10 years | 11 years | 12 years | 13 years | 14 years | 15 years | 16 years | 17 years | 18 years | Unknown | Number | Percent |
| Maryland Training School | | | | | | | | | | | | | |
| White | | 8 | 11 | 17 | 38 | 92 | 256 | 336 | 369 | 47 | 4 | 1,174 | 31.7 |
| Black | 1 | 13 | 18 | 33 | 131 | 315 | 560 | 736 | 660 | 56 | 4 | 2,527 | 68.2 |
| Other | | | | | | | 1 | 1 | 4 | | | 6 | 0.1 |
| Total | 1 | 21 | 29 | 50 | 169 | 407 | 817 | 1,073 | 1,033 | 103 | 4 | 3,707 | 100.0 |
| Montrose School | | | | | | | | | | | | | |
| White | 2 | 2 | 5 | 16 | 57 | 106 | 90 | 59 | 34 | 2 | 1 | 374 | 40.3 |
| Black | | 3 | 8 | 24 | 75 | 160 | 166 | 65 | 38 | 1 | 2 | 542 | 58.5 |
| Other | | | | | | 6 | 2 | 1 | 2 | | | 11 | 1.2 |
| Total | 2 | 5 | 13 | 40 | 132 | 272 | 258 | 125 | 74 | 3 | 3 | 927 | 100.0 |
| Boys' Village | | | | | | | | | | | | | |
| White | | 2 | 5 | 8 | 24 | 60 | 152 | 152 | 143 | 22 | 2 | 570 | 48.9 |
| Black | 3 | 4 | 9 | 18 | 45 | 165 | 145 | 145 | 127 | 12 | 6 | 593 | 50.9 |
| Other | | | | | | 1 | 1 | 1 | | | | 2 | 0.2 |
| Total | 3 | 6 | 14 | 26 | 69 | 119 | 318 | 298 | 270 | 34 | 8 | 1,165 | 100.0 |
| Total Training Schools | | | | | | | | | | | | | |
| White | 2 | 12 | 21 | 41 | 119 | 258 | 498 | 547 | 546 | 71 | 3 | 2,118 | 36.5 |
| Black | 4 | 20 | 35 | 75 | 251 | 534 | 891 | 946 | 825 | 69 | 12 | 3,662 | 63.2 |
| Other | | | | | | 6 | 4 | 3 | 6 | | | 19 | 0.3 |
| Total | 6 | 32 | 56 | 116 | 370 | 798 | 1,393 | 1,496 | 1,377 | 140 | 15 | 5,799 | 100.0 |
| Boys' Forestry Camps | | | | | | | | | | | | | |
| White | | | | | 1 | 1 | 15 | 83 | 87 | 12 | | 233 | 67.3 |
| Black | | | | | | | 1 | 44 | 46 | 5 | | 112 | 32.4 |
| Other | | | | | | | | 1 | | | | 1 | 0.3 |
| Total | | | | | 1 | 1 | 66 | 128 | 133 | 17 | | 346 | 100.0 |

49

TABLE 32
 COMMITMENTS TO MARYLAND'S TRAINING SCHOOLS AND
 FORESTRY CAMPS BY LENGTH OF STAY (BASED ON RELEASES)
 FISCAL 1975

| Length of Stay (Months) | Maryland Training School | Montrose School | Boys' Village | Forestry Camps | Total |
|-------------------------|--------------------------|-----------------|---------------|----------------|-------|
| 0-1 | 121 | 31 | 13 | 16 | 181 |
| 2 | 28 | 15 | 4 | 11 | 58 |
| 3 | 51 | 32 | 14 | 11 | 108 |
| 4 | 92 | 45 | 17 | 52 | 206 |
| 5 | 69 | 52 | 19 | 63 | 203 |
| 6 | 50 | 49 | 20 | 60 | 179 |
| 7 | 45 | 42 | 18 | 49 | 154 |
| 8 | 23 | 28 | 24 | 18 | 93 |
| 9 | 20 | 27 | 12 | 20 | 79 |
| 10 | 17 | 22 | 3 | 16 | 58 |
| 11 | 8 | 10 | 8 | 15 | 41 |
| 12 | 5 | 14 | 6 | 6 | 31 |
| 13 | 7 | 7 | 2 | 2 | 18 |
| 14 | 4 | 2 | 3 | 3 | 12 |
| 15 | 4 | 1 | 6 | 2 | 13 |
| 16 | 2 | 4 | 3 | | 9 |
| 17 | 5 | | 4 | 1 | 10 |
| 18 | | 2 | 2 | 1 | 5 |
| Over 18 | 10 | 2 | 18 | | 30 |
| Total | 561 | 385 | 196 | 346 | 1,488 |
| Average | 4.8 | 6.2 | 7.1 | 6.2 | 5.8 |

The above table suggests that the length of stay in Maryland's training schools and forestry camps during fiscal 1975 showed little variation between institutions. With an average of 5.8 months, the length of stay ranged from a low of 4.8 months for Maryland Training School to a high of 7.1 months for Boys' Village.

TABLE 33
 DETENTION CENTER ADMISSIONS
 BY INSTITUTION AND SEX
 FISCAL 1968 - 1975

| Year | Maryland Children's Center | T. J. S. Waxter Children's Center | Total |
|-------------------|----------------------------|-----------------------------------|-------|
| 1968 | | | |
| Male Admissions | 741 | 1,493 | 2,234 |
| Female Admissions | 266 | 803 | 1,069 |
| Total | 1,007 | 2,296 | 3,303 |
| 1969 | | | |
| Male Admissions | 868 | 1,748 | 2,616 |
| Female Admissions | 311 | 941 | 1,252 |
| Total | 1,179 | 2,689 | 3,868 |
| 1970 | | | |
| Male Admissions | 861 | 2,112 | 2,973 |
| Female Admissions | 332 | 1,136 | 1,468 |
| Total | 1,193 | 3,248 | 4,441 |
| 1971 | | | |
| Male Admissions | 933 | 2,154 | 3,087 |
| Female Admissions | 330 | 1,235 | 1,565 |
| Total | 1,263 | 3,389 | 4,652 |
| 1972 | | | |
| Male Admissions | 1,021 | 1,884 | 2,905 |
| Female Admissions | 334 | 892 | 1,226 |
| Total | 1,355 | 2,776 | 4,131 |
| 1973 | | | |
| Male Admissions | 973 | 1,189 | 2,162 |
| Female Admissions | 325 | 836 | 1,161 |
| Total | 1,298 | 2,025 | 3,323 |
| 1974 | | | |
| Male Admissions | 938 | 818 | 1,756 |
| Female Admissions | 295 | 389 | 684 |
| Total | 1,233 | 1,207 | 2,440 |
| 1975 | | | |
| Male Admissions | 980 | 906 | 1,886 |
| Female Admissions | 338 | 253 | 591 |
| Total | 1,318 | 1,159 | 2,477 |

TABLE 34
 ADMISSIONS TO MARYLAND'S CHILDREN CENTERS BY COUNTY OF RESIDENCE
 AND COUNTY OF ADMITTING COURT - FISCAL 1975

| | Maryland Children's Center | | Waxter Children's Center | | Total | |
|---|----------------------------|---------------------------|--------------------------|---------------------------|------------------------|---------------------------|
| | County of Residence | County of Admitting Court | County of Residence | County of Admitting Court | County of Residence | County of Admitting Court |
| REGION 1. DORCHESTER SOMERSET WICOMICO WORCESTER | 9 1 4 10 | 9 1 3 10 | 1 | | 10 1 4 10 | 9 1 3 10 |
| REGION 2. CAROLINE CECIL KENT QUEEN ANNE'S TALBOT | 2 11 3 1 1 | 2 11 3 2 1 | 1 1 | 1 2 | 3 12 3 1 3 | 3 11 3 2 3 |
| REGION 3. BALTIMORE HARFORD | 50 25 | 44 25 | 6 2 | 10 3 | 56 27 | 54 28 |
| REGION 4. ALLEGANY GARRETT WASHINGTON | 20 5 17 | 21 5 15 | 2 3 | 4 1 | 22 5 20 | 25 5 16 |
| REGION 5. ANNE ARUNDEL CARROLL HOWARD | 65 10 11 | 65 11 11 | 191 2 49 | 243 2 77 | 256 12 60 | 308 13 88 |
| REGION 6. FREDERICK MONTGOMERY | 6 109 | 6 112 | 19 218 | 35 289 | 25 327 | 41 401 |
| REGION 7. CALVERT CHARLES PRINCE GEORGE'S ST. MARY'S | 9 19 197 12 | 9 19 196 13 | 4 3 315 5 | 5 6 399 10 | 13 22 512 17 | 14 25 595 23 |
| REGION 8. BALTIMORE CITY | 720 | 724 | 72 | 72 | 792 | 796 |
| OUT-OF-STATE | 1 | | 263 | | 264 | |
| STATE | 1,318 | 1,318 | 1,159 | 1,159 | 2,477 | 2,477 |

TABLE 35
 MARYLAND'S CHILDREN CENTER ADMISSIONS
 AND TRAINING SCHOOL DETENTIONS BY OFFENSE
 FISCAL 1975

| Offense | Maryland Children Centers | | | Maryland Training School | Montrose School | Boys' Village |
|------------------------------|----------------------------|--------------------------|-------|--------------------------|-----------------|---------------|
| | Maryland Children's Center | Waxter Children's Center | Total | | | |
| Arson | 12 | 5 | 17 | 14 | | 10 |
| Assault | 171 | 116 | 287 | 740 | 50 | 100 |
| Auto Theft/Unauthorized Use | 76 | 122 | 198 | 309 | 14 | 91 |
| Burglary/Breaking & Entering | 193 | 180 | 373 | 668 | 34 | 237 |
| Larceny | 72 | 104 | 176 | 297 | 46 | 114 |
| Robbery | 61 | 28 | 89 | 119 | 11 | 79 |
| Disorderly Conduct | 18 | 31 | 49 | 92 | 16 | 40 |
| Sex Offense | 13 | 7 | 20 | 16 | 1 | 7 |
| Vandalism | 26 | 11 | 37 | 56 | 3 | 33 |
| Narcotics Violation | 22 | 53 | 75 | 65 | 12 | 44 |
| Glue Sniffing | 18 | 3 | 21 | 55 | 4 | 4 |
| Alcoholic Beverage Violation | 3 | 9 | 12 | 5 | | 8 |
| Shoplifting | 39 | 87 | 126 | 74 | 43 | 119 |
| Purse Snatching | 11 | 2 | 13 | 55 | | 4 |
| Firearms Violation | 25 | 22 | 47 | 88 | 8 | 29 |
| Rec/Poss of Stolen Goods | 4 | 7 | 11 | 9 | 2 | 13 |
| Trespassing | 14 | 14 | 28 | 41 | 1 | 29 |
| False Fire Alarm | 3 | 1 | 4 | 4 | 1 | |
| Violation of Supervision | 92 | 43 | 135 | 94 | 34 | 40 |
| Other | 32 | 164 | 196 | 90 | 107 | 33 |
| Total Delinquent | 905 | 1,009 | 1,914 | 2,891 | 387 | 1,034 |
| Runaway | 91 | 145 | 236 | 146 | 19 | 41 |
| Truancy | 23 | | 23 | 3 | | 1 |
| Ungovernable | 297 | 3 | 300 | 5 | 1 | 5 |
| Total CIMS | 411 | 148 | 559 | 154 | 20 | 47 |
| Neglect | 1 | | 1 | | | |
| Dependency | | | | 2 | | 5 |
| Dependency & Neglect | | | | | | 2 |
| Mentally Handicapped | 1 | | 1 | | | |
| Total CINA | 2 | | 2 | 2 | | 7 |
| Special Proceedings | | 2 | 2 | 1 | 1 | |
| GRAND TOTAL | 1,318 | 1,159 | 2,477 | 3,048 | 408 | 1,088 |

TABLE 36
 ADMISSIONS TO MARYLAND'S CHILDREN CENTERS
 BY AGE AND RACE
 FISCAL 1975

| Age | Maryland Children's Center | | | | Waxter Children's Center | | | | Total | | | |
|-----------------|----------------------------|-------|-------|-------|--------------------------|-------|-------|-------|-------|-------|-------|-------|
| | Black | White | Other | Total | Black | White | Other | Total | Black | White | Other | Total |
| Under 10 years | 5 | 6 | | 11 | | 1 | | 1 | 5 | 7 | | 12 |
| 10 years | 8 | 7 | 1 | 16 | 1 | 1 | | 2 | 9 | 8 | 1 | 18 |
| 11 years | 13 | 23 | | 36 | 4 | 3 | | 7 | 17 | 26 | | 43 |
| 12 years | 28 | 36 | | 64 | 16 | 6 | | 22 | 44 | 42 | | 86 |
| 13 years | 85 | 80 | 2 | 167 | 29 | 28 | | 57 | 114 | 108 | 2 | 224 |
| 14 years | 125 | 147 | 5 | 277 | 100 | 41 | 2 | 143 | 225 | 188 | 7 | 420 |
| 15 years | 181 | 163 | 1 | 345 | 191 | 66 | 3 | 260 | 372 | 229 | 4 | 605 |
| 16 years | 114 | 99 | 2 | 215 | 224 | 83 | 3 | 310 | 338 | 182 | 5 | 525 |
| 17 years | 97 | 80 | 3 | 180 | 235 | 87 | 3 | 325 | 332 | 167 | 6 | 505 |
| 18 years & over | 4 | 3 | | 7 | 22 | 5 | | 27 | 26 | 8 | | 34 |
| Unknown | | | | | 1 | 3 | 1 | 5 | 1 | 3 | 1 | 5 |
| Total | 660 | 644 | 14 | 1,318 | 823 | 324 | 12 | 1,159 | 1,483 | 968 | 26 | 2,477 |
| Percent | 50.1 | 48.9 | 1.0 | 100.0 | 71.0 | 28.0 | 1.0 | 100.0 | 59.9 | 39.1 | 1.0 | 100.0 |

54

APPENDIX

55

Federal Grants in Operation
During Fiscal 1975

by Program Area

With the assistance of the Governor's Commission on Law Enforcement and the Administration of Justice, Federal funds were provided under the Omnibus Crime Control and Safe Streets Act of 1973 for the following on-going programs during fiscal 1975.

| <u>Juvenile Court Services</u> | <u>LEAA</u> | <u>STATE*</u> |
|--|-------------------|------------------|
| Community Treatment Intensive Probation Project (Baltimore City) | \$ 472,105 | \$ 52,457 |
| Diagnostic and Treatment Services (Prince George's County) | 68,800 | 7,644 |
| Diagnostic and Treatment Services (Baltimore County) | 30,584 | 3,398 |
| Diagnostic and Treatment Services (Eastern Shore) | 17,000 | 1,888 |
| Diagnostic and Treatment Services (Western Maryland) | 11,000 | 1,222 |
| Diagnostic and Treatment Services (Anne Arundel County) | 53,166 | 3,105 |
| | <u>\$ 652,655</u> | <u>\$ 69,714</u> |

| <u>Community Services</u> | <u>LEAA</u> | <u>STATE*</u> |
|--|--------------------|------------------|
| Youth Residence Center (Baltimore City) | \$ 18,000 | \$ 2,000 |
| Youth Service Center (Baltimore City) | 279,321 | 31,035 |
| Shelter Care Facilities Via Family Type Residential Care Capabilities | 117,037 | 13,004 |
| Diversion of Impact Offenders | 312,183 | 39,414 |
| Residential Facilities Project | 44,400 | 4,933 |
| Differential Group Home and Treatment Project | 48,179 | 5,297 |
| House Detention | 101,112 | 14,838 |
| A Study and Evaluation of Prevention Programs | 19,400 | 2,155 |
| Regional Delinquency Prevention Specialists | 57,874 | 8,113 |
| Group Home Guidelines and Evaluation Study | 36,000 | 4,000 |
| Community Treatment of Impact Offenders and Families (Anne Arundel County) | 38,764 | 4,312 |
| Community Arbitration Program (Anne Arundel County) | 51,850 | 5,761 |
| Pre Trial Intervention | 157,484 | 17,498 |
| Shelter and Foster Parents Training Program | 8,323 | 925 |
| Community Volunteer Program | 41,800 | 4,644 |
| | <u>\$1,331,727</u> | <u>\$157,929</u> |

| <u>Institutional Rehabilitation</u> | <u>LEAA</u> | <u>STATE*</u> |
|--|------------------|-----------------|
| Improved and Expanded Institutional Rehabilitation Program | \$ 30,068 | \$ 3,340 |
| Drug Training Program (Montrose) | 3,269 | 363 |
| Automated Drug Program (MTSB) | 4,719 | 524 |
| Health and Family Development (Montrose) | 10,932 | 1,215 |
| | <u>\$ 48,988</u> | <u>\$ 5,442</u> |

| <u>Multi-Functional</u> | <u>LEAA</u> | <u>STATE*</u> |
|---|--------------------|------------------|
| Research Assistance-Staff Positions | \$ 26,352 | \$ 2,934 |
| In-Service Training for Juvenile Services and Private Agencies Personnel (with University of Maryland) | 62,500 | 6,944 |
| Public Information Program | 4,000 | 444 |
| Youth Service Project | 270 | 30 |
| Conference on Juvenile Delinquency Prevention and the National Interest | 1,481 | 164 |
| Second National Conference of Juvenile Justice Project | 3,615 | 402 |
| Southeastern Regional Workshop Project | 225 | 25 |
| | <u>\$ 98,443</u> | <u>\$ 10,943</u> |
| | | |
| TOTAL | <u>\$2,131,813</u> | <u>\$244,028</u> |

*The State must contribute in cash a portion of the total cost of all projects funded by the Governor's Commission.

The services and facilities of the Maryland State Department of Health and Mental Hygiene are operated on a non-discriminatory basis. This policy prohibits discrimination on the basis of race, color, sex, or national origin and applies to the provision of service, use of facilities, opportunity to participate, practice of employment and granting of advantages, privileges and accommodations.

END