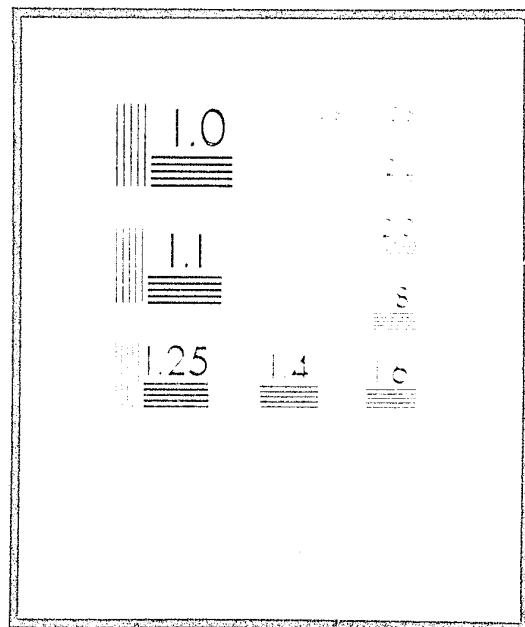


NCJRS

This microfiche was produced from documents received for inclusion in the NCJRS data base. Since NCJRS cannot exercise control over the physical condition of the documents submitted, the individual frame quality will vary. The resolution chart on this frame may be used to evaluate the document quality.



Microfilming procedures used to create this fiche comply with the standards set forth in 41CFR 101-11.504

Points of view or opinions stated in this document are those of the author(s) and do not represent the official position or policies of the U.S. Department of Justice.

U.S. DEPARTMENT OF JUSTICE
LAW ENFORCEMENT ASSISTANCE ADMINISTRATION
NATIONAL CRIMINAL JUSTICE REFERENCE SERVICE
WASHINGTON, D.C. 20531

3 2 77
Date filmed

Model
Volunteer
Project

1974

SURVEY

&

DIRECTORY

37279

CALIFORNIA VOLUNTEER SERVICES
IN CORRECTIONS

State of California

RONALD REAGAN
Governor

Health and Welfare Agency

JAMES E. JENKINS
Secretary



**Department of the
Youth Authority**

Robert L. Smith, Deputy Director
PREVENTION AND COMMUNITY
CORRECTIONS BRANCH

MODEL VOLUNTEER PROJECT

A Grant Program Funded by The
Office of Criminal Justice Planning

Pearldean Golightly
Volunteer Services Administrator

Anne Lassiter
Volunteer Services Consultant

Judith Maxwell
Volunteer Services Consultant

Elizabeth Yost
Volunteer Services Consultant

John Taylor
Administrative Assistant

Christopher Kimble
Resource and Information Assistant

Shirley Houser, Senior Stenographer
Deborah Fisher, Library Coordinator

Leslie Nishimura, Stenographer
Laura Viglione, Clerk Typist

LDA

ALLEN F. BREED,
DIRECTOR

GEORGE R. ROBERTS,
CHIEF DEPUTY DIRECTOR

JAMES C. BARNETT,
DEPUTY DIRECTOR
PLANNING, RESEARCH, EVALUATION
AND DEVELOPMENT BRANCH

YOUTH AUTHORITY BOARD

ALLEN F. BREED,
DIRECTOR AND CHAIRMAN

JULIO GONZALES,
VICE CHAIRMAN

ED BOWE
RICHARD W. CALVIN, JR.
MAURINE B. CROSBY
PAUL A. MEANEY
WILLIAM L. RICHEY
JAMES E. STRATTEN

FOREWORD

The Model Volunteer Project has prepared this publication as a resource for correctional and law enforcement agencies interested in the use of volunteer manpower.

The 1974 Survey and Directory revises and expands the list of volunteer programs published in the Project's 1973 Survey and Directory, and presents new statistical data on the extent and nature of correctional volunteer efforts in California.

The Model Volunteer Project, initiated in 1972 by a grant from the California Office of Criminal Justice Planning, has participated in extensive research of volunteer services in California in addition to providing resource and consultative services to interested agencies and organizations throughout the state.

I hope that correctional and law enforcement agencies will make full use of the Project's services, and that this document will promote the continuing development of effective volunteer services.

Allen F. Breed
Allen F. Breed, Director
NCJF

October 1974

OCT 28 1974

ACQUISITION

TABLE OF CONTENTS

Foreword. i

Introduction. iv

I. Directory of Volunteer Programs in California

 a) North Central Region. 2

 b) North Coastal Region. 9

 c) Southern Region. 16

 Volunteer Activity Charts

 a) North Central Region. 25

 b) North Coastal Region. 29

 c) Southern Region. 33

II. Survey Summary

 Introduction. 40

 Table I: Survey Responses. 41

 Youth Authority, Corrections, Probation. 41

 Police and Sheriffs' Departments. 43

 Tables II & III: Volunteer Utilization. 44

 Tables IV & V: Volunteer Programs. 45

 Tables VI & VII: Volunteer Coordinators. 46

III. Categorical Distribution of Volunteer Utilization

 Table VIII: Fall, 1972 Survey. 48

 Table IX: Youth Authority, Corrections, Probation. 49

 Table X: Probation. 50

 Table XI: Youth Authority Institutions. 51

 Table XI: Youth Authority Parole Units. 51

INTRODUCTION

Table XII: Corrections Institutions. 52
Table XII: Corrections Parole Units. 52
Table XIII: Police Departments. 53
Table XIII: Sheriffs' Departments. 53

The 1974 Survey and Directory presents new statistical data on correctional volunteer efforts in the state of California and a list of 137 correctional and law enforcement agencies actively utilizing volunteers in the delivery of services. Although similar in purpose and format, this publication differs from the Project's 1973 Survey and Directory in survey design and in the inclusion of law enforcement agencies.

The brief, eight-item survey used in this study is considerably less extensive than the 233-item form completed in 1972. Information presented in this publication has been restricted to the extent of volunteer services, the numbers of agencies operating formal programs, the utilization of volunteer coordinators, the current stages of development and future plans of respondents, and the types of volunteer roles utilized by each agency.

Due to the apparent increased use of volunteers by law enforcement agencies, these organizations have been polled and the resulting data presented in the following pages. Police and Sheriff's Departments accounted for 170 responses.

We hope that the list of volunteer programs on pages 2-24 will facilitate communication of interested readers with the listed program representatives. Readers may thereby request information concerning specific aspects of a program.

Much credit and my sincere thanks are due the agencies and programs who cooperated by their responses to the survey and to the following Project staff members for their labors in the production of this publication:
John Taylor, Administrative Assistant--survey design;
Chris Kimble, Resource and Information Assistant--tabulation, narrative, tables and charts, publication design;
Shirley Houser, Senior Stenographer; Deborah Fisher, Library Coordinator; and Leslie Nishimura, Stenographer; clerical detail and especially Laura Viglione--numerous hours of typing.

This publication is a public document and may be reproduced without permission. Copies may be ordered, however, from the Model Volunteer Project Resource Library.

V. Pearldean Golightly
V. Pearldean Golightly
Volunteer Services Administrator

October 1974

I. DIRECTORY OF VOLUNTEER PROGRAMS IN CALIFORNIA

List of Agencies and Volunteer Activities Charts

The following pages list the names and addresses of volunteer programs located throughout the state of California, and the types of services provided by volunteers in each program. It is hoped that this list will serve as a contact sheet by which these agencies may be reached for information concerning specific aspects of their individual programs.

NORTH CENTRAL REGION

County Probation Departments

Colusa County Probation Department
146 Seventh Street
Colusa, California 95932
Telephone: (916) 458-5806
Jack E. Hanstein

El Dorado County Probation Department
295 Fair Lane
Placerville, California 95667
Telephone: (916) 626-2325
Thomas L. Martin, Superintendent

Fresno County Probation Department
Room 700-Courthouse
Fresno, California 93720
Telephone: (215) 488-3425
Roger Palomino, Volunteer Coordinator

Kern County Probation Department
P.O. Box 3309, Station A
Bakersfield, California 93305
Telephone: (805) 861-3162
Augie Flores, Volunteer Coordinator

Kings County Probation Department
Courthouse Box C
Hanford, California 93230
Telephone: (209) 582-3211 Ext. 475
Lynn Bowness, Volunteer Coordinator

Madera County Probation Department
209 W. Yosemite Avenue
Madera, California 93637
Telephone: (209) 674-4641
Nash Gurrola, Senior Probation Officer

NORTH CENTRAL REGION

County Probation Departments
(continued)

Merced County Probation Department
670 W. 22nd Street
Merced, California 95340
Telephone: (209) 722-7411 Ext. 261
Murl Silvey, Deputy Probation Officer II

Placer County Probation Department
360 Elm Avenue
Auburn, California 95603
Telephone: (916) 823-4681
James H. Beattie, Assistant Probation Officer

Plumas County Probation Department
P.O. Box 258
Quincy, California 95971
Telephone: (916) 283-1860
Lee Hennes, Deputy Probation Officer

Sacramento County Probation Department
9601 Kiefer Boulevard
Sacramento, California 95827
Telephone: (916) 363-3161
Frank Young, Volunteer Coordinator

San Joaquin County Probation Department
222 E. Weber Avenue
Stockton, California 95202
Telephone: (209) 944-2313
Mary Bava, Volunteer Coordinator

NORTH CENTRAL REGION

County Probation Departments
(continued)

Shasta County Probation Department
1545 West Street
Redding, California 96001
Telephone: (916) 246-5681
Frank E. Sauer, Assistant Probation Officer

Siskiyou County Probation Department
P.O. Box 780
Yreka, California 96097
Telephone: (916) 842-3531 Ext. 52
Mike Stone, Volunteer Coordinator

Solano County Probation Department
P.O. Box 969
Fairfield, California 94533
Telephone: (707) 422-2010 Ext. 341
Alice T. Grayewski, Supervising Probation Officer

Stanislaus County Probation Department
P.O. Box 732
Modesto, California 95353
Telephone: (209) 526-6526
Larry Owens, Volunteer Coordinator

Tehama County Probation Department
P.O. Box 99
Red Bluff, California 96080
Telephone: (916) 527-4052
Peter J. Capovilla, Chief Probation Officer

Tulare County Probation Department
Room #206-Courthouse
Visalia, California 93277
Telephone: (209) 732-5511 Ext. 409
Jim Judd, Volunteer Coordinator

NORTH CENTRAL REGION

County Probation Departments
(continued)

Tuolumne County Probation Department
Courthouse Annex
Sonora, California 95370
Telephone: (209) 532-3451
Paul S. J. Wallace, Chief Probation Officer

Yolo County Probation Department
P.O. Box 239
Woodland, California 95695
Telephone: (916) 666-8256
Walter Blohm, Deputy Probation Officer II

Yuba County Probation Department
Courthouse
Marysville, California 95901
Telephone: (916) 743-1511 Ext. 224
Jim Curry, Deputy Probation Officer II

Department of Corrections

California Medical Facility
Vacaville, California 95688
Telephone: (707) 448-6841
Sgt. Brown, Volunteer Coordinator

California Correctional Institution - Tehachapi
P.O. Box 1031
Tehachapi, California 93561
Telephone: (805) 822-4402
G.L. Shellcross, Correctional Counselor III

Deuel Vocational Institution
P.O. Box 400
Tracy, California 95376
Telephone: (209) 466-5115
John E. Hacker, Associate Superintendent
James Brower, Volunteer Coordinator

NORTH CENTRAL REGION

Department of the Youth Authority

Bakersfield Parole
516 Kentucky Street
Bakersfield, California 93305
Telephone: (805) 325-8691
Harold L. Edwards

Fresno Parole
2550 Mariposa Street
Fresno, California 93721
Telephone: (209) 488-5241
Joseph F. Spencer

Region II Parole - Sacramento
2955 Ramona Avenue
Sacramento, California 95826
Telephone: (916) 452-1419
Harvey James, Training Officer

Stockton Community Parole Center
609 S. San Joaquin Street
Stockton, California 95202
Telephone: (209) 948-7663
Frank Bumps (or) King Morris

Stockton Parole
1325 N. Center Street
Stockton, California 95202
Telephone: (209) 948-7669
R.J. Ackerman, Supervising Parole Agent

DeWitt Nelson Training Center
7650 Newcastle Road
Stockton, California 95206
Telephone: (209) 944-6150 (or 6113)
Perry Graves, Volunteer Coordinator

NORTH CENTRAL REGION

Department of the Youth Authority
(continued)

Karl Holton School for Boys
P.O. Box 6600
Stockton, California 95206
Telephone: (209) 944-6193
Bruce O'Neal

Mt. Bullion Youth Conservation Camp
Mariposa, California 95338
Telephone: (209) 966-2121
Melvin R. Gebhardt, Superintendent

Northern Reception Center-Clinic
3001 Ramona Avenue
Sacramento, California 95826
Telephone: (916) 452-1411
John Holland, Volunteer Coordinator

O. H. Close School for Boys
6500 Newcastle Road
Stockton, California 95202
Telephone: (209) 944-6321
Jack Kelley, Volunteer Coordinator

Pine Grove Youth Conservation Camp
P.O. Box 438
Pine Grove, California 95665
Telephone: (209) 296-7581
Richard E. Burns, Volunteer Coordinator

Preston School of Industry
Box 5
Ione, California 95640
Telephone: (209) 274-2421
Arthur J. Belton

NORTH CENTRAL REGION

Department of the Youth Authority
(continued)

Washington Ridge Youth Conservation Camp
Washington Star Route
Nevada City, California 95959
Telephone: (916) 265-4623
Carl Hutton, Superintendent

Law Enforcement Agencies

California City Police Department
8190 California City Boulevard
California City, California 93505
Telephone: (714) 373-4895
Officer Thomas Snowney, Volunteer Coordinator

Davis Police Department
708 3rd Street
Davis, California 95616
Telephone: (916) 758-3600
Ron Whitehead

Etna Police Department
P.O. Box 460
Etna, California 96027
Telephone: (916) 467-3400
D. C. Schwinn

Sacramento Police Department
813 6th Street
Sacramento, California 95814
Telephone: (916) 449-5745
Lt. J. Carey, Youth Services Division

NORTH COASTAL REGION

County Probation Departments

Alameda County Probation Department
400 Broadway
Oakland, California 94607
Telephone: (415) 874-6961
Arne Hove, Volunteer Services Specialist

Del Norte County Probation Department
938 K Street
Crescent City, California 95531
Telephone: (707) 464-2010
Barbara Hibner, Volunteer Coordinator

Humboldt County Probation Department
2002 Harrison Avenue
Eureka, California 95501
Telephone: (707) 445-7401
Thomas M. Patmore, Volunteer Coordinator

Marin County Probation Department
Room 163 Civic Center
San Rafael, California 94903
Telephone: (415) 479-1100 Ext. 2821
Gloria Melbostad, Volunteer Coordinator

Mendocino County Probation Department
P.O. Box 303
Ukiah, California 95482
Telephone: (707) 462-6514
James Kolesar, Probation Officer

Monterey County Probation Department
1200 Aquajito Road
Monterey, California 93940
Telephone: (408) 373-1688
William W. Pshide

NORTH COASTAL REGION

County Probation Departments
(continued)

San Francisco Adult Probation Department
850 Bryant Street, Room 200
San Francisco, California 94103
Telephone: (415) 553-1494
Richard Gross, Volunteer Coordinator

San Francisco Juvenile Probation Department
375 Woodside Avenue
San Francisco, California 94127
Telephone: (415) 731-5740
Warren Cain, Volunteer Coordinator
Ethel Fitzgerald, Volunteer Coordinator

San Mateo County Probation Department
21 Tower Road
Belmont, California 94002
Telephone: (415) 573-2173
Vernon D. Johnson, Director of Probation Volunteers
Janet Moore, Volunteer Coordinator

Santa Clara County Probation Department
1955 The Alameda
San Jose, California 95126
Telephone: (408) 299-3350
Ray L. Clark

Santa Cruz County Probation Department
P.O. Box 1299
Santa Cruz, California 95061
Telephone: (408) 335-5361
Bob Hulsey (or) George Fitzgerald

Sonoma County Probation Department
Hall of Justice, 104-J
2555 Mendocino Avenue
Santa Rosa, California 95401
Telephone: (707) 527-2256
Darrell K. Basore

NORTH COASTAL REGION

Department of Corrections

Oakland Parole - District Office
568 West Grand Avenue
Oakland, California 94612
Telephone: (415) 464-0380
William Elliot, District Administrator

San Jose District-Parole & Community Services
237 Race Street
San Jose, California 95126
Telephone: (408) 277-1825
Anthony C. Smith, District Administrator

San Quentin State Prison
Tamal, California 94964
Telephone: (415) 454-1460
K. D. Britt

Department of the Youth Authority

Oakland Parole
235 12th Street, Room 1008
Oakland, California 94607
Telephone: (415) 464-1315
William McCord, Supervising Parole Agent

Regional Parole-Oakland
3756 Grand Avenue, Suite 6
Oakland, California 94610
Telephone: (415) 464-0933
Price King

Richmond Parole
12730 San Pablo Avenue
Richmond, California 94805
Telephone: (415) 232-2279
Eugene Ansell, Supervising Parole Agent

San Francisco Parole
333 Randolph Street
San Francisco, California 94132
Telephone: (415) 587-2271
John W. Pendleton, Supervising Parole Agent

NORTH COASTAL REGION

Department of the Youth Authority
(continued)

San Francisco Community Parole Center
865 Page Street
San Francisco, California 94117
Telephone: (415) 597-2637
Bill Hayes, Assistant Supervising Parole Agent

San Jose Parole
1661 W. San Carlos Street, Room 205
San Jose, California 95128
Telephone: (408) 277-1226
Sue Sullivan, Volunteer Coordinator

Santa Cruz Parole
55 River Street, Suite 201
Santa Cruz, California 95060
Telephone: (408) 427-1420
Vernon R. Pearce, Supervising Parole Agent

Santa Rosa Parole
800 College Avenue
Santa Rosa, California 95404
Telephone: (707) 528-4010
Everett J. McVey

Ben Lomond Youth Conservation Camp
13575 Empire Grade
Santa Cruz, California 95060
Telephone: (408) 423-1652
Frank White, Superintendent

Law Enforcement Agencies

Arcata Police Department
530 7th Street
Arcata, California 95521
Telephone: (707) 822-2424
N. J. Gibson, Jr., Chief of Police

NORTH COASTAL REGION

Law Enforcement Agencies
(continued)

Berkeley Police Department
2171 McKinley Avenue
Berkeley, California 94703
Telephone: (415) 644-6654 (or 6730)
Sgt. Mower, Volunteer Coordinator
Officer M. Moran, Volunteer Coordinator

Eureka Police Department
4th & J Streets
Eureka, California 95501
Telephone: (707) 442-4546
Detective C. Taylor, Youth Services

Foster City Police Department
1040 East Hillside Boulevard
Foster City, California 94404
Telephone: (415) 574-5555
Sgt. McClenahan, Volunteer Coordinator

Fremont Police Department
39710 Civic Center Drive
Fremont, California 94538
Telephone: (415) 796-3232
John Fabbri, Chief of Police

Hayward Police Department
22738 Mission Boulevard
Hayward, California 94541
Telephone: (415) 581-1700
Bill Cook, Volunteer Coordinator
Frank J. Schley, Volunteer Coordinator

Milpitas Youth Service Bureau
777 South Main Street
Milpitas, California 95035
Telephone: (408) 263-4800
Jackie Gee, Volunteer Coordinator

NORTH COASTAL REGION

Law Enforcement Agencies
(continued)

Mountain View Police Department
947 Villa Street
Mountain View, California 94041
Telephone: (415) 968-8540
Lt. Nicholas B. Galiotto, Commander, Juvenile Bureau

Piedmont Police Department
120 Vista Avenue
Piedmont, California 94611
Telephone: (415) 653-7200
H. R. Koelsch, Juvenile Officer

Pleasant Hill Police Department
1900 Pleasant Hill Road
Pleasant Hill, California 94523
Telephone: (415) 933-7770
Lt. Jim Nunes (or) Sgt. Mike Phalen

St. Helena Police Department
1480 Main Street
St. Helena, California 94574
Telephone: (707) 963-3636
Arnold J. Harrison, Chief of Police

Santa Clara Police Department
1541 Civic Center Drive
Santa Clara, California 95050
Telephone: (408) 984-3175
Lt. Joseph Ledesma, Commander, Juvenile Bureau

Sunnyvale Police Department
Department of Public Safety
650 West Olive Street
Sunnyvale, California 94088
Telephone: (408) 736-3466
Howard A. Shipley, Commander

NORTH COASTAL REGION

Law Enforcement Agencies
(continued)

Union City Police Department
1154 Whipple Road
Union City, California 94587
Telephone: (415) 471-1365
Sgt. John Nanty, Volunteer Coordinator

Monterey County Jail
P.O. Box 809
Salinas, California 93901
Telephone: (408) 424-0352 (or 7345)
W. A. Jack Davenport, Sheriff

San Francisco Sheriff's Department
Room 333 City Hall
San Francisco, California 94102
Telephone: (415) 558-2411
Joan Mills, Volunteer Coordinator

San Mateo County Sheriff's Department
Hall of Justice
Redwood City, California 94063
Telephone: (415) 364-1811 Ext. 2271
Tom Weir, Rehabilitation Officer

Santa Clara County Sheriff's Department
180 West Hedding Street
San Jose, California 95110
Telephone: (408) 299-2831
George Williams, Volunteer Coordinator

Santa Rita Rehabilitation Center
Social Services Department
P.O. Box 87
Pleasanton, California 94566
Telephone: (415) 828-1075
Mason C. Layman, Supervisor

Sonoma County Sheriff's Department
2555 Mendocino Avenue, Room 103-J
Santa Rosa, California 95401
Telephone: (707) 527-2511
Don Striepeke, Sheriff

SOUTHERN REGION

County Probation Departments

Los Angeles County Probation Department
9150 E. Imperial Highway
Downey, California 90242
Telephone: (213) 923-7721
Ann Roberts, Volunteer Coordinator

Orange County Probation Department
P.O. Box 10260
Santa Ana, California 92711
Telephone: (719) 532-7908
James G. Husset, Volunteer Coordinator

Riverside County Probation Department
P.O. Box 833
Riverside, California 92502
Telephone: (714) 787-2000
Earl Chapin, Delinquency Prevention Coordinator

San Diego County Probation Department
P.O. Box 23096
San Diego, California 92123
Telephone: (714) 565-3209
Beverly DiGregorio, Volunteer Coordinator

Santa Barbara County Probation Department
P.O. Box 1379
Santa Barbara, California 93102
Telephone: (805) 966-4164
John Casken, Delinquency Prevention Officer

Ventura County Probation Department
501 Poli Street
Ventura, California 93001
Telephone: (805) 648-6131 Ext. 2154
Kathy Rogers, Volunteer Coordinator

SOUTHERN REGION

Department of Corrections

Santa Ana District Parole & Community Services
1427 S. Sycamore Street
Santa Ana, California 92707
Telephone: (714) 835-3550
Max Greenwald, District Administrator

California Institution for Women
16756 Chino-Corona Road
Frontera, California 91720
Telephone: (714) 597-1771
Virginia C. Carlson, Superintendent

Department of the Youth Authority

Community Centered Drug Project
11400 South Norwalk Boulevard, Bldg. 209-211
Norwalk, California 90650
Telephone: (213) 868-4708
Ted C. Tillmanns, Administrator

Culver City Parole
11261 W. Washington Boulevard
Culver City, California 90230
Telephone: (213) 620-2450
William Skully

Esperanza Community Parole Center
3665 E. Whittier Boulevard
Los Angeles, California 90023
Telephone: (213) 269-7351
William F. Carlson, Volunteer Coordinator

La Mesa Parole
8265 Commercial Street, Suite 11
La Mesa, California 92024
Telephone: (714) 753-7276
Lealand Purvis, Supervising Parole Agent

SOUTHERN REGION

Department of the Youth Authority
(continued)

Long Beach Parole
230 East 4th Street
Long Beach, California 90802
Telephone: (213) 435-8334
J. Plains, Volunteer Coordinator

Los Angeles North Parole
2440 South Main Street
Los Angeles, California 90007
Telephone: (213) 620-4974
Roy Bishop, Supervising Parole Agent

Park Centre Settlement House
4082 Centre
San Diego, California 92103
Telephone: (714) 236-7421
Arthur M. Dorsey, Supervising Parole Agent

Project S.P.A.C.E.
1151 North Madison Avenue
Los Angeles, California 90029
Telephone: (213) 620-5942
Tom Pederson, Volunteer Coordinator

Region IV Parole
18002 Irvine Boulevard, Suite B-3
Tustin, California 92680
Telephone: (714) 838-3708
Ken Jenkins, Volunteer Coordinator

Region V Parole
2440 South Main Street
Los Angeles, California 90007
Telephone: (213) 620-3447
Barbara Schack

SOUTHERN REGION

Department of the Youth Authority
(continued)

Region VI Parole
512 E. Wilson Avenue, Room 201
Glendale, California 91206
Telephone: (213) 620-4675
Henry T. Corrales, Regional Supervisor

San Diego Parole
2139 5th Avenue
San Diego, California 92101
Telephone: (714) 236-7401
Bill Baer

San Fernando Valley Parole
8737 Van Nuys Boulevard
Panorama City, California 91402
Telephone: (213) 894-9181
Carol Reid

Ujima Community Parole Center
10323 South Figueroa Street
Los Angeles, California 90003
Telephone: (213) 757-8228
Levan Bell, Supervising Parole Agent

Fred C. Nelles School
11850 East Whittier Boulevard
Whittier, California 90601
Telephone: (213) 698-6781
Lou Batancourt, Volunteer Coordinator

Oak Glen Youth Conservation Camp
41100 Pine Bench Road
Yucaipa, California 92399
Telephone: (714) 797-0196
Floyd Wightman, Assistant Superintendent

SOUTHERN REGION

Department of the Youth Authority
(continued)

Southern Reception Center-Clinic
13200 South Bloomfield Avenue
Norwalk, California 90650
Telephone: (213) 863-5711
Erma Savage, Coordinator of Special Activities

Ventura School
3100 Wright Road
Camarillo, California 93010
Telephone: (805) 485-7951
Sarah Ruth Carpenter, Parole Agent II

Youth Training School
P.O. Box 800
Ontario, California 91764
Telephone: (714) 597-1861
Barney Lampe, Community Resources Coordinator

Law Enforcement Agencies

Banning Police Department
133 East Hays Street
Banning, California 92220
Telephone: (714) 849-4774
Captain Donald Chance, Volunteer Coordinator

Bell Gardens Police Department
Youth Services Bureau
7100 Garfield Avenue
Bell Gardens, California 90201
Telephone: (213) 773-8681
Lt. Richard C. Brug, Volunteer Coordinator

Burbank Police Department
272 East Olive Avenue
Burbank, California 91502
Telephone: (213) 846-9933 Ext. 331
R. C. Loranger, Chief of Police

SOUTHERN REGION

Law Enforcement Agencies
(continued)

Covina Police Department
141 East College Street
Covina, California 91722
Telephone: (213) 331-3391
Frank Burke, Police Sergeant

El Cajon Police Department
100 Fletcher Parkway
El Cajon, California 92020
Telephone: (714) 442-3351 Ext. 69
R. G. Yount, Volunteer Coordinator
Shari David, Volunteer Coordinator

Escondido Police Department
100 Valley Boulevard
Escondido, California 92025
Telephone: (714) 745-6150
Lt. H. J. Hewlett, Volunteer Coordinator

Garden Grove Police Department
11301 Acacia Parkway
Garden Grove, California 92640
Telephone: (714) 638-6829
Sgt. D. Antoine

Glendale Police Department
140 N. Isable Street
Glendale, California 91206
Telephone: (213) 956-4944
Sergeant Frank Ross, Administrative Aide

Glendora Police Department-Counseling Program
150 South Glendora Avenue
Glendora, California 91740
Telephone: (213) 963-5941
Tim Keane (or) Lois Wurmbbrand

SOUTHERN REGION

Law Enforcement Agencies
(continued)

Los Alamitos Police Department
3201 Katella Avenue
Los Alamitos, California 90720
Telephone: (213) 431-1344
Corporal Orville Lewis, Volunteer Coordinator

Los Angeles Police Department
150 North Los Angeles Street
Los Angeles, California 90012
Telephone: (213) 485-3281
Lt. Q. Villanueva

Montclair Police Department
5111 Benito
Montclair, California 91763
Telephone: (714) 621-4771 (or 624-8056)
Russ Bragg, Volunteer Coordinator
Fred Drury, Volunteer Coordinator

Monterey Park Police Department
300 West Newmark Avenue
Monterey Park, California 91754
Telephone: (213) 573-1311
Captain Elder, Volunteer Coordinator

Paso Robles Personal Guidance Council
1030 Vine Street
Paso Robles, California 93446
Telephone: (805) 238-0911
John Spinas

Riverside Police Department
4102 Orange Street
Riverside, California 92501
Telephone: (714) 787-7540
Lt. Leroy Gren

SOUTHERN REGION

Law Enforcement Agencies
(continued)

San Clemente Police Department
100 Avenida Presidio
San Clemente, California 92672
Telephone: (714) 492-5101
Clifford G. Murray, Chief of Police

San Diego Police Department
801 West Market Street
San Diego, California 92101
Telephone: (714) 236-6198
Sgt. G. A. Haddock, Volunteer Coordinator

San Luis Obispo Police Department
P.O. Box 1328
San Luis Obispo, California 93401
Telephone: (805) 544-5151
E. L. Rodgers, Chief of Police

Sierra Madre Police Department
55 West Sierra Madre Boulevard
Sierra Madre, California 91024
Telephone: (213) 355-1414
Thomas C. Kendra, Chief of Police

West Covina Police Department
1444 West Garvey Avenue
West Covina, California 91790
Telephone: (213) 962-8631
C. L. Meacham, Deputy Chief of Police

Los Angeles County Sheriff Department
211 West Temple
Los Angeles, California 90012
Telephone: (213) 974-4916
Watch Commander--Central Jail

Riverside County Jail
Courthouse
Riverside, California 92501
Telephone: (714) 787-2768
Harry McKinney, Superintendent

SOUTHERN REGION

Law Enforcement Agencies
(continued)

San Diego County Sheriff's Department
222 West C Street
San Diego, California 92101
Telephone: (714) 236-2940
Thomas A. Reed, Volunteer Coordinator

Orange County Sheriff's Department
P.O. Box 449
Santa Ana, California 92702
Telephone: (714) 834-3089
Lt. Robert E. Griffeth, Commander, Juvenile Bureau

Santa Barbara County Sheriff's Department (Jail Division)
4436 Calle Real
Santa Barbara, California 93111
Telephone: (805) 964-6725 Ext. 228
Inspector Fritz C. Patterson

VOLUNTEER ACTIVITIES

NORTH CENTRAL REGION YOUTH AUTHORITY <u>Institutions</u>	ADMINISTRATION			EDUCATION			COUNSELING						TRANSPORTATION			PROF.		MISCELLANEOUS																	
	ADVISORY	CLERICAL	COMMUNITY RESOURCES	INTERVIEWER	PUBLIC RELATIONS	RESEARCH/EVALUATION	SUPERVISION	REMEDIAL	VOCATIONAL	SKILLS	INDIVIDUAL	GROUP	DRUG	ALCOHOL	EMPLOYMENT	FAMILY	FINANCIAL	HOMEMAKING	FAMILY PLANNING	VOCATIONAL	EDUCATIONAL	RECREATION	INSTITUTIONAL	FIELD	FAMILY OF CLIENT	JAIL INMATES	MEDICAL	LEGAL	CASE AIDE	COUNSELOR AIDE	JAIL VISITOR	INTERPRETER	RECREATION		
DeWitt Nelson Training Center										*	*	*	*	*								*													
Karl Holton School		*												*	*													*							
Mt. Bullion Youth Conservation Camp										*				*	*																				*
Northern California Reception Center-Clinic	*	*	*				*	*	*	*	*	*	*		*	*	*										*	*	*	*	*	*	*	*	*
Pine Grove Youth Conservation Camp							*			*	*	*																							
Preston School of Industry							*			*	*	*																		*					
Washington Ridge Youth Conservation Camp										*				*						*															
<u>Parole Offices</u>																																			
Region II Headquarters							*			*	*	*	*	*						*	*	*	*	*	*	*	*	*	*	*	*	*	*	*	*
Stockton Parole										*	*	*	*	*	*	*	*	*	*	*	*	*	*	*	*	*	*	*	*	*	*	*	*	*	*
Stockton CPC							*										*	*	*	*	*	*	*	*	*	*	*	*	*	*	*	*	*	*	*
Fresno Parole				*	*					*	*	*	*	*	*	*	*	*	*	*	*	*	*	*	*	*	*	*	*	*	*	*	*	*	*
Bakersfield Parole										*	*	*	*	*	*	*	*	*	*	*	*	*	*	*	*	*	*	*	*	*	*	*	*	*	*

VOLUNTEER ACTIVITIES

NORTH COASTAL REGION (cont.)	DEPARTMENT OF CORRECTIONS	ADMINISTRATION						EDUCATION			COUNSELING							TRANSPORTATION				PROF.		MISCELLANEOUS												
		ADVISORY	CLERICAL	COMMUNITY RESOURCES	INTERVIEWER	PUBLIC RELATIONS	RESEARCH/EVALUATION	SUPERVISION	REMEDIAL	VOCATIONAL	SKILLS	INDIVIDUAL	GROUP	DRUG	ALCOHOL	EMPLOYMENT	FAMILY	FINANCIAL	HOME MAKING	FAMILY PLANNING	VOCATIONAL	EDUCATIONAL	RECREATION	INSTITUTIONAL	FIELD	FAMILY OF CLIENT	JAIL INMATES	MEDICAL	LEGAL	CASE AIDE	COUNSELOR AIDE	JAIL VISITOR	INTERPRETER	RECREATION		
	California State Prison at San Quentin										*			*							*															
	Oakland Parole and Community Services	*		*		*									*						*										*					
	San Jose Parole and Community Services			*		*					*	*			*						*															
	COUNTY PROBATION DEPARTMENTS																																			
	Alameda	*	*			*	*		*	*	*	*			*						*	*				*								*	*	
	Del Norte	*	*				*		*	*	*	*						*	*		*	*													*	*
	Humboldt				*													*	*					*											*	*
	Marin		*	*	*	*		*	*	*	*			*	*	*					*	*		*		*	*	*	*	*	*	*	*	*	*	*
	Mendocino			*				*	*	*	*				*					*	*			*		*										*
	San Francisco adult	*	*	*	*	*		*	*	*	*		*	*	*	*	*				*	*		*		*			*	*	*	*	*	*	*	*
	San Francisco juvenile	*	*	*	*	*	*	*	*	*	*				*	*	*				*	*		*		*			*	*	*	*	*	*	*	*
	Santa Clara adult			*							*	*																								*
	Santa Cruz										*																									*
	Sonoma		*	*	*	*					*		*	*	*	*	*						*		*	*	*	*	*	*	*	*	*	*	*	*

-30-

VOLUNTEER ACTIVITIES

NORTH COASTAL REGION (cont.)	POLICE DEPARTMENTS	POLICE RESERVES	ADMINISTRATION						EDUCATION			COUNSELING							TRANSPORTATION				PROF.		MISCELLANEOUS												
			ADVISORY	CLERICAL	COMMUNITY RESOURCES	INTERVIEWER	PUBLIC RELATIONS	RESEARCH/EVALUATION	SUPERVISION	REMEDIAL	VOCATIONAL	SKILLS	INDIVIDUAL	GROUP	DRUG	ALCOHOL	EMPLOYMENT	FAMILY	FINANCIAL	HOME MAKING	FAMILY PLANNING	VOCATIONAL	EDUCATIONAL	RECREATION	INSTITUTIONAL	FIELD	FAMILY OF CLIENT	JAIL INMATES	MEDICAL	LEGAL	CASE AIDE	COUNSELOR AIDE	JAIL VISITOR	INTERPRETER	RECREATION		
	Arcata	*				*																															
	Berkeley	*									*					*																					
	Cloverdale	*																																			
	Eureka	*	*						*																												
	Foster City									*		*				*					*	*								*	*	*	*	*	*	*	
	Fremont	*		*																				*													
	Hayward	*	*	*		*			*												*	*															
	Milpitas							*	*	*	*									*	*	*	*			*	*	*	*	*	*	*	*	*	*	*	
	Mountain View							*	*																											*	
	Piedmont		*																																		
	Pleasant Hill		*			*																															
	Sacramento		*			*																															
	Saint Helena																																			*	
	Santa Clara										*																										
	Santa Rosa	*																																			

-31-

VOLUNTEER ACTIVITIES

SOUTHERN REGION (cont.) YOUTH AUTHORITY Parole Offices (cont.)	ADMINISTRATION						EDUCATION			COUNSELING											TRANSPORTATION			PROF.		MISCELLANEOUS										
	ADVISORY	CLERICAL	COMMUNITY RESOURCES	INTERVIEWER	PUBLIC RELATIONS	RESEARCH/EVALUATION	SUPERVISION	REMEDIAL	VOCATIONAL	SKILLS	INDIVIDUAL	GROUP	DRUG	ALCOHOL	EMPLOYMENT	FAMILY	FINANCIAL	HOMEMAKING	FAMILY PLANNING	VOCATIONAL	EDUCATIONAL	RECREATION	INSTITUTIONAL	FIELD	FAMILY OF CLIENT	JAIL INMATES	MEDICAL	LEGAL	CASE AIDE	COUNSELOR AIDE	JAIL VISITOR	INTERPRETER	RECREATION			
Los Angeles North		*	*						*	*					*			*				*	*	*	*	*			*		*	*	*	*		
Ujima CPC	*				*	*	*	*	*	*	*										*	*							*				*			
Region VI Headquarters								*		*																		*					*			
Culver City Parole	*		*						*	*		*			*				*			*					*				*		*			
Esperanza CPC								*		*																				*		*		*		
San Fernando Valley Parole							*		*	*				*	*	*				*	*		*	*												
DEPARTMENT OF CORRECTIONS																																				
California Institution for Women	*	*	*	*	*		*	*	*			*	*	*	*	*	*		*	*	*		*			*	*	*	*	*	*	*	*	*	*	
Santa Ana Parole and Community Services			*				*	*		*		*			*									*				*			*		*		*	
COUNTY PROBATION DEPARTMENTS																																				
Los Angeles	*	*	*	*	*	*	*	*	*	*	*	*	*	*	*	*	*	*	*	*	*	*	*	*	*	*	*	*	*	*	*	*	*	*	*	*
Orange	*	*	*	*	*		*	*	*	*	*	*	*	*	*	*	*	*	*	*	*	*	*	*	*	*	*	*	*	*	*	*	*	*	*	*
Riverside		*		*	*		*	*	*	*	*	*	*	*	*	*	*	*	*	*	*	*	*	*	*	*	*	*	*	*	*	*	*	*	*	*

-34-

VOLUNTEER ACTIVITIES

SOUTHERN REGION (cont.) COUNTY PROBATION DEPARTMENTS (cont.)	ADMINISTRATION						EDUCATION			COUNSELING											TRANSPORTATION			PROF.		MISCELLANEOUS											
	ADVISORY	CLERICAL	COMMUNITY RESOURCES	INTERVIEWER	PUBLIC RELATIONS	RESEARCH/EVALUATION	SUPERVISION	REMEDIAL	VOCATIONAL	SKILLS	INDIVIDUAL	GROUP	DRUG	ALCOHOL	EMPLOYMENT	FAMILY	FINANCIAL	HOMEMAKING	FAMILY PLANNING	VOCATIONAL	EDUCATIONAL	RECREATION	INSTITUTIONAL	FIELD	FAMILY OF CLIENT	JAIL INMATES	MEDICAL	LEGAL	CASE AIDE	COUNSELOR AIDE	JAIL VISITOR	INTERPRETER	RECREATION				
San Diego	*	*	*	*	*	*	*	*	*	*	*	*	*	*	*	*	*	*	*	*	*	*	*	*	*	*	*	*	*	*	*	*	*	*	*	*	
Santa Barbara	*	*	*	*	*		*	*	*	*	*	*	*	*	*	*		*	*	*	*	*	*	*	*	*	*	*	*	*	*	*	*	*	*	*	
Ventura								*	*	*	*	*	*	*	*	*	*	*	*	*	*	*	*	*	*	*	*	*	*	*	*	*	*	*	*	*	

-35-

VOLUNTEER ACTIVITIES

SOUTHERN REGION (cont.) SHERIFFS' DEPARTMENTS	ADMINISTRATION						EDUCATION			COUNSELING							TRANSPORTATION			PROF.		MISCELLANEOUS															
	POLICE RESERVES	ADVISORY	CLERICAL	COMMUNITY RESOURCES	INTERVIEWER	PUBLIC RELATIONS	RESEARCH/EVALUATION	SUPERVISION	REMEDIAL	VOCATIONAL	SKILLS	INDIVIDUAL	GROUP	DRUG	ALCOHOL	EMPLOYMENT	FAMILY	FINANCIAL	HOMEMAKING	FAMILY PLANNING	VOCATIONAL	EDUCATIONAL	RECREATION	INSTITUTIONAL	FIELD	FAMILY OF CLIENT	JAIL INMATES	MEDICAL	LEGAL	CASE AIDE	COUNSELOR AIDE	JAIL VISITOR	INTERPRETER	RECREATION			
Los Angeles County																																					
Orange County				*										*																							
Riverside County									*																												
San Diego County			*																																		
Santa Barbara Co.		*																																			

11. SURVEY SUMMARY

INTRODUCTION

This survey of Youth Authority and Department of Corrections agencies, sheriffs' and police departments, and county probation departments was conducted by the Model Volunteer Project during February of 1974. Responses were accepted during a four-month period ending in May. The brief eight-item survey was designed to measure the extent and nature of volunteer utilization by these agencies.

Survey cards were mailed in early February to 575 agencies; 49% of these organizations responded. Police and sheriffs' departments accounted for 61% of all responses and 73% of all organizations asked to respond. Although there were many notable exceptions, responses by law enforcement agencies frequently concerned "police reserve" or "police cadet" volunteers; as utilization of this type of volunteer is not consistent with the focus of the survey, responses of law enforcement agencies have been considered separately in the tabulation of this summary.

Exclusive of law enforcement agencies, 107 of 153 correctional agencies responded; a rate of 70%. A breakdown of response rates follows for Youth Authority Institutions (YI), Youth Authority parole units (YP), Department of Corrections institutions (CI), Department of Corrections parole units (CP), county probation departments (P), police departments (POL) and sheriffs' departments (SHF):

TABLE I

SURVEY RESPONSES

agency	# asked to respond	# of responses	percentage
YI	14	14	100%
YP	49	36	73%
CI	12	5	42%
CP	18	6	33%
P	<u>60</u>	<u>46</u>	<u>77%</u>
SUBTOTAL	153	107	70%
POL	364	153	42%
SHF	<u>58</u>	<u>17</u>	<u>29%</u>
SUBTOTAL	<u>422</u>	<u>170</u>	<u>40%</u>
TOTAL	575	277	49%

Department of Youth Authority, Corrections, Probation Departments

Seventy-five percent (80) of these 107 respondents indicated that they used volunteers as of December 31, 1973 (see Tables II, IV and VI). Of those agencies using volunteers, 76% (61) reported volunteer programs, which were defined for survey purposes as being "formalized, planned, supervised as opposed to occasional, unstructured." Fifty-five percent (44) of the programs reported a volunteer coordinator, a position defined as "one functioning within prescribed management expectations, having administrative responsibility for the program." Forty-seven of the 61 programs indicated plans to expand their programs. Ten agencies reported plans for establishing a program.

Of the 27 agencies not using volunteers, eight reported plans for utilizing them in the future; the remaining 19 agencies (16% of all respondents) indicated they did not use volunteers and had no plans for their future use.

Correctional respondents reported a total of 5,743 volunteers, an average of 72 per organization; however, the median number of volunteers per agency falls in the 1-25 range. Eight of the groups account for 65% of the total number of volunteers.

"Individual counseling" was the most frequently named category of volunteer activity. Categories somewhat less frequently reported were remedial education, employment counseling, group counseling, skills education, drug counseling and case aide.

Some comparisons may be made with data from a survey conducted by MVP during the fall of 1972. Eighty-one percent (56) of the 69 correctional respondents to that survey reported volunteer utilization, whereas 75% (80) of the 107 respondents to the Spring 1974 survey indicated volunteer use. Data on the numbers of agencies reporting structured, formal programs showed an increase of 12%. Data on the number of programs planning expansion increased by seven percent.

Seventy-eight percent (54) of the respondents to the original survey reported having either a full- or part-time volunteer coordinator, whereas only 41% (44) of the correctional respondents to the Spring 1974 survey reported a coordinator. This disparity may be due to the more refined definition of "volunteer coordinator" used in the Spring survey.

The numbers of correctional agencies using volunteers from each

service category has been tabulated and each category ranked by frequency of agency use. A comparison of such rank-orderings for both surveys indicates that use of volunteers in the categories of group counselor, drug counselor, and case aide has become relatively more frequent. Categorical distributions for both surveys may be found on pages 48-53.

Police and Sheriffs' Departments

Of the 364 police departments that received survey cards, 153 responded--a response rate of 42%. Seventeen of the 58 county sheriffs' departments responded to the survey.

Eleven of the departments that indicated volunteer utilization reported using only police reserve or police auxiliary volunteers. Forty-nine law enforcement agencies reported volunteer services to clients such as counseling, tutoring, and transportation. In Tables III, V, VII these categories are denoted "reserve" and "other", respectively. Agencies categorized as "other" may use police reserves in addition to volunteers more directly serving clients (see Volunteer Activities Charts).

Law enforcement agencies reported 190 police reserve volunteers and 2,084 volunteers in other categories, a total of 2,274.

VOLUNTEER UTILIZATION
YOUTH AUTHORITY, CORRECTIONS, PROBATION **TABLE II**

	no.	utilizing volunteers	planning utilization	nr*	number of volunteers	nr*	number of volunteers per agency				
							1-25	26-50	51-100	101-500	500+
YI	14	14	100%	-	1189	2	3	3	1	5	-
YP	36	24	67%	4	111	10	13	1	-	-	-
CI	5	4	80%	1	315	2	1	-	-	1	-
CP	6	3	50%	1	28	1	2	-	-	-	-
P	46	35	76%	2	4100	1	15	4	8	4	3
TOTAL	107	80	75%	8	5743	16	34	8	9	10	3

POLICE AND SHERIFFS' DEPARTMENTS **TABLE III**

POLICE	no.	utilizing volunteers	planning utilization	nr*	number of volunteers	nr*	number of volunteers per agency				
							1-25	26-50	51-100	101-500	500+
reserves	153	11	72%	-	190	3	6	1	1	-	-
other		38	25%	13	993	10	15	2	4	2	-
<u>SHERIFF</u>	17	11	65%	2	1091	-	5	3	1	1	1
TOTAL	170	60	36%	15	2274	13	26	6	6	3	1

* nr - no response
 YI - Youth Authority institutions
 YP - Youth Authority parole units
 CI - Department of Corrections institutions
 CP - Department of Corrections parole units
 P - county probation departments

VOLUNTEER PROGRAMS

YOUTH AUTHORITY, CORRECTIONS, PROBATION

TABLE IV

	no.	having program		nr*	plan	current stage of program			dimin	nr*	foresee expansion	nr*	plan future program		nr*
						begin	expand	well-estab							
YI	14	14	100%	-	-	3	8	3	-	-	12	1	-	-	
YP	36	12	33%	1	2	3	3	3	1	-	7	1	5	8	
CI	5	2	40%	-	-	-	-	2	-	-	2	-	-	3	
CP	6	2	33%	-	-	2	-	-	-	-	1	-	1	1	
P	46	31	70%	-	1	5	14	10	1	-	25	1	4	5	
TOTAL	107	61	57%	1	3	13	25	18	2	-	47	3	10	17	

-45-

POLICE AND SHERIFFS' DEPARTMENTS

TABLE V

	no.	having program		nr*	plan	current stage of program			dimin	nr*	foresee expansion	nr*	plan future program		nr*
						begin	expand	well-estab							
<u>POLICE</u>															
reserves	153	10	7%	1	-	-	3	7	-	-	4	1	-	-	
other		30	20%	-	1	6	4	18	1	-	23	4	17	32	
<u>SHERIFF</u>	17	10	59%	-	-	1	6	3	-	-	8	1	2	4	
TOTAL	170	50	29%	1	1	7	13	28	1	-	35	6	19	36	

* nr - no response

YI - Youth Authority institutions

CP - Department of Corrections parole units

YP - Youth Authority parole units

P - county probation departments

CI - Department of Corrections institutions

VOLUNTEER COORDINATORS

YOUTH AUTHORITY, CORRECTIONS, PROBATION

TABLE VI

	no.	having coordinator		nr*	full time	part time	nr*	more than 1 coordinator	total # of coordinators	nr*
YI	14	6	43%	-	2	4	1	-	6	1
YP	36	8	28%	1	-	3	5	-	3	5
CI	5	3	60%	-	-	2	1	1	4	1
CP	6	-	-	-	-	-	-	-	-	-
P	46	27	59%	3	14	12	4	7	48	3
TOTAL	107	44	41%	4	16	21	11	8	61	10

-46-

POLICE AND SHERIFFS' DEPARTMENT

TABLE VII

	no.	having coordinator		nr*	full time	part time	nr*	more than 1 coordinator	total # of coordinators	nr*
<u>POLICE</u>										
reserves	153	-	-	3	-	-	-	-	-	-
other		16	10%	1	4	12	3	8	38	1
<u>SHERIFF</u>	17	4	24%	-	2	2	1	2	9	1
TOTAL	170	20	11%	4	6	14	4	10	47	2

* nr - no response

YI - Youth Authority institutions

CP - Department of Corrections parole units

YP - Youth Authority parole units

P - county probation departments

CI - Department of Corrections institutions

III: CATEGORICAL DISTRIBUTIONS OF VOLUNTEER UTILIZATION

Categorical distributions represent the numbers of agencies utilizing volunteers in the listed service categories.

A comparison of distributions with the distribution for the Fall 1972 survey (page 48) seems to indicate a decrease in all service categories. This disparity is due to the more complete response to this section of the 1972 survey, and does not indicate an actual decline in the numbers of agencies using volunteers in these roles.

Proportionate changes in the relative frequency of use of each service category may be readily seen, however.

TABLE VIII

MVP SURVEY: FALL, 1972

YOUTH AUTHORITY, CORRECTIONS, PROBATION (N=69)

<u>Administration</u>		
Advisory -----	(30)	-----@
Clerical -----	(24)	-----@
Community Resources -----	(47)	-----@
Interviewer -----	(27)	-----@
Public Relations -----	(33)	-----@
Research/Evaluation -----	(18)	-----@
Supervision -----	(25)	-----@
<u>Education</u>		
Remedial -----	(49)	-----@
Vocational -----	(37)	-----@
Skills -----	(53)	-----@
<u>Counseling</u>		
Individual -----	(58)	-----@
Group -----	(41)	-----@
Drug -----	(40)	-----@
Alcohol -----	(37)	-----@
Employment -----	(50)	-----@
Family -----	(37)	-----@
Financial -----	(30)	-----@
Homemaking -----	(32)	-----@
Family Planning -----	(28)	-----@
Vocational -----	(43)	-----@
Educational -----	(45)	-----@
<u>Transportation</u>		
Recreation -----	(41)	-----@
Institutional -----	(18)	-----@
Field -----	(30)	-----@
Family of Client -----	(26)	-----@
Jail Inmates -----	(9)	-----@
<u>Professional</u>		
Medical -----	(11)	-----@
Legal -----	(18)	-----@
<u>Miscellaneous</u>		
Case Aide -----	(40)	-----@
Counselor Aide -----	(40)	-----@
Jail Visitor -----	(21)	-----@
Interpreter -----	(22)	-----@
Recreation -----	(55)	-----@
Other -----		

YOUTH AUTHORITY, CORRECTIONS, PROBATION (N=80)

<u>Administration</u>		
Advisory	(17)	-----@
Clerical	(21)	-----@
Community Resources	(27)	-----@
Interviewer	(17)	-----@
Public Relations	(19)	-----@
Research/Evaluation	(6)	-----@
Supervision	(16)	-----@
<u>Education</u>		
Remedial	(37)	-----@
Vocational	(17)	-----@
Skills	(34)	-----@
<u>Counseling</u>		
Individual	(60)	-----@
Group	(35)	-----@
Drug	(34)	-----@
Alcohol	(22)	-----@
Employment	(36)	-----@
Family	(25)	-----@
Financial	(9)	-----@
Homemaking	(8)	-----@
Family Planning	(9)	-----@
Vocational	(23)	-----@
Educational	(20)	-----@
<u>Transportation</u>		
Recreation	(31)	-----@
Institutional	(15)	-----@
Field	(23)	-----@
Family of Client	(12)	-----@
Jail Inmates	(12)	-----@
<u>Professional</u>		
Medical	(3)	--@
Legal	(9)	-----@
<u>Miscellaneous</u>		
Case Aide	(34)	-----@
Counselor Aide	(15)	-----@
Jail Visitor	(16)	-----@
Interpreter	(15)	-----@
Recreation	(32)	-----@
Other	(27)	-----@

-69-

COUNTY PROBATION DEPARTMENTS (N=35)

<u>Administration</u>		
Advisory	(10)	-----@
Clerical	(14)	-----@
Community Resources	(14)	-----@
Interviewer	(14)	-----@
Public Relations	(11)	-----@
Research/Evaluation	(5)	-----@
Supervision	(12)	-----@
<u>Education</u>		
Remedial	(19)	-----@
Vocational	(11)	-----@
Skills	(22)	-----@
<u>Counseling</u>		
Individual	(27)	-----@
Group	(16)	-----@
Drug	(13)	-----@
Alcohol	(12)	-----@
Employment	(16)	-----@
Family	(12)	-----@
Financial	(6)	-----@
Homemaking	(5)	-----@
Family Planning	(5)	-----@
Vocational	(9)	-----@
Educational	(10)	-----@
<u>Transportation</u>		
Recreation	(15)	-----@
Institutional	(11)	-----@
Field	(12)	-----@
Family of Client	(6)	-----@
Jail Inmates	(6)	-----@
<u>Professional</u>		
Medical	(3)	--@
Legal	(4)	-----@
<u>Miscellaneous</u>		
Case Aide	(24)	-----@
Counselor Aide	(10)	-----@
Jail Visitor	(7)	-----@
Interpreter	(10)	-----@
Recreation	(18)	-----@
Other	(14)	-----@

-50-

YOUTH AUTHORITY INSTITUTIONS (N=14)

YOUTH AUTHORITY PAROLE UNITS (N=24)

<u>Administration</u>			<u>Administration</u>		
Advisory -----	(1)	@	Advisory -----	(4)	---@
Clerical -----	(3)	--@	Clerical -----	(3)	--@
Community Resources -----	(3)	--@	Community Resources -----	(5)	---@
Interviewer -----	(1)	@	Interviewer -----	(1)	@
Public Relations -----	(3)	--@	Public Relations -----	(2)	-@
Research/Evaluation -----			Research/Evaluation -----	(1)	@
Supervision -----	(1)	@	Supervision -----	(2)	-@
<u>Education</u>			<u>Education</u>		
Remedial -----	(5)	---@	Remedial -----	(11)	-----@
Vocational -----	(2)	-@	Vocational -----	(2)	-@
Skills -----	(5)	---@	Skills -----	(6)	---@
<u>Counseling</u>			<u>Counseling</u>		
Individual -----	(10)	-----@	Individual -----	(21)	-----@
Group -----	(7)	-----@	Group -----	(8)	-----@
Drug -----	(8)	-----@	Drug -----	(11)	-----@
Alcohol -----	(4)	---@	Alcohol -----	(3)	--@
Employment -----	(5)	---@	Employment -----	(10)	-----@
Family -----	(3)	--@	Family -----	(7)	-----@
Financial -----			Financial -----	(2)	-@
Homemaking -----	(1)	@	Homemaking -----	(2)	-@
Family Planning -----			Family Planning -----	(2)	-@
Vocational -----	(3)	--@	Vocational -----	(8)	-----@
Educational -----	(2)	-@	Educational -----	(6)	---@
<u>Transportation</u>			<u>Transportation</u>		
Recreation -----	(2)	-@	Recreation -----	(13)	-----@
Institutional -----	(2)	-@	Institutional -----	(3)	--@
Field -----	(1)	@	Field -----	(8)	-----@
Family of Client -----	(1)	@	Family of Client -----	(3)	--@
Jail Inmates -----	(1)	@	Jail Inmates -----	(4)	---@
<u>Professional</u>			<u>Professional</u>		
Medical -----	(2)	-@	Medical -----		
Legal -----			Legal -----	(3)	--@
<u>Miscellaneous</u>			<u>Miscellaneous</u>		
Case Aide -----	(2)	-@	Case Aide -----	(6)	---@
Counselor Aide -----	(2)	-@	Counselor Aide -----	(2)	-@
Jail Visitor -----	(2)	-@	Jail Visitor -----	(6)	---@
Interpreter -----	(1)	@	Interpreter -----	(3)	--@
Recreation -----	(4)	---@	Recreation -----	(10)	-----@
Other -----	(6)	---@	Other -----	(6)	---@

DEPARTMENT OF CORRECTIONS INSTITUTIONS (N=4)

DEPARTMENT OF CORRECTIONS PAROLE UNITS (N=3)

<u>Administration</u>			<u>Administration</u>		
Advisory -----	(1)	@	Advisory -----	(1)	@
Clerical -----	(1)	@	Clerical -----		
Community Resources -----	(2)	-@	Community Resources -----	(3)	--@
Interviewer -----	(1)	@	Interviewer -----		
Public Relations -----	(1)	@	Public Relations -----	(2)	-@
Research/Evaluation -----			Research/Evaluation -----		
Supervision -----			Supervision -----	(1)	@
<u>Education</u>			<u>Education</u>		
Remedial -----	(1)	@	Remedial -----	(1)	@
Vocational -----	(2)	-@	Vocational -----		
Skills -----	(1)	@	Skills -----		
<u>Counseling</u>			<u>Counseling</u>		
Individual -----			Individual -----	(2)	-@
Group -----	(3)	--@	Group -----	(1)	@
Drug -----	(1)	@	Drug -----	(1)	@
Alcohol -----	(3)	--@	Alcohol -----		
Employment -----	(3)	--@	Employment -----	(2)	-@
Family -----	(2)	-@	Family -----	(1)	@
Financial -----	(1)	@	Financial -----		
Homemaking -----			Homemaking -----		
Family Planning -----	(2)	-@	Family Planning -----		
Vocational -----	(1)	@	Vocational -----	(2)	-@
Educational -----	(2)	-@	Educational -----		
<u>Transportation</u>			<u>Transportation</u>		
Recreation -----			Recreation -----	(1)	@
Institutional -----	(1)	@	Institutional -----		
Field -----	(1)	@	Field -----	(1)	@
Family of Client -----	(2)	-@	Family of Client -----		
Jail Inmates -----	(1)	@	Jail Inmates -----		
<u>Professional</u>			<u>Professional</u>		
Medical -----			Medical -----		
Legal -----			Legal -----		
<u>Miscellaneous</u>			<u>Miscellaneous</u>		
Case Aide -----	(1)	@	Case Aide -----	(1)	@
Counselor Aide -----			Counselor Aide -----	(1)	@
Jail Visitor -----	(1)	@	Jail Visitor -----		
Interpreter -----	(1)	@	Interpreter -----		
Recreation -----			Recreation -----		
Other -----	(1)	@	Other -----		

POLICE DEPARTMENTS (N=49)

SHERIFFS' DEPARTMENTS (N=11)

<u>Administration</u>	
Advisory -----	(3) --@
Clerical -----	(12) -----@
Community Resources -----	(13) -----@
Interviewer -----	
Public Relations -----	(11) -----@
Research/Evaluation -----	(3) --@
Supervision -----	(3) --@
<u>Education</u>	
Remedial -----	(4) ---@
Vocational -----	(12) -----@
Skills -----	(4) ---@
<u>Counseling</u>	
Individual -----	(16) -----@
Group -----	(8) -----@
Drug -----	(10) -----@
Alcohol -----	(7) -----@
Employment -----	(5) ---@
Family -----	(11) -----@
Financial -----	
Homemaking -----	
Family Planning -----	(2) -@
Vocational -----	(7) -----@
Educational -----	(7) -----@
<u>Transportation</u>	
Recreation -----	(6) -----@
Institutional -----	(2) -@
Field -----	(5) -----@
Family of Client -----	(2) -@
Jail Inmates -----	(2) -@
<u>Professional</u>	
Medical -----	(6) -----@
Legal -----	(2) -@
<u>Miscellaneous</u>	
Case Aide -----	(4) ---@
Counselor Aide -----	(6) -----@
Jail Visitor -----	
Interpreter -----	(4) ---@
Recreation -----	(7) -----@
Police Reserve -----	(19) -----@

<u>Administration</u>	
Advisory -----	(2) -@
Clerical -----	(4) ---@
Community Resources -----	(4) ---@
Interviewer -----	(4) ---@
Public Relations -----	(3) ---@
Research/Evaluation -----	(2) -@
Supervision -----	(2) -@
<u>Education</u>	
Remedial -----	(4) ---@
Vocational -----	(4) ---@
Skills -----	(6) -----@
<u>Counseling</u>	
Individual -----	(4) ---@
Group -----	(5) ---@
Drug -----	(5) ---@
Alcohol -----	(8) -----@
Employment -----	(5) ---@
Family -----	(5) ---@
Financial -----	(1) @
Homemaking -----	(2) -@
Family Planning -----	(3) ---@
Vocational -----	(3) ---@
Educational -----	(4) ---@
<u>Transportation</u>	
Recreation -----	(1) @
Institutional -----	
Field -----	(1) @
Family of Client -----	(3) ---@
Jail Inmates -----	(3) ---@
<u>Professional</u>	
Medical -----	(2) -@
Legal -----	(3) ---@
<u>Miscellaneous</u>	
Case Aide -----	(2) -@
Counselor Aide -----	(3) ---@
Jail Visitor -----	(5) -----@
Interpreter -----	(2) -@
Recreation -----	(3) ---@
Other -----	(12) -----@

-53-

END