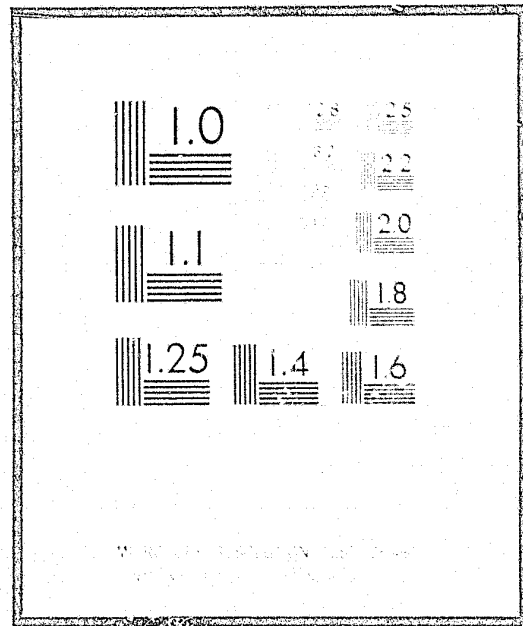


NCJRS

This microfiche was produced from documents received for inclusion in the NCJRS data base. Since NCJRS cannot exercise control over the physical condition of the documents submitted, the individual frame quality will vary. The resolution chart on this frame may be used to evaluate the document quality.



Microfilming procedures used to create this fiche comply with the standards set forth in 41CFR 101-11.504

Points of view or opinions stated in this document are those of the author(s) and do not represent the official position or policies of the U.S. Department of Justice.

U.S. DEPARTMENT OF JUSTICE
LAW ENFORCEMENT ASSISTANCE ADMINISTRATION
NATIONAL CRIMINAL JUSTICE REFERENCE SERVICE
WASHINGTON, D.C. 20531

4/14/77

Date filmed

OFFENDERS RELEASED FROM JUVENILE CORRECTIONAL INSTITUTIONS CALENDAR 1975



37935

DEPARTMENT OF HEALTH AND SOCIAL SERVICES
DIVISION OF CORRECTIONS
BUREAU OF PLANNING, DEVELOPMENT, AND RESEARCH
MADISON, WISCONSIN 53701

STATISTICAL BULLETIN C-52

NOVEMBER 1976

STATE OF WISCONSIN

DEPARTMENT OF HEALTH AND SOCIAL SERVICES
Manuel Carballo, Secretary

DIVISION OF CORRECTIONS
Allyn R. Sielaff, Administrator

BUREAU OF PLANNING, DEVELOPMENT, AND RESEARCH
Paul H. Kusuda, Director
Perry C. Baker, Chief, Research and Evaluation Section
Theodore H. Johnson, Chief, Information and Systems Development Section

OFFENDERS RELEASED FROM JUVENILE CORRECTIONAL INSTITUTIONS

Calendar 1975

H I G H L I G H T S

1. Juvenile male first releases to aftercare remained at 1974 levels while re-releases decreased 27 percent.
2. Juvenile female first releases decreased 48 percent over 1974 levels while re-releases increased 48 percent.
3. The parents of one-half of the first and re-released boys and the first-released girls and almost two-thirds (64 percent) of the re-released girls were reported to be divorced, separated, widowed, or never married. (See Table 7.)
4. More than one-half of the first-released boys and girls (58 and 54 percent respectively) were from families reported to be in at least the lower middle socio-economic brackets. This was also true for 4 out of 10 re-released boys and girls. (See Table 8.)
5. Seven out of 10 first-released boys and girls were reported to have made satisfactory progress while enrolled in institution educational programs. This was also true for 6 out of 10 re-released boys and girls. (See Table 9.)
6. Nine out of 10 boys and girls first-released to aftercare supervision were White. Three-fourths of the boys and girls re-released were also White. (See Table 14.)

NCJRS

DEC 7 1975

ACQUISITIONS

Information on boys and girls released to aftercare supervision during calendar year 1975 is presented in Tables 1 through 14. Tables A through D report selected characteristics of first and re-released youth for the period 1971-1975. Youth are also granted direct discharges from juvenile institutions, usually upon attainment of the age of majority (18 years). Appendix Table A reports on the characteristics of juveniles granted discharges during calendar year 1975.

Table A
Selected Characteristics of First-Released Boys, 1971-1975

Characteristic	Year				
	1971	1972	1973	1974	1975
Average (mean) months stay in institution	6.8	8.2	10.1	9.5	9.9
Median age at release	16.6	16.7	16.7	16.7	16.8
Percent released to Milwaukee County	37.5	30.4	24.3	23.7	24.2
Percent with excellent institutional adjustment	11.7	14.1	12.0	11.0	11.8
Percent with excellent educational progress in institution	12.7	16.3	15.8	22.2	23.8
Percent with excellent vocational progress in institution	6.0	5.0	10.0	11.0	9.2
Percent from foster homes before admission	9.4	4.4	6.7	6.0	8.2
Percent to foster homes after release	7.0	6.8	12.0	8.6	11.3
Total number of first-released boys	614	474	341	465	476

The average (mean) length of stay for first-released boys increased from 9.5 months in 1974 to 9.9 months in 1975. Other characteristics have remained relatively stable during the past five years.

Table B
Selected Characteristics of First-Released Girls, 1971-1975

Characteristic	Year				
	1971	1972	1973	1974	1975
Average (mean) months stay in institution	6.2	8.4	10.3	10.1	9.4
Median age at release	16.3	16.6	16.6	16.7	16.7
Percent released to Milwaukee County	51.8	30.5	26.3	17.9	28.6
Percent with excellent institutional adjustment	9.6	6.7	10.5	7.5	2.9
Percent with excellent educational progress in institution	13.2	13.3	22.4	14.9	18.6
Percent with excellent vocational progress in institution	12.3	12.4	18.4	7.5	2.9
Percent from foster homes before admission	14.6	21.9	5.3	17.9	21.4
Percent to foster homes after release	20.5	20.0	25.0	20.9	25.7
Total number of first-released girls	220	105	76	134	70

The average (mean) length of stay for first-released girls decreased from 10.1 months in 1974 to 9.4 months in 1975. The number of first-released girls dropped to a five-year low of 70 in 1975. Slightly more than one-fourth (29 percent), as opposed to 18 percent in 1974, were released to Milwaukee County. Other characteristics showed no change.

Table C
Selected Characteristics of Re-released Boys, 1971-1975

Characteristic	Year				
	1971	1972	1973	1974	1975
Average (mean) months stay in institution	6.9	8.0	10.1	8.4	10.5
Median age at release	17.1	17.2	17.0	17.2	17.1
Percent re-released to Milwaukee County	62.9	59.1	42.2	42.6	26.0
Percent with excellent institutional adjustment	12.0	12.8	10.4	10.3	9.0
Total number of re-released boys	685	389	135	136	100

Boys re-released to aftercare spent an average of 10.5 months in the institution. This is a high for the five-year period. Slightly more than one-fourth (26 percent) of the boys were re-released to placements in Milwaukee County. Other characteristics remained stable.

Table D
Selected Characteristics of Re-released Girls, 1971-1975

Characteristic	Year				
	1971	1972	1973	1974	1975
Average (mean) months stay in institution	6.9	8.0	10.1	8.4	8.0
Median age at release	16.8	17.2	16.4	17.3	17.1
Percent re-released to Milwaukee County	58.2	43.9	60.0	33.3	19.4
Percent with excellent institutional adjustment	8.6	8.5	13.3	4.8	3.2
Total number of re-released girls	141	82	30	21	31

Less than one-fifth (19 percent) of the re-released girls returned to placements in Milwaukee County. This is a low for the five-year period. The average (mean) length of stay decreased from 8.4 months in 1974 to 8.0 months in 1975.

Prepared by: Barbara Drown, Social Research Analyst
Research and Evaluation Section
Bureau of Planning, Development, and Research
Division of Corrections
P.O. Box 669
Madison, Wisconsin 53701

Table 1
 Releases from Wisconsin Juvenile Correctional Institutions
 1968-1975

Calendar Year of Release	Total/a Releases	Total Boys	Boys						Total Girls	Girls					
			First Releases			Re-releases				First Releases			Re-releases		
			Total	Mil-waukee	All Other Counties	Total	Mil-waukee	All Other Counties		Total	Mil-waukee	All Other Counties	Total	Mil-waukee	All Other Counties
1968	1,903	1,515	827	482	345	688	456	232	388	263	164	99	125	72	53
1969	1,977	1,546	788	456	332	758	475	283	431	268	152	116	163	103	60
1970	2,080	1,669	834	409	425	835	528	307	411	245	130	115	166	103	63
1971	1,660	1,299	614	230	384	685	431	254	361	220	114	106	141	82	59
1972	1,050	863	474	144	330	389	230	159	187	105	32	73	82	36	46
1973	582	476	341	83	258	135	57	78	106	76	20	56	30	18	12
1974	756	601	465	110	355	136	58	78	155	134	24	110	21	7	14
1975	677	576	476	115	361	100	26	74	101	70	20	50	31	6	25

/a Only first and re-releases are presented in this table. Direct discharges are not included.

Table 2
 Releases from Wisconsin Juvenile Correctional Institutions
 TYPE OF RELEASE
 January 1-December 31, 1975

Type of Release	Boys						Girls					
	Number			Percent			Number			Percent		
	Total	Mil-waukee	All Other Counties	Total	Mil-waukee	All Other Counties	Total	Mil-waukee	All Other Counties	Total	Mil-waukee	All Other Counties
Total	832	258	574	100.0	100.0	100.0	136	40	96	100.0	100.0	100.0
First release	476	115	361	57.3	44.6	62.9	70	20	50	51.5	50.0	52.1
Second or subsequent release	100	26	74	12.0	10.1	12.9	31	6	25	22.8	15.0	26.0
Direct discharge	249	112	137	29.9	43.4	23.9	34	14	20	25.0	35.0	20.8
Discharge by court order	5	3	2	0.6	1.2	0.3	1	-	1	0.7	-	1.1
Death	2	2	-	0.2	0.7	-	-	-	-	-	-	-

Table 3
 Releases from Wisconsin Juvenile Correctional Institutions
 COUNTY AND TYPE OF RELEASE
 January 1-December 31, 1975

COUNTY TO WHICH RELEASED	TOTAL RELEASES	FIRST RELEASE	RE-RELEASE	DIRECT DISCHARGE	DISCHARGE BY COURT ORDER	TOTAL BOYS	FIRST RELEASE	RE-RELEASE	DIRECT DISCHARGE	DISCHARGE BY COURT ORDER	TOTAL GIRLS	FIRST RELEASE	RE-RELEASE	DIRECT DISCHARGE	DISCHARGE BY COURT ORDER
TOTAL	966	546	131	283	6	830	476	100	249	5	136	70	31	34	1
ADAMS	5	2	1	2	-	5	2	1	2	-	-	-	-	-	-
ASHLAND	2	1	-	1	-	2	1	-	1	-	-	-	-	-	-
BARRON	9	6	-	3	-	9	6	-	3	-	-	-	-	-	-
BAYFIELD	6	5	1	-	-	5	5	-	-	-	1	-	1	-	-
BROWN	21	14	4	3	-	19	14	2	3	-	2	-	2	-	-
BUFFALO	-	-	-	-	-	-	-	-	-	-	-	-	-	-	-
SURNETT	2	1	1	-	-	2	1	1	-	-	-	-	-	-	-
SALUMET	2	1	1	-	-	2	1	1	-	-	-	-	-	-	-
CHIPPEWA	13	7	3	3	-	13	7	3	3	-	-	-	-	-	-
CLARK	8	8	-	-	-	8	8	-	-	-	-	-	-	-	-
COLUMBIA	1	1	-	-	-	1	1	-	-	-	-	-	-	-	-
CRAWFORD	4	2	1	1	-	4	2	1	1	-	-	-	-	-	-
DANE	26	15	3	7	1	18	10	2	6	-	8	5	1	1	1
DODGE	4	2	1	1	-	3	2	-	1	-	1	-	1	-	-
DOOR	3	2	-	1	-	3	2	-	1	-	-	-	-	-	-
DOUGLAS	21	12	7	2	-	12	11	-	1	-	9	1	7	1	-
DUNN	1	-	-	1	-	1	-	-	1	-	-	-	-	-	-
EAU CLAIRE	24	13	7	4	-	21	12	5	4	-	3	1	2	-	-
FLORENCE	1	1	-	-	-	1	1	-	-	-	-	-	-	-	-
FOND DU LAC	14	11	-	3	-	13	11	-	2	-	1	-	-	1	-
FOREST	2	2	-	-	-	2	2	-	-	-	-	-	-	-	-
GRANT	1	-	-	1	-	-	-	-	-	-	1	-	-	1	-
GREEN	-	-	-	-	-	-	-	-	-	-	-	-	-	-	-
GREEN LAKE	2	1	-	1	-	2	1	-	1	-	-	-	-	-	-
IOWA	2	1	1	-	-	2	1	1	-	-	-	-	-	-	-
IRON	-	-	-	-	-	-	-	-	-	-	-	-	-	-	-
JACKSON	1	-	-	1	-	1	-	-	1	-	-	-	-	-	-
JEFFERSON	3	3	-	-	-	2	2	-	-	-	1	1	-	-	-
JUNEAU	7	5	1	1	-	6	4	1	1	-	1	1	-	-	-
KENOSHA	59	36	11	12	-	51	31	10	10	-	8	5	1	2	-
KEWAUNEE	3	3	-	-	-	2	2	-	-	-	1	1	-	-	-
LACROSSE	12	5	2	5	-	11	4	2	5	-	1	1	-	-	-
LAFAYETTE	-	-	-	-	-	-	-	-	-	-	-	-	-	-	-
LANGLADE	2	2	-	-	-	2	2	-	-	-	-	-	-	-	-
LINCOLN	6	3	1	2	-	6	3	1	2	-	-	-	-	-	-
MANITOWOC	3	3	-	-	-	3	3	-	-	-	6	2	2	2	-
MARATHON	29	20	4	5	-	23	18	2	3	-	-	-	-	-	-
MARINETTE	6	5	1	-	-	6	5	1	-	-	-	-	-	-	-
MARQUETTE	-	-	-	-	-	-	-	-	-	-	-	-	-	-	-
MENOMINEE	4	2	2	-	-	4	2	2	-	-	-	-	-	-	-

Table 3 (Concluded)

COUNTY TO WHICH RELEASED	TOTAL RELEASES	FIRST RELEASE	RE-RELEASE	DIRECT DISCHARGE	DISCHARGE BY COURT ORDER	TOTAL BOYS	FIRST RELEASE	RE-RELEASE	DIRECT DISCHARGE	DISCHARGE BY COURT ORDER	TOTAL GIRLS	FIRST RELEASE	RE-RELEASE	DIRECT DISCHARGE	DISCHARGE BY COURT ORDER
MILWAUKEE	296	135	32	126	3	256	115	26	112	3	40	20	6	14	-
MONROE	1	-	-	1	-	1	-	-	1	-	-	-	-	-	-
OCONTO	4	2	1	1	-	4	2	1	1	-	-	-	-	-	-
ONEIDA	13	7	1	5	-	8	3	1	4	-	5	4	-	1	-
OUTAGAMIE	30	21	5	3	1	25	17	5	2	1	5	4	-	1	-
OZAUKEE	6	1	1	4	-	6	1	1	4	-	-	-	-	-	-
PEPIN	-	-	-	-	-	-	-	-	-	-	-	-	-	-	-
PIERCE	-	-	-	-	-	-	-	-	-	-	-	-	-	-	-
POLK	4	2	1	1	-	3	1	1	1	-	1	1	-	-	-
PORTAGE	9	8	1	-	-	7	6	1	-	-	2	2	-	-	-
PRICE	2	1	-	1	-	2	1	-	1	-	-	-	-	-	-
RACINE	42	22	3	17	-	37	17	3	17	-	5	5	-	-	-
RICHLAND	1	1	-	-	-	1	1	-	-	-	-	-	-	-	-
ROCK	48	36	7	5	-	42	32	6	4	-	6	4	1	1	-
RUSK	5	2	1	2	-	4	2	-	2	-	1	-	1	-	-
ST. CROIX	12	12	-	-	-	12	12	-	-	-	-	-	-	-	-
SAUK	5	4	-	1	-	5	4	-	1	-	-	-	-	-	-
SAWYER	12	8	4	-	-	11	8	3	-	-	1	-	1	-	-
SHAWANO	6	3	1	2	-	5	3	-	2	-	1	-	1	-	-
SHEBOYGAN	15	10	2	3	-	13	8	2	3	-	2	2	-	-	-
TAYLOR	-	-	-	-	-	-	-	-	-	-	-	-	-	-	-
TREMPEALEAU	-	-	-	-	-	-	-	-	-	-	-	-	-	-	-
VERNON	3	2	-	1	-	2	1	-	1	-	1	1	-	-	-
VILAS	9	4	4	1	-	4	1	3	-	-	5	3	1	1	-
WALWORTH	8	4	-	4	-	7	4	-	3	-	1	-	-	1	-
WASHBURN	5	3	2	-	-	4	2	2	-	-	1	1	-	-	-
WASHINGTON	12	6	1	5	-	11	6	1	4	-	1	-	-	1	-
WAUKESHA	35	21	4	10	-	31	20	2	9	-	4	1	2	1	-
WAUPACA	3	2	1	-	-	3	2	1	-	-	-	-	-	-	-
WAUSHARA	5	4	-	1	-	3	2	-	1	-	2	2	-	-	-
WINNEBAGO	14	10	2	2	-	12	9	1	2	-	2	1	1	-	-
WOOD	11	9	-	2	-	11	9	-	2	-	-	-	-	-	-
OUT OF STATE	18	11	4	3	-	17	10	4	3	-	1	1	-	-	-
UNKNOWN	23	-	-	22	1	18	-	-	17	1	5	-	-	5	-

Table 6
 Releases from Wisconsin Juvenile Correctional Institutions
 INSTITUTIONAL ADJUSTMENT AND TYPE OF RELEASE
 January 1-December 31, 1975

Institution Adjustment	Boys						Girls					
	First Releases			Re-releases			First Releases			Re-releases		
	Total	Mil-waukee	All Other Counties	Total	Mil-waukee	All Other Counties	Total	Mil-waukee	All Other Counties	Total	Mil-waukee	All Other Counties
<u>Number</u>	476	115	361	100	26	74	70	20	50	31	6	25
Excellent	56	12	44	9	2	7	2	-	2	1	-	1
Better than average	184	43	141	43	11	32	22	1	21	7	-	7
Average	193	50	143	39	11	28	40	14	26	13	3	10
Poorer than average	42	9	33	8	2	6	6	5	1	10	3	7
Extremely poor	-	-	-	1	-	1	-	-	-	-	-	-
Unknown	1	1	-	-	-	-	-	-	-	-	-	-
<u>Percent</u>	100.0	100.0	100.0	100.0	100.0	100.0	100.0	100.0	100.0	100.0	100.0	100.0
Excellent	11.8	10.4	12.2	9.0	7.7	9.5	2.9	-	4.0	3.2	-	4.0
Better than average	38.7	37.4	39.1	43.0	42.3	43.2	31.4	5.0	42.0	22.6	-	28.0
Average	40.5	43.5	39.6	39.0	42.3	37.8	57.1	70.0	52.0	41.9	50.0	40.0
Poorer than average	8.8	7.8	9.1	8.0	7.7	8.1	8.6	25.0	2.0	32.3	50.0	28.0
Extremely poor	-	-	-	1.0	-	1.4	-	-	-	-	-	-
Unknown	0.2	0.9	-	-	-	-	-	-	-	-	-	-

Table 7
 Releases from Wisconsin Juvenile Correctional Institutions
 MARITAL STATUS OF NATURAL PARENTS AND TYPE OF RELEASE
 January 1-December 31, 1975

Marital Status of Youth's Natural Parents at Admission	Boys						Girls					
	First Releases			Re-releases			First Releases			Re-releases		
	Total	Mil-waukee	All Other Counties	Total	Mil-waukee	All Other Counties	Total	Mil-waukee	All Other Counties	Total	Mil-waukee	All Other Counties
<u>Number</u>	476	115	361	100	26	74	70	20	50	31	6	25
Parents not married	29	14	15	3	1	2	3	2	1	1	-	1
Parents married	218	49	169	48	11	37	30	4	26	9	2	7
Parents divorced or separated	179	45	134	39	12	27	26	7	19	16	4	12
Parents widowed	34	4	30	9	2	7	10	6	4	3	-	3
Both natural parents dead	4	1	3	1	-	1	1	1	-	-	-	-
Other	6	2	4	-	-	-	-	-	-	-	-	-
Unknown	6	-	6	-	-	-	-	-	-	2	-	2
<u>Percent</u>	100.0	100.0	100.0	100.0	100.0	100.0	100.0	100.0	100.0	100.0	100.0	100.0
Parents not married	6.1	12.2	4.2	3.0	3.8	2.7	4.3	10.0	2.0	3.2	-	4.0
Parents married	45.8	42.6	46.8	48.0	42.3	50.0	42.9	20.0	52.0	29.0	33.3	28.0
Parents divorced or separated	37.6	39.1	37.1	39.0	46.2	36.5	37.1	35.0	38.0	51.6	66.7	48.0
Parents widowed	7.1	3.5	8.3	9.0	7.7	9.5	14.3	30.0	8.0	9.7	-	12.0
Both natural parents dead	0.8	0.9	0.8	1.0	-	1.3	1.4	5.0	-	-	-	-
Other	1.3	1.7	1.1	-	-	-	-	-	-	-	-	-
Unknown	1.3	-	1.7	-	-	-	-	-	-	6.5	-	8.0

Table 8
 Releases from Wisconsin Juvenile Correctional Institutions
 SOCIO-ECONOMIC LEVEL AND TYPE OF RELEASE
 January 1-December 31, 1975

Socio-Economic Level of Family	Boys						Girls					
	First Releases			Re-releases			First Releases			Re-releases		
	Total	Mil-waukee	All Other Counties	Total	Mil-waukee	All Other Counties	Total	Mil-waukee	All Other Counties	Total	Mil-waukee	All Other Counties
<u>Number</u>	<u>476</u>	<u>115</u>	<u>361</u>	<u>100</u>	<u>26</u>	<u>74</u>	<u>70</u>	<u>20</u>	<u>50</u>	<u>31</u>	<u>6</u>	<u>25</u>
Upper	4	-	4	-	-	-	1	1	-	-	-	-
Upper-middle	67	10	57	6	1	5	6	-	6	1	-	1
Lower-middle	180	31	149	32	7	25	26	5	21	11	2	9
Upper-lower	160	44	116	38	9	29	23	7	16	10	1	9
Lower-lower	65	30	35	24	9	15	14	7	7	9	3	6
<u>Percent</u>	<u>100.0</u>	<u>100.0</u>	<u>100.0</u>	<u>100.0</u>	<u>100.0</u>	<u>100.0</u>	<u>100.0</u>	<u>100.0</u>	<u>100.0</u>	<u>100.0</u>	<u>100.0</u>	<u>100.0</u>
Upper	0.8	-	1.1	-	-	-	1.4	5.0	-	-	-	-
Upper-middle	14.1	8.7	15.8	6.0	3.9	6.8	8.6	-	12.0	3.2	-	4.0
Lower-middle	37.8	27.0	41.3	32.0	26.9	33.8	37.1	25.0	42.0	35.5	33.3	36.0
Upper-lower	33.6	38.2	32.1	38.0	34.6	39.2	32.9	35.0	32.0	32.3	16.7	36.0
Lower-lower	13.7	26.1	9.7	24.0	34.6	20.2	20.0	35.0	14.0	29.0	50.0	24.0

- 12 -

Table 9
 Releases from Wisconsin Juvenile Correctional Institutions
 EDUCATIONAL PROGRESS AND TYPE OF RELEASE
 January 1-December 31, 1975

Educational Progress at Institution	Boys						Girls					
	First Releases			Re-releases			First Releases			Re-releases		
	Total	Mil-waukee	All Other Counties	Total	Mil-waukee	All Other Counties	Total	Mil-waukee	All Other Counties	Total	Mil-waukee	All Other Counties
<u>Number</u>	<u>476</u>	<u>115</u>	<u>361</u>	<u>100</u>	<u>26</u>	<u>74</u>	<u>70</u>	<u>20</u>	<u>50</u>	<u>31</u>	<u>6</u>	<u>25</u>
Not applicable	2	-	2	2	-	2	-	-	-	1	-	1
Excellent	113	29	84	23	7	16	13	2	11	6	-	6
Satisfactory	336	76	260	68	19	49	55	17	38	21	5	16
No progress	24	10	14	6	-	6	-	-	-	3	1	2
Regression	-	-	-	-	-	-	-	-	-	-	-	-
No evaluation made	1	-	1	1	-	1	2	1	1	-	-	-
<u>Percent</u>	<u>100.0</u>	<u>100.0</u>	<u>100.0</u>	<u>100.0</u>	<u>100.0</u>	<u>100.0</u>	<u>100.0</u>	<u>100.0</u>	<u>100.0</u>	<u>100.0</u>	<u>100.0</u>	<u>100.0</u>
Not applicable	0.4	-	0.5	2.0	-	2.7	-	-	-	3.2	-	4.0
Excellent	23.8	25.2	23.3	23.0	26.9	21.6	18.6	10.0	22.0	19.4	-	24.0
Satisfactory	70.6	66.1	72.0	68.0	73.1	66.2	78.5	85.0	76.0	67.7	83.3	64.0
No progress	5.0	8.7	3.9	6.0	-	8.1	-	-	-	9.7	16.7	8.0
Regression	-	-	-	-	-	-	-	-	-	-	-	-
No evaluation made	0.2	-	0.3	1.0	-	1.4	2.9	5.0	2.0	-	-	-

- 13 -

Table 10
 Releases from Wisconsin Juvenile Correctional Institutions
 VOCATIONAL PROGRESS AND TYPE OF RELEASE
 January 1-December 31, 1975

Vocational Progress at Institution	Boys						Girls					
	First Releases			Re-releases			First Releases			Re-releases		
	Total	Mil- waukee	All Other Counties	Total	Mil- waukee	All Other Counties	Total	Mil- waukee	All Other Counties	Total	Mil- waukee	All Other Counties
<u>Number</u>	476	115	361	100	26	74	70	20	50	31	6	25
Not applicable	164	61	103	38	14	24	29	13	16	7	4	3
Excellent	44	5	39	6	1	5	2	-	2	4	-	4
Satisfactory	239	40	199	49	11	38	36	5	31	19	1	18
No progress	19	7	12	7	-	7	-	-	-	1	1	-
Regression	1	-	1	-	-	-	-	-	-	-	-	-
No evaluation made	9	2	7	-	-	-	3	2	1	-	-	-
<u>Percent</u>	100.0	100.0	100.0	100.0	100.0	100.0	100.0	100.0	100.0	100.0	100.0	100.0
Not applicable	34.5	53.0	28.5	38.0	53.8	32.4	41.4	65.0	32.0	22.6	66.6	12.0
Excellent	9.2	4.4	10.8	6.0	3.9	6.8	2.9	-	4.0	12.9	-	16.0
Satisfactory	50.2	34.8	55.1	49.0	42.3	51.3	51.4	25.0	62.0	61.3	16.7	72.0
No progress	4.0	6.1	3.3	7.0	-	9.5	-	-	-	3.2	16.7	-
Regression	0.2	-	0.3	-	-	-	-	-	-	-	-	-
No evaluation made	1.9	1.7	2.0	-	-	-	4.3	10.0	2.0	-	-	-

Table 11
 Releases from Wisconsin Juvenile Correctional Institutions
 INSTITUTION AND TYPE OF RELEASE
 January 1-December 31, 1975

Institution Released From	Boys						Girls					
	First Releases			Re-releases			First Releases			Re-releases		
	Total	Mil- waukee	All Other Counties	Total	Mil- waukee	All Other Counties	Total	Mil- waukee	All Other Counties	Total	Mil- waukee	All Other Counties
<u>Number</u>	476	115	361	100	26	74	70	20	50	31	6	25
Lincoln Boys School	159	4	155	34	1	33	31	1	30	18	-	18
Wisconsin School for Boys	198	91	107	52	23	29	-	-	-	-	-	-
Camp Flambeau	51	-	51	7	-	7	-	-	-	-	-	-
Wisconsin School for Girls	68	20	48	7	2	5	39	19	20	13	6	7
<u>Percent</u>	100.0	100.0	100.0	100.0	100.0	100.0	100.0	100.0	100.0	100.0	100.0	100.0
Lincoln Boys School	33.4	3.5	42.9	34.0	3.8	44.6	44.3	5.0	60.0	58.1	-	72.0
Wisconsin School for Boys	41.6	79.1	29.6	52.0	88.5	39.2	-	-	-	-	-	-
Camp Flambeau	10.7	-	14.1	7.0	-	9.4	-	-	-	-	-	-
Wisconsin School for Girls	14.3	17.4	13.4	7.0	7.7	6.8	55.7	95.0	40.0	41.9	100.0	28.0

Table 12
 Releases from Wisconsin Juvenile Correctional Institutions
 LIVING ARRANGEMENT BEFORE ADMISSION AND TYPE OF RELEASE
 January 1-December 31, 1975

Living Arrangement Before Admission	Boys						Girls					
	First Releases			Re-releases			First Releases			Re-releases		
	Total	Mil-waukee	All Other Counties	Total	Mil-waukee	All Other Counties	Total	Mil-waukee	All Other Counties	Total	Mil-waukee	All Other Counties
<u>Number</u>	476	115	361	100	26	74	70	20	50	31	6	25
With both parents (step-parents)	239	56	183	44	11	33	28	5	23	4	2	2
With one parent (step-parent)	164	47	117	33	11	22	22	11	11	6	2	4
With relative(s)	10	2	8	4	1	3	-	-	-	3	-	3
In foster home	39	4	35	18	2	16	15	2	13	16	2	14
In child welfare institution	16	5	11	1	1	-	4	1	3	2	-	2
In Mendota or Winnebago State Hospital	2	-	2	-	-	-	-	-	-	-	-	-
Other	6	1	5	-	-	-	1	1	-	-	-	-
<u>Percent</u>	100.0	100.0	100.0	100.0	100.0	100.0	100.0	100.0	100.0	100.0	100.0	100.0
With both parents (step-parents)	50.2	48.7	50.7	44.0	42.3	44.6	40.0	25.0	46.0	12.9	33.3	8.0
With one parent (step-parent)	34.4	40.9	32.4	33.0	42.3	29.7	31.5	55.0	22.0	19.4	33.3	16.0
With relative(s)	2.1	1.7	2.2	4.0	3.9	4.1	-	-	-	9.7	-	12.0
In foster home	8.2	3.5	9.7	18.0	7.6	21.6	21.4	10.0	26.0	51.6	33.3	56.0
In child welfare institution	3.4	4.3	3.1	1.0	3.9	-	5.7	5.0	6.0	6.4	-	8.0
In Mendota or Winnebago State Hospital	0.4	-	0.5	-	-	-	-	-	-	-	-	-
Other	1.3	0.9	1.4	-	-	-	1.4	5.0	-	-	-	-

- 16 -

Table 13
 Releases from Wisconsin Juvenile Correctional Institutions
 LIVING ARRANGEMENT AFTER RELEASE AND TYPE OF RELEASE
 January 1-December 31, 1975

Living Arrangement After Release	Boys						Girls					
	First Releases			Re-releases			First Releases			Re-releases		
	Total	Mil-waukee	All Other Counties	Total	Mil-waukee	All Other Counties	Total	Mil-waukee	All Other Counties	Total	Mil-waukee	All Other Counties
<u>Number</u>	476	115	361	100	26	74	70	20	50	31	6	25
With parents (step-parents)	237	56	181	41	9	32	28	4	24	9	1	8
With one parent (step-parent)	154	41	113	37	13	24	18	9	9	7	3	4
With relative(s)	24	6	18	9	2	7	3	-	3	2	-	2
In foster home	54	11	43	10	2	8	18	5	13	11	1	10
In child welfare institution	2	-	2	1	-	1	-	-	-	-	-	-
In Mendota or Winnebago State Hospital	-	-	-	-	-	-	-	-	-	-	-	-
Other	5	1	4	2	-	2	3	2	1	2	1	1
<u>Percent</u>	100.0	100.0	100.0	100.0	100.0	100.0	100.0	100.0	100.0	100.0	100.0	100.0
With parents (step-parents)	49.8	48.7	50.1	41.0	34.6	43.2	40.0	20.0	48.0	29.0	16.7	32.0
With one parent (step-parent)	32.4	35.6	31.3	37.0	50.0	32.4	25.7	45.0	18.0	22.5	50.0	16.0
With relative(s)	5.0	5.2	5.0	9.0	7.7	9.5	4.3	-	6.0	6.5	-	8.0
In foster home	11.3	9.6	11.9	10.0	7.7	10.8	25.7	25.0	26.0	35.5	16.7	40.0
In child welfare institution	0.4	-	0.6	1.0	-	1.4	-	-	-	-	-	-
In Mendota or Winnebago State Hospital	-	-	-	-	-	-	-	-	-	-	-	-
Other	1.1	0.9	1.1	2.0	-	2.7	4.3	10.0	2.0	6.5	16.7	4.0

- 17 -

Table 14
Releases from Wisconsin Juvenile Correctional Institutions
RACE AND TYPE OF RELEASE
January 1-December 31, 1975

Race	Boys						Girls					
	First Releases			Re-releases			First Releases			Re-releases		
	Total	Mil-waukee	All Other Counties	Total	Mil-waukee	All Other Counties	Total	Mil-waukee	All Other Counties	Total	Mil-waukee	All Other Counties
Number	476	115	361	100	26	74	70	20	50	31	6	25
White	364	53	311	72	17	55	52	7	45	21	2	19
White (Mexican Origin)	6	2	4	2	1	1	-	-	-	-	-	-
Non-white	106	60	46	26	8	18	18	13	5	10	4	6
Black	74	58	16	16	8	8	16	12	4	5	4	1
Native American (Indian)	30	2	28	10	-	10	1	-	1	5	-	5
Other	2	-	2	-	-	-	1	1	-	-	-	-
Percent	100.0	100.0	100.0	100.0	100.0	100.0	100.0	100.0	100.0	100.0	100.0	100.0
White	76.5	46.1	86.2	72.0	65.4	74.3	74.3	35.0	90.0	67.8	33.3	76.0
White (Mexican Origin)	1.3	1.7	1.1	2.0	3.8	1.4	-	-	-	-	-	-
Non-white	22.2	52.2	12.7	26.0	30.8	24.3	25.7	65.0	10.0	32.2	66.7	24.0
Black	15.5	50.5	4.4	16.0	30.8	10.8	22.9	60.0	8.0	16.1	66.7	4.0
Native American (Indian)	6.3	1.7	7.8	10.0	-	13.5	1.4	-	2.0	16.1	-	20.0
Other	0.4	-	0.5	-	-	-	1.4	5.0	-	16.1	-	-

Appendix A
Characteristics of Juveniles Directly Discharged or
Discharged by Court Order from Wisconsin Juvenile Correctional Institutions
January 1-December 31, 1975

Characteristic	Total Cases		Boys		Girls	
	Number	Percent	Number	Percent	Number	Percent
<u>Type of Release</u>	289	100.0	254	100.0	35	100.0
Direct discharge	283	97.9	249	98.0	34	97.1
Discharge by court order	6	2.1	5	2.0	1	2.9
<u>Age at Release</u>	289	100.0	254	100.0	35	100.0
12 years	-	-	-	-	-	-
13 years	1	0.3	1	0.4	-	-
14 years	1	0.3	-	-	1	2.9
15 years	1	0.3	1	0.4	-	-
16 years	4	1.4	4	1.6	-	-
17 years	14	4.8	11	4.3	3	8.6
18 years	268	92.9	237	93.3	31	88.5
<u>Months in Institution</u>	289	100.0	254	100.0	35	100.0
Less than 3 months	18	6.2	15	5.9	3	8.6
3 through 5 months	62	21.5	55	21.6	7	21.0
6 through 8 months	66	22.8	59	23.1	7	21.0
9 through 11 months	43	14.9	40	16.7	3	8.6
12 through 14 months	41	14.2	37	14.5	4	10.4
15 through 17 months	24	8.3	22	8.7	2	5.7
18 through 20 months	17	5.9	14	5.5	3	8.6
21 through 23 months	6	2.1	4	1.6	2	5.7
24 months and over	12	4.1	8	2.4	4	10.4
<u>Race</u>	289	100.0	254	100.0	35	100.0
White	192	66.4	174	68.5	18	51.4
White (Mexican Origin)	1	0.3	1	0.4	-	-
Non-white	96	33.3	79	31.1	17	48.6
Black	73	25.3	63	24.8	10	28.6
Native American (Indian)	23	8.0	16	6.3	7	20.0
Other	-	-	-	-	-	-
<u>Living Arrangement Prior to Admission</u>	289	100.0	254	100.0	35	100.0
With both parent (step-parents)	119	41.2	110	43.3	9	25.7
With one parent (step-parent)	106	36.7	95	37.4	11	31.4
With relative(s)	17	5.9	17	6.7	-	-
In foster home	28	9.7	22	8.7	6	17.1
In child welfare institution	9	3.1	4	1.6	5	14.3
In Mendota or Winnebago State Hospital	1	0.3	-	-	1	2.9
Other	9	3.1	6	2.3	3	8.6

Appendix Table A (Concluded)

Characteristic	Total Cases		Boys		Girls	
	Number	Percent	Number	Percent	Number	Percent
<u>Living Arrangement Following Release</u>	<u>289</u>	<u>100.0</u>	<u>254</u>	<u>100.0</u>	<u>35</u>	<u>100.0</u>
With both parents (step-parents)	93	32.2	89	35.0	4	11.4
With one parent (step-parent)	88	30.5	81	31.9	7	20.0
With relative(s)	14	4.8	14	5.5	-	-
In foster home	5	1.7	5	2.0	-	-
In child welfare institution	-	-	-	-	-	-
In Mendota or Winnebago State Hospital	1	0.3	1	0.4	-	-
Other	88	30.5	64	25.2	24	68.6
<u>Educational Progress at Institution</u>	<u>289</u>	<u>100.0</u>	<u>254</u>	<u>100.0</u>	<u>35</u>	<u>100.0</u>
Not applicable	30	10.4	26	10.2	4	11.4
Excellent	49	17.0	47	18.5	2	5.7
Satisfactory	136	47.1	113	44.5	23	65.7
No progress	61	21.1	56	22.1	5	14.3
Regression	3	1.0	3	1.2	-	-
No evaluation made	10	3.4	9	3.5	1	2.9
<u>Vocational Progress at Institution</u>	<u>289</u>	<u>100.0</u>	<u>254</u>	<u>100.0</u>	<u>35</u>	<u>100.0</u>
Not applicable	93	32.2	78	30.7	15	42.9
Excellent	21	7.3	20	7.9	1	2.9
Satisfactory	104	36.0	96	37.8	8	22.9
No progress	52	18.0	47	18.5	5	14.3
Regression	1	0.3	1	0.4	-	-
No evaluation made	18	6.2	12	4.7	6	17.0

ADDENDUM

Table 10A*

New Admissions to Wisconsin Juvenile Correctional Institutions
INSTITUTION AND MAJOR DELINQUENT ACT JUST BEFORE ADMISSION
January 1-December 31, 1975

Major Delinquent Act Just Before Admission	Total	Boys	Girls	Ethan Allen School (WSB)	Lincoln Hills School		Oakwood School (WSG)
					Total	Boys	
Number	701	638	60	401	265	28	32
Murder	2	2	-	1	1	-	-
Conduct regardless of life	3	2	1	2	-	-	1
Aggravated assault	38	36	2	28	8	-	2
Assault, battery	13	9	4	6	5	2	2
Threaten bodily harm	3	3	-	1	2	-	-
Rape	2	2	-	2	-	-	-
Armed robbery	43	37	3	31	6	1	2
Robbery	8	8	-	5	3	-	-
Burglary	243	239	4	157	84	2	2
Auto theft	130	126	4	71	56	1	3
Other theft	100	83	17	47	43	7	10
Forgery, fraud, checks	17	12	5	5	7	2	3
Receiving stolen property	6	6	-	6	-	-	-
Arson	3	2	1	1	1	-	-
Criminal damage to property	4	4	-	3	1	-	-
Vandalism	13	12	1	5	7	1	-
Drug offenses	16	16	-	8	8	-	-
Uncontrollable	9	7	2	6	1	2	-
Running away	11	7	4	6	4	3	1
Sex misconduct	10	8	2	5	5	2	-
Drinking	5	4	1	-	4	1	-
Truancy	3	3	-	1	2	-	-
All other	19	10	9	4	9	3	6
Percent	100.0	100.0	100.0	100.0	100.0	100.0	100.0
Murder	0.3	0.3	-	0.2	0.4	-	-
Conduct regardless of life	0.4	0.3	1.7	0.5	-	-	3.1
Aggravated assault	5.4	5.6	3.3	7.0	3.0	-	6.3
Assault, battery	1.9	1.4	6.7	1.5	1.9	7.1	6.3
Threaten bodily harm	0.4	0.5	-	0.2	0.8	-	-

ADDENDUM
Table 10A* (Concluded)

Major Delinquent Act Just Before Admission	Total	Boys	Girls	Ethan Allen School (WSB)	Lincoln Hills School			Oakwood School (WSG)
					Total	Boys	Girls	
Rape	0.3	0.3	-	0.5	-	-	-	-
Armed robbery	6.2	5.8	5.0	7.7	2.6	2.5	3.6	6.3
Robbery	1.1	1.3	-	1.3	1.1	1.3	-	-
Burglary	34.7	37.5	6.7	39.2	31.7	34.6	7.1	6.3
Auto theft	18.5	19.7	6.7	17.7	21.1	23.2	3.6	9.4
Other theft	14.2	13.0	28.2	11.7	16.2	15.2	25.0	31.2
Forgery, fraud, checks	2.4	1.9	8.3	1.3	3.4	3.0	7.1	9.4
Receiving stolen property	0.9	0.9	-	1.5	-	-	-	-
Arson	0.4	0.3	1.7	0.2	0.8	0.4	3.6	-
Criminal damage to property	0.6	0.6	-	0.7	0.4	0.4	-	-
Vandalism	1.9	1.9	1.7	1.3	3.0	3.0	3.6	-
Drug offenses	2.3	2.5	-	2.0	3.0	3.4	-	-
Uncontrollable	1.3	1.1	3.3	1.5	1.1	0.4	7.1	-
Running away	1.6	1.1	6.7	1.5	1.5	0.4	10.7	3.1
Sex misconduct	1.4	1.3	3.3	1.3	1.9	1.3	7.1	-
Drinking	0.7	0.6	1.7	-	1.9	1.7	3.6	-
Truancy	0.4	0.5	-	0.2	0.8	0.8	-	-
All other	2.7	1.6	15.0	1.0	3.4	2.5	10.7	18.6

* This table is furnished as an addendum to Table 10 of the 1975 Statistical Bulletin C-51, Admissions to Juvenile Institutions, to provide clarification of the category "other" pertaining to major delinquent act. This information is not generally available, but was computed manually to off-set current inadequacies of the computerized corrections information system. (This C-51 bulletin was sent out earlier.)

END