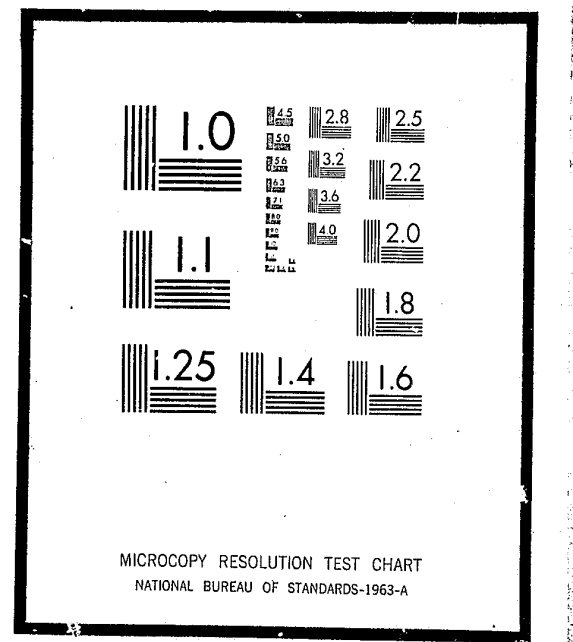


# NCJRS

This microfiche was produced from documents received for inclusion in the NCJRS data base. Since NCJRS cannot exercise control over the physical condition of the documents submitted, the individual frame quality will vary. The resolution chart on this frame may be used to evaluate the document quality.



Microfilming procedures used to create this fiche comply with the standards set forth in 41CFR 101-11.504

Points of view or opinions stated in this document are those of the author(s) and do not represent the official position or policies of the U.S. Department of Justice.

U.S. DEPARTMENT OF JUSTICE  
LAW ENFORCEMENT ASSISTANCE ADMINISTRATION  
NATIONAL CRIMINAL JUSTICE REFERENCE SERVICE  
WASHINGTON, D.C. 20531

Date filmed

6/30/76

## A COMPARATIVE STUDY OF FIRST OFFENDERS AND RECIDIVISTS



DIVISION OF RESEARCH  
TEXAS DEPARTMENT OF CORRECTIONS  
HUNTSVILLE, TEXAS

RESEARCH REPORT NO. 9

MARCH 1972

A COMPARATIVE STUDY OF  
FIRST OFFENDERS AND RECIDIVISTS

March 1972

DIVISION OF RESEARCH STAFF

James E. Mabry, Director  
Joe E. Reed, Assistant Director  
Gerry McPherson, Planning and  
Field Services Director  
Rodger Kloppe, Special Projects Director  
Steve Pipkin, Research Associate  
Calvin McAdams, Technical Writer  
Johanna Kollert, Research Assistant  
Woods Swinburn, Research Assistant  
Tom Brooks, Programmer Analysis  
Ralph Bryan, Operations Programmer  
Richard Kleinhans, Research Intern  
Judy Meade, Research Intern  
Bill Stone, Research Intern  
Jo Ann Bryant, Secretary  
Lynn Dorn, Secretary

TEXAS DEPARTMENT OF CORRECTIONS

P. O. BOX 99

HUNTSVILLE, TEXAS 77340

TEXAS BOARD OF CORRECTIONS

H. H. COFFIELD  
Chairman  
Rockdale, Texas

JAMES M. WINDHAM  
Vice-Chairman  
Livingston, Texas

W. ERVIN JAMES  
Member  
Houston, Texas

WALTER M. MISCHER  
Secretary  
Houston, Texas

FRED W. SHIELD  
Member  
San Antonio, Texas

LESTER BOYD  
Member  
Vernon, Texas

L. H. TRUE  
Member  
Wimberly, Texas

DAVID D. ALLEN  
Member  
Houston, Texas

T. LOUIS AUSTIN, JR.  
Member  
Dallas, Texas

ADMINISTRATION

GEORGE J. BETO, Ph.D.  
Director

W. J. ESTELLE, JR.  
Assistant Director

SAMMIE D. BRADLEY  
Assistant for Industry

W. DEE KUTACH  
Assistant for Treatment

BYRON W. FRIERSON  
Assistant for Agriculture

JACK D. KYLE  
Assistant for Business

ALTON L. AKINS  
Assistant for Construction

## PREFACE

The field of criminology and corrections has recently become the focal point of increasing interest and concern by both the social scientist and the general public. This recent interest and concern has served to further enhance the Texas Department of Corrections' decision to initiate studies designed to examine and explore factors related to the field of criminal corrections. One method chosen to achieve this goal was the utilization of research reports designed to identify various characteristics of felon offenders.

With this goal in mind, the intent of this study was to summarize and present statistical information on three inmate populations within the Texas Department of Corrections. It is believed that this type of information, summarized and made readily available, will benefit personnel concerned with the criminal justice process.

The data presented in this report were compiled from files maintained by the Data Processing Department of the Texas Department of Corrections.

Secretarial support was provided by Mrs. Jo Ann Bryant.

The research contained in this document was funded under Texas Criminal Justice Council Grant Number 1-F3-871. The

fact that the Criminal Justice Council furnished financial support to the activity described in this publication does not necessarily indicate the concurrence of the Criminal Justice Council to any statements or conclusions presented in this document.

CONTENTS

	<u>Page</u>
Preface .....	i
List of Tables .....	iv
List of Figures .....	vi
Introduction .....	1
Social Characteristics .....	4
Age .....	4
Sex .....	5
Ethnic Group .....	5
Marital Status .....	5
Military Record .....	6
Residence .....	7
Education and Intelligence .....	8
Prior Criminal History .....	11
Offense Information .....	13
Institutional Behavior .....	16
Typical Offenders .....	19
Tables .....	21
Figures .....	62

# LIST OF TABLES

<u>Table</u>	<u>Title</u>	<u>Page</u>
1	Age-Group Classification of the Inmate Population Studied .....	22
2	Sex of the Inmate Population Groups Studied .....	23
3	Inmate Ethnic Group Distribution .....	24
4	Marital Status of TDC Inmate Population .....	25
5	Military Record .....	26
6	Residence at the Time of Incarceration .....	27
7	Summary of Present Educational Achievement Levels .....	29
8	Summary of Present Intelligence Quotients .....	30
9	Suspended Sentences Received by Inmates Before Their Current TDC Confinement .....	31
10	Federal Probated Sentences Received Prior to Current TDC Confinement .....	32
11	State Probated Sentences Received Prior to Current TDC Confinement .....	33
12	Summary of Previous Confinements .....	34
13	Previous Confinements in Detention Homes .....	35
14	Previous Confinements in Reformatories .....	36
15	Previous Confinements in Jail .....	37

# LIST OF TABLES (Concluded)

<u>Table</u>	<u>Title</u>	<u>Page</u>
16	Previous Confinements in Military Prisons .....	38
17	Previous Confinements in Other Prisons .....	39
18	Previous Confinements in TDC .....	40
19	Number of Offenses .....	41
20	Summary of Offenses Committed .....	42
21	Offenses Committed by First Offenders .....	45
22	Offenses Committed by Recidivists .....	48
23	Offenses Committed by Subsequent/Habitual Offenders .....	51
24	Summary of Codefendants of Current TDC Inmates .....	54
25	Length of Maximum Sentence .....	55
26	Commutation-Time Classification of Inmates .....	56
27	Escapes Attempted .....	57
28	Escapes Completed .....	59
29	Solitary Confinement Records of Inmates in TDC .....	61



LIST OF FIGURES

<u>Figure</u>	<u>Title</u>	<u>Page</u>
1	Percentage and Number ..... Representation of Populations Used in this Study	63
2	Offender Distribution by Age .....	64
3	Ethnic Distribution of First ..... Offenders, Recidivists, and Subsequent/Habituals	65
4	Offender Distribution by ..... Selected Marital Statuses	66
5	Offender Distribution by ..... Educational Achievement	67
6	Offender Distribution by ..... Intelligence Quotient	68
7	Offender Distribution by ..... Previous Confinements	69
8	Offender Distribution by ..... Sentences	70

## INTRODUCTION

Society's current state of awareness and involvement in the area of criminal corrections introduces the question of just who is in prison. An approach to this question would be to divide the Texas Department of Corrections' (TDC) inmate population into smaller sub-populations. These sub-populations could then be compared and contrasted to determine social and criminal characteristics.

For the purpose of this study, the inmate population was divided into three sub-populations: the first offender, the recidivist, and the subsequent/habitual. The first offender population was operationally defined as all inmates in TDC who had no prior confinements either in TDC, other institutions, or other prisons. The recidivist population was operationally defined as all inmates currently in TDC, who had a previous TDC confinement. Likewise, the subsequent/habitual population was operationally defined as all inmates currently in TDC who had a previous TDC confinement, whose sentences reflected a prior criminal history; i.e., a subsequent offense such as forgery, habitual burglary, or third-offense robbery.

The total population studied was 11,696 or 75.2% of the total TDC inmate population of 15,547. Specifically,

the first offender population numbered 6,101 or 52.2% of the population studied. The recidivist population numbered 4,759 or 40.7% of the population studied, while the subsequent/habituals number 836 or 7.1%. The remaining 3,851 inmates constituted the segment of TDC's population who were previously confined in another state or federal prison and thus did not qualify under the operational definition of a recidivist. Figure 1 presents visually the size of the populations studied in relation to each other.

Although the original approach to the study was to compare and/or contrast the three populations, occasionally the populations were combined and a mean figure presented. Keeping this in mind, it should be noted that the first offender population was disproportionally large (52%) of the population studied. Therefore, the mean scores presented may have reflected the influence of such a large population. For example, 50% or 5,907 inmates of the three population totals were between 17 and 30 years of age. This was largely due to the influence of the first offender population who proved to be statistically younger than either of the other two populations.

The authors realize that TDC's inmate population is made up of individuals and not just numbers; however, it

was beyond the scope of this study to treat 11,696 inmates individually. For purposes of determining social and criminal characteristics, an effort was made to compare and contrast the three distinct populations across a variety of known variables.

The information contained in this report was derived from 99 variables maintained in the Department's Inmate Information File. This file contains a variety of information on each inmate which is collected, to a large extent, upon admission while a few variables are collected or updated during incarceration and discharge. The data presented herein were reduced from frequency distributions for each of the 99 variables. These distributions were reviewed and studied to determine their relative significance in light of the selected goal.

Of the 99 variables, 59 were selected as significantly relevant to the overall goal of this study. To present a more readable and logical presentation, these 59 variables were further grouped into five categories: (1) Social Characteristics, (2) Education and Intelligence, (3) Prior Criminal History, (4) Offense Information, and (5) Institutional Behavior. These categories will be presented in the order mentioned above, with related tables and graphs presented in a separate section of this report.

A COMPARATIVE STUDY OF FIRST OFFENDERS  
AND RECIDIVISTS

by Tom Zuniga, Stephen Pipkin, and Joe Reed

SOCIAL CHARACTERISTICS

Age

The age distributions of the three populations studied are illustrated in table 1 and figure 2. As expected, the youngest of the three inmate populations was the first offenders with over 60% between the ages of 17 and 30. In contrast, 43% of the recidivists and only 16% of the subsequent/habituals fell into this age category. The other side of the spectrum reflects that over 45% of the subsequent/habitual population were between the ages of 41 and 70, while 24% of the recidivists and only 10% of the first offenders were in this age group. Due partly to the influence of the very large first offender population, 5,907 or 50% of the three populations were between the ages of 17 and 30.

Figure 2 illustrates the fact that subsequent/habituals were low in the 17 to 30 age group but became more predominant as one progressed from the 17 to 30 age group, to the 31 to 45 and the 46+ age groups.

#### Sex

Over 91% of the total of the three populations were male. Although the female population proved to be very small, it is significant to point out that of the total of 447 females counted across the three populations, 79.6% of these were first offenders and only 2.2% were counted as subsequent/habituals (table 2).

#### Ethnic Group

The ethnic group distributions are presented in table 3. The first offenders were 45% Negro, 39% Caucasian, and only 16% Mexican or Latin. In contrast, the recidivist group had 42% Negro, 38% Caucasian, and 20% Mexican or Latin; while the subsequent/habitual group had 35% Negro, 52% Caucasian, and 12% Mexican or Latin. The general ethnic distribution for the total TDC population is 40% Negro, 40% Caucasian, and 20% Mexican or Latin (figure 3).

#### Marital Status

Table 4 presents the marital status of the three populations studied. The largest percentage for all three populations was "single" with an average of 35%. The second largest group was "married" followed closely

by the "divorced" category (averages of 25% and 20% respectively).

It is interesting to note that while over 33% of the subsequent/habitual population were either divorced or separated, 29% of the recidivists and only 17% of the first offenders fell into this category. The subsequent/habitual offenders were more frequently involved in a common-law relationship with over 5% participation, followed by 4.2% of the recidivists and 2.7% of the first offenders. (For purposes of this study, a common-law relationship was operationally defined as a relationship which resulted in the birth of one or more children.)

Figure 4 presents the reader with a visual comparison of marital statuses per population. It is interesting to note that the variable "separated" had the smallest representation for all three populations, with less than a 10% count for any population.

#### Military Record

Of the nearly 12,000 inmates distributed in the three populations, a mean of 66% had no prior military service. The recidivists had the highest percentage with over 72% showing no prior military service, followed by the subsequent/habitual (62%) and the first offender (61%).

Of those showing prior military service, all three populations showed a preference for the Army with 14.7%, 17.0%, and 19.5% respectively, for the first offenders, recidivists, and subsequent/habituals. This study showed that 3.9% of the first offenders, 4.3% of the recidivists, and 5.9% of the subsequent/habituals served in the Navy prior to acquiring inmate status in the Department of Corrections. The categories contributing the least number of men to the Department of Corrections were the Coast Guard and the Reserves with a total of 26 for all three populations (table 5).

#### Residence

The inmates residence at the time of incarceration is presented by Standard Metropolitan Statistical Areas in table 6. The Houston, Dallas, San Antonio, and Fort Worth areas accounted for 48.73% of the first offenders, 62.27% of the recidivists and 52.16% of the subsequent/habituals. All twenty-eight metropolitan areas combined accounted for the residence of 66.08% of the first offenders, 84.21% of the recidivists, and 74.28% of the subsequent/habituals.

It was interesting to note that almost 19% of the three population totals were born outside the boundaries of Texas. The first offenders had the largest percentage with 21.2%, followed by 17.7% of the subsequent/habituals, and 16.8% of the recidivists.



## EDUCATION AND INTELLIGENCE

The educational achievement levels were derived from scores obtained on the Gray-Votaw-Rogers General Achievement Test and are presented in table 7 and figure 5.

The mode, or the most frequently appearing educational achievement level, was the same for the recidivists and subsequent/habituals at 5 years 4 months, but higher for the first offenders at 7 years 4 months. The median educational achievement was 7 years 4 months for the first offenders, 7 years 0 months and 7 years 2 months, respectively, for the recidivists and subsequent/habituals.

A trend developed in the percentage of illiterates. High were the first offenders with 6.3%, followed by the recidivists and subsequent/habituals with 6.2% and 5.9%, respectively.

The first offenders also had the largest percentage at the highest educational achievement level (12 years 0 months) with 1.8%. Next were the subsequent/habituals with 1.5% and the recidivists with 1.4%. As indicated in figure 5, the illiterate category stands out as the smallest group of the four-group breakdown for all three

populations. The 6- to 9-year category loomed dominantly, with all three populations registering over 37% representation.

The intelligence quotient (I.Q.) scores were determined by either the Otis Quick-Scoring Intelligence Test of the Revised Beta for literates and by the Chicago Non-Verbal Test of Mental Ability for illiterates. These scores are shown in table 8 and figure 6.

Both the first offenders and the recidivists had a modal I.Q. score of 94, with the subsequent/habituals scoring 104. The subsequent/habituals had the highest median I.Q. with 97, followed by the first offenders with 94 and the recidivists with 91. The first offenders had the highest mean I.Q. with 89, followed by the subsequent/habituals with 87 and the recidivists with 86.

The subsequent/habitual population failed to register in the 30 to 39 and 130+ I.Q. categories, while only 0.4% of the first offenders and 0.3% of the recidivists were counted in these categories.

The recidivists had the highest percentage in the sub-70 I.Q. range, the mentally defective range, with 16.9% representation. The first offenders registered 14.0% sub-70 I.Q. scores, but the subsequent/habituals were the lowest with 13.8% in the sub-70 category.

In contrast, 3.2% of the first offenders had I.Q. scores of 120 or higher, while 1.8% of the recidivists and 1.4% of the subsequent/habituals fell into these categories. Figure 6 visually illustrates that all three populations registered a low percentage in the 120+ I.Q. category, while over 35% of each of the populations were in the 70 to 99 I.Q. category.

#### PRIOR CRIMINAL HISTORY

Table 9 reveals that the percentage of each population having received a suspended sentence prior to their current TDC confinement got progressively larger as one moved from first offender to recidivist to subsequent/habitual (2.9% versus 9.8% versus 15.2% respectively).

Over 56% of the recidivists had received a probated sentence either as adults or juveniles, as had 45.1% of the first offenders and 43.9% of the subsequent/habituals (tables 10 and 11).

Table 12 and figure 7 indicate that across various confinement facilities, the first offenders repeatedly failed to register a count. This may be expected because, as shown in table 1, the first offender population is younger and, based on age alone, would not qualify for detention in several of the confinement facilities listed. The only previous confinement registering a count for the first offender population was in the category of jail confinements with 51.8% having had a jail confinement. The recidivists were high in this category with 88.4%, followed by the subsequent/habituals with 82.3%.

Figure 7 shows that while nearly 80% of the subsequent/habitual population had prior TDC confinements, 100% of the recidivists had been previously confined.

Tables 13 to 18 provide a more detailed account of the number of previous confinements in the various types of confinement facilities listed in table 12.

#### OFFENSE INFORMATION

Table 19 represents the total number of offenses by population without regard to the type of offense committed. Nearly 71% of the subsequent/habitual population had only one offense prior to acquiring their present inmate status. In contrast, 61% of the recidivists and 58% of the first offenders were in this category. Stated another way, 41.9% of the first offenders had two or more offenses prior to acquiring their present inmate status, compared to 38.3% for the recidivists and 29.1% for the subsequent/habituals.

Only 0.4% of the first offenders had committed 11 or more offenses, while 0.7% of the recidivists and 0.8% of the subsequent/habituals had committed as many as 11 or more offenses.

Table 20 reveals burglary to be the most frequently committed offense for all three populations with 24.1% of the total number of offenses. More specifically, 20.3% of the first offenders, 29.4% of the recidivists, and 27.4% of the subsequent/habituals had committed a burglary offense prior to their current confinement.

Robbery was the second most frequently committed criminal act in the first offender population (17.5%), while theft over \$50 occupied this position for recidivists,

and driving while intoxicated (D.W.I.) for subsequent/habituals (19.4% and 22.2%, respectively). Over twice as many first offenders (11.9%) had a murder offense as did recidivists (5.6%), and almost 14 times as many had a murder offense as did subsequent/habituals (11.9% versus 0.9%).

Of the offenses which most often connote personal violence (rape, murder, assault, and assault with intent to commit), the first offenders once again had the highest percentage with 23.4% compared to 12.4% for the recidivists and 5.1% for the subsequent/habituals.

Crimes of acquisition of property by illegal means (robbery, burglary, forgery, embezzlement, etc.) comprised the largest percentage of the total crimes committed by the three populations studied. These offenses accounted for 59.7% of all offenses committed by the first offenders, 72.1% of all offenses by recidivists, and 63.9% of all offenses by subsequent/habituals. Drug offenses were also common. This offense was most prominent among first offenders (13.5%) followed by the recidivists (12.4%) and the subsequent/habituals (6.2%). (See tables 21, 22, and 23.)

A larger percentage of the subsequent/habitual population had no codefendants than either the recidivists or

first offenders (63.4%, 62.0%, and 61.6%, respectively). In fact, over 91% of the subsequent/habitual population had none or only one codefendant while 84% of the recidivists and 80% of the first offenders fell in this category. Statistically, the first offenders (38.4%) were more likely to be in the company of a codefendant than the recidivists (37.9%) or the subsequent/habituals (26.6%). (See table 24.)

The modal maximum sentence for the first offenders and recidivists was the same at 4 years 6 months, while a life sentence was the mode for the subsequent/habitual offender. The median was again 4 years 6 months for the first offenders, but longer for the recidivists, 8 years 9 months. The median for the subsequent/habituals was highly skewed due to its large life sentence segment (59.4%). (See table 25.)

Figure 8 clearly illustrates the over-representation of the subsequent/habitual in the life sentence category, as contrasted to the other two populations. The first offender dominates the 1- to 5-year sentence category with over 50% representation, while the recidivist is the dominant population in the 6- to 14-year sentence category.



## INSTITUTIONAL BEHAVIOR

Table 26 presents the commutation-time category distribution for the three populations studied. Basically, all categories require some degree of supervision with the exception of State Approved Trusty (SAT) Class I.

All trusty categories (SAT I, II, III, and III (Construction) earn "good time", whereby the time value of the normal day is increased, thereby shortening the actual time served in prison. Lineman Class I and Class II, although non-trusty categories, also earn "good time"; however, Class III earns no good time.

In the State Approved Trusty I category the first offenders had the smallest percentage (4.8%) followed by the recidivists with 5.1% and the subsequent/habituals with 5.6%.

Tables 27 and 28 show the number of escapes attempted and the number of escapes completed. For purposes of this study, these two categories are separate and distinct from each other. To illustrate, an attempted and successful escape is not counted both as an attempted escape and completed escape but merely as a completed escape. There is, therefore, no duplication of figures. If the reader wishes to compare or contrast the total number of escapes

attempted with escapes completed, he must simply add the appropriate columns of both tables for any desired population and/or category.

Table 27 shows that for all categories and for the three populations, the percentage of attempted increased progressively per population as one moved from the first offenders (0.4%) to the recidivists (5.8%) and to the subsequent/habituals (6.8%). Of the three populations, the subsequent/habitual offenders had the largest number of attempted escapes (2.6%).

Table 28 reveals a trend in agreement with the previous trend noted for escapes attempted; that is, the percentage of completions increased progressively as one moved from the first offenders (2.7%) to the recidivists (25.6%) and to the subsequent/habituals (26.9%).

Most completed escapes were from other institutions with a total of 848 or 52.5% of the total escapes completed by all three populations. The recidivists accounted for 74% of all completed escapes, the subsequent/habituals for 13.8%, and the first offenders 10.3%. In the Texas Department of Corrections, the subsequent/habituals were most active with 4.0% having completed escapes followed by 1.7% for the recidivists and 0.1% for the first offenders.

Table 29 reveals that the first offenders were the least active in the number of times in solitary with 75.0% showing no confinements in solitary. The subsequent/habituals were next with 72.2% followed by 72.0% for the recidivists. More subsequent/habituals (1.7%) than either the recidivists (1.3%) or the first offenders (0.9%) were counted as having served time in solitary six or more times.

### TYPICAL CHARACTERISTICS

The characteristics of the "typical" first offender, recidivist, and subsequent/habitual, as derived from central tendency statistical data, are presented as follows:

<u>CHARACTERISTICS</u>	<u>FIRST OFFENDER</u>	<u>RECIDIVIST</u>	<u>SUBSEQUENT/ HABITUAL</u>
Age in Years	22 to 25	31 to 34	38 to 41
Ethnic Group	Negro	Negro	Caucasian
Sex	Male	Male	Male
County of Residence	Harris	Harris	Harris
Marital Status	Single	Single	Single
Military Record	None	None	None
Educational Achievement	6.9	7.0	6.9
Intelligence Quotient	94	91	97
Most Frequent Offense	Burglary	Burglary	Burglary
Codefendants	0	0	0
Commutation-Time Classification	Class I Lineman	Class I Lineman	Class I Lineman
Times in Solitary	0	0	0
Length of Maximum Sentence, Years	4 to 5	8 to 9	Life
Suspended Sentence Received	0.	0	0

TYPICAL CHARACTERISTICS (Concluded)

<u>CHARACTERISTICS</u>	<u>FIRST OFFENDER</u>	<u>RECIDIVIST</u>	<u>SUBSEQUENT/ HABITUAL</u>
Probated Sentence Received	0	0	0
Parole Violations	0	0	0
Previous TDC Confinements	0	1	1

T A B L E S

TABLE 1

## AGE - GROUP CLASSIFICATION OF THE INMATE POPULATION STUDIED

Age Group	FIRST OFFENDER		RECIDIVIST		SUBSEQUENT/ HABITUAL	
	Number Inmates	Percent Inmates	Number Inmates	Percent Inmates	Number Inmates	Percent Inmates
17 - 21	1,166	19.09	104	2.16	3	0.35
22 - 25	1,478	24.22	740	15.53	32	3.80
26 - 30	1,072	17.55	1,206	25.31	106	12.66
31 - 35	519	8.49	867	18.19	141	16.84
36 - 40	316	5.15	646	13.56	134	16.01
41 - 45	228	3.70	524	10.98	125	14.93
46 - 55	295	4.51	493	10.32	178	21.26
56 - 70	141	2.24	170	3.49	79	9.34
Not specified	886	14.48	9	.18	38	4.51
TOTAL	6,101	100.00	4,759	100.00	836	100.00

TABLE 2

SEX OF THE INMATE POPULATION GROUPS STUDIED

<u>Sex</u>	FIRST OFFENDER		RECIDIVIST		SUBSEQUENT/ HABITUAL	
	<u>Number Inmates</u>	<u>Percent Inmates</u>	<u>Number Inmates</u>	<u>Percent Inmates</u>	<u>Number Inmates</u>	<u>Percent Inmates</u>
Female	356	5.83	81	1.70	10	1.19
Male	5,745	94.15	4,678	98.29	826	98.80
TOTAL	6,101	100.00	4,759	100.00	836	100.00



TABLE 3

INMATE ETHNIC GROUP DISTRIBUTION

<u>Ethnic Group</u>	FIRST OFFENDER		RECIDIVIST		SUBSEQUENT/ HABITUAL	
	<u>Number Inmates</u>	<u>Percent Inmates</u>	<u>Number Inmates</u>	<u>Percent Inmates</u>	<u>Number Inmates</u>	<u>Percent Inmates</u>
Negro	2,773	45.45	2,015	42.34	296	35.40
Caucasian	2,360	38.68	1,797	37.76	437	52.27
Mexican or Latin	968	15.86	947	19.89	103	12.32
TOTAL	6,101	100.00	4,759	100.00	836	100.00

TABLE 4

## MARITAL STATUS OF TDC INMATE POPULATION

<u>Marital Status</u>	FIRST OFFENDER		RECIDIVIST		SUBSEQUENT/ HABITUAL	
	<u>Number Inmates</u>	<u>Percent Inmates</u>	<u>Number Inmates</u>	<u>Percent Inmates</u>	<u>Number Inmates</u>	<u>Percent Inmates</u>
Single	2,310	37.86	1,773	37.25	253	30.26
Married	1,513	24.79	1,255	26.37	200	23.92
Common law	169	2.77	199	4.18	42	5.02
Divorced	687	11.26	1,068	22.44	231	27.63
Separated	390	6.39	347	7.29	52	6.22
Widow	156	2.55	98	2.05	16	1.91
Not specified	875	14.33	19	.39	42	5.00
TOTAL	6,101	100.00	4,759	100.00	836	100.00

TABLE 5

## MILITARY RECORD

<u>Military Branch</u>	FIRST OFFENDER		RECIDIVIST		SUBSEQUENT/ HABITUAL	
	<u>Number Inmates</u>	<u>Percent Inmates</u>	<u>Number Inmates</u>	<u>Percent Inmates</u>	<u>Number Inmates</u>	<u>Percent Inmates</u>
Air Force	154	2.52	134	2.81	30	3.58
Army	895	14.66	809	16.99	163	19.49
National Guard	11	.18	3	.06	1	.11
Marines	142	2.32	97	2.03	21	2.51
Navy	236	3.86	207	4.34	49	5.86
Two or more branches of military	25	.40	56	1.17	7	.83
Coast Guard	6	.09	6	.12	2	.23
Reserves	5	.08	6	.12	1	.11
No service record	3,751	61.48	3,436	72.20	525	62.79
Not specified	876	14.35	5	.10	37	4.42
TOTAL	6,101	100.00	4,759	100.00	836	100.00

TABLE 6  
RESIDENCE AT THE TIME OF INCARCERATION

Standard Metropolitan Statistical Areas	FIRST OFFENDER		RECIDIVIST		SUBSEQUENT/ HABITUAL	
	Number Inmates	Percent Inmates	Number Inmates	Percent Inmates	Number Inmates	Percent Inmates
Abilene (Taylor & Jones Co.s)	55	.90	38	.80	7	.84
Amarillo (Potter & Randall Cos.)	72	1.18	63	1.32	7	.84
Austin (Travis Co.)	151	2.48	186	3.91	33	3.95
Beaumont - Port Arthur - Orange (Jefferson & Orange Cos.)	131	2.15	92	1.93	7	.84
Brownsville - Harlingen - Dan Benito (Cameron Co.)	28	.46	27	.57	3	.36
Bryan - College Station (Brazos Co.)	12	.20	10	.21	2	.24
Corpus Christi (Nueces & San Patricio Cos.)	82	1.34	92	1.93	13	1.56
Dallas (Dallas, Collin, Denton, Ellis, Kaufman, & Rockwall Cos.)	995	16.31	986	20.72	141	16.87
El Paso (El Paso Co.)	35	.57	46	.97	3	.36
Forth Worth (Tarrant & Johnson Cos.)	371	6.08	324	6.81	50	5.98
Galveston - Texas City (Galveston Co.)	72	1.18	1	.02	13	1.56

TABLE 6 (Concluded)

Standard Metropolitan Statistical Areas	FIRST OFFENDER		RECIDIVIST		SUBSEQUENT/ HABITUAL	
	Number Inmates	Percent Inmates	Number Inmates	Percent Inmates	Number Inmates	Percent Inmates
Houston (Harris, Brazoria, Fort Bend, Liberty & Montgomery Cos.)	1,236	20.26	1,230	25.85	214	25.60
Laredo (Webb Co.)	15	.25	4	.08	1	.12
Longview (Gregg Co.)	48	.79	38	.80	10	1.20
Lubbock (Lubbock Co.)	53	.87	87	1.83	16	1.91
McAllen - Pharr- Edinburg (Hidalgo Co.)	38	.62	21	.44	1	.12
Midland (Midland Co.)	18	.30	54	1.13	6	.72
Odessa (Ector Co.)	36	.59	60	1.26	8	.96
San Angelo (Tom Green Co.)	30	.49	28	.59	5	.60
San Antonio (Bexar & Guadalupe Cos.)	371	6.08	423	8.89	31	3.71
Sherman - Denison (Grayson Co.)	20	.33	14	.29	4	.48
Texarkana (Bowie Co.)	19	.31	15	.32	1	.12
Tyler (Smith Co.)	46	.75	30	.63	13	1.56
Waco (McLennan Co.)	63	1.03	89	1.87	20	2.39
Wichita Falls (Wichita & Archer Cos.)	35	.57	38	.80	12	1.44
Other Counties	998	16.36	631	13.26	141	16.87
Out of State	198	3.25	124	2.61	33	3.95
Not Specified	<u>873</u>	<u>14.31</u>	<u>8</u>	<u>.17</u>	<u>41</u>	<u>4.90</u>
TOTAL	6,101	100.00	4,759	100.00	836	100.00

TABLE 7

## SUMMARY OF PRESENT EDUCATIONAL ACHIEVEMENT LEVELS

Educational Achievement in Years and Months	FIRST OFFENDER		RECIDIVIST		SUBSEQUENT/ HABITUAL	
	Number Inmates	Percent Inmates	Number Inmates	Percent Inmates	Number Inmates	Percent Inmates
Illiterate	385	6.31	296	6.21	50	5.98
3.0 - 3.9	425	6.90	276	5.77	56	6.62
4.0 - 4.9	712	11.63	473	9.89	101	12.02
5.0 - 5.9	824	13.46	809	16.96	150	17.90
6.0 - 6.9	880	14.38	708	14.82	111	13.22
7.0 - 7.9	913	14.93	748	15.67	115	13.70
8.0 - 8.9	658	10.74	566	11.86	90	10.70
9.0 - 9.9	624	10.17	501	10.48	77	9.17
10.0 - 10.9	265	4.28	202	4.20	37	4.39
11.0 - 11.9	131	2.10	89	1.84	18	2.10
12 years	114	1.86	67	1.40	13	1.55
No test scores	170	2.76	23	.47	18	2.14
TOTAL	6,101	100.00	4,759	100.00	836	100.00

TABLE 8  
SUMMARY OF PRESENT INTELLIGENCE QUOTIENTS

Test Scores	FIRST OFFENDER		RECIDIVIST		SUBSEQUENT/ HABITUAL	
	Number Inmates	Percent Inmates	Number Inmates	Percent Inmates	Number Inmates	Percent Inmates
Illiterate	3	0.04	0	--	0	--
30 - 39	2	.02	3	0.06	0	--
40 - 49	217	3.50	185	3.87	27	3.22
50 - 59	226	3.64	181	3.74	33	3.86
60 - 69	421	6.83	440	9.20	57	6.74
70 - 79	748	12.20	639	13.39	104	12.38
80 - 89	932	15.22	806	16.88	112	13.34
90 - 99	1,057	17.28	843	17.66	115	13.70
100 - 109	1,020	16.67	710	14.86	123	14.66
110 - 119	546	8.90	335	6.99	52	6.14
120 - 129	177	2.86	78	1.61	12	1.38
130 - 139	21	.28	8	.16	0	--
140 - 149	5	.08	3	.06	0	--
150+	1	.01	0	--	0	--
No test	725	11.86	528	11.09	201	24.03
TOTAL	6,101	100.00	4,759	100.00	836	100.00

TABLE 9

SUSPENDED SENTENCES RECEIVED BY INMATES BEFORE  
THEIR CURRENT TDC CONFINEMENT

<u>Number of Suspended Sentences</u>	FIRST OFFENDER		RECIDIVIST		SUBSEQUENT/ HABITUAL	
	<u>Number Inmates</u>	<u>Percent Inmates</u>	<u>Number Inmates</u>	<u>Percent Inmates</u>	<u>Number Inmates</u>	<u>Percent Inmates</u>
Adult						
1	173	2.83	453	9.51	122	14.59
2	4	.06	10	.21	2	.23
Juvenile						
1	1	.01	2	.04	3	.35
2	0	--	0	--	0	--
TOTAL	178	2.90	465	9.76	127	15.17



TABLE 10

FEDERAL PROBATED SENTENCES RECEIVED PRIOR TO  
CURRENT TDC CONFINEMENT

<u>Number of Probated Sentences</u>	FIRST OFFENDER		RECIDIVIST		SUBSEQUENT/ HABITUAL	
	<u>Number Inmates</u>	<u>Percent Inmates</u>	<u>Number Inmates</u>	<u>Percent Inmates</u>	<u>Number Inmates</u>	<u>Percent Inmates</u>
Federal - Adult						
1	61	0.99	103	2.16	21	2.51
2	5	.08	7	.14	0	--
3+	1	.01	0	--	0	--
Federal - Juvenile						
1	11	.18	9	.18	1	.11
2	0	--	2	.04	0	--
3+	0	--	0	--	0	--
TOTAL	78	1.26	121	2.52	22	2.62

TABLE 11

STATE PROBATED SENTENCES RECEIVED PRIOR TO  
CURRENT TDC CONFINEMENT

<u>Number of Probated Sentences</u>	FIRST OFFENDER		RECIDIVIST		SUBSEQUENT/ HABITUAL	
	<u>Number Inmates</u>	<u>Percent Inmates</u>	<u>Number Inmates</u>	<u>Percent Inmates</u>	<u>Number Inmates</u>	<u>Percent Inmates</u>
State - Adult						
1	2,169	35.55	1,867	34.22	245	29.30
2	155	2.54	120	2.52	36	4.30
3+	15	.24	9	.18	6	.71
State - Juvenile						
1	388	6.35	649	13.63	73	8.73
2	21	.34	33	.69	6	.71
3+	5	.07	9	.18	1	.11
TOTAL	2,753	45.09	2,687	51.42	367	43.86

TABLE 12

## SUMMARY OF PREVIOUS CONFINEMENTS

<u>Type of Confinement Facility</u>	FIRST OFFENDER		RECIDIVIST		SUBSEQUENT/ HABITUAL	
	<u>Number Inmates</u>	<u>Percent Inmates</u>	<u>Number Inmates</u>	<u>Percent Inmates</u>	<u>Number Inmates</u>	<u>Percent Inmates</u>
Detention home	0	--	1,390	29.21	139	16.63
Reformatory	0	--	1,405	29.53	224	26.80
Jail	3,161	51.82	4,207	88.41	688	82.39
Military prison	0	--	554	11.63	107	12.80
Other prison	0	--	1,134	23.83	193	23.09
TDC	0	--	4,759	100.00	656	79.47

TABLE 13

## PREVIOUS CONFINEMENTS IN DETENTION HOMES

<u>Number of Confinements</u>	FIRST OFFENDER		RECIDIVIST		SUBSEQUENT/ HABITUAL	
	<u>Number Inmates</u>	<u>Percent Inmates</u>	<u>Number Inmates</u>	<u>Percent Inmates</u>	<u>Number Inmates</u>	<u>Percent Inmates</u>
0	6,101	100.00	3,369	70.79	697	83.37
1 - 5	0	--	1,031	21.63	103	12.30
6 - 10	0	--	234	4.90	24	2.83
11 - 15	0	--	90	1.86	9	1.04
16 - 20	0	--	18	.37	1	.11
21 - 25	0	--	6	.12	1	.11
26 - 50	0	--	8	.16	1	.11
Over 50	0	-	3	.06	0	--
TOTAL	6,101	100.00	4,759	100.00	836	100.00

TABLE 14

## PREVIOUS CONFINEMENTS IN REFORMATORIES

<u>Number of Confinements</u>	FIRST OFFENDER		RECIDIVIST		SUBSEQUENT/ HABITUAL	
	<u>Number Inmates</u>	<u>Percent Inmates</u>	<u>Number Inmates</u>	<u>Percent Inmates</u>	<u>Number Inmates</u>	<u>Percent Inmates</u>
0	6,101	100.00	3,354	70.47	612	73.20
1	0	--	750	15.47	118	14.11
2	0	--	397	8.34	66	7.89
3	0	--	175	3.67	28	3.34
4	0	--	62	1.30	8	.95
5	0	--	12	.25	2	.11
6+	0	--	9	.18	2	.11
TOTAL	6,101	100.00	4,759	100.00	836	100.00

TABLE 15

## PREVIOUS CONFINEMENTS IN JAIL

<u>Number of Confinements</u>	FIRST OFFENDER		RECIDIVIST		SUBSEQUENT/ HABITUAL	
	<u>Number Inmates</u>	<u>Percent Inmates</u>	<u>Number Inmates</u>	<u>Percent Inmates</u>	<u>Number Inmates</u>	<u>Percent Inmates</u>
0	2,940	48.18	552	11.59	148	17.70
1	1,309	21.45	611	12.83	90	10.76
2	683	11.19	598	12.56	84	10.04
3 - 5	781	12.79	1,335	28.04	191	22.83
6 - 10	265	4.32	941	19.76	170	20.27
11 - 15	67	1.06	371	7.77	78	9.31
16 - 20	23	.35	138	2.88	36	4.27
21 - 30	21	.31	126	2.60	23	2.67
31 - 40	5	.06	31	.62	11	1.25
41 - 50	4	.05	31	.62	3	.34
51 - 70	2	.02	14	.28	1	.11
70+	1	.01	11	.22	1	.11
TOTAL	6,101	100.00	4,759	100.00	836	100.00

TABLE 16

## PREVIOUS CONFINEMENTS IN MILITARY PRISONS

<u>Number of Confinements</u>	FIRST OFFENDER		RECIDIVIST		SUBSEQUENT/ HABITUAL	
	<u>Number Inmates</u>	<u>Percent Inmates</u>	<u>Number Inmates</u>	<u>Percent Inmates</u>	<u>Number Inmates</u>	<u>Percent Inmates</u>
0	6,101	100.00	4,206	88.37	729	87.20
1	0	--	321	6.74	63	7.53
2 - 3	0	--	195	4.08	31	3.70
4 - 5	0	--	26	.53	9	1.06
6+	0	--	12	.22	4	.44
TOTAL	6,101	100.00	4,759	100.00	836	100.00

TABLE 17

## PREVIOUS CONFINEMENTS IN OTHER PRISONS

<u>Number of Confinements</u>	FIRST OFFENDER		RECIDIVIST		SUBSEQUENT/ HABITUAL	
	<u>Number Inmates</u>	<u>Percent Inmates</u>	<u>Number Inmates</u>	<u>Percent Inmates</u>	<u>Number Inmates</u>	<u>Percent Inmates</u>
0	6,101	100.00	3,625	76.17	643	76.91
1	0	--	713	14.98	118	14.11
2 - 3	0	--	344	7.22	64	7.65
4 - 5	0	--	54	1.13	9	1.06
6+	0	--	23	.46	2	.23
TOTAL	6,101	100.00	4,759	100.00	836	100.00



**CONTINUED**

**1 OF 2**

TABLE 18

## PREVIOUS CONFINEMENTS IN TDC

<u>Number of Confinements</u>	FIRST OFFENDER		RECIDIVIST		SUBSEQUENT/ HABITUAL	
	<u>Number Inmates</u>	<u>Percent Inmates</u>	<u>Number Inmates</u>	<u>Percent Inmates</u>	<u>Number Inmates</u>	<u>Percent Inmates</u>
0	6,101	100.00	0	--	180	21.53
1	0	--	2,775	58.31	190	22.72
2 - 3	0	--	1,717	36.07	406	48.55
4 - 5	0	--	223	4.68	50	5.97
6+	0	--	44	.91	10	1.17
TOTAL	6,101	100.00	4,759	100.00	836	100.00

TABLE 19

## NUMBER OF OFFENSES

Number of Offenses	FIRST OFFENDER		RECIDIVIST		SUBSEQUENT/ HABITUAL	
	Number Inmates	Percent Inmates	Number Inmates	Percent Inmates	Number Inmates	Percent Inmates
1	3,545	58.10	2,935	61.67	593	70.93
2	1,455	23.84	950	19.96	122	14.59
3	538	8.81	371	7.79	56	6.69
4	246	4.03	205	4.30	29	3.46
5	140	2.29	119	2.50	9	1.07
6	78	1.27	71	1.49	7	.83
7	33	.54	35	.73	8	.95
8	17	.27	17	.35	3	.35
9	16	.26	11	.23	2	.23
10	7	.11	12	.25	0	--
11+	26	.37	33	.66	7	.79
TOTAL	6,101	100.00	4,759	100.00	836	100.00

TABLE 20

## SUMMARY OF OFFENSES COMMITTED

Offense Committed	FIRST OFFENDER		RECIDIVIST		SUBSEQUENT/ HABITUAL	
	Number Commitments	Percent Commitments	Number Commitments	Percent Commitments	Number Commitments	Percent Commitments
Murder	880	11.91	342	5.60	10	0.91
Rape	368	4.98	125	2.07	4	.39
Robbery	1,300	17.51	885	14.65	144	14.11
Assault	36	.49	23	.38	3	.29
Burglary	1,497	20.26	1,774	29.31	280	27.45
Theft over \$50	1,065	14.41	1,184	19.40	153	15.00
Auto theft	40	.54	21	.34	4	.39
Arson	33	.44	16	.26	2	.19
Forgery	370	5.00	419	6.90	51	5.00
Fraud	97	1.31	78	1.29	11	1.07
Stolen property	22	.29	13	.21	2	.19

TABLE 20 (Continued)

Offense Committed	FIRST OFFENDER		RECIDIVIST		SUBSEQUENT/ HABITUAL	
	Number Commitments	Percent Commitments	Number Commitments	Percent Commitments	Number Commitments	Percent Commitments
Weapons	57	0.77	76	1.25	4	0.39
Prostitution	1	.01	0	--	1	.09
Sex offenses	22	.29	69	1.14	7	.66
Drugs	826	11.18	589	9.70	52	5.05
Gambling	1	.01	0	--	0	--
Family	4	.05	0	--	0	--
Driving while intoxicated	115	1.55	2	.03	227	22.21
B/E motor vehicle	108	1.46	64	1.06	17	1.62
Escapes	36	.48	53	.87	8	.70
Assault with intent to commit	448	6.03	263	4.33	36	3.50
Embezzlement	21	.28	15	.24	2	.19

TABLE 20 (Concluded)

<u>Offense Committed</u>	FIRST OFFENDER		RECIDIVIST		SUBSEQUENT/ HABITUAL	
	<u>Number Commitments</u>	<u>Percent Commitments</u>	<u>Number Commitments</u>	<u>Percent Commitments</u>	<u>Number Commitments</u>	<u>Percent Commitments</u>
Malicious mischief	20	0.27	15	0.24	0	--
Kidnapping	11	.14	6	.10	1	0.19
Conspiracy	1	.01	2	.03	0	--
Against state	1	.01	0	--	0	--
Public justice	7	.09	3	.03	1	.19
TOTAL	7,387	100.00	6,037	100.00	1,020	100.00

TABLE 21

OFFENSES COMMITTED BY FIRST OFFENDERS

Number of Offenses	MURDER		RAPE		ROBBERY		ASSAULT		BURGLARY	
	Number Inmates	Percent Inmates	Number Inmates	Percent Inmates	Number Inmates	Percent Inmates	Number Inmates	Percent Inmates	Number Inmates	Percent Inmates
0	5,221	85.57	5,733	93.96	4,801	78.69	6,065	99.40	4,604	75.46
1	842	13.80	335	5.49	892	14.62	34	.55	1,123	18.40
2	29	.47	22	.36	199	3.26	2	.03	236	3.86
3	7	.11	7	.11	90	1.47	0	--	63	1.03
4	1	.01	1	.01	55	.90	0	--	33	.54
5	1	.01	2	.03	34	.55	0	--	17	.27
6	0	--	1	.01	11	.18	0	--	10	.16
7+	0	--	0	--	19	.29	0	--	15	.21
TOTAL	6,101	100.00	6,101	100.00	6,101	100.00	6,101	100.00	6,101	100.00
Number of Offenses	THEFT OVER \$50		AUTO THEFT		ARSON		FORGERY		FRAUD	
	Number Inmates	Percent Inmates	Number Inmates	Percent Inmates	Number Inmates	Percent Inmates	Number Inmates	Percent Inmates	Number Inmates	Percent Inmates
0	5,036	82.54	6,061	99.34	6,068	99.45	5,731	93.93	6,004	98.41
1	785	12.86	39	.63	29	.47	267	4.37	74	1.21
2	188	3.08	1	.01	2	.03	50	.81	14	.22
3	47	.77	0	--	0	--	17	.27	4	.06
4	23	.37	0	--	1	.01	13	.21	3	.04
5	11	.18	0	--	0	--	9	.14	1	.01
6	6	.09	0	--	0	--	6	.09	1	.01
7+	5	.06	0	--	1	.01	8	.11	0	--
TOTAL	6,101	100.00	6,101	100.00	6,101	100.00	6,101	100.00	6,101	100.00

TABLE 21 (Continued)

Number of Offenses	STOLEN PROPERTY		WEAPONS		PROSTITUTION		SEX OFFENSES		DRUGS	
	Number Inmates	Percent Inmates	Number Inmates	Percent Inmates	Number Inmates	Percent Inmates	Number Inmates	Percent Inmates	Number Inmates	Percent Inmates
0	6,079	99.63	6,044	99.06	6,100	99.98	5,979	98.00	5,275	86.46
1	20	.32	56	.91	1	.01	100	1.63	575	9.42
2	1	.01	1	.01	0	--	17	.27	166	2.72
3	1	.01	0	--	0	--	2	.03	53	.86
4	0	--	0	--	0	--	2	.03	17	.27
5	0	--	0	--	0	--	1	.01	10	.16
6	0	--	0	--	0	--	0	--	3	.04
7+	0	--	0	--	0	--	0	--	2	.02
TOTAL	6,101	100.00	6,101	100.00	6,101	100.00	6,101	100.00	6,101	100.00

Number of Offenses	GAMBLING		FAMILY		D.W.I.		BREAKING & ENTERING MOTOR VEHICLE		ESCAPES	
	Number Inmates	Percent Inmates	Number Inmates	Percent Inmates	Number Inmates	Percent Inmates	Number Inmates	Percent Inmates	Number Inmates	Percent Inmates
0	6,100	99.98	6,097	99.93	5,985	98.11	5,993	98.22	6,065	99.40
1	1	.01	4	.06	94	1.54	90	1.47	34	.55
2	0	--	0	--	19	.31	18	.29	2	.03
3	0	--	0	--	2	.03	0	--	0	--
4	0	--	0	--	0	--	0	--	0	--
5	0	--	0	--	0	--	0	--	0	--
6	0	--	0	--	0	--	0	--	0	--
7+	0	--	0	--	0	--	0	--	0	--
TOTAL	6,101	100.00	6,101	100.00	6,101	100.00	6,101	100.00	6,101	100.00



TABLE 21 (Concluded)

ASSAULT W/INTENT TO COMMIT			EMBEZZLEMENT		MALICIOUS MISCHIEF		KIDNAPPING		CONSPIRACY	
Number of Offenses	Number Inmates	Percent Inmates	Number Inmates	Percent Inmates	Number Inmates	Percent Inmates	Number Inmates	Percent Inmates	Number Inmates	Percent Inmates
0	5,653	92.65	6,080	99.65	6,081	99.67	6,090	99.81	6,100	99.98
1	398	6.52	16	.26	20	.32	9	.14	1	.01
2	38	.62	2	.03	0	--	2	.03	0	--
3	8	.13	1	.01	0	--	0	--	0	--
4	1	.01	2	.03	0	--	0	--	0	--
5	0	--	0	--	0	--	0	--	0	--
6	1	.01	0	--	0	--	0	--	0	--
7+	2	.03	0	--	0	--	0	--	0	--
TOTAL	6,101	100.00	6,101	100.00	6,101	100.00	6,101	100.00	6,101	100.00

AGAINST STATE			PUBLIC JUSTICE	
Number of Offenses	Number Inmates	Percent Inmates	Number Inmates	Percent Inmates
0	6,100	99.98	6,094	99.88
1	1	.01	7	.11
2	0	--	0	--
3	0	--	0	--
4	0	--	0	--
5	0	--	0	--
6	0	--	0	--
7+	0	--	0	--
TOTAL	6,101	100.00	6,101	100.00

TABLE 22

## OFFENSES COMMITTED BY RECIDIVISTS

Number of Offenses	MURDER		RAPE		ROBBERY		ASSAULT		BURGLARY	
	Number Inmates	Percent Inmates	Number Inmates	Percent Inmates	Number Inmates	Percent Inmates	Number Inmates	Percent Inmates	Number Inmates	Percent Inmates
0	4,427	93.02	4,634	97.37	3,874	81.40	4,736	99.51	3,021	63.47
1	321	6.74	115	2.41	632	13.28	20	.42	1,351	27.63
2	10	.21	7	.14	137	2.87	3	.06	252	5.29
3	1	.02	3	.06	55	1.15	0	--	74	1.55
4	0	--	0	--	33	.69	0	--	38	.79
5	0	--	0	--	14	.29	0	--	21	.44
6	0	--	0	--	9	.18	0	--	16	.33
7+	0	--	0	--	5	.10	0	--	22	.44
TOTAL	4,759	100.00	4,759	100.00	4,759	100.00	4,759	100.00	4,759	100.00

Number of Offenses	THEFT OVER \$50		AUTO THEFT		ARSON		FORGERY		FRAUD	
	Number Inmates	Percent Inmates	Number Inmates	Percent Inmates	Number Inmates	Percent Inmates	Number Inmates	Percent Inmates	Number Inmates	Percent Inmates
0	3,575	75.12	4,738	99.55	4,743	99.66	4,340	91.19	4,681	98.36
1	913	19.18	21	.44	14	.29	275	5.77	62	1.30
2	165	3.46	0	--	1	.02	68	1.42	7	.14
3	69	1.44	0	--	1	.02	30	.63	4	.08
4	22	.46	0	--	0	--	17	.35	4	.08
5	5	.10	0	--	0	--	7	.14	1	.02
6	4	.08	0	--	0	--	8	.16	0	--
7+	6	.12	0	--	0	--	14	.28	0	--
TOTAL	4,759	100.00	4,759	100.00	4,759	100.00	4,759	100.00	4,759	100.00

TABLE 22 (Continued)

Number of Offenses	STOLEN PROPERTY		WEAPONS		SEX OFFENSES		DRUGS		D.W.I.	
	Number Inmates	Percent Inmates	Number Inmates	Percent Inmates	Number Inmates	Percent Inmates	Number Inmates	Percent Inmates	Number Inmates	Percent Inmates
0	4,746	99.72	4,683	98.40	4,690	98.55	4,170	87.62	4,757	99.95
1	13	.27	75	1.57	56	1.17	476	10.00	2	.04
2	0	--	0	--	10	.21	75	1.57	0	--
3	0	--	0	--	1	.02	22	.46	0	--
4	0	--	1	.02	2	.04	12	.25	0	--
5	0	--	0	--	0	--	1	.02	0	--
6	0	--	0	--	0	--	1	.02	0	--
7+	0	--	0	--	0	--	2	.04	0	--
TOTAL	4,759	100.00	4,759	100.00	4,759	100.00	4,759	100.00	4,759	100.00

Number of Offenses	BREAKING & ENTERING MOTOR VEHICLE		ESCAPES		ASSAULT W/INTENT TO COMMIT		EMBEZZLEMENT		MALICIOUS MISCHIEF	
	Number Inmates	Percent Inmates	Number Inmates	Percent Inmates	Number Inmates	Percent Inmates	Number Inmates	Percent Inmates	Number Inmates	Percent Inmates
0	4,695	98.65	4,706	98.88	4,496	94.47	4,744	99.68	4,744	99.68
1	56	1.17	49	1.02	226	4.74	13	.27	13	.27
2	6	.12	3	.06	34	.71	2	.04	2	.04
3	0	--	1	.02	1	.02	0	--	0	--
4	1	.02	0	--	1	.02	0	--	0	--
5	0	--	0	--	1	.02	0	--	0	--
6	1	.02	0	--	0	--	0	--	0	--
7+	0	--	0	--	0	--	0	--	0	--
TOTAL	4,759	100.00	4,759	100.00	4,759	100.00	4,759	100.00	4,759	100.00

TABLE 22 (Concluded)

	KIDNAPPING		CONSPIRACY		PUBLIC JUSTICE	
Number of Offenses	Number Inmates	Percent Inmates	Number Inmates	Percent Inmates	Number Inmates	Percent Inmates
0	4,753	99.87	4,757	99.95	4,756	99.93
1	6	.12	2	.04	3	.06
2	0	--	0	--	0	--
3	0	--	0	--	0	--
4	0	--	0	--	0	--
5	0	--	0	--	0	--
6	0	--	0	--	0	--
7+	0	--	0	--	0	--
TOTAL	4,759	100.00	4,759	100.00	4,759	100.00

TABLE 23

## OFFENSES COMMITTED BY SUBSEQUENT/HABITUAL OFFENDERS

MURDER			RAPE		ROBBERY		ASSAULT		BURGLARY	
Number of Offenses	Number Inmates	Percent Inmates	Number Inmates	Percent Inmates	Number Inmates	Percent Inmates	Number Inmates	Percent Inmates	Number Inmates	Percent Inmates
0	826	98.80	832	99.52	692	82.77	833	99.64	556	66.50
1	9	1.07	4	.47	106	12.67	3	.35	238	28.46
2	1	.11	0	--	15	1.79	0	--	22	2.63
3	0	--	0	--	9	1.07	0	--	10	1.19
4	0	--	0	--	8	.95	0	--	3	.35
5	0	--	0	--	3	.35	0	--	2	.23
6	0	--	0	--	0	--	0	--	1	.11
7+	0	--	0	--	3	.35	0	--	4	.45
TOTAL	836	100.00	836	100.00	836	100.00	836	100.00	836	100.00

THEFT OVER \$50			AUTO THEFT		ARSON		FORGERY		FRAUD	
Number of Offenses	Number Inmates	Percent Inmates	Number Inmates	Percent Inmates	Number Inmates	Percent Inmates	Number Inmates	Percent Inmates	Number Inmates	Percent Inmates
0	683	81.69	832	99.52	834	99.76	785	93.89	825	98.68
1	121	14.47	4	.47	1	.11	36	4.30	10	1.19
2	22	2.63	0	--	1	.11	5	.59	1	.11
3	5	.59	0	--	0	--	2	.23	0	--
4	0	--	0	--	0	--	3	.35	0	--
5	3	.35	0	--	0	--	2	.23	0	--
6	0	--	0	--	0	--	1	.11	0	--
7+	2	.22	0	--	0	--	2	.23	0	--
TOTAL	836	100.00	836	100.00	836	100.00	836	100.00	836	100.00

TABLE 23 (Continued)

Number of Offenses	STOLEN PROPERTY		WEAPONS		PROSTITUTION		SEX OFFENSES		DRUGS	
	Number Inmates	Percent Inmates	Number Inmates	Percent Inmates	Number Inmates	Percent Inmates	Number Inmates	Percent Inmates	Number Inmates	Percent Inmates
0	834	99.76	832	99.52	835	99.88	829	99.16	784	93.77
1	2	.23	4	.47	1	.11	7	.83	47	5.62
2	0	--	0	--	0	--	0	--	3	.35
3	0	--	0	--	0	--	0	--	2	.23
4	0	--	0	--	0	--	0	--	0	--
5	0	--	0	--	0	--	0	--	0	--
6	0	--	0	--	0	--	0	--	0	--
7+	0	--	0	--	0	--	0	--	0	--
TOTAL	836	100.00	836	100.00	836	100.00	836	100.00	836	100.00

Number of Offenses	D.W.I.		BREAKING & ENTERING MOTOR VEHICLE		ESCAPES		ASSAULT W/INTENT TO COMMIT		EMBEZZLEMENT	
	Number Inmates	Percent Inmates	Number Inmates	Percent Inmates	Number Inmates	Percent Inmates	Number Inmates	Percent Inmates	Number Inmates	Percent Inmates
0	609	72.84	819	97.96	828	99.04	800	95.69	834	99.76
1	185	22.12	16	1.91	7	.83	32	3.82	2	.23
2	36	4.30	1	.11	1	.11	2	.23	0	--
3	6	.71	0	--	0	--	2	.23	0	--
4	0	--	0	--	0	--	0	--	0	--
5	0	--	0	--	0	--	0	--	0	--
6	0	--	0	--	0	--	0	--	0	--
7+	0	--	0	--	0	--	0	--	0	--
TOTAL	836	100.00	836	100.00	836	100.00	836	100.00	836	100.00

TABLE 23 (Concluded)

Number of Offenses	KIDNAPPING		PUBLIC JUSTICE	
	Number Inmates	Percent Inmates	Number Inmates	Percent Inmates
0	835	99.88	835	99.88
1	1	.11	1	.11
2	0	--	0	--
3	0	--	0	--
4	0	--	0	--
5	0	--	0	--
6	0	--	0	--
7+	0	--	0	--
TOTAL	836	100.00	836	100.00

TABLE 24

## SUMMARY OF CODEFENDANTS OF CURRENT TDC INMATES

<u>Number of Codefendants</u>	FIRST OFFENDER		RECIDIVIST		SUBSEQUENT/ HABITUAL	
	<u>Number Inmates</u>	<u>Percent Inmates</u>	<u>Number Inmates</u>	<u>Percent Inmates</u>	<u>Number Inmates</u>	<u>Percent Inmates</u>
0	3,759	61.61	2,953	62.03	614	73.44
1	1,158	18.98	1,076	22.60	147	17.58
2	628	10.29	463	9.72	55	6.57
3	317	5.19	142	2.98	13	1.55
4	121	1.98	56	1.21	3	.35
5	53	.86	22	.46	2	.23
6+	65	1.11	45	.93	2	.23
TOTAL	6,101	100.00	4,759	100.00	836	100.00



TABLE 25

## LENGTH OF MAXIMUM SENTENCE

<u>Sentence in Years</u>	FIRST OFFENDER		RECIDIVIST		SUBSEQUENT/ HABITUAL	
	<u>Number Inmates</u>	<u>Percent Inmates</u>	<u>Number Inmates</u>	<u>Percent Inmates</u>	<u>Number Inmates</u>	<u>Percent Inmates</u>
1 - 3	1,528	25.02	641	13.45	159	19.00
4 - 5	1,696	27.79	1,031	21.65	47	5.61
6 - 7	419	6.86	463	9.72	5	.58
8 - 9	228	3.73	348	7.30	2	.23
10 - 14	759	12.42	952	19.98	105	12.52
15 - 19	322	5.24	339	7.11	7	.81
20 - 24	211	3.34	216	4.51	4	.47
25 - 29	181	2.95	205	4.29	2	.23
30 - 59	296	4.77	243	5.06	5	.56
60 - 98	47	.73	30	.61	1	.11
99	94	1.54	69	1.44	1	.11
99+	16	.17	14	.28	1	.11
Life	304	4.98	208	4.37	497	59.44
TOTAL	6,101	100.00	4,759	100.00	836	100.00

TABLE 26  
COMMUTATION-TIME CLASSIFICATION OF INMATES

<u>Classification</u>	FIRST OFFENDER		RECIDIVIST		SUBSEQUENT/ HABITUAL	
	<u>Number Inmates</u>	<u>Percent Inmates</u>	<u>Number Inmates</u>	<u>Percent Inmates</u>	<u>Number Inmates</u>	<u>Percent Inmates</u>
Class I - Lineman	3,189	52.27	2,696	56.65	502	60.04
Class II - Lineman	13	.21	1	.02	0	--
Class III - Lineman	187	3.06	95	1.99	21	2.51
SAT I	291	4.76	243	5.10	47	5.62
SAT II	358	5.86	342	7.18	48	5.74
SAT III	1,976	32.38	1,279	26.87	201	24.04
SAT III (Construction)	87	1.42	103	2.16	16	1.91
Not specified	0	--	0	--	1	.11
TOTAL	6,101	100.00	4,759	100.00	836	100.00

TABLE 27

## ESCAPES ATTEMPTED

<u>Number of Attempts</u>	FIRST OFFENDER		RECIDIVIST		SUBSEQUENT/ HABITUAL	
	<u>Number Inmates</u>	<u>Percent Inmates</u>	<u>Number Inmates</u>	<u>Percent Inmates</u>	<u>Number Inmates</u>	<u>Percent Inmates</u>
Juvenile						
1	1	0.01	47	0.98	5	0.59
2	0	--	21	.44	3	.35
3	0	--	3	.06	0	--
4	0	--	3	.06	1	.11
5+	0	--	4	.08	0	--
Other institutions						
1	17	.27	88	1.84	14	1.67
2	0	--	11	.23	2	.23
3	0	--	3	.06	2	.23
4	0	--	1	.02	0	--
5+	0	--	4	.08	0	--

TABLE 27 (Concluded)

<u>Number of Attempts</u>	FIRST OFFENDER		RECIDIVIST		SUBSEQUENT/ HABITUAL	
	<u>Number Inmates</u>	<u>Percent Inmates</u>	<u>Number Inmates</u>	<u>Percent Inmates</u>	<u>Number Inmates</u>	<u>Percent Inmates</u>
Other prisons						
1	1	0.01	20	0.42	1	0.11
2	0	--	3	.06	3	.35
3	0	--	1	.02	0	--
4	0	--	0	--	0	--
5+	0	--	2	.04	0	--
TDC						
1	6	.09	59	1.23	22	2.63
2	0	--	7	.14	3	.35
3	0	--	1	.02	0	--
4	0	--	0	--	0	--
5+	0	--	0	--	0	--

TABLE 28

## ESCAPES COMPLETED

	FIRST OFFENDER		RECIDIVIST		SUBSEQUENT/ HABITUAL	
<u>Number Completed</u>	<u>Number Inmates</u>	<u>Percent Inmates</u>	<u>Number Inmates</u>	<u>Percent Inmates</u>	<u>Number Inmates</u>	<u>Percent Inmates</u>
Juvenile						
1	2	0.03	238	5.00	44	5.26
2	1	.01	104	2.18	12	1.43
3	0	--	49	1.02	6	.71
4	0	--	23	.48	5	.59
5+	0	--	49	1.02	8	.93
Other institutions						
1	132	2.16	416	8.74	67	8.01
2	18	.29	101	2.12	18	2.15
3	4	.06	35	.73	8	.95
4	0	--	20	.42	4	.47
5+	0	--	25	.50	0	--

TABLE 28 (Concluded)

<u>Number Completed</u>	FIRST OFFENDER		RECIDIVIST		SUBSEQUENT/ HABITUAL	
	<u>Number Inmates</u>	<u>Percent Inmates</u>	<u>Number Inmates</u>	<u>Percent Inmates</u>	<u>Number Inmates</u>	<u>Percent Inmates</u>
Other prisons						
1	1	0.01	73	1.53	16	1.91
2	0	--	8	.16	1	.11
3	0	--	0	--	1	.11
4	0	--	0	--	0	--
5+	0	--	0	--	2	.22
TDC						
1	9	.14	66	1.38	26	3.11
2	0	--	8	.16	5	.59
3	0	--	4	.08	1	.11
4	0	--	1	.02	1	.11
5+	0	--	2	.04	1	.11

TABLE 29

## SOLITARY CONFINEMENT RECORDS OF INMATES IN TDC

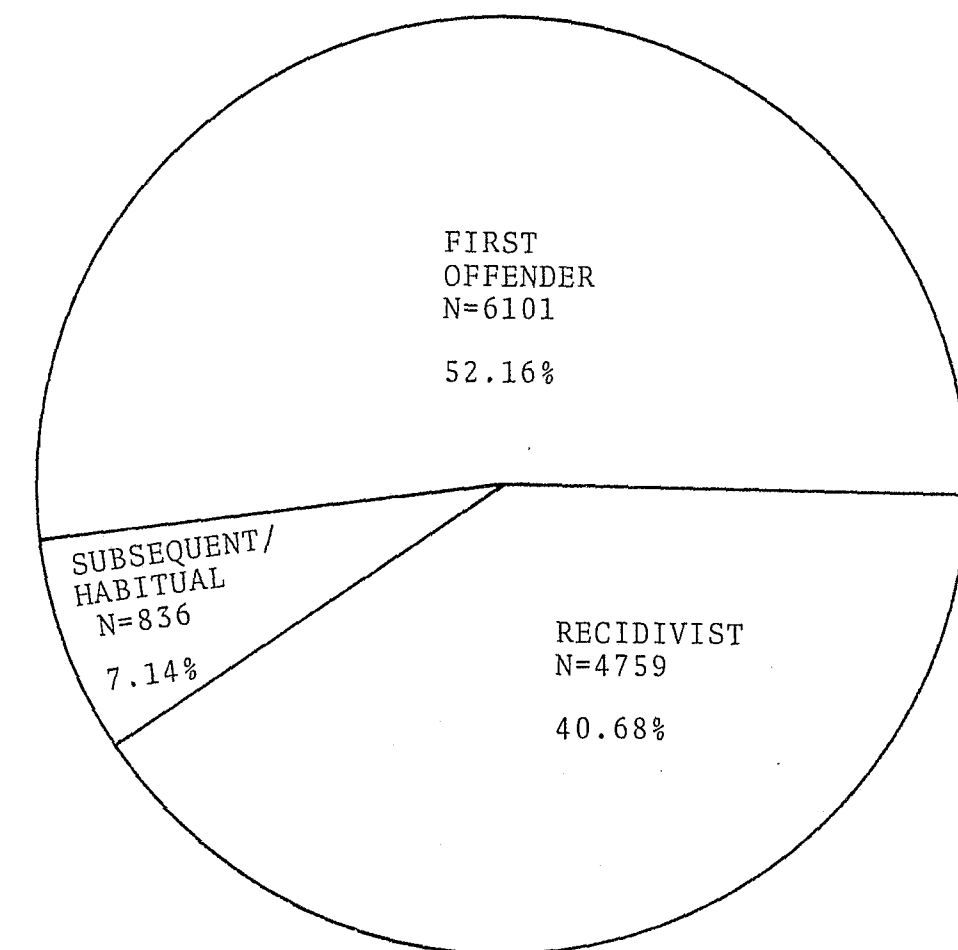
<u>Times in Solitary</u>	FIRST OFFENDER		RECIDIVIST		SUBSEQUENT/ HABITUAL	
	<u>Number Inmates</u>	<u>Percent Inmates</u>	<u>Number Inmates</u>	<u>Percent Inmates</u>	<u>Number Inmates</u>	<u>Percent Inmates</u>
0	4,574	74.97	3,426	71.98	604	72.24
1	854	13.99	687	14.43	121	14.47
2	341	5.58	334	7.01	59	7.05
3 - 5	276	4.51	250	5.24	37	4.41
6 - 10	47	.75	52	1.06	13	1.51
11 - 16	9	.12	10	.20	2	.23
TOTAL	6,101	100.00	4,759	100.00	836	100.00

FIGURES



Figure 1

PERCENTAGE AND NUMBER REPRESENTATION OF  
POPULATIONS USED IN THIS STUDY



TOTAL N= 11,696

Figure 2  
OFFENDER DISTRIBUTION BY AGE

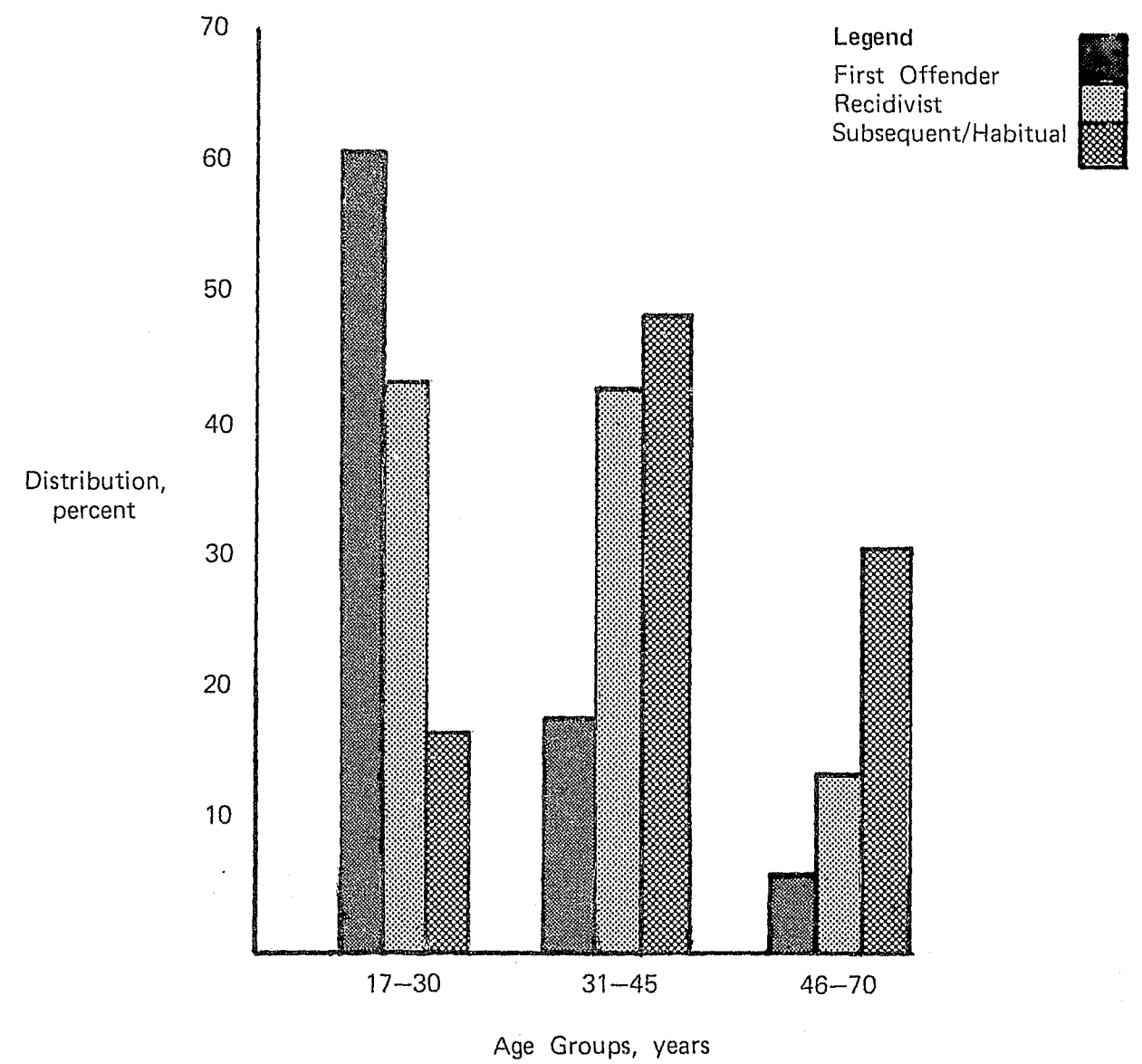


Figure 3  
ETHNIC DISTRIBUTION OF FIRST OFFENDERS,  
RECIDIVISTS, AND SUBSEQUENT/HABITUALS

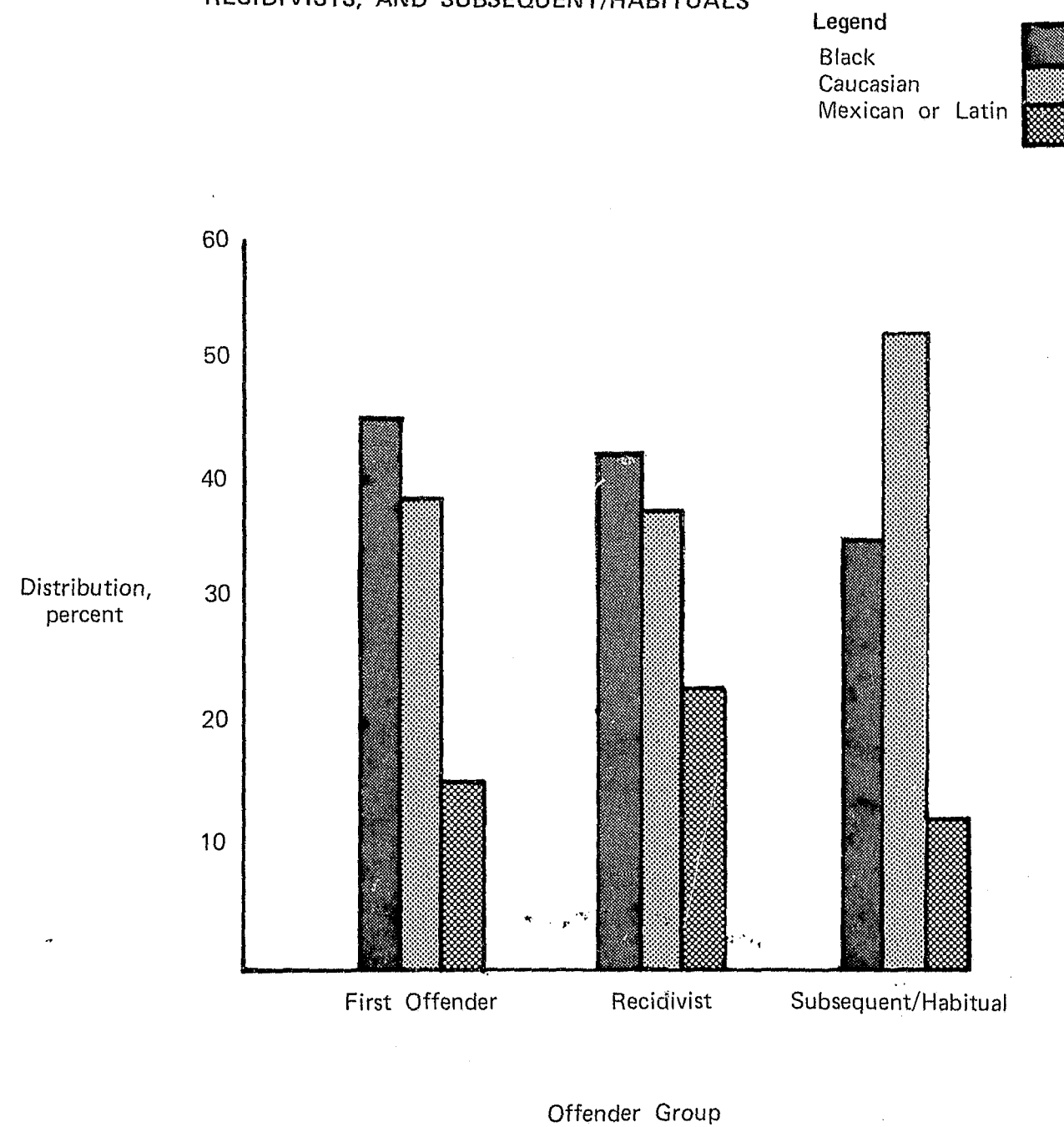


Figure 4  
OFFENDER DISTRIBUTION BY SELECTED  
MARITAL STATUSES

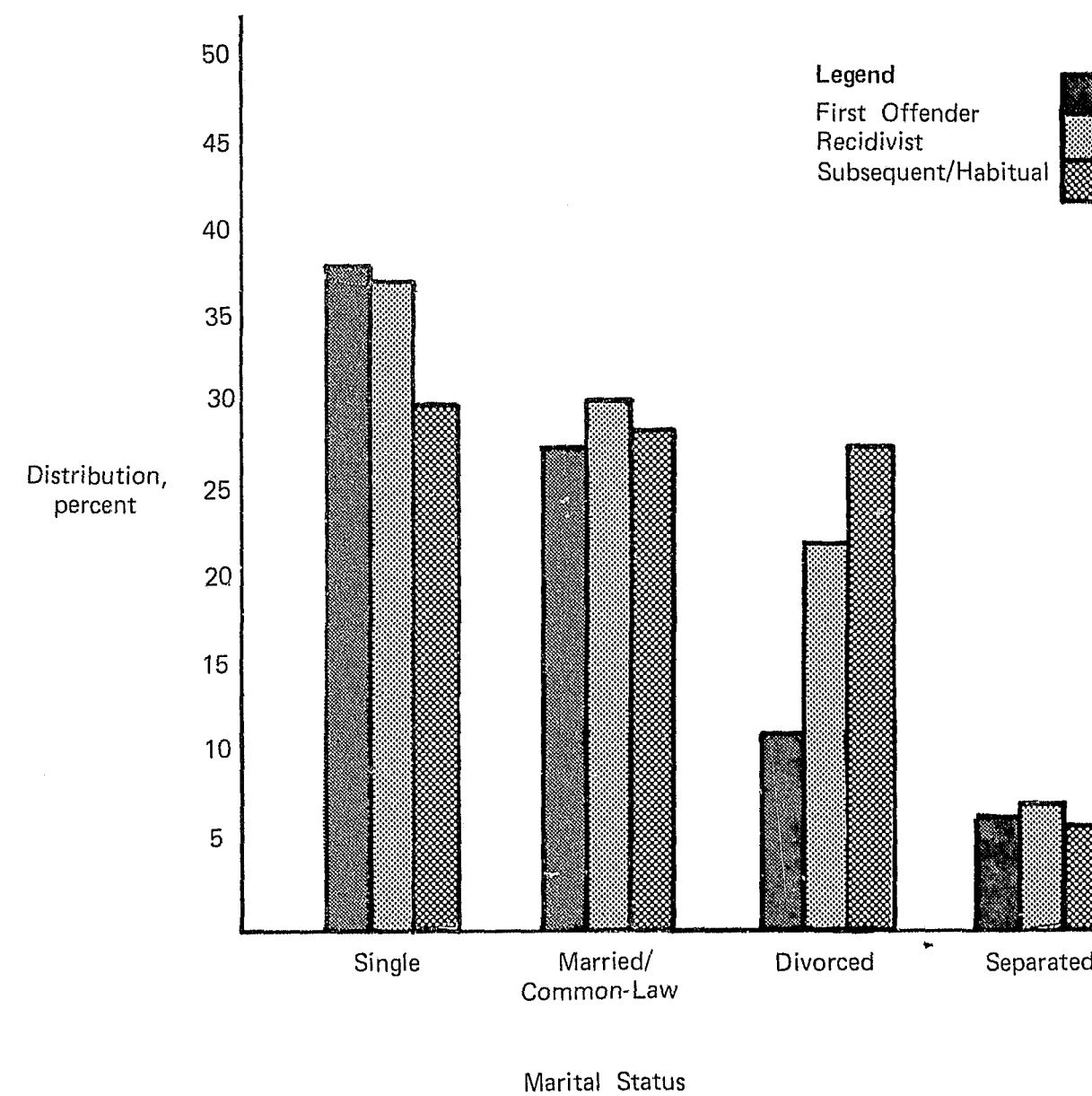


Figure 5  
OFFENDER DISTRIBUTION BY EDUCATIONAL  
ACHIEVEMENT

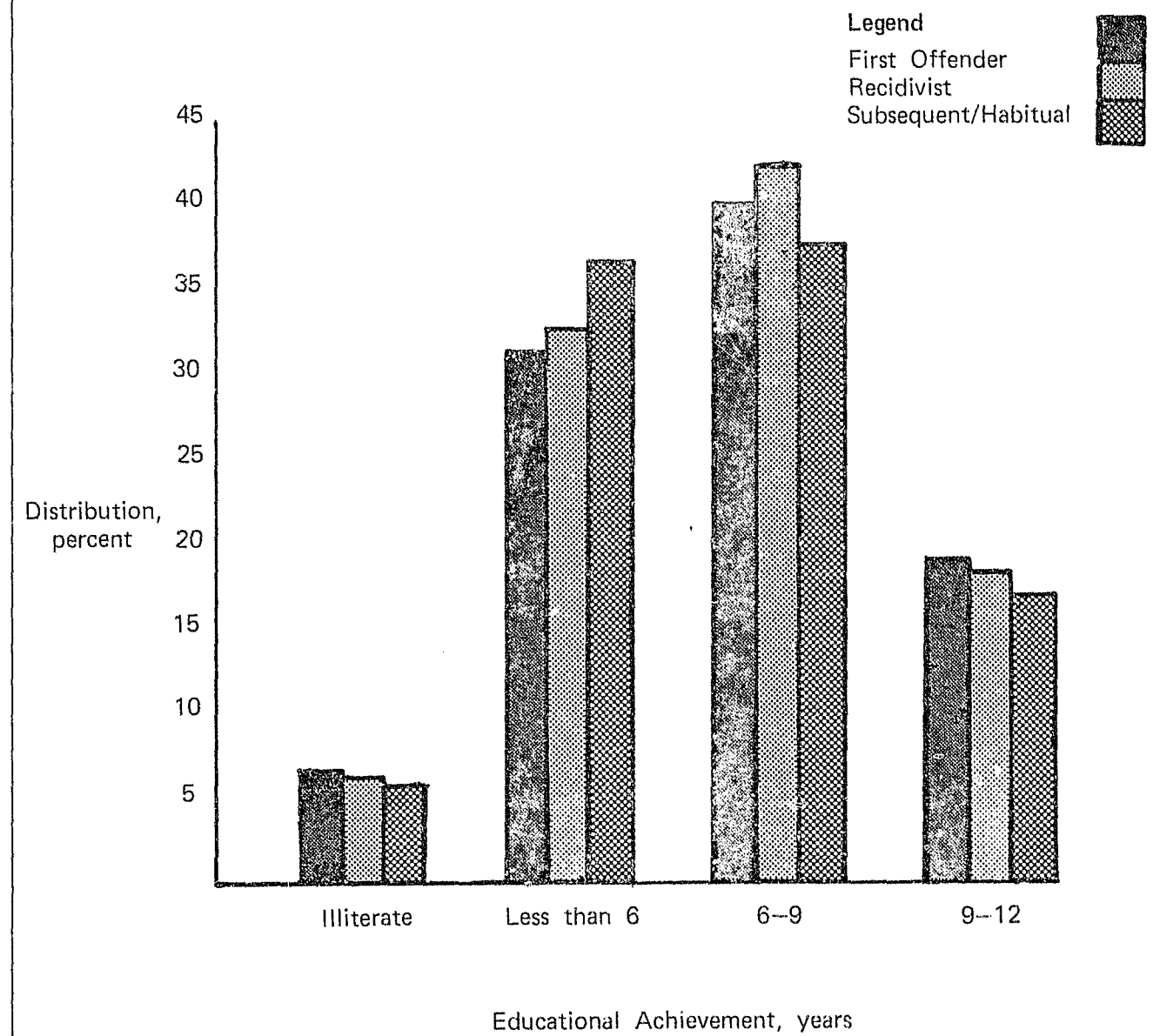


Figure 6  
OFFENDER DISTRIBUTION BY INTELLIGENCE  
QUOTIENT

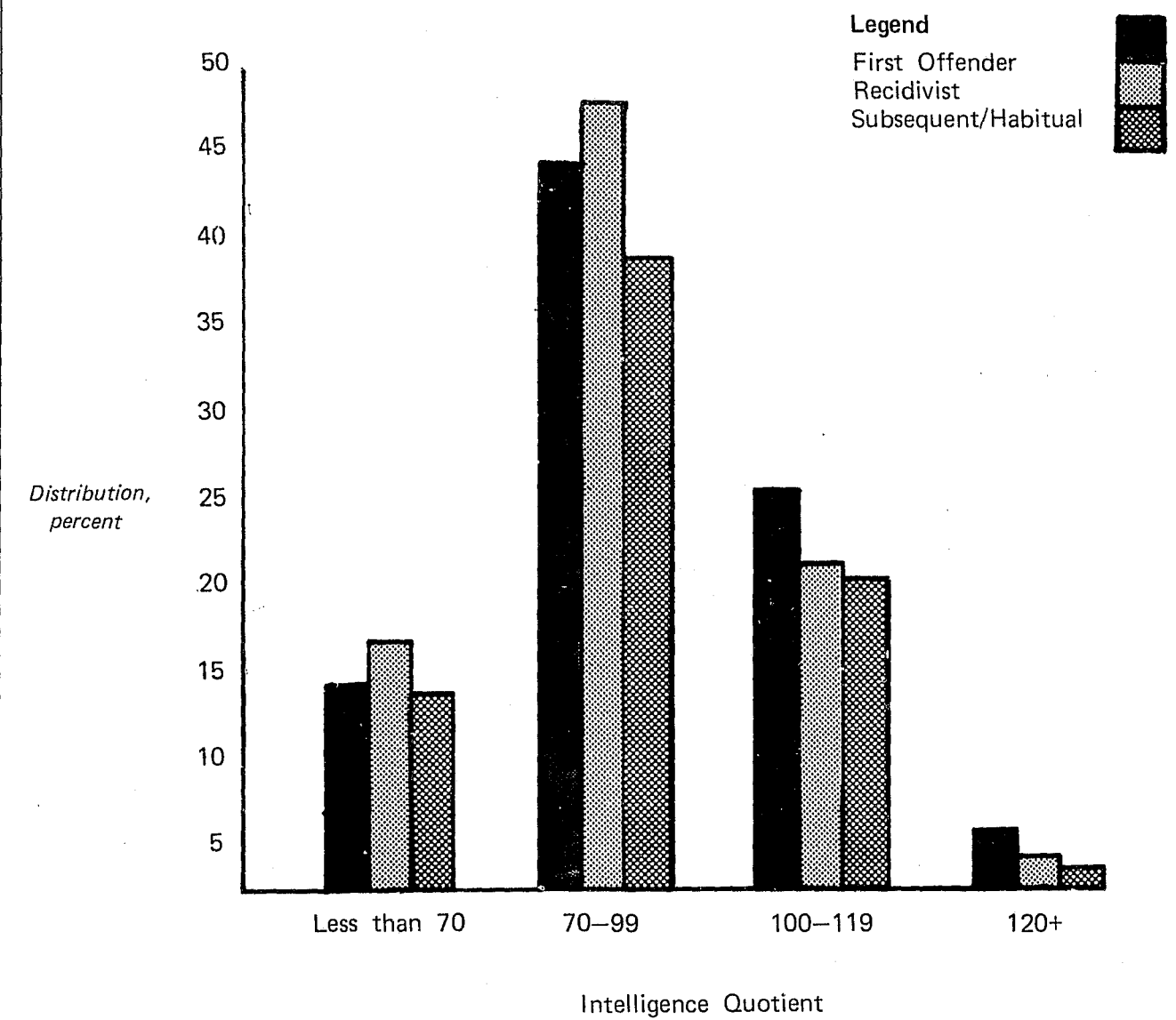


Figure 7

OFFENDER DISTRIBUTION BY PREVIOUS CONFINEMENTS

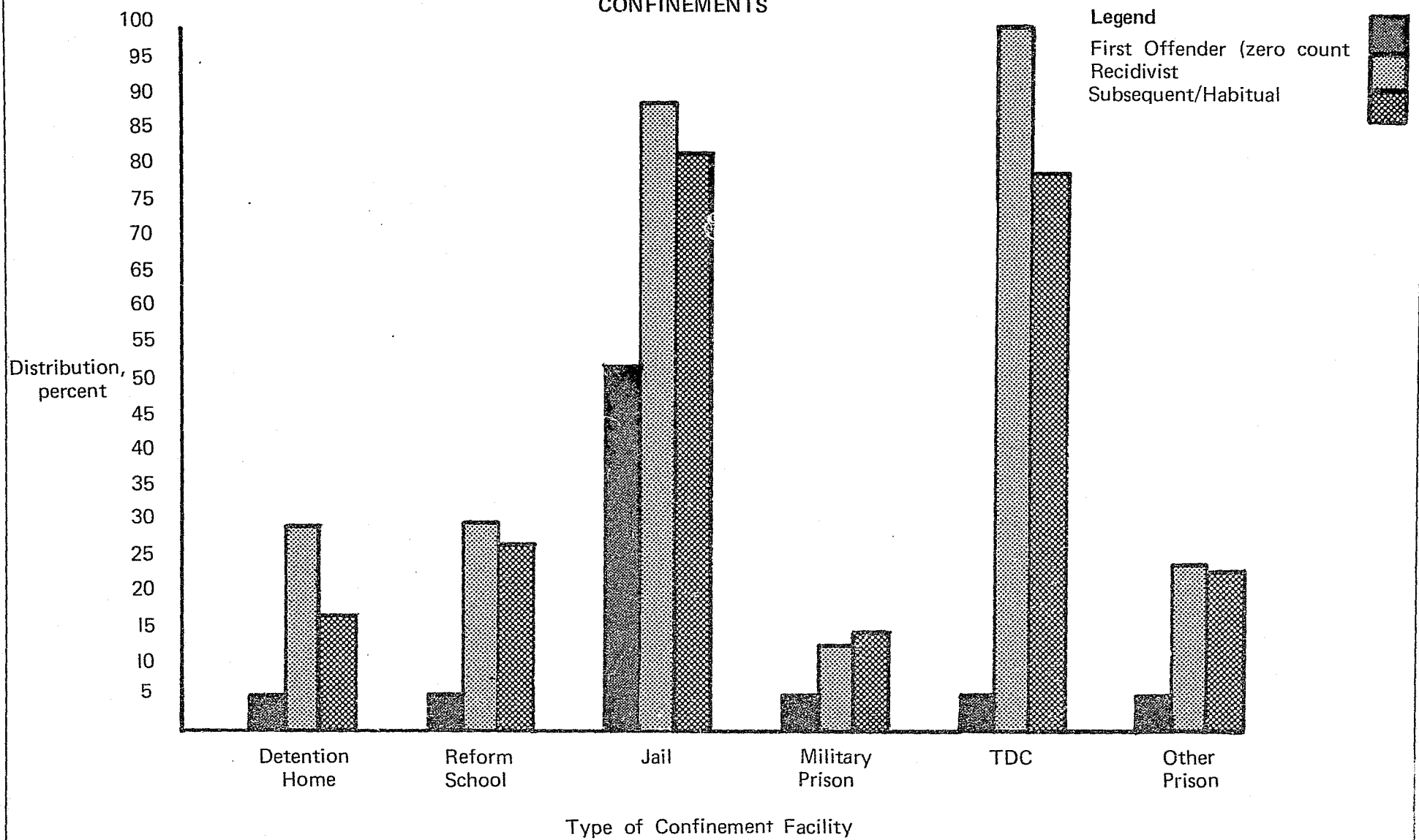


Figure 8  
OFFENDER DISTRIBUTION BY SENTENCES

Legend  
First Offender  
Recidivist  
Subsequent/Habitual

