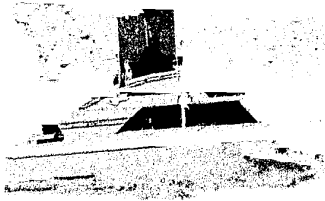


MPD



49676



CONTENTS

- 1. Introduction
- 2. Chapter 1: The History of the City
- 3. Chapter 2: The City's Growth
- 4. Chapter 3: The City's Development
- 5. Chapter 4: The City's Future
- 6. Chapter 5: The City's Present
- 7. Chapter 6: The City's Past
- 8. Chapter 7: The City's Future
- 9. Chapter 8: The City's Present
- 10. Chapter 9: The City's Past
- 11. Chapter 10: The City's Future
- 12. Chapter 11: The City's Present
- 13. Chapter 12: The City's Past
- 14. Chapter 13: The City's Future
- 15. Chapter 14: The City's Present
- 16. Chapter 15: The City's Past
- 17. Chapter 16: The City's Future
- 18. Chapter 17: The City's Present
- 19. Chapter 18: The City's Past
- 20. Chapter 19: The City's Future
- 21. Chapter 20: The City's Present
- 22. Chapter 21: The City's Past
- 23. Chapter 22: The City's Future
- 24. Chapter 23: The City's Present
- 25. Chapter 24: The City's Past
- 26. Chapter 25: The City's Future
- 27. Chapter 26: The City's Present
- 28. Chapter 27: The City's Past
- 29. Chapter 28: The City's Future
- 30. Chapter 29: The City's Present
- 31. Chapter 30: The City's Past
- 32. Chapter 31: The City's Future
- 33. Chapter 32: The City's Present
- 34. Chapter 33: The City's Past
- 35. Chapter 34: The City's Future
- 36. Chapter 35: The City's Present
- 37. Chapter 36: The City's Past
- 38. Chapter 37: The City's Future
- 39. Chapter 38: The City's Present
- 40. Chapter 39: The City's Past
- 41. Chapter 40: The City's Future
- 42. Chapter 41: The City's Present
- 43. Chapter 42: The City's Past
- 44. Chapter 43: The City's Future
- 45. Chapter 44: The City's Present
- 46. Chapter 45: The City's Past
- 47. Chapter 46: The City's Future
- 48. Chapter 47: The City's Present
- 49. Chapter 48: The City's Past
- 50. Chapter 49: The City's Future
- 51. Chapter 50: The City's Present
- 52. Chapter 51: The City's Past
- 53. Chapter 52: The City's Future
- 54. Chapter 53: The City's Present
- 55. Chapter 54: The City's Past
- 56. Chapter 55: The City's Future
- 57. Chapter 56: The City's Present
- 58. Chapter 57: The City's Past
- 59. Chapter 58: The City's Future
- 60. Chapter 59: The City's Present
- 61. Chapter 60: The City's Past
- 62. Chapter 61: The City's Future
- 63. Chapter 62: The City's Present
- 64. Chapter 63: The City's Past
- 65. Chapter 64: The City's Future
- 66. Chapter 65: The City's Present
- 67. Chapter 66: The City's Past
- 68. Chapter 67: The City's Future
- 69. Chapter 68: The City's Present
- 70. Chapter 69: The City's Past
- 71. Chapter 70: The City's Future
- 72. Chapter 71: The City's Present
- 73. Chapter 72: The City's Past
- 74. Chapter 73: The City's Future
- 75. Chapter 74: The City's Present
- 76. Chapter 75: The City's Past
- 77. Chapter 76: The City's Future
- 78. Chapter 77: The City's Present
- 79. Chapter 78: The City's Past
- 80. Chapter 79: The City's Future
- 81. Chapter 80: The City's Present
- 82. Chapter 81: The City's Past
- 83. Chapter 82: The City's Future
- 84. Chapter 83: The City's Present
- 85. Chapter 84: The City's Past
- 86. Chapter 85: The City's Future
- 87. Chapter 86: The City's Present
- 88. Chapter 87: The City's Past
- 89. Chapter 88: The City's Future
- 90. Chapter 89: The City's Present
- 91. Chapter 90: The City's Past
- 92. Chapter 91: The City's Future
- 93. Chapter 92: The City's Present
- 94. Chapter 93: The City's Past
- 95. Chapter 94: The City's Future
- 96. Chapter 95: The City's Present
- 97. Chapter 96: The City's Past
- 98. Chapter 97: The City's Future
- 99. Chapter 98: The City's Present
- 100. Chapter 99: The City's Past
- 101. Chapter 100: The City's Future

INDEX

- A. Introduction
- B. Chapter 1: The History of the City
- C. Chapter 2: The City's Growth
- D. Chapter 3: The City's Development
- E. Chapter 4: The City's Future
- F. Chapter 5: The City's Present
- G. Chapter 6: The City's Past
- H. Chapter 7: The City's Future
- I. Chapter 8: The City's Present
- J. Chapter 9: The City's Past
- K. Chapter 10: The City's Future
- L. Chapter 11: The City's Present
- M. Chapter 12: The City's Past
- N. Chapter 13: The City's Future
- O. Chapter 14: The City's Present
- P. Chapter 15: The City's Past
- Q. Chapter 16: The City's Future
- R. Chapter 17: The City's Present
- S. Chapter 18: The City's Past
- T. Chapter 19: The City's Future
- U. Chapter 20: The City's Present
- V. Chapter 21: The City's Past
- W. Chapter 22: The City's Future
- X. Chapter 23: The City's Present
- Y. Chapter 24: The City's Past
- Z. Chapter 25: The City's Future
- AA. Chapter 26: The City's Present
- AB. Chapter 27: The City's Past
- AC. Chapter 28: The City's Future
- AD. Chapter 29: The City's Present
- AE. Chapter 30: The City's Past
- AF. Chapter 31: The City's Future
- AG. Chapter 32: The City's Present
- AH. Chapter 33: The City's Past
- AI. Chapter 34: The City's Future
- AJ. Chapter 35: The City's Present
- AK. Chapter 36: The City's Past
- AL. Chapter 37: The City's Future
- AM. Chapter 38: The City's Present
- AN. Chapter 39: The City's Past
- AO. Chapter 40: The City's Future
- AP. Chapter 41: The City's Present
- AQ. Chapter 42: The City's Past
- AR. Chapter 43: The City's Future
- AS. Chapter 44: The City's Present
- AT. Chapter 45: The City's Past
- AU. Chapter 46: The City's Future
- AV. Chapter 47: The City's Present
- AW. Chapter 48: The City's Past
- AX. Chapter 49: The City's Future
- AY. Chapter 50: The City's Present
- AZ. Chapter 51: The City's Past
- BA. Chapter 52: The City's Future
- BB. Chapter 53: The City's Present
- BC. Chapter 54: The City's Past
- BD. Chapter 55: The City's Future
- BE. Chapter 56: The City's Present
- BF. Chapter 57: The City's Past
- BG. Chapter 58: The City's Future
- BH. Chapter 59: The City's Present
- BI. Chapter 60: The City's Past
- BJ. Chapter 61: The City's Future
- BK. Chapter 62: The City's Present
- BL. Chapter 63: The City's Past
- BM. Chapter 64: The City's Future
- BN. Chapter 65: The City's Present
- BO. Chapter 66: The City's Past
- BP. Chapter 67: The City's Future
- BQ. Chapter 68: The City's Present
- BR. Chapter 69: The City's Past
- BS. Chapter 70: The City's Future
- BT. Chapter 71: The City's Present
- BU. Chapter 72: The City's Past
- BV. Chapter 73: The City's Future
- BW. Chapter 74: The City's Present
- BX. Chapter 75: The City's Past
- BY. Chapter 76: The City's Future
- BZ. Chapter 77: The City's Present
- CA. Chapter 78: The City's Past
- CB. Chapter 79: The City's Future
- CC. Chapter 80: The City's Present
- CD. Chapter 81: The City's Past
- CE. Chapter 82: The City's Future
- CF. Chapter 83: The City's Present
- CG. Chapter 84: The City's Past
- CH. Chapter 85: The City's Future
- CI. Chapter 86: The City's Present
- CJ. Chapter 87: The City's Past
- CK. Chapter 88: The City's Future
- CL. Chapter 89: The City's Present
- CM. Chapter 90: The City's Past
- CN. Chapter 91: The City's Future
- CO. Chapter 92: The City's Present
- CP. Chapter 93: The City's Past
- CQ. Chapter 94: The City's Future
- CR. Chapter 95: The City's Present
- CS. Chapter 96: The City's Past
- CT. Chapter 97: The City's Future
- CU. Chapter 98: The City's Present
- CV. Chapter 99: The City's Past
- CV. Chapter 100: The City's Future



From Chief Jefferson

NCJRS

AUG 14 1978

ACQUISITIONS



In today's complex society, it is no longer adequate for police departments to work alone in pursuit of their enforcement responsibilities. They must relate to and identify with the public they serve. Recognizing this, our department has accepted the challenge to develop more progressive techniques in our quest to preserve the peace and prevent crime. Most important of these techniques is our ability to mobilize community support for our programs. We are making great strides in this area. The understanding and support of the citizens in all parts of the city has had a tremendous impact on our ability to further crime reduction and to develop innovative approaches to dealing with the specific problems that confront our community.

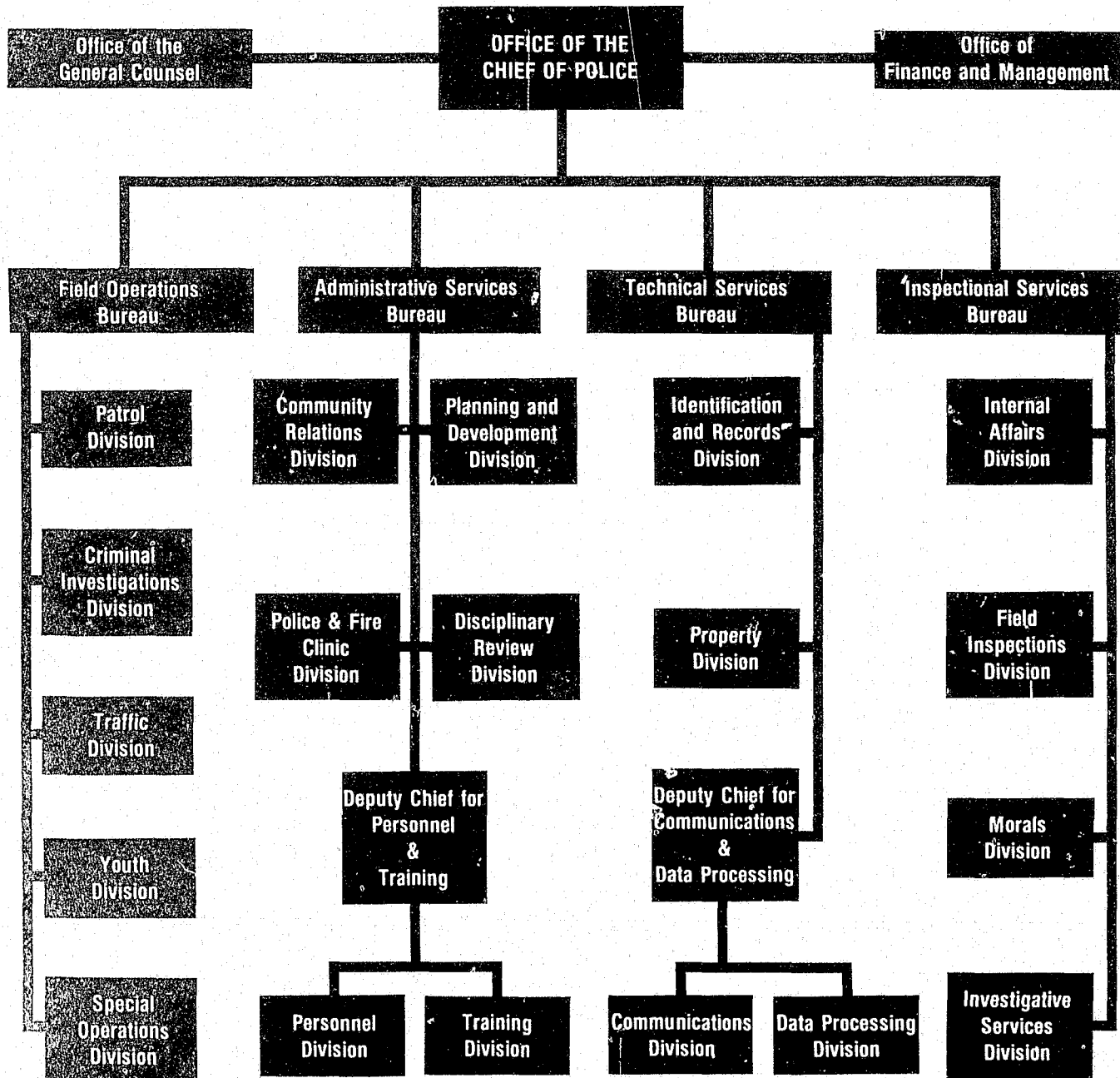
Over the past ten years our department, like our city, has undergone significant changes. Advancement in modern police technology and a reorganization of the department has enabled us to provide quicker response and better service to the people of Washington. In return, the cooperation and interest of our citizens has furthered our potential for improving city life.

We must now build on that solid foundation of cooperation which has developed in order to create a greater awareness of the problem of crime and to obtain a commitment to further self-help measures which can be used to prevent it.

This past year has seen the improvement of some already established programs and the development of new ones. As you will see in looking through this annual report, police-community projects are found in all areas of our department. With the "hand-in-hand" efforts of the 4100 *dedicated* men and women of the Metropolitan Police Department and the many *dedicated* and concerned citizens of our city, we will continue to make great strides in the improvement of the quality of life in our Nation's Capital.

Burtell M. Jefferson
Chief of Police

Organization



Field Operations Bureau



*Assistant Chief Bernard D. Crooke, Jr.
Field Operations Officer*

The Field Operations Officer provides the direction, coordination and control necessary to insure the successful accomplishment of the mission and functions of that bureau. The Field Operations Bureau provides services in the following areas:

Patrol. . .

Members protect life and property by preventing crime, enforcing the law, preserving the peace and apprehending criminals.

Criminal Investigations. . .

Members conduct city-wide criminal investigations of specific felonies and crime requiring extensive follow-up investigations or the use of specialized skills.

Traffic. . .

Members control traffic, enforce vehicle regulations, investigate accidents and utilize selective traffic enforcement and educational materials to further the prevention of vehicle and pedestrian accidents.

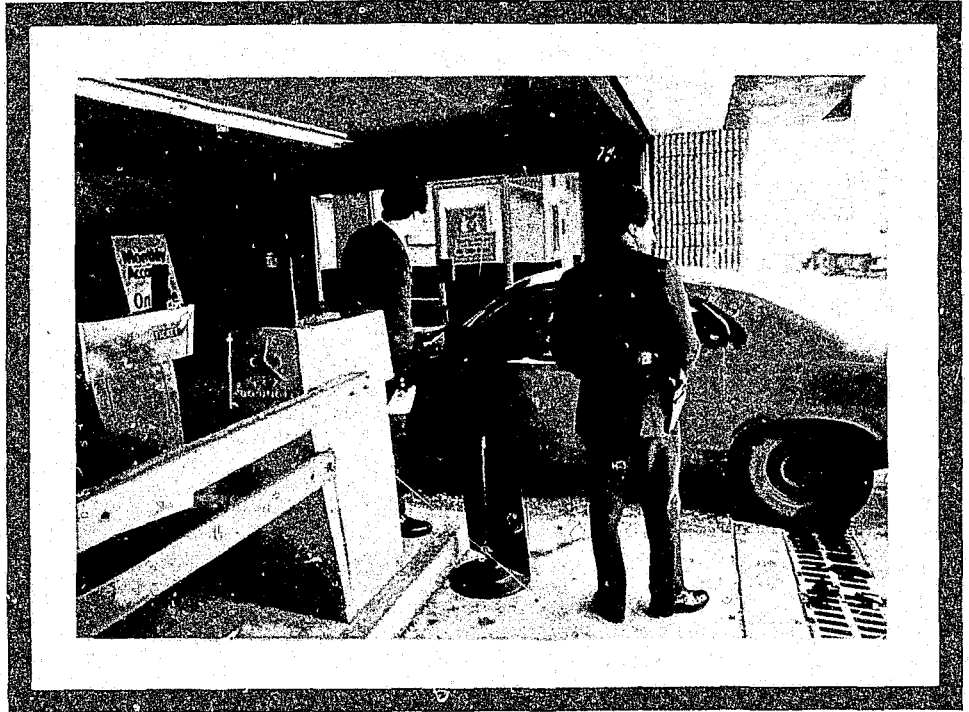
Special Operations. . .

Members provide extra tactical personnel to combat specific crime problems and specially trained personnel to respond to unusual law enforcement situations and events.

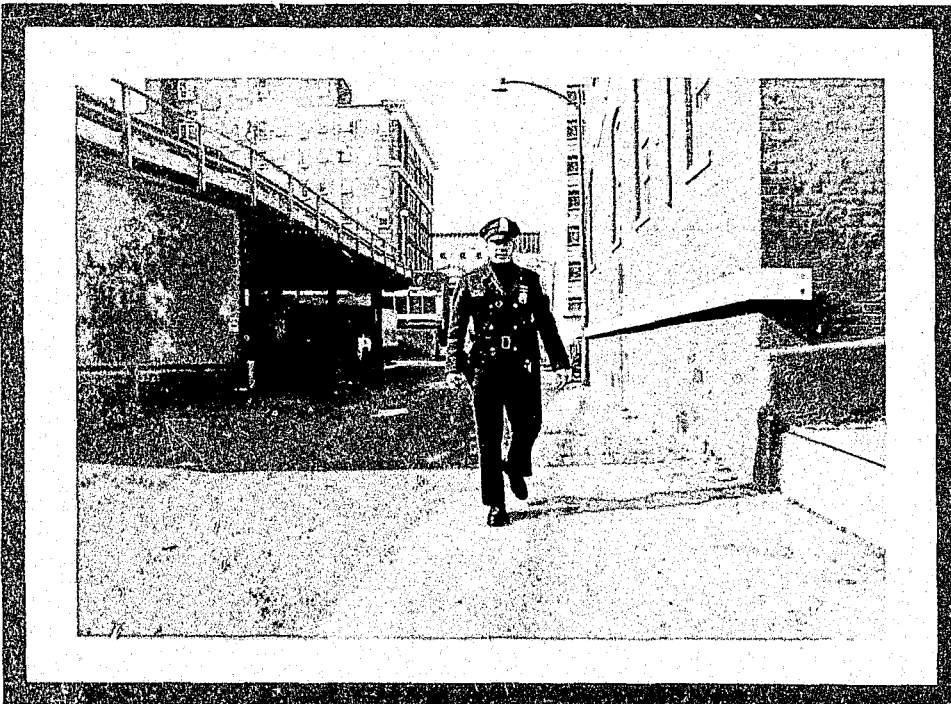
Youth. . .

Members provide expertise needed for the proper handling of police cases involving juveniles, investigate missing person cases and carry out programs specifically designed to prevent juvenile delinquency.

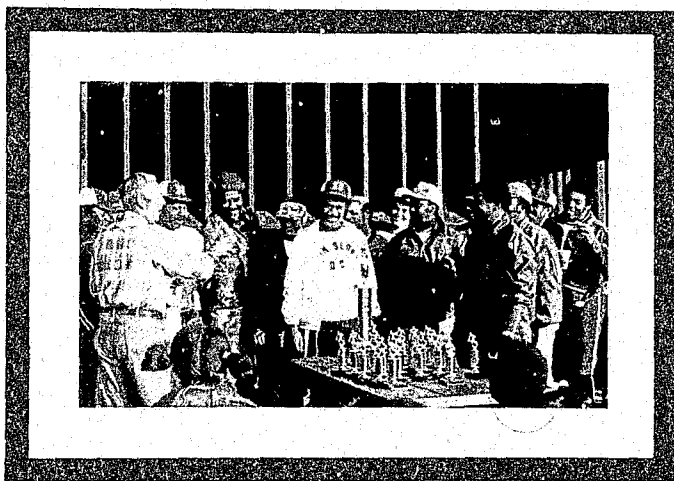
Patrol



Parking lots in the First District were given special attention in order to monitor Larceny from Auto offenses. Strict enforcement of Police Regulations concerning parking lots and their attendants, and the distribution of flyers concerning larcenies resulted in a 50% reduction in this crime for the First District.



Five special footbeats were established in the Second District to handle traffic and minor complaints thus releasing scout cars for more serious calls.



Third District's team was this year's baseball champions—walking away with all the top trophies.



Radar operations were instituted in the Fourth District to reduce speed violations.



A Civilian Observer Program designed to assist the police through the observation and prompt reporting of criminal activity by trained citizens has been implemented by the Fifth District.



Combined efforts of the First District Patrol Section and the Community Services Section reduced truancy and shoplifting when officers patrolled the downtown business district where they apprehended truants and returned them to school.

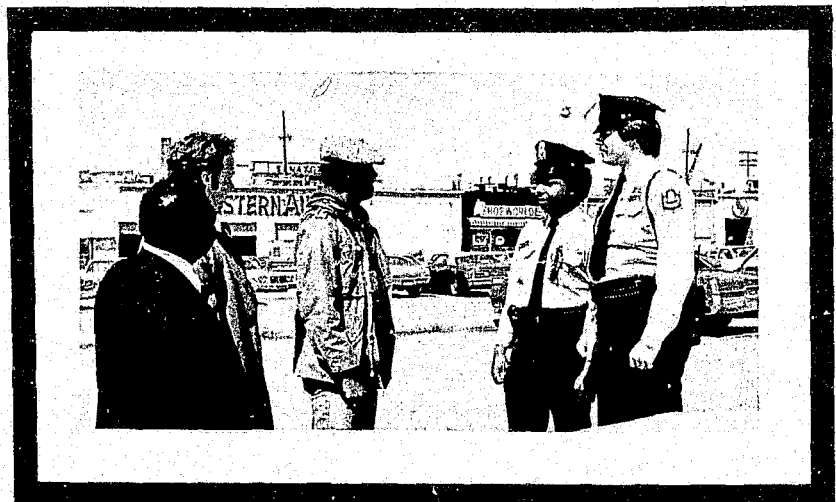


Twenty youngsters enjoyed a one-day, sightseeing excursion to New York City thanks to the Fifth District.



In an effort to offset youth inactivity during the summer months, the Third District implemented various sports programs. Funds for equipment and trophies were supplied by concerned citizens and local business representatives.

In utilizing personnel to the best advantage in reducing crime and apprehending criminals, section commanders in the Sixth District assign uniform officers to casual clothes when patterns of particular offenses are pinpointed.



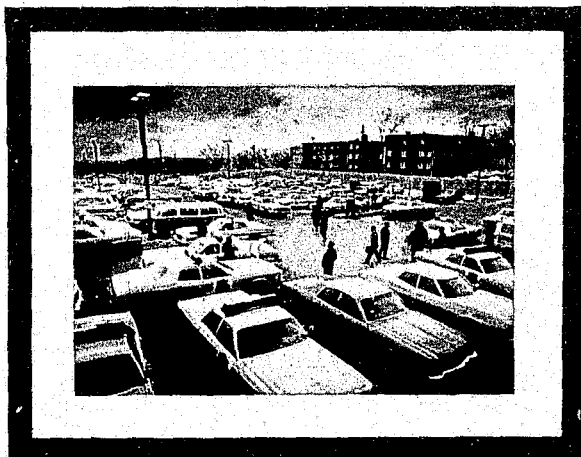
A program involving the use of casual clothes personnel was implemented by the Seventh District in order to reduce mailbox larcenies.



In order to reduce robbery holdups of business establishments in the Seventh District, TAC II (an alarm device that allows one vehicle to monitor as many as twenty businesses at one time) was used and monitored by both uniform and casual clothes personnel.

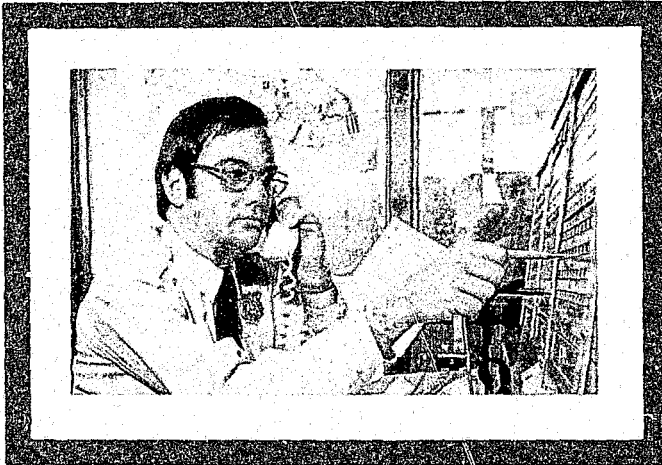
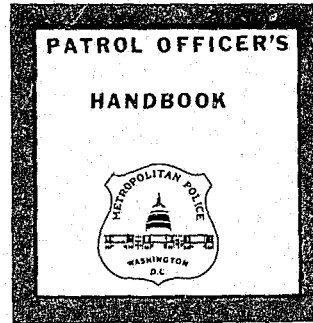


Members of the Sixth District gave so that needy children would get to enjoy Christmas.

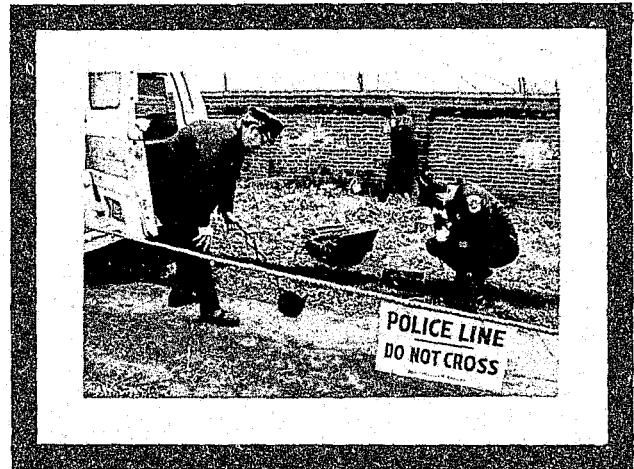


Fourth District has established a permanent midnight section. Some benefits have been more officers on duty at peak times, reduced sick leave and higher morale.

The Patrol Officer's Handbook, designed and used by members of the Fourth District, is an easy reference guide that assists patrol officers in the reporting and handling of various police tasks.



Members of the Metropolitan Police Reserve Corps donate their time and talents to the department. This reserve officer, assigned to the Second District, assists the station crew by operating the switchboard.



First District's Crime Scene Search Unit established an all time city-wide high of 30 identifications during the month of June 1977.



The Special Projects Unit of the Second District pulled off the third successful "STING" operation known as "TRI-CON." This undercover fencing operation, which was concluded on September 8, 1977, resulted in arrest warrants for 156 subjects, recovery of more than \$1 million in stolen property, and seizure of \$100,000 in cocaine, heroin and other illicit drugs.

Criminal Investigations



The Arson Squad, comprised of four police investigators and four firemen, has significantly increased the closure rate of arsons due to the mutual cooperation of both departments.

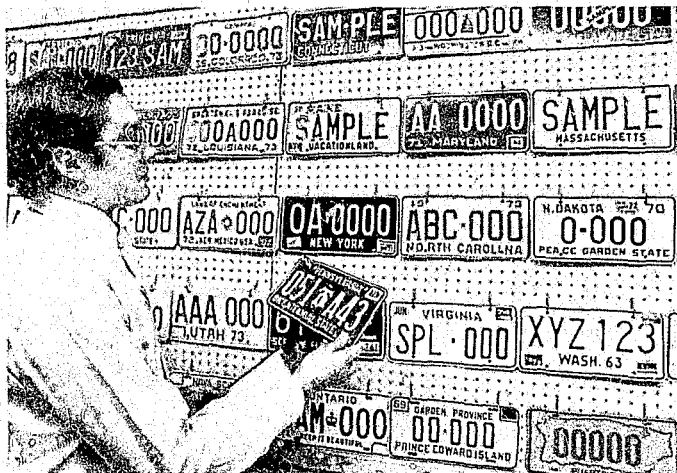


A total of 297 lineups were conducted by the Lineup Unit involving 1,931 defendants and 4,128 witnesses.



The Fugitive Unit handled a total of 1,958 fugitive assignments of which 1,948 were closed.

Our Homicide Branch achieved a closure rate of over 80%. Additionally, we experienced the lowest number of criminal homicides in the past seven years.



A major insurance fraud was stopped by the Auto Theft Unit resulting in the recovery of 16 automobiles that had been reported "stolen" by their owners.



Members of the Check and Fraud Section attended a 32 hour course on "white collar crime" in an effort to put a stop to the latest and most sophisticated methods of fraud such as computer crime.

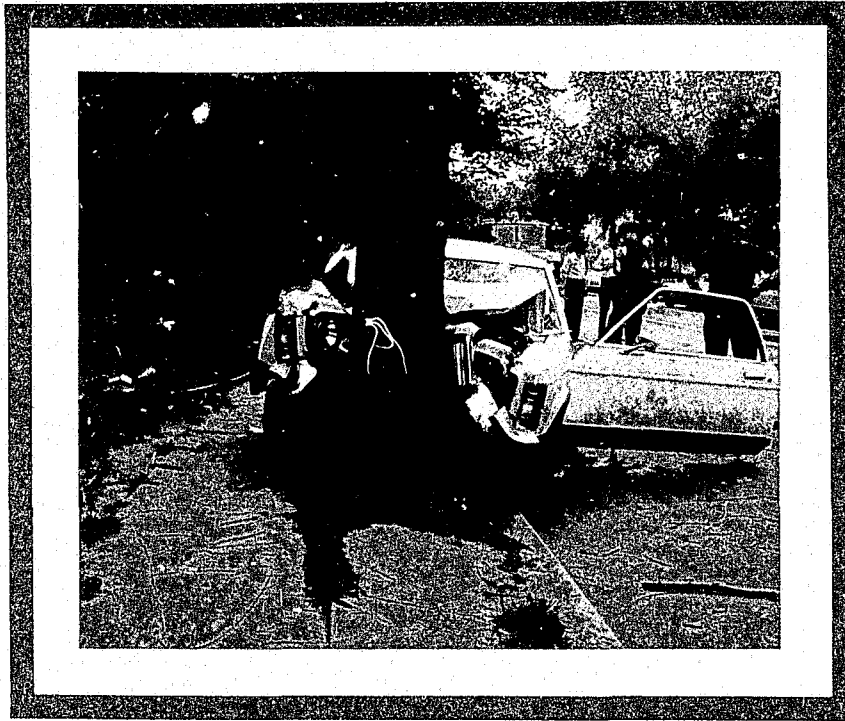


The Bank Squad has the responsibility for investigating all robberies of financial institutions. In an effort to prevent robberies, lectures and training programs are conducted by this squad for bank employees.

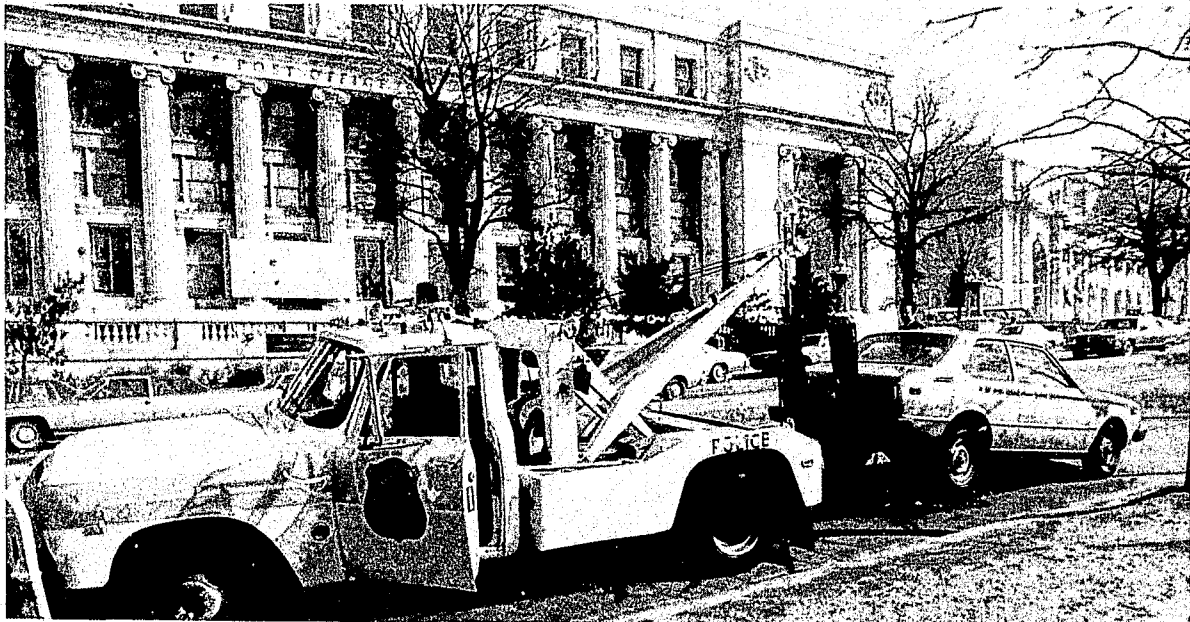


Investigators of the Sex Offense Branch met each month with other Metropolitan Area Sex Squad Investigators to exchange information and develop suspects.

Traffic—Special Operations

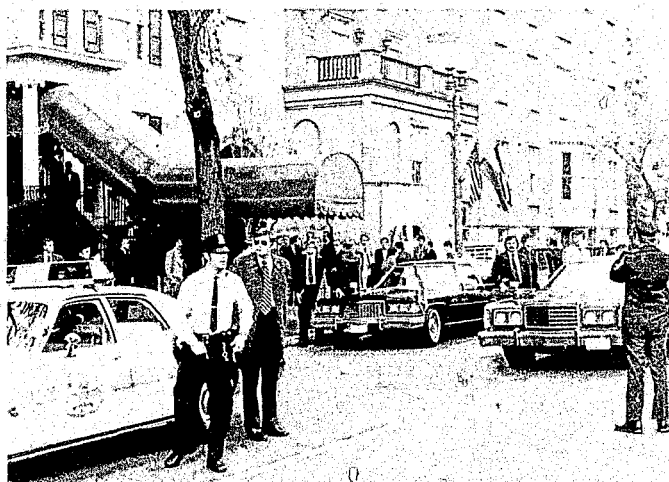


The lowest traffic fatality rate since 1961 was achieved due to the increased efforts in the area of traffic enforcement and safety programs.



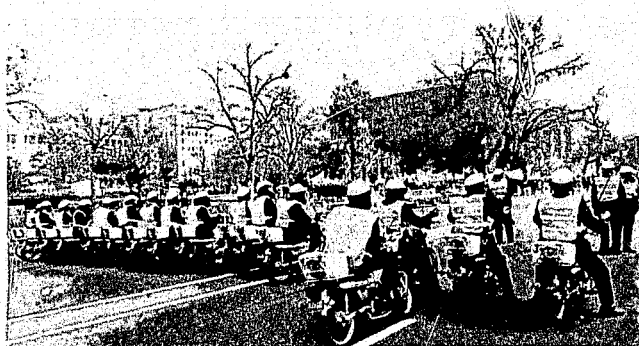
"Rush Hour" streets are cleared of all vehicles during peak hours to expedite the flow of traffic in and out of the city.

The Special Projects Section was involved in 11 barricaded criminal type situations. Due to the highly disciplined, motivated and restrained team effort, all 11 situations were handled successfully with a minimum amount of injuries and no loss of life after arrival of the unit on the scene.

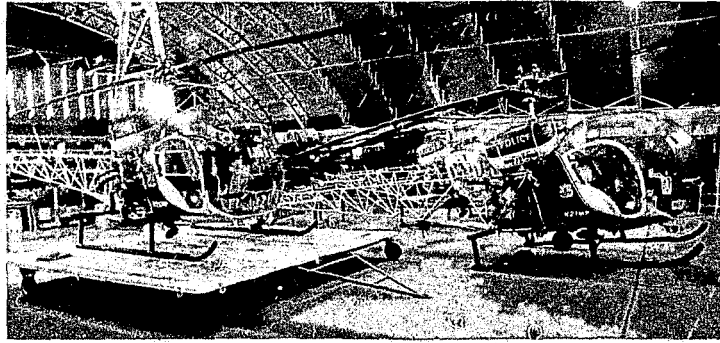


The Special Events Section handled 957 escort and security details for such dignitaries as the President of the United States, the Vice-President, the Mayor, Foreign Heads of State and Diplomats.

In addition to their regularly assigned duties, members of the Special Projects and Special Events Sections can also be found standing ready should their services be needed at any demonstration, parade or other major event.



The Helicopter Branch, which currently has 4 operational helicopters, flew a total of 2,956.1 hours.



The Explosive Ordnance Section destroyed over 2,300 explosive, chemical and incendiary devices.

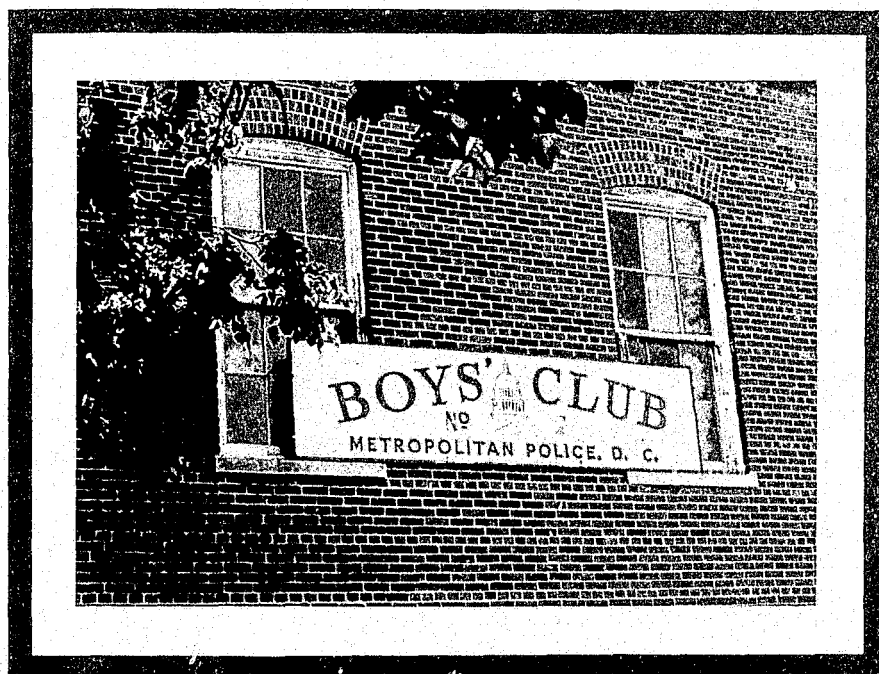


The Harbor Unit patrolled 19,234 miles, rescuing 806 persons and assisting 207 disabled boats.

Youth

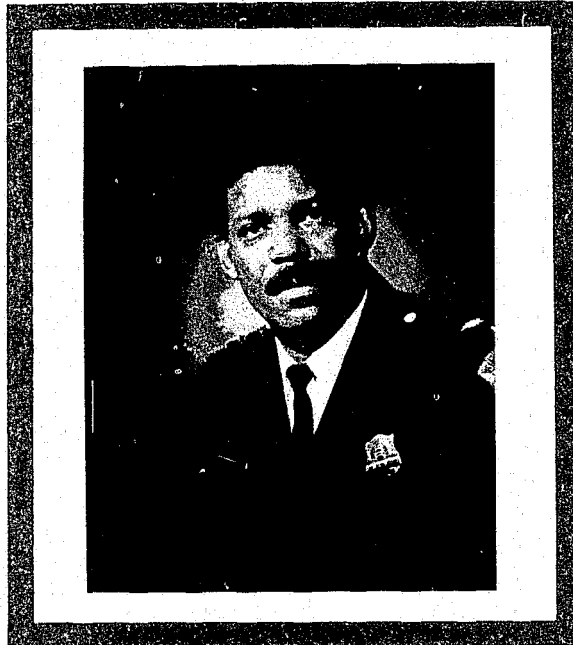


The passage of the "Prevention of Child Abuse and Neglect Act of 1977," which requires the reporting of suspected abuse and neglect cases under penalty of law, should significantly increase the number of cases reported to police.



A 5 year campaign to raise \$5 million for the Police Boys' and Girls' Club (official name as of October 1977) was started. Monies will be used to replace 8 of the 10 clubhouses, purchase equipment and restore Camp Brown in Scotland, Md.

Administrative Services Bureau

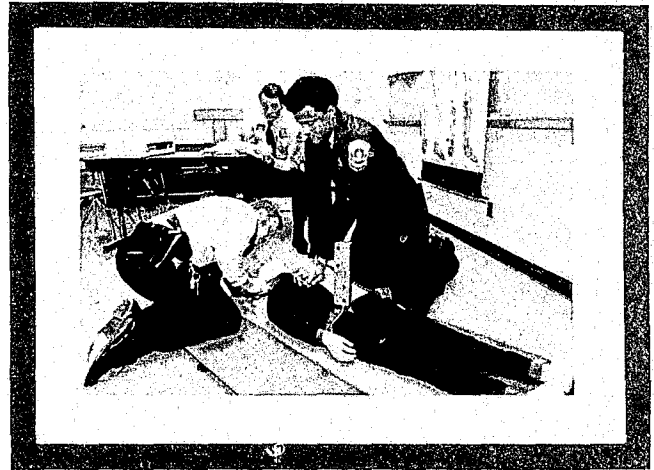


*Assistant Chief Maurice T. Turner
Administrative Services Officer*

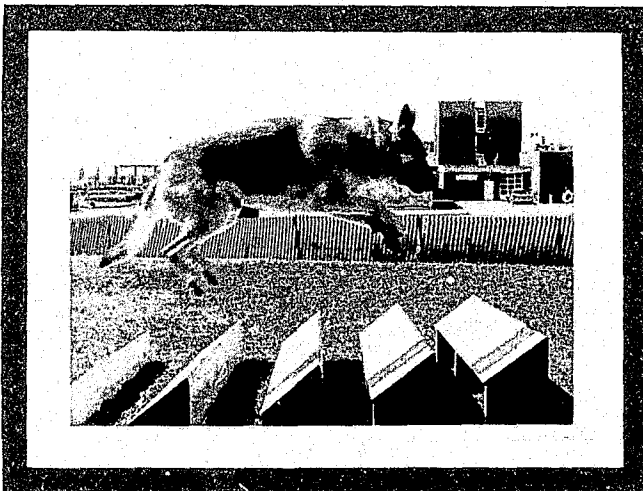
The Administrative Services Officer provides the direction, coordination and control necessary to insure the successful accomplishment of the mission and functions of that bureau. The Administrative Services Bureau provides services in the following areas:

- Community Relations. . . Members develop and promote programs to improve police relations with the community and the news media, and administer a public information program for disseminating timely and factual information concerning department operations.*
- Planning. . . Members develop and disseminate departmental policies, procedures and programs; make long-range planning and organizational analysis; and review department operations to improve procedures and insure optimum utilization of resources.*
- Clinic. . . Members minister to the health needs of the force.*
- Disciplinary Review. . . Members administer disciplinary review activities.*
- Personnel. . . Members recruit new employees and subsequently provide effective personnel and employment-related services.*
- Training. . . Members develop, administer, supervise, coordinate and evaluate training programs for sworn and civilian employees of the department.*
- Labor Relations. . . Members provide the department's viewpoint to the unions which represent officers and sergeants and the non-supervisory wage grade employees in such matters as pay negotiations and working conditions.*

Training



An eight-hour First Aid/Cardio-pulmonary Resuscitation (CPR) Training Program has been inaugurated. Approximately 45 sworn personnel are trained per week by members of the Training Division who have been certified as CPR instructors.



The Canine Training Section trained 20 new man-dog teams and brought back 82 teams for refresher training.



The indoor pistol range was opened for In-Service Firearms Training. All sworn personnel must qualify semi-annually and are now trained in "night firing" and "reactionary firing."





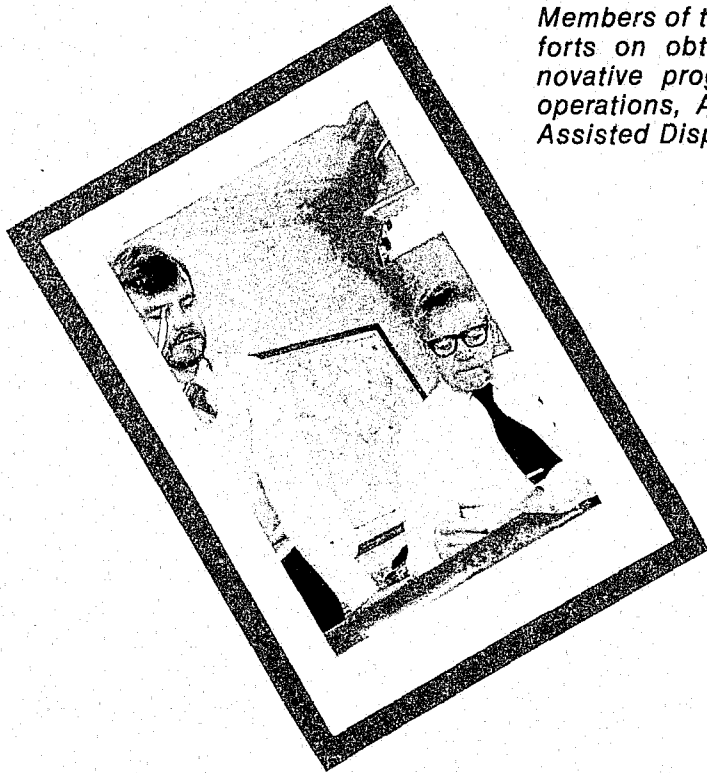
METROPOLITAN POLICE DEPARTMENT

Metro - Intercom

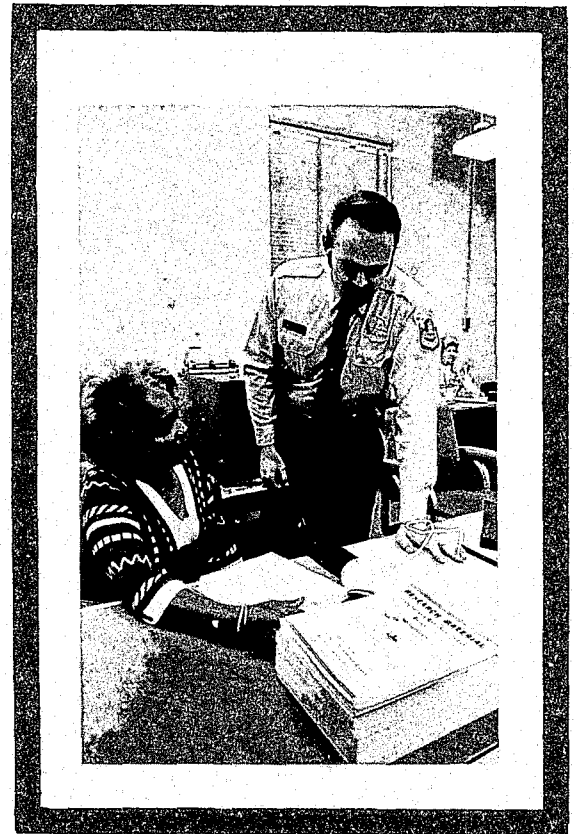
Washington, D. C. July, 1977 Vol. 9 No. 7



Planning



Members of the Special Projects Unit concentrated their efforts on obtaining grant funding to finance several innovative programs. These included the "Sting" fencing operations, Alcohol Enforcement Program and Computer Assisted Dispatching.



A new classification and filing system has been implemented in the Administrative Support Unit to include a Synopsis and Retrieval Index Guide for the newly created Research Studies File.



The Management Programs Unit coordinates efforts with the contractor and the building site inspector to resolve problems that arise during the remodeling of a district station.

Labor Relations



The Office of Labor Relations provided coordination, advice and guidance to various officials in reference to contract interpretation and labor problems.

Disciplinary Review



The Disciplinary Review Division reviews all reports for disciplinary action above unit level.

Personnel



Personnel Division updated the Automated Personnel System by processing 5,000 survey forms.



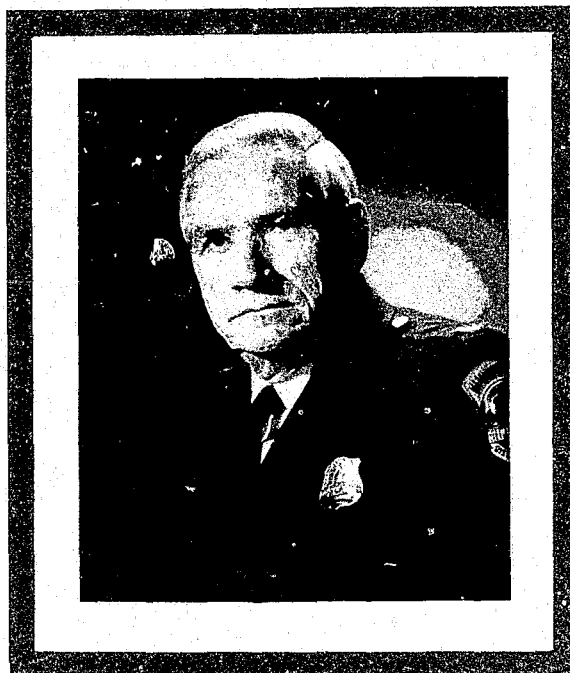
Dedicated crossing guards make walking to school safe for our children.

Clinic



A crash cart was purchased for the Police and Fire Clinic and stocked with necessary equipment and medications to be used in emergency situations.

Technical Services Bureau



*Assistant Chief John S. Hughes
Technical Services Officer*

The Technical Services Officer provides the direction, coordination and control necessary to insure the successful accomplishment of the mission and functions of that bureau. The Technical Services Bureau provides services in the following areas:

Identification. . .

Members provide criminal record, photographic, mail, messenger, weapon registration and printing services; technical expertise for firearm, ballistic, fingerprint, questioned document and crime scene examinations; and maintain the central prisoner processing and holding facility.

Property. . .

Members provide uniforms, vehicles, office supplies and equipment; maintain a carpenter shop; store and control evidence, contraband, lost and found property and impounded vehicles; and repair office machines, vehicles and service weapons.

Data Processing. . .

Members maintain the Washington Area Law Enforcement System (WALES), design statistical reporting systems, analyze the rate and types of crimes and traffic accidents, and determine the most effective means of handling data requirements.

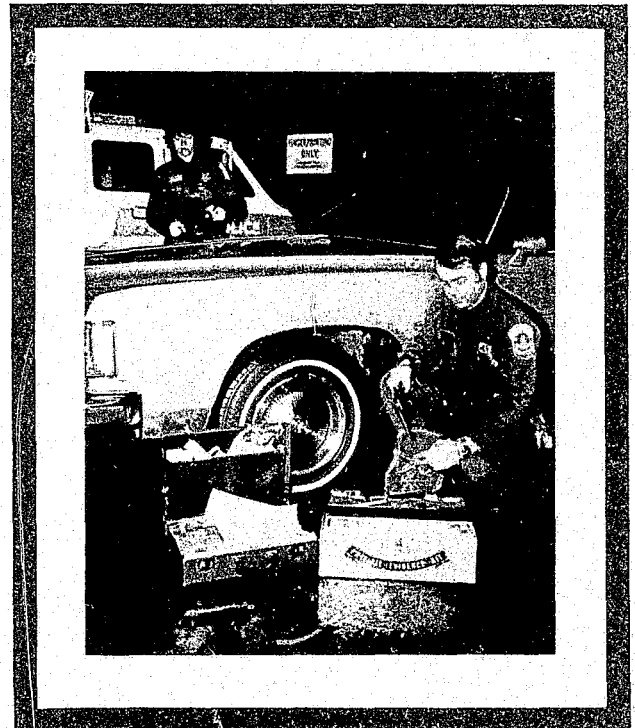
Communications. . .

Members record and classify requests for police assistance received by telephone or radio; assign these calls to the appropriate unit for action; operate the teletype system; act as the focal point for entries and inquiries into the National Crime Information Center (NCIC) and WALES; and maintain communication equipment.

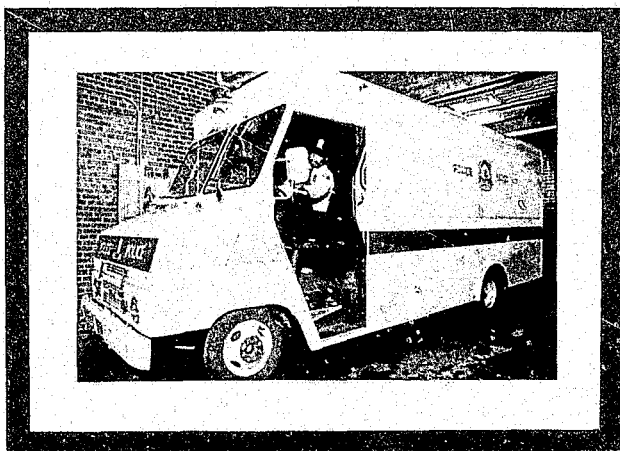
Identification



Members of the Firearm's Examination Section tested various types of ammunition for possible use by the department. After a six months exhaustive study, a 158 grain, lead-hollow point bullet was selected.



The Crime Scene Examination Section processes all major crime scenes. This section has enhanced its ability to conduct searches for physical evidence through expertise gained from additional training provided by the FBI.

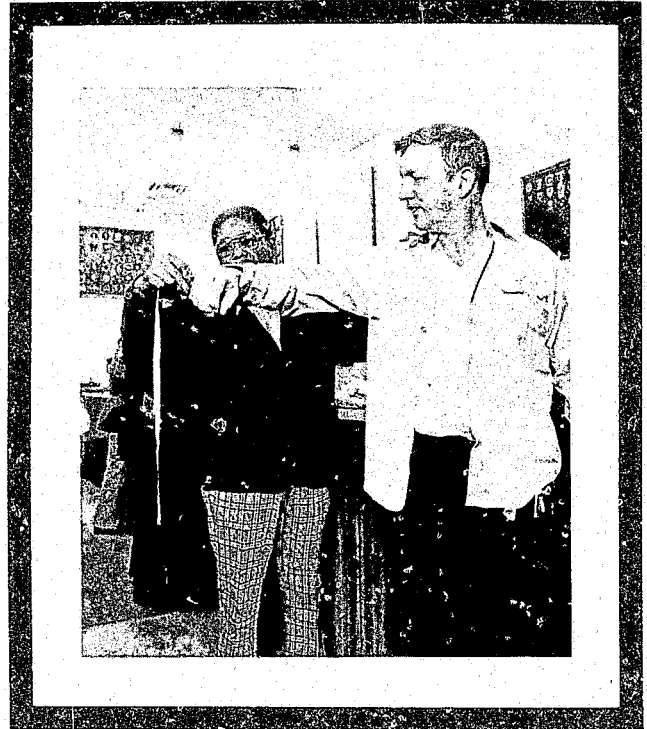


A new stepvan, fully equipped with all the modern safety features, was placed into operation for transporting prisoners.

Property



The Clothing and Equipment section issued new style hats and ties for female officers.

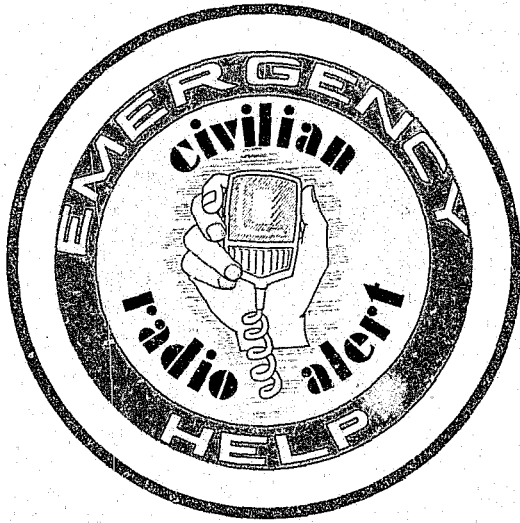


Over-the-counter transactions, such as uniform fittings, were handled on an average of 69 members per operating day.

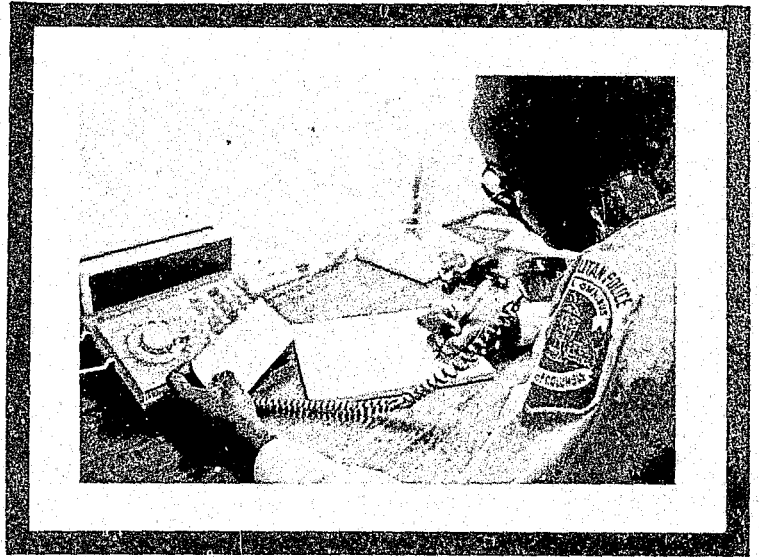


Two hundred and sixty new 1977 Plymouth Sedans were purchased and placed into service by Fleet Management.

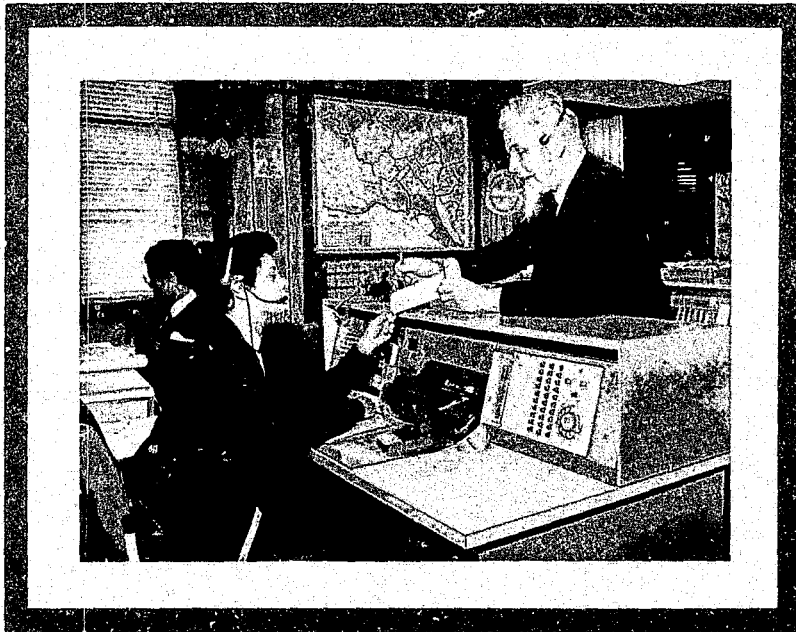
Communications



The Civilian Radio Alert System enables taxi drivers to aid citizens, report crimes and suspicious circumstances, and to advise of emergency situations by radioing their dispatchers who in turn notify the police.



The Telephone Reporting Unit has expanded its services to include Grand Larceny from Auto, Petit Larceny and Hit and Run reports. Out of the 28,841 calls for police that TRU handled, 15,785 reports were taken relieving the patrol officer for other duties.



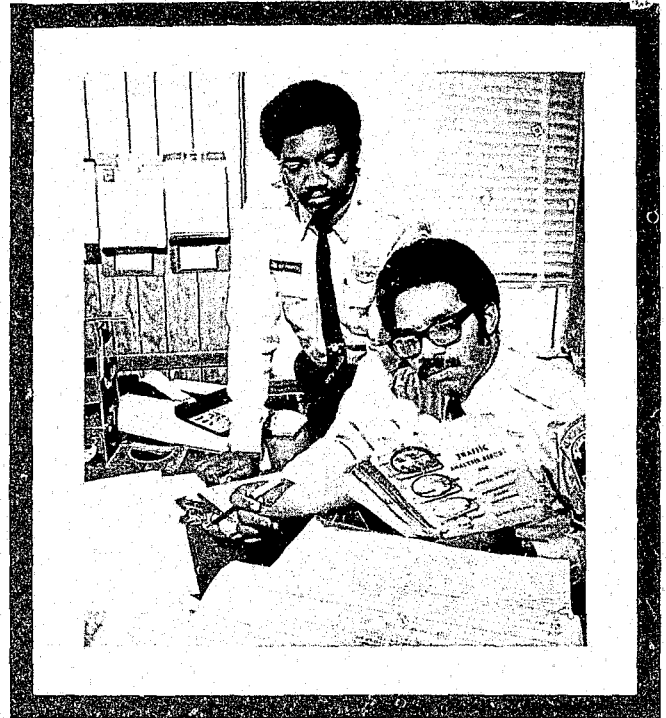
The Operations Branch received over 1,000,000 "911" emergency calls this year. Due to the increased efficiency of the dispatchers, 95% of these calls were answered instantaneously while the average waiting time of the remaining 5% was only 3.6 seconds.

Data Processing

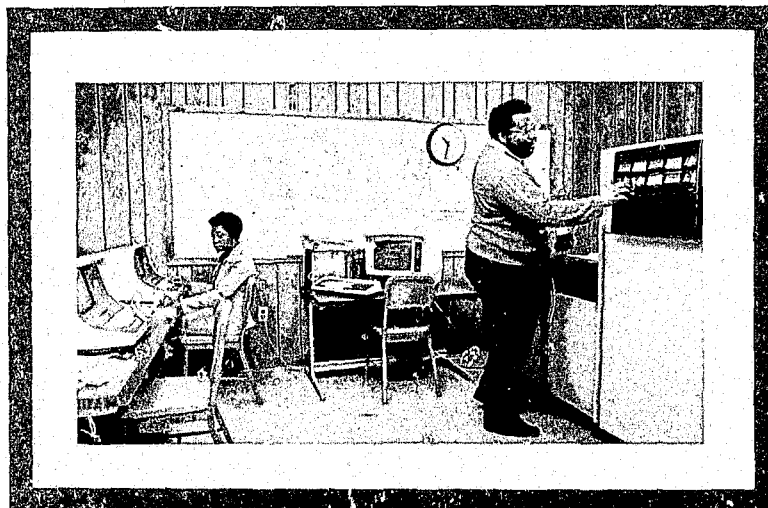
Washington Area Law Enforcement System



*The District of Columbia
Bail Agency has become
a new user of WALEs,
adding yet another por-
tion of the criminal
justice community.*

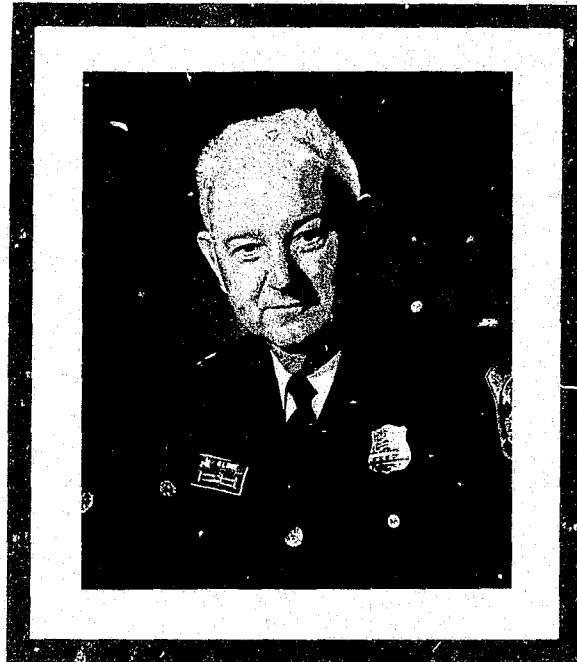


*The Traffic Analysis Section compiles
statistics on all traffic accidents,
monitors high accident areas and pro-
vides information as to causing factors
on a monthly basis.*



*Computer equipment to support the Computer
Assisted Dispatching System has been installed,
and the basic software programming has been
developed and is in the testing stage.*

Inspectional Services Bureau



*Assistant Chief Robert L. Rabe
Inspectional Services Officer*

The Inspectional Services Officer provides the direction, coordination and control necessary to insure the successful accomplishment of the mission and functions of that bureau. The Inspectional Services Bureau provides services in the following areas:

Morals. . .

Members investigate and suppress vice activities involving illegal gambling, liquor, narcotics and indecent or obscene movies and printed material; and provide liaison in vice enforcement matters requiring communication or cooperative efforts between this department and other governmental or private agencies.

Investigative Services. . .

Members gather and analyze information on the criminal activities of persons, groups and organizations that conspire to obstruct justice or violate criminal statutes; coordinate with local, state and federal investigative agencies on criminal matters of mutual concern; and administer the department's responsibilities in connection with commercial security and detective agencies.

Internal Affairs. . .

Members provide advice and investigative assistance in alleged incidents of criminal activity or serious infractions of disciplinary rules by members; identify and monitor situations that may be conducive to facilitating corrupt practices; and conduct investigations of all areas of police activity where conditions may threaten the integrity of the department.

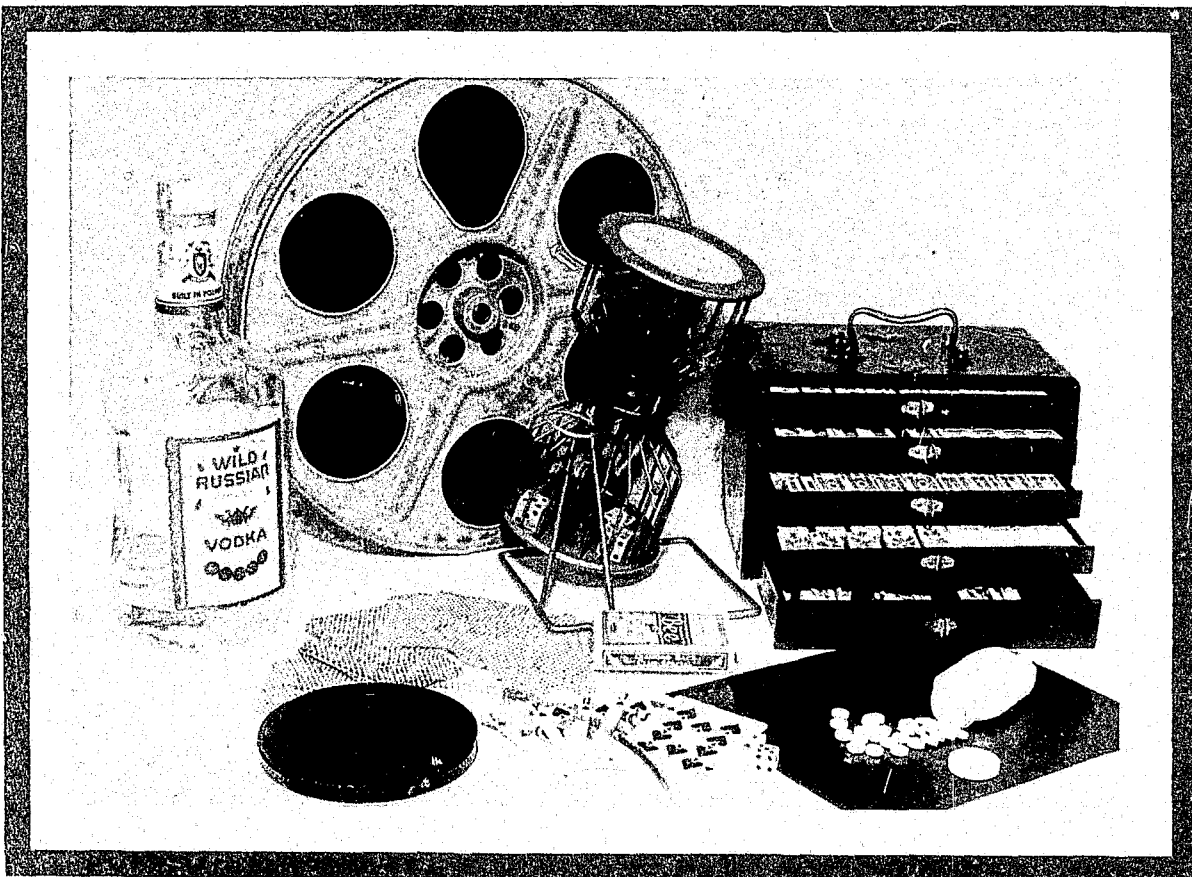
Field Inspections. . .

Members provide inspectional services of personnel, materiel resources and procedures to locate and identify operational or administrative deficiencies for correction and administer the occupational health and safety management program.

Morals

The Liquor Unit cited 42 establishments to the Alcoholic Beverage Control Board for violations and made 125 arrests.

Twenty arrests were made by the Obscenity Unit for violations of Obscenity Laws and eight films were seized from various area theaters.



Investigations in two high schools and one college were made by the School Section of the Narcotic Branch resulting in 26 arrests.

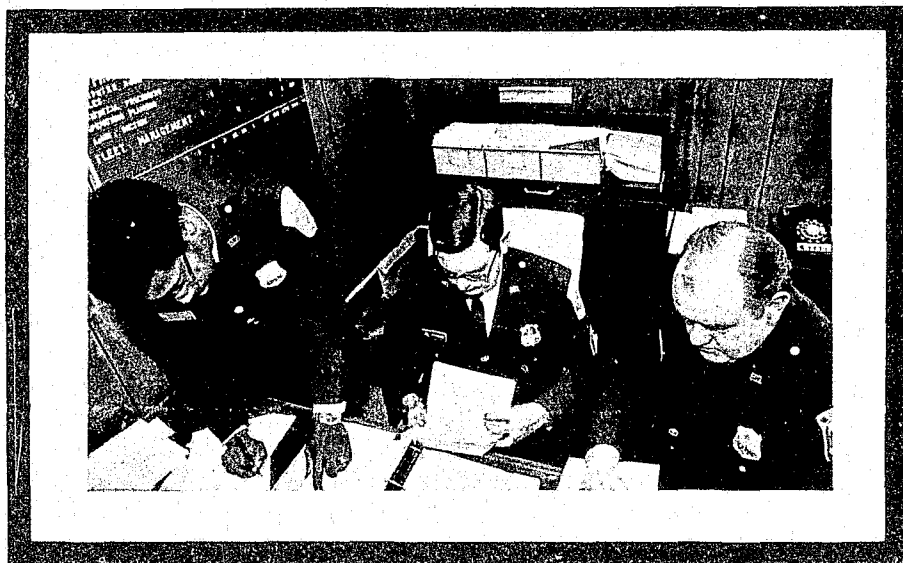
Major gambling figures were arrested during coordinated raids by the Gambling Unit, one of which was the "kingpin" of a 3.5 million dollar gambling operation in Chinatown.

Investigative Services



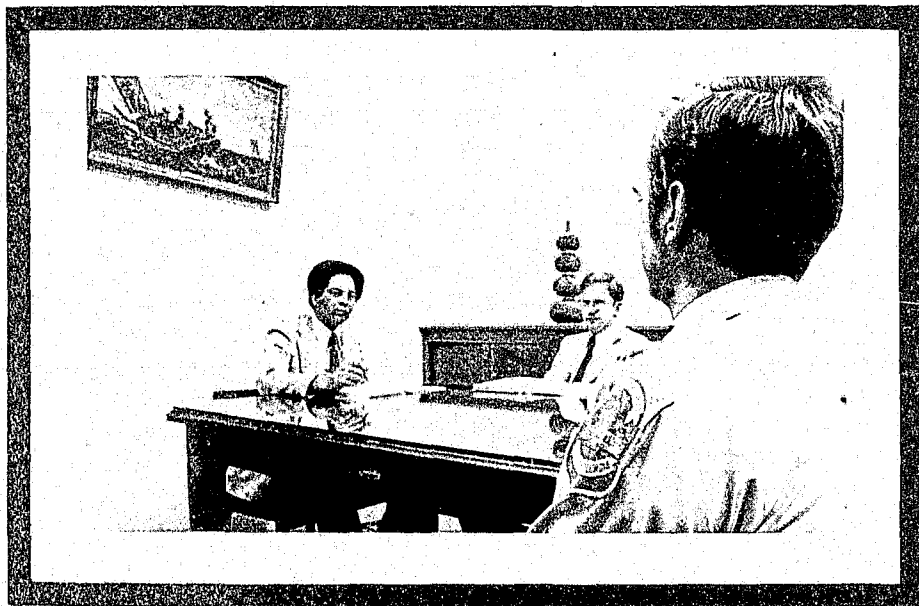
The Major Crimes Branch of the Investigative Services Division completed a long-term undercover project, operated in conjunction with the FBI, known as "HIGHROLLER." By becoming the fences' fence, property valued at \$2 million was recovered and 25 people were charged, all of whom pled guilty.

Field Inspections



Time and Attendance records were one of the many types of inspections conducted by the Field Inspections Division.

Internal Affairs

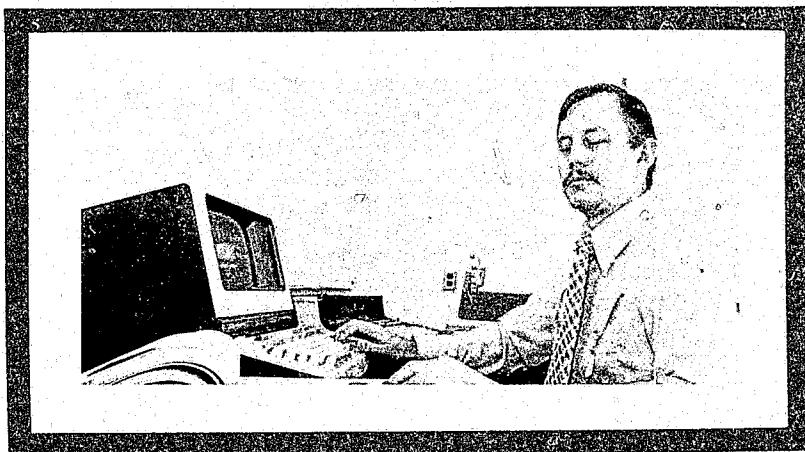


A function of Internal Affairs Division is to investigate attempts to bribe police officers. Here are two IAD investigators advising a member as to the best way to proceed with his case.

Finance

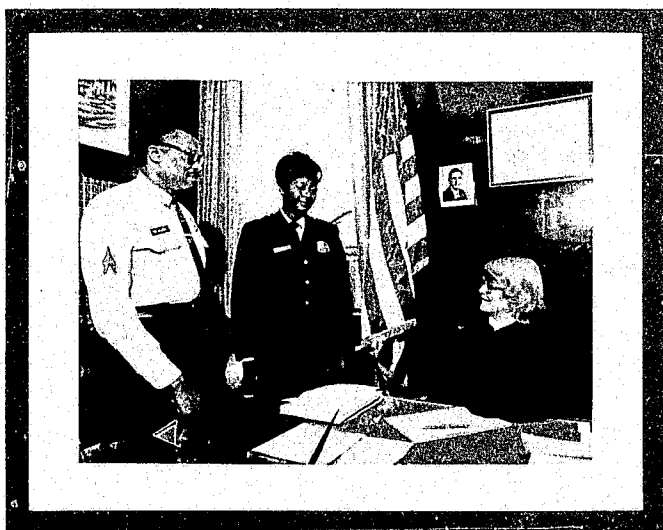
Members establish and maintain an effective financial system to insure proper justification, control and accountability of departmental funds; administer a program to insure effective and efficient payroll accounting procedures; prepare and justify the annual budget; project future financial requirements; and maintain the program planning budgeting system.

The Office of Finance and Management computerized accounting operations. Management will now be able to monitor the expenditure of funds more accurately, and make timely adjustments in order to meet budgetary constraints.



General Counsel

Members organize and plan comprehensive legal programs, advise the Chief of Police and top administrators on the legal aspects of operating policies and training programs, and monitor criminal cases which are lost or affected by incomplete investigation or improper police procedures.



Court Liaison officers confer with a Superior Court judge in chambers.

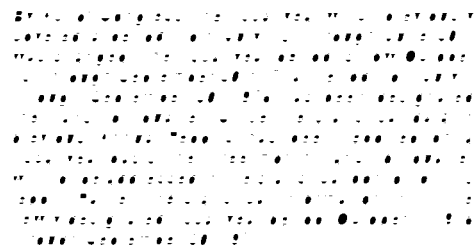


Attorneys from the Office of the General Counsel provided on-the-scene legal advice at many demonstrations and events during the year.

Remembering

Those Police Officers Who Have Given Their Lives In the Performance of Their Duty

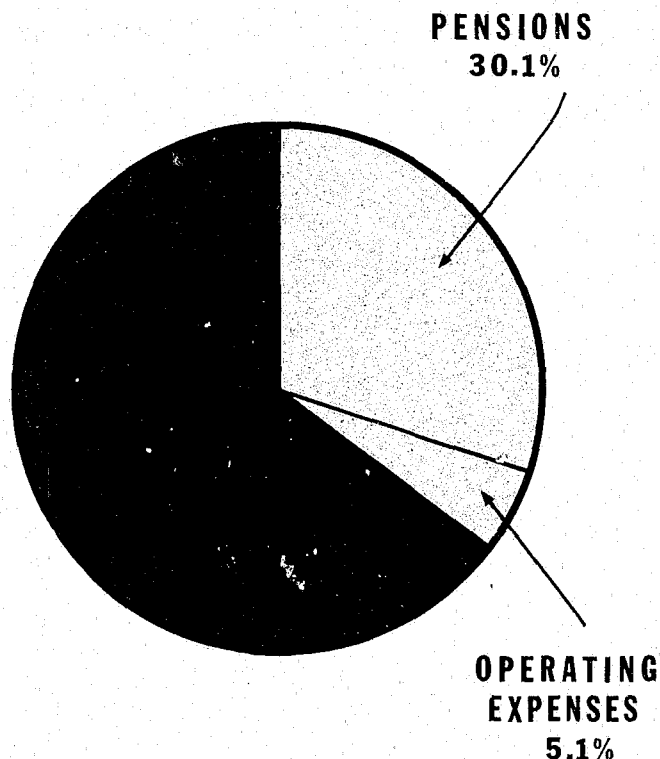
| | | | |
|--------------------------|----------------|--------------------------|----------------|
| Doyle, Francis M. | Dec. 29, 1871 | Grant, Raymond E. | Aug. 14, 1939 |
| Fowler, John H. | Sept. 9, 1884 | Davis, Robert W. | Jan. 1, 1940 |
| Passau, Fritz | May 17, 1889 | Cummins, Charles F., Jr. | June 12, 1940 |
| Crippen, Americus N. | Nov. 5, 1889 | Blackwell, Otho L. | June 13, 1940 |
| Constantine, Adolphus C. | Sept. 10, 1891 | Gaile, Uel M. | Aug. 19, 1940 |
| Slack, Junius B. | Nov. 27, 1891 | Rosenberg, Irving | Feb. 15, 1942 |
| Smith, John J. | July 7, 1904 | Johnston, Charles R. | May 9, 1943 |
| Yetton, William E. | Nov. 9, 1908 | Weston, William J., Jr. | March 5, 1945 |
| Mathews, William H. | March 5, 1909 | Downs, Donald W. | Sept. 1, 1946 |
| Gawen, Willie R. | March 2, 1915 | Hamilton, Harry E. | Nov. 1, 1946 |
| Conrad, John A. | May 21, 1918 | Taylor, Richard H. | Dec. 13, 1946 |
| Dunigan, David T. | May 21, 1918 | Estes, Hubert W. | May 16, 1947 |
| Kidwell, Lester M. | July 11, 1918 | Donoghue, Mortimer P. | Sept. 15, 1948 |
| Wilson, Harry | July 21, 1919 | Beacham, Grady A. | Dec. 2, 1948 |
| Armstrong, James E. | Dec. 20, 1919 | Cassels, George W. | July 12, 1953 |
| McKimmie, Oscar A. | Jan. 17, 1920 | Myers, Lester G. | Nov. 13, 1958 |
| Bradley, Preston E. | Feb. 21, 1921 | Shelton, Harold K. | May 3, 1959 |
| Hayden, Samuel C. | Feb. 27, 1921 | Brereton, Donald | Jan. 7, 1960 |
| Chinn, George D. | Oct. 20, 1921 | Dodson, Terrell M. | April 17, 1960 |
| Keleher, Edmund P. | Jan. 10, 1922 | Hunter, Elmer L. | March 20, 1963 |
| Stange, Frederick G. | Feb. 28, 1923 | Higginbotham, David C. | Dec. 7, 1963 |
| Purcell, John | Oct. 17, 1923 | Handwerk, Robert D. | Jan. 24, 1964 |
| Leisinger, Raymond C. | Aug. 28, 1924 | Donovan, Martin I. | July 9, 1964 |
| Koontz, Claude C. | Nov. 30, 1925 | Willis, Marcus P. | Dec. 27, 1965 |
| Skinner, Earl A. | June 9, 1926 | Stocker, Marvin L. | March 23, 1966 |
| Busch, Leo W. K. | Sept. 28, 1926 | Ponton, Russell W. | May 2, 1967 |
| Helm, James G. | Feb. 11, 1928 | Silvia, Gilbert M. | Nov. 25, 1967 |
| Rupe, Claude O. | Oct. 14, 1928 | Dorsey, Lawrence L. | Feb. 2, 1968 |
| McAuliffe, John F. | Jan. 21, 1929 | Williams, Eugene I. | Feb. 27, 1968 |
| Buchanan, William S. | April 18, 1929 | Williams, Stephen A. | July 2, 1968 |
| McDonald, Harry J. | July 22, 1929 | Ivery, Willie C. | Nov. 15, 1968 |
| Alexander, Edgar P. | Nov. 16, 1929 | Cody, Michael J. | July 14, 1969 |
| Kaylor, Rose H. | Dec. 10, 1929 | Hawfield, David C. | July 14, 1969 |
| Bauer, Frederick W. | June 6, 1930 | Nairn, Allan L. | Nov. 30, 1969 |
| Scoville, Frank J. | Sept. 24, 1930 | Rose, David H. | Feb. 20, 1971 |
| Taylor, Jessie L. | May 17, 1931 | Fisher, Glenn P. | March 10, 1971 |
| Poole, Charles D. | Aug. 4, 1931 | Young, Jerard F. | May 21, 1971 |
| Gelhar, Arthur H. | Aug. 8, 1931 | Sigmon, William L. | May 25, 1971 |
| Swanson, Elmer A. | July 6, 1932 | Harwood, Dana E. | Sept. 25, 1972 |
| Shinault, George D. | Aug. 14, 1932 | Hassell, Ronnie W. | Dec. 2, 1972 |
| Sinclair, Raymond V. | Dec. 28, 1934 | Jones, George D., Jr. | March 24, 1973 |
| Nussbaum, Frank L. | Feb. 16, 1936 | Cobb, Gail A. | Sept. 20, 1974 |
| Jones, Paul W. | March 15, 1936 | Acri, Michael J. | Oct. 16, 1976 |
| Wessells, Ernest T. | April 23, 1938 | Wilson, Bruce W. | April 26, 1977 |
| Conklin, Richard T. | June 5, 1938 | | |



Department Resources

Budget Appropriations

| UNIT | TOTAL BUDGET | PERCENT OF DEPARTMENT BUDGET |
|---------------------------------------|------------------|------------------------------|
| Administration | | |
| Chief of Police | \$ 121,000 | 0.09 |
| Office of the General Counsel | 493,700 | 0.36 |
| Office of Finance and Management | 502,800 | 0.37 |
| Field Operations Bureau | | |
| Field Operations Officer | 274,400 | 0.20 |
| Patrol Division | 56,582,900 | 41.35 |
| Criminal Investigations | 4,480,600 | 3.27 |
| Traffic Division | 1,657,600 | 1.21 |
| Youth Division | 1,377,600 | 1.01 |
| Special Operations | 4,451,000 | 3.25 |
| Administrative Services Bureau | | |
| Administrative Services Officer | 265,900 | 0.19 |
| Community Relations Division | 658,500 | 0.48 |
| Planning & Development | 531,400 | 0.39 |
| Training Division | 1,188,200 | 0.87 |
| Personnel Division | 517,200 | 0.38 |
| Police & Fire Clinic | 991,600 | 0.72 |
| Disciplinary Review Division | 122,400 | 0.09 |
| Technical Services Bureau | | |
| Technical Services Officer | 136,900 | 0.10 |
| Identification & Records | 3,273,300 | 2.39 |
| Communications Division | 3,429,600 | 2.51 |
| Property Division | 1,986,500 | 1.45 |
| Data Processing Division | 1,642,000 | 1.20 |
| Inspectional Services Bureau | | |
| Inspectional Services Officer | 80,300 | 0.06 |
| Internal Affairs Division | 772,500 | 0.56 |
| Field Inspections Division | 540,900 | 0.40 |
| Morals Division | 1,921,300 | 1.41 |
| Investigative Services Division | 690,600 | 0.50 |
| Police Pension and Relief | | |
| Relief Payments | 36,222,300 | 26.47 |
| Payments to Beneficiaries | 5,536,300 | 4.05 |
| Police Support Activity | 6,393,700 | 4.67 |



| | |
|-----------------------------------|----------------------|
| Salaries | \$ 88,690,700 |
| Pensions | 41,120,900 |
| Operating Expenses* | 7,031,400 |
| Total Operating Expenses | 136,843,000 |
| Capital Improvements | |
| Equipment | 0 |
| Total Capital Improvements | 0 |
| Grand Total | \$136,843,000 |
| Supplemental Grant Funding | \$ 68,900 |

*Operating expenses include \$637,700 in retirement refunds budgeted for sworn officers resigning from the department.

Salaries

Police

| SALARY CLASS AND TITLE | SERVICE STEP | | | | | | | | |
|---|--------------|----------|----------|----------|----------|----------|----------|----------|----------|
| | 1 | 2 | 3 | 4 | 5 | 6 | 7 | 8 | 9 |
| Class 1: Police Private | \$12,890 | \$13,279 | \$13,924 | \$14,568 | \$15,596 | \$16,629 | \$17,274 | \$17,919 | \$18,562 |
| Class 3: Detective Assistant Pilot | 16,112 | 16,919 | 17,724 | 18,530 | 19,335 | 20,141 | 20,946 | — | — |
| Class 4: Police Sergeant Detective Sergeant | 17,507 | 18,379 | 19,257 | 20,135 | 21,013 | 21,885 | — | — | — |
| Class 5: Police Lieutenant | 20,235 | 21,252 | 22,263 | 23,274 | 24,285 | — | — | — | — |
| Class 6: Marine Engineer Pilot | 22,108 | 23,207 | 24,313 | 25,413 | — | — | — | — | — |
| Class 7: Police Captain | 23,975 | 25,174 | 26,374 | 27,569 | — | — | — | — | — |
| Class 8: Police Inspector | 27,791 | 29,180 | 30,575 | 31,969 | — | — | — | — | — |
| Class 9: Deputy Chief of Police | 32,614 | 34,819 | 37,031 | 39,242 | — | — | — | — | — |
| Class 10: Assistant Chief of Police | 38,670 | 41,247 | 43,825 | — | — | — | — | — | — |
| Class 11: *Chief of Police | 44,726 | 47,437 | — | — | — | — | — | — | — |

Civilian

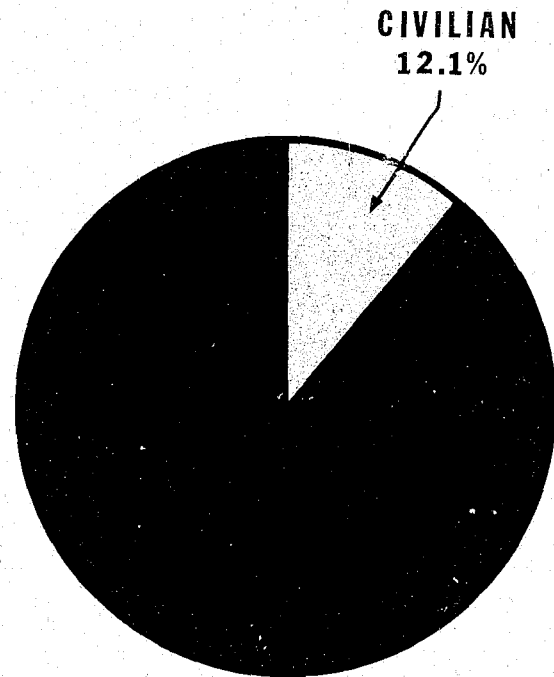
| | SERVICE STEP | | | | | | | | | |
|-------|--------------|----------|----------|----------|----------|----------|----------|----------|----------|----------|
| | 1 | 2 | 3 | 4 | 5 | 6 | 7 | 8 | 9 | 10 |
| GS— 1 | \$ 5,810 | \$ 6,004 | \$ 6,198 | \$ 6,392 | \$ 6,586 | \$ 6,780 | \$ 6,974 | \$ 7,168 | \$ 7,362 | \$ 7,556 |
| 2 | 6,572 | 6,791 | 7,010 | 7,229 | 7,448 | 7,667 | 7,886 | 8,105 | 8,324 | 8,543 |
| 3 | 7,408 | 7,655 | 7,902 | 8,149 | 8,396 | 8,643 | 8,890 | 9,137 | 9,384 | 9,631 |
| 4 | 8,316 | 8,593 | 8,870 | 9,147 | 9,424 | 9,701 | 9,978 | 10,255 | 10,532 | 10,809 |
| 5 | 9,303 | 9,613 | 9,923 | 10,233 | 10,543 | 10,853 | 11,163 | 11,473 | 11,783 | 12,093 |
| 6 | 10,370 | 10,716 | 11,062 | 11,408 | 11,754 | 12,100 | 12,446 | 12,792 | 13,138 | 13,484 |
| 7 | 11,523 | 11,907 | 12,291 | 12,675 | 13,059 | 13,443 | 13,827 | 14,211 | 14,595 | 14,979 |
| 8 | 12,763 | 13,188 | 13,613 | 14,038 | 14,463 | 14,888 | 15,313 | 15,738 | 16,163 | 16,588 |
| 9 | 14,097 | 14,567 | 15,037 | 15,507 | 15,977 | 16,447 | 16,917 | 17,387 | 17,857 | 18,327 |
| 10 | 15,524 | 16,041 | 16,558 | 17,075 | 17,592 | 18,109 | 18,626 | 19,143 | 19,660 | 20,177 |
| 11 | 17,056 | 17,625 | 18,194 | 18,763 | 19,332 | 19,901 | 20,470 | 21,039 | 21,608 | 22,177 |
| 12 | 20,442 | 21,123 | 21,804 | 22,485 | 23,166 | 23,847 | 24,528 | 25,209 | 25,890 | 26,571 |
| 13 | 24,308 | 25,118 | 25,928 | 26,738 | 27,548 | 28,358 | 29,168 | 29,978 | 30,788 | 31,598 |
| 14 | 28,725 | 29,683 | 30,641 | 31,599 | 32,557 | 33,515 | 34,473 | 35,431 | 36,389 | 37,347 |
| 15 | 33,789 | 34,915 | 36,041 | 37,167 | 38,293 | 39,419 | 40,545* | 41,671* | 42,797* | 43,923* |
| 16 | 39,629* | 40,950* | 42,271* | 43,592* | 44,913* | 46,234* | 47,555* | 48,876* | 50,197* | — |
| 17 | 46,423* | 47,970* | 49,517* | 51,064* | 52,611* | — | — | — | — | — |
| 18 | 54,410* | — | — | — | — | — | — | — | — | — |

*The rate of pay is limited by Section 5308 of Title 5 of the United States Code.

Distribution

Civilian

| | |
|--------------------------------|-----|
| Office of the Chief of Police | 35 |
| Field Operations Bureau | 1 |
| Patrol | 55 |
| Criminal Investigations | 14 |
| Traffic | 3 |
| Youth | 6 |
| Special Operations | 11 |
| Total | 90 |
| Administrative Services Bureau | 65 |
| Planning & Development | 18 |
| Total | 83 |
| Inspectional Services Bureau | 18 |
| Technical Services Bureau | 346 |
| Grand Total | 572 |



Police—By Rank and Unit

As of September 30, 1977

| RANK OR GRADE | TOTAL | 1 | 2 | 3 | 4 | 5 | 6 | 7 | FIELD OPER. | CID | TD | YD | SOD | ADM. SERV. | TECH. SERV. | INSP. SERV. | OFFICE OF CHIEF | GENERAL COUNSEL | FIN. AND MAN. |
|---------------------------|-------|-----|-----|-----|-----|-----|-----|-----|----------------|-----|----|----|-----|---------------|----------------|----------------|-----------------------|--------------------|---------------------|
| Chief of Police | 1 | — | — | — | — | — | — | — | — | — | — | — | — | — | — | — | 1 | — | — |
| Assistant Chief of Police | 4 | — | — | — | — | — | — | — | 1 | — | — | — | — | 1 | 1 | 1 | — | — | — |
| Deputy Chief of Police | 8 | — | — | — | — | — | — | — | 1 | 1 | 1 | 1 | 1 | 1 | 1 | 1 | — | — | — |
| Inspector | 24 | 1 | 1 | 1 | 1 | 1 | 1 | 1 | 5 | — | — | — | — | 3 | 4 | 3 | — | 1 | 1 |
| Captain | 46 | 4 | 4 | 4 | 3 | 4 | 4 | 4 | — | 4 | 1 | 1 | 2 | 2 | 3 | 5 | 1 | — | — |
| Lieutenant | 167 | 14 | 16 | 16 | 14 | 15 | 15 | 15 | 1 | 9 | 4 | 3 | 8 | 13 | 13 | 10 | — | 1 | — |
| Sergeant | 521 | 62 | 50 | 51 | 42 | 46 | 32 | 39 | 2 | 20 | 13 | 9 | 29 | 28 | 38 | 54 | 1 | 4 | 1 |
| D/Sergeant | 18 | 1 | — | 2 | — | — | 2 | 1 | — | 6 | — | 2 | — | 2 | 1 | 1 | — | — | — |
| Officer—Men | 2,445 | 355 | 293 | 309 | 258 | 274 | 181 | 235 | — | 8 | 55 | 31 | 169 | 96 | 155 | 18 | — | 8 | — |
| Officer—Women | 274 | 34 | 27 | 42 | 35 | 31 | 19 | 33 | — | 1 | 2 | 2 | 5 | 13 | 28 | — | — | 2 | — |
| Technician | 154 | 15 | 13 | 19 | 14 | 15 | 10 | 17 | — | 6 | 3 | 3 | 3 | 2 | 29 | 4 | — | — | 1 |
| PLC—With Comp | 422 | 27 | 16 | 46 | 27 | 26 | 18 | 26 | — | 148 | 5 | 10 | 1 | 2 | — | 70 | — | — | — |
| PLC—Without Comp | 81 | 15 | 11 | — | — | 5 | 1 | 2 | — | 3 | — | 16 | — | — | — | 28 | — | — | — |
| Total | 4,165 | 528 | 431 | 490 | 394 | 417 | 283 | 373 | 10 | 206 | 84 | 78 | 218 | 163 | 273 | 195 | 3 | 16 | 3 |
| Authorized Strength | 4,200 | | | | | | | | | | | | | | | | | | |
| Actual Strength | 4,165 | | | | | | | | | | | | | | | | | | |
| Total Vacancies | 35 | | | | | | | | | | | | | | | | | | |

of Personnel

Police—By Rank and Assignment

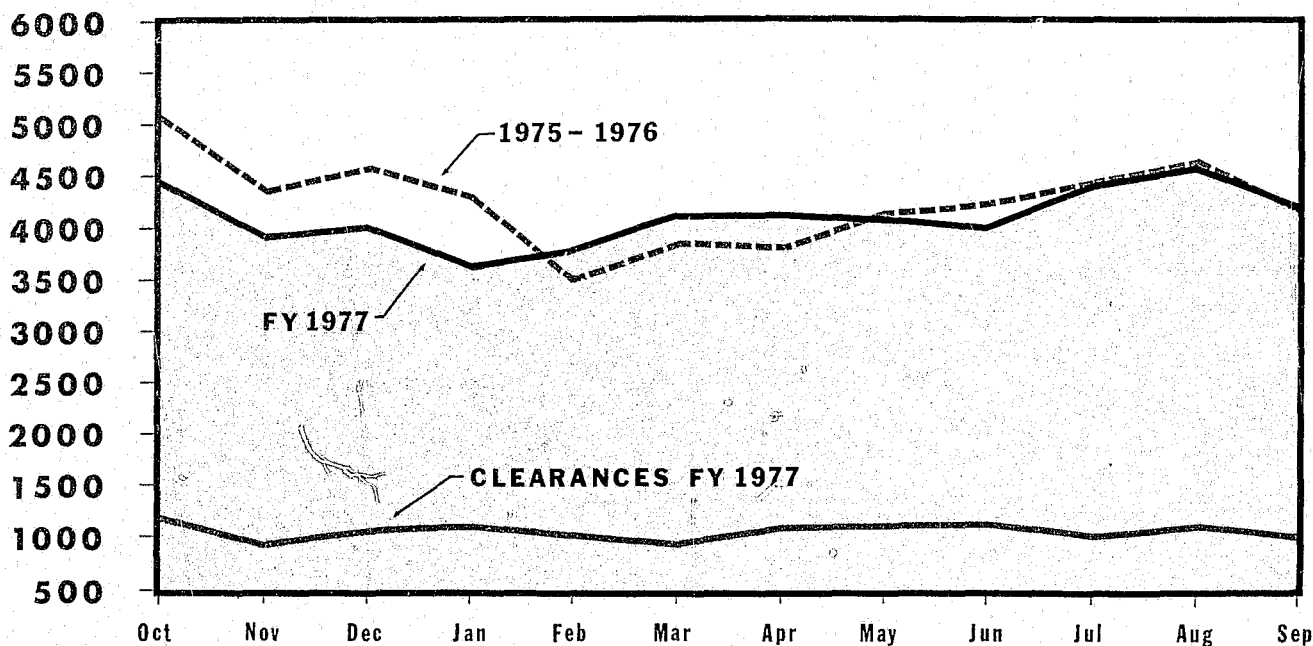
As of September 30, 1977

| ASSIGNMENT | TOTAL | CHIEF | ASSISTANT CHIEF | DEPUTY CHIEF | INSPECTOR | CAPTAIN | LIEUTENANT | SERGEANT | DETECTIVE SERGEANT | OFFICER - MEN | OFFICER - WOMEN | TECHNICIAN | PLAINCLOTHESMAN W/COMP | PLAINCLOTHESMAN W/OUT COMP | CADET |
|----------------------------------|-------|-------|-----------------|--------------|-----------|---------|------------|----------|--------------------|---------------|-----------------|------------|------------------------|----------------------------|-------|
| Administrative | 65 | 1 | 3 | 6 | 15 | 26 | 14 | — | — | — | — | — | — | — | — |
| Supervisory | 137 | — | — | — | 3 | 2 | 71 | 55 | 5 | — | — | 1 | — | — | — |
| Station Clerk | 81 | — | — | — | — | — | — | — | — | 56 | — | 24 | — | 1 | — |
| Patrol Signal System | 21 | — | — | — | — | — | — | — | — | 17 | 4 | — | — | — | — |
| Clerical | 202 | — | — | — | — | — | 2 | 27 | — | 141 | 25 | 7 | — | — | 2 |
| Light Duty | 8 | — | — | — | — | — | 1 | 1 | 1 | 3 | 1 | — | 1 | — | — |
| Community Relations | 150 | — | — | — | — | — | 7 | 12 | — | 120 | 11 | — | — | — | — |
| Radio Operator | 69 | — | — | — | — | — | — | 7 | — | 50 | 12 | — | — | — | 10 |
| Instructor | 39 | — | — | — | — | — | — | 13 | — | 26 | — | — | — | — | — |
| Maintenance (Radio and Vehicles) | 24 | — | — | — | — | — | — | 4 | — | 20 | — | — | — | — | 1 |
| Other | 30 | — | — | — | — | — | — | 4 | — | 20 | 6 | — | — | — | 4 |
| (A) Sub-Total | 826 | 1 | 3 | 6 | 18 | 28 | 95 | 123 | 6 | 453 | 59 | 32 | 1 | 1 | 17 |
| Acting Sergeant | — | — | — | — | — | — | — | — | — | — | — | — | — | — | — |
| Foot Patrol | 96 | — | — | — | — | — | — | — | — | 91 | 5 | — | — | — | 3 |
| Canine Foot Patrol | 13 | — | — | — | — | — | — | 2 | — | — | — | 11 | — | — | — |
| Tactical Foot Patrol (Uniform) | 17 | — | — | — | — | — | — | 2 | — | 13 | 2 | — | — | — | — |
| Scooter Patrol | 112 | — | — | — | — | — | — | 12 | — | 92 | 8 | — | — | — | — |
| Recruits | 9 | — | — | — | — | — | — | — | — | 4 | 5 | — | — | — | — |
| One-Man Scout Car | 313 | — | — | — | — | — | — | 100 | — | 186 | 10 | 17 | — | — | — |
| Two-Man Scout Car | 272 | — | — | — | — | — | — | — | — | 239 | 25 | 8 | — | — | — |
| Tactical Patrol (Vehicle) | 80 | — | — | — | — | — | — | 9 | — | 68 | 3 | — | — | — | — |
| Transport Vehicle | 50 | — | — | — | — | — | — | — | — | 49 | 1 | — | — | — | — |
| Traffic Car | 28 | — | — | — | — | — | — | 4 | — | 24 | — | — | — | — | — |
| Motorcycle | 8 | — | — | — | — | — | — | — | — | 8 | — | — | — | — | — |
| Criminal Investigation | 261 | — | — | — | — | — | 5 | 14 | 4 | 16 | 5 | 1 | 191 | 25 | — |
| Vice Investigation | 145 | — | — | — | — | 1 | 3 | 23 | — | 34 | 6 | — | 54 | 24 | — |
| Casual Clothes Patrol | 74 | — | — | — | — | — | 2 | 6 | — | 62 | 4 | — | — | — | — |
| Plants | — | — | — | — | — | — | — | — | — | — | — | — | — | — | — |
| Traffic Post | — | — | — | — | — | — | — | — | — | — | — | — | — | — | — |
| Identification Officer | 66 | — | — | — | — | — | — | 2 | — | 43 | 1 | 20 | — | — | 1 |
| Helicopter Patrol | 16 | — | — | — | — | — | — | 2 | — | 14 | — | — | — | — | — |
| Harbor Patrol | 15 | — | — | — | — | — | — | 2 | — | 13 | — | — | — | — | — |
| Other Investigation | 50 | — | — | — | — | 4 | 1 | 22 | 1 | — | — | — | 22 | — | — |
| Other | 44 | — | — | — | — | — | — | 11 | — | 32 | 1 | — | — | — | — |
| (B) Sub-Total | 1,669 | — | — | — | — | 5 | 11 | 211 | 5 | 988 | 76 | 57 | 267 | 49 | 4 |
| (C) Leave/Day-Off Sub-Total | 1,542 | — | 1 | 2 | 6 | 10 | 60 | 186 | 7 | 918 | 117 | 64 | 143 | 28 | 4 |
| CDU | — | — | — | — | — | — | — | — | — | — | — | — | — | — | — |
| Training | 11 | — | — | — | — | — | — | — | — | 7 | 1 | 1 | 2 | — | — |
| School | 11 | — | — | — | — | — | 1 | — | — | 8 | — | — | 2 | — | — |
| Official Visit | — | — | — | — | — | — | — | — | — | — | — | — | — | — | — |
| Other | 106 | — | — | — | — | 3 | — | 1 | — | 71 | 21 | — | 7 | 3 | — |
| (D) Sub-Total | 128 | — | — | — | — | 3 | 1 | 1 | — | 86 | 22 | 1 | 11 | 3 | — |
| (E) Total Command (A+B+C+D) | 4,165 | 1 | 4 | 8 | 24 | 46 | 167 | 521 | 18 | 2,445 | 274 | 154 | 422 | 81 | 25 |
| (F) Operating Strength (A+B) | 2,495 | 1 | 3 | 6 | 18 | 33 | 106 | 334 | 11 | 1,441 | 135 | 89 | 268 | 50 | 21 |

Crime and Clearance

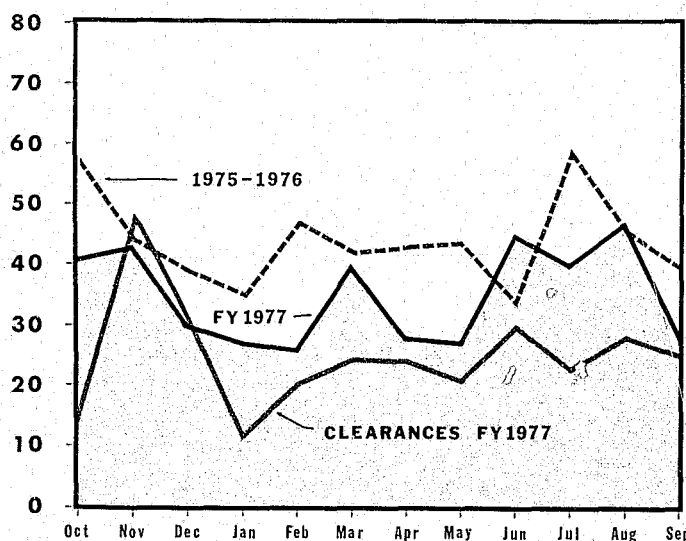
Index Crime

TOTAL CRIME INDEX OFFENSES



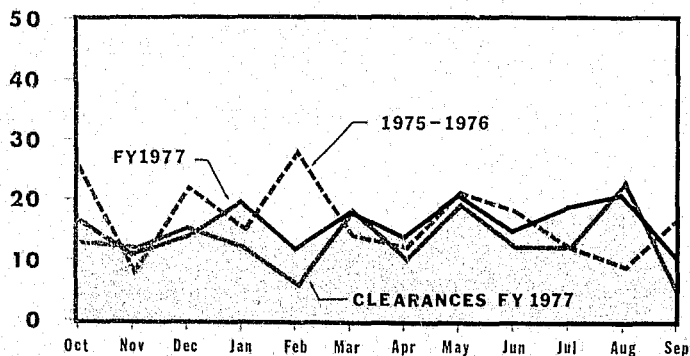
Reported offenses totaled 49,789 in FY 1977 -- down 3.0% from 51,493 in the corresponding months of 1975-1976. This is the lowest total for the comparable twelve-month period since 1967. (The city peak was 86,208 in 1970.) Decreases in Crime Against Persons outpaced decreases in Crime Against Property. Seasonal variation in crime patterns was not as pronounced as in former years, blurring the distinction between traditional summer peaks after winter lows. Solved cases totaled 12,940 for a clearance rate of 26.0%.

Rape



Reported rape was reduced 20.0% from last year, 423 compared to 530, continuing the overall downward trend and making this year's incidence the lowest in eight years. Better than three out of five cases were cleared this year.

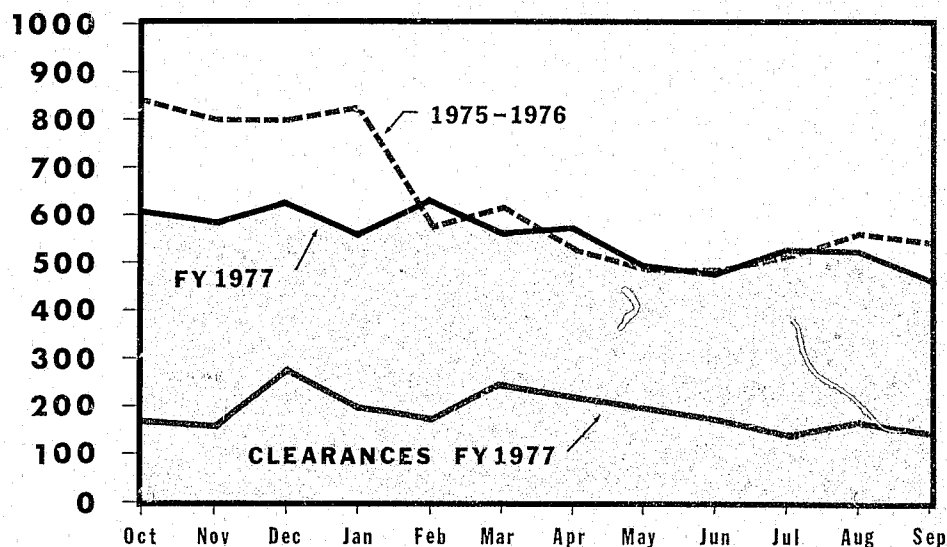
Homicide



Homicide's total of 193 cases was the first under 200 reported for any twelve-month period since the late 1960's. Clearance rates generally run about 80% yearly but may exceed 100% in months when investigation is successfully concluded on cases pending from previous months.

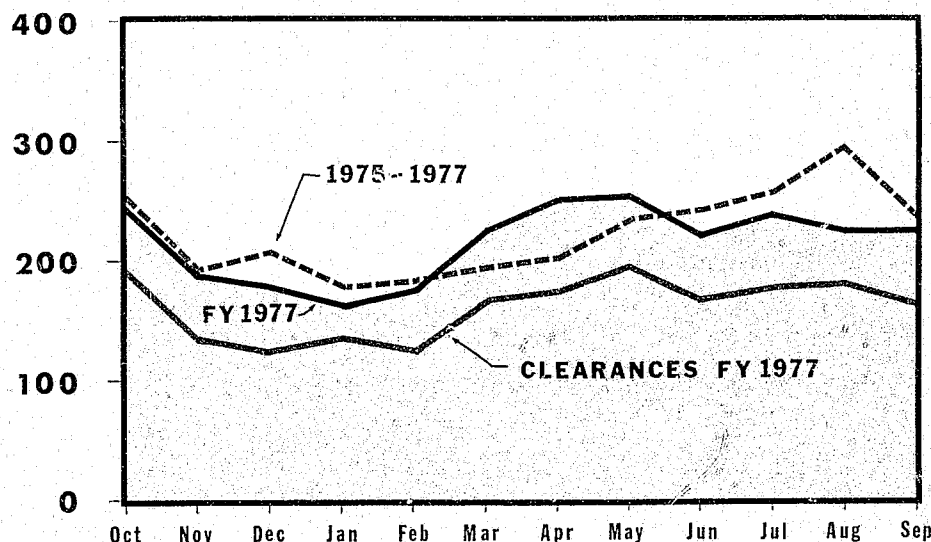
Robbery

Robbery at 6,731 was down 11.8% - 921 fewer than last year. The bulk of the decrease came from the continuing erosion of the 800-a-month nonseasonal plateau in parts of the previous two years. The current incidence, averaging 561 robberies a month, is the lowest in ten years and 35.0% of all robberies were solved.



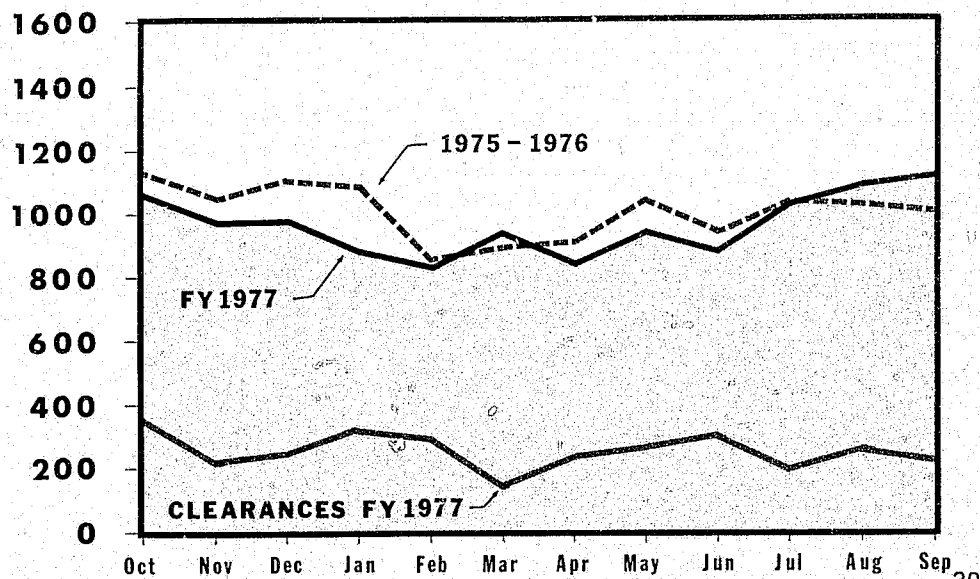
Aggravated Assault

Aggravated assault has decreased each year since 1972. This year's total, 2,619 compared to 2,700 last year, is the lowest since 1965. Three out of four cases were cleared.

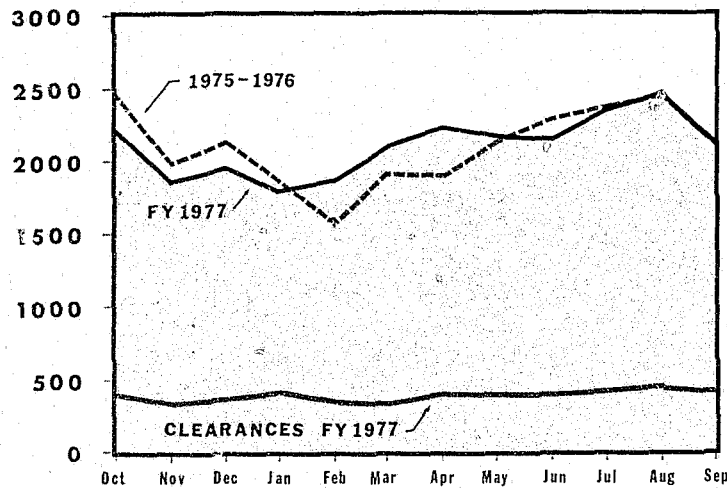


Burglary

There were 11,649 burglaries this year compared to 12,128 last year. The current incidence is the lowest since 1966 and less than half that of the crime peak in 1970. The clearance rate has steadily improved in the 1970's from one in seven to one in four.

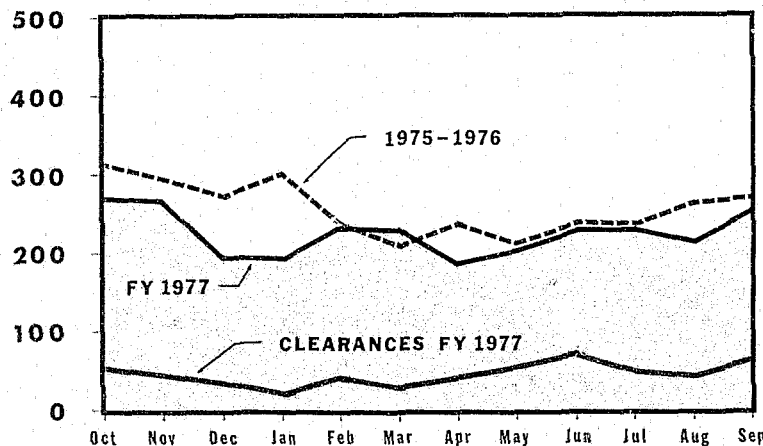


Larceny



Larceny is the only Index category to increase in FY 1977 over the corresponding months in 1975-1976 -- up 1.3% from 25,181 to 25,446. This offense has ranged between 22,000 and 27,000 in the last six years. Like burglary, larceny usually peaks in the summer time. This year's peak in August was 2,473, well below several 3,000 months in 1969 and 1970. Only 17.8% of all larcenies were cleared this year, the lowest rate of any Index category.

Auto Theft



Auto theft has been decreasing each year for seven years and continues to record new lows. At 2,728, this year's incidence is the lowest since 1962. During three months of this year, less than 200 thefts occurred. The last time fewer than 200 autos were stolen in a single month was in 1962. The clearance rate is also improving, from less than one in ten for the early 1970's to better than one in five this year.

| CATEGORY | INDEX CRIME OFFENSES | | | INDEX CRIME CLEARANCES | | | | |
|--------------------|------------------------------------|------------------------------------|--------------------|------------------------------------|---------|------------------------------------|---------|----------------|
| | OCT. 1975 THROUGH SEPT. 1976 | OCT. 1976 THROUGH SEPT. 1977 | *PERCENT CHANGE | OCT. 1975 THROUGH SEPT. 1976 | | OCT. 1976 THROUGH SEPT. 1977 | | RATE CHANGE |
| | | | | TOTAL | PERCENT | TOTAL | PERCENT | |
| Homicide | 201 | 193 | -3.5 | 165 | 82.1 | 157 | 81.3 | -0.8 |
| Rape | 530 | 423 | -20.0 | 373 | 70.4 | 302 | 71.4 | +1.0 |
| Robbery | 7,652 | 6,731 | -11.8 | 2,542 | 33.2 | 2,355 | 35.0 | +1.8 |
| Aggravated Assault | 2,700 | 2,619 | -2.7 | 1,995 | 73.9 | 1,949 | 74.4 | +0.5 |
| Burglary | 12,128 | 11,649 | -3.7 | 3,056 | 25.2 | 3,093 | 26.6 | +1.4 |
| Larceny | 25,181 | 25,446 | +1.3 | 4,353 | 17.3 | 4,524 | 17.8 | +0.5 |
| Auto Theft | 3,101 | 2,728 | -11.8 | 628 | 20.3 | 560 | 20.5 | +0.2 |
| TOTAL | 51,493 | 49,789 | -3.0 | 13,112 | 25.5 | 12,940 | 26.0 | +0.5 |

*Percent change includes extra day in February 1976.

Crime Data by Police District

| CLASSIFICATION OF OFFENSES | TOTAL | 1 | 2 | 3 | 4 | 5 | 6 | 7 |
|------------------------------------|--------|--------|--------|--------|-------|-------|-------|-------|
| Criminal Homicide | | | | | | | | |
| Murder and Non-Negligent | | | | | | | | |
| Manslaughter | 193 | 27 | 4 | 53 | 22 | 34 | 17 | 36 |
| Manslaughter by Negligence | 28 | 2 | 3 | 1 | 7 | 0 | 3 | 6 |
| Rape (By Force) | 358 | 41 | 16 | 77 | 68 | 64 | 42 | 50 |
| Assault with Intent to Rape | 65 | 9 | 3 | 14 | 7 | 9 | 4 | 19 |
| Carnal Knowledge | 59 | 10 | — | 10 | 8 | 9 | 6 | 16 |
| Attempt Carnal Knowledge | 1 | — | — | — | — | — | 1 | — |
| Total Rape Offenses | 483 | 60 | 19 | 101 | 83 | 82 | 53 | 85 |
| Assault | | | | | | | | |
| By Gun | 842 | 129 | 29 | 193 | 120 | 134 | 98 | 139 |
| By Knife or Cutting Tool | 829 | 168 | 52 | 212 | 78 | 132 | 78 | 109 |
| By Other Dangerous Weapon | 859 | 211 | 58 | 173 | 96 | 109 | 79 | 133 |
| By Hands, Fists, etc. (Aggravated) | 89 | 13 | 5 | 18 | 8 | 15 | 13 | 17 |
| Other Assaults (Non-Aggravated) | 1,556 | 356 | 197 | 217 | 173 | 188 | 179 | 246 |
| Police Assaults | 174 | 34 | 25 | 43 | 16 | 26 | 7 | 23 |
| Total Assault Offenses | 4,349 | 911 | 366 | 856 | 491 | 604 | 454 | 667 |
| Robbery | | | | | | | | |
| Highways, Streets, etc. | 4,306 | 1,004 | 335 | 967 | 461 | 668 | 288 | 583 |
| Commercial House | 707 | 137 | 65 | 91 | 147 | 152 | 42 | 73 |
| Gas or Service Station | 209 | 44 | 13 | 18 | 32 | 49 | 23 | 30 |
| Chain Store | 72 | 17 | 10 | 2 | 8 | 14 | 10 | 11 |
| Residence (Anywhere on Premises) | 459 | 51 | 12 | 98 | 58 | 82 | 52 | 106 |
| Bank, Credit Union and Other | 60 | 25 | 21 | 3 | 1 | 7 | — | 3 |
| Miscellaneous | 918 | 168 | 52 | 231 | 135 | 128 | 70 | 134 |
| Total Robbery Offenses | 6,731 | 1,446 | 508 | 1,410 | 842 | 1,100 | 485 | 940 |
| Armed, Any Weapon | 2,610 | 615 | 201 | 542 | 307 | 384 | 186 | 375 |
| Strong Arm, No Weapon | 4,121 | 831 | 307 | 868 | 535 | 716 | 299 | 565 |
| Burglary | | | | | | | | |
| Residential, Night | 2,073 | 255 | 212 | 285 | 299 | 319 | 276 | 427 |
| Residential, Day | 5,172 | 683 | 534 | 818 | 867 | 665 | 597 | 1,008 |
| Residential, Unknown | 51 | 10 | — | — | 27 | — | 14 | — |
| Non-Residential, Night | 2,002 | 380 | 280 | 289 | 338 | 342 | 161 | 212 |
| Non-Residential, Day | 2,307 | 477 | 463 | 353 | 336 | 330 | 133 | 215 |
| Non-Residential, Unknown | 44 | 14 | 9 | 5 | 5 | 7 | — | 4 |
| Total Burglary Offenses | 11,649 | 1,819 | 1,498 | 1,750 | 1,872 | 1,663 | 1,181 | 1,866 |
| Unlawful Entry, No Force | 3,350 | 530 | 661 | 609 | 382 | 417 | 269 | 482 |
| Forcible Entry | 7,560 | 1,181 | 726 | 1,051 | 1,347 | 1,160 | 794 | 1,301 |
| Attempt | 739 | 108 | 111 | 90 | 143 | 86 | 118 | 83 |
| Larceny | | | | | | | | |
| Pocket Picking | 760 | 220 | 220 | 195 | 47 | 33 | 12 | 33 |
| Purse Snatching | 1,734 | 368 | 144 | 306 | 245 | 242 | 133 | 296 |
| Shoplifting | 2,103 | 915 | 593 | 156 | 151 | 114 | 72 | 102 |
| From Auto, Not Accessory | 7,012 | 1,885 | 1,030 | 1,259 | 874 | 924 | 458 | 582 |
| Auto Parts, Accessories | 5,266 | 966 | 734 | 615 | 888 | 919 | 496 | 648 |
| Bicycles | 1,531 | 285 | 386 | 205 | 217 | 187 | 102 | 149 |
| From Buildings | 5,068 | 1,087 | 1,818 | 798 | 432 | 394 | 205 | 334 |
| From Coin Machine | 339 | 59 | 61 | 41 | 63 | 33 | 29 | 53 |
| All Other | 1,633 | 279 | 270 | 182 | 245 | 243 | 193 | 221 |
| Total Larceny Offenses | 25,446 | 6,064 | 5,256 | 3,757 | 3,162 | 3,089 | 1,700 | 2,418 |
| \$200 and Over | 2,999 | 717 | 808 | 494 | 279 | 353 | 130 | 218 |
| \$50 to \$200 | 9,433 | 2,131 | 2,046 | 1,316 | 1,247 | 1,246 | 606 | 841 |
| Under \$50 | 13,014 | 3,216 | 2,402 | 1,947 | 1,636 | 1,490 | 964 | 1,359 |
| Auto Theft | 2,728 | 464 | 342 | 389 | 369 | 500 | 299 | 365 |
| Total Part 1 Offenses | 49,817 | 10,393 | 7,774 | 8,047 | 6,651 | 6,855 | 3,999 | 6,098 |
| Total Crime Index Offenses | 49,789 | 10,391 | 7,771 | 8,046 | 6,644 | 6,849 | 3,996 | 6,092 |
| Total Part 2 Offenses | 17,179 | 3,697 | 2,580 | 4,207 | 1,706 | 1,841 | 1,399 | 1,749 |
| Grand Total (Part 1 and Part 2) | 66,996 | 14,090 | 10,354 | 12,254 | 8,357 | 8,696 | 5,398 | 7,847 |

Arrests

Adults

| CLASSIFICATION OF OFFENSES | | AGE | | | | | | | | | | | | | | | | RACE | | |
|---|-----|-----|-----|-------|-------|-------|-------|-------|-------|-------|-------|-------|-------|-------|--------------|---------------------|-------|-----------|---------------|--------|
| | | Sex | 18 | 19 | 20 | 21 | 22 | 23 | 24 | 25-29 | 30-34 | 35-39 | 40-44 | 45-49 | 50 & Over | Age Not Reported | Total | White | Non- White | |
| Murder and Nonnegligent Manslaughter | 01a | M | 15 | 9 | 5 | 5 | 11 | 9 | 7 | 33 | 20 | 11 | 11 | 5 | 10 | — | 151 | | | |
| | | F | 1 | — | — | 1 | 1 | 1 | 2 | 5 | 1 | 3 | 2 | 1 | 4 | — | 22 | 4 | 169 | |
| Manslaughter by Negligence | 01b | M | 1 | — | — | 1 | — | 2 | 1 | 3 | 3 | 4 | 2 | 1 | 2 | — | 20 | | | |
| | | F | 1 | — | — | — | — | — | — | — | — | — | — | 1 | — | — | 2 | * | * | |
| Forcible Rape | 02 | M | 10 | 6 | 13 | 10 | 9 | 6 | 9 | 36 | 20 | 9 | 5 | 3 | 4 | 2 | 142 | | | |
| | | F | — | — | 1 | — | — | 1 | — | — | — | — | 1 | 1 | — | — | 4 | 2 | 144 | |
| Robbery | 03 | M | 157 | 123 | 120 | 95 | 102 | 76 | 71 | 297 | 100 | 54 | 20 | 11 | 10 | 8 | 1,244 | | | |
| | | F | 13 | 15 | 19 | 22 | 18 | 14 | 16 | 30 | 9 | 3 | — | — | 1 | 1 | 161 | 52 | 1,353 | |
| Aggravated Assault | 04 | M | 43 | 45 | 53 | 46 | 45 | 42 | 49 | 223 | 174 | 158 | 84 | 58 | 150 | 9 | 1,179 | | | |
| | | F | 12 | 7 | 4 | 11 | 9 | 7 | 16 | 48 | 39 | 29 | 18 | 16 | 23 | 1 | 240 | 66 | 1,353 | |
| Burglary—Breaking or Entering | 05 | M | 134 | 98 | 80 | 77 | 76 | 58 | 63 | 209 | 92 | 49 | 29 | 21 | 20 | 10 | 1,016 | | | |
| | | F | 7 | 2 | 2 | 2 | 2 | 3 | 2 | 4 | 5 | 3 | — | 1 | — | 1 | 34 | 70 | 980 | |
| Larceny—Theft (Except Motor Vehicle Theft) | 06 | M | 214 | 197 | 151 | 115 | 134 | 104 | 122 | 459 | 236 | 143 | 88 | 57 | 71 | 12 | 2,103 | | | |
| | | F | 60 | 45 | 37 | 53 | 42 | 34 | 33 | 144 | 54 | 44 | 16 | 16 | 29 | 2 | 609 | 287 | 2,425 | |
| Motor Vehicle Theft | 07 | M | 61 | 37 | 32 | 37 | 35 | 20 | 26 | 80 | 45 | 30 | 15 | 5 | 8 | 6 | 437 | | | |
| | | F | 8 | 6 | 3 | 8 | 6 | 3 | 2 | 13 | 6 | 2 | 2 | 1 | — | — | 60 | 52 | 445 | |
| Other Assaults | 08 | M | 37 | 27 | 39 | 32 | 43 | 33 | 41 | 157 | 96 | 75 | 43 | 28 | 39 | 8 | 698 | | | |
| | | F | 6 | 10 | 4 | 2 | 4 | 6 | 4 | 20 | 12 | 11 | 4 | 2 | — | — | 85 | 102 | 681 | |
| Arson | 09 | M | 3 | 1 | 1 | 2 | 2 | 1 | — | 5 | 13 | 2 | 2 | 3 | 5 | — | 40 | | | |
| | | F | 1 | — | — | — | 1 | — | — | 4 | 6 | 2 | — | — | — | — | 14 | 10 | 44 | |
| Forgery & Counterfeiting | 10 | M | 8 | 8 | 7 | 12 | 14 | 11 | 10 | 67 | 23 | 11 | 4 | 5 | 2 | — | 182 | | | |
| | | F | 4 | 3 | 4 | 7 | 6 | 12 | 5 | 28 | 12 | 1 | 4 | 3 | 1 | — | 90 | 31 | 241 | |
| Fraud | 11 | M | 6 | 8 | 10 | 10 | 7 | 9 | 9 | 71 | 27 | 24 | 23 | 6 | 12 | — | 222 | | | |
| | | F | 4 | 6 | 3 | 6 | 7 | 4 | 4 | 17 | 19 | 6 | 5 | 2 | 3 | — | 86 | 55 | 253 | |
| Embezzlement | 12 | M | 2 | 2 | 4 | 8 | 3 | 8 | 8 | 10 | 5 | 12 | 8 | 1 | — | — | 71 | | | |
| | | F | — | 2 | 3 | 3 | 1 | 1 | 2 | 10 | 2 | 1 | 2 | 1 | 2 | — | 30 | 13 | 88 | |
| Stolen Property; Buying, Receiving, Possessing | 13 | M | 46 | 36 | 29 | 25 | 30 | 19 | 12 | 79 | 43 | 33 | 15 | 13 | 16 | 2 | 398 | | | |
| | | F | 3 | 5 | 4 | 3 | 2 | 4 | 3 | 18 | 4 | 4 | 1 | — | 1 | — | 52 | 32 | 418 | |
| Vandalism | 14 | M | 28 | 26 | 30 | 34 | 25 | 28 | 32 | 100 | 62 | 35 | 13 | 15 | 24 | 3 | 455 | | | |
| | | F | 5 | 2 | 4 | 3 | 1 | 1 | 3 | 5 | 4 | 2 | 1 | — | 2 | 1 | 34 | 76 | 413 | |
| Weapons; Carrying, Possessing, etc. | 15 | M | 56 | 33 | 37 | 52 | 60 | 57 | 57 | 224 | 150 | 92 | 81 | 60 | 90 | 3 | 1,052 | | | |
| | | F | 2 | 4 | 6 | 8 | 7 | 10 | 7 | 26 | 16 | 17 | 9 | 7 | 10 | — | 129 | 143 | 1,038 | |
| Prostitution and Commercialized Vice | 16 | M | 14 | 8 | 11 | 25 | 17 | 23 | 27 | 90 | 52 | 51 | 31 | 18 | 37 | 2 | 406 | | | |
| | | F | 79 | 86 | 93 | 122 | 111 | 86 | 119 | 243 | 46 | 12 | 5 | 2 | 1 | 2 | 1,007 | 398 | 1,015 | |
| Sex Offenses (Except Forcible Rape and Prostitution) | 17 | M | 9 | 6 | 3 | 7 | 10 | 8 | 12 | 41 | 24 | 20 | 19 | 5 | 17 | 2 | 183 | | | |
| | | F | 4 | 3 | 1 | 7 | 8 | 9 | 4 | 11 | 2 | — | — | — | — | — | 49 | 51 | 181 | |
| Drug Abuse Violations | 18 | M | 127 | 108 | 114 | 130 | 132 | 121 | 128 | 532 | 278 | 177 | 78 | 48 | 45 | 7 | 2,025 | | | |
| | | F | 12 | 22 | 13 | 29 | 23 | 22 | 23 | 106 | 32 | 26 | 12 | 2 | 7 | 1 | 330 | 272 | 2,083 | |
| Gambling | 19 | M | 30 | 32 | 18 | 19 | 28 | 22 | 24 | 104 | 90 | 86 | 86 | 83 | 238 | 3 | 863 | | | |
| | | F | — | — | 4 | 2 | 3 | 2 | 2 | 12 | 15 | 8 | 1 | 8 | 32 | — | 89 | 52 | 900 | |
| Offenses Against Family and Children | 20 | M | — | — | — | — | — | — | — | 2 | 3 | — | 1 | — | — | — | 6 | | | |
| | | F | — | — | — | — | — | — | 1 | — | 1 | — | — | — | — | — | 2 | — | 8 | |
| Driving Under the Influence** | 21 | M | — | — | — | — | — | — | — | — | — | — | — | — | — | — | 3,968 | 3,968 | * | |
| | | F | — | — | — | — | — | — | — | — | — | — | — | — | — | — | — | — | * | |
| Liquor Laws | 22 | M | 4 | — | 4 | 3 | 8 | 6 | 6 | 21 | 15 | 20 | 18 | 14 | 86 | — | 205 | | | |
| | | F | 2 | 1 | 9 | 5 | 5 | 5 | 5 | 13 | 2 | 6 | 1 | 2 | 9 | — | 65 | 44 | 226 | |
| Drunkenness | 23 | M | — | — | — | — | — | — | — | — | — | — | 1 | — | — | — | 1 | | | |
| | | F | — | — | — | — | — | 1 | — | 1 | — | — | — | — | — | — | 2 | 2 | 1 | |
| Disorderly Conduct | 24 | M | 277 | 234 | 253 | 308 | 255 | 242 | 286 | 1,165 | 647 | 406 | 251 | 179 | 206 | 51 | 4,760 | | | |
| | | F | 53 | 52 | 91 | 83 | 93 | 88 | 105 | 232 | 98 | 60 | 40 | 21 | 19 | 11 | 1,046 | 1,012 | 4,794 | |
| Vagrancy | 25 | M | — | 2 | — | — | — | 1 | 1 | — | 2 | 1 | 1 | 1 | 1 | — | 10 | | | |
| | | F | — | — | — | — | — | — | — | — | — | — | — | — | — | — | — | 4 | 6 | |
| All Other Offenses (Except Traffic) | 26 | M | 106 | 90 | 99 | 117 | 141 | 138 | 158 | 586 | 370 | 250 | 183 | 133 | 206 | 34 | 2,611 | | | |
| | | F | 18 | 24 | 18 | 32 | 28 | 28 | 32 | 112 | 59 | 33 | 19 | 14 | 28 | 6 | 451 | 540 | 2,522 | |
| TOTAL | | | | 1,683 | 1,431 | 1,436 | 1,579 | 1,565 | 1,386 | 1,549 | 5,696 | 3,034 | 2,026 | 1,255 | 874 | 1,471 | 4,156 | 29,141*** | 3,370 | 21,781 |

* Race data not available

** Male and female data not available

*** Fugitive from justice not included

Arrests

Juveniles

| CLASSIFICATION OF OFFENSES | | | AGE | | | | | | | RACE | |
|--|-----|--------|---------|--------------------|-----------|-----------|-----------|-----------|------------|----------------------|-------|
| | | | Sex | 10 and Under | 11-12 | 13-14 | 15 | 16 | 17 | Total Under 18 | White |
| Murder and Nonnegligent Manslaughter | 01a | M F | — — | — — | 1 2 | 5 — | 10 — | 5 — | 21 2 | — | 23 |
| Manslaughter by Negligence | 01b | M F | — — | — — | — — | 1 — | 1 — | — — | 2 — | * | * |
| Forcible Rape | 02 | M F | — — | 1 — | 11 — | 7 — | 9 1 | 13 — | 41 1 | — | 42 |
| Robbery | 03 | M F | 9 2 | 38 11 | 135 11 | 140 7 | 167 5 | 172 5 | 661 41 | 6 | 696 |
| Aggravated Assault | 04 | M F | 8 1 | 30 5 | 52 13 | 29 15 | 53 15 | 59 13 | 231 62 | — | 293 |
| Burglary—Breaking or Entering | 05 | M F | 38 2 | 100 9 | 285 8 | 172 11 | 183 7 | 181 6 | 959 43 | 29 | 973 |
| Larceny—Theft (Except Motor Vehicle Theft) | 06 | M F | 19 1 | 84 9 | 255 31 | 188 32 | 210 37 | 237 23 | 993 133 | 24 | 1,102 |
| Motor Vehicle Theft | 07 | M F | 2 — | 8 — | 67 3 | 56 6 | 78 — | 69 4 | 280 13 | 24 | 269 |
| Other Assaults | 08 | M F | 3 2 | 9 8 | 64 20 | 54 14 | 57 13 | 51 6 | 238 63 | 4 | 297 |
| Arson | 09 | M F | 1 — | 3 — | 16 2 | 14 4 | 7 3 | 4 — | 45 9 | — | 54 |
| Forgery and Counterfeiting | 10 | M F | — 1 | — — | 3 2 | — 3 | 1 6 | 9 10 | 13 22 | 2 | 33 |
| Fraud | 11 | M F | — — | 1 — | 1 — | — 1 | 1 1 | 3 — | 6 2 | 2 | 6 |
| Embezzlement | 12 | M F | — — | — — | — — | — — | 1 — | — — | 1 — | — | 1 |
| Stolen Property; Buying, Receiving, Possessing | 13 | M F | — — | 8 — | 28 — | 22 1 | 40 2 | 32 2 | 130 5 | 6 | 129 |
| Vandalism | 14 | M F | 14 1 | 31 1 | 43 6 | 26 2 | 26 5 | 41 4 | 181 19 | 6 | 194 |
| Weapons; Carrying, Possessing, etc. | 15 | M F | 1 — | 1 — | 10 — | 19 1 | 13 — | 23 1 | 67 2 | 1 | 68 |
| Prostitution and Commercialized Vice | 16 | M F | — — | — 1 | — 3 | — 2 | 2 6 | 3 15 | 5 27 | 6 | 26 |
| Sea Offenses (Except Forcible Rape and Prostitution) | 17 | M F | 10 — | 23 2 | 19 1 | 14 — | 4 — | 7 — | 77 3 | 4 | 76 |
| Drug Abuse Violations | 18 | M F | — — | 5 — | 25 8 | 43 8 | 67 10 | 94 8 | 234 34 | 34 | 234 |
| Gambling | 19 | M F | — — | — — | 1 — | 2 — | 3 — | 2 — | 8 — | — | 8 |
| Offenses Against Family and Children | 20 | M F | — — | — — | — — | — — | — — | — — | — — | — | — |
| Driving Under the Influence | 21 | M F | — — | — — | — — | — — | — — | — — | — — | — | — |
| Liquor Laws | 22 | M F | — — | — — | — — | — — | — — | — — | — — | — | — |
| Drunkenness | 23 | M F | — — | — — | — — | — — | — — | — — | — — | — | — |
| Disorderly Conduct | 24 | M F | — — | 1 1 | 20 8 | 13 9 | 38 11 | 56 3 | 128 32 | 4 | 156 |
| Vagrancy | 25 | M F | — — | — — | — — | — — | — — | — — | — — | — | — |
| All Other Offenses (Except Traffic) | 26 | M F | 5 — | 11 3 | 54 9 | 40 5 | 51 7 | 60 3 | 221 27 | 2 | 246 |
| TOTAL | | | 120 | 404 | 1,217 | 966 | 1,151 | 1,224 | 5,082** | 154 | 4,926 |

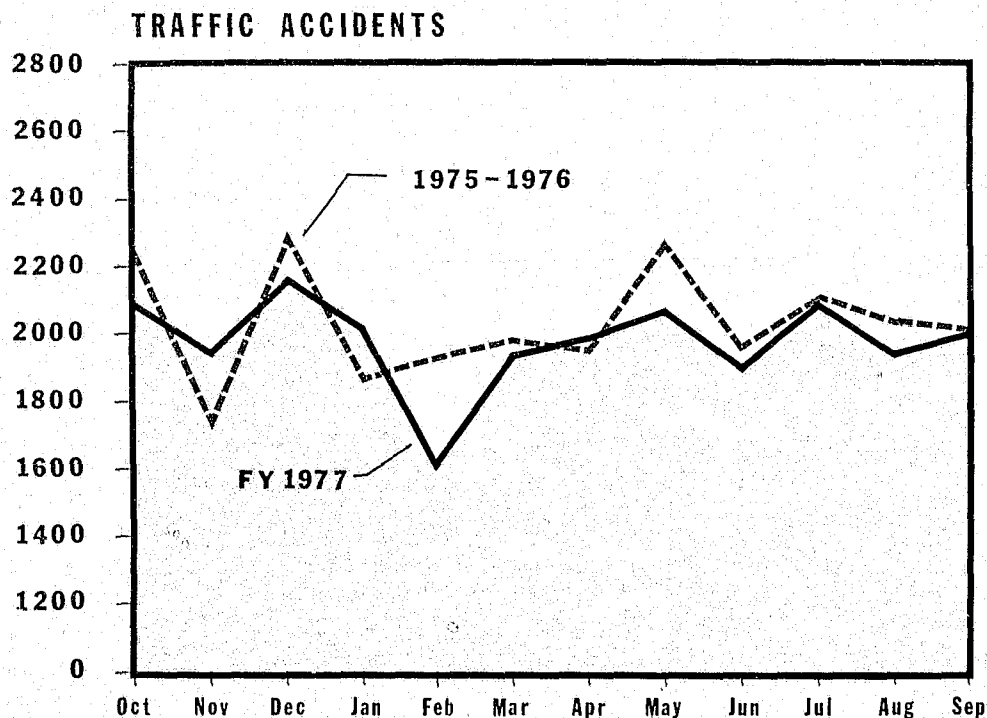
*Race data not available.

**Fugitive from justice not included.

Traffic Accidents

Accident Summary

| | NUMBER OF ACCIDENTS | FATAL | NON-FATAL | PROP. DAMAGE |
|--------------------------------|------------------------|-----------|--------------|---------------|
| 1. Speeding | 1,129 | 12 | 479 | 634 |
| 2. Defective Brakes | 286 | 0 | 122 | 164 |
| 3. Following Too Close | 1,427 | 0 | 667 | 760 |
| 4. Auto Right of Way | 1,385 | 0 | 576 | 809 |
| 5. Pedestrian R.O.W. | 151 | 1 | 140 | 10 |
| 6. Improper Turn | 636 | 0 | 130 | 506 |
| 7. Yield Sign | 19 | 0 | 7 | 12 |
| 8. Red Light | 715 | 0 | 383 | 332 |
| 9. Flashing Light | 53 | 0 | 30 | 23 |
| 10. Directions Signal | 40 | 0 | 15 | 25 |
| 11. Stop Sign | 268 | 1 | 134 | 133 |
| 12. Drunk Driving | 758 | 1 | 234 | 523 |
| 13. Improper Passing | 222 | 0 | 39 | 183 |
| 14. Wrong Way One Way Street | 61 | 0 | 24 | 37 |
| 15. Wrong Side of Street | 385 | 0 | 118 | 267 |
| 16. Improper Starting/Backing | 850 | 0 | 84 | 766 |
| 17. Defective Veh. or Equip. | 222 | 1 | 68 | 153 |
| 18. Pedestrian Violation | 141 | 0 | 130 | 11 |
| 19. No Charge/Hearing Set | 4,828 | 34 | 2,281 | 2,513 |
| 20. Full Time and Attention | 6,723 | 6 | 1,685 | 5,032 |
| 21. Changing Lanes w/o Caution | 1,142 | 0 | 217 | 925 |
| 22. Hit and Run | 0 | 0 | 0 | 0 |
| 23. Failure to Set Hand Brake | 63 | 0 | 14 | 49 |
| 24. Opening Door to Traffic | 22 | 0 | 6 | 16 |
| 25. Other | 2,304 | 5 | 660 | 1,639 |
| TOTAL | 23,826 | 61 | 8,243 | 15,522 |



Accidents by Day of the Week

| | TOTAL | FATAL | NON-FATAL | NO INJURY |
|-----------|--------|-------|-----------|-----------|
| Sunday | 2,755 | 9 | 963 | 1,783 |
| Monday | 3,436 | 10 | 1,105 | 2,321 |
| Tuesday | 3,259 | 8 | 1,135 | 2,116 |
| Wednesday | 3,372 | 11 | 1,189 | 2,172 |
| Thursday | 3,289 | 8 | 1,203 | 2,078 |
| Friday | 3,911 | 7 | 1,353 | 2,551 |
| Saturday | 3,804 | 8 | 1,295 | 2,501 |
| Total | 23,826 | 61 | 8,243 | 15,522 |

Accidents by Police District

| DISTRICT | TOTAL | FATAL | NON-FATAL | NO INJURY |
|----------|--------|-------|-----------|-----------|
| 1 | 4,312 | 5 | 1,346 | 2,961 |
| 2 | 4,671 | 7 | 1,333 | 3,331 |
| 3 | 2,609 | 4 | 838 | 1,767 |
| 4 | 3,623 | 11 | 1,368 | 2,244 |
| 5 | 3,605 | 13 | 1,436 | 2,156 |
| 6 | 1,990 | 9 | 776 | 1,205 |
| 7 | 3,016 | 12 | 1,146 | 1,858 |
| TOTAL | 23,826 | 61 | 8,243 | 15,522 |

Police Vehicle Data

Fleet Strength

| CLASSIFICATION | TOTAL |
|-----------------------|-------|
| Automobiles | |
| Marked | |
| Scout Cars | 138 |
| Cruisers | 163 |
| Unmarked | |
| Cruisers | 187 |
| Patrol Wagon | 18 |
| *Utility | 52 |
| *Bus & Vans | 2 |
| *Cranes | 10 |
| Motorcycles | 14 |
| Motor Scooters | 327 |
| Boats | 10 |
| Helicopters | 4 |
| Trailers & Misc. | 19 |
| *Fork Lifts | 2 |
| Total Operating Units | 870 |
| *Total Service Units | 66 |
| Total Marine Units | 10 |
| Grand Total | 946 |

| VEHICLE ACTION | INJURY | PROP. DAMAGE | TOTAL |
|----------------|--------|--------------|-------|
| Routine Run | 5 | 53 | 58 |
| Patrolling | 122 | 161 | 283 |
| Emergency | 13 | 29 | 42 |
| Pursuit | 4 | 21 | 25 |
| Parked | — | 30 | 30 |
| Total | 144 | 294 | 438 |

| ACCIDENTS BY TOUR OF DUTY | |
|------------------------------|-----|
| 0000-0800 | 81 |
| 0800-1600 | 174 |
| 1600-2400 | 153 |
| Total | 408 |

| ACCIDENT REVIEW BOARD FINDINGS | |
|-----------------------------------|-----|
| Preventable | 173 |
| Non-Preventable | 235 |
| Total | 408 |

| TYPE OF POLICE VEHICLE | |
|---------------------------|-----|
| Patrol Wagon | 23 |
| Motorcycle | — |
| Motor Scooter | 39 |
| Van | — |
| Jeep | — |
| Bus | — |
| Crane | 7 |
| Scout Car | 186 |
| Cruiser (Marked) | 100 |
| Cruiser (Unmarked) | 53 |
| Station Wagon | — |
| Truck | — |
| K-9 Cruiser | — |
| Other | — |
| Total | 408 |

| ACCIDENTS BY UNIT | |
|----------------------|-----|
| 1 Dist. | 66 |
| 2 Dist. | 31 |
| 3 Dist. | 48 |
| 4 Dist. | 52 |
| 5 Dist. | 50 |
| 6 Dist. | 44 |
| 7 Dist. | 53 |
| Traffic | 12 |
| SOD | 18 |
| CID | 13 |
| Youth | 4 |
| Adm. Serv. | — |
| Tech. Serv. | 11 |
| Insp. Serv. | 4 |
| Field Oper. | 2 |
| Total | 408 |

| ACCIDENTS BY DAY OF WEEK | |
|-----------------------------|-----|
| Sunday | 46 |
| Monday | 64 |
| Tuesday | 59 |
| Wednesday | 55 |
| Thursday | 55 |
| Friday | 71 |
| Saturday | 58 |
| Total | 408 |

Supplemental Data

Value of Property Stolen

By Type of Crime

| CLASSIFICATION OF OFFENSES | | NUMBER OF ACTUAL OFFENSES | VALUE OF PROPERTY STOLEN |
|--------------------------------|--|---------------------------|--------------------------|
| 3. | Robbery | | |
| (A) | Highways, Streets, etc. | 4,306 | \$ 424,628 |
| (B) | Commercial House (Except C, D, & F) | 707 | 147,953 |
| (C) | Gas or Service Station | 209 | 35,452 |
| (D) | Chain Store | 72 | 8,178 |
| (E) | Residence (Anywhere on Premises) | 459 | 134,701 |
| (F) | Bank | 60 | 24,642 |
| (G) | Miscellaneous | 918 | 192,625 |
| (H) | Armed, Any Weapon | 4,121 | 725,846 |
| (I) | Strong Arm, No Weapon | 2,610 | 242,333 |
| TOTAL ROBBERY (Excluding H, I) | | 6,731 | 968,179 |
| 5. | Burglary | | |
| (A) | Residence, Dwelling | | |
| 1. | Residential, Night | 2,073 | 504,908 |
| 2. | Residential, Day | 5,190 | 1,535,225 |
| 3. | Residential, Unknown | 33 | 53,097 |
| (B) | Non-Residence | | |
| 1. | Non-Residential, Night | 2,002 | 511,977 |
| 2. | Non-Residential, Day | 2,307 | 662,540 |
| 3. | Non-Residential, Unknown | 44 | 8,289 |
| TOTAL BURGLARY | | 11,649 | 3,276,036 |
| 6. | Larceny - Theft | | |
| (A) | \$200 and Over | 2,999 | 2,565,442 |
| (B) | \$50 to \$200 | 9,433 | 892,774 |
| (C) | Under \$50 | 13,014 | 208,256 |
| TOTAL LARCENY | | 25,446 | 3,666,472 |
| 6x. | Nature of Larcenies (Shown Under Item 6) | | |
| (A) | Pickpocket | 760 | 74,662 |
| (B) | Purse-Snatching | 1,734 | 100,061 |
| (C) | Shoplifting | 2,103 | 111,155 |
| (D) | From Auto - Not Accessories | 7,012 | 1,472,263 |
| (E) | Auto Parts - Accessories | 5,266 | 449,427 |
| (F) | Bicycle Theft | 1,531 | 99,526 |
| (G) | From Building | 5,068 | 1,140,438 |
| (H) | From Any Coin Operated Machine | 339 | 5,226 |
| (I) | All Other | 1,633 | 213,714 |
| TOTAL LARCENY | | 25,446 | 3,666,472 |
| 7. | Auto Theft | | |
| (A) | Total Auto Theft Offenses | 2,728 | 3,639,576 |
| GRAND TOTAL (Excluding 6x) | | 46,554 | \$11,550,263 |

By Type of Property

| TYPE OF PROPERTY | VALUE OF PROPERTY | | PERCENTAGE RECOVERED | NET LOSS |
|-------------------------------|-------------------|-------------|----------------------|-------------|
| | STOLEN | RECOVERED | | |
| (A) Currency, Notes, etc. | \$ 1,547,167 | \$ 70,763 | 4.6 | \$1,476,404 |
| (B) Jewelry & Precious Metals | 1,184,128 | 27,164 | 2.3 | 1,156,964 |
| (C) Furs | 64,209 | 2,745 | 4.3 | 61,464 |
| (D) Clothing | 392,283 | 49,034 | 12.5 | 343,249 |
| (E) Automobiles | 3,639,576 | 1,498,744 | 41.2 | 2,140,832 |
| (F) Miscellaneous | 4,722,900 | 250,982 | 5.3 | 4,471,918 |
| TOTAL | \$11,550,263 | \$1,899,432 | 16.4 | \$9,650,831 |

Communications

Radio Calls

| | |
|--------------|----------------|
| First Shift | 127,514 |
| Second Shift | 215,643 |
| Third Shift | 275,525 |
| TOTAL | 618,682 |

Telephone Reporting Branch

| | |
|--|---------------|
| Larceny | 1,186 |
| Larceny from Auto | 4,105 |
| Animal Bites | 564 |
| Stolen Bicycles | 652 |
| Stolen Tags | 273 |
| Stolen Autos | 869 |
| Property (Lost and Damaged) | 3,956 |
| Destroying Property | 707 |
| Missing Persons | 226 |
| Other | 73 |
| Additional Information (PD 252) | 1,831 |
| Accidents (Hit and Run) | 1,187 |
| Total Original Reports | 15,629 |
| Assignment, No Report Necessary | 13,262 |
| Total Assignments | 28,891 |

Miscellaneous Incidents Investigated by Police District

| INCIDENT INVESTIGATED | TOTAL | 1-D | 2-D | 3-D | 4-D | 5-D | 6-D | 7-D |
|------------------------------|---------------|--------------|--------------|--------------|--------------|--------------|--------------|--------------|
| Animal Bite | 1,883 | 195 | 117 | 216 | 321 | 416 | 249 | 369 |
| ABC Violation | 112 | 19 | 34 | 32 | 7 | 13 | — | 7 |
| Auto, Interstate Recovery | 644 | 98 | 49 | 93 | 95 | 84 | 110 | 115 |
| Bomb Threat/Scare | 744 | 206 | 204 | 83 | 75 | 86 | 28 | 62 |
| Crane Violation | 13 | — | — | — | — | 3 | 2 | 8 |
| Damage to Property | 2,303 | 439 | 282 | 246 | 351 | 382 | 243 | 360 |
| Death | 1,992 | 251 | 256 | 298 | 382 | 430 | 145 | 230 |
| Drunk to Detox. | 3 | 1 | 1 | — | — | 1 | — | — |
| Fall | 242 | 77 | 49 | 30 | 25 | 27 | 20 | 14 |
| Fire, Suspicious Origin | 167 | 31 | 21 | 33 | 21 | 24 | 12 | 25 |
| Gunshot (Self Inflicted) | 5 | — | — | — | 1 | 2 | — | 2 |
| Injury | 1,255 | 311 | 148 | 173 | 133 | 210 | 125 | 155 |
| Mental Observation | 877 | 147 | 145 | 124 | 133 | 124 | 85 | 119 |
| Missing Person | 4,634 | 447 | 193 | 667 | 822 | 692 | 555 | 1,258 |
| Overdose | 473 | 48 | 46 | 62 | 66 | 75 | 60 | 116 |
| Property, Lost | 7,053 | 1,520 | 1,942 | 881 | 874 | 768 | 418 | 650 |
| Property, Recovered | 2,769 | 761 | 557 | 425 | 305 | 326 | 158 | 237 |
| Policeman Injured (On Duty) | 1 | — | — | — | — | 1 | — | — |
| Policeman Injured (Off Duty) | 1 | — | — | — | 1 | — | — | — |
| Sick Case | 809 | 293 | 99 | 102 | 64 | 80 | 95 | 76 |
| Special Police Violations | 15 | 3 | 2 | 2 | 1 | 1 | 1 | 5 |
| Stop and Frisk | 285 | 80 | 32 | 69 | 34 | 36 | 13 | 21 |
| Suicide | 9 | 2 | 3 | — | 2 | — | 1 | 1 |
| Suicide (Attempt) | 81 | 8 | 15 | 19 | 10 | 11 | 4 | 14 |
| Suspected, Proceeds of Crime | 877 | 163 | 123 | 166 | 62 | 154 | 91 | 118 |
| Other or Not Reported | 1,240 | 616 | 180 | 109 | 64 | 76 | 78 | 117 |
| TOTAL | 28,487 | 5,716 | 4,498 | 3,830 | 3,849 | 4,022 | 2,493 | 4,079 |

Calls for Police Service

| CODE | TYPE CALL | 2400-0800 SHIFT | AVG. TIME ON CALL | 0800-1600 SHIFT | AVG. TIME ON CALL | 1600-2400 SHIFT | AVG. TIME ON CALL |
|-------|---------------------|--------------------|-------------------------|--------------------|-------------------------|--------------------|-------------------------|
| 0100 | Homicide | 47 | 76 | 25 | 73 | 45 | 46 |
| 0200 | Rape | 393 | 53 | 223 | 50 | 371 | 53 |
| 0300 | Robbery | 2,897 | 29 | 4,004 | 31 | 7,628 | 29 |
| 0400 | A.D.W. | 817 | 43 | 807 | 40 | 1,884 | 37 |
| 0500 | Burglary | 5,825 | 35 | 9,215 | 39 | 10,586 | 33 |
| 0600 | Larceny | 4,478 | 28 | 18,293 | 32 | 14,271 | 30 |
| 0690 | Stolen Bike | 126 | 23 | 939 | 33 | 1,156 | 31 |
| 0700 | Stolen Auto | 1,990 | 29 | 4,055 | 32 | 3,819 | 31 |
| 4002 | Animal Case | 782 | 25 | 2,119 | 30 | 2,699 | 28 |
| 4003 | Alarm-Burg/Holdup | 11,030 | 18 | 11,301 | 16 | 16,622 | 16 |
| 4006 | Disorderly | 29,067 | 19 | 27,372 | 22 | 63,876 | 21 |
| 4010 | Juveniles | 652 | 20 | 1,531 | 19 | 3,065 | 20 |
| 4012 | Man with _____ | 892 | 19 | 1,082 | 20 | 2,443 | 15 |
| 4014 | Police in Trouble | 178 | 16 | 181 | 18 | 476 | 18 |
| 4015 | Prowler | 1,567 | 17 | 148 | 26 | 1,130 | 23 |
| 4016 | See Complainant | 1,933 | 23 | 2,891 | 29 | 2,640 | 20 |
| 4017 | Shooting | 309 | 24 | 239 | 26 | 690 | 10 |
| 4019 | Transport | 394 | 34 | 1,332 | 37 | 1,568 | 32 |
| 5000 | Incidentals | 15,403 | 28 | 32,142 | 28 | 38,911 | 27 |
| 5050 | All Other | 28,366 | 15 | 34,982 | 20 | 49,005 | 19 |
| 6001 | Traffic Accident | 8,909 | 30 | 26,411 | 27 | 25,865 | 26 |
| 6002 | Traffic Complaint | 8,356 | 27 | 32,201 | 27 | 21,496 | 26 |
| 6011 | Traffic Accid. MPD | 106 | 38 | 221 | 37 | 223 | 31 |
| 6091 | Traffic (Hit & Run) | 1,427 | 32 | 3,801 | 29 | 4,366 | 28 |
| 6121 | Traffic (DWI) | 1,570 | 07 | 128 | 11 | 685 | 08 |
| Total | | 127,514 | 22 | 215,643 | 26 | 275,525 | 24 |

| DISTRICT | FIRST | SECOND | THIRD | FOURTH | FIFTH | SIXTH | SEVENTH |
|-------------|---------|--------|--------|--------|--------|--------|---------|
| Total Calls | 118,777 | 95,050 | 92,666 | 85,992 | 92,107 | 53,183 | 80,907 |
| % of Total | 19.2 | 15.3 | 15.0 | 13.9 | 14.9 | 8.6 | 13.1 |

Weapons Used in Specific Offenses

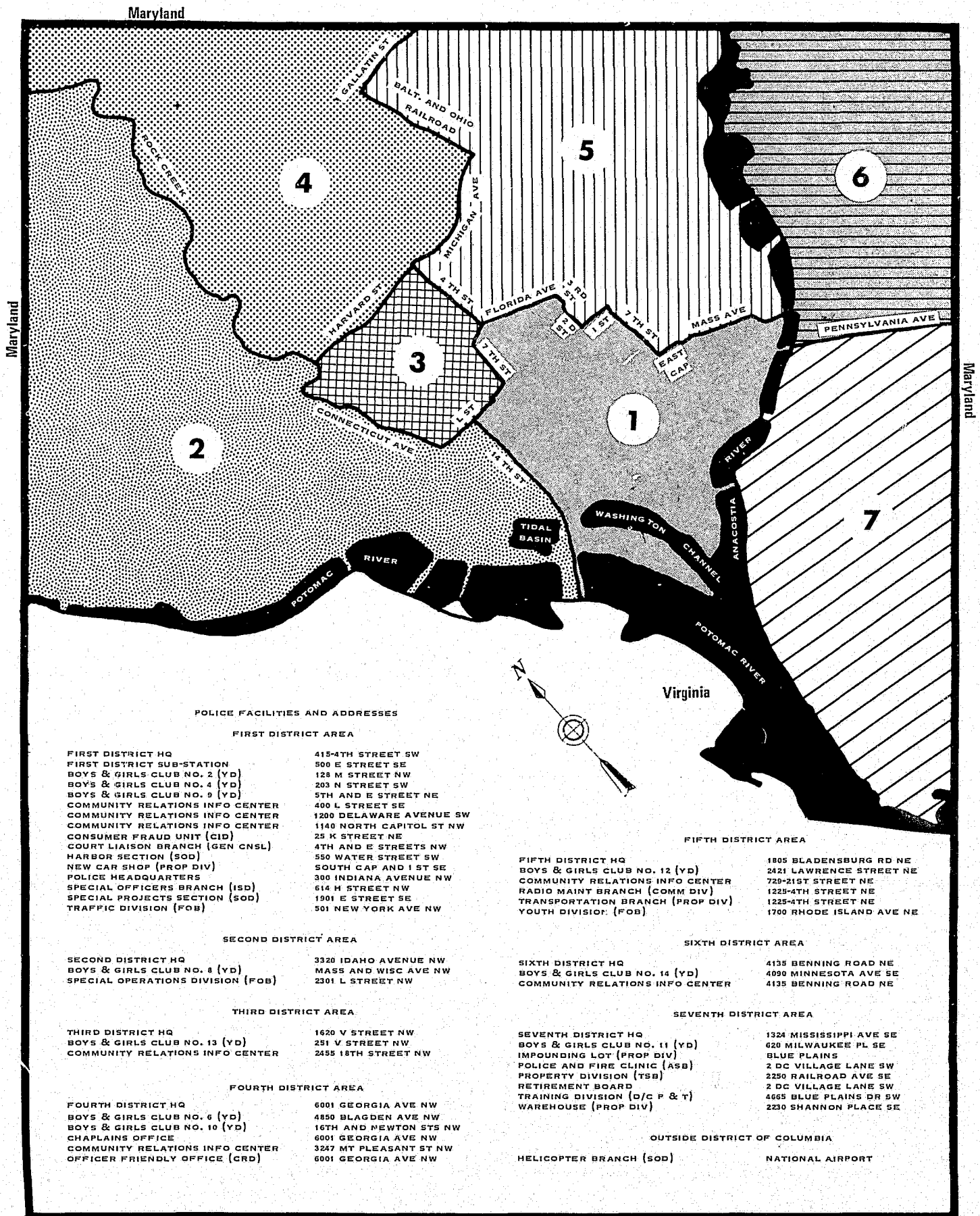
| WEAPON | HOMICIDE | ROBBERY | AGGRAVATED ASSAULT | WEAPON | HOMICIDE | ROBBERY | AGGRAVATED ASSAULT |
|------------------|----------|---------|--------------------|---------------------|----------|---------|--------------------|
| Air Rifle | — | 6 | 14 | Kicked | — | 52 | 84 |
| Automobile | — | — | — | Knife | 29 | 450 | 654 |
| Ax | — | 1 | 5 | Knife, Switch Blade | — | 2 | 1 |
| Blackjack | — | 1 | 4 | Lamp | — | — | 1 |
| Blunt Instrument | 2 | 1 | — | Lye | — | — | 9 |
| Bottle | 1 | 27 | 170 | Razor | 1 | 16 | 54 |
| Brass Knuckles | — | — | 3 | Revolver or Pistol | 97 | 2,732 | 761 |
| Brick | — | 8 | 30 | Rifle | 1 | 14 | 15 |
| Can Opener | — | — | — | Rubber Hose | — | 1 | — |
| Chair | — | — | 12 | Sharp Insrtument | 1 | 10 | 37 |
| Cleaver | — | — | 2 | Shot Gun | 7 | 232 | 84 |
| Club | 1 | 8 | 34 | Shovel | — | — | 4 |
| Dish | — | — | — | Stick | 1 | 42 | 107 |
| Fists | 4 | 554 | 23 | Stone | — | — | 9 |
| Flat Iron | — | — | 6 | Teeth | — | 1 | 2 |
| Fork | — | — | 5 | Water Glass | — | — | 1 |
| Hammer | 1 | 8 | 19 | Other-Specified & | | | |
| Hands | 14 | 2,084 | 6 | Not Above | 8 | 258 | 271 |
| Hatchet | — | 3 | 11 | Unknown | 22 | 193 | 107 |
| Hot Water | 3 | 2 | 7 | | | | |
| Ice Pick | — | — | 4 | | | | |
| Iron Pipe | — | 25 | 63 | | | | |
| | | | | TOTAL | 193 | 6,731 | 2,619 |

Law Enforcement Officers Assaulted

| Type of Activity | Total Assaults by Weapon A | TYPE OF WEAPON | | | | Type of Activity | Total Assaults by Weapon A | TYPE OF WEAPON | | | |
|--|----------------------------|---------------------------------------|-------------------------------------|--------------------------|----------------------------|------------------------------------|----------------------------|--------------------------|-------------------------------------|--------------------------|----------------------------|
| | | Firearm B | Knife or Other Cutting Instrument C | Other Dangerous Weapon D | Hands, Fists, Feet, etc. E | | | Firearm B | Knife or Other Cutting Instrument C | Other Dangerous Weapon D | Hands, Fists, Feet, etc. E |
| 1. Responding to "disturbance" calls (family quarrels, man with gun, etc.) | 24 | 4 | 3 | 4 | 13 | 8. Ambush - no warning | — | — | — | — | — |
| 2. Burglaries in progress or pursuing burglary suspects | — | — | — | — | — | 9. Mentally deranged | — | — | — | — | — |
| 3. Robberies in progress or pursuing robbery suspects | — | — | — | — | — | 10. Traffic pursuits and stops | 29 | 3 | 1 | 6 | 19 |
| 4. Attempting other arrests | 27 | 1 | — | 7 | 19 | 11. All other | 64 | 7 | 6 | 17 | 34 |
| 5. Civil disorder (riot, mass disobedience) | — | — | — | — | — | 12. TOTAL (1-11) | 174 | 17 | 13 | 43 | 101 |
| 6. Handling, transporting, custody of prisoners | 15 | — | — | 2 | 13 | 13. Number with personal injury | 80 | 3 | 3 | 21 | 53 |
| 7. Investigating suspicious persons or circumstances | 15 | 2 | 3 | 7 | 3 | 14. Number without personal injury | 94 | 14 | 10 | 22 | 48 |
| 15. Time of assaults | | A.M. 20 P.M. 6 | | | | | | 17 7 4 7 15 6 9 19 29 35 | | | |
| | | 12:01 2:00 4:00 6:00 8:00 10:00 12:00 | | | | | | | | | |

Washington, D.C., by Police Districts

With Locations of Police Facilities



Police Chiefs, Past and Present

| | |
|----------------------|-----------------------------|
| William B. Webb | Sept. 1861—1864 |
| A.C. Richards | Dec. 1, 1864—Jan. 28, 1878 |
| Thomas P. Morgan | Feb. 2, 1878—Nov. 29, 1879 |
| William G. Brock | Dec. 1, 1879—April 1, 1883 |
| William M. Dye | April 1, 1883—June 30, 1886 |
| Samuel H. Walker | July 1, 1886—Dec. 1, 1886 |
| William C. Moore | Dec. 8, 1886—July 12, 1898 |
| Richard Sylvester | July 18, 1898—April 1, 1915 |
| Raymond W. Pullman | April 1, 1915—Feb. 22, 1920 |
| Harry L. Gessford | April 19, 1920—Dec. 1, 1921 |
| Daniel Sullivan | Feb. 11, 1922—Oct. 1, 1925 |
| Edwin B. Hesse | Oct. 6, 1925—April 1, 1929 |
| Henry G. Pratt | April 1, 1929—Nov. 1, 1931 |
| Pelham D. Glassford | Nov. 16, 1931—Oct. 20, 1932 |
| Ernest W. Brown | Oct. 22, 1932—Nov. 1, 1941 |
| Edward J. Kelly | Nov. 1, 1941—Feb. 1, 1946 |
| Harvey G. Callahan | Feb. 1, 1946—June 30, 1947 |
| Robert J. Barrett | July 1, 1947—Nov. 30, 1951 |
| Robert V. Murray | Dec. 1, 1951—Dec. 1, 1964 |
| John B. Layton | Dec. 1, 1964—July 31, 1969 |
| Jerry V. Wilson | Aug. 1, 1969—Sept. 30, 1974 |
| Maurice J. Cullinane | Dec. 15, 1974—Jan. 31, 1978 |
| Burtell M. Jefferson | Jan. 12, 1978— |

[illegible]

THURSDAY, JULY 20, 1957

News

The Two
Surrey

Stiff Hanafi

As Terror

A Hostage

12 Hanafis
3 Found

Life Sentence

Hanafis

**All Evidence
Presented
Hanafi Trial**

D.C. Jury Getting Today After 8 W

The Washington Star

Metro

I am proud of you and the members of the Metropolitan Police. You are indeed professionals.

Sincerely,

Finney Carter

Chief Maurice J. Cullinane
Metropolitan Police Department
Washington, D.C. 20001

The W

**SUNDAY
EDITION**

125th Year No. 203 Washington D. C., Sunday, July 24, 1977 Phone (202) 464-5000 60 Cents in Advance

All 12 Ha

Khalils, 2 Others Found Guilty of 2nd-Degree Murder; All Are Guilty of Conspiracy in Building Takeovers

END