

BERKELEY POLICE DEPARTMENT



51771

ANNUAL REPORT 1977

As a law enforcement officer, my fundamental duty is to serve mankind; to safeguard lives and property; to protect the innocent against deception, the weak against oppression or intimidation, and the peaceful against violence or disorder; and to respect the Constitutional rights of all men to liberty, equality and justice.

I will keep my private life unsullied as an example to all; maintain courageous calm in the face of danger, scorn, or ridicule; develop self-restraint; and be constantly mindful of the welfare of others. Honest in thought and deed in both my personal and official life, I will be exemplary in obeying the laws of the land and the regulations of my department. Whatever I see or hear of a confidential nature or that is confided to me in my official capacity will be kept ever secret unless revelation is necessary in the performance of my duty.

I will never act officiously or permit personal feelings, prejudices, animosities or friendships to influence my decisions. With no compromise for crime and with relentless prosecution of criminals, I will enforce the law courteously and appropriately without fear or favor, malice or ill will, never employing unnecessary force or violence and never accepting gratuities.

I recognize the badge of my office as a symbol of public faith, and I accept it as a public trust to be held so long as I am true to the ethics of the police service. I will constantly strive to achieve these objectives and ideals, dedicating myself before God to my chosen profession. . . law enforcement.

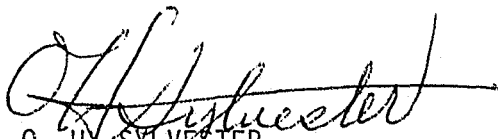
TO: ELIJAH B. ROGERS, City Manager
FROM: O. H. SYLVESTER, Chief of Police
SUBJECT: ANNUAL REPORT FOR THE CALENDAR YEAR 1977

I am pleased to submit to you the Police Department Annual Report for the calendar year 1977.

The incidence of major crime in Berkeley decreased for the third successive year, a 4.9% decrease in 1977 over 1976.

Our efforts to replace sworn officers with qualified non-sworn personnel in those positions not requiring peace officer powers continued in 1977 with the conversion of one Police Captain's position to a Departmental Administrative Officer position. The Paraprofessional Program, a federally funded project to utilize non-sworn uniformed personnel to respond to non-emergency calls for service, was funded for a third year. We also instituted an Aid to the Elderly Program using CETA funded positions to provide specialized services to senior citizens.

The quality of service provided by the Berkeley Police Department is due in no small part to the assistance and cooperation provided us by the City Manager's Office, the City Council, the Police Review Commission, other City Departments, the District Attorney's staff, the Courts, neighboring law enforcement agencies, and the citizens of Berkeley. For these efforts they have our sincerest thanks.


O. H. SYLVESTER
Chief of Police

L-2/1b

TABLE OF CONTENTS

	<u>Page</u>
Law Enforcement Code of Ethics	
Letter of Transmittal	
Demographic Facts About Berkeley.....	1
Narrative Reports:	
Administrative Division.....	4
Service Division.....	8
Patrol Division.....	12
Detective Division.....	16
	<u>Table</u>
Plant and Equipment.....	1
Activity of Record Bureau.....	2
Expenditures for Fiscal Year 1976 - 1977.....	3
Distribution of Personnel by Activity.....	4
Police Personnel Appointments, Resignations, Retirements and Military Leaves.....	5
Salary Scale and Distribution of Personnel.....	6
Education, Age and Experience Distribution of Personnel.....	7
Summary of Police Personnel Absences.....	8
Annual Comparison of Police Overtime in Hours, 1973 - 1977.....	9
Changes in Police Personnel, Calendar Year 1977.....	10
Personnel Complaints and Personnel Commendations, 1977.....	11
Disposition of Personnel Complaints Received.....	12
Activity of Bureau of Identification.....	13
Activity of Warrant Bureau.....	14
Motor Vehicle Collisions by Type and Classification.....	15
Age and Sex of Persons Killed by Collision Classification.....	16
Comparison of Traffic Enforcement to Injury and Fatal Collision Causes.....	17
Activity of Pedestrians Killed and Injured.....	18
Motor Vehicle Collision Comparison, 1973 - 1977.....	19
City of Berkeley Census Tracts.....	20
Major Offenses by Census Tract - 1977.....	21
Crime Clock.....	22

Table
Number

Per Cent of Major Offenses Cleared Compared with Other United States Population Centers	23
Major Offense Rate Compared with Other United States Population Centers.....	24
Offenses Known and Arrests.....	25
Major Offenses Known To and Cleared by Police.....	26
Age, Sex and Race of Adults Arrested.....	27
Age, Sex and Race of Juveniles Detained.....	28
Adult Criminal Charges and Dispositions.....	29
Juvenile Detentions and Dispositions.....	30
Residence Data on Persons Arrested for Certain Offenses....	31
Auto Theft and Recoveries.....	32
Value of Property Reported Stolen and Amount Recovered by Kind of Property.....	33
Value of Property Reported Stolen and Amounts Recovered by Type of Offense.....	34
Persons Reported Missing.....	35
Suicides and Attempts.....	36
Miscellaneous Services Rendered.....	37

DEMOGRAPHIC FACTS ABOUT BERKELEY

SCHOOLS AND COLLEGES: Fourteen primary schools, two junior high schools and one high school with two campus facilities.

One of the world's largest universities, the University of California with an enrollment of 29,304 in the Fall of 1976, is located in the east central portion of the City. Situated adjacent to the University grounds is the State School for the Deaf and the Blind with an enrollment of 124; Armstrong College, schools of business and professional law with an enrollment of 623, is located in Central Berkeley.

MUNICIPAL GOVERNMENT: Council-Manager form of government since 1923.

ASSESSED VALUATION: Total assessed value of taxable property, \$426,969,136. This does not include approximately 30% of the incorporated area which is publicly owned by Federal, State and local agencies.

INDUSTRY: About 310 industrial plants producing a wide variety of products.

POPULATION: Official figures released by the Bureau of Census indicate a Berkeley population of 114,081.

AREA: 10.16 square miles, or 6,503 acres of developed land; 7.94 square miles of undeveloped waterfront remain within the incorporated boundaries.

TRANSPORTATION: A metropolitan bus system connects directly and by transfer with several hundred miles of bus lines in adjoining communities and San Francisco. Berkeley is also an integral part of the Bay Area Rapid Transit System, which began East Bay operation in 1972 and extended its service to San Francisco and Daly City in 1974.

RECREATION: Thirty-six public parks; remodeled and enlarged marina; and a modern concrete surfaced fishing pier extending 3,000 feet into San Francisco Bay. Tilden Regional Park, comprising 2,100 acres of recreational area and available to a metropolitan population of more than 1,090,000 persons, is located at the eastern Berkeley city limit.



Chief O. H. Sylvester, Jr., a Deputy Chief with the Oakland Police Department, was appointed to Berkeley as Chief of Police on September 19, 1977, after a nationwide search. He holds a B.A. from the University of California, Berkeley, and a Masters Degree in Public Administration from the University of Southern California.

Chief Sylvester's police experience began in 1949 when he joined the Oakland Police Department as a patrolman and progressed through the ranks by competitive examination. In June of 1971 he was appointed Deputy Chief and served his last assignment with that Department as Commanding Officer of the Bureau of Investigation.

While working with the Oakland Police Department, Chief Sylvester participated in the development of the Department's New Careers Program, the Model Cities Intern Program for Police Officers, and directed the Bay Area Minority Recruitment Project.

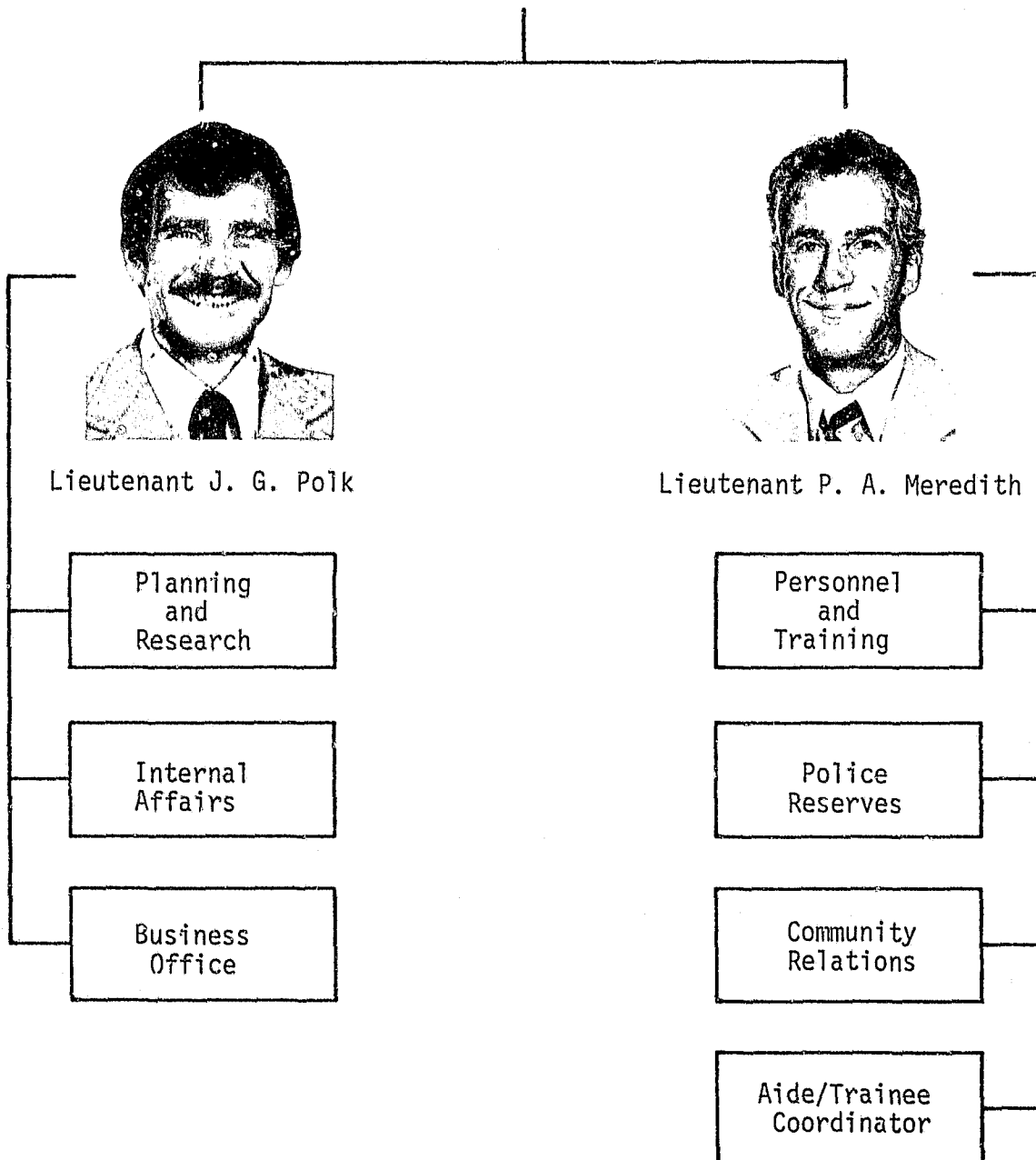
He is a member of the American Society for Public Administration, the California Police Chiefs Association, the International Association of Chiefs of Police (including their Communications Committee), Public Service Advisory Committee of Peralta College for Non-Traditional Study, the Executive Committee and Vice President of Region 6 (Western States) of the National Organization of Black Law Enforcement Executives. He was most recently honored to serve as the only Western representative of an eight-man Liaison Committee for Law Enforcement formed by the U.S. Attorney General in April of 1978 to meet bi-monthly in Washington D.C.

He has been active in many community services, including the Board of Directors of the Oakland Boys Club, Board of Governors of the Goodwill Industries, Lake Merritt Breakfast Club (sponsor of Children's Fairyland), Lion's International Service Club, Men of Tomorrow Inc., Kiwanis International Service Club, Boy Scouts of America, the Oakland Central YMCA, Chairman of the Fund Raising Campaign for the Board of Directors of the Northwest YMCA, Family Service Agency, the National Conference of Christians and Jews, and the National Association for the Advancement of Colored People (NAACP).

ADMINISTRATIVE DIVISION



Captain T. W. Johnson



ADMINISTRATIVE DIVISION

The Administrative and Personnel & Training Divisions were combined during 1977, with the functions of the two divisions remaining basically the same but under the command of a single Captain.

The Administrative Captain is assisted by two Lieutenants. The Division includes a personnel section, a training section, a crime prevention unit, an Internal Affairs Bureau, a Planning and Research Bureau, a business office, and the Police Reserves.



The Division works with the City Personnel Department in recruiting and selection of police personnel and assists in preparation of promotional examinations. The Division is responsible for pre-employment personnel investigations, personnel records, training, administrative studies, employee evaluation, employee health and safety, community relations programs, the coordination of crime prevention efforts throughout the Department and within the community, police cadet assignment, police reserve program, budget control, timekeeping, and payroll, and investigation of complaints made against Departmental personnel.

The Planning and Research Bureau functions as a Staff advisory unit to all other divisions. This unit provides information on new techniques and programs of value to the Department, prepares Federal

and State grant requests, maintains current information on applicable court decisions and legislation, assists in budget preparation, and prepares studies as requested by the Chief of Police.

Besides being responsible for the investigation of allegations of police misconduct and violation of rules and regulations, the In-

ternal Affairs Bureau also provides administrative and investigative support to the City Attorney's Office in matters relating to the Police Department and acts as liaison with the Police Review Investigator.

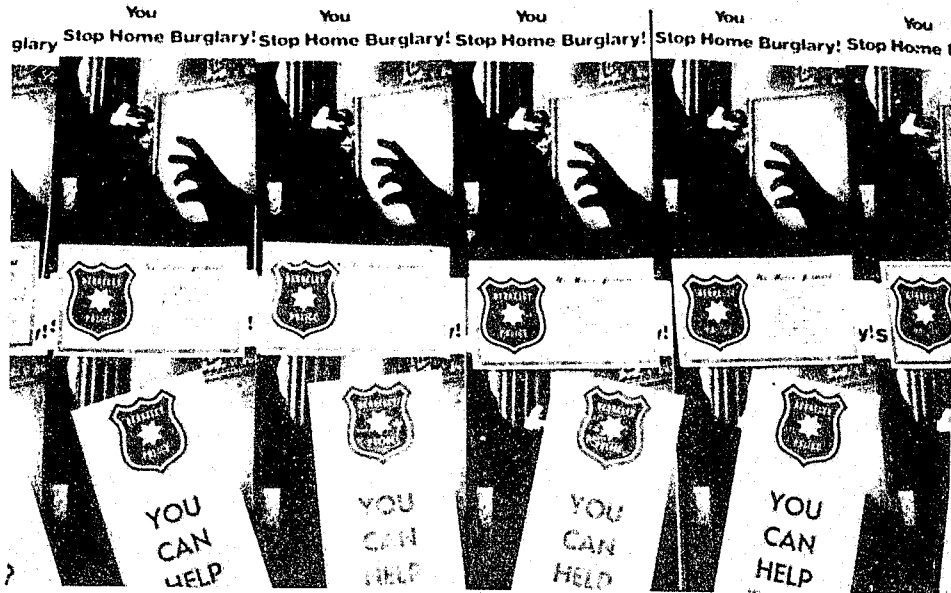


The Police Reserves continues active participation in the Patrol function. Its members are utilized to handle more of the less sensitive police tasks, thereby freeing regular police officers for situations requiring a higher degree of training and experience. During 1977, total Reserve contributions amounted to 13,362 hours, 10,273 of which constituted duty assignment at no cost to the City. Members are active in routine patrol, handling of special events requiring additional police service, and backup patrol.

During calendar year 1977, 16 sworn and 34 non-sworn employees were hired. Additionally, 3 Police Trainees were promoted to Patrol Officer.

The training section administered a total of 17,069 man hours of training during 1977.

Operation Identification, home security checks, public appearances in the community, neighborhood meetings and workshops, tours of the Hall of Justice, and the Ride-Along Program allowed police personnel to make positive contact with thousands of people. These continuing community relations/crime prevention programs are administered by the Crime Prevention Unit.



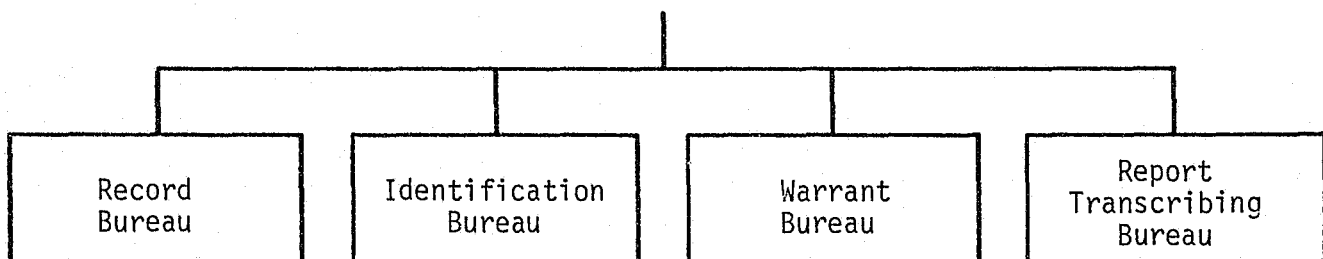
SERVICE DIVISION



Captain W. E. Jenkins



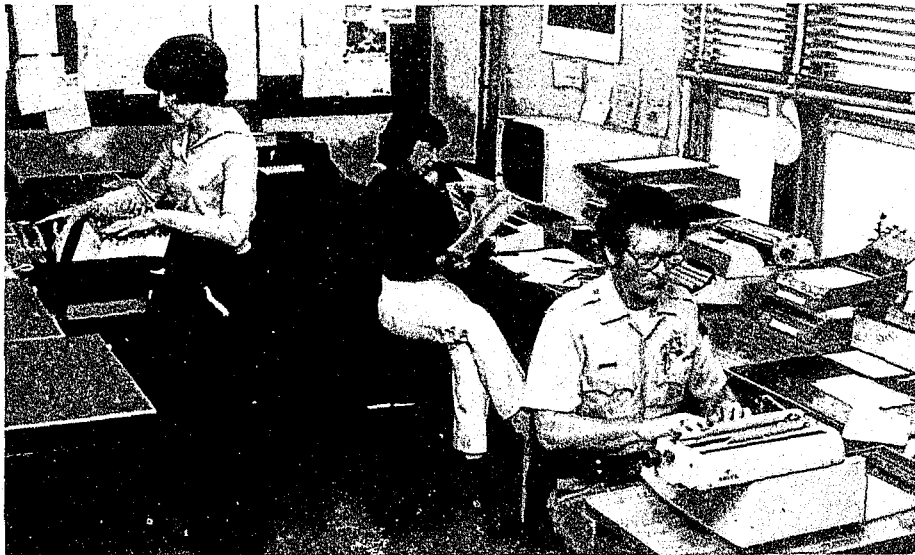
Lieutenant R. J. Peters



SERVICE DIVISION

The Service Division is commanded by a Captain who is assisted by a Lieutenant and several sworn and non-sworn supervisors. The Division is divided into four bureaus: the Record Bureau, Identification Bureau, Warrant Bureau and Report Transcribing Bureau. During the past year another subdivision was created, the Report Review Unit. The Division operates with a total of 52.5 authorized sworn and non-sworn positions; however, a number of these positions remained vacant all year.

The Service Division provides the support functions necessary to operate the Police Department. These functions include, but are not limited to: maintenance of all police activity records; transcription of incident reports dictated by patrol officers; technical crime scene investigations and identification; custody of prisoners and operation of the jail; operation of the patrol wagon; custody and control of physical evidence, property and police supplies; telecommunications network terminal operations; traffic and misdemeanor warrant processing and service; departmental data and statistical production on various departmental activities; and informational services to the public.

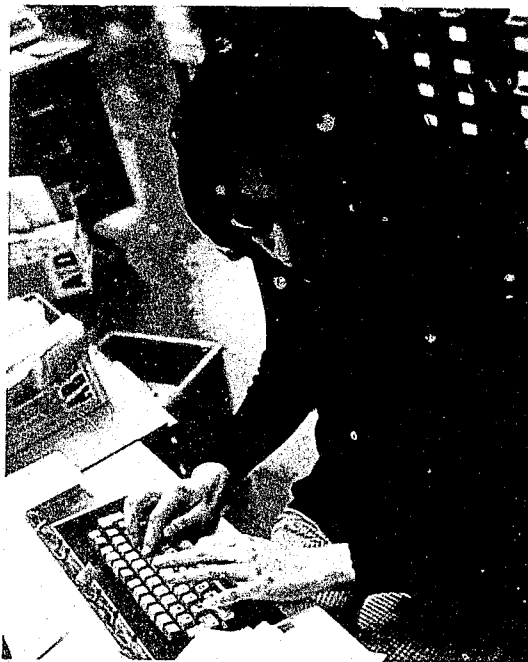


The Record Bureau processed 72,521 police reports in 1977. These figures do not represent the "non-official" reports originated and

processed within the Division. Report processing includes transcription, duplication, routing, review, indexing, abstraction of statistical data, microfilm storage and security of the finished product.

The Identification Bureau provides technical crime scene investigators for all major crimes. During the year 1977 the ID Bureau conducted 3,655 crime scene investigations, leading to 34,092 fingerprint comparisons, resulting in the positive identification of 147 persons responsible for various crimes. The ID Bureau also provides expert court testimony on matters of physical evidence.

The Warrant Bureau processed 33,693 criminal and traffic warrants. An additional 5,437 warrants were received from outside agencies for persons residing in Berkeley or in our jail. Our backlog of unserved local warrants dropped from



79,799 on January 1st to 61,926 on December 31st due to Court ordered dismissals of 39,280 misdemeanor and traffic warrants. The backlog of unserved outside warrants dropped from 16,125 to 1,537 due to the circumscription of the service provided by the Warrant Bureau in the processing of outside traffic warrants.



The Telecommunications Center processed 33,659 teletype messages during the year. The Center also handled in excess of 193,000 messages from and inquiries into the Police Information Network (PIN), Stolen Vehicle System (SVS), and National Crime Information Center (NCIC) communications systems.

The Report Review Unit was organized in July 1977. It combined all of the report review functions formerly conducted by the three Division Platoons. The unit now consists of one Sergeant, two Patrol Officers and one Police Service Assistant, processing 2,000 pages of reports daily in less time than under the previous system. The consolidation of report reviewing has enabled the Department to be consistent in report quality and reduce the number of problems with follow-up investigations. Last year this unit reviewed more than 72,000 reports.



The Service Division for the past two years has been in the process of replacing sworn personnel with a non-sworn force. Police Service Assistants are now in positions providing services that were formerly held by sworn officers. This program not only saves money; it provides the flexibility that allows us to hire more female personnel for those functions that require female presence on a 24 hour basis. We now have a total of 13 sworn employees and supervisors to approximately 40 non-sworn employees. The program is successful.

We have also continued to support programs offering training and employment to residents of this city. The Division participates in the CETA program and has actively participated in the City's Workcreation program for the past several years.

PATROL DIVISION

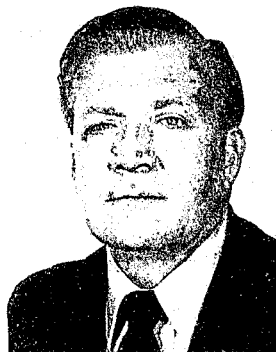


Captain D. T. Hickman



Lieutenant B. J. Miller

First
Platoon



Lieutenant T. J. Haley

Second
Platoon

Traffic
Bureau

Foot
Patrol

Para-
Professional



Lieutenant P. E. Doran

Third
Platoon

Communications
Center

PATROL DIVISION

The Patrol Division is commanded by a Captain with the assistance of three lieutenants. The Division is comprised of three patrol platoons, a Traffic Bureau, a Foot Patrol Detail, a Communications Bureau, a Senior Citizen Program and a Paraprofessional Unit.



The Patrol Division is the Department's primary representative to the community. Providing immediate police service on a 24-hour-a-day basis, it is the front line unit in the prevention and investigation of crime. Specific functions of the Patrol Division include continual patrol of residential and commercial areas to prevent criminal activities; investigation of all reports alleging violations of the law, including the necessary follow-up investigations; identification and arrest of criminal offenders; investigation of traffic collisions and participation in traffic enforcement programs; response to all types of emergency calls; and performance of miscellaneous services related to community concerns.

The Traffic Bureau's responsibilities include the enforcement of traffic regulations; investigation of traffic hazards and the initia-



tion of remedial measures; review and analysis of collision reports and issuance of citations when appropriate following such review; preparation and maintenance of charts and summaries of traffic collisions for use by officers in selective enforcement programs; cooperation with schools and other organizations in traffic safety education; preparation of specialized traffic studies, cooperation with the City Traffic Engineer in solving traffic problems; promulgation of necessary traffic control legislation; traffic control at special functions; and preparation of reports as directed.

The Traffic Bureau also includes a Bicycle Detail which regulates bicycle licensing and operation, conducts and supervises a bicycle court which is comprised of youngsters from the community.

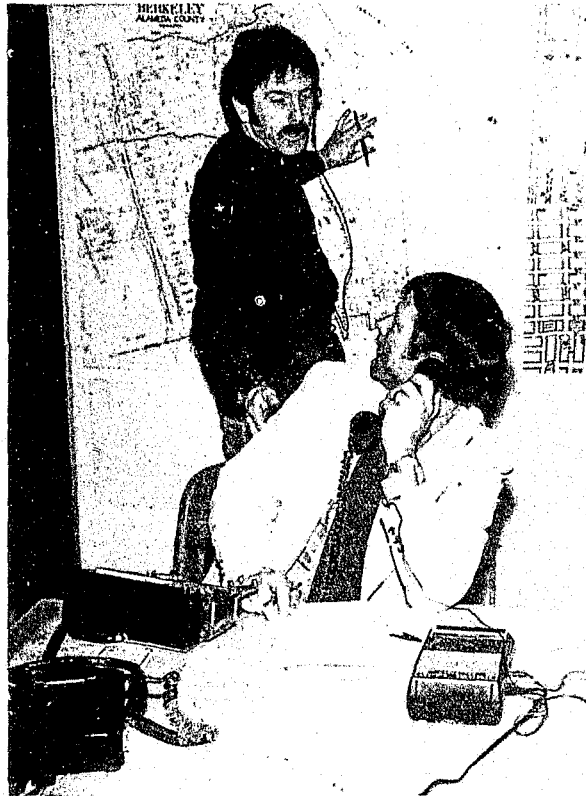
The Foot Patrol Detail is supervised by the Director of the Junior Traffic Police, a Sergeant with a two-fold responsibility. In cooperation with local schools, he administers the Berkeley Junior Traffic Police and Adult Crossing Guard programs. Additionally, he supervises the Foot Patrol Detail whose members walk various business districts throughout the city. Foot Patrol officers also provide added protection to Senior citizens through supervision of a federally funded program titled, "Senior Citizen Safety Program. Under this program six civilian employees assist senior citizens at the senior citizen centers and throughout the city by providing safe corridors of travel, security checks, property identification and crime prevention information and techniques. Foot Patrol in the south campus area



is provided jointly by this Department and officers from the University of California Police Department.

In December of 1975 a federally funded grant program titled "Reduction of Response Time Through Utilization of Paraprofessional Personnel" was initiated within the Patrol Division. The program placed eight uniformed non-sworn Police Service Assistants, supervised by a Sergeant, into field operations handling non-hazardous calls that do not require police officer power. The objective of the program is to relieve beat officers of as many relatively minor calls as possible so that sworn officers' response time to more serious calls might be reduced.

A "Barricaded Subject/-Hostage Negotiation Team" comprised of a carefully selected and screened group of officers was organized in 1976. The primary aim of the unit is the non-violent resolution of situations involving a barricaded subject, either with or without hostages. If, however, violence is inescapable, the officers are specially trained in response techniques that minimize danger to innocent persons.



DETECTIVE DIVISION



Captain J. R. Crooke



Lieutenant D. C. Smithson

Inspectors
Bureau



Lieutenant M. J. Healy

Juvenile
Bureau

DETECTIVE DIVISION

The Detective Division, commanded by a Captain with the assistance of a Lieutenant of Inspectors and a Director (Lieutenant) of the Juvenile Bureau, is comprised of the Inspectors Bureau, the Juvenile Bureau and the Special Investigations Bureau. The general overall function of the Division is to assist, advise and coordinate the efforts of the Patrol Division within the specialized parameters delineated below.



The Inspectors Bureau consists of nine details including the Homicide Detail, responsible for homicide, felony assault and missing person investigations; the Sex Crimes Detail, responsible for rape and felony sex offense investigations and coordination of cases involving misdemeanor sex offenses; the Robbery Detail, responsible for robbery, purse snatch, bribery, extortion, kidnapping and illegal weapons investigation; the Burglary Detail, responsible for residential and commercial burglary and receiving and/or possession of stolen property investigations; the Theft Detail, responsible for grand theft, bunco and fraud investigations and the inspection of second-hand establishments; the Auto Detail, responsible for the in-

vestigation of vehicle theft, auto burglary, thefts from vehicles, and felony offenses involving drunk driving and hit-run driving; the Forgery Detail, responsible for investigation and case preparation in matters of forgery, bad checks and counterfeiting, and credit card offenses; the Fugitive Detail, responsible for the service of felony warrants, escape and jail breaking investigations, parole violations and extraditions; and the General Works Detail, responsible for arson, organized crime investigations and investigations involving explosive devices.



The Press Officer, also a member of the Inspectors Bureau, maintains liaison with and provides information to the news media regarding police investigations and other functions and programs of the Police Department.

The Special Investigations Bureau is responsible for investigation of violations involving illicit drug activity, prostitution, gambling and liquor laws.

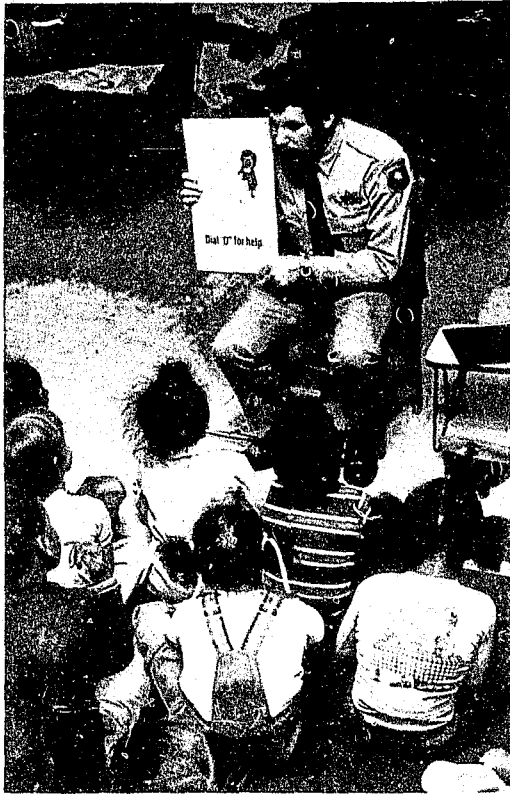
Over the years the main emphasis of the Special Investigations Bureau has been in the identification and arrest of major narcotics dealers. However, in late 1976 and in all of 1977 the main emphasis had to be diverted to enforcement of laws relating to prostitution. The diversion of emphasis is clearly reflected in the volume of narcotics and dangerous drugs seized over the past three years.

VOLUME OF NARCOTICS AND DANGEROUS DRUGS SEIZED
1975 THROUGH 1977

Year	Heroin Grams	Cocaine Grams	Mari- juana Pounds	Hashish Grams	LSD Units	Dangerous Drugs Units
1975	14,586.24	12,798.30	376.75	80.20	9,044.00	4,851.00
1976	4,012.10	2,899.40	144.10	836.90	4,656.00	31,919.00
1977	393.30	2,064.00	32.44	239.00	14,457.00	1,192.00

Street prostitution along the lower section of University Avenue became a major concern of the Police Department and community groups and resulted in an almost total commitment by the Special Investigations Bureau to the problem. Special Investigations Bureau personnel made a total of 400 separate arrests for soliciting there in 1977, but arrests alone were not enough to stop the influx of prostitutes. Substantial deterrence was provided by uniformed officers assigned to walk in the area and by citizen groups which also walked in the area seeking to prevent "customers" and solicitors from conversing. Major assistance in abating the problem was provided by the Berkeley-Albany Municipal Court which speedily processed the arrests and dealt with the persons found guilty. By the end of the year the problem was eliminated. The increase in prostitution is clearly seen in a review of arrest statistics covering the past three years.

Year	Persons Arrested For Soliciting	Offenses Charged
1975	17	39
1976	248	372
1977	400	616



The Juvenile Bureau is responsible for review, evaluation and departmental disposition of all juvenile offenders; innovating, planning and implementing delinquency programs; coordination and liaison with other agencies involved in the juvenile justice process; counseling and supervision of youthful offenders, coordination of activities involving the Big Brother, Big Sister and Firefighter Big Brother Programs; and providing assistance and cooperating with other organizations working in behalf of youth.

Juvenile arrests decreased by 4.5% over 1976. Of the 1,183 individuals involved in 1,553 arrests, 448 or 37% were non-residents.

Diversion programs involving Berkeley youths and administered by the Bureau during 1977 included a snow trip, attendance at both professional and college basketball games, the Ice Follies, water skiing, and others.



The Bureau continued to emphasize working with youngsters in the community where they live. It is believed that the utilization of community resources can be more effective in aiding an early offender in making a successful adjustment into society, rather than thrusting him or her too quickly into the criminal justice system.

Professional training continued to be stressed during 1977. During the year Bureau personnel attended courses in child abuse, family crisis intervention, and child pornography investigations. Bureau personnel were also instrumental in developing and implementing a forty-eight hour regionalized training program for juvenile law enforcement officers in Alameda County.



table 1

PLANT AND EQUIPMENT

VEHICLES

Services	4
*Ambulances, radio equipped	0
Prisoner van, radio equipped	1
ID vehicle/Warrant Bureau	3
Patrol	46
Beat Patrol/Pool	39
Foot Patrol/Police Reserve	4
Traffic Bureau, radar equipped	3
Bus, mobile communications center	0
Detective	12
Inspectors Bureau/Juvenile Bureau	12
Administrative	8
TOTAL	70

OTHER EQUIPMENT:

Portable radios, transistor type, hand held	75
Silent alarms to communications center	183
Police call boxes	27

Police Radio Station - KSL 359, operating on 460.175 M.C. duplex

Hall of Justice Equipment: custom built Communications Center, 12 channel capacity with four complete operating positions, 90 watt rating. Effective radiated power 350 watts.

Approximate usable range:

Station to car - 35 miles
 Car to car - 6 miles
 Car to Station - 20 miles

*Ambulance transferred to Fire Department on May 16, 1977

table 2

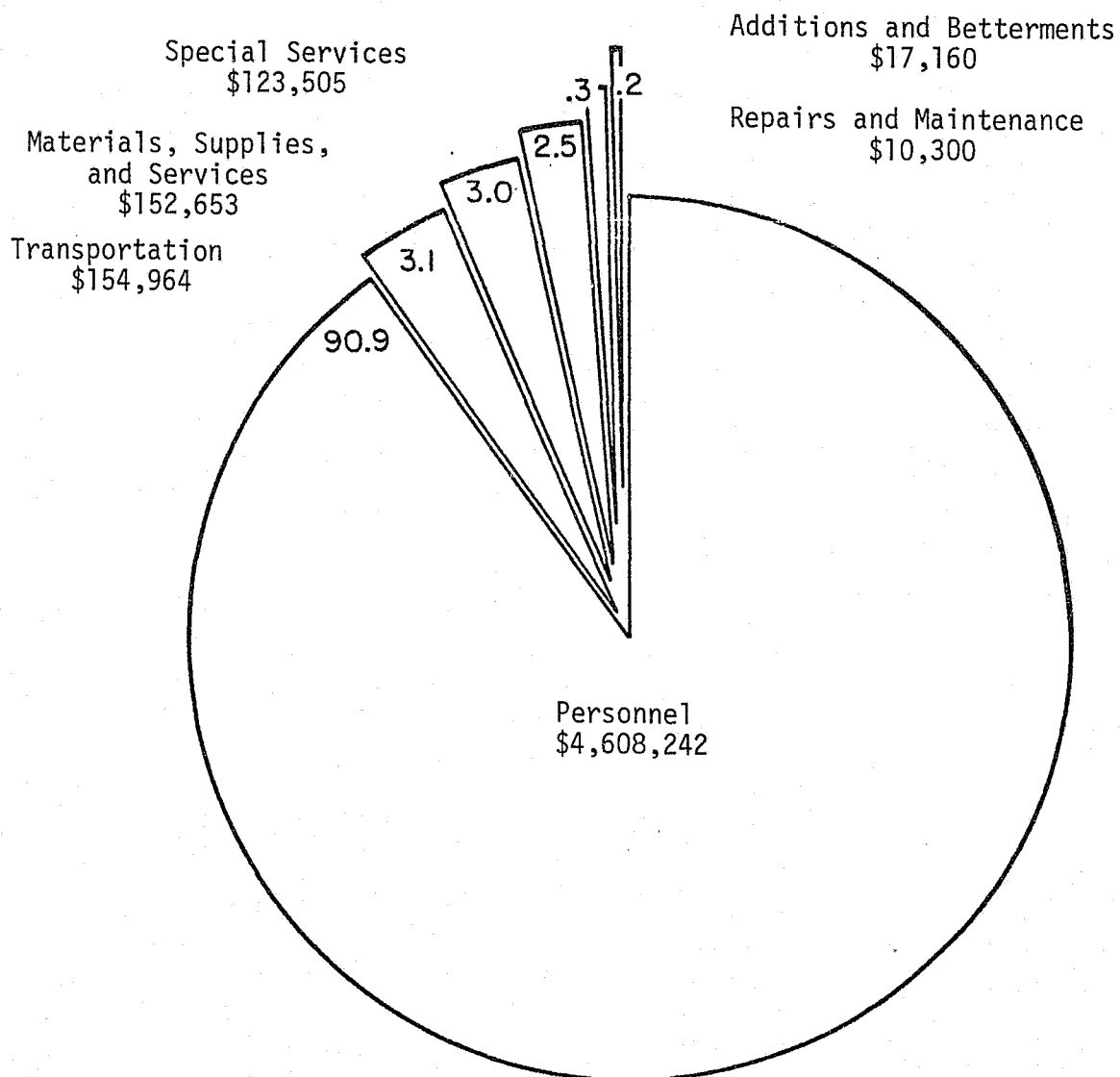
ACTIVITY OF RECORD BUREAU

	1976	1977
Reports processed and filed	73,072	72,521
Ambulance and emergency runs	2,630	1,500*
Jail count	5,695	4,954

*Ambulance transferred to Fire Department May 16, 1977.

table 3

EXPENDITURES FOR FISCAL YEAR 1976-77
POLICE DEPARTMENT



TOTAL 1976-77 BUDGET: \$5,066,824

table 4

DISTRIBUTION OF PERSONNEL BY ACTIVITY

	1973		1974		1975		1976		1977	
Chief of Police	1	1	1	1	1	1	1	1	1	1
Office of the Chief	9	8	8	8	9	9	10	10	11	14
Personnel and Training	7	6	7	8	5	5	5	5	5	5
Community Relations	2	2	3	3	4	3	4	4	4	4
Police Reserves	2	2	2	1	2	2	2	2	2	2
Trainees-Aides	17	9.5	11.5	8	12.5	8.5	7.5	6	7.5	7.0
Inspectors Bureau	19	12	21	20	21	19	21	20	23	25
Juvenile Bureau	11	9	10	10	10	10	10	10	10	10
Special Investigations Bureau	4	4	4	4	4	4	4	4	4	4
Patrol Platoons	106	100	110	108	119	114	115	109	124	111
Traffic Bureau	7	5	7	5	6	6	6	6	6	5
Warrant Bureau	7	5	9	8	7	7	8	8	8	8
Report Transcribing Bureau	7	6	6	5.5	7	6.5	5.5	3	5.5	4
Record Bureau	36	32	32	36	32	31	30	30	30	30
Identification Bureau	3	3	8	7	9	9	9	9	9	9
Crime Specific Bureau	15.5	11.5	.5	0	0	0	0	0	0	0
Foot Patrol Detail	8	8	8	8	8	7	8	8	8	8
TOTAL	260.5	224	248	240.5	256.5	242	246	235	258	247

table 5

POLICE PERSONNEL

APPOINTMENTS, RESIGNATIONS, RETIREMENTS,

MILITARY LEAVES

	1973	1974	1975	1976	1977
Appointed and Reinstated	41	36	10	9	33
Resigned or Dismissed	36.5	24	15	15	21.5
Retired	5	5	1	3	5
On Extended Military Leave	5	1	1	2	2
On Leave of Absence	0	0	0	2	2
On Pension	68	72	72	75	80
Died	1	0	0	0	2

table 6

SALARY SCALE AND DISTRIBUTION OF PERSONNEL

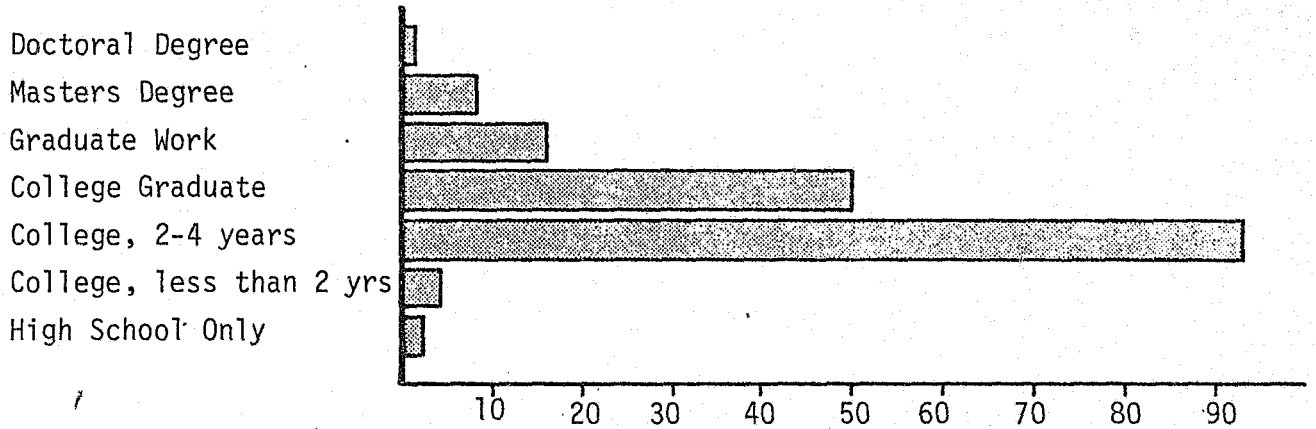
(Effective December 31, 1977)

Title	No.	Monthly Salary	Administrative Division				Detective Division			Patrol Division			Service Division			
			Administration	Personnel and Training	Community Relations	Police Reserves	Inspectors Bureau	Juvenile Bureau	Spec. Investigation	Patrol Platoons	Traffic Bureau	Foot Patrol Detail	Record Bureau	Identification Bureau	Warrant Bureau	Report Transcribing Bureau
Chief of Police	1	2500-3450	1													
Captain	4	2360-2600	1				1			1			1			
Lieutenant	7	2088-2302	1	1			1			3			1			
Inspector	10	1848-2038					10									
Juvenile Bureau Director	1	2088-2302						1								
Internal Affairs Director	1	1848-2302	1													
Special Investigations Director	1	1848-2302							1							
Sergeant	23	1761-1939		1		1				16	1		3		1	
Identification Expert	1	1761-1939												1		
Junior Traffic Police Director	1	1761-1939										1				
Patrol Officer	130	1379-1761	2	3			9	5	3	86	4	8	8		2	
Ass't Patrol Off.	2	1030-1314	1					1								
Admin. Secretary	1	1096-1315	1													
Ass't Admin. Analy.	1	1147-1378											1			
Photographer	1	1073-1286												1		
Senior Clerk	2	1070-1174											1			1
Senior Acc't Clerk	1	1070-1174	1													
Community Service Assistant	3	980-1072			2			1								
Police Serv. Asst.	33	1081-1180								17			16			
Inter. Steno Clerk	2	957-1046	1				1									
Key Punch Operator	2	956-1046											2			
Inter. Typist Clerk	19.5	912-999		1		1	2	1		1			4	2	3	4.5
Inter. Acct. Clerk	2	957-1046	2													
Trainee/Aide	7.5	3.42-4.93		7.5												
Dept. Admin. Off.	1		1													
TOTAL	258		13	13.5	2	2	24	9	4	124	5	9	37	4	6	5.5

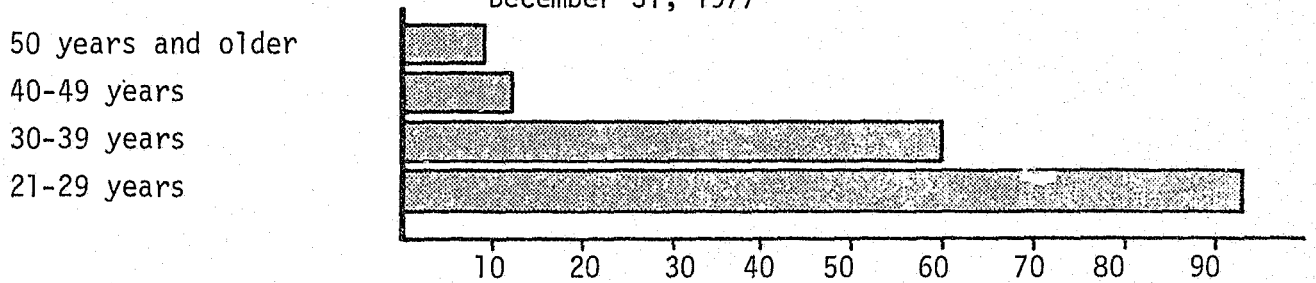
table 7

EDUCATION, AGE & EXPERIENCE DISTRIBUTION OF PERSONNEL

Education of Police Officers*
December 31, 1977



Number of Officers
Age Distribution of Police Officers
December 31, 1977



Number of Officers
Experience Level of Police Officers
December 31, 1977

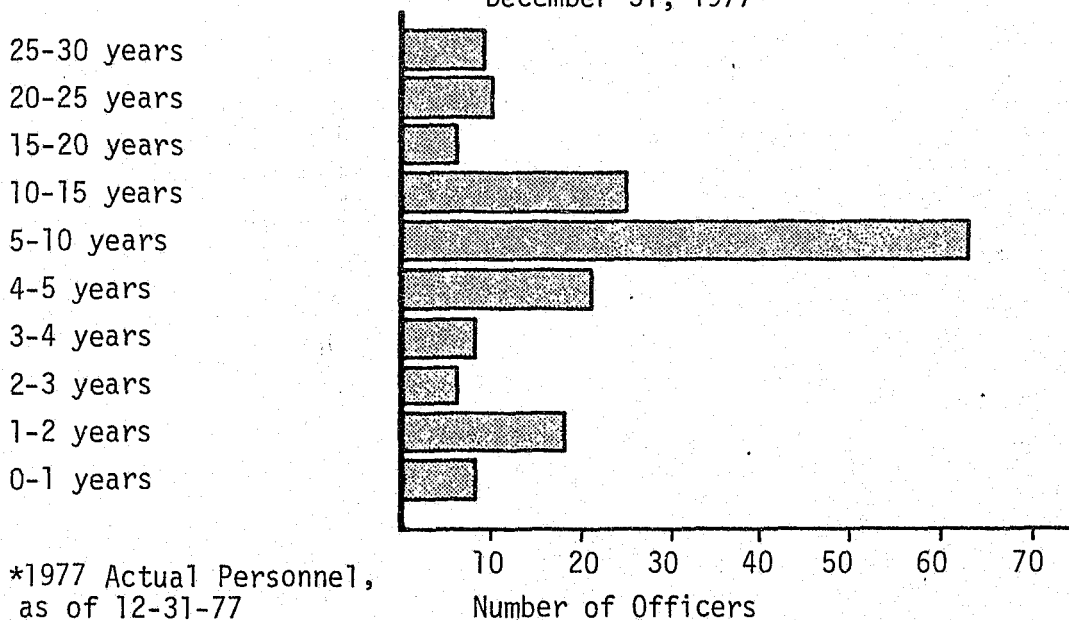


table 8

SUMMARY OF POLICE PERSONNEL ABSENCES

Days Not Present For Duty Due To:	No. of Days 1977
Regular Days Off.....	18,153
Vacation Days.....	2,006
Holidays	698
Illness.....	1,192
Injured in Line of Duty.....	1,325
Death in Family.....	22
Leaves of Absence.....	56
Absent Without Leave.....	1
Military Leaves of Absence.....	91
Suspension.....	30
Recovery of Overtime.....	1,940

table 9

ANNUAL COMPARISON OF POLICE OVERTIME IN HOURS

1973-1977

Year	Paid Overtime (Holidays not included)	Compensatory Overtime Accrued	Average Hrs. Accrued Per Officer	Compensatory Overtime Recovered	Remaining Accumu- lated Compensatory Overtime
1973	26,736.0	17,697.0	78.6	19,223.0	15,494.0
1974	31,609.5	15,053.1	73.4	13,972.8	16,575.0*
1975	18,051.5	17,426.0	90.3	17,640.0	16,361.0
1976	21,739.0	17,438.6	95.3	17,738.2	15,698.3
1977	23,595.0	18,277.6	104.4	15,517.1	20,297.0

*Corrected 1974 figure.

table 10

CHANGES IN POLICE PERSONNEL

Calendar Year 1977

Number of Personnel authorized, January 1	176
Number of Personnel Authorized, December 31	182
Number of Actual Personnel, January 1	170

PERSONNEL ADDITIONS:

Appointed during the year	18
Reinstated during the year	1
Returned from Military Leave	0
Returned from Leave of Absence	0

TOTAL ADDITIONS	19
-----------------------	----

PERSONNEL SEPARATIONS:

Voluntary resignation	9
Retirement on pension	5
Resigned with charges pending	0
Resigned in lieu of dismissal	0
Resigned, failed recruit probation	0
Dismissed for cause	1
Killed in line of duty	0
Deceased	0
Leaves of Absence	0
Military Leaves of Absence	0
From full time to one-half time	0

TOTAL SEPARATIONS	15
-------------------------	----

Number of Actual Personnel, December 31	174
---	-----

table 11

PERSONNEL COMPLAINTS AND PERSONNEL COMMENDATIONS, 1977

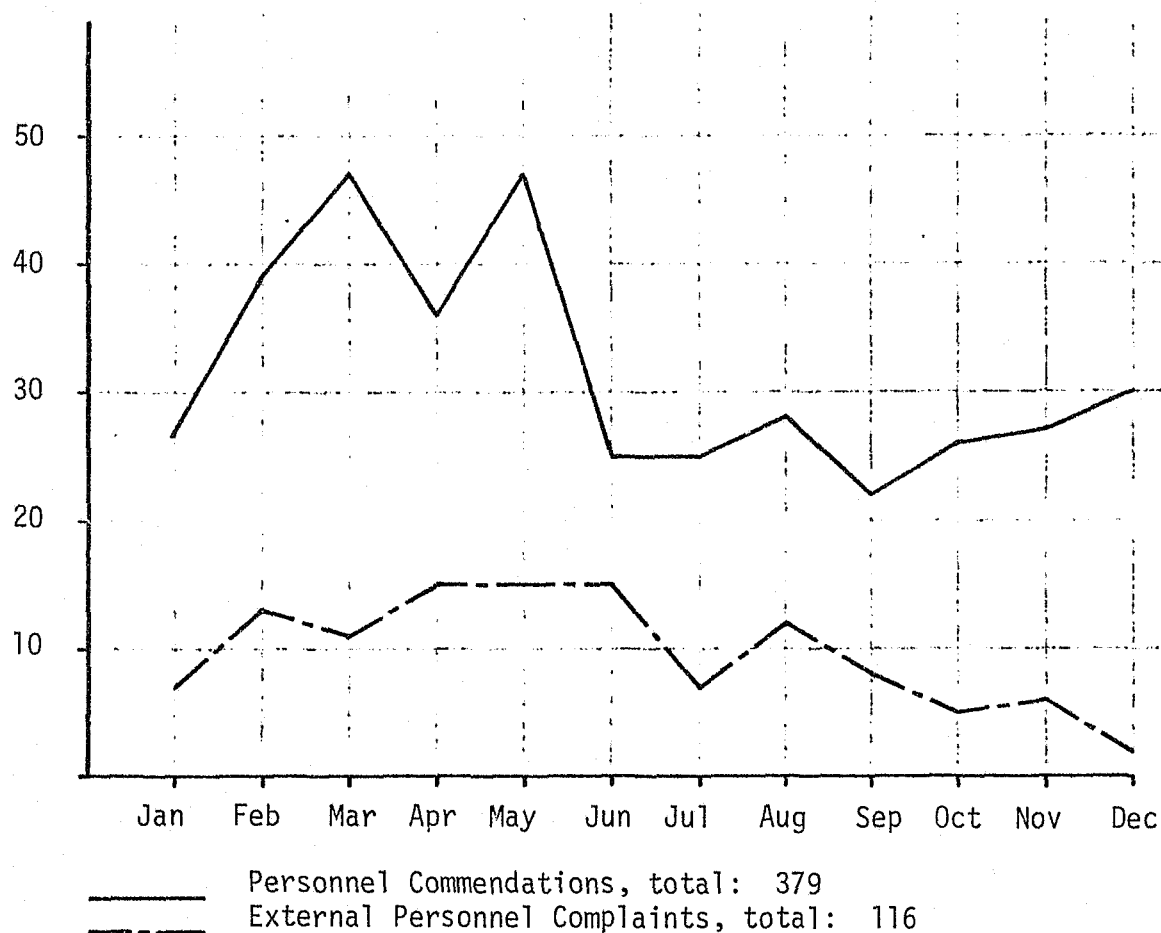


table 12

DISPOSITION OF PERSONNEL COMPLAINTS RECEIVED

	1975	1976	1977
Total External Personnel Complaints Received	229	218	116
Total Allegations*	293	374	193
Complaint Unfounded or did not Occur	119	144	34
Unable to Determine if Complaint Occurred	48	72	39
Complaint Sustained - Officer's Actions Justified	41	79	9
Complaint Sustained - Additional Training Given	59	50	28
Complaint Sustained - Employee Reprimanded	10	18	7
Complaint Sustained - Employee Suspended	8	2	0
Complaint Sustained - Employee Terminated	1	0	0
Complaints Pending at Year End	4	9	4
Withdrawn by Complainant	3	0	5
Personnel Commendations for Year	254	496	379

*Some complaints contain more than one allegation.

table 13

ACTIVITY OF BUREAU OF IDENTIFICATION

CRIMINAL FINGERPRINTS

1. Records on File	<u>1976</u>	<u>1977</u>
Fingerprints on file - Beginning of year	90,794	95,486
Fingerprints filed during year	4,457	2,539
Overage and cancelled fingerprint cards removed during year	235	320
Fingerprints on file - End of year	95,486	97,695
2. Identifications made:		
Local arrests identified by this Bureau	3,132	3,351
Local arrests identified by State and Federal Bureaus of Identification	4,857	3,082
Identifications made by fingerprint evidence left at scene of crime	188	147
3. Latent Fingerprint Investigations:		
Latent fingerprint investigations made	3,590	3,655
Hours expended in above investigations	2,404	2,728
Latent fingerprint comparisons made	33,636	34,092
Hours consumed in above comparisons	189	195
Laboratory examinations made	80	85
Articles examined	100	109

PHOTOGRAPHIC WORK

1. Photographs for Investigative Purpose:		
Made of persons arrested	4,112	40,328
Made of persons wanted	1,163	2,425
Made of evidence	5,935	15,180
Made of miscellaneous views	1,600	1,490

MISCELLANEOUS PUBLIC SERVICE

1. Identification inquiries received from outside agencies	6,231	6,020
Passport letters	248	316
Fingerprint cards process for applicants (schools, etc.)	623	692

table 14

ACTIVITY OF WARRANT BUREAU

<u>B.A.M.C. WARRANTS (Local):</u>	<u>1976</u>	<u>1977</u>
Total on file-Beginning of year	71,544	79,789
Total assigned during year	32,199	33,693
Total served during year	20,396	12,276
Total dismissed during year	3,558	39,280
Total on file-End of year	79,789	61,926
Total bail collected	\$3,495,334	\$2,956,244

Total Warrants Processed:

1977 - 33,693
 1976 - 32,199
 1975 - 28,099

<u>OUTSIDE WARRANTS:</u>	<u>1976</u>	<u>1977</u>
Total on file-Beginning of year	11,050	16,125
Total assigned during year	12,178	5,437
Total served during year	5,385	3,946
Total returned unserved	1,718	16,079
Total on file-End of year	16,125	1,537
Total bail collected	\$844,903	\$1,195,759

Total Warrants Processed (Outside)

1975 - 8,602 1976 - 12,178 1977 - 5,437

TOTAL ALL WARRANTS PROCESSED:

1975 - 36,701 1976 - 44,377 1977 - 39,130

table 15

MOTOR VEHICLE COLLISIONS BY
TYPE AND CLASSIFICATION

MOTOR VEHICLE INVOLVED WITH:	Number of Collisions		
	Prop. Damage or Non- Injury	Injury	Fatal
1. NON-COLLISION	9	32	2
2. PEDESTRIAN		112	2
3. OTHER MOTOR VEHICLE	1,416	781	1
4. MOTOR VEHICLE ON OTHER ROADWAY	9	7	
5. PARKED MOTOR VEHICLE	661	72	1
6. TRAIN	2	1	
7. BICYCLE	11	97	
8. ANIMAL	7	1	
9. FIXED OBJECT	177	67	
10. OTHER OBJECT	10	2	
11. OTHER	0	0	
12. NOT CODED	741	21	
TOTAL	3,043	1,193	6

table 16

AGE AND SEX OF PERSONS KILLED BY
COLLISION CLASSIFICATION

Fatal Collisions															
Age of Persons Killed															Sex M F
All Ages	0 to 4	5 to 9	10 to 14	15 to 19	20 to 24	25 to 34	35 to 44	45 to 54	55 to 64	65 to 74	75 and Over				
3				2						1		3			
2									1		1	1	1		
1					1							1			
1								1						1	
7				2	1			1	1	1	1	5	2		

table 17
COMPARISON OF TRAFFIC ENFORCEMENT TO
INJURY AND FATAL COLLISION CAUSES

VIOLATION/CAUSE OF COLLISION	Citations Issued		Type of Collision			
	Number	Percent of Total	Non-Injury	Injury and Fatal	Total	Percent of Total
SPEEDING	4,886	28.81	264	142	406	9.60
TRAFFIC LIGHTS	1,668	9.90	119	91	210	5.00
STOP SIGNS	1,027	6.00	52	41	93	2.20
IMPROPER TURNS	973	5.80	417	103	520	12.30
IMPROPER PASSING	39	.23	56	19	75	1.70
WRONG SIDE OF STREET	56	.33	29	20	49	1.20
VIOLATION PEDESTRIAN RIGHT OF WAY	187	1.10	1	47	48	1.11
IMPROPER SIGNAL	41	.24	4	1	5	.12
VISION OBSCURED	27	.16	0	0	0	0
RECKLESS DRIVING	7	.04	7	1	8	.19
CUTTING IN	75	.44	5	1	6	.14
FOLLOWING TOO CLOSELY	30	.18	272	127	399	9.41
DEFECTIVE BRAKES	8	.05	14	12	26	.61
DEFECTIVE LIGHTS	5,369	31.70	3	4	7	.17
OTHER IMPROPER DRIVING	621	3.70	988	132	1,120	26.40
HIT RUN-FELONY	0	0	0	1	1	.02
HIT RUN-MISDEMEANOR	94	.60	2	0	2	.05
DRUNK DRIVING	1	.01	102	64	166	3.81
MANSLAUGHTER	0	0	0	1	1	.02
VIOLATION BY PEDESTRIAN AT INTERSECTION	147	.90	2	13	15	.35
VIOLATION BY PEDESTRIAN NOT AT INTERSECTION	106	.61	0	27	27	.64
VIOLATION AUTO RIGHT OF WAY	197	1.20	563	319	882	20.80
MECHANICAL	169	1.00	28	14	42	1.00
OTHER - NOT DRIVING	1,190	7.00	85	49	134	3.16
TOTAL	16,918	100.00%	3,013	1,229	4,242	100.00%

table 18			
ACTIVITY OF PEDESTRIANS KILLED OR INJURED			
ACTIVITY	Fatal	Injured	Total
1. In Crosswalk - at Intersection	1	59	60
2. In Crosswalk - Not At Intersection	0	4	4
3. Crossing - Not in Crosswalk	1	34	35
4. In Road - Includes Shoulder	0	15	15
5. Not in Road	0	13	13
6. Approaching/Leaving School Bus	0	1	1
TOTAL	2	126	128

table 19							
MOTOR VEHICLE COLLISION COMPARISON 1973-1977							
YEAR	Total All Collisions	Fatality Collisions	Injury Collisions	Property Damage Only Collisions	Persons Killed	Persons Injured	Citations Issued in Collisions
1973	4,991	11	1,321	3,659	14	1,769	1,008
1974	4,521	12	1,169	3,340	12	1,589	1,188
1975	4,545	6	1,246	3,293	6	1,710	781
1976	4,348	6	1,225	3,125	6	1,641	796
1977	4,242	6	1,193	3,043	7	1,604	581
Percent Change 1976-1977	-2.4	0	-2.6	-2.6	+16.7	-2.3	-27.0

table 20

CITY OF BERKELEY
CENSUS TRACTS

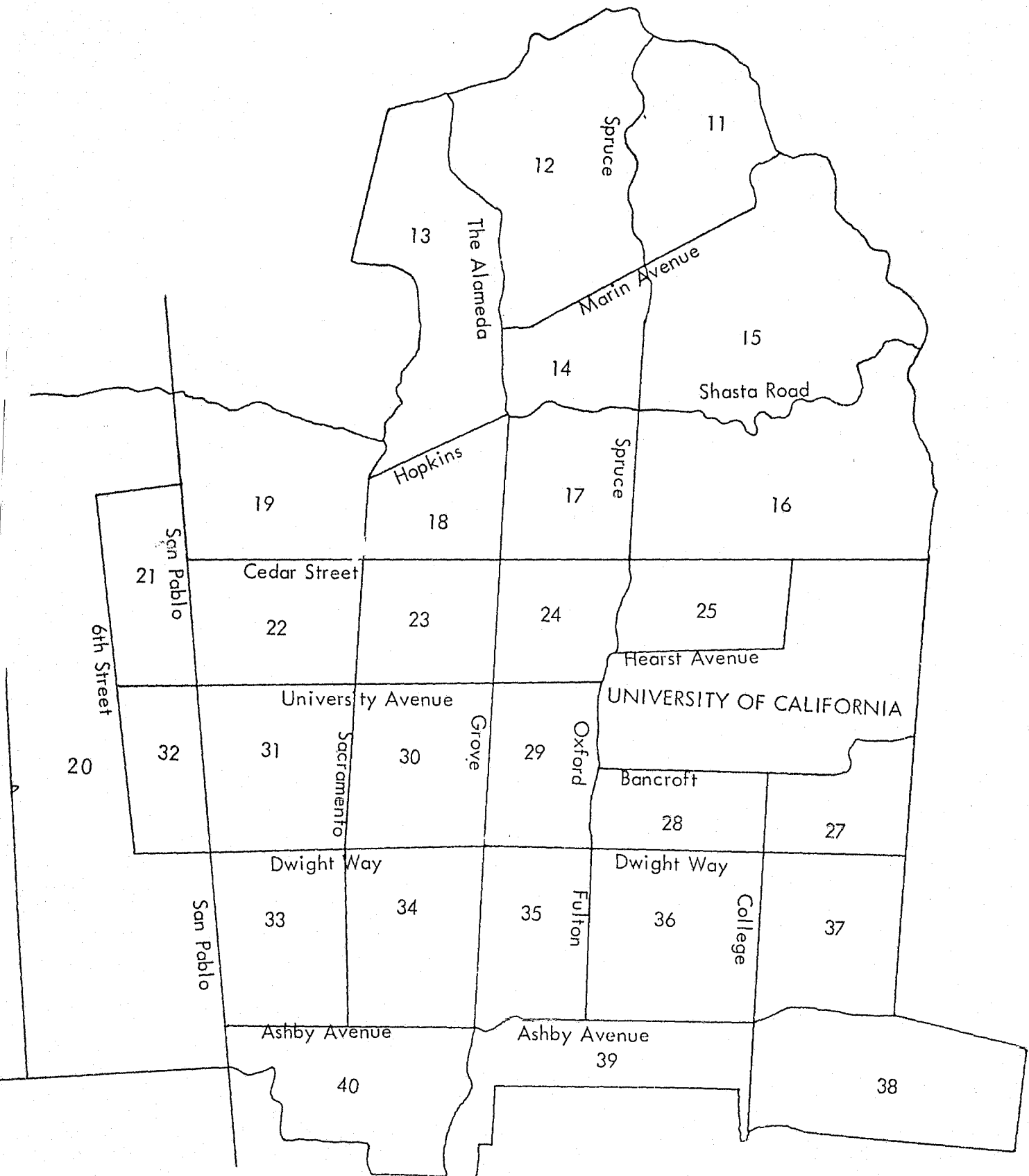


table 21

MAJOR OFFENSES BY CENSUS TRACT - 1977

Census	Homicide	Rape	Robbery	Aggravated Assault	Burglary	Larceny	Auto Theft	Total	% of Total
11	0	0	1	1	40	59	5	106	.88
12	0	0	2	0	43	88	6	139	1.16
13	0	0	10	2	74	83	13	182	1.52
14	0	0	2	1	28	56	11	98	.82
15	0	2	3	0	76	140	17	238	1.99
16	0	1	4	1	82	132	20	240	2.00
17	0	6	5	2	73	183	17	286	2.34
18	0	0	4	2	54	61	15	136	1.13
19	0	4	11	8	104	126	16	269	2.24
20	2	16	45	29	241	592	119	1,044	8.71
21	0	3	14	9	80	136	28	270	2.23
22	0	8	18	25	165	210	47	473	3.95
23	0	6	11	4	107	174	26	328	2.74
24	0	4	11	1	92	244	39	391	3.26
25	0	1	6	1	70	114	32	224	2.04
27	0	2	5	7	133	166	35	348	2.90
28	2	5	28	27	130	472	42	706	5.87
29	1	9	35	15	162	747	53	1,022	8.53
30	0	4	19	12	183	252	32	502	4.17
31	0	7	43	25	159	280	43	557	4.65
32	4	5	19	23	160	184	62	457	3.81
33	2	1	15	11	99	105	37	270	2.25
34	1	5	13	24	210	150	51	454	3.77
35	0	7	35	15	167	282	57	563	4.70
36	0	3	45	10	298	474	55	885	7.36
37	1	2	11	2	110	127	16	269	2.24
38	0	1	5	1	149	141	17	314	2.62
39	0	3	28	13	179	313	29	565	4.71
40	3	5	47	60	248	205	83	651	5.41
TOTAL	16	110	495	331	3,716	6,296	*1,023	11,987	100.00

*242 of the total are outside recoveries

table 22

CRIME CLOCK

OFFENSE	NUMBER OF OFFENSES	RATE
Homicide/Manslaughter	16	1 every 22.8 days
Rape	110	1 " 3.3 days
Robbery	495	1 " 17.7 hours
Aggravated Assault	331	1 " 1.1 days
Burglary	3,716	1 " 2.4 hours
Larceny	6,296	1 " 1.4 hours
Vehicle Theft	781	1 " 11.2 hours
Total Major Offenses	11,745	1 " 44.8 minutes
Battery	876	1 " 10 hours
Arson	38	1 " 9.6 days
Forgery	329	1 " 1.1 days
Fraud	409	1 " 21.4 hours
Receiving Stolen Property	122	1 " 3.0 days
Weapons Offenses	312	1 " 1.2 days
Sex Offenses	161	1 " 2.3 days
Offenses Against Family	23	1 " 15.9 days
Drug Laws	523	1 " 16.7 hours
Drunk Driving	360	1 " 1.0 days
Liquor Laws	122	1 " 3.0 days
Drunkenness	297	1 " 1.2 days
Disorderly Conduct	345	1 " 1.1 days
Vagrancy	412	1 " 21.3 hours
Suspicious Circumstances	4,298	1 " 2.0 hours
Vandalism	2,148	1 " 4.1 hours
Vice	303	1 " 1.2 days
Hazardous Traffic	16,918	1 " 31.1 minutes
Non-Hazardous Traffic	39,269	1 " 13.4 minutes
All Other	51,290	1 " 10.2 minutes
Total Other Offenses	118,555	1 " 4.4 minutes
Total All Offenses	130,300	1 " 4.0 minutes
Misc. Police Activities	14,994	1 " 35.1 minutes
Asst. to Outside Agency	2,320	1 " 3.8 hours
GRAND TOTAL	147,614	1 " 3.6 minutes

table 23

PERCENT OF MAJOR OFFENSES CLEARED BY ARRESTS
 COMPARED WITH OTHER UNITED STATES POPULATION CENTERS*

Comparative Population Centers	Year	Murder	Negligent Man- Slaughter	Rape	Robbery	Aggravated Assault	Burglary	Larceny	Auto Theft	TOTAL
Berkeley Population 114,081**	1977	84.6	100.0	49.1	22.7	63.1	12.3	14.5	16.4	16.1
	1976	83.0	100.0	41.0	36.0	86.0	12.0	20.0	24.0	20.0
	1975	85.0	100.0	38.0	35.0	86.0	16.0	21.0	27.0	22.4
	1974	80.0	85.7	39.0	37.8	80.9	21.7	20.2	32.2	23.7
	1973	61.5	75.0	40.0	31.4	81.9	19.9	20.6	27.3	22.8
Average All Pacific States	1976	75.8	52.6	46.7	28.6	57.7	16.9	20.3	16.5	21.2
	1975	73.8	62.5	45.3	28.2	59.4	17.7	19.9	16.7	21.1
	1974	78.5	70.2	44.9	30.2	59.6	18.6	18.8	16.7	20.8
	1973	75.3	77.1	45.8	30.4	62.6	19.3	18.4	16.3	20.8
	1972	74.1	67.8	45.7	32.8	65.7	19.7	18.2	16.5	20.9
Average of U.S. Cities 50,000 to 100,000 Population	1976	85.9	71.4	49.3	30.2	61.6	17.0	19.6	15.8	20.6
	1975	84.7	79.6	48.9	30.7	61.6	17.8	20.5	16.2	21.4
	1974	86.6	80.5	49.8	29.6	62.1	17.8	20.1	16.5	21.3
	1973	80.7	80.9	47.4	28.7	62.4	17.4	19.6	15.9	20.8
	1972	86.4	81.9	54.9	30.1	65.4	18.1	20.1	15.3	18.5
Average of U.S. Cities 100,000 to 250,000 Population	1976	84.1	84.1	55.5	33.3	71.6	17.8	19.2	16.8	21.4
	1975	81.5	74.8	51.4	31.2	65.8	17.7	19.6	15.1	21.1
	1974	83.1	70.9	50.9	29.4	67.1	17.2	19.0	15.2	20.9
	1973	83.3	76.0	54.9	27.9	67.6	16.4	18.8	14.4	20.4
	1972	86.7	82.3	56.2	28.8	66.1	18.1	18.9	14.5	19.2
Average U.S. Cities 250,000 And Over Population	1976	75.3	71.3	51.3	24.8	59.3	16.0	18.8	10.7	19.8
	1975	75.7	79.3	50.9	25.4	61.9	17.1	19.5	11.3	20.7
	1974	77.0	77.0	50.6	26.3	60.7	17.8	20.4	11.6	21.4
	1973	76.1	82.4	50.4	26.7	61.8	18.5	20.0	14.1	22.0
	1972	79.6	82.4	57.1	30.4	66.7	20.6	21.1	16.6	23.4
Average All U.S. Cities	1976	79.0	76.2	52.3	26.9	62.9	16.8	19.1	14.4	20.5
	1975	78.3	79.3	51.3	27.0	63.5	17.5	19.7	14.4	21.0
	1974	79.9	78.0	51.1	27.3	63.4	17.6	19.8	14.6	21.3
	1973	78.7	81.0	51.3	27.2	63.5	17.6	19.3	15.6	21.2
	1972	82.2	82.4	56.6	30.0	66.3	18.9	19.8	16.6	20.6

*Source of information: F.B.I. Uniform Crime Reports

**1970 Census Figure

table 24
MAJOR CRIME RATE PER 100,000 POPULATION
COMPARED WITH OTHER U.S. POPULATION CENTERS

Comparative Population Centers	Year	Murder	Negligent Man- slaughter	Rape	Robbery	Aggravated Assault	Burglary	Larceny	Auto Theft	TOTAL
Berkeley Population 114,091**	1977	11.4	2.6	96.4	433.9	290.1	3257.0	5518.4	684.5	10294.3
	1976	10.5	2.6	100.9	523.7	238.6	3269.3	5978.1	713.2	10836.8
	1975	11.4	1.8	92.1	492.1	335.1	3796.5	6190.4	675.4	11594.8
	1974	8.8	6.1	67.5	470.7	270.8	3853.1	5974.2	634.6	11285.7
	1973	11.2	6.9	85.8	506.4	242.1	3959.7	5539.9	726.2	11078.1
Average of San Fran- cisco Oakland Metropolitan Area***	1976	12.2		50.4	420.5	319.3	2458.4	4487.1	745.9	8493.8
	1975	12.4		48.5	396.5	301.5	2315.7	4283.7	693.9	8052.2
	1974	11.6		42.2	337.1	297.2	2145.9	3946.3	697.2	7477.5
	1973	10.9		44.9	353.3	274.4	2205.6	3643.0	745.6	7277.8
	1972	8.6		45.2	341.9	247.3	2045.4	1488.9	828.7	5005.9
Average of State of California	1976	10.3		44.7	275.6	338.7	2174.6	3745.8	644.3	7234.0
	1975	10.4		41.6	282.4	321.0	2217.3	3703.7	628.2	7204.6
	1974	9.4		40.6	252.7	307.8	2072.0	3525.5	638.8	6856.8
	1973	9.0		40.6	240.4	275.8	1979.6	3123.6	635.9	6304.9
	1972	8.8		39.7	238.6	253.7	1949.2	1435.1	681.3	4606.2
Average of U.S. Cities 100,000 to 250,000 Population	1976	10.0	2.8	34.9	238.0	289.9	1999.6	4375.7	609.9	7560.8
	1975	10.9	4.3	35.0	282.6	303.1	2177.3	4202.9	687.5	7703.6
	1974	11.7	4.3	34.3	264.9	289.1	2078.8	3719.8	712.4	7115.3
	1973	11.2	4.4	31.2	236.9	265.8	1807.1	3109.0	690.1	6155.7
	1972	10.7	4.2	27.3	218.7	245.7	1707.7	1275.9	687.3	4173.2
Average of All U.S. Cities	1976	9.9	2.7	30.8	275.9	263.7	1652.1	3561.2	572.4	6368.7
	1975	11.1	3.3	31.7	315.9	269.4	1772.7	3450.2	618.3	6469.5
	1974	11.4	3.3	31.5	303.3	256.7	1680.1	3074.9	607.7	5968.9
	1973	11.1	3.4	29.7	270.2	241.4	1457.1	2598.1	597.3	5208.3
	1972	10.7	3.6	27.3	271.7	228.7	1389.9	1082.0	593.9	3604.1
U.S. TOTAL	1976	8.8	0	26.4	195.8	228.7	1439.4	2921.3	446.1	5266.5
	1975	9.6	0	26.3	218.2	227.4	1525.9	2804.8	469.4	5281.7
	1974	10.4	4.5	28.4	235.3	228.0	1519.4	2647.6	500.8	5174.4
	1973	9.3	0	24.3	182.4	198.4	1210.8	2051.2	440.1	4116.4
	1972	8.9	0	22.3	179.9	186.8	1126.1	882.6	423.1	2829.5

*Larceny under \$50 excluded prior to 1973.

**1970 Census Figure.

***Alameda, Contra Costa, Marin, San Francisco, and San Mateo Counties

table 25
OFFENSES KNOWN AND ARRESTS
BERKELEY, CALIFORNIA

	1974		1975		1976		1977	
	off.	arr.	off.	arr.	off.	arr.	off.	arr.
Murder	10	14	13	15	12	10	13	19
Negligent Manslaughter	7	4	2	2	3	2	3	3
Rape	77	28	105	33	115	48	110	54
Robbery	537	177	561	214	597	209	495	104
Assault (Aggravated)	309	241	382	313	272	228	231	209
Burglary	4,396	664	4,328	554	3,727	434	3,716	457
Larceny-Theft	6,816	1,102	7,057	1,344	6,815	1,078	6,296	912
Auto Theft	724	188	770	201	813	146	781	128
TOTAL MAJOR OFFENSES	12,876	2,418	13,218	2,676	12,354	2,155	11,745	1,886
Other Offenses								
Battery	783	236	770	308	840	246	876	260
Arson	*	*	*	*	41	6	38	9
Forgery	276	71	342	75	235	49	329	24
Fraud	465	29	459	23	532	31	409	15
Receiving Stolen Property	189	153	176	117	130	107	122	101
Weapons Offenses	389	186	434	199	378	168	312	95
Sex Offenses	166	43	197	31	205	24	161	26
Offenses Against Family	15	3	20	3	23	9	23	2
Drugs	658	538	559	346	595	311	523	280
Drunk Driving	282	282	328	373	315	302	360	341
Liquor Laws	285	60	250	57	132	46	122	21
Drunkenness	306	273	349	333	314	258	297	245
Disorderly Conduct	434	76	410	35	343	87	345	15
Gambling	12	13	18	15	25	39	10	6
Vagrancy	258	53	217	52	342	65	412	93
Suspicious Circumstances	77	0	805	0	628	0	4,298	0
Miscellaneous Felony	*	*	*	*	71	11	61	35
Miscellaneous Misdemeanor	*	*	*	*	644	*	627	344
Vandalism	2,392	459	2,564	229	2,189	263	2,148	213
City Ordinance	*	*	*	*	5,083	*	552	83
Welfare & Institutions Code	*	*	*	*	415	406	394	334
Vice	10	7	17	19	188	186	303	316
Federal Felonies	*	*	*	*	56	17	24	15
Hazardous Traffic	46,861	19,583	50,476	18,991	17,751	17,894	16,918	16,753
Non-Hazardous Traffic	#	#	#	#	54,546	7,841	39,269	1,337
All Other Offenses	7,740	2,114	9,358	1,806	40,079	1,339	47,919	2,087
TOTAL OTHER OFFENSES	63,969	25,850	67,759	23,013	126,101	29,705	116,852	23,050
GRAND TOTAL OFFENSES	76,845	28,268	80,977	25,688	138,455	31,860	128,597	24,936

* Included in All Other Offenses

Included in Hazardous Traffic

table 26

MAJOR OFFENSES KNOWN TO AND CLEARED BY POLICE

MAJOR OFFENSES	OFFENSES REPORTED	UNFOUNDED	ACTUAL	CLEARED BY ARREST	CLEARED OTHER	TOTAL CLEARED
1. Homicide						
Total	16	0	16	12	1	13
Murder	13	0	13	10	0	10
Manslaughter	3	0	3	2	1	3
2. Rape						
Total	110	0	110	54	8	62
Completed	72	0	72	37	6	43
Attempted	38	0	38	17	2	19
3. Robbery						
Total	497	2	495	148	20	168
Armed	315	1	314	91	7	98
Strong Armed	182	1	181	57	13	70
4. Assault, Aggravated						
Total	331	0	331	213	62	275
Firearm	51	0	51	28	8	36
Cut	62	0	62	35	14	49
Other Weapon	152	0	152	90	35	125
On Police	66	0	66	60	5	65
5. Burglary						
Total	3,720	4	3,716	471	93	564
Force	2,087	2	2,085	259	59	318
No Force	1,322	2	1,320	171	28	199
Attempt	311	0	311	41	6	47
6. Theft						
Total	6,329	33	6,296	965	203	1,168
\$200 - Over	453	2	451	21	13	34
\$50 - \$199	1,553	7	1,546	39	36	75
Under \$50	4,323	24	4,299	905	154	1,059
7. Auto Theft*						
Total	802	21	781	102	77	179
TOTAL MAJOR OFFENSES	11,805	60	11,745	1,965	464	2,429

*Does not include 242 outside auto recoveries

table 26 (continued)
OTHER OFFENSES KNOWN TO AND CLEARED BY POLICE
MISCELLANEOUS CLASSIFICATIONS

OTHER OFFENSES	Offenses Reported	Unfounded	Actual Offenses	Cleared by Arrest	Cleared Other- wise	Total Cleared
8. Battery	876	0	876	268	450	718
9. Arson	38	0	38	6	2	8
10. Forgery	329	0	329	195	39	234
11. Fraud	409	0	409	116	126	242
12. Receiving Stolen Property	123	1	122	104	11	115
13. Weapons Offenses	312	0	312	186	97	283
14. Sex Offenses	161	0	161	54	11	65
15. Offense Against Family	23	0	23	11	9	20
16. Drugs	524	1	523	484	28	512
17. Drunk Driving	360	0	360	348	8	356
18. Liquor Laws	122	0	122	114	4	118
19. Drunkenness	297	0	297	285	12	297
20. Disorderly Conduct	345	0	345	93	158	251
21. Gambling	10	0	10	10	1	11
22. Vagrancy	412	0	412	310	8	318
23. Suspicious Circumstances	4,298	0	4,298	0	4,297	4,297
24. Miscellaneous Felony	61	0	61	35	1	36
25. Misc. Misdemeanor	628	1	627	344	245	589
26. Vandalism	2,150	2	2,148	291	261	552
27. City Ordinance	553	1	552	83	435	518
28. Welfare-Institutions Code	397	3	394	334	59	393
29. Commercialized Vice	303	0	303	291	9	300
30. Federal Laws	24	0	24	8	15	23
31. Hazardous Traffic Custody	366	0	366	201	156	357
32. Non-Haz. Traffic Custody	1,337	0	1,337	0	1,303	1,303
33. All Other	47,999	80	47,919	2,599	43,339	45,938
TOTAL OTHER OFFENSES	62,457	89	62,368	6,770	51,084	57,854
TOTAL MAJOR OFFENSES	11,805	60	11,745	1,965	464	2,429
GRAND TOTAL	74,262	149	74,113	8,735	51,548	60,283

table 27

AGE, SEX, AND RACE OF ADULTS ARRESTED

18 Years of Age and Over

CLASSIFICATION OF OFFENSES	18		19		20		21		22		23		24		25-29		30-34	
	M	F	M	F	M	F	M	F	M	F	M	F	M	F	M	F	M	F
Murder	0	0	1	0	0	0	1	0	0	0	0	0	0	0	8	3	3	1
Neg. Manslaughter	0	0	0	0	0	0	1	0	0	0	0	0	0	0	0	0	0	1
Rape	1	0	4	0	1	0	2	1	5	0	2	0	1	0	19	0	9	0
Robbery	3	0	1	0	6	1	3	1	6	1	2	0	7	0	18	3	8	0
Aggravated Assault	5	1	8	4	10	2	13	0	7	0	4	1	6	2	29	11	24	2
Burglary	24	1	21	1	22	0	20	2	22	0	16	1	10	3	56	4	32	1
Larceny	19	7	22	11	31	6	23	16	24	9	17	9	18	13	98	50	56	17
Auto Theft	4	0	6	0	2	0	6	0	2	1	3	0	4	0	14	0	2	0
Battery	6	1	5	1	7	3	11	0	8	0	11	1	11	0	42	3	24	4
Forgery	1	0	1	0	1	0	2	2	0	0	1	0	0	0	5	3	4	1
Checks & Fraud	0	0	1	0	0	0	0	0	0	0	0	0	2	0	4	0	2	0
Stolen Property	5	1	4	1	9	3	7	0	1	0	3	1	6	1	16	1	7	1
Weapons	1	0	4	1	4	1	3	1	5	0	2	0	3	1	22	5	9	2
Sex Offenses	0	0	0	0	0	0	0	0	1	0	1	0	4	0	6	2	3	0
Offenses vs Family	0	0	0	0	0	0	0	0	0	0	0	0	0	0	1	0	0	1
Drug Laws	19	1	9	4	7	4	4	3	9	3	11	4	9	5	56	17	33	2
Liquor Laws	0	0	0	0	0	0	1	0	0	0	0	0	1	0	3	0	3	0
Drunkenness	3	0	3	3	5	1	6	0	6	2	10	1	9	1	48	7	34	4
Disorderly Conduct	0	0	0	0	1	0	1	0	0	0	0	0	0	0	0	0	0	0
Vagrancy	2	1	1	2	1	5	5	5	0	2	1	1	1	1	13	0	13	2
Gambling	0	0	1	0	1	0	0	0	1	0	0	0	0	0	0	1	1	0
Drunk Driving	3	2	13	0	10	1	15	2	13	1	7	2	15	3	52	8	40	6
Prostitution & Vice	2	23	3	26	5	27	6	20	3	28	5	16	5	13	28	37	12	3
Vandalism	7	1	8	1	8	2	7	1	7	0	3	2	6	1	36	2	17	5
All Others	32	7	38	12	66	10	52	9	45	5	34	12	48	12	177	33	113	11
TOTAL, except traffic	137	46	154	67	197	66	189	63	165	52	133	51	166	56	751	190	449	64
Traffic Arrest	20	2	26	3	37	5	55	6	48	10	50	5	58	7	210	45	133	11
GRAND TOTAL All Offenses	157	48	180	70	234	71	244	69	213	62	183	56	224	63	961	235	582	75

table 27 (continued)
AGE, SEX, AND RACE OF ADULTS ARRESTED
18 Years of Age and Over

CLASSIFICATION OF OFFENSES	35-39		40-44		45-49		50-54		55-59		60-64		65 & Over		TOTAL		RACE		
	M	F	M	F	M	F	M	F	M	F	M	F	M	F	M	F	White	Negro	Other
Murder	0	0	0	0	0	0	0	0	0	1	0	0	1	0	14	5	1	18	0
Neg. Manslaughter	1	0	0	0	0	0	0	0	0	0	0	0	0	0	2	1	2	1	0
Rape	4	0	1	0	0	0	0	0	0	0	0	0	0	0	49	1	9	38	3
Robbery	3	0	1	0	0	0	0	0	0	0	0	0	0	0	58	6	17	47	0
Aggravated Assault	19	2	6	2	8	1	2	0	3	1	5	0	5	0	154	29	54	114	15
Burglary	12	0	4	2	0	0	1	0	1	0	0	0	0	0	241	15	49	191	16
Larceny	10	10	18	18	11	8	6	4	3	2	3	5	3	2	365	177	226	283	33
Auto Theft	4	0	2	0	1	0	0	0	0	0	0	0	0	0	50	1	13	34	4
Battery	12	1	11	0	5	0	1	0	0	0	2	0	2	0	158	14	54	99	19
Forgery	1	0	0	0	1	0	0	0	0	0	0	0	0	0	16	7	9	13	1
Checks & Fraud	1	0	1	0	1	0	1	0	0	0	0	0	0	0	13	0	7	6	0
Stolen Property	4	0	3	1	3	2	2	0	0	0	0	0	0	0	70	12	23	56	3
Weapons	2	0	5	0	3	2	0	1	3	0	0	0	3	0	69	14	16	64	3
Sex Offenses	2	0	1	0	2	0	0	0	0	0	0	0	1	0	21	2	16	6	1
Offenses vs Family	0	0	0	0	0	0	0	0	0	0	0	0	0	0	1	1	1	1	0
Drug Laws	10	1	5	2	3	1	2	0	2	0	0	0	0	0	179	47	108	112	6
Liquor Laws	2	0	1	0	0	0	1	0	0	0	0	0	0	0	12	0	3	9	0
Drunkenness	30	1	17	1	16	0	14	3	9	1	3	1	3	0	216	26	109	103	30
Disorderly Conduct	1	0	1	0	0	0	2	0	0	0	0	0	0	0	6	0	2	3	1
Vagrancy	6	0	5	0	3	0	3	0	0	0	1	0	0	0	55	19	40	23	11
Gambling	0	0	1	0	0	0	0	0	0	0	0	0	0	0	5	1	0	6	0
Drunk Driving	35	3	22	7	17	5	23	3	11	0	8	1	8	2	292	46	166	146	26
Prostitution & Vice	14	1	6	1	3	0	5	0	1	0	3	0	1	0	102	195	179	99	19
Vandalism	6	3	4	0	2	0	1	0	2	0	0	0	1	0	115	18	67	56	10
All Others	49	7	28	2	15	0	9	1	7	0	5	0	2	0	720	121	297	496	48
TOTAL, except traffic	231	29	143	26	94	19	73	12	42	5	30	7	30	4	2,983	758	1,468	2,024	249
Traffic Arrest	66	7	30	1	25	1	13	0	7	1	4	1	1	1	784	105	264	564	61
GRAND TOTAL All Offenses	297	36	173	27	119	20	86	12	49	6	34	8	31	5	3,767	863	1,732	2,588	310

TABLE 28
AGE, SEX AND RACE OF JUVENILES DETAINED

OFFENSE	SEX	10 AND UNDER	11-12	13-14	15	16	17	TOTAL UNDER 18	CAU.	NEGRO	OTHER
1. a. MURDER	M	0	0	0	0	0	0	0	0	0	0
	F	0	0	0	0	0	0	0	0	0	0
b. MANSLAUGHTER	M	0	0	0	0	0	0	0	0	0	0
	F	0	0	0	0	0	0	0	0	0	0
2. FORCIBLE RAPE	M	0	1	0	0	1	2	4	1	3	0
	F	0	0	0	0	0	0	0	0	0	0
3. ROBBERY	M	0	3	7	5	7	16	38	5	31	2
	F	0	0	1	0	1	0	2	0	1	1
4. AGGRAV. ASSAULT	M	0	1	6	5	6	6	24	3	18	3
	F	0	0	0	1	0	1	2	0	2	0
5. BURGLARY	M	9	20	49	36	45	31	190	50	119	21
	F	0	4	1	0	2	4	11	6	5	0
6. LARCENY	M	23	35	95	41	41	41	276	73	182	21
	F	8	11	29	15	22	9	94	30	60	4
7. AUTO THEFT	M	0	1	14	20	17	21	73	27	39	7
	F	0	0	1	1	1	1	4	2	2	0
8. BATTERY	M	6	8	14	12	11	19	70	19	48	3
	F	1	2	7	1	3	4	18	2	16	0
9. FORGERY & FRAUD	M	0	0	0	1	0	0	1	0	1	0
	F	0	0	0	0	1	1	2	1	1	0
10. STOLEN PROPERTY	M	0	1	4	3	7	3	18	4	13	1
	F	0	0	1	0	0	0	1	0	1	0
11. VANDALISM	M	10	12	21	14	7	8	72	35	30	7
	F	1	0	5	0	1	1	8	2	3	3
12. WEAPONS	M	1	0	1	1	4	5	12	2	10	0
	F	0	0	0	0	0	0	0	0	0	0
13. SEX OFFENSES	M	1	1	0	0	0	1	3	0	3	0
	F	0	0	0	0	0	0	0	0	0	0
14. DRUG LAWS	M	0	0	15	10	9	12	46	7	37	2
	F	0	0	1	2	4	1	8	4	3	1
15. GAMBLING	M	0	0	0	0	0	0	0	0	0	0
	F	0	0	0	0	0	0	0	0	0	0
16. ARSON	M	0	0	0	0	0	1	1	0	0	1
	F	0	0	1	0	0	0	1	0	0	1
17. DRUNK DRIVING	M	0	0	0	0	0	3	3	1	2	0
	F	0	0	0	0	0	0	0	0	0	0
18. LIQUOR LAWS	M	0	0	1	0	1	4	6	4	0	2
	F	0	0	0	2	1	0	3	3	0	0
19. DRUNKENNESS	M	0	0	1	0	1	0	2	1	1	0
	F	0	0	0	1	0	0	1	1	0	0
20. DISORDERLY COND.	M	0	3	1	0	1	3	8	2	6	0
	F	0	0	1	0	0	0	1	0	1	0
21. VAGRANCY	M	0	2	3	3	0	4	12	1	5	6
	F	0	0	0	3	2	2	7	2	5	0
22. RUNAWAYS	M	15	9	33	19	16	21	113	54	52	7
	F	6	12	73	38	41	16	186	88	85	13
23. ALL OTHERS	M	36	19	29	29	24	38	175	65	94	16
	F	19	5	23	15	18	26	106	47	53	6
TOTALS	M	101	116	294	199	198	239	1147	354	694	99
	F	35	34	144	79	97	66	455	188	238	29

table 29

ADULT CRIMINAL CHARGES AND DISPOSITIONS

Offenses by Classification	Persons Charged				Disposition*				
	Arrested	Arrested Via Citation	Released No Complaint	Hold for Prosecution**	Adults Guilty		Acquitted or Dismissed	Referred to Juvenile Ct. or Juvenile Bureau	Pending or Released to Other Juris- diction
					As Charged	Of Lesser Offense			
1. a. Murder	19	0	4	14	11	1	1	0	2
b. Manslaughter	3	0	1	2	0	0	2	0	0
2. Rape	50	0	6	42	13	11	10	0	10
3. Robbery	64	0	12	50	26	15	27	0	-15
4. Aggravated Assault	181	2	23	155	29	82	49	0	2
5. Burglary	256	0	28	218	75	85	34	1	23
6. Larceny	313	229	37	481	143	134	201	0	25
7. Auto Theft	51	0	16	32	3	25	11	0	2
TOTAL MAJOR	937	231	127	994	300	353	335	1	49
8. Battery	145	27	54	113	43	32	43	0	0
9. Arson	7	0	2	5	0	4	0	1	0
10. Forgery	23	0	2	21	15	8	5	0	-7
11. Fraud	13	0	0	10	6	4	5	0	-2
12. Weapons Offenses	62	21	17	62	32	24	20	0	-10
13. Receiving Stolen Property	82	0	20	58	11	19	27	0	7
14. Sex Offenses	15	8	2	20	2	3	7	0	8
15. Offense vs. Family	0	0	0	0	0	0	1	0	-1
16. Drug Offenses	215	11	53	159	25	77	64	0	9
17. Drunk Driving	333	6	9	314	243	63	14	0	10
18. Liguor Laws	11	1	1	7	6	1	0	0	4
19. Drunkenness	233	9	136	102	79	2	14	0	12
20. Disorderly Conduct	5	1	4	2	4	1	8	0	-11
21. Gambling	5	1	0	6	6	1	2	0	-3
22. Vagrancy	72	2	5	68	14	45	6	0	4
23. Vandalism	118	15	39	86	45	18	23	0	9
24. Vice	294	3	20	272	76	177	43	2	-20
ALL OTHER OFFENSES	1,554	37	83	20	718	56	220	1	514
TOTAL OTHER	3,187	142	447	1,325	1,325	535	502	4	523
TOTAL ALL OFFENSES	4,124	373	574	2,319	1,625	888	837	5	572

*Includes dispositions of cases pending prior to 1977.

**Does not include those released from other jurisdictions.

table 30

DISPOSITION OF JUVENILE OFFENDERS - BY OFFENSE

OFFENSE	JUVENILE JUSTICE SYSTEM						COMMUNITY TREATMENT PROGRAMS								TOTALS	
	Detained Juvenile Hall		Notice to Appear		Referred Justice Agency		Counseled and Released		Teacher Program		Community Diversion		Supervision Program			
	Boys	Girls	Boys	Girls	Boys	Girls	Boys	Girls	Boys	Girls	Boys	Girls	Boys	Girls	Boys	Girls
RAPE (FORCIBLE)	3														3	
UNLAWFUL INTERCOURSE																
ROBBERY	25	2	8		3		2								38	2
ASSAULT (AGGRAVATED)	14		9	1							1				24	1
ASSAULT (OTHER)	17	2	12	1	5	3	24	11	16		7	6	1		82	23
BURGLARY	73	3	59	1	12	1	24	4	2		19	1	1	1	190	11
GRAND THEFT	6	2	6		4		1						1		18	2
PETTY THEFT	21	8	47	9	12	4	72	49	66	11	23	9	14	2	255	92
AUTO THEFT	38		12		19	3	2	1					4		75	4
STOLEN PROPERTY	7	1	3		1		7								18	1
WEAPONS LAWS	5		4				3								12	
SEX (ALL OTHER)	3	27	1	1		1	2				1				7	29
RUNAWAY	29	53			29	38	19	57	9		23	38	4	3	113	189
BEYOND CONTROL	9	21			1	2	16	9			8	2			34	34
NARCOTICS AND RELATED OFFENSES	31	4	6		5		6	2			1	1			49	7
LIQUOR LAWS	1	1			6		1	3				1	2		10	5
ARSON			1									1			1	1
MALICIOUS MISCHIEF	1	1	18		10	2	32	3	11		3		2		77	6
DISTURBING THE PEACE	1		1				4	1	1				1		8	1
GAMBLING	1		1										1		3	
DRUNK DRIVING	1		2		1										4	
SCHOOL LOITERING	1						6								7	
ALL OTHER OFFENSES	19	3	9	5	31	4	17	13	8		3	1	3	1	90	27
TOTALS	306	128	199	18	139	58	238	153	113	11	89	60	34	7	1,118	435
GRAND TOTALS	434		217		197		391		124		149		41		1,553	

table 31

RESIDENCE DATA ON PERSONS ARRESTED FOR CERTAIN OFFENSES

- Adult & Juvenile -

	Berkeley Residents	Persons not Residing In Berkeley	Total Arrested	In County Less Than One Year	In State Less Than One Year
Murder	12	7	19	2	1
Negligent Manslaughter	1	2	3	1	2
Rape	19	35	54	21	6
Robbery	42	62	104	33	14
Assault	119	90	209	51	25
Burglary	267	190	457	89	47
Larceny	538	374	912	224	121
Auto Theft	62	66	128	48	28
Gambling	3	3	6	1	1
Forgery and Fraud	9	30	39	18	3
Weapons	40	55	95	30	8
Sex Offenses	15	11	26	8	4
Drug Laws	139	141	280	85	36
Drunk Driving	141	200	341	96	38
Liquor Laws	4	17	21	5	4
Disorderly Conduct	5	10	15	1	0
Vagrancy	22	71	93	50	15
Drunkenness	110	135	245	117	85
Offenses vs Family	2	0	2	1	0
Other	1,467	1,716	3,183	972	356
TOTAL	3,017	3,215	6,232	1,853	794

table 32

AUTO THEFT AND RECOVERIES

	1973	1974	1975	1976	1977
Autos Reported Stolen in Berkeley	846	724	770	813	808
Autos Recovered in Berkeley	284	306	331	285	340
Autos Recovered by Outside Departments	379	259	246	280	246
Autos Stolen Outside Recovered in Berkeley	278	218	262	242	242
Percent of Local Stolen Autos Recovered	78.4	78.0	74.9	69.6	72.5
CONDITION OF IGNITION SYSTEM					
Key left in auto or no key needed	211	172	163	180	168
Ignition Shorted	360	372	385	363	372
Unknown or attempt	92	21	29	22	46
TOTALS	663	565	577	565	586

table 33

VALUE OF PROPERTY REPORTED STOLEN AND AMOUNT RECOVERED

BY KIND OF PROPERTY*

Kind of Property	Amount Stolen	Amount Recovered	% Amount Recovered	No. of Cases Where Property Stolen	No. of Cases Where Property Recovered
Currency	\$ 287,126	\$14,946	5.2%	1,910	159
Jewelry	175,312	18,587	10.6%	432	93
Furs/Cloth.	88,379	11,697	13.2%	441	150
Off. Equip.	37,020	3,170	8.6%	132	17
Household	57,182	3,468	6.1%	105	10
Consumables	6,688	993	14.8%	569	255
TV/Radio	481,836	34,130	7.1%	1,995	142
Guns	7,026	514	7.3%	99	9
Misc.	343,135	30,178	8.8%	4,878	553
Livestock	0	0	0	0	0
Not Class.	53,413	42,180	79.0%	31	21
TOTAL	\$1,537,117	\$159,863	10.4%	10,592	1,409

*Offenses included are: Robbery, Burglary, and Larceny only. Auto Theft not included.

table 34

VALUE OF PROPERTY REPORTED STOLEN
AND AMOUNTS RECOVERED BY TYPE OF OFFENSE

OFFENSE	Stolen Property		Recovered Property	
	Number of Cases	Value	Number of Cases	Value
ROBBERY				
Street	1	\$ 110	0	0
Stores and Shops	146	43,830	8	5,992
Service Station	0	0	0	0
Residence	35	4,970	3	522
Bank	15	9,914	4	2,370
Other	298	36,977	29	3,689
TOTAL	495	\$ 95,801	44	\$ 12,573
BURGLARY				
Residence (Day)	1,915	\$ 399,068	125	\$ 25,242
(Night)	801	263,972	79	24,975
Commercial (Day)	808	200,303	48	12,962
(Night)	192	72,446	49	35,413
TOTAL	3,716	\$ 935,789	301	\$ 98,592
LARCENY				
Purse Snatch	78	\$ 3,328	16	\$ 351
Pick Pocket	40	6,947	1	400
Shoplift	840	19,856	642	5,864
From Auto	584	27,911	33	909
Auto Accessories	550	32,006	10	206
Bicycles	691	37,190	71	3,966
Coin Machines	3	0	0	0
Locked Vehicles	1,484	151,980	70	5,133
Phone Booth	12	2,106	0	0
From Building	1,649	145,002	184	13,883
Other	365	76,140	34	23,452
TOTAL	6,296	\$ 502,466	1,061	\$ 54,164
AUTO THEFT				
TOTAL	781	\$ 503,447	620	\$582,966
TOTAL	11,288	\$2,037,503	2,026	\$748,295

table 35

PERSONS REPORTED MISSING

Why Missing	Under 10 Years		10 to 19 Years		20 to 29 Years		30 to 39 Years		40 to 49 Years		50 And Over		Total
	M	F	M	F	M	F	M	F	M	F	M	F	
Chronic Drinking													
Family Trouble				1	1	1							3
Senility or Mental Disturbance			5					4	2	1	21	26	59
Small Children Lost	20	9	1					1					31
Juvenile Runaway	9	6	154	160									329
Spent Time with Friend	7	5	9	10	2	1	4	1	1	1	4		45
Delayed, etc.													
Runaways & Married													
Found Dead													
Unfounded Not Stated		1											1
Arrested Elsewhere			1		1								2
Sick, Despondent, etc.				1	2	1	1						5
Still Missing													
TOTALS	36	21	170	172	6	3	5	6	3	2	25	26	475

table 36
SUICIDES AND ATTEMPTS

	Attempts			Fatal		
	Male	Female	Total	Male	Female	Total
Jump	0	3	3	0	1	1
Cutting or Piercing	12	12	24	0	0	0
Drowning or Submersion	0	0	0	0	0	0
Gas	0	0	0	0	0	0
Hanging - Choking	3	1	4	0	1	1
Poisons	0	3	3	0	1	1
Overdose	10	20	30	2	2	4
Firearms	1	1	2	6	2	8
Other	1	0	1	0	0	0
TOTALS	27	40	67	8	7	15

table 37

MISCELLANEOUS POLICE ACTIVITIES

Nature of Activity	1973	1974	1975	1976	1977
Doors and Windows Found Open	139	443	165	385	292
Street Lamp Outages Reported	1681	1860	1145	1505	937
Arrests for Other Jurisdictions	1084	1271	1213	1301	1063
Transportation Services Rendered	3212	3284	3116	2630	1181
a. Citizen Request for Ambulance*	2940	2928	2159	2309	1142
b. Other Runs	272	356	957	321	39
Safe and Alley Lights Out	110	524	529	520	340
Assisting at Fires	893	1463	691	153	104
Response to Bank and Burglary Alarms	5979	6124	9665	8105	7652
Vacation House Inspections**	1427	1440	700	984	383
Non-Injury Traffic Collisions Investigated	3659	3340	3293	3125	3042
TOTALS	21396	23033	23633	18708	14994

*Ambulance Service Transferred to Fire Department 5-16-77

**Service Discontinued 9-1-77